

OCD10-M46400EN

PREFACE

1. This Parts Catalog is the 1st edition of NFAD7-L(E)IK3 Diesel Engine for ISEKI NOHKI.

Pub. No. : 000Y00D4640

Published : February, 1993

2. Model name

Engine model	Vehicle		Vehicle made by
	Products	Model name	
NFAD7-L(E)IK3	—	—	ISEKI NOHKI

Contents

Fig. No. Fig. Name

ENGINE NFAD7-L(E)IK3

1. CYLINDER BLOCK
2. CYLINDER HEAD & BONNET
3. AIR CLEANER & MUFFLER
4. CAMSHAFT
5. CRANKSHAFT & FLYWHEEL
6. PISTON & CONNECTING ROD
7. BALANCER
8. LUB.OIL SYSTEM & BREATHER
9. RADIATOR & FAN
10. FUEL INJECTION PUMP
11. FUEL OIL SYSTEM
12. FUEL TANK
13. GOVERNOR & CONTROL DEVICE
14. REGULATOR HANDLE
15. HAND STARTING DEVICE
16. STARTING MOTOR
17. LIGHTING DEVICE
18. TOOL,LABEL & GASKET SET
19. TOOL(OPTIONAL)
20. SAFETY LABEL

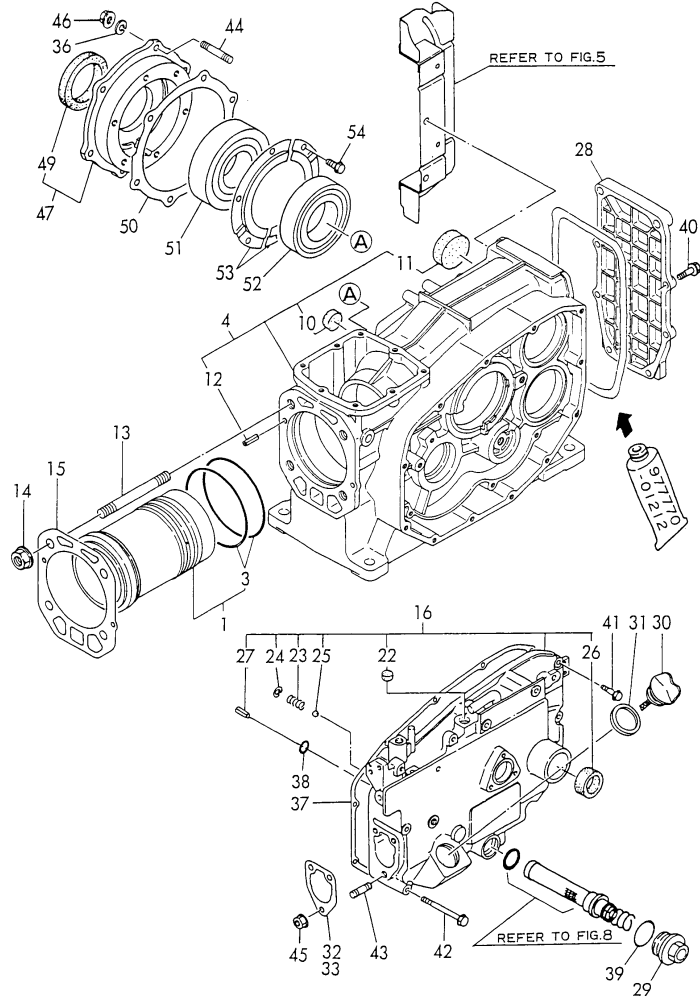
Fig. No. Fig. Name

Fig.1. CYLINDER BLOCK

(A)=NFAD7-LIK3
 (B)=NFAD7-LEIK3
 (C)=

(D)=
 (E)=
 (F)=

SPEC. CODE
 D05190-01110
 D05190-01120
 D05192-01130
 D05190-02100
 D05300-34200

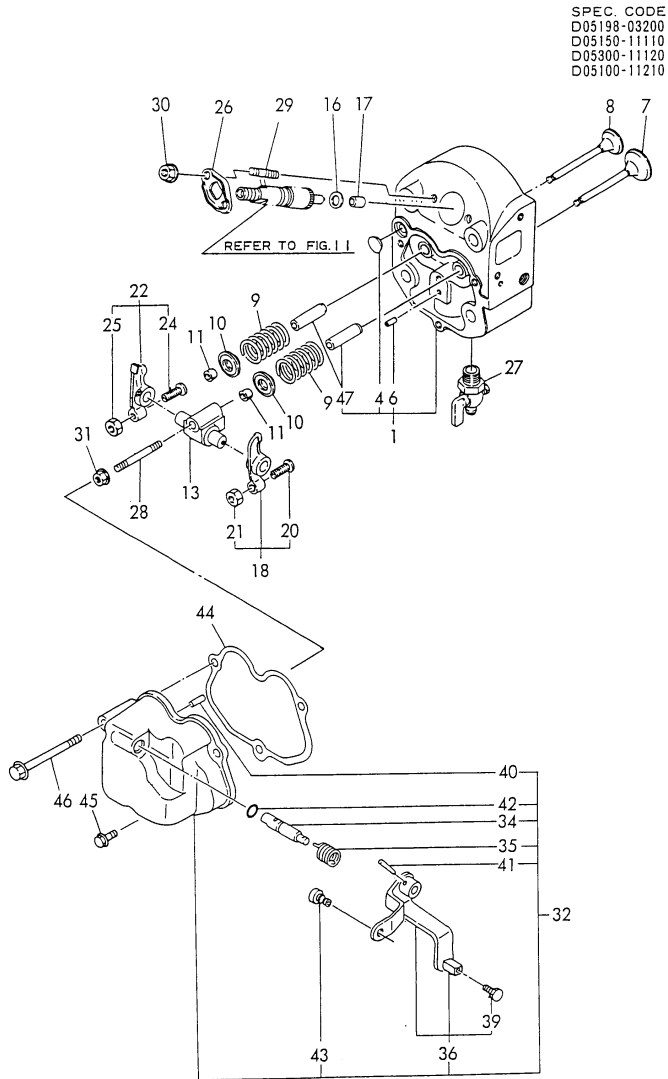


No.	Lev.	Parts No.	Description	Q'ty						I	R
				(A)	(B)	(C)	(D)	(E)	(F)		
1	1	705100-01900	LINER ASSY, CYLINDER	1	1						
3	2	105100-01300	O-RING	2	2						A
4	1	705190-01560	BLOCK ASSY, CYLINDER	1	1						
10	3	105190-01670	PLUG, 22	1	1						
11	3	105190-01680	SEAL, 42	2	2						
12	2	22351-060012	PIN, SPRING 6.0X12	2	2						
13	1	105215-01200	BOLT, HEAD M12	4	4						
14	1	121450-01220	NUT, CYLINDER HEAD	4	4						
15	1	105100-01330	GASKET, HEAD 147X118	1	1						A
16	1	705192-01501	CASE ASSY, GEAR	1	1						
22	2	105100-01660	PLUG, 14	1	1						
23	2	105300-34040	SPRING	1	1						
24	2	22252-000100	RING, 10	1	1						
25	2	24190-120001	BALL, STEEL 3/8	1	1						
26	2	105140-76500	SEAL, TCX25X35X6	1	1						
27	2	22351-060012	PIN, SPRING 6.0X12	1	1						
28	1	105190-01480	COVER	1	1						
29	1	105300-01690	PLUG	1	1						
30	1	105302-01750	CAP, FILLER	1	1						
31	1	101104-01760	GASKET, CAP	1	1						A
32	1	105300-01920	SHIM, T=0.1	1	1						
33	1	104271-01950	SHIM SET,0.2X3,0.3X2	1	1						
36	1	22217-080000	WASHER, SPRING 8	6	6						
37	1	105100-01410	GASKET, GEAR CASE	1	1						A
38	1	24311-000060	O-RING, 1AP6.0	1	1						
39	1	24321-000250	O-RING, 1AG25.0	1	1						
40	1	26106-060202	BOLT, M6X 20 PLATED	6	6						
41	1	26106-060302	BOLT, M6X 30 PLATED	7	7						
42	1	26106-060702	BOLT, M6X 70 PLATED	5	5						
43	1	26216-080222	STUD, M8X 22	3	3						
44	1	26226-080222	STUD, M8X 22	6	6						
45	1	26366-080002	NUT, M8	3	3						
46	1	26716-080002	NUT, M8	6	6						
47	1	705100-02500	HOUSING ASSY, METAL	1	1						
49	2	123325-02500	SEAL, OIL	1	1						
50	1	105100-02020	GASKET	1	1						A
51	1	105100-02300	BEARING, 6308-SH2-C3	1	1						
52	1	105100-02310	BEARING, 6208-SH2-C3	1	1						
53	1	106100-02331	RETAINER, BEARING	2	2						
54	1	26116-050082	BOLT, M5X 8 PLATED	6	6						

Remarks

A)THESE PARTS ARE SOLD BY FIG 18.REF NO.14.

Fig.2. CYLINDER HEAD & BONNET



(A)=NFAD7-LIK3
(B)=NFAD7-LEIK3
(C)=

(D)=
(E)=
(F)=

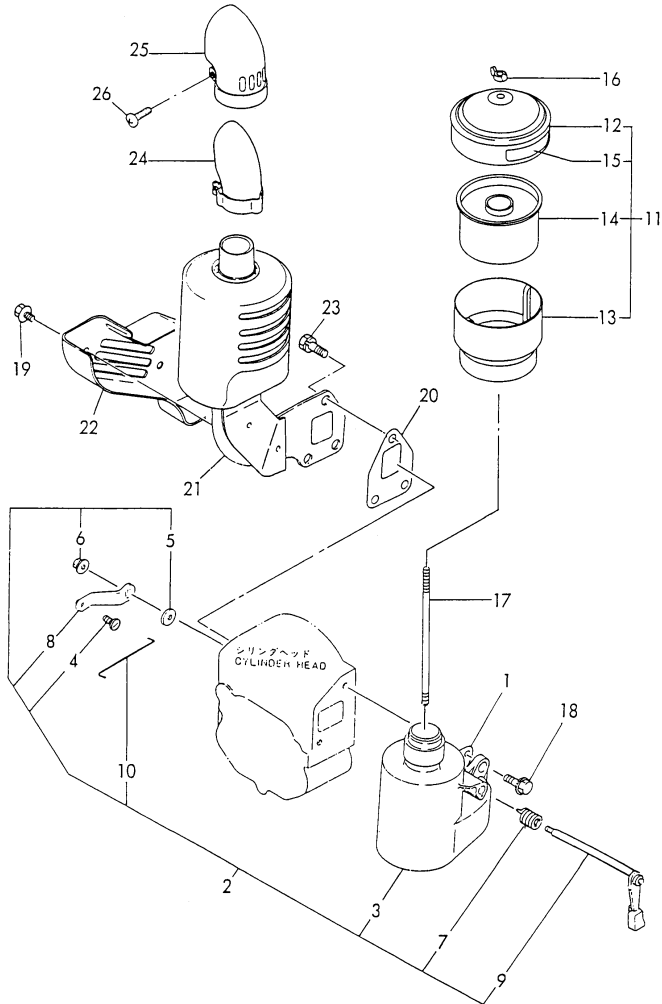
No.	Lev.	Parts No.	Description	Q'ty						I	R
				(A)	(B)	(C)	(D)	(E)	(F)		
1	1	705100-11700	HEAD ASSY, CYLINDER	1	1						
4	2	27231-150000	PLUG 15	1	1						
6	2	105300-11330	PIN	1	1						
7	1	105100-11100	VALVE, INTAKE	1	1						
8	1	105100-11111	VALVE, EXHAUST	1	1						
9	1	105400-11121	SPRING, VALVE	2	2						
10	1	101158-11180	RETAINER, SPRING	2	2						
11	1	27310-070001	COTTER, 7	2	2						
13	1	105300-11290	SUPPORT ASSY, ARM	1	1						
16	1	119625-11880	SEAT, NOZZLE	1	1						
17	1	119625-11870	PROTECTOR, NOZZLE	1	1						A
18	1	105100-11650	ARM, ROCKER	1	1						
20	2	101158-11230	SCREW, VALVE ADJUST	1	1						
21	2	26756-080002	NUT, LOCK M8	1	1						
22	1	105100-11660	ARM, ROCKER	1	1						
24	2	101158-11230	SCREW, VALVE ADJUST	1	1						
25	2	26756-080002	NUT, LOCK M8	1	1						
26	1	105300-11900	RETAINER	1	1						
27	1	105010-11920	COCK, WATER	1	1						
28	1	26216-080452	STUD, M8X 45	1	1						
29	1	26216-060402	STUD, M6X 40	2	2						
30	1	26366-060002	NUT, M6	2	2						
31	1	26366-080002	NUT, M8	1	1						
32	1	105198-11200	BONNET ASSY, HEAD	1	1						
34	2	105092-03600	SHAFT, DECOMPRESSION	1	1						
35	2	104200-03641	SPRING, DECOMPRESSION	1	1						
36	2	105198-03740	LEVER ASSY	1	1						
39	3	105225-66990	SCREW, M5X8.5	1	1						
40	2	22312-030180	PIN, PARALLEL M3X18	1	1						
41	2	22322-030180	PIN, TAPER 3X18	1	1						
42	2	24311-000070	O-RING, 1AP7.0	1	1						A
43	2	183250-03550	JOINT	1	1						
44	1	105100-11310	GASKET, BONNET	1	1						A
45	1	26106-060202	BOLT, M6X 20 PLATED	2	2						
46	1	26106-060602	BOLT, M6X 60 PLATED	1	1						
47	1	105300-11801	GUIDE, VALVE	2	2						1

Remarks

A)THESE PARTS ARE SOLD BY FIG 18.REF NO.14.
1)REPAIR PART.

Fig.3. AIR CLEANER & MUFFLER

SPEC. CODE
 D05198-1211025
 D05198-12210
 D05290-13100



(A)=NFAD7-LIK3
 (B)=NFAD7-LEIK3
 (C)=

(D)=
 (E)=
 (F)=

No.	Lev.	Parts No.	Description	Q'ty						I	R
				(A)	(B)	(C)	(D)	(E)	(F)		
1	1	105190-12050	GASKET	1	1						
2	1	105198-12010	PIPE, AIR INTAKE	1	1						
3	2	105198-12020	PIPE, AIR INTAKE	1	1						
4	2	183250-03550	JOINT	1	1						
5	2	22137-100000	WASHER, 10	1	1						
6	2	26366-060002	NUT, M6	1	1						
7	2	104200-03641	SPRING, DECOMPRESSION	1	1						
8	2	105198-03770	LEVER, DECOMPRESSION	1	1						
9	2	105198-03780	SHAFT	1	1						
10	2	105150-03790	ROD	1	1						
11	1	105192-12510	CLEANER, AIR	1	1						
12	2	105192-12530	COVER ASSY	1	1						
13	2	104304-12590	SUMP, OIL	1	1						
14	2	104304-12540	ELEMENT	1	1						
15	2	105092-07311	LABEL	1	1						
16	1	105092-12550	NUT	1	1						
17	1	105092-12560	BOLT	1	1						
18	1	26106-080202	BOLT, M8X 20 PLATED	2	2						
19	1	160260-01580	BOLT, FLANGE M6X6	2	2						
20	1	105300-13200	GASKET, SILENCER	1	1						A
21	1	105190-13510	SILENCER ASSY	1	1						
22	1	105190-13550	COVER	1	1						
23	1	26013-080189	BOLT, M8X 18	3	3						
24	1	105370-13570	PIPE	1	1						
25	1	105212-13590	COVER	1	1						
26	1	26554-060162	SCREW, M6X16	1	1						

Remarks

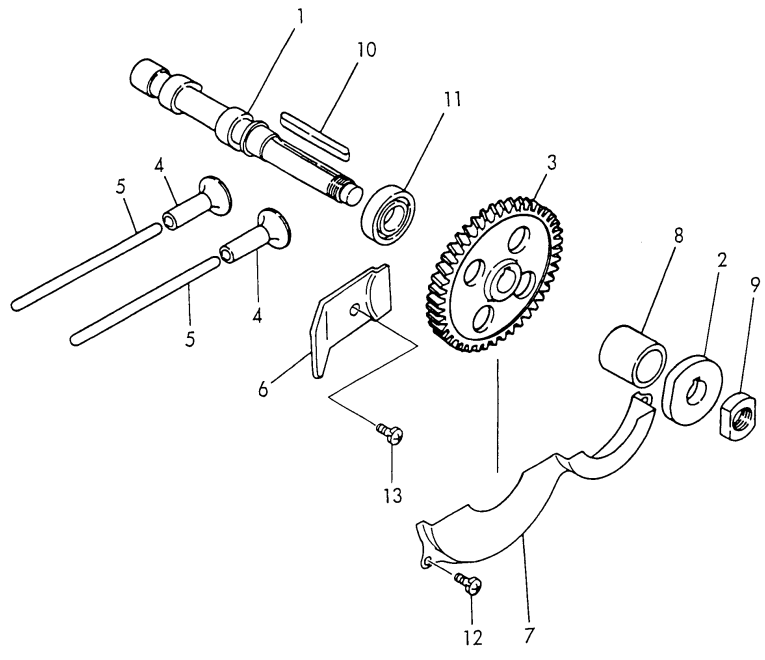
A) THESE PARTS ARE SOLD BY FIG 18. REF
 NO.14.

Fig.4. CAMSHAFT

(A)=NFAD7-LIK3
 (B)=NFAD7-LEIK3
 (C)=

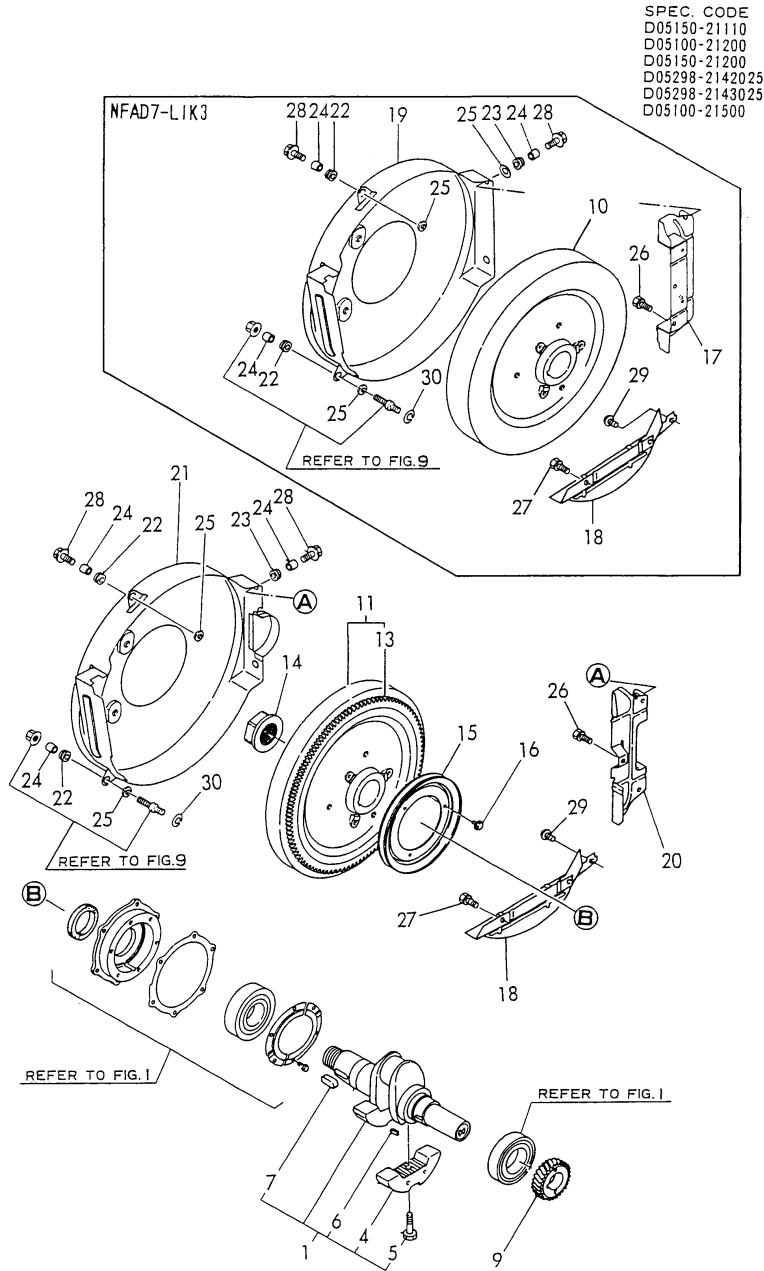
(D)=
 (E)=
 (F)=

SPEC. CODE
 D05170-14110
 D05100-14120
 D05302-14130



No.	Lev.	Parts No.	Description	Q'ty						I	R
				(A)	(B)	(C)	(D)	(E)	(F)		
1	1	105170-14010	CAMSHAFT	1	1						
2	1	105100-14091	CAM, FUEL	1	1						
3	1	105100-14100	GEAR, CAMSHAFT	1	1						
4	1	105300-14200	TAPPET	2	2						
5	1	105100-14400	ROD, PUSH	2	2						
6	1	105190-14421	RETAINER, BEARING	1	1						
7	1	105100-14600	COVER	1	1						
8	1	105302-14700	SPACER	1	1						
9	1	104300-76460	NUT	1	1						
10	1	22512-070550	KEY, 7X 55	1	1						
11	1	24101-060064	BEARING, BALL 6006	1	1						
12	1	26022-060122	SCREW, M6X12	3	3						
13	1	26022-060122	SCREW, M6X12	1	1						

Fig.5. CRANKSHAFT & FLYWHEEL



(A)=NFAD7-LIK3
(B)=NFAD7-LEIK3
(C)=

(D)=
(E)=
(F)=

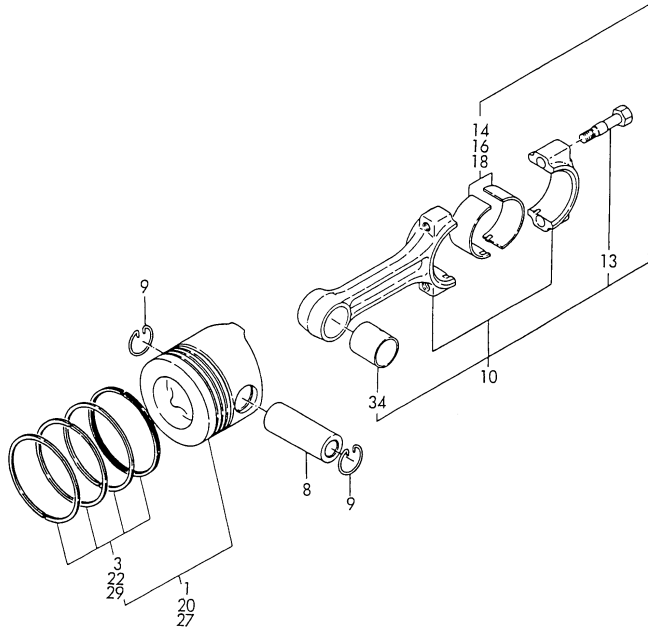
No.	Lev.	Parts No.	Description	Q'ty						I	R
				(A)	(B)	(C)	(D)	(E)	(F)		
1	1	705190-21700	CRANKSHAFT ASSY	1	1						
4	2	105190-21100	WEIGHT, BALANCE	2	2						
5	2	106100-21130	BOLT, BALANCE WEIGHT	2	2						
6	2	22512-050120	KEY, 5X 12	1	1						
7	2	22512-100260	KEY, 10X 26	1	1						
9	1	105100-21200	GEAR, CRANKSHAFT	1	1						
10	1	105100-21400	FLYWHEEL	1							
11	1	105100-21590	FLYWHEEL ASSY		1						
13	2	105100-21600	GEAR, RING		1						
14	1	104200-21530	NUT, END	1	1						
15	1	104104-21600	V-PULLEY	1	1						
16	1	26106-060122	BOLT, M6X 12 PLATED	3	3						
17	1	105190-21310	COVER	1							
18	1	105192-21320	COVER	1	1						
19	1	105198-21300	COVER, FLYWHEEL	1							
20	1	105190-21360	COVER		1						
21	1	105198-21360	COVER, FLYWHEEL		1						
22	1	105300-21381	ABSORBER	2	2						
23	1	105300-44451	ABSORBER	2	2						
24	1	105300-44460	COLLAR	4	4						
25	1	160120-76940	WASHER	5	5						
26	1	26013-060142	BOLT, M6X 14	3	2						
27	1	26013-060142	BOLT, M6X 14	2	2						
28	1	26106-060202	BOLT, M6X 20 PLATED	3	3						
29	1	26557-060082	SCREW, M6X 8	1	1						
30	1	105190-21910	WASHER	1	1						

Fig.6. PISTON & CONNECTING ROD

(A)=NFAD7-LIK3
 (B)=NFAD7-LEIK3
 (C)=

(D)=
 (E)=
 (F)=

SPEC. CODE
 D05150-22100
 D05100-23100



No.	Lev.	Parts No.	Description	Q'ty						I	R
				(A)	(B)	(C)	(D)	(E)	(F)		
1	1	105150-22090	PISTON ASSY	1	1						
3	2	705170-22501	RING SET, PISTON	1	1						
8	1	119810-22300	PIN, PISTON	1	1						
9	1	105100-22400	CIRCLIP	2	2						
10	1	705100-23100	ROD ASSY, CONNECTING	1	1						
13	2	105300-23200	BOLT, CONNECTING ROD	2	2						
14	2	705100-23600	BEARING, CRANK PIN	1	1						
16	1	705100-23610	BEARING ASSY, 0.25	1	1						1
18	1	705100-23620	BEARING, 0.50 US	1	1						2
20	1	105100-22471	PISTON ASSY, 0.25 OS	1	1						3
22	2	105100-22510	RING SET, 0.25 OS	1	1						3
27	1	105100-22481	PISTON ASSY, 0.50 OS	1	1						4
29	2	105100-22520	RING SET, 0.50 OS	1	1						4
34	1	105100-23910	BEARING, PISTON PIN	1	1						5

Remarks

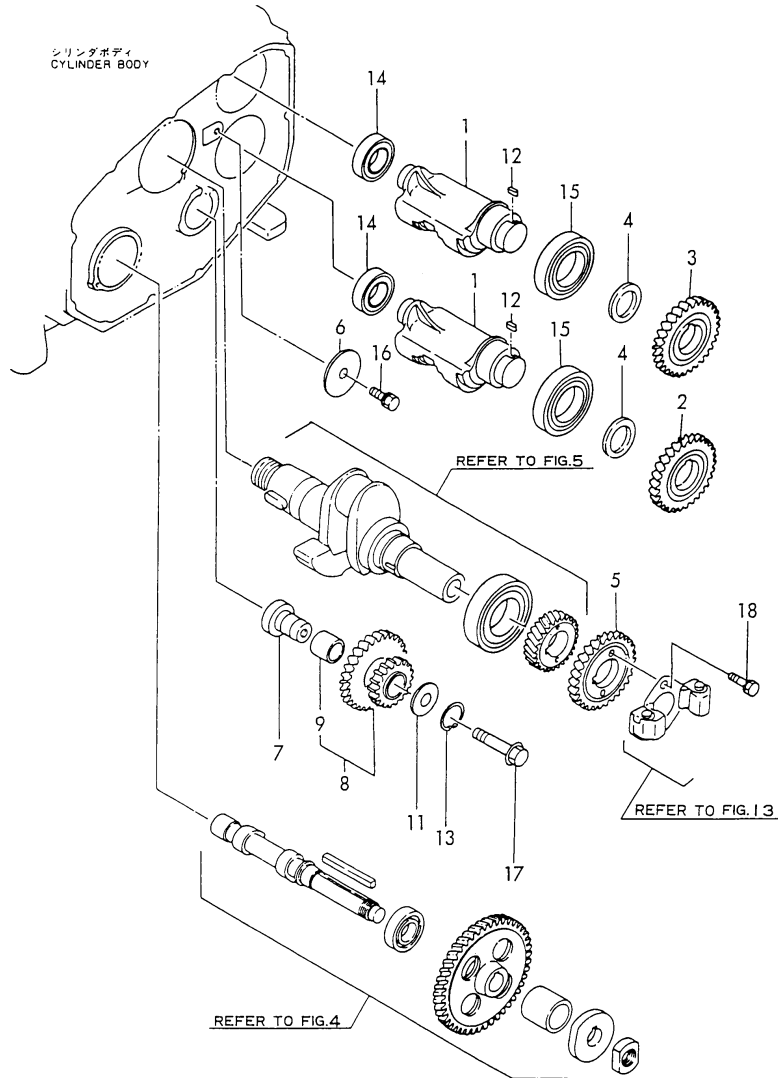
- 1)UNDER-SIZE(U.S=0.25)PART.
- 2)UNDER-SIZE(U.S=0.50)PART.
- 3)OVER-SIZE(O.S=0.25)PART.
- 4)OVER-SIZE(O.S=0.50)PART.
- 5)REPAIR PART.

Fig.7. BALANCER

(A)=NFAD7-LIK3
 (B)=NFAD7-LEIK3
 (C)=

(D)=
 (E)=
 (F)=

SPEC. CODE
 D05190-28110
 D05192-28120



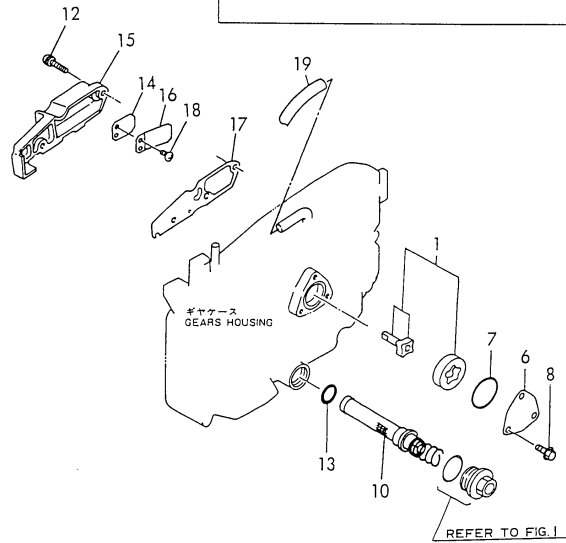
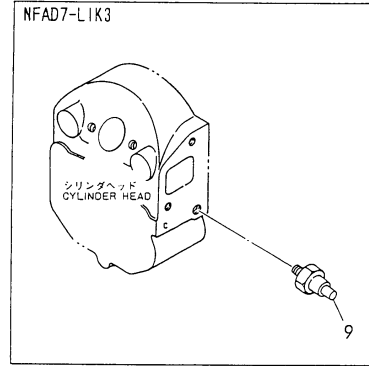
No.	Lev.	Parts No.	Description	Q'ty						I	R
				(A)	(B)	(C)	(D)	(E)	(F)		
1	1	105190-28250	SHAFT, BALANCER	2	2						
2	1	105190-28300	GEAR, BALANCER	1	1						
3	1	105190-28310	GEAR, BALANCER	1	1						
4	1	105190-28380	SPACER	2	2						
5	1	105190-28410	GEAR, BALANCER	1	1						
6	1	105300-28450	RETAINER	1	1						
7	1	105302-28701	SHAFT, IDLE GEAR	1	1						
8	1	105192-28710	GEAR ASSY, IDLE	1	1						
9	2	105302-28720	BUSH	1	1						
11	1	105362-28750	SPACER	1	1						
12	1	105215-76490	KEY	2	2						
13	1	22242-000210	RING, 21	1	1						
14	1	24101-060044	BEARING, BALL 6004	2	2						
15	1	24121-060074	BEARING, BALL 6007NR	2	2						
16	1	26013-080202	BOLT, M8X 20	1	1						
17	1	26106-100652	BOLT, M10X 65 PLATED	1	1						
18	1	26013-060222	BOLT, M6X 22	2	2						

Fig.8. LUB.OIL SYSTEM & BREATHER

(A)=NFAD7-LIK3
 (B)=NFAD7-LEIK3
 (C)=

(D)=
 (E)=
 (F)=

SPEC. CODE
 D05100-03100
 D05300-32100
 D05140-34100
 D05190-35100



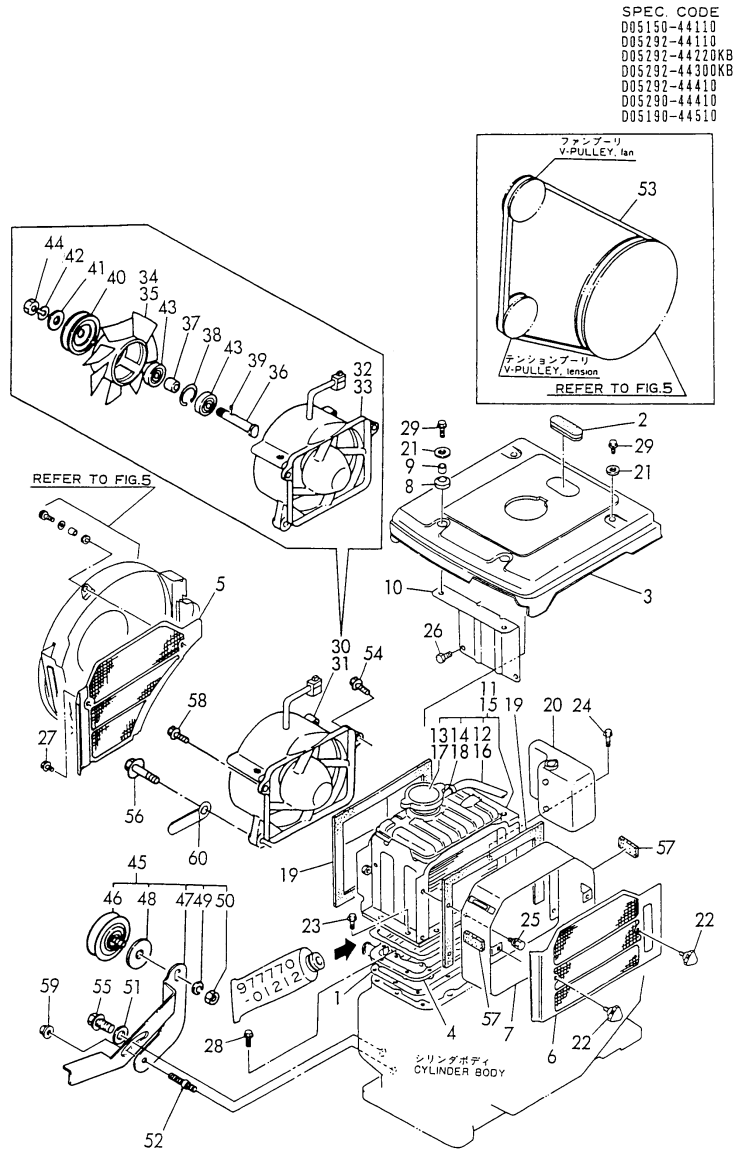
No.	Lev.	Parts No.	Description	Q'ty						I	R	
				(A)	(B)	(C)	(D)	(E)	(F)			
1	1	705300-32500	ROTOR ASSY	1	1							
1-1	1	105300-32500	PUMP, LUB.OIL CMP	1	1							N
		(A=EXXXXX) (B=EXXXXX)										
6	1	103338-32070	COVER	1	1							
7	1	103338-32570	O-RING	1	1							A
8	1	26106-060122	BOLT, M6X 12 PLATED	3	3							
9	1	105140-34100	INDICATOR	1								
10	1	105190-35050	STRAINER ASSY, OIL	1	1							
12	1	26023-060252	SCREW, M6X25	3	3							
13	1	24341-000200	O-RING, 1AS20.0	1	1							A
14	1	101158-03061	VALVE	1	1							
15	1	105100-03081	COVER, BREATHER	1	1							
16	1	101158-03111	RETAINER	1	1							
17	1	105100-03130	GASKET	1	1							
18	1	105362-78960	SCREW, M4X8	2	2							
19	1	23064-090400	PIPE, 9X 400	1	1							

Remarks
 (A)These parts are also sold by
 Fig.18 No.14.
 (Gasket set P/# 705100-92600)

Fig.9. RADIATOR & FAN

(A)=NFAD7-LIK3
 (B)=NFAD7-LEIK3
 (C)=

(D)=
 (E)=
 (F)=



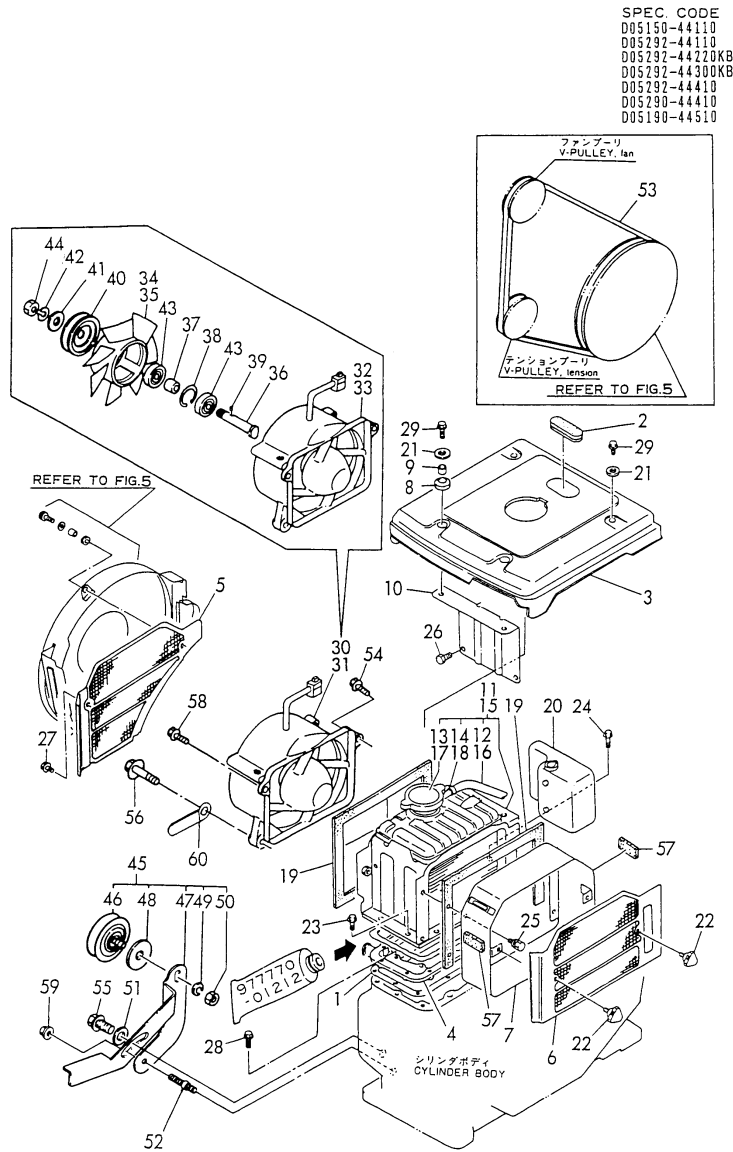
SPEC. CODE

D05150-44110
D05292-44110
D05292-44220KB
D05292-44300KB
D05292-44410
D05290-44410
D05190-44510

No.	Lev.	Parts No.	Description	Q'ty						I	R
				(A)	(B)	(C)	(D)	(E)	(F)		
1	1	105190-44050	GASKET	1	1						
2	1	105300-44220	COVER, RADIATOR	1	1						
3	1	105198-44250	COVER, RADIATOR	1	1						M
3-1	1	105198-44250-1	COVER, RADIATOR	1	1						
4	1	105190-44300	BRACKET, RADIATOR	1	1						
5	1	105100-44330	SCREEN	1	1						M
5-1	1	105100-44330-1	SCREEN	1	1						
6	1	105292-44340	SCREEN	1	1						M
6-1	1	105292-44340-1	SCREEN	1	1						
7	1	105292-44360	DUCT, SCREEN	1	1						
8	1	105300-44451	ABSORBER	2	2						
9	1	105300-44460	COLLAR	2	2						
10	1	105100-44490	STAY	1	1						
11	1	105198-44500	RADIATOR ASSY	1	1						
12	2	105340-44570	PIPE, 7X170	1							
13	2	105198-44590	CAP, RADIATOR	1							
14	2	121250-44590	CLAMP	1							
15	1	105292-44500	RADIATOR ASSY		1						
16	2	105340-44570	PIPE, 7X170		1						
17	2	105198-44590	CAP, RADIATOR		1						
18	2	121250-44590	CLAMP		1						
19	1	104607-44540	SPONGE	2	2						
20	1	105100-44630	TANK, SUB	1	1						
21	1	160120-76940	WASHER	4	4						
22	1	160725-78350	KNOB	2	2						
23	1	26013-060162	BOLT, M6X 16	8	8						
24	1	26013-060202	BOLT, M6X 20	1	1						
25	1	26013-060129	BOLT, M6X 12	4	4						
26	1	26106-060122	BOLT, M6X 12 PLATED	2	2						
27	1	26106-060122	BOLT, M6X 12 PLATED	1	1						
28	1	26106-060202	BOLT, M6X 20 PLATED	8	8						
29	1	26106-060202	BOLT, M6X 20 PLATED	4	4						
30	1	105172-44201	CASE ASSY, FAN	1							
31	1	105292-44200	CASE ASSY, FAN		1						
32	2	105172-44680	COVER ASSY	1							
33	2	105292-44680	COVER ASSY		1						
34	2	105172-44700	FAN, COOLING	1							
35	2	105100-44850	FAN, COOLING		1						
36	2	105340-44710	SHAFT, FAN	1	1						
37	2	106383-44720	SPACER	1	1						
38	2	106383-44740	CIRCLIP	1	1						
39	2	105340-44750	PIN	1	1						
40	2	105100-44770	PULLEY, FAN	2	2						
41	2	105100-44780	WASHER, PULLEY	1	1						
42	2	22217-120000	WASHER, SPRING 12	1	1						
43	2	24107-062013	BEARING, 6201ZZP6	2	2						
44	2	26777-120002	NUT, LOCK M12	1	1						
45	1	105100-44810	PULLEY ASSY, TENSION	1	1						
46	2	106100-44650	PULLEY, TENSION	1	1						
47	2	105100-44940	LEVER, PULLEY	1	1						
48	2	106100-44960	CAP	1	1						

Remarks
 M)MISPRINT

Fig.9. RADIATOR & FAN



(A)=NFAD7-LIK3
(B)=NFAD7-LEIK3
(C)=

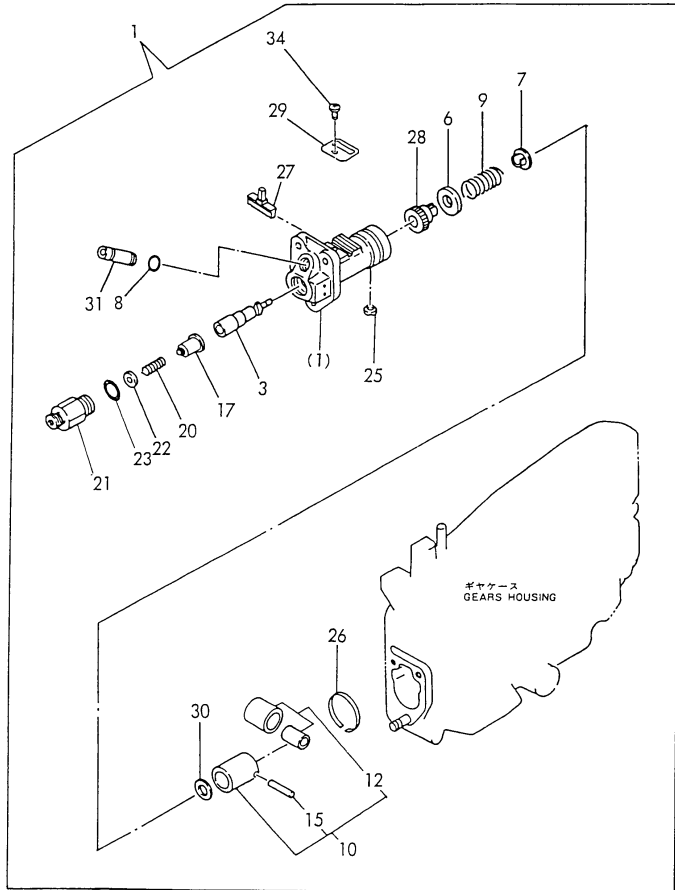
(D)=
(E)=
(F)=

No.	Lev.	Parts No.	Description	Q'ty						I	R
				(A)	(B)	(C)	(D)	(E)	(F)		
49	2	22217-080000	WASHER, SPRING 8	1	1						
50	2	26716-080002	NUT, M8	1	1						
51	1	22137-080000	WASHER, 8			1					
52	1	105100-44930	BOLT	1	1						
53	1	25117-003451	V-BELT, M34.5H	1	1						
54	1	26106-060252	BOLT, M6X 25 PLATED	1	1						
55	1	26106-080202	BOLT, M8X 20 PLATED	1	1						
56	1	26106-080352	BOLT, M8X 35 PLATED	2	2						
57	1	106100-44560	SPONGE, 15X5X1000	2	2						
58	1	26106-060302	BOLT, M6X 30 PLATED	1	1						
59	1	26366-060002	NUT, M6	1	1						
60	1	105430-67110	CLAMP, CORD	1							

Remarks
M)MISPRINT

Fig.10. FUEL INJECTION PUMP

SPEC. CODE
D05100-51111



(A)=NFAD7-LIK3
(B)=NFAD7-LEIK3
(C)=

(D)=
(E)=
(F)=

No.	Lev.	Parts No.	Description	Q'ty						I	R
				(A)	(B)	(C)	(D)	(E)	(F)		
1	1	705100-51111	PUMP ASSY, INJECTION	1	1						
3	2	105200-51100	PLUNGER ASSY	1	1						
6	2	174307-51170	RETAINER, SPRING A	1	1						
7	2	174307-51181	RETAINER, SPRING B	1	1						
8	2	114250-51190	O-RING, S27	1	1						
9	2	124950-51190	SPRING, PLUNGER	1	1						
10	2	724550-51520	GUIDE, PLUNGER	1	1						
12	3	711100-51540	ROLLER ASSY	1	1						
15	3	174100-54120	PIN	1	1						
17	2	128170-51300	VALVE ASSY, DELIVERY	1	1						
20	2	124550-51320	SPRING, DELIVERY	1	1						
21	2	124550-51341	HOLDER, DELIVERY L43	1	1						
22	2	124550-51350	GASKET, DELIVERY	1	1						A
23	2	124550-51370	O-RING	1	1						A
25	2	104271-51450	PIECE, GUIDE	1	1						
26	2	104271-51460	CIRCLIP	1	1						
27	2	105300-51500	RACK, CONTROL	1	1						
28	2	105300-51510	PINION	1	1						
29	2	105300-51550	RETAINER, RACK	1	1						
30	2	174307-51700	SHIM SET	1	1						
31	2	105300-51800	JOINT	1	1						
34	2	26022-050102	SCREW, M5X10	1	1						

Remarks

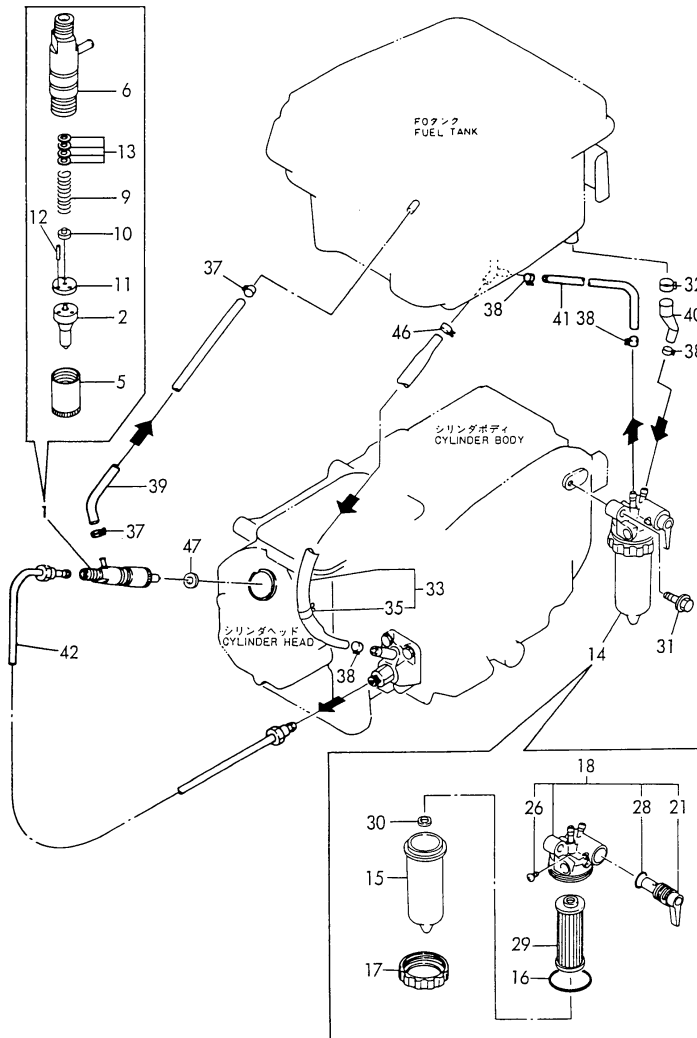
A)THESE PARTS ARE SOLD BY FIG 18.REF
NO.14.

Fig.11. FUEL OIL SYSTEM

(A)=NFAD7-LIK3
 (B)=NFAD7-LEIK3
 (C)=

(D)=
 (E)=
 (F)=

SPEC. CODE
 D05100-53100
 D05300-55200
 D05100-59110
 D05192-59220



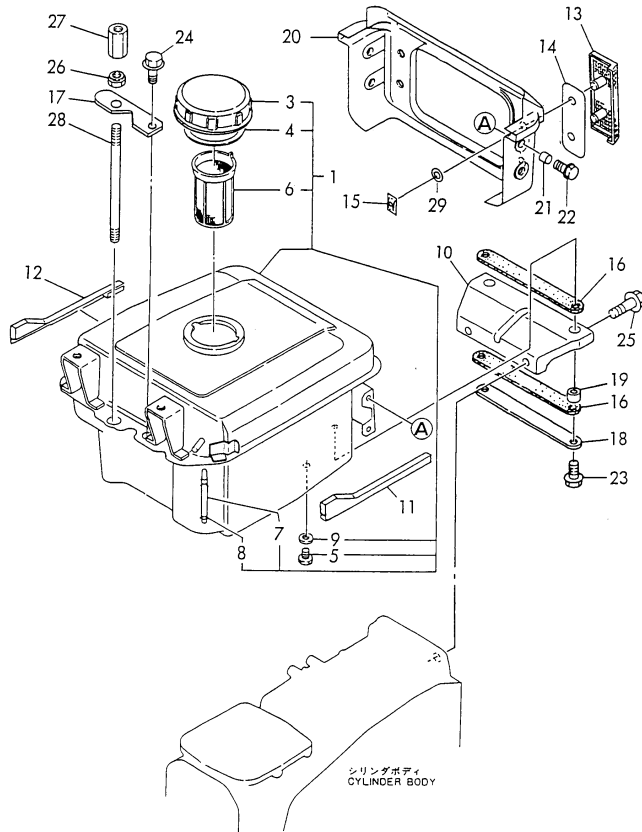
No.	Lev.	Parts No.	Description	Q'ty						I	R
				(A)	(B)	(C)	(D)	(E)	(F)		
1	1	705100-53100	VALVE ASSY,INJECTION	1	1						
2	2	119800-53000	VALVE ASSY,INJECTION	1	1						
5	2	114250-53080	NUT, NOZZLE D16.95	1	1						
6	2	105300-53100	HOLDER ASSY, NOZZLE	1	1						
9	2	114250-53120	SPRING, NOZZLE	1	1						
10	2	114250-53130	SEAT, SPRING	1	1						
11	2	114250-53140	PLATE	1	1						
12	2	114250-53210	PIN	2	2						
13	2	114250-53400	SHIM SET	1	1						
14	1	105370-55650	STRAINER ASSY, FUEL	1	1						
15	2	105300-55530	CUP, STRAINER	1	1						
16	2	105300-55520	O-RING	1	1						A
17	2	105300-55610	RING, RETAINING	1	1						
18	2	105300-55700	BODY ASSY, STRAINER	1	1						
21	3	105300-55340	LEVER	1	1						
26	3	104200-55750	SCREW, M4	1	1						
28	3	24311-000160	O-RING, 1AP16.0	1	1						
29	2	105370-55710	ELEMENT	1	1						
30	2	105300-55750	FLOAT	1	1						
31	1	26106-080302	BOLT, M8X 30 PLATED	1	1						
32	1	129301-03660	CLAMP 16	1	1						
33	1	105100-59010	PIPE ASSY, FUEL	1	1						
35	2	124766-59050	CLIP, HOSE 12	1	1						
37	1	124722-59050	CLIP, HOSE 9	2	2						
38	1	124766-59050	CLIP, HOSE 12	4	4						
39	1	105300-59100	PIPE, FUEL RETURN	1	1						
40	1	105192-59561	PIPE, FUEL	1	1						
41	1	105192-59570	PIPE, FUEL	1	1						
42	1	105100-59800	PIPE ASSY, INJECTION	1	1						
46	1	23080-013000	CLAMP, 13	1	1						
47	1	104884-59170	GASKET	1	1						

Remarks

A)THESE PARTS ARE SOLD BY FIG 18.REF NO.14.

Fig.12. FUEL TANK

SPEC. CODE
 D05197-07200
 D05198-55140KB
 D05298-55320KB
 D05292-55410KB
 D05302-55510



(A)=NFAD7-LIK3
 (B)=NFAD7-LEIK3
 (C)=

(D)=
 (E)=
 (F)=

No.	Lev.	Parts No.	Description	Q'ty						I	R
				(A)	(B)	(C)	(D)	(E)	(F)		
1	1	705292-55700-1	TANK ASSY, FUEL	1	1						
3	2	105302-55040	CAP, FUEL TANK	1	1						
4	2	101504-55051	GASKET	1	1						A
5	2	105300-55080	PLUG, 8	1	1						
6	2	105372-55100	STRAINER, FUEL	1	1						
7	2	104300-55160	GAUGE, LEVEL	1	1						
8	2	103854-55220	RETAINER	2	2						
9	2	23414-080000	GASKET, 8X1.0	1	1						
10	1	105190-55240	STAY, FUEL TANK	1	1						M
10-1	1	105190-55240-1	STAY, FUEL TANK	1	1						
11	1	105198-55250	MOULDING	1	1						M
11-1	1	105198-55250-1	MOULDING	1	1						
12	1	105198-55260	MOULDING	1	1						M
12-1	1	105198-55260-1	MOULDING	1	1						
13	1	105292-55450	PLATE	2	2						
14	1	105292-55460	PLATE	2	2						
15	1	105292-55471	NUT, M5	4	4						
16	1	105192-55520	ABSORBER	2	2						
17	1	105198-55520	RETAINER	1	1						
18	1	105192-55530	RETAINER	1	1						
19	1	105100-55540	COLLAR	2	2						
20	1	105298-55820	COVER, LIGHT	1	1						M
20-1	1	105298-55820-1	COVER, LIGHT	1	1						
		(A=92.11.20) (B=92.11.20)									
21	1	105100-55820	BUSH	4	4						
22	1	26106-060122	BOLT, M6X 12 PLATED	4	4						
23	1	26106-080222	BOLT, M8X 22 PLATED	2	2						
24	1	26106-080222	BOLT, M8X 22 PLATED	1	1						
25	1	26106-080322	BOLT, M8X 32 PLATED	2	2						
26	1	104107-07900	NUT, M10	1	1						
27	1	105300-07910	NUT	1	1						
28	1	105140-07940	BOLT, LIFTING	1	1						
29	1	120270-09310	GASKET	4	4						

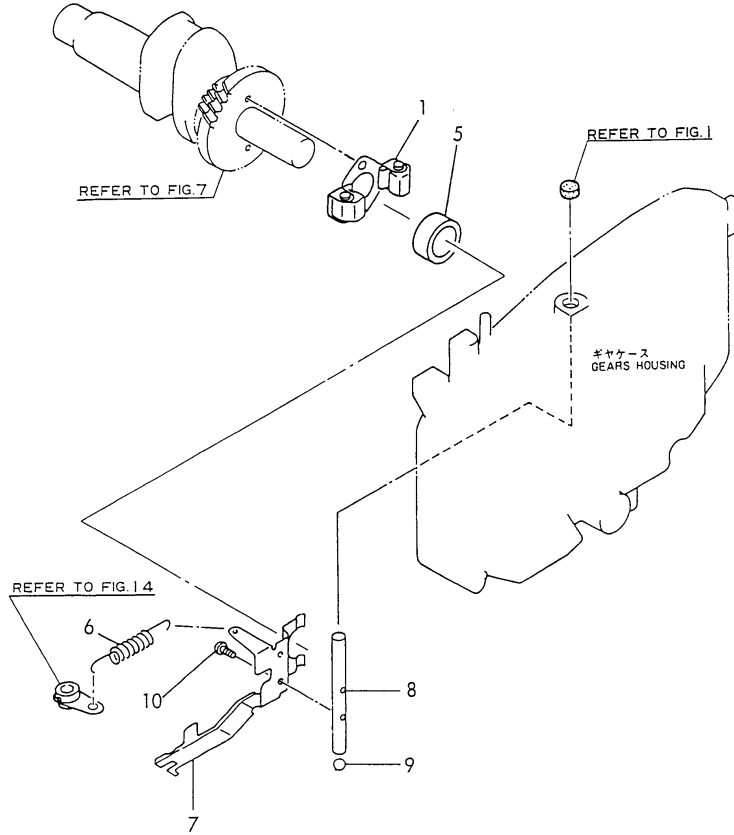
Remarks
 A)THESE PARTS ARE SOLD BY FIG 18.REF
 NO.14.
 M)MISPRINT

Fig.13. GOVERNOR & CONTROL DEVICE

SPEC. CODE
D05300-61100
D05100-66100

(A)=NFAD7-LIK3
(B)=NFAD7-LEIK3
(C)=

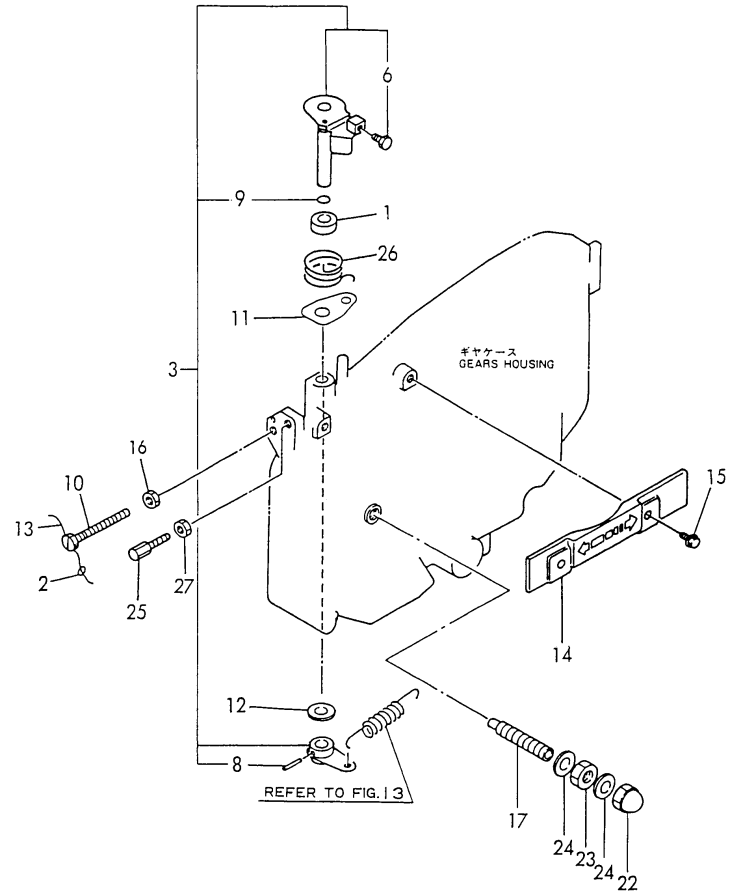
(D)=
(E)=
(F)=



No.	Lev.	Parts No.	Description	Q'ty						I	R
				(A)	(B)	(C)	(D)	(E)	(F)		
1	1	705300-61702	GOVERNOR ASSY	1	1						
5	1	105300-61600	SLEEVE, GOVERNOR	1	1						
6	1	105300-66010	SPRING, REGULATOR	1	1						
7	1	105100-66300	LEVER, GOVERNOR	1	1						
8	1	105100-66400	SHAFT	1	1						
9	1	24190-120001	BALL, STEEL 3/8	1	1						
10	1	26022-050102	SCREW, M5X10	2	2						

Fig.14. REGULATOR HANDLE

SPEC. CODE
 D05192-66210
 D05507-66300
 D05302-66220
 D05302-67101



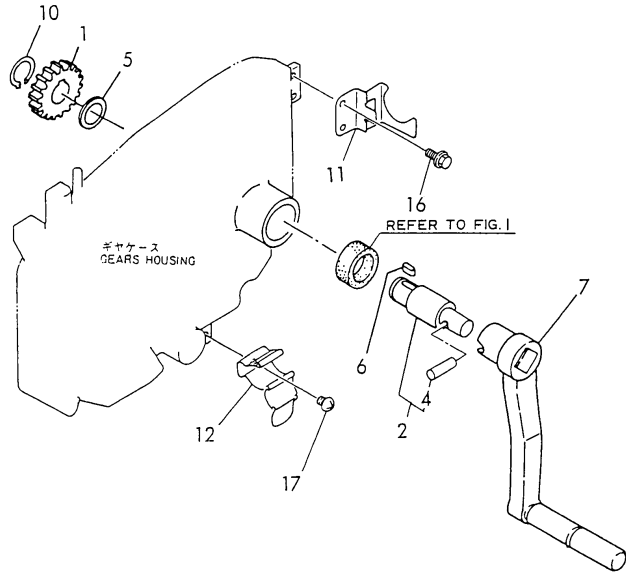
(A)=NFAD7-LIK3
 (B)=NFAD7-LEIK3
 (C)=

(D)=
 (E)=
 (F)=

No.	Lev.	Parts No.	Description	Q'ty						I	R
				(A)	(B)	(C)	(D)	(E)	(F)		
1	1	121575-21850	WASHER	1	1						
2	1	135210-61090	LEAD	1	1						
3	1	705192-66700	SHAFT ASSY	1	1						
6	3	105225-66990	SCREW, M5X8.5	1	1						
8	2	22322-030200	PIN, TAPER 3X20	1	1						
9	2	24311-000070	O-RING, 1AP7.0	1	1						
10	1	105300-66520	SCREW	1	1						
11	1	105300-66850	RETAINER	1	1						
12	1	22117-100000	WASHER, 10	1	1						
13	1	22451-060080	WIRE, 0.6X80	1	1						
14	1	105300-66110	COVER	1	1						
15	1	26106-060122	BOLT, M6X 12 PLATED	2	2						
16	1	26756-060002	NUT, LOCK M6	1	1						
17	1	105507-66551	LIMITER ASSY, FUEL	1	1						
22	1	124060-66950	NUT, CAP M10	1	1						
23	1	26796-100002	NUT, LOCK M10	1	1						
24	1	43400-500430	SEAL WASHER 10S	2	2						
25	1	102100-67080	BOLT, ADJUSTING	1	1						
26	1	105502-67301	SPRING, RETURN	1	1						
27	1	26756-060002	NUT, LOCK M6	1	1						

Fig.15. HAND STARTING DEVICE

SPEC. CODE
 D05192-08200
 D05190-76110
 D05300-7622012



(A)=NFAD7-LIK3
 (B)=NFAD7-LEIK3
 (C)=

(D)=
 (E)=
 (F)=

No.	Lev.	Parts No.	Description	Q'ty						I	R
				(A)	(B)	(C)	(D)	(E)	(F)		
1	1	105192-76330	GEAR, STARTING	1	1						
2	1	705302-76900	SHAFT ASSY, STARTING	1	1						
4	2	104200-76480	PIN	1	1						
5	1	105300-76470	COLLAR	1	1						
6	1	105300-76490	KEY, 7X10	1	1						
7	1	106500-76790	HANDLE ASSY	1	1						
10	1	22242-000200	RING, 20	1	1						
11	1	105100-08100	BRACKET, HANDLE	1	1						
12	1	105300-08510	BRACKET ASSY	1	1						
16	1	26106-060122	BOLT, M6X 12 PLATED	2	2						
17	1	26557-060082	SCREW, M6X 8	1	1						

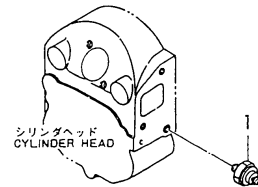
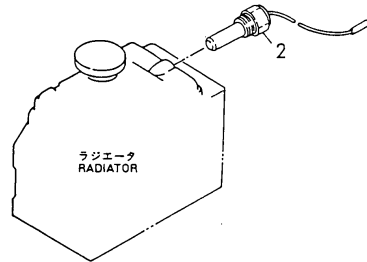
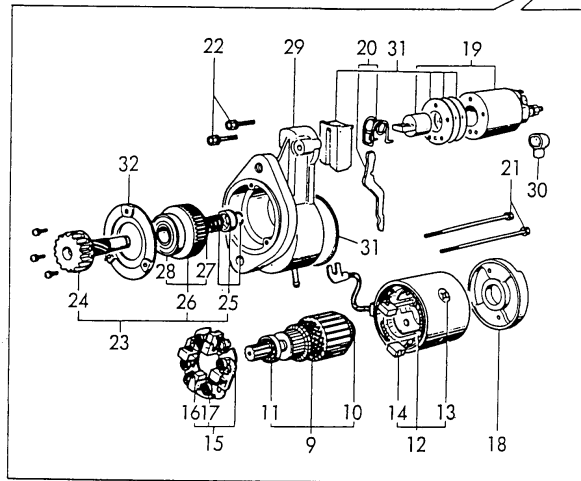
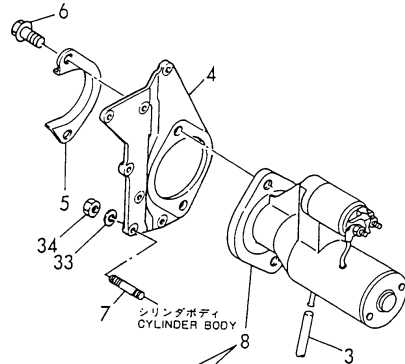
Fig.16. STARTING MOTOR

(A)=NFAD7-LIK3
 (B)=NFAD7-LEIK3
 (C)=

(D)=
 (E)=
 (F)=

SPEC. CODE
 D05192-7711025
 D05050-78200

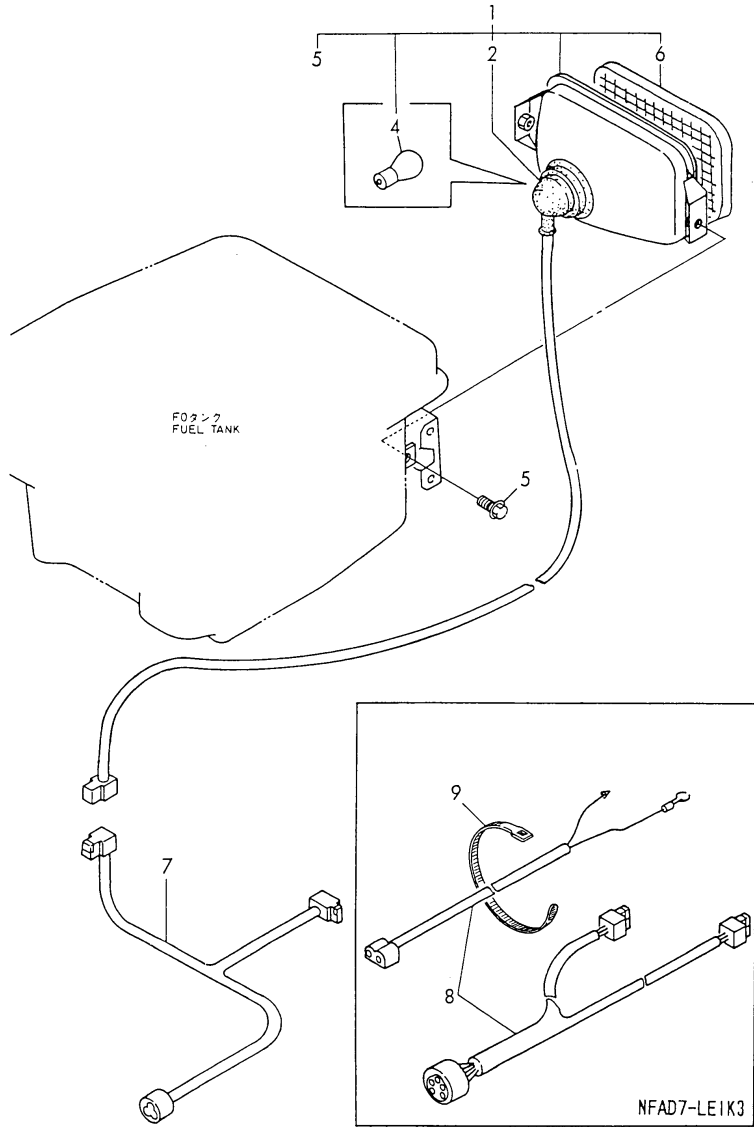
NFAD7-LEIK3



No.	Lev.	Parts No.	Description	Qty						I	R
				(A)	(B)	(C)	(D)	(E)	(F)		
1	1	124060-39451	SWITCH, 0.2KG		1						
2	1	105300-44900	SWITCH		1						
3	1	105840-59100	PIPE		1						
4	1	105100-77470	BRACKET		1						
5	1	105192-77480	COVER		1						
6	1	26013-120302	BOLT, M12X 30		2						
7	1	26226-060222	STUD, M6X 22		4						
8	1	105300-77010	STARTER, S114-438		1						
9	2	X211461005	ARMATURE		1						
10	3	X211415502	BEARING, BALL		1						
11	3	X211425502	BEARING, BALL		1						
12	2	X211442003	COIL ASSY, FIELD		1						
13	3	X21143215	SCREW, CORE		4						
14	3	X211469002	BRUSH (+)		2						
15	2	X211449007	HOLDER ASSY, BRUSH		1						
16	3	X211459002	BRUSH (-)		2						
17	3	X21148314	SPRING, BRUSH		4						
18	2	X211483003	COVER		1						
19	2	171008-77530	SWITCH, MAGNETIC		1						
20	2	X211446012	LEVER, SHIFT		1						
21	2	X211468005	BOLT, THROUGH		2						
22	2	X21145866	BOLT		2						
23	2	X211455011	PINION ASSY		1						
24	3	X211465011	SHAFT, PINION		1						
25	3	X211429006	STOPPER SET		1						
26	3	X211425506	CLUTCH ASSY		1						
27	4	X211435502	BALL BEARING		1						
28	4	X211455502	BALL BEARING		1						
29	2	X211456605	CASE ASSY, GEAR		1						
30	2	X21142742	COVER (A), RUBBER		1						
31	2	X211458012	COVER KIT		1						
32	2	X211428008	RETAINER, BEARING		1						
33	1	22212-060000	WASHER 6		4						
34	1	26716-060002	NUT, M6		4						

Fig.17. LIGHTING DEVICE

SPEC. CODE
 D05192-78120
 D05198-78330
 D05298-78330



(A)=NFAD7-LIK3
 (B)=NFAD7-LEIK3
 (C)=

(D)=
 (E)=
 (F)=

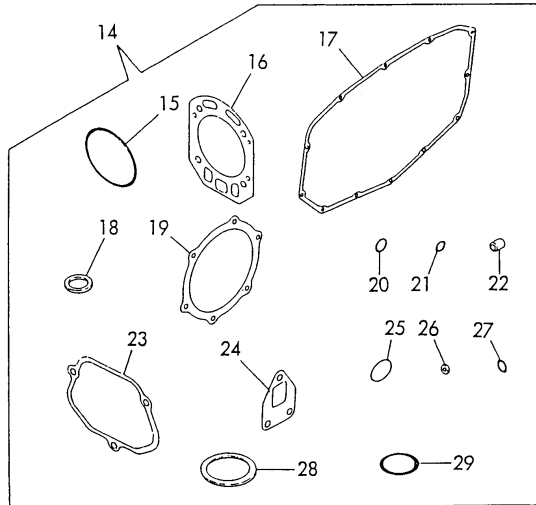
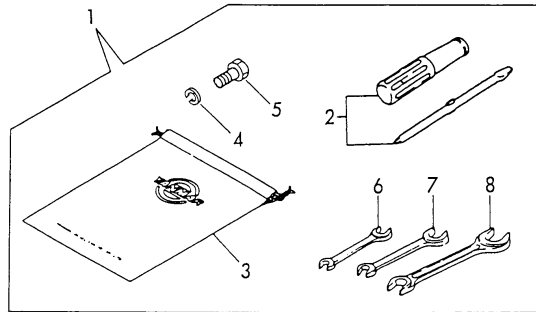
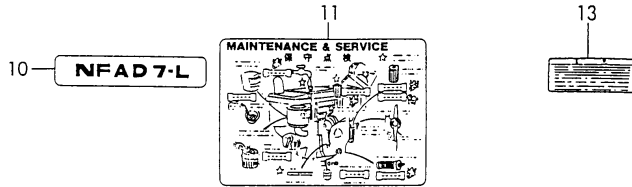
No.	Lev.	Parts No.	Description	Q'ty						I	R
				(A)	(B)	(C)	(D)	(E)	(F)		
1	1	105192-78020	LAMP ASSY, HEAD	1	1						
2	2	105192-78040	SOCKET	1	1						
4	2	105192-78250	BULB, A12V-25/25W	1	1						
5	2	26106-080142	BOLT, M8X 14 PLATED	2	2						
6	2	105192-78260	LENS	1	1						
7	1	105298-78530	HARNESS, WIRE	1							
8	1	105298-78540	HARNESS, WIRE			1					
9	1	160370-78950	BAND, L=98			1					

Fig.18. TOOL,LABEL & GASKET SET

(A)=NFAD7-LIK3
 (B)=NFAD7-LEIK3
 (C)=

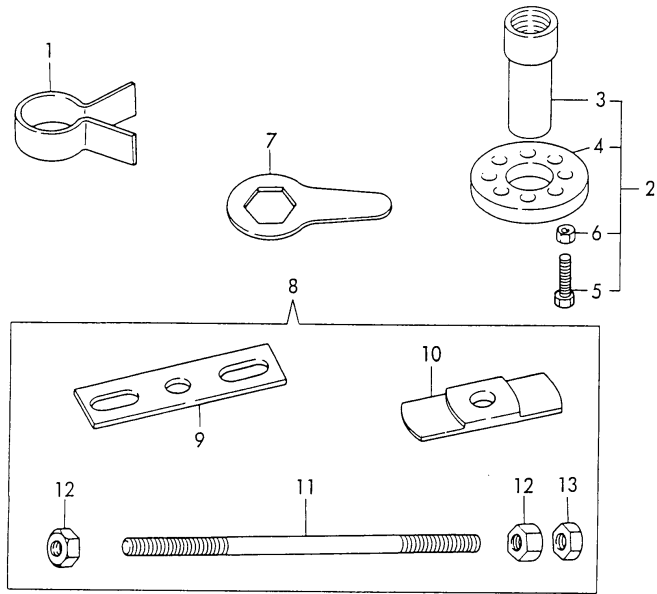
(D)=
 (E)=
 (F)=

SPEC. CODE
 D05198-07120
 D05300-92100



No.	Lev.	Parts No.	Description	Q'ty						I	R
				(A)	(B)	(C)	(D)	(E)	(F)		
1	1	705300-92100	BOX ASSY, TOOL	1	1						
2	2	104200-92350	DRIVER, SCREW	1	1						
3	2	105300-92600	BAG, TOOL	1	1						
4	2	22217-120000	WASHER, SPRING 12	3	3						
5	2	26206-120352	BOLT, M12X 35 PLATED	3	3						
6	2	28110-100120	SPANNER, 10X12	1	1						
7	2	28110-140170	SPANNER, 14X17	1	1						
8	2	28110-190220	SPANNER, 19X22	1	1						
10	1	105198-07060	LABEL	1	1						
11	1	105190-07100	LABEL	1	1						
13	1	105370-07450	LABEL, RADIATOR CAP	1	1						
14	1	705100-92600	GASKET SET	1	1						
15	2	105100-01300	O-RING	2	2						
16	2	105100-01330	GASKET, HEAD 147X118	1	1						
17	2	105100-01410	GASKET, GEAR CASE	1	1						
18	2	101104-01760	GASKET, CAP	1	1						
19	2	105100-02020	GASKET	1	1						
20	2	24341-000200	O-RING, 1AS20.0	1	1						
21	2	24311-000070	O-RING, 1AP7.0	1	1						
22	2	119625-11870	PROTECTOR, NOZZLE	1	1						
23	2	105100-11310	GASKET, BONNET	1	1						
24	2	105300-13200	GASKET, SILENCER	1	1						
25	2	103338-32570	O-RING	1	1						
26	2	124550-51350	GASKET, DELIVERY	1	1						
27	2	124550-51370	O-RING	1	1						
28	2	101504-55051	GASKET	1	1						
29	2	105300-55520	O-RING	1	1						

Fig.19. TOOL(OPTIONAL)



(A)=NFAD7-LIK3
(B)=NFAD7-LEIK3
(C)=

(D)=
(E)=
(F)=

No.	Lev.	Parts No.	Description	Q'ty						I	R
				(A)	(B)	(C)	(D)	(E)	(F)		
1	1	101300-92140	TOOL, PISTON&RING	1	1						
2	1	704200-92700	TOOL ASSY, FLYWHEEL	1	1						
3	2	104200-92110	RETAINER, A	1	1						
4	2	104200-92120	RETAINER, B	1	1						
5	2	104200-92130	TOOL	2	2						
6	2	26716-120002	NUT, M12	2	2						
7	1	104200-92100	WRENCH	1	1						
8	1	701300-92210	TOOL ASSY, LINER	1	1						
9	2	172200-92020	TOOL, LINER REMOVER	1	1						
10	2	101300-92010	TOOL, LINER REMOVER	1	1						
11	2	103338-92030	BOLT, LINER REMOVER	1	1						
12	2	26716-160002	NUT, M16	2	2						
13	2	26757-160002	NUT, LOCK M16	1	1						

Fig.20. SAFETY LABEL

(A)=NFAD7-LIK3
(B)=NFAD7-LEIK3
(C)=

(D)=
(E)=
(F)=

No.	Lev.	Parts No.	Description	Q'ty						I	R
				(A)	(B)	(C)	(D)	(E)	(F)		
1	1	1E8500-97220	LABEL, RADIATOR	1	1						
2	1	1E5120-86720	LABEL, CAUTION	1	1						
3	1	1E5120-86600	WARNING,EXHAUST GAS	1	1						
4	1	1E8230-97030	LABEL, DANGER B	1	1						

Parts No. Index

Parts No.	Fig. No.	Ref. No.
101104-01760	1	31
	18	18
101158-03061	8	14
101158-03111	8	16
101158-11180	2	10
101158-11230	2	20
		24
101300-92010	19	10
101300-92140	19	1
101504-55051	12	4
	18	28
102100-67080	14	25
103338-32070	8	6
103338-32570	8	7
	18	25
103338-92030	19	11
103854-55220	12	8
104104-21600	5	15
104107-07900	12	26
104200-03641	2	35
	3	7
104200-21530	5	14
104200-55750	11	26
104200-76480	15	4
104200-92100	19	7
104200-92110	19	3
104200-92120	19	4
104200-92130	19	5
104200-92350	18	2
104271-01950	1	33
104271-51450	10	25
104271-51460	10	26
104300-55160	12	7
104300-76460	4	9
104304-12540	3	14
104304-12590	3	13
104607-44540	9	19
104884-59170	11	47
105010-11920	2	27
105092-03600	2	34
105092-07311	3	15
105092-12550	3	16
105092-12560	3	17
105100-01300	1	3
	18	15
105100-01330	1	15
	18	16
105100-01410	1	37
	18	17
105100-01660	1	22

Parts No.	Fig. No.	Ref. No.
105100-02020	1	50
	18	19
105100-02300	1	51
105100-02310	1	52
105100-03081	8	15
105100-03130	8	17
105100-08100	15	11
105100-11100	2	7
105100-11111	2	8
105100-11310	2	44
	18	23
105100-11650	2	18
105100-11660	2	22
105100-14091	4	2
105100-14100	4	3
105100-14400	4	5
105100-14600	4	7
105100-21200	5	9
105100-21400	5	10
105100-21590	5	11
105100-21600	5	13
105100-22400	6	9
105100-22471	6	20
105100-22481	6	27
105100-22510	6	22
105100-22520	6	29
105100-23910	6	34
105100-44330	9	5
105100-44330-1	9	5 -1
105100-44490	9	10
105100-44630	9	20
105100-44770	9	40
105100-44780	9	41
105100-44810	9	45
105100-44850	9	35
105100-44930	9	52
105100-44940	9	47
105100-55540	12	19
105100-55820	12	21
105100-59010	11	33
105100-59800	11	42
105100-66300	13	7
105100-66400	13	8
105100-77470	16	4
105140-07940	12	28
105140-34100	8	9
105140-76500	1	26
105150-03790	3	10
105150-22090	6	1
105170-14010	4	1

Parts No.	Fig. No.	Ref. No.
105172-44201	9	30
105172-44680	9	32
105172-44700	9	34
105190-01480	1	28
105190-01670	1	10
105190-01680	1	11
105190-07100	18	11
105190-12050	3	1
105190-13510	3	21
105190-13550	3	22
105190-14421	4	6
105190-21100	5	4
105190-21310	5	17
105190-21360	5	20
105190-21910	5	30
105190-28250	7	1
105190-28300	7	2
105190-28310	7	3
105190-28380	7	4
105190-28410	7	5
105190-35050	8	10
105190-44050	9	1
105190-44300	9	4
105190-55240	12	10
105190-55240-1	12	10 -1
105192-12510	3	11
105192-12530	3	12
105192-21320	5	18
105192-28710	7	8
105192-55520	12	16
105192-55530	12	18
105192-59561	11	40
105192-59570	11	41
105192-76330	15	1
105192-77480	16	5
105192-78020	17	1
105192-78040	17	2
105192-78250	17	4
105192-78260	17	6
105198-03740	2	36
105198-03770	3	8
105198-03780	3	9
105198-07060	18	10
105198-11200	2	32
105198-12010	3	2
105198-12020	3	3
105198-21300	5	19
105198-21360	5	21
105198-44250	9	3
105198-44250-1	9	3 -1

Parts No.	Fig. No.	Ref. No.
105198-44500	9	11
105198-44590	9	13
		17
105198-55250	12	11
105198-55250-1	12	11 -1
105198-55260	12	12
105198-55260-1	12	12 -1
105198-55520	12	17
105200-51100	10	3
105212-13590	3	25
105215-01200	1	13
105215-76490	7	12
105225-66990	2	39
	14	6
105292-44200	9	31
105292-44340	9	6
105292-44340-1	9	6 -1
105292-44360	9	7
105292-44500	9	15
105292-44680	9	33
105292-55450	12	13
105292-55460	12	14
105292-55471	12	15
105298-55820	12	20
105298-55820-1	12	20 -1
105298-78530	17	7
105298-78540	17	8
105300-01690	1	29
105300-01920	1	32
105300-07910	12	27
105300-08510	15	12
105300-11290	2	13
105300-11330	2	6
105300-11801	2	47
105300-11900	2	26
105300-13200	3	20
	18	24
105300-14200	4	4
105300-21381	5	22
105300-23200	6	13
105300-28450	7	6
105300-32500	8	1 -1
105300-34040	1	23
105300-44220	9	2
105300-44451	5	23
	9	8
105300-44460	5	24
	9	9
105300-44900	16	2
105300-51500	10	27

Parts No. Index

Parts No.	Fig. No.	Ref. No.
105300-51510	10	28
105300-51550	10	29
105300-51800	10	31
105300-53100	11	6
105300-55080	12	5
105300-55340	11	21
105300-55520	11	16
	18	29
105300-55530	11	15
105300-55610	11	17
105300-55700	11	18
105300-55750	11	30
105300-59100	11	39
105300-61600	13	5
105300-66010	13	6
105300-66110	14	14
105300-66520	14	10
105300-66850	14	11
105300-76470	15	5
105300-76490	15	6
105300-77010	16	8
105300-92600	18	3
105302-01750	1	30
105302-14700	4	8
105302-28701	7	7
105302-28720	7	9
105302-55040	12	3
105340-44570	9	12
		16
105340-44710	9	36
105340-44750	9	39
105362-28750	7	11
105362-78960	8	18
105370-07450	18	13
105370-13570	3	24
105370-55650	11	14
105370-55710	11	29
105372-55100	12	6
105400-11121	2	9
105430-67110	9	60
105502-67301	14	26
105507-66551	14	17
105840-59100	16	3
106100-02331	1	53
106100-21130	5	5
106100-44560	9	57
106100-44650	9	46
106100-44960	9	48
106383-44720	9	37
106383-44740	9	38

Parts No.	Fig. No.	Ref. No.
106500-76790	15	7
114250-51190	10	8
114250-53080	11	5
114250-53120	11	9
114250-53130	11	10
114250-53140	11	11
114250-53210	11	12
114250-53400	11	13
119625-11870	2	17
		18
	18	22
119625-11880	2	16
119800-53000	11	2
119810-22300	6	8
120270-09310	12	29
121250-44590	9	14
		18
121450-01220	1	14
121575-21850	14	1
123325-02500	1	49
124060-39451	16	1
124060-66950	14	22
124550-51320	10	20
124550-51341	10	21
124550-51350	10	22
	18	26
124550-51370	10	23
	18	27
124722-59050	11	37
124766-59050	11	35
		38
124950-51190	10	9
128170-51300	10	17
129301-03660	11	32
135210-61090	14	2
160120-76940	5	25
	9	21
160260-01580	3	19
160370-78950	17	9
160725-78350	9	22
171008-77530	16	19
172200-92020	19	9
174100-54120	10	15
174307-51170	10	6
174307-51181	10	7
174307-51700	10	30
183250-03550	2	43
	3	4
1E5120-86600	20	3
1E5120-86720	20	2
1E8230-97030	20	4

Parts No.	Fig. No.	Ref. No.
1E8500-97220	20	1
22117-100000	14	12
22137-080000	9	51
22137-100000	3	5
22212-060000	16	33
22217-080000	1	36
	9	49
22217-120000	9	42
	18	4
22242-000200	15	10
22242-000210	7	13
22252-000100	1	24
22312-030180	2	40
22322-030180	2	41
22322-030200	14	8
22351-060012	1	12
		27
22451-060080	14	13
22512-050120	5	6
22512-070550	4	10
22512-100260	5	7
23064-090400	8	19
23080-013000	11	46
23414-080000	12	9
24101-060044	7	14
24101-060064	4	11
24107-062013	9	43
24121-060074	7	15
24190-120001	1	25
	13	9
24311-000060	1	38
24311-000070	2	42
	14	9
	18	21
24311-000160	11	28
24321-000250	1	39
24341-000200	8	13
	18	20
25117-003451	9	53
26013-060129	9	25
26013-060142	5	26
		27
26013-060162	9	23
26013-060202	9	24
26013-060222	7	18
26013-080189	3	23
26013-080202	7	16
26013-120302	16	6
26022-050102	10	34
	13	10

Parts No.	Fig. No.	Ref. No.
26022-060122	4	12
		13
26023-060252	8	12
26106-060122	5	16
	8	8
	9	26
		27
	12	22
	14	15
	15	16
26106-060202	1	40
	2	45
	5	28
	9	28
		29
26106-060252	9	54
26106-060302	1	41
	9	58
26106-060602	2	46
26106-060702	1	42
26106-080142	17	5
26106-080202	3	18
	9	55
26106-080222	12	23
		24
26106-080302	11	31
26106-080322	12	25
26106-080352	9	56
26106-100652	7	17
26116-050082	1	54
26206-120352	18	5
26216-060402	2	29
26216-080222	1	43
26216-080452	2	28
26226-060222	16	7
26226-080222	1	44
26366-060002	2	30
	3	6
	9	59
26366-080002	1	45
	2	31
26554-060162	3	26
26557-060082	5	29
	15	17
26716-060002	16	34
26716-080002	1	46
	9	50
26716-120002	19	6
26716-160002	19	12
26756-060002	14	16

Parts No. Index

Parts No.	Fig. No.	Ref. No.
26756-060002	14	27
26756-080002	2	21
		25
26757-160002	19	13
26777-120002	9	44
26796-100002	14	23
27231-150000	2	4
27310-070001	2	11
28110-100120	18	6
28110-140170	18	7
28110-190220	18	8
43400-500430	14	24
701300-92210	19	8
704200-92700	19	2
705100-01900	1	1
705100-02500	1	47
705100-11700	2	1
705100-23100	6	10
705100-23600	6	14
705100-23610	6	16
705100-23620	6	18
705100-51111	10	1
705100-53100	11	1
705100-92600	18	14
705170-22501	6	3
705190-01560	1	4
705190-21700	5	1
705192-01501	1	16
705192-66700	14	3
705292-55700-1	12	1
705300-32500	8	1
705300-61702	13	1
705300-92100	18	1
705302-76900	15	2
711100-51540	10	12
724550-51520	10	10
X211415502	16	10
X211425502	16	11
X211425506	16	26
X21142742	16	30
X211428008	16	32
X211429006	16	25
X21143215	16	13
X211435502	16	27
X211442003	16	12
X211446012	16	20
X211449007	16	15
X211455011	16	23
X211455502	16	28
X211456605	16	29

Parts No.	Fig. No.	Ref. No.
X211458012	16	31
X21145866	16	22
X211459002	16	16
X211461005	16	9
X211465011	16	24
X211468005	16	21
X211469002	16	14
X211483003	16	18
X21148314	16	17

Parts No.	Fig. No.	Ref. No.
-----------	----------	----------

Parts No.	Fig. No.	Ref. No.
-----------	----------	----------