

0CD10-M46301EN

Introduction

1. This parts catalog for ISEKI Co., Ltd. NFAD6-LIK3, NFAD6-LEIK3 is published as a revised edition of diesel engine.

| | Parts catalog No. | Date of issue | Remarks |
|---------------------|-------------------|---------------|---------|
| First edition | 000Y00D4630 | Mar., 1993 | No Need |
| 1st revised edition | 000Y00D4631 | Feb., 2006 | |

2. This parts catalog does not contain the technical data needed for maintenance service.

3. The illustrations used in this parts catalog have been simplified for clarity.

4. The essential points list.

| Model | Column | Model of ISEKI name |
|-------------|--------|---------------------|
| NFAD6-LIK3 | A | KA60/KLC6 |
| NFAD6-LEIK3 | B | KA60G/KLC6G |

5. The contents of this parts catalog are subject to change without notice.

6. Be sure to use only Yanmar genuine part for repairs. If imitation parts are used, it may cause engine defects.

How to read this Parts Catalog.

1. Parts mentioned in Parts Catalog may not necessarily be standard equipping parts
2. Parts change may be made without prior notice.
3. Form of this Parts Catalog.

| REF. | LEV. | PARTS No. | DESCRIPTION | QTY. | | | | | | I | R |
|-------|------|--|---------------------|------|-----|-----|-----|-----|-----|---|---|
| | | | | (A) | (B) | (C) | (D) | (E) | (F) | | |
| 1 | | 729595-51390 | FUEL INJECTION PUMP | 1 | 1 | 1 | 1 | 1 | | | |
| 1-1 | | 729595-51391 | FUEL INJECTION PUMP | 1 | 1 | 1 | 1 | 1 | | | |
| | | (A=E00185) (B=E00200) | | | | | | | | | |
| 3 | | 26022-060162 | SCREW M 6X16 | 9 | 9 | 9 | 9 | 9 | | | |
| 1 3-1 | | 26022-060162 | SCREW M 6X16 | 4 | 4 | 4 | 4 | 4 | | | K |
| | | (A=E00156) (B=E00156) (C=E00156) (D=E00156) (E=E00156) | | | | | | | | | |
| 4 | | 129470-51040 | CAMSHFT | 9 | 9 | 9 | 9 | 9 | | | |
| 5 | | 122710-51050 | BEARING. ROLLER | 9 | 9 | 9 | 9 | 9 | | | |
| 6 | | 129470-51060 | RETAINER | 9 | 9 | 9 | 9 | 9 | | | |

| | |
|---------|---|
| Remarks | (1) BOOST COMPENSATOR TYPE. OPTIONAL PART. TO E#00155 (4JH-DT, 4JH-DTZ) |
|---------|---|

① Ref. No.

The Ref. No. in the list may not be in accordance with the Ref. No. on illustration.

(Ex.) illustration No, List head No,
 1 1 (Before change) → 1-1 (After change)

When interchangeable symbol N, and k, illustrations for the new parts are sometimes omitted.

② Lev. (Level)

Indication and Meaning of Level

Level Hereunder is given the relation among the number (1,2,3) the level and the nominal parent-child relationship.

- 1 ---- Parent parts (Assembly parts)
- 2 ---- Child parts included in " 1 " (Semi-Assembly parts, component parts of Assembly parts.)
- 3 ---- Child parts included in " 2 ", Grand-child parts in terms of " 1 ".
(Component parts of Semi-Assembly parts.)

Note) A parts of non-sale parts are illustrated but not listed.

③ Change Mark

Change Mark " I " is given to the part for which a design change was made at this time.

The design change was not shown in the last published Parts Catalog.

④ Interchangeability Mark

In the case where a part change took place, one of the following interchangeability marks is indicated for that part

| Symbol | Interchangeability | Contents note |
|--------|--------------------|--|
| N | Old ← → New | New Part is interchangeable for Old Part but not interchangeable conversely. |
| Q | Old ← → New | New Part is not interchangeable for Old Part but interchangeable conversely. |
| R | Old ← → New | New Part is interchangeable for Old Part and vice versa. |
| S | Old ← → New | New Part is not interchangeable for Old Part and vice versa. |
| W | | Part newly added. |
| Z | | Part discontinued. |
| F | | Not interchangeable single part but interchangeable by set of the related parts. |
| K | | Changed only in quantity used. |

⑤ Effective Machine No.

When a part is changed, Effective Machine No. of a Model for which the part is applicable is indication In each column of (A)-(F).

| Product Symbol | Product No. | Product Symbol | Product No. |
|----------------|---------------------------|----------------|-------------|
| C | Clutch No, Compressor No, | M | Machine No, |
| D | Drive No, | T | Tractor No, |
| E | Engine No, | Note 1)※ | Date |

Note 1) Date may follow the symbol in some cases. (Ex.) ※1996.01

Note 2) As far as engine models shown by " XXX " are concerned, the modification of the parts could not be Predicted or the engine models themselves could not be identified.

Note 3) (A=E/#00185) means that the design change on the part has been effective for the model at the, column (A) (in the case, for 4JH-DT) on and from E/#(Engine Serial Number) 00185

⑥ Remarks Mark

Figures or alphabets (Symbols) are entered in the remark column.

The comments (remarks) on the pertinent parts are indicated in the lower part of the list by the same symbols a those stated above.

Contents

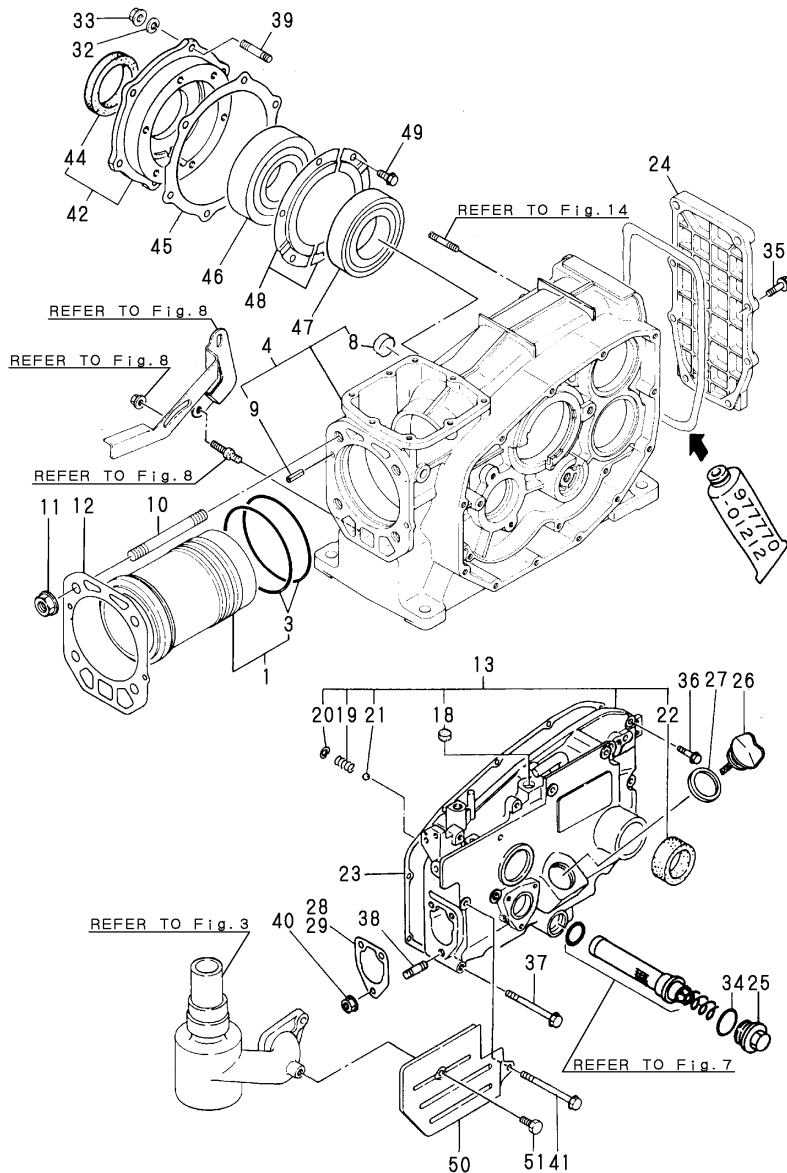
Fig. No. Fig. Name

NFAD6-L(E)IK3

1. CYLINDER BLOCK
2. CYLINDER HEAD & BONNET
3. AIR CLEANER & MUFFLER
4. CAMSHAFT
5. CRANKSHAFT & FLYWHEEL
6. PISTON & CONNECTING ROD
7. LUB.OIL SYSTEM & BREATHER
8. RADIATOR & FAN
9. FUEL INJECTION PUMP
10. FUEL OIL SYSTEM
11. FUEL TANK
12. HAND STARTING DEVICE
13. GOVERNOR & CONTROL DEVICE
14. STARTING MOTOR
15. LIGHTING DEVICE
16. TOOL,LABEL & GASKET SET
17. TOOL(OPTIONAL)
18. SAFETY LABEL

Fig. No. Fig. Name

Fig.1. CYLINDER BLOCK



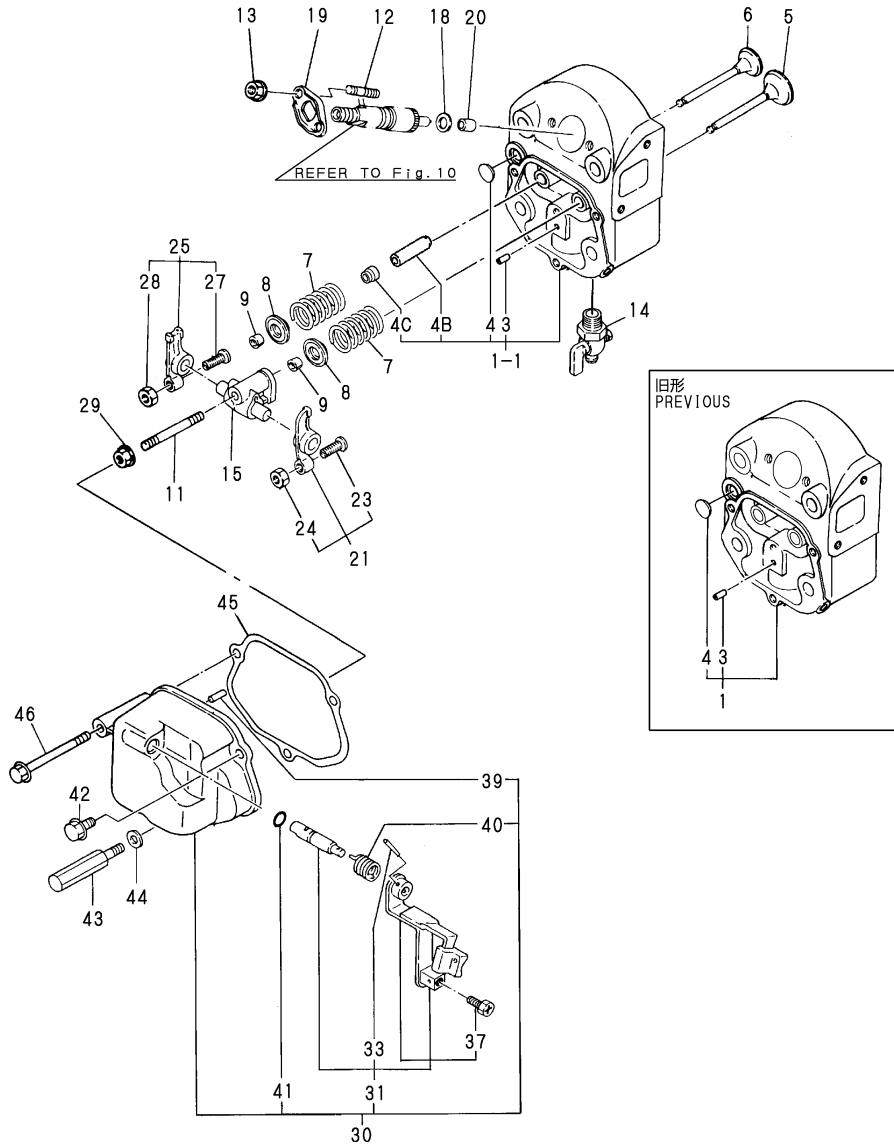
Remarks
 (A) THESE PART ARE ALSO SOLD BY
 FIG.16 NO.14-2
 (GASKET SET.P/# 705092-92610).

(A)=NFAD6-LIK3
 (B)=NFAD6-LEIK3
 (C)=

(D)=
 (E)=
 (F)=

| No. | Lev. | Parts No. | Description | Q'ty | | | | | | I | R |
|------|------|-----------------------------|----------------------|------|-----|-----|-----|-----|-----|---|-----|
| | | | | (A) | (B) | (C) | (D) | (E) | (F) | | |
| 1 | 1 | 705090-01900 | LINER ASSY, CYLINDER | 1 | 1 | | | | | | |
| 3 | 2 | 105090-01300 | O-RING | 2 | 2 | | | | | | A |
| 4 | 1 | 705090-01560 | BLOCK ASSY, CYLINDER | 1 | 1 | | | | | | |
| 8 | 2 | 105215-01670 | SEAL, 20 | 1 | 1 | | | | | | |
| 9 | 2 | 22351-060012 | PIN, SPRING 6.0X12 | 2 | 2 | | | | | | |
| 10 | 1 | 105215-01200 | BOLT, HEAD M12 | 4 | 4 | | | | | | |
| 11 | 1 | 121450-01220 | NUT, CYLINDER HEAD | 4 | 4 | | | | | | |
| 12 | 1 | 105090-01330 | GASKET, HEAD | 1 | 1 | | | | | | |
| 12-1 | 1 | 105090-01331 | GASKET, CYL. HEAD | 1 | 1 | | | | | | N A |
| | | (A=*1995.05) (B=*1995.05) | | | | | | | | | |
| 13 | 1 | 705092-01500 | CASE ASSY, GEAR | 1 | 1 | | | | | | |
| 18 | 2 | 105100-01660 | PLUG, 14 | 1 | 1 | | | | | | |
| 19 | 2 | 105300-34040 | SPRING | 1 | 1 | | | | | | |
| 20 | 2 | 22252-000100 | RING, 10 | 1 | 1 | | | | | | |
| 21 | 2 | 24190-120001 | BALL, STEEL 3/8 | 1 | 1 | | | | | | |
| 22 | 2 | 105140-76500 | SEAL, TCX25X35X6 | 1 | 1 | | | | | | |
| 22-1 | 2 | 120270-61250 | SEAL, OIL | 1 | 1 | | | | | | R |
| | | (A=E/#038151) (B=E/#038183) | | | | | | | | | |
| 23 | 1 | 105090-01410 | GASKET, GEAR CASE | 1 | 1 | | | | | | A |
| 24 | 1 | 105090-01480 | COVER | 1 | 1 | | | | | | |
| 25 | 1 | 105300-01690 | PLUG | 1 | 1 | | | | | | |
| 26 | 1 | 105090-01750 | CAP | 1 | 1 | | | | | | |
| 27 | 1 | 101104-01760 | GASKET, CAP | 1 | 1 | | | | | | A |
| 28 | 1 | 105300-01920 | SHIM, T=0.1 | 1 | 1 | | | | | | |
| 29 | 1 | 104271-01950 | SHIM SET,0.2X3,0.3X2 | 1 | 1 | | | | | | |
| 29-1 | 1 | 105090-01960 | SHIM SET, ADJUSTING | 1 | 1 | | | | | | N |
| | | (A=*2005.01) (B=E/#073909) | | | | | | | | | |
| 32 | 1 | 22217-080000 | WASHER, SPRING 8 | 6 | 6 | | | | | | |
| 33 | 1 | 26716-080002 | NUT, M8 | 6 | 6 | | | | | | |
| 34 | 1 | 24321-000250 | O-RING, 1AG25.0 | 1 | 1 | | | | | | |
| 35 | 1 | 26106-060202 | BOLT, M6X 20 PLATED | 6 | 6 | | | | | | |
| 36 | 1 | 26106-060302 | BOLT, M6X 30 PLATED | 6 | 6 | | | | | | |
| 37 | 1 | 26106-060552 | BOLT, M6X 55 PLATED | 1 | 1 | | | | | | |
| 38 | 1 | 26216-080222 | STUD, M8X 22 | 3 | 3 | | | | | | |
| 39 | 1 | 26226-080222 | STUD, M8X 22 | 6 | 6 | | | | | | |
| 40 | 1 | 26366-080002 | NUT, M8 | 3 | 3 | | | | | | |
| 40-1 | 1 | 26306-080002 | NUT, M8 | 3 | 3 | | | | | | N |
| | | (A=*2001.06) (B=E/#057498) | | | | | | | | | |
| 41 | 1 | 26106-060652 | BOLT, M6X 65 PLATED | 4 | 4 | | | | | | |
| 42 | 1 | 705090-02500 | HOUSING ASSY, METAL | 1 | 1 | | | | | | |
| 44 | 2 | 111130-02160 | SEAL, TC35508 | 1 | 1 | | | | | | |
| 45 | 1 | 105090-02020 | GASKET | 1 | 1 | | | | | | |
| 45-1 | 1 | 105090-02021 | GASKET | 1 | 1 | | | | | | N A |
| | | (A=*1995.05) (B=*1995.05) | | | | | | | | | |
| 46 | 1 | 105100-02300 | BEARING, 6308-SH2-C3 | 1 | 1 | | | | | | |
| 47 | 1 | 105100-02310 | BEARING, 6208-SH2-C3 | 1 | 1 | | | | | | |
| 48 | 1 | 106100-02331 | RETAINER, BEARING | 2 | 2 | | | | | | |
| 49 | 1 | 26116-050082 | BOLT, M5X 8 PLATED | 6 | 6 | | | | | | |
| 50 | 1 | 105092-01420 | COVER | 1 | 1 | | | | | | |
| 51 | 1 | 26013-060102 | BOLT, M6X 10 | 1 | 1 | | | | | | |

Fig.2. CYLINDER HEAD & BONNET



(A)=NFAD6-LIK3
(B)=NFAD6-LEIK3
(C)=

(D)=
(E)=
(F)=

| No. | Lev. | Parts No. | Description | Q'ty | | | | | | I | R |
|------|------|-----------------------------|-----------------------|------|-----|-----|-----|-----|-----|---|-----|
| | | | | (A) | (B) | (C) | (D) | (E) | (F) | | |
| 1 | 1 | 705090-11700 | HEAD ASSY, CYLINDER | 1 | 1 | | | | | | |
| 1-1 | 1 | 705090-11701 | HEAD ASSY, CYLINDER | 1 | 1 | | | | | | N |
| | | (A=E/#074871) (B=*2005.06) | | | | | | | | | |
| 3 | 2 | 105300-11330 | PIN | 1 | 1 | | | | | | |
| 4 | 2 | 27231-150000 | PLUG 15 | 1 | 1 | | | | | | |
| 4B | 2 | 105090-11800 | GUIDE, VALVE | 1 | 1 | | | | | | W 2 |
| | | (A=E/#074871) (B=*2005.06) | | | | | | | | | |
| 4C | 2 | 128170-11340 | SEAL, VALVE STEM | 1 | 1 | | | | | | W |
| | | (A=E/#074871) (B=*2005.06) | | | | | | | | | |
| 5 | 1 | 105090-11100 | VALVE, INTAKE | 1 | 1 | | | | | | |
| 6 | 1 | 105090-11111 | VALVE, EXHAUST | 1 | 1 | | | | | | |
| 7 | 1 | 105400-11121 | SPRING, VALVE | 2 | 2 | | | | | | |
| 8 | 1 | 101158-11180 | RETAINER, SPRING | 2 | 2 | | | | | | |
| 9 | 1 | 27310-070001 | COTTER, 7 | 2 | 2 | | | | | | |
| 11 | 1 | 26216-080452 | STUD, M8X 45 | 1 | 1 | | | | | | |
| 12 | 1 | 26216-060402 | STUD, M6X 40 | 2 | 2 | | | | | | |
| 12-1 | 1 | 26216-060352 | STUD, M6X 35 | 2 | 2 | | | | | | S 1 |
| | | (A=*1997.07) (B=*1997.07) | | | | | | | | | |
| 13 | 1 | 26366-060002 | NUT, M6 | 2 | 2 | | | | | | |
| 14 | 1 | 105010-11920 | COCK, WATER | 1 | 1 | | | | | | |
| 15 | 1 | 105090-11290 | SUPPORT ASSY, ARM | 1 | 1 | | | | | | |
| 18 | 1 | 119625-11880 | SEAT, NOZZLE | 1 | 1 | | | | | | |
| 19 | 1 | 105300-11900 | RETAINER | 1 | 1 | | | | | | |
| 19-1 | 1 | 119625-11900 | RETAINER, NOZZLE | 1 | 1 | | | | | | S 1 |
| | | (A=*1997.07) (B=*1997.07) | | | | | | | | | |
| 20 | 1 | 119625-11870 | PROTECTOR, NOZZLE | 1 | 1 | | | | | | |
| 20-1 | 1 | 119625-11871 | PROTECTOR, NOZZLE | 1 | 1 | | | | | | R A |
| | | (A=E/#030695) (B=E/#030706) | | | | | | | | | |
| 21 | 1 | 105090-11650 | ARM, ROCKER | 1 | 1 | | | | | | |
| 23 | 2 | 101158-11230 | SCREW, VALVE ADJUST | 1 | 1 | | | | | | |
| 24 | 2 | 26756-080002 | NUT, LOCK M8 | 1 | 1 | | | | | | |
| 25 | 1 | 105090-11660 | ARM, ROCKER | 1 | 1 | | | | | | |
| 27 | 2 | 101158-11230 | SCREW, VALVE ADJUST | 1 | 1 | | | | | | |
| 28 | 2 | 26756-080002 | NUT, LOCK M8 | 1 | 1 | | | | | | |
| 29 | 1 | 26366-080002 | NUT, M8 | 1 | 1 | | | | | | |
| 29-1 | 1 | 26306-080002 | NUT, M8 | 1 | 1 | | | | | | N |
| | | (A=*2001.06) (B=E/#057498) | | | | | | | | | |
| 30 | 1 | 705092-11520 | BONNET ASSY, HEAD | 1 | 1 | | | | | | |
| 31 | 2 | 705092-03550 | LEVER ASSY | 1 | 1 | | | | | | |
| 33 | 3 | 22322-030180 | PIN, TAPER 3X18 | 1 | 1 | | | | | | |
| 37 | 4 | 105225-66990 | SCREW, M5X8.5 | 1 | 1 | | | | | | |
| 39 | 2 | 22312-030180 | PIN, PARALLEL M3X18 | 1 | 1 | | | | | | |
| 40 | 2 | 104200-03641 | SPRING, DECOMPRESSION | 1 | 1 | | | | | | |
| 41 | 2 | 24311-000070 | O-RING, 1AP7.0 | 1 | 1 | | | | | | A |
| 42 | 1 | 26106-060202 | BOLT, M6X 20 PLATED | 1 | 1 | | | | | | |
| 43 | 1 | 105090-11820 | BOLT | 1 | 1 | | | | | | |
| 44 | 1 | 22117-060000 | WASHER, 6 | 1 | 1 | | | | | | |
| 45 | 1 | 105090-11310 | GASKET, BONNET | 1 | 1 | | | | | | A |
| 46 | 1 | 26106-060602 | BOLT, M6X 60 PLATED | 1 | 1 | | | | | | |

Remarks

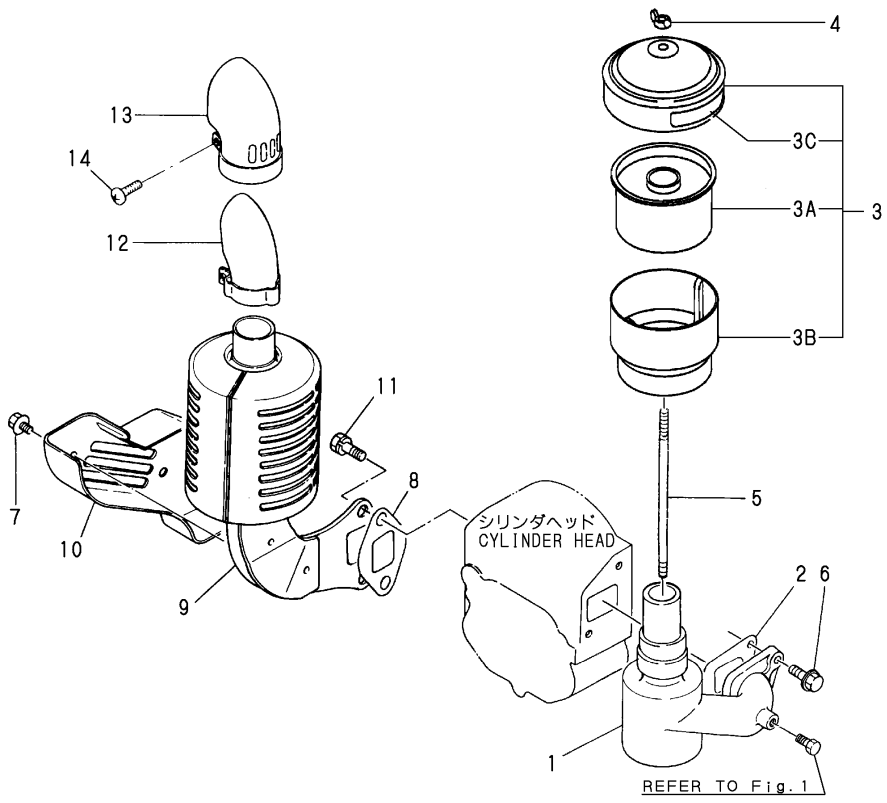
(A) THESE PART ARE ALSO SOLD BY FIG. 16 NO. 14-2

(GASKET SET.P/# 705092-92610).

(1) INTERCHANGEABLE BY SIMULTANEOUS REPLACEMENT WITH NO. 12-1 AND 19-1.

(2) REPAIR PART.

Fig.3. AIR CLEANER & MUFFLER



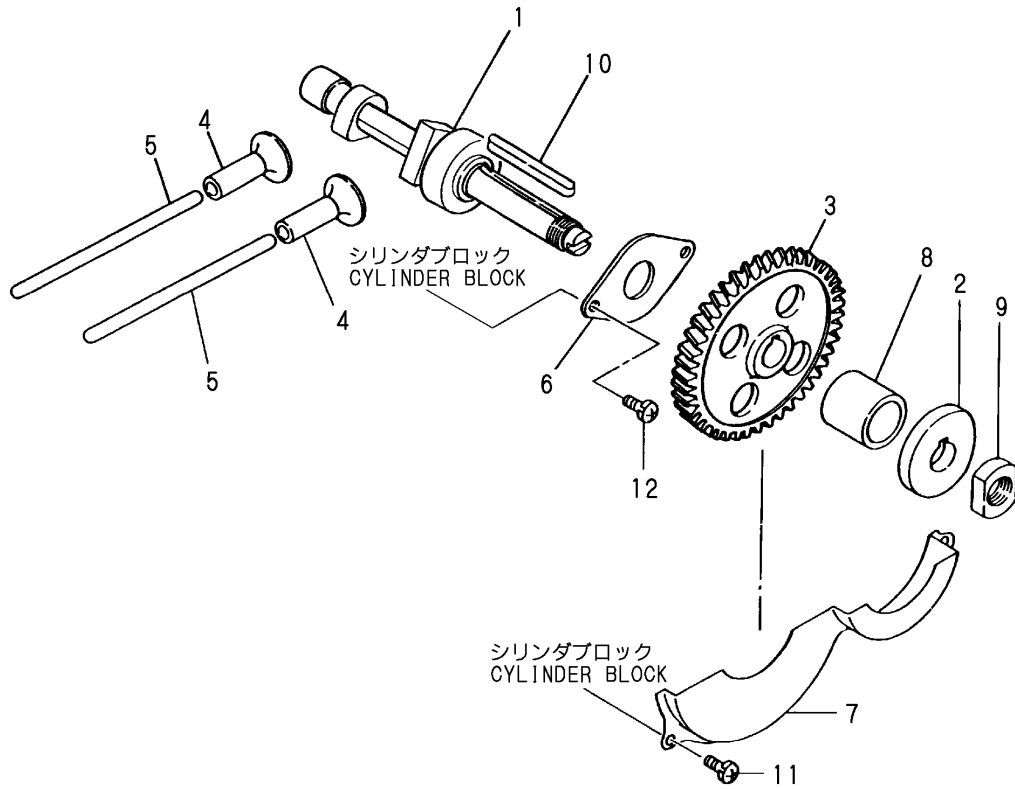
(A)=NFAD6-LIK3
(B)=NFAD6-LEIK3
(C)=

(D)=
(E)=
(F)=

| No. | Lev. | Parts No. | Description | Q'ty | | | | | | I | R |
|-----|------|-------------------------------|---------------------------------------|------|-----|-----|-----|-----|-----|---|-----|
| | | | | (A) | (B) | (C) | (D) | (E) | (F) | | |
| 1 | 1 | 105092-12021 | PIPE, AIR INTAKE | 1 | 1 | | | | | | |
| 2 | 1 | 105190-12050 | GASKET | 1 | 1 | | | | | | |
| 3 | 1 | 105092-12511 | CLEANER, AIR | 1 | 1 | | | | | | |
| 3-1 | 1 | 105092-12512 (A=*2002.04) | CLEANER, AIR (B=*2002.04) | 1 | 1 | | | | | | R |
| 3A | 2 | 104204-12540 (A=E/#039546) | ELEMENT, AIR CLEANER (B=E/#039531) | 1 | 1 | | | | | | W |
| 3B | 2 | 104204-12590 (A=FROM 1ST) | SUMP, OIL (B=FROM 1ST) | 1 | 1 | | | | | | W |
| 3C | 2 | 105092-07311 (A=FROM 1ST) | LABEL (B=FROM 1ST) | 1 | 1 | | | | | | W |
| 4 | 1 | 105092-12550 | NUT | 1 | 1 | | | | | | |
| 5 | 1 | 105092-12560 | BOLT | 1 | 1 | | | | | | |
| 6 | 1 | 26106-080202 | BOLT, M8X 20 PLATED | 2 | 2 | | | | | | |
| 7 | 1 | 160260-01580 | BOLT, FLANGE M6X6 | 2 | 2 | | | | | | |
| 8 | 1 | 105010-13200 | GASKET | 1 | 1 | | | | | | |
| 8-1 | 1 | 105010-13201 (A=*1995.05) | GASKET (B=*1995.05) | 1 | 1 | | | | | | N A |
| 9 | 1 | 105090-13510 | SILENCER | 1 | 1 | | | | | | |
| 9-1 | 1 | 105090-13511 (A=*1998.12) | SILENCER (B=*1998.12) | 1 | 1 | | | | | | N |
| 10 | 1 | 105090-13550 | COVER | 1 | 1 | | | | | | |
| 11 | 1 | 26013-080189 | BOLT, M8X 18 | 2 | 2 | | | | | | |
| 12 | 1 | 105430-13570 | PIPE | 1 | 1 | | | | | | |
| 13 | 1 | 105430-13590 | COVER | 1 | 1 | | | | | | |
| 14 | 1 | 26554-060162 | SCREW, M6X16 | 1 | 1 | | | | | | |

Remarks
(A) THESE PART ARE ALSO SOLD BY
FIG.16 NO.14-2
(GASKET SET.P/# 705092-92610).

Fig.4. CAMSHAFT



(A)=NFAD6-LIK3
 (B)=NFAD6-LEIK3
 (C)=

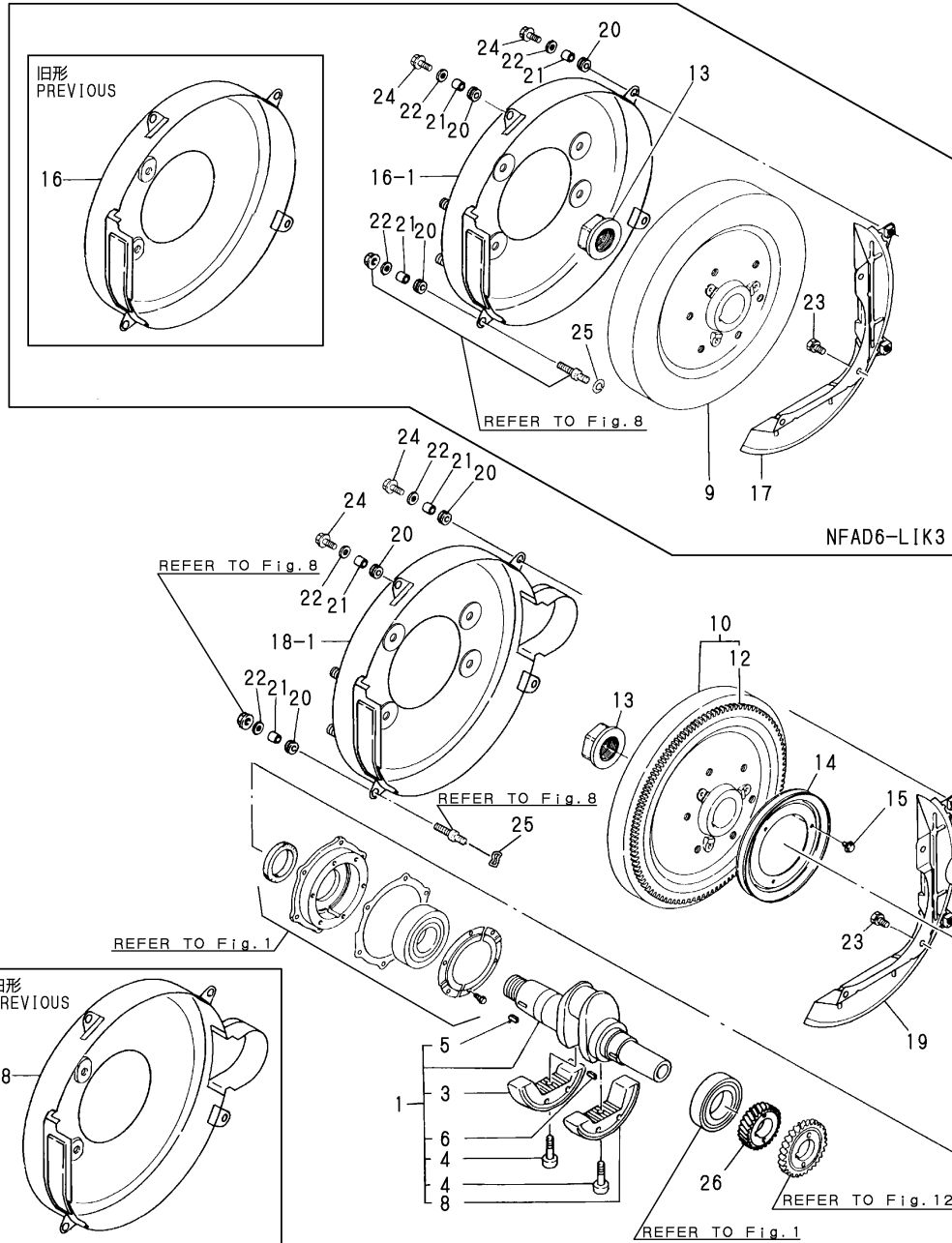
(D)=
 (E)=
 (F)=

| No. | Lev. | Parts No. | Description | Q'ty | | | | | | I | R |
|-----|------|--------------|-------------------|------|-----|-----|-----|-----|-----|---|---|
| | | | | (A) | (B) | (C) | (D) | (E) | (F) | | |
| 1 | 1 | 105090-14010 | CAMSHAFT | 1 | 1 | | | | | | |
| 2 | 1 | 105090-14091 | CAM, FUEL | 1 | 1 | | | | | | |
| 3 | 1 | 105090-14100 | GEAR, CAMSHAFT | 1 | 1 | | | | | | |
| 4 | 1 | 105300-14200 | TAPPET | 2 | 2 | | | | | | |
| 5 | 1 | 105090-14400 | ROD, PUSH | 2 | 2 | | | | | | |
| 6 | 1 | 105090-14420 | RETAINER, BEARING | 1 | 1 | | | | | | |
| 7 | 1 | 105090-14600 | COVER | 1 | 1 | | | | | | |
| 8 | 1 | 105092-14700 | SPACER | 1 | 1 | | | | | | |
| 9 | 1 | 104300-76460 | NUT | 1 | 1 | | | | | | |
| 10 | 1 | 22512-070500 | KEY, 7X 50 | 1 | 1 | | | | | | |
| 11 | 1 | 26022-060122 | SCREW, M6X12 | 2 | 2 | | | | | | |
| 12 | 1 | 26557-060142 | SCREW M 6X 14 | 2 | 2 | | | | | | |

Fig.5. CRANKSHAFT & FLYWHEEL

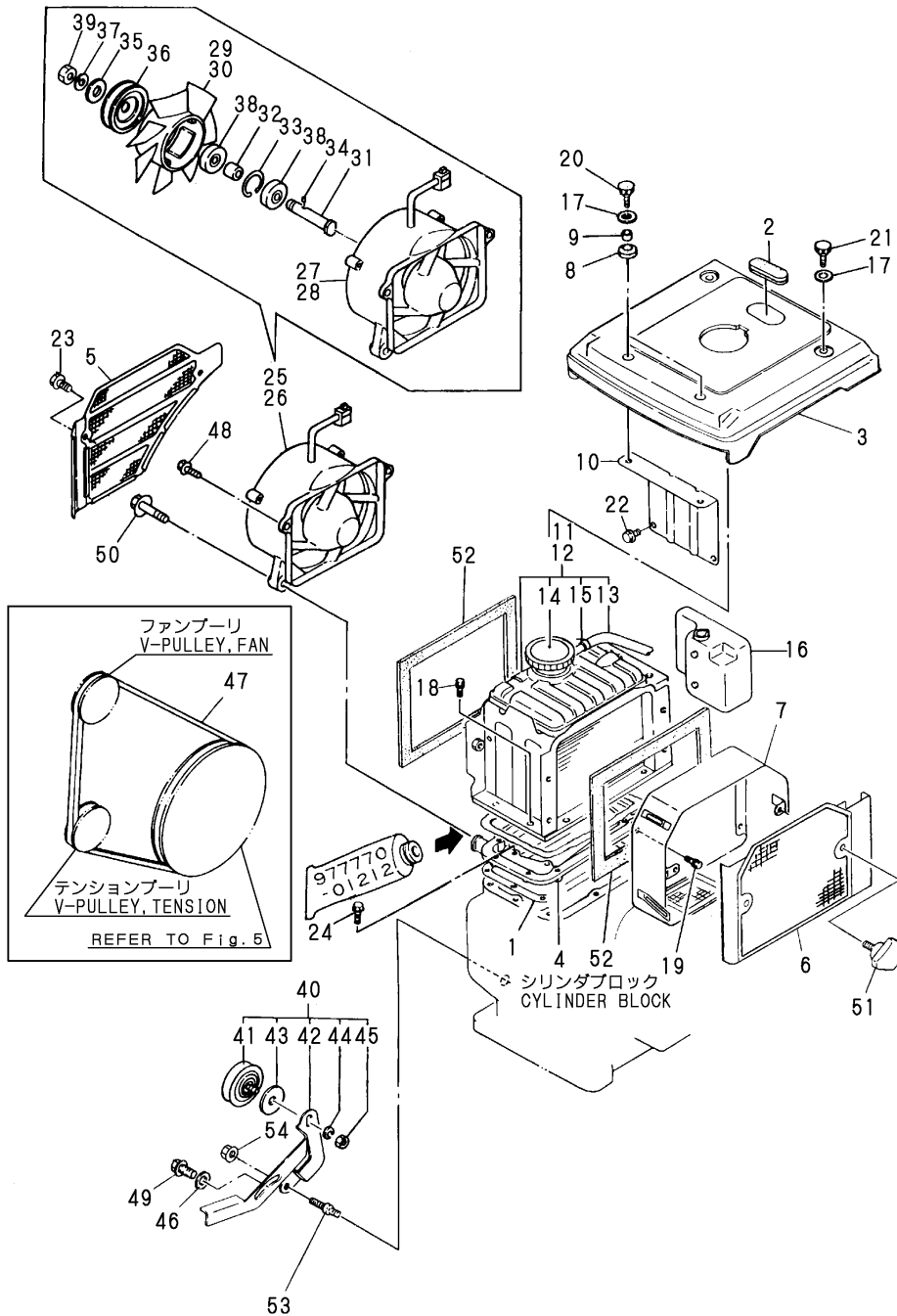
(A)=NFAD6-LIK3
 (B)=NFAD6-LEIK3
 (C)=

(D)=
 (E)=
 (F)=



| No. | Lev. | Parts No. | Description | Q'ty | | | | | | I | R |
|--------------|------|--------------|----------------------|------|-----|-----|-----|-----|-----|---|---|
| | | | | (A) | (B) | (C) | (D) | (E) | (F) | | |
| 1 | 1 | 705092-21710 | CRANKSHAFT ASSY | 1 | 1 | | | | | | |
| 3 | 2 | 105092-21700 | WEIGHT, BALANCE | 1 | 1 | | | | | | |
| 4 | 2 | 105092-21130 | BOLT, BALANCE WEIGHT | 2 | 2 | | | | | | |
| 5 | 2 | 22512-050140 | KEY, 5X 14 | 1 | 1 | | | | | | |
| 6 | 2 | 22512-050140 | KEY, 5X 14 | 1 | 1 | | | | | | |
| 8 | 2 | 105092-21710 | WEIGHT, BALANCE | 1 | 1 | | | | | | |
| 9 | 1 | 105090-21401 | FLYWHEEL | 1 | | | | | | | |
| 10 | 1 | 105090-21591 | FLYWHEEL ASSY | | 1 | | | | | | |
| 12 | 2 | 104511-21600 | GEAR, RING | | 1 | | | | | | |
| 13 | 1 | 105010-21530 | NUT, END | 1 | 1 | | | | | | |
| 14 | 1 | 104407-21600 | V-PULLEY | 1 | 1 | | | | | | |
| 15 | 1 | 26106-060122 | BOLT, M6X 12 PLATED | 3 | 3 | | | | | | |
| 16 | 1 | 105098-21300 | COVER, FLYWHEEL | 1 | | | | | | | |
| 16-1 | 1 | 105098-21310 | COVER, FLYWHEEL | 1 | | | | | | | N |
| (A=*2006.02) | | | | | | | | | | | |
| 17 | 1 | 105092-21310 | SUPPORT | 1 | | | | | | | |
| 18 | 1 | 105098-21360 | COVER, FLYWHEEL | | 1 | | | | | | |
| 18-1 | 1 | 105098-21320 | COVER, FLYWHEEL | | 1 | | | | | | N |
| (B=*2006.02) | | | | | | | | | | | |
| 19 | 1 | 105092-21360 | SUPPORT | | 1 | | | | | | |
| 20 | 1 | 105300-21381 | ABSORBER | 4 | 4 | | | | | | |
| 21 | 1 | 105300-44460 | COLLAR | 4 | 4 | | | | | | |
| 22 | 1 | 160120-76940 | WASHER | 4 | 4 | | | | | | |
| 23 | 1 | 26013-060142 | BOLT, M6X 14 | 3 | 3 | | | | | | |
| 24 | 1 | 26106-060202 | BOLT, M6X 20 PLATED | 3 | 3 | | | | | | |
| 25 | 1 | 105190-21910 | WASHER | 1 | 1 | | | | | | |
| 26 | 1 | 105090-21200 | GEAR, CRANKSHAFT | 1 | 1 | | | | | | |

Fig.8. RADIATOR & FAN

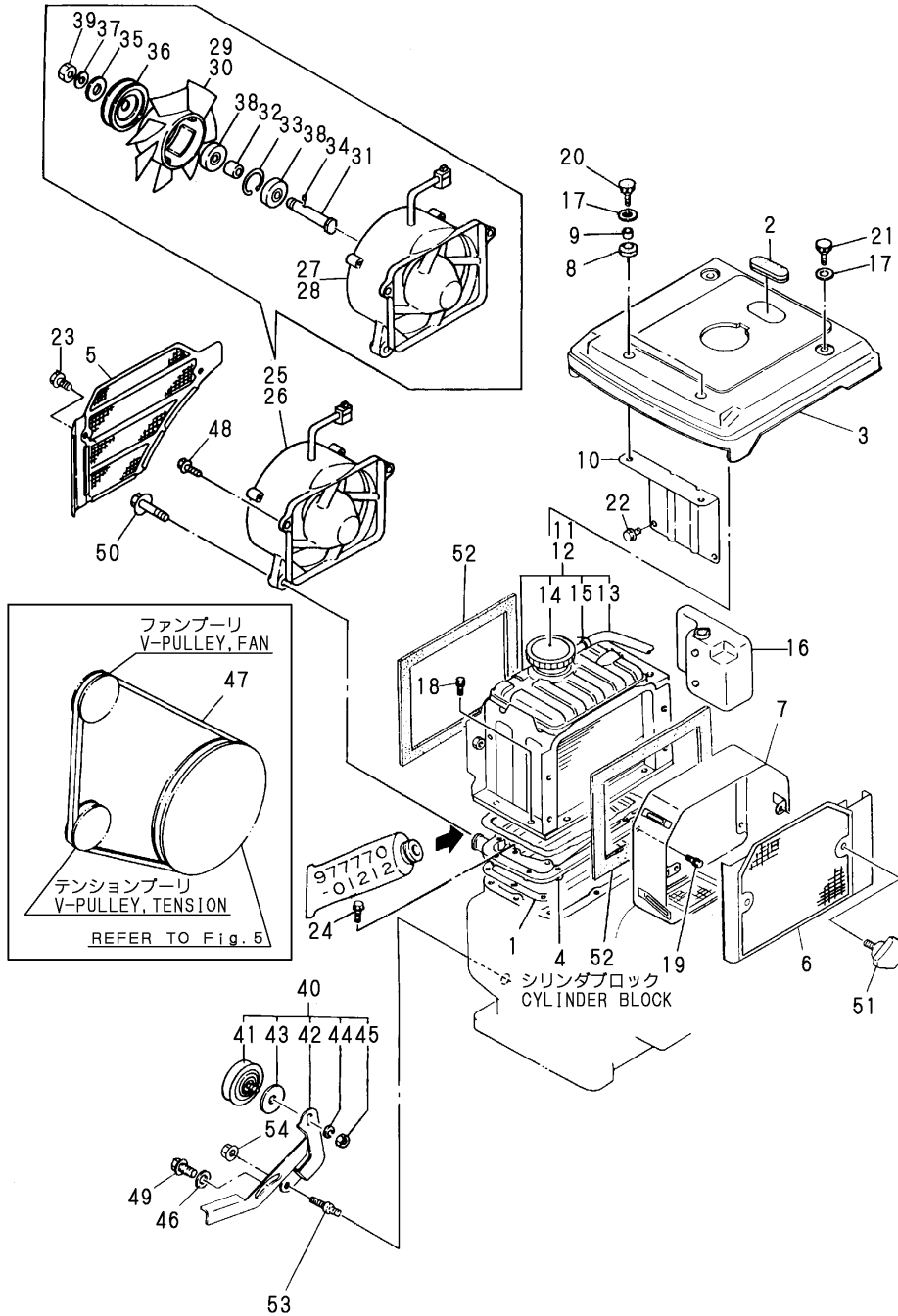


(A)=NFAD6-LIK3
(B)=NFAD6-LEIK3
(C)=

(D)=
(E)=
(F)=

| No. | Lev. | Parts No. | Description | Q'ty | | | | | | I | R |
|-----|------|----------------|----------------------|------|-----|-----|-----|-----|-----|---|---|
| | | | | (A) | (B) | (C) | (D) | (E) | (F) | | |
| 1 | 1 | 105090-44050 | GASKET | 1 | 1 | | | | | | |
| 2 | 1 | 105300-44220 | COVER, RADIATOR | 1 | 1 | | | | | | |
| 3 | 1 | 105090-44251-1 | COVER, RADIATOR | 1 | 1 | | | | | | |
| 4 | 1 | 105090-44300 | BRACKET, RADIATOR | 1 | 1 | | | | | | |
| 5 | 1 | 105090-44330-1 | SCREEN | 1 | 1 | | | | | | |
| 6 | 1 | 105092-44350-1 | SCREEN | 1 | 1 | | | | | | |
| 7 | 1 | 105092-44360 | DUCT, SCREEN | 1 | 1 | | | | | | |
| 8 | 1 | 105300-44451 | ABSORBER | 2 | 2 | | | | | | |
| 9 | 1 | 105300-44460 | COLLAR | 2 | 2 | | | | | | |
| 10 | 1 | 105090-44490 | STAY | 1 | 1 | | | | | | |
| 11 | 1 | 105098-44500 | RADIATOR ASSY | 1 | | | | | | | |
| 12 | 1 | 105050-44500 | RADIATOR ASSY | | 1 | | | | | | |
| 13 | 2 | 105340-44570 | PIPE, 7X170 | 1 | 1 | | | | | | |
| 14 | 2 | 105198-44590 | CAP, RADIATOR | 1 | 1 | | | | | | |
| 15 | 2 | 121250-44590 | CLAMP | 1 | 1 | | | | | | |
| 16 | 1 | 105100-44630 | TANK, SUB | 1 | 1 | | | | | | |
| 17 | 1 | 160120-76940 | WASHER | 4 | 4 | | | | | | |
| 18 | 1 | 26013-060162 | BOLT, M6X 16 | 9 | 9 | | | | | | |
| 19 | 1 | 26013-060129 | BOLT, M6X 12 | 4 | 4 | | | | | | |
| 20 | 1 | 26106-060202 | BOLT, M6X 20 PLATED | 2 | 2 | | | | | | |
| 21 | 1 | 26106-060102 | BOLT, M6X 10 PLATED | 2 | 2 | | | | | | |
| 22 | 1 | 26106-060122 | BOLT, M6X 12 PLATED | 2 | 2 | | | | | | |
| 23 | 1 | 26106-060122 | BOLT, M6X 12 PLATED | 1 | 1 | | | | | | |
| 24 | 1 | 26106-060202 | BOLT, M6X 20 PLATED | 8 | 8 | | | | | | |
| 25 | 1 | 105092-44201 | CASE ASSY, FAN | 1 | | | | | | | |
| 26 | 1 | 105090-44211 | CASE ASSY, FAN | | 1 | | | | | | |
| 27 | 2 | 105092-44680 | COVER, FAN | 1 | | | | | | | |
| 28 | 2 | 105090-44800 | CASE, COOLING FAN | | 1 | | | | | | |
| 29 | 2 | 105092-44700 | FAN, COOLING | 1 | | | | | | | |
| 30 | 2 | 105090-44850 | FAN, COOLING | | 1 | | | | | | |
| 31 | 2 | 105340-44710 | SHAFT, FAN | 1 | 1 | | | | | | |
| 32 | 2 | 106383-44720 | SPACER | 1 | 1 | | | | | | |
| 33 | 2 | 106383-44740 | CIRCLIP | 1 | 1 | | | | | | |
| 34 | 2 | 105340-44750 | PIN | 1 | 1 | | | | | | |
| 35 | 2 | 105100-44780 | WASHER, PULLEY | 1 | 1 | | | | | | |
| 36 | 2 | 105100-44770 | PULLEY, FAN | 2 | 2 | | | | | | |
| 37 | 2 | 22217-120000 | WASHER, SPRING 12 | 1 | 1 | | | | | | |
| 38 | 2 | 24107-062013 | BEARING, 6201ZZP6 | 2 | 2 | | | | | | |
| 39 | 2 | 26777-120002 | NUT, LOCK M12 | 1 | 1 | | | | | | |
| 40 | 1 | 105090-44810 | PULLEY ASSY, TENSION | 1 | 1 | | | | | | |
| 41 | 2 | 106100-44650 | PULLEY, TENSION | 1 | 1 | | | | | | |
| 42 | 2 | 105090-44940 | LEVER, PULLEY | 1 | 1 | | | | | | |
| 43 | 2 | 106100-44960 | CAP | 1 | 1 | | | | | | |
| 44 | 2 | 22217-080000 | WASHER, SPRING 8 | 1 | 1 | | | | | | |
| 45 | 2 | 26716-080002 | NUT, M8 | 1 | 1 | | | | | | |
| 46 | 1 | 22137-080000 | WASHER, 8 | 1 | 1 | | | | | | |
| 47 | 1 | 25117-003301 | V-BELT, M33H | 1 | 1 | | | | | | |
| 48 | 1 | 26106-060252 | BOLT, M6X 25 PLATED | 2 | 2 | | | | | | |
| 49 | 1 | 26106-080162 | BOLT, M8X 16 PLATED | 1 | 1 | | | | | | |
| 50 | 1 | 26106-080352 | BOLT, M8X 35 PLATED | 2 | 2 | | | | | | |
| 51 | 1 | 160725-78350 | KNOB | 2 | 2 | | | | | | |

Fig.8. RADIATOR & FAN

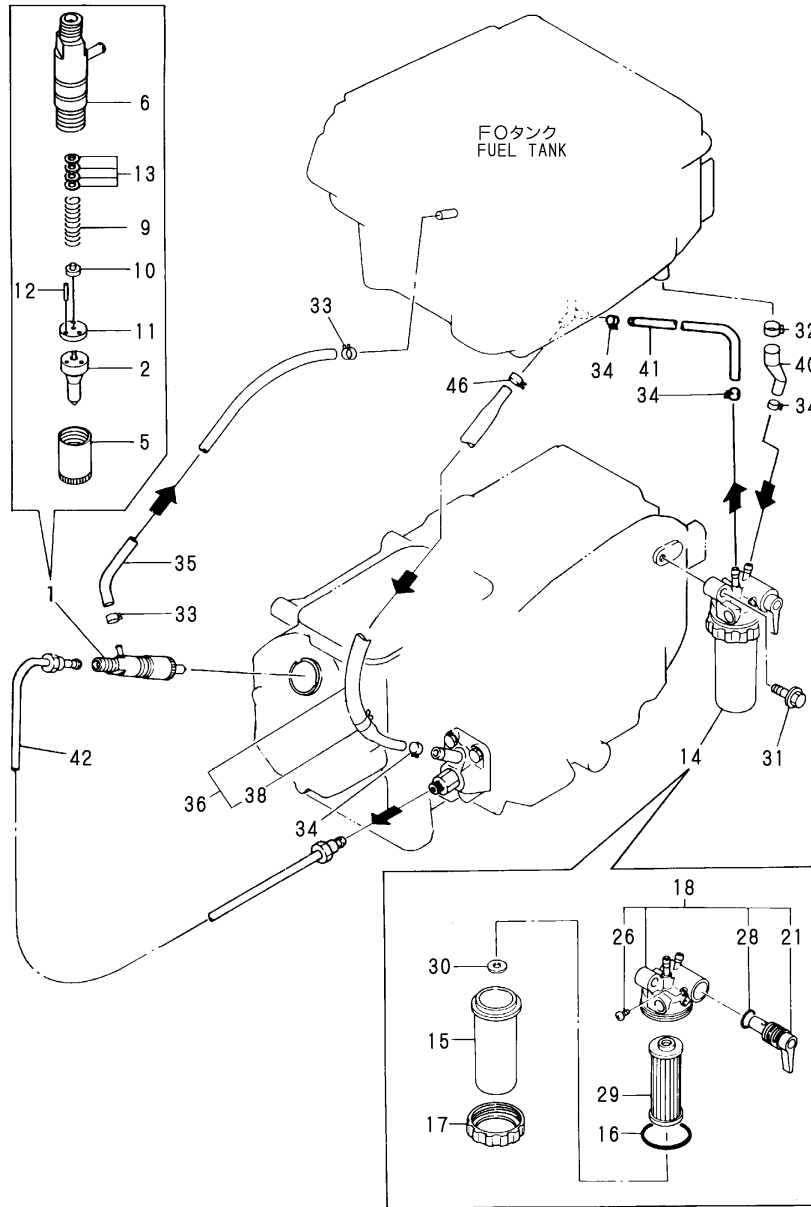


(A)=NFAD6-LIK3
(B)=NFAD6-LEIK3
(C)=

(D)=
(E)=
(F)=

| No. | Lev. | Parts No. | Description | Qty | | | | | | I | R |
|-----|------|--------------|-------------------|-----|-----|-----|-----|-----|-----|---|---|
| | | | | (A) | (B) | (C) | (D) | (E) | (F) | | |
| 52 | 1 | 106100-44560 | SPONGE, 15X5X1000 | 2 | 2 | | | | | | |
| 53 | 1 | 105100-44930 | BOLT | 1 | 1 | | | | | | |
| 54 | 1 | 26366-060002 | NUT, M6 | 1 | 1 | | | | | | |

Fig.10. FUEL OIL SYSTEM



(A)=NFAD6-LIK3
(B)=NFAD6-LEIK3
(C)=

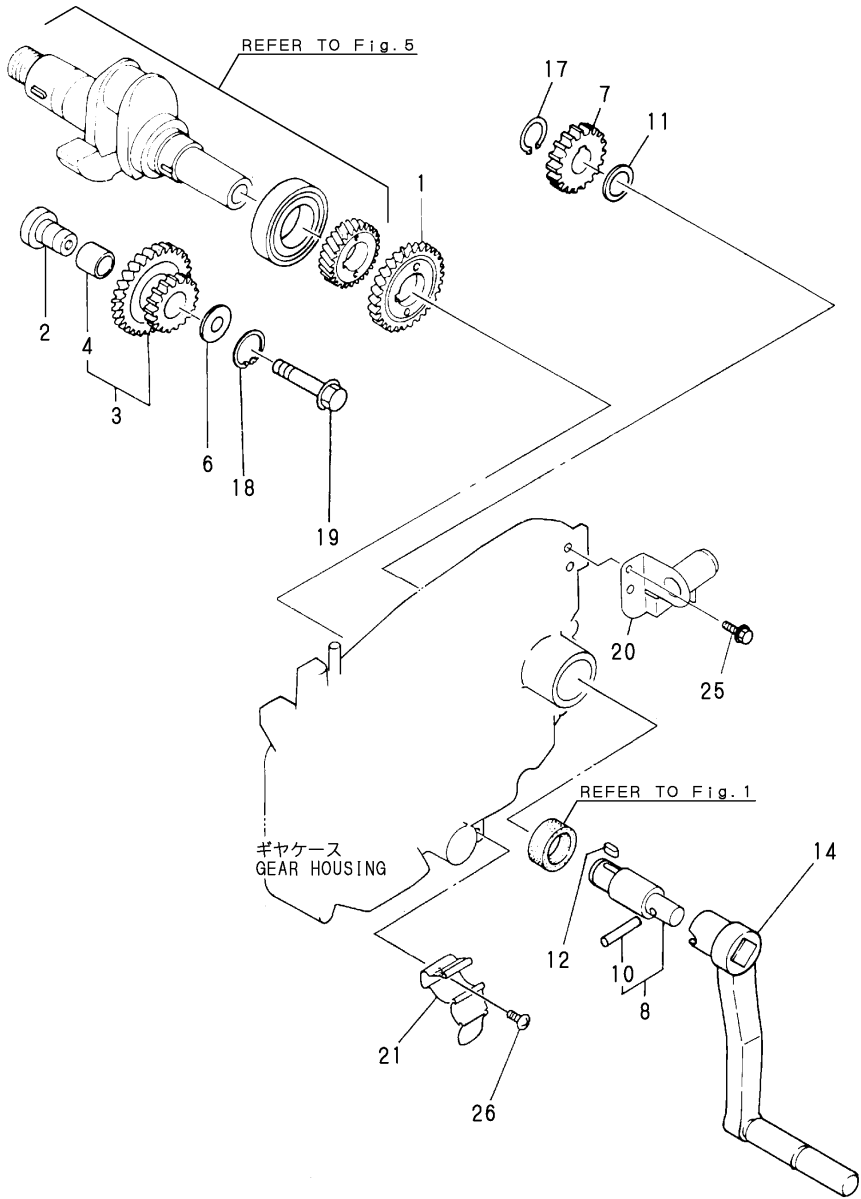
(D)=
(E)=
(F)=

| No. | Lev. | Parts No. | Description | Q'ty | | | | | | I | R |
|------|------|---------------------------|----------------------|------|-----|-----|-----|-----|-----|---|---|
| | | | | (A) | (B) | (C) | (D) | (E) | (F) | | |
| 1 | 1 | 705050-53100 | VALVE ASSY,INJECTION | 1 | 1 | | | | | | |
| 2 | 2 | 105050-53000 | VALVE ASSY,INJECTION | 1 | 1 | | | | | | |
| 5 | 2 | 114250-53080 | NUT, NOZZLE D16.95 | 1 | 1 | | | | | | |
| 6 | 2 | 105300-53100 | HOLDER ASSY, NOZZLE | 1 | 1 | | | | | | |
| 9 | 2 | 114250-53120 | SPRING, NOZZLE | 1 | 1 | | | | | | |
| 10 | 2 | 114250-53130 | SEAT, SPRING | 1 | 1 | | | | | | |
| 11 | 2 | 114250-53140 | PLATE | 1 | 1 | | | | | | |
| 12 | 2 | 114250-53210 | PIN | 2 | 2 | | | | | | |
| 13 | 2 | 114250-53400 | SHIM SET | 1 | 1 | | | | | | |
| 14 | 1 | 105370-55650 | STRAINER ASSY, FUEL | 1 | 1 | | | | | | |
| 15 | 2 | 105300-55530 | CUP, STRAINER | 1 | 1 | | | | | | |
| 16 | 2 | 105300-55520 | O-RING | 1 | 1 | | | | | | A |
| 17 | 2 | 105300-55610 | RING, RETAINING | 1 | 1 | | | | | | |
| 18 | 2 | 105300-55700 | BODY ASSY, STRAINER | 1 | 1 | | | | | | |
| 21 | 3 | 105300-55340 | LEVER | 1 | 1 | | | | | | |
| 26 | 3 | 104200-55750 | SCREW, M4 | 1 | 1 | | | | | | |
| 28 | 3 | 24311-000160 | O-RING, 1AP16.0 | 1 | 1 | | | | | | |
| 29 | 2 | 105370-55710 | ELEMENT | 1 | 1 | | | | | | |
| 30 | 2 | 105300-55750 | FLOAT | 1 | 1 | | | | | | |
| 31 | 1 | 26106-080302 | BOLT, M8X 30 PLATED | 1 | 1 | | | | | | |
| 32 | 1 | 129301-03660 | CLAMP 16 | 1 | 1 | | | | | | |
| 33 | 1 | 124722-59050 | CLIP, HOSE 9 | 2 | 2 | | | | | | |
| 34 | 1 | 124766-59050 | CLIP, HOSE 12 | 4 | 4 | | | | | | |
| 35 | 1 | 105300-59100 | PIPE, FUEL RETURN | 1 | 1 | | | | | | |
| 36 | 1 | 105090-59020 | PIPE ASSY, FUEL | 1 | 1 | | | | | | |
| 38 | 2 | 124766-59050 | CLIP, HOSE 12 | 1 | 1 | | | | | | |
| 40 | 1 | 105192-59560 | PIPE, FUEL | 1 | 1 | | | | | | |
| 40-1 | 1 | 105192-59562 | PIPE, FUEL | 1 | 1 | | | | | | N |
| | | (A=*1995.11) (B=*1995.11) | | | | | | | | | |
| 41 | 1 | 105192-59570 | PIPE, FUEL | 1 | 1 | | | | | | |
| 42 | 1 | 105090-59800 | PIPE ASSY, INJECTION | 1 | 1 | | | | | | |
| 46 | 1 | 23080-013000 | CLAMP, 13 | 1 | 1 | | | | | | |

Remarks

(A) THESE PART ARE ALSO SOLD BY
FIG.16 NO.14-2
(GASKET SET.P/# 705092-92610).

Fig.12. HAND STARTING DEVICE

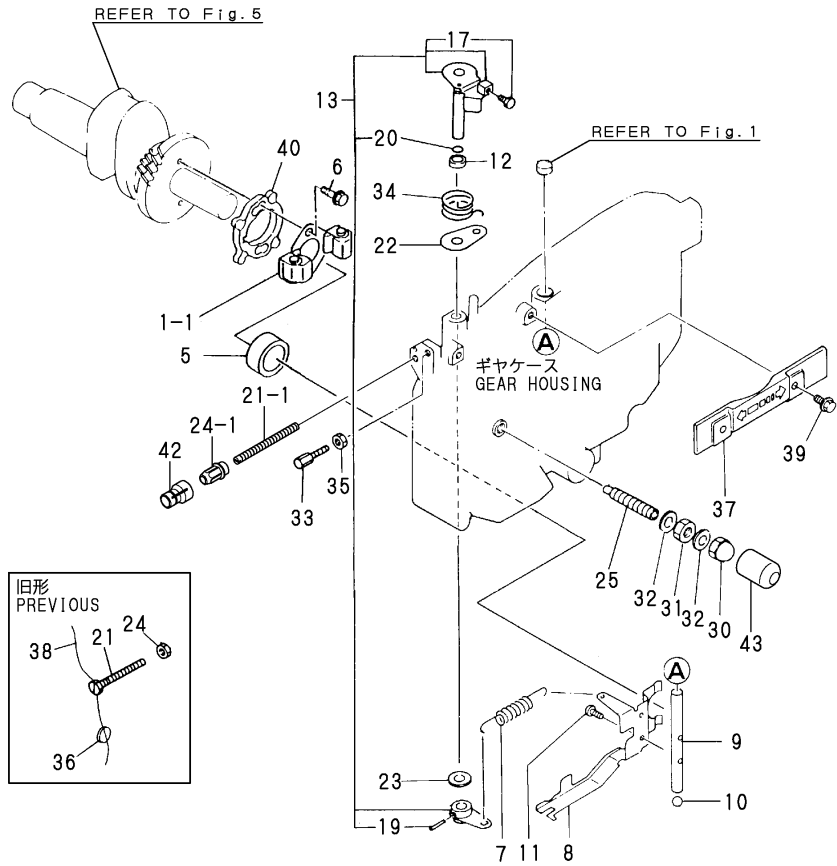


(A)=NFAD6-LIK3
(B)=NFAD6-LEIK3
(C)=

(D)=
(E)=
(F)=

| No. | Lev. | Parts No. | Description | Q'ty | | | | | | I | R |
|------|------|--------------|----------------------|------|-----|-----|-----|-----|-----|---|---|
| | | | | (A) | (B) | (C) | (D) | (E) | (F) | | |
| 1 | 1 | 105092-28410 | GEAR, BALANCER | 1 | 1 | | | | | | |
| 2 | 1 | 105302-28701 | SHAFT, IDLE GEAR | 1 | 1 | | | | | | |
| 3 | 1 | 105092-28710 | GEAR ASSY, IDLE | 1 | 1 | | | | | | |
| 4 | 2 | 105302-28720 | BUSH | 1 | 1 | | | | | | |
| 6 | 1 | 105362-28750 | SPACER | 1 | 1 | | | | | | |
| 7 | 1 | 105092-76330 | GEAR, STARTER | 1 | 1 | | | | | | |
| 8 | 1 | 705302-76900 | SHAFT ASSY, STARTING | 1 | 1 | | | | | | |
| 10 | 2 | 104200-76480 | PIN | 1 | 1 | | | | | | |
| 11 | 1 | 105300-76470 | COLLAR | 1 | 1 | | | | | | |
| 12 | 1 | 105300-76490 | KEY, 7X10 | 1 | 1 | | | | | | |
| 14 | 1 | 106100-76790 | HANDLE ASSY | 1 | 1 | | | | | | |
| 17 | 1 | 22242-000200 | RING, 20 | 1 | 1 | | | | | | |
| 18 | 1 | 22242-000210 | RING, 21 | 1 | 1 | | | | | | |
| 19 | 1 | 26106-100652 | BOLT, M10X 65 PLATED | 1 | 1 | | | | | | |
| 19-1 | 1 | 26106-100702 | BOLT, M10X 70 PLATED | 1 | 1 | | | | | | R |
| | | (A=*1995.08) | (B=*1995.08) | | | | | | | | |
| 20 | 1 | 105198-08100 | BRACKET, HANDLE | 1 | 1 | | | | | | |
| 21 | 1 | 105300-08510 | BRACKET ASSY | 1 | 1 | | | | | | |
| 25 | 1 | 26106-060122 | BOLT, M6X 12 PLATED | 2 | 2 | | | | | | |
| 26 | 1 | 26557-060082 | SCREW, M6X 8 | 1 | 1 | | | | | | |

Fig.13. GOVERNOR & CONTROL DEVICE



(A)=NFAD6-LIK3
(B)=NFAD6-LEIK3
(C)=

(D)=
(E)=
(F)=

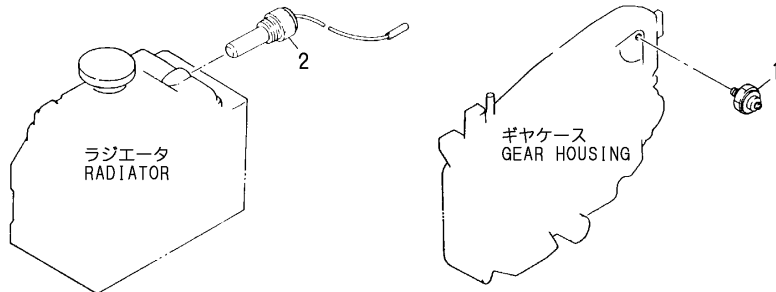
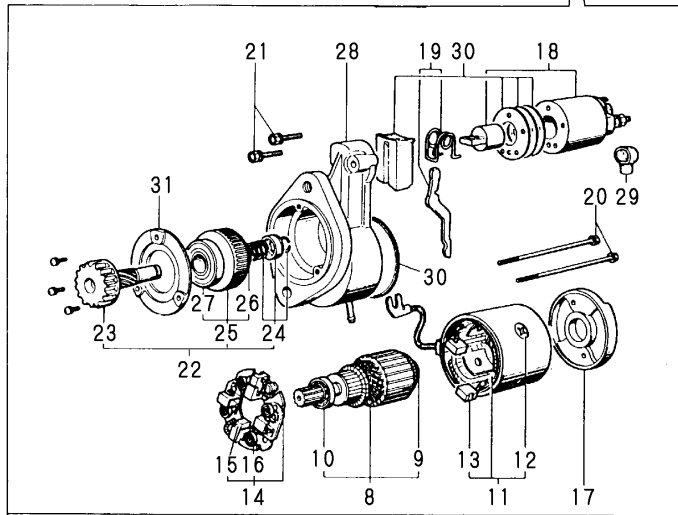
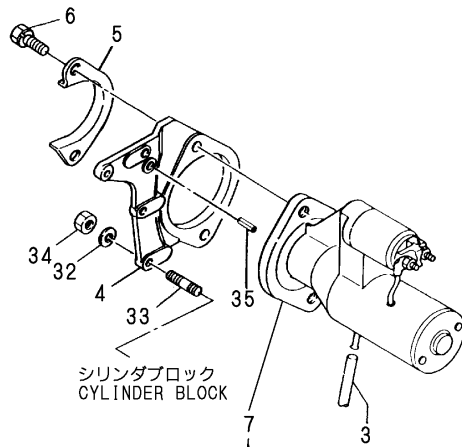
| No. | Lev. | Parts No. | Description | Q'ty | | | | | | I | R |
|------|------|-----------------------------|---------------------|------|-----|-----|-----|-----|-----|---|-----|
| | | | | (A) | (B) | (C) | (D) | (E) | (F) | | |
| 1-1 | 1 | 705090-61700 | GOVERNOR ASSY | 1 | 1 | | | | | | |
| 5 | 1 | 105300-61600 | SLEEVE, GOVERNOR | 1 | 1 | | | | | | |
| 6 | 1 | 174100-61600 | BOLT | 2 | 2 | | | | | | |
| 7 | 1 | 105300-66010 | SPRING, REGULATOR | 1 | 1 | | | | | | |
| 8 | 1 | 105090-66300 | LEVER, GOVERNOR | 1 | 1 | | | | | | |
| 9 | 1 | 105100-66400 | SHAFT | 1 | 1 | | | | | | |
| 10 | 1 | 24190-120001 | BALL, STEEL 3/8 | 1 | 1 | | | | | | |
| 11 | 1 | 26022-050102 | SCREW, M5X10 | 2 | 2 | | | | | | |
| 12 | 1 | 121575-21850 | WASHER | 1 | 1 | | | | | | |
| 13 | 1 | 705192-66700 | SHAFT ASSY | 1 | 1 | | | | | | |
| 17 | 3 | 105225-66990 | SCREW, M5X8.5 | 1 | 1 | | | | | | |
| 19 | 2 | 22322-030200 | PIN, TAPER 3X20 | 1 | 1 | | | | | | |
| 20 | 2 | 24311-000070 | O-RING, 1AP7.0 | 1 | 1 | | | | | | |
| 21 | 1 | 105300-66520 | SCREW | 1 | 1 | | | | | | |
| 21-1 | 1 | 105090-66830 | SCREW | 1 | 1 | | | | | | S 1 |
| | | (A=*2005.01) (B=E/#073909) | | | | | | | | | |
| 22 | 1 | 105300-66850 | RETAINER | 1 | 1 | | | | | | |
| 23 | 1 | 22117-100000 | WASHER, 10 | 1 | 1 | | | | | | |
| 24 | 1 | 26756-060002 | NUT, LOCK M6 | 1 | 1 | | | | | | |
| 24-1 | 1 | 129209-61370 | NUT, M6 | 1 | 1 | | | | | | S 1 |
| | | (A=*2005.01) (B=E/#073909) | | | | | | | | | |
| 25 | 1 | 105507-66551 | LIMITER ASSY, FUEL | 1 | 1 | | | | | | |
| 30 | 1 | 124060-66950 | NUT, CAP M10 | 1 | 1 | | | | | | |
| 31 | 1 | 26796-100002 | NUT, LOCK M10 | 1 | 1 | | | | | | |
| 32 | 1 | 43400-500430 | SEAL WASHER 10S | 2 | 2 | | | | | | |
| 32-1 | 1 | 22190-100002 | WASHER, SEAL 10 | 2 | 2 | | | | | | N |
| | | (A=E/#028215) (B=E/#028209) | | | | | | | | | |
| 33 | 1 | 102100-67080 | BOLT, ADJUSTING | 1 | 1 | | | | | | |
| 34 | 1 | 105502-67301 | SPRING, RETURN | 1 | 1 | | | | | | |
| 35 | 1 | 26756-060002 | NUT, LOCK M6 | 1 | 1 | | | | | | |
| 36 | 1 | 135210-61090 | LEAD | 1 | 1 | | | | | | Z |
| | | (A=E/XXX) (B=E/XXX) | | | | | | | | | |
| 37 | 1 | 105300-66110 | COVER | 1 | 1 | | | | | | |
| 38 | 1 | 22451-060080 | WIRE, 0.6X80 | 1 | 1 | | | | | | Z |
| | | (A=E/XXX) (B=E/XXX) | | | | | | | | | |
| 39 | 1 | 26106-060122 | BOLT, M6X 12 PLATED | 2 | 2 | | | | | | |
| 40 | 1 | 105090-61810 | PIECE, DISTANCE | 1 | 1 | | | | | | |
| 42 | 1 | 119285-66650 | CAP, HIGH-IDLE | 1 | 1 | | | | | | W 1 |
| | | (A=*2005.04) (B=*2005.04) | | | | | | | | | |
| 43 | 1 | 105300-66610 | CAP | 1 | 1 | | | | | | W |
| | | (A=E/XXX) (B=E/XXX) | | | | | | | | | |

Remarks

(1)INTERCHANGEABLE BY SIMULTANEOUS REPLACEMENT WITH NO.21-1,24-1,AND 42.

Fig.14. STARTING MOTOR

NFAD6-LEIK3

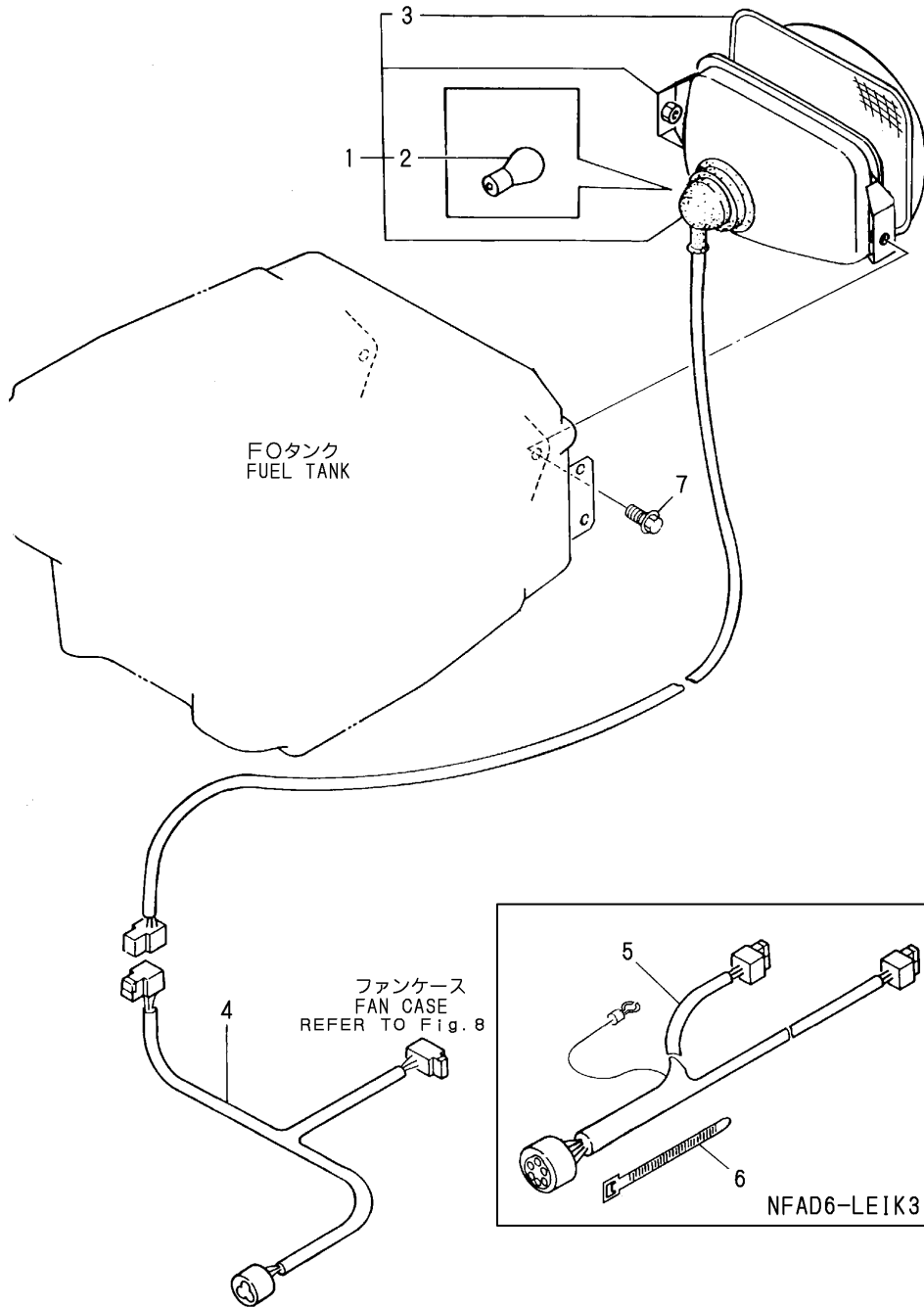


(A)=NFAD6-LIK3
(B)=NFAD6-LEIK3
(C)=

(D)=
(E)=
(F)=

| No. | Lev. | Parts No. | Description | Q'ty | | | | | | I | R |
|------|------|------------------------------|--------------------|------|-----|-----|-----|-----|-----|---|---|
| | | | | (A) | (B) | (C) | (D) | (E) | (F) | | |
| 1 | 1 | 124060-39451 | SWITCH, 0.2KG | | 1 | | | | | | |
| 1-1 | 1 | 124060-39452 (B=*2000.01) | SWITCH, 0.2KG | | 1 | | | | | | N |
| 2 | 1 | 105300-44900 | SWITCH | | 1 | | | | | | |
| 3 | 1 | 105840-59100 | PIPE | | 1 | | | | | | |
| 4 | 1 | 105090-77471 | BRACKET | | 1 | | | | | | |
| 5 | 1 | 105192-77480 | COVER | | 1 | | | | | | |
| 6 | 1 | 26013-120302 | BOLT, M12X 30 | | 2 | | | | | | |
| 7 | 1 | 105300-77010 | STARTER, S114-438 | | 1 | | | | | | |
| 8 | 2 | X211461005 | ARMATURE | | 1 | | | | | | |
| 9 | 3 | X211415502 | BEARING, BALL | | 1 | | | | | | |
| 9-1 | 3 | X2130350900 (B=EXXX) | BALL BEARING | | 1 | | | | | | R |
| 10 | 3 | X211425502 | BEARING, BALL | | 1 | | | | | | |
| 10-1 | 3 | X211425511 (B=EXXX) | BALL BEARING | | 1 | | | | | | R |
| 11 | 2 | X211442003 | COIL ASSY, FIELD | | 1 | | | | | | |
| 12 | 3 | X21143215 | SCREW, CORE | | 4 | | | | | | |
| 13 | 3 | X211469002 | BRUSH (+) | | 2 | | | | | | |
| 14 | 2 | X211449007 | HOLDER ASSY, BRUSH | | 1 | | | | | | |
| 15 | 3 | X211459002 | BRUSH (-) | | 2 | | | | | | |
| 16 | 3 | X21148314 | SPRING, BRUSH | | 4 | | | | | | |
| 17 | 2 | X211483003 | COVER | | 1 | | | | | | |
| 18 | 2 | 171008-77530 | SWITCH, MAGNETIC | | 1 | | | | | | |
| 18-1 | 2 | X2114T71110 (B=EXXX) | SWITCH, MAGNETIC | | 1 | | | | | | N |
| 19 | 2 | X211446012 | LEVER, SHIFT | | 1 | | | | | | |
| 20 | 2 | X211468005 | BOLT, THROUGH | | 2 | | | | | | |
| 21 | 2 | X21145866 | BOLT | | 2 | | | | | | |
| 22 | 2 | X211455011 | PINION ASSY | | 1 | | | | | | |
| 23 | 3 | X211465011 | SHAFT, PINION | | 1 | | | | | | |
| 24 | 3 | X211429006 | STOPPER SET | | 1 | | | | | | |
| 25 | 3 | X211425506 | CLUTCH ASSY | | 1 | | | | | | |
| 26 | 4 | X211435502 | BALL BEARING | | 1 | | | | | | |
| 26-1 | 4 | X211495502 (B=EXXX) | BEARING, BALL | | 1 | | | | | | R |
| 27 | 4 | X211455502 | BALL BEARING | | 1 | | | | | | |
| 28 | 2 | X211456605 | CASE ASSY, GEAR | | 1 | | | | | | |
| 29 | 2 | X21142742 | COVER (A), RUBBER | | 1 | | | | | | |
| 30 | 2 | X211458012 | COVER KIT | | 1 | | | | | | |
| 31 | 2 | X211428008 | RETAINER, BEARING | | 1 | | | | | | |
| 32 | 1 | 22212-060000 | WASHER 6 | | 4 | | | | | | |
| 32-1 | 1 | 22217-060000 (B=*1991.01) | WASHER, SPRING 6 | | 4 | | | | | | N |
| 33 | 1 | 26226-060222 | STUD, M6X 22 | | 4 | | | | | | |
| 34 | 1 | 26716-060002 | NUT, M6 | | 4 | | | | | | |
| 35 | 1 | 22351-060012 | PIN, SPRING 6.0X12 | | 1 | | | | | | |

Fig.15. LIGHTING DEVICE



(A)=NFAD6-LIK3
(B)=NFAD6-LEIK3
(C)=

(D)=
(E)=
(F)=

| No. | Lev. | Parts No. | Description | Q'ty | | | | | | I | R |
|-----|------|------------------------------|---------------------|------|-----|-----|-----|-----|-----|---|---|
| | | | | (A) | (B) | (C) | (D) | (E) | (F) | | |
| 1 | 1 | 105092-78020 | LAMP ASSY, HEAD | 1 | 1 | | | | | | |
| 2 | 2 | 194190-55810 | BULB 12V-35/25W | 1 | 1 | | | | | | |
| 3 | 2 | 105092-78260 | LENS | 1 | 1 | | | | | | |
| 4 | 1 | 105092-78530 | HARNESS, WIRE | 1 | | | | | | | |
| 5 | 1 | 105092-78540 | HARNESS, WIRE | | 1 | | | | | | |
| 6 | 1 | 160370-78950 | BAND, L=98 | | 1 | | | | | | |
| 6-1 | 1 | 29621-100000 (B=*2004.05) | BAND, TR100 | | 1 | | | | | | R |
| 7 | 1 | 26106-080142 | BOLT, M8X 14 PLATED | 2 | 2 | | | | | | |

Fig.16. TOOL,LABEL & GASKET SET

(A)=NFAD6-LIK3
(B)=NFAD6-LEIK3
(C)=

(D)=
(E)=
(F)=

| No. | Lev. | Parts No. | Description | Q'ty | | | | | | I | R |
|------|------|--------------|----------------------|------|-----|-----|-----|-----|-----|---|---|
| | | | | (A) | (B) | (C) | (D) | (E) | (F) | | |
| 1 | 1 | 105190-07100 | LABEL | 1 | 1 | | | | | | |
| 2 | 1 | 105090-07160 | LABEL, START | 1 | 1 | | | | | | |
| 3 | 1 | 105370-07450 | LABEL, RADIATOR CAP | 1 | 1 | | | | | | Z |
| 5 | 1 | 105372-07150 | LABEL, LUB. OIL | 1 | 1 | | | | | | |
| 6-1 | 1 | 705300-92101 | BOX ASSY, TOOL | 1 | 1 | | | | | | |
| 7 | 2 | 104200-92350 | DRIVER, SCREW | 1 | 1 | | | | | | |
| 8 | 2 | 105300-92600 | BAG, TOOL | 1 | 1 | | | | | | |
| 9 | 2 | 28110-100120 | SPANNER, 10X12 | 1 | 1 | | | | | | |
| 10 | 2 | 28110-140170 | SPANNER, 14X17 | 1 | 1 | | | | | | |
| 11 | 2 | 28110-190220 | SPANNER, 19X22 | 1 | 1 | | | | | | |
| 12 | 2 | 22217-120000 | WASHER, SPRING 12 | 3 | 3 | | | | | | |
| 13 | 2 | 26206-120352 | BOLT, M12X 35 PLATED | 3 | 3 | | | | | | |
| 14 | 1 | 705092-92600 | GASKET SET | 1 | 1 | | | | | | |
| 14-1 | 1 | 705092-92601 | GASKET SET | 1 | 1 | | | | | | N |
| 14-2 | 1 | 705092-92610 | GASKET SET | 1 | 1 | | | | | | N |
| 15 | 2 | 105090-01300 | O-RING | 2 | 2 | | | | | | |
| 16 | 2 | 105090-01330 | GASKET, HEAD | 1 | 1 | | | | | | |
| 16-1 | 2 | 105090-01331 | GASKET, CYL. HEAD | 1 | 1 | | | | | | N |
| 17 | 2 | 105090-01410 | GASKET, GEAR CASE | 1 | 1 | | | | | | |
| 18 | 2 | 101104-01760 | GASKET, CAP | 1 | 1 | | | | | | |
| 19 | 2 | 105090-02020 | GASKET | 1 | 1 | | | | | | |
| 19-1 | 2 | 105090-02021 | GASKET | 1 | 1 | | | | | | N |
| 20 | 2 | 24341-000200 | O-RING, 1AS20.0 | 1 | 1 | | | | | | |
| 21 | 2 | 24311-000070 | O-RING, 1AP7.0 | 1 | 1 | | | | | | |
| 22 | 2 | 119625-11870 | PROTECTOR, NOZZLE | 1 | 1 | | | | | | |
| 22-1 | 2 | 119625-11871 | PROTECTOR, NOZZLE | 1 | 1 | | | | | | R |
| 23 | 2 | 105090-11310 | GASKET, BONNET | 1 | 1 | | | | | | |
| 24 | 2 | 105010-13200 | GASKET | 1 | 1 | | | | | | |
| 24-1 | 2 | 105010-13201 | GASKET | 1 | 1 | | | | | | N |
| 25 | 2 | 103338-32570 | O-RING | 1 | 1 | | | | | | |
| 26 | 2 | 124550-51350 | GASKET, DELIVERY | 1 | 1 | | | | | | |
| 27 | 2 | 124550-51370 | O-RING | 1 | 1 | | | | | | |
| 28 | 2 | 101504-55051 | GASKET | 1 | 1 | | | | | | |
| 28-1 | 2 | 105302-55050 | GASKET, CAP | 1 | 1 | | | | | | N |
| 29 | 2 | 105300-55520 | O-RING | 1 | 1 | | | | | | |
| 30 | 1 | 105250-07310 | LABEL, RADIATOR | 1 | 1 | | | | | | W |
| 31 | 1 | 105250-07320 | LABEL,NO FIRE | 1 | 1 | | | | | | W |
| 32 | 1 | 105100-07300 | LABEL, CAUTION | 1 | 1 | | | | | | W |
| 33 | 1 | 161690-07300 | LABEL | 1 | 1 | | | | | | W |

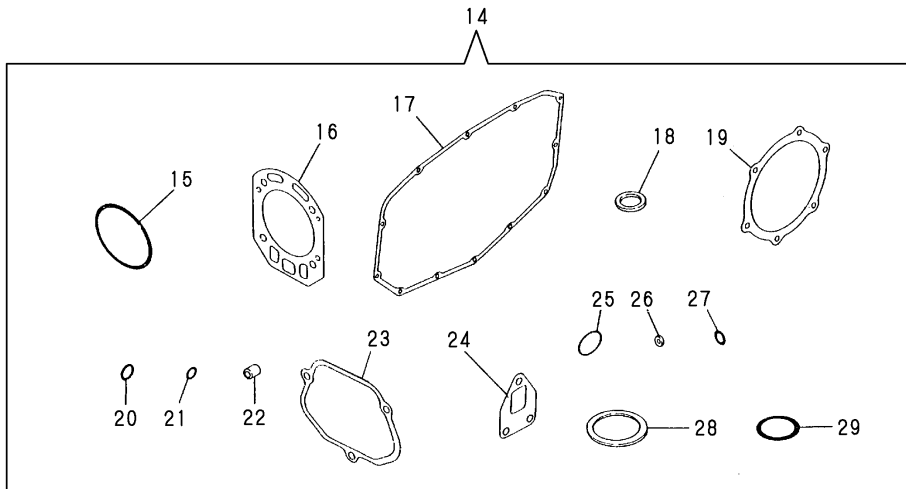
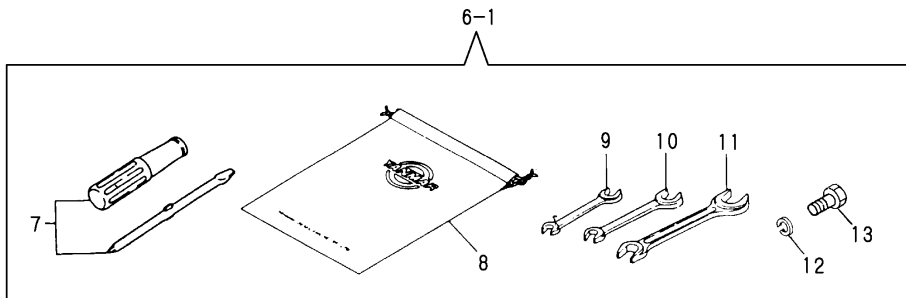
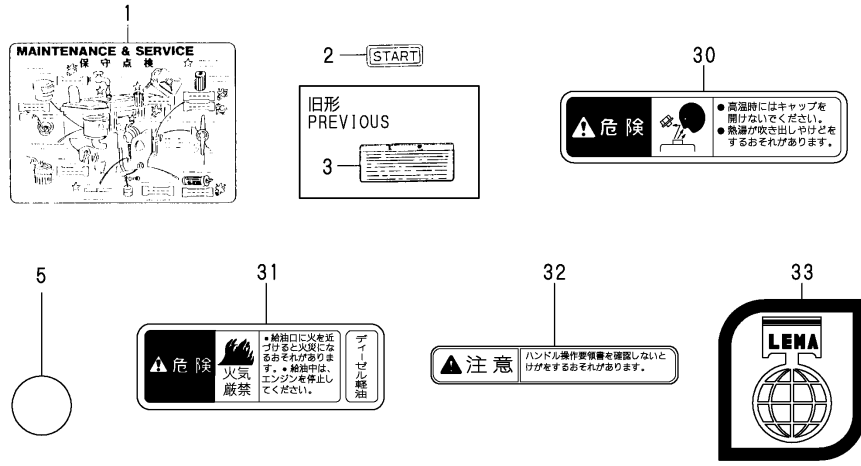
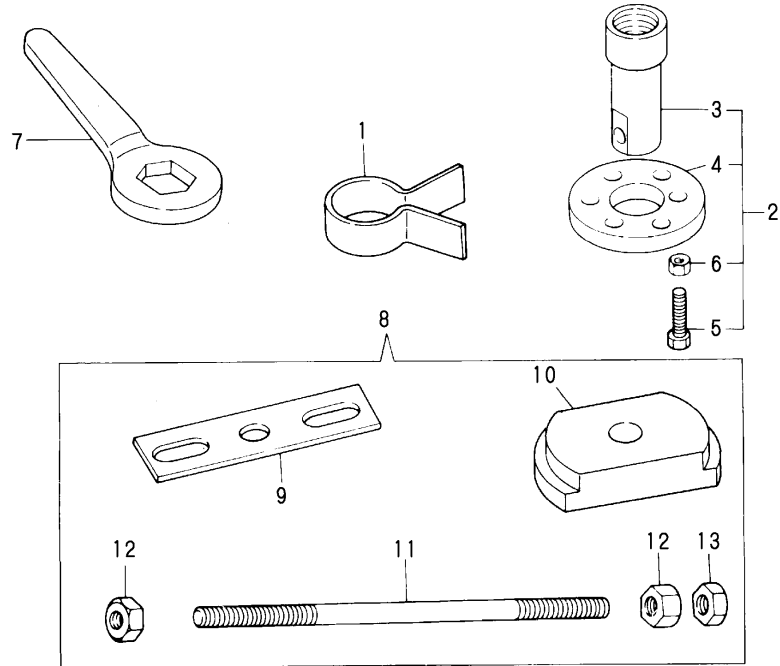


Fig.17. TOOL(OPTIONAL)

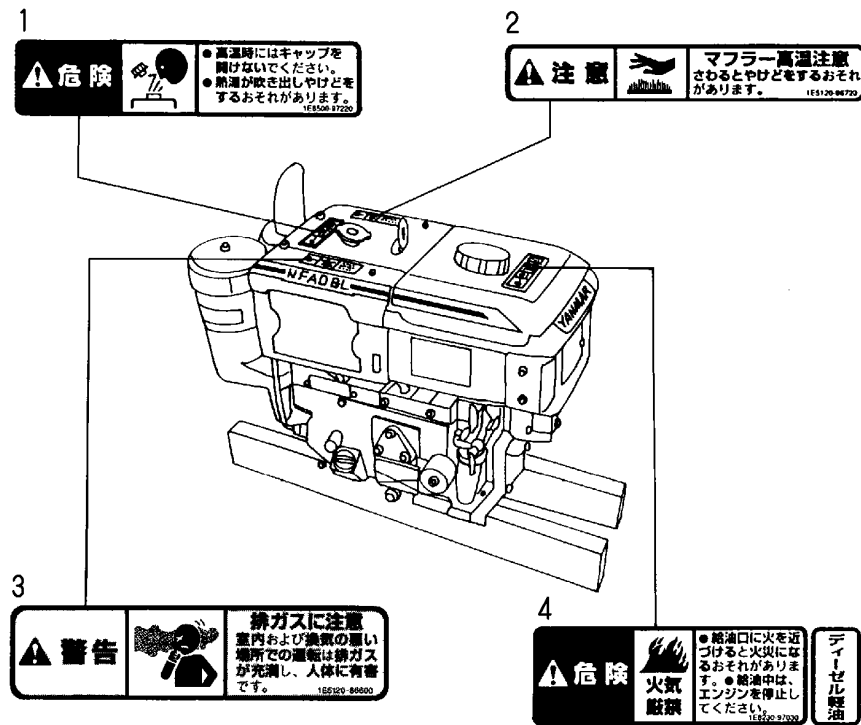


(A)=NFAD6-LIK3
(B)=NFAD6-LEIK3
(C)=

(D)=
(E)=
(F)=

| No. | Lev. | Parts No. | Description | Q'ty | | | | | | I | R |
|-----|------|--------------|---------------------|------|-----|-----|-----|-----|-----|---|---|
| | | | | (A) | (B) | (C) | (D) | (E) | (F) | | |
| 1 | 1 | 101300-92140 | TOOL, PISTON&RING | 1 | 1 | | | | | | |
| 2 | 1 | 105090-92190 | TOOL, WHEEL REMOVER | 1 | 1 | | | | | | |
| 3 | 2 | 105090-92110 | RETAINER, A | 1 | 1 | | | | | | |
| 4 | 2 | 104200-92120 | RETAINER, B | 1 | 1 | | | | | | |
| 5 | 2 | 104200-92130 | TOOL | 2 | 2 | | | | | | |
| 6 | 2 | 26717-120002 | NUT, M12 | 2 | 2 | | | | | | |
| 7 | 1 | 105010-92100 | WRENCH | 1 | 1 | | | | | | |
| 8 | 1 | 105090-92090 | TOOL ASSY, LINER | 1 | 1 | | | | | | |
| 9 | 2 | 172200-92020 | TOOL, LINER REMOVER | 1 | 1 | | | | | | |
| 10 | 2 | 105090-92010 | TOOL, LINER REMOVER | 1 | 1 | | | | | | |
| 11 | 2 | 103338-92030 | BOLT, LINER REMOVER | 1 | 1 | | | | | | |
| 12 | 2 | 26716-160002 | NUT, M16 | 2 | 2 | | | | | | |
| 13 | 2 | 26757-160002 | NUT, LOCK M16 | 1 | 1 | | | | | | |

Fig.18. SAFETY LABEL



警告表示(ラベル)の部品コード番号

| No. | 部品番号 | 警告表示内容 |
|-----|--------------|----------|
| 1 | 1E8500-97220 | 熱湯吹き出し注意 |
| 2 | 1E5120-86720 | マフラー高温注意 |
| 3 | 1E5120-86600 | 排気ガス注意 |
| 4 | 1E8230-97030 | 火気厳禁 |

安全銘板の貼付け位置は、取扱説明書をご参照下さい。

(A)=NFAD6-LIK3
(B)=NFAD6-LEIK3
(C)=

(D)=
(E)=
(F)=

| No. | Lev. | Parts No. | Description | Qty | | | | | | I | R |
|-----|------|--------------|----------------------|-----|-----|-----|-----|-----|-----|---|---|
| | | | | (A) | (B) | (C) | (D) | (E) | (F) | | |
| 1 | 1 | 1E8500-97220 | LABEL, RADIATOR | 1 | 1 | | | | | | |
| 2 | 1 | 1E5120-86720 | LABEL, CAUTION | 1 | 1 | | | | | | |
| 3 | 1 | 1E5120-86600 | WARNING, EXHAUST GAS | 1 | 1 | | | | | | |
| 4 | 1 | 1E8230-97030 | LABEL, DANGER B | 1 | 1 | | | | | | |

Parts No. Index

| Parts No. | Fig. No. | Ref. No. |
|--------------|----------|----------|
| 101104-01760 | 1 | 27 |
| | 16 | 18 |
| 101158-03061 | 7 | 12 |
| 101158-03111 | 7 | 14 |
| 101158-11180 | 2 | 8 |
| 101158-11230 | 2 | 23 |
| | | 27 |
| 101300-92140 | 17 | 1 |
| 101504-55051 | 11 | 4 |
| | 16 | 28 |
| 102100-67080 | 13 | 33 |
| 103338-32070 | 7 | 6 |
| 103338-32570 | 7 | 7 |
| | 16 | 25 |
| 103338-92030 | 17 | 11 |
| 104107-07900 | 11 | 12 |
| 104200-03641 | 2 | 40 |
| 104200-55750 | 10 | 26 |
| 104200-76480 | 12 | 10 |
| 104200-92120 | 17 | 4 |
| 104200-92130 | 17 | 5 |
| 104200-92350 | 16 | 7 |
| 104204-12540 | 3 | 3 A |
| 104204-12590 | 3 | 3 B |
| 104271-01950 | 1 | 29 |
| 104271-51450 | 9 | 24 |
| 104271-51460 | 9 | 25 |
| 104300-32150 | 7 | 1 |
| 104300-76460 | 4 | 9 |
| 104407-21600 | 5 | 14 |
| 104511-21600 | 5 | 12 |
| 104607-55220 | 11 | 9 |
| 105010-11920 | 2 | 14 |
| 105010-13200 | 3 | 8 |
| | 16 | 24 |
| 105010-13201 | 3 | 8 -1 |
| | 16 | 24 -1 |
| 105010-21530 | 5 | 13 |
| 105010-92100 | 17 | 7 |
| 105050-44500 | 8 | 12 |
| 105050-53000 | 10 | 2 |
| 105090-01300 | 1 | 3 |
| | 16 | 15 |
| 105090-01330 | 1 | 12 |
| | 16 | 16 |
| 105090-01331 | 1 | 12 -1 |
| | 16 | 16 -1 |
| 105090-01410 | 1 | 23 |
| | 16 | 17 |
| 105090-01480 | 1 | 24 |

| Parts No. | Fig. No. | Ref. No. |
|----------------|----------|----------|
| 105090-01750 | 1 | 26 |
| 105090-01960 | 1 | 29 -1 |
| 105090-02020 | 1 | 45 |
| | 16 | 19 |
| 105090-02021 | 1 | 45 -1 |
| | 16 | 19 -1 |
| 105090-03081 | 7 | 13 |
| 105090-03131 | 7 | 15 |
| 105090-07160 | 16 | 2 |
| 105090-07940 | 11 | 14 |
| 105090-11100 | 2 | 5 |
| 105090-11111 | 2 | 6 |
| 105090-11290 | 2 | 15 |
| 105090-11310 | 2 | 45 |
| | 16 | 23 |
| 105090-11650 | 2 | 21 |
| 105090-11660 | 2 | 25 |
| 105090-11800 | 2 | 4 B |
| 105090-11820 | 2 | 43 |
| 105090-13510 | 3 | 9 |
| 105090-13511 | 3 | 9 -1 |
| 105090-13550 | 3 | 10 |
| 105090-14010 | 4 | 1 |
| 105090-14091 | 4 | 2 |
| 105090-14100 | 4 | 3 |
| 105090-14400 | 4 | 5 |
| 105090-14420 | 4 | 6 |
| 105090-14600 | 4 | 7 |
| 105090-21200 | 5 | 26 |
| 105090-21401 | 5 | 9 |
| 105090-21591 | 5 | 10 |
| 105090-22190 | 6 | 1 |
| 105090-22400 | 6 | 9 |
| 105090-22470 | 6 | 20 |
| 105090-22480 | 6 | 26 |
| 105090-22510 | 6 | 22 |
| 105090-22520 | 6 | 28 |
| 105090-23910 | 6 | 12 A |
| 105090-44050 | 8 | 1 |
| 105090-44211 | 8 | 26 |
| 105090-44251-1 | 8 | 3 |
| 105090-44300 | 8 | 4 |
| 105090-44330-1 | 8 | 5 |
| 105090-44490 | 8 | 10 |
| 105090-44800 | 8 | 28 |
| 105090-44810 | 8 | 40 |
| 105090-44850 | 8 | 30 |
| 105090-44940 | 8 | 42 |
| 105090-59020 | 10 | 36 |
| 105090-59800 | 10 | 42 |

| Parts No. | Fig. No. | Ref. No. |
|----------------|----------|----------|
| 105090-61810 | 13 | 40 |
| 105090-66300 | 13 | 8 |
| 105090-66830 | 13 | 21 -1 |
| 105090-77471 | 14 | 4 |
| 105090-92010 | 17 | 10 |
| 105090-92090 | 17 | 8 |
| 105090-92110 | 17 | 3 |
| 105090-92190 | 17 | 2 |
| 105092-01420 | 1 | 50 |
| 105092-07311 | 3 | 3 C |
| 105092-12021 | 3 | 1 |
| 105092-12511 | 3 | 3 |
| 105092-12512 | 3 | 3 -1 |
| 105092-12550 | 3 | 4 |
| 105092-12560 | 3 | 5 |
| 105092-14700 | 4 | 8 |
| 105092-21130 | 5 | 4 |
| 105092-21310 | 5 | 17 |
| 105092-21360 | 5 | 19 |
| 105092-21700 | 5 | 3 |
| 105092-21710 | 5 | 8 |
| 105092-28410 | 12 | 1 |
| 105092-28710 | 12 | 3 |
| 105092-44201 | 8 | 25 |
| 105092-44350-1 | 8 | 6 |
| 105092-44360 | 8 | 7 |
| 105092-44680 | 8 | 27 |
| 105092-44700 | 8 | 29 |
| 105092-55150 | 11 | 7 |
| 105092-55241-1 | 11 | 15 |
| 105092-55520 | 11 | 20 |
| 105092-55530 | 11 | 21 |
| 105092-55830-1 | 11 | 16 |
| 105092-76330 | 12 | 7 |
| 105092-78020 | 15 | 1 |
| 105092-78260 | 15 | 3 |
| 105092-78530 | 15 | 4 |
| 105092-78540 | 15 | 5 |
| 105098-21300 | 5 | 16 |
| 105098-21310 | 5 | 16 -1 |
| 105098-21320 | 5 | 18 -1 |
| 105098-21360 | 5 | 18 |
| 105098-44500 | 8 | 11 |
| 105100-01660 | 1 | 18 |
| 105100-02300 | 1 | 46 |
| 105100-02310 | 1 | 47 |
| 105100-07300 | 16 | 32 |
| 105100-44630 | 8 | 16 |
| 105100-44770 | 8 | 36 |
| 105100-44780 | 8 | 35 |

| Parts No. | Fig. No. | Ref. No. |
|--------------|----------|----------|
| 105100-44930 | 8 | 53 |
| 105100-55540 | 11 | 22 |
| 105100-55820 | 11 | 17 |
| 105100-66400 | 13 | 9 |
| 105140-34100 | 7 | 9 |
| 105140-76500 | 1 | 22 |
| 105190-07100 | 16 | 1 |
| 105190-12050 | 3 | 2 |
| 105190-21910 | 5 | 25 |
| 105190-35050 | 7 | 10 |
| 105192-59560 | 10 | 40 |
| 105192-59562 | 10 | 40 -1 |
| 105192-59570 | 10 | 41 |
| 105192-77480 | 14 | 5 |
| 105198-08100 | 12 | 20 |
| 105198-44590 | 8 | 14 |
| 105200-51100 | 9 | 4 |
| 105215-01200 | 1 | 10 |
| 105215-01670 | 1 | 8 |
| 105225-23200 | 6 | 13 |
| 105225-66990 | 2 | 37 |
| | 13 | 17 |
| 105250-07310 | 16 | 30 |
| 105250-07320 | 16 | 31 |
| 105300-01690 | 1 | 25 |
| 105300-01920 | 1 | 28 |
| 105300-08510 | 12 | 21 |
| 105300-11330 | 2 | 3 |
| 105300-11900 | 2 | 19 |
| 105300-14200 | 4 | 4 |
| 105300-21381 | 5 | 20 |
| 105300-34040 | 1 | 19 |
| 105300-44220 | 8 | 2 |
| 105300-44451 | 8 | 8 |
| 105300-44460 | 5 | 21 |
| | 8 | 9 |
| 105300-44900 | 14 | 2 |
| 105300-51500 | 9 | 26 |
| 105300-51510 | 9 | 27 |
| 105300-51550 | 9 | 28 |
| 105300-51800 | 9 | 33 |
| 105300-53100 | 10 | 6 |
| 105300-55080 | 11 | 5 |
| 105300-55340 | 10 | 21 |
| 105300-55520 | 10 | 16 |
| | 16 | 29 |
| 105300-55530 | 10 | 15 |
| 105300-55610 | 10 | 17 |
| 105300-55700 | 10 | 18 |
| 105300-55750 | 10 | 30 |

Parts No. Index

| Parts No. | Fig. No. | Ref. No. |
|--------------|----------|----------|
| 105300-59100 | 10 | 35 |
| 105300-61600 | 13 | 5 |
| 105300-66010 | 13 | 7 |
| 105300-66110 | 13 | 37 |
| 105300-66520 | 13 | 21 |
| 105300-66610 | 13 | 43 |
| 105300-66850 | 13 | 22 |
| 105300-76470 | 12 | 11 |
| 105300-76490 | 12 | 12 |
| 105300-77010 | 14 | 7 |
| 105300-92600 | 16 | 8 |
| 105302-28701 | 12 | 2 |
| 105302-28720 | 12 | 4 |
| 105302-55040 | 11 | 3 |
| 105302-55050 | 11 | 4 -1 |
| | 16 | 28 -1 |
| 105340-44570 | 8 | 13 |
| 105340-44710 | 8 | 31 |
| 105340-44750 | 8 | 34 |
| 105362-28750 | 12 | 6 |
| 105362-78960 | 7 | 16 |
| 105370-07450 | 16 | 3 |
| 105370-55650 | 10 | 14 |
| 105370-55710 | 10 | 29 |
| 105372-07150 | 16 | 5 |
| 105372-55100 | 11 | 6 |
| 105400-11121 | 2 | 7 |
| 105430-13570 | 3 | 12 |
| 105430-13590 | 3 | 13 |
| 105500-07920 | 11 | 13 |
| 105502-67301 | 13 | 34 |
| 105507-66551 | 13 | 25 |
| 105840-59100 | 14 | 3 |
| 106100-02331 | 1 | 48 |
| 106100-44560 | 8 | 52 |
| 106100-44650 | 8 | 41 |
| 106100-44960 | 8 | 43 |
| 106100-76790 | 12 | 14 |
| 106383-44720 | 8 | 32 |
| 106383-44740 | 8 | 33 |
| 111130-02160 | 1 | 44 |
| 114250-51190 | 9 | 34 |
| 114250-53080 | 10 | 5 |
| 114250-53120 | 10 | 9 |
| 114250-53130 | 10 | 10 |
| 114250-53140 | 10 | 11 |
| 114250-53210 | 10 | 12 |
| 114250-53400 | 10 | 13 |
| 119285-66650 | 13 | 42 |
| 119625-11870 | 2 | 20 |

| Parts No. | Fig. No. | Ref. No. |
|--------------|----------|----------|
| 119625-11870 | 16 | 22 |
| 119625-11871 | 2 | 20 -1 |
| | 16 | 22 -1 |
| 119625-11880 | 2 | 18 |
| 119625-11900 | 2 | 19 -1 |
| 120270-61250 | 1 | 22 -1 |
| 121250-44590 | 8 | 15 |
| 121450-01220 | 1 | 11 |
| 121575-21850 | 13 | 12 |
| 124060-39451 | 14 | 1 |
| 124060-39452 | 14 | 1 -1 |
| 124060-66950 | 13 | 30 |
| 124550-51320 | 9 | 20 |
| 124550-51341 | 9 | 21 |
| 124550-51350 | 9 | 22 |
| | 16 | 26 |
| 124550-51370 | 9 | 23 |
| | 16 | 27 |
| 124722-59050 | 10 | 33 |
| 124766-59050 | 10 | 34 |
| | | 38 |
| 124950-22300 | 6 | 8 |
| 124950-51190 | 9 | 9 |
| 128170-11340 | 2 | 4 C |
| 129100-51300 | 9 | 17 |
| 129209-61370 | 13 | 24 -1 |
| 129301-03660 | 10 | 32 |
| 135210-61090 | 13 | 36 |
| 160120-76940 | 5 | 22 |
| | 8 | 17 |
| 160260-01580 | 3 | 7 |
| 160370-78950 | 15 | 6 |
| 160725-78350 | 8 | 51 |
| 161690-07300 | 16 | 33 |
| 171008-77530 | 14 | 18 |
| 172200-92020 | 17 | 9 |
| 174100-54120 | 9 | 15 |
| 174100-61600 | 13 | 6 |
| 174307-51170 | 9 | 7 |
| 174307-51181 | 9 | 8 |
| 174307-51700 | 9 | 29 |
| 194190-55810 | 15 | 2 |
| 1E5120-86600 | 18 | 3 |
| 1E5120-86720 | 18 | 2 |
| 1E8230-97030 | 18 | 4 |
| 1E8500-97220 | 18 | 1 |
| 22117-060000 | 2 | 44 |
| 22117-100000 | 13 | 23 |
| 22137-080000 | 8 | 46 |
| 22190-100002 | 13 | 32 -1 |

| Parts No. | Fig. No. | Ref. No. |
|--------------|----------|----------|
| 22212-060000 | 14 | 32 |
| 22217-060000 | 14 | 32 -1 |
| 22217-080000 | 1 | 32 |
| | 8 | 44 |
| 22217-120000 | 8 | 37 |
| | 16 | 12 |
| 22242-000200 | 12 | 17 |
| 22242-000210 | 12 | 18 |
| 22252-000100 | 1 | 20 |
| 22312-030180 | 2 | 39 |
| 22322-030180 | 2 | 33 |
| 22322-030200 | 13 | 19 |
| 22351-060012 | 1 | 9 |
| | 14 | 35 |
| 22451-060080 | 13 | 38 |
| 22512-050140 | 5 | 5 |
| | | 6 |
| 22512-070500 | 4 | 10 |
| 23064-090370 | 7 | 17 |
| 23080-013000 | 10 | 46 |
| 23414-080000 | 11 | 8 |
| 24107-062013 | 8 | 38 |
| 24190-120001 | 1 | 21 |
| | 13 | 10 |
| 24311-000070 | 2 | 41 |
| | 13 | 20 |
| | 16 | 21 |
| 24311-000160 | 10 | 28 |
| 24321-000250 | 1 | 34 |
| 24341-000200 | 7 | 11 |
| | 16 | 20 |
| 25117-003301 | 8 | 47 |
| 26013-060102 | 1 | 51 |
| 26013-060129 | 8 | 19 |
| 26013-060142 | 5 | 23 |
| 26013-060162 | 8 | 18 |
| 26013-080189 | 3 | 11 |
| 26013-120302 | 14 | 6 |
| 26022-050102 | 9 | 32 |
| | 13 | 11 |
| 26022-060122 | 4 | 11 |
| 26023-060252 | 7 | 18 |
| 26106-060102 | 8 | 21 |
| 26106-060122 | 5 | 15 |
| | 7 | 8 |
| | 8 | 22 |
| | | 23 |
| | 11 | 18 |
| | 12 | 25 |
| | 13 | 39 |

| Parts No. | Fig. No. | Ref. No. |
|--------------|----------|----------|
| 26106-060202 | 1 | 35 |
| | 2 | 42 |
| | 5 | 24 |
| | 8 | 20 |
| | | 24 |
| 26106-060222 | 7 | 18 -1 |
| 26106-060252 | 8 | 48 |
| 26106-060302 | 1 | 36 |
| 26106-060552 | 1 | 37 |
| 26106-060602 | 2 | 46 |
| 26106-060652 | 1 | 41 |
| 26106-080142 | 11 | 10 |
| | 15 | 7 |
| 26106-080162 | 8 | 49 |
| 26106-080202 | 3 | 6 |
| | 11 | 19 |
| 26106-080302 | 10 | 31 |
| 26106-080322 | 11 | 11 |
| 26106-080352 | 8 | 50 |
| 26106-100652 | 12 | 19 |
| 26106-100702 | 12 | 19 -1 |
| 26116-050082 | 1 | 49 |
| 26206-120352 | 16 | 13 |
| 26216-060352 | 2 | 12 -1 |
| 26216-060402 | 2 | 12 |
| 26216-080222 | 1 | 38 |
| 26216-080452 | 2 | 11 |
| 26226-060222 | 14 | 33 |
| 26226-080222 | 1 | 39 |
| 26306-080002 | 1 | 40 -1 |
| | 2 | 29 -1 |
| 26366-060002 | 2 | 13 |
| | 8 | 54 |
| 26366-080002 | 1 | 40 |
| | 2 | 29 |
| 26554-060162 | 3 | 14 |
| 26557-060082 | 12 | 26 |
| 26557-060142 | 4 | 12 |
| 26716-060002 | 14 | 34 |
| 26716-080002 | 1 | 33 |
| | 8 | 45 |
| 26716-160002 | 17 | 12 |
| 26717-120002 | 17 | 6 |
| 26756-060002 | 13 | 24 |
| | | 35 |
| 26756-080002 | 2 | 24 |
| | | 28 |
| 26757-160002 | 17 | 13 |
| 26777-120002 | 8 | 39 |
| 26796-100002 | 13 | 31 |

Parts No. Index

| Parts No. | Fig. No. | Ref. No. |
|----------------|----------|----------|
| 27231-150000 | 2 | 4 |
| 27310-070001 | 2 | 9 |
| 28110-100120 | 16 | 9 |
| 28110-140170 | 16 | 10 |
| 28110-190220 | 16 | 11 |
| 29621-100000 | 15 | 6 -1 |
| 43400-500430 | 13 | 32 |
| 705050-53100 | 10 | 1 |
| 705090-01560 | 1 | 4 |
| 705090-01900 | 1 | 1 |
| 705090-02500 | 1 | 42 |
| 705090-11700 | 2 | 1 |
| 705090-11701 | 2 | 1 -1 |
| 705090-22501 | 6 | 3 |
| 705090-23100 | 6 | 10 |
| 705090-23600 | 6 | 14 |
| 705090-23610 | 6 | 16 |
| 705090-23620 | 6 | 18 |
| 705090-51101 | 9 | 1 |
| 705090-51102 | 9 | 1 -1 |
| 705090-61700 | 13 | 1 -1 |
| 705092-01500 | 1 | 13 |
| 705092-03550 | 2 | 31 |
| 705092-11520 | 2 | 30 |
| 705092-21710 | 5 | 1 |
| 705092-55700-1 | 11 | 1 |
| 705092-92600 | 16 | 14 |
| 705092-92601 | 16 | 14 -1 |
| 705092-92610 | 16 | 14 -2 |
| 705192-66700 | 13 | 13 |
| 705300-92101 | 16 | 6 -1 |
| 705302-76900 | 12 | 8 |
| 711100-51540 | 9 | 12 |
| 724550-51520 | 9 | 10 |
| X211415502 | 14 | 9 |
| X211425502 | 14 | 10 |
| X211425506 | 14 | 25 |
| X211425511 | 14 | 10 -1 |
| X21142742 | 14 | 29 |
| X211428008 | 14 | 31 |
| X211429006 | 14 | 24 |
| X21143215 | 14 | 12 |
| X211435502 | 14 | 26 |
| X211442003 | 14 | 11 |
| X211446012 | 14 | 19 |
| X211449007 | 14 | 14 |
| X211455011 | 14 | 22 |
| X211455502 | 14 | 27 |
| X211456605 | 14 | 28 |
| X211458012 | 14 | 30 |

| Parts No. | Fig. No. | Ref. No. |
|-------------|----------|----------|
| X21145866 | 14 | 21 |
| X211459002 | 14 | 15 |
| X211461005 | 14 | 8 |
| X211465011 | 14 | 23 |
| X211468005 | 14 | 20 |
| X211469002 | 14 | 13 |
| X211483003 | 14 | 17 |
| X21148314 | 14 | 16 |
| X211495502 | 14 | 26 -1 |
| X2114T71110 | 14 | 18 -1 |
| X2130350900 | 14 | 9 -1 |

| Parts No. | Fig. No. | Ref. No. |
|-----------|----------|----------|
|-----------|----------|----------|

| Parts No. | Fig. No. | Ref. No. |
|-----------|----------|----------|
|-----------|----------|----------|