

OCD10-M46000EN

# PREFACE

1. This Parts Catalog is the 1st edition of 4TN100TL-MCC Diesel Engine for MOROOKA.

Pub. No. : 000Y00D4600

Published : March, 1993

2. Model name

Engine model	Vehicle		Vehicle made by
	Products	Model name	
4TN100TL-MCC	CNCRT CRASHER	—	MOROOKA

## Directions for the Parts Catalog.

1. This Parts Catalog shows both standard and optional parts.
2. Parts may change without prior notice.
3. The following is an example of the Parts Catalog format.

REF.	LEV.	PARTS NO.	DESCRIPTION	Q'TY						I	R
				(A)	(B)	(C)	(D)	(E)	(F)		
1	1	729595-51390	FUEL INJECTION PUMP	1	1	1	1	1			1
1-1	1	729595-51391	FUEL INJECTION PUMP	1	1	1	1	1		N	1
		(A=E00185) (B=E00200)									
3	2	26022-060162	SCREW M 6X 16	9	9	9	9	9			
3-1	2	26022-060162	SCREW M 6X 16	4	4	4	4	4		K	
		(A=E00156) (B=E00156) (C=E00156) (D=E00156) (E=E00156)									
4	2	129470-51040	CAMSHAFT	1	1	1	1	1			
5	2	122710-51050	BEARING, ROLLER	2	2	2	2	2			
6	2	129470-51060	RETAINER	1	1	1	1	1			

Remarks
(1) BOOST COMPEMSATOR TYPE. OPTIONAL PART, TO E00155,(4JH-DT, 4JH-DTZ

### ① Ref. No.

The Ref. No. listed may not be in accordance with the illustration Ref. No.

(Ex.) Illustration No.

List Ref No.

1

1

(Before change)

1-1

(After change)

For interchangeable symbols N, R and K, illustrations for new parts may be abbreviated.

### ② Lev. (Level)

Level indication

The numbers below indicate the level of relativity towards the main part.

1 ----- Main parts (Assembly parts)

2 ----- Sub component included in " 1 ".

3 ----- Sub component included in " 2 ".

Note) Parts that are not for sale are partially illustrated but not listed.

### ③ Interchangeability Symbol

When a part change takes place, one of the following interchangeability symbols is indicated beside the part.

Symbol	Interchangeability	Contents note
N	Old $\begin{matrix} \leftarrow \text{Yes} \\ \text{No} \rightarrow \end{matrix}$ New	New Part is interchangeable for Old Part but Old Part is not interchangeable for New Part.
Q	Old $\begin{matrix} \leftarrow \text{No} \\ \text{Yes} \rightarrow \end{matrix}$ New	New Part is not interchangeable for Old Part but Old Part is interchangeable for New Part.
R	Old $\begin{matrix} \leftarrow \text{Yes} \\ \text{Yes} \rightarrow \end{matrix}$ New	New/ Old Parts are both interchangeable.
S	Old $\begin{matrix} \leftarrow \text{No} \\ \text{No} \rightarrow \end{matrix}$ New	New/ Old Parts are both not interchangeable.
W		Part newly added.
Z		Part discontinued.
F		Not interchangeable by a single part but interchangeable together with related parts.
K		Changes only for used parts quantities.

### ④ Effective Machine No.

When a part changes, the effective Machine No. will be indicated in the (A)-(F) column.

Product Symbol	Product No.	Product Symbol	Product No.
C	Clutch No. Compressor No.	F	Machine No. (Agricultural Equip.)
D	Drive No.	M	Machine No.
E	Engine No.		

Note 1) A date may follow the symbol. (Ex.) 1996.01

Note 2) "XXXXX" and "ZZZZZ" are for parts that could not be predicted or for engine models that could not be identified.

Note 3) (A=E00185) is the E (Engine Serial Number) for the column (A) model (in this case 4JH-DT) after the parts design change.

### ⑤ Remarks

Figures or alphabets (symbols) are entered in the remarks column.

The comments (remarks) on parts that are indicated at the bottom of the illustration are the same symbols as those stated above.

# Contents

Fig. No.	Fig. Name	Fig. No.	Fig. Name
ENGINE 4TN100TL-MCC			
1.	CYLINDER BLOCK		
2.	GEAR HOUSING		
3.	FLYWHEEL HOUSING & OIL SUMP		
4.	CYLINDER HEAD & BONNET		
5.	SUCTION MANIFOLD		
6.	EXHUST MANIFOLD		
7.	TURBO-CHARGER		
8.	CAMSHAFT & DRIVE GEAR		
9.	CRANKSHAFT & PISTON		
10.	LUB. OIL SYSTEM		
11.	OIL COOLAR CASE		
12.	COOLING WATER PUMP		
13.	FUEL INJECTION PUMP		
14.	GEVERNOR		
15.	FEED PUMP		
16.	FUEL INJECTION VALVE		
17.	FUEL PIPES		
18.	STARTING MOTOR		
19.	GENERATOR		
20.	ELECTRIC PARTS		
21.	GASKET SET A (CYLINDER BLOCK)		
22.	GASKET SET B (CYLINDER HEAD)		

# Fig.1. CYLINDER BLOCK

(A)=4TN100TL-MCC

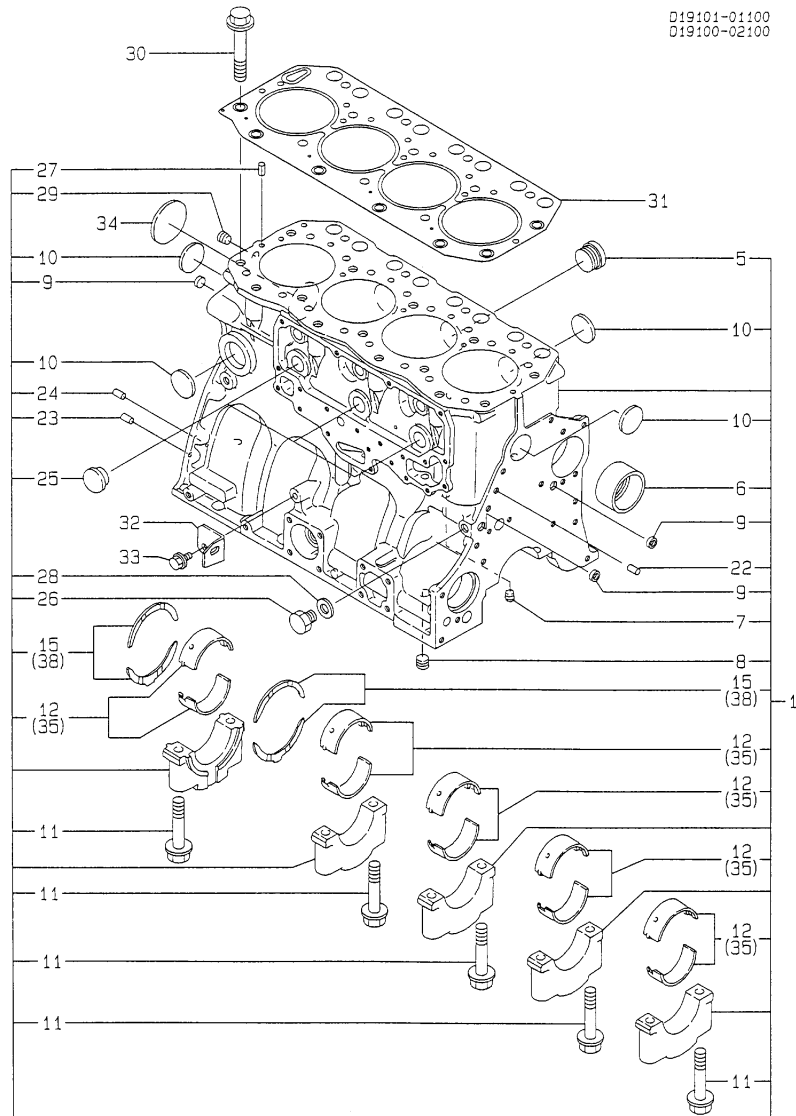
(B)=

(C)=

(D)=

(E)=

(F)=



019101-01100  
019100-02100

No.	Lev.	Parts No.	Description	Q'ty						I	R
				(A)	(B)	(C)	(D)	(E)	(F)		
1	1	719141-01561	BLOCK ASSY, CYLINDER	1							
5	2	171051-01921	PLUG, NPTF1	1							
6	2	119000-02410	BUSH, CAMSHAFT	1							
7	2	23871-010000	PLUG, R01	1							
8	2	23871-030000	PLUG, R03	1							
9	2	27241-140000	PLUG, 14	4							
10	2	27241-400000	PLUG, 40	5							
11	2	119000-02020	BOLT, METAL CAP	10							
12	2	719000-02800	BEARING, MAIN	5							
15	2	719000-02930	BEARING, THRUST	2							
22	2	129100-01580	PIN, M8X16	2							
23	2	129100-01580	PIN, M8X16	2							
24	2	129100-01580	PIN, M8X16	2							
25	2	119000-01840	PLUG, RUBBER	3							
26	2	135602-34390	RETAINER	1							
27	2	22351-080016	PIN, SPRING 8.0X16	2							
28	2	23414-140000	GASKET, 14X1.0	1							G
29	2	23871-020000	PLUG, R02	1							
30	1	119000-01200	BOLT, HEAD	18							
31	1	119100-01340	GASKET, HEAD T=1.3	1							H
32	1	119100-01980	RETAINER, PUMP	1							
33	1	26106-080162	BOLT, M8X 16 PLATED	2							
34	1	27231-600000	PLUG, 60	1							
35	1	719000-02870	BEARING, 0.25 US	5							1
38	1	719000-02940	BEARING, THRUST 0.25	2							2

**Remarks**

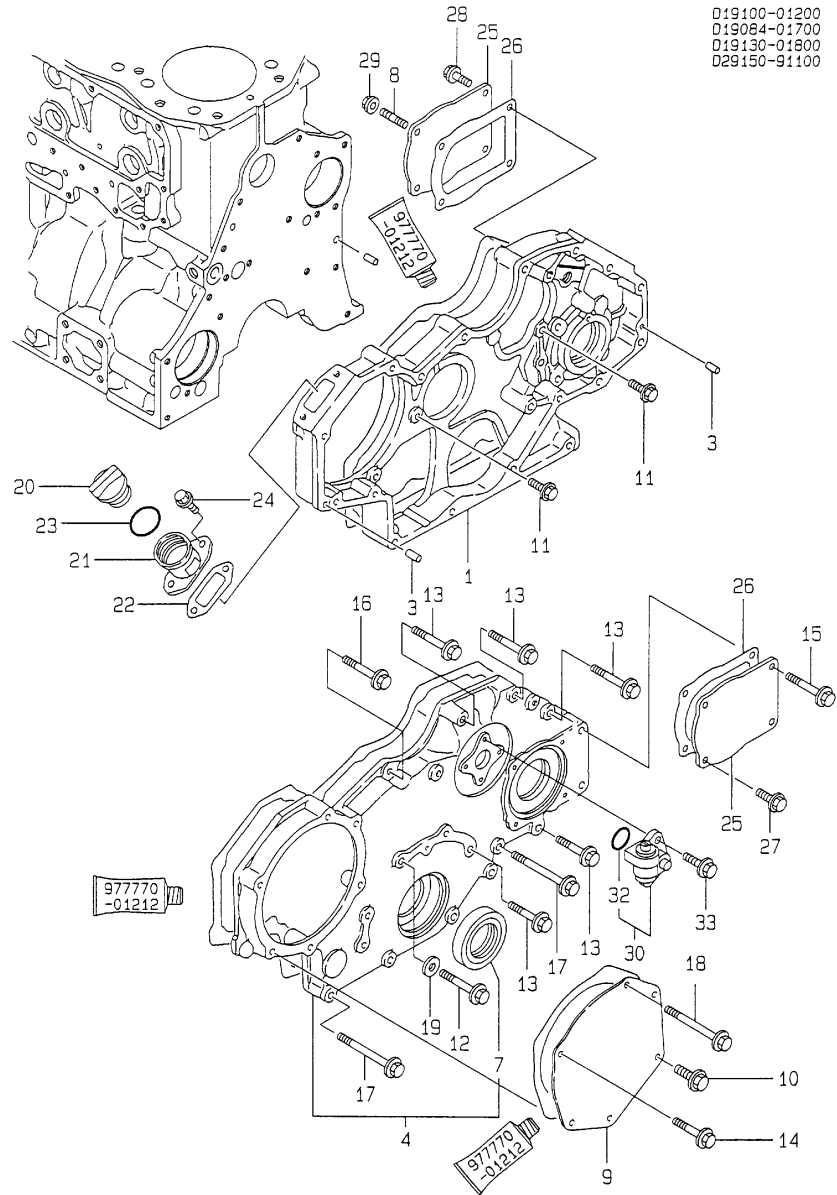
(1) UNDER-SIZE(U.S=0.25)PART.

(2) OVER-SIZE(O.S=0.25)PART.

(G) THESE PARTS ARE SOLD BY FIG.21, REF.NO.1.

(H) THESE PARTS ARE SOLD BY FIG.22, REF.NO.1.

Fig.2. GEAR HOUSING



(A)=4TN100TL-MCC

(B)=

(C)=

(D)=

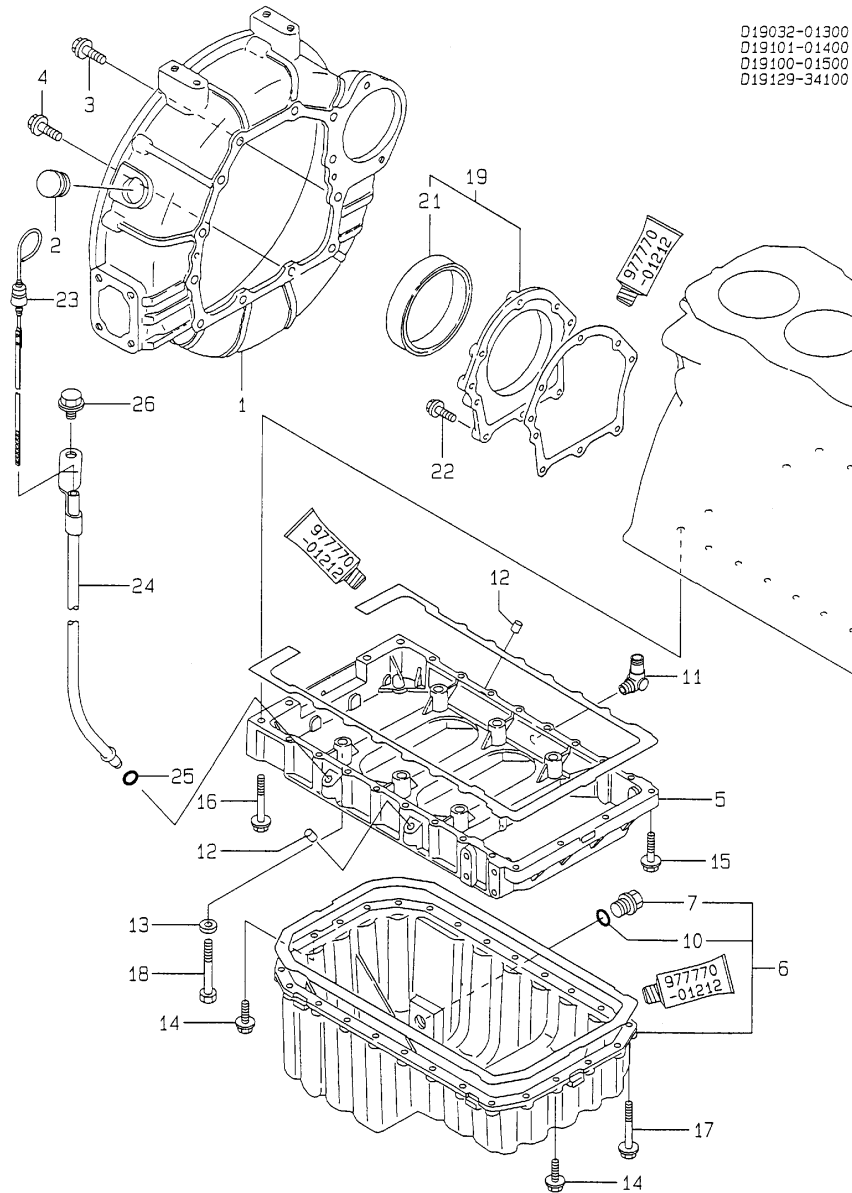
(E)=

(F)=

No.	Lev.	Parts No.	Description	Q'ty						I	R
				(A)	(B)	(C)	(D)	(E)	(F)		
1	1	119000-01500	CASE, GEAR	1							
3	1	129100-01580	PIN, M8X16	2							
4	1	119000-01590	COVER ASSY,GEAR CASE	1							
7	2	121850-01800	SEAL, OIL	1							G
8	1	121850-01920	STUD, 2D8X22	2							
9	1	119000-01930	COVER	1							
10	1	26106-080182	BOLT, M8X 18 PLATED	1							
11	1	26106-080202	BOLT, M8X 20 PLATED	5							
12	1	26106-080402	BOLT, M8X 40 PLATED	1							
13	1	26106-080452	BOLT, M8X 45 PLATED	5							
14	1	26106-080452	BOLT, M8X 45 PLATED	3							
15	1	26106-080502	BOLT, M8X 50 PLATED	2							
16	1	26106-080552	BOLT, M8X 55 PLATED	1							
17	1	26106-080752	BOLT, M8X 75 PLATED	4							
18	1	26106-080902	BOLT, M8X 90 PLATED	2							
19	1	43400-500420	SEAL WASHER 8	1							G
20	1	124160-01751	COVER, FILLER	1							
21	1	119000-01760	FLANGE	1							
22	1	119000-01771	GASKET	1							G
23	1	24311-000320	O-RING, 1AP32.0	1							G
24	1	26106-080252	BOLT, M8X 25 PLATED	2							
25	1	124610-01851	COVER	2							
26	1	124610-01862	GASKET	2							G
27	1	26106-080202	BOLT, M8X 20 PLATED	2							
28	1	26106-080202	BOLT, M8X 20 PLATED	2							
29	1	26366-080002	NUT, M8	2							
30	1	129150-91400	GEAR	1							
32	2	24341-000240	O-RING, 1AS24.0	1							G
33	1	26106-060162	BOLT, M6X 16 PLATED	2							

Remarks  
(G) THESE PARTS ARE SOLD BY FIG.21,  
REF.NO.1.

Fig.3. FLYWHEEL HOUSING & OIL SUMP



D19032-01300  
D19101-01400  
D19100-01500  
D19129-34100

(A)=4TN100TL-MCC

(B)=

(C)=

(D)=

(E)=

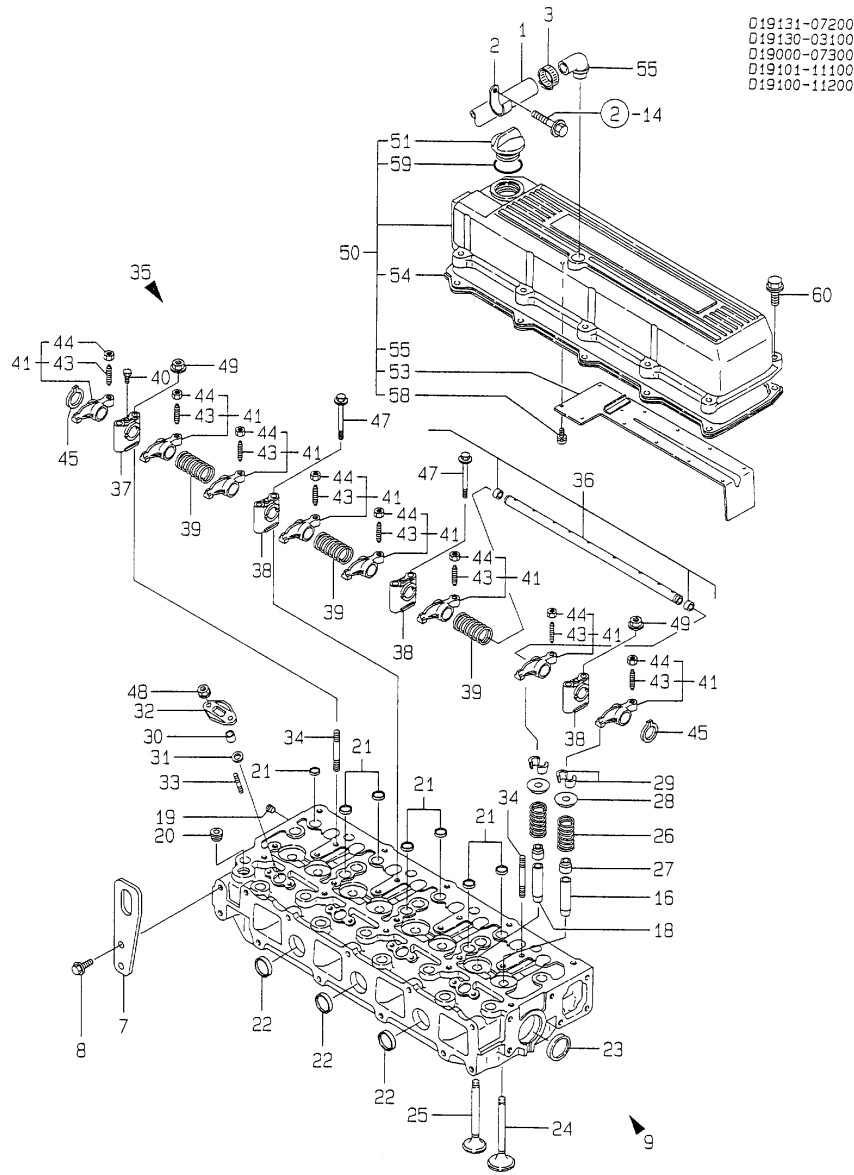
(F)=

No.	Lev.	Parts No.	Description	Q'ty						I	R
				(A)	(B)	(C)	(D)	(E)	(F)		
1	1	119032-01601	HOUSING, FLYWHEEL	1							
2	1	119620-01750	CAP	1							
3	1	26106-100252	BOLT, M10X 25 PLATED	8							
4	1	26106-100302	BOLT, M10X 30 PLATED	4							
5	1	119100-01730	SPACER	1							
6	1	119100-01770	SUMP ASSY, OIL	1							
7	2	171301-01640	PLUG, 22	1							
10	2	24341-000240	O-RING, 1AS24.0	1							G
11	1	124070-13300	ELBOW, PT3/8	1							
12	1	124976-34850	CAP	2							
13	1	22117-120000	WASHER, 12	6							
14	1	26106-080252	BOLT, M8X 25 PLATED	8							
15	1	26106-080352	BOLT, M8X 35 PLATED	4							
16	1	26106-080702	BOLT, M8X 70 PLATED	2							
17	1	26106-080802	BOLT, M8X 80 PLATED	18							
18	1	26116-120852	BOLT, M12X 85 PLATED	6							
19	1	119100-01640	CASE ASSY, OIL SEAL	1							
21	2	124411-01780	SEAL, HTC95X115X12	1							G
22	1	26106-080252	BOLT, M8X 25 PLATED	8							
23	1	119129-34801	DIPSTICK, OIL	1							
24	1	119129-34811	GUIDE, DIPSTICK	1							
25	1	24311-240100	O-RING, 1AP10A	1							
26	1	26106-100162	BOLT, M10X 16 PLATED	1							

Remarks

(G) THESE PARTS ARE SOLD BY FIG.21,  
REF.NO.1.

Fig.4. CYLINDER HEAD & BONNET



(A)=4TN100TL-MCC

(B)=

(C)=

(D)=

(E)=

(F)=

No.	Lev.	Parts No.	Description	Q'ty						I	R
				(A)	(B)	(C)	(D)	(E)	(F)		
1	1	171350-03090	PIPE , BREATHER 900	1							
2	1	129150-03100	RETAINER, PIPE	1							
3	1	23000-022000	CLAMP, 22	1							
7	1	119000-07200	LIFTER	2							
8	1	26106-100202	BOLT, M10X 20 PLATED	4							
9	1	719129-11700	HEAD ASSY, CYLINDER	1							
16	2	121850-11800	GUIDE, VALVE	4							1
18	2	119000-11810	GUIDE, VALVE	4							1
19	2	123385-82200	PLUG, 1/16	1							
20	2	23871-030000	PLUG, R03	1							
21	2	27241-160000	PLUG, 16	7							
22	2	27241-280000	PLUG, 28	3							
23	2	27241-400000	PLUG, 40	2							
24	2	121850-11100	VALVE, INTAKE	4							
25	2	119101-11110	VALVE, EXHAUST	4							
26	2	121850-11120	SPRING, VALVE	8							
27	2	121850-11150	SEAL, VALVE STEM	8							H
28	2	121850-11180	RETAINER, SPRING	8							
29	2	124250-11190	COTTER	8							
30	2	119625-11870	PROTECTOR, NOZZLE	4							H
31	2	119625-11880	SEAT, NOZZLE	4							H
32	2	119625-11900	RETAINER, NOZZLE	4							
33	2	26216-060252	STUD, M6X 25	8							
34	2	26216-080652	STUD, M8X 65	2							
35	1	119100-11240	SHAFT ASSY, ROCKER	1							
37	2	119000-11260	SUPPORT, ROCKER ARM	1							
38	2	119000-11270	SUPPORT, ROCKER ARM	3							
39	2	119000-11280	SPRING	3							
40	2	119000-11290	BOLT	1							
41	2	719129-11650	ARM ASSY, ROCKER	8							
43	3	119000-11230	SCREW, VALVE ADJUST	8							
44	3	129150-11750	NUT, M8	8							
45	2	22242-000180	RING, 18	2							
47	1	26106-080652	BOLT, M8X 65 PLATED	6							
48	1	26366-060002	NUT, M6	8							
49	1	26366-080002	NUT, M8	2							
50	1	119129-11520	BONNET ASSY, HEAD	1							
51	2	124160-01751	COVER, FILLER	1							
53	2	119100-03200	COVER	1							
54	2	119100-11320	GASKET, BONNET	1							H
55	2	119100-11330	ELBOW	1							
58	2	26022-050122	SCREW, M5X12	11							
59	2	24311-000320	O-RING, 1AP32.0	1							G
60	1	26106-080252	BOLT, M8X 25 PLATED	10							

Remarks

(G) THESE PARTS ARE SOLD BY FIG.21,

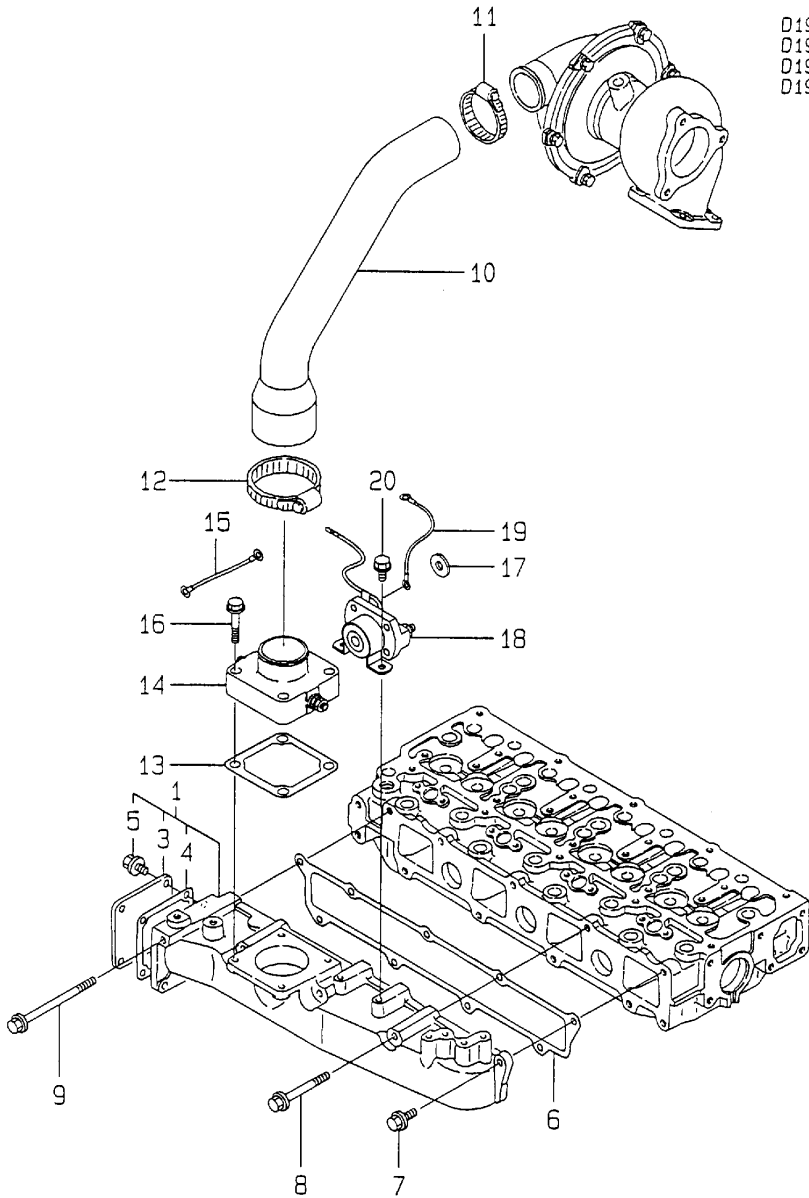
REF.NO.1.

(H) THESE PARTS ARE SOLD BY FIG.22,

REF.NO.1.



Fig.5. SUCTION MANIFOLD



D19100-12100  
 D19101-12200  
 D19006-77500  
 D19131-77300

(A)=4TN100TL-MCC

(B)=

(C)=

(D)=

(E)=

(F)=

No.	Lev.	Parts No.	Description	Q'ty						I	R
				(A)	(B)	(C)	(D)	(E)	(F)		
1	1	719129-12100	MANIFOLD ASSY,INTAKE	1							
3	2	119100-12120	COVER, MANIFOLD	1							
4	2	121850-77021	GASKET	1							G
5	2	26106-080142	BOLT, M8X 14 PLATED	4							
6	1	119100-12112	GASKET, MANIFOLD	1							G
7	1	26106-080202	BOLT, M8X 20 PLATED	5							
8	1	26106-080702	BOLT, M8X 70 PLATED	3							
9	1	26106-081152	BOLT, M8X115 PLATED	1							
10	1	119101-12850	PIPE, AIR INTAKE	1							
11	1	23000-060000	CLAMP, 60	1							
12	1	23000-070000	CLAMP, 70	1							
13	1	121850-77021	GASKET	1							G
14	1	121850-77050	HEATER	1							
15	1	129100-77820	WIRE	1							
16	1	26106-080352	BOLT, M8X 35 PLATED	4							
17	1	106100-55800	WASHER	1							
18	1	124612-77910	SWITCH	1							
19	1	121872-77950	WIRE	1							
20	1	26014-060142	BOLT, M6X 14	1							

Remarks  
 (G) THESE PARTS ARE SOLD BY FIG.22,  
 REF.NO.1.

Fig.6. EXHUST MANIFOLD

(A)=4TN100TL-MCC

(B)=

(C)=

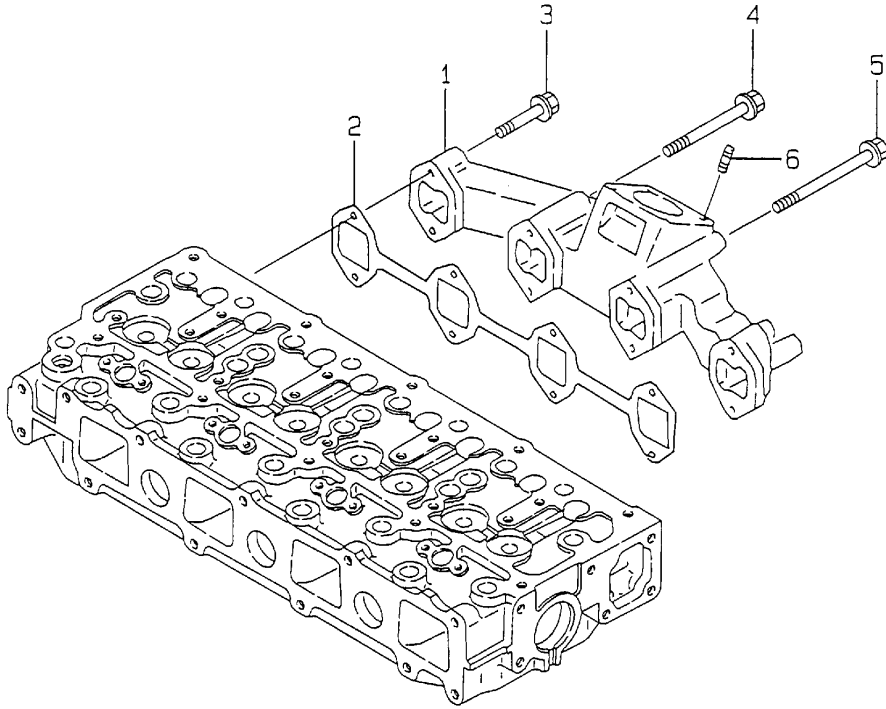
(D)=

(E)=

(F)=

No.	Lev.	Parts No.	Description	Q'ty						I	R
				(A)	(B)	(C)	(D)	(E)	(F)		
1	1	119101-13100	MANIFOLD, EXHAUST	1							
2	1	119101-13200	GASKET	1							G
3	1	26106-080402	BOLT, M8X 40 PLATED	4							
4	1	26106-080702	BOLT, M8X 70 PLATED	3							
5	1	26106-081102	BOLT, M8X110 PLATED	1							
6	1	26216-080222	STUD, M8X 22	4							

D19101-13100

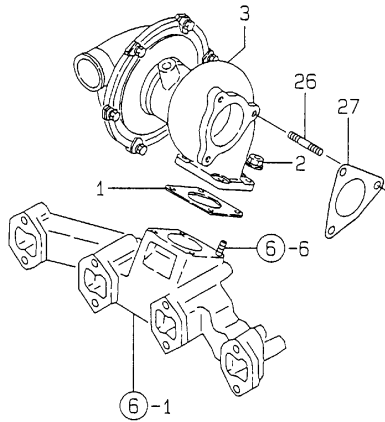
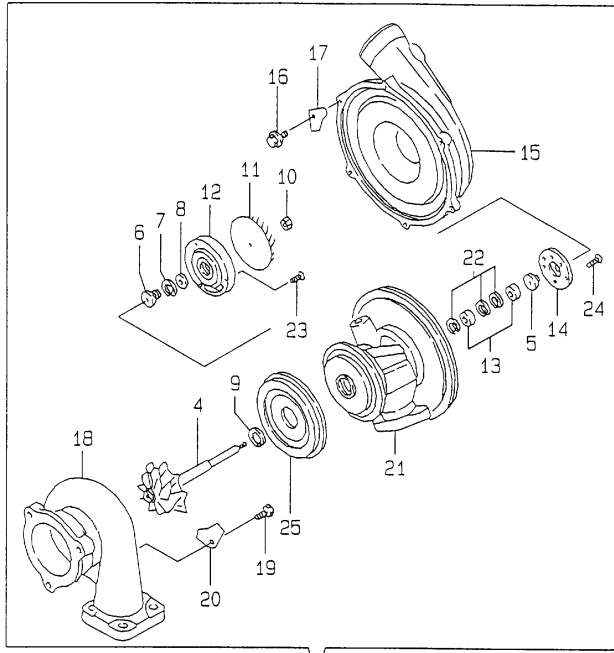


Remarks

(G) THESE PARTS ARE SOLD BY FIG.22,  
REF.NO.1.

Fig.7. TURBO-CHARGER

019131-18110  
019131-93120



(A)=4TN100TL-MCC

(B)=

(C)=

(D)=

(E)=

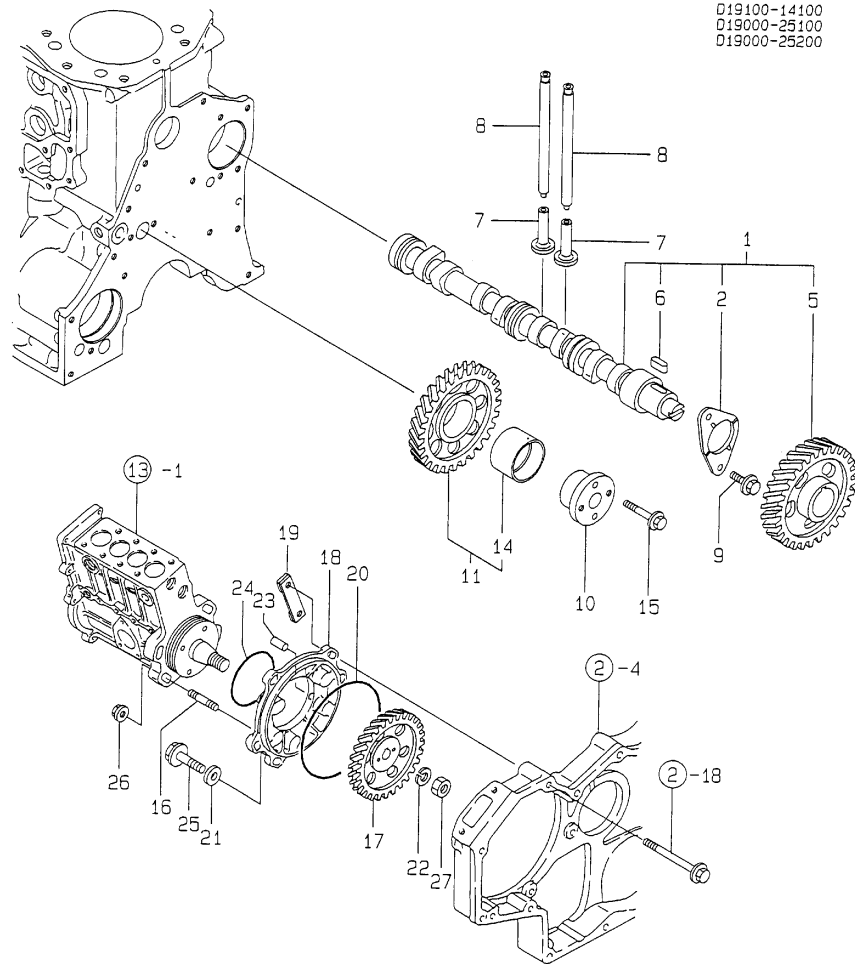
(F)=

No.	Lev.	Parts No.	Description	Q'ty						I	R
				(A)	(B)	(C)	(D)	(E)	(F)		
1	1	129472-18090	GASKET	1							G
2	1	194990-18090	NUT, M8	4							
3	1	119101-18010	TURBINE, RHB52	1							
4	2	119101-18500	SHAFT, TURBINE	1							
5	2	129404-18510	BUSHING	1							
6	2	129404-18520	OIL THROWER	1							
7	2	129404-18530	RING, SEAL	1							
8	2	129404-18540	RING, SEAL	1							
9	2	129404-18550	RING, SEAL	1							
10	2	129404-18560	NUT, D8/4.5 T5	1							
11	2	119101-18510	WHEEL, BLOWER	1							
12	2	129404-18580	PLATE	1							
13	2	129404-18590	BEARING	2							
14	2	129404-18600	BEARING, THRUST	1							
15	2	119101-18520	HOUSING ASSY	1							
16	2	129403-18620	BOLT M 5X 10.5	6							
17	2	119101-18530	PLATE	6							
18	2	119101-18540	HOUSING	1							
19	2	119101-18550	BOLT, M8	4							
20	2	119101-18560	PLATE	4							
21	2	119101-18570	HOUSING, BEARING	1							
22	2	129404-18680	CIRCLIP	3							
23	2	129406-18690	SCREW	4							
24	2	129406-18700	SCREW	3							
25	2	129404-18720	PROTECTOR, HEAT	1							
26	1	26216-080222	STUD, M8X 22	3							
27	1	129472-13520	GASKET	1							G

Remarks

(G) THESE PARTS ARE SOLD BY FIG.22,  
REF.NO.1,2.

Fig.8. CAMSHAFT & DRIVE GEAR



(A)=4TN100TL-MCC

(B)=

(C)=

(D)=

(E)=

(F)=

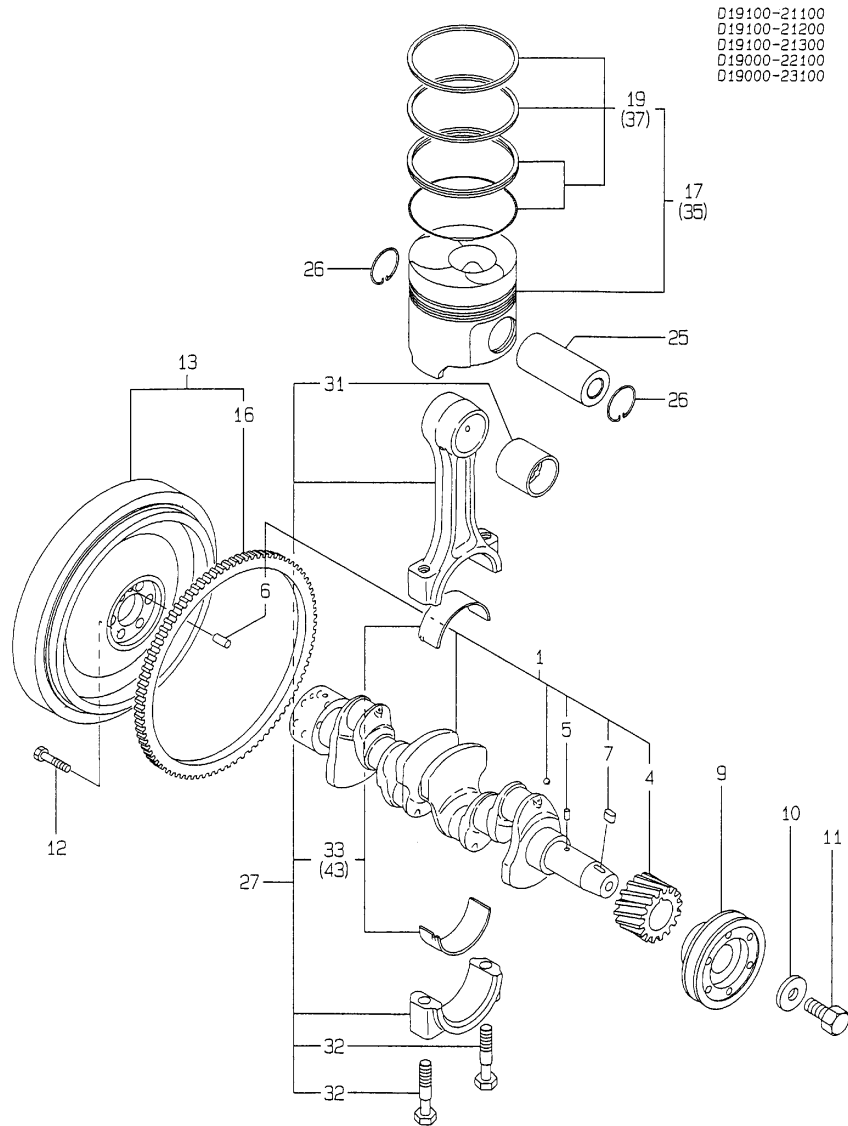
No.	Lev.	Parts No.	Description	Q'ty						I	R
				(A)	(B)	(C)	(D)	(E)	(F)		
1	1	119100-14000	CAMSHAFT ASSY	1							
2	2	119000-02450	BEARING, THRUST	1							
5	2	119000-14100	GEAR, CAMSHAFT Z=48	1							
6	2	22512-070140	KEY, 7X 14	1							
7	1	119000-14200	TAPPET	8							
8	1	129150-14400	ROD, PUSH L=178	8							
9	1	26106-080162	BOLT, M8X 16 PLATED	2							
10	1	119000-25050	SHAFT, IDLE GEAR	1							
11	1	119000-25100	GEAR ASSY, IDLE Z=51	1							
14	2	119000-25930	BUSH, IDLE GEAR	1							1
15	1	26013-080452	BOLT, M8X 45	2							
16	1	121850-01900	STUD, SB10X32	4							
17	1	119000-25900	GEAR, PUMP	1							
18	1	119000-25910	BRACKET, PUMP	1							
19	1	119000-25920	RETAINER	1							
20	1	24341-001350	O-RING, 1AS135.0	1							G
21	1	106100-55800	WASHER	3							
22	1	22217-180000	WASHER, SPRING 18	1							
23	1	22351-050012	PIN, SPRING 5.0X12	1							
24	1	124410-51960	O-RING	1							G
25	1	26106-080252	BOLT, M8X 25 PLATED	3							
26	1	26366-100002	NUT, M10	4							
27	1	26776-180002	NUT, LOCK M18	1							

Remarks

(G) THESE PARTS ARE SOLD BY FIG.21, REF.NO.1.

(1) REPAIR PART.

Fig.9. CRANKSHAFT & PISTON



(A)=4TN100TL-MCC

(B)=

(C)=

(D)=

(E)=

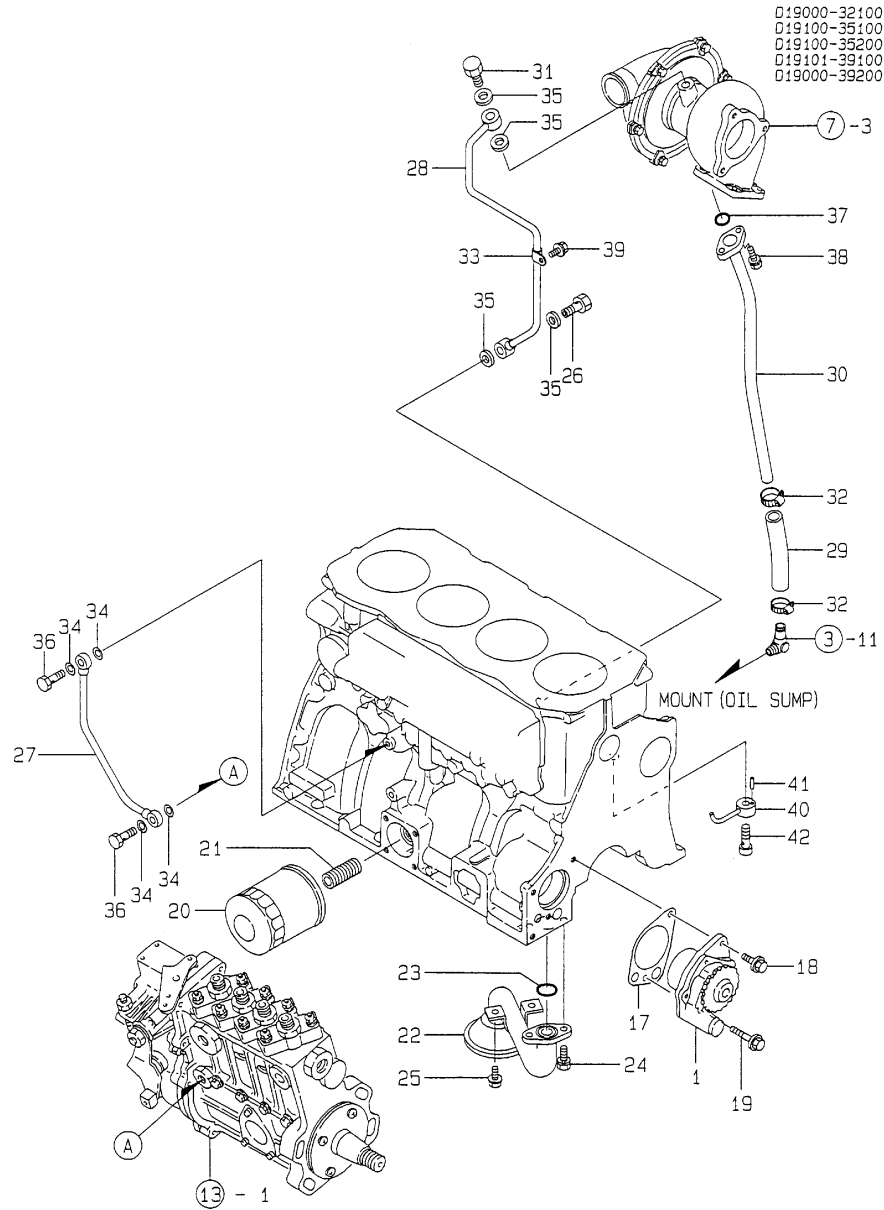
(F)=

No.	Lev.	Parts No.	Description	Q'ty						I	R
				(A)	(B)	(C)	(D)	(E)	(F)		
1	1	719100-21700	CRANKSHAFT ASSY	1							
4	2	121850-21200	GEAR, CRANKSHAFT	1							
5	2	121850-21290	PIN	1							
6	2	121850-21920	PIN, M10X22	1							
7	2	22512-070140	KEY, 7X 14	1							
9	1	119000-21650	V-PULLEY	1							
10	1	121850-21660	WASHER	1							
11	1	121850-21680	BOLT	1							
12	1	121850-21130	BOLT, FLYWHEEL	6							
13	1	119100-21590	FLYWHEEL ASSY	1							
16	2	124550-21600	GEAR, RING	1							
17	1	119000-22000	PISTON ASSY	4							
19	2	719000-22500	RING SET, PISTON	4							
25	1	119000-22300	PIN, PISTON	4							
26	1	22252-000340	RING, 34	8							
27	1	719000-23100	ROD ASSY, CONNECTING	4							
31	2	119000-23910	BEARING, PISTON PIN	4							1
32	2	121850-23200	BOLT, CONNECTING ROD	8							
33	2	719000-23600	BEARING, CRANK PIN	4							
35	1	719000-22900	PISTON ASSY, 0.25 OS	4							2
37	2	719000-22950	RING SET, 0.25 OS	4							2
43	1	719000-23610	BEARING ASSY, 0.25	4							3

Remarks

- (1) REPAIR PART.
- (2) OVER-SIZED(O.S=0.25)PART.
- (3) UNDER-SIZED(U.S=0.25)PART.

Fig.10. LUB. OIL SYSTEM



(A)=4TN100TL-MCC

(B)=

(C)=

(D)=

(E)=

(F)=

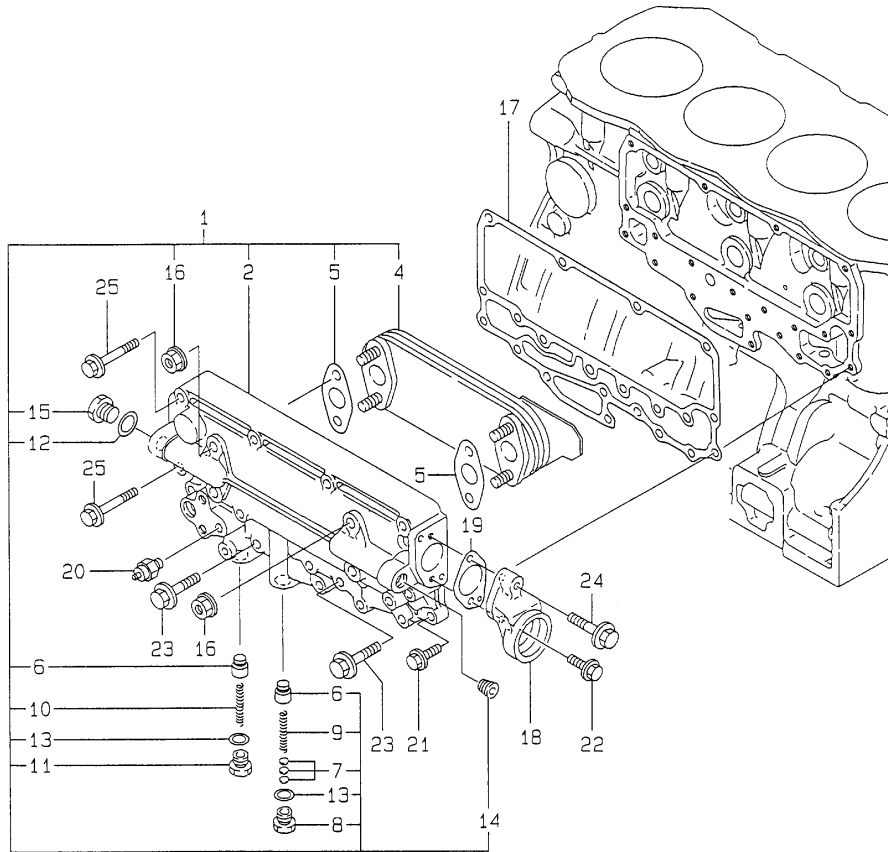
No.	Lev.	Parts No.	Description	Q'ty						I	R
				(A)	(B)	(C)	(D)	(E)	(F)		
1	1	119000-32001	PUMP ASSY, OIL	1							
17	1	119000-32020	GASKET, PUMP	1							G
18	1	26106-080162	BOLT, M8X 16 PLATED	1							
19	1	26106-080502	BOLT, M8X 50 PLATED	1							
20	1	119005-35100	FILTER, D80X100L	1							
21	1	119000-35140	BOLT, FILTER	1							
22	1	119100-35090	PIPE ASSY, OIL INLET	1							
23	1	24311-000220	O-RING, 1AP22.0	1							G
24	1	26013-080162	BOLT, M8X 16	2							
25	1	26106-080162	BOLT, M8X 16 PLATED	2							
26	1	121252-39150	BOLT, JOINT M10X1.5	1							
27	1	119100-39350	PIPE, OIL	1							
28	1	119101-39600	PIPE, OIL	1							
29	1	129792-39610	JOINT, RUBBER	1							
30	1	119101-39650	PIPE, OIL	1							
31	1	124413-39710	BOLT, PIPE JOINT M10	1							
32	1	23000-025000	CLAMP, 25	2							
33	1	23297-080081	CLAMP, A8X 8	1							
34	1	23414-080000	GASKET, 8X1.0	4							G
35	1	23414-100000	GASKET, 10X1.0	4							
36	1	23857-030000	BOLT, JOINT 3	2							
37	1	24314-000180	O-RING, 4CP18.0	1							
38	1	26106-060162	BOLT, M6X 16 PLATED	2							
39	1	26106-080122	BOLT, M8X 12 PLATED	1							
40	1	119000-39650	NOZZLE	4							
41	1	22351-030010	PIN, SPRING 3.0X10	4							
42	1	23857-030000	BOLT, JOINT 3	4							

Remarks

(G) THESE PARTS ARE SOLD BY FIG.21, REF.NO.1.

Fig.11. OIL COOLAR CASE

D19000-33100  
D19100-39400



(A)=4TN100TL-MCC

(B)=

(C)=

(D)=

(E)=

(F)=

No.	Lev.	Parts No.	Description	Q'ty						I	R
				(A)	(B)	(C)	(D)	(E)	(F)		
1	1	719000-33700	COOLER ASSY, OIL	1							
1-1	1	119140-92600	SET,LO COOLER CMP	1							N
(A=E2009.12)											
2	2	119000-33010	CASE, OIL COOLER	1							
4	2	119000-33050	COOLER, OIL	1							
5	2	121952-33071	GASKET, COOLER	2							G
6	2	119000-34030	VALVE, CONTROL	2							
7	2	121850-35230	SHIM, T=1.0	5							
8	2	124223-35510	RETAINER, SPRING	1							
9	2	124411-35520	SPRING	1							
10	2	121952-39830	SPRING	1							
11	2	123672-84530	RETAINER, VALVE	1							
12	2	23414-160000	GASKET, 16X1.0	1							G
13	2	23414-180000	GASKET, 18X1.0	2							G
13-1	2	23414-170000	GASKET, 17X1.0	2							N
(A=E2009.12)											
14	2	23871-030000	PLUG, R03	2							
15	2	23887-160002	PLUG, 16	1							
16	2	26376-100002	NUT, M10	4							
17	1	119000-33021	GASKET	1							G
18	1	119000-33030	BEND	1							
19	1	119000-33041	GASKET	1							G
20	1	121250-39450	SWITCH, 1.0KG	1							
21	1	26106-080202	BOLT, M8X 20 PLATED	3							
22	1	26106-080202	BOLT, M8X 20 PLATED	1							
23	1	26106-080352	BOLT, M8X 35 PLATED	8							
24	1	26106-080352	BOLT, M8X 35 PLATED	1							
25	1	26106-080502	BOLT, M8X 50 PLATED	10							

Remarks

(G) THESE PARTS ARE SOLD BY FIG.21,  
REF.NO.1.

Fig.12. COOLING WATER PUMP

(A)=4TN100TL-MCC

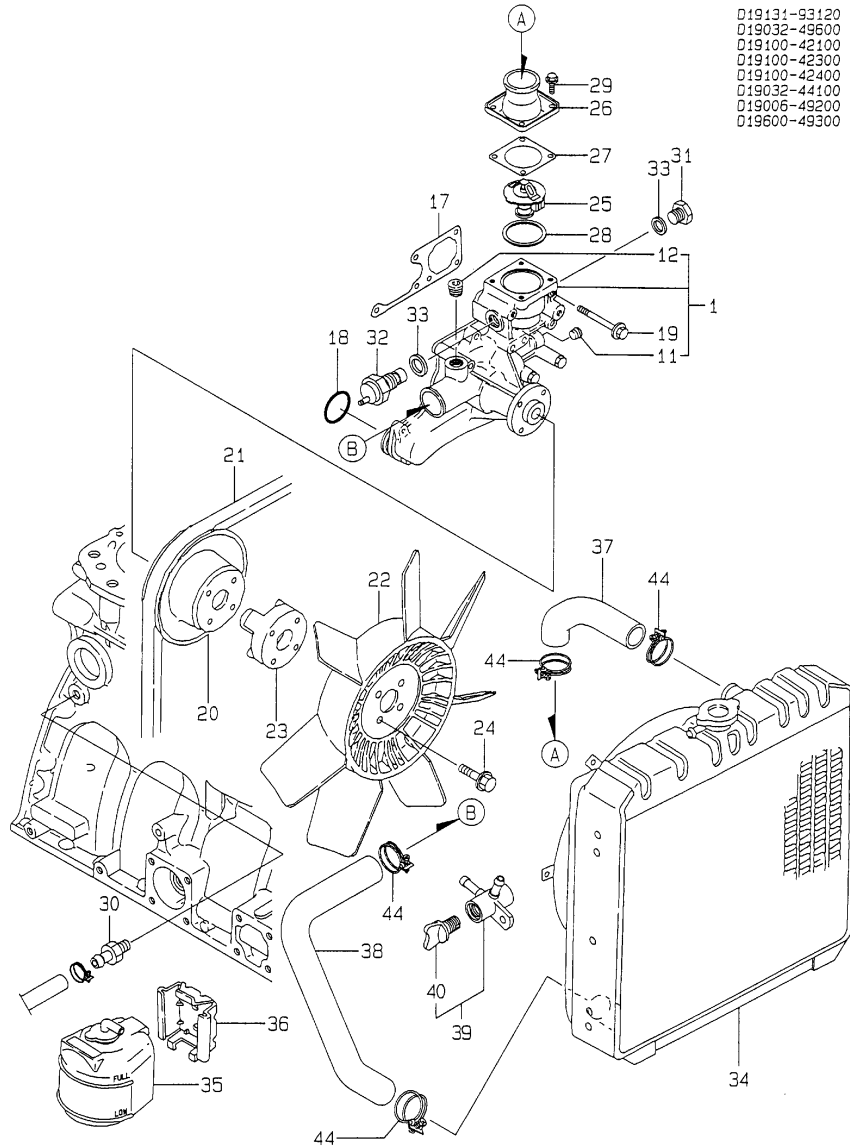
(B)=

(C)=

(D)=

(E)=

(F)=



D19131-93120  
 D19032-49500  
 D19100-42100  
 D19100-42300  
 D19100-42400  
 D19032-44100  
 D19006-49200  
 D19600-49300

No.	Lev.	Parts No.	Description	Q'ty						I	R
				(A)	(B)	(C)	(D)	(E)	(F)		
1	1	119006-42001	PUMP ASSY, WATER	1							
11	2	23871-020000	PLUG, R02	1							
12	2	23871-030000	PLUG, R03	1							
17	1	119000-42021	GASKET, WATER PUMP	1							G
18	1	24311-000360	O-RING, 1AP36.0	1							G
19	1	26106-080652	BOLT, M8X 65 PLATED	5							
20	1	119000-42250	V-PULLEY	1							
21	1	171087-42280	V-BELT, A44	1							
22	1	121950-44741	FAN, COOLING	1							
23	1	119141-44760	SPACER, FAN	1							
24	1	26106-080552	BOLT, M8X 55 PLATED	4							
25	1	119000-48170	THERMOSTAT, 71	1							
26	1	121850-49530	COVER, THERMOSTAT	1							
27	1	121850-49540	GASKET, THERMOSTAT	1							H
28	1	121850-49550	GASKET, THERMOSTAT	1							H
29	1	26014-060142	BOLT, M6X 14	4							
30	1	121550-49111	JOINT, PT1/4	1							
31	1	121450-42450	PLUG, M16	1							
32	1	121470-44900	SENSOR	1							
33	1	124465-44950	GASKET, 16	2							G
34	1	119141-44531	RADIATOR	1							
35	1	120445-44530	TANK, SUB	1							
36	1	120445-44540	SUPPORT	1							
37	1	119141-49011	PIPE, WATER	1							
38	1	119131-49021	PIPE, WATER	1							
39	1	129150-49100	COCK ASSY, 3-WAY	1							
40	2	129150-49080	COCK, DRAIN	1							
44	1	23010-050000	CLAMP, 50	4							

Remarks

(G) THESE PARTS ARE SOLD BY FIG.21,

REF.NO.1.

(H) THESE PARTS ARE SOLD BY FIG.22,

REF.NO.1.



Fig.13. FUEL INJECTION PUMP

(A)=4TN100TL-MCC

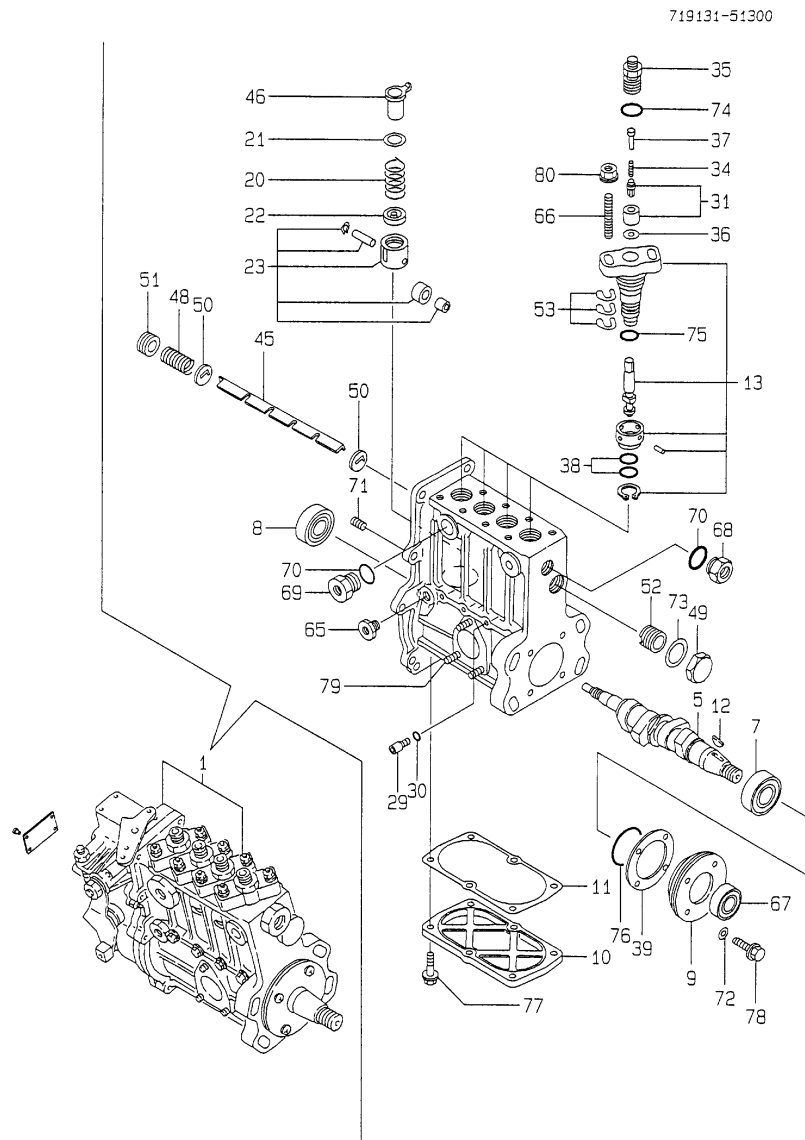
(B)=

(C)=

(D)=

(E)=

(F)=

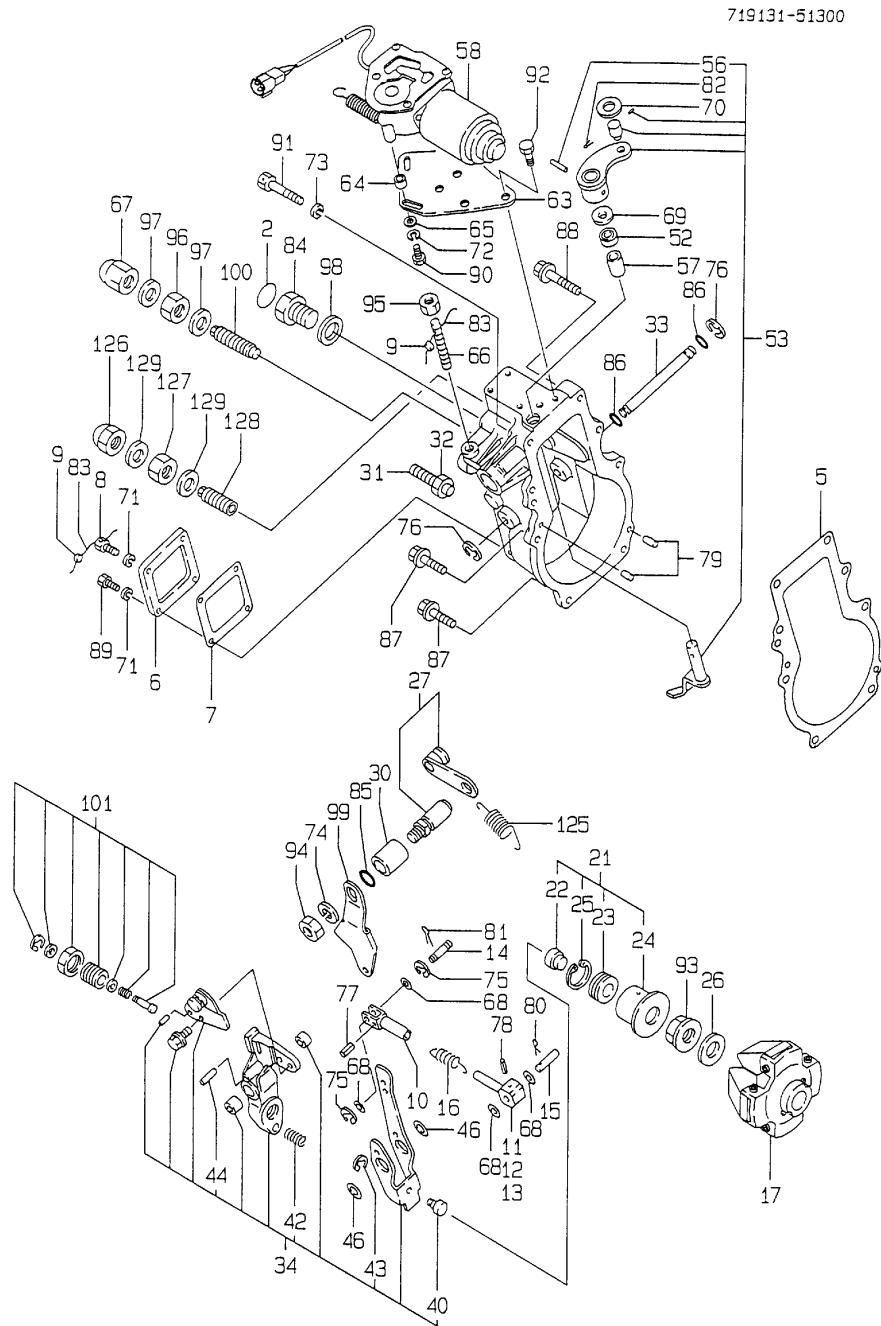


No.	Lev.	Parts No.	Description	Q'ty						I	R
				(A)	(B)	(C)	(D)	(E)	(F)		
1	1	719131-51300	PUMP ASSY, INJECTION	1							1
5	2	119100-51030	CAMSHAFT	1							
7	2	119000-51050	BEARING, HR32005XJ	1							
8	2	122710-51050	BEARING, HR30203J	1							
9	2	119000-51060	SUPPORT, BEARING A	1							
10	2	119100-51081	COVER	1							
11	2	119100-51091	GASKET	1							
12	2	144626-51090	KEY, 5X19	1							
13	2	119000-51101	PLUNGER ASSY	4							
20	2	119000-51161	SPRING, PLUNGER	4							
21	2	119000-51170	SEAT, SPRING A	4							
22	2	119000-51181	SEAT, SPRING B	4							
23	2	119000-51201	TAPPET ASSY	4							
29	2	129155-51270	STOPPER, TAPPET	4							
30	2	129155-51280	O-RING, S6	4							
31	2	128400-51300	VALVE ASSY, DELIVERY	4							
34	2	119000-51330	SPRING, DELIVERY	4							
35	2	119000-51340	HOLDER, DELIVERY	4							
36	2	122710-51350	GASKET	4							
37	2	119000-51360	STOPPER, VALVE	4							
38	2	119000-51410	O-RING, S18	8							
39	2	119000-51450	SHIM SET, CAMSHAFT	1							
45	2	119100-51500	RACK, CONTROL	1							
46	2	119000-51510	SLEEVE, CONTROL	4							
48	2	119000-51530	SPRING, RACK	1							
49	2	119000-51550	COVER	1							
50	2	119000-51570	GUIDE, RACK	2							
51	2	119000-51580	SCREW	1							
52	2	119000-51590	SCREW	1							
53	2	119000-51650	SHIM SET, ADJUSTING	8							
65	2	121850-51700	BUSH	1							
66	2	119000-51800	BOLT	8							
67	2	119000-51900	SEAL, AC1290E0	1							
68	2	121952-51900	PLUG	1							
69	2	144626-51940	PLUG	1							
70	2	144626-51950	O-RING, 1016	2							
71	2	137600-53900	SCREW, M6X6	1							
72	2	22190-060000	WASHER, SEAL 6	4							
73	2	23414-220029	GASKET, 22X1.0	1							
74	2	24312-000150	O-RING, 2P15.0	4							
75	2	24341-000260	O-RING, 1AS26.0	4							
76	2	24341-000500	O-RING, 1AS50.0	1							
77	2	26106-060182	BOLT, M6X 18 PLATED	6							
78	2	26106-060202	BOLT, M6X 20 PLATED	4							
79	2	26216-060162	STUD, M6X 16	3							
80	2	26366-080002	NUT, M8	8							

Remarks

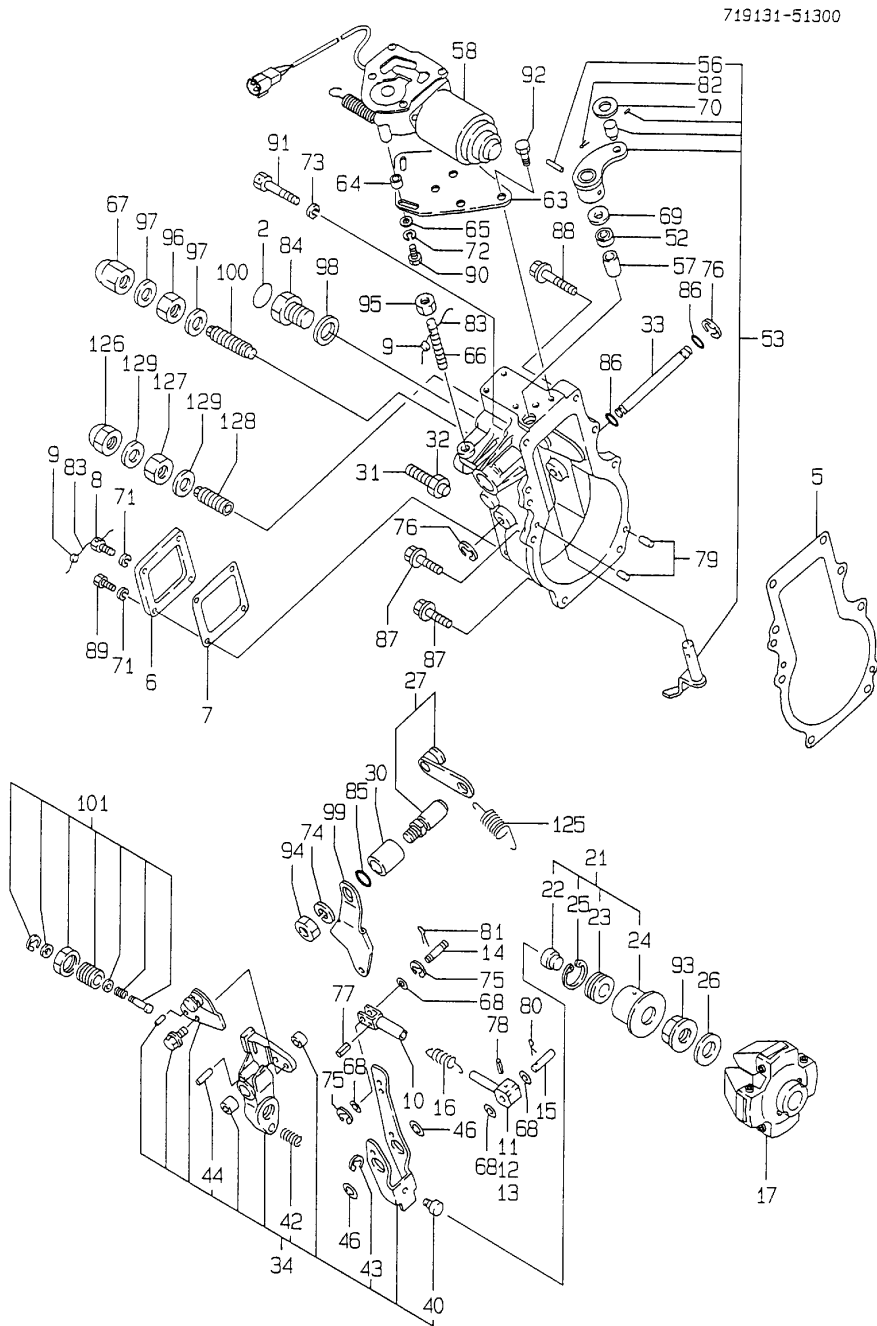
(1) GOVERNOR ASSY(FIG NO.14)AND FEED PUMP(FIG NO.15)IS INCORPORATED IN THIS FUEL INJECTION PUMP ASSY (REF NO.1).

Fig.14. GEVERNOR



No.	Lev.	Parts No.	Description	Q'ty						I	R
				(A)	(B)	(C)	(D)	(E)	(F)		
2	2	124610-51970	LABEL	1							
5	2	119000-61051	GASKET	1							
6	2	120323-61060	COVER, GOVERNOR CASE	1							
7	2	120323-61070	GASKET	1							
8	2	129155-61090	BOLT	1							
9	2	135210-61090	LEAD	2							
10	2	119000-61120	LINK	1							
11	2	119000-61140	LINK, MARK-1 L=40	1							
12	2	119000-61150	LINK, MARK-2 L=42	1							
13	2	119000-61160	LINK, MARK-3 L=44	1							
14	2	119000-61170	PIN, LINK	1							
15	2	119000-61180	PIN, LINK	1							
16	2	119000-61190	SPRING	1							
17	2	119000-61200	WEIGHT ASSY,GOVERNOR	1							
21	2	119000-61300	SLEEVE ASSY, L=30	1							
22	3	119000-61310	SHIFTER	1							
23	3	119000-61320	BEARING, THRUST	1							
24	3	119000-61340	SLEEVE	1							
25	3	22262-000260	RING, R-26	1							
26	2	119000-61380	SPACER	1							
27	2	119000-61400	SHAFT ASSY	1							
30	2	119100-61430	BUSH	1							
31	2	129155-61460	BOLT, IDLE	1							
32	2	119000-61470	NUT, M6	1							
33	2	119000-61490	SHAFT	1							
34	2	119000-61500	LEVER ASSY, GOVERNOR	1							
40	3	124616-61540	SHIFTER	1							
42	3	121850-61600	SPRING, FUEL CONTROL	1							
43	3	22272-000040	RING, E- 4	1							
44	3	22351-020012	PIN, SPRING 2.0X12	1							
46	2	119000-61630	SHIM SET	1							
52	2	148616-61650	SEAL, VC081404	1							
53	2	119000-61801	LEVER ASSY, STOP	1							
56	3	22351-030016	PIN, SPRING 3.0X16	1							
57	2	119000-61841	BUSH	1							
58	2	119032-61850	MOTOR, STOP	1							
63	2	119000-61870	BRACKET, STOP MOTOR	1							
64	2	119000-61880	SPACER	3							
65	2	119000-61890	WASHER	3							
66	2	121855-61910	BOLT, LIMITER	1							
67	2	129100-61930	NUT, CAP	1							
68	2	22117-050000	WASHER, 5	4							
69	2	22137-080000	WASHER, 8	1							
70	2	22137-080000	WASHER, 8	1							
71	2	22217-050000	WASHER, SPRING 5	4							
72	2	22217-050000	WASHER, SPRING 5	3							
73	2	22217-060000	WASHER, SPRING 6	1							
74	2	22217-100000	WASHER, SPRING 10	1							
75	2	22272-000040	RING, E- 4	2							
76	2	22272-000080	RING, E- 8	2							
77	2	22351-030016	PIN, SPRING 3.0X16	1							

Fig.14. GEVERNOR



(A)=4TN100TL-MCC

(B)=

(C)=

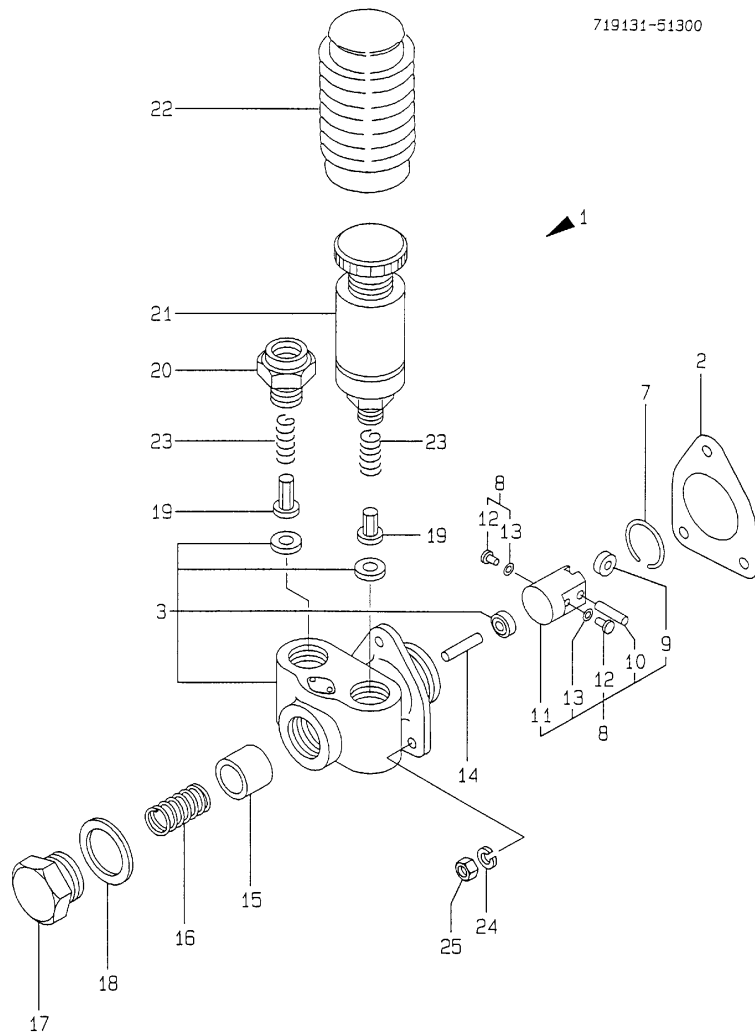
(D)=

(E)=

(F)=

No.	Lev.	Parts No.	Description	Q'ty						I	R
				(A)	(B)	(C)	(D)	(E)	(F)		
78	2	22351-030025	PIN, SPRING 3.0X25	1							
79	2	22351-050020	PIN, SPRING 5.0X20	2							
80	2	22372-050000	PIN, SNAP 5	1							
81	2	22417-120120	PIN, COTTER 1.2X12	1							
82	2	22417-160120	PIN, COTTER 1.6X12	1							
83	2	22453-060000	WIRE, 0.6	2							
84	2	23887-160002	PLUG, 16	1							
85	2	24311-000110	O-RING, 1AP11.0	1							
86	2	24341-000080	O-RING, 1AS8.0	2							
87	2	26106-060222	BOLT, M6X 22 PLATED	6							
88	2	26106-060352	BOLT, M6X 35 PLATED	1							
89	2	26116-050102	BOLT, M5X 10 PLATED	3							
90	2	26116-050252	BOLT, M5X 25 PLATED	3							
91	2	26116-060356	BOLT, M6X 35 PLATED	1							
92	2	26116-080142	BOLT 8X14	4							
93	2	26376-120002	NUT, M12	1							
94	2	26606-100002	NUT, M10	1							
95	2	26756-080002	NUT, LOCK M8	1							
96	2	26777-120002	NUT, LOCK M12	1							
97	2	43400-500450	SEAL WASHER 12S	2							
98	2	43400-500500	SEAL WASHER 16	1							
99	1	119100-61440	LEVER, GOVERNOR	1							
100	1	120323-61470	BOLT, CONTROL	1							
101	1	119101-61550	ANGLEICH ASSY	1							
125	1	119032-61700	SPRING, GOVERNOR	1							
126	1	26667-080002	NUT, CAP M8	1							
127	1	26756-080002	NUT, LOCK M8	1							
128	1	26911-080322	SCREW, M8X32	1							
129	1	43400-500420	SEAL WASHER 8	2							

Fig.15. FEED PUMP



(A)=4TN100TL-MCC

(B)=

(C)=

(D)=

(E)=

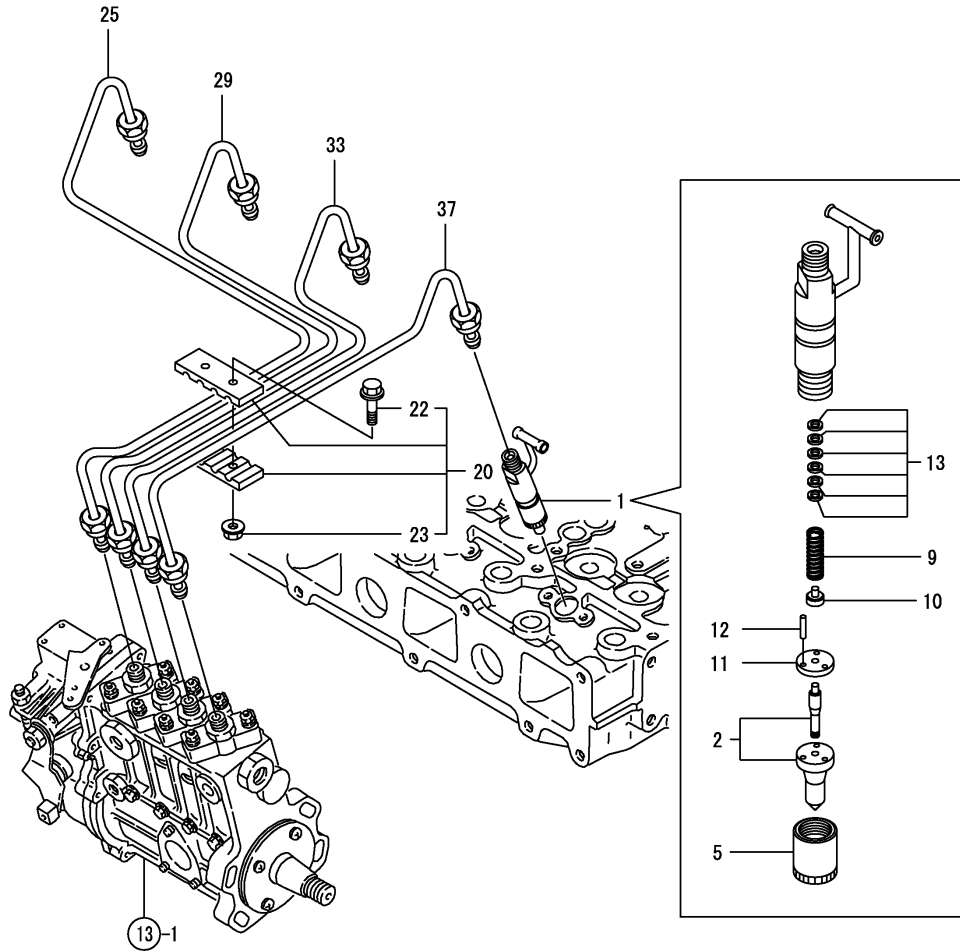
(F)=

No.	Lev.	Parts No.	Description	Q'ty						I	R
				(A)	(B)	(C)	(D)	(E)	(F)		
1	1	119000-52000	PUMP ASSY, FUEL FEED	1							
2	2	124410-51861	GASKET	1							G
3	2	121820-52020	BODY ASSY, PUMP	1							
7	2	121820-52070	PIN	1							
8	2	119000-52100	TAPPET ASSY	1							
9	3	121820-52110	ROLLER	1							
10	3	148688-52120	PIN, ROLLER	1							
11	3	119000-52130	GUIDE	1							
12	3	121820-52140	RETAINER	2							
13	3	119000-52150	SHIM	2							
14	2	121820-52160	SPINDLE, INTER	1							
15	2	121820-52170	PISTON	1							
16	2	121820-52180	SPRING, VALVE	1							
17	2	121820-52190	RETAINER, SPRING	1							
18	2	121820-52200	GASKET, 25	1							
19	2	121820-52210	VALVE	2							
20	2	121820-52230	RETAINER, SPRING	1							
21	2	121820-52300	PUMP, PRIMING	1							
22	2	121820-52400	COVER	1							
23	2	121820-52510	SPRING, VALVE	2							
24	2	22217-060000	WASHER, SPRING 6	3							
25	2	26716-060002	NUT, M6	3							

Remarks

(G) THESE PARTS ARE SOLD BY FIG.21, REF.NO.1.

Fig.16. FUEL INJECTION VALVE



(A)=4TN100TL-MCC

(B)=

(C)=

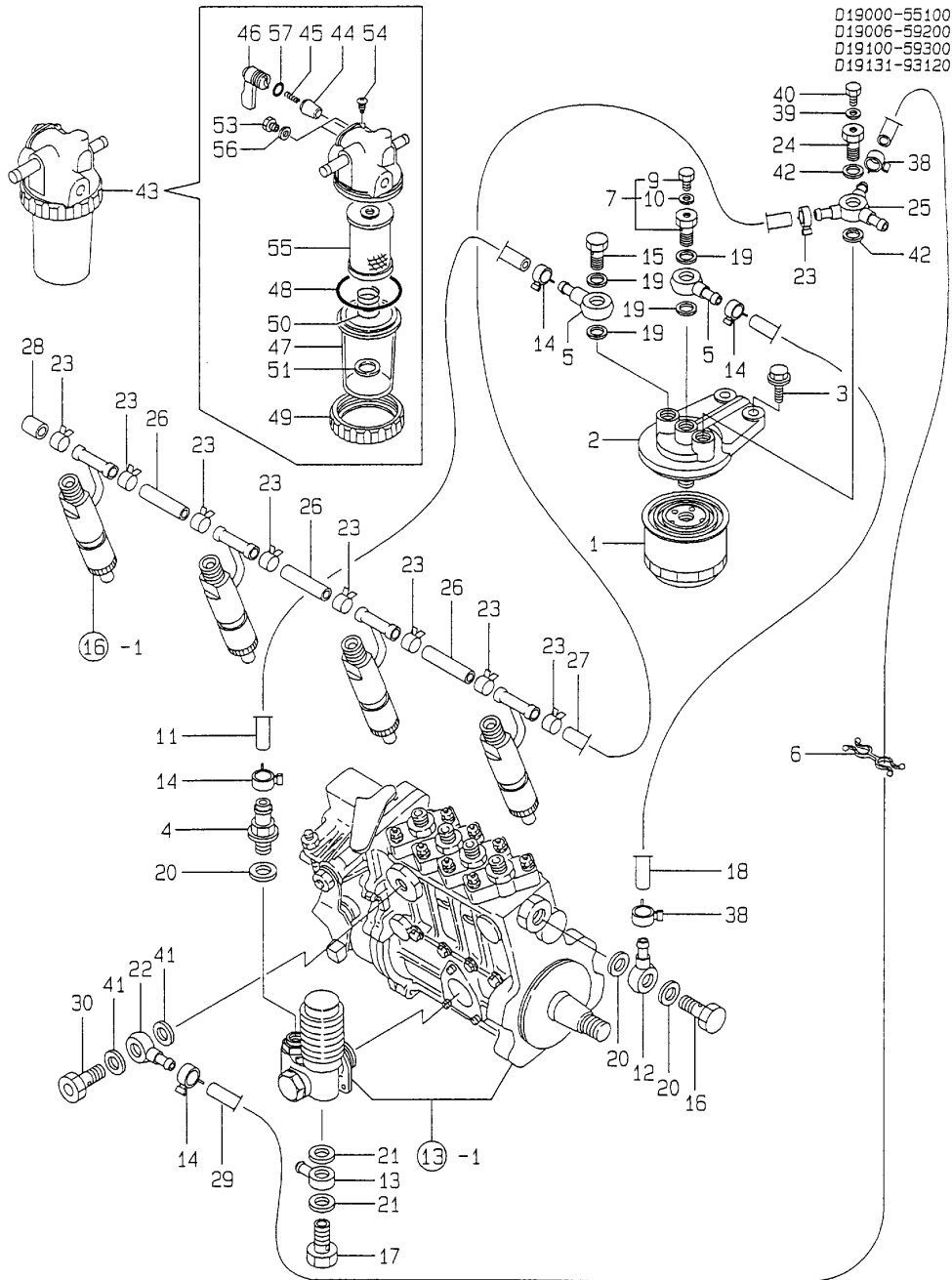
(D)=

(E)=

(F)=

No.	Lev.	Parts No.	Description	Q'ty						I	R
				(A)	(B)	(C)	(D)	(E)	(F)		
1	1	719129-53100	VALVE ASSY,INJECTION	4							
2	2	119000-53000	VALVE ASSY,INJECTION	4							
5	2	114250-53080	NUT, NOZZLE D16.95	4							
9	2	114250-53120	SPRING, NOZZLE	4							
10	2	114250-53130	SEAT, SPRING	4							
11	2	114250-53140	PLATE	4							
12	2	114250-53210	PIN	8							
13	2	114250-53400	SHIM SET	4							
20	1	123472-59090	RETAINER ASSY	1							
22	2	26106-060202	BOLT, M6X 20 PLATED	2							
23	2	26366-060002	NUT, M6	2							
25	1	119100-59810	PIPE ASSY, INJECTION	1							
29	1	119100-59820	PIPE ASSY, INJECTION	1							
33	1	119100-59830	PIPE ASSY, INJECTION	1							
37	1	119100-59840	PIPE ASSY, INJECTION	1							

Fig.17. FUEL PIPES



D19000-55100  
 D19006-59200  
 D19100-59300  
 D19131-93120

(A)=4TN100TL-MCC

(B)=

(C)=

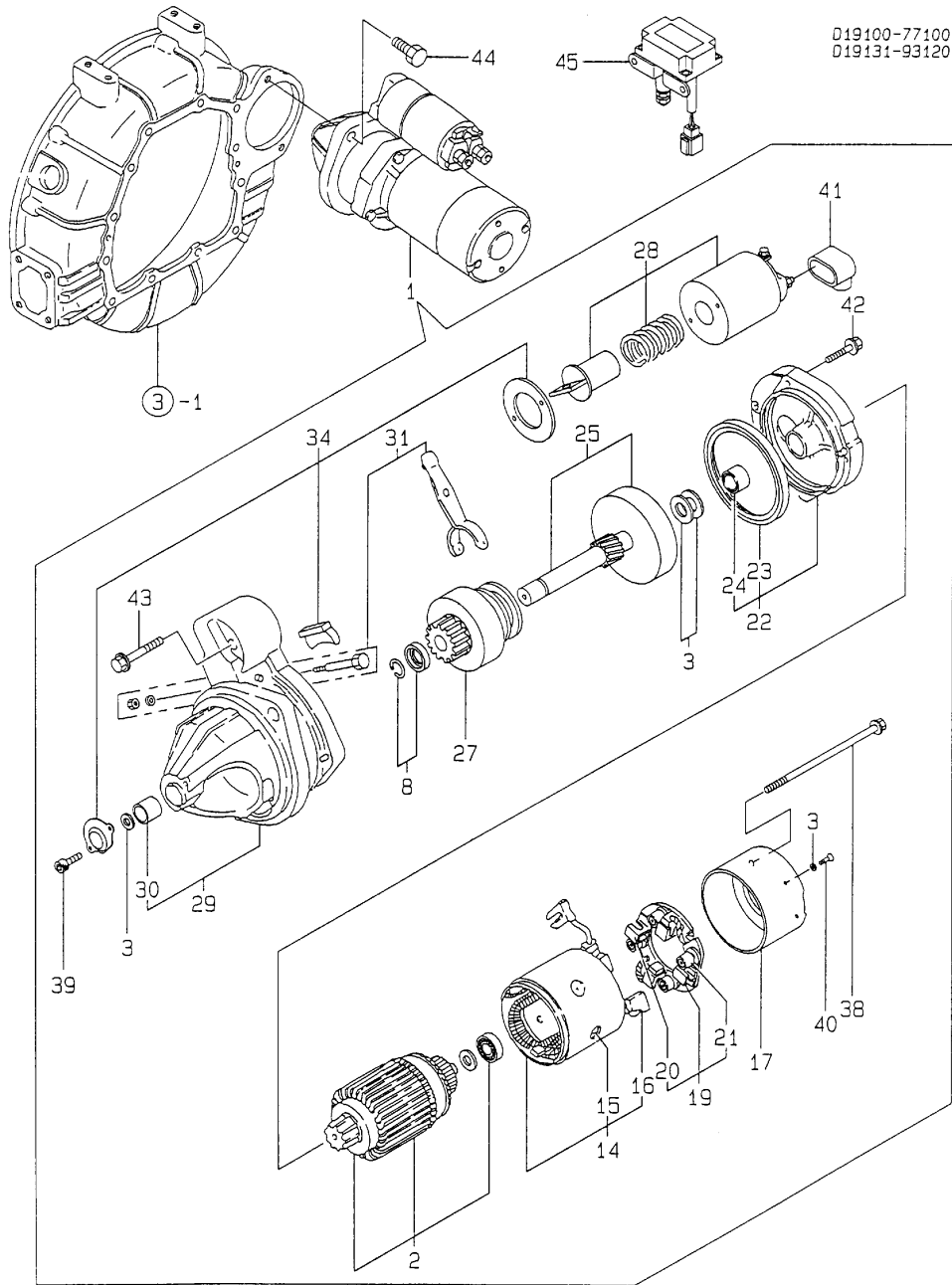
(D)=

(E)=

(F)=

No.	Lev.	Parts No.	Description	Q'ty						I	R
				(A)	(B)	(C)	(D)	(E)	(F)		
1	1	119000-55600	FILTER, FUEL	1							
2	1	129470-55610	BODY, STRAINER	1							
3	1	26106-100252	BOLT, M10X 25 PLATED	2							
4	1	121250-49110	JOINT, PIPE	1							
5	1	101304-59020	JOINT, PIPE 12	2							
6	1	119006-59110	CLAMP	1							
7	1	103854-59191	BOLT ASSY, JOINT M12	1							
9	2	124060-59380	PLUG, 6	1							
10	2	43400-500390	SEAL WASHER 6S	1							
11	1	105025-59530	PIPE, FUEL D13X400	1							
12	1	121855-59880	JOINT, PIPE	1							
13	1	121855-59880	JOINT, PIPE	1							
14	1	23000-013000	CLAMP, 13	4							
15	1	23857-060000	BOLT, JOINT 6	1							
16	1	23857-080000	BOLT, JOINT 8	1							
17	1	23857-080000	BOLT, JOINT 8	1							
18	1	23980-730240	HOSE, 7.3X 240	1							
19	1	43400-500450	SEAL WASHER 12S	4							
20	1	43400-500470	SEAL WASHER 14S	3							
21	1	43400-500470	SEAL WASHER 14S	2							
22	1	101304-59020	JOINT, PIPE 12	1							
23	1	124066-59100	CLIP, HOSE 8	9							
24	1	129495-59300	BOLT, PIPE JOINT	1							
25	1	129470-59530	JOINT, PIPE	1							
26	1	119000-59550	PIPE, FUEL RETURN	3							
27	1	119000-59560	PIPE, FUEL RETURN	1							
28	1	129150-59580	CAP	1							
29	1	129255-59580	PIPE, FUEL	1							
30	1	129100-59951	VALVE ASSY, CHECK	1							
38	1	23000-013000	CLAMP, 13	2							
39	1	23414-080000	GASKET, 8X1.0	1							
40	1	26106-080102	BOLT, M8X 10 PLATED	1							
41	1	43400-500450	SEAL WASHER 12S	2							
42	1	43400-500470	SEAL WASHER 14S	2							
43	1	129335-55700	SEPARATOR ASSY,WATER	1							
44	2	104200-55321	VALVE, TAPER	1							
45	2	104200-55330	SPRING, VALVE	1							
46	2	104200-55341	HANDLE	1							
47	2	124064-55510	COVER	1							
48	2	102103-55520	O-RING	1							
49	2	110250-55610	RING, RETAINING	1							
50	2	121257-55720	SPRING	1							
51	2	121257-55731	FLOAT	1							
53	2	101720-55750	PLUG, 6	2							
54	2	104200-55750	SCREW, M4	1							
55	2	171081-55910	SCREEN	1							
56	2	23418-060000	GASKET, 6X1.0	2							
57	2	24311-240100	O-RING, 1AP10A	1							

Fig.18. STARTING MOTOR



D19100-77100  
D19131-93120

(A)=4TN100TL-MCC

(B)=

(C)=

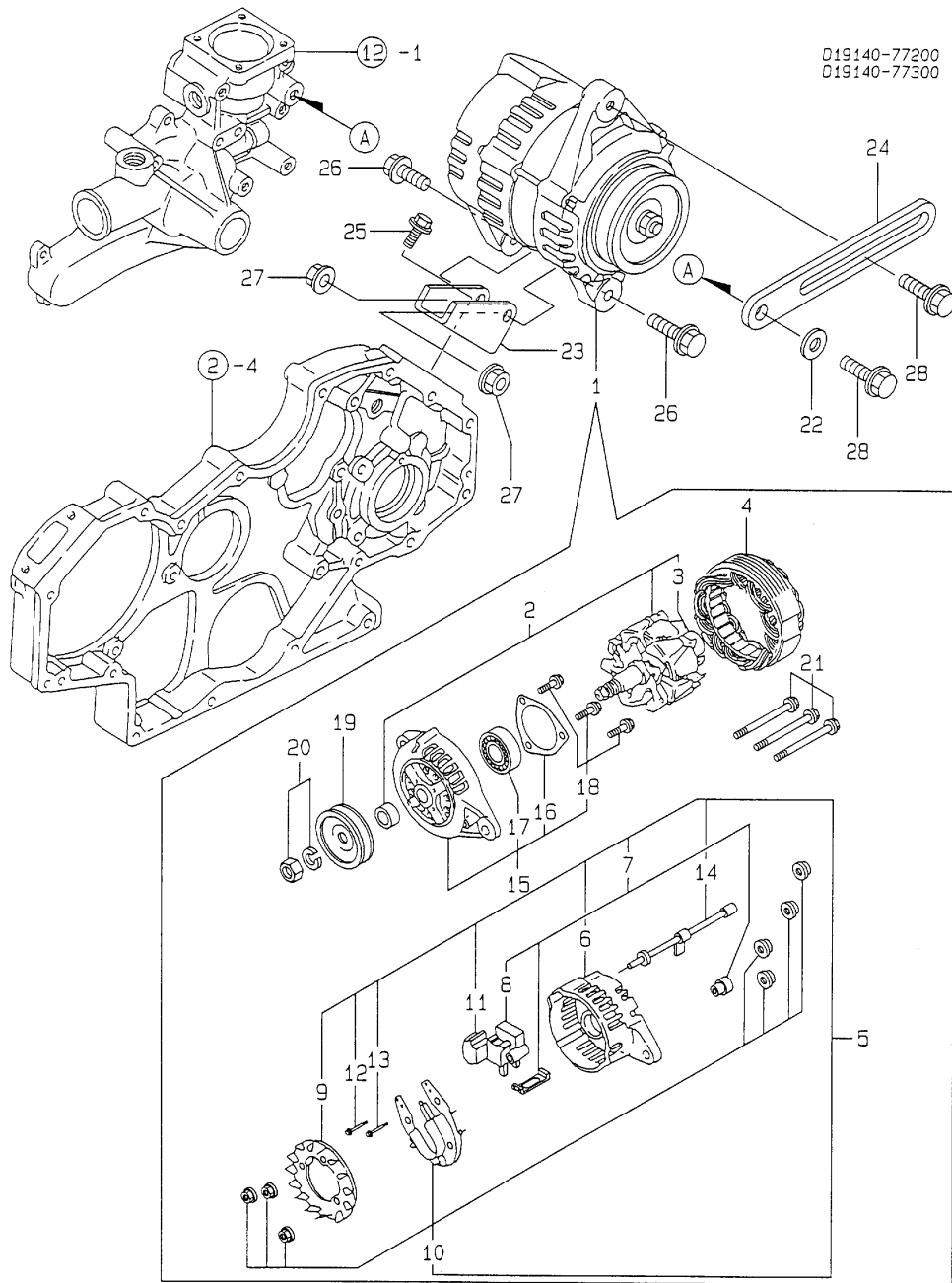
(D)=

(E)=

(F)=

No.	Lev.	Parts No.	Description	Q'ty						I	R
				(A)	(B)	(C)	(D)	(E)	(F)		
1	1	121254-77012	STARTING MOTOR(DC12V	1							
2	2	121254-77401	ARMATURE, (NON-ASB.)	1							
3	2	121254-77430	WASHER KIT, THRUST	1							
8	2	121254-77480	STOPPER KIT, PINION	1							
14	2	121254-77520	COIL ASSY, FIELD	1							
15	3	121254-77530	SCREW, POLE CORE	8							
16	3	121254-77540	BRUSH(+)	2							
17	2	121254-77550	COVER ASSY, REAR	1							
19	2	121254-77570	HOLDER ASSY, BRUSH	1							
20	3	121254-77580	BRUSH (-)	2							
21	3	121254-77590	SPRING, BRUSH	4							
22	2	121254-77600	BEARING ASSY, CENTER	1							
23	3	119129-77210	SEAL, OIL	1							
24	3	119129-77220	BEARING, NEEDLE	1							
25	2	121254-77640	SHAFT ASSY, GEAR	1							
27	2	121254-77661	PINION ASSY	1							
28	2	121254-77670	SWITCH, MAGNETIC	1							
29	2	121254-77681	CASE ASSY, GEAR	1							
30	3	121254-77690	METAL, GEAR CASE	1							
31	2	121254-77700	LEVER SET, SHIFT	1							
34	2	121254-77730	DUST COVER SET	1							
38	2	121254-77770	BOLT, THROUGH	2							
39	2	26450-050122	BOLT, M5X 12	2							
40	2	121254-77790	SCREW 4	2							
41	2	121254-77810	COVER, TERMINAL	1							
42	2	26106-060302	BOLT, M6X 30 PLATED	3							
43	2	26106-060452	BOLT, M6X 45 PLATED	2							
44	1	26116-120302	BOLT, M12X 30 PLATED	2							
45	1	129136-77100	RELAY, SAFETY	1							

Fig.19. GENERATOR



(A)=4TN100TL-MCC

(B)=

(C)=

(D)=

(E)=

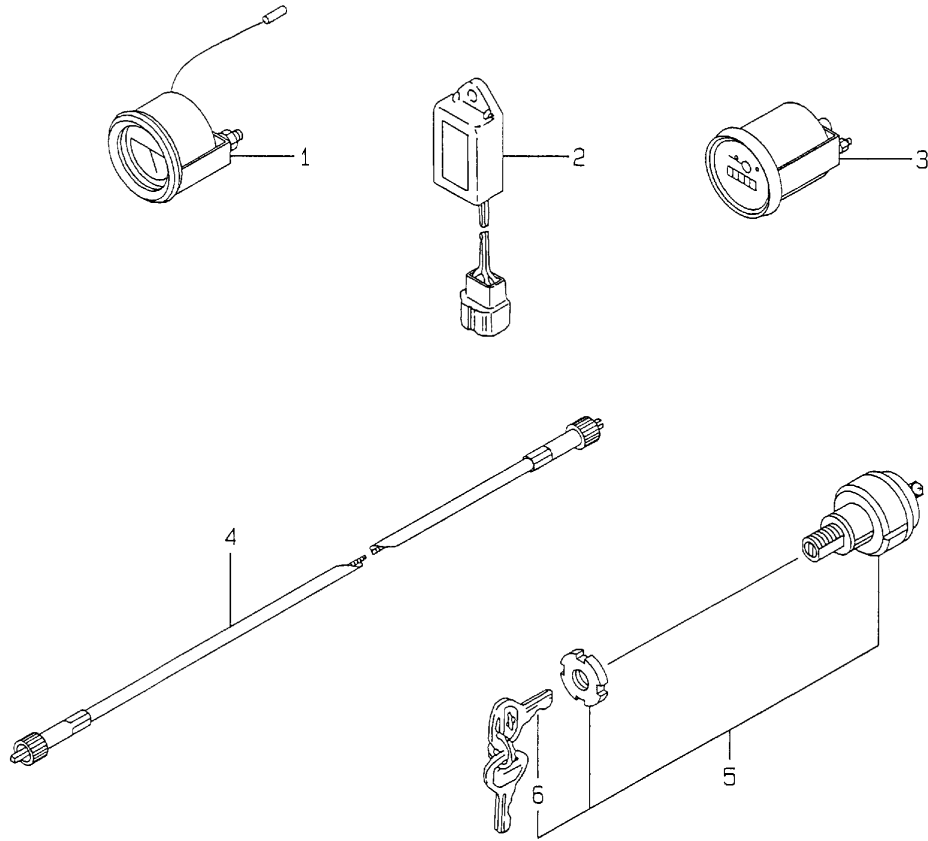
(F)=

No.	Lev.	Parts No.	Description	Q'ty						I	R
				(A)	(B)	(C)	(D)	(E)	(F)		
1	1	119836-77200	GENERATOR	1							
2	2	119836-77700	ROTOR ASSY	1							
3	3	119836-77850	BALL BEARING	1							
4	2	119836-77710	STATOR ASSY	1							
5	2	119836-77721	COVER ASSY, REAR	1							
6	3	119836-77730	COVER, REAR	1							
7	3	119836-77741	BRUSH ASSY,REGULATOR	1							
8	4	119836-77750	BRUSH ASSY	1							
9	3	119836-77760	GUIDE, FAN SIDE	1							
10	3	119836-77770	DIODE ASSY	1							
11	3	119836-77780	CONDENSER	1							
12	3	119836-77871	BOLT (1)	1							
13	3	119836-77880	BOLT (2)	1							
14	3	119836-77890	WIRE ASSY, LEAD	1							
15	2	119836-77790	COVER ASSY, FRONT	1							
16	3	119836-77800	RETAINER, BEARING	1							
17	3	119836-77840	BALL BEARING	1							
18	2	119836-77860	SCREW KID	1							
19	2	119836-77810	PULLEY	1							
20	2	119836-77820	NUT ASSY, PULLEY	1							
21	2	119836-77830	BOLT, THROUGH	1							
22	1	106100-55800	WASHER	1							
23	1	119005-77340	BRACKET, GENERATOR	1							
24	1	121857-77330	ADJUSTER	1							
25	1	26106-080202	BOLT, M8X 20 PLATED	2							
26	1	26106-080302	BOLT, M8X 30 PLATED	2							
27	1	26366-080002	NUT, M8	2							
28	1	26106-080202	BOLT, M8X 20 PLATED	2							



# Fig.20. ELECTRIC PARTS

D19131-93120

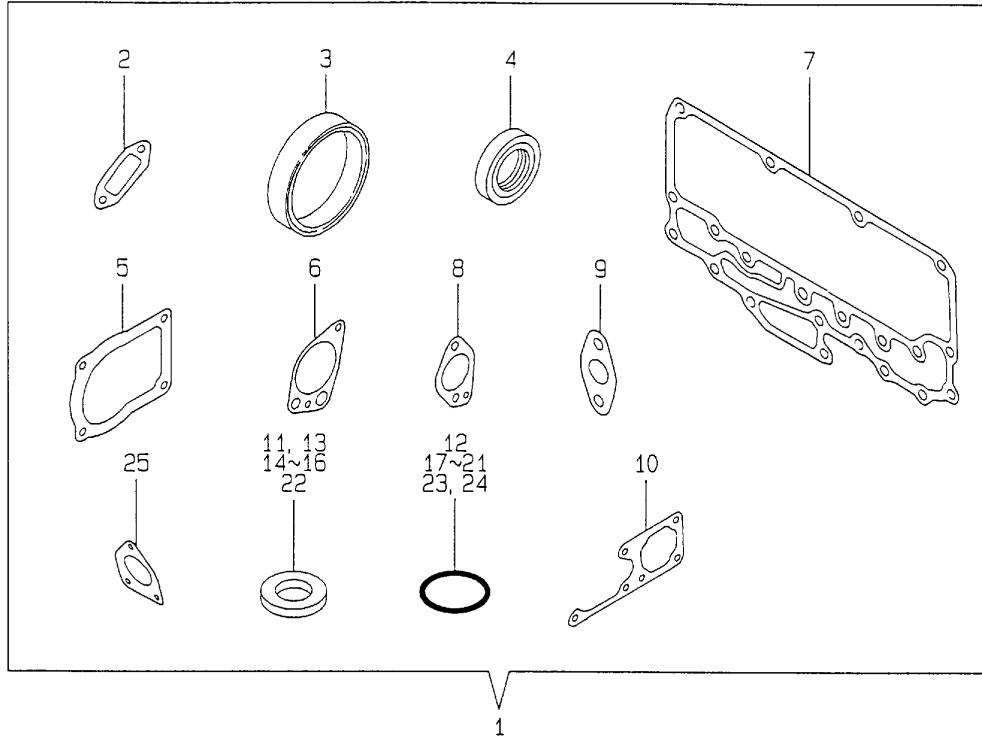


(A)=4TN100TL-MCC  
(B)=  
(C)=

(D)=  
(E)=  
(F)=

No.	Lev.	Parts No.	Description	Q'ty						I	R
				(A)	(B)	(C)	(D)	(E)	(F)		
1	1	171010-77850	THERMOSTAT	1							
2	1	128300-77920	TIMER	1							
3	1	171080-91100	TACHOMETER	1							
4	1	124701-91140	CABLE, L=985	1							
5	1	121575-91250	SWITCH, KEY	1							
6	2	123482-91291	KEY	2							

Fig.21. GASKET SET A (CYLINDER BLOCK)



(A)=4TN100TL-MCC

(B)=

(C)=

(D)=

(E)=

(F)=

No.	Lev.	Parts No.	Description	Q'ty						I	R
				(A)	(B)	(C)	(D)	(E)	(F)		
1	1	719130-92601	GASKET SET, BLOCK	1							1
1-1	1	119131-92600	GASKET SET(NON-ASB.)	1							N 1
(A=E2009.12)											
2	2	119000-01771	GASKET	1							
3	2	124411-01780	SEAL, HTC95X115X12	1							
4	2	121850-01800	SEAL, OIL	1							
5	2	124610-01862	GASKET	2							
6	2	119000-32020	GASKET, PUMP	1							
7	2	119000-33021	GASKET	1							
8	2	119000-33041	GASKET	1							
9	2	121952-33071	GASKET, COOLER	2							
10	2	119000-42021	GASKET, WATER PUMP	1							
11	2	124465-44950	GASKET, 16	2							
12	2	124410-51960	O-RING	1							
13	2	23414-080000	GASKET, 8X1.0	4							
14	2	23414-140000	GASKET, 14X1.0	1							
15	2	23414-160000	GASKET, 16X1.0	1							
16	2	23414-180000	GASKET, 18X1.0	2							
16-1	2	23414-170000	GASKET, 17X1.0	2							N
(A=E2009.12)											
17	2	24311-000220	O-RING, 1AP22.0	1							
18	2	24311-000360	O-RING, 1AP36.0	1							
19	2	24341-000240	O-RING, 1AS24.0	1							
20	2	24341-000240	O-RING, 1AS24.0	1							
21	2	24341-001350	O-RING, 1AS135.0	1							
22	2	43400-500420	SEAL WASHER 8	1							
22-1	2	22190-080003	WASHER, SEAL 8	1							N
(A=E2009.12)											
23	2	24311-000320	O-RING, 1AP32.0	1							
24	2	24311-000320	O-RING, 1AP32.0	1							
25	2	124410-51861	GASKET	1							

Remarks

(1) OPTIONAL PART.

N:Old  $\xrightarrow{\text{Yes}}$  New, Q:Old  $\xrightarrow{\text{No}}$  New, R:Old  $\xrightarrow{\text{Yes}}$  New, S:Old  $\xrightarrow{\text{No}}$  New, W:Add, Z:Discontinued, F:Interchangeable by set, K:Q'ty Change



## Parts No. Index

Parts No.	Fig. No.	Ref. No.
101304-59020	17	5
		22
101720-55750	17	53
102103-55520	17	48
103854-59191	17	7
104200-55321	17	44
104200-55330	17	45
104200-55341	17	46
104200-55750	17	54
105025-59530	17	11
106100-55800	5	17
	8	21
	19	22
110250-55610	17	49
114250-53080	16	5
114250-53120	16	9
114250-53130	16	10
114250-53140	16	11
114250-53210	16	12
114250-53400	16	13
119000-01200	1	30
119000-01500	2	1
119000-01590	2	4
119000-01760	2	21
119000-01771	2	22
	21	2
119000-01840	1	25
119000-01930	2	9
119000-02020	1	11
119000-02410	1	6
119000-02450	8	2
119000-07200	4	7
119000-11230	4	43
119000-11260	4	37
119000-11270	4	38
119000-11280	4	39
119000-11290	4	40
119000-11810	4	18
119000-14100	8	5
119000-14200	8	7
119000-21650	9	9
119000-22000	9	17
119000-22300	9	25
119000-23910	9	31
119000-25050	8	10
119000-25100	8	11
119000-25900	8	17
119000-25910	8	18
119000-25920	8	19
119000-25930	8	14

Parts No.	Fig. No.	Ref. No.
119000-32001	10	1
119000-32020	10	17
	21	6
119000-33010	11	2
119000-33021	11	17
	21	7
119000-33030	11	18
119000-33041	11	19
	21	8
119000-33050	11	4
119000-34030	11	6
119000-35140	10	21
119000-39650	10	40
119000-42021	12	17
	21	10
119000-42250	12	20
119000-48170	12	25
119000-51050	13	7
119000-51060	13	9
119000-51101	13	13
119000-51161	13	20
119000-51170	13	21
119000-51181	13	22
119000-51201	13	23
119000-51330	13	34
119000-51340	13	35
119000-51360	13	37
119000-51410	13	38
119000-51450	13	39
119000-51510	13	46
119000-51530	13	48
119000-51550	13	49
119000-51570	13	50
119000-51580	13	51
119000-51590	13	52
119000-51650	13	53
119000-51800	13	66
119000-51900	13	67
119000-52000	15	1
119000-52100	15	8
119000-52130	15	11
119000-52150	15	13
119000-53000	16	2
119000-55600	17	1
119000-59550	17	26
119000-59560	17	27
119000-61051	14	5
119000-61120	14	10
119000-61140	14	11
119000-61150	14	12

Parts No.	Fig. No.	Ref. No.
119000-61160	14	13
119000-61170	14	14
119000-61180	14	15
119000-61190	14	16
119000-61200	14	17
119000-61300	14	21
119000-61310	14	22
119000-61320	14	23
119000-61340	14	24
119000-61380	14	26
119000-61400	14	27
119000-61470	14	32
119000-61490	14	33
119000-61500	14	34
119000-61630	14	46
119000-61801	14	53
119000-61841	14	57
119000-61870	14	63
119000-61880	14	64
119000-61890	14	65
119005-35100	10	20
119005-77340	19	23
119006-42001	12	1
119006-59110	17	6
119032-01601	3	1
119032-61700	14	125
119032-61850	14	58
119100-01340	1	31
	22	2
119100-01640	3	19
119100-01730	3	5
119100-01770	3	6
119100-01980	1	32
119100-03200	4	53
119100-11240	4	35
119100-11320	4	54
	22	4
119100-11330	4	55
119100-12112	5	6
	22	7
119100-12120	5	3
119100-14000	8	1
119100-21590	9	13
119100-35090	10	22
119100-39350	10	27
119100-51030	13	5
119100-51081	13	10
119100-51091	13	11
119100-51500	13	45
119100-59810	16	25

Parts No.	Fig. No.	Ref. No.
119100-59820	16	29
119100-59830	16	33
119100-59840	16	37
119100-61430	14	30
119100-61440	14	99
119101-11110	4	25
119101-12850	5	10
119101-13100	6	1
119101-13200	6	2
	22	8
119101-18010	7	3
119101-18500	7	4
119101-18510	7	11
119101-18520	7	15
119101-18530	7	17
119101-18540	7	18
119101-18550	7	19
119101-18560	7	20
119101-18570	7	21
119101-39600	10	28
119101-39650	10	30
119101-61550	14	101
119129-11520	4	50
119129-34801	3	23
119129-34811	3	24
119129-77210	18	23
119129-77220	18	24
119131-49021	12	38
119131-92600	21	1 -1
119140-92600	11	1 -1
119141-44531	12	34
119141-44760	12	23
119141-49011	12	37
119620-01750	3	2
119625-11870	4	30
	22	5
119625-11880	4	31
	22	6
119625-11900	4	32
119836-77200	19	1
119836-77700	19	2
119836-77710	19	4
119836-77721	19	5
119836-77730	19	6
119836-77741	19	7
119836-77750	19	8
119836-77760	19	9
119836-77770	19	10
119836-77780	19	11
119836-77790	19	15

## Parts No. Index

Parts No.	Fig. No.	Ref. No.
119836-77800	19	16
119836-77810	19	19
119836-77820	19	20
119836-77830	19	21
119836-77840	19	17
119836-77850	19	3
119836-77860	19	18
119836-77871	19	12
119836-77880	19	13
119836-77890	19	14
120323-61060	14	6
120323-61070	14	7
120323-61470	14	100
120445-44530	12	35
120445-44540	12	36
121250-39450	11	20
121250-49110	17	4
121252-39150	10	26
121254-77012	18	1
121254-77401	18	2
121254-77430	18	3
121254-77480	18	8
121254-77520	18	14
121254-77530	18	15
121254-77540	18	16
121254-77550	18	17
121254-77570	18	19
121254-77580	18	20
121254-77590	18	21
121254-77600	18	22
121254-77640	18	25
121254-77661	18	27
121254-77670	18	28
121254-77681	18	29
121254-77690	18	30
121254-77700	18	31
121254-77730	18	34
121254-77770	18	38
121254-77790	18	40
121254-77810	18	41
121257-55720	17	50
121257-55731	17	51
121450-42450	12	31
121470-44900	12	32
121550-49111	12	30
121575-91250	20	5
121820-52020	15	3
121820-52070	15	7
121820-52110	15	9
121820-52140	15	12

Parts No.	Fig. No.	Ref. No.
121820-52160	15	14
121820-52170	15	15
121820-52180	15	16
121820-52190	15	17
121820-52200	15	18
121820-52210	15	19
121820-52230	15	20
121820-52300	15	21
121820-52400	15	22
121820-52510	15	23
121850-01800	2	7
	21	4
121850-01900	8	16
121850-01920	2	8
121850-11100	4	24
121850-11120	4	26
121850-11150	4	27
	22	3
121850-11180	4	28
121850-11800	4	16
121850-21130	9	12
121850-21200	9	4
121850-21290	9	5
121850-21660	9	10
121850-21680	9	11
121850-21920	9	6
121850-23200	9	32
121850-35230	11	7
121850-49530	12	26
121850-49540	12	27
	22	9
121850-49550	12	28
	22	10
121850-51700	13	65
121850-61600	14	42
121850-77021	5	4
		13
	22	11
		12
121850-77050	5	14
121855-59880	17	12
		13
121855-61910	14	66
121857-77330	19	24
121872-77950	5	19
121950-44741	12	22
121952-33071	11	5
	21	9
121952-39830	11	10
121952-51900	13	68

Parts No.	Fig. No.	Ref. No.
122710-51050	13	8
122710-51350	13	36
123385-82200	4	19
123472-59090	16	20
123482-91291	20	6
123672-84530	11	11
124060-59380	17	9
124064-55510	17	47
124066-59100	17	23
124070-13300	3	11
124160-01751	2	20
	4	51
124223-35510	11	8
124250-11190	4	29
124410-51861	15	2
	21	25
124410-51960	8	24
	21	12
124411-01780	3	21
	21	3
124411-35520	11	9
124413-39710	10	31
124465-44950	12	33
	21	11
124550-21600	9	16
124610-01851	2	25
124610-01862	2	26
	21	5
124610-51970	14	2
124612-77910	5	18
124616-61540	14	40
124701-91140	20	4
124976-34850	3	12
128300-77920	20	2
128400-51300	13	31
129100-01580	1	22
		23
		24
	2	3
129100-59951	17	30
129100-61930	14	67
129100-77820	5	15
129136-77100	18	45
129150-03100	4	2
129150-11750	4	44
129150-14400	8	8
129150-49080	12	40
129150-49100	12	39
129150-59580	17	28
129150-91400	2	30

Parts No.	Fig. No.	Ref. No.
129155-51270	13	29
129155-51280	13	30
129155-61090	14	8
129155-61460	14	31
129255-59580	17	29
129335-55700	17	43
129400-92450	22	15
129403-18620	7	16
129404-18510	7	5
129404-18520	7	6
129404-18530	7	7
129404-18540	7	8
129404-18550	7	9
129404-18560	7	10
129404-18580	7	12
129404-18590	7	13
129404-18600	7	14
129404-18680	7	22
129404-18720	7	25
129406-18690	7	23
129406-18700	7	24
129470-55610	17	2
129470-59530	17	25
129472-13520	7	27
	22	14
129472-18090	7	1
	22	13
129495-59300	17	24
129792-39610	10	29
135210-61090	14	9
135602-34390	1	26
137600-53900	13	71
144626-51090	13	12
144626-51940	13	69
144626-51950	13	70
148616-61650	14	52
148688-52120	15	10
171010-77850	20	1
171051-01921	1	5
171080-91100	20	3
171081-55910	17	55
171087-42280	12	21
171301-01640	3	7
171350-03090	4	1
194990-18090	7	2
22117-050000	14	68
22117-120000	3	13
22137-080000	14	69
		70
22190-060000	13	72

## Parts No. Index

Parts No.	Fig. No.	Ref. No.
22190-080003	21	22 -1
22217-050000	14	71
		72
22217-060000	14	73
	15	24
22217-100000	14	74
22217-180000	8	22
22242-000180	4	45
22252-000340	9	26
22262-000260	14	25
22272-000040	14	43
		75
22272-000080	14	76
22351-020012	14	44
22351-030010	10	41
22351-030016	14	56
		77
22351-030025	14	78
22351-050012	8	23
22351-050020	14	79
22351-080016	1	27
22372-050000	14	80
22417-120120	14	81
22417-160120	14	82
22453-060000	14	83
22512-070140	8	6
	9	7
23000-013000	17	14
		38
23000-022000	4	3
23000-025000	10	32
23000-060000	5	11
23000-070000	5	12
23010-050000	12	44
23297-080081	10	33
23414-080000	10	34
	17	39
	21	13
23414-100000	10	35
23414-140000	1	28
	21	14
23414-160000	11	12
	21	15
23414-170000	11	13 -1
	21	16 -1
23414-180000	11	13
	21	16
23414-220029	13	73
23418-060000	17	56
23857-030000	10	36

Parts No.	Fig. No.	Ref. No.
23857-030000	10	42
23857-060000	17	15
23857-080000	17	16
		17
23871-010000	1	7
23871-020000	1	29
	12	11
23871-030000	1	8
	4	20
	11	14
	12	12
23887-160002	11	15
	14	84
23980-730240	17	18
24311-000110	14	85
24311-000220	10	23
	21	17
24311-000320	2	23
	4	59
	21	23
		24
24311-000360	12	18
	21	18
24311-240100	3	25
	17	57
24312-000150	13	74
24314-000180	10	37
24341-000080	14	86
24341-000240	2	32
	3	10
	21	19
		20
24341-000260	13	75
24341-000500	13	76
24341-001350	8	20
	21	21
26013-080162	10	24
26013-080452	8	15
26014-060142	5	20
	12	29
26022-050122	4	58
26106-060162	2	33
	10	38
26106-060182	13	77
26106-060202	13	78
	16	22
26106-060222	14	87
26106-060302	18	42
26106-060352	14	88
26106-060452	18	43

Parts No.	Fig. No.	Ref. No.
26106-080102	17	40
26106-080122	10	39
26106-080142	5	5
26106-080162	1	33
	8	9
	10	18
		25
26106-080182	2	10
26106-080202	2	11
		27
		28
	5	7
	11	21
		22
	19	25
		28
26106-080252	2	24
	3	14
		22
	4	60
	8	25
26106-080302	19	26
26106-080352	3	15
	5	16
	11	23
		24
26106-080402	2	12
	6	3
26106-080452	2	13
		14
26106-080502	2	15
	10	19
	11	25
26106-080552	2	16
	12	24
26106-080652	4	47
	12	19
26106-080702	3	16
	5	8
	6	4
26106-080752	2	17
26106-080802	3	17
26106-080902	2	18
26106-081102	6	5
26106-081152	5	9
26106-100162	3	26
26106-100202	4	8
26106-100252	3	3
	17	3
26106-100302	3	4

Parts No.	Fig. No.	Ref. No.
26116-050102	14	89
26116-050252	14	90
26116-060356	14	91
26116-080142	14	92
26116-120302	18	44
26116-120852	3	18
26216-060162	13	79
26216-060252	4	33
26216-080222	6	6
	7	26
26216-080652	4	34
26366-060002	4	48
	16	23
26366-080002	2	29
	4	49
	13	80
	19	27
26366-100002	8	26
26376-100002	11	16
26376-120002	14	93
26450-050122	18	39
26606-100002	14	94
26667-080002	14	126
26716-060002	15	25
26756-080002	14	95
		127
26776-180002	8	27
26777-120002	14	96
26911-080322	14	128
27231-600000	1	34
27241-140000	1	9
27241-160000	4	21
27241-280000	4	22
27241-400000	1	10
	4	23
43400-500390	17	10
43400-500420	2	19
	14	129
	21	22
43400-500450	14	97
	17	19
		41
43400-500470	17	20
		21
		42
43400-500500	14	98
719000-02800	1	12
719000-02870	1	35
719000-02930	1	15
719000-02940	1	38

# Parts No. Index

Parts No.	Fig. No.	Ref. No.
719000-22500	9	19
719000-22900	9	35
719000-22950	9	37
719000-23100	9	27
719000-23600	9	33
719000-23610	9	43
719000-33700	11	1
719100-21700	9	1
719129-11650	4	41
719129-11700	4	9
719129-12100	5	1
719129-53100	16	1
719130-92601	21	1
719131-51300	13	1
719141-01561	1	1
719141-99021	22	1

Parts No.	Fig. No.	Ref. No.
-----------	----------	----------

Parts No.	Fig. No.	Ref. No.
-----------	----------	----------

Parts No.	Fig. No.	Ref. No.
-----------	----------	----------