

OCD10-M45900EN

PREFACE

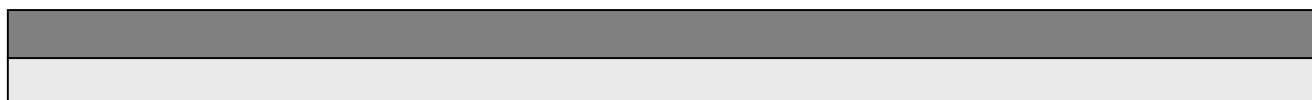
1. This Parts Catalog is the 1st edition of 3,4TN100(T)L-G(L,H) Diesel Engine for OHATSU-TOUKYOU DENNKI.

Pub. No. : 000Y00D4590

Published : January, 1993

2. Model name

Engine model	Vehicle		Vehicle made by
	Products	Model name	
3,4TN100(T)L-G(L,H)	GENERATOR	—	OHATSU TOUKYOU DENNKI



Contents

Fig. No.	Fig. Name	Fig. No.	Fig. Name
3,4	TN100(T)L-G(L,H)	25.	GASKET SET A(CYLINDER BLOCK)
1.	CYLINDER BLOCK		
2.	CYLINDER BLOCK		
3.	GEAR HOUSING		
4.	FLYWHEEL HOUSING & OIL SUMP		
5.	CYLINDER HEAD & BONNET		
6.	CYLINDER HEAD & BONNET		
7.	SUCTION MANIFOLD & AIR CLEANER		
8.	EXHAUST MANIFOLD		
9.	TURBO-CHARGER		
10.	CAMSHAFT & DRIVE GEAR		
11.	CRANKSHAFT & PISTON		
12.	LUB. OIL SYSTEM		
13.	OIL COOLER		
14.	COOLING WATER SYSTEM		
15.	FUEL INJECTION PUMP		
16.	FUEL INJECTION PUMP		
17.	GOVERNOR		
18.	FEED PUMP		
19.	FUEL INJECTION VALVE		
20.	FUEL PIPES		
21.	ENGINE STOPPING DEVICE		
22.	STARTING MOTOR		
23.	TENSION PULLEY		
24.	ELECTRIC PARTS		

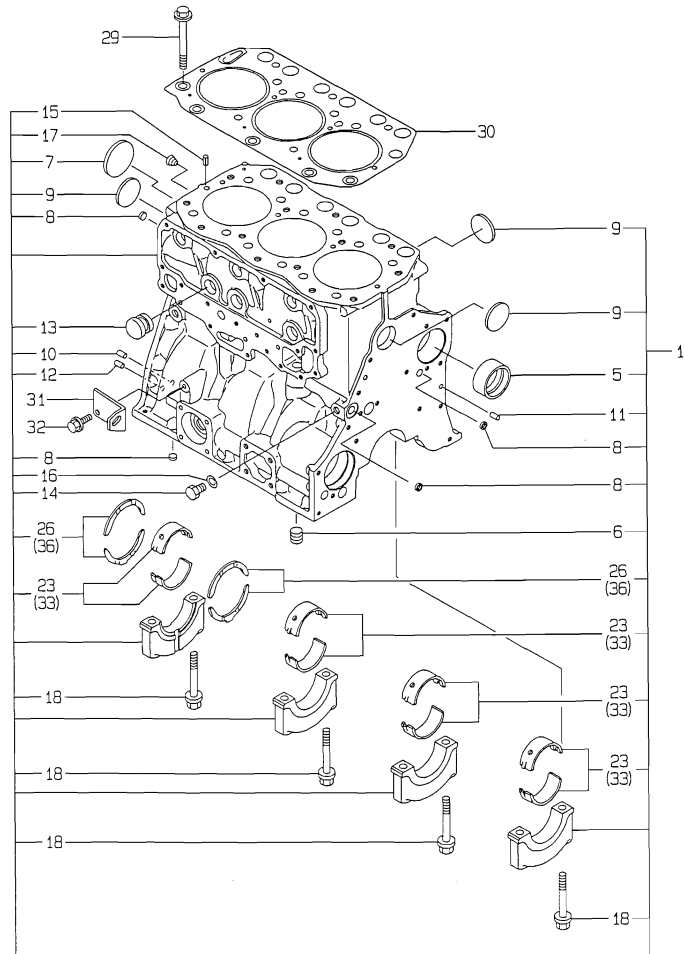
Fig.1. CYLINDER BLOCK

(A)=3TN100L-GL
 (B)=4TN100L-GL
 (C)=4TN100L-GH

(D)=4TN100TL-GL
 (E)=4TN100TL-GH
 (F)=

Y0004590
 3, 47N100 (T) L-G (L, H)

D19040-01100
 D19100-02100



No.	Lev.	Parts No.	Description	Q'ty						I	R
				(A)	(B)	(C)	(D)	(E)	(F)		
1	1	719040-01560	BLOCK ASSY, CYLINDER	1							
5	2	119000-02410	BUSH, CAMSHAFT	1							
6	2	23871-030000	PLUG, R03	1							
7	2	27231-600000	PLUG, 60	1							
8	2	27241-140000	PLUG, 14	4							
9	2	27241-400000	PLUG, 40	3							
10	2	129100-01580	PIN, M8X16	2							
11	2	129100-01580	PIN, M8X16	2							
12	2	129100-01580	PIN, M8X16	2							
13	2	119000-01840	PLUG, RUBBER	3							
14	2	135602-34390	RETAINER	1							
15	2	22351-080016	PIN, SPRING 8.0X16	2							
16	2	23414-140000	GASKET, 14X1.0	1							\$
17	2	23871-020000	PLUG, R02	1							
18	2	119000-02020	BOLT, METAL CAP	8							
23	2	119000-02800	BEARING, MAIN	4							
26	2	119000-02930	BEARING, THRUST	2							
29	1	119000-01200	BOLT, HEAD	18							
30	1	119000-01340	GASKET, HEAD T=1.3	1							
31	1	119100-01980	RETAINER, PUMP	1							
32	1	26106-080162	BOLT, M8X 16 PLATED	2							
33	1	719000-02870	BEARING, 0.25 US	4							1
36	1	719000-02940	BEARING, THRUST 0.25	2							2

Remarks

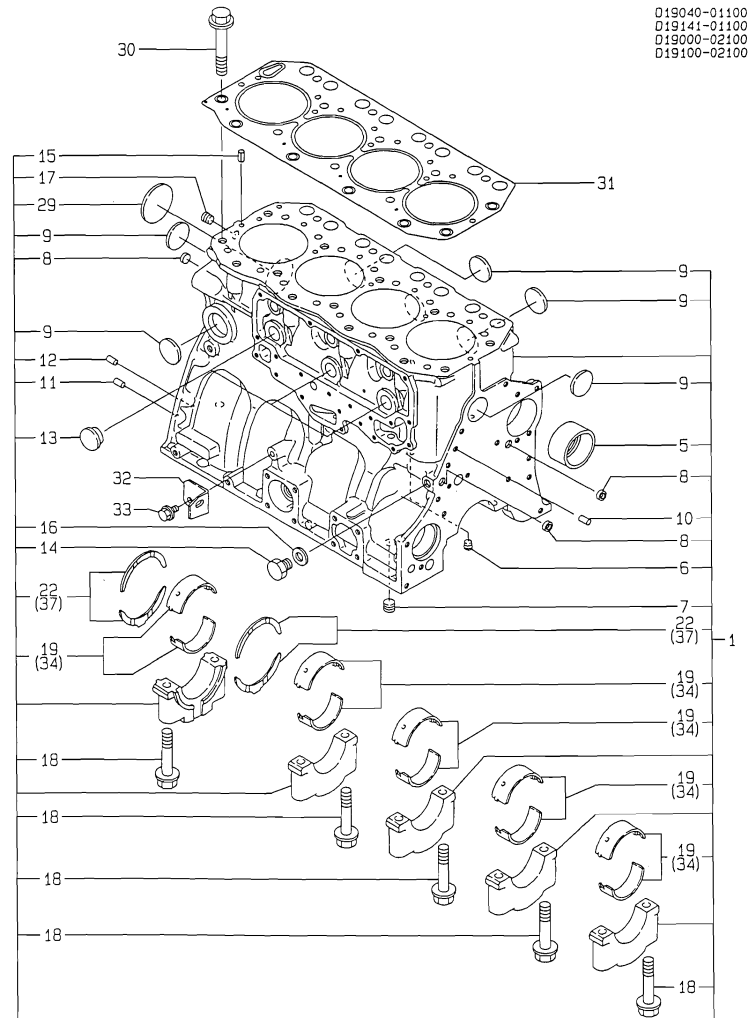
- (1) UNDER-SIZED(U.S=0.25)PART.
- (2) OVER-SIZED(O.S=0.25)PART.
- (§) THESE PARTS ARE SOLD BY FIG.25, REF.NO.1,2.

Fig.2. CYLINDER BLOCK

(A)=3TN100L-GL
(B)=4TN100L-GL
(C)=4TN100L-GH

(D)=4TN100TL-GL
(E)=4TN100TL-GH
(F)=

Y0004590
3, 4TN100 (T) L-G (L, H)



019040-01100
019141-01100
019000-02100
019100-02100

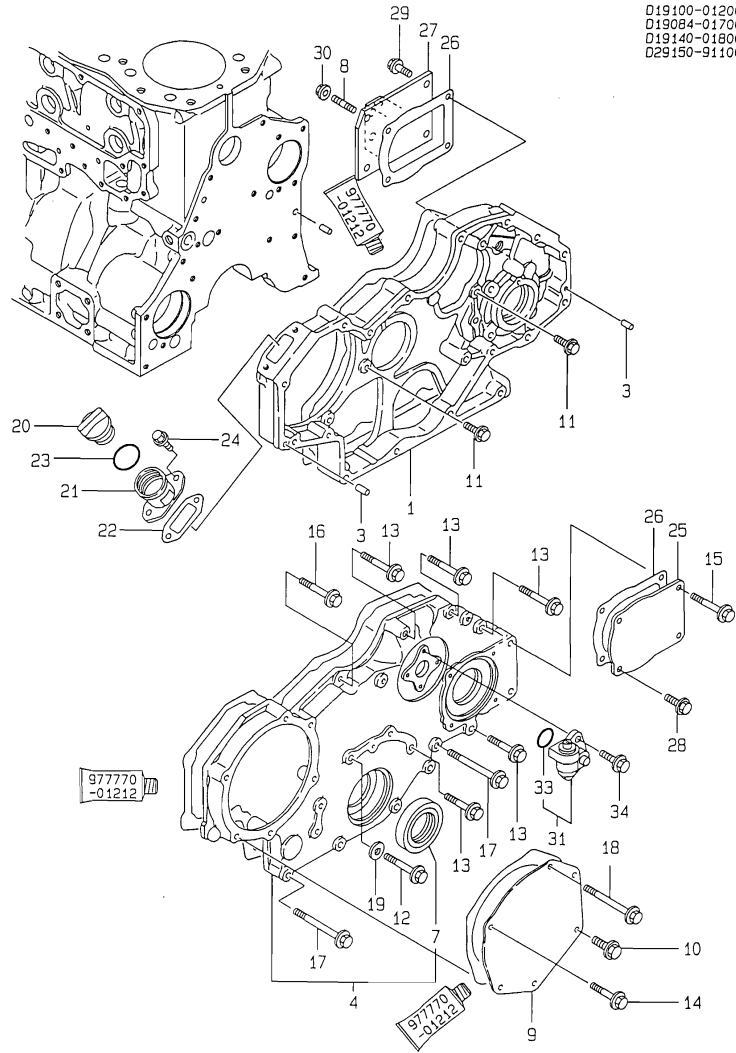
No.	Lev.	Parts No.	Description	Q'ty						I	R
				(A)	(B)	(C)	(D)	(E)	(F)		
1	1	719140-01560	BLOCK ASSY, CYLINDER	1	1	1	1				
5	2	119000-02410	BUSH, CAMSHAFT	1	1	1	1				
6	2	23871-010000	PLUG, R01	1	1	1	1				
7	2	23871-030000	PLUG, R03	1	1	1	1				
8	2	27241-140000	PLUG, 14	4	4	4	4				
9	2	27241-400000	PLUG, 40	5	5	5	5				
10	2	129100-01580	PIN, M8X16	2	2	2	2				
11	2	129100-01580	PIN, M8X16	2	2	2	2				
12	2	129100-01580	PIN, M8X16	2	2	2	2				
13	2	119000-01840	PLUG, RUBBER	3	3	3	3				
14	2	135602-34390	RETAINER	1	1	1	1				
15	2	22351-080016	PIN, SPRING 8.0X16	2	2	2	2				
16	2	23414-140000	GASKET, 14X1.0	1	1	1	1				\$
17	2	23871-020000	PLUG, R02	1	1	1	1				
18	2	119000-02020	BOLT, METAL CAP	10	10	10	10				
19	2	719000-02110	BEARING, MAIN	5	5	5	5				
22	2	719000-02930	BEARING, THRUST	2	2	2	2				
29	2	27231-600000	PLUG, 60	1	1	1	1				
30	1	119000-01200	BOLT, HEAD	18	18	18	18				
31	1	119100-01340	GASKET, HEAD T=1.3	1	1	1	1				
32	1	119100-01980	RETAINER, PUMP	1	1	1	1				
33	1	26106-080162	BOLT, M8X 16 PLATED	2	2	2	2				
34	1	719000-02870	BEARING, 0.25 US	5	5	5	5				1
37	1	719000-02940	BEARING, THRUST 0.25	2	2	2	2				2

Remarks

- (1) UNDER-SIZED(U.S=0.25)PART.
- (2) OVER-SIZED(O.S=0.25)PART.
- (3) THESE PARTS ARE SOLD BY FIG.25, REF.NO.1,2.

Fig.3. GEAR HOUSING

Y0004590
3. 4TN100 (T) L-G (L, H)



D19100-01200
D19084-01700
D19140-01800
D29150-91100

(A)=3TN100L-GL
(B)=4TN100L-GL
(C)=4TN100L-GH

(D)=4TN100TL-GL
(E)=4TN100TL-GH
(F)=

No.	Lev.	Parts No.	Description	Q'ty						I	R
				(A)	(B)	(C)	(D)	(E)	(F)		
1	1	119000-01500	CASE, GEAR	1	1	1	1	1			
3	1	129100-01580	PIN, M8X16	2	2	2	2	2			
4	1	119000-01590	COVER ASSY,GEAR CASE	1	1	1	1	1			
7	2	121850-01800	SEAL, OIL	1	1	1	1	1		\$	
8	1	121850-01920	STUD, 2D8X22	2	2	2	2	2			
9	1	119000-01930	COVER	1	1	1	1	1			
10	1	26106-080182	BOLT, M8X 18 PLATED	1	1	1	1	1			
11	1	26106-080202	BOLT, M8X 20 PLATED	5	5	5	5	5			
12	1	26106-080402	BOLT, M8X 40 PLATED	1	1	1	1	1			
13	1	26106-080452	BOLT, M8X 45 PLATED	5	5	5	5	5			
14	1	26106-080452	BOLT, M8X 45 PLATED	3	3	3	3	3			
15	1	26106-080502	BOLT, M8X 50 PLATED	2	2	2	2	2			
16	1	26106-080552	BOLT, M8X 55 PLATED	1	1	1	1	1			
17	1	26106-080752	BOLT, M8X 75 PLATED	4	4	4	4	4			
18	1	26106-080902	BOLT, M8X 90 PLATED	2	2	2	2	2			
19	1	43400-500420	SEAL WASHER 8	1	1	1	1	1		\$	
20	1	124160-01751	COVER, FILLER	1	1	1	1	1			
21	1	119000-01760	FLANGE	1	1	1	1	1			
22	1	119000-01771	GASKET	1	1	1	1	1		\$	
23	1	24311-000320	O-RING, 1AP32.0	1	1	1	1	1		\$	
24	1	26106-080252	BOLT, M8X 25 PLATED	2	2	2	2	2			
25	1	124610-01851	COVER	1	1	1	1	1			
26	1	124610-01862	GASKET	2	2	2	2	2		\$	
27	1	119140-39480	BRACKET	1	1	1	1	1			
28	1	26106-080202	BOLT, M8X 20 PLATED	2	2	2	2	2			
29	1	26106-080202	BOLT, M8X 20 PLATED	2	2	2	2	2			
30	1	26366-080002	NUT, M8	2	2	2	2	2			
31	1	129150-91400	GEAR	1	1	1	1	1			
33	2	24341-000240	O-RING, 1AS24.0	1	1	1	1	1		\$	
34	1	26106-060162	BOLT, M6X 16 PLATED	2	2	2	2	2			

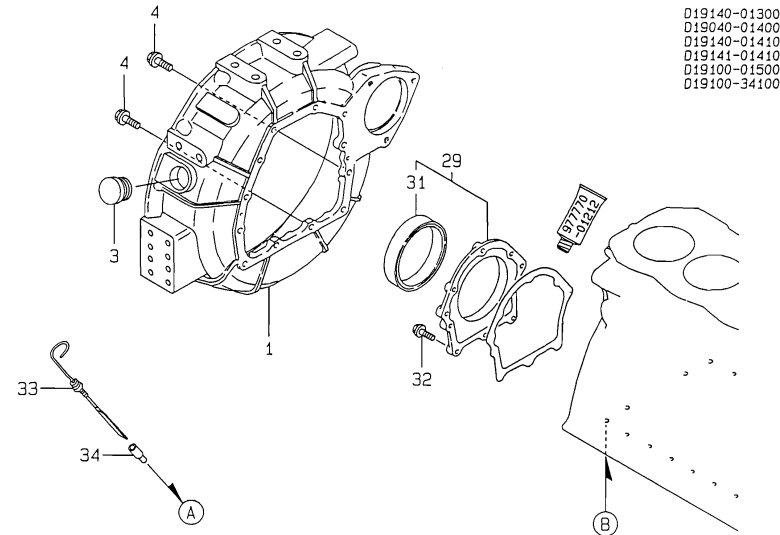
Remarks
(\$) THESE PARTS ARE SOLD BY FIG.25,
REF.NO.1,2.

Fig.4. FLYWHEEL HOUSING & OIL SUMP

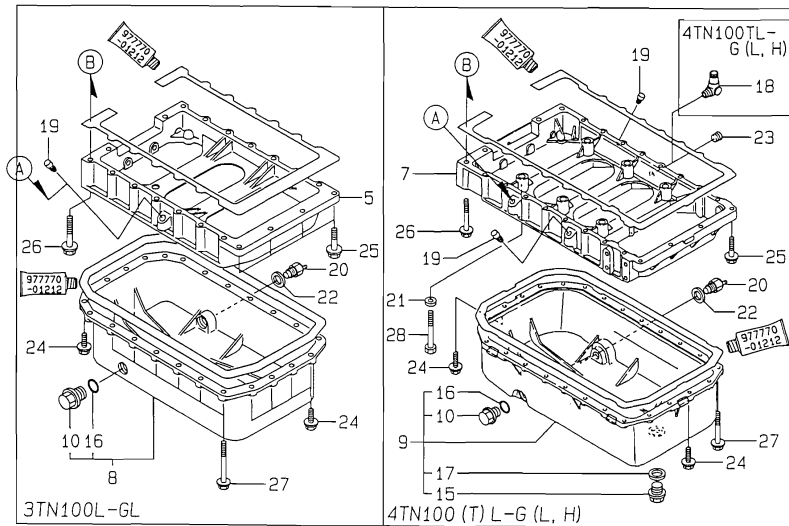
(A)=3TN100L-GL
(B)=4TN100L-GL
(C)=4TN100L-GH

(D)=4TN100TL-GL
(E)=4TN100TL-GH
(F)=

Y0004590
3. 4TN100 (T) L-G (L, H)



019140-01300
019040-01400
019140-01410
019141-01410
019100-01500
019100-34100



No.	Lev.	Parts No.	Description	Qty						I	R
				(A)	(B)	(C)	(D)	(E)	(F)		
1	1	119140-01600	HOUSING, FLYWHEEL	1	1	1	1	1			
3	1	129795-11750	CAP	1	1	1	1	1			
4	1	26106-100302	BOLT, M10X 30 PLATED	12	12	12	12	12			
5	1	119000-01730	SPACER, OIL SUMP	1							
7	1	119100-01730	SPACER		1	1	1	1			
8	1	119040-01780	SUMP ASSY, OIL	1							
9	1	119140-01780	SUMP ASSY, OIL		1	1	1	1			
10	2	171301-01640	PLUG, 22	1	1	1	1	1			
15	2	127610-44900	PLUG, M36X1.5		1	1	1	1			
16	2	24341-000240	O-RING, 1AS24.0	1	1	1	1	1		\$	
17	2	43400-500640	SEAL WASHER 36S		1	1	1	1			
18	1	124070-13300	ELBOW, PT3/8				1	1			
19	1	124976-34850	CAP	1	2	2	2	2			
20	1	121470-44900	SENSOR	1	1	1	1	1			
21	1	22117-120000	WASHER, 12		6	6	6	6			
22	1	23414-160000	GASKET, 16X1.0	1	1	1	1	1			
23	1	23871-030000	PLUG, R03		1	1					
24	1	26106-080252	BOLT, M8X 25 PLATED	8	8	8	8	8			
25	1	26106-080352	BOLT, M8X 35 PLATED	4	4	4	4	4			
26	1	26106-080702	BOLT, M8X 70 PLATED	2	2	2	2	2			
27	1	26106-080802	BOLT, M8X 80 PLATED	14	18	18	18	18			
28	1	26116-120852	BOLT, M12X 85 PLATED		6	6	6	6			
29	1	119100-01640	CASE ASSY, OIL SEAL	1	1	1	1	1			
31	2	124411-01780	SEAL, HTC95X115X12	1	1	1	1	1		\$	
32	1	26106-080252	BOLT, M8X 25 PLATED	8	8	8	8	8			
33	1	119100-34800	DIPSTICK, OIL	1	1	1	1	1			
34	1	121520-34810	GUIDE, DIPSTICK	1	1	1	1	1			

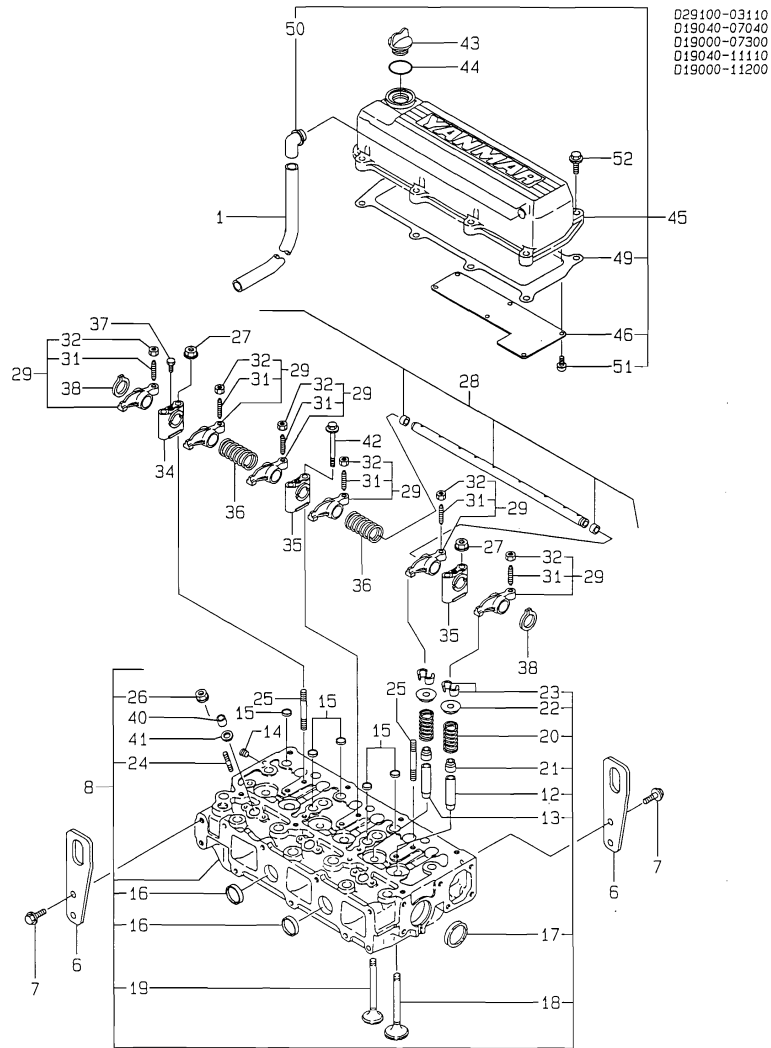
Remarks
(\$) THESE PARTS ARE SOLD BY FIG.25,
REF.NO.1,2.

Fig.5. CYLINDER HEAD & BONNET

(A)=3TN100L-GL
(B)=4TN100L-GL
(C)=4TN100L-GH

(D)=4TN100TL-GL
(E)=4TN100TL-GH
(F)=

Y00D4590
3, 4TN100 (T) L-G (L, H)



No.	Lev.	Parts No.	Description	Q'ty						I	R
				(A)	(B)	(C)	(D)	(E)	(F)		
1	1	129150-03090	HOSE, ID16X2T	1							
6	1	119000-07200	LIFTER	2							
7	1	26106-100202	BOLT, M10X 20 PLATED	4							
12	2	121850-11160	GUIDE, VALVE	3							
13	2	119000-11170	GUIDE, VALVE	3							
14	2	123385-82200	PLUG, 1/16	1							
15	2	27241-160000	PLUG, 16	5							
16	2	27241-280000	PLUG, 28	2							
17	2	27241-400000	PLUG, 40	2							
18	2	121850-11100	VALVE, INTAKE	3							
19	2	119000-11110	VALVE, EXHAUST	3							
20	2	121850-11120	SPRING, VALVE	6							
21	2	121850-11150	SEAL, VALVE STEM	6							
22	2	121850-11180	RETAINER, SPRING	6							
23	2	124250-11190	COTTER	6							
24	2	26216-060252	STUD, M6X 25	6							
25	2	26216-080652	STUD, M8X 65	2							
26	2	26366-060002	NUT, M6	6							
27	2	26366-080002	NUT, M8	2							
28	1	119000-11340	SHAFT ASSY, ROCKER	1							
29	2	719000-11650	ARM ASSY, ROCKER	6							
31	3	119000-11230	SCREW, VALVE ADJUST	6							
32	3	129150-11750	NUT, M8	6							
34	2	119000-11260	SUPPORT, ROCKER ARM	1							
35	2	119000-11270	SUPPORT, ROCKER ARM	2							
36	2	119000-11280	SPRING	2							
37	2	119000-11290	BOLT	1							
38	2	22242-000180	RING, 18	2							
40	1	119625-11870	PROTECTOR, NOZZLE	3							
41	1	119625-11880	SEAT, NOZZLE	3							
42	1	26106-080652	BOLT, M8X 65 PLATED	4							
43	1	124160-01751	COVER, FILLER	1							
44	1	24311-000320	O-RING, 1AP32.0	1							§
45	1	119000-11311	BONNET ASSY, HEAD	1							
46	2	119000-03200	COVER, BREATHER	1							
49	2	119000-11320	GASKET, BONNET	1							§
50	2	119100-11330	ELBOW	1							
51	2	26022-050122	SCREW, M5X12	7							
52	1	26106-080252	BOLT, M8X 25 PLATED	8							

Remarks

(1) REPAIR PART.

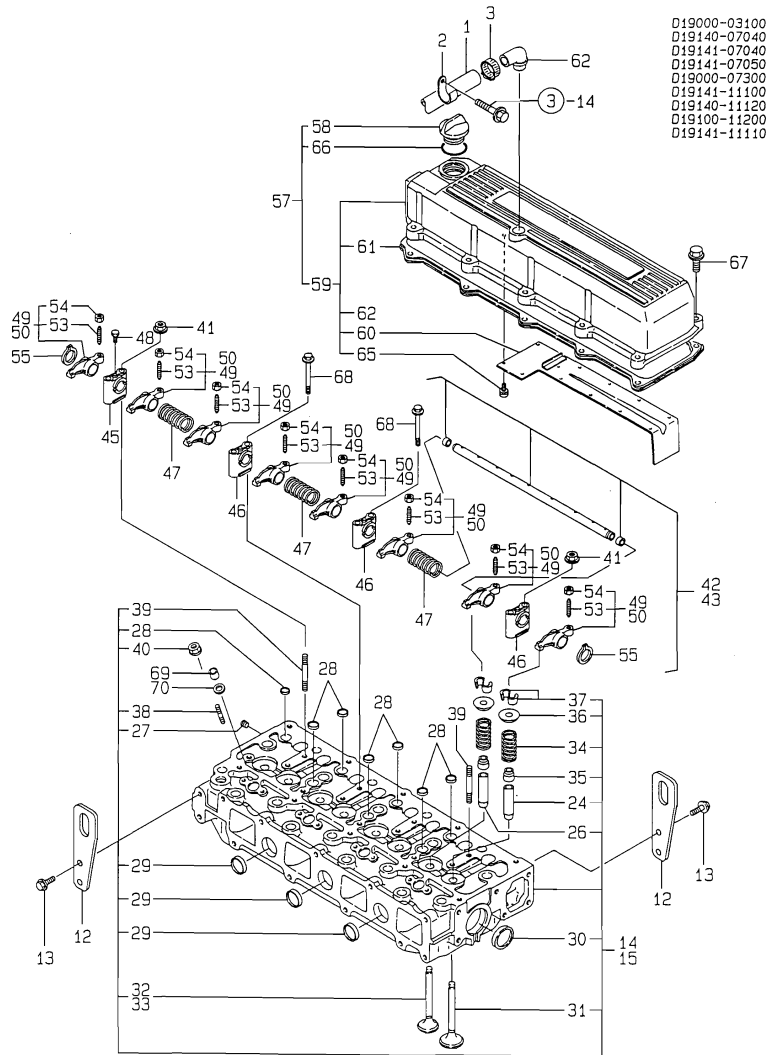
(§) THESE PARTS ARE SOLD BY FIG.25, REF.NO.1,2.

Fig.6. CYLINDER HEAD & BONNET

(A)=3TN100L-GL
(B)=4TN100L-GL
(C)=4TN100L-GH

(D)=4TN100TL-GL
(E)=4TN100TL-GH
(F)=

Y00D4590
3. 4TN100 (T) L-G (L, H)



No.	Lev.	Parts No.	Description	Qty						I	R
				(A)	(B)	(C)	(D)	(E)	(F)		
1	1	119006-03090	HOSE, BREATHER	1	1	1	1				
2	1	129150-03100	RETAINER, PIPE	1	1	1	1				
3	1	23000-022000	CLAMP, 22	1	1	1	1				
12	1	119000-07200	LIFTER	2	2	2	2				
13	1	26106-100202	BOLT, M10X 20 PLATED	4	4	4	4				
14	1	719129-11700	HEAD ASSY, CYLINDER	1	1						
15	1	719141-11710	HEAD ASSY, CYLINDER				1	1			
24	2	121850-11800	GUIDE, VALVE	4	4	4	4				1
26	2	119000-11810	GUIDE, VALVE	4	4	4	4				1
27	2	123385-82200	PLUG, 1/16	1	1	1	1				
28	2	27241-160000	PLUG, 16	7	7	7	7				
29	2	27241-280000	PLUG, 28	3	3	3	3				
30	2	27241-400000	PLUG, 40	2	2	2	2				
31	2	121850-11100	VALVE, INTAKE	4	4	4	4				
32	2	119000-11110	VALVE, EXHAUST	4	4						
33	2	119101-11110	VALVE, EXHAUST				4	4			
34	2	121850-11120	SPRING, VALVE	8	8	8	8				
35	2	121850-11150	SEAL, VALVE STEM	8	8	8	8				
36	2	121850-11180	RETAINER, SPRING	8	8	8	8				
37	2	124250-11190	COTTER	8	8	8	8				
38	2	26216-060252	STUD, M6X 25	8	8	8	8				
39	2	26216-080652	STUD, M8X 65	2	2	2	2				
40	2	26366-060002	NUT, M6	8	8	8	8				
41	2	26366-080002	NUT, M8	2	2	2	2				
42	1	119100-11230	SHAFT ASSY, ROCKER	1	1	1					
43	1	119100-11240	SHAFT ASSY, ROCKER					1			
45	2	119000-11260	SUPPORT, ROCKER ARM	1	1	1	1				
46	2	119000-11270	SUPPORT, ROCKER ARM	3	3	3	3				
47	2	119000-11280	SPRING	3	3	3	3				
48	2	119000-11290	BOLT	1	1	1	1				
49	2	719129-11660	ARM ASSY, ROCKER	8	8	8					
50	2	719129-11650	ARM ASSY, ROCKER					8			
53	3	119000-11230	SCREW, VALVE ADJUST	8	8	8	8				
54	3	129150-11750	NUT, M8	8	8	8	8				
55	2	22242-000180	RING, 18	2	2	2	2				
57	1	119129-11520	BONNET ASSY, HEAD	1	1	1	1				
58	2	124160-01751	COVER, FILLER	1	1	1	1				
59	2	119100-11311	BONNET ASSY, HEAD	1	1	1	1				
60	3	119100-03200	COVER	1	1	1	1				
61	3	119100-11320	GASKET, BONNET	1	1	1	1				
62	3	119100-11330	ELBOW	1	1	1	1				
65	3	26022-050122	SCREW, M5X12	11	11	11	11				
66	2	24311-000320	O-RING, 1AP32.0	1	1	1	1				\$
67	1	26106-080252	BOLT, M8X 25 PLATED	10	10	10	10				
68	1	26106-080652	BOLT, M8X 65 PLATED	6	6	6	6				
69	1	119625-11870	PROTECTOR, NOZZLE	4	4	4	4				
70	1	119625-11880	SEAT, NOZZLE	4	4	4	4				

Remarks
(1) REPAIR PART.
(\$) THESE PARTS ARE SOLD BY FIG.25,
REF.NO.1,2.

Fig.7. SUCTION MANIFOLD & AIR CLEANER

(A)=3TN100L-GL
 (B)=4TN100L-GL
 (C)=4TN100L-GH

(D)=4TN100TL-GL
 (E)=4TN100TL-GH
 (F)=

No.	Lev.	Parts No.	Description	Q'ty						I	R
				(A)	(B)	(C)	(D)	(E)	(F)		
1	1	119000-12100	MANIFOLD, AIR INTAKE	1							
2	1	719129-12100	MANIFOLD ASSY,INTAKE		1	1	1	1			
4	2	119100-12120	COVER, MANIFOLD		1	1	1	1			
5	2	121850-77021	GASKET		1	1	1	1			
6	2	26106-080142	BOLT, M8X 14 PLATED		4	4	4	4			
7	1	119000-12110	GASKET, MANIFOLD	1							
8	1	119100-12112	GASKET, MANIFOLD		1	1	1	1			
9	1	26106-080202	BOLT, M8X 20 PLATED	5	5	5	5	5			
10	1	26106-080702	BOLT, M8X 70 PLATED	1	3	3	3	3			
11	1	26106-081152	BOLT, M8X115 PLATED	1	1	1	1	1			
12	1	119140-12130	STAY, SILENCER	1	1	1					
13	1	129412-12460	COVER				1	1			
14	1	127412-18853	SILENCER	1	1	1					
15	1	127488-18910	CLIP, HOSE	1	1	1					
16	1	121850-77021	GASKET	1	1	1					
17	1	23000-054000	CLAMP, 54				1	1			
18	1	26106-080182	BOLT, M8X 18 PLATED	4	4	4					
19	1	119101-12850	PIPE, AIR INTAKE				1	1			
20	1	23000-060000	CLAMP, 60				1	1			
21	1	23000-070000	CLAMP, 70				1	1			
22	1	121850-77021	GASKET				1	1			
23	1	121850-77100	CAPSULE				1	1			
24	1	26106-080142	BOLT, M8X 14 PLATED				4	4			

Y0004590
 3. 4TN100 (T) L-G (L, H)

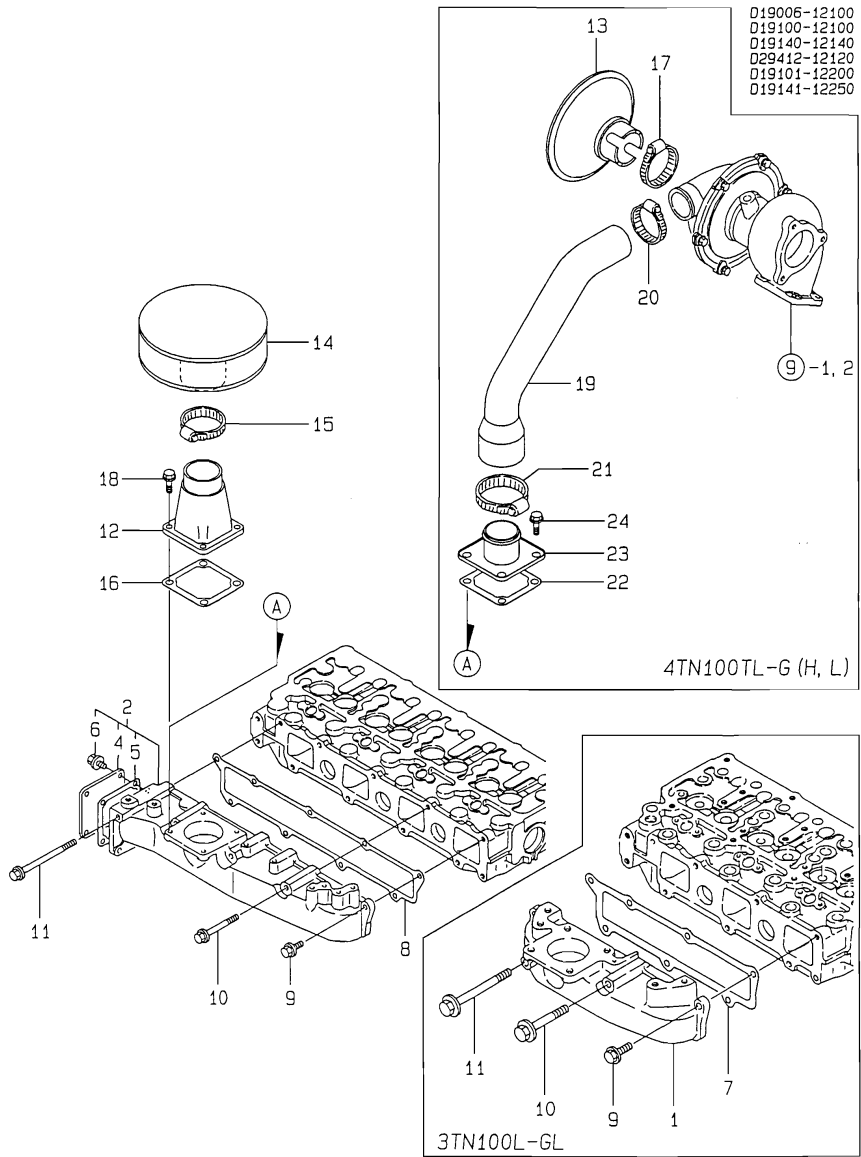
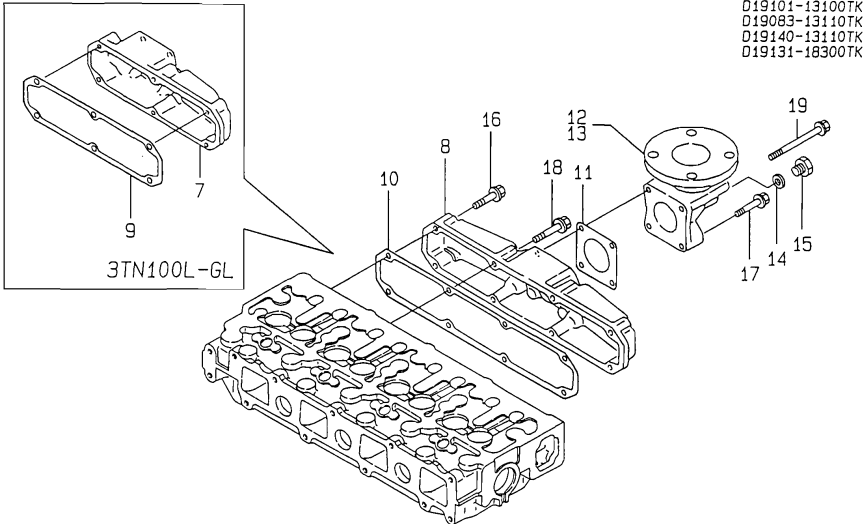


Fig.8. EXHAUST MANIFOLD

(A)=3TN100L-GL
(B)=4TN100L-GL
(C)=4TN100L-GH

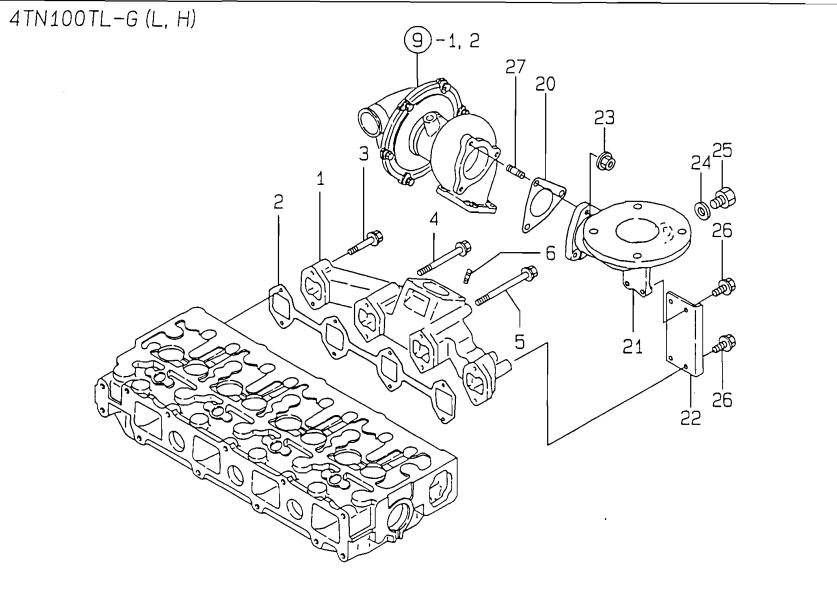
(D)=4TN100TL-GL
(E)=4TN100TL-GH
(F)=

Y00D4590
3. 4TN100 (T) L-G (L, H)



D19101-13100TK
D19083-13110TK
D19140-13110TK
D19131-18300TK

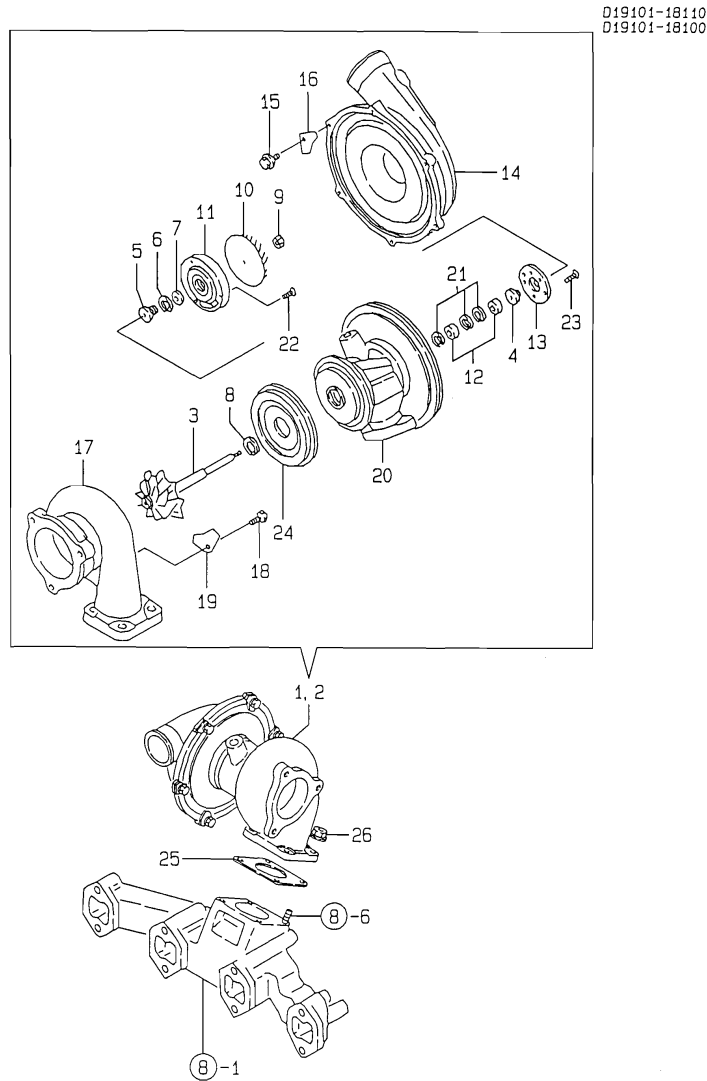
4TN100TL-G (L, H)



No.	Lev.	Parts No.	Description	Q'ty						I	R
				(A)	(B)	(C)	(D)	(E)	(F)		
1	1	119101-13100	MANIFOLD, EXHAUST				1	1			
2	1	119101-13200	GASKET				1	1			
3	1	26106-080402	BOLT, M8X 40 PLATED				4	4			
4	1	26106-080702	BOLT, M8X 70 PLATED				3	3			
5	1	26106-081102	BOLT, M8X110 PLATED				1	1			
6	1	26216-080222	STUD, M8X 22				4	4			
7	1	119000-13100	MANIFOLD, EXHAUST	1							
8	1	119100-13100	MANIFOLD, EXHAUST		1	1					
9	1	119000-13200	GASKET	1							
10	1	119100-13200	GASKET		1	1					
11	1	129400-13201	GASKET, SILENCER	1	1	1					
12	1	119140-13300	BEND, EXHAUST 65A		1	1					
13	1	129411-13300	BEND, EXHAUST 50A	1							
14	1	23414-170000	GASKET, 17X1.0	1	1	1					
15	1	23894-030002	PLUG, G3/8	1	1	1					
16	1	26106-080402	BOLT, M8X 40 PLATED	4	4	4					
17	1	26106-080452	BOLT, M8X 45 PLATED	2	2	2					
18	1	26106-080502	BOLT, M8X 50 PLATED	2	4	4					
19	1	26106-080952	BOLT, M8X 95 PLATED	2	2	2					
20	1	129792-13520	GASKET				1	1			
21	1	119131-18390	BEND, EXHAUST				1	1			
22	1	119131-18400	STAY				1	1			
23	1	194990-22050	NUT, M8				3	3			
24	1	23414-170000	GASKET, 17X1.0				1	1			
25	1	23894-030002	PLUG, G3/8				1	1			
26	1	26106-080162	BOLT, M8X 16 PLATED				4	4			
27	1	26216-080222	STUD, M8X 22				3	3			

Fig.9. TURBO-CHARGER

Y00D4590
3, 4TN100 (T) L-G (L, H)



(A)=3TN100L-GL
(B)=4TN100L-GL
(C)=4TN100L-GH

(D)=4TN100TL-GL
(E)=4TN100TL-GH
(F)=

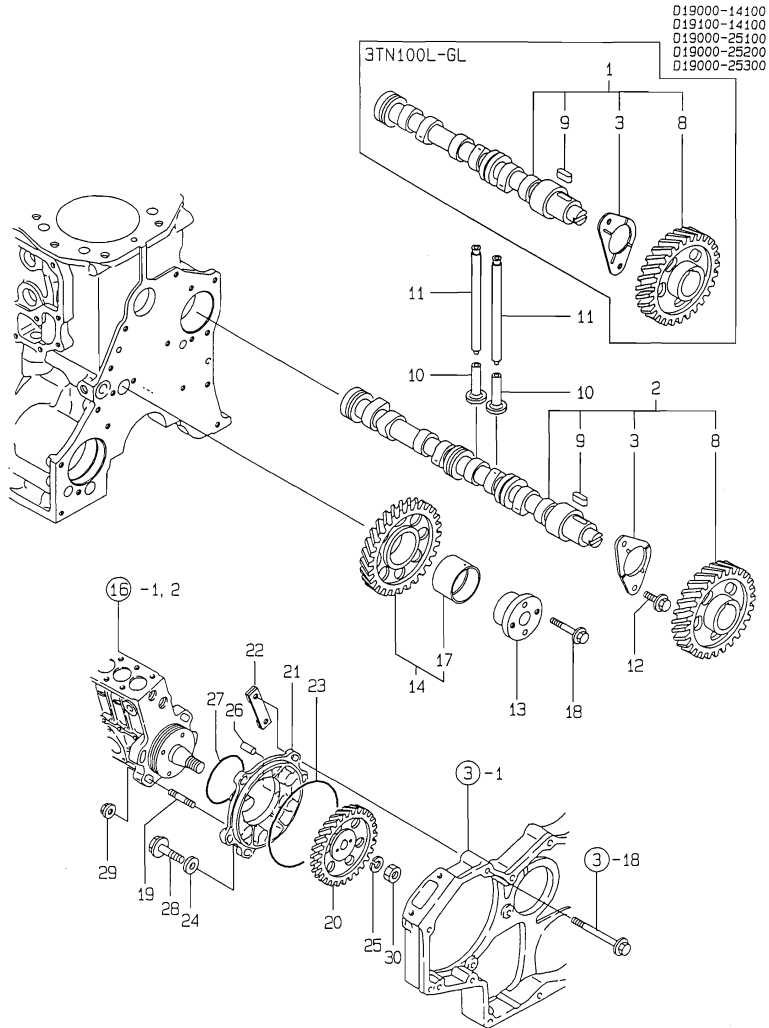
No.	Lev.	Parts No.	Description	Q'ty						I	R
				(A)	(B)	(C)	(D)	(E)	(F)		
1	1	119101-18020	TURBINE, RHB52				1				
2	1	119101-18010	TURBINE, RHB52					1			
3	2	119101-18500	SHAFT, TURBINE				1	1			
4	2	129404-18510	BUSHING				1	1			
5	2	129404-18520	OIL THROWER				1	1			
6	2	129404-18530	RING, SEAL				1	1			
7	2	129404-18540	RING, SEAL				1	1			
8	2	129404-18550	RING, SEAL				1	1			
9	2	129404-18560	NUT, D8/4.5 T5				1	1			
10	2	119101-18510	WHEEL, BLOWER				1	1			
11	2	129404-18580	PLATE				1	1			
12	2	129404-18590	BEARING				2	2			
13	2	129404-18600	BEARING, THRUST				1	1			
14	2	119101-18520	HOUSING ASSY				1	1			
15	2	129403-18620	BOLT M 5X 10.5				6	6			
16	2	119101-18530	PLATE				6	6			
17	2	119101-18540	HOUSING				1	1			
18	2	119101-18550	BOLT, M8				4	4			
19	2	119101-18560	PLATE				4	4			
20	2	119101-18570	HOUSING, BEARING				1	1			
21	2	129404-18680	CIRCLIP				3	3			
22	2	129406-18690	SCREW				4	4			
23	2	129406-18700	SCREW				3	3			
24	2	129404-18720	PROTECTOR, HEAT				1	1			
25	1	129472-18090	GASKET				1	1			
26	1	194990-22050	NUT, M8				4	4			

Fig.10. CAMSHAFT & DRIVE GEAR

(A)=3TN100L-GL
(B)=4TN100L-GL
(C)=4TN100L-GH

(D)=4TN100TL-GL
(E)=4TN100TL-GH
(F)=

Y00D4590
3, 4TN100 (T) L-G (L, H)



No.	Lev.	Parts No.	Description	Q'ty						I	R
				(A)	(B)	(C)	(D)	(E)	(F)		
1	1	119000-14000	CAMSHAFT ASSY	1							
2	1	119100-14000	CAMSHAFT ASSY		1						
3	2	119000-02450	BEARING, THRUST	1	1	1	1	1			
8	2	119000-14100	GEAR, CAMSHAFT Z=48	1	1	1	1	1			
9	2	22512-070140	KEY, 7X 14	1	1	1	1	1			
10	1	119000-14200	TAPPET	6	8	8	8	8			
11	1	129150-14400	ROD, PUSH L=178	6	8	8	8	8			
12	1	26106-080162	BOLT, M8X 16 PLATED	2	2	2	2	2			
13	1	119000-25050	SHAFT, IDLE GEAR	1	1	1	1	1			
14	1	119000-25100	GEAR ASSY, IDLE Z=51	1	1	1	1	1			
17	2	119000-25930	BUSH, IDLE GEAR	1	1	1	1	1			1
18	1	26013-080452	BOLT, M8X 45	2	2	2	2	2			
19	1	121850-01900	STUD, SB10X32	4	4	4	4	4			
20A	1	119000-25900	GEAR, PUMP	1	1	1	1	1			
20B	1	119000-25950	GEAR, PUMP			1					
21	1	119000-25910	BRACKET, PUMP	1	1	1	1	1			
22	1	119000-25920	RETAINER	1	1	1	1	1			
23	1	24341-001350	O-RING, 1AS135.0	1	1	1	1	1			\$
24	1	106100-55800	WASHER	3	3	3	3	3			
25	1	22217-180000	WASHER, SPRING 18	1	1	1	1	1			
26	1	22351-050012	PIN, SPRING 5.0X12	1	1	1	1	1			
27	1	124410-51960	O-RING	1	1	1	1	1			\$
28	1	26106-080252	BOLT, M8X 25 PLATED	3	3	3	3	3			
29	1	26366-100002	NUT, M10	4	4	4	4	4			
30	1	26776-180002	NUT, LOCK M18	1	1	1	1	1			

Remarks

(1) REPAIR PART.

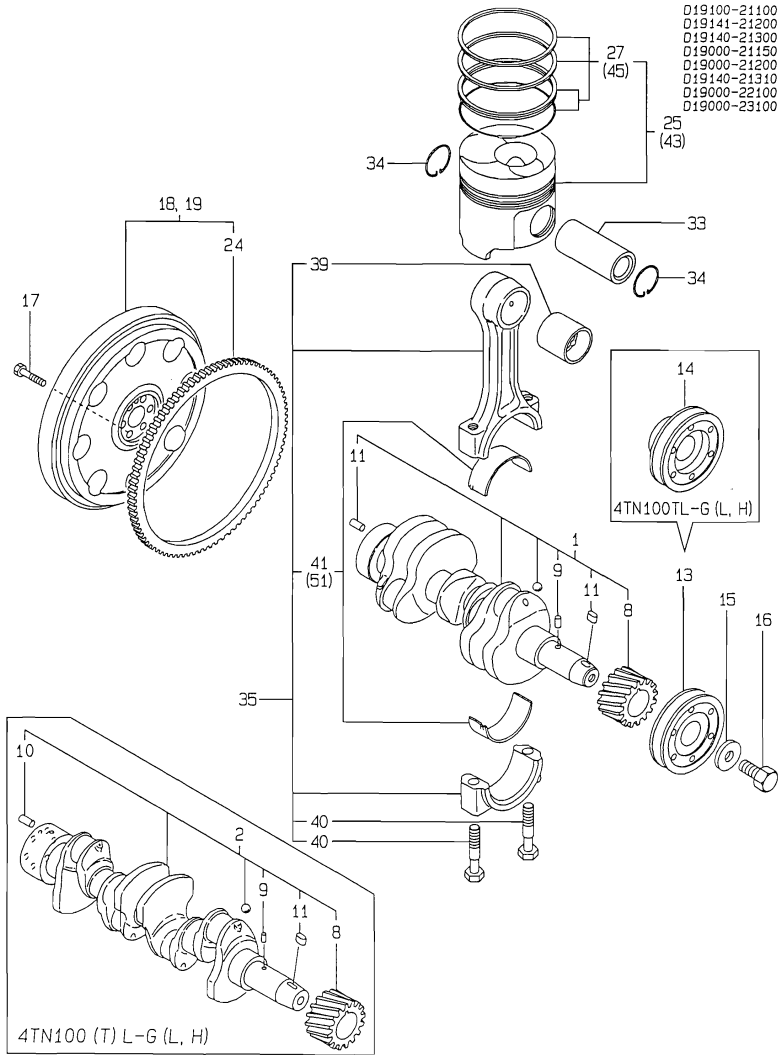
(\$) THESE PARTS ARE SOLD BY FIG.25, REF.NO.1,2.

Fig.11. CRANKSHAFT & PISTON

(A)=3TN100L-GL
(B)=4TN100L-GL
(C)=4TN100L-GH

(D)=4TN100TL-GL
(E)=4TN100TL-GH
(F)=

Y0004590
3. 4TN100L-G (L, H)



No.	Lev.	Parts No.	Description	Q'ty						I	R
				(A)	(B)	(C)	(D)	(E)	(F)		
1	1	719000-21700	CRANKSHAFT ASSY	1							
2	1	719100-21700	CRANKSHAFT ASSY		1						
8	2	121850-21200	GEAR, CRANKSHAFT	1	1	1	1	1			
9	2	121850-21290	PIN	1	1	1	1	1			
10	2	121850-21920	PIN, M10X22	1	1	1	1	1			
11	2	22512-070140	KEY, 7X 14	1	1	1	1	1			
13	1	119000-21650	V-PULLEY	1	1	1					
14	1	119141-21650	V-PULLEY				1	1			
15	1	121850-21660	WASHER	1	1	1	1	1			
16	1	121850-21680	BOLT	1	1	1	1	1			
17	1	121850-21130	BOLT, FLYWHEEL	6	6	6	6	6			
18	1	119140-21590	FLYWHEEL ASSY	1	1		1				
19	1	119140-21570	FLYWHEEL ASSY			1		1			
24	2	127410-21480	GEAR, RING Z=129	1	1	1	1	1			
25	1	119000-22000	PISTON ASSY	3	4	4	4	4			
27	2	719000-22500	RING SET, PISTON	3	4	4	4	4			
33	1	119000-22300	PIN, PISTON	3	4	4	4	4			
34	1	22252-000340	RING, 34	6	8	8	8	8			
35	1	719000-23100	ROD ASSY, CONNECTING	3	4	4	4	4			
39	2	119000-23910	BEARING, PISTON PIN	3	4	4	4	4		1	
40	2	121850-23200	BOLT, CONNECTING ROD	6	8	8	8	8			
41	2	719000-23600	BEARING, CRANK PIN	3	4	4	4	4			
43	1	719000-22900	PISTON ASSY, 0.25 OS	3	4	4	4	4			2
45	2	719000-22950	RING SET, 0.25 OS	3	4	4	4	4			2
51	1	719000-23610	BEARING ASSY, 0.25	3	4	4	4	4			3

Remarks

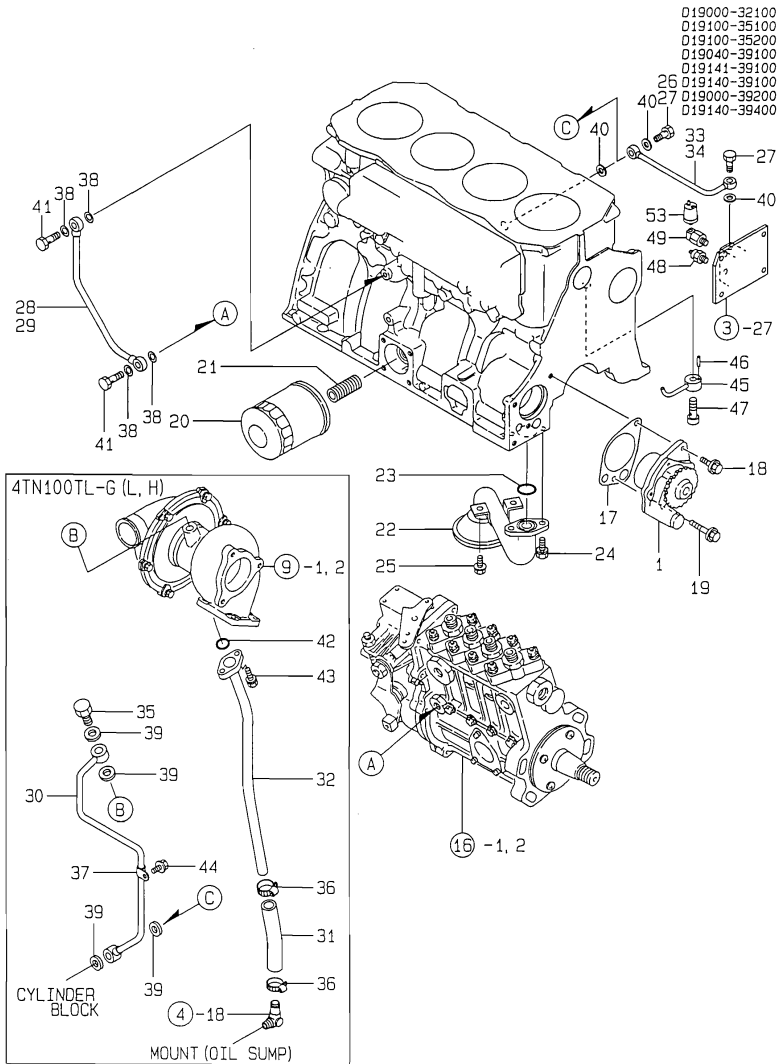
- (1) REPAIR PART.
- (2) OVER-SIZED(O.S=0.25)PART.
- (3) UNDER-SIZED(U.S=0.25)PART.

Fig.12. LUB. OIL SYSTEM

(A)=3TN100L-GL
(B)=4TN100L-GL
(C)=4TN100L-GH

(D)=4TN100TL-GL
(E)=4TN100TL-GH
(F)=

Y00D4590
3, 4TN100 (7) L-G (L, H)



No.	Lev.	Parts No.	Description	Q'ty						I	R
				(A)	(B)	(C)	(D)	(E)	(F)		
1	1	119000-32001	PUMP ASSY, OIL	1	1	1	1	1			
17	1	119000-32020	GASKET, PUMP	1	1	1	1	1		\$	
18	1	26106-080162	BOLT, M8X 16 PLATED	1	1	1	1	1			
19	1	26106-080502	BOLT, M8X 50 PLATED	1	1	1	1	1			
20	1	119005-35100	FILTER, D80X100L	1	1	1	1	1			
21	1	119000-35140	BOLT, FILTER	1	1	1	1	1			
22	1	119100-35090	PIPE ASSY, OIL INLET	1	1	1	1	1			
23	1	24311-000220	O-RING, 1AP22.0	1	1	1	1	1		\$	
24	1	26013-080162	BOLT, M8X 16	2	2	2	2	2			
25	1	26106-080162	BOLT, M8X 16 PLATED	2	2	2	2	2			
26	1	119141-39150	BOLT, M10X1.5					1	1		
27	1	121252-39150	BOLT, JOINT M10X1.5	1	2	2	1	1			
28	1	119000-39350	PIPE, OIL	1							
29	1	119100-39350	PIPE, OIL		1	1	1	1			
30	1	119101-39600	PIPE, OIL					1	1		
31	1	129792-39610	JOINT, RUBBER					1	1		
32	1	119101-39650	PIPE, OIL					1	1		
33	1	119140-39650	PIPE, OIL	1	1	1					
34	1	119141-39650	PIPE, OIL					1	1		
35	1	124413-39710	BOLT, PIPE JOINT M10					1	1		
36	1	23000-025000	CLAMP, 25					2	2		
37	1	23297-080081	CLAMP, A8X 8					1	1		
38	1	23414-080000	GASKET, 8X1.0	2	2	2	4	4		\$	
39	1	23414-100000	GASKET, 10X1.0	4	4	4	4	4			
40	1	23414-100000	GASKET, 10X1.0					3	3		
41	1	23857-030000	BOLT, JOINT 3	1	1	1	2	2			
42	1	24314-000180	O-RING, 4CP18.0					1	1		
43	1	26106-060162	BOLT, M6X 16 PLATED					2	2		
44	1	26106-080122	BOLT, M8X 12 PLATED					1	1		
45	1	119000-39650	NOZZLE	3	4	4	4	4			
46	1	22351-030010	PIN, SPRING 3.0X10	3	4	4	4	4			
47	1	23857-030000	BOLT, JOINT 3	3	4	4	4	4			
48	1	121250-39450	SWITCH, 1.0KG	1	1	1	1	1			
49	1	123482-39660	DAMPER	1	1	1	1	1			
53	1	144626-91560	SENSOR	1	1	1	1	1			

Remarks
(\$) THESE PARTS ARE SOLD BY FIG.25,
REF.NO.1,2.

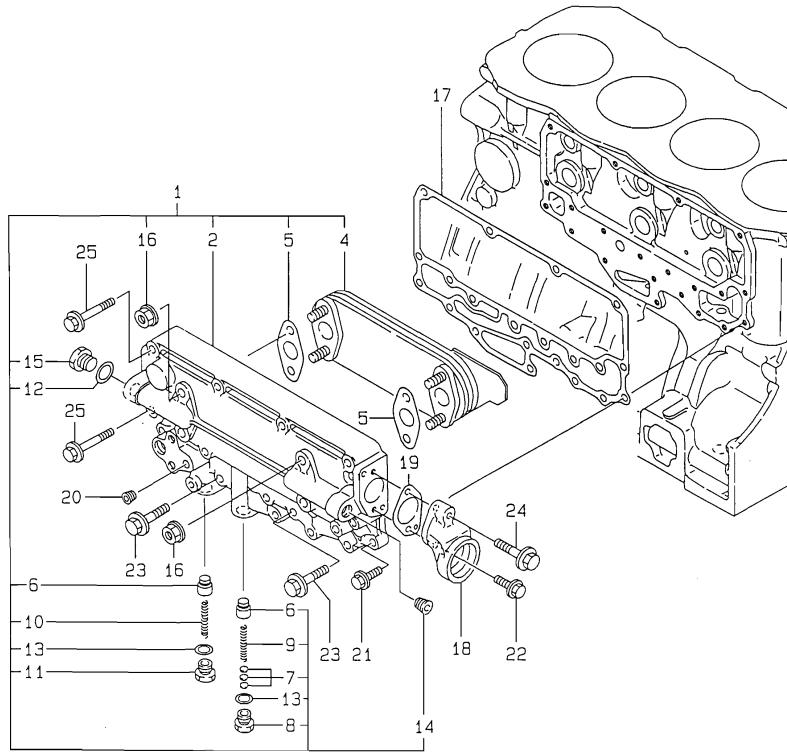
Fig.13. OIL COOLER

(A)=3TN100L-GL
(B)=4TN100L-GL
(C)=4TN100L-GH

(D)=4TN100TL-GL
(E)=4TN100TL-GH
(F)=

Y00D4590
3. 47N100 (7) L-G (L, H)

019140-33110



No.	Lev.	Parts No.	Description	Q'ty						I	R
				(A)	(B)	(C)	(D)	(E)	(F)		
1	1	719000-33700	COOLER ASSY, OIL	1	1	1	1	1			
1-1	1	119140-95900	SET,LO COOLER CMP	1	1	1	1	1		N	
2	2	119000-33010	CASE, OIL COOLER	1	1	1	1	1			
4	2	119000-33050	COOLER, OIL	1	1	1	1	1			
5	2	121952-33071	GASKET, COOLER	2	2	2	2	2		\$	
6	2	119000-34030	VALVE, CONTROL	2	2	2	2	2			
7	2	121850-35230	SHIM, T=1.0	5	5	5	5	5			
8	2	124223-35510	RETAINER, SPRING	1	1	1	1	1			
9	2	124411-35520	SPRING	1	1	1	1	1			
10	2	121952-39830	SPRING	1	1	1	1	1			
11	2	123672-84530	RETAINER, VALVE	1	1	1	1	1			
12	2	23414-160000	GASKET, 16X1.0	1	1	1	1	1		\$	
13	2	23414-180000	GASKET, 18X1.0	2	2	2	2	2		\$	
13-1	2	23414-170000	GASKET, 17X1.0	2	2	2	2	2		N	
		(A=E2009.12)	(B=E2009.12)	(C=E2009.12)	(D=E2009.12)	(E=E2009.12)					
14	2	23871-030000	PLUG, R03	2	2	2	2	2			
15	2	23887-160002	PLUG, 16	1	1	1	1	1			
16	2	26376-100002	NUT, M10	4	4	4	4	4			
17	1	119000-33021	GASKET	1	1	1	1	1		\$	
18	1	119000-33030	BEND	1	1	1	1	1			
19	1	119000-33041	GASKET	1	1	1	1	1		\$	
20	1	23871-010000	PLUG, R01	1	1	1	1	1			
21	1	26106-080202	BOLT, M8X 20 PLATED	3	3	3	3	3			
22	1	26106-080202	BOLT, M8X 20 PLATED	1	1	1	1	1			
23	1	26106-080352	BOLT, M8X 35 PLATED	8	8	8	8	8			
24	1	26106-080352	BOLT, M8X 35 PLATED	1	1	1	1	1			
25	1	26106-080502	BOLT, M8X 50 PLATED	10	10	10	10	10			

Remarks
(\$) THESE PARTS ARE SOLD BY FIG.25,
REF.NO.1,2.

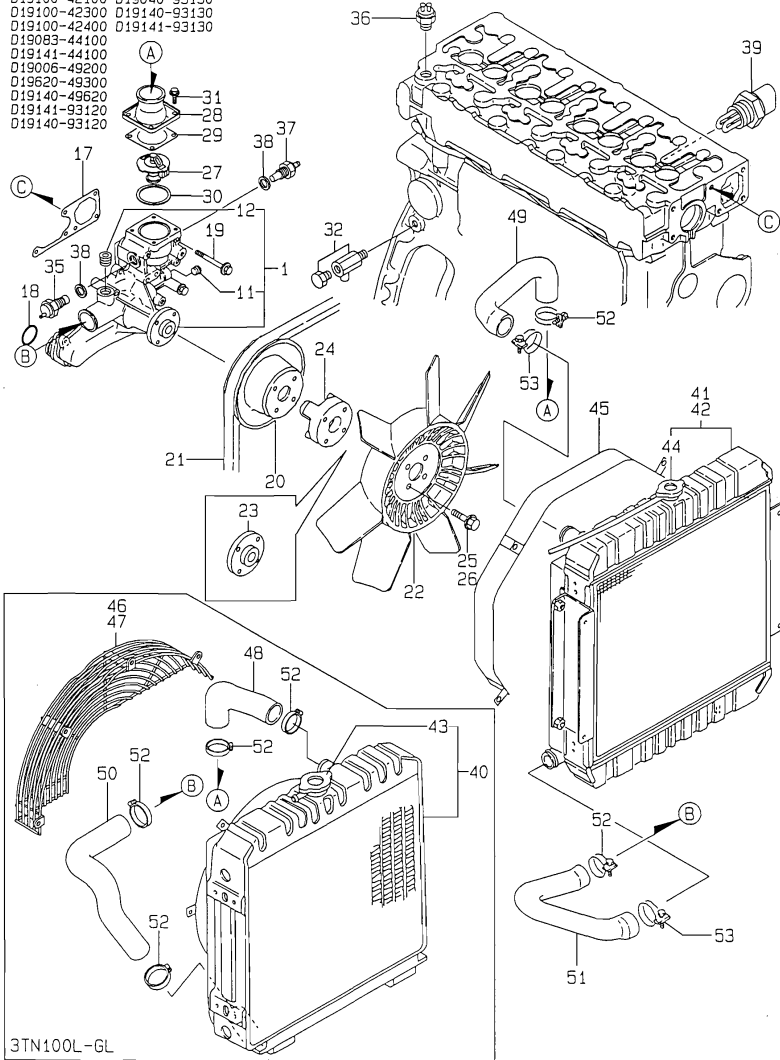
Fig.14. COOLING WATER SYSTEM

(A)=3TN100L-GL
(B)=4TN100L-GL
(C)=4TN100L-GH

(D)=4TN100TL-GL
(E)=4TN100TL-GH
(F)=

Y0004590
3, 4TN100 (T) L-G (L, H)

- D19100-42100 D19040-93130
- D19100-42300 D19140-93130
- D19100-42400 D19141-93130
- D19083-44100
- D19141-44100
- D19006-49200
- D19620-49300
- D19140-49520
- D19141-93120
- D19140-93120

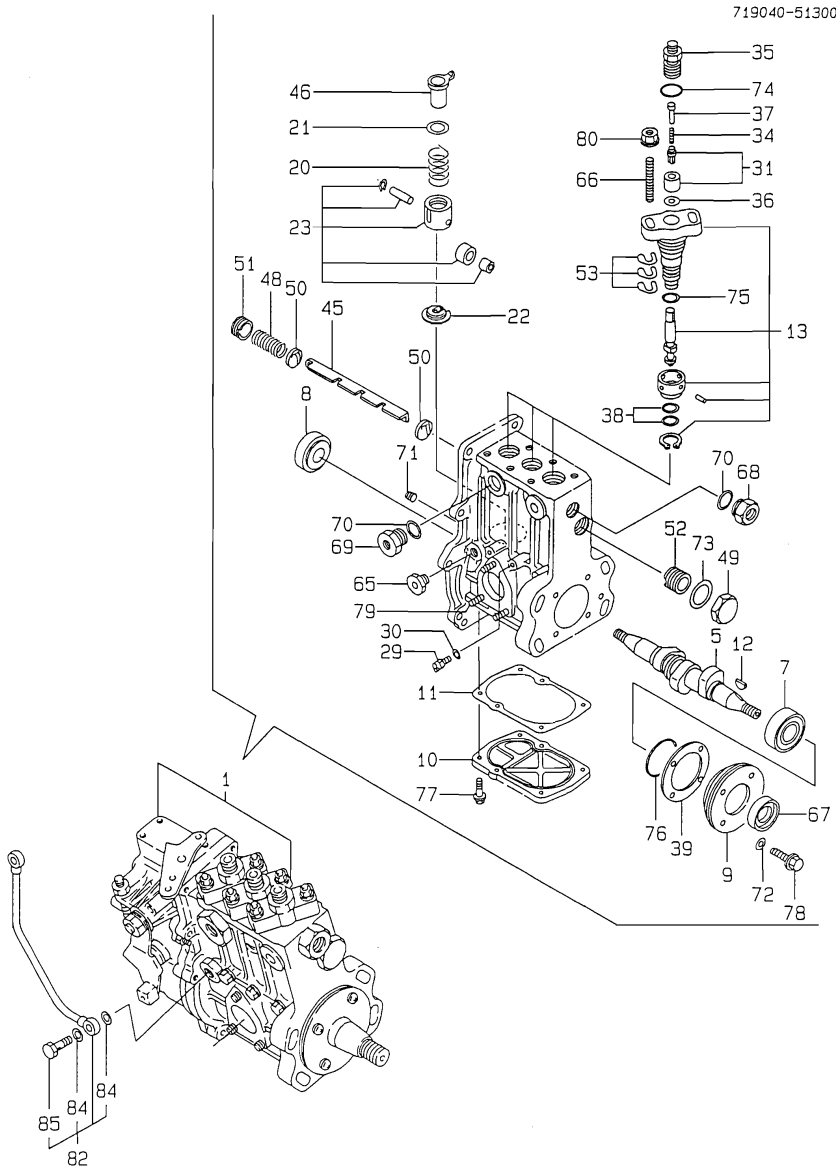


No.	Lev.	Parts No.	Description	Q'ty						I	R
				(A)	(B)	(C)	(D)	(E)	(F)		
1	1	119006-42001	PUMP ASSY, WATER	1	1	1	1	1			
11	2	23871-020000	PLUG, R02	1	1	1	1	1			
12	2	23871-030000	PLUG, R03	1	1	1	1	1			
17	1	119000-42021	GASKET, WATER PUMP	1	1	1	1	1		\$	
18	1	24311-000360	O-RING, 1AP36.0	1	1	1	1	1		\$	
19	1	26106-080652	BOLT, M8X 65 PLATED	5	5	5	5	5			
20	1	119000-42250	V-PULLEY	1	1	1	1	1			
21	1	171087-42280	V-BELT, A44	1	1	1	1	1			
22	1	121972-44740	FAN, COOLING	1	1	1	1	1			
23	1	119130-44760	SPACER, FAN	1							
24	1	119141-44760	SPACER, FAN		1	1	1	1			
25	1	26014-080352	BOLT, M8X 35	4							
26	1	26106-080552	BOLT, M8X 55 PLATED		4	4	4	4			
27	1	119000-48170	THERMOSTAT, 71	1	1	1	1	1			
28	1	121850-49530	COVER, THERMOSTAT	1	1	1	1	1			
29	1	121850-49540	GASKET, THERMOSTAT	1	1	1	1	1			
30	1	121850-49550	GASKET, THERMOSTAT	1	1	1	1	1			
31	1	26014-060142	BOLT, M6X 14	4	4	4	4	4			
32	1	119620-49290	COCK ASSY, 1/4	1	1	1	1	1			
35	1	121250-44901	SWITCH, 110	1	1	1	1	1			
36	1	171375-44900	SWITCH, 15	1	1	1	1	1			
37	1	171375-44910	SENSOR	1	1	1	1	1			
38	1	124465-44950	GASKET, 16	2	2	2	2	2		\$	
39	1	46150-504500	HEATER	1	1	1	1	1			
40	1	119083-44500	RADIATOR	1							
41	1	119140-44500	RADIATOR		1	1					
42	1	119141-44500	RADIATOR				1	1			
43	2	121850-44660	CAP	1							
44	2	119259-44570	CAP, RADIATOR		1	1	1	1			
45	1	119140-44560	PROTECTOR, FAN		1	1	1	1			
46	1	119083-44570	NET, WIRE	1							
47	1	119083-44580	NET, WIRE	1							
48	1	119040-49010	PIPE, WATER	1							
49	1	119140-49010	PIPE, WATER		1	1	1	1			
50	1	119130-49020	PIPE, WATER	1							
51	1	119140-49020	PIPE, WATER		1	1	1	1			
52	1	23000-048000	CLAMP, 48	4	2	2	2	2			
53	1	23000-054000	CLAMP, 54		2	2	2	2			

Remarks
(\$) THESE PARTS ARE SOLD BY FIG.25,
REF.NO.1,2.

Fig.15. FUEL INJECTION PUMP

Y00D4590
3. 47N100 (T) L-G (L, H)



(A)=3TN100L-GL
(B)=4TN100L-GL
(C)=4TN100L-GH

(D)=4TN100TL-GL
(E)=4TN100TL-GH
(F)=

No.	Lev.	Parts No.	Description	Qty						I	R
				(A)	(B)	(C)	(D)	(E)	(F)		
1	1	719040-51300	PUMP ASSY, INJECTION	1							
5	2	119000-51030	CAMSHAFT	1							
7	2	119000-51050	BEARING, HR32005XJ	1							
8	2	122710-51050	BEARING, HR30203J	1							
9	2	119000-51060	SUPPORT, BEARING A	1							
10	2	119000-51081	COVER	1							
11	2	119000-51091	GASKET	1							
12	2	144626-51090	KEY, 5X19	1							
13	2	119100-51101	PLUNGER ASSY	3							
20	2	119000-51161	SPRING, PLUNGER	3							
21	2	119000-51170	SEAT, SPRING A	3							
22	2	119000-51181	SEAT, SPRING B	3							
23	2	119000-51201	TAPPET ASSY	3							
29	2	129155-51270	STOPPER, TAPPET	3							
30	2	129155-51280	O-RING, S6	3							
31	2	128400-51300	VALVE ASSY, DELIVERY	3							
34	2	119000-51330	SPRING, DELIVERY	3							
35	2	119000-51340	HOLDER, DELIVERY	3							
36	2	122710-51350	GASKET	3							
37	2	119000-51360	STOPPER, VALVE	3							
38	2	119000-51410	O-RING, S18	6							
39	2	119000-51450	SHIM SET, CAMSHAFT	1							
45	2	119000-51500	RACK, CONTROL	1							
46	2	119000-51510	SLEEVE, CONTROL	3							
48	2	119000-51530	SPRING, RACK	1							
49	2	119000-51550	COVER	1							
50	2	119000-51570	GUIDE, RACK	2							
51	2	119000-51580	SCREW	1							
52	2	119000-51590	SCREW	1							
53	2	119000-51650	SHIM SET, ADJUSTING	6							
65	2	121850-51700	BUSH	1							
66	2	119000-51800	BOLT	6							
67	2	119000-51900	SEAL, AC1290E0	1							
68	2	121952-51900	PLUG	1							
69	2	144626-51940	PLUG	1							
70	2	144626-51950	O-RING, 1016	2							
71	2	137600-53900	SCREW, M6X6	1							
72	2	22190-060000	WASHER, SEAL 6	4							
73	2	23414-220029	GASKET, 22X1.0	1							
74	2	24312-000150	O-RING, 2P15.0	3							
75	2	24341-000260	O-RING, 1AS26.0	3							
76	2	24341-000500	O-RING, 1AS50.0	1							
77	2	26106-060182	BOLT, M6X 18 PLATED	6							
78	2	26106-060202	BOLT, M6X 20 PLATED	4							
79	2	26216-060162	STUD, M6X 16	3							
80	2	26366-080002	NUT, M8	6							
82	2	119000-51990	PIPE ASSY, OIL	1							
84	3	23414-080000	GASKET, 8X1.0	2							
85	3	23857-030000	BOLT, JOINT 3	1							

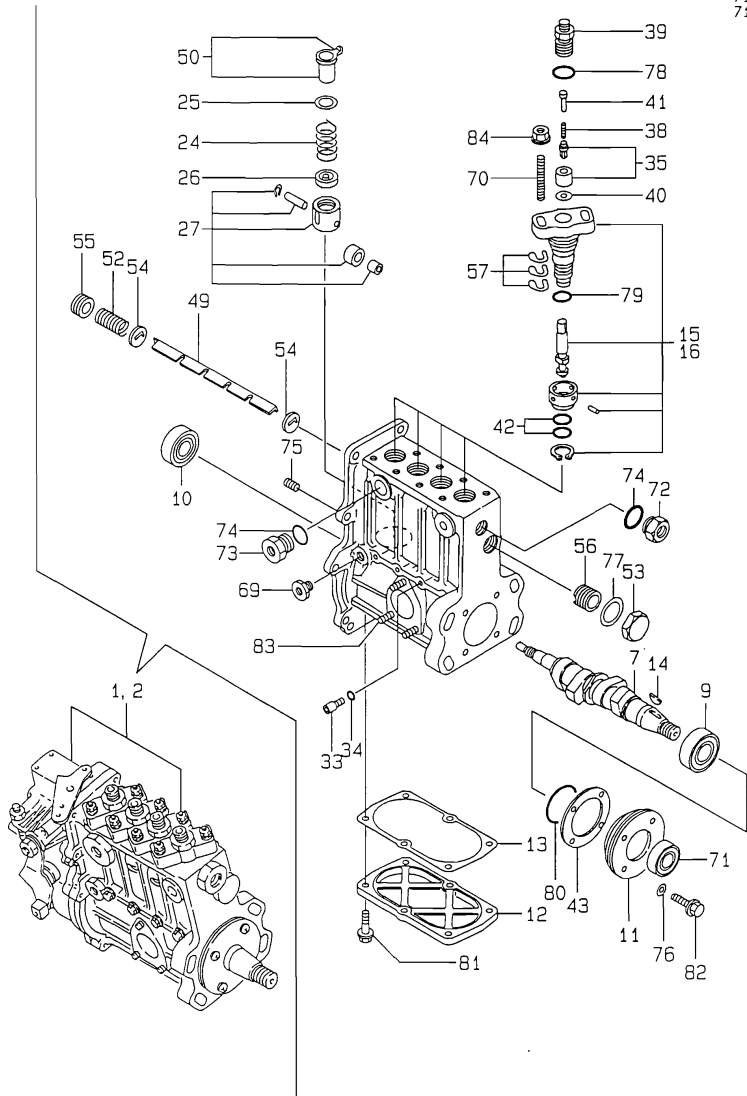
Fig.16. FUEL INJECTION PUMP

(A)=3TN100L-GL
(B)=4TN100L-GL
(C)=4TN100L-GH

(D)=4TN100TL-GL
(E)=4TN100TL-GH
(F)=

Y00D4590
3, 4TN100 (T) L-G (L, H)

719140-51340
719141-51340
719140-51330
719141-51330



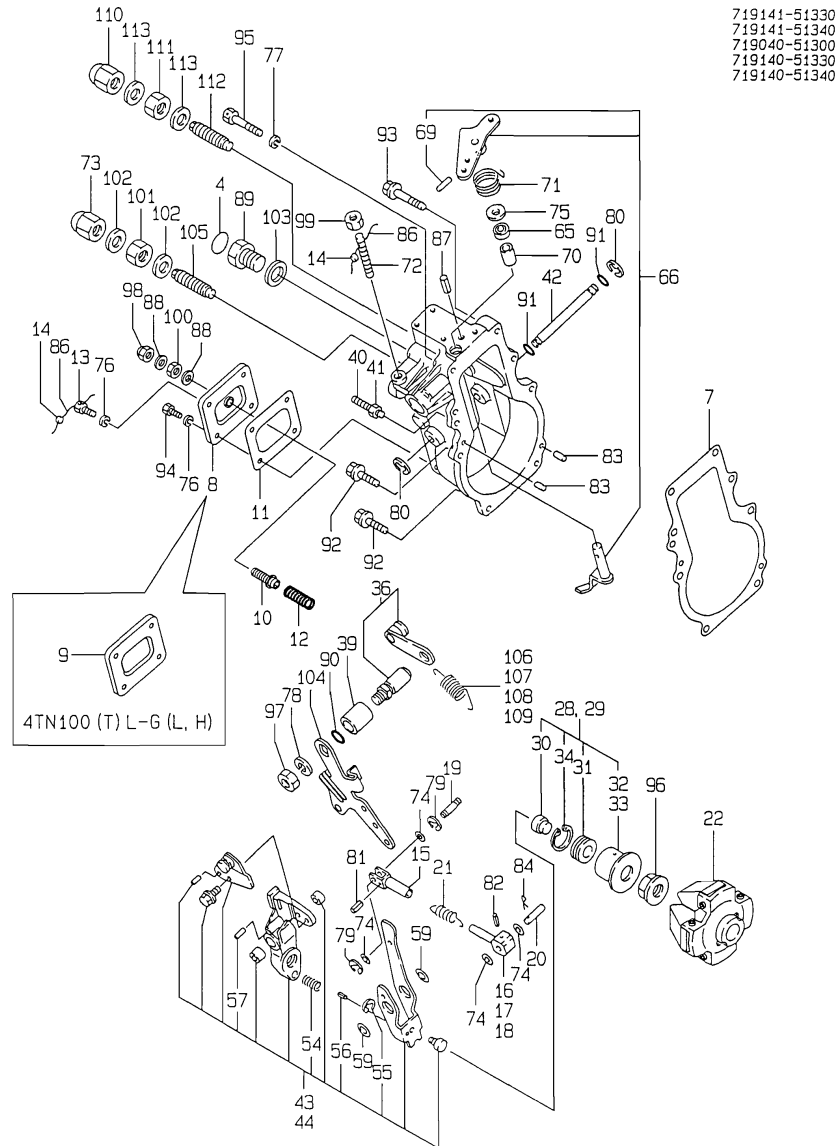
No.	Lev.	Parts No.	Description	Q'ty						I	R
				(A)	(B)	(C)	(D)	(E)	(F)		
1A	1	719140-51330	PUMP ASSY, INJECTION		1						
1B	1	719141-51330	PUMP ASSY, INJECTION					1			
2A	1	719140-51340	PUMP ASSY, INJECTION			1					
2B	1	719141-51340	PUMP ASSY, INJECTION							1	
7	2	119100-51030	CAMSHAFT		1	1	1	1			
9	2	119000-51050	BEARING, HR32005XJ		1	1	1	1			
10	2	122710-51050	BEARING, HR30203J		1	1	1	1			
11	2	119000-51060	SUPPORT, BEARING A		1	1	1	1			
12	2	119100-51081	COVER		1	1	1	1			
13	2	119100-51091	GASKET		1	1	1	1			
14	2	144626-51090	KEY, 5X19		1	1	1	1			
15	2	119100-51101	PLUNGER ASSY		4		4				
16	2	119000-51101	PLUNGER ASSY			4		4			
24	2	119000-51161	SPRING, PLUNGER		4	4	4	4			
25	2	119000-51170	SEAT, SPRING A		4	4	4	4			
26	2	119000-51181	SEAT, SPRING B		4	4	4	4			
27	2	119000-51201	TAPPET ASSY		4	4	4	4			
33	2	129155-51270	STOPPER, TAPPET		4	4	4	4			
34	2	129155-51280	O-RING, S6		4	4	4	4			
35	2	128400-51300	VALVE ASSY, DELIVERY		4	4	4	4			
38	2	119000-51330	SPRING, DELIVERY		4	4	4	4			
39	2	119000-51340	HOLDER, DELIVERY		4	4	4	4			
40	2	122710-51350	GASKET		4	4	4	4			
41	2	119000-51360	STOPPER, VALVE		4	4	4	4			
42	2	119000-51410	O-RING, S18		8	8	8	8			
43	2	119000-51450	SHIM SET, CAMSHAFT		1	1	1	1			
49	2	119100-51500	RACK, CONTROL		1	1	1	1			
50	2	119000-51510	SLEEVE, CONTROL		4	4	4	4			
52	2	119000-51530	SPRING, RACK		1	1	1	1			
53	2	119000-51550	COVER		1	1	1	1			
54	2	119000-51570	GUIDE, RACK		2	2	2	2			
55	2	119000-51580	SCREW		1	1	1	1			
56	2	119000-51590	SCREW		1	1	1	1			
57	2	119000-51650	SHIM SET, ADJUSTING		8	8	8	8			
69	2	121850-51700	BUSH		1	1	1	1			
70	2	119000-51800	BOLT		8	8	8	8			
71	2	119000-51900	SEAL, AC1290E0		1	1	1	1			
72	2	121952-51900	PLUG		1	1	1	1			
73	2	144626-51940	PLUG		1	1	1	1			
74	2	144626-51950	O-RING, 1016		2	2	2	2			
75	2	137600-53900	SCREW, M6X6		1	1	1	1			
76	2	22190-060000	WASHER, SEAL 6		4	4	4	4			
77	2	23414-220029	GASKET, 22X1.0		1	1	1	1			
78	2	24312-000150	O-RING, 2P15.0		4	4	4	4			
79	2	24341-000260	O-RING, 1AS26.0		4	4	4	4			
80	2	24341-000500	O-RING, 1AS50.0		1	1	1	1			
81	2	26106-060182	BOLT, M6X 18 PLATED		6	6	6	6			
82	2	26106-060202	BOLT, M6X 20 PLATED		4	4	4	4			
83	2	26216-060162	STUD, M6X 16		3	3	3	3			
84	2	26366-080002	NUT, M8		8	8	8	8			

Fig.17. GOVERNOR

(A)=3TN100L-GL
(B)=4TN100L-GL
(C)=4TN100L-GH

(D)=4TN100TL-GL
(E)=4TN100TL-GH
(F)=

Y00D4590
3. 4TN100 (T) L-G (L, H)



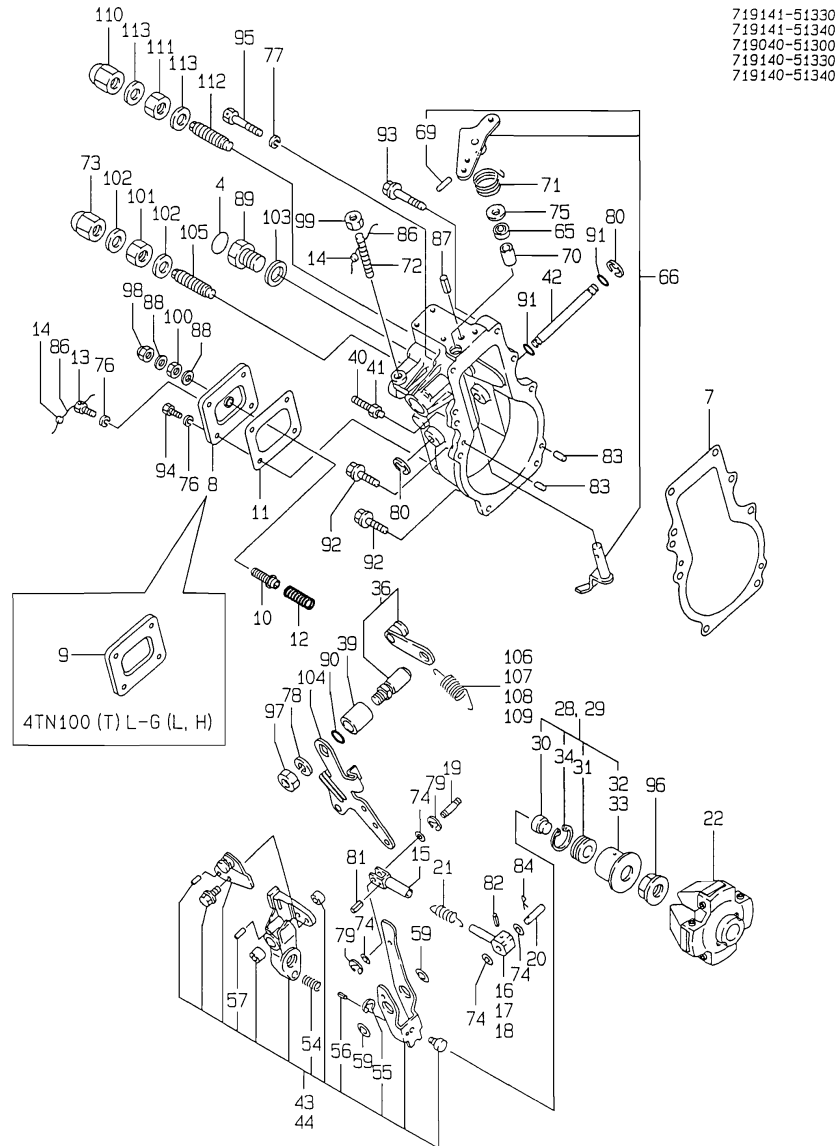
No.	Lev.	Parts No.	Description	Q'ty						I	R
				(A)	(B)	(C)	(D)	(E)	(F)		
4	2	124610-51970	LABEL	1	1	1	1	1			
7	2	119000-61051	GASKET	1	1	1	1	1			
8	2	119141-61060	COVER, GOVERNOR CASE	1							
9	2	120323-61060	COVER, GOVERNOR CASE		1	1	1	1			
10	2	119141-61070	BOLT	1							
11	2	120323-61070	GASKET	1	1	1	1	1			
12	2	119141-61080	SPRING	1							
13	2	129155-61090	BOLT	1	1	1	1	1			
14	2	135210-61090	LEAD	2	2	2	2	2			
15	2	119000-61120	LINK	1	1	1	1	1			
16	2	119000-61140	LINK, MARK-1 L=40	1	1	1	1	1			
17	2	119000-61150	LINK, MARK-2 L=42	1	1	1	1	1			
18	2	119000-61160	LINK, MARK-3 L=44	1	1	1	1	1			
19	2	119000-61170	PIN, LINK	1	1	1	1	1			
20	2	119000-61180	PIN, LINK	1	1	1	1	1			
21	2	119000-61190	SPRING	1	1	1	1	1			
22A	2	119100-61200	WEIGHT ASSY,GOVERNOR	1	1						
22B	2	119000-61200	WEIGHT ASSY,GOVERNOR			1			1		
23B	3	119000-61210				4			4		
28	2	119100-61300	SLEEVE ASSY, L=35.5	1	1		1				
29	2	119000-61300	SLEEVE ASSY, L=30			1			1		
30	3	119000-61310	SHIFTER	1	1	1	1	1			
31	3	119000-61320	BEARING, THRUST	1	1	1	1	1			
32	3	119100-61340	SLEEVE	1	1				1		
33	3	119000-61340	SLEEVE			1			1		
34	3	22262-000260	RING, R-26	1	1	1	1	1			
35	2	119000-61380	SPACER			1			1		
36	2	119000-61400	SHAFT ASSY	1	1	1	1	1			
39	2	119100-61430	BUSH	1	1	1	1	1			
40	2	129155-61460	BOLT, IDLE	1	1	1	1	1			
41	2	119000-61470	NUT, M6	1	1	1	1	1			
42	2	119000-61490	SHAFT	1	1	1	1	1			
43	2	119141-61500	LEVER ASSY, GOVERNOR	1	1				1		
44	2	119000-61500	LEVER ASSY, GOVERNOR			1			1		
46	3	124616-61540	SHIFTER			1			1		
50	3	119005-61520				1			1		
54	3	121850-61600	SPRING, FUEL CONTROL	1	1	1	1	1			
55	3	22272-000040	RING, E- 4	1	1	1	1	1			
56	3	22351-020004	PIN, SPRING 2.0X 4	1	1				1		
57	3	22351-020012	PIN, SPRING 2.0X12	1	1	1	1	1			
59	2	119000-61630	SHIM SET	1	1	1	1	1			
65	2	148616-61650	SEAL, VC081404	1	1	1	1	1			
66	2	119100-61771	LEVER ASSY, STOP	1	1	1	1	1			
69	3	22351-030016	PIN, SPRING 3.0X16	1	1	1	1	1			
70	2	119000-61841	BUSH	1	1	1	1	1			
71	2	119100-61860	SPRING, RETURN	1	1	1	1	1			
72	2	121855-61910	BOLT, LIMITER	1	1	1	1	1			
73	2	129100-61930	NUT, CAP	1	1	1	1	1			
74	2	22117-050000	WASHER, 5	4	4	4	4	4			
75	2	22137-080000	WASHER, 8	1	1	1	1	1			
76	2	22217-050000	WASHER, SPRING 5	4	4	4	4	4			

Fig.17. GOVERNOR

(A)=3TN100L-GL
(B)=4TN100L-GL
(C)=4TN100L-GH

(D)=4TN100TL-GL
(E)=4TN100TL-GH
(F)=

Y0004590
3. 4TN100 (T) L-G (L, H)



No.	Lev.	Parts No.	Description	Qty						I	R
				(A)	(B)	(C)	(D)	(E)	(F)		
77	2	22217-060000	WASHER, SPRING 6	1	1	1	1	1			
78	2	22217-100000	WASHER, SPRING 10	1	1	1	1	1			
79	2	22272-000040	RING, E- 4	2	2	2	2	2			
80	2	22272-000080	RING, E- 8	2	2	2	2	2			
81	2	22351-030016	PIN, SPRING 3.0X16	1	1	1	1	1			
82	2	22351-030025	PIN, SPRING 3.0X25	1	1	1	1	1			
83	2	22351-050020	PIN, SPRING 5.0X20	2	2	2	2	2			
84	2	22372-050000	PIN, SNAP 5	1	1	1	1	1			
86	2	22453-060000	WIRE, 0.6	2	2	2	2	2			
87	2	22492-060362	PIN, B6X36	1	1	1	1	1			
88	2	23414-080012	GASKET, 8X1.0	2							
89	2	23887-160002	PLUG, 16	1	1	1	1	1			
90	2	24311-000110	O-RING, 1AP11.0	1	1	1	1	1			
91	2	24341-000080	O-RING, 1AS8.0	2	2	2	2	2			
92	2	26106-060222	BOLT, M6X 22 PLATED	6	6	6	6	6			
93	2	26106-060352	BOLT, M6X 35 PLATED	1	1	1	1	1			
94	2	26116-050102	BOLT, M5X 10 PLATED	3	3	3	3	3			
95	2	26116-060356	BOLT, M6X 35 PLATED	1	1	1	1	1			
96	2	26376-120002	NUT, M12	1	1	1	1	1			
97	2	26606-100002	NUT, M10	1	1	1	1	1			
98	2	26667-080002	NUT, CAP M8	1							
99	2	26756-080002	NUT, LOCK M8	1	1	1	1	1			
100	2	26756-080002	NUT, LOCK M8	1							
101	2	26777-120002	NUT, LOCK M12	1	1	1	1	1			
102	2	43400-500450	SEAL WASHER 12S	2	2	2	2	2			
103	2	43400-500500	SEAL WASHER 16	1	1	1	1	1			
104	1	119141-61440	LEVER, CONTROL	1	1	1	1	1			
105	1	120323-61470	BOLT, CONTROL	1	1	1	1	1			
106	1	119100-61700	SPRING, GOVERNOR		1						
107	1	119100-61710	SPRING, GOVERNOR				1				
108	1	119083-61700	SPRING, GOVERNOR			1					
109	1	119141-61700	SPRING, GOVERNOR						1		
110	1	26667-080002	NUT, CAP M8	1	1	1	1	1	1		
111	1	26756-080002	NUT, LOCK M8	1	1	1	1	1	1		
112	1	26911-080322	SCREW, M8X32	1	1	1	1	1	1		
113	1	43400-500420	SEAL WASHER 8	2	2	2	2	2	2		

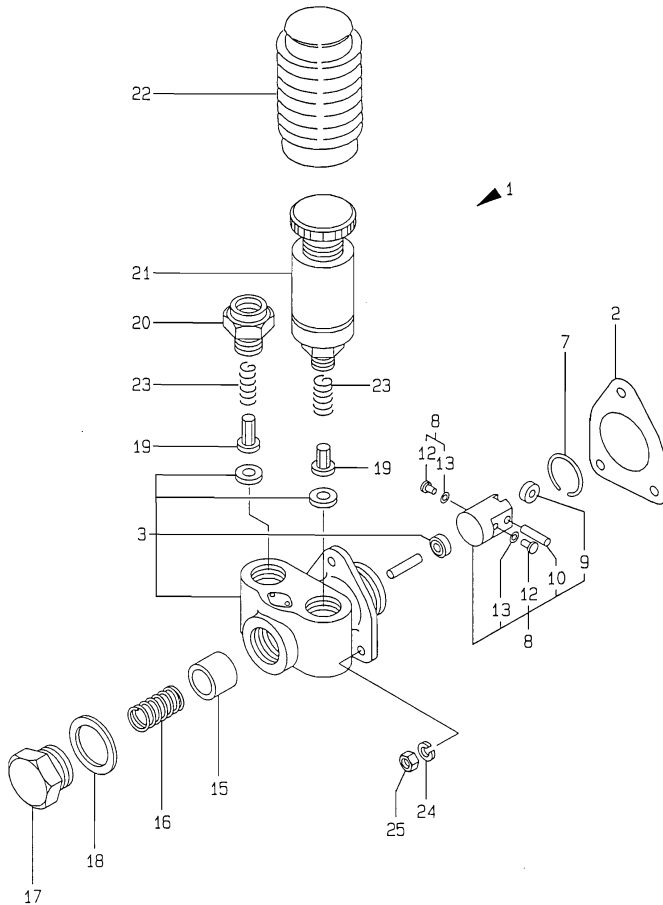
Fig.18. FEED PUMP

(A)=3TN100L-GL
(B)=4TN100L-GL
(C)=4TN100L-GH

(D)=4TN100TL-GL
(E)=4TN100TL-GH
(F)=

Y00D4590
3, 4TN100 (7) L-G (L, H)

719040-51300
719140-51330
719141-51330
719140-51340
719141-51340



No.	Lev.	Parts No.	Description	Q'ty						I	R
				(A)	(B)	(C)	(D)	(E)	(F)		
1	1	119000-52000	PUMP ASSY, FUEL FEED	1	1	1	1	1			
2	2	124410-51861	GASKET	1	1	1	1	1		\$	
3	2	121820-52020	BODY ASSY, PUMP	1	1	1	1	1			
7	2	121820-52070	PIN	1	1	1	1	1			
8	2	119000-52100	TAPPET ASSY	1	1	1	1	1			
9	3	121820-52110	ROLLER	1	1	1	1	1			
10	3	148688-52120	PIN, ROLLER	1	1	1	1	1			
12	3	121820-52140	RETAINER	2	2	2	2	2			
13	3	119000-52150	SHIM	2	2	2	2	2			
15	2	121820-52170	PISTON	1	1	1	1	1			
16	2	121820-52180	SPRING, VALVE	1	1	1	1	1			
17	2	121820-52190	RETAINER, SPRING	1	1	1	1	1			
18	2	121820-52200	GASKET, 25	1	1	1	1	1			
19	2	121820-52210	VALVE	2	2	2	2	2			
20	2	121820-52230	RETAINER, SPRING	1	1	1	1	1			
21	2	121820-52300	PUMP, PRIMING	1	1	1	1	1			
22	2	121820-52400	COVER	1	1	1	1	1			
23	2	121820-52510	SPRING, VALVE	2	2	2	2	2			
24	2	22217-060000	WASHER, SPRING 6	3	3	3	3	3			
25	2	26716-060002	NUT, M6	3	3	3	3	3			

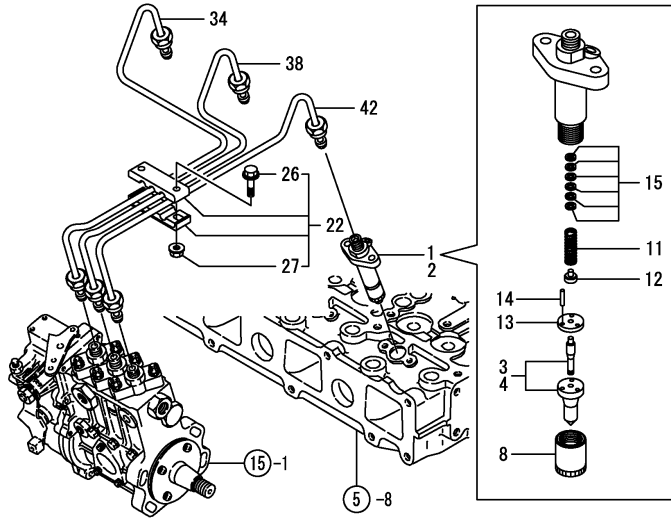
Remarks
(\$) THESE PARTS ARE SOLD BY FIG.25,
REF.NO.1,2.

Fig.19. FUEL INJECTION VALVE

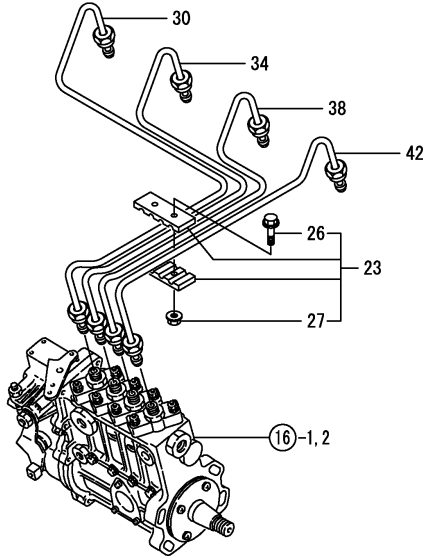
(A)=3TN100L-GL
 (B)=4TN100L-GL
 (C)=4TN100L-GH

(D)=4TN100TL-GL
 (E)=4TN100TL-GH
 (F)=

3, 4TN100 (T) L-G (L, H)



4TN100 (T) L-G (L, H)



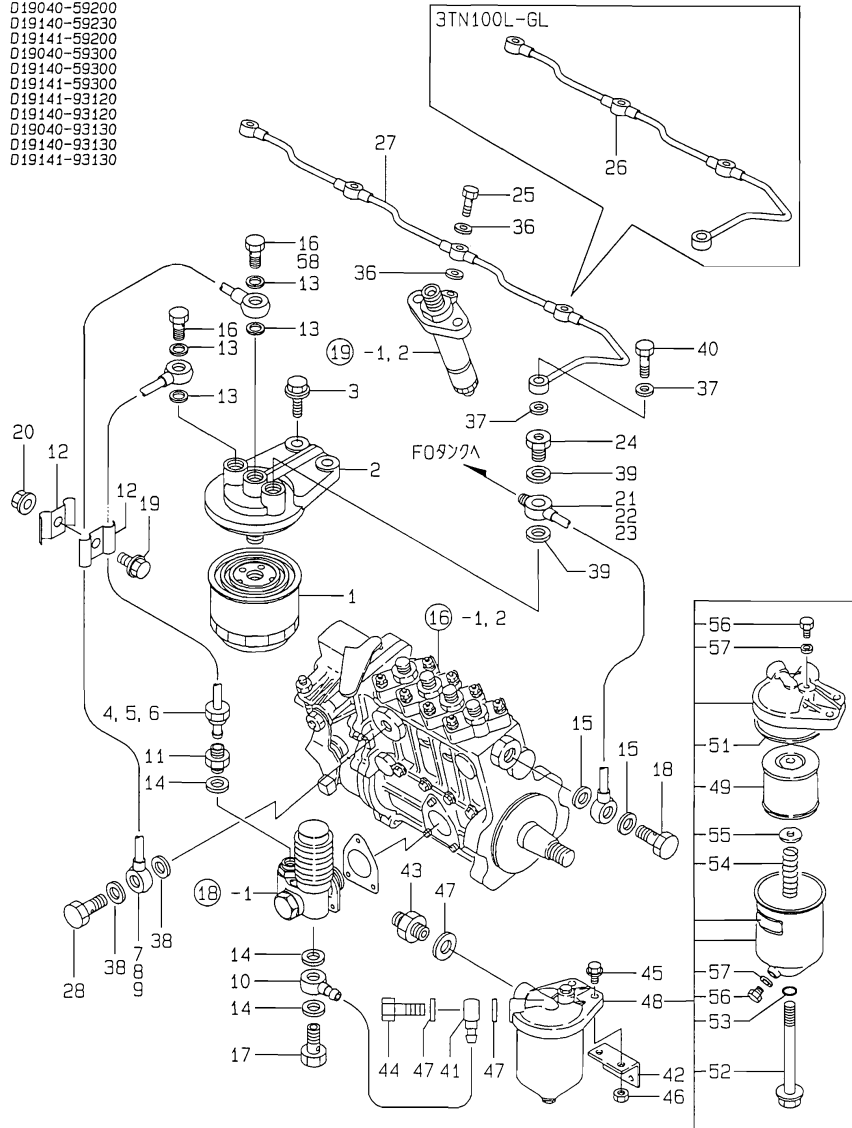
No.	Lev.	Parts No.	Description	Q'ty						I	R
				(A)	(B)	(C)	(D)	(E)	(F)		
1	1	719000-73100	VALVE ASSY,INJECTION	3	4	4	4				M
1-1	1	719045-53100	VALVE ASSY,INJECTION	3	4	4	4				
2	1	719101-73100	VALVE ASSY,INJECTION					4			M
2-1	1	719141-53100	VALVE ASSY,INJECTION					4			
3	2	119000-53000	VALVE ASSY,INJECTION	3	4	4	4				
4	2	119101-53000	VALVE ASSY,INJECTION					4			
8	2	114250-53080	NUT, NOZZLE D16.95	3	4	4	4	4			
11	2	114250-53120	SPRING, NOZZLE	3	4	4	4	4			
12	2	114250-53130	SEAT, SPRING	3	4	4	4	4			
13	2	114250-53140	PLATE	3	4	4	4	4			
14	2	114250-53210	PIN	6	8	8	8	8			
15	2	114250-53400	SHIM SET	3	4	4	4	4			
22	1	123372-59080	RETAINER	1							
23	1	123472-59090	RETAINER ASSY		1	1	1	1			
26	2	26106-060202	BOLT, M6X 20 PLATED	2	2	2	2	2			
27	2	26366-060002	NUT, M6	2	2	2	2	2			
30	1	119100-59810	PIPE ASSY, INJECTION		1	1	1	1			
34	1	119100-59820	PIPE ASSY, INJECTION	1	1	1	1	1			
38	1	119100-59830	PIPE ASSY, INJECTION	1	1	1	1	1			
42	1	119100-59840	PIPE ASSY, INJECTION	1	1	1	1	1			

Remarks
 (M) MISPRINT.

Fig.20. FUEL PIPES

Y00D4590
3, 4TN100 (T) L-G (L, H)

- 019000-55100
- 019040-59200
- 019140-59230
- 019141-59200
- 019040-59300
- 019140-59300
- 019141-59300
- 019141-93120
- 019140-93120
- 019040-93130
- 019140-93130
- 019141-93130



(A)=3TN100L-GL
(B)=4TN100L-GL
(C)=4TN100L-GH

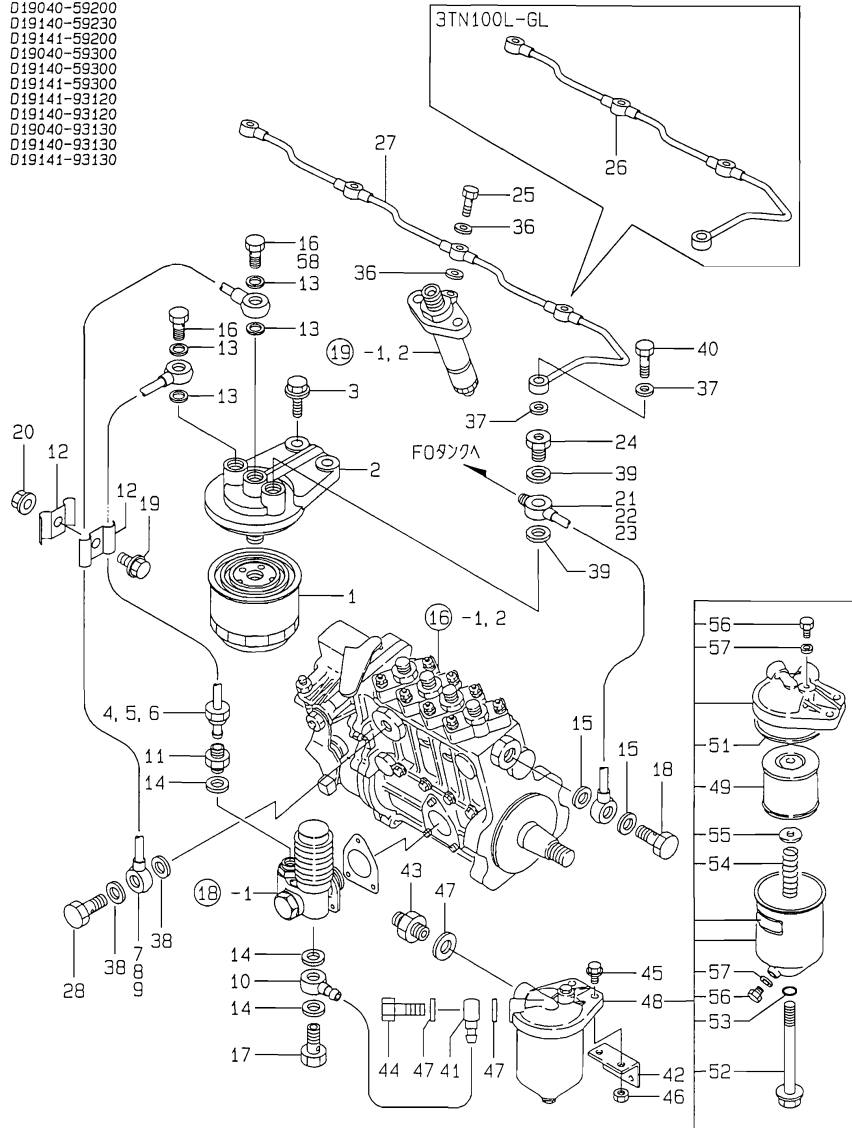
(D)=4TN100TL-GL
(E)=4TN100TL-GH
(F)=

No.	Lev.	Parts No.	Description	Q'ty						I	R
				(A)	(B)	(C)	(D)	(E)	(F)		
1	1	119000-55600	FILTER, FUEL	1	1	1	1	1			
2	1	129470-55610	BODY, STRAINER	1	1	1	1	1			
3	1	26106-100252	BOLT, M10X 25 PLATED	2	2	2	2	2			
4	1	119040-59010	PIPE ASSY, FUEL	1							
5	1	119140-59010	PIPE ASSY, FUEL		1	1		1			
6	1	119141-59010	PIPE, FUEL					1			
7	1	119040-59020	PIPE ASSY, FUEL	1							
8	1	119140-59020	PIPE ASSY, FUEL		1	1		1			
9	1	119141-59020	PIPE, FUEL					1			
10	1	171090-59130	JOINT, PIPE	1	1	1	1	1			
11	1	144628-59520	UNION, 10	1	1	1	1	1			
12	1	127450-59680	RETAINER	2	2	2	2	2			
13	1	23414-120000	GASKET, 12X1.0	4	4	4	4	4			
14	1	23414-140000	GASKET, 14X1.0	3	3	3	3	3			
14-2	1	22190-140002	WASHER, SEAL 14	3						R	
14A	1	124450-01980	GASKET (B=E*****) (C=E*****) (D=E*****) (E=E*****)	3	3	3	3	3		N	
15	1	23414-140000	GASKET, 14X1.0	2	2	2	2	2			
16	1	23857-060000	BOLT, JOINT 6	2	2	2	2	2			
16-1	1	23857-060000	BOLT, JOINT 6 (A=FROM 1ST) (B=FROM 1ST) (C=FROM 1ST) (D=FROM 1ST) (E=FROM 1ST)	1	1	1	1	1		K	
17	1	23857-080000	BOLT, JOINT 8	1	1	1	1	1			
18	1	23857-080000	BOLT, JOINT 8	1	1	1	1	1			
19	1	26106-080142	BOLT, M8X 14 PLATED	1	1	1	1	1			
20	1	26366-080002	NUT, M8	1	1	1	1	1			
21	1	119040-59030	PIPE ASSY, FUEL	1							
22	1	119140-59030	PIPE ASSY, FUEL		1	1		1			
23	1	119141-59030	PIPE, FUEL					1			
24	1	129495-59300	BOLT, PIPE JOINT	1	1	1	1	1			
25	1	129491-59540	BOLT, PIPE JOINT M6	4	4	4	4	4			
26	1	119040-59550	PIPE ASSY, RETURN	1							
27	1	119140-59550	PIPE, FUEL		1	1	1	1			
28	1	129100-59951	VALVE ASSY, CHECK	1	1	1	1	1			
36	1	23414-060000	GASKET, 6X1.0	8	8	8	8	8			
37	1	23414-080000	GASKET, 8X1.0	2	2	2	2	2			
38	1	23414-120000	GASKET, 12X1.0	2	2	2	2	2			
39	1	23414-140000	GASKET, 14X1.0	2	2	2	2	2			
40	1	23851-030000	JOINT BOLT 3	1	1	1	1	1			
41	1	110250-39030	JOINT	1	1	1	1	1			
42	1	123672-55811	BRACKET	1	1	1	1	1			
43	1	171090-59140	JOINT	1	1	1	1	1			
44	1	23857-080000	BOLT, JOINT 8	1	1	1	1	1			
45	1	26106-100302	BOLT, M10X 30 PLATED	2	2	2	2	2			
46	1	26706-100002	NUT, M10	2	2	2	2	2			
47	1	43400-500470	SEAL WASHER 14S	3	3	3	3	3			
48	1	43623-500030	SEPARATOR	1	1	1	1	1			
49	2	42430-550060	ELEMENT, FUEL OIL	1	1	1	1	1			
51	2	123325-35140	GASKET	1	1	1	1	1			
52	2	123325-35110	BOLT	1	1	1	1	1			
53	2	24311-000120	O-RING, 1AP12.0	1	1	1	1	1			
54	2	123678-55790	SPRING, SET	1	1	1	1	1			

Fig.20. FUEL PIPES

Y00D4590
3, 4TN100 (T) L-G (L, H)

- 019000-55100
- 019040-59200
- 019140-59230
- 019141-59200
- 019040-59300
- 019140-59300
- 019141-59300
- 019141-93120
- 019140-93120
- 019040-93130
- 019140-93130
- 019141-93130



(A)=3TN100L-GL
(B)=4TN100L-GL
(C)=4TN100L-GH

(D)=4TN100TL-GL
(E)=4TN100TL-GH
(F)=

No.	Lev.	Parts No.	Description	Q'ty						I	R
				(A)	(B)	(C)	(D)	(E)	(F)		
55	2	123678-55860	SEAT, SPRING D30/16	1	1	1	1	1			
56	2	23887-080002	PLUG 8	2	2	2	2	2			
57	2	23414-080000	GASKET, 8X1.0	2	2	2	2	2			
58	1	103854-39140	BOLT, PIPE JOINT	1	1	1	1	1		W	
		(A=FROM 1ST) (B=FROM 1ST) (C=FROM 1ST) (D=FROM 1ST) (E=FROM 1ST)									

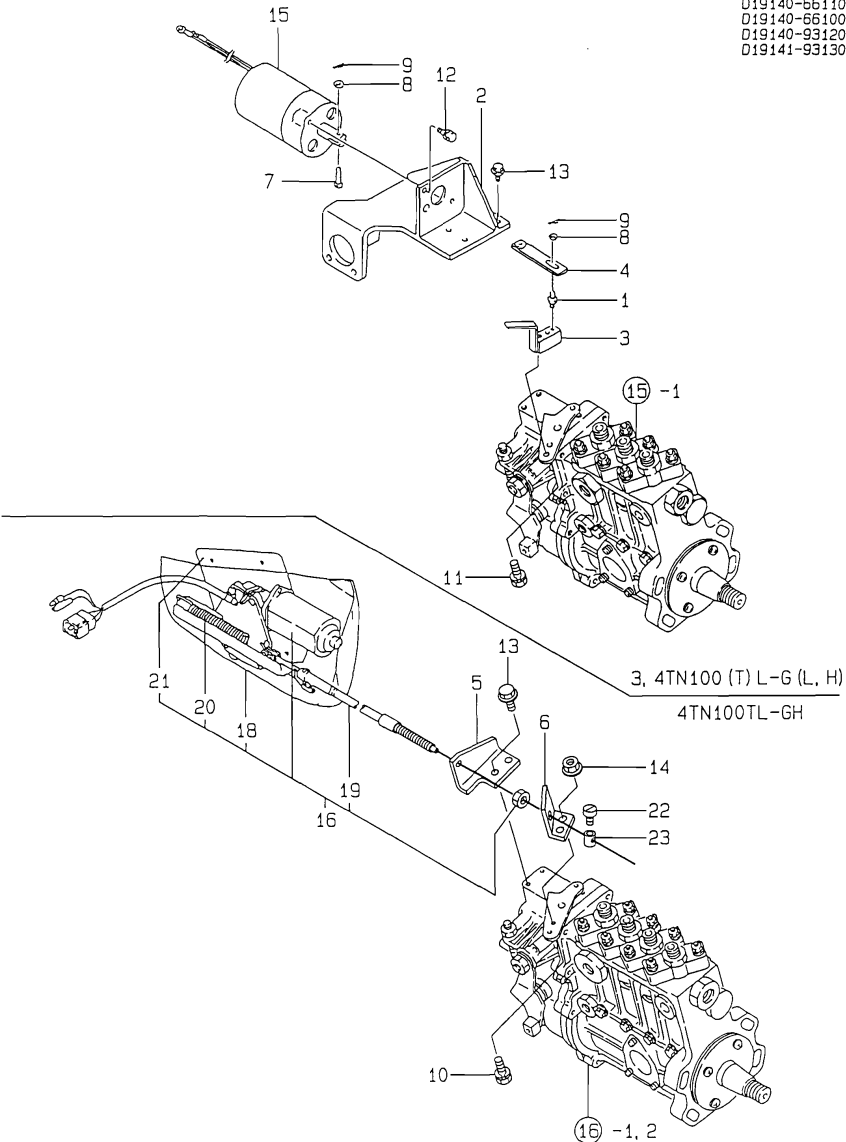
Fig.21. ENGINE STOPPING DEVICE

(A)=3TN100L-GL
 (B)=4TN100L-GL
 (C)=4TN100L-GH

(D)=4TN100TL-GL
 (E)=4TN100TL-GH
 (F)=

Y0004590
 3, 4TN100 (T) L-G (L, H)

019140-66110
 019140-66100
 019140-93120
 019141-93130



No.	Lev.	Parts No.	Description	Q'ty						I	R
				(A)	(B)	(C)	(D)	(E)	(F)		
1	1	120220-66250	PIN	1	1		1				
2	1	119140-66450	BRACKET	1	1		1				
3	1	124610-66460	LEVER, STOP	1	1		1				
4	1	124610-66470	LEVER	1	1		1				
5	1	119140-66500	BRACKET					1		1	
6	1	124610-66510	LEVER					1		1	
7	1	124790-66950	PIN	1	1		1				
8	1	22111-050000	WASHER	2	2		2				
9	1	22360-050000	SNAP PIN 5	2	2		2				
10	1	26013-060122	BOLT, M6X 12				2			2	
11	1	26013-060149	BOLT, M6X 14	2	2		2				
12	1	26106-060162	BOLT, M6X 16 PLATED	2	2		2				
13	1	26106-080142	BOLT, M8X 14 PLATED	4	4		4		4	2	
14	1	26366-060002	NUT, M6				2			2	
15	1	46116-800040	SOLENOID VALVE	1	1		1				
16	1	121575-77900	MOTOR, STOP				1			1	
18	2	121575-77960	COVER				1			1	
19	2	121575-77970	CABLE ASSY (970MM)				1			1	
20	2	121575-77980	SPRING				1			1	
21	2	121575-77990	BRACKET				1			1	
22	1	26117-040088	BOLT M 4X 8 PLATED				1			1	
23	1	106500-44870	STOPPER				1			1	

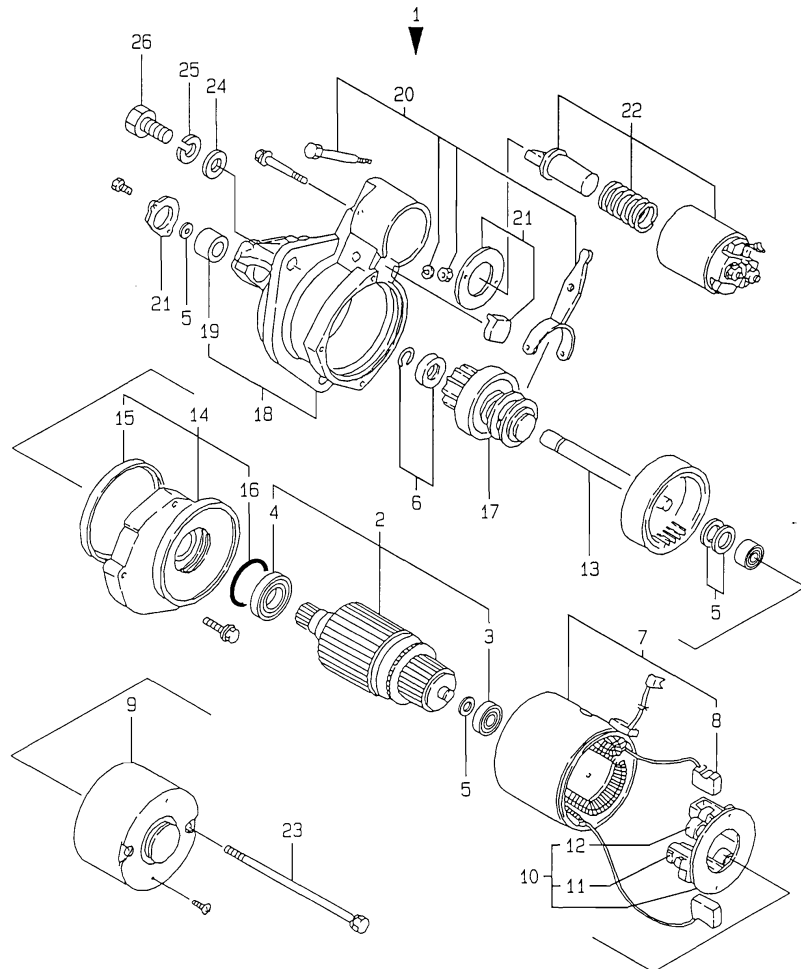
Fig.22. STARTING MOTOR

(A)=3TN100L-GL
(B)=4TN100L-GL
(C)=4TN100L-GH

(D)=4TN100TL-GL
(E)=4TN100TL-GH
(F)=

Y00D4590
3, 4TN100 (7) L-G (L, H)

D24610-77100



No.	Lev.	Parts No.	Description	Q'ty						I	R
				(A)	(B)	(C)	(D)	(E)	(F)		
1	1	124610-77010	STARTER, S13-68A	1	1	1	1	1			
2	2	X213011001	ARMATURE ASSY	1	1	1	1	1			
3	3	X21302302	BALL BEARING	1	1	1	1	1			
4	3	X21303302	BALL BEARING	1	1	1	1	1			
5	2	X21302115	WASHER KIT, THRUST	1	1	1	1	1			
6	2	X21303119	STOPPER SET, PINION	1	1	1	1	1			
7	2	X21308220	COIL ASSY, FIELD	1	1	1	1	1			
8	3	X21308311	BRUSH (+)	2	2	2	2	2			
9	2	X225013012	COVER, REAR	1	1	1	1	1			
10	2	X21307305	HOLDER ASSY, BRUSH	1	1	1	1	1			
11	3	X21305312	BRUSH (-)	2	2	2	2	2			
12	3	X21305313	SPRING, BRUSH	4	4	4	4	4			
13	2	X225011113	SHAFT ASSY, GEAR	1	1	1	1	1			
14	2	X21304400	BEARING ASSY, CENTER	1	1	1	1	1			
15	3	X21301402	SEAL, OIL	1	1	1	1	1			
16	3	X21302402	O-RING	1	1	1	1	1			
17	2	X213035002	PINION ASSY	1	1	1	1	1			
18	2	X213046003	HOUSING ASSY, GEAR	1	1	1	1	1			
19	3	X21302601	METAL, CASE BEARING	1	1	1	1	1			
20	2	X21302605	LEVER SET	1	1	1	1	1			
21	2	X21303610	COVER SET, DUST	1	1	1	1	1			
22	2	X213017001	SWITCH ASSY, MAGNET.	1	1	1	1	1			
23	2	X21305820	BOLT, THROUGH	2	2	2	2	2			
24	1	22137-120000	WASHER, 12	3	3	3	3	3			
25	1	22217-120000	WASHER, SPRING 12	3	3	3	3	3			
26	1	26116-120352	BOLT, M12X 35 PLATED	3	3	3	3	3			

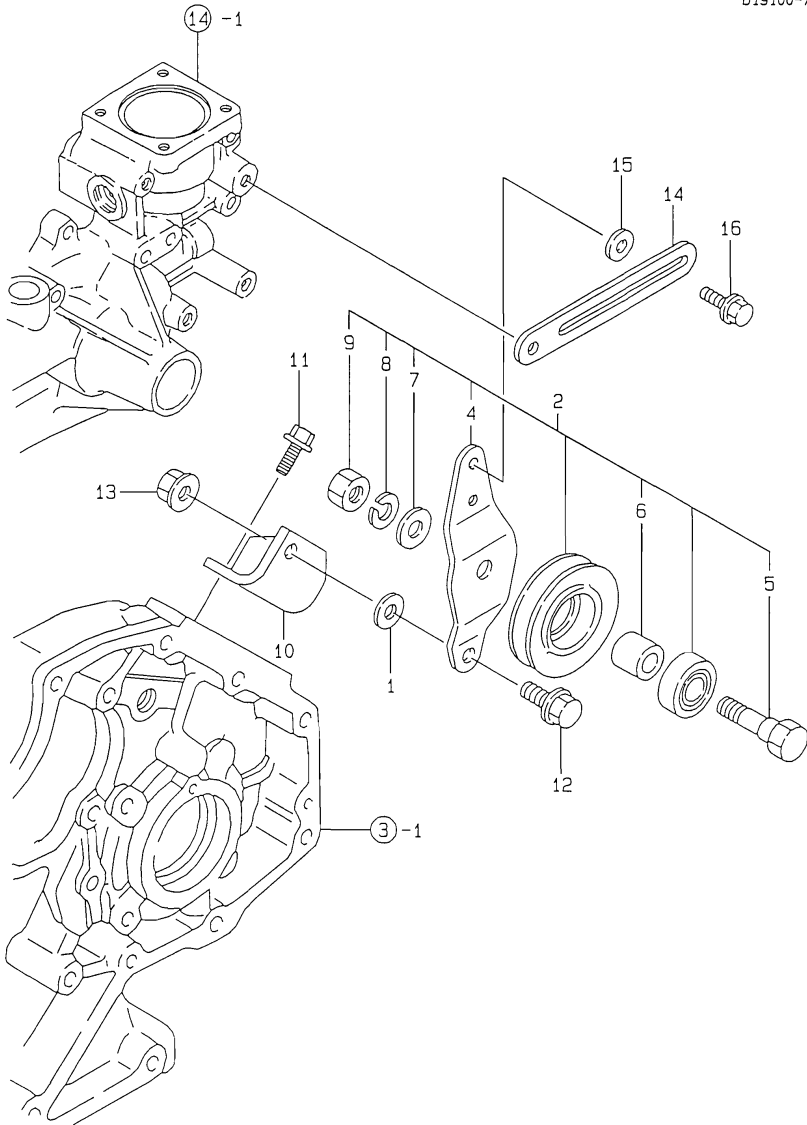
Fig.23. TENSION PULLEY

(A)=3TN100L-GL
 (B)=4TN100L-GL
 (C)=4TN100L-GH

(D)=4TN100TL-GL
 (E)=4TN100TL-GH
 (F)=

Y00D4590
 3. 4TN100 (T) L-G (L, H)

D24595-77200
 D19100-77300

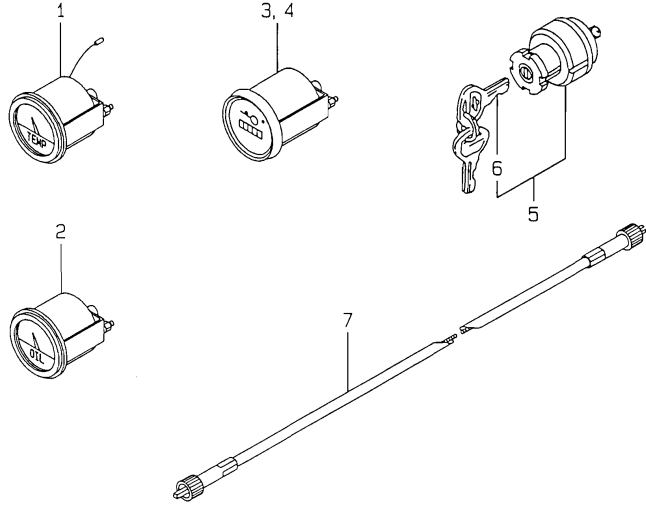


No.	Lev.	Parts No.	Description	Q'ty						I	R
				(A)	(B)	(C)	(D)	(E)	(F)		
1	1	121575-21850	WASHER	1	1	1	1	1			
2	1	171325-44290	PULLEY ASSY, TENSION	1	1	1	1	1			
4	2	171325-44300	BRACKET, PULLEY	1	1	1	1	1			
5	2	171325-44310	BOLT	1	1	1	1	1			
6	2	171325-44320	SPACER	1	1	1	1	1			
7	2	22127-120000	WASHER, 12	1	1	1	1	1			
8	2	22217-120000	WASHER, SPRING 12	1	1	1	1	1			
9	2	26716-120002	NUT, M12	1	1	1	1	1			
10	1	119000-77340	BRACKET	1	1	1	1	1			
11	1	26106-080202	BOLT, M8X 20 PLATED	2	2	2	2	2			
12	1	26106-100252	BOLT, M10X 25 PLATED	1	1	1	1	1			
13	1	26366-100002	NUT, M10	1	1	1	1	1			
14	1	121522-77330	ADJUSTER	1	1	1	1	1			
15	1	121236-77340	SPACER	1	1	1	1	1			
16	1	26106-080222	BOLT, M8X 22 PLATED	2	2	2	2	2			

Fig.24. ELECTRIC PARTS

Y0004590
3, 4TN100 (T) L-G (L, H)

D19140-93120
D19141-93120
D19040-93130
D19140-93130
D19141-93130



(A)=3TN100L-GL
(B)=4TN100L-GL
(C)=4TN100L-GH

(D)=4TN100TL-GL
(E)=4TN100TL-GH
(F)=

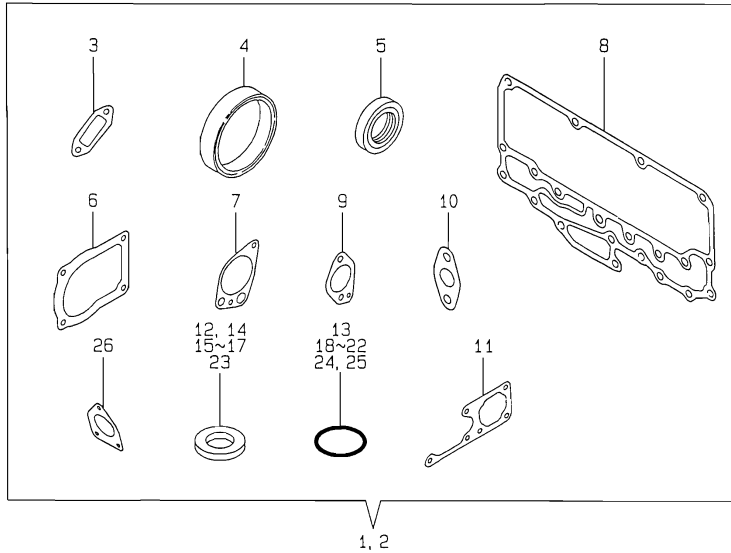
No.	Lev.	Parts No.	Description	Q'ty						I	R
				(A)	(B)	(C)	(D)	(E)	(F)		
1	1	171010-77850	THERMOSTAT	2	2	2	2	2			
2	1	171090-91010	GAUGE	1	1	1	1	1			
3	1	171011-91100	TACHOMETER	1	1		1				
4	1	171014-91101	TACHOMETER			1		1			
5	1	121400-91251	SWITCH, STARTER	1	1	1	1	1			
6	2	121400-91271	KEY, SWITCH	1	1	1	1	1			
7	1	42130-502220	CABLE, TACHOMETER	1	1	1	1	1			

Fig.25. GASKET SET A(CYLINDER BLOCK)

(A)=3TN100L-GL
(B)=4TN100L-GL
(C)=4TN100L-GH

(D)=4TN100TL-GL
(E)=4TN100TL-GH
(F)=

Y00D4590
3, 4TN100 (T) L-G (L, H)



No.	Lev.	Parts No.	Description	Q'ty						I	R
				(A)	(B)	(C)	(D)	(E)	(F)		
1	1	719040-92600	GASKET SET, BLOCK	1							1
2	1	719130-92602	GASKET SET, BLOCK							1	1
2-1	1	119140-92650	SET,LO COOLER CMP								N 1
			(B=E2009.12) (C=E2009.12) (D=E2009.12) (E=E2009.12)								
3	2	119000-01771	GASKET	1	1	1	1	1			
4	2	124411-01780	SEAL, HTC95X115X12	1	1	1	1	1			
5	2	121850-01800	SEAL, OIL	1	1	1	1	1			
6	2	124610-01862	GASKET	2	2	2	2	2			
7	2	119000-32020	GASKET, PUMP	1	1	1	1	1			
8	2	119000-33021	GASKET	1	1	1	1	1			
9	2	119000-33041	GASKET	1	1	1	1	1			
10	2	121952-33071	GASKET, COOLER	2	2	2	2	2			
11	2	119000-42021	GASKET, WATER PUMP	1	1	1	1	1			
12	2	124465-44950	GASKET, 16	2	2	2	2	2			
13	2	124410-51960	O-RING	1	1	1	1	1			
14	2	23414-080000	GASKET, 8X1.0	2	2	2	4	4			
15	2	23414-140000	GASKET, 14X1.0	1	1	1	1	1			
16	2	23414-160000	GASKET, 16X1.0	1	1	1	1	1			
17	2	23414-180000	GASKET, 18X1.0	2	2	2	2	2			
17-1	2	23414-170000	GASKET, 17X1.0	2	2	2	2	2			N
			(B=E2009.12) (C=E2009.12) (D=E2009.12) (E=E2009.12)								
18	2	24311-000220	O-RING, 1AP22.0	1	1	1	1	1			
19	2	24311-000360	O-RING, 1AP36.0	1	1	1	1	1			
20	2	24341-000240	O-RING, 1AS24.0	1	1	1	1	1			
21	2	24341-000240	O-RING, 1AS24.0	1	1	1	1	1			
22	2	24341-001350	O-RING, 1AS135.0	1	1	1	1	1			
23	2	43400-500420	SEAL WASHER 8	1	1	1	1	1			
24	2	24311-000320	O-RING, 1AP32.0	1	1	1	1	1			
25	2	24311-000320	O-RING, 1AP32.0	1	1	1	1	1			
26	2	124410-51861	GASKET	1	1	1	1	1			

Remarks
(1) OPTIONAL PART.

Parts No. Index

Parts No.	Fig. No.	Ref. No.
103854-39140	20	58
106100-55800	10	24
106500-44870	21	23
110250-39030	20	41
114250-53080	19	8
114250-53120	19	11
114250-53130	19	12
114250-53140	19	13
114250-53210	19	14
114250-53400	19	15
119000-01200	1	29
	2	30
119000-01340	1	30
119000-01500	3	1
119000-01590	3	4
119000-01730	4	5
119000-01760	3	21
119000-01771	3	22
	25	3
119000-01840	1	13
	2	13
119000-01930	3	9
119000-02020	1	18
	2	18
119000-02410	1	5
	2	5
119000-02450	10	3
119000-02800	1	23
119000-02930	1	26
119000-03200	5	46
119000-07200	5	6
	6	12
119000-11110	5	19
	6	32
119000-11170	5	13
119000-11230	5	31
	6	53
119000-11260	5	34
	6	45
119000-11270	5	35
	6	46
119000-11280	5	36
	6	47
119000-11290	5	37
	6	48
119000-11311	5	45
119000-11320	5	49
119000-11340	5	28
119000-11810	6	26
119000-12100	7	1

Parts No.	Fig. No.	Ref. No.
119000-12110	7	7
119000-13100	8	7
119000-13200	8	9
119000-14000	10	1
119000-14100	10	8
119000-14200	10	10
119000-21650	11	13
119000-22000	11	25
119000-22300	11	33
119000-23910	11	39
119000-25050	10	13
119000-25100	10	14
119000-25900	10	20 A
119000-25910	10	21
119000-25920	10	22
119000-25930	10	17
119000-25950	10	20 B
119000-32001	12	1
119000-32020	12	17
	25	7
119000-33010	13	2
119000-33021	13	17
	25	8
119000-33030	13	18
119000-33041	13	19
	25	9
119000-33050	13	4
119000-34030	13	6
119000-35140	12	21
119000-39350	12	28
119000-39650	12	45
119000-42021	14	17
	25	11
119000-42250	14	20
119000-48170	14	27
119000-51030	15	5
119000-51050	15	7
	16	9
119000-51060	15	9
	16	11
119000-51081	15	10
119000-51091	15	11
119000-51101	16	16
119000-51161	15	20
	16	24
119000-51170	15	21
	16	25
119000-51181	15	22
	16	26
119000-51201	15	23

Parts No.	Fig. No.	Ref. No.
119000-51201	16	27
119000-51330	15	34
	16	38
119000-51340	15	35
	16	39
119000-51360	15	37
	16	41
119000-51410	15	38
	16	42
119000-51450	15	39
	16	43
119000-51500	15	45
119000-51510	15	46
	16	50
119000-51530	15	48
	16	52
119000-51550	15	49
	16	53
119000-51570	15	50
	16	54
119000-51580	15	51
	16	55
119000-51590	15	52
	16	56
119000-51650	15	53
	16	57
119000-51800	15	66
	16	70
119000-51900	15	67
	16	71
119000-51990	15	82
119000-52000	18	1
119000-52100	18	8
119000-52150	18	13
119000-53000	19	3
119000-55600	20	1
119000-61051	17	7
119000-61120	17	15
119000-61140	17	16
119000-61150	17	17
119000-61160	17	18
119000-61170	17	19
119000-61180	17	20
119000-61190	17	21
119000-61200	17	22 B
119000-61210	17	23 B
119000-61300	17	29
119000-61310	17	30
119000-61320	17	31
119000-61340	17	33

Parts No.	Fig. No.	Ref. No.
119000-61380	17	35
119000-61400	17	36
119000-61470	17	41
119000-61490	17	42
119000-61500	17	44
119000-61630	17	59
119000-61841	17	70
119000-77340	23	10
119005-35100	12	20
119005-61520	17	50
119006-03090	6	1
119006-42001	14	1
119040-01780	4	8
119040-49010	14	48
119040-59010	20	4
119040-59020	20	7
119040-59030	20	21
119040-59550	20	26
119083-44500	14	40
119083-44570	14	46
119083-44580	14	47
119083-61700	17	108
119100-01340	2	31
119100-01640	4	29
119100-01730	4	7
119100-01980	1	31
	2	32
119100-03200	6	60
119100-11230	6	42
119100-11240	6	43
119100-11311	6	59
119100-11320	6	61
119100-11330	5	50
	6	62
119100-12112	7	8
119100-12120	7	4
119100-13100	8	8
119100-13200	8	10
119100-14000	10	2
119100-34800	4	33
119100-35090	12	22
119100-39350	12	29
119100-51030	16	7
119100-51081	16	12
119100-51091	16	13
119100-51101	15	13
	16	15
119100-51500	16	49
119100-59810	19	30
119100-59820	19	34

Parts No. Index

Parts No.	Fig. No.	Ref. No.
119100-59830	19	38
119100-59840	19	42
119100-61200	17	22 A
119100-61300	17	28
119100-61340	17	32
119100-61430	17	39
119100-61700	17	106
119100-61710	17	107
119100-61771	17	66
119100-61860	17	71
119101-11110	6	33
119101-12850	7	19
119101-13100	8	1
119101-13200	8	2
119101-18010	9	2
119101-18020	9	1
119101-18500	9	3
119101-18510	9	10
119101-18520	9	14
119101-18530	9	16
119101-18540	9	17
119101-18550	9	18
119101-18560	9	19
119101-18570	9	20
119101-39600	12	30
119101-39650	12	32
119101-53000	19	4
119129-11520	6	57
119130-44760	14	23
119130-49020	14	50
119131-18390	8	21
119131-18400	8	22
119140-01600	4	1
119140-01780	4	9
119140-12130	7	12
119140-13300	8	12
119140-21570	11	19
119140-21590	11	18
119140-39480	3	27
119140-39650	12	33
119140-44500	14	41
119140-44560	14	45
119140-49010	14	49
119140-49020	14	51
119140-59010	20	5
119140-59020	20	8
119140-59030	20	22
119140-59550	20	27
119140-66450	21	2
119140-66500	21	5

Parts No.	Fig. No.	Ref. No.
119140-92650	25	2 -1
119140-95900	13	1 -1
119141-21650	11	14
119141-39150	12	26
119141-39650	12	34
119141-44500	14	42
119141-44760	14	24
119141-59010	20	6
119141-59020	20	9
119141-59030	20	23
119141-61060	17	8
119141-61070	17	10
119141-61080	17	12
119141-61440	17	104
119141-61500	17	43
119141-61700	17	109
119259-44570	14	44
119620-49290	14	32
119625-11870	5	40
	6	69
119625-11880	5	41
	6	70
120220-66250	21	1
120323-61060	17	9
120323-61070	17	11
120323-61470	17	105
121236-77340	23	15
121250-39450	12	48
121250-44901	14	35
121252-39150	12	27
121400-91251	24	5
121400-91271	24	6
121470-44900	4	20
121520-34810	4	34
121522-77330	23	14
121575-21850	23	1
121575-77900	21	16
121575-77960	21	18
121575-77970	21	19
121575-77980	21	20
121575-77990	21	21
121820-52020	18	3
121820-52070	18	7
121820-52110	18	9
121820-52140	18	12
121820-52170	18	15
121820-52180	18	16
121820-52190	18	17
121820-52200	18	18
121820-52210	18	19

Parts No.	Fig. No.	Ref. No.
121820-52230	18	20
121820-52300	18	21
121820-52400	18	22
121820-52510	18	23
121850-01800	3	7
	25	5
121850-01900	10	19
121850-01920	3	8
121850-11100	5	18
	6	31
121850-11120	5	20
	6	34
121850-11150	5	21
	6	35
121850-11160	5	12
121850-11180	5	22
	6	36
121850-11800	6	24
121850-21130	11	17
121850-21200	11	8
121850-21290	11	9
121850-21660	11	15
121850-21680	11	16
121850-21920	11	10
121850-23200	11	40
121850-35230	13	7
121850-44660	14	43
121850-49530	14	28
121850-49540	14	29
121850-49550	14	30
121850-51700	15	65
	16	69
121850-61600	17	54
121850-77021	7	5
		16
		22
121850-77100	7	23
121855-61910	17	72
121952-33071	13	5
	25	10
121952-39830	13	10
121952-51900	15	68
	16	72
121972-44740	14	22
122710-51050	15	8
	16	10
122710-51350	15	36
	16	40
123325-35110	20	52
123325-35140	20	51

Parts No.	Fig. No.	Ref. No.
123372-59080	19	22
123385-82200	5	14
	6	27
123472-59090	19	23
123482-39660	12	49
123672-55811	20	42
123672-84530	13	11
123678-55790	20	54
123678-55860	20	55
124070-13300	4	18
124160-01751	3	20
	5	43
	6	58
124223-35510	13	8
124250-11190	5	23
	6	37
124410-51861	18	2
	25	26
124410-51960	10	27
	25	13
124411-01780	4	31
	25	4
124411-35520	13	9
124413-39710	12	35
124450-01980	20	14 A
124465-44950	14	38
	25	12
124610-01851	3	25
124610-01862	3	26
	25	6
124610-51970	17	4
124610-66460	21	3
124610-66470	21	4
124610-66510	21	6
124610-77010	22	1
124616-61540	17	46
124790-66950	21	7
124976-34850	4	19
127410-21480	11	24
127412-18853	7	14
127450-59680	20	12
127488-18910	7	15
127610-44900	4	15
128400-51300	15	31
	16	35
129100-01580	1	10
		11
		12
	2	10
		11

Parts No. Index

Parts No.	Fig. No.	Ref. No.
129100-01580	2	12
	3	3
129100-59951	20	28
129100-61930	17	73
129150-03090	5	1
129150-03100	6	2
129150-11750	5	32
	6	54
129150-14400	10	11
129150-91400	3	31
129155-51270	15	29
	16	33
129155-51280	15	30
	16	34
129155-61090	17	13
129155-61460	17	40
129400-13201	8	11
129403-18620	9	15
129404-18510	9	4
129404-18520	9	5
129404-18530	9	6
129404-18540	9	7
129404-18550	9	8
129404-18560	9	9
129404-18580	9	11
129404-18590	9	12
129404-18600	9	13
129404-18680	9	21
129404-18720	9	24
129406-18690	9	22
129406-18700	9	23
129411-13300	8	13
129412-12460	7	13
129470-55610	20	2
129472-18090	9	25
129491-59540	20	25
129495-59300	20	24
129792-13520	8	20
129792-39610	12	31
129795-11750	4	3
135210-61090	17	14
135602-34390	1	14
	2	14
137600-53900	15	71
	16	75
144626-51090	15	12
	16	14
144626-51940	15	69
	16	73
144626-51950	15	70

Parts No.	Fig. No.	Ref. No.
144626-51950	16	74
144626-91560	12	53
144628-59520	20	11
148616-61650	17	65
148688-52120	18	10
171010-77850	24	1
171011-91100	24	3
171014-91101	24	4
171087-42280	14	21
171090-59130	20	10
171090-59140	20	43
171090-91010	24	2
171301-01640	4	10
171325-44290	23	2
171325-44300	23	4
171325-44310	23	5
171325-44320	23	6
171375-44900	14	36
171375-44910	14	37
194990-22050	8	23
	9	26
22111-050000	21	8
22117-050000	17	74
22117-120000	4	21
22127-120000	23	7
22137-080000	17	75
22137-120000	22	24
22190-060000	15	72
	16	76
22190-140002	20	14 -2
22217-050000	17	76
22217-060000	17	77
	18	24
22217-100000	17	78
22217-120000	22	25
	23	8
22217-180000	10	25
22242-000180	5	38
	6	55
22252-000340	11	34
22262-000260	17	34
22272-000040	17	55
		79
22272-000080	17	80
22351-020004	17	56
22351-020012	17	57
22351-030010	12	46
22351-030016	17	69
		81
22351-030025	17	82

Parts No.	Fig. No.	Ref. No.
22351-050012	10	26
22351-050020	17	83
22351-080016	1	15
	2	15
22360-050000	21	9
22372-050000	17	84
22453-060000	17	86
22492-060362	17	87
22512-070140	10	9
	11	11
23000-022000	6	3
23000-025000	12	36
23000-048000	14	52
23000-054000	7	17
	14	53
23000-060000	7	20
23000-070000	7	21
23297-080081	12	37
23414-060000	20	36
23414-080000	12	38
	15	84
	20	37
		57
	25	14
23414-080012	17	88
23414-100000	12	39
		40
23414-120000	20	13
		38
23414-140000	1	16
	2	16
	20	14
		15
		39
	25	15
23414-160000	4	22
	13	12
	25	16
23414-170000	8	14
		24
	13	13 -1
	25	17 -1
23414-180000	13	13
	25	17
23414-220029	15	73
	16	77
23851-030000	20	40
23857-030000	12	41
		47
		85

Parts No.	Fig. No.	Ref. No.
23857-060000	20	16
		16 -1
23857-080000	20	17
		18
		44
23871-010000	2	6
	13	20
23871-020000	1	17
	2	17
	14	11
23871-030000	1	6
	2	7
	4	23
	13	14
	14	12
23887-080002	20	56
23887-160002	13	15
	17	89
23894-030002	8	15
		25
24311-000110	17	90
24311-000120	20	53
24311-000220	12	23
	25	18
24311-000320	3	23
	5	44
	6	66
	25	24
		25
24311-000360	14	18
	25	19
24312-000150	15	74
	16	78
24314-000180	12	42
24341-000080	17	91
24341-000240	3	33
	4	16
	25	20
		21
24341-000260	15	75
	16	79
24341-000500	15	76
	16	80
24341-001350	10	23
	25	22
26013-060122	21	10
26013-060149	21	11
26013-080162	12	24
26013-080452	10	18
26014-060142	14	31

Parts No. Index

Parts No.	Fig. No.	Ref. No.
26014-080352	14	25
26022-050122	5	51
	6	65
26106-060162	3	34
	12	43
	21	12
26106-060182	15	77
	16	81
26106-060202	15	78
	16	82
	19	26
26106-060222	17	92
26106-060352	17	93
26106-080122	12	44
26106-080142	7	6
		24
		19
	20	13
26106-080162	1	32
	2	33
	8	26
	10	12
	12	18
		25
26106-080182	3	10
	7	18
26106-080202	3	11
		28
		29
	7	9
	13	21
		22
	23	11
26106-080222	23	16
26106-080252	3	24
	4	24
		32
	5	52
	6	67
	10	28
26106-080352	4	25
	13	23
		24
26106-080402	3	12
	8	3
		16
26106-080452	3	13
		14
	8	17
26106-080502	3	15

Parts No.	Fig. No.	Ref. No.
26106-080502	8	18
	12	19
	13	25
26106-080552	3	16
	14	26
26106-080652	5	42
	6	68
	14	19
26106-080702	4	26
	7	10
	8	4
26106-080752	3	17
26106-080802	4	27
26106-080902	3	18
26106-080952	8	19
26106-081102	8	5
26106-081152	7	11
26106-100202	5	7
	6	13
26106-100252	20	3
	23	12
26106-100302	4	4
	20	45
26116-050102	17	94
26116-060356	17	95
26116-120352	22	26
26116-120852	4	28
26117-040088	21	22
26216-060162	15	79
	16	83
26216-060252	5	24
	6	38
26216-080222	8	6
		27
26216-080652	5	25
	6	39
26366-060002	5	26
	6	40
	19	27
	21	14
26366-080002	3	30
	5	27
	6	41
	15	80
	16	84
	20	20
26366-100002	10	29
	23	13
26376-100002	13	16
26376-120002	17	96

Parts No.	Fig. No.	Ref. No.
26606-100002	17	97
26667-080002	17	98
		110
26706-100002	20	46
26716-060002	18	25
26716-120002	23	9
26756-080002	17	99
		100
		111
26776-180002	10	30
26777-120002	17	101
26911-080322	17	112
27231-600000	1	7
	2	29
27241-140000	1	8
	2	8
27241-160000	5	15
	6	28
27241-280000	5	16
	6	29
27241-400000	1	9
	2	9
	5	17
	6	30
42130-502220	24	7
42430-550060	20	49
43400-500420	3	19
	17	113
	25	23
43400-500450	17	102
43400-500470	20	47
43400-500500	17	103
43400-500640	4	17
43623-500030	20	48
46116-800040	21	15
46150-504500	14	39
719000-02110	2	19
719000-02870	1	33
	2	34
719000-02930	2	22
719000-02940	1	36
	2	37
719000-11650	5	29
719000-21700	11	1
719000-22500	11	27
719000-22900	11	43
719000-22950	11	45
719000-23100	11	35
719000-23600	11	41
719000-23610	11	51

Parts No.	Fig. No.	Ref. No.
719000-33700	13	1
719000-73100	19	1
719040-01560	1	1
719040-51300	15	1
719040-92600	25	1
719045-53100	19	1 -1
719100-21700	11	2
719101-73100	19	2
719129-11650	6	50
719129-11660	6	49
719129-11700	6	14
719129-12100	7	2
719130-92602	25	2
719140-01560	2	1
719140-51330	16	1 A
719140-51340	16	2 A
719141-11710	6	15
719141-51330	16	1 B
719141-51340	16	2 B
719141-53100	19	2 -1
X213011001	22	2
X21301402	22	15
X213017001	22	22
X21302115	22	5
X21302302	22	3
X21302402	22	16
X21302601	22	19
X21302605	22	20
X21303119	22	6
X21303302	22	4
X213035002	22	17
X21303610	22	21
X21304400	22	14
X213046003	22	18
X21305312	22	11
X21305313	22	12
X21305820	22	23
X21307305	22	10
X21308220	22	7
X21308311	22	8
X22501113	22	13
X225013012	22	9