

0CD10-M45800EN

PREFACE

1. This Parts Catalog is the 1st edition of 3,4TN100(T)L-P(S) Diesel Engine for TERAL KYOKUTO.

Pub. No. : 000Y00D4580

Published : June, 1993

2. Model name

Engine model	Vehicle		Vehicle made by
	Products	Model name	
3,4TN100(T)L-P(S)	FLUE GAS FAN	—	TERAL KYOKUTO

Directions for the Parts Catalog.

1. This Parts Catalog shows both standard and optional parts.
2. Parts may change without prior notice.
3. The following is an example of the Parts Catalog format.

REF.	LEV.	PARTS NO.	DESCRIPTION	Q'TY						I	R
				(A)	(B)	(C)	(D)	(E)	(F)		
1	1	729595-51390	FUEL INJECTION PUMP	1	1	1	1	1			1
1-1	1	729595-51391	FUEL INJECTION PUMP	1	1	1	1	1		N	1
		(A=E00185) (B=E00200)									
3	2	26022-060162	SCREW M 6X 16	9	9	9	9	9			
3-1	2	26022-060162	SCREW M 6X 16	4	4	4	4	4		K	
		(A=E00156) (B=E00156) (C=E00156) (D=E00156) (E=E00156)									
4	2	129470-51040	CAMSHAFT	1	1	1	1	1			
5	2	122710-51050	BEARING, ROLLER	2	2	2	2	2			
6	2	129470-51060	RETAINER	1	1	1	1	1			

Remarks
(1) BOOST COMPEMSATOR TYPE. OPTIONAL PART, TO E00155,(4JH-DT, 4JH-DTZ

① Ref. No.

The Ref. No. listed may not be in accordance with the illustration Ref. No.

(Ex.) Illustration No.

List Ref No.

1

1

(Before change) → 1-1 (After change)

For interchangeable symbols N, R and K, illustrations for new parts may be abbreviated.

② Lev. (Level)

Level indication

The numbers below indicate the level of relativity towards the main part.

1 ----- Main parts (Assembly parts)

2 ----- Sub component included in " 1 ".

3 ----- Sub component included in " 2 ".

Note) Parts that are not for sale are partially illustrated but not listed.

③ Interchangeability Symbol

When a part change takes place, one of the following interchangeability symbols is indicated beside the part.

Symbol	Interchangeability	Contents note
N	Old $\begin{matrix} \leftarrow \text{Yes} \\ \text{No} \rightarrow \end{matrix}$ New	New Part is interchangeable for Old Part but Old Part is not interchangeable for New Part.
Q	Old $\begin{matrix} \leftarrow \text{No} \\ \text{Yes} \rightarrow \end{matrix}$ New	New Part is not interchangeable for Old Part but Old Part is interchangeable for New Part.
R	Old $\begin{matrix} \leftarrow \text{Yes} \\ \text{Yes} \rightarrow \end{matrix}$ New	New/ Old Parts are both interchangeable.
S	Old $\begin{matrix} \leftarrow \text{No} \\ \text{No} \rightarrow \end{matrix}$ New	New/ Old Parts are both not interchangeable.
W		Part newly added.
Z		Part discontinued.
F		Not interchangeable by a single part but interchangeable together with related parts.
K		Changes only for used parts quantities.

④ Effective Machine No.

When a part changes, the effective Machine No. will be indicated in the (A)-(F) column.

Product Symbol	Product No.	Product Symbol	Product No.
C	Clutch No. Compressor No.	F	Machine No. (Agricultural Equip.)
D	Drive No.	M	Machine No.
E	Engine No.		

Note 1) A date may follow the symbol. (Ex.) 1996.01

Note 2) "XXXXX" and "ZZZZZ" are for parts that could not be predicted or for engine models that could not be identified.

Note 3) (A=E00185) is the E (Engine Serial Number) for the column (A) model (in this case 4JH-DT) after the parts design change.

⑤ Remarks

Figures or alphabets (symbols) are entered in the remarks column.

The comments (remarks) on parts that are indicated at the bottom of the illustration are the same symbols as those stated above.

Contents

Fig. No. Fig. Name

ENGI. 3,4TN100(T)L-P

1. CYLINDER BLOCK
2. CYLINDER BLOCK
3. GEAR HOUSING
4. FLIWHEEL HOUSING & OIL SUMP
5. CYLINDER HEAD & BONNET
6. CYLINDER HEAD & BONNET
7. SUCTION MANIFOLD & AIR CLEANER
8. EXHAUST MANIFOLD & SILENCER
9. TURBINE
10. CAMSHAFT & DRIVING GEAR
11. CRANKSHAFT & PISTON
12. LUB.OIL SYSTEM
13. OIL COOLER HOUSING
14. COOLING WATER SYSTEM
15. FUEL INJECTION PUMP
16. FUEL OIL INJECTION PUMP
17. FEED PUMP
18. GONERNOR
19. FUEL OIL INJECTION VALVE
20. FUEL OIL LINE
21. FUEL TANK
22. ENGINE STOP DEVICE
23. STARTING MOTOR
24. GENERATOR

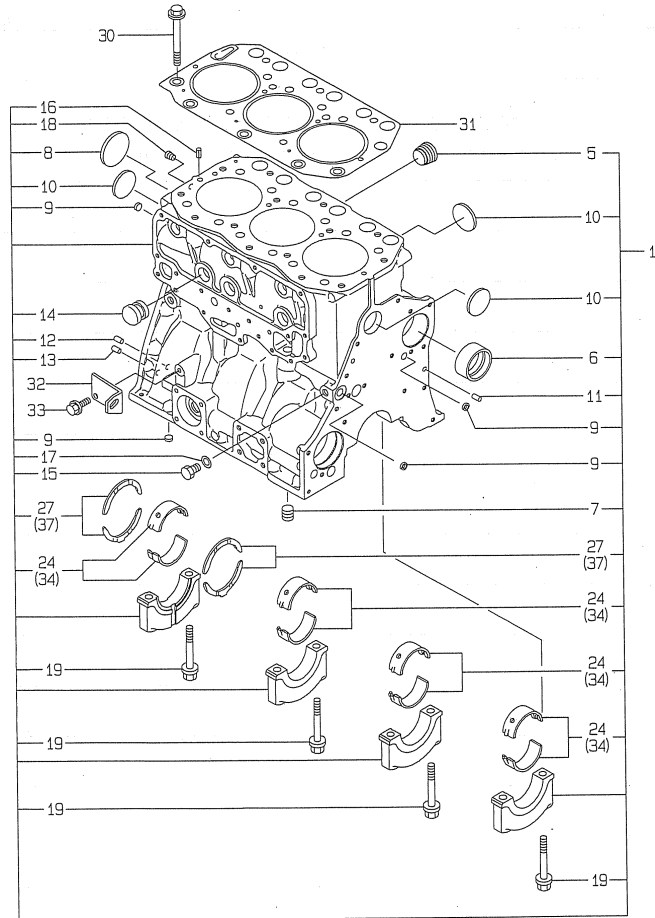
Fig. No. Fig. Name

25. ENGINE CONTROL DEVICE
26. ENGINE SUPPORT
27. PANEL
28. GASKET SET(CYLINDER BLOCK)
29. GASKET SET(CYLINDER HEAD)&TOOL

Fig.1. CYLINDER BLOCK

Y0004580
3, 4TN100 (T) L-P (S)

D19040-01110
D19000-02100



(A)=3TN100L-P
(B)=3TN100L-PS
(C)=4TN100L-P

(D)=4TN100L-PS
(E)=4TN100TL-P
(F)=4TN100TL-PS

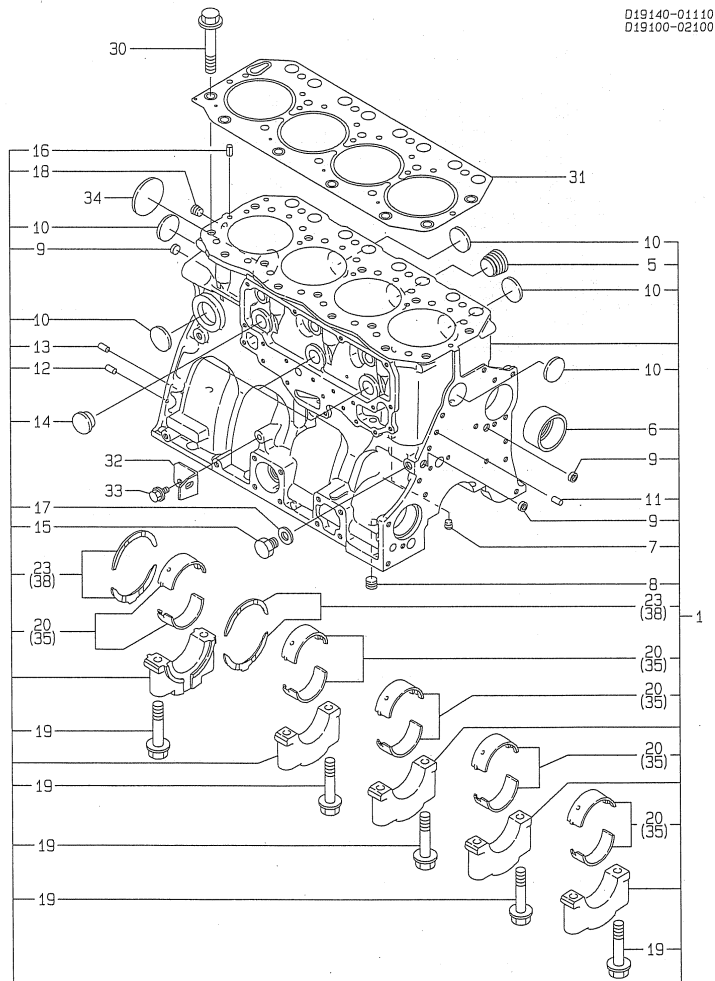
No.	Lev.	Parts No.	Description	Q'ty						I	R
				(A)	(B)	(C)	(D)	(E)	(F)		
1	1			1	1						
5	2	171051-01921	PLUG, NPTF1	1	1						
6	2	119000-02410	BUSH, CAMSHAFT	1	1						
7	2	23871-030000	PLUG, R03	1	1						
8	2	27231-600000	PLUG, 60	1	1						
9	2	27241-140000	PLUG, 14	4	4						
10	2	27241-400000	PLUG, 40	3	3						
11	2	129100-01580	PIN, M8X16	2	2						
12	2	129100-01580	PIN, M8X16	2	2						
13	2	129100-01580	PIN, M8X16	2	2						
14	2	119000-01840	PLUG, RUBBER	3	3						
15	2	135602-34390	RETAINER	1	1						
16	2	22351-080016	PIN, SPRING 8.0X16	2	2						
17	2	23414-140000	GASKET, 14X1.0	1	1						G
18	2	23871-020000	PLUG, R02	1	1						
19	2	119000-02020	BOLT, METAL CAP	8	8						
24	2	119000-02800	BEARING, MAIN	4	4						
27	2	119000-02930	BEARING, THRUST	2	2						
30	1	119000-01200	BOLT, HEAD	14	14						
31	1	119000-01340	GASKET, HEAD T=1.3	1	1						H
32	1	119100-01980	RETAINER, PUMP	1	1						
33	1	26106-080162	BOLT, M8X 16 PLATED	2	2						
34	1	719000-02870	BEARING, 0.25 US	4	4						1
37	1	719000-02940	BEARING, THRUST 0.25	2	2						2

Remarks

- (1) UNDER-SIZED(U.S=0.25)PART.
- (2) OVER-SIZED(O.S=0.25)PART.
- (G) THESE PARTS ARE SOLD BY FIG.28, REF.NO.1,2.
- (H) THESE PARTS ARE SOLD BY FIG.29, REF.NO.1.

Fig.2. CYLINDER BLOCK

Y0004580
3. 4TN100 (T) L-P (S)



D19140-01110
D19100-02100

(A)=3TN100L-P
(B)=3TN100L-PS
(C)=4TN100L-P

(D)=4TN100L-PS
(E)=4TN100TL-P
(F)=4TN100TL-PS

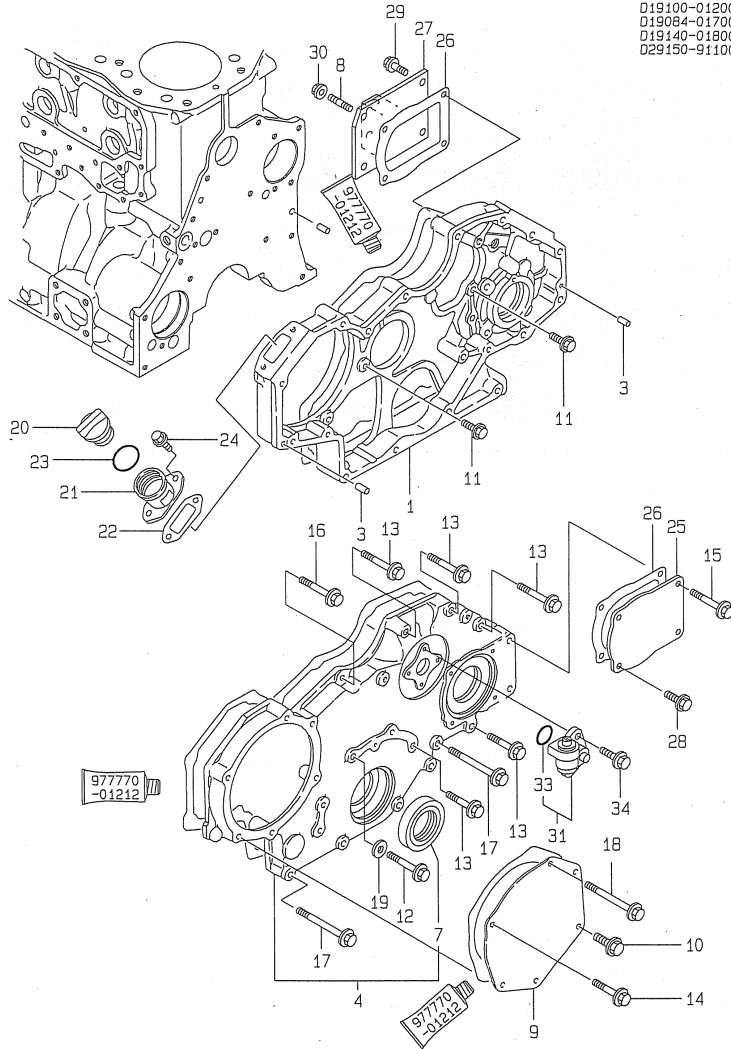
No.	Lev.	Parts No.	Description	Q'ty						I	R
				(A)	(B)	(C)	(D)	(E)	(F)		
1	1	719141-01561	BLOCK ASSY, CYLINDER			1	1	1	1		
5	2	171051-01921	PLUG, NPTF1			1	1	1	1		
6	2	119000-02410	BUSH, CAMSHAFT			1	1	1	1		
7	2	23871-010000	PLUG, R01			1	1	1	1		
8	2	23871-030000	PLUG, R03			1	1	1	1		
9	2	27241-140000	PLUG, 14			4	4	4	4		
10	2	27241-400000	PLUG, 40			5	5	5	5		
11	2	129100-01580	PIN, M8X16			2	2	2	2		
12	2	129100-01580	PIN, M8X16			2	2	2	2		
13	2	129100-01580	PIN, M8X16			2	2	2	2		
14	2	119000-01840	PLUG, RUBBER			3	3	3	3		
15	2	135602-34390	RETAINER			1	1	1	1		
16	2	22351-080016	PIN, SPRING 8.0X16			2	2	2	2		
17	2	23414-140000	GASKET, 14X1.0			1	1	1	1		H
18	2	23871-020000	PLUG, R02			1	1	1	1		
19	2	119000-02020	BOLT, METAL CAP			10	10	10	10		
20	2	119000-02800	BEARING, MAIN			5	5	5	5		
23	2	119000-02930	BEARING, THRUST			2	2	2	2		
30	1	119000-01200	BOLT, HEAD			18	18	18	18		
31	1	119100-01340	GASKET, HEAD T=1.3			1	1	1	1		G
32	1	119100-01980	RETAINER, PUMP			1	1	1	1		
33	1	26106-080162	BOLT, M8X 16 PLATED			2	2	2	2		
34	1	27231-600000	PLUG, 60			1	1	1	1		
35	1	719000-02870	BEARING, 0.25 US			5	5	5	5		1
38	1	719000-02940	BEARING, THRUST 0.25			2	2	2	2		2

Remarks

- (1) UNDER-SIZED(U.S=0.25)PART.
- (2) OVER-SIZED(O.S=0.25)PART.
- (G) THESE PARTS ARE SOLD BY FIG.29, REF.NO.2,3.
- (H) THESE PARTS ARE SOLD BY FIG.28, REF.NO.2.

Fig.3. GEAR HOUSING

Y00D4580
3, 4TN100 (7) L-P (S)



(A)=3TN100L-P
(B)=3TN100L-PS
(C)=4TN100L-P

(D)=4TN100L-PS
(E)=4TN100TL-P
(F)=4TN100TL-PS

No.	Lev.	Parts No.	Description	Q'ty						I	R
				(A)	(B)	(C)	(D)	(E)	(F)		
1	1	119000-01500	CASE, GEAR	1	1	1	1	1	1		
3	1	129100-01580	PIN, M8X16	2	2	2	2	2	2		
4	1	119000-01590	COVER ASSY,GEAR CASE	1	1	1	1	1	1		
7	2	121850-01800	SEAL, OIL	1	1	1	1	1	1		G
8	1	121850-01920	STUD, 2D8X22	2	2	2	2	2	2		
9	1	119000-01930	COVER	1	1	1	1	1	1		
10	1	26106-080182	BOLT, M8X 18 PLATED	1	1	1	1	1	1		
11	1	26106-080202	BOLT, M8X 20 PLATED	5	5	5	5	5	5		
12	1	26106-080402	BOLT, M8X 40 PLATED	1	1	1	1	1	1		
13	1	26106-080452	BOLT, M8X 45 PLATED	5	5	5	5	5	5		
14	1	26106-080452	BOLT, M8X 45 PLATED	3	3	3	3	3	3		
15	1	26106-080502	BOLT, M8X 50 PLATED	2	2	2	2	2	2		
16	1	26106-080552	BOLT, M8X 55 PLATED	1	1	1	1	1	1		
17	1	26106-080752	BOLT, M8X 75 PLATED	4	4	4	4	4	4		
18	1	26106-080902	BOLT, M8X 90 PLATED	2	2	2	2	2	2		
19	1	43400-500420	SEAL WASHER 8	1	1	1	1	1	1		G
20	1	124160-01751	COVER, FILLER	1	1	1	1	1	1		
21	1	119000-01760	FLANGE	1	1	1	1	1	1		
22	1	119000-01771	GASKET	1	1	1	1	1	1		G
23	1	24311-000320	O-RING, 1AP32.0	1	1	1	1	1	1		G
24	1	26106-080252	BOLT, M8X 25 PLATED	2	2	2	2	2	2		
25	1	124610-01851	COVER	1	1	1	1	1	1		
26	1	124610-01862	GASKET	2	2	2	2	2	2		G
27	1	119140-39480	BRACKET	1	1	1	1	1	1		
28	1	26106-080202	BOLT, M8X 20 PLATED	2	2	2	2	2	2		
29	1	26106-080202	BOLT, M8X 20 PLATED	2	2	2	2	2	2		
30	1	26366-080002	NUT, M8	2	2	2	2	2	2		
31	1	129150-91400	GEAR	1	1	1	1	1	1		
33	2	24341-000240	O-RING, 1AS24.0	1	1	1	1	1	1		G
34	1	26106-060162	BOLT, M6X 16 PLATED	2	2	2	2	2	2		

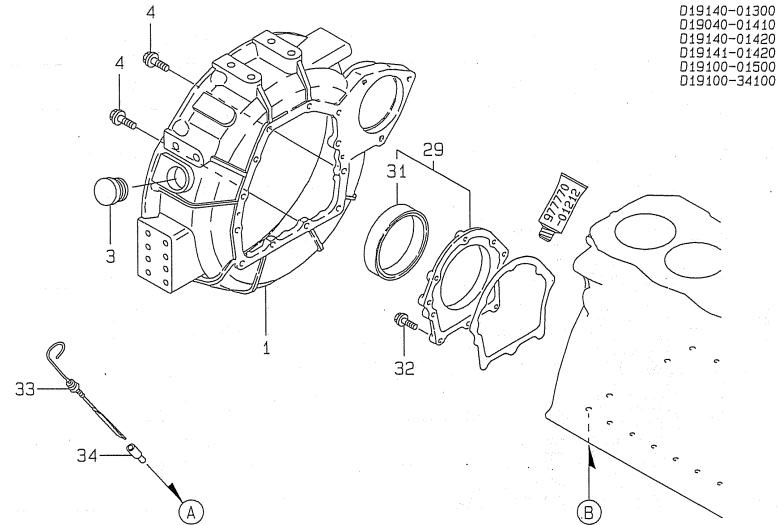
Remarks
(G) THESE PARTS ARE SOLD BY FIG.28,
REF.NO.1,2.

Fig.4. FLIWHEEL HOUSING & OIL SUMP

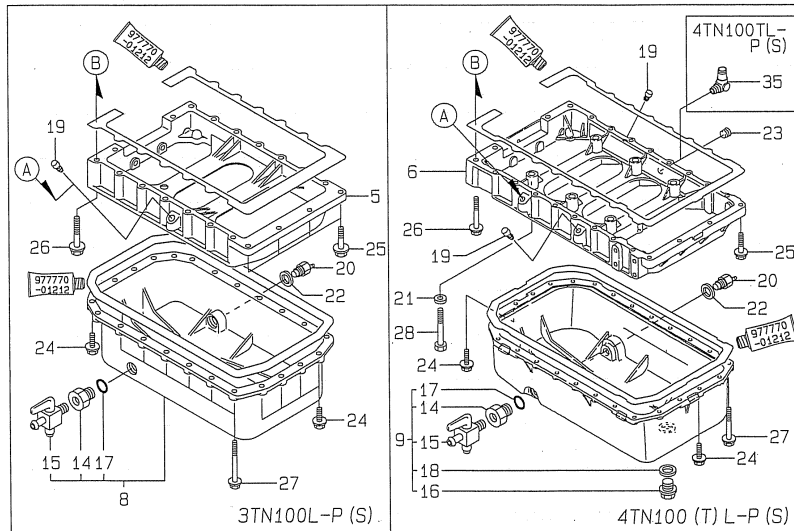
(A)=3TN100L-P
(B)=3TN100L-PS
(C)=4TN100L-P

(D)=4TN100L-PS
(E)=4TN100TL-P
(F)=4TN100TL-PS

Y0004580
3, 4TN100 (T) L-P (S)



D19140-01300
D19040-01410
D19140-01420
D19141-01420
D19100-01500
D19100-34100



No.	Lev.	Parts No.	Description	Q'ty						I	R
				(A)	(B)	(C)	(D)	(E)	(F)		
1	1	119140-01600	HOUSING, FLYWHEEL	1	1	1	1	1	1		
3	1	129795-11750	CAP	1	1	1	1	1	1		
4	1	26106-100302	BOLT, M10X 30 PLATED	12	12	12	12	12	12		
5	1	119000-01730	SPACER, OIL SUMP	1	1						
6	1	119100-01730	SPACER			1	1	1	1		
8	1	119040-01790	SUMP ASSY, OIL	1	1						
9	1	119140-01790	SUMP ASSY, OIL			1	1	1	1		
14	2	129113-01740	SOCKET, M22XPT3/8	1	1	1	1	1	1		
15	2	104200-11920	COCK, WATER	1	1	1	1	1	1		
16	2	127610-44900	PLUG, M36X1.5			1	1	1	1		
17	2	23414-220000	GASKET, 22X1.0	1	1	1	1	1	1		G
18	2	43400-500640	SEAL WASHER 36S			1	1	1	1		
19	1	124976-34850	CAP	1	1	2	2	2	2		
20	1	121470-44900	SENSOR	1	1	1	1	1	1		
21	1	22117-120000	WASHER, 12			6	6	6	6		
22	1	23414-160000	GASKET, 16X1.0	1	1	1	1	1	1		
23	1	23871-030000	PLUG, R03			1	1				
24	1	26106-080252	BOLT, M8X 25 PLATED	8	8	8	8	8	8		
25	1	26106-080352	BOLT, M8X 35 PLATED	4	4	4	4	4	4		
26	1	26106-080702	BOLT, M8X 70 PLATED	2	2	2	2	2	2		
27	1	26106-080802	BOLT, M8X 80 PLATED	14	14	18	18	18	18		
28	1	26116-120852	BOLT, M12X 85 PLATED			6	6	6	6		
29	1	119100-01640	CASE ASSY, OIL SEAL	1	1	1	1	1	1		
31	2	124411-01780	SEAL, HTC95X115X12	1	1	1	1	1	1		G
32	1	26106-080252	BOLT, M8X 25 PLATED	8	8	8	8	8	8		
33	1	119100-34800	DIPSTICK, OIL	1	1	1	1	1	1		
34	1	121520-34810	GUIDE, DIPSTICK	1	1	1	1	1	1		
35	1	124070-13300	ELBOW, PT3/8							1	1

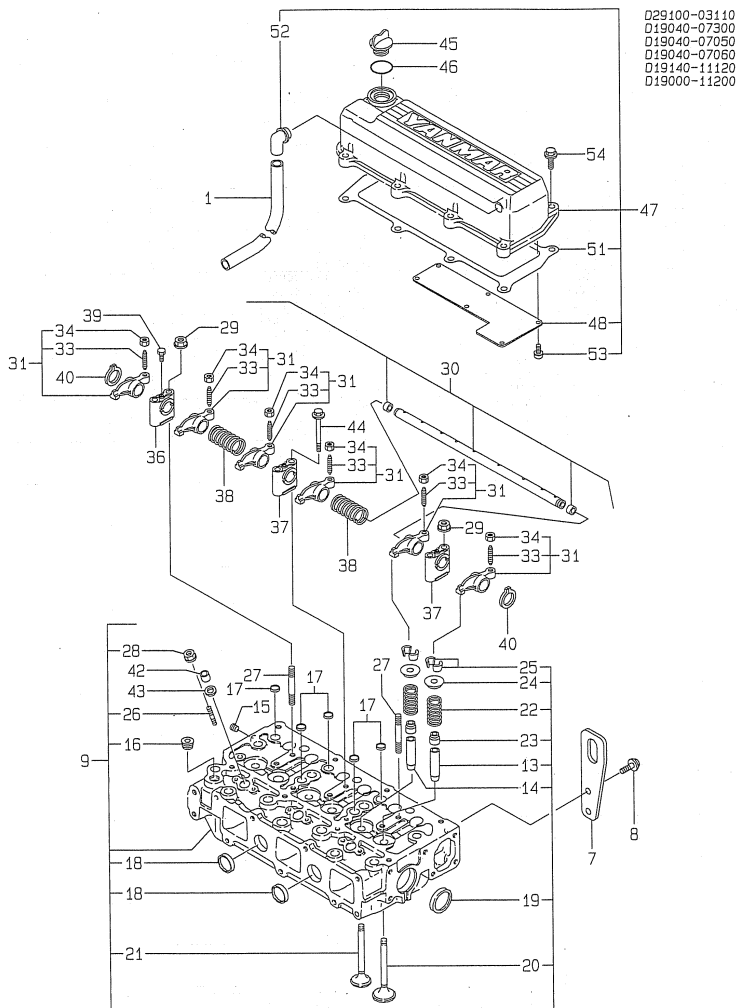
Remarks
(G) THESE PARTS ARE SOLD BY FIG.28,
REF.NO.1,2.

Fig.5. CYLINDER HEAD & BONNET

(A)=3TN100L-P
(B)=3TN100L-PS
(C)=4TN100L-P

(D)=4TN100L-PS
(E)=4TN100TL-P
(F)=4TN100TL-PS

Y0004580
3. 4TN100 (T) L-P (S)



No.	Lev.	Parts No.	Description	Q'ty						I	R
				(A)	(B)	(C)	(D)	(E)	(F)		
1	1	129150-03090	HOSE, ID16X2T	1	1						
7	1	119000-07200	LIFTER	1	1						
8	1	26106-100202	BOLT, M10X 20 PLATED	2	2						
9	1	719000-11700	HEAD ASSY, CYLINDER	1	1						
13	2	121850-11800	GUIDE, VALVE	3	3						1
14	2	119000-11810	GUIDE, VALVE	3	3						1
15	2	123385-82200	PLUG, 1/16	1	1						
16	2	23871-030000	PLUG, R03	1	1						
17	2	27241-160000	PLUG, 16	5	5						
18	2	27241-280000	PLUG, 28	2	2						
19	2	27241-400000	PLUG, 40	2	2						
20	2	121850-11100	VALVE, INTAKE	3	3						
21	2	119000-11110	VALVE, EXHAUST	3	3						
22	2	121850-11120	SPRING, VALVE	6	6						
23	2	121850-11150	SEAL, VALVE STEM	6	6						H
24	2	121850-11180	RETAINER, SPRING	6	6						
25	2	124250-11190	COTTER	6	6						
26	2	26216-060252	STUD, M6X 25	6	6						
27	2	26216-080652	STUD, M8X 65	2	2						
28	2	26366-060002	NUT, M6	6	6						
29	2	26366-080002	NUT, M8	2	2						
30	1	119000-11340	SHAFT ASSY, ROCKER	1	1						
31	2	719000-11650	ARM ASSY, ROCKER	6	6						
33	3	119000-11230	SCREW, VALVE ADJUST	6	6						
34	3	129150-11750	NUT, M8	6	6						
36	2	119000-11260	SUPPORT, ROCKER ARM	1	1						
37	2	119000-11270	SUPPORT, ROCKER ARM	2	2						
38	2	119000-11280	SPRING	2	2						
39	2	119000-11290	BOLT	1	1						
40	2	22242-000180	RING, 18	2	2						
42	1	119625-11870	PROTECTOR, NOZZLE	3	3						H
43	1	119625-11880	SEAT, NOZZLE	3	3						H
44	1	26106-080652	BOLT, M8X 65 PLATED	4	4						
45	1	124160-01751	COVER, FILLER	1	1						
46	1	24311-000320	O-RING, 1AP32.0	1	1						G
47	1	119000-11311	BONNET ASSY, HEAD	1	1						
48	2	119000-03200	COVER, BREATHER	1	1						
51	2	119000-11320	GASKET, BONNET	1	1						H
52	2	119100-11330	ELBOW	1	1						
53	2	26022-050122	SCREW, M5X12	7	7						
54	1	26106-080252	BOLT, M8X 25 PLATED	8	8						

Remarks

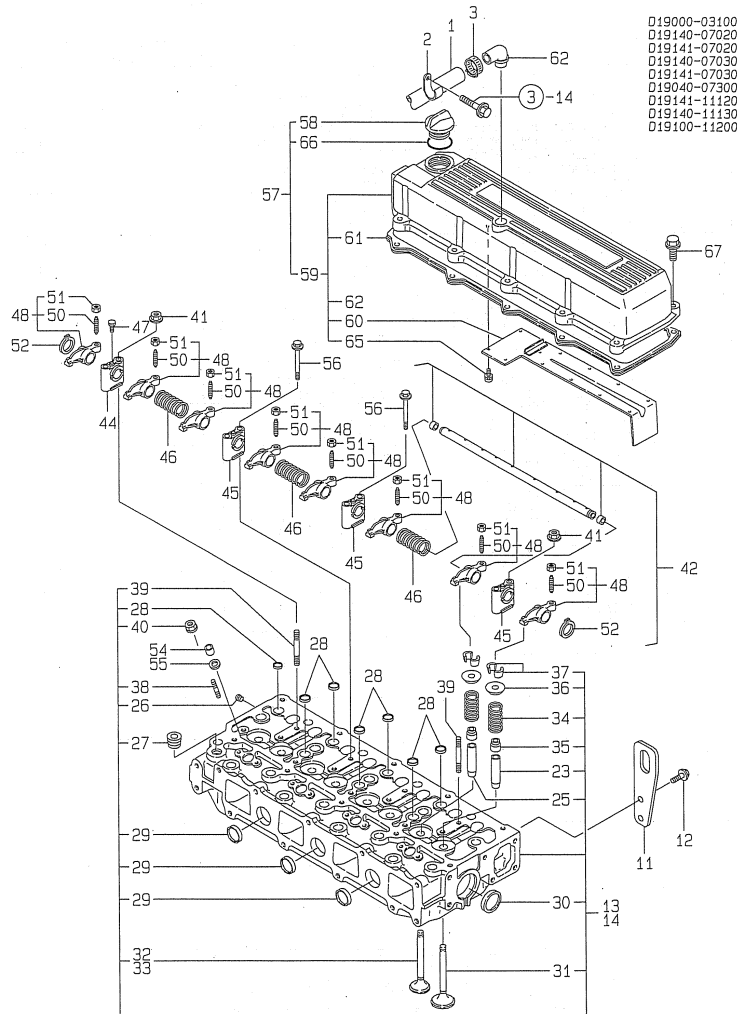
- (1) REPAIR PART.
- (G) THESE PARTS ARE SOLD BY FIG.28, REF.NO.1,2.
- (H) THESE PARTS ARE SOLD BY FIG.29, REF.NO.1.

Fig.6. CYLINDER HEAD & BONNET

(A)=3TN100L-P
(B)=3TN100L-PS
(C)=4TN100L-P

(D)=4TN100L-PS
(E)=4TN100TL-P
(F)=4TN100TL-PS

Y00D4580
3, 4TN100 (T) L-P (S)



No.	Lev.	Parts No.	Description	Q'ty						I	R
				(A)	(B)	(C)	(D)	(E)	(F)		
1	1	119006-03090	HOSE, BREATHER	1	1	1	1				
2	1	129150-03100	RETAINER, PIPE	1	1	1	1				
3	1	23000-022000	CLAMP, 22	1	1	1	1				
11	1	119000-07200	LIFTER	1	1	1	1				
12	1	26106-100202	BOLT, M10X 20 PLATED	2	2	2	2				
13	1	719129-11700	HEAD ASSY, CYLINDER	1	1						
14	1							1	1		
23	2	121850-11800	GUIDE, VALVE	4	4	4	4				1
25	2	119000-11810	GUIDE, VALVE	4	4	4	4				1
26	2	123385-82200	PLUG, 1/16	1	1	1	1				
27	2	23871-030000	PLUG, R03	1	1	1	1				
28	2	27241-160000	PLUG, 16	7	7	7	7				
29	2	27241-280000	PLUG, 28	3	3	3	3				
30	2	27241-400000	PLUG, 40	2	2	2	2				
31	2	121850-11100	VALVE, INTAKE	4	4	4	4				
32	2	119000-11110	VALVE, EXHAUST	4	4						
33	2	119101-11110	VALVE, EXHAUST					4	4		
34	2	121850-11120	SPRING, VALVE	8	8	8	8				
35	2	121850-11150	SEAL, VALVE STEM	8	8	8	8				G
36	2	121850-11180	RETAINER, SPRING	8	8	8	8				
37	2	124250-11190	COTTER	8	8	8	8				
38	2	26216-060252	STUD, M6X 25	8	8	8	8				
39	2	26216-080652	STUD, M8X 65	2	2	2	2				
40	2	26366-060002	NUT, M6	8	8	8	8				
41	2	26366-080002	NUT, M8	2	2	2	2				
42	1	119100-11230	SHAFT ASSY, ROCKER	1	1	1	1				
44	2	119000-11260	SUPPORT, ROCKER ARM	1	1	1	1				
45	2	119000-11270	SUPPORT, ROCKER ARM	3	3	3	3				
46	2	119000-11280	SPRING	3	3	3	3				
47	2	119000-11290	BOLT	1	1	1	1				
48	2	719129-11660	ARM ASSY, ROCKER	8	8	8	8				
50	3	119000-11230	SCREW, VALVE ADJUST	8	8	8	8				
51	3	129150-11750	NUT, M8	8	8	8	8				
52	2	22242-000180	RING, 18	2	2	2	2				
54	1	119625-11870	PROTECTOR, NOZZLE	4	4	4	4				G
55	1	119625-11880	SEAT, NOZZLE	4	4	4	4				G
56	1	26106-080652	BOLT, M8X 65 PLATED	6	6	6	6				
57	1	119129-11520	BONNET ASSY, HEAD	1	1	1	1				
58	2	124160-01751	COVER, FILLER	1	1	1	1				
59	2	119100-11311	BONNET ASSY, HEAD	1	1	1	1				
60	3	119100-03200	COVER	1	1	1	1				
61	3	119100-11320	GASKET, BONNET	1	1	1	1				G
62	3	119100-11330	ELBOW	1	1	1	1				
65	3	26022-050122	SCREW, M5X12	11	11	11	11				
66	2	24311-000320	O-RING, 1AP32.0	1	1	1	1				H
67	1	26106-080252	BOLT, M8X 25 PLATED	10	10	10	10				

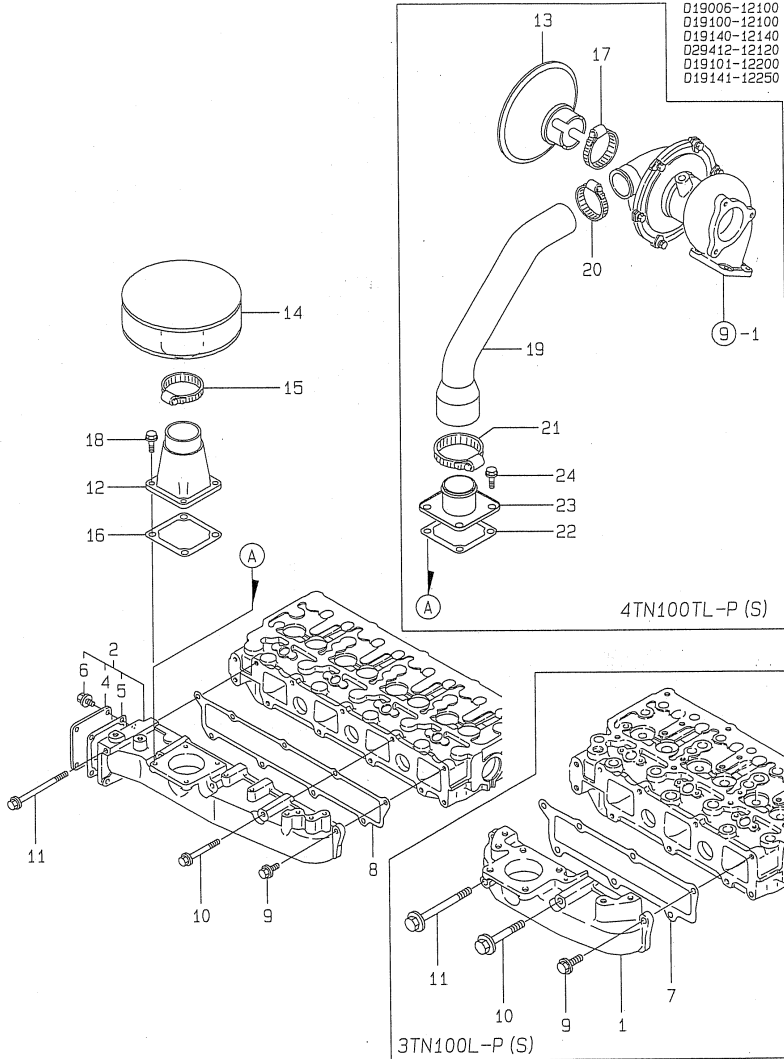
Remarks
(G) THESE PARTS ARE SOLD BY FIG.29, REF.NO.2,3.
(H) THESE PARTS ARE SOLD BY FIG.28, REF.NO.2.
(1) REPAIR PART.

Fig.7. SUCTION MANIFOLD & AIR CLEANER

(A)=3TN100L-P
 (B)=3TN100L-PS
 (C)=4TN100L-P

(D)=4TN100L-PS
 (E)=4TN100TL-P
 (F)=4TN100TL-PS

Y00D4580
 3, 4TN100 (T) L-P (S)



No.	Lev.	Parts No.	Description	Q'ty						I	R
				(A)	(B)	(C)	(D)	(E)	(F)		
1	1	119000-12100	MANIFOLD, AIR INTAKE	1	1						
2	1	719129-12100	MANIFOLD ASSY,INTAKE							1	
4	2	119100-12120	COVER, MANIFOLD				1	1	1	1	
5	2	121850-77021	GASKET				1	1	1	1	
6	2	26106-080142	BOLT, M8X 14 PLATED				4	4	4	4	
7	1	119000-12110	GASKET, MANIFOLD	1	1						G
8	1	119100-12112	GASKET, MANIFOLD				1	1	1	1	G
9	1	26106-080202	BOLT, M8X 20 PLATED	5	5		5	5	5	5	
10	1	26106-080702	BOLT, M8X 70 PLATED	1	1		3	3	3	3	
11	1	26106-081152	BOLT, M8X115 PLATED	1	1		1	1	1	1	
12	1	119140-12130	STAY, SILENCER	1	1		1	1			
13	1	129412-12460	COVER							1	1
14	1	127412-18853	SILENCER	1	1		1	1			
15	1	127488-18910	CLIP, HOSE	1	1		1	1			
16	1	121850-77021	GASKET	1	1		1	1			G
17	1	23000-054000	CLAMP, 54							1	1
18	1	26106-080182	BOLT, M8X 18 PLATED	4	4		4	4			
19	1	119101-12850	PIPE, AIR INTAKE							1	1
20	1	23000-060000	CLAMP, 60							1	1
21	1	23000-070000	CLAMP, 70							1	1
22	1	121850-77021	GASKET							1	1
23	1	121850-77100	CAPSULE							1	1
24	1	26106-080142	BOLT, M8X 14 PLATED							4	4

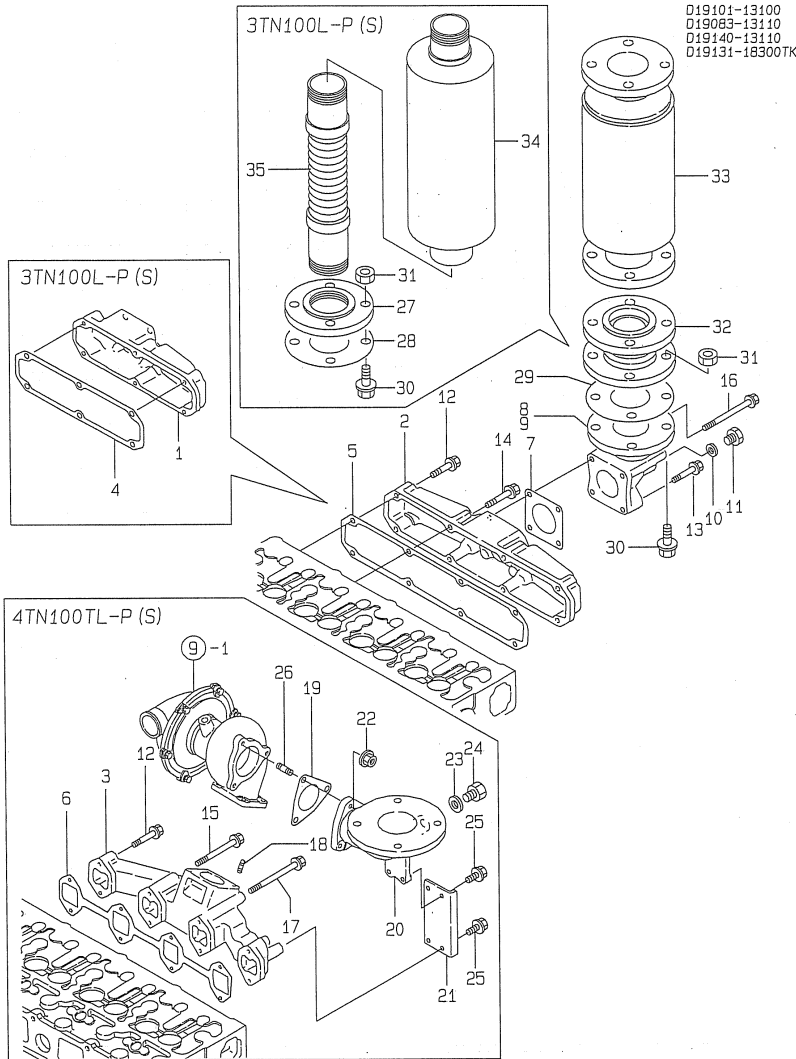
Remarks
 (G) THESE PARTS ARE SOLD BY FIG.29,
 REF.NO.1,2,3.

Fig.8. EXHAUST MANIFOLD & SILENCER

(A)=3TN100L-P
(B)=3TN100L-PS
(C)=4TN100L-P

(D)=4TN100L-PS
(E)=4TN100TL-P
(F)=4TN100TL-PS

Y00D4580
3, 4TN100 (T) L-P (S)



No.	Lev.	Parts No.	Description	Q'ty						I	R	
				(A)	(B)	(C)	(D)	(E)	(F)			
1	1	119000-13100	MANIFOLD, EXHAUST	1	1							
2	1	119100-13100	MANIFOLD, EXHAUST			1	1					
3	1	119101-13100	MANIFOLD, EXHAUST					1	1			
4	1	119000-13200	GASKET	1	1						G	
5	1	119100-13200	GASKET			1	1				G	
6	1	119101-13200	GASKET					1	1		G	
7	1	129400-13201	GASKET, SILENCER	1	1	1	1				G	
8	1	119140-13300	BEND, EXHAUST 65A			1	1					
9	1	129411-13300	BEND, EXHAUST 50A	1	1							
10	1	23414-170000	GASKET, 17X1.0	1	1	1	1					
11	1	23894-030002	PLUG, G3/8	1	1	1	1					
12	1	26106-080402	BOLT, M8X 40 PLATED	4	4	4	4	4	4			
13	1	26106-080452	BOLT, M8X 45 PLATED	2	2	2	2					
14	1	26106-080502	BOLT, M8X 50 PLATED	2	2	4	4					
15	1	26106-080702	BOLT, M8X 70 PLATED							3	3	
16	1	26106-080952	BOLT, M8X 95 PLATED	2	2	2	2					
17	1	26106-081102	BOLT, M8X110 PLATED							1	1	
18	1	26216-080222	STUD, M8X 22							4	4	
19	1	129792-13520	GASKET							1	1	G
20	1	119131-18390	BEND, EXHAUST							1	1	
21	1	119131-18400	STAY							1	1	
22	1	194990-22050	NUT, M8							3	3	
23	1	23414-170000	GASKET, 17X1.0							1	1	
24	1	23894-030002	PLUG, G3/8							1	1	
25	1	26106-080162	BOLT, M8X 16 PLATED							4	4	
26	1	26216-080222	STUD, M8X 22							3	3	
27	1	23217-050000	FLANGE, 5K 50	1	1							
28	1	23446-050000	GASKET 50	1	1							
29	1	23446-065000	GASKET 65			1	1	1	1			
30	1	26116-120502	BOLT, M12X 50 PLATED	4	4	4	4	4	4			
31	1	26716-120002	NUT, M12	4	4	4	4	4	4			
32	1	43100-500560	BELLOWS			1	1	1	1			
33	1	43100-500900	SILENCER			1	1	1	1			
34	1	43100-552900	SILENCER	1	1							
35	1	43720-500120	PIPE	1	1							

Remarks
(G) THESE PARTS ARE SOLD BY FIG.29,
REF.NO.1,2,3.

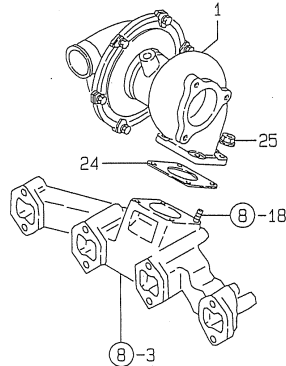
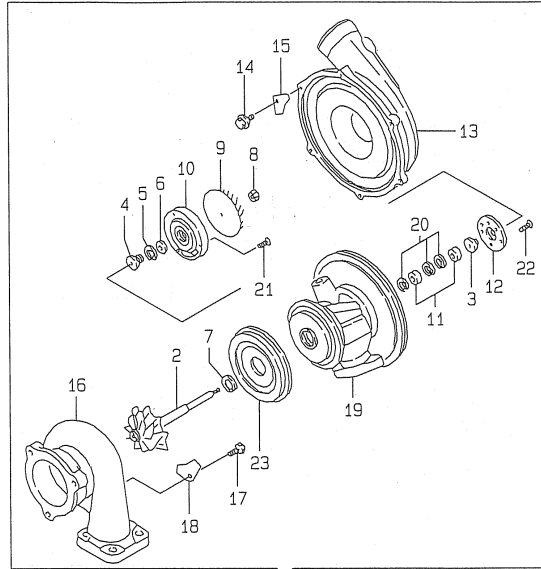
Fig.9. TURBINE

(A)=3TN100L-P
(B)=3TN100L-PS
(C)=4TN100L-P

(D)=4TN100L-PS
(E)=4TN100TL-P
(F)=4TN100TL-PS

Y00D4580
3, 4TN100 (T) L-P (S)

D19101-18110

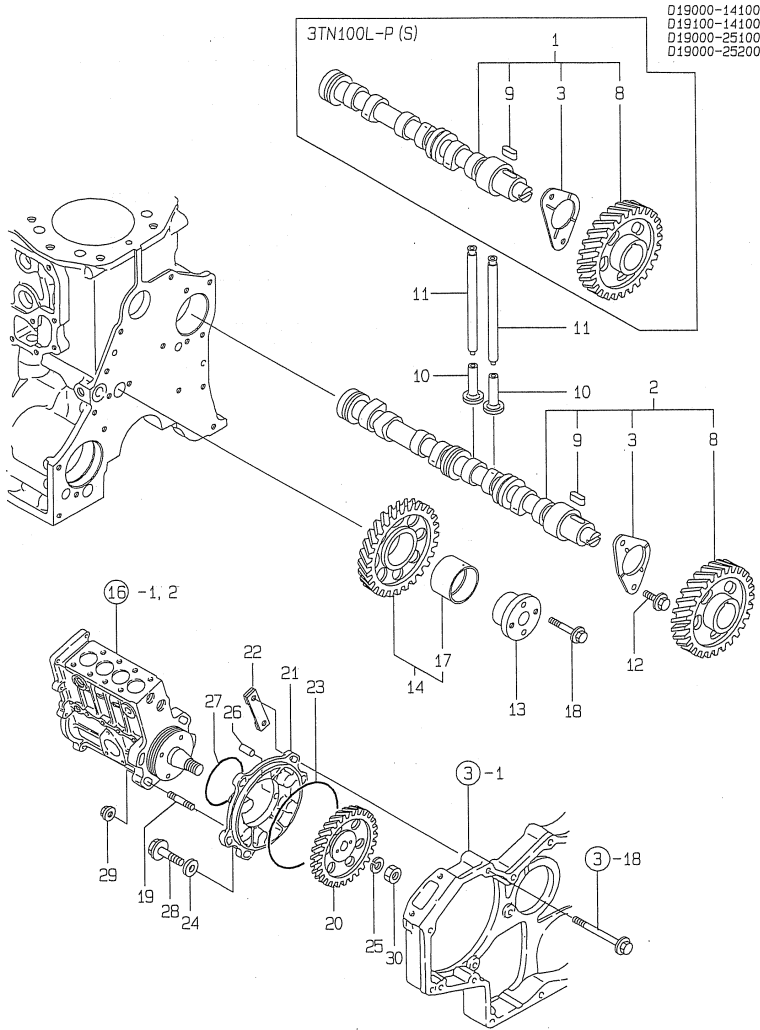


No.	Lev.	Parts No.	Description	Q'ty						I	R
				(A)	(B)	(C)	(D)	(E)	(F)		
1	1	119101-18020	TURBINE, RHB52					1	1		
2	2	119101-18500	SHAFT, TURBINE					1	1		
3	2	129404-18510	BUSHING					1	1		
4	2	129404-18520	OIL THROWER					1	1		
5	2	129404-18530	RING, SEAL					1	1		
6	2	129404-18540	RING, SEAL					1	1		
7	2	129404-18550	RING, SEAL					1	1		
8	2	129404-18560	NUT, D8/4.5 T5					1	1		
9	2	119101-18510	WHEEL, BLOWER					1	1		
10	2	129404-18580	PLATE					1	1		
11	2	129404-18590	BEARING					2	2		
12	2	129404-18600	BEARING, THRUST					1	1		
13	2	119101-18520	HOUSING ASSY					1	1		
14	2	129403-18620	BOLT M 5X 10.5					6	6		
15	2	119101-18530	PLATE					6	6		
16	2	119101-18540	HOUSING					1	1		
17	2	119101-18550	BOLT, M8					4	4		
18	2	119101-18560	PLATE					4	4		
19	2	119101-18570	HOUSING, BEARING					1	1		
20	2	129404-18680	CIRCLIP					3	3		
21	2	129406-18690	SCREW					4	4		
22	2	129406-18700	SCREW					3	3		
23	2	129404-18720	PROTECTOR, HEAT					1	1		
24	1	129472-18090	GASKET					1	1		G
25	1	194990-22050	NUT, M8					4	4		

Remarks
(G) THESE PARTS ARE SOLD BY FIG.29,
REF.NO.3.

Fig.10. CAMSHAFT & DRIVING GEAR

Y0004580
3, 4TN100 (T) L-P (S)



(A)=3TN100L-P
(B)=3TN100L-PS
(C)=4TN100L-P

(D)=4TN100L-PS
(E)=4TN100TL-P
(F)=4TN100TL-PS

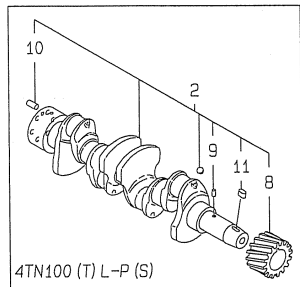
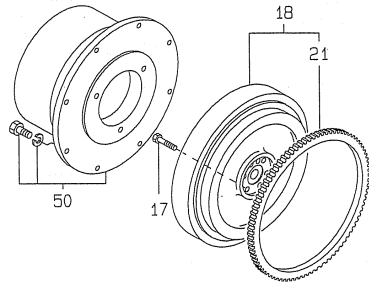
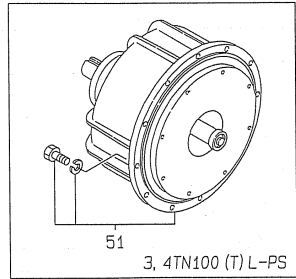
No.	Lev.	Parts No.	Description	Q'ty						I	R
				(A)	(B)	(C)	(D)	(E)	(F)		
1	1	119000-14000	CAMSHAFT ASSY	1	1						
2	1	119100-14000	CAMSHAFT ASSY								
3	2	119000-02450	BEARING, THRUST	1	1	1	1	1	1		
8	2	119000-14100	GEAR, CAMSHAFT Z=48	1	1	1	1	1	1		
9	2	22512-070140	KEY, 7X 14	1	1	1	1	1	1		
10	1	119000-14200	TAPPET	6	6	8	8	8	8		
11	1	129150-14400	ROD, PUSH L=178	6	6	8	8	8	8		
12	1	26106-080162	BOLT, M8X 16 PLATED	2	2	2	2	2	2		
13	1	119000-25050	SHAFT, IDLE GEAR	1	1	1	1	1	1		
14	1	119000-25100	GEAR ASSY, IDLE Z=51	1	1	1	1	1	1		
17	2	119000-25930	BUSH, IDLE GEAR	1	1	1	1	1	1		1
18	1	26013-080452	BOLT, M8X 45	2	2	2	2	2	2		
19	1	121850-01900	STUD, SB10X32	4	4	4	4	4	4		
20	1	119000-25900	GEAR, PUMP	1	1	1	1	1	1		
21	1	119000-25910	BRACKET, PUMP	1	1	1	1	1	1		
22	1	119000-25920	RETAINER	1	1	1	1	1	1		
23	1	24341-001350	O-RING, 1AS135.0	1	1	1	1	1	1		G
24	1	106100-55800	WASHER	3	3	3	3	3	3		
25	1	22217-180000	WASHER, SPRING 18	1	1	1	1	1	1		
26	1	22351-050012	PIN, SPRING 5.0X12	1	1	1	1	1	1		
27	1	124410-51960	O-RING	1	1	1	1	1	1		G
28	1	26106-080252	BOLT, M8X 25 PLATED	3	3	3	3	3	3		
29	1	26366-100002	NUT, M10	4	4	4	4	4	4		
30	1	26776-180002	NUT, LOCK M18	1	1	1	1	1	1		

Remarks

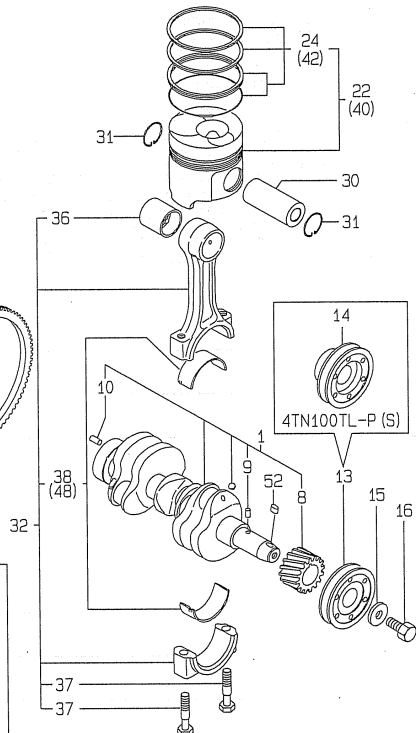
(1) REPAIR PART.
(G) THESE PARTS ARE SOLD BY FIG.28,
REF.NO.1,2.

Fig.11. CRANKSHAFT & PISTON

Y00D4580
3, 4TN100 (T) L-P (S)



D19100-21100
D19141-21200
D19000-21150
D19000-22100
D19000-23100
D19000-21200
D19040-21300



(A)=3TN100L-P
(B)=3TN100L-PS
(C)=4TN100L-P

(D)=4TN100L-PS
(E)=4TN100TL-P
(F)=4TN100TL-PS

No.	Lev.	Parts No.	Description	Q'ty						I	R
				(A)	(B)	(C)	(D)	(E)	(F)		
1	1	719000-21700	CRANKSHAFT ASSY	1	1						
2	1	719100-21700	CRANKSHAFT ASSY								
8	2	121850-21200	GEAR, CRANKSHAFT	1	1	1	1	1	1		
9	2	121850-21290	PIN	1	1	1	1	1	1		
10	2	121850-21920	PIN, M10X22	1	1	1	1	1	1		
13	1	119000-21650	V-PULLEY	1	1	1	1				
14	1	119141-21650	V-PULLEY							1	1
15	1	121850-21660	WASHER	1	1	1	1	1	1		
16	1	121850-21680	BOLT	1	1	1	1	1	1		
17	1	121850-21130	BOLT, FLYWHEEL	6	6	6	6	6	6		
18	1	171090-21601	FLYWHEEL ASSY	1	1	1	1	1	1		
21	2	127410-21480	GEAR, RING Z=129	1	1	1	1	1	1		
22	1	119000-22000	PISTON ASSY	3	3	4	4	4	4		
24	2	719000-22500	RING SET, PISTON	3	3	4	4	4	4		
30	1	119000-22300	PIN, PISTON	3	3	4	4	4	4		
31	1	22252-000340	RING, 34	6	6	8	8	8	8		
32	1	719000-23100	ROD ASSY, CONNECTING	3	3	4	4	4	4		
36	2	119000-23910	BEARING, PISTON PIN	3	3	4	4	4	4		1
37	2	121850-23200	BOLT, CONNECTING ROD	6	6	8	8	8	8		
38	2	719000-23600	BEARING, CRANK PIN	3	3	4	4	4	4		
40	1	719000-22900	PISTON ASSY, 0.25 OS	3	3	4	4	4	4		2
42	2	719000-22950	RING SET, 0.25 OS	3	3	4	4	4	4		2
48	1	719000-23610	BEARING ASSY, 0.25	3	3	4	4	4	4		3
50	1	45100-501950	CLUTCH ASSY	1		1		1			
51	1	45100-502530	CLUTCH, FAYH-93H		1		1		1		
52	1	22512-070140	KEY, 7X 14	1	1	1	1	1	1		

Remarks

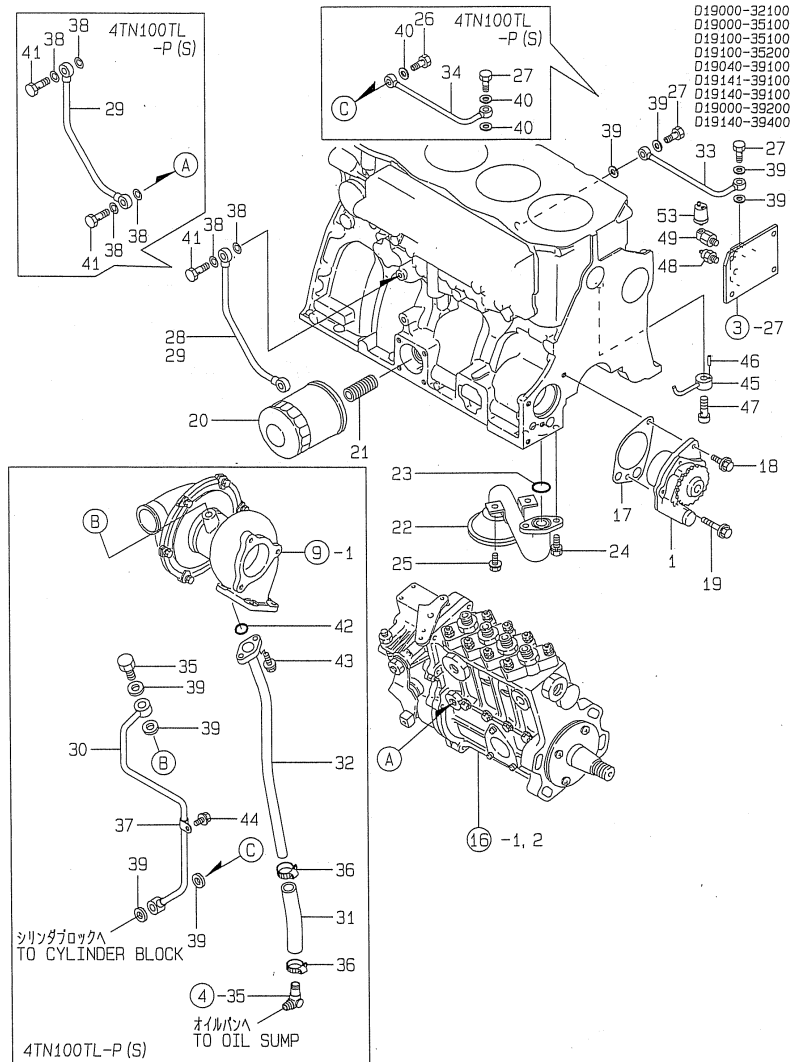
- (1) REPAIR PART.
- (2) OVER-SIZED(O.S=0.25)PART.
- (3) UNDER-SIZED(U.S=0.25)PART.

Fig.12. LUB.OIL SYSTEM

(A)=3TN100L-P
(B)=3TN100L-PS
(C)=4TN100L-P

(D)=4TN100L-PS
(E)=4TN100TL-P
(F)=4TN100TL-PS

Y00D4580
3. 4TN100 (T) L-P (S)



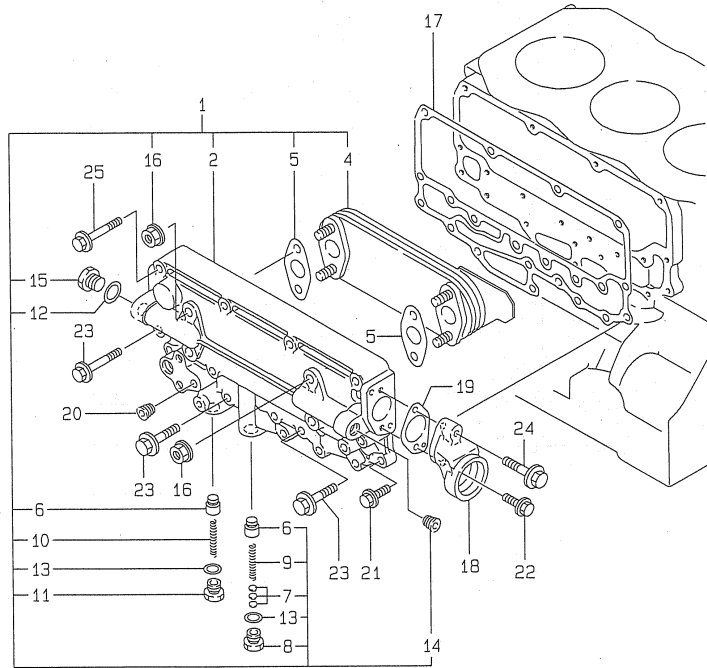
No.	Lev.	Parts No.	Description	Q'ty						I	R
				(A)	(B)	(C)	(D)	(E)	(F)		
1	1	119000-32001	PUMP ASSY, OIL	1	1	1	1	1	1		
17	1	119000-32020	GASKET, PUMP	1	1	1	1	1	1		G
18	1	26106-080162	BOLT, M8X 16 PLATED	1	1	1	1	1	1		
19	1	26106-080502	BOLT, M8X 50 PLATED	1	1	1	1	1	1		
20	1	119005-35100	FILTER, D80X100L	1	1	1	1	1	1		
21	1	119000-35140	BOLT, FILTER	1	1	1	1	1	1		
22	1	119100-35090	PIPE ASSY, OIL INLET	1	1	1	1	1	1		
23	1	24311-000220	O-RING, 1AP22.0	1	1	1	1	1	1		G
24	1	26013-080162	BOLT, M8X 16	2	2	2	2	2	2		
25	1	26106-080162	BOLT, M8X 16 PLATED	2	2	2	2	2	2		
26	1	119141-39150	BOLT, M10X1.5						1	1	
27	1	121252-39150	BOLT, JOINT M10X1.5	1	1	2	2	1	1		
28	1	119000-39350	PIPE, OIL	1	1						
29	1	119100-39350	PIPE, OIL			1	1	1	1		
30	1	119101-39600	PIPE, OIL						1	1	
31	1	129792-39610	JOINT, RUBBER						1	1	
32	1	119101-39650	PIPE, OIL						1	1	
33	1	119140-39650	PIPE, OIL	1	1	1	1				
34	1	119141-39650	PIPE, OIL						1	1	
35	1	124413-39710	BOLT, PIPE JOINT M10						1	1	
36	1	23000-025000	CLAMP, 25						2	2	
37	1	23297-080081	CLAMP, A8X 8						1	1	
38	1	23414-080000	GASKET, 8X1.0	2	2	2	2	2	4	4	G
39	1	23414-100000	GASKET, 10X1.0	4	4	4	4	4	4	4	
40	1	23414-100000	GASKET, 10X1.0						3	3	
41	1	23857-030000	BOLT, JOINT 3	1	1	1	1	1	2	2	
42	1	24314-000180	O-RING, 4CP18.0						1	1	
43	1	26106-060162	BOLT, M6X 16 PLATED						2	2	
44	1	26106-080122	BOLT, M8X 12 PLATED						1	1	
45	1	119000-39650	NOZZLE	3	3	4	4	4	4	4	
46	1	22351-030010	PIN, SPRING 3.0X10	3	3	4	4	4	4	4	
47	1	23857-030000	BOLT, JOINT 3	3	3	4	4	4	4	4	
48	1	121250-39450	SWITCH, 1.0KG	1	1	1	1	1	1	1	
49	1	123482-39660	DAMPER	1	1	1	1	1	1	1	
53	1	144626-91560	SENSOR	1	1	1	1	1	1	1	

Remarks
(G) THESE PARTS ARE SOLD BY FIG.28,
REF.NO.1,2.

Fig.13. OIL COOLER HOUSING

Y00D4580
3, 4TN100 (T) L-P (S)

D19140-33110



(A)=3TN100L-P
(B)=3TN100L-PS
(C)=4TN100L-P

(D)=4TN100L-PS
(E)=4TN100TL-P
(F)=4TN100TL-PS

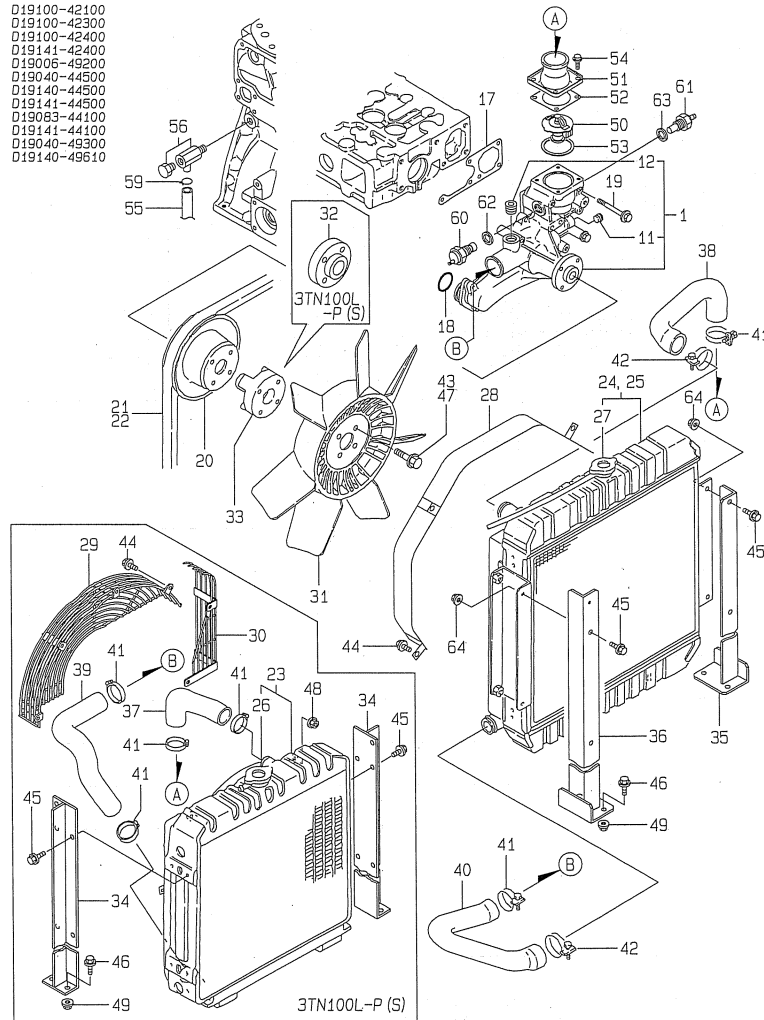
No.	Lev.	Parts No.	Description	Q'ty						I	R
				(A)	(B)	(C)	(D)	(E)	(F)		
1	1	719000-33700	COOLER ASSY, OIL	1	1	1	1	1	1		
1-1	1	119140-92600	SET,LO COOLER CMP			1	1	1	1		N
		(A=E2009.12)	(B=E2009.12)	(C=E2009.12)	(D=E2009.12)	(E=E2009.12)	(F=E2009.12)				
2	2	119000-33010	CASE, OIL COOLER	1	1	1	1	1	1		
4	2	119000-33050	COOLER, OIL	1	1	1	1	1	1		
5	2	121952-33071	GASKET, COOLER	2	2	2	2	2	2		G
6	2	119000-34030	VALVE, CONTROL	2	2	2	2	2	2		
7	2	121850-35230	SHIM, T=1.0	5	5	5	5	5	5		
8	2	124223-35510	RETAINER, SPRING	1	1	1	1	1	1		
9	2	124411-35520	SPRING	1	1	1	1	1	1		
10	2	121952-39830	SPRING	1	1	1	1	1	1		
11	2	123672-84530	RETAINER, VALVE	1	1	1	1	1	1		
12	2	23414-160000	GASKET, 16X1.0	1	1	1	1	1	1		G
13	2	23414-180000	GASKET, 18X1.0	2	2	2	2	2	2		G
13-1	2	23414-170000	GASKET, 17X1.0			2	2	2	2		N
		(A=E2009.12)	(B=E2009.12)	(C=E2009.12)	(D=E2009.12)	(E=E2009.12)	(F=E2009.12)				
14	2	23871-030000	PLUG, R03	2	2	2	2	2	2		
15	2	23887-160002	PLUG, 16	1	1	1	1	1	1		
16	2	26376-100002	NUT, M10	4	4	4	4	4	4		
17	1	119000-33021	GASKET	1	1	1	1	1	1		G
18	1	119000-33030	BEND	1	1	1	1	1	1		
19	1	119000-33041	GASKET	1	1	1	1	1	1		G
20	1	23871-010000	PLUG, R01	1	1	1	1	1	1		
21	1	26106-080202	BOLT, M8X 20 PLATED	3	3	3	3	3	3		
22	1	26106-080202	BOLT, M8X 20 PLATED	1	1	1	1	1	1		
23	1	26106-080352	BOLT, M8X 35 PLATED	8	8	8	8	8	8		
24	1	26106-080352	BOLT, M8X 35 PLATED	1	1	1	1	1	1		
25	1	26106-080502	BOLT, M8X 50 PLATED	10	10	10	10	10	10		

Remarks
(G) THESE PARTS ARE SOLD BY FIG.28,
REF.NO.1,2.

Fig.14. COOLING WATER SYSTEM

Y0004580
3, 4TN100 (T) L-P (S)

D19100-42100
D19100-42300
D19100-42400
D19141-42400
D19006-49200
D19040-44500
D19140-44500
D19141-44500
D19083-44100
D19141-44100
D19040-49300
D19140-49610



Remarks
(G) THESE PARTS ARE SOLD BY FIG.29,
REF.NO.1,2,3.
(H) THESE PARTS ARE SOLD BY FIG.28,
REF.NO.1,2.

(A)=3TN100L-P
(B)=3TN100L-PS
(C)=4TN100L-P

(D)=4TN100L-PS
(E)=4TN100TL-P
(F)=4TN100TL-PS

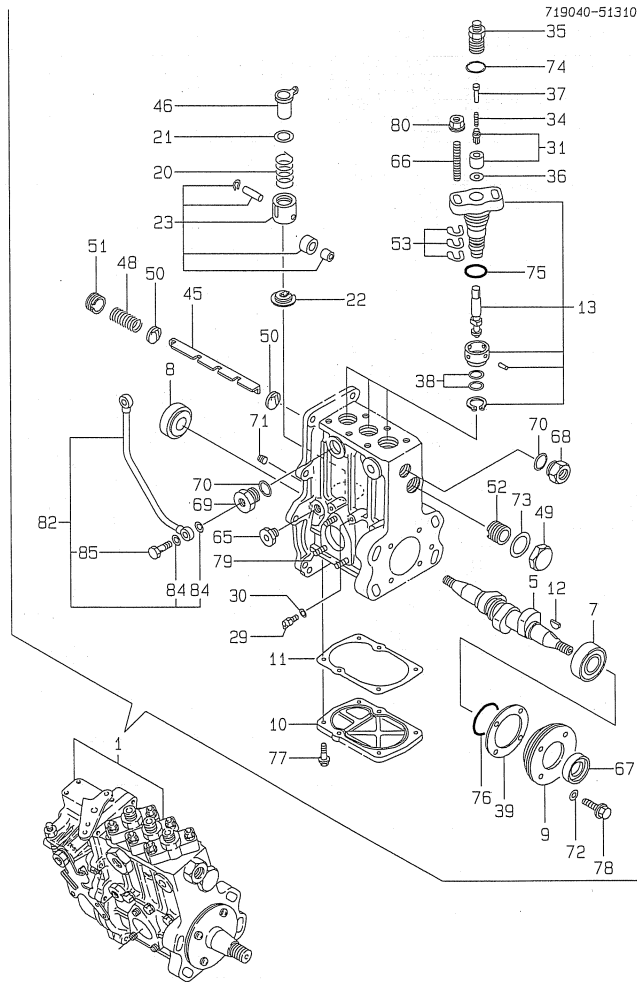
No.	Lev.	Parts No.	Description	Qty						I	R
				(A)	(B)	(C)	(D)	(E)	(F)		
1	1	119006-42001	PUMP ASSY, WATER	1	1	1	1	1	1		
11	2	23871-020000	PLUG, R02	1	1	1	1	1	1		
12	2	23871-030000	PLUG, R03	1	1	1	1	1	1		
17	1	119000-42021	GASKET, WATER PUMP	1	1	1	1	1	1		H
18	1	24311-000360	O-RING, 1AP36.0	1	1	1	1	1	1		H
19	1	26106-080652	BOLT, M8X 65 PLATED	5	5	5	5	5	5		
20	1	119000-42250	V-PULLEY	1	1	1	1	1	1		
21	1	171087-42280	V-BELT, A44	1	1	1	1				
22	1	129052-96150	V-BELT, A45						1	1	
23	1	119083-44500	RADIATOR	1	1						
24	1	119140-44500	RADIATOR			1	1				
25	1	119141-44500	RADIATOR					1	1		
26	2	121850-44660	CAP	1	1						
27	2	119259-44570	CAP, RADIATOR			1	1	1	1		
28	1	119140-44560	PROTECTOR, FAN			1	1	1	1		
29	1	119083-44570	NET, WIRE	1	1						
30	1	119083-44580	NET, WIRE	1	1						
31	1	121972-44740	FAN, COOLING	1	1	1	1	1	1		
32	1	119130-44760	SPACER, FAN	1	1						
33	1	119141-44760	SPACER, FAN			1	1	1	1		
34	1	119040-44900	BRACKET, RADIATOR	2	2						
35	1	119140-44900	BRACKET, RADIATOR			1	1	1	1		
36	1	119140-44910	BRACKET, RADIATOR			1	1	1	1		
37	1	119040-49010	PIPE, WATER	1	1						
38	1	119140-49010	PIPE, WATER			1	1	1	1		
39	1	119130-49020	PIPE, WATER	1	1						
40	1	119140-49020	PIPE, WATER			1	1	1	1		
41	1	23000-048000	CLAMP, 48	4	4	2	2	2	2		
42	1	23000-054000	CLAMP, 54			2	2	2	2		
43	1	26014-080352	BOLT, M8X 35	4	4						
44	1	26106-080142	BOLT, M8X 14 PLATED	6	6	4	4	4	4		
45	1	26106-080182	BOLT, M8X 18 PLATED	8	8	8	8	8	8		
46	1	26106-080302	BOLT, M8X 30 PLATED	4	4	4	4	4	4		
47	1	26106-080552	BOLT, M8X 55 PLATED			4	4	4	4		
48	1	26366-080002	NUT, M8	6	6						
49	1	26366-080002	NUT, M8	4	4	4	4	4	4		
50	1	119000-48170	THERMOSTAT, 71	1	1	1	1	1	1		
51	1	121850-49530	COVER, THERMOSTAT	1	1	1	1	1	1		
52	1	121850-49540	GASKET, THERMOSTAT	1	1	1	1	1	1		G
53	1	121850-49550	GASKET, THERMOSTAT	1	1	1	1	1	1		G
54	1	26014-060142	BOLT, M6X 14	4	4	4	4	4	4		
55	1	124738-49150	PIPE, DRAIN L=300	1	1	1	1	1	1		
56	1	119620-49290	COCK ASSY, 1/4	1	1	1	1	1	1		
59	1	124766-59050	CLIP, HOSE 12	1	1	1	1	1	1		
60	1	121250-44901	SWITCH, 110	1	1	1	1	1	1		
61	1	121470-44900	SENSOR	1	1	1	1	1	1		
62	1	124465-44950	GASKET, 16	1	1	1	1	1	1		H
63	1	23414-160000	GASKET, 16X1.0	1	1	1	1	1	1		H
64	1	26366-080002	NUT, M8			4	4	4	4		

Fig.15. FUEL INJECTION PUMP

(A)=3TN100L-P
(B)=3TN100L-PS
(C)=4TN100L-P

(D)=4TN100L-PS
(E)=4TN100TL-P
(F)=4TN100TL-PS

Y00D4580
3. 4TN100 (T) L-P (S)



No.	Lev.	Parts No.	Description	Q'ty						I	R
				(A)	(B)	(C)	(D)	(E)	(F)		
1	1	719040-51310	PUMP ASSY, INJECTION	1	1						1
5	2	119000-51030	CAMSHAFT	1	1						
7	2	119000-51050	BEARING, HR32005XJ	1	1						
8	2	122710-51050	BEARING, HR30203J	1	1						
9	2	119000-51060	SUPPORT, BEARING A	1	1						
10	2	119000-51081	COVER	1	1						
11	2	119000-51091	GASKET	1	1						
12	2	144626-51090	KEY, 5X19	1	1						
13	2	119100-51101	PLUNGER ASSY	3	3						
20	2	119000-51161	SPRING, PLUNGER	3	3						
21	2	119000-51170	SEAT, SPRING A	3	3						
22	2	119000-51181	SEAT, SPRING B	3	3						
23	2	119000-51201	TAPPET ASSY	3	3						
29	2	129155-51270	STOPPER, TAPPET	3	3						
30	2	129155-51280	O-RING, S6	3	3						
31	2	128400-51300	VALVE ASSY, DELIVERY	3	3						
34	2	119000-51330	SPRING, DELIVERY	3	3						
35	2	119000-51340	HOLDER, DELIVERY	3	3						
36	2	122710-51350	GASKET	3	3						
37	2	119000-51360	STOPPER, VALVE	3	3						
38	2	119000-51410	O-RING, S18	6	6						
39	2	119000-51450	SHIM SET, CAMSHAFT	1	1						
45	2	119000-51500	RACK, CONTROL	1	1						
46	2	119000-51510	SLEEVE, CONTROL	3	3						
48	2	119000-51530	SPRING, RACK	1	1						
49	2	119000-51550	COVER	1	1						
50	2	119000-51570	GUIDE, RACK	2	2						
51	2	119000-51580	SCREW	1	1						
52	2	119000-51590	SCREW	1	1						
53	2	119000-51650	SHIM SET, ADJUSTING	6	6						
65	2	121850-51700	BUSH	1	1						
66	2	119000-51800	BOLT	6	6						
67	2	119000-51900	SEAL, AC1290E0	1	1						
68	2	121952-51900	PLUG	1	1						
69	2	144626-51940	PLUG	1	1						
70	2	144626-51950	O-RING, 1016	2	2						
71	2	137600-53900	SCREW, M6X6	1	1						
72	2	22190-060000	WASHER, SEAL 6	4	4						
73	2	23414-220029	GASKET, 22X1.0	1	1						
74	2	24312-000150	O-RING, 2P15.0	3	3						
75	2	24341-000260	O-RING, 1AS26.0	3	3						
76	2	24341-000500	O-RING, 1AS50.0	1	1						
77	2	26106-060182	BOLT, M6X 18 PLATED	6	6						
78	2	26106-060202	BOLT, M6X 20 PLATED	4	4						
79	2	26216-060162	STUD, M6X 16	3	3						
80	2	26366-080002	NUT, M8	6	6						
82	2	119000-51990	PIPE ASSY, OIL	1	1						
84	2	23414-080000	GASKET, 8X1.0	2	2						
85	2	23857-030000	BOLT, JOINT 3	1	1						

Remarks

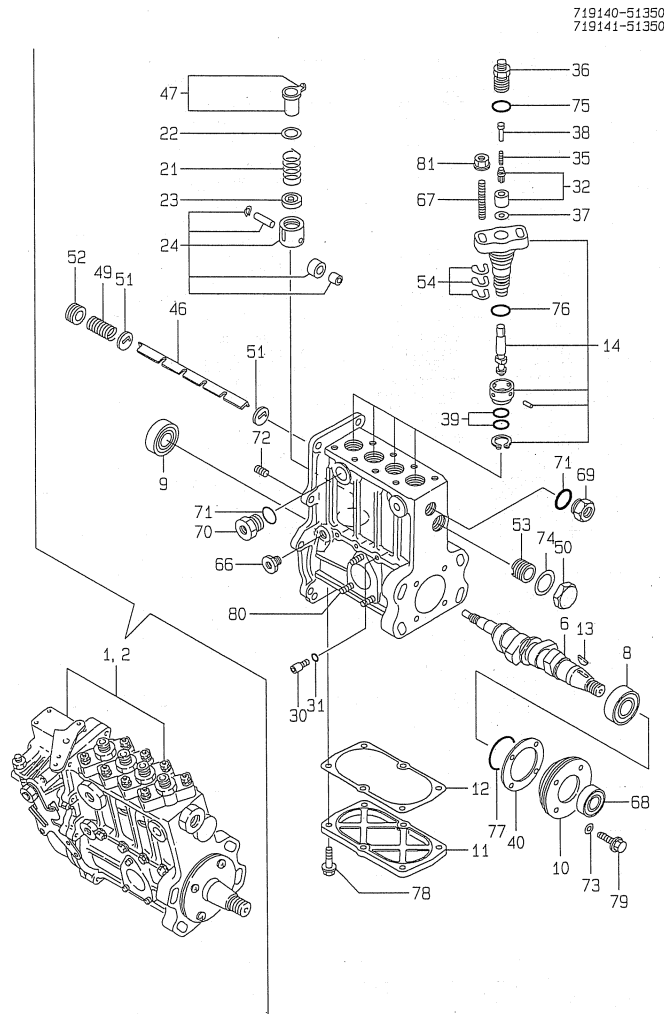
(1) FEED PUMP ASSY(FIG.NO.17)AND GOVERNOR ASSY(FIG.NO.18)IS INCORPORATED IN THIS FUEL INJECTION PUMP ASSY(REF.NO.1).

Fig.16. FUEL OIL INJECTION PUMP

(A)=3TN100L-P
(B)=3TN100L-PS
(C)=4TN100L-P

(D)=4TN100L-PS
(E)=4TN100TL-P
(F)=4TN100TL-PS

Y0004580
3, 4TN100 (T) L-P (S)



No.	Lev.	Parts No.	Description	Q'ty						I	R	
				(A)	(B)	(C)	(D)	(E)	(F)			
1	1	719140-51350	PUMP ASSY, INJECTION			1	1				1	
2	1	719141-51350	PUMP ASSY, INJECTION							1	1	1
6	2	119100-51030	CAMSHAFT			1	1	1	1			
8	2	119000-51050	BEARING, HR32005XJ			1	1	1	1			
9	2	122710-51050	BEARING, HR30203J			1	1	1	1			
10	2	119000-51060	SUPPORT, BEARING A			1	1	1	1			
11	2	119100-51081	COVER			1	1	1	1			
12	2	119100-51091	GASKET			1	1	1	1			
13	2	144626-51090	KEY, 5X19			1	1	1	1			
14	2	119100-51101	PLUNGER ASSY			4	4	4	4			
21	2	119000-51161	SPRING, PLUNGER			4	4	4	4			
22	2	119000-51170	SEAT, SPRING A			4	4	4	4			
23	2	119000-51181	SEAT, SPRING B			4	4	4	4			
24	2	119000-51201	TAPPET ASSY			4	4	4	4			
30	2	129155-51270	STOPPER, TAPPET			4	4	4	4			
31	2	129155-51280	O-RING, S6			4	4	4	4			
32	2	128400-51300	VALVE ASSY, DELIVERY			4	4	4	4			
35	2	119000-51330	SPRING, DELIVERY			4	4	4	4			
36	2	119000-51340	HOLDER, DELIVERY			4	4	4	4			
37	2	122710-51350	GASKET			4	4	4	4			
38	2	119000-51360	STOPPER, VALVE			4	4	4	4			
39	2	119000-51410	O-RING, S18			8	8	8	8			
40	2	119000-51450	SHIM SET, CAMSHAFT			1	1	1	1			
46	2	119100-51500	RACK, CONTROL			1	1	1	1			
47	2	119000-51510	SLEEVE, CONTROL			4	4	4	4			
49	2	119000-51530	SPRING, RACK			1	1	1	1			
50	2	119000-51550	COVER			1	1	1	1			
51	2	119000-51570	GUIDE, RACK			2	2	2	2			
52	2	119000-51580	SCREW			1	1	1	1			
53	2	119000-51590	SCREW			1	1	1	1			
54	2	119000-51650	SHIM SET, ADJUSTING			8	8	8	8			
66	2	121850-51700	BUSH			1	1	1	1			
67	2	119000-51800	BOLT			8	8	8	8			
68	2	119000-51900	SEAL, AC1290E0			1	1	1	1			
69	2	121952-51900	PLUG			1	1	1	1			
70	2	144626-51940	PLUG			1	1	1	1			
71	2	144626-51950	O-RING, 1016			2	2	2	2			
72	2	137600-53900	SCREW, M6X6			1	1	1	1			
73	2	22190-060000	WASHER, SEAL 6			4	4	4	4			
74	2	23414-220029	GASKET, 22X1.0			1	1	1	1			
75	2	24312-000150	O-RING, 2P15.0			4	4	4	4			
76	2	24341-000260	O-RING, 1AS26.0			4	4	4	4			
77	2	24341-000500	O-RING, 1AS50.0			1	1	1	1			
78	2	26106-060182	BOLT, M6X 18 PLATED			6	6	6	6			
79	2	26106-060202	BOLT, M6X 20 PLATED			4	4	4	4			
80	2	26216-060162	STUD, M6X 16			3	3	3	3			
81	2	26366-080002	NUT, M8			8	8	8	8			

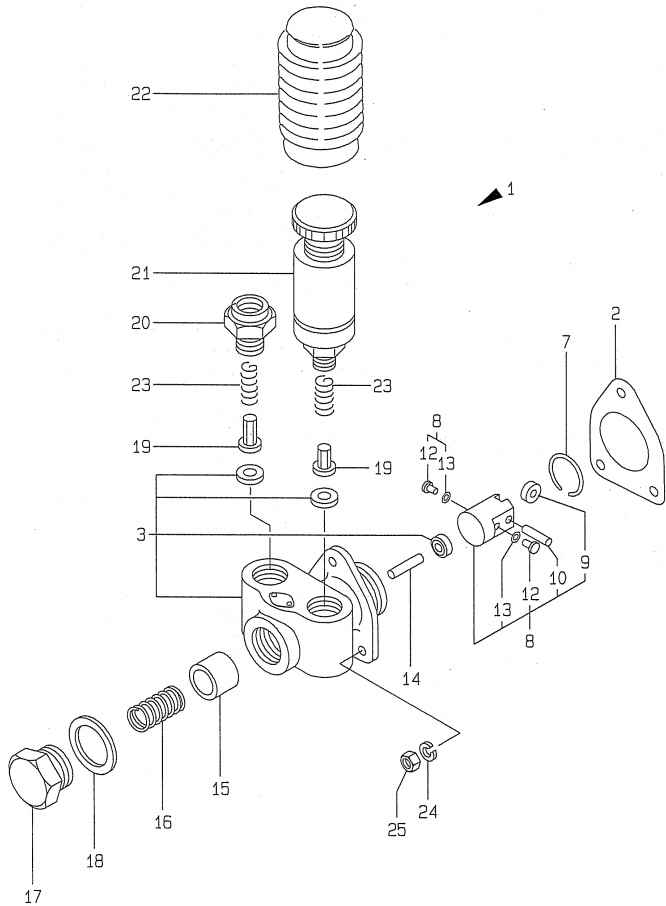
Remarks

(1) FEED PUMP ASSY(FIG.NO.17)AND GOVERNOR ASSY(FIG.NO.18)IS INCORPORATED IN THIS FUEL INJECTION PUMP ASSY(REF.NO.1,2).

Fig.17. FEED PUMP

Y0004580
3. 4TN100 (T) L-P (S)

719040-51310
719140-51350
719141-51350



(A)=3TN100L-P
(B)=3TN100L-PS
(C)=4TN100L-P

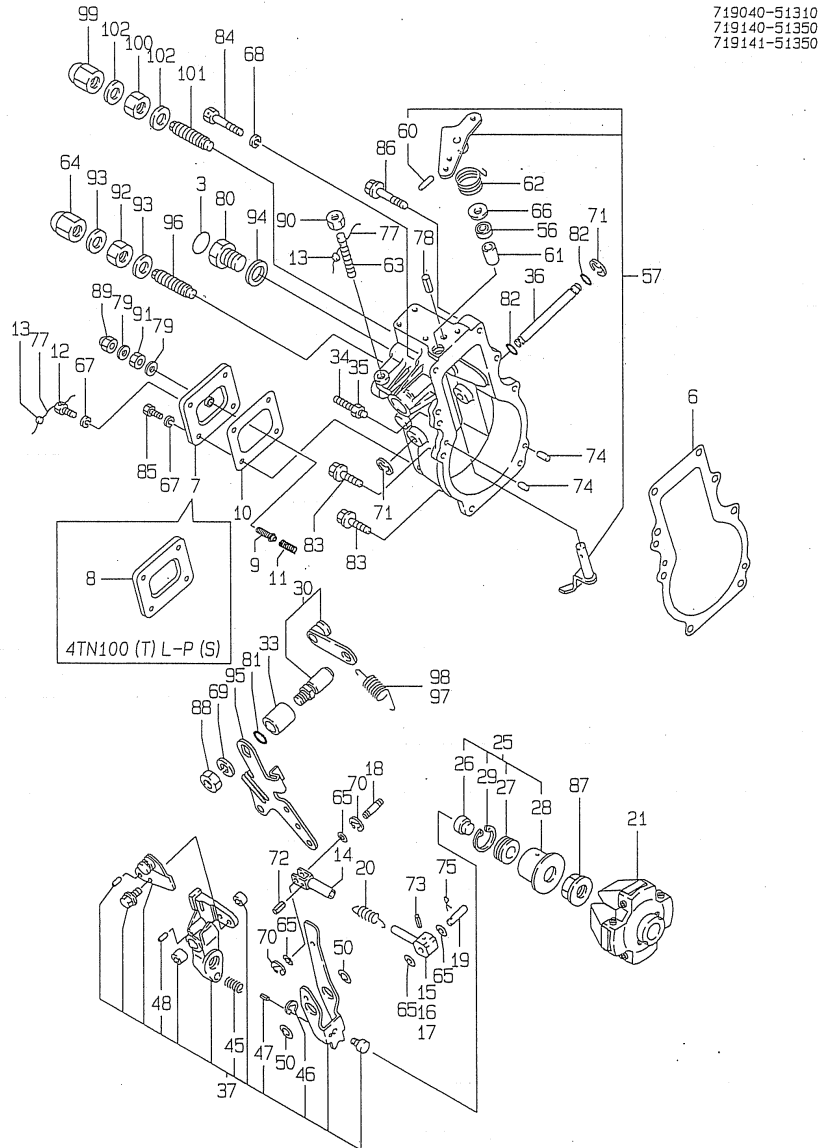
(D)=4TN100L-PS
(E)=4TN100TL-P
(F)=4TN100TL-PS

No.	Lev.	Parts No.	Description	Q'ty						I	R
				(A)	(B)	(C)	(D)	(E)	(F)		
1	1	119000-52000	PUMP ASSY, FUEL FEED	1	1	1	1	1	1		
2	2	124410-51861	GASKET	1	1	1	1	1	1		G
3	2	121820-52020	BODY ASSY, PUMP	1	1	1	1	1	1		
7	2	121820-52070	PIN	1	1	1	1	1	1		
8	2	119000-52100	TAPPET ASSY	1	1	1	1	1	1		
9	3	121820-52110	ROLLER	1	1	1	1	1	1		
10	3	148688-52120	PIN, ROLLER	1	1	1	1	1	1		
12	3	121820-52140	RETAINER	2	2	2	2	2	2		
13	3	119000-52150	SHIM	2	2	2	2	2	2		
14	2	121820-52160	SPINDLE, INTER	1	1	1	1	1	1		
15	2	121820-52170	PISTON	1	1	1	1	1	1		
16	2	121820-52180	SPRING, VALVE	1	1	1	1	1	1		
17	2	121820-52190	RETAINER, SPRING	1	1	1	1	1	1		
18	2	121820-52200	GASKET, 25	1	1	1	1	1	1		
19	2	121820-52210	VALVE	2	2	2	2	2	2		
20	2	121820-52230	RETAINER, SPRING	1	1	1	1	1	1		
21	2	121820-52300	PUMP, PRIMING	1	1	1	1	1	1		
22	2	121820-52400	COVER	1	1	1	1	1	1		
23	2	121820-52510	SPRING, VALVE	2	2	2	2	2	2		
24	2	22217-060000	WASHER, SPRING 6	3	3	3	3	3	3		
25	2	26716-060002	NUT, M6	3	3	3	3	3	3		

Remarks
(G) THESE PARTS ARE SOLD BY FIG.28,
REF.NO.1,2.

Fig.18. GONERNOR

Y00D4580
3, 4TN100 (T) L-P (S)

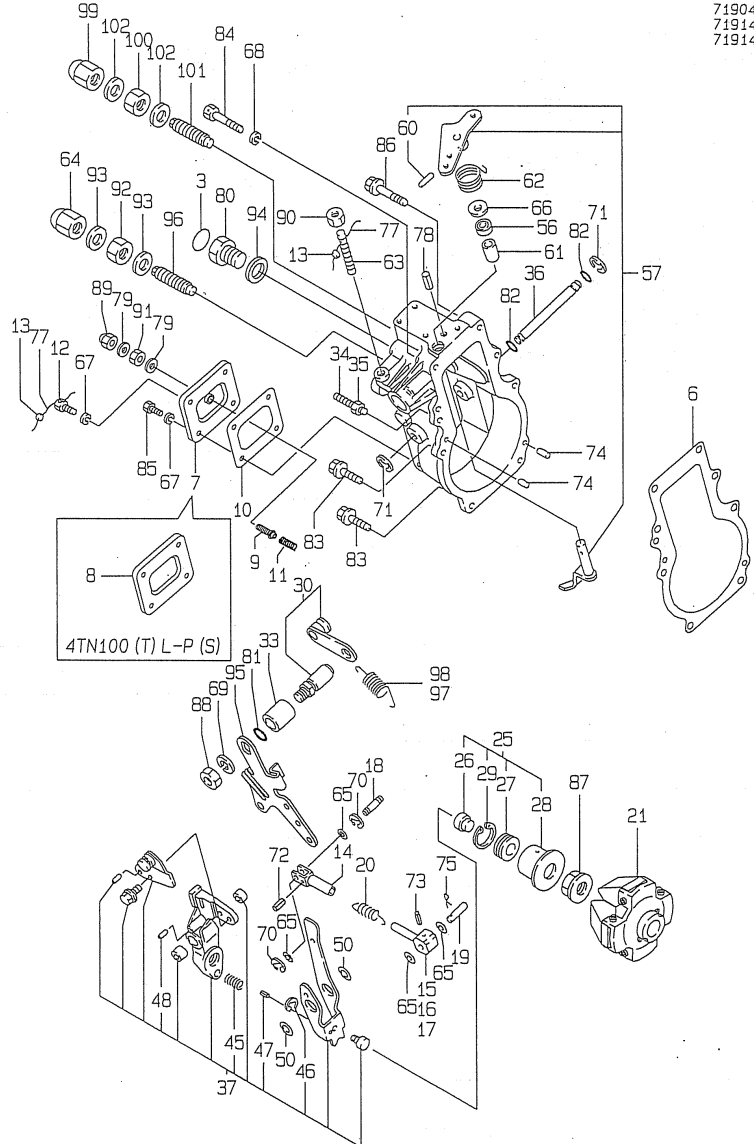


No.	Lev.	Parts No.	Description	Q'ty						I	R
				(A)	(B)	(C)	(D)	(E)	(F)		
3	2	124610-51970	LABEL	1	1	1	1	1	1		
6	2	119000-61051	GASKET	1	1	1	1	1	1		
7	2	119141-61060	COVER, GOVERNOR CASE	1	1						
8	2	120323-61060	COVER, GOVERNOR CASE			1	1	1	1		
9	2	119141-61070	BOLT	1	1						
10	2	120323-61070	GASKET	1	1	1	1	1	1		
11	2	119141-61080	SPRING	1	1						
12	2	129155-61090	BOLT	1	1	1	1	1	1		
13	2	135210-61090	LEAD	2	2	2	2	2	2		
14	2	119000-61120	LINK	1	1	1	1	1	1		
15	2	119000-61140	LINK, MARK-1 L=40	1	1	1	1	1	1		
16	2	119000-61150	LINK, MARK-2 L=42	1	1	1	1	1	1		
17	2	119000-61160	LINK, MARK-3 L=44	1	1	1	1	1	1		
18	2	119000-61170	PIN, LINK	1	1	1	1	1	1		
19	2	119000-61180	PIN, LINK	1	1	1	1	1	1		
20	2	119000-61190	SPRING	1	1	1	1	1	1		
21	2	119100-61200	WEIGHT ASSY,GOVERNOR	1	1	1	1	1	1		
25	2	119100-61300	SLEEVE ASSY, L=35.5	1	1	1	1	1	1		
26	3	119000-61310	SHIFTER	1	1	1	1	1	1		
27	3	119000-61320	BEARING, THRUST	1	1	1	1	1	1		
28	3	119100-61340	SLEEVE	1	1	1	1	1	1		
29	3	22262-000260	RING, R-26	1	1	1	1	1	1		
30	2	119000-61400	SHAFT ASSY	1	1	1	1	1	1		
33	2	119100-61430	BUSH	1	1	1	1	1	1		
34	2	129155-61460	BOLT, IDLE	1	1	1	1	1	1		
35	2	119000-61470	NUT, M6	1	1	1	1	1	1		
36	2	119000-61490	SHAFT	1	1	1	1	1	1		
37	2	119141-61500	LEVER ASSY, GOVERNOR	1	1	1	1	1	1		
45	3	121850-61600	SPRING, FUEL CONTROL	1	1	1	1	1	1		
46	3	22272-000040	RING, E- 4	1	1	1	1	1	1		
47	3	22351-020004	PIN, SPRING 2.0X 4	1	1	1	1	1	1		
48	3	22351-020012	PIN, SPRING 2.0X12	1	1	1	1	1	1		
50	2	119000-61630	SHIM SET	1	1	1	1	1	1		
56	2	148616-61650	SEAL, VC081404	1	1	1	1	1	1		
57	2	119100-61771	LEVER ASSY, STOP	1	1	1	1	1	1		
60	3	22351-030016	PIN, SPRING 3.0X16	1	1	1	1	1	1		
61	2	119000-61841	BUSH	1	1	1	1	1	1		
62	2	119100-61860	SPRING, RETURN	1	1	1	1	1	1		
63	2	121855-61910	BOLT, LIMITER	1	1	1	1	1	1		
64	2	129100-61930	NUT, CAP	1	1	1	1	1	1		
65	2	22117-050000	WASHER, 5	4	4	4	4	4	4		
66	2	22137-080000	WASHER, 8	1	1	1	1	1	1		
67	2	22217-050000	WASHER, SPRING 5	4	4	4	4	4	4		
68	2	22217-060000	WASHER, SPRING 6	1	1	1	1	1	1		
69	2	22217-100000	WASHER, SPRING 10	1	1	1	1	1	1		
70	2	22272-000040	RING, E- 4	2	2	2	2	2	2		
71	2	22272-000080	RING, E- 8	2	2	2	2	2	2		
72	2	22351-030016	PIN, SPRING 3.0X16	1	1	1	1	1	1		
73	2	22351-030025	PIN, SPRING 3.0X25	1	1	1	1	1	1		
74	2	22351-050020	PIN, SPRING 5.0X20	2	2	2	2	2	2		
75	2	22372-050000	PIN, SNAP 5	1	1	1	1	1	1		

Fig.18. GONERNOR

Y00D4580
3, 4TN100 (T) L-P (S)

719040-51310
719140-51350
719141-51350



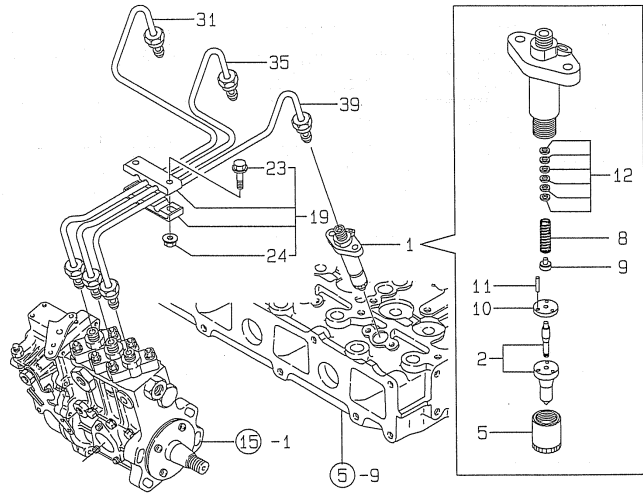
(A)=3TN100L-P
(B)=3TN100L-PS
(C)=4TN100L-P

(D)=4TN100L-PS
(E)=4TN100TL-P
(F)=4TN100TL-PS

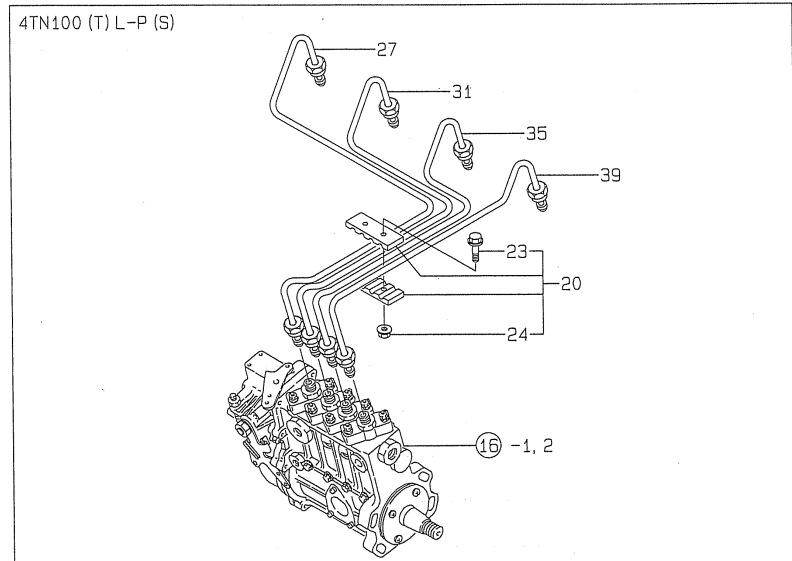
No.	Lev.	Parts No.	Description	Q'ty						I	R
				(A)	(B)	(C)	(D)	(E)	(F)		
77	2	22453-060000	WIRE, 0.6	2	2	2	2	2	2		
78	2	22492-060362	PIN, B6X36	1	1	1	1	1	1		
79	2	23414-080012	GASKET, 8X1.0	2	2						
80	2	23887-160002	PLUG, 16	1	1	1	1	1	1		
81	2	24311-000110	O-RING, 1AP11.0	1	1	1	1	1	1		
82	2	24341-000080	O-RING, 1AS8.0	2	2	2	2	2	2		
83	2	26106-060222	BOLT, M6X 22 PLATED	6	6	6	6	6	6		
84	2	26106-060352	BOLT, M6X 35 PLATED	1	1	1	1	1	1		
85	2	26116-050102	BOLT, M5X 10 PLATED	3	3	3	3	3	3		
86	2	26116-060356	BOLT, M6X 35 PLATED			1	1	1	1		
87	2	26376-120002	NUT, M12			1	1	1	1		
88	2	26606-100002	NUT, M10			1	1	1	1		
89	2	26667-080002	NUT, CAP M8	1	1						
90	2	26756-080002	NUT, LOCK M8	1	1	1	1	1	1		
91	2	26756-080002	NUT, LOCK M8	1	1						
92	2	26777-120002	NUT, LOCK M12	1	1	1	1	1	1		
93	2	43400-500450	SEAL WASHER 12S	2	2	2	2	2	2		
94	2	43400-500500	SEAL WASHER 16	1	1	1	1	1	1		
95	1	119100-61440	LEVER, GOVERNOR	1	1	1	1	1	1		
96	1	120323-61470	BOLT, CONTROL	1	1	1	1	1	1		
97	1	119100-61700	SPRING, GOVERNOR			1	1				
98	1	119100-61710	SPRING, GOVERNOR	1	1			1	1		
99	1	26667-080002	NUT, CAP M8	1	1	1	1	1	1		
100	1	26756-080002	NUT, LOCK M8	1	1	1	1	1	1		
101	1	26911-080322	SCREW, M8X32	1	1	1	1	1	1		
102	1	43400-500420	SEAL WASHER 8	2	2	2	2	2	2		

Fig.19. FUEL OIL INJECTION VALVE

Y00D4580
3, 4TN100 (T) L-P (S)



019045-53100
019000-59100
019100-59100



(A)=3TN100L-P
(B)=3TN100L-PS
(C)=4TN100L-P

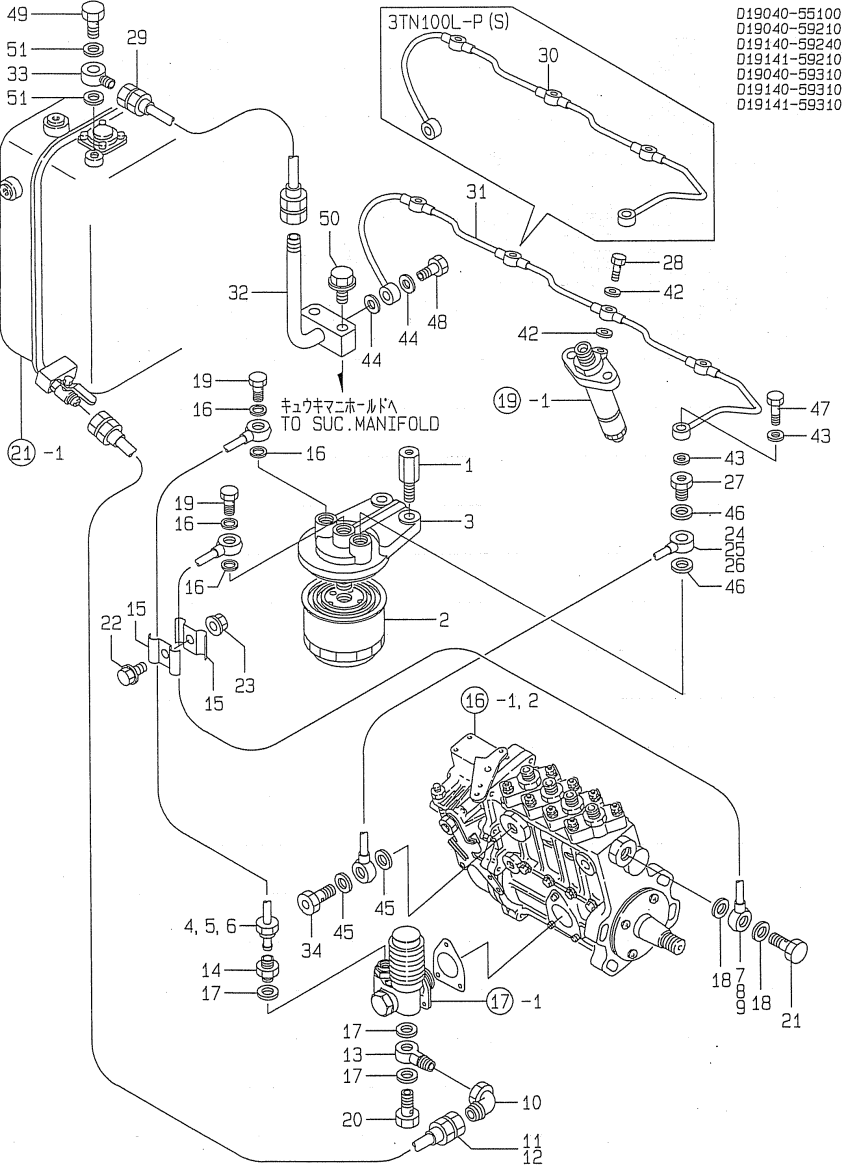
(D)=4TN100L-PS
(E)=4TN100TL-P
(F)=4TN100TL-PS

No.	Lev.	Parts No.	Description	Q'ty						I	R
				(A)	(B)	(C)	(D)	(E)	(F)		
1	1	719000-73100	VALVE ASSY,INJECTION	3	3	4	4	4	4		M
1A	1	719100-53200	VALVE ASSY,INJECTION	3	3	4	4				
1B	1	719000-53100	VALVE ASSY,INJECTION					4	4		
2A	2	119100-53000	VALVE ASSY,INJECTION	3	3	4	4				
2B	2	119000-53000	VALVE ASSY,INJECTION					4	4		
5	2	114250-53080	NUT, NOZZLE D16.95	3	3	4	4	4	4		
8	2	114250-53120	SPRING, NOZZLE	3	3	4	4	4	4		
9	2	114250-53130	SEAT, SPRING	3	3	4	4	4	4		
10	2	114250-53140	PLATE	3	3	4	4	4	4		
11	2	114250-53210	PIN	6	6	8	8	8	8		
12	2	114250-53400	SHIM SET	3	3	4	4	4	4		
19	1	123372-59080	RETAINER	1	1						
20	1	123472-59090	RETAINER ASSY			1	1	1	1		
23	2	26106-060202	BOLT, M6X 20 PLATED	2	2	2	2	2	2		
24	2	26366-060002	NUT, M6	2	2	2	2	2	2		
27	1	119100-59810	PIPE ASSY, INJECTION			1	1	1	1		
31	1	119100-59820	PIPE ASSY, INJECTION	1	1	1	1	1	1		
35	1	119100-59830	PIPE ASSY, INJECTION	1	1	1	1	1	1		
39	1	119100-59840	PIPE ASSY, INJECTION	1	1	1	1	1	1		

Remarks
(M)MISPRINT.

Fig.20. FUEL OIL LINE

Y00D4580
3, 4TN100 (T) L-P (S)



019040-55100
019040-59210
019140-59240
019141-59210
019040-59310
019140-59310
019141-59310

(A)=3TN100L-P
(B)=3TN100L-PS
(C)=4TN100L-P

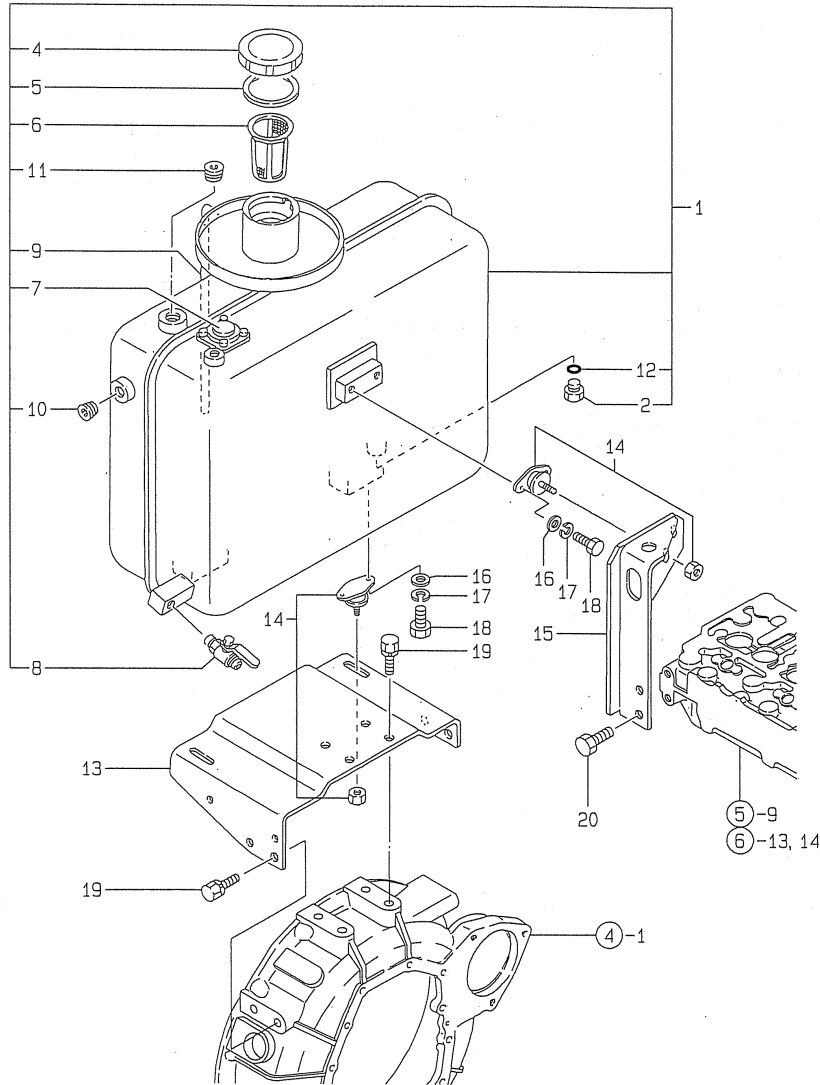
(D)=4TN100L-PS
(E)=4TN100TL-P
(F)=4TN100TL-PS

No.	Lev.	Parts No.	Description	Qty						I	R
				(A)	(B)	(C)	(D)	(E)	(F)		
1	1	119040-55500	BOLT	2	2	2	2	2	2		
2	1	119000-55600	FILTER, FUEL	1	1	1	1	1	1		
3	1	129470-55610	BODY, STRAINER	1	1	1	1	1	1		
4	1	119040-59010	PIPE ASSY, FUEL	1	1						
5	1	119140-59010	PIPE ASSY, FUEL			1	1				
6	1	119141-59010	PIPE, FUEL						1	1	
7	1	119040-59020	PIPE ASSY, FUEL	1	1						
8	1	119140-59020	PIPE ASSY, FUEL			1	1				
9	1	119141-59020	PIPE, FUEL						1	1	
10	1	119040-59050	ELBOW, PT3/8	1	1	1	1	1	1	1	
11	1	119140-59110	PIPE, 10AXL560			1	1	1	1	1	
12	1	171090-59111	PIPE, 10AXL450	1	1						
13	1	171090-59130	JOINT, PIPE	1	1	1	1	1	1	1	
14	1	144628-59520	UNION, 10	1	1	1	1	1	1	1	
15	1	127450-59680	RETAINER	2	2	2	2	2	2	2	
16	1	23414-120000	GASKET, 12X1.0	4	4	4	4	4	4	4	
17	1	23414-140000	GASKET, 14X1.0	3	3	3	3	3	3	3	
18	1	23414-140000	GASKET, 14X1.0	2	2	2	2	2	2	2	
19	1	23857-060000	BOLT, JOINT 6	2	2	2	2	2	2	2	
20	1	23857-080000	BOLT, JOINT 8	1	1	1	1	1	1	1	
21	1	23857-080000	BOLT, JOINT 8	1	1	1	1	1	1	1	
22	1	26106-080142	BOLT, M8X 14 PLATED	1	1	1	1	1	1	1	
23	1	26366-080002	NUT, M8	1	1	1	1	1	1	1	
24	1	119040-59040	PIPE ASSY, FUEL	1	1						
25	1	119140-59040	PIPE, FUEL			1	1				
26	1	119141-59040	PIPE ASSY, FUEL						1	1	
27	1	129495-59300	BOLT, PIPE JOINT	1	1	1	1	1	1	1	
28	1	129491-59540	BOLT, PIPE JOINT M6	3	3	4	4	4	4	4	
29	1	171094-59540	PIPE, FLEXIBLE	1	1	1	1	1	1	1	
30	1	119040-59560	PIPE ASSY, RETURN	1	1						
31	1	119140-59560	PIPE, FUEL			1	1	1	1	1	
32	1	119040-59570	BEND	1	1	1	1	1	1	1	
33	1	171090-59600	JOINT, PIPE	1	1	1	1	1	1	1	
34	1	129100-59951	VALVE ASSY, CHECK	1	1	1	1	1	1	1	
42	1	23414-060000	GASKET, 6X1.0	6	6	8	8	8	8	8	
43	1	23414-080000	GASKET, 8X1.0	2	2	2	2	2	2	2	
44	1	23414-080000	GASKET, 8X1.0	2	2	2	2	2	2	2	
45	1	23414-120000	GASKET, 12X1.0	2	2	2	2	2	2	2	
46	1	23414-140000	GASKET, 14X1.0	2	2	2	2	2	2	2	
47	1	23851-030000	JOINT BOLT 3	1	1	1	1	1	1	1	
48	1	23851-030000	JOINT BOLT 3	1	1	1	1	1	1	1	
49	1	23857-080000	BOLT, JOINT 8	1	1	1	1	1	1	1	
50	1	26106-100352	BOLT, M10X 35 PLATED	2	2	2	2	2	2	2	
51	1	43400-500470	SEAL WASHER 14S	2	2	2	2	2	2	2	

Fig.21. FUEL TANK

Y00D4580
3, 4TN100 (T) L-P (S)

D19040-55200



(A)=3TN100L-P
(B)=3TN100L-PS
(C)=4TN100L-P

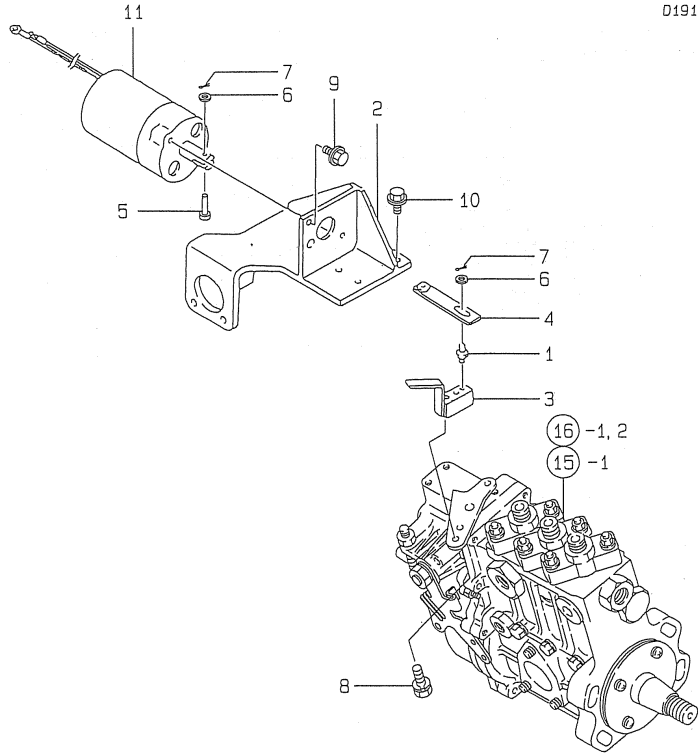
(D)=4TN100L-PS
(E)=4TN100TL-P
(F)=4TN100TL-PS

No.	Lev.	Parts No.	Description	Q'ty						I	R
				(A)	(B)	(C)	(D)	(E)	(F)		
1	1	171090-55103	TANK ASSY, FUEL	1	1	1	1	1	1		
2	2	124060-01640	PLUG, M12	1	1	1	1	1	1		
4	2	105015-55040	CAP, FUEL TANK	1	1	1	1	1	1		
5	2	101504-55051	GASKET	1	1	1	1	1	1		
6	2	101504-55101	STRAINER, FUEL	1	1	1	1	1	1		
7	2	123563-55200	GAUGE, LEVEL	1	1	1	1	1	1		
8	2	123563-55300	COCK	1	1	1	1	1	1		
9	2	23061-070330	PIPE, 7X 330	1	1	1	1	1	1		
10	2	23871-030000	PLUG, R03	1	1	1	1	1	1		
11	2	23871-040000	PLUG, R04	1	1	1	1	1	1		
12	2	24311-000140	O-RING, 1AP14.0	1	1	1	1	1	1		
13	1	123563-55800	BRACKET, FUEL TANK	1	1	1	1	1	1		
14	1	171048-55850	ABSORBER	3	3	3	3	3	3		
15	1	171090-55851	BRACKET, FUEL TANK	1	1	1	1	1	1		
16	1	22117-120000	WASHER, 12	2	2	2	2	2	2		
17	1	22217-120000	WASHER, SPRING 12	2	2	2	2	2	2		
18	1	26013-060142	BOLT, M6X 14	6	6	6	6	6	6		
19	1	26013-100222	BOLT, M10X 22	8	8	8	8	8	8		
20	1	26116-120252	BOLT, M12X 25 PLATED	2	2	2	2	2	2		

Fig.22. ENGINE STOP DEVICE

Y00D4580
3, 4TN100 (T) L-P (S)

019140-66110



(A)=3TN100L-P
(B)=3TN100L-PS
(C)=4TN100L-P

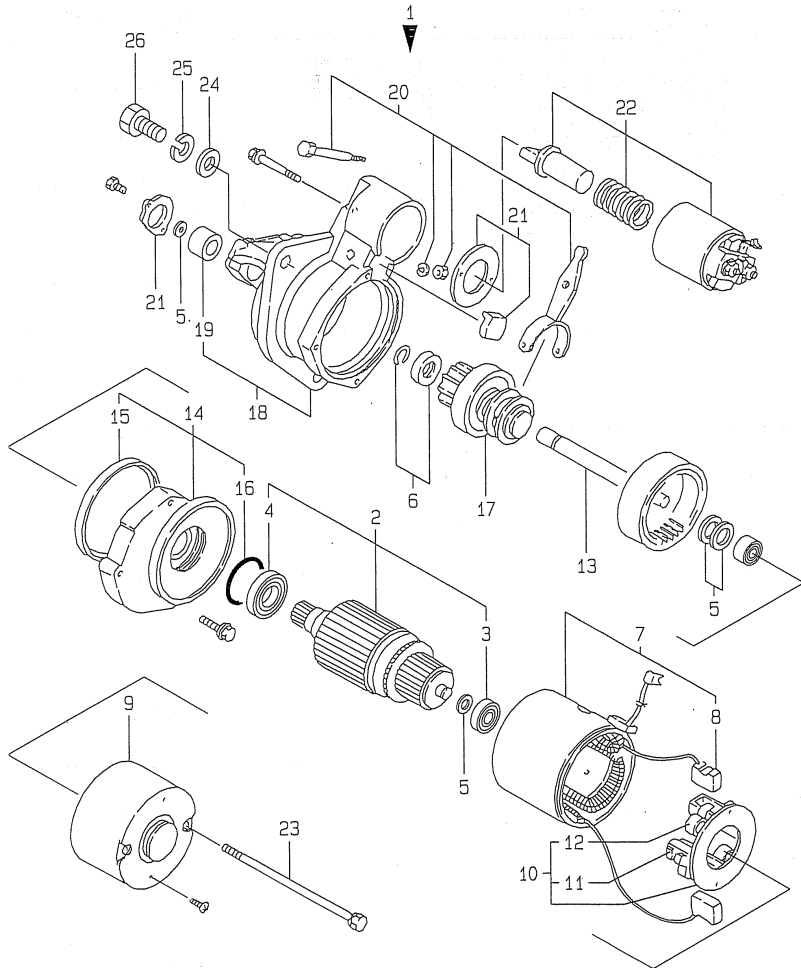
(D)=4TN100L-PS
(E)=4TN100TL-P
(F)=4TN100TL-PS

No.	Lev.	Parts No.	Description	Q'ty						I	R
				(A)	(B)	(C)	(D)	(E)	(F)		
1	1	120220-66250	PIN	1	1	1	1	1	1		
2	1	119140-66450	BRACKET	1	1	1	1	1	1		
3	1	124610-66460	LEVER, STOP	1	1	1	1	1	1		
4	1	124610-66470	LEVER	1	1	1	1	1	1		
5	1	124790-66950	PIN	1	1	1	1	1	1		
6	1	22111-050000	WASHER	2	2	2	2	2	2		
7	1	22360-050000	SNAP PIN 5	2	2	2	2	2	2		
8	1	26013-060149	BOLT, M6X 14	2	2	2	2	2	2		
9	1	26106-060162	BOLT, M6X 16 PLATED	2	2	2	2	2	2		
10	1	26106-080142	BOLT, M8X 14 PLATED	4	4	4	4	4	4		
11	1	46116-800040	SOLENOID VALVE	1	1	1	1	1	1		

Fig.23. STARTING MOTOR

Y00D4580
3. 4TN100 (T) L-P (S)

D24610-77100



(A)=3TN100L-P
(B)=3TN100L-PS
(C)=4TN100L-P

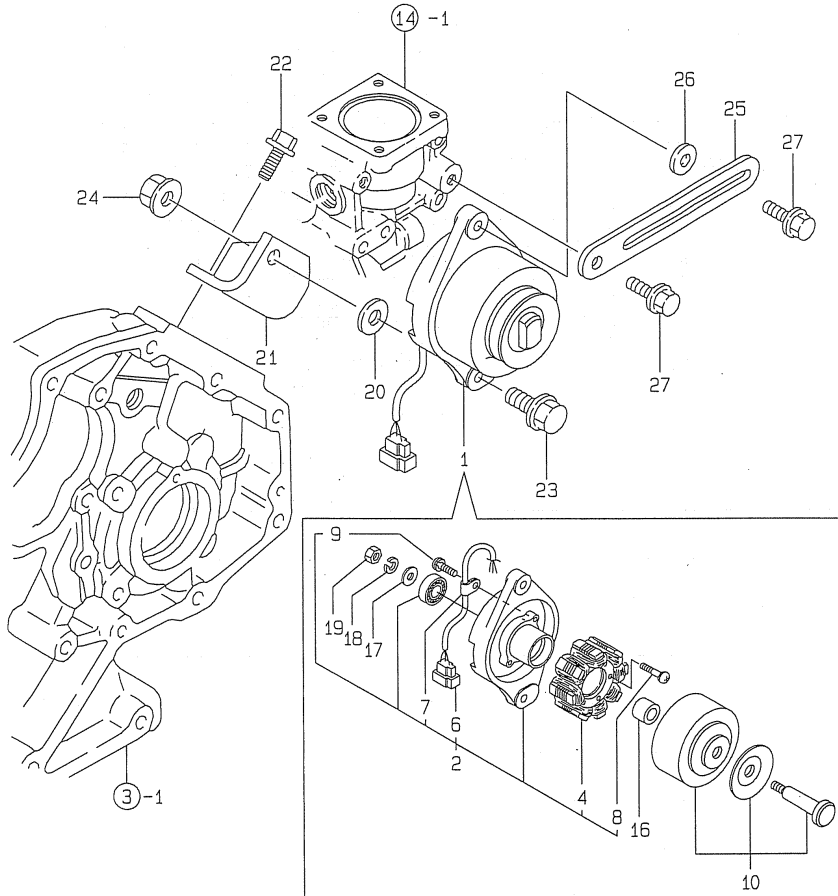
(D)=4TN100L-PS
(E)=4TN100TL-P
(F)=4TN100TL-PS

No.	Lev.	Parts No.	Description	Q'ty						I	R
				(A)	(B)	(C)	(D)	(E)	(F)		
1	1	124610-77010	STARTER, S13-68A	1	1	1	1	1	1		
2	2	X213011001	ARMATURE ASSY	1	1	1	1	1	1		
3	3	X21302302	BALL BEARING	1	1	1	1	1	1		
4	3	X21303302	BALL BEARING	1	1	1	1	1	1		
5	2	X21302115	WASHER KIT, THRUST	1	1	1	1	1	1		
6	2	X21303119	STOPPER SET, PINION	1	1	1	1	1	1		
7	2	X21308220	COIL ASSY, FIELD	1	1	1	1	1	1		
8	3	X21308311	BRUSH (+)	2	2	2	2	2	2		
9	2	X225013012	COVER, REAR	1	1	1	1	1	1		
10	2	X21307305	HOLDER ASSY, BRUSH	1	1	1	1	1	1		
11	3	X21305312	BRUSH (-)	2	2	2	2	2	2		
12	3	X21305313	SPRING, BRUSH	4	4	4	4	4	4		
13	2	X22501113	SHAFT ASSY, GEAR	1	1	1	1	1	1		
14	2	X21304400	BEARING ASSY, CENTER	1	1	1	1	1	1		
15	3	X21301402	SEAL, OIL	1	1	1	1	1	1		
16	3	X21302402	O-RING	1	1	1	1	1	1		
17	2	X213035002	PINION ASSY	1	1	1	1	1	1		
18	2	X213046003	HOUSING ASSY, GEAR	1	1	1	1	1	1		
19	3	X21302601	METAL, CASE BEARING	1	1	1	1	1	1		
20	2	X21302605	LEVER SET	1	1	1	1	1	1		
21	2	X21303610	COVER SET, DUST	1	1	1	1	1	1		
22	2	X213017001	SWITCH ASSY, MAGNET.	1	1	1	1	1	1		
23	2	X21305820	BOLT, THROUGH	2	2	2	2	2	2		
24	1	22137-120000	WASHER, 12	3	3	3	3	3	3		
25	1	22217-120000	WASHER, SPRING 12	3	3	3	3	3	3		
26	1	26116-120352	BOLT, M12X 35 PLATED	3	3	3	3	3	3		

Fig.24. GENERATOR

Y00D4580
3, 4TN100 (T) L-P (S)

D19040-77200
D19100-77300



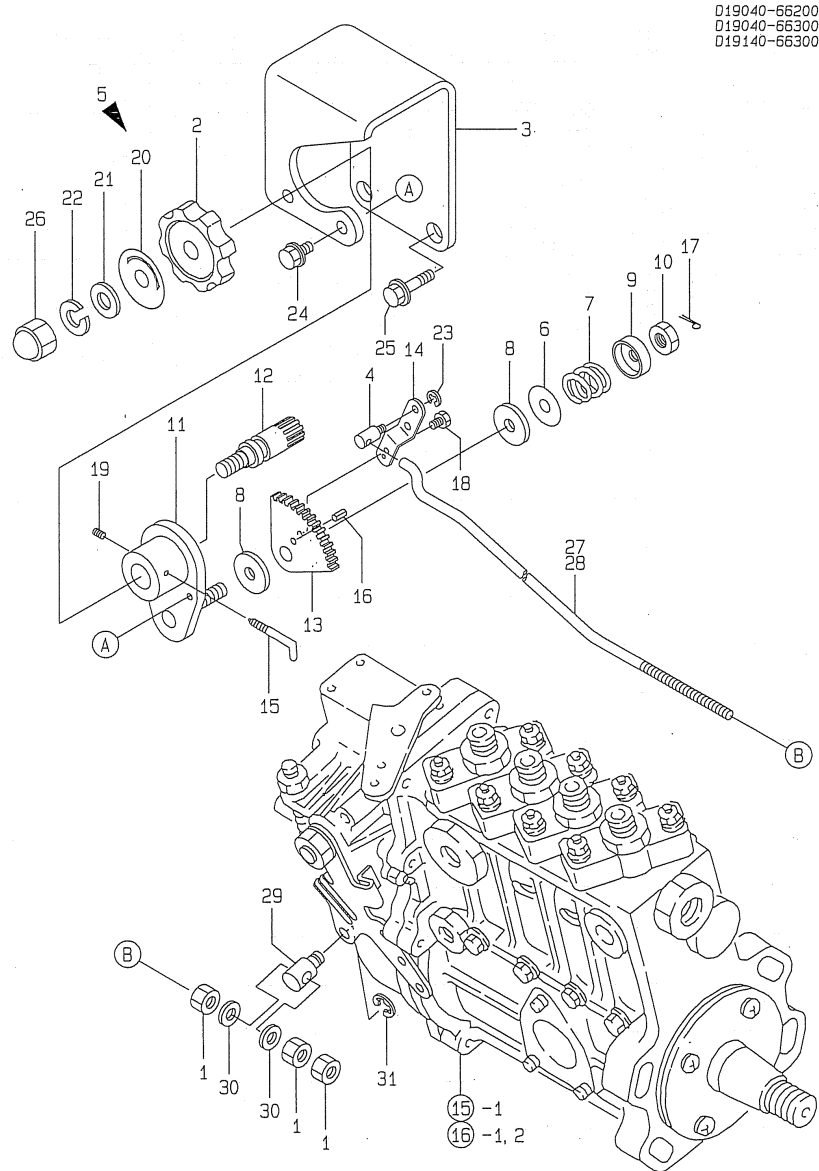
(A)=3TN100L-P
(B)=3TN100L-PS
(C)=4TN100L-P

(D)=4TN100L-PS
(E)=4TN100TL-P
(F)=4TN100TL-PS

No.	Lev.	Parts No.	Description	Q'ty						I	R
				(A)	(B)	(C)	(D)	(E)	(F)		
1	1	171301-77201	DYNAMO ASSY, 15A	1	1	1	1	1	1		
2	2	XM08137	PLATE ASSY	1	1	1	1	1	1		
4	3	XM08180	STATOR SET	1	1	1	1	1	1		
6	3	XM17878	COUPLER	1	1	1	1	1	1		
7	3	XM36410	CLAMP	1	1	1	1	1	1		
8	3	26022-040252	SCREW, M4X25	2	2	2	2	2	2		
9	3	XYSPS4008	SCREW	1	1	1	1	1	1		
10	2	XM82184	FLYWHEEL ASSY	1	1	1	1	1	1		
16	2	106383-44720	SPACER	1	1	1	1	1	1		
17	2	106383-44730	WASHER	1	1	1	1	1	1		
18	2	22212-100000	SPRING WASHER 10	1	1	1	1	1	1		
19	2	26716-100002	NUT, M10	1	1	1	1	1	1		
20	1	121575-21850	WASHER	1	1	1	1	1	1		
21	1	119000-77340	BRACKET	1	1	1	1	1	1		
22	1	26106-080202	BOLT, M8X 20 PLATED	2	2	2	2	2	2		
23	1	26106-100252	BOLT, M10X 25 PLATED	1	1	1	1	1	1		
24	1	26366-100002	NUT, M10	1	1	1	1	1	1		
25	1	121522-77330	ADJUSTER	1	1	1	1	1	1		
26	1	121236-77340	SPACER	1	1	1	1	1	1		
27	1	26106-080222	BOLT, M8X 22 PLATED	2	2	2	2	2	2		

Fig.25. ENGINE CONTROL DEVICE

Y00D4580
3, 4TN100 (T) L-P (S)



019040-66200
019040-66300
019140-66300

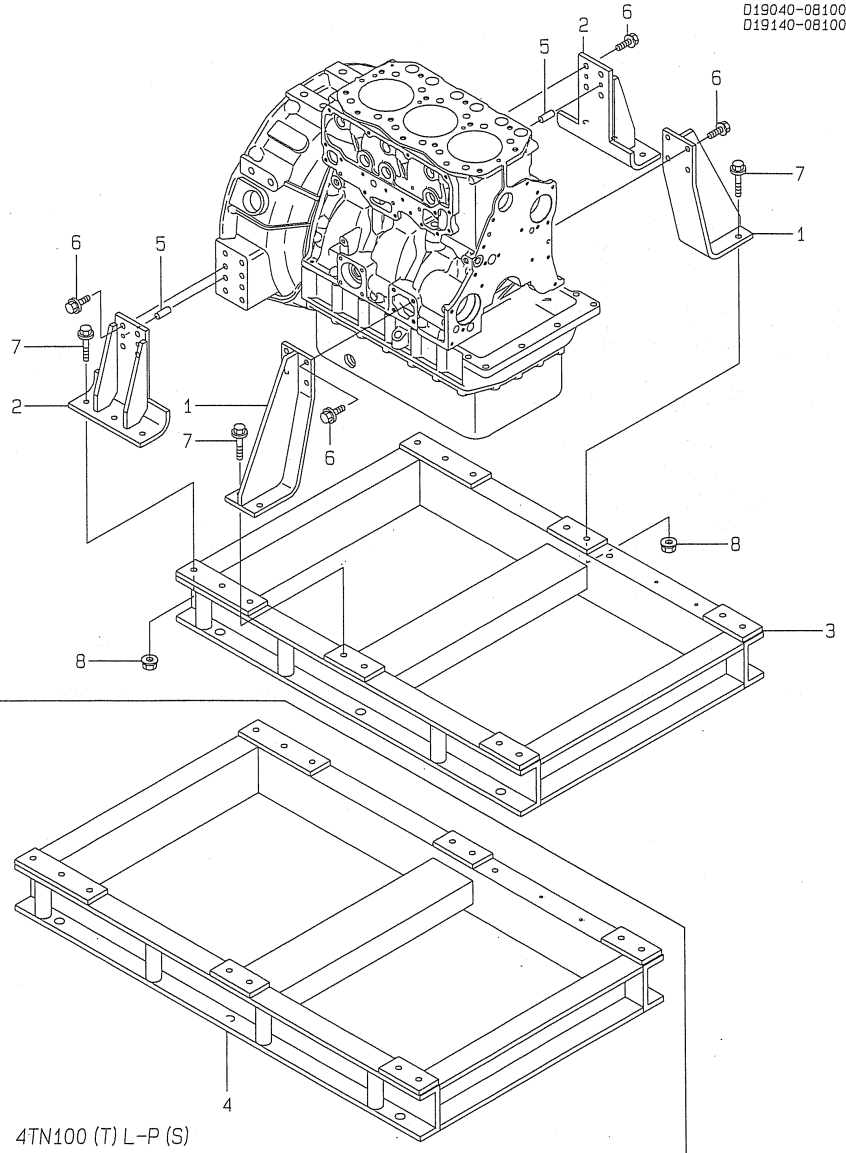
(A)=3TN100L-P
(B)=3TN100L-PS
(C)=4TN100L-P

(D)=4TN100L-PS
(E)=4TN100TL-P
(F)=4TN100TL-PS

No.	Lev.	Parts No.	Description	Qty						I	R
				(A)	(B)	(C)	(D)	(E)	(F)		
1	1	26756-050002	NUT, LOCK M5	3	3	3	3	3	3		
2	1	126650-66020	HANDLE, REGULATOR	1	1	1	1	1	1		
3	1	119040-66110	BRACKET	1	1	1	1	1	1		
4	1	119888-66130	PIVOT	1	1	1	1	1	1		
5	1	171048-67010	CONTROLLER ASSY	1	1	1	1	1	1		
6	2	171102-66080	WASHER	1	1	1	1	1	1		
7	2	104200-66820	SPRING	1	1	1	1	1	1		
8	2	104200-66830	PLATE, FRICTION	2	2	2	2	2	2		
9	2	104200-66850	WASHER	1	1	1	1	1	1		
10	2	104200-66860	NUT	1	1	1	1	1	1		
11	2	171085-67100	BRACKET	1	1	1	1	1	1		
12	2	171085-67110	SHAFT, DRIVE	1	1	1	1	1	1		
13	2	171085-67120	GEAR	1	1	1	1	1	1		
14	2	171048-67130	LEVER	1	1	1	1	1	1		
15	2	171048-67140	STOPPER	1	1	1	1	1	1		
16	2	22351-020006	PIN, SPRING 2.0X 6	1	1	1	1	1	1		
17	2	22411-200150	COTTER PIN	1	1	1	1	1	1		
18	2	26116-060082	BOLT, M6X 8 PLATED	1	1	1	1	1	1		
19	2	26921-050122	SCREW, M5X12	1	1	1	1	1	1		
20	1	170064-67210	LABEL, HANDLE	1	1	1	1	1	1		
21	1	22117-100000	WASHER, 10	1	1	1	1	1	1		
22	1	22217-100000	WASHER, SPRING 10	1	1	1	1	1	1		
23	1	22272-000050	RING, E- 5	1	1	1	1	1	1		
24	1	26106-060102	BOLT, M6X 10 PLATED	2	2	2	2	2	2		
25	1	26106-100202	BOLT, M10X 20 PLATED	2	2	2	2	2	2		
26	1	26657-100002	NUT, CAP M10	1	1	1	1	1	1		
27	1	119040-66300	LINK, ENGINE CONTROL	1	1						
28	1	119140-66300	LINK, ENGINE CONTROL			1	1	1	1		
29	1	171085-67210	PIVOT	1	1	1	1	1	1		
30	1	22117-050000	WASHER, 5	2	2	2	2	2	2		
31	1	22272-000070	RING, E- 7	1	1	1	1	1	1		

Fig.26. ENGINE SUPPORT

Y00D4580
3, 4TN100 (T) L-P (S)



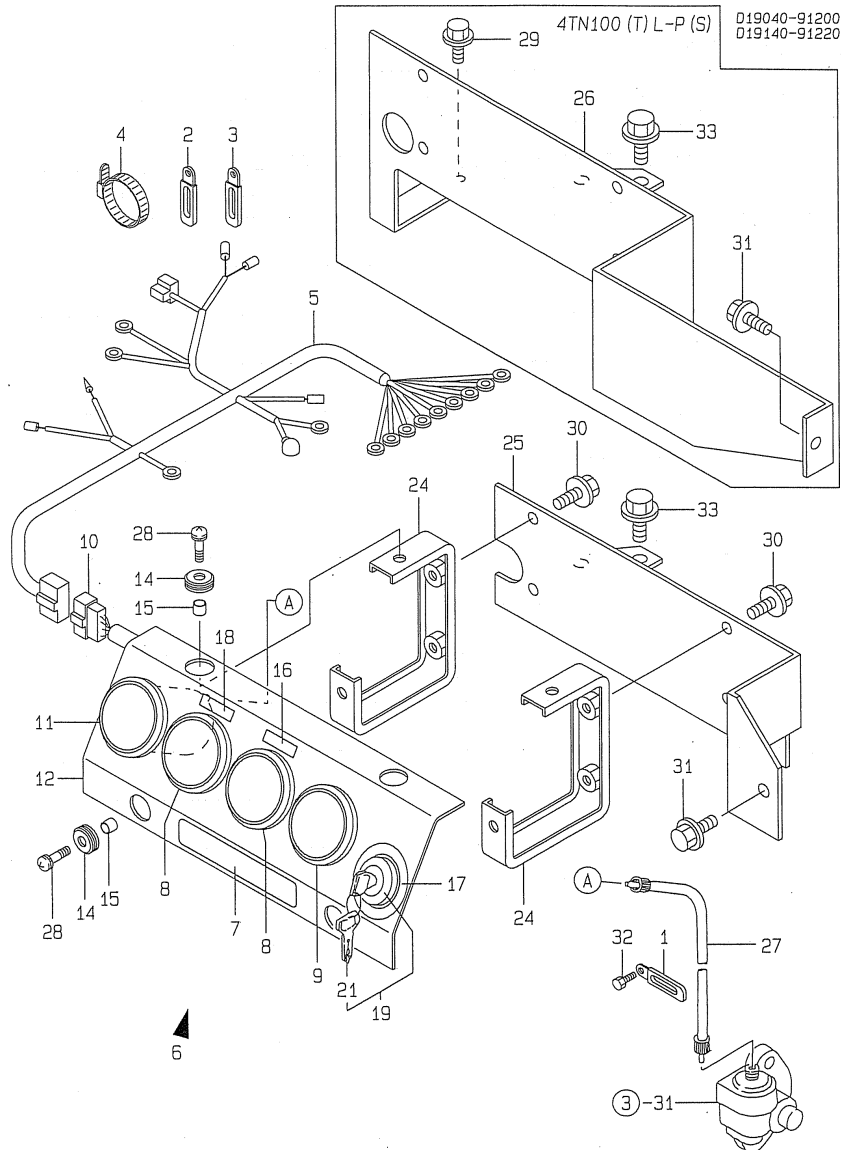
(A)=3TN100L-P
(B)=3TN100L-PS
(C)=4TN100L-P

(D)=4TN100L-PS
(E)=4TN100TL-P
(F)=4TN100TL-PS

No.	Lev.	Parts No.	Description	Q'ty						I	R
				(A)	(B)	(C)	(D)	(E)	(F)		
1	1	119040-08020	FOOT	2	2	2	2	2	2		
2	1	171090-08030	FOOT	2	2	2	2	2	2		
3	1	119040-08100	ENGINE BED	1	1						
4	1	119140-08100	ENGINE BED			1	1	1	1		
5	1	22312-080200	PIN, PARALLEL M8X20	4	4	4	4	4	4		
6	1	26106-100222	BOLT, M10X 22 PLATED	16	16	16	16	16	16		
7	1	26106-100452	BOLT, M10X 45 PLATED	10	10	10	10	10	10		
8	1	26366-100002	NUT, M10	10	10	10	10	10	10		

Fig.27. PANEL

Y00D4580
3. 4TN100 (T) L-P (S)



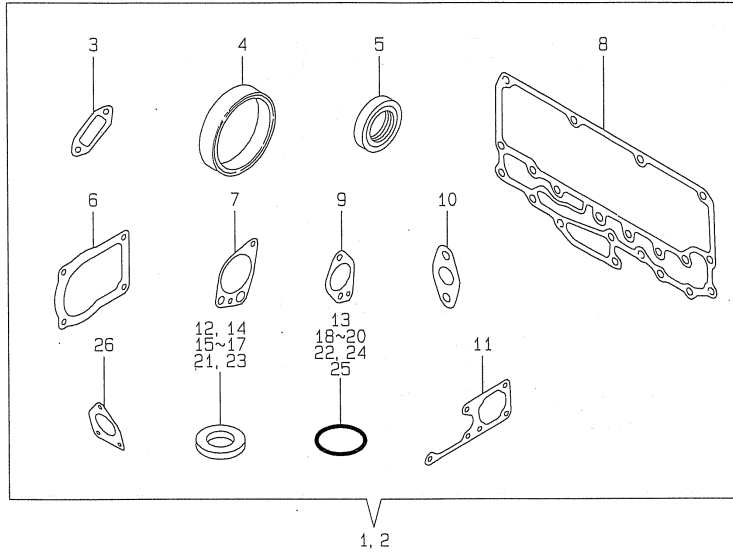
(A)=3TN100L-P
(B)=3TN100L-PS
(C)=4TN100L-P

(D)=4TN100L-PS
(E)=4TN100TL-P
(F)=4TN100TL-PS

No.	Lev.	Parts No.	Description	Q'ty						I	R
				(A)	(B)	(C)	(D)	(E)	(F)		
1	1	194440-51620	CLAMP	1	1	1	1	1	1		
2	1	194440-51620	CLAMP	1	1	1	1	1	1		
3	1	194180-51640	CLAMP, HARNESS	1	1	1	1	1	1		
4	1	121750-59890	BAND, 140	2	2	2	2	2	2		
5	1	119040-91020	HARNESS, WIRE	1	1	1	1	1	1		
6	1	129113-91100	PANEL ASSY	1	1	1	1	1	1		
7	2	104507-07190	LABEL, YANMAR	1	1	1	1	1	1		
8	2	171010-77850	THERMOSTAT	2	2	2	2	2	2		
9	2	171090-91010	GAUGE	1	1	1	1	1	1		
10	2	129113-91030	HARNESS, WIRE	1	1	1	1	1	1		
11	2	171011-91100	TACHOMETER	1	1	1	1	1	1		
12	2	129113-91110	PANEL	1	1	1	1	1	1		
14	2	121400-91520	ABSORBER	4	4	4	4	4	4		
15	2	121400-91530	SPACER	4	4	4	4	4	4		
16	2	132310-91900	LABEL(L.O PRESSURE	1	1	1	1	1	1		
17	2	171048-91900	LABEL	1	1	1	1	1	1		
18	2	132310-91920	LABEL(C.W PRESSURE	1	1	1	1	1	1		
19	2	933110-00100	SWITCH ASSY, STARTER	1	1	1	1	1	1		
21	3	933110-00301	KEY ASSY	1	1	1	1	1	1		
24	1	119888-91120	SUPPORT	2	2	2	2	2	2		
25	1	119040-91130	BRACKET, PANEL	1	1						
26	1	119140-91140	BRACKET, PANEL			1	1	1	1		
27	1	124701-91140	CABLE, L=985	1	1	1	1	1	1		
28	1	26033-060202	SCREW M 6X 20	4	4	4	4	4	4		
29	1	26106-060122	BOLT, M6X 12 PLATED			1	1	1	1		
30	1	26106-080122	BOLT, M8X 12 PLATED	4	4	4	4	4	4		
31	1	26106-080122	BOLT, M8X 12 PLATED	1	1	1	1	1	1		
32	1	26476-060142	SCREW, TAPPING M6X14	1	1	1	1	1	1		
33	1	26106-080122	BOLT, M8X 12 PLATED	2	2	2	2	2	2		

Fig.28. GASKET SET(CYLINDER BLOCK)

Y00D4580
3, 4TN100 (T) L-P (S)



(A)=3TN100L-P
(B)=3TN100L-PS
(C)=4TN100L-P

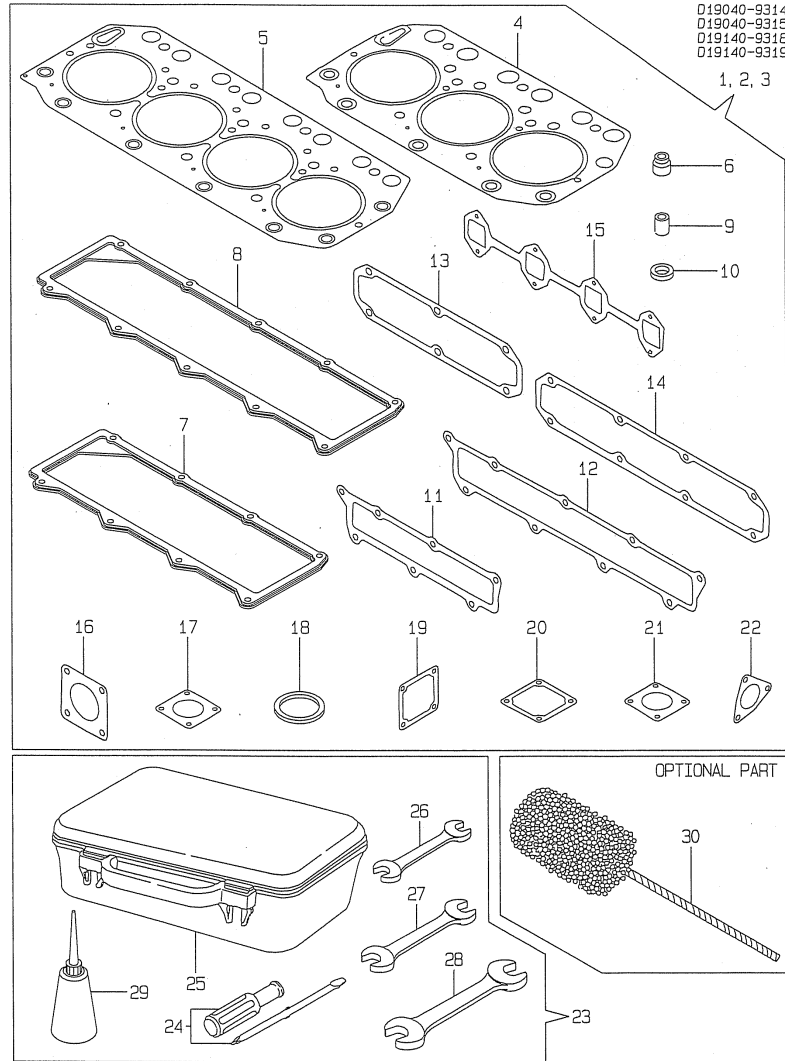
(D)=4TN100L-PS
(E)=4TN100TL-P
(F)=4TN100TL-PS

No.	Lev.	Parts No.	Description	Q'ty						I	R
				(A)	(B)	(C)	(D)	(E)	(F)		
1	1		GASKET SET(NON ASB.)	1	1	1	1				1
2	1		GASKET SET(NON ASB.)							1	1
3	2	119000-01771	GASKET	1	1	1	1	1	1		
4	2	124411-01780	SEAL, HTC95X115X12	1	1	1	1	1	1		
5	2	121850-01800	SEAL, OIL	1	1	1	1	1	1		
6	2	124610-01862	GASKET	2	2	2	2	2	2		
7	2	119000-32020	GASKET, PUMP	1	1	1	1	1	1		
8	2	119000-33021	GASKET	1	1	1	1	1	1		
9	2	119000-33041	GASKET	1	1	1	1	1	1		
10	2	121952-33071	GASKET, COOLER	2	2	2	2	2	2		
11	2	119000-42021	GASKET, WATER PUMP	1	1	1	1	1	1		
12	2	124465-44950	GASKET, 16	1	1	1	1	1	1		
13	2	124410-51960	O-RING	1	1	1	1	1	1		
14	2	23414-080000	GASKET, 8X1.0	2	2	2	2	2	4	4	
15	2	23414-140000	GASKET, 14X1.0	1	1	1	1	1	1		
16	2	23414-160000	GASKET, 16X1.0	1	1	1	1	1	1		
17	2	23414-180000	GASKET, 18X1.0	2	2	2	2	2	2		
17-1	2	23414-170000	GASKET, 17X1.0			2	2	2	2		N
			(C=E2009.12) (D=E2009.12) (E=E2009.12) (F=E2009.12)								
18	2	24311-000220	O-RING, 1AP22.0	1	1	1	1	1	1		
19	2	24311-000360	O-RING, 1AP36.0	1	1	1	1	1	1		
20	2	24341-000240	O-RING, 1AS24.0	1	1	1	1	1	1		
21	2	23414-220000	GASKET, 22X1.0	1	1	1	1	1	1		
22	2	24341-001350	O-RING, 1AS135.0	1	1	1	1	1	1		
23	2	43400-500420	SEAL WASHER 8	1	1	1	1	1	1		
24	2	24311-000320	O-RING, 1AP32.0	1	1	1	1	1	1		
25	2	24311-000320	O-RING, 1AP32.0	1	1	1	1	1	1		
26	2	124410-51861	GASKET	1	1	1	1	1	1		

Remarks
(1) OPTIONAL PART.

Fig.29. GASKET SET(CYLINDER HEAD)&TOOL

Y0004580
3, 4TN100 (T) L-P (S)



(A)=3TN100L-P
(B)=3TN100L-PS
(C)=4TN100L-P

(D)=4TN100L-PS
(E)=4TN100TL-P
(F)=4TN100TL-PS

No.	Lev.	Parts No.	Description	Qty						I	R
				(A)	(B)	(C)	(D)	(E)	(F)		
1	1			1	1						1
2	1					1	1				1
3	1							1	1		1
4	2	119000-01340	GASKET, HEAD T=1.3	1	1						
5	2	119100-01340	GASKET, HEAD T=1.3			1	1	1	1		
6	2	121850-11150	SEAL, VALVE STEM	6	6	8	8	8	8		
7	2	119000-11320	GASKET, BONNET	1	1						
8	2	119100-11320	GASKET, BONNET			1	1	1	1		
9	2	119625-11870	PROTECTOR, NOZZLE	3	3	4	4	4	4		
10	2	119625-11880	SEAT, NOZZLE	3	3	4	4	4	4		
11	2	119000-12110	GASKET, MANIFOLD	1	1						
12	2	119100-12112	GASKET, MANIFOLD			1	1	1	1		
13	2	119000-13200	GASKET	1	1						
14	2	119100-13200	GASKET			1	1				
15	2	119101-13200	GASKET							1	1
16	2	129400-13201	GASKET, SILENCER	1	1	1	1				
17	2	121850-49540	GASKET, THERMOSTAT	1	1	1	1	1	1		
18	2	121850-49550	GASKET, THERMOSTAT	1	1	1	1	1	1		
19	2	121850-77021	GASKET	1	1	1	1				
20	2	121850-77021	GASKET							1	1
21	2	129472-18090	GASKET							1	1
22	2	129792-13520	GASKET							1	1
23	1	171001-93100	BOX, TOOL	1	1	1	1	1	1		
24	2	104200-92350	DRIVER, SCREW	1	1	1	1	1	1		
25	2	104200-92600	BOX, TOOL	1	1	1	1	1	1		
26	2	28110-100120	SPANNER, 10X12	1	1	1	1	1	1		
27	2	28110-140170	SPANNER, 14X17	1	1	1	1	1	1		
28	2	28110-190220	SPANNER, 19X22	1	1	1	1	1	1		
29	2	28210-000140	OILER	1	1	1	1	1	1		
30	1	129400-92450	HONE	1	1	1	1	1	1		1

Remarks
(1) OPTIONAL PART.

Parts No. Index

Parts No.	Fig. No.	Ref. No.
	1	1
	6	14
	28	1
		2
	29	1
		2
		3
101504-55051	21	5
101504-55101	21	6
104200-11920	4	15
104200-66820	25	7
104200-66830	25	8
104200-66850	25	9
104200-66860	25	10
104200-92350	29	24
104200-92600	29	25
104507-07190	27	7
105015-55040	21	4
106100-55800	10	24
106383-44720	24	16
106383-44730	24	17
114250-53080	19	5
114250-53120	19	8
114250-53130	19	9
114250-53140	19	10
114250-53210	19	11
114250-53400	19	12
119000-01200	1	30
	2	30
119000-01340	1	31
	29	4
119000-01500	3	1
119000-01590	3	4
119000-01730	4	5
119000-01760	3	21
119000-01771	3	22
	28	3
119000-01840	1	14
	2	14
119000-01930	3	9
119000-02020	1	19
	2	19
119000-02410	1	6
	2	6
119000-02450	10	3
119000-02800	1	24
	2	20
119000-02930	1	27
	2	23
119000-03200	5	48

Parts No.	Fig. No.	Ref. No.
119000-07200	5	7
	6	11
119000-11110	5	21
	6	32
119000-11230	5	33
	6	50
119000-11260	5	36
	6	44
119000-11270	5	37
	6	45
119000-11280	5	38
	6	46
119000-11290	5	39
	6	47
119000-11311	5	47
119000-11320	5	51
	29	7
119000-11340	5	30
119000-11810	5	14
	6	25
119000-12100	7	1
119000-12110	7	7
	29	11
119000-13100	8	1
119000-13200	8	4
	29	13
119000-14000	10	1
119000-14100	10	8
119000-14200	10	10
119000-21650	11	13
119000-22000	11	22
119000-22300	11	30
119000-23910	11	36
119000-25050	10	13
119000-25100	10	14
119000-25900	10	20
119000-25910	10	21
119000-25920	10	22
119000-25930	10	17
119000-32001	12	1
119000-32020	12	17
	28	7
119000-33010	13	2
119000-33021	13	17
	28	8
119000-33030	13	18
119000-33041	13	19
	28	9
119000-33050	13	4
119000-34030	13	6

Parts No.	Fig. No.	Ref. No.
119000-35140	12	21
119000-39350	12	28
119000-39650	12	45
119000-42021	14	17
	28	11
119000-42250	14	20
119000-48170	14	50
119000-51030	15	5
119000-51050	15	7
	16	8
119000-51060	15	9
	16	10
119000-51081	15	10
119000-51091	15	11
119000-51161	15	20
	16	21
119000-51170	15	21
	16	22
119000-51181	15	22
	16	23
119000-51201	15	23
	16	24
119000-51330	15	34
	16	35
119000-51340	15	35
	16	36
119000-51360	15	37
	16	38
119000-51410	15	38
	16	39
119000-51450	15	39
	16	40
119000-51500	15	45
119000-51510	15	46
	16	47
119000-51530	15	48
	16	49
119000-51550	15	49
	16	50
119000-51570	15	50
	16	51
119000-51580	15	51
	16	52
119000-51590	15	52
	16	53
119000-51650	15	53
	16	54
119000-51800	15	66
	16	67
119000-51900	15	67

Parts No.	Fig. No.	Ref. No.
119000-51900	16	68
119000-51990	15	82
119000-52000	17	1
119000-52100	17	8
119000-52150	17	13
119000-53000	19	2 B
119000-55600	20	2
119000-61051	18	6
119000-61120	18	14
119000-61140	18	15
119000-61150	18	16
119000-61160	18	17
119000-61170	18	18
119000-61180	18	19
119000-61190	18	20
119000-61310	18	26
119000-61320	18	27
119000-61400	18	30
119000-61470	18	35
119000-61490	18	36
119000-61630	18	50
119000-61841	18	61
119000-77340	24	21
119005-35100	12	20
119006-03090	6	1
119006-42001	14	1
119040-01790	4	8
119040-08020	26	1
119040-08100	26	3
119040-44900	14	34
119040-49010	14	37
119040-55500	20	1
119040-59010	20	4
119040-59020	20	7
119040-59040	20	24
119040-59050	20	10
119040-59560	20	30
119040-59570	20	32
119040-66110	25	3
119040-66300	25	27
119040-91020	27	5
119040-91130	27	25
119083-44500	14	23
119083-44570	14	29
119083-44580	14	30
119100-01340	2	31
	29	5
119100-01640	4	29
119100-01730	4	6
119100-01980	1	32

Parts No. Index

Parts No.	Fig. No.	Ref. No.
119100-01980	2	32
119100-03200	6	60
119100-11230	6	42
119100-11311	6	59
119100-11320	6	61
	29	8
119100-11330	5	52
	6	62
119100-12112	7	8
	29	12
119100-12120	7	4
119100-13100	8	2
119100-13200	8	5
	29	14
119100-14000	10	2
119100-34800	4	33
119100-35090	12	22
119100-39350	12	29
119100-51030	16	6
119100-51081	16	11
119100-51091	16	12
119100-51101	15	13
	16	14
119100-51500	16	46
119100-53000	19	2 A
119100-59810	19	27
119100-59820	19	31
119100-59830	19	35
119100-59840	19	39
119100-61200	18	21
119100-61300	18	25
119100-61340	18	28
119100-61430	18	33
119100-61440	18	95
119100-61700	18	97
119100-61710	18	98
119100-61771	18	57
119100-61860	18	62
119101-11110	6	33
119101-12850	7	19
119101-13100	8	3
119101-13200	8	6
	29	15
119101-18020	9	1
119101-18500	9	2
119101-18510	9	9
119101-18520	9	13
119101-18530	9	15
119101-18540	9	16
119101-18550	9	17

Parts No.	Fig. No.	Ref. No.
119101-18560	9	18
119101-18570	9	19
119101-39600	12	30
119101-39650	12	32
119129-11520	6	57
119130-44760	14	32
119130-49020	14	39
119131-18390	8	20
119131-18400	8	21
119140-01600	4	1
119140-01790	4	9
119140-08100	26	4
119140-12130	7	12
119140-13300	8	8
119140-39480	3	27
119140-39650	12	33
119140-44500	14	24
119140-44560	14	28
119140-44900	14	35
119140-44910	14	36
119140-49010	14	38
119140-49020	14	40
119140-59010	20	5
119140-59020	20	8
119140-59040	20	25
119140-59110	20	11
119140-59560	20	31
119140-66300	25	28
119140-66450	22	2
119140-91140	27	26
119140-92600	13	1 -1
119141-21650	11	14
119141-39150	12	26
119141-39650	12	34
119141-44500	14	25
119141-44760	14	33
119141-59010	20	6
119141-59020	20	9
119141-59040	20	26
119141-61060	18	7
119141-61070	18	9
119141-61080	18	11
119141-61500	18	37
119259-44570	14	27
119620-49290	14	56
119625-11870	5	42
	6	54
	29	9
119625-11880	5	43
	6	55

Parts No.	Fig. No.	Ref. No.
119625-11880	29	10
119888-66130	25	4
119888-91120	27	24
120220-66250	22	1
120323-61060	18	8
120323-61070	18	10
120323-61470	18	96
121236-77340	24	26
121250-39450	12	48
121250-44901	14	60
121252-39150	12	27
121400-91520	27	14
121400-91530	27	15
121470-44900	4	20
	14	61
121520-34810	4	34
121522-77330	24	25
121575-21850	24	20
121750-59890	27	4
121820-52020	17	3
121820-52070	17	7
121820-52110	17	9
121820-52140	17	12
121820-52160	17	14
121820-52170	17	15
121820-52180	17	16
121820-52190	17	17
121820-52200	17	18
121820-52210	17	19
121820-52230	17	20
121820-52300	17	21
121820-52400	17	22
121820-52510	17	23
121850-01800	3	7
	28	5
121850-01900	10	19
121850-01920	3	8
121850-11100	5	20
	6	31
121850-11120	5	22
	6	34
121850-11150	5	23
	6	35
	29	6
121850-11180	5	24
	6	36
121850-11800	5	13
	6	23
121850-21130	11	17
121850-21200	11	8

Parts No.	Fig. No.	Ref. No.
121850-21290	11	9
121850-21660	11	15
121850-21680	11	16
121850-21920	11	10
121850-23200	11	37
121850-35230	13	7
121850-44660	14	26
121850-49530	14	51
121850-49540	14	52
	29	17
121850-49550	14	53
	29	18
121850-51700	15	65
	16	66
121850-61600	18	45
121850-77021	7	5
		16
		22
	29	19
		20
121850-77100	7	23
121855-61910	18	63
121952-33071	13	5
	28	10
121952-39830	13	10
121952-51900	15	68
	16	69
121972-44740	14	31
122710-51050	15	8
	16	9
122710-51350	15	36
	16	37
123372-59080	19	19
123385-82200	5	15
	6	26
123472-59090	19	20
123482-39660	12	49
123563-55200	21	7
123563-55300	21	8
123563-55800	21	13
123672-84530	13	11
124060-01640	21	2
124070-13300	4	35
124160-01751	3	20
	5	45
	6	58
124223-35510	13	8
124250-11190	5	25
	6	37
124410-51861	17	2

Parts No. Index

Parts No.	Fig. No.	Ref. No.
124410-51861	28	26
124410-51960	10	27
	28	13
124411-01780	4	31
	28	4
124411-35520	13	9
124413-39710	12	35
124465-44950	14	62
	28	12
124610-01851	3	25
124610-01862	3	26
	28	6
124610-51970	18	3
124610-66460	22	3
124610-66470	22	4
124610-77010	23	1
124701-91140	27	27
124738-49150	14	55
124766-59050	14	59
124790-66950	22	5
124976-34850	4	19
126650-66020	25	2
127410-21480	11	21
127412-18853	7	14
127450-59680	20	15
127488-18910	7	15
127610-44900	4	16
128400-51300	15	31
	16	32
129052-96150	14	22
129100-01580	1	11
		12
		13
	2	11
		12
		13
	3	3
129100-59951	20	34
129100-61930	18	64
129113-01740	4	14
129113-91030	27	10
129113-91100	27	6
129113-91110	27	12
129150-03090	5	1
129150-03100	6	2
129150-11750	5	34
	6	51
129150-14400	10	11
129150-91400	3	31
129155-51270	15	29

Parts No.	Fig. No.	Ref. No.
129155-51270	16	30
129155-51280	15	30
	16	31
129155-61090	18	12
129155-61460	18	34
129400-13201	8	7
	29	16
129400-92450	29	30
129403-18620	9	14
129404-18510	9	3
129404-18520	9	4
129404-18530	9	5
129404-18540	9	6
129404-18550	9	7
129404-18560	9	8
129404-18580	9	10
129404-18590	9	11
129404-18600	9	12
129404-18680	9	20
129404-18720	9	23
129406-18690	9	21
129406-18700	9	22
129411-13300	8	9
129412-12460	7	13
129470-55610	20	3
129472-18090	9	24
	29	21
129491-59540	20	28
129495-59300	20	27
129792-13520	8	19
	29	22
129792-39610	12	31
129795-11750	4	3
132310-91900	27	16
132310-91920	27	18
135210-61090	18	13
135602-34390	1	15
	2	15
137600-53900	15	71
	16	72
144626-51090	15	12
	16	13
144626-51940	15	69
	16	70
144626-51950	15	70
	16	71
144626-91560	12	53
144628-59520	20	14
148616-61650	18	56
148688-52120	17	10

Parts No.	Fig. No.	Ref. No.
170064-67210	25	20
171001-93100	29	23
171010-77850	27	8
171011-91100	27	11
171048-55850	21	14
171048-67010	25	5
171048-67130	25	14
171048-67140	25	15
171048-91900	27	17
171051-01921	1	5
	2	5
171085-67100	25	11
171085-67110	25	12
171085-67120	25	13
171085-67210	25	29
171087-42280	14	21
171090-08030	26	2
171090-21601	11	18
171090-55103	21	1
171090-55851	21	15
171090-59111	20	12
171090-59130	20	13
171090-59600	20	33
171090-91010	27	9
171094-59540	20	29
171102-66080	25	6
171301-77201	24	1
194180-51640	27	3
194440-51620	27	1
		2
194990-22050	8	22
	9	25
22111-050000	22	6
22117-050000	18	65
	25	30
22117-100000	25	21
22117-120000	4	21
	21	16
22137-080000	18	66
22137-120000	23	24
22190-060000	15	72
	16	73
22212-100000	24	18
22217-050000	18	67
22217-060000	17	24
	18	68
22217-100000	18	69
	25	22
22217-120000	21	17
	23	25

Parts No.	Fig. No.	Ref. No.
22217-180000	10	25
22242-000180	5	40
	6	52
22252-000340	11	31
22262-000260	18	29
22272-000040	18	46
		70
22272-000050	25	23
22272-000070	25	31
22272-000080	18	71
22312-080200	26	5
22351-020004	18	47
22351-020006	25	16
22351-020012	18	48
22351-030010	12	46
22351-030016	18	60
		72
22351-030025	18	73
22351-050012	10	26
22351-050020	18	74
22351-080016	1	16
	2	16
22360-050000	22	7
22372-050000	18	75
22411-200150	25	17
22453-060000	18	77
22492-060362	18	78
22512-070140	10	9
	11	52
23000-022000	6	3
23000-025000	12	36
23000-048000	14	41
23000-054000	7	17
	14	42
23000-060000	7	20
23000-070000	7	21
23061-070330	21	9
23217-050000	8	27
23297-080081	12	37
23414-060000	20	42
23414-080000	12	38
	15	84
	20	43
		44
	28	14
23414-080012	18	79
23414-100000	12	39
		40
23414-120000	20	16
		45

Parts No. Index

Parts No.	Fig. No.	Ref. No.
23414-140000	1	17
	2	17
	20	17
		18
		46
	28	15
23414-160000	4	22
	13	12
	14	63
	28	16
23414-170000	8	10
		23
	13	13 -1
	28	17 -1
23414-180000	13	13
	28	17
23414-220000	4	17
	28	21
23414-220029	15	73
	16	74
23446-050000	8	28
23446-065000	8	29
23851-030000	20	47
		48
23857-030000	12	41
		47
	15	85
23857-060000	20	19
23857-080000	20	20
		21
		49
23871-010000	2	7
	13	20
23871-020000	1	18
	2	18
	14	11
23871-030000	1	7
	2	8
	4	23
	5	16
	6	27
	13	14
	14	12
	21	10
23871-040000	21	11
23887-160002	13	15
	18	80
23894-030002	8	11
		24
24311-000110	18	81

Parts No.	Fig. No.	Ref. No.
24311-000140	21	12
24311-000220	12	23
	28	18
24311-000320	3	23
	5	46
	6	66
	28	24
		25
24311-000360	14	18
	28	19
24312-000150	15	74
	16	75
24314-000180	12	42
24341-000080	18	82
24341-000240	3	33
	28	20
24341-000260	15	75
	16	76
24341-000500	15	76
	16	77
24341-001350	10	23
	28	22
26013-060142	21	18
26013-060149	22	8
26013-080162	12	24
26013-080452	10	18
26013-100222	21	19
26014-060142	14	54
26014-080352	14	43
26022-040252	24	8
26022-050122	5	53
	6	65
26033-060202	27	28
26106-060102	25	24
26106-060122	27	29
26106-060162	3	34
	12	43
	22	9
26106-060182	15	77
	16	78
26106-060202	15	78
	16	79
	19	23
26106-060222	18	83
26106-060352	18	84
26106-080122	12	44
	27	30
		31
		33
26106-080142	7	6

Parts No.	Fig. No.	Ref. No.
26106-080142	7	24
	14	44
	20	22
	22	10
26106-080162	1	33
	2	33
	8	25
	10	12
	12	18
		25
26106-080182	3	10
	7	18
	14	45
26106-080202	3	11
		28
		29
	7	9
	13	21
		22
	24	22
26106-080222	24	27
26106-080252	3	24
	4	24
		32
	5	54
	6	67
	10	28
26106-080302	14	46
26106-080352	4	25
	13	23
		24
26106-080402	3	12
	8	12
26106-080452	3	13
		14
	8	13
26106-080502	3	15
	8	14
	12	19
	13	25
26106-080552	3	16
	14	47
26106-080652	5	44
	6	56
	14	19
26106-080702	4	26
	7	10
	8	15
26106-080752	3	17
26106-080802	4	27

Parts No.	Fig. No.	Ref. No.
26106-080902	3	18
26106-080952	8	16
26106-081102	8	17
26106-081152	7	11
26106-100202	5	8
	6	12
	25	25
26106-100222	26	6
26106-100252	24	23
26106-100302	4	4
26106-100352	20	50
26106-100452	26	7
26116-050102	18	85
26116-060082	25	18
26116-060356	18	86
26116-120252	21	20
26116-120352	23	26
26116-120502	8	30
26116-120852	4	28
26216-060162	15	79
	16	80
26216-060252	5	26
	6	38
26216-080222	8	18
		26
26216-080652	5	27
	6	39
26366-060002	5	28
	6	40
	19	24
26366-080002	3	30
	5	29
	6	41
	14	48
		49
		64
	15	80
	16	81
	20	23
26366-100002	10	29
	24	24
	26	8
26376-100002	13	16
26376-120002	18	87
26476-060142	27	32
26606-100002	18	88
26657-100002	25	26
26667-080002	18	89
		99
26716-060002	17	25

Parts No. Index

Parts No.	Fig. No.	Ref. No.
26716-100002	24	19
26716-120002	8	31
26756-050002	25	1
26756-080002	18	90
		91
		100
26776-180002	10	30
26777-120002	18	92
26911-080322	18	101
26921-050122	25	19
27231-600000	1	8
	2	34
27241-140000	1	9
	2	9
27241-160000	5	17
	6	28
27241-280000	5	18
	6	29
27241-400000	1	10
	2	10
	5	19
	6	30
28110-100120	29	26
28110-140170	29	27
28110-190220	29	28
28210-000140	29	29
43100-500560	8	32
43100-500900	8	33
43100-552900	8	34
43400-500420	3	19
	18	102
	28	23
43400-500450	18	93
43400-500470	20	51
43400-500500	18	94
43400-500640	4	18
43720-500120	8	35
45100-501950	11	50
45100-502530	11	51
46116-800040	22	11
719000-02870	1	34
	2	35
719000-02940	1	37
	2	38
719000-11650	5	31
719000-11700	5	9
719000-21700	11	1
719000-22500	11	24
719000-22900	11	40
719000-22950	11	42

Parts No.	Fig. No.	Ref. No.
719000-23100	11	32
719000-23600	11	38
719000-23610	11	48
719000-33700	13	1
719000-53100	19	1 B
719000-73100	19	1
719040-51310	15	1
719100-21700	11	2
719100-53200	19	1 A
719129-11660	6	48
719129-11700	6	13
719129-12100	7	2
719140-51350	16	1
719141-01561	2	1
719141-51350	16	2
933110-00100	27	19
933110-00301	27	21
X213011001	23	2
X21301402	23	15
X213017001	23	22
X21302115	23	5
X21302302	23	3
X21302402	23	16
X21302601	23	19
X21302605	23	20
X21303119	23	6
X21303302	23	4
X213035002	23	17
X21303610	23	21
X21304400	23	14
X213046003	23	18
X21305312	23	11
X21305313	23	12
X21305820	23	23
X21307305	23	10
X21308220	23	7
X21308311	23	8
X22501113	23	13
X225013012	23	9
XM08137	24	2
XM08180	24	4
XM17878	24	6
XM36410	24	7
XM82184	24	10
XYSPS4008	24	9

Parts No.	Fig. No.	Ref. No.
-----------	----------	----------

Parts No.	Fig. No.	Ref. No.
-----------	----------	----------