

OCD10-M44700EN

# PREFACE

1. This Parts Catalog is the 1st edition of 3TN75L-RNH2 Diesel Engine for NISHIHATSU.

Pub. No. : 000Y00D4470

Published : May,1992

2. Model name

Engine model	Vehicle		Vehicle made by
	Products	Model name	
3TN75L-RNH2	—	—	NISHIHATSU

## Directions for the Parts Catalog.

1. This Parts Catalog shows both standard and optional parts.
2. Parts may change without prior notice.
3. The following is an example of the Parts Catalog format.

REF.	LEV.	PARTS NO.	DESCRIPTION	Q'TY						I	R
				(A)	(B)	(C)	(D)	(E)	(F)		
1	1	729595-51390	FUEL INJECTION PUMP	1	1	1	1	1			1
1-1	1	729595-51391	FUEL INJECTION PUMP	1	1	1	1	1		N	1
		(A=E00185) (B=E00200)									
3	2	26022-060162	SCREW M 6X 16	9	9	9	9	9			
3-1	2	26022-060162	SCREW M 6X 16	4	4	4	4	4		K	
		(A=E00156) (B=E00156) (C=E00156) (D=E00156) (E=E00156)									
4	2	129470-51040	CAMSHAFT	1	1	1	1	1			
5	2	122710-51050	BEARING, ROLLER	2	2	2	2	2			
6	2	129470-51060	RETAINER	1	1	1	1	1			

Remarks
(1) BOOST COMPEMSATOR TYPE. OPTIONAL PART, TO E00155,(4JH-DT, 4JH-DTZ

### ① Ref. No.

The Ref. No. listed may not be in accordance with the illustration Ref. No.

(Ex.) Illustration No.

List Ref No.

1

1

(Before change)

1-1

(After change)

For interchangeable symbols N, R and K, illustrations for new parts may be abbreviated.

### ② Lev. (Level)

Level indication

The numbers below indicate the level of relativity towards the main part.

1 ----- Main parts (Assembly parts)

2 ----- Sub component included in " 1 ".

3 ----- Sub component included in " 2 ".

Note) Parts that are not for sale are partially illustrated but not listed.

### ③ Interchangeability Symbol

When a part change takes place, one of the following interchangeability symbols is indicated beside the part.

Symbol	Interchangeability	Contents note
N	Old $\begin{matrix} \leftarrow \text{Yes} \\ \text{No} \rightarrow \end{matrix}$ New	New Part is interchangeable for Old Part but Old Part is not interchangeable for New Part.
Q	Old $\begin{matrix} \leftarrow \text{No} \\ \text{Yes} \rightarrow \end{matrix}$ New	New Part is not interchangeable for Old Part but Old Part is interchangeable for New Part.
R	Old $\begin{matrix} \leftarrow \text{Yes} \\ \text{Yes} \rightarrow \end{matrix}$ New	New/ Old Parts are both interchangeable.
S	Old $\begin{matrix} \leftarrow \text{No} \\ \text{No} \rightarrow \end{matrix}$ New	New/ Old Parts are both not interchangeable.
W		Part newly added.
Z		Part discontinued.
F		Not interchangeable by a single part but interchangeable together with related parts.
K		Changes only for used parts quantities.

### ④ Effective Machine No.

When a part changes, the effective Machine No. will be indicated in the (A)-(F) column.

Product Symbol	Product No.	Product Symbol	Product No.
C	Clutch No. Compressor No.	F	Machine No. (Agricultural Equip.)
D	Drive No.	M	Machine No.
E	Engine No.		

Note 1) A date may follow the symbol. (Ex.) 1996.01

Note 2) "XXXXX" and "ZZZZZ" are for parts that could not be predicted or for engine models that could not be identified.

Note 3) (A=E00185) is the E (Engine Serial Number) for the column (A) model (in this case 4JH-DT) after the parts design change.

### ⑤ Remarks

Figures or alphabets (symbols) are entered in the remarks column.

The comments (remarks) on parts that are indicated at the bottom of the illustration are the same symbols as those stated above.

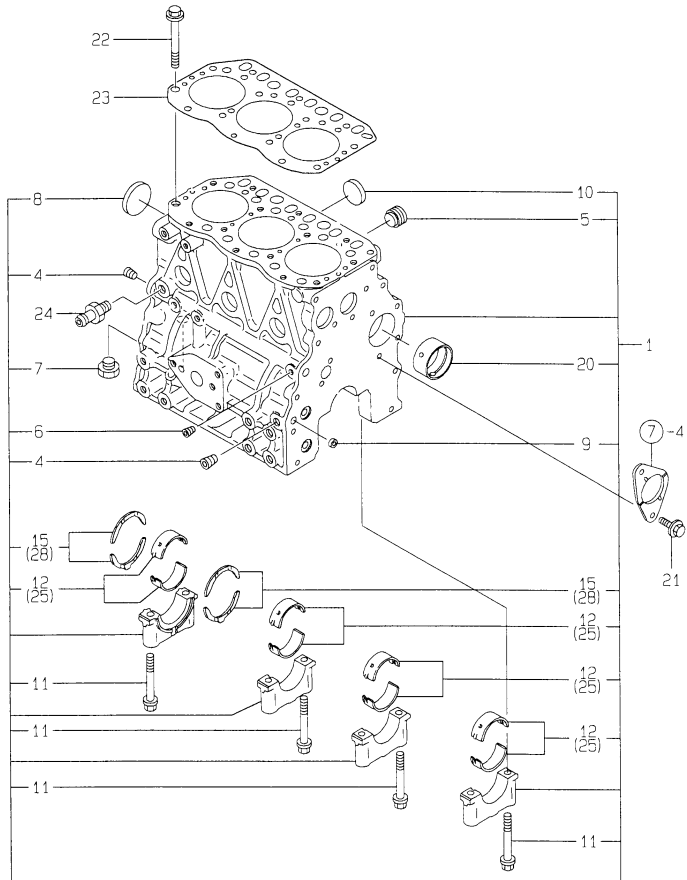
# Contents

Fig. No.	Fig. Name	Fig. No.	Fig. Name
ENGINE 3TN75L-RNH2			
1.	CYLINDER BLOCK		
2.	GEAR HOUSING		
3.	FLYWHEEL HOUSING & OIL SUMP		
4.	CYLINDER HEAD & BONNET		
5.	SUCTION MANIFOLD & AIR CLEANER		
6.	EXHAUST MANIFOLD		
7.	CAMSHAFT & DRIVE GEAR		
8.	CRANKSHAFT & PISTON		
9.	LUB. OIL SYSTEM		
10.	COOLING WATER SYSTEM		
11.	FUEL INJECTION PUMP		
12.	GOVERNOR		
13.	FUEL INJECTION VALVE		
14.	FUEL PIPES		
15.	ENGINE STOP DEVICE		
16.	STARTING MOTOR		
17.	GENERATOR		
18.	GASKET SET(OPTIONAL PARTS)		

# Fig.1. CYLINDER BLOCK

Y00D4470  
3TN75L-RNH2

D19810-01100  
D19865-02100  
D29129-02200  
D19600-49300



(A)=3TN75L-RNH2

(B)=

(C)=

(D)=

(E)=

(F)=

No.	Lev.	Parts No.	Description	Q'ty						I	R
				(A)	(B)	(C)	(D)	(E)	(F)		
1	1	719810-01560	BLOCK ASSY, CYLINDER	1							
4	2	124160-01910	PLUG, PT1/4	2							
5	2	171051-01921	PLUG, NPTF1	1							
6	2	23871-010000	PLUG, R01	1							
7	2	23887-120002	PLUG, 12	1							
8	2	27231-500000	PLUG 50	1							
9	2	27241-120000	PLUG, 12	2							
10	2	27241-300000	PLUG 30	6							
11	2	119620-02020	BOLT, METAL CAP	8							
12	2	719810-02800	BEARING, MAIN	4							
15	2	719810-02930	BEARING, THRUST	2							
20	2	129795-02411	BUSH, CAMSHAFT	1							
21	1	26106-080162	BOLT, M8X 16 PLATED	2							
22	1	119810-01200	BOLT, HEAD	14							
23	1	119865-01331	GASKET, HEAD T=1.4	1							\$
24	1	121550-49111	JOINT, PT1/4	1							
25	1	119810-02870	BEARING, 0.25 US	4							1
28	1	119810-02940	BEARING, THRUST 0.25	2							2

**Remarks**

(1) UNDER-SIZE(U.S=0.25)PART.

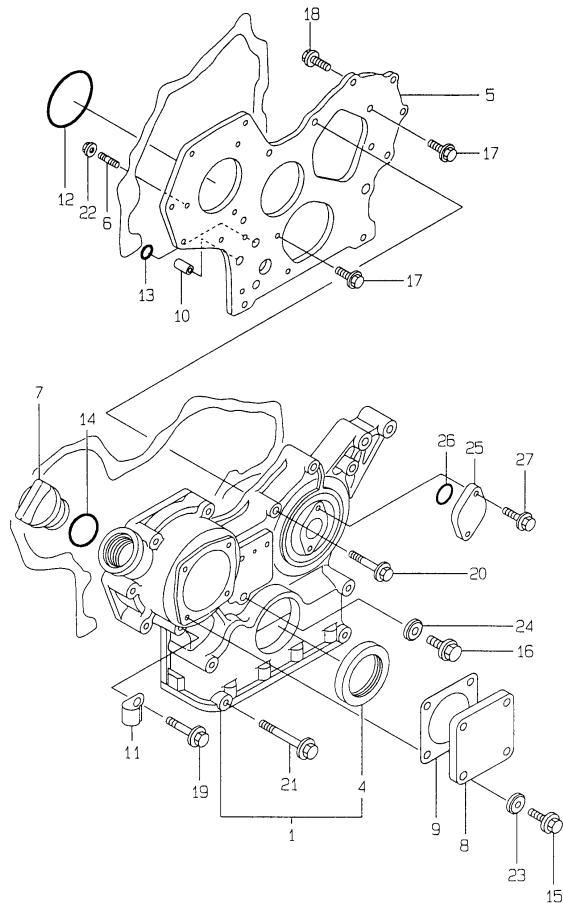
(2) OVER-SIZE(O.S=0.25)PART.

(§) THESE PARTS ARE SOLD BY FIG.18,  
REF.NO.8.

# Fig.2. GEAR HOUSING

Y00D4470  
37N75L-RNH2

D29400-01220  
D29100-01810



(A)=3TN75L-RNH2

(B)=

(C)=

(D)=

(E)=

(F)=

No.	Lev.	Parts No.	Description	Q'ty						I	R
				(A)	(B)	(C)	(D)	(E)	(F)		
1	1	719810-01500	CASE ASSY, GEAR	1							
4	2	129795-01800	SEAL, OIL	1							
5	1	129400-01520	FLANGE, GEAR CASE	1							
6	1	121450-01560	STUD, M8X22	3							
7	1	124160-01751	COVER, FILLER	1							
8	1	124240-01871	COVER	1							
9	1	124240-01883	GASKET	1							\$
10	1	129795-01950	PIPE, KNOCK L=18	2							
11	1	129150-03100	RETAINER, PIPE	1							
12	1	121850-51960	O-RING	1							\$
13	1	24311-000160	O-RING, 1AP16.0	2							\$
14	1	24311-000320	O-RING, 1AP32.0	1							\$
15	1	26106-080122	BOLT, M8X 12 PLATED	4							
16	1	26106-080162	BOLT, M8X 16 PLATED	1							
17	1	26106-080162	BOLT, M8X 16 PLATED	3							
18	1	26106-080202	BOLT, M8X 20 PLATED	2							
19	1	26106-080452	BOLT, M8X 45 PLATED	6							
20	1	26106-080552	BOLT, M8X 55 PLATED	3							
21	1	26106-080852	BOLT, M8X 85 PLATED	4							
22	1	26366-080002	NUT, M8	3							
23	1	43400-500410	SEAL WASHER 8S	4							\$
24	1	43400-500410	SEAL WASHER 8S	1							\$
25	1	121023-01550	COVER	1							
26	1	24341-000240	O-RING, 1AS24.0	1							\$
27	1	26106-060122	BOLT, M6X 12 PLATED	2							

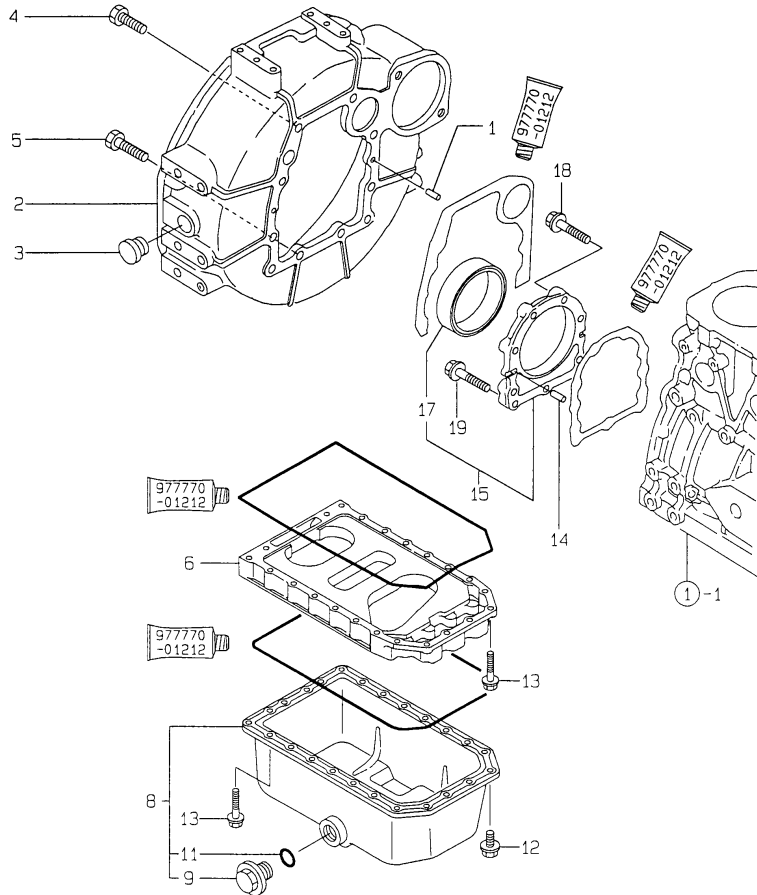
Remarks

(\$) THESE PARTS ARE SOLD BY FIG.18,  
REF.NO.8.

Fig.3. FLYWHEEL HOUSING & OIL SUMP

Y00D4470  
3TN75L-RNH2

D29100-01310  
D19810-01410  
D19800-01500



(A)=3TN75L-RNH2

(B)=

(C)=

(D)=

(E)=

(F)=

No.	Lev.	Parts No.	Description	Q'ty						I	R
				(A)	(B)	(C)	(D)	(E)	(F)		
1	1	129100-01580	PIN, M8X16	2							
2	1	171301-01600	HOUSING, FLYWHEEL	1							
3	1	119620-01750	CAP	1							
4	1	26206-100252	BOLT, M10X 25 PLATED	6							
5	1	26206-100302	BOLT, M10X 30 PLATED	4							
6	1	119810-01730	SPACER, OIL SUMP	1							
8	1	119810-01770	SUMP ASSY, OIL	1							
9	2	171301-01640	PLUG, 22	1							
11	2	24341-000240	O-RING, 1AS24.0	1							
12	1	26106-080162	BOLT, M8X 16 PLATED	6							
13	1	26106-080452	BOLT, M8X 45 PLATED	22							
14	1	129100-01580	PIN, M8X16	2							
15	1	719810-01650	CASE ASSY, OIL SEAL	1							
17	2	119810-01780	SEAL, 769310	1							
18	1	26106-080302	BOLT, M8X 30 PLATED	6							
19	1	26106-080352	BOLT, M8X 35 PLATED	3							

Fig.4. CYLINDER HEAD & BONNET

(A)=3TN75L-RNH2

(B)=

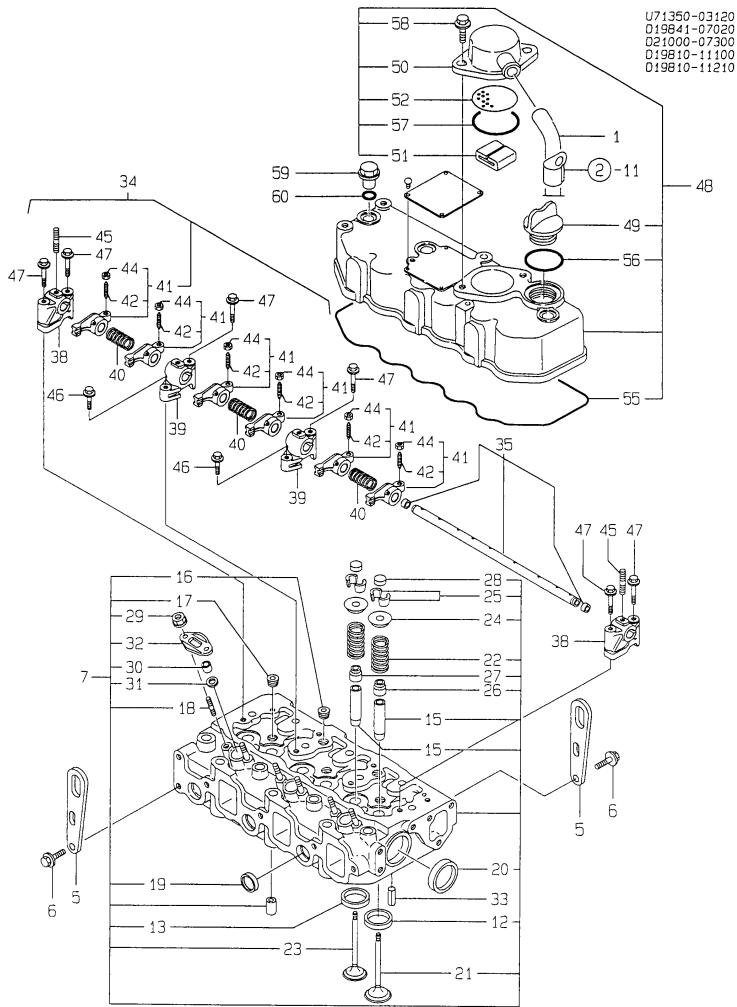
(C)=

(D)=

(E)=

(F)=

Y00D4470  
3TN75L-RNH2



No.	Lev.	Parts No.	Description	Q'ty						I	R
				(A)	(B)	(C)	(D)	(E)	(F)		
1	1	171350-03090	PIPE , BREATHER 900	1							
5	1	124736-07900	LIFTER	2							
6	1	26106-080142	BOLT, M8X 14 PLATED	4							
7	1	719820-11700	HEAD ASSY, CYLINDER	1							
12	2	119810-11080	SEAT, INTAKE VALVE	3							
13	2	119810-11090	SEAT, EXHAUST VALVE	3							
15	2	124060-11800	GUIDE, VALVE	6							1
16	2	121850-11860	PLUG, PT1/4	2							
17	2	23871-030000	PLUG, R03	3							
18	2	26216-060302	STUD, M6X 30	6							
19	2	27241-220000	PLUG, 22	3							
20	2	27241-400000	PLUG, 40	2							
21	2	119810-11100	VALVE, INTAKE	3							
22	2	119810-11120	SPRING, VALVE	6							
23	2	119810-11130	VALVE, EXHAUST	3							
24	2	104211-11180	RETAINER, SPRING	6							
25	2	101158-11190	COTTER	6							
25-1	2	27310-070001	COTTER, 7	6							N
(A=EXXXXX)											
26	2	124160-11340	SEAL, VALVE STEM	3							\$
27	2	124950-11340	SEAL, VALVE STEM	3							\$
28	2	104211-11370	CAP, VALVE	6							
29	2	26367-060002	NUT, M6	6							
30	2	119625-11870	PROTECTOR, NOZZLE	3							
31	2	119625-11880	SEAT, NOZZLE	3							
32	2	119625-11900	RETAINER, NOZZLE	3							
33	1	22351-060012	PIN, SPRING 6.0X12	2							
34	1	119865-11200	SUPPORT ASSY, ARM	1							
35	2	119810-11240	SHAFT ASSY, ROCKER	1							
38	2	129155-11260	SUPPORT, ROCKER ARM	2							
39	2	129155-11270	SUPPORT, ROCKER ARM	2							
40	2	129150-11280	SPRING	3							
41	2	719810-11650	ARM ASSY, ROCKER	6							
42	3	129150-11230	SCREW, VALVE ADJUST	6							
44	3	129150-11750	NUT, M8	6							
45	2	26226-080182	STUD, M8X 18	3							
46	1	26106-080252	BOLT, M8X 25 PLATED	2							
47	1	26106-080502	BOLT, M8X 50 PLATED	6							
48	1	119810-11350	BONNET ASSY, HEAD	1							
49	2	124160-01751	COVER, FILLER	1							
50	2	129150-03020	COVER, BREATHER	1							
51	2	129150-03070	BAFFLE, BREATHER	1							
52	2	129150-03080	PLATE, BAFFLE	1							
55	2	119865-11310	GASKET, BONNET	1							\$
56	2	24311-000320	O-RING, 1AP32.0	1							\$
57	2	24341-000500	O-RING, 1AS50.0	1							\$
58	2	26106-080162	BOLT, M8X 16 PLATED	2							
59	1	124160-11360	KNOB	3							
60	1	24311-000120	O-RING, 1AP12.0	3							\$

Remarks

(1) REPAIR PART.

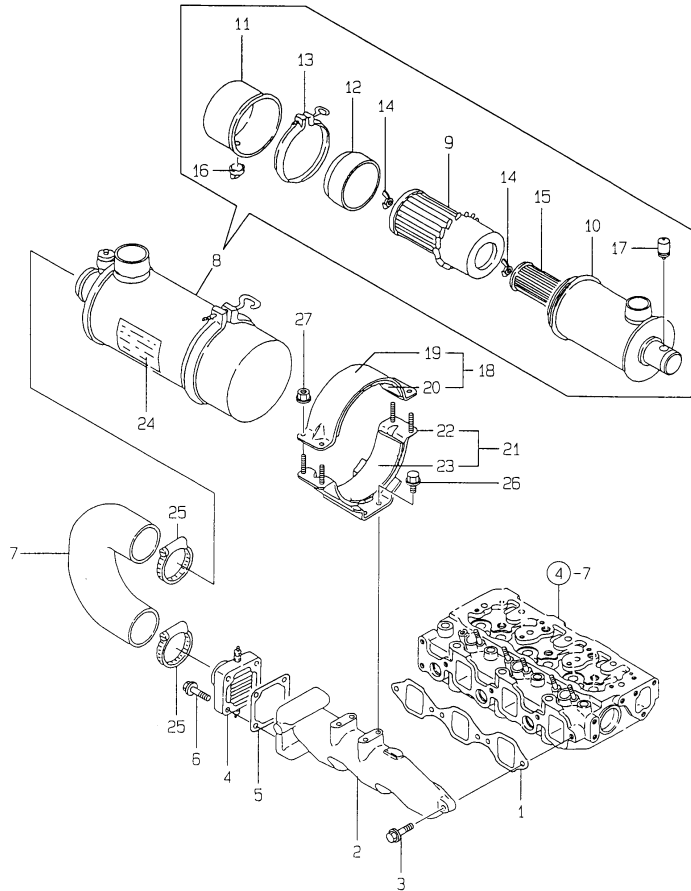
(\$) THESE PARTS ARE SOLD BY FIG.18, REF.NO.8.



Fig.5. SUCTION MANIFOLD & AIR CLEANER

Y00D4470  
3TN75L-RNH2

D19840-12200  
D29100-77501  
D19841-93110



(A)=3TN75L-RNH2

(B)=

(C)=

(D)=

(E)=

(F)=

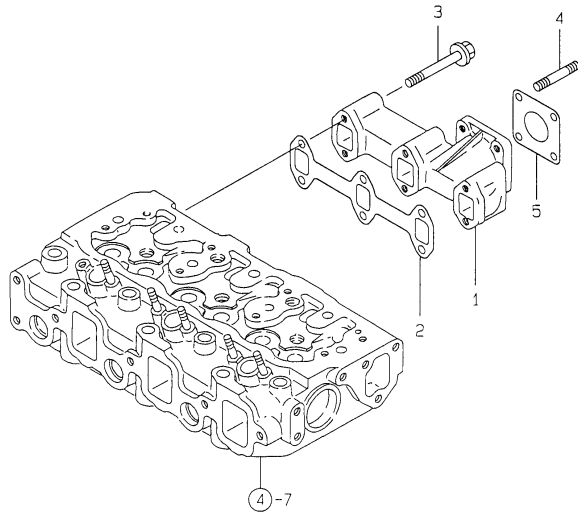
No.	Lev.	Parts No.	Description	Q'ty						I	R
				(A)	(B)	(C)	(D)	(E)	(F)		
1	1	119810-12111	GASKET, MANIFOLD	1							\$
2	1	171301-12701	MANIFOLD, AIR INTAKE	1							
3	1	26106-080252	BOLT, M8X 25 PLATED	4							
4	1	129120-77501	HEATER	1							
5	1	129150-77511	GASKET	1							\$
6	1	26106-080352	BOLT, M8X 35 PLATED	4							
7	1	119841-12210	PIPE, AIR INTAKE	1							
8	1	121521-12500	CLEANER ASSY, AIR	1							
9	2	121420-12511	ELEMENT	1							
10	2	171061-12520	BODY, CLEANER	1							
11	2	121422-12530	CUP	1							
12	2	121420-12540	SCARF, BAFFLE	1							
13	2	121420-12550	CLAMP ASSY	1							
14	2	121420-12561	NUT, WING	2							
15	2	121422-12570	ELEMENT	1							
16	2	121422-12580	VALVE, UNLOADER	1							
17	2	126650-12680	INDICATOR	1							
18	1	121400-12540	BAND ASSY, CLEANER	1							
19	2	121400-12560	BAND, AIR CLEANER	1							
20	2	121400-12570	SEAT, RUBBER B	1							
21	1	171351-12580	SUPPORT ASSY,CLEANER	1							
22	2	171351-12560	SUPPORT, AIR CLEANER	1							
23	2	171351-12570	SEAT, RUBBER	1							
24	1	129136-12600	LABEL, AIR CLEANER	1							
25	1	23000-060000	CLAMP, 60	2							
26	1	26106-080142	BOLT, M8X 14 PLATED	4							
27	1	26366-060002	NUT, M6	4							

Remarks  
(\$ ) THESE PARTS ARE SOLD BY FIG.18,  
REF.NO.8.

# Fig.6. EXHAUST MANIFOLD

Y00D4470  
3TN75L-RNH2

019910-13100TK  
019841-93110



(A)=3TN75L-RNH2  
(B)=  
(C)=

(D)=  
(E)=  
(F)=

No.	Lev.	Parts No.	Description	Q'ty						I	R
				(A)	(B)	(C)	(D)	(E)	(F)		
1	1	119810-13100	MANIFOLD, EXHAUST	1							
2	1	119810-13110	GASKET	1							\$
3	1	26106-080602	BOLT, M8X 60 PLATED	6							
4	1	26216-080222	STUD, M8X 22	4							
5	1	121000-13201	GASKET, SILENCER	1							\$

Remarks  
(\$ ) THESE PARTS ARE SOLD BY FIG.18,  
REF.NO.8.

# Fig.7. CAMSHAFT & DRIVE GEAR

(A)=3TN75L-RNH2

(B)=

(C)=

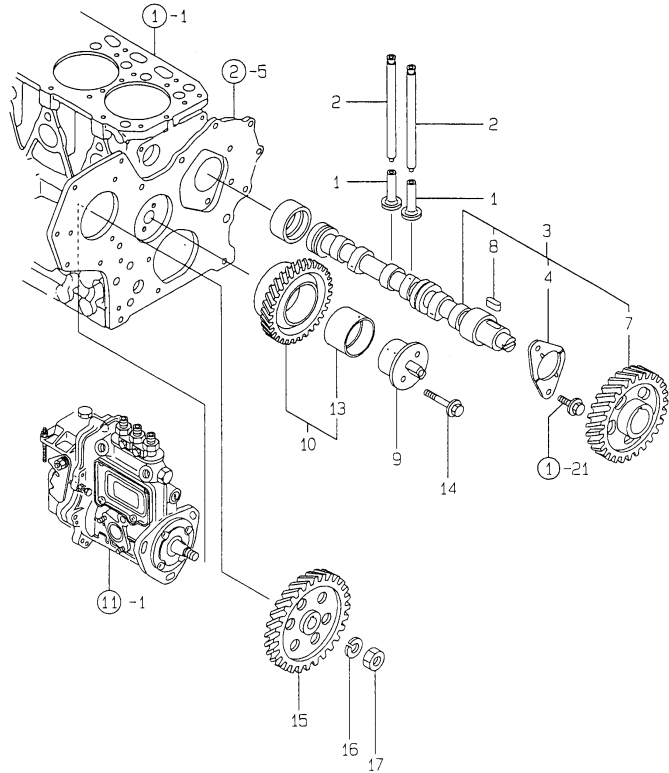
(D)=

(E)=

(F)=

Y00D4470  
3TN75L-RNH2

D19865-14100  
D29100-25101  
D29100-25200



No.	Lev.	Parts No.	Description	Q'ty						I	R
				(A)	(B)	(C)	(D)	(E)	(F)		
1	1	129150-14200	TAPPET	6							
2	1	119810-14400	ROD, PUSH	6							
3	1	119810-14580	CAMSHAFT ASSY	1							
4	2	129150-02450	BEARING, THRUST	1							
7	2	129150-14101	GEAR, CAMSHAFT	1							
8	2	22512-070140	KEY, 7X 14	1							
9	1	129100-25061	SHAFT, IDLE	1							
10	1	129150-25101	GEAR ASSY, IDLE	1							
13	2	129150-25920	BUSH, IDLE GEAR	1							1
14	1	26106-080452	BOLT, M8X 45 PLATED	2							
15	1	129100-25900	GEAR, PUMP	1							
16	1	22217-120000	WASHER, SPRING 12	1							
17	1	26716-120002	NUT, M12	1							

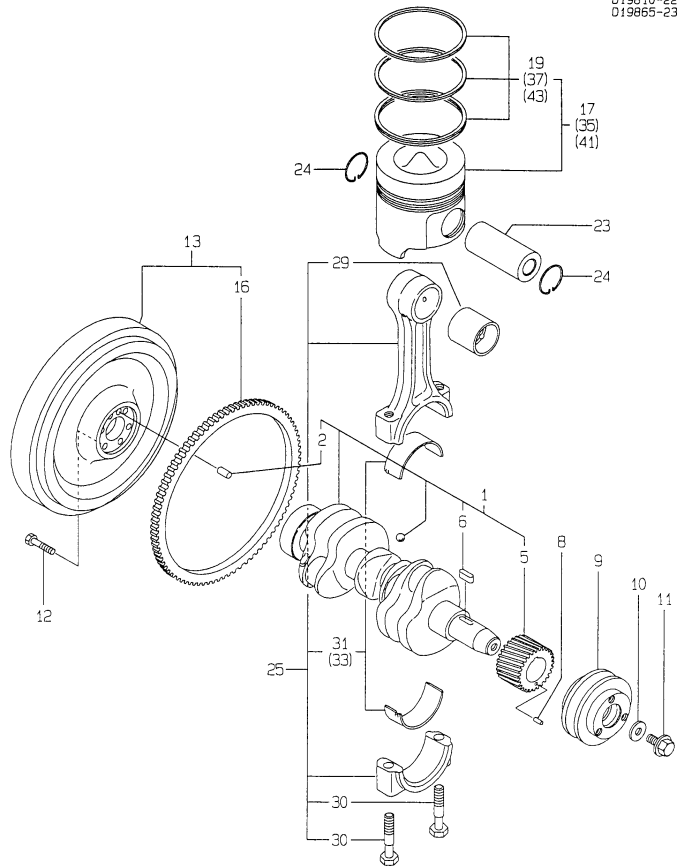
Remarks

(1) REPAIR PART.

# Fig.8. CRANKSHAFT & PISTON

Y00D4470  
3TN75L-RNH2

019810-21100  
029400-21200  
019810-21300  
019810-22100  
019865-23100



(A)=3TN75L-RNH2

(B)=

(C)=

(D)=

(E)=

(F)=

No.	Lev.	Parts No.	Description	Q'ty						I	R
				(A)	(B)	(C)	(D)	(E)	(F)		
1	1	719810-21700	CRANKSHAFT ASSY	1							
2	2	129100-01580	PIN, M8X16	1							
5	2	129150-21200	GEAR, CRANKSHAFT	1							
6	2	22512-070140	KEY, 7X 14	1							
8	1	22351-040010	PIN, SPRING 4.0X10	1							
9	1	171301-21650	V-PULLEY	1							
10	1	129795-21661	WASHER	1							
11	1	121850-21680	BOLT	1							
12	1	121111-21501	BOLT, FLYWHEEL	6							
13	1	171301-21580	FLYWHEEL ASSY	1							
16	2	119865-21600	GEAR, RING	1							
17	1	119810-22090	PISTON ASSY	3							
19	2	719810-22500	RING SET, PISTON	3							
23	1	119810-22300	PIN, PISTON	3							
24	1	119810-22400	CIRCLIP	6							
25	1	719810-23100	ROD ASSY, CONNECTING	3							
29	2	119810-23910	BEARING, PISTON PIN	3							1
30	2	119810-23200	BOLT, CONNECTING ROD	6							
31	2	119810-23600	BEARING, CRANK PIN	3							
33	1	119810-23610	BEARING, 0.25 US	3							2
35	1	719810-22910	PISTON ASSY, 0.25 OS	3							3
37	2	719810-22960	RING SET, 0.25 OS	3							3
41	1	119810-22920	PISTON ASSY, 0.50 OS	3							4
43	2	719885-22550	RING SET, 0.50 OS	3							4

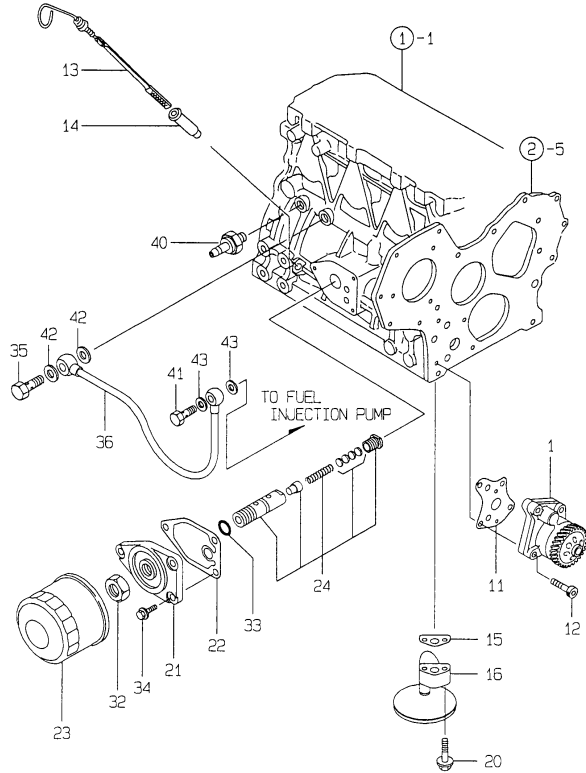
Remarks

- (1) REPAIR PART.
- (2) UNDER-SIZE(U.S=0.25)PART.
- (3) OVER-SIZE(O.S=0.25)PART.
- (4) OVER-SIZE(O.S=0.50)PART.

# Fig.9. LUB. OIL SYSTEM

Y0004470  
3TN75L-RNH2

D19865-32100  
D19810-34100  
D19810-35110  
D29100-35200  
D19865-39110  
D19600-39100



(A)=3TN75L-RNH2

(B)=

(C)=

(D)=

(E)=

(F)=

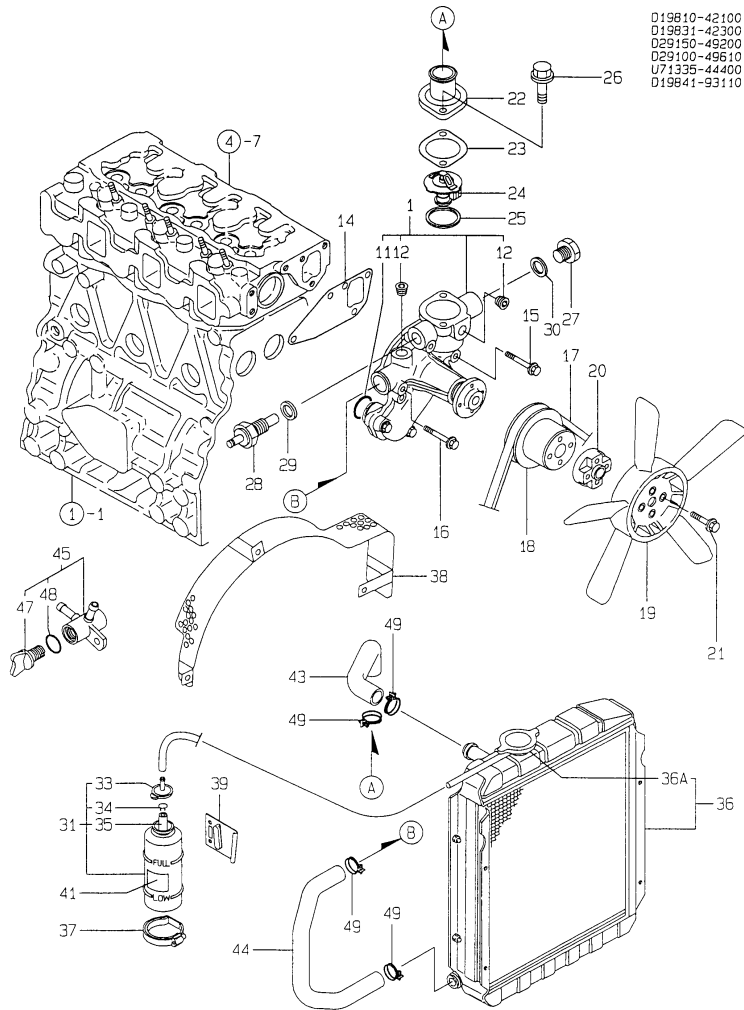
No.	Lev.	Parts No.	Description	Q'ty						I	R
				(A)	(B)	(C)	(D)	(E)	(F)		
1	1	119810-32000	PUMP ASSY, OIL	1							
11	1	129150-32020	GASKET, PUMP	1							\$
12	1	26450-060252	BOLT, M6X 25	4							
13	1	119600-34800	DIPSTICK, OIL	1							
14	1	121520-34810	GUIDE, DIPSTICK	1							
15	1	129150-35041	GASKET	1							\$
16	1	119810-35300	PIPE ASSY, OIL INLET	1							
20	1	26106-080352	BOLT, M8X 35 PLATED	2							
21	1	129150-35101	BRACKET, STRAINER	1							
22	1	129150-35111	GASKET	1							\$
23	1	129150-35150	FILTER 90X80L	1							
24	1	119865-35300	VALVE ASSY, CONTROL	1							
32	1	129150-35350	NUT	1							
33	1	24311-000160	O-RING, 1AP16.0	1							\$
34	1	26106-080202	BOLT, M8X 20 PLATED	3							
35	1	124160-39140	BOLT, PIPE JOINT M10	1							
36	1	119810-39200	PIPE ASSY, OIL	1							
40	1	124160-39450	SWITCH, 0.5KG	1							
41	1	124550-59820	BOLT, PIPE JOINT M8	1							
42	1	23414-100000	GASKET, 10X1.0	2							\$
43	1	43400-500410	SEAL WASHER 8S	2							

Remarks

(\$) THESE PARTS ARE SOLD BY FIG.18,  
REF.NO.8.

Fig.10. COOLING WATER SYSTEM

Y00D4470  
3TN75L-RNH2

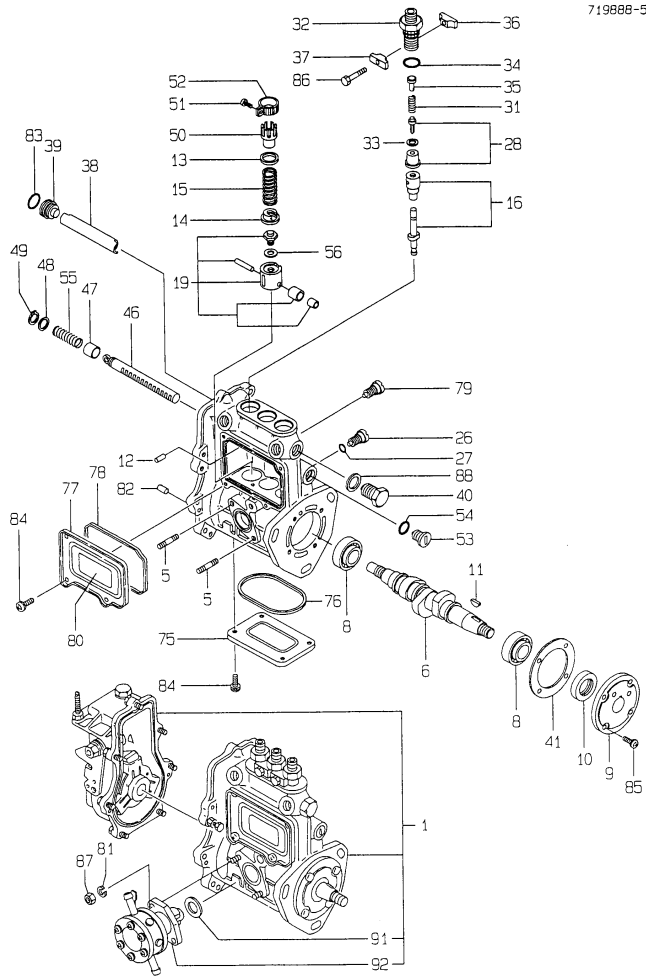


No.	Lev.	Parts No.	Description	Q'ty						I	R
				(A)	(B)	(C)	(D)	(E)	(F)		
1	1	119810-42001	PUMP ASSY, WATER	1							
11	2	129150-42320	O-RING	1							
12	2	23871-030000	PLUG, R03	2							
14	1	129150-42020	GASKET, WATER PUMP	1							\$
15	1	26106-080352	BOLT, M8X 35 PLATED	1							
16	1	26106-080552	BOLT, M8X 55 PLATED	3							
17	1	119831-42290	V-BELT, A37.5	1							
18	1	129403-42380	V-PULLEY, D=110	1							
19	1	124700-44740	FAN, COOLING 5X310	1							
20	1	171353-44760	SPACER, FAN	1							
21	1	26106-060352	BOLT, M6X 35 PLATED	4							
22	1	129350-49530	COVER, THERMOSTAT	1							
23	1	129795-49551	GASKET	1							\$
24	1	129155-49800	THERMOSTAT, 71	1							
25	1	129150-49811	GASKET, THERMOSTAT	1							\$
26	1	26106-080202	BOLT, M8X 20 PLATED	2							
27	1	121450-42450	PLUG, M16	1							
28	1	121250-44901	SWITCH, 110	1							
29	1	124465-44950	GASKET, 16	1							\$
30	1	124465-44950	GASKET, 16	1							\$
31	1	124450-44510	TANK ASSY, SUB	1							
33	2	124450-44530	CAP	1							
34	2	124450-44560	RETAINER	1							
35	2	23061-070230	PIPE, 7X 230	1							
36	1	171340-44510	RADIATOR	1							
36A	2	123682-44210	CAP, RADIATOR	1							
37	1	124450-44550	BAND	1							
38	1	171301-44560	PROTECTOR, FAN	1							
39	1	121256-44600	BRACKET, SUB TANK	1							
41	1	124764-44810	LABEL, SUB-TANK	1							
43	1	119841-49010	PIPE, WATER	1							
44	1	171301-49020	PIPE, WATER	1							
45	1	121450-49110	COCK ASSY, 3-WAY	1							
47	2	121250-49121	PLUG, DRAIN	1							
48	2	24311-000160	O-RING, 1AP16.0	1							
49	1	23010-038000	CLAMP, 38	4							

Remarks  
(\$) THESE PARTS ARE SOLD BY FIG.18,  
REF.NO.8.

# Fig.11. FUEL INJECTION PUMP

Y00D4470  
37N75L-RNH2



(A)=3TN75L-RNH2

(B)=

(C)=

(D)=

(E)=

(F)=

No.	Lev.	Parts No.	Description	Q'ty						I	R
				(A)	(B)	(C)	(D)	(E)	(F)		
1	1	719888-51430	PUMP ASSY, INJECTION	1							1
5	2	129155-51020	STUD	2							
6	2	119810-51040	CAMSHAFT	1							
8	2	122710-51050	BEARING, HR30203J	2							
9	2	129470-51060	RETAINER, BEARING	1							
10	2	129470-51080	SEAL, AF0741F0	1							
11	2	122710-51090	KEY	1							
12	2	129155-51140	PIN	3							
13	2	174307-51170	RETAINER, SPRING A	3							
14	2	129155-51180	RETAINER, SPRING	3							
15	2	124950-51190	SPRING, PLUNGER	3							
16	2	119810-51200	PLUNGER ASSY	3							
19	2	129155-51200	TAPPET ASSY	3							
26	2	129155-51270	STOPPER, TAPPET	3							
27	2	129155-51280	O-RING, S6	3							
28	2	128170-51300	VALVE ASSY, DELIVERY	3							
31	2	129155-51320	SPRING, DELIVERY	3							
32	2	129155-51340	RETAINER	3							
33	2	124550-51350	GASKET, DELIVERY	3							
34	2	124550-51370	O-RING	3							
35	2	129155-51370	STOPPER, VALVE	3							
36	2	129155-51380	STOPPER	2							
37	2	129155-51390	STOPPER	2							
38	2	129155-51400	DEFLECTOR	1							
39	2	129155-51410	BOLT	1							
40	2	129155-51420	PLUG, M16	1							
41	2	129155-51450	SHIM SET, ADJUSTING	1							
46	2	129155-51500	RACK, CONTROL	1							
47	2	129155-51521	BUSH, RACK	1							
48	2	129155-51530	SPACER	1							
49	2	129155-51540	CIRCLIP	1							
50	2	129155-51550	PINION, CONTROL	3							
51	2	122117-51560	SCREW	3							
52	2	174307-51560	PINION	3							
53	2	129155-51570	PLUG, M12	1							
54	2	129155-51580	O-RING	1							
55	2	129155-51591	SPRING, RACK	1							
56	2	129155-51600	SHIM SET, ADJUSTING	3							
75	2	129155-51700	COVER	1							
76	2	129155-51710	GASKET	1							
77	2	129155-51750	COVER	1							
78	2	129155-51760	GASKET	1							
79	2	129155-51790	STOPPER, RACK	1							
80	2	129156-51910	LABEL, CAUTION	1							
81	2	22217-060000	WASHER, SPRING 6	2							
82	2	22351-050010	PIN, SPRING 5.0X10	2							
83	2	24341-000160	O-RING, 1AS16.0	1							
84	2	26022-050102	SCREW, M5X10	8							
85	2	26022-060162	SCREW, M6X16	4							
86	2	26116-050302	BOLT, M5X 30 PLATED	2							
87	2	26716-060002	NUT, M6	2							

Remarks

(1) GOVERNOR ASSY(FIG.12) IS INCORPORATED IN THIS FUEL INJECTION PUMP ASSY(REF.NO.1).

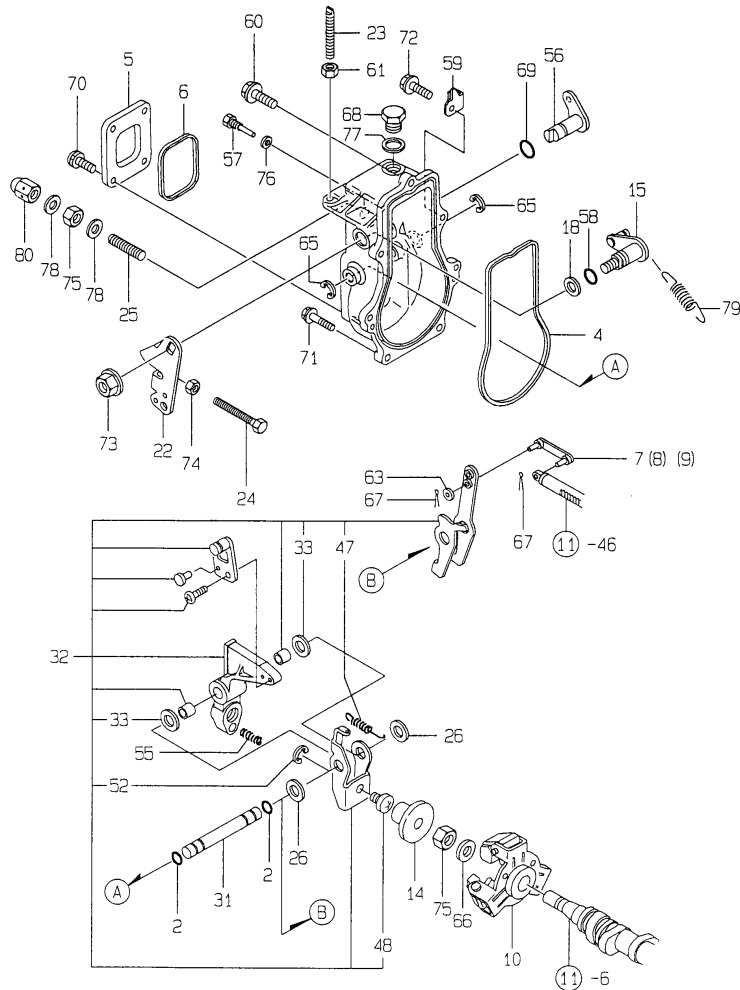




Fig.12. GOVERNOR

Y00D4470  
3TN75L-RNH2

7198888-51430



(A)=3TN75L-RNH2

(B)=

(C)=

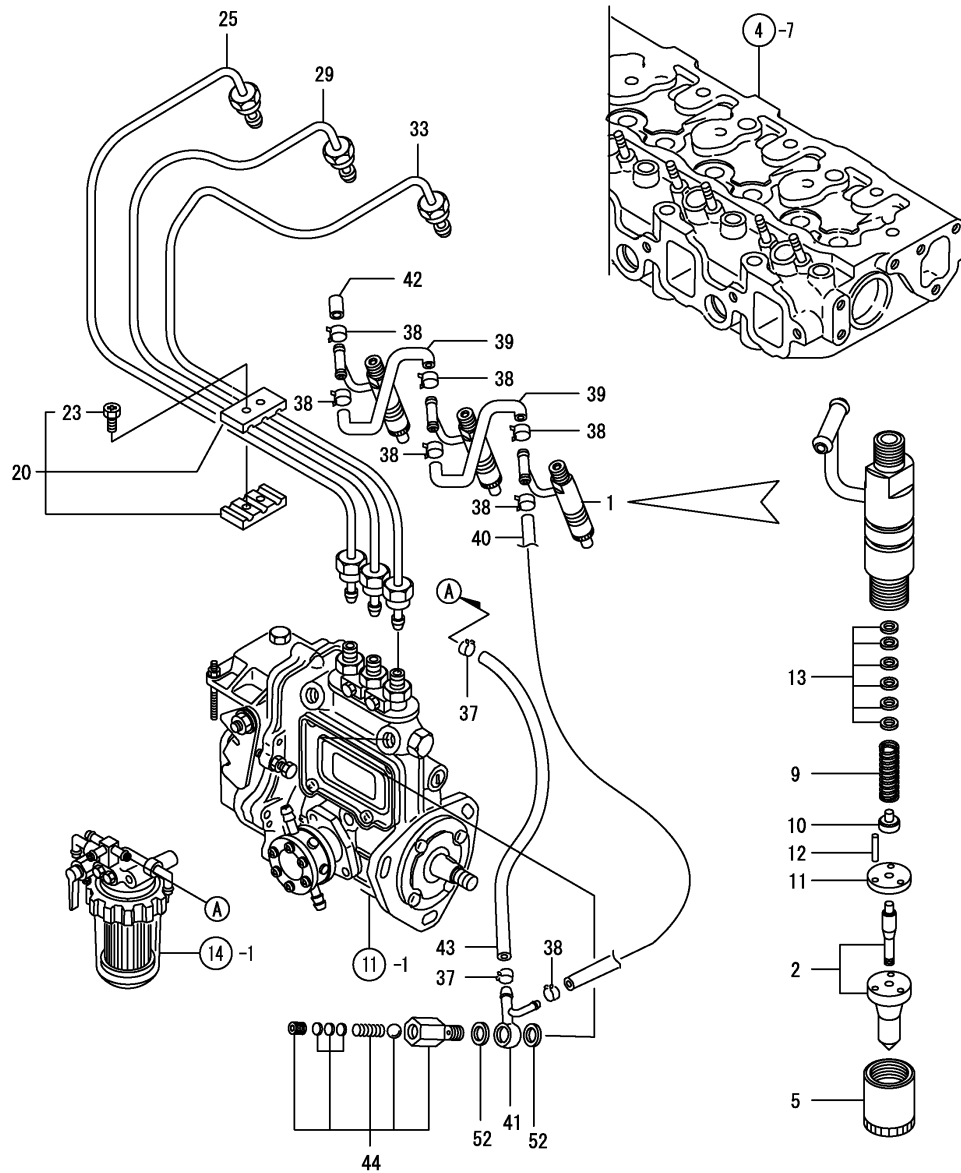
(D)=

(E)=

(F)=

No.	Lev.	Parts No.	Description	Q'ty						I	R
				(A)	(B)	(C)	(D)	(E)	(F)		
2	2	129155-51280	O-RING, S6	2							
4	2	129155-61050	GASKET	1							
5	2	129155-61060	COVER, GOVERNOR CASE	1							
6	2	129155-61070	GASKET	1							
7	2	129155-61120	LINK, L=30 MARK 0	1							
8	2	129155-61130	LINK, L=31 MARK 1	1							
9	2	129155-61140	LINK, L=30.5 MARK 05	1							
10	2	129155-61201	WEIGHT ASSY,GOVERNOR	1							
14	2	129155-61341	SLEEVE	1							
15	2	129100-61400	SHAFT ASSY	1							
18	2	129155-61430	SPACER	1							
22	2	129100-61440	LEVER, CONTROL	1							
23	2	129155-61450	BOLT, LIMITER	1							
24	2	129155-61460	BOLT, IDLE	1							
25	2	129155-61470	BOLT, CONTROL	1							
26	2	129155-61480	SPACER ASSY	2							
31	2	129155-61490	SHAFT	1							
32	2	129116-61500	LEVER ASSY, GOVERNOR	1							
33	3	174307-51700	SHIM SET	2							
47	3	119843-61540	SPRING, SET	1							
48	3	129155-61540	SHIFTER	1							
52	3	22272-000040	RING, E- 4	1							
55	2	129500-61650	SPRING, FUEL CONTROL	1							
56	2	129116-61803	LEVER, STOP	1							
57	2	129155-61810	PIN	1							
58	2	129155-61830	O-RING, S10	1							
59	2	129116-61890	SUPPORT	1							
60	2	129155-61950	BOLT	1							
61	2	124550-66370	NUT, M6	1							
63	2	22117-040000	WASHER, 4	1							
65	2	22272-000060	RING, E- 6	2							
66	2	22287-120000	WASHER, 12	1							
67	2	22372-040000	PIN, SNAP 4	2							
68	2	23887-100002	PLUG, 10	1							
69	2	24311-240100	O-RING, 1AP10A	1							
70	2	26022-050102	SCREW, M5X10	4							
71	2	26106-060202	BOLT, M6X 20 PLATED	5							
72	2	26106-060252	BOLT, M6X 25 PLATED	1							
73	2	26366-080002	NUT, M8	1							
74	2	26756-060002	NUT, LOCK M6	1							
75	2	26776-120002	NUT, LOCK M12	2							
76	2	43400-500390	SEAL WASHER 6S	1							
77	2	43400-500430	SEAL WASHER 10S	1							
78	2	43400-500450	SEAL WASHER 12S	2							
79	1	129500-61700	SPRING, GOVERNOR	1							
80	1	26687-120002	NUT, CAP M12	1							

Fig.13. FUEL INJECTION VALVE



(A)=3TN75L-RNH2

(B)=

(C)=

(D)=

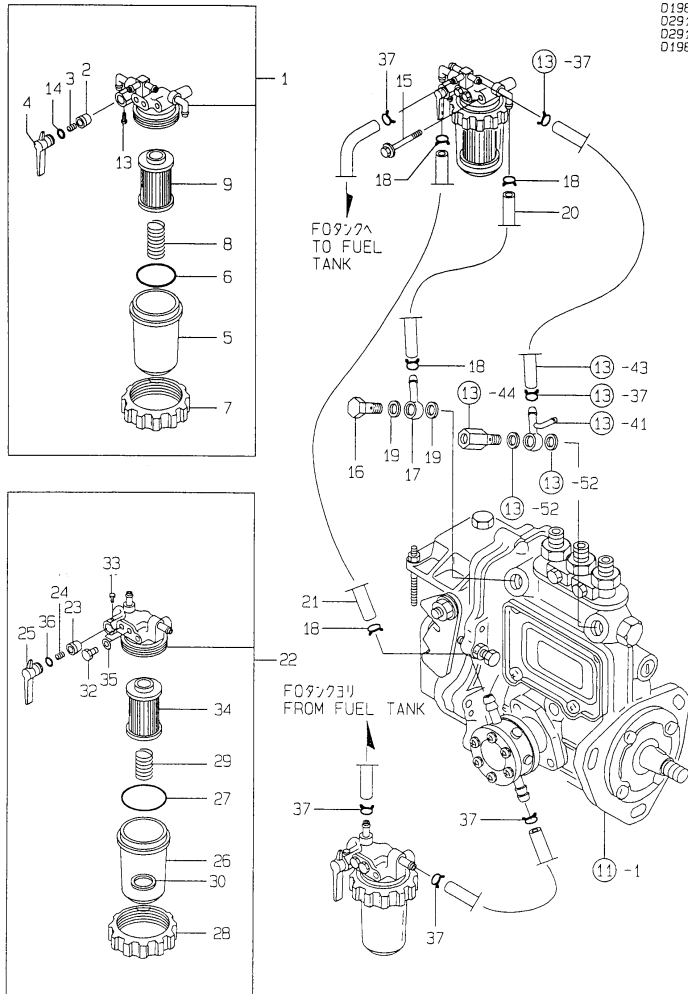
(E)=

(F)=

No.	Lev.	Parts No.	Description	Q'ty						I	R
				(A)	(B)	(C)	(D)	(E)	(F)		
1	1	719810-53100	VALVE ASSY,INJECTION	3							
2	2	119810-53000	VALVE ASSY,INJECTION	3							
5	2	114250-53080	NUT, NOZZLE D16.95	3							
9	2	114250-53120	SPRING, NOZZLE	3							
10	2	114250-53130	SEAT, SPRING	3							
11	2	114250-53140	PLATE	3							
12	2	114250-53210	PIN	6							
13	2	114250-53400	SHIM SET	3							
20	1	129150-59120	RETAINER, PIPE	1							
23	2	129150-59130	BOLT, M4X12	2							
25	1	119810-59810	PIPE ASSY, INJECTION	1							
29	1	119810-59820	PIPE ASSY, INJECTION	1							
33	1	119810-59830	PIPE ASSY, INJECTION	1							
37	1	124766-59050	CLIP, HOSE 12	2							
38	1	124066-59100	CLIP, HOSE 8	7							
39	1	121250-59550	PIPE, FUEL D8X120	2							
40	1	119840-59560	PIPE, FUEL RETURN	1							
41	1	119840-59570	JOINT	1							
42	1	129150-59580	CAP	1							
43	1	105025-59750	PIPE, FUEL	1							
44	1	129100-59951	VALVE ASSY, CHECK	1							
52	1	23414-120000	GASKET, 12X1.0	2							

Fig.14. FUEL PIPES

Y00D4470  
3TN75L-RNH2



019810-55111  
029100-59211  
029100-59302  
019841-93110

(A)=3TN75L-RNH2

(B)=

(C)=

(D)=

(E)=

(F)=

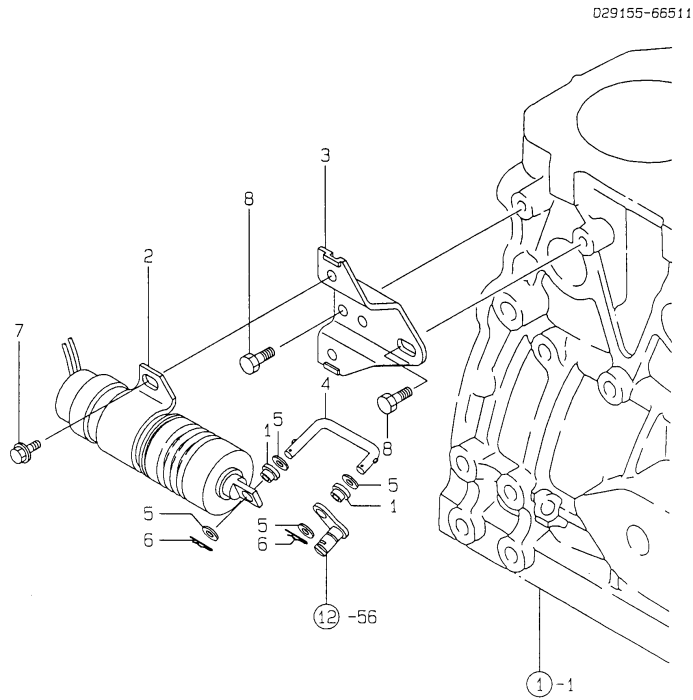
No.	Lev.	Parts No.	Description	Qty						I	R
				(A)	(B)	(C)	(D)	(E)	(F)		
1	1	119810-55621	FILTER ASSY, FUEL	1							
2	2	104200-55321	VALVE, TAPER	1							
3	2	104200-55330	SPRING, VALVE	1							
4	2	119810-55340	LEVER	1							
5	2	121254-55510	COVER	1							
6	2	102103-55520	O-RING	1							
7	2	110250-55610	RING, RETAINING	1							
8	2	121250-55620	SPRING	1							
9	2	119810-55650	ELEMENT	1							
13	2	104200-55750	SCREW, M4	1							
14	2	24311-240100	O-RING, 1AP10A	1							
15	1	26014-080702	BOLT, M8X 70	1							
16	1	103854-39140	BOLT, PIPE JOINT	1							
17	1	101304-59020	JOINT, PIPE 12	1							
18	1	124766-59050	CLIP, HOSE 12	4							
19	1	104200-59170	GASKET, 12	2							\$
20	1	129555-59510	PIPE, D13/7.5X180	1							
21	1	105025-59530	PIPE, FUEL D13X400	1							
22	1	121257-55700	SEPARATOR, WATER	1							
23	2	104200-55321	VALVE, TAPER	1							
24	2	104200-55330	SPRING, VALVE	1							
25	2	104200-55341	HANDLE	1							
26	2	121254-55510	COVER	1							
27	2	102103-55520	O-RING	1							
28	2	110250-55610	RING, RETAINING	1							
29	2	121257-55720	SPRING	1							
30	2	121257-55731	FLOAT	1							
32	2	101720-55750	PLUG, 6	2							
33	2	104200-55750	SCREW, M4	1							
34	2	171081-55910	SCREEN	1							
35	2	23418-060000	GASKET, 6X1.0	2							
36	2	24311-240100	O-RING, 1AP10A	1							
37	1	124766-59050	CLIP, HOSE 12	6							

Remarks

(\$) THESE PARTS ARE SOLD BY FIG.18,  
REF.NO.8.

# Fig.15. ENGINE STOP DEVICE

Y00D4470  
3TN75L-RNH2



(A)=3TN75L-RNH2  
(B)=  
(C)=

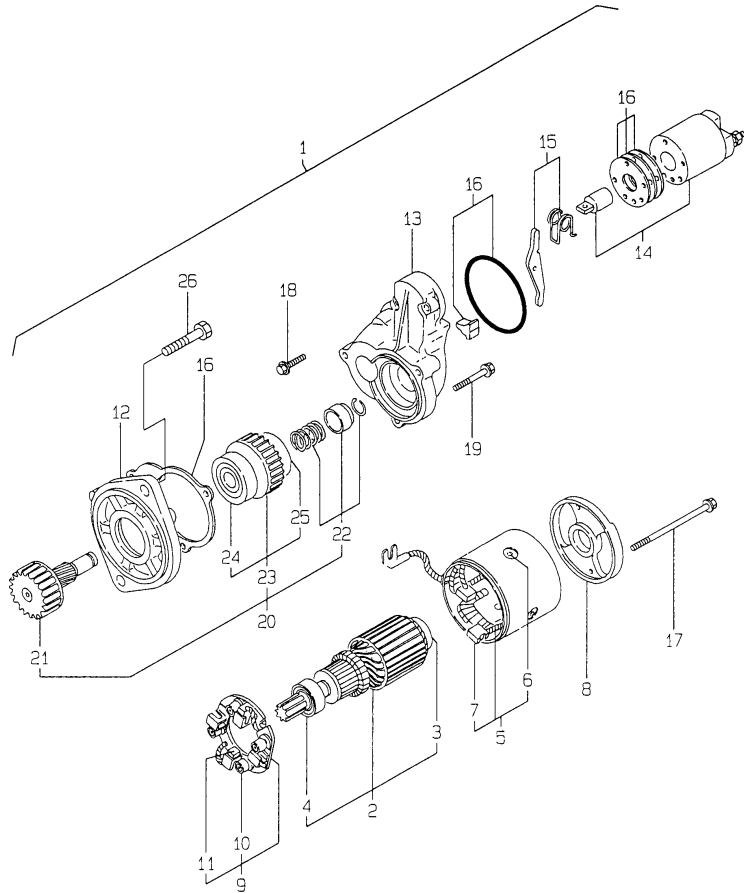
(D)=  
(E)=  
(F)=

No.	Lev.	Parts No.	Description	Q'ty						I	R
				(A)	(B)	(C)	(D)	(E)	(F)		
1	1	119245-66400	BUSH	2							
2	1	129155-66800	SOLENOID	1							
3	1	129155-66811	BRACKET, SOLENOID	1							
4	1	129155-66822	LINK, SOLENOID	1							
5	1	22137-040000	WASHER, 4	4							
6	1	22360-040000	PIN, SNAP 4	2							
7	1	26106-060102	BOLT, M6X 10 PLATED	2							
8	1	26116-080122	BOLT, M8X 12 PLATED	2							

Fig.16. STARTING MOTOR

Y00D4470  
3TN75L-RNH2

019810-77120



(A)=3TN75L-RNH2

(B)=

(C)=

(D)=

(E)=

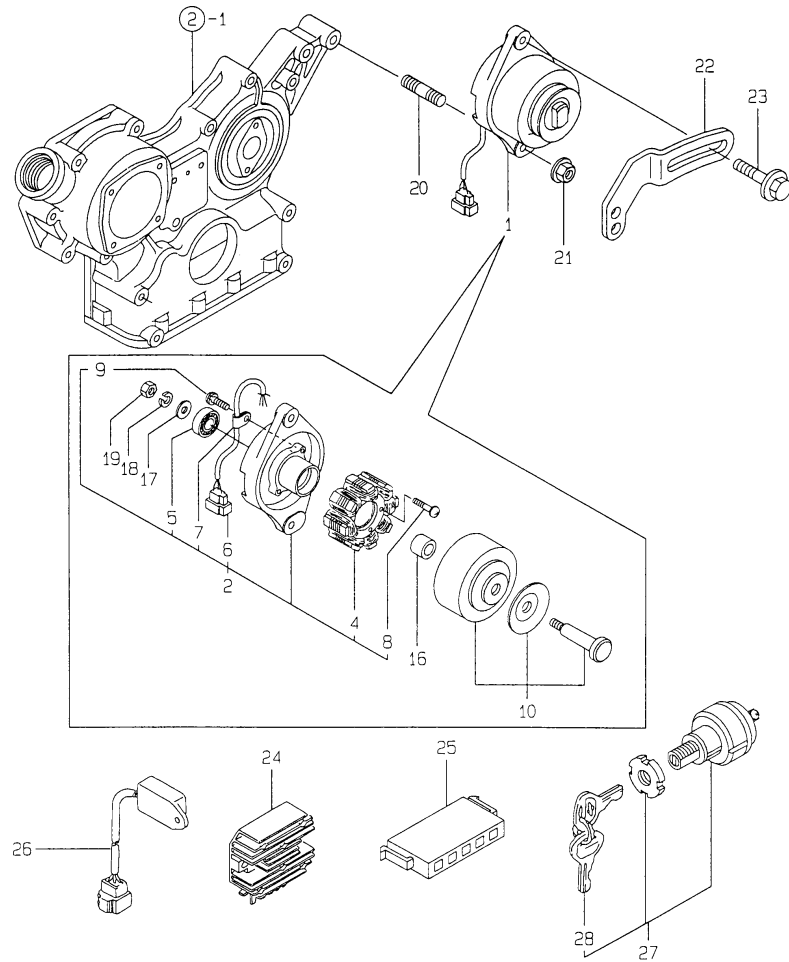
(F)=

No.	Lev.	Parts No.	Description	Q'ty						I	R
				(A)	(B)	(C)	(D)	(E)	(F)		
1	1	124976-77011	STARTER, S114-349A	1							
2	2	X211451007	ARMATURE ASSY	1							
3	3	X211415502	BEARING, BALL	1							
4	3	X211425502	BEARING, BALL	1							
5	2	X211472106	COIL ASSY, FIELD	1							
6	3	X21148215	SCREW, POLE CORE	4							
7	3	X21143315	BRUSH (+)	2							
8	2	X211483003	COVER	1							
9	2	X211429007	HOLDER ASSY, BRUSH	1							
10	3	X21148314	SPRING, BRUSH	4							
11	3	X211459002	BRUSH (-)	2							
12	2	X211476504	HOUSING ASSY, GEAR	1							
13	2	X211414501	HOUSING, CENTER	1							
14	2	X211447007	SWITCH, MAGNETIC	1							
15	2	X21146012	LEVER, SHIFT	1							
16	2	X211448004	COVER KIT	1							
17	2	X211468005	BOLT, THROUGH	2							
18	2	X21145866	BOLT	2							
19	2	X21142867	BOLT	3							
20	2	X211415505	CLUTCH ASSY	1							
21	3	X211495009	SHAFT	1							
22	3	X211429006	STOPPER SET	1							
23	3	X211425505	CLUTCH ASSY	1							
24	4	X211435502	BALL BEARING	1							
25	4	X211445502	BALL BEARING	1							
26	1	26116-120252	BOLT, M12X 25 PLATED	2							

# Fig.17. GENERATOR

Y00D4470  
3TN75L-RNH2

D29410-77200  
D19810-77310  
D19841-93110



(A)=3TN75L-RNH2

(B)=

(C)=

(D)=

(E)=

(F)=

No.	Lev.	Parts No.	Description	Q'ty						I	R
				(A)	(B)	(C)	(D)	(E)	(F)		
1	1	171301-77201	DYNAMO ASSY, 15A	1							
2	2	XM08137	PLATE ASSY	1							
4	3	XM08180	STATOR ASSY	1							
6	3	XM17878	COUPLER	1							
7	3	XM36410	CLAMP	1							
8	3	26022-040252	SCREW, M4X25	2							
9	3	XYSPS4008	SCREW	1							
10	2	XM82184	FLYWHEEL ASSY	1							
16	2	106383-44720	SPACER	1							
17	2	106383-44730	WASHER	1							
18	2	22212-100000	SPRING WASHER 10	1							
19	2	26716-100002	NUT, M10	1							
20	1	121450-01570	STUD	1							
21	1	26366-100002	NUT, M10	1							
22	1	119810-77330	ADJUSTER	1							
23	1	26014-080252	BOLT, M8X 25	1							
24	1	119660-77710	LIMITER, CURRENT 15A	1							
24-1	1	119660-77711	LIMITER, CURRENT 15A	1							N
(A=*1999.07.)											
25	1	171301-77720	COUPLER	1							
26	1	128300-77920	TIMER	1							
27	1	121400-91251	SWITCH, STARTER	1							
28	2	121400-91271	KEY, SWITCH	1							

Fig.18. GASKET SET(OPTIONAL PARTS)

(A)=3TN75L-RNH2

(B)=

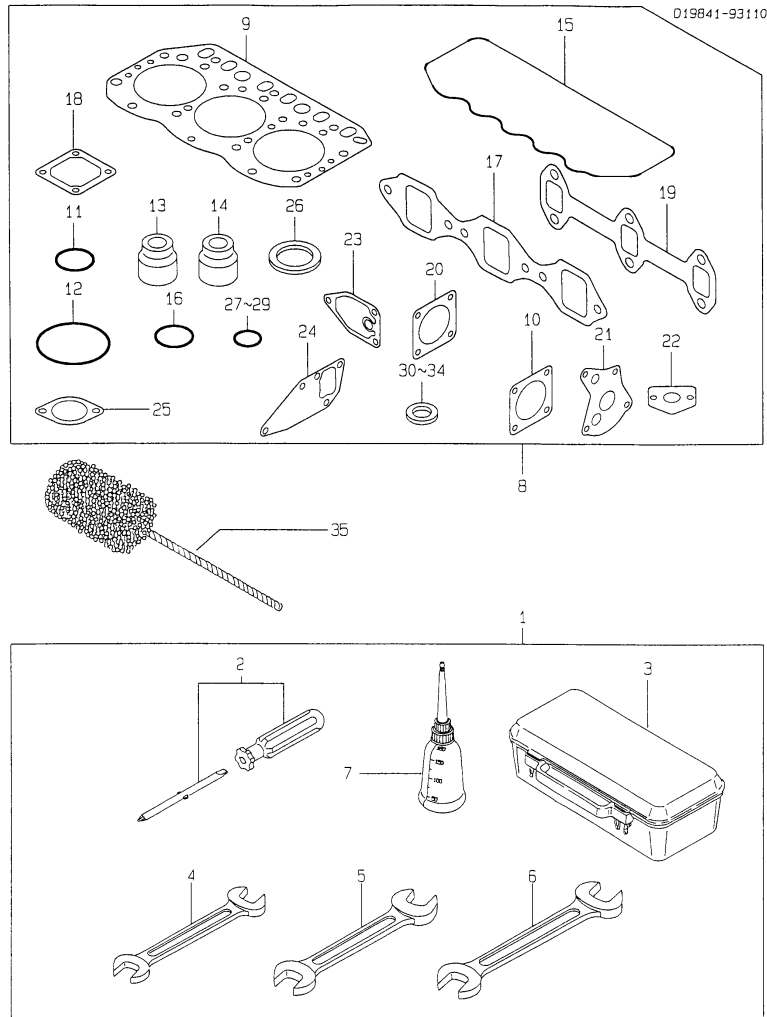
(C)=

(D)=

(E)=

(F)=

Y00D4470  
3TN75L-RNH2



No.	Lev.	Parts No.	Description	Q'ty						I	R
				(A)	(B)	(C)	(D)	(E)	(F)		
1	1	171001-93100	BOX, TOOL	1							
2	2	104200-92350	DRIVER, SCREW	1							
3	2	104200-92600	BOX, TOOL	1							
4	2	28110-100120	SPANNER, 10X12	1							
5	2	28110-140170	SPANNER, 14X17	1							
6	2	28110-190220	SPANNER, 19X22	1							
7	2	28210-000140	OILER	1							
8	1	719885-92602	GASKET SET	1							1
9	2	119865-01331	GASKET, HEAD T=1.4	1							
10	2	124240-01883	GASKET	1							
11	2	121850-51960	O-RING	1							
12	2	24311-000320	O-RING, 1AP32.0	2							
13	2	124950-11340	SEAL, VALVE STEM	3							
14	2	124160-11340	SEAL, VALVE STEM	3							
15	2	119865-11310	GASKET, BONNET	1							
16	2	24341-000500	O-RING, 1AS50.0	1							
17	2	119810-12111	GASKET, MANIFOLD	1							
18	2	129150-77511	GASKET	1							
19	2	119810-13110	GASKET	1							
20	2	121000-13201	GASKET, SILENCER	1							
21	2	129150-32020	GASKET, PUMP	1							
22	2	129150-35041	GASKET	1							
23	2	129150-35111	GASKET	1							
24	2	129150-42020	GASKET, WATER PUMP	1							
25	2	129795-49551	GASKET	1							
26	2	129150-49811	GASKET, THERMOSTAT	1							
27	2	24311-000160	O-RING, 1AP16.0	3							
28	2	24341-000240	O-RING, 1AS24.0	1							
29	2	24311-000120	O-RING, 1AP12.0	3							
30	2	43400-500410	SEAL WASHER 8S	5							
31	2	23414-100000	GASKET, 10X1.0	2							
32	2	124465-44950	GASKET, 16	2							
33	2	104200-59170	GASKET, 12	2							
34	2	23414-120000	GASKET, 12X1.0	2							
35	1	129400-92400	FLEX HORN	1							1

Remarks  
(1) OPTIONAL PART.

## Parts No. Index

Parts No.	Fig. No.	Ref. No.
101158-11190	4	25
101304-59020	14	17
101720-55750	14	32
102103-55520	14	6
		27
103854-39140	14	16
104200-55321	14	2
		23
104200-55330	14	3
		24
104200-55341	14	25
104200-55750	14	13
		33
104200-59170	14	19
	18	33
104200-92350	18	2
104200-92600	18	3
104211-11180	4	24
104211-11370	4	28
105025-59530	14	21
105025-59750	13	43
106383-44720	17	16
106383-44730	17	17
110250-55610	14	7
		28
114250-53080	13	5
114250-53120	13	9
114250-53130	13	10
114250-53140	13	11
114250-53210	13	12
114250-53400	13	13
119245-66400	15	1
119600-34800	9	13
119620-01750	3	3
119620-02020	1	11
119625-11870	4	30
119625-11880	4	31
119625-11900	4	32
119660-77710	17	24
119660-77711	17	24 -1
119810-01200	1	22
119810-01730	3	6
119810-01770	3	8
119810-01780	3	17
119810-02870	1	25
119810-02940	1	28
119810-11080	4	12
119810-11090	4	13
119810-11100	4	21
119810-11120	4	22

Parts No.	Fig. No.	Ref. No.
119810-11130	4	23
119810-11240	4	35
119810-11350	4	48
119810-12111	5	1
	18	17
119810-13100	6	1
119810-13110	6	2
	18	19
119810-14400	7	2
119810-14580	7	3
119810-22090	8	17
119810-22300	8	23
119810-22400	8	24
119810-22920	8	41
119810-23200	8	30
119810-23600	8	31
119810-23610	8	33
119810-23910	8	29
119810-32000	9	1
119810-35300	9	16
119810-39200	9	36
119810-42001	10	1
119810-51040	11	6
119810-51200	11	16
119810-53000	13	2
119810-55340	14	4
119810-55621	14	1
119810-55650	14	9
119810-59810	13	25
119810-59820	13	29
119810-59830	13	33
119810-77330	17	22
119831-42290	10	17
119840-59560	13	40
119840-59570	13	41
119841-12210	5	7
119841-49010	10	43
119843-61540	12	47
119865-01331	1	23
	18	9
119865-11200	4	34
119865-11310	4	55
	18	15
119865-21600	8	16
119865-35300	9	24
121000-13201	6	5
	18	20
121023-01550	2	25
121111-21501	8	12
121250-44901	10	28

Parts No.	Fig. No.	Ref. No.
121250-49121	10	47
121250-55620	14	8
121250-59550	13	39
121254-55510	14	5
		26
121256-44600	10	39
121257-55700	14	22
121257-55720	14	29
121257-55731	14	30
121400-12540	5	18
121400-12560	5	19
121400-12570	5	20
121400-91251	17	27
121400-91271	17	28
121420-12511	5	9
121420-12540	5	12
121420-12550	5	13
121420-12561	5	14
121422-12530	5	11
121422-12570	5	15
121422-12580	5	16
121450-01560	2	6
121450-01570	17	20
121450-42450	10	27
121450-49110	10	45
121520-34810	9	14
121521-12500	5	8
121550-49111	1	24
121850-11860	4	16
121850-21680	8	11
121850-51960	2	12
	18	11
122117-51560	11	51
122710-51050	11	8
122710-51090	11	11
123682-44210	10	36 A
124060-11800	4	15
124066-59100	13	38
124160-01751	2	7
	4	49
124160-01910	1	4
124160-11340	4	26
	18	14
124160-11360	4	59
124160-39140	9	35
124160-39450	9	40
124240-01871	2	8
124240-01883	2	9
	18	10
124450-44510	10	31

Parts No.	Fig. No.	Ref. No.
124450-44530	10	33
124450-44550	10	37
124450-44560	10	34
124465-44950	10	29
		30
	18	32
124550-51350	11	33
124550-51370	11	34
124550-59820	9	41
124550-66370	12	61
124700-44740	10	19
124736-07900	4	5
124764-44810	10	41
124766-59050	13	37
	14	18
		37
124950-11340	4	27
	18	13
124950-51190	11	15
124976-77011	16	1
126650-12680	5	17
128170-51300	11	28
128300-77920	17	26
129100-01580	3	1
		14
	8	2
129100-25061	7	9
129100-25900	7	15
129100-52100	11	92
129100-59951	13	44
129100-61400	12	15
129100-61440	12	22
129116-61500	12	32
129116-61803	12	56
129116-61890	12	59
129120-77501	5	4
129136-12600	5	24
129150-02450	7	4
129150-03020	4	50
129150-03070	4	51
129150-03080	4	52
129150-03100	2	11
129150-11230	4	42
129150-11280	4	40
129150-11750	4	44
129150-14101	7	7
129150-14200	7	1
129150-21200	8	5
129150-25101	7	10
129150-25920	7	13



## Parts No. Index

Parts No.	Fig. No.	Ref. No.
129150-32020	9	11
	18	21
129150-35041	9	15
	18	22
129150-35101	9	21
129150-35111	9	22
	18	23
129150-35150	9	23
129150-35350	9	32
129150-42020	10	14
	18	24
129150-42320	10	11
129150-49811	10	25
	18	26
129150-59120	13	20
129150-59130	13	23
129150-59580	13	42
129150-77511	5	5
	18	18
129155-11260	4	38
129155-11270	4	39
129155-49800	10	24
129155-51020	11	5
129155-51140	11	12
129155-51180	11	14
129155-51200	11	19
129155-51270	11	26
129155-51280	11	27
	12	2
129155-51320	11	31
129155-51340	11	32
129155-51370	11	35
129155-51380	11	36
129155-51390	11	37
129155-51400	11	38
129155-51410	11	39
129155-51420	11	40
129155-51450	11	41
129155-51500	11	46
129155-51521	11	47
129155-51530	11	48
129155-51540	11	49
129155-51550	11	50
129155-51570	11	53
129155-51580	11	54
129155-51591	11	55
129155-51600	11	56
129155-51700	11	75
129155-51710	11	76
129155-51750	11	77

Parts No.	Fig. No.	Ref. No.
129155-51760	11	78
129155-51790	11	79
129155-52050	11	91
129155-61050	12	4
129155-61060	12	5
129155-61070	12	6
129155-61120	12	7
129155-61130	12	8
129155-61140	12	9
129155-61201	12	10
129155-61341	12	14
129155-61430	12	18
129155-61450	12	23
129155-61460	12	24
129155-61470	12	25
129155-61480	12	26
129155-61490	12	31
129155-61540	12	48
129155-61810	12	57
129155-61830	12	58
129155-61950	12	60
129155-66800	15	2
129155-66811	15	3
129155-66822	15	4
129156-51910	11	80
129350-49530	10	22
129400-01520	2	5
129400-92400	18	35
129403-42380	10	18
129470-51060	11	9
129470-51080	11	10
129500-61650	12	55
129500-61700	12	79
129555-59510	14	20
129795-01800	2	4
129795-01950	2	10
129795-02411	1	20
129795-21661	8	10
129795-49551	10	23
	18	25
171001-93100	18	1
171051-01921	1	5
171061-12520	5	10
171081-55910	14	34
171301-01600	3	2
171301-01640	3	9
171301-12701	5	2
171301-21580	8	13
171301-21650	8	9
171301-44560	10	38

Parts No.	Fig. No.	Ref. No.
171301-49020	10	44
171301-77201	17	1
171301-77720	17	25
171340-44510	10	36
171350-03090	4	1
171351-12560	5	22
171351-12570	5	23
171351-12580	5	21
171353-44760	10	20
174307-51170	11	13
174307-51560	11	52
174307-51700	12	33
22117-040000	12	63
22137-040000	15	5
22212-100000	17	18
22217-060000	11	81
22217-120000	7	16
22272-000040	12	52
22272-000060	12	65
22287-120000	12	66
22351-040010	8	8
22351-050010	11	82
22351-060012	4	33
22360-040000	15	6
22372-040000	12	67
22512-070140	7	8
	8	6
23000-060000	5	25
23010-038000	10	49
23061-070230	10	35
23414-100000	9	42
	18	31
23414-120000	13	52
	18	34
23418-060000	14	35
23871-010000	1	6
23871-030000	4	17
	10	12
23887-100002	12	68
23887-120002	1	7
24311-000120	4	60
	18	29
24311-000160	2	13
	9	33
	10	48
	18	27
24311-000320	2	14
	4	56
	18	12
24311-240100	12	69

Parts No.	Fig. No.	Ref. No.
24311-240100	14	14
		36
24341-000160	11	83
24341-000240	2	26
	3	11
	18	28
24341-000500	4	57
	18	16
26014-080252	17	23
26014-080702	14	15
26022-040252	17	8
26022-050102	11	84
	12	70
26022-060162	11	85
26106-060102	15	7
26106-060122	2	27
26106-060202	12	71
26106-060252	12	72
26106-060352	10	21
26106-080122	2	15
26106-080142	4	6
	5	26
26106-080162	1	21
	2	16
		17
	3	12
	4	58
26106-080202	2	18
	9	34
	10	26
26106-080252	4	46
	5	3
26106-080302	3	18
26106-080352	3	19
	5	6
	9	20
	10	15
26106-080452	2	19
	3	13
	7	14
26106-080502	4	47
26106-080552	2	20
	10	16
26106-080602	6	3
26106-080852	2	21
26116-050302	11	86
26116-080122	15	8
26116-120252	16	26
26206-100252	3	4
26206-100302	3	5

## Parts No. Index

Parts No.	Fig. No.	Ref. No.
26216-060302	4	18
26216-080222	6	4
26226-080182	4	45
26366-060002	5	27
26366-080002	2	22
	12	73
26366-100002	17	21
26367-060002	4	29
26450-060252	9	12
26687-120002	12	80
26716-060002	11	87
26716-100002	17	19
26716-120002	7	17
26756-060002	12	74
26776-120002	12	75
27231-500000	1	8
27241-120000	1	9
27241-220000	4	19
27241-300000	1	10
27241-400000	4	20
27310-070001	4	25 -1
28110-100120	18	4
28110-140170	18	5
28110-190220	18	6
28210-000140	18	7
43400-500390	12	76
43400-500410	2	23
		24
	9	43
	18	30
43400-500430	12	77
43400-500450	12	78
43400-500490	11	88
719810-01500	2	1
719810-01560	1	1
719810-01650	3	15
719810-02800	1	12
719810-02930	1	15
719810-11650	4	41
719810-21700	8	1
719810-22500	8	19
719810-22910	8	35
719810-22960	8	37
719810-23100	8	25
719810-53100	13	1
719820-11700	4	7
719885-22550	8	43
719885-92602	18	8
719888-51430	11	1
X211414501	16	13

Parts No.	Fig. No.	Ref. No.
X211415502	16	3
X211415505	16	20
X211425502	16	4
X211425505	16	23
X21142867	16	19
X211429006	16	22
X211429007	16	9
X21143315	16	7
X211435502	16	24
X211445502	16	25
X211447007	16	14
X211448004	16	16
X211451007	16	2
X21145866	16	18
X211459002	16	11
X21146012	16	15
X211468005	16	17
X211472106	16	5
X211476504	16	12
X21148215	16	6
X211483003	16	8
X21148314	16	10
X211495009	16	21
XM08137	17	2
XM08180	17	4
XM17878	17	6
XM36410	17	7
XM82184	17	10
XYSPTS4008	17	9

Parts No.	Fig. No.	Ref. No.
-----------	----------	----------

Parts No.	Fig. No.	Ref. No.
-----------	----------	----------