

OCD10-M43400EN

PREFACE

1. This Parts Catalog is the 1st edition of YDG305/306S-EN Diesel Engine for NIKKEN.

Pub. No. : 000Y00D4340

Published : January, 1992

2. Model name

Engine model	Vehicle		Vehicle made by
	Products	Model name	
YDG305/306S-EN	GENERATOR	—	NIKKEN

How to read this Parts Catalog.

1. Parts mentioned in Parts Catalog may not necessarily be standard equipping parts
2. Parts change may be made without prior notice.
3. Form of this Parts Catalog.

REF.	LEV.	PARTS No.	DESCRIPTION	QTY						I	R
				(A)	(B)	(C)	(D)	(E)	(F)		
1		729595-51390	FUEL INJECTION PUMP		1	1	1	1			
1-1	1	729595-51391	FUEL INJECTION PUMP	1	1	1	1	1		N	1
3	2	26022-060162	SCREW M 6X16		9	9	9	9	9		
1 3-1	2	26022-060162	SCREW M 6X16		4	4	4	4	4		K
4	2	129470-51040	CAMSHFT		9	9	9	9	9		
5	2	122710-51050	BEARING. ROLLER		9	9	9	9	9		
6	2	129470-51060	RETAINER		9	9	9	9	9		

Remarks	
(1)	BOOST COMPEMSATOR TYPE. OPTIONAL PART. TO E#00155 (4JH-DT, 4JH-DTZ)

① Ref. No.

The Ref. No. in the list may not be in accordance with the Ref. No. on illustration.

(Ex.) illustration No, List heed No,

1 1 (Before change) → 1-1 (After change)

When interchangeable symbol N, and k, illustrations for the new parts are sometimes omitted.

② Lev. (Level)

Indication and Meaning of Level

Level Hereunder is given the relation among the number of number (1,2,3) the level and the nominal parent-child relationship.

1 ---- Parent parts (Assembly parts)

2 ---- Child parts included in " 1 " (Semi-Assembly parts, component parts of Assembly parts.)

3 ---- Child parts included in " 2 ", Grand-child parts in terms of " 1 ".

(Component parts of Semi-Assembly parts.)

Note) A parts of non-sale parts are illustrated but not listed.




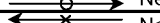
③ Change Mark

Change Mark " I " is given to the part for which a design change was made at this time.

The design change was not shown in the last published Parts Catalog.

④ Interchangeability Mark

In the case where a part change took place, one of the following interchangeability marks is indicated for that part

Symbol	Interchangeability	Contents note
N	Old ←  New	New Part is interchangeable for Old Part but not interchangeable conversely.
Q	Old ←  New	New Part is not interchangeable for Old Part but interchangeable conversely.
R	Old ←  New	New Part is interchangeable for Old Part and vice versa.
S	Old ←  New	New Part is not interchangeable for Old Part and vice versa.
W		Part newly added.
Z		Part discontinued.
F		Not interchangeable single part but interchangeable by set of the related parts.
K		Changed only in quantity used.

⑤ Effective Machine No.

When a part is changed, Effective Machine No. of a Model for which the part is applicable is indication

In each column of (A)-(F).

Product Symbol	Product No.	Product Symbol	Product No.
C	Clutch No, Compressor No,	M	Machine No,
D	Drive No,	T	Tractor No,
E	Engine No,	Note 1)※	Date

Note 1) Date may follow the symbol in some cases. (Ex.) ※1996.01

Note 2) As far as engine models shown by " XXX " are concerned, the modification of the parts could not be Predicted or the engine models themselves could not be identified.

Note 3) (A=E/#00185) means that the design change on the part has been effective for the model at the, column (A) (in the case, for 4JH-DT) on and from E/(Engine Serial Number) 00185

⑥ Remarks Mark

Figures or alphabets (Symbols) are entered in the remark column.

The comments (remarks) on the pertinent parts are indicated in the lower part of the list by the same symbols a those stated above.

Contents

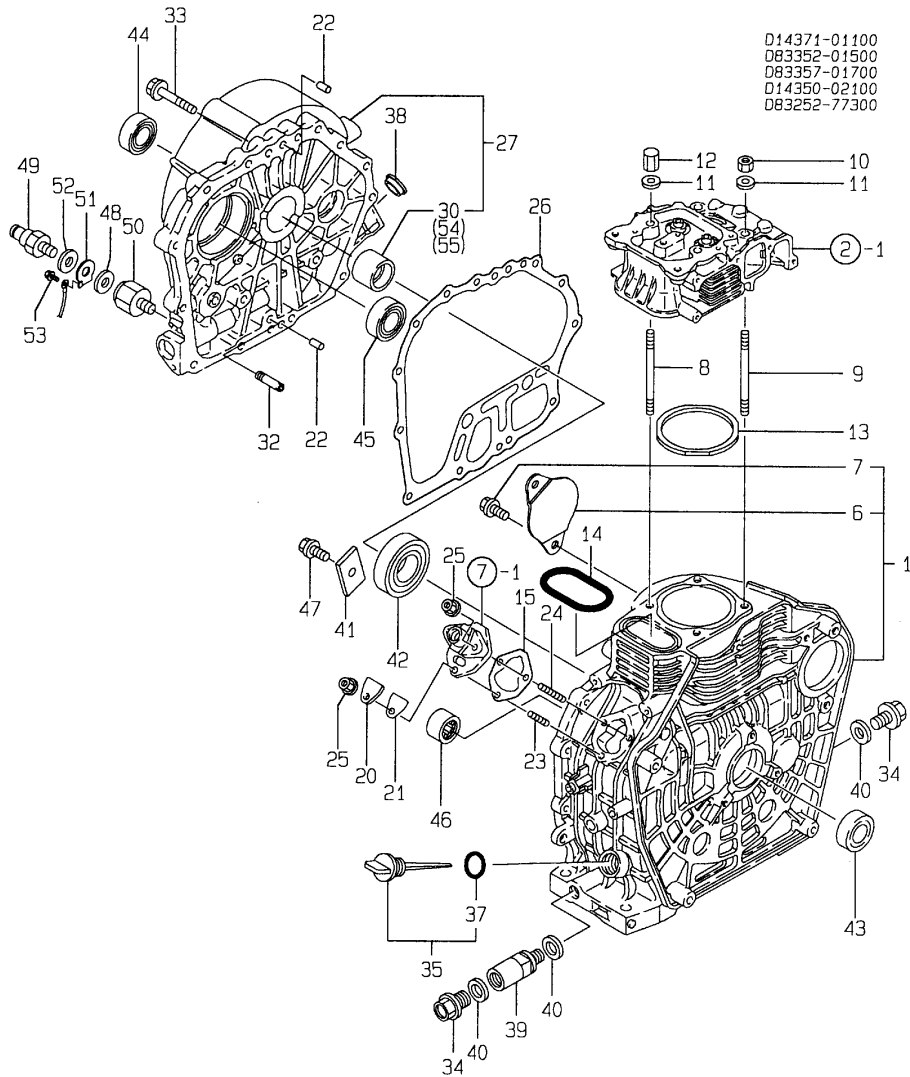
Fig. No. Fig. Name

YDG305/306S-EN

1. CYLINDER BLOCK
2. CYLINDER HEAD & BONNET
3. AIR CLEANER & MUFFLER
4. CRANKSHAFT, PISTON & CAMSHAFT
5. LUB. OIL PUMP & GOVERNOR
6. COOLING DEVICE
7. FUEL INJECTION PUMP
8. FUEL TANK & FUEL PIPE
9. STARTING MOTOR & DYNAMO
10. TOOL, LABEL & GASKET SET
11. SOUND-PROOF CASE
12. GENERATOR
13. BATTERY
14. PANEL

Fig. No. Fig. Name

Fig.1. CYLINDER BLOCK



(A)=YDG305S-N(90)
 (B)=YDG306S-N(90)
 (C)=YDG305S-N(91)
 (D)=YDG306S-N(91)
 (E)=
 (F)=

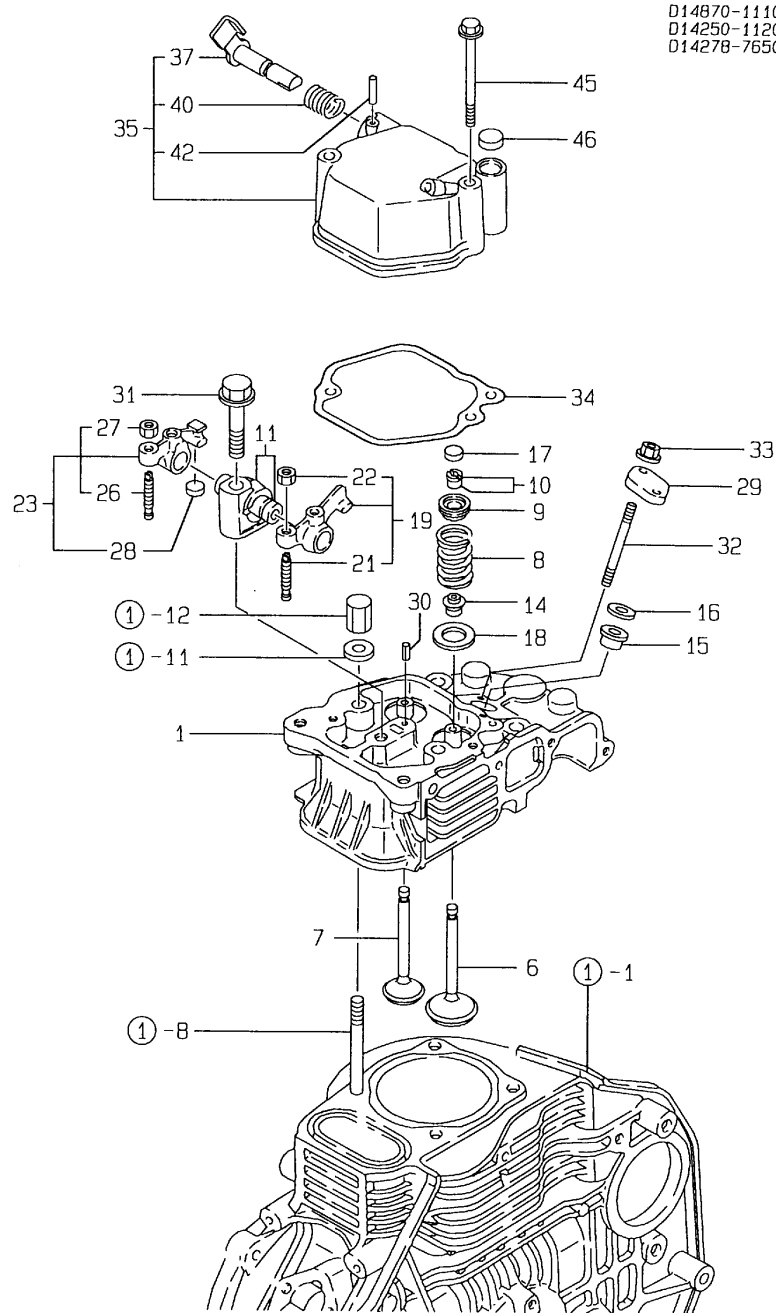
No.	Lev.	Parts No.	Description	Q'ty						I	R
				(A)	(B)	(C)	(D)	(E)	(F)		
1	1	714371-01560	BLOCK ASSY, CYLINDER	1	1	1	1				
6	2	114350-01700	COVER	1	1	1	1				
7	2	26106-100122	BOLT, M10X 12 PLATED	2	2	2	2				
8	1	114350-01200	BOLT, HEAD	2	2	2	2				
9	1	114350-01210	BOLT, HEAD	2	2	2	2				
10	1	114350-01220	NUT, CYLINDER HEAD	2	2	2	2				
11	1	105225-01240	WASHER	4	4	4	4				
12	1	114350-01250	NUT, CYLINDER HEAD	2	2	2	2				
13	1	114350-01340	GASKET, HEAD	1	1	1	1				
14	1	114350-01380	O-RING	1	1	1	1				
15	1	114250-01800	SHIM SET	1	1	1	1				
20	1	114250-01830	COVER	1	1	1	1				
21	1	114250-01840	GASKET	1	1	1	1				
22	1	22312-080120	PIN, PARALLEL M8X12	2	2	2	2				
23	1	26226-060182	STUD, M6X 18	1	1	1	1				
24	1	26226-060222	STUD, M6X 22	2	2	2	2				
25	1	26366-060002	NUT, M6	3	3	3	3				
26	1	114350-01412	GASKET, CRANK CASE	1	1	1	1				
27	1	183350-01450	COVER, CRANK CASE	1	1	1	1				
30	2	114350-02100	BEARING, MAIN	1	1	1	1				1
32	1	114250-35150	PIPE, OIL INLET	1	1	1	1				
33	1	26106-080352	BOLT, M8X 35 PLATED	15	15	15	15				
34	1	105425-01690	PLUG, 16	2	2	2	2				
35	1	160910-01740	CAP ASSY	1	1	1	1				
37	2	24311-000180	O-RING, 1AP18.0	1	1	1	1				
38	1	160110-01870	PLUG, RUBBER	1	1	1	1				
39	1	183366-08351	NIPPLE, DRAIN	1	1	1	1				
40	1	43400-500490	SEAL WASHER 16	3	3	3	3				
41	1	114250-02030	RETAINER, BEARING	1	1	1	1				
42	1	114350-02113	BEARING, B35-135G3C3	1	1	1	1				
43	1	160110-02220	SEAL, OIL	1	1	1	1				
44	1	160110-02220	SEAL, OIL	1	1	1	1				
45	1	24101-062060	BEARING, BALL 6206C3	1	1	1	1				
46	1	24162-152112	BEARING, 152112	1	1	1	1				
47	1	26106-080122	BOLT, M8X 12 PLATED	1	1	1	1				
48	1	183366-08290	WASHER	1	1	1	1				
49	1	183250-39450	SWITCH, 1.0KG	1	1	1	1				
50	1	183366-39460	JOINT	1	1	1	1				
51	1	171022-39470	TERMINAL, EARTH	1	1	1	1				
52	1	22117-100000	WASHER, 10	1	1	1	1				
53	1	26557-040082	SCREW, M4X 8	1	1	1	1				
54	1	114350-02200	BEARING, 0.25 US	1	1	1	1				2
55	1	114350-02210	BEARING, 0.50 US	1	1	1	1				2

Remarks
 (1) REPAIR PART.
 (2) UNDER-SIZED PART.

Fig.2. CYLINDER HEAD & BONNET

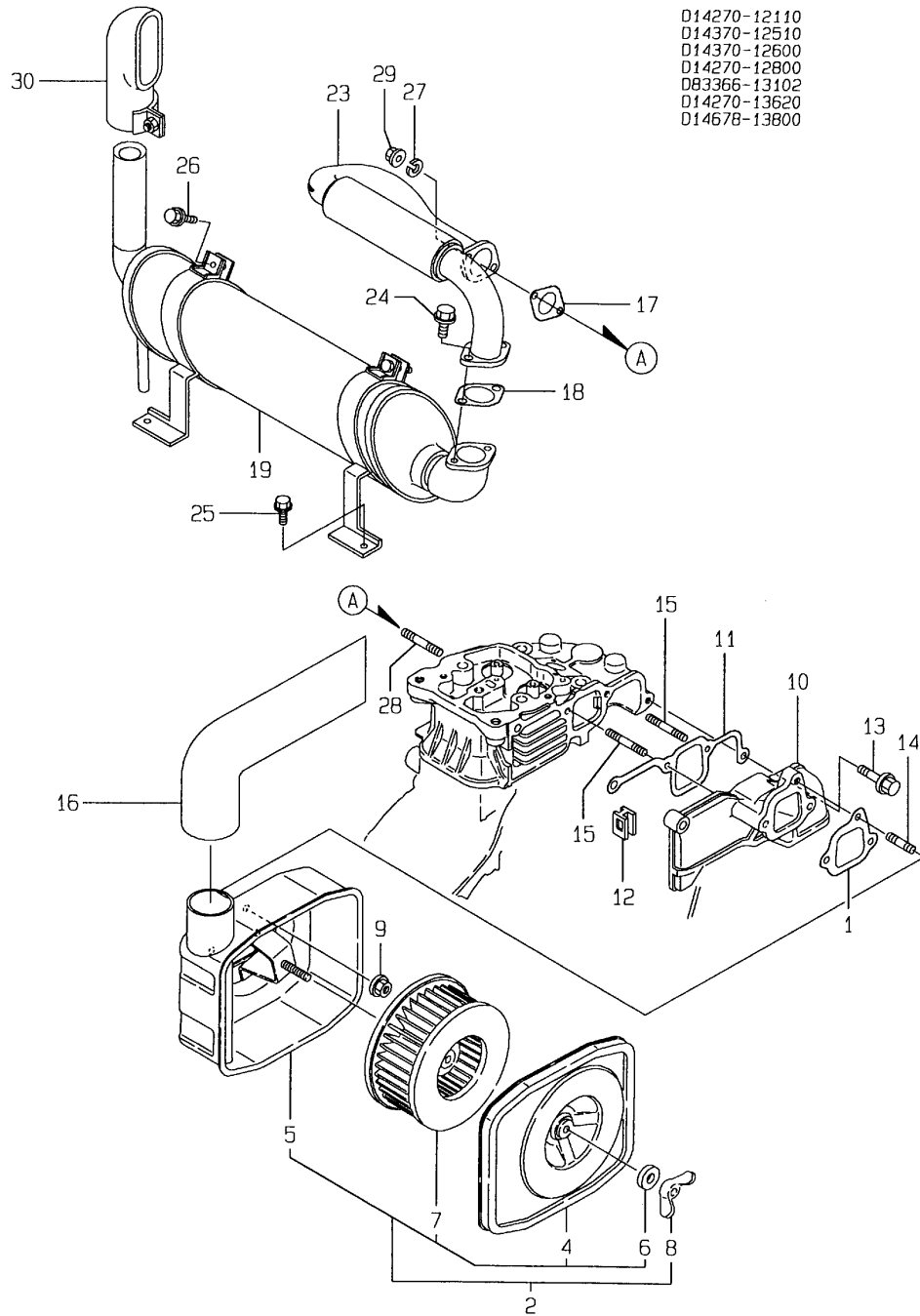
(A)=YDG305S-N(90)
 (B)=YDG306S-N(90)
 (C)=YDG305S-N(91)

(D)=YDG306S-N(91)
 (E)=
 (F)=



No.	Lev.	Parts No.	Description	Q'ty						I	R
				(A)	(B)	(C)	(D)	(E)	(F)		
1	1	114870-11020	HEAD ASSY, CYLINDER	1	1	1	1				
6	1	114350-11101	VALVE, INTAKE	1	1	1	1				
7	1	114350-11113	VALVE, EXHAUST	1	1	1	1				
8	1	114350-11120	SPRING, VALVE	2	2	2	2				
9	1	101158-11180	RETAINER, SPRING	2	2	2	2				
10	1	27310-060001	COTTER, 6	2	2	2	2				
11	1	114250-11290	SUPPORT, ROCKER ARM	1	1	1	1				
14	1	114350-11340	SEAL, VALVE STEM	2	2	2	2				
15	1	114250-11460	GASKET, NOZZLE	1	1	1	1				
16	1	114350-11470	SPACER, NOZZLE	1	1	1	1				
17	1	105010-11490	CAP, VALVE	1	1	1	1				
18	1	114250-11600	WASHER	2	2	2	2				
19	1	114250-11651	ARM, ROCKER	1	1	1	1				
21	2	114250-11240	SCREW, VALVE ADJUST	1	1	1	1				
22	2	26756-060002	NUT, LOCK M6	1	1	1	1				
23	1	714370-11660	ARM ASSY, ROCKER	1	1	1	1				
26	3	114250-11240	SCREW, VALVE ADJUST	1	1	1	1				
27	3	26756-060002	NUT, LOCK M6	1	1	1	1				
28	2	105010-11490	CAP, VALVE	1	1	1	1				
29	1	114250-11900	RETAINER, NOZZLE	1	1	1	1				
30	1	22351-040008	PIN, SPRING 4.0X 8	1	1	1	1				
31	1	26106-080452	BOLT, M8X 45 PLATED	1	1	1	1				
32	1	26226-060502	STUD, M6X 50	2	2	2	2				
33	1	26366-060002	NUT, M6	2	2	2	2				
34	1	114250-11310	GASKET, BONNET	1	1	1	1				
35	1	114250-11951	BONNET ASSY, HEAD	1	1	1	1				
37	2	114250-03591	LEVER ASSY	1	1	1	1				
40	2	114250-03640	SPRING, DECOMPRESSION	1	1	1	1				
42	2	22312-030160	PIN, PARALLEL M3X16	1	1	1	1				
45	1	26106-060552	BOLT, M6X 55 PLATED	2	2	2	2				
46	1	129100-61850	PLUG, 12	1	1	1	1				

Fig.3. AIR CLEANER & MUFFLER



- D14270-12110
- D14370-12510
- D14370-12600
- D14270-12800
- D83366-13102
- D14270-13620
- D14678-13800

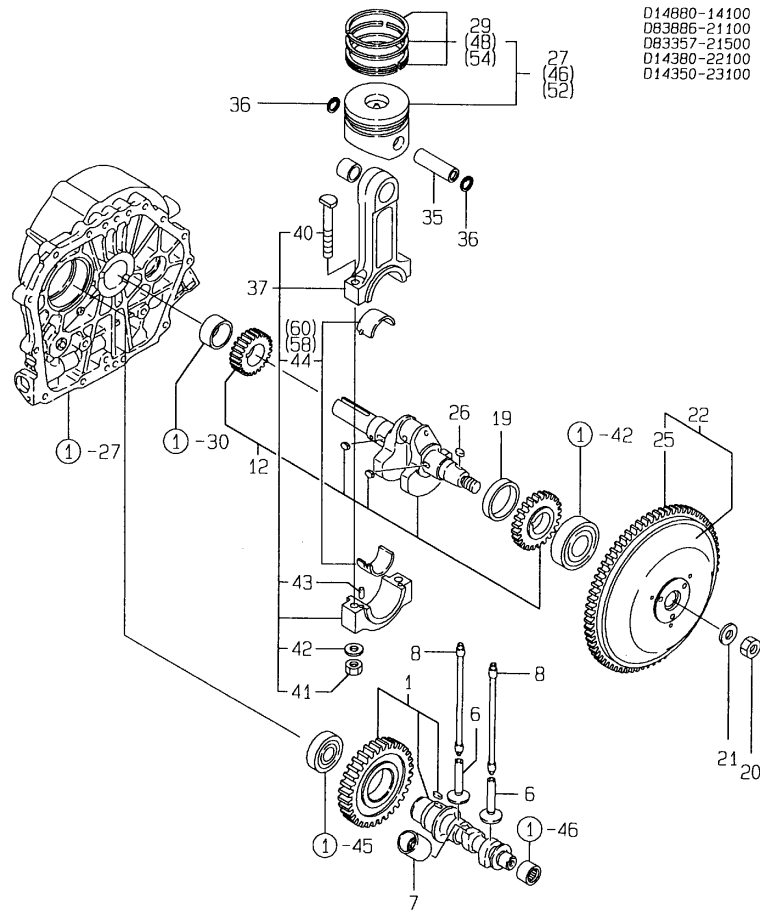
(A)=YDG305S-N(90)
 (B)=YDG306S-N(90)
 (C)=YDG305S-N(91)

(D)=YDG306S-N(91)
 (E)=
 (F)=

No.	Lev.	Parts No.	Description	Qty						I	R
				(A)	(B)	(C)	(D)	(E)	(F)		
1	1	114250-12210	GASKET, AIR CLEANER	1	1	1	1				
2	1	783366-12560	CLEANER ASSY, AIR	1	1	1	1				
4	3	114250-12520	COVER, AIR CREAMER	1	1	1	1				
5	3	183366-12530	CASE ASSY	1	1	1	1				
6	3	114250-12560	WASHER, SEAL M6	1	1	1	1				
7	3	114250-12580	ELEMENT	1	1	1	1				
8	2	114250-12550	NUT, WING M6	1	1	1	1				
9	1	26366-060002	NUT, M6	3	3	3	3				
10	1	114350-12011	PIPE, AIR INTAKE	1	1	1	1				
11	1	114350-12201	GASKET	1	1	1	1				
12	1	114650-12350	GROMMET	1	1	1	1				
13	1	26106-060252	BOLT, M6X 25 PLATED	2	2	2	2				
14	1	26226-060142	STUD, M6X 14	1	1	1	1				
15	1	26226-060552	STUD, M6X 55	2	2	2	2				
16	1	183366-12590	HOSE, CLEANER	1	1	1	1				
17	1	114250-13200	GASKET, MUFFLER	1	1	1	1				
18	1	183671-13210	GASKET	1	1	1	1				
19	1	183366-13300	MUFFLER ASSY	1	1	1	1				
23	1	183366-13601	PIPE	1	1	1	1				
24	1	26013-080302	BOLT, M8X 30	2	2	2	2				
25	1	26014-060142	BOLT, M6X 14	4	4	4	4				
26	1	26106-060202	BOLT, M6X 20 PLATED	2	2	2	2				
27	1	22213-080000	WASHER, SPRING 8	2	2	2	2				
28	1	26216-080182	STUD, M8X 18	2	2	2	2				
29	1	26366-080002	NUT, M8	2	2	2	2				
30	1	114658-13800	PIPE	1	1	1	1				

Fig.4. CRANKSHAFT, PISTON & CAMSHAFT

(A)=YDG305S-N(90)
 (B)=YDG306S-N(90)
 (C)=YDG305S-N(91)
 (D)=YDG306S-N(91)
 (E)=
 (F)=

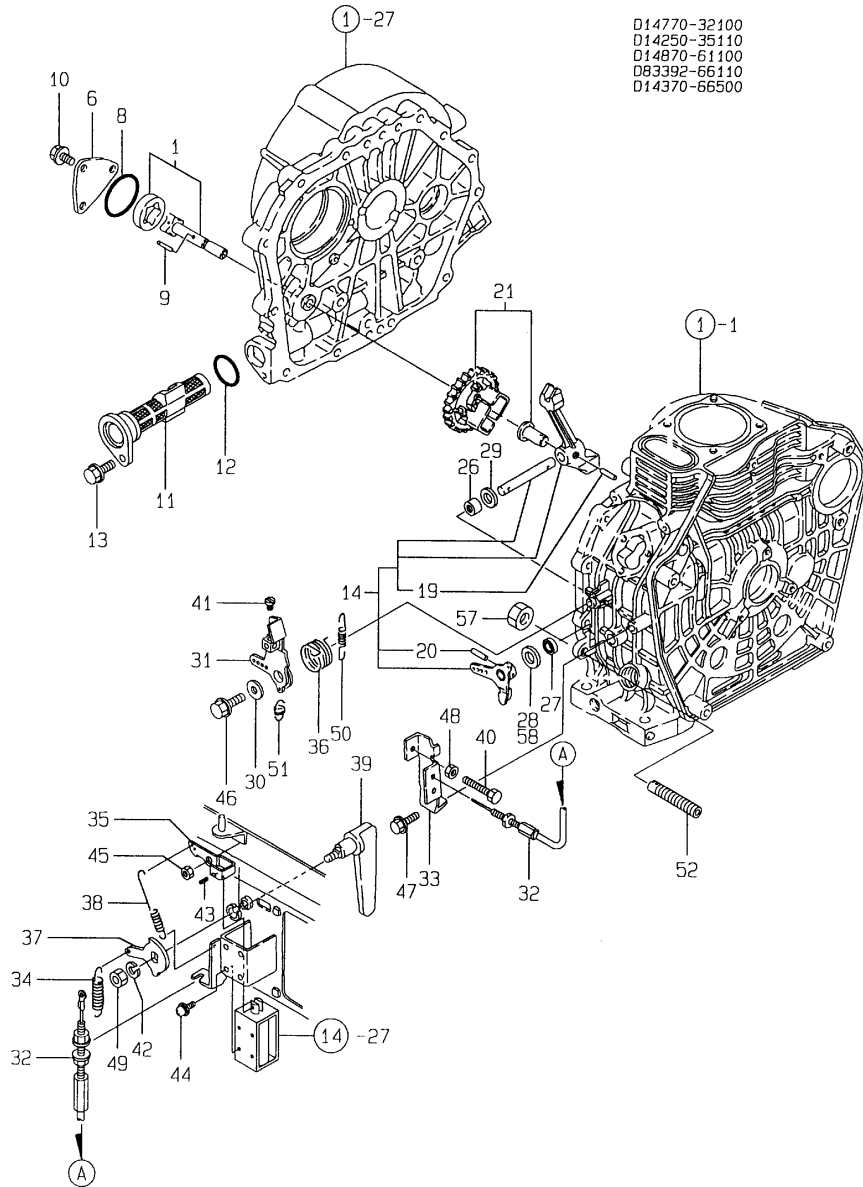


No.	Lev.	Parts No.	Description	Q'ty						I	R
				(A)	(B)	(C)	(D)	(E)	(F)		
1	1	714880-14580	CAMSHAFT ASSY	1	1	1	1				
6	1	114250-14200	TAPPET	2	2	2	2				
7	1	114250-14260	TAPPET	1	1	1	1				
8	1	114350-14450	ROD ASSY, PUSH	2	2	2	2				
12	1	783292-21700	CRANKSHAFT ASSY	1	1	1	1			M	
12-1	1	783392-21700	CRANKSHAFT ASSY	1	1	1	1				
19	1	183350-21350	SPACER, CRANKSHAFT	1	1	1	1				
20	1	103854-01221	NUT, CYLINDER HEAD	1	1	1	1				
21	1	114250-21550	WASHER	1	1	1	1				
22	1	183366-21590	FLYWHEEL ASSY	1	1	1	1				
25	2	114362-21600	GEAR, RING	1	1	1	1				
26	1	22512-040120	KEY, 4X 12	1	1	1	1				
27	1	714380-22720	PISTON ASSY, D	1	1	1	1				
29	2	714350-22502	RING SET, PISTON	1	1	1	1				
35	1	114350-22301	PIN, PISTON D=21	1	1	1	1				
36	1	22252-000210	RING, 21	2	2	2	2				
37	1	714350-23702	ROD ASSY, CONNECTING	1	1	1	1			M	
37-1	1	714350-23704	ROD ASSY, CONNECTING	1	1	1	1				
40	3	114250-23200	BOLT, CONNECTING ROD	2	2	2	2				
41	3	114250-23220	NUT	2	2	2	2				
42	3	114250-23250	WASHER	2	2	2	2				
43	3	22312-030080	PIN, PARALLEL M3X 8	2	2	2	2				
44	2	714350-23600	BEARING, CRANK PIN	1	1	1	1				
46	1	714380-22620	PISTON ASSY, 0.25 OS	1	1	1	1			1	
48	2	714350-22542	RING SET, 0.25 OS	1	1	1	1			1	
52	1	714380-22580	PISTON ASSY, 0.50 OS	1	1	1	1			2	
54	2	714350-22550	RING SET, 0.50 OS	1	1	1	1			2	
58	1	714350-23610	BEARING ASSY, 0.25	1	1	1	1			3	
60	1	714350-23620	BEARING, 0.50 US	1	1	1	1			4	

Remarks

- (1) OVER-SIZE(O.S=0.25)PART.
- (2) OVER-SIZE(O.S=0.50)PART.
- (3) UNDER-SIZE(U.S=0.25)PART.
- (4) UNDER-SIZE(U.S=0.50)PART.
- (M) MISPRINT.

Fig.5. LUB. OIL PUMP & GOVERNOR



(A)=YDG305S-N(90)
 (B)=YDG306S-N(90)
 (C)=YDG305S-N(91)
 (D)=YDG306S-N(91)
 (E)=
 (F)=

No.	Lev.	Parts No.	Description	Qty						I	R
				(A)	(B)	(C)	(D)	(E)	(F)		
1	1	114250-32010	PUMP ASSY, OIL	1	1	1	1				
6	1	114250-32070	COVER	1	1	1	1				
8	1	103338-32570	O-RING	1	1	1	1				
9	1	22312-030160	PIN, PARALLEL M3X16	1	1	1	1				
10	1	26476-060142	SCREW, TAPPING M6X14	3	3	3	3				
11	1	114250-35070	FILTER, OIL	1	1	1	1				
12	1	24341-000224	O-RING, 1AS22.4	1	1	1	1				
13	1	26106-060162	BOLT, M6X 16 PLATED	1	1	1	1				
14	1	714350-61500	LEVER ASSY, GOVERNOR	1	1	1	1				
19	3	22322-030200	PIN, TAPER 3X20	1	1	1	1				
20	2	22322-030200	PIN, TAPER 3X20	1	1	1	1				
21	1	714770-61700	GOVERNOR ASSY	1	1	1	1				
26	1	121450-61520	BEARING, NEEDLE 8	2	2	2	2				
27	1	114770-61600	SEAL, OIL	1	1	1	1				W 1
(A=E/#N00251) (B=E/#N00251)											
28	1	114770-61610	WASHER, THRUST	1	1	1	1				W 1
(A=E/#N00251) (B=E/#N00251)											
29	1	22137-080000	WASHER, 8	1	1	1	1				
30	1	183350-55130	WASHER	1	1	1	1				
31	1	114883-66060	HANDLE, REGULATOR	1	1	1	1				
32	1	183266-66110	WIRE	1	1	1	1				
33	1	114252-66120	BRACKET	1	1	1	1				
34	1	183266-66210	SPRING	1	1	1	1				
35	1	183267-66240	LEVER, LOCK	1	1	1	1				
36	1	114252-66252	SPRING, RETURN	1	1	1	1				
37	1	183266-66330	LEVER, LOCK	1	1	1	1				
38	1	183267-66330	SPRING	1	1	1	1				
39	1	183267-66350	LEVER, LOCK	1	1	1	1				
40	1	114250-66440	BOLT, ADJUSTING	1	1	1	1				
41	1	105225-66990	SCREW, M5X8.5	1	1	1	1				
42	1	22217-080000	WASHER, SPRING 8	1	1	1	1				
43	1	22351-030012	PIN, SPRING 3.0X12	1	1	1	1				
44	1	26023-030082	SCREW, M3X 8	4	4	4	4				
45	1	26347-060002	NUT, M6	1	1	1	1				
46	1	26476-060142	SCREW, TAPPING M6X14	1	1	1	1				
47	1	26476-060202	SCREW, TAPPING M6X20	1	1	1	1				
48	1	26757-060002	NUT, LOCK M6	1	1	1	1				
49	1	26757-080002	NUT, LOCK M8	1	1	1	1				
50	1	114870-66010	SPRING, REGULATOR	1	1	1	1				
51	1	114250-66200	SPRING, RETURN	1	1	1	1				
52	1	114250-66550	LIMITER ASSY, FUEL	1	1	1	1				
57	1	26696-100002	NUT, LOCK M10	1	1	1	1				
58	1	114250-61600	BUSH	1	1						Z 1
(A=E/#N00251) (B=E/#N00251)											

Remarks

(1) REF.NO.58 CHANGED TO REF.NO.27 & 28.

Fig.6. COOLING DEVICE

(A)=YDG305S-N(90

(B)=YDG306S-N(90

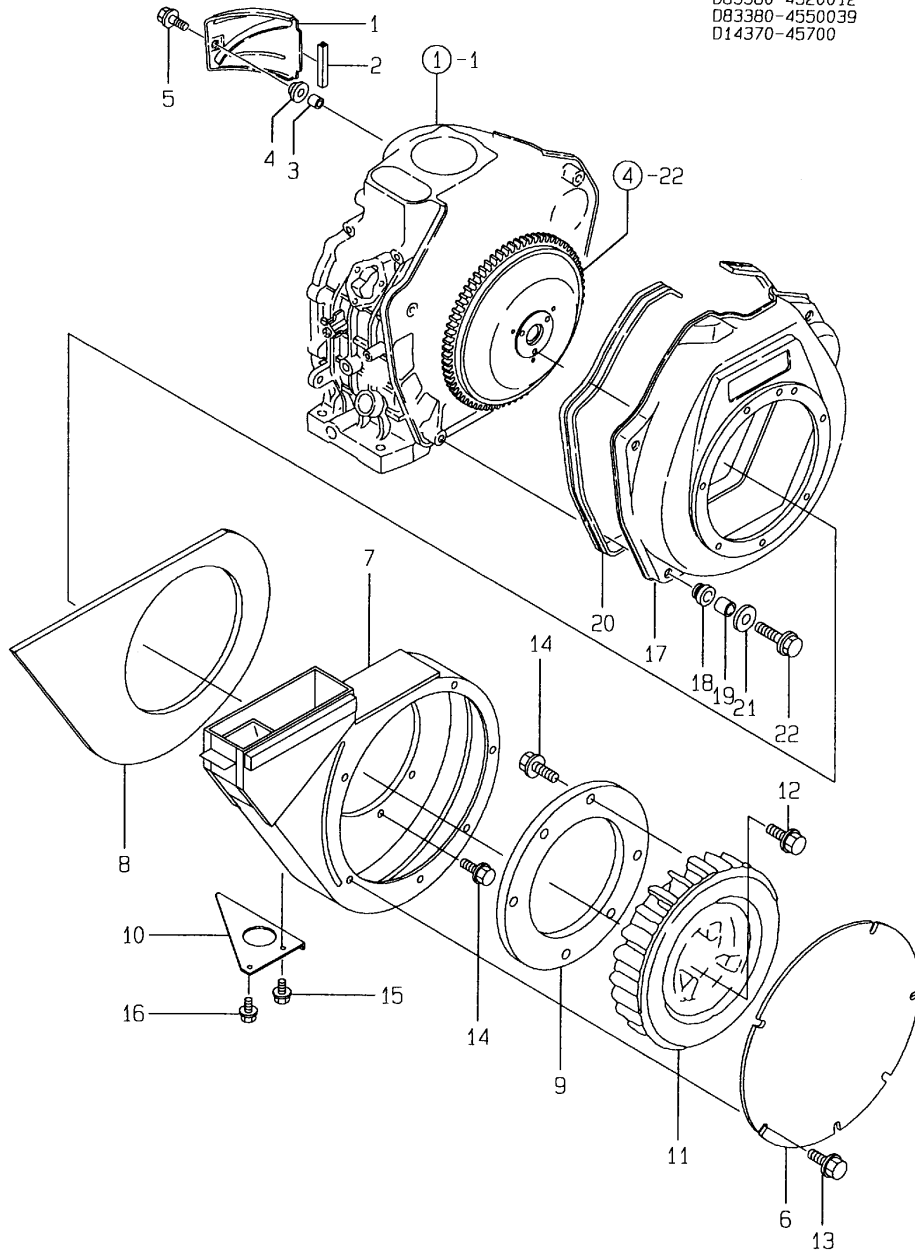
(C)=YDG305S-N(91

(D)=YDG306S-N(91

(E)=

(F)=

D14370-45100
 D83380-45200 12
 D83380-45500 39
 D14370-45700

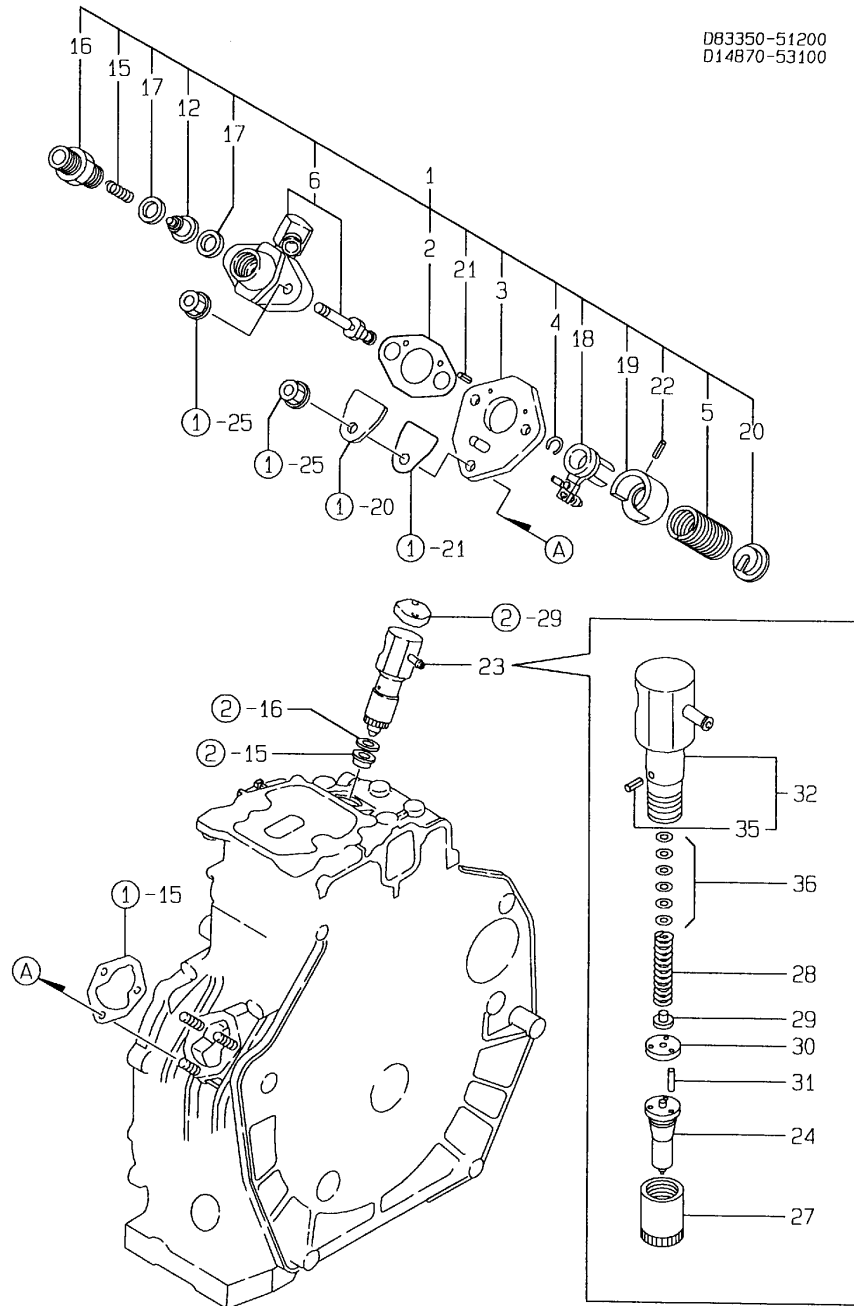


No.	Lev.	Parts No.	Description	Q'ty						I	R
				(A)	(B)	(C)	(D)	(E)	(F)		
1	1	114870-45200	COVER	1	1	1	1				
2	1	114350-45320	RUBBER, SEAL	1	1	1	1				
3	1	114350-45340	COLLAR	1	1	1	1				
4	1	183720-55210	GROMMET	1	1	1	1				
5	1	26476-060202	SCREW, TAPPING M6X20	1	1	1	1				
6	1	183366-45220	COVER ASSY	1	1	1	1				
7	1	183366-45300	SCROLL	1	1	1	1				
8	1	183366-45320	ISOLATOR	1	1	1	1				
9	1	183366-45410	COVER, FAN	1	1	1	1				
10	1	183366-45460	STAY, SCROLL	1	1	1	1				
11	1	183366-45600	FAN, COOLING	1	1	1	1				
12	1	26014-080302	BOLT, M8X 30	3	3	3	3				
13	1	26106-060082	BOLT, M6X 8 PLATED	7	7	7	7				
14	1	26106-060122	BOLT, M6X 12 PLATED	14	14	14	14				
15	1	26106-060142	BOLT, M6X 14 PLATED	1	1	1	1				
16	1	26557-060142	SCREW M 6X 14	1	1	1	1				
17	1	183366-45111	CASE, COOLING FAN	1	1	1	1				
18	1	114250-45300	ABSORBER	5	5	5	5				
19	1	114250-45310	COLLAR	5	5	5	5				
20	1	114250-45330	SEAL, FAN CASE L=875	1	1	1	1				
21	1	160120-76940	WASHER	5	5	5	5				
22	1	26476-060252	SCREW, TAPPING M6X25	5	5	5	5				

Fig.7. FUEL INJECTION PUMP

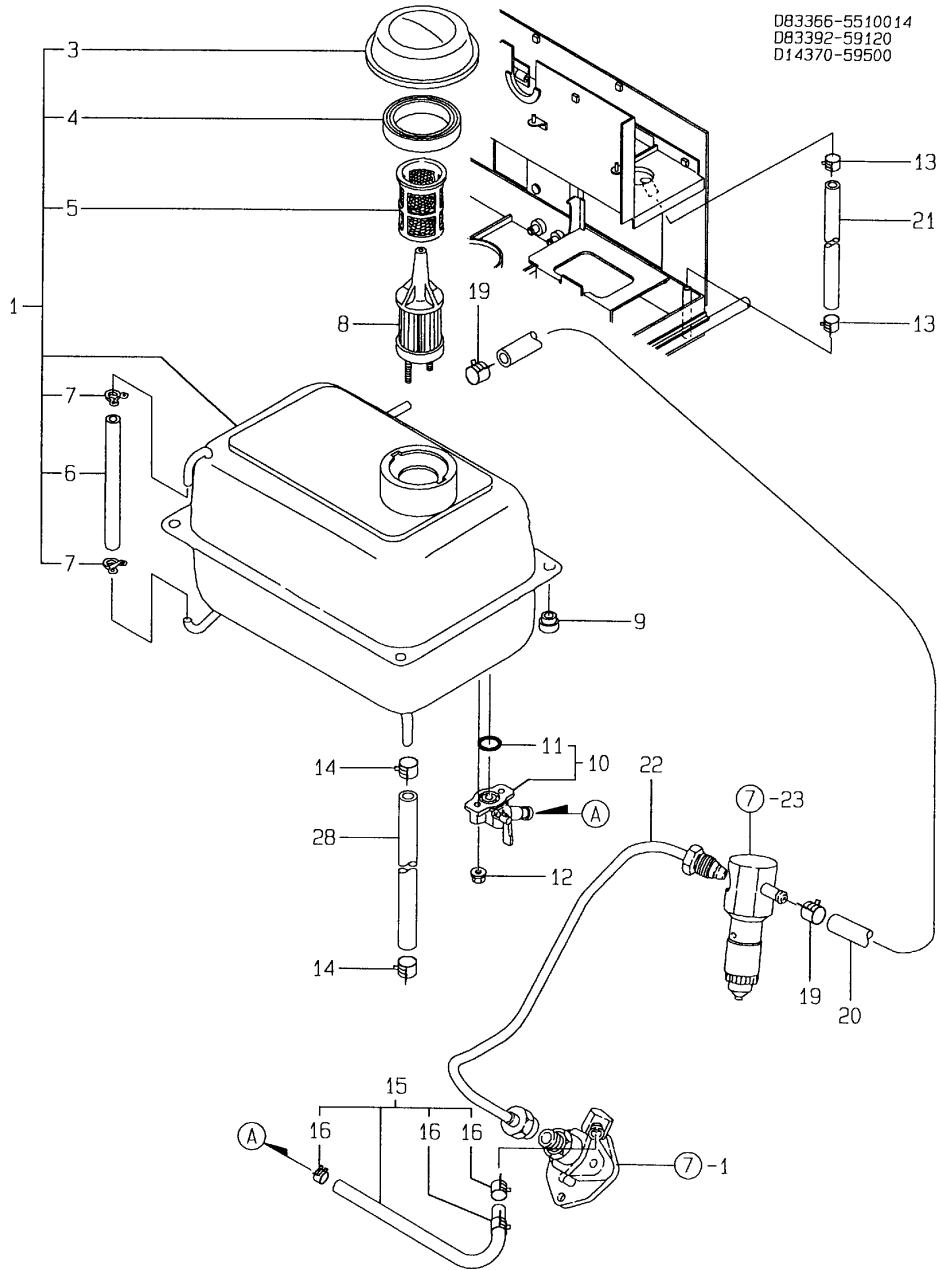
(A)=YDG305S-N(90)
 (B)=YDG306S-N(90)
 (C)=YDG305S-N(91)

(D)=YDG306S-N(91)
 (E)=
 (F)=



No.	Lev.	Parts No.	Description	Q'ty						I	R
				(A)	(B)	(C)	(D)	(E)	(F)		
1	1	783350-51701	PUMP ASSY, INJECTION	1	1	1	1				
2	2	105546-51020	GASKET	1	1	1	1				
3	2	114250-51080	PLATE	1	1	1	1				
4	2	114250-51150	RING, SNAP	1	1	1	1				
5	2	114250-51160	SPRING, PLUNGER	1	1	1	1				
6	2	183350-51200	BODY ASSY, PUMP	1	1	1	1				
12	2	114250-51300	VALVE ASSY, DELIVERY	1	1	1	1				
15	2	105546-51330	SPRING, DELIVERY	1	1	1	1				
16	2	114250-51340	HOLDER, DELIVERY	1	1	1	1				
17	2	124550-51350	GASKET, DELIVERY	2	2	2	2				
18	2	114250-51600	LEVER ASSY, CONTROL	1	1	1	1				
19	2	114250-51640	SEAT, SPRING A	1	1	1	1				
20	2	114250-51650	SEAT, SPRING B	1	1	1	1				
21	2	22351-020006	PIN, SPRING 2.0X 6	2	2	2	2				
22	2	22351-030008	PIN, SPRING 3.0X 8	1	1	1	1				
23	1	714870-53100	VALVE ASSY, INJECTION	1	1	1	1				
24	2	114870-53000	VALVE ASSY, INJECTION	1	1	1	1				
27	2	114250-53080	NUT, NOZZLE D16.95	1	1	1	1				
28	2	114250-53120	SPRING, NOZZLE	1	1	1	1				
29	2	114250-53130	SEAT, SPRING	1	1	1	1				
30	2	114250-53140	PLATE	1	1	1	1				
31	2	114250-53210	PIN	2	2	2	2				
32	2	114250-53300	HOLDER ASSY, NOZZLE	1	1	1	1				
35	3	114250-53331	PIN	1	1	1	1				
36	2	114250-53400	SHIM SET	1	1	1	1				

Fig.8. FUEL TANK & FUEL PIPE



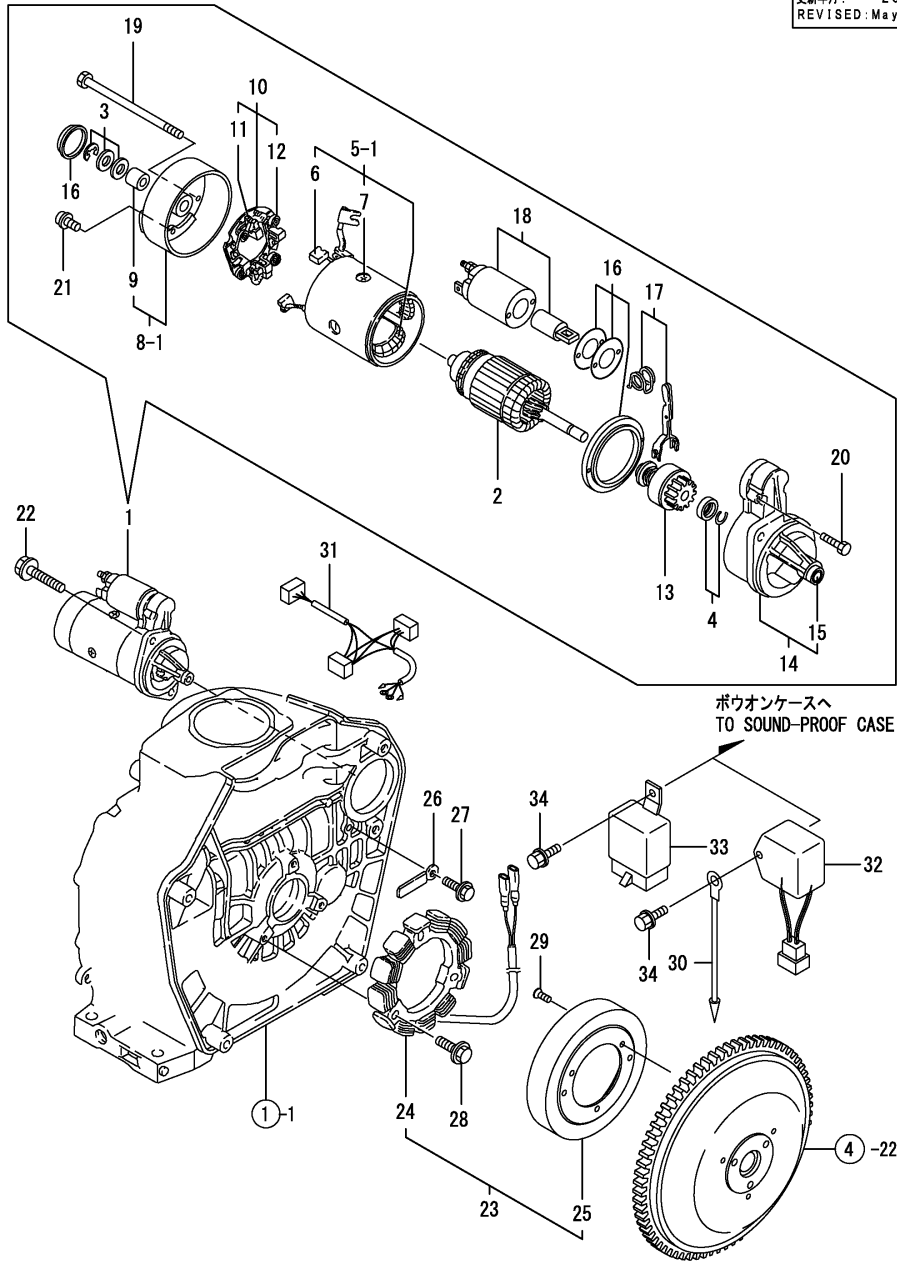
(A)=YDG305S-N(90)
 (B)=YDG306S-N(90)
 (C)=YDG305S-N(91)

(D)=YDG306S-N(91)
 (E)=
 (F)=

No.	Lev.	Parts No.	Description	Qty						I	R
				(A)	(B)	(C)	(D)	(E)	(F)		
1	1	783366-55700	TANK ASSY, FUEL	1	1	1	1				
3	2	105015-55040	CAP, FUEL TANK	1	1	1	1				
4	2	101504-55051	GASKET	1	1	1	1				
5	2	160710-55100	FILTER, FUEL	1	1	1	1				
6	2	183366-55150	GAUGE, LEVEL	1	1	1	1				
7	2	103854-55220	RETAINER	2	2	2	2				
8	1	183366-55120	FILTER, FUEL	1	1	1	1				
9	1	183720-55210	GROMMET	4	4	4	4				
10	1	183250-55320	COCK ASSY, FUEL	1	1	1	1				
11	2	24341-000150	O-RING, 1AS15.0	1	1	1	1				
12	1	26366-060002	NUT, M6	2	2	2	2				
13	1	171008-03990	CLIP, HOSE 18.5	2	2	2	2				
14	1	106990-44660	CLIP, HOSE 12.5	2	2	2	2				
15	1	183366-59010	PIPE ASSY, FUEL	1	1	1	1				
16	2	106990-44660	CLIP, HOSE 12.5	3	3	3	3				
19	1	124722-59050	CLIP, HOSE 9	2	2	2	2				
20	1	183671-59060	PIPE, FUEL RETURN	1	1	1	1				
21	1	183266-59341	PIPE, DRAIN	1	1	1	1				
22	1	114350-59800	PIPE ASSY, INJECTION	1	1	1	1				
28	1	183366-59330	PIPE, FUEL RETURN	1	1	1	1				

Fig.9. STARTING MOTOR & DYNAMO

発行No. 000Y00D4340-1
 更新年月: 2005.05
 REVISED: May, 2005



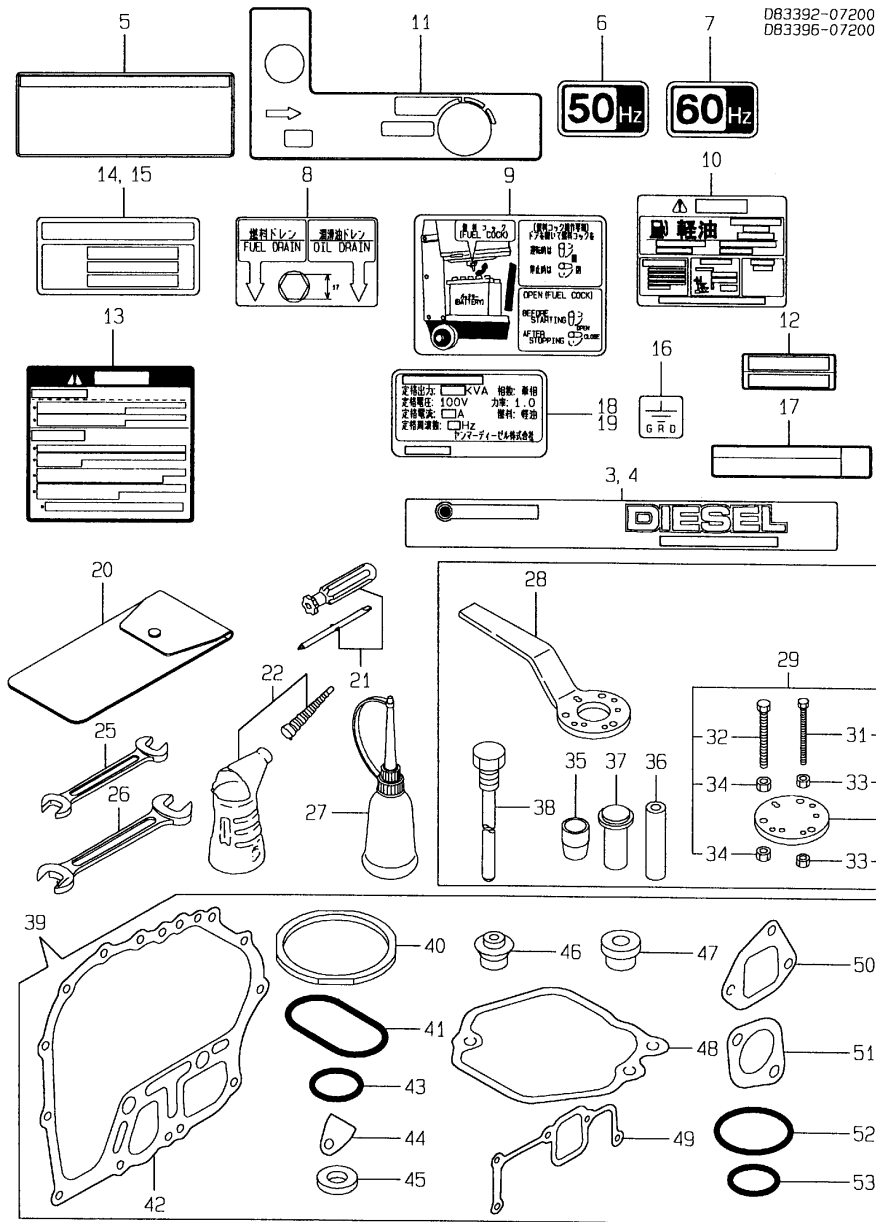
(A)=YDG305S-N(90)
 (B)=YDG306S-N(90)
 (C)=YDG305S-N(91)

(D)=YDG306S-N(91)
 (E)=
 (F)=

No.	Lev.	Parts No.	Description	Q'ty						I	R
				(A)	(B)	(C)	(D)	(E)	(F)		
1	1	114362-77010	STARTER, S114-414A	1	1	1	1				
2	2	X211461104	ARMATURE	1	1	1	1				
3	2	X21148110	WASHER SET, THRUST	1	1	1	1				
4	2	X21147155	STOPPER SET, PINION	1	1	1	1				
5-1	2	X211492108	COIL ASSY, FIELD	1	1	1	1				
6	3	X21145312	BRUSH, +	2	2	2	2				
7	3	X21143215	SCREW, CORE	4	4	4	4				
8-1	2	X211473008	COVER, REAR	1	1	1	1				
9	3	X21145352	METAL	1	1	1	1				
10	2	X211489001	HOLDER ASSY, BRUSH	1	1	1	1				
11	3	X21148313	BRUSH (-)	1	1	1	1				
12	3	X21149314	SPRING, BRUSH	3	3	3	3				
13	2	X211445508	PINION ASSY	1	1	1	1				
14	2	X211416603	HOUSING ASSY, GEAR	1	1	1	1				
15	3	X21145352	METAL	1	1	1	1				
16	2	X211478006	COVER KIT	1	1	1	1				
17	2	X211456013	LEVER KIT, SHIFT	1	1	1	1				
18	2	X211427501	SWITCH, MAGNETIC	1	1	1	1				
19	2	X211468005	BOLT, THROUGH	2	2	2	2				
20	2	X21145867	BOLT, M6	2	2	2	2				
21	2	X21142835	SCREW SET	1	1	1	1				
22	1	26106-100302	BOLT, M10X 30 PLATED	2	2	2	2				
23	1	114351-78250	DYNAMO ASSY	1	1	1	1				
24	2	114351-78750	STATOR ASSY	1	1	1	1				
25	2	114351-78760	WHEEL, DYNAMO	1	1	1	1				
26	1	160710-78710	CLAMP, CORD	1	1	1	1				
27	1	26476-060142	SCREW, TAPPING M6X14	1	1	1	1				
28	1	26476-060202	SCREW, TAPPING M6X20	3	3	3	3				
29	1	26577-060142	SCREW M 6X 14	3	3	3	3				
30	1	183350-77400	WIRE, LEAD	1	1	1	1				
31	1	183267-91390	HARNES, WIRE	1	1	1	1				
32	1	183256-78300	REGULATOR	1	1	1	1				
33	1	183256-78310	RELAY	1	1	1	1				
34	1	26106-060122	BOLT, M6X 12 PLATED	2	2	2	2				

Fig.10. TOOL, LABEL & GASKET SET

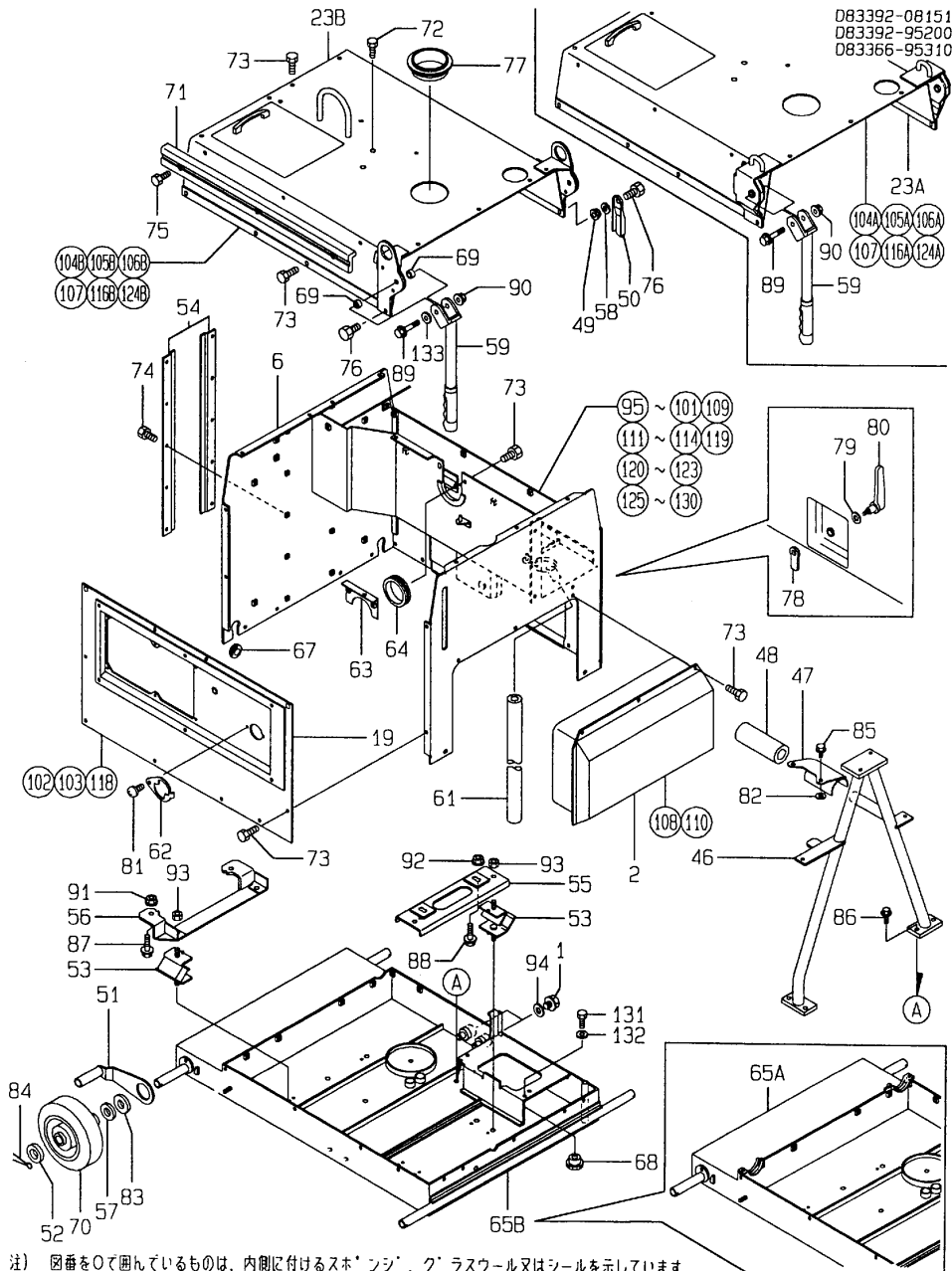
(A)=YDG305S-N(90)
 (B)=YDG306S-N(90)
 (C)=YDG305S-N(91)
 (D)=YDG306S-N(91)
 (E)=
 (F)=



No.	Lev.	Parts No.	Description	Q'ty						I	R
				(A)	(B)	(C)	(D)	(E)	(F)		
3	1	183392-07160	LABEL	2		2					
4	1	183396-07160	LABEL		2			2			
5	1	183292-07210	LABEL, OPERATION	1	1	1	1				
6	1	183610-07230	LABEL, 50HZ	1		1					
7	1	183620-07230	LABEL, 60HZ		1			1			
8	1	183366-07240	LABEL, DAIN	1	1	1	1				
9	1	183366-07251	LABEL, F.O. COCK	1	1	1	1				
10	1	183250-07260	LABEL, CAUTION	1	1	1	1				
11	1	183266-07260	LABEL, OPERATION	1	1	1	1				
12	1	183366-07280	LABEL, AIR CLEANER	1	1	1	1				
13	1	183366-07290	LABEL	1	1	1	1				
14	1	183392-07350	LABEL	1		1					
15	1	183396-07350	LABEL		1			1			
16	1	183210-07390	LABEL, G.R.D.	1	1	1	1				
17	1	183250-07450	LABEL	1	1	1	1				
18	1	183352-07580	LABEL (GENERATOR	1		1					
19	1	183362-07580	LABEL (GENERATOR		1			1			
20	1	114250-92600	BAG, TOOL	1	1	1	1				
21	1	160330-92730	DRIVE, SCREW	1	1	1	1				
22	1	7E4133-99290	JUG ASSY, OIL	1	1	1	1				
25	1	28110-100120	SPANNER, 10X12	1	1	1	1				
26	1	28110-140170	SPANNER, 14X17	1	1	1	1				
27	1	28210-000150	OILER	1	1	1	1				
28	1	114250-92101	F.W. LOCKING HANDLE	1	1	1	1				1
29	1	114250-92130	REMOVER, FLYWHEEL	1	1	1	1				1
31	2	26116-060454	BOLT M 6X 45 PLATED	4	4	4	4				1
32	2	26116-080454	BOLT, M8X 45 PLATED	3	3	3	3				1
33	2	26716-060002	NUT, M6	8	8	8	8				1
34	2	26716-080002	NUT, M8	6	6	6	6				1
35	1	114661-92300	GUIDE	1	1	1	1				1
36	1	114650-92310	INSTALLING TOOL	1	1	1	1				1
37	1	114650-92350	INSTALLING TOOL	1	1	1	1				1
38	1	183562-92350	TOOL, ROTOR REMOVER	1	1	1	1				1
39	1	714350-92602	GASKET SET	1	1	1	1				1
40	2	114350-01340	GASKET, HEAD	1	1	1	1				
41	2	114350-01380	O-RING	1	1	1	1				
42	2	114350-01412	GASKET, CRANK CASE	1	1	1	1				
43	2	24311-000180	O-RING, 1AP18.0	2	2	2	2				
44	2	114250-01840	GASKET	1	1	1	1				
45	2	43400-500490	SEAL WASHER 16	2	2	2	2				
46	2	114350-11340	SEAL, VALVE STEM	2	2	2	2				
47	2	114250-11460	GASKET, NOZZLE	1	1	1	1				
48	2	114250-11310	GASKET, BONNET	1	1	1	1				
49	2	114350-12201	GASKET	1	1	1	1				
50	2	114250-12210	GASKET, AIR CLEANER	1	1	1	1				
51	2	183671-13200	GASKET	1	1	1	1				
52	2	103338-32570	O-RING	1	1	1	1				
53	2	24341-000224	O-RING, 1AS22.4	1	1	1	1				

Remarks
 (1) OPTIONAL PARTS.

Fig.11. SOUND-PROOF CASE



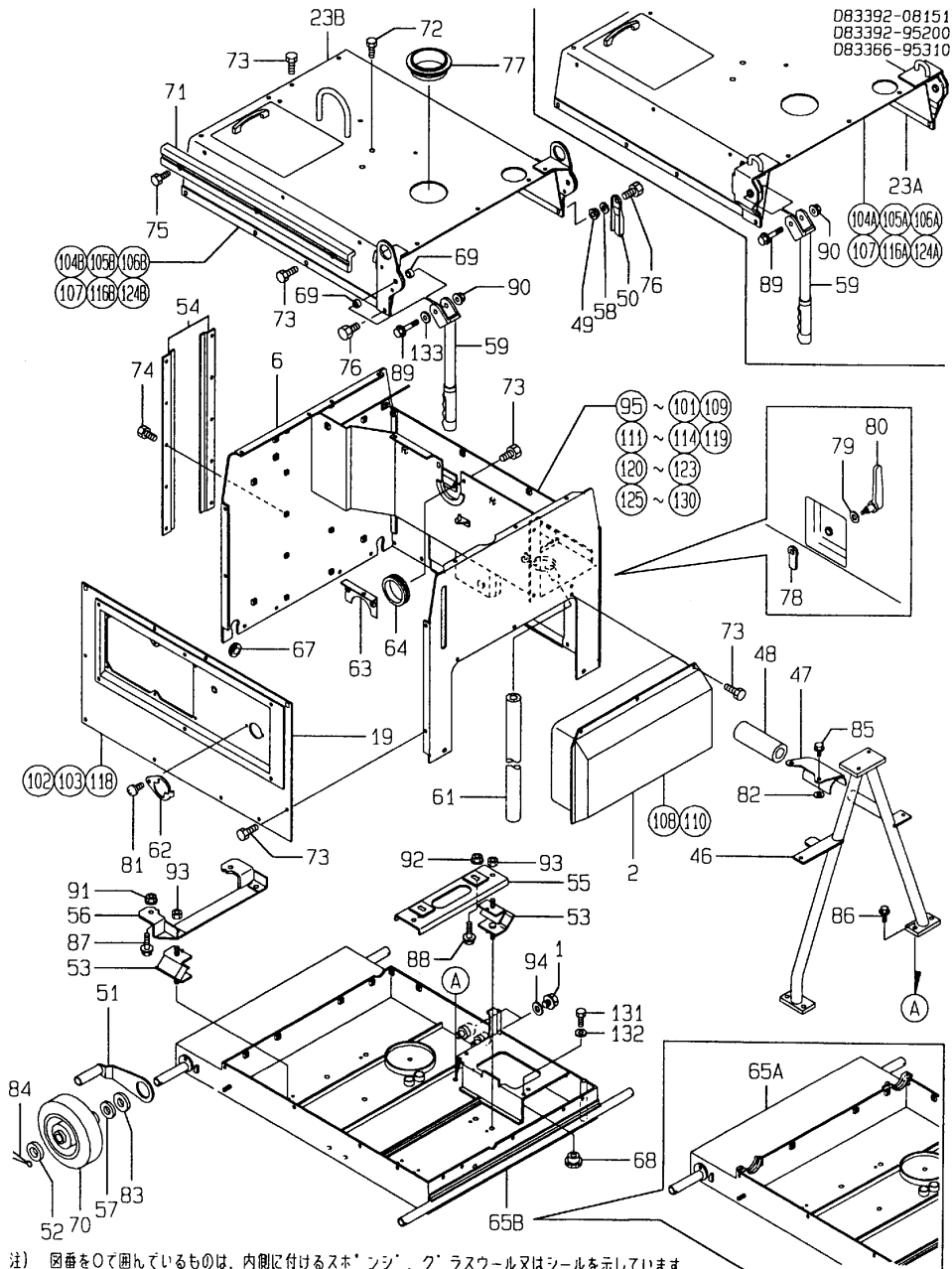
注) 図番を〇で囲んでいるものは、内側に付けるスポンジ、グラスウール又はシールを示しています。
 Note) The encircled drawing numbers indicate the parts lined with rubber sponge, glass wool or some kinds of seal.

(A)=YDG305S-N(90)
 (B)=YDG306S-N(90)
 (C)=YDG305S-N(91)
 (D)=YDG306S-N(91)
 (E)=
 (F)=

No.	Lev.	Parts No.	Description	Q'ty						I	R
				(A)	(B)	(C)	(D)	(E)	(F)		
1	1	105425-01690	PLUG, 16	2	2	2	2				
2A	1	183392-08080	CASE ASSY	1	1						
2B	1	183392-08081	CASE ASSY			1	1				
6A	1	183392-08090	CASE ASSY	1	1						
6B	1	183392-08091	CASE ASSY			1	1				
19A	1	183392-08100	CASE	1	1						
19B	1	183392-08101	CASE ASSY			1	1				
23A	1	183392-08110	CASE ASSY	1	1						
23B	1	183392-08111	CASE ASSY			1	1				
46	1	183266-08120	FRAME	1	1	1	1				
47	1	183366-08150	STOPPER	1	1	1	1				
48	1	183366-08180	RUBBER	1	1	1	1				
49	1	183392-08180	PIECE	1	1	1	1				
50	1	183392-08190	STOPPER	1	1	1	1				
51	1	183266-08201	STOPPER	2	2	2	2				
52	1	183266-08210	WASHER, 20	2	2	2	2				
53	1	183250-08220	DAMPER	4	4	4	4				
54	1	183392-08220	STAY	2	2	2	2				
55	1	183392-08230	STAY, DAMPER	1	1	1	1				
56	1	183392-08250	STAY, DAMPER	1	1	1	1				
57	1	183266-08270	WASHER, 20/40	4	4	4	4				
58	1	183366-08290	WASHER	1	1	1	1				
59	1	183392-08310	HANDLE	2	2	2	2				
61	1	183366-08400	PIPE, WATER DRAIN	1	1	1	1				
62	1	183266-08421	STOPPER	1	1	1	1				
63	1	183366-08461	FLANGE	1	1	1	1				
64	1	183366-08470	COVER, MUFFLER	1	1	1	1				
65A	1	183266-08560	CASE	1	1						
65B	1	183266-08561	CASE			1	1				
67	1	183396-08580	GROMMET			2	2				
68	1	183210-08810	NUT	1	1	1	1				
69	1	183396-08830	SPACER			4	4				
70	1	183250-08840	WHEEL, 223	4	4	4	4				
71A	1	183392-08810	FENDER	2	2						
71B	1	183396-08870	FENDER			2	2				
72	1	183392-08930	BOLT, M8X20	2	2	2	2				
73	1	183392-08950	BOLT, M6X15	47	47	47	47				
74	1	183392-08950	BOLT, M6X15	8	8	8	8				
75	1	183392-08950	BOLT, M6X15	6	6	6	6				
76	1	183392-08970	BOLT, M6X28	2	2	2	2				
77	1	183366-55210	GROMMET	1	1	1	1				
78	1	194312-61810	CAM, BONNET LOCK	1	1	1	1				
79	1	194312-61840	WASHER, BWW-626	1	1	1	1				
80A	1	194555-61820	LEVER, BONNET LOCK	1	1						
80B	1	183267-66350	LEVER, LOCK			1	1				
81	1	183896-91090	SCREW, M5X10	1	1	1	1				
82	1	22137-080000	WASHER, 8	2	2	2	2				
83	1	22137-200000	WASHER, 20	4	4	4	4				
84	1	22417-400360	COTTER PIN 4.0X36	4	4	4	4				
85	1	26106-080202	BOLT, M8X 20 PLATED	2	2	2	2				
86	1	26106-100162	BOLT, M10X 16 PLATED	4	4	4	4				

Fig.11. SOUND-PROOF CASE

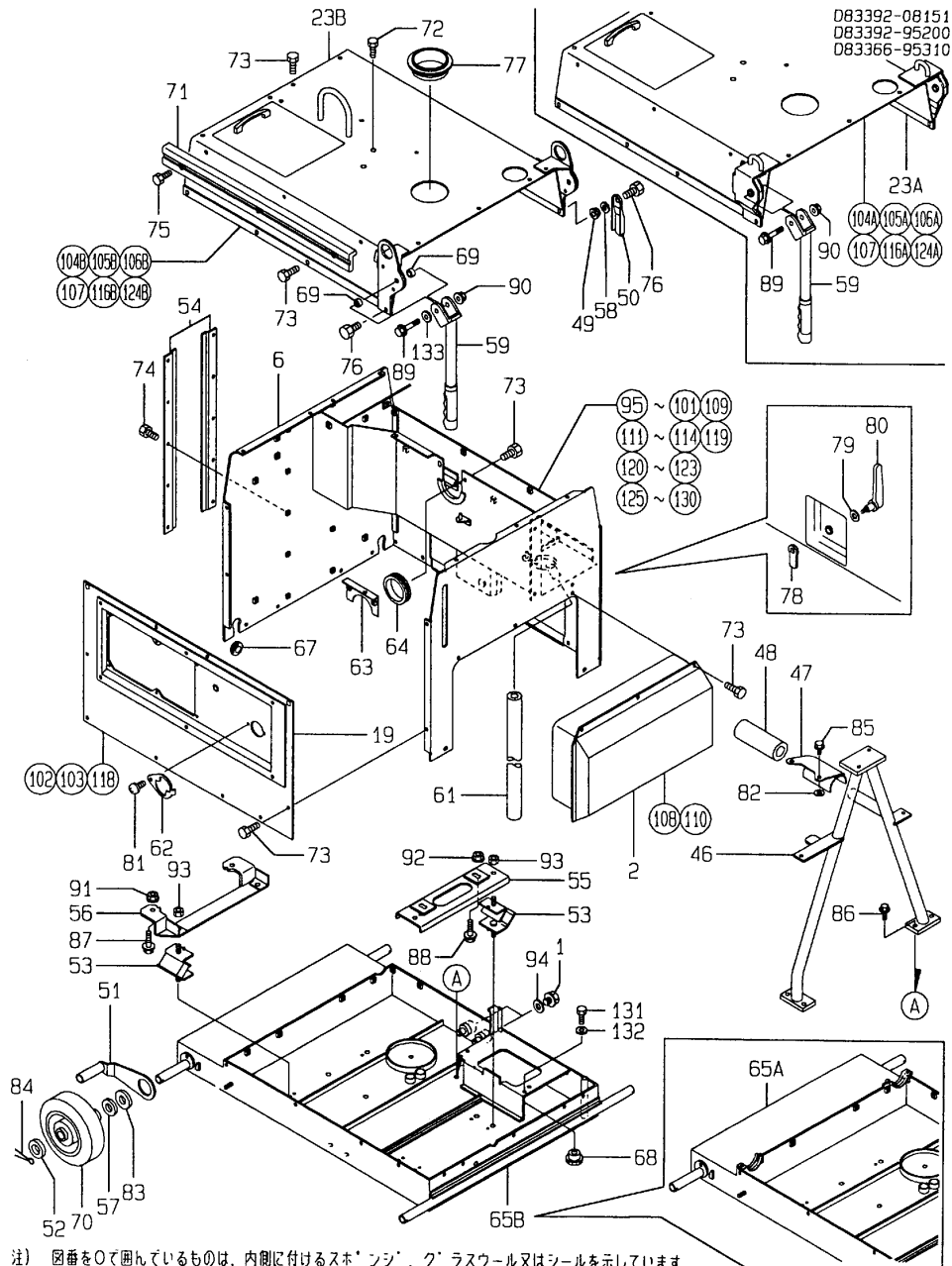
(A)=YDG305S-N(90)
 (B)=YDG306S-N(90)
 (C)=YDG305S-N(91)
 (D)=YDG306S-N(91)
 (E)=
 (F)=



注) 図番を〇で囲んでいるものは、内側に付けるスポンジ、グラスウール又はシールを示しています。
 Note) The encircled drawing numbers indicate the parts lined with rubber sponge, glass wool or some kinds of seal.

No.	Lev.	Parts No.	Description	Qty						I	R
				(A)	(B)	(C)	(D)	(E)	(F)		
87	1	26106-100352	BOLT, M10X 35 PLATED	2	2	2	2				
88	1	26106-100382	BOLT, M10X 38 PLATED	2	2	2	2				
89	1	26203-100552	BOLT M10X 55	2	2	2	2				
90	1	26343-100002	NUT, M10	2	2	2	2				
91	1	26366-100002	NUT, M10	2	2	2	2				
92	1	26366-100002	NUT, M10	2	2	2	2				
93	1	26696-100002	NUT, LOCK M10	8	8	8	8				
94	1	43400-500490	SEAL WASHER 16	2	2	2	2				
95	1	183366-95011	SPONGE, 20T305	1	1	1	1				
96	1	183366-95030	SPONGE, 20T307	1	1	1	1				
97	1	183366-95050	SPONGE, 20T309	1	1	1	1				
98	1	183366-95060	SPONGE, 30T310	1	1	1	1				
99	1	183366-95070	SPONGE, 30T311	1	1	1	1				
100	1	183366-95080	SPONGE, 30T312	1	1	1	1				
101	1	183366-95090	SPONGE, 30T313	1	1	1	1				
102	1	183366-95130	SPONGE, 20T401	1	1	1	1				
103	1	183366-95140	SPONGE, 20T402	1	1	1	1				
104A	1	183366-95310	SPONGE	1	1						
104B	1	183396-95150	SPONGE			1	1				
105A	1	183366-95480	SHEET	2	2						
105B	1	183396-95160	SEAT			2	2				
106A	1	183366-95490	SHEET	1	1						
106B	1	183396-95170	SEAT			1	1				
107	1	183396-95180	SEAT			1	1				
108	1	183366-95190	SPONGE, 10T201	2	2	2	2				
109A	1	183366-95410	SEAT	3	3						
109B	1	183396-95190	SEAT			3	3				
110	1	183366-95200	SPONGE, 10T202	1	1	1	1				
111A	1	183366-95400	SEAT	1	1						
111B	1	183396-95200	SEAT			1	1				
112	1	183396-95220	SPONGE			1	1				
113	1	183396-95230	SPONGE			1	1				
114	1	183396-95240	SPONGE			1	1				
115	1	183366-95280	SPONGE, 15T601	2	2	2	2				
116A	1	183366-95171	SPONGE	1	1						
116B	1	183396-95280	SPONGE			1	1				
117	1	183366-95290	SPONGE, 15T602	1	1	1	1				
118	1	183396-95300	SPONGE			1	1				
119A	1	183366-95120	SPONGE	1	1						
119B	1	183396-95310	SPONGE			1	1				
120	1	183366-95950	SEAT	1	1	1	1				
121	1	183366-95980	CAP, RUBBER	2	2	3	3				
122	1	183396-95210	WOOL, GLASS			1	1				
123A	1	183366-95671	WOOL, GLASS	1	1						
123B	1	183396-95270	WOOL, GLASS			1	1				
124A	1	183366-95691	WOOL, GLASS	1	1						
124B	1	183396-95290	WOOL, GLASS			1	1				
125A	1	183366-95730	WOOL, GLASS	1	1						
125B	1	183396-95320	WOOL, GLASS			1	1				
126A	1	183392-95600	WOOL, GLASS	1	1						
126B	1	183366-95652	WOOL, GLASS			1	1				

Fig.11. SOUND-PROOF CASE

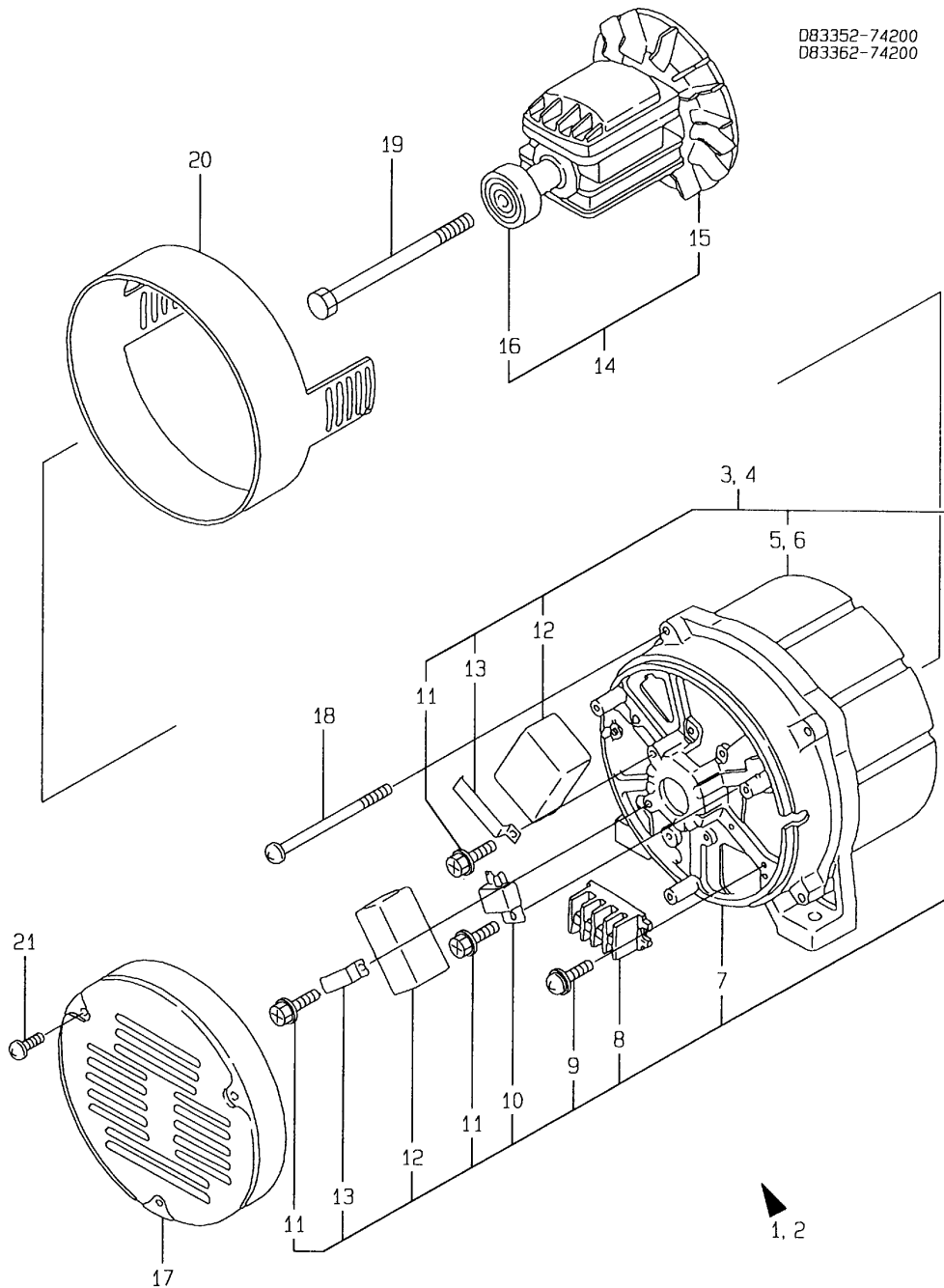


注) 図番を〇で囲んでいるものは、内側に付けるスポンジ、グラスウール又はシールを示しています。
 Note) The encircled drawing numbers indicate the parts lined with rubber sponge, glass wool or some kinds of seal.

(A)=YDG305S-N(90) (D)=YDG306S-N(91)
 (B)=YDG306S-N(90) (E)=
 (C)=YDG305S-N(91) (F)=

No.	Lev.	Parts No.	Description	Q'ty						I	R
				(A)	(B)	(C)	(D)	(E)	(F)		
127	1	183366-95662	WOOL, GLASS	1	1	1	1				
128	1	183366-95740	WOOL, GLASS	1	1	1	1				
129	1	183366-95040	SPONGE, 20T308	2	2						
130	1	183366-95260	SPONGE	2	2						
131	1	26113-060202	BOLT, M6X 20					1	1		
132	1	22113-060000	WASHER, 6					1	1		
133	1	22113-100000	WASHER, 10					2	2		

Fig.12. GENERATOR



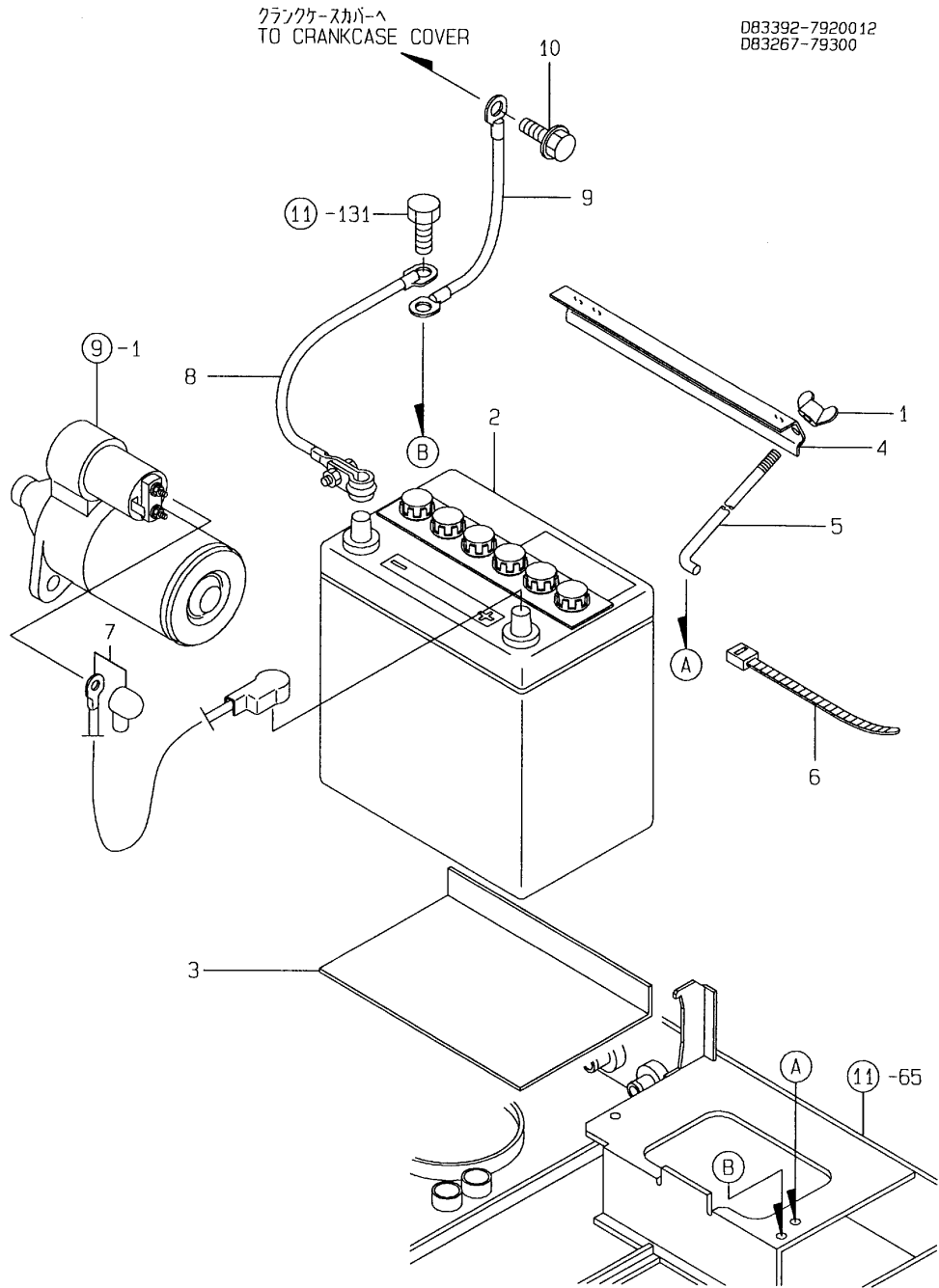
D83352-74200
D83362-74200

(A)=YDG305S-N(90)
(B)=YDG306S-N(90)
(C)=YDG305S-N(91)

(D)=YDG306S-N(91)
(E)=
(F)=

No.	Lev.	Parts No.	Description	Q'ty						I	R
				(A)	(B)	(C)	(D)	(E)	(F)		
1	1	183352-74060	GENERATOR 2.7KVA(50H	1		1					
2	1	183362-74060	GENERATOR 3.0KVA(60H		1		1				
3	2	X2A00160KA	STATOR ASSY	1		1					
4	2	X2A00160KB	STATOR ASSY (60HZ)		1		1				
5	3	X2A00161KA	STATOR (50HZ)	1		1					
6	3	X2A00161KB	STATOR (60HZ)		1		1				
7	3	X2A00155K	COVER, REAR	1	1	1	1				
8	3	183820-74270	TERMINAL	1	1	1	1				
9	3	183350-74380	SCREW, M4X14	1	1	1	1				
10	3	183210-74470	RECTIFIER	1	1	1	1				
11	3	183620-74310	SCREW M 5X10	3	3	3	3				
12	3	XD71802	CONDENSER	2	2	2	2				
13	3	X4A00227K	CLAMP	2	2	2	2				
14	2	X2A00162K	ROTOR ASSY	1	1	1	1				
15	3	X3A00183K	FAN	1	1	1	1				
16	3	XM67896	BEARING	1	1	1	1				
17	2	183250-74400	COVER, GENERATOR END	1	1	1	1				
18	1	183362-74410	BOLT, THROUGH M6X110	4	4	4	4				
19	1	183382-74430	BOLT, M10X188	1	1	1	1				
20	1	183262-74090	BAND, GENERATOR	1	1	1	1				
21	1	26022-040082	SCREW, M4X 8	3	3	3	3				

Fig.13. BATTERY

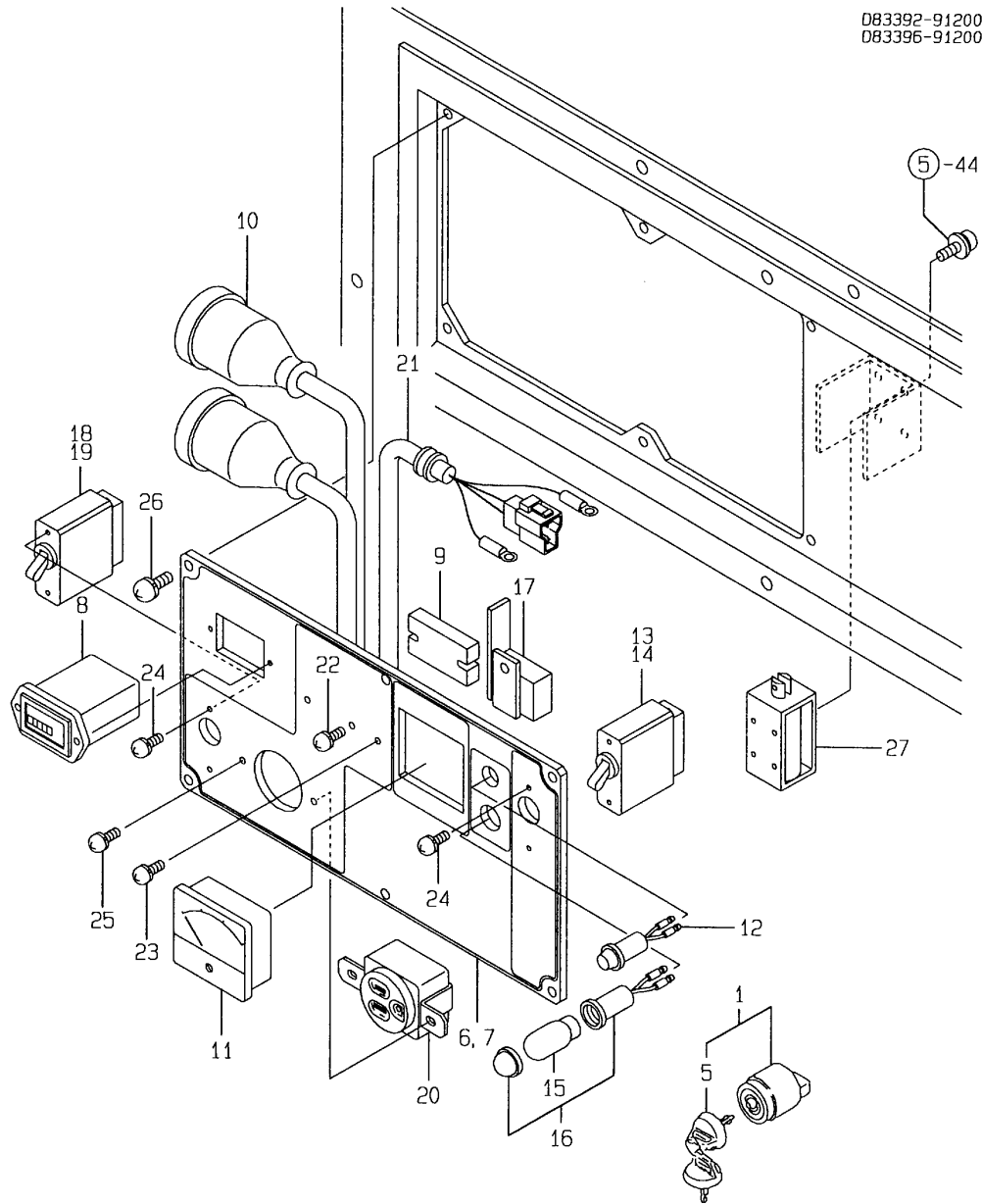


(A)=YDG305S-N(90)
(B)=YDG306S-N(90)
(C)=YDG305S-N(91)

(D)=YDG306S-N(91)
(E)=
(F)=

No.	Lev.	Parts No.	Description	Qty						I	R
				(A)	(B)	(C)	(D)	(E)	(F)		
1	1	101147-12550	NUT	2	2	2	2				
2	1	183392-79620	BATTERY, YT60-24L	1	1	1	1				
3	1	183920-79620	SEAT, BATTERY	1	1	1	1				
4	1	183350-79630	RETAINER, BATTERY	1	1	1	1				
5	1	183920-79650	BOLT, BATTERY	2	2	2	2				
6	1	121750-59890	BAND, 140	2	2	2	2				
7	1	183251-79560	CABLE, +	1	1	1	1				
8	1	183920-79560	CABLE, -	1	1	1	1				
9	1	183251-79570	CABLE (-)	1	1	1	1				
10	1	26106-060122	BOLT, M6X 12 PLATED	2	2	2	2				

Fig.14. PANEL



(A)=YDG305S-N(90)
 (B)=YDG306S-N(90)
 (C)=YDG305S-N(91)
 (D)=YDG306S-N(91)
 (E)=
 (F)=

No.	Lev.	Parts No.	Description	Q'ty						I	R
				(A)	(B)	(C)	(D)	(E)	(F)		
1	1	160797-77250	SWITCH ASSY, KEY	1	1	1	1				
5	2	160797-77270	KEY, REVERSE	1	1	1	1				
6	1	183392-91070	PANEL ASSY	1		1					
7	1	183396-91070	PANEL ASSY		1		1				
8	2	X3A00281K01	HOUR METER	1	1	1	1				
9	2	XM41120	TERMINAL	1	1	1	1				
10	2	X4A00450KA	SOCKET ASSY	1	1	1	1				
11	2	183820-91290	VOLT METER (150V)	1	1	1	1				
12	2	183820-91310	BULB(AC110V OR AC220)	1	1	1	1				
13	2	183000-96400	BREAKER, AC 17.5A	1		1					
14	2	XM08675	AC BREAKER (60HZ)		1		1				
15	2	XM67108	BULB, L.O.ALART	1	1	1	1				
16	2	XM67109	SOCKET, LAMP	1	1	1	1				
17	2	X4A01577KA	RELAY ASSY	1	1	1	1				
18	2	X4A02363K02	BREAKER	1		1					
19	2	X4A02363K03	BREAKER		1		1				
20	2	XM08679	PLUG SOCKET (125V)	1	1	1	1				
21	2	X3A02712KA	HARNES, WIRE	1	1	1	1				
22	2	XYSPS4012	SCREW, M4	2	2	2	2				
23	2	XYSPS4016	SCREW, M4	1	1	1	1				
24	2	XYSNS3006	SCREW M3	4	4	4	4				
25	2	XYSNS4008	SCREW M 4	2	2	2	2				
26	1	183896-91090	SCREW, M5X10	6	6	6	6				
27	1	183250-91690	DC.SOLENOID(12V.10W)	1	1	1	1				

Parts No. Index

Parts No.	Fig. No.	Ref. No.
101147-12550	13	1
101158-11180	2	9
101504-55051	8	4
103338-32570	5	8
	10	52
103854-01221	4	20
103854-55220	8	7
105010-11490	2	17
		28
105015-55040	8	3
105225-01240	1	11
105225-66990	5	41
105425-01690	1	34
	11	1
105546-51020	7	2
105546-51330	7	15
106990-44660	8	14
		16
114250-01800	1	15
114250-01830	1	20
114250-01840	1	21
	10	44
114250-02030	1	41
114250-03591	2	37
114250-03640	2	40
114250-11240	2	21
		26
114250-11290	2	11
114250-11310	2	34
	10	48
114250-11460	2	15
	10	47
114250-11600	2	18
114250-11651	2	19
114250-11900	2	29
114250-11951	2	35
114250-12210	3	1
	10	50
114250-12520	3	4
114250-12550	3	8
114250-12560	3	6
114250-12580	3	7
114250-13200	3	17
114250-14200	4	6
114250-14260	4	7
114250-21550	4	21
114250-23200	4	40
114250-23220	4	41
114250-23250	4	42
114250-32010	5	1

Parts No.	Fig. No.	Ref. No.
114250-32070	5	6
114250-35070	5	11
114250-35150	1	32
114250-45300	6	18
114250-45310	6	19
114250-45330	6	20
114250-51080	7	3
114250-51150	7	4
114250-51160	7	5
114250-51300	7	12
114250-51340	7	16
114250-51600	7	18
114250-51640	7	19
114250-51650	7	20
114250-53080	7	27
114250-53120	7	28
114250-53130	7	29
114250-53140	7	30
114250-53210	7	31
114250-53300	7	32
114250-53331	7	35
114250-53400	7	36
114250-61600	5	58
114250-66200	5	51
114250-66440	5	40
114250-66550	5	52
114250-92101	10	28
114250-92130	10	29
114250-92600	10	20
114252-66120	5	33
114252-66252	5	36
114350-01200	1	8
114350-01210	1	9
114350-01220	1	10
114350-01250	1	12
114350-01340	1	13
	10	40
114350-01380	1	14
	10	41
114350-01412	1	26
	10	42
114350-01700	1	6
114350-02100	1	30
114350-02113	1	42
114350-02200	1	54
114350-02210	1	55
114350-11101	2	6
114350-11113	2	7
114350-11120	2	8
114350-11340	2	14

Parts No.	Fig. No.	Ref. No.
114350-11340	10	46
114350-11470	2	16
114350-12011	3	10
114350-12201	3	11
	10	49
114350-14450	4	8
114350-22301	4	35
114350-45320	6	2
114350-45340	6	3
114350-59800	8	22
114351-78250	9	23
114351-78750	9	24
114351-78760	9	25
114362-21600	4	25
114362-77010	9	1
114650-12350	3	12
114650-92310	10	36
114650-92350	10	37
114658-13800	3	30
114661-92300	10	35
114770-61600	5	27
114770-61610	5	28
114870-11020	2	1
114870-45200	6	1
114870-53000	7	24
114870-66010	5	50
114883-66060	5	31
121450-61520	5	26
121750-59890	13	6
124550-51350	7	17
124722-59050	8	19
129100-61850	2	46
160110-01870	1	38
160110-02220	1	43
		44
160120-76940	6	21
160330-92730	10	21
160710-55100	8	5
160710-78710	9	26
160797-77250	14	1
160797-77270	14	5
160910-01740	1	35
171008-03990	8	13
171022-39470	1	51
183000-96400	14	13
183210-07390	10	16
183210-08810	11	68
183210-74470	12	10
183250-07260	10	10
183250-07450	10	17

Parts No.	Fig. No.	Ref. No.
183250-08220	11	53
183250-08840	11	70
183250-39450	1	49
183250-55320	8	10
183250-74400	12	17
183250-91690	14	27
183251-79560	13	7
183251-79570	13	9
183256-78300	9	32
183256-78310	9	33
183262-74090	12	20
183266-07260	10	11
183266-08120	11	46
183266-08201	11	51
183266-08210	11	52
183266-08270	11	57
183266-08421	11	62
183266-08560	11	65 A
183266-08561	11	65 B
183266-59341	8	21
183266-66110	5	32
183266-66210	5	34
183266-66330	5	37
183267-66240	5	35
183267-66330	5	38
183267-66350	5	39
	11	80 B
183267-91390	9	31
183292-07210	10	5
183350-01450	1	27
183350-21350	4	19
183350-51200	7	6
183350-55130	5	30
183350-74380	12	9
183350-77400	9	30
183350-79630	13	4
183352-07580	10	18
183352-74060	12	1
183362-07580	10	19
183362-74060	12	2
183362-74410	12	18
183366-07240	10	8
183366-07251	10	9
183366-07280	10	12
183366-07290	10	13
183366-08150	11	47
183366-08180	11	48
183366-08290	1	48
	11	58
183366-08351	1	39

Parts No. Index

Parts No.	Fig. No.	Ref. No.
183366-08400	11	61
183366-08461	11	63
183366-08470	11	64
183366-12530	3	5
183366-12590	3	16
183366-13300	3	19
183366-13601	3	23
183366-21590	4	22
183366-39460	1	50
183366-45111	6	17
183366-45220	6	6
183366-45300	6	7
183366-45320	6	8
183366-45410	6	9
183366-45460	6	10
183366-45600	6	11
183366-55120	8	8
183366-55150	8	6
183366-55210	11	77
183366-59010	8	15
183366-59330	8	28
183366-95011	11	95
183366-95030	11	96
183366-95040	11	129
183366-95050	11	97
183366-95060	11	98
183366-95070	11	99
183366-95080	11	100
183366-95090	11	101
183366-95120	11	119 A
183366-95130	11	102
183366-95140	11	103
183366-95171	11	116 A
183366-95190	11	108
183366-95200	11	110
183366-95260	11	130
183366-95280	11	115
183366-95290	11	117
183366-95310	11	104 A
183366-95400	11	111 A
183366-95410	11	109 A
183366-95480	11	105 A
183366-95490	11	106 A
183366-95652	11	126 B
183366-95662	11	127
183366-95671	11	123 A
183366-95691	11	124 A
183366-95730	11	125 A
183366-95740	11	128
183366-95950	11	120

Parts No.	Fig. No.	Ref. No.
183366-95980	11	121
183382-74430	12	19
183392-07160	10	3
183392-07350	10	14
183392-08080	11	2 A
183392-08081	11	2 B
183392-08090	11	6 A
183392-08091	11	6 B
183392-08100	11	19 A
183392-08101	11	19 B
183392-08110	11	23 A
183392-08111	11	23 B
183392-08180	11	49
183392-08190	11	50
183392-08220	11	54
183392-08230	11	55
183392-08250	11	56
183392-08310	11	59
183392-08810	11	71 A
183392-08930	11	72
183392-08950	11	73
		74
		75
183392-08970	11	76
183392-79620	13	2
183392-91070	14	6
183392-95600	11	126 A
183396-07160	10	4
183396-07350	10	15
183396-08580	11	67
183396-08830	11	69
183396-08870	11	71 B
183396-91070	14	7
183396-95150	11	104 B
183396-95160	11	105 B
183396-95170	11	106 B
183396-95180	11	107
183396-95190	11	109 B
183396-95200	11	111 B
183396-95210	11	122
183396-95220	11	112
183396-95230	11	113
183396-95240	11	114
183396-95270	11	123 B
183396-95280	11	116 B
183396-95290	11	124 B
183396-95300	11	118
183396-95310	11	119 B
183396-95320	11	125 B
183562-92350	10	38

Parts No.	Fig. No.	Ref. No.
183610-07230	10	6
183620-07230	10	7
183620-74310	12	11
183671-13200	10	51
183671-13210	3	18
183671-59060	8	20
183720-55210	6	4
	8	9
183820-74270	12	8
183820-91290	14	11
183820-91310	14	12
183896-91090	11	81
	14	26
183920-79560	13	8
183920-79620	13	3
183920-79650	13	5
194312-61810	11	78
194312-61840	11	79
194555-61820	11	80 A
22113-060000	11	132
22113-100000	11	133
22117-100000	1	52
22137-080000	5	29
	11	82
22137-200000	11	83
22213-080000	3	27
22217-080000	5	42
22252-000210	4	36
22312-030080	4	43
22312-030160	2	42
	5	9
22312-080120	1	22
22322-030200	5	19
		20
22351-020006	7	21
22351-030008	7	22
22351-030012	5	43
22351-040008	2	30
22417-400360	11	84
22512-040120	4	26
24101-062060	1	45
24162-152112	1	46
24311-000180	1	37
	10	43
24341-000150	8	11
24341-000224	5	12
	10	53
26013-080302	3	24
26014-060142	3	25
26014-080302	6	12

Parts No.	Fig. No.	Ref. No.
26022-040082	12	21
26023-030082	5	44
26106-060082	6	13
26106-060122	6	14
	9	34
	13	10
26106-060142	6	15
26106-060162	5	13
26106-060202	3	26
26106-060252	3	13
26106-060552	2	45
26106-080122	1	47
26106-080202	11	85
26106-080352	1	33
26106-080452	2	31
26106-100122	1	7
26106-100162	11	86
26106-100302	9	22
26106-100352	11	87
26106-100382	11	88
26113-060202	11	131
26116-060454	10	31
26116-080454	10	32
26203-100552	11	89
26216-080182	3	28
26226-060142	3	14
26226-060182	1	23
26226-060222	1	24
26226-060502	2	32
26226-060552	3	15
26343-100002	11	90
26347-060002	5	45
26366-060002	1	25
	2	33
	3	9
	8	12
26366-080002	3	29
26366-100002	11	91
		92
26476-060142	5	10
		46
	9	27
26476-060202	5	47
	6	5
	9	28
26476-060252	6	22
26557-040082	1	53
26557-060142	6	16
26577-060142	9	29
26696-100002	5	57

Parts No. Index

Parts No.	Fig. No.	Ref. No.
26696-100002	11	93
26716-060002	10	33
26716-080002	10	34
26756-060002	2	22
		27
26757-060002	5	48
26757-080002	5	49
27310-060001	2	10
28110-100120	10	25
28110-140170	10	26
28210-000150	10	27
43400-500490	1	40
	10	45
	11	94
714350-22502	4	29
714350-22542	4	48
714350-22550	4	54
714350-23600	4	44
714350-23610	4	58
714350-23620	4	60
714350-23702	4	37
714350-23704	4	37 -1
714350-61500	5	14
714350-92602	10	39
714370-11660	2	23
714371-01560	1	1
714380-22580	4	52
714380-22620	4	46
714380-22720	4	27
714770-61700	5	21
714870-53100	7	23
714880-14580	4	1
783292-21700	4	12
783350-51701	7	1
783366-12560	3	2
783366-55700	8	1
783392-21700	4	12 -1
7E4133-99290	10	22
X211416603	9	14
X211427501	9	18
X21142835	9	21
X21143215	9	7
X211445508	9	13
X21145312	9	6
X21145352	9	9
		15
X211456013	9	17
X21145867	9	20
X211461104	9	2
X211468005	9	19

Parts No.	Fig. No.	Ref. No.
X21147155	9	4
X211473008	9	8 -1
X211478006	9	16
X21148110	9	3
X21148313	9	11
X211489001	9	10
X211492108	9	5 -1
X21149314	9	12
X2A00155K	12	7
X2A00160KA	12	3
X2A00160KB	12	4
X2A00161KA	12	5
X2A00161KB	12	6
X2A00162K	12	14
X3A00183K	12	15
X3A00281K01	14	8
X3A02712KA	14	21
X4A00227K	12	13
X4A00450KA	14	10
X4A01577KA	14	17
X4A02363K02	14	18
X4A02363K03	14	19
XD71802	12	12
XM08675	14	14
XM08679	14	20
XM41120	14	9
XM67108	14	15
XM67109	14	16
XM67896	12	16
XYSNS3006	14	24
XYSNS4008	14	25
XYSNS4012	14	22
XYSNS4016	14	23

Parts No.	Fig. No.	Ref. No.
-----------	----------	----------

Parts No.	Fig. No.	Ref. No.
-----------	----------	----------