

0CD10-M42401EN

PREFACE

1. This Parts Catalog is the 2nd edition of L60/70ADEDMK Diesel Engine for MEIJI KIKAI.

Pub. No. : 000Y00D4241

Published : January, 1993

2. Model name

Engine model	Vehicle		Vehicle made by
	Products	Model name	
L60/70ADEDMK	COMPRESSOR	—	MEIJI KIKAI

Directions for the Parts Catalog.

1. This Parts Catalog shows both standard and optional parts.
2. Parts may change without prior notice.
3. The following is an example of the Parts Catalog format.

REF.	LEV.	PARTS NO.	DESCRIPTION	Q'TY						I	R
				(A)	(B)	(C)	(D)	(E)	(F)		
1	1	729595-51390	FUEL INJECTION PUMP	1	1	1	1	1			1
1-1	1	729595-51391	FUEL INJECTION PUMP	1	1	1	1	1		N	1
		(A=E00185) (B=E00200)									
3	2	26022-060162	SCREW M 6X 16	9	9	9	9	9			
3-1	2	26022-060162	SCREW M 6X 16	4	4	4	4	4		K	
		(A=E00156) (B=E00156) (C=E00156) (D=E00156) (E=E00156)									
4	2	129470-51040	CAMSHAFT	1	1	1	1	1			
5	2	122710-51050	BEARING, ROLLER	2	2	2	2	2			
6	2	129470-51060	RETAINER	1	1	1	1	1			

Remarks
(1) BOOST COMPEMSATOR TYPE. OPTIONAL PART, TO E00155,(4JH-DT, 4JH-DTZ

① Ref. No.

The Ref. No. listed may not be in accordance with the illustration Ref. No.

(Ex.) Illustration No.

List Ref No.

1

1

(Before change)

1-1

(After change)

For interchangeable symbols N, R and K, illustrations for new parts may be abbreviated.

② Lev. (Level)

Level indication

The numbers below indicate the level of relativity towards the main part.

1 ----- Main parts (Assembly parts)

2 ----- Sub component included in " 1 ".

3 ----- Sub component included in " 2 ".

Note) Parts that are not for sale are partially illustrated but not listed.

③ Interchangeability Symbol

When a part change takes place, one of the following interchangeability symbols is indicated beside the part.

Symbol	Interchangeability	Contents note
N	Old $\begin{matrix} \leftarrow \text{Yes} \\ \text{No} \rightarrow \end{matrix}$ New	New Part is interchangeable for Old Part but Old Part is not interchangeable for New Part.
Q	Old $\begin{matrix} \leftarrow \text{No} \\ \text{Yes} \rightarrow \end{matrix}$ New	New Part is not interchangeable for Old Part but Old Part is interchangeable for New Part.
R	Old $\begin{matrix} \leftarrow \text{Yes} \\ \text{Yes} \rightarrow \end{matrix}$ New	New/ Old Parts are both interchangeable.
S	Old $\begin{matrix} \leftarrow \text{No} \\ \text{No} \rightarrow \end{matrix}$ New	New/ Old Parts are both not interchangeable.
W		Part newly added.
Z		Part discontinued.
F		Not interchangeable by a single part but interchangeable together with related parts.
K		Changes only for used parts quantities.

④ Effective Machine No.

When a part changes, the effective Machine No. will be indicated in the (A)-(F) column.

Product Symbol	Product No.	Product Symbol	Product No.
C	Clutch No. Compressor No.	F	Machine No. (Agricultural Equip.)
D	Drive No.	M	Machine No.
E	Engine No.		

Note 1) A date may follow the symbol. (Ex.) 1996.01

Note 2) "XXXXX" and "ZZZZZ" are for parts that could not be predicted or for engine models that could not be identified.

Note 3) (A=E00185) is the E (Engine Serial Number) for the column (A) model (in this case 4JH-DT) after the parts design change.

⑤ Remarks

Figures or alphabets (symbols) are entered in the remarks column.

The comments (remarks) on parts that are indicated at the bottom of the illustration are the same symbols as those stated above.

Contents

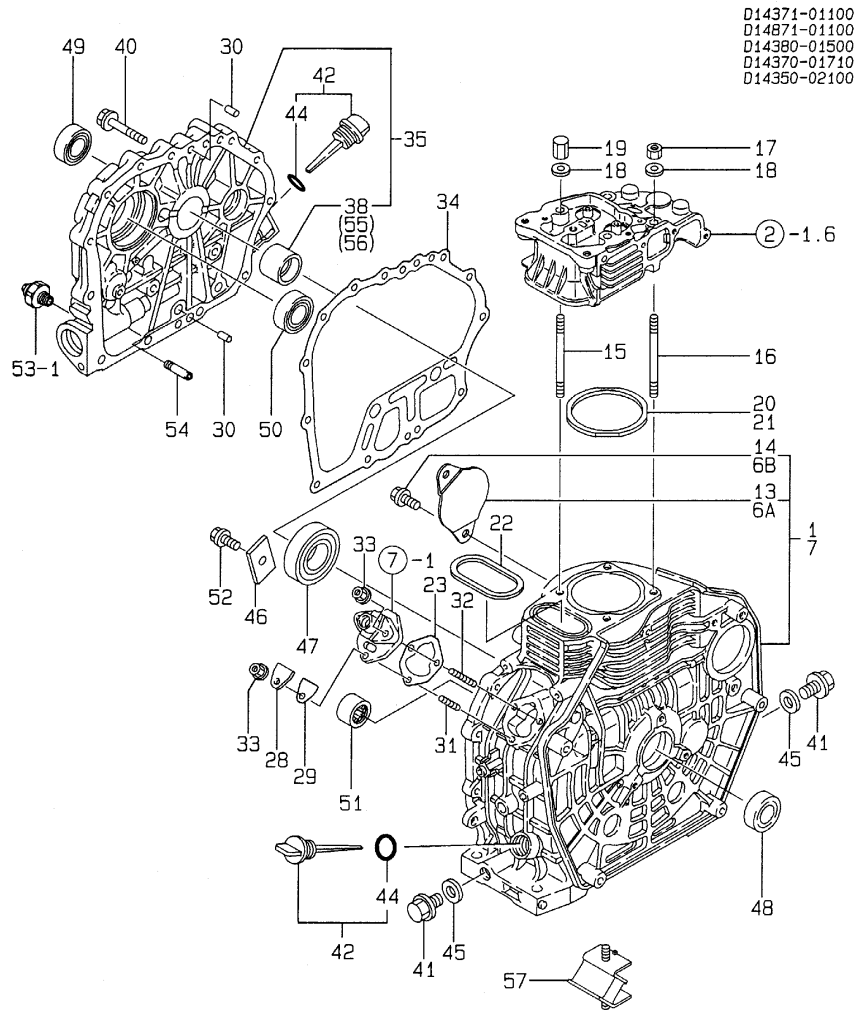
Fig. No. Fig. Name

Fig. No. Fig. Name

L60/70ADEDK

1. CYLINDER BLOCK
2. CYLINDER HEAD & BONNET
3. AIR CLEANER & MUFFLER
4. CRANKSHAFT,PISTON & CAMSHAFT
5. LUB. OIL PUMP & GOVERNOR
6. COOLING & STARTING DEVICE
7. FUEL INJECTION PUMP
8. FUEL TANK & FUEL PIPE
9. STARTING MOTOR & DYNAMO
10. TOOL & LABEL
11. GASKET SET (OPTIONAL)

Fig.1. CYLINDER BLOCK



(A)=L60AEDDMK
(B)=L70AEDDMK
(C)=

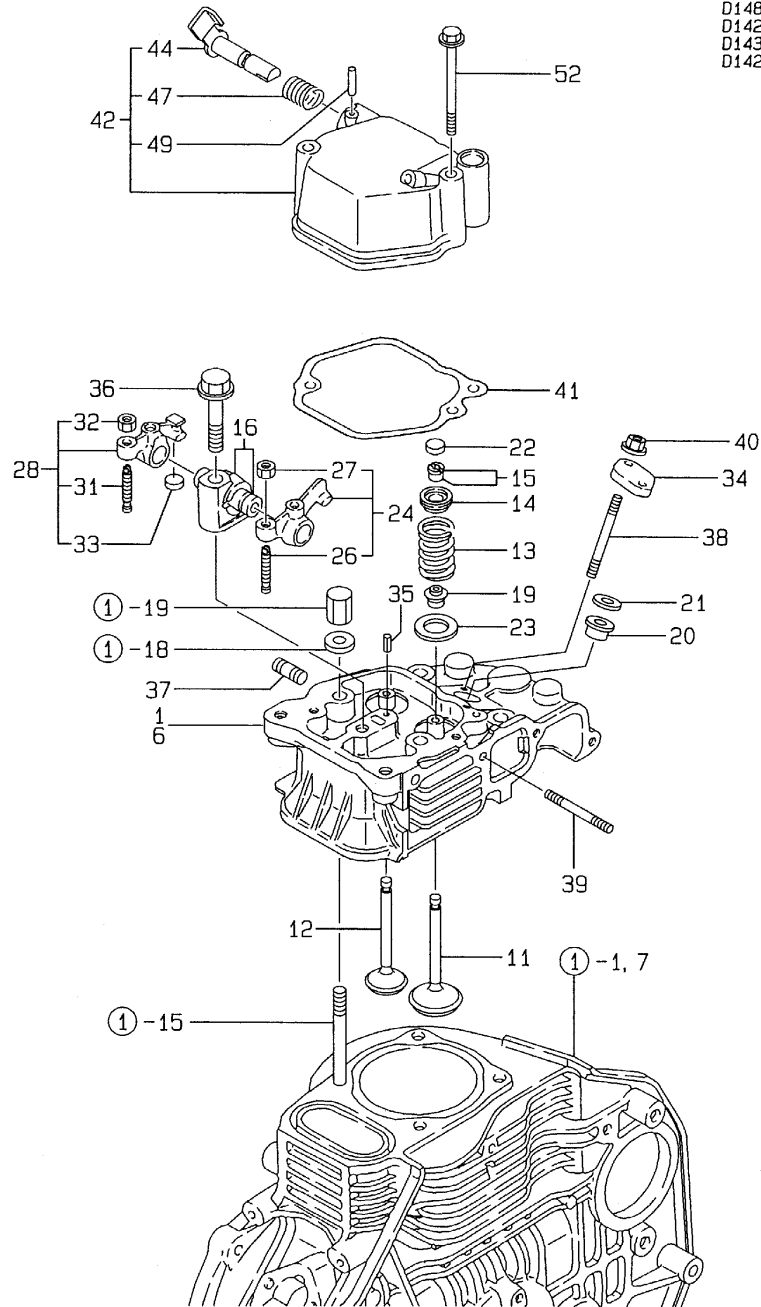
(D)=
(E)=
(F)=

No.	Lev.	Parts No.	Description	Q'ty						I	R
				(A)	(B)	(C)	(D)	(E)	(F)		
1	1	714371-01560	BLOCK ASSY, CYLINDER	1							
6A	2	114350-01700	COVER	1							W
(A=FROM 1ST)											
6B	2	26106-100122	BOLT, M10X 12 PLATED	2							W
(A=FROM 1ST)											
7	1	714871-01560	BLOCK ASSY, CYLINDER		1						
13	2	114350-01700	COVER		1						
14	2	26106-100122	BOLT, M10X 12 PLATED		2						
15	1	114350-01200	BOLT, HEAD	2	2						
16	1	114350-01210	BOLT, HEAD	2	2						
17	1	114350-01220	NUT, CYLINDER HEAD	2	2						
18	1	105225-01240	WASHER	4	4						
19	1	114350-01250	NUT, CYLINDER HEAD	2	2						
20	1	114350-01340	GASKET, HEAD	1							
21	1	114870-01340	GASKET, HEAD		1						
22	1	114350-01380	O-RING	1	1						
23	1	114250-01800	SHIM SET	1	1						
28	1	114250-01830	COVER	1	1						
29	1	114250-01840	GASKET	1	1						
30	1	22312-080120	PIN, PARALLEL M8X12	2	2						
31	1	26226-060182	STUD, M6X 18	1	1						
32	1	26226-060222	STUD, M6X 22	2	2						
33	1	26366-060002	NUT, M6	3	3						
34	1	114350-01412	GASKET, CRANK CASE	1	1						
35	1	114360-01453	COVER, CRANK CASE	1	1						
38	2	114350-02100	BEARING, MAIN	1	1						1
40	1	26106-080352	BOLT, M8X 35 PLATED	15	15						
41	1	105425-01690	PLUG, 16	2	2						
42	1	160910-01740	CAP ASSY	2	2						
44	2	24311-000180	O-RING, 1AP18.0	2	2						
45	1	43400-500490	SEAL WASHER 16S	2	2						
46	1	114250-02030	RETAINER, BEARING	1	1						
47	1	114350-02113	BEARING, B35-135G3C3	1	1						
48	1	160110-02220	SEAL, OIL	1	1						
49	1	160110-02220	SEAL, OIL	1	1						
50	1	24101-062060	BEARING, BALL 6206C3	1	1						
51	1	24162-152112	BEARING, 152112	1	1						
52	1	26106-080122	BOLT, M8X 12 PLATED	1	1						
53	1	23871-010000	PLUG, R01	1	1						M
53-1	1	121252-39450	SWITCH, 0.5KG	1	1						
54	1	114250-35150	PIPE, OIL INLET	1	1						
55	1	114350-02200	BEARING, 0.25 US	1	1						2
56	1	114350-02210	BEARING, 0.50 US	1	1						2
57	1	183279-08210	DAMPER	4	4						

Remarks

- (1) REPAIR PART.
- (2) UNDER-SIZE(U.S=0.25)PART.
- (M) MISPRINT.

Fig.2. CYLINDER HEAD & BONNET



D14870-11101
 D14250-11200
 D14370-12600
 D14270-13600

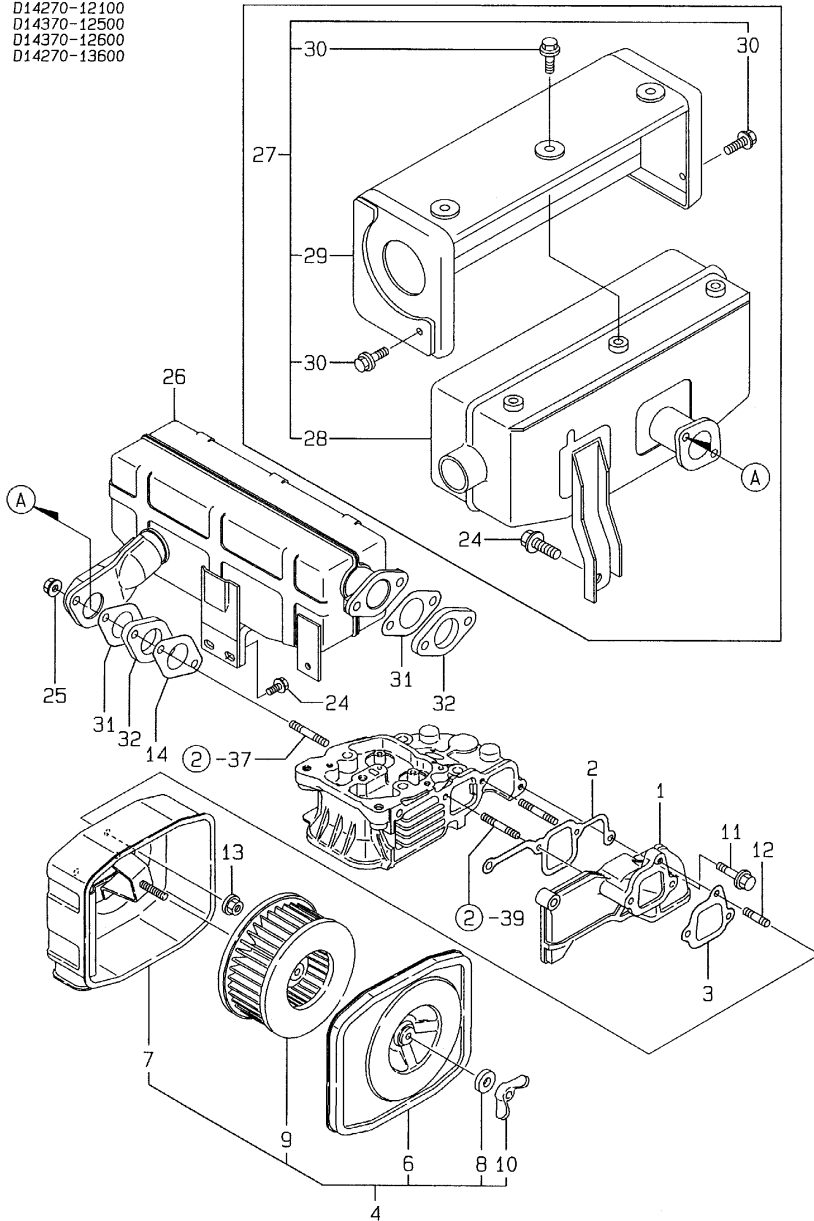
(A)=L60AEDDMK
 (B)=L70AEDDMK
 (C)=

(D)=
 (E)=
 (F)=

No.	Lev.	Parts No.	Description	Q'ty						I	R
				(A)	(B)	(C)	(D)	(E)	(F)		
1	1	114350-11021	HEAD ASSY, CYLINDER	1							
1-1	1	114870-11020	HEAD ASSY, CYLINDER	1							N
		(A=*)									
6	1	114870-11020	HEAD ASSY, CYLINDER		1						
11	1	114350-11101	VALVE, INTAKE	1	1						
12	1	114350-11113	VALVE, EXHAUST	1	1						
13	1	114350-11120	SPRING, VALVE	2	2						
14	1	101158-11180	RETAINER, SPRING	2	2						
15	1	105010-11190	COTTER	4	4						
15-1	1	27310-060001	COTTER, 6	2	2						N
		(A=EXXXXX) (B=EXXXXX)									
16	1	114250-11290	SUPPORT, ROCKER ARM	1	1						
19	1	114350-11340	SEAL, VALVE STEM	2	2						
20	1	114250-11460	GASKET, NOZZLE	1	1						
21	1	114350-11470	SPACER, NOZZLE	1	1						
22	1	105010-11490	CAP, VALVE	1	1						
23	1	114250-11600	WASHER	2	2						
24	1	114250-11651	ARM, ROCKER	1	1						
26	2	114250-11240	SCREW, VALVE ADJUST	1	1						
27	2	26756-060002	NUT, LOCK M6	1	1						
28	1	714370-11660	ARM ASSY, ROCKER	1	1						
31	2	114250-11240	SCREW, VALVE ADJUST	1	1						
32	2	26756-060002	NUT, LOCK M6	1	1						
33	2	105010-11490	CAP, VALVE	1	1						
34	1	114250-11900	RETAINER, NOZZLE	1	1						
35	1	22351-040008	PIN, SPRING 4.0X 8	1	1						
36	1	26106-080452	BOLT, M8X 45 PLATED	1	1						
37	1	26216-080182	STUD, M8X 18	2	2						
38	1	26226-060502	STUD, M6X 50	2	2						
39	1	26226-060552	STUD, M6X 55	2	2						
40	1	26366-060002	NUT, M6	2	2						
41	1	114250-11310	GASKET, BONNET	1	1						
42	1	114250-11951	BONNET ASSY, HEAD	1	1						
44	2	114250-03591	LEVER ASSY	1	1						
47	2	114250-03640	SPRING, DECOMPRESSION	1	1						
49	2	22312-030160	PIN, PARALLEL M3X16	1	1						
52	1	26106-060552	BOLT, M6X 55 PLATED	2	2						

Fig.3. AIR CLEANER & MUFFLER

D14270-12100
 D14370-12500
 D14370-12600
 D14270-13600



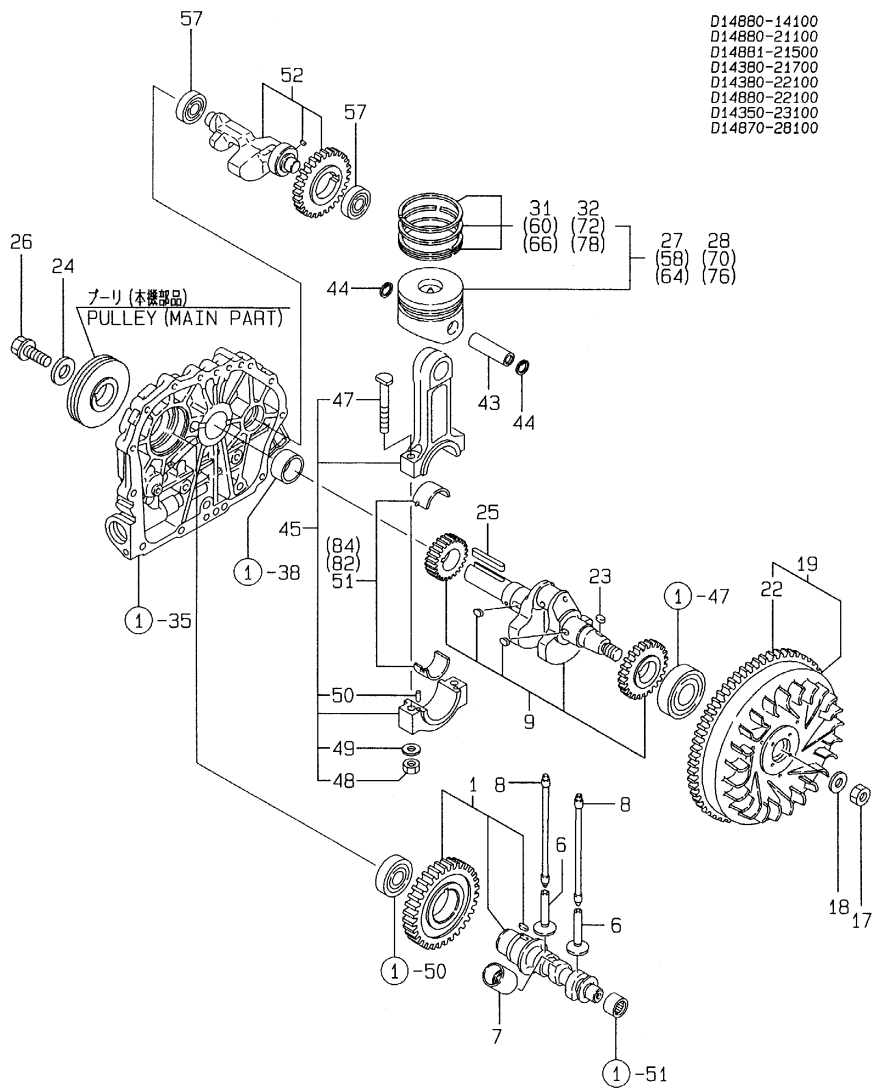
(A)=L60AEDDMK
 (B)=L70AEDDMK
 (C)=

(D)=
 (E)=
 (F)=

No.	Lev.	Parts No.	Description	Q'ty						I	R
				(A)	(B)	(C)	(D)	(E)	(F)		
1	1	114350-12011	PIPE, AIR INTAKE	1	1						
2	1	114350-12201	GASKET	1	1						
3	1	114250-12210	GASKET, AIR CLEANER	1	1						
4	1	714250-12560	CLEANER ASSY, AIR	1	1						
6	2	114250-12520	COVER, AIR CLEANER	1	1						
7	2	114250-12530	CASE ASSY, CLEANER	1	1						
8	2	114250-12560	WASHER, SEAL M6	1	1						
9	2	114250-12580	ELEMENT	1	1						
10	2	114250-12550	NUT, WING M6	1	1						
11	1	26106-060252	BOLT, M6X 25 PLATED	2	2						
12	1	26226-060142	STUD, M6X 14	1	1						
13	1	26366-060002	NUT, M6	3	3						
14	1	114250-13200	GASKET, MUFFLER	1	1						
15	1	114870-13550	MUFFLER ASSY	1	1						M
16	2	114870-13560	SILENCER	1	1						M
17	2	114870-13700	COVER	1	1						M
18	2	114870-13710	COVER	1	1						M
19	2	114870-13720	COVER	2	2						M
20	2	26106-060082	BOLT, M6X 8 PLATED	12	12						M
21	1	114252-13800	EXTENSION ASSY	1	1						M
23	3	114252-13960	SCREW 6X 25	1	1						M
24	1	26106-060122	BOLT, M6X 12 PLATED	2	2						
25	1	26366-080002	NUT, M8	2	2						
26	1	114352-13550	MUFFLER	1	1						1
27	1	114352-13621	MUFFLER ASSY	1	1						1
28	2	114352-13631	MUFFLER	1	1						1
29	2	114352-13722	COVER	1	1						1
30	2	26106-060082	BOLT, M6X 8 PLATED	7	7						1
31	1	114250-13200	GASKET, MUFFLER	2	2						
32	1	114252-13900	FLANGE	2	2						

Remarks
 (M) MISPRINT.
 (1) SELECTIVE PART.

Fig.4. CRANKSHAFT,PISTON & CAMSHAFT



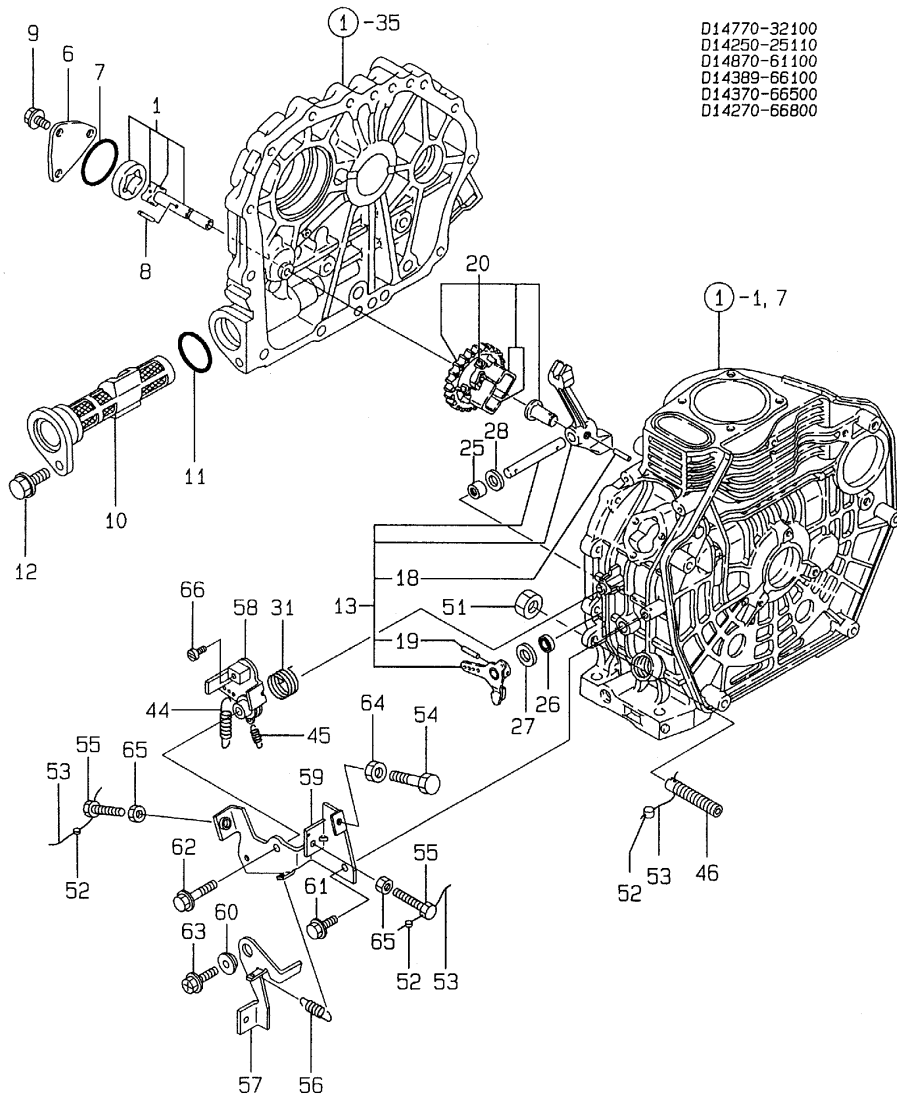
(A)=L60AEDDMK
(B)=L70AEDDMK
(C)=

(D)=
(E)=
(F)=

No.	Lev.	Parts No.	Description	Q'ty						I	R
				(A)	(B)	(C)	(D)	(E)	(F)		
1	1	714880-14580	CAMSHAFT ASSY	1	1						
6	1	114250-14200	TAPPET	2	2						
7	1	114250-14260	TAPPET	1	1						
8	1	114350-14450	ROD ASSY, PUSH	2	2						
9	1	714360-21720	CRANKSHAFT ASSY	1	1						
17	1	103854-01221	NUT, CYLINDER HEAD	1	1						
18	1	114250-21550	WASHER	1	1						
19	1	114881-21590	FLYWHEEL ASSY	1	1						
22	2	114362-21600	GEAR, RING	1	1						
23	1	22512-040120	KEY, 4X 12	1	1						
24	1	160310-14550	WASHER	1	1						
25	1	22512-070360	KEY, 7X 36	1	1						
26	1	26106-080202	BOLT, M8X 20 PLATED	1	1						
27	1	714380-22720	PISTON ASSY, D		1						
28	1	714880-22720	PISTON ASSY, D		1						
31	2	714350-22502	RING SET, PISTON	1							
32	2	714870-22500	RING SET, PISTON		1						
43	1	114350-22301	PIN, PISTON D=21	1	1						
44	1	22252-000210	RING, 21	2	2						
45	1	714350-23702	ROD ASSY, CONNECTING	1	1						M
		(A=FROM 1ST) (B=FROM 1ST)									
45-1	1	714350-23704	ROD ASSY, CONNECTING	1	1						
47	2	114250-23200	BOLT, CONNECTING ROD	2	2						
48	2	114250-23220	NUT	2	2						
49	2	114250-23250	WASHER	2	2						
50	2	22312-030080	PIN, PARALLEL M3X 8	2	2						
51	2	714350-23600	BEARING, CRANK PIN	1	1						W
		(A=FROM 1ST) (B=FROM 1ST)									
52	1	714870-28510	SHAFT ASSY, BALANCER	1	1						M
52-1	1	714350-28520	SHAFT ASSY, BALANCER	1	1						
57	1	24101-062024	BEARING, BALL 6202	2	2						
58	1	714380-22620	PISTON ASSY, 0.25 OS	1							1
60	2	714350-22542	RING SET, 0.25 OS	1							1
64	1	714380-22580	PISTON ASSY, 0.50 OS	1							2
66	2	714350-22550	RING SET, 0.50 OS	1							2
70	1	714880-22620	PISTON ASSY, 0.25 OS		1						1
72	2	714870-22540	RING SET, 0.25 OS		1						1
76	1	714880-22580	PISTON ASSY, 0.50 OS		1						2
78	2	714870-22550	RING SET, 0.50 OS		1						2
82	1	714350-23610	BEARING ASSY, 0.25	1	1						3
84	1	714350-23620	BEARING, 0.50 US	1	1						4

Remarks
 (1)OVER-SIZE(O.S=0.25)PART.
 (2)OVER-SIZE(O.S=0.50)PART.
 (3)UNDER-SIZE(U.S=0.25)PART.
 (4)UNDER-SIZE(U.S=0.50)PART.
 (M) MISPRINT.

Fig.5. LUB. OIL PUMP & GOVERNOR



(A)=L60AEDMK
(B)=L70AEDMK
(C)=

(D)=
(E)=
(F)=

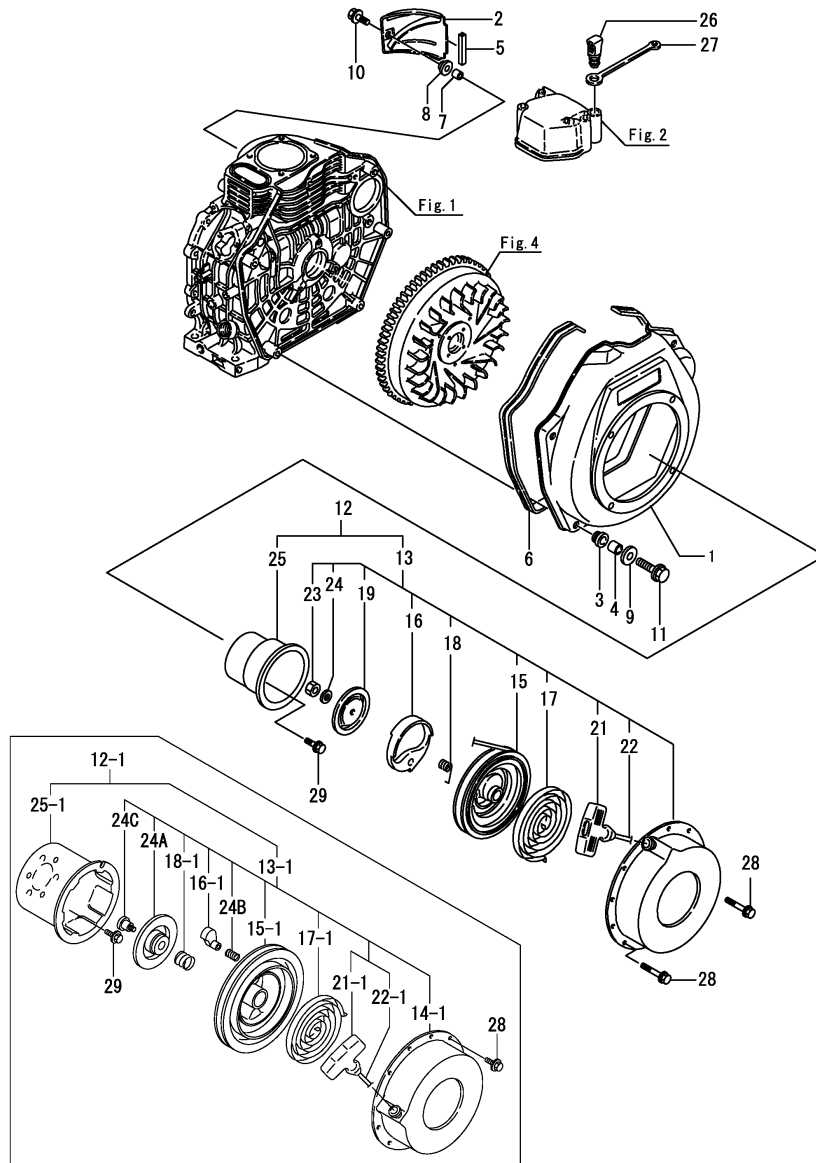
No.	Lev.	Parts No.	Description	Q'ty						I	R
				(A)	(B)	(C)	(D)	(E)	(F)		
1	1	114250-32010	PUMP ASSY, OIL	1	1						
6	1	114250-32070	COVER	1	1						
7	1	103338-32570	O-RING	1	1						
8	1	22312-030160	PIN, PARALLEL M3X16	1	1						
9	1	26476-060142	SCREW, TAPPING M6X14	3	3						
10	1	114250-35070	FILTER, OIL	1	1						
11	1	24341-000224	O-RING, 1AS22.4	1	1						
12	1	26106-060162	BOLT, M6X 16 PLATED	1	1						
13	1	714350-61500	LEVER ASSY, GOVERNOR	1	1						
18	2	22322-030200	PIN, TAPER 3X20	1	1						
19	2	22322-030200	PIN, TAPER 3X20	1	1						
20	1	714770-61700	GOVERNOR ASSY	1	1						
25	1	121450-61520	BEARING, NEEDLE 8	2	2						
26	1	114770-61600	SEAL, OIL	1	1						
27	1	114770-61610	WASHER, THRUST	1	1						
28	1	22137-080000	WASHER, 8	1	1						
29	1	114250-66050	HANDLE, REGULATOR	1	1						M
31	1	114252-66252	SPRING, RETURN	1	1						
32	1	714628-66500	BRACKET ASSY	1	1						M
36	3	114250-66440	BOLT, ADJUSTING	1	1						M
37	3	102100-67080	BOLT, ADJUSTING	1	1						M
38	2	26757-060002	NUT, LOCK M6	2	2						M
39	1	160725-78350	KNOB	1	1						M
40	1	26106-060202	BOLT, M6X 20 PLATED	1	1						M
41	1	26117-040088	BOLT M 4X 8 PLATED	1	1						M
42	1	26347-060002	NUT, M6	1	1						M
43	1	26476-060142	SCREW, TAPPING M6X14	1	1						M
44	1	114870-66010	SPRING, REGULATOR	1	1						
45	1	114250-66200	SPRING, RETURN	1	1						
46	1	114250-66550	LIMITER ASSY, FUEL	1	1						
51	1	26696-100002	NUT, LOCK M10	1	1						
52	1	135210-61090	LEAD	2	2						
53	1	22451-060000	WIRE, 0.6	2	2						
54	1	102100-67080	BOLT, ADJUSTING	1	1						
55	1	114250-66440	BOLT, ADJUSTING	2	2						
56	1	114268-66200	SPRING, RETURN	1	1						
57	1	114650-66150	LEVER, STOP	1	1						
58	1	114652-66871	LEVER, REGULATOR	1	1						
59	1	114652-66881	BRACKET	1	1						
60	1	114654-66140	PIECE	1	1						
61	1	26106-060122	BOLT, M6X 12 PLATED	1	1						
62	1	26106-060302	BOLT, M6X 30 PLATED	1	1						
63	1	26476-060202	SCREW, TAPPING M6X20	1	1						
64	1	26757-060002	NUT, LOCK M6	1	1						
65	1	26757-060002	NUT, LOCK M6	2	2						
66	1	105225-66990	SCREW, M5X8.5	1	1						

Remarks
(M) MISPRINT.

Fig.6. COOLING & STARTING DEVICE

(A)=L60AEDDMK
(B)=L70AEDDMK
(C)=

(D)=
(E)=
(F)=



No.	Lev.	Parts No.	Description	Q'ty						I	R
				(A)	(B)	(C)	(D)	(E)	(F)		
1	1	114360-45101	CASE, COOLING FAN	1	1						
2	1	114870-45200	COVER	1	1						
3	1	114250-45300	ABSORBER	5	5						
4	1	114250-45310	COLLAR	5	5						
5	1	114350-45320	RUBBER, SEAL	1	1						
6	1	114250-45330	SEAL, FAN CASE L=875	1	1						
7	1	114350-45340	COLLAR	1	1						
8	1	183720-55210	GROMMET	1	1						
9	1	160120-76940	WASHER	5	5						
10	1	26476-060202	SCREW, TAPPING M6X20	1	1						
11	1	26476-060252	SCREW, TAPPING M6X25	5	5						
12	1	114880-76050	STARTER ASSY, RECOIL	1	1						
12-1	1	114880-76051	STARTER ASSY, RECOIL	1	1						R 1
		(A=EZZZZZ) (B=EZZZZZ)									
13	2	114880-76250	STARTER ASSY, RECOIL	1	1						
13-1	2	114880-76251	STARTER ASSY, RECOIL	1	1						S
		(A=EZZZZZ) (B=EZZZZZ)									
14-1	3	114880-76511	CASE, STARTER	1	1						S
		(A=EZZZZZ) (B=EZZZZZ)									
15	3	160810-76520	REEL	1	1						
15-1	3	114880-76520	REEL	1	1						S
		(A=EZZZZZ) (B=EZZZZZ)									
16	3	160840-76530	RATCHET	1	1						
16-1	3	114870-76530	RATCHET	2	2						S
		(A=EZZZZZ) (B=EZZZZZ)									
17	3	160810-76540	SPRING, SPIRAL	1	1						
17-1	3	114870-76540	SPRING, SPIRAL	1	1						S
		(A=EZZZZZ) (B=EZZZZZ)									
18	3	160840-76560	SPRING, FRICTION	1	1						
18-1	3	114870-76560	SPRING, FRICTION	1	1						S
		(A=EZZZZZ) (B=EZZZZZ)									
19	3	160810-76580	PLATE, FRICTION	1	1						Z
		(A=EZZZZZ) (B=EZZZZZ)									
21	3	160810-76620	KNOB, STARTER	1	1						
21-1	4	114870-76620	KNOB, STARTER	1	1						S
		(A=EZZZZZ) (B=EZZZZZ)									
22	3	160810-76630	ROPE, STARTER	1	1						
22-1	4	114870-76630	ROPE, STARTER	1	1						S
		(A=EZZZZZ) (B=EZZZZZ)									
23	3	181130-76680	NUT	1	1						Z
		(A=EZZZZZ) (B=EZZZZZ)									
24	3	181130-76700	WASHER	1	1						Z
		(A=EZZZZZ) (B=EZZZZZ)									
24A	3	114880-76550	GUIDE, RATCHET	1	1						W
		(A=EZZZZZ) (B=EZZZZZ)									
24B	3	114870-76570	SPRING, RETURN	2	2						W
		(A=EZZZZZ) (B=EZZZZZ)									
24C	3	114870-76580	SCREW	1	1						W
		(A=EZZZZZ) (B=EZZZZZ)									
25	2	114350-76590	PULLEY, STARTER	1	1						
25-1	2	114350-76591	PULLEY, STARTER	1	1						S

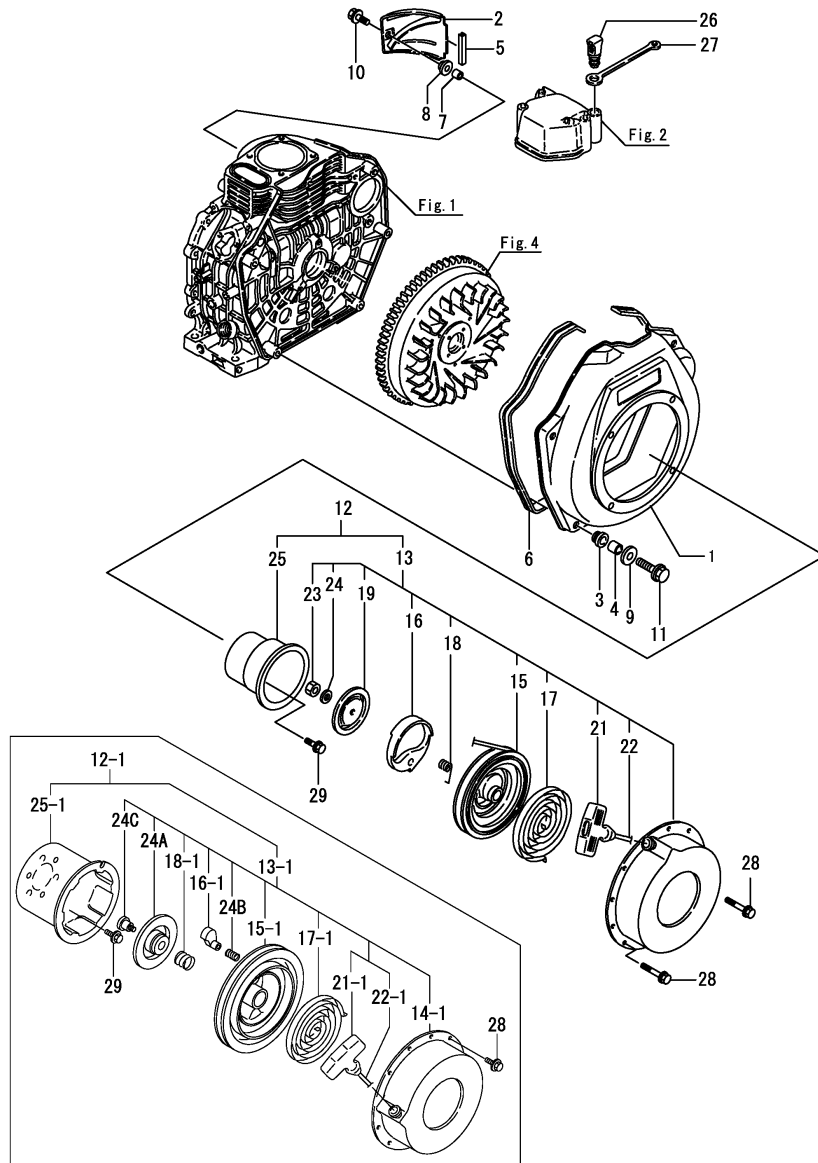
Remarks

(1) Interchangeable by simultaneous replacement with Ref.13-1 and Ref.25-1

Fig.6. COOLING & STARTING DEVICE

(A)=L60AEDMK
(B)=L70AEDMK
(C)=

(D)=
(E)=
(F)=

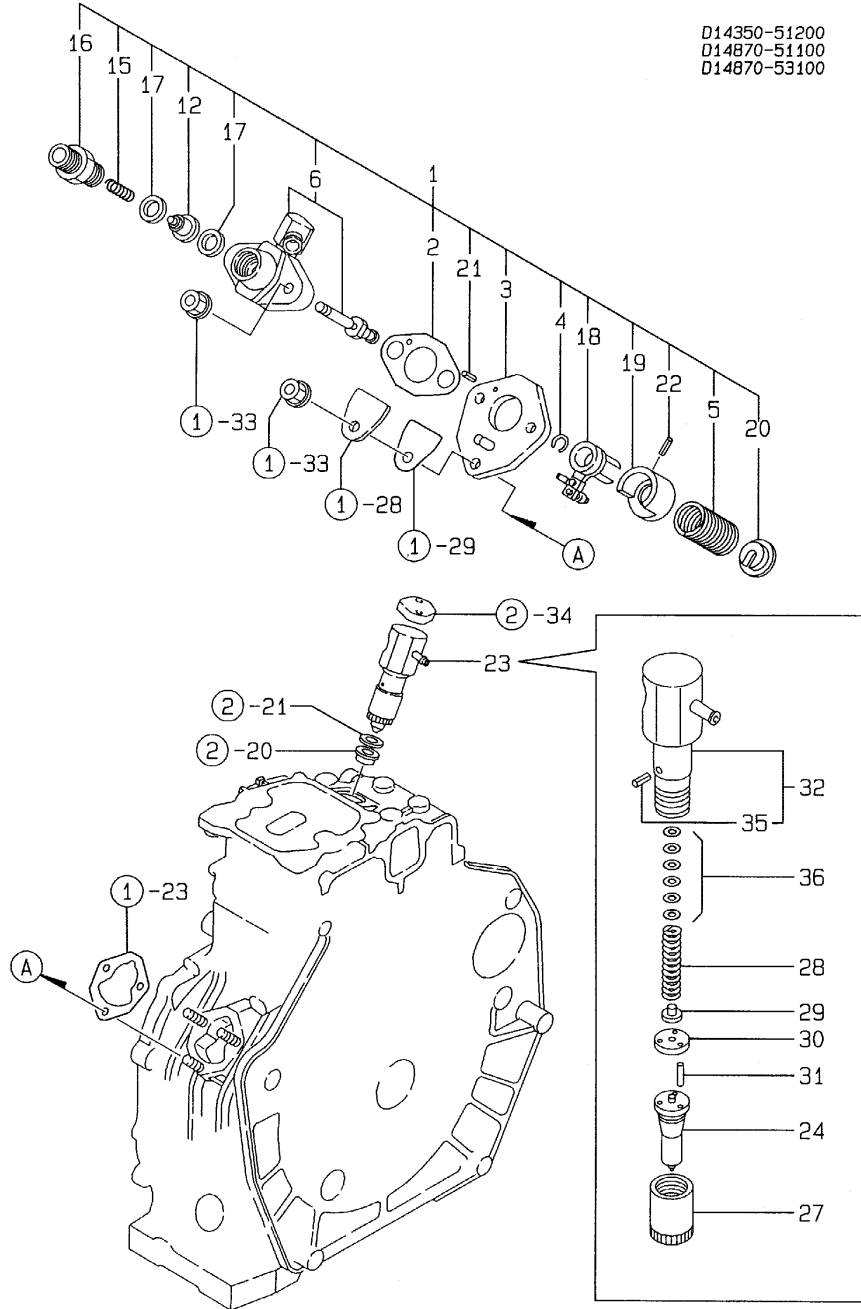


No.	Lev.	Parts No.	Description	Q'ty						I	R	
				(A)	(B)	(C)	(D)	(E)	(F)			
		(A=EZZZZZ)	(B=EZZZZZ)									
26	1	114250-76600	PLUNGER	1	1							
27	1	114250-76610	HOLDER, PLUNGER	1	1							
28	1	26106-060082	BOLT, M6X 8 PLATED	4	4							
29	1	26106-060122	BOLT, M6X 12 PLATED	3	3							

Remarks

(1) Interchangeable by simultaneous replacement with Ref.13-1 and Ref.25-1

Fig.7. FUEL INJECTION PUMP

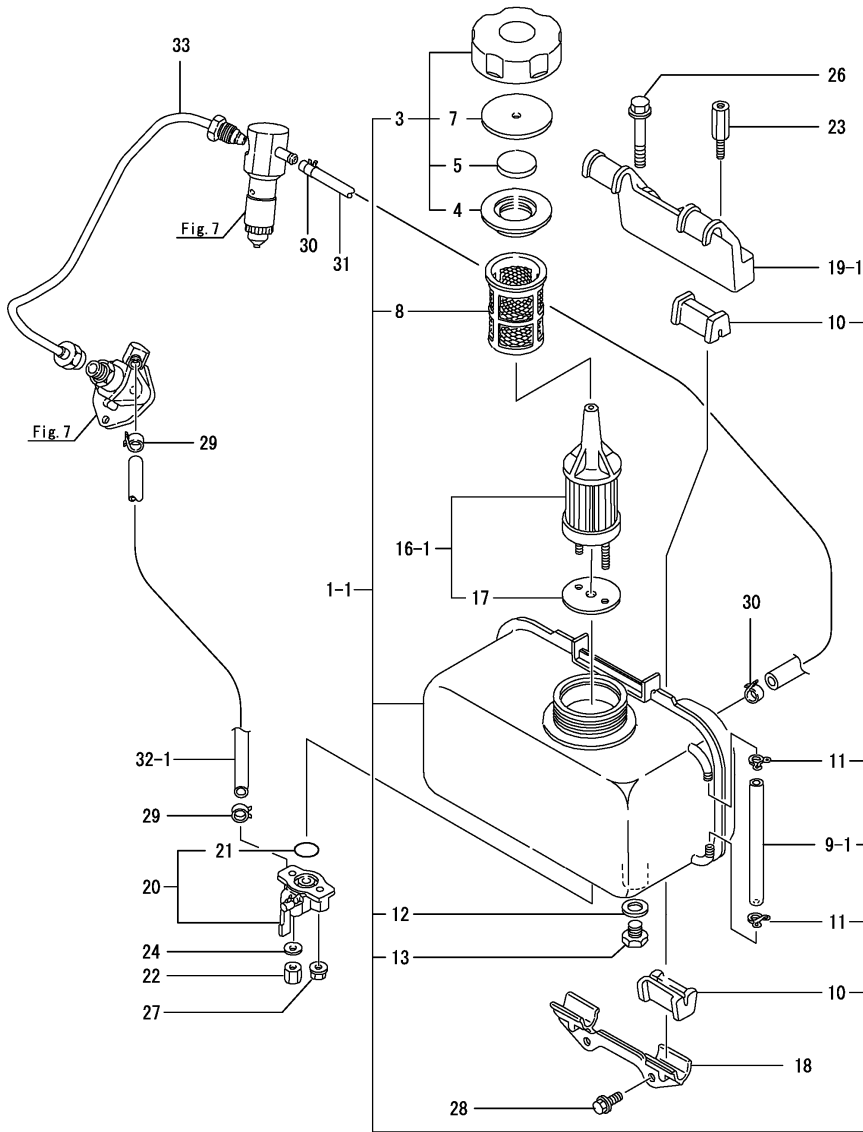


(A)=L60AEDDMK
(B)=L70AEDDMK
(C)=

(D)=
(E)=
(F)=

No.	Lev.	Parts No.	Description	Q'ty						I	R
				(A)	(B)	(C)	(D)	(E)	(F)		
1A	1	714350-51710	PUMP ASSY, INJECTION	1							
1B	1	714870-51700	PUMP ASSY, INJECTION		1						
2	2	105546-51020	GASKET	1	1						
3	2	114250-51080	PLATE	1	1						
4	2	114250-51150	RING, SNAP	1	1						
5	2	114250-51160	SPRING, PLUNGER	1	1						
6	2	114350-51200	BODY ASSY, PUMP	1	1						
12	2	114250-51300	VALVE ASSY, DELIVERY	1	1						
15	2	105546-51330	SPRING, DELIVERY	1	1						
16	2	114250-51340	HOLDER, DELIVERY	1	1						
17	2	124550-51350	GASKET, DELIVERY	2	2						
18	2	114250-51600	LEVER ASSY, CONTROL	1	1						
19	2	114250-51640	SEAT, SPRING A	1	1						
20	2	114250-51650	SEAT, SPRING B	1	1						
21	2	22351-020006	PIN, SPRING 2.0X 6	2	2						
22	2	22351-030008	PIN, SPRING 3.0X 8	1	1						
23	1	714350-53100	VALVE ASSY, INJECTION	1	1						
24	2	114870-53000	VALVE ASSY, INJECTION	1	1						
27	2	114250-53080	NUT, NOZZLE D16.95	1	1						
28	2	114250-53120	SPRING, NOZZLE	1	1						
29	2	114250-53130	SEAT, SPRING	1	1						
30	2	114250-53140	PLATE	1	1						
31	2	114250-53210	PIN	2	2						
32	2	114250-53300	HOLDER ASSY, NOZZLE	1	1						
35	3	114250-53331	PIN	1	1						
36	2	114250-53400	SHIM SET	1	1						

Fig.8. FUEL TANK & FUEL PIPE



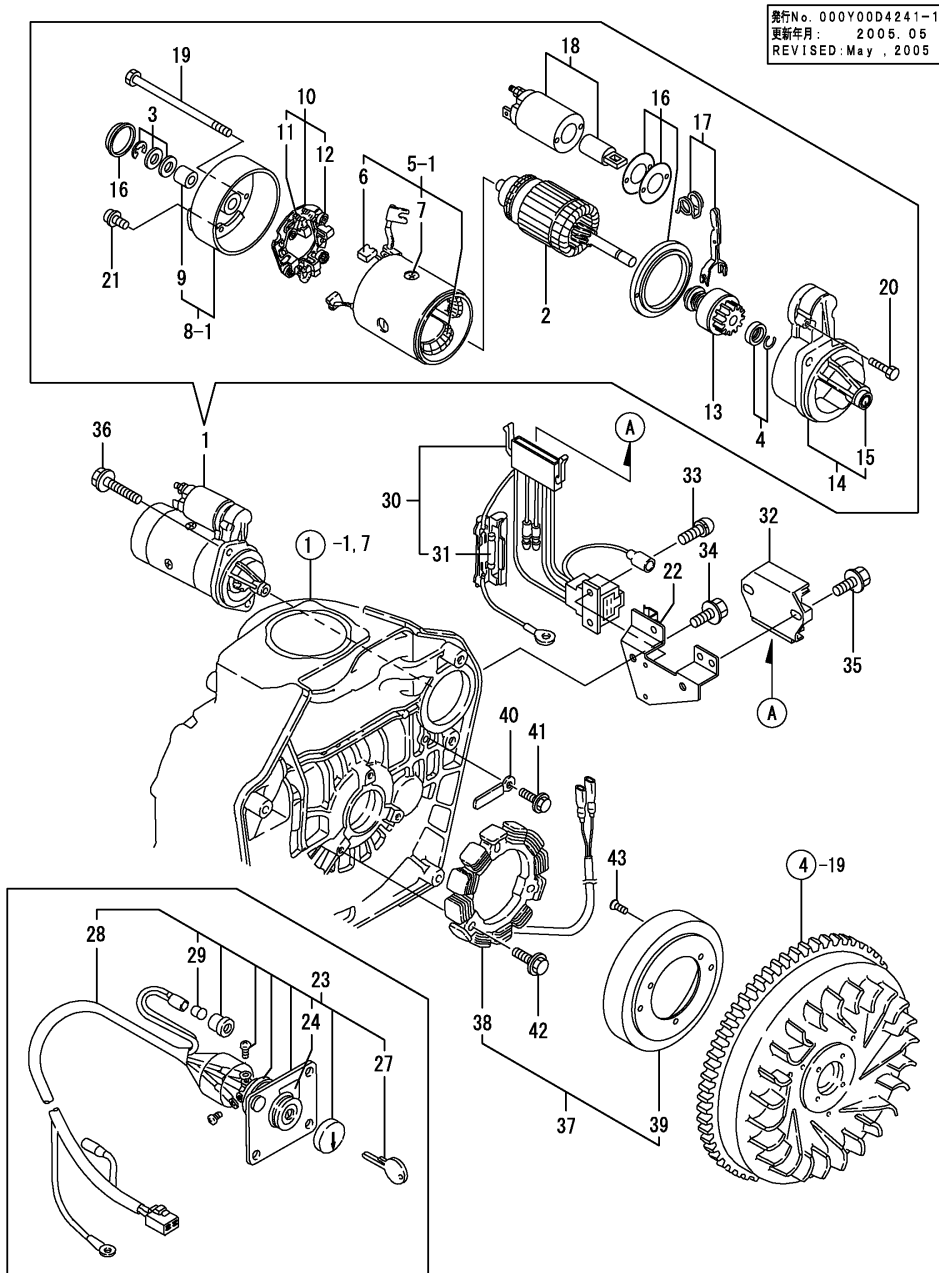
(A)=L60AEDMK
(B)=L70AEDMK
(C)=

(D)=
(E)=
(F)=

No.	Lev.	Parts No.	Description	Q'ty						I	R
				(A)	(B)	(C)	(D)	(E)	(F)		
1	1	714350-55711	TANK ASSY, FUEL	1	1						M
1-1	1	714650-55701	TANK ASSY, FUEL	1	1						
3	2	114250-55041	CAP ASSY	1	1						
4	3	114250-55050	GASKET	1	1						
5	3	114250-55060	SEAL	1	1						
7	3	114250-55080	SEAT	1	1						
8	2	114250-55100	FILTER, FUEL	1	1						
9	2	114350-55150	GAUGE, LEVEL	1	1						M
9-1	2	114650-55150	GAUGE, LEVEL	1	1						
10	2	114250-55201	DAMPER, FUEL TANK	4	4						
11	2	124722-59050	CLIP, HOSE 9	2	2						
12	2	23414-120000	GASKET, 12X1.0	1	1						
13	2	23887-120002	PLUG, 12	1	1						
16	1	114350-55120	FILTER ASSY, FUEL	1	1						M
16-1	1	114650-55120	FILTER ASSY, FUEL	1	1						
17	2	114250-55130	GASKET	1	1						
18	1	114250-55211	STAY, FUEL TANK	1	1						
19	1	114350-55231	STAY, FUEL TANK	1	1						M
19-1	1	114350-55240	STAY, FUEL TANK	1	1						
20	1	114250-55300	COCK ASSY, FUEL	1	1						
21	2	24341-000150	O-RING, 1AS15.0	1	1						
22	1	114252-55800	NUT	1	1						
23	1	114650-55810	BOLT	1	1						
24	1	22117-060000	WASHER, 6	1	1						
25	1	22117-080000	WASHER, 8	1	1						M
26	1	26106-080452	BOLT, M8X 45 PLATED	1	1						
27	1	26366-060002	NUT, M6	1	1						
28	1	26476-060142	SCREW, TAPPING M6X14	2	2						
29	1	106990-44660	CLIP, HOSE 12.5	2	2						
30	1	124722-59050	CLIP, HOSE 9	2	2						
31	1	114250-59060	PIPE, FUEL RETURN	1	1						
32	1	114360-59060	PIPE, FUEL L=55	1	1						M
32-1	1	114252-59050	PIPE, FUEL	1	1						
33	1	114350-59800	PIPE ASSY, INJECTION	1	1						

Remarks
(M)MISPRINT

Fig.9. STARTING MOTOR & DYNAMO

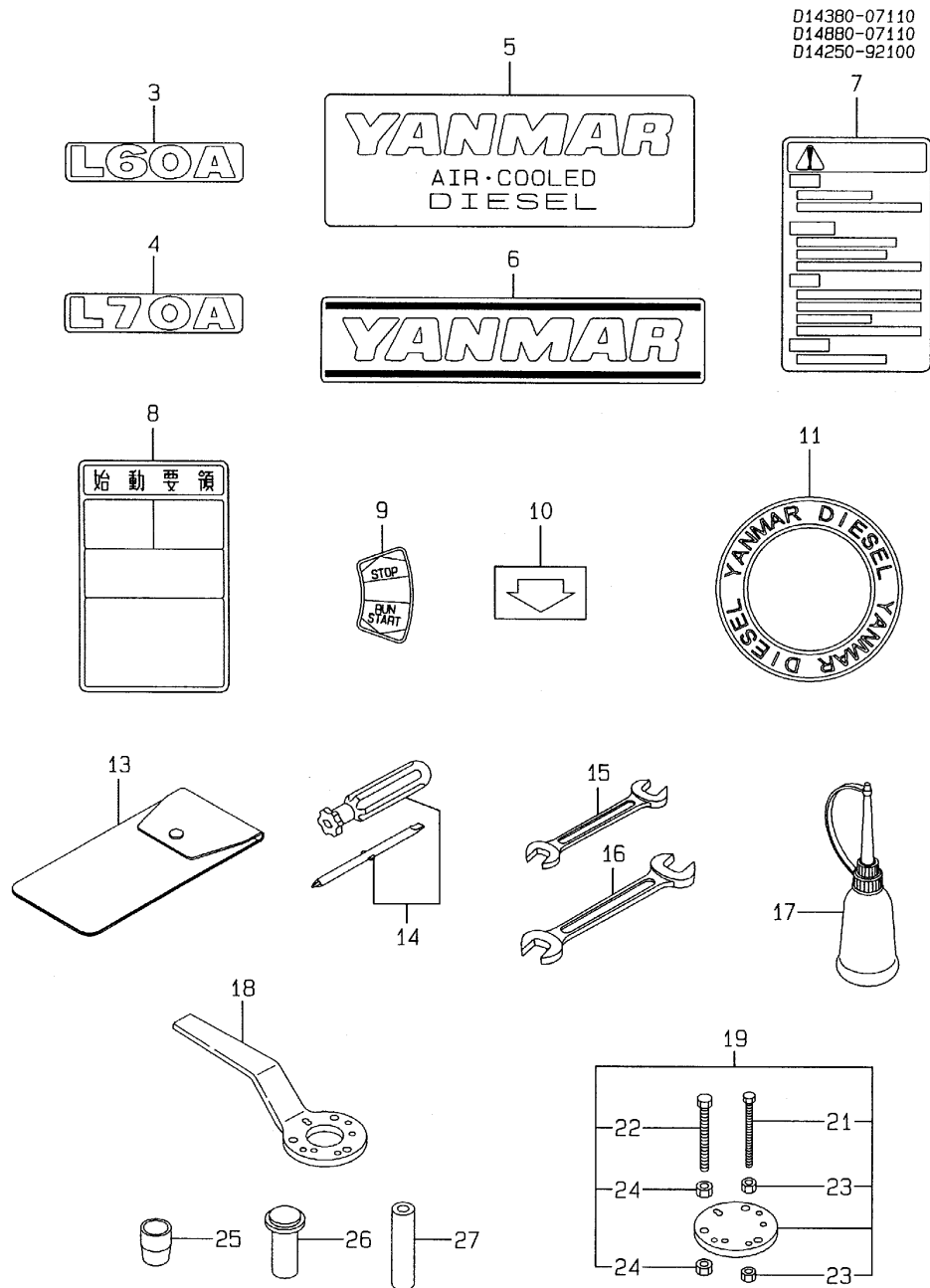


(A)=L60AEDDMK
(B)=L70AEDDMK
(C)=

(D)=
(E)=
(F)=

No.	Lev.	Parts No.	Description	Q'ty						I	R
				(A)	(B)	(C)	(D)	(E)	(F)		
1	1	114362-77010	STARTER, S114-414A	1	1						
2	2	X211461104	ARMATURE	1	1						
3	2	X21148110	WASHER SET, THRUST	1	1						
4	2	X21147155	STOPPER SET, PINION	1	1						
5-1	2	X211492108	COIL ASSY, FIELD	1	1						
6	3	X21145312	BRUSH, +	2	2						
7	3	X21143215	SCREW, CORE	4	4						
8-1	2	X211473008	COVER, REAR	1	1						
9	3	X21145352	METAL	1	1						
10	2	X211489001	HOLDER ASSY, BRUSH	1	1						
11	3	X21148313	BRUSH (-)	1	1						
12	3	X21149314	SPRING, BRUSH	3	3						
13	2	X211445508	PINION ASSY	1	1						
14	2	X211416603	HOUSING ASSY, GEAR	1	1						
15	3	X21145352	METAL	1	1						
16	2	X211478006	COVER KIT	1	1						
17	2	X211456013	LEVER KIT, SHIFT	1	1						
18	2	X211427501	SWITCH, MAGNETIC	1	1						
19	2	X211468005	BOLT, THROUGH	2	2						
20	2	X21145867	BOLT, M6	2	2						
21	2	X21142835	SCREW SET	1	1						
22	1	114385-77400	BRACKET	1	1						
23	1	114351-77500	PANEL ASSY	1	1						
24	2	105198-07120	LABEL, STARTER	1	1						
27	2	106100-77630	KEY, SWITCH	2	2						
28	2	114351-77700	HARNESS, WIRE	1	1						
29	3	29220-083200	BULB (12V/3.4W)	1	1						
30	1	114351-77540	HARNESS, WIRE	1	1						
31	2	29411-150000	FUSE, CARTRIDGE 15A	2	2						
32	1	119660-77710	LIMITER, CURRENT 15A	1	1						
33	1	26023-040102	SCREW, M4X10	2	2						
34	1	26106-060122	BOLT, M6X 12 PLATED	2	2						
35	1	26106-060202	BOLT, M6X 20 PLATED	2	2						
36	1	26106-100302	BOLT, M10X 30 PLATED	2	2						
37	1	114351-78260	DYNAMO ASSY	1	1						
38	2	114351-78770	STATOR ASSY, 132.1MM	1	1						
39	2	114351-78780	WHEEL, DYNAMO	1	1						
40	1	160710-78710	CLAMP, CORD	1	1						
41	1	26476-060142	SCREW, TAPPING M6X14	1	1						
42	1	26476-060202	SCREW, TAPPING M6X20	3	3						
43	1	26577-060142	SCREW M 6X 14	3	3						

Fig.10. TOOL & LABEL

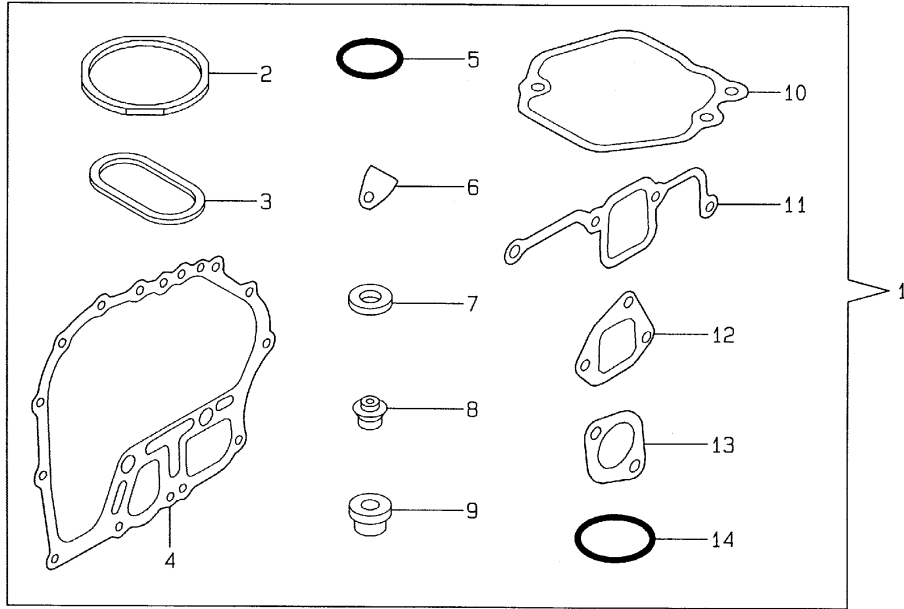


(A)=L60AEDMK
(B)=L70AEDMK
(C)=

(D)=
(E)=
(F)=

No.	Lev.	Parts No.	Description	Q'ty						I	R
				(A)	(B)	(C)	(D)	(E)	(F)		
3	1	114370-07050	LABEL(L60A)	1							
4	1	114870-07050	LABEL(L70A)		1						
5	1	114250-07090	LABEL, AIR COOLED	1	1						
6	1	114250-07110	LABEL, YANMAR	1	1						
7	1	114250-07240	LABEL, CAUTION	1	1						
8	1	114250-07250	LABEL, HOW TO START	1	1						
9	1	114250-07260	LABEL, OPERATION	1	1						
10	1	114250-07270	LABEL, DECOMP.	1	1						
11	1	114250-07350	LABEL, YANMAR DIESEL	1	1						
13	1	114250-92600	BAG, TOOL	1	1						
14	1	160330-92730	DRIVE, SCREW	1	1						
15	1	28110-100120	SPANNER, 10X12	1	1						
16	1	28110-140170	SPANNER, 14X17	1	1						
17	1	28210-000150	OILER	1	1						
18	1	114250-92101	HANDLE	1	1						
19	1	114250-92130	TOOL, WHEEL REMOVER	1	1						
21	2	26116-060454	BOLT M 6X 45 PLATED	4	4						
22	2	26116-080454	BOLT, M8X 45 PLATED	3	3						
23	2	26716-060002	NUT, M6	8	8						
24	2	26716-080002	NUT, M8	6	6						
25	1	114350-92301	GUIDE, OIL SEAL	1	1						
26	1	114350-92311	INSTALLING TOOL	1	1						
27	1	114350-92350	INSTALLING TOOL	1	1						

Fig.11. GASKET SET (OPTIONAL)



(A)=L60AEDDMK
(B)=L70AEDDMK
(C)=

(D)=
(E)=
(F)=

No.	Lev.	Parts No.	Description	Q'ty						I	R
				(A)	(B)	(C)	(D)	(E)	(F)		
1A	1	714883-92600	GASKET SET	1							1
1B	1	714881-92600	GASKET SET		1						1
2A	2	114350-01340	GASKET, HEAD	1							
2B	2	114870-01340	GASKET, HEAD		1						
3	2	114350-01380	O-RING	1	1						
4	2	114350-01412	GASKET, CRANK CASE	1	1						
5	2	24311-000180	O-RING, 1AP18.0	2	2						
6	2	114250-01840	GASKET	1	1						
7	2	43400-500490	SEAL WASHER 16S	2	2						
8	2	114350-11340	SEAL, VALVE STEM	2	2						
9	2	114250-11460	GASKET, NOZZLE	1	1						
10	2	114250-11310	GASKET, BONNET	1	1						
11	2	114350-12201	GASKET	1	1						
12	2	114250-12210	GASKET, AIR CLEANER	1	1						
13	2	114250-13200	GASKET, MUFFLER	1	1						
14	2	103338-32570	O-RING	1	1						

Remarks
(1)OPTIONAL PART.

Parts No. Index

Parts No.	Fig. No.	Ref. No.
101158-11180	2	14
102100-67080	5	37
		54
103338-32570	5	7
	11	14
103854-01221	4	17
105010-11190	2	15
105010-11490	2	22
		33
105198-07120	9	24
105225-01240	1	18
105225-66990	5	66
105425-01690	1	41
105546-51020	7	2
105546-51330	7	15
106100-77630	9	27
106990-44660	8	29
114250-01800	1	23
114250-01830	1	28
114250-01840	1	29
	11	6
114250-02030	1	46
114250-03591	2	44
114250-03640	2	47
114250-07090	10	5
114250-07110	10	6
114250-07240	10	7
114250-07250	10	8
114250-07260	10	9
114250-07270	10	10
114250-07350	10	11
114250-11240	2	26
		31
114250-11290	2	16
114250-11310	2	41
	11	10
114250-11460	2	20
	11	9
114250-11600	2	23
114250-11651	2	24
114250-11900	2	34
114250-11951	2	42
114250-12210	3	3
	11	12
114250-12520	3	6
114250-12530	3	7
114250-12550	3	10
114250-12560	3	8
114250-12580	3	9
114250-13200	3	14

Parts No.	Fig. No.	Ref. No.
114250-13200	3	31
	11	13
114250-14200	4	6
114250-14260	4	7
114250-21550	4	18
114250-23200	4	47
114250-23220	4	48
114250-23250	4	49
114250-32010	5	1
114250-32070	5	6
114250-35070	5	10
114250-35150	1	54
114250-45300	6	3
114250-45310	6	4
114250-45330	6	6
114250-51080	7	3
114250-51150	7	4
114250-51160	7	5
114250-51300	7	12
114250-51340	7	16
114250-51600	7	18
114250-51640	7	19
114250-51650	7	20
114250-53080	7	27
114250-53120	7	28
114250-53130	7	29
114250-53140	7	30
114250-53210	7	31
114250-53300	7	32
114250-53331	7	35
114250-53400	7	36
114250-55041	8	3
114250-55050	8	4
114250-55060	8	5
114250-55080	8	7
114250-55100	8	8
114250-55130	8	17
114250-55201	8	10
114250-55211	8	18
114250-55300	8	20
114250-59060	8	31
114250-66050	5	29
114250-66200	5	45
114250-66440	5	36
		55
114250-66550	5	46
114250-76600	6	26
114250-76610	6	27
114250-92101	10	18
114250-92130	10	19

Parts No.	Fig. No.	Ref. No.
114250-92600	10	13
114252-13800	3	21
114252-13900	3	32
114252-13960	3	23
114252-55800	8	22
114252-59050	8	32 -1
114252-66252	5	31
114268-66200	5	56
114350-01200	1	15
114350-01210	1	16
114350-01220	1	17
114350-01250	1	19
114350-01340	1	20
	11	2 A
114350-01380	1	22
	11	3
114350-01412	1	34
	11	4
114350-01700	1	6 A
		13
114350-02100	1	38
114350-02113	1	47
114350-02200	1	55
114350-02210	1	56
114350-11021	2	1
114350-11101	2	11
114350-11113	2	12
114350-11120	2	13
114350-11340	2	19
	11	8
114350-11470	2	21
114350-12011	3	1
114350-12201	3	2
	11	11
114350-14450	4	8
114350-22301	4	43
114350-45320	6	5
114350-45340	6	7
114350-51200	7	6
114350-55120	8	16
114350-55150	8	9
114350-55231	8	19
114350-55240	8	19 -1
114350-59800	8	33
114350-76590	6	25
114350-76591	6	25 -1
114350-92301	10	25
114350-92311	10	26
114350-92350	10	27
114351-77500	9	23

Parts No.	Fig. No.	Ref. No.
114351-77540	9	30
114351-77700	9	28
114351-78260	9	37
114351-78770	9	38
114351-78780	9	39
114352-13550	3	26
114352-13621	3	27
114352-13631	3	28
114352-13722	3	29
114360-01453	1	35
114360-45101	6	1
114360-59060	8	32
114362-21600	4	22
114362-77010	9	1
114370-07050	10	3
114385-77400	9	22
114650-55120	8	16 -1
114650-55150	8	9 -1
114650-55810	8	23
114650-66150	5	57
114652-66871	5	58
114652-66881	5	59
114654-66140	5	60
114770-61600	5	26
114770-61610	5	27
114870-01340	1	21
	11	2 B
114870-07050	10	4
114870-11020	2	1 -1
		6
114870-13550	3	15
114870-13560	3	16
114870-13700	3	17
114870-13710	3	18
114870-13720	3	19
114870-45200	6	2
114870-53000	7	24
114870-66010	5	44
114870-76530	6	16 -1
114870-76540	6	17 -1
114870-76560	6	18 -1
114870-76570	6	24 B
114870-76580	6	24 C
114870-76620	6	21 -1
114870-76630	6	22 -1
114880-76050	6	12
114880-76051	6	12 -1
114880-76250	6	13
114880-76251	6	13 -1
114880-76511	6	14 -1

Parts No. Index

Parts No.	Fig. No.	Ref. No.
114880-76520	6	15 -1
114880-76550	6	24 A
114881-21590	4	19
119660-77710	9	32
121252-39450	1	53 -1
121450-61520	5	25
124550-51350	7	17
124722-59050	8	11
		30
135210-61090	5	52
160110-02220	1	48
		49
160120-76940	6	9
160310-14550	4	24
160330-92730	10	14
160710-78710	9	40
160725-78350	5	39
160810-76520	6	15
160810-76540	6	17
160810-76580	6	19
160810-76620	6	21
160810-76630	6	22
160840-76530	6	16
160840-76560	6	18
160910-01740	1	42
181130-76680	6	23
181130-76700	6	24
183279-08210	1	57
183720-55210	6	8
22117-060000	8	24
22117-080000	8	25
22137-080000	5	28
22252-000210	4	44
22312-030080	4	50
22312-030160	2	49
	5	8
22312-080120	1	30
22322-030200	5	18
		19
22351-020006	7	21
22351-030008	7	22
22351-040008	2	35
22451-060000	5	53
22512-040120	4	23
22512-070360	4	25
23414-120000	8	12
23871-010000	1	53
23887-120002	8	13
24101-062024	4	57
24101-062060	1	50

Parts No.	Fig. No.	Ref. No.
24162-152112	1	51
24311-000180	1	44
	11	5
24341-000150	8	21
24341-000224	5	11
26023-040102	9	33
26106-060082	3	20
		30
	6	28
26106-060122	3	24
	5	61
	6	29
	9	34
26106-060162	5	12
26106-060202	5	40
	9	35
26106-060252	3	11
26106-060302	5	62
26106-060552	2	52
26106-080122	1	52
26106-080202	4	26
26106-080352	1	40
26106-080452	2	36
	8	26
26106-100122	1	6 B
		14
26106-100302	9	36
26116-060454	10	21
26116-080454	10	22
26117-040088	5	41
26216-080182	2	37
26226-060142	3	12
26226-060182	1	31
26226-060222	1	32
26226-060502	2	38
26226-060552	2	39
26347-060002	5	42
26366-060002	1	33
	2	40
	3	13
	8	27
26366-080002	3	25
26476-060142	5	9
		43
	8	28
	9	41
26476-060202	5	63
	6	10
	9	42
26476-060252	6	11

Parts No.	Fig. No.	Ref. No.
26577-060142	9	43
26696-100002	5	51
26716-060002	10	23
26716-080002	10	24
26756-060002	2	27
		32
26757-060002	5	38
		64
		65
27310-060001	2	15 -1
28110-100120	10	15
28110-140170	10	16
28210-000150	10	17
29220-083200	9	29
29411-150000	9	31
43400-500490	1	45
	11	7
714250-12560	3	4
714350-22502	4	31
714350-22542	4	60
714350-22550	4	66
714350-23600	4	51
714350-23610	4	82
714350-23620	4	84
714350-23702	4	45
714350-23704	4	45 -1
714350-28520	4	52 -1
714350-51710	7	1 A
714350-53100	7	23
714350-55711	8	1
714350-61500	5	13
714360-21720	4	9
714370-11660	2	28
714371-01560	1	1
714380-22580	4	64
714380-22620	4	58
714380-22720	4	27
714628-66500	5	32
714650-55701	8	1 -1
714770-61700	5	20
714870-22500	4	32
714870-22540	4	72
714870-22550	4	78
714870-28510	4	52
714870-51700	7	1 B
714871-01560	1	7
714880-14580	4	1
714880-22580	4	76
714880-22620	4	70
714880-22720	4	28

Parts No.	Fig. No.	Ref. No.
714881-92600	11	1 B
714883-92600	11	1 A
X211416603	9	14
X211427501	9	18
X21142835	9	21
X21143215	9	7
X211445508	9	13
X21145312	9	6
X21145352	9	9
		15
X211456013	9	17
X21145867	9	20
X211461104	9	2
X211468005	9	19
X21147155	9	4
X211473008	9	8 -1
X211478006	9	16
X21148110	9	3
X21148313	9	11
X211489001	9	10
X211492108	9	5 -1
X21149314	9	12