

0CD10-M42300EN

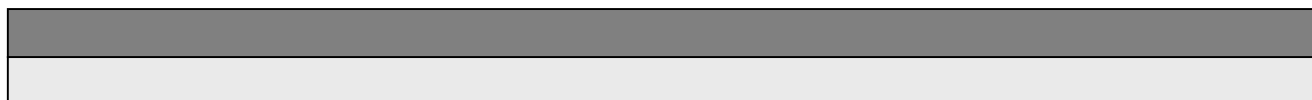
PREFACE

1. This Parts Catalog is the 1st edition of 4TN100L-TQ Diesel Engine for TOUKYU SHARYOU.

Pub. No. : 000Y00D4230
Published : September, 1991

2. Model name

Engine model	Vehicle		Vehicle made by
	Products	Model name	
4TN100L-TQ	—	—	TOUKYU SHARYOU



Directions for the Parts Catalog.

1. The parts stipulated in this Parts Catalog are not necessarily standard equipped parts.
2. Parts may change without prior notice.
3. The following is an example of the Parts Catalog format.

REF.	LEV.	PARTS NO.	DESCRIPTION	Q'TY						I	R
				(A)	(B)	(C)	(D)	(E)	(F)		
1	1	729595-51390	FUEL INJECTION PUMP	1	1	1	1	1			1
1-1	1	729595-51391	FUEL INJECTION PUMP	1	1	1	1	1		N	1
		(A=E00185) (B=E00200)									
3	2	26022-060162	SCREW M 6X 16	9	9	9	9	9			
3-1	2	26022-060162	SCREW M 6X 16	4	4	4	4	4		K	
		(A=E00156) (B=E00156) (C=E00156) (D=E00156) (E=E00156)									
4	2	129470-51040	CAMSHAFT	1	1	1	1	1			
5	2	122710-51050	BEARING, ROLLER	2	2	2	2	2			
6	2	129470-51060	RETAINER	1	1	1	1	1			

Remarks
(1) BOOST COMPEMSATOR TYPE. OPTIONAL PART, TO E00155,(4JH-DT, 4JH-DTZ

① Ref. No.

The Ref. No. listed may not be in accordance with the illustration Ref. No.

(Ex.) Illustration No.

List Ref No.

1

1

(Before change)

1-1

(After change)

For interchangeable symbols N, R and K, illustrations for new parts may be abbreviated.

② Lev. (Level)

Level indication

The numbers below indicate the level of relativity towards the main part.

1 ----- Main parts (Assembly parts)

2 ----- Sub component included in " 1 ".

3 ----- Sub component included in " 2 ".

Note) Parts that are not for sale are partially illustrated but not listed.

③ Interchangeability Mark

When a part change takes place, one of the following interchangeability symbols is indicated beside the part.

Symbol	Interchangeability	Contents note
N	Old $\begin{matrix} \leftarrow \text{Yes} \\ \text{No} \rightarrow \end{matrix}$ New	New Part is interchangeable for Old Part but Old Part is not interchangeable for New Part.
Q	Old $\begin{matrix} \leftarrow \text{No} \\ \text{Yes} \rightarrow \end{matrix}$ New	New Part is not interchangeable for Old Part but Old Part is interchangeable for New Part.
R	Old $\begin{matrix} \leftarrow \text{Yes} \\ \text{Yes} \rightarrow \end{matrix}$ New	New/ Old Parts are both interchangeable.
S	Old $\begin{matrix} \leftarrow \text{No} \\ \text{No} \rightarrow \end{matrix}$ New	New/ Old Parts are both not interchangeable.
W		Part newly added.
Z		Part discontinued.
F		Not interchangeable by a single part but interchangeable together with related parts.
K		Changes only for used parts quantities.

④ Effective Machine No.

When a part changes, the effective Machine No. will be indicated in the (A)-(F) column.

Product Symbol	Product No.	Product Symbol	Product No.
C	Clutch No. Compressor No.	F	Machine No. (Agricultural Equip.)
D	Drive No.	M	Machine No.
E	Engine No.	Note 1)	Date

Note 1) A date may follow the symbol. (Ex.) 1996.01

Note 2) " XXX " are for parts that could not be predicted or for engine models that could not be identified.

Note 3) (A=E00185) is the E (Engine Serial Number) for the column (A) model (in this case 4JH-DT) after the parts design change.

⑤ Remarks Mark

Figures or alphabets (symbols) are entered in the remarks column.

The comments (remarks) on parts that are indicated at the bottom of the illustration are the same symbols as those stated above.

Contents

Fig. No.	Fig. Name	Fig. No.	Fig. Name
4TN100L-TQ			
1.	CYLINDER BLOCK		
2.	GEAR HOUSING		
3.	FLYWHEEL HOUSING & OIL SUMP		
4.	CYLINDER HEAD & BONNET		
5.	SUCTION MANIFOLD		
6.	EXHAUST MANIFOLD		
7.	CAMSHAFT & DRIVE GEAR		
8.	CRANKSHAFT & PISTON		
9.	LUB. OIL SYSTEM		
10.	OIL COOLLER		
11.	COOLING WATER PUMP		
12.	FUEL INJECTION PUMP		
13.	GOVERNOR		
14.	FEED PUMP		
15.	FUEL INJECTION VALVE		
16.	FUEL OIL PIPES		
17.	STARTING MOTOR		
18.	GENERATOR		
19.	ELECTRIC PARTS		
20.	GASKET SET(CYLINDER BLOCK)		
21.	GASKET SET(CYLINDER HEAD)		

Fig.1. CYLINDER BLOCK

(A)=4TN100L-TQ

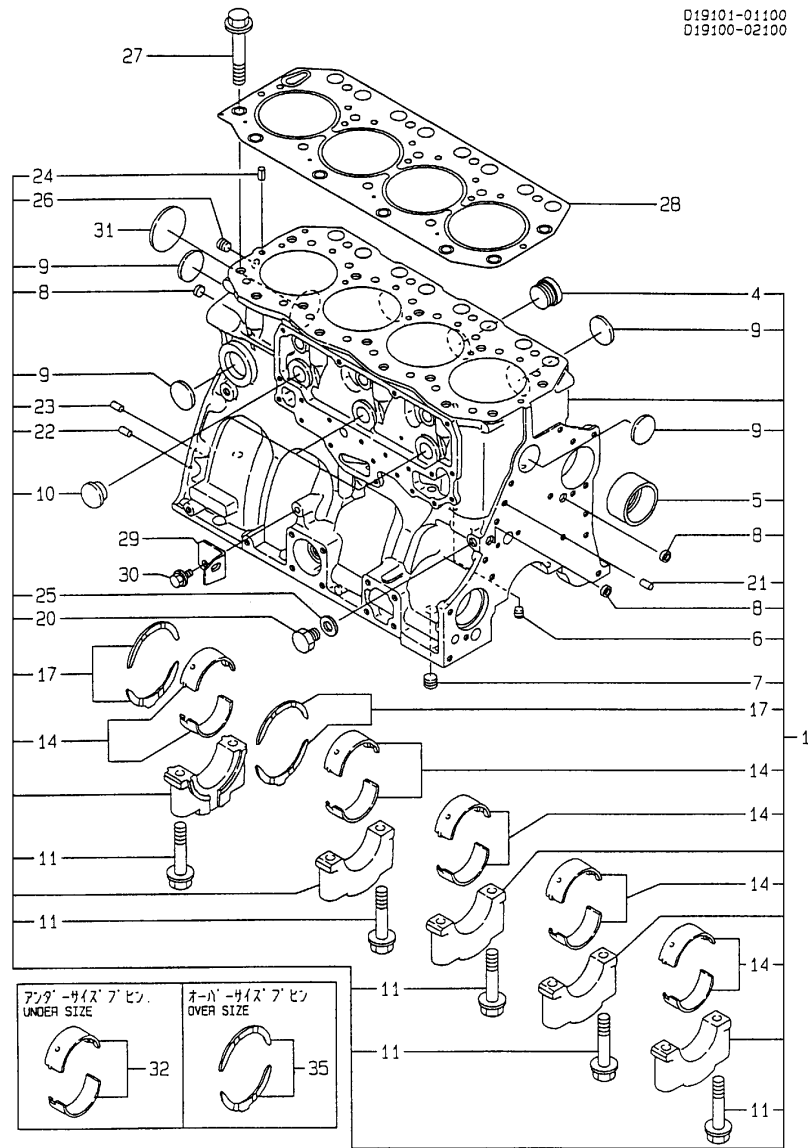
(B)=

(C)=

(D)=

(E)=

(F)=



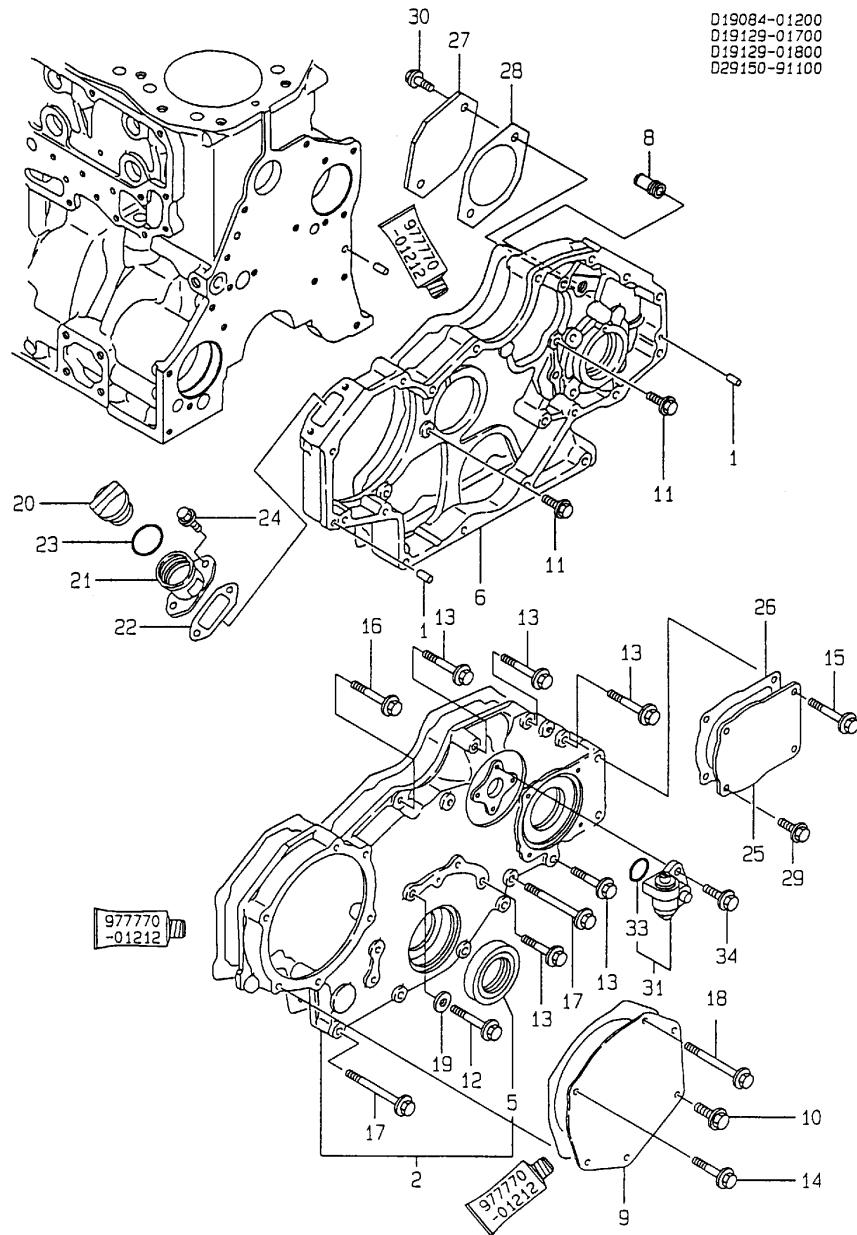
D19101-01100
D19100-02100

No.	Lev.	Parts No.	Description	Q'ty						I	R
				(A)	(B)	(C)	(D)	(E)	(F)		
1	1	719129-01560	BLOCK ASSY, CYLINDER	1							
4	2	171051-01921	PLUG, NPTF1	1							
5	2	119000-02410	BUSH, CAMSHAFT	1							
6	2	23871-010000	PLUG, R01	1							
7	2	23871-030000	PLUG, R03	1							
8	2	27241-140000	PLUG, 14	4							
9	2	27241-400000	PLUG, 40	5							
10	2	119000-01840	PLUG, RUBBER	3							
11	2	119000-02020	BOLT, METAL CAP	10							
14	2	719000-02800	BEARING, MAIN	5							
17	2	719000-02930	BEARING, THRUST	2							
20	2	135602-34390	RETAINER	1							
21	2	129100-01580	PIN, M8X16	2							
22	2	129100-01580	PIN, M8X16	2							
23	2	129100-01580	PIN, M8X16	2							
24	2	22351-080016	PIN, SPRING 8.0X16	2							
25	2	23414-140000	GASKET, 14X1.0	1							
26	2	23871-020000	PLUG, R02	1							
27	1	119000-01200	BOLT, HEAD	18							
28	1	119100-01340	GASKET, HEAD T=1.3	1							
29	1	119100-01980	RETAINER, PUMP	1							
30	1	26106-080162	BOLT, M8X 16 PLATED	2							
31	1	27231-600000	PLUG, 60	1							
32	1	719000-02870	BEARING, 0.25 US	5							1
35	1	719000-02940	BEARING, THRUST 0.25	2							2

Remarks

- (1) UNDER-SIZE(U.S=0.25)PART.
- (2) OVER-SIZE(O.S=0.25)PART.

Fig.2. GEAR HOUSING



D19084-01200
 D19129-01700
 D19129-01800
 D29150-91100

(A)=4TN100L-TQ

(B)=

(C)=

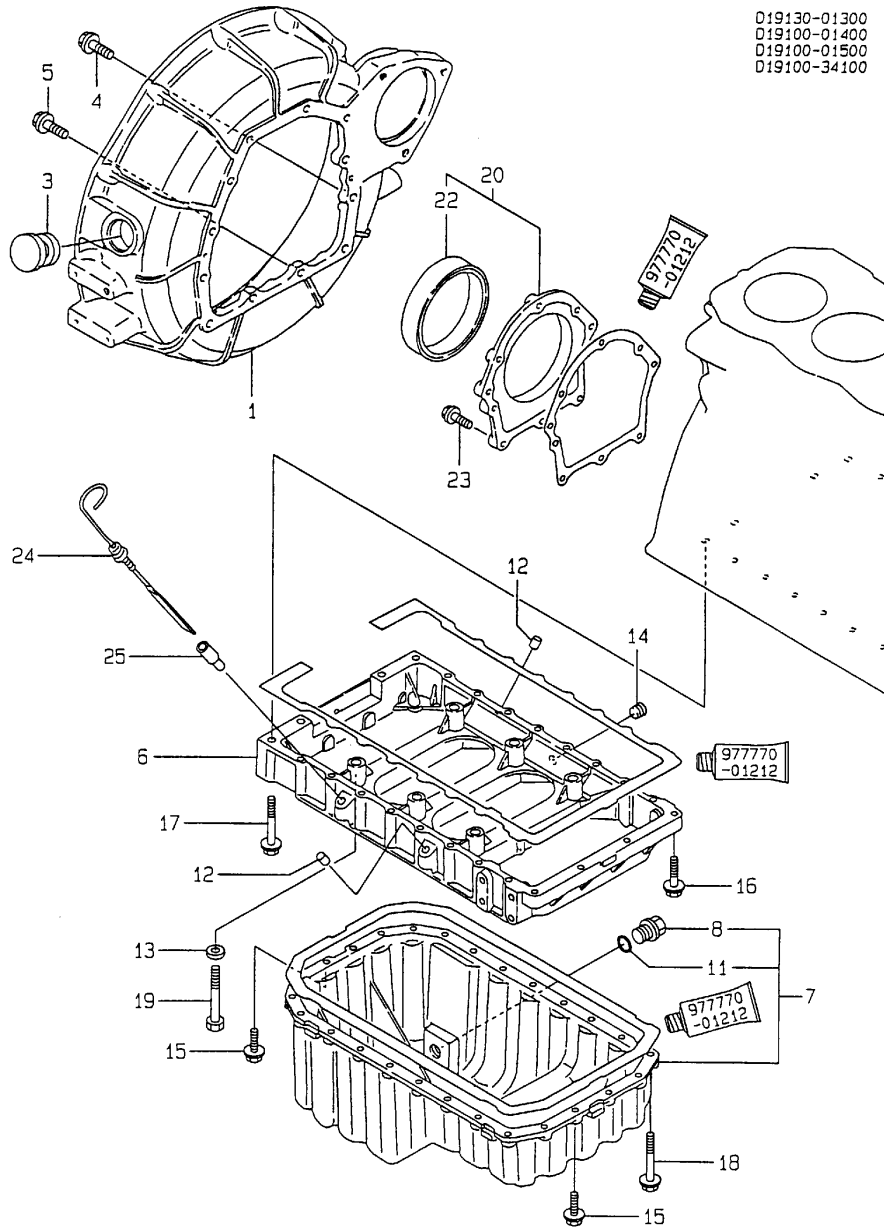
(D)=

(E)=

(F)=

No.	Lev.	Parts No.	Description	Q'ty						I	R
				(A)	(B)	(C)	(D)	(E)	(F)		
1	1	129100-01580	PIN, M8X16	2							
2	1	119000-01590	COVER ASSY,GEAR CASE	1							
5	2	121850-01800	SEAL, OIL	1							
6	1	119084-01500	CASE, GEAR	1							
8	1	121851-11970	JOINT, PIPE	1							
9	1	119000-01930	COVER	1							
10	1	26106-080182	BOLT, M8X 18 PLATED	1							
11	1	26106-080202	BOLT, M8X 20 PLATED	5							
12	1	26106-080402	BOLT, M8X 40 PLATED	1							
13	1	26106-080452	BOLT, M8X 45 PLATED	5							
14	1	26106-080452	BOLT, M8X 45 PLATED	3							
15	1	26106-080502	BOLT, M8X 50 PLATED	2							
16	1	26106-080552	BOLT, M8X 55 PLATED	1							
17	1	26106-080752	BOLT, M8X 75 PLATED	4							
18	1	26106-080902	BOLT, M8X 90 PLATED	2							
19	1	43400-500420	SEAL WASHER 8	1							
20	1	124160-01751	COVER, FILLER	1							
21	1	119000-01760	FLANGE	1							
22	1	119000-01771	GASKET	1							
23	1	24311-000320	O-RING, 1AP32.0	1							
24	1	26106-080252	BOLT, M8X 25 PLATED	2							
25	1	124610-01851	COVER	1							
26	1	124610-01862	GASKET	1							
27	1	121023-26070	COVER	1							
28	1	121023-26061	GASKET	1							
29	1	26106-080202	BOLT, M8X 20 PLATED	2							
30	1	26106-100202	BOLT, M10X 20 PLATED	2							
31	1	129150-91400	GEAR	1							
33	2	24341-000240	O-RING, 1AS24.0	1							
34	1	26106-060162	BOLT, M6X 16 PLATED	2							

Fig.3. FLYWHEEL HOUSING & OIL SUMP



019130-01300
019100-01400
019100-01500
019100-34100

(A)=4TN100L-TQ

(B)=

(C)=

(D)=

(E)=

(F)=

No.	Lev.	Parts No.	Description	Q'ty						I	R
				(A)	(B)	(C)	(D)	(E)	(F)		
1	1	119130-01600	HOUSING, FLYWHEEL	1							
3	1	119620-01750	CAP	1							
4	1	26106-100252	BOLT, M10X 25 PLATED	8							
5	1	26106-100302	BOLT, M10X 30 PLATED	4							
6	1	119100-01730	SPACER	1							
7	1	119100-01770	SUMP ASSY, OIL	1							
8	2	171301-01640	PLUG, 22	1							
11	2	24341-000240	O-RING, 1AS24.0	1							
12	1	124976-34850	CAP	2							
13	1	22117-120000	WASHER, 12	6							
14	1	23871-030000	PLUG, R03	1							
15	1	26106-080252	BOLT, M8X 25 PLATED	8							
16	1	26106-080352	BOLT, M8X 35 PLATED	4							
17	1	26106-080702	BOLT, M8X 70 PLATED	2							
18	1	26106-080802	BOLT, M8X 80 PLATED	18							
19	1	26116-120852	BOLT, M12X 85 PLATED	6							
20	1	119100-01640	CASE ASSY, OIL SEAL	1							
22	2	124411-01780	SEAL, HTC95X115X12	1							
23	1	26106-080252	BOLT, M8X 25 PLATED	8							
24	1	119100-34800	DIPSTICK, OIL	1							
25	1	121520-34810	GUIDE, DIPSTICK	1							

Fig.4. CYLINDER HEAD & BONNET

(A)=4TN100L-TQ

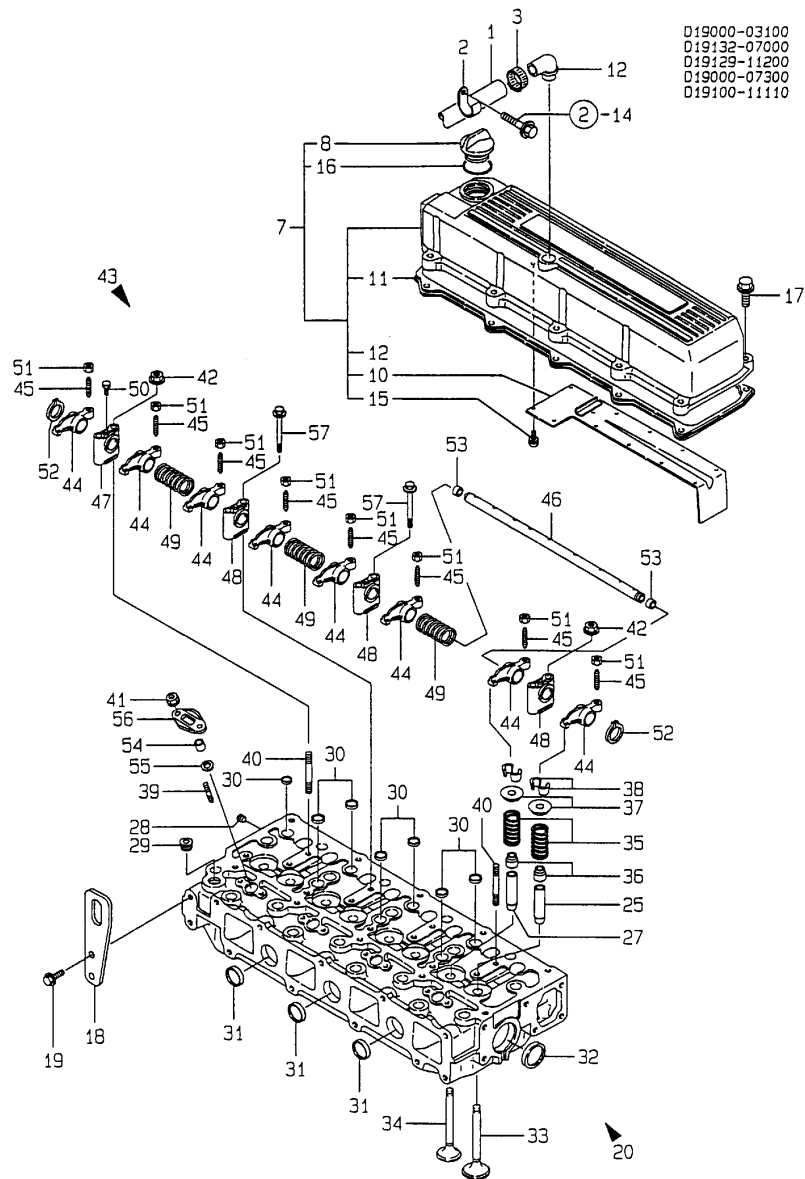
(B)=

(C)=

(D)=

(E)=

(F)=



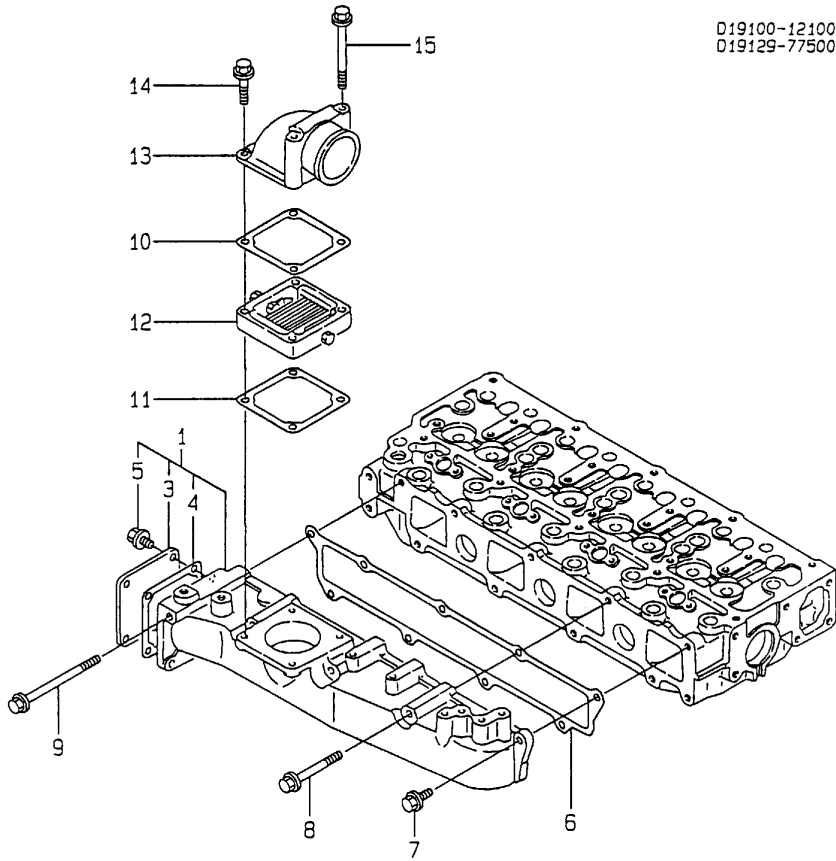
No.	Lev.	Parts No.	Description	Q'ty						I	R
				(A)	(B)	(C)	(D)	(E)	(F)		
1	1	119006-03090	HOSE, BREATHER	1							
2	1	129150-03100	RETAINER, PIPE	1							
3	1	23000-022000	CLAMP, 22	1							
7	1	119129-11520	BONNET ASSY, HEAD	1							
8	2	124160-01751	COVER, FILLER	1							
10	3	119100-03200	COVER	1							
11	3	119100-11320	GASKET, BONNET	1							
12	3	119100-11330	ELBOW	1							
15	3	26022-050122	SCREW, M5X12	11							
16	2	24311-000320	O-RING, 1AP32.0	1							
17	1	26106-080252	BOLT, M8X 25 PLATED	10							
18	1	119000-07200	LIFTER	2							
19	1	26106-100202	BOLT, M10X 20 PLATED	4							
20	1	719129-11700	HEAD ASSY, CYLINDER	1							
25	2	121850-11800	GUIDE, VALVE	4							1
27	2	119000-11810	GUIDE, VALVE	4							1
28	2	123385-82200	PLUG, 1/16	1							
29	2	23871-030000	PLUG, R03	1							
30	2	27241-160000	PLUG, 16	7							
31	2	27241-280000	PLUG, 28	3							
32	2	27241-400000	PLUG, 40	2							
33	2	121850-11100	VALVE, INTAKE	4							
34	2	119000-11110	VALVE, EXHAUST	4							
35	2	121850-11120	SPRING, VALVE	8							
36	2	121850-11150	SEAL, VALVE STEM	8							
37	2	121850-11180	RETAINER, SPRING	8							
38	2	124250-11190	COTTER	8							
39	2	26216-060252	STUD, M6X 25	8							
40	2	26216-080652	STUD, M8X 65	2							
41	2	26366-060002	NUT, M6	6							
42	2	26366-080002	NUT, M8	2							
43	1	119100-11240	SHAFT ASSY, ROCKER	1							
44	2	119000-11200	ARM, ROCKER	8							
45	2	119000-11230	SCREW, VALVE ADJUST	8							
46	2	119100-11250	SHAFT, ROCKER ARM	1							
47	2	119000-11260	SUPPORT, ROCKER ARM	1							
48	2	119000-11270	SUPPORT, ROCKER ARM	3							
49	2	119000-11280	SPRING	3							
50	2	119000-11290	BOLT	1							
51	2	129150-11750	NUT, M8	8							
52	2	22242-000180	RING, 18	2							
53	2	27241-100000	PLUG, 10	2							
54	1	119625-11870	PROTECTOR, NOZZLE	4							
55	1	119625-11880	SEAT, NOZZLE	4							
56	1	119625-11900	RETAINER, NOZZLE	4							
57	1	26106-080652	BOLT, M8X 65 PLATED	6							

Remarks

(1) REPAIR PART.

N:Old $\xrightarrow{\text{Yes}}$ New, Q:Old $\xrightarrow{\text{No}}$ New, R:Old $\xrightarrow{\text{Yes}}$ New, S:Old $\xrightarrow{\text{No}}$ New, W:Add, Z:Discontinued, F:Interchangeable by set, K:Q'ty Change

Fig.5. SUCTION MANIFOLD

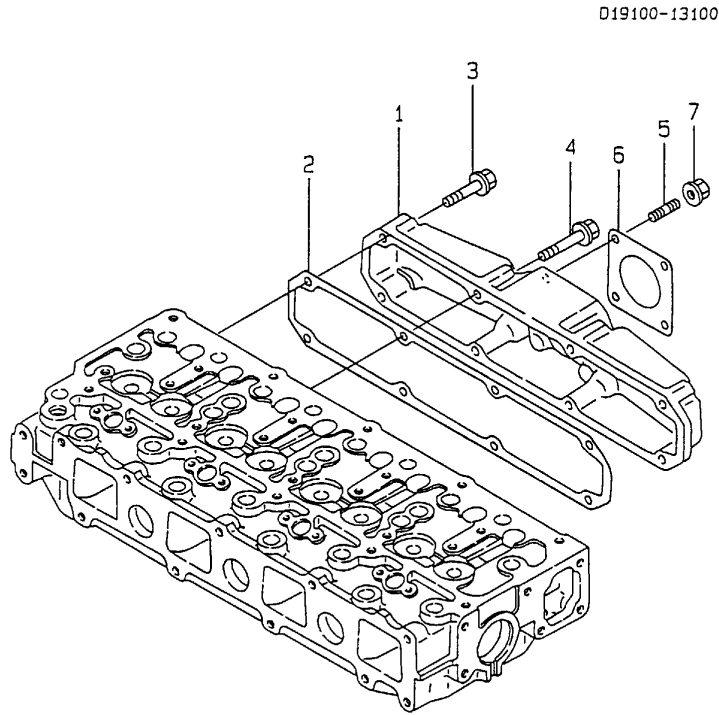


(A)=4TN100L-TQ
(B)=
(C)=

(D)=
(E)=
(F)=

No.	Lev.	Parts No.	Description	Q'ty						I	R
				(A)	(B)	(C)	(D)	(E)	(F)		
1	1	719129-12100	MANIFOLD ASSY,INTAKE	1							
3	2	119100-12120	COVER, MANIFOLD	1							
4	2	121850-77021	GASKET	1							
5	2	26106-080142	BOLT, M8X 14 PLATED	4							
6	1	119100-12112	GASKET, MANIFOLD	1							
7	1	26106-080202	BOLT, M8X 20 PLATED	5							
8	1	26106-080702	BOLT, M8X 70 PLATED	3							
9	1	26106-081152	BOLT, M8X115 PLATED	1							
10	1	119129-77020	GASKET	1							
11	1	121850-77021	GASKET	1							
12	1	119129-77500	HEATER	1							
13	1	119129-77520	BEND	1							
14	1	26106-080402	BOLT, M8X 40 PLATED	2							
15	1	26106-080902	BOLT, M8X 90 PLATED	2							

Fig.6. EXHAUST MANIFOLD

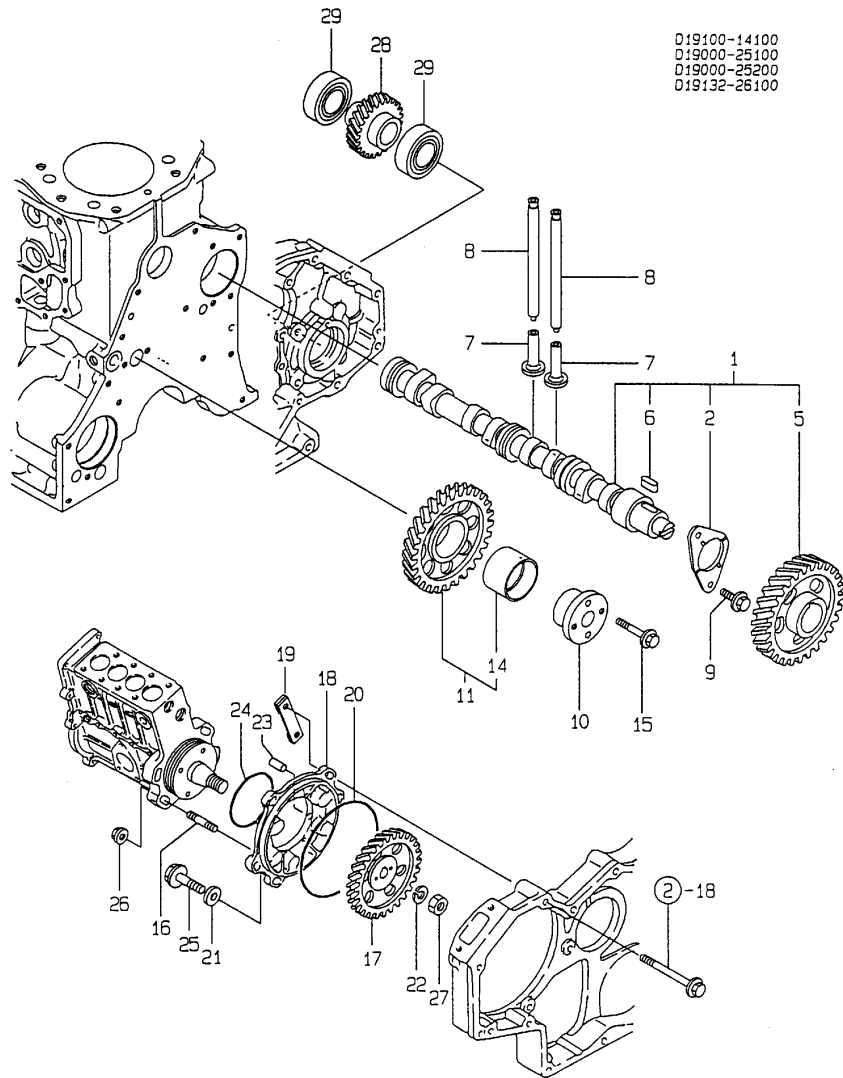


(A)=4TN100L-TQ
(B)=
(C)=

(D)=
(E)=
(F)=

No.	Lev.	Parts No.	Description	Q'ty						I	R
				(A)	(B)	(C)	(D)	(E)	(F)		
1	1	119100-13100	MANIFOLD, EXHAUST	1							
2	1	119100-13200	GASKET	1							
3	1	26106-080402	BOLT, M8X 40 PLATED	4							
4	1	26106-080502	BOLT, M8X 50 PLATED	4							
5	1	26216-080222	STUD, M8X 22	4							
6	1	129400-13200	GASKET, SILENCER	3							
7	2	194990-22050	NUT, M8	4							

Fig.7. CAMSHAFT & DRIVE GEAR



(A)=4TN100L-TQ

(B)=

(C)=

(D)=

(E)=

(F)=

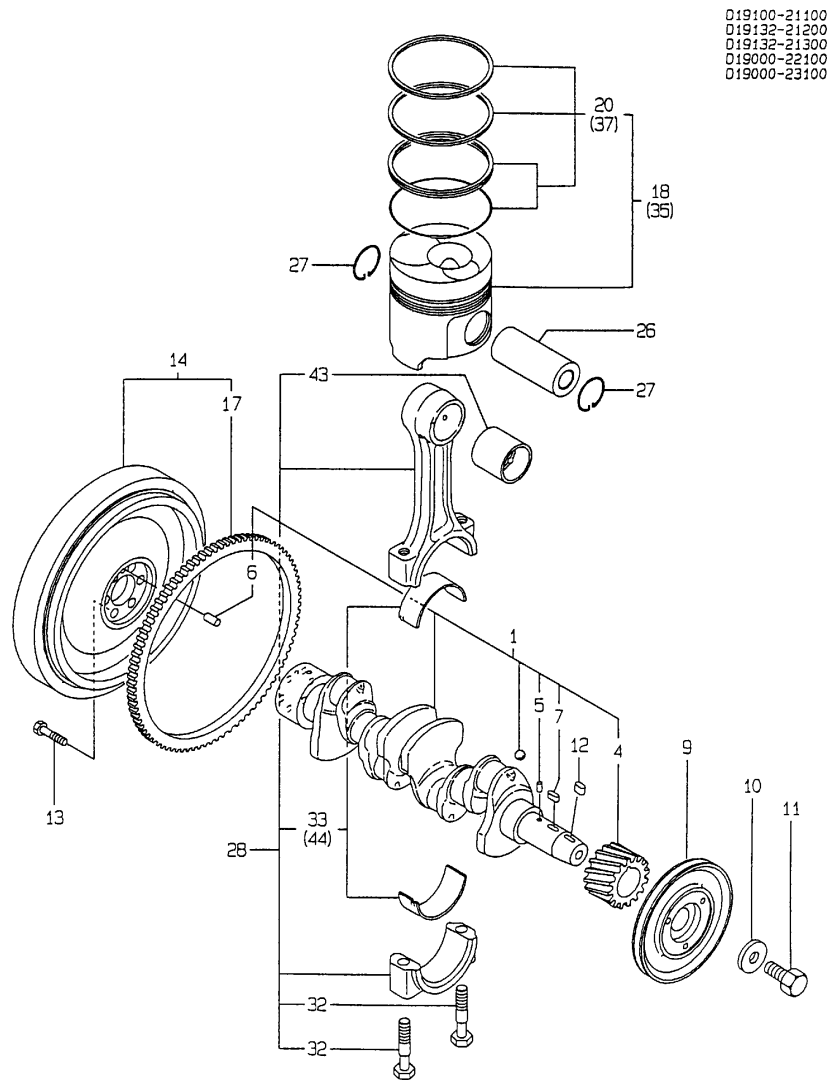
No.	Lev.	Parts No.	Description	Qty						I	R
				(A)	(B)	(C)	(D)	(E)	(F)		
1	1	119100-14000	CAMSHAFT ASSY	1							
2	2	119000-02450	BEARING, THRUST	1							
5	2	119000-14100	GEAR, CAMSHAFT Z=48	1							
6	2	22512-070140	KEY, 7X 14	1							
7	1	119000-14200	TAPPET	8							
8	1	129150-14400	ROD, PUSH L=178	8							
9	1	26106-080162	BOLT, M8X 16 PLATED	2							
10	1	119000-25050	SHAFT, IDLE GEAR	1							
11	1	119000-25100	GEAR ASSY, IDLE Z=51	1							
14	2	119000-25930	BUSH, IDLE GEAR	1							1
15	1	26013-080452	BOLT, M8X 45	2							
16	1	121850-01900	STUD, SB10X32	4							
17	1	119000-25900	GEAR, PUMP	1							
18	1	119000-25910	BRACKET, PUMP	1							
19	1	119000-25920	RETAINER	1							
20	1	24341-001350	O-RING, 1AS135.0	1							
21	1	106100-55800	WASHER	3							
22	1	22217-180000	WASHER, SPRING 18	1							
23	1	22351-050012	PIN, SPRING 5.0X12	1							
24	1	124410-51960	O-RING	1							
25	1	26106-080252	BOLT, M8X 25 PLATED	3							
26	1	26366-100002	NUT, M10	4							
27	1	26776-180002	NUT, LOCK M18	1							
28	1	119132-26200	GEAR	1							
29	1	24101-060064	BEARING, BALL 6006	2							

Remarks

(1) REPAIR PART.

N:Old $\xrightarrow{\text{Yes}}$ New, Q:Old $\xrightarrow{\text{No}}$ New, R:Old $\xrightarrow{\text{Yes}}$ New, S:Old $\xrightarrow{\text{No}}$ New, W:Add, Z:Discontinued, F:Interchangeable by set, K:Qty Change

Fig.8. CRANKSHAFT & PISTON



019100-21100
 019132-21200
 019132-21300
 019000-22100
 019000-23100

(A)=4TN100L-TQ
 (B)=
 (C)=

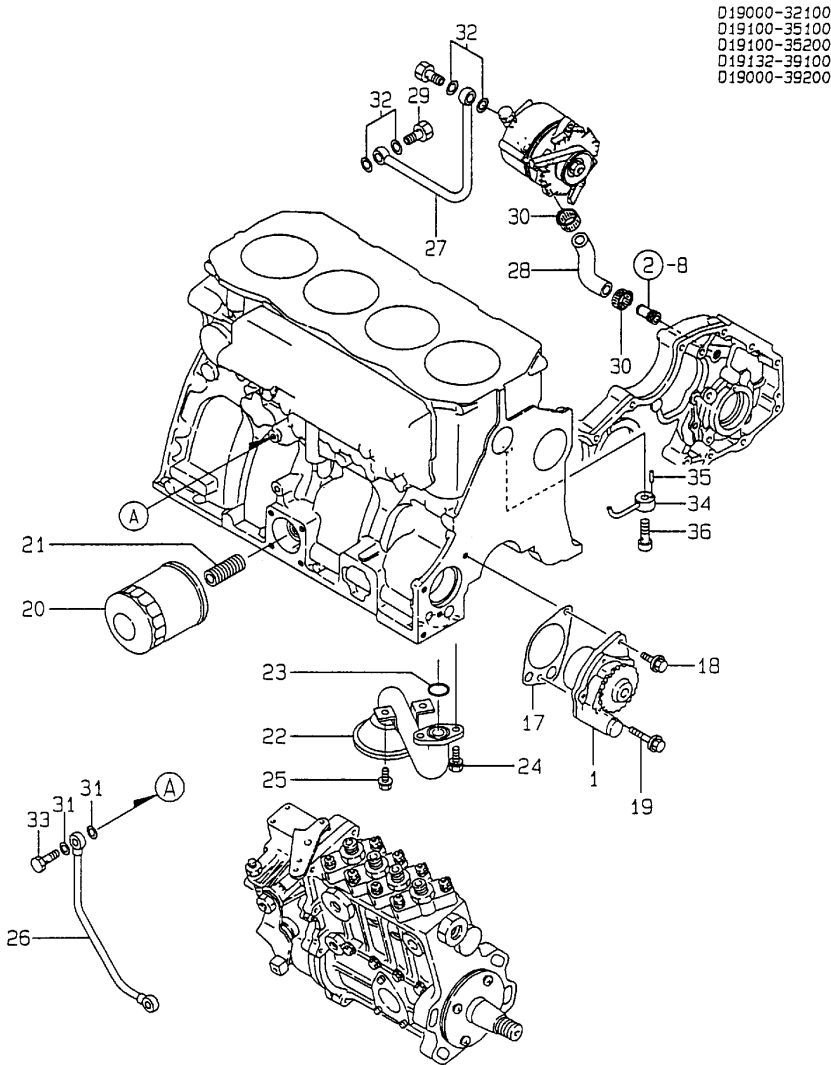
(D)=
 (E)=
 (F)=

No.	Lev.	Parts No.	Description	Q'ty						I	R
				(A)	(B)	(C)	(D)	(E)	(F)		
1	1	719100-21700	CRANKSHAFT ASSY	1							
4	2	121850-21200	GEAR, CRANKSHAFT	1							
5	2	121850-21290	PIN	1							
6	2	121850-21920	PIN, M10X22	1							
7	2	22512-070140	KEY, 7X 14	1							
9	1	119132-21650	V-PULLEY	1							
10	1	121850-21660	WASHER	1							
11	1	121850-21680	BOLT	1							
12	1	22512-070140	KEY, 7X 14	1							
13	1	121850-21130	BOLT, FLYWHEEL	6							
14	1	119132-21590	FLYWHEEL ASSY	1							
17	2	119131-21600	GEAR, RING	1							
18	1	119000-22000	PISTON ASSY	4							
20	2	719000-22500	RING SET, PISTON	4							
26	1	119000-22300	PIN, PISTON	4							
27	1	22252-000340	RING, 34	8							
28	1	719000-23100	ROD ASSY, CONNECTING	4							
32	2	121850-23200	BOLT, CONNECTING ROD	8							
33	2	719000-23600	BEARING, CRANK PIN	4							
35	1	719000-22900	PISTON ASSY, 0.25 OS	4							1
37	2	719000-22950	RING SET, 0.25 OS	4							1
43	1	119000-23910	BEARING, PISTON PIN	4							2
44	1	719000-23610	BEARING ASSY, 0.25	4							3

Remarks

- (1) OVER-SIZE(O.S=0.25)PART.
- (2) REPAIR PART.
- (3) UNDER-SIZE(U.S=0.25)PART.

Fig.9. LUB. OIL SYSTEM



(A)=4TN100L-TQ

(B)=

(C)=

(D)=

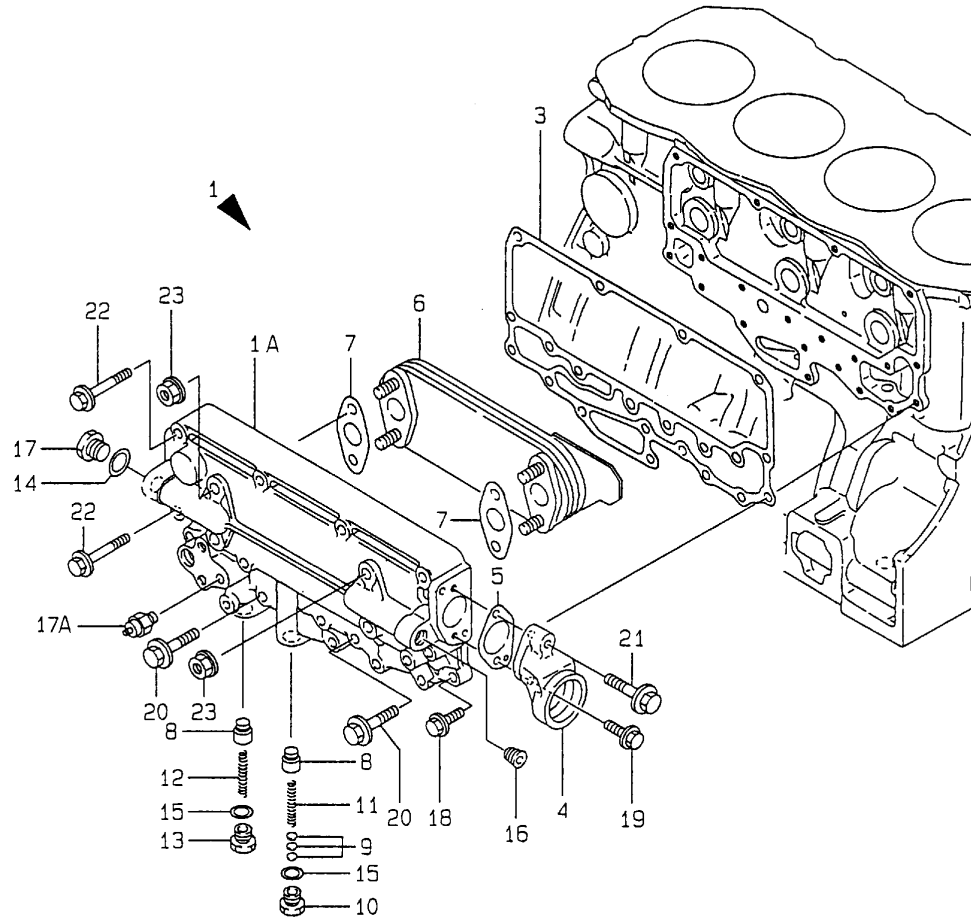
(E)=

(F)=

No.	Lev.	Parts No.	Description	Qty						I	R
				(A)	(B)	(C)	(D)	(E)	(F)		
1	1	119000-32001	PUMP ASSY, OIL	1							
17	1	119000-32020	GASKET, PUMP	1							
18	1	26106-080162	BOLT, M8X 16 PLATED	1							
19	1	26106-080502	BOLT, M8X 50 PLATED	1							
20	1	119005-35100	FILTER, D80X100L	1							
21	1	119000-35140	BOLT, FILTER	1							
22	1	119100-35090	PIPE ASSY, OIL INLET	1							
23	1	24311-000220	O-RING, 1AP22.0	1							
24	1	26013-080162	BOLT, M8X 16	2							
25	1	26106-080162	BOLT, M8X 16 PLATED	2							
26	1	119100-39350	PIPE, OIL	1							
27	1	119084-39600	PIPE, OIL	1							
28	1	119084-39610	PIPE, OIL	1							
29	1	124413-39710	BOLT, PIPE JOINT M10	1							
30	1	23000-022000	CLAMP, 22	2							
31	1	23414-080000	GASKET, 8X1.0	2							
32	1	23414-100000	GASKET, 10X1.0	4							
33	1	23857-030000	BOLT, JOINT 3	1							
34	1	119000-39650	NOZZLE	4							
35	1	22351-030010	PIN, SPRING 3.0X10	4							
36	1	23857-030000	BOLT, JOINT 3	4							

Fig.10. OIL COOLLER

D19000-33100
D19100-39400



(A)=4TN100L-TQ

(B)=

(C)=

(D)=

(E)=

(F)=

No.	Lev.	Parts No.	Description	Q'ty						I	R
				(A)	(B)	(C)	(D)	(E)	(F)		
1	1	119129-92610	SET,LO COOLER CMP	1							W
		(A=E2009.12)									
1A	2	119000-33010	CASE, OIL COOLER	1							
3	2	119000-33021	GASKET	1							
4	2	119000-33030	BEND	1							
5	2	119000-33041	GASKET	1							
6	2	119000-33050	COOLER, OIL	1							
7	2	121952-33071	GASKET, COOLER	2							
8	2	119000-34030	VALVE, CONTROL	2							
9	2	121850-35230	SHIM, T=1.0	5							
10	2	124223-35510	RETAINER, SPRING	1							
11	2	124411-35520	SPRING	1							
12	2	121952-39830	SPRING	1							
13	2	123672-84530	RETAINER, VALVE	1							
14	2	23414-160000	GASKET, 16X1.0	1							
15	2	23414-180000	GASKET, 18X1.0	2							
15-1	2	23414-170000	GASKET, 17X1.0	2							N
		(A=E2009.12)									
16	2	23871-030000	PLUG, R03	1							
17	2	23887-160002	PLUG, 16	1							
18	2	26106-080202	BOLT, M8X 20 PLATED	3							
19	2	26106-080202	BOLT, M8X 20 PLATED	1							
20	2	26106-080352	BOLT, M8X 35 PLATED	8							
21	2	26106-080352	BOLT, M8X 35 PLATED	1							
22	2	26106-080502	BOLT, M8X 50 PLATED	10							
23	2	26376-100002	NUT, M10	4							
24	2	121250-39450	SWITCH, 1.0KG	1							

Fig.11. COOLING WATER PUMP

(A)=4TN100L-TQ

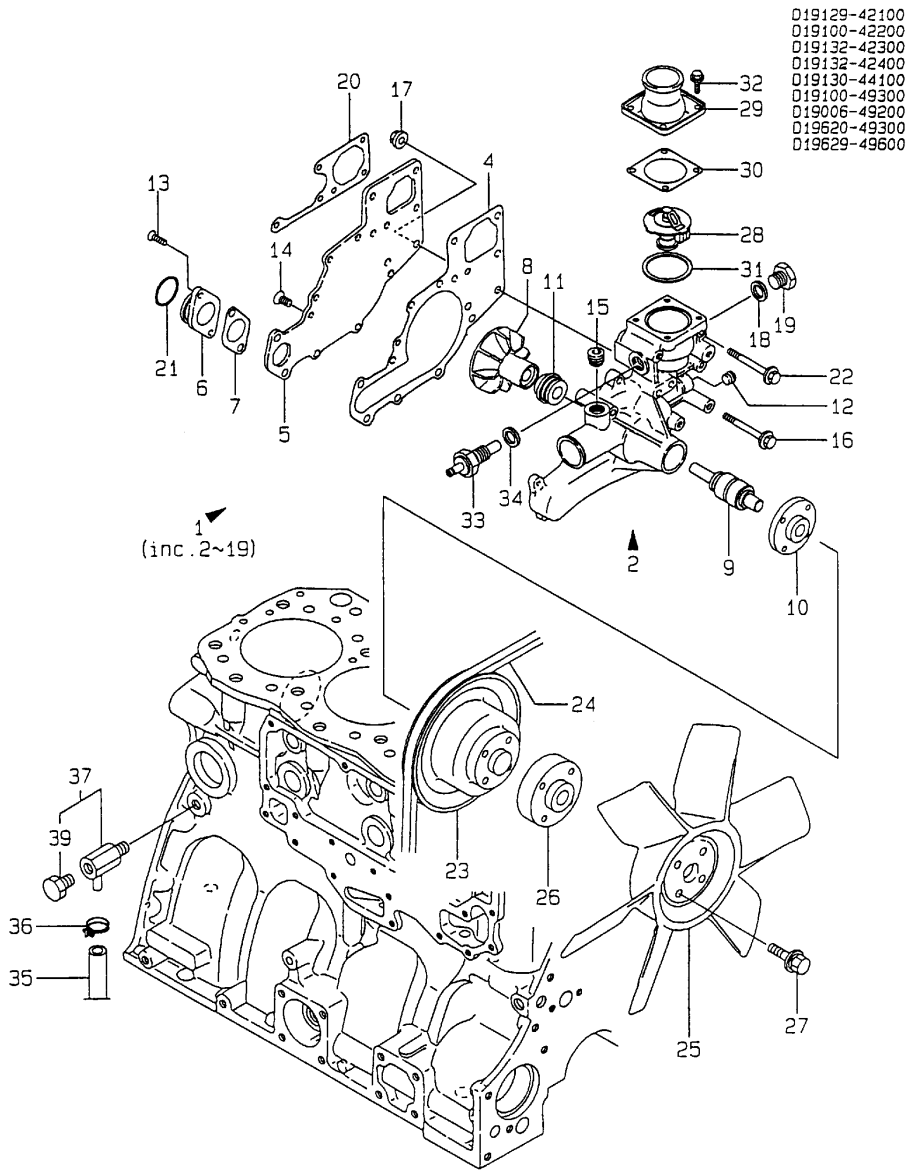
(B)=

(C)=

(D)=

(E)=

(F)=



No.	Lev.	Parts No.	Description	Q'ty						I	R
				(A)	(B)	(C)	(D)	(E)	(F)		
1	1	719129-42000	PUMP ASSY, WATER	1							
2	2	119006-42001	PUMP ASSY, WATER	1							
4	3	119000-42051	GASKET, WATER PUMP	1							
5	3	119000-42121	PLATE, PUMP	1							
6	3	119000-42141	FLANGE	1							
7	3	119000-42151	GASKET, WATER PUMP	1							
8	3	119000-42201	IMPELLER, 75X75X38	1							
9	3	119000-42240	BEARING, SHAFT	1							
10	3	119000-42261	FLANGE	1							
11	3	119660-42310	SEAL, MECHANICAL	1							
12	3	23871-020000	PLUG, R02	1							
13	3	26577-060202	SCREW, M6X20	2							
14	3	26577-080162	SCREW, M8X16	6							
15	3	23871-030000	PLUG, R03	1							
16	3	26106-080602	BOLT, M8X 60 PLATED	2							
17	3	26726-080002	NUT, M8	2							
18	2	124465-44950	GASKET, 16	2							
19	2	23887-160002	PLUG, 16	2							
20	1	119000-42021	GASKET, WATER PUMP	1							
21	1	24311-000360	O-RING, 1AP36.0	1							
22	1	26106-080652	BOLT, M8X 65 PLATED	5							
23	1	119132-42250	PULLEY, WATER PUMP	1							
24	1	25132-055200	V-BELT A52	1							
25	1	121950-44741	FAN, COOLING	1							
26	1	119130-44760	SPACER, FAN	1							
27	1	26014-080452	BOLT, M8X 45	4							
28	1	119000-48170	THERMOSTAT, 71	1							
29	1	121850-49530	COVER, THERMOSTAT	1							
30	1	121850-49540	GASKET, THERMOSTAT	1							
31	1	121850-49550	GASKET, THERMOSTAT	1							
32	1	26014-060142	BOLT, M6X 14	4							
33	1	124250-49351	SENSOR	1							
34	1	129150-49360	GASKET	1							
35	1	124766-49160	PIPE, WATER DRAIN	1							
36	1	124766-59050	CLIP, HOSE 12	1							
37	1	119620-49290	COCK ASSY, 1/4	1							
39	2	119620-49310	VALVE	1							

Fig.12. FUEL INJECTION PUMP

(A)=4TN100L-TQ

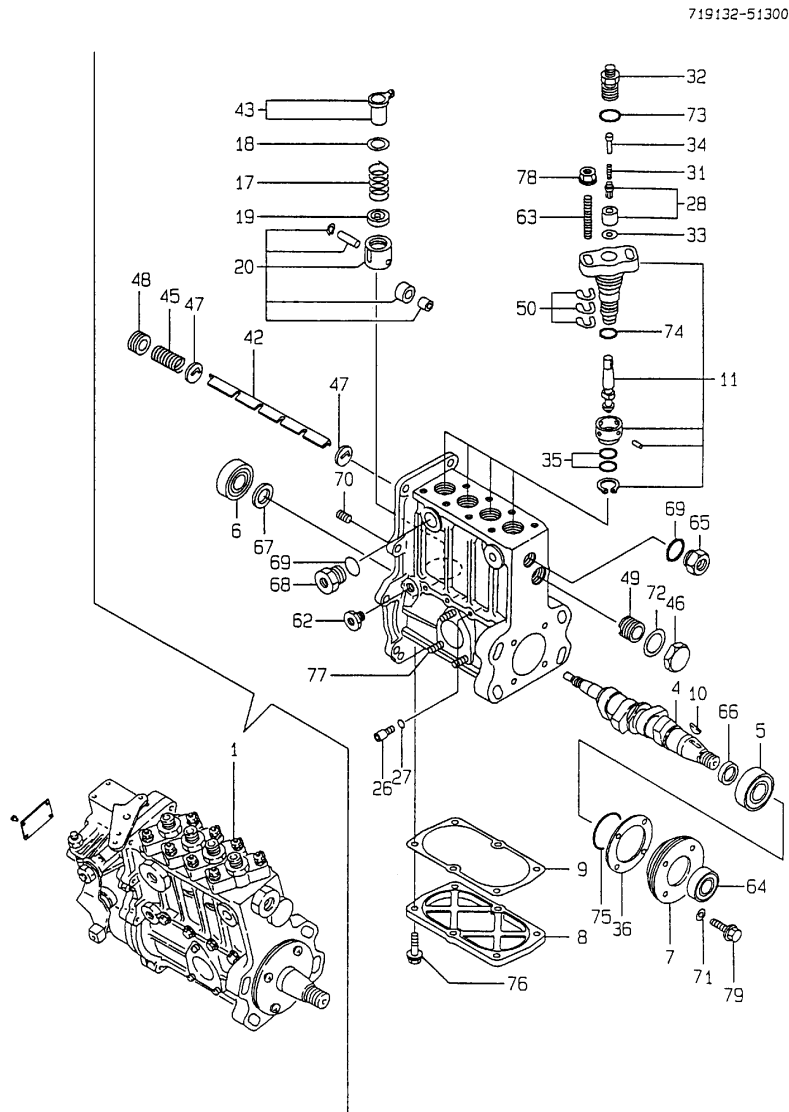
(B)=

(C)=

(D)=

(E)=

(F)=



No.	Lev.	Parts No.	Description	Q'ty						I	R
				(A)	(B)	(C)	(D)	(E)	(F)		
1	1	729132-51300	PUMP ASSY, INJECTION	1							1
4	2	119100-51030	CAMSHAFT	1							
5	2	119000-51050	BEARING, HR32005XJ	1							
6	2	122710-51050	BEARING, HR30203J	1							
7	2	119000-51060	SUPPORT, BEARING A	1							
8	2	119100-51081	COVER	1							
9	2	119100-51091	GASKET	1							
10	2	144626-51090	KEY, 5X19	1							
11	2	119000-51101	PLUNGER ASSY	4							
17	2	119000-51161	SPRING, PLUNGER	4							
18	2	119000-51170	SEAT, SPRING A	4							
19	2	119000-51181	SEAT, SPRING B	4							
20	2	119000-51201	TAPPET ASSY	4							
26	2	129155-51270	STOPPER, TAPPET	4							
27	2	129155-51280	O-RING, S6	4							
28	2	128400-51300	VALVE ASSY, DELIVERY	4							
31	2	119000-51330	SPRING, DELIVERY	4							
32	2	119000-51340	HOLDER, DELIVERY	4							
33	2	122710-51350	GASKET	4							
34	2	119000-51360	STOPPER, VALVE	4							
35	2	119000-51410	O-RING, S18	8							
36	2	119000-51450	SHIM SET, CAMSHAFT	1							
42	2	119100-51500	RACK, CONTROL	1							
43	2	119000-51510	SLEEVE, CONTROL	4							
45	2	119000-51530	SPRING, RACK	1							
46	2	119000-51550	COVER	1							
47	2	119000-51570	GUIDE, RACK	2							
48	2	119000-51580	SCREW	1							
49	2	119000-51590	SCREW	1							
50	2	119000-51650	SHIM SET, ADJUSTING	8							
62	2	121850-51700	BUSH	1							
63	2	119000-51800	BOLT	8							
64	2	119000-51900	SEAL, AC1290E0	1							
65	2	121952-51900	PLUG	1							
66	2	119000-51911	SPACER, CAMSHAFT	1							
67	2	122710-51920	SPACER	1							
68	2	144626-51940	PLUG	1							
69	2	144626-51950	O-RING, 1016	2							
70	2	137600-53900	SCREW, M6X6	1							
71	2	22190-060000	WASHER, SEAL 6	4							
72	2	23414-220029	GASKET, 22X1.0	1							
73	2	24312-000150	O-RING, 2P15.0	4							
74	2	24341-000260	O-RING, 1AS26.0	4							
75	2	24341-000500	O-RING, 1AS50.0	1							
76	2	26106-060182	BOLT, M6X 18 PLATED	6							
77	2	26216-060162	STUD, M6X 16	3							
78	2	26366-080002	NUT, M8	8							
79	2	26106-060202	BOLT, M6X 20 PLATED	4							

Remarks

(1)GOVERNOR(FIG.NO.13) & FEED PUMP (FIG.14)IS INCORPORATED IN THIS FUEL INJECTION PUMP(REF.NO.1).

Fig.13. GOVERNOR

(A)=4TN100L-TQ

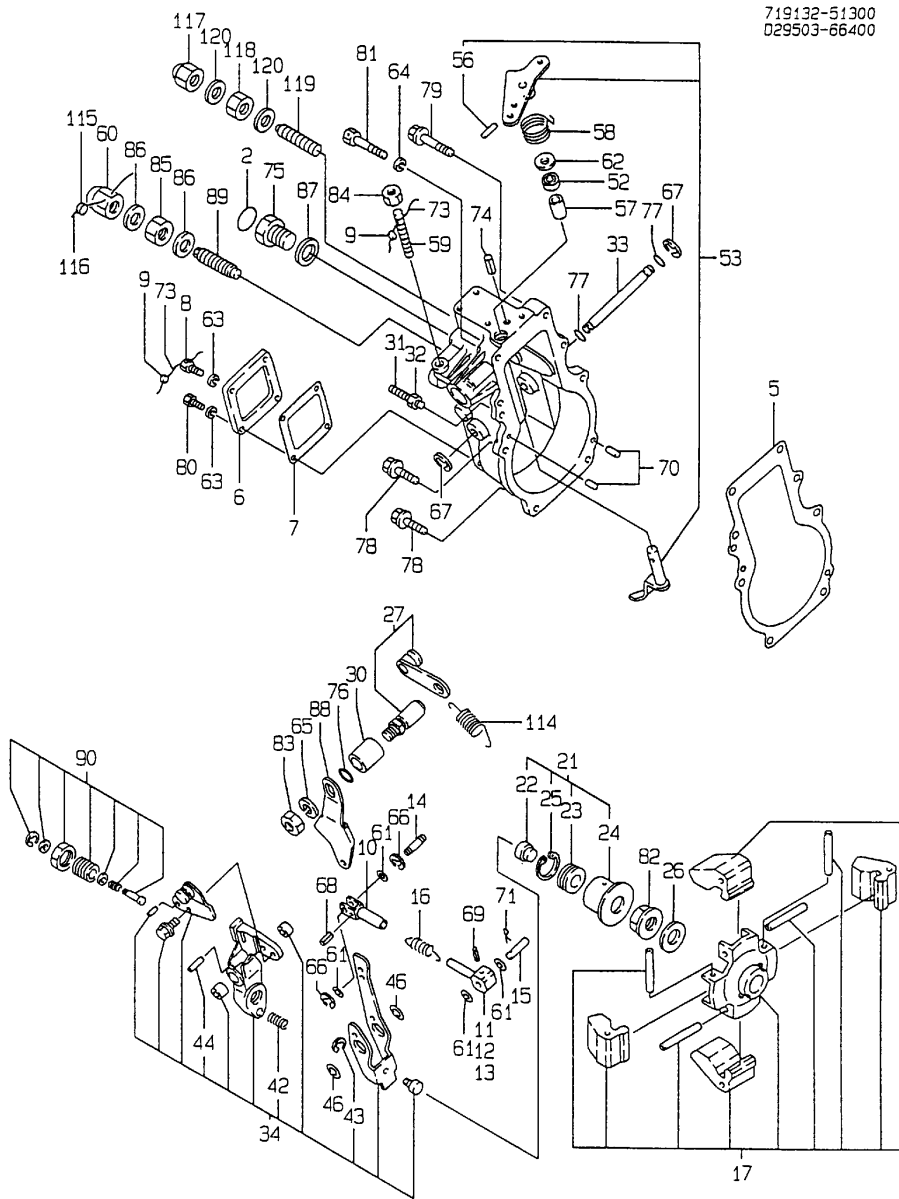
(B)=

(C)=

(D)=

(E)=

(F)=



No.	Lev.	Parts No.	Description	Q'ty						I	R
				(A)	(B)	(C)	(D)	(E)	(F)		
2	2	124610-51970	LABEL	1							
5	2	119000-61051	GASKET	1							
6	2	120323-61060	COVER, GOVERNOR CASE	1							
7	2	120323-61070	GASKET	1							
8	2	129155-61090	BOLT	1							
9	2	135210-61090	LEAD	2							
10	2	119000-61120	LINK	1							
11	2	119000-61140	LINK, MARK-1 L=40	1							
12	2	119000-61150	LINK, MARK-2 L=42	1							
13	2	119000-61160	LINK, MARK-3 L=44	1							
14	2	119000-61170	PIN, LINK	1							
15	2	119000-61180	PIN, LINK	1							
16	2	119000-61190	SPRING	1							
17	2	119000-61200	WEIGHT ASSY,GOVERNOR	1							
21	2	119000-61300	SLEEVE ASSY, L=30	1							
22	3	119000-61310	SHIFTER	1							
23	3	119000-61320	BEARING, THRUST	1							
24	3	119000-61340	SLEEVE	1							
25	3	22262-000260	RING, R-26	1							
26	2	119000-61380	SPACER	1							
27	2	119000-61400	SHAFT ASSY	1							
30	2	119000-61430	BUSH	1							
31	2	129470-61450	BOLT, LIMITER	1							
32	2	119000-61470	NUT, M6	1							
33	2	119000-61490	SHAFT	1							
34	2	119000-61500	LEVER ASSY, GOVERNOR	1							
42	3	121850-61600	SPRING, FUEL CONTROL	1							
43	3	22272-000040	RING, E- 4	1							
44	3	22351-020012	PIN, SPRING 2.0X12	1							
46	2	119000-61630	SHIM SET	1							
52	2	148616-61650	SEAL, VC081404	1							
53	2	119100-61771	LEVER ASSY, STOP	1							
56	3	22351-030016	PIN, SPRING 3.0X16	1							
57	2	119000-61841	BUSH	1							
58	2	119100-61860	SPRING, RETURN	1							
59	2	121855-61910	BOLT, LIMITER	1							
60	2	129100-61930	NUT, CAP	1							
61	2	22117-050000	WASHER, 5	4							
62	2	22137-080000	WASHER, 8	1							
63	2	22217-050000	WASHER, SPRING 5	4							
64	2	22217-060000	WASHER, SPRING 6	1							
65	2	22217-100000	WASHER, SPRING 10	1							
66	2	22272-000040	RING, E- 4	2							
67	2	22272-000080	RING, E- 8	2							
68	2	22351-030016	PIN, SPRING 3.0X16	1							
69	2	22351-030025	PIN, SPRING 3.0X25	1							
70	2	22351-050020	PIN, SPRING 5.0X20	2							
71	2	22372-050000	PIN, SNAP 5	1							
73	2	22451-100000	WIRE, 1.0	2							
74	2	22492-060362	PIN, B6X36	1							
75	2	23887-160002	PLUG, 16	1							

Fig.13. GOVERNOR

(A)=4TN100L-TQ

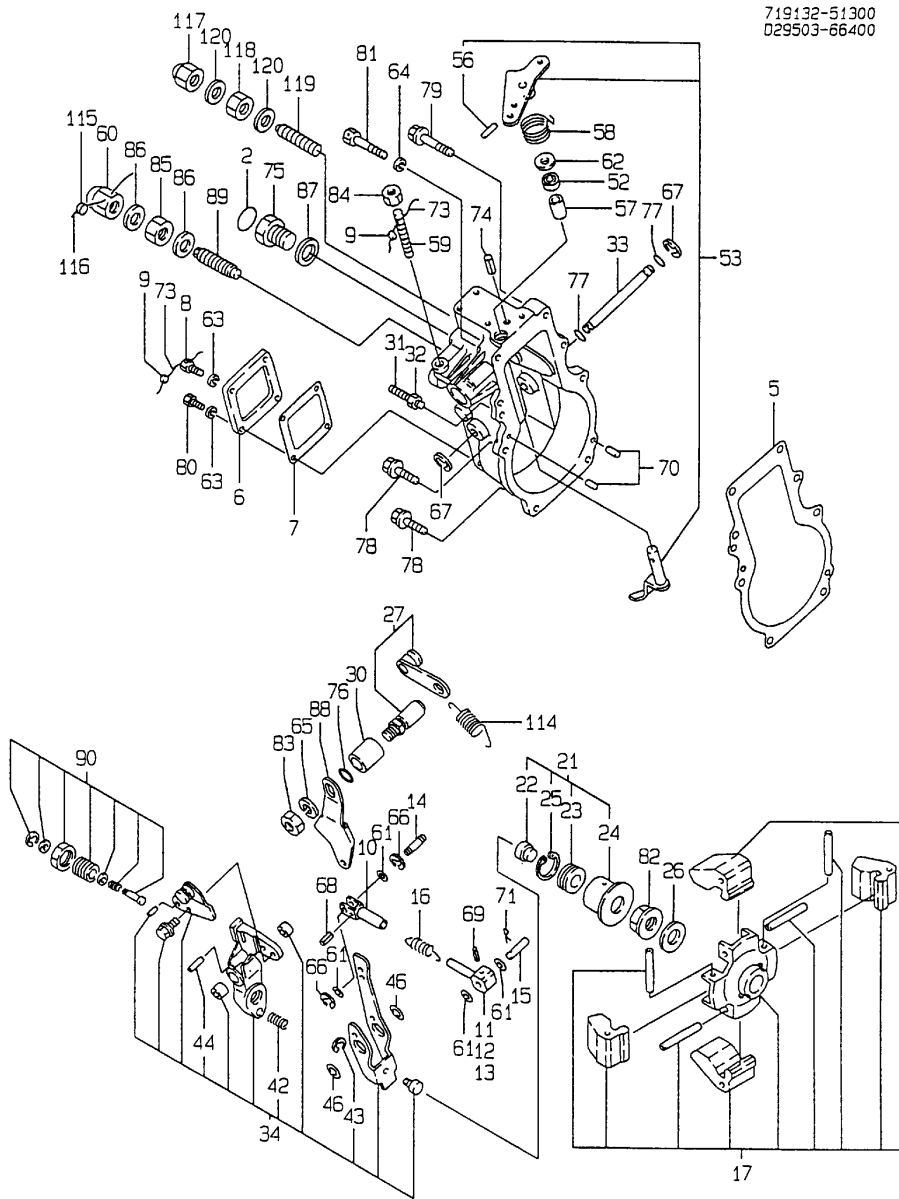
(B)=

(C)=

(D)=

(E)=

(F)=

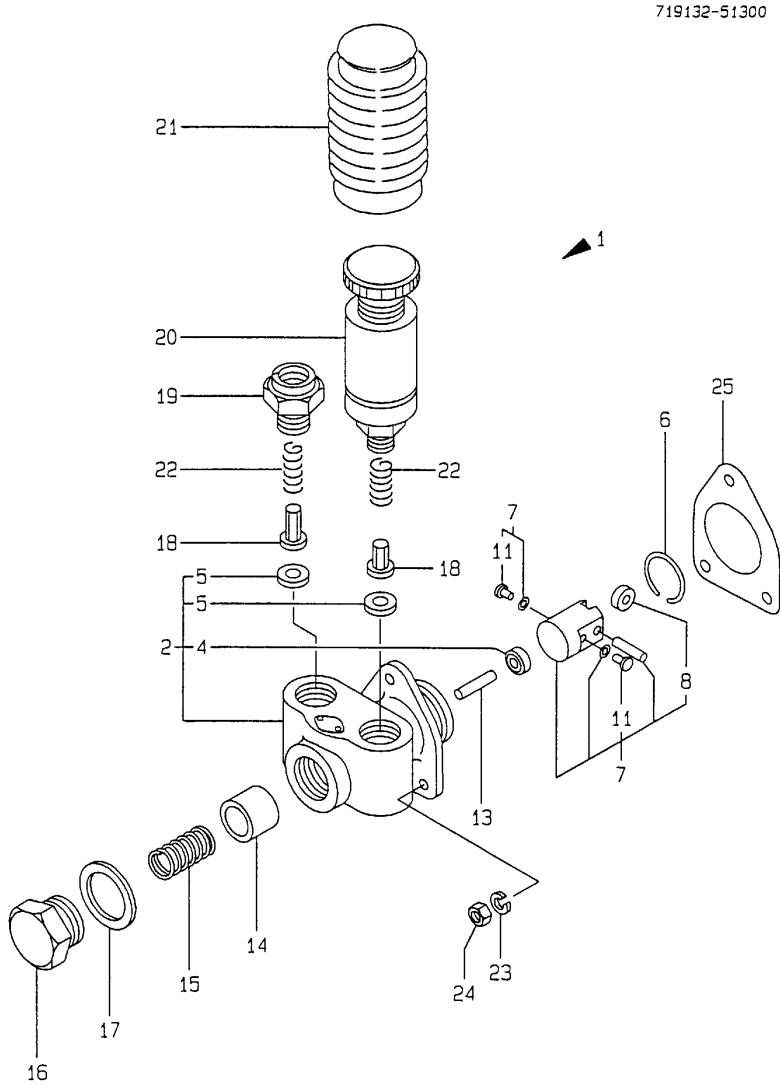


No.	Lev.	Parts No.	Description	Q'ty						I	R
				(A)	(B)	(C)	(D)	(E)	(F)		
76	2	24311-000110	O-RING, 1AP11.0	1							
77	2	24341-000080	O-RING, 1AS8.0	2							
78	2	26106-060222	BOLT, M6X 22 PLATED	6							
79	2	26106-060352	BOLT, M6X 35 PLATED	1							
80	2	26116-050102	BOLT, M5X 10 PLATED	3							
81	2	26116-060356	BOLT, M6X 35 PLATED	1							
82	2	26376-120002	NUT, M12	1							
83	2	26736-100002	NUT, M10	1							
84	2	26757-080002	NUT, LOCK M8	1							
85	2	26777-120002	NUT, LOCK M12	1							
86	2	43400-500450	SEAL WASHER 12S	2							
87	2	43400-500500	SEAL WASHER 16	1							
88	1	119100-61440	LEVER, GOVERNOR	1							
89	1	120323-61470	BOLT, CONTROL	1							
90	1	119101-61550	ANGLEICH ASSY	1							
114	1	119032-61700	SPRING, GOVERNOR	1							
115	1	135210-61090	LEAD	1							
116	1	22451-060000	WIRE, 0.6	1							
117	1	26667-080002	NUT, CAP M8	1							
118	1	26757-080002	NUT, LOCK M8	1							
119	1	26911-080322	SCREW, M8X32	1							
120	1	43400-500420	SEAL WASHER 8	2							

Fig.14. FEED PUMP

(A)=4TN100L-TQ
(B)=
(C)=

(D)=
(E)=
(F)=

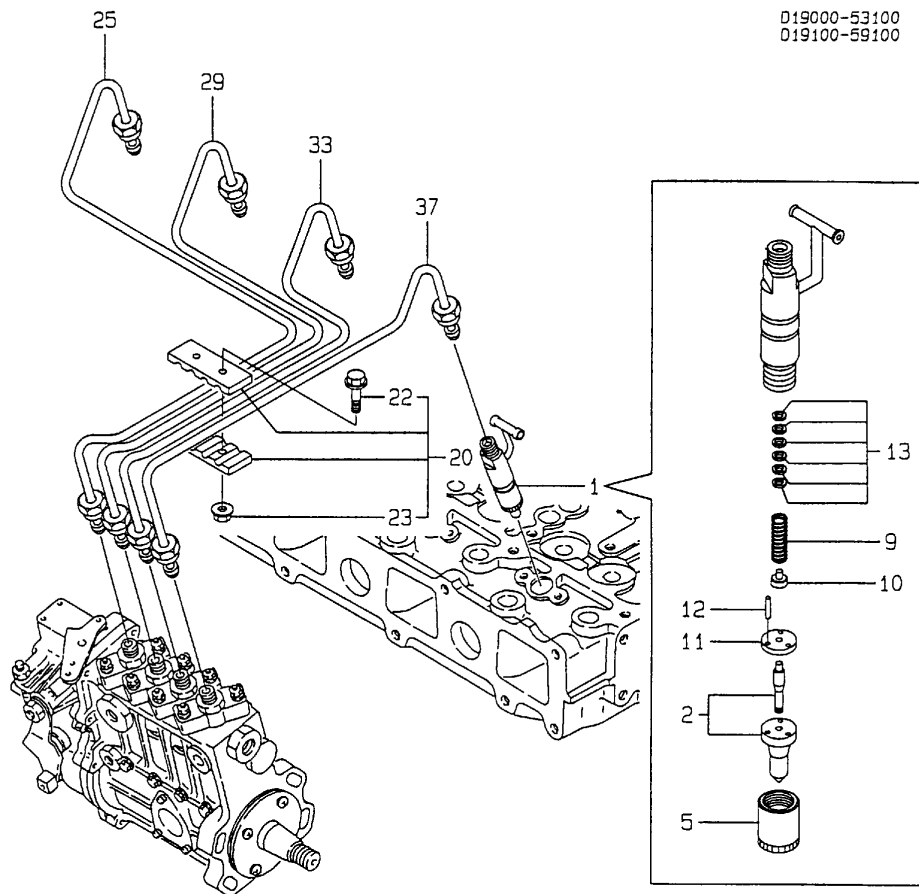


No.	Lev.	Parts No.	Description	Qty						I	R
				(A)	(B)	(C)	(D)	(E)	(F)		
1	1	119000-52000	PUMP ASSY, FUEL FEED	1							
2	2	121820-52020	BODY ASSY, PUMP	1							
4	3	121820-52040	SEAL, OIL	1							
5	3	121820-52050	GASKET	2							
6	2	121820-52070	PIN	1							
7	2	119000-52100	TAPPET ASSY	1							
8	3	121820-52110	ROLLER	1							
11	3	121820-52140	RETAINER	2							
13	2	121820-52160	SPINDLE, INTER	1							
14	2	121820-52170	PISTON	1							
15	2	121820-52180	SPRING, VALVE	1							
16	2	121820-52190	RETAINER, SPRING	1							
17	2	121820-52200	GASKET, 25	1							
18	2	121820-52210	VALVE	2							
19	2	121820-52230	RETAINER, SPRING	1							
20	2	121820-52300	PUMP, PRIMING	1							
21	2	121820-52400	COVER	1							
22	2	121820-52510	SPRING, VALVE	2							
23	2	22217-060000	WASHER, SPRING 6	3							
24	2	26716-060002	NUT, M6	3							
25	2	124410-51861	GASKET	1							

Fig.15. FUEL INJECTION VALVE

(A)=4TN100L-TQ
(B)=
(C)=

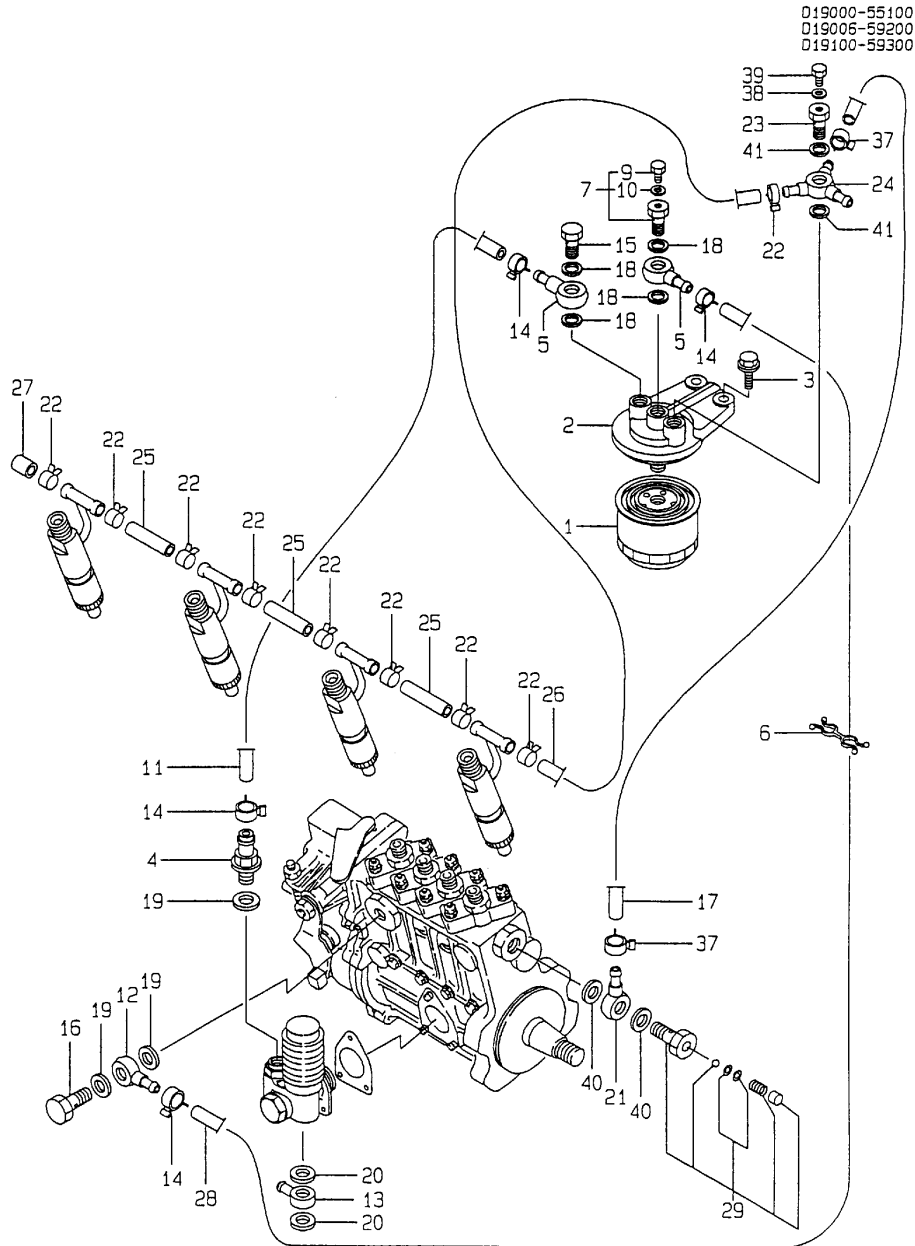
(D)=
(E)=
(F)=



019000-53100
019100-59100

No.	Lev.	Parts No.	Description	Q'ty						I	R
				(A)	(B)	(C)	(D)	(E)	(F)		
1	1	719129-53100	VALVE ASSY,INJECTION	4							
2	2	119000-53000	VALVE ASSY,INJECTION	4							
5	2	114250-53080	NUT, NOZZLE D16.95	4							
9	2	114250-53120	SPRING, NOZZLE	4							
10	2	114250-53130	SEAT, SPRING	4							
11	2	114250-53140	PLATE	4							
12	2	114250-53210	PIN	8							
13	2	114250-53400	SHIM SET	4							
20	1	123472-59090	RETAINER ASSY	1							
22	2	26106-060202	BOLT, M6X 20 PLATED	2							
23	2	26366-060002	NUT, M6	2							
25	1	119100-59810	PIPE ASSY, INJECTION	1							
29	1	119100-59820	PIPE ASSY, INJECTION	1							
33	1	119100-59830	PIPE ASSY, INJECTION	1							
37	1	119100-59840	PIPE ASSY, INJECTION	1							

Fig.16. FUEL OIL PIPES



(A)=4TN100L-TQ

(B)=

(C)=

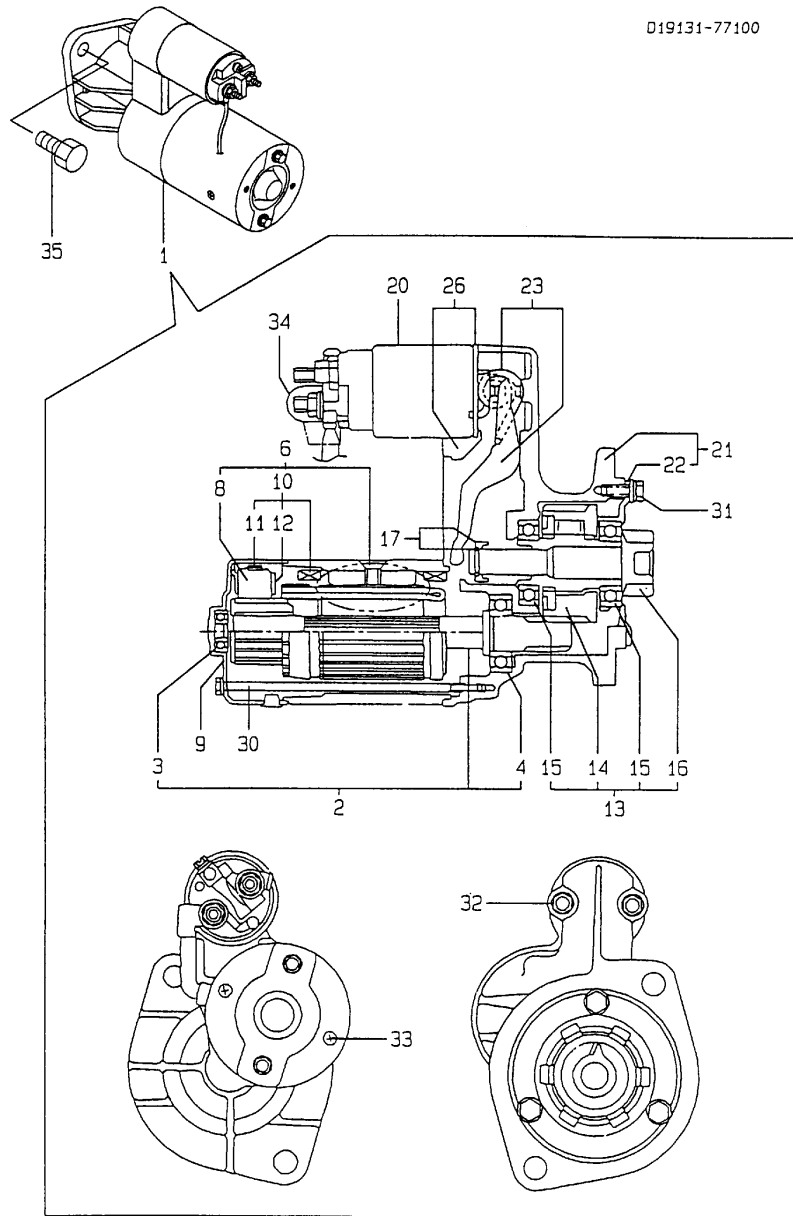
(D)=

(E)=

(F)=

No.	Lev.	Parts No.	Description	Q'ty						I	R
				(A)	(B)	(C)	(D)	(E)	(F)		
1	1	119000-55600	FILTER, FUEL	1							
2	1	129470-55610	BODY, STRAINER	1							
3	1	26106-100252	BOLT, M10X 25 PLATED	2							
4	1	121250-49110	JOINT, PIPE	1							
5	1	101304-59020	JOINT, PIPE 12	2							
6	1	119006-59110	CLAMP	1							
7	1	103854-59191	BOLT ASSY, JOINT M12	1							
9	2	124060-59380	PLUG, 6	1							
10	2	43400-500390	SEAL WASHER 6S	1							
11	1	105025-59530	PIPE, FUEL D13X400	1							
12	1	121855-59880	JOINT, PIPE	1							
13	1	121855-59880	JOINT, PIPE	1							
14	1	23000-013000	CLAMP, 13	4							
15	1	23857-060000	BOLT, JOINT 6	1							
16	1	23857-080000	BOLT, JOINT 8	1							
17	1	23980-730240	HOSE, 7.3X 240	1							
18	1	43400-500450	SEAL WASHER 12S	4							
19	1	43400-500470	SEAL WASHER 14S	3							
20	1	43400-500470	SEAL WASHER 14S	2							
21	1	101304-59020	JOINT, PIPE 12	1							
22	1	124066-59100	CLIP, HOSE 8	9							
23	1	129495-59300	BOLT, PIPE JOINT	1							
24	1	129470-59530	JOINT, PIPE	1							
25	1	119000-59550	PIPE, FUEL RETURN	3							
26	1	119000-59560	PIPE, FUEL RETURN	1							
27	1	129150-59580	CAP	1							
28	1	129255-59580	PIPE, FUEL	1							
29	1	129100-59951	VALVE ASSY, CHECK	1							
37	1	23000-013000	CLAMP, 13	2							
38	1	23414-080000	GASKET, 8X1.0	1							
39	1	26106-080102	BOLT, M8X 10 PLATED	1							
40	1	43400-500450	SEAL WASHER 12S	2							
41	1	43400-500470	SEAL WASHER 14S	2							

Fig.17. STARTING MOTOR



(A)=4TN100L-TQ

(B)=

(C)=

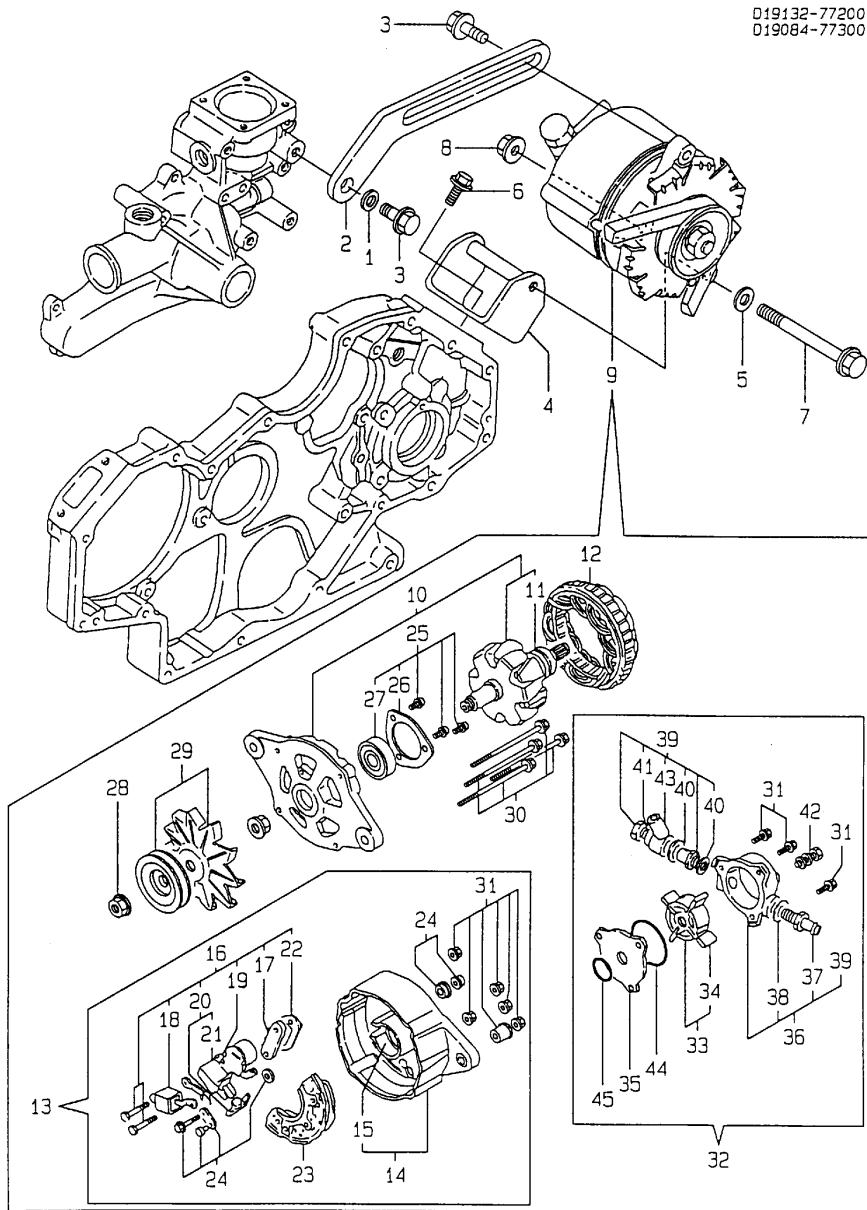
(D)=

(E)=

(F)=

No.	Lev.	Parts No.	Description	Q'ty						I	R
				(A)	(B)	(C)	(D)	(E)	(F)		
1	1	119131-77010	STARTING MOTOR	1							
2	2	119131-77400	ARMATURE ASSY	1							
3	3	171008-77410	BEARING(1)	1							
4	3	119131-77420	BALL BEARING	1							
6	2	119131-77440	COIL ASSY, FIELD	1							
8	3	119131-77450	BRUSH (+)	2							
9	2	119131-77460	COVER ASSY, REAR	1							
10	2	119131-77480	HOLDER ASSY, BRUSH	1							
11	3	119131-77500	BRUSH (-)	2							
12	3	119131-77490	SPRING, BRUSH	4							
13	2	119131-77510	PINION	1							
14	3	119131-77520	CLUTCH ASSY	1							
15	4	119131-77530	BALL BEARING	2							
16	3	119131-77540	PINION SHAFT	1							
17	2	119131-77550	STOPPER KIT, PINION	1							
20	2	119131-77590	SWITCH, MAGNETIC	1							
21	2	119131-77600	CASE ASSY, GEAR	1							
22	3	119131-77610	METAL, GEAR CASE	1							
23	2	119131-77620	LEVER SET, SHIFT	1							
26	2	119131-77650	COVER SET, DUST	1							
30	2	129400-77640	BOLT, THROUGH	2							
31	2	26014-060162	BOLT, M6X 16	3							
32	2	119131-77690	BOLT M 6X 45 PLATED	2							
33	2	26557-040102	SCREW, M4X10	2							
34	2	121254-77810	COVER, TERMINAL	1							
35	1	26116-120302	BOLT, M12X 30 PLATED	2							

Fig.18. GENERATOR



(A)=4TN100L-TQ

(B)=

(C)=

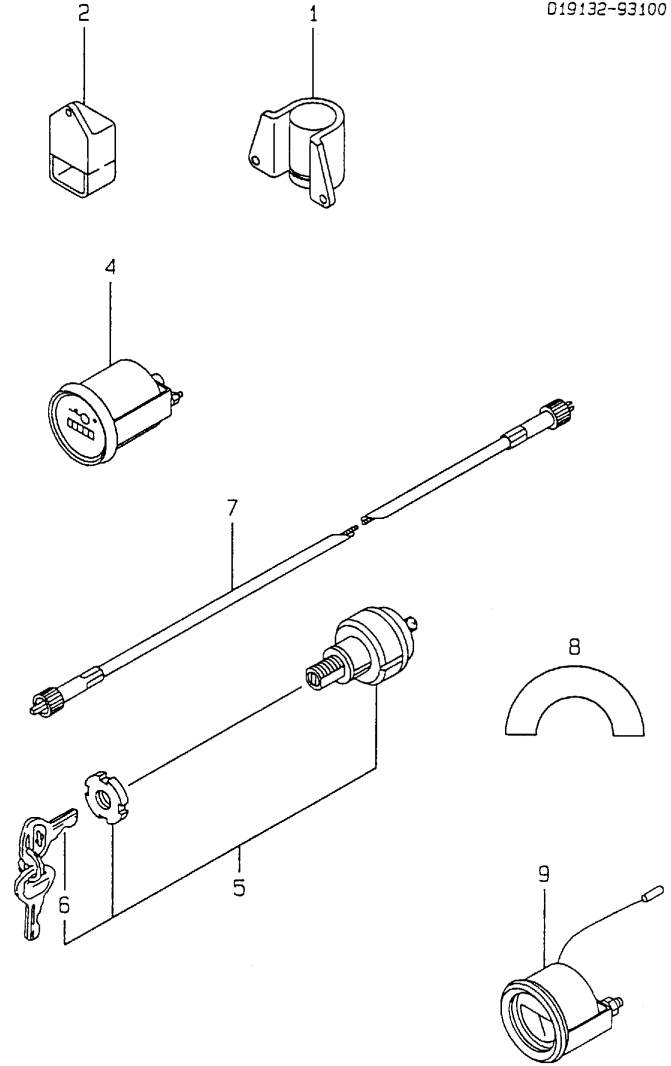
(D)=

(E)=

(F)=

No.	Lev.	Parts No.	Description	Qty						I	R
				(A)	(B)	(C)	(D)	(E)	(F)		
1	1	106100-55800	WASHER	1							
2	1	119084-77330	ADJUSTER	1							
3	1	26106-080202	BOLT, M8X 20 PLATED	2							
4	1	119000-77250	BRACKET, GENERATOR	1							
5	1	22137-100000	WASHER, 10	1							
6	1	26106-080222	BOLT, M8X 22 PLATED	2							
7	1	26116-101202	BOLT, M10X120 PLATED	1							
8	1	26366-100002	NUT, M10	1							
9	1	119132-77200	GENERATOR	1							
10	2	XL240G6100	ROTOR ASSY	1							
11	3	X6202NCDG	BEARING, BALL	1							
12	2	XL24072001	STATOR ASSY	1							
13	2	XL240G6300	COVER ASSY	1							
14	3	XL240G5301	COVER	1							
15	4	XL1505922	SEAL, OIL	1							
16	3	XL2258315	REGULATOR ASSY	1							
17	4	XL2254317	TERMINAL	1							
18	4	XL2252318	CONDENSER	1							
19	4	XL16013351	DIODE	1							
20	4	XL15043303	HOLDER ASSY, BRUSH	1							
21	4	XL15083251	BRUSH	2							
22	4	XTR2Z49	REGULATOR	1							
23	3	XL2254320	DIODE ASSY	1							
24	3	XL140G1310	TERMINAL BOLT ASSY	1							
25	2	XL240G2400	COVER ASSY	1							
26	3	XL1406404	BEARING RETAINER	1							
27	3	X6303G	BALL BEARING	1							
28	2	XL1505810	PULLEY NUT	1							
29	2	XL17095002	PULLEY SET	1							
30	2	XL15018015	BOLT, THROUGH	4							
31	2	XL2251800	SCREW KIT	1							
32	2	XVP25A19008	VACUUM PUMP ASSY	1							
33	3	XVP2549302	ROTOR	1							
34	4	XVP2519103	VANE	4							
35	3	XVP2589401	CENTER PLATE	1							
36	3	XVP2559203	HOUSING ASSY	1							
37	4	X30621231	DELIVERY CONNECTOR	1							
38	4	X21161502	GASKET 22X16	1							
39	4	XVP2529471	VALVE ASSY	1							
40	4	XB424590	GASKET, 24X18	2							
41	4	XB437057	GASKET, 24X12	1							
42	3	X20650781	BOLT, OIL CONNECTOR	1							
43	3	XVP30G1962	CONNECTOR	1							
44	3	X20840631	O-RING	1							
45	3	XVP251915	O-RING	1							

Fig.19. ELECTRIC PARTS



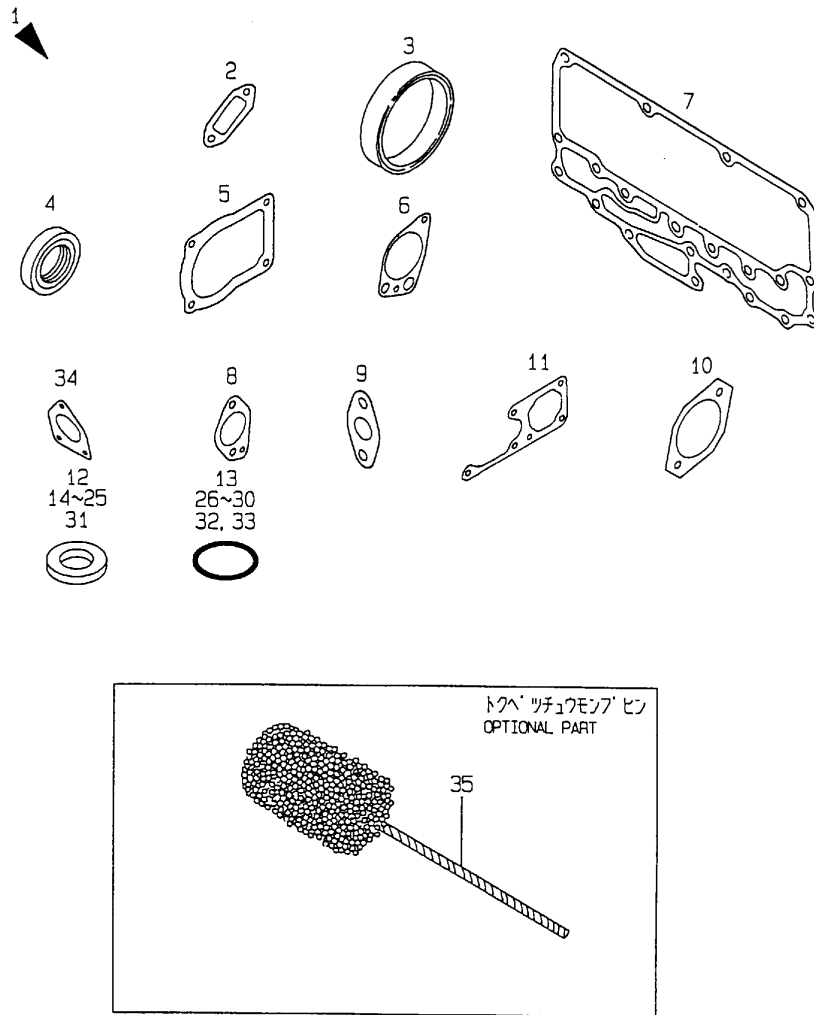
0:19132-93100

(A)=4TN100L-TQ
(B)=
(C)=

(D)=
(E)=
(F)=

No.	Lev.	Parts No.	Description	Q'ty						I	R
				(A)	(B)	(C)	(D)	(E)	(F)		
1	1	119129-77910	RELAY, MAGNETIC	1							
2	1	119129-77920	TIMER	1							
4	1	171014-91101	TACHOMETER	1							
5	1	121400-91251	SWITCH, STARTER	1							
6	2	121400-91271	KEY, SWITCH	1							
7	1	124737-91420	CABLE, TACHOMETER	1							
8	1	171085-91610	LABEL	1							
9	1	46150-502340	THERMOMETER, WATER	1							

Fig.20. GASKET SET(CYLINDER BLOCK)



No.	Lev.	Parts No.	Description	Q'ty						I	R
				(A)	(B)	(C)	(D)	(E)	(F)		
1	1	719129-99013	GASKET SET, BLOCK	1							1
1-1	1	119129-92610	GASKET SET,BLOCK	1							N 1
(A=E2009.12)											
2	2	119000-01771	GASKET	1							
3	2	124411-01780	SEAL, HTC95X115X12	1							
4	2	121850-01800	SEAL, OIL	1							
5	2	124610-01862	GASKET	1							
6	2	119000-32020	GASKET, PUMP	1							
7	2	119000-33021	GASKET	1							
8	2	119000-33041	GASKET	1							
9	2	121952-33071	GASKET, COOLER	2							
10	2	121023-26061	GASKET	1							
11	2	119000-42021	GASKET, WATER PUMP	1							
12	2	124465-44950	GASKET, 16	2							
13	2	124410-51960	O-RING	1							
14	2	23414-080000	GASKET, 8X1.0	2							
15	2	23414-080000	GASKET, 8X1.0	1							
16	2	43400-500450	SEAL WASHER 12S	4							
17	2	43400-500450	SEAL WASHER 12S	2							
18	2	23414-140000	GASKET, 14X1.0	1							
19	2	43400-500470	SEAL WASHER 14S	3							
20	2	129150-49360	GASKET	1							
21	2	43400-500470	SEAL WASHER 14S	2							
22	2	23414-100000	GASKET, 10X1.0	4							
23	2	43400-500470	SEAL WASHER 14S	2							
24	2	23414-160000	GASKET, 16X1.0	1							
25	2	23414-180000	GASKET, 18X1.0	2							
25-1	2	23414-170000	GASKET, 17X1.0	2							N
(A=E2009.12)											
26	2	24311-000220	O-RING, 1AP22.0	1							
27	2	24311-000360	O-RING, 1AP36.0	1							
28	2	24341-000240	O-RING, 1AS24.0	1							
29	2	24341-000240	O-RING, 1AS24.0	1							
30	2	24341-001350	O-RING, 1AS135.0	1							
31	2	43400-500420	SEAL WASHER 8	1							
32	2	24311-000320	O-RING, 1AP32.0	1							
33	2	24311-000320	O-RING, 1AP32.0	1							
34	2	124410-51861	GASKET	1							
35	2	119000-61070	GASKET	1							
35-1	2	119000-61071	GASKET	1							N
36	1	129400-92420	FLEX HORN	1							1

Remarks
(1) OPTIONAL PART.

Parts No. Index

Parts No.	Fig. No.	Ref. No.
101304-59020	16	5
		21
103854-59191	16	7
105025-59530	16	11
106100-55800	7	21
	18	1
114250-53080	15	5
114250-53120	15	9
114250-53130	15	10
114250-53140	15	11
114250-53210	15	12
114250-53400	15	13
119000-01200	1	27
119000-01590	2	2
119000-01760	2	21
119000-01771	2	22
	20	2
119000-01840	1	10
119000-01930	2	9
119000-02020	1	11
119000-02410	1	5
119000-02450	7	2
119000-07200	4	18
119000-11110	4	34
119000-11200	4	44
119000-11230	4	45
119000-11260	4	47
119000-11270	4	48
119000-11280	4	49
119000-11290	4	50
119000-11810	4	27
119000-14100	7	5
119000-14200	7	7
119000-22000	8	18
119000-22300	8	26
119000-23910	8	43
119000-25050	7	10
119000-25100	7	11
119000-25900	7	17
119000-25910	7	18
119000-25920	7	19
119000-25930	7	14
119000-32001	9	1
119000-32020	9	17
	20	6
119000-33010	10	1 A
119000-33021	10	3
	20	7
119000-33030	10	4
119000-33041	10	5

Parts No.	Fig. No.	Ref. No.
119000-33041	20	8
119000-33050	10	6
119000-34030	10	8
119000-35140	9	21
119000-39650	9	34
119000-42021	11	20
	20	11
119000-42051	11	4
119000-42121	11	5
119000-42141	11	6
119000-42151	11	7
119000-42201	11	8
119000-42240	11	9
119000-42261	11	10
119000-48170	11	28
119000-51050	12	5
119000-51060	12	7
119000-51101	12	11
119000-51161	12	17
119000-51170	12	18
119000-51181	12	19
119000-51201	12	20
119000-51330	12	31
119000-51340	12	32
119000-51360	12	34
119000-51410	12	35
119000-51450	12	36
119000-51510	12	43
119000-51530	12	45
119000-51550	12	46
119000-51570	12	47
119000-51580	12	48
119000-51590	12	49
119000-51650	12	50
119000-51800	12	63
119000-51900	12	64
119000-51911	12	66
119000-52000	14	1
119000-52100	14	7
119000-53000	15	2
119000-55600	16	1
119000-59550	16	25
119000-59560	16	26
119000-61051	13	5
119000-61070	20	35
119000-61071	20	35 -1
119000-61120	13	10
119000-61140	13	11
119000-61150	13	12
119000-61160	13	13

Parts No.	Fig. No.	Ref. No.
119000-61170	13	14
119000-61180	13	15
119000-61190	13	16
119000-61200	13	17
119000-61300	13	21
119000-61310	13	22
119000-61320	13	23
119000-61340	13	24
119000-61380	13	26
119000-61400	13	27
119000-61430	13	30
119000-61470	13	32
119000-61490	13	33
119000-61500	13	34
119000-61630	13	46
119000-61841	13	57
119000-77250	18	4
119005-35100	9	20
119006-03090	4	1
119006-42001	11	2
119006-59110	16	6
119032-61700	13	114
119084-01500	2	6
119084-39600	9	27
119084-39610	9	28
119084-77330	18	2
119100-01340	1	28
	21	2
119100-01640	3	20
119100-01730	3	6
119100-01770	3	7
119100-01980	1	29
119100-03200	4	10
119100-11240	4	43
119100-11250	4	46
119100-11320	4	11
	21	4
119100-11330	4	12
119100-12112	5	6
	21	7
119100-12120	5	3
119100-13100	6	1
119100-13200	6	2
	21	8
119100-14000	7	1
119100-34800	3	24
119100-35090	9	22
119100-39350	9	26
119100-51030	12	4
119100-51081	12	8

Parts No.	Fig. No.	Ref. No.
119100-51091	12	9
119100-51500	12	42
119100-59810	15	25
119100-59820	15	29
119100-59830	15	33
119100-59840	15	37
119100-61440	13	88
119100-61771	13	53
119100-61860	13	58
119101-61550	13	90
119129-11520	4	7
119129-77020	5	10
	21	12
119129-77500	5	12
119129-77520	5	13
119129-77910	19	1
119129-77920	19	2
119129-92610	10	1
	20	1 -1
119130-01600	3	1
119130-44760	11	26
119131-21600	8	17
119131-77010	17	1
119131-77400	17	2
119131-77420	17	4
119131-77440	17	6
119131-77450	17	8
119131-77460	17	9
119131-77480	17	10
119131-77490	17	12
119131-77500	17	11
119131-77510	17	13
119131-77520	17	14
119131-77530	17	15
119131-77540	17	16
119131-77550	17	17
119131-77590	17	20
119131-77600	17	21
119131-77610	17	22
119131-77620	17	23
119131-77650	17	26
119131-77690	17	32
119132-21590	8	14
119132-21650	8	9
119132-26200	7	28
119132-42250	11	23
119132-77200	18	9
119620-01750	3	3
119620-49290	11	37
119620-49310	11	39

Parts No. Index

Parts No.	Fig. No.	Ref. No.
119625-11870	4	54
	21	5
119625-11880	4	55
	21	6
119625-11900	4	56
119660-42310	11	11
120323-61060	13	6
120323-61070	13	7
120323-61470	13	89
121023-26061	2	28
	20	10
121023-26070	2	27
121250-39450	10	24
121250-49110	16	4
121254-77810	17	34
121400-91251	19	5
121400-91271	19	6
121520-34810	3	25
121820-52020	14	2
121820-52040	14	4
121820-52050	14	5
121820-52070	14	6
121820-52110	14	8
121820-52140	14	11
121820-52160	14	13
121820-52170	14	14
121820-52180	14	15
121820-52190	14	16
121820-52200	14	17
121820-52210	14	18
121820-52230	14	19
121820-52300	14	20
121820-52400	14	21
121820-52510	14	22
121850-01800	2	5
	20	4
121850-01900	7	16
121850-11100	4	33
121850-11120	4	35
121850-11150	4	36
	21	3
121850-11180	4	37
121850-11800	4	25
121850-21130	8	13
121850-21200	8	4
121850-21290	8	5
121850-21660	8	10
121850-21680	8	11
121850-21920	8	6
121850-23200	8	32

Parts No.	Fig. No.	Ref. No.
121850-35230	10	9
121850-49530	11	29
121850-49540	11	30
	21	10
121850-49550	11	31
	21	11
121850-51700	12	62
121850-61600	13	42
121850-77021	5	4
		11
	21	13
		14
121851-11970	2	8
121855-59880	16	12
		13
121855-61910	13	59
121950-44741	11	25
121952-33071	10	7
	20	9
121952-39830	10	12
121952-51900	12	65
122710-51050	12	6
122710-51350	12	33
122710-51920	12	67
123385-82200	4	28
123472-59090	15	20
123672-84530	10	13
124060-59380	16	9
124066-59100	16	22
124160-01751	2	20
	4	8
124223-35510	10	10
124250-11190	4	38
124250-49351	11	33
124410-51861	14	25
	20	34
124410-51960	7	24
	20	13
124411-01780	3	22
	20	3
124411-35520	10	11
124413-39710	9	29
124465-44950	11	18
	20	12
	21	15
124610-01851	2	25
124610-01862	2	26
	20	5
124610-51970	13	2
124737-91420	19	7

Parts No.	Fig. No.	Ref. No.
124766-49160	11	35
124766-59050	11	36
124976-34850	3	12
128400-51300	12	28
129100-01580	1	21
		22
		23
	2	1
129100-59951	16	29
129100-61930	13	60
129150-03100	4	2
129150-11750	4	51
129150-14400	7	8
129150-49360	11	34
	20	20
129150-59580	16	27
129150-91400	2	31
129155-51270	12	26
129155-51280	12	27
129155-61090	13	8
129255-59580	16	28
129400-13200	6	6
	21	9
129400-77640	17	30
129400-92420	20	36
129470-55610	16	2
129470-59530	16	24
129470-61450	13	31
129495-59300	16	23
135210-61090	13	9
		115
135602-34390	1	20
137600-53900	12	70
144626-51090	12	10
144626-51940	12	68
144626-51950	12	69
148616-61650	13	52
171008-77410	17	3
171014-91101	19	4
171051-01921	1	4
171085-91610	19	8
171301-01640	3	8
194990-22050	6	7
22117-050000	13	61
22117-120000	3	13
22137-080000	13	62
22137-100000	18	5
22190-060000	12	71
22217-050000	13	63
22217-060000	13	64

Parts No.	Fig. No.	Ref. No.
22217-060000	14	23
22217-100000	13	65
22217-180000	7	22
22242-000180	4	52
22252-000340	8	27
22262-000260	13	25
22272-000040	13	43
		66
22272-000080	13	67
22351-020012	13	44
22351-030010	9	35
22351-030016	13	56
		68
22351-030025	13	69
22351-050012	7	23
22351-050020	13	70
22351-080016	1	24
22372-050000	13	71
22451-060000	13	116
22451-100000	13	73
22492-060362	13	74
22512-070140	7	6
	8	7
		12
23000-013000	16	14
		37
23000-022000	4	3
	9	30
23414-080000	9	31
	16	38
	20	14
		15
23414-100000	9	32
	20	22
23414-140000	1	25
	20	18
23414-160000	10	14
	20	24
23414-170000	10	15 -1
	20	25 -1
23414-180000	10	15
	20	25
23414-220029	12	72
23857-030000	9	33
		36
23857-060000	16	15
23857-080000	16	16
23871-010000	1	6
23871-020000	1	26
	11	12

Parts No. Index

Parts No.	Fig. No.	Ref. No.
23871-030000	1	7
	3	14
	4	29
	10	16
	11	15
23887-160002	10	17
	11	19
	13	75
23980-730240	16	17
24101-060064	7	29
24311-000110	13	76
24311-000220	9	23
	20	26
24311-000320	2	23
	4	16
	20	32
		33
24311-000360	11	21
	20	27
24312-000150	12	73
24341-000080	13	77
24341-000240	2	33
	3	11
	20	28
		29
24341-000260	12	74
24341-000500	12	75
24341-001350	7	20
	20	30
25132-055200	11	24
26013-080162	9	24
26013-080452	7	15
26014-060142	11	32
26014-060162	17	31
26014-080452	11	27
26022-050122	4	15
26106-060162	2	34
26106-060182	12	76
26106-060202	12	79
	15	22
26106-060222	13	78
26106-060352	13	79
26106-080102	16	39
26106-080142	5	5
26106-080162	1	30
	7	9
	9	18
		25
26106-080182	2	10
26106-080202	2	11

Parts No.	Fig. No.	Ref. No.
26106-080202	2	29
	5	7
	10	18
		19
	18	3
26106-080222	18	6
26106-080252	2	24
	3	15
		23
	4	17
	7	25
26106-080352	3	16
	10	20
		21
26106-080402	2	12
	5	14
	6	3
26106-080452	2	13
		14
26106-080502	2	15
	6	4
	9	19
	10	22
26106-080552	2	16
26106-080602	11	16
26106-080652	4	57
	11	22
26106-080702	3	17
	5	8
26106-080752	2	17
26106-080802	3	18
26106-080902	2	18
	5	15
26106-081152	5	9
26106-100202	2	30
	4	19
26106-100252	3	4
	16	3
26106-100302	3	5
26116-050102	13	80
26116-060356	13	81
26116-101202	18	7
26116-120302	17	35
26116-120852	3	19
26216-060162	12	77
26216-060252	4	39
26216-080222	6	5
26216-080652	4	40
26366-060002	4	41
	15	23

Parts No.	Fig. No.	Ref. No.
26366-080002	4	42
	12	78
26366-100002	7	26
	18	8
26376-100002	10	23
26376-120002	13	82
26557-040102	17	33
26577-060202	11	13
26577-080162	11	14
26667-080002	13	117
26716-060002	14	24
26726-080002	11	17
26736-100002	13	83
26757-080002	13	84
		118
26776-180002	7	27
26777-120002	13	85
26911-080322	13	119
27231-600000	1	31
27241-100000	4	53
27241-140000	1	8
27241-160000	4	30
27241-280000	4	31
27241-400000	1	9
	4	32
43400-500390	16	10
43400-500420	2	19
	13	120
	20	31
43400-500450	13	86
	16	18
		40
	20	16
		17
43400-500470	16	19
		20
		41
	20	19
		21
		23
43400-500500	13	87
46150-502340	19	9
719000-02800	1	14
719000-02870	1	32
719000-02930	1	17
719000-02940	1	35
719000-22500	8	20
719000-22900	8	35
719000-22950	8	37
719000-23100	8	28

Parts No.	Fig. No.	Ref. No.
719000-23600	8	33
719000-23610	8	44
719100-21700	8	1
719129-01560	1	1
719129-11700	4	20
719129-12100	5	1
719129-42000	11	1
719129-53100	15	1
719129-99013	20	1
719129-99021	21	1
729132-51300	12	1
X20650781	18	42
X20840631	18	44
X21161502	18	38
X30621231	18	37
X6202NCDG	18	11
X6303G	18	27
XB424590	18	40
XB437057	18	41
XL1406404	18	26
XL140G1310	18	24
XL15018015	18	30
XL15043303	18	20
XL1505810	18	28
XL1505922	18	15
XL15083251	18	21
XL16013351	18	19
XL17095002	18	29
XL2251800	18	31
XL2252318	18	18
XL2254317	18	17
XL2254320	18	23
XL2258315	18	16
XL24072001	18	12
XL240G2400	18	25
XL240G5301	18	14
XL240G6100	18	10
XL240G6300	18	13
XTR2Z49	18	22
XVP2519103	18	34
XVP251915	18	45
XVP2529471	18	39
XVP2549302	18	33
XVP2559203	18	36
XVP2589401	18	35
XVP25A19008	18	32
XVP30G1962	18	43