

0CD10-M42202EN

# Contents

OCD10-M42202

Fig. No.	Fig. Name
<b>ENGINE</b>	
1.	CYLINDER BLOCK
2.	GEAR HOUSING
3.	FLYWHEEL HOUSING
4.	LUB. OIL SUMP
5.	CYLINDER HEAD
6.	BONNET
7.	SUCTION & EXHAUST MANIFOLD
8.	CAMSHAFT
9.	CRANKSHAFT & FLYWHEEL
10.	PISTON & CONNECTING ROD
11.	LUB. OIL SYSTEM
12.	COOLING WATER PUMP & FAN
13.	THERMOSTAT
14.	COOLING WATER PIPES
15.	COOLING WATER PIPE(BY-PASS)
16.	FUEL INJECTION PUMP
17.	FUEL INJECTION DEVICE
18.	FUEL OIL SYSTEM
19.	GOVERNOR
20.	ENGINE STOP
21.	STARTING MOTOR(COMPONENT PARTS)
22.	STARTING MOTOR(COMPONENT PARTS)
23.	GENERATOR(COMPONENT PARTS)
24.	ELECTRIC PARTS

Fig. No.	Fig. Name
25.	TOOLS
26.	GASKET SET

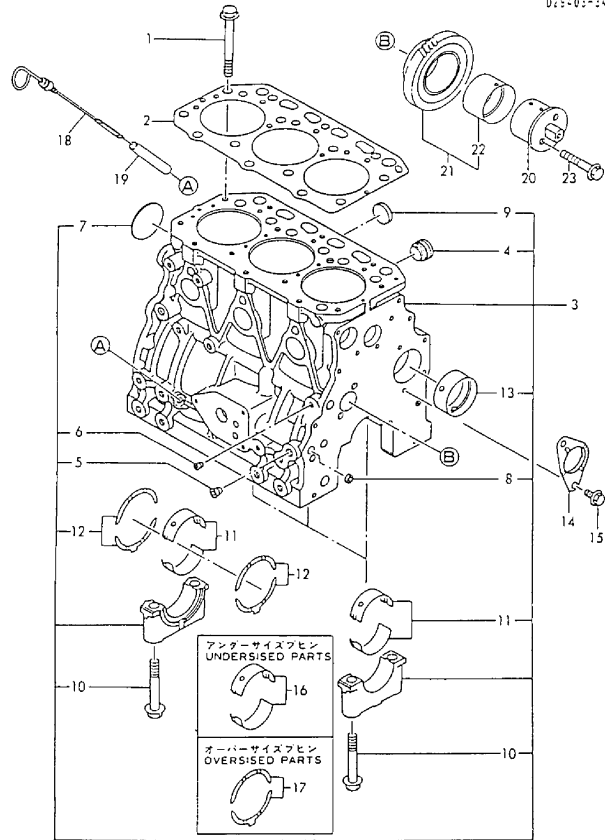
Fig.1. CYLINDER BLOCK

(A)=3TN84L-RDC  
(B)=3TN84L-RDCC  
(C)=

(D)=  
(E)=  
(F)=

Fig.1 シリンダブロック  
CYLINDER BLOCK

026105-23100  
026150-22100  
026125-22100  
026150-22200  
026100-22101  
026105-24100



No.	Lev.	Parts No.	Description	Q'ty						I	R
				(A)	(B)	(C)	(D)	(E)	(F)		
1	1	129150-01200	BOLT, HEAD	14	14						
2	1	129157-01332	GASKET, HEAD	1	1						
3	1	729157-01560	BLOCK ASSY, CYLINDER	1	1						
4	2	171051-01921	PLUG, NPTF1	1	1						
5	2	124160-01910	PLUG, PT1/4	3	3						
6	2	23871-010000	PLUG, R01	1	1						
7	2	27231-500000	PLUG 50	1	1						
8	2	27241-120000	PLUG, 12	2	2						
9	2	27241-300000	PLUG 30	6	6						
10	2	129150-02020	BOLT, METAL CAP	8	8						
11	2	129150-02800	BEARING, MAIN	4	4						
12	2	129150-02930	BEARING, THRUST	2	2						
13	2	129795-02411	BUSH, CAMSHAFT	1	1						
14	1	129150-02450	BEARING, THRUST	1	1						Z
(A=EXXX)											
15	1	26106-080162	BOLT, M8X 16 PLATED	2	2						
16	1	129150-02870	BEARING, 0.25 US	4	4						1
17	1	129150-02940	BEARING, THRUST 0.25	2	2						2
18	1	129403-34800	DIPSTICK, OIL	1	1						
19	1	121520-34810	GUIDE, DIPSTICK	1	1						
20	1	129100-25061	SHAFT, IDLE	1	1						
21	1	129150-25101	GEAR ASSY, IDLE	1	1						
23	1	26106-080452	BOLT, M8X 45 PLATED	2	2						

Remarks

- (1) UNDER-SIZE(U.S=0.25)PART.
- (2) OVER-SIZE(O.S=0.25)PART.

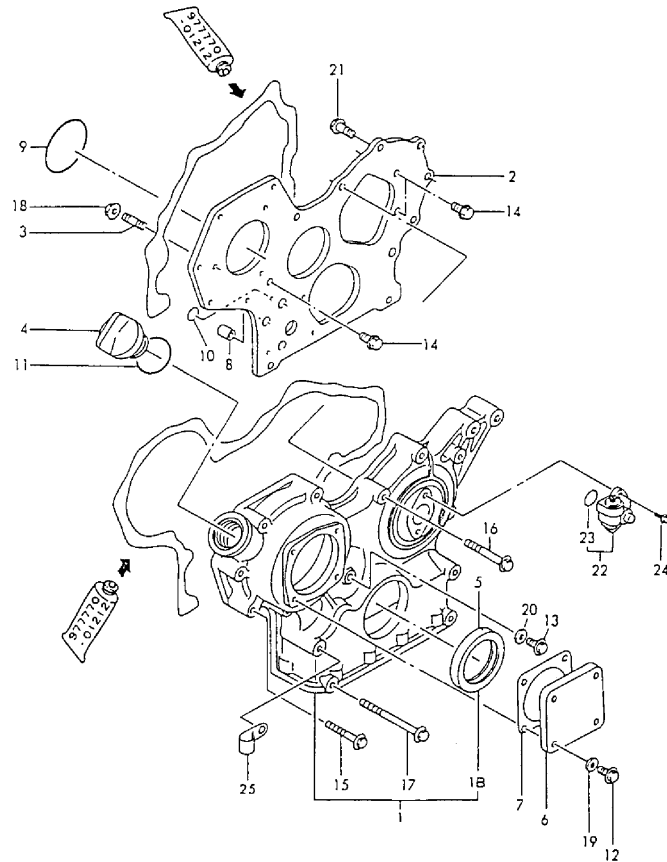
Fig.2. GEAR HOUSING

(A)=3TN84L-RDC  
(B)=3TN84L-RDCC  
(C)=

(D)=  
(E)=  
(F)=

Fig.2 ギヤケース  
GEAR HOUSING

012440-01110  
012440-01111  
012440-01112  
012440-01113  
012440-01114  
012440-01115  
012440-01116  
012440-01117  
012440-01118  
012440-01119  
012440-01120



No.	Lev.	Parts No.	Description	Q'ty						I	R
				(A)	(B)	(C)	(D)	(E)	(F)		
1	1	129400-01590 (A=EXXX) (B=EXXX)	CASE ASSY, GEAR	1	1						W
1B	2	129795-01800 (A=EXXX) (B=EXXX)	SEAL, OIL	1	1						W
2	1	129400-01520 (A=EXXX) (B=EXXX)	FLANGE, GEAR CASE	1	1						
3	1	121450-01560	STUD, M8X22	3	3						
4	1	124160-01751	COVER, FILLER	1	1						
5	1	129795-01800 (A=EXXX) (B=EXXX)	SEAL, OIL	1	1						Z
6	1	124240-01871	COVER	1	1						
7	1	124240-01882	GASKET	1	1						
7-1	1	124240-01883 (A=E26262) (B=*1990.03)	GASKET	1	1						R
7-2	1	124240-01883	GASKET	1	1						
8	1	129795-01950	PIPE, KNOCK L=18	2	2						
9	1	121850-51960	O-RING	1	1						
10	1	24311-000160	O-RING, 1AP16.0	2	2						
11	1	24311-000320	O-RING, 1AP32.0	1	1						
12	1	26106-080122	BOLT, M8X 12 PLATED	4	4						
13	1	26106-080162	BOLT, M8X 16 PLATED	1	1						
14	1	26106-080162	BOLT, M8X 16 PLATED	3	3						
15	1	26106-080452	BOLT, M8X 45 PLATED	6	6						
16	1	26106-080552	BOLT, M8X 55 PLATED	3	3						
17	1	26106-080852	BOLT, M8X 85 PLATED	4	4						
18	1	26366-080002	NUT, M8	3	3						
19	1	43400-500410	SEAL WASHER 8	4	4						
19-2	1	22190-080002	WASHER, SEAL 6		4						
20	1	43400-500410	SEAL WASHER 8	1	1						
20-2	1	22190-080002	WASHER, SEAL 6		1						
21	1	26106-080202	BOLT, M8X 20 PLATED	2	2						
22	1	129150-91400	GEAR	1	1						
23	2	24341-000240	O-RING, 1AS24.0	1	1						
24	1	26106-060162	BOLT, M6X 16 PLATED	2	2						
25	1	129150-03100 (A=EXXX) (B=EXXX)	RETAINER, PIPE	1	1						W

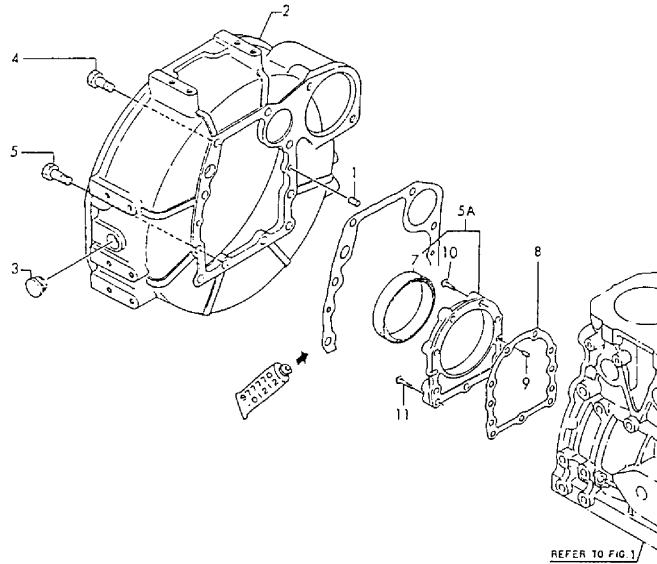
# Fig.3. FLYWHEEL HOUSING

(A)=3TN84L-RDC  
 (B)=3TN84L-RDCC  
 (C)=

(D)=  
 (E)=  
 (F)=

Fig. 3 フライホイールハウジング  
 FLYWHEEL HOUSING

029100-01610  
 029100-01610



No.	Lev.	Parts No.	Description	Q'ty						I	R
				(A)	(B)	(C)	(D)	(E)	(F)		
1	1	129100-01580	PIN, M8X16	2	2						
2	1	171301-01600	HOUSING, FLYWHEEL	1	1						
3	1	119620-01750	CAP	1	1						
4	1	26206-100252	BOLT, M10X 25 PLATED	6	6						
5	1	26206-100302	BOLT, M10X 30 PLATED	4	4						
5A	1	129100-01640	CASE ASSY, OIL SEAL	1	1						W
(A=E27003) (B=*1990.05)											
7	2	129795-01780	SEAL, OIL	1	1						
8	1	129150-01660	GASKET	1	1						Z
(A=E07093) (B=*1988.01)											
9	1	129100-01580	PIN, M8X16	2	2						
10	1	26106-080302	BOLT, M8X 30 PLATED	6	6						
11	1	26106-080352	BOLT, M8X 35 PLATED	3	3						

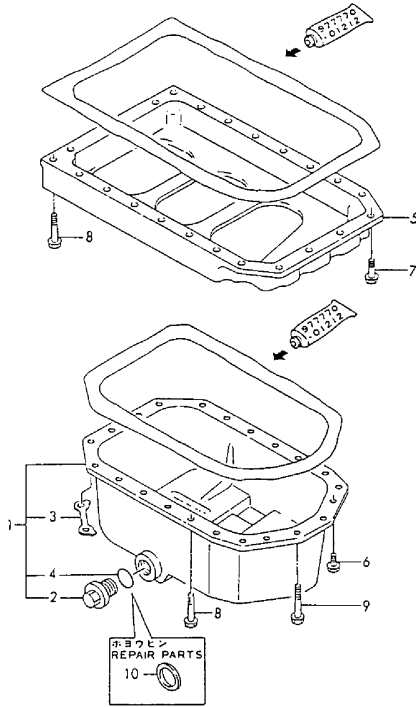
Fig.4. LUB. OIL SUMP

(A)=3TN84L-RDC  
(B)=3TN84L-RDCC  
(C)=

(D)=  
(E)=  
(F)=

Fig.4 オイルパン  
LUB. OIL SUMP

029100-01410



No.	Lev.	Parts No.	Description	Q'ty						I	R
				(A)	(B)	(C)	(D)	(E)	(F)		
1	1	771341-01540	SUMP ASSY, OIL	1	1						
1-1	1	129100-01770	SUMP ASSY, OIL	1	1						R
		(A=E27003) (B=*1990.05)									
2	2	171301-01640	PLUG, 22	1	1						
3	2	129100-01790	RETAINER	2	2						
4	2	24341-000240	O-RING, 1AS24.0	1	1						
5	1	129100-01730	SPACER, OIL SUMP	1	1						
6	1	26106-080162	BOLT, M8X 16 PLATED	4	4						
7	1	26106-080252	BOLT, M8X 25 PLATED	2	2						
8	1	26106-080452	BOLT, M8X 45 PLATED	16	16						
9	1	26106-080502	BOLT, M8X 50 PLATED	4	4						
10	1	43400-500550	SEAL WASHER 22	1	1						1

Remarks  
(1) REPAIR PART.

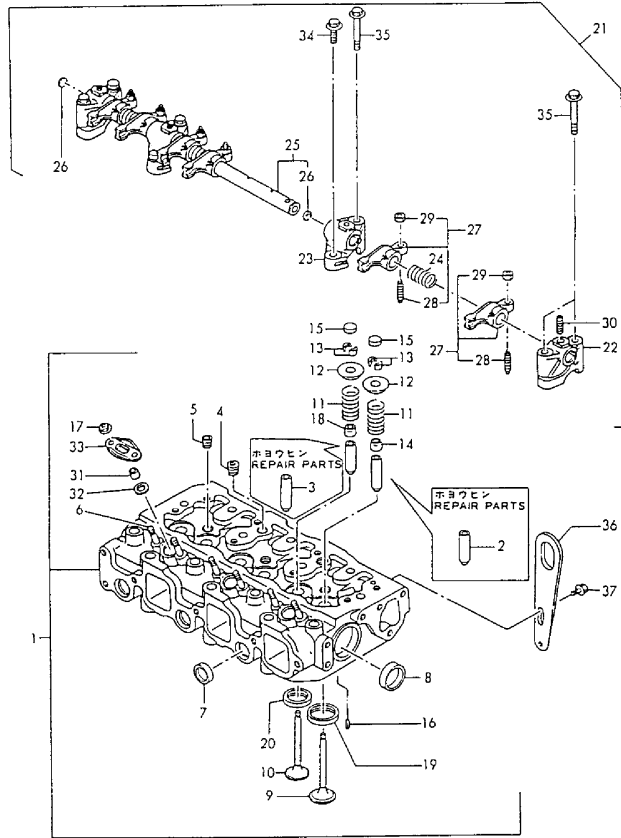
Fig.5. CYLINDER HEAD

(A)=3TN84L-RDC  
(B)=3TN84L-RDCC  
(C)=

(D)=  
(E)=  
(F)=

Fig.5 シリンダヘッド  
CYLINDER HEAD

021000-97500  
023102-11100

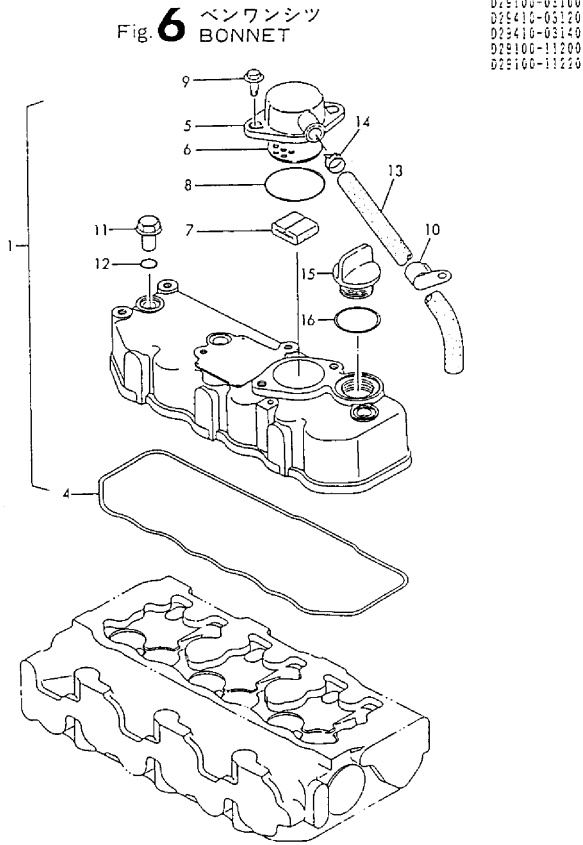


No.	Lev.	Parts No.	Description	Q'ty						I	R
				(A)	(B)	(C)	(D)	(E)	(F)		
1	1	771364-11700	HEAD ASSY, CYLINDER	1	1						
2	2	120130-11860	GUIDE, VALVE	3	3						1
3	2	129150-11810	GUIDE, VALVE	3	3						1
4	2	121850-11860	PLUG, PT1/4	2	2						
5	2	23871-030000	PLUG, R03	3	3						
6	2	26216-060202	STUD, M6X 20	6	6						
7	2	27241-220000	PLUG, 22	3	3						
8	2	27241-400000	PLUG, 40	2	2						
9	2	129100-11100	VALVE, INTAKE	3	3						
10	2	129100-11130	VALVE, EXHAUST	3	3						
11	2	129795-11120	SPRING, VALVE	6	6						
12	2	129795-11180	RETAINER, SPRING	6	6						
13	2	103338-11190	COTTER	6	6						
13-1	2	27310-080001	COTTER, 8	6	6						R
(A=EXXXXX) (B=EXXXXX)											
14	2	124460-11340	SEAL, VALVE STEM	3	3						
15	2	129150-11370	CAP, VALVE	6	6						
16	2	22351-060012	PIN, SPRING 6.0X12	2	2						
17	2	26366-060002	NUT, M6	6	6						
18	2	121400-11340	SEAL, VALVE STEM	3	3						
19	2	129470-11080	SEAT, INTAKE VALVE	3	3						
20	2	129470-11090	SEAT, EXHAUST VALVE	3	3						
21	1	129155-11241	SHAFT ASSY, ROCKER	1	1						
22	2	129155-11260	SUPPORT, ROCKER ARM	2	2						
23	2	129155-11270	SUPPORT, ROCKER ARM	2	2						
24	2	129150-11280	SPRING	3	3						
25	2	129150-11290	SHAFT, ROCKER ARM	1	1						
26	3	27241-100000	PLUG, 10	2	2						
27	2	729150-11651	ARM ASSY, ROCKER	6	6						
27-1	2	729402-11650	ARM ASSY, ROCKER	6	6						R
(A=E27003) (B=*1990.05)											
28	3	129150-11230	SCREW, VALVE ADJUST	6	6						
29	3	129150-11750	NUT, M8	6	6						
30	2	26226-080182	STUD, M8X 18	3	3						
31	1	119625-11870	PROTECTOR, NOZZLE	3	3						
32	1	119625-11880	SEAT, NOZZLE	3	3						
33	1	119625-11900	RETAINER, NOZZLE	3	3						
34	1	26106-080252	BOLT, M8X 25 PLATED	2	2						
35	1	26106-080502	BOLT, M8X 50 PLATED	6	6						
36	1	124736-07900	LIFTER	2	2						
37	1	26106-080142	BOLT, M8X 14 PLATED	4	4						

Remarks

(1) REPAIR PART.

Fig.6. BONNET



D22100-05100  
 D22410-05120  
 D22410-03140  
 D22100-11200  
 D22100-11220

(A)=3TN84L-RDC  
 (B)=3TN84L-RDCC  
 (C)=

(D)=  
 (E)=  
 (F)=

No.	Lev.	Parts No.	Description	Q'ty						I	R
				(A)	(B)	(C)	(D)	(E)	(F)		
1	1	729132-11520	BONNET ASSY, HEAD	1	1						
1-1	1	129100-11350	BONNET ASSY, HEAD	1	1						N
		(A=E27003) (B=*1990.05)									
4	2	129150-11310	GASKET, BONNET	1	1						
5	2	129150-03020	COVER, BREATHER	1	1						
6	2	129150-03080	PLATE, BAFFLE	1	1						
7	2	129150-03070	BAFFLE, BREATHER	1	1						
8	2	24341-000500	O-RING, 1AS50.0	1	1						
9	2	26106-080162	BOLT, M8X 16 PLATED	2	2						
10	1	129150-03100	RETAINER, PIPE	1	1						Z
		(A=EXXX) (B=EXXX)									
11	1	124160-11360	KNOB	3	3						
12	1	24311-000120	O-RING, 1AP12.0	3	3						
13	1	129410-03100	PIPE, BREATHER	1	1						W
		(A=E13865) (B=*1988.12)									
14	1	129410-03990	CLAMP 22	2	2						W
		(A=E13865) (B=*1988.12)									
15	1	124160-01751	COVER, FILLER	1	1						
16	1	24311-000320	O-RING, 1AP32.0	1	1						



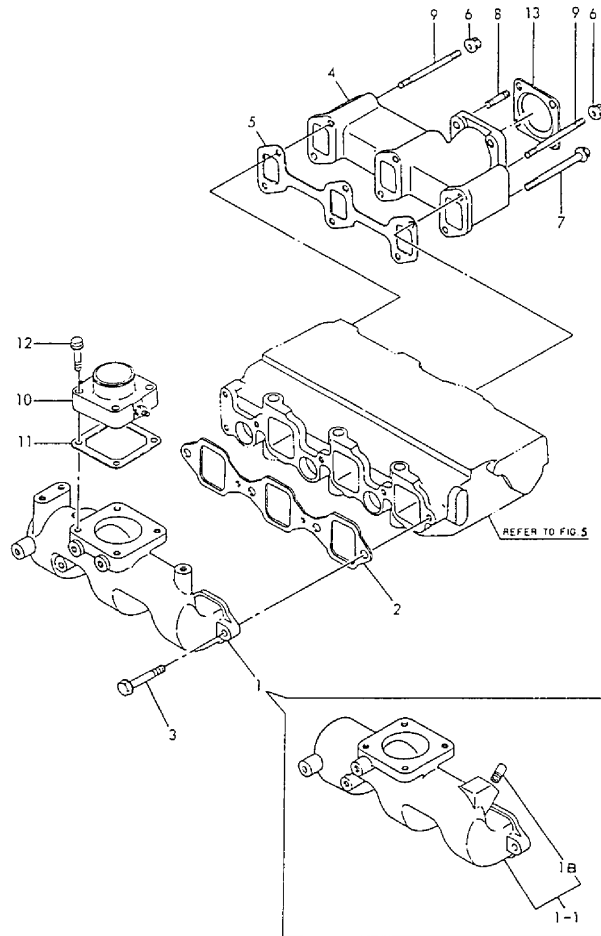
Fig.7. SUCTION & EXHAUST MANIFOLD

(A)=3TN84L-RDC  
(B)=3TN84L-RDCC  
(C)=

(D)=  
(E)=  
(F)=

Fig.7 キュウハイキマニホールド  
SUCTION & EXHAUST MANIFOLD

D2E111-122C0  
D2E100-131C0  
D2E100-77501  
D2E115-93100



No.	Lev.	Parts No.	Description	Q'ty						I	R
				(A)	(B)	(C)	(D)	(E)	(F)		
1	1	129150-12100	MANIFOLD, AIR INTAKE	1	1						
1-1	1	129115-12100	MANIFOLD, AIR INTAKE	1	1						S
		(A=E13865) (B=*1988.12)									
1B	2	104407-44480	JOINT	1	1						W
		(A=E13865) (B=*1988.12)									
2	1	129150-12110	GASKET, MANIFOLD	1	1						
2-1	1	129150-12111	GASKET, MANIFOLD	1	1						N
		(A=E27003) (B=*1990.05)									
3	1	26106-080252	BOLT, M8X 25 PLATED	4	4						
4	1	129100-13110	MANIFOLD, EXHAUST	1	1						
5	1	129150-13110	GASKET	1	1						
6	1	194990-22050	NUT, M8	2	2						
7	1	26106-080802	BOLT, M8X 80 PLATED	4	4						
8	1	26216-080222	STUD, M8X 22	4	4						
9	1	26216-080802	STUD, M8X 80	2	2						
10	1	129120-77501	HEATER	1	1						
11	1	129150-77510	GASKET	1	1						
11-1	1	129150-77511	GASKET	1	1						N
		(A=E27003) (B=*1990.05)									
12	1	26106-080352	BOLT, M8X 35 PLATED	4	4						
13	1	124701-11910	GASKET, SILENCER	1	1						
13-1	1	124701-11911	GASKET, SILENCER	1	1						N
		(A=E27692) (B=*1990.06)									

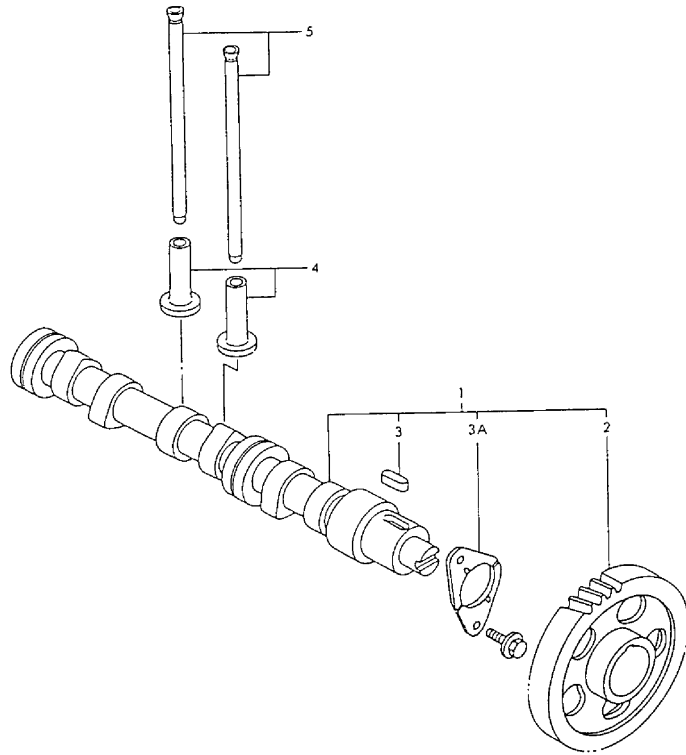
Fig.8. CAMSHAFT

(A)=3TN84L-RDC  
(B)=3TN84L-RDCC  
(C)=

(D)=  
(E)=  
(F)=

Fig.8 カムシャフト  
CAMSHAFT

029125-14100  
029150-14100



No.	Lev.	Parts No.	Description	Q'ty						I	R
				(A)	(B)	(C)	(D)	(E)	(F)		
1	1	129129-14580 (A=EXXX)	CAMSHAFT ASSY (B=EXXX)	1	1						W
2	2	129150-14101	GEAR, CAMSHAFT	1	1						
3	2	22512-070140	KEY, 7X 14	1	1						
3A	2	129150-02450 (A=EXXX)	BEARING, THRUST (B=EXXX)	1	1						W
4	1	129150-14200	TAPPET	6	6						
5	1	129150-14400	ROD, PUSH L=178	6	6						

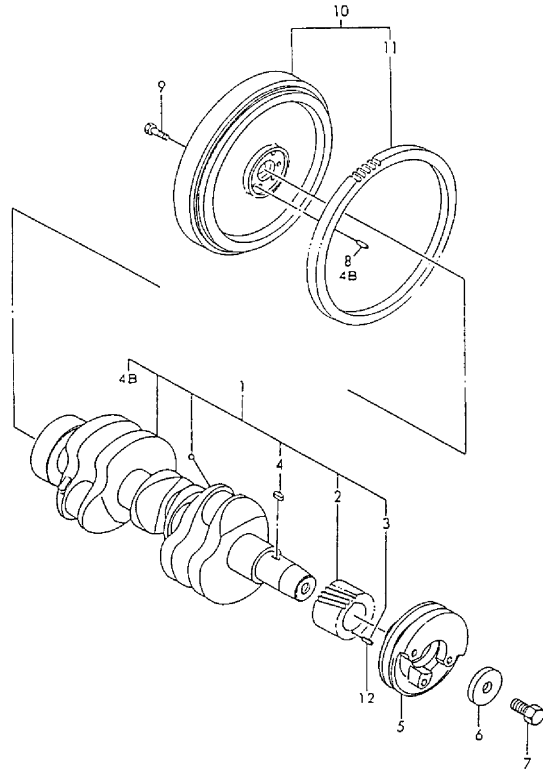
Fig.9. CRANKSHAFT & FLYWHEEL

(A)=3TN84L-RDC  
(B)=3TN84L-RDCC  
(C)=

(D)=  
(E)=  
(F)=

Fig. 9 クランクシャフト & フライホイール  
CRANKSHAFT & FLYWHEEL

029160-21100  
029160-21206  
029126-21526



No.	Lev.	Parts No.	Description	Q'ty						I	R
				(A)	(B)	(C)	(D)	(E)	(F)		
1	1	729150-21700	CRANKSHAFT ASSY	1	1						
1-1	1	729102-21700	CRANKSHAFT ASSY	1	1						S
		(A=E11206) (B=*1988.09)									
3	2	22351-040010	PIN, SPRING 4.0X10	1	1						Z
		(A=EXXX) (B=EXXX)									
4B	2	129100-01580	PIN, M8X16	1	1						W
		(A=E27003) (B=*1990.05)									
5	1	171340-21650	V-PULLEY	1	1						
6	1	129795-21661	WASHER	1	1						
7	1	121850-21680	BOLT	1	1						
8	1	129100-01580	PIN, M8X16	1	1						Z
		(A=E27003) (B=*1990.05)									
9	1	121111-21501	BOLT, FLYWHEEL	6	6						
10	1	171340-21580	FLYWHEEL ASSY	1	1						
10-1	1	129128-21590	FLYWHEEL ASSY	1	1						S
		(A=E11206) (B=*1988.09)									
11	2	119865-21600	GEAR, RING	1	1						
12	1	22351-040010	PIN, SPRING 4.0X10	1	1						W
		(A=EXXX) (B=EXXX)									

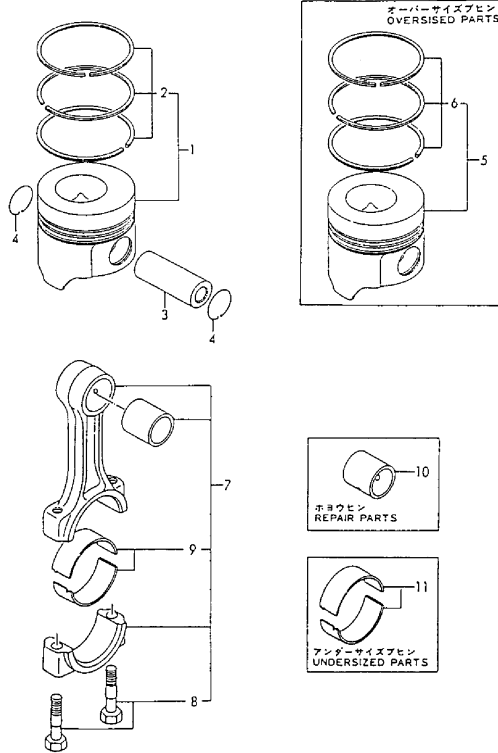
Fig.10. PISTON & CONNECTING ROD

(A)=3TN84L-RDC  
(B)=3TN84L-RDCC  
(C)=

(D)=  
(E)=  
(F)=

Fig. 10 ピストン&コネクティングロッド  
PISTON & CONNECTING ROD

029105-22100  
029105-22500  
029105-22910



No.	Lev.	Parts No.	Description	Q'ty						I	R
				(A)	(B)	(C)	(D)	(E)	(F)		
1	1	129105-22090	PISTON ASSY	3	3						
2	2	729105-22500	RING SET, PISTON	3	3						
3	1	129150-22300	PIN, PISTON D26 L66	3	3						
4	1	121100-22400	CIRCLIP	6	6						
5	1	729105-22910	PISTON ASSY, 0.25 OS	3	3						1
6	2	729105-22950	RING SET, 0.25 OS	3	3						1
6-1	2	729105-22951	RING SET, 0.25 OS	3	3						N 1
		(A=E04264) (B=*1987.09)									
7	1	729150-23700	ROD ASSY, CONNECTING	3	3						
7-1	1	729402-23100	ROD ASSY, CONNECTING	3	3						N
		(A=EXXX) (B=EXXX)									
8	2	121550-23200	BOLT, CONNECTING ROD	6	6						
		(A=E27003) (B=*1990.05)									
9	2	129150-23600	BEARING, CRANK PIN	3	3						
10	1	129100-23910	BEARING, PISTON PIN	3	3						2
11	1	129150-23610	BEARING, 0.25 US	3	3						3

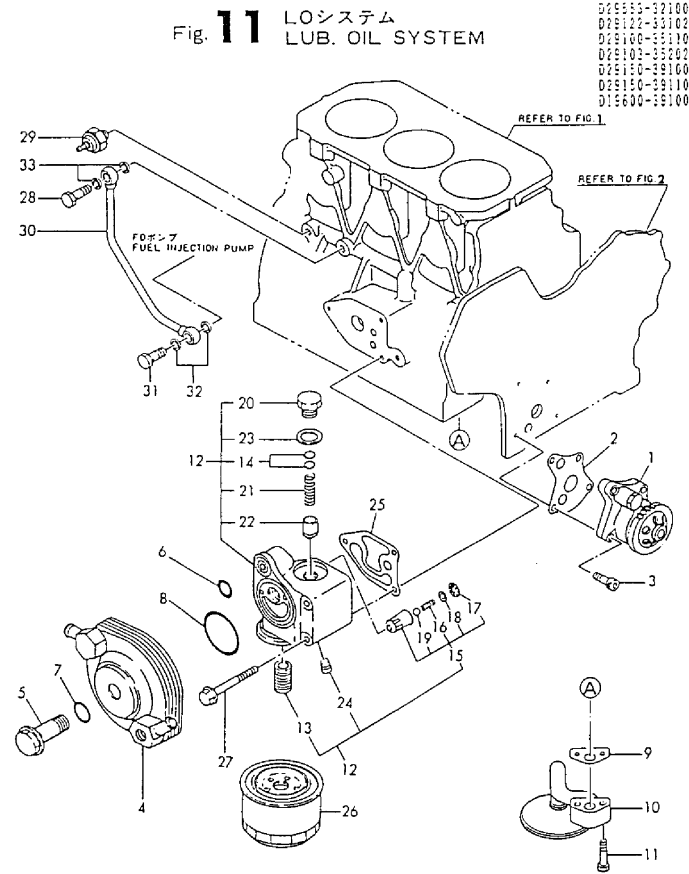
Remarks

- (1) OVER-SIZE(O.S=0.25)PART.
- (2) REPAIR PART.
- (3) UNDER-SIZE(U.S=0.25)PART.

Fig.11. LUB. OIL SYSTEM

(A)=3TN84L-RDC  
(B)=3TN84L-RDCC  
(C)=

(D)=  
(E)=  
(F)=



No.	Lev.	Parts No.	Description	Q'ty						I	R
				(A)	(B)	(C)	(D)	(E)	(F)		
1	1	129553-32000	PUMP ASSY, OIL	1	1						
2	1	129150-32020	GASKET, PUMP	1	1						
3	1	26450-060252	BOLT, M6X 25	4	4						
4	1	129103-33031	COOLER, OIL	1	1						
5	1	129103-33132	BOLT	1	1						
6	1	24311-000200	O-RING, 1AP20.0	1	1						
7	1	24311-000210	O-RING, 1AP21.0	1	1						
8	1	24321-000550	O-RING, 1AG55.0	1	1						
9	1	129150-35040	GASKET	1	1						
9-1	1	129150-35041	GASKET	1	1						N
		(A=E27003) (B=*1990.05)									
10	1	129100-35300	PIPE ASSY, OIL INLET	1	1						
10-1	1	129100-35301	PIPE ASSY, OIL INLET	1	1						N
		(A=E16587) (B=*1989.04)									
11	1	26116-080352	BOLT, M8X 35 PLATED	2	2						
11-1	1	26106-080352	BOLT, M8X 35 PLATED	2	2						N
		(A=E23660) (B=*1990.01)									
12	1	129103-35101	BRACKET ASSY, FILTER	1	1						
13	2	129100-35140	STUD	1	1						
14	2	121850-35200	SHIM SET	1	1						
15	2	129553-35500	VALVE ASSY, BYPASS	1	1						Z
		(A=E14114) (B=*1989.01)									
16	3	129553-35520	SPRING	1	1						Z
		(A=E14114) (B=*1989.01)									
17	3	129553-35530	RETAINER, SPRING	1	1						Z
		(A=E14114) (B=*1989.01)									
18	3	129553-35540	SHIM	1	1						Z
		(A=E14114) (B=*1989.01)									
19	3	24190-130001	BALL, STEEL 13/32	1	1						Z
		(A=E14114) (B=*1989.01)									
20	2	124223-35510	RETAINER, SPRING	1	1						
21	2	121850-35520	SPRING	1	1						
22	2	121850-35531	VALVE, CONTROL	1	1						
23	2	23414-180000	GASKET, 18X1.0	1	1						
24	2	23871-020000	PLUG, R02	1	1						
25	1	129103-35121	GASKET	1	1						
25-1	1	129103-35122	GASKET	1	1						N
		(A=E27692) (B=*1990.06)									
26	1	129150-35150	FILTER 90X80L	1	1						
27	1	26106-080752	BOLT, M8X 75 PLATED	3	3						
28	1	124160-39140	BOLT, PIPE JOINT M10	1	1						
29	1	124160-39450	SWITCH, 0.5KG	1	1						
30	1	129150-39450	PIPE ASSY, OIL	1	1						
31	1	124550-59820	BOLT, PIPE JOINT M8	1	1						
32	1	23414-080000	GASKET, 8X1.0	2	2						
33	1	23414-100000	GASKET, 10X1.0	2	2						

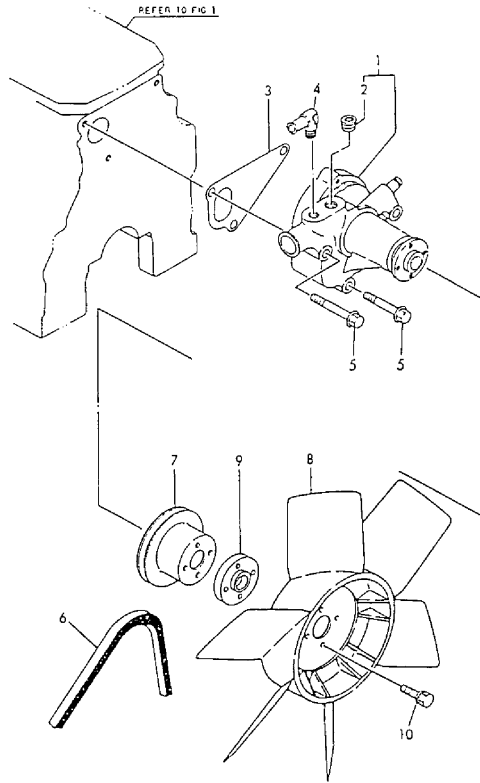
# Fig.12. COOLING WATER PUMP & FAN

(A)=3TN84L-RDC  
(B)=3TN84L-RDCC  
(C)=

(D)=  
(E)=  
(F)=

Fig. 12 CWポンプ&ファン  
COOLING WATER PUMP & FAN

D29103-4211G  
D29100-42300  
D29116-44400



No.	Lev.	Parts No.	Description	Q'ty						I	R
				(A)	(B)	(C)	(D)	(E)	(F)		
1	1	129100-42001	PUMP ASSY, WATER	1	1						
1-1	1	129100-42002	PUMP ASSY, WATER	1	1						N
				(A=E27003)		(B=*1990.05)					
2	2	23871-030000	PLUG, R03	1	1						
3	1	129100-42020	GASKET, WATER PUMP	1	1						
4	1	129103-49301	ELBOW, PT1/4	1	1						
5	1	26106-080602	BOLT, M8X 60 PLATED	3	3						
6	1	124732-42290	V-BELT, AX37	1	1						
7	1	129403-42380	V-PULLEY, D=110	1	1						
8	1	171027-44740	FAN, COOLING D=310	1	1						
9	1	124574-44761	SPACER, FAN	1	1						
10	1	26014-060252	BOLT, M6X 25	4	4						

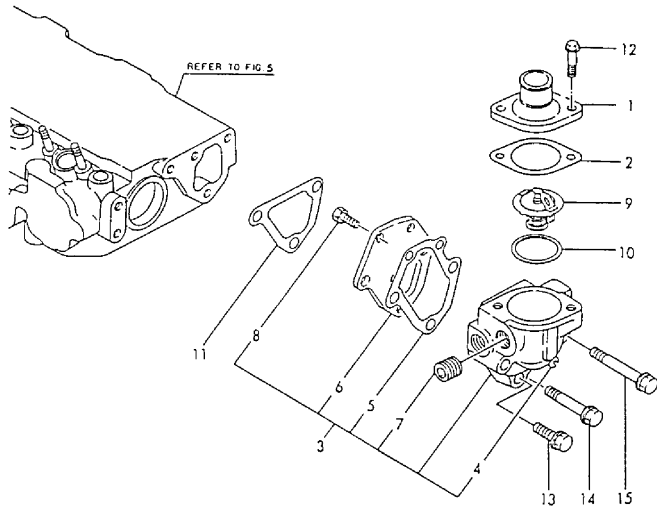
Fig.13. THERMOSTAT

(A)=3TN84L-RDC  
(B)=3TN84L-RDCC  
(C)=

(D)=  
(E)=  
(F)=

Fig. 13 サーモスタット  
THERMOSTAT

029100-49210



No.	Lev.	Parts No.	Description	Q'ty						I	R
				(A)	(B)	(C)	(D)	(E)	(F)		
1	1	129350-49530	COVER, THERMOSTAT	1	1						
2	1	129795-49550	GASKET	1	1						
2-1	1	129795-49551	GASKET	1	1						N
		(A=E27003) (B=*1990.05)									
3	1	129100-49800	CASE ASSY, THERMOSTAT	1	1						
4	2	124770-11770	JOINT, PIPE PT1/8	1	1						
5	2	129100-49820	GASKET	1	1						
6	2	129100-49830	COVER, THERMOSTAT	1	1						
7	2	23871-030000	PLUG, R03	1	1						
8	2	26116-060162	BOLT, M6X 16 PLATED	2	2						
9	1	129155-49800	THERMOSTAT, 71	1	1						
10	1	129150-49810	GASKET, THERMOSTAT	1	1						
10-1	1	129150-49811	GASKET, THERMOSTAT	1	1						N
		(A=E27003) (B=*1990.05)									
11	1	129100-49840	GASKET	1	1						
12	1	26106-080202	BOLT, M8X 20 PLATED	2	2						
13	1	26106-080252	BOLT, M8X 25 PLATED	1	1						
14	1	26106-080502	BOLT, M8X 50 PLATED	1	1						
15	1	26106-080602	BOLT, M8X 60 PLATED	1	1						

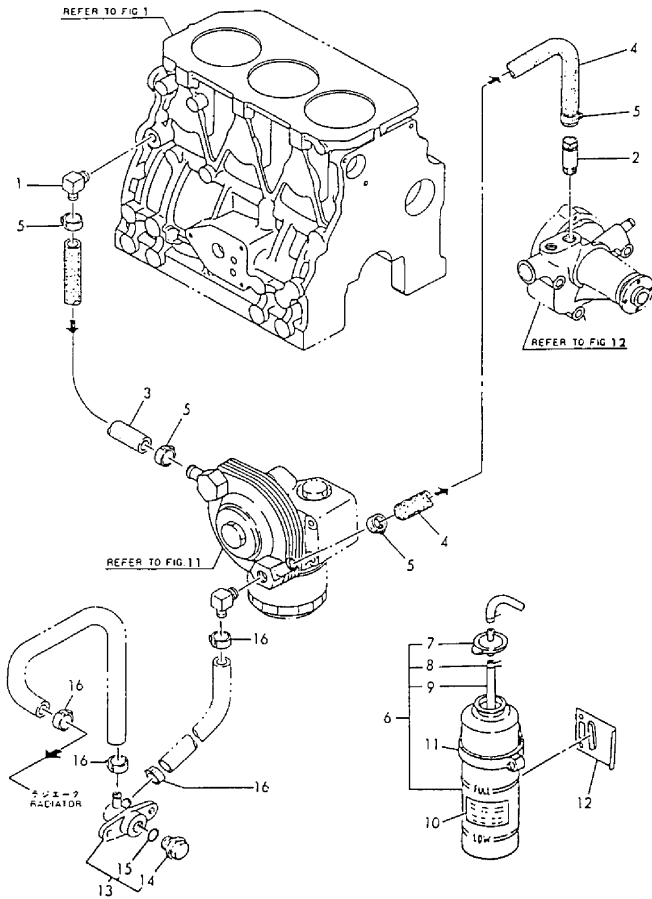
Fig.14. COOLING WATER PIPES

(A)=3TN84L-RDC  
(B)=3TN84L-RDCC  
(C)=

(D)=  
(E)=  
(F)=

Fig. 14 CWパイプ  
COOLING WATER LINE

D26116-45500  
D26258-45400  
D26116-51100



No.	Lev.	Parts No.	Description	Q'ty						I	R
				(A)	(B)	(C)	(D)	(E)	(F)		
1	1	121750-49110 (A=E07093)	JOINT	1	1						Z
2	1	129122-44480	JOINT	1	1						
3	1	129403-49031	PIPE, WATER	1	1						
4	1	129403-49050	PIPE, WATER	1	1						
4-1	1	129258-49040 (A=E27003)	PIPE, WATER	1	1						S
5	1	23000-022000	CLAMP, 22	4	4						
6	1	124450-44510	TANK ASSY, SUB	1	1						
6A	2	124450-44520	BODY, TANK	1	1						
7	2	124450-44530	CAP	1	1						
8	2	124450-44560	RETAINER	1	1						
9	2	23061-070230	PIPE, 7X 230	1	1						
10	1	121470-44540	LABEL, SUB-TANK	1	1						
11	1	124450-44550	BAND	1	1						
12	1	121256-44600	BRACKET, SUB TANK	1	1						
13	1	121450-49100	BODY, 3-WAY COCK	1	1						
13-1	1	119620-49290	COCK ASSY, 1/4	1	1						S
13-2	1	129116-49290 (A=E13865)	COCK ASSY, 1/4	1	1						S
14	2	121250-49121 (A=E07093)	PLUG, DRAIN	1	1						Z
15	2	24311-000160	O-RING, 1AP16.0	1	1						Z
16	2	23010-038000	CLAMP, 38	4	4						
16-1	1	124766-59050 (A=E07093)	CLIP, HOSE 12	2	2						S



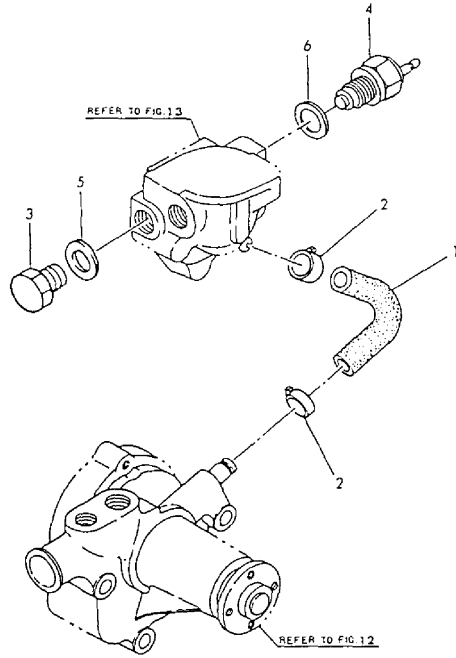
# Fig.15. COOLING WATER PIPE(BY-PASS)

(A)=3TN84L-RDC  
 (B)=3TN84L-RDCC  
 (C)=

(D)=  
 (E)=  
 (F)=

Fig. 15 CWバイブ(バイパス)  
 COOLING WATER PIPE (BY-PASS)

02E109-44900  
 02E120-44910



No.	Lev.	Parts No.	Description	Q'ty						I	R
				(A)	(B)	(C)	(D)	(E)	(F)		
1	1	129100-49050	PIPE, WATER	1	1						
2	1	23000-016000	CLAMP, 16	2	2						
3	1	121450-42450	PLUG, M16	1	1						
4	1	121250-44901	SWITCH, 110	1	1						
5	1	124465-44950	GASKET, 16	1	1						
6	1	124465-44950	GASKET, 16	1	1						

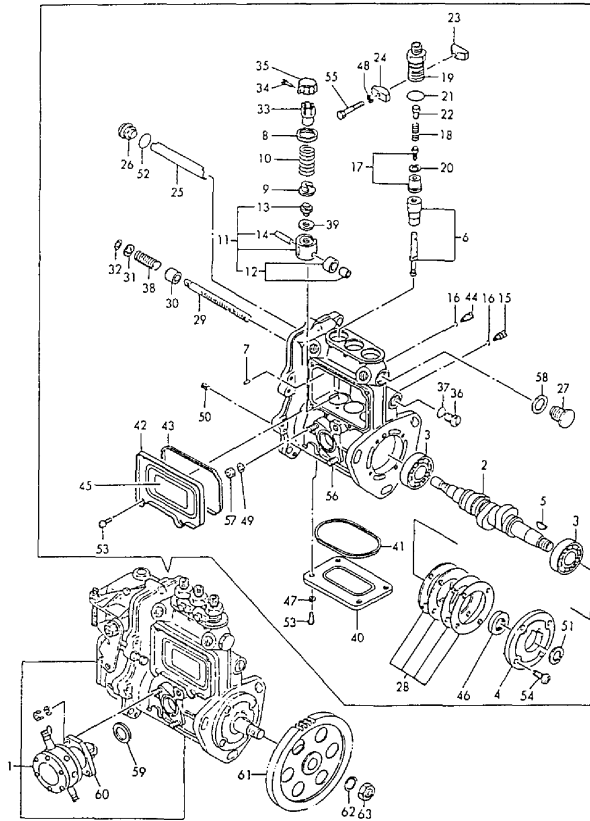
Fig.16. FUEL INJECTION PUMP

(A)=3TN84L-RDC  
(B)=3TN84L-RDCC  
(C)=

(D)=  
(E)=  
(F)=

Fig. 16 FOファンシャポンプ  
FUEL INJECTION PUMP

D29106-52200  
D29106-51200  
D29111E-51420  
D29106-52300



No.	Lev.	Parts No.	Description	Q'ty						I	R
				(A)	(B)	(C)	(D)	(E)	(F)		
1	1	729116-51410	PUMP ASSY, INJECTION	1	1						1
2	2	119810-51040	CAMSHAFT	1	1						
3	2	122710-51050	BEARING, HR30203J	2	2						
4	2	129470-51060	RETAINER, BEARING	1	1						
5	2	122710-51090	KEY	1	1						
6	2	129400-51200	PLUNGER ASSY	3	3						
7	2	129155-51140	PIN	3	3						
8	2	174307-51170	RETAINER, SPRING A	3	3						
9	2	129155-51180	RETAINER, SPRING	3	3						
10	2	124950-51190	SPRING, PLUNGER	3	3						
11	2	129155-51200	TAPPET ASSY	3	3						
12	3	711100-51540	ROLLER ASSY	3	3						
13	3	129155-51250	BOLT, ADJUSTING	3	3						
14	3	174100-54120	PIN	3	3						
15	2	129155-51270	STOPPER, TAPPET	3	3						
16	2	129155-51280	O-RING, S6	3	3						
17	2	128170-51300	VALVE ASSY, DELIVERY	3	3						
18	2	129155-51320	SPRING, DELIVERY	3	3						
19	2	129155-51340	RETAINER	3	3						
20	2	124550-51350	GASKET, DELIVERY	3	3						
21	2	124550-51370	O-RING	3	3						
22	2	129155-51370	STOPPER, VALVE	3	3						
23	2	129155-51380	STOPPER	2	2						
24	2	129155-51390	STOPPER	2	2						
25	2	129155-51400	DEFLECTOR	1	1						
26	2	129155-51410	BOLT	1	1						
27	2	129155-51420	PLUG, M16	1	1						
28	2	129155-51450	SHIM SET, ADJUSTING	1	1						
29	2	129155-51500	RACK, CONTROL	1	1						
30	2	129155-51521	BUSH, RACK	1	1						
31	2	129155-51530	SPACER	1	1						
32	2	129155-51540	CIRCLIP	1	1						
33	2	129155-51550	PINION, CONTROL	3	3						
34	2	122117-51560	SCREW	3	3						
35	2	174307-51560	PINION	3	3						
36	2	129155-51570	PLUG, M12	1	1						
37	2	129155-51580	O-RING	1	1						
38	2	129155-51591	SPRING, RACK	1	1						
39	2	129155-51600	SHIM SET, ADJUSTING	3	3						
40	2	129155-51700	COVER	1	1						
41	2	129155-51710	GASKET	1	1						
42	2	129155-51750	COVER	1	1						
43	2	129155-51760	GASKET	1	1						
44	2	129155-51790	STOOPER, RACK	1	1						
45	2	129156-51910	LABEL, CAUTION	1	1						
46	2	129470-51080	SEAL, AF0741F0	1	1						
47	2	22217-050000	WASHER, SPRING 5	4	4						Z
		(A=EXXX) (B=EXXX)									
48	2	22217-050000	WASHER, SPRING 5	4	4						Z
		(A=EXXX) (B=EXXX)									
49	2	22217-060000	WASHER, SPRING 6	2	2						

Remarks

(1) GOVERNOR ASSY(FIG.NO.19)IS  
INCORPORATED IN THIS FUEL  
INJECTION PUMP ASSY(REF.NO.1).

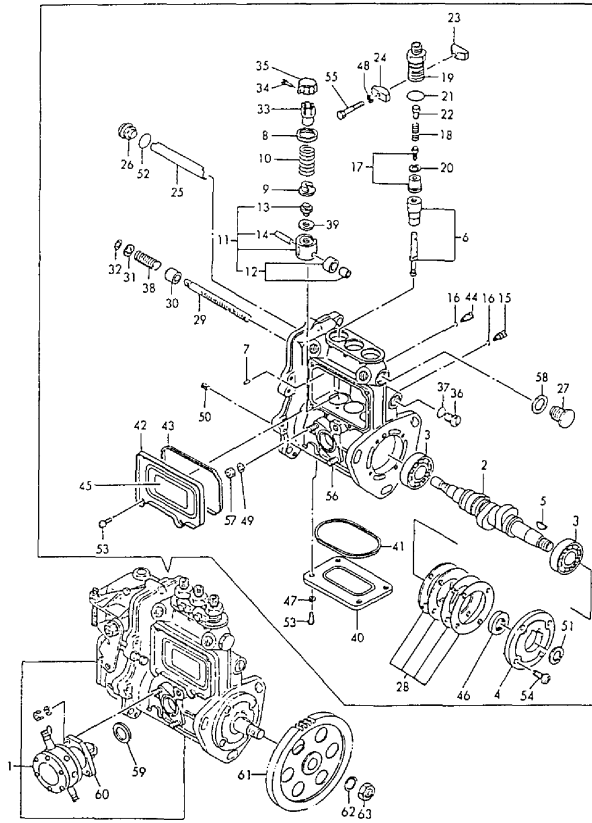
Fig.16. FUEL INJECTION PUMP

(A)=3TN84L-RDC  
(B)=3TN84L-RDCC  
(C)=

(D)=  
(E)=  
(F)=

Fig. 16 FOファンシャポンプ  
FUEL INJECTION PUMP

029106-23200  
029106-31260  
72911E-31410  
029106-52300



No.	Lev.	Parts No.	Description	Q'ty						I	R
				(A)	(B)	(C)	(D)	(E)	(F)		
50	2	22351-050010	PIN, SPRING 5.0X10	2	2						
51	2	22287-120000	WASHER, 12	1	1						Z
		(A=E07093) (B=E07093)									
52	2	24341-000160	O-RING, 1AS16.0	1	1						
53	2	26022-050102	SCREW, M5X10	8	8						
54	2	26022-060162	SCREW, M6X16	4	4						
55	2	26116-050302	BOLT, M5X 30 PLATED	2	2						
56	2	26216-060142	STUD, M6X 14	2	2						
56-1	2	129155-51020	STUD	2	2						R
		(A=E07093) (B=*1987.12)									
57	2	26716-060002	NUT, M6	2	2						
58	2	43400-500490	SEAL WASHER 16	1	1						
59	2	129155-52050	GASKET	1	1						
60	2	129100-52100	PUMP ASSY, FUEL FEED	1	1						
61	1	129100-25900	GEAR, PUMP	1	1						
62	1	22217-120000	WASHER, SPRING 12	1	1						
63	1	26716-120002	NUT, M12	1	1						

Remarks

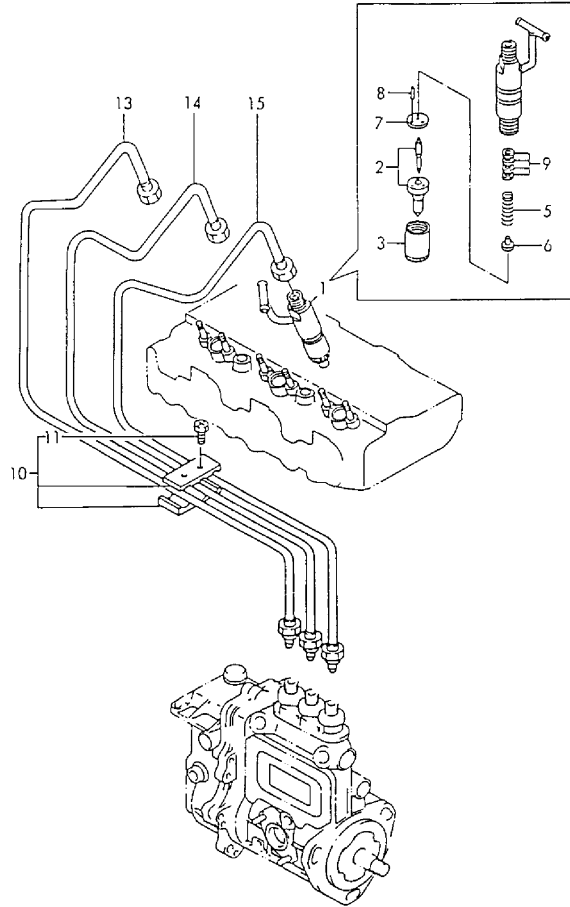
(1) GOVERNOR ASSY(FIG.NO.19)IS  
INCORPORATED IN THIS FUEL  
INJECTION PUMP ASSY(REF.NO.1).

# Fig.17. FUEL INJECTION DEVICE

(A)=3TN84L-RDC  
 (B)=3TN84L-RDCC  
 (C)=

(D)=  
 (E)=  
 (F)=

Fig. 17 FOファンクションウチ  
 FUEL INJECTION DEVICE 029100-53100  
 029100-53100



No.	Lev.	Parts No.	Description	Q'ty						I	R
				(A)	(B)	(C)	(D)	(E)	(F)		
1	1	729100-53100	VALVE ASSY,INJECTION	3	3						
2	2	129100-53000	VALVE ASSY,INJECTION	3	3						
3	2	114250-53080	NUT, NOZZLE D16.95	3	3						
5	2	114250-53120	SPRING, NOZZLE	3	3						
6	2	114250-53130	SEAT, SPRING	3	3						
7	2	114250-53140	PLATE	3	3						
8	2	114250-53210	PIN	6	6						
9	2	114250-53400	SHIM SET	3	3						
9F-1	3	114250-53460	SHIM, T=0.15	1	1						
10	1	129150-59120	RETAINER, PIPE	1	1						
11	2	129150-59130	BOLT, M4X12	2	2						
13	1	129100-59810	PIPE ASSY, INJECTION	1	1						
14	1	129100-59820	PIPE ASSY, INJECTION	1	1						
15	1	129100-59830	PIPE ASSY, INJECTION	1	1						

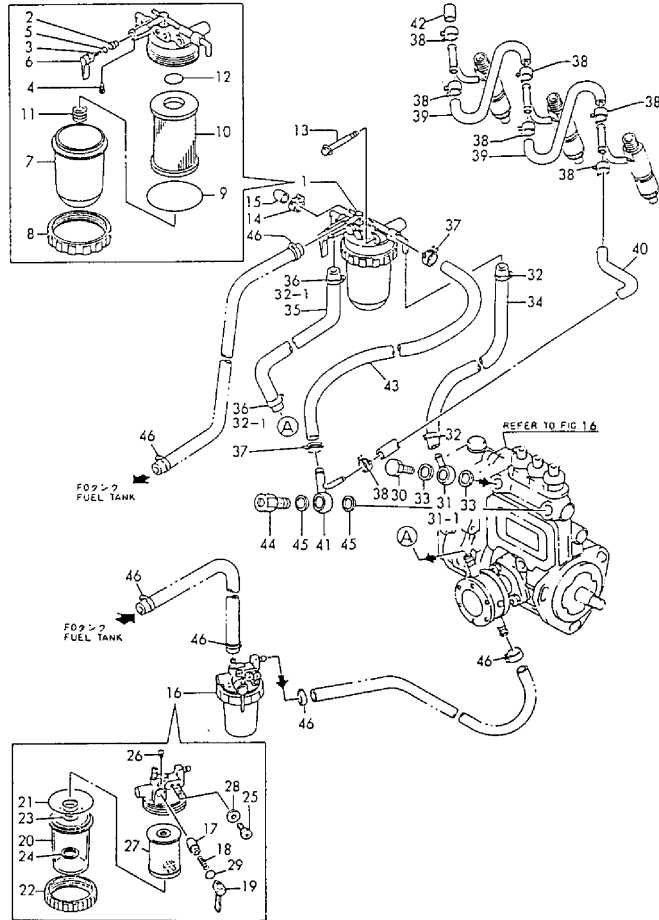
Fig.18. FUEL OIL SYSTEM

(A)=3TN84L-RDC  
(B)=3TN84L-RDCC  
(C)=

(D)=  
(E)=  
(F)=

Fig. 18 FOシステム  
FUEL SYSTEM

029100-55112  
029109-55211,  
029106-55502  
029116-55100



No.	Lev.	Parts No.	Description	Q'ty						I	R
				(A)	(B)	(C)	(D)	(E)	(F)		
1	1	129100-55621	FILTER ASSY, FUEL	1	1						
2	2	104200-55321	VALVE, TAPER	1	1						
3	2	104200-55330	SPRING, VALVE	1	1						
4	2	104200-55750	SCREW, M4	1	1						
5	2	24311-240100	O-RING, 1AP10A	1	1						
6	2	129100-55670	LEVER	1	1						
7	2	129100-55680	CUP, STRAINER	1	1						
8	2	129100-55690	RING, RETAINING	1	1						
9	2	24321-000650	O-RING, 1AG65.0	1	1						
10	2	129100-55650	ELEMENT	1	1						
11	2	129100-55700	SPRING	1	1						
12	2	24311-000160	O-RING, 1AP16.0	1	1						
13	1	26106-080652	BOLT, M8X 65 PLATED	1	1						
13-1	1	26014-080702	BOLT, M8X 70	1	1						R
		(A=E08519)	(B=*1988.06)								
14	1	124066-59100	CLIP, HOSE 8	1	1						
15	1	129150-59580	CAP	1	1						
16	1	121257-55700	SEPARATOR, WATER	1	1						
17	2	104200-55321	VALVE, TAPER	1	1						
18	2	104200-55330	SPRING, VALVE	1	1						
19	2	104200-55341	HANDLE	1	1						
20	2	121254-55510	COVER	1	1						
21	2	102103-55520	O-RING	1	1						
22	2	110250-55610	RING, RETAINING	1	1						
23	2	121257-55720	SPRING	1	1						
24	2	121257-55731	FLOAT	1	1						
25	2	101720-55750	PLUG, 6	2	2						
26	2	104200-55750	SCREW, M4	1	1						
27	2	171081-55910	SCREEN	1	1						
28	2	23418-060000	GASKET, 6X1.0	2	2						
29	2	24311-240100	O-RING, 1AP10A	1	1						
30	1	103854-39140	BOLT, PIPE JOINT	1	1						
31	1	129150-59020	JOINT, PIPE	1	1						
31-1	1	101304-59020	JOINT, PIPE 12	1	1						N
		(A=E01148)	(B=*1986.)								
32	1	124766-59050	CLIP, HOSE 12	2	2						
32-1	1	124766-59050	CLIP, HOSE 12	4	4						K
		(A=*1991.02)	(B=*1991.02)								
33	1	104200-59170	GASKET, 12	2	2						
34	1	129555-59510	PIPE, D13/7.5X180	1	1						
35	1	129255-59580	PIPE, FUEL	1	1						
35-1	1	105025-59530	PIPE, FUEL D13X400	1	1						R
		(A=E34615)	(B=*1990.12)								
36	1	23000-013000	CLAMP, 13	2	2						Z
		(A=*1991.02)	(B=*1991.02)								
37	1	124766-59050	CLIP, HOSE 12	2	2						
37-1	1	124766-59050	CLIP, HOSE 12	2	2						
38	1	124066-59100	CLIP, HOSE 8	7	7						
39	1	121250-59550	PIPE, FUEL D8X120	2	2						
40	1	119840-59560	PIPE, FUEL RETURN	1	1						
41	1	119840-59570	JOINT	1	1						

N:Old  $\begin{matrix} \text{Yes} \\ \text{No} \end{matrix}$  New, Q:Old  $\begin{matrix} \text{No} \\ \text{Yes} \end{matrix}$  New, R:Old  $\begin{matrix} \text{Yes} \\ \text{No} \end{matrix}$  New, S:Old  $\begin{matrix} \text{No} \\ \text{Yes} \end{matrix}$  New, W:Add, Z:Discontinued, F:Interchangeable by set, K:Q'ty Change  
 ++ CONTINUE ++  
 Copyright (C) YANMAR CO., LTD. All Rights Reserved.

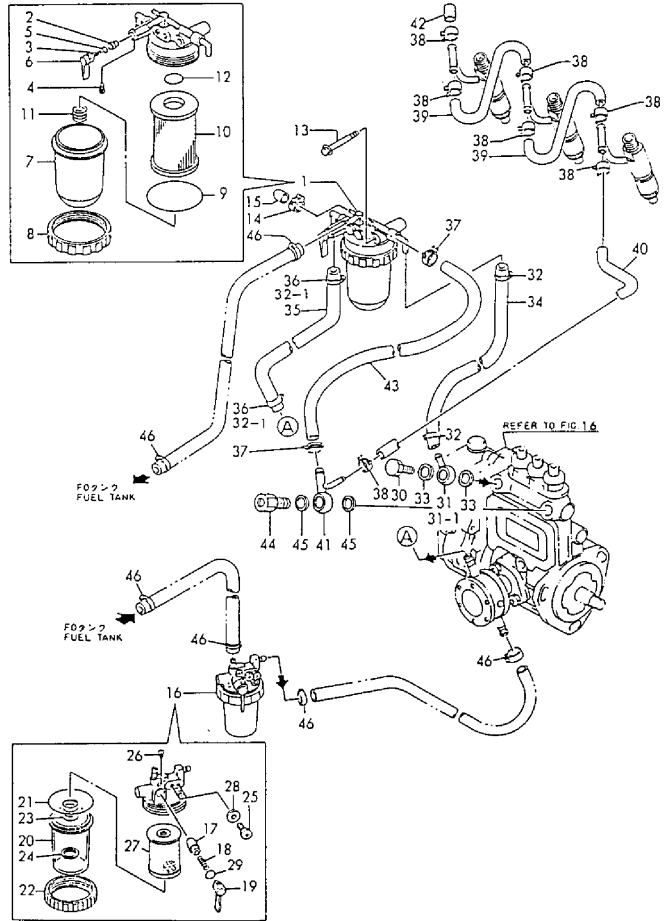
Fig.18. FUEL OIL SYSTEM

(A)=3TN84L-RDC  
(B)=3TN84L-RDCC  
(C)=

(D)=  
(E)=  
(F)=

Fig. 18 FOシステム  
FUEL SYSTEM

029100-55112  
029109-55211  
029106-55502  
029116-55100

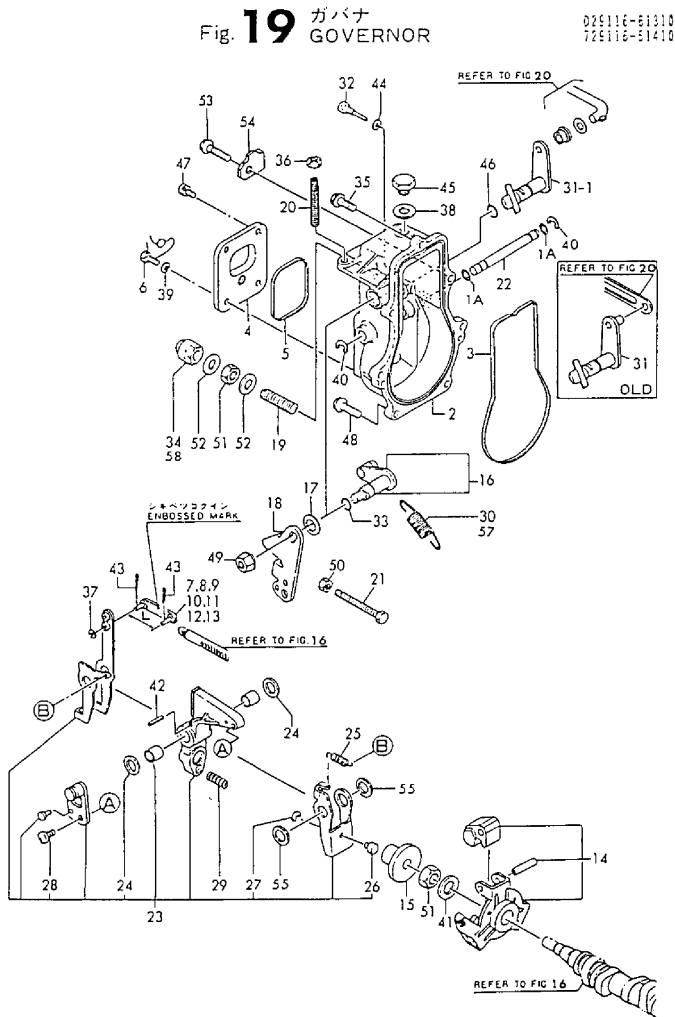


No.	Lev.	Parts No.	Description	Q'ty						I	R
				(A)	(B)	(C)	(D)	(E)	(F)		
42	1	129150-59580	CAP	1	1						
43	1	129255-59580	PIPE, FUEL	1	1						
43-1	1	105025-59750	PIPE, FUEL	1	1						R
				(A=E34615)	(B=*1990.12)						
44	1	129100-59951	VALVE ASSY, CHECK	1	1						
45	1	23414-120000	GASKET, 12X1.0	2	2						
46	1	23000-013000	CLAMP, 13	6	6						

Fig.19. GOVERNOR

(A)=3TN84L-RDC  
(B)=3TN84L-RDCC  
(C)=

(D)=  
(E)=  
(F)=



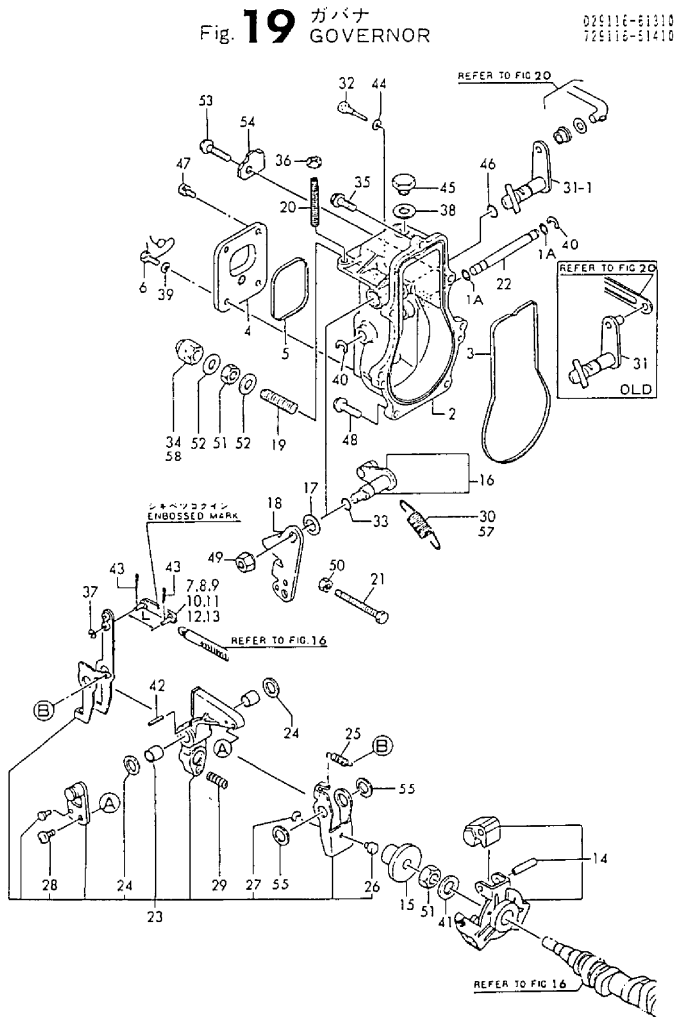
No.	Lev.	Parts No.	Description	Q'ty						I	R
				(A)	(B)	(C)	(D)	(E)	(F)		
1A	2	129155-51280	O-RING, S6	2	2						
2	2	119843-61010	CASE, GOVERNOR	1	1						
2-1	2	119843-61011	CASE, GOVERNOR	1	1						S
3	2	(A=E11957) 129155-61050 (B=*1988.10)	GASKET	1	1						
4	2	129155-61060	COVER, GOVERNOR CASE	1	1						
5	2	129155-61070	GASKET	1	1						
6	2	129155-61090 (A=E11957) (B=*1988.10)	BOLT	1	1						Z
7	2	129155-61120	LINK, L=30 MARK 0	1	1						
8	2	129155-61130	LINK, L=31 MARK 1	1	1						
9	2	129155-61140	LINK, L=30.5 MARK 05	1	1						
10	2	129155-61150 (A=E11957) (B=*1988.10)	LINK, L=33	1	1						Z
11	2	129155-61160 (A=E11957) (B=*1988.10)	LINK, L=34 MARK4	1	1						Z
12	2	129155-61170 (A=E11957) (B=*1988.10)	LINK, L=28 MARK 8	1	1						Z
13	2	129155-61180 (A=E11957) (B=*1988.10)	LINK, L=29 MARK 9	1	1						Z
14	2	129155-61201 (A=E11957) (B=*1988.10)	WEIGHT ASSY, GOVERNOR	1	1						
15	2	129155-61341	SLEEVE	1	1						
16	2	129100-61400	SHAFT ASSY	1	1						
17	2	129155-61430	SPACER	1	1						
18	2	129100-61440	LEVER, CONTROL	1	1						
19	2	129155-61450	BOLT, LIMITER	1	1						
20	2	129155-61460	BOLT, IDLE	1	1						
21	2	129155-61470	BOLT, CONTROL	1	1						
22	2	129155-61490	SHAFT	1	1						
23	2	129116-61500	LEVER ASSY, GOVERNOR	1	1						
24	3	174307-51700	SHIM SET	2	2						
25	3	119843-61540	SPRING, SET	1	1						
26	3	129155-61540	SHIFTER	1	1						
27	3	22272-000040	RING, E- 4	1	1						
28	3	26022-060122	SCREW, M6X12	1	1						
29	2	129500-61650	SPRING, FUEL CONTROL	1	1						
30	2	129500-61700 (A=E11957) (B=*1988.10)	SPRING, GOVERNOR	1	1						Z
31	2	129116-61800 (A=E11957) (B=*1988.10)	LEVER ASSY, STOP	1	1						
31-1	2	129116-61801 (A=E02513) (B=*1987.04)	LEVER ASSY, STOP	1	1						S
31-2	2	129116-61802 (A=*1987.12) (B=*1987.12)	LEVER ASSY, STOP	1	1						N
31-3	2	129116-61803 (A=E11957) (B=*1988.10)	LEVER, STOP	1	1						S
32	2	129155-61810	PIN	1	1						
33	2	129155-61830	O-RING, S10	1	1						
34	2	129100-61930	NUT, CAP	1	1						
34-1	2	26687-120002 (A=E11957) (B=*1988.10)	NUT, CAP M12	1	1						N
34-2	2	26687-120002	NUT, CAP M12	1	1						Z

N:Old  $\xrightarrow{Yes}$  New, Q:Old  $\xrightarrow{No}$  New, R:Old  $\xrightarrow{Yes}$  New, S:Old  $\xrightarrow{No}$  New, W:Add, Z:Discontinued, F:Interchangeable by set, K:Q'ty Change  
 ++ CONTINUE ++  
 Copyright (C) YANMAR CO., LTD. All Rights Reserved.

Fig.19. GOVERNOR

(A)=3TN84L-RDC  
(B)=3TN84L-RDCC  
(C)=

(D)=  
(E)=  
(F)=



No.	Lev.	Parts No.	Description	Q'ty						I	R
				(A)	(B)	(C)	(D)	(E)	(F)		
		(A=EXXX) (B=EXXX)									
35	2	129155-61950	BOLT	1	1						
36	2	124550-66370	NUT, M6	1	1						
37	2	22117-040000	WASHER, 4	1	1						
38	2	22190-100000	WASHER, SEAL 10	1	1						
38-1	2	43400-500430	SEAL WASHER 10	1	1						N
39	2	22217-050000	WASHER, SPRING 5	1	1						Z
		(A=E11957) (B=*1988.10)									
40	2	22272-000060	RING, E- 6	2	2						
41	2	22287-120000	WASHER, 12	1	1						
42	2	22351-030016	PIN, SPRING 3.0X16	1	1						Z
		(A=EXXX) (B=EXXX)									
43	2	22360-040000	PIN, SNAP 4	2	2						
43-1	2	22372-040000	PIN, SNAP 4	2	2						R
		(A=*1991.02) (B=*1991.02)									
44	2	23414-050000	GASKET, 5X1.0	1	1						
44-1	2	43400-500390	SEAL WASHER 6	1	1						N
		(A=E20773) (B=*1989.09)									
45	2	23887-100002	PLUG, 10	1	1						
46	2	24311-000080	O-RING, 1AP8.0	1	1						
46-1	2	24311-240100	O-RING, 1AP10A	1	1						S
		(A=E11957) (B=*1988.10)									
47	2	26022-050102	SCREW, M5X10	3	3						
47-1	2	26022-050102	SCREW, M5X10	4	4						K
		(A=E11957) (B=*1988.10)									
48	2	26106-060202	BOLT, M6X 20 PLATED	6	6						
48-1	2	26106-060202	BOLT, M6X 20 PLATED	5	5						K
		(A=E04944) (B=*1987.11)									
49	2	26366-080002	NUT, M8	1	1						
50	2	26756-060002	NUT, LOCK M6	1	1						
51	2	26776-120002	NUT, LOCK M12	2	2						
52	2	43400-500450	SEAL WASHER 12	2	2						
53	2	26106-060252	BOLT, M6X 25 PLATED	1	1						W
		(A=E04944) (B=*1987.11)									
54	2	129116-61890	SUPPORT	1	1						W
		(A=E04944) (B=*1987.11)									
55	2	129155-61480	SPACER ASSY	2	2						W
		(A=EXXX) (B=EXXX)									
57	1	129500-61700	SPRING, GOVERNOR	1	1						W
		(A=EXXX) (B=EXXX)									
58	1	26687-120002	NUT, CAP M12	1	1						W
		(A=EXXX) (B=EXXX)									



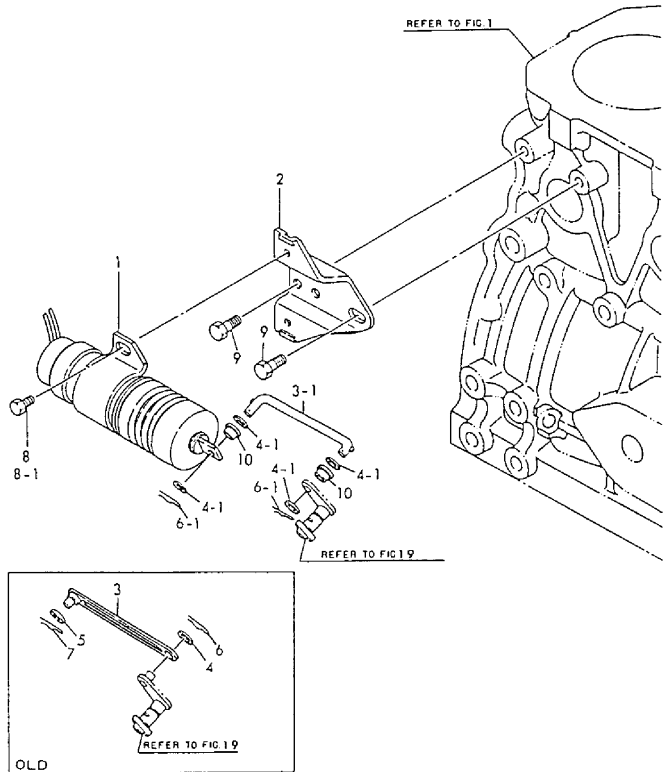
Fig.20. ENGINE STOP

(A)=3TN84L-RDC  
(B)=3TN84L-RDCC  
(C)=

(D)=  
(E)=  
(F)=

Fig. 20 エンジンストップ  
ENGINE STOP

029155-66811



No.	Lev.	Parts No.	Description	Q'ty						I	R
				(A)	(B)	(C)	(D)	(E)	(F)		
1	1	129155-66800	SOLENOID	1	1						
2	1	129155-66811	BRACKET, SOLENOID	1	1						
3	1	129155-66821	LINK, SOLENOID	1	1						
3-1	1	129155-66822 (A=E02513) (B=*1987.04)	LINK, SOLENOID	1	1						N
4	1	22117-060000	WASHER, 6	1	1						
4-1	1	22117-040000 (A=E02513) (B=*1987.04)	WASHER, 4	4	4						S
4-2	1	22137-040000	WASHER, 4	4	4						N
5	1	22117-080000 (A=E02513) (B=*1987.04)	WASHER, 8	1	1						Z
6	1	22360-060000	PIN, SNAP 6	1	1						
6-1	1	22360-040000 (A=E02513) (B=*1987.04)	PIN, SNAP 4	2	2						S
7	1	22360-080000 (A=E02513) (B=*1987.04)	SNAP PIN 8	1	1						Z
8	1	26016-060102	BOLT M 6X 10	2	2						
8-1	1	26106-060102 (A=E03516) (B=*1987.08)	BOLT, M6X 10 PLATED	2	2						N
9	1	26116-080122	BOLT, M8X 12 PLATED	2	2						
10	1	119245-66400 (A=E02513) (B=*1987.04)	BUSH	2	2						W

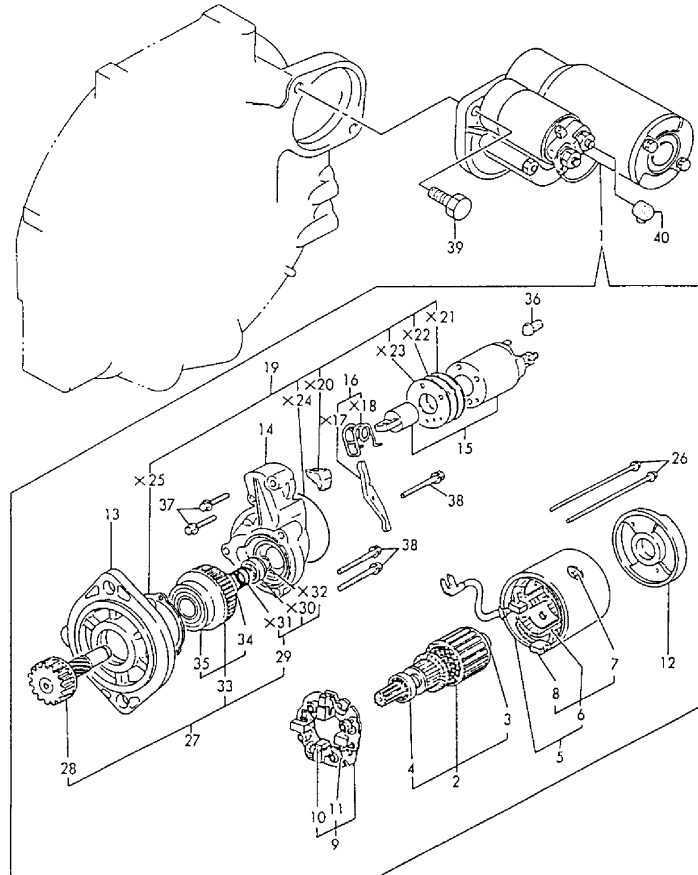
Fig.21. STARTING MOTOR(COMPONENT PARTS)

(A)=3TN84L-RDC  
(B)=3TN84L-RDCC  
(C)=

(D)=  
(E)=  
(F)=

Fig. 21 スタートモータ(インナーパーツ)  
STARTING MOTOR(COMPONENT PARTS)

D29100-77100  
D25116-93100



No.	Lev.	Parts No.	Description	Q'ty						I	R
				(A)	(B)	(C)	(D)	(E)	(F)		
1	1	171008-77010	STARTER, S114-483	1							
2	2	171008-77400	ARMATURE ASSY	1							
3	3	171008-77410	BEARING(1)	1							
4	3	171008-77420	BEARING(2)	1							
5	2	171008-77430	YOKE ASSY	1							
6	3	171008-77440	COIL ASSY, FIELD	1							
7	4	171008-77450	SCREW	4							
8	4	171008-77460	BRUSH (+)	2							
9	2	171008-77470	HOLDER ASSY, BRUSH	1							
10	3	171008-77480	BRUSH (-)	2							
11	3	171008-77490	SPRING, BRUSH	4							
12	2	171008-77500	COVER, REAR	1							
13	2	171008-77510	HOUSING ASSY, GEAR	1							
14	2	171008-77520	HOUSING, CENTER	1							
15	2	171008-77530	SWITCH, MAGNETIC	1							
16	2	171008-77540	LEVER SET, SHIFT	1							
19	2	171008-77570	COVER SET, DUST	1							
19-1	2	171008-77571	DUST COVER, (NON-ASB.)	1							N
(A=E33169)											
26	2	171008-77640	BOLT, THROUGH	2							
27	2	171008-77650	PINION ASSY	1							
28	3	171008-77660	SHAFT, PINION	1							
29	3	171008-77670	STOPPER SET, PINION	1							
33	3	171008-77720	CLUTCH ASSY	1							
34	4	171008-77730	BALL BEARING (3)	1							
35	4	171008-77740	BALL BEARING (4)	1							
36	2	171008-77750	COVER, M TERMINAL	1							
37	2	26106-060322	BOLT, M6X 32 PLATED	2							
38	2	26106-060402	BOLT, M6X 40 PLATED	3							
39	1	26116-120252	BOLT, M12X 25 PLATED	2							
40	1	124550-77030	COVER, TERMINAL	1							

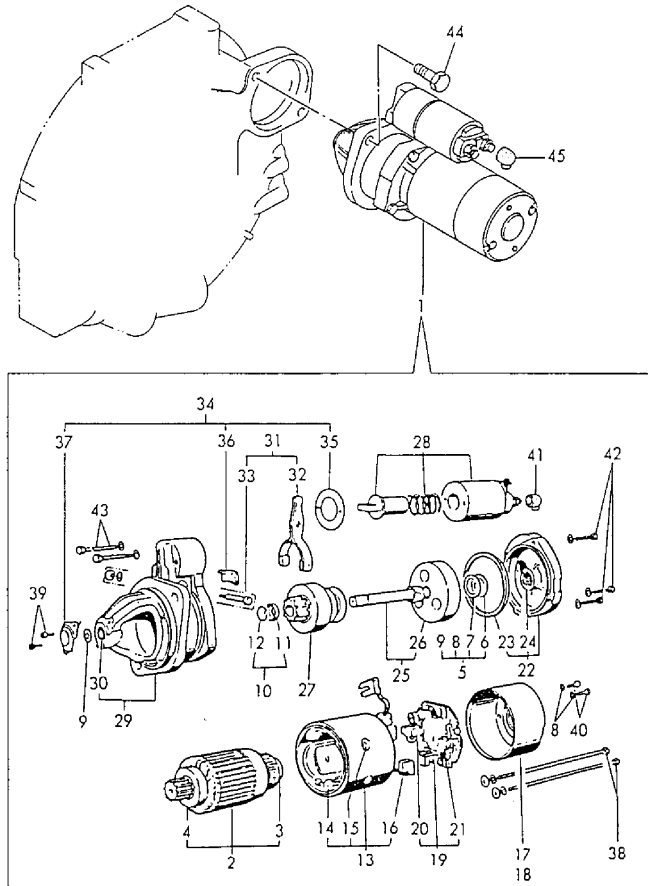
Fig.22. STARTING MOTOR(COMPONENT PARTS)

(A)=3TN84L-RDC  
(B)=3TN84L-RDCC  
(C)=

(D)=  
(E)=  
(F)=

Fig. 22 スターティングモータ(インナーパーツ)  
STARTING MOTOR(COMPONENT PARTS)

D2E410-77160  
D2E116-5516C



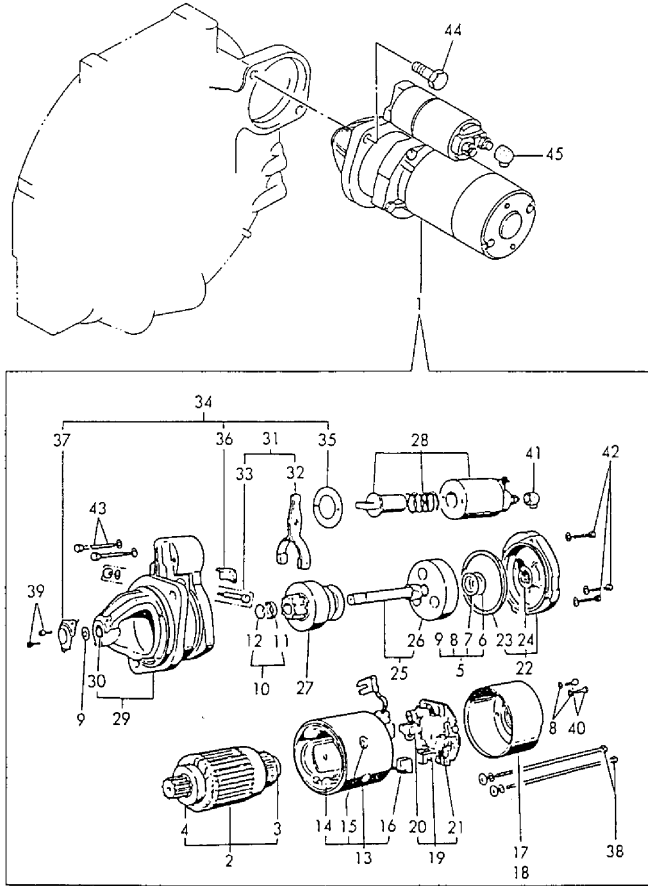
No.	Lev.	Parts No.	Description	Q'ty						I	R
				(A)	(B)	(C)	(D)	(E)	(F)		
1	1	121254-77011	STARTER, S13-41A		1						
1-1	1	121254-77012	STARTING MOTOR		1						N
				(B=*1990.11)							
2	2	121254-77400	ARMATURE ASSY		1						
2-1	2	121254-77401	AMATURE, (NON-ASB.)		1						N
				(B=*1990.11)							
3	3	121254-77410	BALL BEARING		1						Z
				(B=*1990.11)							
4	3	121254-77420	BALL BEARING		1						Z
				(B=*1990.11)							
5	2	121254-77430	WASHER KIT, THRUST		1						
6	3	121254-77440	WASHER, THRUST		1						
7	3	121254-77450	WASHER, THRUST		1						
8	3	121254-77460	WASHER, THRUST		1						
9	3	121254-77470	WASHER, THRUST		1						
10	2	121254-77480	STOPPER KIT, PINION		1						
11	3	121254-77490	STOPPER		1						
12	3	121254-77500	CLIP		1						
13	2	121254-77510	YORK ASSY		1						
14	2	121254-77520	COIL ASSY, FIELD		1						
15	3	121254-77530	SCREW, POLE CORE		4						
16	3	121254-77540	BRUSH (+)		2						
17	2	121254-77550	COVER ASSY, REAR		1						
18	3	121254-77560	BOLT		1						
19	2	121254-77570	HOLDER ASSY, BRUSH		1						
20	3	121254-77580	BRUSH (-)		2						
21	3	121254-77590	SPRING, BRUSH		4						
22	2	121254-77600	BEARING ASSY, CENTER		1						
23	3	121254-77610	SEAL, OIL		1						
23-1	3	119129-77210	SEAL, OIL		1						N
				(B=*1989.09)							
24	3	121254-77620	NEEDLE BEARING		1						
24-1	3	119129-77220	BEARING, NEEDLE		1						N
				(B=*1989.09)							
25	2	121254-77640	SHAFT ASSY, GEAR		1						
26	3	121254-77650	INNER		1						
27	2	121254-77661	PINION ASSY		1						
28	2	121254-77670	SWITCH, MAGNETIC		1						
29	2	121254-77681	CASE ASSY, GEAR		1						
30	3	121254-77690	METAL, GEAR CASE		1						
31	2	121254-77700	LEVER SET' SHIFT		1						
32	3	121254-77710	LEVER, SHIFT		1						
33	3	121254-77720	PIN		1						
34	2	121254-77730	COVER SET, DUST		1						
35	3	121254-77740	COVER, DUST		1						
36	3	121254-77750	COVER, DUST		1						
37	3	121254-77760	COVER, DUST		1						
38	2	121254-77770	BOLT, THROUGH		2						
39	2	121254-77780	SCREW 5		2						
39-1	2	26450-050122	BOLT, M5X 12		2						N
				(B=*1988.11)							

Fig.22. STARTING MOTOR(COMPONENT PARTS)

(A)=3TN84L-RDC  
 (B)=3TN84L-RDCC  
 (C)=

(D)=  
 (E)=  
 (F)=

Fig. 22 スターティングモータ(インナーパーツ)  
 STARTING MOTOR(COMPONENT PARTS) D2E410-77160  
 D2E116-55160



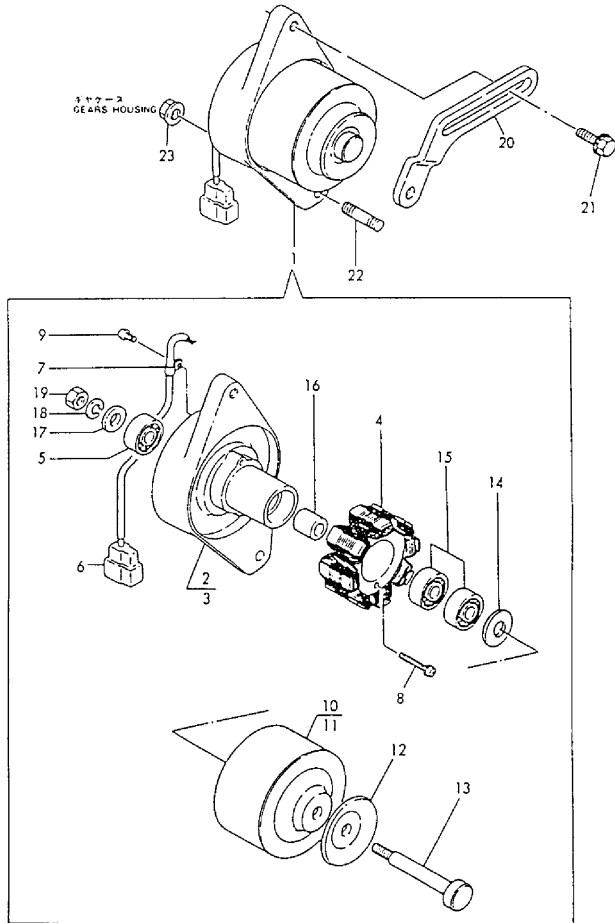
No.	Lev.	Parts No.	Description	Q'ty						I	R
				(A)	(B)	(C)	(D)	(E)	(F)		
40	2	121254-77790	SCREW 4		2						
41	2	121254-77810	COVER, TERMINAL		1						
42	2	26106-060302	BOLT, M6X 30 PLATED		3						
43	2	26106-060452	BOLT, M6X 45 PLATED		2						
44	1	26116-120252	BOLT, M12X 25 PLATED		2						
45	1	124550-77030	COVER, TERMINAL		1						

Fig.23. GENERATOR(COMPONENT PARTS)

(A)=3TN84L-RDC  
(B)=3TN84L-RDCC  
(C)=

(D)=  
(E)=  
(F)=

Fig. 23 ジェネレータ(インナーパーツ)  
GENERATOR (COMPONENT PARTS) 029410-77200  
925400-77300



No.	Lev.	Parts No.	Description	Q'ty						I	R
				(A)	(B)	(C)	(D)	(E)	(F)		
1	1	171301-77201	DYNAMO ASSY, 15A	1	1						
2	2	XM08137	PLATE ASSY	1	1						
3	3	XM08138	PLATE	1	1						
4	3	XM08180	STATOR ASSY	1	1						
5	3	XM27436	BALL BEARING	1	1						
6	3	XM17878	COUPLER	1	1						
7	3	XM36410	CLAMP	1	1						
8	3	26022-040252	SCREW, M4X25	2	2						
9	3	XYSPS4008	SCREW	1	1						
10	2	XM82184	FLYWHEEL ASSY	1	1						
11	3	XM82110	FLYWHEEL	1	1						
12	3	XM72174	PULLEY	1	1						
13	3	XM72664	SHAFT	1	1						
14	3	XM37336	WASHER	1	1						
15	3	XM27436	BALL BEARING	2	2						
16	2	106383-44720	SPACER	1	1						
17	2	106383-44730	WASHER	1	1						
18	2	22212-100000	SPRING WASHER 10	1	1						
19	2	26716-100002	NUT, M10	1	1						
20	1	129400-77330	ADJUSTER	1	1						
21	1	26014-080252	BOLT, M8X 25	1	1						
22	1	121450-01570	STUD	1	1						
23	1	26366-100002	NUT, M10	1	1						

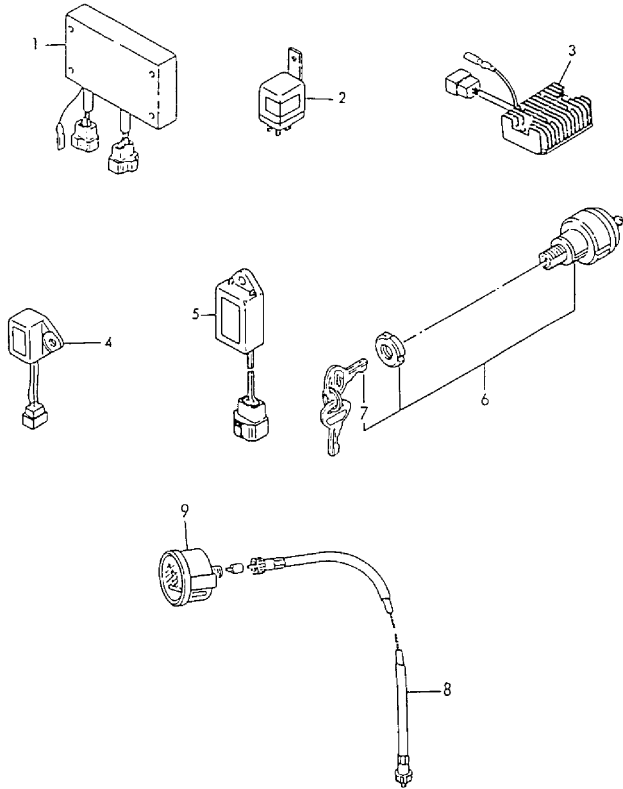
Fig.24. ELECTRIC PARTS

(A)=3TN84L-RDC  
(B)=3TN84L-RDCC  
(C)=

(D)=  
(E)=  
(F)=

Fig. 24 デンソウヒン  
ELECTRIC PARTS

025116-53100



No.	Lev.	Parts No.	Description	Q'ty						I	R
				(A)	(B)	(C)	(D)	(E)	(F)		
1	1	171440-77800	RELAY, EMERGENCY	1	1						
1-1	1	171440-77801	RELAY, EMERGENCY	1	1						R
(A=E27692) (B=*1990.06)											
2	1	121522-77101	RELAY, SAFETY	3	3						
3	1	171301-77700	LIMITER, CURRENT	1	1						
3-1	1	129132-77700	LIMITER, RS5136	1	1						R
(A=E07093) (B=*1988.03)											
4	1	121522-77721	INDICATOR	1	1						
5	1	128300-77920	TIMER	1	1						
6	1	121400-91251	SWITCH, STARTER	1	1						
7	2	121400-91271	KEY, SWITCH	2	2						
8	1	194145-56901	CABLE, HOUR-METER	1	1						
9	1	171080-91100	TACHOMETER	1	1						

Fig.25. TOOLS

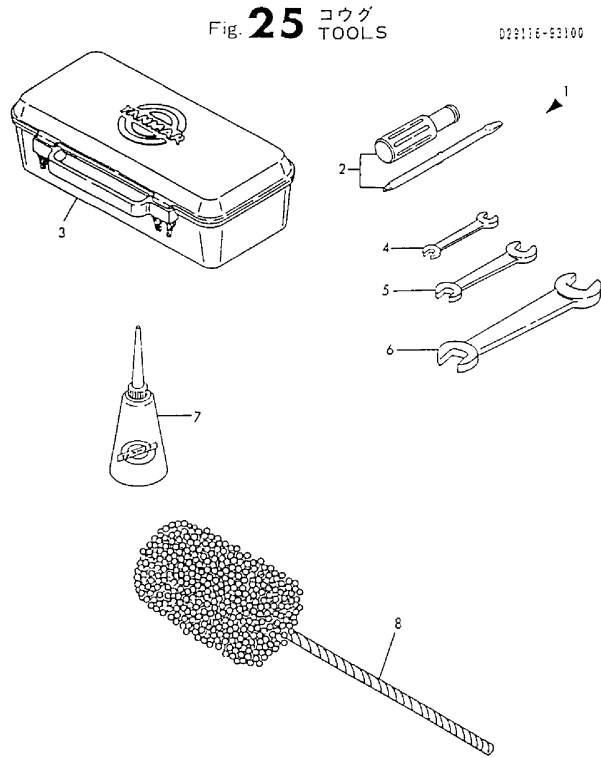


Fig. 25 コウグ  
TOOLS

(A)=3TN84L-RDC  
(B)=3TN84L-RDCC  
(C)=

(D)=  
(E)=  
(F)=

No.	Lev.	Parts No.	Description	Q'ty						I	R
				(A)	(B)	(C)	(D)	(E)	(F)		
1	1	171001-93100	BOX, TOOL	1	1						
2	2	104200-92350	DRIVER, SCREW	1	1						
3	2	104200-92600	BOX, TOOL	1	1						
4	2	28110-100120	SPANNER, 10X12	1	1						
5	2	28110-140170	SPANNER, 14X17	1	1						
6	2	28110-190220	SPANNER, 19X22	1	1						
7	2	28210-000140	OILER	1	1						
8	1	129400-92420	FLEX HORN	1	1						1

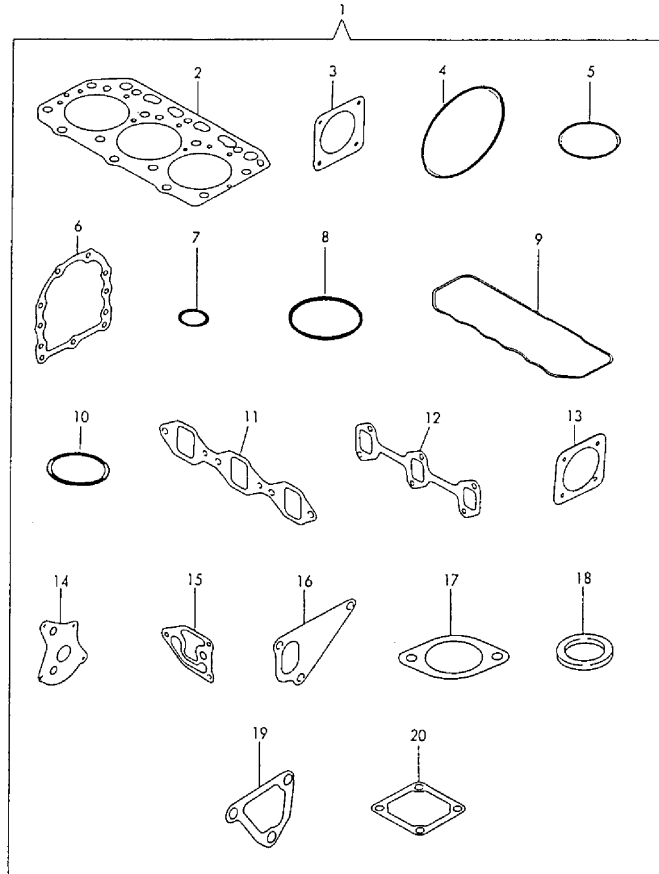
Remarks  
(1) OPTIONAL PART.

Fig.26. GASKET SET

(A)=3TN84L-RDC  
(B)=3TN84L-RDCC  
(C)=

(D)=  
(E)=  
(F)=

Fig. 26 バッキンセット(オプション)  
GASKET SET (OPTIONAL)



No.	Lev.	Parts No.	Description	Q'ty						I	R
				(A)	(B)	(C)	(D)	(E)	(F)		
1	1	729115-92600	GASKET SET	1	1						
1-1	1	729115-92601	GASKET SET	1	1						N
		(A=E27692) (B=*1990.06)									
2	2	129157-01332	GASKET, HEAD	1	1						
3	2	124240-01882	GASKET	1	1						
3-1	2	124240-01883	GASKET	1	1						N
		(A=E26262) (B=*1990.03)									
4	2	121850-51960	O-RING	1	1						
5	2	24311-000320	O-RING, 1AP32.0	1	1						
6	2	129150-01660	GASKET	1	1						Z
		(A=E07093) (B=*1988.01)									
7	2	24311-000120	O-RING, 1AP12.0	3	3						
8	2	24341-000500	O-RING, 1AS50.0	1	1						
9	2	129150-11310	GASKET, BONNET	1	1						
10	2	121420-01760	O-RING	1	1						
10-1	2	24311-000320	O-RING, 1AP32.0	1	1						N
		(A=E07804) (B=*1988.05)									
11	2	129150-12110	GASKET, MANIFOLD	1	1						
11-1	2	129150-12111	GASKET, MANIFOLD	1	1						N
		(A=E27003) (B=*1990.05)									
12	2	129150-13110	GASKET	1	1						
13	2	124701-11910	GASKET, SILENCER	1	1						
13-1	2	124701-11911	GASKET, SILENCER	1	1						N
		(A=E27692) (B=*1990.06)									
14	2	129150-32020	GASKET, PUMP	1	1						
15	2	129103-35121	GASKET	1	1						
15-1	2	129103-35122	GASKET	1	1						N
		(A=E27692) (B=*1990.06)									
16	2	129100-42020	GASKET, WATER PUMP	1	1						
17	2	129795-49550	GASKET	1	1						
17-1	2	129795-49551	GASKET	1	1						N
		(A=E27003) (B=*1990.05)									
18	2	129150-49810	GASKET, THERMOSTAT	1	1						
18-1	2	129150-49811	GASKET, THERMOSTAT	1	1						N
		(A=E27003) (B=*1990.05)									
19	2	129100-49840	GASKET	1	1						
20	2	129150-77510	GASKET	1	1						
20-1	2	129150-77511	GASKET	1	1						N
		(A=E27003) (B=*1990.05)									



## Parts No. Index

Parts No.	Fig. No.	Ref. No.
101304-59020	18	31 -1
101720-55750	18	25
102103-55520	18	21
103338-11190	5	13
103854-39140	18	30
104200-55321	18	2
		17
104200-55330	18	3
		18
104200-55341	18	19
104200-55750	18	4
		26
104200-59170	18	33
104200-92350	25	2
104200-92600	25	3
104407-44480	7	1 B
105025-59530	18	35 -1
105025-59750	18	43 -1
106383-44720	23	16
106383-44730	23	17
110250-55610	18	22
114250-53080	17	3
114250-53120	17	5
114250-53130	17	6
114250-53140	17	7
114250-53210	17	8
114250-53400	17	9
114250-53460	17	9 F-1
119129-77210	22	23 -1
119129-77220	22	24 -1
119245-66400	20	10
119620-01750	3	3
119620-49290	14	13 -1
119625-11870	5	31
119625-11880	5	32
119625-11900	5	33
119810-51040	16	2
119840-59560	18	40
119840-59570	18	41
119843-61010	19	2
119843-61011	19	2 -1
119843-61540	19	25
119865-21600	9	11
120130-11860	5	2
121100-22400	10	4
121111-21501	9	9
121250-44901	15	4
121250-49121	14	14
121250-59550	18	39
121254-55510	18	20

Parts No.	Fig. No.	Ref. No.
121254-77011	22	1
121254-77012	22	1 -1
121254-77400	22	2
121254-77401	22	2 -1
121254-77410	22	3
121254-77420	22	4
121254-77430	22	5
121254-77440	22	6
121254-77450	22	7
121254-77460	22	8
121254-77470	22	9
121254-77480	22	10
121254-77490	22	11
121254-77500	22	12
121254-77510	22	13
121254-77520	22	14
121254-77530	22	15
121254-77540	22	16
121254-77550	22	17
121254-77560	22	18
121254-77570	22	19
121254-77580	22	20
121254-77590	22	21
121254-77600	22	22
121254-77610	22	23
121254-77620	22	24
121254-77640	22	25
121254-77650	22	26
121254-77661	22	27
121254-77670	22	28
121254-77681	22	29
121254-77690	22	30
121254-77700	22	31
121254-77710	22	32
121254-77720	22	33
121254-77730	22	34
121254-77740	22	35
121254-77750	22	36
121254-77760	22	37
121254-77770	22	38
121254-77780	22	39
121254-77790	22	40
121254-77810	22	41
121256-44600	14	12
121257-55700	18	16
121257-55720	18	23
121257-55731	18	24
121400-11340	5	18
121400-91251	24	6
121400-91271	24	7

Parts No.	Fig. No.	Ref. No.
121420-01760	26	10
121450-01560	2	3
121450-01570	23	22
121450-42450	15	3
121450-49100	14	13
121470-44540	14	10
121520-34810	1	19
121522-77101	24	2
121522-77721	24	4
121550-23200	10	8
121750-49110	14	1
121850-11860	5	4
121850-21680	9	7
121850-35200	11	14
121850-35520	11	21
121850-35531	11	22
121850-51960	2	9
	26	4
122117-51560	16	34
122710-51050	16	3
122710-51090	16	5
124066-59100	18	14
		38
124160-01751	2	4
	6	15
124160-01910	1	5
124160-11360	6	11
124160-39140	11	28
124160-39450	11	29
124223-35510	11	20
124240-01871	2	6
124240-01882	2	7
	26	3
124240-01883	2	7 -1
		7 -2
	26	3 -1
124450-44510	14	6
124450-44520	14	6 A
124450-44530	14	7
124450-44550	14	11
124450-44560	14	8
124460-11340	5	14
124465-44950	15	5
		6
124550-51350	16	20
124550-51370	16	21
124550-59820	11	31
124550-66370	19	36
124550-77030	21	40
	22	45

Parts No.	Fig. No.	Ref. No.
124574-44761	12	9
124701-11910	7	13
	26	13
124701-11911	7	13 -1
	26	13 -1
124732-42290	12	6
124736-07900	5	36
124766-59050	14	16 -1
	18	32
		32 -1
		37
		37 -1
124770-11770	13	4
124950-51190	16	10
128170-51300	16	17
128300-77920	24	5
129100-01580	3	1
		9
	9	4 B
		8
129100-01640	3	5 A
129100-01730	4	5
129100-01770	4	1 -1
129100-01790	4	3
129100-11100	5	9
129100-11130	5	10
129100-11350	6	1 -1
129100-13110	7	4
129100-23910	10	10
129100-25061	1	20
129100-25900	16	61
129100-35140	11	13
129100-35300	11	10
129100-35301	11	10 -1
129100-42001	12	1
129100-42002	12	1 -1
129100-42020	12	3
	26	16
129100-49050	15	1
129100-49800	13	3
129100-49820	13	5
129100-49830	13	6
129100-49840	13	11
	26	19
129100-52100	16	60
129100-53000	17	2
129100-55621	18	1
129100-55650	18	10
129100-55670	18	6
129100-55680	18	7

## Parts No. Index

Parts No.	Fig. No.	Ref. No.
129100-55690	18	8
129100-55700	18	11
129100-59810	17	13
129100-59820	17	14
129100-59830	17	15
129100-59951	18	44
129100-61400	19	16
129100-61440	19	18
129100-61930	19	34
129103-33031	11	4
129103-33132	11	5
129103-35101	11	12
129103-35121	11	25
	26	15
129103-35122	11	25 -1
	26	15 -1
129103-49301	12	4
129105-22090	10	1
129115-12100	7	1 -1
129116-49290	14	13 -2
129116-61500	19	23
129116-61800	19	31
129116-61801	19	31 -1
129116-61802	19	31 -2
129116-61803	19	31 -3
129116-61890	19	54
129120-77501	7	10
129122-44480	14	2
129128-21590	9	10 -1
129129-14580	8	1
129132-77700	24	3 -1
129150-01200	1	1
129150-01660	3	8
	26	6
129150-02020	1	10
129150-02450	1	14
	8	3 A
129150-02800	1	11
129150-02870	1	16
129150-02930	1	12
129150-02940	1	17
129150-03020	6	5
129150-03070	6	7
129150-03080	6	6
129150-03100	2	25
	6	10
129150-11230	5	28
129150-11280	5	24
129150-11290	5	25
129150-11310	6	4

Parts No.	Fig. No.	Ref. No.
129150-11310	26	9
129150-11370	5	15
129150-11750	5	29
129150-11810	5	3
129150-12100	7	1
129150-12110	7	2
	26	11
129150-12111	7	2 -1
	26	11 -1
129150-13110	7	5
	26	12
129150-14101	8	2
129150-14200	8	4
129150-14400	8	5
129150-22300	10	3
129150-23600	10	9
129150-23610	10	11
129150-25101	1	21
129150-32020	11	2
	26	14
129150-35040	11	9
129150-35041	11	9 -1
129150-35150	11	26
129150-39450	11	30
129150-49810	13	10
	26	18
129150-49811	13	10 -1
	26	18 -1
129150-59020	18	31
129150-59120	17	10
129150-59130	17	11
129150-59580	18	15
		42
129150-77510	7	11
	26	20
129150-77511	7	11 -1
	26	20 -1
129150-91400	2	22
129155-11241	5	21
129155-11260	5	22
129155-11270	5	23
129155-49800	13	9
129155-51020	16	56 -1
129155-51140	16	7
129155-51180	16	9
129155-51200	16	11
129155-51250	16	13
129155-51270	16	15
129155-51280	16	16
	19	1 A

Parts No.	Fig. No.	Ref. No.
129155-51320	16	18
129155-51340	16	19
129155-51370	16	22
129155-51380	16	23
129155-51390	16	24
129155-51400	16	25
129155-51410	16	26
129155-51420	16	27
129155-51450	16	28
129155-51500	16	29
129155-51521	16	30
129155-51530	16	31
129155-51540	16	32
129155-51550	16	33
129155-51570	16	36
129155-51580	16	37
129155-51591	16	38
129155-51600	16	39
129155-51700	16	40
129155-51710	16	41
129155-51750	16	42
129155-51760	16	43
129155-51790	16	44
129155-52050	16	59
129155-61050	19	3
129155-61060	19	4
129155-61070	19	5
129155-61090	19	6
129155-61120	19	7
129155-61130	19	8
129155-61140	19	9
129155-61150	19	10
129155-61160	19	11
129155-61170	19	12
129155-61180	19	13
129155-61201	19	14
129155-61341	19	15
129155-61430	19	17
129155-61450	19	19
129155-61460	19	20
129155-61470	19	21
129155-61480	19	55
129155-61490	19	22
129155-61540	19	26
129155-61810	19	32
129155-61830	19	33
129155-61950	19	35
129155-66800	20	1
129155-66811	20	2
129155-66821	20	3

Parts No.	Fig. No.	Ref. No.
129155-66822	20	3 -1
129156-51910	16	45
129157-01332	1	2
	26	2
129255-59580	18	35
		43
129258-49040	14	4 -1
129350-49530	13	1
129400-01520	2	2
129400-01590	2	1
129400-51200	16	6
129400-77330	23	20
129400-92420	25	8
129403-34800	1	18
129403-42380	12	7
129403-49031	14	3
129403-49050	14	4
129410-03100	6	13
129410-03990	6	14
129470-11080	5	19
129470-11090	5	20
129470-51060	16	4
129470-51080	16	46
129500-61650	19	29
129500-61700	19	30
		57
129553-32000	11	1
129553-35500	11	15
129553-35520	11	16
129553-35530	11	17
129553-35540	11	18
129555-59510	18	34
129795-01780	3	7
129795-01800	2	1 B
		5
129795-01950	2	8
129795-02411	1	13
129795-11120	5	11
129795-11180	5	12
129795-21661	9	6
129795-49550	13	2
	26	17
129795-49551	13	2 -1
	26	17 -1
171001-93100	25	1
171008-77010	21	1
171008-77400	21	2
171008-77410	21	3
171008-77420	21	4
171008-77430	21	5

## Parts No. Index

Parts No.	Fig. No.	Ref. No.
171008-77440	21	6
171008-77450	21	7
171008-77460	21	8
171008-77470	21	9
171008-77480	21	10
171008-77490	21	11
171008-77500	21	12
171008-77510	21	13
171008-77520	21	14
171008-77530	21	15
171008-77540	21	16
171008-77570	21	19
171008-77571	21	19 -1
171008-77640	21	26
171008-77650	21	27
171008-77660	21	28
171008-77670	21	29
171008-77720	21	33
171008-77730	21	34
171008-77740	21	35
171008-77750	21	36
171027-44740	12	8
171051-01921	1	4
171080-91100	24	9
171081-55910	18	27
171301-01600	3	2
171301-01640	4	2
171301-77201	23	1
171301-77700	24	3
171340-21580	9	10
171340-21650	9	5
171440-77800	24	1
171440-77801	24	1 -1
174100-54120	16	14
174307-51170	16	8
174307-51560	16	35
174307-51700	19	24
194145-56901	24	8
194990-22050	7	6
22117-040000	19	37
	20	4 -1
22117-060000	20	4
22117-080000	20	5
22137-040000	20	4 -2
22190-080002	2	19 -2
		20 -2
22190-100000	19	38
22212-100000	23	18
22217-050000	16	47
		48

Parts No.	Fig. No.	Ref. No.
22217-050000	19	39
22217-060000	16	49
22217-120000	16	62
22272-000040	19	27
22272-000060	19	40
22287-120000	16	51
	19	41
22351-030016	19	42
22351-040010	9	3
		12
22351-050010	16	50
22351-060012	5	16
22360-040000	19	43
	20	6 -1
22360-060000	20	6
22360-080000	20	7
22372-040000	19	43 -1
22512-070140	8	3
23000-013000	18	36
		46
23000-016000	15	2
23000-022000	14	5
23010-038000	14	16
23061-070230	14	9
23414-050000	19	44
23414-080000	11	32
23414-100000	11	33
23414-120000	18	45
23414-180000	11	23
23418-060000	18	28
23871-010000	1	6
23871-020000	11	24
23871-030000	5	5
	12	2
	13	7
23887-100002	19	45
24190-130001	11	19
24311-000080	19	46
24311-000120	6	12
	26	7
24311-000160	2	10
	14	15
	18	12
24311-000200	11	6
24311-000210	11	7
24311-000320	2	11
	6	16
	26	5
		10 -1
24311-240100	18	5

Parts No.	Fig. No.	Ref. No.
24311-240100	18	29
	19	46 -1
24321-000550	11	8
24321-000650	18	9
24341-000160	16	52
24341-000240	2	23
	4	4
24341-000500	6	8
	26	8
26014-060252	12	10
26014-080252	23	21
26014-080702	18	13 -1
26016-060102	20	8
26022-040252	23	8
26022-050102	16	53
	19	47
		47 -1
26022-060122	19	28
26022-060162	16	54
26106-060102	20	8 -1
26106-060162	2	24
26106-060202	19	48
		48 -1
26106-060252	19	53
26106-060302	22	42
26106-060322	21	37
26106-060402	21	38
26106-060452	22	43
26106-080122	2	12
26106-080142	5	37
26106-080162	1	15
	2	13
		14
	4	6
	6	9
26106-080202	2	21
	13	12
26106-080252	4	7
	5	34
	7	3
	13	13
26106-080302	3	10
26106-080352	3	11
	7	12
	11	11 -1
26106-080452	1	23
	2	15
	4	8
26106-080502	4	9
	5	35

Parts No.	Fig. No.	Ref. No.
26106-080502	13	14
26106-080552	2	16
26106-080602	12	5
	13	15
26106-080652	18	13
26106-080752	11	27
26106-080802	7	7
26106-080852	2	17
26116-050302	16	55
26116-060162	13	8
26116-080122	20	9
26116-080352	11	11
26116-120252	21	39
	22	44
26206-100252	3	4
26206-100302	3	5
26216-060142	16	56
26216-060202	5	6
26216-080222	7	8
26216-080802	7	9
26226-080182	5	30
26366-060002	5	17
26366-080002	2	18
	19	49
26366-100002	23	23
26450-050122	22	39 -1
26450-060252	11	3
26687-120002	19	34 -1
		34 -2
		58
26716-060002	16	57
26716-100002	23	19
26716-120002	16	63
26756-060002	19	50
26776-120002	19	51
27231-500000	1	7
27241-100000	5	26
27241-120000	1	8
27241-220000	5	7
27241-300000	1	9
27241-400000	5	8
27310-080001	5	13 -1
28110-100120	25	4
28110-140170	25	5
28110-190220	25	6
28210-000140	25	7
43400-500390	19	44 -1
43400-500410	2	19
		20
43400-500430	19	38 -1

# Parts No. Index

Parts No.	Fig. No.	Ref. No.
43400-500450	19	52
43400-500490	16	58
43400-500550	4	10
711100-51540	16	12
729100-53100	17	1
729102-21700	9	1 -1
729105-22500	10	2
729105-22910	10	5
729105-22950	10	6
729105-22951	10	6 -1
729115-92600	26	1
729115-92601	26	1 -1
729116-51410	16	1
729132-11520	6	1
729150-11651	5	27
729150-21700	9	1
729150-23700	10	7
729157-01560	1	3
729402-11650	5	27 -1
729402-23100	10	7 -1
771341-01540	4	1
771364-11700	5	1
XM08137	23	2
XM08138	23	3
XM08180	23	4
XM17878	23	6
XM27436	23	5
		15
XM36410	23	7
XM37336	23	14
XM72174	23	12
XM72664	23	13
XM82110	23	11
XM82184	23	10
XYS4008	23	9

Parts No.	Fig. No.	Ref. No.
-----------	----------	----------

Parts No.	Fig. No.	Ref. No.
-----------	----------	----------

Parts No.	Fig. No.	Ref. No.
-----------	----------	----------