

0CD10-M42102EN

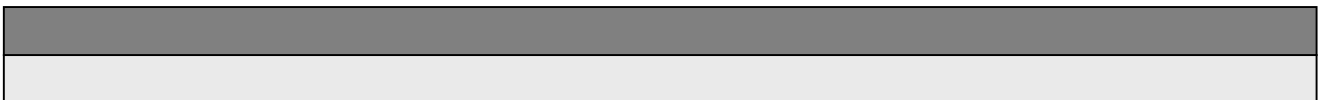
PREFACE

1. This Parts Catalog is the 1st edition of 3TN84L-RNKH Diesel Engine for HANIX IND..

Pub. No. : 000Y00D4212
Published : September, 1991

2. Model name

Engine model	Vehicle		Vehicle made by
	Products	Model name	
3TN84L-RNKH	—	—	HANIX IND.



Directions for the Parts Catalog.

1. This Parts Catalog shows both standard and optional parts.
2. Parts may change without prior notice.
3. The following is an example of the Parts Catalog format.

REF.	LEV.	PARTS NO.	DESCRIPTION	Q'TY						I	R
				(A)	(B)	(C)	(D)	(E)	(F)		
1	1	729595-51390	FUEL INJECTION PUMP	1	1	1	1	1			1
1-1	1	729595-51391	FUEL INJECTION PUMP	1	1	1	1	1		N	1
		(A=E00185) (B=E00200)									
3	2	26022-060162	SCREW M 6X 16	9	9	9	9	9			
3-1	2	26022-060162	SCREW M 6X 16	4	4	4	4	4		K	
		(A=E00156) (B=E00156) (C=E00156) (D=E00156) (E=E00156)									
4	2	129470-51040	CAMSHAFT	1	1	1	1	1			
5	2	122710-51050	BEARING, ROLLER	2	2	2	2	2			
6	2	129470-51060	RETAINER	1	1	1	1	1			

Remarks
(1) BOOST COMPEMSATOR TYPE. OPTIONAL PART, TO E00155,(4JH-DT, 4JH-DTZ

① Ref. No.

The Ref. No. listed may not be in accordance with the illustration Ref. No.

(Ex.) Illustration No.

List Ref No.

1

1

(Before change)

1-1

(After change)

For interchangeable symbols N, R and K, illustrations for new parts may be abbreviated.

② Lev. (Level)

Level indication

The numbers below indicate the level of relativity towards the main part.

1 ----- Main parts (Assembly parts)

2 ----- Sub component included in " 1 ".

3 ----- Sub component included in " 2 ".

Note) Parts that are not for sale are partially illustrated but not listed.

③ Interchangeability Symbol

When a part change takes place, one of the following interchangeability symbols is indicated beside the part.

Symbol	Interchangeability	Contents note
N	Old $\begin{matrix} \leftarrow \text{Yes} \\ \text{No} \rightarrow \end{matrix}$ New	New Part is interchangeable for Old Part but Old Part is not interchangeable for New Part.
Q	Old $\begin{matrix} \leftarrow \text{No} \\ \text{Yes} \rightarrow \end{matrix}$ New	New Part is not interchangeable for Old Part but Old Part is interchangeable for New Part.
R	Old $\begin{matrix} \leftarrow \text{Yes} \\ \text{Yes} \rightarrow \end{matrix}$ New	New/ Old Parts are both interchangeable.
S	Old $\begin{matrix} \leftarrow \text{No} \\ \text{No} \rightarrow \end{matrix}$ New	New/ Old Parts are both not interchangeable.
W		Part newly added.
Z		Part discontinued.
F		Not interchangeable by a single part but interchangeable together with related parts.
K		Changes only for used parts quantities.

④ Effective Machine No.

When a part changes, the effective Machine No. will be indicated in the (A)-(F) column.

Product Symbol	Product No.	Product Symbol	Product No.
C	Clutch No. Compressor No.	F	Machine No. (Agricultural Equip.)
D	Drive No.	M	Machine No.
E	Engine No.		

Note 1) A date may follow the symbol. (Ex.) 1996.01

Note 2) "XXXXX" and "ZZZZZ" are for parts that could not be predicted or for engine models that could not be identified.

Note 3) (A=E00185) is the E (Engine Serial Number) for the column (A) model (in this case 4JH-DT) after the parts design change.

⑤ Remarks

Figures or alphabets (symbols) are entered in the remarks column.

The comments (remarks) on parts that are indicated at the bottom of the illustration are the same symbols as those stated above.

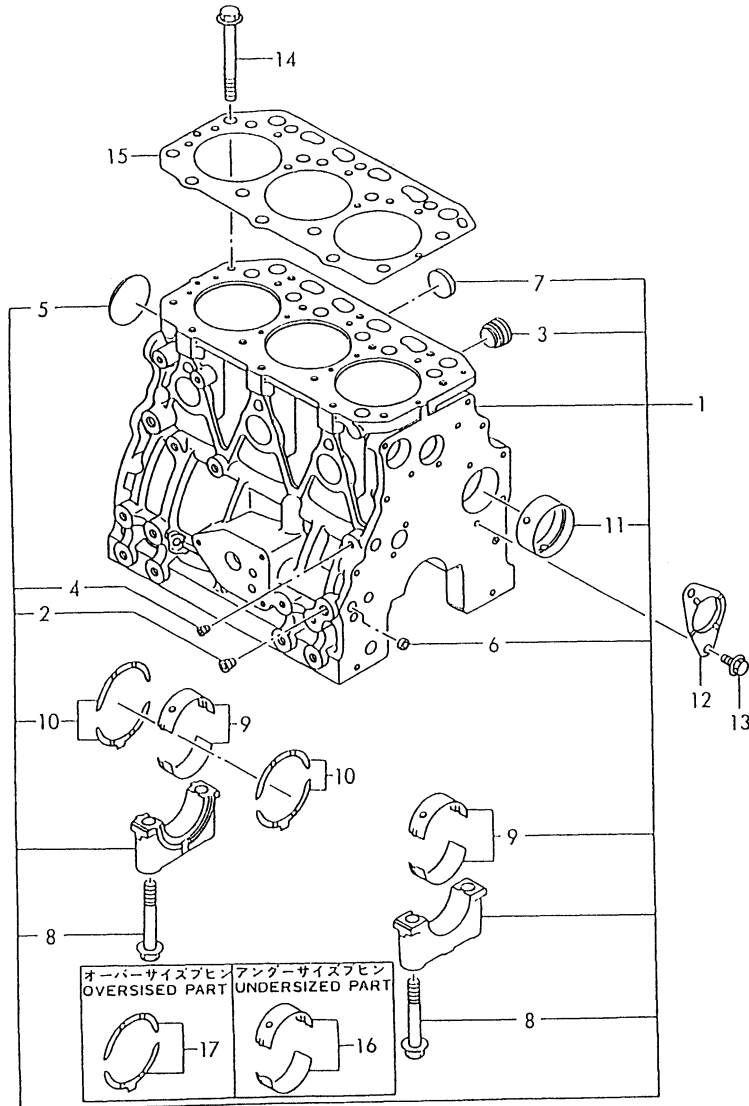
Contents

Fig. No.	Fig. Name
ENGINE 3TN84L-RNKH	
1.	CYLINDER BLOCK
2.	GEAR HOUSING
3.	FLYWHEEL HOUSING
4.	LUB.OIL SUMP
5.	BONNET
6.	CYLINDER HEAD
7.	SUCTION MANIFOLD
8.	EXHAUST MANIFOLD
9.	CAMSHAFT & IDLE GEAR
10.	CRANKSHAFT & FLYWHEEL
11.	PISTON & CONNECTING ROD
12.	LUB.OIL SYSTEM
13.	LUB.OIL LINE
14.	COOLING WATER SYSTEM
15.	THERMOSTAT
16.	COOLING WATER LINE
17.	FUEL INJECTION PUMP
18.	FUEL INJECTION DEVICE
19.	FUEL SYSTEM
20.	FUEL RETURN LINE
21.	WATER SEPARATOR
22.	GOVERNOR
23.	ENGINE STOP
24.	STARTING MOTOR(COMPONENT PARTS)

Fig. No.	Fig. Name
25.	GENERATOR(COMPONENT PARTS)
26.	GASKET SET
27.	SPECIAL TOOL(OPTIONAL)

Fig.1. CYLINDER BLOCK

029105-01100
 029150-02100
 029129-02200



(A)=3TN84L-RNKH

(B)=

(C)=

(D)=

(E)=

(F)=

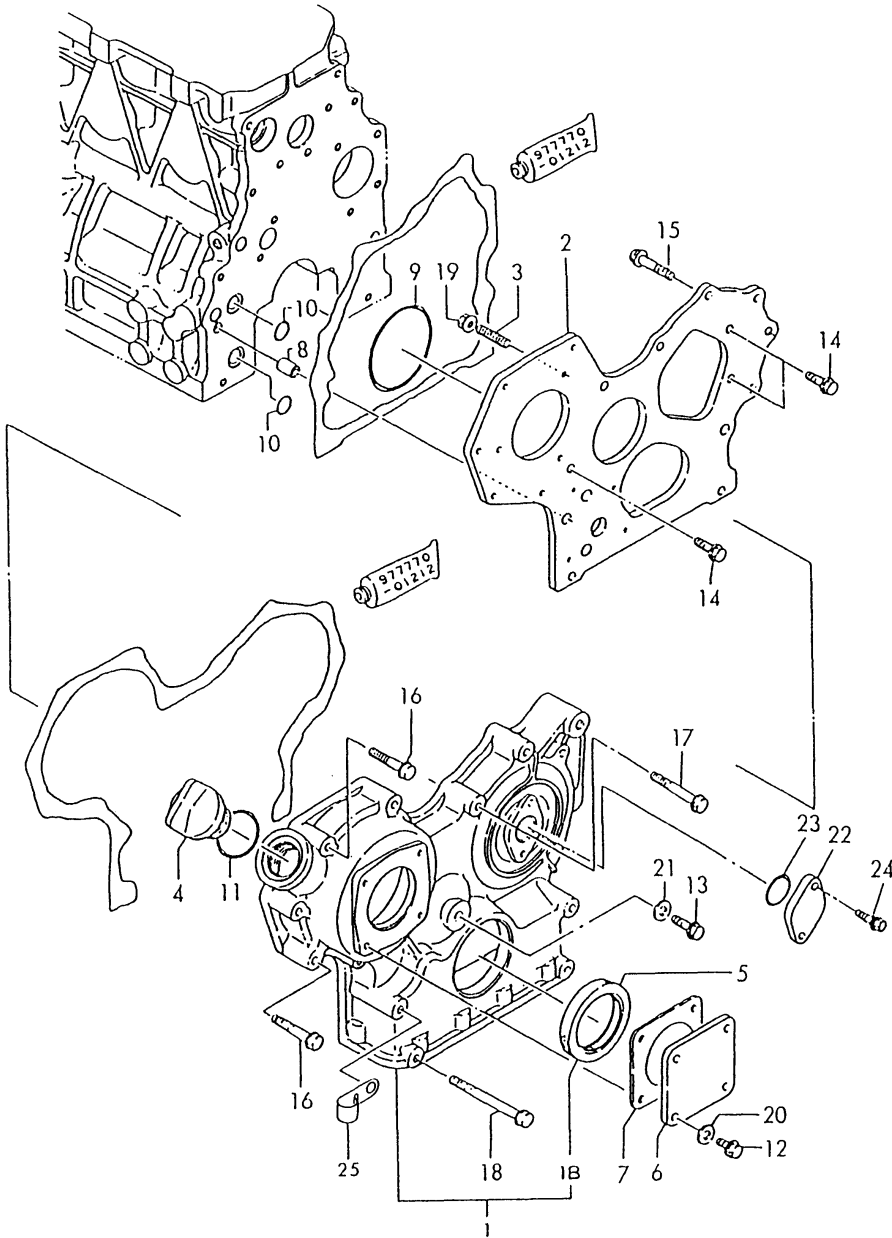
No.	Lev.	Parts No.	Description	Q'ty						I	R
				(A)	(B)	(C)	(D)	(E)	(F)		
1	1	729157-01560	BLOCK ASSY, CYLINDER	1							
2	2	124160-01910	PLUG, PT1/4	3							
3	2	171051-01921	PLUG, NPTF1	1							
4	2	23871-010000	PLUG, R01	1							
5	2	27231-500000	PLUG 50	1							
6	2	27241-120000	PLUG, 12	2							
7	2	27241-300000	PLUG 30	6							
8	2	129150-02020	BOLT, METAL CAP	8							
9	2	129150-02800	BEARING, MAIN	4							
10	2	129150-02930	BEARING, THRUST	2							
11	2	129795-02411	BUSH, CAMSHAFT	1							
12	1	129150-02450	BEARING, THRUST	1							Z
(A=EXXX)											
13	1	26106-080162	BOLT, M8X 16 PLATED	2							
14	1	129150-01200	BOLT, HEAD	14							
15	1	129157-01332	GASKET, HEAD	1							
16	1	129150-02870	BEARING, 0.25 US	4							1
17	1	129150-02940	BEARING, THRUST 0.25	2							2

Remarks

- (1) UNDER-SIZE PART.
- (2) OVER-SIZE PART.

Fig.2. GEAR HOUSING

D29400-01220
D29100-01810



(A)=3TN84L-RNKH

(B)=

(C)=

(D)=

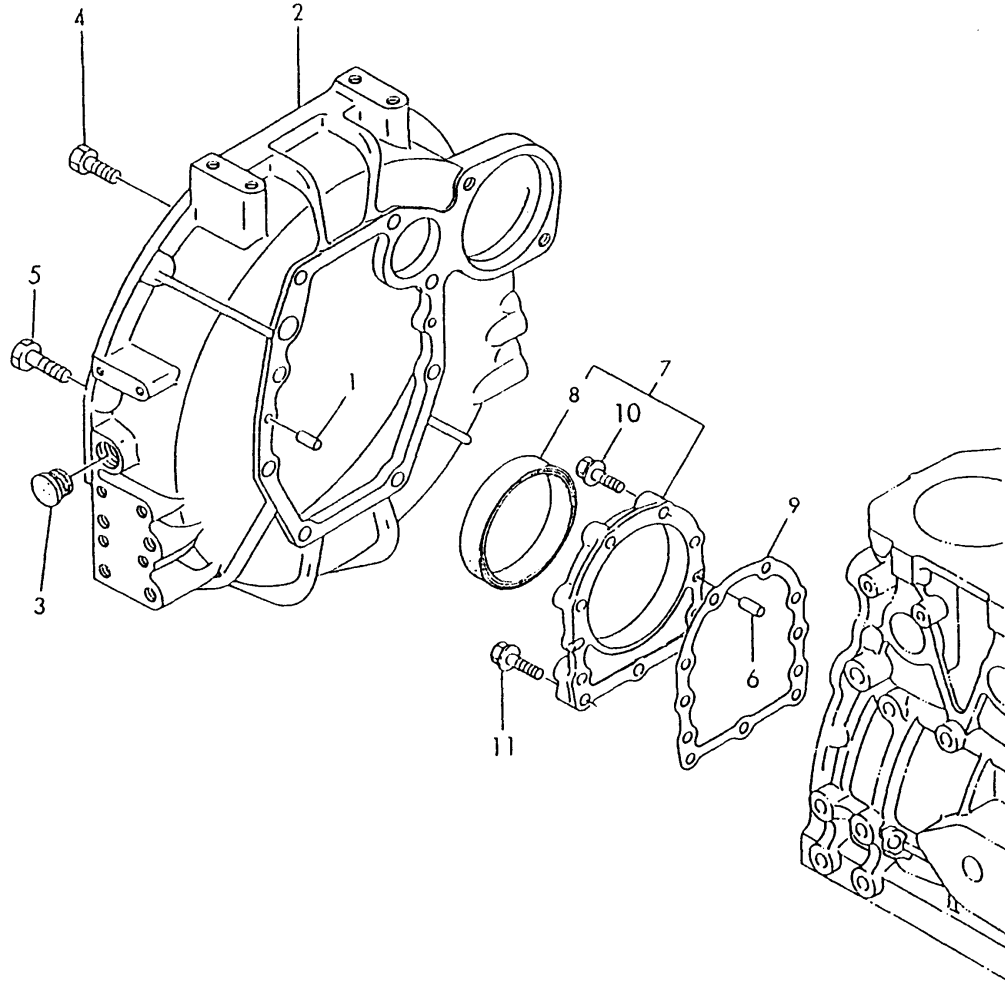
(E)=

(F)=

No.	Lev.	Parts No.	Description	Q'ty						I	R
				(A)	(B)	(C)	(D)	(E)	(F)		
1	1	129400-01590	CASE ASSY, GEAR	1							W
		(A=*1990.05)									
1B	2	129795-01800	SEAL, OIL	1							W
		(A=*1990.05)									
2	1	129400-01520	FLANGE, GEAR CASE	1							
3	1	121450-01560	STUD, M8X22	3							
4	1	124160-01751	COVER, FILLER	1							
5	1	129795-01800	SEAL, OIL	1							Z
		(A=*1990.05)									
6	1	124240-01871	COVER	1							
7	1	124240-01882	GASKET	1							
7-1	1	124240-01883	GASKET	1							R
		(A=E23654)									
8	1	129795-01950	PIPE, KNOCK L=18	2							
9	1	121850-51960	O-RING	1							
10	1	24311-000160	O-RING, 1AP16.0	2							
11	1	24311-000320	O-RING, 1AP32.0	1							
12	1	26106-080122	BOLT, M8X 12 PLATED	4							
13	1	26106-080162	BOLT, M8X 16 PLATED	1							
14	1	26106-080162	BOLT, M8X 16 PLATED	3							
15	1	26106-080202	BOLT, M8X 20 PLATED	2							
16	1	26106-080452	BOLT, M8X 45 PLATED	6							
17	1	26106-080552	BOLT, M8X 55 PLATED	3							
18	1	26106-080852	BOLT, M8X 85 PLATED	4							
19	1	26366-080002	NUT, M8	3							
20	1	43400-500410	SEAL WASHER 8S	4							
21	1	43400-500410	SEAL WASHER 8S	1							
22	1	121023-01550	COVER	1							
23	1	24311-000260	O-RING, 1AP26.0	1							
23-1	1	24341-000240	O-RING, 1AS24.0	1							R
		(A=E13552)									
24	1	26106-060122	BOLT, M6X 12 PLATED	2							
25	1	129150-03100	RETAINER, PIPE	1							W
		(A=*1990.05)									

Fig.3. FLYWHEEL HOUSING

029500-01310
029100-01510



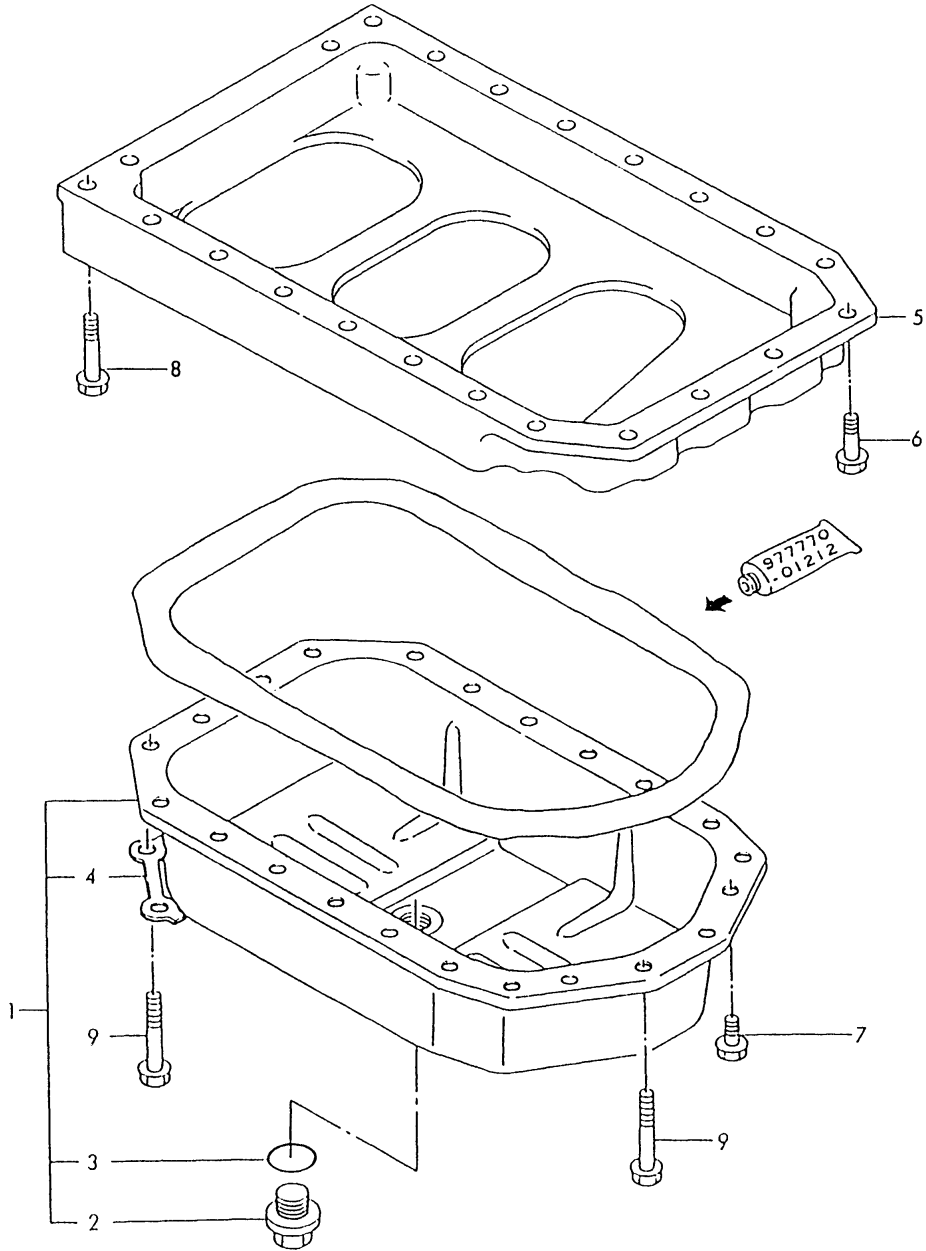
(A)=3TN84L-RNKH
(B)=
(C)=

(D)=
(E)=
(F)=

No.	Lev.	Parts No.	Description	Q'ty						I	R
				(A)	(B)	(C)	(D)	(E)	(F)		
1	1	129100-01580	PIN, M8X16	2							
2	1	171440-01600	HOUSING, FLYWHEEL	1							
3	1	119620-01750	CAP	1							
4	1	26206-100252	BOLT, M10X 25 PLATED	6							
5	1	26206-100302	BOLT, M10X 30 PLATED	4							
6	1	129100-01580	PIN, M8X16	2							
7	1	129100-01640	CASE ASSY, OIL SEAL	1							W
		(A=*1990.05)									
8	2	129795-01780	SEAL, OIL	1							
9	1	129150-01660	GASKET	1							Z
		(A=EXXX)									
10	1	26106-080302	BOLT, M8X 30 PLATED	6							
11	1	26106-080352	BOLT, M8X 35 PLATED	3							

Fig.4. LUB.OIL SUMP

029100-01400



(A)=3TN84L-RNKH

(B)=

(C)=

(D)=

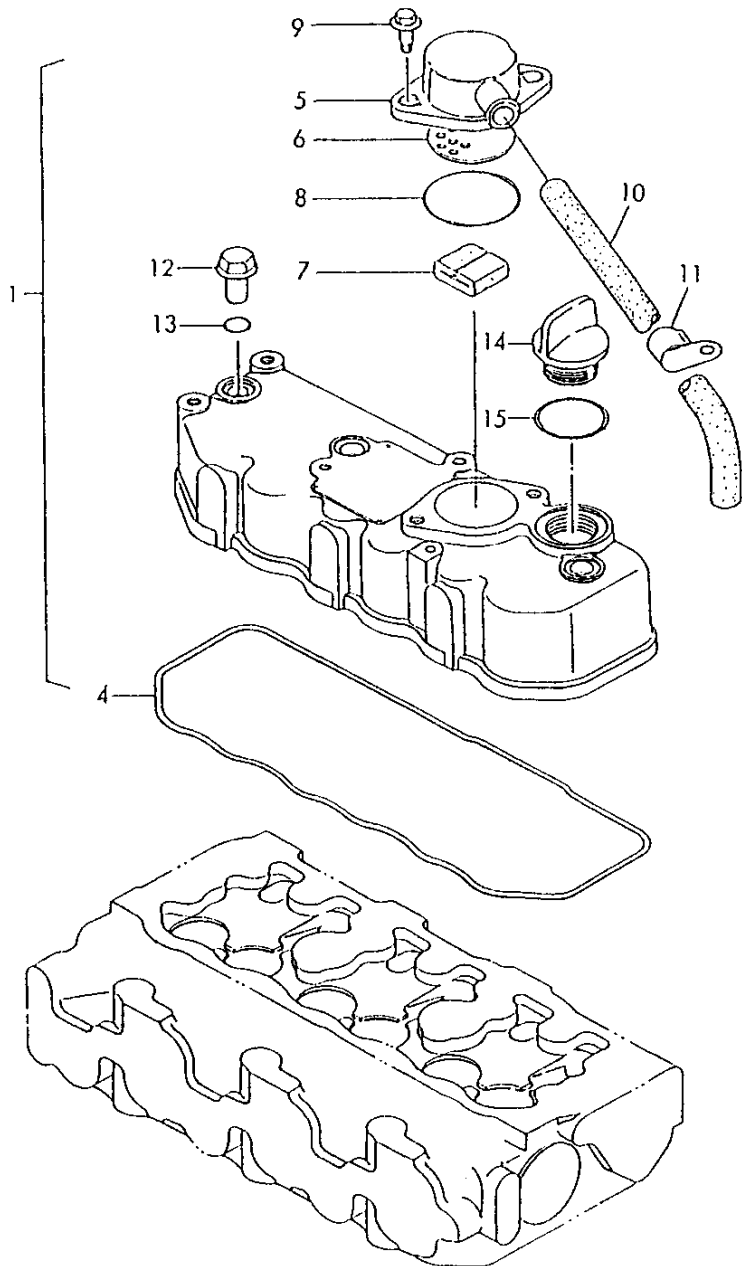
(E)=

(F)=

No.	Lev.	Parts No.	Description	Q'ty						I	R
				(A)	(B)	(C)	(D)	(E)	(F)		
1	1	729100-01540	SUMP ASSY, OIL	1							
1-1	1	729102-01540	SUMP ASSY, OIL	1							R
(A=*1990.)											
2	2	171301-01640	PLUG, 22	1							
3	2	24341-000240	O-RING, 1AS24.0	1							
4	2	129100-01790	RETAINER	2							
5	1	129100-01730	SPACER, OIL SUMP	1							
6	1	26106-080252	BOLT, M8X 25 PLATED	2							
7	1	26106-080162	BOLT, M8X 16 PLATED	4							
8	1	26106-080452	BOLT, M8X 45 PLATED	16							
9	1	26106-080502	BOLT, M8X 50 PLATED	4							

Fig.5. BONNET

U71350-03120
029100-11220



(A)=3TN84L-RNKH

(B)=

(C)=

(D)=

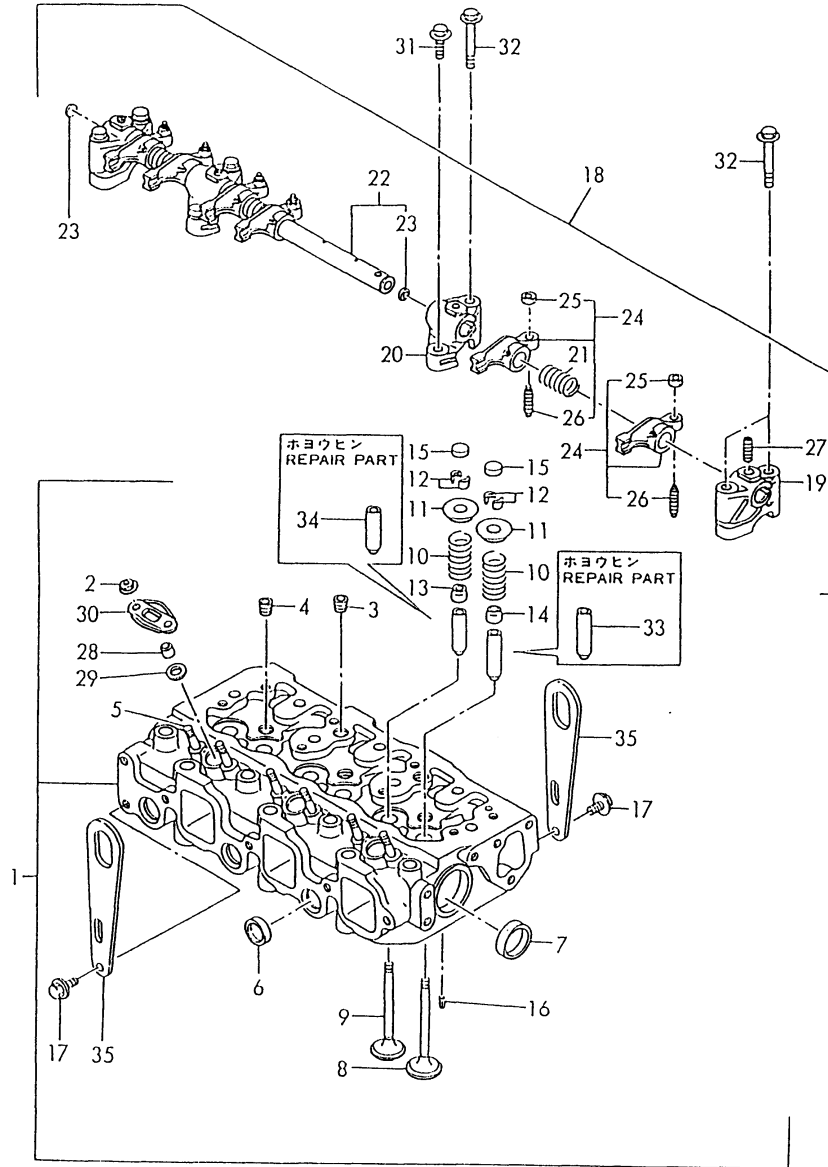
(E)=

(F)=

No.	Lev.	Parts No.	Description	Q'ty						I	R
				(A)	(B)	(C)	(D)	(E)	(F)		
1	1	729132-11520	BONNET ASSY, HEAD	1							
1-1	1	129100-11350	BONNET ASSY, HEAD	1							N
(A=*1990.05)											
4	2	129150-11310	GASKET, BONNET	1							
5	2	129150-03020	COVER, BREATHER	1							
6	2	129150-03080	PLATE, BAFFLE	1							
7	2	129150-03070	BAFFLE, BREATHER	1							
8	2	24341-000500	O-RING, 1AS50.0	1							
9	2	26106-080162	BOLT, M8X 16 PLATED	2							
10	1	171350-03090	PIPE , BREATHER 900	1							
11	1	129150-03100	RETAINER, PIPE	1							Z
(A=*1990.05)											
12	1	124160-11360	KNOB	3							
13	1	24311-000120	O-RING, 1AP12.0	3							
14	1	124160-01751	COVER, FILLER	1							
15	1	24311-000320	O-RING, 1AP32.0	1							

Fig.6. CYLINDER HEAD

D21000-07300
D29102-11110



(A)=3TN84L-RNKH

(B)=

(C)=

(D)=

(E)=

(F)=

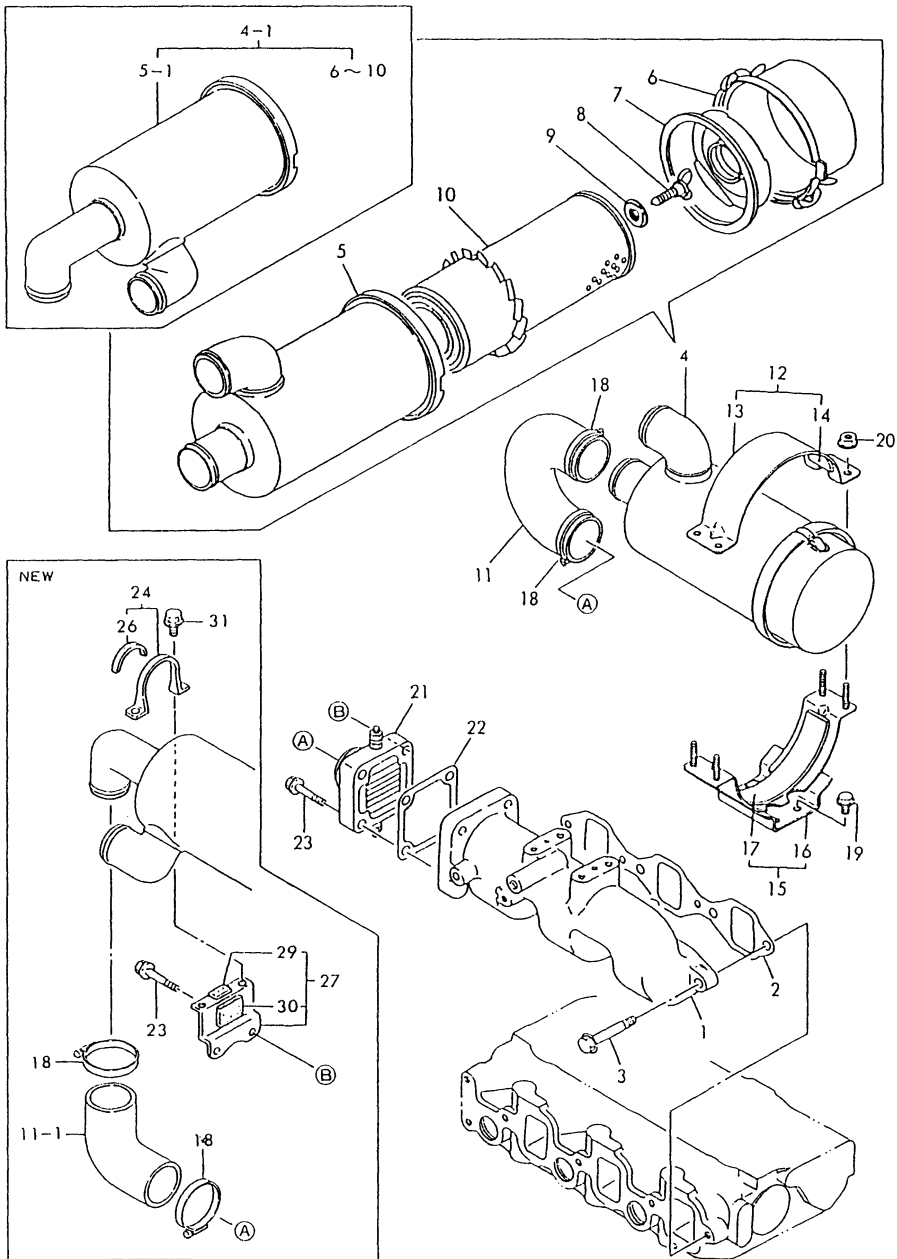
No.	Lev.	Parts No.	Description	Q'ty						I	R
				(A)	(B)	(C)	(D)	(E)	(F)		
1	1	729102-11700	HEAD ASSY, CYLINDER	1							
2	2	26366-060002	NUT, M6	6							
3	2	121850-11860	PLUG, PT1/4	2							
4	2	23871-030000	PLUG, R03	3							
5	2	26216-060202	STUD, M6X 20	6							
6	2	27241-220000	PLUG, 22	3							
7	2	27241-400000	PLUG, 40	2							
8	2	129100-11100	VALVE, INTAKE	3							
9	2	129100-11110	VALVE, EXHAUST	3							
10	2	129795-11120	SPRING, VALVE	6							
11	2	129795-11180	RETAINER, SPRING	6							
12	2	103338-11190	COTTER	6							
12-1	2	27310-080001	COTTER, 8	6							R
(A=EXXXXX)											
13	2	121400-11340	SEAL, VALVE STEM	3							
14	2	124460-11340	SEAL, VALVE STEM	3							
15	2	129150-11370	CAP, VALVE	6							
16	2	22351-060012	PIN, SPRING 6.0X12	2							
17	1	26106-080142	BOLT, M8X 14 PLATED	4							
18	1	129155-11241	SHAFT ASSY, ROCKER	1							
19	2	129155-11260	SUPPORT, ROCKER ARM	2							
20	2	129155-11270	SUPPORT, ROCKER ARM	2							
21	2	129150-11280	SPRING	3							
22	2	129150-11290	SHAFT, ROCKER ARM	1							
23	3	27241-100000	PLUG, 10	2							
24	2	729150-11651	ARM ASSY, ROCKER	6							
24-1	2	729402-11650	ARM ASSY, ROCKER	6							N
(A=*1990.05)											
25	3	129150-11750	NUT, M8	6							
26	3	129150-11230	SCREW, VALVE ADJUST	6							
27	2	26226-080182	STUD, M8X 18	3							
28	1	119625-11870	PROTECTOR, NOZZLE	3							
29	1	119625-11880	SEAT, NOZZLE	3							
30	1	119625-11900	RETAINER, NOZZLE	3							
31	1	26106-080252	BOLT, M8X 25 PLATED	2							
32	1	26106-080502	BOLT, M8X 50 PLATED	6							
33	1	120130-11860	GUIDE, VALVE	3							1
34	1	129150-11810	GUIDE, VALVE	3							1
35	1	124736-07900	LIFTER	2							

Remarks

(1)REPAIR PART.

Fig.7. SUCTION MANIFOLD

029100-12100
029131-12100
029100-77501



(A)=3TN84L-RNKH

(B)=

(C)=

(D)=

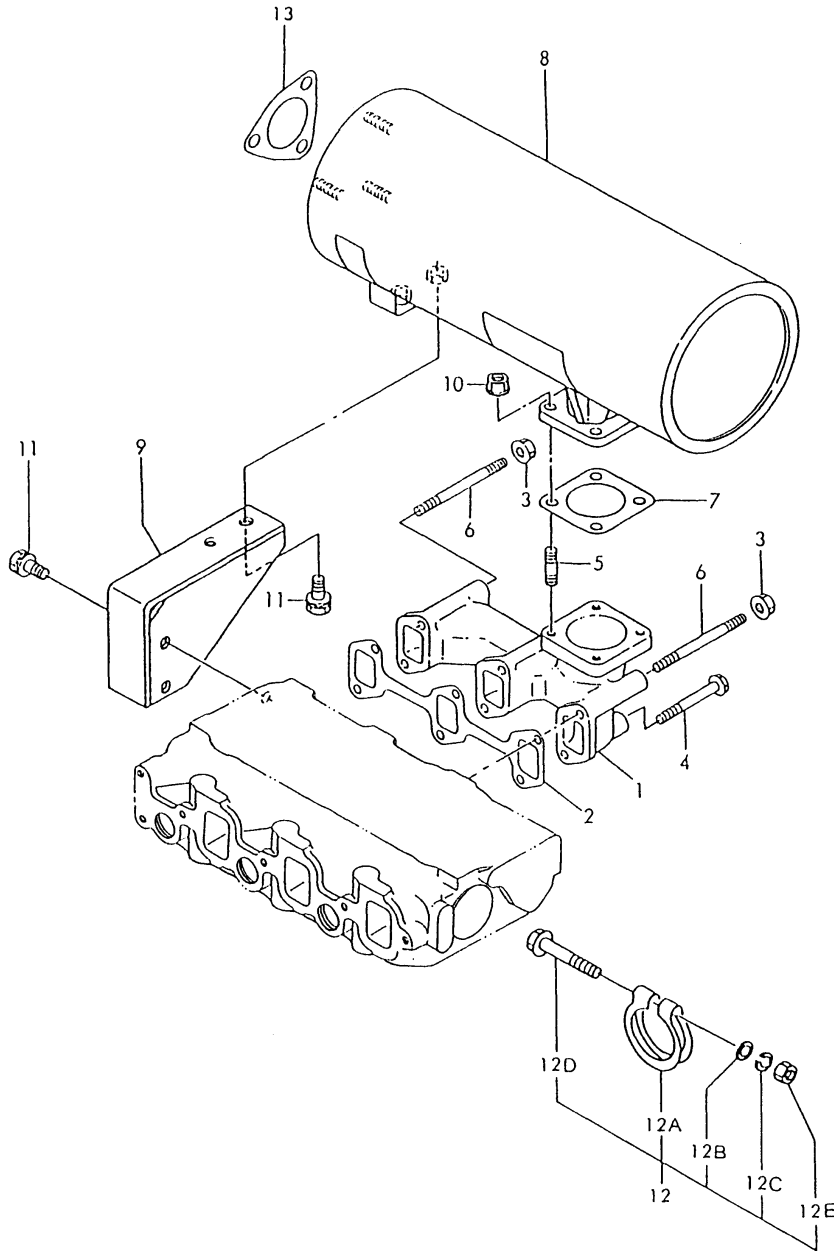
(E)=

(F)=

No.	Lev.	Parts No.	Description	Q'ty						I	R
				(A)	(B)	(C)	(D)	(E)	(F)		
1	1	129122-12100	MANIFOLD, AIR INTAKE	1							
2	1	129150-12110	GASKET, MANIFOLD	1							
2-1	1	129150-12111	GASKET, MANIFOLD	1							N
(A=*1990.06)											
3	1	26106-080252	BOLT, M8X 25 PLATED	4							
4	1	171351-12500	CLEANER ASSY, AIR	1							
4-1	1	129131-12500	CLEANER ASSY, AIR	1							S
(A=E16567)											
5	2	171351-12520	CASE ASSY	1							
5-1	2	129131-12520	BODY, AIR CLEANER	1							S
(A=E16567)											
6	2	121120-12531	PAN, DUST	1							
7	2	121120-12541	RETAINER, ELEMENT	1							
8	2	121120-12561	BOLT	1							
9	2	121120-12571	WASHER, SEAL	1							
10	2	121120-12901	ELEMENT	1							
11	1	171351-12210	PIPE, AIR INTAKE	1							
11-1	1	129327-12210	PIPE, AIR INTAKE	1							S
(A=E16567)											
12	1	121400-12540	BAND ASSY, CLEANER	1							
13	2	121400-12560	BAND, AIR CLEANER	1							
14	2	121400-12570	SEAT, RUBBER B	1							
15	1	171351-12580	SUPPORT ASSY,CLEANER	1							
16	2	171351-12560	SUPPORT, AIR CLEANER	1							
17	2	171351-12570	SEAT, RUBBER	1							
18	1	23000-060000	CLAMP, 60	2							
19	1	26106-080142	BOLT, M8X 14 PLATED	4							
20	1	26366-060002	NUT, M6	4							
21	1	129120-77501	HEATER	1							
22	1	129150-77510	GASKET	1							
22-1	1	129150-77511	GASKET	1							N
(A=*1990.06)											
23	1	26106-080352	BOLT, M8X 35 PLATED	4							
24	1	129132-12800	BAND, AIR CLEANER	1							W
(A=E16567)											
26	2	129132-12860	SEAT, RUBBER	1							W
(A=E16567)											
27	1	129132-12820	SUPPORT	1							W
(A=E16567)											
29	2	129132-12890	SEAT, RUBBER	1							W
(A=E16567)											
30	2	129132-12900	DAMPER	1							W
(A=E16567)											
31	1	26106-060142	BOLT, M6X 14 PLATED	2							W
(A=E16567)											

Fig.8. EXHAUST MANIFOLD

U71350-13100
 029131-13210
 029131-93050



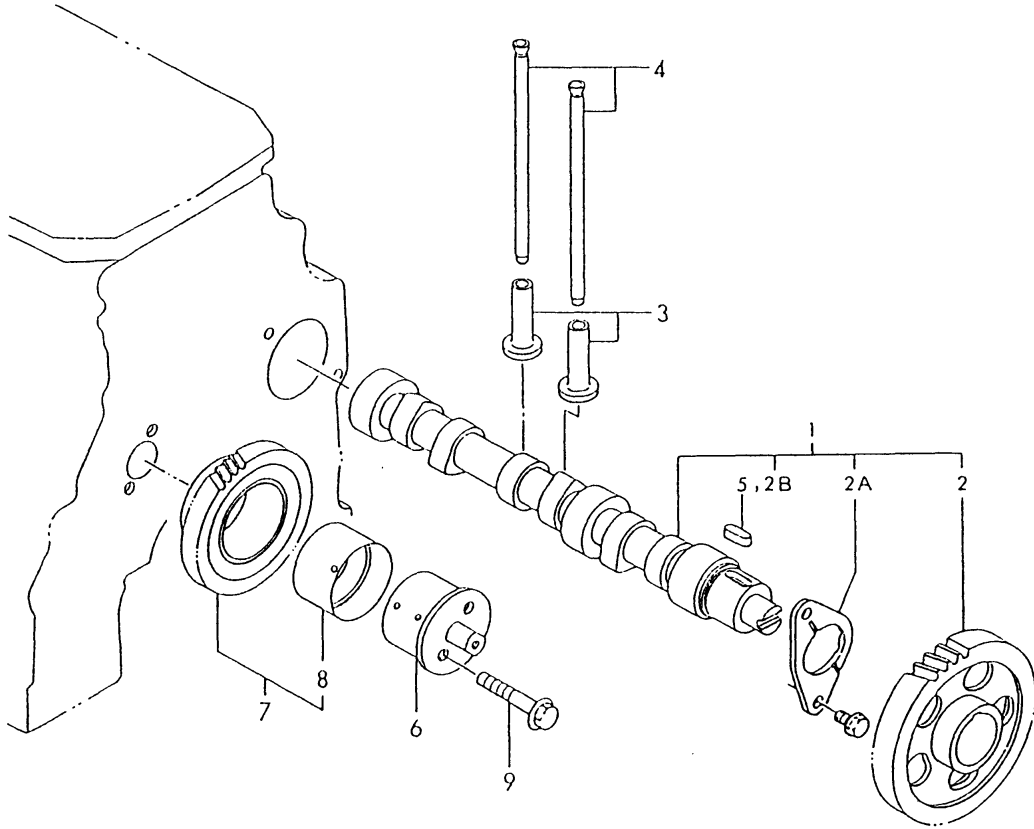
(A)=3TN84L-RNKH
 (B)=
 (C)=

(D)=
 (E)=
 (F)=

No.	Lev.	Parts No.	Description	Q'ty						I	R
				(A)	(B)	(C)	(D)	(E)	(F)		
1	1	171350-13100	MANIFOLD, EXHAUST	1							
2	1	129150-13110	GASKET	1							
3	1	194990-22050	NUT, M8	2							
4	1	26106-080802	BOLT, M8X 80 PLATED	4							
5	1	26216-080222	STUD, M8X 22	4							
6	1	26216-080802	STUD, M8X 80	2							
7	1	124701-11910	GASKET, SILENCER	1							
7-1	1	124701-11911	GASKET, SILENCER	1							N
(A=*1990.06)											
8	1	129131-13510	SILENCER	1							
9	1	171350-13650	STAY, SILENCER	1							
10	1	194990-22050	NUT, M8	4							
11	1	26014-080202	BOLT, M8X 20	4							
12	1	121120-13590	CLAMP	1							W
(A=*1991.02)											
12A	2	121120-13580	CLAMP	1							
12B	2	22137-100000	WASHER, 10	1							W
(A=*1991.02)											
12C	2	22217-100000	WASHER, SPRING 10	1							W
(A=*1991.02)											
12D	2	26106-100652	BOLT, M10X 65 PLATED	1							W
(A=*1991.02)											
12E	2	26706-100002	NUT, M10	1							W
(A=*1991.02)											
13	1	103954-13200	GASKET, SILENCER	1							W
(A=EXXX)											

Fig.9. CAMSHAFT & IDLE GEAR

029129-14100
029100-25101



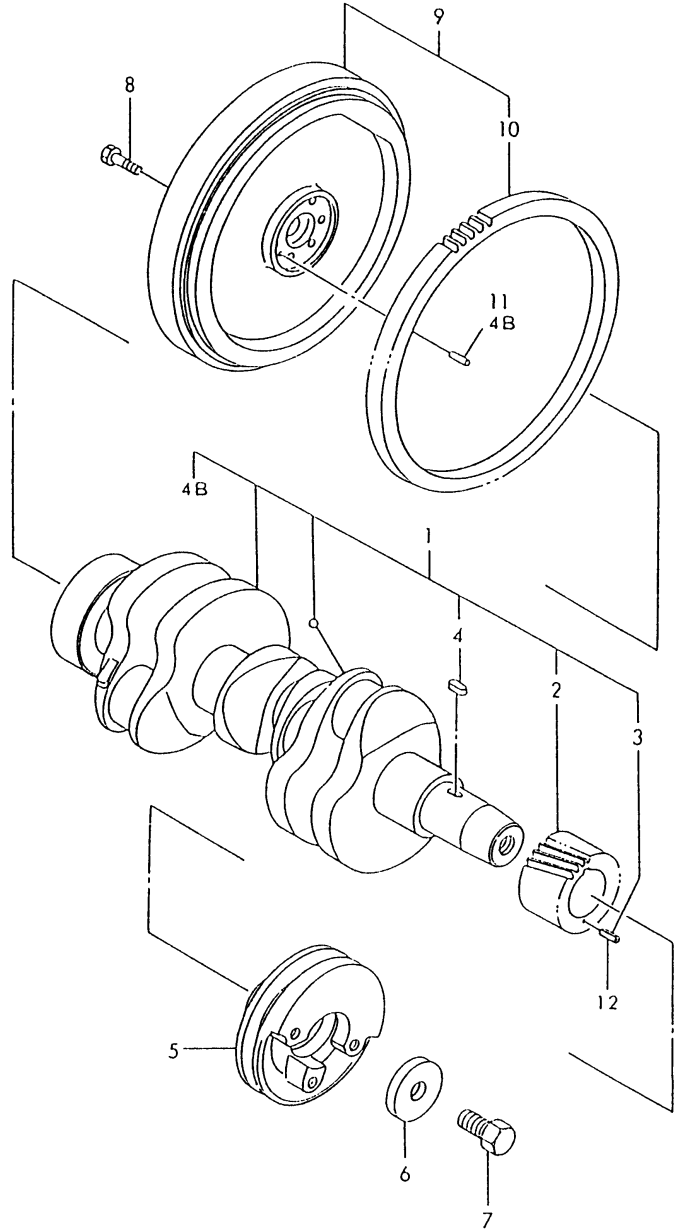
(A)=3TN84L-RNKH
(B)=
(C)=

(D)=
(E)=
(F)=

No.	Lev.	Parts No.	Description	Q'ty						I	R
				(A)	(B)	(C)	(D)	(E)	(F)		
1	1	129129-14580 (A=EXXX)	CAMSHAFT ASSY	1							W
2	2	129150-14101	GEAR, CAMSHAFT	1							
2A	2	129150-02450 (A=EXXX)	BEARING, THRUST	1							W
2B	2	22512-070140 (A=EXXX)	KEY, 7X 14	1							W
3	1	129150-14200	TAPPET	6							
4	1	129150-14400	ROD, PUSH L=178	6							
5	1	22512-070140 (A=EXXX)	KEY, 7X 14	1							Z
6	1	129100-25061	SHAFT, IDLE	1							
7	1	129150-25101	GEAR ASSY, IDLE	1							
9	1	26106-080452	BOLT, M8X 45 PLATED	2							

Fig.10. CRANKSHAFT & FLYWHEEL

029100-21100
 029100-21200
 U71350-21300



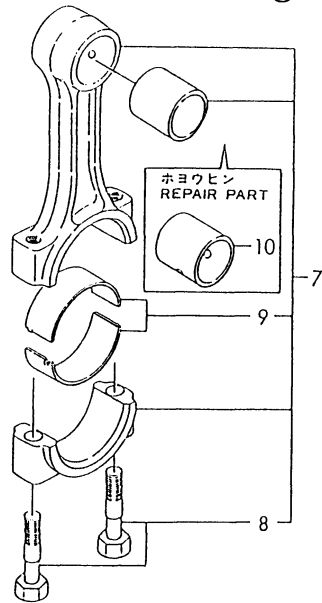
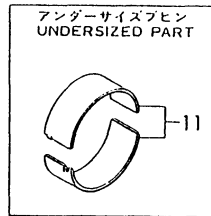
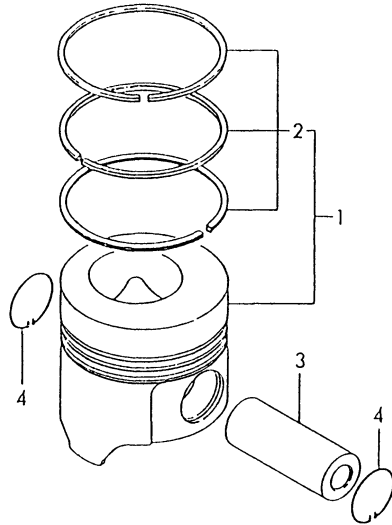
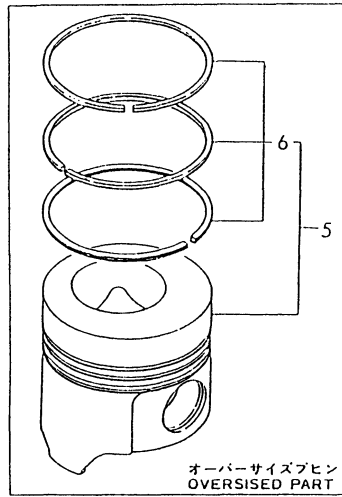
(A)=3TN84L-RNKH
 (B)=
 (C)=

(D)=
 (E)=
 (F)=

No.	Lev.	Parts No.	Description	Q'ty						I	R
				(A)	(B)	(C)	(D)	(E)	(F)		
1	1	729150-21700	CRANKSHAFT ASSY	1							
1-1	1	729102-21700	CRANKSHAFT ASSY	1							R
(A=E10229)											
2	2	129150-21200	GEAR, CRANKSHAFT	1							
3	2	22351-040010	PIN, SPRING 4.0X10	1							Z
(A=*1990.)											
4	2	22512-070140	KEY, 7X 14	1							
4B	2	129100-01580	PIN, M8X16	1							W
(A=*1990.)											
5	1	171340-21650	V-PULLEY	1							
6	1	129795-21661	WASHER	1							
7	1	121850-21680	BOLT	1							
8	1	121111-21501	BOLT, FLYWHEEL	6							
9	1	171350-21590	FLYWHEEL ASSY	1							
10	2	124550-21600	GEAR, RING	1							
11	1	129100-01580	PIN, M8X16	1							Z
(A=*1990.)											
12	1	22351-040010	PIN, SPRING 4.0X10	1							W
(A=*1990.)											

Fig.11. PISTON & CONNECTING ROD

029105-22110
029150-23100



(A)=3TN84L-RNKH
(B)=
(C)=

(D)=
(E)=
(F)=

No.	Lev.	Parts No.	Description	Q'ty						I	R
				(A)	(B)	(C)	(D)	(E)	(F)		
1	1	129105-22080	PISTON ASSY	3							
2	2	729157-22501	RING SET, PISTON	3							
2-1	2	129105-22500	RING SET, PISTON	3							R
(A=E10229)											
3	1	129150-22300	PIN, PISTON D26 L66	3							
4	1	121100-22400	CIRCLIP	6							
5	1	729105-22900	PISTON ASSY, 0.25 OS	3							1
6	2	729157-22951	RING SET, 0.25 OS	3							1
7	1	729150-23700	ROD ASSY, CONNECTING	3							
7-1	1	729402-23100	ROD ASSY, CONNECTING	1							N
(A=*1990.05)											
8	2	121550-23200	BOLT, CONNECTING ROD	6							
9	2	129150-23600	BEARING, CRANK PIN	3							
10	1	129100-23910	BEARING, PISTON PIN	3							2
11	1	129150-23610	BEARING, 0.25 US	3							3

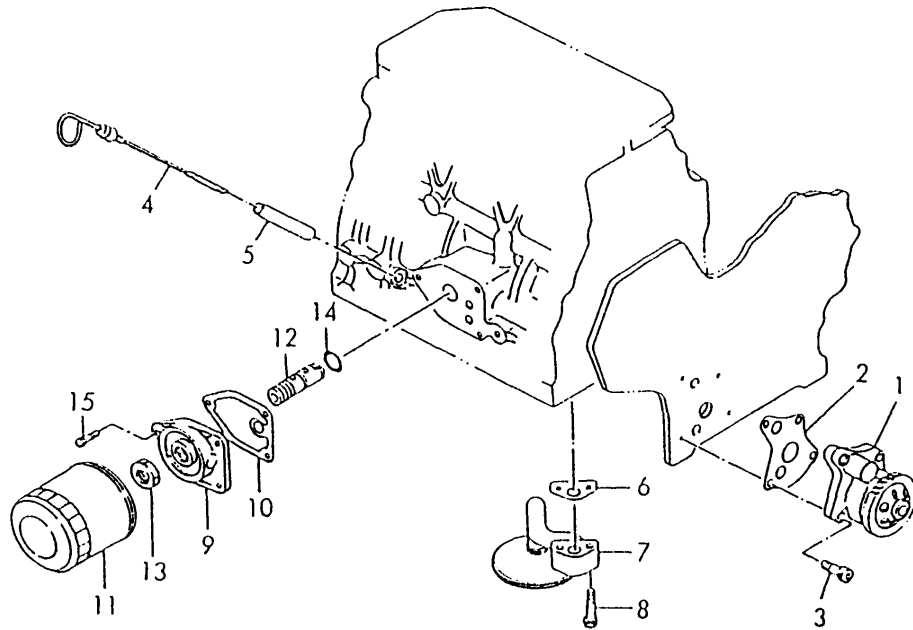
Remarks
(1)OVER-SIZE PART.
(2)REPAIR PART.
(3)UNDER-SIZE PART.

Fig.12. LUB.OIL SYSTEM

D29150-32100
 D29100-34110
 D29100-35100
 D29100-35200

(A)=3TN84L-RNKH
 (B)=
 (C)=

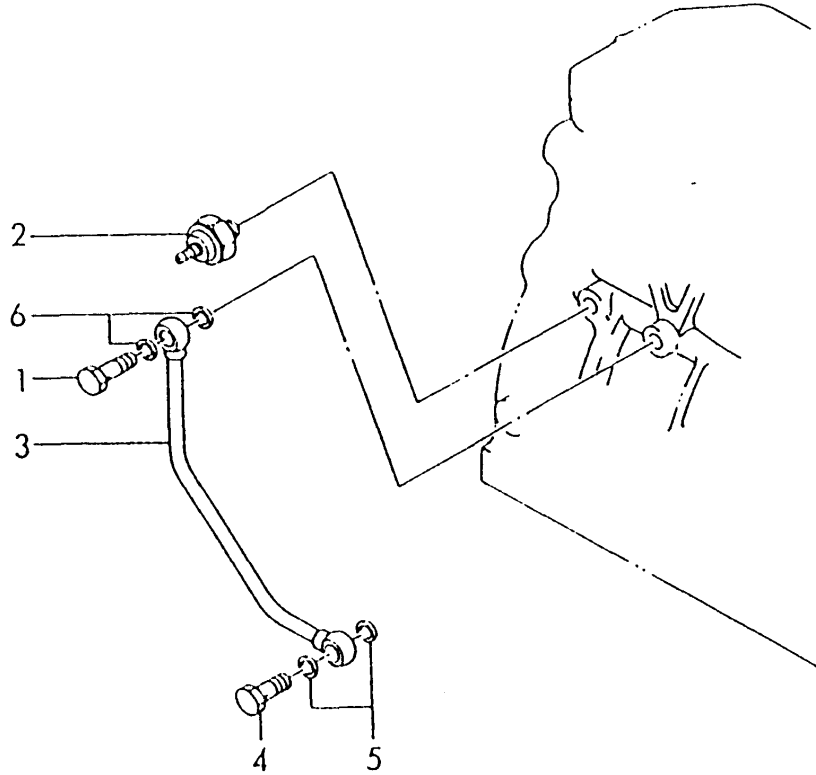
(D)=
 (E)=
 (F)=



No.	Lev.	Parts No.	Description	Q'ty						I	R
				(A)	(B)	(C)	(D)	(E)	(F)		
1	1	129150-32000	PUMP ASSY, OIL	1							
2	1	129150-32020	GASKET, PUMP	1							
3	1	26450-060252	BOLT, M6X 25	4							
4	1	171420-34800	DIPSTICK, OIL	1							
5	1	121520-34810	GUIDE, DIPSTICK	1							
6	1	129150-35040	GASKET	1							
6-1	1	129150-35041	GASKET	1							N
		(A=*1990.06)									
7	1	129150-35091	PIPE ASSY, OIL INLET	1							
8	1	26106-080352	BOLT, M8X 35 PLATED	2							
9	1	129150-35101	BRACKET, STRAINER	1							
10	1	129150-35110	GASKET	1							
10-1	1	129150-35111	GASKET	1							N
		(A=*1990.06)									
11	1	129150-35150	FILTER 90X80L	1							
12	1	119865-35300	VALVE ASSY, CONTROL	1							
13	1	129150-35350	NUT	1							
14	1	24311-000160	O-RING, 1AP16.0	1							
15	1	26106-080202	BOLT, M8X 20 PLATED	3							

Fig.13. LUB.OIL LINE

D29150-39110
D19600-39100



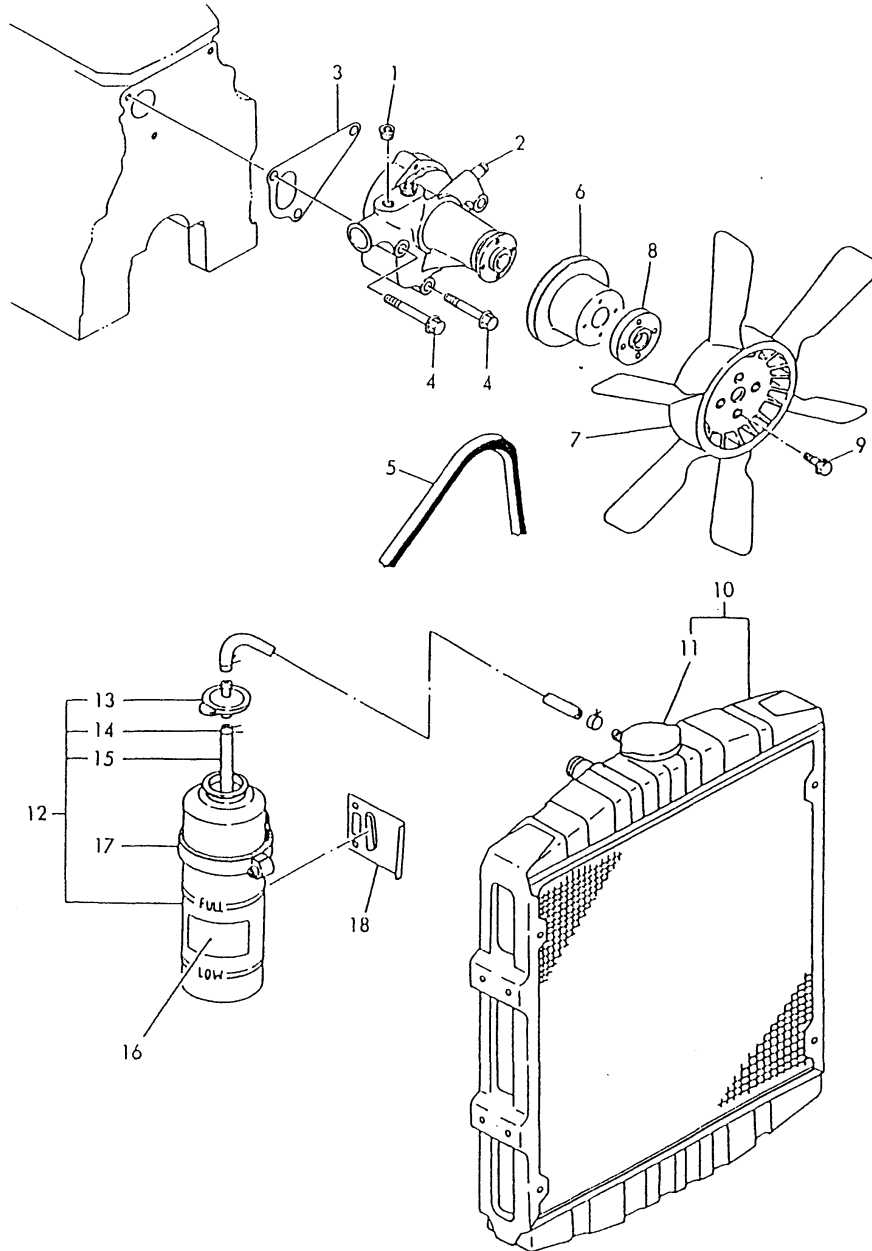
(A)=3TN84L-RNKH
(B)=
(C)=

(D)=
(E)=
(F)=

No.	Lev.	Parts No.	Description	Q'ty						I	R
				(A)	(B)	(C)	(D)	(E)	(F)		
1	1	124160-39140	BOLT, PIPE JOINT M10	1							
2	1	124160-39450	SWITCH, 0.5KG	1							
3	1	129150-39450	PIPE ASSY, OIL	1							
4	1	124550-59820	BOLT, PIPE JOINT M8	1							
5	1	23414-080000	GASKET, 8X1.0	2							
6	1	23414-100000	GASKET, 10X1.0	2							

Fig.14. COOLING WATER SYSTEM

029100-42110
 029131-42300
 U71340-44400
 029131-93050



(A)=3TN84L-RNKH

(B)=

(C)=

(D)=

(E)=

(F)=

No.	Lev.	Parts No.	Description	Q'ty						I	R
				(A)	(B)	(C)	(D)	(E)	(F)		
1	1	121850-11860	PLUG, PT1/4	1							
2	1	129100-42001	PUMP ASSY, WATER	1							
2-1	1	129100-42002	PUMP ASSY, WATER	1							N
(A=*1990.06)											
3	1	129100-42020	GASKET, WATER PUMP	1							
4	1	26106-080602	BOLT, M8X 60 PLATED	3							
5	1	124732-42290	V-BELT, AX37	1							
6	1	129550-42350	V-PULLEY, D=120	1							
7	1	171340-44740	FAN, COOLING D335XNF	1							
8	1	124574-44761	SPACER, FAN	1							
9	1	26014-060252	BOLT, M6X 25	4							
10	1	171064-44501	RADIATOR	1							
10A	2	121250-44590	CLAMP	2							
10B	2	171064-44610	SHROUD	1							
10D	2	119631-44800	LABEL, RADIATOR	1							
10E	2	171064-49150	HOSE	1							
10F	2	26014-080122	BOLT, M8X 12	4							
11	2	124450-44590	CAP, RADIATOR	1							
12	1	171064-44510	TANK ASSY, SUB	1							
13	2	171064-44530	CAP	1							
13-1	2	121450-44531	CAP	1							S
(A=E08604)											
14	2	124450-44560	RETAINER	1							
15	2	23065-070225	HOSE 7X 225	1							
16	1	121470-44540	LABEL, SUB-TANK	1							
17	1	124450-44550	BAND	1							
18	1	121256-44600	BRACKET, SUB TANK	1							

Fig.15. THERMOSTAT

029100-49210

(A)=3TN84L-RNKH
(B)=
(C)=

(D)=
(E)=
(F)=

No.	Lev.	Parts No.	Description	Q'ty						I	R
				(A)	(B)	(C)	(D)	(E)	(F)		
1	1	129350-49530	COVER, THERMOSTAT	1							
2	1	129795-49550	GASKET	1							
2-1	1	129795-49551	GASKET	1							N
(A=*1990.06)											
3	1	129100-49800	CASE ASSY,THERMOSTAT	1							
4	2	124770-11770	JOINT, PIPE PT1/8	1							
5	2	129100-49820	GASKET	1							
6	2	129100-49830	COVER, THERMOSTAT	1							
7	2	23871-030000	PLUG, R03	1							
8	2	26116-060162	BOLT, M6X 16 PLATED	2							
9	1	129155-49800	THERMOSTAT, 71	1							
10	1	129150-49810	GASKET, THERMOSTAT	1							
10-1	1	129150-49811	GASKET, THERMOSTAT	1							N
(A=*1990.06)											
11	1	129100-49840	GASKET	1							
12	1	26106-080202	BOLT, M8X 20 PLATED	2							
13	1	26106-080252	BOLT, M8X 25 PLATED	1							
14	1	26106-080502	BOLT, M8X 50 PLATED	1							
15	1	26106-080602	BOLT, M8X 60 PLATED	1							

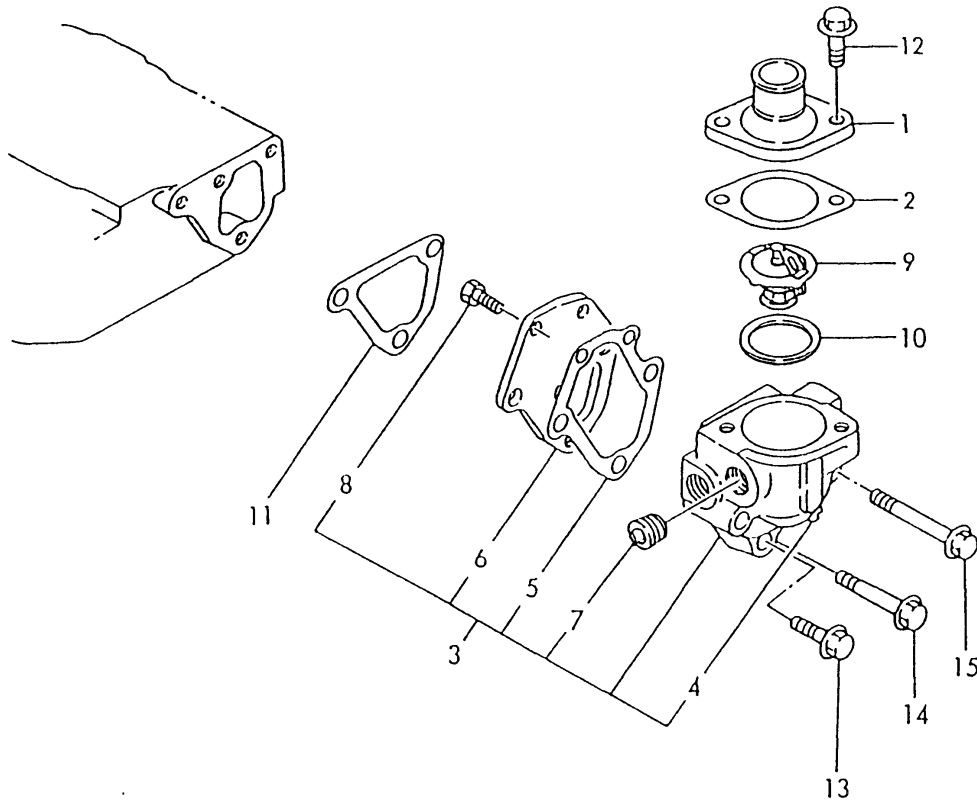
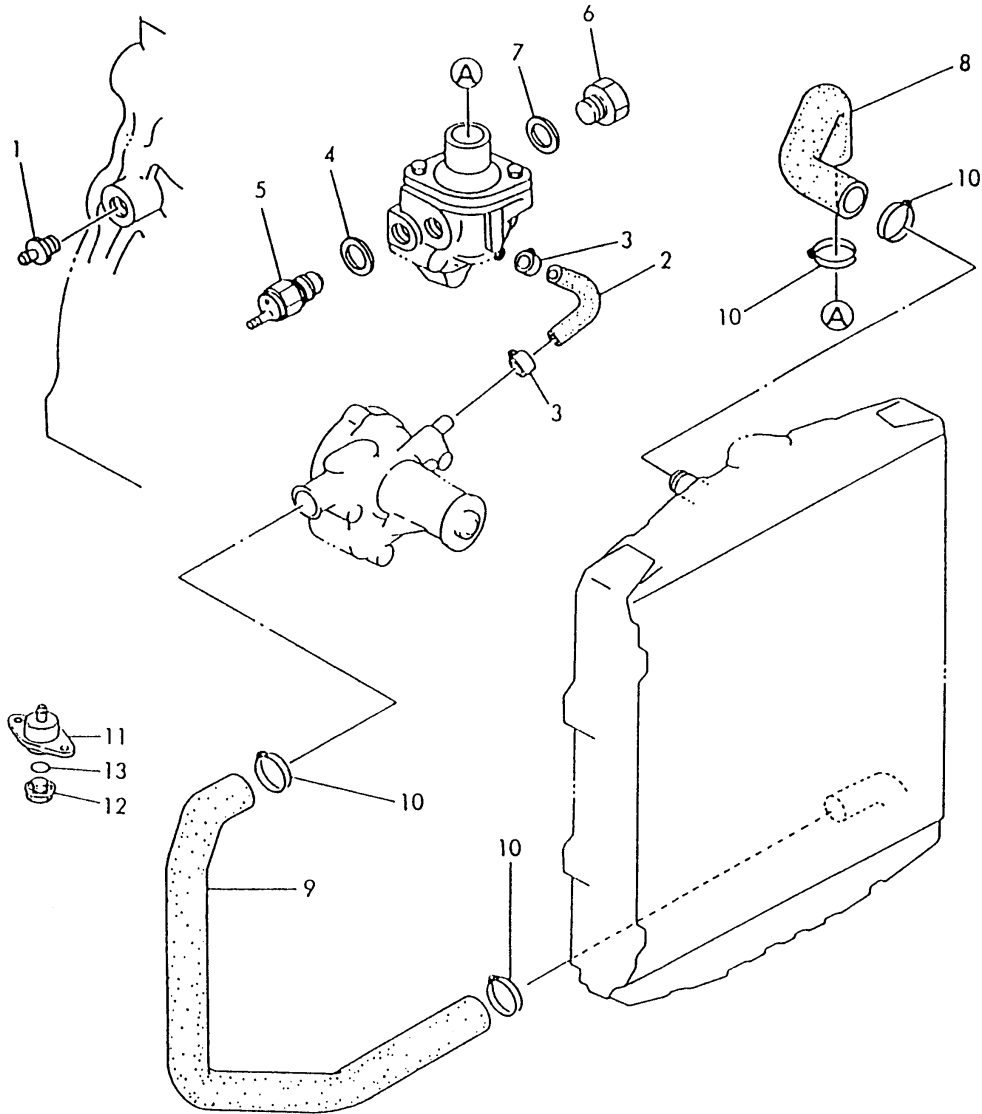


Fig.16. COOLING WATER LINE

019600-49300
 029100-49500
 029100-49610
 029131-93050



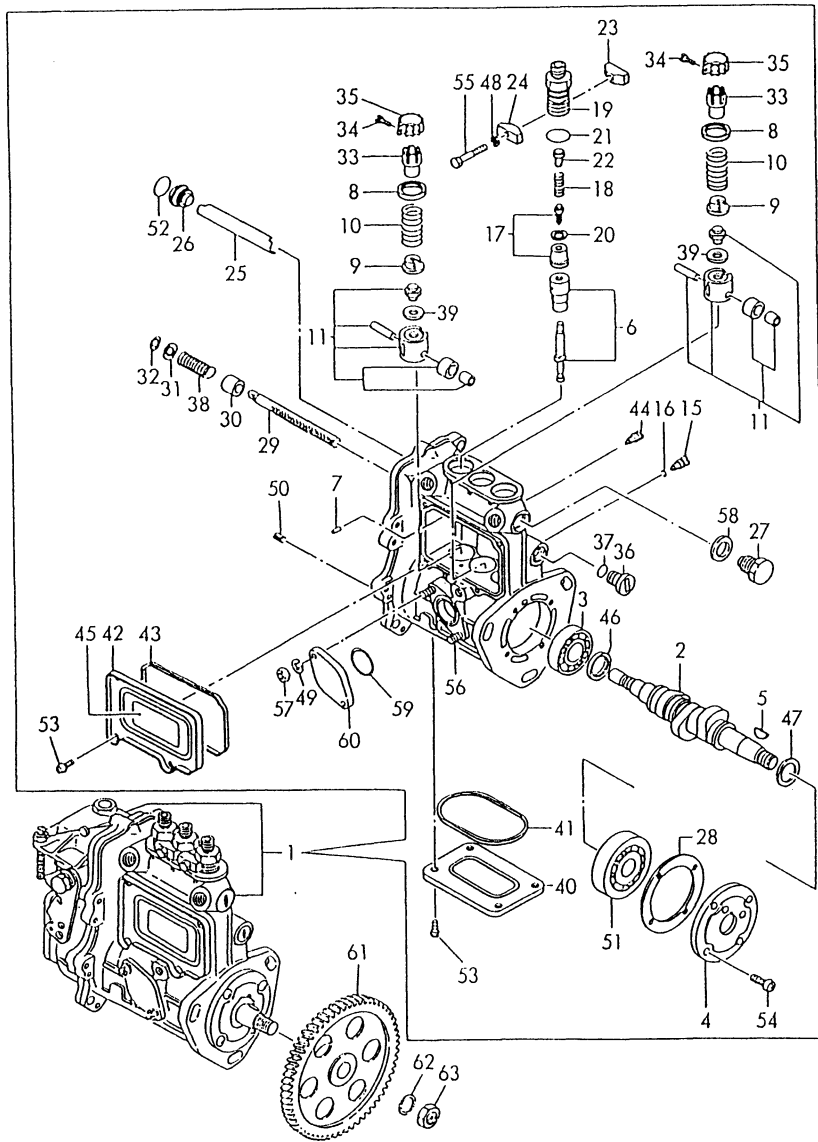
(A)=3TN84L-RNKH
 (B)=
 (C)=

(D)=
 (E)=
 (F)=

No.	Lev.	Parts No.	Description	Q'ty						I	R
				(A)	(B)	(C)	(D)	(E)	(F)		
1	1	121550-49111	JOINT, PT1/4	1							
2	1	129100-49050	PIPE, WATER	1							
3	1	23000-016000	CLAMP, 16	2							
4	1	124465-44950	GASKET, 16	1							
5	1	121250-44901	SWITCH, 110	1							
6	1	121450-42450	PLUG, M16	1							
7	1	124465-44950	GASKET, 16	1							
8	1	171350-49010	PIPE, WATER	1							
9	1	171350-49020	PIPE, WATER	1							
10	1	23010-038000	CLAMP, 38	4							
11	1	121521-49100	BODY ASSY, COCK	1							
12	1	121250-49121	PLUG, DRAIN	1							
13	1	24311-000160	O-RING, 1AP16.0	1							

Fig.17. FUEL INJECTION PUMP

D29150-25200
729135-51391



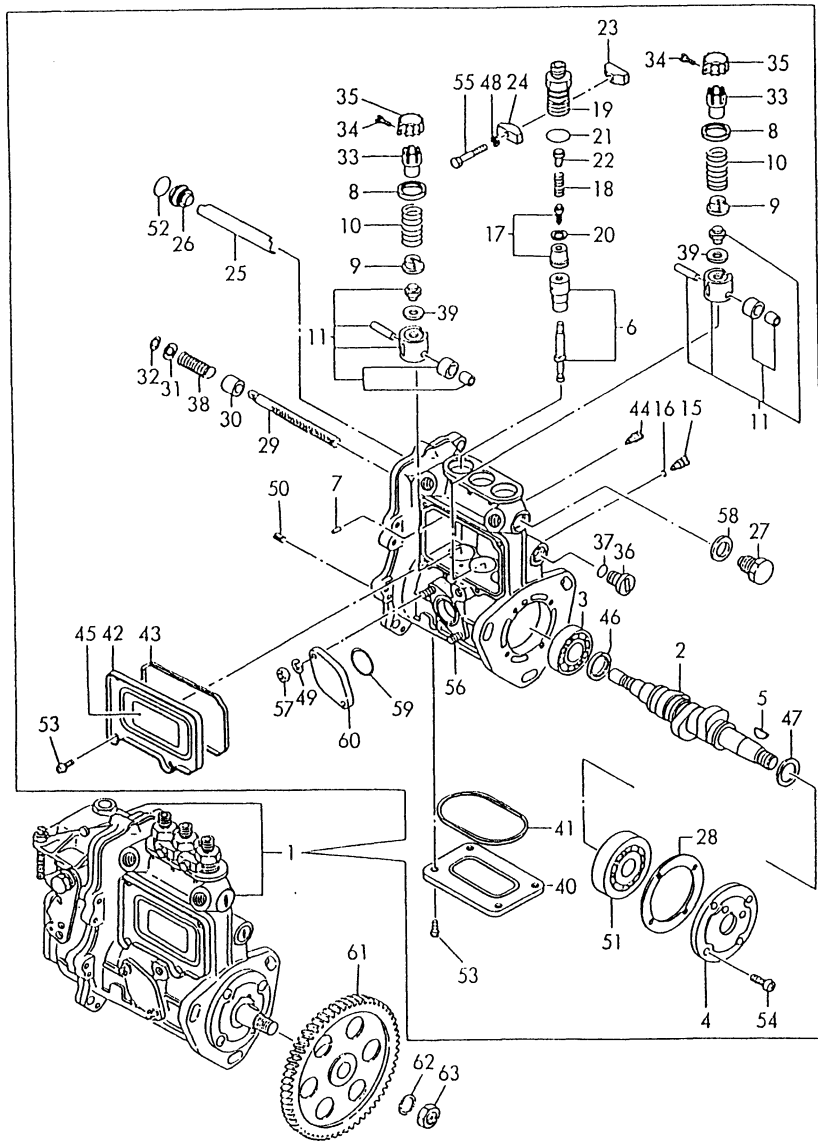
No.	Lev.	Parts No.	Description	Qty						I	R
				(A)	(B)	(C)	(D)	(E)	(F)		
1	1	729135-51390	PUMP ASSY, INJECTION	1							1
1-1	1	729135-51391	PUMP ASSY, INJECTION	1							N
(A=EXXX)											
2	2	119810-51040	CAMSHAFT	1							
3	2	129155-51050	BEARING, 17BM001D	1							
4	2	129155-51060	SUPPORT, CAMSHAFT	1							
5	2	122710-51090	KEY	1							
6	2	129400-51100	PLUNGER ASSY	3							
7	2	129155-51140	PIN	3							
8	2	174307-51170	RETAINER, SPRING A	3							
9	2	129155-51180	RETAINER, SPRING	3							
10	2	124950-51190	SPRING, PLUNGER	3							
11	2	129155-51200	TAPPET ASSY	3							
15	2	129155-51270	STOPPER, TAPPET	3							
16	2	129155-51280	O-RING, S6	3							
17	2	128170-51300	VALVE ASSY, DELIVERY	3							
18	2	129155-51320	SPRING, DELIVERY	3							
19	2	129155-51340	RETAINER	3							
20	2	124550-51350	GASKET, DELIVERY	3							
21	2	124550-51370	O-RING	3							
22	2	129155-51370	STOPPER, VALVE	3							
23	2	129155-51380	STOPPER	2							
24	2	129155-51390	STOPPER	2							
25	2	129155-51400	DEFLECTOR	1							
26	2	129155-51410	BOLT	1							
27	2	129155-51420	PLUG, M16	1							
28	2	129155-51450	SHIM SET, ADJUSTING	1							
29	2	129155-51500	RACK, CONTROL	1							
30	2	129155-51521	BUSH, RACK	1							
31	2	129155-51530	SPACER	1							
32	2	129155-51540	CIRCLIP	1							
33	2	129155-51550	PINION, CONTROL	3							
34	2	122117-51560	SCREW	3							
35	2	174307-51560	PINION	3							
36	2	129155-51570	PLUG, M12	1							
37	2	129155-51580	O-RING	1							
38	2	129155-51591	SPRING, RACK	1							
39	2	129155-51600	SHIM SET, ADJUSTING	3							
40	2	129155-51700	COVER	1							
41	2	129155-51710	GASKET	1							
42	2	129155-51750	COVER	1							
43	2	129155-51760	GASKET	1							
44	2	129155-51790	STOOPER, RACK	1							
45	2	129156-51910	LABEL, CAUTION	1							
46	2	129155-51930	SPACER, T=3.25	1							
47	2	129155-51940	SPACER, T=1.5	1							
48	2	22217-050000	WASHER, SPRING 5	2							Z
(A=EXXX)											
49	2	22217-060000	WASHER, SPRING 6	2							
50	2	22351-050010	PIN, SPRING 5.0X10	2							
51	2	24101-063034	BEARING, BALL 6303	1							

Remarks

(1)GOVERNOR ASSY(FIG.NO.22)IS INCORPORATED IN THIS FUEL INJECTION PUMP ASSY(REF.NO.1).

Fig.17. FUEL INJECTION PUMP

029150-25200
729135-51391



(A)=3TN84L-RNKH

(B)=

(C)=

(D)=

(E)=

(F)=

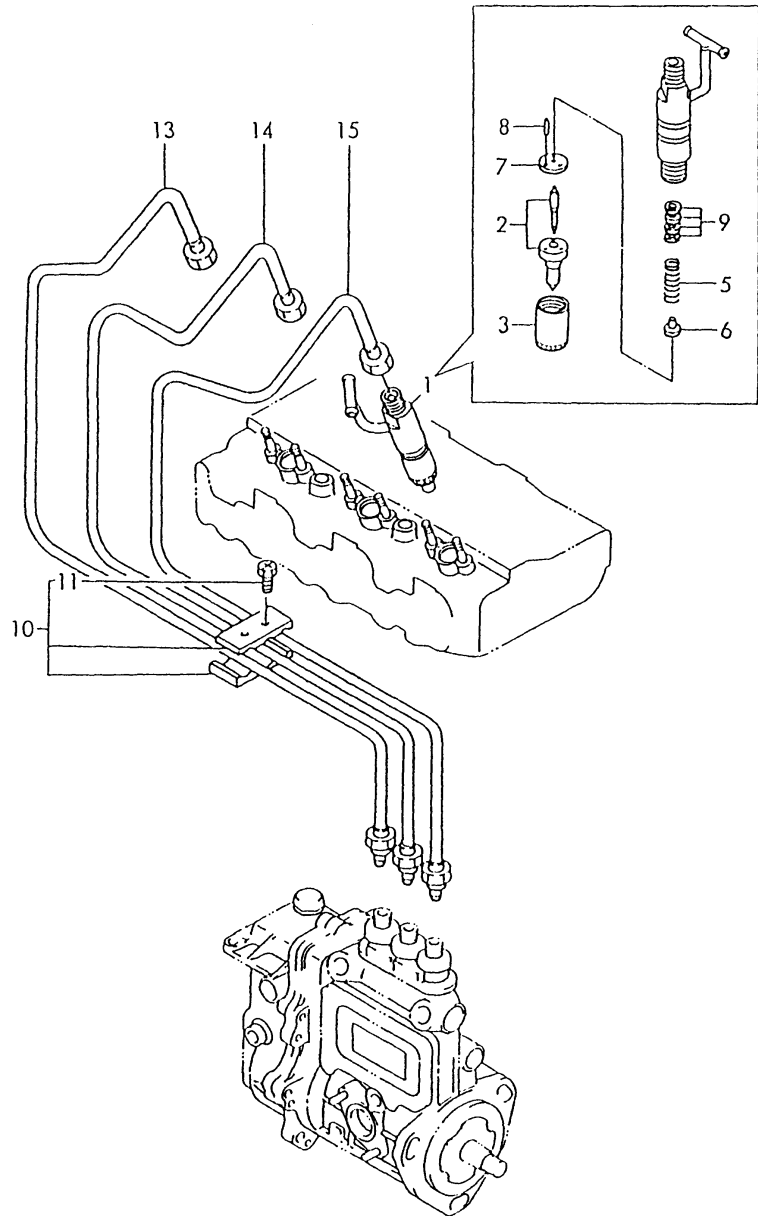
No.	Lev.	Parts No.	Description	Q'ty						I	R
				(A)	(B)	(C)	(D)	(E)	(F)		
52	2	24341-000160	O-RING, 1AS16.0	1							
53	2	26022-050102	SCREW, M5X10	8							
54	2	26022-060162	SCREW, M6X16	4							
55	2	26116-050302	BOLT, M5X 30 PLATED	2							
56	2	26216-060142	STUD, M6X 14	2							
56-1	2	129155-51020	STUD	2							N
(A=E04449)											
57	2	26716-060002	NUT, M6	2							
58	2	43400-500490	SEAL WASHER 16S	1							
59	2	129155-52050	GASKET	1							
60	2	129100-52200	COVER	1							
61	1	129150-25900	GEAR, PUMP	1							
62	1	22217-120000	WASHER, SPRING 12	1							
63	1	26716-120002	NUT, M12	1							

Remarks

(1)GOVERNOR ASSY(FIG.NO.22)IS INCORPORATED IN THIS FUEL INJECTION PUMP ASSY(REF.NO.1).

Fig.18. FUEL INJECTION DEVICE

D29503-53100
D29100-59110



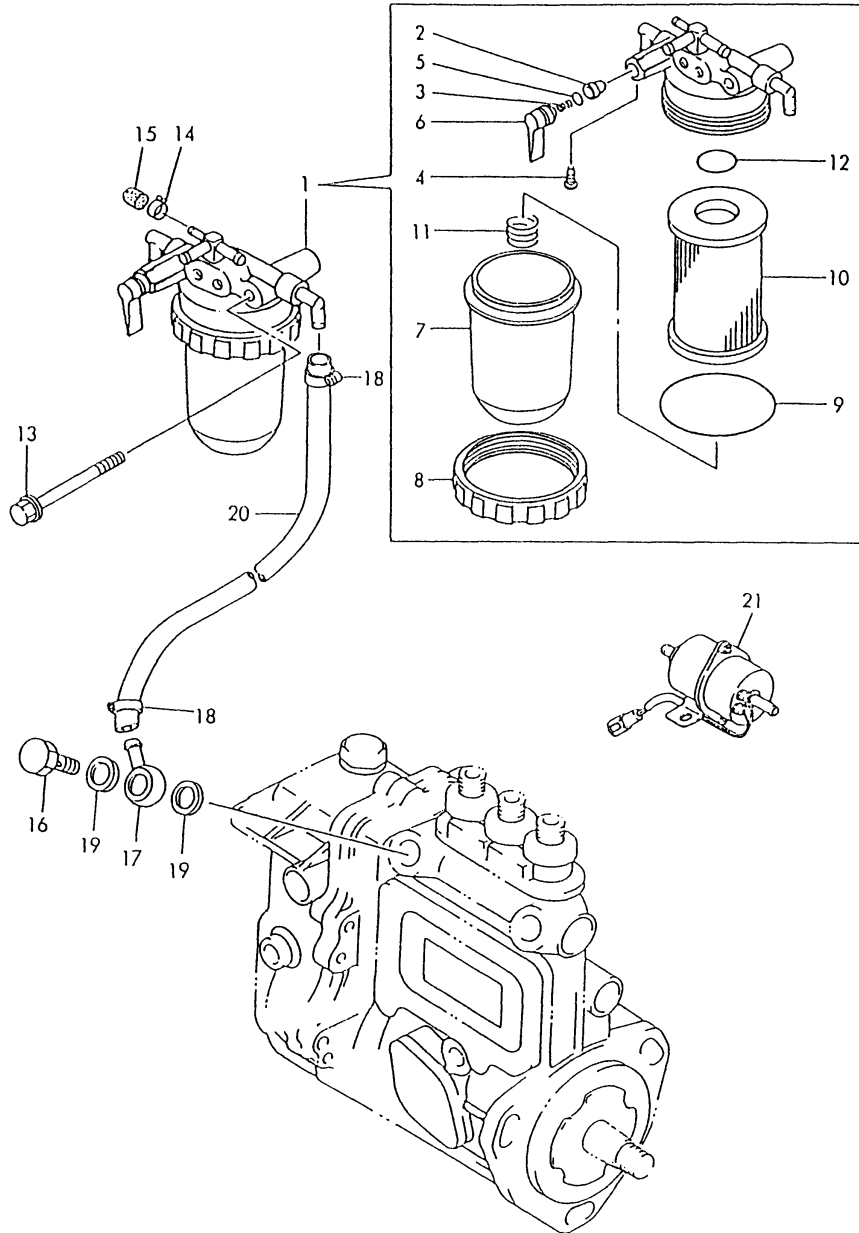
(A)=3TN84L-RNKH
(B)=
(C)=

(D)=
(E)=
(F)=

No.	Lev.	Parts No.	Description	Q'ty						I	R
				(A)	(B)	(C)	(D)	(E)	(F)		
1	1	729503-53100	VALVE ASSY,INJECTION	3							
2	2	129503-53000	VALVE ASSY,INJECTION	3							
3	2	114250-53080	NUT, NOZZLE D16.95	3							
5	2	114250-53120	SPRING, NOZZLE	3							
6	2	114250-53130	SEAT, SPRING	3							
7	2	114250-53140	PLATE	3							
8	2	114250-53210	PIN	6							
9	2	114250-53400	SHIM SET	3							
10	1	129150-59120	RETAINER, PIPE	1							
11	2	129150-59130	BOLT, M4X12	2							
13	1	129100-59910	PIPE ASSY, INJECTION	1							
14	1	129100-59920	PIPE ASSY, INJECTION	1							
15	1	129100-59930	PIPE ASSY, INJECTION	1							

Fig.19. FUEL SYSTEM

029100-55112
 029255-59210
 029131-93050



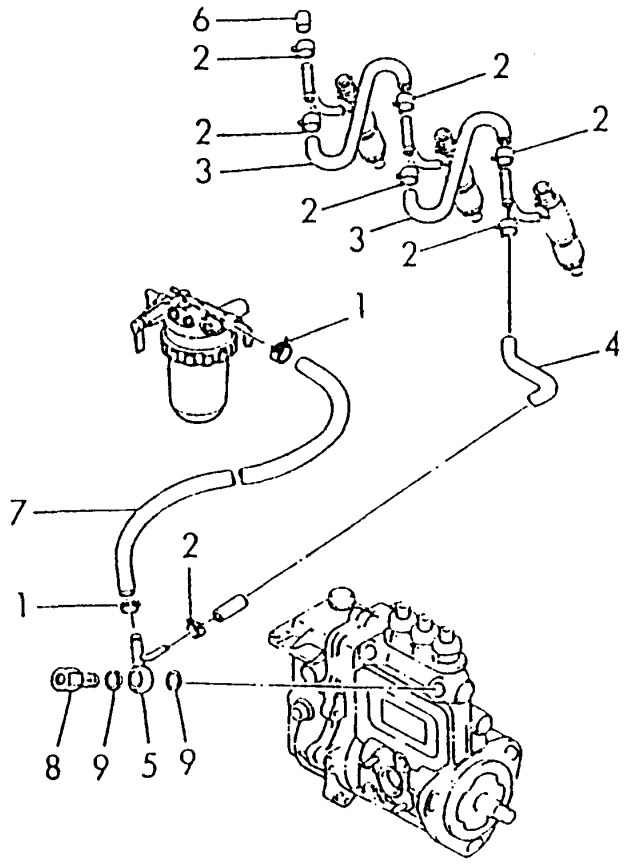
(A)=3TN84L-RNKH
 (B)=
 (C)=

(D)=
 (E)=
 (F)=

No.	Lev.	Parts No.	Description	Q'ty						I	R
				(A)	(B)	(C)	(D)	(E)	(F)		
1	1	129100-55621	FILTER ASSY, FUEL	1							
2	2	104200-55321	VALVE, TAPER	1							
3	2	104200-55330	SPRING, VALVE	1							
4	2	104200-55750	SCREW, M4	1							
5	2	24311-240100	O-RING, 1AP10A	1							
6	2	129100-55670	LEVER	1							
7	2	129100-55680	CUP, STRAINER	1							
8	2	129100-55690	RING, RETAINING	1							
9	2	24321-000650	O-RING, 1AG65.0	1							
10	2	129100-55650	ELEMENT	1							
11	2	129100-55700	SPRING	1							
12	2	24311-000160	O-RING, 1AP16.0	1							
13	1	26106-080652	BOLT, M8X 65 PLATED	1							
13-1	1	26014-080702	BOLT, M8X 70	1							R
(A=E07806)											
14	1	124066-59100	CLIP, HOSE 8	1							
15	1	129150-59580	CAP	1							
16	1	103854-39140	BOLT, PIPE JOINT	1							
17	1	101304-59020	JOINT, PIPE 12	1							
18	1	124766-59050	CLIP, HOSE 12	2							
19	1	104200-59170	GASKET, 12	2							
20	1	129555-59510	PIPE, D13/7.5X180	1							
21	1	129322-77400	PUMP ASSY, FUEL FEED	1							
21-1	1	129322-77401	PUMP ASSY, FUEL FEED	1							R
(A=E05524)											

Fig.20. FUEL RETURN LINE

029100-59302



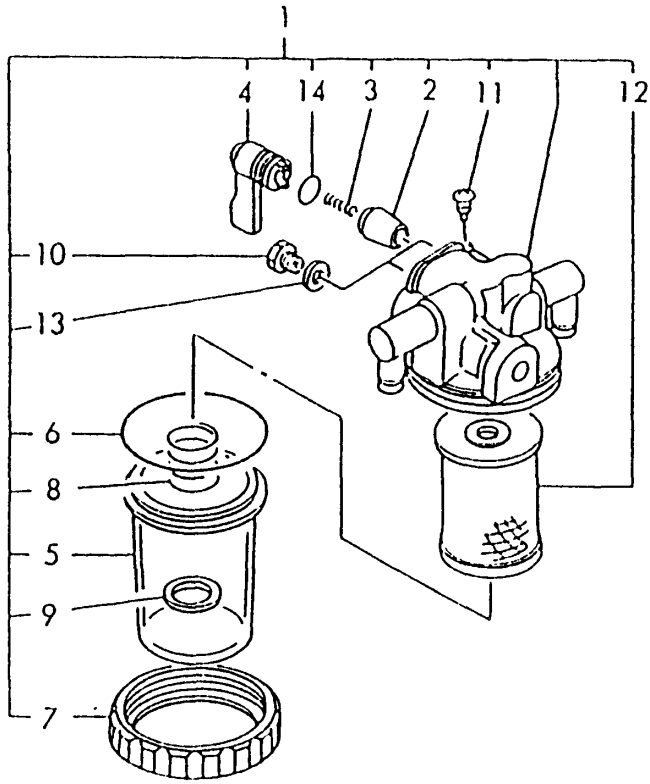
(A)=3TN84L-RNKH
(B)=
(C)=

(D)=
(E)=
(F)=

No.	Lev.	Parts No.	Description	Q'ty						I	R
				(A)	(B)	(C)	(D)	(E)	(F)		
1	1	124766-59050	CLIP, HOSE 12	2							
2	1	124066-59100	CLIP, HOSE 8	7							
3	1	121250-59550	PIPE, FUEL D8X120	2							
4	1	119840-59560	PIPE, FUEL RETURN	1							
5	1	119840-59570	JOINT	1							
6	1	129150-59580	CAP	1							
7	1	129255-59580	PIPE, FUEL	1							
7-1	1	105025-59750 (A=*1990.12)	PIPE, FUEL	1							R
8	1	129100-59951	VALVE ASSY, CHECK	1							
9	1	23414-120000	GASKET, 12X1.0	2							

Fig.21. WATER SEPARATOR

029131-93050



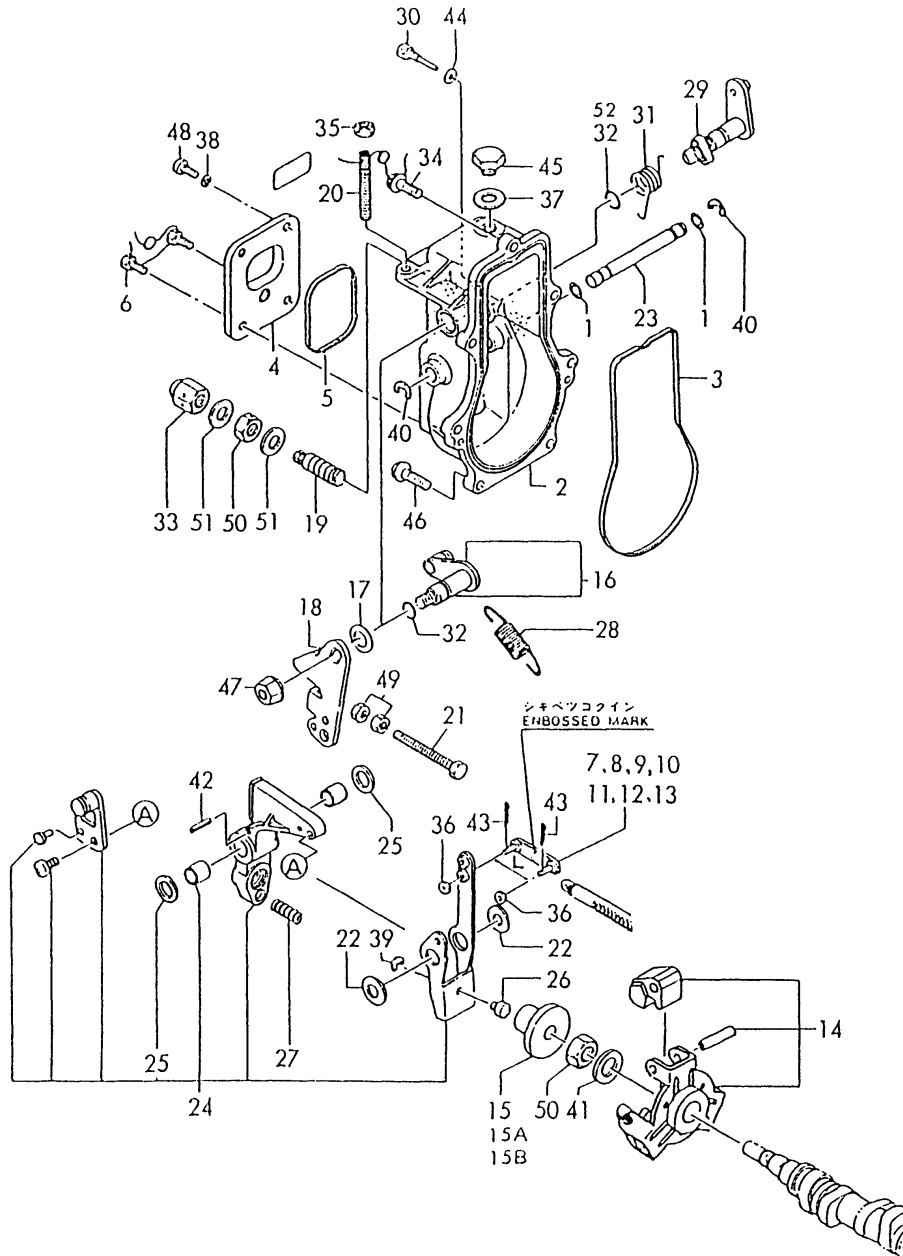
(A)=3TN84L-RNKH
(B)=
(C)=

(D)=
(E)=
(F)=

No.	Lev.	Parts No.	Description	Q'ty						I	R
				(A)	(B)	(C)	(D)	(E)	(F)		
1	1	129335-55700	SEPARATOR ASSY,WATER	1							
2	2	104200-55321	VALVE, TAPER	1							
3	2	104200-55330	SPRING, VALVE	1							
4	2	104200-55341	HANDLE	1							
5	2	124064-55510	COVER	1							
6	2	102103-55520	O-RING	1							
7	2	110250-55610	RING, RETAINING	1							
8	2	121257-55720	SPRING	1							
9	2	121257-55731	FLOAT	1							
10	2	101720-55750	PLUG, 6	2							
11	2	104200-55750	SCREW, M4	1							
12	2	171081-55910	SCREEN	1							
13	2	23418-060000	GASKET, 6X1.0	2							
14	2	24311-240100	O-RING, 1AP10A	1							

Fig.22. GOVERNOR

129135-5139!



(A)=3TN84L-RNKH

(B)=

(C)=

(D)=

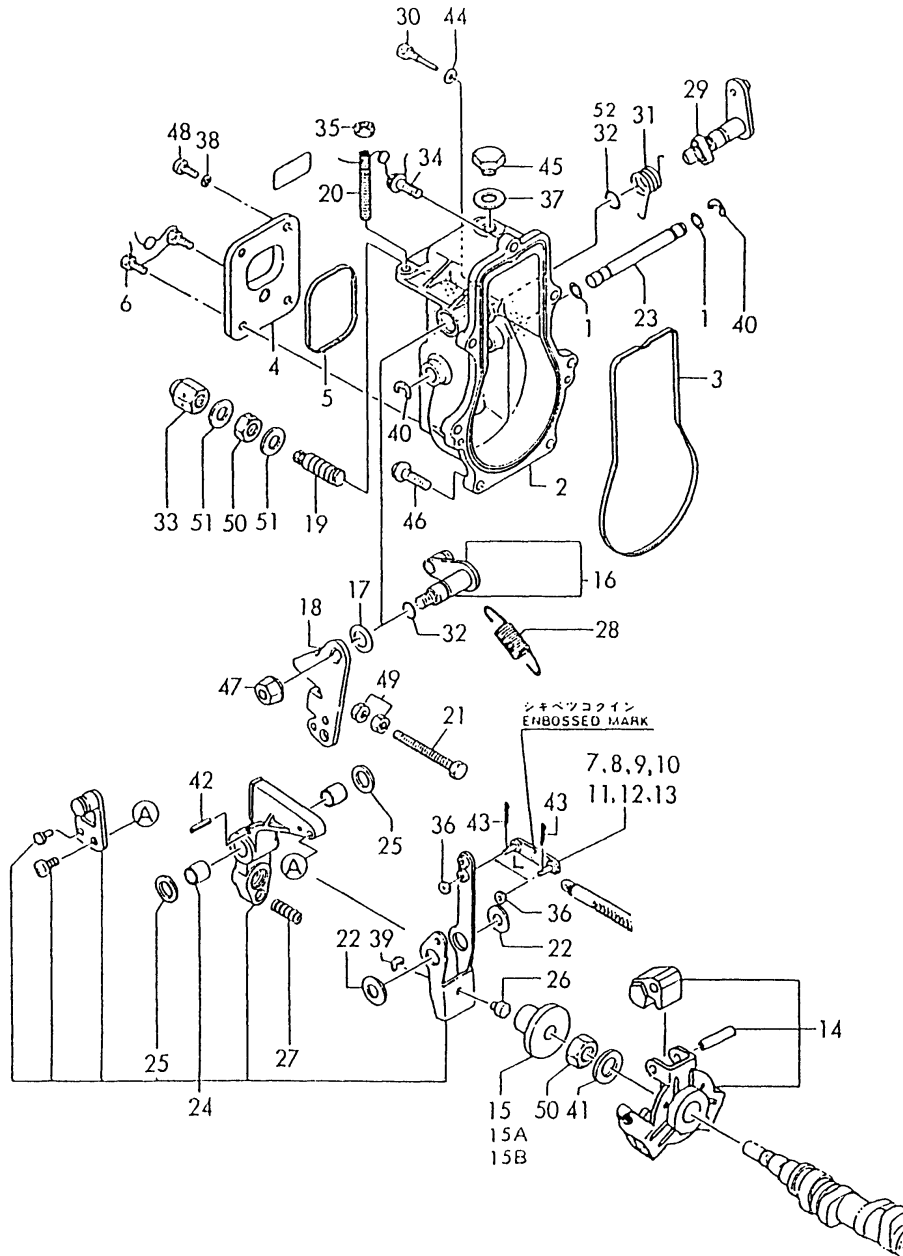
(E)=

(F)=

No.	Lev.	Parts No.	Description	Q'ty						I	R
				(A)	(B)	(C)	(D)	(E)	(F)		
1	2	129155-51280	O-RING, S6	2							
2	2	129155-61010	CASE, GOVERNOR	1							
2-1	2	129155-61011	CASE, GOVERNOR	1							S
(A=E11051)											
3	2	129155-61050	GASKET	1							
4	2	129155-61060	COVER, GOVERNOR CASE	1							
5	2	129155-61070	GASKET	1							
6	2	129155-61090	BOLT	1							Z
(A=*1989.)											
7	2	129155-61120	LINK, L=30 MARK 0	1							
8	2	129155-61130	LINK, L=31 MARK 1	1							
9	2	129155-61140	LINK, L=30.5 MARK 05	1							
10	2	129155-61150	LINK, L=33	1							Z
(A=*1989.)											
11	2	129155-61160	LINK, L=34 MARK4	1							Z
(A=*1989.)											
12	2	129155-61170	LINK, L=28 MARK 8	1							Z
(A=*1989.)											
13	2	129155-61180	LINK, L=29 MARK 9	1							Z
(A=EXXX)											
14	2	129155-61201	WEIGHT ASSY,GOVERNOR	1							
15	2	129155-61341	SLEEVE	1							
15A	2	129155-61350	SLEEVE, L=24.9	1							W
(A=EXXX)											
15B	2	129155-61360	SLEEVE, L=25.2	1							W
(A=EXXX)											
16	2	129100-61400	SHAFT ASSY	1							
17	2	129155-61430	SPACER	1							
18	2	129100-61440	LEVER, CONTROL	1							
19	2	129100-61450	LIMITER ASSY, FUEL	1							
20	2	129155-61450	BOLT, LIMITER	1							
21	2	129155-61460	BOLT, IDLE	1							
22	2	129155-61480	SPACER ASSY	2							
23	2	129155-61490	SHAFT	1							
24	2	129500-61500	LEVER ASSY, GOVERNOR	1							
25	3	174307-51700	SHIM SET	2							
26	2	129155-61540	SHIFTER	1							
27	2	129100-61650	SPRING, CONTROLLER	1							
28	2	171353-61710	SPRING, GOVERNOR	1							
29	2	129155-61801	LEVER, STOP	1							
29-1	2	129155-61802	LEVER, STOP	1							S
(A=E11051)											
29-2	1	129255-61802	LEVER, STOP	1							S
(A=E18048)											
30	2	129155-61810	PIN	1							
31	2	129155-61820	SPRING, RETURN	1							
31-1	2	129100-61821	SPRING, RETURN	1							S
(A=E14087)											
32	2	129155-61830	O-RING, S10	3							
32-1	2	129155-61830	O-RING, S10	1							K
(A=EXXX)											

Fig.22. GOVERNOR

129135-5139!



(A)=3TN84L-RNKH

(B)=

(C)=

(D)=

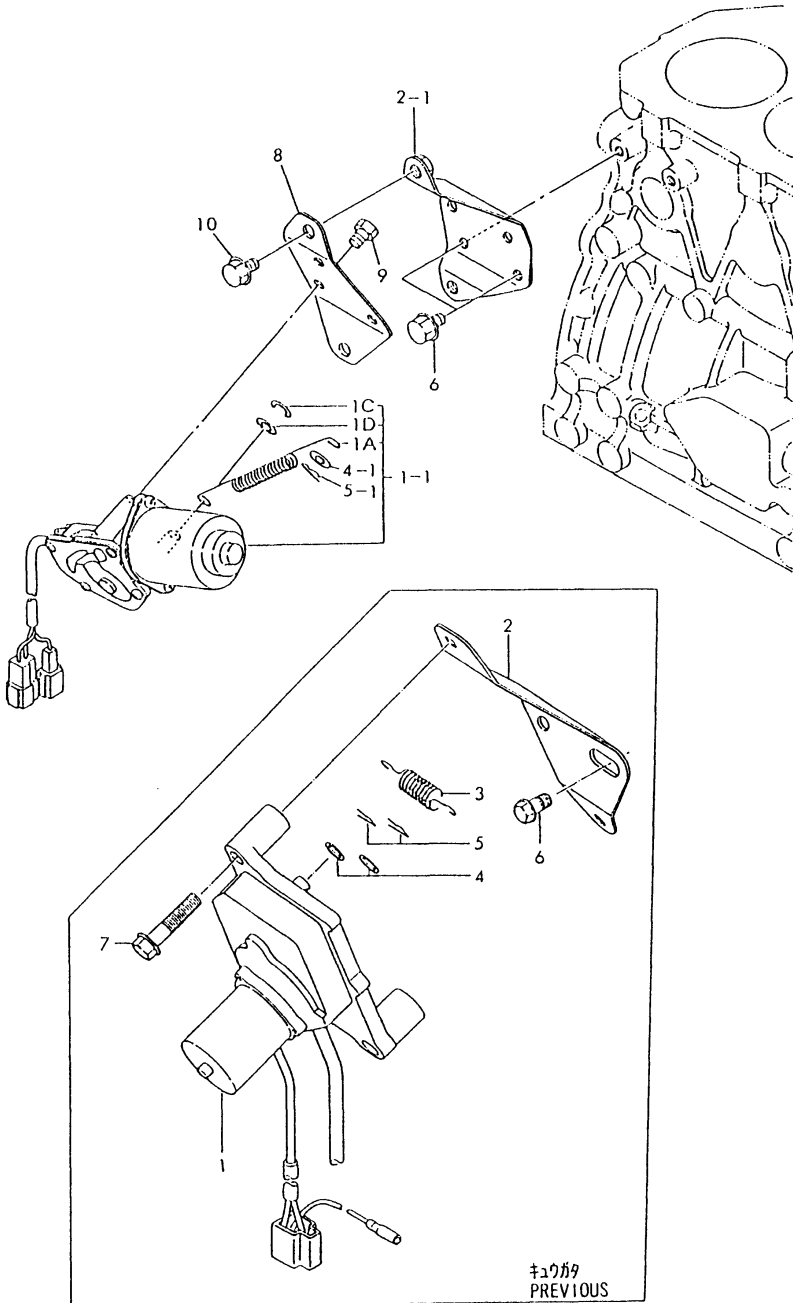
(E)=

(F)=

No.	Lev.	Parts No.	Description	Q'ty						I	R
				(A)	(B)	(C)	(D)	(E)	(F)		
33	2	129100-61930	NUT, CAP	1							
33-1	1	26687-120002	NUT, CAP M12	1							S
(A=E18048)											
34	2	129155-61950	BOLT	1							
35	2	124550-66370	NUT, M6	1							
36	2	22117-040000	WASHER, 4	2							
36-1	2	22117-040000	WASHER, 4	1							K
(A=EXXX)											
37	2	22190-100000	WASHER, SEAL 10	1							
37-1	2	43400-500430	SEAL WASHER 10S	1							R
(A=*1989.)											
38	2	22217-050000	WASHER, SPRING 5	1							Z
(A=*1989.)											
39	2	22272-000040	RING, E- 4	1							
40	2	22272-000060	RING, E- 6	2							
41	2	22287-120000	WASHER, 12	1							
42	2	22351-030016	PIN, SPRING 3.0X16	1							
43	2	22360-040000	PIN, SNAP 4	2							
43-1	2	22372-040000	PIN, SNAP 4	2							R
(A=*1991.02)											
44	2	23414-050000	GASKET, 5X1.0	1							
44-1	2	43400-500390	SEAL WASHER 6S	1							N
(A=EXXX)											
45	2	23887-100002	PLUG, 10	1							
46	2	26106-060202	BOLT, M6X 20 PLATED	6							
47	2	26366-080002	NUT, M8	1							
48	2	26557-050102	SCREW, M5X10	3							
48-1	2	26022-050102	SCREW, M5X10	4							K
(A=EXXX)											
49	2	26756-060002	NUT, LOCK M6	2							
49-1	2	26756-060002	NUT, LOCK M6	1							K
(A=EXXX)											
50	2	26776-120002	NUT, LOCK M12	2							
51	2	43400-500450	SEAL WASHER 12S	2							
52	2	24311-000080	O-RING, 1AP8.0	1							W
(A=EXXX)											
52-1	1	24311-240100	O-RING, 1AP10A	1							W
(A=E18048)											

Fig.23. ENGINE STOP

029107-66500



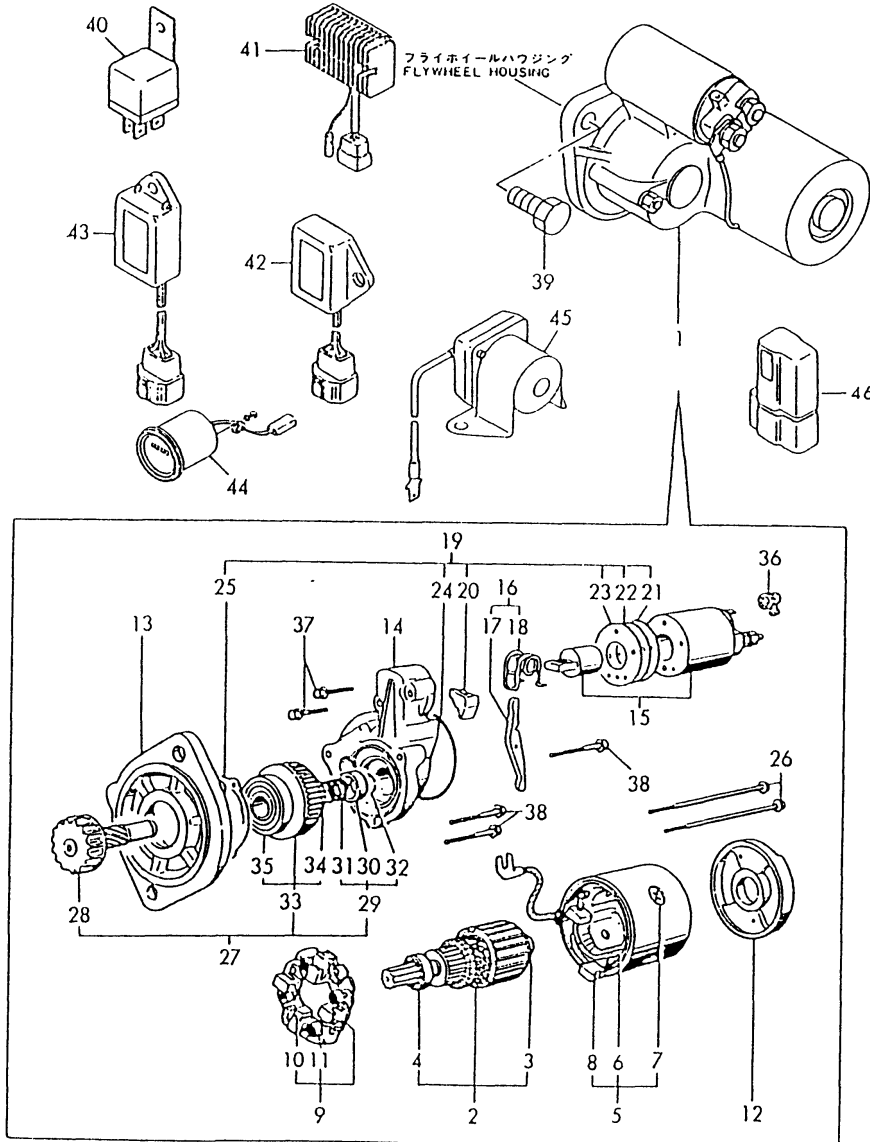
(A)=3TN84L-RNKH
(B)=
(C)=

(D)=
(E)=
(F)=

No.	Lev.	Parts No.	Description	Q'ty						I	R
				(A)	(B)	(C)	(D)	(E)	(F)		
1	1	129150-66800	MOTOR, STOP	1							
1-1	1	129107-66791	MOTOR ASSY, STOP	1							S
		(A=E04953)									
1A	2	129107-66830	SPRING, STOP MOTOR	1							W
		(A=E04953)									
1C	2	129566-66880	RING, SNAP	1							W
		(A=E04953)									
1D	2	129566-66890	WASHER	1							W
		(A=E04953)									
2	1	129155-66810	BRACKET, STOP MOTOR	1							
2-1	1	129107-66810	BRACKET, STOP MOTOR	1							S
		(A=E04953)									
3	1	129155-66820	SPRING	1							Z
		(A=E04953)									
4	1	22117-080000	WASHER, 8	2							
4-1	1	22117-080000	WASHER, 8	1							K
		(A=E04953)									
5	1	22360-080000	SNAP PIN 8	2							
5-1	1	22360-080000	SNAP PIN 8	1							K
		(A=E04953)									
6	1	26106-080122	BOLT, M8X 12 PLATED	2							
7	1	26106-080402	BOLT, M8X 40 PLATED	2							Z
		(A=E04953)									
8	1	129107-66820	BRACKET, STOP MOTOR	1							W
		(A=E04953)									
9	1	26116-050102	BOLT, M5X 10 PLATED	3							W
		(A=E04953)									
10	1	26106-080122	BOLT, M8X 12 PLATED	2							W
		(A=E04953)									

Fig.24. STARTING MOTOR(COMPONENT PARTS)

029100-77100
029131-93050



(A)=3TN84L-RNKH
(B)=
(C)=

(D)=
(E)=
(F)=

No.	Lev.	Parts No.	Description	Q'ty						I	R
				(A)	(B)	(C)	(D)	(E)	(F)		
1	1	171008-77010	STARTER, S114-483	1							
2	2	171008-77400	ARMATURE ASSY	1							
3	3	171008-77410	BEARING	1							
4	3	171008-77420	BEARING	1							
5	2	171008-77430	YOKE ASSY	1							
6	3	171008-77440	COIL ASSY, FIELD	1							
7	4	171008-77450	SCREW	4							
8	4	171008-77460	BRUSH (+)	2							
9	2	171008-77470	HOLDER ASSY, BRUSH	1							
10	3	171008-77480	BRUSH (-)	2							
11	3	171008-77490	SPRING, BRUSH	4							
12	2	171008-77500	COVER, REAR	1							
13	2	171008-77510	CASE, GEAR	1							
14	2	171008-77520	HOUSING, CENTER	1							
15	2	171008-77530	SWITCH, MAGNETIC	1							
16	2	171008-77540	LEVER SET	1							
17	3	171008-77550	LEVER, SHIFT	1							
18	3	171008-77560	SPRING	1							
19	2	171008-77570	COVER KIT, DUST	1							
19-1	2	171008-77571 (A=*1990.11)	COVER KIT, DUST	1							N
20	3	171008-77580 (A=*1990.11)	COVER (A,DUST)	1							Z
21	3	171008-77590 (A=*1990.11)	COVER (B,DUST)	1							Z
22	3	171008-77600 (A=*1990.11)	COVER (C,DUST)	1							Z
23	3	171008-77610 (A=*1990.11)	COVER (D,DUST)	1							Z
24	3	171008-77620 (A=*1990.11)	COVER (E,DUST)	1							Z
25	3	171008-77630 (A=*1990.11)	COVER (F,DUST)	1							Z
26	2	171008-77640	BOLT, THROUGH	2							
27	2	171008-77650	PINION ASSY	1							
28	3	171008-77660	SHAFT	1							
29	3	171008-77670	STOPPER SET	1							
30	4	171008-77680	STOPPER	1							
31	4	171008-77690	SPRING, RETURN	1							
32	4	171008-77700	CLIP	1							
33	3	171008-77720	CLUTCH ASSY	1							
34	4	171008-77730	BEARING, BALL	1							
35	4	171008-77740	BEARING	1							
36	2	171008-77750	COVER	1							
37	2	26106-060322	BOLT, M6X 32 PLATED	2							
38	2	26106-060402	BOLT, M6X 40 PLATED	3							
39	1	26116-120252	BOLT, M12X 25 PLATED	2							
40	1	121522-77101	RELAY, SAFETY	1							
40-1	1	119247-77100 (A=E18048)	RELAY, SAFETY	2							K
41	1	171301-77700	LIMITER, CURRENT	1							

Fig.24. STARTING MOTOR(COMPONENT PARTS)

029100-77100
029131-93050

(A)=3TN84L-RNKH
(B)=
(C)=

(D)=
(E)=
(F)=

No.	Lev.	Parts No.	Description	Q'ty						I	R
				(A)	(B)	(C)	(D)	(E)	(F)		
41-1	1	129132-77700 (A=E06584)	LIMITER, RS5136	1							R
42	1	121522-77721	INDICATOR	1							
43	1	128300-77920	TIMER	1							
44	1	933113-10300 (A=EXXX)	METER ASSY, HOUR	1							
45	1	129100-77910 (A=EXXX)	RELAY, MAGNETIC	1							
46	1	119643-66900 (A=E20546)	DIODE	1							W

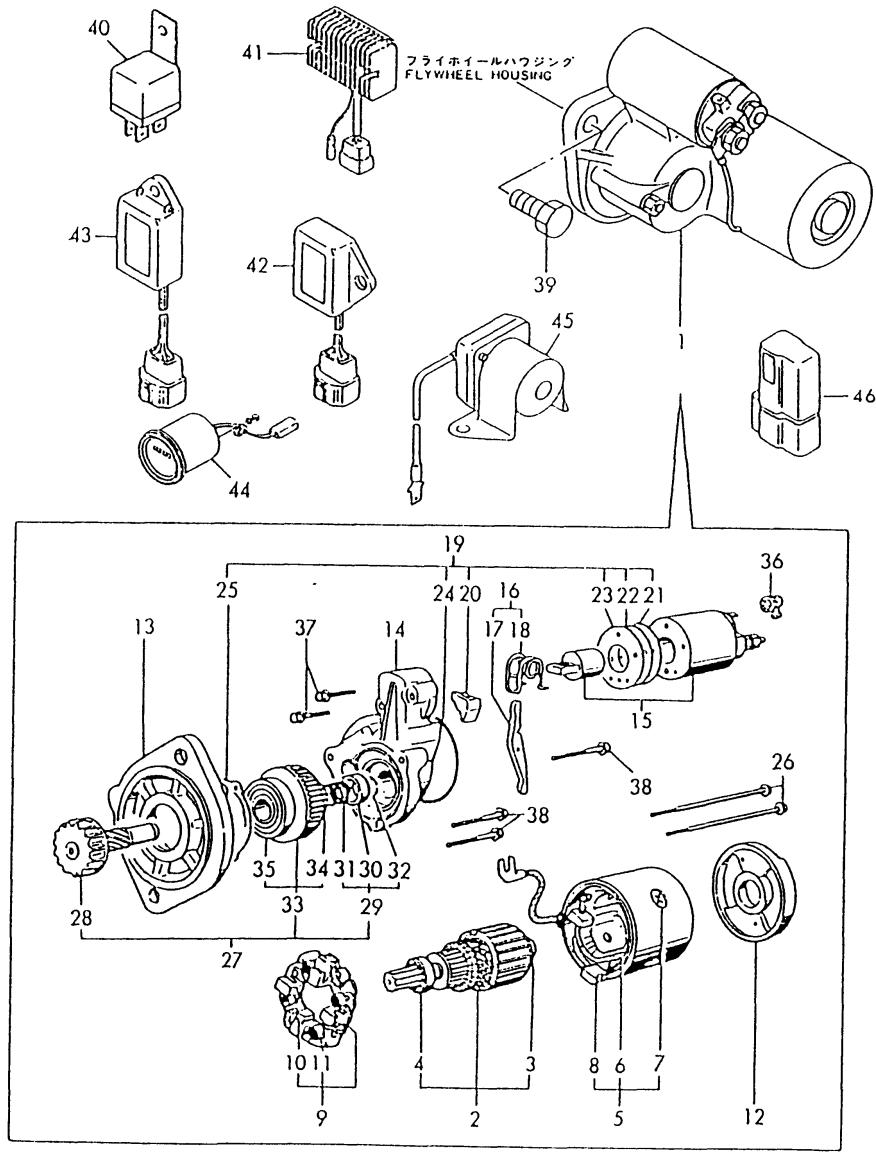
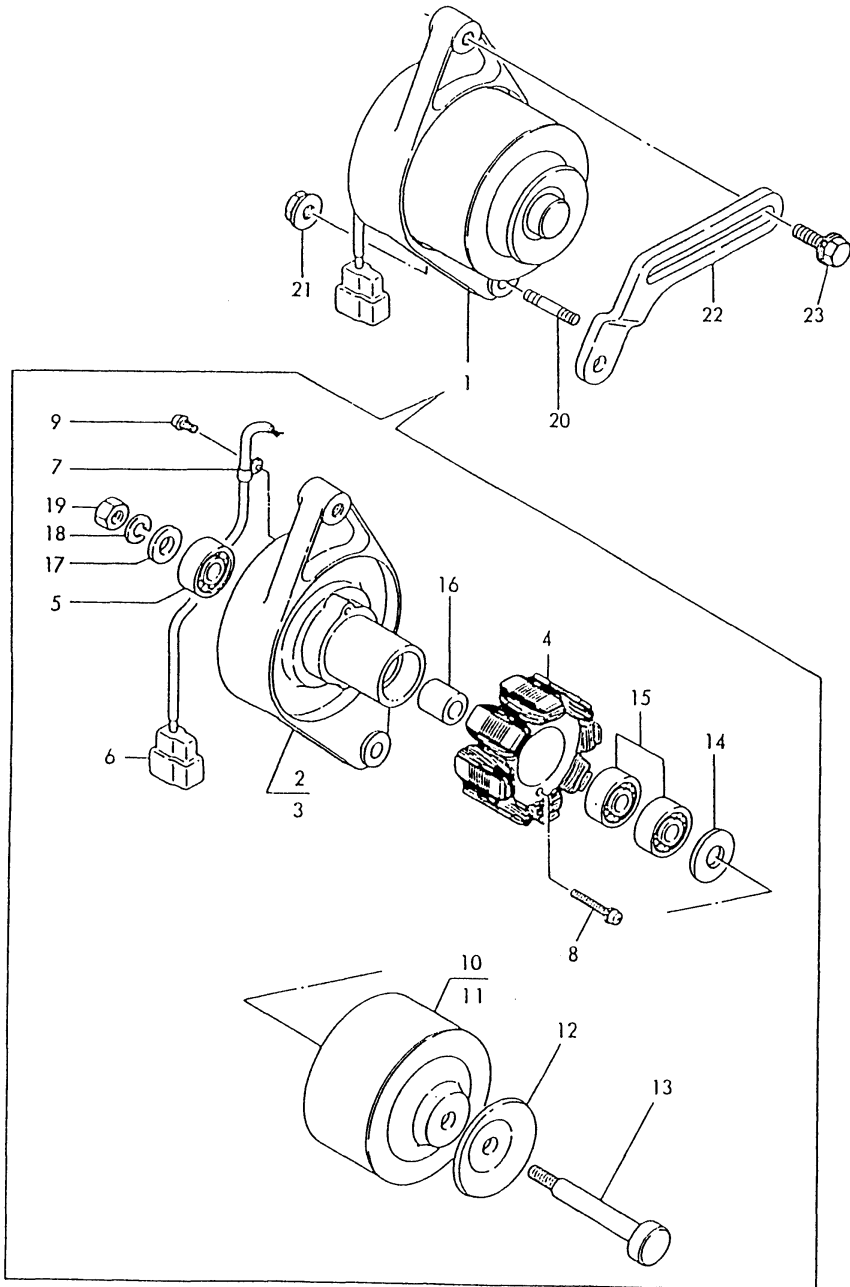


Fig.25. GENERATOR(COMPONENT PARTS)

D29410-77200
D29400-77300

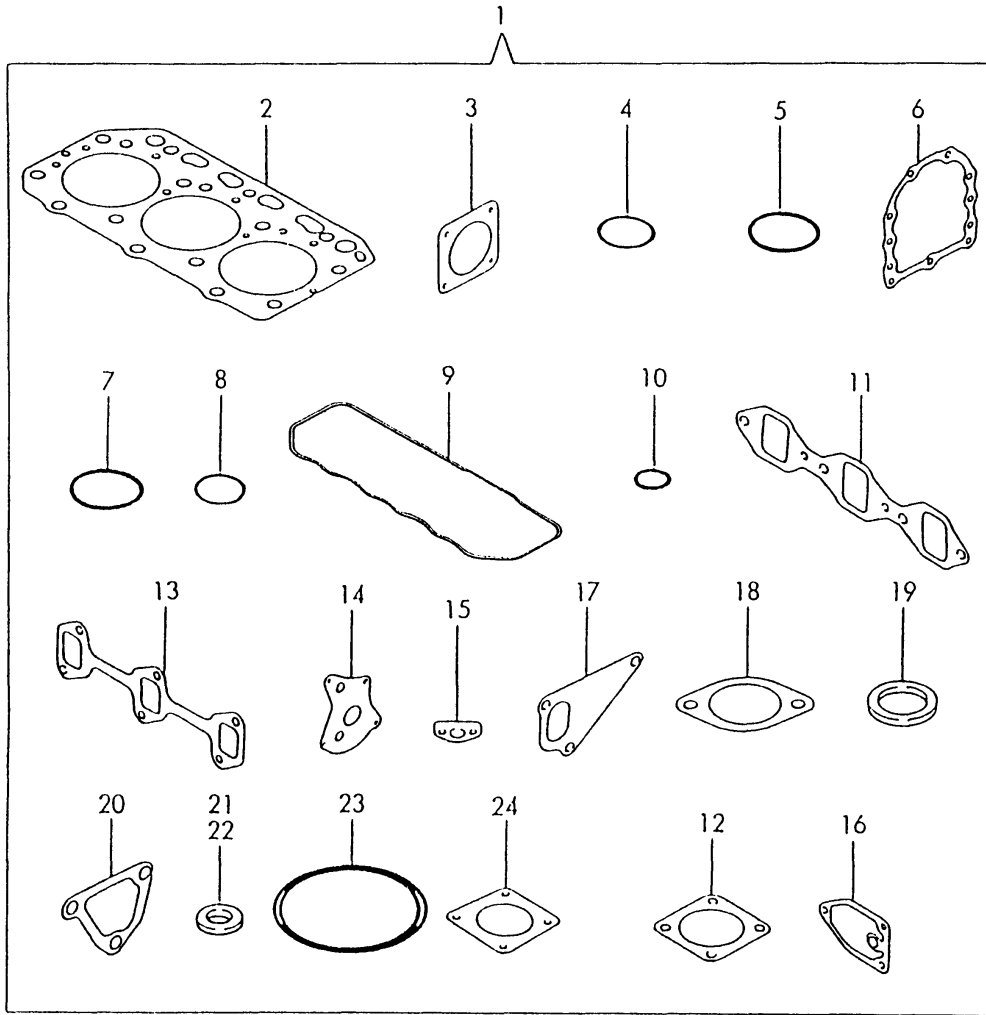
(A)=3TN84L-RNKH
(B)=
(C)=

(D)=
(E)=
(F)=



No.	Lev.	Parts No.	Description	Q'ty						I	R
				(A)	(B)	(C)	(D)	(E)	(F)		
1	1	171301-77201	DYNAMO ASSY, 15A	1							
2	2	XM08137	PLATE ASSY	1							
3	3	XM08138	PLATE	1							
4	3	XM08180	STATOR SET	1							
5	3	XM27436	BEARING, BALL	1							
6	3	XM17878	COUPLER	1							
7	3	XM36410	CLAMP	1							
8	3	26022-040252	SCREW, M4X25	2							
9	3	XYSPS4008	SCREW	1							
10	2	XM82184	FLYWHEEL ASSY	1							
11	3	XM82110	FLYWHEEL	1							
12	3	XM72174	PULLEY	1							
13	3	XM72664	SHAFT	1							
14	3	XM37336	WASHER	1							
15	3	XM27436	BEARING, BALL	2							
16	2	106383-44720	SPACER	1							
17	2	106383-44730	WASHER	1							
18	2	22212-100000	SPRING WASHER 10	1							
19	2	26716-100002	NUT, M10	1							
20	1	121450-01570	STUD	1							
21	1	26366-100002	NUT, M10	1							
22	1	129400-77330	ADJUSTER	1							
23	1	26014-080252	BOLT, M8X 25	1							

Fig.26. GASKET SET



(A)=3TN84L-RNKH

(B)=

(C)=

(D)=

(E)=

(F)=

No.	Lev.	Parts No.	Description	Q'ty						I	R
				(A)	(B)	(C)	(D)	(E)	(F)		
1	1	729131-92600	GASKET SET	1							1
1-1	1	729131-92602	GASKET SET	1							N 1
(A=E23654)											
2	2	129157-01332	GASKET, HEAD	1							
3	2	124240-01882	GASKET	1							
3-1	2	124240-01883	GASKET	1							R
(A=E23654)											
4	2	121850-51960	O-RING	1							
5	2	24311-000320	O-RING, 1AP32.0	1							
6	2	129150-01660	GASKET	1							Z
(A=E23654)											
7	2	24341-000500	O-RING, 1AS50.0	1							
8	2	121420-01760	O-RING	1							
8-1	2	24311-000320	O-RING, 1AP32.0	1							N
(A=E06752)											
9	2	129150-11310	GASKET, BONNET	1							
10	2	24311-000120	O-RING, 1AP12.0	3							
11	2	129150-12110	GASKET, MANIFOLD	1							
12	2	124701-11910	GASKET, SILENCER	1							
13	2	129150-13110	GASKET	1							
14	2	129150-32020	GASKET, PUMP	1							
15	2	129150-35040	GASKET	1							
15-1	2	129150-35041	GASKET	1							N
(A=*1990.06)											
16	2	129150-35110	GASKET	1							
16-1	2	129150-35111	GASKET	1							N
(A=*1990.06)											
17	2	129100-42020	GASKET, WATER PUMP	1							
18	2	129795-49550	GASKET	1							
18-1	2	129795-49551	GASKET	1							N
(A=*1990.06)											
19	2	129150-49810	GASKET, THERMOSTAT	1							
19-1	2	129150-49811	GASKET, THERMOSTAT	1							N
(A=*1990.06)											
20	2	129100-49840	GASKET	1							
21	2	124465-44950	GASKET, 16	2							
22	2	129150-49360	GASKET	1							
23	2	24321-000650	O-RING, 1AG65.0	1							
24	2	129150-77510	GASKET	1							
24-1	2	129150-77511	GASKET	1							N
(A=*1990.06)											

Remarks

(1)OPTIONAL PART.

N:Old $\xrightarrow{\text{Yes}}$ New, Q:Old $\xrightarrow{\text{No}}$ New, R:Old $\xrightarrow{\text{Yes}}$ New, S:Old $\xrightarrow{\text{No}}$ New, W:Add, Z:Discontinued, F:Interchangeable by set, K:Q'ty Change

Parts No. Index

Parts No.	Fig. No.	Ref. No.
101304-59020	19	17
101720-55750	21	10
102103-55520	21	6
103338-11190	6	12
103854-39140	19	16
103954-13200	8	13
104200-55321	19	2
	21	2
104200-55330	19	3
	21	3
104200-55341	21	4
104200-55750	19	4
	21	11
104200-59170	19	19
105025-59750	20	7 -1
106383-44720	25	16
106383-44730	25	17
110250-55610	21	7
114250-53080	18	3
114250-53120	18	5
114250-53130	18	6
114250-53140	18	7
114250-53210	18	8
114250-53400	18	9
119247-77100	24	40 -1
119620-01750	3	3
119625-11870	6	28
119625-11880	6	29
119625-11900	6	30
119631-44800	14	10 D
119643-66900	24	46
119810-51040	17	2
119840-59560	20	4
119840-59570	20	5
119865-35300	12	12
120130-11860	6	33
121023-01550	2	22
121100-22400	11	4
121111-21501	10	8
121120-12531	7	6
121120-12541	7	7
121120-12561	7	8
121120-12571	7	9
121120-12901	7	10
121120-13580	8	12 A
121120-13590	8	12
121250-44590	14	10 A
121250-44901	16	5
121250-49121	16	12
121250-59550	20	3

Parts No.	Fig. No.	Ref. No.
121256-44600	14	18
121257-55720	21	8
121257-55731	21	9
121400-11340	6	13
121400-12540	7	12
121400-12560	7	13
121400-12570	7	14
121420-01760	26	8
121450-01560	2	3
121450-01570	25	20
121450-42450	16	6
121450-44531	14	13 -1
121470-44540	14	16
121520-34810	12	5
121521-49100	16	11
121522-77101	24	40
121522-77721	24	42
121550-23200	11	8
121550-49111	16	1
121850-11860	6	3
	14	1
121850-21680	10	7
121850-51960	2	9
	26	4
122117-51560	17	34
122710-51090	17	5
124064-55510	21	5
124066-59100	19	14
	20	2
124160-01751	2	4
	5	14
124160-01910	1	2
124160-11360	5	12
124160-39140	13	1
124160-39450	13	2
124240-01871	2	6
124240-01882	2	7
	26	3
124240-01883	2	7 -1
	26	3 -1
124450-44550	14	17
124450-44560	14	14
124450-44590	14	11
124460-11340	6	14
124465-44950	16	4
	7	
	26	21
124550-21600	10	10
124550-51350	17	20
124550-51370	17	21

Parts No.	Fig. No.	Ref. No.
124550-59820	13	4
124550-66370	22	35
124574-44761	14	8
124701-11910	8	7
	26	12
124701-11911	8	7 -1
124732-42290	14	5
124736-07900	6	35
124766-59050	19	18
	20	1
124770-11770	15	4
124950-51190	17	10
128170-51300	17	17
128300-77920	24	43
129100-01580	3	1
		6
	10	4 B
		11
129100-01640	3	7
129100-01730	4	5
129100-01790	4	4
129100-11100	6	8
129100-11110	6	9
129100-11350	5	1 -1
129100-23910	11	10
129100-25061	9	6
129100-42001	14	2
129100-42002	14	2 -1
129100-42020	14	3
	26	17
129100-49050	16	2
129100-49800	15	3
129100-49820	15	5
129100-49830	15	6
129100-49840	15	11
	26	20
129100-52200	17	60
129100-55621	19	1
129100-55650	19	10
129100-55670	19	6
129100-55680	19	7
129100-55690	19	8
129100-55700	19	11
129100-59910	18	13
129100-59920	18	14
129100-59930	18	15
129100-59951	20	8
129100-61400	22	16
129100-61440	22	18
129100-61450	22	19

Parts No.	Fig. No.	Ref. No.
129100-61650	22	27
129100-61821	22	31 -1
129100-61930	22	33
129100-77910	24	45
129105-22080	11	1
129105-22500	11	2 -1
129107-66791	23	1 -1
129107-66810	23	2 -1
129107-66820	23	8
129107-66830	23	1 A
129120-77501	7	21
129122-12100	7	1
129129-14580	9	1
129131-12500	7	4 -1
129131-12520	7	5 -1
129131-13510	8	8
129132-12800	7	24
129132-12820	7	27
129132-12860	7	26
129132-12890	7	29
129132-12900	7	30
129132-77700	24	41 -1
129150-01200	1	14
129150-01660	3	9
	26	6
129150-02020	1	8
129150-02450	1	12
	9	2 A
129150-02800	1	9
129150-02870	1	16
129150-02930	1	10
129150-02940	1	17
129150-03020	5	5
129150-03070	5	7
129150-03080	5	6
129150-03100	2	25
	5	11
129150-11230	6	26
129150-11280	6	21
129150-11290	6	22
129150-11310	5	4
	26	9
129150-11370	6	15
129150-11750	6	25
129150-11810	6	34
129150-12110	7	2
	26	11
129150-12111	7	2 -1
129150-13110	8	2
	26	13

Parts No. Index

Parts No.	Fig. No.	Ref. No.
129150-14101	9	2
129150-14200	9	3
129150-14400	9	4
129150-21200	10	2
129150-22300	11	3
129150-23600	11	9
129150-23610	11	11
129150-25101	9	7
129150-25900	17	61
129150-32000	12	1
129150-32020	12	2
	26	14
129150-35040	12	6
	26	15
129150-35041	12	6 -1
	26	15 -1
129150-35091	12	7
129150-35101	12	9
129150-35110	12	10
	26	16
129150-35111	12	10 -1
	26	16 -1
129150-35150	12	11
129150-35350	12	13
129150-39450	13	3
129150-49360	26	22
129150-49810	15	10
	26	19
129150-49811	15	10 -1
	26	19 -1
129150-59120	18	10
129150-59130	18	11
129150-59580	19	15
	20	6
129150-66800	23	1
129150-77510	7	22
	26	24
129150-77511	7	22 -1
	26	24 -1
129155-11241	6	18
129155-11260	6	19
129155-11270	6	20
129155-49800	15	9
129155-51020	17	56 -1
129155-51050	17	3
129155-51060	17	4
129155-51140	17	7
129155-51180	17	9
129155-51200	17	11
129155-51270	17	15

Parts No.	Fig. No.	Ref. No.
129155-51280	17	16
	22	1
129155-51320	17	18
129155-51340	17	19
129155-51370	17	22
129155-51380	17	23
129155-51390	17	24
129155-51400	17	25
129155-51410	17	26
129155-51420	17	27
129155-51450	17	28
129155-51500	17	29
129155-51521	17	30
129155-51530	17	31
129155-51540	17	32
129155-51550	17	33
129155-51570	17	36
129155-51580	17	37
129155-51591	17	38
129155-51600	17	39
129155-51700	17	40
129155-51710	17	41
129155-51750	17	42
129155-51760	17	43
129155-51790	17	44
129155-51930	17	46
129155-51940	17	47
129155-52050	17	59
129155-61010	22	2
129155-61011	22	2 -1
129155-61050	22	3
129155-61060	22	4
129155-61070	22	5
129155-61090	22	6
129155-61120	22	7
129155-61130	22	8
129155-61140	22	9
129155-61150	22	10
129155-61160	22	11
129155-61170	22	12
129155-61180	22	13
129155-61201	22	14
129155-61341	22	15
129155-61350	22	15 A
129155-61360	22	15 B
129155-61430	22	17
129155-61450	22	20
129155-61460	22	21
129155-61480	22	22
129155-61490	22	23

Parts No.	Fig. No.	Ref. No.
129155-61540	22	26
129155-61801	22	29
129155-61802	22	29 -1
129155-61810	22	30
129155-61820	22	31
129155-61830	22	32
		32 -1
129155-61950	22	34
129155-66810	23	2
129155-66820	23	3
129156-51910	17	45
129157-01332	1	15
	26	2
129255-59580	20	7
129255-61802	22	29 -2
129322-77400	19	21
129322-77401	19	21 -1
129327-12210	7	11 -1
129335-55700	21	1
129350-49530	15	1
129400-01520	2	2
129400-01590	2	1
129400-51100	17	6
129400-77330	25	22
129400-92420	27	1
129500-61500	22	24
129503-53000	18	2
129550-42350	14	6
129555-59510	19	20
129566-66880	23	1 C
129566-66890	23	1 D
129795-01780	3	8
129795-01800	2	1 B
		5
129795-01950	2	8
129795-02411	1	11
129795-11120	6	10
129795-11180	6	11
129795-21661	10	6
129795-49550	15	2
	26	18
129795-49551	15	2 -1
	26	18 -1
171008-77010	24	1
171008-77400	24	2
171008-77410	24	3
171008-77420	24	4
171008-77430	24	5
171008-77440	24	6
171008-77450	24	7

Parts No.	Fig. No.	Ref. No.
171008-77460	24	8
171008-77470	24	9
171008-77480	24	10
171008-77490	24	11
171008-77500	24	12
171008-77510	24	13
171008-77520	24	14
171008-77530	24	15
171008-77540	24	16
171008-77550	24	17
171008-77560	24	18
171008-77570	24	19
171008-77571	24	19 -1
171008-77580	24	20
171008-77590	24	21
171008-77600	24	22
171008-77610	24	23
171008-77620	24	24
171008-77630	24	25
171008-77640	24	26
171008-77650	24	27
171008-77660	24	28
171008-77670	24	29
171008-77680	24	30
171008-77690	24	31
171008-77700	24	32
171008-77720	24	33
171008-77730	24	34
171008-77740	24	35
171008-77750	24	36
171051-01921	1	3
171064-44501	14	10
171064-44510	14	12
171064-44530	14	13
171064-44610	14	10 B
171064-49150	14	10 E
171081-55910	21	12
171301-01640	4	2
171301-77201	25	1
171301-77700	24	41
171340-21650	10	5
171340-44740	14	7
171350-03090	5	10
171350-13100	8	1
171350-13650	8	9
171350-21590	10	9
171350-49010	16	8
171350-49020	16	9
171351-12210	7	11
171351-12500	7	4

Parts No. Index

Parts No.	Fig. No.	Ref. No.
171351-12520	7	5
171351-12560	7	16
171351-12570	7	17
171351-12580	7	15
171353-61710	22	28
171420-34800	12	4
171440-01600	3	2
174307-51170	17	8
174307-51560	17	35
174307-51700	22	25
194990-22050	8	3
		10
22117-040000	22	36
		36 -1
22117-080000	23	4
		4 -1
		12 B
22137-100000	8	12 B
22190-100000	22	37
22212-100000	25	18
22217-050000	17	48
		22 38
22217-060000	17	49
22217-100000	8	12 C
22217-120000	17	62
22272-000040	22	39
22272-000060	22	40
22287-120000	22	41
22351-030016	22	42
22351-040010	10	3
		12
22351-050010	17	50
22351-060012	6	16
22360-040000	22	43
22360-080000	23	5
		5 -1
22372-040000	22	43 -1
22512-070140	9	2 B
		5
		10 4
23000-016000	16	3
23000-060000	7	18
23010-038000	16	10
23065-070225	14	15
23414-050000	22	44
23414-080000	13	5
23414-100000	13	6
23414-120000	20	9
23418-060000	21	13
23871-010000	1	4
23871-030000	6	4

Parts No.	Fig. No.	Ref. No.
23871-030000	15	7
23887-100002	22	45
24101-063034	17	51
24311-000080	22	52
24311-000120	5	13
	26	10
24311-000160	2	10
	12	14
	16	13
	19	12
24311-000260	2	23
24311-000320	2	11
	5	15
	26	5
		8 -1
24311-240100	19	5
	21	14
	22	52 -1
24321-000650	19	9
	26	23
24341-000160	17	52
24341-000240	2	23 -1
	4	3
24341-000500	5	8
	26	7
26014-060252	14	9
26014-080122	14	10 F
26014-080202	8	11
26014-080252	25	23
26014-080702	19	13 -1
26022-040252	25	8
26022-050102	17	53
	22	48 -1
26022-060162	17	54
26106-060122	2	24
26106-060142	7	31
26106-060202	22	46
26106-060322	24	37
26106-060402	24	38
26106-080122	2	12
	23	6
		10
26106-080142	6	17
	7	19
26106-080162	1	13
	2	13
		14
	4	7
	5	9
26106-080202	2	15

Parts No.	Fig. No.	Ref. No.
26106-080202	12	15
	15	12
26106-080252	4	6
	6	31
	7	3
	15	13
26106-080302	3	10
26106-080352	3	11
	7	23
	12	8
26106-080402	23	7
26106-080452	2	16
	4	8
	9	9
26106-080502	4	9
	6	32
	15	14
26106-080552	2	17
26106-080602	14	4
	15	15
26106-080652	19	13
26106-080802	8	4
26106-080852	2	18
26106-100652	8	12 D
26116-050102	23	9
26116-050302	17	55
26116-060162	15	8
26116-120252	24	39
26206-100252	3	4
26206-100302	3	5
26216-060142	17	56
26216-060202	6	5
26216-080222	8	5
26216-080802	8	6
26226-080182	6	27
26366-060002	6	2
	7	20
26366-080002	2	19
	22	47
26366-100002	25	21
26450-060252	12	3
26557-050102	22	48
26687-120002	22	33 -1
26706-100002	8	12 E
26716-060002	17	57
26716-100002	25	19
26716-120002	17	63
26756-060002	22	49
		49 -1
26776-120002	22	50

Parts No.	Fig. No.	Ref. No.
27231-500000	1	5
27241-100000	6	23
27241-120000	1	6
27241-220000	6	6
27241-300000	1	7
27241-400000	6	7
27310-080001	6	12 -1
43400-500390	22	44 -1
43400-500410	2	20
		21
43400-500430	22	37 -1
43400-500450	22	51
43400-500490	17	58
729100-01540	4	1
729102-01540	4	1 -1
729102-11700	6	1
729102-21700	10	1 -1
729105-22900	11	5
729131-92600	26	1
729131-92602	26	1 -1
729132-11520	5	1
729135-51390	17	1
729135-51391	17	1 -1
729150-11651	6	24
729150-21700	10	1
729150-23700	11	7
729157-01560	1	1
729157-22501	11	2
729157-22951	11	6
729402-11650	6	24 -1
729402-23100	11	7 -1
729503-53100	18	1
933113-10300	24	44
XM08137	25	2
XM08138	25	3
XM08180	25	4
XM17878	25	6
XM27436	25	5
		15
XM36410	25	7
XM37336	25	14
XM72174	25	12
XM72664	25	13
XM82110	25	11
XM82184	25	10
XYSPS4008	25	9