

OCD10-M41901EN

PREFACE

1. This Parts Catalog is the 2nd edition of EP1200-3500BL Diesel Engine for HOKUETSU.

Pub. No. : 000Y00D4191
Published : September, 1991

2. Model name

Engine model	Vehicle		Vehicle made by
	Products	Model name	
EP1200-3500BL	GENERATOR	—	HOKUETSU

Contents

Fig. No.	Fig. Name
EP1200BL	
1.	CYLINDER BLOCK
2.	CYLINDER HEAD & BONNET
3.	AIR CLEANER & MUFFLER
4.	CRANKSHAFT,PISTON & CAMSHAFT
5.	FUEL TANK & FUEL PIPE
6.	CARBURETOR
7.	GOVERNOR & CONTROL DEVICE
8.	MAGNETO & STARTING DEVICE
9.	LABEL & TOOL
10.	FRAME
11.	GENERATOR
25.	(11A)RECTIFIER & HARNESS(SPARE PARTS)
12.	PANEL
13.	CYLINDER BLOCK
14.	CYLINDER HEAD & BONNET
15.	AIR CLEANER & MUFFLER
16.	CRANKSHAFT, PISTON & CAMSHAFT
17.	FUEL TANK & FUEL PIPE
18.	CARBURETOR
19.	GOVERNOR & CONTROL DEVICE
20.	MAGNETO & STARTING DEVICE
21.	LABEL & TOOL
22.	FRAME
23.	GENERATOR

Fig. No.	Fig. Name
24.	PANEL

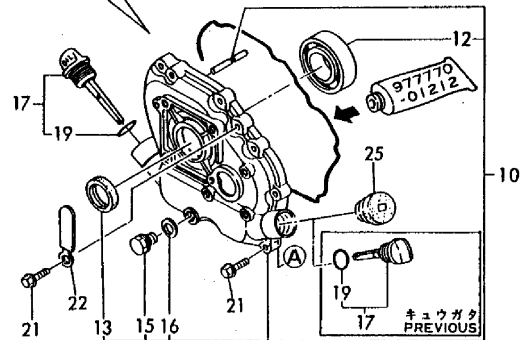
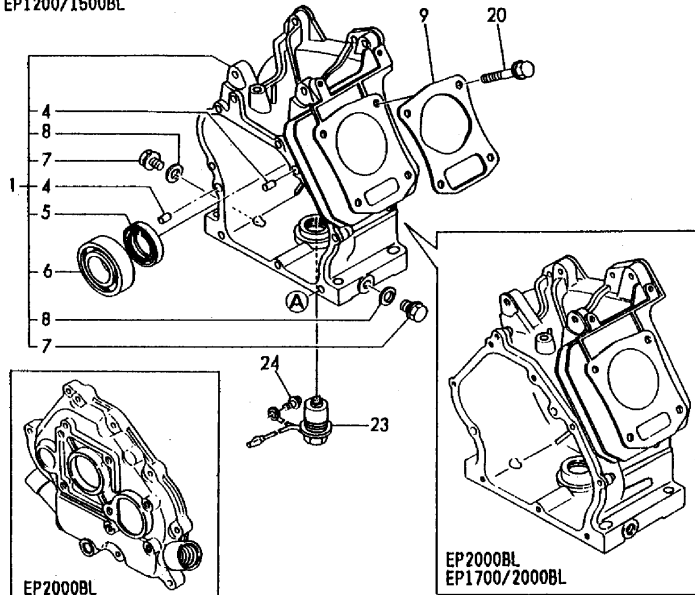
Fig.1. CYLINDER BLOCK

(A)=EP1200/1500
 (B)=EP1700/2000
 (C)=EP2000/2500

(D)=EP2500/3000
 (E)=EP3000/3500
 (F)=

Fig. 1 シリンダブロック
 CYLINDER BLOCK

EP1200/1500BL



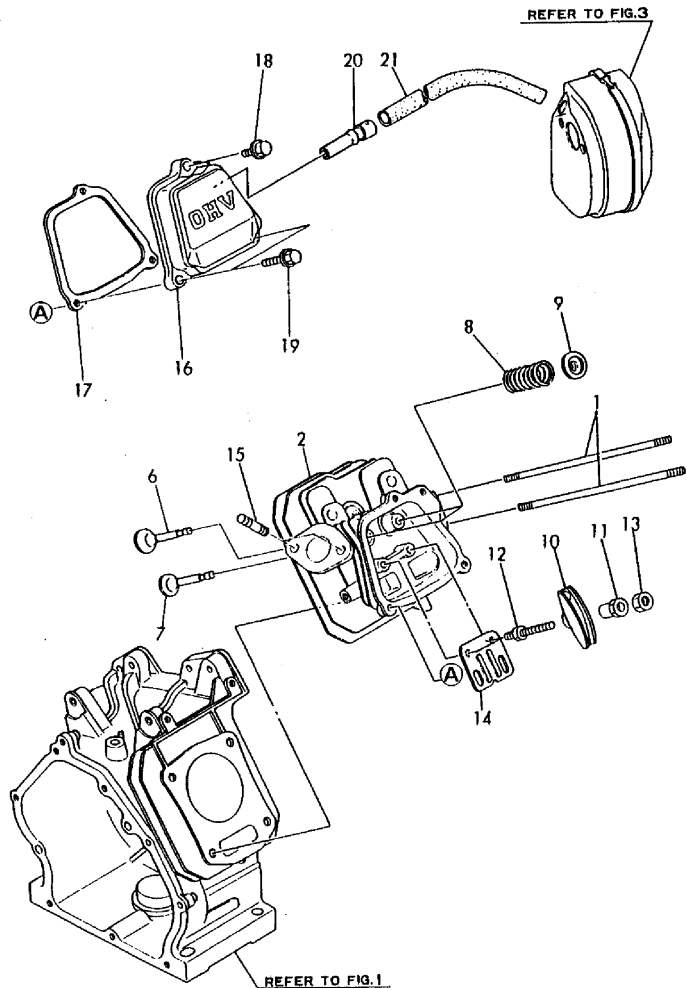
No.	Lev.	Parts No.	Description	Q'ty						I	R
				(A)	(B)	(C)	(D)	(E)	(F)		
1A	1	760597-01560	BLOCK ASSY, CYLINDER	1							
1B	1	760697-01560	BLOCK ASSY, CYLINDER		1						
1C	1	760698-01640	BLOCK ASSY, CYLINDER			1					
4	2	22312-080120	PIN, PARALLEL M8X12	2	2	2					
5A	2	160610-02220	SEAL, 20326	1							
5B	2	160690-02220	SEAL, TC25416		1	1					
6A	2	24101-062040	BEARING, BALL 6204C3	1							
6B	2	24101-062050	BEARING, BALL 6205C3		1	1					
7	2	160610-01690	PLUG, M12	2	2	2					
8	2	104200-59170	GASKET, 12	2	2	2					
9A	1	160590-01330	GASKET, HEAD	1							
9B	1	160690-01330	GASKET, HEAD		1						
9C	1	160698-01330	GASKET, HEAD			1					
10A	1	760594-01500	COVER ASSY	1							
10B	1	760694-01500	COVER ASSY		1	1					
12A	2	24101-062040	BEARING, BALL 6204C3	1							
12B	2	24101-062050	BEARING, BALL 6205C3		1	1					
13A	2	160640-02220	SEAL, OIL	1							
13B	2	160690-02220	SEAL, TC25416		1	1					
15	2	160610-01690	PLUG, M12	1							
16	2	104200-59170	GASKET, 12	1							
17	1	160710-01760	CAP ASSY, L82	2	2	2					
17-1	1	160710-01760	CAP ASSY, L82	1	1	1					K
		(A=*1989.11)	(B=*1989.11)	(C=*1989.11)							
19	2	24311-000180	O-RING, 1AP18.0	2	2	2					
19-1	2	24311-000180	O-RING, 1AP18.0	1	1	1					K
		(A=*1989.11)	(B=*1989.11)	(C=*1989.11)							
20	1	160610-04201	BOLT, FLANGE M8X53	4	4	4					
21	1	26476-060252	SCREW, TAPPING M6X25	8	8	8					
22	1	160260-78700	CLAMP	1	1	1					
23	1	160770-78820	SENSOR	1	1	1					
24	1	26476-060142	SCREW, TAPPING M6X14	1	1	1					
25	1	160110-01870	PLUG, RUBBER	1	1	1					W
		(A=*1989.11)	(B=*1989.11)	(C=*1989.11)							

Fig.2. CYLINDER HEAD & BONNET

(A)=EP1200/1500
(B)=EP1700/2000
(C)=EP2000/2500

(D)=EP2500/3000
(E)=EP3000/3500
(F)=

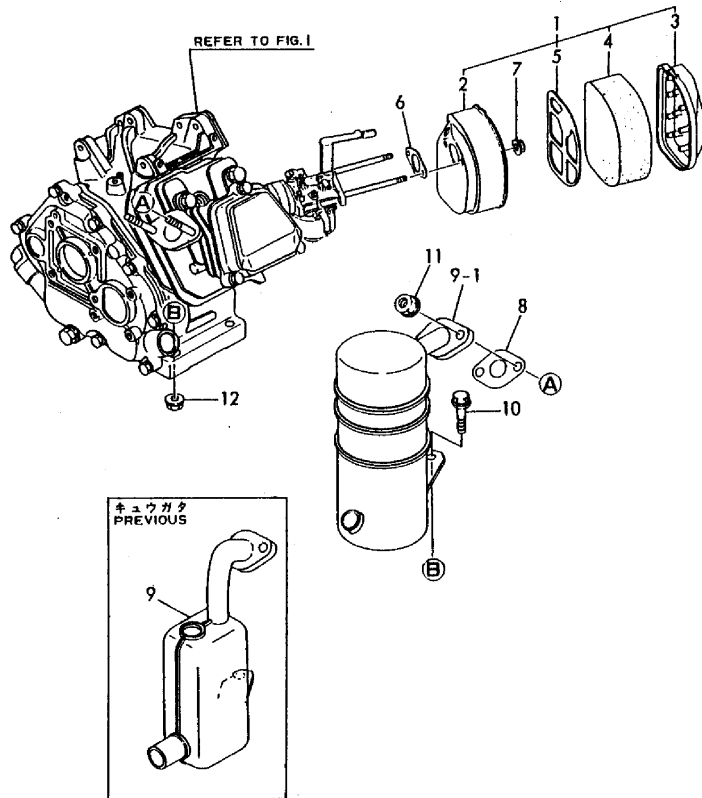
Fig.2 シリンダヘッド&ベンワンシツ
CYLINDER HEAD & BONNET



No.	Lev.	Parts No.	Description	Q'ty						I	R
				(A)	(B)	(C)	(D)	(E)	(F)		
1	1	160610-04570	BOLT, M6X70	2	2	2					
2A	1	160590-11010	HEAD ASSY, CYLINDER	1							
2B	1	160690-11010	HEAD, CYLINDER		1	1					
6A	1	160590-11100	VALVE, INTAKE	1							
6B	1	160690-11100	VALVE, INTAKE		1	1					
7A	1	160590-11110	VALVE, EXHAUST	1							
7B	1	160690-11110	VALVE, EXHAUST		1	1					
8	1	160690-11120	SPRING, VALVE	2	2	2					
9	1	160690-11180	RETAINER, SPRING	2	2	2					
10	1	160690-11200	ARM, ROCKER	2	2	2					
11	1	160690-11220	PIVOT, ROCKER ARM	2	2	2					
11-1	1	160690-11221	PIVOT, ROCKER ARM	2	2	2					N
(A=EZZZZZ) (B=EZZZZZ) (C=EZZZZZ) (D=EZZZZZ) (E=EZZZZZ)											
12	1	160690-11270	BOLT	2	2	2					
13	1	160690-11280	NUT, M6X0.5	2	2	2					
14	1	160690-11290	PLATE, GUIDE	1	1	1					
15	1	26216-080182	STUD, M8X 18	2	2	2					
16	1	160690-11300	BONNET	1	1	1					
17	1	160690-11310	GASKET, BONNET	1	1	1					
18	1	26106-060202	BOLT, M6X 20 PLATED	1	1	1					
19	1	26106-060352	BOLT, M6X 35 PLATED	2	2	2					
20	1	160690-03050	BREATHER	1	1	1					
21	1	160810-03180	PIPE, BREATHER	1	1	1					

Fig.3. AIR CLEANER & MUFFLER

Fig.3 エアクリーナ&マフラー
AIR CLEANER & MUFFLER



(A)=EP1200/1500
(B)=EP1700/2000
(C)=EP2000/2500

(D)=EP2500/3000
(E)=EP3000/3500
(F)=

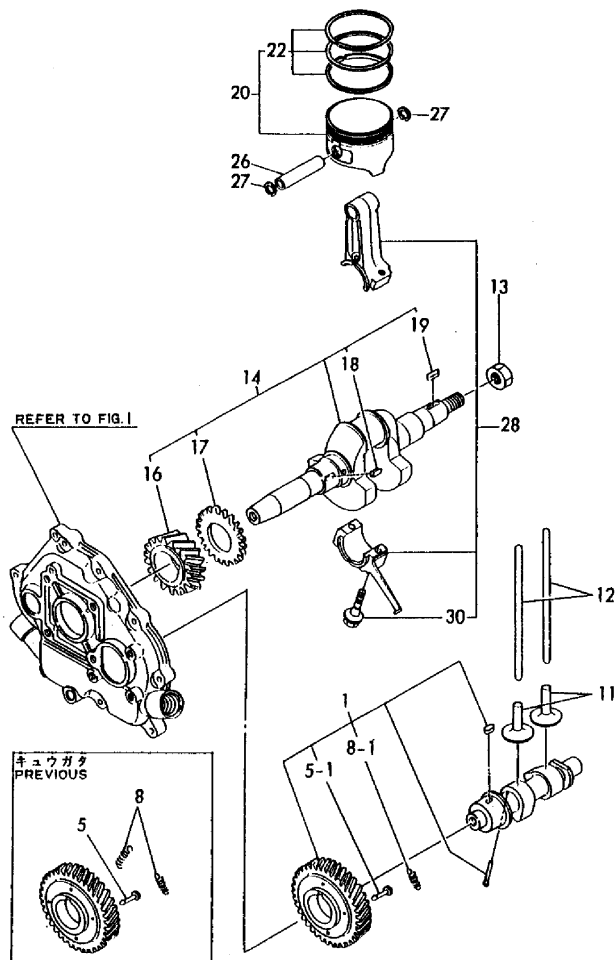
No.	Lev.	Parts No.	Description	Qty						I	R
				(A)	(B)	(C)	(D)	(E)	(F)		
1	1	160693-12510	CLEANER ASSY, AIR	1	1	1					
3	2	160769-12531	CAP, AIR CLEANER	1	1	1					
4	2	160693-12540	ELEMENT	1	1	1					
5	2	160769-12550	HOLDER, ELEMENT	1	1	1					
5-1	2	160693-12550	HOLDER, ELEMENT	1	1	1					Q
		(A=*1989.11) (B=*1989.11) (C=*1989.11)									
6	1	160610-56150	GASKET, CARBURETOR	1	1	1					
7	1	26366-060002	NUT, M6	2	2	2					
8	1	160690-13200	GASKET, MUFFLER	1	1	1					
9A	1	160597-13500	MUFFLER	1							
9A-1	1	160597-13510	MUFFLER	1							N
		(A=*1990.10)									
9B	1	160697-13500	MUFFLER		1	1					
9B-1	1	160697-13510	MUFFLER		1	1					N
		(B=*1990.10) (C=*1990.10)									
10	1	26106-080382	BOLT, M8X 38 PLATED	1	1	1					
11	1	26366-080002	NUT, M8	2	2	2					
12	1	26366-080002	NUT, M8	1	1	1					

Fig.4. CRANKSHAFT,PISTON & CAMSHAFT

(A)=EP1200/1500
(B)=EP1700/2000
(C)=EP2000/2500

(D)=EP2500/3000
(E)=EP3000/3500
(F)=

Fig. 4 クランクシャフト、ピストン&カムシャフト
CRANKSHAFT, PISTON & CAMSHAFT



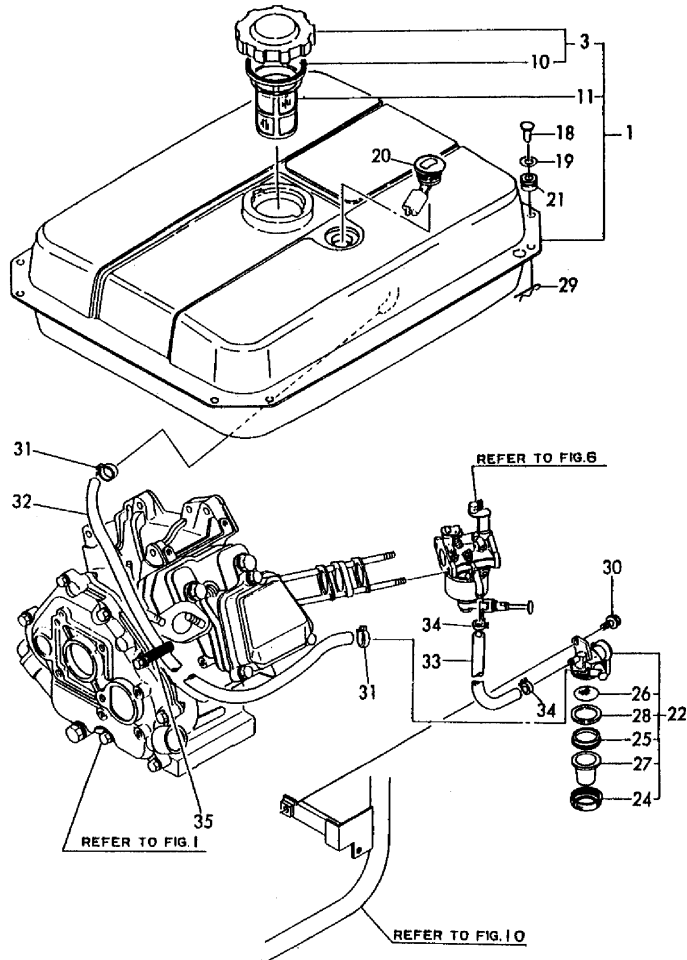
No.	Lev.	Parts No.	Description	Q'ty						I	R
				(A)	(B)	(C)	(D)	(E)	(F)		
1A	1	160594-14050	CAMSHAFT ASSY	1							
1B	1	160694-14050	CAMSHAFT ASSY		1	1					
5	2	160510-14540	PIN, GUIDE	3	3	3					
5-1	2	160510-14540	PIN, GUIDE	1	1	1					K
		(A=*1991.07) (B=*1991.07) (C=*1991.07)									
8	2	160690-14560	SPRING,DECOMPRESSION	2	2	2					
8-1	2	160690-14570	SPRING,DECOMPRESSION	1	1	1					K
		(A=*1991.07) (B=*1991.07) (C=*1991.07)									
11	1	160690-14200	TAPPET	2	2	2					
11-1	1	160490-14200	TAPPET	2	2	2					N
		(A=*1990.01) (B=*1990.01) (C=*1990.01)									
12A	1	160590-14400	ROD, PUSH	2							
12B	1	114250-14400	ROD, PUSH		2	2					
13	1	160610-04910	NUT, FLYWHEEL M14	1	1	1					
14A	1	760594-21700	CRANKSHAFT ASSY	1							
14B	1	760694-21700	CRANKSHAFT ASSY		1	1					
16A	2	160590-21200	GEAR, CRANKSHAFT	1							
16B	2	160690-21201	GEAR, CRANKSHAFT		1	1					
17	2	160590-21210	GEAR, IDLE	1	1	1					
18A	2	160610-21290	KEY, 4X10	1							
18B	2	22512-040120	KEY, 4X 12		1	1					
19	2	22512-040160	KEY, 4X 16	1	1	1					
20A	1	160590-22010	PISTON ASSY	1							
20A-1	1	160590-22011	PISTON ASSY	1							R
		(A=*1990.11)									
20A-2	1	160590-22010	PISTON ASSY	1							R
		(A=*1991.01)									
20B	1	160690-22010	PISTON ASSY		1						
20B-1	1	160690-22011	PISTON ASSY		1						R
		(B=*1989.09)									
20B-2	1	160690-22010	PISTON ASSY		1						R
		(B=*1989.11)									
20B-3	1	160690-22011	PISTON ASSY		1						R
		(B=*1991.01)									
20C	1	160698-22010	PISTON ASSY				1				
22A	2	760590-22500	RING SET, PISTON	1							
22A-1	2	760590-22501	RING SET, PISTON	1							S
		(A=*1990.11)									
22B	2	760690-22500	RING SET, PISTON		1						
22B-1	2	760690-22501	RING SET, PISTON		1						S
		(B=*1991.01)									
22C	2	760698-22500	RING SET, PISTON				1				
26A	1	160590-22300	PIN, PISTON	1							
26B	1	160690-22300	PIN, PISTON		1	1					
27A	1	22252-000130	RING, 13	2							
27B	1	22252-000160	RING, 16		2	2					
28A	1	760590-23700	ROD ASSY, CONNECTING	1							
28B	1	760690-23700	ROD ASSY, CONNECTING		1	1					
30	2	160710-23201	BOLT, CONNECTING ROD	2	2	2					

Fig.5. FUEL TANK & FUEL PIPE

(A)=EP1200/1500
 (B)=EP1700/2000
 (C)=EP2000/2500

(D)=EP2500/3000
 (E)=EP3000/3500
 (F)=

Fig. 5 FOタンク&FOパイプ
 FUEL TANK & FUEL LINE



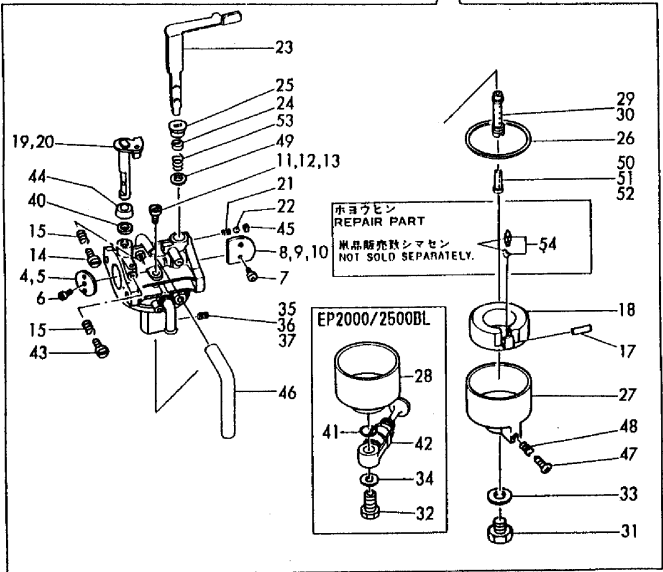
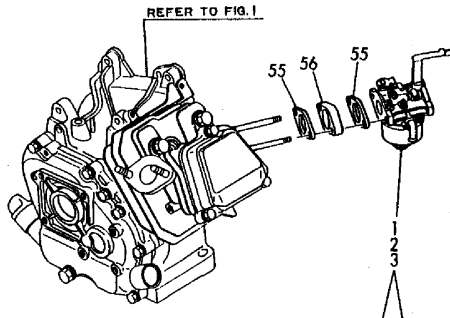
No.	Lev.	Parts No.	Description	Qty						I	R
				(A)	(B)	(C)	(D)	(E)	(F)		
1	1	783730-55710	TANK ASSY, FUEL	1	1	1					
1-1	1	783730-55700	TANK ASSY, FUEL	1	1	1					N
		(A=*1991.03)	(B=*1991.03)	(C=*1991.03)							
3	2	160710-55061	CAP ASSY	1	1	1					
10	3	160393-55050	GASKET	1	1	1					
11	2	160610-55100	FILTER, FUEL	1	1	1					
18	1	183350-55120	PIN, 6X14	4	4	4					
19	1	183350-55130	WASHER	4	4	4					
20	1	183621-55150	GAUGE	1	1	1					
21	1	183720-55210	GROMMET	4	4	4					
22	1	160692-55300	COCK ASSY, FUEL	1	1	1					
24	2	160710-55360	RING	1	1	1					
25	2	160710-55370	GASKET	1	1	1					
26	2	160710-55381	FILTER, FUEL	1	1	1					
27	2	160710-55390	CUP, FUEL COCK L37	1	1	1					
28	2	160692-55421	PLATE	1	1	1					
29	1	22360-060000	PIN, SNAP 6	4	4	4					
30	1	26106-060122	BOLT, M6X 12 PLATED	1	1	1					
31	1	106990-44660	CLIP, HOSE 12.5	2	2	2					
32	1	160802-59360	PIPE, FUEL	1	1	1					
32-1	1	160690-59360	PIPE, FUEL	1	1	1					N
		(A=*1989.12)	(B=*1989.12)	(C=*1989.12)							
33	1	160975-59360	PIPE, FUEL	1	1	1					
34	1	124060-77680	CLIP, HOSE 10	2	2	2					
35	1	160710-78710	CLAMP, CORD	1	1	1					

Fig.6. CARBURETOR

(A)=EP1200/1500
(B)=EP1700/2000
(C)=EP2000/2500

(D)=EP2500/3000
(E)=EP3000/3500
(F)=

Fig.6 キャブレタ CARBURETOR



No.	Lev.	Parts No.	Description	Q'ty						I	R
				(A)	(B)	(C)	(D)	(E)	(F)		
1	1	160597-56010	CARBURETOR ASSY	1							
2	1	160697-56010	CARBURETOR ASSY		1						
3	1	160698-56060	CARBURETOR ASSY			1					
4	2	160592-56540	VALVE, THROTTLE	1	1						
5	2	160698-56520	VALVE, THROTTLE				1				
6	2	160810-56670	SCREW	1	1	1					
7	2	160903-56670	SCREW	2	2	2					
8	2	160590-56330	VALVE, CHOKE	1							
9	2	160691-56680	VALVE, CHOKE			1					
10	2	160698-56530	VALVE, CHOKE				1				
11	2	160590-56740	JET, PILOT	1							
12	2	160610-56740	JET, PILOT			1					
13	2	160510-56740	JET, PILOT				1				
14	2	160692-56710	SCREW	1	1	1					
15	2	181230-56380	SPRING	2	2	2					
17	2	160610-56630	PIN, FLOAT	1	1	1					
18	2	160769-56620	FLOAT ASSY	1	1	1					
19	2	160692-56640	SHAFT, THROTTLE	1	1						
20	2	160698-56550	SHAFT, THROTTLE				1				
21	2	160310-56980	SPRING, CHOKE	1	1	1					
22	2	160310-56990	BALL, STEEL	1	1	1					
23	2	160697-56650	LEVER, CHOKE	1	1	1					
24	2	160810-56580	RING, CHOKE SHAFT	1	1	1					
25	2	160810-56590	RING, CHOKE LEVER	1	1	1					
26	2	160610-56610	GASKET	1	1	1					
27	2	160769-56640	BODY, FLOAT CHAMBER	1		1					
28	2	160702-56670	BODY, FLOAT CHAMBER			1					
29	2	160590-56670	NOZZLE, MAIN	1	1						
30	2	160698-56570	NOZZLE, MAIN				1				
31	2	160769-56660	BOLT	1		1					
32	2	160692-56730	BOLT			1					
33	2	160610-56611	GASKET	1		1					
34	2	160802-56480	GASKET			1					
35	2	160590-56770	JET, ENRICHMENT	1							
36	2	160690-56800	JET, ENRICHMENT			1					
37	2	160692-56780	JET, ENRICHMENT				1				
38	2	26117-040088	BOLT M 4X 8 PLATED	1	1	1					
40	2	160640-56850	SEAL	1	1	1					
41	2	160692-56620	O-RING			1					
42	2	160792-56630	BODY, FLOAT CHAMBER			1					
43	2	160667-56750	ADJUSTER	1	1	1					
44	2	160702-56720	RING	1	1	1					
45	2	160692-56700	PLUG	1	1	1					
46	2	160692-56770	HOSE	1	1	1					
47	2	160610-56900	SCREW	1		1					
48	2	181230-56380	SPRING	1		1					
49	2	160692-56800	RUBBER, SEAL	1	1	1					
50	2	160590-56800	NOZZLE, MAIN	1							
51	2	160690-56750	NOZZLE, MAIN			1					
52	2	160698-56590	NOZZLE, MAIN				1				
53	2	160691-56720	SPRING			1					

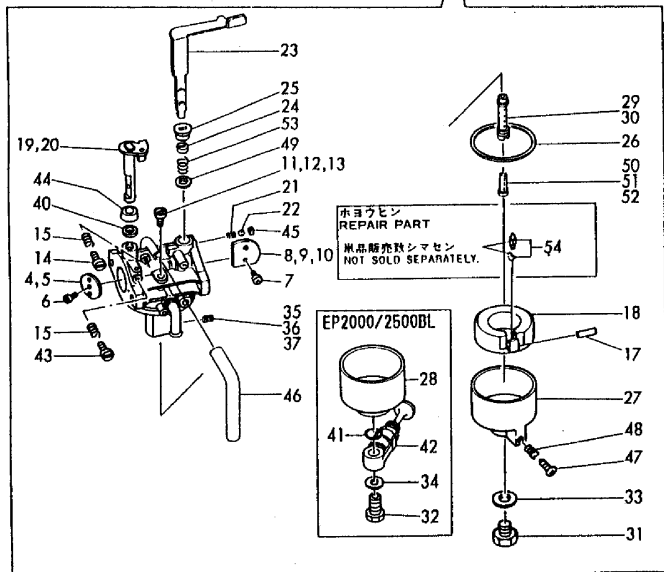
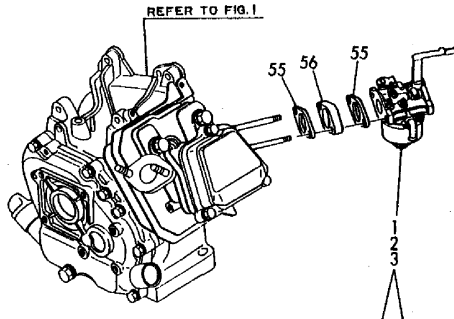
Remarks
1) ONLY FOR REPAIR.

Fig.6. CARBURETOR

(A)=EP1200/1500
 (B)=EP1700/2000
 (C)=EP2000/2500

(D)=EP2500/3000
 (E)=EP3000/3500
 (F)=

Fig.6 キャブレタ
 CARBURETOR



No.	Lev.	Parts No.	Description	Q'ty						I	R
				(A)	(B)	(C)	(D)	(E)	(F)		
54	1	160692-56560	VALVE ASSY, NEEDLE	1	1	1					1
55	1	160610-56150	GASKET, CARBURETOR	2	2	2					
56	1	160690-56160	SPACER, CARBURETOR	1	1	1					

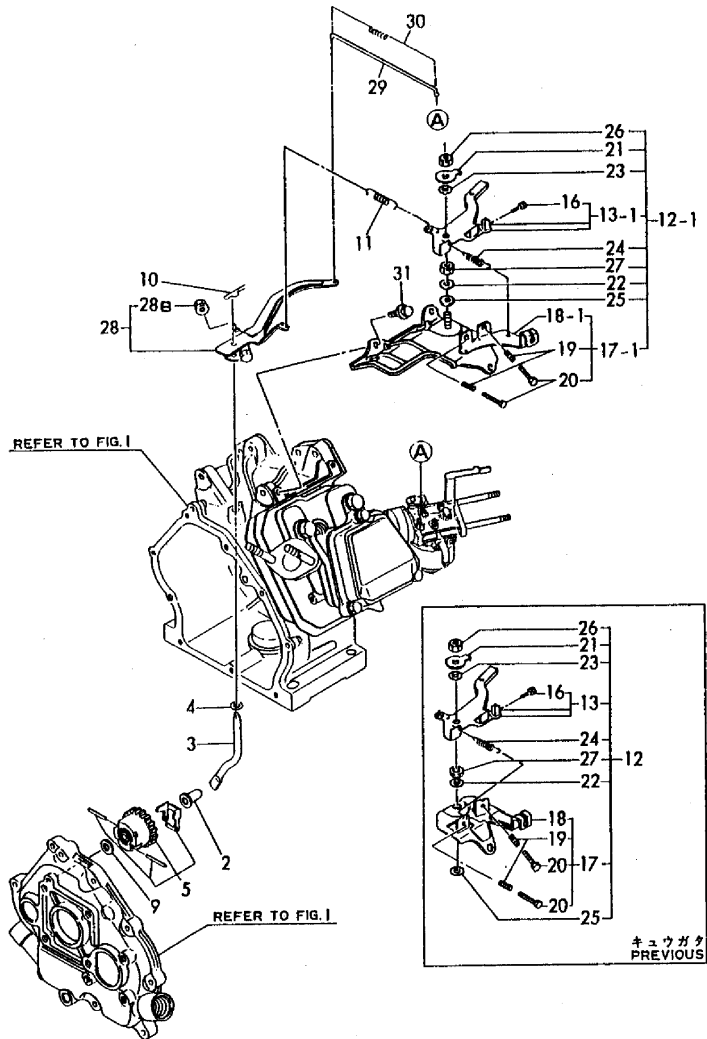
Remarks
 1) ONLY FOR REPAIR.

Fig.7. GOVERNOR & CONTROL DEVICE

(A)=EP1200/1500
(B)=EP1700/2000
(C)=EP2000/2500

(D)=EP2500/3000
(E)=EP3000/3500
(F)=

Fig.7 ガバナ&ソウジュウソウチ
GOVERNOR & CONTROL DEVICE



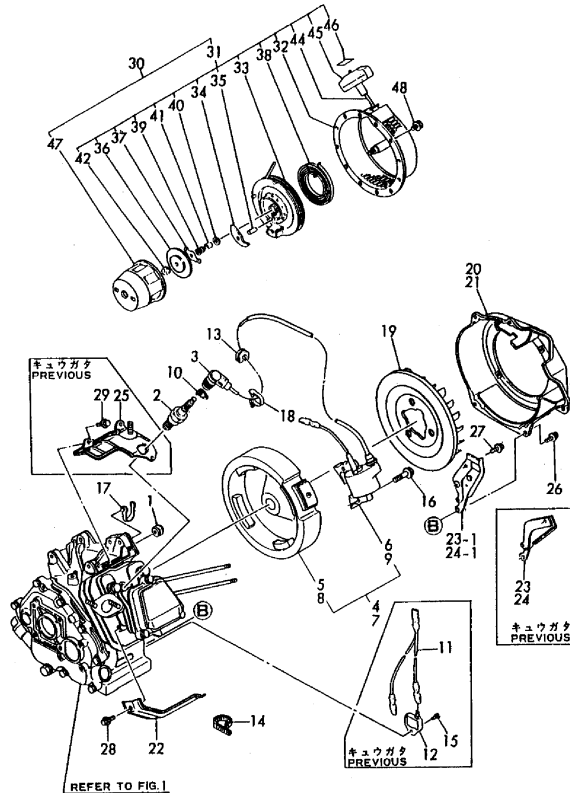
No.	Lev.	Parts No.	Description	Q'ty						I	R
				(A)	(B)	(C)	(D)	(E)	(F)		
2	1	160690-61300	SPINDLE	1	1	1					
3	1	160690-61310	SHAFT	1	1	1					
4	1	160690-61450	WASHER	1	1	1					
5	1	160690-61600	GEAR ASSY, GOVERNOR	1	1	1					
9	1	160120-76940	WASHER	1	1	1					
10	1	22372-080000	PIN, SNAP 8	1	1	1					
11A	1	160594-66010	SPRING, GOVERNOR	1							
11B	1	160693-66010	SPRING, GOVERNOR		1	1					
12	1	160690-66100	CONTROLLER ASSY	1	1	1					
12-1	1	160690-66101	CONTROLLER ASSY	1	1	1					R
		(A=*1989.10) (B=*1989.10) (C=*1989.10)									
13	2	160690-66080	LEVER, CONTROL	1	1	1					
13-1	2	160690-66081	LEVER ASSY, CONTROL	1	1	1					R
		(A=*1989.10) (B=*1989.10) (C=*1989.10)									
16	3	26117-040088	BOLT M 4X 8 PLATED	1	1	1					
17	2	160690-66110	BASE ASSY	1	1	1					
17-1	2	160690-66111	BASE ASSY	1	1	1					R
		(A=*1989.10) (B=*1989.10) (C=*1989.10)									
18	3	160690-66120	BASE, CONTROL	1	1	1					
18-1	3	160690-66141	BASE ASSY	1	1	1					R
		(A=*1989.10) (B=*1989.10) (C=*1989.10)									
19	3	160520-66291	SPRING	2	2	2					
20	3	26117-040257	BOLT, M4X 25 PLATED	2	2	2					
21	2	160690-66160	WASHER	1	1	1					
22	2	160664-66170	WASHER	1	1	1					
23	2	160664-66180	SPRING	1	1	1					
24	2	160664-66220	SPRING, RETURN	1	1	1					
25	2	22137-060000	WASHER, 6	1	1	1					
26	2	26347-060002	NUT, M6	1	1	1					
27	2	26757-060002	NUT, LOCK M6	1	1	1					
28	1	160690-66180	LEVER ASSY, GOVERNOR	1	1	1					W
		(A=*1991.03) (B=*1991.03) (C=*1991.03)									
28B	2	26366-060002	NUT, M6	1	1	1					
29	1	160690-66200	LINK, THROTTLE	1	1	1					
30	1	160690-66210	SPRING, TENSION	1	1	1					
31	1	26476-060142	SCREW, TAPPING M6X14	3	2	2					W
		(A=*1989.10) (B=*1989.10) (C=*1989.10)									

Fig.8. MAGNETO & STARTING DEVICE

(A)=EP1200/1500
(B)=EP1700/2000
(C)=EP2000/2500

(D)=EP2500/3000
(E)=EP3000/3500
(F)=

Fig.8 フライホイールマグネット&シドウスウチ
FLY. MAGNETO & STARTING DEVICE



No.	Lev.	Parts No.	Description	Qty						I	R
				(A)	(B)	(C)	(D)	(E)	(F)		
1	1	160341-01950	PIPE	1	1	1					
2	1	160690-78010	PLUG, SPARK BP6ES	1	1	1					
3	1	160700-78040	CAP, PLUG	1	1	1					
4	1	160594-78050	MAGNETIC ASSY	1							
4-1	1	160594-78051	MAGNETIC ASSY	1							N
		(A=*1989.11)									
5	2	160594-78500	ROTOR	1							
6	2	160590-78530	COIL, IGNITION	1							
6-1	2	160594-78530	COIL, IGNITION	1							N
		(A=*1989.11)									
6-2	2	160594-78531	COIL, IGNITION	1							S 1
		(A=*1990.11)									
6A	2	160690-78230	WIRE	1							W 1
		(A=*1990.11)									
7	1	160694-78050	MAGNETIC ASSY		1	1					
7-1	1	160694-78051	MAGNETIC ASSY		1	1					N
		(B=*1989.11) (C=*1989.11)									
8	2	160694-78500	ROTOR		1	1					
9	2	160690-78530	COIL, IGNITION		1	1					
9-1	2	160690-78531	COIL, IGNITION		1	1					N
		(B=*1989.11) (C=*1989.11)									
9-2	2	160690-78532	COIL, IGNITION		1	1					S 2
		(B=*1990.11) (C=*1990.11)									
9A	2	160690-78230	WIRE		1	1					W 2
		(B=*1990.11) (C=*1990.11)									
10	1	160700-78050	TERMINAL, PLUG	1	1	1					
11	1	160690-78210	WIRE, LEAD	1	1	1					Z
		(A=*1989.11) (B=*1989.11) (C=*1989.11)									
12	1	160690-78650	TRANSISTOR	1	1	1					Z
		(A=*1989.11) (B=*1989.11) (C=*1989.11)									
13	1	160700-78720	GROMMET	1	1	1					
14	1	160370-78950	BAND, L=98	1	1	1					
15	1	26023-040102	SCREW, M4X10	1	1	1					Z
		(A=*1989.11) (B=*1989.11) (C=*1989.11)									
16	1	26476-060302	SCREW, TAPPING M6X30	2	2	2					
17	1	29610-000650	CLAMP, SPEED 065	1	1	1					
18	1	29610-000950	CLAMP, SPEED 095	1	1	1					
19	1	160694-45010	FAN, COOLING	1	1	1					
20	1	160597-45110	CASE, COOLING FAN	1							
20-1	1	160597-45100	CASE, COOLING FAN	1							S
		(A=*1991.03)									
21	1	160697-45110	CASE, COOLING FAN		1	1					
21-1	1	160697-45100	CASE, COOLING FAN		1	1					S
		(B=*1991.03) (C=*1991.03)									
22	1	160690-45200	COVER	1	1	1					
23	1	160590-45210	COVER	1							
23-1	1	160590-45211	COVER	1							S
		(A=*1991.03)									
24	1	160690-45210	COVER		1	1					
24-1	1	160690-45211	COVER		1	1					S
		(B=*1991.03) (C=*1991.03)									

Remarks

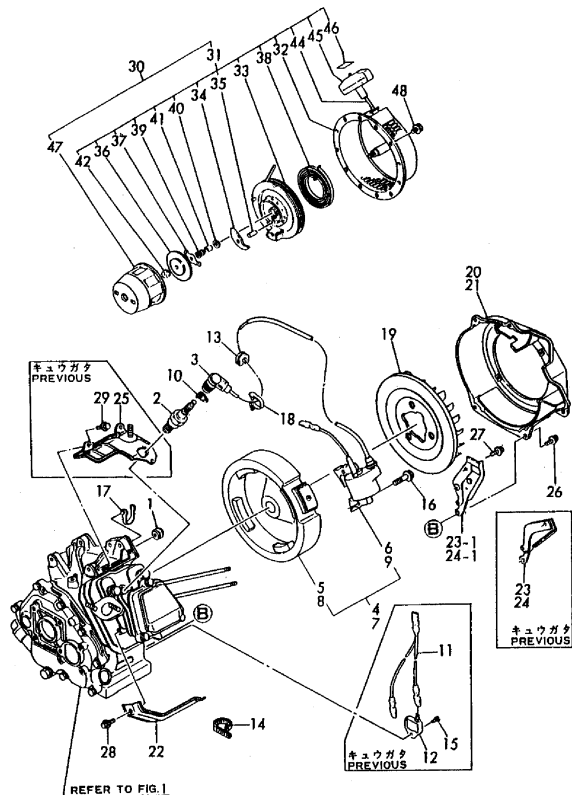
- (1) SIMULTANEOUS REPLACEMENT OF REF. NO.6-2(IGNITION COIL,P/# 160594-78531) & REF.NO.6A(STOP CORD, P/# 160690-78230) ARE INTERCHANGEABLE.
- (2) SIMULTANEOUS REPLACEMENT OF REF. NO.9-2(IGNITION COIL,P/# 160690-78532) & REF.NO.9A(STOP CORD, P/# 160690-78230) ARE INTERCHANGEABLE.

Fig.8. MAGNETO & STARTING DEVICE

(A)=EP1200/1500
(B)=EP1700/2000
(C)=EP2000/2500

(D)=EP2500/3000
(E)=EP3000/3500
(F)=

Fig.8 フライホイールマグネット & シドウスウチ
FLY. MAGNETO & STARTING DEVICE



No.	Lev.	Parts No.	Description	Q'ty						I	R
				(A)	(B)	(C)	(D)	(E)	(F)		
25	1	160690-45220	COVER, HEAD	1	1	1					Z
		(A=*1989.10) (B=*1989.10) (C=*1989.10)									
26	1	26476-060122	SCREW, TAPPING M6X12	4	4	4					
27	1	26476-060122	SCREW, TAPPING M6X12	1	1	1					
28	1	26476-060122	SCREW, TAPPING M6X12	1	1	1					
29	1	26476-060122	SCREW, TAPPING M6X12	3	3	3					Z
		(A=*1989.10) (B=*1989.10) (C=*1989.10)									
30	1	160694-76050	STARTER ASSY, RECOIL	1	1	1					
31	2	160694-76250	STARTER ASSY, RECOIL	1	1	1					
32	3	160694-76510	CASE, STARTER	1	1	1					
33	3	160690-76520	REEL	1	1	1					
34	3	160690-76800	RATCHET	1	1	1					
35	3	160690-76810	PIN, RATCHET	1	1	1					
36	3	160690-76580	PLATE, FRICTION	1	1	1					
37	3	160690-76530	GUIDE, RATCHET	1	1	1					
38	3	160690-76540	SPRING, SPIRAL	1	1	1					
39	3	160690-76560	SPRING, FRICTION	1	1	1					
40	3	160690-76550	WASHER, THRUST	1	1	1					
41	3	160690-76820	SHAFT	1	1	1					
42	3	26367-060002	NUT, M6	1	1	1					
44	3	160690-76630	ROPE, STARTER	1	1	1					
45	3	160690-76620	KNOB, STARTER	1	1	1					
46	3	160690-76830	CAP, KNOB	1	1	1					
47	2	160690-76590	PULLEY, STARTER	1	1	1					
48	1	26106-060082	BOLT, M6X 8 PLATED	4	4	4					

Remarks

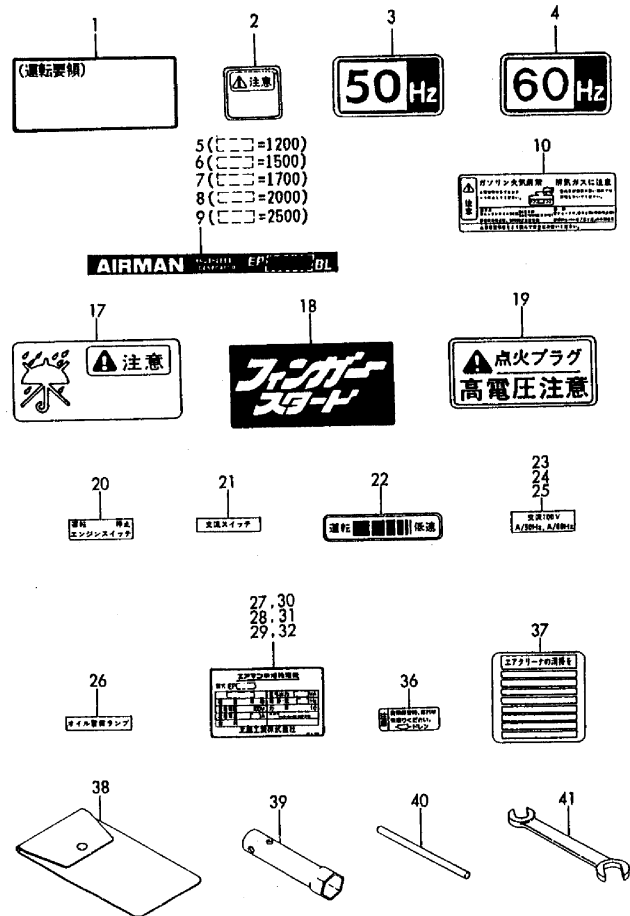
- (1) SIMULTANEOUS REPLACEMENT OF REF. NO.6-2(IGNITION COIL,P/# 160594-78531) & REF.NO.6A(STOP CORD, P/# 160690-78230) ARE INTERCHANGEABLE.
- (2) SIMULTANEOUS REPLACEMENT OF REF. NO.9-2(IGNITION COIL,P/# 160690-78532) & REF.NO.9A(STOP CORD, P/# 160690-78230) ARE INTERCHANGEABLE.

Fig.9. LABEL & TOOL

(A)=EP1200/1500
(B)=EP1700/2000
(C)=EP2000/2500

(D)=EP2500/3000
(E)=EP3000/3500
(F)=

Fig.9 コウグ&ラベル
TOOL & LABEL



No.	Lev.	Parts No.	Description	Q'ty						I	R
				(A)	(B)	(C)	(D)	(E)	(F)		
1	1	183730-07220	LABEL, OPERATION	1	1	1					
2	1	183210-07230	LABEL, MUFFLER	1	1	1					
3	1	183610-07230	LABEL, 50HZ	1	1	1					1
4	1	183620-07230	LABEL, 60HZ	1	1	1					2
5	1	183630-07230	LABEL	1							1
6	1	183640-07230	LABEL	1							2
7	1	183730-07230	LABEL, GENERATOR		1						1
8	1	183740-07230	LABEL		1	1					
9	1	183741-07230	LABEL			1					2
10	1	160690-07250	LABEL, CAUTION	1	1	1					
17	1	183210-07400	LABEL, RAIN CAUTION	1	1	1					
18	1	183730-07400	LABEL, FINGER START	1	1	1					
19	1	183210-07410	LABEL, PLUG	1	1	1					
20	1	183730-07420	LABEL, ENGINE SWITCH	1	1	1					
21	1	183730-07430	LABEL, AC SWITCH	1	1	1					
22	1	183730-07440	LABEL, OPERATION	1	1	1					
23	1	183630-07450	LABEL, AMPERE	1							
24	1	183730-07450	LABEL, AMPERE		1						
25	1	183731-07450	LABEL, AMPERE			1					
26	1	183730-07470	LABEL, OIL ALERT	1	1	1					
27	1	183630-07520	LABEL (GENERATOR	1							1
28	1	183640-07520	LABEL (GENERATOR	1							2
29	1	183730-07520	LABEL (GENERATOR		1						1
30	1	183731-07520	LABEL (GENERATOR			1					2
31	1	183740-07520	LABEL (GENERATOR		1						2
32	1	183741-07520	LABEL (GENERATOR			1					2
36	1	160520-07270	LABEL, DRAIN	1	1	1					
36-1	1	160520-07271	LABEL, DRAIN	1	1	1					N
		(A=*1990.09)	(B=*1990.09)	(C=*1990.09)							
37	1	160520-07370	LABEL, CLEANER	1	1	1					
38	1	160110-92610	BAG, TOOL	1	1	1					
39	1	160120-92700	WRENCH, 21 L86	1	1	1					
40	1	160110-92710	HANDLE, WRENCH	1	1	1					
41	1	28110-100120	SPANNER, 10X12	1	1	1					

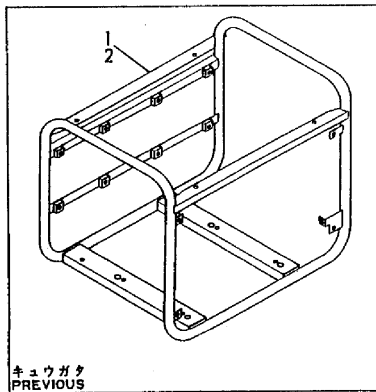
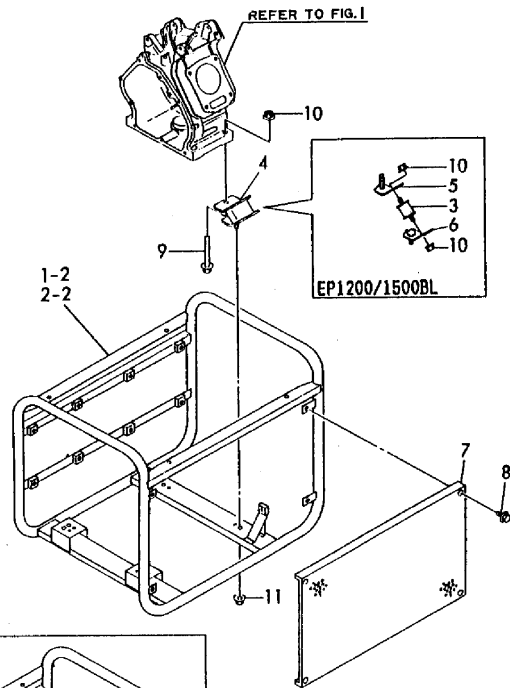
Remarks
(1) 50HZ
(2) 60HZ

Fig.10. FRAME

(A)=EP1200/1500
 (B)=EP1700/2000
 (C)=EP2000/2500

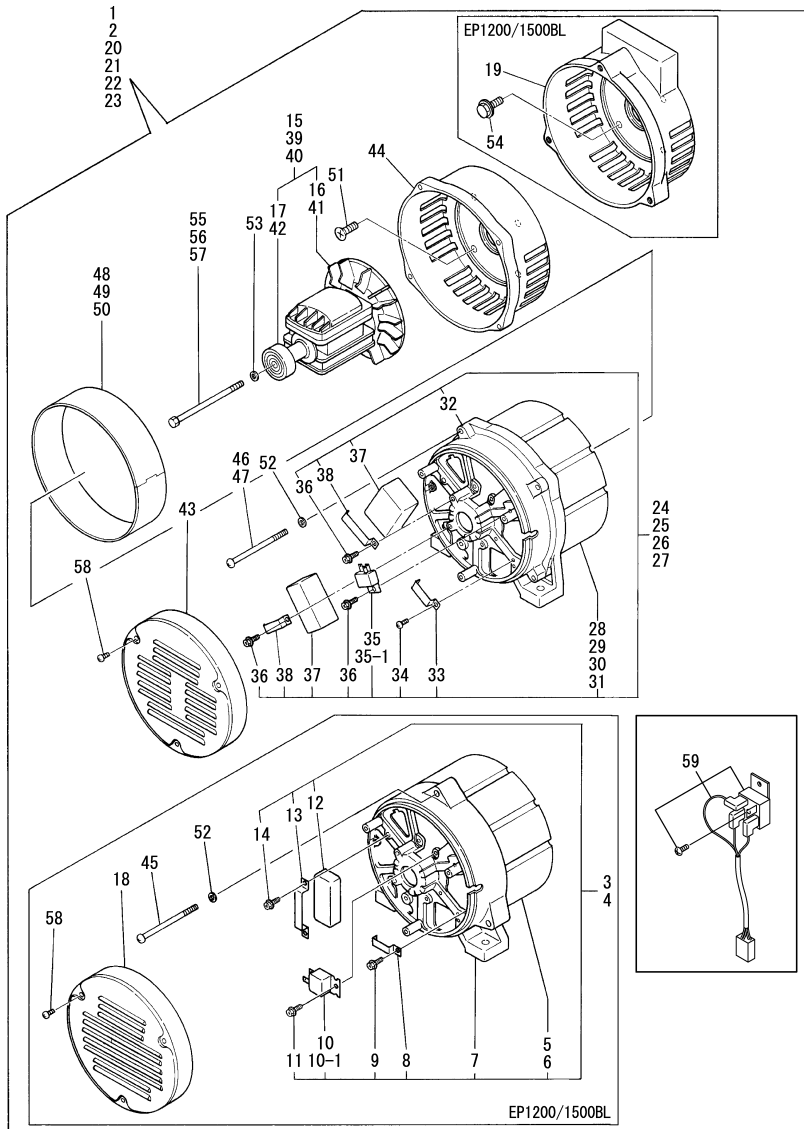
(D)=EP2500/3000
 (E)=EP3000/3500
 (F)=

Fig. 10 フレーム
 FRAME



No.	Lev.	Parts No.	Description	Q'ty						I	R
				(A)	(B)	(C)	(D)	(E)	(F)		
1	1	183630-08060	FRAME	1							
1-1	1	183630-08061	FRAME	1							N
(A=*1990.09)											
1-2	1	183630-08051	FRAME	1							N
(A=*1991.03)											
2	1	183730-08060	FRAME		1	1					
2-1	1	183730-08061	FRAME		1	1					N
(B=*1990.09) (C=*1990.09)											
2-2	1	183730-08051	FRAME		1	1					N
(B=*1991.03) (C=*1991.03)											
3	1	183630-08210	DAMPER	4							
4	1	183730-08210	DAMPER		4	4					
5	1	183630-08550	STAY, DAMPER	4							
6	1	183630-08560	STAY, DAMPER	4							
7	1	183730-08750	COVER	1	1	1					
8	1	114252-13950	BOLT, M6X8	4	4	4					
9	1	26106-080382	BOLT, M8X 38 PLATED		4	4					
10	1	26366-080002	NUT, M8	12	4	4					
11	1	26376-100002	NUT, M10	4	4	4					

Fig.11. GENERATOR



(A)=EP1200/1500
(B)=EP1700/2000
(C)=EP2000/2500

(D)=EP2500/3000
(E)=EP3000/3500
(F)=

No.	Lev.	Parts No.	Description	Q'ty						I	R
				(A)	(B)	(C)	(D)	(E)	(F)		
1	1	183630-74060	GENERATOR, 1.5KVA	1						1	
2	1	183640-74060	GENERATOR, 1.5KVA	1						2	
3	2	183630-74200	STATOR ASSY	1						1	
4	2	183640-74200	STATOR ASSY	1						2	
5	3	183630-74290	STATOR	1						1	
5-1	3	183630-74291	STATOR	1						F 3	
(A=EZZZZZ)											
6	3	183640-74290	STATOR	1						2	
7	3	183640-74250	COVER, REAR	1							
8	3	183640-74310	CLAMP	1							
9	3	183640-74320	SCREW	1							
10	3	183640-74470	RECTIFIER	1						4	
10-1	3	183387-74250	RECTIFIER	1						S	
(A=EZZZZZ)											
10A	3	183640-74470	RECTIFIER	1						2	
11	3	183640-74480	SCREW	1							
11-1	3	183620-74310	SCREW	1						N	
(A=EXXXXX)											
11-2	3	183387-74260	SCREW	1						N	
(A=EZZZZZ)											
12	3	183640-74170	CONDENSER	1							
13	3	183640-74180	CLAMP	1							
14	3	183640-74190	SCREW	2							
15	2	183640-74350	ROTOR ASSY	1							
16	3	183640-74360	FAN	1							
17	3	183640-74370	BEARING	1							
18	2	183640-74410	COVER	1							
19	2	183640-74150	COVER, FRONT	1							
20	1	183730-74060	GENERATOR, 2.0KVA		1					1	
21	1	183731-74060	GENERATOR			1				1	
22	1	183740-74060	GENERATOR, 2.0KVA		1					2	
23	1	183741-74060	GENERATOR			1				2	
24	2	183730-74200	STATOR ASSY		1					1	
25	2	183731-74200	STATOR ASSY			1				1	
26	2	183740-74200	STATOR ASSY		1					2	
27	2	183741-74200	STATOR ASSY			1				2	
28	3	183730-74290	STATOR		1					1	
29	3	183731-74290	STATOR			1				1	
29-1	3	183731-74291	STATOR			1				F 3	
(C=EZZZZZ)											
30	3	183740-74290	STATOR		1					2	
31	3	183741-74290	STATOR			1				2	
32	3	183740-74250	COVER, REAR		1	1					
33	3	183740-74310	CLAMP		1	1					
34	3	183350-74380	SCREW, M4X14		1	1					
35	3	183210-74470	RECTIFIER		1	1				4	
35-1	3	183387-74250	RECTIFIER			1				S	
(C=EZZZZZ)											
36	3	183620-74310	SCREW		3	3					
36-1	3	183387-74260	SCREW			3				N	
(C=EZZZZZ)											

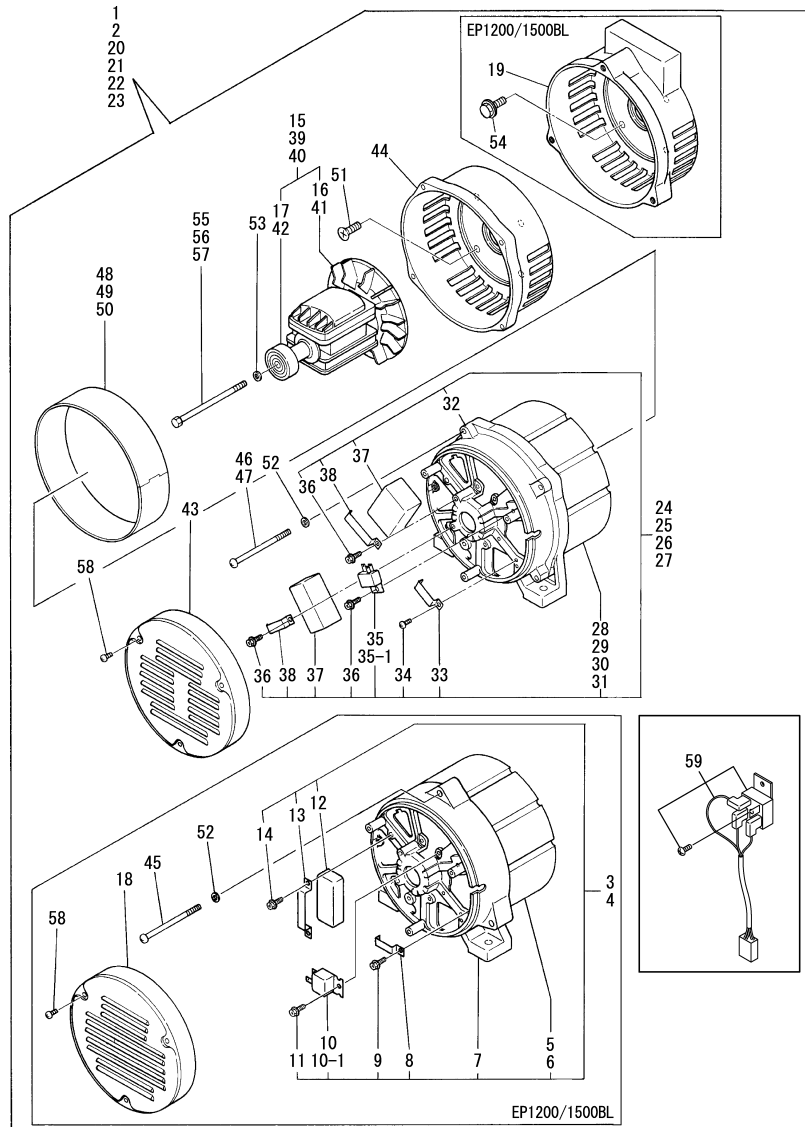
Remarks

- (1)50Hz
- (2)60Hz
- (3)Interchangeable by simultaneous replacement with No.59.
- (4)Interchangeable with Fig.59.

Fig.11. GENERATOR

(A)=EP1200/1500
 (B)=EP1700/2000
 (C)=EP2000/2500

(D)=EP2500/3000
 (E)=EP3000/3500
 (F)=



No.	Lev.	Parts No.	Description	Qty						I	R
				(A)	(B)	(C)	(D)	(E)	(F)		
37	3	183740-74170	CONDENSER		2	2					
38	3	183740-74180	CLAMP		2	2					
39	2	183741-74350	ROTOR ASSY		1						
40	2	183740-74350	ROTOR ASSY			1					
41	3	183740-74360	FAN		1	1					
42	3	183740-74370	BEARING		1	1					
43	2	183740-74410	COVER		1	1					
44	2	183740-74150	COVER, FRONT		1	1					
45	1	183250-74410	SCREW, M6	3							
46	1	183262-74410	BOLT, THROUGH M6X90		4						
47	1	183452-74410	BOLT, THROUGH M6X100			4					
48	1	183630-74750	BAND, GENERATOR	1							
49	1	183730-74750	BAND, GENERATOR		1						
50	1	183731-74750	BAND, GENERATOR			1					
51	1	183730-74950	SCREW, M8X18		4	4					
52	1	22217-060000	WASHER, SPRING 6	3	4	4					
53	1	22217-080000	WASHER, SPRING 8	1	1	1					
54	1	26106-080202	BOLT, M8X 20 PLATED	4							
55	1	26116-081702	BOLT, M8X170 PLATED	1							
56	1	26116-081902	BOLT, M8X190 PLATED		1						
57	1	26116-082002	BOLT, M8X200 PLATED			1					
58	1	26557-040082	SCREW, M4X 8	3	3	3					
59	1	184120-99100	RECTIFIER ASSY	1	1	1					W

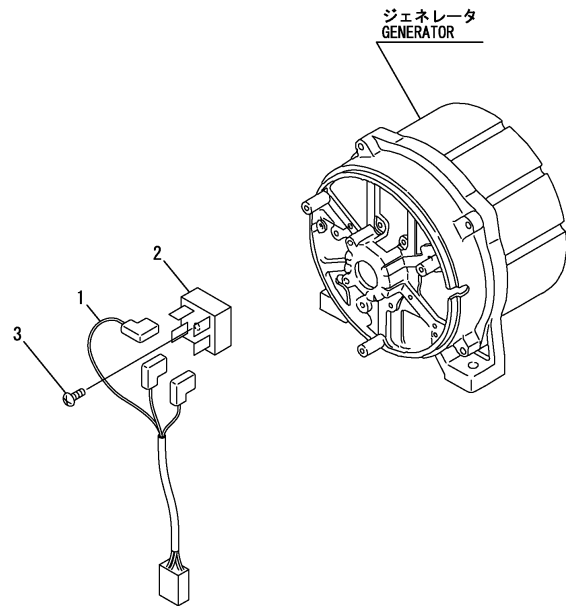
(A=*2013.05) (B=*2013.05) (C=*2013.05)

Remarks
 (1)50Hz
 (2)60Hz
 (3)Interchangeable by simultaneous replacement with No.59.
 (4)Interchangeable with Fig.59.

Fig.25. (11A)RECTIFIER & HARNESS(SPARE PARTS)

(A)=EP1200/1500
 (B)=EP1700/2000
 (C)=EP2000/2500

(D)=EP2500/3000
 (E)=EP3000/3500
 (F)=



No.	Lev.	Parts No.	Description	Q'ty						I	R
				(A)	(B)	(C)	(D)	(E)	(F)		
1	1	184120-99200 (A=EZZZZZ)	HARNESS ASSY (C=EZZZZZ)	1		1					W
2	1	183387-74250 (A=EZZZZZ)	RECTIFIER (C=EZZZZZ)	1		1					W
3	1	183387-74260 (A=EZZZZZ)	SCREW (C=EZZZZZ)	1		1					W

Remarks

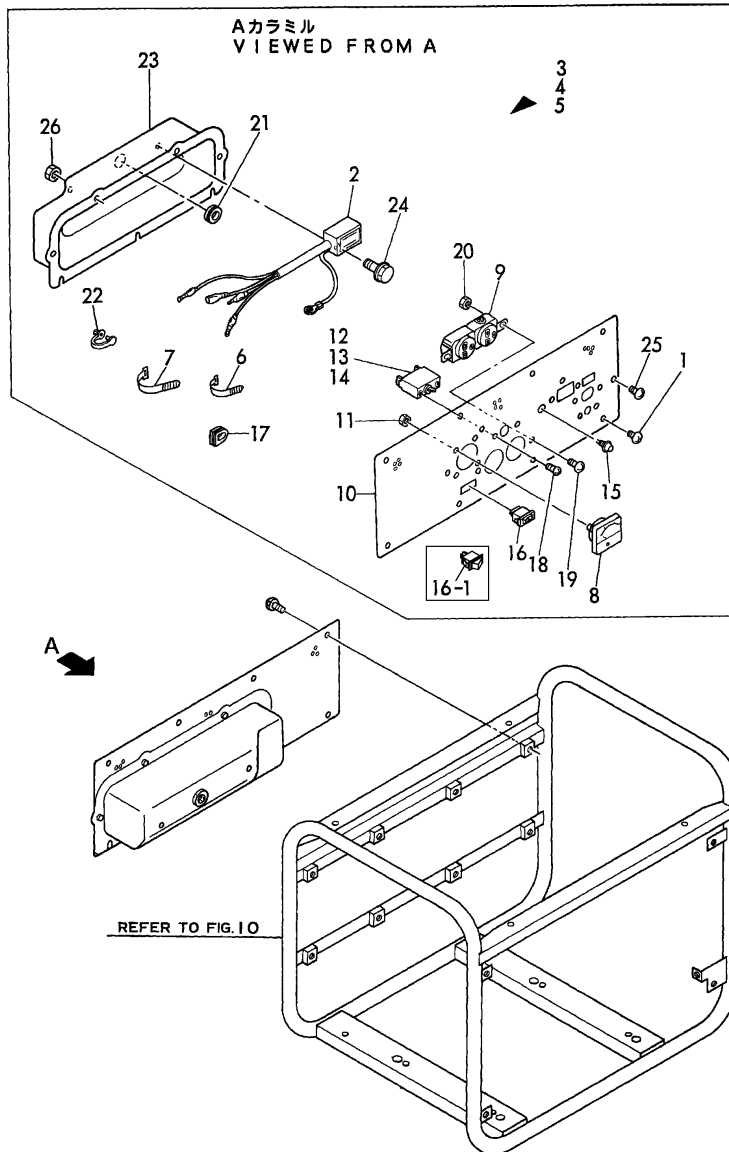
*This FIG applies to machines equipped with the old rectifier and in which the parts (new rectifier/wire harness assy/screw) have been replaced individually.

Fig.12. PANEL

(A)=EP1200/1500
 (B)=EP1700/2000
 (C)=EP2000/2500

(D)=EP2500/3000
 (E)=EP3000/3500
 (F)=

Fig. 12 パネル
 PANEL



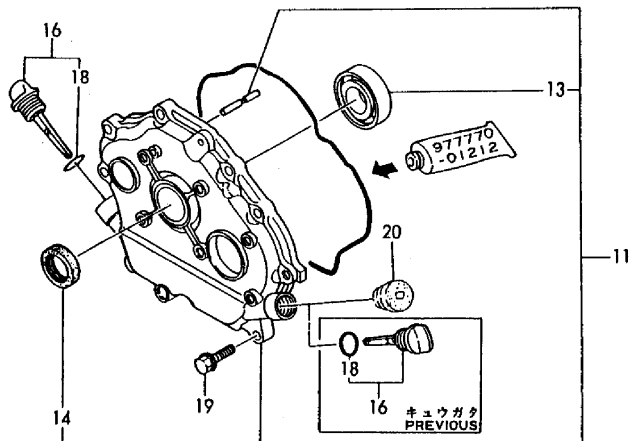
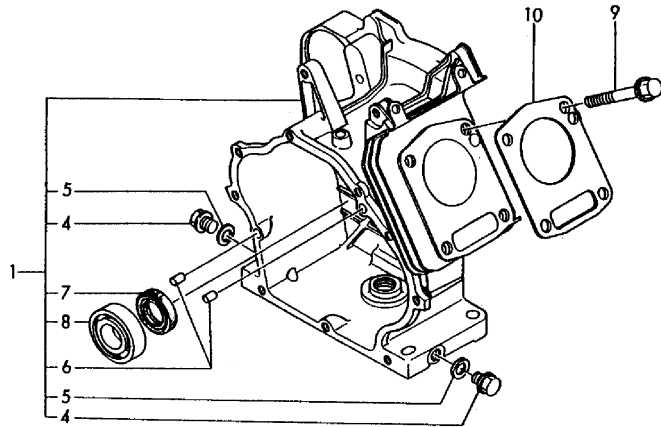
No.	Lev.	Parts No.	Description	Qty						I	R
				(A)	(B)	(C)	(D)	(E)	(F)		
1	1	183210-08850	SCREW, M6X10	8	8	8					
2	1	160770-78830	SENSOR	1	1	1					
3	1	183640-91660	PANEL ASSY	1							
4	1	183740-91660	PANEL ASSY		1						
5	1	183741-91660	PANEL ASSY				1				
6	2	121750-59890	BAND, 140	1	1	1					
7	2	160370-78950	BAND, L=98	2	2	2					
8	2	183820-91290	VOLT METER (150V)	1	1	1					
8-1	2	183730-91210	REGULATOR, VOLTAGE	1	1	1					S
		(A=*1991.07) (B=*1991.07) (C=*1991.07)									
9	2	183920-91320	SOCKET, 125VX2	1	1	1					
10	2	183730-91760	BOARD, PANEL	1	1	1					
10-1	2	183730-91762	BOARD, PANEL	1	1	1					S
		(A=*1990.09) (B=*1990.09) (C=*1990.09)									
11	2	183925-91990	NUT, LOCK	2	2	2					
12	2	183360-91290	AC BREAKER (15A)	1							
13	2	183000-96540	BREAKER, AC 20A			1					
14	2	183000-96550	BREAKER, AC 25A				1				
15	2	183000-97130	LAMP, OIL ALERT	1	1	1					
16	2	183000-97440	SWITCH, STOP	1	1	1					
16-1	2	183730-91450	SWITCH, STOP	1	1	1					S
		(A=*1991.01) (B=*1991.01) (C=*1991.01)									
17	2	183625-98040	GROMMET	1	1	1					
18	2	26557-030062	SCREW, M3X 6	2	2	2					
19	2	26557-040062	SCREW, M4X 6	2	2	2					
20	2	26757-040002	NUT, LOCK M4	2	2	2					
21	2	29311-122000	GROMMET, 12.0X2	1	1	1					
22	2	29610-000650	CLAMP, SPEED 065	1	1	1					
23	1	183730-91850	BOX, PANEL	1	1	1					
24	1	26106-060122	BOLT, M6X 12 PLATED	1	1	1					
25	1	26557-040062	SCREW, M4X 6	4	4	4					
26	1	26757-040002	NUT, LOCK M4	4	4	4					

Fig.13. CYLINDER BLOCK

(A)=EP1200/1500
(B)=EP1700/2000
(C)=EP2000/2500

(D)=EP2500/3000
(E)=EP3000/3500
(F)=

Fig. 13 シリンダブロック
CYLINDER BLOCK



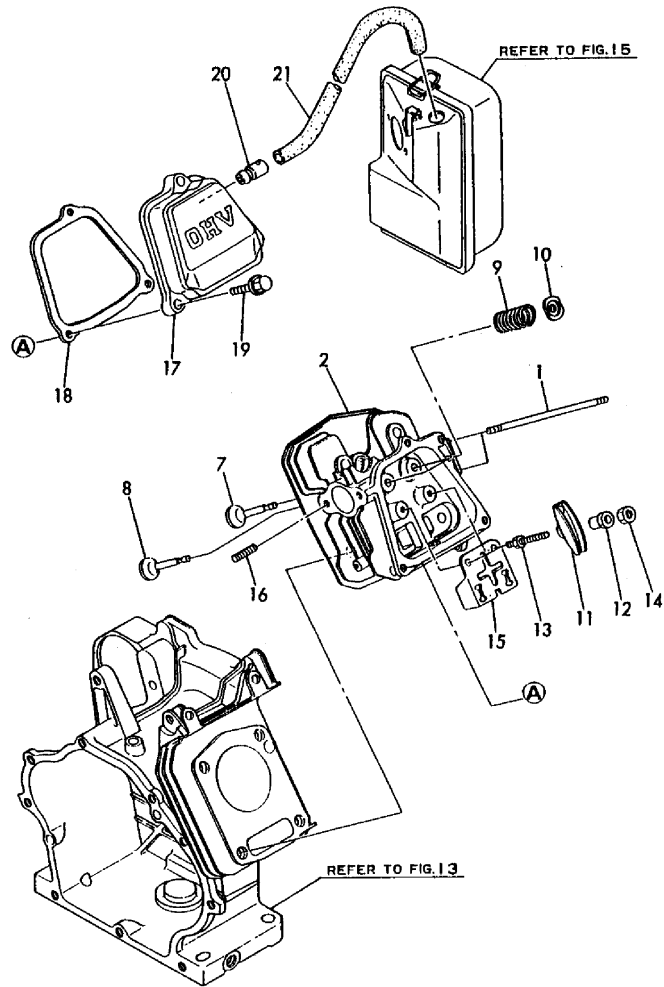
No.	Lev.	Parts No.	Description	Q'ty						I	R
				(A)	(B)	(C)	(D)	(E)	(F)		
1A	1	760797-01560	BLOCK ASSY, CYLINDER				1				
1B	1	760797-01580	BLOCK ASSY, CYLINDER					1			
4	2	160610-01690	PLUG, M12				2	2			
5	2	104200-59170	GASKET, 12				2	2			
6	2	22312-080120	PIN, PARALLEL M8X12				2	2			
7	2	160110-02220	SEAL, OIL				1	1			
8	2	24101-062060	BEARING, BALL 6206C3				1	1			
9	1	160890-01210	BOLT, FLANGE M10X70				4	4			
10	1	160790-01330	GASKET, HEAD				1	1			
11	1	760994-01500	COVER ASSY				1	1			
13	2	24101-062060	BEARING, BALL 6206C3				1	1			
14	2	160110-02220	SEAL, OIL				1	1			
16	1	160810-01740	CAP ASSY				2	2			
16-1	1	160810-01740	CAP ASSY				1	1			K
			(D=*1989.10)				(E=*1989.10)				
18	2	24311-000180	O-RING, 1AP18.0				2	2			
18-1	2	24311-000180	O-RING, 1AP18.0				1	1			K
			(D=*1989.10)				(E=*1989.10)				
19	1	26106-080302	BOLT, M8X 30 PLATED				9	9			
20	1	160110-01870	PLUG, RUBBER				1	1			W
			(D=*1989.10)				(E=*1989.10)				

Fig.14. CYLINDER HEAD & BONNET

(A)=EP1200/1500
 (B)=EP1700/2000
 (C)=EP2000/2500

(D)=EP2500/3000
 (E)=EP3000/3500
 (F)=

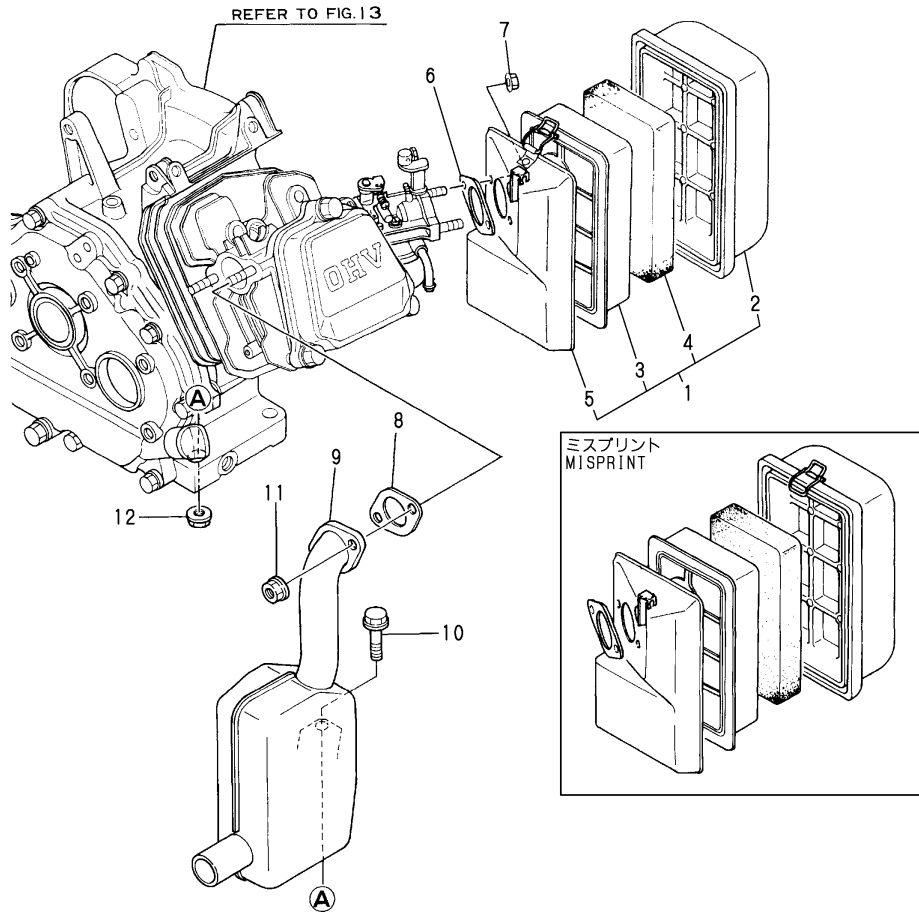
Fig. 14 シリンダヘッド&ベンワンシツ
 CYLINDER HEAD & BONNET



No.	Lev.	Parts No.	Description	Q'ty						I	R
				(A)	(B)	(C)	(D)	(E)	(F)		
1	1	160790-04600	BOLT, M6X75				2	2			
2	1	160790-11010	HEAD ASSY, CYLINDER				1	1			
7	1	160790-11100	VALVE, INTAKE				1	1			
8	1	160790-11110	VALVE, EXHAUST				1	1			
9	1	160890-11120	SPRING, VALVE				2	2			
10	1	160810-11180	RETAINER, SPRING				2	2			
11	1	160890-11200	ARM, ROCKER				2	2			
12	1	160690-11220	PIVOT, ROCKER ARM				2	2			
12-1	1	160690-11221	PIVOT, ROCKER ARM				2	2		N	
				(D=EZZZZZ)	(E=EZZZZZ)						
13	1	160690-11270	BOLT				2	2			
14	1	160690-11280	NUT, M6X0.5				2	2			
15	1	160890-11290	PLATE, GUIDE				1	1			
16	1	26216-080182	STUD, M8X 18				2	2			
17	1	160890-11300	BONNET ASSY, HEAD				1	1			
18	1	160890-11310	GASKET, BONNET				1	1			
19	1	26106-060352	BOLT, M6X 35 PLATED				3	3			
20	1	160610-03050	BREATHER ASSY				1	1			
21	1	160820-03180	PIPE, BREATHER				1	1			

Fig.15. AIR CLEANER & MUFFLER

P/C NEWS No:Y00D4191-2
PUBLISHED:2004/9



(A)=EP1200/1500
(B)=EP1700/2000
(C)=EP2000/2500

(D)=EP2500/3000
(E)=EP3000/3500
(F)=

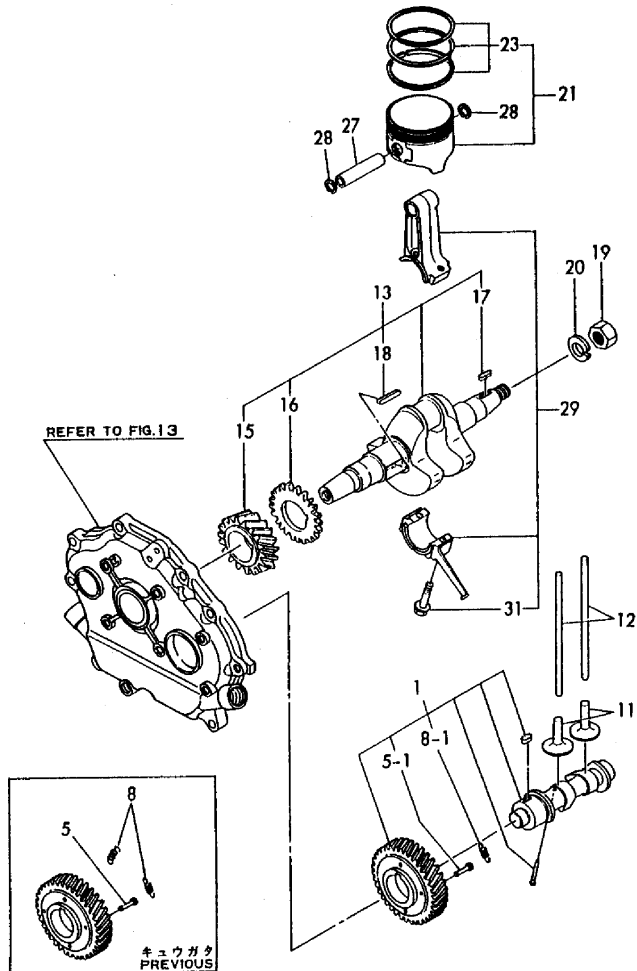
No.	Lev.	Parts No.	Description	Q'ty						I	R
				(A)	(B)	(C)	(D)	(E)	(F)		
1	1	160790-12500	CLEANER ASSY, AIR				1	1			
2	2	160790-12510	COVER, AIR CLEANER				1	1			
3	2	160790-12530	HOLDER, ELEMENT				1	1			
4	2	160790-12540	ELEMENT				1	1			
5	2	160790-12520	CASE				1	1			
6	1	160810-56150	GASKET, CARBURETOR				1	1			
7	1	26366-060002	NUT, M6				2	2			
8	1	160890-13210	GASKET, MUFFLER				1	1			
9	1	160797-13500	MUFFLER				1	1			
10	1	26106-080382	BOLT, M8X 38 PLATED				1	1			
11	1	26366-080002	NUT, M8				2	2			
12	1	26366-080002	NUT, M8				1	1			

Fig.16. CRANKSHAFT, PISTON & CAMSHAFT

(A)=EP1200/1500
(B)=EP1700/2000
(C)=EP2000/2500

(D)=EP2500/3000
(E)=EP3000/3500
(F)=

Fig. 16 クランクシャフト、ピストン&カムシャフト
CRANKSHAFT, PISTON & CAMSHAFT



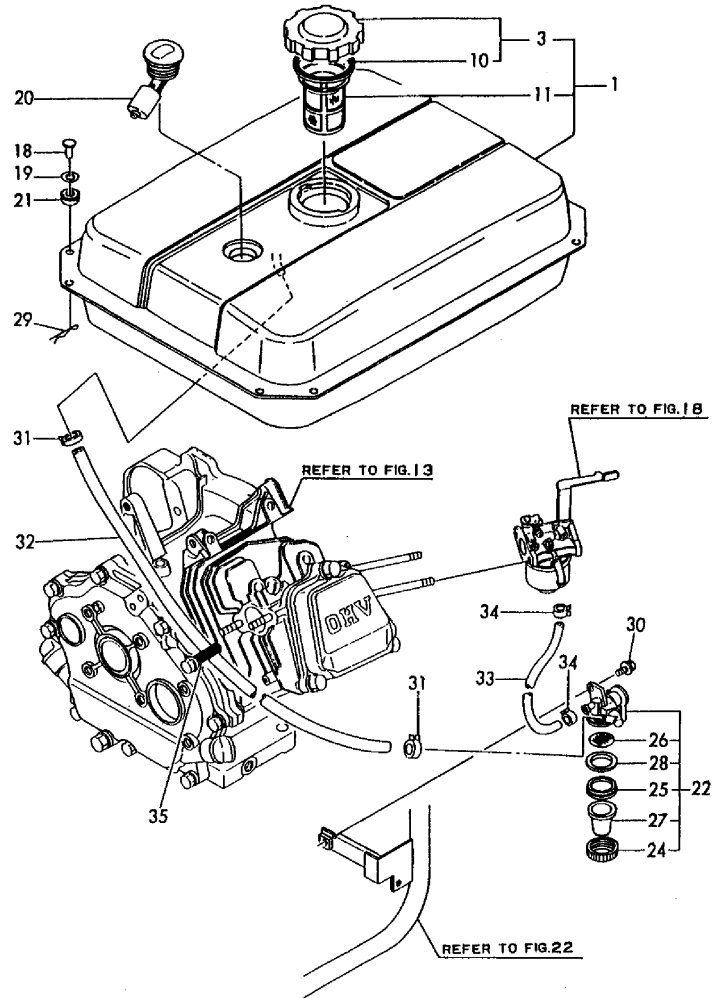
No.	Lev.	Parts No.	Description	Q'ty						I	R
				(A)	(B)	(C)	(D)	(E)	(F)		
1	1	160994-14051	CAMSHAFT ASSY				1	1			
5	2	160810-14540	PIN, GUIDE				3	3			
5-1	2	160810-14540	PIN, GUIDE				1	1		K	
			(D=*1991.07)			(E=*1991.07)					
8	2	160790-14560	SPRING, DECOMPRESSION				2	2			
8-1	2	160890-14560	SPRING, DECOMPRESSION				1	1		N	
			(D=*1991.07)			(E=*1991.07)					
11	1	160890-14400	ROD, PUSH				2	2			
11-1	1	114250-14400	ROD, PUSH				2	2		N	
			(D=EXXX)			(E=EXXX)					
12	1	160890-14200	TAPPET				2	2			
13	1	760797-21700	CRANKSHAFT ASSY				1	1			
15	2	160890-21200	GEAR, CRANKSHAFT				1	1			
16	2	160890-21220	GEAR, BALANCER				1	1			
17	2	22512-040160	KEY, 4X 16				1	1			
18	2	22512-040300	KEY, 4X 30				1	1			
19	1	26737-160002	NUT, M16				1	1			
20	1	22217-160000	WASHER, SPRING 16				1	1			
21A	1	160790-22010	PISTON ASSY				1				
21A-1	1	160790-22011	PISTON ASSY				1			R	
			(D=*1989.10)								
21A-2	1	160790-22010	PISTON ASSY				1			R	
			(D=*1989.08)								
21A-3	1	160790-22011	PISTON ASSY				1			R	
			(D=*1990.10)								
21B	1	160798-22010	PISTON ASSY					1			
23A	2	760790-22500	RING SET, PISTON				1				
23A-1	2	760790-22501	RING SET, PISTON				1			S	
			(D=*1990.10)								
23B	2	760798-22500	RING SET, PISTON					1			
27	1	160890-22300	PIN, PISTON				1	1			
28	1	22252-000190	RING, 19				2	2			
29	1	760790-23700	ROD ASSY, CONNECTING				1	1			
31	2	160810-23201	BOLT, CONNECTING ROD				1	1			
31-1	2	160810-23201	BOLT, CONNECTING ROD				2	2		K	
			(D=EXXX)			(E=EXXX)					

Fig.17. FUEL TANK & FUEL PIPE

(A)=EP1200/1500
(B)=EP1700/2000
(C)=EP2000/2500

(D)=EP2500/3000
(E)=EP3000/3500
(F)=

Fig. 17 FOタンク&FOパイプ
FUEL TANK & FUEL LINE



No.	Lev.	Parts No.	Description	Q'ty						I	R
				(A)	(B)	(C)	(D)	(E)	(F)		
1	1	783830-55710	TANK ASSY, FUEL				1	1			
1-1	1	783830-55700	TANK ASSY, FUEL				1	1			N
			(D=*1991.03)				(E=*1991.03)				
3	2	160710-55061	CAP ASSY				1	1			
10	3	160393-55050	GASKET				1	1			
11	2	160610-55100	FILTER, FUEL				1	1			
18	1	183350-55120	PIN, 6X14				4	4			
19	1	183350-55130	WASHER				4	4			
20	1	183925-55150	GAUGE				1	1			
21	1	183720-55210	GROMMET				4	4			
22	1	160692-55300	COCK ASSY, FUEL				1	1			
24	2	160710-55360	RING				1	1			
25	2	160710-55370	GASKET				1	1			
26	2	160710-55381	FILTER, FUEL				1	1			
27	2	160710-55390	CUP, FUEL COCK L37				1	1			
28	2	160692-55421	PLATE				1	1			
29	1	22360-060000	PIN, SNAP 6				4	4			
30	1	26106-060122	BOLT, M6X 12 PLATED				1	1			
31	1	106990-44660	CLIP, HOSE 12.5				2	2			
32	1	160992-59350	PIPE, FUEL				1	1			
33	1	160667-59360	PIPE, FUEL				1	1			
34	1	124060-77680	CLIP, HOSE 10				2	2			
35	1	160710-78710	CLAMP, CORD				1	1			

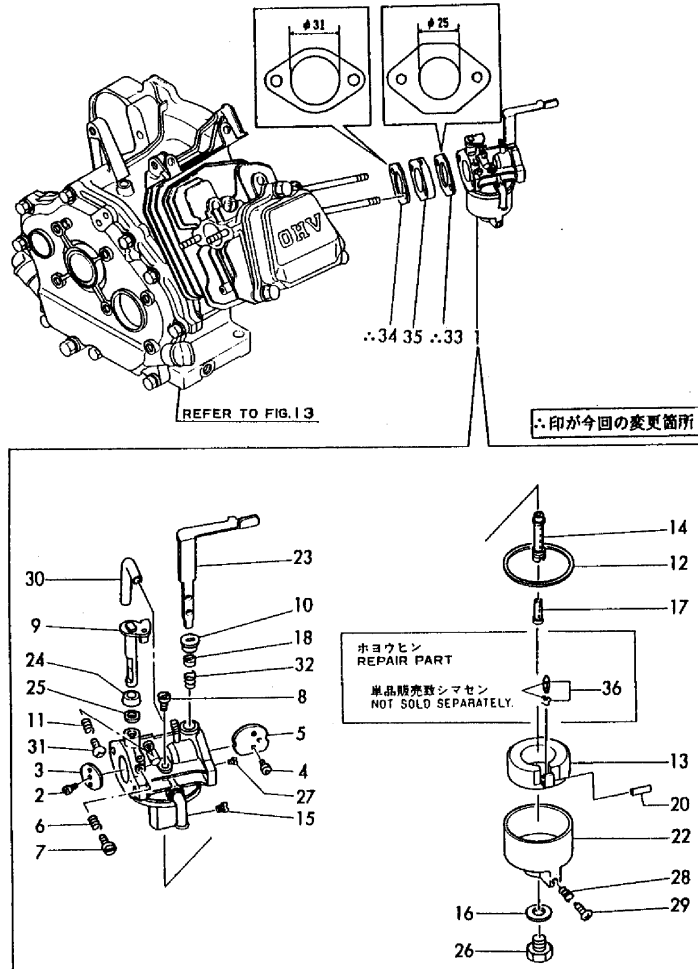
Fig.18. CARBURETOR

(A)=EP1200/1500
(B)=EP1700/2000
(C)=EP2000/2500

(D)=EP2500/3000
(E)=EP3000/3500
(F)=

発行No. 000Y00M7850-1
更新年月: 1990.12
REVISED: Dec. 1990

Fig. 18 キャブレタ
CARBURETOR



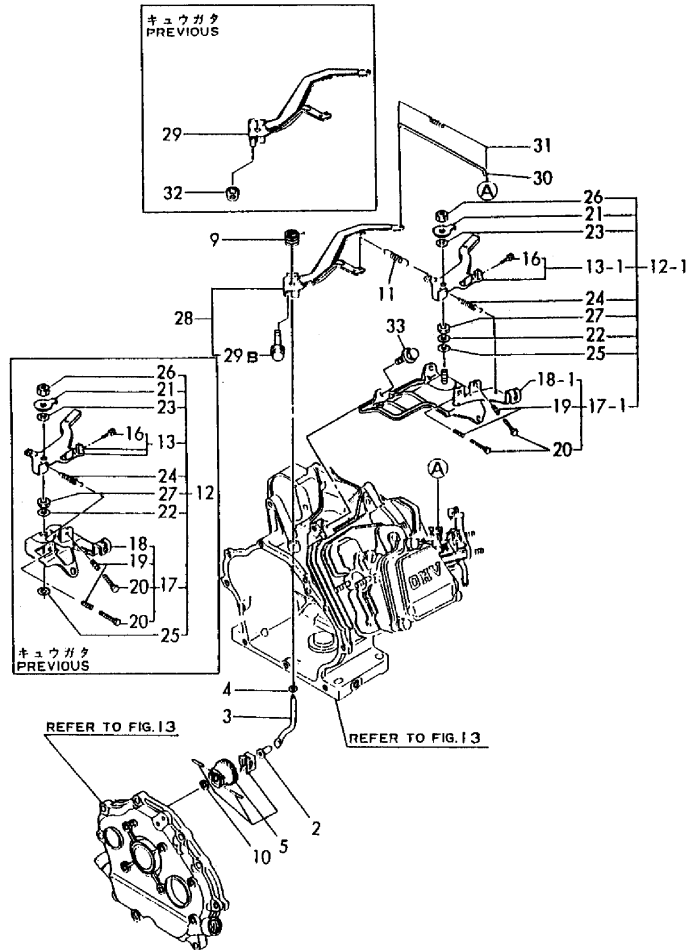
No.	Lev.	Parts No.	Description	Q'ty						I	R
				(A)	(B)	(C)	(D)	(E)	(F)		
1	1	160798-56030	CARBURETOR ASSY				1	1			
2	2	160120-56670	SCREW				2	2			
3	2	160880-56760	VALVE, THROTTLE				1	1			
4	2	160903-56670	SCREW				2	2			
5	2	160792-56520	VALVE, CHOKE				1	1			
6	2	181230-56380	SPRING				1	1			
7	2	160667-56750	ADJUSTER				1	1			
8	2	160667-56740	JET, PILOT				1	1			
9	2	160797-56660	SHAFT, THROTTLE				1	1			M
9-1	2	160798-56570	SHAFT, THROTTLE				1	1			
10	2	160792-56540	RING				1	1			
11	2	181230-56380	SPRING				1	1			
12	2	160210-56610	WASHER				1	1			
13	2	160810-56620	FLOAT ASSY				1	1			
14	2	160793-56560	NOZZLE, MAIN				1	1			
15	2	160797-56570	JET, ENRICHMENT				1	1			
16	2	160120-56721	GASKET				1	1			
17	2	160790-56570	NOZZLE				1	1			
18	2	160810-56580	RING, CHOKE SHAFT				1	1			
20	2	160610-56630	PIN, FLOAT				1	1			
22	2	160790-56590	BODY, FLOAT				1	1			
23	2	160797-56650	LEVER, CHOKE				1	1			M
23-1	2	160797-56650	LEVER, CHOKE				1	1			
24	2	160702-56720	RING				1	1			
25	2	160640-56850	SEAL				1	1			
26	2	160790-56610	BOLT				1	1			
27	2	160792-56610	JET, PILOT				1	1			
28	2	181230-56380	SPRING				1	1			
29	2	160610-56900	SCREW				1	1			
30	2	160692-56770	HOSE				1	1			
31	2	160692-56710	SCREW				1	1			
32	2	160791-56710	SPRING, BRAKE				1	1			
33	1	160790-56150	GASKET, CARBURETOR				1	1			
34	1	160810-56150	GASKET, CARBURETOR				1	1			
35	1	160790-56160	INSULATOR				1	1			
36	1	160792-56670	VALVE ASSY, NEEDLE				1	1			1

Fig.19. GOVERNOR & CONTROL DEVICE

(A)=EP1200/1500
(B)=EP1700/2000
(C)=EP2000/2500

(D)=EP2500/3000
(E)=EP3000/3500
(F)=

Fig. 19 ガバナ&ソウジュウソウチ
GOVERNOR & CONTROL DEVICE



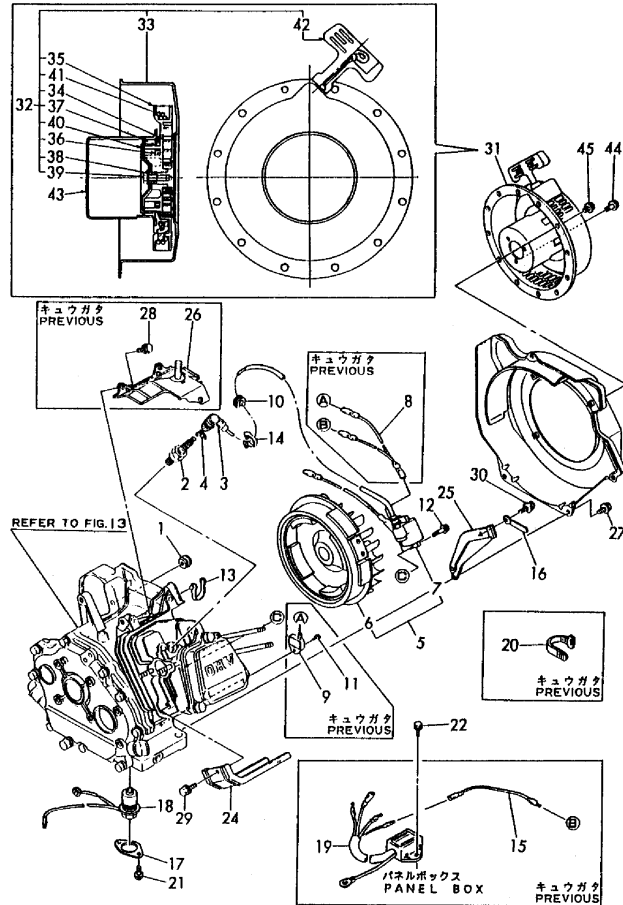
No.	Lev.	Parts No.	Description	Q'ty						I	R
				(A)	(B)	(C)	(D)	(E)	(F)		
2	1	160690-61300	SPINDLE				1	1			
3	1	160690-61310	SHAFT				1	1			
4	1	160690-61450	WASHER				1	1			
5	1	160690-61600	GEAR ASSY, GOVERNOR				1	1			
9	1	160890-66050	SPRING, RETURN				1	1			
10	1	160120-76940	WASHER				1	1			
11	1	160797-66010	SPRING, GOVERNOR				1	1			
12	1	160890-66100	CONTROLLER ASSY				1	1			
12-1	1	160890-66101	CONTROLLER ASSY				1	1		R	
13	2	160890-66080	LEVER ASSY, CONTROL	(D=*1989.10)	(E=*1989.10)		1	1			
13-1	2	160890-66081	LEVER ASSY, CONTROL				1	1		R	
16	3	26117-040088	BOLT M 4X 8 PLATED	(D=*1989.10)	(E=*1989.10)		1	1			
16A	3	160690-66900	WASHER, 4				1	1		W	
17	2	160690-66110	BASE ASSY	(D=*1989.10)	(E=*1989.10)		1	1			
17-1	2	160890-66110	BASE ASSY				1	1		R	
18	3	160690-66120	BASE, CONTROL	(D=*1989.10)	(E=*1989.10)		1	1			
18-1	3	160890-66141	BASE ASSY				1	1		N	
19	3	160520-66291	SPRING	(D=*1989.10)	(E=*1989.10)		2	2			
20	3	26117-040257	BOLT, M4X 25 PLATED				2	2			
21	2	160690-66160	WASHER				1	1			
22	2	160664-66170	WASHER				1	1			
23	2	160664-66180	SPRING				1	1			
24	2	160664-66220	SPRING, RETURN				1	1			
25	2	22137-060000	WASHER, 6				1	1			
26	2	26347-060002	NUT, M6				1	1			
27	2	26757-060002	NUT, LOCK M6				1	1			
28	1	160890-66190	LEVER ASSY, GOVERNOR	(D=*1990.03)	(E=*1990.03)		1	1		W	
29	1	160890-66150	LEVER, GOVERNOR	(D=*1990.03)	(E=*1990.03)		1	1		Z	
29B	2	26106-060252	BOLT, M6X 25 PLATED	(D=*1989.10)	(E=*1989.10)		1	1		W	
30	1	160690-66200	LINK, THROTTLE				1	1			
31	1	160690-66210	SPRING, TENSION				1	1			
32	1	26366-060002	NUT, M6	(D=*1990.03)	(E=*1990.03)		1	1		Z	
33	1	26476-060142	SCREW, TAPPING M6X14	(D=*1989.10)	(E=*1989.10)		2	2		W	

Fig.20. MAGNETO & STARTING DEVICE

(A)=EP1200/1500
(B)=EP1700/2000
(C)=EP2000/2500

(D)=EP2500/3000
(E)=EP3000/3500
(F)=

Fig.20 フライホイールマグネット&シドウスウチ
FLY. MAGNETO & STARTING DEVICE



No.	Lev.	Parts No.	Description	Q'ty						I	R
				(A)	(B)	(C)	(D)	(E)	(F)		
1	1	160341-01950	PIPE				1	1			
2	1	160690-78010	PLUG, SPARK BP6ES				1	1			
3	1	160700-78040	CAP, PLUG				1	1			
4	1	160700-78050	TERMINAL, PLUG				1	1			
5	1	160794-78050	MAGNETIC ASSY				1	1			
5-1	1	160794-78051	MAGNETIC ASSY				1	1		N	
6	2	160794-78500	ROTOR	(D=*1989.11)	(E=*1989.11)		1	1			
7	2	160797-78520	COIL ASSY, IGNITION				1	1			
7-1	2	160797-78521	COIL, IGNITION	(D=*1989.11)	(E=*1989.11)		1	1		N	
7-2	2	160797-78522	COIL, IGNITION	(D=*1989.11)	(E=*1989.11)		1	1		S 1	
7A	2	160690-78230	WIRE	(D=*1990.11)	(E=*1990.11)		1	1		W 1	
8	1	160690-78210	WIRE, LEAD	(D=*1989.11)	(E=*1989.11)		1	1		Z	
9	1	160791-78660	TRANSISTOR	(D=*1989.11)	(E=*1989.11)		1	1		Z	
10	1	160700-78720	GROMMET				1	1			
11	1	26023-040102	SCREW, M4X10	(D=*1989.11)	(E=*1989.11)		1	1		Z	
12	1	26476-060252	SCREW, TAPPING M6X25				2	2			
13	1	29610-000650	CLAMP, SPEED 065				1	1			
14	1	29610-000950	CLAMP, SPEED 095				1	1			
15	1	160975-78200	WIRE, LEAD	(D=*1990.03)	(E=*1990.03)		1	1		Z	
16	1	160710-78710	CLAMP, CORD				1	1			
17	1	160797-78800	COVER				1	1			
18	1	160797-78810	SENSOR				1	1			
19	1	160770-78830	SENSOR	(D=*1990.03)	(E=*1990.03)		1	1		Z	
20	1	160370-78950	BAND, L=98	(D=*1990.03)	(E=*1990.03)		1	1		Z	
21	1	26023-040082	SCREW, M4X 8				2	2			
22	1	26476-060142	SCREW, TAPPING M6X14				1	1			
23	1	160797-45150	CASE, COOLING FAN				1	1			
23-1	1	160797-45140	CASE, COOLING FAN	(D=*1991.03)	(E=*1991.03)		1	1		N	
24	1	160890-45200	COVER, HEAD				1	1			
25	1	160790-45210	COVER				1	1			
26	1	160890-45220	COVER, HEAD	(D=*1989.10)	(E=*1989.10)		1	1		Z	
27	1	26476-060142	SCREW, TAPPING M6X14				4	4			
28	1	26476-060142	SCREW, TAPPING M6X14	(D=*1989.10)	(E=*1989.10)		3	3		Z	
29	1	26476-060142	SCREW, TAPPING M6X14				2	2			
30	1	26476-060142	SCREW, TAPPING M6X14				1	1			
31	1	160794-76050	STARTER ASSY, RECOIL				1	1			
32	2	160794-76250	STARTER ASSY, RECOIL				1	1			
33	3	160794-76510	CASE, STARTER				1	1			

Remarks

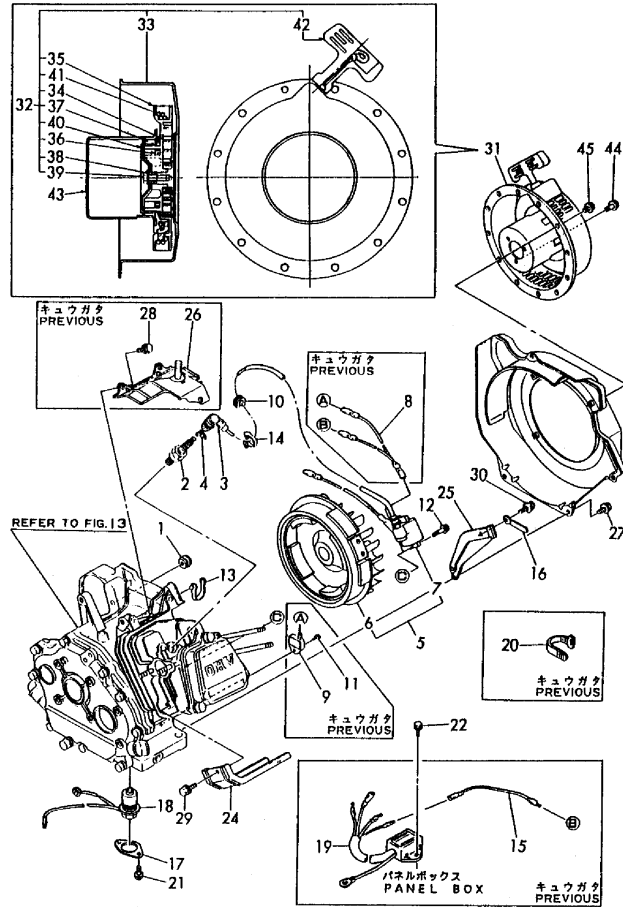
(1) SIMULTANEOUS REPLACEMENT OF REF. NO.7-2(IGNITION COIL, P/# 160797-78522) & REF.NO.9A(STOP CORD, P/# 160690-78230) ARE INTERCHANGEABLE.

Fig.20. MAGNETO & STARTING DEVICE

(A)=EP1200/1500
(B)=EP1700/2000
(C)=EP2000/2500

(D)=EP2500/3000
(E)=EP3000/3500
(F)=

Fig.20 フライホイールマグネット&シドウソウチ
FLY. MAGNETO & STARTING DEVICE



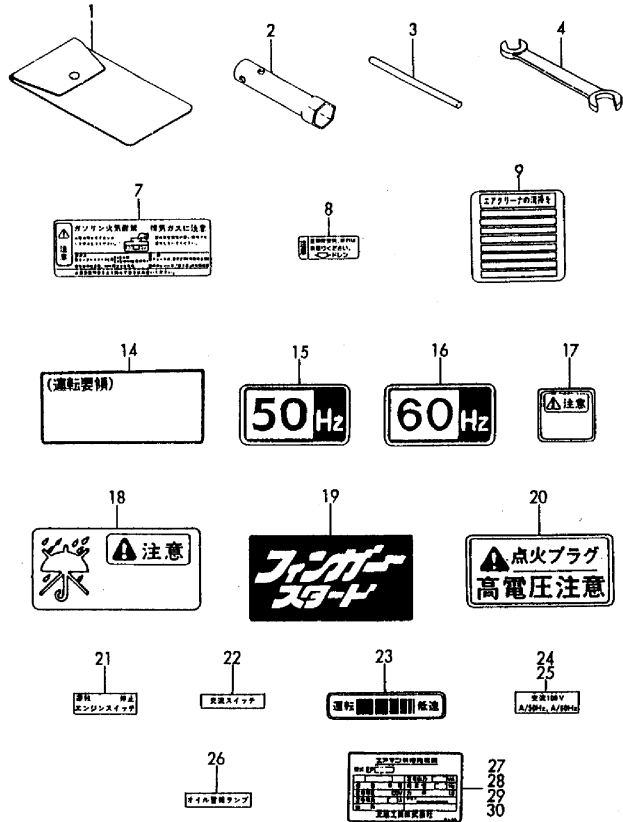
No.	Lev.	Parts No.	Description	Q'ty						I	R
				(A)	(B)	(C)	(D)	(E)	(F)		
34	3	160890-76510	SPRING, SPIRAL				1	1			
35	3	160794-76520	REEL				1	1			
36	3	160641-76550	SPRING, DOG				3	3			
37	3	160890-76540	DOG				3	3			
38	3	160890-76550	SPRING, BRAKE				1	1			
39	3	160641-76570	SCREW				1	1			
40	3	160794-76570	RETAINER				1	1			
41	3	160890-76580	ROPE, STARTER				1	1			
42	3	160260-76620	KNOB, STARTER				1	1			
43	2	160794-76590	PULLEY, STARTER				1	1			
44	1	26106-060082	BOLT, M6X 8 PLATED				4	4			
45	1	26106-060122	BOLT, M6X 12 PLATED				3	3			

Remarks

(1) SIMULTANEOUS REPLACEMENT OF REF. NO.7-2(IGNITION COIL, P/# 160797-78522) & REF.NO.9A(STOP CORD, P/# 160690-78230) ARE INTERCHANGEABLE.

Fig.21. LABEL & TOOL

Fig. 21 コウグ&ラベル
TOOL & LABEL



31 (□□□=2500)
32 (□□□=3000) — AIRMAN
33 (□□□=3500)

(A)=EP1200/1500
(B)=EP1700/2000
(C)=EP2000/2500

(D)=EP2500/3000
(E)=EP3000/3500
(F)=

No.	Lev.	Parts No.	Description	Q'ty						I	R
				(A)	(B)	(C)	(D)	(E)	(F)		
1	1	160110-92610	BAG, TOOL				1	1			
2	1	160120-92700	WRENCH, 21 L86				1	1			
3	1	160110-92710	HANDLE, WRENCH				1	1			
4	1	28110-100120	SPANNER, 10X12				1	1			
7	1	160690-07250	LABEL, CAUTION				1	1			
8	1	160520-07270	LABEL, DRAIN				1	1			
8-1	1	160520-07271	LABEL, DRAIN				1	1		N	
9	1	160520-07370	LABEL, CLEANER	(D=*1990.09)	(E=*1990.09)		1	1			
14	1	183730-07220	LABEL, OPERATION				1	1			
15	1	183610-07230	LABEL, 50HZ				1	1			
16	1	183620-07230	LABEL, 60HZ				1	1			
17	1	183210-07230	LABEL, MUFFLER				1	1			
18	1	183210-07400	LABEL, RAIN CAUTION				1	1			
19	1	183730-07400	LABEL, FINGER START				1	1			
20	1	183210-07410	LABEL, PLUG				1	1			
21	1	183730-07420	LABEL, ENGINE SWITCH				1	1			
22	1	183730-07430	LABEL, AC SWITCH				1	1			
23	1	183730-07440	LABEL, OPERATION				1	1			
24	1	183830-07450	LABEL, AMPERE				1				
25	1	183831-07450	LABEL, AMPERE					1			
26	1	183730-07470	LABEL, OIL ALERT				1	1			
27	1	183830-07520	LABEL (GENERATOR				1			1	
28	1	183831-07520	LABEL (GENERATOR					1		1	
29	1	183840-07520	LABEL (GENERATOR				1			2	
30	1	183841-07520	LABEL (GENERATOR					1		2	
31	1	183830-07230	LABEL, GENERATOR				1				
32	1	183840-07230	LABEL, GENERATOR				1	1			
33	1	183841-07230	LABEL, GENERATOR					1			

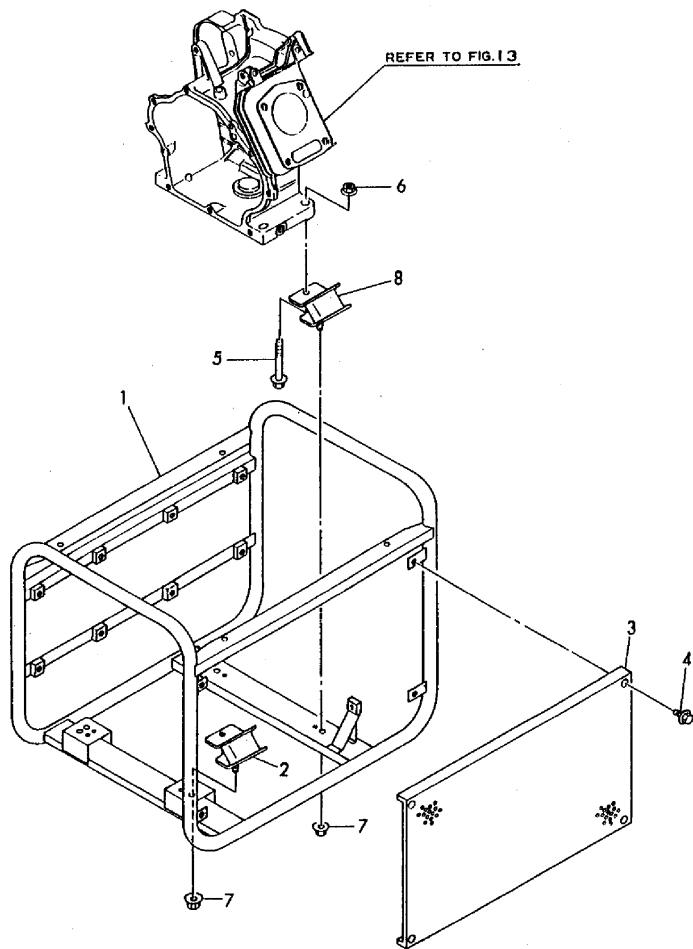
Remarks
(1) 50HZ
(2) 60HZ

Fig.22. FRAME

(A)=EP1200/1500
 (B)=EP1700/2000
 (C)=EP2000/2500

(D)=EP2500/3000
 (E)=EP3000/3500
 (F)=

Fig.22 フレーム
 FRAME



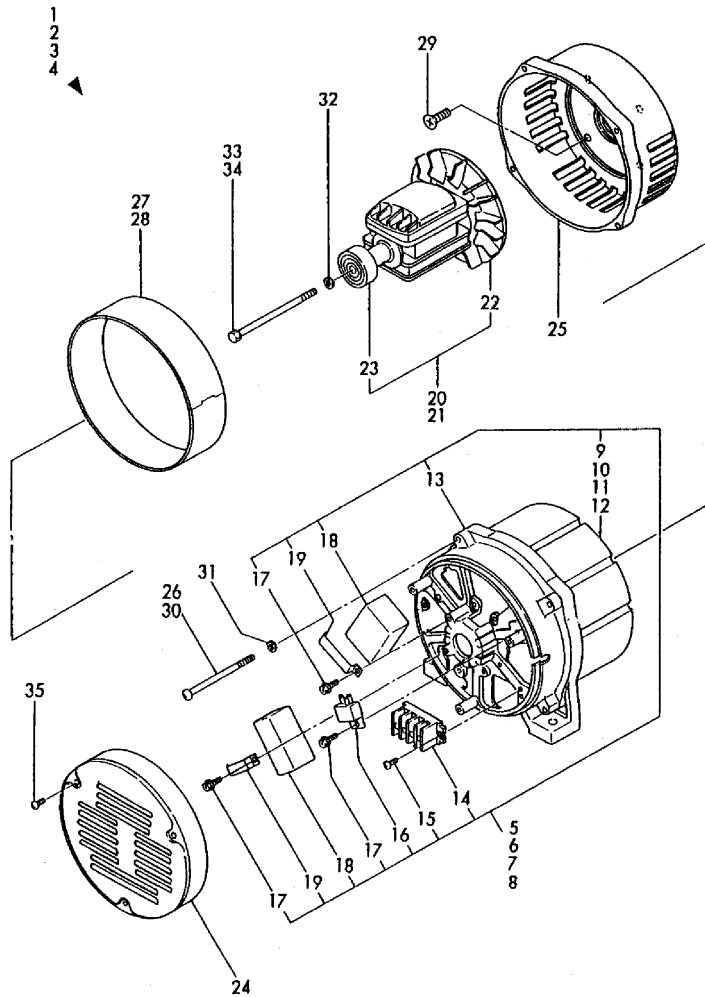
No.	Lev.	Parts No.	Description	Q'ty						I	R	
				(A)	(B)	(C)	(D)	(E)	(F)			
1	1	183830-08060	FRAME				1	1				
1-1	1	183830-08050	FRAME				1	1			N	
			(D=*1991.03)	(E=*1991.03)								
2	1	183830-08210	DAMPER				2	2				
3	1	183830-08750	COVER				1	1				
4	1	114252-13950	BOLT, M6X8				4	4				
5	1	26106-080382	BOLT, M8X 38 PLATED				4	4				
6	1	26366-080002	NUT, M8				4	4				
7	1	26376-100002	NUT, M10				4	4				
8	1	183730-08210	DAMPER				2	2				

Fig.23. GENERATOR

(A)=EP1200/1500
 (B)=EP1700/2000
 (C)=EP2000/2500

(D)=EP2500/3000
 (E)=EP3000/3500
 (F)=

Fig. 23 ジェネレータ
 GENERATOR



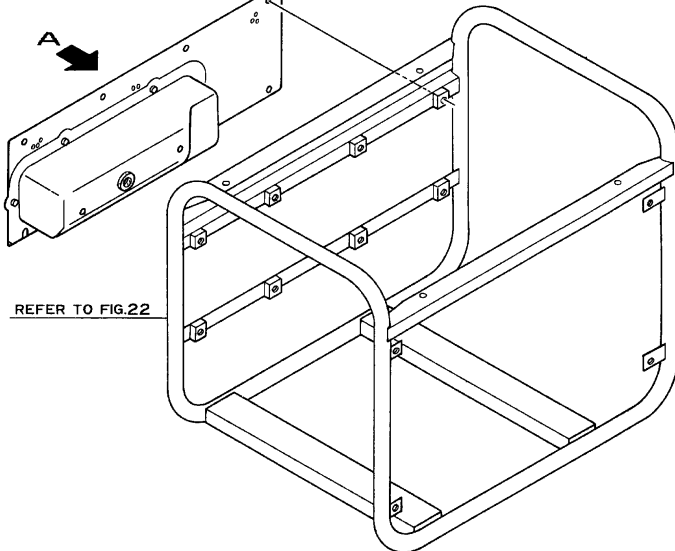
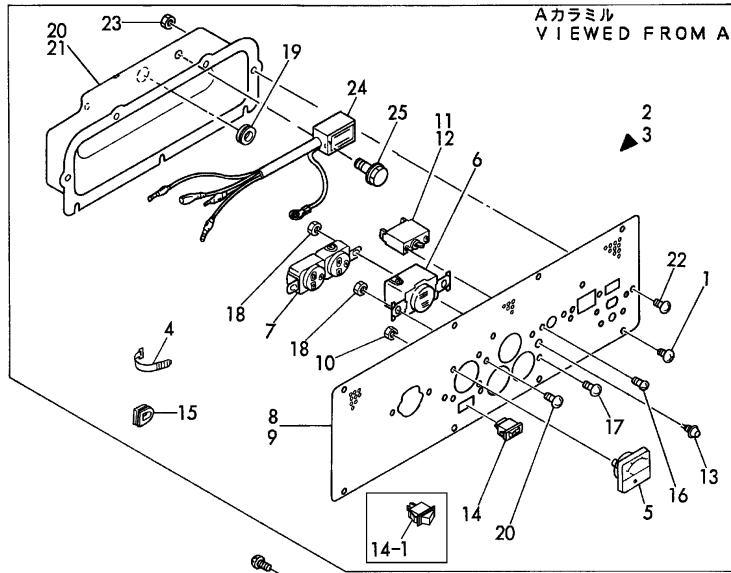
No.	Lev.	Parts No.	Description	Q'ty						I	R
				(A)	(B)	(C)	(D)	(E)	(F)		
1	1	183830-74060	GENERATOR, 3.0KVA				1				1
2	1	183831-74060	GENERATOR ASSY					1			1
3	1	183840-74060	GENELATOR				1				2
4	1	183841-74060	GENERATOR ASSY					1			2
5	2	183830-74200	STATOR				1				1
6	2	183831-74200	STATOR ASSY					1			1
7	2	183840-74200	STATOR ASSY				1				2
8	2	183841-74200	STATOR ASSY					1			2
9	3	183830-74290	STATOR				1				1
10	3	183831-74290	STATOR					1			1
11	3	183840-74290	STATOR				1				2
12	3	183841-74290	STATOR					1			2
13	3	183740-74250	COVER, REAR				1	1			
14	3	183820-74270	TERMINAL				1	1			
15	3	183350-74380	SCREW, M4X14				2	2			
16	3	183210-74470	RECTIFIER				1	1			
17	3	183620-74310	SCREW M 5X10				3	3			
18	3	183740-74170	CONDENSER				2	2			
19	3	183740-74180	CLAMP				2	2			
20	2	183840-74350	ROTOR ASSY				1				
21	2	183841-74350	ROTOR ASSY					1			
22	3	183740-74360	FAN				1	1			
23	3	183740-74370	BEARING				1	1			
24	2	183740-74410	COVER				1	1			
25	2	183840-74150	COVER, FRONT				1	1			
26	1	183362-74410	BOLT, THROUGH M6X110				4				
27	1	183830-74750	BAND, GENERATOR				1				
28	1	183831-74750	BAND, GENERATOR					1			
29	1	183730-74950	SCREW, M8X18				4	4			
30	1	183831-74950	BOLT, THROUGH M6X125					4			
31	1	22217-060000	WASHER, SPRING 6				4	4			
32	1	22217-100000	WASHER, SPRING 10				1	1			
33	1	26116-102002	BOLT, M10X200 PLATED				1				
34	1	26116-102152	BOLT, M10X215 PLATED					1			
35	1	26557-040082	SCREW, M4X 8				3	3			

Fig.24. PANEL

(A)=EP1200/1500
(B)=EP1700/2000
(C)=EP2000/2500

(D)=EP2500/3000
(E)=EP3000/3500
(F)=

Fig. 24 パネル
PANEL



No.	Lev.	Parts No.	Description	Q'ty						I	R
				(A)	(B)	(C)	(D)	(E)	(F)		
1	1	183210-08850	SCREW, M6X10				8	8			
2	1	183840-91660	PANEL ASSY				1				
3	1	183841-91660	PANEL ASSY					1			
4	2	160370-78950	BAND, L=98				2	2			
5	2	183820-91290	VOLT METER (150V)				1	1			
5-1	2	183730-91210	REGULATOR, VOLTAGE				1	1			S
			(D=*1991.07)								
6	2	183830-91320	SOCKET, 30A				1	1			
7	2	183920-91320	SOCKET, 125VX2				1	1			
8	2	183830-91760	BOARD, PANEL				1				
8-1	2	183830-91761	BOARD, PANEL				1				S
			(D=*1991.07)								
9	2	183841-91760	BOARD, PANEL						1		
9-1	2	183841-91761	BOARD, PANEL						1		S
			(E=*1991.07)								
10	2	183925-91990	NUT, LOCK				2	2			
11	2	183000-96520	BREAKER, AC 30A				1				
12	2	183000-96570	BREAKER, AC 35A					1			
13	2	183000-97130	LAMP, OIL ALERT				1	1			
14	2	183000-97440	SWITCH, STOP				1	1			
14-1	2	183730-91450	SWITCH, STOP				1	1			S
			(D=*1991.01)								
			(E=*1991.01)								
15	2	183625-98040	GROMMET				1	1			
16	2	26557-030062	SCREW, M3X 6				2	2			
17	2	26557-040062	SCREW, M4X 6				4	4			
18	2	26757-040002	NUT, LOCK M4				4	4			
19	2	29311-122000	GROMMET, 12.0X2				1	1			
20	1	183730-91850	BOX, PANEL				1				
21	1	183830-91850	BOX, PANEL					1			
22	1	26557-040062	SCREW, M4X 6				4	4			
23	1	26757-040002	NUT, LOCK M4				4	4			
24	1	160770-78830	SENSOR				1	1			W
			(D=*1990.03)								
			(E=*1990.03)								
25	1	26106-060122	BOLT, M6X 12 PLATED				1	1			W
			(D=*1990.03)								
			(E=*1990.03)								

Parts No. Index

Parts No.	Fig. No.	Ref. No.
104200-59170	1	8
		16
	13	5
106990-44660	5	31
	17	31
114250-14400	4	12 B
	16	11 -1
114252-13950	10	8
	22	4
121750-59890	12	6
124060-77680	5	34
	17	34
160110-01870	1	25
	13	20
160110-02220	13	7
		14
160110-92610	9	38
	21	1
160110-92710	9	40
	21	3
160120-56670	18	2
160120-56721	18	16
160120-76940	7	9
	19	10
160120-92700	9	39
	21	2
160210-56610	18	12
160260-76620	20	42
160260-78700	1	22
160310-56980	6	21
160310-56990	6	22
160341-01950	8	1
	20	1
160370-78950	8	14
	12	7
	20	20
	24	4
160393-55050	5	10
	17	10
160490-14200	4	11 -1
160510-14540	4	5
		5 -1
160510-56740	6	13
160520-07270	9	36
	21	8
160520-07271	9	36 -1
	21	8 -1
160520-07370	9	37
	21	9
160520-66291	7	19

Parts No.	Fig. No.	Ref. No.
160520-66291	19	19
160590-01330	1	9 A
160590-11010	2	2 A
160590-11100	2	6 A
160590-11110	2	7 A
160590-14400	4	12 A
160590-21200	4	16 A
160590-21210	4	17
160590-22010	4	20 A
		20 A-2
160590-22011	4	20 A-1
160590-22300	4	26 A
160590-45210	8	23
160590-45211	8	23 -1
160590-56330	6	8
160590-56670	6	29
160590-56740	6	11
160590-56770	6	35
160590-56800	6	50
160590-78530	8	6
160592-56540	6	4
160594-14050	4	1 A
160594-66010	7	11 A
160594-78050	8	4
160594-78051	8	4 -1
160594-78500	8	5
160594-78530	8	6 -1
160594-78531	8	6 -2
160597-13500	3	9 A
160597-13510	3	9 A-1
160597-45100	8	20 -1
160597-45110	8	20
160597-56010	6	1
160610-01690	1	7
		15
	13	4
160610-02220	1	5 A
160610-03050	14	20
160610-04201	1	20
160610-04570	2	1
160610-04910	4	13
160610-21290	4	18 A
160610-55100	5	11
	17	11
160610-56150	3	6
	6	55
160610-56610	6	26
160610-56611	6	33
160610-56630	6	17
	18	20

Parts No.	Fig. No.	Ref. No.
160610-56740	6	12
160610-56900	6	47
	18	29
160640-02220	1	13 A
160640-56850	6	40
	18	25
160641-76550	20	36
160641-76570	20	39
160664-66170	7	22
	19	22
160664-66180	7	23
	19	23
160664-66220	7	24
	19	24
160667-56740	18	8
160667-56750	6	43
	18	7
160667-59360	17	33
160690-01330	1	9 B
160690-02220	1	5 B
		13 B
160690-03050	2	20
160690-07250	9	10
	21	7
160690-11010	2	2 B
160690-11100	2	6 B
160690-11110	2	7 B
160690-11120	2	8
160690-11180	2	9
160690-11200	2	10
160690-11220	2	11
	14	12
160690-11221	2	11 -1
	14	12 -1
160690-11270	2	12
	14	13
160690-11280	2	13
	14	14
160690-11290	2	14
160690-11300	2	16
160690-11310	2	17
160690-13200	3	8
160690-14200	4	11
160690-14560	4	8
160690-14570	4	8 -1
160690-21201	4	16 B
160690-22010	4	20 B
		20 B-2
160690-22011	4	20 B-1
		20 B-3

Parts No.	Fig. No.	Ref. No.
160690-22300	4	26 B
160690-45200	8	22
160690-45210	8	24
160690-45211	8	24 -1
160690-45220	8	25
160690-56160	6	56
160690-56750	6	51
160690-56800	6	36
160690-59360	5	32 -1
160690-61300	7	2
	19	2
160690-61310	7	3
	19	3
160690-61450	7	4
	19	4
160690-61600	7	5
	19	5
160690-66080	7	13
160690-66081	7	13 -1
160690-66100	7	12
160690-66101	7	12 -1
160690-66110	7	17
	19	17
160690-66111	7	17 -1
160690-66120	7	18
	19	18
160690-66141	7	18 -1
160690-66160	7	21
	19	21
160690-66180	7	28
160690-66200	7	29
	19	30
160690-66210	7	30
	19	31
160690-66900	19	16 A
160690-76520	8	33
160690-76530	8	37
160690-76540	8	38
160690-76550	8	40
160690-76560	8	39
160690-76580	8	36
160690-76590	8	47
160690-76620	8	45
160690-76630	8	44
160690-76800	8	34
160690-76810	8	35
160690-76820	8	41
160690-76830	8	46
160690-78010	8	2
	20	2

Parts No. Index

Parts No.	Fig. No.	Ref. No.
160690-78210	8	11
	20	8
160690-78230	8	6 A
		9 A
	20	7 A
160690-78530	8	9
160690-78531	8	9 -1
160690-78532	8	9 -2
160690-78650	8	12
160691-56680	6	9
160691-56720	6	53
160692-55300	5	22
	17	22
160692-55421	5	28
	17	28
160692-56560	6	54
160692-56620	6	41
160692-56640	6	19
160692-56700	6	45
160692-56710	6	14
	18	31
160692-56730	6	32
160692-56770	6	46
	18	30
160692-56780	6	37
160692-56800	6	49
160693-12510	3	1
160693-12540	3	4
160693-12550	3	5 -1
160693-66010	7	11 B
160694-14050	4	1 B
160694-45010	8	19
160694-76050	8	30
160694-76250	8	31
160694-76510	8	32
160694-78050	8	7
160694-78051	8	7 -1
160694-78500	8	8
160697-13500	3	9 B
160697-13510	3	9 B-1
160697-45100	8	21 -1
160697-45110	8	21
160697-56010	6	2
160697-56650	6	23
160698-01330	1	9 C
160698-22010	4	20 C
160698-56060	6	3
160698-56520	6	5
160698-56530	6	10
160698-56550	6	20

Parts No.	Fig. No.	Ref. No.
160698-56570	6	30
160698-56590	6	52
160700-78040	8	3
	20	3
160700-78050	8	10
	20	4
160700-78720	8	13
	20	10
160702-56670	6	28
160702-56720	6	44
	18	24
160710-01760	1	17
		17 -1
160710-23201	4	30
160710-55061	5	3
	17	3
160710-55360	5	24
	17	24
160710-55370	5	25
	17	25
160710-55381	5	26
	17	26
160710-55390	5	27
	17	27
160710-78710	5	35
	17	35
	20	16
160769-12531	3	3
160769-12550	3	5
160769-56620	6	18
160769-56640	6	27
160769-56660	6	31
160770-78820	1	23
160770-78830	12	2
	20	19
	24	24
160790-01330	13	10
160790-04600	14	1
160790-11010	14	2
160790-11100	14	7
160790-11110	14	8
160790-12500	15	1
160790-12510	15	2
160790-12520	15	5
160790-12530	15	3
160790-12540	15	4
160790-14560	16	8
160790-22010	16	21 A
		21 A-2
160790-22011	16	21 A-1

Parts No.	Fig. No.	Ref. No.
160790-22011	16	21 A-3
160790-45210	20	25
160790-56150	18	33
160790-56160	18	35
160790-56570	18	17
160790-56590	18	22
160790-56610	18	26
160791-56710	18	32
160791-78660	20	9
160792-56520	18	5
160792-56540	18	10
160792-56610	18	27
160792-56630	6	42
160792-56670	18	36
160793-56560	18	14
160794-76050	20	31
160794-76250	20	32
160794-76510	20	33
160794-76520	20	35
160794-76570	20	40
160794-76590	20	43
160794-78050	20	5
160794-78051	20	5 -1
160794-78500	20	6
160797-13500	15	9
160797-45140	20	23 -1
160797-45150	20	23
160797-56570	18	15
160797-56650	18	23
		23 -1
160797-56660	18	9
160797-66010	19	11
160797-78520	20	7
160797-78521	20	7 -1
160797-78522	20	7 -2
160797-78800	20	17
160797-78810	20	18
160798-22010	16	21 B
160798-56030	18	1
160798-56570	18	9 -1
160802-56480	6	34
160802-59360	5	32
160810-01740	13	16
		16 -1
160810-03180	2	21
160810-11180	14	10
160810-14540	16	5
		5 -1
160810-23201	16	31
		31 -1

Parts No.	Fig. No.	Ref. No.
160810-56150	15	6
	18	34
160810-56580	6	24
	18	18
160810-56590	6	25
160810-56620	18	13
160810-56670	6	6
160820-03180	14	21
160880-56760	18	3
160890-01210	13	9
160890-11120	14	9
160890-11200	14	11
160890-11290	14	15
160890-11300	14	17
160890-11310	14	18
160890-13210	15	8
160890-14200	16	12
160890-14400	16	11
160890-14560	16	8 -1
160890-21200	16	15
160890-21220	16	16
160890-22300	16	27
160890-45200	20	24
160890-45220	20	26
160890-66050	19	9
160890-66080	19	13
160890-66081	19	13 -1
160890-66100	19	12
160890-66101	19	12 -1
160890-66110	19	17 -1
160890-66141	19	18 -1
160890-66150	19	29
160890-66190	19	28
160890-76510	20	34
160890-76540	20	37
160890-76550	20	38
160890-76580	20	41
160903-56670	6	7
	18	4
160975-59360	5	33
160975-78200	20	15
160992-59350	17	32
160994-14051	16	1
181230-56380	6	15
		48
	18	6
		11
		28
183000-96520	24	11
183000-96540	12	13

Parts No. Index

Parts No.	Fig. No.	Ref. No.
183000-96550	12	14
183000-96570	24	12
183000-97130	12	15
	24	13
183000-97440	12	16
	24	14
183210-07230	9	2
	21	17
183210-07400	9	17
	21	18
183210-07410	9	19
	21	20
183210-08850	12	1
	24	1
183210-74470	11	35
	23	16
183250-74410	11	45
183262-74410	11	46
183350-55120	5	18
	17	18
183350-55130	5	19
	17	19
183350-74380	11	34
	23	15
183360-91290	12	12
183362-74410	23	26
183387-74250	11	10 -1
		35 -1
	25	2
183387-74260	11	11 -2
		36 -1
	25	3
183452-74410	11	47
183610-07230	9	3
	21	15
183620-07230	9	4
	21	16
183620-74310	11	11 -1
		36
	23	17
183621-55150	5	20
183625-98040	12	17
	24	15
183630-07230	9	5
183630-07450	9	23
183630-07520	9	27
183630-08051	10	1 -2
183630-08060	10	1
183630-08061	10	1 -1
183630-08210	10	3

Parts No.	Fig. No.	Ref. No.
183630-08550	10	5
183630-08560	10	6
183630-74060	11	1
183630-74200	11	3
183630-74290	11	5
183630-74291	11	5 -1
183630-74750	11	48
183640-07230	9	6
183640-07520	9	28
183640-74060	11	2
183640-74150	11	19
183640-74170	11	12
183640-74180	11	13
183640-74190	11	14
183640-74200	11	4
183640-74250	11	7
183640-74290	11	6
183640-74310	11	8
183640-74320	11	9
183640-74350	11	15
183640-74360	11	16
183640-74370	11	17
183640-74410	11	18
183640-74470	11	10
		10 A
183640-74480	11	11
183640-91660	12	3
183720-55210	5	21
	17	21
183730-07220	9	1
	21	14
183730-07230	9	7
183730-07400	9	18
	21	19
183730-07420	9	20
	21	21
183730-07430	9	21
	21	22
183730-07440	9	22
	21	23
183730-07450	9	24
183730-07470	9	26
	21	26
183730-07520	9	29
183730-08051	10	2 -2
183730-08060	10	2
183730-08061	10	2 -1
183730-08210	10	4
	22	8
183730-08750	10	7

Parts No.	Fig. No.	Ref. No.
183730-74060	11	20
183730-74200	11	24
183730-74290	11	28
183730-74750	11	49
183730-74950	11	51
	23	29
183730-91210	12	8 -1
	24	5 -1
183730-91450	12	16 -1
	24	14 -1
183730-91760	12	10
183730-91762	12	10 -1
183730-91850	12	23
	24	20
183731-07450	9	25
183731-07520	9	30
183731-74060	11	21
183731-74200	11	25
183731-74290	11	29
183731-74291	11	29 -1
183731-74750	11	50
183740-07230	9	8
183740-07520	9	31
183740-74060	11	22
183740-74150	11	44
183740-74170	11	37
	23	18
183740-74180	11	38
	23	19
183740-74200	11	26
183740-74250	11	32
	23	13
183740-74290	11	30
183740-74310	11	33
183740-74350	11	40
183740-74360	11	41
	23	22
183740-74370	11	42
	23	23
183740-74410	11	43
	23	24
183740-91660	12	4
183741-07230	9	9
183741-07520	9	32
183741-74060	11	23
183741-74200	11	27
183741-74290	11	31
183741-74350	11	39
183741-91660	12	5
183820-74270	23	14

Parts No.	Fig. No.	Ref. No.
183820-91290	12	8
	24	5
183830-07230	21	31
183830-07450	21	24
183830-07520	21	27
183830-08050	22	1 -1
183830-08060	22	1
183830-08210	22	2
183830-08750	22	3
183830-74060	23	1
183830-74200	23	5
183830-74290	23	9
183830-74750	23	27
183830-91320	24	6
183830-91760	24	8
183830-91761	24	8 -1
183830-91850	24	21
183831-07450	21	25
183831-07520	21	28
183831-74060	23	2
183831-74200	23	6
183831-74290	23	10
183831-74750	23	28
183831-74950	23	30
183840-07230	21	32
183840-07520	21	29
183840-74060	23	3
183840-74150	23	25
183840-74200	23	7
183840-74290	23	11
183840-74350	23	20
183840-91660	24	2
183841-07230	21	33
183841-07520	21	30
183841-74060	23	4
183841-74200	23	8
183841-74290	23	12
183841-74350	23	21
183841-91660	24	3
183841-91760	24	9
183841-91761	24	9 -1
183920-91320	12	9
	24	7
183925-55150	17	20
183925-91990	12	11
	24	10
184120-99100	11	59
184120-99200	25	1
22137-060000	7	25
	19	25

Parts No. Index

Parts No.	Fig. No.	Ref. No.
22217-060000	11	52
	23	31
22217-080000	11	53
22217-100000	23	32
22217-160000	16	20
22252-000130	4	27 A
22252-000160	4	27 B
22252-000190	16	28
22312-080120	1	4
	13	6
22360-060000	5	29
	17	29
22372-080000	7	10
22512-040120	4	18 B
22512-040160	4	19
	16	17
22512-040300	16	18
24101-062040	1	6 A
		12 A
24101-062050	1	6 B
		12 B
24101-062060	13	8
		13
24311-000180	1	19
		19 -1
	13	18
		18 -1
26023-040082	20	21
26023-040102	8	15
	20	11
26106-060082	8	48
	20	44
26106-060122	5	30
	12	24
	17	30
	20	45
	24	25
26106-060202	2	18
26106-060252	19	29 B
26106-060352	2	19
	14	19
26106-080202	11	54
26106-080302	13	19
26106-080382	3	10
	10	9
	15	10
	22	5
26116-081702	11	55
26116-081902	11	56
26116-082002	11	57

Parts No.	Fig. No.	Ref. No.
26116-102002	23	33
26116-102152	23	34
26117-040088	6	38
	7	16
	19	16
26117-040257	7	20
	19	20
26216-080182	2	15
	14	16
26347-060002	7	26
	19	26
26366-060002	3	7
	7	28 B
	15	7
	19	32
26366-080002	3	11
		12
	10	10
	15	11
		12
	22	6
26367-060002	8	42
26376-100002	10	11
	22	7
26476-060122	8	26
		27
		28
		29
26476-060142	1	24
	7	31
	19	33
	20	22
		27
		28
		29
		30
26476-060252	1	21
	20	12
26476-060302	8	16
26557-030062	12	18
	24	16
26557-040062	12	19
		25
	24	17
		22
26557-040082	11	58
	23	35
26737-160002	16	19
26757-040002	12	20
		26

Parts No.	Fig. No.	Ref. No.
26757-040002	24	18
		23
26757-060002	7	27
	19	27
28110-100120	9	41
	21	4
29311-122000	12	21
	24	19
29610-000650	8	17
	12	22
	20	13
29610-000950	8	18
	20	14
760590-22500	4	22 A
760590-22501	4	22 A-1
760590-23700	4	28 A
760594-01500	1	10 A
760594-21700	4	14 A
760597-01560	1	1 A
760690-22500	4	22 B
760690-22501	4	22 B-1
760690-23700	4	28 B
760694-01500	1	10 B
760694-21700	4	14 B
760697-01560	1	1 B
760698-01640	1	1 C
760698-22500	4	22 C
760790-22500	16	23 A
760790-22501	16	23 A-1
760790-23700	16	29
760797-01560	13	1 A
760797-01580	13	1 B
760797-21700	16	13
760798-22500	16	23 B
760994-01500	13	11
783730-55700	5	1 -1
783730-55710	5	1
783830-55700	17	1 -1
783830-55710	17	1

Parts No.	Fig. No.	Ref. No.
-----------	----------	----------