

0CD10-M40201EN

# PREFACE

1. This Parts Catalog is the 1st edition of 3T75HL-HKSAB Diesel Engine for HOKUETSU.

Pub. No. : 000Y00D4021

Published : May, 1991

2. Model name

Engine model	Vehicle		Vehicle made by
	Products	Model name	
3T75HL-HKSAB	—	—	HOKUETSU

## Directions for the Parts Catalog.

1. This Parts Catalog shows both standard and optional parts.
2. Parts may change without prior notice.
3. The following is an example of the Parts Catalog format.

REF.	LEV.	PARTS NO.	DESCRIPTION	Q'TY						I	R
				(A)	(B)	(C)	(D)	(E)	(F)		
1	1	729595-51390	FUEL INJECTION PUMP	1	1	1	1	1			1
1-1	1	729595-51391	FUEL INJECTION PUMP	1	1	1	1	1		N	1
		(A=E00185) (B=E00200)									
3	2	26022-060162	SCREW M 6X 16	9	9	9	9	9			
3-1	2	26022-060162	SCREW M 6X 16	4	4	4	4	4		K	
		(A=E00156) (B=E00156) (C=E00156) (D=E00156) (E=E00156)									
4	2	129470-51040	CAMSHAFT	1	1	1	1	1			
5	2	122710-51050	BEARING, ROLLER	2	2	2	2	2			
6	2	129470-51060	RETAINER	1	1	1	1	1			

Remarks (1) BOOST COMPEMSATOR TYPE. OPTIONAL PART, TO E00155,(4JH-DT, 4JH-DTZ
----------------------------------------------------------------------------------

### ① Ref. No.

The Ref. No. listed may not be in accordance with the illustration Ref. No.

(Ex.) Illustration No.

List Ref No.

1

1

(Before change)

1-1

(After change)

For interchangeable symbols N, R and K, illustrations for new parts may be abbreviated.

### ② Lev. (Level)

Level indication

The numbers below indicate the level of relativity towards the main part.

1 ----- Main parts (Assembly parts)

2 ----- Sub component included in " 1 ".

3 ----- Sub component included in " 2 ".

Note) Parts that are not for sale are partially illustrated but not listed.

### ③ Interchangeability Symbol

When a part change takes place, one of the following interchangeability symbols is indicated beside the part.

Symbol	Interchangeability	Contents note
N	Old $\begin{matrix} \leftarrow \text{Yes} \\ \text{No} \rightarrow \end{matrix}$ New	New Part is interchangeable for Old Part but Old Part is not interchangeable for New Part.
Q	Old $\begin{matrix} \leftarrow \text{No} \\ \text{Yes} \rightarrow \end{matrix}$ New	New Part is not interchangeable for Old Part but Old Part is interchangeable for New Part.
R	Old $\begin{matrix} \leftarrow \text{Yes} \\ \text{Yes} \rightarrow \end{matrix}$ New	New/ Old Parts are both interchangeable.
S	Old $\begin{matrix} \leftarrow \text{No} \\ \text{No} \rightarrow \end{matrix}$ New	New/ Old Parts are both not interchangeable.
W		Part newly added.
Z		Part discontinued.
F		Not interchangeable by a single part but interchangeable together with related parts.
K		Changes only for used parts quantities.

### ④ Effective Machine No.

When a part changes, the effective Machine No. will be indicated in the (A)-(F) column.

Product Symbol	Product No.	Product Symbol	Product No.
C	Clutch No. Compressor No.	F	Machine No. (Agricultural Equip.)
D	Drive No.	M	Machine No.
E	Engine No.		

Note 1) A date may follow the symbol. (Ex.) 1996.01

Note 2) "XXXXX" and "ZZZZZ" are for parts that could not be predicted or for engine models that could not be identified.

Note 3) (A=E00185) is the E (Engine Serial Number) for the column (A) model (in this case 4JH-DT) after the parts design change.

### ⑤ Remarks

Figures or alphabets (symbols) are entered in the remarks column.

The comments (remarks) on parts that are indicated at the bottom of the illustration are the same symbols as those stated above.

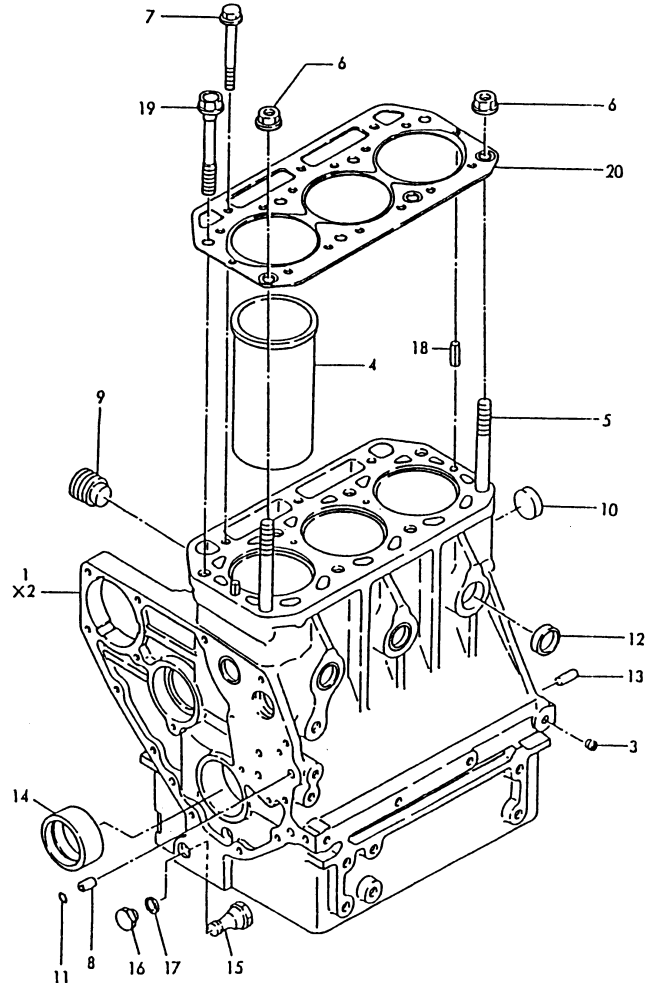
# Contents

Fig. No.	Fig. Name
ENGINE 3T75HL-HKSA/B	
1.	CYLINDER BLOCK
2.	GEARS HOUSING
3.	LUB.OIL SUMP
4.	MOUNTING FLANGE
5.	BLOCK BLIND COVER
6.	MAIN BEARING HOUSING
7.	CAMSHAFT BEARING
8.	BREATHER
9.	ENGINE LIFTER
10.	CYLINDER HEAD
11.	BONNET
12.	SUCTION MANIFOLD
13.	EXHAUST MANIFOLD
14.	CAMSHAFT
15.	CRANKSHAFT
16.	FLYWHEEL
17.	PISTON
18.	CONNECTING ROD
19.	LUB. OIL PUMP
20.	LUB.OIL DIPSTICK
21.	LUB. OIL STRAINER
22.	LUB. OIL PIPES
23.	COOLING WATER PUMP
24.	COOLING FAN

Fig. No.	Fig. Name
25.	COOLING WATER PIPES
26.	THERMOSTAT
27.	FUEL INJECTION PUMP
28.	FUEL FEED PUMP
29.	FUEL INJECTION VALVE
30.	FUEL STRAINER
31.	FUEL INJECTION PIPES
32.	FUEL PIPES
33.	GOVERNOR
34.	SOLENOID
35.	REMOTE CONTROL DEVICE
36.	IDLE ADJUSTER
37.	SPEED CONTROL SYSTEM
38.	ENGINE STOP
39.	ELECTRIC PARTS
40.	THERMOSTART DEVICE
41.	STARTING MOTOR COMPONENT PARTS
42.	GENERATOR COMPONENT PARTS
43.	GASKET SET

# Fig.1. CYLINDER BLOCK

021500-01102  
 U71002-01100  
 U71009-01400  
 021550-02100



×印部品ハ単品販売致シマセン  
 ×MARK PARTS : NOT SOLD SEPARATELY

Remarks

- (1) UNDER-SIZED(U.S=0.25)PART.
- (2) OVER-SIZED(O.S=0.25)PART.

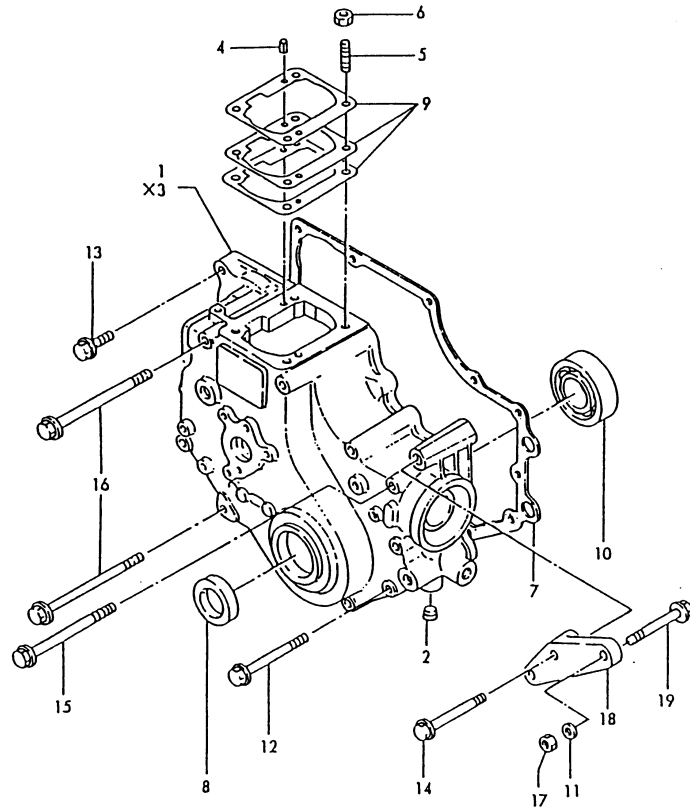
(A)=3T75HL-HKSA  
 (B)=3T75HL-HKSB  
 (C)=

(D)=  
 (E)=  
 (F)=

No.	Lev.	Parts No.	Description	Q'ty						I	R
				(A)	(B)	(C)	(D)	(E)	(F)		
1	1	721500-01562	BLOCK ASSY, CYLINDER	1	1						
3	2	124060-01050	PLUG, PT1/8	7	7						
4	2	121500-01100	LINER, CYLINDER	3	3						
5	2	121450-01210	BOLT, HEAD	2	2						
6	2	121450-01220	NUT, CYLINDER HEAD	2	2						
7	2	129350-01230	BOLT, HEAD	3	3						
8	2	124085-01900	GUIDE	2	2						
9	2	171051-01921	PLUG, NPTF1	2	2						
10	2	121450-01990	PLUG, 30	1	1						
11	2	24311-000100	O-RING, 1AP10.0	2	2						
12	2	27241-300000	PLUG 30	5	5						
13	2	22312-080160	PIN, PARALLEL M8X16	2	2						
14	2	121520-02100	BEARING, MAIN	1	1						
15	2	124500-01950	BOLT	1	1						
16	2	121550-35100	NUT, CAP PF1/4	1	1						
17	2	121550-35110	GASKET, 18	1	1						
18	2	22351-060012	PIN, SPRING 6.0X12	2	2						
19	1	121550-01200	BOLT, HEAD	6	6						
20A	1	121575-01333	GASKET, HEAD	1							
20A-1	1	121575-01334	GASKET, HEAD	1							N
(A=EA1128)											
20B	1	121550-01331	GASKET, HEAD		1						

# Fig.2. GEARS HOUSING

U71002-01200



×印部品ハ単品販売致シマセン  
 ×MARK PARTS : NOT SOLD SEPARATELY

(A)=3T75HL-HKSA  
 (B)=3T75HL-HKSB  
 (C)=

(D)=  
 (E)=  
 (F)=

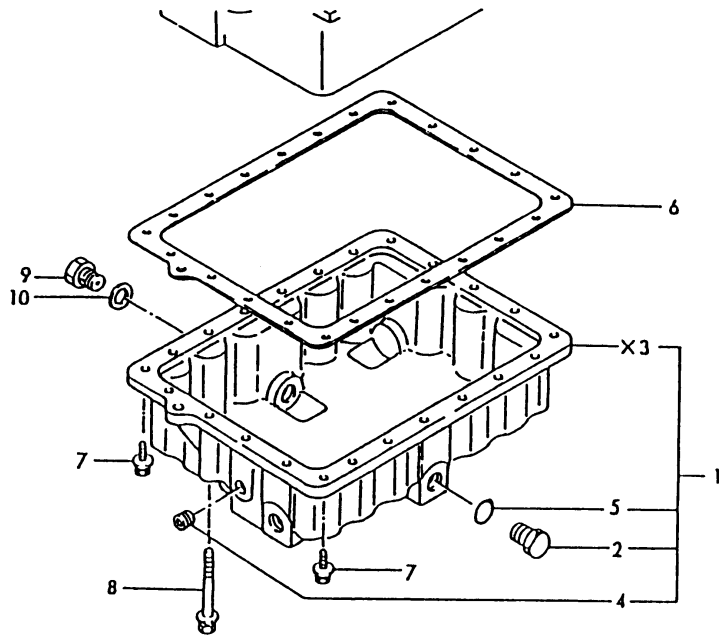
No.	Lev.	Parts No.	Description	Q'ty						I	R
				(A)	(B)	(C)	(D)	(E)	(F)		
1	1	721000-01611	CASE ASSY, GEAR	1	1						
2	2	124060-01050	PLUG, PT1/8	1	1						
4	2	22351-040010	PIN, SPRING 4.0X10	2	2						
5	2	121450-01560	STUD, M8X22	4	4						
6	2	194990-22050	NUT, M8	4	4						
7	1	121575-01510	GASKET, GEAR CASE	1	1						
7-1	1	121575-01511	GASKET, GEAR CASE	1	1						N
		(A=*1990.12) (B=*1990.12)									
8	1	121450-01801	SEAL, TC25408	1	1						
9	1	121450-01951	SHIM SET, ADJUSTING	1	1						
10	1	24101-063050	BEARING, BALL 6305C3	1	1						
11	1	22137-100000	WASHER, 10	1	1						Z
		(A=EXXX) (B=EXXX)									
12	1	26106-080852	BOLT, M8X 85 PLATED	5	5						
13	1	26106-080302	BOLT, M8X 30 PLATED	2	2						
14	1	26106-100502	BOLT, M10X 50 PLATED	1	1						
15	1	26106-081052	BOLT, M8X105 PLATED	1	1						
16	1	26106-081152	BOLT, M8X115 PLATED	4	4						
17	1	26706-100002	NUT, M10	1	1						
18	1	171003-77253	BRACKET, GENERATOR	1	1						
19	1	26106-100552	BOLT, M10X 55 PLATED	1	1						

Remarks

- (1) UNDER-SIZED(U.S=0.25)PART.
- (2) OVER-SIZED(O.S=0.25)PART.

Fig.3. LUB.OIL SUMP

U71009-01300



X印部品ハ単品販売致シマセン  
 X-MARK PARTS : NOT SOLD SEPARATELY

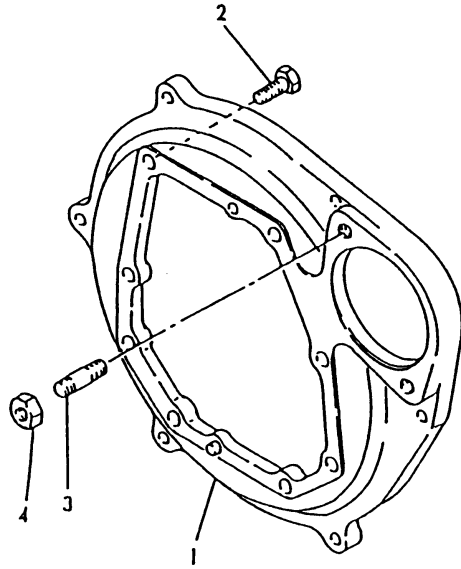
(A)=3T75HL-HKSA  
 (B)=3T75HL-HKSB  
 (C)=

(D)=  
 (E)=  
 (F)=

No.	Lev.	Parts No.	Description	Qty						I	R
				(A)	(B)	(C)	(D)	(E)	(F)		
1	1	721500-01540	SUMP ASSY, OIL	1	1						
2	2	23887-220002	PLUG	1	1						
4	2	124160-01910	PLUG, PT1/4	1	1						
5	2	43400-500550	SEAL WASHER	1	1						
6	1	121575-01750	GASKET, OIL SUMP	1	1						
6-1	1	121575-01751	GASKET, OIL SUMP	1	1						N
		(A=*1990.12)	(B=*1990.12)								
7	1	26014-060202	BOLT, M6X 20	22	22						
8	1	26014-060652	BOLT M 6X 65	1	1						
9	1	43400-500450	SEAL WASHER 12		1						Z
		(B=EXXX)									
10	1	104200-55080	PLUG, DRAIN		1						Z
		(B=EXXX)									

# Fig.4. MOUNTING FLANGE

U71009-01400



(A)=3T75HL-HKSA  
(B)=3T75HL-HKSB  
(C)=

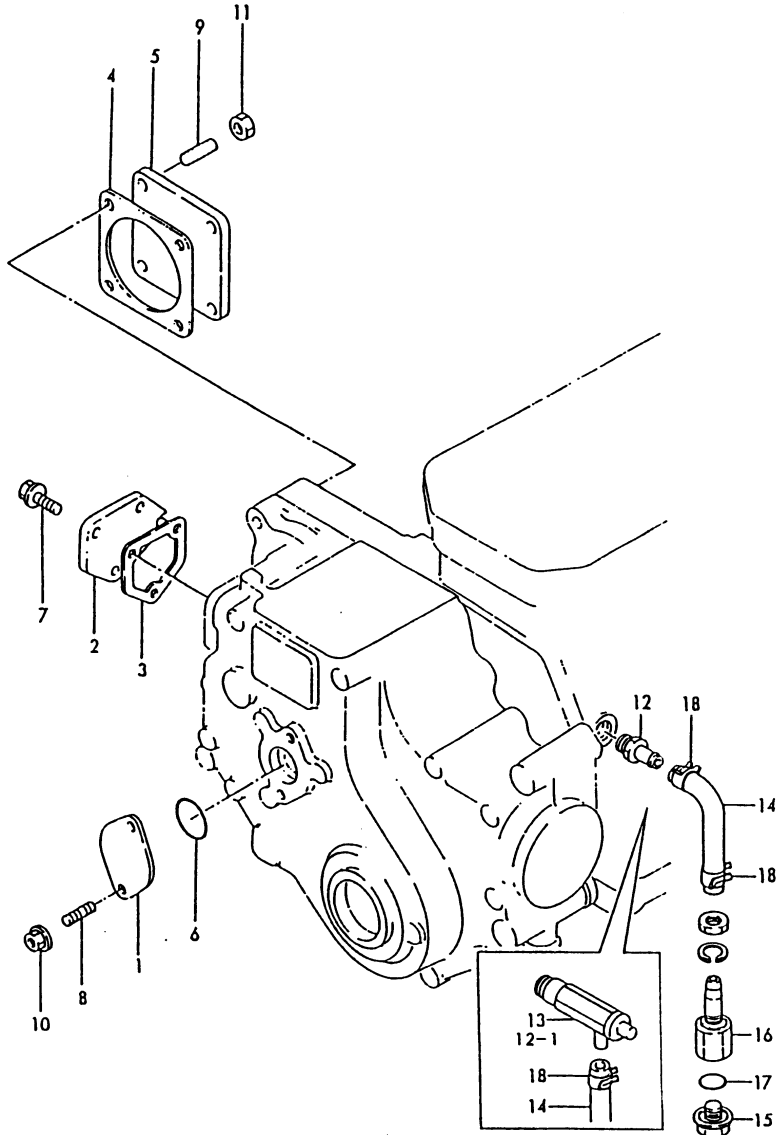
(D)=  
(E)=  
(F)=

No.	Lev.	Parts No.	Description	Q'ty						I	R
				(A)	(B)	(C)	(D)	(E)	(F)		
1	1	171016-01600	FLANGE, MOUNTING	1	1						
2	1	26206-100252	BOLT, M10X 25 PLATED	8	8						
3	1	26216-120252	STUD, M12X 25	2	2						
4	1	26716-120002	NUT, M12	2	2						



Fig.5. BLOCK BLIND COVER

U71009-01510  
U71009-93030

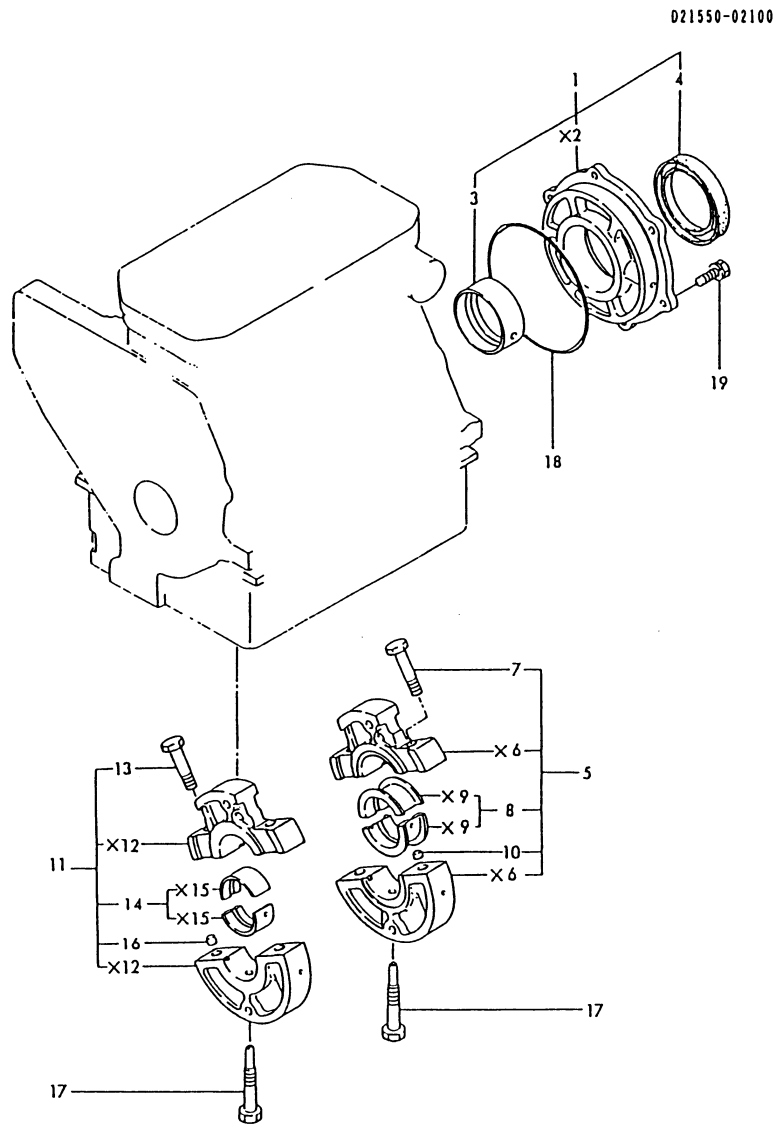


(A)=3T75HL-HKSA  
(B)=3T75HL-HKSB  
(C)=

(D)=  
(E)=  
(F)=

No.	Lev.	Parts No.	Description	Q'ty						I	R
				(A)	(B)	(C)	(D)	(E)	(F)		
1	1	121023-01550	COVER	1	1						
2	1	121000-01850	COVER, BLOCK	1	1						
3	1	121575-01860	GASKET	1	1						
3-1	1	121575-01861 (A=*1990.12) (B=*1990.12)	GASKET	1	1						N
4	1	124240-01882	GASKET	1	1						
4-1	1	124240-01883 (A=EB0377) (B=*1990.01)	GASKET	1	1						N
5	1	124240-01871	COVER	1	1						
6	1	24341-000260	O-RING, 1AS26.0	1	1						
6-1	1	24341-000240 (A=EA9474) (B=*1989.04)	O-RING, 1AS24.0	1	1						N
7	1	26106-060122	BOLT, M6X 12 PLATED	3	3						
8	1	26216-060142	STUD, M6X 14	2	2						
9	1	26216-080222	STUD, M8X 22	4	4						
10	1	26366-060002	NUT, M6	2	2						
11	1	194990-22050	NUT, M8	4	4						
12	1	121550-49111	JOINT, PT1/4	1							
12-1	1	128370-01800 (A=EXXX)	COCK ASSY, 1/4	1							N
13	1	128370-01800	COCK ASSY, 1/4		1						
14	1	171022-49160	PIPE, DRAIN L=650	1	1						
15	1	129350-49120 (A=EXXX)	PLUG, DRAIN	1							Z
16	1	129350-49130 (A=EXXX)	BODY	1							Z
17	1	24311-000120 (A=EXXX)	O-RING, 1AP12.0	1							Z
18	1	124766-59050	CLIP, HOSE 12	2	1						
18-1	1	124766-59050 (A=EXXX)	CLIP, HOSE 12	1							K

Fig.6. MAIN BEARING HOUSING



×印部品は単品販売致しません  
 ×MARK PARTS : NOT SOLD SEPARATELY

(A)=3T75HL-HKSA  
 (B)=3T75HL-HKSB  
 (C)=

(D)=  
 (E)=  
 (F)=

No.	Lev.	Parts No.	Description	Q'ty						I	R
				(A)	(B)	(C)	(D)	(E)	(F)		
1	1	721550-02500	HOUSING ASSY, METAL	1	1						
3	2	121550-02110	BEARING, MAIN	1	1						
4	2	121551-02220	SEAL, OIL	1	1						
5	1	721550-02611	HOUSING ASSY	1	1						
5-1	1	721550-02610	HOUSING ASSY, METAL	1	1						N
		(A=EA2274) (B=*1987.12)									
7	2	129350-02070	BOLT	2	2						
7-1	2	121250-02070	BOLT	2	2						N
		(A=EA2274) (B=*1987.12)									
8	2	721550-02800	BEARING, MAIN	1	1						
10	2	129350-02050	PIPE	2	2						Z
		(A=EA2274) (B=*1987.12)									
11	1	721550-02621	HOUSING ASSY	1	1						
11-1	1	721550-02620	HOUSING ASSY, METAL	1	1						N
		(A=EA2274) (B=*1987.12)									
13	2	129350-02070	BOLT	2	2						
13-1	2	121250-02070	BOLT	2	2						N
		(A=EA2274) (B=*1987.12)									
14	2	721550-02810	BEARING, MAIN	1	1						
16	2	129350-02050	PIPE	2	2						Z
		(A=EA2274) (B=*1987.12)									
17	1	121550-02300	BOLT	2	2						
18	1	24341-001350	O-RING, 1AS135.0	1	1						
19	1	26013-080202	BOLT, M8X 20	6	6						

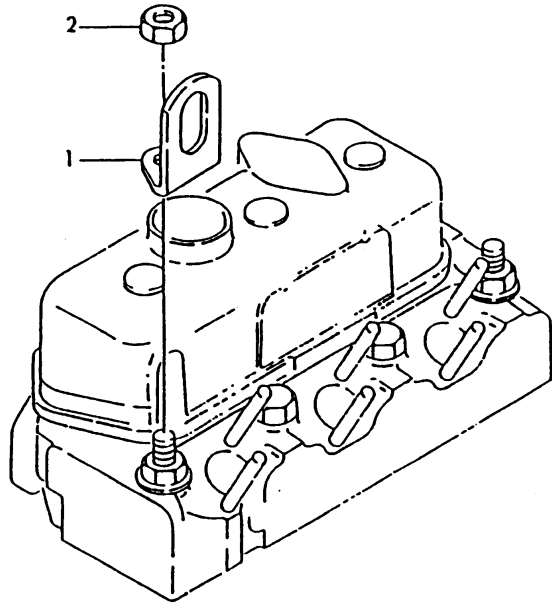
Remarks  
 (1) REPAIR PART.





Fig.9. ENGINE LIFTER

024936-07300

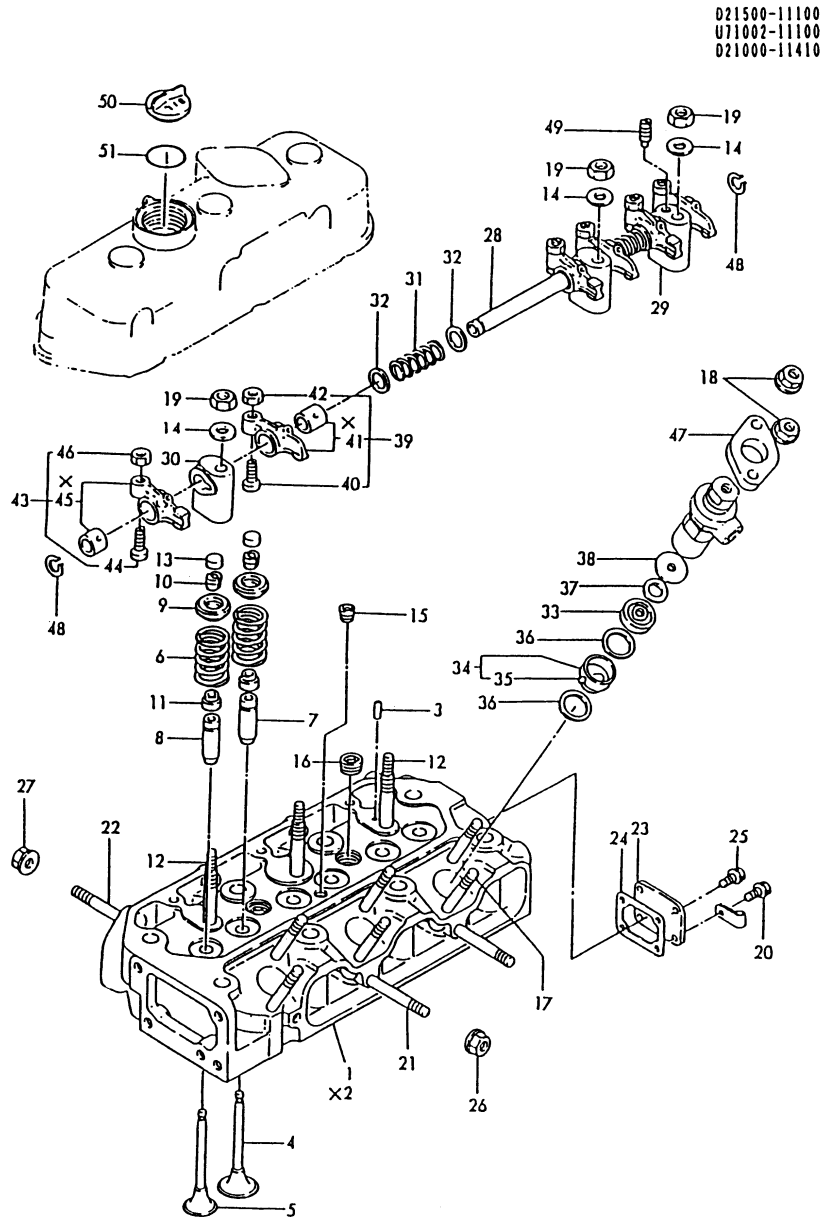


(A)=3T75HL-HKSA  
(B)=3T75HL-HKSB  
(C)=

(D)=  
(E)=  
(F)=

No.	Lev.	Parts No.	Description	Q'ty						I	R
				(A)	(B)	(C)	(D)	(E)	(F)		
1	1	121575-07230	LIFTER	1	1						
2	1	129305-07950	NUT, M12	1	1						

Fig.10. CYLINDER HEAD



\*印部品ハ単品販売致シマセン  
\*MARK PARTS : NOT SOLD SEPARATELY

(A)=3T75HL-HKSA  
(B)=3T75HL-HKSB  
(C)=

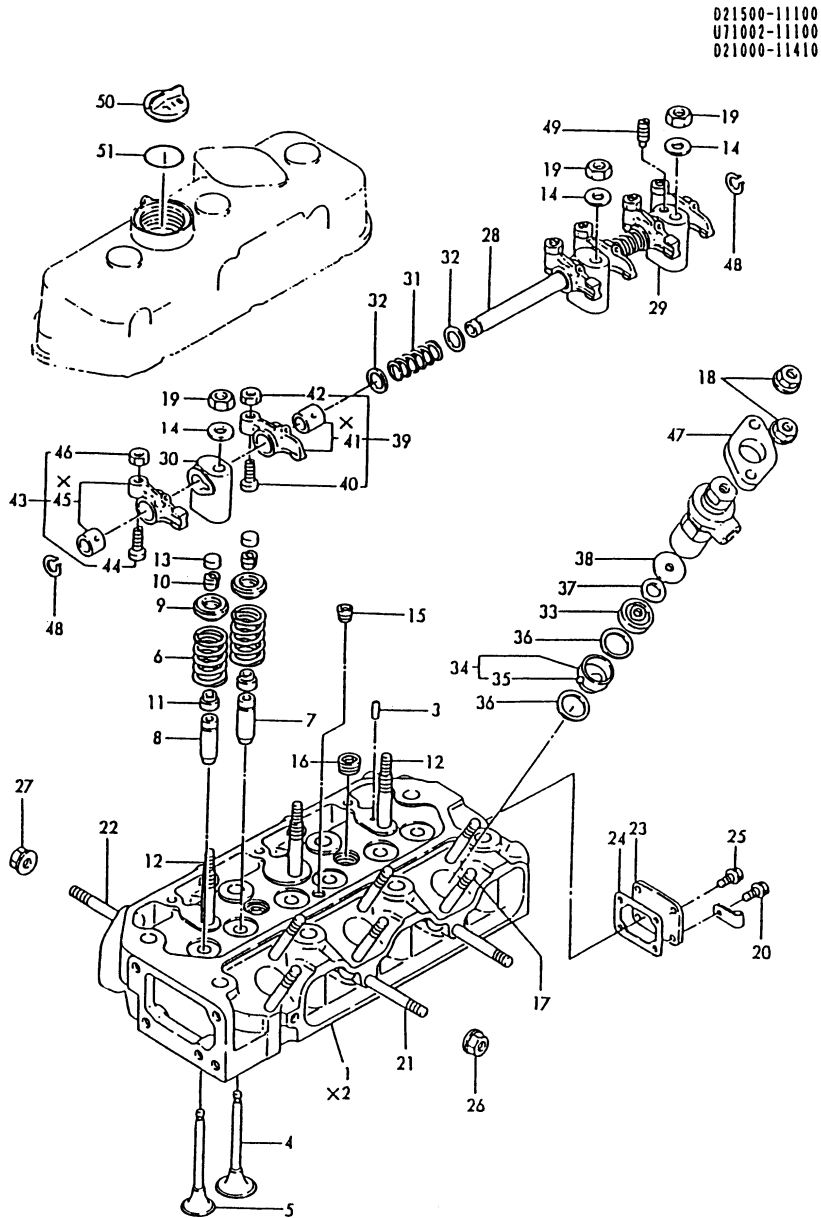
(D)=  
(E)=  
(F)=

No.	Lev.	Parts No.	Description	Q'ty						I	R
				(A)	(B)	(C)	(D)	(E)	(F)		
1	1	721580-11700	HEAD ASSY, CYLINDER		1						
1A	1	771002-11700	HEAD ASSY, CYLINDER	1							
3	2	121000-11050	PIN, 4.5X12	1	1						
4	2	104211-11100	VALVE, INTAKE	3	3						
5	2	121500-11110	VALVE, EXHAUST	3	3						
6	2	121575-11121	SPRING, VALVE	6	6						
7	2	119810-11160	GUIDE, VALVE	3	3						
7-1	2	124060-11160 (A=E96693) (B=*1985.04)	GUIDE, VALVE	3	3						N
8	2	128272-11171	GUIDE, VALVE	3	3						
8-1	2	128272-11170 (A=E96887) (B=*1985.05)	GUIDE, VALVE	3	3						S
9	2	104211-11180	RETAINER, SPRING	6	6						
10	2	101158-11190	COTTER	6	6						
10-1	2	27310-070001 (A=EXXXXX) (B=EXXXXX)	COTTER, 7	6	6						N
11	2	124950-11340	SEAL, VALVE STEM	6	6						
12	2	105225-11350	STUD	3	3						
13	2	104211-11370	CAP, VALVE	6	6						
14	2	22137-100000	WASHER, 10	3	3						
15	2	23871-020000	PLUG, R02	1	1						
16	2	23871-030000	PLUG, R03	2	2						
17	2	26216-080702	STUD, M8X 70	6	6						
18	2	121465-11950	NUT	6	6						
19	2	26696-100002	NUT, LOCK M10	3	3						
20	2	121250-01710 (A=EXXXX) (B=EXXXX)	BOLT, SUMP M8X14	1	1						Z
21	2	121450-11550	STUD, MANIFOLD	2	2						
22	2	121450-11550	STUD, MANIFOLD	2	2						
23	2	121450-11670	COVER, HEAD	1	1						
24	2	121450-11680	GASKET	1	1						
24-1	2	121450-11681 (A=*1990.12) (B=*1990.12)	GASKET	1	1						N
25	2	26106-080122	BOLT, M8X 12 PLATED	3	3						
25-1	2	26106-080122 (A=EXXXX) (B=EXXXX)	BOLT, M8X 12 PLATED	4	4						K
26	2	194990-22050	NUT, M8	2	2						
27	2	26366-080002	NUT, M8	2	2						
28	1	121550-11240	SHAFT ASSY, ROCKER	1	1						
29	1	121450-11260	SUPPORT, ROCKER ARM	1	1						
30	1	121450-11270	SUPPORT, ROCKER ARM	2	2						
31	1	121550-11280	SPRING	2	2						
32	1	121550-11290	WASHER	6	6						
33	1	128695-11410	CHAMBER	3	3						
34	1	121575-11421	CHAMBER	3	3						
35	2	103338-11430	PIN	3	3						
36	1	121550-11451	GASKET, CHAMBER	6	6						
37	1	128275-11490	PROTECTOR	3	3						
38	1	128695-11500	COVER	3	3						
39	1	721450-11650	ARM ASSY, ROCKER	3	3						
40	2	101158-11230	SCREW, VALVE ADJUST	3	3						

# Fig.10. CYLINDER HEAD

(A)=3T75HL-HKSA  
 (B)=3T75HL-HKSB  
 (C)=

(D)=  
 (E)=  
 (F)=



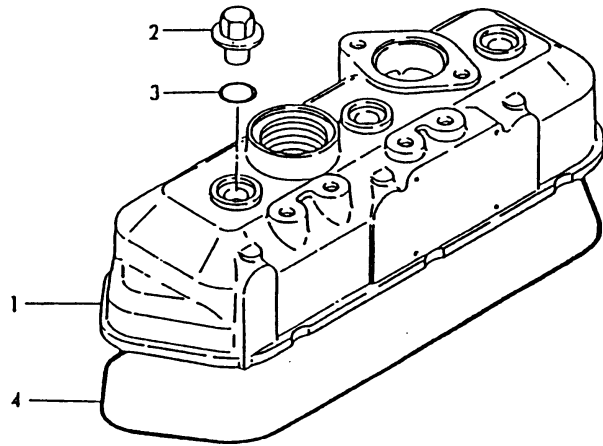
021500-11100  
 U11002-11100  
 021000-11410

No.	Lev.	Parts No.	Description	Q'ty						I	R
				(A)	(B)	(C)	(D)	(E)	(F)		
42	2	26756-080002	NUT, LOCK M8	3	3						
43	1	721450-11660	ARM ASSY, ROCKER	3	3						
44	2	101158-11230	SCREW, VALVE ADJUST	3	3						
46	2	26756-080002	NUT, LOCK M8	3	3						
47	1	101147-11900	RETAINER	3	3						
48	1	22242-000140	RING, 14	2	2						
49	1	26921-080102	SCREW, M8X10	1	1						
50	1	124160-01751	COVER, FILLER	1	1						
51	1	24311-000320	O-RING, 1AP32.0	1	1						

×印部品ハ単品販売致シマセン  
 ×MARK PARTS : NOT SOLD SEPARATELY

Fig.11. BONNET

D21500-11200



(A)=3T75HL-HKSA  
(B)=3T75HL-HKSB  
(C)=

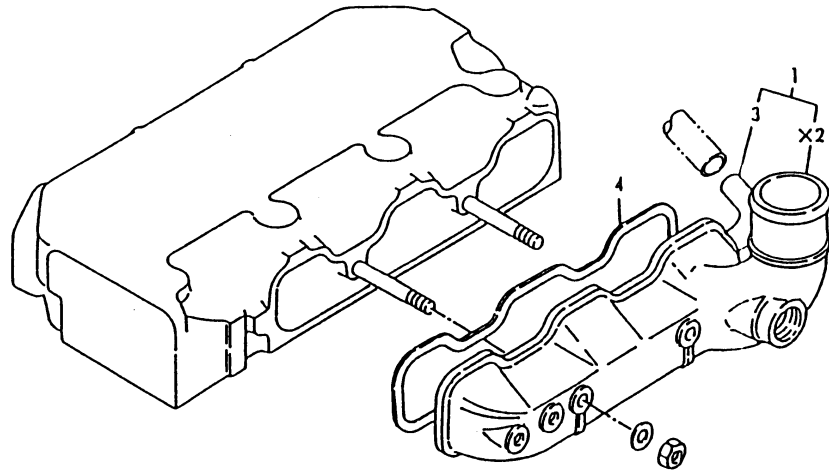
(D)=  
(E)=  
(F)=

No.	Lev.	Parts No.	Description	Q'ty						I	R
				(A)	(B)	(C)	(D)	(E)	(F)		
1	1	121520-11300	BONNET	1	1						
2	1	124160-11360	KNOB	3	3						
3	1	24311-000120	O-RING, 1AP12.0	3	3						
4	1	121550-11310	GASKET, BONNET	1	1						



Fig.12. SUCTION MANIFOLD

U71056-12200



X印部品ハ単品販売致シマセン  
 \*MARK PARTS : NOT SOLD SEPARATELY

(A)=3T75HL-HKSA  
 (B)=3T75HL-HKSB  
 (C)=

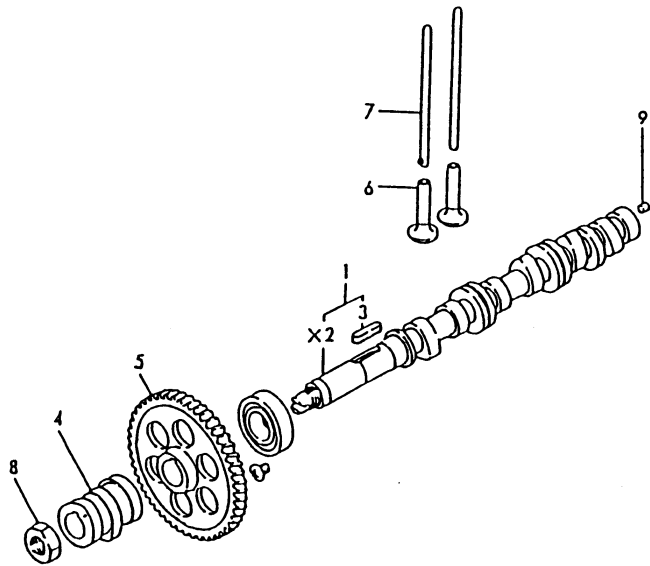
(D)=  
 (E)=  
 (F)=

No.	Lev.	Parts No.	Description	Q'ty						I	R
				(A)	(B)	(C)	(D)	(E)	(F)		
1	1	121500-12730	MANIFOLD ASSY,INTAKE	1	1						
3	2	121500-12790	JOINT, PIPE PT1/4	1	1						
4	1	121551-12710	GASKET, MANIFOLD	1	1						



# Fig.14. CAMSHAFT

021500-14110  
021551-14100



\* 印部品は単品販売致シマセン  
\* MARK PARTS : NOT SOLD SEPARATELY

(A)=3T75HL-HKSA  
(B)=3T75HL-HKSB  
(C)=

(D)=  
(E)=  
(F)=

No.	Lev.	Parts No.	Description	Q'ty						I	R
				(A)	(B)	(C)	(D)	(E)	(F)		
1A	1	721500-14581	CAMSHAFT ASSY	1							
1B	1	721550-14580	CAMSHAFT ASSY		1						
3	2	22512-070300	KEY, 7X 30	1	1						
4A	1	121575-14090	CAM, FUEL	1							
4B	1	121450-14090	CAM, FUEL		1						
5	1	129350-14100	GEAR, CAMSHAFT	1	1						
6	1	104200-14200	TAPPET	6	6						
7	1	121550-14400	ROD, PUSH	6	6						
8	1	121450-14120	NUT	1	1						
9	1	121000-14550	PLUG	1							W

(A=EXXX)

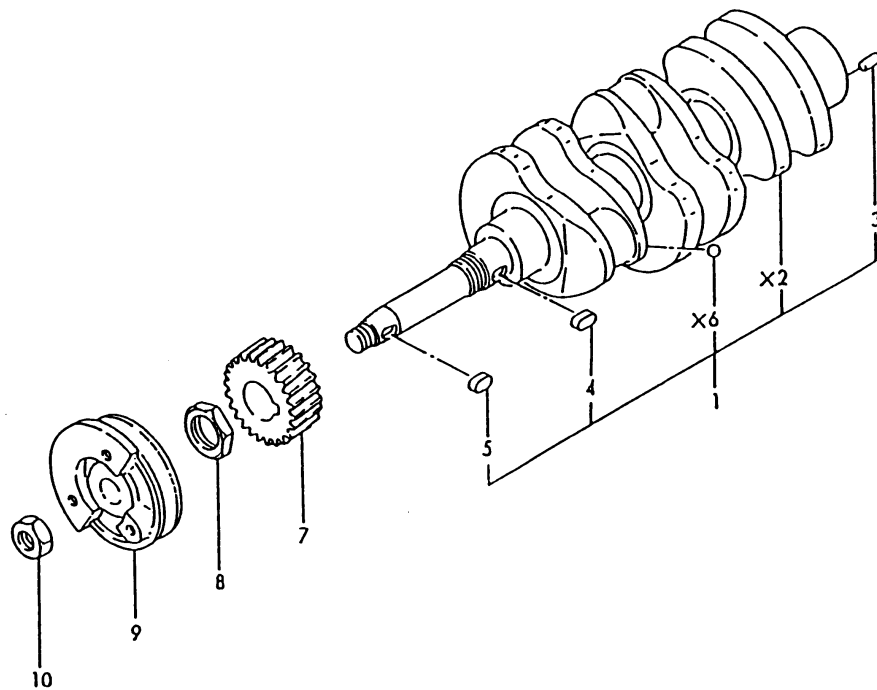
Fig.15. CRANKSHAFT

021500-21100

(A)=3T75HL-HKSA  
(B)=3T75HL-HKSB  
(C)=

(D)=  
(E)=  
(F)=

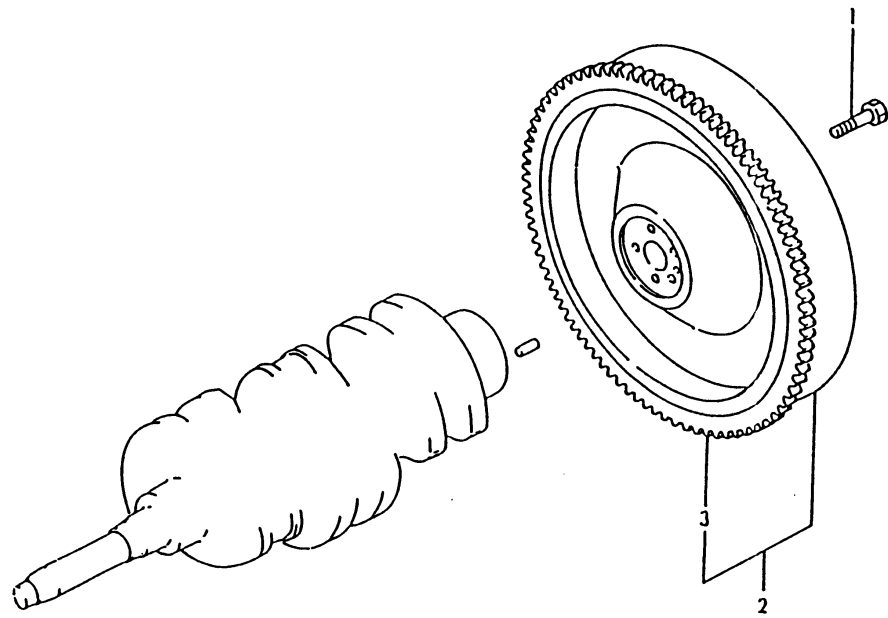
No.	Lev.	Parts No.	Description	Q'ty						I	R
				(A)	(B)	(C)	(D)	(E)	(F)		
1	1	721500-21700	CRANKSHAFT ASSY	1	1						
3	2	22312-080160	PIN, PARALLEL M8X16	1	1						
4	2	22512-070180	KEY, 7X 18	1	1						
5	2	22512-070180	KEY, 7X 18	1	1						
7	1	129350-21200	GEAR, CRANKSHAFT	1	1						
8	1	121450-21541	NUT, CRANKSHAFT GEAR	1	1						
9	1	121500-21652	V-PULLEY	1	1						
10	1	26776-180002	NUT, LOCK M18	1	1						



×印部品ハ単品販売致シマセン  
×MARK PARTS : NOT SOLD SEPARATELY

Fig.16. FLYWHEEL

U71009-21300



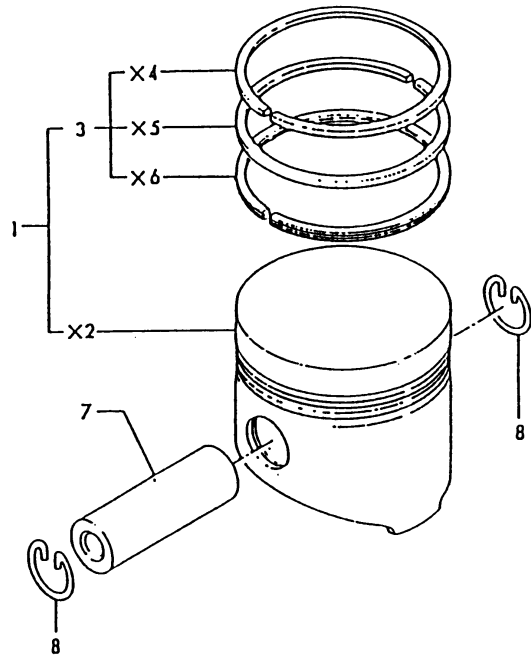
(A)=3T75HL-HKSA  
(B)=3T75HL-HKSB  
(C)=

(D)=  
(E)=  
(F)=

No.	Lev.	Parts No.	Description	Qty						I	R
				(A)	(B)	(C)	(D)	(E)	(F)		
1	1	121111-21501	BOLT, FLYWHEEL	5	5						
2	1	171009-21590	FLYWHEEL ASSY	1	1						
3	2	129350-21600	GEAR, RING	1	1						

# Fig.17. PISTON

D21500-22100  
U71002-22100



X印部品ハ単品販売致シマセン  
X-MARK PARTS : NOT SOLD SEPARATELY

(A)=3T75HL-HKSA  
(B)=3T75HL-HKSB  
(C)=

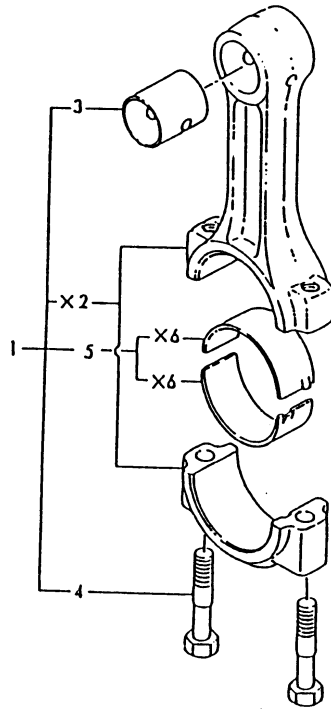
(D)=  
(E)=  
(F)=

No.	Lev.	Parts No.	Description	Q'ty						I	R	
				(A)	(B)	(C)	(D)	(E)	(F)			
1A	1	171002-22090	PISTON ASSY	3								
1B	1	121500-22090	PISTON ASSY		3							
3A	2	771002-22500	RING SET, PISTON	3								
3B	2	721500-22500	RING SET, PISTON		3							
7	1	104200-22300	PIN, PISTON	3	3							
8	1	172100-22400	CIRCLIP	6	6							

Remarks  
(1) FIG.NO.21 IS INCORPORATED IN  
REF.NO.1 & NO.2.

Fig.18. CONNECTING ROD

021550-23100



X 印部品ハ単品販売致シマセン  
X-MARK PARTS : NOT SOLD SEPARATELY

(A)=3T75HL-HKSA  
(B)=3T75HL-HKSB  
(C)=

(D)=  
(E)=  
(F)=

No.	Lev.	Parts No.	Description	Q'ty						I	R
				(A)	(B)	(C)	(D)	(E)	(F)		
1	1	721550-23100	ROD ASSY, CONNECTING	3	3						
3	2	124060-23100	BEARING, PISTON PIN	3	3						
4	2	121550-23200	BOLT, CONNECTING ROD	6	6						
5	2	721550-23600	BEARING, CRANK PIN	3	3						

Remarks  
(1) FIG.NO.21 IS INCORPORATED IN  
REF.NO.1.

Fig.19. LUB. OIL PUMP

(A)=3T75HL-HKSA  
 (B)=3T75HL-HKSB  
 (C)=

(D)=  
 (E)=  
 (F)=

No.	Lev.	Parts No.	Description	Q'ty						I	R
				(A)	(B)	(C)	(D)	(E)	(F)		
1	1	121450-32021	GASKET, PUMP	1	1						
2	1	121575-32090	PUMP ASSY, OIL	1	1						
3	1	26013-060222	BOLT, M6X 22	3	3						

021575-32100

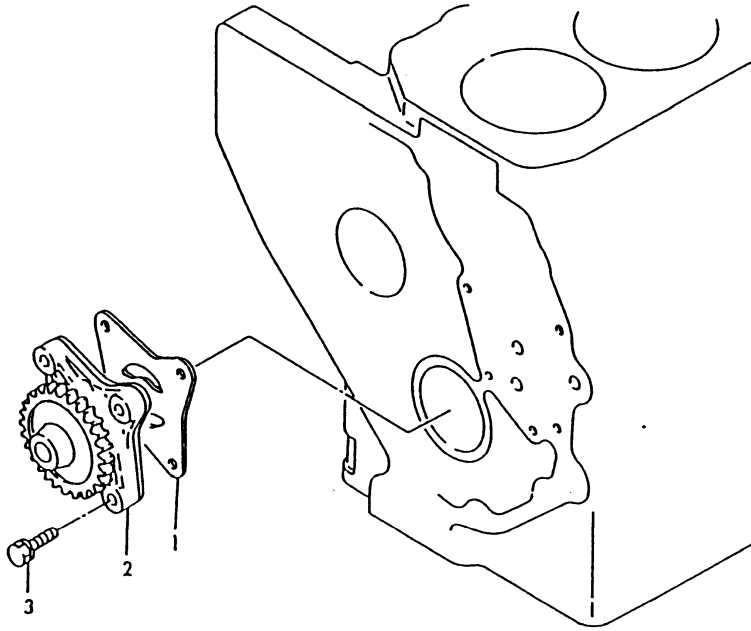
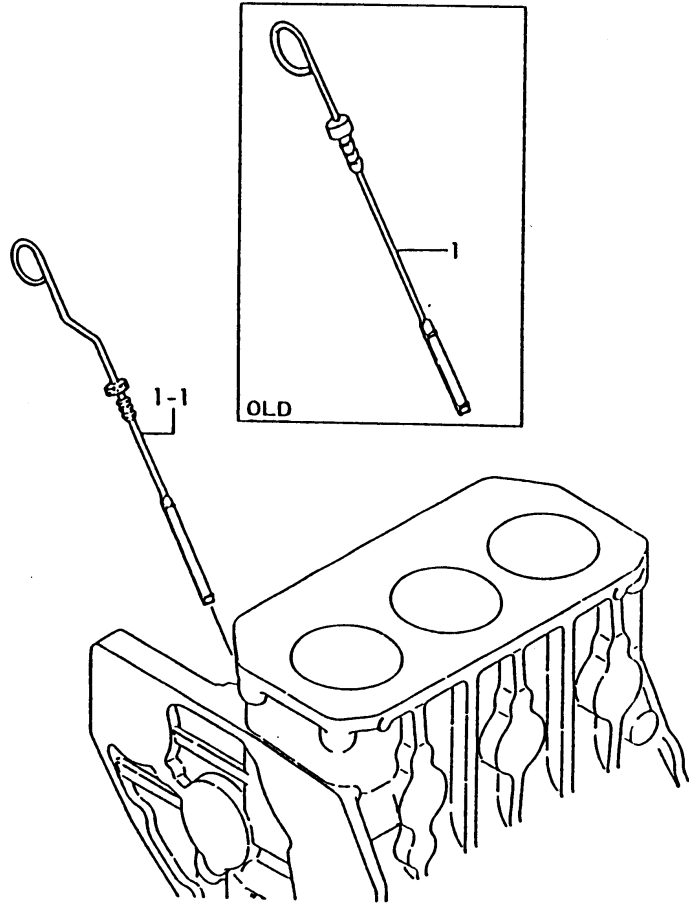




Fig.20. LUB.OIL DIPSTICK

028695-34100



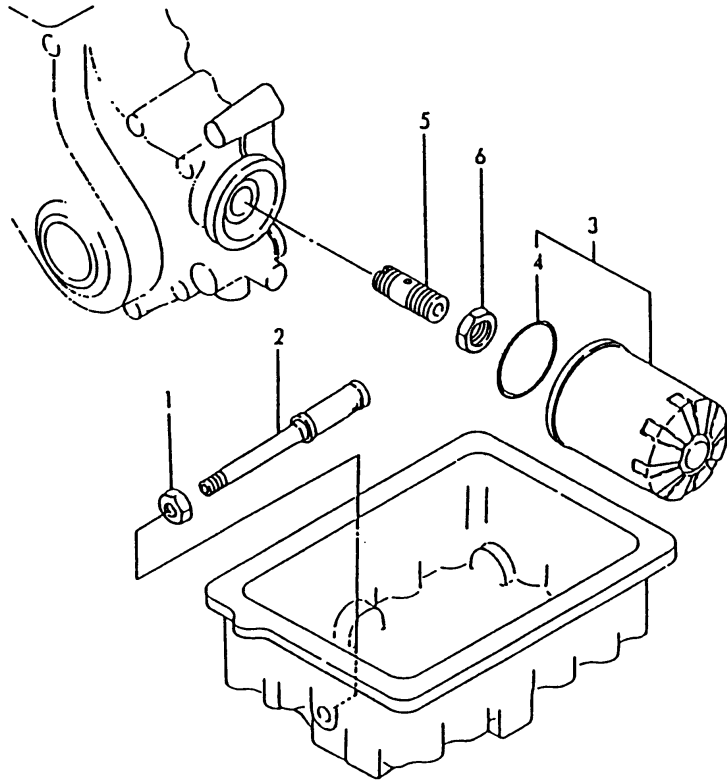
(A)=3T75HL-HKSA  
(B)=3T75HL-HKSB  
(C)=

(D)=  
(E)=  
(F)=

No.	Lev.	Parts No.	Description	Q'ty						I	R	
				(A)	(B)	(C)	(D)	(E)	(F)			
1	1	171008-34802	DIPSTICK, OIL	1	1							
1-1	1	128695-34800	DIPSTICK, OIL	1	1							S
		(A=E96469)	(B=*1985.03)									

Fig.21. LUB. OIL STRAINER

024732-35100



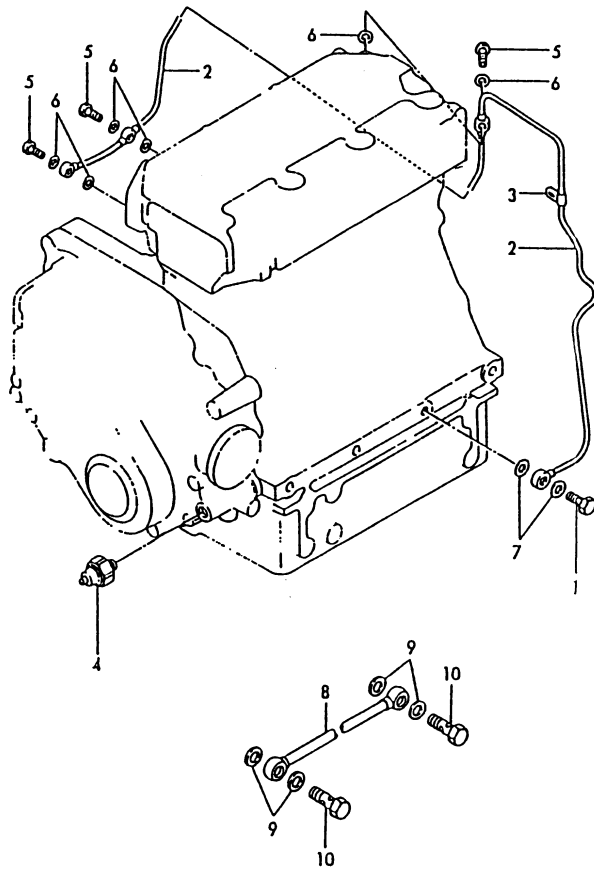
(A)=3T75HL-HKSA  
(B)=3T75HL-HKSB  
(C)=

(D)=  
(E)=  
(F)=

No.	Lev.	Parts No.	Description	Q'ty						I	R
				(A)	(B)	(C)	(D)	(E)	(F)		
1	1	124450-35070	NUT, PF1/4	1	1						
2	1	124732-35090	PIPE ASSY, OIL INLET	1	1						
3	1	129150-35150	FILTER 90X80L	1							
3-1	1	124550-35110 (A=E96099)	ELEMENT	1	1						S
3-2	1	124085-35111 (A=*1990.12) (B=*1990.12)	FILTER, OIL	1	1						N
4	2	124450-35110	O-RING	1	1						
5	1	171007-35301	VALVE	1							
5-1	1	124085-35300 (A=E96099)	VALVE ASSY, CONTROL	1	1						S
6	1	124085-35350	NUT, M20	1	1						

Fig.22. LUB. OIL PIPES

021550-39100

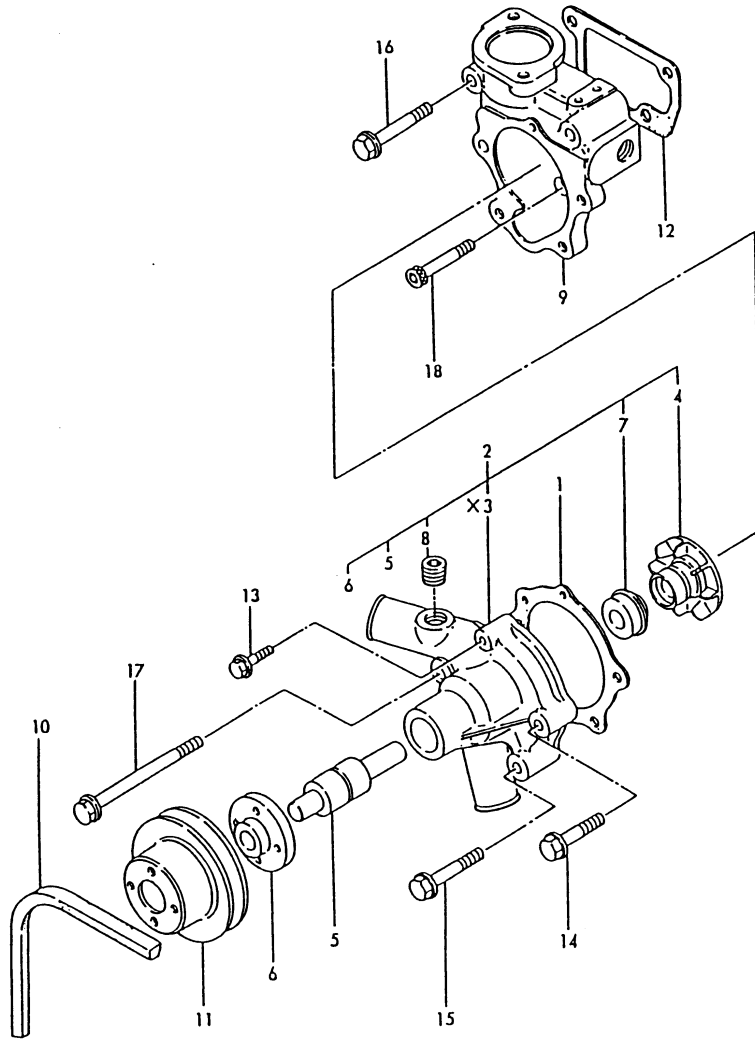


(A)=3T75HL-HKSA  
(B)=3T75HL-HKSB  
(C)=

(D)=  
(E)=  
(F)=

No.	Lev.	Parts No.	Description	Q'ty						I	R
				(A)	(B)	(C)	(D)	(E)	(F)		
1	1	124160-39140	BOLT, PIPE JOINT M10	1	1						
2	1	121550-39200	PIPE, OIL	1	1						
3	1	124450-39240	RETAINER, PIPE	1	1						
4	1	124160-39450	SWITCH, 0.5KG	1	1						
5	1	124550-59820	BOLT, PIPE JOINT M8	3	3						
6	1	23414-080000	GASKET, 8X1.0	6	6						
7	1	23414-100000	GASKET, 10X1.0	2	2						
8	1	171007-39401	PIPE, BY-PASS	1							Z
		(A=EXXX)									
9	1	23414-120000	GASKET, 12X1.0	4							Z
		(A=EXXX)									
10	1	23857-060000	BOLT, JOINT 6	2							Z
		(A=EXXX)									

Fig.23. COOLING WATER PUMP



X 印部品ハ単品販売致シマセン  
 X-MARK PARTS : NOT SOLD SEPARATELY

(A)=3T75HL-HKSA  
 (B)=3T75HL-HKSB  
 (C)=

(D)=  
 (E)=  
 (F)=

No.	Lev.	Parts No.	Description	Q'ty						I	R
				(A)	(B)	(C)	(D)	(E)	(F)		
1	1	121000-42051	GASKET, WATER PUMP	1	1						
2	1	121000-42100	PUMP ASSY, WATER	1	1						
4	2	129350-42200	IMPELLER	1	1						
5	2	121450-42240	BEARING, SHAFT	1	1						
6	2	121450-42260	FLANGE, V-PULLEY	1	1						
7	2	121450-42310	SEAL, MECHANICAL	1	1						
8	2	23871-030000	PLUG, R03	1	1						
9	1	171003-42123	BRACKET, PUMP	1	1						
10	1	124736-42290	V-BELT, A34	1	1						
11	1	121450-42350	V-PULLEY	1	1						
12	1	171003-44411	GASKET	1	1						
13	1	26106-060322	BOLT, M6X 32 PLATED	1	1						
14	1	26106-080402	BOLT, M8X 40 PLATED	2	2						
15	1	26106-080452	BOLT, M8X 45 PLATED	1	1						
16	1	26106-080552	BOLT, M8X 55 PLATED	2	2						
17	1	26106-081052	BOLT, M8X105 PLATED	1	1						
18	1	26450-080452	BOLT, M8X 45	1	1						

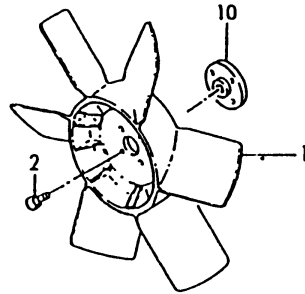
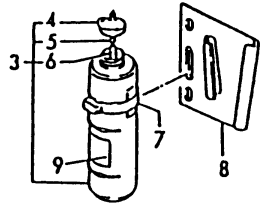
Fig.24. COOLING FAN

U71009-44410  
U71009-93030

(A)=3T75HL-HKSA  
(B)=3T75HL-HKSB  
(C)=

(D)=  
(E)=  
(F)=

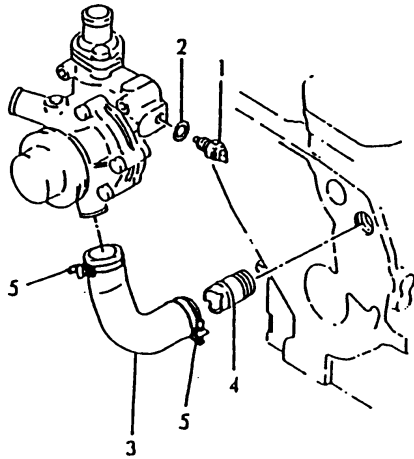
No.	Lev.	Parts No.	Description	Q'ty						I	R
				(A)	(B)	(C)	(D)	(E)	(F)		
1	1	171340-44740	FAN, COOLING D335XNF	1	1						
1-1	1	171440-44740	FAN, COOLING D350XQF	1	1						S
		(A=E96693) (B=*1985.04)									
2	1	26014-060252	BOLT, M6X 25	4	4						
3	1	124450-44510	TANK ASSY, SUB	1	1						
4	2	124450-44530	CAP	1	1						
5	2	124450-44560	RETAINER	1	1						
6	2	23061-070230	PIPE, 7X 230	1	1						
7	1	124450-44550	BAND	1	1						
8	1	121256-44600	BRACKET, SUB TANK	1	1						
9	1	129410-44540	LABEL, SUB-TANK	1	1						
9-1	1	124764-44810	LABEL, SUB-TANK	1	1						N
		(A=EXXX) (B=EXXX)									
10	1	171009-44760	SPACER	1	1						



Remarks  
(1) OPTIONAL PART.

Fig.25. COOLING WATER PIPES

U71009-49100



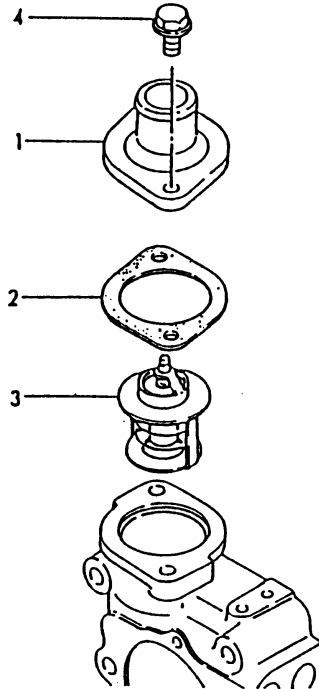
(A)=3T75HL-HKSA  
(B)=3T75HL-HKSB  
(C)=

(D)=  
(E)=  
(F)=

No.	Lev.	Parts No.	Description	Q'ty						I	R
				(A)	(B)	(C)	(D)	(E)	(F)		
1	1	121250-44901	SWITCH, 110	1	1						
2	1	124465-44950	GASKET, 16	1	1						
3	1	171003-49030	PIPE, WATER	1	1						
4	1	124160-49480	JOINT, PIPE	1	1						
5	1	23010-038000	CLAMP, 38	2	2						

Fig.26. THERMOSTAT

021000-49200



(A)=3T75HL-HKSA  
(B)=3T75HL-HKSB  
(C)=

(D)=  
(E)=  
(F)=

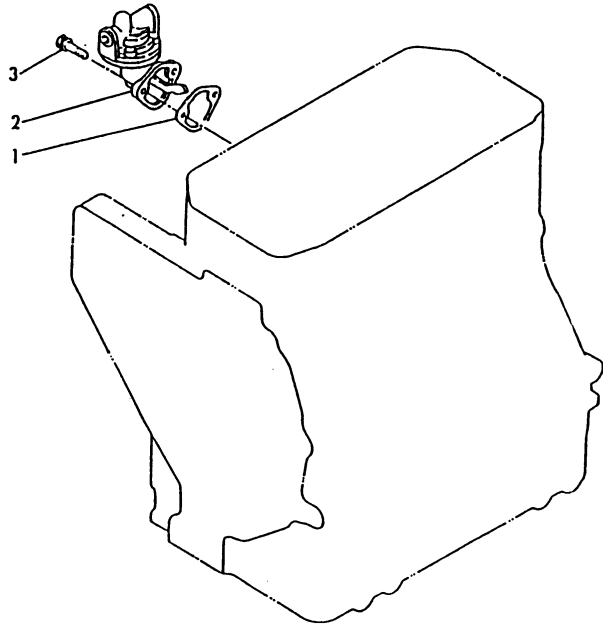
No.	Lev.	Parts No.	Description	Q'ty						I	R
				(A)	(B)	(C)	(D)	(E)	(F)		
1	1	129350-49530	COVER, THERMOSTAT	1	1						
2	1	129350-49540	GASKET	1	1						
2-1	1	129350-49541	GASKET	1	1						N
		(A=EB0377) (B=*1990.01)									
3	1	129350-49800	THERMOSTAT, 71	1	1						
4	1	26106-080182	BOLT, M8X 18 PLATED	2	2						





# Fig.28. FUEL FEED PUMP

U71051-52100



(A)=3T75HL-HKSA  
(B)=3T75HL-HKSB  
(C)=

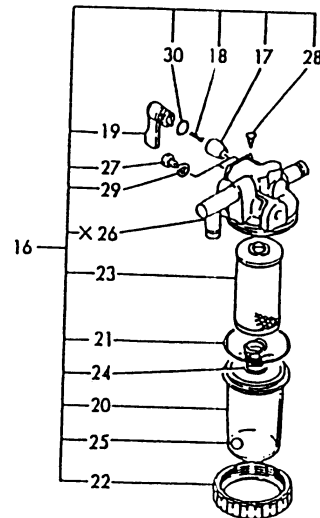
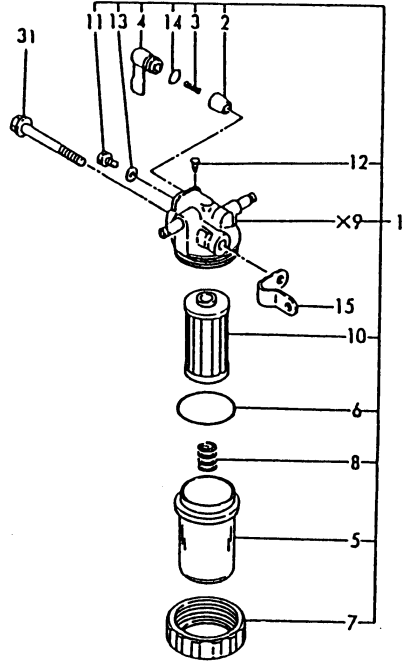
(D)=  
(E)=  
(F)=

No.	Lev.	Parts No.	Description	Q'ty						I	R
				(A)	(B)	(C)	(D)	(E)	(F)		
1	1	121520-01850	GASKET	1	1						
1-1	1	121520-01851	GASKET	1	1						N
		(A=EB0377) (B=*1990.01)									
2	1	129301-52020	PUMP ASSY, FUEL FEED	1	1						
3	1	26014-060182	BOLT, M6X 18	2	2						



Fig.30. FUEL STRAINER

U71009-93030



X印部品ハ単品販売致シマセン  
X-MARK PARTS : NOT SOLD SEPARATELY

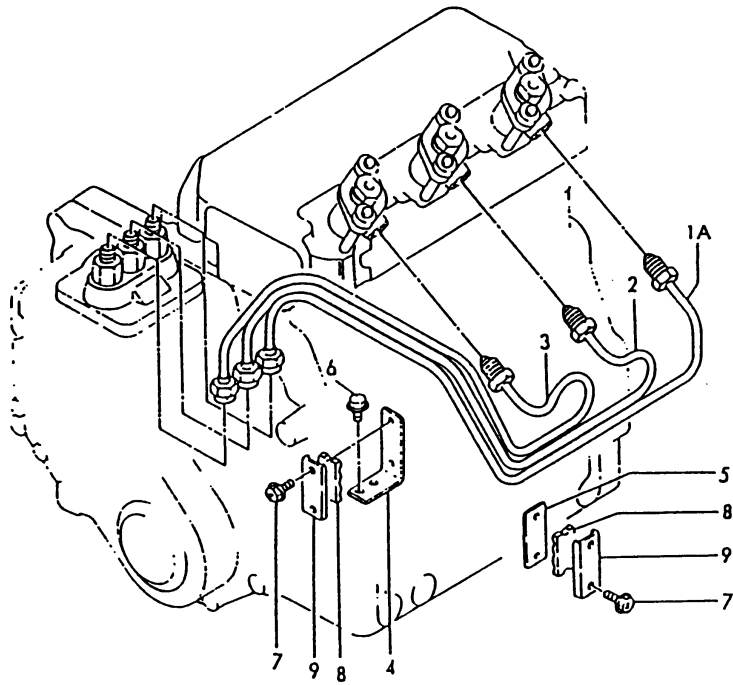
(A)=3T75HL-HKSA  
(B)=3T75HL-HKSB  
(C)=

(D)=  
(E)=  
(F)=

No.	Lev.	Parts No.	Description	Q'ty						I	R
				(A)	(B)	(C)	(D)	(E)	(F)		
1	1	121254-55600	STRAINER ASSY, FUEL	1	1						
2	2	104200-55321	VALVE, TAPER	1	1						
3	2	104200-55330	SPRING, VALVE	1	1						
4	2	104200-55341	HANDLE	1	1						
5	2	121254-55510	COVER	1	1						
6	2	102103-55520	O-RING	1	1						
7	2	110250-55610	RING, RETAINING	1	1						
8	2	121250-55620	SPRING	1	1						
10	2	124550-55700	FILTER, FUEL L=90	1	1						
11	2	101720-55750	PLUG, 6	2	2						
12	2	104200-55750	SCREW, M4	1	1						
13	2	23418-060000	GASKET, 6X1.0	2	2						
14	2	24311-240100	O-RING, 1AP10A	1	1						
15	1	171008-55612	BRACKET, STRAINER	1	1						
15-1	1	171009-55610	BRACKET, STRAINER	1	1						N
		(A=E96469) (B=*1985.03)									
16	1	171009-55700	SEPARATOR ASSY,WATER	1	1						
17	2	104200-55321	VALVE, TAPER	1	1						
18	2	104200-55330	SPRING, VALVE	1	1						
19	2	104200-55341	HANDLE	1	1						
20	2	124064-55510	COVER	1	1						
21	2	102103-55520	O-RING	1	1						
22	2	110250-55610	RING, RETAINING	1	1						
23	2	171081-55910	SCREEN	1	1						
24	2	121257-55720	SPRING	1	1						
25	2	121257-55731	FLOAT	1	1						
27	2	101720-55750	PLUG, 6	2	2						
28	2	104200-55750	SCREW, M4	1	1						
29	2	23418-060000	GASKET, 6X1.0	2	2						
30	2	24311-240100	O-RING, 1AP10A	1	1						
31	1	26106-080602	BOLT, M8X 60 PLATED	1	1						

Fig.31. FUEL INJECTION PIPES

021500-59100



(A)=3T75HL-HKSA  
(B)=3T75HL-HKSB  
(C)=

(D)=  
(E)=  
(F)=

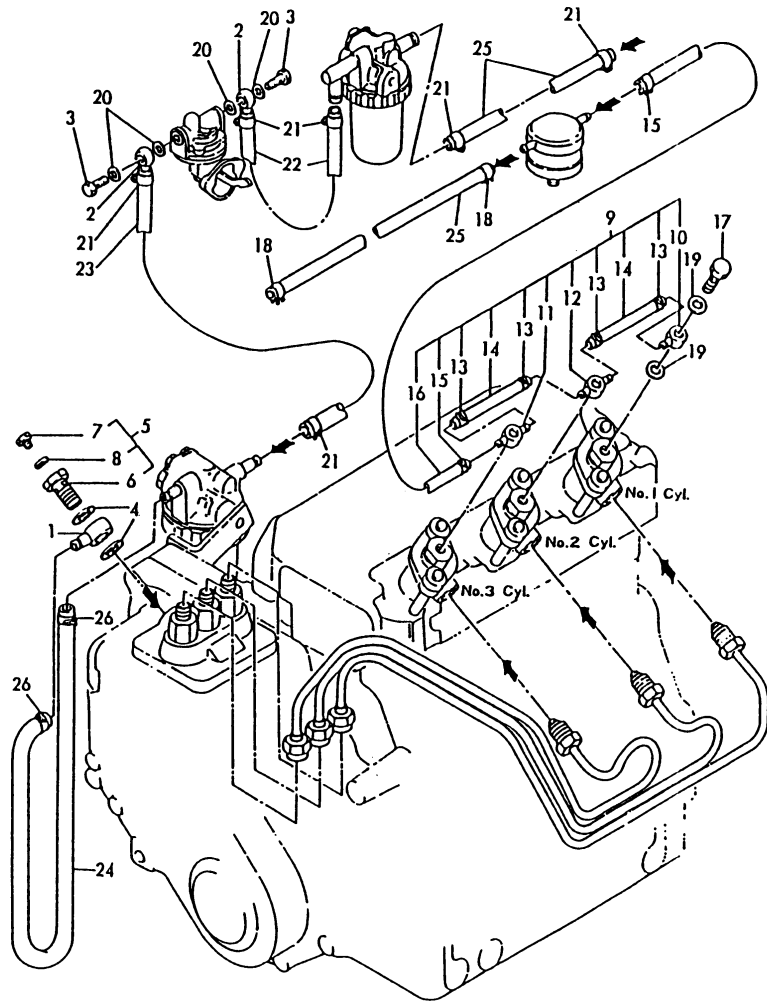
No.	Lev.	Parts No.	Description	Q'ty						I	R
				(A)	(B)	(C)	(D)	(E)	(F)		
1A	1	121522-59810	PIPE ASSY, INJECTION	1	1						
2	1	121522-59820	PIPE ASSY, INJECTION	1	1						
3	1	121522-59830	PIPE ASSY, INJECTION	1	1						
4	1	121450-59850	BRACKET	1	1						
5	1	121250-59860	BRACKET	1	1						
6	1	26116-060102	BOLT, M6X 10 PLATED	2	2						
7	1	121465-59950	BOLT, M6X16	4	4						
8	1	123325-59100	RETAINER, PIPE	2	2						
9	1	123325-59110	COVER	2	2						

Fig.32. FUEL PIPES

(A)=3T75HL-HKSA  
(B)=3T75HL-HKSB  
(C)=

(D)=  
(E)=  
(F)=

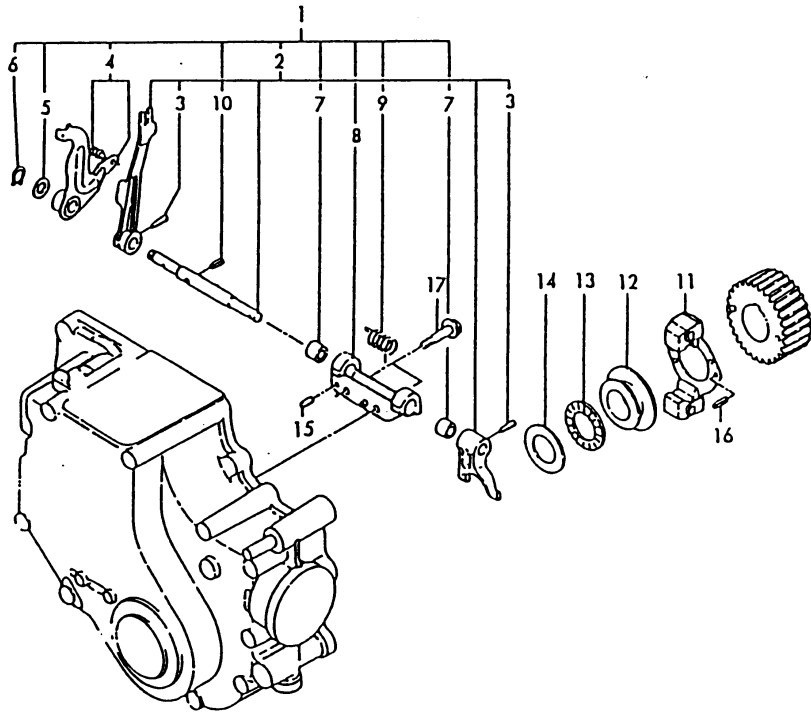
U71009-59200  
U71009-93030



No.	Lev.	Parts No.	Description	Q'ty						I	R
				(A)	(B)	(C)	(D)	(E)	(F)		
1	1	129150-59020	JOINT, PIPE	1	1						
1-1	1	101304-59020	JOINT, PIPE 12	1	1						N
		(A=EA3100) (B=*1987.06)									
2	1	104264-59030	JOINT, PIPE 8	2	2						
3	1	105582-59150	BOLT, PIPE JOINT	2	2						
4	1	104200-59170	GASKET, 12	2	2						
5	1	103854-59191	BOLT ASSY, JOINT M12	1	1						
6	2	103854-59201	BOLT, PIPE JOINT M12	1	1						
7	2	124060-59380	PLUG, 6	1	1						
8	2	43400-500390	SEAL WASHER 6	1	1						
9	1	171002-59501	PIPE ASSY, RETURN	1	1						
10	2	124550-59030	JOINT, PIPE 8	1	1						
11	2	121750-59090	JOINT, PIPE 8	1	1						
12	2	124550-59090	JOINT, PIPE 8	1	1						
13	2	124066-59100	CLIP, HOSE 8	4	4						
14	2	121450-59550	PIPE, FUEL D8X80	2	2						
15	2	124060-77680	CLIP, HOSE 10	2	2						
16	2	121158-77700	PIPE, FUEL	1	1						
17	1	101147-59810	BOLT, PIPE JOINT M8	3	3						
18	1	124060-77680	CLIP, HOSE 10	2	2						
19	1	23414-080012	GASKET, 8X1.0	6	6						
20	1	23414-080012	GASKET, 8X1.0	4	4						
21	1	124766-59050	CLIP, HOSE 12	6	6						
22	1	121236-59080	PIPE, FUEL D12X400	1	1						
23	1	121250-59080	PIPE, FUEL D12X180	1	1						
24	1	129335-59090	PIPE, FUEL D13X500	1	1						
25	1	124766-59530	PIPE, FUEL D12X350	2	2						
26	1	23000-013000	CLAMP, 13	2	2						

Fig.33. GOVERNOR

U71007-61100



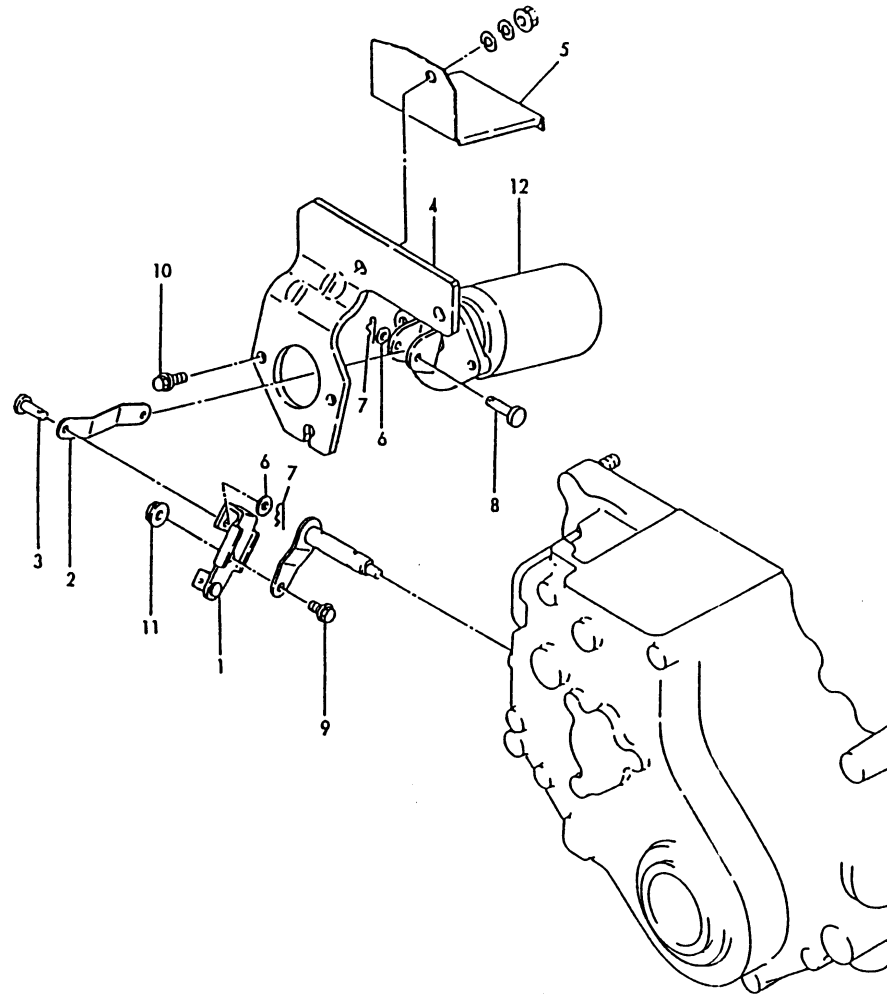
(A)=3T75HL-HKSA  
(B)=3T75HL-HKSB  
(C)=

(D)=  
(E)=  
(F)=

No.	Lev.	Parts No.	Description	Q'ty						I	R
				(A)	(B)	(C)	(D)	(E)	(F)		
1	1	171007-61000	LEVER ASSY, GOVERNOR	1	1						
2	2	121000-61010	SHAFT	1	1						
3	3	22322-030200	PIN, TAPER 3X20	2	2						
4	2	121000-61160	LEVER ASSY, CONTROL	1	1						
5	2	121000-61180	WASHER	1	1						
6	2	121000-61190	CIRCLIP	1	1						
7	2	121520-61520	BEARING, NEEDLE	2	2						
8	2	121000-61620	SUPPORT	1	1						
9	2	171007-66310	SPRING, STARTING	1	1						
10	2	22351-030012	PIN, SPRING 3.0X12	1	1						
11	1	121000-61101	WEIGHT ASSY,GOVERNOR	1	1						
12	1	121000-61600	SLEEVE, GOVERNOR	1	1						
13	1	121575-61710	BEARING, FNTA-2542	1	1						
14	1	121575-61720	COLLAR	1	1						
15	1	22312-040080	PIN, PARALLEL M4X 8	2	2						
16	1	22351-040008	PIN, SPRING 4.0X 8	2	2						
17	1	26013-060302	BOLT, M6X 30	2	2						

Fig.34. SOLENOID

U71009-65100



(A)=3T75HL-HKSA  
(B)=3T75HL-HKSB  
(C)=

(D)=  
(E)=  
(F)=

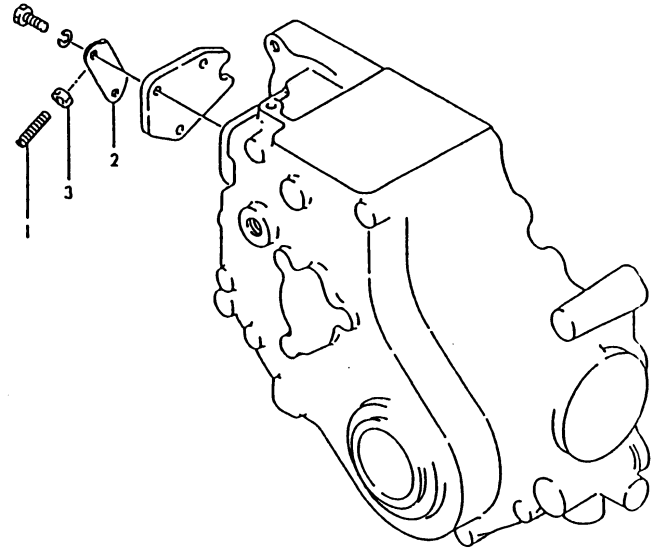
No.	Lev.	Parts No.	Description	Q'ty						I	R
				(A)	(B)	(C)	(D)	(E)	(F)		
1	1	171002-65090	JOINT	1	1						
2	1	171002-65111	LINK, SOLENOID	1	1						
3	1	171002-65121	PIN	1	1						
4	1	171002-65130	BRACKET, SOLENOID	1	1						
5	1	171002-65141	COVER	1	1						
6	1	22117-050000	WASHER, 5	2	2						
7	1	22360-050000	SNAP PIN 5	2	2						
8	1	22487-050160	PIN, H 5X 16	1	1						
9	1	26106-060122	BOLT, M6X 12 PLATED	1	1						
10	1	26116-060122	BOLT, M6X 12 PLATED	2	2						
11	1	26366-060002	NUT, M6	1	1						
12	1	46116-500120	SOLENOID VALVE	1	1						
12-1	1	129410-77950	SOLENOID, MAGNETIC	1	1						N
		(A=E96469)	(B=*1985.03)								
12-2	1	129410-77951	SOLENOID	1	1						S
		(A=EA0336)	(B=*1986.07)								
12-3	1	171335-77951	SOLENOID, MAGNETIC	1	1						N
		(A=EA8166)	(B=*1989.02)								





Fig.36. IDLE ADJUSTER

021575-66210



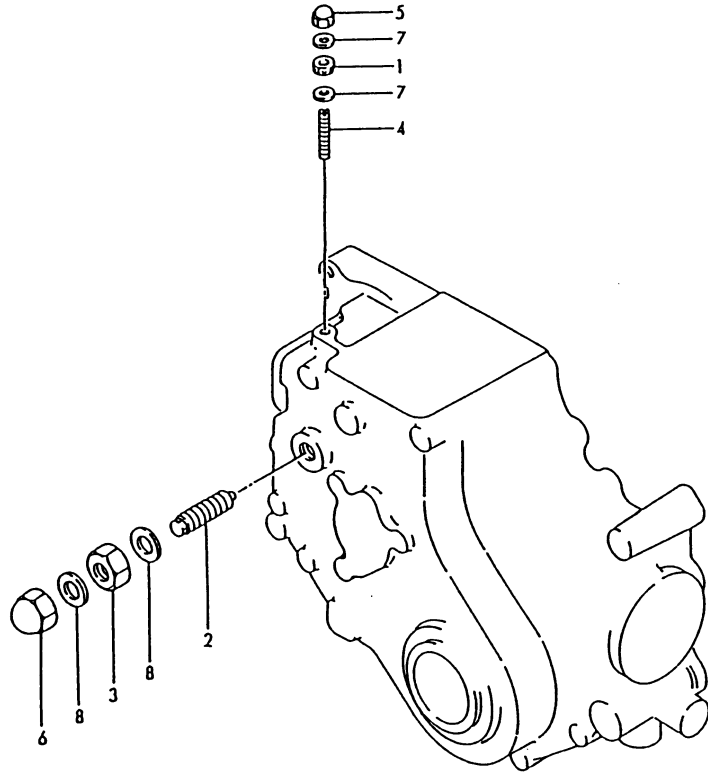
(A)=3T75HL-HKSA  
(B)=3T75HL-HKSB  
(C)=

(D)=  
(E)=  
(F)=

No.	Lev.	Parts No.	Description	Q'ty						I	R
				(A)	(B)	(C)	(D)	(E)	(F)		
1	1	121575-66800	SCREW	1	1						
2	1	121575-66850	RETAINER	1	1						
3	1	26756-060002	NUT, LOCK M6	1	1						

# Fig.37. SPEED CONTROL SYSTEM

U71009-66300  
U71009-66310



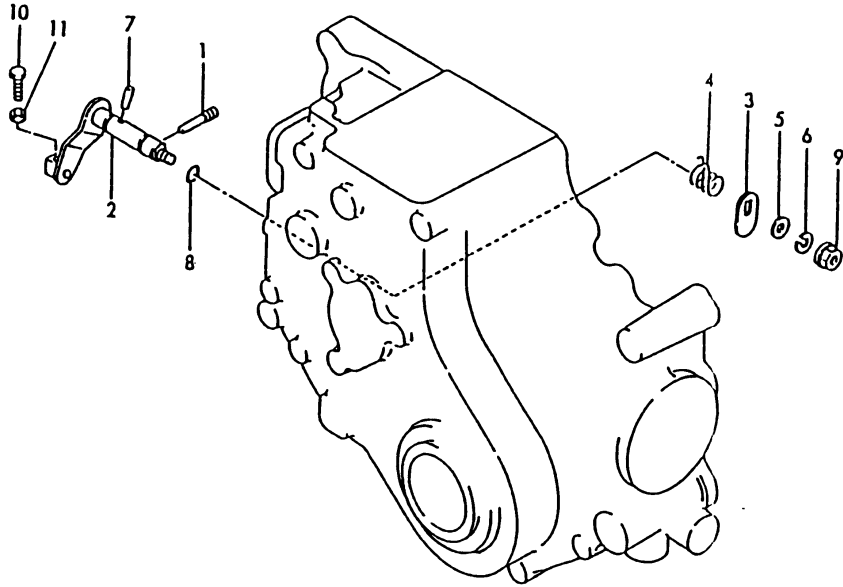
(A)=3T75HL-HKSA  
(B)=3T75HL-HKSB  
(C)=

(D)=  
(E)=  
(F)=

No.	Lev.	Parts No.	Description	Q'ty						I	R
				(A)	(B)	(C)	(D)	(E)	(F)		
1	1	124550-66370	NUT, M6	1	1						
2	1	171007-66550	LIMITER ASSY, FUEL	1	1						
2-1	1	121473-66550	LIMITER ASSY, FUEL		1						N
			(B=EXXX)								
3	1	26776-120002	NUT, LOCK M12	1	1						
4	1	121575-66830	SCREW	1	1						
4-1	1	171002-66830	SCREW	1							N
			(A=EA9474)								
5	1	26666-060002	NUT, CAP M6	1	1						
6	1	26687-120002	NUT, CAP M12	1	1						
7	1	43400-500400	SEAL WASHER 6	2	2						
8	1	43400-500450	SEAL WASHER 12	2	2						

Fig.38. ENGINE STOP

U71002-66500  
U71009-93030



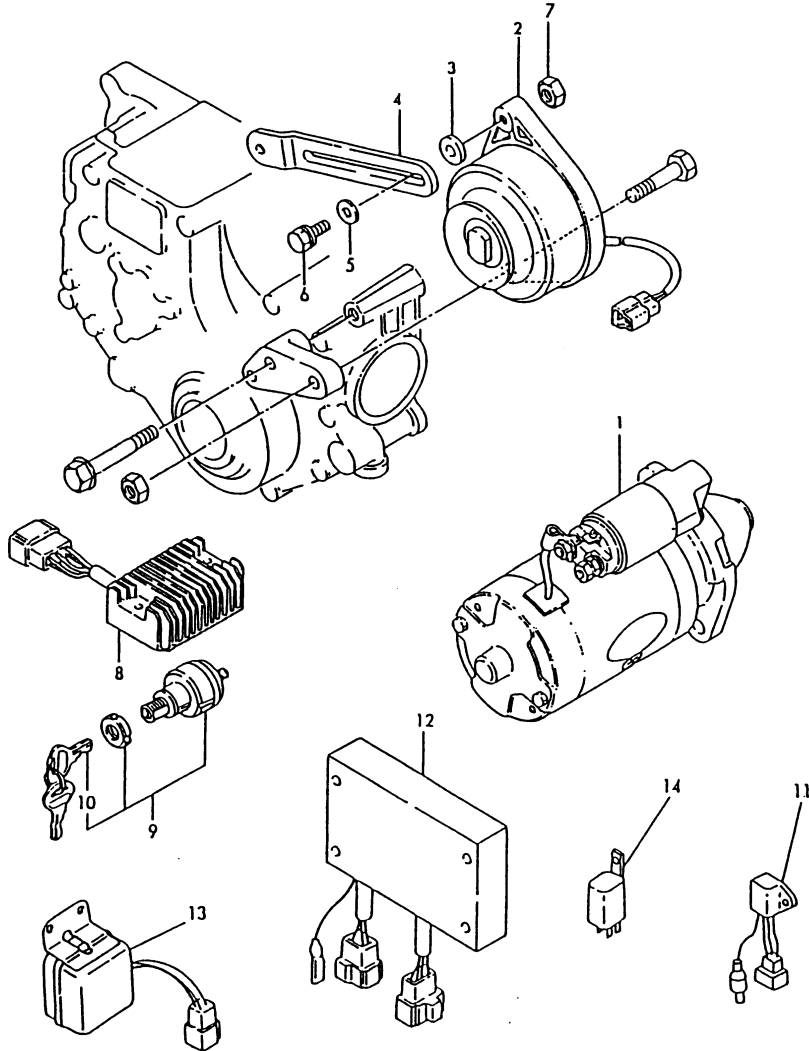
(A)=3T75HL-HKSA  
(B)=3T75HL-HKSB  
(C)=

(D)=  
(E)=  
(F)=

No.	Lev.	Parts No.	Description	Q'ty						I	R
				(A)	(B)	(C)	(D)	(E)	(F)		
1	1	124250-03640	SCREW	1	1						
2	1	121575-66520	LEVER, ENGINE STOP	1	1						
3	1	121575-66550	CAM	1	1						
4	1	121575-66580	SPRING, RETURN	1	1						
5	1	22117-060000	WASHER, 6	1	1						
6	1	22217-060000	WASHER, SPRING 6	1	1						
7	1	22322-030160	PIN, TAPER 3X16	1	1						
8	1	24311-000070	O-RING, 1AP7.0	1	1						
9	1	26716-060002	NUT, M6	1	1						
10	1	26116-050128	BOLT, M5X 12 PLATED	1	1						
11	1	26756-050002	NUT, LOCK M5	1	1						

Fig.39. ELECTRIC PARTS

U71009-77100  
U71009-93030



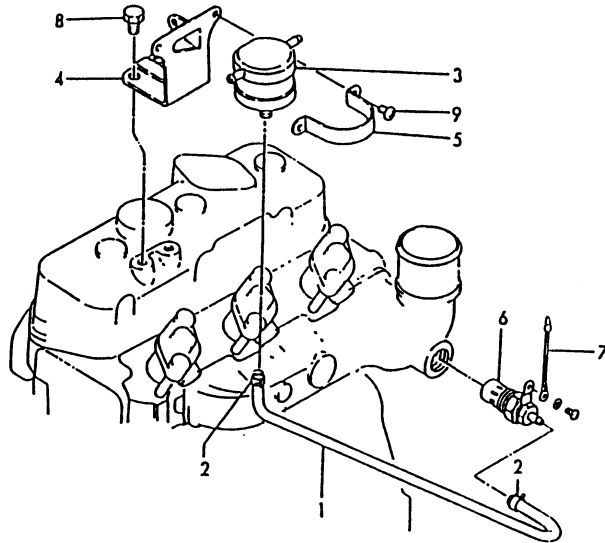
(A)=3T75HL-HKSA  
(B)=3T75HL-HKSB  
(C)=

(D)=  
(E)=  
(F)=

No.	Lev.	Parts No.	Description	Q'ty						I	R
				(A)	(B)	(C)	(D)	(E)	(F)		
1	1	124250-77012	STARTER, S12-77A	1	1						
2	1	121000-77201	GENERATOR	1	1						
3	1	171003-77320	SPACER	1							Z
(A=EXXX)											
4	1	121521-77330	ADJUSTER	1	1						
5	1	22217-080000	WASHER, SPRING 8	1	1						
6	1	26014-080252	BOLT, M8X 25	1	1						
7	1	26756-080002	NUT, LOCK M8	1	1						
8	1	171008-77710	LIMITER, RS5110	1	1						
9	1	121400-91251	SWITCH, STARTER	1	1						
10	2	121400-91271	KEY, SWITCH	1	1						
11	1	121522-77721	INDICATOR	1	1						
12	1	171440-77800	RELAY, EMERGENCY	1	1						
12-1	1	171440-77801	RELAY, EMERGENCY	1	1						N
(A=EB1266) (B=*1990.06)											
13	1	121474-77920	TIMER	1	1						
14	1	121522-77101	RELAY, SAFETY	2	2						

Fig.40. THERMOSTART DEVICE

U71009-77200



(A)=3T75HL-HKSA  
(B)=3T75HL-HKSB  
(C)=

(D)=  
(E)=  
(F)=

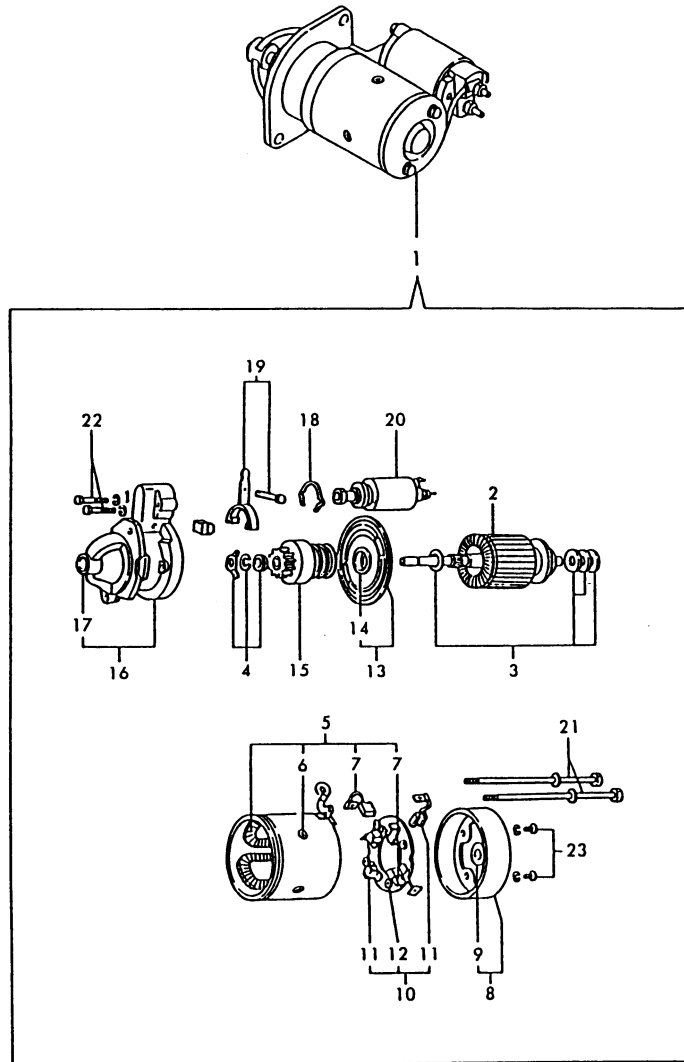
No.	Lev.	Parts No.	Description	Q'ty						I	R
				(A)	(B)	(C)	(D)	(E)	(F)		
1	1	121201-59570	PIPE, FUEL RETURN	1	1						
2	1	124060-77680	CLIP, HOSE 10	2	2						
3	1	121750-77800	TANK ASSY, HEADER	1	1						
4	1	121550-77810	BRACKET	1	1						
5	1	124460-77820	RETAINER	1	1						
6	1	121520-77910	PLUG, THERMOSTAT	1	1						
7	1	121120-77920	WIRE	1	1						
8	1	26106-080122	BOLT, M8X 12 PLATED	2	2						
9	1	26557-060082	SCREW, M6X 8	2	2						

# Fig.41. STARTING MOTOR COMPONENT PARTS

(A)=3T75HL-HKSA  
(B)=3T75HL-HKSB  
(C)=

(D)=  
(E)=  
(F)=

U71009-77100



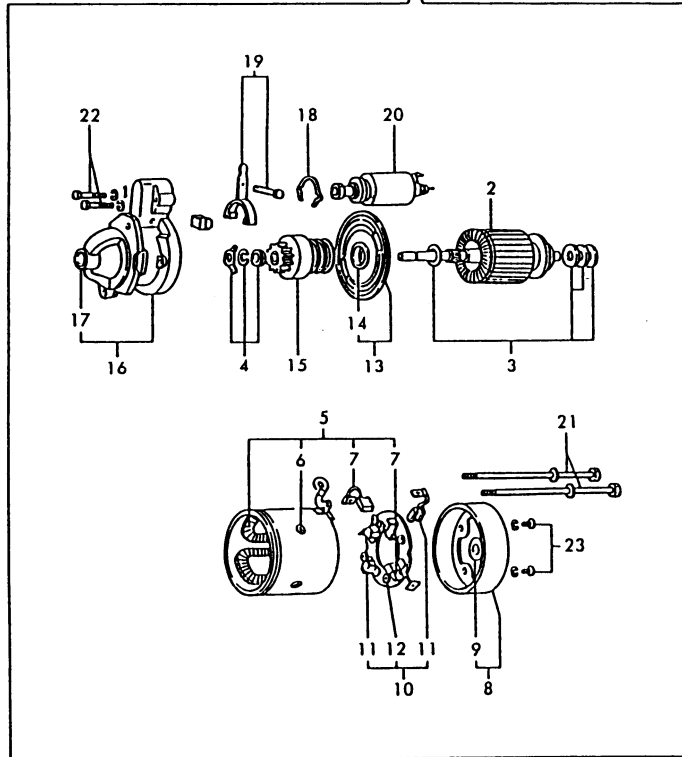
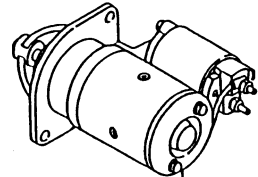
No.	Lev.	Parts No.	Description	Qty						I	R
				(A)	(B)	(C)	(D)	(E)	(F)		
1	1	124250-77012	STARTER, S12-77A	1	1						
2	2	X21207100	ARMATURE ASSY	1	1						
2-1	2	124250-77500	ARMATURE ASSY	1	1						N
3	2	X21201115	WASHER SET, THRUST	1	1						
3-1	2	124250-77510	WASHER KIT	1	1						N
4	2	X21201110	STOPPER SET	1	1						
4-1	2	124250-77070	STOPPER SET, PINION	1	1						N
5	2	X21204259	COIL ASSY	1	1						
5-1	2	124250-77110	COIL ASSY, FIELD	1	1						N
6	3	X21142215	SCREW	4	4						
6-1	3	124250-77120	SCREW SET, PORE CORE	4	4						N
7	3	X21209311	BRUSH (+)	2	2						
7-1	3	124250-77130	BRUSH (+)	2	2						N
8	2	X22501300	COVER ASSY, REAR	1	1						
8-1	2	124250-77140	COVER ASSY, REAR	1	1						N
9	3	X21204302	METAL, COVER BEARING	1	1						
9-1	3	124250-77150	METAL, REAR COVER	1	1						N
10	2	X21205310	HOLDER ASSY, BRUSH	1	1						
10-1	2	124250-77160	HOLDER ASSY, BRUSH	1	1						N
11	3	X21207312	BRUSH (-)	2	2						
11-1	3	124250-77170	BRUSH (-)	2	2						N
12	3	X21201313	SPRING, BRUSH	4	4						
12-1	3	124250-77180	SPRING, BRUSH	4	4						N
13	2	X21205400	BEARING ASSY	1	1						
13-1	2	124250-77190	BEARING ASSY, CENTER	1	1						N
14	3	X21204401	METAL, CENTER BERG.	1	1						
14-1	3	124250-77520	BEARING	1	1						N
15	2	X212045001	PINION ASSY	1	1						
15-1	2	124250-77210	PINION ASSY	1	1						N
16	2	X21205650	CASE ASSY, GEAR	1	1						
16-1	2	124250-77220	CASE ASSY, GEAR	1	1						N
17	3	X21202601	METAL, GEAR CASE	1	1						
17-1	3	124250-77230	METAL, GEAR CASE	1	1						N
18	2	X21202602	COVER SET	1	1						
18-1	2	124250-77240	COVER SET, DUST	1	1						N

Fig.41. STARTING MOTOR COMPONENT PARTS

(A)=3T75HL-HKSA  
(B)=3T75HL-HKSB  
(C)=

(D)=  
(E)=  
(F)=

U71009-77100



No.	Lev.	Parts No.	Description	Qty						I	R
				(A)	(B)	(C)	(D)	(E)	(F)		
		(A=EXXX) (B=EXXX)									
19	2	X21201605	LEVER SET	1	1						
19-1	2	124250-77270	LEVER SET, SHIFT	1	1						N
		(A=EXXX) (B=EXXX)									
20	2	X212037002	SWITCH, MAGNETIC	1	1						
20-1	2	124250-77310	SWITCH, MAGNETIC	1	1						N
		(A=EXXX) (B=EXXX)									
21	2	X21204810	BOLT, THROUGH	2	2						
21-1	2	124250-77320	BOLT, THROUGH	2	2						N
		(A=EXXX) (B=EXXX)									
22	2	X21145866	BOLT	2	2						Z
		(A=EXXX) (B=EXXX)									
23	2	X0630412	BOLT M 4X 12	2	2						
23-1	2	26557-040122	SCREW, M4X12	2	2						N
		(A=EXXX) (B=EXXX)									

Fig.42. GENERATOR COMPONENT PARTS

(A)=3T75HL-HKSA  
 (B)=3T75HL-HKSB  
 (C)=

(D)=  
 (E)=  
 (F)=

No.	Lev.	Parts No.	Description	Q'ty						I	R
				(A)	(B)	(C)	(D)	(E)	(F)		
1	1	121000-77201	GENERATOR	1	1						
2	2	XM72886	FLYWHEEL ASSY	1	1						
3	3	XM27436	BALL BEARING	2	2						
4	3	XM72174	PULLEY	1	1						
5	3	XM42752	SHAFT	1	1						
6	3	XM37336	WASHER	1	1						
7	2	XM32983	COLLAR	1	1						
8	2	XM86025	WASHER	1	1						
9	2	XM21923	WASHER, SPRING	1	1						
10	2	XM86372	NUT	1	1						
11	2	XM91456	PLATE ASSY	1	1						
12	3	XM91457	PLATE	1	1						
13	3	XM91460	STATOR ASSY	1	1						
14	3	XM27436	BALL BEARING	1	1						
15	3	XM17878	COUPLER	1	1						
16	3	XM06900	CLAMP	1	1						
17	3	XYSPS4008	SCREW	1	1						
18	3	XYSPS4024	SCREW	2	2						
19	2	XM61014	CAP	1	1						

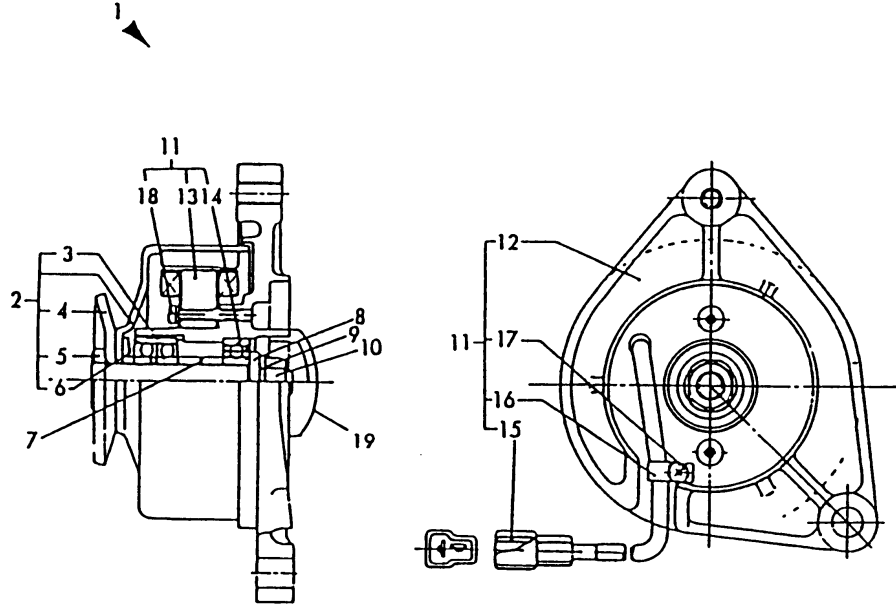
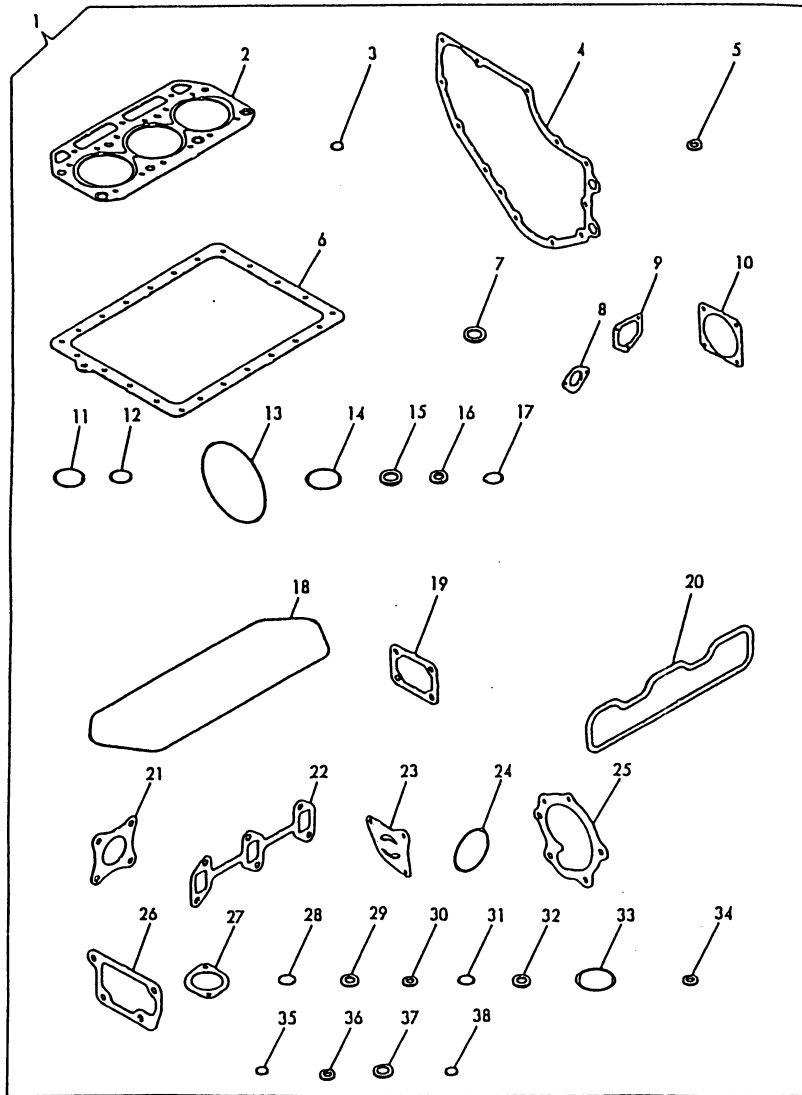




Fig.43. GASKET SET



(A)=3T75HL-HKSA  
(B)=3T75HL-HKSB  
(C)=

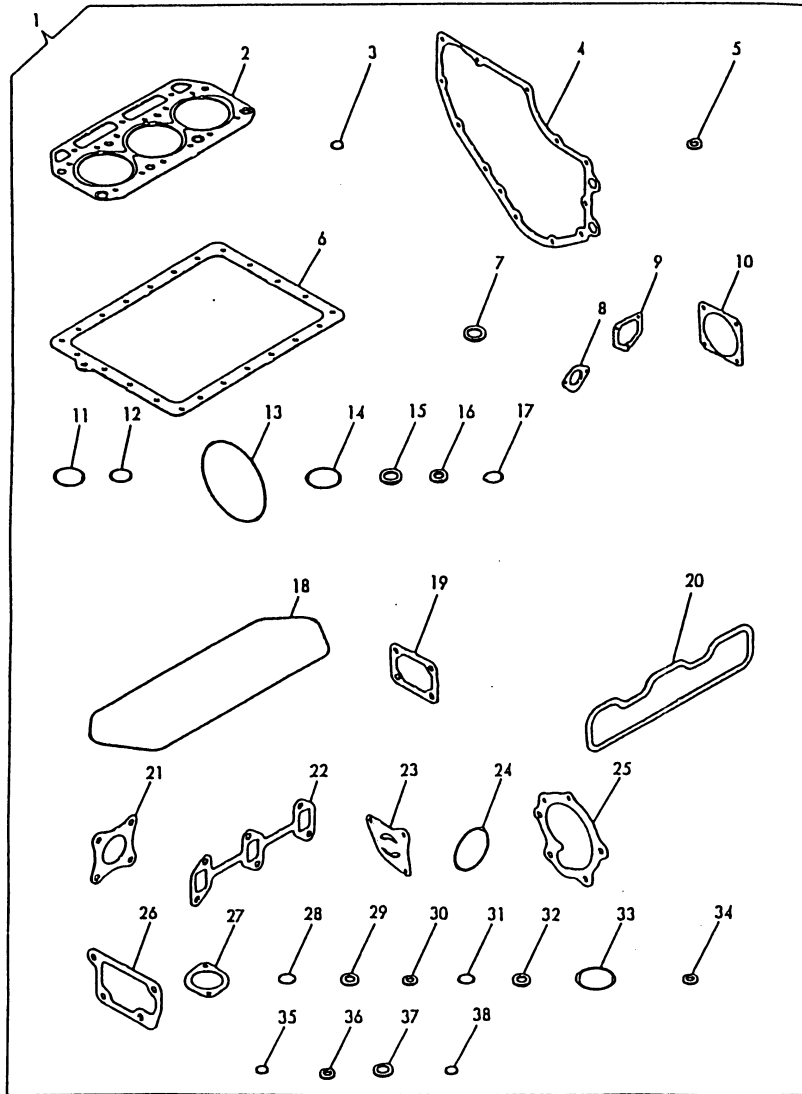
(D)=  
(E)=  
(F)=

No.	Lev.	Parts No.	Description	Q'ty						I	R
				(A)	(B)	(C)	(D)	(E)	(F)		
1A	1	771002-92620	GASKET SET	1							
1A-1	1	771002-92621	GASKET SET	1							N
(A=EXXX)											
1B	1	771009-92600	GASKET SET		1						
1B-1	1	771009-92601	GASKET SET		1						N
(B=EXXX)											
2A	2	121575-01333	GASKET, HEAD	1							
2A-1	2	121575-01334	GASKET, HEAD	1							N
(A=EA1128)											
2B	2	121550-01331	GASKET, HEAD		1						
3	2	24311-000100	O-RING, 1AP10.0	1	1						
4	2	121575-01510	GASKET, GEAR CASE	1	1						
4-1	2	121575-01511	GASKET, GEAR CASE	1	1						N
(A=*1990.12) (B=*1990.12)											
5	2	43400-500410	SEAL WASHER 8		4						
6	2	121575-01750	GASKET, OIL SUMP	1	1						
6-1	2	121575-01751	GASKET, OIL SUMP	1	1						N
(A=*1990.12) (B=*1990.12)											
7	2	43400-500550	SEAL WASHER	1	1						
8	2	121520-01850	GASKET	1	1						
8-1	2	121520-01851	GASKET	1	1						N
(A=EB0377) (B=*1990.01)											
9	2	121575-01860	GASKET	1	1						
9-1	2	121575-01861	GASKET	1	1						N
(A=*1990.12) (B=*1990.12)											
10	2	124240-01882	GASKET	1	1						
10-1	2	124240-01883	GASKET	1	1						N
(A=EB0377) (B=*1990.01)											
11	2	121420-01760	O-RING	1	1						
12	2	24341-000260	O-RING, 1AS26.0	1	1						
12-1	2	24341-000240	O-RING, 1AS24.0	1	1						N
(A=EA9474) (B=*1989.04)											
13	2	24341-001350	O-RING, 1AS135.0	1	1						
14	2	24341-000400	O-RING, 1AS40.0	1	1						
15	2	121550-11451	GASKET, CHAMBER	6	6						
16	2	128275-11490	PROTECTOR	3	3						
17	2	24311-000120	O-RING, 1AP12.0	3	3						
18	2	121550-11310	GASKET, BONNET	1	1						
19	2	121450-11680	GASKET	1	1						
19-1	2	121450-11681	GASKET	1	1						N
(A=*1990.12) (B=*1990.12)											
20	2	121551-12710	GASKET, MANIFOLD	1	1						
21	2	124701-11910	GASKET, SILENCER	1	1						
21-1	2	124701-11911	GASKET, SILENCER	1	1						N
(A=EB1266) (B=*1990.06)											
22	2	121550-13520	GASKET	1	1						
22-1	2	121550-13521	GASKET	1	1						N
(A=*1990.12) (B=*1990.12)											
23	2	121450-32021	GASKET, PUMP	1	1						
24	2	124450-35110	O-RING	1	1						
25	2	121000-42051	GASKET, WATER PUMP	1	1						

Fig.43. GASKET SET

(A)=3T75HL-HKSA  
 (B)=3T75HL-HKSB  
 (C)=

(D)=  
 (E)=  
 (F)=



No.	Lev.	Parts No.	Description	Q'ty						I	R
				(A)	(B)	(C)	(D)	(E)	(F)		
26	2	171003-44411	GASKET	1	1						
27	2	129350-49540	GASKET	1	1						
27-1	2	129350-49541	GASKET	1	1						N
		(A=EB0377)	(B=*1990.01)								
28	2	24311-000160	O-RING, 1AP16.0		1						
29	2	124950-51270	GASKET	3	3						
30	2	124550-51350	GASKET, DELIVERY	3	3						
31	2	124550-51370	O-RING	3	3						
32	2	172100-53200	GASKET	3	3						
33	2	102103-55520	O-RING	1	1						
34	2	43400-500390	SEAL WASHER 6	1	1						
35	2	24311-000090	O-RING, 1AP9.0	1	1						
36	2	43400-500400	SEAL WASHER 6	2	2						
37	2	43400-500450	SEAL WASHER 12	2	2						
38	2	24311-000070	O-RING, 1AP7.0	1	1						

## Parts No. Index

Parts No.	Fig. No.	Ref. No.
101147-11900	10	47
101147-59810	32	17
101158-11190	10	10
101158-11230	10	40
		44
101304-59020	32	1 -1
101720-55750	30	11
		27
102103-55520	30	6
		21
	43	33
103338-11430	10	35
103854-51251	27	13
103854-51660	27	25
103854-53180	29	9
103854-59191	32	5
103854-59201	32	6
104200-14200	14	6
104200-22300	17	7
104200-53080	29	3
104200-55080	3	10
104200-55321	30	2
		17
104200-55330	30	3
		18
104200-55341	30	4
		19
104200-55750	30	12
		28
104200-59170	32	4
104211-11100	10	4
104211-11180	10	9
104211-11370	10	13
104211-53120	29	6
104264-59030	32	2
105225-11350	10	12
105582-59150	32	3
110250-53150	29	8
110250-55610	30	7
		22
113200-53110	29	5
113200-53120	29	7
119810-11160	10	7
121000-01850	5	2
121000-11050	10	3
121000-14550	14	9
121000-42051	23	1
	43	25
121000-42100	23	2
121000-61010	33	2

Parts No.	Fig. No.	Ref. No.
121000-61101	33	11
121000-61160	33	4
121000-61180	33	5
121000-61190	33	6
121000-61600	33	12
121000-61620	33	8
121000-66011	35	1 B
121000-66020	35	1 A
121000-66090	35	3
121000-77201	39	2
	42	1
121023-01550	5	1
121111-21501	16	1
121120-77920	40	7
121150-51460	27	21
121158-77700	32	16
121201-59570	40	1
121236-59080	32	22
121250-01710	10	20
121250-02070	6	7 -1
		13 -1
121250-44901	25	1
121250-55620	30	8
121250-59080	32	23
121250-59860	31	5
121254-55510	30	5
121254-55600	30	1
121256-44600	24	8
121257-55720	30	24
121257-55731	30	25
121400-91251	39	9
121400-91271	39	10
121420-01760	43	11
121450-01210	1	5
121450-01220	1	6
121450-01560	2	5
121450-01801	2	8
121450-01951	2	9
121450-01990	1	10
121450-03012	8	2
121450-11260	10	29
121450-11270	10	30
121450-11550	10	21
		22
121450-11670	10	23
121450-11680	10	24
	43	19
121450-11681	10	24 -1
	43	19 -1
121450-14090	14	4 B

Parts No.	Fig. No.	Ref. No.
121450-14120	14	8
121450-21541	15	8
121450-32021	19	1
	43	23
121450-42240	23	5
121450-42260	23	6
121450-42310	23	7
121450-42350	23	11
121450-51500	27	22
121450-59550	32	14
121450-59850	31	4
121456-13582	13	6
121465-11950	10	18
121465-13582	13	6 -1
121465-59950	31	7
121473-66550	37	2 -1
121474-77920	39	13
121500-01100	1	4
121500-11110	10	5
121500-12730	12	1
121500-12790	12	3
121500-21652	15	9
121500-22090	17	1 B
121520-01850	28	1
	43	8
121520-01851	28	1 -1
	43	8 -1
121520-02100	1	14
121520-11300	11	1
121520-61520	33	7
121520-77910	40	6
121521-77330	39	4
121522-59810	31	1 A
121522-59820	31	2
121522-59830	31	3
121522-77101	39	14
121522-77721	39	11
121550-01200	1	19
121550-01331	1	20 B
	43	2 B
121550-02110	6	3
121550-02300	6	17
121550-11240	10	28
121550-11280	10	31
121550-11290	10	32
121550-11310	11	4
	43	18
121550-11451	10	36
	43	15
121550-13520	13	5

Parts No.	Fig. No.	Ref. No.
121550-13520	43	22
121550-13521	13	5 -1
	43	22 -1
121550-14400	14	7
121550-23200	18	4
121550-35100	1	16
121550-35110	1	17
121550-39200	22	2
121550-49111	5	12
121550-51100	27	3 B
121550-77810	40	4
121551-02220	6	4
121551-12710	12	4
	43	20
121575-01333	1	20 A
	43	2 A
121575-01334	1	20 A-1
	43	2 A-1
121575-01510	2	7
	43	4
121575-01511	2	7 -1
	43	4 -1
121575-01750	3	6
	43	6
121575-01751	3	6 -1
	43	6 -1
121575-01860	5	3
	43	9
121575-01861	5	3 -1
	43	9 -1
121575-07230	9	1
121575-11121	10	6
121575-11421	10	34
121575-14090	14	4 A
121575-32090	19	2
121575-51100	27	3 A
121575-61710	33	13
121575-61720	33	14
121575-66051	35	2
121575-66520	38	2
121575-66550	38	3
121575-66580	38	4
121575-66800	36	1
121575-66830	37	4
121575-66850	36	2
121750-59090	32	11
121750-77800	40	3
123325-59100	31	8
123325-59110	31	9
124060-01050	1	3

## Parts No. Index

Parts No.	Fig. No.	Ref. No.
124060-01050	2	2
124060-11160	10	7 -1
124060-23100	18	3
124060-51300	27	15
124060-59380	32	7
124060-77680	32	15
		18
	40	2
124064-55510	30	20
124066-59100	32	13
124085-01900	1	8
124085-35111	21	3 -2
124085-35300	21	5 -1
124085-35350	21	6
124160-01751	10	50
124160-01910	3	4
124160-11360	11	2
124160-39140	22	1
124160-39450	22	4
124160-49480	25	4
124240-01871	5	5
124240-01882	5	4
	43	10
124240-01883	5	4 -1
	43	10 -1
124250-03640	38	1
124250-77012	39	1
	41	1
124250-77070	41	4 -1
124250-77110	41	5 -1
124250-77120	41	6 -1
124250-77130	41	7 -1
124250-77140	41	8 -1
124250-77150	41	9 -1
124250-77160	41	10 -1
124250-77170	41	11 -1
124250-77180	41	12 -1
124250-77190	41	13 -1
124250-77210	41	15 -1
124250-77220	41	16 -1
124250-77230	41	17 -1
124250-77240	41	18 -1
124250-77270	41	19 -1
124250-77310	41	20 -1
124250-77320	41	21 -1
124250-77500	41	2 -1
124250-77510	41	3 -1
124250-77520	41	14 -1
124450-35070	21	1
124450-35110	21	4

Parts No.	Fig. No.	Ref. No.
124450-35110	43	24
124450-39240	22	3
124450-44510	24	3
124450-44530	24	4
124450-44550	24	7
124450-44560	24	5
124460-77820	40	5
124465-44950	25	2
124500-01950	1	15
124550-35110	21	3 -1
124550-51320	27	16
124550-51341	27	17
124550-51350	27	18
	43	30
124550-51370	27	19
	43	31
124550-55700	30	10
124550-59030	32	10
124550-59090	32	12
124550-59820	22	5
124550-66370	37	1
124701-11910	13	1
	43	21
124701-11911	13	1 -1
	43	21 -1
124732-35090	21	2
124736-42290	23	10
124764-44810	24	9 -1
124766-59050	5	18
		18 -1
	32	21
124766-59530	32	25
124770-53000	29	2
124950-11340	10	11
124950-51190	27	6
124950-51270	27	14
	43	29
124950-51450	27	20
124950-51510	27	23
124950-51640	27	24
128272-11170	10	8 -1
128272-11171	10	8
128275-11490	10	37
	43	16
128370-01800	5	12 -1
		13
128670-03030	8	5
128670-03040	8	6
128695-11410	10	33
128695-11500	10	38

Parts No.	Fig. No.	Ref. No.
128695-34800	20	1 -1
129150-35150	21	3
129150-59020	32	1
129301-52020	28	2
129305-07950	9	2
129335-59090	32	24
129350-01230	1	7
129350-02050	6	10
		16
129350-02070	6	7
		13
129350-14100	14	5
129350-21200	15	7
129350-21600	16	3
129350-42200	23	4
129350-49120	5	15
129350-49130	5	16
129350-49530	26	1
129350-49540	26	2
	43	27
129350-49541	26	2 -1
	43	27 -1
129350-49800	26	3
129410-44540	24	9
129410-77950	34	12 -1
129410-77951	34	12 -2
171002-22090	17	1 A
171002-59501	32	9
171002-65090	34	1
171002-65111	34	2
171002-65121	34	3
171002-65130	34	4
171002-65141	34	5
171002-66830	37	4 -1
171003-42123	23	9
171003-44411	23	12
	43	26
171003-49030	25	3
171003-77253	2	18
171003-77320	39	3
171007-35301	21	5
171007-39401	22	8
171007-61000	33	1
171007-66310	33	9
171007-66550	37	2
171008-03203	8	3
171008-03990	8	7
171008-34802	20	1
171008-55612	30	15
171008-77710	39	8

Parts No.	Fig. No.	Ref. No.
171009-21590	16	2
171009-44760	24	10
171009-55610	30	15 -1
171009-55700	30	16
171009-67510	35	7
171016-01600	4	1
171022-49160	5	14
171051-01921	1	9
171081-55910	30	23
171335-77951	34	12 -3
171340-44740	24	1
171440-44740	24	1 -1
171440-77800	39	12
171440-77801	39	12 -1
172100-22400	17	8
172100-53200	29	10
	43	32
174100-54120	27	9
174307-51170	27	4
174307-51181	27	5
174307-51700	27	26
194990-22050	2	6
	5	11
	10	26
22117-050000	27	27
	34	6
22117-060000	38	5
22137-100000	2	11
	10	14
22217-050000	27	28
22217-060000	38	6
22217-080000	39	5
22242-000120	35	4
22242-000140	10	48
22312-040080	33	15
22312-080160	1	13
	15	3
22322-030160	38	7
22322-030200	33	3
22351-030012	33	10
22351-040008	33	16
22351-040010	2	4
22351-060012	1	18
22360-050000	34	7
22487-050160	34	8
22512-070180	15	4
		5
22512-070300	14	3
23000-013000	32	26
23010-038000	25	5

## Parts No. Index

Parts No.	Fig. No.	Ref. No.
23061-070230	24	6
23414-080000	22	6
23414-080012	32	19
		20
23414-100000	22	7
23414-120000	22	9
23418-060000	30	13
		29
23857-060000	22	10
23871-020000	10	15
23871-030000	10	16
	23	8
23887-220002	3	2
24101-062054	7	1
24101-063050	2	10
24311-000070	38	8
	43	38
24311-000090	35	5
	43	35
24311-000100	1	11
	43	3
24311-000120	5	17
	11	3
	43	17
24311-000160	43	28
24311-000320	10	51
24311-240100	30	14
		30
24341-000240	5	6 -1
	43	12 -1
24341-000260	5	6
	43	12
24341-000400	8	4
	43	14
24341-001350	6	18
	43	13
26013-060222	19	3
26013-060302	33	17
26013-080202	6	19
26014-060162	35	8
26014-060182	28	3
26014-060202	3	7
26014-060252	24	2
26014-060652	3	8
26014-080252	39	6
26033-050102	27	29 -1
26106-060122	5	7
	34	9
26106-060322	23	13
26106-080122	10	25

Parts No.	Fig. No.	Ref. No.
26106-080122	10	25 -1
	40	8
26106-080162	8	1
26106-080182	26	4
26106-080302	2	13
26106-080402	23	14
26106-080452	23	15
26106-080552	23	16
26106-080602	30	31
26106-080852	2	12
26106-081052	2	15
	23	17
26106-081152	2	16
26106-100502	2	14
26106-100552	2	19
26116-050128	38	10
26116-060102	31	6
26116-060122	34	10
26206-100252	4	2
26216-060142	5	8
26216-080222	5	9
	13	4
26216-080702	10	17
26216-120252	4	3
26366-060002	5	10
	34	11
26366-080002	10	27
	35	6
26450-080452	23	18
26557-040122	41	23 -1
26557-060082	40	9
26587-050102	27	29
26587-080102	7	2
26587-080122	7	2 -1
26666-060002	37	5
26687-120002	37	6
26696-100002	10	19
26706-100002	2	17
26716-060002	38	9
26716-120002	4	4
26756-050002	38	11
26756-060002	36	3
26756-080002	10	42
		46
	39	7
26776-120002	37	3
26776-180002	15	10
26921-080102	10	49
27241-300000	1	12
27310-070001	10	10 -1

Parts No.	Fig. No.	Ref. No.
43400-500390	32	8
	43	34
43400-500400	37	7
	43	36
43400-500410	43	5
43400-500450	3	9
	37	8
	43	37
43400-500550	3	5
	43	7
46116-500120	34	12
711100-51540	27	10
721000-01611	2	1
721450-11650	10	39
721450-11660	10	43
721500-01540	3	1
721500-01562	1	1
721500-14581	14	1 A
721500-21700	15	1
721500-22500	17	3 B
721500-51100	27	1 A
721500-53100	29	1
721522-51700	27	1 B
721550-02500	6	1
721550-02610	6	5 -1
721550-02611	6	5
721550-02620	6	11 -1
721550-02621	6	11
721550-02800	6	8
721550-02810	6	14
721550-14580	14	1 B
721550-23100	18	1
721550-23600	18	5
721551-13500	13	2
721580-11700	10	1
724550-51520	27	7
771002-11700	10	1 A
771002-22500	17	3 A
771002-92620	43	1 A
771002-92621	43	1 A-1
771009-92600	43	1 B
771009-92601	43	1 B-1
X0630412	41	23
X21142215	41	6
X21145866	41	22
X21201110	41	4
X21201115	41	3
X21201313	41	12
X21201605	41	19
X21202601	41	17

Parts No.	Fig. No.	Ref. No.
X21202602	41	18
X212037002	41	20
X21204259	41	5
X21204302	41	9
X21204401	41	14
X212045001	41	15
X21204810	41	21
X21205310	41	10
X21205400	41	13
X21205650	41	16
X21207100	41	2
X21207312	41	11
X21209311	41	7
X22501300	41	8
XM06900	42	16
XM17878	42	15
XM21923	42	9
XM27436	42	3
		14
XM32983	42	7
XM37336	42	6
XM42752	42	5
XM61014	42	19
XM72174	42	4
XM72886	42	2
XM86025	42	8
XM86372	42	10
XM91456	42	11
XM91457	42	12
XM91460	42	13
XYSPS4008	42	17
XYSPS4024	42	18