

OCD10-M39900EN

PREFACE

1. This Parts Catalog is the 1st edition of EP1700-3100(S) Diesel Engine for HOKUETSU.

Pub. No. : 000Y00D3990

Published : July, 1991

2. Model name

Engine model	Vehicle		Vehicle made by
	Products	Model name	
EP1700-3100(S)	GENERATOR	—	HOKUETSU

Directions for the Parts Catalog.

1. The parts stipulated in this Parts Catalog are not necessarily standard equipped parts.
2. Parts may change without prior notice.
3. The following is an example of the Parts Catalog format.

REF.	LEV.	PARTS NO.	DESCRIPTION	Q'TY						I	R
				(A)	(B)	(C)	(D)	(E)	(F)		
1	1	729595-51390	FUEL INJECTION PUMP	1	1	1	1	1			1
1-1	1	729595-51391	FUEL INJECTION PUMP	1	1	1	1	1		N	1
		(A=E00185) (B=E00200)									
3	2	26022-060162	SCREW M 6X 16	9	9	9	9	9			
3-1	2	26022-060162	SCREW M 6X 16	4	4	4	4	4		K	
		(A=E00156) (B=E00156) (C=E00156) (D=E00156) (E=E00156)									
4	2	129470-51040	CAMSHAFT	1	1	1	1	1			
5	2	122710-51050	BEARING, ROLLER	2	2	2	2	2			
6	2	129470-51060	RETAINER	1	1	1	1	1			

Remarks
(1) BOOST COMPEMSATOR TYPE. OPTIONAL PART, TO E00155,(4JH-DT, 4JH-DTZ

① Ref. No.

The Ref. No. listed may not be in accordance with the illustration Ref. No.

(Ex.) Illustration No.

List Ref No.

1

1

(Before change)

1-1

(After change)

For interchangeable symbols N, R and K, illustrations for new parts may be abbreviated.

② Lev. (Level)

Level indication

The numbers below indicate the level of relativity towards the main part.

1 ----- Main parts (Assembly parts)

2 ----- Sub component included in " 1 ".

3 ----- Sub component included in " 2 ".

Note) Parts that are not for sale are partially illustrated but not listed.

③ Interchangeability Mark

When a part change takes place, one of the following interchangeability symbols is indicated beside the part.

Symbol	Interchangeability	Contents note
N	Old $\begin{matrix} \leftarrow \text{Yes} \\ \text{No} \rightarrow \end{matrix}$ New	New Part is interchangeable for Old Part but Old Part is not interchangeable for New Part.
Q	Old $\begin{matrix} \leftarrow \text{No} \\ \text{Yes} \rightarrow \end{matrix}$ New	New Part is not interchangeable for Old Part but Old Part is interchangeable for New Part.
R	Old $\begin{matrix} \leftarrow \text{Yes} \\ \text{Yes} \rightarrow \end{matrix}$ New	New/ Old Parts are both interchangeable.
S	Old $\begin{matrix} \leftarrow \text{No} \\ \text{No} \rightarrow \end{matrix}$ New	New/ Old Parts are both not interchangeable.
W		Part newly added.
Z		Part discontinued.
F		Not interchangeable by a single part but interchangeable together with related parts.
K		Changes only for used parts quantities.

④ Effective Machine No.

When a part changes, the effective Machine No. will be indicated in the (A)-(F) column.

Product Symbol	Product No.	Product Symbol	Product No.
C	Clutch No. Compressor No.	F	Machine No. (Agricultural Equip.)
D	Drive No.	M	Machine No.
E	Engine No.		

Note 1) A date may follow the symbol. (Ex.) 1996.01

Note 2) "XXXXX" and "ZZZZZ" are for parts that could not be predicted or for engine models that could not be identified.

Note 3) (A=E00185) is the E (Engine Serial Number) for the column (A) model (in this case 4JH-DT) after the parts design change.

⑤ Remarks Mark

Figures or alphabets (symbols) are entered in the remarks column.

The comments (remarks) on parts that are indicated at the bottom of the illustration are the same symbols as those stated above.

Contents

Fig. No. Fig. Name

EP1700-3100(S)

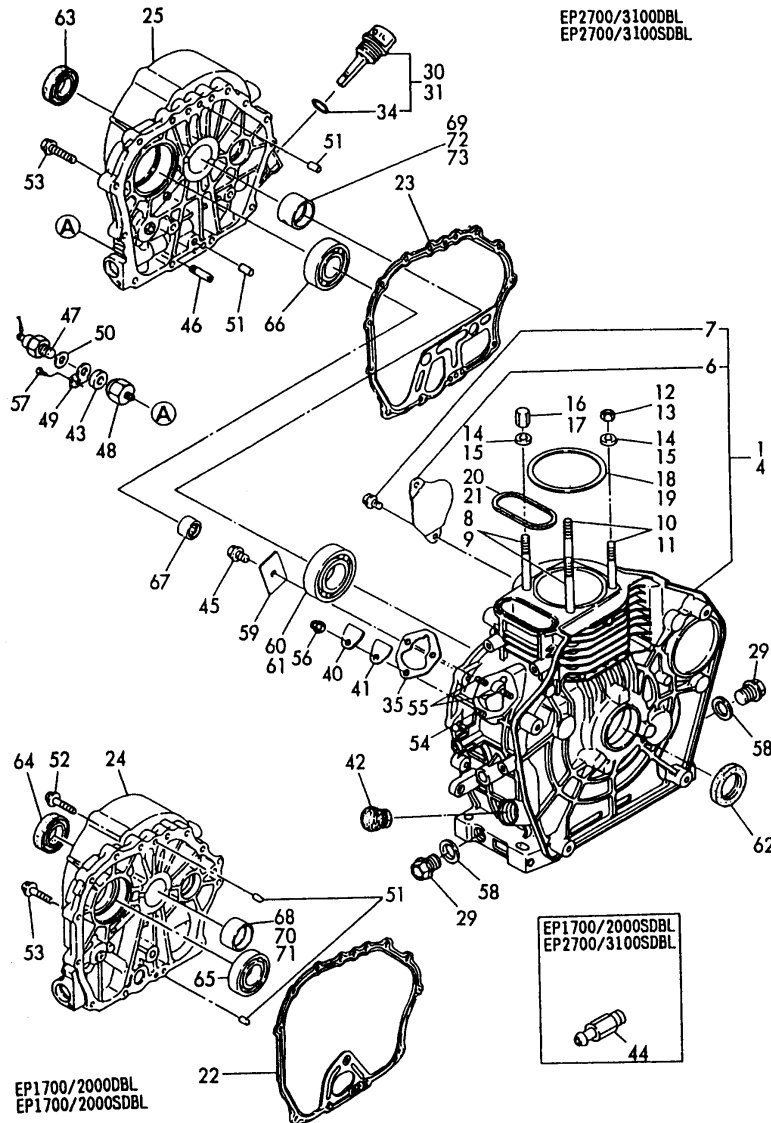
1. CYLINDER BLOCK
2. CYLINDER HEAD & BONNET
3. AIR CLEANER & MUFFLER
4. CRANKSHAFT, PISTON & CAMSHAFT
5. LUB. OIL PUMP & GOVERNOR
6. COOLING & STARTING DEVICE
7. FUEL INJECTION PUMP
8. FUEL TANK & FUEL PIPE
9. STARTING MOTOR & DYNAMO
10. LABEL, TOOL & GASKET SET
11. FRAME
12. SOUND-PROOF CASE
13. GENERATOR
14. PANEL(FRAME TYPE)
15. PANEL(SOUND-PROOF TYPE)

Fig. No. Fig. Name

Fig.1. CYLINDER BLOCK

(A)=EP1700/2000
(B)=EP1700/2000S
(C)=EP2700/3100

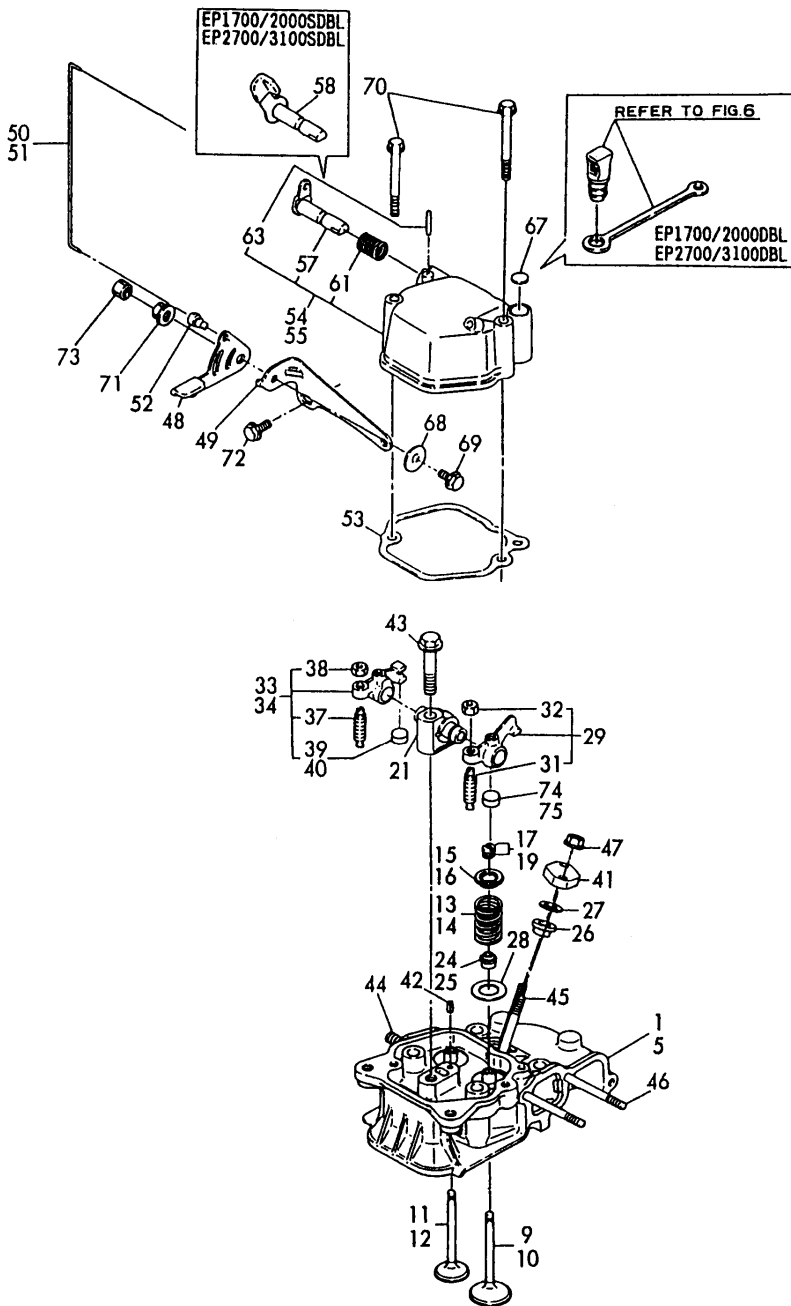
(D)=EP2700/3100S
(E)=
(F)=



No.	Lev.	Parts No.	Description	Q'ty						I	R
				(A)	(B)	(C)	(D)	(E)	(F)		
1	1	714271-01560	BLOCK ASSY, CYLINDER	1	1						
4	1	714371-01560	BLOCK ASSY, CYLINDER					1	1		
6	2	114350-01700	COVER	1	1	1	1				
7	2	26106-100122	BOLT, M10X 12 PLATED	1	1	1	1				
8	1	114250-01200	BOLT, HEAD	2	2						
9	1	114350-01200	BOLT, HEAD			2	2				
10	1	114250-01210	BOLT, HEAD	2	2						
11	1	114350-01210	BOLT, HEAD			2	2				
12	1	114250-01220	NUT, CYLINDER HEAD	2	2						
13	1	114350-01220	NUT, CYLINDER HEAD			2	2				
14	1	124950-01250	WASHER	4	4						
15	1	105225-01240	WASHER			4	4				
16	1	114250-01250	NUT, CAP	2	2						
17	1	114350-01250	NUT, CYLINDER HEAD			2	2				
18	1	114250-01340	GASKET, HEAD	1	1						
19	1	114350-01340	GASKET, HEAD			1	1				
20	1	114250-01380	O-RING	1	1						
21	1	114350-01380	O-RING			1	1				
22	1	114250-01412	GASKET, CRANK CASE	1	1						
23	1	114350-01412	GASKET, CRANK CASE			1	1				
24	1	183250-01450	COVER, CRANK CASE	1	1						
25	1	183350-01450	COVER, CRANK CASE			1	1				
29	1	105425-01690	PLUG, 16	2	1	2	1				
30	1	160710-01760	CAP ASSY, L82	1	1						
31	1	160910-01740	CAP ASSY			1	1				
34	2	24311-000180	O-RING, 1AP18.0	1	1	1	1				
35	1	114250-01800	SHIM SET	1	1	1	1				
40	1	114250-01830	COVER	1	1	1	1				
41	1	114250-01840	GASKET	1	1	1	1				
42	1	160110-01870	PLUG, RUBBER	1	1	1	1				
43	1	183366-08290	WASHER	1	1	1	1				
44	1	183366-08351	NIPPLE, DRAIN		1		1				
45	1	26106-080122	BOLT, M8X 12 PLATED	1	1	1	1				
46	1	114250-35150	PIPE, OIL INLET	1		1	1				
47	1	183250-39450	SWITCH, 1.0KG	1	1	1	1				
48	1	183366-39460	JOINT	1	1	1	1				
49	1	171022-39470	TERMINAL, EARTH	1	1	1	1				
50	1	22117-100000	WASHER, 10	1	1	1	1				
51	1	22312-080120	PIN, PARALLEL M8X12	2	2	2	2				
52	1	26106-060252	BOLT, M6X 25 PLATED	14	14						
53	1	26106-080352	BOLT, M8X 35 PLATED	1	1	15	15				
54	1	26226-060182	STUD, M6X 18	1	1	1	1				
55	1	26226-060222	STUD, M6X 22	2	2	2	2				
56	1	26366-060002	NUT, M6	3	3	3	3				
57	1	26557-040082	SCREW, M4X 8	1	1	1	1				
58	1	43400-500490	SEAL WASHER 16	2	2	2	2				
59	1	114250-02030	RETAINER, BEARING	1	1	1	1				
60	1	114250-02113	BEARING, HR6306G3C3	1	1						
61	1	114350-02113	BEARING, B35-135G3C3			1	1				
62	1	160110-02220	SEAL, OIL	1	1	1	1				
63	1	160110-02220	SEAL, OIL			1	1				

Remarks
(1) ONLY FOR REPAIR.
(2) UNDERSIZED PART.

Fig.2. CYLINDER HEAD & BONNET



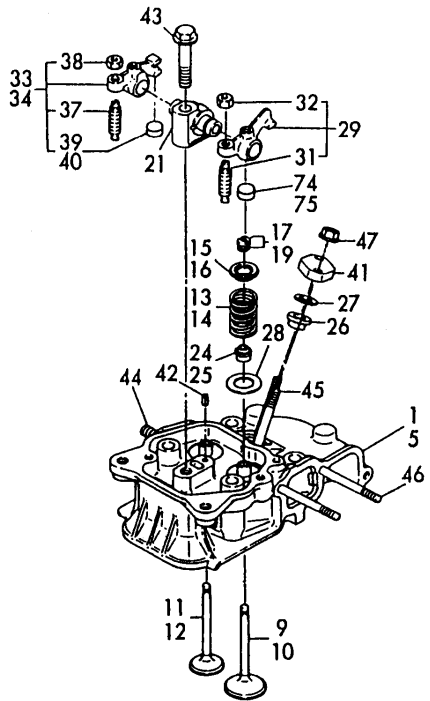
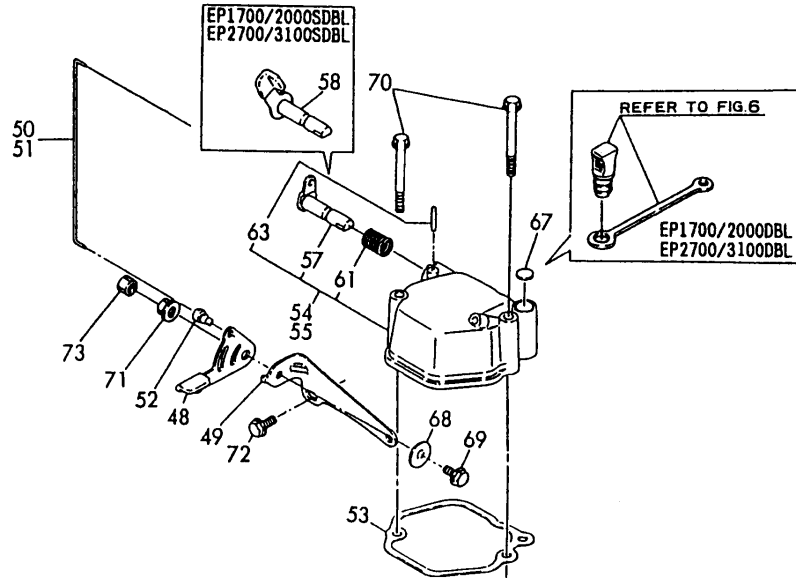
(A)=EP1700/2000
 (B)=EP1700/2000S
 (C)=EP2700/3100
 (D)=EP2700/3100S
 (E)=
 (F)=

No.	Lev.	Parts No.	Description	Q'ty						I	R
				(A)	(B)	(C)	(D)	(E)	(F)		
1	1	114250-11020	HEAD ASSY, CYLINDER	1	1						
5	1	114350-11021	HEAD ASSY, CYLINDER			1	1				
9	1	114250-11101	VALVE, INTAKE	1	1						
10	1	114350-11101	VALVE, INTAKE			1	1				
11	1	114250-11113	VALVE, EXHAUST	1	1						
12	1	114350-11113	VALVE, EXHAUST			1	1				
13	1	114250-11120	SPRING, VALVE	2	2						
14	1	114350-11120	SPRING, VALVE			2	2				
15	1	101158-11180	RETAINER, SPRING			2	2				
16	1	114250-11180	RETAINER, SPRING	2	2						
17	1	27310-060001	COTTER, 6			2	2				
19	1	714250-11570	COTTER ASSY	2	2						
21	1	114250-11290	SUPPORT, ROCKER ARM	1	1	1	1				
24	1	114250-11340	SEAL, VALVE STEM	2	2						
25	1	114350-11340	SEAL, VALVE STEM			2	2				
26	1	114250-11460	GASKET, NOZZLE	1	1	1	1				
27	1	114350-11470	SPACER, NOZZLE	1	1	1	1				
28	1	114250-11600	WASHER	2	2	2	2				
29	1	114250-11651	ARM, ROCKER	1	1	1	1				
31	2	114250-11240	SCREW, VALVE ADJUST	1	1	1	1				
32	2	26756-060002	NUT, LOCK M6	1	1	1	1				
33	1	714270-11660	ARM ASSY, ROCKER	1	1						
34	1	714370-11660	ARM ASSY, ROCKER			1	1				
37	3	114250-11240	SCREW, VALVE ADJUST	1	1	1	1				
38	3	26756-060002	NUT, LOCK M6	1	1	1	1				
39	2	119260-11370	CAP, VALVE	1	1						
40	2	105010-11490	CAP, VALVE			1	1				
41	1	114250-11900	RETAINER, NOZZLE	1	1	1	1				
42	1	22351-040008	PIN, SPRING 4.0X 8	1	1	1	1				
43	1	26106-080452	BOLT, M8X 45 PLATED	1	1	1	1				
44	1	26216-080182	STUD, M8X 18	2	2	2	2				
45	1	26226-060502	STUD, M6X 50	2	2	2	2				
46	1	26226-060552	STUD, M6X 55	2	2	2	2				
47	1	26366-060002	NUT, M6	2	2	2	2				
48	1	183250-03410	LEVER, DECOMPRESSION	1		1					
49	1	183250-03450	BRACKET, LEVER	1		1					
50	1	183250-03510	LINK	1							
51	1	183350-03510	LINK			1					
52	1	183250-03550	JOINT	2		2					
53	1	114250-11310	GASKET, BONNET	1	1	1	1				
54	1	183250-11951	BONNET ASSY, HEAD	1		1					
55	1	114250-11951	BONNET ASSY, HEAD			1	1				
57	2	183250-03601	SHAFT, DECOMPRESSION	1		1					
58	2	114250-03591	LEVER ASSY		1		1				
61	2	114250-03640	SPRING, DECOMPRESSION	1	1	1	1				
63	2	22312-030160	PIN, PARALLEL M3X16	1	1	1	1				
67	1	129100-61850	PLUG, 12		1		1				
68	1	160670-66350	COLLAR	1		1					
69	1	26106-060202	BOLT, M6X 20 PLATED	1		1					
70	1	26106-060552	BOLT, M6X 55 PLATED	2	2	2	2				
71	1	26366-060002	NUT, M6	1		1					

Fig.2. CYLINDER HEAD & BONNET

(A)=EP1700/2000
 (B)=EP1700/2000S
 (C)=EP2700/3100

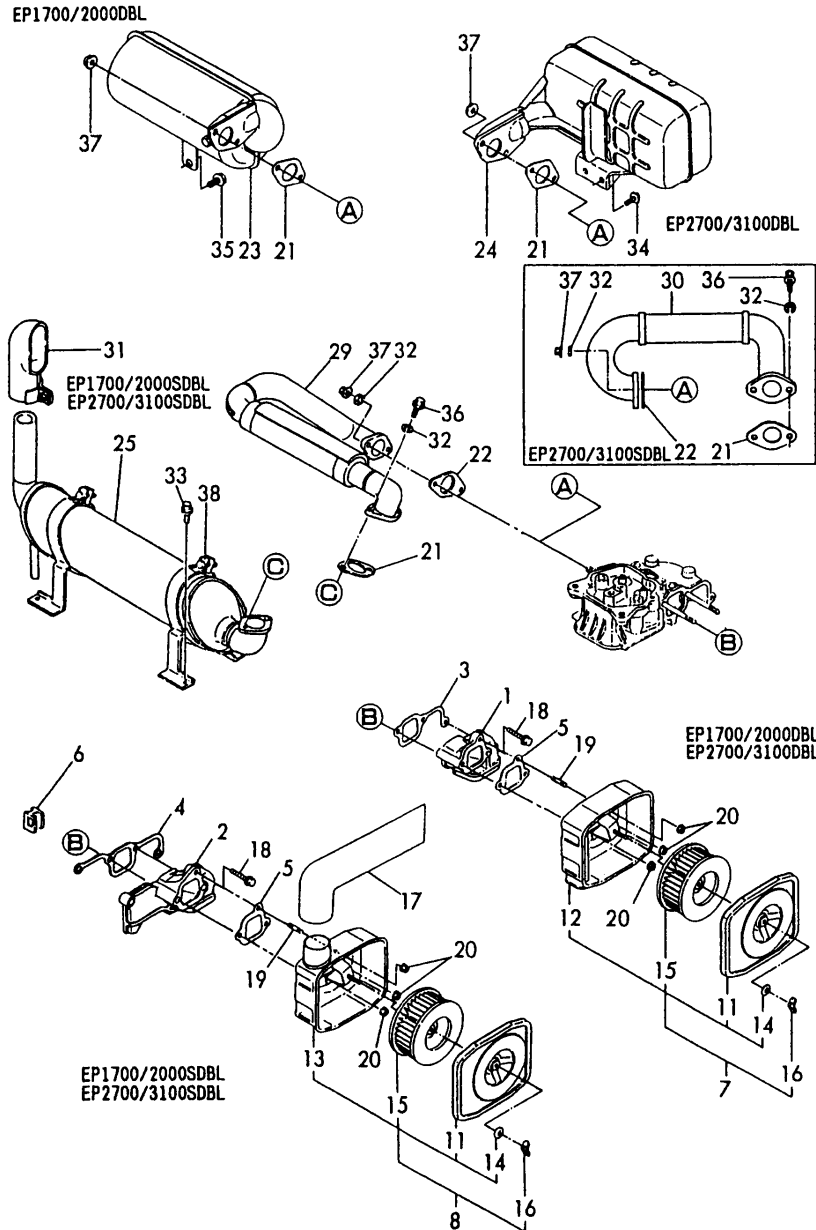
(D)=EP2700/3100S
 (E)=
 (F)=



No.	Lev.	Parts No.	Description	Qty						I	R	
				(A)	(B)	(C)	(D)	(E)	(F)			
72	1	26476-060142	SCREW, TAPPING M6X14	2		2						
73	1	26756-060002	NUT, LOCK M6	1		1						
74	1	105010-11490	CAP, VALVE				1		1			
75	1	119260-11370	CAP, VALVE	1	1							

Fig.3. AIR CLEANER & MUFFLER

(A)=EP1700/2000 (D)=EP2700/3100S
 (B)=EP1700/2000S (E)=
 (C)=EP2700/3100 (F)=

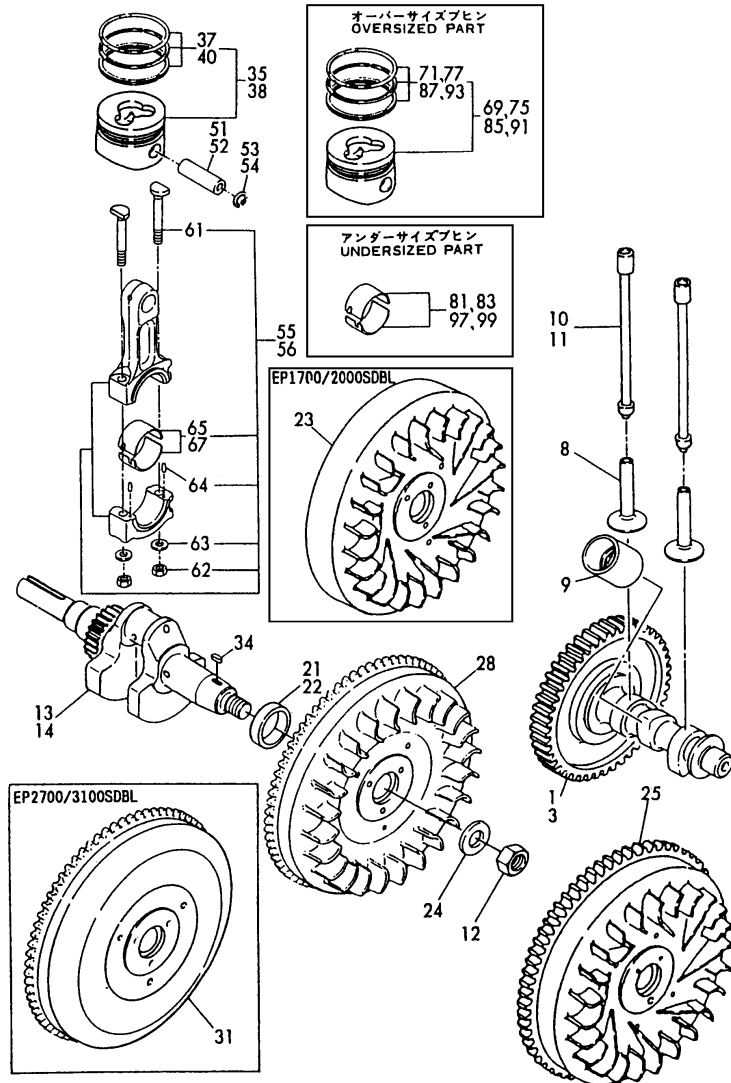


No.	Lev.	Parts No.	Description	Q'ty						I	R
				(A)	(B)	(C)	(D)	(E)	(F)		
1	1	114250-12010	PIPE, AIR INTAKE	1	1						
2	1	114350-12011	PIPE, AIR INTAKE				1	1			
3	1	114250-12200	GASKET	1	1						
4	1	114350-12201	GASKET				1	1			
5	1	114250-12210	GASKET, AIR CLEANER	1	1	1	1	1			
6	1	114650-12350	GROMMET						1		
7	1	714250-12560	CLEANER ASSY, AIR	1		1					
8	1	783366-12560	CLEANER ASSY, AIR		1			1			
11	3	114250-12520	COVER, AIR CLEANER	1	1	1	1	1			
12	3	114250-12530	CASE ASSY, CLEANER	1		1					
13	3	183366-12530	CASE ASSY			1		1			
14	3	114250-12560	WASHER, SEAL M6	1	1	1	1	1			
15	3	114250-12580	ELEMENT	1	1	1	1	1			
16	2	114250-12550	NUT, WING M6	1	1	1	1	1			
17	1	183366-12590	HOSE, CLEANER			1		1			
18	1	26106-060252	BOLT, M6X 25 PLATED	1	1	2	2				
19	1	26226-060142	STUD, M6X 14	1	1	1	1				
20	1	26366-060002	NUT, M6	3	3	3	3				
21	1	114250-13200	GASKET, MUFFLER	1	1	1	1				
22	1	183671-13210	GASKET		1		1				
23	1	183263-13510	MUFFLER	1							
24	1	183350-13512	MUFFLER ASSY				1				
25	1	183366-13300	MUFFLER ASSY		1		1				
29	1	183266-13601	PIPE		1						
30	1	183366-13601	PIPE					1			
31	1	114658-13800	PIPE		1		1				
32	1	22213-080000	WASHER, SPRING 8		4		4				
33	1	26014-060142	BOLT, M6X 14		4		4				
34	1	26106-060162	BOLT, M6X 16 PLATED			2					
35	1	26106-080162	BOLT, M8X 16 PLATED	1							
36	1	26106-080282	BOLT, M8X 28 PLATED		2		2				
37	1	26366-080002	NUT, M8	2	2	2	2				
38	1	26106-060202	BOLT, M6X 20 PLATED		2		2				

Fig.4. CRANKSHAFT, PISTON & CAMSHAFT

(A)=EP1700/2000
(B)=EP1700/2000S
(C)=EP2700/3100

(D)=EP2700/3100S
(E)=
(F)=



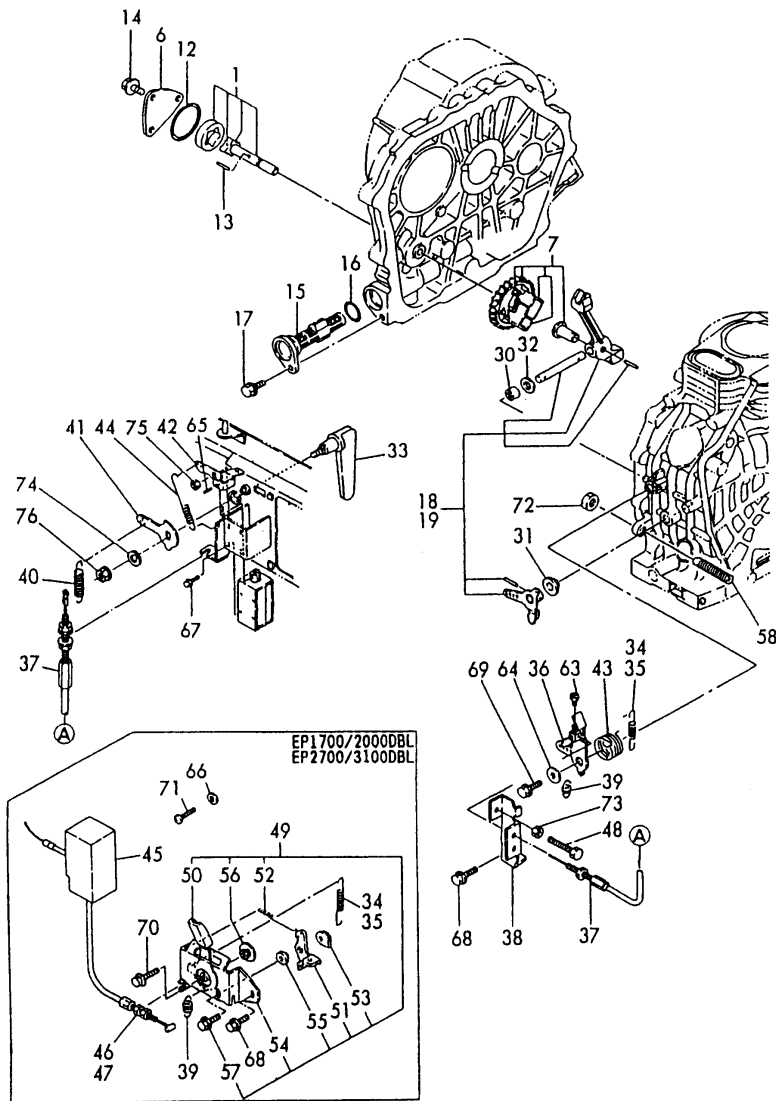
No.	Lev.	Parts No.	Description	Qty						I	R
				(A)	(B)	(C)	(D)	(E)	(F)		
1	1	714780-14580	CAMSHAFT ASSY	1	1						
1-1	1	714780-14581	CAMSHAFT ASSY, D	1	1						R
				(A=EZZZZZ)		(B=EZZZZZ)					
3	1	714880-14580	CAMSHAFT ASSY			1	1				
8	1	114250-14200	TAPPET	2	2	2	2				
9	1	114250-14260	TAPPET	1	1	1	1				
10	1	114250-14450	ROD ASSY, PUSH	2	2						
11	1	114350-14450	ROD ASSY, PUSH			2	2				
12	1	103854-01221	NUT, CYLINDER HEAD	1	1	1	1				
13	1	714284-21700	CRANKSHAFT ASSY	1	1						M
13-1	1	783292-21700	CRANKSHAFT ASSY	1	1						
14	1	714384-21700	CRANKSHAFT ASSY			1	1				M
14-1	1	783392-21700	CRANKSHAFT ASSY			1	1				
21	1	183250-21350	SPACER, CRANKSHAFT	1	1						
22	1	183350-21350	SPACER, CRANKSHAFT			1	1				
23	1	114780-21400	FLYWHEEL	1							1
24	1	114250-21550	WASHER	1	1	1	1				
25	1	114881-21590	FLYWHEEL ASSY			1					2
28	1	183266-21590	FLYWHEEL ASSY		1						
31	1	183366-21590	FLYWHEEL ASSY				1				
34	1	22512-040120	KEY, 4X 12	1	1	1	1				
35	1	714280-22720	PISTON ASSY, D	1	1						
37	2	714250-22502	RING SET, PISTON	1	1						
38	1	714380-22720	PISTON ASSY, D			1	1				
40	2	714350-22502	RING SET, PISTON			1	1				
51	1	114250-22302	PIN, PISTON D=19	1	1						
52	1	114350-22301	PIN, PISTON D=21			1	1				
53	1	22252-000190	RING, 19	2	2						
54	1	22252-000210	RING, 21			2	2				
55	1	714250-23703	ROD ASSY, CONNECTING	1	1						
56	1	714350-23702	ROD ASSY, CONNECTING			1	1				M
56-1	1	714350-23704	ROD ASSY, CONNECTING			1	1				
61	3	114250-23200	BOLT, CONNECTING ROD	2	2	2	2				
62	3	114250-23220	NUT	2	2	2	2				
63	3	114250-23250	WASHER	2	2	2	2				
64	3	22312-030080	PIN, PARALLEL M3X 8	2	2	2	2				
65	2	714250-23600	BEARING, CRANK PIN	1	1						
67	2	714350-23600	BEARING, CRANK PIN			1	1				
69	1	714280-22620	PISTON ASSY, 0.25 OS	1	1						3
71	2	714250-22542	RING SET, 0.25 OS	1	1						3
75	1	714280-22580	PISTON ASSY, 0.50 OS	1	1						3
77	2	714250-22550	RING SET, 0.50 OS	1	1						3
81	1	714250-23610	BEARING ASSY, 0.25	1	1						4
83	1	714250-23620	BEARING, 0.50 US	1	1						4
85	1	714380-22620	PISTON ASSY, 0.25 OS			1	1				3
87	2	714350-22542	RING SET, 0.25 OS			1	1				3
91	1	714380-22580	PISTON ASSY, 0.50 OS			1	1				3
93	2	714350-22550	RING SET, 0.50 OS			1	1				3
97	1	714350-23610	BEARING ASSY, 0.25			1	1				4
99	1	714350-23620	BEARING, 0.50 US			1	1				4

Remarks

- (1) RECOIL STARTER ENGINE
- (2) ELECTRIC STARTER ENGINE
- (3) OVERSIZED PART.
- (4) UNDERSIZED PART.
- (M) MISPRINT.

Fig.5. LUB. OIL PUMP & GOVERNOR

(A)=EP1700/2000
 (B)=EP1700/2000S
 (C)=EP2700/3100
 (D)=EP2700/3100S
 (E)=
 (F)=



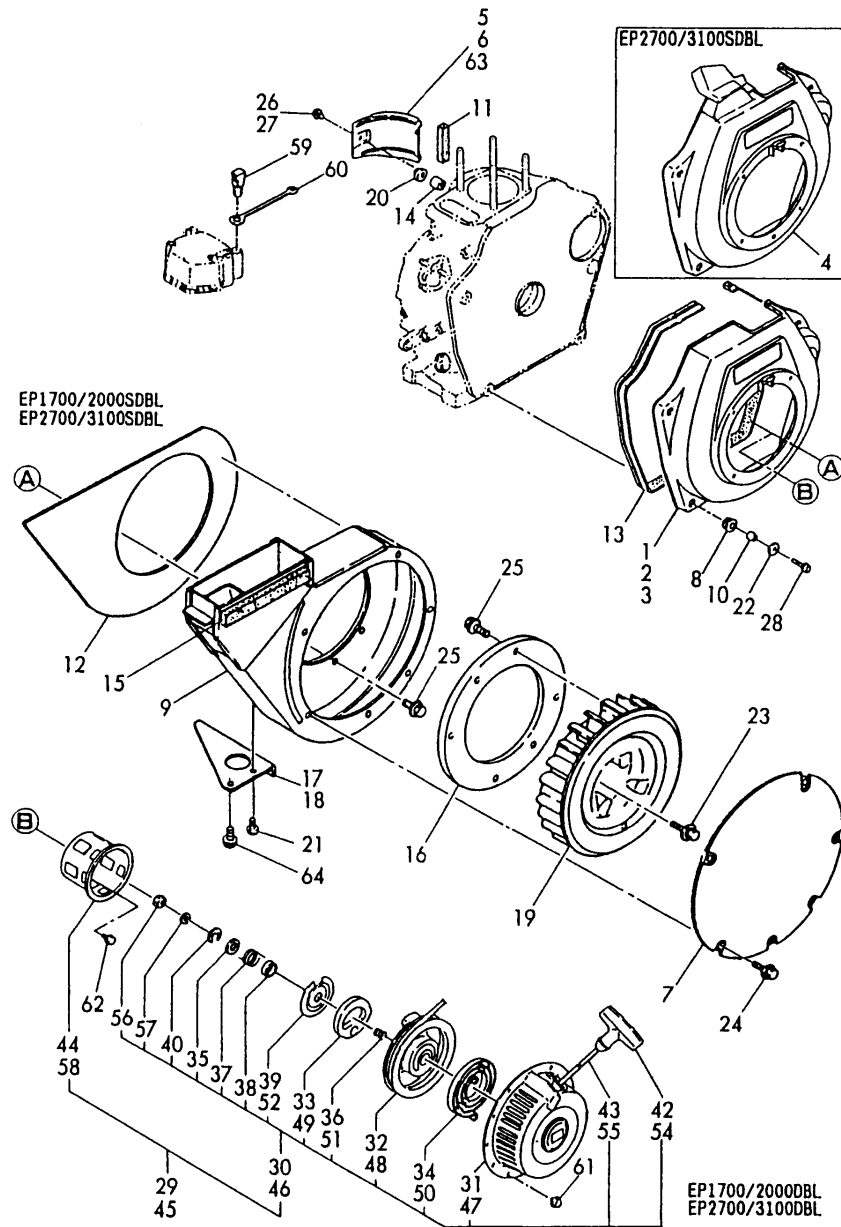
No.	Lev.	Parts No.	Description	Q'ty						I	R
				(A)	(B)	(C)	(D)	(E)	(F)		
1	1	114250-32010	PUMP ASSY, OIL	1	1	1	1				
6	1	114250-32070	COVER	1	1	1	1				
7	1	714770-61700	GOVERNOR ASSY	1	1	1	1				
12	1	103338-32570	O-RING	1	1	1	1				
13	1	22312-030160	PIN, PARALLEL M3X16	1	1	1	1				
14	1	26476-060142	SCREW, TAPPING M6X14	3	3	3	3				
15	1	114250-35070	FILTER, OIL	1	1	1	1				
16	1	24341-000224	O-RING, 1AS22.4	1	1	1	1				
17	1	26106-060162	BOLT, M6X 16 PLATED	1	1	1	1				
18	1	714250-61501	LEVER ASSY, GOVERNOR	1	1						
19	1	714350-61501	LEVER ASSY, GOVERNOR			1	1				
30	1	121450-61520	BEARING, NEEDLE 8	2	2	2	2				
31	1	114250-61600	BUSH	1	1	1	1				
32	1	22137-080000	WASHER, 8	1	1	1	1				
33	1	183267-66350	LEVER, LOCK		1		1				
34	1	114770-66010	SPRING, REGULATOR	1	1						
35	1	114870-66010	SPRING, REGULATOR			1	1				
36	1	114252-66060	HANDLE, REGULATOR		1		1				
37	1	183266-66110	WIRE		1		1				
38	1	114252-66120	BRACKET		1		1				
39	1	114250-66200	SPRING, RETURN	1	1	1	1				
40	1	183266-66210	SPRING		1		1				
41	1	183266-66230	LEVER, LOCK		1		1				
42	1	183267-66240	LEVER, LOCK		1		1				
43	1	114252-66252	SPRING, RETURN		1		1				
44	1	183250-66331	SPRING		1		1				
45	1	183250-66410	COVER	1		1					
46	1	183250-66420	WIRE	1							1
47	1	183350-66420	WIRE, L=180			1					2
48	1	114250-66440	BOLT, ADJUSTING		1		1				
49	1	183250-66511	BRACKET ASSY, HANDLE	1		1					
50	2	183250-66301	HANDLE	1		1					
51	2	183250-66321	LEVER, LOCK	1		1					
52	2	183250-66331	SPRING	1		1					
53	2	183250-66341	NUT, LOCK	1		1					
54	2	183250-66351	BRACKET	1		1					
55	2	183250-66361	COLLAR	1		1					
56	2	183250-66371	COLLAR	1		1					
57	2	26106-060162	BOLT, M6X 16 PLATED	1		1					
58	1	114250-66550	LIMITER ASSY, FUEL	1	1	1	1				
63	1	105225-66990	SCREW, M5X8.5		1		1				
64	1	183350-55130	WASHER		1		1				
65	1	22351-030012	PIN, SPRING 3.0X12		1		1				
66	1	23418-050000	GASKET, 5X1.0	1		1					
67	1	26023-030082	SCREW, M3X 8		4		4				
68	1	26476-060142	SCREW, TAPPING M6X14	1	1	1	1				
69	1	26476-060202	SCREW, TAPPING M6X20		1		1				
70	1	26106-060202	BOLT, M6X 20 PLATED	1		1					
71	1	26557-040082	SCREW, M4X 8	2	2						
72	1	26696-100002	NUT, LOCK M10	1	1	1	1				
73	1	26757-060002	NUT, LOCK M6		1		1				

Remarks
 (1) RECOIL STARTER ENGINE
 (2) ELECTRIC STARTER ENGINE

Fig.6. COOLING & STARTING DEVICE

(A)=EP1700/2000
(B)=EP1700/2000S
(C)=EP2700/3100

(D)=EP2700/3100S
(E)=
(F)=

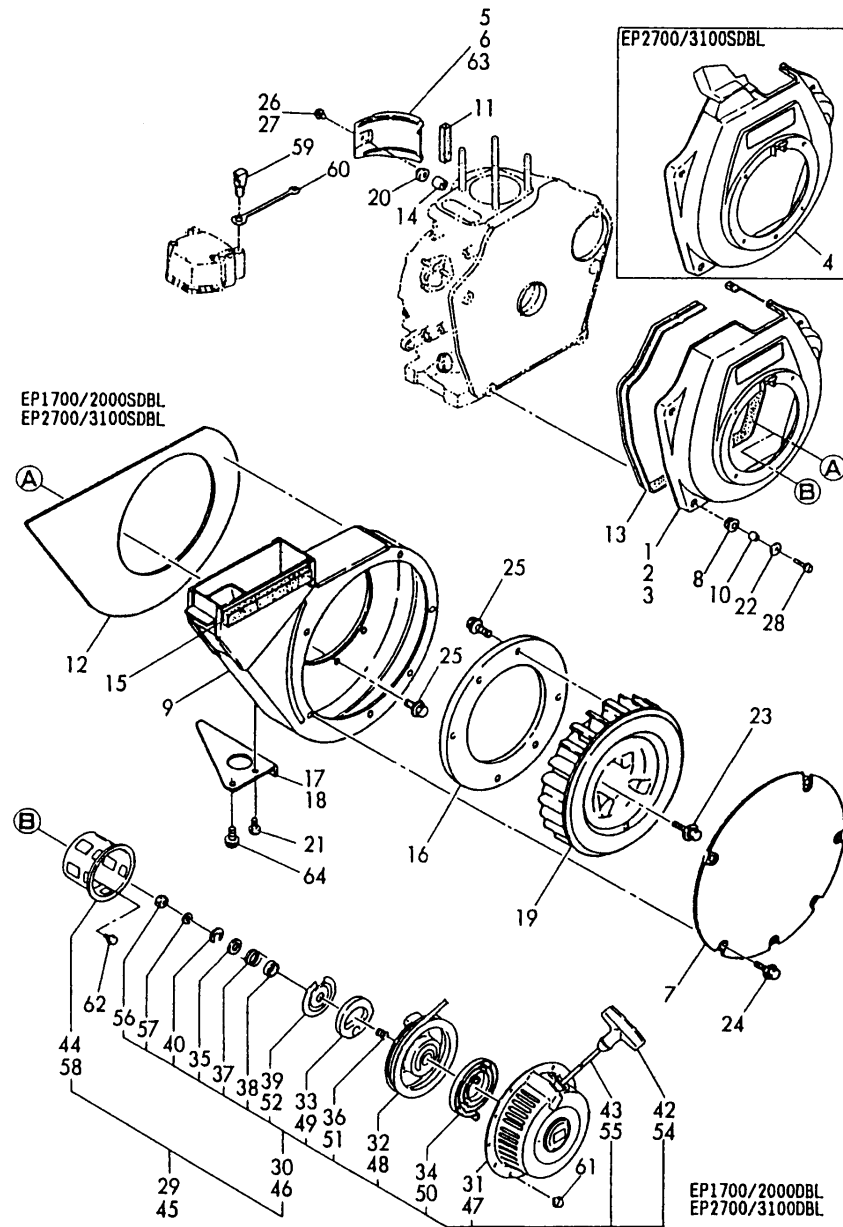


No.	Lev.	Parts No.	Description	Qty						I	R
				(A)	(B)	(C)	(D)	(E)	(F)		
1	1	114780-45100	CASE, COOLING FAN	1							
2	1	114360-45101	CASE, COOLING FAN			1					
3	1	183266-45110	CASE, COOLING FAN		1						
4	1	183366-45111	CASE, COOLING FAN					1			
5	1	114350-45201	COVER						1		
6	1	114250-45211	COVER	1	1						
7	1	183366-45220	COVER ASSY		1			1			
8	1	114250-45300	ABSORBER	4	4	5	5				
9	1	183366-45300	SCROLL		1			1			
10	1	114250-45310	COLLAR	4	4	5	5				
11	1	114350-45320	RUBBER, SEAL				1	1			
12	1	183366-45320	ISOLATOR		1			1			
13	1	114250-45330	SEAL, FAN CASE L=875	1	1	1	1				
14	1	114350-45340	COLLAR			1	1				
15	1	183266-45360	SPONGE		1						
16	1	183366-45410	COVER, FAN		1		1				
17	1	183266-45460	STAY, SCROLL		1						
18	1	183366-45460	STAY, SCROLL					1			
19	1	183366-45600	FAN, COOLING		1		1				
20	1	183720-55210	GROMMET			1	1				
21	1	26557-060142	SCREW M 6X 14		1		1				
22	1	160120-76940	WASHER	4	4	5	5				
23	1	26014-080302	BOLT, M8X 30		3		3				
24	1	26106-060082	BOLT, M6X 8 PLATED		7		7				
25	1	26106-060122	BOLT, M6X 12 PLATED		14		14				
26	1	26476-060142	SCREW, TAPPING M6X14	1	1						
27	1	26476-060202	SCREW, TAPPING M6X20				1	1			
28	1	26476-060252	SCREW, TAPPING M6X25	4	4	5	5				
29	1	114260-76050	STARTER ASSY, RECOIL	1							
30	2	114260-76250	STARTER ASSY, RECOIL	1							
31	3	114260-76520	CASE, STARTER	1							
32	3	160260-76520	REEL	1							
33	3	160260-76530	RATCHET	1							
34	3	160260-76540	SPRING, SPIRAL	1							
35	3	160260-76550	WASHER, THRUST	1							
36	3	160260-76560	SPRING, FRICTION	1							
37	3	160290-76570	SPRING, RETURN	1							
38	3	160260-76580	COVER	1							
39	3	160260-76590	PLATE, FRICTION	1							
40	3	160260-76600	CIRCLIP	1							
42	3	160260-76620	KNOB, STARTER	1							
43	3	160260-76630	ROPE, STARTER	1							
44	2	114250-76590	PULLEY, STARTER	1							
45	1	114880-76050	STARTER ASSY, RECOIL				1				
46	2	114880-76250	STARTER ASSY, RECOIL				1				
47	3	114880-76510	CASE, STARTER				1				
48	3	160810-76520	REEL				1				
49	3	160840-76530	RATCHET				1				
50	3	160810-76540	SPRING, SPIRAL				1				
51	3	160840-76560	SPRING, FRICTION				1				
52	3	160810-76580	PLATE, FRICTION				1				

Fig.6. COOLING & STARTING DEVICE

(A)=EP1700/2000
 (B)=EP1700/2000S
 (C)=EP2700/3100

(D)=EP2700/3100S
 (E)=
 (F)=

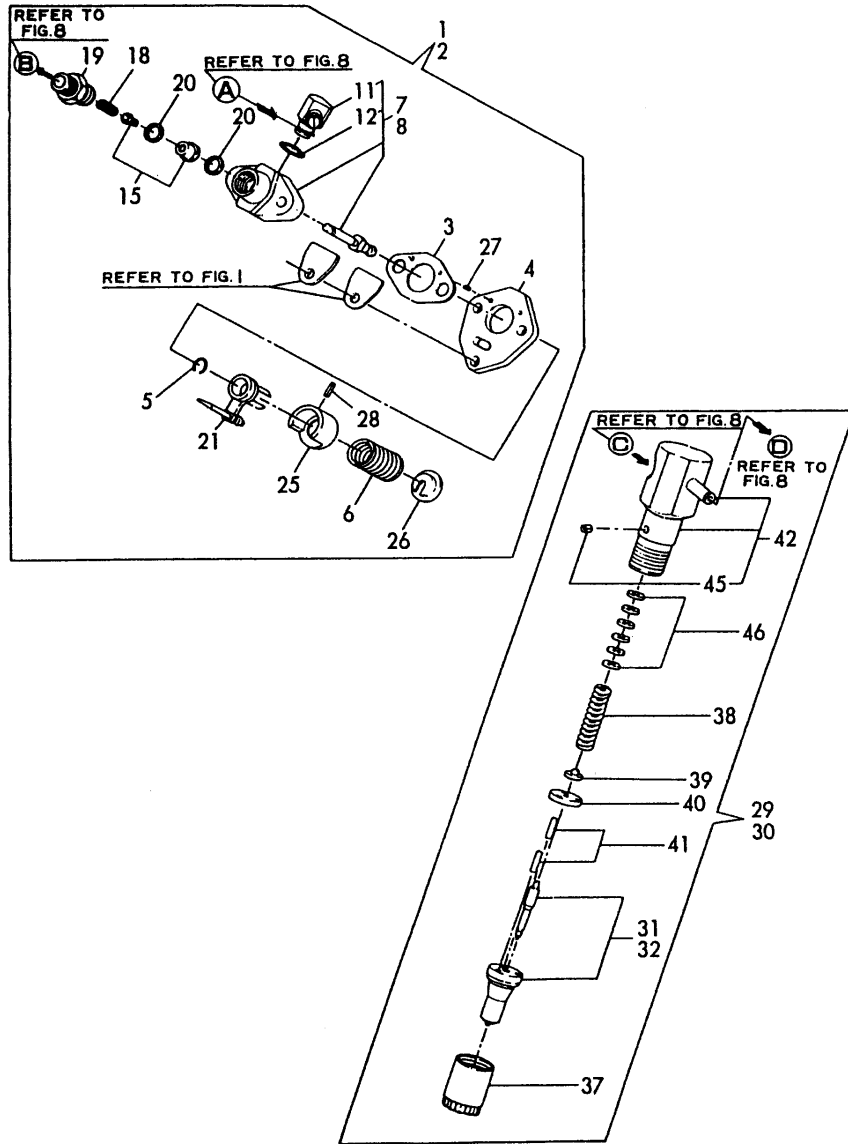


No.	Lev.	Parts No.	Description	Qty						I	R
				(A)	(B)	(C)	(D)	(E)	(F)		
54	3	160810-76620	KNOB, STARTER			1					
55	3	160810-76630	ROPE, STARTER			1					
56	3	181130-76680	NUT			1					
57	3	181130-76700	WASHER			1					
58	2	114350-76590	PULLEY, STARTER			1					
59	1	114250-76600	PLUNGER	1		1					
60	1	114250-76610	HOLDER, PLUNGER	1		1					
61	1	26106-060082	BOLT, M6X 8 PLATED	4		4					
62	1	26106-060122	BOLT, M6X 12 PLATED	3		3					
63	1	114870-45200	COVER			1					
64	1	26106-060142	BOLT, M6X 14 PLATED		1		1				

Fig.7. FUEL INJECTION PUMP

(A)=EP1700/2000
 (B)=EP1700/2000S
 (C)=EP2700/3100

(D)=EP2700/3100S
 (E)=
 (F)=

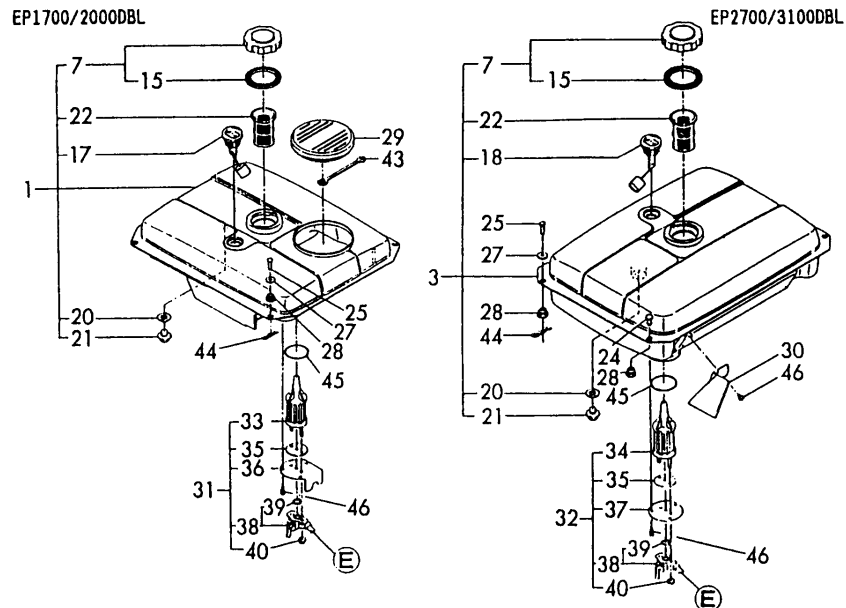


No.	Lev.	Parts No.	Description	Qty						I	R
				(A)	(B)	(C)	(D)	(E)	(F)		
1	1	783250-51701	PUMP ASSY, INJECTION	1	1						
2	1	783350-51701	PUMP ASSY, INJECTION					1	1		
3	2	105546-51020	GASKET	1	1	1	1				
4	2	114250-51080	PLATE	1	1	1	1				
5	2	114250-51150	RING, SNAP	1	1	1	1				
6	2	114250-51160	SPRING, PLUNGER	1	1	1	1				
7	2	183250-51200	BODY ASSY, PUMP	1	1						
8	2	183350-51200	BODY ASSY, PUMP					1	1		
11	3	114250-51180	JOINT, PIPE	1	1	1	1				
12	3	114250-51190	O-RING, S27	1	1	1	1				
15	2	114250-51300	VALVE ASSY, DELIVERY	1	1	1	1				
18	2	105546-51330	SPRING, DELIVERY	1	1	1	1				
19	2	114250-51340	HOLDER, DELIVERY	1	1	1	1				
20	2	124550-51350	GASKET, DELIVERY	2	2	2	2				
21	2	114250-51600	LEVER ASSY, CONTROL	1	1	1	1				
25	2	114250-51640	SEAT, SPRING A	1	1	1	1				
26	2	114250-51650	SEAT, SPRING B	1	1	1	1				
27	2	22351-020006	PIN, SPRING 2.0X 6	2	2	2	2				
28	2	22351-030008	PIN, SPRING 3.0X 8	1	1	1	1				
29	1	714250-53101	VALVE ASSY,INJECTION	1	1						
30	1	714870-53100	VALVE ASSY,INJECTION					1	1		
31	2	114250-53001	VALVE ASSY,INJECTION	1	1						
32	2	114870-53000	VALVE ASSY,INJECTION					1	1		
37	2	114250-53080	NUT, NOZZLE D16.95	1	1	1	1				
38	2	114250-53120	SPRING, NOZZLE	1	1	1	1				
39	2	114250-53130	SEAT, SPRING	1	1	1	1				
40	2	114250-53140	PLATE	1	1	1	1				
41	2	114250-53210	PIN	2	2	2	2				
42	2	114250-53300	HOLDER ASSY, NOZZLE	1	1	1	1				
45	3	114250-53331	PIN	1	1	1	1				
46	2	114250-53400	SHIM SET	1	1	1	1				

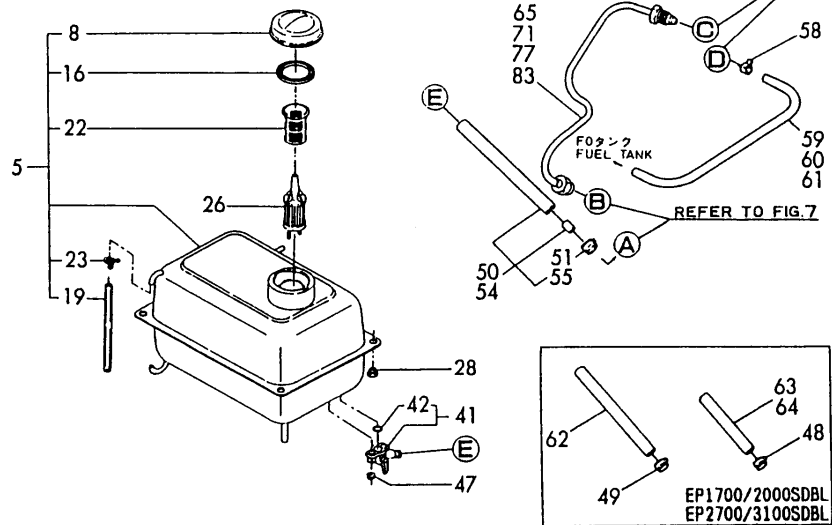
Fig.8. FUEL TANK & FUEL PIPE

(A)=EP1700/2000
 (B)=EP1700/2000S
 (C)=EP2700/3100

(D)=EP2700/3100S
 (E)=
 (F)=



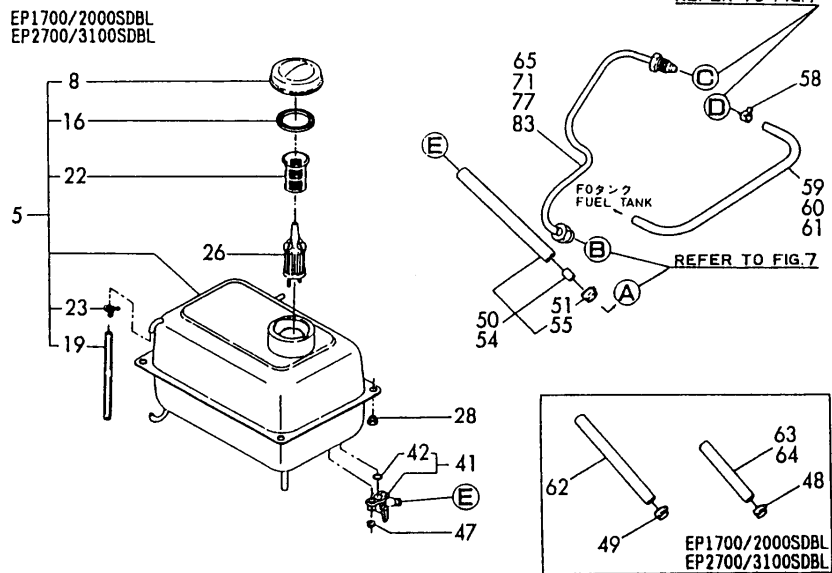
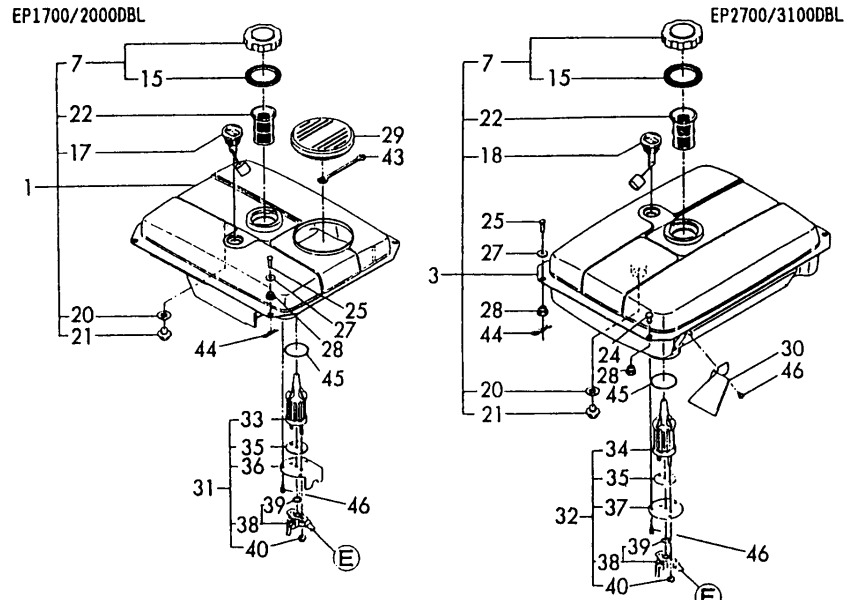
EP1700/2000SDBL
 EP2700/3100SDBL



No.	Lev.	Parts No.	Description	Q'ty						I	R
				(A)	(B)	(C)	(D)	(E)	(F)		
1	1	783250-55720	TANK ASSY, FUEL	1							
3	1	783350-55720	TANK ASSY, FUEL			1					
5	1	783366-55700	TANK ASSY, FUEL		1		1				
7	2	160710-55061	CAP ASSY	1		1					
8	2	105015-55040	CAP, FUEL TANK		1		1				
15	3	160393-55050	GASKET	1		1					
16	2	101504-55051	GASKET		1		1				
17	2	183925-55150	GAUGE	1							
18	2	183621-55150	GAUGE			1					
19	2	183366-55150	GAUGE, LEVEL		1		1				
20	2	23414-120000	GASKET, 12X1.0	1		1					
21	2	23887-120002	PLUG, 12	1		1					
22	2	160710-55100	FILTER, FUEL	1	1	1	1				
23	2	103854-55220	RETAINER		2		2				
24	1	183350-55110	PIN, 6X12				2				
25	1	183350-55120	PIN, 6X14	4		2					
26	1	183366-55120	FILTER, FUEL		1		1				
27	1	183350-55130	WASHER	4		2					
28	1	183720-55210	GROMMET	4	4	4	4				
29	1	183250-55250	COVER	1							
30	1	183350-55260	PLATE, GUIDE				1				
31	1	183250-55300	COCK ASSY, FUEL	1							
32	1	183350-55300	COCK ASSY, FUEL				1				
33	2	183250-55120	FILTER, FUEL	1							
34	2	114350-55120	FILTER ASSY, FUEL				1				
35	2	114250-55130	GASKET	1		1					
36	2	183250-55170	PLATE	1							
37	2	183350-55170	PLATE				1				
38	2	183250-55320	COCK ASSY, FUEL	1		1					
39	3	24341-000150	O-RING, 1AS15.0	1		1					
40	2	26366-060002	NUT, M6	2		2					
41	1	183250-55320	COCK ASSY, FUEL		1		1				
42	2	24341-000150	O-RING, 1AS15.0		1		1				
43	1	114250-76610	HOLDER, PLUNGER	1							
44	1	22360-060000	PIN, SNAP 6	4		2					
45	1	24311-000400	O-RING, 1AP40.0	1		1					
46	1	26022-050102	SCREW, M5X10	7		5					
47	1	26366-060002	NUT, M6		2		2				
48	1	171008-03990	CLIP, HOSE 18.5		2		2				
49	1	106990-44660	CLIP, HOSE 12.5		2		2				
50	1	183350-59010	PIPE ASSY, FUEL	1		1					
51	2	106990-44660	CLIP, HOSE 12.5	3		3					
54	1	183366-59010	PIPE ASSY, FUEL		1		1				
55	2	106990-44660	CLIP, HOSE 12.5		3		3				
58	1	124722-59050	CLIP, HOSE 9	2	2	2	2				
59	1	183250-59060	PIPE, FUEL RETURN	1							
60	1	183350-59060	PIPE, FUEL RETURN				1				
61	1	183671-59060	PIPE, FUEL RETURN		1		1				
62	1	183366-59330	PIPE, FUEL RETURN		1		1				
63	1	183366-59341	PIPE		1						
64	1	183366-59351	PIPE, FUEL RETURN				1				

Fig.8. FUEL TANK & FUEL PIPE

(A)=EP1700/2000 (D)=EP2700/3100S
 (B)=EP1700/2000S (E)=
 (C)=EP2700/3100 (F)=



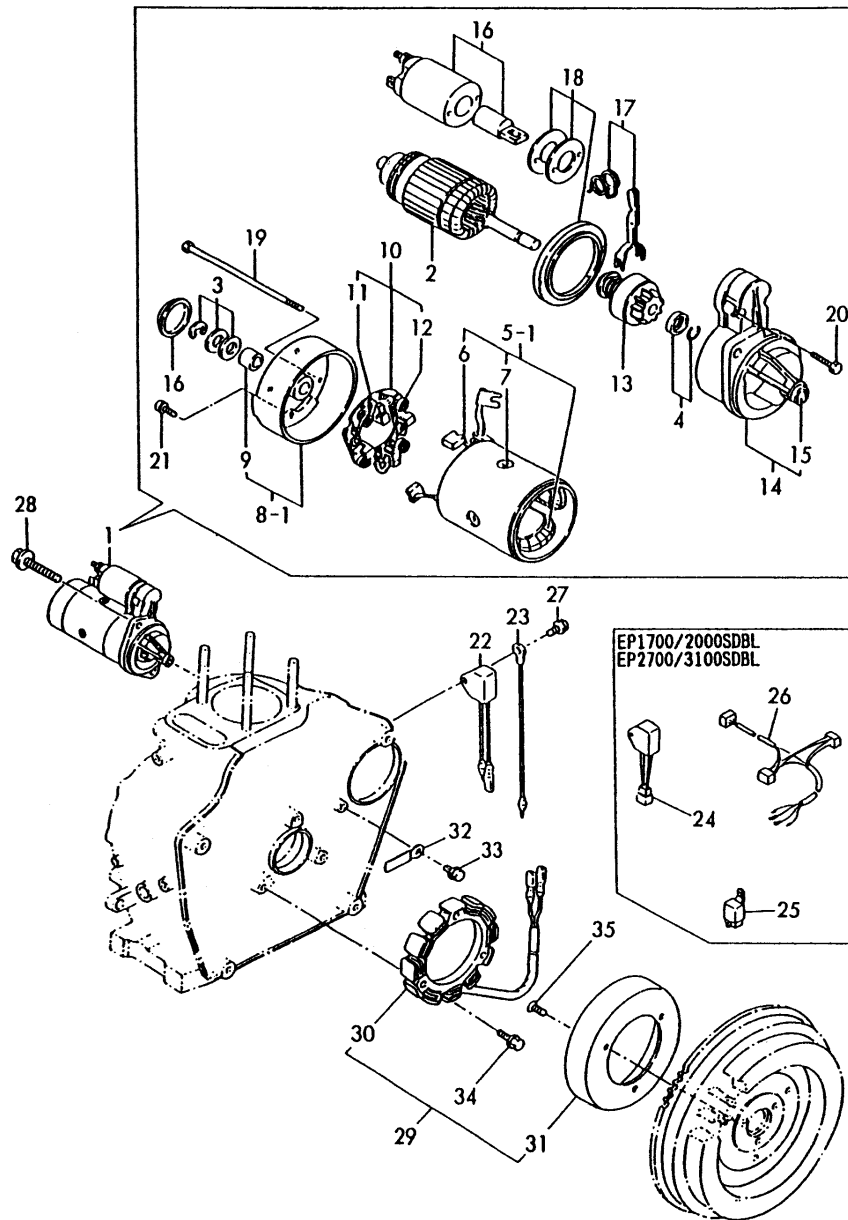
No.	Lev.	Parts No.	Description	Qty						I	R
				(A)	(B)	(C)	(D)	(E)	(F)		
65	1	114250-59800	PIPE ASSY, INJECTION		1						
71	1	114350-59800	PIPE ASSY, INJECTION				1				
77	1	183250-59800	PIPE ASSY, INJECTION	1							
83	1	183350-59800	PIPE ASSY, INJECTION			1					

Fig.9. STARTING MOTOR & DYNAMO

(A)=EP1700/2000
(B)=EP1700/2000S
(C)=EP2700/3100

(D)=EP2700/3100S
(E)=
(F)=

発行No.000Y003990-1
更新年月：2005.05
REVISED：May,2005

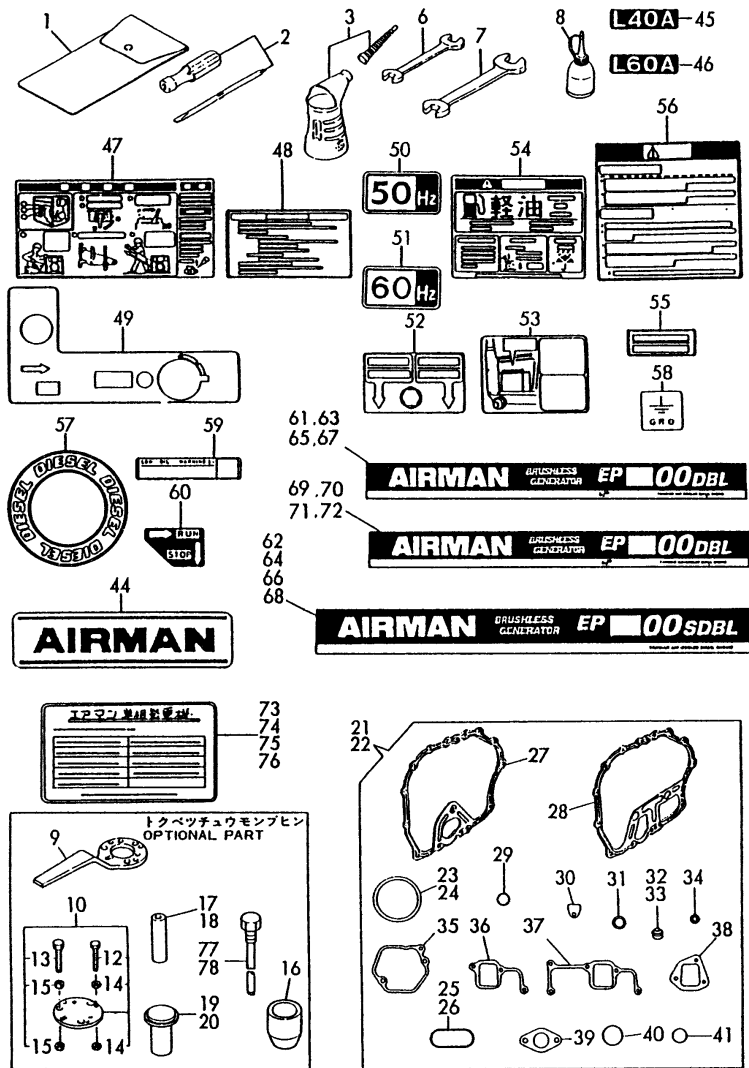


No.	Lev.	Parts No.	Description	Qty						I	R
				(A)	(B)	(C)	(D)	(E)	(F)		
1	1	114362-77010	STARTER, S114-414A	1	1	1					
2	2	X211461104	ARMATURE	1	1	1					
3	2	X21148110	WASHER SET, THRUST	1	1	1					
4	2	X21147155	STOPPER SET, PINION	1	1	1					
5-1	2	X211492108	COIL ASSY, FIELD	1	1	1					
6	3	X21145312	BRUSH, +	2	2	2					
7	3	X21143215	SCREW, CORE	4	4	4					
8-1	2	X211473008	COVER, REAR	1	1	1					
9	3	X21145352	METAL	1	1	1					
10	2	X211489001	HOLDER ASSY, BRUSH	1	1	1					
11	3	X21148313	BRUSH (-)	1	1	1					
12	3	X21149314	SPRING, BRUSH	3	3	3					
13	2	X211445508	PINION ASSY	1	1	1					
14	2	X211416603	HOUSING ASSY, GEAR	1	1	1					
15	3	X21145352	METAL	1	1	1					
16	2	X211478006	COVER KIT	1	1	1					
17	2	X211456013	LEVER KIT, SHIFT	1	1	1					
18	2	X211427501	SWITCH, MAGNETIC	1	1	1					
19	2	X211468005	BOLT, THROUGH	2	2	2					
20	2	X21145867	BOLT, M6	2	2	2					
21	2	X21142835	SCREW SET	1	1	1					
22	1	160970-77350	RECTIFIER, ZR2117			1					
23	1	183350-77400	WIRE, LEAD	1	1	1					
24	1	183256-78300	REGULATOR	1		1					
25	1	183256-78310	RELAY	1		1					
26	1	183267-91390	HARNES, WIRE	1		1					
27	1	26106-060122	BOLT, M6X 12 PLATED			1					
28	1	26106-100302	BOLT, M10X 30 PLATED	2	2	2					
29	1	114351-78250	DYNAMO ASSY	1	1	1					
30	2	114351-78750	STATOR ASSY	1	1	1					
31	2	114351-78760	WHEEL, DYNAMO	1	1	1					
32	1	160710-78710	CLAMP, CORD	1	1	1					
33	1	26476-060142	SCREW, TAPPING M6X14	1	1	1					
34	1	26476-060202	SCREW, TAPPING M6X20	3	3	3					
35	1	26577-060142	SCREW M 6X 14	3	3	3					

Fig.10. LABEL, TOOL & GASKET SET

(A)=EP1700/2000
(B)=EP1700/2000S
(C)=EP2700/3100

(D)=EP2700/3100S
(E)=
(F)=



No.	Lev.	Parts No.	Description	Q'ty						I	R
				(A)	(B)	(C)	(D)	(E)	(F)		
1	1	114250-92600	BAG, TOOL	1	1	1	1				
2	1	160330-92730	DRIVE, SCREW	1	1	1	1				
3	1	7E4133-99290	JUG ASSY, OIL		1		1				
6	1	28110-100120	SPANNER, 10X12	1	1	1	1				
7	1	28110-140170	SPANNER, 14X17	1	1	1	1				
8	1	28210-000150	OILER	1	1	1	1				
9	1	114250-92101	F.W. LOCKING HANDLE	1	1	1	1				1
10	1	114250-92130	REMOVER, FLYWHEEL	1	1	1	1				1
12	2	26116-060454	BOLT M 6X 45 PLATED	4	4	4	4				1
13	2	26116-080454	BOLT, M8X 45 PLATED	3	3	3	3				1
14	2	26716-060002	NUT, M6	8	8	8	8				1
15	2	26716-080002	NUT, M8	6	6	6	6				1
16	1	114361-92300	GUIDE, OIL SEAL			1	1				1
17	1	114250-92311	INSTALLING TOOL	1	1						1
18	1	114350-92311	INSTALLING TOOL			1	1				1
19	1	114250-92350	INSTALLING TOOL	1	1						1
20	1	114350-92350	INSTALLING TOOL			1	1				1
21	1	714250-92602	GASKET SET	1	1						1
22	1	714350-92602	GASKET SET			1	1				1
23	2	114250-01340	GASKET, HEAD	1	1						
24	2	114350-01340	GASKET, HEAD			1	1				
25	2	114250-01380	O-RING	1	1						
26	2	114350-01380	O-RING			1	1				
27	2	114250-01412	GASKET, CRANK CASE	1	1						
28	2	114350-01412	GASKET, CRANK CASE			1	1				
29	2	24311-000180	O-RING, 1AP18.0	2	2	2	2				
30	2	114250-01840	GASKET	1	1	1	1				
31	2	43400-500490	SEAL WASHER 16	2	2	2	2				
32	2	114250-11340	SEAL, VALVE STEM	2	2						
33	2	114350-11340	SEAL, VALVE STEM			2	2				
34	2	114250-11460	GASKET, NOZZLE	1	1	1	1				
35	2	114250-11310	GASKET, BONNET	1	1	1	1				
36	2	114250-12200	GASKET	1	1						
37	2	114350-12201	GASKET			1	1				
38	2	114250-12210	GASKET, AIR CLEANER	1	1	1	1				
39	2	114250-13200	GASKET, MUFFLER	1	1	1	1				
40	2	103338-32570	O-RING	1	1	1	1				
41	2	24341-000224	O-RING, 1AS22.4	1	1	1	1				
44	1	183252-07110	LABEL(HOKUETSU)	1	1						
45	1	114270-07050	LABEL(L40A)	1							
46	1	114370-07050	LABEL(L60A)		1						
47	1	183250-07210	LABEL, OPERATION	1	1						
48	1	183292-07210	LABEL, OPERATION		1	1					
49	1	183267-07230	LABEL		1	1					
50	1	183610-07230	LABEL, 50HZ	1	1	1	1				2
51	1	183620-07230	LABEL, 60HZ	1	1	1	1				3
52	1	183366-07240	LABEL, DAIN		1	1					
53	1	183366-07251	LABEL, F.O. COCK		1	1					
54	1	183250-07260	LABEL, CAUTION	1	1	1	1				
55	1	183366-07280	LABEL, AIR CLEANER		1	1					
56	1	183366-07290	LABEL		1	1					

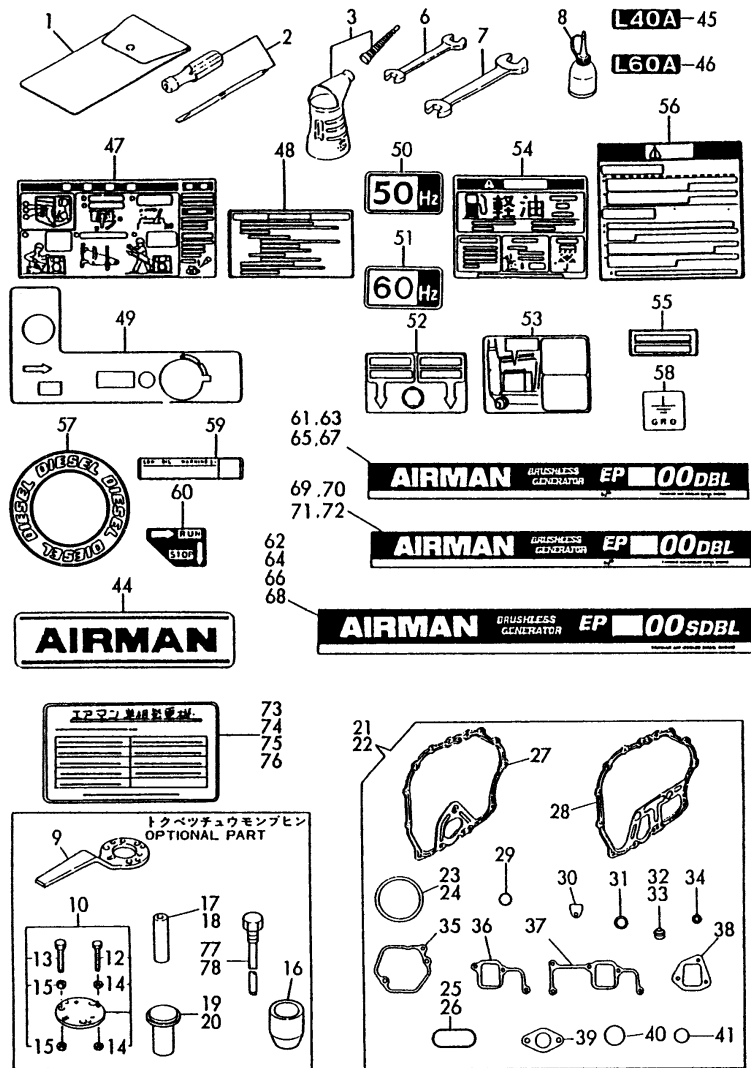
Remarks

- (1) OPTIONAL PART.
- (2) 50HZ
- (3) 60HZ

Fig.10. LABEL, TOOL & GASKET SET

(A)=EP1700/2000
 (B)=EP1700/2000S
 (C)=EP2700/3100

(D)=EP2700/3100S
 (E)=
 (F)=



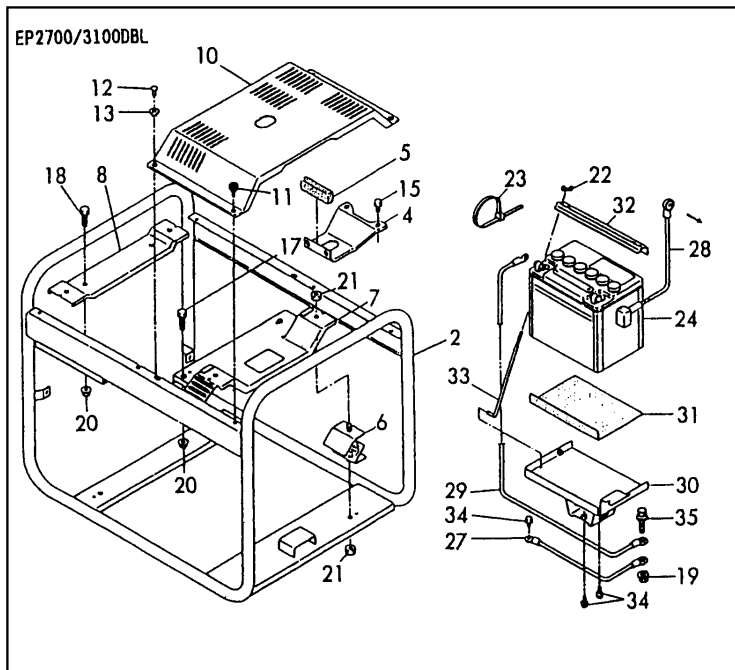
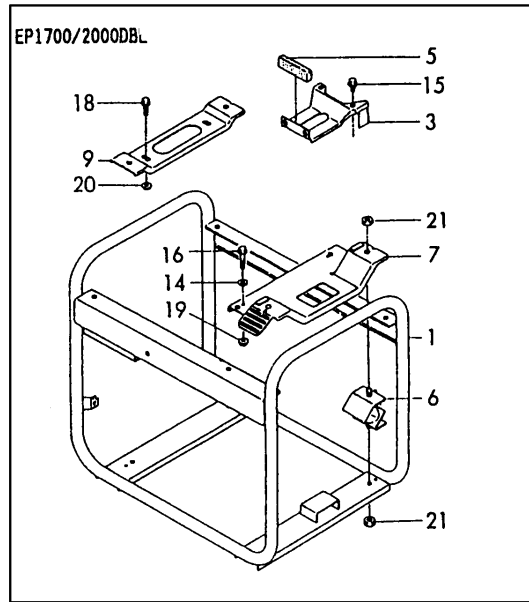
No.	Lev.	Parts No.	Description	Q'ty						I	R
				(A)	(B)	(C)	(D)	(E)	(F)		
57	1	114261-07350	LABEL	1		1					
58	1	183210-07390	LABEL, G.R.D.		1			1			
59	1	183250-07450	LABEL	1	1	1	1				
60	1	183250-07480	LABEL, RUN-STOP	1		1					
61	1	183252-07850	LABEL, GENERATOR	1							
62	1	183257-07850	LABEL, GENERATOR		2						
63	1	183262-07850	LABEL, GENERATOR	1							
64	1	183267-07850	LABEL, GENERATOR		2						
65	1	183353-07850	LABEL, GENERATOR			1					
66	1	183357-07850	LABEL, GENERATOR					2			
67	1	183363-07850	LABEL, GENERATOR			1					
68	1	183367-07850	LABEL, GENERATOR					2			
69	1	183252-07860	LABEL, GENERATOR	1							
70	1	183262-07860	LABEL, GENERATOR	1							
71	1	183353-07860	LABEL, GENERATOR			1					
72	1	183363-07860	LABEL, GENERATOR			1					
73	1	183252-07870	LABEL, GENERATOR	1	1						
74	1	183262-07870	LABEL, GENERATOR	1	1						
75	1	183352-07870	LABEL, GENERATOR					1	1		
76	1	183362-07870	LABEL, GENERATOR					1	1		
77	1	183262-92350	TOOL, ROTOR REMOVER	1	1						
78	1	183362-92350	TOOL, ROTOR REMOVER					1	1		

Remarks
 (1) OPTIONAL PART.
 (2) 50HZ
 (3) 60HZ

Fig.11. FRAME

(A)=EP1700/2000
 (B)=EP1700/2000S
 (C)=EP2700/3100

(D)=EP2700/3100S
 (E)=
 (F)=



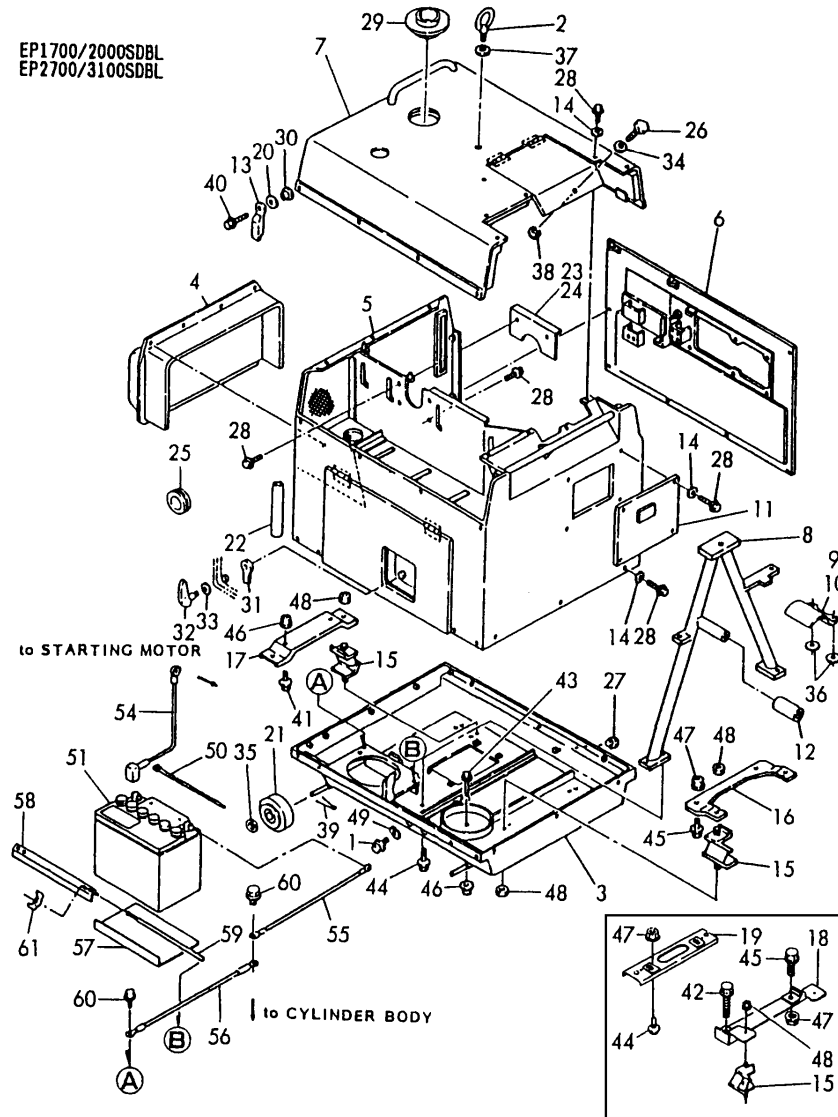
No.	Lev.	Parts No.	Description	Qty						I	R
				(A)	(B)	(C)	(D)	(E)	(F)		
1	1	183282-08020	FRAME	1							
2	1	183350-08050	FRAME			1					
3	1	183250-08150	STOPPER	1							
4	1	183350-08150	STOPPER			1					
5	1	183250-08160	RUBBER, STOPPER	1		1					
6	1	183250-08220	DAMPER	4		4					
7	1	183886-08230	STAY, DAMPER	1		1					
8	1	183886-08250	STAY, DAMPER			1					
9	1	183282-08250	STAY, DAMPER	1							
10	1	183350-08350	COVER, ENGINE						1		
11	1	183350-08390	GROMMET						2		
12	1	183350-55110	PIN, 6X12						2		
13	1	183720-55210	GROMMET						2		
14	1	22137-080000	WASHER, 8		2						
15	1	26106-080162	BOLT, M8X 16 PLATED	2		2					
16	1	26106-080382	BOLT, M8X 38 PLATED	2							
17	1	26106-100402	BOLT, M10X 40 PLATED						2		
18	1	26106-100352	BOLT, M10X 35 PLATED	2		2					
19	1	26366-080002	NUT, M8	2		1					
20	1	26366-100002	NUT, M10	2		5					
21	1	26696-100002	NUT, LOCK M10	8		8					
22	1	101147-12550	NUT						2		
23	1	121750-59890	BAND, 140						1		
24	1	183350-79510	BATTERY ASSY, 26A19L						1		
27	1	183350-79550	CABLE, -						1		
28	1	183350-79560	CABLE, +						1		
29	1	183920-79560	CABLE, -						1		
30	1	183350-79610	BRACKET, BATTERY						1		
31	1	183920-79620	SEAT, BATTERY						1		
32	1	183350-79630	RETAINER, BATTERY						1		
33	1	183920-79650	BOLT, BATTERY						2		
34	1	26106-060102	BOLT, M6X 10 PLATED						4		
35	1	26106-080302	BOLT, M8X 30 PLATED						1		

Fig.12. SOUND-PROOF CASE

(A)=EP1700/2000
 (B)=EP1700/2000S
 (C)=EP2700/3100

(D)=EP2700/3100S
 (E)=
 (F)=

EP1700/2000SDBL
 EP2700/3100SDBL



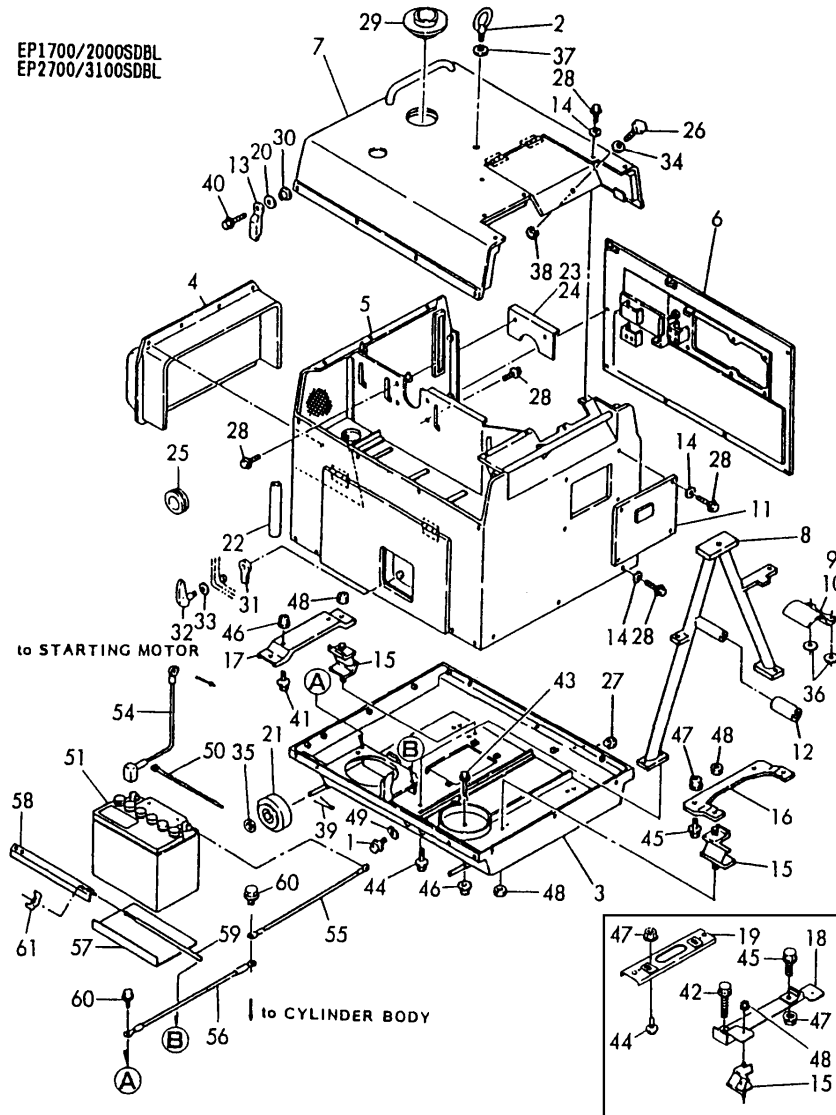
No.	Lev.	Parts No.	Description	Q'ty						I	R
				(A)	(B)	(C)	(D)	(E)	(F)		
1	1	105425-01690	PLUG, 16		2		2				
2	1	105990-07920	BOLT, EYE M14		1		1				
3	1	183366-08051	CASE		1		1				
4	1	183366-08080	COVER		1		1				
5	1	183366-08091	CASE		1		1				
6	1	183267-08100	CASE		1		1				
7	1	183366-08111	CASE		1		1				
8	1	183366-08120	FRAME, LIFTING		1		1				
9	1	183266-08150	STOPPER		1						
10	1	183366-08150	STOPPER						1		
11	1	183366-08170	COVER		1		1				
12	1	183366-08180	RUBBER		1		1				
13	1	183366-08190	STOPPER		1		1				
14	1	183366-08210	WASHER, 6		18		18				
15	1	183250-08220	DAMPER		4		4				
16	1	183266-08240	STAY, DAMPER		1						
17	1	183267-08240	STAY, DAMPER		1						
18	1	183392-08230	STAY, DAMPER						1		
19	1	183392-08250	STAY, DAMPER						1		
20	1	183366-08290	WASHER		1		1				
21	1	183266-08360	WHEEL, 100		4		4				
22	1	183366-08400	PIPE, WATER DRAIN		1		1				
23	1	183366-08460	FLANGE						1		
24	1	183366-08461	FLANGE		1						
25	1	183366-08470	COVER, MUFFLER		1		1				
26	1	183101-08550	BOLT		1		1				
27	1	183210-08810	NUT		1		1				
28	1	183366-08900	BOLT, M6X14		52		52				
29	1	183366-55210	GROMMET		1		1				
30	1	160810-55480	PIECE		1		1				
31	1	194312-61810	CAM, BONNET LOCK		1		1				
32	1	194555-61820	LEVER, BONNET LOCK		1		1				
33	1	194312-61840	WASHER, BWW-626		1		1				
34	1	183350-55130	WASHER		1		1				
35	1	22117-120000	WASHER, 12		4		4				
36	1	22137-080000	WASHER, 8		2		2				
37	1	22137-140000	WASHER, 14		1		1				
38	1	22272-000050	RING, E- 5		4		1				
39	1	22417-320250	PIN, COTTER 3.2X25		4		4				
40	1	183267-08910	BOLT, M6X25		1		1				
41	1	26106-080252	BOLT, M8X 25 PLATED		2						
42	1	26106-080452	BOLT, M8X 45 PLATED						1		
43	1	26106-080602	BOLT, M8X 60 PLATED		1						
44	1	26106-100162	BOLT, M10X 16 PLATED		4		4				
45	1	26106-100382	BOLT, M10X 38 PLATED		2		3				
46	1	26366-080002	NUT, M8		4		4				
47	1	26366-100002	NUT, M10		2		5				
48	1	26696-100002	NUT, LOCK M10		8		8				
49	1	43400-500490	SEAL WASHER 16		2		2				
50	1	121750-59890	BAND, 140		2		2				
51	1	183350-79510	BATTERY ASSY, 26A19L		1		1				

Fig.12. SOUND-PROOF CASE

(A)=EP1700/2000
 (B)=EP1700/2000S
 (C)=EP2700/3100

(D)=EP2700/3100S
 (E)=
 (F)=

EP1700/2000SDBL
 EP2700/3100SDBL

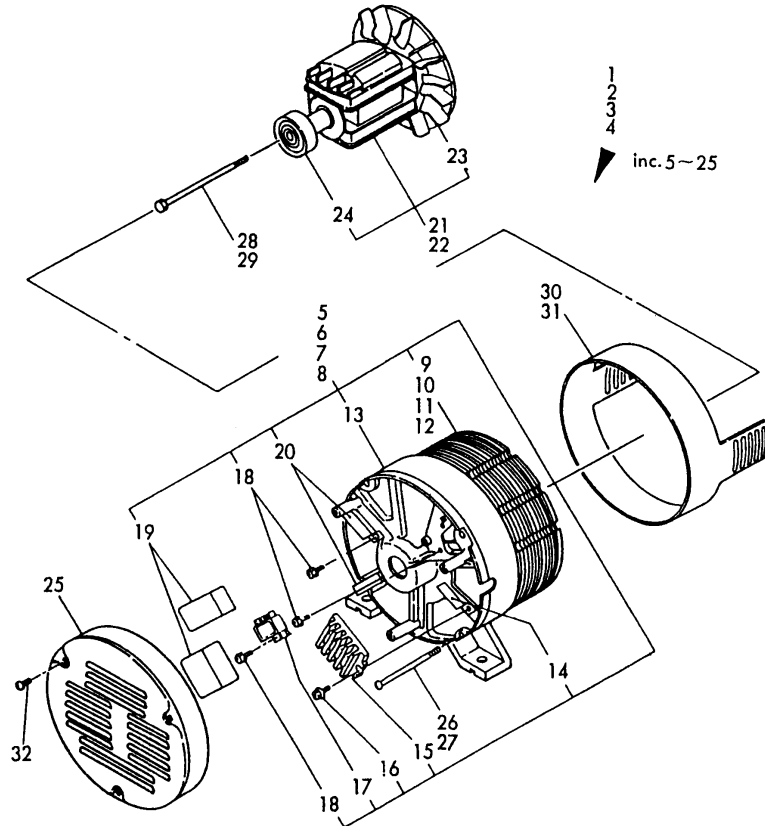


No.	Lev.	Parts No.	Description	Q'ty						I	R
				(A)	(B)	(C)	(D)	(E)	(F)		
54	1	183251-79560	CABLE, +		1		1				
55	1	183920-79560	CABLE, -		1		1				
56	1	183251-79570	CABLE (-)		1		1				
57	1	183920-79620	SEAT, BATTERY		1		1				
58	1	183350-79630	RETAINER, BATTERY		1		1				
59	1	183920-79650	BOLT, BATTERY		2		2				
60	1	26106-060122	BOLT, M6X 12 PLATED		2		2				
61	1	26635-060002	NUT, WING M6		2		2				

Fig.13. GENERATOR

(A)=EP1700/2000
 (B)=EP1700/2000S
 (C)=EP2700/3100

(D)=EP2700/3100S
 (E)=
 (F)=



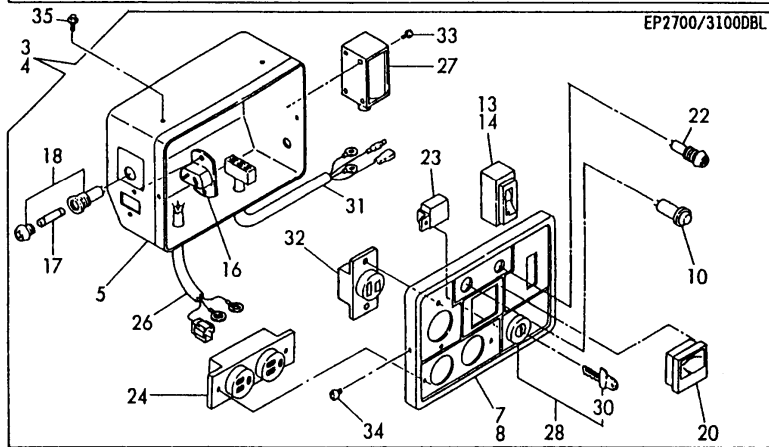
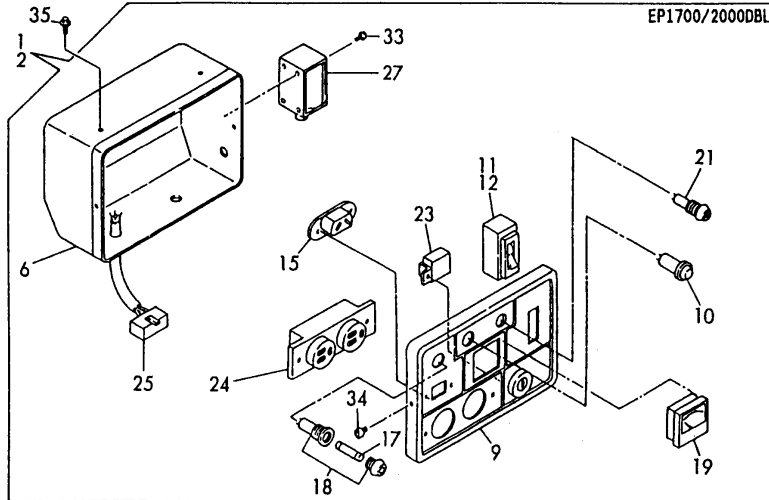
No.	Lev.	Parts No.	Description	Q'ty						I	R
				(A)	(B)	(C)	(D)	(E)	(F)		
1	1	183252-74060	GENERATOR 1.7KVA(50H	1	1						1
2	1	183262-74060	GENERATOR 2.0KVA(60H	1	1						2
3	1	183352-74060	GENERATOR 2.7KVA(50H			1	1				1
4	1	183362-74060	GENERATOR 3.0KVA(60H			1	1				2
5	2	X2A00153KA	STATOR ASSY (50HZ)	1	1						1
6	2	X2A00153KB	STATOR ASSY (60HZ)	1	1						2
7	2	X2A00160KA	STATOR ASSY			1	1				1
8	2	X2A00160KB	STATOR ASSY (60HZ)			1	1				2
9	3	X2A00154KA	STATOR (50HZ)	1	1						1
10	3	X2A00154KB	STATOR (60HZ)	1	1						2
11	3	X2A00161KA	STATOR (50HZ)			1	1				1
12	3	X2A00161KB	STATOR (60HZ)			1	1				2
13	3	X2A00155K	COVER, REAR	1	1	1	1				
14	3	XM27978	CLAMP	1	1						
15	3	183820-74270	TERMINAL			1	1				
16	3	183350-74380	SCREW, M4X14	1	1	1	1				
17	3	183210-74470	RECTIFIER	1	1	1	1				
18	3	183620-74310	SCREW M 5X10	3	3	3	3				
19	3	XD71802	CONDENSER	2	2	2	2				
20	3	X4A00227K	CLAMP	2	2	2	2				
21	2	X2A00156K	ROTOR ASSY	1	1						
22	2	X2A00162K	ROTOR ASSY			1	1				
23	3	X3A00183K	FAN	1	1	1	1				
24	3	XM67896	BEARING	1	1	1	1				
24A	3	183294-74080	RECTIFIER, ROTOR	1	1						W
		(A=FROM 1ST) (B=FROM 1ST)									
25	2	X2A00728K01	COVER, END	1	1	1	1				
26	1	183262-74410	BOLT, THROUGH M6X90	4	4						
27	1	183362-74410	BOLT, THROUGH M6X110			4	4				
28	1	26116-081902	BOLT, M8X190 PLATED	1	1						
29	1	183382-74430	BOLT, M10X188			1	1				
30	1	183262-74090	BAND, GENERATOR	1	1						
31	1	183362-74090	BAND			1	1				
32	1	26022-040082	SCREW, M4X 8	3	3	3	3				

Remarks
 (1) 50HZ
 (2) 60HZ

Fig.14. PANEL(FRAME TYPE)

(A)=EP1700/2000
 (B)=EP1700/2000S
 (C)=EP2700/3100

(D)=EP2700/3100S
 (E)=
 (F)=



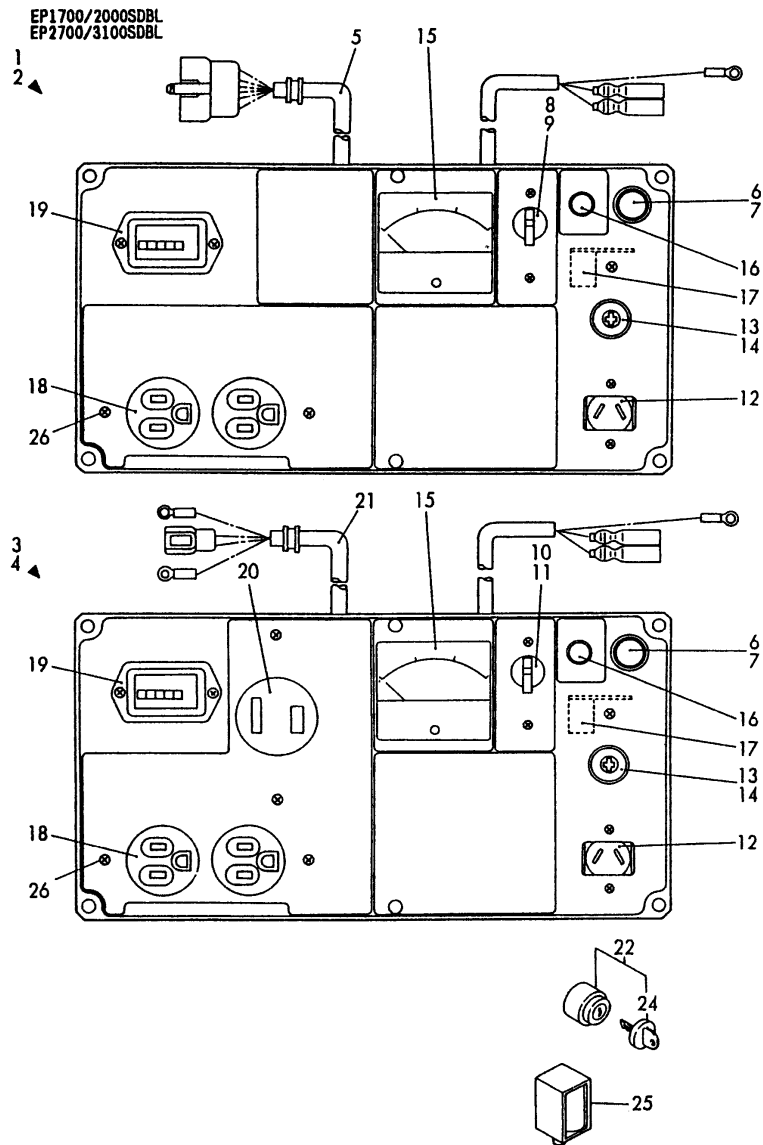
No.	Lev.	Parts No.	Description	Qty						I	R
				(A)	(B)	(C)	(D)	(E)	(F)		
1	1	183252-91050	BOX ASSY,PANEL(50HZ)	1							1
2	1	183262-91050	BOX ASSY,PANEL(60HZ)	1							2
3	1	183350-91051	BOX ASSY,PANEL(50HZ)			1					1
4	1	183360-91051	BOX ASSY,PANEL(60HZ)			1					2
5	2	183350-91360	BOX, PANEL			1					
6	2	183820-91361	BOX, PANEL	1							
7	2	183351-91201	PANEL ASSY (50HZ)			1					1
8	2	183361-91201	PANEL ASSY (60HZ)			1					2
9	2	X2A00230K	PANEL ASSY	1							
10	3	183366-91330	BULB, L.O.ALART	1		1					
11	3	183920-91710	CIRCUIT BREAKER(17A)	1							1
12	3	183720-91230	CIRCUIT BREAKER(20A)	1							2
13	3	183351-91230	BREAKER, 27AT			1					1
14	3	183820-91230	NO FUSE BREAKER(30A)			1					2
15	3	183250-91250	PLUG SOCKET (DC 12V)	1							
16	3	183720-91250	PLUG SOCKET (DC 12V)				1				
17	3	183720-91240	FUSE (15A)	1		1					
18	3	183620-91230	HOLDER, FUSE	1		1					
19	3	183820-91280	VOLT METER (150V)	1							
20	3	183820-91290	VOLT METER (150V)				1				
21	3	183820-91310	BULB(AC110V OR AC220)	1							
22	3	183820-91320	BULB, AC110V				1				
23	3	183266-91680	RELAY	1		1					
24	3	183920-91320	SOCKET, 125VX2	1		1					
25	3	183250-91370	HARNESS	1							
26	3	183351-91371	HARNESS				1				
27	3	183266-91690	DC.SOLENOID(12V)	1		1					
28	3	183920-91450	SWITCH ASSY, KEY				1				
30	4	183920-91280	KEY, STARTER SWITCH				1				
31	3	183351-91380	HARNESS, WIRE				1				
32	3	183820-91220	CONSENT (30A)				1				
33	3	183620-91310	SCREW M 3X 10	2		4					
34	2	183520-91290	SCREW M 4X 8	2		6					
35	1	26106-060082	BOLT, M6X 8 PLATED	3		3					

Remarks
 (1) 50HZ
 (2) 60HZ

Fig.15. PANEL(SOUND-PROOF TYPE)

(A)=EP1700/2000
 (B)=EP1700/2000S
 (C)=EP2700/3100

(D)=EP2700/3100S
 (E)=
 (F)=



No.	Lev.	Parts No.	Description	Q'ty						I	R
				(A)	(B)	(C)	(D)	(E)	(F)		
1	1	183257-91050	PANEL ASSY (50HZ)	1							1
2	1	183267-91050	PANEL ASSY (60HZ)		1						2
3	1	183357-91050	PANEL ASSY (50HZ)				1				1
4	1	183367-91050	PANEL ASSY (60HZ)						1		2
5	2	X3A00277KA	HARNESS, WIRE		1						
6	2	XM67108	BULB, L.O.ALART		1		1				
7	2	XM67109	SOCKET, LAMP		1		1				
8	2	XM57961	AC BREAKER (50HZ)		1						1
9	2	XM08675	AC BREAKER (60HZ)		1						2
10	2	X4A00314K02	AC BREAKER (50HZ)						1		1
11	2	X4A00314K01	AC BREAKER (60HZ)						1		2
12	2	183720-91250	PLUG SOCKET (DC 12V)		1		1				
13	2	183720-91240	FUSE (15A)		1		1				
14	2	183620-91230	HOLDER, FUSE		1		1				
15	2	183820-91280	VOLT METER (150V)		1		1				
16	2	183820-91310	BULB(AC110V OR AC220		1		1				
17	2	XM57634	RELAY ASSY		1		1				
18	2	XM81428	SOCKET, 100V		1		1				
19	2	X3A00281K01	HOUR METER		1		1				
20	2	XM71340	CONSENT (30A)						1		
22	1	160797-77250	SWITCH ASSY, KEY		1		1				
24	2	160797-77270	KEY, REVERSE		1		1				
25	1	183250-91690	DC.SOLENOID(12V.10W)		1		1				
26	1	26022-050102	SCREW, M5X10		6		6				

Remarks
 (1) 50HZ
 (2) 60HZ

Parts No. Index

Parts No.	Fig. No.	Ref. No.
101147-12550	11	22
101158-11180	2	15
101504-55051	8	16
103338-32570	5	12
	10	40
103854-01221	4	12
103854-55220	8	23
105010-11490	2	40
		74
105015-55040	8	8
105225-01240	1	15
105225-66990	5	63
105425-01690	1	29
	12	1
105546-51020	7	3
105546-51330	7	18
105990-07920	12	2
106990-44660	8	49
		51
		55
114250-01200	1	8
114250-01210	1	10
114250-01220	1	12
114250-01250	1	16
114250-01340	1	18
	10	23
114250-01380	1	20
	10	25
114250-01412	1	22
	10	27
114250-01800	1	35
114250-01830	1	40
114250-01840	1	41
	10	30
114250-02030	1	59
114250-02100	1	68
114250-02113	1	60
114250-02200	1	70
114250-02210	1	71
114250-03591	2	58
114250-03640	2	61
114250-11020	2	1
114250-11101	2	9
114250-11113	2	11
114250-11120	2	13
114250-11180	2	16
114250-11240	2	31
		37
114250-11290	2	21
114250-11310	2	53

Parts No.	Fig. No.	Ref. No.
114250-11310	10	35
114250-11340	2	24
	10	32
114250-11460	2	26
	10	34
114250-11600	2	28
114250-11651	2	29
114250-11900	2	41
114250-11951	2	55
114250-12010	3	1
114250-12200	3	3
	10	36
114250-12210	3	5
	10	38
114250-12520	3	11
114250-12530	3	12
114250-12550	3	16
114250-12560	3	14
114250-12580	3	15
114250-13200	3	21
	10	39
114250-14200	4	8
114250-14260	4	9
114250-14450	4	10
114250-21550	4	24
114250-22302	4	51
114250-23200	4	61
114250-23220	4	62
114250-23250	4	63
114250-32010	5	1
114250-32070	5	6
114250-35070	5	15
114250-35150	1	46
114250-45211	6	6
114250-45300	6	8
114250-45310	6	10
114250-45330	6	13
114250-51080	7	4
114250-51150	7	5
114250-51160	7	6
114250-51180	7	11
114250-51190	7	12
114250-51300	7	15
114250-51340	7	19
114250-51600	7	21
114250-51640	7	25
114250-51650	7	26
114250-53001	7	31
114250-53080	7	37
114250-53120	7	38

Parts No.	Fig. No.	Ref. No.
114250-53130	7	39
114250-53140	7	40
114250-53210	7	41
114250-53300	7	42
114250-53331	7	45
114250-53400	7	46
114250-55130	8	35
114250-59800	8	65
114250-61600	5	31
114250-66200	5	39
114250-66440	5	48
114250-66550	5	58
114250-76590	6	44
114250-76600	6	59
114250-76610	6	60
	8	43
114250-92101	10	9
114250-92130	10	10
114250-92311	10	17
114250-92350	10	19
114250-92600	10	1
114252-66060	5	36
114252-66120	5	38
114252-66252	5	43
114260-76050	6	29
114260-76250	6	30
114260-76520	6	31
114261-07350	10	57
114270-07050	10	45
114350-01200	1	9
114350-01210	1	11
114350-01220	1	13
114350-01250	1	17
114350-01340	1	19
	10	24
114350-01380	1	21
	10	26
114350-01412	1	23
	10	28
114350-01700	1	6
114350-02100	1	69
114350-02113	1	61
114350-02200	1	72
114350-02210	1	73
114350-11021	2	5
114350-11101	2	10
114350-11113	2	12
114350-11120	2	14
114350-11340	2	25
	10	33

Parts No.	Fig. No.	Ref. No.
114350-11470	2	27
114350-12011	3	2
114350-12201	3	4
	10	37
114350-14450	4	11
114350-22301	4	52
114350-45201	6	5
114350-45320	6	11
114350-45340	6	14
114350-55120	8	34
114350-59800	8	71
114350-76590	6	58
114350-92311	10	18
114350-92350	10	20
114351-78250	9	29
114351-78750	9	30
114351-78760	9	31
114360-45101	6	2
114361-92300	10	16
114362-77010	9	1
114370-07050	10	46
114650-12350	3	6
114658-13800	3	31
114770-66010	5	34
114780-21400	4	23
114780-45100	6	1
114870-45200	6	63
114870-53000	7	32
114870-66010	5	35
114880-76050	6	45
114880-76250	6	46
114880-76510	6	47
114881-21590	4	25
119260-11370	2	39
		75
121450-61520	5	30
121750-59890	11	23
	12	50
124550-51350	7	20
124722-59050	8	58
124950-01250	1	14
129100-61850	2	67
160110-01870	1	42
160110-02220	1	62
		63
160120-76940	6	22
160210-02220	1	64
160260-76520	6	32
160260-76530	6	33
160260-76540	6	34

Parts No. Index

Parts No.	Fig. No.	Ref. No.
160260-76550	6	35
160260-76560	6	36
160260-76580	6	38
160260-76590	6	39
160260-76600	6	40
160260-76620	6	42
160260-76630	6	43
160290-76570	6	37
160330-92730	10	2
160393-55050	8	15
160670-66350	2	68
160710-01760	1	30
160710-55061	8	7
160710-55100	8	22
160710-78710	9	32
160797-77250	15	22
160797-77270	15	24
160810-55480	12	30
160810-76520	6	48
160810-76540	6	50
160810-76580	6	52
160810-76620	6	54
160810-76630	6	55
160840-76530	6	49
160840-76560	6	51
160910-01740	1	31
160970-77350	9	22
171008-03990	8	48
171022-39470	1	49
181130-76680	6	56
181130-76700	6	57
183101-08550	12	26
183210-07390	10	58
183210-08810	12	27
183210-74470	13	17
183250-01450	1	24
183250-03410	2	48
183250-03450	2	49
183250-03510	2	50
183250-03550	2	52
183250-03601	2	57
183250-07210	10	47
183250-07260	10	54
183250-07450	10	59
183250-07480	10	60
183250-08150	11	3
183250-08160	11	5
183250-08220	11	6
	12	15
183250-11951	2	54

Parts No.	Fig. No.	Ref. No.
183250-21350	4	21
183250-39450	1	47
183250-51200	7	7
183250-55120	8	33
183250-55170	8	36
183250-55250	8	29
183250-55300	8	31
183250-55320	8	38
		41
183250-59060	8	59
183250-59800	8	77
183250-66301	5	50
183250-66321	5	51
183250-66331	5	44
		52
183250-66341	5	53
183250-66351	5	54
183250-66361	5	55
183250-66371	5	56
183250-66410	5	45
183250-66420	5	46
183250-66511	5	49
183250-91250	14	15
183250-91370	14	25
183250-91690	15	25
183251-79560	12	54
183251-79570	12	56
183252-07110	10	44
183252-07850	10	61
183252-07860	10	69
183252-07870	10	73
183252-74060	13	1
183252-91050	14	1
183256-78300	9	24
183256-78310	9	25
183257-07850	10	62
183257-91050	15	1
183262-07850	10	63
183262-07860	10	70
183262-07870	10	74
183262-74060	13	2
183262-74090	13	30
183262-74410	13	26
183262-91050	14	2
183262-92350	10	77
183263-13510	3	23
183266-08150	12	9
183266-08240	12	16
183266-08360	12	21
183266-13601	3	29

Parts No.	Fig. No.	Ref. No.
183266-21590	4	28
183266-45110	6	3
183266-45360	6	15
183266-45460	6	17
183266-66110	5	37
183266-66210	5	40
183266-66230	5	41
183266-91680	14	23
183266-91690	14	27
183267-07230	10	49
183267-07850	10	64
183267-08100	12	6
183267-08240	12	17
183267-08910	12	40
183267-66240	5	42
183267-66350	5	33
183267-91050	15	2
183267-91390	9	26
183282-08020	11	1
183282-08250	11	9
183292-07210	10	48
183294-74080	13	24 A
183350-01450	1	25
183350-03510	2	51
183350-08050	11	2
183350-08150	11	4
183350-08350	11	10
183350-08390	11	11
183350-13512	3	24
183350-21350	4	22
183350-51200	7	8
183350-55110	8	24
	11	12
183350-55120	8	25
183350-55130	5	64
	8	27
	12	34
183350-55170	8	37
183350-55260	8	30
183350-55300	8	32
183350-59010	8	50
183350-59060	8	60
183350-59800	8	83
183350-66420	5	47
183350-74380	13	16
183350-77400	9	23
183350-79510	11	24
	12	51
183350-79550	11	27
183350-79560	11	28

Parts No.	Fig. No.	Ref. No.
183350-79610	11	30
183350-79630	11	32
	12	58
183350-91051	14	3
183350-91360	14	5
183351-91201	14	7
183351-91230	14	13
183351-91371	14	26
183351-91380	14	31
183352-07870	10	75
183352-74060	13	3
183353-07850	10	65
183353-07860	10	71
183357-07850	10	66
183357-91050	15	3
183360-91051	14	4
183361-91201	14	8
183362-07870	10	76
183362-74060	13	4
183362-74090	13	31
183362-74410	13	27
183362-92350	10	78
183363-07850	10	67
183363-07860	10	72
183366-07240	10	52
183366-07251	10	53
183366-07280	10	55
183366-07290	10	56
183366-08051	12	3
183366-08080	12	4
183366-08091	12	5
183366-08111	12	7
183366-08120	12	8
183366-08150	12	10
183366-08170	12	11
183366-08180	12	12
183366-08190	12	13
183366-08210	12	14
183366-08290	1	43
	12	20
183366-08351	1	44
183366-08400	12	22
183366-08460	12	23
183366-08461	12	24
183366-08470	12	25
183366-08900	12	28
183366-12530	3	13
183366-12590	3	17
183366-13300	3	25
183366-13601	3	30

Parts No. Index

Parts No.	Fig. No.	Ref. No.
183366-21590	4	31
183366-39460	1	48
183366-45111	6	4
183366-45220	6	7
183366-45300	6	9
183366-45320	6	12
183366-45410	6	16
183366-45460	6	18
183366-45600	6	19
183366-55120	8	26
183366-55150	8	19
183366-55210	12	29
183366-59010	8	54
183366-59330	8	62
183366-59341	8	63
183366-59351	8	64
183366-91330	14	10
183367-07850	10	68
183367-91050	15	4
183382-74430	13	29
183392-08230	12	18
183392-08250	12	19
183520-91290	14	34
183610-07230	10	50
183620-07230	10	51
183620-74310	13	18
183620-91230	14	18
	15	14
183620-91310	14	33
183621-55150	8	18
183671-13210	3	22
183671-59060	8	61
183720-55210	6	20
	8	28
	11	13
183720-91230	14	12
183720-91240	14	17
	15	13
183720-91250	14	16
	15	12
183820-74270	13	15
183820-91220	14	32
183820-91230	14	14
183820-91280	14	19
	15	15
183820-91290	14	20
183820-91310	14	21
	15	16
183820-91320	14	22
183820-91361	14	6

Parts No.	Fig. No.	Ref. No.
183886-08230	11	7
183886-08250	11	8
183920-79560	11	29
	12	55
183920-79620	11	31
	12	57
183920-79650	11	33
	12	59
183920-91280	14	30
183920-91320	14	24
183920-91450	14	28
183920-91710	14	11
183925-55150	8	17
194312-61810	12	31
194312-61840	12	33
194555-61820	12	32
22117-100000	1	50
22117-120000	12	35
22137-080000	5	32
	11	14
	12	36
22137-140000	12	37
22213-080000	3	32
22217-080000	5	74
22252-000190	4	53
22252-000210	4	54
22272-000050	12	38
22312-030080	4	64
22312-030160	2	63
	5	13
22312-080120	1	51
22351-020006	7	27
22351-030008	7	28
22351-030012	5	65
22351-040008	2	42
22360-060000	8	44
22417-320250	12	39
22512-040120	4	34
23414-120000	8	20
23418-050000	5	66
23887-120002	8	21
24101-062050	1	65
24101-062060	1	66
24162-152112	1	67
24311-000180	1	34
	10	29
24311-000400	8	45
24341-000150	8	39
	42	
24341-000224	5	16

Parts No.	Fig. No.	Ref. No.
24341-000224	10	41
26014-060142	3	33
26014-080302	6	23
26022-040082	13	32
26022-050102	8	46
	15	26
26023-030082	5	67
26106-060082	6	24
	61	
	14	35
26106-060102	11	34
26106-060122	6	25
	62	
	9	27
	12	60
26106-060142	6	64
26106-060162	3	34
	5	17
	57	
26106-060202	2	69
	3	38
	5	70
26106-060252	1	52
	3	18
26106-060552	2	70
26106-080122	1	45
26106-080162	3	35
	11	15
26106-080252	12	41
26106-080282	3	36
26106-080302	11	35
26106-080352	1	53
26106-080382	11	16
26106-080452	2	43
	12	42
26106-080602	12	43
26106-100122	1	7
26106-100162	12	44
26106-100302	9	28
26106-100352	11	18
26106-100382	12	45
26106-100402	11	17
26116-060454	10	12
26116-080454	10	13
26116-081902	13	28
26216-080182	2	44
26226-060142	3	19
26226-060182	1	54
26226-060222	1	55
26226-060502	2	45

Parts No.	Fig. No.	Ref. No.
26226-060552	2	46
26347-060002	5	75
26366-060002	1	56
	2	47
		71
	3	20
	8	40
		47
26366-080002	3	37
	11	19
	12	46
26366-100002	11	20
	12	47
26476-060142	2	72
	5	14
		68
	6	26
	9	33
26476-060202	5	69
	6	27
	9	34
26476-060252	6	28
26557-040082	1	57
	5	71
26557-060142	6	21
26577-060142	9	35
26635-060002	12	61
26696-100002	5	72
	11	21
	12	48
26716-060002	10	14
26716-080002	10	15
26756-060002	2	32
		38
		73
26757-060002	5	73
26757-080002	5	76
27310-060001	2	17
28110-100120	10	6
28110-140170	10	7
28210-000150	10	8
43400-500490	1	58
	10	31
	12	49
714250-11570	2	19
714250-12560	3	7
714250-22502	4	37
714250-22542	4	71
714250-22550	4	77
714250-23600	4	65

Parts No. Index

Parts No.	Fig. No.	Ref. No.
714250-23610	4	81
714250-23620	4	83
714250-23703	4	55
714250-53101	7	29
714250-61501	5	18
714250-92602	10	21
714270-11660	2	33
714271-01560	1	1
714280-22580	4	75
714280-22620	4	69
714280-22720	4	35
714284-21700	4	13
714350-22502	4	40
714350-22542	4	87
714350-22550	4	93
714350-23600	4	67
714350-23610	4	97
714350-23620	4	99
714350-23702	4	56
714350-23704	4	56 -1
714350-61501	5	19
714350-92602	10	22
714370-11660	2	34
714371-01560	1	4
714380-22580	4	91
714380-22620	4	85
714380-22720	4	38
714384-21700	4	14
714770-61700	5	7
714780-14580	4	1
714780-14581	4	1 -1
714870-53100	7	30
714880-14580	4	3
783250-51701	7	1
783250-55720	8	1
783292-21700	4	13 -1
783350-51701	7	2
783350-55720	8	3
783366-12560	3	8
783366-55700	8	5
783392-21700	4	14 -1
7E4133-99290	10	3
X211416603	9	14
X211427501	9	18
X21142835	9	21
X21143215	9	7
X211445508	9	13
X21145312	9	6
X21145352	9	9
		15

Parts No.	Fig. No.	Ref. No.
X211456013	9	17
X21145867	9	20
X211461104	9	2
X211468005	9	19
X211471155	9	4
X211473008	9	8 -1
X211478006	9	16
X21148110	9	3
X21148313	9	11
X211489001	9	10
X211492108	9	5 -1
X21149314	9	12
X2A00153KA	13	5
X2A00153KB	13	6
X2A00154KA	13	9
X2A00154KB	13	10
X2A00155K	13	13
X2A00156K	13	21
X2A00160KA	13	7
X2A00160KB	13	8
X2A00161KA	13	11
X2A00161KB	13	12
X2A00162K	13	22
X2A00230K	14	9
X2A00728K01	13	25
X3A00183K	13	23
X3A00277KA	15	5
X3A00281K01	15	19
X4A00227K	13	20
X4A00314K01	15	11
X4A00314K02	15	10
XD71802	13	19
XM08675	15	9
XM27978	13	14
XM57634	15	17
XM57961	15	8
XM67108	15	6
XM67109	15	7
XM67896	13	24
XM71340	15	20
XM81428	15	18

Parts No.	Fig. No.	Ref. No.
-----------	----------	----------

Parts No.	Fig. No.	Ref. No.
-----------	----------	----------