

0CD10-M37303EN

1 A 2

記載対象機種

The following models are described in the parts catalog.

機種名 Model	作業機メーカー Manufacturer's name	搭載商品名 Product equipped with the Model	備考 Note
3TN84L - RHKCH	北越工業(株) HOKUETSU INDUSTRIAL Co.,Ltd.	PDS - 504	スクリー コンプレッサー SCREW COMPRESSOR OEM

パーツカタログの見方

- このパーツカタログに記載されている部品は、必ずしも標準装備部品ではありません。
- 部品変更は、予告なく行うことがあります。
- パーツカタログリスト様式

OCF10-J21601 29. FO噴射ポンプ(ブーコン用)

No.	レベル	部品番号	部品名	数量						I	R	
				(A)	(B)	(C)	(D)	(E)	(F)			
1	1	729595-51390	FO噴射ポンプ ASY(ブーコン用)	1	1	1	1	1	1	1		
1-1	1	729595-51391	FO噴射ポンプ ASY(ブーコン用)	1	1	1	1	1	1		N	1
3	2	26022-060162	ナベコネジ (ハネ6X16)	9	9	9	9	9				
3-1	2	26022-060162	ナベコネジ (ハネ6X16)	4	4	4	4	4			K	
4	2	129470-51040	カムシャフト	1	1	1	1	1	1			
5	2	122710-51050	ベアリング (HR30203J)	2	2	2	2	2				
6	2	129470-51060	ベアリング 軸受	1	1	1	1	1				

(A)=4JH-DT (B)=4JH-DTZ (C)=4JH-DTZP (D)=4JH-DTZA (E)=4JH-DTZY (F)=

備考
1) ブーストコンペンサータ付、4JH-DT、4JH-DTZ とも E00155までは特別注文仕様とします。

① 見出しNo. (REF. No.)

リスト頁の見出しNo.とイラスト図番の末尾が一致しない場合があります。

(例) イラスト図番

リスト頁の見出しNo.

1

1(変更前)

→ 1-1 (変更後)

互換性記号 N、R、K の場合は新部品のイラストを省略している場合があります。

② レベル (LEV.)

レベル

1...表示している数字はレベルを表し、親子の関係を示します。(1は親部品です)

2...は、1に含まれる子部品です。

3...は、2に含まれる子部品(1から見れば孫部品)です。

(注) 非販売部品のイラストは一部展開しておりますが、リストには記載しておりません。

③ 互換性区分

部分変更が行われた場合、その部品に対して下記の互換性記号が表示されます。

記号	互換性	内容
N	旧 ← ⊗ → 新	新部品は、旧部品に対して互換性有り、その逆は無し。
Q	旧 ← ⊗ → 新	新部品は、旧部品に対して互換性無し、その逆は有り。
R	旧 ← ⊕ → 新	新・旧部品の双方に対して互換性有り。
S	旧 ← ⊗ → 新	新・旧部品の双方に対して互換性無し。
W		新規追加となった部品。
Z		廃止された部品
F		単品では、互換性無し。但し関連部品セットにて互換性有り。
K		使用個数のみの変更

④ 実施記号

部品が変更された時には、適用される商品形式の実施号機が(A)～(F)欄毎に表示されます。

商品記号	商品No.	商品記号	商品No.
C	クラッチNo.コンプレッサーNo.	F	本機No.(農機商品)
D	ドライブNo.	M	本機No.
E	エンジンNo.		

注1) 記号の後に西暦年月を記載している事もあります。(例) ※1990.02

注2) 実施号機が「XXXXX」・「ZZZZZ」は、部品変更の予告又は、実施号機が確定できなかった部品です。

注3) (A=E00185)は、A欄の商品形式(=4JH-DT)の部品変更実施号機は、E(=エンジンNo.)が00185号機以降であることを示します。

⑤ 備考(リマーク)区分

R...欄に数字又は、英字(記号)を表示してあります。

イラスト下段に上記の記号と同一記号を表記して当該部品に対するコメント(備考)を表示しています。

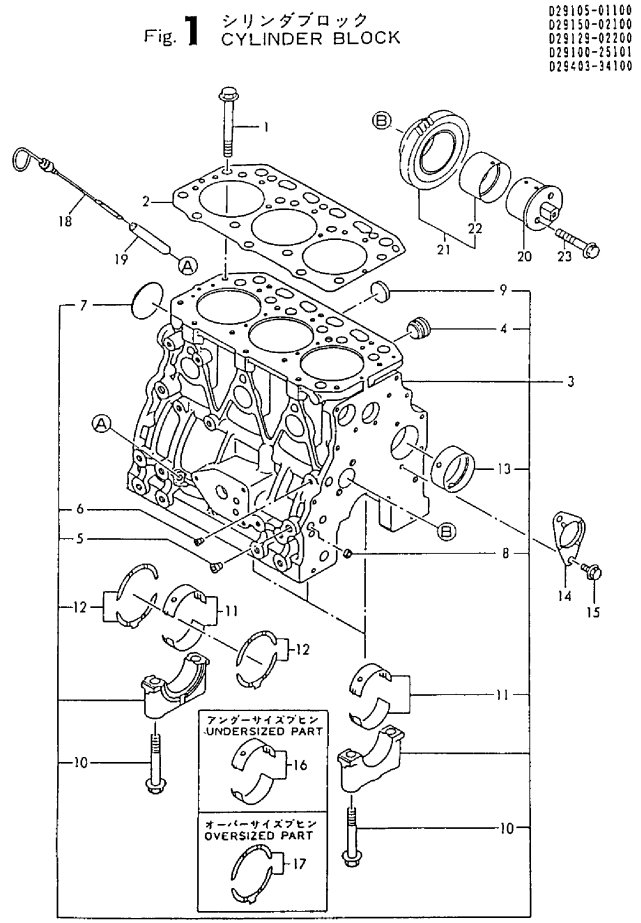
Contents

OCD10-M37303

Fig. No.	Fig. Name
ENGINE	
1.	CYLINDER BLOCK
2.	GEAR HOUSING
3.	FLYWHEEL HOUSING
4.	LUB. OIL SUMP
5.	OIL SEAL HOUSING
6.	CYLINDER HEAD
7.	BONNET
8.	SUCTION & EXHAUST MANIFOLD
9.	CAMSHAFT
10.	CRANKSHAFT & FLYWHEEL
11.	PISTON & CONNECTING ROD
12.	LUB. OIL SYSTEM
13.	COOLING WATER PUMP
14.	THERMOSTAT
15.	COOLING WATER PIPES
16.	COOLING WATER PIPE(BY-PASS)
17.	FUEL INJECTION PUMP
18.	FUEL INJECTION VALVE
19.	FUEL STRAINER
20.	FUEL INJECTION PIPES
21.	FUEL PIPES
22.	FUEL RETURN PIPES
23.	GOVERNOR
24.	ENGINE STOP DEVICE

Fig. No.	Fig. Name
25.	STARTING MOTOR(COMPONENT PARTS)
26.	GENERATOR(COMPONENT PARTS)
27.	ELECTRIC PARTS
28.	GASKET SET(OPTIONAL)
29.	SPECIAL TOOL(OPTIONAL)

Fig.1. CYLINDER BLOCK



(A)=3TN84L-RHKCH
(B)=
(C)=

(D)=
(E)=
(F)=

No.	Lev.	Parts No.	Description	Q'ty						I	R
				(A)	(B)	(C)	(D)	(E)	(F)		
1	1	129150-01200	BOLT, HEAD	14							
2	1	129157-01332	GASKET, HEAD	1							
3	1	729157-01560	BLOCK ASSY, CYLINDER	1							
4	2	171051-01921	PLUG, NPTF1	1							
5	2	124160-01910	PLUG, PT1/4	3							
6	2	23871-010000	PLUG, R01	1							
7	2	27231-500000	PLUG 50	1							
8	2	27241-120000	PLUG, 12	2							
9	2	27241-300000	PLUG 30	6							
10	2	129150-02020	BOLT, METAL CAP	8							
11	2	129150-02800	BEARING, MAIN	4							
12	2	129150-02930	BEARING, THRUST	2							
13	2	129795-02411	BUSH, CAMSHAFT	1							
14	1	129150-02450	BEARING, THRUST	1							Z
(A=EXXX)											
15	1	26106-080162	BOLT, M8X 16 PLATED	2							
16	1	129150-02870	BEARING, 0.25 US	4							1
17	1	129150-02940	BEARING, THRUST 0.25	2							2
18	1	129403-34800	DIPSTICK, OIL	1							
19	1	121520-34810	GUIDE, DIPSTICK	1							
20	1	129100-25061	SHAFT, IDLE	1							
21	1	129150-25101	GEAR ASSY, IDLE	1							
23	1	26106-080452	BOLT, M8X 45 PLATED	2							

Remarks
(1) UNDER-SIZE(U.S=0.25)PART.
(2) OVER-SIZE(O.S=0.25)PART.

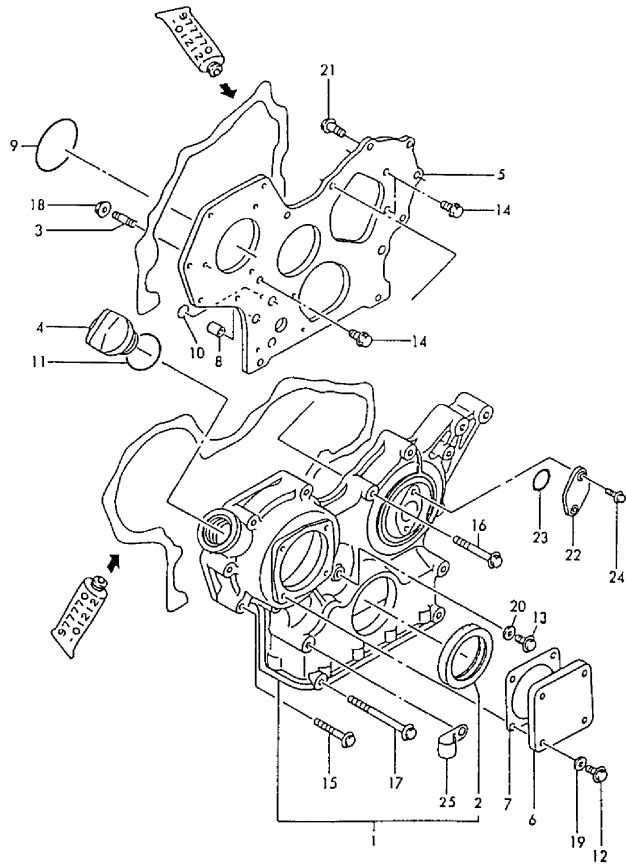
Fig.2. GEAR HOUSING

(A)=3TN84L-RHKCH
(B)=
(C)=

(D)=
(E)=
(F)=

Fig.2 ギヤケース
GEAR HOUSING

D25400-01220
D25100-01810



No.	Lev.	Parts No.	Description	Q'ty						I	R
				(A)	(B)	(C)	(D)	(E)	(F)		
1	1	719810-01500 (A=*1991.10)	CASE ASSY, GEAR	1							W
2	2	129795-01800	SEAL, OIL	1							
3	1	121450-01560	STUD, M8X22	3							
4	1	124160-01751	COVER, FILLER	1							
5	1	129400-01520	FLANGE, GEAR CASE	1							
6	1	124240-01871	COVER	1							
7	1	124240-01882	GASKET	1							
7-1	1	124240-01883	GASKET	1							N
		(A=E23655)									
7-2	1	124240-01883	GASKET	1							
8	1	129795-01950	PIPE, KNOCK L=18	2							
9	1	121850-51960	O-RING	1							
10	1	24311-000160	O-RING, 1AP16.0	2							
11	1	24311-000320	O-RING, 1AP32.0	1							
12	1	26106-080122	BOLT, M8X 12 PLATED	4							
13	1	26106-080162	BOLT, M8X 16 PLATED	1							
14	1	26106-080162	BOLT, M8X 16 PLATED	3							
15	1	26106-080452	BOLT, M8X 45 PLATED	6							
16	1	26106-080552	BOLT, M8X 55 PLATED	3							
17	1	26106-080852	BOLT, M8X 85 PLATED	4							
18	1	26366-080002	NUT, M8	3							
19	1	43400-500410	SEAL WASHER 8	4							
20	1	43400-500410	SEAL WASHER 8	1							
21	1	26106-080202	BOLT, M8X 20 PLATED	2							
22	1	121023-01550	COVER	1							
23	1	24311-000260	O-RING, 1AP26.0	1							
23-1	1	24341-000240	O-RING, 1AS24.0	1							N
		(A=E13228)									
24	1	26106-060122	BOLT, M6X 12 PLATED	2							
25	1	129150-03100 (A=EXXXX)	RETAINER, PIPE	1							W

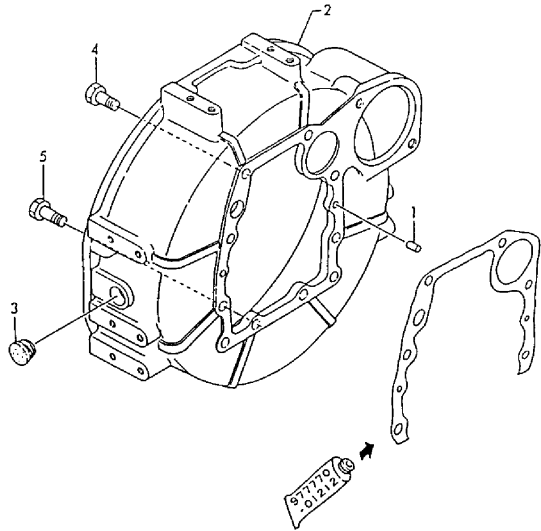
Fig.3. FLYWHEEL HOUSING

(A)=3TN84L-RHKCH
 (B)=
 (C)=

(D)=
 (E)=
 (F)=

Fig.3 フライホイールハウジング
 FLYWHEEL HOUSING

029110-01310



No.	Lev.	Parts No.	Description	Q'ty						I	R
				(A)	(B)	(C)	(D)	(E)	(F)		
1	1	129100-01580	PIN, M8X16	2							
2	1	129110-01600	HOUSING, FLYWHEEL	1							
3	1	119620-01750	CAP	1							
4	1	26206-100252	BOLT, M10X 25 PLATED	6							
5	1	26206-100302	BOLT, M10X 30 PLATED	4							

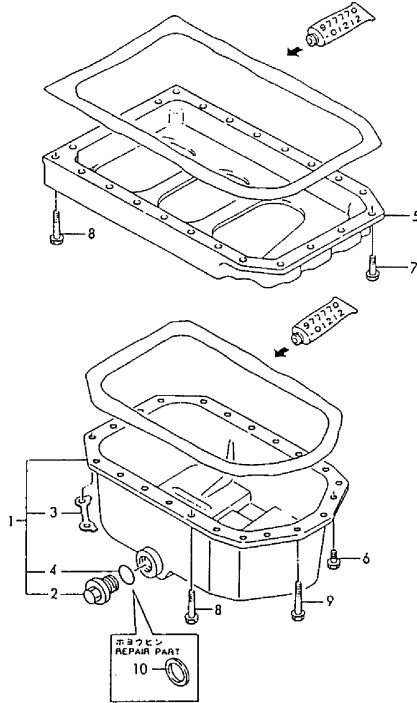
Fig.4. LUB. OIL SUMP

(A)=3TN84L-RHKCH
(B)=
(C)=

(D)=
(E)=
(F)=

Fig.4 オイルパン
LUB. OIL SUMP

029100-01410
029115-93100



No.	Lev.	Parts No.	Description	Q'ty						I	R
				(A)	(B)	(C)	(D)	(E)	(F)		
1	1	771341-01540	SUMP ASSY, OIL	1							
1-1	1	129100-01770	SUMP ASSY, OIL	1							N
(A=E27683)											
2	2	171301-01640	PLUG, 22	1							
3	2	129100-01790	RETAINER	2							
4	2	24341-000240	O-RING, 1AS24.0	1							
5	1	129100-01730	SPACER, OIL SUMP	1							
6	1	26106-080162	BOLT, M8X 16 PLATED	4							
7	1	26106-080252	BOLT, M8X 25 PLATED	2							
8	1	26106-080452	BOLT, M8X 45 PLATED	16							
9	1	26106-080502	BOLT, M8X 50 PLATED	4							
10	1	43400-500550	SEAL WASHER	1							1

Remarks
(1) REPAIR PART.

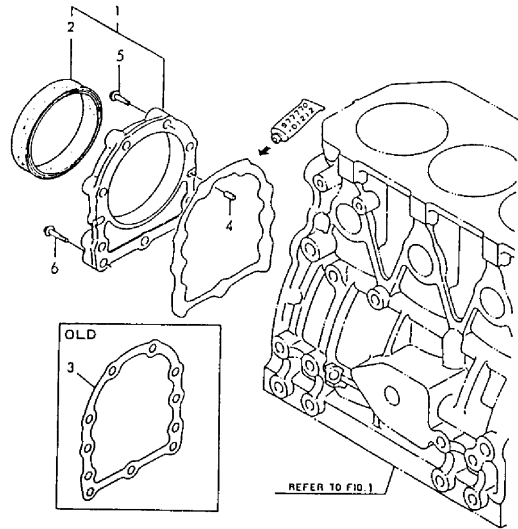
Fig.5. OIL SEAL HOUSING

(A)=3TN84L-RHKCH
(B)=
(C)=

(D)=
(E)=
(F)=

Fig.5 オイルシールケース
OIL SEAL HOUSING

029100-01510



No.	Lev.	Parts No.	Description	Q'ty						I	R
				(A)	(B)	(C)	(D)	(E)	(F)		
1	1	129100-01640 (A=E27683)	CASE ASSY, OIL SEAL	1							W
2	2	129795-01780	SEAL, OIL	1							
3	1	129150-01660 (A=EXXX)	GASKET	1							Z
4	1	129100-01580	PIN, M8X16	2							
5	1	26106-080302	BOLT, M8X 30 PLATED	6							
6	1	26106-080352	BOLT, M8X 35 PLATED	3							

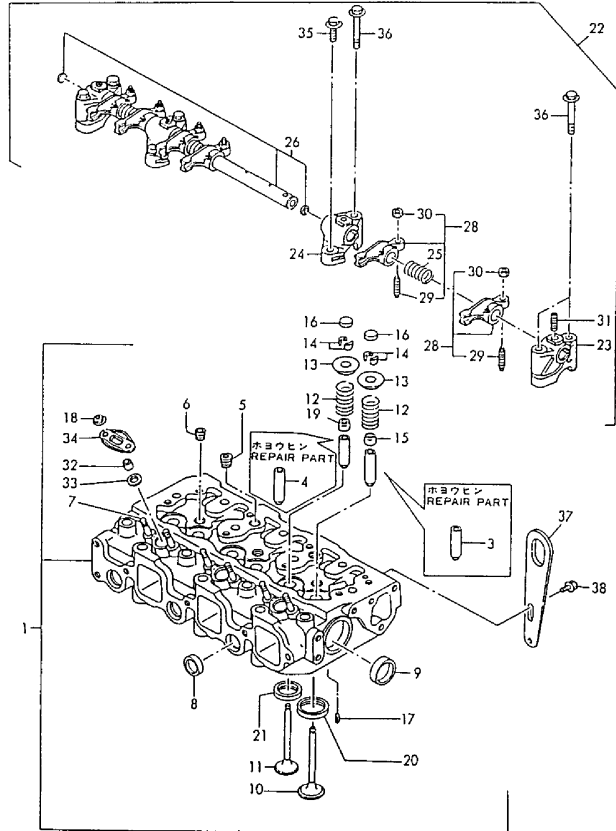
Fig.6. CYLINDER HEAD

(A)=3TN84L-RHKCH
(B)=
(C)=

(D)=
(E)=
(F)=

Fig.6 シリンダヘッド
CYLINDER HEAD

D21000-07300
D25102-11100



No.	Lev.	Parts No.	Description	Q'ty						I	R
				(A)	(B)	(C)	(D)	(E)	(F)		
1	1	771364-11700	HEAD ASSY, CYLINDER	1							
3	2	120130-11860	GUIDE, VALVE	3							1
4	2	129150-11810	GUIDE, VALVE	3							1
5	2	121850-11860	PLUG, PT1/4	2							
6	2	23871-030000	PLUG, R03	3							
7	2	26216-060202	STUD, M6X 20	6							
8	2	27241-220000	PLUG, 22	3							
9	2	27241-400000	PLUG, 40	2							
10	2	129100-11100	VALVE, INTAKE	3							
11	2	129100-11130	VALVE, EXHAUST	3							
12	2	129795-11120	SPRING, VALVE	6							
13	2	129795-11180	RETAINER, SPRING	6							
14	2	103338-11190	COTTER	6							
14-1	2	27310-080001	COTTER, 8	6							R
(A=EXXXXX)											
15	2	124460-11340	SEAL, VALVE STEM	3							
16	2	129150-11370	CAP, VALVE	6							
17	2	22351-060012	PIN, SPRING 6.0X12	2							
18	2	26366-060002	NUT, M6	6							
19	2	121400-11340	SEAL, VALVE STEM	3							
20	2	129470-11080	SEAT, INTAKE VALVE	3							
21	2	129470-11090	SEAT, EXHAUST VALVE	3							
22	1	129155-11241	SHAFT ASSY, ROCKER	1							
23	2	129155-11260	SUPPORT, ROCKER ARM	2							
24	2	129155-11270	SUPPORT, ROCKER ARM	2							
25	2	129150-11280	SPRING	3							
26	2	129150-11290	SHAFT, ROCKER ARM	1							
28	2	729150-11651	ARM ASSY, ROCKER	6							
28-1	2	729402-11650	ARM ASSY, ROCKER	6							N
(A=EXXX)											
29	3	129150-11230	SCREW, VALVE ADJUST	6							
30	3	129150-11750	NUT, M8	6							
31	2	26226-080182	STUD, M8X 18	3							
32	1	119625-11870	PROTECTOR, NOZZLE	3							
33	1	119625-11880	SEAT, NOZZLE	3							
34	1	119625-11900	RETAINER, NOZZLE	3							
35	1	26106-080252	BOLT, M8X 25 PLATED	2							
36	1	26106-080502	BOLT, M8X 50 PLATED	6							
37	1	124736-07900	LIFTER	2							
38	1	26106-080142	BOLT, M8X 14 PLATED	4							

Remarks

(1) REPAIR PART.

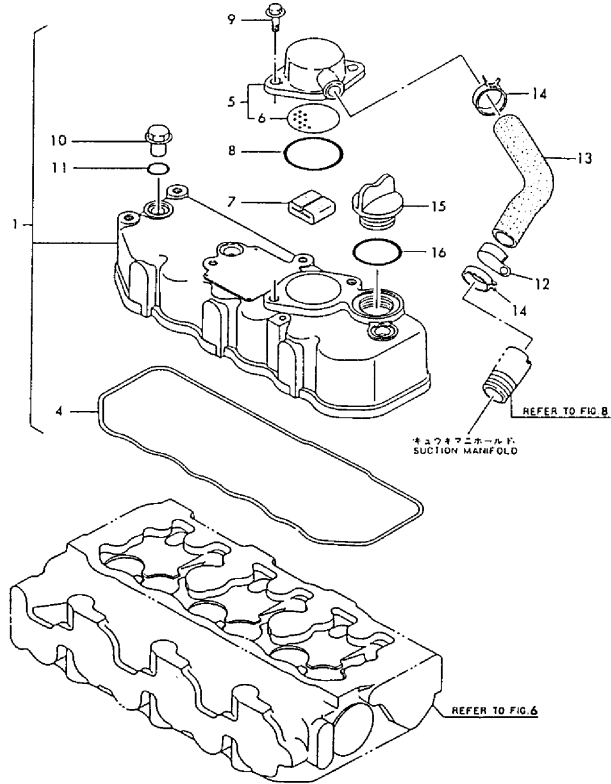
Fig.7. BONNET

(A)=3TN84L-RHKCH
(B)=
(C)=

(D)=
(E)=
(F)=

Fig.7 ベンワンシツ
BONNET

029410-03140
029100-11220



No.	Lev.	Parts No.	Description	Q'ty						I	R
				(A)	(B)	(C)	(D)	(E)	(F)		
1	1	129100-11350 (A=EXXX)	BONNET ASSY, HEAD	1							W
3	2	121420-01760	O-RING	1							
4	2	129150-11310	GASKET, BONNET	1							
5	2	129150-03010	COVER ASSY	1							
6	3	129150-03080	PLATE, BAFFLE	1							
7	2	129150-03070	BAFFLE, BREATHER	1							
8	2	24341-000500	O-RING, 1AS50.0	1							
9	2	26106-080162	BOLT, M8X 16 PLATED	2							
10	1	124160-11360	KNOB	3							
11	1	24311-000120	O-RING, 1AP12.0	3							
12	1	129150-03100 (A=EXXX)	RETAINER, PIPE	1							Z
13	1	129410-03100	PIPE , BREATHER	1							
14	1	129410-03990	CLAMP 22	2							
15	1	124160-01751	COVER, FILLER	1							
16	1	24311-000320	O-RING, 1AP32.0	1							

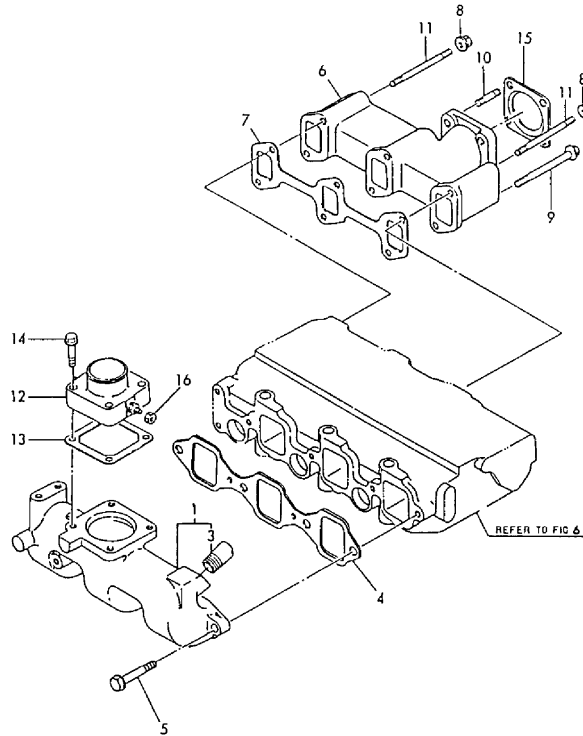
Fig.8. SUCTION & EXHAUST MANIFOLD

(A)=3TN84L-RHKCH
(B)=
(C)=

(D)=
(E)=
(F)=

Fig. 8 キュウハイキマニホルド
SUCTION & EXHAUST MANIFOLD

029115-12200
029100-13100TK
029100-77501
029115-93100



No.	Lev.	Parts No.	Description	Q'ty						I	R
				(A)	(B)	(C)	(D)	(E)	(F)		
1	1	129115-12100	MANIFOLD, AIR INTAKE	1							
3	2	104407-44480	JOINT	1							
4	1	129150-12110	GASKET, MANIFOLD	1							
4-1	1	129150-12111 (A=E27683)	GASKET, MANIFOLD	1							N
5	1	26106-080252	BOLT, M8X 25 PLATED	4							
6	1	129100-13110	MANIFOLD, EXHAUST	1							
7	1	129150-13110	GASKET	1							
8	1	194990-22050	NUT, M8	2							
9	1	26106-080802	BOLT, M8X 80 PLATED	4							
10	1	26216-080222	STUD, M8X 22	4							
11	1	26216-080802	STUD, M8X 80	2							
12	1	129120-77501	HEATER	1							
13	1	129150-77510	GASKET	1							
13-1	1	129150-77511 (A=E27683)	GASKET	1							N
14	1	26106-080352	BOLT, M8X 35 PLATED	4							
15	1	124701-11910	GASKET, SILENCER	1							
15-1	1	124701-11911 (A=E27683)	GASKET, SILENCER	1							N
16	1	26756-060002	NUT, LOCK M6	1							

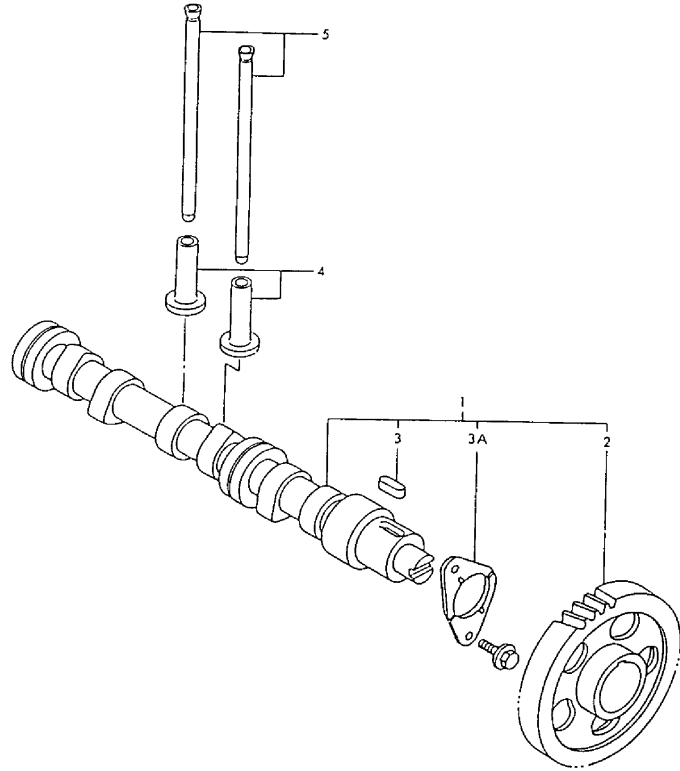
Fig.9. CAMSHAFT

(A)=3TN84L-RHKCH
(B)=
(C)=

(D)=
(E)=
(F)=

Fig. 9 カムシャフト
CAMSHAFT

029129-14100



No.	Lev.	Parts No.	Description	Q'ty						I	R
				(A)	(B)	(C)	(D)	(E)	(F)		
1	1	129129-14580 (A=EXXX)	CAMSHAFT ASSY	1							W
2	2	129150-14101	GEAR, CAMSHAFT	1							
3	2	22512-070140	KEY, 7X 14	1							
3A	2	129150-02450 (A=EXXX)	BEARING, THRUST	1							W
4	1	129150-14200	TAPPET	6							
5	1	129150-14400	ROD, PUSH L=178	6							

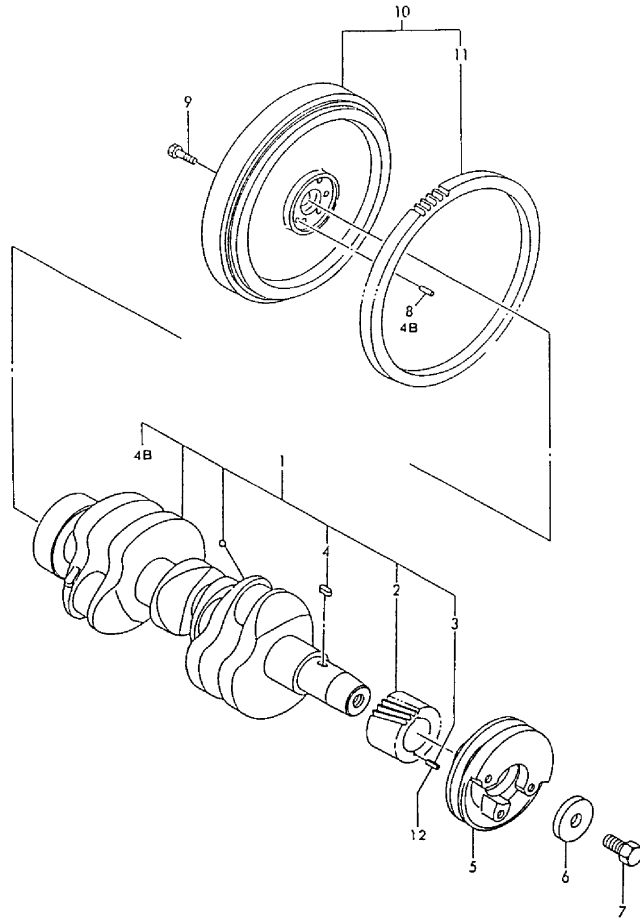
Fig.10. CRANKSHAFT & FLYWHEEL

(A)=3TN84L-RHKCH
(B)=
(C)=

(D)=
(E)=
(F)=

Fig. 10 クランクシャフト & フライホイール
CRANKSHAFT & FLYWHEEL

029100-21100
029100-21200
029115-21300



No.	Lev.	Parts No.	Description	Q'ty						I	R
				(A)	(B)	(C)	(D)	(E)	(F)		
1	1	729150-21700	CRANKSHAFT ASSY	1							
1-1	1	729102-21700	CRANKSHAFT ASSY	1							N
(A=E08517)											
2	2	129150-21200	GEAR, CRANKSHAFT	1							
3	2	22351-040010	PIN, SPRING 4.0X10	1							Z
(A=E27683)											
4	2	22512-070140	KEY, 7X 14	1							
4B	2	129100-01580	PIN, M8X16	1							W
(A=E27683)											
5	1	171340-21650	V-PULLEY	1							
6	1	129795-21661	WASHER	1							
7	1	121850-21680	BOLT	1							
8	1	129100-01580	PIN, M8X16	1							Z
(A=E27683)											
9	1	121111-21501	BOLT, FLYWHEEL	6							
10	1	129115-21590	FLYWHEEL ASSY	1							
11	2	119865-21600	GEAR, RING	1							
12	1	22351-040010	PIN, SPRING 4.0X10	1							W
(A=E27683)											

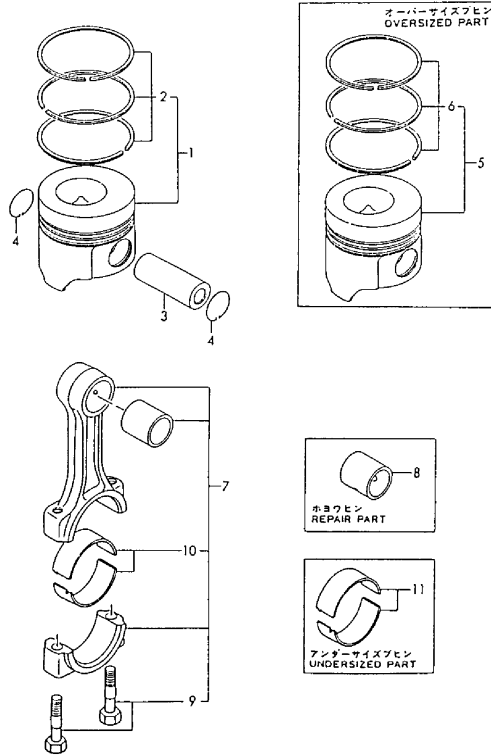
Fig.11. PISTON & CONNECTING ROD

(A)=3TN84L-RHKCH
(B)=
(C)=

(D)=
(E)=
(F)=

Fig. 11 ピストン&コネクティングロッド
PISTON & CONNECTING ROD

029105-22100
029150-23100



No.	Lev.	Parts No.	Description	Q'ty						I	R
				(A)	(B)	(C)	(D)	(E)	(F)		
1	1	129105-22090	PISTON ASSY	3							
2	2	729105-22500	RING SET, PISTON	3							
2-1	2	729105-22501	RING SET, PISTON	3							N
2-2	2	729105-22500	RING SET, PISTON	3							N
		(A=E02861)									
		(A=E21129)									
3	1	129150-22300	PIN, PISTON D26 L66	3							
4	1	121100-22400	CIRCLIP	6							
5	1	729105-22910	PISTON ASSY, 0.25 OS	3							1
6	2	729105-22950	RING SET, 0.25 OS	3							1
6-1	2	729105-22951	RING SET, 0.25 OS	3							N 1
		(A=E02861)									
7	1	729150-23700	ROD ASSY, CONNECTING	3							
7-1	1	729402-23100	ROD ASSY, CONNECTING	3							N
		(A=EXXX)									
8	2	129100-23910	BEARING, PISTON PIN	3							2
9	2	121550-23200	BOLT, CONNECTING ROD	6							
10	2	129150-23600	BEARING, CRANK PIN	3							
11	1	129150-23610	BEARING, 0.25 US	3							3

Remarks

- (1) OVER-SIZE(O.S=0.25)PART.
- (2) REPAIR PART.
- (3) UNDER-SIZE(U.S=0.25)PART.

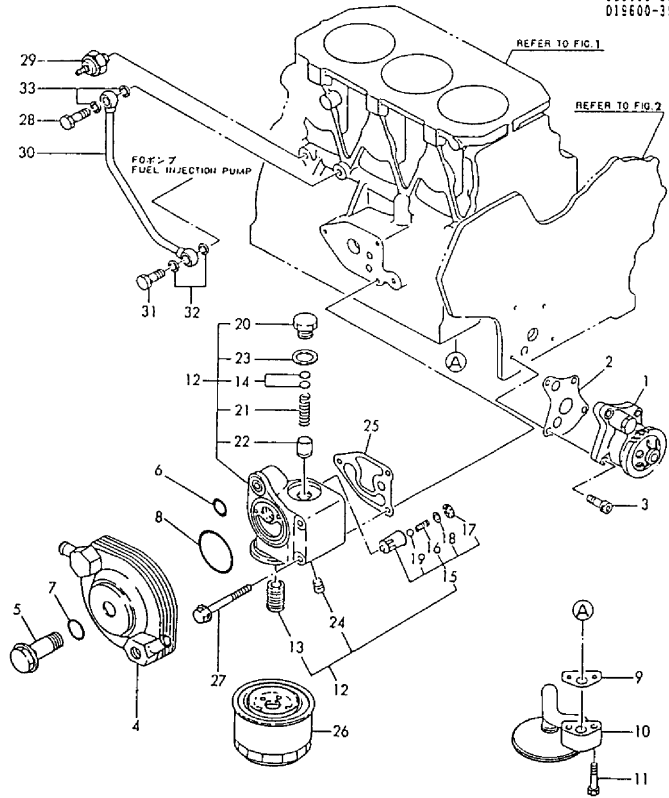
Fig.12. LUB. OIL SYSTEM

(A)=3TN84L-RHKCH
(B)=
(C)=

(D)=
(E)=
(F)=

Fig.12 LOシステム
LUB. OIL SYSTEM

029553-32100
029122-33102
029100-35110
029103-35202
029150-39110
015600-39100



No.	Lev.	Parts No.	Description	Q'ty						I	R
				(A)	(B)	(C)	(D)	(E)	(F)		
1	1	129553-32000	PUMP ASSY, OIL	1							
2	1	129150-32020	GASKET, PUMP	1							
3	1	26450-060252	BOLT, M6X 25	4							
4	1	129103-33031	COOLER, OIL	1							
5	1	129103-33132	BOLT	1							
6	1	24311-000200	O-RING, 1AP20.0	1							
7	1	24311-000210	O-RING, 1AP21.0	1							
8	1	24321-000550	O-RING, 1AG55.0	1							
9	1	129150-35040	GASKET	1							
9-1	1	129150-35041	GASKET	1							N
		(A=E27683)									
10	1	129100-35300	PIPE ASSY, OIL INLET	1							
10-1	1	129100-35301	PIPE ASSY, OIL INLET	1							N
		(A=E22824)									
11	1	26116-080352	BOLT, M8X 35 PLATED	2							
11-1	1	26106-080352	BOLT, M8X 35 PLATED	2							N
		(A=E22824)									
12	1	129103-35101	BRACKET ASSY, FILTER	1							
13	2	129100-35140	STUD	1							
14	2	121850-35200	SHIM SET	1							
15	2	129553-35500	VALVE ASSY, BYPASS	1							Z
		(A=E22824)									
16	3	129553-35520	SPRING	1							Z
		(A=E22824)									
17	3	129553-35530	RETAINER, SPRING	1							Z
		(A=E22824)									
18	3	129553-35540	SHIM	1							Z
		(A=E22824)									
19	3	24190-130001	BALL, STEEL 13/32	1							Z
		(A=E22824)									
20	2	124223-35510	RETAINER, SPRING	1							
21	2	121850-35520	SPRING	1							
22	2	121850-35531	VALVE, CONTROL	1							
23	2	23414-180000	GASKET, 18X1.0	1							
24	2	23871-020000	PLUG, R02	1							
25	1	129103-35121	GASKET	1							
25-1	1	129103-35122	GASKET	1							N
		(A=E27683)									
26	1	129150-35150	FILTER 90X80L	1							
27	1	26106-080752	BOLT, M8X 75 PLATED	3							
28	1	124160-39140	BOLT, PIPE JOINT M10	1							
29	1	124160-39450	SWITCH, 0.5KG	1							
30	1	129150-39450	PIPE ASSY, OIL	1							
31	1	124550-59820	BOLT, PIPE JOINT M8	1							
32	1	23414-080000	GASKET, 8X1.0	2							
33	1	23414-100000	GASKET, 10X1.0	2							

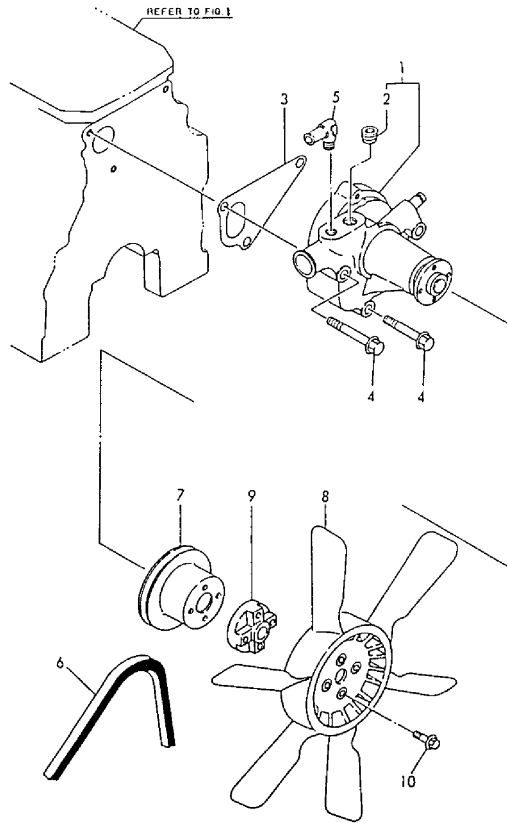
Fig.13. COOLING WATER PUMP

(A)=3TN84L-RHKCH
(B)=
(C)=

(D)=
(E)=
(F)=

Fig. 13 CWポンプ&ファン
COOLING WATER PUMP & FAN

025103-42110
025100-42300
025115-44400



No.	Lev.	Parts No.	Description	Q'ty						I	R
				(A)	(B)	(C)	(D)	(E)	(F)		
1	1	129100-42001	PUMP ASSY, WATER	1							
1-1	1	129100-42002	PUMP ASSY, WATER	1							N
(A=E27683)											
2	2	23871-030000	PLUG, R03	1							
3	1	129100-42020	GASKET, WATER PUMP	1							
4	1	26106-080602	BOLT, M8X 60 PLATED	3							
5	1	129103-49301	ELBOW, PT1/4	1							
6	1	124732-42290	V-BELT, AX37	1							
7	1	129403-42380	V-PULLEY, D=110	1							
8	1	171440-44740	FAN, COOLING D350XQF	1							
9	1	171353-44760	SPACER, FAN	1							
10	1	26106-060352	BOLT, M6X 35 PLATED	4							

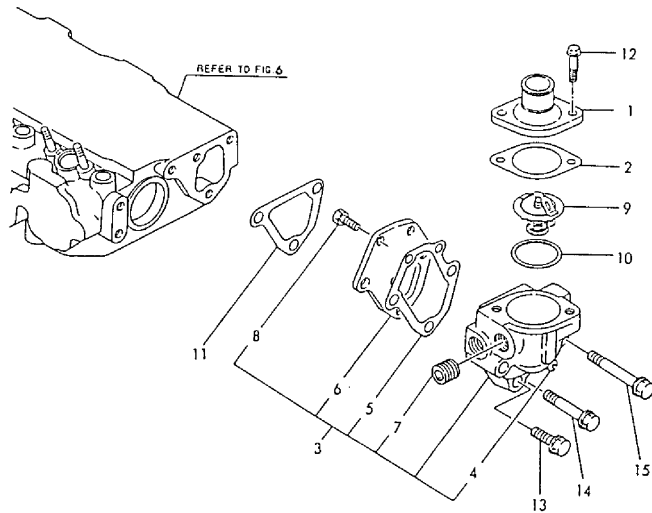
Fig.14. THERMOSTAT

(A)=3TN84L-RHKCH
(B)=
(C)=

(D)=
(E)=
(F)=

Fig. 14 サーモスタット
THERMOSTAT

029100-49210



No.	Lev.	Parts No.	Description	Q'ty						I	R
				(A)	(B)	(C)	(D)	(E)	(F)		
1	1	129350-49530	COVER, THERMOSTAT	1							
2	1	129795-49550	GASKET	1							
2-1	1	129795-49551	GASKET	1							N
(A=E27683)											
3	1	129100-49800	CASE ASSY, THERMOSTAT	1							
4	2	124770-11770	JOINT, PIPE PT1/8	1							
5	2	129100-49820	GASKET	1							
6	2	129100-49830	COVER, THERMOSTAT	1							
7	2	23871-030000	PLUG, R03	1							
8	2	26116-060162	BOLT, M6X 16 PLATED	2							
9	1	129155-49800	THERMOSTAT, 71	1							
10	1	129150-49810	GASKET, THERMOSTAT	1							
10-1	1	129150-49811	GASKET, THERMOSTAT	1							N
(A=E27683)											
11	1	129100-49840	GASKET	1							
12	1	26106-080202	BOLT, M8X 20 PLATED	2							
13	1	26106-080252	BOLT, M8X 25 PLATED	1							
14	1	26106-080502	BOLT, M8X 50 PLATED	1							
15	1	26106-080602	BOLT, M8X 60 PLATED	1							

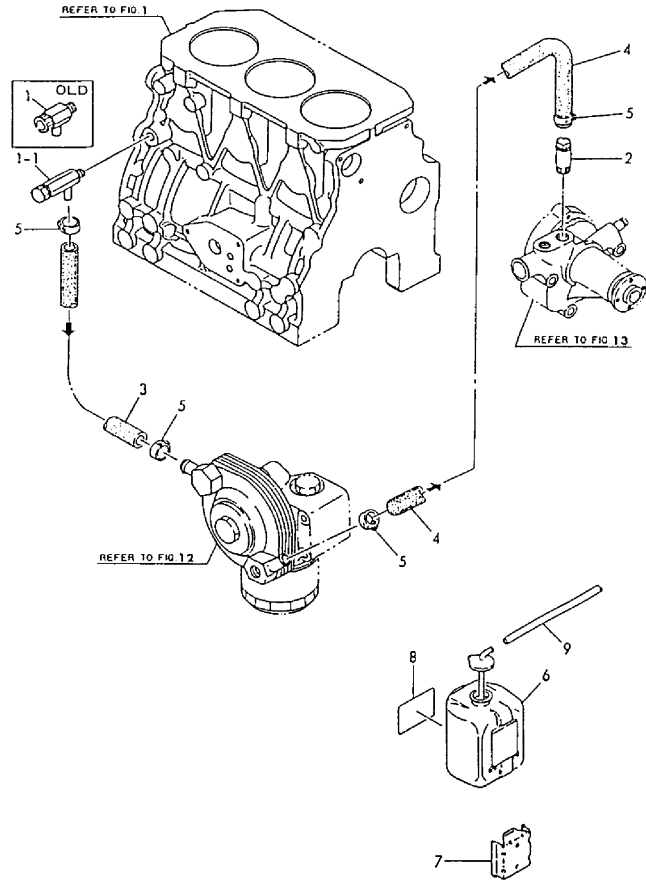
Fig.15. COOLING WATER PIPES

(A)=3TN84L-RHKCH
(B)=
(C)=

(D)=
(E)=
(F)=

Fig. 15 CWパイプ
COOLING WATER LINE

029116-49300
029258-49400
029115-93100



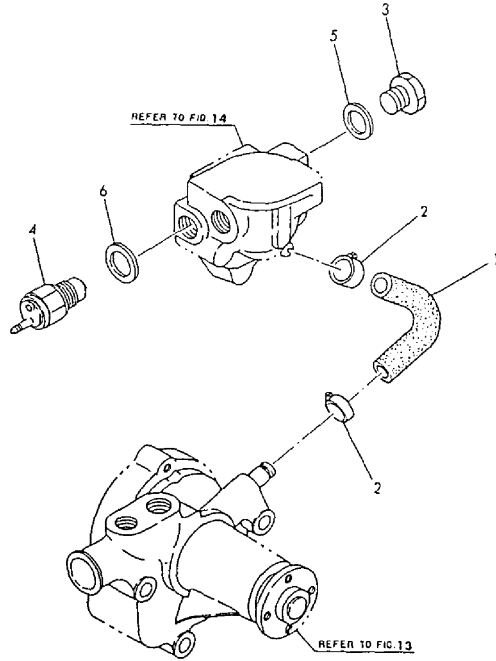
No.	Lev.	Parts No.	Description	Q'ty						I	R
				(A)	(B)	(C)	(D)	(E)	(F)		
1	1	119620-49290	COCK ASSY, 1/4	1							
1-1	1	129116-49290	COCK ASSY, 1/4	1							N
(A=E09397)											
2	1	129122-44480	JOINT	1							
3	1	129403-49031	PIPE, WATER	1							
4	1	129403-49050	PIPE, WATER	1							
4-1	1	129258-49040	PIPE, WATER	1							N
(A=E23655)											
5	1	23000-022000	CLAMP, 22	4							
6	1	120445-44530	TANK, SUB	1							
7	1	120445-44540	SUPPORT	1							
8	1	129410-44540	LABEL, SUB-TANK	1							
9	1	124722-49160	PIPE, DRAIN 7/12X250	1							

Fig.16. COOLING WATER PIPE(BY-PASS)

(A)=3TN84L-RHKCH
(B)=
(C)=

(D)=
(E)=
(F)=

Fig. 16 CWバイパス(バイパス)
COOLING WATER PIPE (BY-PASS) 029100-44500
029100-44610



No.	Lev.	Parts No.	Description	Q'ty						I	R	
				(A)	(B)	(C)	(D)	(E)	(F)			
1	1	129100-49050	PIPE, WATER	1								
2	1	23000-016000	CLAMP, 16	2								
3	1	121450-42450	PLUG, M16	1								
4	1	121250-44901	SWITCH, 110	1								
5	1	124465-44950	GASKET, 16	1								
6	1	124465-44950	GASKET, 16	1								

Fig.17. FUEL INJECTION PUMP

(A)=3TN84L-RHKCH

(B)=

(C)=

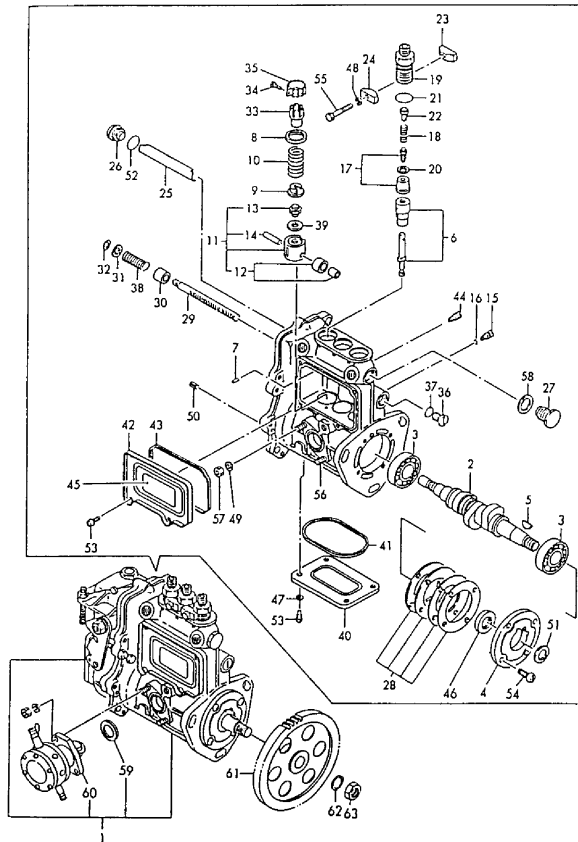
(D)=

(E)=

(F)=

Fig. 17 FOファンシャポンプ
FUEL INJECTION PUMP

029100-25200
728116-51410



No.	Lev.	Parts No.	Description	Q'ty						I	R
				(A)	(B)	(C)	(D)	(E)	(F)		
1	1	729116-51410	PUMP ASSY, INJECTION	1							1
2	2	119810-51040	CAMSHAFT	1							
3	2	122710-51050	BEARING, HR30203J	2							
4	2	129470-51060	RETAINER, BEARING	1							
5	2	122710-51090	KEY	1							
6	2	129400-51200	PLUNGER ASSY	3							
7	2	129155-51140	PIN	3							
8	2	174307-51170	RETAINER, SPRING A	3							
9	2	129155-51180	RETAINER, SPRING	3							
10	2	124950-51190	SPRING, PLUNGER	3							
11	2	129155-51200	TAPPET ASSY	3							
12	3	711100-51540	ROLLER ASSY	3							
13	3	129155-51250	BOLT, ADJUSTING	3							
14	3	174100-54120	PIN	3							
15	2	129155-51270	STOPPER, TAPPET	3							
16	2	129155-51280	O-RING, S6	3							
17	2	128170-51300	VALVE ASSY, DELIVERY	3							
18	2	129155-51320	SPRING, DELIVERY	3							
19	2	129155-51340	RETAINER	3							
20	2	124550-51350	GASKET, DELIVERY	3							
21	2	124550-51370	O-RING	3							
22	2	129155-51370	STOPPER, VALVE	3							
23	2	129155-51380	STOPPER	2							
24	2	129155-51390	STOPPER	2							
25	2	129155-51400	DEFLECTOR	1							
26	2	129155-51410	BOLT	1							
27	2	129155-51420	PLUG, M16	1							
28	2	129155-51450	SHIM SET, ADJUSTING	1							
29	2	129155-51500	RACK, CONTROL	1							
30	2	129155-51521	BUSH, RACK	1							
31	2	129155-51530	SPACER	1							
32	2	129155-51540	CIRCLIP	1							
33	2	129155-51550	PINION, CONTROL	3							
34	2	122117-51560	SCREW	3							
35	2	174307-51560	PINION	3							
36	2	129155-51570	PLUG, M12	1							
37	2	129155-51580	O-RING	1							
38	2	129155-51591	SPRING, RACK	1							
39	2	129155-51600	SHIM SET, ADJUSTING	3							
40	2	129155-51700	COVER	1							
41	2	129155-51710	GASKET	1							
42	2	129155-51750	COVER	1							
43	2	129155-51760	GASKET	1							
44	2	129155-51790	STOOPER, RACK	1							
45	2	129156-51910	LABEL, CAUTION	1							
46	2	129470-51080	SEAL, AF0741F0	1							
47	2	22217-050000	WASHER, SPRING 5	4							Z
				(A=EXXX)							
48	2	22217-050000	WASHER, SPRING 5	4							Z
				(A=EXXX)							
49	2	22217-060000	WASHER, SPRING 6	2							

Remarks

(1) GOVERNOR ASSY(FIG.23)IS
INCORPORATED IN THIS FUEL
INJECTION PUMP ASSY.(REF.NO.1)

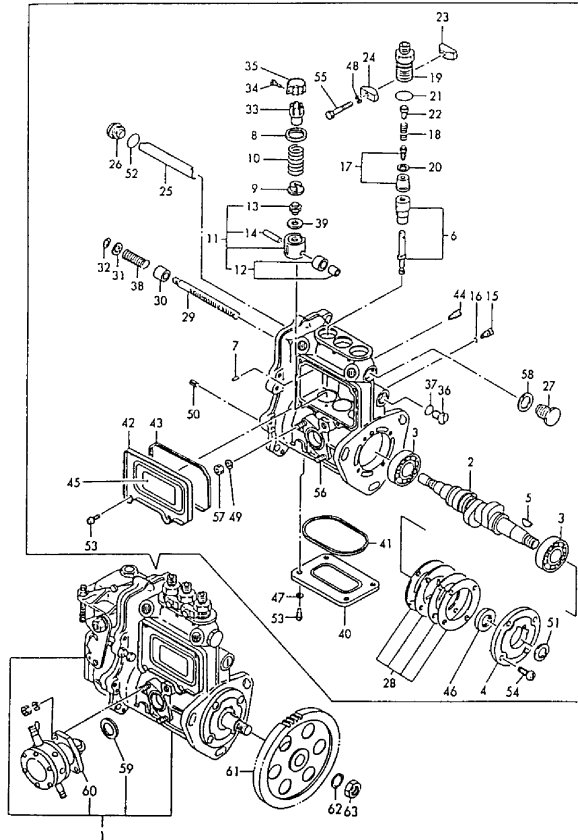
Fig.17. FUEL INJECTION PUMP

(A)=3TN84L-RHKCH
(B)=
(C)=

(D)=
(E)=
(F)=

Fig. 17 FOファンシャポンプ
FUEL INJECTION PUMP

029100-25200
728116-51410



No.	Lev.	Parts No.	Description	Q'ty						I	R
				(A)	(B)	(C)	(D)	(E)	(F)		
50	2	22351-050010	PIN, SPRING 5.0X10	2							
51	2	22287-120000	WASHER, 12	1							Z
(A=EXXX)											
52	2	24341-000160	O-RING, 1AS16.0	1							
53	2	26022-050102	SCREW, M5X10	8							
53-1	2	26022-050102	SCREW, M5X10	4							K
(A=EXXX)											
53-2	2	26022-050102	SCREW, M5X10	8							K
(A=EXXX)											
53A	2	26022-050102	SCREW, M5X10	4							W
(A=EXXX)											
53A-1	2	26022-050102	SCREW, M5X10	4							Z
(A=EXXX)											
54	2	26022-060162	SCREW, M6X16	4							
55	2	26116-050302	BOLT, M5X 30 PLATED	2							
56	2	26216-060142	STUD, M6X 14	2							
56-1	2	129155-51020	STUD	2							N
(A=E04946)											
57	2	26716-060002	NUT, M6	2							
58	2	43400-500490	SEAL WASHER 16	1							
59	2	129155-52050	GASKET	1							
60	2	129100-52100	PUMP ASSY, FUEL FEED	1							
61	1	129100-25900	GEAR, PUMP	1							
62	1	22217-120000	WASHER, SPRING 12	1							
63	1	26716-120002	NUT, M12	1							

Remarks

(1) GOVERNOR ASSY(FIG.23)IS
INCORPORATED IN THIS FUEL
INJECTION PUMP ASSY.(REF.NO.1)

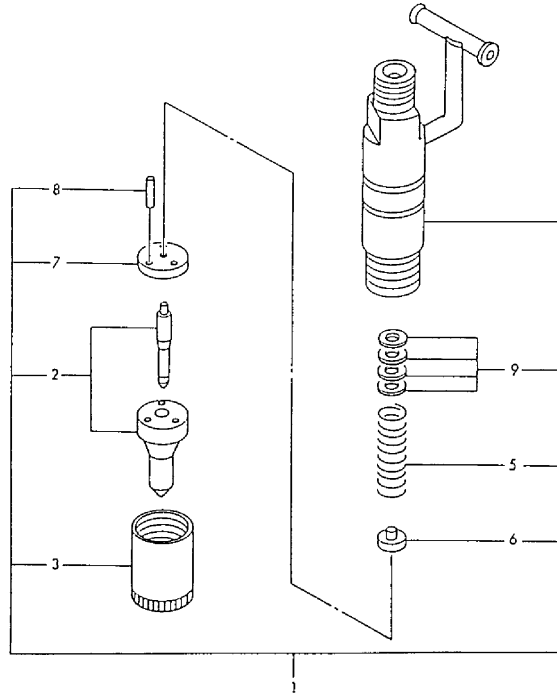
Fig.18. FUEL INJECTION VALVE

(A)=3TN84L-RHKCH
(B)=
(C)=

(D)=
(E)=
(F)=

Fig. 18 FOファンシャベン
FUEL INJECTION VALVE

D29100-53100



No.	Lev.	Parts No.	Description	Q'ty						I	R
				(A)	(B)	(C)	(D)	(E)	(F)		
1	1	729100-53100	VALVE ASSY,INJECTION	3							
2	2	129100-53000	VALVE ASSY,INJECTION	3							
3	2	114250-53080	NUT, NOZZLE D16.95	3							
5	2	114250-53120	SPRING, NOZZLE	3							
6	2	114250-53130	SEAT, SPRING	3							
7	2	114250-53140	PLATE	3							
8	2	114250-53210	PIN	6							
9	2	114250-53400	SHIM SET	3							
9F-1	3	114250-53460	SHIM, T=0.15	1							

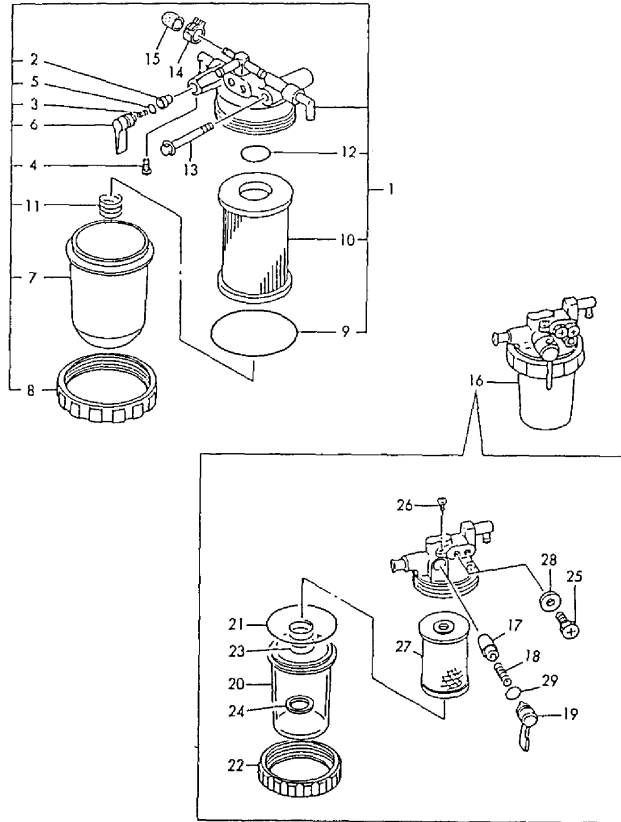
Fig.19. FUEL STRAINER

(A)=3TN84L-RHKCH
(B)=
(C)=

(D)=
(E)=
(F)=

Fig. 19 FOフィルタ
FUEL STRAINER

029100-55112
029115-53100



No.	Lev.	Parts No.	Description	Q'ty						I	R
				(A)	(B)	(C)	(D)	(E)	(F)		
1	1	129100-55621	FILTER ASSY, FUEL	1							
2	2	104200-55321	VALVE, TAPER	1							
3	2	104200-55330	SPRING, VALVE	1							
4	2	104200-55750	SCREW, M4	1							
5	2	24311-240100	O-RING, 1AP10A	1							
6	2	129100-55670	LEVER	1							
7	2	129100-55680	CUP, STRAINER	1							
8	2	129100-55690	RING, RETAINING	1							
9	2	24321-000650	O-RING, 1AG65.0	1							
10	2	129100-55650	ELEMENT	1							
11	2	129100-55700	SPRING	1							
12	2	24311-000160	O-RING, 1AP16.0	1							
13	1	26106-080652	BOLT, M8X 65 PLATED	1							
13-1	1	26014-080702	BOLT, M8X 70	1							N
(A=E01131)											
14	1	124066-59100	CLIP, HOSE 8	1							
15	1	129150-59580	CAP	1							
16	1	171009-55700	SEPARATOR ASSY,WATER	1							
17	2	104200-55321	VALVE, TAPER	1							
18	2	104200-55330	SPRING, VALVE	1							
19	2	104200-55341	HANDLE	1							
20	2	124064-55510	COVER	1							
21	2	102103-55520	O-RING	1							
22	2	110250-55610	RING, RETAINING	1							
23	2	121257-55720	SPRING	1							
24	2	121257-55731	FLOAT	1							
25	2	101720-55750	PLUG, 6	2							
26	2	104200-55750	SCREW, M4	1							
27	2	171081-55910	SCREEN	1							
28	2	23418-060000	GASKET, 6X1.0	2							
29	2	24311-240100	O-RING, 1AP10A	1							

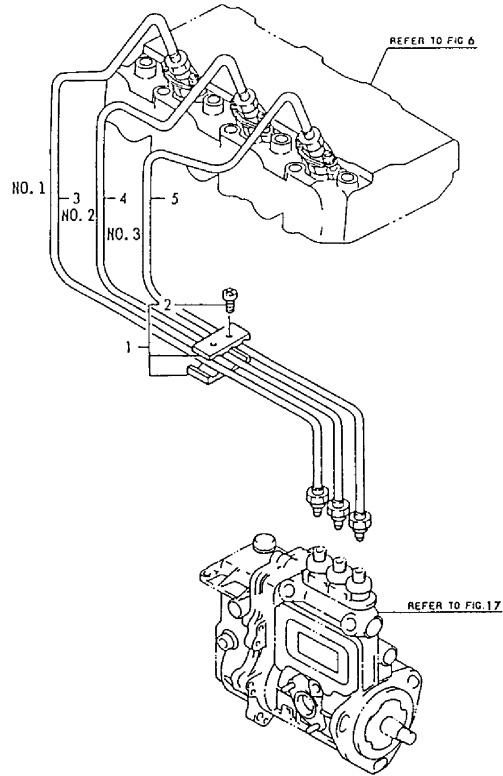
Fig.20. FUEL INJECTION PIPES

(A)=3TN84L-RHKCH
(B)=
(C)=

(D)=
(E)=
(F)=

Fig. 20 FOファンシャパイプ
FUEL INJECTION LINE

029115-59100



No.	Lev.	Parts No.	Description	Q'ty						I	R
				(A)	(B)	(C)	(D)	(E)	(F)		
1	1	129150-59120	RETAINER, PIPE	1							
2	2	129150-59130	BOLT, M4X12	2							
3	1	129100-59810	PIPE ASSY, INJECTION	1							
3-1	1	129115-59810 (A=E03513)	PIPE ASSY, INJECTION	1							N
4	1	129100-59820	PIPE ASSY, INJECTION	1							
4-1	1	129155-59820 (A=E03513)	PIPE ASSY, INJECTION	1							N
4-2	1	129115-59820 (A=E03513)	PIPE ASSY, INJECTION	1							N
5	1	129100-59830 (A=E03513)	PIPE ASSY, INJECTION	1							
5-1	1	129155-59830 (A=E03513)	PIPE ASSY, INJECTION	1							N
5-2	1	129115-59830 (A=E03513)	PIPE ASSY, INJECTION	1							N

Fig.21. FUEL PIPES

(A)=3TN84L-RHKCH

(B)=

(C)=

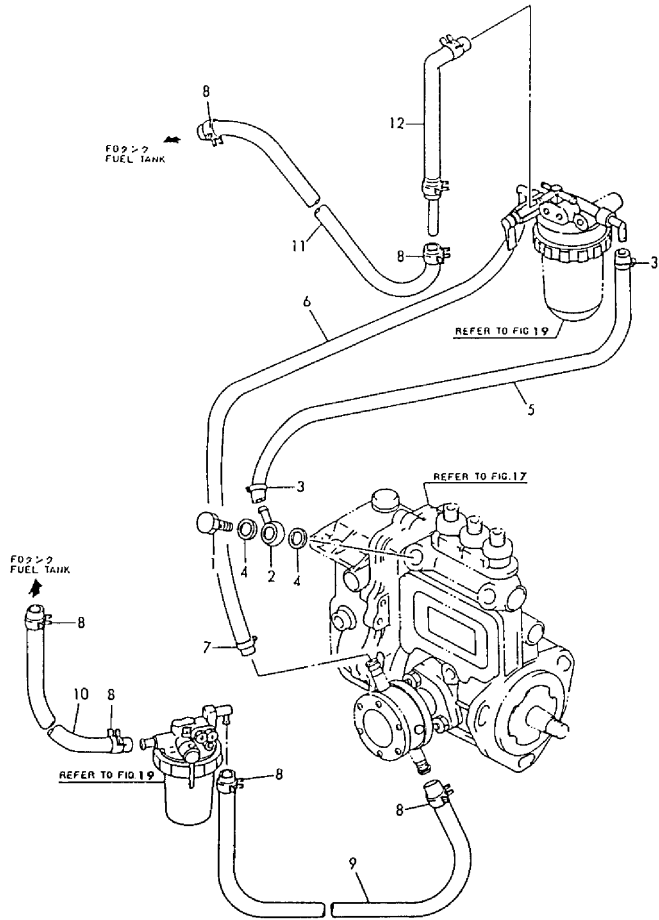
(D)=

(E)=

(F)=

Fig. 21 FOパイプ
FUEL LINE

D29115-59200
D29115-93100



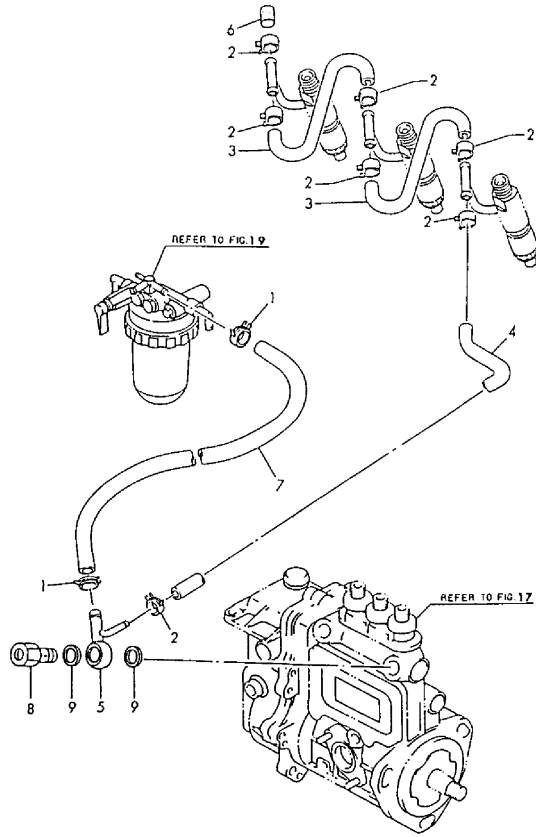
No.	Lev.	Parts No.	Description	Q'ty						I	R
				(A)	(B)	(C)	(D)	(E)	(F)		
1	1	103854-39140	BOLT, PIPE JOINT	1							
2	1	129150-59020	JOINT, PIPE	1							
2-1	1	101304-59020	JOINT, PIPE 12	1							N
(A=E11861)											
3	1	124766-59050	CLIP, HOSE 12	2							
4	1	104200-59170	GASKET, 12	2							
5	1	129555-59510	PIPE, D13/7.5X180	1							
5-1	1	129115-59510	PIPE, FUEL	1							N
(A=E33792)											
6	1	129255-59580	PIPE, FUEL	1							
6-1	1	105025-59750	PIPE, FUEL	1							N
(A=E11861)											
7	1	124766-59050	CLIP, HOSE 12	2							
7-1	1	23000-013000	CLAMP, 13	2							N
(A=E11861)											
7-2	1	124766-59050	CLIP, HOSE 12	2							R
(A=*1991.)											
7-3	1	124766-59050	CLIP, HOSE 12	2							
8	1	124766-59050	CLIP, HOSE 12	7							
9	1	124732-59091	PIPE, FUEL	1							
9-1	1	121920-59580	PIPE, FUEL	1							N
(A=E29683)											
10	1	121256-59090	PIPE, FUEL	1							
11	1	124756-59530	PIPE, FUEL D12X280	1							
12	1	119840-59601	BEND	1							

Fig.22. FUEL RETURN PIPES

(A)=3TN84L-RHKCH
(B)=
(C)=

(D)=
(E)=
(F)=

Fig. 22 FOモドシパイプ
FUEL RETURN LINE 029100-59302



No.	Lev.	Parts No.	Description	Q'ty						I	R
				(A)	(B)	(C)	(D)	(E)	(F)		
1	1	124766-59050	CLIP, HOSE 12	2							
2	1	124066-59100	CLIP, HOSE 8	7							
3	1	121250-59550	PIPE, FUEL D8X120	2							
4	1	119840-59560	PIPE, FUEL RETURN	1							
5	1	119840-59570	JOINT	1							
6	1	129150-59580	CAP	1							
7	1	129255-59580	PIPE, FUEL	1							
7-1	1	105025-59750	PIPE, FUEL	1							N
(A=E33792)											
8	1	129100-59951	VALVE ASSY, CHECK	1							
9	1	23414-120000	GASKET, 12X1.0	2							

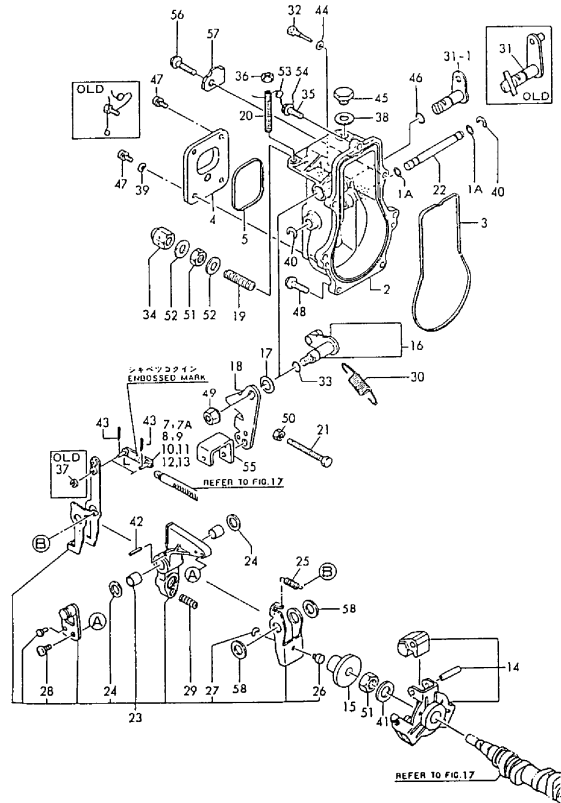
Fig.23. GOVERNOR

(A)=3TN84L-RHKCH
(B)=
(C)=

(D)=
(E)=
(F)=

Fig. 23 ガバナー GOVERNOR

729115-51410
029428-56400
029115-53100



No.	Lev.	Parts No.	Description	Q'ty						I	R
				(A)	(B)	(C)	(D)	(E)	(F)		
1A	1	129155-51280	O-RING, S6	2							
2	1	119843-61010	CASE, GOVERNOR	1							
2-1	1	119843-61011	CASE, GOVERNOR	1						F	1
(A=E08517)											
3	1	129155-61050	GASKET	1							
4	1	129155-61060	COVER, GOVERNOR CASE	1							
5	1	129155-61070	GASKET	1							
6	1	129155-61090	BOLT	1							Z
(A=E08517)											
7	1	129155-61120	LINK, L=30 MARK 0	1							2
7A	1	129155-61140	LINK, L=30.5 MARK 05	1							W 2
(A=FROM 1ST)											
8	1	129155-61130	LINK, L=31 MARK 1	1							2
9	1	129155-61140	LINK, L=30.5 MARK 05	1							Z 2
(A=EXXX)											
10	1	129155-61150	LINK, L=33	1							Z 2
(A=EXXX)											
11	1	129155-61160	LINK, L=34 MARK4	1							Z 2
(A=EXXX)											
12	1	129155-61170	LINK, L=28 MARK 8	1							Z 2
(A=EXXX)											
13	1	129155-61180	LINK, L=29 MARK 9	1							Z 2
(A=EXXX)											
14	1	129155-61201	WEIGHT ASSY,GOVERNOR	1							
15	1	129155-61341	SLEEVE	1							
16	1	129100-61400	SHAFT ASSY	1							
17	1	129155-61430	SPACER	1							
18	1	129100-61440	LEVER, CONTROL	1							
19	1	129155-61450	BOLT, LIMITER	1							
20	1	129155-61460	BOLT, IDLE	1							
21	1	129155-61470	BOLT, CONTROL	1							
22	1	129155-61490	SHAFT	1							
23	1	129116-61500	LEVER ASSY, GOVERNOR	1							
24	2	174307-51700	SHIM SET	2							
25	2	119843-61540	SPRING, SET	1							
26	2	129155-61540	SHIFTER	1							
27	2	22272-000040	RING, E- 4	1							
28	2	26022-060122	SCREW, M6X12	1							
29	1	129500-61650	SPRING, FUEL CONTROL	1							
30	1	129500-61700	SPRING, GOVERNOR	1							
31	1	129116-61800	LEVER ASSY, STOP	1							
31-1	1	129116-61801	LEVER ASSY, STOP	1							S
(A=E02359)											
31-2	1	129116-61802	LEVER ASSY, STOP	1							N
(A=E03858)											
31-3	1	129116-61803	LEVER, STOP	1							F 1
(A=E08517)											
32	1	129155-61810	PIN	1							
33	1	129155-61830	O-RING, S10	1							
34	1	129100-61930	NUT, CAP	1							
34-1	1	26687-120002	NUT, CAP M12	1							N

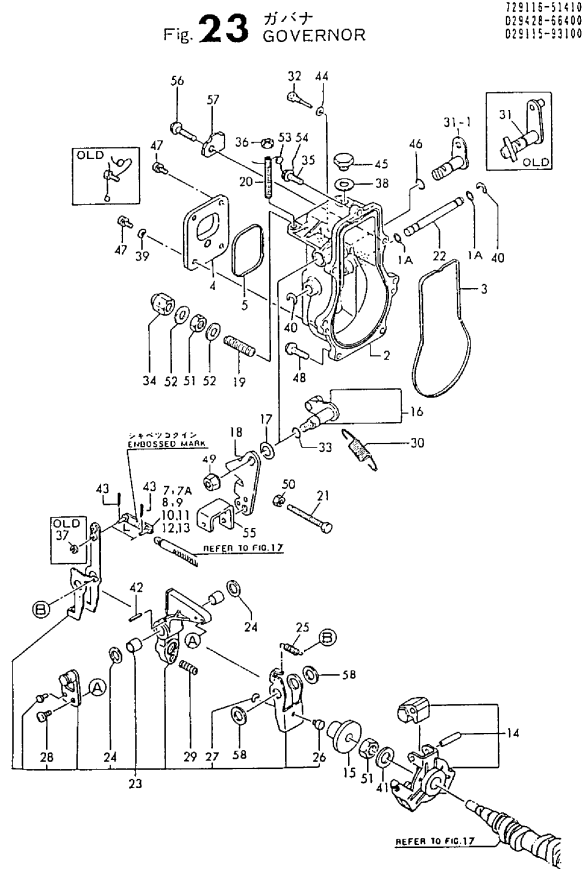
Remarks

- (1) INTERCHANGEABLE BY SIMULTANEOUS REPLACEMENT WITH REF.NO.2-1, NO.31-3 & NO.46-1.
- (2) SELECTIVE PARTS : CERTAIN THE CLASSIFICATION MARK, THEN PLACE YOUR ORDER.(ILLUSTRATION)

Fig.23. GOVERNOR

(A)=3TN84L-RHKCH
(B)=
(C)=

(D)=
(E)=
(F)=



729115-51410
029478-56400
029115-53100

Fig. 23 ガバナー GOVERNOR

No.	Lev.	Parts No.	Description	Q'ty						I	R
				(A)	(B)	(C)	(D)	(E)	(F)		
(A=E08517)											
35	1	129155-61950	BOLT	1							
36	1	124550-66370	NUT, M6	1							
37	1	22117-04000	WASHER, 4	1							
38	1	22190-10000	WASHER, SEAL 10	1							
38-1	1	43400-500430	SEAL WASHER 10	1							N
(A=E08517)											
39	1	22217-050000	WASHER, SPRING 5	1							Z
(A=E08517)											
40	1	22272-000060	RING, E- 6	2							
41	1	22287-120000	WASHER, 12	1							
42	1	22351-030016	PIN, SPRING 3.0X16	1							Z
(A=E08517)											
43	1	22360-040000	PIN, SNAP 4	2							
43-1	1	22372-040000	PIN, SNAP 4	2							R
(A=E08517)											
44	1	23414-050000	GASKET, 5X1.0	1							
44-1	1	43400-500390	SEAL WASHER 6	1							N
(A=E08517)											
45	1	23887-100002	PLUG, 10	1							
46	1	24311-000080	O-RING, 1AP8.0	1							
46-1	1	24311-240100	O-RING, 1AP10A	1							F 1
(A=E08517)											
47	1	26022-050102	SCREW, M5X10	3							
47-1	1	26022-050102	SCREW, M5X10	4							K
(A=E08517)											
48	1	26106-060202	BOLT, M6X 20 PLATED	6							
48-1	1	26106-060202	BOLT, M6X 20 PLATED	5							K
(A=E08517)											
49	1	26366-080002	NUT, M8	1							
50	1	26756-060002	NUT, LOCK M6	1							
51	1	26776-120002	NUT, LOCK M12	2							
52	1	43400-500450	SEAL WASHER 12	2							
53	1	135210-61090	LEAD	1							
54	1	22451-060000	WIRE, 0.6	1							
55	1	129410-67511	JOINT	1							
55-1	1	129115-67510	JOINT	1							S
(A=E08517)											
56	1	26106-060252	BOLT, M6X 25 PLATED	1							W
(A=E08517)											
57	1	129116-61890	SUPPORT	1							W
(A=E08517)											
58	1	129155-61480	SPACER ASSY	2							W
(A=E08517)											

Remarks

- (1) INTERCHANGEABLE BY SIMULTANEOUS REPLACEMENT WITH REF.NO.2-1, NO.31-3 & NO.46-1.
- (2) SELECTIVE PARTS : CERTAIN THE CLASSIFICATION MARK, THEN PLACE YOUR ORDER.(ILLUSTRATION)

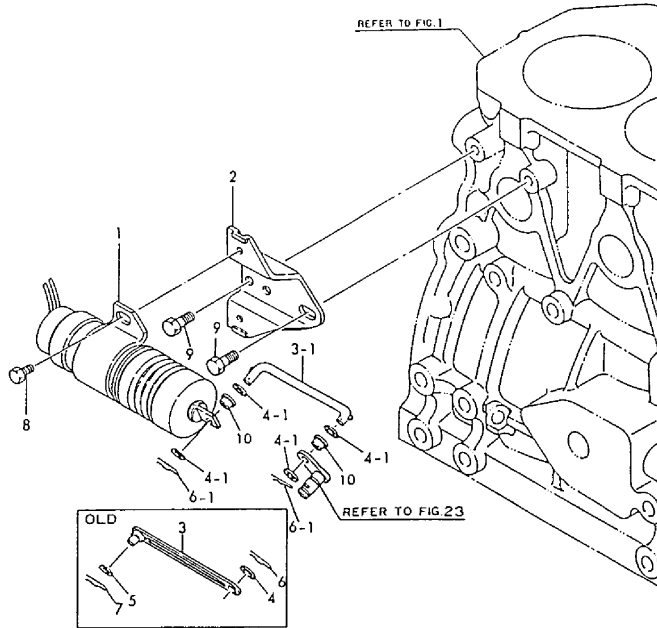
Fig.24. ENGINE STOP DEVICE

(A)=3TN84L-RHKCH
(B)=
(C)=

(D)=
(E)=
(F)=

Fig. 24 エンジンストップ
ENGINE STOP

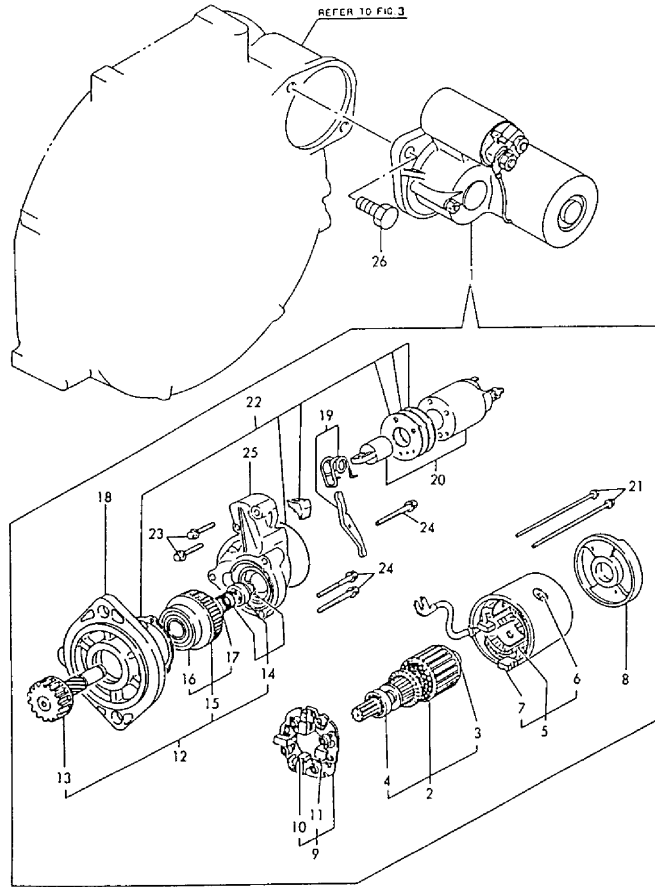
D29115-66510



No.	Lev.	Parts No.	Description	Q'ty						I	R
				(A)	(B)	(C)	(D)	(E)	(F)		
1	1	129155-66800	SOLENOID	1							
2	1	129155-66811	BRACKET, SOLENOID	1							
3	1	129155-66821	LINK, SOLENOID	1							
3-1	1	129155-66822 (A=E02359)	LINK, SOLENOID	1							S
3-2	1	129115-66820 (A=E02359)	LINK, SOLENOID	1							S
4	1	22117-060000 (A=E02359)	WASHER, 6	1							
4-1	1	22117-040000 (A=E02359)	WASHER, 4	4							S
4-2	1	22137-040000 (A=E06331)	WASHER, 4	4							N
5	1	22117-080000 (A=E02359)	WASHER, 8	1							Z
6	1	22360-060000 (A=E02359)	PIN, SNAP 6	1							
6-1	1	22360-040000 (A=E02359)	PIN, SNAP 4	2							S
7	1	22360-080000 (A=E02359)	SNAP PIN 8	1							Z
8	1	26016-060102 (A=E01378)	BOLT M 6X 10	2							
8-1	1	26106-060102 (A=E01378)	BOLT, M6X 10 PLATED	2							N
9	1	26116-080122 (A=E01378)	BOLT, M8X 12 PLATED	2							
10	1	119245-66400 (A=E01378)	BUSH	2							W

Fig.25. STARTING MOTOR(COMPONENT PARTS)

Fig. 25 スターティングモータ(インナーパーツ)
STARTING MOTOR (COMPONENT PARTS) 029400-171130



(A)=3TN84L-RHKCH
(B)=
(C)=

(D)=
(E)=
(F)=

No.	Lev.	Parts No.	Description	Qty						I	R
				(A)	(B)	(C)	(D)	(E)	(F)		
1	1	129400-77010	STARTER, S13-94	1							
1-1	1	129400-77011	STARTER, S13-94A	1							N
(A=E28678)											
2	2	X21309100	ARMATURE ASSY	1							
2-1	2	129400-77400	AMATURE ASSY.	1							R
(A=FROM 1ST)											
2-2	2	129400-77401	AMATURE, (NON-ASB.)	1							N
(A=E28678)											
2-3	2	129400-77400	AMATURE ASSY.	1							Q
(A=E28678)											
3	3	X211415502	BEARING, BALL	1							
3-1	3	171008-77410	BEARING(1)	1							R
(A=FROM 1ST)											
4	3	X211425502	BEARING, BALL	1							
4-1	3	171008-77420	BEARING(2)	1							R
(A=FROM 1ST)											
5	2	X213012001	COIL ASSY, FIELD	1							
5-1	2	129400-77440	COIL ASSY, FIELD	1							R
(A=FROM 1ST)											
6	3	X21143215	SCREW, CORE	4							
6-1	3	171008-77450	SCREW	4							R
(A=FROM 1ST)											
7	3	X213023112	BRUSH, +	2							
7-1	3	129400-77460	BRUSH (+)	2							R
(A=FROM 1ST)											
8	2	X213053014	COVER	1							
8-1	2	129400-77510	COVER, REAR	1							R
(A=FROM 1ST)											
9	2	X213053021	HOLDER ASSY, BRUSH	1							
9-1	2	129400-77470	HOLDER ASSY, BRUSH	1							R
(A=FROM 1ST)											
10	3	X213023112	BRUSH, +	2							
10-1	3	129400-77480	BRUSH (-)	2							R
(A=FROM 1ST)											
11	3	X21306313	SPRING, BRUSH	4							
11-1	3	129400-77490	SPRING, BRUSH	4							R
(A=FROM 1ST)											
12	2	X211455505	PINION CLUTCH ASSY	1							
12-1	2	171008-77650	PINION ASSY	1							R
(A=FROM 1ST)											
13	3	X211495009	SHAFT	1							
13-1	3	171008-77660	SHAFT, PINION	1							R
(A=FROM 1ST)											
14	3	X211429006	STOPPER SET	1							
14-1	3	171008-77670	STOPPER SET, PINION	1							R
(A=FROM 1ST)											
15	3	X211425505	CLUTCH ASSY	1							
15-1	3	171008-77720	CLUTCH ASSY	1							R
(A=FROM 1ST)											
16	4	X211435502	BALL BEARING	1							
16-1	4	171008-77730	BALL BEARING (3)	1							R

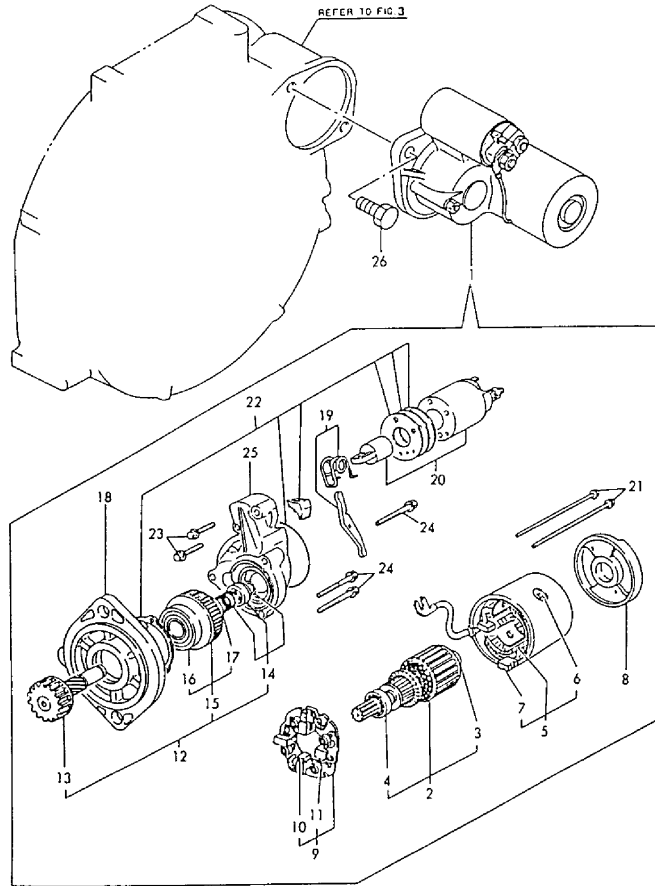
N:Old $\begin{matrix} \text{Yes} \\ \text{No} \end{matrix}$ New, Q:Old $\begin{matrix} \text{No} \\ \text{Yes} \end{matrix}$ New, R:Old $\begin{matrix} \text{Yes} \\ \text{No} \end{matrix}$ New, S:Old $\begin{matrix} \text{No} \\ \text{Yes} \end{matrix}$ New, W:Add, Z:Discontinued, F:Interchangeable by set, K:Qty Change
 ++ CONTINUE ++
 Copyright (C) YANMAR CO., LTD. All Rights Reserved.

Fig.25. STARTING MOTOR(COMPONENT PARTS)

(A)=3TN84L-RHKCH
(B)=
(C)=

(D)=
(E)=
(F)=

Fig. 25 スターティングモータ(インナーパーツ)
STARTING MOTOR (COMPONENT PARTS) 029400-17130



No.	Lev.	Parts No.	Description	Q'ty						I	R
				(A)	(B)	(C)	(D)	(E)	(F)		
			(A=FROM 1ST)								
17	4	X211445502	BALL BEARING	1							
17-1	4	171008-77740	BALL BEARING (4)	1							R
			(A=FROM 1ST)								
18	2	X211476504	HOUSING ASSY, GEAR	1							
18-1	2	171008-77510	HOUSING ASSY, GEAR	1							R
			(A=FROM 1ST)								
19	2	X211446012	LEVER, SHIFT	1							
19-1	2	171008-77540	LEVER SET, SHIFT	1							R
			(A=FROM 1ST)								
20	2	X213077001	SWITCH ASSY	1							
20-1	2	129400-77530	SWITCH ASSY,MAGNETIC	1							R
			(A=FROM 1ST)								
21	2	X21309820	BOLT, THROUGH	2							
21-1	2	129400-77640	BOLT, THROUGH	2							R
			(A=FROM 1ST)								
22	2	X21306910	COVER KIT	1							
22-1	2	129400-77570	COVER KIT, DUST	1							R
			(A=FROM 1ST)								
22-2	2	129400-77571	DUST COVER,(NON-ASB. (A=E28678)	1							N
22-3	2	129400-77570	COVER KIT, DUST (A=EXXX)	1							Q
			(A=FROM 1ST)								
23	2	X21145866	BOLT	2							
23-1	2	26106-060322	BOLT, M6X 32 PLATED	2							R
			(A=FROM 1ST)								
24	2	X21142867	BOLT	3							
24-1	2	26106-060402	BOLT, M6X 40 PLATED	3							R
			(A=FROM 1ST)								
25	2	X213054001	BRACKET ASSY, CENTER	1							
25-1	2	129400-77520	HOUSING, CENTER	1							R
			(A=FROM 1ST)								
26	1	26116-120252	BOLT, M12X 25 PLATED	2							

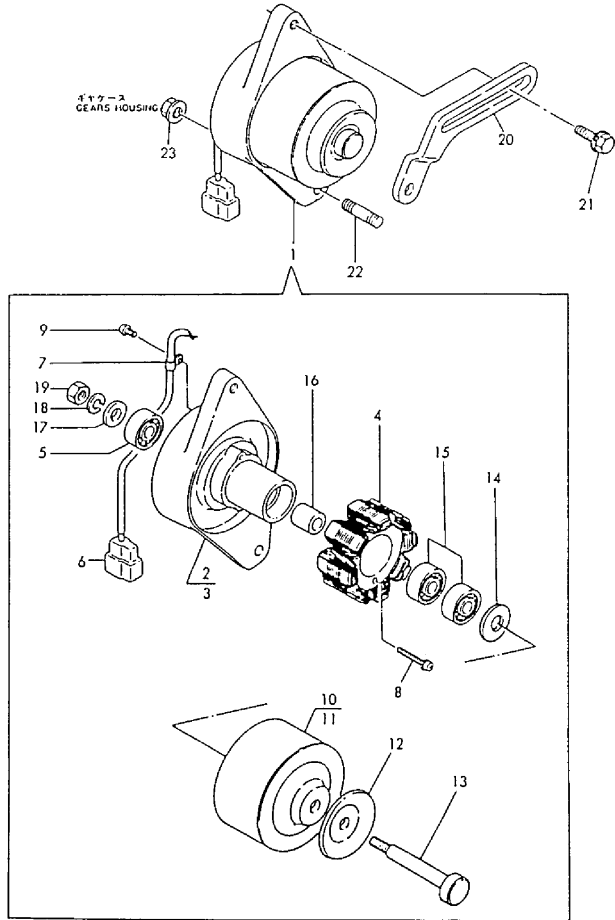
Fig.26. GENERATOR(COMPONENT PARTS)

(A)=3TN84L-RHKCH
(B)=
(C)=

(D)=
(E)=
(F)=

Fig. 26 ジェネレータ(インナーパーツ)
GENERATOR (COMPONENT PARTS)

029410-17200
029400-17300

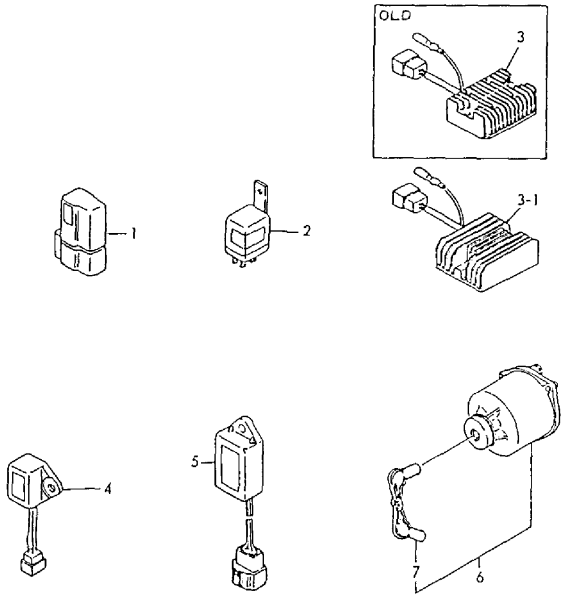


No.	Lev.	Parts No.	Description	Q'ty						I	R
				(A)	(B)	(C)	(D)	(E)	(F)		
1	1	171301-77201	DYNAMO ASSY, 15A	1							
2	2	XM08137	PLATE ASSY	1							
3	3	XM08138	PLATE	1							
4	3	XM08180	STATOR ASSY	1							
5	3	XM27436	BALL BEARING	1							
6	3	XM17878	COUPLER	1							
7	3	XM36410	CLAMP	1							
8	3	26022-040252	SCREW, M4X25	2							
9	3	XYSPS4008	SCREW	1							
10	2	XM82184	FLYWHEEL ASSY	1							
11	3	XM82110	FLYWHEEL	1							
12	3	XM72174	PULLEY	1							
13	3	XM72664	SHAFT	1							
14	3	XM37336	WASHER	1							
15	3	XM27436	BALL BEARING	2							
16	2	106383-44720	SPACER	1							
17	2	106383-44730	WASHER	1							
18	2	22212-100000	WASHER 10,SPRING	1							
19	2	26716-100002	NUT, M10	1							
20	1	129400-77330	ADJUSTER	1							
21	1	26014-080252	BOLT, M8X 25	1							
22	1	121450-01570	STUD	1							
23	1	26366-100002	NUT, M10	1							

Fig.27. ELECTRIC PARTS

Fig. **27** デンソウヒン
ELECTRIC PARTS

029115-93100



(A)=3TN84L-RHKCH
(B)=
(C)=

(D)=
(E)=
(F)=

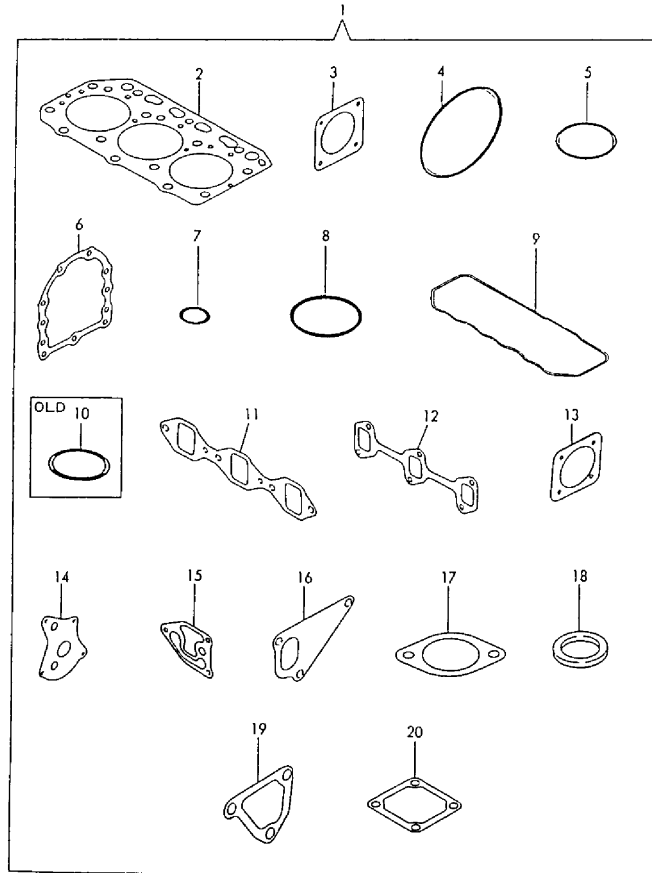
No.	Lev.	Parts No.	Description	Q'ty						I	R
				(A)	(B)	(C)	(D)	(E)	(F)		
1	1	119643-66900	DIODE	4							
2	1	121522-77101	RELAY, SAFETY	3							
3	1	171301-77700	LIMITER, CURRENT	1							
3-1	1	129132-77700 (A=E06331)	LIMITER, RS5136	1							N
4	1	121522-77721	INDICATOR	1							
5	1	128300-77920	TIMER	1							
6	1	129115-91250	SWITCH ASSY	1							
7	2	129115-91270	KEY ASSY	1							

Fig.28. GASKET SET(OPTIONAL)

(A)=3TN84L-RHKCH
(B)=
(C)=

(D)=
(E)=
(F)=

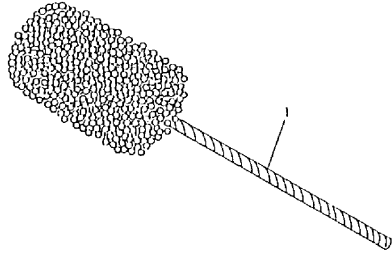
Fig.28 バッキンセット
GASKET SET



No.	Lev.	Parts No.	Description	Q'ty						I	R
				(A)	(B)	(C)	(D)	(E)	(F)		
1	1	729115-92600	GASKET SET	1							
1-1	1	729115-92601	GASKET SET	1							N
(A=E07131)											
1-2	1	729115-92602	GASKET SET	1							N
(A=E27683)											
2	2	129157-01332	GASKET, HEAD	1							
3	2	124240-01882	GASKET	1							
3-1	2	124240-01883	GASKET	1							N
(A=E23655)											
4	2	121850-51960	O-RING	1							
5	2	24311-000320	O-RING, 1AP32.0	1							
5-1	2	24311-000320	O-RING, 1AP32.0	2							K
(A=E07131)											
6	2	129150-01660	GASKET	1							Z
(A=EXXX)											
7	2	24311-000120	O-RING, 1AP12.0	3							
8	2	24341-000500	O-RING, 1AS50.0	1							
9	2	129150-11310	GASKET, BONNET	1							
10	2	121420-01760	O-RING	1							Z
(A=E07131)											
11	2	129150-12110	GASKET, MANIFOLD	1							
11-1	2	129150-12111	GASKET, MANIFOLD	1							N
(A=E27683)											
12	2	129150-13110	GASKET	1							
13	2	124701-11910	GASKET, SILENCER	1							
13-1	2	124701-11911	GASKET, SILENCER	1							N
(A=E27683)											
14	2	129150-32020	GASKET, PUMP	1							
15	2	129103-35121	GASKET	1							
15-1	2	129103-35122	GASKET	1							N
(A=E27683)											
16	2	129100-42020	GASKET, WATER PUMP	1							
17	2	129795-49550	GASKET	1							
17-1	2	129795-49551	GASKET	1							N
(A=E27683)											
18	2	129150-49810	GASKET, THERMOSTAT	1							
18-1	2	129150-49811	GASKET, THERMOSTAT	1							N
(A=E27683)											
19	2	129100-49840	GASKET	1							
20	2	129150-77510	GASKET	1							
20-1	2	129150-77511	GASKET	1							N
(A=E27683)											

Fig.29. SPECIAL TOOL(OPTIONAL)

Fig. **29** トクシュコウグ (オプション)
SPECIAL TOOLS (OPTIONAL)



(A)=3TN84L-RHKCH
(B)=
(C)=

(D)=
(E)=
(F)=

No.	Lev.	Parts No.	Description	Q'ty						I	R
				(A)	(B)	(C)	(D)	(E)	(F)		
1	1	129400-92420	FLEX HORN	1							

Parts No. Index

Parts No.	Fig. No.	Ref. No.
101304-59020	21	2 -1
101720-55750	19	25
102103-55520	19	21
103338-11190	6	14
103854-39140	21	1
104200-55321	19	2
		17
104200-55330	19	3
		18
104200-55341	19	19
104200-55750	19	4
		26
104200-59170	21	4
104407-44480	8	3
105025-59750	21	6 -1
	22	7 -1
106383-44720	26	16
106383-44730	26	17
110250-55610	19	22
114250-53080	18	3
114250-53120	18	5
114250-53130	18	6
114250-53140	18	7
114250-53210	18	8
114250-53400	18	9
114250-53460	18	9 F-1
119245-66400	24	10
119620-01750	3	3
119620-49290	15	1
119625-11870	6	32
119625-11880	6	33
119625-11900	6	34
119643-66900	27	1
119810-51040	17	2
119840-59560	22	4
119840-59570	22	5
119840-59601	21	12
119843-61010	23	2
119843-61011	23	2 -1
119843-61540	23	25
119865-21600	10	11
120130-11860	6	3
120445-44530	15	6
120445-44540	15	7
121023-01550	2	22
121100-22400	11	4
121111-21501	10	9
121250-44901	16	4
121250-59550	22	3
121256-59090	21	10

Parts No.	Fig. No.	Ref. No.
121257-55720	19	23
121257-55731	19	24
121400-11340	6	19
121420-01760	7	3
	28	10
121450-01560	2	3
121450-01570	26	22
121450-42450	16	3
121520-34810	1	19
121522-77101	27	2
121522-77721	27	4
121550-23200	11	9
121850-11860	6	5
121850-21680	10	7
121850-35200	12	14
121850-35520	12	21
121850-35531	12	22
121850-51960	2	9
	28	4
121920-59580	21	9 -1
122117-51560	17	34
122710-51050	17	3
122710-51090	17	5
124064-55510	19	20
124066-59100	19	14
	22	2
124160-01751	2	4
	7	15
124160-01910	1	5
124160-11360	7	10
124160-39140	12	28
124160-39450	12	29
124223-35510	12	20
124240-01871	2	6
124240-01882	2	7
	28	3
124240-01883	2	7 -1
		7 -2
	28	3 -1
124460-11340	6	15
124465-44950	16	5
		6
124550-51350	17	20
124550-51370	17	21
124550-59820	12	31
124550-66370	23	36
124701-11910	8	15
	28	13
124701-11911	8	15 -1
	28	13 -1

Parts No.	Fig. No.	Ref. No.
124722-49160	15	9
124732-42290	13	6
124732-59091	21	9
124736-07900	6	37
124756-59530	21	11
124766-59050	21	3
		7
		7 -2
		7 -3
		8
	22	1
124770-11770	14	4
124950-51190	17	10
128170-51300	17	17
128300-77920	27	5
129100-01580	3	1
	5	4
	10	4 B
		8
129100-01640	5	1
129100-01730	4	5
129100-01770	4	1 -1
129100-01790	4	3
129100-11100	6	10
129100-11130	6	11
129100-11350	7	1
129100-13110	8	6
129100-23910	11	8
129100-25061	1	20
129100-25900	17	61
129100-35140	12	13
129100-35300	12	10
129100-35301	12	10 -1
129100-42001	13	1
129100-42002	13	1 -1
129100-42020	13	3
	28	16
129100-49050	16	1
129100-49800	14	3
129100-49820	14	5
129100-49830	14	6
129100-49840	14	11
	28	19
129100-52100	17	60
129100-53000	18	2
129100-55621	19	1
129100-55650	19	10
129100-55670	19	6
129100-55680	19	7
129100-55690	19	8

Parts No.	Fig. No.	Ref. No.
129100-55700	19	11
129100-59810	20	3
129100-59820	20	4
129100-59830	20	5
129100-59951	22	8
129100-61400	23	16
129100-61440	23	18
129100-61930	23	34
129103-33031	12	4
129103-33132	12	5
129103-35101	12	12
129103-35121	12	25
	28	15
129103-35122	12	25 -1
	28	15 -1
129103-49301	13	5
129105-22090	11	1
129110-01600	3	2
129115-12100	8	1
129115-21590	10	10
129115-59510	21	5 -1
129115-59810	20	3 -1
129115-59820	20	4 -2
129115-59830	20	5 -2
129115-66820	24	3 -2
129115-67510	23	55 -1
129115-91250	27	6
129115-91270	27	7
129116-49290	15	1 -1
129116-61500	23	23
129116-61800	23	31
129116-61801	23	31 -1
129116-61802	23	31 -2
129116-61803	23	31 -3
129116-61890	23	57
129120-77501	8	12
129122-44480	15	2
129129-14580	9	1
129132-77700	27	3 -1
129150-01200	1	1
129150-01660	5	3
	28	6
129150-02020	1	10
129150-02450	1	14
	9	3 A
129150-02800	1	11
129150-02870	1	16
129150-02930	1	12
129150-02940	1	17
129150-03010	7	5

Parts No. Index

Parts No.	Fig. No.	Ref. No.
129150-03070	7	7
129150-03080	7	6
129150-03100	2	25
	7	12
129150-11230	6	29
129150-11280	6	25
129150-11290	6	26
129150-11310	7	4
	28	9
129150-11370	6	16
129150-11750	6	30
129150-11810	6	4
129150-12110	8	4
	28	11
129150-12111	8	4 -1
	28	11 -1
129150-13110	8	7
	28	12
129150-14101	9	2
129150-14200	9	4
129150-14400	9	5
129150-21200	10	2
129150-22300	11	3
129150-23600	11	10
129150-23610	11	11
129150-25101	1	21
129150-32020	12	2
	28	14
129150-35040	12	9
129150-35041	12	9 -1
129150-35150	12	26
129150-39450	12	30
129150-49810	14	10
	28	18
129150-49811	14	10 -1
	28	18 -1
129150-59020	21	2
129150-59120	20	1
129150-59130	20	2
129150-59580	19	15
	22	6
129150-77510	8	13
	28	20
129150-77511	8	13 -1
	28	20 -1
129155-11241	6	22
129155-11260	6	23
129155-11270	6	24
129155-49800	14	9
129155-51020	17	56 -1

Parts No.	Fig. No.	Ref. No.
129155-51140	17	7
129155-51180	17	9
129155-51200	17	11
129155-51250	17	13
129155-51270	17	15
129155-51280	17	16
	23	1 A
129155-51320	17	18
129155-51340	17	19
129155-51370	17	22
129155-51380	17	23
129155-51390	17	24
129155-51400	17	25
129155-51410	17	26
129155-51420	17	27
129155-51450	17	28
129155-51500	17	29
129155-51521	17	30
129155-51530	17	31
129155-51540	17	32
129155-51550	17	33
129155-51570	17	36
129155-51580	17	37
129155-51591	17	38
129155-51600	17	39
129155-51700	17	40
129155-51710	17	41
129155-51750	17	42
129155-51760	17	43
129155-51790	17	44
129155-52050	17	59
129155-59820	20	4 -1
129155-59830	20	5 -1
129155-61050	23	3
129155-61060	23	4
129155-61070	23	5
129155-61090	23	6
129155-61120	23	7
129155-61130	23	8
129155-61140	23	7 A
		9
129155-61150	23	10
129155-61160	23	11
129155-61170	23	12
129155-61180	23	13
129155-61201	23	14
129155-61341	23	15
129155-61430	23	17
129155-61450	23	19
129155-61460	23	20

Parts No.	Fig. No.	Ref. No.
129155-61470	23	21
129155-61480	23	58
129155-61490	23	22
129155-61540	23	26
129155-61810	23	32
129155-61830	23	33
129155-61950	23	35
129155-66800	24	1
129155-66811	24	2
129155-66821	24	3
129155-66822	24	3 -1
129156-51910	17	45
129157-01332	1	2
	28	2
129255-59580	21	6
	22	7
129258-49040	15	4 -1
129350-49530	14	1
129400-01520	2	5
129400-51200	17	6
129400-77010	25	1
129400-77011	25	1 -1
129400-77330	26	20
129400-77400	25	2 -1
		2 -3
129400-77401	25	2 -2
129400-77440	25	5 -1
129400-77460	25	7 -1
129400-77470	25	9 -1
129400-77480	25	10 -1
129400-77490	25	11 -1
129400-77510	25	8 -1
129400-77520	25	25 -1
129400-77530	25	20 -1
129400-77570	25	22 -1
		22 -3
129400-77571	25	22 -2
129400-77640	25	21 -1
129400-92420	29	1
129403-34800	1	18
129403-42380	13	7
129403-49031	15	3
129403-49050	15	4
129410-03100	7	13
129410-03990	7	14
129410-44540	15	8
129410-67511	23	55
129470-11080	6	20
129470-11090	6	21
129470-51060	17	4

Parts No.	Fig. No.	Ref. No.
129470-51080	17	46
129500-61650	23	29
129500-61700	23	30
129553-32000	12	1
129553-35500	12	15
129553-35520	12	16
129553-35530	12	17
129553-35540	12	18
129555-59510	21	5
129795-01780	5	2
129795-01800	2	2
129795-01950	2	8
129795-02411	1	13
129795-11120	6	12
129795-11180	6	13
129795-21661	10	6
129795-49550	14	2
	28	17
129795-49551	14	2 -1
	28	17 -1
135210-61090	23	53
171008-77410	25	3 -1
171008-77420	25	4 -1
171008-77450	25	6 -1
171008-77510	25	18 -1
171008-77540	25	19 -1
171008-77650	25	12 -1
171008-77660	25	13 -1
171008-77670	25	14 -1
171008-77720	25	15 -1
171008-77730	25	16 -1
171008-77740	25	17 -1
171009-55700	19	16
171051-01921	1	4
171081-55910	19	27
171301-01640	4	2
171301-77201	26	1
171301-77700	27	3
171340-21650	10	5
171353-44760	13	9
171440-44740	13	8
174100-54120	17	14
174307-51170	17	8
174307-51560	17	35
174307-51700	23	24
194990-22050	8	8
22117-040000	23	37
	24	4 -1
22117-060000	24	4
22117-080000	24	5

Parts No. Index

Parts No.	Fig. No.	Ref. No.
22137-040000	24	4 -2
22190-100000	23	38
22212-100000	26	18
22217-050000	17	47
		48
	23	39
22217-060000	17	49
22217-120000	17	62
22272-000040	23	27
22272-000060	23	40
22287-120000	17	51
	23	41
22351-030016	23	42
22351-040010	10	3
		12
22351-050010	17	50
22351-060012	6	17
22360-040000	23	43
	24	6 -1
22360-060000	24	6
22360-080000	24	7
22372-040000	23	43 -1
22451-060000	23	54
22512-070140	9	3
	10	4
23000-013000	21	7 -1
23000-016000	16	2
23000-022000	15	5
23414-050000	23	44
23414-080000	12	32
23414-100000	12	33
23414-120000	22	9
23414-180000	12	23
23418-060000	19	28
23871-010000	1	6
23871-020000	12	24
23871-030000	6	6
	13	2
	14	7
23887-100002	23	45
24190-130001	12	19
24311-000080	23	46
24311-000120	7	11
	28	7
24311-000160	2	10
	19	12
24311-000200	12	6
24311-000210	12	7
24311-000260	2	23
24311-000320	2	11

Parts No.	Fig. No.	Ref. No.
24311-000320	7	16
	28	5
		5 -1
24311-240100	19	5
		29
	23	46 -1
24321-000550	12	8
24321-000650	19	9
24341-000160	17	52
24341-000240	2	23 -1
	4	4
24341-000500	7	8
	28	8
26014-080252	26	21
26014-080702	19	13 -1
26016-060102	24	8
26022-040252	26	8
26022-050102	17	53
		53 -1
		53 -2
		53 A
		53 A-1
	23	47
		47 -1
26022-060122	23	28
26022-060162	17	54
26106-060102	24	8 -1
26106-060122	2	24
26106-060202	23	48
		48 -1
26106-060252	23	56
26106-060322	25	23 -1
26106-060352	13	10
26106-060402	25	24 -1
26106-080122	2	12
26106-080142	6	38
26106-080162	1	15
	2	13
		14
	4	6
	7	9
26106-080202	2	21
	14	12
26106-080252	4	7
	6	35
	8	5
	14	13
26106-080302	5	5
26106-080352	5	6
	8	14

Parts No.	Fig. No.	Ref. No.
26106-080352	12	11 -1
26106-080452	1	23
	2	15
	4	8
26106-080502	4	9
	6	36
	14	14
26106-080552	2	16
26106-080602	13	4
	14	15
26106-080652	19	13
26106-080752	12	27
26106-080802	8	9
26106-080852	2	17
26116-050302	17	55
26116-060162	14	8
26116-080122	24	9
26116-080352	12	11
26116-120252	25	26
26206-100252	3	4
26206-100302	3	5
26216-060142	17	56
26216-060202	6	7
26216-080222	8	10
26216-080802	8	11
26226-080182	6	31
26366-060002	6	18
26366-080002	2	18
	23	49
26366-100002	26	23
26450-060252	12	3
26687-120002	23	34 -1
26716-060002	17	57
26716-100002	26	19
26716-120002	17	63
26756-060002	8	16
	23	50
26776-120002	23	51
27231-500000	1	7
27241-120000	1	8
27241-220000	6	8
27241-300000	1	9
27241-400000	6	9
27310-080001	6	14 -1
43400-500390	23	44 -1
43400-500410	2	19
		20
43400-500430	23	38 -1
43400-500450	23	52
43400-500490	17	58

Parts No.	Fig. No.	Ref. No.
43400-500550	4	10
711100-51540	17	12
719810-01500	2	1
729100-53100	18	1
729102-21700	10	1 -1
729105-22500	11	2
		2 -2
729105-22501	11	2 -1
729105-22910	11	5
729105-22950	11	6
729105-22951	11	6 -1
729115-92600	28	1
729115-92601	28	1 -1
729115-92602	28	1 -2
729116-51410	17	1
729150-11651	6	28
729150-21700	10	1
729150-23700	11	7
729157-01560	1	3
729402-11650	6	28 -1
729402-23100	11	7 -1
771341-01540	4	1
771364-11700	6	1
X211415502	25	3
X211425502	25	4
X211425505	25	15
X21142867	25	24
X211429006	25	14
X21143215	25	6
X211435502	25	16
X211445502	25	17
X211446012	25	19
X211455505	25	12
X21145866	25	23
X211476504	25	18
X211495009	25	13
X213012001	25	5
X213023112	25	7
		10
X213053014	25	8
X213053021	25	9
X213054001	25	25
X21306313	25	11
X21306910	25	22
X213077001	25	20
X21309100	25	2
X21309820	25	21
XM08137	26	2
XM08138	26	3
XM08180	26	4

Parts No. Index

Parts No.	Fig. No.	Ref. No.
XM17878	26	6
XM27436	26	5
		15
XM36410	26	7
XM37336	26	14
XM72174	26	12
XM72664	26	13
XM82110	26	11
XM82184	26	10
XYSPS4008	26	9

Parts No.	Fig. No.	Ref. No.
-----------	----------	----------

Parts No.	Fig. No.	Ref. No.
-----------	----------	----------

Parts No.	Fig. No.	Ref. No.
-----------	----------	----------