

0CD10-M37002EN

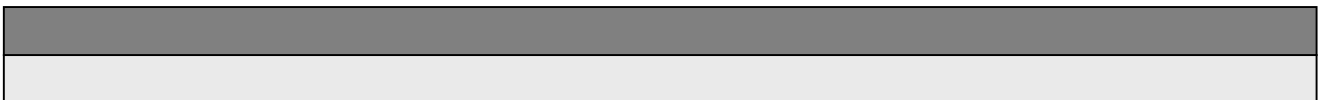
# PREFACE

1. This Parts Catalog is the 1st edition of 3TN84TL-RMZ2 Diesel Engine for MITSUI.

Pub. No. : 000Y00D3702  
Published : November, 1992

2. Model name

Engine model	Vehicle		Vehicle made by
	Products	Model name	
3TN84TL-RMZ2	—	—	MITSUI



## Directions for the Parts Catalog.

1. This Parts Catalog shows both standard and optional parts.
2. Parts may change without prior notice.
3. The following is an example of the Parts Catalog format.

REF.	LEV.	PARTS NO.	DESCRIPTION	Q'TY						I	R
				(A)	(B)	(C)	(D)	(E)	(F)		
1	1	729595-51390	FUEL INJECTION PUMP	1	1	1	1	1			1
1-1	1	729595-51391	FUEL INJECTION PUMP	1	1	1	1	1		N	1
		(A=E00185) (B=E00200)									
3	2	26022-060162	SCREW M 6X 16	9	9	9	9	9			
3-1	2	26022-060162	SCREW M 6X 16	4	4	4	4	4		K	
		(A=E00156) (B=E00156) (C=E00156) (D=E00156) (E=E00156)									
4	2	129470-51040	CAMSHAFT	1	1	1	1	1			
5	2	122710-51050	BEARING, ROLLER	2	2	2	2	2			
6	2	129470-51060	RETAINER	1	1	1	1	1			

Remarks
(1) BOOST COMPEMSATOR TYPE. OPTIONAL PART, TO E00155,(4JH-DT, 4JH-DTZ

### ① Ref. No.

The Ref. No. listed may not be in accordance with the illustration Ref. No.

(Ex.) Illustration No.

List Ref No.

1

1

(Before change)

1-1

(After change)

For interchangeable symbols N, R and K, illustrations for new parts may be abbreviated.

### ② Lev. (Level)

Level indication

The numbers below indicate the level of relativity towards the main part.

1 ----- Main parts (Assembly parts)

2 ----- Sub component included in " 1 ".

3 ----- Sub component included in " 2 ".

Note) Parts that are not for sale are partially illustrated but not listed.

### ③ Interchangeability Symbol

When a part change takes place, one of the following interchangeability symbols is indicated beside the part.

Symbol	Interchangeability	Contents note
N	Old $\begin{matrix} \leftarrow \text{Yes} \\ \text{No} \rightarrow \end{matrix}$ New	New Part is interchangeable for Old Part but Old Part is not interchangeable for New Part.
Q	Old $\begin{matrix} \leftarrow \text{No} \\ \text{Yes} \rightarrow \end{matrix}$ New	New Part is not interchangeable for Old Part but Old Part is interchangeable for New Part.
R	Old $\begin{matrix} \leftarrow \text{Yes} \\ \text{Yes} \rightarrow \end{matrix}$ New	New/ Old Parts are both interchangeable.
S	Old $\begin{matrix} \leftarrow \text{No} \\ \text{No} \rightarrow \end{matrix}$ New	New/ Old Parts are both not interchangeable.
W		Part newly added.
Z		Part discontinued.
F		Not interchangeable by a single part but interchangeable together with related parts.
K		Changes only for used parts quantities.

### ④ Effective Machine No.

When a part changes, the effective Machine No. will be indicated in the (A)-(F) column.

Product Symbol	Product No.	Product Symbol	Product No.
C	Clutch No. Compressor No.	F	Machine No. (Agricultural Equip.)
D	Drive No.	M	Machine No.
E	Engine No.		

Note 1) A date may follow the symbol. (Ex.) 1996.01

Note 2) "XXXXX" and "ZZZZZ" are for parts that could not be predicted or for engine models that could not be identified.

Note 3) (A=E00185) is the E (Engine Serial Number) for the column (A) model (in this case 4JH-DT) after the parts design change.

### ⑤ Remarks

Figures or alphabets (symbols) are entered in the remarks column.

The comments (remarks) on parts that are indicated at the bottom of the illustration are the same symbols as those stated above.

# Contents

Fig. No.    Fig. Name

## ENGINE 3TN84TL-RNZ2

1. CYLINDER BLOCK
2. GEAR HOUSING
3. FLYWHEEL HOUSING & OIL SUMP
4. CYLINDER HEAD & BONNET
5. SUCTION MANIFOLD & AIR CLEANER
6. EXHAUST MANIFOLD & SILENCER
7. CAMSHAFT
8. TURBO-CHARGER
9. CRANKSHAFT,PISTON & CON. ROD
10. LUB. OIL SYSTEM
11. LUB. OIL RETURN PIPE
12. COOLING WATER SYSTEM
13. FUEL INJECTION PUMP
14. FUEL INJECTION DEVICE
15. FUEL OIL SYSTEM
16. GOVERNOR
17. ENGINE STOP
18. STARTING MOTOR(COMPONENT PARTS)
19. GENERATOR(COMPONENT PARTS)
20. GASKET SET & TOOL

Fig. No.    Fig. Name

# Fig.1. CYLINDER BLOCK

(A)=3TN84TL-RMZ2

(B)=

(C)=

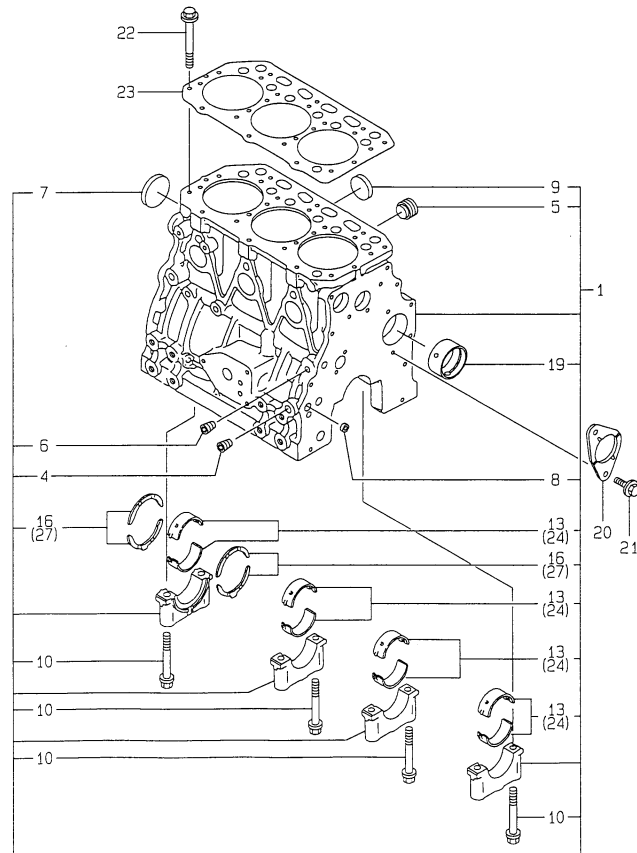
(D)=

(E)=

(F)=

Y0003702  
3TN84TL-RMZ2

D29106-01100  
D29150-02100  
D29129-02200



No.	Lev.	Parts No.	Description	Q'ty						I	R
				(A)	(B)	(C)	(D)	(E)	(F)		
1	1	729106-01560	BLOCK ASSY, CYLINDER	1							
4	2	124160-01910	PLUG, PT1/4	3							
5	2	171051-01921	PLUG, NPTF1	1							
6	2	23871-010000	PLUG, R01	1							
7	2	27231-500000	PLUG 50	1							
8	2	27241-120000	PLUG, 12	2							
9	2	27241-300000	PLUG 30	6							
10	2	129150-02020	BOLT, METAL CAP	8							
13	2	129150-02800	BEARING, MAIN	4							
16	2	129150-02930	BEARING, THRUST	2							
19	2	129795-02411	BUSH, CAMSHAFT	1							
20	1	129150-02450	BEARING, THRUST	1							Z
(A=EXXX)											
21	1	26106-080162	BOLT, M8X 16 PLATED	2							
22	1	129150-01200	BOLT, HEAD	14							
23	1	129157-01332	GASKET, HEAD	1							\$
24	1	129150-02870	BEARING, 0.25 US	4							1
27	1	129150-02940	BEARING, THRUST 0.25	2							2

**Remarks**

- (1) UNDER-SIZE(U.S=0.25)PART.
- (2) OVER-SIZE(O.S=0.25)PART.
- (§) THESE PARTS ARE SOLD BY FIG.20, REF.NO.1.

Fig.2. GEAR HOUSING

(A)=3TN84TL-RM22

(B)=

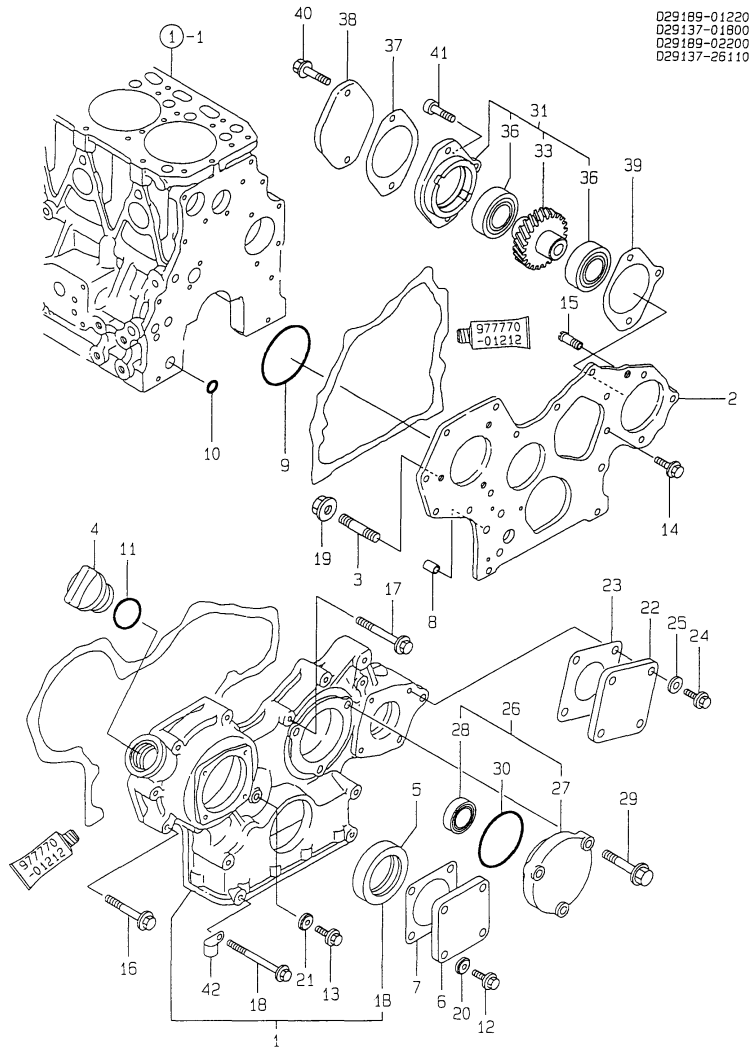
(C)=

(D)=

(E)=

(F)=

Y00D3702  
3TN84TL-RM22



No.	Lev.	Parts No.	Description	Q'ty						I	R
				(A)	(B)	(C)	(D)	(E)	(F)		
1	1	171353-01590	CASE ASSY, GEAR	1							W
		(A=EXXX)									
1B	2	129795-01800	SEAL, OIL	1							W
		(A=EXXX)									
2	1	129189-01520	FLANGE, GEAR CASE	1							
3	1	121450-01560	STUD, M8X22	3							
4	1	124160-01751	COVER, FILLER	1							
5	1	129795-01800	SEAL, OIL	1							Z
		(A=EXXX)									
6	1	124240-01871	COVER	1							
7	1	124240-01883	GASKET	1							\$
8	1	129795-01950	PIPE, KNOCK L=18	2							
9	1	121850-51960	O-RING	1							\$
10	1	24311-000160	O-RING, 1AP16.0	2							
11	1	24311-000320	O-RING, 1AP32.0	1							\$
12	1	26106-080122	BOLT, M8X 12 PLATED	4							
13	1	26106-080162	BOLT, M8X 16 PLATED	1							
14	1	26106-080162	BOLT, M8X 16 PLATED	3							
15	1	129122-44480	JOINT	1							
16	1	26106-080452	BOLT, M8X 45 PLATED	6							
17	1	26106-080552	BOLT, M8X 55 PLATED	3							
18	1	26106-080852	BOLT, M8X 85 PLATED	4							
19	1	26366-080002	NUT, M8	3							
20	1	43400-500410	SEAL WASHER 8S	4							
21	1	43400-500410	SEAL WASHER 8S	1							
22	1	124240-01871	COVER	1							
23	1	124240-01883	GASKET	1							\$
24	1	26106-080162	BOLT, M8X 16 PLATED	4							
24-1	1	26106-080122	BOLT, M8X 12 PLATED	4							N
		(A=EXXX)									
25	1	43400-500410	SEAL WASHER 8S	4							
26	1	129189-02990	COVER	1							
27	2	129189-02800	CASE, BEARING	1							
28	2	24101-063030	BEARING, BALL 6303C3	1							
29	1	129189-91980	BOLT	3							
30	1	24321-000600	O-RING, 1AG60.0	1							
31	1	129137-26000	DRIVE ASSY, PUMP	1							
33	2	129137-26200	GEAR ASSY	1							
36	2	24101-060064	BEARING, BALL 6006	2							
37	1	121023-26061	GASKET	1							
38	1	121023-26070	COVER	1							
39	1	171353-26080	GASKET	1							
40	1	26106-100452	BOLT, M10X 45 PLATED	2							
41	1	26450-080282	BOLT, M8X 28	1							
42	1	129150-03100	RETAINER, PIPE	1							W
		(A=EXXX)									

Remarks  
(\$) THESE PARTS ARE SOLD BY FIG.20,  
REF.NO.1.

Fig.3. FLYWHEEL HOUSING & OIL SUMP

(A)=3TN84TL-RMZ2

(B)=

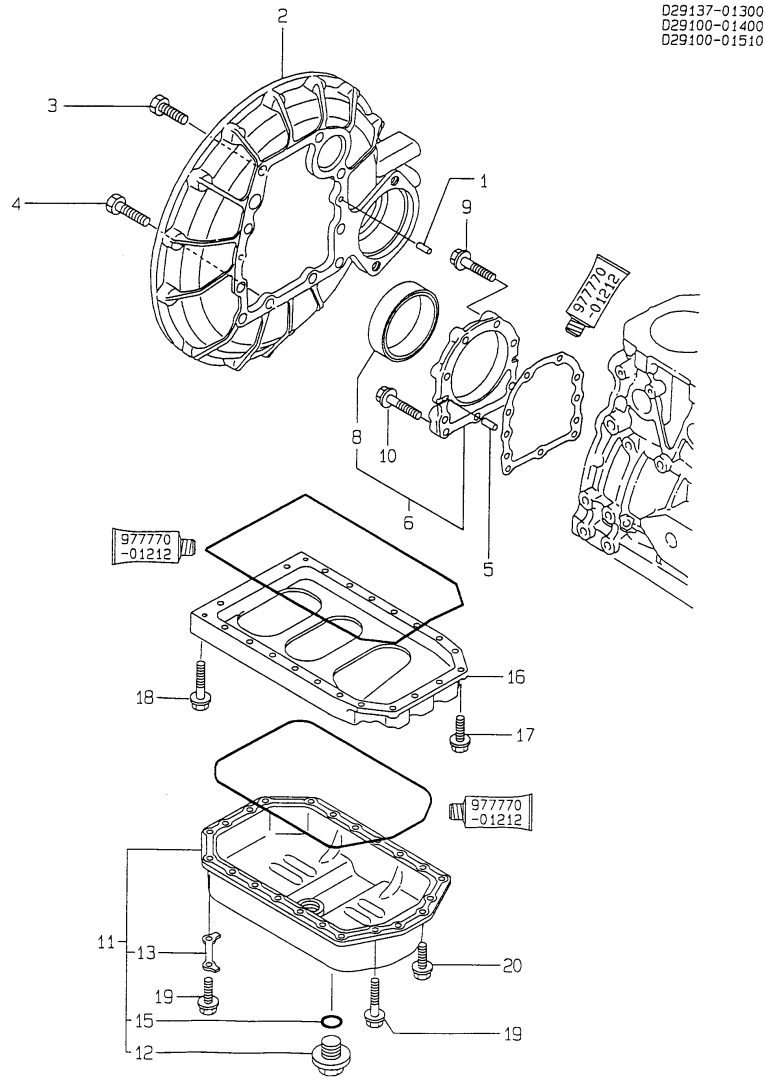
(C)=

(D)=

(E)=

(F)=

Y00D3702  
3TN84TL-RMZ2



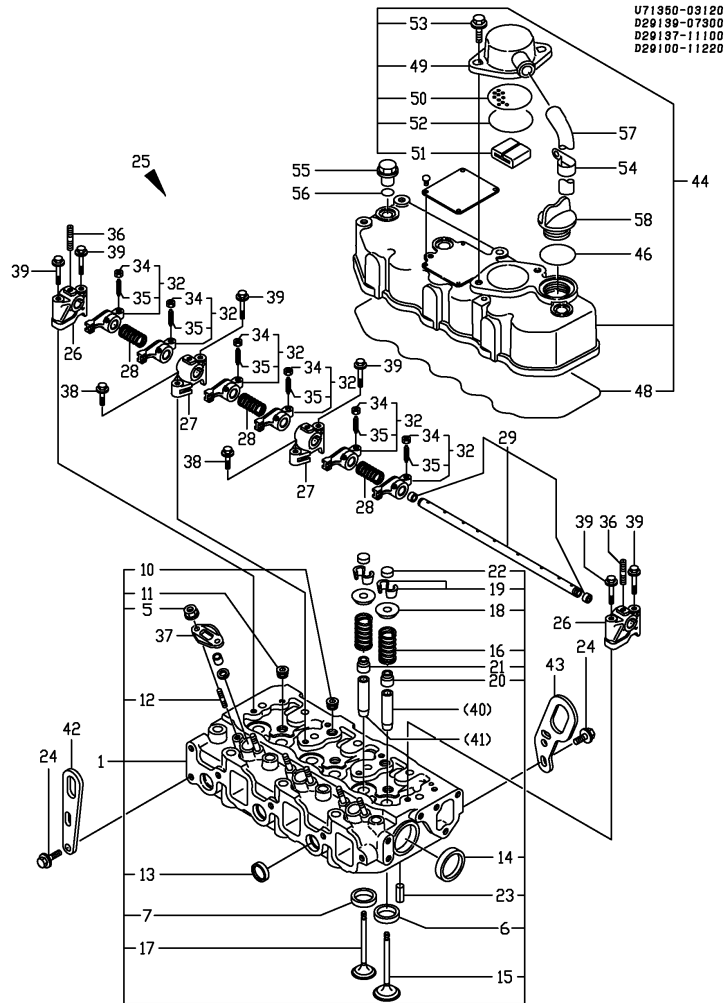
D29137-01300  
D29100-01400  
D29100-01510

No.	Lev.	Parts No.	Description	Q'ty						I	R
				(A)	(B)	(C)	(D)	(E)	(F)		
1	1	129100-01580	PIN, M8X16	2							
2	1	129137-01600	HOUSING, FLYWHEEL	1							
3	1	26206-100252	BOLT, M10X 25 PLATED	6							
4	1	26206-100302	BOLT, M10X 30 PLATED	4							
5	1	129100-01580	PIN, M8X16	2							
6	1	129100-01640	CASE ASSY, OIL SEAL	1							
8	2	129795-01780	SEAL, OIL	1							
9	1	26106-080302	BOLT, M8X 30 PLATED	6							
10	1	26106-080352	BOLT, M8X 35 PLATED	3							
11	1	729102-01540	SUMP ASSY, OIL	1							
12	2	171301-01640	PLUG, 22	1							
13	2	129100-01790	RETAINER	2							
15	2	24341-000240	O-RING, 1AS24.0	1							
16	1	129100-01730	SPACER, OIL SUMP	1							
17	1	26106-080252	BOLT, M8X 25 PLATED	2							
18	1	26106-080452	BOLT, M8X 45 PLATED	16							
19	1	26106-080502	BOLT, M8X 50 PLATED	4							
20	1	26106-080162	BOLT, M8X 16 PLATED	4							

Fig.4. CYLINDER HEAD & BONNET

Y00d3702  
3TN84TL-RM22

4 シリンダヘッド @ ボンネット  
CYLINDER HEAD @ BONNET



(A)=3TN84TL-RM22

(B)=

(C)=

(D)=

(E)=

(F)=

No.	Lev.	Parts No.	Description	Q'ty						I	R
				(A)	(B)	(C)	(D)	(E)	(F)		
1	1	771364-11700	HEAD ASSY, CYLINDER	1							
5	2	26366-060002	NUT, M6	6							
6	2	129470-11080	SEAT, INTAKE VALVE	3							
7	2	129470-11090	SEAT, EXHAUST VALVE	3							
10	2	121850-11860	PLUG, PT1/4	2							
11	2	23871-030000	PLUG, R03	3							
12	2	26216-060202	STUD, M6X 20	6							
13	2	27241-220000	PLUG, 22	3							
14	2	27241-400000	PLUG, 40	2							
15	2	129100-11100	VALVE, INTAKE	3							
16	2	129795-11120	SPRING, VALVE	6							
17	2	129100-11130	VALVE, EXHAUST	3							
18	2	129795-11180	RETAINER, SPRING	6							
19	2	103338-11190	COTTER	6							
19-1	2	27310-080001	COTTER, 8	6							R
(A=EXXXXX)											
20	2	121400-11340	SEAL, VALVE STEM	3							
21	2	124460-11340	SEAL, VALVE STEM	3							
22	2	129150-11370	CAP, VALVE	6							
23	2	22351-060012	PIN, SPRING 6.0X12	2							
24	1	26106-080142	BOLT, M8X 14 PLATED	3							
25	1	129155-11241	SHAFT ASSY, ROCKER	1							
26	2	129155-11260	SUPPORT, ROCKER ARM	2							
27	2	129155-11270	SUPPORT, ROCKER ARM	2							
28	2	129150-11280	SPRING	3							
29	2	129150-11290	SHAFT, ROCKER ARM	1							
32	2	729402-11650	ARM ASSY, ROCKER	6							
34	3	129150-11750	NUT, M8	6							
35	3	129150-11230	SCREW, VALVE ADJUST	6							
36	2	26226-080182	STUD, M8X 18	3							
37	1	119625-11900	RETAINER, NOZZLE	3							
38	1	26106-080252	BOLT, M8X 25 PLATED	2							
39	1	26106-080502	BOLT, M8X 50 PLATED	6							
40	1	120130-11860	GUIDE, VALVE	3							1
41	1	129150-11810	GUIDE, VALVE	3							1
42	1	124736-07900	LIFTER	1							
43	1	119260-07900	LIFTER	1							
44	1	729132-11520	BONNET ASSY, HEAD	1							
44-1	1	129100-11350	BONNET ASSY, HEAD	1							N
(A=EXXXX)											
48	2	129150-11310	GASKET, BONNET	1							\$
49	2	129150-03020	COVER, BREATHER	1							
50	2	129150-03080	PLATE, BAFFLE	1							
51	2	129150-03070	BAFFLE, BREATHER	1							
52	2	24341-000500	O-RING, 1AS50.0	1							\$
53	2	26106-080162	BOLT, M8X 16 PLATED	2							
54	1	129150-03100	RETAINER, PIPE	1							Z
(A=EXXXX)											
55	1	124160-11360	KNOB	3							
56	1	24311-000120	O-RING, 1AP12.0	3							\$
57	1	171350-03090	PIPE, BREATHER 900	1							

Remarks

(1) REPAIR PART.

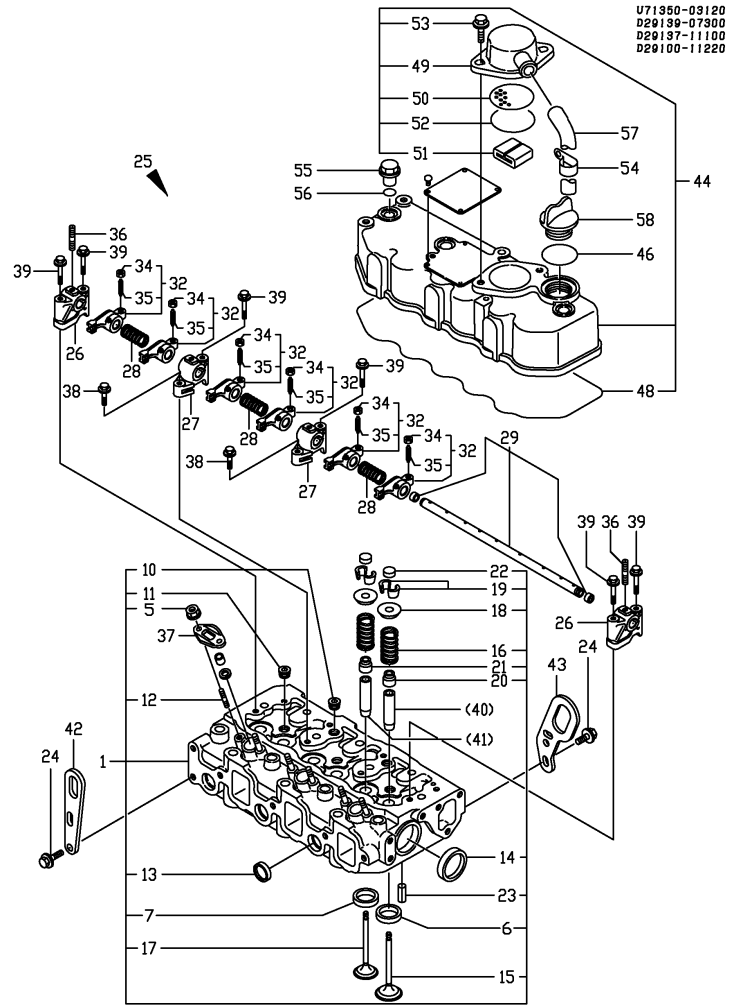
(\$) THESE PARTS ARE SOLD BY FIG.20, REF.NO.1.



# Fig.4. CYLINDER HEAD & BONNET

Y00d3702  
3TN84TL-RMZ2

## 4 シリンダヘッド @ ボンネット CYLINDER HEAD @ BONNET



(A)=3TN84TL-RMZ2

(B)=

(C)=

(D)=

(E)=

(F)=

No.	Lev.	Parts No.	Description	Q'ty						I	R
				(A)	(B)	(C)	(D)	(E)	(F)		
58	1	124160-01751	COVER, FILLER	1							
59	1	24311-000320	O-RING, 1AP32.0	1							

Remarks

(1) REPAIR PART.  
(\$ ) THESE PARTS ARE SOLD BY FIG.20,  
REF.NO.1.

Fig.5. SUCTION MANIFOLD & AIR CLEANER

(A)=3TN84TL-RM22

(B)=

(C)=

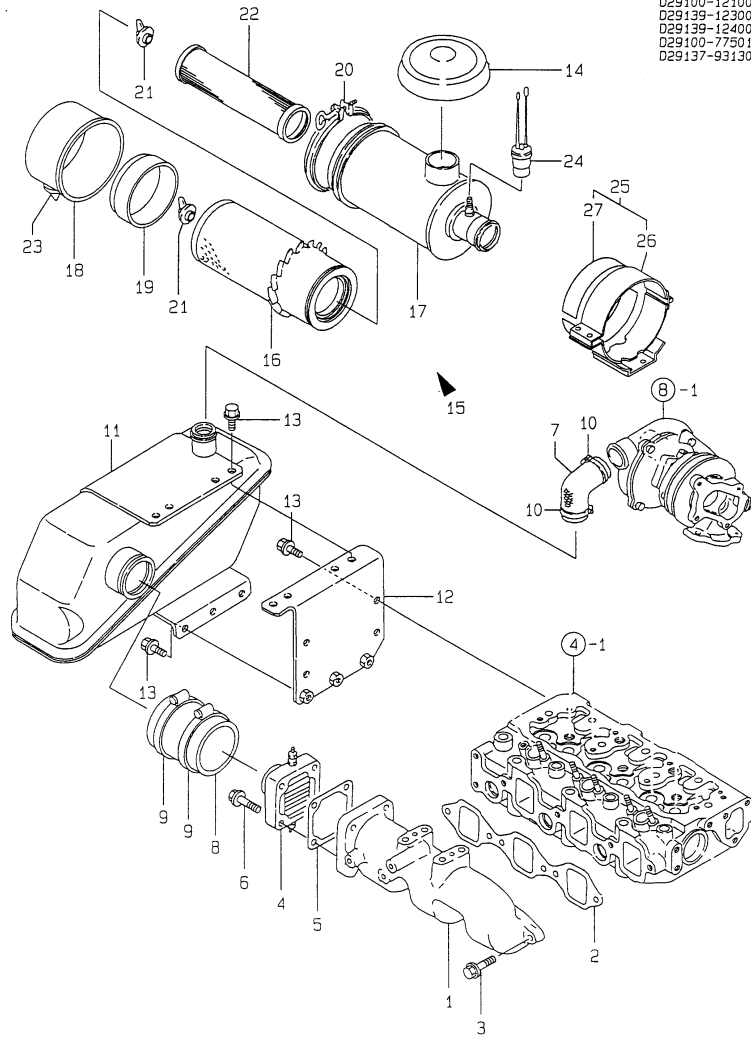
(D)=

(E)=

(F)=

Y0003702  
3TN84TL-RM22

D29100-12100  
D29139-12300  
D29139-1240012  
D29100-77501  
D29137-93130



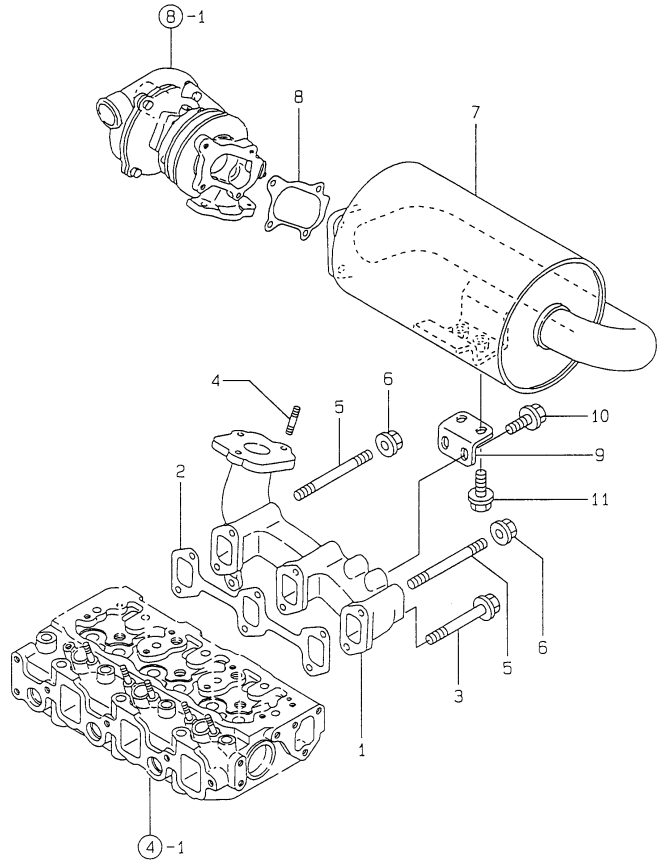
No.	Lev.	Parts No.	Description	Q'ty						I	R
				(A)	(B)	(C)	(D)	(E)	(F)		
1	1	129122-12100	MANIFOLD, AIR INTAKE	1							
2	1	129150-12111	GASKET, MANIFOLD	1							\$
3	1	26106-080252	BOLT, M8X 25 PLATED	4							
4	1	129120-77501	HEATER	1							
5	1	129150-77511	GASKET	1							\$
6	1	26106-080352	BOLT, M8X 35 PLATED	4							
7	1	129139-12050	HOSE, WATER	1							
8	1	129122-12060	HOSE	1							
9	1	23000-060000	CLAMP, 60	2							
10	1	23010-040000	CLAMP, 40	2							
10-1	1	23000-041000	CLAMP, 41	2							N
(A=E07254)											
11	1	129139-12200	TANK, SURGE	1							
12	1	129122-12211	BRACKET	1							
13	1	26106-080162	BOLT, M8X 16 PLATED	11							
14	1	121521-12400	CAP, RAIN	1							
15	1	171061-12500	CLEANER ASSY, AIR	1							
16	2	121420-12511	ELEMENT	1							
17	2	171061-12520	BODY ASSY	1							
18	2	121422-12530	CUP	1							
19	2	121420-12540	SCARF, BAFFLE	1							
20	2	121420-12550	CLAMP ASSY	1							
21	2	121420-12561	NUT, WING	2							
22	2	121422-12570	ELEMENT	1							
23	2	121422-12580	VALVE, UNLOADER	1							
24	2	171061-12800	INDICATOR	1							
25	1	129132-12581	SUPPORT ASSY,CLEANER	1							
26	2	129132-12561	SUPPORT, AIR CLEANER	1							
27	2	119640-12580	SEAT, RUBBER	2							

Remarks  
(\$) THESE PARTS ARE SOLD BY FIG.20,  
REF.NO.1.

Fig.6. EXHAUST MANIFOLD & SILENCER

Y00D3702  
3TNB4TL-RM22

D29139-13100TK  
D29139-13211



(A)=3TN84TL-RM22

(B)=

(C)=

(D)=

(E)=

(F)=

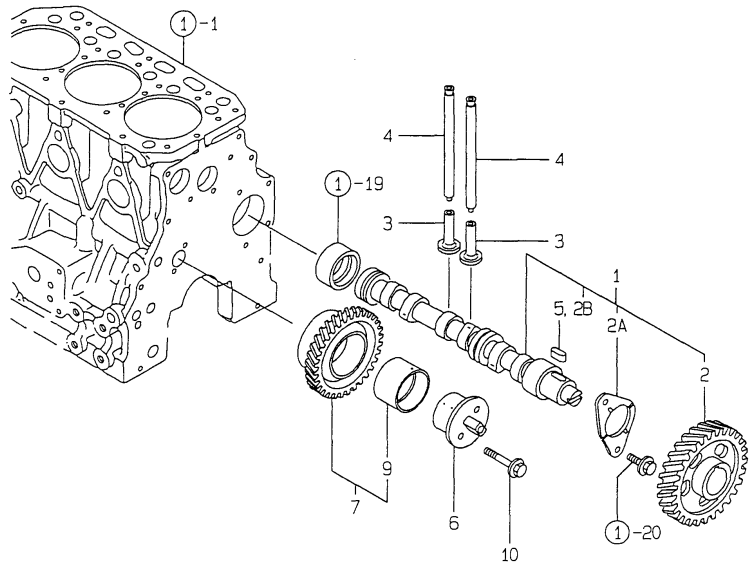
No.	Lev.	Parts No.	Description	Q'ty						I	R
				(A)	(B)	(C)	(D)	(E)	(F)		
1	1	129139-13100	MANIFOLD, EXHAUST	1							
2	1	129150-13110	GASKET	1							\$
3	1	26106-080802	BOLT, M8X 80 PLATED	4							
4	1	26216-080222	STUD, M8X 22	3							
5	1	26216-080802	STUD, M8X 80	2							
6	1	194990-22050	NUT, M8	2							
7	1	129139-13521	SILENCER ASSY	1							
8	1	129403-18090	GASKET	1							\$
9	1	129322-18150	BRACKET	1							
10	1	26106-080142	BOLT, M8X 14 PLATED	2							
11	1	26106-080202	BOLT, M8X 20 PLATED	2							

Remarks  
(\$ ) THESE PARTS ARE SOLD BY FIG.20,  
REF.NO.1.

# Fig.7. CAMSHAFT

Y0003702  
3TN84TL-AMZ2

D29189-14110  
D29189-25100



(A)=3TN84TL-RMZ2

(B)=

(C)=

(D)=

(E)=

(F)=

No.	Lev.	Parts No.	Description	Q'ty						I	R
				(A)	(B)	(C)	(D)	(E)	(F)		
1	1	129189-14580 (A=EXXX)	CAMSHAFT	1							W
2	2	129189-14100	GEAR, CAMSHAFT	1							
2A	2	129150-02450 (A=EXXX)	BEARING, THRUST	1							W
2B	2	22512-070140 (A=EXXX)	KEY, 7X 14	1							W
3	1	129150-14200	TAPPET	6							
4	1	129150-14400	ROD, PUSH L=178	6							
5	1	22512-070140 (A=EXXX)	KEY, 7X 14	1							Z
6	1	129189-25050	SHAFT, IDLE	1							
7	1	129189-25100	GEAR ASSY, IDLE	1							
9	2	129189-25060	BUSH, IDLE GEAR	1							
10	1	26106-080502	BOLT, M8X 50 PLATED	2							

# Fig.8. TURBO-CHARGER

(A)=3TN84TL-RMZ2

(B)=

(C)=

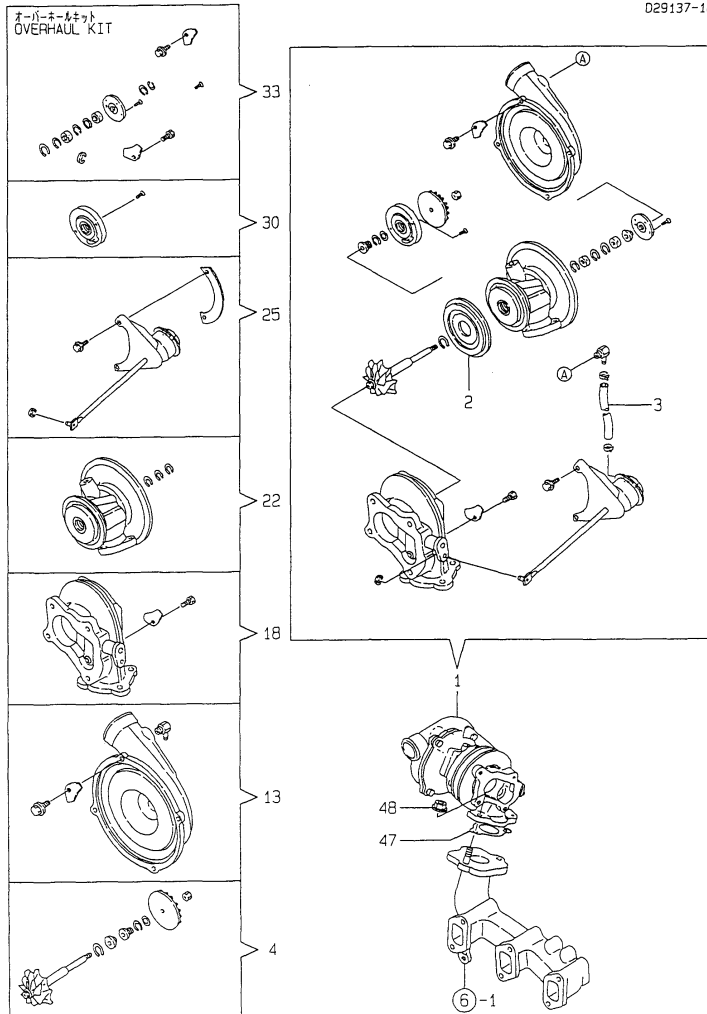
(D)=

(E)=

(F)=

Y0003702  
3TN84TL-RMZ2

029137-18110



No.	Lev.	Parts No.	Description	Q'ty						I	R
				(A)	(B)	(C)	(D)	(E)	(F)		
1	1	129137-18010	TURBINE, RHB31W/G	1							
2	2	129403-18720	PROTECTOR, HEAT	1							
3	2	129403-18750	HOSE	1							
4	2	129403-18770	ROTOR ASSY, TURBO	1							
13	2	129403-18780	HOUSING ASSY, BLOWER	1							
18	2	XNB139825	HOUSING ASSY, TURBO	1							
22	2	129403-18800	HOUSING ASSY	1							
25	2	XNB139826	CONTROL ASSY	1							
30	2	XNB139815	SEAL PLATE ASSY	1							
33	2	XNB139827	OVERHAUL KIT	1							
47	1	129477-18100	GASKET	1							\$
48	1	194990-22050	NUT, M8	3							

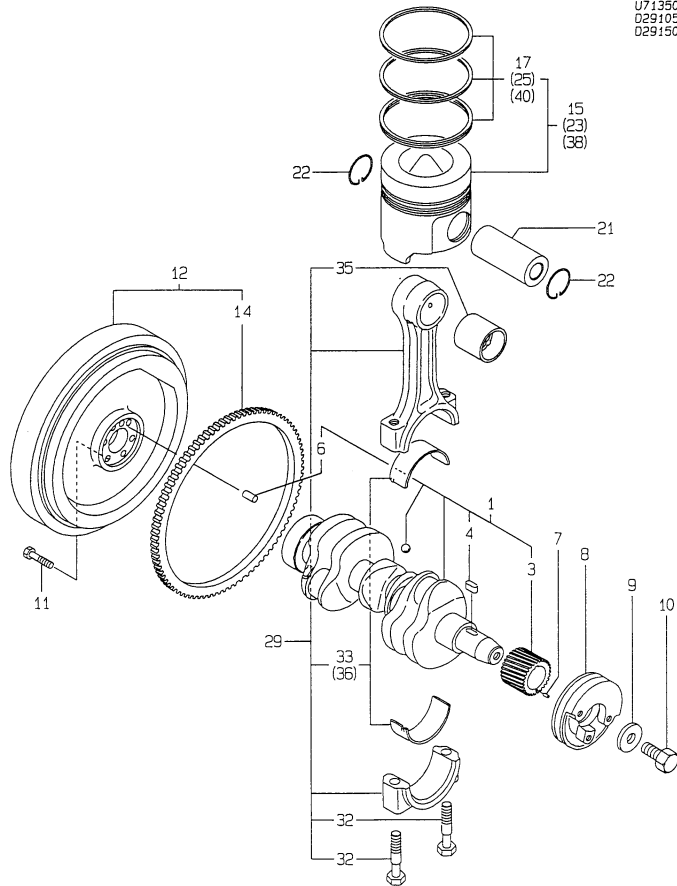
Remarks

(\$) THESE PARTS ARE SOLD BY FIG.20,  
REF.NO.1.

Fig.9. CRANKSHAFT,PISTON & CON. ROD

Y0003702  
3TN84TL-RMZ2

D29189-21100  
D29100-21200  
U71350-21300  
D29105-22100  
D29150-23100



(A)=3TN84TL-RMZ2

(B)=

(C)=

(D)=

(E)=

(F)=

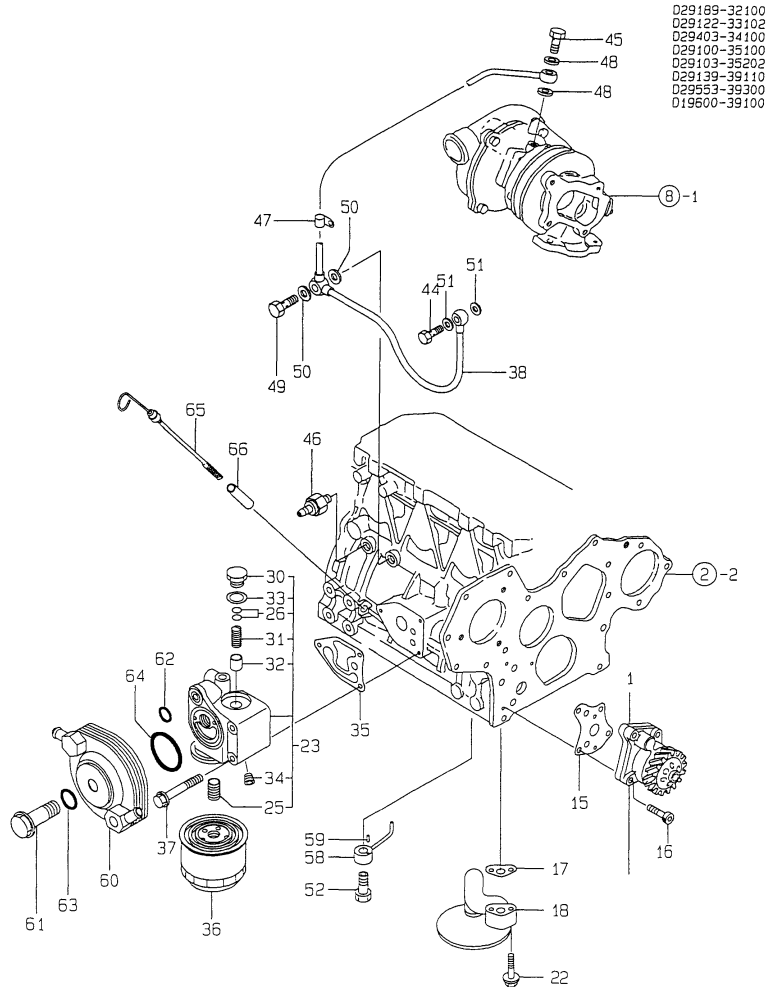
No.	Lev.	Parts No.	Description	Q'ty						I	R
				(A)	(B)	(C)	(D)	(E)	(F)		
1	1	129189-21100	CRANKSHAFT ASSY	1							
3	2	129189-21200	GEAR, CRANKSHAFT	1							
4	2	22512-070140	KEY, 7X 14	1							
6	2	129100-01580	PIN, M8X16	1							
7	1	22351-040010	PIN, SPRING 4.0X10	1							
8	1	171340-21650	V-PULLEY	1							
9	1	129795-21661	WASHER	1							
10	1	121850-21680	BOLT	1							
11	1	121111-21501	BOLT, FLYWHEEL	6							
12	1	171350-21590	FLYWHEEL ASSY	1							
14	2	124550-21600	GEAR, RING	1							
15	1	129105-22090	PISTON ASSY	3							
17	2	729105-22500	RING SET, PISTON	3							
21	1	129150-22300	PIN, PISTON D26 L66	3							
22	1	121100-22400	CIRCLIP	6							
23	1	729105-22910	PISTON ASSY, 0.25 OS	3							1
25	2	729105-22951	RING SET, 0.25 OS	3							1
29	1	729402-23100	ROD ASSY, CONNECTING	3							
32	2	121550-23200	BOLT, CONNECTING ROD	6							
33	2	129150-23600	BEARING, CRANK PIN	3							
35	1	129100-23910	BEARING, PISTON PIN	3							2
36	1	129150-23610	BEARING, 0.25 US	3							3
38	1	129105-22920	PISTON ASSY, 0.50 OS	3							W 4
		(A=E XXX)									
40	2	129105-22970	RING SET, 0.50 OS	3							W 4
		(A=E XXX)									

Remarks

- (1) OVER-SIZE(O.S=0.25)PART.
- (2) REPAIR PART.
- (3) UNDER-SIZE(U.S=0.25)PART.
- (4) OVER-SIZE(O.S=0.50)PART.

Fig.10. LUB. OIL SYSTEM

Y00D3702  
3TN84T-RMZ2



(A)=3TN84TL-RMZ2

(B)=

(C)=

(D)=

(E)=

(F)=

No.	Lev.	Parts No.	Description	Q'ty						I	R
				(A)	(B)	(C)	(D)	(E)	(F)		
1	1	129189-32000	PUMP ASSY, OIL	1							
15	1	129150-32020	GASKET, PUMP	1							\$
16	1	26450-060252	BOLT, M6X 25	4							
17	1	129150-35041	GASKET	1							\$
18	1	129150-35091	PIPE ASSY, OIL INLET	1							
22	1	26106-080352	BOLT, M8X 35 PLATED	2							
23	1	129103-35101	BRACKET ASSY, FILTER	1							
25	2	129100-35140	STUD	1							
26	2	121850-35200	SHIM SET	1							
30	2	124223-35510	RETAINER, SPRING	1							
31	2	121850-35520	SPRING	1							
32	2	121850-35531	VALVE, CONTROL	1							
33	2	23414-180000	GASKET, 18X1.0	1							
34	2	23871-020000	PLUG, R02	1							
35	1	129103-35122	GASKET	1							\$
36	1	129150-35150	FILTER 90X80L	1							
37	1	26106-080752	BOLT, M8X 75 PLATED	3							
38	1	129139-39030	PIPE ASSY, OIL	1							
44	1	105010-39140	BOLT, PIPE JOINT	1							
45	1	124160-39140	BOLT, PIPE JOINT M10	1							
46	1	124160-39450	SWITCH, 0.5KG	1							
47	1	124223-39900	RETAINER	1							
48	1	43400-500410	SEAL WASHER 8S	2							
49	1	124550-59820	BOLT, PIPE JOINT M8	1							
50	1	23414-080000	GASKET, 8X1.0	2							
51	1	23414-100000	GASKET, 10X1.0	2							
52	1	129792-39410	VALVE ASSY, CHECK	3							
58	1	129553-39650	NOZZLE	3							
59	1	22351-030010	PIN, SPRING 3.0X10	3							
60	1	129103-33031	COOLER, OIL	1							
61	1	129103-33132	BOLT	1							
62	1	24311-000200	O-RING, 1AP20.0	1							
63	1	24311-000210	O-RING, 1AP21.0	1							
64	1	24321-000550	O-RING, 1AG55.0	1							
65	1	129403-34800	DIPSTICK, OIL	1							
66	1	121520-34810	GUIDE, DIPSTICK	1							

Remarks

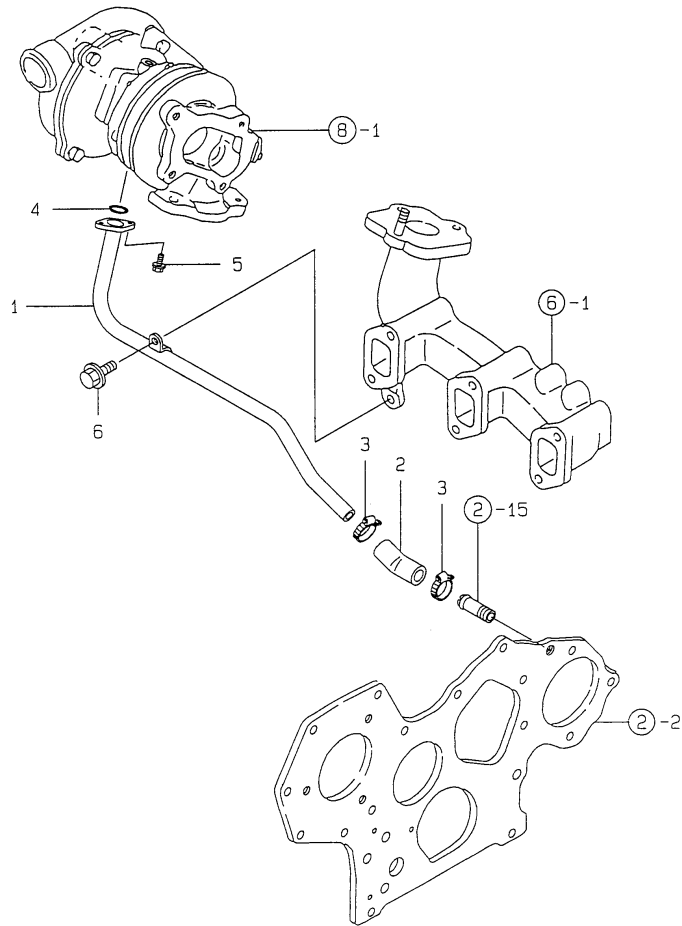
(\$) THESE PARTS ARE SOLD BY FIG.20,  
REF.NO.1.

N:Old  $\xrightarrow{\text{Yes}}$  New, Q:Old  $\xrightarrow{\text{No}}$  New, R:Old  $\xrightarrow{\text{Yes}}$  New, S:Old  $\xrightarrow{\text{No}}$  New, W:Add, Z:Discontinued, F:Interchangeable by set, K:Q'ty Change

Fig.11. LUB. OIL RETURN PIPE

Y0003702  
3TN84TL-RMZ2

029139-39200



(A)=3TN84TL-RMZ2

(B)=

(C)=

(D)=

(E)=

(F)=

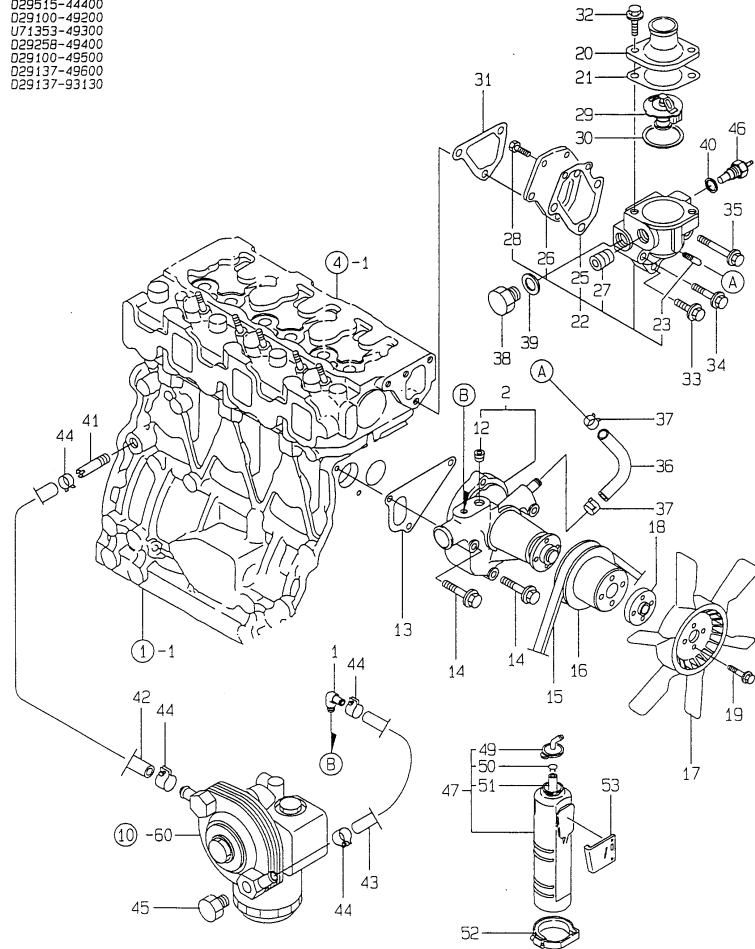
No.	Lev.	Parts No.	Description	Q'ty						I	R
				(A)	(B)	(C)	(D)	(E)	(F)		
1	1	129139-39601	PIPE, OIL	1							
2	1	129403-39610	JOINT, RUBBER	1							
3	1	23000-022000	CLAMP, 22	2							
4	1	24314-000160	O-RING, 4CP16.0	1							
5	1	26106-060162	BOLT, M6X 16 PLATED	2							
6	1	26106-080122	BOLT, M8X 12 PLATED	1							



Fig.12. COOLING WATER SYSTEM

Y0003702  
3TN84TL-RM22

D29103-42110  
U71353-42300  
D29515-44400  
D29100-49200  
U71353-49300  
D29258-49400  
D29100-49500  
D29137-49600  
D29137-93130



(A)=3TN84TL-RM22

(B)=

(C)=

(D)=

(E)=

(F)=

No.	Lev.	Parts No.	Description	Q'ty						I	R
				(A)	(B)	(C)	(D)	(E)	(F)		
1	1	129103-49301	ELBOW, PT1/4	1							
2	1	129100-42002	PUMP ASSY, WATER	1							
12	2	23871-030000	PLUG, R03	1							
13	1	129100-42020	GASKET, WATER PUMP	1							\$
14	1	26106-080602	BOLT, M8X 60 PLATED	3							
15	1	124732-42290	V-BELT, AX37	1							
16	1	129120-42350	V-PULLEY, 130	1							
17	1	129354-44740	FAN, COOLING	1							
18	1	124574-44761	SPACER, FAN	1							
19	1	26014-060252	BOLT, M6X 25	4							
20	1	129350-49530	COVER, THERMOSTAT	1							
21	1	129795-49551	GASKET	1							\$
22	1	129100-49800	CASE ASSY,THERMOSTAT	1							
23	2	124770-11770	JOINT, PIPE PT1/8	1							
25	2	129100-49820	GASKET	1							
26	2	129100-49830	COVER, THERMOSTAT	1							
27	2	23871-030000	PLUG, R03	1							
28	2	26116-060162	BOLT, M6X 16 PLATED	2							
29	1	129155-49800	THERMOSTAT, 71	1							
30	1	129150-49811	GASKET, THERMOSTAT	1							\$
31	1	129100-49840	GASKET	1							\$
32	1	26106-080202	BOLT, M8X 20 PLATED	2							
33	1	26106-080252	BOLT, M8X 25 PLATED	1							
34	1	26106-080502	BOLT, M8X 50 PLATED	1							
35	1	26106-080602	BOLT, M8X 60 PLATED	1							
36	1	129100-49050	PIPE, WATER	1							
37	1	23000-016000	CLAMP, 16	2							
38	1	121450-42450	PLUG, M16	1							
39	1	124465-44950	GASKET, 16	1							\$
40	1	129150-49360	GASKET	1							\$
41	1	129122-44480	JOINT	1							
42	1	129403-49031	PIPE, WATER	1							
43	1	129258-49040	PIPE, WATER	1							
44	1	23000-022000	CLAMP, 22	4							
45	1	171056-49120	PLUG, DRAIN	1							
46	1	171056-49351	SENSOR	1							
47	1	124450-44510	TANK ASSY, SUB	1							
49	2	124450-44530	CAP	1							
50	2	124450-44560	RETAINER	1							
51	2	23061-070230	PIPE, 7X 230	1							
52	1	124450-44550	BAND	1							
53	1	121256-44600	BRACKET, SUB TANK	1							

Remarks

(\$) THESE PARTS ARE SOLD BY FIG.20,  
REF.NO.1.

Fig.13. FUEL INJECTION PUMP

(A)=3TN84TL-RMZ2

(B)=

(C)=

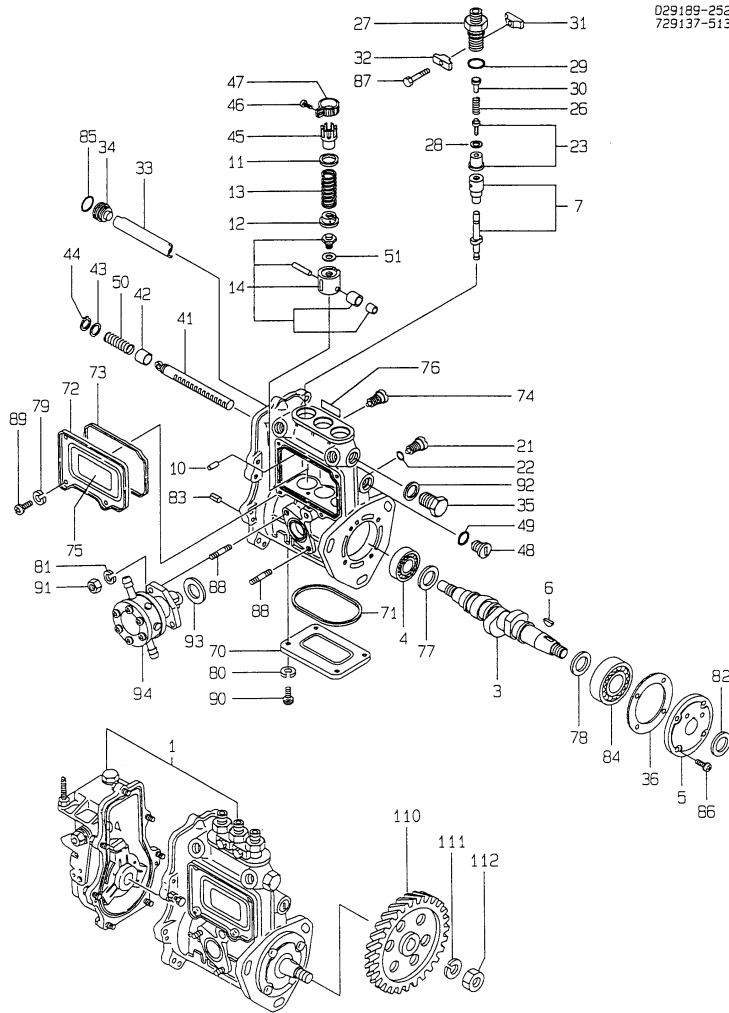
(D)=

(E)=

(F)=

Y00D3702  
3TN84TL-RMZ2

D29189-25200  
729137-51381



No.	Lev.	Parts No.	Description	Q'ty						I	R
				(A)	(B)	(C)	(D)	(E)	(F)		
1	1	729137-51370	PUMP ASSY, INJECTION	1							1
1-1	1	729137-51381	PUMP ASSY, INJECTION	1							N 1
(A=EXXX)											
3	2	119810-51040	CAMSHAFT	1							
4	2	129155-51050	BEARING, 17BM001D	1							
5	2	129155-51060	SUPPORT, CAMSHAFT	1							
6	2	122710-51090	KEY	1							
7	2	129470-51101	PLUNGER ASSY	3							
10	2	129155-51140	PIN	3							
11	2	174307-51170	RETAINER, SPRING A	3							
12	2	129155-51180	RETAINER, SPRING	3							
13	2	124950-51190	SPRING, PLUNGER	3							
14	2	129155-51200	TAPPET ASSY	3							
21	2	129155-51270	STOPPER, TAPPET	3							
22	2	129155-51280	O-RING, S6	3							
23	2	129100-51300	VALVE ASSY, DELIVERY	3							
26	2	129155-51320	SPRING, DELIVERY	3							
27	2	129155-51340	RETAINER	3							
28	2	124550-51350	GASKET, DELIVERY	3							
29	2	124550-51370	O-RING	3							
30	2	129155-51370	STOPPER, VALVE	3							
31	2	129155-51380	STOPPER	2							
32	2	129155-51390	STOPPER	2							
33	2	129155-51400	DEFLECTOR	1							
34	2	129155-51410	BOLT	1							
35	2	129155-51420	PLUG, M16	1							
36	2	129155-51450	SHIM SET, ADJUSTING	1							
41	2	129155-51500	RACK, CONTROL	1							
42	2	129155-51521	BUSH, RACK	1							
43	2	129155-51530	SPACER	1							
44	2	129155-51540	CIRCLIP	1							
45	2	129155-51550	PINION, CONTROL	3							
46	2	122117-51560	SCREW	3							
47	2	174307-51560	PINION	3							
48	2	129155-51570	PLUG, M12	1							
49	2	129155-51580	O-RING	1							
50	2	129155-51591	SPRING, RACK	1							
51	2	129155-51600	SHIM SET, ADJUSTING	3							
70	2	129155-51700	COVER	1							
71	2	129155-51710	GASKET	1							
72	2	129155-51750	COVER	1							
73	2	129155-51760	GASKET	1							
74	2	129155-51790	STOOPER, RACK	1							
75	2	129156-51910	LABEL, CAUTION	1							
76	2	129156-51920	LABEL (729156-51300)	1							
76-1	2	129137-51981	LABEL, FUEL I. PUMP	1							N
(A=EXXX)											
77	2	129155-51930	SPACER, T=3.25	1							
78	2	129155-51940	SPACER, T=1.5	1							
79	2	22217-050000	WASHER, SPRING 5	4							Z
(A=EXXX)											

Remarks

(1) GOVERNOR ASSY(FIG.NO.16)IS INCORPORATED IN THIS FUEL INJECTION PUMP ASSY(REF.NO.1).

# Fig.13. FUEL INJECTION PUMP

(A)=3TN84TL-RMZ2

(B)=

(C)=

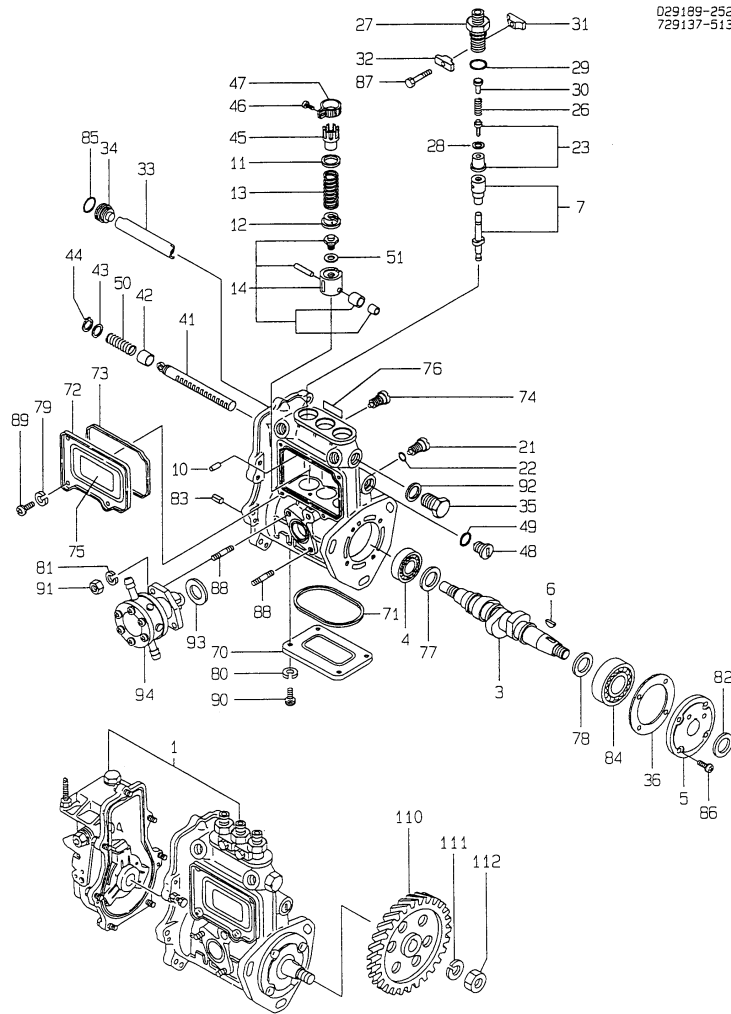
(D)=

(E)=

(F)=

Y0003702  
3TN84TL-RMZ2

D29189-25200  
729137-51381

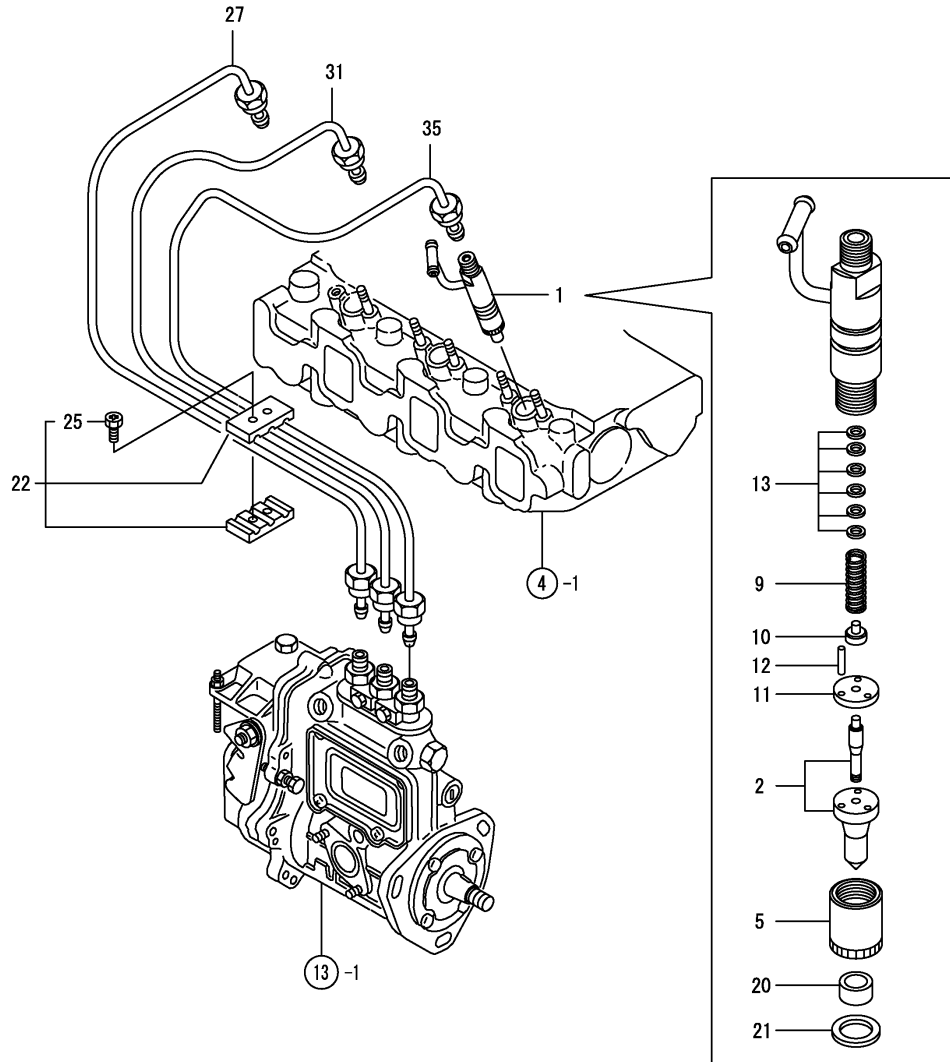


No.	Lev.	Parts No.	Description	Q'ty						I	R
				(A)	(B)	(C)	(D)	(E)	(F)		
80	2	22217-050000 (A=EXXX)	WASHER, SPRING 5	4							Z
81	2	22217-060000	WASHER, SPRING 6	2							
82	2	22287-120000	WASHER, 12	1							
83	2	22351-050010	PIN, SPRING 5.0X10	2							
84	2	24101-063034	BEARING, BALL 6303	1							
85	2	24341-000160	O-RING, 1AS16.0	1							
86	2	26022-060162	SCREW, M6X16	4							
87	2	26116-050302	BOLT, M5X 30 PLATED	2							
88	2	129155-51020	STUD	2							
89	2	26557-050102	SCREW, M5X10	4							
89-1	2	26022-050102 (A=EXXX)	SCREW, M5X10	4							N
90	2	26557-050102	SCREW, M5X10	4							
90-1	2	26022-050102 (A=EXXX)	SCREW, M5X10	4							N
91	2	26716-060002	NUT, M6	2							
92	2	43400-500490	SEAL WASHER 16S	1							
93	2	129155-52050	GASKET	1							
94	2	129100-52100	PUMP ASSY, FUEL FEED	1							
110	1	129189-25900	GEAR, PUMP	1							
111	1	22217-120000	WASHER, SPRING 12	1							
112	1	26716-120002	NUT, M12	1							

Remarks

(1) GOVERNOR ASSY(FIG.NO.16)IS  
INCORPORATED IN THIS FUEL  
INJECTION PUMP ASSY(REF.NO.1).

Fig.14. FUEL INJECTION DEVICE



(A)=3TN84TL-RMZ2

(B)=

(C)=

(D)=

(E)=

(F)=

No.	Lev.	Parts No.	Description	Q'ty						I	R
				(A)	(B)	(C)	(D)	(E)	(F)		
1	1	729137-53200	VALVE ASSY,INJECTION	3							
2	2	129503-53050	VALVE ASSY,INJECTION	3							
5	2	114250-53080	NUT, NOZZLE D16.95	3							
9	2	114250-53120	SPRING, NOZZLE	3							
10	2	114250-53130	SEAT, SPRING	3							
11	2	114250-53140	PLATE	3							
12	2	114250-53210	PIN	6							
13	2	114250-53400	SHIM SET	3							
20	2	119625-11870	PROTECTOR, NOZZLE	3							
21	2	129137-11880	SEAT, NOZZLE	3							
22	1	129150-59120	RETAINER, PIPE	1							
25	2	129150-59130	BOLT, M4X12	2							
27	1	129100-59910	PIPE ASSY, INJECTION	1							
31	1	129100-59920	PIPE ASSY, INJECTION	1							
35	1	129100-59930	PIPE ASSY, INJECTION	1							

Fig.15. FUEL OIL SYSTEM

(A)=3TN84TL-RMZ2

(B)=

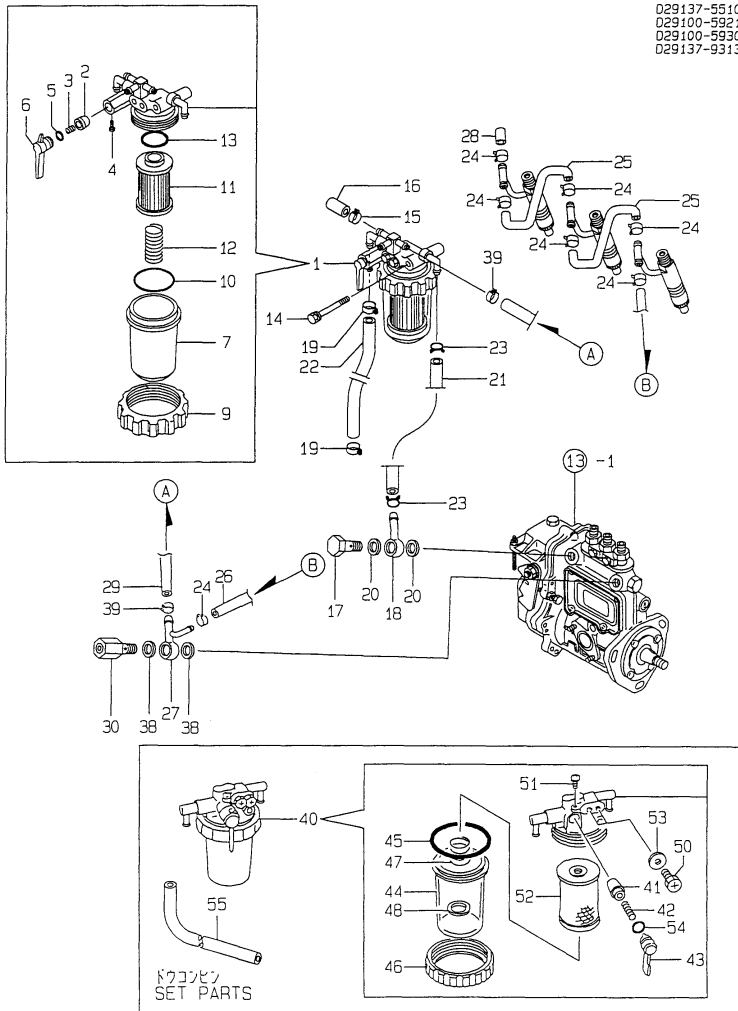
(C)=

(D)=

(E)=

(F)=

Y00D3702  
3TN84TL-RMZ2



029137-55100  
029100-59211  
029100-59302  
029137-93130

No.	Lev.	Parts No.	Description	Q'ty						I	R
				(A)	(B)	(C)	(D)	(E)	(F)		
1	1	129100-55621	FILTER ASSY, FUEL	1							
2	2	104200-55321	VALVE, TAPER	1							
3	2	104200-55330	SPRING, VALVE	1							
4	2	104200-55750	SCREW, M4	1							
5	2	24311-240100	O-RING, 1AP10A	1							
6	2	129100-55670	LEVER	1							
7	2	129100-55680	CUP, STRAINER	1							
9	2	129100-55690	RING, RETAINING	1							
10	2	24321-000650	O-RING, 1AG65.0	1							\$
11	2	129100-55650	ELEMENT	1							
12	2	129100-55700	SPRING	1							
13	2	24311-000160	O-RING, 1AP16.0	1							
14	1	26014-080852	BOLT, M8X 85	1							
15	1	124066-59100	CLIP, HOSE 8	1							
16	1	129150-59580	CAP	1							
17	1	103854-39140	BOLT, PIPE JOINT	1							
18	1	101304-59020	JOINT, PIPE 12	1							
19	1	23000-013000	CLAMP, 13	2							
19-1	1	124766-59050	CLIP, HOSE 12	2							N
(A=E07874)											
20	1	104200-59170	GASKET, 12	2							
21	1	129555-59510	PIPE, D13/7.5X180	1							
22	1	129255-59580	PIPE, FUEL	1							
22-1	1	105025-59750	PIPE, FUEL	1							N
(A=E07512)											
23	1	124766-59050	CLIP, HOSE 12	2							
24	1	124066-59100	CLIP, HOSE 8	7							
25	1	121250-59550	PIPE, FUEL D8X120	2							
26	1	119840-59560	PIPE, FUEL RETURN	1							
27	1	119840-59570	JOINT	1							
28	1	129150-59580	CAP	1							
29	1	129255-59580	PIPE, FUEL	1							
29-1	1	105025-59530	PIPE, FUEL D13X400	1							N
(A=E07512)											
30	1	129100-59951	VALVE ASSY, CHECK	1							
38	1	23414-120000	GASKET, 12X1.0	2							
39	1	124766-59050	CLIP, HOSE 12	2							
40	1	129335-55700	SEPARATOR ASSY, WATER	1							
41	2	104200-55321	VALVE, TAPER	1							
42	2	104200-55330	SPRING, VALVE	1							
43	2	104200-55341	HANDLE	1							
44	2	124064-55510	COVER	1							
45	2	102103-55520	O-RING	1							
46	2	110250-55610	RING, RETAINING	1							
47	2	121257-55720	SPRING	1							
48	2	121257-55731	FLOAT	1							
50	2	101720-55750	PLUG, 6	2							
51	2	104200-55750	SCREW, M4	1							
52	2	171081-55910	SCREEN	1							
53	2	23418-060000	GASKET, 6X1.0	2							
54	2	24311-240100	O-RING, 1AP10A	1							

Remarks  
(\$) THESE PARTS ARE SOLD BY FIG.20,  
REF.NO.1.

Fig.15. FUEL OIL SYSTEM

(A)=3TN84TL-RMZ2

(B)=

(C)=

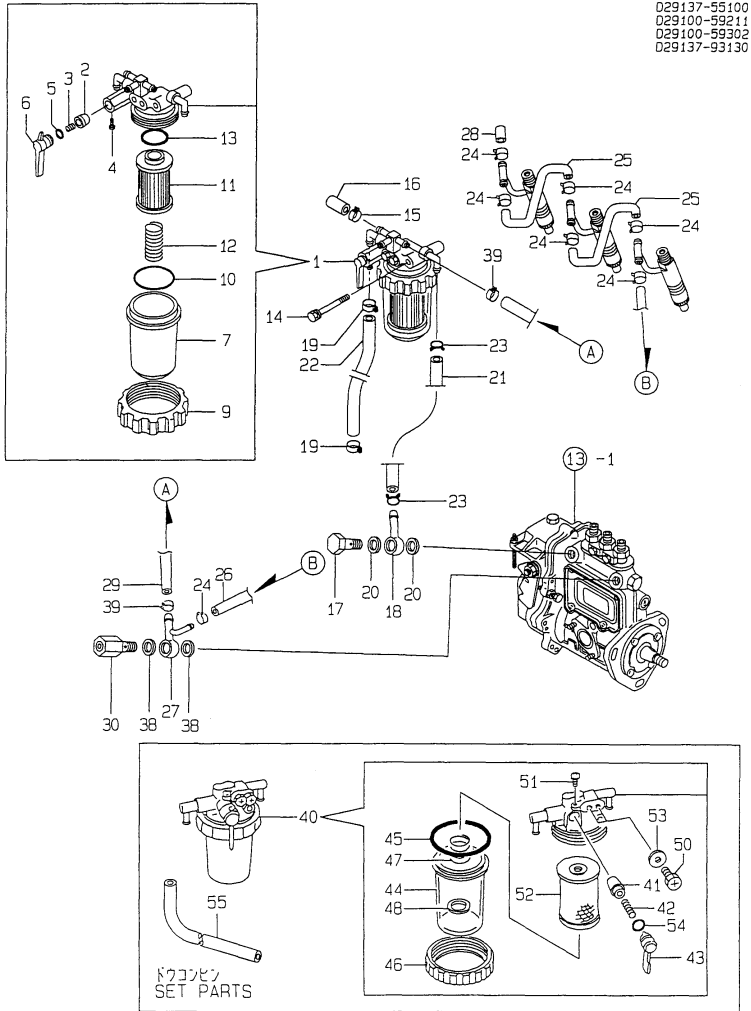
(D)=

(E)=

(F)=

No.	Lev.	Parts No.	Description	Q'ty						I	R
				(A)	(B)	(C)	(D)	(E)	(F)		
55	1	121525-59090	PIPE, FUEL D12X2500	2							

Y00D3702  
3TN84TL-RMZ2



Remarks  
(\$) THESE PARTS ARE SOLD BY FIG.20,  
REF.NO.1.

Fig.16. GOVERNOR

(A)=3TN84TL-RM22

(B)=

(C)=

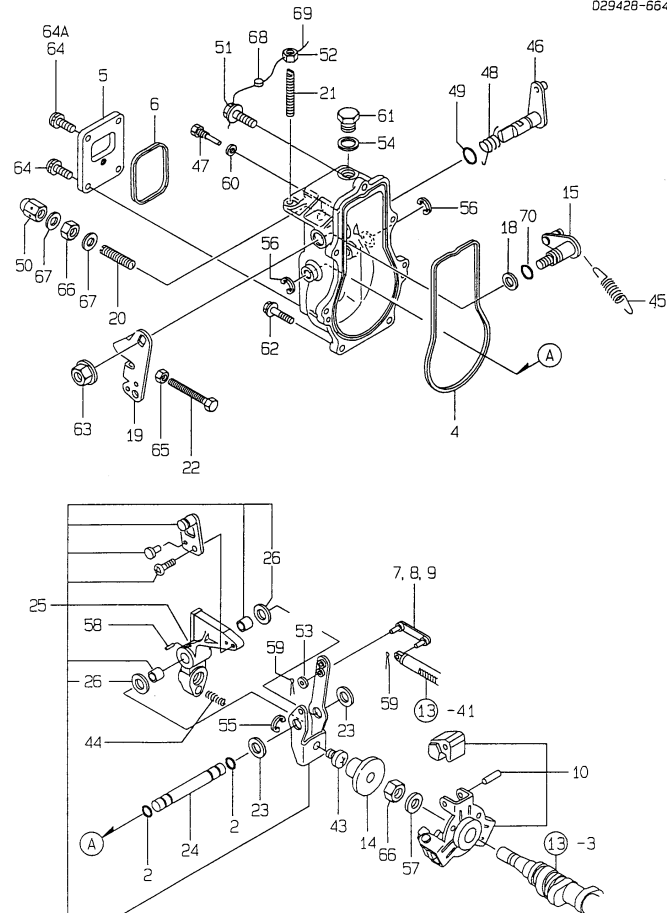
(D)=

(E)=

(F)=

Y00D3702  
3TN84TL-RM22

729137-51381  
029428-66400



No.	Lev.	Parts No.	Description	Q'ty						I	R
				(A)	(B)	(C)	(D)	(E)	(F)		
2	1	129155-51280	O-RING, S6	2							
4	1	129155-61050	GASKET	1							
5	1	129155-61060	COVER, GOVERNOR CASE	1							
6	1	129155-61070	GASKET	1							
7	1	129155-61120	LINK, L=30 MARK 0	1							1
8	1	129155-61130	LINK, L=31 MARK 1	1							1
9	1	129155-61140	LINK, L=30.5 MARK 05	1							1
10	1	129155-61201	WEIGHT ASSY,GOVERNOR	1							
14	1	129155-61341	SLEEVE	1							
15	1	129100-61400	SHAFT ASSY	1							
18	1	129155-61430	SPACER	1							
19	1	129100-61440	LEVER, CONTROL	1							
20	1	129155-61470	BOLT, CONTROL	1							
21	1	129155-61450	BOLT, LIMITER	1							
22	1	129155-61460	BOLT, IDLE	1							
23	1	129155-61480	SPACER ASSY	2							
24	1	129155-61490	SHAFT	1							
25	1	129500-61500	LEVER ASSY, GOVERNOR	1							
25-1	1	129500-61501	LEVER ASSY, GOVERNOR	1							N
(A=*1992.03)											
26	2	174307-51700	SHIM SET	2							
43	1	129155-61540	SHIFTER	1							
44	1	129100-61650	SPRING, CONTROLLER	1							
45	1	171353-61710	SPRING, GOVERNOR	1							
46	1	129255-61802	LEVER, STOP	1							
47	1	129155-61810	PIN	1							
48	1	129100-61821	SPRING, RETURN	1							
49	1	129155-61830	O-RING, S10	1							
50	1	26687-120002	NUT, CAP M12	1							
51	1	129155-61950	BOLT	1							
52	1	124550-66370	NUT, M6	1							
53	1	22117-040000	WASHER, 4	1							
54	1	43400-500430	SEAL WASHER 10S	1							
55	1	22272-000040	RING, E- 4	1							
56	1	22272-000060	RING, E- 6	2							
57	1	22287-120000	WASHER, 12	1							
58	1	22351-030016	PIN, SPRING 3.0X16	1							
59	1	22360-040000	PIN, SNAP 4	2							
59-1	1	22372-040000	PIN, SNAP 4	2							N
(A=E07874)											
60	1	43400-500390	SEAL WASHER 6S	1							
61	1	23887-100002	PLUG, 10	1							
62	1	26106-060202	BOLT, M6X 20 PLATED	6							
63	1	26366-080002	NUT, M8	1							
64	1	26022-050102	SCREW, M5X10	4							
64-1	1	26022-050102	SCREW, M5X10	2							K
(A=*1992.03)											
64A	1	26023-050102	SCREW, M5X10	2							W
(A=*1992.03)											
65	1	26756-060002	NUT, LOCK M6	1							
66	1	26776-120002	NUT, LOCK M12	2							

Remarks

(1) SELECTIVE PARTS : CERTAIN THE CLASSIFICATION MARK, THEN PLACE YOUR ORDER.(ILLUSTRATION)

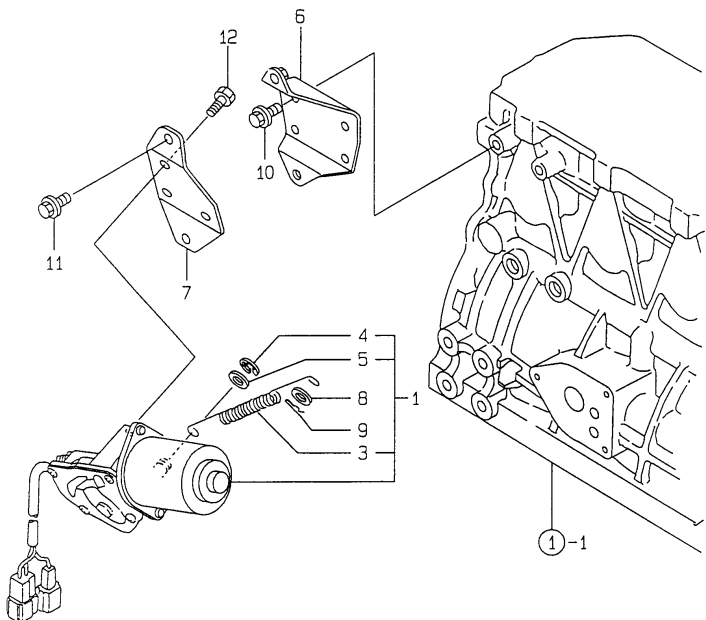




# Fig.17. ENGINE STOP

Y00D3702  
3TN84TL-RMZ2

D29107-66500



(A)=3TN84TL-RMZ2

(B)=

(C)=

(D)=

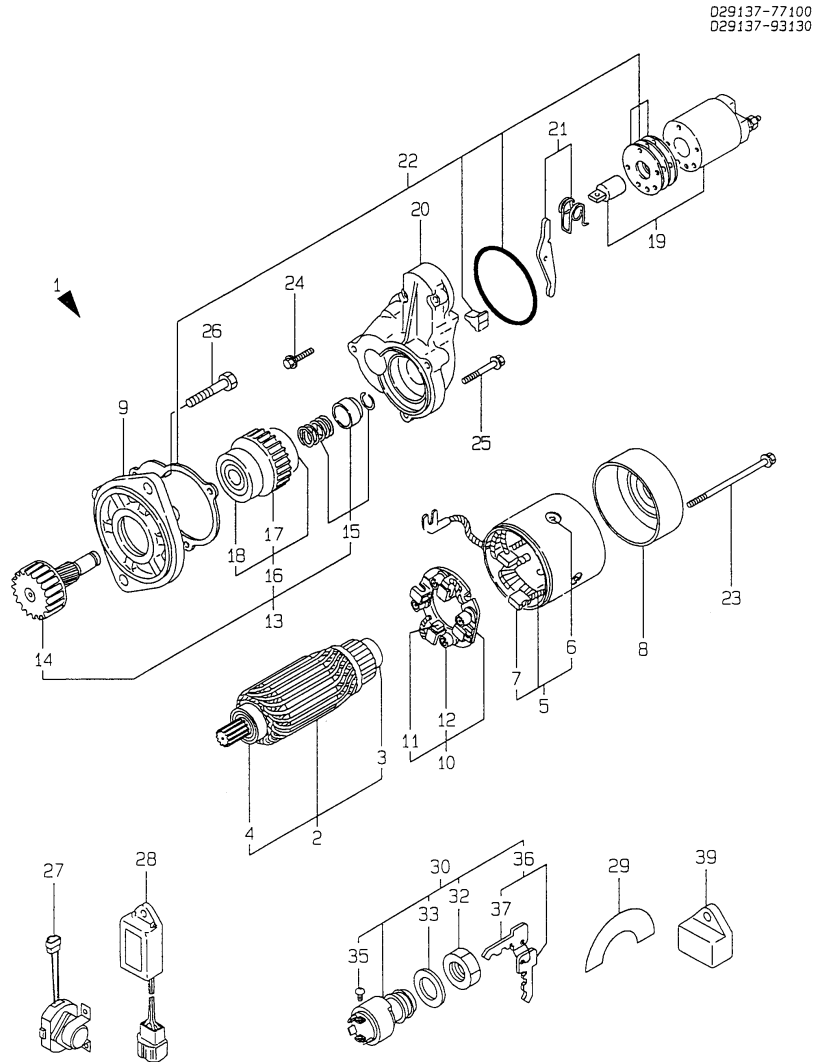
(E)=

(F)=

No.	Lev.	Parts No.	Description	Q'ty						I	R
				(A)	(B)	(C)	(D)	(E)	(F)		
1	1	129107-66791	MOTOR ASSY, STOP	1							
3	2	129107-66830	SPRING, STOP MOTOR	1							
4	2	129566-66880	RING, SNAP	1							
5	2	129566-66890	WASHER	1							
6	1	129107-66810	BRACKET, STOP MOTOR	1							
7	1	129107-66820	BRACKET, STOP MOTOR	1							
8	1	22117-080000	WASHER, 8	1							
9	1	22360-080000	SNAP PIN 8	1							
10	1	26106-080122	BOLT, M8X 12 PLATED	2							
11	1	26106-080122	BOLT, M8X 12 PLATED	2							
12	1	26116-050102	BOLT, M5X 10 PLATED	3							

Fig.18. STARTING MOTOR(COMPONENT PARTS)

Y00D3702  
3TN84TL-RM22



029137-77100  
029137-93130

(A)=3TN84TL-RM22

(B)=

(C)=

(D)=

(E)=

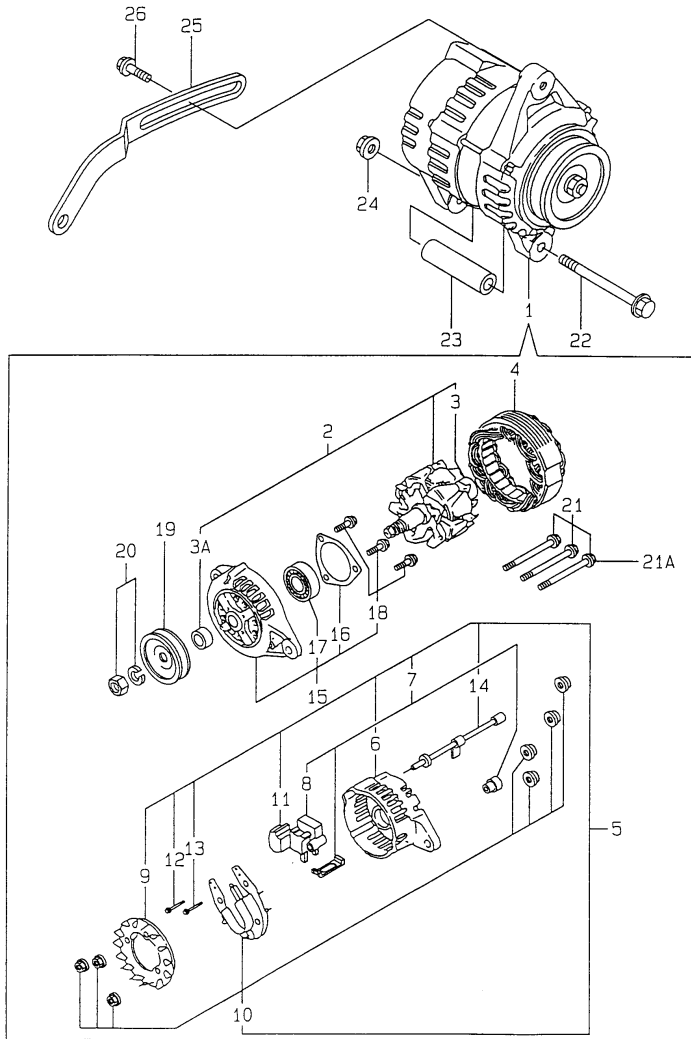
(F)=

No.	Lev.	Parts No.	Description	Q'ty						I	R
				(A)	(B)	(C)	(D)	(E)	(F)		
1	1	129137-77010	STARTER, S13 124	1							
2	2	X21309100	ARMATURE ASSY	1							
3	3	X211415502	BEARING, BALL	1							
4	3	X211425502	BEARING, BALL	1							
5	2	X213012001	COIL ASSY, FIELD	1							
6	3	X21143215	SCREW, CORE	4							
7	3	X213023112	BRUSH, +	2							
8	2	X22403300	COVER ASSY, REAR	1							
9	2	X211476504	HOUSING ASSY, GEAR	1							
10	2	X213073021	HOLDER ASSY, BRUSH	1							
11	3	X213023112	BRUSH, +	2							
12	3	X21306313	SPRING, BRUSH	4							
13	2	X211455505	PINION CLUTCH ASSY	1							
14	3	X211495009	SHAFT	1							
15	2	X211429006	STOPPER SET	1							
16	3	X211425505	CLUTCH ASSY	1							
17	4	X211435505	SHAFT ASSY	1							
18	4	X211445502	BALL BEARING	1							
19	2	X213047007	SWITCH ASSY,MAGNETIC	1							
20	2	X213054001	BRACKET ASSY, CENTER	1							
21	2	X211446012	LEVER, SHIFT	1							
22	2	X21306910	COVER KIT	1							
23	2	X21309820	BOLT, THROUGH	2							
24	2	X21145866	BOLT	3							
25	2	X21142867	BOLT	2							
26	1	26116-120252	BOLT, M12X 25 PLATED	2							
27	1	171051-77100	RELAY, SAFETY	1							
28	1	128300-77920	TIMER	1							
29	1	171085-91610	LABEL	1							
30	1	194180-52110	SWITCH, STARTING	1							
32	2	194275-52320	NUT, RING	1							
33	2	194275-52330	PACKING	1							
35	2	26022-040082	SCREW, M4X 8	7							
36	2	194155-52160	KEY ASSY	1							
37	3	194155-52190	KEY	2							
39	1	160970-77350	RECTIFIER, ZR2117	1							

Fig.19. GENERATOR(COMPONENT PARTS)

Y0003702  
3TN84TL-RMZ2

D29100-77210  
D29100-77310



(A)=3TN84TL-RMZ2

(B)=

(C)=

(D)=

(E)=

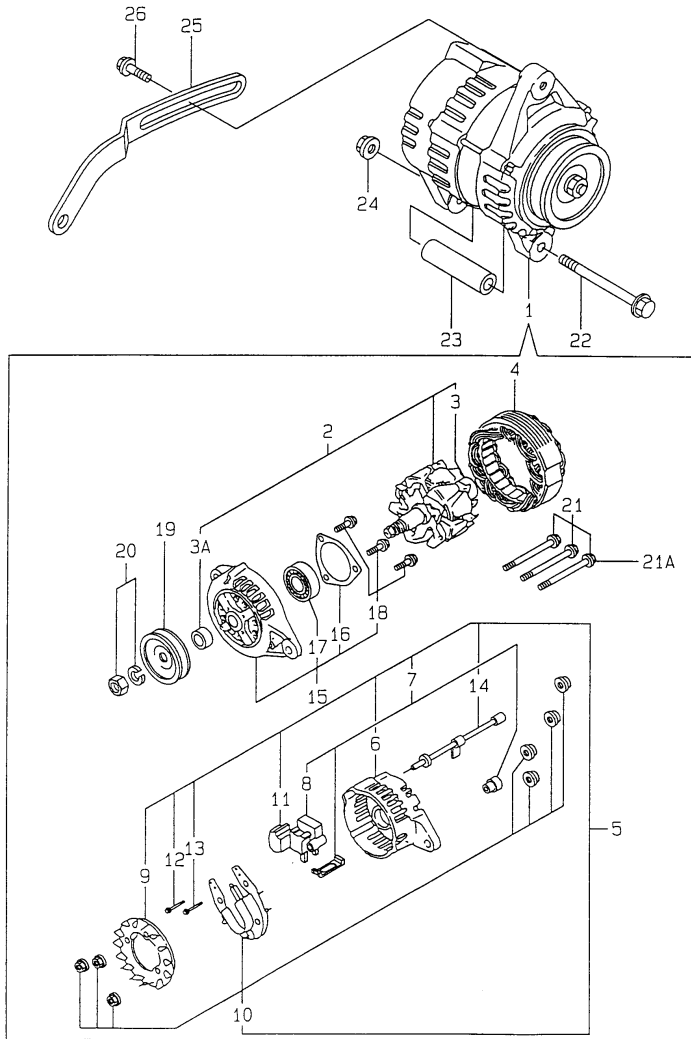
(F)=

No.	Lev.	Parts No.	Description	Q'ty						I	R
				(A)	(B)	(C)	(D)	(E)	(F)		
1	1	119836-77200	GENERATOR	1							
1-1	1	124080-77201	GENERATOR, LR135-91	1							N
		(A=EXXX)									
2	2	119836-77700	ROTOR ASSY	1							
2-1	2	124080-77300	ROTOR ASSY	1							N
		(A=EXXX)									
3	3	119836-77850	BALL BEARING	1							
3-1	3	124080-77490	BALL BEARING	1							N
		(A=EXXX)									
3A	3	124080-77310	SPACER	1							W
		(A=EXXX)									
4	2	119836-77710	STATOR ASSY	1							
4-1	2	124080-77320	STATOR ASSY	1							N
		(A=EXXX)									
5	2	119836-77721	COVER ASSY, REAR	1							
5-1	2	124080-77330	COVER ASSY	1							N
		(A=EXXX)									
6	3	119836-77730	COVER, REAR	1							
6-1	3	124080-77340	COVER, REAR	1							N
		(A=EXXX)									
7	3	119836-77741	BRUSH ASSY,REGULATOR	1							
7-1	3	124080-77350	BRUSH REGULATOR(N/CO	1							N
		(A=EXXX)									
8	4	119836-77750	BRUSH ASSY	1							
8-1	4	124080-77360	BRUSH ASSY	2							N
		(A=EXXX)									
9	3	119836-77760	GUIDE, FAN SIDE	1							Z
		(A=EXXX)									
10	3	119836-77770	DIODE ASSY	1							
10-1	3	124080-77400	DIODE ASSY	1							N
		(A=EXXX)									
11	3	119836-77780	CONDENSER	1							Z
		(A=EXXX)									
12	3	119836-77871	BOLT (1)	1							Z
		(A=EXXX)									
13	3	119836-77880	BOLT (2)	1							Z
		(A=EXXX)									
14	3	119836-77890	WIRE ASSY, LEAD	1							
14-1	3	124080-77530	WIRE ASSY, LEAD	1							N
		(A=EXXX)									
15	2	119836-77790	COVER ASSY, FRONT	1							
15-1	2	124080-77420	COVER ASSY	1							N
		(A=EXXX)									
16	3	119836-77800	RETAINER, BEARING	1							
16-1	3	124080-77430	RETAINER, BEARING	1							N
		(A=EXXX)									
17	3	119836-77840	BALL BEARING	1							
17-1	3	124080-77480	BEARING, 6202DDU	1							N
		(A=EXXX)									
18	3	119836-77860	SCREW KID	1							
18-1	3	124080-77500	SCREW KIT	1							N

Fig.19. GENERATOR(COMPONENT PARTS)

Y0003702  
3TN84TL-RMZ2

D29100-77210  
D29100-77310



(A)=3TN84TL-RMZ2

(B)=

(C)=

(D)=

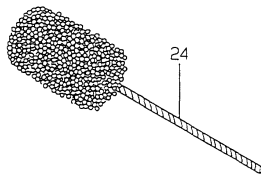
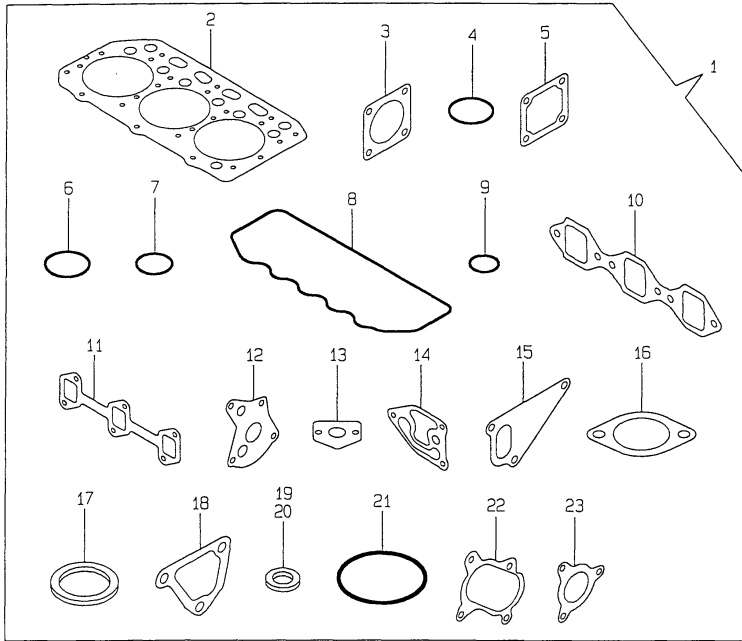
(E)=

(F)=

No.	Lev.	Parts No.	Description	Q'ty						I	R	
				(A)	(B)	(C)	(D)	(E)	(F)			
		(A=EXXX)										
19	2	119836-77810	PULLEY	1								
19-1	2	124080-77440	PULLEY ASSY	1								N
		(A=EXXX)										
20	2	119836-77820	NUT ASSY, PULLEY	1								
20-1	2	124080-77470	NUT ASSY, PULLEY	1								N
		(A=EXXX)										
21	2	119836-77830	BOLT, THROUGH	3								
21-1	2	124080-77450	BOLT, THROUGH	2								N
		(A=EXXX)										
21A	2	124080-77460	BOLT, THROUGH	1								W
		(A=EXXX)										
22	1	129136-77250	BOLT M 8X105	1								
22-1	1	26106-081202	BOLT, M8X120 PLATED	1								N
		(A=EXXX)										
23	1	119820-77340	PIECE, DISTANCE	1								
23-1	1	129150-77340	SPACER	1								N
		(A=EXXX)										
24	1	26366-080002	NUT, M8	1								
25	1	129100-77330	ADJUSTER	1								
26	1	26014-080252	BOLT, M8X 25	1								

Fig.20. GASKET SET & TOOL

Y0003702  
3TN84TL-RMZ2



(A)=3TN84TL-RMZ2

(B)=

(C)=

(D)=

(E)=

(F)=

No.	Lev.	Parts No.	Description	Q'ty						I	R
				(A)	(B)	(C)	(D)	(E)	(F)		
1	1	729137-92612	GASKET SET	1							1
2	2	129157-01332	GASKET, HEAD	1							
3	2	124240-01883	GASKET	2							
4	2	121850-51960	O-RING	1							
5	2	129150-77511	GASKET	1							
6	2	24341-000500	O-RING, 1AS50.0	1							
7	2	24311-000320	O-RING, 1AP32.0	2							
8	2	129150-11310	GASKET, BONNET	1							
9	2	24311-000120	O-RING, 1AP12.0	3							
10	2	129150-12111	GASKET, MANIFOLD	1							
11	2	129150-13110	GASKET	1							
12	2	129150-32020	GASKET, PUMP	1							
13	2	129150-35041	GASKET	1							
14	2	129103-35122	GASKET	1							
15	2	129100-42020	GASKET, WATER PUMP	1							
16	2	129795-49551	GASKET	1							
17	2	129150-49811	GASKET, THERMOSTAT	1							
18	2	129100-49840	GASKET	1							
19	2	124465-44950	GASKET, 16	1							
20	2	129150-49360	GASKET	1							
21	2	24321-000650	O-RING, 1AG65.0	1							
22	2	129403-18090	GASKET	1							
23	2	129477-18100	GASKET	1							
24	1	129400-92420	HONE	1							1

Remarks

(1) OPTIONAL PART.

# Parts No. Index

Parts No.	Fig. No.	Ref. No.
101304-59020	15	18
101720-55750	15	50
102103-55520	15	45
103338-11190	4	19
103854-39140	15	17
104200-55321	15	2
		41
104200-55330	15	3
		42
104200-55341	15	43
104200-55750	15	4
		51
104200-59170	15	20
105010-39140	10	44
105025-59530	15	29 -1
105025-59750	15	22 -1
110250-55610	15	46
114250-53080	14	5
114250-53120	14	9
114250-53130	14	10
114250-53140	14	11
114250-53210	14	12
114250-53400	14	13
119260-07900	4	43
119625-11870	14	20
119625-11900	4	37
119640-12580	5	27
119810-51040	13	3
119820-77340	19	23
119836-77200	19	1
119836-77700	19	2
119836-77710	19	4
119836-77721	19	5
119836-77730	19	6
119836-77741	19	7
119836-77750	19	8
119836-77760	19	9
119836-77770	19	10
119836-77780	19	11
119836-77790	19	15
119836-77800	19	16
119836-77810	19	19
119836-77820	19	20
119836-77830	19	21
119836-77840	19	17
119836-77850	19	3
119836-77860	19	18
119836-77871	19	12
119836-77880	19	13
119836-77890	19	14

Parts No.	Fig. No.	Ref. No.
119840-59560	15	26
119840-59570	15	27
120130-11860	4	40
121023-26061	2	37
121023-26070	2	38
121100-22400	9	22
121111-21501	9	11
121250-59550	15	25
121256-44600	12	53
121257-55720	15	47
121257-55731	15	48
121400-11340	4	20
121420-12511	5	16
121420-12540	5	19
121420-12550	5	20
121420-12561	5	21
121422-12530	5	18
121422-12570	5	22
121422-12580	5	23
121450-01560	2	3
121450-42450	12	38
121520-34810	10	66
121521-12400	5	14
121525-59090	15	55
121550-23200	9	32
121850-11860	4	10
121850-21680	9	10
121850-35200	10	26
121850-35520	10	31
121850-35531	10	32
121850-51960	2	9
	20	4
122117-51560	13	46
122710-51090	13	6
124064-55510	15	44
124066-59100	15	15
		24
124080-77201	19	1 -1
124080-77300	19	2 -1
124080-77310	19	3 A
124080-77320	19	4 -1
124080-77330	19	5 -1
124080-77340	19	6 -1
124080-77350	19	7 -1
124080-77360	19	8 -1
124080-77400	19	10 -1
124080-77420	19	15 -1
124080-77430	19	16 -1
124080-77440	19	19 -1
124080-77450	19	21 -1

Parts No.	Fig. No.	Ref. No.
124080-77460	19	21 A
124080-77470	19	20 -1
124080-77480	19	17 -1
124080-77490	19	3 -1
124080-77500	19	18 -1
124080-77530	19	14 -1
124160-01751	2	4
	4	58
124160-01910	1	4
124160-11360	4	55
124160-39140	10	45
124160-39450	10	46
124223-35510	10	30
124223-39900	10	47
124240-01871	2	6
		22
124240-01883	2	7
		23
	20	3
124450-44510	12	47
124450-44530	12	49
124450-44550	12	52
124450-44560	12	50
124460-11340	4	21
124465-44950	12	39
	20	19
124550-21600	9	14
124550-51350	13	28
124550-51370	13	29
124550-59820	10	49
124550-66370	16	52
124574-44761	12	18
124732-42290	12	15
124736-07900	4	42
124766-59050	15	19 -1
		23
		39
124770-11770	12	23
124950-51190	13	13
128300-77920	18	28
129100-01580	3	1
		5
	9	6
129100-01640	3	6
129100-01730	3	16
129100-01790	3	13
129100-11100	4	15
129100-11130	4	17
129100-11350	4	44 -1
129100-23910	9	35

Parts No.	Fig. No.	Ref. No.
129100-35140	10	25
129100-42002	12	2
129100-42020	12	13
	20	15
129100-49050	12	36
129100-49800	12	22
129100-49820	12	25
129100-49830	12	26
129100-49840	12	31
	20	18
129100-51300	13	23
129100-52100	13	94
129100-55621	15	1
129100-55650	15	11
129100-55670	15	6
129100-55680	15	7
129100-55690	15	9
129100-55700	15	12
129100-59910	14	27
129100-59920	14	31
129100-59930	14	35
129100-59951	15	30
129100-61400	16	15
129100-61440	16	19
129100-61650	16	44
129100-61821	16	48
129100-77330	19	25
129103-33031	10	60
129103-33132	10	61
129103-35101	10	23
129103-35122	10	35
	20	14
129103-49301	12	1
129105-22090	9	15
129105-22920	9	38
129105-22970	9	40
129107-66791	17	1
129107-66810	17	6
129107-66820	17	7
129107-66830	17	3
129120-42350	12	16
129120-77501	5	4
129122-12060	5	8
129122-12100	5	1
129122-12211	5	12
129122-44480	2	15
	12	41
129132-12561	5	26
129132-12581	5	25
129136-77250	19	22

## Parts No. Index

Parts No.	Fig. No.	Ref. No.
129137-01600	3	2
129137-11880	14	21
129137-18010	8	1
129137-26000	2	31
129137-26200	2	33
129137-51981	13	76 -1
129137-77010	18	1
129139-12050	5	7
129139-12200	5	11
129139-13100	6	1
129139-13521	6	7
129139-39030	10	38
129139-39601	11	1
129150-01200	1	22
129150-02020	1	10
129150-02450	1	20
	7	2 A
129150-02800	1	13
129150-02870	1	24
129150-02930	1	16
129150-02940	1	27
129150-03020	4	49
129150-03070	4	51
129150-03080	4	50
129150-03100	2	42
	4	54
129150-11230	4	35
129150-11280	4	28
129150-11290	4	29
129150-11310	4	48
	20	8
129150-11370	4	22
129150-11750	4	34
129150-11810	4	41
129150-12111	5	2
	20	10
129150-13110	6	2
	20	11
129150-14200	7	3
129150-14400	7	4
129150-22300	9	21
129150-23600	9	33
129150-23610	9	36
129150-32020	10	15
	20	12
129150-35041	10	17
	20	13
129150-35091	10	18
129150-35150	10	36
129150-49360	12	40

Parts No.	Fig. No.	Ref. No.
129150-49360	20	20
129150-49811	12	30
	20	17
129150-59120	14	22
129150-59130	14	25
129150-59580	15	16
		28
129150-77340	19	23 -1
129150-77511	5	5
	20	5
129155-11241	4	25
129155-11260	4	26
129155-11270	4	27
129155-49800	12	29
129155-51020	13	88
129155-51050	13	4
129155-51060	13	5
129155-51140	13	10
129155-51180	13	12
129155-51200	13	14
129155-51270	13	21
129155-51280	13	22
	16	2
129155-51320	13	26
129155-51340	13	27
129155-51370	13	30
129155-51380	13	31
129155-51390	13	32
129155-51400	13	33
129155-51410	13	34
129155-51420	13	35
129155-51450	13	36
129155-51500	13	41
129155-51521	13	42
129155-51530	13	43
129155-51540	13	44
129155-51550	13	45
129155-51570	13	48
129155-51580	13	49
129155-51591	13	50
129155-51600	13	51
129155-51700	13	70
129155-51710	13	71
129155-51750	13	72
129155-51760	13	73
129155-51790	13	74
129155-51930	13	77
129155-51940	13	78
129155-52050	13	93
129155-61050	16	4

Parts No.	Fig. No.	Ref. No.
129155-61060	16	5
129155-61070	16	6
129155-61120	16	7
129155-61130	16	8
129155-61140	16	9
129155-61201	16	10
129155-61341	16	14
129155-61430	16	18
129155-61450	16	21
129155-61460	16	22
129155-61470	16	20
129155-61480	16	23
129155-61490	16	24
129155-61540	16	43
129155-61810	16	47
129155-61830	16	49
129155-61950	16	51
129156-51910	13	75
129156-51920	13	76
129157-01332	1	23
	20	2
129189-01520	2	2
129189-02800	2	27
129189-02990	2	26
129189-14100	7	2
129189-14580	7	1
129189-21100	9	1
129189-21200	9	3
129189-25050	7	6
129189-25060	7	9
129189-25100	7	7
129189-25900	13	110
129189-32000	10	1
129189-91980	2	29
129255-59580	15	22
		29
129255-61802	16	46
129258-49040	12	43
129322-18150	6	9
129335-55700	15	40
129350-49530	12	20
129354-44740	12	17
129400-92420	20	24
129403-18090	6	8
	20	22
129403-18720	8	2
129403-18750	8	3
129403-18770	8	4
129403-18780	8	13
129403-18800	8	22

Parts No.	Fig. No.	Ref. No.
129403-34800	10	65
129403-39610	11	2
129403-49031	12	42
129470-11080	4	6
129470-11090	4	7
129470-51101	13	7
129477-18100	8	47
	20	23
129500-61500	16	25
129500-61501	16	25 -1
129503-53050	14	2
129553-39650	10	58
129555-59510	15	21
129566-66880	17	4
129566-66890	17	5
129792-39410	10	52
129795-01780	3	8
129795-01800	2	1 B
		5
129795-01950	2	8
129795-02411	1	19
129795-11120	4	16
129795-11180	4	18
129795-21661	9	9
129795-49551	12	21
	20	16
135210-61090	16	68
160970-77350	18	39
171051-01921	1	5
171051-77100	18	27
171056-49120	12	45
171056-49351	12	46
171061-12500	5	15
171061-12520	5	17
171061-12800	5	24
171081-55910	15	52
171085-91610	18	29
171301-01640	3	12
171340-21650	9	8
171350-03090	4	57
171350-21590	9	12
171353-01590	2	1
171353-26080	2	39
171353-61710	16	45
174307-51170	13	11
174307-51560	13	47
174307-51700	16	26
194155-52160	18	36
194155-52190	18	37
194180-52110	18	30

## Parts No. Index

Parts No.	Fig. No.	Ref. No.
194275-52320	18	32
194275-52330	18	33
194990-22050	6	6
	8	48
22117-040000	16	53
22117-080000	17	8
22217-050000	13	79
		80
22217-060000	13	81
22217-120000	13	111
22272-000040	16	55
22272-000060	16	56
22287-120000	13	82
	16	57
22351-030010	10	59
22351-030016	16	58
22351-040010	9	7
22351-050010	13	83
22351-060012	4	23
22360-040000	16	59
22360-080000	17	9
22372-040000	16	59 -1
22451-060000	16	69
22512-070140	7	2 B
		5
	9	4
23000-013000	15	19
23000-016000	12	37
23000-022000	11	3
	12	44
23000-041000	5	10 -1
23000-060000	5	9
23010-040000	5	10
23061-070230	12	51
23414-080000	10	50
23414-100000	10	51
23414-120000	15	38
23414-180000	10	33
23418-060000	15	53
23871-010000	1	6
23871-020000	10	34
23871-030000	4	11
	12	12
		27
23887-100002	16	61
24101-060064	2	36
24101-063030	2	28
24101-063034	13	84
24311-000120	4	56
	20	9

Parts No.	Fig. No.	Ref. No.
24311-000160	2	10
	15	13
24311-000200	10	62
24311-000210	10	63
24311-000320	2	11
	4	59
	20	7
24311-240100	15	5
		54
	16	70
24314-000160	11	4
24321-000550	10	64
24321-000600	2	30
24321-000650	15	10
	20	21
24341-000160	13	85
24341-000240	3	15
24341-000500	4	52
	20	6
26014-060252	12	19
26014-080252	19	26
26014-080852	15	14
26022-040082	18	35
26022-050102	13	89 -1
		90 -1
	16	64
		64 -1
26022-060162	13	86
26023-050102	16	64 A
26106-060162	11	5
26106-060202	16	62
26106-080122	2	12
		24 -1
	11	6
	17	10
		11
26106-080142	4	24
	6	10
26106-080162	1	21
	2	13
		14
		24
	3	20
	4	53
	5	13
26106-080202	6	11
	12	32
26106-080252	3	17
	4	38
	5	3

Parts No.	Fig. No.	Ref. No.
26106-080252	12	33
26106-080302	3	9
26106-080352	3	10
	5	6
	10	22
26106-080452	2	16
	3	18
26106-080502	3	19
	4	39
	7	10
	12	34
26106-080552	2	17
26106-080602	12	14
		35
26106-080752	10	37
26106-080802	6	3
26106-080852	2	18
26106-081202	19	22 -1
26106-100452	2	40
26116-050102	17	12
26116-050302	13	87
26116-060162	12	28
26116-120252	18	26
26206-100252	3	3
26206-100302	3	4
26216-060202	4	12
26216-080222	6	4
26216-080802	6	5
26226-080182	4	36
26366-060002	4	5
26366-080002	2	19
	16	63
	19	24
26450-060252	10	16
26450-080282	2	41
26557-050102	13	89
		90
26687-120002	16	50
26716-060002	13	91
26716-120002	13	112
26756-060002	16	65
26776-120002	16	66
27231-500000	1	7
27241-120000	1	8
27241-220000	4	13
27241-300000	1	9
27241-400000	4	14
27310-080001	4	19 -1
43400-500390	16	60
43400-500410	2	20

Parts No.	Fig. No.	Ref. No.
43400-500410	2	21
		25
	10	48
43400-500430	16	54
43400-500450	16	67
43400-500490	13	92
729102-01540	3	11
729105-22500	9	17
729105-22910	9	23
729105-22951	9	25
729106-01560	1	1
729132-11520	4	44
729137-51370	13	1
729137-51381	13	1 -1
729137-53200	14	1
729137-92612	20	1
729402-11650	4	32
729402-23100	9	29
771364-11700	4	1
X211415502	18	3
X211425502	18	4
X211425505	18	16
X21142867	18	25
X211429006	18	15
X21143215	18	6
X211435505	18	17
X211445502	18	18
X211446012	18	21
X211455505	18	13
X21145866	18	24
X211476504	18	9
X211495009	18	14
X213012001	18	5
X213023112	18	7
		11
X213047007	18	19
X213054001	18	20
X21306313	18	12
X21306910	18	22
X213073021	18	10
X21309100	18	2
X21309820	18	23
X22403300	18	8
XNB139815	8	30
XNB139825	8	18
XNB139826	8	25
XNB139827	8	33