

OCD10-M36202EN

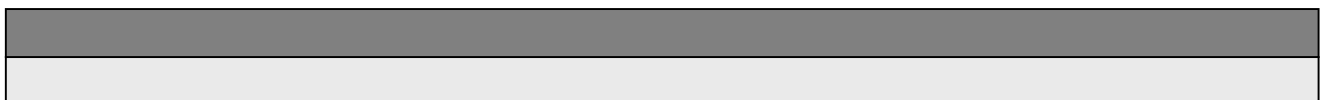
# PREFACE

1. This Parts Catalog is the 1st edition of 3T72LE-TBS,TB Diesel Engine for TAKEUCHI IND..

Pub. No. : 000Y00D3622  
Published : December,1991

2. Model name

Engine model	Vehicle		Vehicle made by
	Products	Model name	
3T72LE-TBS,TB	—	—	TAKEUCHI IND.



## Directions for the Parts Catalog.

1. This Parts Catalog shows both standard and optional parts.
2. Parts may change without prior notice.
3. The following is an example of the Parts Catalog format.

REF.	LEV.	PARTS NO.	DESCRIPTION	Q'TY						I	R
				(A)	(B)	(C)	(D)	(E)	(F)		
1	1	729595-51390	FUEL INJECTION PUMP	1	1	1	1	1			1
1-1	1	729595-51391	FUEL INJECTION PUMP	1	1	1	1	1		N	1
		(A=E00185) (B=E00200)									
3	2	26022-060162	SCREW M 6X 16	9	9	9	9	9			
3-1	2	26022-060162	SCREW M 6X 16	4	4	4	4	4		K	
		(A=E00156) (B=E00156) (C=E00156) (D=E00156) (E=E00156)									
4	2	129470-51040	CAMSHAFT	1	1	1	1	1			
5	2	122710-51050	BEARING, ROLLER	2	2	2	2	2			
6	2	129470-51060	RETAINER	1	1	1	1	1			

Remarks
(1) BOOST COMPEMSATOR TYPE. OPTIONAL PART, TO E00155,(4JH-DT, 4JH-DTZ

### ① Ref. No.

The Ref. No. listed may not be in accordance with the illustration Ref. No.

(Ex.) Illustration No.

List Ref No.

1

1

(Before change)

1-1

(After change)

For interchangeable symbols N, R and K, illustrations for new parts may be abbreviated.

### ② Lev. (Level)

Level indication

The numbers below indicate the level of relativity towards the main part.

1 ----- Main parts (Assembly parts)

2 ----- Sub component included in " 1 ".

3 ----- Sub component included in " 2 ".

Note) Parts that are not for sale are partially illustrated but not listed.

### ③ Interchangeability Symbol

When a part change takes place, one of the following interchangeability symbols is indicated beside the part.

Symbol	Interchangeability	Contents note
N	Old $\begin{matrix} \leftarrow \text{Yes} \\ \text{No} \rightarrow \end{matrix}$ New	New Part is interchangeable for Old Part but Old Part is not interchangeable for New Part.
Q	Old $\begin{matrix} \leftarrow \text{No} \\ \text{Yes} \rightarrow \end{matrix}$ New	New Part is not interchangeable for Old Part but Old Part is interchangeable for New Part.
R	Old $\begin{matrix} \leftarrow \text{Yes} \\ \text{Yes} \rightarrow \end{matrix}$ New	New/ Old Parts are both interchangeable.
S	Old $\begin{matrix} \leftarrow \text{No} \\ \text{No} \rightarrow \end{matrix}$ New	New/ Old Parts are both not interchangeable.
W		Part newly added.
Z		Part discontinued.
F		Not interchangeable by a single part but interchangeable together with related parts.
K		Changes only for used parts quantities.

### ④ Effective Machine No.

When a part changes, the effective Machine No. will be indicated in the (A)-(F) column.

Product Symbol	Product No.	Product Symbol	Product No.
C	Clutch No. Compressor No.	F	Machine No. (Agricultural Equip.)
D	Drive No.	M	Machine No.
E	Engine No.		

Note 1) A date may follow the symbol. (Ex.) 1996.01

Note 2) "XXXXX" and "ZZZZZ" are for parts that could not be predicted or for engine models that could not be identified.

Note 3) (A=E00185) is the E (Engine Serial Number) for the column (A) model (in this case 4JH-DT) after the parts design change.

### ⑤ Remarks

Figures or alphabets (symbols) are entered in the remarks column.

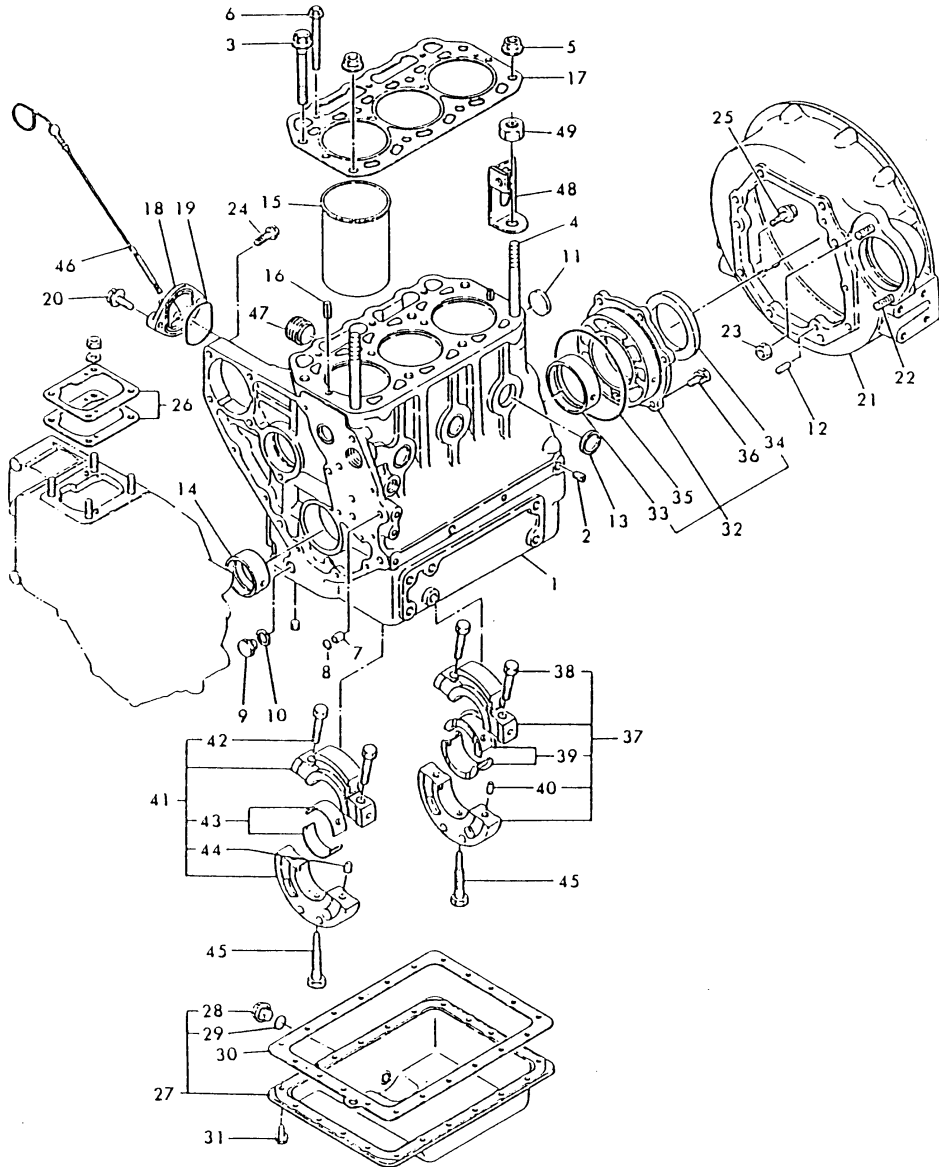
The comments (remarks) on parts that are indicated at the bottom of the illustration are the same symbols as those stated above.

# Contents

Fig. No.	Fig. Name	Fig. No.	Fig. Name
3T72LE-TBS,TB			
1.	CYLINDER BLOCK		
2.	GEAR CASE		
3.	CYLINDER HEAD		
4.	AIR CLEANER & SILENCER		
5.	CAMSHAFT		
6.	CRANKSHAFT		
7.	PISTON & CONNECT.ROD		
8.	LUB.OIL SYSTEM		
9.	COOLING SYSTEM		
10.	FUEL INJECTION PUMP		
11.	FUEL INJECTION VALVE		
12.	FUEL INJECTION SYSTEM		
13.	GOVERNOR		
14.	ELECTRIC STARTING EQUIPMENT		
15.	GENERATOR		
16.	STARTING MOTOR		
17.	THERMOSTART		
18.	GAUGE		
19.	TOOLS		
20.	GASKET KIT (FOR OVER-HAUL)		

Fig.1. CYLINDER BLOCK

021027-01121  
 021450-02101  
 024936-07300  
 021450-34100



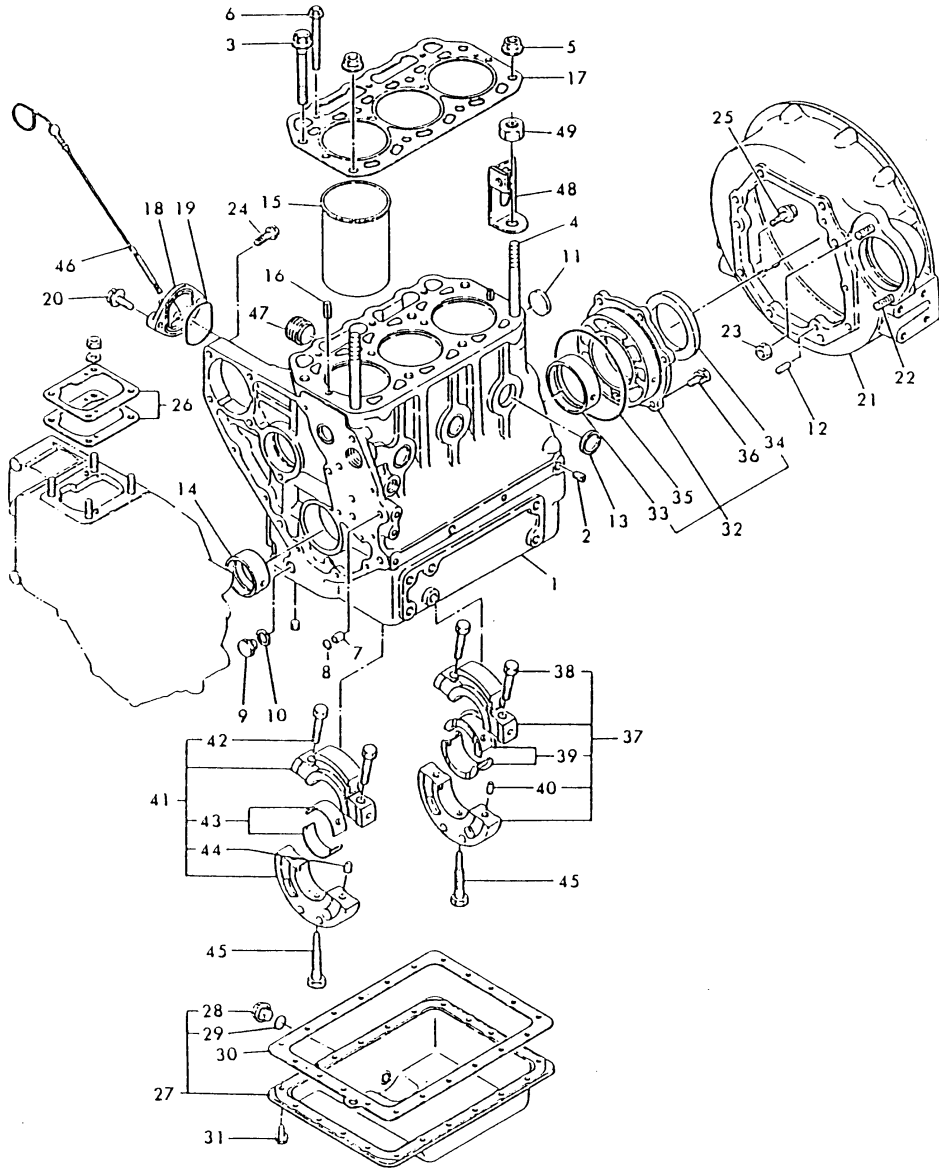
(A)=3T72LE-TBS  
 (B)=3T72LE-TB  
 (C)=

(D)=  
 (E)=  
 (F)=

No.	Lev.	Parts No.	Description	Q'ty						I	R
				(A)	(B)	(C)	(D)	(E)	(F)		
1	1	721450-01564	BLOCK ASSY, CYLINDER	1	1						
2	2	124060-01050	PLUG, PT1/8	7	7						
3	2	121450-01203	BOLT, HEAD	6	6						
4	2	121450-01210	BOLT, HEAD	2	2						
5	2	121450-01220	NUT, CYLINDER HEAD	2	2						
6	2	129350-01230	BOLT, HEAD	3	3						
7	2	124085-01900	GUIDE	2	2						
8	2	24311-000100	O-RING, 1AP10.0	2	2						
9	2	121450-01960	PLUG, PF1/4	1	1						
10	2	121450-01980	GASKET	1	1						
11	2	121450-01990	PLUG, 30	1	1						
12	2	22312-080180	PIN, PARALLEL M8X18	2	2						
13	2	27241-300000	PLUG 30	5	5						
14	2	121450-02100	BEARING, MAIN	1	1						
15	2	121450-01100	LINER ASSY, CYLINDER	3	3						
16	2	22351-060012	PIN, SPRING 6.0X12	2	2						
17	1	121000-01330	GASKET, HEAD	1	1						
18	1	121450-34831	BRACKET	1	1						
19	1	121450-34840	GASKET	1	1						
20	1	26106-080222	BOLT, M8X 22 PLATED	2	2						
21	1	121027-01601	FLANGE, MOUNTING	1	1						
22	1	26216-100252	STUD, M10X 25	2	2						
23	1	26706-100002	NUT, M10	2	2						
24	1	26106-080142	BOLT, M8X 14 PLATED	4	4						
25	1	26206-100282	BOLT, M10X 28 PLATED	10	10						
26	1	121450-01951	SHIM SET, ADJUSTING	1	1						
27	1	721450-01540	SUMP ASSY, OIL	1	1						
28	2	124060-01640	PLUG, M12	1	1						
29	2	24311-000140	O-RING, 1AP14.0	1	1						
30	1	121000-01750	GASKET, OIL SUMP	1	1						
30-1	1	121000-01751	GASKET, OIL SUMP	1	1						N
		(A=EC9660) (B=EC8298)									
31	1	121450-01710	BOLT, SUMP	21	21						
31-1	1	26106-060082	BOLT, M6X 8 PLATED	21	21						N
		(A=EC1623) (B=EC3030)									
32	1	721450-02500	HOUSING ASSY, METAL	1	1						
33	2	121450-02110	BEARING, MAIN	1	1						
34	2	124085-02220	SEAL, OIL	1	1						
35	1	105225-02020	O-RING	1	1						
36	1	26013-080202	BOLT, M8X 20	6	6						
37	1	721450-02612	HOUSING ASSY, METAL	1	1						
37-1	1	721450-02611	HOUSING ASSY	1	1						S
		(A=EC9386) (B=EC8298)									
38	2	121450-02072	BOLT	2	2						
38-1	2	121450-02071	BOLT	2	2						S
		(A=EC9386) (B=EC8298)									
39	2	121450-02160	BEARING, MAIN	1	1						
40	2	121450-02050	PIPE, KNOCK	2	2						Z
		(A=EC9386) (B=EC8298)									
41	1	721450-02622	HOUSING ASSY, METAL	1	1						
41-1	1	721450-02621	HOUSING ASSY	1	1						S

# Fig.1. CYLINDER BLOCK

021027-01121  
 021450-02101  
 024936-07300  
 021450-34100

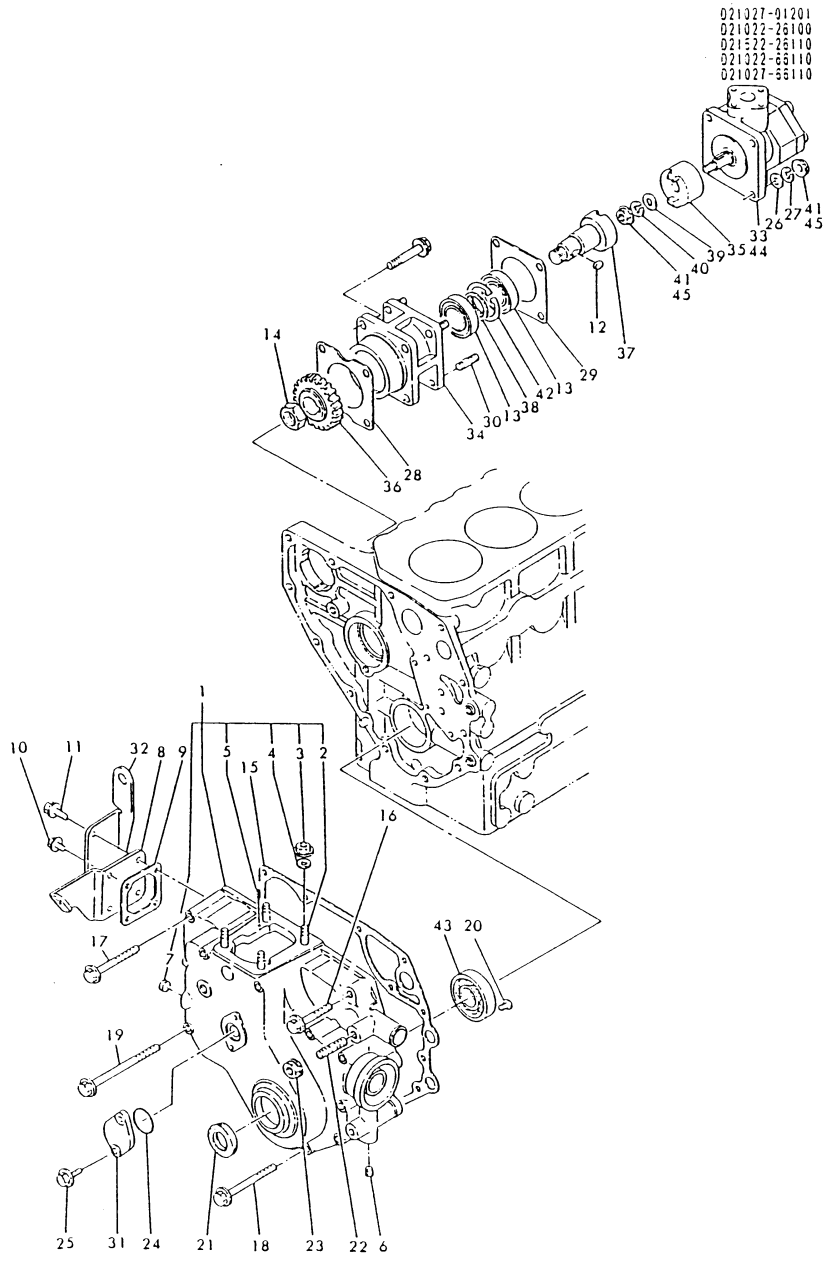


(A)=3T72LE-TBS  
 (B)=3T72LE-TB  
 (C)=

(D)=  
 (E)=  
 (F)=

No.	Lev.	Parts No.	Description	Q'ty						I	R
				(A)	(B)	(C)	(D)	(E)	(F)		
		(A=EC9386) (B=EC8298)									
42	2	121450-02072	BOLT	2	2						
42-1	2	121450-02071	BOLT	2	2						S
		(A=EC9386) (B=EC8298)									
43	2	121450-02170	BEARING, MAIN	1	1						
44	2	121450-02050	PIPE, KNOCK	2	2						Z
		(A=EC9386) (B=EC8298)									
45	1	105225-02300	BOLT	2	2						
46	1	121470-34800	DIPSTICK, OIL	1	1						
46-1	1	121467-34800	DIPSTICK, OIL	1	1						N
		(A=EB3065) (B=EB3126)									
47	1	171051-01921	PLUG, NPTF1	2	2						
48	1	121027-07230	LIFTER	1	1						
48-1	1	121575-07230	LIFTER	1	1						N
		(A=EXXX) (B=EXXX)									
49	1	129305-07950	NUT, M12	1	1						

# Fig.2. GEAR CASE



(A)=3T72LE-TBS  
(B)=3T72LE-TB  
(C)=

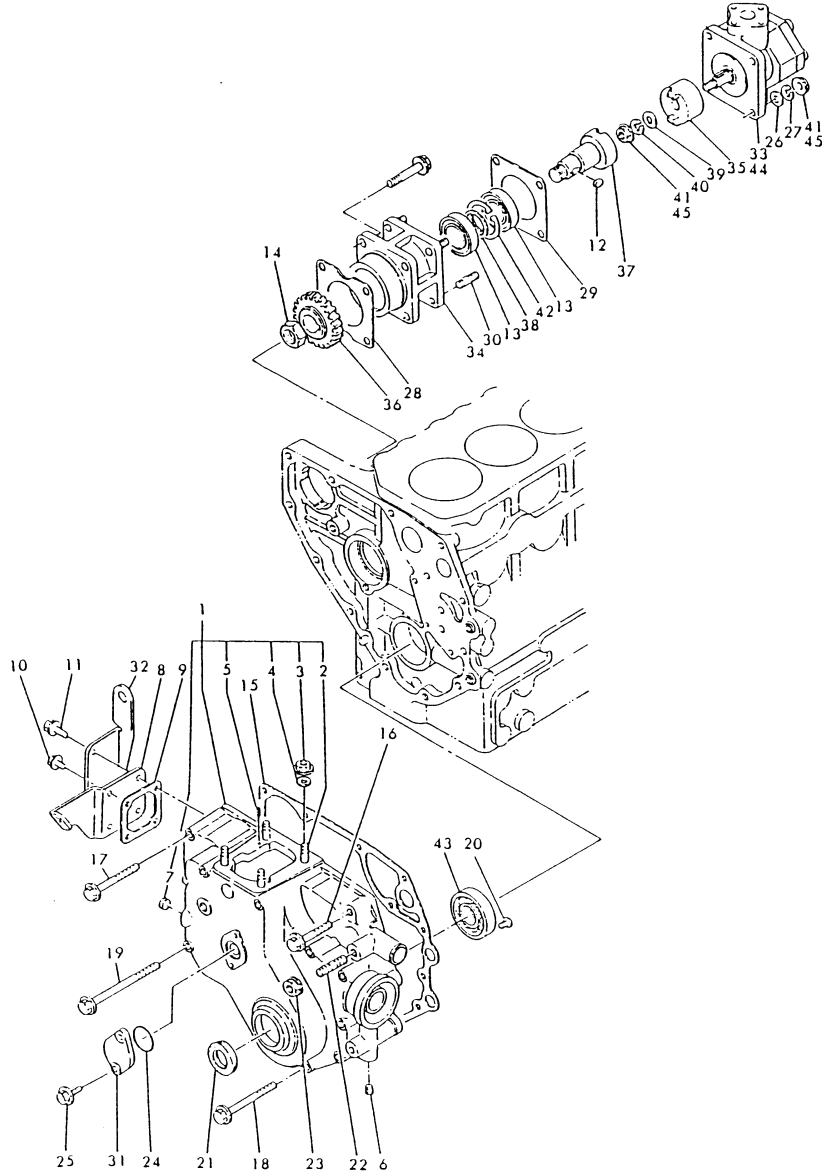
(D)=  
(E)=  
(F)=

No.	Lev.	Parts No.	Description	Q'ty						I	R
				(A)	(B)	(C)	(D)	(E)	(F)		
1	1	721085-01612	CASE ASSY, GEAR	1	1						
2	2	26216-080222	STUD, M8X 22	4	4						
3	2	26366-080002	NUT, M8	4	4						
4	2	43400-500410	SEAL WASHER 8	4	4						
5	2	22351-040010	PIN, SPRING 4.0X10	2	2						
6	2	124060-01050	PLUG, PT1/8	1	1						
7	2	121085-01890	PLUG	1	1						
8	1	121450-01551	COVER, BLOCK	1	1						
9	1	121450-01531	GASKET	1	1						
10	1	26106-060142	BOLT, M6X 14 PLATED	2	2						
11	1	26106-060202	BOLT, M6X 20 PLATED	2	2						
12	1	22512-070120	KEY, 7X 12	1	1						
13	1	24107-060054	BEARING, BALL 6005ZZ	2	2						
14	1	26776-160002	NUT, LOCK M16	1	1						
15	1	121450-01511	GASKET, GEAR CASE	1	1						
16	1	26106-080452	BOLT, M8X 45 PLATED	1	1						
17	1	26106-080752	BOLT, M8X 75 PLATED	2	2						
18	1	26106-080852	BOLT, M8X 85 PLATED	7	7						
19	1	26106-081152	BOLT, M8X115 PLATED	3	3						
20	1	26587-080102	SCREW, M8X10	1	1						
21	1	121450-01801	SEAL, TC25408	1	1						
22	1	121450-01570	STUD	1	1						
23	1	26706-100002	NUT, M10	1	1						
24	1	24341-000260	O-RING, 1AS26.0	1	1						
24-1	1	24341-000240	O-RING, 1AS24.0	1	1						N
		(A=EC9660) (B=EC8298)									
25	1	26106-060142	BOLT, M6X 14 PLATED	2	2						
26	1	22117-080000	WASHER, 8	4	4						
26-1	1	22117-080000	WASHER, 8		1						K
		(B=EB6639)									
27	1	22217-080000	WASHER, SPRING 8	4	4						
28	1	124240-01882	GASKET	1	1						
28-1	1	124240-01883	GASKET	1	1						N
		(A=EC9660) (B=EC8298)									
29	1	124950-26021	GASKET	1	1						
30	1	26216-080222	STUD, M8X 22	4	4						
31	1	121013-01550	COVER	1	1						M
31-1	1	121023-01550	COVER	1	1						
32	1	121027-66200	SUPPORT, WIRE	1	1						
33	1	121022-26010	PUMP ASSY, HYDRAULIC	1							
34	1	121522-26051	BRACKET, PUMP	1	1						
35	1	121522-26160	JOINT	1	1						
36	1	121522-26200	GEAR	1	1						
37	1	121522-26401	SHAFT, PUMP DRIVING	1	1						
38	1	124950-26420	SPACER	1	1						
39	1	194100-41670	WASHER 8.5X18X2	1							
40	1	22217-080000	WASHER, SPRING 8	1	1						
41	1	26366-080002	NUT, M8	5							
42	1	22252-000470	RING, 47	1	1						
43	1	24101-063050	BEARING, BALL 6305C3	1	1						
44	1	121522-26010	PUMP ASSY, HYDRAULIC	1							

Remarks  
(M) MISPRINT.

**Fig.2. GEAR CASE**

021027-01201  
 021022-26100  
 021522-26110  
 021022-66110  
 021027-66110



No.	Lev.	Parts No.	Description	Q'ty						I	R
				(A)	(B)	(C)	(D)	(E)	(F)		
45	1	26716-080002	NUT, M8		5						

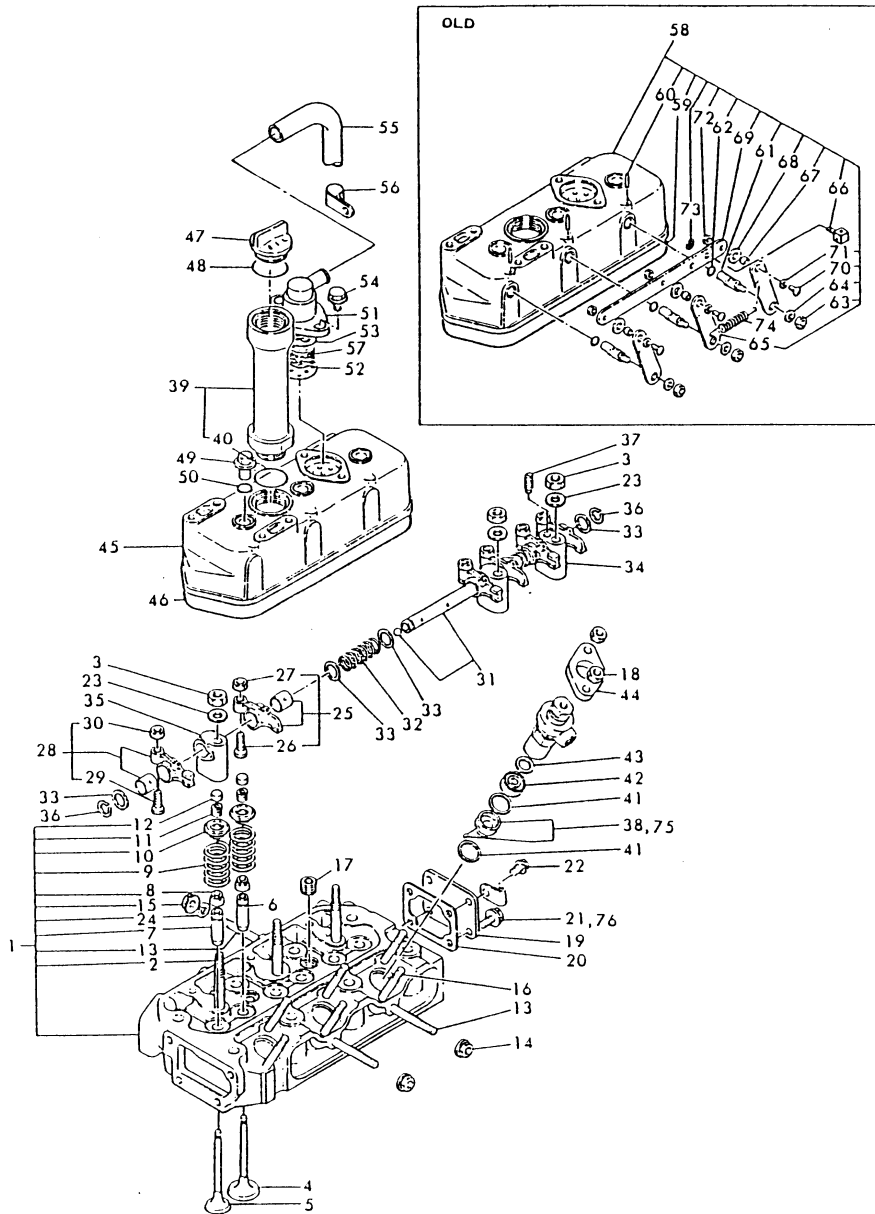
Remarks  
 (M) MISPRINT.

N:Old  $\xleftrightarrow{Yes}$  New, Q:Old  $\xleftrightarrow{No}$  New, R:Old  $\xleftrightarrow{Yes}$  New, S:Old  $\xleftrightarrow{No}$  New, W:Add, Z:Discontinued, F:Interchangeable by set, K:Q'ty Change  
 Copyright (C) YANMAR CO., LTD. All Rights Reserved.



Fig.3. CYLINDER HEAD

021027-03101  
021022-11100  
021027-11100



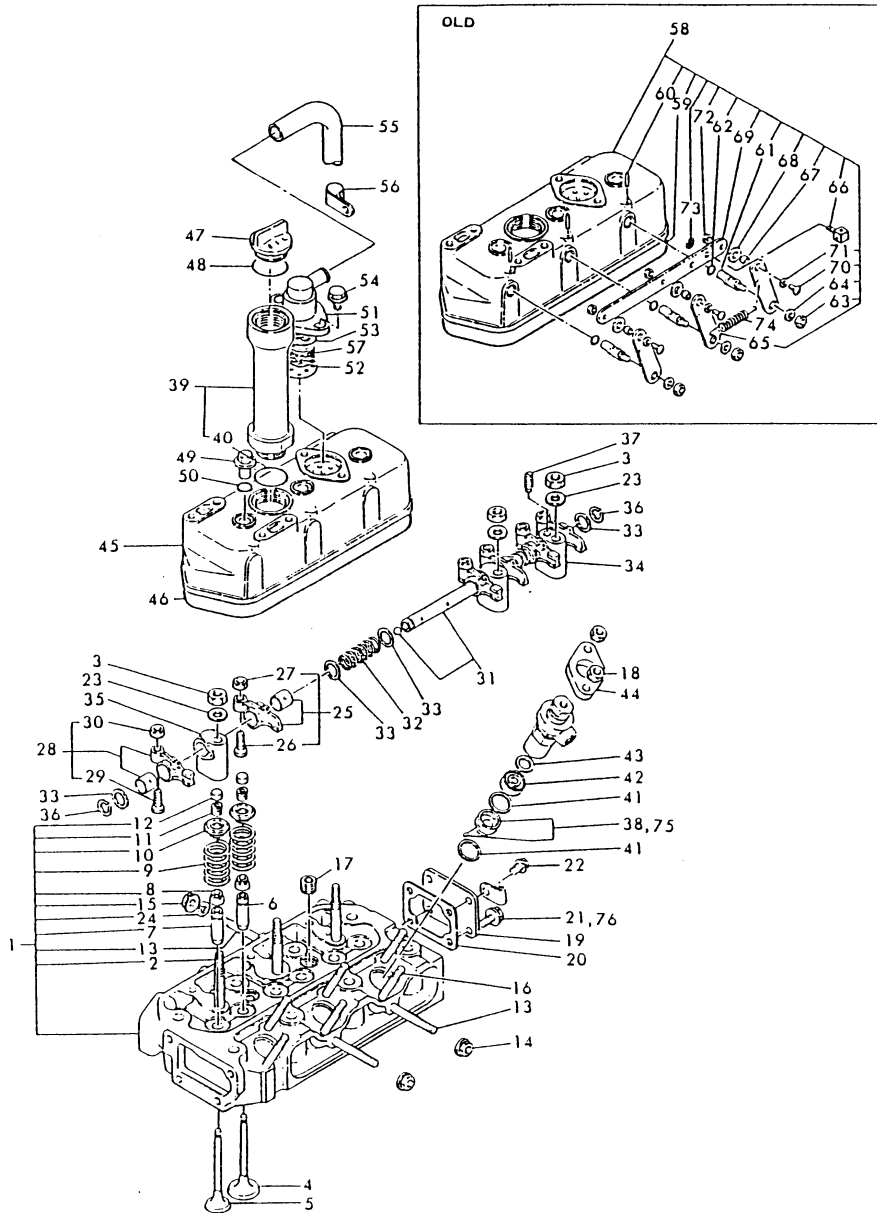
(A)=3T72LE-TBS  
(B)=3T72LE-TB  
(C)=

(D)=  
(E)=  
(F)=

No.	Lev.	Parts No.	Description	Qty						I	R
				(A)	(B)	(C)	(D)	(E)	(F)		
1	1	721450-11700	HEAD ASSY, CYLINDER	1	1						
2	2	105225-11350	STUD	3	3						
3	2	26696-100002	NUT, LOCK M10	3	3						
4	2	105225-11100	VALVE, INTAKE	3	3						
5	2	105225-11110	VALVE, EXHAUST	3	3						
6	2	124060-11160	GUIDE, VALVE	3	3						
7	2	124060-11170	GUIDE, VALVE	3	3						
7-1	2	128272-11170	GUIDE, VALVE	3	3						S
		(A=EB9077) (B=EB9380)									
8	2	124950-11340	SEAL, VALVE STEM	6	6						
9	2	124060-11120	SPRING, VALVE	6	6						
10	2	104200-11180	RETAINER, SPRING	6	6						
11	2	101158-11190	COTTER	6	6						
11-1	2	27310-070001	COTTER, 7	6	6						N
		(A=EXXXXX) (B=EXXXXX)									
12	2	104211-11370	CAP, VALVE	6	6						
13	2	121450-11550	STUD, MANIFOLD	4	4						
14	2	26366-080002	NUT, M8	2	2						
15	2	26366-080002	NUT, M8	2	2						
16	2	26216-080652	STUD, M8X 65	6	6						
17	2	23871-030000	PLUG, R03	2	2						
18	1	121465-11950	NUT	6	6						
19	1	121450-11670	COVER, HEAD	1	1						
19-1	1	129301-11670	COVER	1	1						N
		(A=EB5430) (B=EB6639)									
20	1	121450-11680	GASKET	1	1						
20-1	1	121450-11681	GASKET	1	1						N
		(A=EC9660) (B=EC8298)									
21	1	26106-080122	BOLT, M8X 12 PLATED	2							
22	1	121250-01710	BOLT, SUMP M8X14	2	2						
22-1	1	26106-080142	BOLT, M8X 14 PLATED	2	2						N
		(A=EC9386) (B=EC8298)									
23	1	22137-100000	WASHER, 10	3	3						
24	1	22212-080000	WASHER 8,SPRING	2	2						
24-1	1	22217-080000	WASHER, SPRING 8	2	2						N
		(A=EXXXX) (B=EXXXX)									
25	1	721450-11650	ARM ASSY, ROCKER	3	3						
26	2	101158-11230	SCREW, VALVE ADJUST	3	3						
27	2	26756-080002	NUT, LOCK M8	3	3						
28	1	721450-11660	ARM ASSY, ROCKER	3	3						
29	2	101158-11230	SCREW, VALVE ADJUST	3	3						
30	2	26756-080002	NUT, LOCK M8	3	3						
31	1	121450-11240	SHAFT ASSY, ROCKER	1	1						
32	1	121550-11280	SPRING	2	2						
33	1	121550-11290	WASHER	6	6						
34	1	121450-11260	SUPPORT, ROCKER ARM	1	1						
35	1	121450-11270	SUPPORT, ROCKER ARM	2	2						
36	1	22242-000140	RING, 14	2	2						
37	1	26921-080102	SCREW, M8X10	1	1						
38	1	121022-11400	CHAMBER	3							
39	1	121027-11742	PIPE	1	1						

Fig.3. CYLINDER HEAD

021027-03101  
021022-11100  
021027-11100



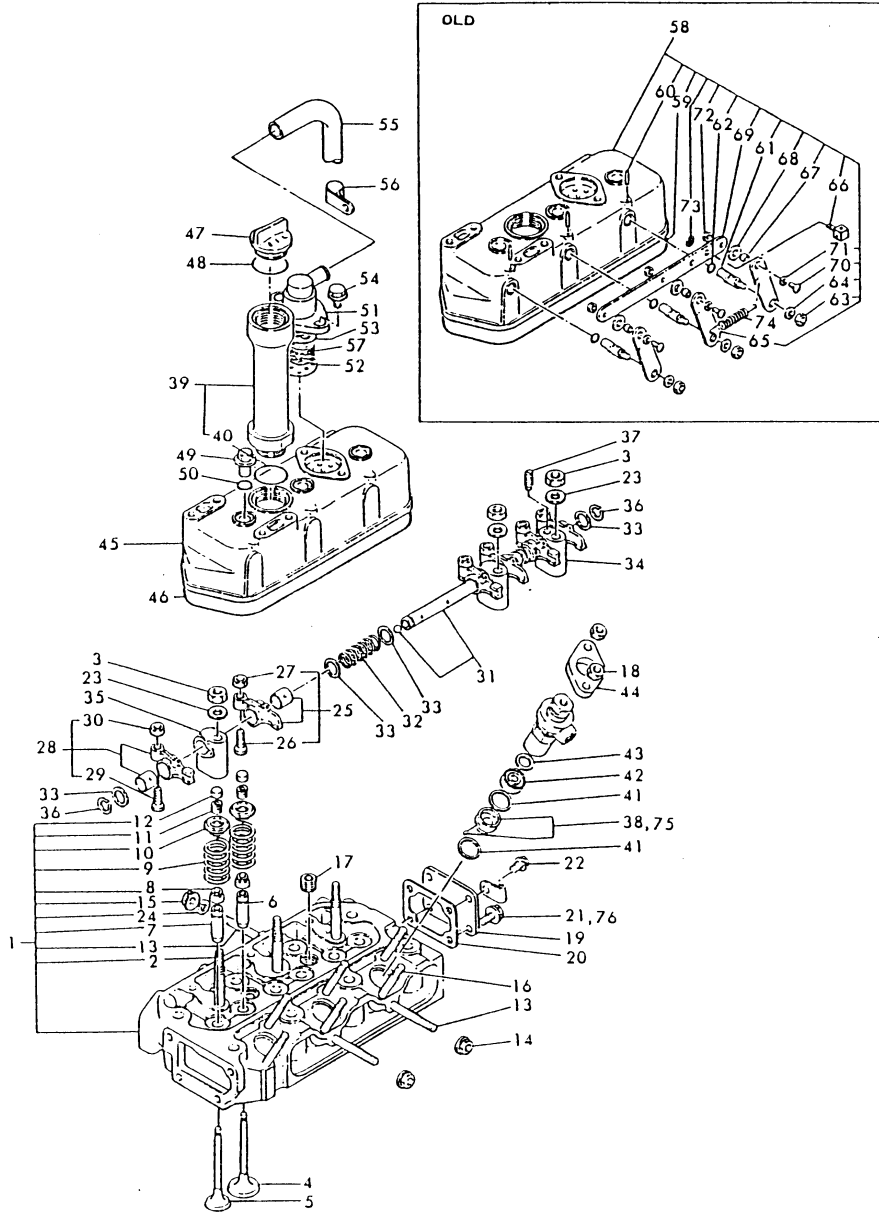
(A)=3T72LE-TBS  
(B)=3T72LE-TB  
(C)=

(D)=  
(E)=  
(F)=

No.	Lev.	Parts No.	Description	Qty						I	R
				(A)	(B)	(C)	(D)	(E)	(F)		
40	2	24321-000350	O-RING, 1AG35.0	1	1						
41	1	124950-11450	GASKET, CHAMBER	6	6						
42	1	124950-11410	CHAMBER	3	3						
43	1	101147-11490	INSULATOR	3	3						
44	1	101147-11900	RETAINER	3	3						
45	1	121023-11300	BONNET	1	1						
46	1	121450-11310	GASKET, BONNET	1	1						
47	1	124160-01751	COVER, FILLER	1	1						
48	1	121420-01760	O-RING	1	1						
48-1	1	24311-000320	O-RING, 1AP32.0	1	1						N
		(A=EB3065) (B=EB3126)									
49	1	124160-11360	KNOB	3	3						
50	1	24311-000120	O-RING, 1AP12.0	3	3						
51	1	121450-03012	BODY, BREATHER	1	1						
52	1	121450-03020	BODY, BREATHER	1	1						
53	1	24341-000400	O-RING, 1AS40.0	1	1						
54	1	26016-080162	BOLT, M8X 16	2	2						
54-1	1	26106-080162	BOLT, M8X 16 PLATED	2	2						N
		(A=EXXX) (B=EXXX)									
55	1	23065-130650	PIPE, 13X 650	1	1						
56	1	124160-01650	CLAMP, PIPE	1	1						
57	1	121450-03030	WOOL, STEEL	1	1						
58	1	721023-11520	BONNET ASSY, HEAD	1	1						Z
		(A=EXXX) (B=EXXX)									
59	2	121450-11310	GASKET, BONNET	1	1						Z
		(A=EXXX) (B=EXXX)									
60	2	22312-030220	PIN, PARALLEL M3X22	3	3						Z
		(A=EXXX) (B=EXXX)									
61	2	121450-03610	SHAFT, DECOMPRESSION	3	3						Z
		(A=EXXX) (B=EXXX)									
62	2	24311-000070	O-RING, 1AP7.0	3	3						Z
		(A=EXXX) (B=EXXX)									
63	2	26716-060002	NUT, M6	4	4						Z
		(A=EXXX) (B=EXXX)									
64	2	22117-060000	WASHER, 6	4	4						Z
		(A=EXXX) (B=EXXX)									
65	2	121462-03740	LEVER, DECOMPRESSION	3	3						Z
		(A=EXXX) (B=EXXX)									
66	2	121250-03783	RETAINER, INNER WIRE	1	1						Z
		(A=EXXX) (B=EXXX)									
67	2	121450-03770	COLLAR	3	3						Z
		(A=EXXX) (B=EXXX)									
68	2	23418-080000	GASKET, 8X1.0	3	3						Z
		(A=EXXX) (B=EXXX)									
69	2	121023-03760	CONNECTOR	1	1						Z
		(A=EXXX) (B=EXXX)									
70	2	26557-050122	SCREW, M5X12	3	3						Z
		(A=EXXX) (B=EXXX)									
71	2	22117-050000	WASHER, 5	3	3						Z
		(A=EXXX) (B=EXXX)									
72	2	26756-050002	NUT, LOCK M5	3	3						Z

# Fig.3. CYLINDER HEAD

021027-03101  
021022-11100  
021027-11100



(A)=3T72LE-TBS  
(B)=3T72LE-TB  
(C)=

(D)=  
(E)=  
(F)=

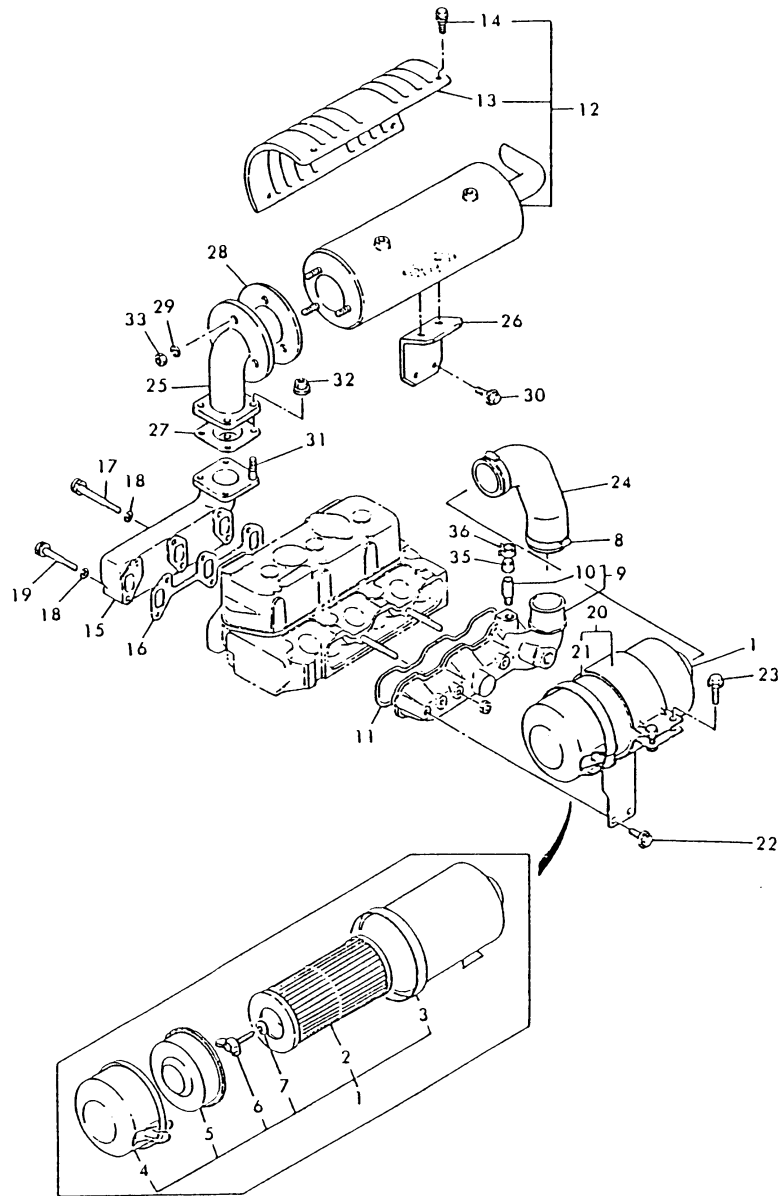
No.	Lev.	Parts No.	Description	Q'ty						I	R
				(A)	(B)	(C)	(D)	(E)	(F)		
73		(A=E XXX) (B=E XXX) 2 22272-000060	RING, E- 6	1	1						Z
74	1	160110-66011 (A=E XXX) (B=E XXX)	SPRING, REGULATOR	1	1						Z
75	1	121450-11402	CHAMBER			3					
76	1	26106-080102	BOLT, M8X 10 PLATED			2					

Fig.4. AIR CLEANER & SILENCER

(A)=3T72LE-TBS  
(B)=3T72LE-TB  
(C)=

(D)=  
(E)=  
(F)=

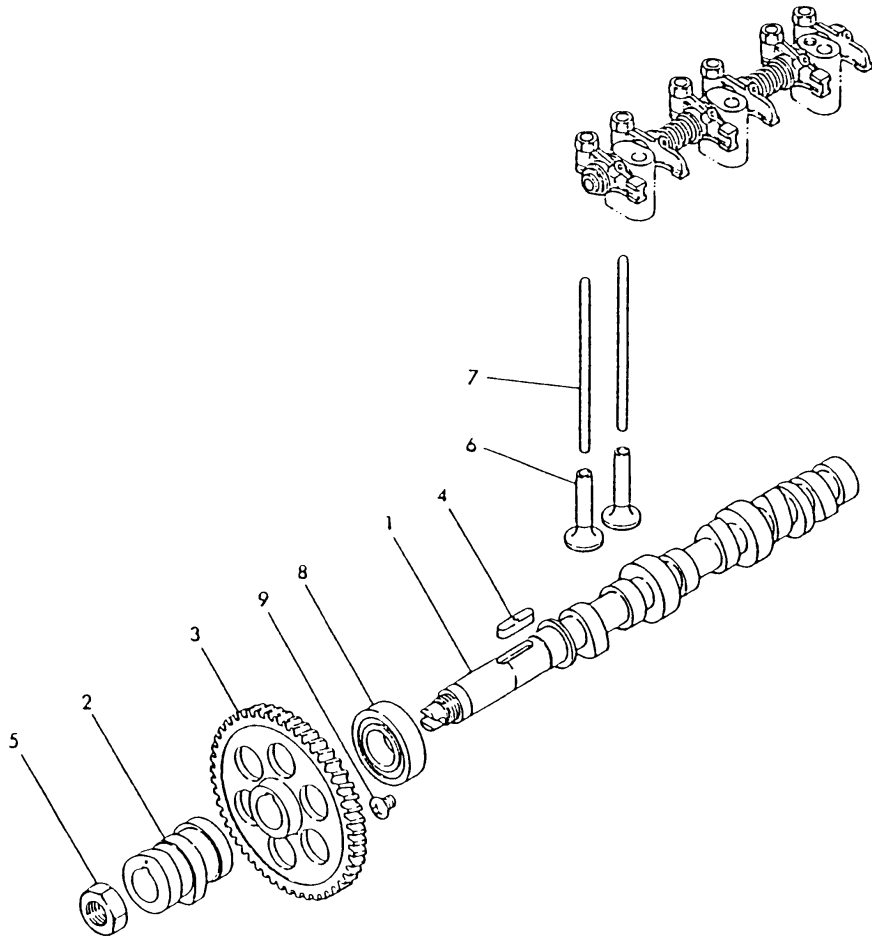
021023-12100  
021027-13100



No.	Lev.	Parts No.	Description	Q'ty						I	R
				(A)	(B)	(C)	(D)	(E)	(F)		
1	1	121464-12500	CLEANER ASSY, AIR	1	1						
2	2	124066-12510	ELEMENT	1	1						
3	2	121450-12520	BODY, AIR CLEANER	1	1						
4	2	121450-12530	PAN ASSY, DUST	1	1						
5	2	124064-12670	BAFFLE ASSY	1	1						
6	2	124064-12680	BOLT	1	1						
7	2	124064-12690	WASHER	1	1						
8	1	23010-058000	CLAMP, 58	2	2						
9	1	121000-12732	MANIFOLD ASSY,INTAKE	1	1						
10	2	121000-12770	JOINT, PIPE PT1/8	1	1						
11	1	121450-12710	GASKET, MANIFOLD	1	1						
12	1	121027-13491	SILENCER ASSY	1	1						
13	2	121027-13610	COVER, SILENCER	1	1						
14	2	26014-080142	BOLT, M8X 14	4	4						
15	1	121027-13511	MANIFOLD, EXHAUST	1	1						
16	1	121450-13250	GASKET	1	1						
16-1	1	121450-13251	GASKET, (NON-ASB.)	1	1						N
		(A=EC9660) (B=EC8298)									
17	1	121465-13582	BOLT, M8X58	2	2						
18	1	22217-080000	WASHER, SPRING 8	4	4						
19	1	121465-13652	BOLT, M8X65	1	1						
20	1	121023-12580	SUPPORT ASSY,CLEANER	1	1						
21	2	121023-12570	FELT	2	2						
21-1	2	121023-12570	FELT	4	4						K
		(A=EXXX) (B=EXXX)									
22	1	26106-080162	BOLT, M8X 16 PLATED	4	4						
23	1	26106-080322	BOLT, M8X 32 PLATED	2	2						
24	1	121023-12550	PIPE, EXTENSION	1	1						
25	1	121027-13550	CONNECTOR	1	1						
25-1	1	124732-13550	PIPE	1	1						R
		(A=EB0965) (B=EB0744)									
26	1	121027-13650	STAY, SILENCER	1	1						
27	1	124701-11910	GASKET, SILENCER	1	1						
27-1	1	124701-11911	GASKET, SILENCER	1	1						N
		(A=EC9660) (B=EC8298)									
28	1	103954-13200	GASKET, SILENCER	1	1						
29	1	22212-100000	WASHER 10,SPRING	3	3						
29-1	1	22217-100000	WASHER, SPRING 10	3	3						N
		(A=EXXX) (B=EXXX)									
30	1	26106-080182	BOLT, M8X 18 PLATED	3	3						
31	1	26216-080252	STUD, M8X 25	4	4						
32	1	26366-080002	NUT, M8	4	4						
33	1	26696-100002	NUT, LOCK M10	3	3						
34	1	26013-080452	BOLT, M8X 45	1	1						
35	1	121023-12740	PIPE	1	1						
36	1	23080-013000	CLAMP, 13	1	1						

Fig.5. CAMSHAFT

024060-02200  
021450-14100



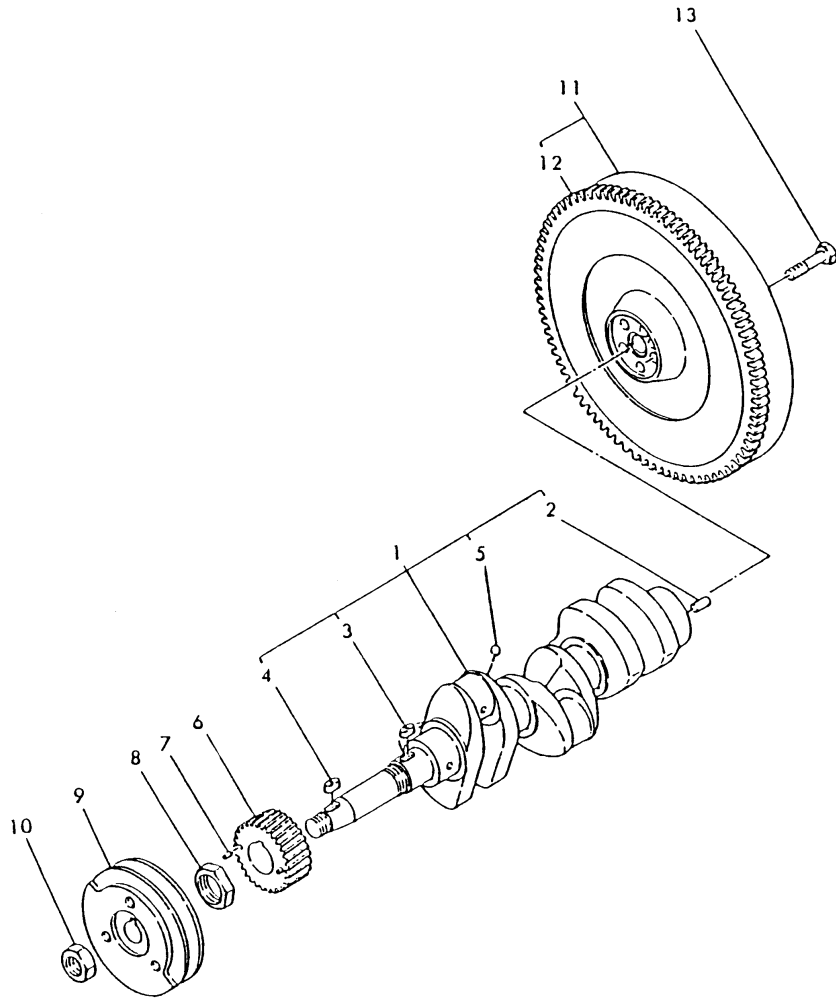
(A)=3T72LE-TBS  
(B)=3T72LE-TB  
(C)=

(D)=  
(E)=  
(F)=

No.	Lev.	Parts No.	Description	Q'ty						I	R
				(A)	(B)	(C)	(D)	(E)	(F)		
1	1	121450-14010	CAMSHAFT	1	1						
2	1	121450-14090	CAM, FUEL	1	1						
3	1	121450-14100	GEAR, CAMSHAFT	1	1						
4	1	22512-070300	KEY, 7X 30	1	1						
5	1	121450-14120	NUT	1	1						
6	1	104200-14200	TAPPET	6	6						
7	1	121450-14400	ROD, PUSH	6	6						
8	1	24101-062054	BEARING, BALL 6205	1	1						
9	1	26587-080102	SCREW, M8X10	1	1						
9-1	1	26587-080122	SCREW, M8X12	1	1						N
		(A=EC9386)	(B=EC8279)								

Fig.6. CRANKSHAFT

021027-21110



(A)=3T72LE-TBS  
(B)=3T72LE-TB  
(C)=

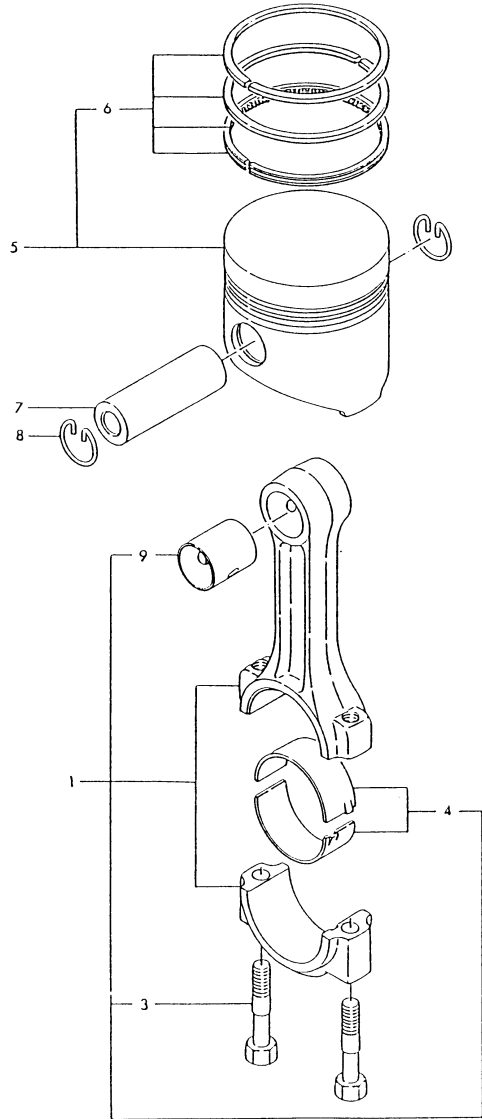
(D)=  
(E)=  
(F)=

No.	Lev.	Parts No.	Description	Qty						I	R
				(A)	(B)	(C)	(D)	(E)	(F)		
1	1	721000-21701	CRANKSHAFT ASSY	1	1						
2	2	22312-080160	PIN, PARALLEL M8X16	1	1						
3	2	22512-070180	KEY, 7X 18	1	1						
4	2	22512-070180	KEY, 7X 18	1	1						
5	2	24190-080001	BALL, STEEL 1/4	3	3						
6	1	121450-21200	GEAR, CRANKSHAFT	1	1						
7	1	22351-040008	PIN, SPRING 4.0X 8	2	2						
8	1	121450-21541	NUT, CRANKSHAFT GEAR	1	1						
9	1	121450-21652	V-PULLEY	1	1						
10	1	26776-180002	NUT, LOCK M18	1	1						
11	1	121027-21591	FLYWHEEL ASSY	1	1						
12	2	124060-21600	GEAR, RING	1	1						
13	1	105225-21500	BOLT, FLYWHEEL	5	5						
13-1	1	105225-21501	BOLT, FLYWHEEL	5	5						R

(A)=EXXX (B)=EXXX

Fig.7. PISTON & CONNECT.ROD

021450-22100  
005311-23100



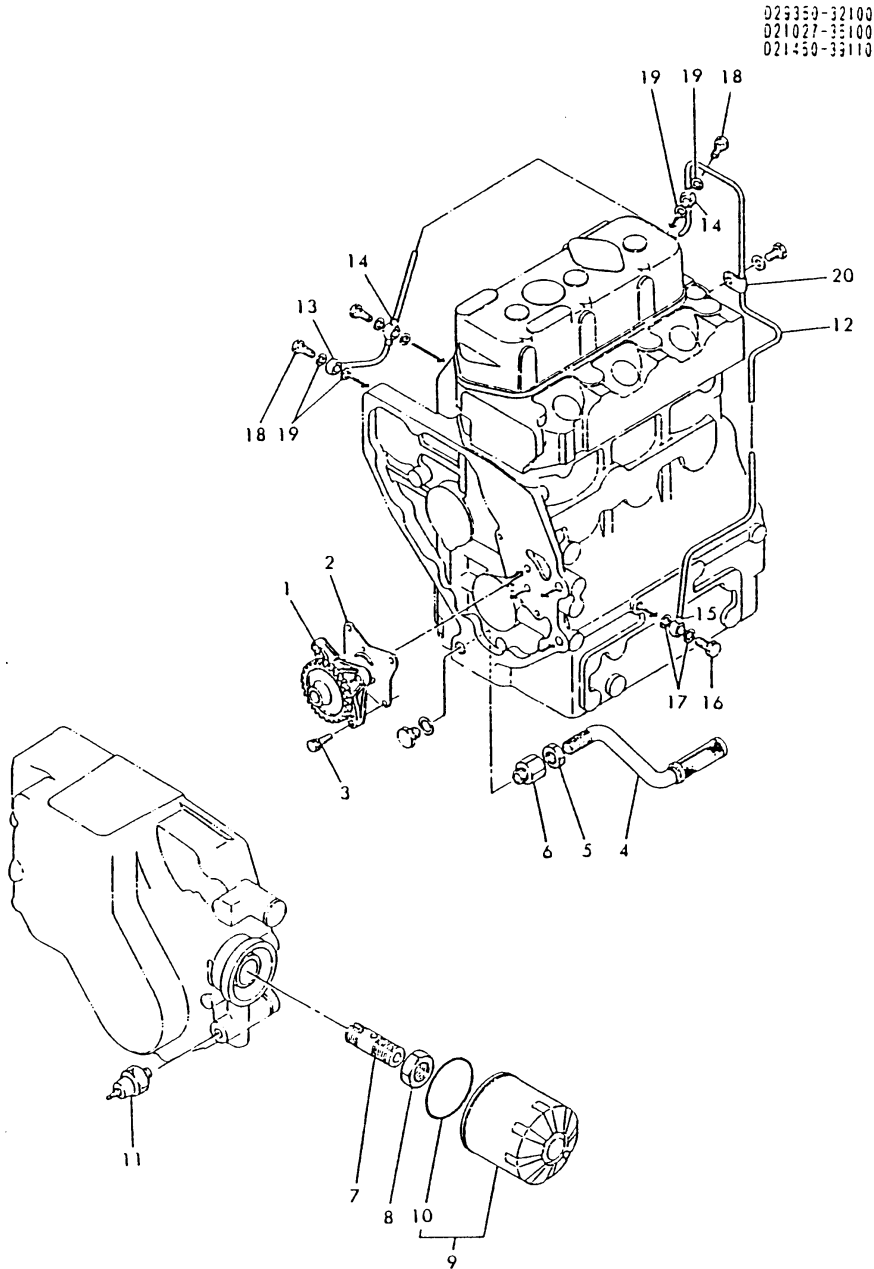
(A)=3T72LE-TBS  
(B)=3T72LE-TB  
(C)=

(D)=  
(E)=  
(F)=

No.	Lev.	Parts No.	Description	Q'ty						I	R
				(A)	(B)	(C)	(D)	(E)	(F)		
1	1	705225-23100	ROD ASSY, CONNECTING	3	3						
3	2	105225-23200	BOLT, CONNECTING ROD	6	6						
4	2	705311-23600	BEARING, CRANK PIN	3	3						
5	1	121450-22091	PISTON ASSY	3	3						
6	2	721450-22500	RING SET, PISTON	3	3						
7	1	105225-22300	PIN, PISTON	3	3						
8	1	105225-22400	CIRCLIP	6	6						
9	1	105225-23180	BEARING, PISTON PIN	3	3						1

Remarks  
(1) REPAIR PART.

Fig.8. LUB.OIL SYSTEM



(A)=3T72LE-TBS  
(B)=3T72LE-TB  
(C)=

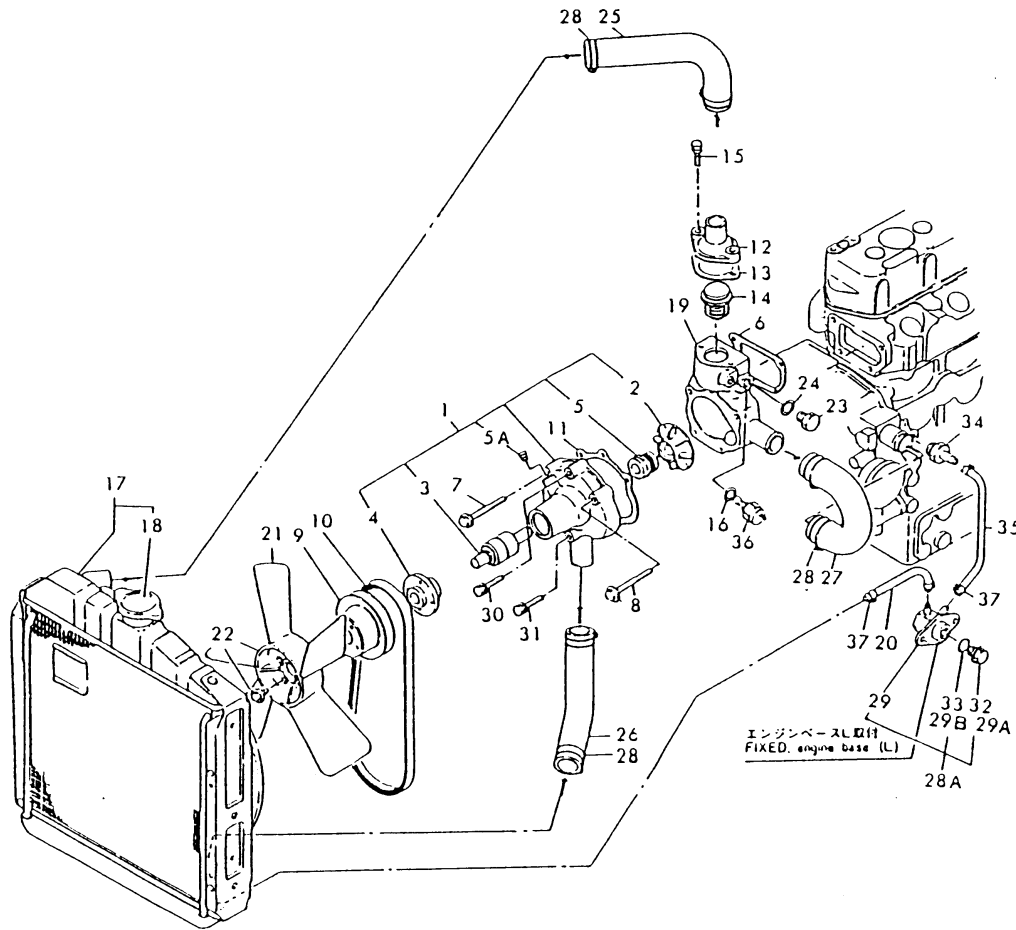
(D)=  
(E)=  
(F)=

No.	Lev.	Parts No.	Description	Qty						I	R
				(A)	(B)	(C)	(D)	(E)	(F)		
1	1	129350-32090	PUMP ASSY, OIL	1	1						
2	1	121450-32021	GASKET, PUMP	1	1						
3	1	26013-060222	BOLT, M6X 22	3	3						
4	1	121450-35090	PIPE ASSY, OIL INLET	1	1						
5	1	124450-35070	NUT, PF1/4	1	1						
6	1	121150-35100	BRACKET	1	1						
7	1	124085-35300	VALVE ASSY, CONTROL	1	1						
8	1	124085-35350	NUT, M20	1	1						
9	1	124550-35110	ELEMENT	1	1						
9-1	1	124085-35111	FILTER, OIL	1	1						R
		(A=EC9660) (B=EC8298)									
10	2	124450-35110	O-RING	1	1						
11	1	124160-39450	SWITCH, 0.5KG	1	1						
12	1	121450-39201	PIPE, 85X195X440	1	1						
13	2	103288-39170	JOINT, PIPE	1	1						
14	2	124450-39180	JOINT, PIPE	2	2						
15	2	124160-39540	JOINT, PIPE 10	1	1						
16	1	124160-39140	BOLT, PIPE JOINT M10	1	1						
17	1	23414-100000	GASKET, 10X1.0	2	2						
18	1	124550-59820	BOLT, PIPE JOINT M8	3	3						
19	1	23414-080000	GASKET, 8X1.0	6	6						
20	1	124450-39240	RETAINER, PIPE	1	1						



Fig.9. COOLING SYSTEM

021023-42100  
021027-44100  
021027-49120  
021023-49200



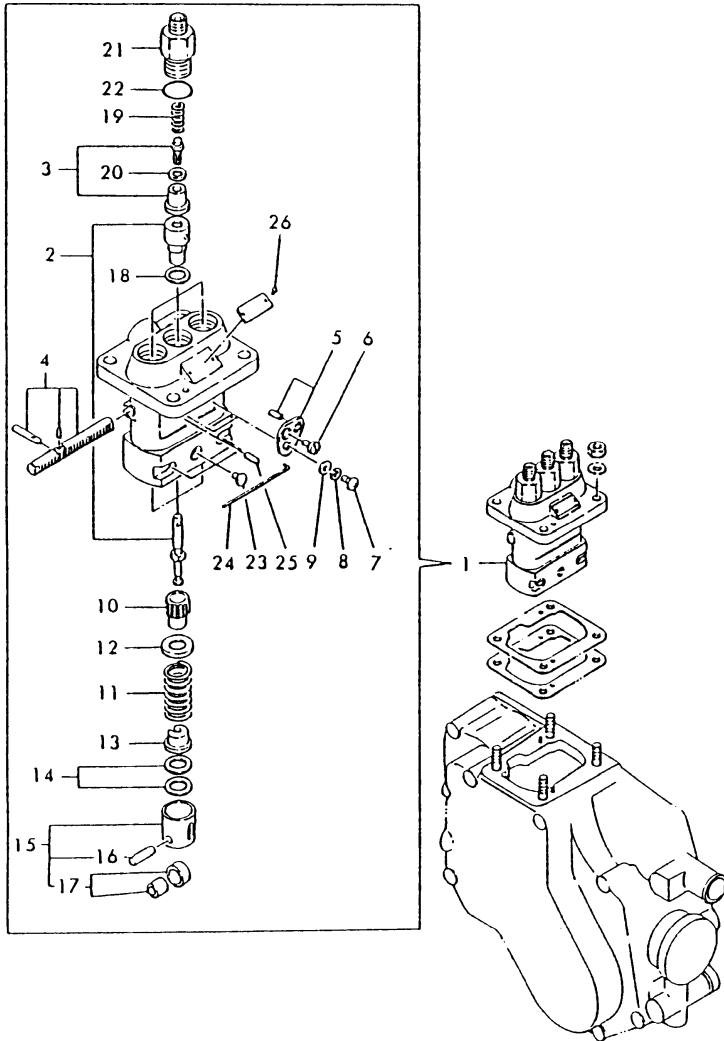
(A)=3T72LE-TBS  
(B)=3T72LE-TB  
(C)=

(D)=  
(E)=  
(F)=

No.	Lev.	Parts No.	Description	Qty						I	R
				(A)	(B)	(C)	(D)	(E)	(F)		
1	1	121023-42100	PUMP ASSY, WATER	1	1						
1-1	1	121025-42000	PUMP ASSY, WATER	1	1						N
		(A=EB6845) (B=EB6645)									
2	2	129350-42200	IMPELLER	1	1						
3	2	121450-42240	BEARING, SHAFT	1	1						
4	2	121450-42260	FLANGE, V-PULLEY	1	1						
5	2	121450-42310	SEAL, MECHANICAL	1	1						
5A	2	23871-020000	PLUG, R02	1	1						W
		(A=EB6845) (B=EB6645)									
6	1	121450-44410	GASKET	1	1						
7	1	26106-080822	BOLT M 8X 82 PLATED	3	3						
8	1	26106-080872	BOLT M 8X 87 PLATED	1	1						
9	1	121450-42350	V-PULLEY	1	1						
10	1	121023-42290	V-BELT, AX33	1	1						
11	1	121023-42051	GASKET, WATER PUMP	1	1						
12	1	129350-49530	COVER, THERMOSTAT	1	1						
13	1	124736-49540	GASKET	1	1						
14	1	124790-49800	THERMOSTAT	1	1						
15	1	26106-080202	BOLT, M8X 20 PLATED	2	2						
16	1	124250-49360	GASKET	1	1						
17	1	121027-44500	RADIATOR	1	1						
18	2	124450-44590	CAP, RADIATOR	1	1						
19	1	121023-42120	BRACKET, PUMP	1	1						
20	1	121750-49150	PIPE, WATER DRAIN	1	1						
21	1	121023-44740	FAN, COOLING	1	1						
22	1	26106-060122	BOLT, M6X 12 PLATED	4	4						
23	1	121450-42450	PLUG, M16	1	1						
24	1	124465-44950	GASKET, 16	1	1						
25	1	121023-49010	PIPE, WATER	1	1						
26	1	121450-49020	PIPE, WATER	1	1						
27	1	121450-49030	PIPE, WATER	1	1						
28	1	23010-038000	CLAMP, 38	6	6						
28A	1	121450-49110	COCK ASSY, 3-WAY	1	1						W
		(A=EC9660) (B=EC8279)									
29	2	121450-49100	BODY, 3-WAY COCK	1	1						
29A	2	121250-49121	PLUG, DRAIN	1	1						W
		(A=EC9660) (B=EC8279)									
29B	2	24311-000160	O-RING, 1AP16.0	1	1						W
		(A=EC9660) (B=EC8279)									
30	1	26014-060352	BOLT, M6X 35	1	1						
31	1	26106-060322	BOLT, M6X 32 PLATED	1	1						
32	1	121250-49121	PLUG, DRAIN	1	1						Z
		(A=EC9660) (B=EC8279)									
33	1	24311-000160	O-RING, 1AP16.0	1	1						Z
		(A=EC9660) (B=EC8279)									
34	1	121550-49111	JOINT, PT1/4	1	1						
35	1	124766-49160	PIPE, WATER DRAIN	1	1						
36	1	124250-49351	SENSOR	1	1						
37	1	124766-59050	CLIP, HOSE 12	4	4						

Fig.10. FUEL INJECTION PUMP

021461-51100



(A)=3T72LE-TBS  
(B)=3T72LE-TB  
(C)=

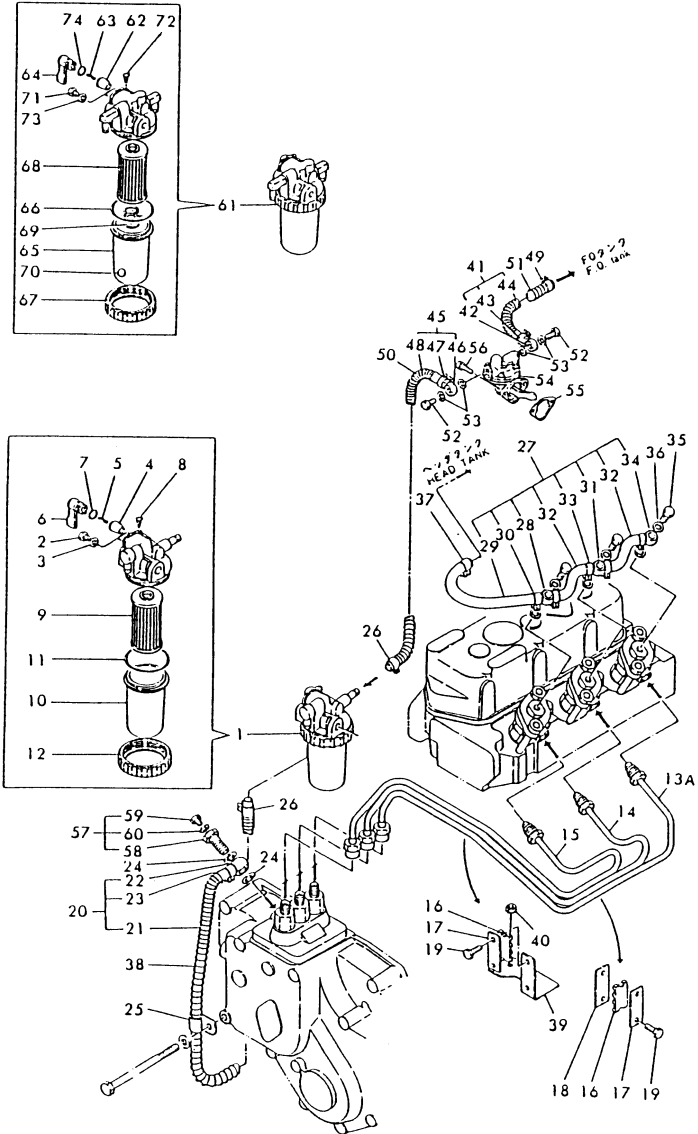
(D)=  
(E)=  
(F)=

No.	Lev.	Parts No.	Description	Q'ty						I	R
				(A)	(B)	(C)	(D)	(E)	(F)		
1	1	721461-51700	PUMP ASSY, INJECTION	1	1						
2	2	124950-51100	PLUNGER ASSY	3	3						
3	2	124950-51130	VALVE W/SEAT, DELIV.	3	3						
3-1	2	124060-51300	VALVE ASSY, DELIVERY	3	3						N
		(A=EXXX) (B=EXXX)									
4	2	121450-51500	RACK, CONTROL	1	1						
5	2	124950-51640	PLATE ASSY, ADJUST	2	2						
6	2	103854-51660	SCREW	2	2						
7	2	26587-050102	SCREW, M5X10	2	2						
7-1	2	26033-050102	SCREW, M5X10	2	2						N
		(A=EC9660) (B=EC8298)									
8	2	22217-050000	WASHER, SPRING 5	2	2						Z
		(A=EC9660) (B=EC8298)									
9	2	22131-050000	WASHER 5	2	2						
9-1	2	22117-050000	WASHER, 5	2	2						N
		(A=EXXX) (B=EXXX)									
9-2	2	22117-050000	WASHER, 5	2	2						Z
		(A=EC9660) (B=EC8298)									
10	2	124950-51510	PINION	3	3						
11	2	124950-51190	SPRING, PLUNGER	3	3						
12	2	174307-51170	RETAINER, SPRING A	3	3						
13	2	174307-51181	RETAINER, SPRING B	3	3						
14	2	174307-51700	SHIM SET	3	3						
15	2	724550-51520	GUIDE, PLUNGER	3	3						
16	3	174100-54120	PIN	3	3						
17	3	711100-51540	ROLLER ASSY	3	3						
18	2	124950-51270	GASKET	3	3						
19	2	124550-51320	SPRING, DELIVERY	3	3						
20	2	124550-51350	GASKET, DELIVERY	3	3						
21	2	124550-51341	HOLDER, DELIVERY L43	3	3						
22	2	124550-51370	O-RING	3	3						
23	2	124950-51450	PIECE, GUIDE	3	3						
24	2	121150-51460	PIN, GUIDE	1	1						
25	2	103854-51251	PIN, PLUNGER	1	1						
26	2	124220-51890	RIVET	2	2						



Fig.12. FUEL INJECTION SYSTEM

021000-52100  
 021022-55110  
 021023-59100  
 021022-59201



(A)=3T72LE-TBS  
 (B)=3T72LE-TB  
 (C)=

(D)=  
 (E)=  
 (F)=

No.	Lev.	Parts No.	Description	Qty						I	R
				(A)	(B)	(C)	(D)	(E)	(F)		
1	1	121027-55600	FILTER ASSY, FUEL	1	1						
2	2	101720-55750	PLUG, 6	2	2						
3	2	23418-060000	GASKET, 6X1.0	2	2						
4	2	104200-55321	VALVE, TAPER	1	1						
5	2	104200-55330	SPRING, VALVE	1	1						
6	2	104200-55341	HANDLE	1	1						
7	2	24311-240100	O-RING, 1AP10A	1	1						
8	2	104200-55750	SCREW, M4	1	1						
9	2	104500-55710	ELEMENT	1	1						
10	2	124064-55510	COVER	1	1						
10-1	2	104500-55510	CUP	1	1						N
		(A=EXXX) (B=EXXX)									
11	2	102103-55520	O-RING	1	1						
12	2	110250-55610	RING, RETAINING	1	1						
13A	1	121450-59810	PIPE, FUEL INJECTION	1	1						
14	1	121450-59820	PIPE ASSY, INJECTION	1	1						
15	1	121450-59830	PIPE, FUEL INJECTION	1	1						
16	1	123325-59100	RETAINER, PIPE	2	2						
17	1	123325-59110	COVER	2	2						
18	1	121250-59860	BRACKET	1	1						
19	1	121465-59950	BOLT, M6X16	4	4						
20	1	121027-59011	PIPE ASSY, FUEL	1	1						
20-1	1	121454-59011	PIPE ASSY, FUEL	1	1						N
		(A=EC9386) (B=EC8279)									
21	2	121492-59090	PIPE, FUEL	1	1						
21-1	2	121454-59090	PIPE, FUEL D12X700	1	1						N
		(A=EC9386) (B=EC8279)									
22	2	101304-59020	JOINT, PIPE 12	1	1						
23	2	124766-59050	CLIP, HOSE 12	1	1						
24	1	104200-59170	GASKET, 12	2	2						
25	1	124160-01650	CLAMP, PIPE	1	1						
26	1	124766-59050	CLIP, HOSE 12	2	2						
27	1	121027-59500	PIPE ASSY, RETURN	1	1						
28	2	121750-59090	JOINT, PIPE 8	1	1						
29	2	121400-77701	PIPE, FUEL D11X280	1	1						
30	2	124060-77680	CLIP, HOSE 10	1	1						
31	2	124550-59090	JOINT, PIPE 8	1	1						
32	2	121450-59550	PIPE, FUEL D8X80	2	2						
33	2	124066-59100	CLIP, HOSE 8	4	4						
34	2	124550-59030	JOINT, PIPE 8	1	1						
35	1	101147-59810	BOLT, PIPE JOINT M8	3	3						
36	1	23414-080012	GASKET, 8X1.0	6	6						
37	1	124060-77680	CLIP, HOSE 10	1	1						
38	1	121492-59060	PIPE, FUEL	1	1						
38-1	1	106100-59060	SPRING, PROTECTE	1	1						R
		(A=EB6059) (B=EB6639)									
39	1	121023-59851	RETAINER	1	1						
40	1	26776-120002	NUT, LOCK M12	1	1						
41	1	121022-59030	PIPE ASSY, FUEL	1	1						
42	2	104264-59030	JOINT, PIPE 8	1	1						
43	2	124766-59050	CLIP, HOSE 12	1	1						

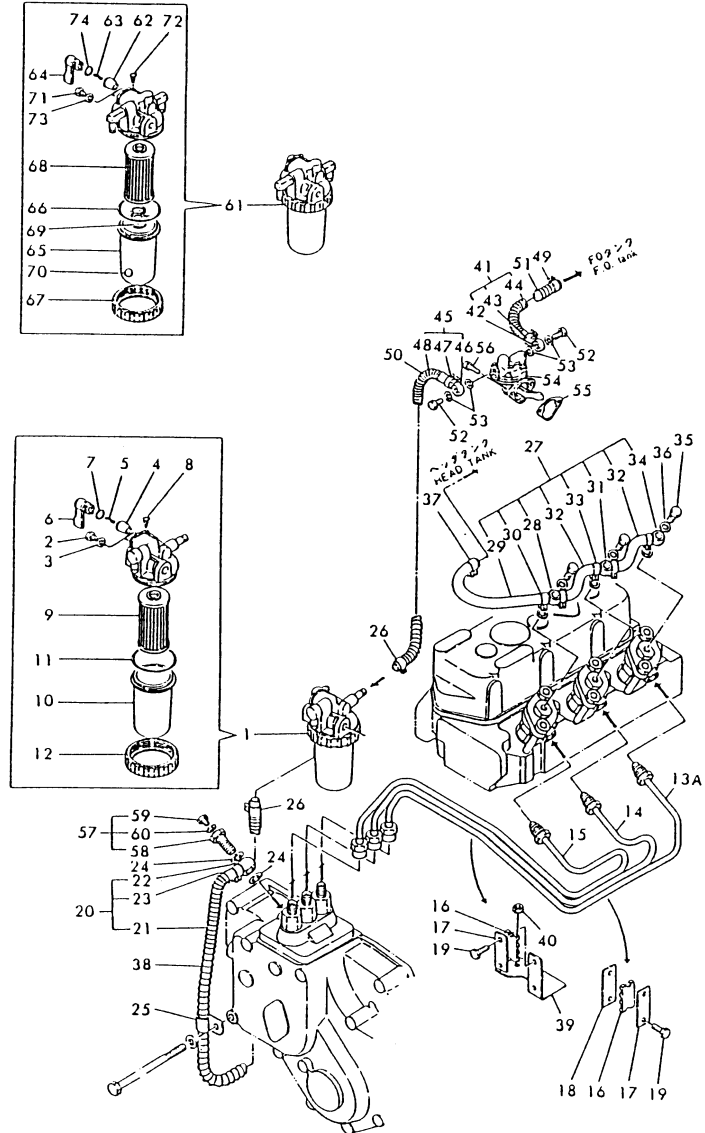
Remarks  
 (M) MISPRINT.

# Fig.12. FUEL INJECTION SYSTEM

021000-52100  
 021022-55110  
 021023-59100  
 021022-59201

(A)=3T72LE-TBS  
 (B)=3T72LE-TB  
 (C)=

(D)=  
 (E)=  
 (F)=

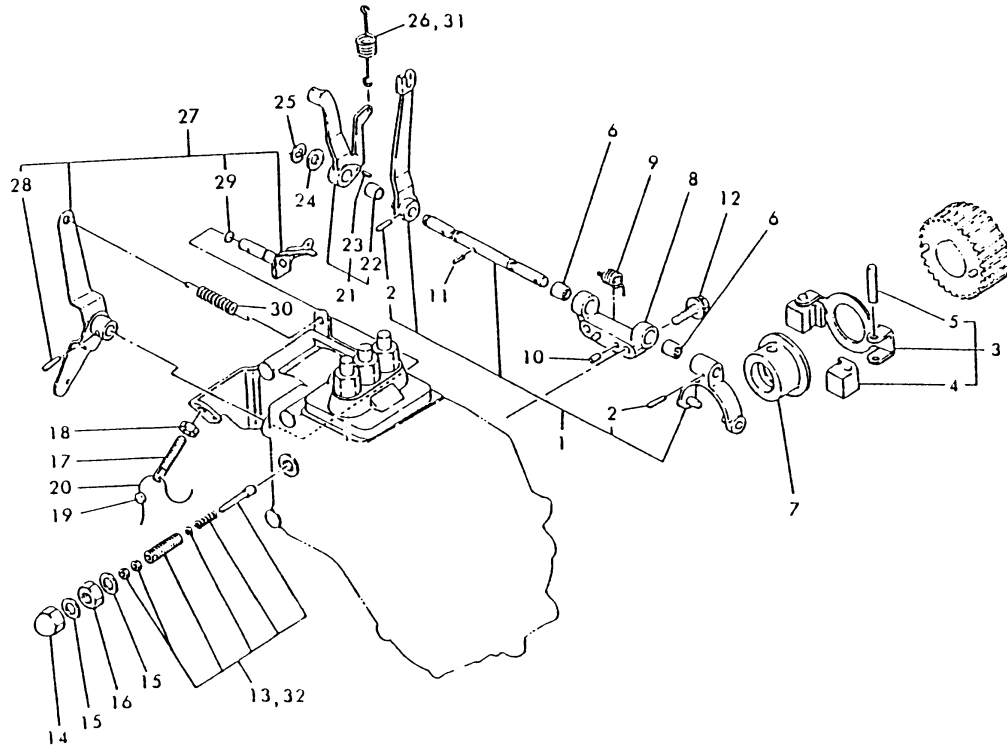


No.	Lev.	Parts No.	Description	Q'ty						I	R
				(A)	(B)	(C)	(D)	(E)	(F)		
44	2	121522-59080	PIPE, FUEL	1	1						
45	1	129334-59020	PIPE ASSY, FUEL	1	1						
46	2	104264-59030	JOINT, PIPE 8	1	1						
47	2	124766-59050	CLIP, HOSE 12	1	1						
48	2	121236-59080	PIPE, FUEL D12X400	1	1						
49	1	124766-59050	CLIP, HOSE 12	1	1						
50-1	1	106100-59060	SPRING, PROTECTE	1	1						
51	1	121522-59060	SPRING, PROTECTE	1	1						
52	1	105582-59150	BOLT, PIPE JOINT	2	2						
53	1	23414-080012	GASKET, 8X1.0	4	4						
54	1	121256-52020	PUMP ASSY, FUEL FEED	1	1						
55	1	121520-01850	GASKET	1	1						
55-1	1	121520-01851	GASKET	1	1						N
		(A=EC9660) (B=EC8298)									
56	1	26015-060182	BOLT M 6X 18	2	2						
56-1	1	26014-060182	BOLT, M6X 18	2	2						N
		(A=EXXX) (B=EXXX)									
57	1	103854-59191	BOLT ASSY, JOINT M12	1	1						
58	2	103854-59201	BOLT, PIPE JOINT M12	1	1						
59	2	124060-59380	PLUG, 6	1	1						
60	2	43400-500390	SEAL WASHER 6	1	1						
61	1	129335-55700	SEPARATOR ASSY,WATER	1	1						
62	2	104200-55321	VALVE, TAPER	1	1						
63	2	104200-55330	SPRING, VALVE	1	1						
64	2	104200-55341	HANDLE	1	1						
65	2	124064-55510	COVER	1	1						
66	2	102103-55520	O-RING	1	1						
67	2	110250-55610	RING, RETAINING	1	1						
68	2	121257-55710	SCREEN	1	1						
68-1	2	171081-55910	SCREEN	1	1						N
		(A=EXXX) (B=EXXX)									
69	2	121257-55720	SPRING	1	1						
70	2	121257-55730	FLOAT	1	1						
70-1	2	121257-55731	FLOAT	1	1						N
		(A=EXXX) (B=EXXX)									
71	2	101720-55750	PLUG, 6	2	2						
72	2	104200-55750	SCREW, M4	1	1						
73	2	23418-060000	GASKET, 6X1.0	2	2						
74	2	24311-240100	O-RING, 1AP10A	1	1						

Remarks  
 (M) MISPRINT.

Fig.13. GOVERNOR

029350-1110  
021022-1110  
021027-1110



(A)=3T72LE-TBS  
(B)=3T72LE-TB  
(C)=

(D)=  
(E)=  
(F)=

No.	Lev.	Parts No.	Description	Q'ty						I	R
				(A)	(B)	(C)	(D)	(E)	(F)		
1	1	121450-61001	LEVER ASSY, GOVERNOR	1	1						
2	2	22322-030180	PIN, TAPER 3X18	2	2						
3	1	121450-61101	WEIGHT ASSY, GOVERNOR	1	1						
4	2	104200-61200	WEIGHT, GOVERNOR	2	2						
5	2	172200-61220	PIN, GOVERNOR WEIGHT	2	2						
5-1	2	119660-61220	PIN, GOVERNOR WEIGHT	2	2						R
		(A=EC1623)	(B=EC3030)								
6	1	121520-61520	BEARING, NEEDLE	2	2						
7	1	129350-61600	SLEEVE, GOVERNOR	1	1						
8	1	121520-61620	SUPPORT	1	1						
9	1	121450-61631	SPRING	1	1						
10	1	22312-040080	PIN, PARALLEL M4X 8	2	2						
11	1	22351-030010	PIN, SPRING 3.0X10	1	1						
12	1	26106-060222	BOLT, M6X 22 PLATED	2	2						
13	1	121473-66550	LIMITER ASSY, FUEL	1							
14	1	26687-120002	NUT, CAP M12	1	1						
15	1	43400-500450	SEAL WASHER 12	2	2						
16	1	26736-120002	NUT, M12	1	1						
17	1	121450-66420	SCREW	1	1						
18	1	124772-66890	NUT	1	1						
19	1	135210-61090	LEAD	1	1						
20	1	22451-060000	WIRE, 0.6	1	1						
21	1	121450-66180	LEVER ASSY	1	1						
22	2	121450-66170	BUSH	1	1						
23	2	22312-030080	PIN, PARALLEL M3X 8	1	1						
24	1	22137-080000	WASHER, 8	1	1						
25	1	22272-000060	RING, E- 6	1	1						
26	1	121022-66010	SPRING, REGULATOR	1							
27	1	121027-66000	LEVER ASSY, REGULATOR	1	1						
28	2	22322-030200	PIN, TAPER 3X20	1	1						
29	2	24311-000070	O-RING, 1AP7.0	1	1						
30	1	104104-67300	SPRING, RETURN	1	1						
31	1	121450-66010	SPRING, REGULATOR	1	1						
32	1	121567-66551	LIMITER ASSY, FUEL	1							

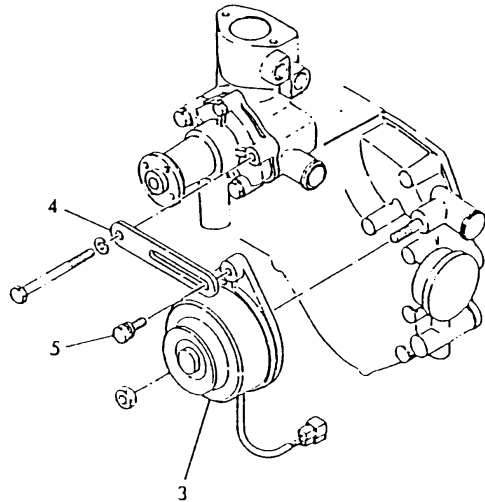
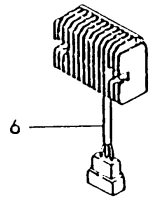
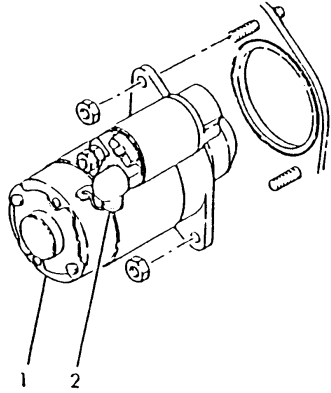
Fig.14. ELECTRIC STARTING EQUIPMENT

021450-77100

(A)=3T72LE-TBS  
(B)=3T72LE-TB  
(C)=

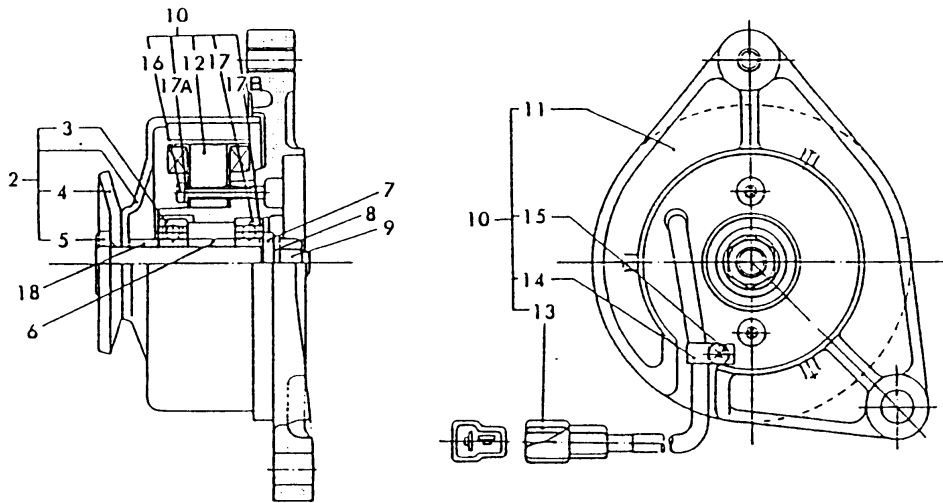
(D)=  
(E)=  
(F)=

No.	Lev.	Parts No.	Description	Q'ty						I	R
				(A)	(B)	(C)	(D)	(E)	(F)		
1	1	121450-77010	STARTER, S114-235B	1	1						
2	1	124160-77020	COVER, TERMINAL	1	1						
3	1	121450-77200	DYNAMO, 12V-180W	1	1						
4	1	121450-77330	ADJUSTER	1	1						
5	1	26014-080282	BOLT, M8X 28	1	1						
6	1	121450-77711	LIMITER, RS5101	1	1						
6-1	1	121520-77710	LIMITER, CURRENT	1	1						R
		(A=EC7135) (B=EC6661)									



# Fig.15. GENERATOR

021450-77100



(A)=3T72LE-TBS  
(B)=3T72LE-TB  
(C)=

(D)=  
(E)=  
(F)=

No.	Lev.	Parts No.	Description	Q'ty						I	R
				(A)	(B)	(C)	(D)	(E)	(F)		
1	1	121450-77200	DYNAMO, 12V-180W	1	1						
2	2	94210M42875	FLYWHEEL COMP	1	1						
2-1	2	XM622270000	FLYWHEEL	1	1						R
		(A=EXXX) (B=EXXX)									
3	3	94210M86124	BALL BEARING	1	1						
3-1	2	XM861240000	B.BEARING #6201ZZC3	1	1						R
		(A=EXXX) (B=EXXX)									
4	3	94210M42929	PULLEY	1	1						
4-1	2	XM429290000	PLATE, PULLEY	1	1						R
		(A=EXXX) (B=EXXX)									
5	3	94210M42927	SHAFT	1	1						
5-1	2	XM429270000	SHAFT	1	1						R
		(A=EXXX) (B=EXXX)									
6	2	94210M32983	COLLAR	1	1						
6-1	2	XM329830000	COLLAR	1	1						R
		(A=EXXX) (B=EXXX)									
7	2	94210M86025	PLAIN WASHER	1	1						
7-1	2	XM860250000	WASHER 10	1	1						R
		(A=EXXX) (B=EXXX)									
8	2	94210M21923	SPRING WASHER	1	1						
8-1	2	22217-100000	WASHER, SPRING 10	1	1						N
		(A=EXXX) (B=EXXX)									
9	2	94210M86372	NUT	1	1						
9-1	2	26706-100002	NUT, M10	1	1						N
		(A=EXXX) (B=EXXX)									
10	2	94210M51416	PLATE ASSY	1	1						
10-1	2	XM514160000	PLATE ASSY	1	1						R
		(A=EXXX) (B=EXXX)									
11	3	94210M51417	PLATE, COIL	1	1						
11-1	3	XM514170000	PLATE	1	1						R
		(A=EXXX) (B=EXXX)									
12	3	94210M51418	STATOR ASSY	1	1						
12-1	3	XM514180000	STATOR	1	1						R
		(A=EXXX) (B=EXXX)									
13	3	94210M96717	COUPLER	1	1						
13-1	3	XM967170000	COUPLER	1	1						R
		(A=EXXX) (B=EXXX)									
14	3	94210M06900	CLAMP	1	1						
14-1	3	XM069000000	CLAMP	1	1						R
		(A=EXXX) (B=EXXX)									
15	3	26021-040082	SCREW M 4X 8	1	1						
15-1	3	26557-040082	SCREW, M4X 8	1	1						N
		(A=EXXX) (B=EXXX)									
16	3	26021-040025	SCREW M 4X 2	2	2						
16-1	3	26557-040252	SCREW, M4X25	2	2						N
		(A=EXXX) (B=EXXX)									
17	3	94210M86124	BALL BEARING	1	1						
17-1	3	XM861240000	B.BEARING #6201ZZC3	1	1						R
		(A=EXXX) (B=EXXX)									
17A	3	22217-040000	WASHER, SPRING 4	2	2						W
		(A=EXXX) (B=EXXX)									



Fig.15. GENERATOR

(A)=3T72LE-TBS  
(B)=3T72LE-TB  
(C)=

(D)=  
(E)=  
(F)=

021450-77100

No.	Lev.	Parts No.	Description	Q'ty						I	R
				(A)	(B)	(C)	(D)	(E)	(F)		
17B	3	22217-040000	WASHER, SPRING 4	1	1						W
		(A=EXXX)	(B=EXXX)								
18	2	94210M42802	COLLAR	1	1						
18-1	2	XM428020000	COLLAR	1	1						R
		(A=EXXX)	(B=EXXX)								

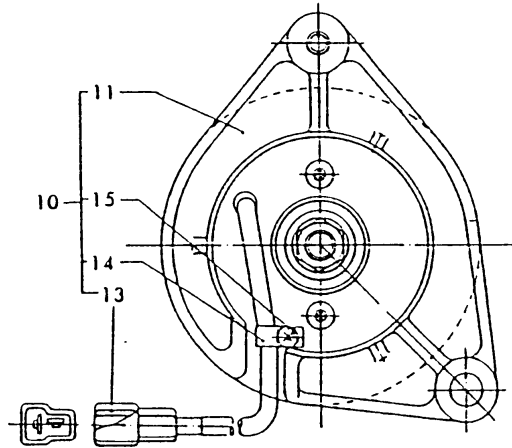
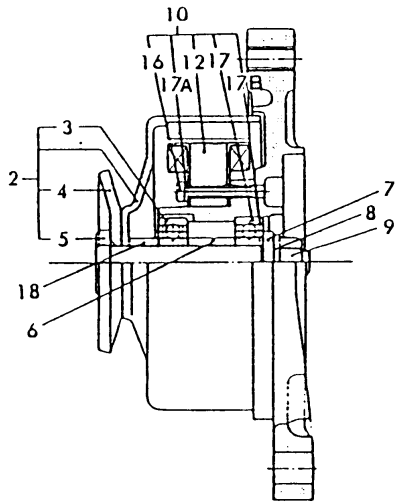
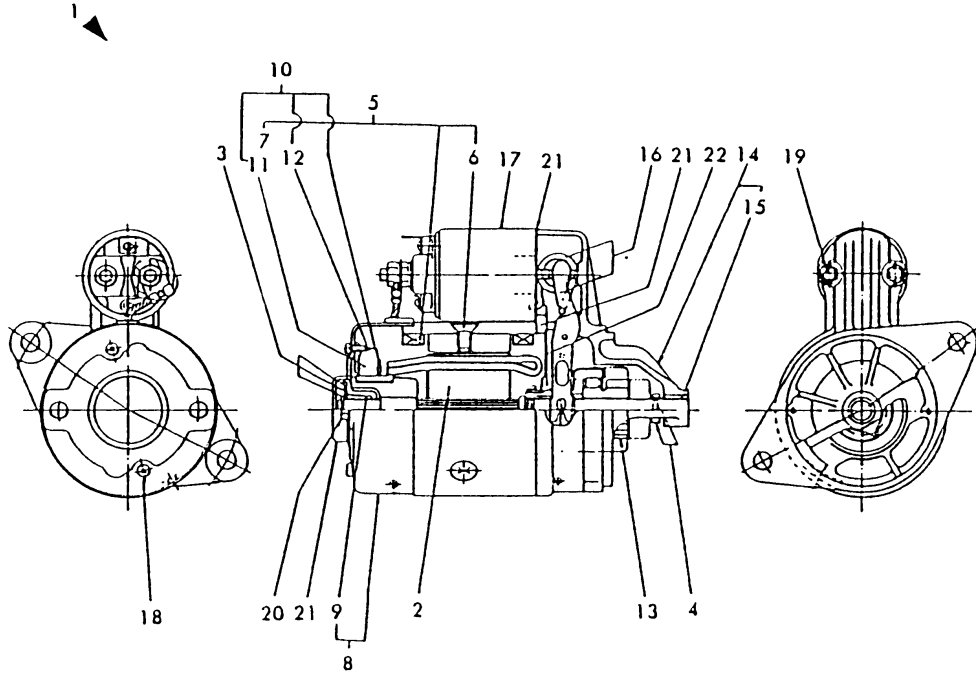


Fig.16. STARTING MOTOR

021450-77100



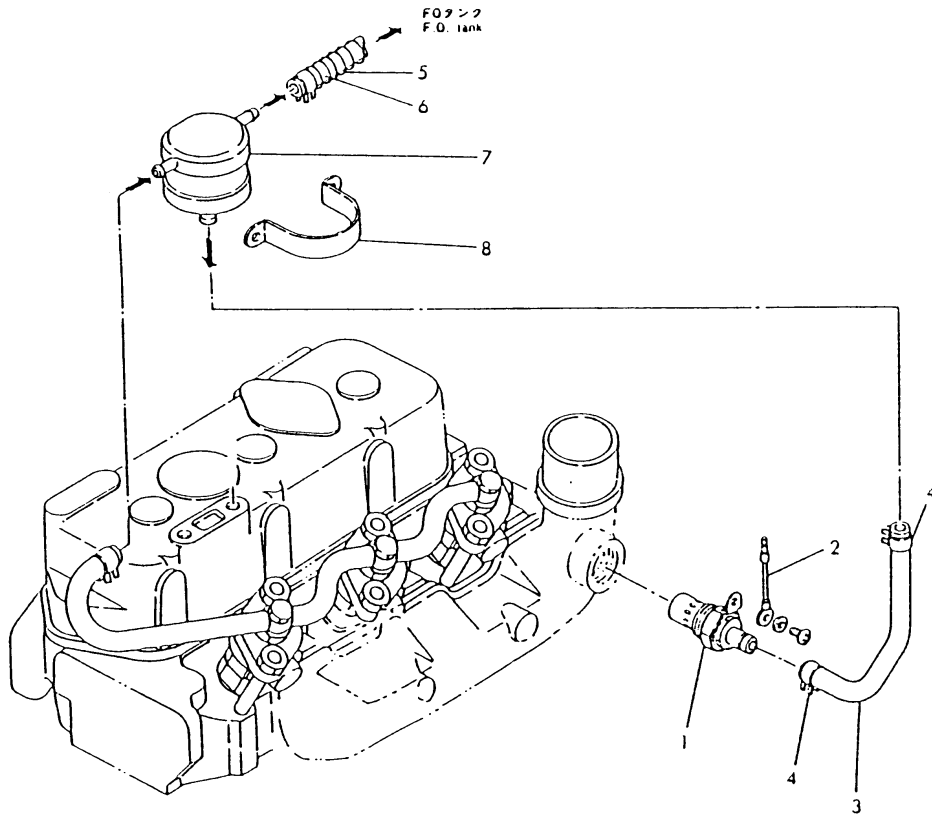
(A)=3T72LE-TBS  
(B)=3T72LE-TB  
(C)=

(D)=  
(E)=  
(F)=

No.	Lev.	Parts No.	Description	Q'ty						I	R
				(A)	(B)	(C)	(D)	(E)	(F)		
1	1	121450-77010	STARTER, S114-235B	1	1						
2	2	X211491001	ARMATURE ASSY	1	1						
3	2	X21148110	WASHER SET, THRUST	1	1						
4	2	X21147155	STOPPER SET, PINION	1	1						
5	2	X211432001	COIL ASSY, FIELD	1	1						
6	3	X21147215	SCREW, POLE CORE	4	4						
7	3	X21145312	BRUSH, +	2	2						
8	2	X211453002	COVER ASSY, REAR	1	1						
9	3	X21145352	METAL	1	1						
10	2	X21141360	HOLDER ASSY, BRUSH	1	1						
11	3	X21145313	BRUSH (-)	2	2						
12	3	X21144314	SPRING, BRUSH	4	4						
13	2	X211455003	PINION ASSY	1	1						
14	2	X211456009	CASE ASSY, GEAR	1	1						
15	3	X21144661	METAL, GEAR CASE	1	1						
16	2	X21148652	LEVER SET, SHIFT	1	1						
17	2	X211497004	SWITCH ASSY, MAGNET	1	1						
18	2	26557-040122	SCREW, M4X12	2	2						
19	2	26117-060322	BOLT M 6X 32 PLATED	2	2						
20	2	X21146815	BOLT, THROUGH	2	2						
21	2	X21143963	COVER KIT, DUCT	1	1						
22	2	X21143454	PLATE, CENTER	1	1						

Fig.17. THERMOSTART

021022-77200



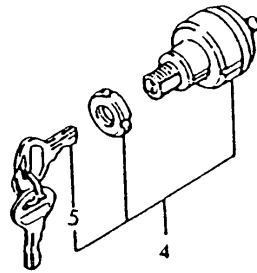
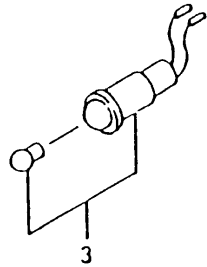
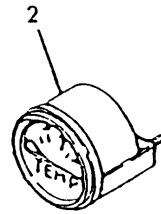
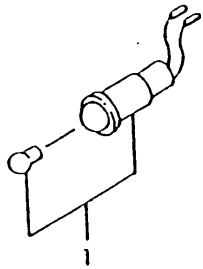
(A)=3T72LE-TBS  
(B)=3T72LE-TB  
(C)=

(D)=  
(E)=  
(F)=

No.	Lev.	Parts No.	Description	Q'ty						I	R
				(A)	(B)	(C)	(D)	(E)	(F)		
1	1	121023-77910	PLUG, THERMOSTAT	1	1						
2	1	121120-77920	WIRE	1	1						
3	1	121400-77701	PIPE, FUEL D11X280	1	1						
4	1	124060-77680	CLIP, HOSE 10	2	2						
5	1	121492-59060	PIPE, FUEL	1	1						
6	1	105225-59130	PIPE ASSY, RETURN	1	1						
7	1	121750-77800	TANK ASSY, HEADER	1	1						
8	1	124460-77820	RETAINER	1	1						

Fig.18. GAUGE

029327-91200



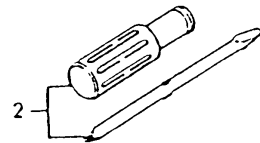
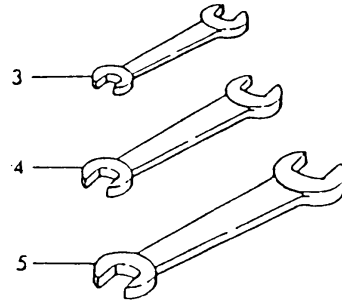
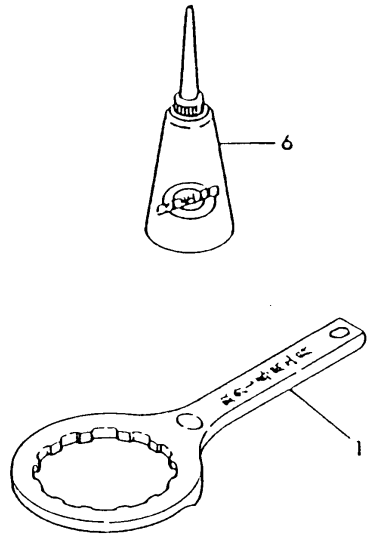
(A)=3T72LE-TBS  
(B)=3T72LE-TB  
(C)=

(D)=  
(E)=  
(F)=

No.	Lev.	Parts No.	Description	Q'ty						I	R
				(A)	(B)	(C)	(D)	(E)	(F)		
1	1	124732-77720	LAMP, CHARGING	1	1						
2	1	124732-77850	THERMOMETER, WATER	1	1						
3	1	124732-77970	LAMP, PILOT	1	1						
4	1	933110-00100	SWITCH ASSY, STARTER	1	1						
5	2	933110-00301	KEY ASSY	1	1						

# Fig.19. TOOLS

024732-32102

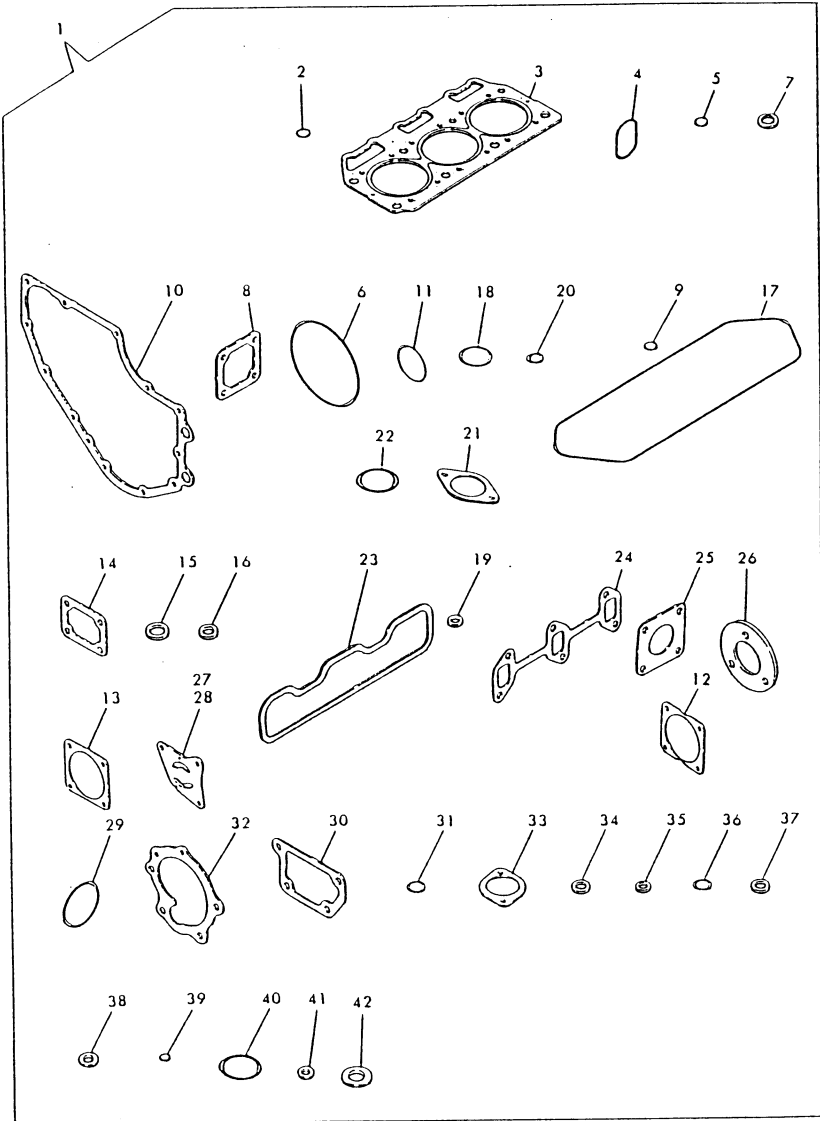


(A)=3T72LE-TBS  
(B)=3T72LE-TB  
(C)=

(D)=  
(E)=  
(F)=

No.	Lev.	Parts No.	Description	Q'ty						I	R	
				(A)	(B)	(C)	(D)	(E)	(F)			
1	1	124550-35350	WRENCH, FILTER	1	1							
1-1	1	119640-92750	WRENCH, FILTER 80	1	1							R
		(A=EC9660) (B=EC8298)										
2	1	104200-92350	DRIVER, SCREW	1	1							
3	1	28110-100130	SPANNER, 10X13	1	1							
3-1	1	28110-100120	SPANNER, 10X12	1	1							N
		(A=EA9088) (B=EB0744)										
4	1	28110-170190	SPANNER, 17X19	1	1							
4-1	1	28110-140170	SPANNER, 14X17	1	1							N
		(A=EA9088) (B=EB0744)										
5	1	28110-220240	SPANNER, 22X24	1	1							
5-1	1	28110-190220	SPANNER, 19X22	1	1							N
		(A=EA9088) (B=EB0744)										
6	1	28210-000140	OILER	1	1							

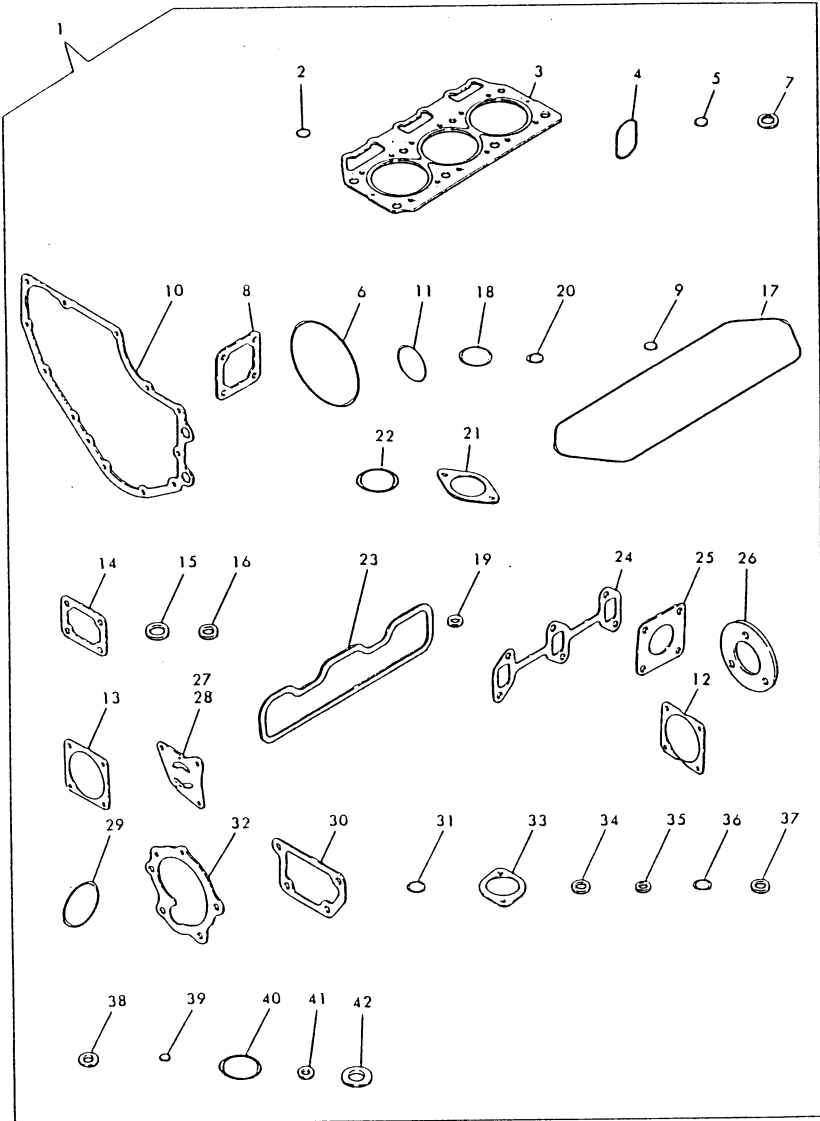
Fig.20. GASKET KIT (FOR OVER-HAUL)



No.	Lev.	Parts No.	Description	Q'ty						I	R
				(A)	(B)	(C)	(D)	(E)	(F)		
1	1	721027-92600	GASKET SET	1	1						1
1-1	1	721027-92601	GASKET SET	1	1						N 1
		(A=EXXX) (B=EXXX)									
2	2	24311-000100	O-RING, 1AP10.0	2	2						
3	2	121000-01330	GASKET, HEAD	1	1						
4	2	121450-34840	GASKET	1	1						
5	2	24311-000140	O-RING, 1AP14.0	1	1						
6	2	105225-02020	O-RING	1	1						
7	2	43400-500410	SEAL WASHER 8	4	4						
8	2	121450-01531	GASKET	1	1						
9	2	24311-000070	O-RING, 1AP7.0	4	4						
9-1	2	24311-000070	O-RING, 1AP7.0	1	1						K
		(A=EXXX) (B=EXXX)									
10	2	121450-01511	GASKET, GEAR CASE	1	1						
11	2	24341-000260	O-RING, 1AS26.0	1	1						
11-1	2	24341-000240	O-RING, 1AS24.0	1	1						N
		(A=EC9660) (B=EC8298)									
12	2	124240-01882	GASKET	1	1						
12-1	2	124240-01883	GASKET	1	1						N
		(A=EC9660) (B=EC8298)									
13	2	124950-26021	GASKET	2	2						
14	2	121450-11680	GASKET	1	1						
14-1	1	121450-11681	GASKET	1	1						N
		(A=EC9660) (B=EC8298)									
15	2	124950-11450	GASKET, CHAMBER	6	6						
16	2	101147-11490	INSULATOR	3	3						
17	2	121450-11310	GASKET, BONNET	1	1						
18	2	24321-000350	O-RING, 1AG35.0	2	2						
19	2	23418-080000	GASKET, 8X1.0	3	3						Z
		(A=EXXX) (B=EXXX)									
20	2	24311-000120	O-RING, 1AP12.0	3	3						
21	2	121450-03071	GASKET	1	1						Z
		(A=EXXX) (B=EXXX)									
22	2	24341-000400	O-RING, 1AS40.0	1	1						
23	2	121450-12710	GASKET, MANIFOLD	1	1						
24	2	121450-13250	GASKET	1	1						
24-1	1	121450-13251	GASKET, (NON-ASB.)	1	1						N
		(A=EC9660) (B=EC8298)									
25	2	124701-11910	GASKET, SILENCER	1	1						
25-1	2	124701-11911	GASKET, SILENCER	1	1						N
		(A=EC9660) (B=EC8298)									
26	2	103954-13200	GASKET, SILENCER	1	1						
27	2	121450-32020	GASKET	1	1						Z
		(A=EXXX) (B=EXXX)									
28	2	121450-32021	GASKET, PUMP	1	1						
29	2	124450-35110	O-RING	1	1						
30	2	121450-44410	GASKET	1	1						
31	2	24311-000160	O-RING, 1AP16.0	1	1						
32	2	121023-42051	GASKET, WATER PUMP	1	1						
33	2	124736-49540	GASKET	1	1						
34	2	124950-51270	GASKET	3	3						

Remarks  
(1)OPTIONAL PART.

Fig.20. GASKET KIT (FOR OVER-HAUL)



(A)=3T72LE-TBS  
(B)=3T72LE-TB  
(C)=

(D)=  
(E)=  
(F)=

No.	Lev.	Parts No.	Description	Q'ty						I	R
				(A)	(B)	(C)	(D)	(E)	(F)		
35	2	124550-51350	GASKET, DELIVERY	3	3						
36	2	124550-51370	O-RING	3	3						
37	2	172100-53200	GASKET	3	3						
38	2	23418-060000	GASKET, 6X1.0	2	2						
39	2	24311-240100	O-RING, 1AP10A	1	1						
40	2	102103-55520	O-RING	1	1						
41	2	43400-500390	SEAL WASHER 6	1	1						
42	2	43400-500450	SEAL WASHER 12	2	2						

---

---

---

---

---

---

---

---

---

---

---

---

---

---

---

---

---

---

---

---

---

---

---

---

Remarks  
(1)OPTIONAL PART.

## Parts No. Index

Parts No.	Fig. No.	Ref. No.
101147-11490	3	43
	20	16
101147-11900	3	44
101147-53080	11	4
101147-59810	12	35
101158-11190	3	11
101158-11230	3	26
		29
101304-59020	12	22
101720-55750	12	2
		71
102103-55520	12	11
		66
	20	40
103288-39170	8	13
103854-51251	10	25
103854-51660	10	6
103854-53120	11	6
103854-53180	11	9
103854-59191	12	57
103854-59201	12	58
103954-13200	4	28
	20	26
104104-67300	13	30
104200-11180	3	10
104200-14200	5	6
104200-55321	12	4
		62
104200-55330	12	5
		63
104200-55341	12	6
		64
104200-55750	12	8
		72
104200-59170	12	24
104200-61200	13	4
104200-92350	19	2
104211-11370	3	12
104264-59030	12	42
		46
104500-55510	12	10 -1
104500-55710	12	9
105225-02020	1	35
	20	6
105225-02300	1	45
105225-11100	3	4
105225-11110	3	5
105225-11350	3	2
105225-21500	6	13
105225-21501	6	13 -1

Parts No.	Fig. No.	Ref. No.
105225-22300	7	7
105225-22400	7	8
105225-23180	7	9
105225-23200	7	3
105225-59130	17	6
105582-59150	12	52
106100-59060	12	38 -1
		50 -1
110250-53150	11	8
110250-55610	12	12
		67
113200-53110	11	5
113200-53120	11	7
119640-92750	19	1 -1
119660-61220	13	5 -1
121000-01330	1	17
	20	3
121000-01750	1	30
121000-01751	1	30 -1
121000-12732	4	9
121000-12770	4	10
121013-01550	2	31
121022-11400	3	38
121022-26010	2	33
121022-59030	12	41
121022-66010	13	26
121023-01550	2	31 -1
121023-03760	3	69
121023-11300	3	45
121023-12550	4	24
121023-12570	4	21
		21 -1
121023-12580	4	20
121023-12740	4	35
121023-42051	9	11
	20	32
121023-42100	9	1
121023-42120	9	19
121023-42290	9	10
121023-44740	9	21
121023-49010	9	25
121023-59851	12	39
121023-77910	17	1
121025-42000	9	1 -1
121027-01601	1	21
121027-07230	1	48
121027-11742	3	39
121027-13491	4	12
121027-13511	4	15
121027-13550	4	25

Parts No.	Fig. No.	Ref. No.
121027-13610	4	13
121027-13650	4	26
121027-21591	6	11
121027-44500	9	17
121027-55600	12	1
121027-59011	12	20
121027-59500	12	27
121027-66000	13	27
121027-66200	2	32
121085-01890	2	7
121120-77920	17	2
121150-35100	8	6
121150-51460	10	24
121236-59080	12	48
121250-01710	3	22
121250-03783	3	66
121250-49121	9	29 A
		32
121250-59860	12	18
121256-52020	12	54
121257-55710	12	68
121257-55720	12	69
121257-55730	12	70
121257-55731	12	70 -1
121400-77701	12	29
	17	3
121420-01760	3	48
121450-01100	1	15
121450-01203	1	3
121450-01210	1	4
121450-01220	1	5
121450-01511	2	15
	20	10
121450-01531	2	9
	20	8
121450-01551	2	8
121450-01570	2	22
121450-01710	1	31
121450-01801	2	21
121450-01951	1	26
121450-01960	1	9
121450-01980	1	10
121450-01990	1	11
121450-02050	1	40
		44
121450-02071	1	38 -1
		42 -1
121450-02072	1	38
		42
121450-02100	1	14

Parts No.	Fig. No.	Ref. No.
121450-02110	1	33
121450-02160	1	39
121450-02170	1	43
121450-03012	3	51
121450-03020	3	52
121450-03030	3	57
121450-03071	20	21
121450-03610	3	61
121450-03770	3	67
121450-11240	3	31
121450-11260	3	34
121450-11270	3	35
121450-11310	3	46
		59
	20	17
121450-11402	3	75
121450-11550	3	13
121450-11670	3	19
121450-11680	3	20
	20	14
121450-11681	3	20 -1
	20	14 -1
121450-12520	4	3
121450-12530	4	4
121450-12710	4	11
	20	23
121450-13250	4	16
	20	24
121450-13251	4	16 -1
	20	24 -1
121450-14010	5	1
121450-14090	5	2
121450-14100	5	3
121450-14120	5	5
121450-14400	5	7
121450-21200	6	6
121450-21541	6	8
121450-21652	6	9
121450-22091	7	5
121450-32020	20	27
121450-32021	8	2
	20	28
121450-34831	1	18
121450-34840	1	19
	20	4
121450-35090	8	4
121450-39201	8	12
121450-42240	9	3
121450-42260	9	4
121450-42310	9	5



## Parts No. Index

Parts No.	Fig. No.	Ref. No.
121450-42350	9	9
121450-42450	9	23
121450-44410	9	6
	20	30
121450-49020	9	26
121450-49030	9	27
121450-49100	9	29
121450-49110	9	28 A
121450-51500	10	4
121450-59550	12	32
121450-59810	12	13 A
121450-59820	12	14
121450-59830	12	15
121450-61001	13	1
121450-61101	13	3
121450-61631	13	9
121450-66010	13	31
121450-66170	13	22
121450-66180	13	21
121450-66420	13	17
121450-77010	14	1
	16	1
121450-77200	14	3
	15	1
121450-77330	14	4
121450-77711	14	6
121454-59011	12	20 -1
121454-59090	12	21 -1
121462-03740	3	65
121464-12500	4	1
121465-11950	3	18
121465-13582	4	17
121465-13652	4	19
121465-59950	12	19
121467-34800	1	46 -1
121470-34800	1	46
121473-66550	13	13
121492-59060	12	38
	17	5
121492-59090	12	21
121520-01850	12	55
121520-01851	12	55 -1
121520-61520	13	6
121520-61620	13	8
121520-77710	14	6 -1
121522-26010	2	44
121522-26051	2	34
121522-26160	2	35
121522-26200	2	36
121522-26401	2	37

Parts No.	Fig. No.	Ref. No.
121522-59060	12	51
121522-59080	12	44
121550-11280	3	32
121550-11290	3	33
121550-49111	9	34
121567-66551	13	32
121575-07230	1	48 -1
121750-49150	9	20
121750-59090	12	28
121750-77800	17	7
123325-59100	12	16
123325-59110	12	17
124060-01050	1	2
	2	6
124060-01640	1	28
124060-11120	3	9
124060-11160	3	6
124060-11170	3	7
124060-21600	6	12
124060-51300	10	3 -1
124060-59380	12	59
124060-77680	12	30
		37
	17	4
124064-12670	4	5
124064-12680	4	6
124064-12690	4	7
124064-55510	12	10
		65
124066-12510	4	2
124066-59100	12	33
124085-01900	1	7
124085-02220	1	34
124085-35111	8	9 -1
124085-35300	8	7
124085-35350	8	8
124160-01650	3	56
	12	25
124160-01751	3	47
124160-11360	3	49
124160-39140	8	16
124160-39450	8	11
124160-39540	8	15
124160-77020	14	2
124220-51890	10	26
124240-01882	2	28
	20	12
124240-01883	2	28 -1
	20	12 -1
124250-49351	9	36

Parts No.	Fig. No.	Ref. No.
124250-49360	9	16
124450-35070	8	5
124450-35110	8	10
	20	29
124450-39180	8	14
124450-39240	8	20
124450-44590	9	18
124460-77820	17	8
124465-44950	9	24
124550-35110	8	9
124550-35350	19	1
124550-51320	10	19
124550-51341	10	21
124550-51350	10	20
	20	35
124550-51370	10	22
	20	36
124550-59030	12	34
124550-59090	12	31
124550-59820	8	18
124701-11910	4	27
	20	25
124701-11911	4	27 -1
	20	25 -1
124732-13550	4	25 -1
124732-77720	18	1
124732-77850	18	2
124732-77970	18	3
124736-49540	9	13
	20	33
124766-49160	9	35
124766-59050	9	37
	12	23
		26
		43
		47
		49
124770-53000	11	3
124772-66890	13	18
124790-49800	9	14
124950-11340	3	8
124950-11410	3	42
124950-11450	3	41
	20	15
124950-26021	2	29
	20	13
124950-26420	2	38
124950-51100	10	2
124950-51130	10	3
124950-51190	10	11

Parts No.	Fig. No.	Ref. No.
124950-51270	10	18
	20	34
124950-51450	10	23
124950-51510	10	10
124950-51640	10	5
128272-11170	3	7 -1
129301-11670	3	19 -1
129305-07950	1	49
129334-59020	12	45
129335-55700	12	61
129350-01230	1	6
129350-32090	8	1
129350-42200	9	2
129350-49530	9	12
129350-61600	13	7
135210-61090	13	19
160110-66011	3	74
171051-01921	1	47
171081-55910	12	68 -1
172100-53200	11	10
	20	37
172200-61220	13	5
174100-54120	10	16
174307-51170	10	12
174307-51181	10	13
174307-51700	10	14
194100-41670	2	39
22117-050000	3	71
	10	9 -1
		9 -2
22117-060000	3	64
22117-080000	2	26
		26 -1
22131-050000	10	9
22137-080000	13	24
22137-100000	3	23
22212-080000	3	24
22212-100000	4	29
22217-040000	15	17 A
		17 B
22217-050000	10	8
22217-080000	2	27
		40
	3	24 -1
	4	18
22217-100000	4	29 -1
	15	8 -1
22242-000140	3	36
22252-000470	2	42
22272-000060	3	73

## Parts No. Index

Parts No.	Fig. No.	Ref. No.
22272-000060	13	25
22312-030080	13	23
22312-030220	3	60
22312-040080	13	10
22312-080160	6	2
22312-080180	1	12
22322-030180	13	2
22322-030200	13	28
22351-030010	13	11
22351-040008	6	7
22351-040010	2	5
22351-060012	1	16
22451-060000	13	20
22512-070120	2	12
22512-070180	6	3
		4
		4
22512-070300	5	4
23010-038000	9	28
23010-058000	4	8
23065-130650	3	55
23080-013000	4	36
23414-080000	8	19
23414-080012	12	36
		53
		17
23414-100000	8	17
23418-060000	12	3
		73
		38
	20	
23418-080000	3	68
	20	19
		5 A
23871-020000	9	5
23871-030000	3	17
24101-062054	5	8
24101-063050	2	43
24107-060054	2	13
24190-080001	6	5
24311-000070	3	62
	13	29
	20	9
		9 -1
24311-000100	1	8
	20	2
24311-000120	3	50
	20	20
24311-000140	1	29
	20	5
24311-000160	9	29 B
		33
	20	31
24311-000320	3	48 -1

Parts No.	Fig. No.	Ref. No.
24311-240100	12	7
		74
	20	39
24321-000350	3	40
	20	18
24341-000240	2	24 -1
	20	11 -1
24341-000260	2	24
	20	11
24341-000400	3	53
	20	22
26013-060222	8	3
26013-080202	1	36
26013-080452	4	34
26014-060182	12	56 -1
26014-060352	9	30
26014-080142	4	14
26014-080282	14	5
26015-060182	12	56
26016-080162	3	54
26021-040025	15	16
26021-040082	15	15
26033-050102	10	7 -1
26106-060082	1	31 -1
26106-060122	9	22
26106-060142	2	10
		25
		11
26106-060202	2	11
26106-060222	13	12
26106-060322	9	31
26106-080102	3	76
26106-080122	3	21
26106-080142	1	24
	3	22 -1
26106-080162	3	54 -1
	4	22
26106-080182	4	30
26106-080202	9	15
26106-080222	1	20
26106-080322	4	23
26106-080452	2	16
26106-080752	2	17
26106-080822	9	7
26106-080852	2	18
26106-080872	9	8
26106-081152	2	19
26117-060322	16	19
26206-100282	1	25
26216-080222	2	2
		30

Parts No.	Fig. No.	Ref. No.
26216-080252	4	31
26216-080652	3	16
26216-100252	1	22
26366-080002	2	3
		41
	3	14
		15
	4	32
26557-040082	15	15 -1
26557-040122	16	18
26557-040252	15	16 -1
26557-050122	3	70
26587-050102	10	7
26587-080102	2	20
	5	9
26587-080122	5	9 -1
26687-120002	13	14
26696-100002	3	3
	4	33
26706-100002	1	23
	2	23
	15	9 -1
26716-060002	3	63
26716-080002	2	45
26736-120002	13	16
26756-050002	3	72
26756-080002	3	27
		30
26776-120002	12	40
26776-160002	2	14
26776-180002	6	10
26921-080102	3	37
27241-300000	1	13
27310-070001	3	11 -1
28110-100120	19	3 -1
28110-100130	19	3
28110-140170	19	4 -1
28110-170190	19	4
28110-190220	19	5 -1
28110-220240	19	5
28210-000140	19	6
43400-500390	12	60
	20	41
43400-500410	2	4
	20	7
43400-500450	13	15
	20	42
705225-23100	7	1
705311-23600	7	4
711100-51540	10	17

Parts No.	Fig. No.	Ref. No.
721000-21701	6	1
721023-11520	3	58
721027-92600	20	1
721027-92601	20	1 -1
721085-01612	2	1
721450-01540	1	27
721450-01564	1	1
721450-02500	1	32
721450-02611	1	37 -1
721450-02612	1	37
721450-02621	1	41 -1
721450-02622	1	41
721450-11650	3	25
721450-11660	3	28
721450-11700	3	1
721450-22500	7	6
721461-51700	10	1
724550-51520	10	15
724950-53100	11	1
933110-00100	18	4
933110-00301	18	5
94210M06900	15	14
94210M21923	15	8
94210M32983	15	6
94210M42802	15	18
94210M42875	15	2
94210M42927	15	5
94210M42929	15	4
94210M51416	15	10
94210M51417	15	11
94210M51418	15	12
94210M86025	15	7
94210M86124	15	3
		17
94210M86372	15	9
94210M96717	15	13
X21141360	16	10
X211432001	16	5
X21143454	16	22
X21143963	16	21
X21144314	16	12
X21144661	16	15
X211453002	16	8
X21145312	16	7
X21145313	16	11
X21145352	16	9
X211455003	16	13
X211456009	16	14
X21146815	16	20
X21147155	16	4

# Parts No. Index

Parts No.	Fig. No.	Ref. No.
X21147215	16	6
X21148110	16	3
X21148652	16	16
X211491001	16	2
X211497004	16	17
XM069000000	15	14 -1
XM329830000	15	6 -1
XM428020000	15	18 -1
XM429270000	15	5 -1
XM429290000	15	4 -1
XM514160000	15	10 -1
XM514170000	15	11 -1
XM514180000	15	12 -1
XM622270000	15	2 -1
XM860250000	15	7 -1
XM861240000	15	3 -1
		17 -1
XM967170000	15	13 -1

Parts No.	Fig. No.	Ref. No.
-----------	----------	----------

Parts No.	Fig. No.	Ref. No.
-----------	----------	----------

Parts No.	Fig. No.	Ref. No.
-----------	----------	----------