

0CD10-M33301EN

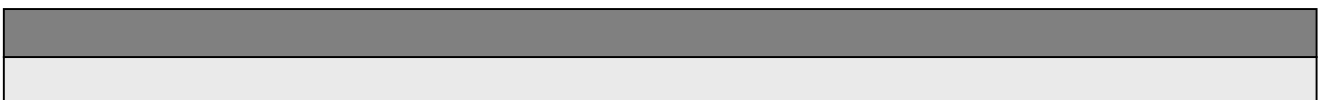
PREFACE

1. This Parts Catalog is the 2nd edition of YES3800 Diesel Engine.

Pub. No. : 000Y00D3331
Published : December, 1992

2. Model name

Engine model	Vehicle		Vehicle made by
	Products	Model name	
YES3800	SWEEPER	—	—



Directions for the Parts Catalog.

- The parts stipulated in this Parts Catalog are not necessarily standard equipped parts.
- Parts may change without prior notice.
- The following is an example of the Parts Catalog format.

OCF10-G21601 29. FUEL INJECTION PUMP(W/BOOST)

REF.	LEV.	PARTS NO.	DESCRIPTION	Q'TY						I	R
				(A)	(B)	(C)	(D)	(E)	(F)		
1	1	729595-51390	FUEL INJECTION PUMP	1	1	1	1	1			1
1-1	1	729595-51391	FUEL INJECTION PUMP	1	1	1	1	1		N	1
		(A=E00185) (B=E00200)									
3	2	26022-060162	SCREW M 6X 16	9	9	9	9	9			
3-1	2	26022-060162	SCREW M 6X 16	4	4	4	4	4		K	
		(A=E00156) (B=E00156) (C=E00156) (D=E00156) (E=E00156)									
4	2	129470-51040	CAMSHAFT	1	1	1	1	1			
5	2	122710-51050	BEARING, ROLLER	2	2	2	2	2			
6	2	129470-51060	RETAINER	1	1	1	1	1			

Remarks

(1) BOOST COMPEMSATOR TYPE. OPTIONAL PART, TO E00155,(4JH-DT, 4JH-DTZ

① Ref. No.

The Ref. No. listed may not be in accordance with the illustration Ref. No.

(Ex.) Illustration No.

List Ref No.

1

1

(Before change) → 1-1 (After change)

For interchangeable symbols N, R and K, illustrations for new parts may be abbreviated.

② Lev. (Level)

Level indication

The numbers below indicate the level of relativity towards the main part.

1 ----- Main parts (Assembly parts)

2 ----- Sub component included in " 1 ".

3 ----- Sub component included in " 2 ".

Note) Parts that are not for sale are partially illustrated but not listed.

③ Interchangeability Mark

When a part change takes place, one of the following interchangeability symbols is indicated beside the part.

Symbol	Interchangeability	Contents note
N	Old $\begin{matrix} \leftarrow \text{Yes} \\ \text{No} \rightarrow \end{matrix}$ New	New Part is interchangeable for Old Part but Old Part is not interchangeable for New Part.
Q	Old $\begin{matrix} \leftarrow \text{No} \\ \text{Yes} \rightarrow \end{matrix}$ New	New Part is not interchangeable for Old Part but Old Part is interchangeable for New Part.
R	Old $\begin{matrix} \leftarrow \text{Yes} \\ \text{Yes} \rightarrow \end{matrix}$ New	New/ Old Parts are both interchangeable.
S	Old $\begin{matrix} \leftarrow \text{No} \\ \text{No} \rightarrow \end{matrix}$ New	New/ Old Parts are both not interchangeable.
W		Part newly added.
Z		Part discontinued.
F		Not interchangeable by a single part but interchangeable together with related parts.
K		Changes only for used parts quantities.

④ Effective Machine No.

When a part changes, the effective Machine No. will be indicated in the (A)-(F) column.

Product Symbol	Product No.	Product Symbol	Product No.
C	Clutch No. Compressor No.	F	Machine No. (Agricultural Equip.)
D	Drive No.	M	Machine No.
E	Engine No.		

Note 1) A date may follow the symbol. (Ex.) 1996.01

Note 2) "XXXXX" and "ZZZZZ" are for parts that could not be predicted or for engine models that could not be identified.

Note 3) (A=E00185) is the E (Engine Serial Number) for the column (A) model (in this case 4JH-DT) after the parts design change.

⑤ Remarks Mark

Figures or alphabets (symbols) are entered in the remarks column.

The comments (remarks) on parts that are indicated at the bottom of the illustration are the same symbols as those stated above.

Contents

Fig. No.	Fig. Name	Fig. No.	Fig. Name
YES3800			
1.	CYLINDER BLOCK		
2.	BREATHER & BONNET		
3.	LABEL		
4.	CYLINDER HEAD		
5.	AIR CLEANER & MUFFLER		
6.	CAMSHAFT		
7.	CRANKSHAFT & PISTON		
8.	FAN CASE		
9.	FUEL TANK & PIPE		
10.	CARBURETOR		
11.	GOVERNOR		
12.	CONTROL DEVICE		
13.	STARTING DEVICE		
14.	MAGNETO & STOP SWITCH		
15.	TOOL & GASKET SET(ENGINE)		
16.	ACCESSOYY		
17.	BODY(1)		
18.	BODY(2)		

Fig.1. CYLINDER BLOCK

(A)=YES3800

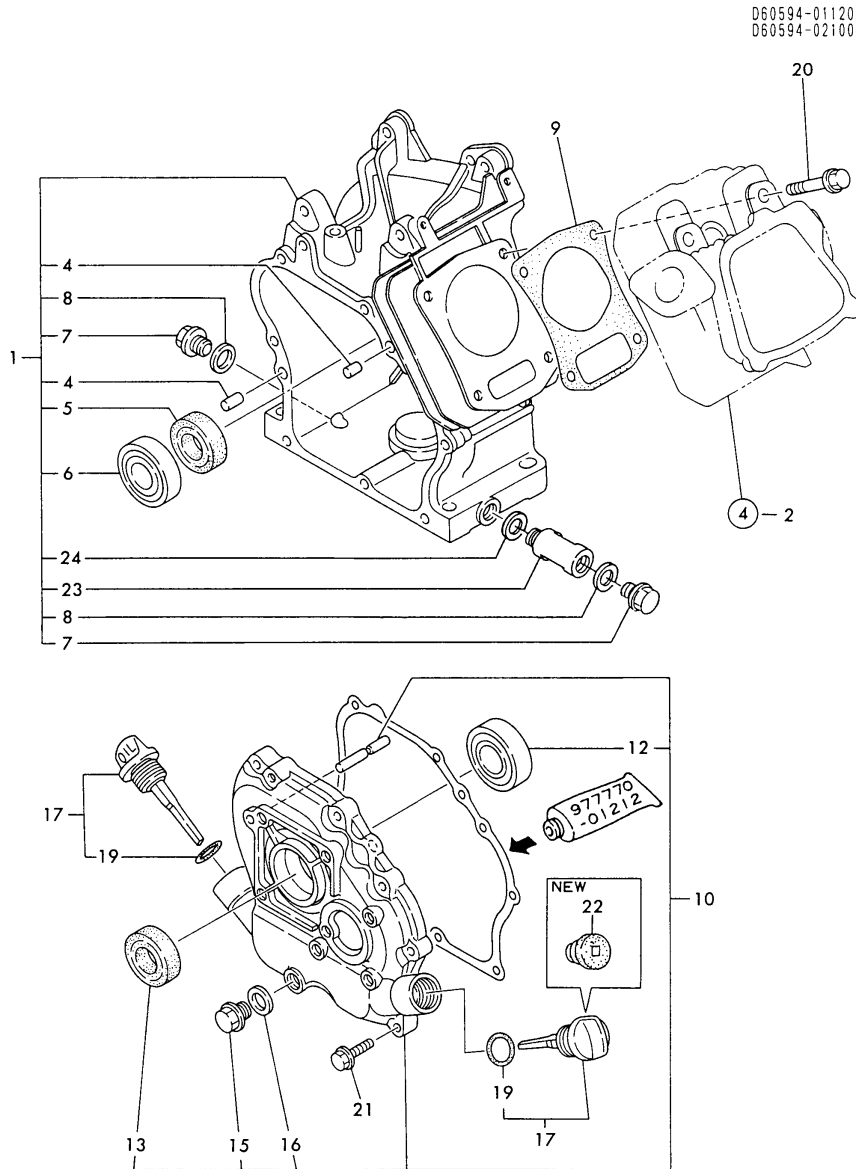
(B)=

(C)=

(D)=

(E)=

(F)=



No.	Lev.	Parts No.	Description	Q'ty						I	R
				(A)	(B)	(C)	(D)	(E)	(F)		
1	1	760590-01561	BLOCK ASSY, CYLINDER	1							
4	2	22312-080120	PIN, PARALLEL M8X12	2							
5	2	160610-02220	SEAL, 20326	1							
6	2	24101-062040	BEARING, BALL 6204C3	1							
7	2	160610-01690	PLUG, M12	2							
8	2	104200-59170	GASKET, 12	2							
9	1	160590-01330	GASKET, HEAD	1							
10	1	760594-01510	COVER ASSY	1							
12	2	24101-062040	BEARING, BALL 6204C3	1							
13	2	160610-02220	SEAL, 20326	1							M
13-1	2	160640-02220	SEAL, OIL	1							
15	2	160610-01690	PLUG, M12	1							
16	2	104200-59170	GASKET, 12	1							
17	1	160710-01760	CAP ASSY, L82	2							
17-1	1	160710-01760	CAP ASSY, L82	1							K
(A=M/# 16328)											
19	2	24311-000180	O-RING, 1AP18.0	2							
19-1	2	24311-000180	O-RING, 1AP18.0	1							K
(A=M/# 16328)											
20	1	160610-04201	BOLT, FLANGE M8X53	4							
21	1	26476-060252	SCREW, TAPPING M6X25	8							
22	1	160110-01870	PLUG, RUBBER	1							W
(A=M/# 16328)											
23	1	160802-01700	JOINT, DRAIN	1							W
(A=*)											
24	1	104200-59170	GASKET, 12	1							W
(A=*)											

Remarks
(M) MISPRINT.

Fig.2. BREATHER & BONNET

(A)=YES3800
(B)=
(C)=

(D)=
(E)=
(F)=

No.	Lev.	Parts No.	Description	Q'ty						I	R
				(A)	(B)	(C)	(D)	(E)	(F)		
1	1	160690-03050	BREATHER	1							
2	1	160820-03180	PIPE , BREATHER	1							
2-1	1	160810-03180	PIPE , BREATHER	1							N
		(A=*)									
3	1	160690-11300	BONNET	1							
4	1	160690-11310	GASKET, BONNET	1							
5	1	26106-060202	BOLT, M6X 20 PLATED	1							
6	1	26106-060352	BOLT, M6X 35 PLATED	2							

D60690-03100
D60690-11200

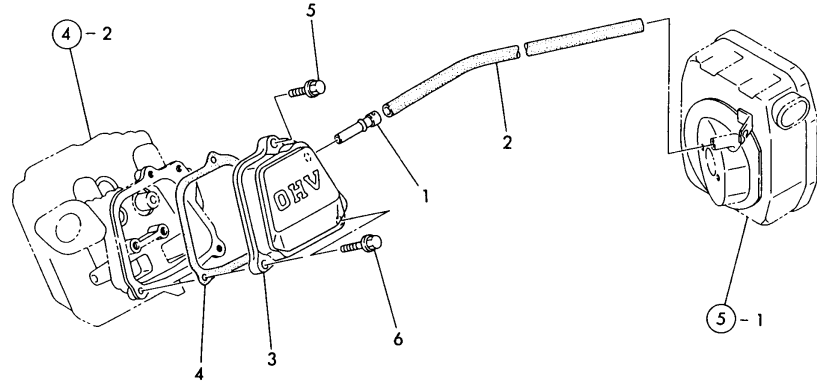
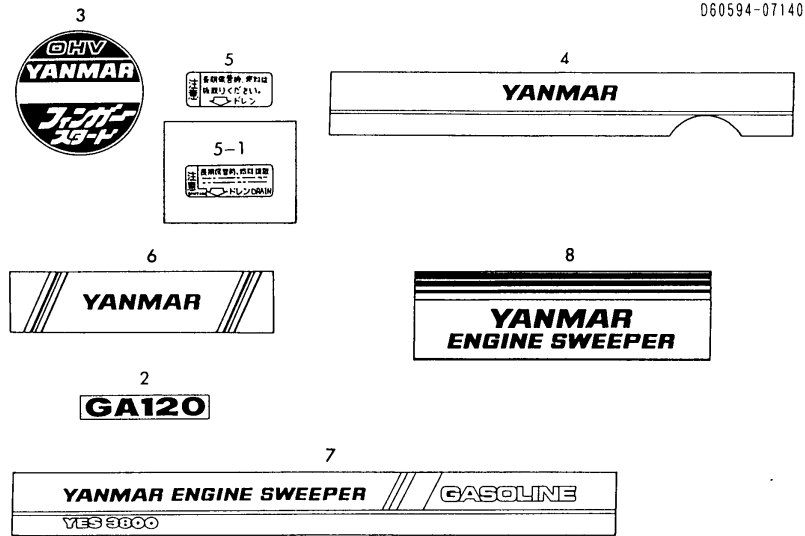


Fig.3. LABEL



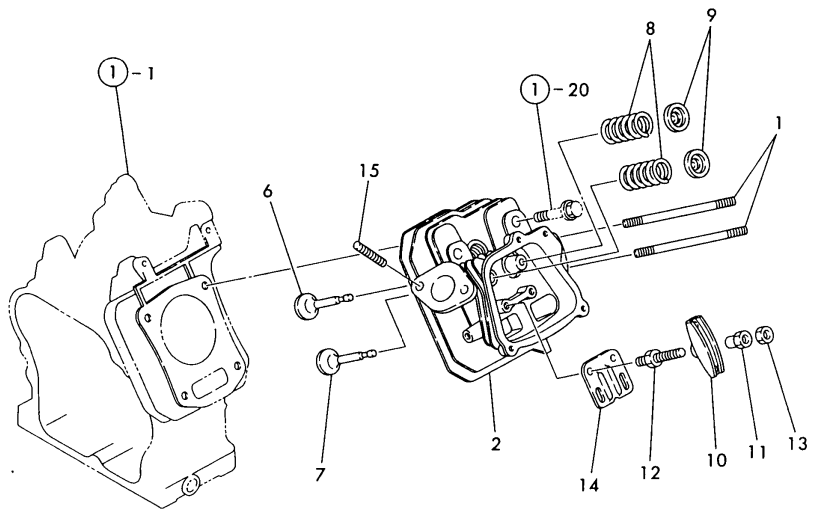
No.	Lev.	Parts No.	Description	Q'ty						I	R
				(A)	(B)	(C)	(D)	(E)	(F)		
2	1	160590-07040 (A=M/# 22426)	LABEL	1							Z
3	1	160690-07100	LABEL, OHV MARK	1							
3-1	1	160590-07120 (A=M/# 22426)	LABEL, OHV MARK	1							S
4	1	160594-07950	LABEL	1							
5	1	160520-07270	LABEL, DRAIN	1							
5-1	1	160520-07271 (A=M/# 22426)	LABEL, DRAIN	1							N
5-2	1	160520-07272 (A=* 1992.08)	LABEL, DRAIN	1							S
6	1	160594-07960	LABEL	1							
7	1	160594-07970	LABEL	1							
8	1	160594-07980	LABEL	1							

Fig.4. CYLINDER HEAD

(A)=YES3800
(B)=
(C)=

(D)=
(E)=
(F)=

D60590-11100



No.	Lev.	Parts No.	Description	Q'ty						I	R
				(A)	(B)	(C)	(D)	(E)	(F)		
1	1	160610-04570	BOLT, M6X70	2							
2	1	160590-11010	HEAD ASSY, CYLINDER	1							
6	1	160590-11100	VALVE, INTAKE	1							
7	1	160590-11110	VALVE, EXHAUST	1							
8	1	160690-11120	SPRING, VALVE	2							
9	1	160690-11180	RETAINER, SPRING	2							
10	1	160690-11200	ARM, ROCKER	2							
11	1	160690-11220	PIVOT, ROCKER ARM	2							
11-1	1	160690-11221	PIVOT, ROCKER ARM	2							N
(A=EZZZZZ)											
12	1	160690-11270	BOLT	2							
12-1	1	160690-11271	BOLT	2							N
(A=M/# 22426)											
13	1	160690-11280	NUT, M6X0.5	2							
14	1	160690-11290	PLATE, GUIDE	1							
15	1	26216-080182	STUD, M8X 18	2							

Fig.5. AIR CLEANER & MUFFLER

(A)=YES3800

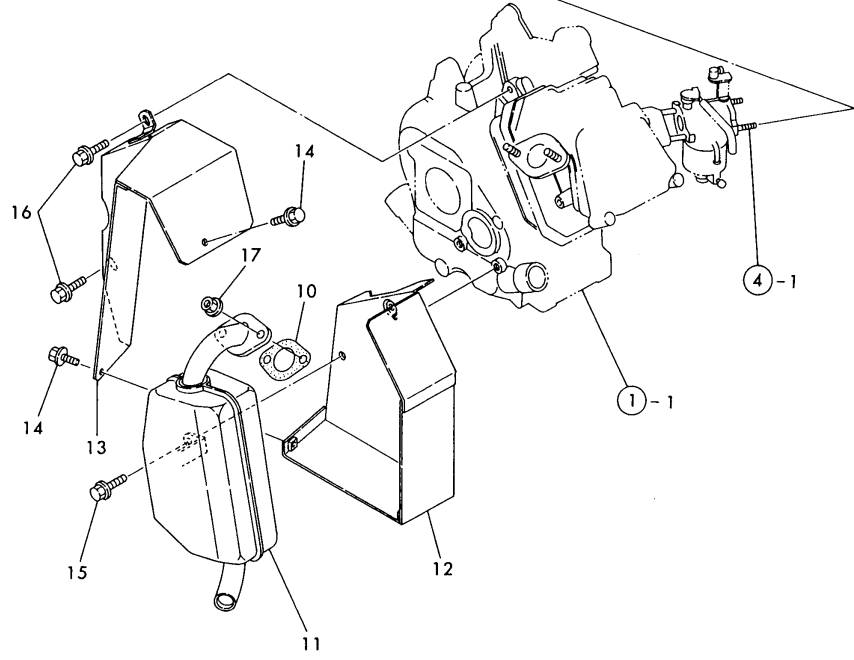
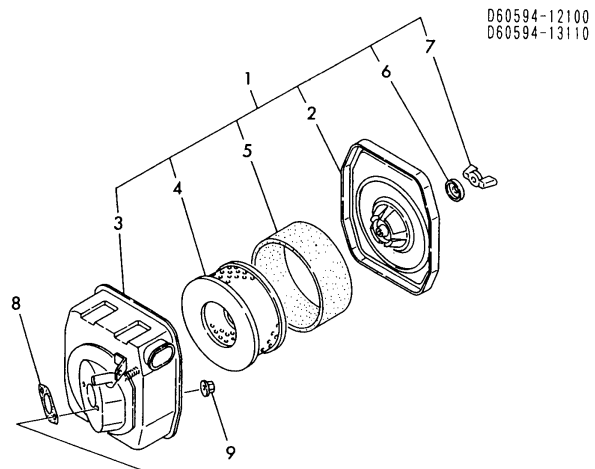
(B)=

(C)=

(D)=

(E)=

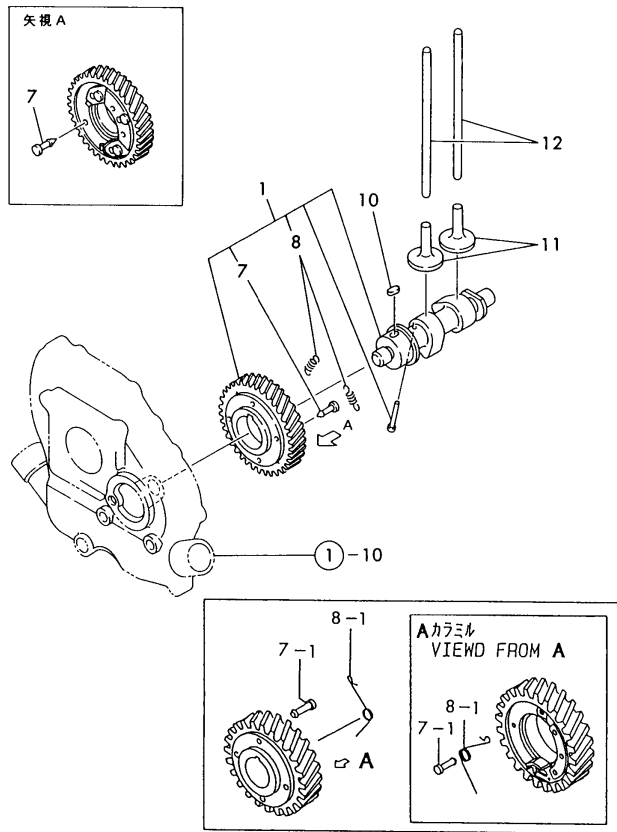
(F)=



No.	Lev.	Parts No.	Description	Q'ty						I	R
				(A)	(B)	(C)	(D)	(E)	(F)		
1	1	160594-12500	CLEANER ASSY, AIR	1							
2	2	114250-12520	COVER, AIR CREAMER	1							
3	2	160693-12630	CASE ASSY	1							
4	2	114250-12540	ELEMENT	1							
5	2	160693-12930	SPONGE, AIR CLEANER	1							
6	2	114250-12560	WASHER, SEAL M6	1							
7	2	114250-12550	NUT, WING M6	1							
8	1	160610-56150	GASKET, CARBURETOR	1							
9	1	26366-060002	NUT, M6	2							
10	1	160690-13200	GASKET, MUFFLER	1							
11	1	160594-13510	MUFFLER	1							
12	1	160594-13550	COVER	1							
13	1	160594-13560	COVER	1							
14	1	26106-060082	BOLT, M6X 8 PLATED	2							
15	1	26476-060142	SCREW, TAPPING M6X14	1							
16	1	26106-080122	BOLT, M8X 12 PLATED	2							
17	1	26366-080002	NUT, M8	2							

Fig.6. CAMSHAFT

D60594-14110

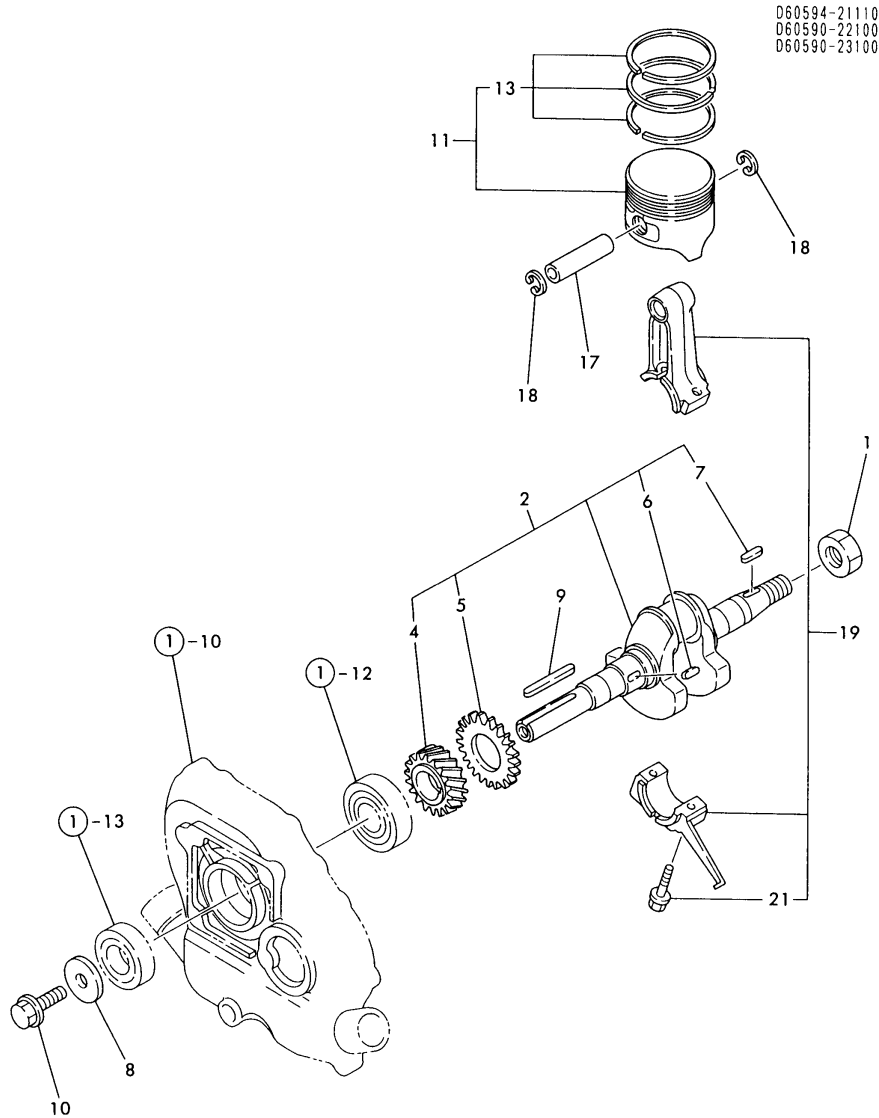


(A)=YES3800
(B)=
(C)=

(D)=
(E)=
(F)=

No.	Lev.	Parts No.	Description	Qty						I	R
				(A)	(B)	(C)	(D)	(E)	(F)		
1	1	160594-14060	CAMSHAFT ASSY	1							
7	2	160510-14560	PIN, GUIDE	1							
7-1	2	160690-14530	PIN, GUIDE	1							S
(A=M/# 22426)											
7-2	2	160690-14531	PIN, GUIDE	1							S
(A=* 1992.10)											
8	2	160690-14560	SPRING, DECOMPRESSION	2							
8-1	2	160690-14570	SPRING, DECOMPRESSION	1							K
(A=M/# 22426)											
8-2	2	160590-14570	SPRING, DECOMPRESSION	1							S
(A=* 1992.02)											
10	1	22512-040120	KEY, 4X 12	1							
11	1	160690-14200	TAPPET	2							
11-1	1	160490-14200	TAPPET	2							N
(A=M/# 18165)											
12	1	160590-14400	ROD, PUSH	2							

Fig.7. CRANKSHAFT & PISTON



(A)=YES3800

(B)=

(C)=

(D)=

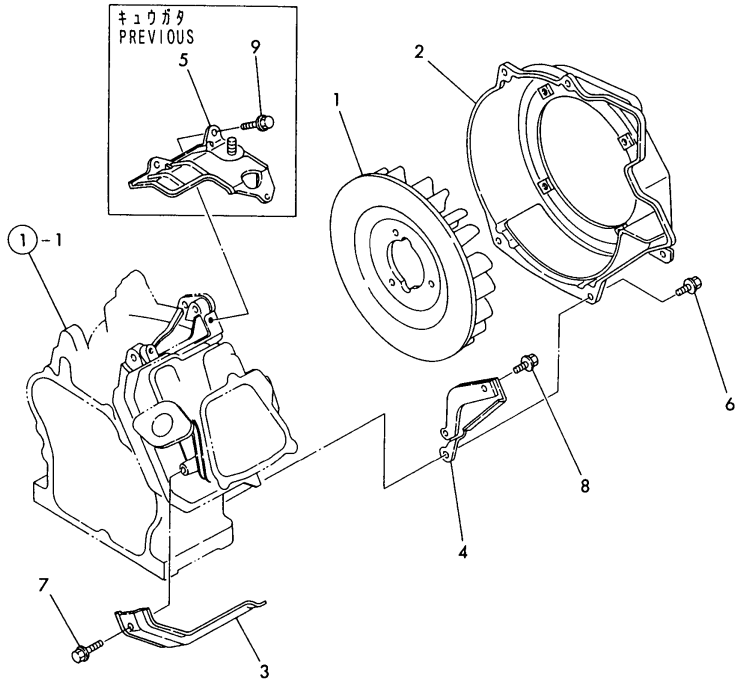
(E)=

(F)=

No.	Lev.	Parts No.	Description	Q'ty						I	R
				(A)	(B)	(C)	(D)	(E)	(F)		
1	1	160610-04910	NUT, FLYWHEEL M14	1							
2	1	760594-21710	CRANKSHAFT ASSY	1							
4	2	160590-21200	GEAR, CRANKSHAFT	1							
5	2	160590-21210	GEAR, IDLE	1							
6	2	160610-21290	KEY, 4X10	1							
7	2	22512-040160	KEY, 4X 16	1							
8	1	160310-14550	WASHER	1							
9	1	22512-050240	KEY, 5X 24	1							
10	1	26106-080202	BOLT, M8X 20 PLATED	1							
11	1	160590-22010	PISTON ASSY	1							
11-1	1	160590-22011	PISTON ASSY	1							N
(A=M/# 22425)											
13	2	760590-22500	RING SET, PISTON	1							
13-1	2	760590-22501	RING SET, PISTON	1							N
(A=M/# 22425)											
17	1	160590-22300	PIN, PISTON	1							
18	1	22252-000130	RING, 13	2							
19	1	760590-23700	ROD ASSY, CONNECTING	1							
21	2	160710-23201	BOLT, CONNECTING ROD	2							

Fig.8. FAN CASE

D60593-4510014



(A)=YES3800

(B)=

(C)=

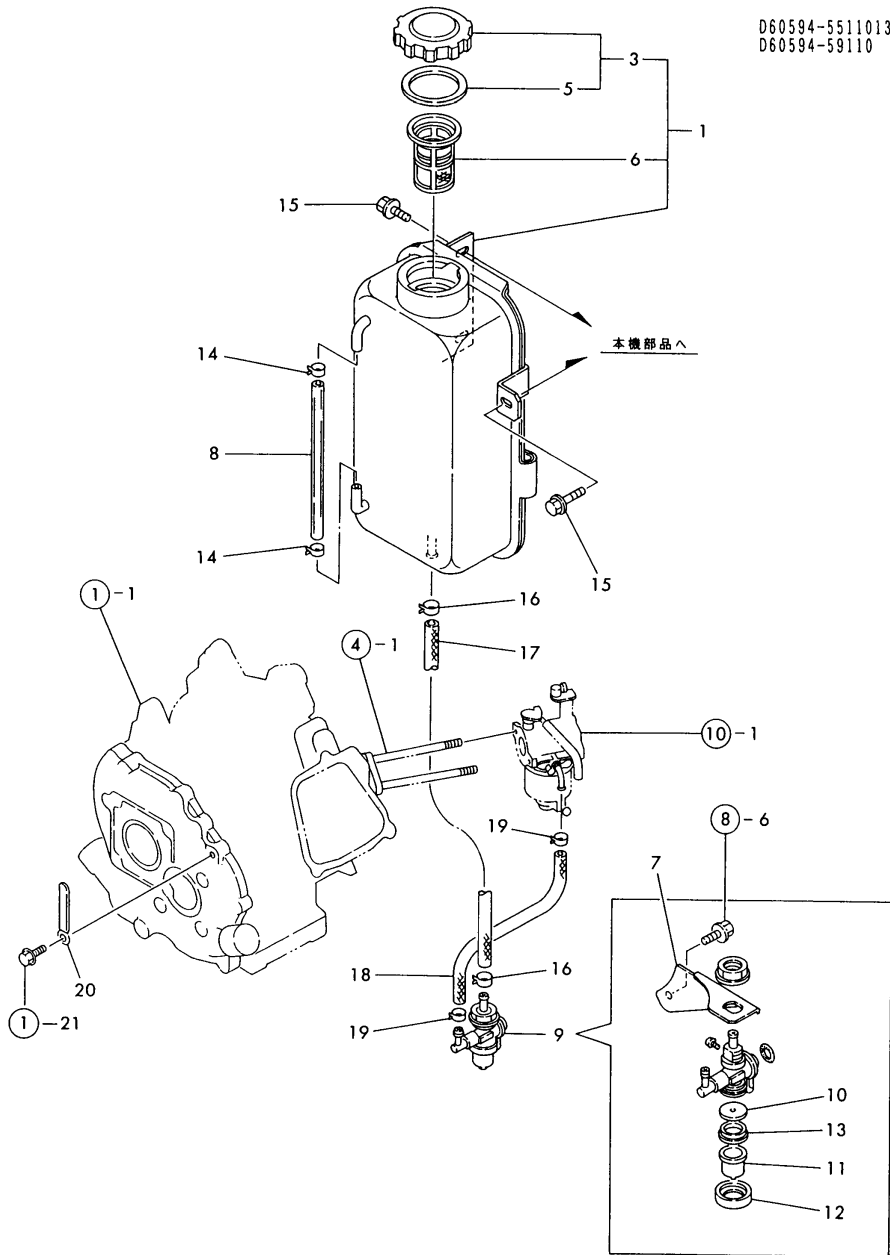
(D)=

(E)=

(F)=

No.	Lev.	Parts No.	Description	Q'ty						I	R
				(A)	(B)	(C)	(D)	(E)	(F)		
1	1	160690-45011	FAN, COOLING	1							
2	1	160593-45110	CASE, COOLING FAN	1							
3	1	160690-45200	COVER	1							
4	1	160590-45210	COVER	1							
4-1	1	160590-45211	COVER	1							S
(A=M/# 22426)											
5	1	160690-45220	COVER, HEAD	1							Z
(A=M/# 16328)											
6	1	26476-060142	SCREW, TAPPING M6X14	4							
7	1	26476-060142	SCREW, TAPPING M6X14	1							
8	1	26476-060142	SCREW, TAPPING M6X14	1							
9	1	26476-060142	SCREW, TAPPING M6X14	3							Z
(A=M/# 16328)											

Fig.9. FUEL TANK & PIPE



D60594-5511013
D60594-59110

(A)=YES3800

(B)=

(C)=

(D)=

(E)=

(F)=

No.	Lev.	Parts No.	Description	Q'ty						I	R
				(A)	(B)	(C)	(D)	(E)	(F)		
1	1	760594-55700	TANK ASSY, FUEL	1							
3	2	160710-55061	CAP ASSY	1							
5	3	160393-55050	GASKET	1							
6	2	160610-55100	FILTER, FUEL	1							
7	1	160702-55280	STAY	1							
8	1	160594-55150	GAUGE, FUEL	1							
8-1	1	160594-55151	GAUGE, LEVEL	1							S
(A=M/# 22094)											
9	1	160762-55300	COCK ASSY, FUEL	1							
10	2	160810-55380	FILTER	1							
11	2	160210-55390	CUP	1							
12	2	160210-55360	NUT	1							
13	2	160210-55370	GASKET	1							
14	1	124722-59050	CLIP, HOSE 9	2							
15	1	26106-060122	BOLT, M6X 12 PLATED	3							
16	1	106990-44660	CLIP, HOSE 12.5	2							
17	1	160992-59350	PIPE, FUEL	1							
18	1	160720-59361	PIPE, FUEL L=134	1							
19	1	124060-77680	CLIP, HOSE 10	2							
20	1	160710-78710	CLAMP, CORD	1							W
(A=*)											

Fig.10. CARBURETOR

(A)=YES3800

(B)=

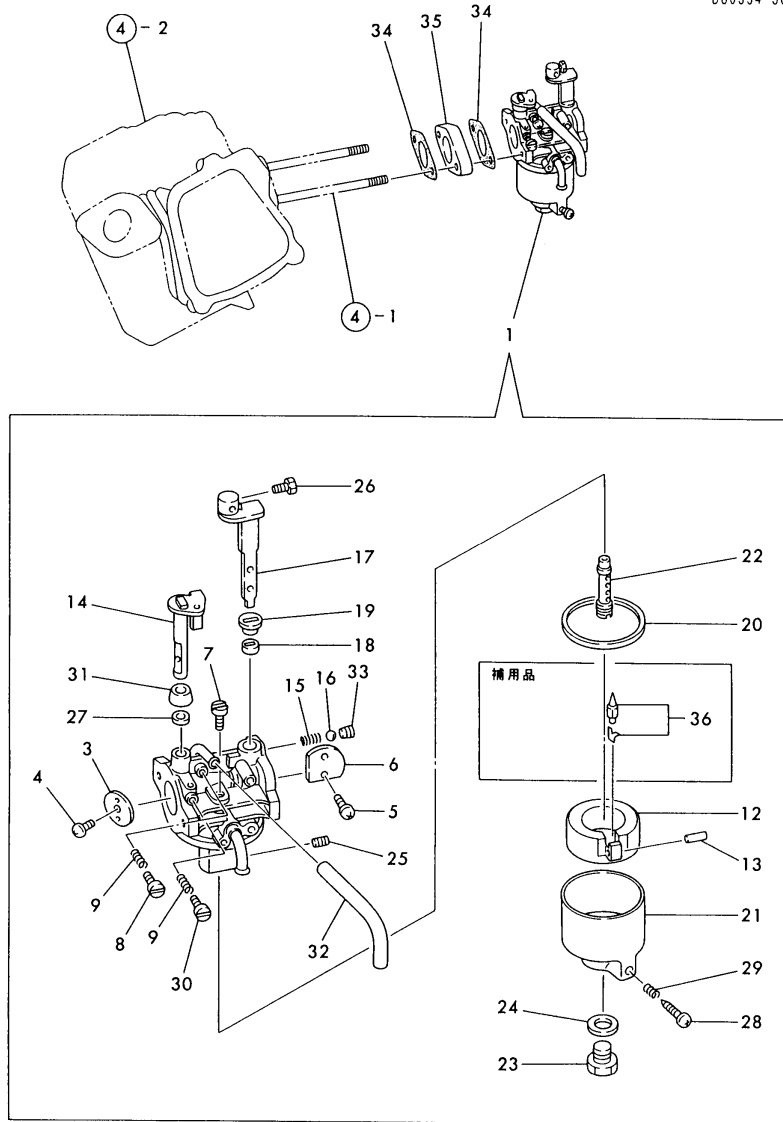
(C)=

(D)=

(E)=

(F)=

D60594-56110



No.	Lev.	Parts No.	Description	Qty						I	R
				(A)	(B)	(C)	(D)	(E)	(F)		
1	1	160594-56020	CARBURETOR ASSY	1							
3	2	160592-56540	VALVE, THROTTLE	1							
4	2	160810-56670	SCREW	1							
5	2	160903-56670	SCREW	2							
6	2	160692-56530	VALVE, CHOKE	1							
7	2	160510-56740	JET, PILOT	1							
8	2	160692-56710	SCREW	1							
9	2	181230-56380	SPRING	2							
12	2	160769-56620	FLOAT ASSY	1							
13	2	160610-56630	PIN, FLOAT	1							
14	2	160692-56640	SHAFT, THROTTLE	1							
15	2	160310-56980	SPRING, CHOKE	1							
16	2	160310-56990	BALL, STEEL	1							
17	2	160692-56650	LEVER, CHOKE	1							
18	2	160810-56580	RING, CHOKE SHAFT	1							
19	2	160594-56590	RING, CHOKE LEVER	1							
20	2	160610-56610	GASKET	1							
21	2	160769-56640	BODY, FLOAT CHAMBER	1							
22	2	160692-56670	NOZZLE, MAIN	1							
23	2	160769-56660	BOLT	1							
24	2	160610-56611	GASKET	1							
25	2	160594-56770	JET, ENRICHMENT	1							
26	2	26117-040088	BOLT M 4X 8 PLATED	1							
27	2	160640-56850	SEAL	1							
28	2	160610-56900	SCREW	1							
29	2	181230-56380	SPRING	1							
30	2	160667-56750	ADJUSTER	1							
31	2	160702-56720	RING	1							
32	2	160692-56770	HOSE	1							
33	2	160692-56700	PLUG	1							
34	1	160610-56150	GASKET, CARBURETOR	2							
35	1	160690-56160	SPACER, CARBURETOR	1							
36	1	160692-56560	VALVE ASSY, NEEDLE	1							1

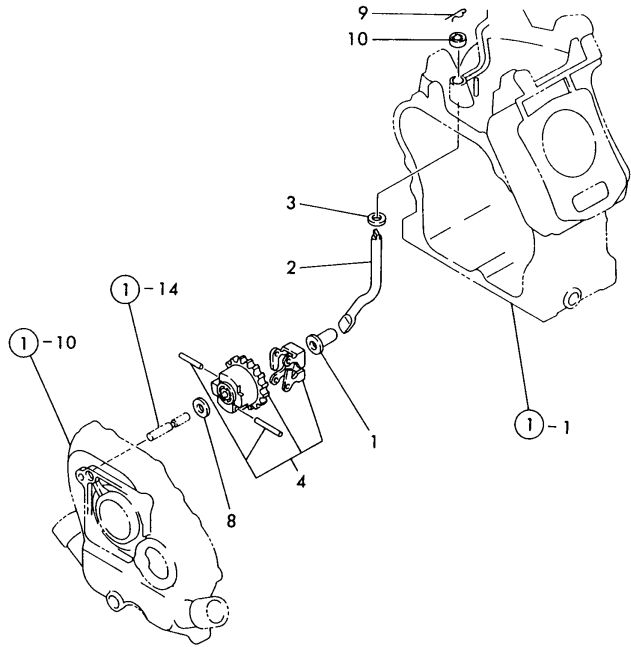
Remarks

(1) ONLY FOR REPAIR

N:Old $\xrightarrow{\text{Yes}}$ New, Q:Old $\xrightarrow{\text{No}}$ New, R:Old $\xrightarrow{\text{Yes}}$ New, S:Old $\xrightarrow{\text{No}}$ New, W:Add, Z:Discontinued, F:Interchangeable by set, K:Qty Change

Fig.11. GOVERNOR

060690-61100



(A)=YES3800
(B)=
(C)=

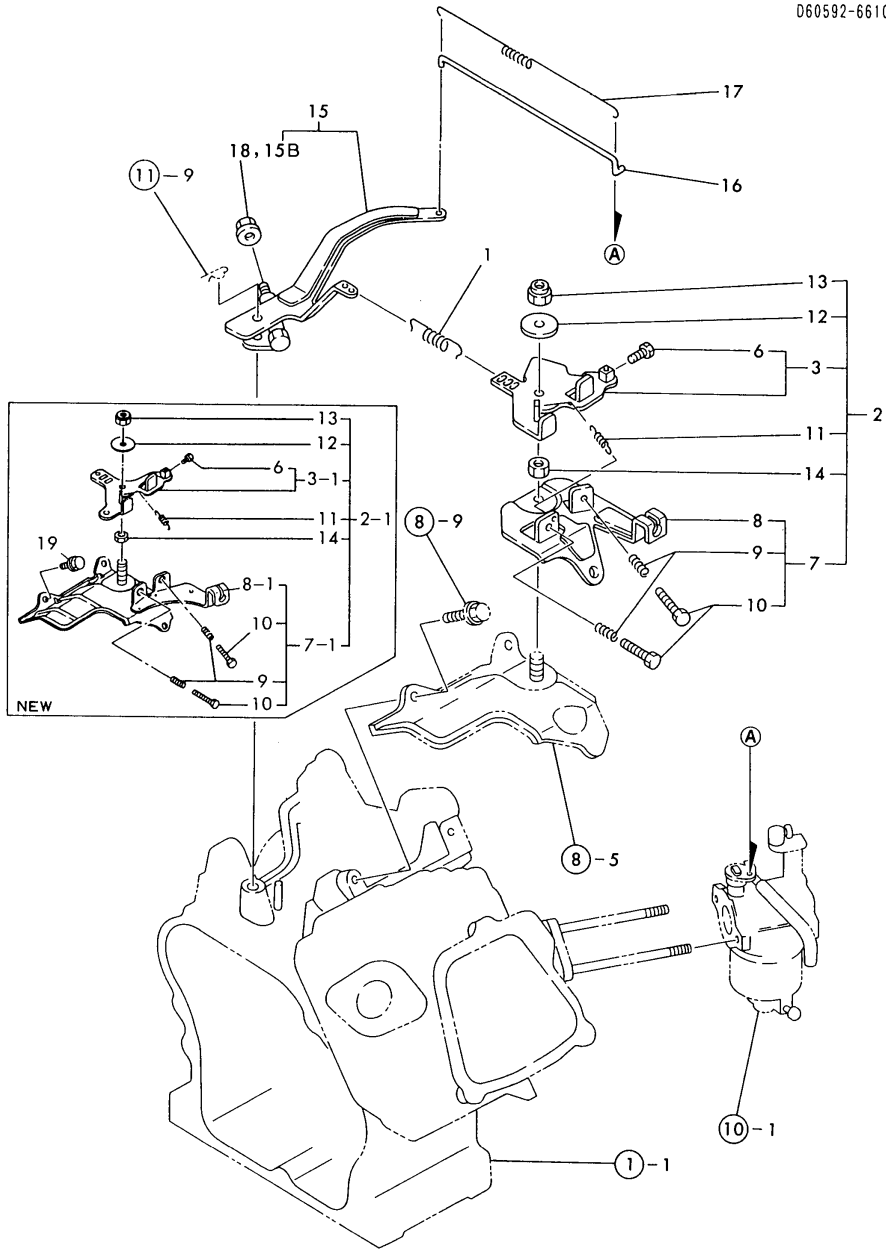
(D)=
(E)=
(F)=

No.	Lev.	Parts No.	Description	Q'ty						I	R
				(A)	(B)	(C)	(D)	(E)	(F)		
1	1	160690-61300	SPINDLE	1							
2	1	160690-61310	SHAFT	1							
3	1	160690-61450	WASHER	1							
4	1	160690-61600	GEAR ASSY, GOVERNOR	1							
8	1	160120-76940	WASHER	1							
9	1	22372-080000	PIN, SNAP 8	1							
10	1	114770-61600	SEAL, OIL	1							W

(A=M/# 22426)

Fig.12. CONTROL DEVICE

D60592-66100



(A)=YES3800

(B)=

(C)=

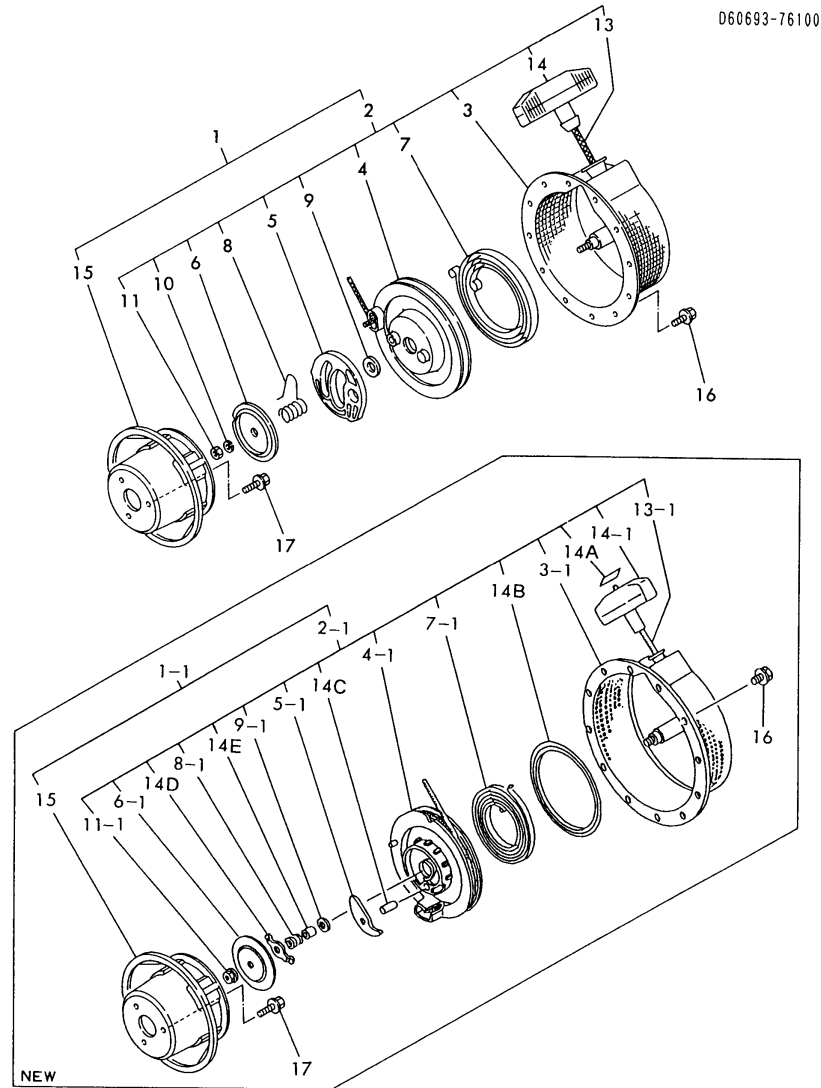
(D)=

(E)=

(F)=

No.	Lev.	Parts No.	Description	Q'ty						I	R
				(A)	(B)	(C)	(D)	(E)	(F)		
1	1	160590-66010	SPRING, GOVERNOR	1							
2	1	160692-66100	CONTROLLER ASSY	1							
2-1	1	160692-66101	CONTROLLER ASSY	1							R
(A=M/# 16328)											
3	2	160692-66050	HANDLE ASSY	1							
3-1	2	160692-66051	LEVER ASSY, CONTROL	1							R
(A=M/# 17304)											
6	3	26117-040088	BOLT M 4X 8 PLATED	1							
7	2	160690-66110	BASE ASSY	1							
7-1	2	160690-66111	BASE ASSY	1							R
(A=M/# 17304)											
8	3	160690-66120	BASE, CONTROL	1							
8-1	3	160690-66140	BASE ASSY	1							N
(A=M/# 17304)											
8-2	3	160690-66141	BASE ASSY	1							N
(A=M/# 22426)											
8-3	3	160690-66142	BASE ASSY	1							N
(A=* 1992.07)											
9	3	160520-66291	SPRING	2							
10	3	26117-040257	BOLT, M4X 25 PLATED	2							
11	2	160664-66220	SPRING, RETURN	1							
12	2	160670-66350	COLLAR	1							
13	2	26347-060002	NUT, M6	1							
14	2	26757-060002	NUT, LOCK M6	1							
15	1	160690-66180	LEVER ASSY, GOVERNOR	1							W
(A=M/# 20567)											
15B	2	26366-060002	NUT, M6	1							W
(A=M/# 20567)											
16	1	160690-66200	LINK, THROTTLE	1							
17	1	160690-66210	SPRING, TENSION	1							
18	1	26366-060002	NUT, M6	1							Z
(A=M/# 20567)											
19	1	26476-060142	SCREW, TAPPING M6X14	3							W
(A=M/# 16328)											

Fig.13. STARTING DEVICE



060693-76100

(A)=YES3800

(B)=

(C)=

(D)=

(E)=

(F)=

No.	Lev.	Parts No.	Description	Q'ty						I	R
				(A)	(B)	(C)	(D)	(E)	(F)		
1	1	160593-76050	STARTER ASSY, RECOIL	1							
1-1	1	160693-76050 (A=*)	STARTER ASSY, RECOIL	1							N
2	2	160593-76250	STARTER ASSY, RECOIL	1							
2-1	2	160693-76250 (A=*)	STARTER ASSY, RECOIL	1							S
3	3	160593-76510	CASE, STARTER	1							
3-1	3	160693-76510 (A=*)	CASE, STARTER	1							S
4	3	160610-76520	REEL	1							
4-1	3	160690-76520 (A=*)	REEL	1							S
5	3	160610-76530	RATCHET	1							
5-1	3	160690-76800 (A=*)	RATCHET	1							S
6	3	160610-76580	PLATE, FRICTION	1							
6-1	3	160690-76580 (A=*)	PLATE, FRICTION	1							S
7	3	160710-76540	SPRING, SPIRAL	1							
7-1	3	160690-76540 (A=*)	SPRING, SPIRAL	1							S
8	3	160610-76560	SPRING, FRICTION	1							
8-1	3	160690-76560 (A=*)	SPRING, FRICTION	1							S
9	3	160610-76550	WASHER, THRUST	1							
9-1	3	160690-76550 (A=*)	WASHER, THRUST	1							S
10	3	22217-060000 (A=*)	WASHER, SPRING 6	1							Z
11	3	26717-060002	NUT, M6	1							
11-1	3	26367-060002 (A=*)	NUT, M6	1							N
13	3	160260-76630	ROPE, STARTER	1							
13-1	3	160690-76630 (A=*)	ROPE, STARTER	1							S
14	3	160769-76620	KNOB, STARTER	1							
14-1	3	160690-76620 (A=*)	KNOB, STARTER	1							S
14A	3	160690-76830 (A=*)	CAP, KNOB	1							W
14B	3	160690-76840 (A=*)	PLATE	1							W
14C	3	160690-76810 (A=*)	PIN, RATCHET	1							W
14D	3	160693-76530 (A=*)	GUIDE, RATCHET	1							W
14E	3	160690-76820 (A=*)	SHAFT	1							W
15	2	160690-76590	PULLEY, STARTER	1							
16	1	26106-060082	BOLT, M6X 8 PLATED	4							
17	1	26106-060122	BOLT, M6X 12 PLATED	3							

N:Old $\xleftrightarrow{\text{Yes/No}}$ New, Q:Old $\xleftrightarrow{\text{No/Yes}}$ New, R:Old $\xleftrightarrow{\text{Yes/No}}$ New, S:Old $\xleftrightarrow{\text{No/Yes}}$ New, W:Add, Z:Discontinued, F:Interchangeable by set, K:Q'ty Change

Fig.15. TOOL & GASKET SET(ENGINE)

(A)=YES3800

(B)=

(C)=

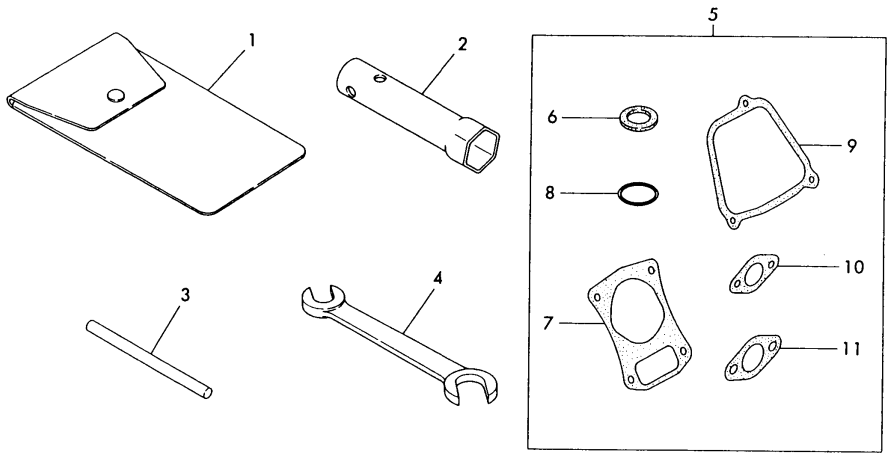
(D)=

(E)=

(F)=

No.	Lev.	Parts No.	Description	Q'ty						I	R
				(A)	(B)	(C)	(D)	(E)	(F)		
1	1	160110-92610	BAG, TOOL	1							
2	1	160120-92700	WRENCH, 21 L86	1							
3	1	160110-92710	HANDLE, WRENCH	1							
4	1	28110-100120	SPANNER, 10X12	1							
5	1	760590-92600	GASKET SET	1							1
6	2	104200-59170	GASKET, 12	3							1
7	2	160590-01330	GASKET, HEAD	1							1
8	2	24311-000180	O-RING, 1AP18.0	2							1
9	2	160690-11310	GASKET, BONNET	1							1
10	2	160610-56150	GASKET, CARBURETOR	3							1
11	2	160690-13200	GASKET, MUFFLER	1							1

060610-92100



Remarks

(1) OPTIONAL PART.

Fig.16. ACCESSOYY

(A)=YES3800

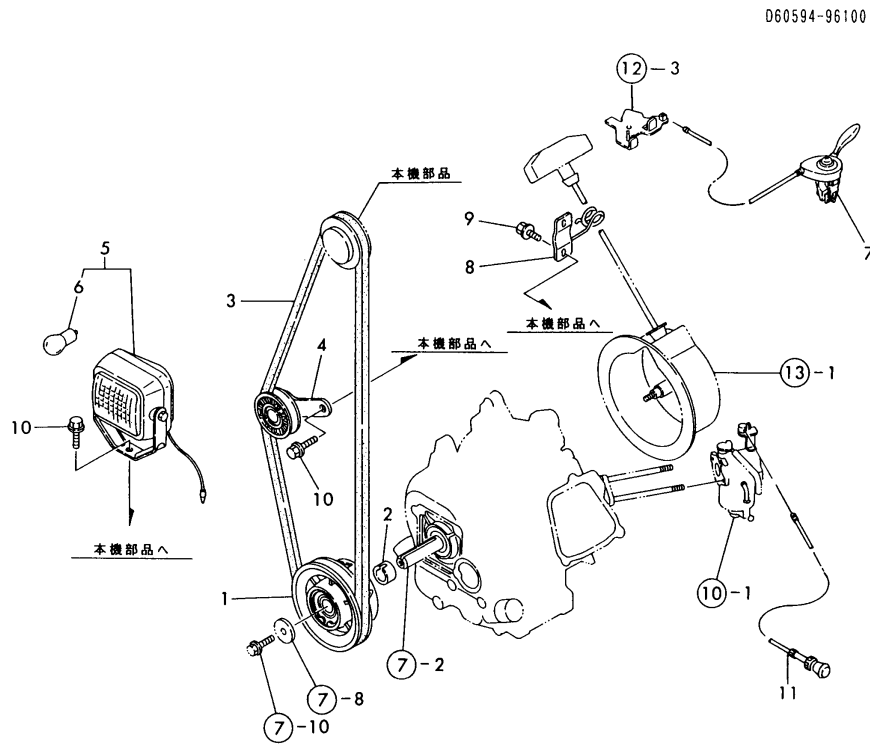
(B)=

(C)=

(D)=

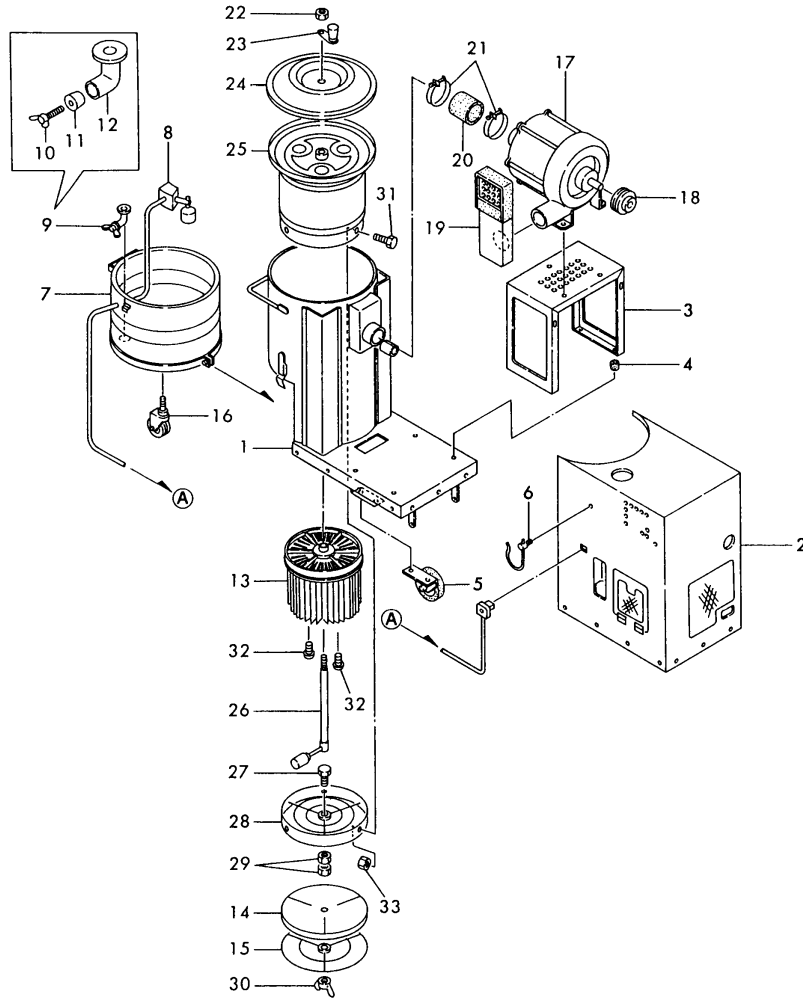
(E)=

(F)=



No.	Lev.	Parts No.	Description	Q'ty						I	R
				(A)	(B)	(C)	(D)	(E)	(F)		
1	1	160594-96010	PULLEY	1							
2	1	160594-96020	COLLAR	1							
3	1	160594-96050	V-BELT	1							
4	1	160594-96060	PULLEY, TENSION	1							
5	1	160594-96100	LAMP	1							
6	2	160594-96110	VALVE	1							
7	1	160594-96150	LEVER ASSY, THROTTLE	1							
8	1	160594-96200	GUIDE, ROPE	1							
9	1	26106-060122	BOLT, M6X 12 PLATED	2							
10	1	26106-080142	BOLT, M8X 14 PLATED	2							
11	1	183101-56900	WIRE ASSY, CHOKE	1							W
(A=*)											

Fig.17. BODY(1)



(A)=YES3800

(B)=

(C)=

(D)=

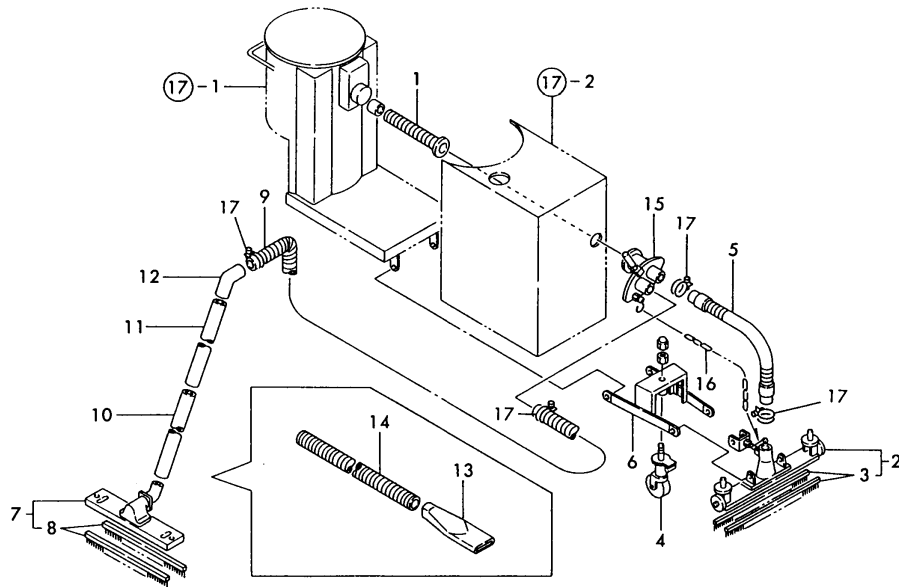
(E)=

(F)=

No.	Lev.	Parts No.	Description	Q'ty						I	R
				(A)	(B)	(C)	(D)	(E)	(F)		
1	1	160594-95020	FRAME	1							
2	1	160594-95030	PANEL	1							
3	1	160594-95040	BASE	1							
4	1	160594-95060	ABSORBER	4							
5	1	160594-95070	WHEEL, 150	2							
6	1	160594-95090	HANGER	6							
7	1	160594-95120	BUCKET	1							
8	1	160594-95130	SWITCH, FLOAT	1							
9	1	160594-95140	COCK, DRAIN	1							
10	2	160594-95640	BOLT	1							
11	2	160594-95630	VALVE	1							
12	2	160594-95620	PIPE	1							
13	1	160594-95150	FILTER ASSY, OIL	1							
14	1	160594-95160	FILTER	1							
15	1	160594-95170	RETAINER	1							
16	1	160594-95180	WHEEL, 75	3							
17	1	160594-95200	CASE	1							
18	1	160594-95210	PULLEY	1							
19	1	160594-95220	MUFFLER	1							
20	1	160594-95230	HOSE	1							
21	1	160594-95240	BAND	2							
22	1	160594-95600	NUT	1							
23	1	160594-95590	HANDLE	1							
24	1	160594-95520	PLATE	1							
25	1	160594-95530	PLATE	1							
26	1	160594-95580	SHAFT	1							
27	1	26116-060162	BOLT, M6X 16 PLATED	1							
28	1	160594-95550	GUARD	1							
29	1	26716-060002	NUT, M6	2							
30	1	26635-060002	NUT, WING M6	1							
31	1	26116-050152	BOLT M 5X 15 PLATED	3							
32	1	26557-040352	SCREW, M4X35	3							
33	1	26716-050002	NUT, M5	3							

Fig.18. BODY(2)

発行No. 000Y00D3331-1
 更新年月: 1993.11
 REVISED: NOV. 1993



(A)=YES3800
 (B)=
 (C)=

(D)=
 (E)=
 (F)=

No.	Lev.	Parts No.	Description	Q'ty						I	R
				(A)	(B)	(C)	(D)	(E)	(F)		
1	1	160594-95110	HOSE	1							
2	1	160594-95300	NOZZLE ASSY	1							
3	2	160594-95340	BRUSH	2							
4	1	160594-95320	WHEEL, LT-75RH	1							
5	1	160594-95310	HOSE	1							
6	1	160594-95270	SUPPORT ASSY	1							
7	1	160594-95350	NOZZLE ASSY	1							
8	2	160594-95370	BRUSH	2							
9	1	160594-95360	HOSE, 2.5M	1							
9A	1	X1605940000	HOSE, 10M	1						W	1
		(A=*)									
10	1	160594-95400	PIPE	1							
11	1	160594-95410	PIPE	1							
12	1	160594-95420	PIPE	1							
13	1	160594-95430	NOZZLE	1							
14	1	160594-95440	BRUSH	1							
15	1	160594-95100	VALVE ASSY	1							
16	1	160594-95330	CHAIN	1							
17	1	X1751523000	HOSE BAND	4						W	
		(A=*)									

Remarks
 (1) OPTIONAL PART.

Parts No. Index

Parts No.	Fig. No.	Ref. No.
104200-59170	1	8
		16
		24
	15	6
106990-44660	9	16
114250-12520	5	2
114250-12540	5	4
114250-12550	5	7
114250-12560	5	6
114770-61600	11	10
124060-77680	9	19
124722-59050	9	14
160110-01870	1	22
160110-92610	15	1
160110-92710	15	3
160120-76940	11	8
160120-92700	15	2
160210-55360	9	12
160210-55370	9	13
160210-55390	9	11
160260-76630	13	13
160310-14550	7	8
160310-56980	10	15
160310-56990	10	16
160360-78700	14	11
160393-55050	9	5
160490-14200	6	11 -1
160510-14560	6	7
160510-56740	10	7
160520-07270	3	5
160520-07271	3	5 -1
160520-07272	3	5 -2
160520-66291	12	9
160590-01330	1	9
	15	7
160590-07040	3	2
160590-07120	3	3 -1
160590-11010	4	2
160590-11100	4	6
160590-11110	4	7
160590-14400	6	12
160590-14570	6	8 -2
160590-21200	7	4
160590-21210	7	5
160590-22010	7	11
160590-22011	7	11 -1
160590-22300	7	17
160590-45210	8	4
160590-45211	8	4 -1
160590-66010	12	1

Parts No.	Fig. No.	Ref. No.
160590-78530	14	6
160590-78531	14	6 -1
160590-78532	14	6 -2
160592-56540	10	3
160593-45110	8	2
160593-76050	13	1
160593-76250	13	2
160593-76510	13	3
160593-78062	14	4
160593-78071	14	4 -1
160593-78502	14	5
160593-78510	14	5 -1
160593-78620	14	7
160594-07950	3	4
160594-07960	3	6
160594-07970	3	7
160594-07980	3	8
160594-12500	5	1
160594-13510	5	11
160594-13550	5	12
160594-13560	5	13
160594-14060	6	1
160594-55150	9	8
160594-55151	9	8 -1
160594-56020	10	1
160594-56590	10	19
160594-56770	10	25
160594-78200	14	13
160594-78210	14	19
160594-78220	14	20
160594-95020	17	1
160594-95030	17	2
160594-95040	17	3
160594-95060	17	4
160594-95070	17	5
160594-95090	17	6
160594-95100	18	15
160594-95110	18	1
160594-95120	17	7
160594-95130	17	8
160594-95140	17	9
160594-95150	17	13
160594-95160	17	14
160594-95170	17	15
160594-95180	17	16
160594-95200	17	17
160594-95210	17	18
160594-95220	17	19
160594-95230	17	20
160594-95240	17	21

Parts No.	Fig. No.	Ref. No.
160594-95250	14	23
160594-95270	18	6
160594-95300	18	2
160594-95310	18	5
160594-95320	18	4
160594-95330	18	16
160594-95340	18	3
160594-95350	18	7
160594-95360	18	9
160594-95370	18	8
160594-95400	18	10
160594-95410	18	11
160594-95420	18	12
160594-95430	18	13
160594-95440	18	14
160594-95520	17	24
160594-95530	17	25
160594-95550	17	28
160594-95580	17	26
160594-95590	17	23
160594-95600	17	22
160594-95620	17	12
160594-95630	17	11
160594-95640	17	10
160594-96010	16	1
160594-96020	16	2
160594-96050	16	3
160594-96060	16	4
160594-96100	16	5
160594-96110	16	6
160594-96150	16	7
160594-96200	16	8
160610-01690	1	7
		15
160610-02220	1	5
		13
160610-04201	1	20
160610-04570	4	1
160610-04910	7	1
160610-21290	7	6
160610-55100	9	6
160610-56150	5	8
	10	34
	15	10
160610-56610	10	20
160610-56611	10	24
160610-56630	10	13
160610-56900	10	28
160610-76520	13	4
160610-76530	13	5

Parts No.	Fig. No.	Ref. No.
160610-76550	13	9
160610-76560	13	8
160610-76580	13	6
160611-77250	14	21
160640-02220	1	13 -1
160640-56850	10	27
160664-66220	12	11
160667-56750	10	30
160670-66350	12	12
160690-03050	2	1
160690-07100	3	3
160690-11120	4	8
160690-11180	4	9
160690-11200	4	10
160690-11220	4	11
160690-11221	4	11 -1
160690-11270	4	12
160690-11271	4	12 -1
160690-11280	4	13
160690-11290	4	14
160690-11300	2	3
160690-11310	2	4
	15	9
160690-13200	5	10
	15	11
160690-14200	6	11
160690-14530	6	7 -1
160690-14531	6	7 -2
160690-14560	6	8
160690-14570	6	8 -1
160690-45011	8	1
160690-45200	8	3
160690-45220	8	5
160690-56160	10	35
160690-61300	11	1
160690-61310	11	2
160690-61450	11	3
160690-61600	11	4
160690-66110	12	7
160690-66111	12	7 -1
160690-66120	12	8
160690-66140	12	8 -1
160690-66141	12	8 -2
160690-66142	12	8 -3
160690-66180	12	15
160690-66200	12	16
160690-66210	12	17
160690-76520	13	4 -1
160690-76540	13	7 -1
160690-76550	13	9 -1

Parts No. Index

Parts No.	Fig. No.	Ref. No.
160690-76560	13	8 -1
160690-76580	13	6 -1
160690-76590	13	15
160690-76620	13	14 -1
160690-76630	13	13 -1
160690-76800	13	5 -1
160690-76810	13	14 C
160690-76820	13	14 E
160690-76830	13	14 A
160690-76840	13	14 B
160690-78010	14	1
160690-78210	14	8
160690-78230	14	6 A
160690-78650	14	9
160690-78660	14	10
160692-56530	10	6
160692-56560	10	36
160692-56640	10	14
160692-56650	10	17
160692-56670	10	22
160692-56700	10	33
160692-56710	10	8
160692-56770	10	32
160692-66050	12	3
160692-66051	12	3 -1
160692-66100	12	2
160692-66101	12	2 -1
160693-12630	5	3
160693-12930	5	5
160693-76050	13	1 -1
160693-76250	13	2 -1
160693-76510	13	3 -1
160693-76530	13	14 D
160700-78040	14	2
160700-78050	14	3
160700-78720	14	14
160702-55280	9	7
160702-56720	10	31
160710-01760	1	17
		17 -1
160710-23201	7	21
160710-55061	9	3
160710-76540	13	7
160710-78710	9	20
160720-59361	9	18
160762-55300	9	9
160769-56620	10	12
160769-56640	10	21
160769-56660	10	23
160769-76620	13	14

Parts No.	Fig. No.	Ref. No.
160802-01700	1	23
160810-03180	2	2 -1
160810-55380	9	10
160810-56580	10	18
160810-56670	10	4
160820-03180	2	2
160903-56670	10	5
160992-59350	9	17
181230-56380	10	9
		29
183101-56900	16	11
22217-060000	13	10
22252-000130	7	18
22312-080120	1	4
22372-080000	11	9
22512-040120	6	10
22512-040160	7	7
22512-050240	7	9
24101-062040	1	6
		12
24311-000180	1	19
		19 -1
	15	8
26023-040102	14	15
26106-060082	5	14
	13	16
26106-060122	9	15
	13	17
	16	9
26106-060202	2	5
26106-060352	2	6
26106-080122	5	16
26106-080142	16	10
26106-080202	7	10
26116-050152	17	31
26116-060162	17	27
26117-040088	10	26
	12	6
26117-040257	12	10
26216-080182	4	15
26347-060002	12	13
26366-060002	5	9
	12	15 B
		18
26366-080002	5	17
	14	22
26367-060002	13	11 -1
26476-060142	5	15
	8	6
		7

Parts No.	Fig. No.	Ref. No.
26476-060142	8	8
		9
	12	19
	14	18
26476-060252	1	21
26476-060302	14	16
		17
26557-040352	17	32
26635-060002	17	30
26716-050002	17	33
26716-060002	17	29
26717-060002	13	11
26757-060002	12	14
28110-100120	15	4
29610-000650	14	24
29610-000950	14	12
760590-01561	1	1
760590-22500	7	13
760590-22501	7	13 -1
760590-23700	7	19
760590-92600	15	5
760594-01510	1	10
760594-21710	7	2
760594-55700	9	1
X1605940000	18	9 A
X1751523000	18	17

Parts No.	Fig. No.	Ref. No.
-----------	----------	----------