

0CD10-M32703EN

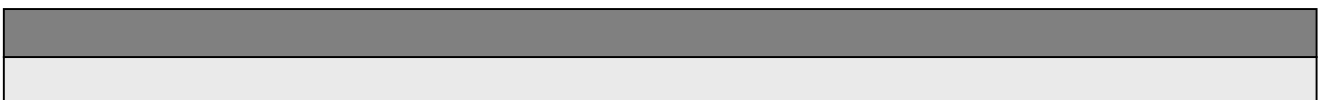
PREFACE

1. This Parts Catalog is the 1st edition of NFAD6-L(E)IK1 Diesel Engine for ISEKI NOHKI.

Pub. No. : 000Y00D3273
Published : September, 1992

2. Model name

Engine model	Vehicle		Vehicle made by
	Products	Model name	
NFAD6-L(E)IK1	—	—	ISEKI NOHKI



How to read this Parts Catalog.

1. Parts mentioned in Parts Catalog may not necessarily be standard equipping parts
2. Parts change may be made without prior notice.
3. Form of this Parts Catalog.

REF.	LEV.	PARTS No.	DESCRIPTION	QTY						I	R
				(A)	(B)	(C)	(D)	(E)	(F)		
1		729595-51390	FUEL INJECTION PUMP		1	1	1	1			
1-1	1	729595-51391	FUEL INJECTION PUMP	1	1	1	1	1		N	1
3	2	26022-060162	SCREW M 6X16		9	9	9	9	9		
1 3-1	2	26022-060162	SCREW M 6X16		4	4	4	4	4		K
4	2	129470-51040	CAMSHFT		9	9	9	9	9		
5	2	122710-51050	BEARING. ROLLER		9	9	9	9	9		
6	2	129470-51060	RETAINER		9	9	9	9	9		

Remarks	
(1)	BOOST COMPEMSATOR TYPE. OPTIONAL PART. TO E#00155 (4JH-DT, 4JH-DTZ)

① Ref. No.

The Ref. No. in the list may not be in accordance with the Ref. No. on illustration.

(Ex.) illustration No, List heed No,

1 1 (Before change) → 1-1 (After change)

When interchangeable symbol N, and k, illustrations for the new parts are sometimes omitted.

② Lev. (Level)

Indication and Meaning of Level

Level Hereunder is given the relation among the number of number (1,2,3) the level and the nominal parent-child relationship.

1 ---- Parent parts (Assembly parts)

2 ---- Child parts included in " 1 " (Semi-Assembly parts, component parts of Assembly parts.)

3 ---- Child parts included in " 2 ", Grand-child parts in terms of " 1 ".

(Component parts of Semi-Assembly parts.)

Note) A parts of non-sale parts are illustrated but not listed.




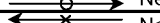
③ Change Mark

Change Mark " I " is given to the part for which a design change was made at this time.

The design change was not shown in the last published Parts Catalog.

④ Interchangeability Mark

In the case where a part change took place, one of the following interchangeability marks is indicated for that part

Symbol	Interchangeability	Contents note
N	Old ←  New	New Part is interchangeable for Old Part but not interchangeable conversely.
Q	Old ←  New	New Part is not interchangeable for Old Part but interchangeable conversely.
R	Old ←  New	New Part is interchangeable for Old Part and vice versa.
S	Old ←  New	New Part is not interchangeable for Old Part and vice versa.
W		Part newly added.
Z		Part discontinued.
F		Not interchangeable single part but interchangeable by set of the related parts.
K		Changed only in quantity used.

⑤ Effective Machine No.

When a part is changed, Effective Machine No. of a Model for which the part is applicable is indication

In each column of (A)-(F).

Product Symbol	Product No.	Product Symbol	Product No.
C	Clutch No, Compressor No,	M	Machine No,
D	Drive No,	T	Tractor No,
E	Engine No,	Note 1)※	Date

Note 1) Date may follow the symbol in some cases. (Ex.) ※1996.01

Note 2) As far as engine models shown by " XXX " are concerned, the modification of the parts could not be Predicted or the engine models themselves could not be identified.

Note 3) (A=E/#00185) means that the design change on the part has been effective for the model at the, column (A) (in the case, for 4JH-DT) on and from E/(Engine Serial Number) 00185

⑥ Remarks Mark

Figures or alphabets (Symbols) are entered in the remark column.

The comments (remarks) on the pertinent parts are indicated in the lower part of the list by the same symbols a those stated above.

Contents

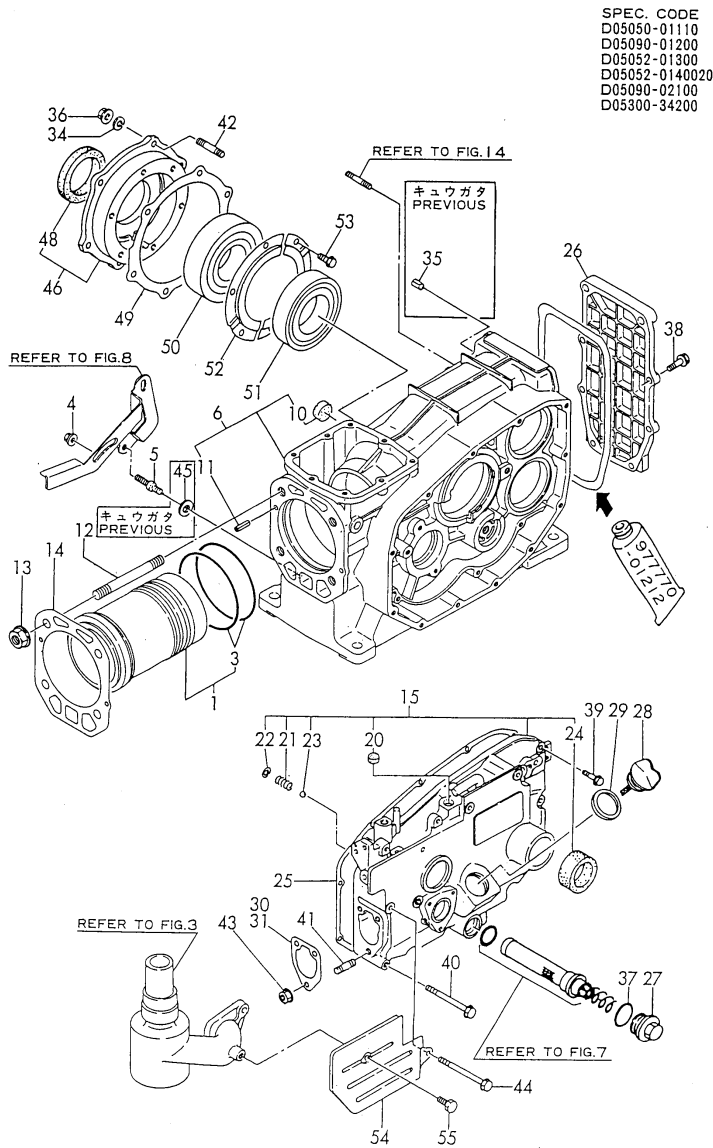
Fig. No. Fig. Name

ENGINE NFAD6-L(E)IK1

1. CYLINDER BLOCK
2. CYLINDER HEAD & BONNET
3. AIR CLEANER & MUFFLER
4. CAMSHAFT
5. CRANKSHAFT & FLYWHEEL
6. PISTON & CONNECTING ROD
7. LUB. OIL SYSTEM & BREATHER
8. RADIATER & FAN
9. FUEL INJECTION PUMP
10. FUEL OIL SYSTEM
11. FUEL TANK
12. HAND STARTING DEVICE
13. GOVERNOR & CONTROL DEVICE
14. STARTING MOTOR
15. LIGHTING DEVICE
16. TOOL & LABEL
17. TOOL (OPTIONAL)

Fig. No. Fig. Name

Fig.1. CYLINDER BLOCK



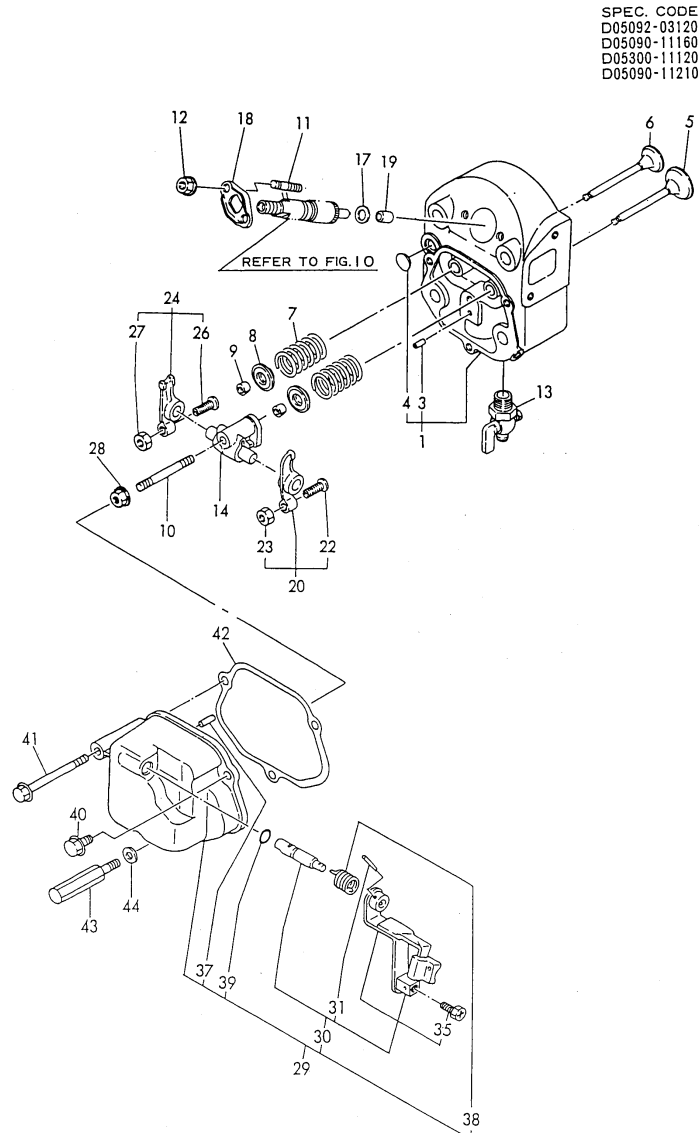
(A)=NFAD6-LIK1
 (B)=NFAD6-LEIK1
 (C)=

(D)=
 (E)=
 (F)=

No.	Lev.	Parts No.	Description	Qty						I	R
				(A)	(B)	(C)	(D)	(E)	(F)		
1	1	705090-01900	LINER ASSY, CYLINDER	1	1						
3	2	105090-01300	O-RING	2	2						\$
4	1	26366-060002	NUT, M6	1	1						
5	1	105100-44930	BOLT	1	1						
6	1	705090-01560	BLOCK ASSY, CYLINDER	1	1						
10	2	105215-01670	SEAL, 20	1	1						
11	2	22351-060012	PIN, SPRING 6.0X12	2	2						
12	1	105215-01200	BOLT, HEAD M12	4	4						
13	1	121450-01220	NUT, CYLINDER HEAD	4	4						
14	1	105090-01330	GASKET, HEAD	1	1						\$
15	1	705092-01500	CASE ASSY, GEAR	1	1						
20	2	105100-01660	PLUG, 14	1	1						
21	2	105300-34040	SPRING	1	1						
22	2	22252-000100	RING, 10	1	1						
23	2	24190-120001	BALL, STEEL 3/8	1	1						
24	2	105140-76500	SEAL, TCX25X35X6	1	1						
25	1	105090-01410	GASKET, GEAR CASE	1	1						\$
26	1	105090-01480	COVER	1	1						
27	1	105300-01690	PLUG	1	1						
28	1	105090-01750	CAP	1	1						
29	1	101104-01760	GASKET, CAP	1	1						\$
30	1	105300-01920	SHIM, T=0.1	1	1						
31	1	104271-01950	SHIM SET, 0.2X3, 0.3X2	1	1						
34	1	22217-080000	WASHER, SPRING 8	6	6						
35	1	22351-060012	PIN, SPRING 6.0X12		1						Z
		(B=EXXX)									
36	1	26716-080002	NUT, M8	6	6						
37	1	24321-000250	O-RING, 1AG25.0	1	1						
38	1	26106-060202	BOLT, M6X 20 PLATED	6	6						
39	1	26106-060302	BOLT, M6X 30 PLATED	6	6						
40	1	26106-060552	BOLT, M6X 55 PLATED	1	1						
41	1	26216-080222	STUD, M8X 22	3	3						
42	1	26226-080222	STUD, M8X 22	6	6						
43	1	26366-080002	NUT, M8	3	3						
44	1	26106-060652	BOLT, M6X 65 PLATED	4	4						
45	1	160120-76940	WASHER	1	1						Z
		(A=EXXX)	(B=EXXX)								
46	1	705090-02500	HOUSING ASSY, METAL	1	1						
48	2	111130-02160	SEAL, TC35508	1	1						
49	1	105090-02020	GASKET	1	1						\$
50	1	105100-02300	BEARING, 6308-SH2-C3	1	1						
51	1	105100-02310	BEARING, 6208-SH2-C3	1	1						
52	1	106100-02331	RETAINER, BEARING	2	2						
53	1	26116-050082	BOLT, M5X 8 PLATED	6	6						
54	1	105092-01420	COVER	1	1						
55	1	26013-060102	BOLT, M6X 10	1	1						

Remarks
 (\$) ORDER BY FIG NO.16-16

Fig.2. CYLINDER HEAD & BONNET



(A)=NFAD6-LIK1
(B)=NFAD6-LEIK1
(C)=

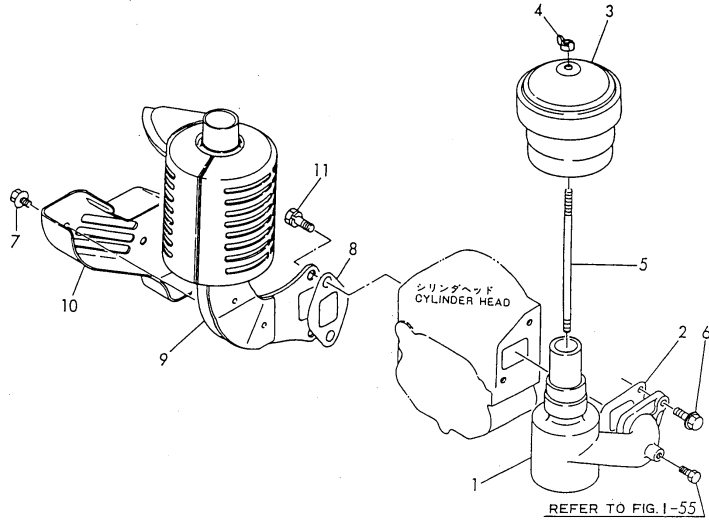
(D)=
(E)=
(F)=

No.	Lev.	Parts No.	Description	Q'ty						I	R
				(A)	(B)	(C)	(D)	(E)	(F)		
1	1	705090-11700	HEAD ASSY, CYLINDER	1	1						
3	2	105300-11330	PIN	1	1						
4	2	27231-150000	PLUG 15	1	1						
5	1	105090-11100	VALVE, INTAKE	1	1						
6	1	105090-11111	VALVE, EXHAUST	1	1						
7	1	105400-11121	SPRING, VALVE	2	2						
8	1	101158-11180	RETAINER, SPRING	2	2						
9	1	27310-070001	COTTER, 7	2	2						
10	1	26216-080452	STUD, M8X 45	1	1						
11	1	26216-060402	STUD, M6X 40	2	2						
12	1	26366-060002	NUT, M6	2	2						
13	1	105010-11920	COCK, WATER	1	1						
14	1	105090-11290	SUPPORT ASSY, ARM	1	1						
17	1	119625-11880	SEAT, NOZZLE	1	1						
18	1	105300-11900	RETAINER	1	1						
19	1	119625-11870	PROTECTOR, NOZZLE	1	1						\$
20	1	105090-11650	ARM, ROCKER	1	1						
22	2	101158-11230	SCREW, VALVE ADJUST	1	1						
23	2	26756-080002	NUT, LOCK M8	1	1						
24	1	105090-11660	ARM, ROCKER	1	1						
26	2	101158-11230	SCREW, VALVE ADJUST	1	1						
27	2	26756-080002	NUT, LOCK M8	1	1						
28	1	26366-080002	NUT, M8	1	1						
29	1	705092-11520	BONNET ASSY, HEAD	1	1						
30	2	705092-03550	LEVER ASSY	1	1						
31	3	22322-030180	PIN, TAPER 3X18	1	1						
35	4	105225-66990	SCREW, M5X8.5	1	1						
37	2	22312-030180	PIN, PARALLEL M3X18	1	1						
38	2	104200-03641	SPRING, DECOMPRESSION	1	1						
39	2	24311-000070	O-RING, 1AP7.0	1	1						\$
40	1	26106-060202	BOLT, M6X 20 PLATED	1	1						
41	1	26106-060602	BOLT, M6X 60 PLATED	1	1						
42	1	105090-11310	GASKET, BONNET	1	1						\$
43	1	105090-11820	BOLT	1	1						
44	1	22117-060000	WASHER, 6	1	1						

Remarks
(\$) ORDER BY FIG NO.16-16

Fig.3. AIR CLEANER & MUFFLER

SPEC. CODE
D05092-1212025
D05092-12210
D05098-13100



(A)=NFAD6-LIK1
(B)=NFAD6-LEIK1
(C)=

(D)=
(E)=
(F)=

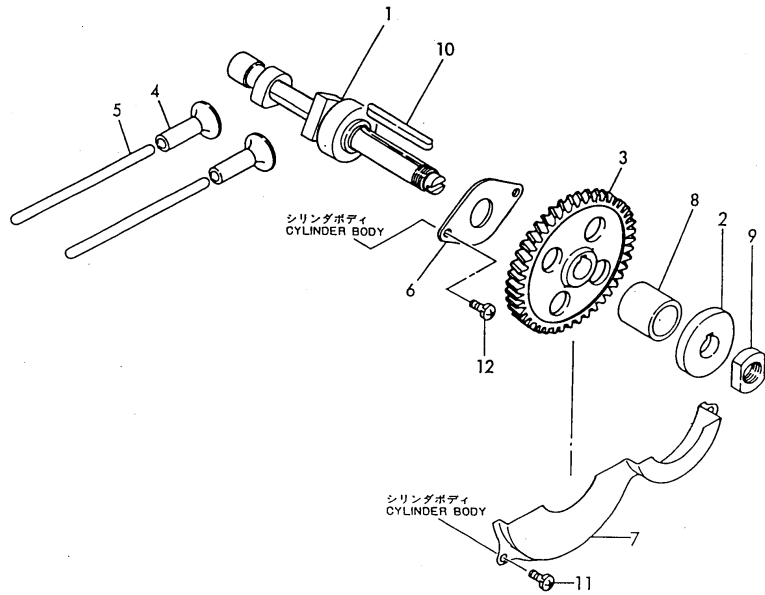
No.	Lev.	Parts No.	Description	Q'ty						I	R
				(A)	(B)	(C)	(D)	(E)	(F)		
1	1	105092-12021	PIPE, AIR INTAKE	1	1						
2	1	105190-12050	GASKET	1	1						
3	1	105092-12511	CLEANER, AIR	1	1						
4	1	105092-12550	NUT	1	1						
5	1	105092-12560	BOLT	1	1						
6	1	26106-080202	BOLT, M8X 20 PLATED	2	2						
7	1	160260-01580	BOLT, FLANGE M6X6	2	2						
8	1	105010-13200	GASKET	1	1						\$
9	1	105098-13520	SILENCER ASSY	1	1						
10	1	105090-13550	COVER	1	1						
11	1	26013-080209	BOLT, M8X 20	2	2						
11-1	1	26013-080189	BOLT, M8X 18	2	2						N

(A=E018778) (B=E018778)

Remarks
(\$) ORDER BY FIG NO.16-16

Fig.4. CAMSHAFT

SPEC. CODE
D05090-14110
D05092-14130



(A)=NFAD6-LIK1
(B)=NFAD6-LEIK1
(C)=

(D)=
(E)=
(F)=

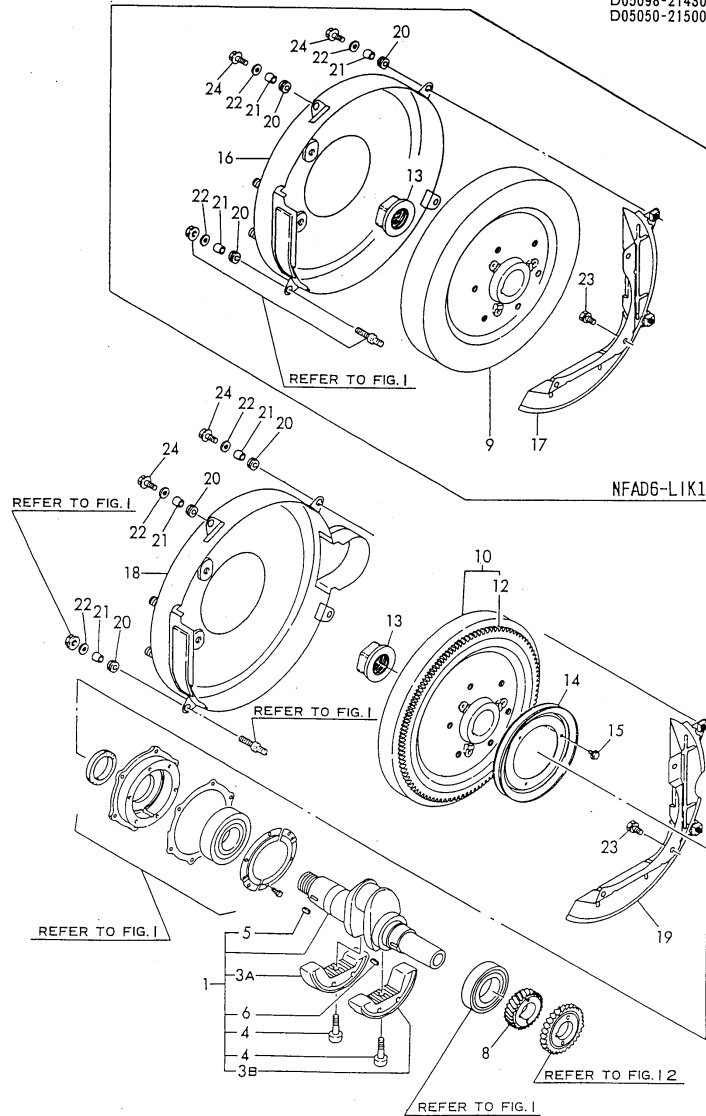
No.	Lev.	Parts No.	Description	Q'ty						I	R
				(A)	(B)	(C)	(D)	(E)	(F)		
1	1	105090-14010	CAMSHAFT	1	1						
2	1	105090-14091	CAM, FUEL	1	1						
3	1	105090-14100	GEAR, CAMSHAFT	1	1						
4	1	105300-14200	TAPPET	2	2						
5	1	105090-14400	ROD, PUSH	2	2						
6	1	105090-14420	RETAINER, BEARING	1	1						
7	1	105090-14600	COVER	1	1						
8	1	105092-14700	SPACER	1	1						
9	1	104300-76460	NUT	1	1						
10	1	22512-070500	KEY, 7X 50	1	1						
11	1	26022-060122	SCREW, M6X12	2	2						
12	1	26557-060142	SCREW M 6X 14	2	2						

Fig.5. CRANKSHAFT & FLYWHEEL

(A)=NFAD6-LIK1
 (B)=NFAD6-LEIK1
 (C)=

(D)=
 (E)=
 (F)=

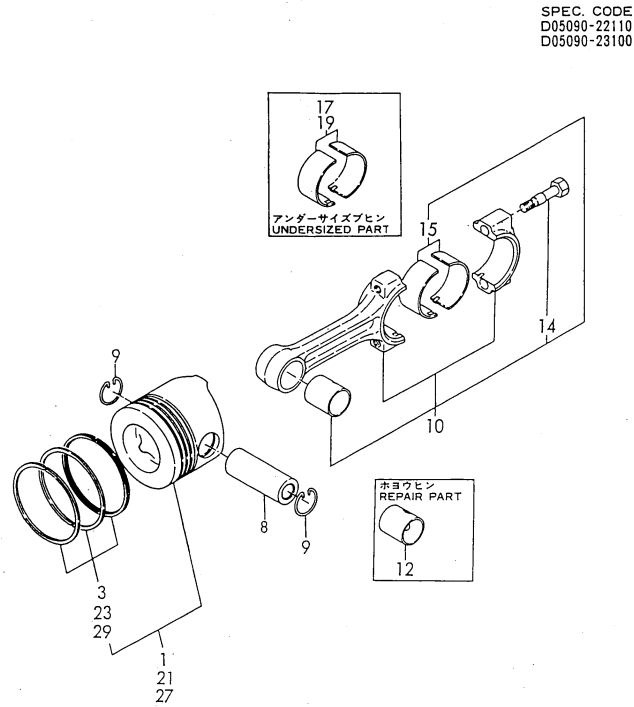
SPEC. CODE
 D05092-21110
 D05050-21200
 D05090-21200.
 D05098-2142025
 D05098-2143025
 D05050-21500



No.	Lev.	Parts No.	Description	Q'ty						I	R
				(A)	(B)	(C)	(D)	(E)	(F)		
1	1	705092-21700	CRANKSHAFT ASSY	1	1						M
1-1	1	705092-21710	CRANKSHAFT ASSY	1	1						
3A	2	105092-21700	WEIGHT, BALANCE	1	1						
3B	2	105092-21710	WEIGHT, BALANCE	1	1						
4	2	105092-21130	BOLT, BALANCE WEIGHT	2	2						
5	2	22512-050140	KEY, 5X 14	1	1						
6	2	22512-050140	KEY, 5X 14	1	1						
8	1	105090-21200	GEAR, CRANKSHAFT	1	1						
9	1	105090-21401	FLYWHEEL	1							
10	1	105090-21591	FLYWHEEL ASSY		1						
12	2	104511-21600	GEAR, RING		1						
13	1	105010-21530	NUT, END	1	1						
14	1	104407-21600	V-PULLEY		1						
15	1	26106-060122	BOLT, M6X 12 PLATED	3	3						
16	1	105098-21300	COVER, FLYWHEEL	1							
17	1	105092-21310	SUPPORT		1						
18	1	105098-21360	COVER, FLYWHEEL			1					
19	1	105092-21360	SUPPORT			1					
20	1	105300-21381	ABSORBER	4	4						
21	1	105300-44460	COLLAR	4	4						
22	1	160120-76940	WASHER	4	4						
23	1	26013-060142	BOLT, M6X 14	3	3						
24	1	26106-060202	BOLT, M6X 20 PLATED	3	3						

Remarks
 (M) MISPRINT:REFER TO THE NEXT ITEM.

Fig.6. PISTON & CONNECTING ROD



SPEC. CODE
D05090-22110
D05090-23100

(A)=NFAD6-LIK1
(B)=NFAD6-LEIK1
(C)=

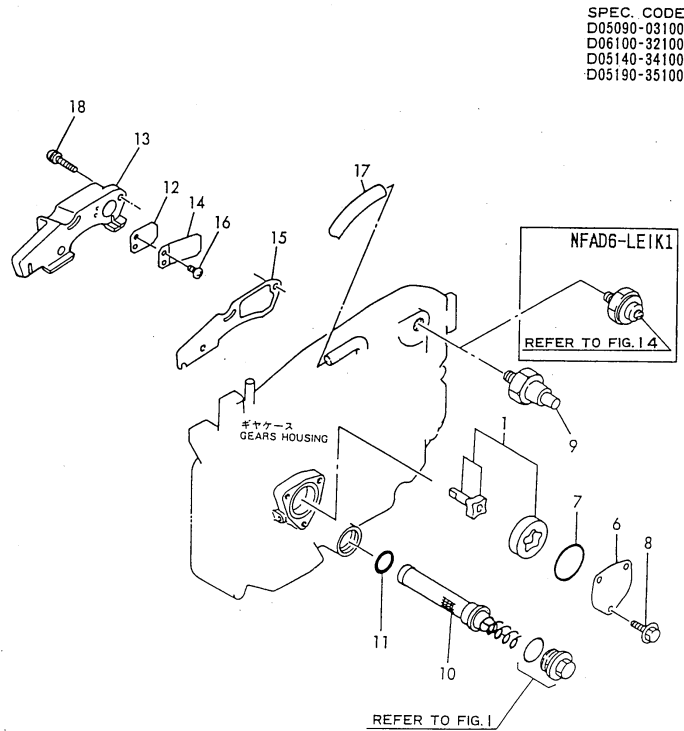
(D)=
(E)=
(F)=

No.	Lev.	Parts No.	Description	Q'ty						I	R
				(A)	(B)	(C)	(D)	(E)	(F)		
1	1	105090-22190	PISTON ASSY	1	1						
3	2	705090-22501	RING SET, PISTON	1	1						
8	1	124950-22300	PIN, PISTON	1	1						
9	1	105090-22400	CIRCLIP	2	2						
10	1	705090-23100	ROD ASSY, CONNECTING	1	1						
12	2	105090-23910	BEARING, PISTON PIN	1	1						
14	2	105225-23200	BOLT, CONNECTING ROD	2	2						
15	2	705090-23600	BEARING, CRANK PIN	1	1						
17	1	705090-23610	BEARING ASSY, 0.25	1	1						1
19	1	705090-23620	BEARING, 0.50 US	1	1						2
21	1	105090-22470	PISTON ASSY, 0.25 OS	1	1						3
23	2	105090-22510	RING SET, 0.25 OS	1	1						3
27	1	105090-22480	PISTON ASSY, 0.50 OS	1	1						4
29	2	105090-22520	RING SET, 0.50 OS	1	1						4

Remarks

- (1) UNDER SIZE(U.S=0.25)PART.
- (2) UNDER SIZE(U.S=0.50)PART.
- (3) OVER SIZE(O.S=0.25)PART.
- (4) OVER SIZE(O.S=0.50)PART.

Fig.7. LUB. OIL SYSTEM & BREATHER



(A)=NFAD6-LIK1
 (B)=NFAD6-LEIK1
 (C)=

(D)=
 (E)=
 (F)=

No.	Lev.	Parts No.	Description	Q'ty						I	R
				(A)	(B)	(C)	(D)	(E)	(F)		
1	1	104300-32150	ROTOR ASSY, INNER	1	1						
6	1	103338-32070	COVER	1	1						
7	1	103338-32570	O-RING	1	1						\$
8	1	26106-060122	BOLT, M6X 12 PLATED	3	3						
9	1	105140-34100	INDICATOR	1							
10	1	105190-35050	STRAINER ASSY, OIL	1	1						
11	1	24341-000200	O-RING, 1AS20.0	1	1						\$
12	1	101158-03061	VALVE	1	1						
13	1	105090-03081	COVER, BREATHER	1	1						
14	1	101158-03111	RETAINER	1	1						
15	1	105090-03131	GASKET	1	1						
16	1	105362-78960	SCREW, M4X8	2	2						
17	1	23064-090370	PIPE, 9X 370	1	1						
18	1	26023-060252	SCREW, M6X25	2	2						

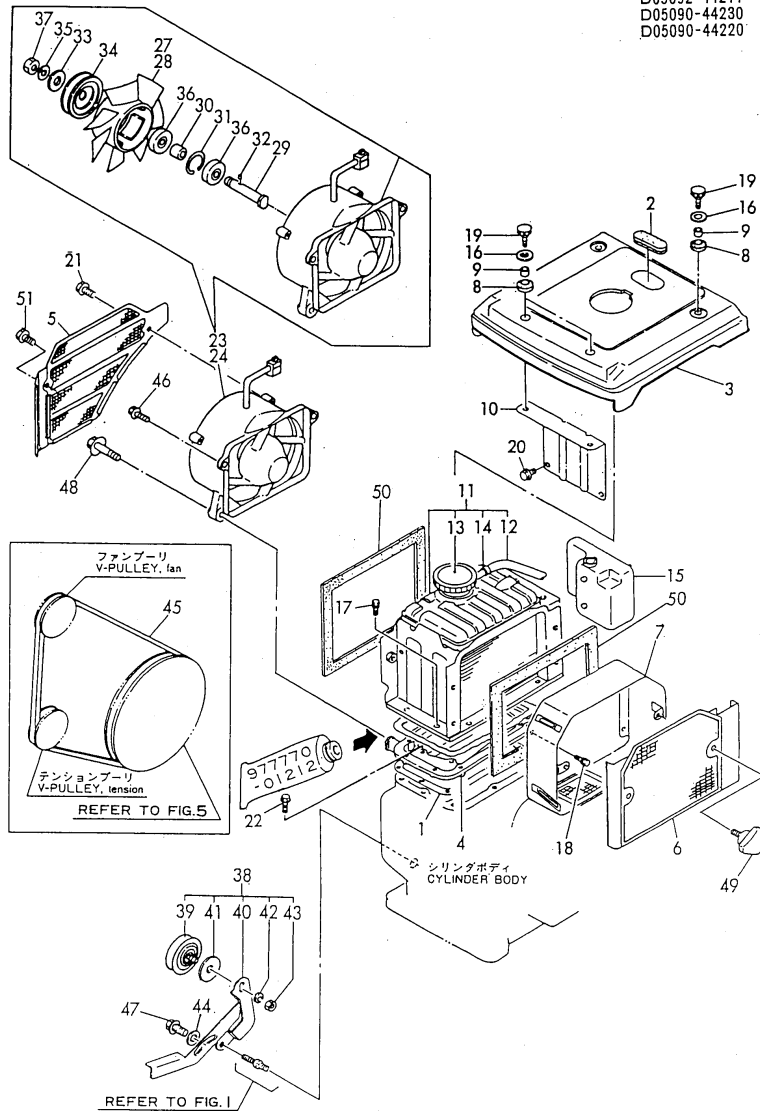
Remarks
 (\$) ORDER BY FIG NO.16-16

Fig.8. RADIATER & FAN

(A)=NFAD6-LIK1
 (B)=NFAD6-LEIK1
 (C)=

(D)=
 (E)=
 (F)=

SPEC. CODE
 D05050-44140
 D05098-44140
 D05092-44240CB
 D05090-44300CB
 D05092-44211
 D05090-44230
 D05090-44220

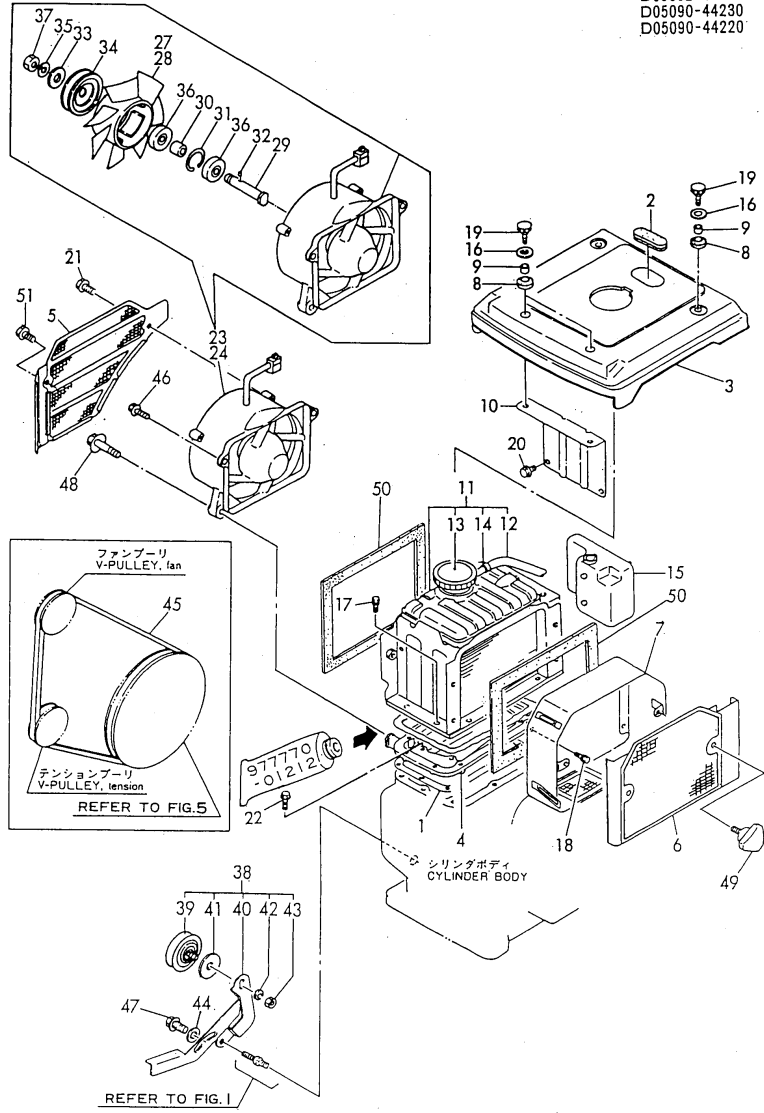


No.	Lev.	Parts No.	Description	Q'ty						I	R
				(A)	(B)	(C)	(D)	(E)	(F)		
1	1	105090-44050	GASKET	1	1						
2	1	105300-44220	COVER, RADIATOR	1	1						
3	1	105090-44251	COVER, RADIATOR	1	1						
3-1	1	105090-44251-1 (A=E027438) (B=E027438)	COVER, RADIATOR	1	1						S
4	1	105090-44300	BRACKET, RADIATOR	1	1						
5	1	105090-44330	SCREEN	1	1						
5-1	1	105090-44330-1 (A=E027438) (B=E027438)	SCREEN	1	1						S
6	1	105092-44350	SCREEN	1	1						
6-1	1	105092-44350-1 (A=E027438) (B=E027438)	SCREEN	1	1						S
7	1	105092-44360	DUCT, SCREEN	1	1						
8	1	105300-44451	ABSORBER	2	2						
9	1	105300-44460	COLLAR	2	2						
10	1	105090-44490	STAY	1	1						
11A	1	105098-44500	RADIATOR ASSY	1							
11B	1	105050-44500	RADIATOR ASSY		1						
12	2	105340-44570	PIPE, 7X170	1	1						
13	2	105198-44590	CAP, RADIATOR	1	1						
14	2	121250-44590	CLAMP	1	1						
15	1	105100-44630	TANK, SUB	1	1						
16	1	160120-76940	WASHER	4	4						
17	1	26013-060162	BOLT, M6X 16	9	9						
18	1	26013-060149	BOLT, M6X 14	4	4						
18-1	1	26013-060129 (A=E018167) (B=E018167)	BOLT, M6X 12	4	4						N
19	1	26106-060202	BOLT, M6X 20 PLATED	4	4						
19-1A	1	26106-060202 (A=EXXX) (B=EXXX)	BOLT, M6X 20 PLATED	2	2						K
19-1B	1	26106-060102 (A=EXXX) (B=EXXX)	BOLT, M6X 10 PLATED	2	2						W
20	1	26106-060122	BOLT, M6X 12 PLATED	2	2						
21	1	26106-060122	BOLT, M6X 12 PLATED	1	1						
22	1	26106-060202	BOLT, M6X 20 PLATED	8	8						
23	1	105092-44201	CASE ASSY, FAN	1							
24	1	105090-44211	CASE ASSY, FAN		1						
25	2	105092-44680	COVER, FAN	1							
26	2	105090-44800	CASE, COOLING FAN		1						
27	2	105092-44700	FAN, COOLING	1							
28	2	105090-44850	FAN, COOLING		1						
29	2	105340-44710	SHAFT, FAN	1	1						
30	2	106383-44720	SPACER	1	1						
31	2	106383-44740	CIRCLIP	1	1						
32	2	105340-44750	PIN	1	1						
33	2	105100-44780	WASHER, PULLEY	1	1						
34	2	105100-44770	PULLEY, FAN	2	2						
35	2	22217-120000	WASHER, SPRING 12	1	1						
36	2	24107-062013	BEARING, 6201ZZP6	2	2						
37	2	26777-120002	NUT, LOCK M12	1	1						
38	1	105090-44810	PULLEY ASSY, TENSION	1	1						

Fig.8. RADIATER & FAN

(A)=NFAD6-LIK1
 (B)=NFAD6-LEIK1
 (C)=

(D)=
 (E)=
 (F)=



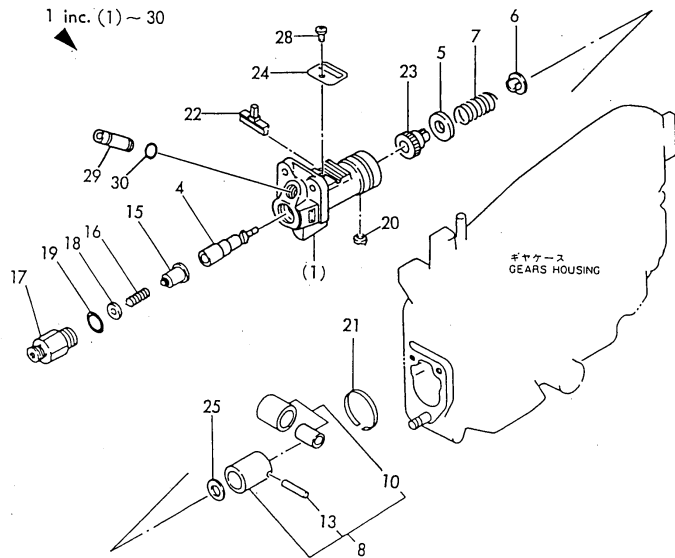
No.	Lev.	Parts No.	Description	Q'ty						I	R
				(A)	(B)	(C)	(D)	(E)	(F)		
39	2	106100-44650	PULLEY, TENSION	1	1						
40	2	105090-44940	LEVER, PULLEY	1	1						
41	2	106100-44960	CAP	1	1						
42	2	22217-080000	WASHER, SPRING 8	1	1						
43	2	26716-080002	NUT, M8	1	1						
44	1	22137-080000	WASHER, 8	1	1						
45	1	25117-003301	V-BELT, M33H	1	1						
46	1	26106-060252	BOLT, M6X 25 PLATED	2	2						
47	1	26106-080162	BOLT, M8X 16 PLATED	1	1						
48	1	26106-080352	BOLT, M8X 35 PLATED	2	2						
49	1	160725-78350	KNOB	2	2						
50	1	106100-44560	SPONGE, 15X5X1000	2	2						W
(A)=EXXX (B)=EXXX											

Fig.9. FUEL INJECTION PUMP

(A)=NFAD6-LIK1
 (B)=NFAD6-LEIK1
 (C)=

(D)=
 (E)=
 (F)=

SPEC. CODE
 D05090-51102



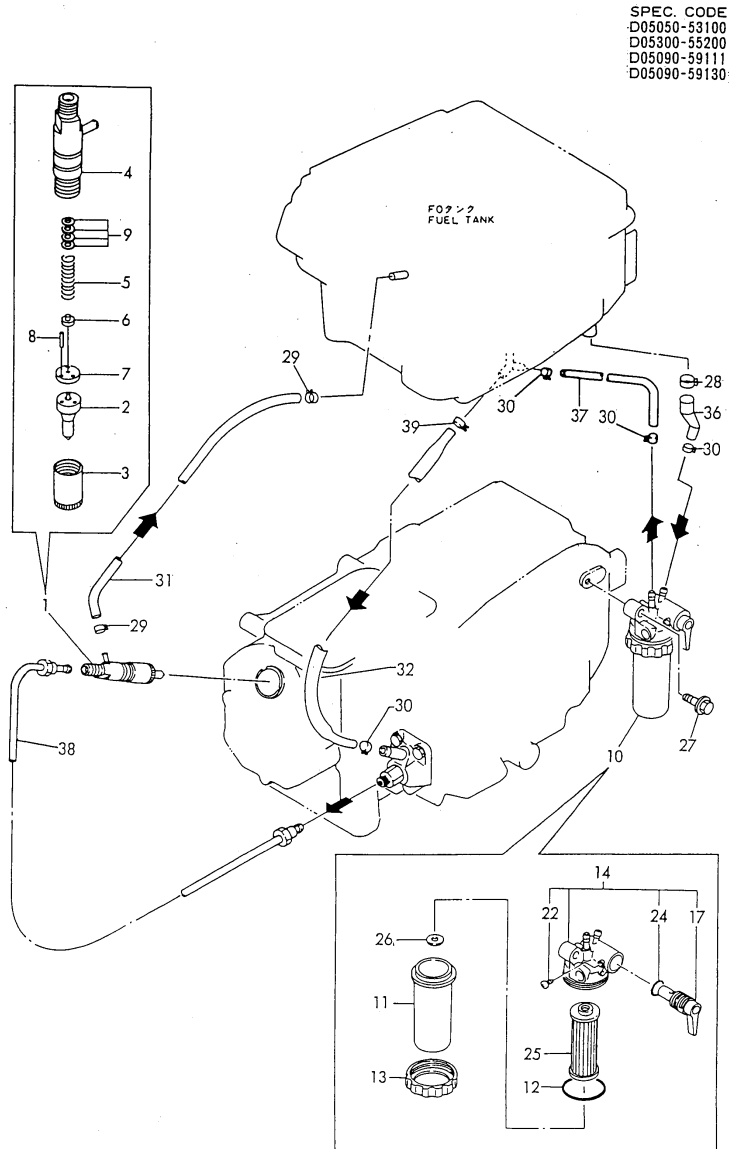
No.	Lev.	Parts No.	Description	Q'ty						I	R
				(A)	(B)	(C)	(D)	(E)	(F)		
1	1	705090-51101	PUMP ASSY, INJECTION	1	1						
4	2	105200-51100	PLUNGER ASSY	1	1						
5	2	174307-51170	RETAINER, SPRING A	1	1						
6	2	174307-51181	RETAINER, SPRING B	1	1						
7	2	124950-51190	SPRING, PLUNGER	1	1						
8	2	724550-51520	GUIDE, PLUNGER	1	1						
10	3	711100-51540	ROLLER ASSY	1	1						
13	3	174100-54120	PIN	1	1						
15	2	129100-51300	VALVE ASSY, DELIVERY	1	1						
16	2	124550-51320	SPRING, DELIVERY	1	1						
17	2	124550-51341	HOLDER, DELIVERY L43	1	1						
18	2	124550-51350	GASKET, DELIVERY	1	1						
19	2	124550-51370	O-RING	1	1						\$
20	2	104271-51450	PIECE, GUIDE	1	1						\$
21	2	104271-51460	CIRCLIP	1	1						
22	2	105300-51500	RACK, CONTROL	1	1						
23	2	105300-51510	PINION	1	1						
24	2	105300-51550	RETAINER, RACK	1	1						
25	2	174307-51700	SHIM SET	1	1						
28	2	26022-050102	SCREW, M5X10	1	1						
29	2	105300-51800	JOINT	1	1						
30	2	114250-51190	O-RING, S27	1	1						

Remarks
 (\$) ORDER BY FIG NO.16-16

Fig.10. FUEL OIL SYSTEM

(A)=NFAD6-LIK1
(B)=NFAD6-LEIK1
(C)=

(D)=
(E)=
(F)=



No.	Lev.	Parts No.	Description	Q'ty						I	R
				(A)	(B)	(C)	(D)	(E)	(F)		
1	1	705090-53100	VALVE ASSY,INJECTION	1	1						
1-1	1	705050-53100	VALVE ASSY,INJECTION	1	1						N
		(A=EXXX) (B=EXXX)									
2	2	105090-53000	VALVE ASSY,INJECTION	1	1						
2-1	2	105050-53000	VALVE ASSY,INJECTION	1	1						N
		(A=EXXX) (B=EXXX)									
3	2	114250-53080	NUT, NOZZLE D16.95	1	1						
4	2	105300-53100	HOLDER ASSY, NOZZLE	1	1						
5	2	114250-53120	SPRING, NOZZLE	1	1						
6	2	114250-53130	SEAT, SPRING	1	1						
7	2	114250-53140	PLATE	1	1						
8	2	114250-53210	PIN	2	2						
9	2	114250-53400	SHIM SET	1	1						
10	1	105370-55650	STRAINER ASSY, FUEL	1	1						
11	2	105300-55530	CUP, STRAINER	1	1						
12	2	105300-55520	O-RING	1	1						\$
13	2	105300-55610	RING, RETAINING	1	1						
14	2	105300-55700	BODY ASSY, STRAINER	1	1						
17	3	105300-55340	LEVER	1	1						
22	3	104200-55750	SCREW, M4	1	1						
24	3	24311-000160	O-RING, 1AP16.0	1	1						
25	2	105370-55710	ELEMENT	1	1						
26	2	105300-55750	FLOAT	1	1						
27	1	26106-080302	BOLT, M8X 30 PLATED	1	1						
28	1	129301-03660	CLAMP 16	1	1						
29	1	124722-59050	CLIP, HOSE 9	2	2						
30	1	124766-59050	CLIP, HOSE 12	4	4						
31	1	105300-59100	PIPE, FUEL RETURN	1	1						
32	1	105090-59020	PIPE ASSY, FUEL	1	1						
36	1	105192-59560	PIPE, FUEL	1	1						
37	1	105192-59570	PIPE, FUEL	1	1						
38	1	105090-59800	PIPE ASSY, INJECTION	1	1						
39	1	23080-013000	CLAMP, 13	1	1						

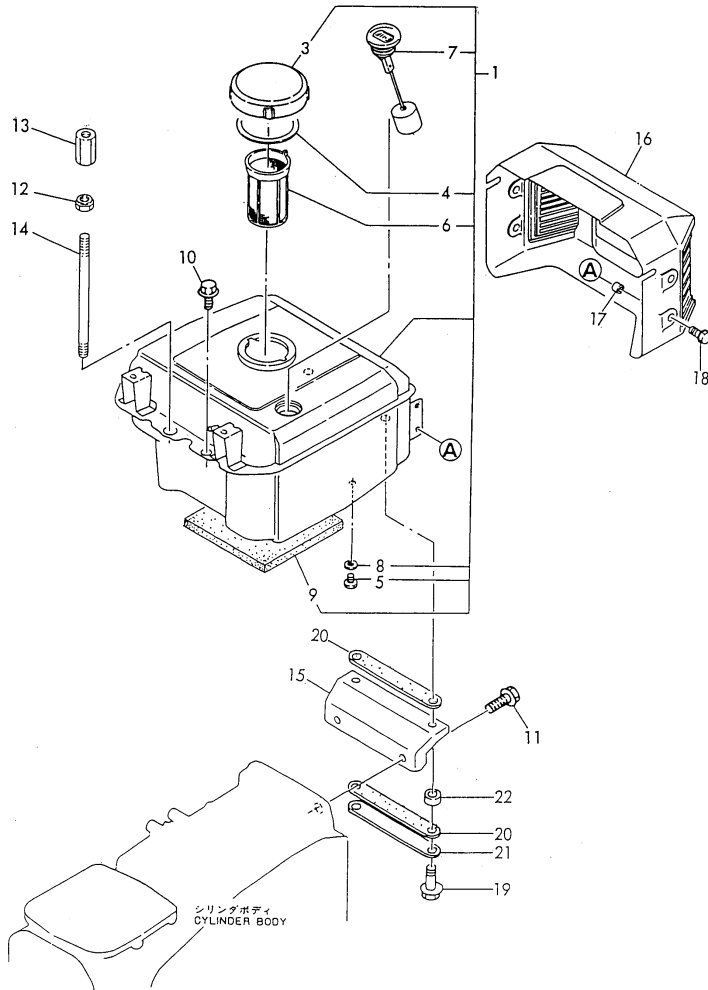
Remarks
(\$) ORDER BY FIG NO.16-16

Fig.11. FUEL TANK

(A)=NFAD6-LIK1
 (B)=NFAD6-LEIK1
 (C)=

(D)=
 (E)=
 (F)=

SPEC. CODE
 D05092-07200
 D05092-55140 CB
 D05092-55320 CB
 D05092-55410 CB
 D05302-55510

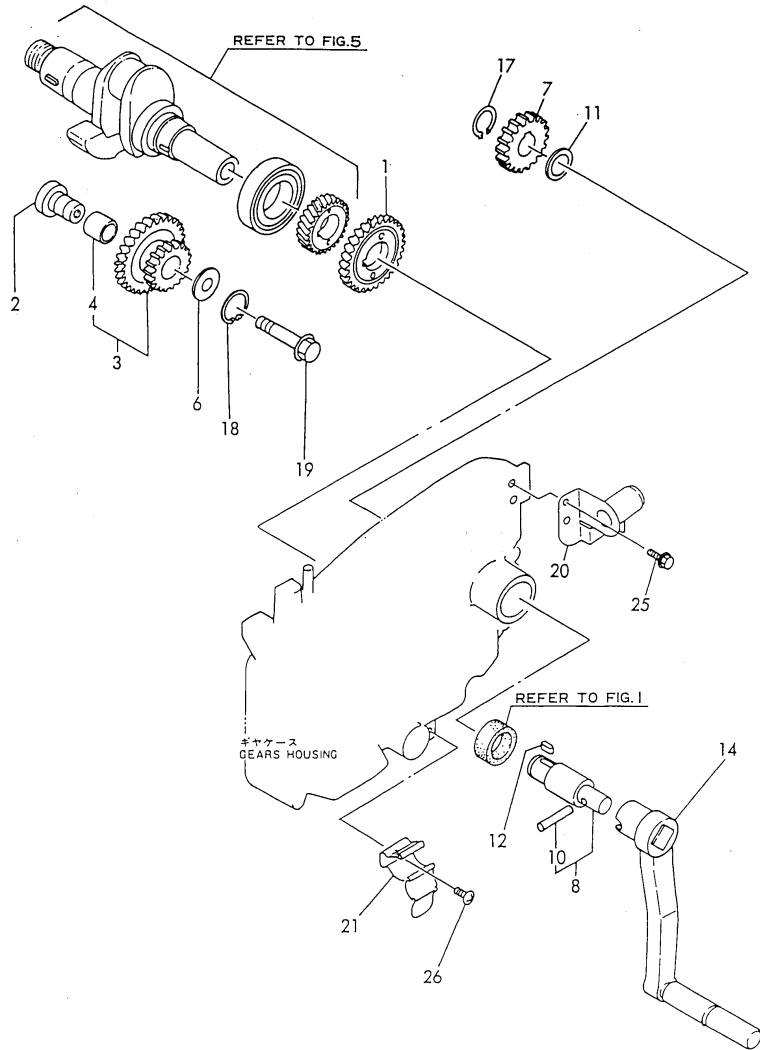


No.	Lev.	Parts No.	Description	Q'ty						I	R
				(A)	(B)	(C)	(D)	(E)	(F)		
1	1	705092-55700-1	TANK ASSY, FUEL	1	1						
3	2	105302-55040	CAP, FUEL TANK	1	1						
4	2	101504-55051	GASKET	1	1						\$
5	2	105300-55080	PLUG, 8	1	1						
6	2	105372-55100	STRAINER, FUEL	1	1						
7	2	105092-55150	GAUGE, FUEL	1	1						
8	2	23414-080000	GASKET, 8X1.0	1	1						
9	2	104607-55220	FELT, FUEL TANK	1	1						
10	1	26106-080142	BOLT, M8X 14 PLATED	1	1						
11	1	26106-080322	BOLT, M8X 32 PLATED	2	2						
12	1	104107-07900	NUT, M10	1	1						
13	1	105500-07920	NUT, M10	1	1						
14	1	105090-07940	BOLT, LIFTING	1	1						
15	1	105092-55241	STAY, FUEL TANK	1	1						
15-1	1	105092-55241-1	STAY, FUEL TANK	1	1						S
(A=E027438) (B=E027438)											
16	1	105092-55820	COVER, LIGHT	1	1						
16-1	1	105092-55830-1	COVER, LIGHT	1	1						S
(A=E027438) (B=E027438)											
17	1	105100-55820	BUSH	4	4						
18	1	26106-060122	BOLT, M6X 12 PLATED	4	4						
19	1	26106-080202	BOLT, M8X 20 PLATED	2	2						
20	1	105092-55520	ABSORBER	2	2						
21	1	105092-55530	RETAINER	1	1						
22	1	105100-55540	COLLAR	2	2						

Remarks
 (\$) ORDER BY FIG NO.16-16

Fig.12. HAND STARTING DEVICE

SPEC. CODE
 D05198-08200
 D05092-76111
 D05090-7612112



(A)=NFAD6-LIK1
 (B)=NFAD6-LEIK1
 (C)=

(D)=
 (E)=
 (F)=

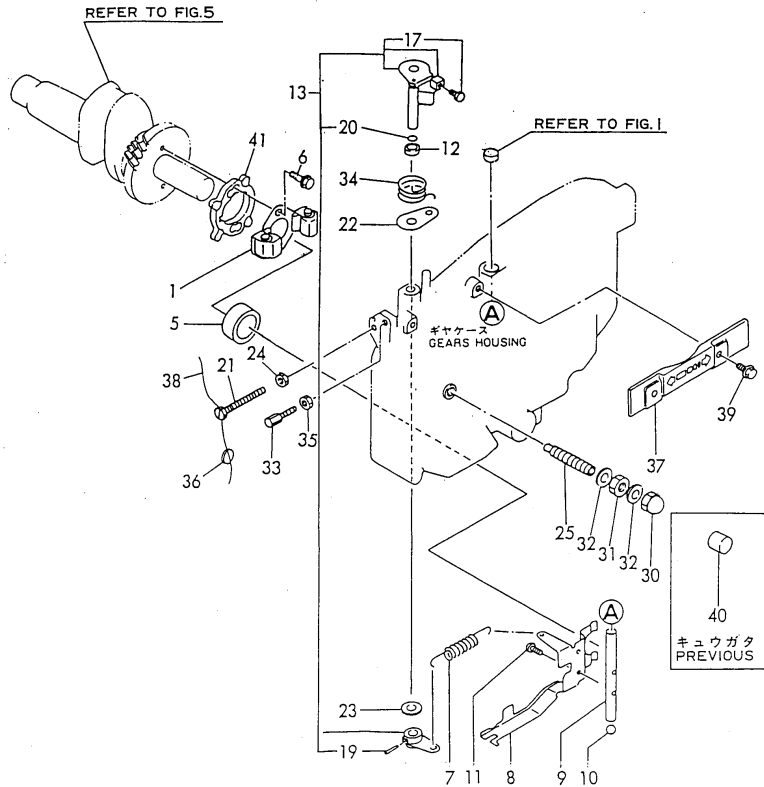
No.	Lev.	Parts No.	Description	Q'ty						I	R
				(A)	(B)	(C)	(D)	(E)	(F)		
1	1	105092-28410	GEAR, BALANCER	1	1						
2	1	105302-28701	SHAFT, IDLE GEAR	1	1						
3	1	105092-28710	GEAR ASSY, IDLE	1	1						
4	2	105302-28720	BUSH	1	1						
6	1	105362-28750	SPACER	1	1						
7	1	105092-76330	GEAR, STARTER	1	1						
8	1	705302-76900	SHAFT ASSY, STARTING	1	1						
10	2	104200-76480	PIN	1	1						
11	1	105300-76470	COLLAR	1	1						
12	1	105300-76490	KEY, 7X10	1	1						
14	1	106100-76790	HANDLE ASSY	1	1						
17	1	22242-000200	RING, 20	1	1						
18	1	22242-000210	RING, 21	1	1						
19	1	26106-100652	BOLT, M10X 65 PLATED	1	1						
20	1	105198-08100	BRACKET, HANDLE	1	1						
21	1	105300-08510	BRACKET ASSY	1	1						
25	1	26106-060122	BOLT, M6X 12 PLATED	2	2						
26	1	26557-060082	SCREW, M6X 8	1	1						

Fig.13. GOVERNOR & CONTROL DEVICE

(A)=NFAD6-LIK1
(B)=NFAD6-LEIK1
(C)=

(D)=
(E)=
(F)=

SPEC. CODE
D05092-61100
D05090-61110
D05090-66100
D05192-66210
D05507-66300
D05302-66220
D05302-67101



No.	Lev.	Parts No.	Description	Q'ty						I	R
				(A)	(B)	(C)	(D)	(E)	(F)		
1	1	705090-61700	GOVERNOR ASSY	1	1						
1-1	1	705300-61702	GOVERNOR ASSY	1	1						N
		(A=E021727) (B=E021727)									
3-1	2	105300-61200	WEIGHT, GOVERNOR	2	2						R
		(A=E021727) (B=E021727)									
5	1	105300-61600	SLEEVE, GOVERNOR	1	1						
6	1	174100-61600	BOLT	2	2						
7	1	105300-66010	SPRING, REGULATOR	1	1						
8	1	105090-66300	LEVER, GOVERNOR	1	1						
9	1	105100-66400	SHAFT	1	1						
10	1	24190-120001	BALL, STEEL 3/8	1	1						
11	1	26022-050102	SCREW, M5X10	2	2						
12	1	121575-21850	WASHER	1	1						
13	1	705192-66700	SHAFT ASSY	1	1						
17	3	105225-66990	SCREW, M5X8.5	1	1						
19	2	22322-030200	PIN, TAPER 3X20	1	1						
20	2	24311-000070	O-RING, 1AP7.0	1	1						
21	1	105300-66520	SCREW	1	1						
22	1	105300-66850	RETAINER	1	1						
23	1	22117-100000	WASHER, 10	1	1						
24	1	26756-060002	NUT, LOCK M6	1	1						
25	1	105192-66551	LIMITER ASSY, FUEL	1	1						
25-1	1	105507-66551	LIMITER ASSY, FUEL	1	1						N
		(A=EXXX) (B=EXXX)									
30	1	124060-66950	NUT, CAP M10	1	1						
31	1	26796-100002	NUT, LOCK M10	1	1						
32	1	43400-500430	SEAL WASHER 10S	2	2						
33	1	102100-67080	BOLT, ADJUSTING	1	1						
34	1	105502-67301	SPRING, RETURN	1	1						
35	1	26756-060002	NUT, LOCK M6	1	1						
36	1	135210-61090	LEAD	1	1						
37	1	105300-66110	COVER	1	1						
38	1	22451-080100	WIRE 0.8X 100	1	1						
38-1	1	22451-060080	WIRE, 0.6X80	1	1						N
		(A=EXXX) (B=EXXX)									
39	1	26106-060122	BOLT, M6X 12 PLATED	2	2						
40	1	105300-66610	CAP	1	1						Z
		(A=EXXX) (B=EXXX)									
41	1	105090-61810	PIECE, DISTANCE	1	1						W
		(A=EXXX) (B=EXXX)									

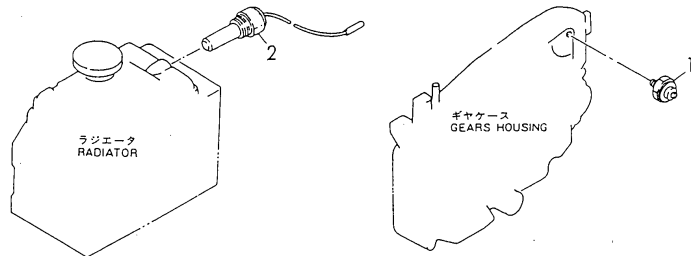
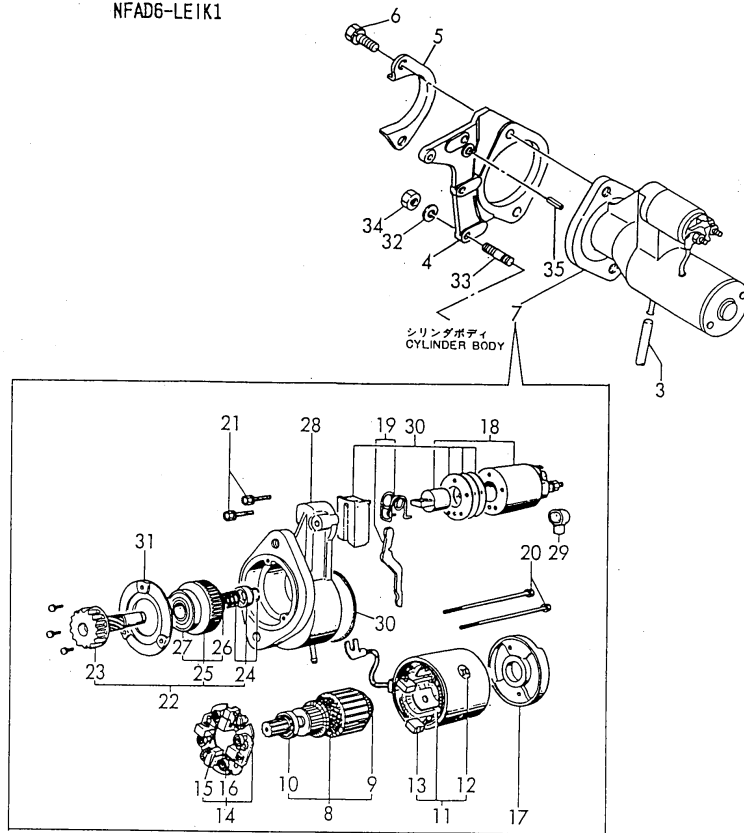
Fig.14. STARTING MOTOR

(A)=NFAD6-LIK1
 (B)=NFAD6-LEIK1
 (C)=

(D)=
 (E)=
 (F)=

SPEC. CODE
 D05092-7715025
 D05050-78200

NFAD6-LEIK1

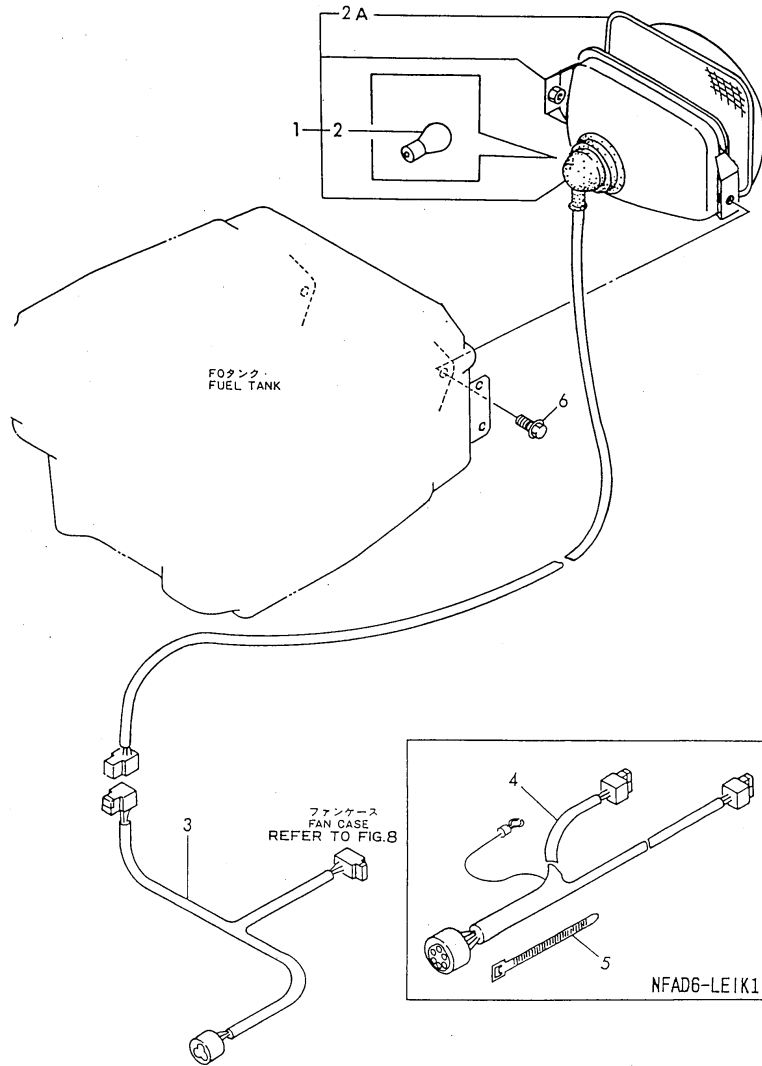


No.	Lev.	Parts No.	Description	Q'ty						I	R
				(A)	(B)	(C)	(D)	(E)	(F)		
1	1	124060-39451	SWITCH, 0.2KG		1						
2	1	105300-44900	SWITCH		1						
3	1	105840-59100	PIPE		1						
4	1	105090-77471	BRACKET		1						
5	1	105192-77480	COVER		1						
6	1	26013-120302	BOLT, M12X 30		2						
7	1	105300-77010	STARTER, S114-438		1						
8	2	X211461005	ARMATURE		1						
9	3	X211415502	BEARING, BALL		1						
10	3	X211425502	BEARING, BALL		1						
11	2	X211442003	COIL ASSY, FIELD		1						
12	3	X21143215	SCREW, CORE		4						
13	3	X211469002	BRUSH (+)		2						
14	2	X211449007	HOLDER ASSY, BRUSH		1						
15	3	X211459002	BRUSH (-)		2						
16	3	X21148314	SPRING, BRUSH		4						
17	2	X211483003	COVER		1						
18	2	X211447007	SWITCH, MAGNETIC		1						
19	2	X211446012	LEVER, SHIFT		1						
20	2	X211468005	BOLT, THROUGH		2						
21	2	X21145866	BOLT		2						
22	2	X211455011	PINION ASSY		1						
23	3	X211465011	SHAFT, PINION		1						
24	3	X211429006	STOPPER SET		1						
25	3	X211425506	CLUTCH ASSY		1						
26	4	X211435502	BALL BEARING		1						
27	4	X211455502	BALL BEARING		1						
28	2	X211456605	CASE ASSY, GEAR		1						
29	2	X21142742	COVER (A), RUBBER		1						
30	2	X211458012	COVER KIT		1						
31	2	X211428008	RETAINER, BEARING		1						
32	1	22212-060000	SPRING WASHER 6		4						
33	1	26226-060222	STUD, M6X 22		4						
34	1	26716-060002	NUT, M6		4						
35	1	22351-060012	PIN, SPRING 6.0X12		1						W

(B=EXXX)

Fig.15. LIGHTING DEVICE

SPEC. CODE
 D05092-78130
 D05092-78340
 D05092-78350



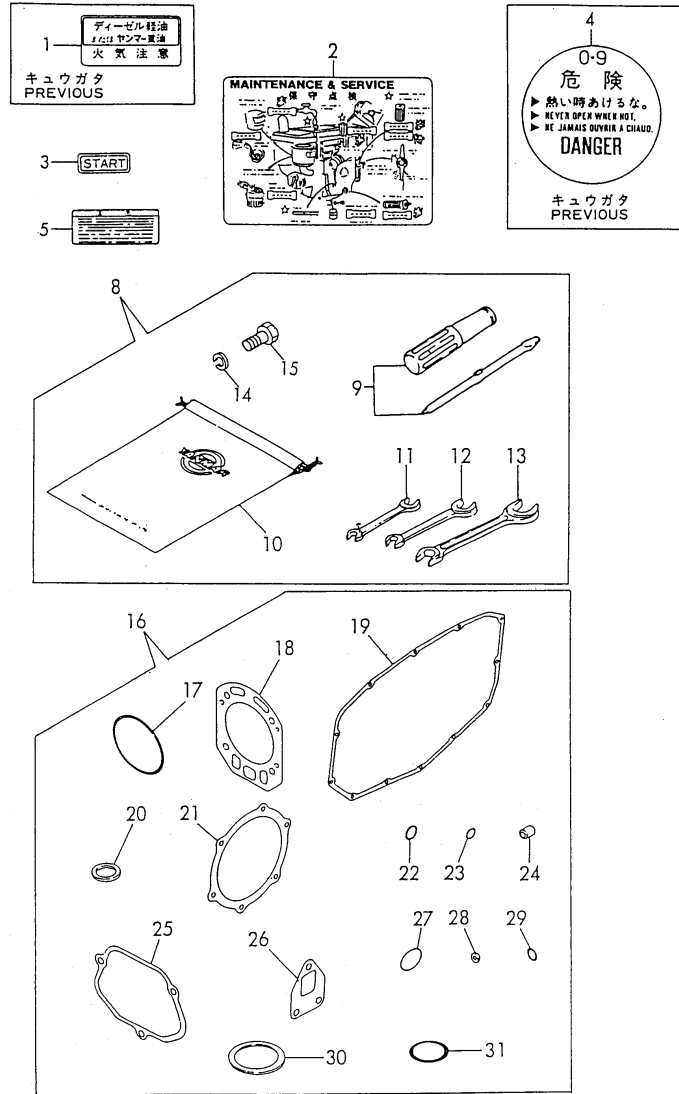
(A)=NFAD6-LIK1
 (B)=NFAD6-LEIK1
 (C)=

(D)=
 (E)=
 (F)=

No.	Lev.	Parts No.	Description	Q'ty						I	R
				(A)	(B)	(C)	(D)	(E)	(F)		
1	1	105092-78020	LAMP ASSY, HEAD	1	1						
2	2	194190-55810	BULB 12V-35/25W	1	1						
2A	2	105092-78260	LENS	1	1						W
(A=E012608) (B=E012605)											
3	1	105092-78550	HARNESS, WIRE	1							
3-1	1	105092-78530	HARNESS, WIRE	1							N
(A=EXXX)											
4	1	105092-78560	HARNESS, WIRE		1						
4-1	1	105092-78540	HARNESS, WIRE		1						N
(B=EXXX)											
5	1	160370-78950	BAND, L=98		1						
6	1	26106-080142	BOLT, M8X 14 PLATED	2	2						

Fig.16. TOOL & LABEL

SPEC. CODE
D05098-07110
D05300-92100



(A)=NFAD6-LIK1
(B)=NFAD6-LEIK1
(C)=

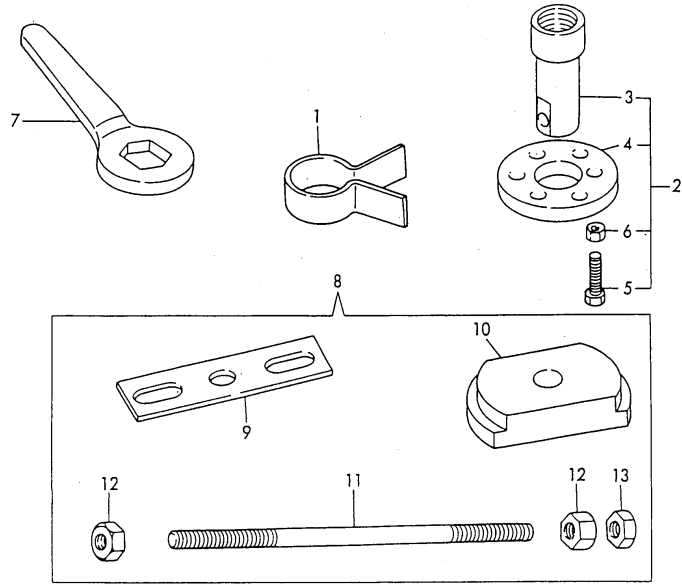
(D)=
(E)=
(F)=

No.	Lev.	Parts No.	Description	Q'ty						I	R
				(A)	(B)	(C)	(D)	(E)	(F)		
1	1	106248-07280 (A=EXXX) (B=EXXX)	LABEL, FUEL OIL	1	1						Z
2	1	105190-07100	LABEL	1	1						
3	1	105090-07160	LABEL, START	1	1						
4	1	105300-07400 (A=EXXX) (B=EXXX)	LABEL, RADIATOR	1	1						Z
5	1	105370-07450	LABEL, RADIATOR CAP	1	1						
8	1	705300-92100	BOX ASSY, TOOL	1	1						
9	2	104200-92350	DRIVER, SCREW	1	1						
10	2	105300-92600	BAG, TOOL	1	1						
11	2	28110-100120	SPANNER, 10X12	1	1						
12	2	28110-140170	SPANNER, 14X17	1	1						
13	2	28110-190220	SPANNER, 19X22	1	1						
14	2	22217-120000	WASHER, SPRING 12	3	3						
15	2	26206-120352	BOLT, M12X 35 PLATED	3	3						
16	1	705092-92600	GASKET SET	1	1						
17	2	105090-01300	O-RING	2	2						
18	2	105090-01330	GASKET, HEAD	1	1						
19	2	105090-01410	GASKET, GEAR CASE	1	1						
20	2	101104-01760	GASKET, CAP	1	1						
21	2	105090-02020	GASKET	1	1						
22	2	24341-000200	O-RING, 1AS20.0	1	1						
23	2	24311-000070	O-RING, 1AP7.0	1	1						
24	2	119625-11870	PROTECTOR, NOZZLE	1	1						
25	2	105090-11310	GASKET, BONNET	1	1						
26	2	105010-13200	GASKET	1	1						
27	2	103338-32570	O-RING	1	1						
28	2	124550-51350	GASKET, DELIVERY	1	1						
29	2	124550-51370	O-RING	1	1						
30	2	101504-55051	GASKET	1	1						
31	2	105300-55520	O-RING	1	1						

Fig.17. TOOL (OPTIONAL)

(A)=NFAD6-LIK1
 (B)=NFAD6-LEIK1
 (C)=

(D)=
 (E)=
 (F)=



No.	Lev.	Parts No.	Description	Q'ty						I	R
				(A)	(B)	(C)	(D)	(E)	(F)		
1	1	101300-92140	TOOL, PISTON&RING	1	1						
2	1	105090-92190	TOOL, WHEEL REMOVER	1	1						
3	2	105090-92110	RETAINER, A	1	1						
4	2	104200-92120	RETAINER, B	1	1						
5	2	104200-92130	TOOL	2	2						
6	2	26717-120002	NUT, M12	2	2						
7	1	105010-92100	WRENCH	1	1						
8	1	105090-92090	TOOL ASSY, LINER	1	1						
9	2	172200-92020	TOOL, LINER REMOVER	1	1						
10	2	105090-92010	TOOL, LINER REMOVER	1	1						
11	2	103338-92030	BOLT, LINER REMOVER	1	1						
12	2	26716-160002	NUT, M16	2	2						
13	2	26757-160002	NUT, LOCK M16	1	1						

Parts No. Index

Parts No.	Fig. No.	Ref. No.
101104-01760	1	29
	16	20
101158-03061	7	12
101158-03111	7	14
101158-11180	2	8
101158-11230	2	22
		26
101300-92140	17	1
101504-55051	11	4
	16	30
102100-67080	13	33
103338-32070	7	6
103338-32570	7	7
	16	27
103338-92030	17	11
104107-07900	11	12
104200-03641	2	38
104200-55750	10	22
104200-76480	12	10
104200-92120	17	4
104200-92130	17	5
104200-92350	16	9
104271-01950	1	31
104271-51450	9	20
104271-51460	9	21
104300-32150	7	1
104300-76460	4	9
104407-21600	5	14
104511-21600	5	12
104607-55220	11	9
105010-11920	2	13
105010-13200	3	8
	16	26
105010-21530	5	13
105010-92100	17	7
105050-44500	8	11 B
105050-53000	10	2 -1
105090-01300	1	3
	16	17
105090-01330	1	14
	16	18
105090-01410	1	25
	16	19
105090-01480	1	26
105090-01750	1	28
105090-02020	1	49
	16	21
105090-03081	7	13
105090-03131	7	15
105090-07160	16	3

Parts No.	Fig. No.	Ref. No.
105090-07940	11	14
105090-11100	2	5
105090-11111	2	6
105090-11290	2	14
105090-11310	2	42
	16	25
105090-11650	2	20
105090-11660	2	24
105090-11820	2	43
105090-13550	3	10
105090-14010	4	1
105090-14091	4	2
105090-14100	4	3
105090-14400	4	5
105090-14420	4	6
105090-14600	4	7
105090-21200	5	8
105090-21401	5	9
105090-21591	5	10
105090-22190	6	1
105090-22400	6	9
105090-22470	6	21
105090-22480	6	27
105090-22510	6	23
105090-22520	6	29
105090-23910	6	12
105090-44050	8	1
105090-44211	8	24
105090-44251	8	3
105090-44251-1	8	3 -1
105090-44300	8	4
105090-44330	8	5
105090-44330-1	8	5 -1
105090-44490	8	10
105090-44800	8	26
105090-44810	8	38
105090-44850	8	28
105090-44940	8	40
105090-53000	10	2
105090-59020	10	32
105090-59800	10	38
105090-61810	13	41
105090-66300	13	8
105090-77471	14	4
105090-92010	17	10
105090-92090	17	8
105090-92110	17	3
105090-92190	17	2
105092-01420	1	54
105092-12021	3	1

Parts No.	Fig. No.	Ref. No.
105092-12511	3	3
105092-12550	3	4
105092-12560	3	5
105092-14700	4	8
105092-21130	5	4
105092-21310	5	17
105092-21360	5	19
105092-21700	5	3 A
105092-21710	5	3 B
105092-28410	12	1
105092-28710	12	3
105092-44201	8	23
105092-44350	8	6
105092-44350-1	8	6 -1
105092-44360	8	7
105092-44680	8	25
105092-44700	8	27
105092-55150	11	7
105092-55241	11	15
105092-55241-1	11	15 -1
105092-55520	11	20
105092-55530	11	21
105092-55820	11	16
105092-55830-1	11	16 -1
105092-76330	12	7
105092-78020	15	1
105092-78260	15	2 A
105092-78530	15	3 -1
105092-78540	15	4 -1
105092-78550	15	3
105092-78560	15	4
105098-13520	3	9
105098-21300	5	16
105098-21360	5	18
105098-44500	8	11 A
105100-01660	1	20
105100-02300	1	50
105100-02310	1	51
105100-44630	8	15
105100-44770	8	34
105100-44780	8	33
105100-44930	1	5
105100-55540	11	22
105100-55820	11	17
105100-66400	13	9
105140-34100	7	9
105140-76500	1	24
105190-07100	16	2
105190-12050	3	2
105190-35050	7	10

Parts No.	Fig. No.	Ref. No.
105192-59560	10	36
105192-59570	10	37
105192-66551	13	25
105192-77480	14	5
105198-08100	12	20
105198-44590	8	13
105200-51100	9	4
105215-01200	1	12
105215-01670	1	10
105225-23200	6	14
105225-66990	2	35
	13	17
105300-01690	1	27
105300-01920	1	30
105300-07400	16	4
105300-08510	12	21
105300-11330	2	3
105300-11900	2	18
105300-14200	4	4
105300-21381	5	20
105300-34040	1	21
105300-44220	8	2
105300-44451	8	8
105300-44460	5	21
	8	9
105300-44900	14	2
105300-51500	9	22
105300-51510	9	23
105300-51550	9	24
105300-51800	9	29
105300-53100	10	4
105300-55080	11	5
105300-55340	10	17
105300-55520	10	12
	16	31
105300-55530	10	11
105300-55610	10	13
105300-55700	10	14
105300-55750	10	26
105300-59100	10	31
105300-61200	13	3 -1
105300-61600	13	5
105300-66010	13	7
105300-66110	13	37
105300-66520	13	21
105300-66610	13	40
105300-66850	13	22
105300-76470	12	11
105300-76490	12	12
105300-77010	14	7

Parts No. Index

Parts No.	Fig. No.	Ref. No.
105300-92600	16	10
105302-28701	12	2
105302-28720	12	4
105302-55040	11	3
105340-44570	8	12
105340-44710	8	29
105340-44750	8	32
105362-28750	12	6
105362-78960	7	16
105370-07450	16	5
105370-55650	10	10
105370-55710	10	25
105372-55100	11	6
105400-11121	2	7
105500-07920	11	13
105502-67301	13	34
105507-66551	13	25 -1
105840-59100	14	3
106100-02331	1	52
106100-44560	8	50
106100-44650	8	39
106100-44960	8	41
106100-76790	12	14
106248-07280	16	1
106383-44720	8	30
106383-44740	8	31
111130-02160	1	48
114250-51190	9	30
114250-53080	10	3
114250-53120	10	5
114250-53130	10	6
114250-53140	10	7
114250-53210	10	8
114250-53400	10	9
119625-11870	2	19
	16	24
119625-11880	2	17
121250-44590	8	14
121450-01220	1	13
121575-21850	13	12
124060-39451	14	1
124060-66950	13	30
124550-51320	9	16
124550-51341	9	17
124550-51350	9	18
	16	28
124550-51370	9	19
	16	29
124722-59050	10	29
124766-59050	10	30

Parts No.	Fig. No.	Ref. No.
124950-22300	6	8
124950-51190	9	7
129100-51300	9	15
129301-03660	10	28
135210-61090	13	36
160120-76940	1	45
	5	22
	8	16
160260-01580	3	7
160370-78950	15	5
160725-78350	8	49
172200-92020	17	9
174100-54120	9	13
174100-61600	13	6
174307-51170	9	5
174307-51181	9	6
174307-51700	9	25
194190-55810	15	2
22117-060000	2	44
22117-100000	13	23
22137-080000	8	44
22212-060000	14	32
22217-080000	1	34
	8	42
22217-120000	8	35
	16	14
22242-000200	12	17
22242-000210	12	18
22252-000100	1	22
22312-030180	2	37
22322-030180	2	31
22322-030200	13	19
22351-060012	1	11
		35
	14	35
22451-060080	13	38 -1
22451-080100	13	38
22512-050140	5	5
		6
22512-070500	4	10
23064-090370	7	17
23080-013000	10	39
23414-080000	11	8
24107-062013	8	36
24190-120001	1	23
	13	10
24311-000070	2	39
	13	20
	16	23
24311-000160	10	24

Parts No.	Fig. No.	Ref. No.
24321-000250	1	37
24341-000200	7	11
	16	22
25117-003301	8	45
26013-060102	1	55
26013-060129	8	18 -1
26013-060142	5	23
26013-060149	8	18
26013-060162	8	17
26013-080189	3	11 -1
26013-080209	3	11
26013-120302	14	6
26022-050102	9	28
	13	11
26022-060122	4	11
26023-060252	7	18
26106-060102	8	19 -1B
26106-060122	5	15
	7	8
	8	20
		21
	11	18
	12	25
	13	39
26106-060202	1	38
	2	40
	5	24
	8	19
		19 -1A
	22	
26106-060252	8	46
26106-060302	1	39
26106-060552	1	40
26106-060602	2	41
26106-060652	1	44
26106-080142	11	10
	15	6
26106-080162	8	47
26106-080202	3	6
	11	19
26106-080302	10	27
26106-080322	11	11
26106-080352	8	48
26106-100652	12	19
26116-050082	1	53
26206-120352	16	15
26216-060402	2	11
26216-080222	1	41
26216-080452	2	10
26226-060222	14	33

Parts No.	Fig. No.	Ref. No.
26226-080222	1	42
26366-060002	1	4
	2	12
26366-080002	1	43
	2	28
26557-060082	12	26
26557-060142	4	12
26716-060002	14	34
26716-080002	1	36
	8	43
26716-160002	17	12
26717-120002	17	6
26756-060002	13	24
		35
26756-080002	2	23
		27
26757-160002	17	13
26777-120002	8	37
26796-100002	13	31
27231-150000	2	4
27310-070001	2	9
28110-100120	16	11
28110-140170	16	12
28110-190220	16	13
43400-500430	13	32
705050-53100	10	1 -1
705090-01560	1	6
705090-01900	1	1
705090-02500	1	46
705090-11700	2	1
705090-22501	6	3
705090-23100	6	10
705090-23600	6	15
705090-23610	6	17
705090-23620	6	19
705090-51101	9	1
705090-53100	10	1
705090-61700	13	1
705092-01500	1	15
705092-03550	2	30
705092-11520	2	29
705092-21700	5	1
705092-21710	5	1 -1
705092-55700-1	11	1
705092-92600	16	16
705192-66700	13	13
705300-61702	13	1 -1
705300-92100	16	8
705302-76900	12	8
711100-51540	9	10

Parts No. Index

Parts No.	Fig. No.	Ref. No.
724550-51520	9	8
X211415502	14	9
X211425502	14	10
X211425506	14	25
X21142742	14	29
X211428008	14	31
X211429006	14	24
X21143215	14	12
X211435502	14	26
X211442003	14	11
X211446012	14	19
X211447007	14	18
X211449007	14	14
X211455011	14	22
X211455502	14	27
X211456605	14	28
X211458012	14	30
X21145866	14	21
X211459002	14	15
X211461005	14	8
X211465011	14	23
X211468005	14	20
X211469002	14	13
X211483003	14	17
X21148314	14	16

Parts No.	Fig. No.	Ref. No.
-----------	----------	----------

Parts No.	Fig. No.	Ref. No.
-----------	----------	----------

Parts No.	Fig. No.	Ref. No.
-----------	----------	----------