

0CD10-M32401EN

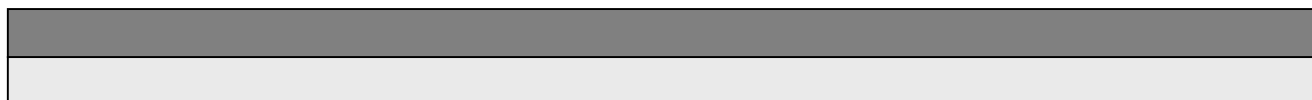
PREFACE

1. This Parts Catalog is the 1st edition of 3TN82L-RNG1 Diesel Engine for NISHIHATSU.

Pub. No. : 000Y00D3241
Published : November, 1991

2. Model name

Engine model	Vehicle		Vehicle made by
	Products	Model name	
3TN82L-RNG1	—	—	NISHIHATSU



Directions for the Parts Catalog.

- The parts stipulated in this Parts Catalog are not necessarily standard equipped parts.
- Parts may change without prior notice.
- The following is an example of the Parts Catalog format.

OCF10-G21601 29. FUEL INJECTION PUMP(W/BOOST)

REF.	LEV.	PARTS NO.	DESCRIPTION	Q'TY						I	R
				(A)	(B)	(C)	(D)	(E)	(F)		
1	1	729595-51390	FUEL INJECTION PUMP	1	1	1	1	1			1
1-1	1	729595-51391	FUEL INJECTION PUMP	1	1	1	1	1		N	1
		(A=E00185) (B=E00200)									
3	2	26022-060162	SCREW M 6X 16	9	9	9	9	9			
3-1	2	26022-060162	SCREW M 6X 16	4	4	4	4	4		K	
		(A=E00156) (B=E00156) (C=E00156) (D=E00156) (E=E00156)									
4	2	129470-51040	CAMSHAFT	1	1	1	1	1			
5	2	122710-51050	BEARING, ROLLER	2	2	2	2	2			
6	2	129470-51060	RETAINER	1	1	1	1	1			

Remarks

(1) BOOST COMPEMSATOR TYPE. OPTIONAL PART, TO E00155,(4JH-DT, 4JH-DTZ

① Ref. No.

The Ref. No. listed may not be in accordance with the illustration Ref. No.

(Ex.) Illustration No.

List Ref No.

1 1 (Before change) → 1-1 (After change)

For interchangeable symbols N, R and K, illustrations for new parts may be abbreviated.

② Lev. (Level)

Level indication

The numbers below indicate the level of relativity towards the main part.

1 ----- Main parts (Assembly parts)

2 ----- Sub component included in " 1 ".

3 ----- Sub component included in " 2 ".

Note) Parts that are not for sale are partially illustrated but not listed.

③ Interchangeability Mark

When a part change takes place, one of the following interchangeability symbols is indicated beside the part.

Symbol	Interchangeability	Contents note
N	Old $\begin{matrix} \leftarrow \text{Yes} \\ \text{No} \rightarrow \end{matrix}$ New	New Part is interchangeable for Old Part but Old Part is not interchangeable for New Part.
Q	Old $\begin{matrix} \leftarrow \text{No} \\ \text{Yes} \rightarrow \end{matrix}$ New	New Part is not interchangeable for Old Part but Old Part is interchangeable for New Part.
R	Old $\begin{matrix} \leftarrow \text{Yes} \\ \text{Yes} \rightarrow \end{matrix}$ New	New/ Old Parts are both interchangeable.
S	Old $\begin{matrix} \leftarrow \text{No} \\ \text{No} \rightarrow \end{matrix}$ New	New/ Old Parts are both not interchangeable.
W		Part newly added.
Z		Part discontinued.
F		Not interchangeable by a single part but interchangeable together with related parts.
K		Changes only for used parts quantities.

④ Effective Machine No.

When a part changes, the effective Machine No. will be indicated in the (A)-(F) column.

Product Symbol	Product No.	Product Symbol	Product No.
C	Clutch No. Compressor No.	F	Machine No. (Agricultural Equip.)
D	Drive No.	M	Machine No.
E	Engine No.		

Note 1) A date may follow the symbol. (Ex.) 1996.01

Note 2) "XXXXX" and "ZZZZZ" are for parts that could not be predicted or for engine models that could not be identified.

Note 3) (A=E00185) is the E (Engine Serial Number) for the column (A) model (in this case 4JH-DT) after the parts design change.

⑤ Remarks Mark

Figures or alphabets (symbols) are entered in the remarks column.

The comments (remarks) on parts that are indicated at the bottom of the illustration are the same symbols as those stated above.

Contents

Fig. No. Fig. Name

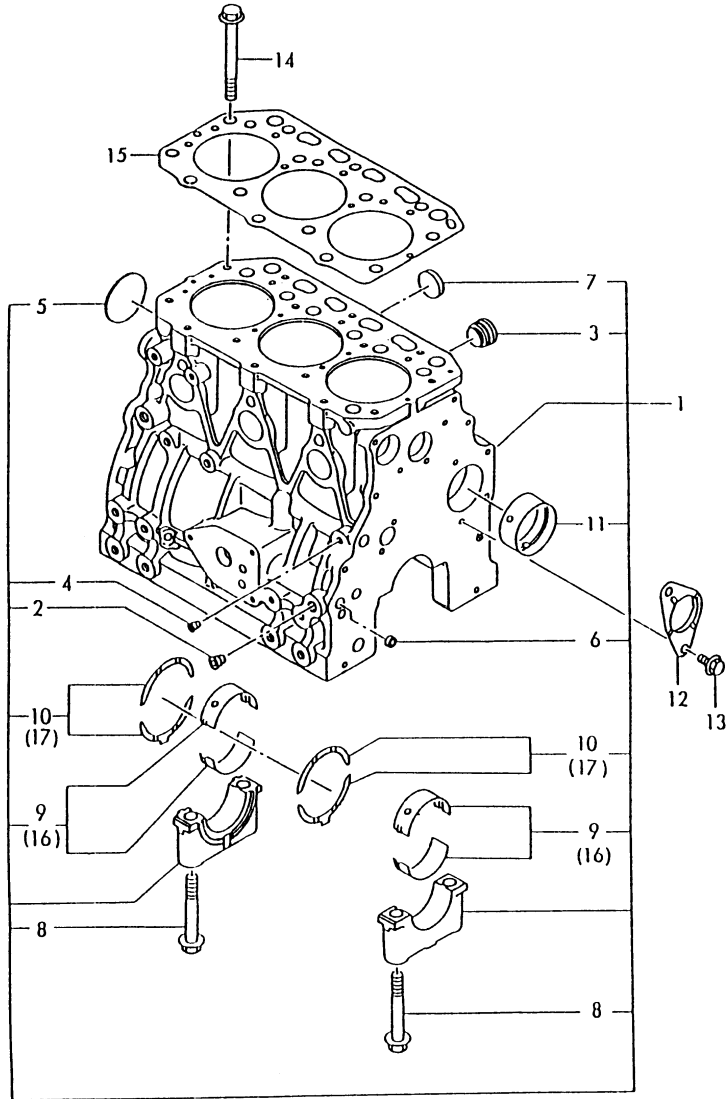
ENGINE 3TN82L-RNG1

1. CYLINDER BLOCK
2. GEAR HOUSING
3. FLYWHEEL HOUSING & OIL SUMP
4. CYLINDER HEAD & BONNET
5. SUCTION MANIFOLD & AIR CLEANER
6. EXHAUST MANIFOLD
7. CAMSHAFT & DRIVING GEAR
8. CRANKSHAFT & PISTON
9. LUB. OIL SYSTEM
10. COOLING WATER SYSTEM
11. THERMOSTAT
12. FUEL INJECTION PUMP
13. FUEL INJECTION PIPES
14. FUEL OIL PIPES
15. GOVERNOR
16. ENGINE STOPPING DEVICE
17. STARTING MOTOR
18. GENERATOR
19. TOOLS & GASKET SET (OPTIONAL)

Fig. No. Fig. Name

Fig.1. CYLINDER BLOCK

029102-01100
 029150-02100
 029150-02200



(A)=3TN82L-RNG1

(B)=

(C)=

(D)=

(E)=

(F)=

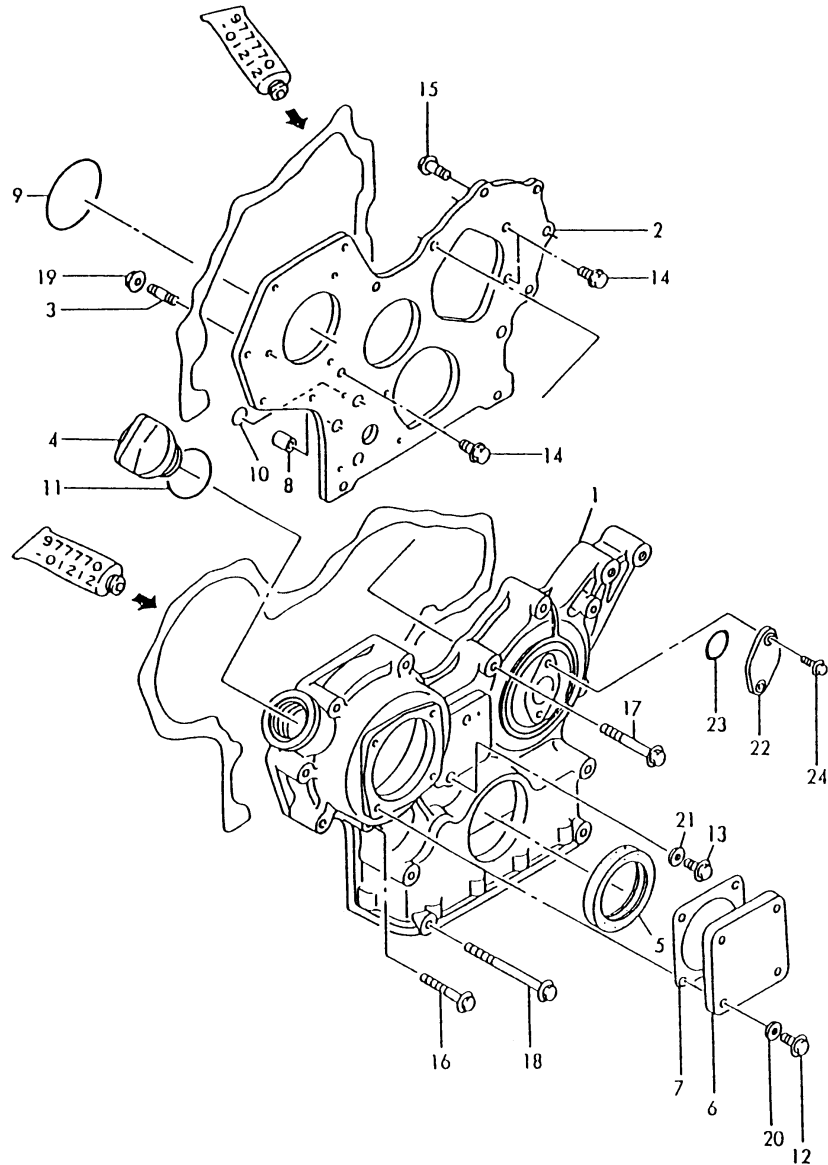
No.	Lev.	Parts No.	Description	Q'ty						I	R
				(A)	(B)	(C)	(D)	(E)	(F)		
1	1	729151-01560	BLOCK ASSY, CYLINDER	1							
2	2	124160-01910	PLUG, PT1/4	3							
3	2	171051-01921	PLUG, NPTF1	1							
4	2	23871-010000	PLUG, R01	1							
5	2	27231-500000	PLUG 50	1							
6	2	27241-120000	PLUG, 12	2							
7	2	27241-300000	PLUG 30	6							
8	2	129150-02020	BOLT, METAL CAP	8							
9	2	129150-02800	BEARING, MAIN	4							
10	2	129150-02930	BEARING, THRUST	2							
11	2	129795-02411	BUSH, CAMSHAFT	1							
12	1	129150-02450	BEARING, THRUST	1							
13	1	26106-080162	BOLT, M8X 16 PLATED	2							
14	1	129150-01200	BOLT, HEAD	14							
15	1	129156-01332	GASKET, HEAD	1							
16	1	129150-02870	BEARING, 0.25 US	4							1
17	1	129150-02940	BEARING, THRUST 0.25	2							2

Remarks

- (1) UNDER-SIZED(U.S=0.25)PART.
- (2) OVER-SIZED(O.S=0.25)PART.

Fig.2. GEAR HOUSING

029400-01210
029100-01810



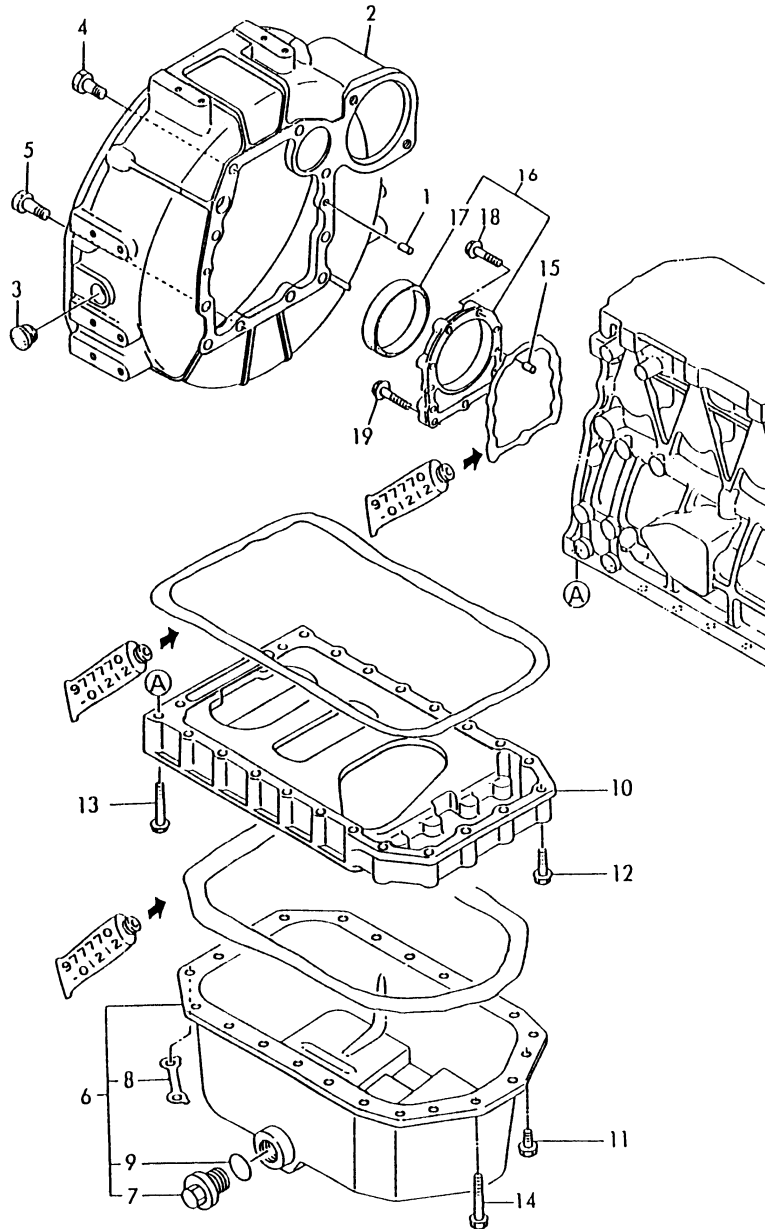
(A)=3TN82L-RNG1
(B)=
(C)=

(D)=
(E)=
(F)=

No.	Lev.	Parts No.	Description	Q'ty						I	R
				(A)	(B)	(C)	(D)	(E)	(F)		
1	1	129400-01500	CASE, GEAR	1							
2	1	129400-01520	FLANGE, GEAR CASE	1							
3	1	121450-01560	STUD, M8X22	3							
4	1	124160-01751	COVER, FILLER	1							
5	1	129795-01800	SEAL, OIL	1							
6	1	124240-01871	COVER	1							
7	1	124240-01882	GASKET	1							
7-1	1	124240-01883	GASKET	1							N
(A=E10858)											
8	1	129795-01950	PIPE, KNOCK L=18	2							
9	1	121850-51960	O-RING	1							
10	1	24311-000160	O-RING, 1AP16.0	2							
11	1	24311-000320	O-RING, 1AP32.0	1							
12	1	26106-080122	BOLT, M8X 12 PLATED	4							
13	1	26106-080162	BOLT, M8X 16 PLATED	1							
14	1	26106-080162	BOLT, M8X 16 PLATED	3							
15	1	26106-080202	BOLT, M8X 20 PLATED	2							
16	1	26106-080452	BOLT, M8X 45 PLATED	6							
17	1	26106-080552	BOLT, M8X 55 PLATED	3							
18	1	26106-080852	BOLT, M8X 85 PLATED	4							
19	1	26366-080002	NUT, M8	3							
20	1	43400-500410	SEAL WASHER 8	4							
21	1	43400-500410	SEAL WASHER 8	1							
22	1	121023-01550	COVER	1							
23	1	24341-000240	O-RING, 1AS24.0	1							
24	1	26106-060122	BOLT, M6X 12 PLATED	2							

Fig.3. FLYWHEEL HOUSING & OIL SUMP

029100-01300
029100-01410
029100-01510



(A)=3TN82L-RNG1

(B)=

(C)=

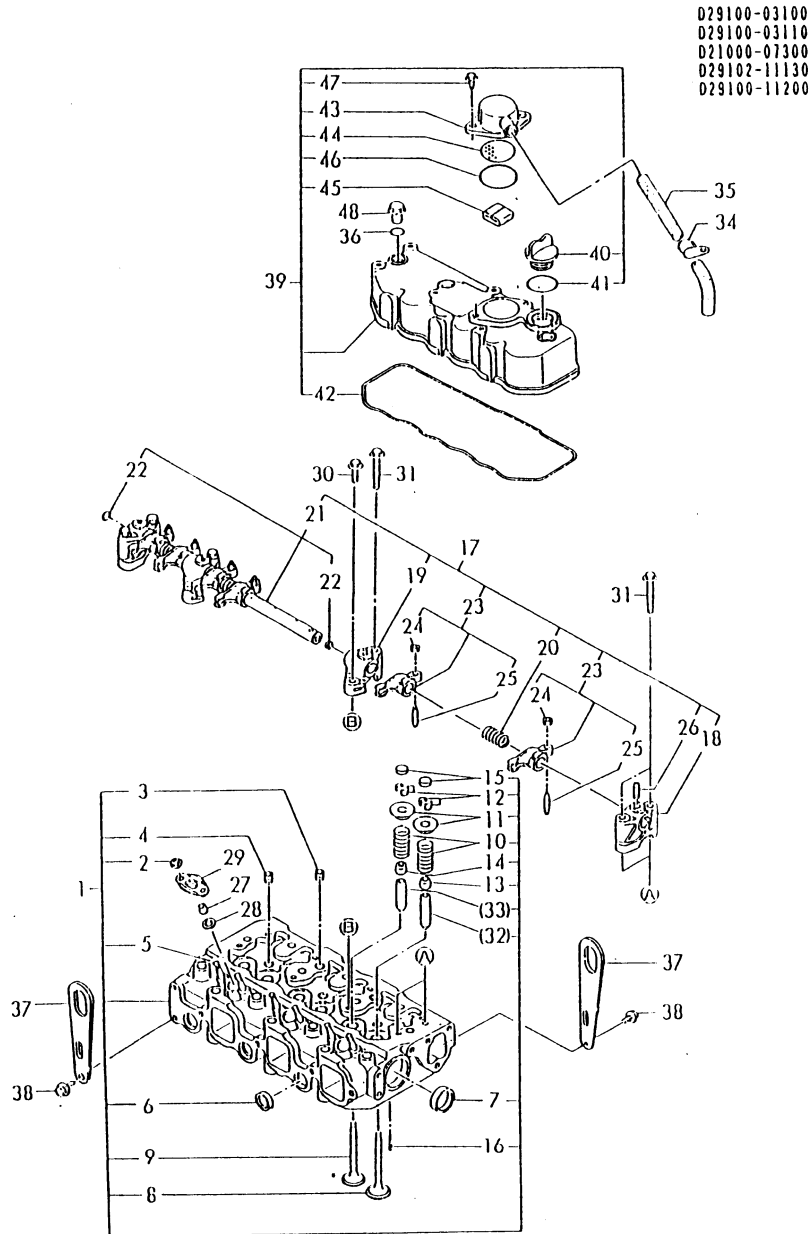
(D)=

(E)=

(F)=

No.	Lev.	Parts No.	Description	Q'ty						I	R
				(A)	(B)	(C)	(D)	(E)	(F)		
1	1	129100-01580	PIN, M8X16	2							
2	1	171420-01600	HOUSING, FLYWHEEL	1							
3	1	119620-01750	CAP	1							
4	1	26206-100252	BOLT, M10X 25 PLATED	6							
5	1	26206-100302	BOLT, M10X 30 PLATED	4							
6	1	771341-01540	SUMP ASSY, OIL	1							
6-1	1	129100-01770	SUMP ASSY, OIL	1							N
(A=E11610)											
7	2	171301-01640	PLUG, 22	1							
8	2	129100-01790	RETAINER	2							
9	2	24341-000240	O-RING, 1AS24.0	1							
10	1	129100-01730	SPACER, OIL SUMP	1							
11	1	26106-080162	BOLT, M8X 16 PLATED	4							
12	1	26106-080252	BOLT, M8X 25 PLATED	2							
13	1	26106-080452	BOLT, M8X 45 PLATED	16							
14	1	26106-080502	BOLT, M8X 50 PLATED	4							
15	1	129100-01580	PIN, M8X16	2							
16	1	129100-01640	CASE ASSY, OIL SEAL	1							W
(A=E11610)											
17	2	129795-01780	SEAL, OIL	1							
18	1	26106-080302	BOLT, M8X 30 PLATED	6							
19	1	26106-080352	BOLT, M8X 35 PLATED	3							

Fig.4. CYLINDER HEAD & BONNET



(A)=3TN82L-RNG1

(B)=

(C)=

(D)=

(E)=

(F)=

No.	Lev.	Parts No.	Description	Q'ty						I	R
				(A)	(B)	(C)	(D)	(E)	(F)		
1	1	729102-11700	HEAD ASSY, CYLINDER	1							
2	2	26366-060002	NUT, M6	6							
3	2	121850-11860	PLUG, PT1/4	2							
4	2	23871-030000	PLUG, R03	3							
5	2	26216-060202	STUD, M6X 20	6							
6	2	27241-220000	PLUG, 22	3							
7	2	27241-400000	PLUG, 40	2							
8	2	129100-11100	VALVE, INTAKE	3							
9	2	129100-11110	VALVE, EXHAUST	3							
10	2	129795-11120	SPRING, VALVE	6							
11	2	129795-11180	RETAINER, SPRING	6							
12	2	103338-11190	COTTER	6							
12-1	2	27310-080001	COTTER, 8	6							R
(A=EXXXXX)											
13	2	121400-11340	SEAL, VALVE STEM	3							
14	2	124460-11340	SEAL, VALVE STEM	3							
15	2	129150-11370	CAP, VALVE	6							
16	2	22351-060012	PIN, SPRING 6.0X12	2							
17	1	129155-11241	SHAFT ASSY, ROCKER	1							
17-1	1	129100-11240	SHAFT ASSY, ROCKER	1							N
(A=*1990.10)											
18	2	129155-11260	SUPPORT, ROCKER ARM	2							
19	2	129155-11270	SUPPORT, ROCKER ARM	2							
20	2	129150-11280	SPRING	3							
21	2	129150-11290	SHAFT, ROCKER ARM	1							
22	3	27241-100000	PLUG, 10	2							
23	2	729150-11651	ARM ASSY, ROCKER	6							
23-1	2	729402-11650	ARM ASSY, ROCKER	6							N
(A=E11610)											
23-2	2	129100-11650	ARM, ROCKER	6							N
(A=*1990.10)											
24	3	129150-11750	NUT, M8	6							
25	3	129150-11230	SCREW, VALVE ADJUST	6							
26	2	26226-080182	STUD, M8X 18	3							
27	1	119625-11870	PROTECTOR, NOZZLE	3							
28	1	119625-11880	SEAT, NOZZLE	3							
29	1	119625-11900	RETAINER, NOZZLE	3							
30	1	26106-080252	BOLT, M8X 25 PLATED	2							
31	1	26106-080502	BOLT, M8X 50 PLATED	6							
32	1	120130-11860	GUIDE, VALVE	3							1
33	1	129150-11810	GUIDE, VALVE	3							1
34	1	129150-03100	RETAINER, PIPE	1							
35	1	129150-03090	HOSE, ID16X2T	1							
36	1	24311-000120	O-RING, 1AP12.0	3							
37	1	124736-07900	LIFTER	2							
38	1	26106-080142	BOLT, M8X 14 PLATED	4							
39	1	729132-11520	BONNET ASSY, HEAD	1							
40	2	124160-01751	COVER, FILLER	1							
41	2	24311-000320	O-RING, 1AP32.0	1							
42	2	129150-11310	GASKET, BONNET	1							
43	2	129150-03020	COVER, BREATHER	1							

Remarks

(1) REPAIR PART.

N:Old $\frac{Yes}{No}$ New, Q:Old $\frac{No}{Yes}$ New, R:Old $\frac{Yes}{Yes}$ New, S:Old $\frac{No}{No}$ New, W:Add, Z:Discontinued, F:Interchangeable by set, K:Q'ty Change

++ CONTINUE ++

Copyright (C) YANMAR CO., LTD. All Rights Reserved.

Fig.4. CYLINDER HEAD & BONNET

(A)=3TN82L-RNG1

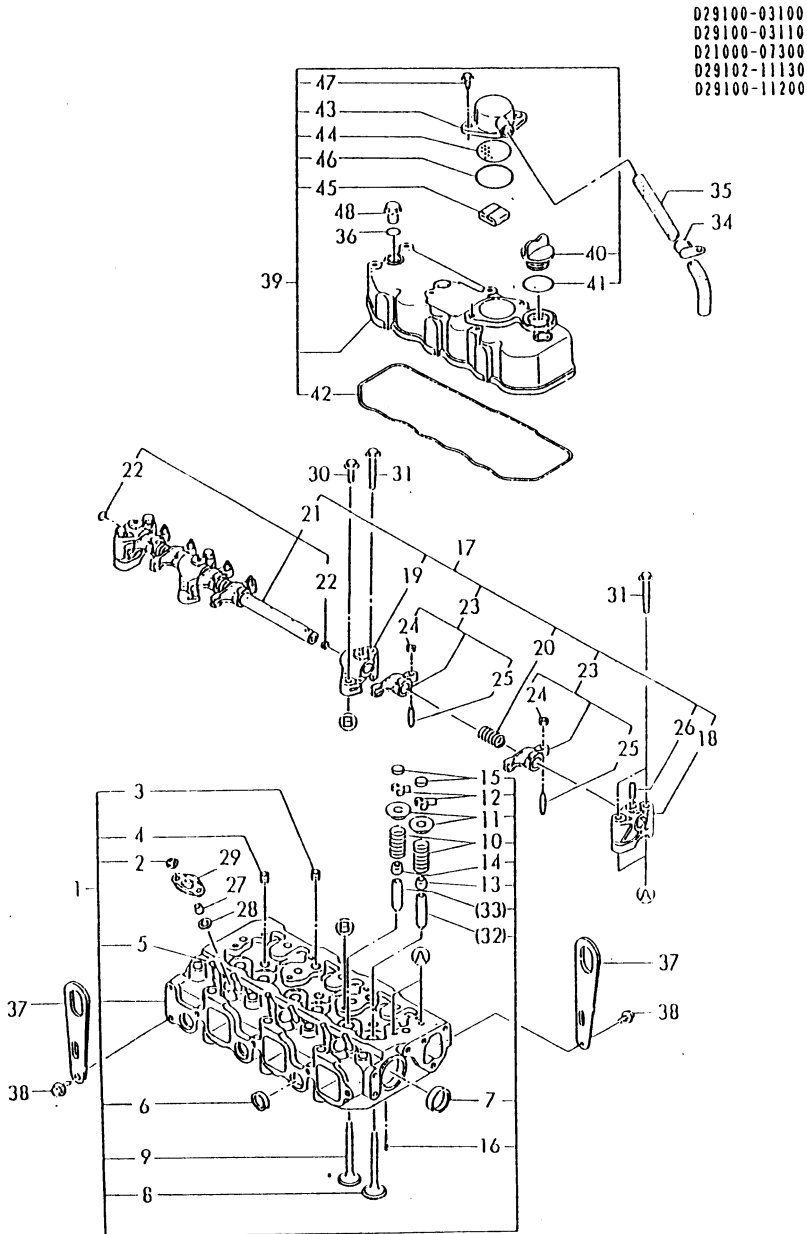
(B)=

(C)=

(D)=

(E)=

(F)=



No.	Lev.	Parts No.	Description	Qty						I	R
				(A)	(B)	(C)	(D)	(E)	(F)		
44	2	129150-03080	PLATE, BAFFLE	1							
45	2	129150-03070	BAFFLE, BREATHER	1							
46	2	24341-000500	O-RING, 1AS50.0	1							
47	2	26106-080162	BOLT, M8X 16 PLATED	2							
48	1	124160-11360	KNOB	3							

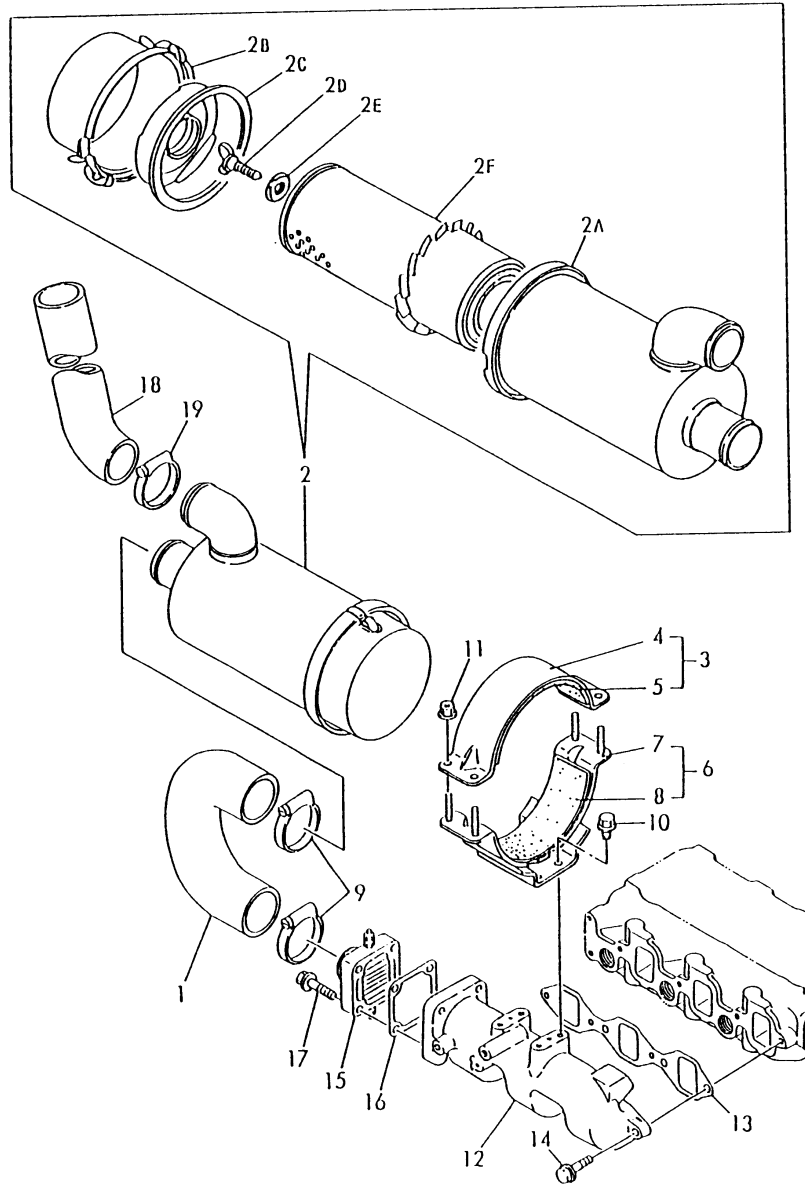
Remarks

(1) REPAIR PART.

N:Old $\xrightarrow{\text{Yes}}$ New, Q:Old $\xrightarrow{\text{No}}$ New, R:Old $\xrightarrow{\text{Yes}}$ New, S:Old $\xrightarrow{\text{No}}$ New, W:Add, Z:Discontinued, F:Interchangeable by set, K:Qty Change

Fig.5. SUCTION MANIFOLD & AIR CLEANER

029100-12100
 U71351-12100
 029100-77501
 029111-93170



(A)=3TN82L-RNG1

(B)=

(C)=

(D)=

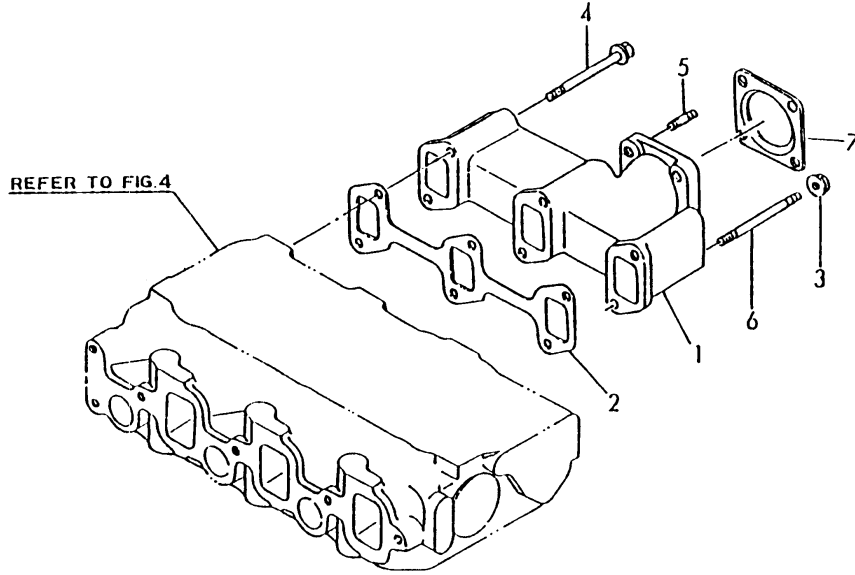
(E)=

(F)=

No.	Lev.	Parts No.	Description	Q'ty						I	R
				(A)	(B)	(C)	(D)	(E)	(F)		
1	1	171351-12210	PIPE, AIR INTAKE	1							
2	1	171351-12500	CLEANER ASSY, AIR	1							
2A	2	171351-12520	CASE ASSY	1							
2B	2	121120-12531	PAN, DUST	1							
2C	2	121120-12541	RETAINER, ELEMENT	1							
2D	2	121120-12561	BOLT	1							
2E	2	121120-12571	WASHER, SEAL	1							
2F	2	121120-12901	ELEMENT	1							
3	1	121400-12540	BAND ASSY, CLEANER	1							
4	2	121400-12560	BAND, AIR CLEANER	1							
5	2	121400-12570	SEAT, RUBBER B	1							
6	1	171351-12580	SUPPORT ASSY,CLEANER	1							
7	2	171351-12560	SUPPORT, AIR CLEANER	1							
8	2	171351-12570	SEAT, RUBBER	1							
9	1	23000-060000	CLAMP, 60	2							
10	1	26106-080142	BOLT, M8X 14 PLATED	4							
11	1	26366-060002	NUT, M6	4							
12	1	129122-12100	MANIFOLD, AIR INTAKE	1							
13	1	129150-12110	GASKET, MANIFOLD	1							
13-1	1	129150-12111	GASKET, MANIFOLD	1							N
		(A=E11610)									
14	1	26106-080252	BOLT, M8X 25 PLATED	4							
15	1	129120-77501	HEATER	1							
16	1	129150-77510	GASKET	1							
16-1	1	129150-77511	GASKET	1							N
		(A=E11610)									
17	1	26106-080352	BOLT, M8X 35 PLATED	4							
18	1	171016-12590	PIPE, EXTENSION	1							
19	1	23000-060000	CLAMP, 60	1							

Fig.6. EXHAUST MANIFOLD

029100-13100
029111-93170



(A)=3TN82L-RNG1
(B)=
(C)=

(D)=
(E)=
(F)=

No.	Lev.	Parts No.	Description	Q'ty						I	R
				(A)	(B)	(C)	(D)	(E)	(F)		
1	1	129100-13110	MANIFOLD, EXHAUST	1							
2	1	129150-13110	GASKET	1							
3	1	194990-22050	NUT, M8	2							
4	1	26106-080802	BOLT, M8X 80 PLATED	4							
5	1	26216-080222	STUD, M8X 22	4							
6	1	26216-080802	STUD, M8X 80	2							
7	1	121000-13200	GASKET, SILENCER	1							

Fig.7. CAMSHAFT & DRIVING GEAR

(A)=3TN82L-RNG1

(B)=

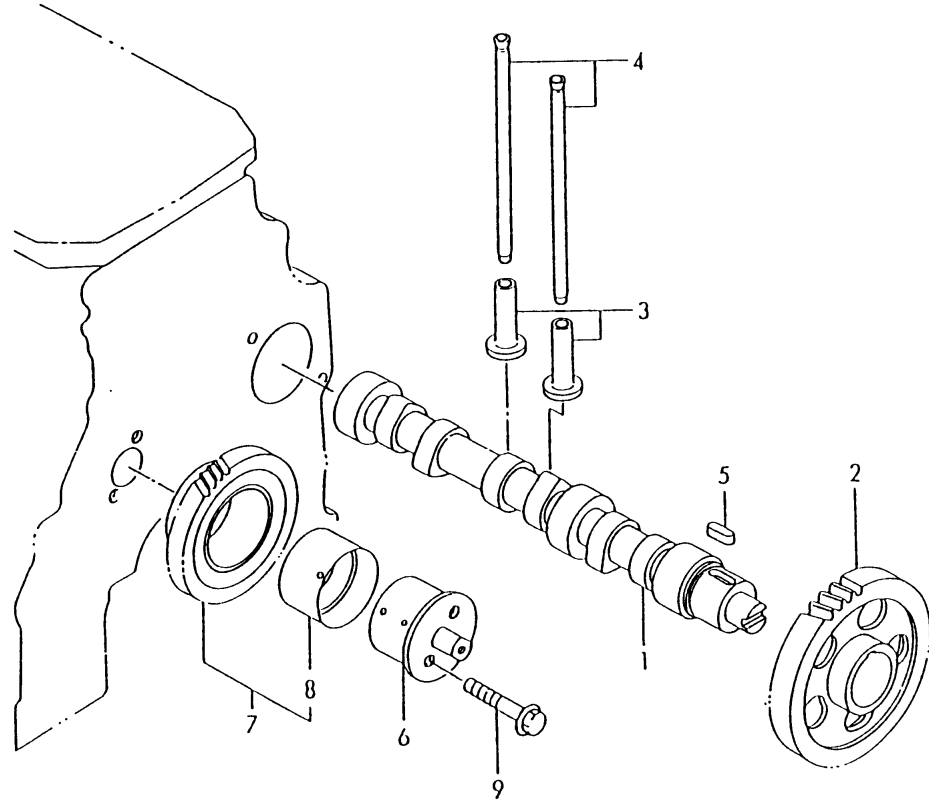
(C)=

(D)=

(E)=

(F)=

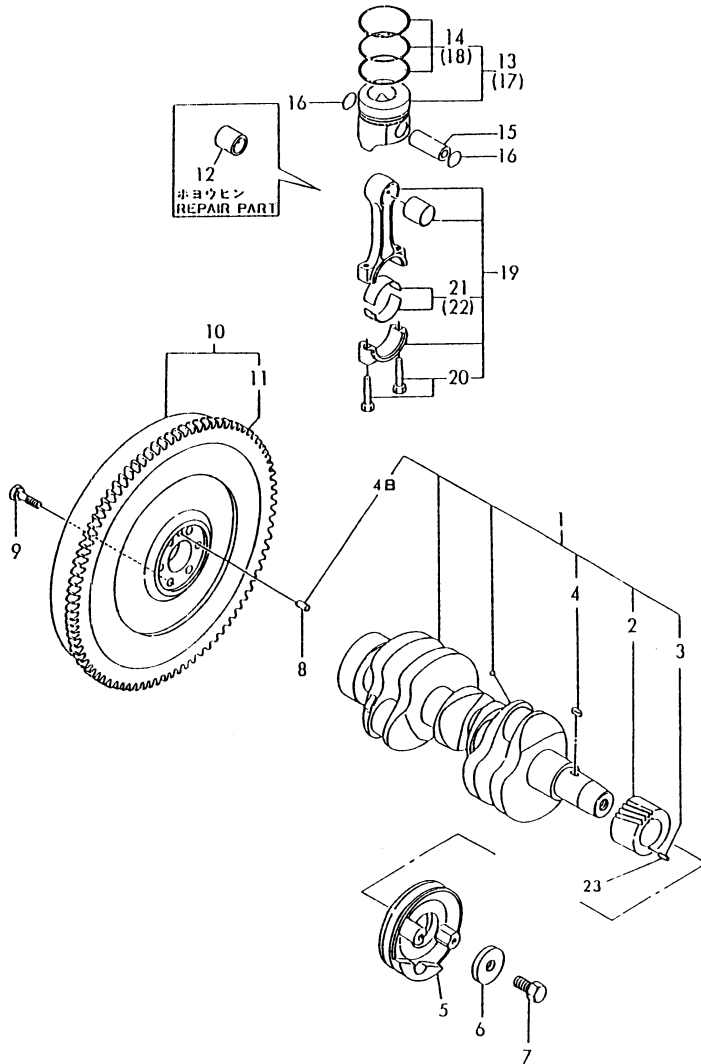
029150-14100
029100-25101



No.	Lev.	Parts No.	Description	Q'ty						I	R
				(A)	(B)	(C)	(D)	(E)	(F)		
1	1	129150-14011	CAMSHAFT	1							
2	1	129150-14101	GEAR, CAMSHAFT	1							
3	1	129150-14200	TAPPET	6							
4	1	129150-14400	ROD, PUSH L=178	6							
5	1	22512-070140	KEY, 7X 14	1							
6	1	129100-25061	SHAFT, IDLE	1							
7	1	129150-25101	GEAR ASSY, IDLE	1							
9	1	26106-080452	BOLT, M8X 45 PLATED	2							

Fig.8. CRANKSHAFT & PISTON

D29100-21100
 D29100-21210
 D29100-21310
 D29402-22110
 D29150-23100



(A)=3TN82L-RNG1

(B)=

(C)=

(D)=

(E)=

(F)=

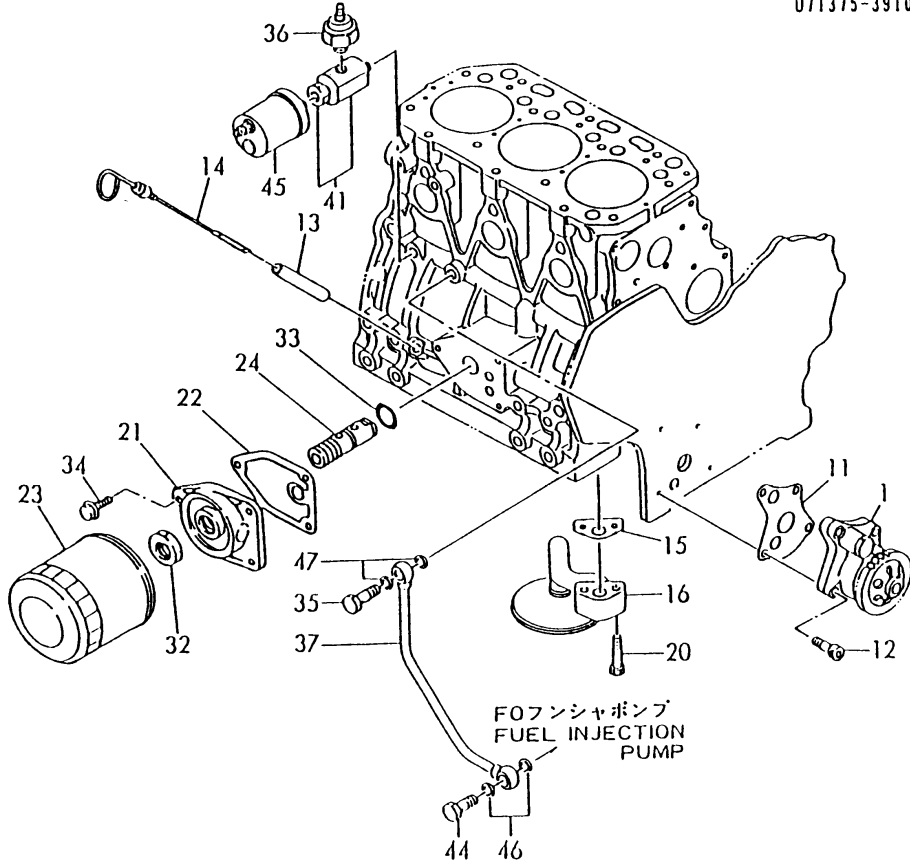
No.	Lev.	Parts No.	Description	Q'ty						I	R
				(A)	(B)	(C)	(D)	(E)	(F)		
1	1	729102-21700	CRANKSHAFT ASSY	1							
2	2	129150-21200	GEAR, CRANKSHAFT	1							
3	2	22351-040010	PIN, SPRING 4.0X10	1							Z
(A=E11510)											
4	2	22512-070140	KEY, 7X 14	1							
4B	2	129100-01580	PIN, M8X16	1							W
(A=E11510)											
5	1	129150-21650	V-PULLEY	1							
6	1	129795-21661	WASHER	1							
7	1	121850-21680	BOLT	1							
8	1	22312-080160	PIN, PARALLEL M8X16	1							Z
(A=E11510)											
9	1	121111-21501	BOLT, FLYWHEEL	6							
10	1	171340-21590	FLYWHEEL ASSY	1							
11	2	124550-21600	GEAR, RING	1							
12	1	129100-23910	BEARING, PISTON PIN	3							3
13	1	129402-22080	PISTON ASSY	3							
14	2	729402-22500	RING SET, PISTON	3							
15	1	129150-22300	PIN, PISTON D26 L66	3							
16	1	121100-22400	CIRCLIP	6							
17	1	729402-22900	PISTON ASSY, 0.25 OS	3							1
18	2	729156-22950	RING SET, 0.25 OS	3							1
19	1	729150-23700	ROD ASSY, CONNECTING	3							
19-1	1	729402-23100	ROD ASSY, CONNECTING	3							N
(A=E11510)											
20	2	121550-23200	BOLT, CONNECTING ROD	6							
21	2	129150-23600	BEARING, CRANK PIN	3							
22	1	129150-23610	BEARING, 0.25 US	3							2
23	1	22351-040010	PIN, SPRING 4.0X10	1							W
(A=E11510)											

Remarks

- (1) OVERSIZED(O.S=0.25)PART.
- (2) UNDERSIZED(U.S=0.25)PART.
- (3) REPAIR PART.

Fig.9. LUB. OIL SYSTEM

D29150-32100
 D29100-34100
 D29100-35110
 D29100-35200
 U71375-39100



(A)=3TN82L-RNG1

(B)=

(C)=

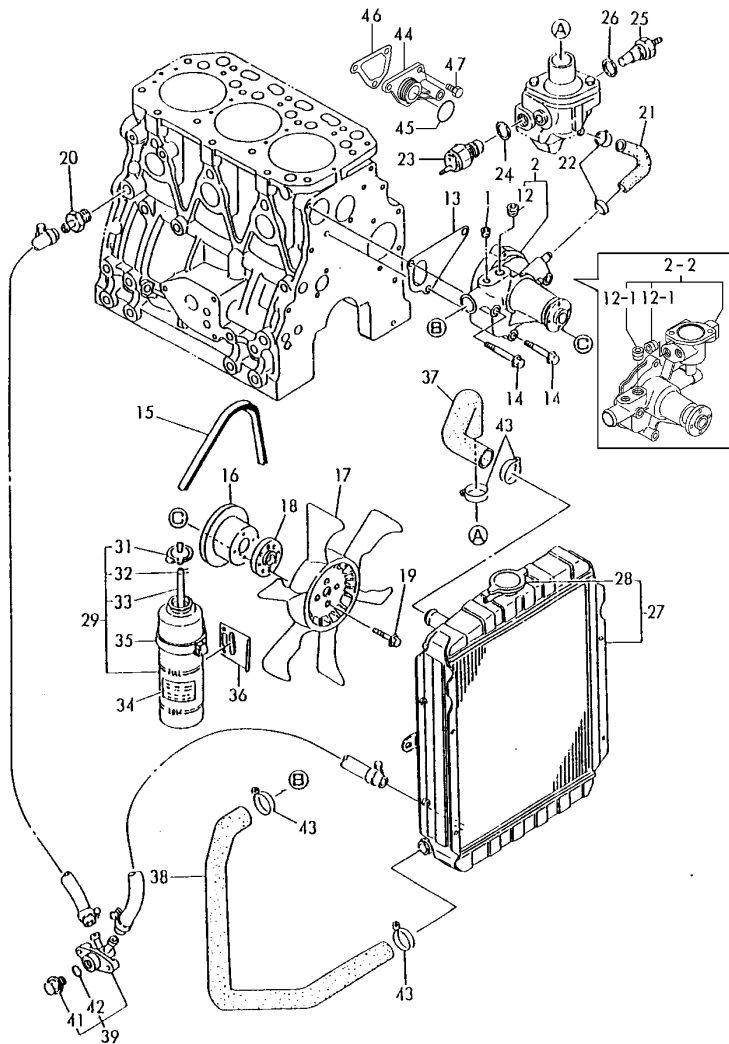
(D)=

(E)=

(F)=

No.	Lev.	Parts No.	Description	Q'ty						I	R
				(A)	(B)	(C)	(D)	(E)	(F)		
1	1	129150-32000	PUMP ASSY, OIL	1							
11	1	129150-32020	GASKET, PUMP	1							
12	1	26450-060252	BOLT, M6X 25	4							
13	1	121520-34810	GUIDE, DIPSTICK	1							
14	1	171420-34820	DIPSTICK, OIL	1							
15	1	129150-35040	GASKET	1							
15-1	1	129150-35041	GASKET	1							N
		(A=E11510)									
16	1	129100-35300	PIPE ASSY, OIL INLET	1							
16-1	1	129100-35301	PIPE ASSY, OIL INLET	1							N
		(A=E10858)									
20	1	26116-080352	BOLT, M8X 35 PLATED	2							
20-1	1	26106-080352	BOLT, M8X 35 PLATED	2							N
		(A=E10858)									
21	1	129150-35101	BRACKET, STRAINER	1							
22	1	129150-35110	GASKET	1							
22-1	1	129150-35111	GASKET	1							N
		(A=E11510)									
23	1	129150-35150	FILTER 90X80L	1							
24	1	119865-35300	VALVE ASSY, CONTROL	1							
32	1	129150-35350	NUT	1							
33	1	24311-000160	O-RING, 1AP16.0	1							
34	1	26106-080202	BOLT, M8X 20 PLATED	3							
35	1	124160-39140	BOLT, PIPE JOINT M10	1							
36	1	124160-39450	SWITCH, 0.5KG	1							
37	1	129150-39450	PIPE ASSY, OIL	1							
41	1	171375-39600	DAMPER ASSY	1							
44	1	124550-59820	BOLT, PIPE JOINT M8	1							
45	1	144626-91560	SENSOR	1							
46	1	23414-080000	GASKET, 8X1.0	2							
47	1	23414-100000	GASKET, 10X1.0	2							

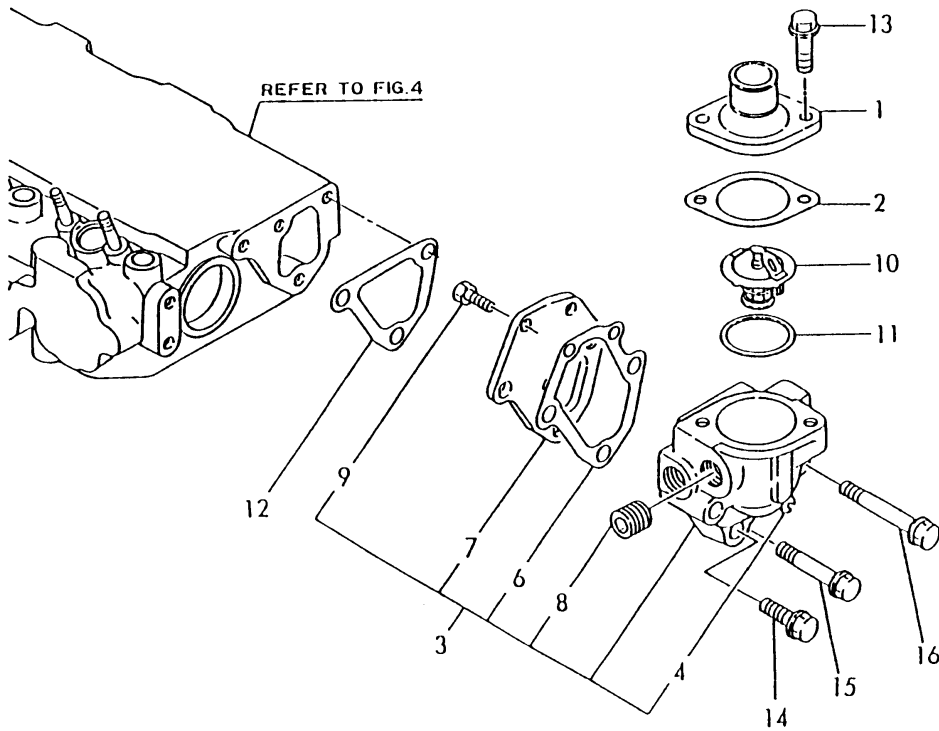
Fig.10. COOLING WATER SYSTEM



Remarks
 (1) Interchangeable by simultaneous replacement with Fig.11 Ref.No.1-1, Fig.18 Ref.No.23-1.

No.	Lev.	Parts No.	Description	Q'ty						I	R
				(A)	(B)	(C)	(D)	(E)	(F)		
1	1	121850-11860	PLUG, PT1/4	1							
2	1	129100-42001	PUMP ASSY, WATER	1							
2-1	1	129100-42002	PUMP ASSY, WATER	1							N
2-2	1	129001-42001	PUMP ASSY, WATER	1							F 1
12	2	23871-030000	PLUG, R03	1							
12-1	2	23871-030000	PLUG, R03	2							K
13	1	129100-42020	GASKET, WATER PUMP	1							
14	1	26106-080602	BOLT, M8X 60 PLATED	3							
15	1	124732-42290	V-BELT, AX37	1							
16	1	129155-42350	V-PULLEY	1							
17	1	171340-44740	FAN, COOLING D335XNF	1							
18	1	124574-44761	SPACER, FAN	1							
19	1	26014-060252	BOLT, M6X 25	4							
20	1	121550-49111	JOINT, PT1/4	1							
21	1	129100-49050	PIPE, WATER	1							
21-1	1	129132-49050	PIPE, WATER	1							R
21-2	1	129132-49050	PIPE, WATER	1							Z
22	1	23000-016000	CLAMP, 16	2							Z
23	1	121250-44901	SWITCH, 110	1							
24	1	124465-44950	GASKET, 16	1							
25	1	124250-49351	SENSOR	1							
26	1	129150-49360	GASKET	1							
27	1	171420-44500	RADIATOR	1							
28	2	124450-44590	CAP, RADIATOR	1							
29	1	124450-44510	TANK ASSY, SUB	1							
31	2	124450-44530	CAP	1							
32	2	124450-44560	RETAINER	1							
33	2	23061-070230	PIPE, 7X 230	1							
34	1	121470-44540	LABEL, SUB-TANK	1							
35	1	124450-44550	BAND	1							
36	1	121256-44600	BRACKET, SUB TANK	1							
37	1	171301-49010	PIPE, WATER	1							
38	1	171301-49020	PIPE, WATER	1							
39	1	121450-49110	COCK ASSY, 3-WAY	1							
41	2	121250-49121	PLUG, DRAIN	1							
42	2	24311-000160	O-RING, 1AP16.0	1							
43	1	23010-038000	CLAMP, 38	4							
44	1	129001-42040	JOINT	1							W
45	1	24321-000300	O-RING, 1AG30.0	1							W
46	1	129100-49840	GASKET	1							W
47	1	26106-080182	BOLT, M8X 18 PLATED	3							W

Fig.11. THERMOSTAT



(A)=3TN82L-RNG1

(B)=

(C)=

(D)=

(E)=

(F)=

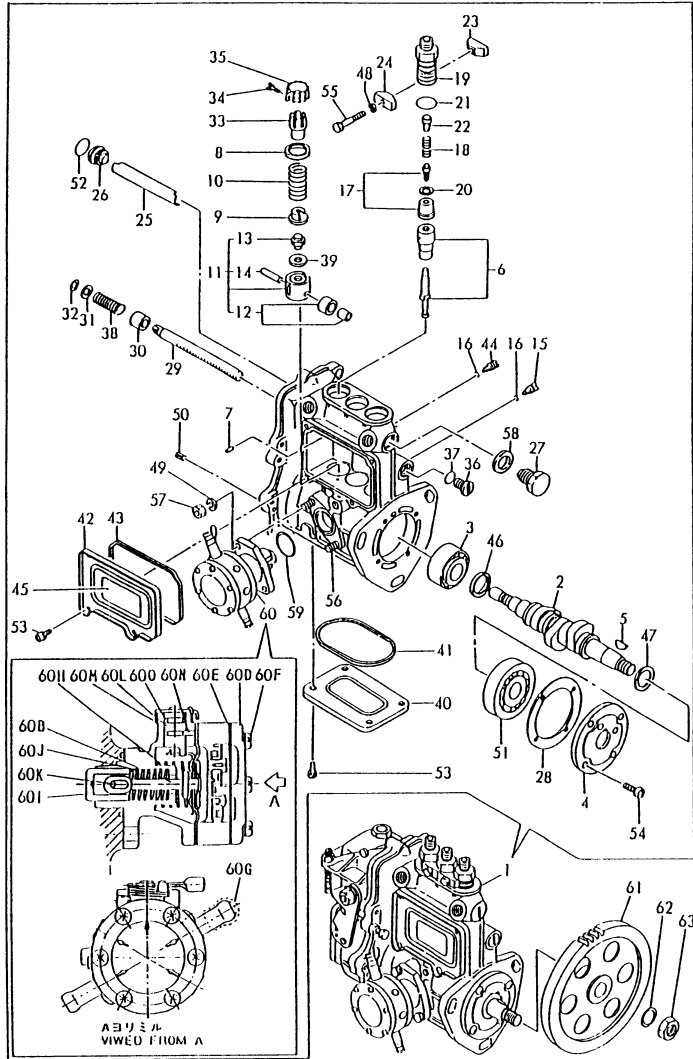
No.	Lev.	Parts No.	Description	Q'ty						I	R
				(A)	(B)	(C)	(D)	(E)	(F)		
1	1	129350-49530	COVER, THERMOSTAT	1							
1-1	1	129350-49560	COVER, THERMOSTAT	1							F 1
(A=EZZZZZ)											
2	1	129795-49550	GASKET	1							
2-1	1	129795-49551	GASKET	1							N
(A=E11510)											
3	1	129100-49800	CASE ASSY,THERMOSTAT	1							Z
(A=EZZZZZ)											
4	2	124770-11770	JOINT, PIPE PT1/8	1							Z
(A=EZZZZZ)											
6	2	129100-49820	GASKET	1							Z
(A=EZZZZZ)											
7	2	129100-49830	COVER, THERMOSTAT	1							Z
(A=EZZZZZ)											
8	2	23871-030000	PLUG, R03	1							Z
(A=EZZZZZ)											
9	2	26116-060162	BOLT, M6X 16 PLATED	2							Z
(A=EZZZZZ)											
10	1	129155-49800	THERMOSTAT, 71	1							
11	1	129150-49810	GASKET, THERMOSTAT	1							
11-1	1	129150-49811	GASKET, THERMOSTAT	1							N
(A=E11510)											
12	1	129100-49840	GASKET	1							Z
(A=EZZZZZ)											
13	1	26106-080202	BOLT, M8X 20 PLATED	2							
14	1	26106-080252	BOLT, M8X 25 PLATED	1							Z
(A=EZZZZZ)											
15	1	26106-080502	BOLT, M8X 50 PLATED	1							Z
(A=EZZZZZ)											
16	1	26106-080602	BOLT, M8X 60 PLATED	1							Z
(A=EZZZZZ)											

Remarks

(1) Interchangeable by simultaneous replacement with Fig.10 Ref.No.2-2, Fig.18 Ref.No.23-1.

Fig.12. FUEL INJECTION PUMP

D29150-25200
D29100-51100
D29100-52100



(A)=3TN82L-RNG1

(B)=

(C)=

(D)=

(E)=

(F)=

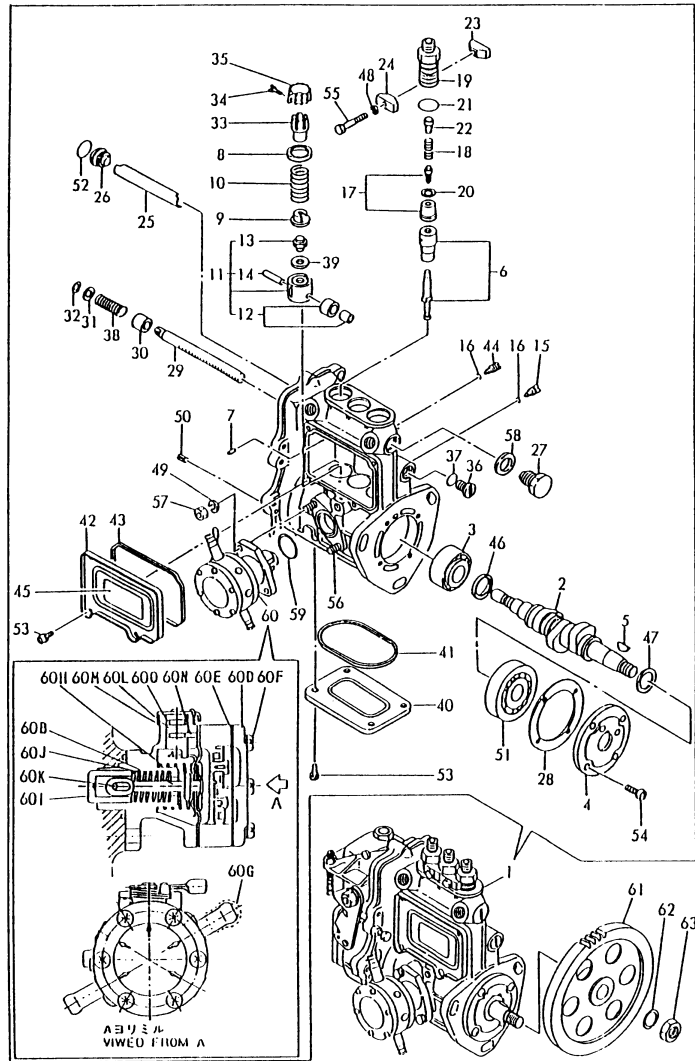
No.	Lev.	Parts No.	Description	Q'ty						I	R
				(A)	(B)	(C)	(D)	(E)	(F)		
1	1	729188-51330	PUMP ASSY, INJECTION	1							1
2	2	119810-51040	CAMSHAFT	1							
3	2	129155-51050	BEARING, 17BM001D	1							
4	2	129155-51060	SUPPORT, CAMSHAFT	1							
5	2	122710-51090	KEY	1							
6	2	129400-51100	PLUNGER ASSY	3							
7	2	129155-51140	PIN	3							
8	2	174307-51170	RETAINER, SPRING A	3							
9	2	129155-51180	RETAINER, SPRING	3							
10	2	124950-51190	SPRING, PLUNGER	3							
11	2	129155-51200	TAPPET ASSY	3							
12	3	711100-51540	ROLLER ASSY	3							
13	3	129155-51250	BOLT, ADJUSTING	3							
14	3	174100-54120	PIN	3							
15	2	129155-51270	STOPPER, TAPPET	3							
16	2	129155-51280	O-RING, S6	3							
17	2	128170-51300	VALVE ASSY, DELIVERY	3							
18	2	129155-51320	SPRING, DELIVERY	3							
19	2	129155-51340	RETAINER	3							
20	2	124550-51350	GASKET, DELIVERY	3							
21	2	124550-51370	O-RING	3							
22	2	129155-51370	STOPPER, VALVE	3							
23	2	129155-51380	STOPPER	2							
24	2	129155-51390	STOPPER	2							
25	2	129155-51400	DEFLECTOR	1							
26	2	129155-51410	BOLT	1							
27	2	129155-51420	PLUG, M16	1							
28	2	129155-51450	SHIM SET, ADJUSTING	1							
29	2	129155-51500	RACK, CONTROL	1							
30	2	129155-51521	BUSH, RACK	1							
31	2	129155-51530	SPACER	1							
32	2	129155-51540	CIRCLIP	1							
33	2	129155-51550	PINION, CONTROL	3							
34	2	122117-51560	SCREW	3							
35	2	174307-51560	PINION	3							
36	2	129155-51570	PLUG, M12	1							
37	2	129155-51580	O-RING	1							
38	2	129155-51591	SPRING, RACK	1							
39	2	129155-51600	SHIM SET, ADJUSTING	3							
40	2	129155-51700	COVER	1							
41	2	129155-51710	GASKET	1							
42	2	129155-51750	COVER	1							
43	2	129155-51760	GASKET	1							
44	2	129155-51790	STOOPER, RACK	1							
45	2	129156-51910	LABEL, CAUTION	1							
46	2	129155-51930	SPACER, T=3.25	1							
47	2	129155-51940	SPACER, T=1.5	1							
48	2	22217-050000	WASHER, SPRING 5	2							
49	2	22217-060000	WASHER, SPRING 6	2							
50	2	22351-050010	PIN, SPRING 5.0X10	2							
51	2	24101-063034	BEARING, BALL 6303	1							

Remarks

(1) GOVERNOR ASSY(FIG NO.15)IS INCORPORATED IN THIS FUEL INJECTION PUMP ASSY(REF NO.1).

Fig.12. FUEL INJECTION PUMP

D29150-25200
D29100-51100
D29100-52100



(A)=3TN82L-RNG1

(B)=

(C)=

(D)=

(E)=

(F)=

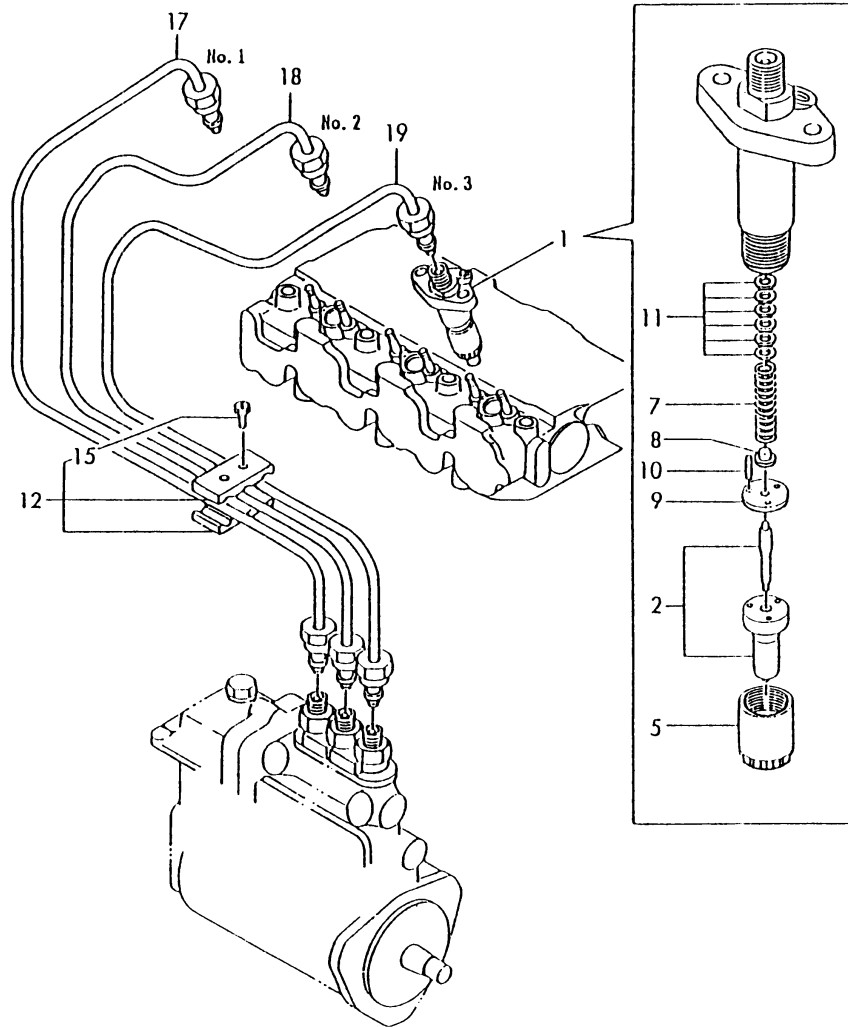
No.	Lev.	Parts No.	Description	Q'ty						I	R
				(A)	(B)	(C)	(D)	(E)	(F)		
52	2	24341-000160	O-RING, 1AS16.0	1							
53	2	26022-050102	SCREW, M5X10	8							
54	2	26022-060162	SCREW, M6X16	4							
55	2	26116-050302	BOLT, M5X 30 PLATED	2							
56	2	129155-51020	STUD	2							
57	2	26716-060002	NUT, M6	2							
58	2	43400-500490	SEAL WASHER 16	1							
59	2	129155-52050	GASKET	1							
60	2	129100-52100	PUMP ASSY, FUEL FEED	1							
60B	3	129158-52020	DIAPHRAGM	1							
60D	3	129158-52060	COVER	1							
60E	3	129158-52070	GASKET	1							
60F	3	129158-52080	SCREW	6							
60G	3	129158-52090	CAP	2							
60H	3	129158-52160	SPRING	1							
60I	3	129158-52250	TAPPET	1							
60J	3	129158-52260	SPRING	1							
60K	3	129158-52270	PIN	1							
60L	3	129158-52350	LEVER	1							
60M	3	129158-52360	SPRING, RETURN	1							
60N	3	129158-52370	PIN	1							
60O	3	129158-52380	O-RING	1							
61	1	129150-25900	GEAR, PUMP	1							
62	1	22217-120000	WASHER, SPRING 12	1							
63	1	26716-120002	NUT, M12	1							

Remarks

(1) GOVERNOR ASSY(FIG NO.15)IS INCORPORATED IN THIS FUEL INJECTION PUMP ASSY(REF NO.1).

Fig.13. FUEL INJECTION PIPES

019800-53100
029100-59110



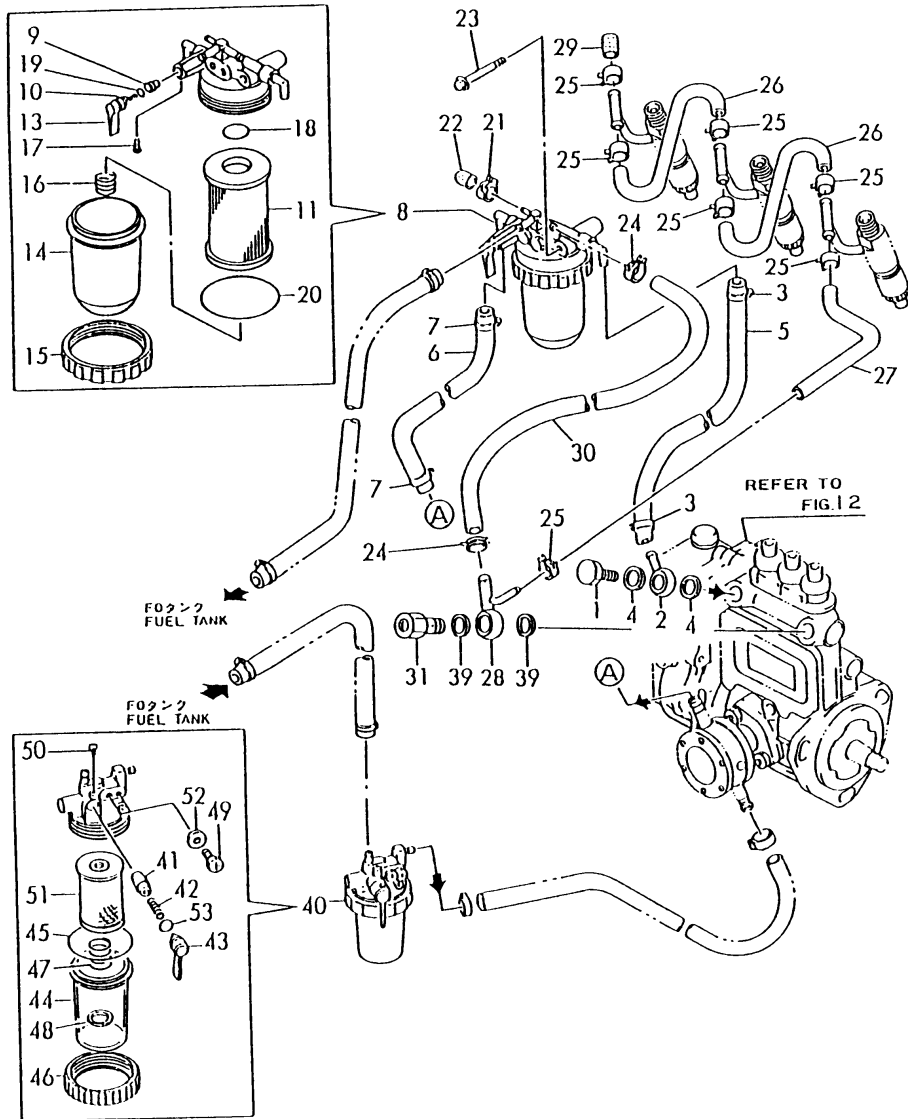
(A)=3TN82L-RNG1
(B)=
(C)=

(D)=
(E)=
(F)=

No.	Lev.	Parts No.	Description	Q'ty						I	R
				(A)	(B)	(C)	(D)	(E)	(F)		
1	1	719800-53300	VALVE ASSY,INJECTION	3							
2	2	119800-53000	VALVE ASSY,INJECTION	3							
5	2	114250-53080	NUT, NOZZLE D16.95	3							
7	2	114250-53120	SPRING, NOZZLE	3							
8	2	114250-53130	SEAT, SPRING	3							
9	2	114250-53140	PLATE	3							
10	2	114250-53210	PIN	6							
11	2	114250-53400	SHIM SET	3							
12	1	129150-59120	RETAINER, PIPE	1							
15	2	129150-59130	BOLT, M4X12	2							
17	1	129100-59910	PIPE ASSY, INJECTION	1							
18	1	129100-59920	PIPE ASSY, INJECTION	1							
19	1	129100-59930	PIPE ASSY, INJECTION	1							

Fig.14. FUEL OIL PIPES

029100-55112
 029100-59211
 029100-59302
 029111-93170



(A)=3TN82L-RNG1

(B)=

(C)=

(D)=

(E)=

(F)=

No.	Lev.	Parts No.	Description	Qty						I	R
				(A)	(B)	(C)	(D)	(E)	(F)		
1	1	103854-39140	BOLT, PIPE JOINT	1							
2	1	101304-59020	JOINT, PIPE 12	1							
3	1	124766-59050	CLIP, HOSE 12	2							
4	1	104200-59170	GASKET, 12	2							
5	1	129555-59510	PIPE, D13/7.5X180	1							
6	1	129255-59580	PIPE, FUEL	1							
7	1	23000-013000	CLAMP, 13	2							
8	1	129100-55621	FILTER ASSY, FUEL	1							
9	2	104200-55321	VALVE, TAPER	1							
10	2	104200-55330	SPRING, VALVE	1							
11	2	129100-55650	ELEMENT	1							
13	2	129100-55670	LEVER	1							
14	2	129100-55680	CUP, STRAINER	1							
15	2	129100-55690	RING, RETAINING	1							
16	2	129100-55700	SPRING	1							
17	2	104200-55750	SCREW, M4	1							
18	2	24311-000160	O-RING, 1AP16.0	1							
19	2	24311-240100	O-RING, 1AP10A	1							
20	2	24321-000650	O-RING, 1AG65.0	1							
21	1	124066-59100	CLIP, HOSE 8	1							
22	1	129150-59580	CAP	1							
23	1	26014-080702	BOLT, M8X 70	1							
24	1	124766-59050	CLIP, HOSE 12	2							
25	1	124066-59100	CLIP, HOSE 8	7							
26	1	121250-59550	PIPE, FUEL D8X120	2							
27	1	119840-59560	PIPE, FUEL RETURN	1							
28	1	119840-59570	JOINT	1							
29	1	129150-59580	CAP	1							
30	1	129255-59580	PIPE, FUEL	1							
31	1	129100-59951	VALVE ASSY, CHECK	1							
39	1	23414-120000	GASKET, 12X1.0	2							
40	1	121257-55700	SEPARATOR, WATER	1							
41	2	104200-55321	VALVE, TAPER	1							
42	2	104200-55330	SPRING, VALVE	1							
43	2	104200-55341	HANDLE	1							
44	2	121254-55510	COVER	1							
45	2	102103-55520	O-RING	1							
46	2	110250-55610	RING, RETAINING	1							
47	2	121257-55720	SPRING	1							
48	2	121257-55731	FLOAT	1							
49	2	101720-55750	PLUG, 6	2							
50	2	104200-55750	SCREW, M4	1							
51	2	171081-55910	SCREEN	1							
52	2	23418-060000	GASKET, 6X1.0	2							
53	2	24311-240100	O-RING, 1AP10A	1							

Fig.15. GOVERNOR

(A)=3TN82L-RNG1

(B)=

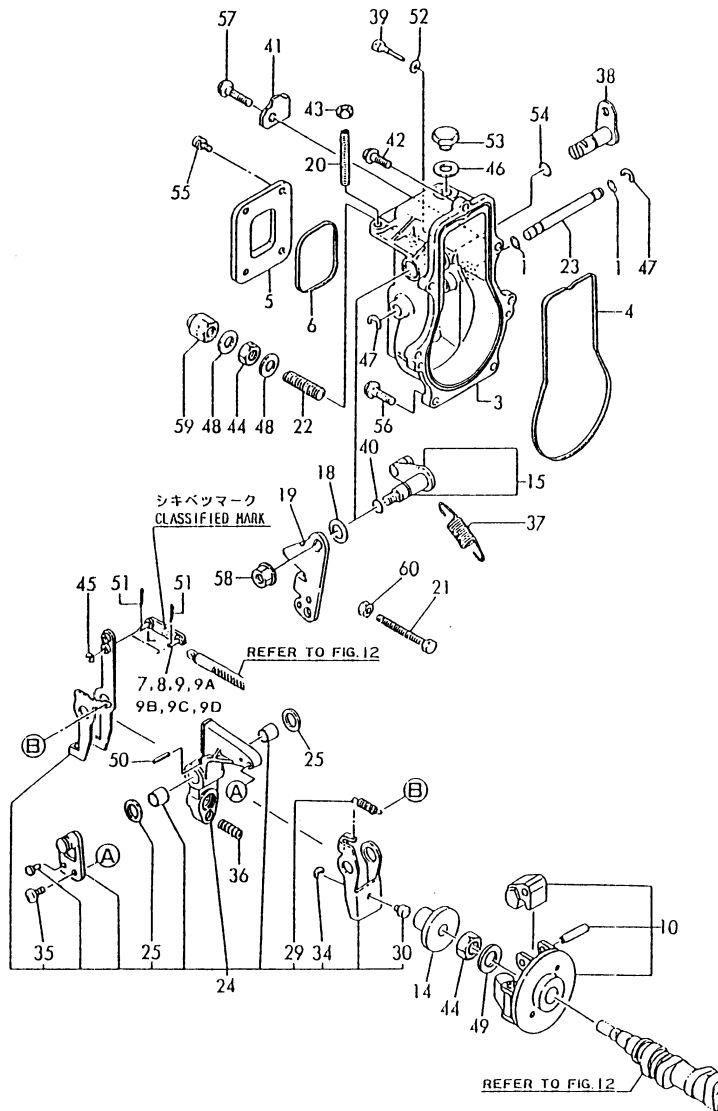
(C)=

(D)=

(E)=

(F)=

029188-61180



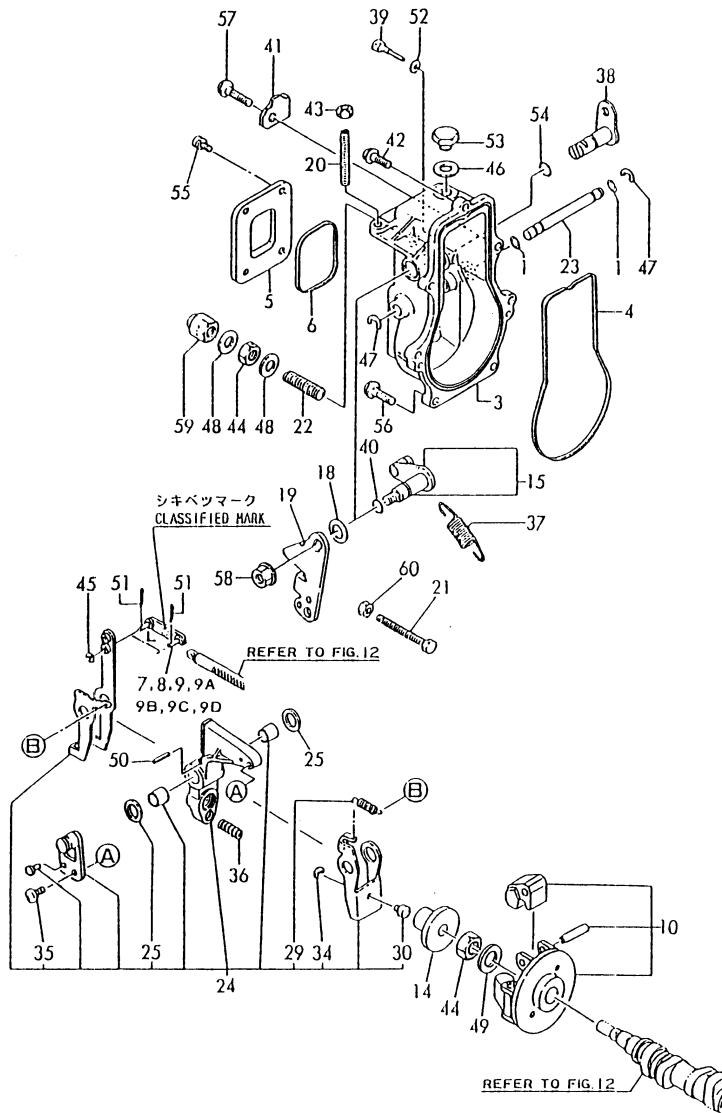
No.	Lev.	Parts No.	Description	Q'ty						I	R
				(A)	(B)	(C)	(D)	(E)	(F)		
1	1	129155-51280	O-RING, S6	2							
3	1	119843-61011	CASE, GOVERNOR	1							
4	1	129155-61050	GASKET	1							
5	1	129155-61060	COVER, GOVERNOR CASE	1							
6	1	129155-61070	GASKET	1							
7	1	129155-61120	LINK, L=30 MARK 0	1							1
8	1	129155-61130	LINK, L=31 MARK 1	1							1
9	1	129155-61140	LINK, L=30.5 MARK 05	1							1
9A	1	129155-61150	LINK, L=33	1							W 1
		(A=EXXX)									
9B	1	129155-61160	LINK, L=34 MARK4	1							W 1
		(A=EXXX)									
9C	1	129155-61170	LINK, L=28 MARK 8	1							W 1
		(A=EXXX)									
9D	1	129155-61180	LINK, L=29 MARK 9	1							W 1
		(A=EXXX)									
10	1	171488-61200	WEIGHT ASSY,GOVERNOR	1							
14	1	129155-61341	SLEEVE	1							
15	1	129100-61400	SHAFT ASSY	1							
18	1	129155-61430	SPACER	1							
19	1	129100-61440	LEVER, CONTROL	1							
20	1	129155-61450	BOLT, LIMITER	1							
21	1	129155-61460	BOLT, IDLE	1							
22	1	129155-61470	BOLT, CONTROL	1							
23	1	129155-61490	SHAFT	1							
24	1	129116-61500	LEVER ASSY, GOVERNOR	1							
25	2	174307-51700	SHIM SET	2							
29	2	119843-61540	SPRING, SET	1							
30	2	129155-61540	SHIFTER	1							
34	2	22272-000040	RING, E- 4	1							
35	2	26022-060122	SCREW, M6X12	1							
36	1	129500-61650	SPRING, FUEL CONTROL	1							
37	1	129477-61720	SPRING, GOVERNOR	1							
38	1	129111-61802	LEVER ASSY, STOP	1							
39	1	129155-61810	PIN	1							
40	1	129155-61830	O-RING, S10	1							
41	1	129116-61890	SUPPORT	1							
42	1	129155-61950	BOLT	1							
43	1	124550-66370	NUT, M6	1							
44	1	26776-120002	NUT, LOCK M12	2							
45	1	22117-040000	WASHER, 4	1							
46	1	22190-100000	WASHER, SEAL 10	1							
46-1	1	43400-500430	SEAL WASHER 10	1							N
		(A=*1990.01)									
47	1	22272-000060	RING, E- 6	2							
48	1	43400-500450	SEAL WASHER 12	2							
49	1	22287-120000	WASHER, 12	1							
50	1	22351-030016	PIN, SPRING 3.0X16	1							
51	1	22360-040000	PIN, SNAP 4	2							
52	1	23414-050000	GASKET, 5X1.0	1							
52-1	1	43400-500390	SEAL WASHER 6	1							N

Remarks

(1) SELECTIVE USE : CERTAIN THE CLASSIFICATION MARK, THEN PLACE YOUR ORDER.(ILLUSRRATION)

Fig.15. GOVERNOR

029188-61180



(A)=3TN82L-RNG1

(B)=

(C)=

(D)=

(E)=

(F)=

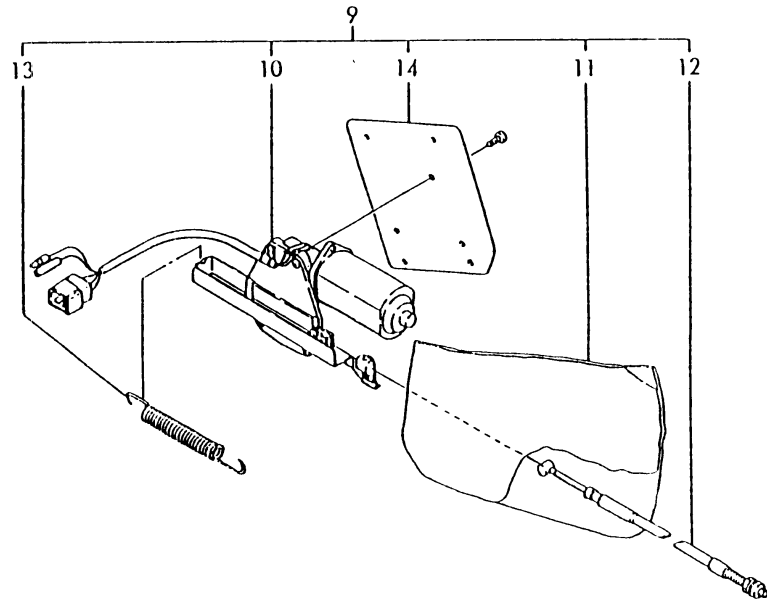
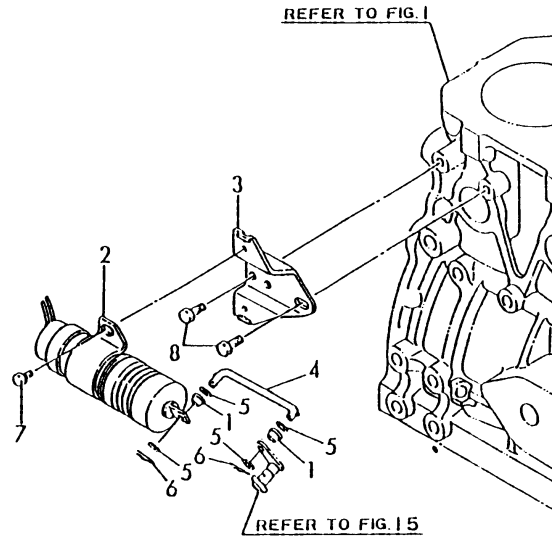
No.	Lev.	Parts No.	Description	Q'ty						I	R
				(A)	(B)	(C)	(D)	(E)	(F)		
(A=EXXX)											
53	1	23887-100002	PLUG, 10	1							
54	1	24311-240100	O-RING, 1AP10A	1							
55	1	26022-050102	SCREW, M5X10	4							
56	1	26106-060202	BOLT, M6X 20 PLATED	5							
57	1	26106-060252	BOLT, M6X 25 PLATED	1							
58	1	26366-080002	NUT, M8	1							
59	1	26687-120002	NUT, CAP M12	1							
60	1	26756-060002	NUT, LOCK M6	1							

Remarks

(1) SELECTIVE USE : CERTAIN THE CLASSIFICATION MARK, THEN PLACE YOUR ORDER.(ILLUSRRATION)

Fig.16. ENGINE STOPPING DEVICE

029155-66511
029111-93170



(A)=3TN82L-RNG1
(B)=
(C)=

(D)=
(E)=
(F)=

No.	Lev.	Parts No.	Description	Qty						I	R
				(A)	(B)	(C)	(D)	(E)	(F)		
1	1	119245-66400	BUSH	2							
2	1	129155-66800	SOLENOID	1							
3	1	129155-66811	BRACKET, SOLENOID	1							
4	1	129155-66822	LINK, SOLENOID	1							
5	1	22137-040000	WASHER, 4	4							
6	1	22360-040000	PIN, SNAP 4	2							
7	1	26106-060102	BOLT, M6X 10 PLATED	2							
8	1	26116-080122	BOLT, M8X 12 PLATED	2							
9	1	121575-77900	MOTOR, STOP	1							
10	2	121575-77950	MOTOR ASSY, STOP	1							
11	2	121575-77960	COVER	1							
12	2	121575-77970	CABLE ASSY (970M/M)	1							
13	2	121575-77980	SPRING	1							
14	2	121575-77990	BRACKET	1							

Fig.17. STARTING MOTOR

(A)=3TN82L-RNG1

(B)=

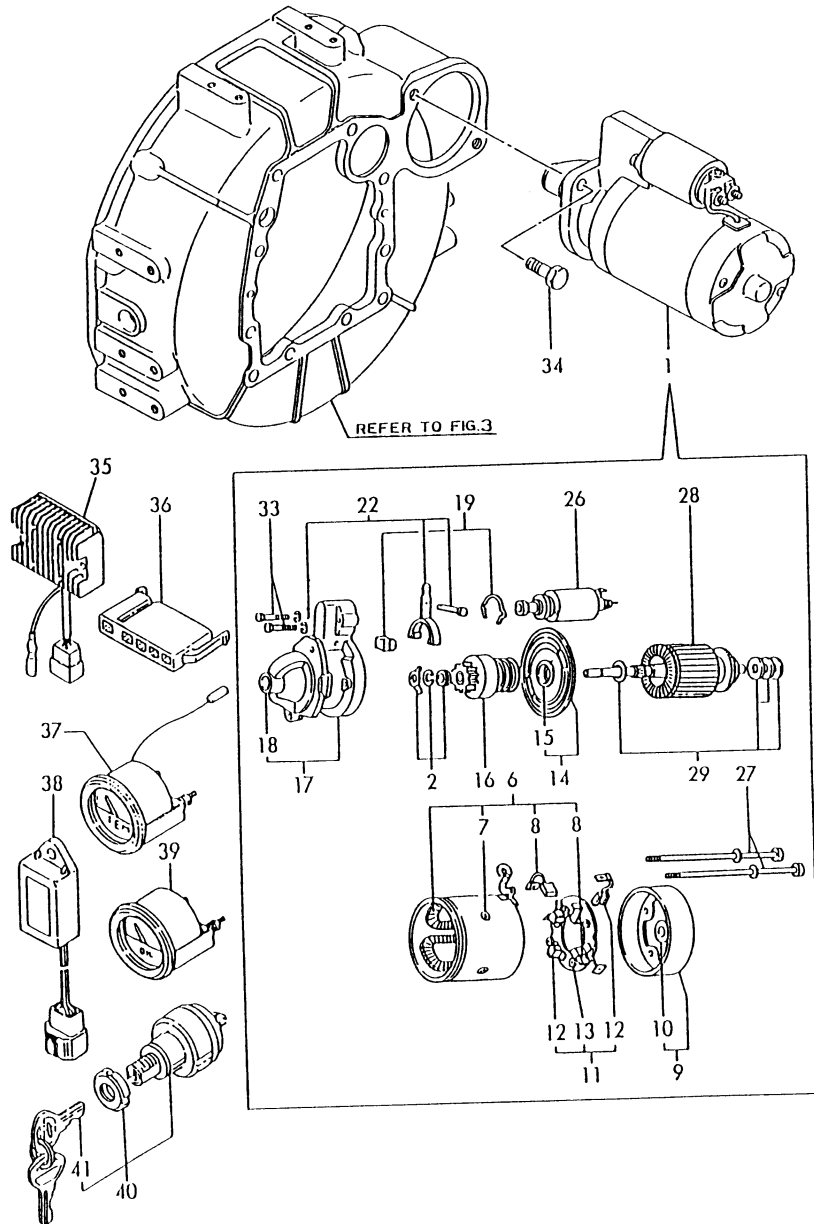
(C)=

(D)=

(E)=

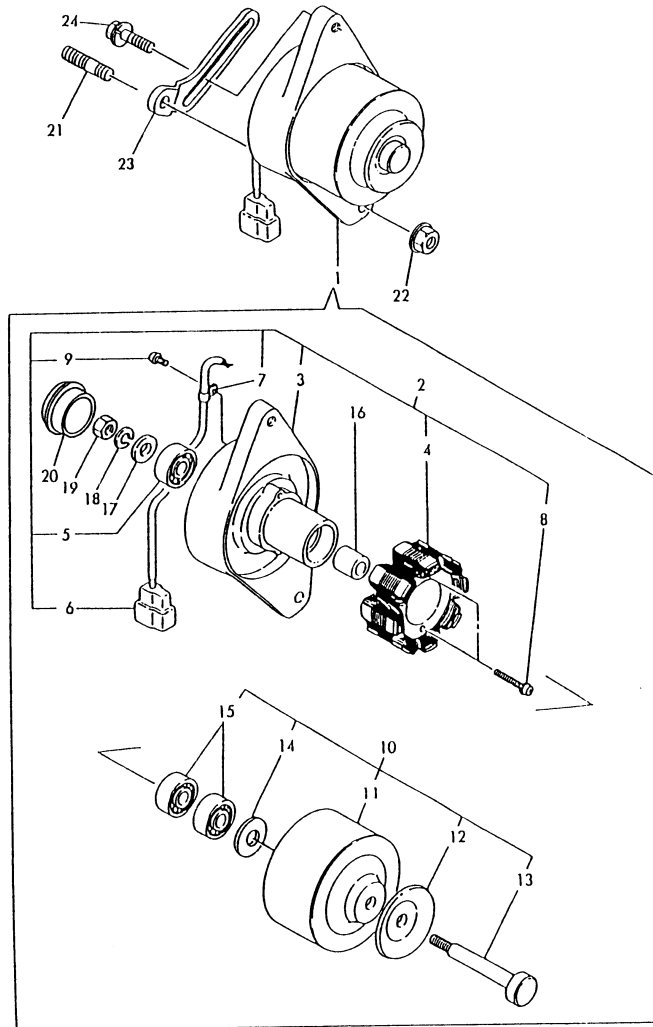
(F)=

029400-77100
029111-93170



No.	Lev.	Parts No.	Description	Q'ty						I	R
				(A)	(B)	(C)	(D)	(E)	(F)		
1	1	124250-77012	STARTER, S12-77A	1							
2	2	124250-77070	STOPPER SET, PINION	1							
6	2	124250-77110	COIL ASSY, FIELD	1							
7	3	124250-77120	SCREW SET, PORE CORE	4							
8	3	124250-77130	BRUSH (+)	2							
9	2	124250-77140	COVER ASSY, REAR	1							
10	3	124250-77150	METAL, REAR COVER	1							
11	2	124250-77160	HOLDER ASSY, BRUSH	1							
12	3	124250-77170	BRUSH (-)	2							
13	3	124250-77180	SPRING, BRUSH	4							
14	2	124250-77190	BEARING ASSY, CENTER	1							
15	3	124250-77520	BEARING	1							
16	2	124250-77210	PINION ASSY	1							
17	2	124250-77220	CASE ASSY, GEAR	1							
18	3	124250-77230	METAL, GEAR CASE	1							
19	2	124250-77240	COVER SET, DUST	1							
22	2	124250-77270	LEVER SET, SHIFT	1							
26	2	124250-77310	SWITCH, MAGNETIC	1							
27	2	124250-77320	BOLT, THROUGH	2							
28	2	124250-77500	ARMATURE ASSY	1							
29	2	124250-77510	WASHER KIT	1							
33	2	26557-040122	SCREW, M4X12	2							
34	1	26116-120252	BOLT, M12X 25 PLATED	2							
35	1	119660-77710	LIMITER, CURRENT 15A	1							
36	1	171301-77720	COUPLER	1							
37	1	171010-77850	THERMOSTAT	1							
38	1	128300-77920	TIMER	1							
39	1	171090-91010	GAUGE	1							
40	1	121400-91251	SWITCH, STARTER	1							
41	2	121400-91271	KEY, SWITCH	1							

Fig.18. GENERATOR



(A)=3TN82L-RNG1

(B)=

(C)=

(D)=

(E)=

(F)=

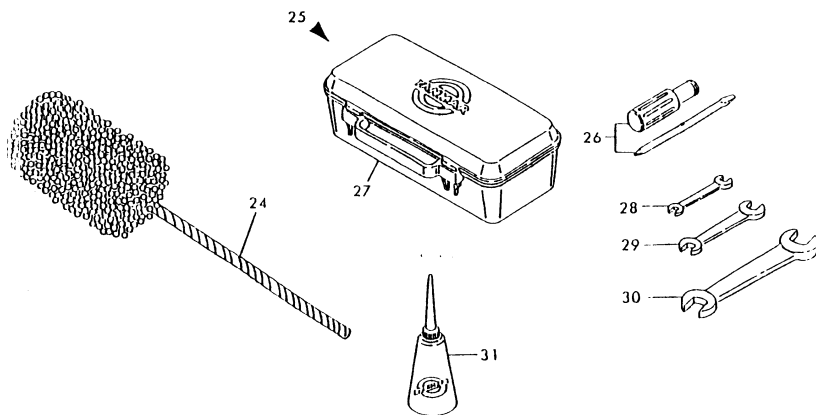
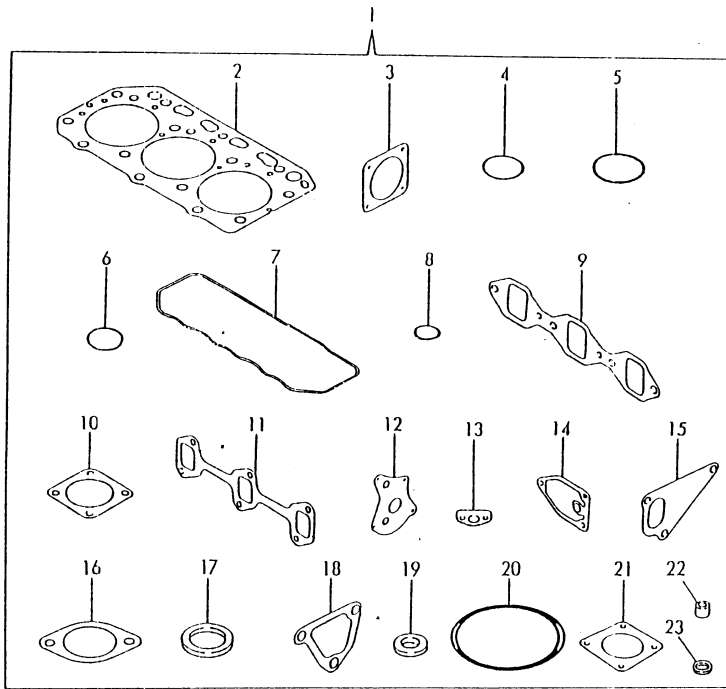
No.	Lev.	Parts No.	Description	Q'ty						I	R
				(A)	(B)	(C)	(D)	(E)	(F)		
1	1	171301-77201	DYNAMO ASSY, 15A	1							
2	2	XM08137	PLATE ASSY	1							
3	3	XM08138	PLATE	1							
4	3	XM08180	STATOR SET	1							
5	3	XM27436	BEARING, BALL	1							
6	3	XM17878	COUPLER	1							
7	3	XM36410	CLAMP	1							
8	3	26022-040252	SCREW, M4X25	2							
9	3	XYSPS4008	SCREW	1							
10	2	XM82184	FLYWHEEL ASSY	1							
11	3	XM82110	FLYWHEEL	1							
12	3	XM72174	PULLEY	1							
13	3	XM72664	SHAFT	1							
14	3	XM37336	WASHER	1							
15	3	XM27436	BEARING, BALL	2							
16	2	106383-44720	SPACER	1							
17	2	106383-44730	WASHER	1							
18	2	22212-100000	SPRING WASHER 10	1							
19	2	26716-100002	NUT, M10	1							
20	2	XM77187	CAP	1							
21	1	121450-01570	STUD	1							
22	1	26366-100002	NUT, M10	1							
23	1	129400-77330	ADJUSTER	1							
23-1	1	129410-77330	ADJUSTER	1							F 1
(A=EZZZZZ)											
24	1	26014-080252	BOLT, M8X 25	1							

Remarks

(1) Interchangeable by simultaneous replacement with Fig.10 Ref.No.2-2, Fig.11 Ref.No.1-1.

Fig.19. TOOLS & GASKET SET (OPTIONAL)

D29111-93170



No.	Lev.	Parts No.	Description	Q'ty						I	R
				(A)	(B)	(C)	(D)	(E)	(F)		
1	1	729188-92601	GASKET SET	1							1
1-1	1	729188-92602	GASKET SET	1							N 1
(A=E11510)											
2	2	129156-01332	GASKET, HEAD	1							
3	2	124240-01882	GASKET	1							
3-1	2	124240-01883	GASKET	1							N
(A=E10858)											
4	2	121850-51960	O-RING	1							
5	2	24311-000320	O-RING, 1AP32.0	1							
6	2	24311-000320	O-RING, 1AP32.0	1							
7	2	129150-11310	GASKET, BONNET	1							
8	2	24311-000120	O-RING, 1AP12.0	3							
9	2	129150-12110	GASKET, MANIFOLD	1							
9-1	2	129150-12111	GASKET, MANIFOLD	1							N
(A=E11510)											
10	2	121000-13200	GASKET, SILENCER	1							
11	2	129150-13110	GASKET	1							
12	2	129150-32020	GASKET, PUMP	1							
13	2	129150-35040	GASKET	1							
13-1	2	129150-35041	GASKET	1							N
(A=E11510)											
14	2	129150-35110	GASKET	1							
14-1	2	129150-35111	GASKET	1							N
(A=E11510)											
15	2	129100-42020	GASKET, WATER PUMP	1							
16	2	129795-49550	GASKET	1							
16-1	2	129795-49551	GASKET	1							N
(A=E11510)											
17	2	129150-49810	GASKET, THERMOSTAT	1							
17-1	2	129150-49811	GASKET, THERMOSTAT	1							N
(A=E11510)											
18	2	129100-49840	GASKET	1							
19	2	124465-44950	GASKET, 16	1							
20	2	24321-000650	O-RING, 1AG65.0	1							
21	2	129150-77510	GASKET	1							
21-1	2	129150-77511	GASKET	1							N
(A=E11510)											
22	2	119625-11870	PROTECTOR, NOZZLE	3							
23	2	119625-11880	SEAT, NOZZLE	3							
24	1	129400-92420	FLEX HORN	1							1
25	1	171001-93100	BOX, TOOL	1							W
(A=*1990.09)											
26	2	104200-92350	DRIVER, SCREW	1							W
(A=*1990.09)											
27	2	104200-92600	BOX, TOOL	1							W
(A=*1990.09)											
28	2	28110-100120	SPANNER, 10X12	1							W
(A=*1990.09)											
29	2	28110-140170	SPANNER, 14X17	1							W
(A=*1990.09)											
30	2	28110-190220	SPANNER, 19X22	1							W

Remarks
 (1) OPTIONAL PART.

Parts No. Index

Parts No.	Fig. No.	Ref. No.
101304-59020	14	2
101720-55750	14	49
102103-55520	14	45
103338-11190	4	12
103854-39140	14	1
104200-55321	14	9
104200-55330	14	41
104200-55341	14	10
104200-55750	14	42
104200-55341	14	43
104200-55750	14	17
104200-59170	14	50
104200-92350	14	4
104200-92600	19	26
106383-44720	19	27
106383-44730	18	16
110250-55610	18	17
114250-53080	14	46
114250-53120	13	5
114250-53130	13	7
114250-53140	13	8
114250-53210	13	9
114250-53400	13	10
119245-66400	13	11
119620-01750	16	1
119625-11870	3	3
119625-11880	4	27
119625-11880	19	22
119625-11900	4	28
119660-77710	19	23
119800-53000	4	29
119810-51040	17	35
119840-59560	13	2
119840-59570	12	2
119843-61011	14	27
119843-61540	14	28
119865-35300	15	3
120130-11860	15	29
121000-13200	9	24
121023-01550	4	32
121100-22400	6	7
121111-21501	19	10
121120-12531	2	22
121120-12541	8	16
121120-12561	8	9
121120-12571	5	2 B
121120-12901	5	2 C
	5	2 D
	5	2 E
	5	2 F

Parts No.	Fig. No.	Ref. No.
121250-44901	10	23
121250-49121	10	41
121250-59550	14	26
121254-55510	14	44
121256-44600	10	36
121257-55700	14	40
121257-55720	14	47
121257-55731	14	48
121400-11340	4	13
121400-12540	5	3
121400-12560	5	4
121400-12570	5	5
121400-91251	17	40
121400-91271	17	41
121450-01560	2	3
121450-01570	18	21
121450-49110	10	39
121470-44540	10	34
121520-34810	9	13
121550-23200	8	20
121550-49111	10	20
121575-77900	16	9
121575-77950	16	10
121575-77960	16	11
121575-77970	16	12
121575-77980	16	13
121575-77990	16	14
121850-11860	4	3
121850-21680	10	1
121850-51960	8	7
122117-51560	2	9
122710-51090	19	4
124066-59100	12	34
124160-01751	12	5
124160-01910	14	21
124160-11360	25	25
124160-39140	2	4
124160-39450	4	40
124240-01871	1	2
124240-01882	4	48
124240-01883	9	35
124250-49351	9	36
124250-77012	2	6
124250-77070	2	7
	19	3
	2	7 -1
	19	3 -1
	10	25
	17	1
	17	2

Parts No.	Fig. No.	Ref. No.
124250-77110	17	6
124250-77120	17	7
124250-77130	17	8
124250-77140	17	9
124250-77150	17	10
124250-77160	17	11
124250-77170	17	12
124250-77180	17	13
124250-77190	17	14
124250-77210	17	16
124250-77220	17	17
124250-77230	17	18
124250-77240	17	19
124250-77270	17	22
124250-77310	17	26
124250-77320	17	27
124250-77500	17	28
124250-77510	17	29
124450-44510	17	15
124450-44530	10	29
124450-44550	10	31
124450-44560	10	35
124460-11340	10	32
124465-44950	10	28
124550-21600	4	14
124550-51350	10	24
124550-51370	19	19
124550-59820	8	11
124550-66370	12	20
124574-44761	12	21
124732-42290	9	44
124736-07900	15	43
124766-59050	10	18
124770-11770	10	15
124950-51190	4	37
128170-51300	14	3
128300-77920	24	24
129001-42001	11	4
129001-42040	12	10
129100-01580	12	17
	17	38
	10	2 -2
	10	44
	3	1
	15	15
	8	4 B
129100-01640	3	16
129100-01730	3	10
129100-01770	3	6 -1
129100-01790	3	8

Parts No.	Fig. No.	Ref. No.
129100-11100	4	8
129100-11110	4	9
129100-11240	4	17 -1
129100-11650	4	23 -2
129100-13110	6	1
129100-23910	8	12
129100-25061	7	6
129100-35300	9	16
129100-35301	9	16 -1
129100-42001	10	2
129100-42002	10	2 -1
129100-42020	10	13
129100-49050	19	15
129100-49800	10	21
129100-49820	11	3
129100-49830	11	6
129100-49840	11	7
	10	46
	11	12
	19	18
	12	60
129100-52100	14	8
129100-55621	14	11
129100-55650	14	13
129100-55670	14	14
129100-55680	14	15
129100-55690	14	16
129100-55700	13	17
129100-59910	13	18
129100-59920	13	19
129100-59930	14	31
129100-61400	15	15
129100-61440	15	19
129111-61802	15	38
129116-61500	15	24
129116-61890	15	41
129120-77501	5	15
129122-12100	5	12
129132-49050	10	21 -1
	10	21 -2
129150-01200	1	14
129150-02020	1	8
129150-02450	1	12
129150-02800	1	9
129150-02870	1	16
129150-02930	1	10
129150-02940	1	17
129150-03020	4	43
129150-03070	4	45
129150-03080	4	44

Parts No. Index

Parts No.	Fig. No.	Ref. No.
129150-03090	4	35
129150-03100	4	34
129150-11230	4	25
129150-11280	4	20
129150-11290	4	21
129150-11310	4	42
	19	7
129150-11370	4	15
129150-11750	4	24
129150-11810	4	33
129150-12110	5	13
	19	9
129150-12111	5	13 -1
	19	9 -1
129150-13110	6	2
	19	11
129150-14011	7	1
129150-14101	7	2
129150-14200	7	3
129150-14400	7	4
129150-21200	8	2
129150-21650	8	5
129150-22300	8	15
129150-23600	8	21
129150-23610	8	22
129150-25101	7	7
129150-25900	12	61
129150-32000	9	1
129150-32020	9	11
	19	12
129150-35040	9	15
	19	13
129150-35041	9	15 -1
	19	13 -1
129150-35101	9	21
129150-35110	9	22
	19	14
129150-35111	9	22 -1
	19	14 -1
129150-35150	9	23
129150-35350	9	32
129150-39450	9	37
129150-49360	10	26
129150-49810	11	11
	19	17
129150-49811	11	11 -1
	19	17 -1
129150-59120	13	12
129150-59130	13	15
129150-59580	14	22

Parts No.	Fig. No.	Ref. No.
129150-59580	14	29
129150-77510	5	16
	19	21
129150-77511	5	16 -1
	19	21 -1
129155-11241	4	17
129155-11260	4	18
129155-11270	4	19
129155-42350	10	16
129155-49800	11	10
129155-51020	12	56
129155-51050	12	3
129155-51060	12	4
129155-51140	12	7
129155-51180	12	9
129155-51200	12	11
129155-51250	12	13
129155-51270	12	15
129155-51280	12	16
	15	1
129155-51320	12	18
129155-51340	12	19
129155-51370	12	22
129155-51380	12	23
129155-51390	12	24
129155-51400	12	25
129155-51410	12	26
129155-51420	12	27
129155-51450	12	28
129155-51500	12	29
129155-51521	12	30
129155-51530	12	31
129155-51540	12	32
129155-51550	12	33
129155-51570	12	36
129155-51580	12	37
129155-51591	12	38
129155-51600	12	39
129155-51700	12	40
129155-51710	12	41
129155-51750	12	42
129155-51760	12	43
129155-51790	12	44
129155-51930	12	46
129155-51940	12	47
129155-52050	12	59
129155-61050	15	4
129155-61060	15	5
129155-61070	15	6
129155-61120	15	7

Parts No.	Fig. No.	Ref. No.
129155-61130	15	8
129155-61140	15	9
129155-61150	15	9 A
129155-61160	15	9 B
129155-61170	15	9 C
129155-61180	15	9 D
129155-61341	15	14
129155-61430	15	18
129155-61450	15	20
129155-61460	15	21
129155-61470	15	22
129155-61490	15	23
129155-61540	15	30
129155-61810	15	39
129155-61830	15	40
129155-61950	15	42
129155-66800	16	2
129155-66811	16	3
129155-66822	16	4
129156-01332	1	15
	19	2
129156-51910	12	45
129158-52020	12	60 B
129158-52060	12	60 D
129158-52070	12	60 E
129158-52080	12	60 F
129158-52090	12	60 G
129158-52160	12	60 H
129158-52250	12	60 I
129158-52260	12	60 J
129158-52270	12	60 K
129158-52350	12	60 L
129158-52360	12	60 M
129158-52370	12	60 N
129158-52380	12	60 O
129255-59580	14	6
		30
129350-49530	11	1
129350-49560	11	1 -1
129400-01500	2	1
129400-01520	2	2
129400-51100	12	6
129400-77330	18	23
129400-92420	19	24
129402-22080	8	13
129410-77330	18	23 -1
129477-61720	15	37
129500-61650	15	36
129555-59510	14	5
129795-01780	3	17

Parts No.	Fig. No.	Ref. No.
129795-01800	2	5
129795-01950	2	8
129795-02411	1	11
129795-11120	4	10
129795-11180	4	11
129795-21661	8	6
129795-49550	11	2
	19	16
129795-49551	11	2 -1
	19	16 -1
144626-91560	9	45
171001-93100	19	25
171010-77850	17	37
171016-12590	5	18
171051-01921	1	3
171081-55910	14	51
171090-91010	17	39
171301-01640	3	7
171301-49010	10	37
171301-49020	10	38
171301-77201	18	1
171301-77720	17	36
171340-21590	8	10
171340-44740	10	17
171351-12210	5	1
171351-12500	5	2
171351-12520	5	2 A
171351-12560	5	7
171351-12570	5	8
171351-12580	5	6
171375-39600	9	41
171420-01600	3	2
171420-34820	9	14
171420-44500	10	27
171488-61200	15	10
174100-54120	12	14
174307-51170	12	8
174307-51560	12	35
174307-51700	15	25
194990-22050	6	3
22117-040000	15	45
22137-040000	16	5
22190-100000	15	46
22212-100000	18	18
22217-050000	12	48
22217-060000	12	49
22217-120000	12	62
22272-000040	15	34
22272-000060	15	47
22287-120000	15	49

Parts No. Index

Parts No.	Fig. No.	Ref. No.
22312-080160	8	8
22351-030016	15	50
22351-040010	8	3
		23
22351-050010	12	50
22351-060012	4	16
22360-040000	15	51
	16	6
22512-070140	7	5
	8	4
23000-013000	14	7
23000-016000	10	22
23000-060000	5	9
		19
23010-038000	10	43
23061-070230	10	33
23414-050000	15	52
23414-080000	9	46
23414-100000	9	47
23414-120000	14	39
23418-060000	14	52
23871-010000	1	4
23871-030000	4	4
	10	12
		12 -1
	11	8
23887-100002	15	53
24101-063034	12	51
24311-000120	4	36
	19	8
24311-000160	2	10
	9	33
	10	42
	14	18
24311-000320	2	11
	4	41
	19	5
		6
24311-240100	14	19
		53
	15	54
24321-000300	10	45
24321-000650	14	20
	19	20
24341-000160	12	52
24341-000240	2	23
	3	9
24341-000500	4	46
26014-060252	10	19
26014-080252	18	24

Parts No.	Fig. No.	Ref. No.
26014-080702	14	23
26022-040252	18	8
26022-050102	12	53
	15	55
26022-060122	15	35
26022-060162	12	54
26106-060102	16	7
26106-060122	2	24
26106-060202	15	56
26106-060252	15	57
26106-080122	2	12
26106-080142	4	38
	5	10
26106-080162	1	13
	2	13
		14
	3	11
	4	47
26106-080182	10	47
26106-080202	2	15
	9	34
	11	13
26106-080252	3	12
	4	30
	5	14
	11	14
26106-080302	3	18
26106-080352	3	19
	5	17
	9	20 -1
26106-080452	2	16
	3	13
	7	9
26106-080502	3	14
	4	31
	11	15
26106-080552	2	17
26106-080602	10	14
	11	16
26106-080802	6	4
26106-080852	2	18
26116-050302	12	55
26116-060162	11	9
26116-080122	16	8
26116-080352	9	20
26116-120252	17	34
26206-100252	3	4
26206-100302	3	5
26216-060202	4	5
26216-080222	6	5

Parts No.	Fig. No.	Ref. No.
26216-080802	6	6
26226-080182	4	26
26366-060002	4	2
	5	11
26366-080002	2	19
	15	58
26366-100002	18	22
26450-060252	9	12
26557-040122	17	33
26687-120002	15	59
26716-060002	12	57
26716-100002	18	19
26716-120002	12	63
26756-060002	15	60
26776-120002	15	44
27231-500000	1	5
27241-100000	4	22
27241-120000	1	6
27241-220000	4	6
27241-300000	1	7
27241-400000	4	7
27310-080001	4	12 -1
28110-100120	19	28
28110-140170	19	29
28110-190220	19	30
28210-000140	19	31
43400-500390	15	52 -1
43400-500410	2	20
		21
43400-500430	15	46 -1
43400-500450	15	48
43400-500490	12	58
711100-51540	12	12
719800-53300	13	1
729102-11700	4	1
729102-21700	8	1
729132-11520	4	39
729150-11651	4	23
729150-23700	8	19
729151-01560	1	1
729156-22950	8	18
729188-51330	12	1
729188-92601	19	1
729188-92602	19	1 -1
729402-11650	4	23 -1
729402-22500	8	14
729402-22900	8	17
729402-23100	8	19 -1
771341-01540	3	6
XM08137	18	2

Parts No.	Fig. No.	Ref. No.
XM08138	18	3
XM08180	18	4
XM17878	18	6
XM27436	18	5
		15
XM36410	18	7
XM37336	18	14
XM72174	18	12
XM72664	18	13
XM77187	18	20
XM82110	18	11
XM82184	18	10
XYSPS4008	18	9