

0CD10-M32102EN

Introduction

1.This parts catalog for ISEKI Co.,Ltd. NFAD5-JIK,NFAD5-EJIK,NFAD6-JIK,NFAD6-EJIK is published as a revised edition of diesel engine.

	Date of issue	Remarks
First edition	June,1991	No Need
1st revised edition	Oct.,2013	

2.This parts catalog does not contain the technical data needed for maintenance service.

3.The illustrations used in this parts catalog have been simplified for clarity.

4.The contents of this parts catalog are subject to change without notice.

5.Be sure to use only Yanmar genuine part for repairs.If imitation parts are used, it may cause engine defects.

Contents

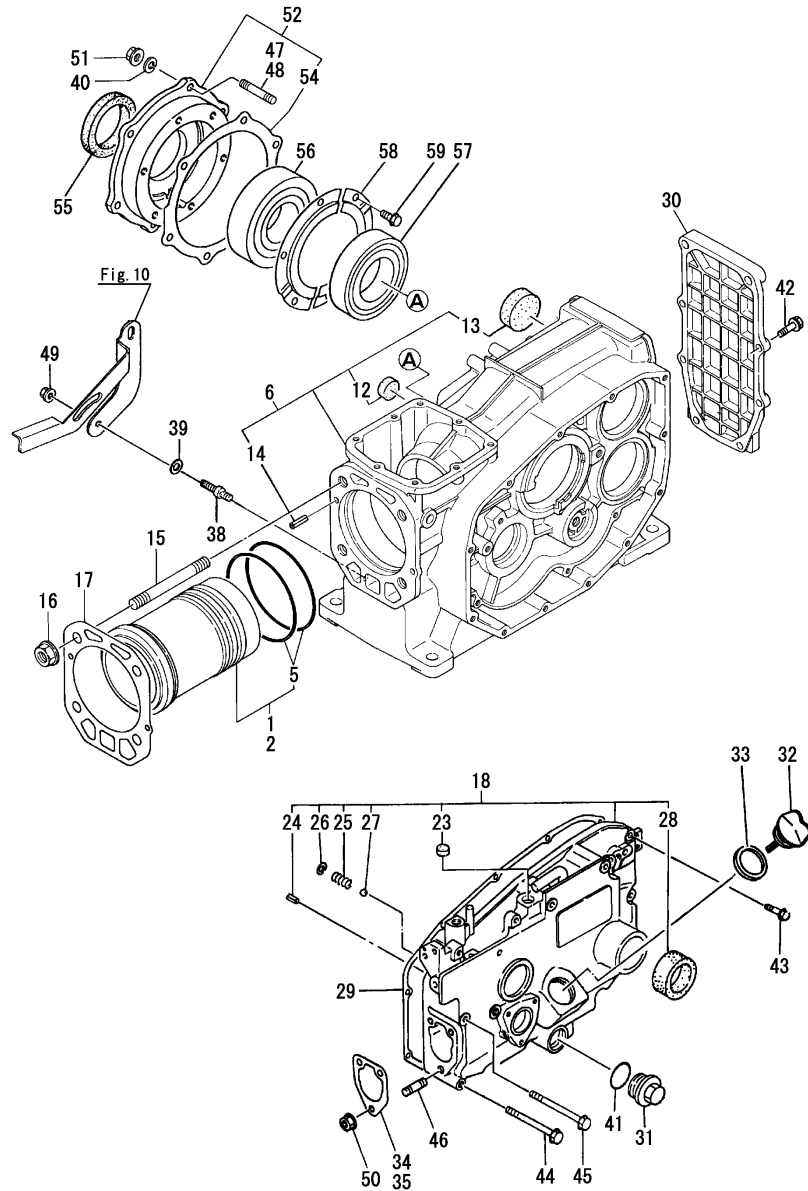
Fig. No. Fig. Name

ENGINE NFAD5,6-(E)JIK

1. CYLINDER BLOCK
2. CYLINDER HEAD & BONNET
3. AIR CLEANER & MUFFLER
4. CAMSHAFT
5. CRANKSHAFT & FLYWHEEL
6. PISTON & CONNECTING ROD
7. BALANCER
8. LUB.OIL SYSTEM
9. RADIATOR & FUEL TANK
10. FAN
11. FUEL INJECTION PUMP
12. FUEL OIL SYSTEM
13. GOVERNOR & CONTROL DEVICE
14. STARTING MOTOR
15. TOOL & LABEL
16. SAFETY LABEL

Fig. No. Fig. Name

Fig.1. CYLINDER BLOCK

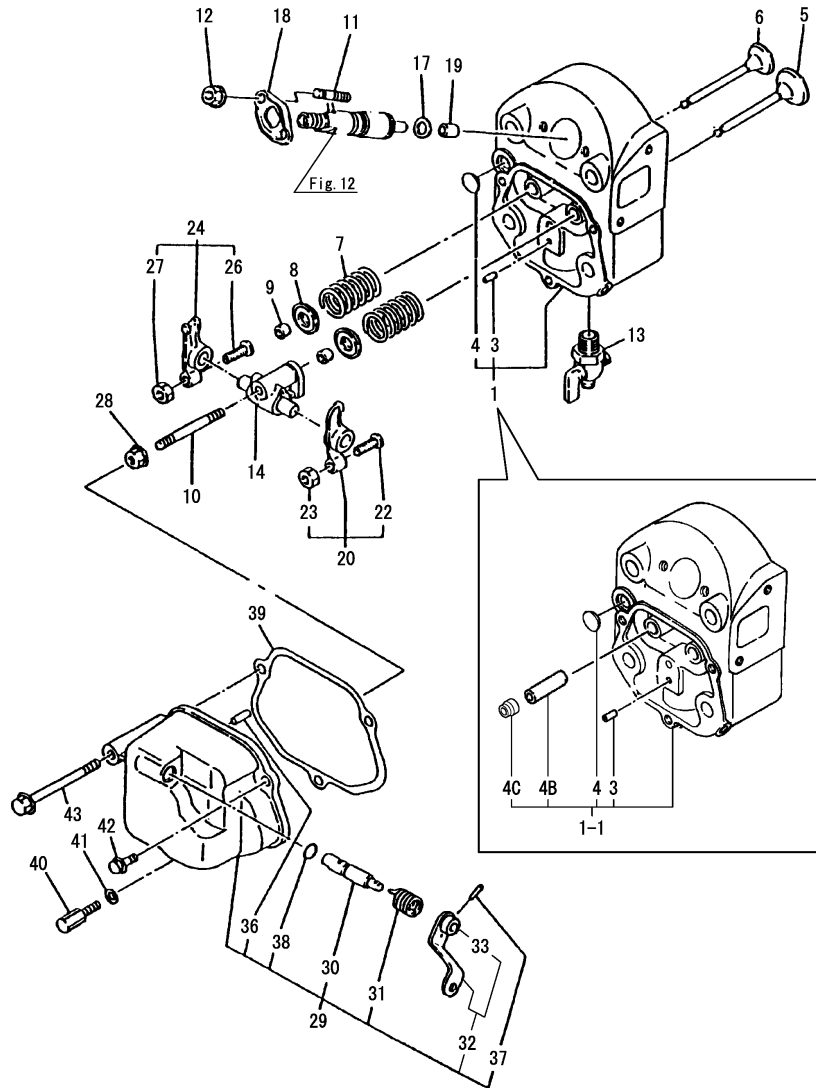


(A)=NFAD5-JIK
(B)=NFAD5-EJIK
(C)=NFAD6-JIK

(D)=NFAD6-EJIK
(E)=
(F)=

No.	Lev.	Parts No.	Description	Q'ty						I	R
				(A)	(B)	(C)	(D)	(E)	(F)		
1	1	705050-01900	LINER ASSY, CYLINDER	1	1						
2	1	705090-01900	LINER ASSY, CYLINDER			1	1				
5	2	105090-01300	O-RING	2	2	2	2				
6	1	705092-01560	BLOCK ASSY, CYLINDER	1	1	1	1				
12	2	105215-01670	SEAL, 20	1	1	1	1				
13	2	105190-01680	SEAL, 42	2	2	2	2				
14	2	22351-060012	PIN, SPRING 6.0X12	2	2	2	2				
15	1	105215-01200	BOLT, HEAD M12	4	4	4	4				
16	1	121450-01220	NUT, CYLINDER HEAD	4	4	4	4				
17	1	105090-01330	GASKET, HEAD	1	1	1	1				
17-1	1	105090-01331	GASKET, HEAD	1	1	1	1				N
		(A=EXXXXX) (B=EXXXXX) (C=EXXXXX) (D=EXXXXX)									
18	1	705092-01500	CASE ASSY, GEAR	1	1	1	1				
23	2	105190-01660	SEAL, 14	1	1	1	1				
23-1	2	105100-01660	PLUG, 14	1	1	1	1				N
		(A=EXXXXX) (B=EXXXXX) (C=EXXXXX) (D=EXXXXX)									
24	2	22351-060012	PIN, SPRING 6.0X12		1		1				Z
		(B=EXXXXX) (D=EXXXXX)									
25	2	105300-34040	SPRING	1	1	1	1				
26	2	22252-000100	RING, 10	1	1	1	1				
27	2	24190-120001	BALL, STEEL 3/8	1	1	1	1				
28	2	105140-76500	SEAL, TCX25X35X6	1	1	1	1				Z
		(A=EXXXXX) (B=EXXXXX) (C=EXXXXX) (D=EXXXXX)									
29	1	105090-01410	GASKET, GEAR CASE	1	1	1	1				
30	1	105090-01480	COVER	1	1	1	1				
31	1	105300-01690	PLUG	1	1	1	1				
32	1	105090-01750	CAP	1	1	1	1				
33	1	101104-01760	GASKET, CAP	1	1	1	1				
34	1	105300-01920	SHIM, T=0.1	1	1	1	1				
35	1	104271-01950	SHIM SET,0.2X3,0.3X2	1	1	1	1				
35-1	1	105090-01960	SHIM SET, ADJUSTING	1	1	1	1				N
		(A=E019929) (B=EXXXXX) (C=E076866) (D=E078086)									
38	1	105100-44930	BOLT	1	1	1	1				
39	1	160120-76940	WASHER	1	1	1	1				Z
		(A=EXXXXX) (B=EXXXXX) (C=EXXXXX) (D=EXXXXX)									
40	1	22217-080000	WASHER, SPRING 8	6	6	6	6				
41	1	24321-000250	O-RING, 1AG25.0	1	1	1	1				
42	1	26106-060202	BOLT, M6X 20 PLATED	6	6	6	6				
43	1	26106-060302	BOLT, M6X 30 PLATED	6	6	6	6				
44	1	26106-060552	BOLT, M6X 55 PLATED	1	1	1	1				
45	1	26106-060652	BOLT, M6X 65 PLATED	4	4	4	4				
46	1	26216-080222	STUD, M8X 22	3	3	3	3				
47	1	26226-080202	STUD, M8X 20	6	6						
47-1	1	26226-080222	STUD, M8X 22	6	6						N
		(A=E003807) (B=E003822)									
48	1	26226-080222	STUD, M8X 22			6	6				
49	1	26366-060002	NUT, M6	1	1	1	1				
50	1	26366-080002	NUT, M8	3	3	3	3				
50-1	1	26306-080002	NUT, M8	3	3	3	3				N
		(A=EXXXXX) (B=EXXXXX) (C=EXXXXX) (D=EXXXXX)									
51	1	26716-080002	NUT, M8	6	6	6	6				

Fig.2. CYLINDER HEAD & BONNET



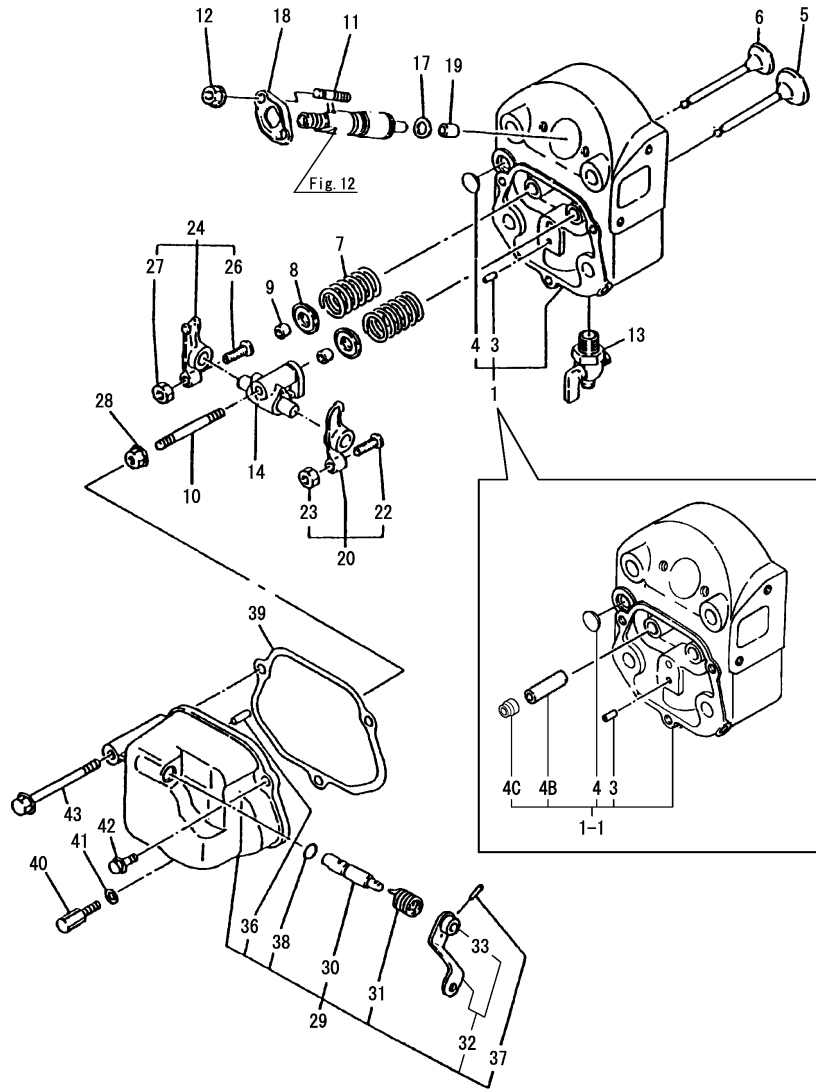
(A)=NFAD5-JIK
(B)=NFAD5-EJIK
(C)=NFAD6-JIK

(D)=NFAD6-EJIK
(E)=
(F)=

No.	Lev.	Parts No.	Description	Q'ty						I	R
				(A)	(B)	(C)	(D)	(E)	(F)		
1	1	705090-11700	HEAD ASSY, CYLINDER			1	1				
1-1	1	705090-11701	HEAD ASSY, CYLINDER (C=E074890) (D=E075077)			1	1				N
1A	1	705050-11700	HEAD ASSY, CYLINDER	1	1						
1A-1	1	705050-11701	HEAD ASSY, CYLINDER (A=E019508) (B=EXXXXX)	1	1						N
3	2	105300-11330	PIN	1	1	1	1				
4	2	27231-150000	PLUG 15	1	1	1	1				
4B	2	105090-11800	GUIDE, VALVE	1	1	1	1				W 1
4C	2	128170-11340	SEAL, VALVE STEM (A=E019508) (B=EXXXXX) (C=E074890) (D=E075077)	1	1	1	1				W
5	1	105090-11100	VALVE, INTAKE				1	1			
5A	1	105050-11100	VALVE, INTAKE	1	1						
6	1	105090-11111	VALVE, EXHAUST				1	1			
6A	1	105050-11111	VALVE, EXHAUST	1	1						
7	1	105400-11121	SPRING, VALVE	2	2	2	2				
8	1	101158-11180	RETAINER, SPRING	2	2	2	2				
9	1	101158-11190	COTTER	4	4	4	4				
9-1	1	27310-070001	COTTER, 7 (A=EXXXXX) (B=EXXXXX) (C=EXXXXX) (D=EXXXXX)	2	2	2	2				R
10	1	26216-080452	STUD, M8X 45	1	1	1	1				
11	1	26216-060402	STUD, M6X 40	2	2	2	2				
11-1	1	26216-060352	STUD, M6X 35 (A=EXXXXX) (B=EXXXXX) (C=EXXXXX) (D=EXXXXX)	2	2	2	2				N
12	1	26366-060002	NUT, M6	2	2	2	2				
13	1	105010-11920	COCK, WATER	1	1	1	1				
14	1	105090-11290	SUPPORT ASSY, ARM	1	1	1	1				
17	1	119625-11880	SEAT, NOZZLE	1	1	1	1				
18	1	105300-11900	RETAINER	1	1	1	1				
18-1	1	119625-11900	RETAINER, NOZZLE (A=EXXXXX) (B=EXXXXX) (C=EXXXXX) (D=EXXXXX)	1	1	1	1				R
19	1	119625-11870	PROTECTOR, NOZZLE	1	1	1	1				
19-1	1	119625-11871	PROTECTOR, NOZZLE (A=EXXXXX) (B=EXXXXX) (C=EXXXXX) (D=EXXXXX)	1	1	1	1				R
20	1	105090-11650	ARM, ROCKER	1	1	1	1				
22	2	101158-11230	SCREW, VALVE ADJUST	1	1	1	1				
23	2	26756-080002	NUT, LOCK M8	1	1	1	1				
24	1	105090-11660	ARM, ROCKER	1	1	1	1				
26	2	101158-11230	SCREW, VALVE ADJUST	1	1	1	1				
27	2	26756-080002	NUT, LOCK M8	1	1	1	1				
28	1	26366-080002	NUT, M8	1	1	1	1				
28-1	1	26306-080002	NUT, M8 (A=EXXXXX) (B=EXXXXX) (C=EXXXXX) (D=EXXXXX)	1	1	1	1				N
29	1	105050-11200	BONNET ASSY, HEAD	1	1	1	1				
30	2	105092-03600	SHAFT, DECOMPRESSION	1	1	1	1				
31	2	104200-03641	SPRING, DECOMPRESSION	1	1	1	1				
32	2	105050-03740	LEVER ASSY	1	1	1	1				
33	3	183250-03550	JOINT	1	1	1	1				
36	2	22312-030180	PIN, PARALLEL M3X18	1	1	1	1				
37	2	22322-030180	PIN, TAPER 3X18	1	1	1	1				

Remarks
(1) Spare parts

Fig.2. CYLINDER HEAD & BONNET



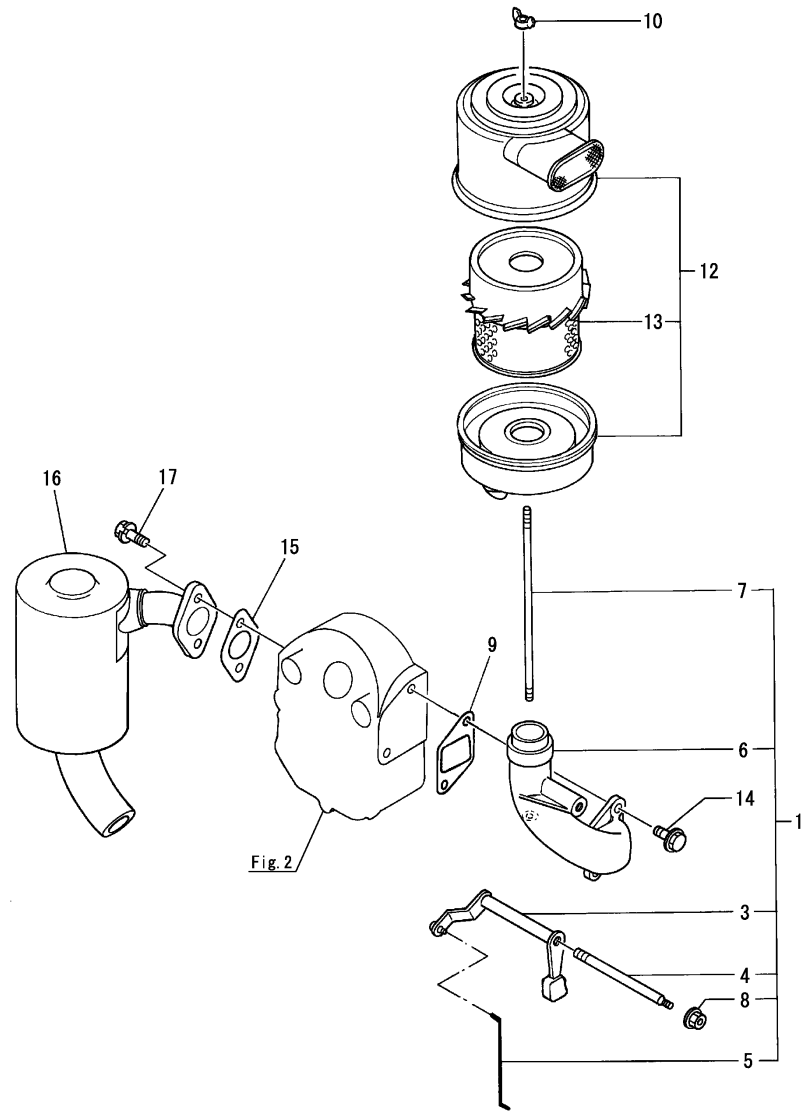
(A)=NFAD5-JIK
(B)=NFAD5-EJIK
(C)=NFAD6-JIK

(D)=NFAD6-EJIK
(E)=
(F)=

No.	Lev.	Parts No.	Description	Q'ty						I	R
				(A)	(B)	(C)	(D)	(E)	(F)		
38	2	24311-000070	O-RING, 1AP7.0	1	1	1	1				
39	1	105090-11310	GASKET, BONNET	1	1	1	1				
40	1	105090-11820	BOLT	1	1	1	1				
41	1	22117-060000	WASHER, 6	1	1	1	1				
42	1	26106-060202	BOLT, M6X 20 PLATED	1	1	1	1				
43	1	26106-060602	BOLT, M6X 60 PLATED	1	1	1	1				

Remarks
(1) Spare parts

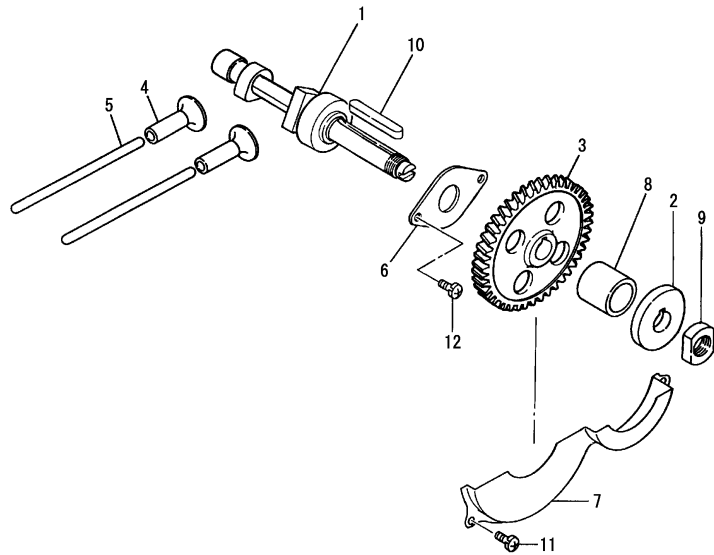
Fig.3. AIR CLEANER & MUFFLER



(A)=NFAD5-JIK
 (B)=NFAD5-EJIK
 (C)=NFAD6-JIK
 (D)=NFAD6-EJIK
 (E)=
 (F)=

No.	Lev.	Parts No.	Description	Q'ty						I	R
				(A)	(B)	(C)	(D)	(E)	(F)		
1	1	105050-12050	PIPE, AIR INTAKE	1	1	1	1				
3	2	105050-03770	LEVER, DECOMPRESSION	1	1	1	1				
4	2	105050-03780	SHAFT	1	1	1	1				
5	2	105050-03790	ROD	1	1	1	1				
6	2	105050-12020	PIPE, AIR INTAKE	1	1	1	1				
7	2	105100-12550	BOLT	1	1	1	1				
8	2	26366-060002	NUT, M6	1	1	1	1				
9	1	105190-12050	GASKET	1	1	1	1				
10	1	101147-12550	NUT	1	1	1	1				
10-1	1	105092-12550	NUT	1	1	1	1				R
		(A=EXXXXX) (B=EXXXXX) (C=EXXXXX) (D=EXXXXX)									
12	1	104300-12950	CLEANER, AIR	1	1	1	1				
12-1	1	104300-12951	CLEANER, AIR	1	1	1	1				R
		(A=EXXXXX) (B=EXXXXX) (C=EXXXXX) (D=EXXXXX)									
13	2	104300-12960	ELEMENT	1	1	1	1				
14	1	26106-080202	BOLT, M8X 20 PLATED	2	2	2	2				
15	1	105010-13200	GASKET	1	1	1	1				
15-1	1	105010-13201	GASKET, AIR INTAKE	1	1	1	1				N
		(A=EXXXXX) (B=EXXXXX) (C=EXXXXX) (D=EXXXXX)									
16	1	105050-13530	SILENCER	1	1	1	1				
17	1	26013-080209	BOLT, M8X 20	2	2	2	2				

Fig.4. CAMSHAFT



(A)=NFAD5-JIK
(B)=NFAD5-EJIK
(C)=NFAD6-JIK

(D)=NFAD6-EJIK
(E)=
(F)=

No.	Lev.	Parts No.	Description	Q'ty						I	R
				(A)	(B)	(C)	(D)	(E)	(F)		
1	1	105090-14010	CAMSHAFT	1	1	1	1				
2	1	105090-14091	CAM, FUEL	1	1	1	1				
3	1	105090-14100	GEAR, CAMSHAFT	1	1	1	1				1
3-1	1	10509G-14100	GEAR, CAMSHAFT	1	1	1	1				S 2
		(A=EXXXXX) (B=EXXXXX) (C=EXXXXX) (D=EXXXXX)									
3-2	1	10509G-14101	GEAR, CAMSHAFT	1	1	1	1				S 3
		(A=E019187) (B=EXXXXX) (C=E072666) (D=E072110)									
4	1	105300-14200	TAPPET	2	2	2	2				
5	1	105090-14400	ROD, PUSH	2	2	2	2				
6	1	105090-14420	RETAINER, BEARING	1	1	1	1				
7	1	105090-14600	COVER	1	1	1	1				
8	1	105092-14700	SPACER	1	1	1	1				
9	1	104300-76460	NUT	1	1	1	1				
10	1	22512-070500	KEY, 7X 50	1	1	1	1				
11	1	26022-060122	SCREW, M6X12	2	2	2	2				
12	1	26557-060142	SCREW M 6X 14	2	2	2	2				

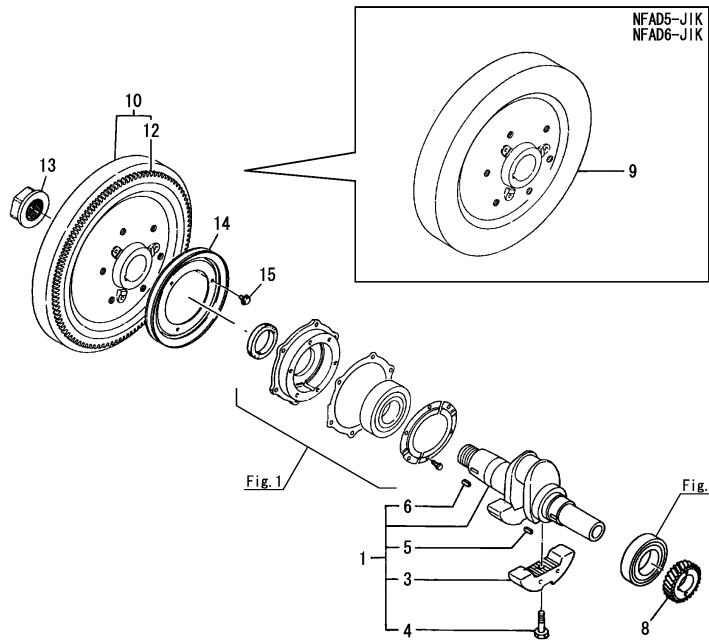
Remarks

- (1)Heat treatment; Normalizing
- (2)Heat treatment; Quenching and tempering
- (3)Heat treatment; Normalizing
- Punching mark; 1

Fig.5. CRANKSHAFT & FLYWHEEL

(A)=NFAD5-JIK
 (B)=NFAD5-EJIK
 (C)=NFAD6-JIK

(D)=NFAD6-EJIK
 (E)=
 (F)=

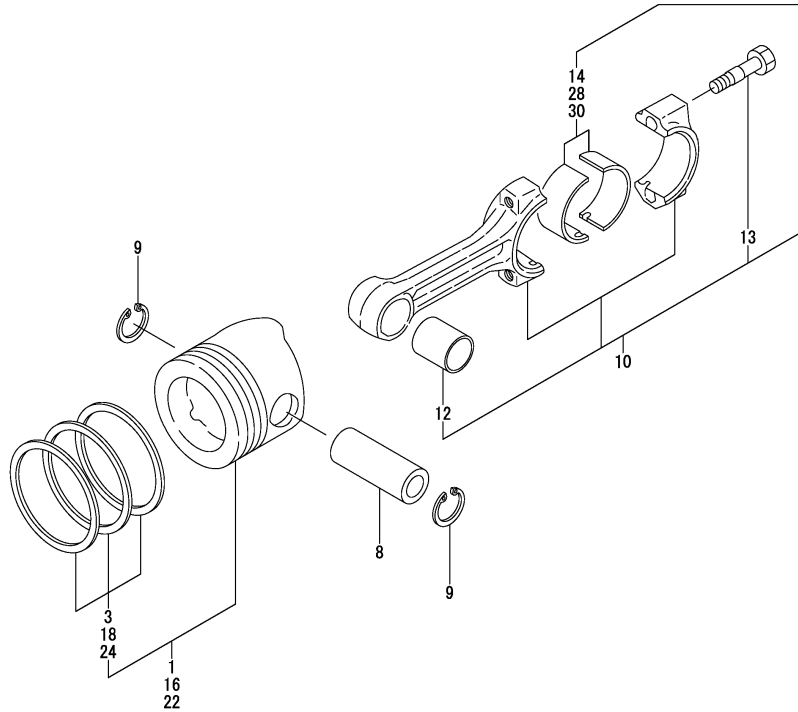


No.	Lev.	Parts No.	Description	Q'ty						I	R
				(A)	(B)	(C)	(D)	(E)	(F)		
1	1	705092-21700	CRANKSHAFT ASSY	1	1	1	1				
3	2	105092-21100	WEIGHT, BALANCE	2	2	2	2				
4	2	105090-21130	BOLT, BALANCE WEIGHT	2	2	2	2				
5	2	22512-050140	KEY, 5X 14	1	1	1	1				
6	2	22512-050140	KEY, 5X 14	1	1	1	1				
8	1	105090-21200	GEAR, CRANKSHAFT	1	1	1	1				1
8-1	1	10509G-21200	GEAR, CRANKSHAFT	1	1	1	1				S 2
		(A=EXXXXX) (B=EXXXXX) (C=EXXXXX) (D=EXXXXX)									
8-2	1	10509G-21201	GEAR, CRANKSHAFT	1	1	1	1				S 3
		(A=E019187) (B=EXXXXX) (C=E072666) (D=E072110)									
9	1	105090-21401	FLYWHEEL	1		1					
10	1	105090-21591	FLYWHEEL ASSY		1		1				
12	2	104511-21600	GEAR, RING		1		1				
13	1	105010-21530	NUT, END	1	1	1	1				
14	1	104407-21600	V-PULLEY	1	1	1	1				
15	1	26106-060122	BOLT, M6X 12 PLATED	3	3	3	3				

Remarks

- (1)Heat treatment; Normalizing
- (2)Heat treatment; Quenching and tempering
- (3)Heat treatment; Normalizing
- Punching mark; 1

Fig.6. PISTON & CONNECTING ROD



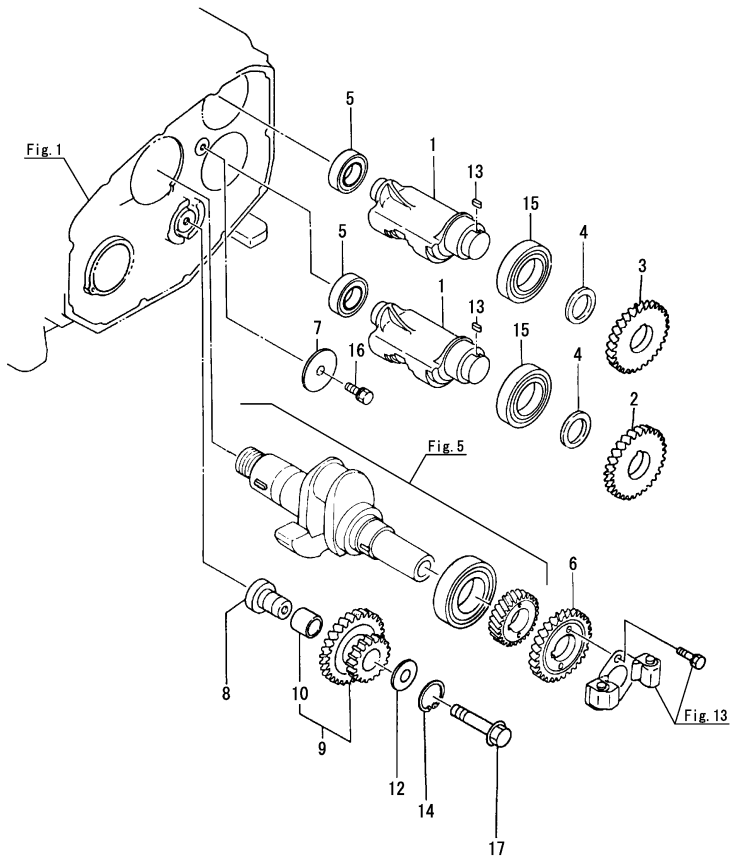
(A)=NFAD5-JIK
 (B)=NFAD5-EJIK
 (C)=NFAD6-JIK
 (D)=NFAD6-EJIK
 (E)=
 (F)=

No.	Lev.	Parts No.	Description	Q'ty						I	R
				(A)	(B)	(C)	(D)	(E)	(F)		
1	1	105090-22190	PISTON ASSY				1	1			
1A	1	105050-22190	PISTON ASSY	1	1						
3	2	705090-22500	RING SET, PISTON			1	1				
3A	2	705050-22510	RING SET, PISTON	1	1						
8	1	124950-22300	PIN, PISTON			1	1				
8A	1	105050-22300	PIN, PISTON	1	1						
9	1	105090-22400	CIRCLIP	2	2	2	2				
10	1	705090-23100	ROD ASSY, CONNECTING	1	1	1	1				
10-1	1	70509G-23100	ROD ASSY, CONNECTING	1	1	1	1				R
		(A=EXXXXX)	(B=EXXXXX)	(C=EXXXXX)	(D=EXXXXX)						
12	3	105090-23910	BEARING, PISTON PIN	1	1	1	1				1
13	3	105225-23200	BOLT, CONNECTING ROD	2	2	2	2				
13-1	3	119717-23200	BOLT, CONNECTING ROD	2	2	2	2				R
		(A=EXXXXX)	(B=EXXXXX)	(C=EXXXXX)	(D=EXXXXX)						
14	2	705090-23600	BEARING, CRANK PIN	1	1	1	2				
16	1	105090-22470	PISTON ASSY, 0.25 OS	1	1	1	1				2
18	2	105090-22510	RING SET, 0.25 OS	1	1	1	1				
22	1	105090-22480	PISTON ASSY, 0.50 OS	1	1	1	1				3
24	2	105090-22520	RING SET, 0.50 OS	1	1	1	1				
28	1	705090-23610	BEARING ASSY, 0.25	1	1	1	1				4
30	1	705090-23620	BEARING, 0.50 US	1	1	1	1				5

Remarks

- (1) Spare parts
- (2) Over sized (O.S.=0.25) parts
- (3) Over sized (O.S.=0.50) parts
- (4) Under sized (U.S.=0.25) parts
- (5) Under sized (U.S.=0.50) parts

Fig.7. BALANCER



(A)=NFAD5-JIK
(B)=NFAD5-EJIK
(C)=NFAD6-JIK

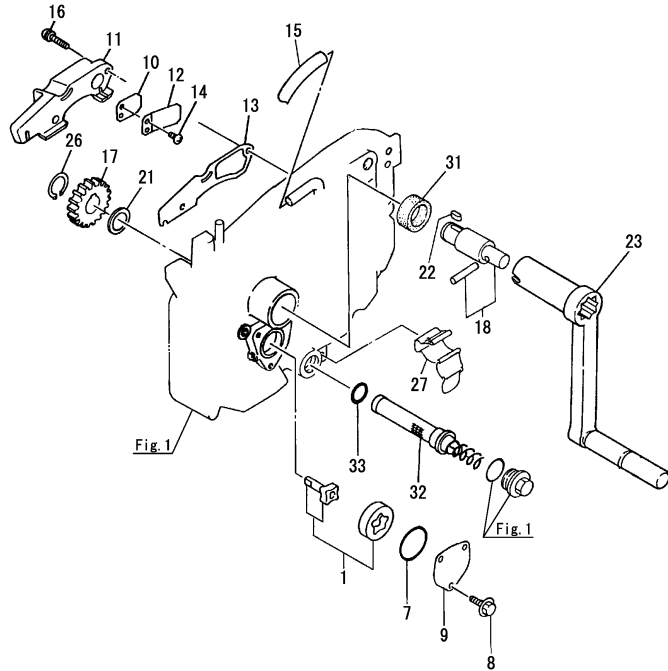
(D)=NFAD6-EJIK
(E)=
(F)=

No.	Lev.	Parts No.	Description	Qty						I	R
				(A)	(B)	(C)	(D)	(E)	(F)		
1	1	105090-28250	SHAFT, BALANCER	2	2	2	2				
2	1	105092-28300	GEAR, BALANCER	1	1	1	1				1
2-1	1	10509G-28300	GEAR, BALANCER	1	1	1	1				S 2
2-2	1	(A=E019187) 10509G-28301	GEAR, BALANCER	1	1	1	1				S 3
		(B=E019187) 10509G-28301	GEAR, BALANCER								
3	1	105092-28310	GEAR, BALANCER	1	1	1	1				1
3-1	1	10509G-28310	GEAR, BALANCER	1	1	1	1				S 2
3-2	1	(A=E019187) 10509G-28311	GEAR, BALANCER	1	1	1	1				S 3
		(B=E019187) 10509G-28311	GEAR, BALANCER								
4	1	105315-28350	BEARING, 60/32NRC3	2	2	2	2				
5	1	105190-28380	SPACER	2	2	2	2				
6	1	105092-28410	GEAR, BALANCER	1	1	1	1				1
6-1	1	10509G-28410	GEAR, BALANCER	1	1	1	1				S 2
6-2	1	(A=E019187) 10509G-28411	GEAR, BALANCER	1	1	1	1				S 3
		(B=E019187) 10509G-28411	GEAR, BALANCER								
7	1	105092-28450	RETAINER	1	1	1	1				
8	1	105302-28701	SHAFT, IDLE GEAR	1	1	1	1				
9	1	105092-28710	GEAR ASSY, IDLE	1	1	1	1				1
9-1	1	10509G-28710	GEAR ASSY, IDLE	1	1	1	1				S 2
9-2	1	(A=E019187) 10509G-28711	GEAR ASSY, IDLE	1	1	1	1				S 3
		(B=E019187) 10509G-28711	GEAR ASSY, IDLE								
10	2	105302-28720	BUSH	1	1	1	1				
12	1	105362-28750	SPACER	1	1	1	1				
13	1	105215-76490	KEY	2	2	2	2				
14	1	22242-000210	RING, 21	1	1	1	1				
15	1	24101-060044	BEARING, BALL 6004	2	2	2	2				
16	1	26013-080202	BOLT, M8X 20	1	1	1	1				
17	1	26106-100652	BOLT, M10X 65 PLATED	1	1	1	1				

Remarks

- (1)Heat treatment; Normalizing
- (2)Heat treatment; Quenching and tempering
- (3)Heat treatment; Normalizing
- Punching mark; 1

Fig.8. LUB.OIL SYSTEM



(A)=NFAD5-JIK
(B)=NFAD5-EJIK
(C)=NFAD6-JIK

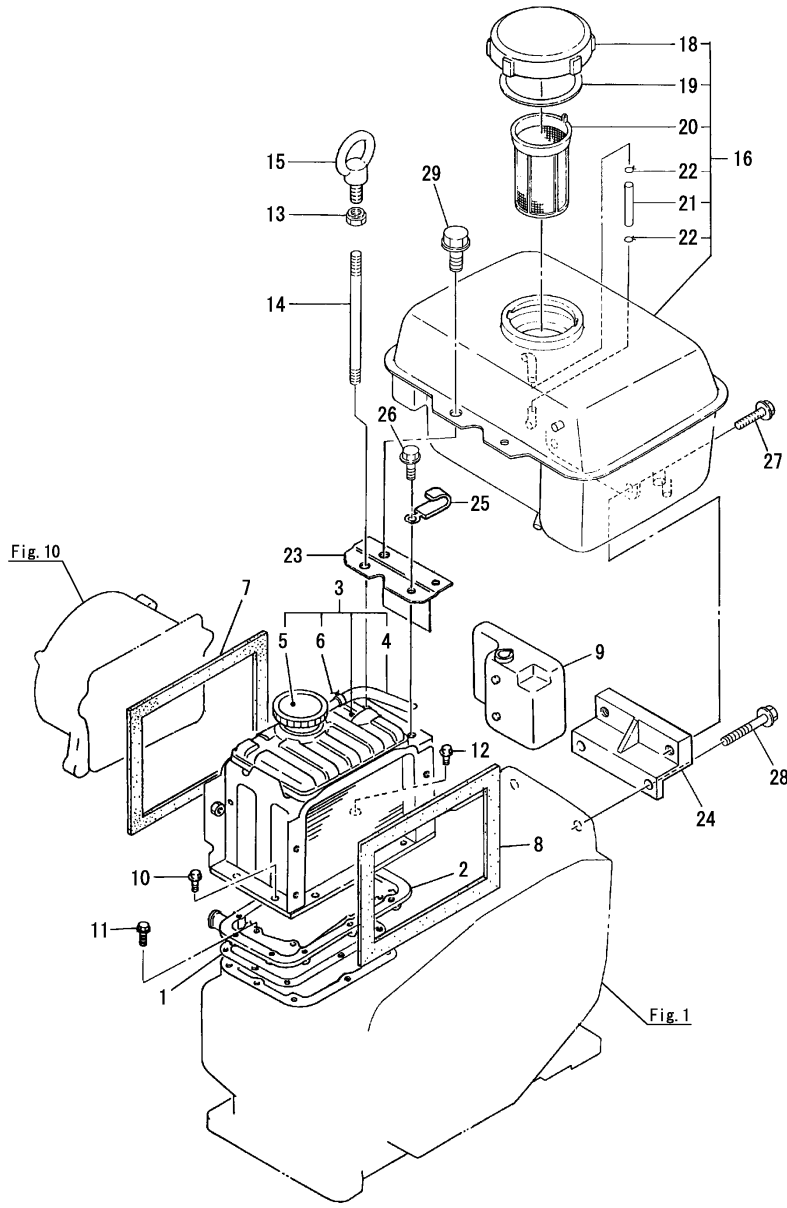
(D)=NFAD6-EJIK
(E)=
(F)=

No.	Lev.	Parts No.	Description	Q'ty						I	R
				(A)	(B)	(C)	(D)	(E)	(F)		
1	1	104300-32150	ROTOR ASSY, INNER	1	1	1	1				
7	1	103338-32570	O-RING	1	1	1	1				
8	1	26106-060122	BOLT, M6X 12 PLATED	3	3	3	3				
9	1	103338-32070	COVER	1	1	1	1				
10	1	101158-03061	VALVE	1	1	1	1				
11	1	105090-03081	COVER, BREATHER	1	1	1	1				
12	1	101158-03111	RETAINER	1	1	1	1				
13	1	105090-03131	GASKET	1	1	1	1				
14	1	105362-78960	SCREW, M4X8	2	2	2	2				
15	1	23064-090370	PIPE, 9X 370	1	1	1	1				
16	1	26023-060252	SCREW, M6X25	2	2	2	2				
16-1	1	26106-060222	BOLT, M6X 22 PLATED	2	2	2	2				R
		(A=EXXXXX) (B=EXXXXX) (C=EXXXXX) (D=EXXXXX)									
17	1	105092-76330	GEAR, STARTER	1	1	1	1				1
17-1	1	10509G-76330	GEAR, STARTING	1	1	1	1				S 2
		(A=EXXXXX) (B=EXXXXX) (C=EXXXXX) (D=EXXXXX)									
17-2	1	10509G-76331	GEAR, STARTING	1	1	1	1				S 3
		(A=E019187) (B=EXXXXX) (C=E072666) (D=E072110)									
18	1	705092-76900	SHAFT ASSY, STARTING	1	1	1	1				
21	1	105300-76470	COLLAR	1	1	1	1				
22	1	105300-76490	KEY, 7X10	1	1	1	1				
23	1	171117-76790	HANDLE, STARTING	1	1	1	1				
26	1	22242-000200	RING, 20	1	1	1	1				
27	1	105300-08510	BRACKET ASSY	1	1	1	1				
31	1	105140-76500	SEAL, TCX25X35X6	1	1	1	1				
31-1	1	120270-61250	SEAL, OIL	1	1	1	1				R
		(A=EXXXXX) (B=EXXXXX) (C=EXXXXX) (D=EXXXXX)									
32	1	105190-35050	STRAINER ASSY, OIL	1	1	1	1				
33	1	24341-000200	O-RING, 1AS20.0	1	1	1	1				

Remarks

- (1)Heat treatment; Normalizing
- (2)Heat treatment; Quenching and tempering
- (3)Heat treatment; Normalizing
- Punching mark; 1

Fig.9. RADIATOR & FUEL TANK

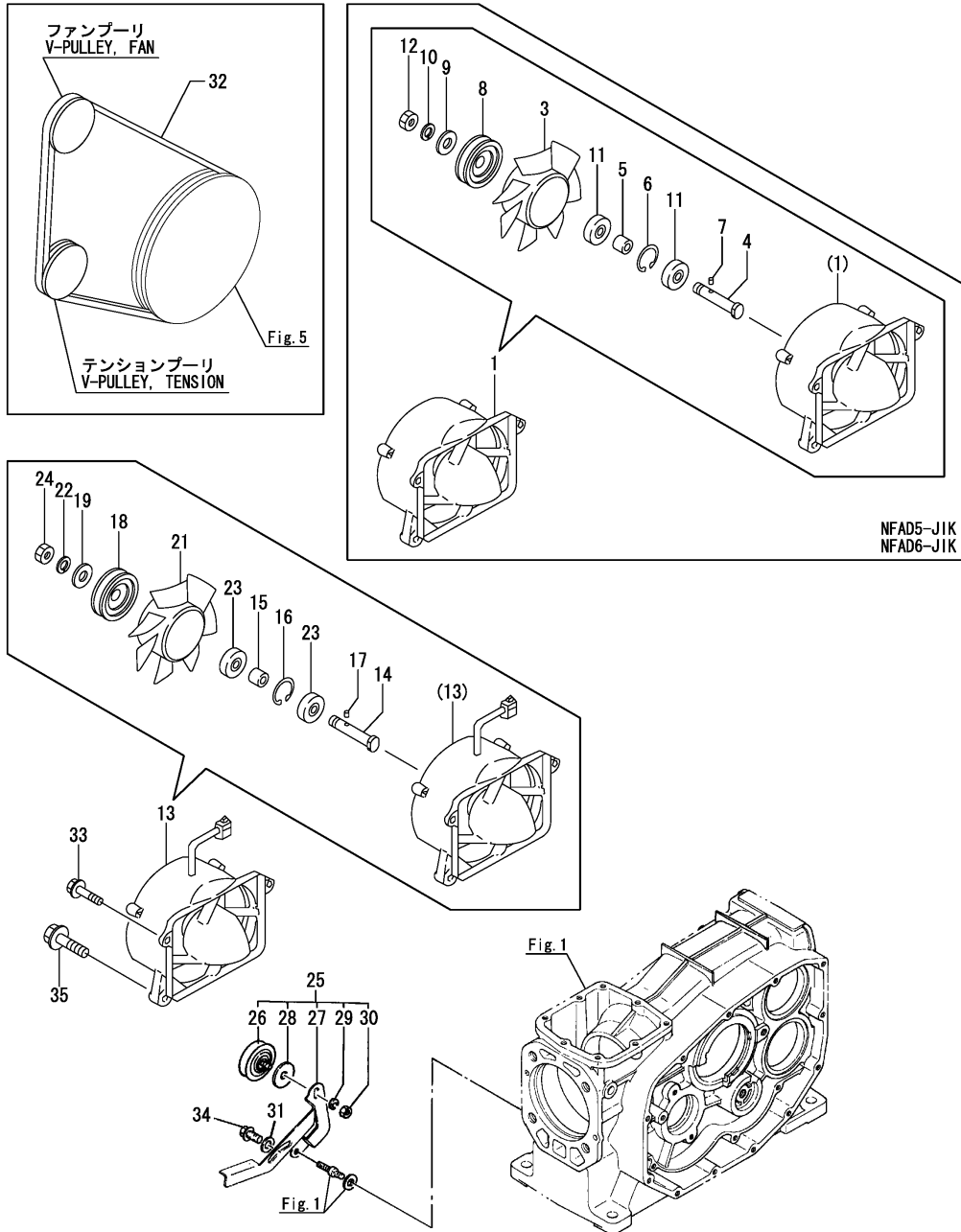


(A)=NFAD5-JIK
(B)=NFAD5-EJIK
(C)=NFAD6-JIK

(D)=NFAD6-EJIK
(E)=
(F)=

No.	Lev.	Parts No.	Description	Q'ty						I	R
				(A)	(B)	(C)	(D)	(E)	(F)		
1	1	105090-44050	GASKET	1	1	1	1				
2	1	105090-44300	BRACKET, RADIATOR	1	1	1	1				
3	1	105050-44500	RADIATOR ASSY	1	1	1	1				
4	2	105340-44570	PIPE, 7X170	1	1	1	1				
5	2	105198-44590	CAP, RADIATOR	1	1	1	1				
6	2	121250-44590	CLAMP	1	1	1	1				
7	1	106100-44560	SPONGE, 15X5X1000	1	1	1	1				
8	1	106100-44560	SPONGE, 15X5X1000	1	1	1	1				
9	1	105100-44630	TANK, SUB	1	1	1	1				
10	1	26013-060162	BOLT, M6X 16	9	9	9	9				
11	1	26106-060202	BOLT, M6X 20 PLATED	8	8	8	8				
12	1	26557-060082	SCREW, M6X 8	1	1	1	1				
13	1	104107-07900	NUT, M10	1	1	1	1				
14	1	105090-07940	BOLT, LIFTING	1	1	1	1				
15	1	26627-100002	NUT, EYE M10	1	1	1	1				
16	1	705090-55710-1	TANK ASSY, FUEL	1	1	1	1				
16-1	1	705090-55710-2	TANK ASSY, FUEL	1	1	1	1				N
(A=99.06.21) (B=99.06.21) (C=99.06.21) (D=99.06.21)											
18	2	105015-55040	CAP, FUEL TANK	1	1	1	1				
19	2	101504-55051	GASKET	1	1	1	1				
20	2	101504-55101	STRAINER, FUEL	1	1	1	1				
21	2	104200-55160	GAUGE, LEVEL	1	1	1	1				
22	2	103854-55220	RETAINER	2	2	2	2				
23	2	105090-55070	SUPPORT	1	1	1	1				
24	2	105090-55080	SUPPORT	1	1	1	1				
25	1	105430-67110	CLAMP, CORD	1	1	1	1				Z
(A=EXXXXX) (B=EXXXXX) (C=EXXXXX) (D=EXXXXX)											
26	1	26106-080142	BOLT, M8X 14 PLATED	1	1	1	1				
27	1	26106-080162	BOLT, M8X 16 PLATED	2	2	2	2				
27-1	1	26106-080142	BOLT, M8X 14 PLATED	2	2	2	2				S
(A=EXXXXX) (B=EXXXXX) (C=EXXXXX) (D=EXXXXX)											
28	1	26106-080352	BOLT, M8X 35 PLATED	2	2	2	2				
29	1	26106-100162	BOLT, M10X 16 PLATED	1	1	1	1				

Fig.10. FAN

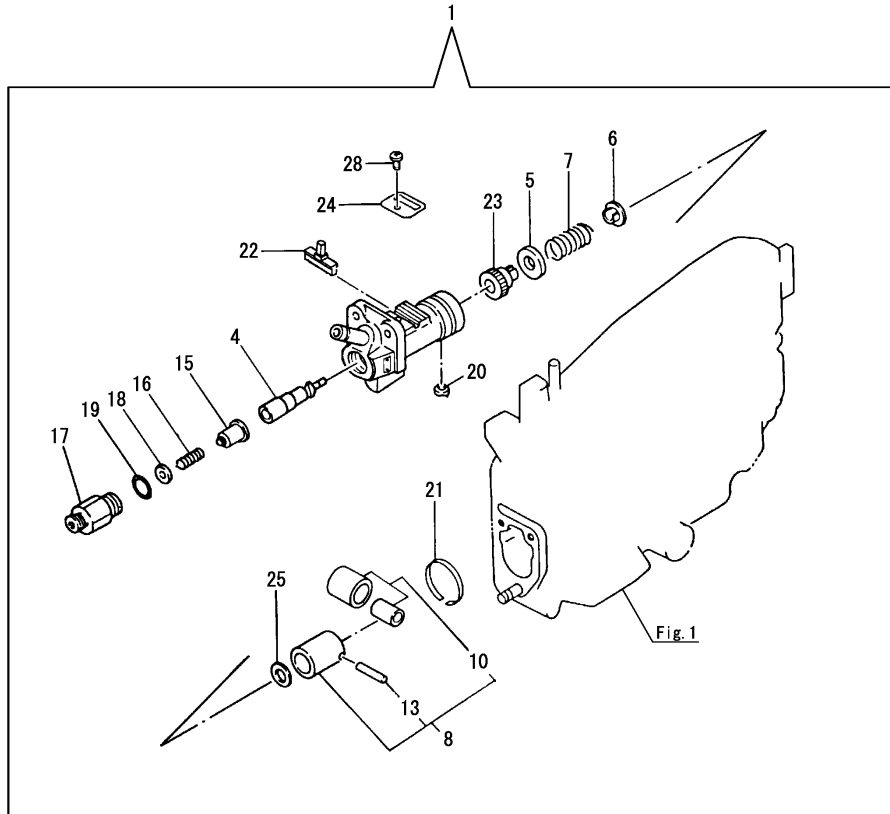


(A)=NFAD5-JIK
(B)=NFAD5-EJIK
(C)=NFAD6-JIK

(D)=NFAD6-EJIK
(E)=
(F)=

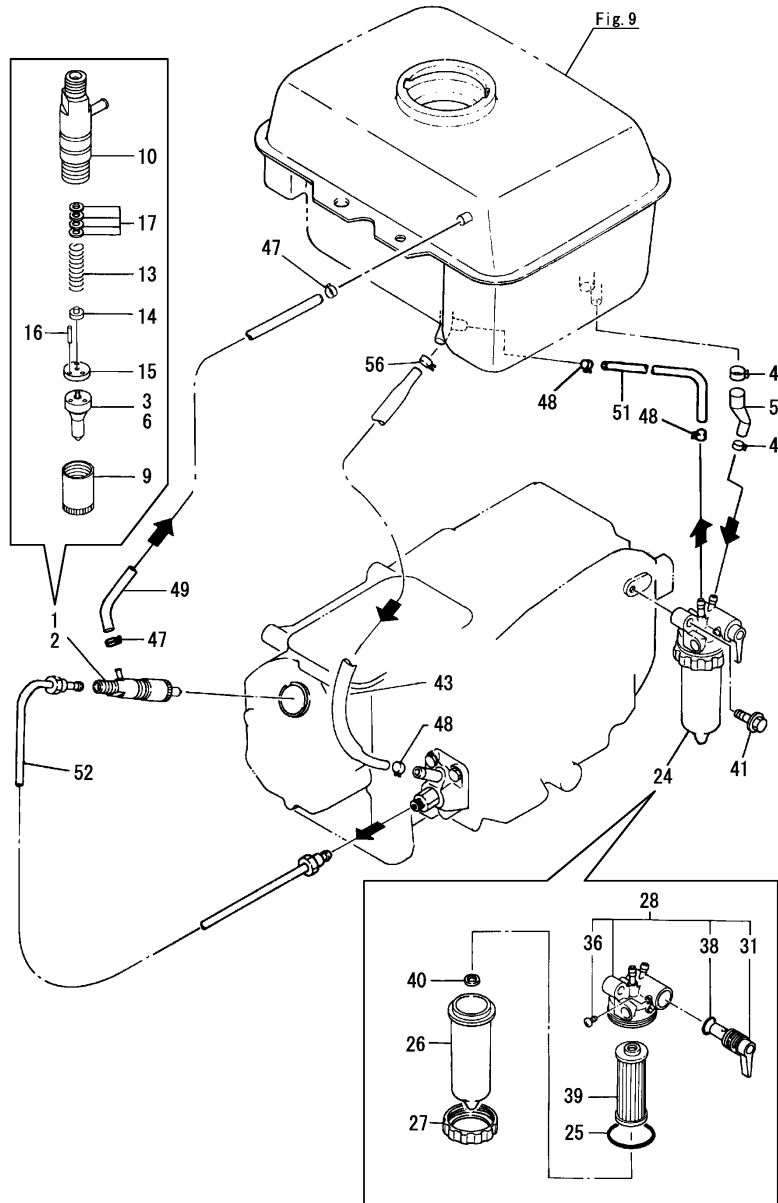
No.	Lev.	Parts No.	Description	Q'ty						I	R
				(A)	(B)	(C)	(D)	(E)	(F)		
1	1	105092-44201	CASE ASSY, FAN	1	1						
3	2	105092-44700	FAN, COOLING	1	1						
4	2	105340-44710	SHAFT, FAN	1	1						
5	2	106383-44720	SPACER	1	1						
6	2	106383-44740	CIRCLIP	1	1						
7	2	105340-44750	PIN	1	1						
8	2	105100-44770	PULLEY, FAN	2	2						
9	2	105100-44780	WASHER, PULLEY	1	1						
10	2	22217-120000	WASHER, SPRING 12	1	1						
11	2	24107-062013	BEARING, 6201ZZP6	2	2						
12	2	26777-120002	NUT, LOCK M12	1	1						
13	1	105090-44211	CASE ASSY, FAN				1			1	
14	2	105340-44710	SHAFT, FAN				1			1	
15	2	106383-44720	SPACER				1			1	
16	2	106383-44740	CIRCLIP				1			1	
17	2	105340-44750	PIN				1			1	
18	2	105100-44770	PULLEY, FAN				2			2	
19	2	105100-44780	WASHER, PULLEY				1			1	
21	2	105090-44850	FAN, COOLING				1			1	
22	2	22217-120000	WASHER, SPRING 12				1			1	
23	2	24107-062013	BEARING, 6201ZZP6				2			2	
24	2	26777-120002	NUT, LOCK M12				1			1	
25	1	105090-44810	PULLEY ASSY, TENSION	1	1	1	1	1	1		
26	2	106100-44650	PULLEY, TENSION	1	1	1	1	1	1		
27	2	105090-44940	LEVER, PULLEY	1	1	1	1	1	1		
28	2	106100-44960	CAP	1	1	1	1	1	1		
29	2	22217-080000	WASHER, SPRING 8	1	1	1	1	1	1		
30	2	26716-080002	NUT, M8	1	1	1	1	1	1		
31	1	22137-080000	WASHER, 8	1	1	1	1	1	1		
32	1	25117-003301	V-BELT, M33H	1	1	1	1	1	1		
33	1	26106-060252	BOLT, M6X 25 PLATED	2	2	2	2	2	2		
34	1	26106-080162	BOLT, M8X 16 PLATED	1	1	1	1	1	1		
35	1	26106-080352	BOLT, M8X 35 PLATED	2	2	2	2	2	2		

Fig.11. FUEL INJECTION PUMP



No.	Lev.	Parts No.	Description	Qty						I	R
				(A)	(B)	(C)	(D)	(E)	(F)		
1	1	705050-51101	PUMP ASSY, INJECTION	1	1						
1A	1	705090-51102	PUMP ASSY, INJECTION			1	1				
4	2	105200-51100	PLUNGER ASSY	1	1	1	1				
5	2	174307-51170	RETAINER, SPRING A	1	1	1	1				
5-1	2	158600-51170	RETAINER, SPRING	1	1	1	1				R
		(A=EXXXXX)	(B=EXXXXX)	(C=EXXXXX)	(D=EXXXXX)						
6	2	174307-51181	RETAINER, SPRING B	1	1	1	1				
7	2	124950-51190	SPRING, PLUNGER	1	1	1	1				
8	2	724550-51520	GUIDE, PLUNGER	1	1	1	1				
10	3	711100-51540	ROLLER ASSY	1	1	1	1				
13	3	174100-54120	PIN	1	1	1	1				
15	2	129100-51300	VALVE ASSY, DELIVERY	1	1	1	1				
16	2	124550-51320	SPRING, DELIVERY	1	1	1	1				
17	2	124550-51341	HOLDER, DELIVERY L43	1	1	1	1				
18	2	124550-51350	GASKET, DELIVERY	1	1	1	1				
19	2	124550-51370	O-RING	1	1	1	1				
20	2	104271-51450	PIECE, GUIDE	1	1	1	1				
21	2	104271-51460	CIRCLIP	1	1	1	1				
22	2	105300-51500	RACK, CONTROL	1	1	1	1				
23	2	105300-51510	PINION	1	1	1	1				
24	2	105300-51550	RETAINER, RACK	1	1	1	1				
25	2	174307-51700	SHIM SET	1	1	1	1				
28	2	26022-050102	SCREW, M5X10	1	1	1	1				

Fig.12. FUEL OIL SYSTEM

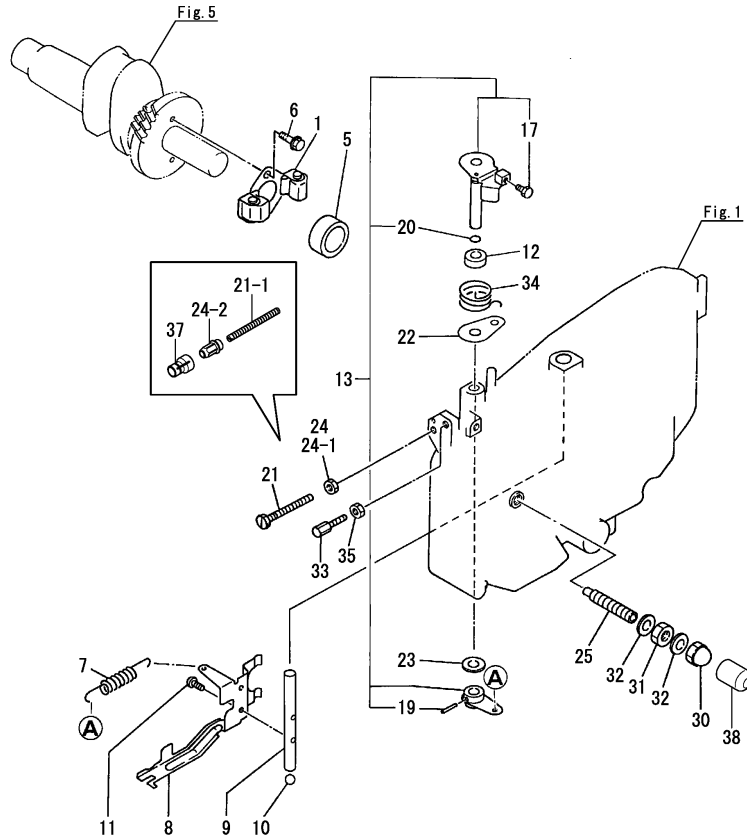


(A)=NFAD5-JIK
(B)=NFAD5-EJIK
(C)=NFAD6-JIK

(D)=NFAD6-EJIK
(E)=
(F)=

No.	Lev.	Parts No.	Description	Q'ty						I	R
				(A)	(B)	(C)	(D)	(E)	(F)		
1	1	705050-53100	VALVE ASSY,INJECTION	1	1						
2	1	705090-53100	VALVE ASSY,INJECTION			1	1				
2-1	1	705050-53100	VALVE ASSY,INJECTION			1	1				N
			(C=E015761) (D=E016420)								
3	2	105050-53000	VALVE ASSY,INJECTION	1	1						
6	2	105090-53000	VALVE ASSY,INJECTION			1	1				
6-1	2	105050-53000	VALVE ASSY,INJECTION			1	1				N
			(C=E015761) (D=E016420)								
9	2	114250-53080	NUT, NOZZLE D16.95	1	1	1	1				
10	2	105300-53100	HOLDER ASSY, NOZZLE	1	1	1	1				
13	2	114250-53120	SPRING, NOZZLE	1	1	1	1				
14	2	114250-53130	SEAT, SPRING	1	1	1	1				
15	2	114250-53140	PLATE	1	1	1	1				
16	2	114250-53210	PIN	2	2	2	2				
17	2	114250-53400	SHIM SET	1	1	1	1				
17-1	2	119803-53400	SHIM SET	1	1	1	1				R
			(A=EXXXXX) (B=EXXXXX) (C=EXXXXX) (D=EXXXXX)								
24	1	105370-55650	STRAINER ASSY, FUEL	1	1	1	1				
24-1	1	105198-55600	STRAINER ASSY, FUEL	1	1	1	1				R
			(A=EXXXXX) (B=EXXXXX) (C=E082723) (D=E085885)								
25	2	105300-55520	O-RING	1	1	1	1				
26	2	105300-55530	CUP, STRAINER	1	1	1	1				
26-1	2	105198-55510	CUP, STRAINER	1	1	1	1				R
			(A=EXXXXX) (B=EXXXXX) (C=E082723) (D=E085885)								
27	2	105300-55610	RING, RETAINING	1	1	1	1				
28	2	105300-55700	BODY ASSY, STRAINER	1	1	1	1				
31	3	105300-55340	LEVER	1	1	1	1				
36	3	104200-55750	SCREW, M4	1	1	1	1				
38	3	24311-000160	O-RING, 1AP16.0	1	1	1	1				
39	2	105370-55710	ELEMENT	1	1	1	1				
39-1	2	105370-55711	ELEMENT	1	1	1	1				R
			(A=EXXXXX) (B=EXXXXX) (C=E081756) (D=E085885)								
40	2	105300-55750	FLOAT	1	1	1	1				
41	1	26106-080302	BOLT, M8X 30 PLATED	1	1	1	1				
42	1	129301-03660	CLAMP 15	1	1	1	1				
43	1	105090-59010	PIPE ASSY, FUEL	1	1	1	1				
47	1	124722-59050	CLIP, HOSE 9	2	2	2	2				
48	1	124766-59050	CLIP, HOSE 11.5	4	4	4	4				
49	1	105500-59100	PIPE, FUEL RETURN	1	1	1	1				
50	1	105300-59561	PIPE, FUEL	1	1	1	1				
50-1	1	105192-59560	PIPE, FUEL	1	1	1	1				N
			(A=EXXXXX) (B=EXXXXX) (C=EXXXXX) (D=EXXXXX)								
51	1	105090-59570	PIPE, FUEL	1	1	1	1				
52	1	105090-59800	PIPE ASSY, INJECTION	1	1	1	1				
56	1	23080-013000	CLAMP, 13	1	1	1	1				

Fig.13. GOVERNOR & CONTROL DEVICE



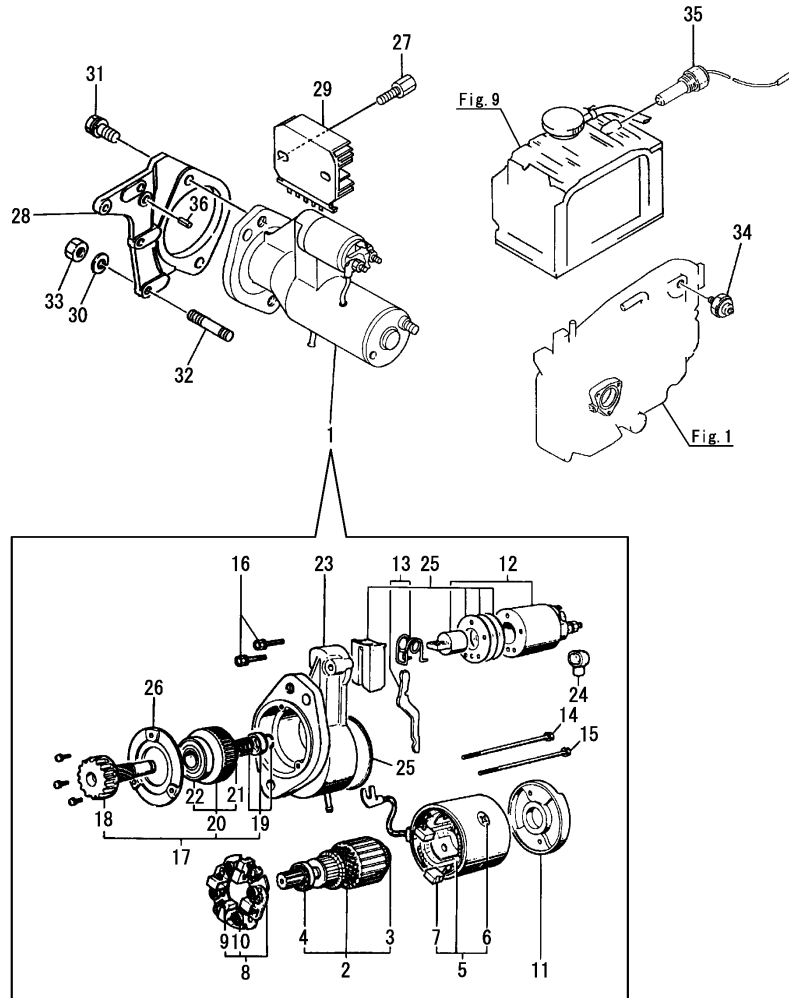
(A)=NFAD5-JIK
(B)=NFAD5-EJIK
(C)=NFAD6-JIK

(D)=NFAD6-EJIK
(E)=
(F)=

No.	Lev.	Parts No.	Description	Qty						I	R
				(A)	(B)	(C)	(D)	(E)	(F)		
1	1	705090-61700	GOVERNOR ASSY	1	1	1	1				
5	1	105300-61600	SLEEVE, GOVERNOR	1	1	1	1				
6	1	174100-61600	BOLT	2	2	2	2				
7	1	105300-66011	SPRING, REGULATOR	1	1	1	1				
8	1	105090-66300	LEVER, GOVERNOR	1	1	1	1				
9	1	105100-66400	SHAFT	1	1	1	1				
10	1	24190-120001	BALL, STEEL 3/8	1	1	1	1				
11	1	26022-050102	SCREW, M5X10	2	2	2	2				
12	1	121575-21850	WASHER	1	1	1	1				
13	1	705192-66700	SHAFT ASSY	1	1	1	1				
17	3	105225-66990	SCREW, M5X8.5	1	1	1	1				
19	2	22322-030200	PIN, TAPER 3X20	1	1	1	1				
20	2	24311-000070	O-RING, 1AP7.0	1	1	1	1				
21	1	105300-66520	SCREW	1	1	1	1				
21-1	1	105090-66830	SCREW	1	1	1	1				N
		(A=E019929) (B=EXXXXX) (C=E076866) (D=E078086)									
22	1	105300-66850	RETAINER	1	1	1	1				
23	1	22117-100000	WASHER, 10	1	1	1	1				
24	1	26757-060002	NUT, LOCK M6	1	1	1	1				
24-1	1	26756-060002	NUT, LOCK M6	1	1	1	1				N
		(A=EXXXXX) (B=EXXXXX) (C=EXXXXX) (D=EXXXXX)									
24-2	1	129209-61370	NUT, M6	1	1	1	1				N
		(A=E019929) (B=EXXXXX) (C=E076866) (D=E078086)									
25	1	105090-66551	LIMITER ASSY, FUEL	1	1	1	1				
25-1	1	105090-66540	LIMITER ASSY, FUEL					1	1		N
		(C=EXXXXX) (D=EXXXXX)									
30	1	124060-66950	NUT, CAP M10	1	1	1	1				
31	1	26796-100002	NUT, LOCK M10	1	1	1	1				
32	1	43400-500430	SEAL WASHER 10S	2	2	2	2				
32-1	1	22190-100002	WASHER, SEAL 10	2	2	2	2				N
		(A=EXXXXX) (B=EXXXXX) (C=EXXXXX) (D=EXXXXX)									
33	1	102100-67080	BOLT, ADJUSTING	1	1	1	1				
34	1	105502-67301	SPRING, RETURN	1	1	1	1				
35	1	26756-060002	NUT, LOCK M6	1	1	1	1				
37	1	119285-66650	CAP, HIGH-IDLE	1	1	1	1				W 1
		(A=E019929) (B=EXXXXX) (C=E076866) (D=E078086)									
38	1	105300-66610	CAP	1	1	1	1				W
		(A=EXXXXX) (B=EXXXXX) (C=EXXXXX) (D=EXXXXX)									

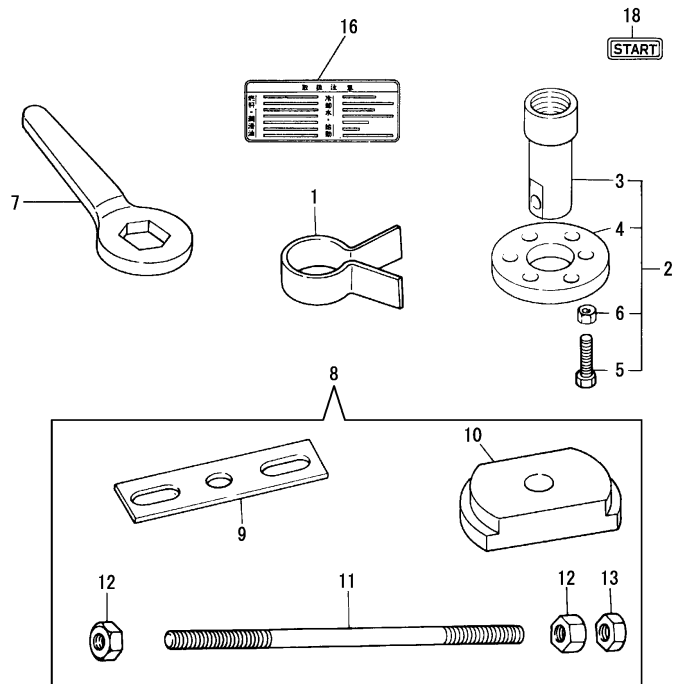
Remarks
(1) Spare parts

Fig.14. STARTING MOTOR



No.	Lev.	Parts No.	Description	Q'ty						I	R
				(A)	(B)	(C)	(D)	(E)	(F)		
1	1	105100-77010	STARTER, S114-438B		1		1				
1-1	1	105100-77011	MOTOR,STARTER		1		1				N
			(B=EXXXXX) (D=EXXXXX)								
2	2	X211461005	ARMATURE		1		1				
3	3	X211415502	BEARING, BALL		1		1				
3-1	3	X2130350900	BEARING, BALL		1		1				R
			(B=EXXXXX) (D=EXXXXX)								
4	3	X211425502	BEARING, BALL		1		1				
4-1	3	X211425511	BALL BEARING		1		1				R
			(B=EXXXXX) (D=EXXXXX)								
5	2	X211442003	COIL ASSY, FIELD		1		1				
6	3	X21143215	SCREW, CORE		1		1				
7	3	X211469002	BRUSH (+)		2		2				
8	2	X211479001	HOLDER ASSY, BRUSH		1		1				
9	3	X211459002	BRUSH (-)		2		2				
10	3	X21148314	SPRING, BRUSH		4		4				
11	2	X211483003	COVER		1		1				
12	2	X211447007	SWITCH, MAGNETIC		1		1				
12-1	2	X2114T71110	SWITCH, MAGNETIC		1		1				N
			(B=EXXXXX) (D=EXXXXX)								
13	2	X211446012	LEVER, SHIFT		1		1				
14	2	X211468005	BOLT, THROUGH		1		1				
15	2	X21148856	BOLT, THROUGH		1		1				
16	2	X21145866	BOLT		2		2				
17	2	X211455011	PINION ASSY		1		1				
18	3	X211465011	SHAFT, PINION		1		1				
19	3	X211429006	STOPPER SET		1		1				
20	3	X211425506	CLUTCH ASSY		1		1				
20-1	3	X211455500	CLUTCH ASSY		1		1				R
			(B=EXXXXX) (D=EXXXXX)								
21	4	X211435502	BALL BEARING		1		1				
21-1	4	X211495502	BEARING, BALL		1		1				R
			(B=EXXXXX) (D=EXXXXX)								
22	4	X211455502	BALL BEARING		1		1				
23	2	X211466605	CASE ASSY, GEAR		1		1				
24	2	X21142742	COVER (A), RUBBER		1		1				
25	2	X211458012	COVER KIT		1		1				
26	2	X211428008	RETAINER, BEARING		1		1				
27	1	105212-01910	BOLT, SPACER		2		2				
28	1	105090-77471	BRACKET		1		1				
29	1	119660-77710	LIMITER, CURRENT 15A		1		1				
29-1	1	119660-77711	LIMITER, CURRENT 15A		1		1				N
			(B=EXXXXX) (D=EXXXXX)								
29-2	1	119660-77712	LIMITER, CURRENT 15A		1		1				R
			(B=EXXXXX) (D=EXXXXX)								
30	1	22212-060000	WASHER 6		4		4				
30-1	1	22217-060000	WASHER, SPRING 6		4		4				N
			(B=E005467) (D=E017491)								
31	1	26013-120302	BOLT, M12X 30		2		2				
32	1	26226-060222	STUD, M6X 22		4		4				
33	1	26716-060002	NUT, M6		4		4				

Fig.15. TOOL & LABEL



(A)=NFAD5-JIK
(B)=NFAD5-EJIK
(C)=NFAD6-JIK

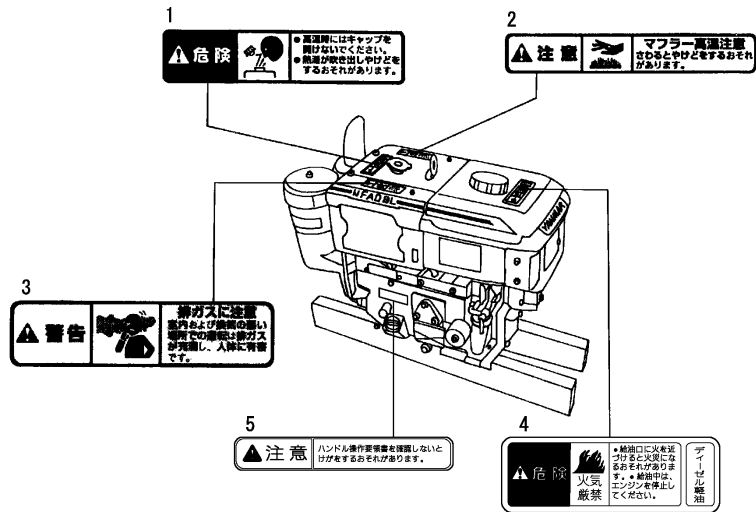
(D)=NFAD6-EJIK
(E)=
(F)=

No.	Lev.	Parts No.	Description	Qty						I	R
				(A)	(B)	(C)	(D)	(E)	(F)		
1	1	101300-92140	TOOL, PISTON&RING	1	1	1	1				1
2	1	105090-92190	TOOL, WHEEL REMOVER	1	1	1	1				1
3	2	105090-92110	RETAINER, A	1	1	1	1				1
4	2	104200-92120	RETAINER, B	1	1	1	1				1
5	2	104200-92130	TOOL	2	2	2	2				1
6	2	26717-120002	NUT, M12	2	2	2	2				1
7	1	105010-92100	WRENCH	1	1	1	1				1
8	1	105090-92090	TOOL ASSY, LINER	1	1	1	1				1
9	2	172200-92020	TOOL, LINER REMOVER	1	1	1	1				1
10	2	105090-92010	TOOL, LINER REMOVER	1	1	1	1				1
11	2	103338-92030	BOLT, LINER REMOVER	1	1	1	1				1
12	2	26716-160002	NUT, M16	2	2	2	2				1
13	2	26757-160002	NUT, LOCK M16	1	1	1	1				1
16	1	105362-07100	LABEL, CAUTION	1	1	1	1				
18	1	105090-07160	LABEL, START	1	1	1	1				

Remarks

(1)Optional parts

Fig.16. SAFETY LABEL



警告表示(ラベル)の部品コード番号

No.	部品番号	警告表示内容
1	1E8500-97220	熱湯吹出し注意
2	1E5120-86720	マフラー高温注意
3	1E5120-86600	排気ガス注意
4	1E8230-97030	火気厳禁
5	105100-07300	ハンドル操作注意

安全銘板の貼付け位置は、取扱説明書をご参照下さい。

No.	Lev.	Parts No.	Description	Q'ty						I	R
				(A)	(B)	(C)	(D)	(E)	(F)		
1	1	1E8500-97220	LABEL, RADIATOR	1	1	1	1				
1-1	1	105250-07310	LABEL, RADIATOR	1	1	1	1				R
		(A=EXXXXX) (B=EXXXXX) (C=EXXXXX) (D=EXXXXX)									
2	1	1E5120-86720	LABEL, CAUTION	1	1	1	1				
3	1	1E5120-86600	WARNING, EXHAUST GAS	1	1	1	1				
4	1	1E8230-97030	LABEL, DANGER B	1	1	1	1				
5	1	105100-07300	LABEL, CAUTION	1	1	1	1				W
		(A=EXXXXX) (B=EXXXXX) (C=EXXXXX) (D=EXXXXX)									

(A)=NFAD5-JIK
(B)=NFAD5-EJIK
(C)=NFAD6-JIK

(D)=NFAD6-EJIK
(E)=
(F)=

Parts No. Index

Parts No.	Fig. No.	Ref. No.
101104-01760	1	33
101147-12550	3	10
101158-03061	8	10
101158-03111	8	12
101158-11180	2	8
101158-11190	2	9
101158-11230	2	22
		26
101300-92140	15	1
101504-55051	9	19
101504-55101	9	20
102100-67080	13	33
103338-32070	8	9
103338-32570	8	7
103338-92030	15	11
103854-55220	9	22
104107-07900	9	13
104200-03641	2	31
104200-55160	9	21
104200-55750	12	36
104200-92120	15	4
104200-92130	15	5
104271-01950	1	35
104271-51450	11	20
104271-51460	11	21
104300-12950	3	12
104300-12951	3	12 -1
104300-12960	3	13
104300-32150	8	1
104300-76460	4	9
104407-21600	5	14
104511-21600	5	12
105010-11920	2	13
105010-13200	3	15
105010-13201	3	15 -1
105010-21530	5	13
105010-92100	15	7
105015-55040	9	18
105050-03740	2	32
105050-03770	3	3
105050-03780	3	4
105050-03790	3	5
105050-11100	2	5 A
105050-11111	2	6 A
105050-11200	2	29
105050-12020	3	6
105050-12050	3	1
105050-13530	3	16
105050-22190	6	1 A
105050-22300	6	8 A

Parts No.	Fig. No.	Ref. No.
105050-44500	9	3
105050-53000	12	3
		6 -1
105090-01300	1	5
105090-01330	1	17
105090-01331	1	17 -1
105090-01410	1	29
105090-01480	1	30
105090-01750	1	32
105090-01960	1	35 -1
105090-02020	1	54
105090-02021	1	54 -1
105090-03081	8	11
105090-03131	8	13
105090-07160	15	18
105090-07940	9	14
105090-11100	2	5
105090-11111	2	6
105090-11290	2	14
105090-11310	2	39
105090-11650	2	20
105090-11660	2	24
105090-11800	2	4 B
105090-11820	2	40
105090-14010	4	1
105090-14091	4	2
105090-14100	4	3
105090-14400	4	5
105090-14420	4	6
105090-14600	4	7
105090-21130	5	4
105090-21200	5	8
105090-21401	5	9
105090-21591	5	10
105090-22190	6	1
105090-22400	6	9
105090-22470	6	16
105090-22480	6	22
105090-22510	6	18
105090-22520	6	24
105090-23910	6	12
105090-28250	7	1
105090-44050	9	1
105090-44211	10	13
105090-44300	9	2
105090-44810	10	25
105090-44850	10	21
105090-44940	10	27
105090-53000	12	6
105090-55070	9	23

Parts No.	Fig. No.	Ref. No.
105090-55080	9	24
105090-59010	12	43
105090-59570	12	51
105090-59800	12	52
105090-66300	13	8
105090-66540	13	25 -1
105090-66551	13	25
105090-66830	13	21 -1
105090-77471	14	28
105090-92010	15	10
105090-92090	15	8
105090-92110	15	3
105090-92190	15	2
105092-03600	2	30
105092-12550	3	10 -1
105092-14700	4	8
105092-21100	5	3
105092-28300	7	2
105092-28310	7	3
105092-28410	7	6
105092-28450	7	7
105092-28710	7	9
105092-44201	10	1
105092-44700	10	3
105092-76330	8	17
10509G-14100	4	3 -1
10509G-14101	4	3 -2
10509G-21200	5	8 -1
10509G-21201	5	8 -2
10509G-28300	7	2 -1
10509G-28301	7	2 -2
10509G-28310	7	3 -1
10509G-28311	7	3 -2
10509G-28410	7	6 -1
10509G-28411	7	6 -2
10509G-28710	7	9 -1
10509G-28711	7	9 -2
10509G-76330	8	17 -1
10509G-76331	8	17 -2
105100-01660	1	23 -1
105100-02300	1	56
105100-02310	1	57
105100-07300	16	5
105100-12550	3	7
105100-44630	9	9
105100-44770	10	8
		18
105100-44780	10	9
		19
105100-44930	1	38

Parts No.	Fig. No.	Ref. No.
105100-66400	13	9
105100-77010	14	1
105100-77011	14	1 -1
105140-76500	1	28
	8	31
105190-01660	1	23
105190-01680	1	13
105190-12050	3	9
105190-28380	7	5
105190-35050	8	32
105192-59560	12	50 -1
105198-44590	9	5
105198-55510	12	26 -1
105198-55600	12	24 -1
105200-51100	11	4
105212-01910	14	27
105215-01200	1	15
105215-01670	1	12
105215-76490	7	13
105225-23200	6	13
105225-66990	13	17
105250-07310	16	1 -1
105300-01690	1	31
105300-01920	1	34
105300-08510	8	27
105300-11330	2	3
105300-11900	2	18
105300-14200	4	4
105300-34040	1	25
105300-44900	14	35
105300-51500	11	22
105300-51510	11	23
105300-51550	11	24
105300-53100	12	10
105300-55340	12	31
105300-55520	12	25
105300-55530	12	26
105300-55610	12	27
105300-55700	12	28
105300-55750	12	40
105300-59561	12	50
105300-61600	13	5
105300-66011	13	7
105300-66520	13	21
105300-66610	13	38
105300-66850	13	22
105300-76470	8	21
105300-76490	8	22
105302-28701	7	8
105302-28720	7	10

Parts No. Index

Parts No.	Fig. No.	Ref. No.
105315-28350	7	4
105340-44570	9	4
105340-44710	10	4
		14
105340-44750	10	7
		17
105362-07100	15	16
105362-28750	7	12
105362-78960	8	14
105370-55650	12	24
105370-55710	12	39
105370-55711	12	39 -1
105400-11121	2	7
105430-67110	9	25
105500-59100	12	49
105502-67301	13	34
106100-02331	1	58
106100-44560	9	7
		8
106100-44650	10	26
106100-44960	10	28
106383-44720	10	5
		15
106383-44740	10	6
		16
111130-02160	1	55
114250-53080	12	9
114250-53120	12	13
114250-53130	12	14
114250-53140	12	15
114250-53210	12	16
114250-53400	12	17
119285-66650	13	37
119625-11870	2	19
119625-11871	2	19 -1
119625-11880	2	17
119625-11900	2	18 -1
119660-77710	14	29
119660-77711	14	29 -1
119660-77712	14	29 -2
119717-23200	6	13 -1
119803-53400	12	17 -1
120270-61250	8	31 -1
121250-44590	9	6
121450-01220	1	16
121575-21850	13	12
124060-39451	14	34
124060-39452	14	34 -1
124060-66950	13	30
124550-51320	11	16

Parts No.	Fig. No.	Ref. No.
124550-51341	11	17
124550-51350	11	18
124550-51370	11	19
124722-59050	12	47
124766-59050	12	48
124950-22300	6	8
124950-51190	11	7
128170-11340	2	4 C
129100-51300	11	15
129209-61370	13	24 -2
129301-03660	12	42
158600-51170	11	5 -1
160120-76940	1	39
171117-76790	8	23
172200-92020	15	9
174100-54120	11	13
174100-61600	13	6
174307-51170	11	5
174307-51181	11	6
174307-51700	11	25
183250-03550	2	33
1E5120-86600	16	3
1E5120-86720	16	2
1E8230-97030	16	4
1E8500-97220	16	1
22117-060000	2	41
22117-100000	13	23
22137-080000	10	31
22190-100002	13	32 -1
22212-060000	14	30
22217-060000	14	30 -1
22217-080000	1	40
	10	29
22217-120000	10	10
		22
22242-000200	8	26
22242-000210	7	14
22252-000100	1	26
22312-030180	2	36
22322-030180	2	37
22322-030200	13	19
22351-060012	1	14
		24
	14	36
22512-050140	5	5
		6
22512-070500	4	10
23064-090370	8	15
23080-013000	12	56
24101-060044	7	15

Parts No.	Fig. No.	Ref. No.
24107-062013	10	11
		23
24190-120001	1	27
	13	10
24311-000070	2	38
	13	20
24311-000160	12	38
24321-000250	1	41
24341-000200	8	33
25117-003301	10	32
26013-060162	9	10
26013-080202	7	16
26013-080209	3	17
26013-120302	14	31
26022-050102	11	28
	13	11
26022-060122	4	11
26023-060252	8	16
26106-060122	5	15
	8	8
26106-060202	1	42
	2	42
	9	11
26106-060222	8	16 -1
26106-060252	10	33
26106-060302	1	43
26106-060552	1	44
26106-060602	2	43
26106-060652	1	45
26106-080142	9	26
		27 -1
26106-080162	9	27
	10	34
26106-080202	3	14
26106-080302	12	41
26106-080352	9	28
	10	35
26106-100162	9	29
26106-100652	7	17
26116-050082	1	59
26216-060352	2	11 -1
26216-060402	2	11
26216-080222	1	46
26216-080452	2	10
26226-060222	14	32
26226-080202	1	47
26226-080222	1	47 -1
		48
26306-080002	1	50 -1
	2	28 -1

Parts No.	Fig. No.	Ref. No.
26366-060002	1	49
	2	12
	3	8
26366-080002	1	50
	2	28
26557-060082	9	12
26557-060142	4	12
26627-100002	9	15
26716-060002	14	33
26716-080002	1	51
	10	30
26716-160002	15	12
26717-120002	15	6
26756-060002	13	24 -1
		35
26756-080002	2	23
		27
26757-060002	13	24
26757-160002	15	13
26777-120002	10	12
		24
26796-100002	13	31
27231-150000	2	4
27310-070001	2	9 -1
43400-500430	13	32
705050-01900	1	1
705050-11700	2	1 A
705050-11701	2	1 A-1
705050-22510	6	3 A
705050-51101	11	1
705050-53100	12	1
		2 -1
705090-01900	1	2
705090-02500	1	52
705090-11700	2	1
705090-11701	2	1 -1
705090-22500	6	3
705090-23100	6	10
705090-23600	6	14
705090-23610	6	28
705090-23620	6	30
705090-51102	11	1 A
705090-53100	12	2
705090-55710-1	9	16
705090-55710-2	9	16 -1
705090-61700	13	1
705092-01500	1	18
705092-01560	1	6
705092-21700	5	1
705092-76900	8	18

Parts No. Index

Parts No.	Fig. No.	Ref. No.
70509G-23100	6	10 -1
705192-66700	13	13
711100-51540	11	10
724550-51520	11	8
X211415502	14	3
X211425502	14	4
X211425506	14	20
X211425511	14	4 -1
X21142742	14	24
X211428008	14	26
X211429006	14	19
X21143215	14	6
X211435502	14	21
X211442003	14	5
X211446012	14	13
X211447007	14	12
X211455011	14	17
X211455502	14	22
X211455500	14	20 -1
X211458012	14	25
X21145866	14	16
X211459002	14	9
X211461005	14	2
X211465011	14	18
X211466605	14	23
X211468005	14	14
X211469002	14	7
X211479001	14	8
X211483003	14	11
X21148314	14	10
X21148856	14	15
X211495502	14	21 -1
X2114T71110	14	12 -1
X2130350900	14	3 -1

Parts No.	Fig. No.	Ref. No.
-----------	----------	----------

Parts No.	Fig. No.	Ref. No.
-----------	----------	----------

Parts No.	Fig. No.	Ref. No.
-----------	----------	----------