

OCD10-M27102EN

PREFACE

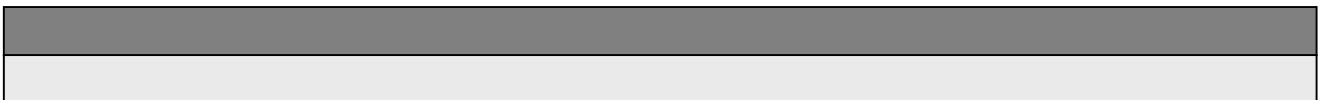
1. This Parts Catalog is the 1st edition of 3TN84L-RMZ Diesel Engine for MITSUI.

Pub. No. : 000Y00D2712

Published : July, 1991

2. Model name

Engine model	Vehicle		Vehicle made by
	Products	Model name	
3TN84L-RMZ	—	—	MITSUI



Directions for the Parts Catalog.

1. This Parts Catalog shows both standard and optional parts.
2. Parts may change without prior notice.
3. The following is an example of the Parts Catalog format.

REF.	LEV.	PARTS NO.	DESCRIPTION	Q'TY						I	R
				(A)	(B)	(C)	(D)	(E)	(F)		
1	1	729595-51390	FUEL INJECTION PUMP	1	1	1	1	1			1
1-1	1	729595-51391	FUEL INJECTION PUMP	1	1	1	1	1		N	1
		(A=E00185) (B=E00200)									
3	2	26022-060162	SCREW M 6X 16	9	9	9	9	9			
3-1	2	26022-060162	SCREW M 6X 16	4	4	4	4	4		K	
		(A=E00156) (B=E00156) (C=E00156) (D=E00156) (E=E00156)									
4	2	129470-51040	CAMSHAFT	1	1	1	1	1			
5	2	122710-51050	BEARING, ROLLER	2	2	2	2	2			
6	2	129470-51060	RETAINER	1	1	1	1	1			

Remarks
(1) BOOST COMPEMSATOR TYPE. OPTIONAL PART, TO E00155,(4JH-DT, 4JH-DTZ

① Ref. No.

The Ref. No. listed may not be in accordance with the illustration Ref. No.

(Ex.) Illustration No.

List Ref No.

1

1

(Before change)

1-1

(After change)

For interchangeable symbols N, R and K, illustrations for new parts may be abbreviated.

② Lev. (Level)

Level indication

The numbers below indicate the level of relativity towards the main part.

1 ----- Main parts (Assembly parts)

2 ----- Sub component included in " 1 ".

3 ----- Sub component included in " 2 ".

Note) Parts that are not for sale are partially illustrated but not listed.

③ Interchangeability Symbol

When a part change takes place, one of the following interchangeability symbols is indicated beside the part.

Symbol	Interchangeability	Contents note
N	Old $\begin{matrix} \leftarrow \text{Yes} \\ \text{No} \rightarrow \end{matrix}$ New	New Part is interchangeable for Old Part but Old Part is not interchangeable for New Part.
Q	Old $\begin{matrix} \leftarrow \text{No} \\ \text{Yes} \rightarrow \end{matrix}$ New	New Part is not interchangeable for Old Part but Old Part is interchangeable for New Part.
R	Old $\begin{matrix} \leftarrow \text{Yes} \\ \text{Yes} \rightarrow \end{matrix}$ New	New/ Old Parts are both interchangeable.
S	Old $\begin{matrix} \leftarrow \text{No} \\ \text{No} \rightarrow \end{matrix}$ New	New/ Old Parts are both not interchangeable.
W		Part newly added.
Z		Part discontinued.
F		Not interchangeable by a single part but interchangeable together with related parts.
K		Changes only for used parts quantities.

④ Effective Machine No.

When a part changes, the effective Machine No. will be indicated in the (A)-(F) column.

Product Symbol	Product No.	Product Symbol	Product No.
C	Clutch No. Compressor No.	F	Machine No. (Agricultural Equip.)
D	Drive No.	M	Machine No.
E	Engine No.		

Note 1) A date may follow the symbol. (Ex.) 1996.01

Note 2) "XXXXX" and "ZZZZZ" are for parts that could not be predicted or for engine models that could not be identified.

Note 3) (A=E00185) is the E (Engine Serial Number) for the column (A) model (in this case 4JH-DT) after the parts design change.

⑤ Remarks

Figures or alphabets (symbols) are entered in the remarks column.

The comments (remarks) on parts that are indicated at the bottom of the illustration are the same symbols as those stated above.

Contents

OCD10-M27102

Fig. No.	Fig. Name
ENGINE 3TN84L-RMZ	
1.	CYLINDER BLOCK
2.	GEAR HOUSING
3.	MOUNTING FRANGE
4.	LUB. OIL SUMP
5.	OIL SEAL HOUSING
6.	TACHOMETER COVER
7.	BREATER
8.	ENGINE LIFTER
9.	CYLINDER HEAD
10.	BONNET
11.	SUCTION MANIFOLD
12.	EXHAUST MANIFOLD
13.	CAMSHAFT
14.	CRANKSHAFT
15.	FLYWHEEL
16.	PISTON
17.	CONNECTING ROD
18.	IDLE GEAR
19.	FUEL INJECTION PUMP GEAR
20.	HYDRAULIC OIL PUMP
21.	LUB.OIL PUMP
22.	LUB.OIL DIPSTICK
23.	LUB.OIL SUCTION PIPE
24.	LUB.OIL STRAINER

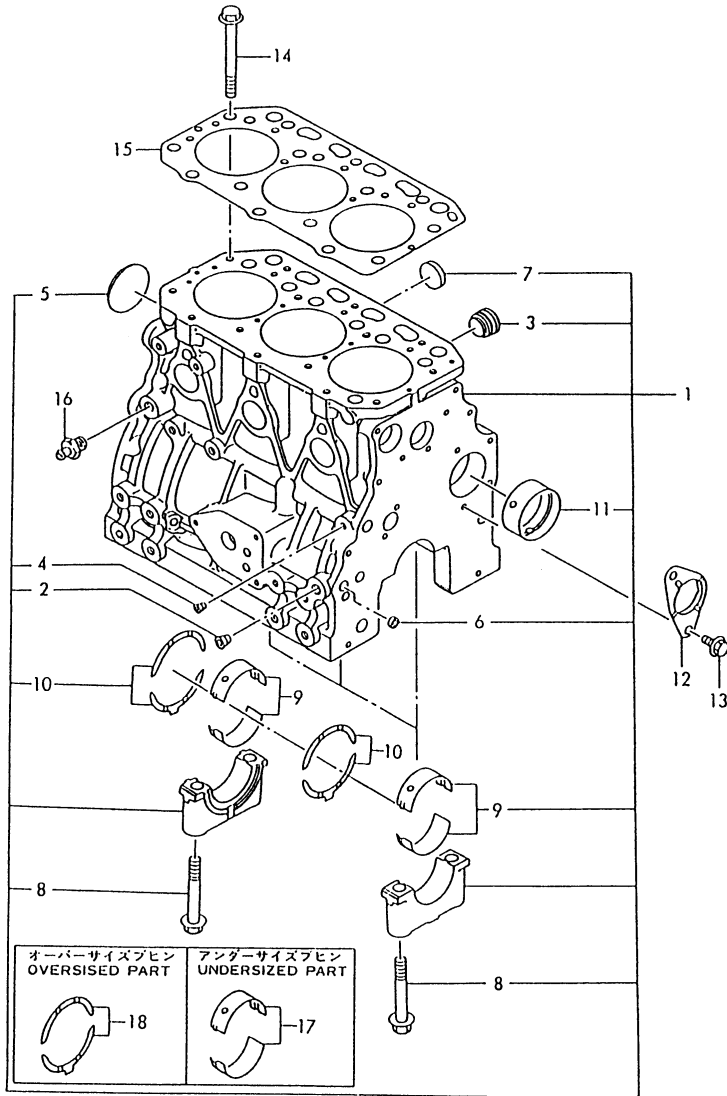
Fig. No.	Fig. Name
25.	LUB.OIL LINE
26.	COOLING WATER PUMP
27.	COOLING WATER FAN
28.	THERMOSTAT
29.	COOLING WATER PIPE(BY-PASS)
30.	FUEL INJECTION PUMP
31.	FUEL INJECTION VALVE
32.	FUEL INJECTION LINE
33.	FUEL LINE
34.	FUEL RETURN LINE
35.	GOVERNOR
36.	ENGINE STOP
37.	STARTING MOTOR(COMPONENT PARTS)
38.	GENERATOR(COMPONENT PARTS)
39.	AIR HEATER
40.	GASKET SET & TOOL(OPTIONAL)

Fig.1. CYLINDER BLOCK

029105-01100
 029150-02100
 029129-02200
 019600-49300

(A)=3TN84L-RMZ
 (B)=
 (C)=

(D)=
 (E)=
 (F)=



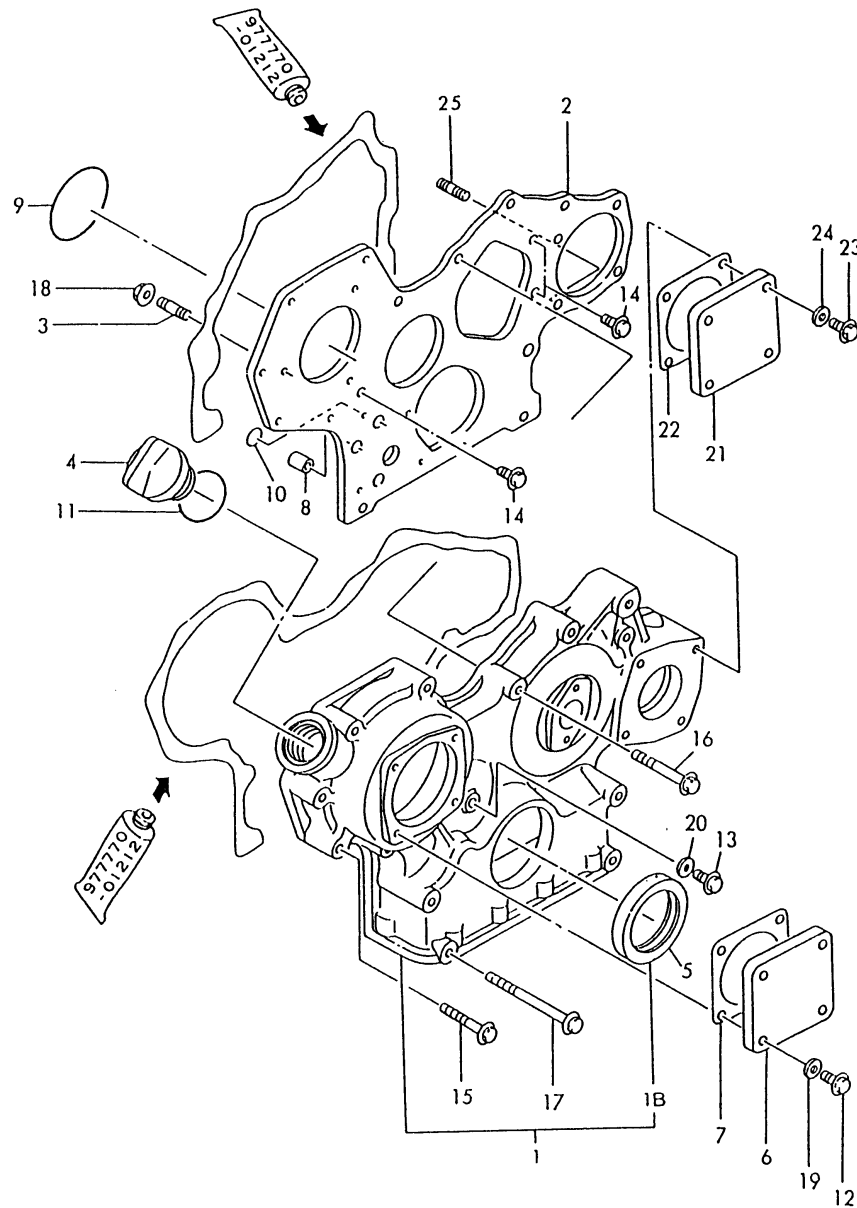
No.	Lev.	Parts No.	Description	Q'ty						I	R
				(A)	(B)	(C)	(D)	(E)	(F)		
1	1	729157-01560	BLOCK ASSY, CYLINDER	1							
2	2	124160-01910	PLUG, PT1/4	3							
3	2	171051-01921	PLUG, NPTF1	1							
4	2	23871-010000	PLUG, R01	1							
5	2	27231-500000	PLUG 50	1							
6	2	27241-120000	PLUG, 12	2							
7	2	27241-300000	PLUG 30	6							
8	2	129150-02020	BOLT, METAL CAP	8							
9	2	129150-02800	BEARING, MAIN	4							
10	2	129150-02930	BEARING, THRUST	2							
11	2	129795-02411	BUSH, CAMSHAFT	1							
12	1	129150-02450	BEARING, THRUST	1							Z
(A=EXXX)											
13	1	26106-080162	BOLT, M8X 16 PLATED	2							
14	1	129150-01200	BOLT, HEAD	14							
15	1	129105-01330	GASKET, HEAD	1							
15-1	1	129157-01332	GASKET, HEAD	1							R
(A=E01447)											
16	1	121550-49111	JOINT, PT1/4	1							
17	1	129150-02870	BEARING, 0.25 US	4							1
18	1	129150-02940	BEARING, THRUST 0.25	2							2

Remarks

- (1) UNDER-SIZE(U.S=0.25)PART.
- (2) OVER-SIZE(O.S=0.25)PART.

Fig.2. GEAR HOUSING

D29489-01220
D29150-01800



(A)=3TN84L-RMZ
(B)=
(C)=

(D)=
(E)=
(F)=

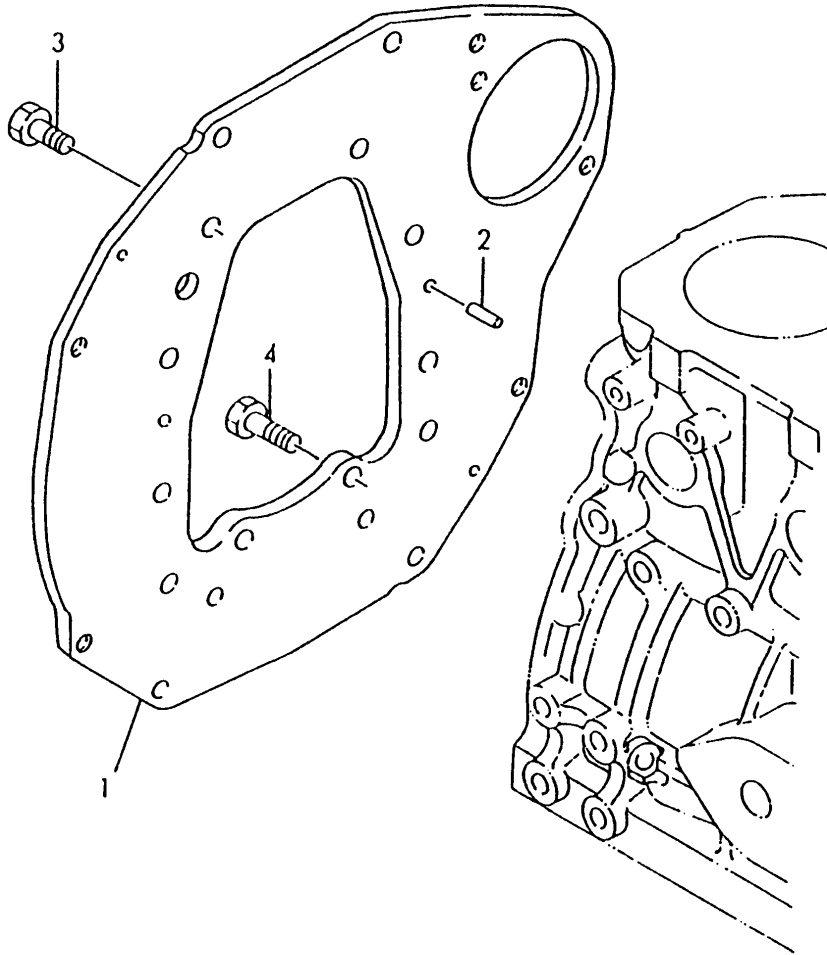
No.	Lev.	Parts No.	Description	Qty						I	R
				(A)	(B)	(C)	(D)	(E)	(F)		
1	1	129100-01590	CASE ASSY, GEAR	1							W
		(A=*1990.05)									
1B	2	129795-01800	SEAL, OIL	1							W
		(A=*1990.05)									
2	1	129100-01520	FLANGE, GEAR CASE	1							
3	1	121450-01560	STUD, M8X22	3							
4	1	124160-01751	COVER, FILLER	1							
5	1	129795-01800	SEAL, OIL	1							Z
		(A=*1990.05)									
6	1	124240-01871	COVER	1							
7	1	124240-01882	GASKET	1							
7-1	1	124240-01883	GASKET	1							N
		(A=*1990.01)									
8	1	129795-01950	PIPE, KNOCK L=18	2							
9	1	121850-51960	O-RING	1							
10	1	24311-000160	O-RING, 1AP16.0	2							
11	1	24311-000320	O-RING, 1AP32.0	1							
12	1	26106-080122	BOLT, M8X 12 PLATED	4							
13	1	26106-080162	BOLT, M8X 16 PLATED	1							
14	1	26106-080162	BOLT, M8X 16 PLATED	3							
15	1	26106-080452	BOLT, M8X 45 PLATED	6							
16	1	26106-080552	BOLT, M8X 55 PLATED	3							
17	1	26106-080852	BOLT, M8X 85 PLATED	4							
18	1	26366-080002	NUT, M8	3							
19	1	43400-500410	SEAL WASHER 8S	4							
20	1	43400-500410	SEAL WASHER 8S	1							
21	1	124240-01871	COVER	1							
22	1	124240-01882	GASKET	1							
22-1	1	124240-01883	GASKET	1							R
		(A=*1990.01)									
23	1	26106-080162	BOLT, M8X 16 PLATED	4							
23-1	1	26106-080122	BOLT, M8X 12 PLATED	4							N
		(A=*1990.05)									
24	1	43400-500410	SEAL WASHER 8S	4							Z
		(A=*1990.05)									
25	1	129150-01580	STUD, M8X30	1							W
		(A=EXXX)									

Fig.3. MOUNTING FRANGE

(A)=3TN84L-RMZ
(B)=
(C)=

(D)=
(E)=
(F)=

U71352-01300



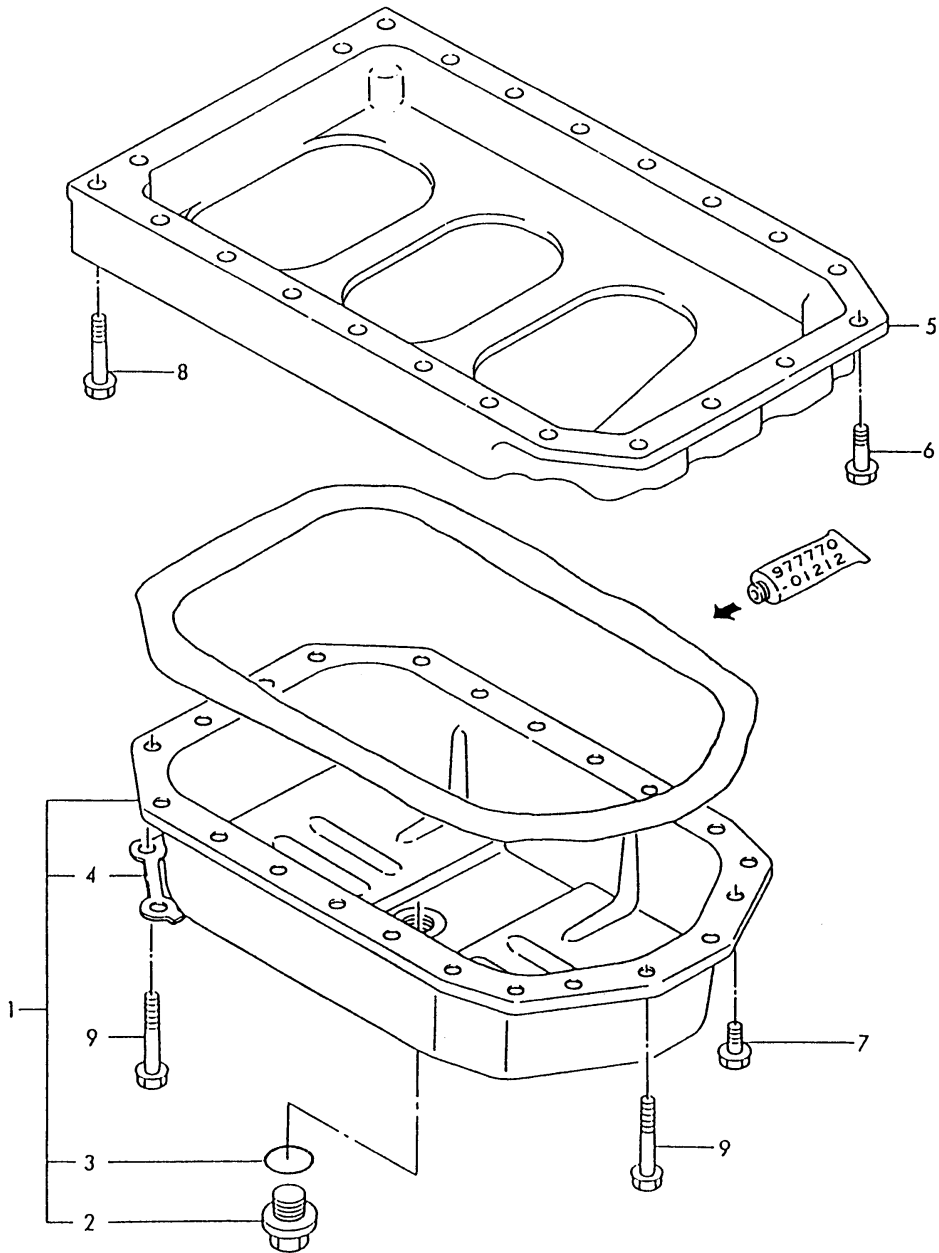
No.	Lev.	Parts No.	Description	Q'ty						I	R
				(A)	(B)	(C)	(D)	(E)	(F)		
1	1	129150-01600	FLANGE, MOUNTING	1							
2	1	22312-080160	PIN, PARALLEL M8X16	1							
2-1	1	129100-01580	PIN, M8X16	1							N
2-2	1	129100-01580	PIN, M8X16	2							K
		(A=E01355) (A=*1990.)									
3	1	26206-100202	BOLT, M10X 20 PLATED	6							
4	1	26206-100252	BOLT, M10X 25 PLATED	4							

Fig.4. LUB. OIL SUMP

029100-01400

(A)=3TN84L-RMZ
(B)=
(C)=

(D)=
(E)=
(F)=



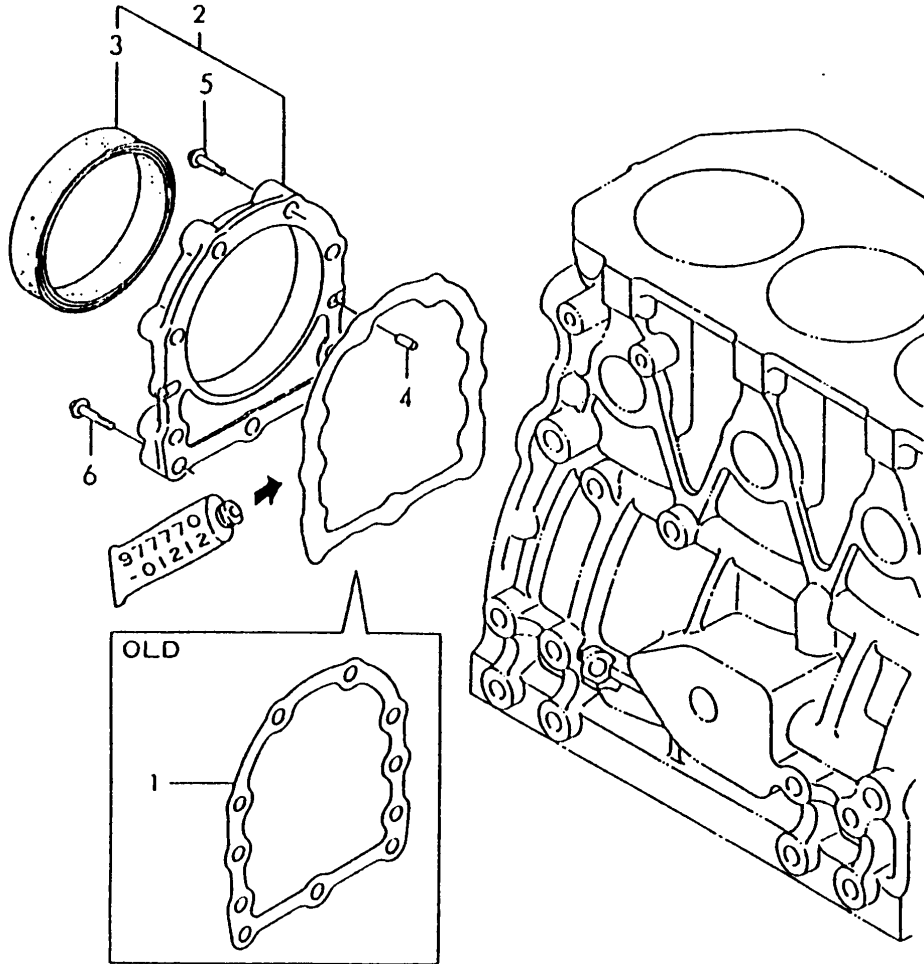
No.	Lev.	Parts No.	Description	Q'ty						I	R
				(A)	(B)	(C)	(D)	(E)	(F)		
1	1	729100-01540	SUMP ASSY, OIL	1							
1-1	1	729102-01540	SUMP ASSY, OIL	1							R
(A=*1990.)											
2	2	171301-01640	PLUG, 22	1							
3	2	24341-000240	O-RING, 1AS24.0	1							
4	2	129100-01790	RETAINER	2							
5	1	129100-01730	SPACER, OIL SUMP	1							
6	1	26106-080252	BOLT, M8X 25 PLATED	2							
7	1	26106-080162	BOLT, M8X 16 PLATED	4							
8	1	26106-080452	BOLT, M8X 45 PLATED	16							
9	1	26106-080502	BOLT, M8X 50 PLATED	4							

Fig.5. OIL SEAL HOUSING

029100-01510

(A)=3TN84L-RMZ
(B)=
(C)=

(D)=
(E)=
(F)=



No.	Lev.	Parts No.	Description	Q'ty						I	R
				(A)	(B)	(C)	(D)	(E)	(F)		
1	1	129150-01660 (A=E08030)	GASKET	1							Z
2	1	129100-01640 (A=*1990.05)	CASE ASSY, OIL SEAL	1							W
3	2	129795-01780	SEAL, OIL	1							
4	1	22312-080160	PIN, PARALLEL M8X16	2							
4-1	1	129100-01580 (A=E01355)	PIN, M8X16	2							N
5	1	26106-080302	BOLT, M8X 30 PLATED	6							
6	1	26106-080352	BOLT, M8X 35 PLATED	3							

Fig.6. TACHOMETER COVER

029100-01810

(A)=3TN84L-RMZ
(B)=
(C)=

(D)=
(E)=
(F)=

No.	Lev.	Parts No.	Description	Q'ty						I	R
				(A)	(B)	(C)	(D)	(E)	(F)		
1	1	121023-01550	COVER	1							
2	1	24311-000260	O-RING, 1AP26.0	1							
2-1	1	24341-000240	O-RING, 1AS24.0	1							N
(A=EXXX)											
3	1	26106-060122	BOLT, M6X 12 PLATED	2							

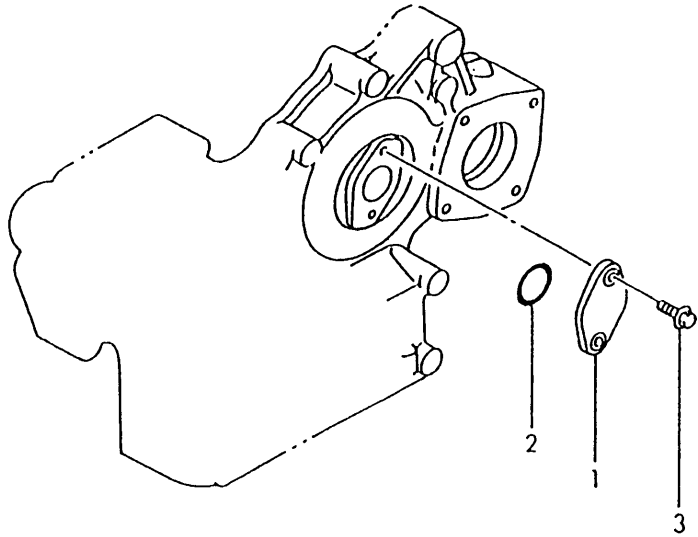
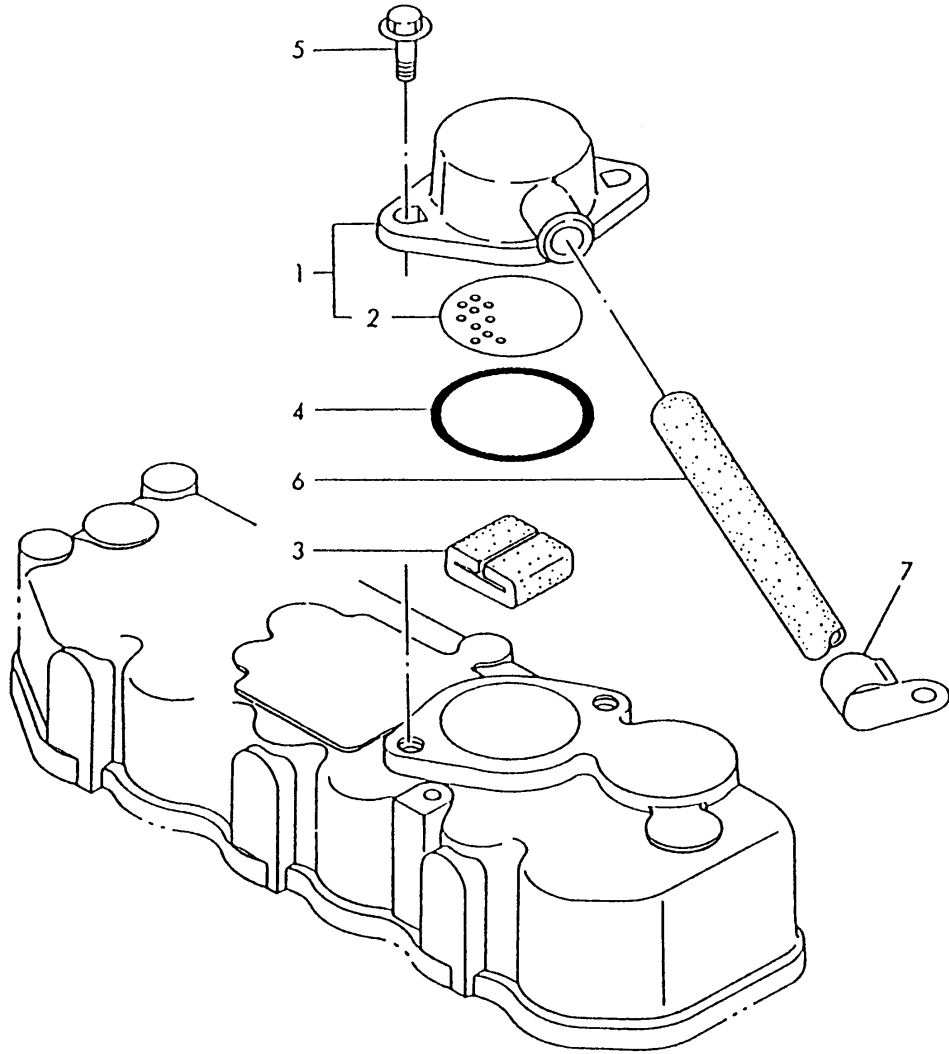


Fig.7. BREATER

029100-03120

(A)=3TN84L-RMZ
(B)=
(C)=

(D)=
(E)=
(F)=



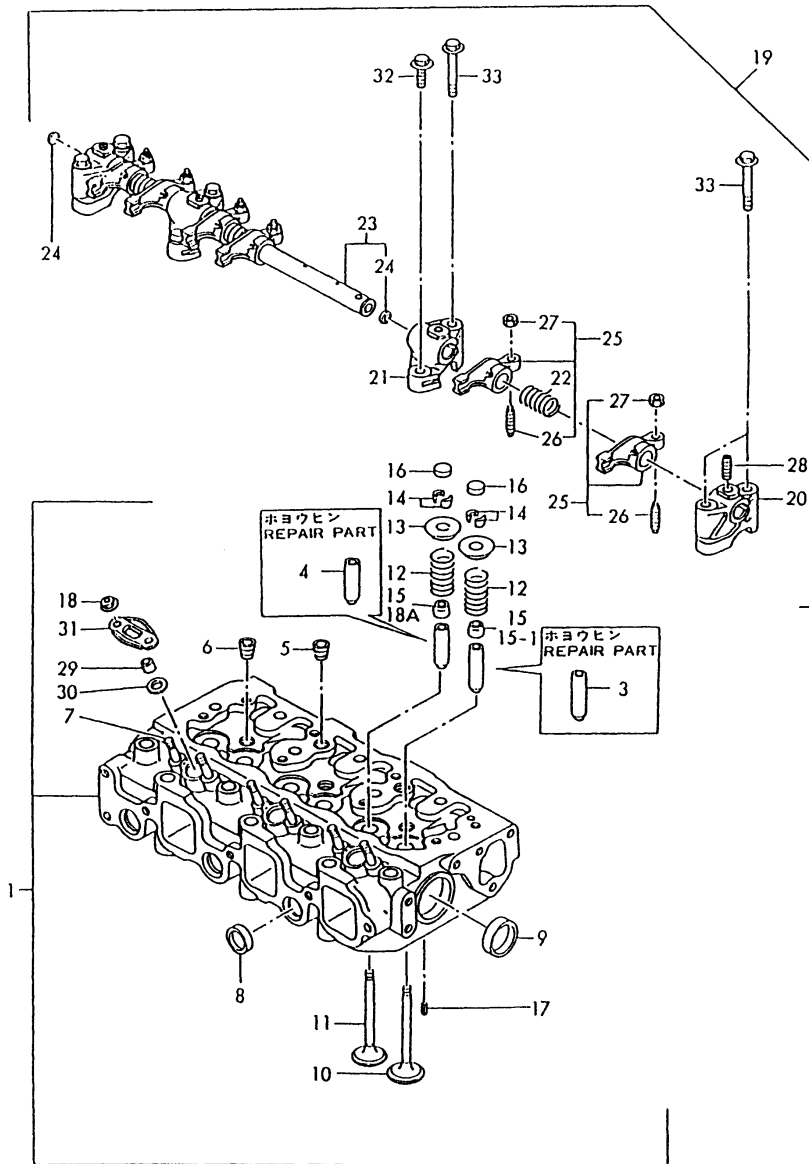
No.	Lev.	Parts No.	Description	Q'ty						I	R
				(A)	(B)	(C)	(D)	(E)	(F)		
1	1	129150-03010	COVER ASSY	1							Z
		(A=*1990.05)									
2	2	129150-03080	PLATE, BAFFLE	1							Z
		(A=*1990.05)									
3	1	129150-03070	BAFFLE, BREATHER	1							Z
		(A=*1990.05)									
4	1	24341-000500	O-RING, 1AS50.0	1							Z
		(A=*1990.05)									
5	1	26106-080162	BOLT, M8X 16 PLATED	2							Z
		(A=*1990.05)									
6	1	129150-03090	HOSE, ID16X2T	1							
7	1	129150-03100	RETAINER, PIPE	1							Z
		(A=*1990.05)									

Fig.9. CYLINDER HEAD

(A)=3TN84L-RMZ
(B)=
(C)=

(D)=
(E)=
(F)=

029102-11110



No.	Lev.	Parts No.	Description	Q'ty						I	R
				(A)	(B)	(C)	(D)	(E)	(F)		
1	1	729102-11700	HEAD ASSY, CYLINDER	1							
1-1	1	729102-11701	HEAD ASSY, CYLINDER	1							N
(A=E01014)											
3	2	120130-11860	GUIDE, VALVE	3							1
4	2	129150-11810	GUIDE, VALVE	3							1
5	2	121850-11860	PLUG, PT1/4	2							
6	2	23871-030000	PLUG, R03	3							
7	2	26216-060202	STUD, M6X 20	6							
8	2	27241-220000	PLUG, 22	3							
9	2	27241-400000	PLUG, 40	2							
10	2	129100-11100	VALVE, INTAKE	3							
11	2	129100-11110	VALVE, EXHAUST	3							
12	2	129795-11120	SPRING, VALVE	6							
13	2	129795-11180	RETAINER, SPRING	6							
14	2	103338-11190	COTTER	6							
14-1	2	27310-080001	COTTER, 8	6							R
(A=EXXXXX)											
15	2	124460-11340	SEAL, VALVE STEM	6							
15-1	2	124460-11340	SEAL, VALVE STEM	3							K
(A=E01014)											
16	2	129150-11370	CAP, VALVE	6							
17	2	22351-060012	PIN, SPRING 6.0X12	2							
18	2	26366-060002	NUT, M6	6							
18A	2	121400-11340	SEAL, VALVE STEM	3							W
(A=E01014)											
19	1	129155-11241	SHAFT ASSY, ROCKER	1							
20	2	129155-11260	SUPPORT, ROCKER ARM	2							
21	2	129155-11270	SUPPORT, ROCKER ARM	2							
22	2	129150-11280	SPRING	3							
23	2	129150-11290	SHAFT, ROCKER ARM	1							
24	3	27241-100000	PLUG, 10	2							
25	2	729150-11651	ARM ASSY, ROCKER	6							
25-1	3	729402-11650	ARM ASSY, ROCKER	6							N
(A=*1990.05)											
26	3	129150-11230	SCREW, VALVE ADJUST	6							
27	3	129150-11750	NUT, M8	6							
28	2	26226-080182	STUD, M8X 18	3							
29	1	119625-11870	PROTECTOR, NOZZLE	3							
30	1	119625-11880	SEAT, NOZZLE	3							
31	1	119625-11900	RETAINER, NOZZLE	3							
32	1	26106-080252	BOLT, M8X 25 PLATED	2							
33	1	26106-080502	BOLT, M8X 50 PLATED	6							

Remarks

(1) REPAIR PART.

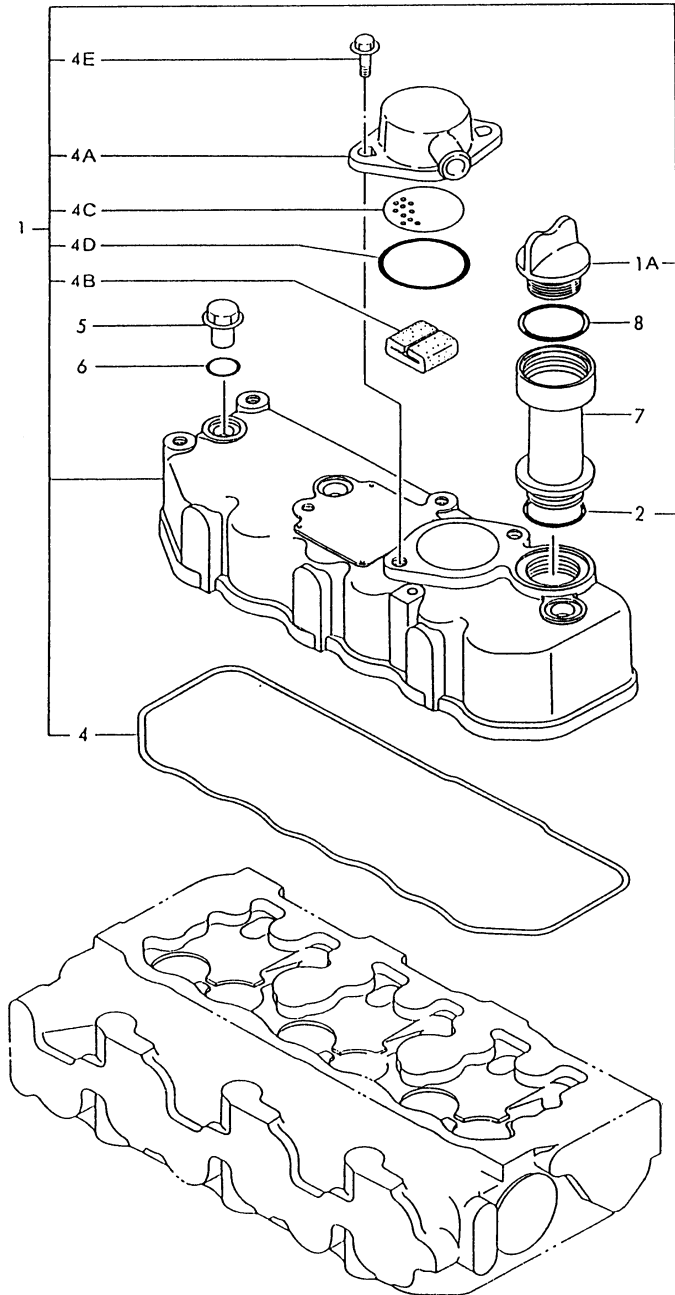
N:Old $\begin{matrix} \text{Yes} \\ \text{No} \end{matrix}$ New, Q:Old $\begin{matrix} \text{No} \\ \text{Yes} \end{matrix}$ New, R:Old $\begin{matrix} \text{Yes} \\ \text{No} \end{matrix}$ New, S:Old $\begin{matrix} \text{No} \\ \text{Yes} \end{matrix}$ New, W:Add, Z:Discontinued, F:Interchangeable by set, K:Q'ty Change

Fig.10. BONNET

(A)=3TN84L-RMZ
(B)=
(C)=

(D)=
(E)=
(F)=

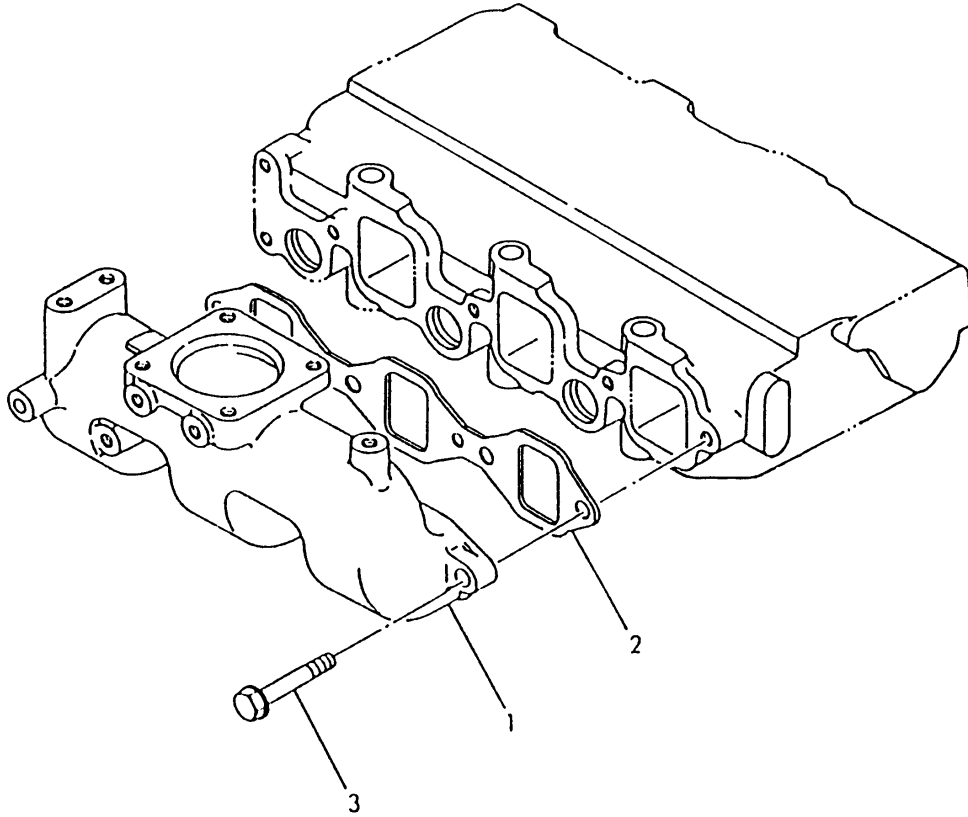
029100-11220
029131-11400



No.	Lev.	Parts No.	Description	Q'ty						I	R
				(A)	(B)	(C)	(D)	(E)	(F)		
1	1	129100-11350	BONNET ASSY, HEAD	1							W
		(A=*1990.05)									
1A	2	124160-01751	COVER, FILLER	1							
2	2	121420-01760	O-RING	1							
2-1	2	24311-000320	O-RING, 1AP32.0	1							N
		(A=E06727)									
4	2	129150-11310	GASKET, BONNET	1							
4A	2	129150-03020	COVER, BREATHER	1							W
		(A=*1990.05)									
4B	2	129150-03070	BAFFLE, BREATHER	1							W
		(A=*1990.05)									
4C	2	129150-03080	PLATE, BAFFLE	1							W
		(A=*1990.05)									
4D	2	24341-000500	O-RING, 1AS50.0	1							W
		(A=*1990.05)									
4E	2	26106-080162	BOLT, M8X 16 PLATED	2							W
		(A=*1990.05)									
5	1	124160-11360	KNOB	3							
6	1	24311-000120	O-RING, 1AP12.0	3							
7	1	171031-11741	PIPE	1							
8	1	24321-000350	O-RING, 1AG35.0	1							

Fig.11. SUCTION MANIFOLD

029150-12200



(A)=3TN84L-RMZ
(B)=
(C)=

(D)=
(E)=
(F)=

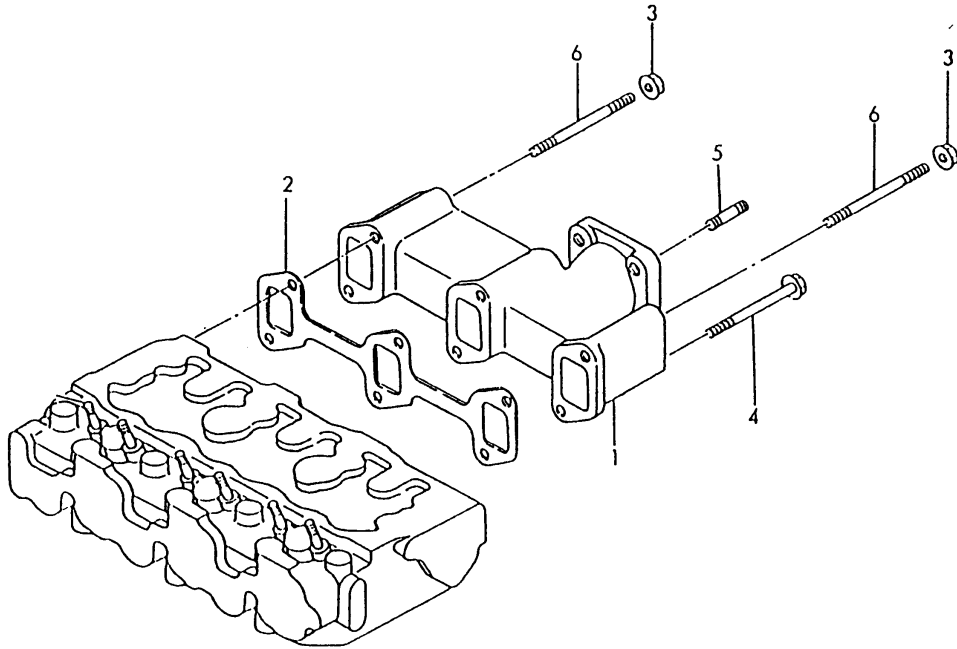
No.	Lev.	Parts No.	Description	Q'ty						I	R
				(A)	(B)	(C)	(D)	(E)	(F)		
1	1	129150-12100	MANIFOLD, AIR INTAKE	1							
2	1	129150-12110	GASKET, MANIFOLD	1							
2-1	1	129150-12111	GASKET, MANIFOLD	1							N
		(A=*1990.06)									
3	1	26106-080252	BOLT, M8X 25 PLATED	4							

Fig.12. EXHAUST MANIFOLD

029100-13100

(A)=3TN84L-RMZ
(B)=
(C)=

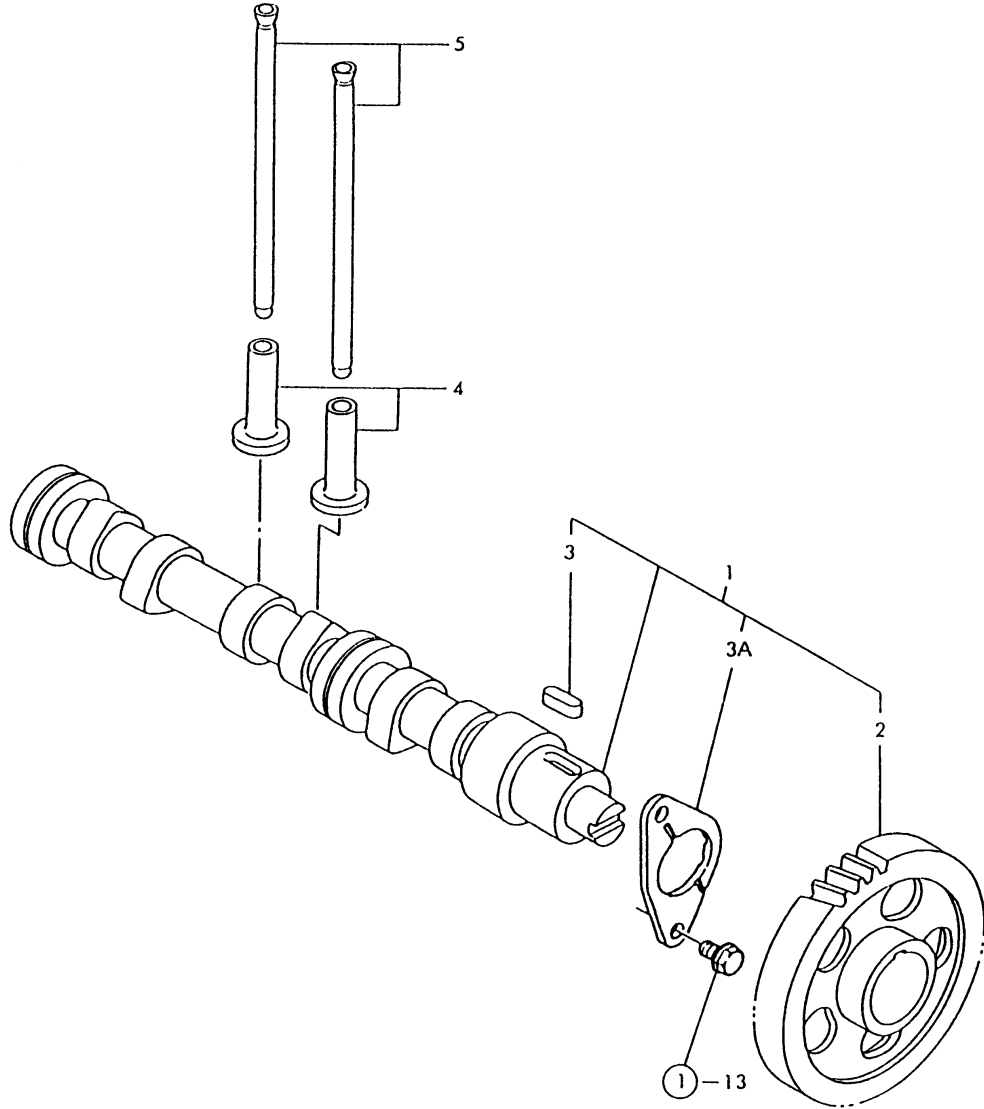
(D)=
(E)=
(F)=



No.	Lev.	Parts No.	Description	Q'ty						I	R
				(A)	(B)	(C)	(D)	(E)	(F)		
1	1	129100-13110	MANIFOLD, EXHAUST	1							
2	1	129150-13110	GASKET	1							
3	1	194990-22050	NUT, M8	2							
4	1	26106-080802	BOLT, M8X 80 PLATED	4							
5	1	26216-080222	STUD, M8X 22	4							
6	1	26216-080802	STUD, M8X 80	2							

Fig.13. CAMSHAFT

D29129-14100



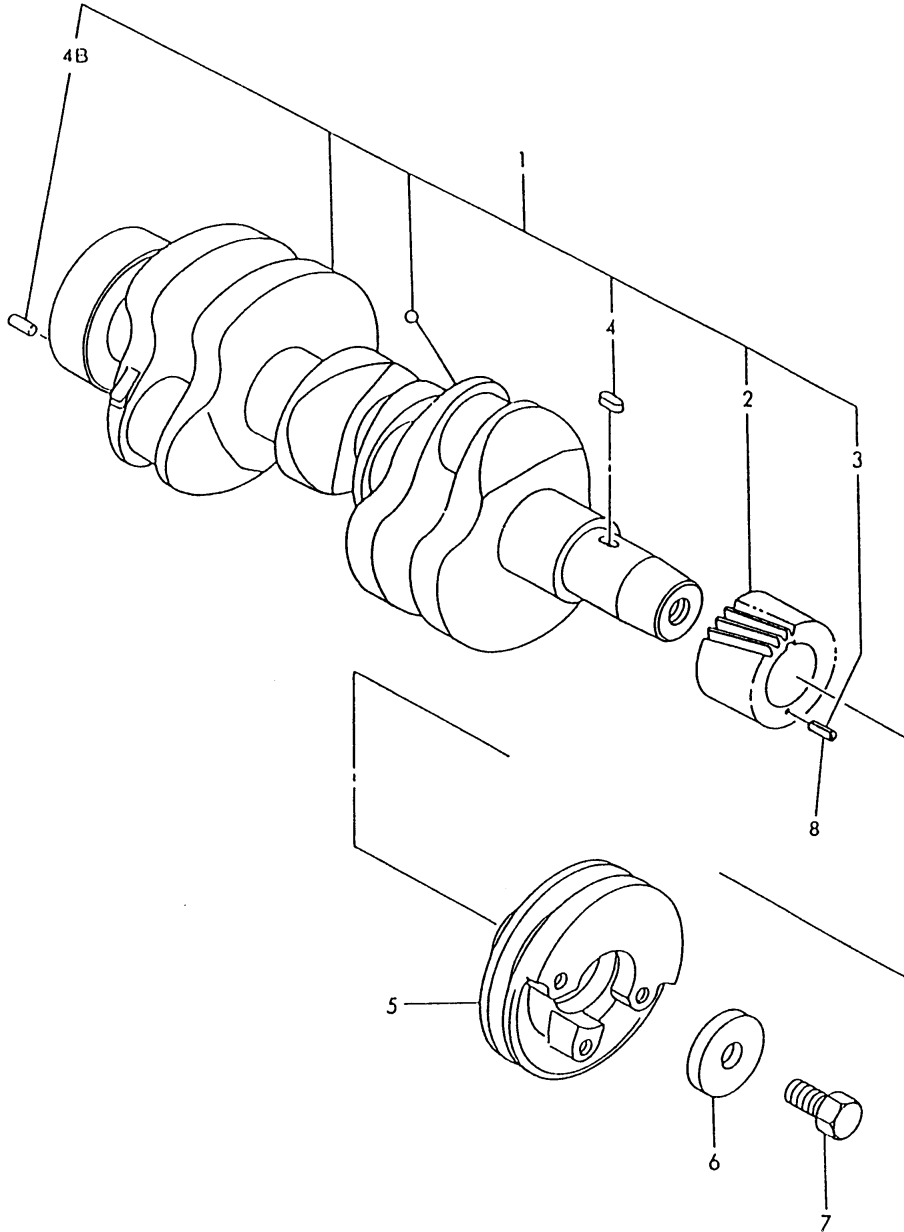
(A)=3TN84L-RMZ
(B)=
(C)=

(D)=
(E)=
(F)=

No.	Lev.	Parts No.	Description	Q'ty						I	R
				(A)	(B)	(C)	(D)	(E)	(F)		
1	1	129129-14580 (A=EXXX)	CAMSHAFT ASSY	1							W
2	2	129150-14101	GEAR, CAMSHAFT	1							
3	2	22512-070140	KEY, 7X 14	1							
3A	2	129150-02450 (A=EXXX)	BEARING, THRUST	1							W
4	1	129150-14200	TAPPET	6							
5	1	129150-14400	ROD, PUSH L=178	6							

Fig.14. CRANKSHAFT

029100-21100
029100-21200



(A)=3TN84L-RMZ
(B)=
(C)=

(D)=
(E)=
(F)=

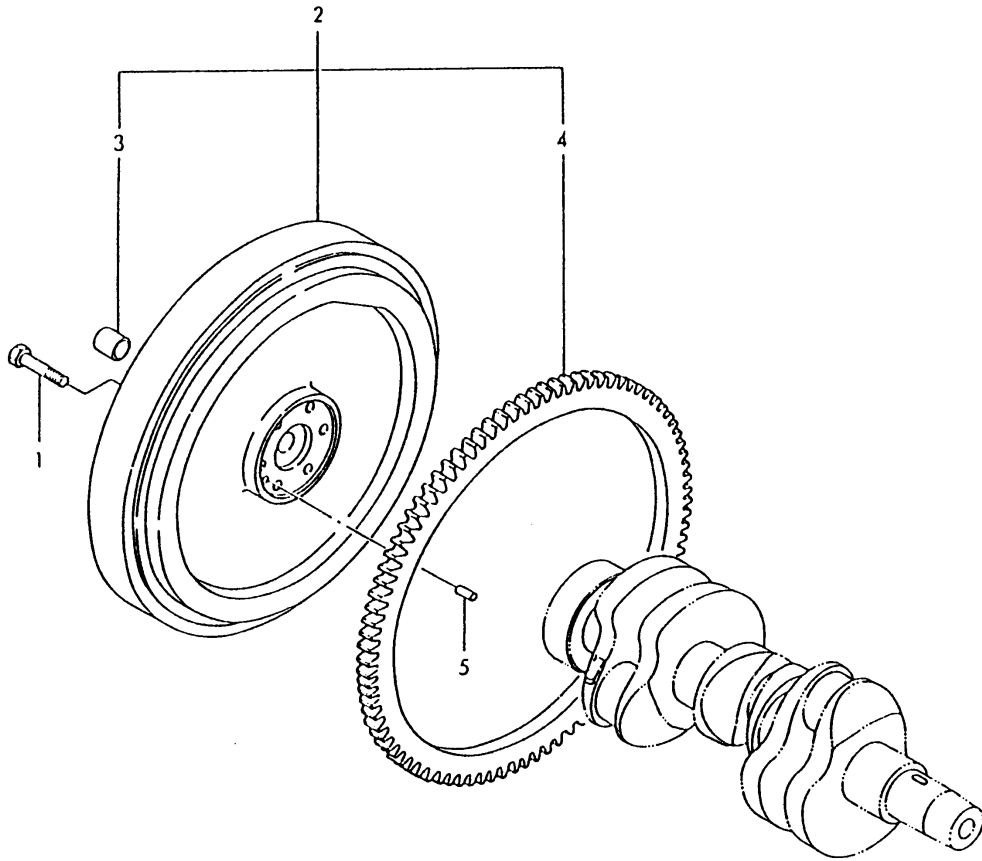
No.	Lev.	Parts No.	Description	Q'ty						I	R
				(A)	(B)	(C)	(D)	(E)	(F)		
1	1	729150-21700	CRANKSHAFT ASSY	1							
1-1	1	729102-21700	CRANKSHAFT ASSY	1							R
(A=E08030)											
2	2	129150-21200	GEAR, CRANKSHAFT	1							
3	2	22351-040010	PIN, SPRING 4.0X10	1							Z
(A=*1990.)											
4	2	22512-070140	KEY, 7X 14	1							
4B	2	129100-01580	PIN, M8X16	1							W
(A=*1990.)											
5	1	171340-21650	V-PULLEY	1							
6	1	129795-21661	WASHER	1							
7	1	121850-21680	BOLT	1							
8	1	22351-040010	PIN, SPRING 4.0X10	1							W
(A=*1990.)											

Fig.15. FLYWHEEL

(A)=3TN84L-RMZ
(B)=
(C)=

(D)=
(E)=
(F)=

029131-21200



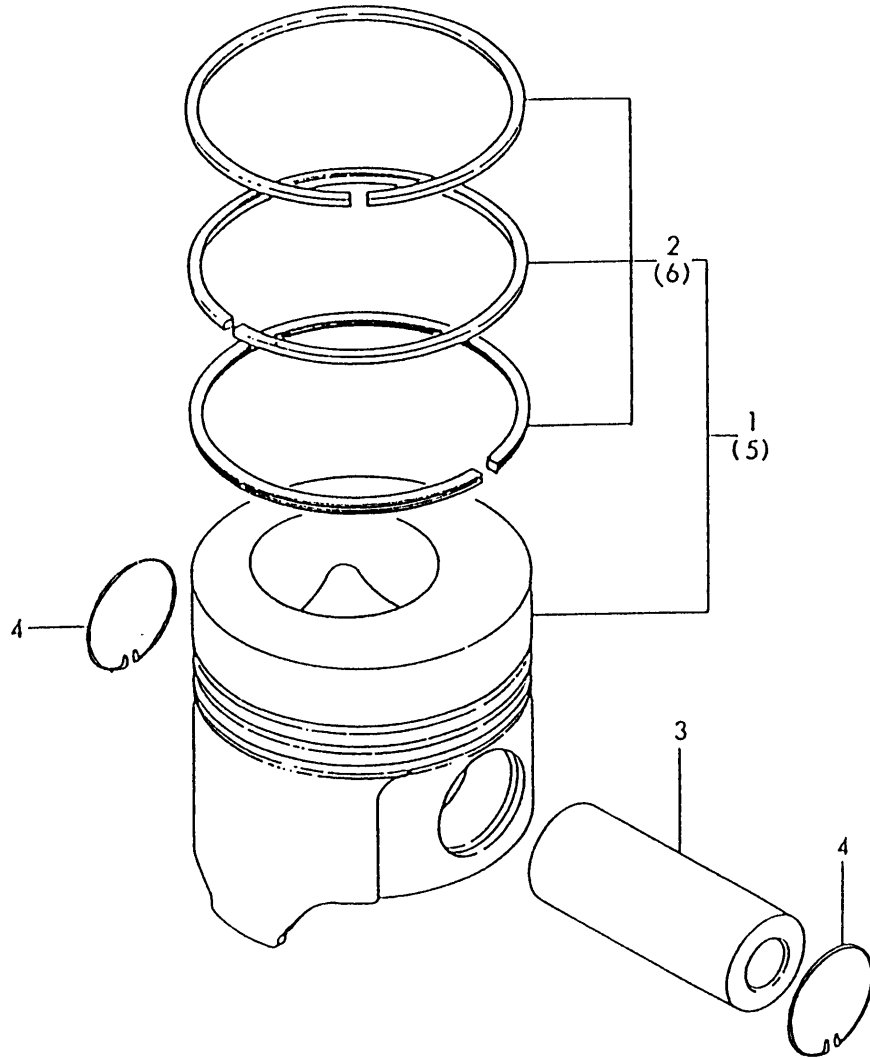
No.	Lev.	Parts No.	Description	Q'ty						I	R
				(A)	(B)	(C)	(D)	(E)	(F)		
1	1	124160-21501	BOLT, FLYWHEEL	6							
2	1	129131-21590	FLYWHEEL ASSY	1							
3	2	124450-21230	BUSH	1							
4	2	124550-21600	GEAR, RING	1							
5	1	22312-080160	PIN, PARALLEL M8X16	1							
5-1	1	129100-01580	PIN, M8X16	1							N
		(A=E01355)									
5-2	1	129100-01580	PIN, M8X16	1							Z
		(A=*1990.)									

Fig.16. PISTON

D29105-22110

(A)=3TN84L-RMZ
(B)=
(C)=

(D)=
(E)=
(F)=



No.	Lev.	Parts No.	Description	Q'ty						I	R
				(A)	(B)	(C)	(D)	(E)	(F)		
1	1	129105-22080	PISTON ASSY	3							
1-1	1	529002-22080	PISTON ASSY	3							R
(A=*1991.)											
1-2	1	129105-22080	PISTON ASSY	3							R
(A=*1991.)											
2	2	729157-22500	RING SET, PISTON	3							
2-1	2	129105-22500	RING SET, PISTON	3							N
(A=E08030)											
3	1	129150-22300	PIN, PISTON D26 L66	3							
3-1	1	129202-22300	PIN, PISTON D26 L70	3							R
(A=*1991.)											
3-2	1	129150-22300	PIN, PISTON D26 L66	3							R
(A=*1991.)											
4	1	121100-22400	CIRCLIP	6							
4-1	1	22252-000260	RING, 26	6							R
(A=*1991.)											
4-2	1	121100-22400	CIRCLIP	6							R
(A=*1991.)											
5	1	729105-22900	PISTON ASSY, 0.25 OS	3							1
6	2	729157-22950	RING SET, 0.25 OS	3							1

Remarks
(1) OVER-SIZE(O.S=0.25)PART.

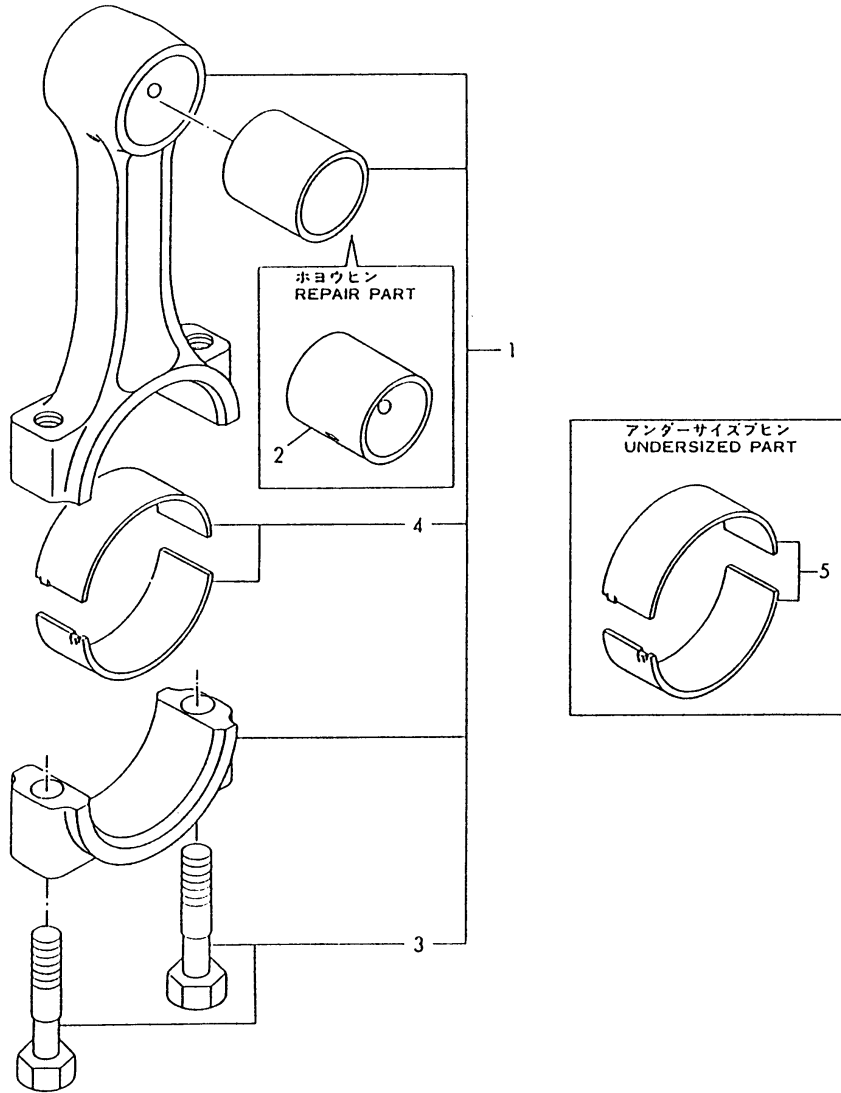
Fig.17. CONNECTING ROD

D29150-23100

(A)=3TN84L-RMZ
(B)=
(C)=

(D)=
(E)=
(F)=

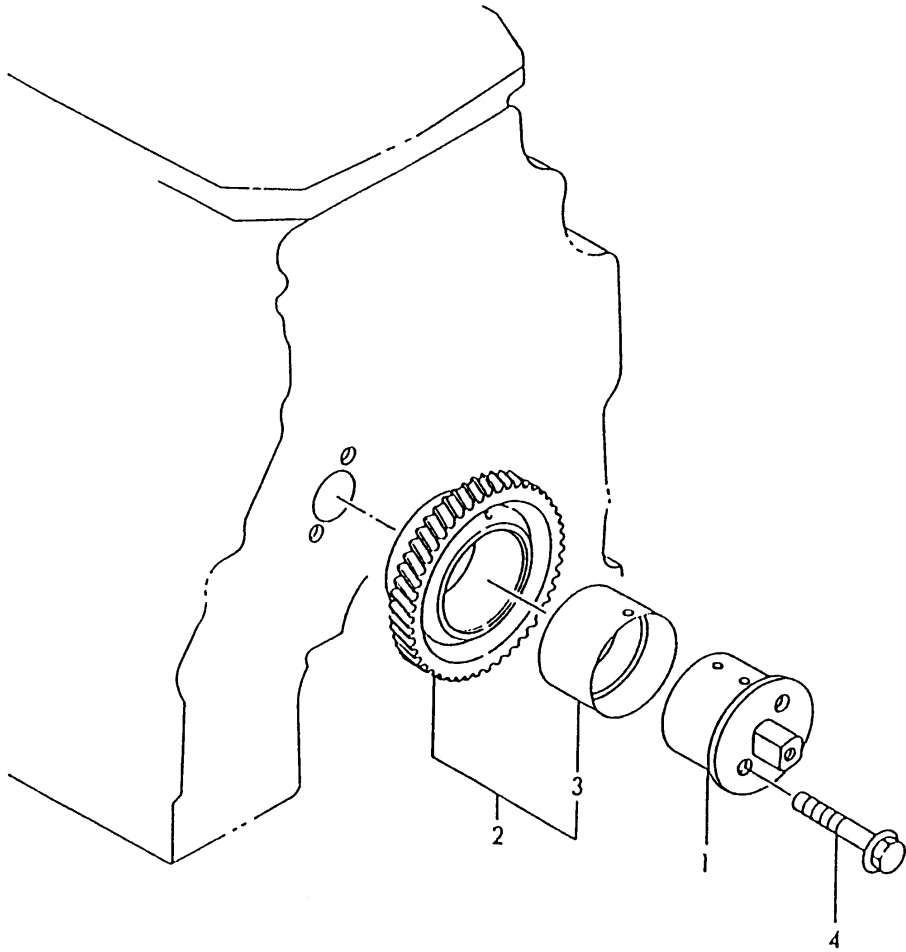
No.	Lev.	Parts No.	Description	Q'ty						I	R
				(A)	(B)	(C)	(D)	(E)	(F)		
1	1	729150-23700	ROD ASSY, CONNECTING	3							
1-1	1	729402-23100	ROD ASSY, CONNECTING	3							N
(A=*1990.05)											
2	2	129100-23910	BEARING, PISTON PIN	3							1
3	2	121550-23200	BOLT, CONNECTING ROD	6							
4	2	129150-23600	BEARING, CRANK PIN	3							
5	1	129150-23610	BEARING, 0.25 US	3							2



Remarks
(1) REPAIR PART.
(2) UNDER-SIZE(U.S=0.25)PART.

Fig.18. IDLE GEAR

D29100-25101



(A)=3TN84L-RMZ
(B)=
(C)=

(D)=
(E)=
(F)=

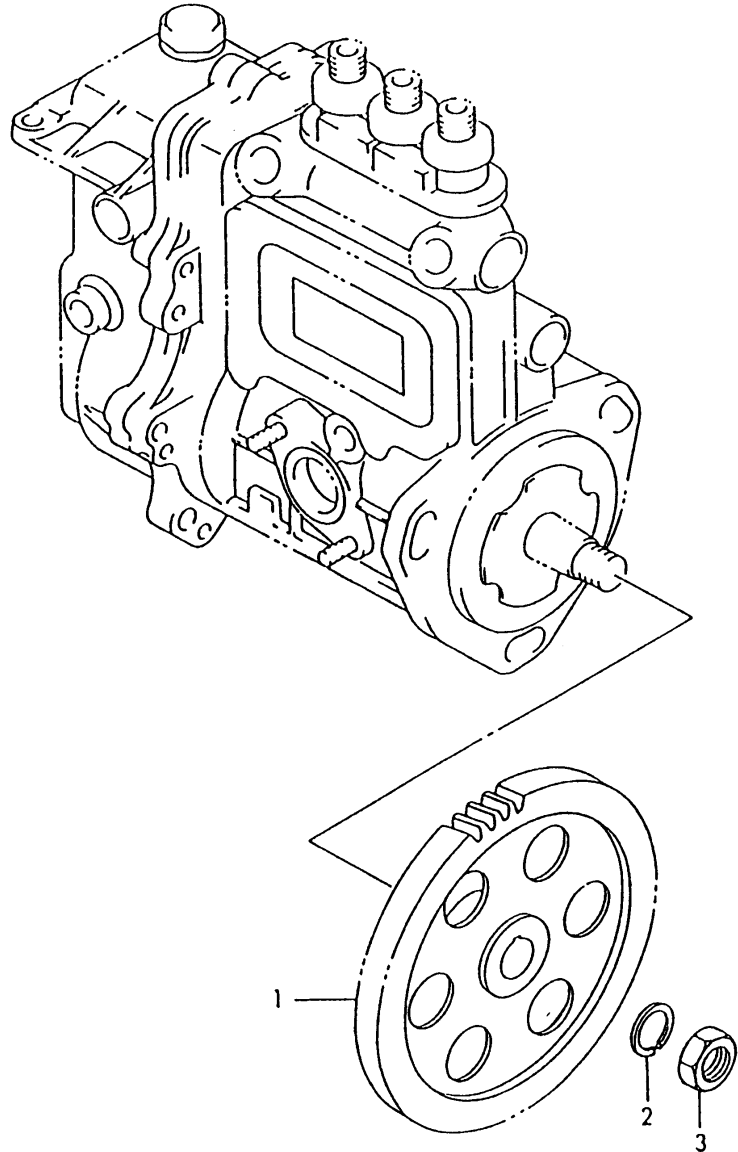
No.	Lev.	Parts No.	Description	Q'ty						I	R
				(A)	(B)	(C)	(D)	(E)	(F)		
1	1	129100-25061	SHAFT, IDLE	1							
2	1	129150-25101	GEAR ASSY, IDLE	1							
4	1	26106-080452	BOLT, M8X 45 PLATED	2							

Fig.19. FUEL INJECTION PUMP GEAR

029150-25200

(A)=3TN84L-RMZ
(B)=
(C)=

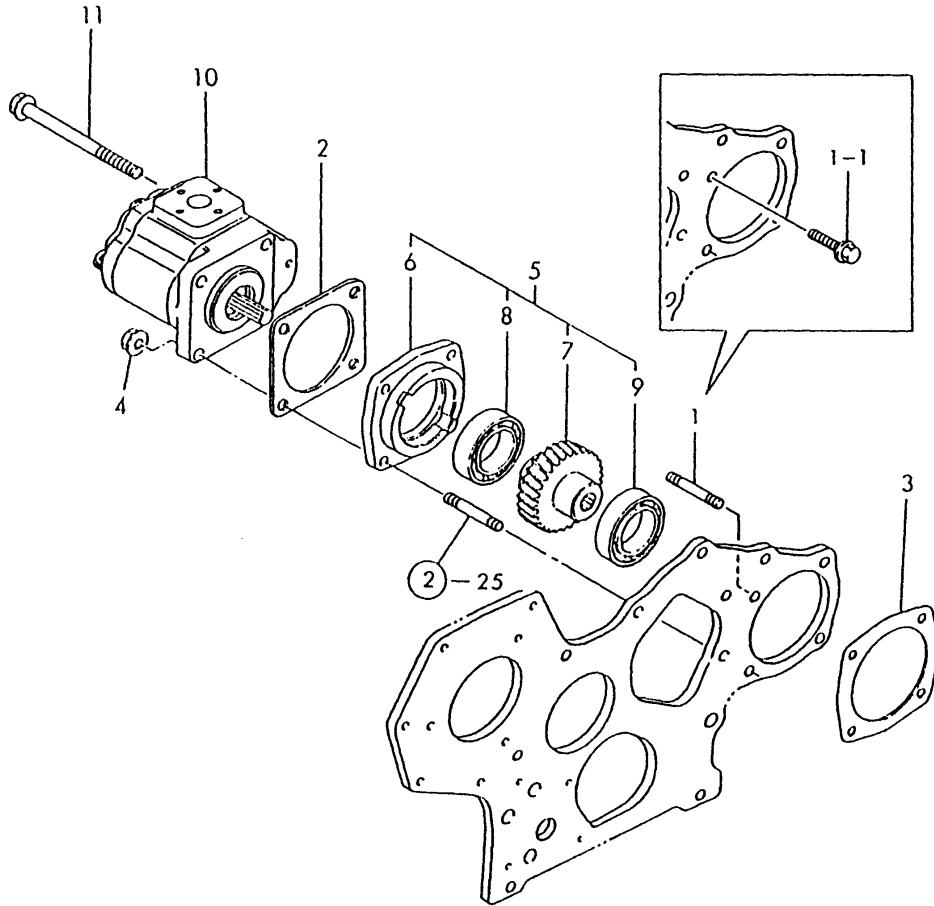
(D)=
(E)=
(F)=



No.	Lev.	Parts No.	Description	Q'ty						I	R
				(A)	(B)	(C)	(D)	(E)	(F)		
1	1	129150-25900	GEAR, PUMP	1							
2	1	22217-120000	WASHER, SPRING 12	1							
3	1	26716-120002	NUT, M12	1							

Fig.20. HYDRAULIC OIL PUMP

D29555-26100
D29131-26200



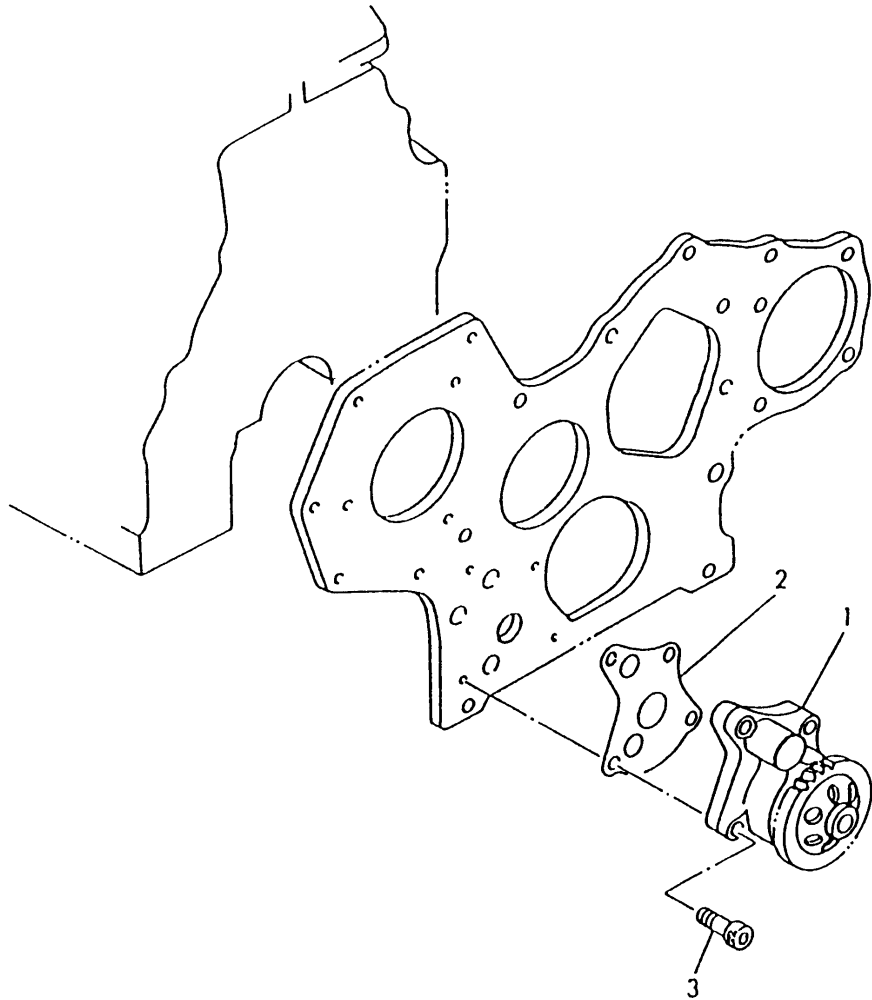
(A)=3TN84L-RMZ
(B)=
(C)=

(D)=
(E)=
(F)=

No.	Lev.	Parts No.	Description	Q'ty						I	R
				(A)	(B)	(C)	(D)	(E)	(F)		
1	1	129150-01580	STUD, M8X30	1							
1-1	1	26106-080402	BOLT, M8X 40 PLATED	1							N
				(A=*1990.05)							
2	1	124240-01882	GASKET	1							
2-1	1	124240-01883	GASKET	1							R
				(A=*1990.01)							
3	1	129150-01880	GASKET	1							
3-1	1	129150-01881	GASKET	1							N
				(A=*1990.06)							
3-2	1	129150-01881	GASKET	1							Z
				(A=E*XXX)							
4	1	194990-22050	NUT, M8	2							
5	1	129555-26000	DRIVE ASSY, PUMP	1							
6	2	129150-26050	BRACKET, PUMP	1							
7	2	129555-26201	GEAR ASSY, PUMP	1							
8	2	129555-26240	BEARING, BALL 6006C4	1							
9	2	24101-060024	BEARING, BALL 6002	1							
10	1	194640-41110	PUMP ASSY, HYDRAULIC	1							
11	1	26106-081202	BOLT, M8X120 PLATED	2							

Fig.21. LUB.OIL PUMP

D29150-32100



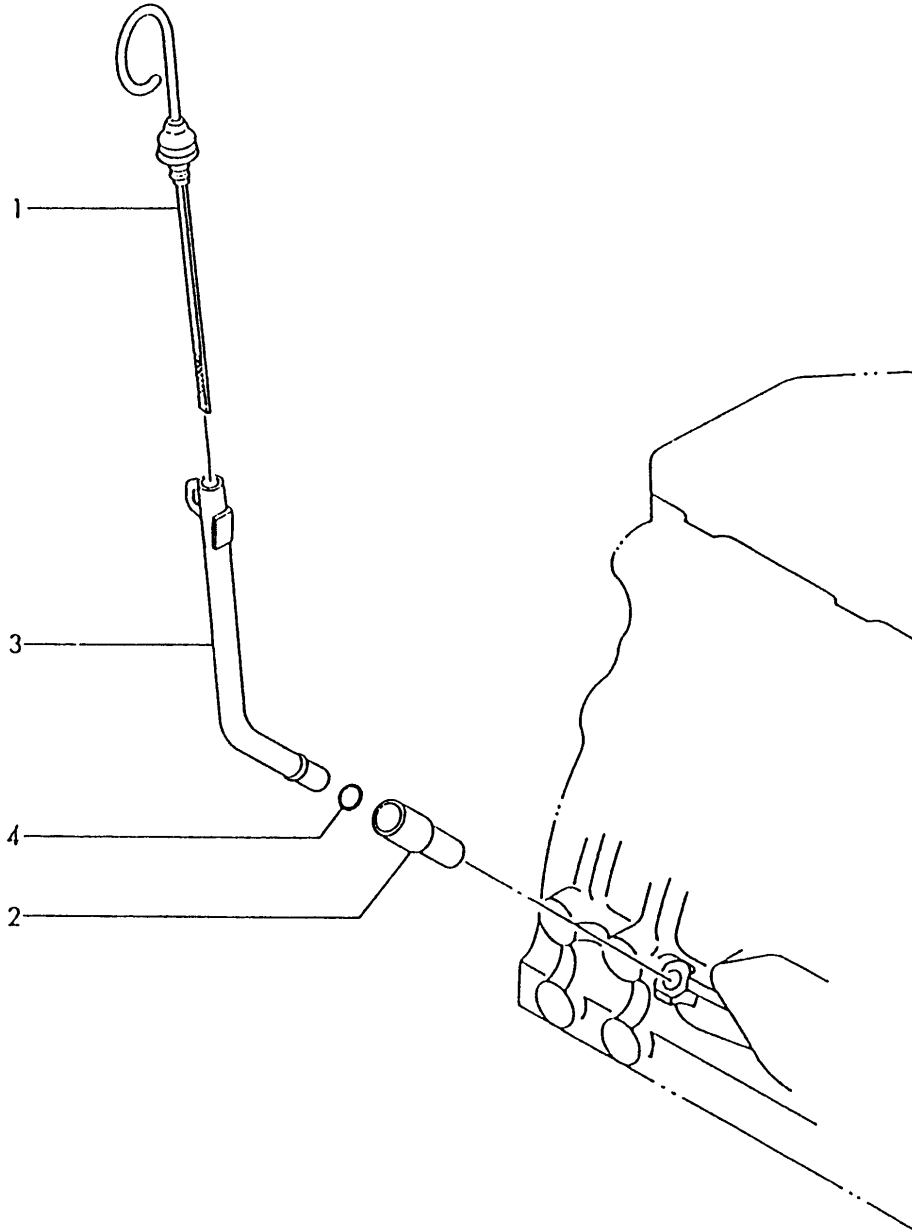
(A)=3TN84L-RMZ
(B)=
(C)=

(D)=
(E)=
(F)=

No.	Lev.	Parts No.	Description	Q'ty						I	R
				(A)	(B)	(C)	(D)	(E)	(F)		
1	1	129150-32000	PUMP ASSY, OIL	1							
2	1	129150-32020	GASKET, PUMP	1							
3	1	26450-060252	BOLT, M6X 25	4							

Fig.22. LUB.OIL DIPSTICK

029128-34110



(A)=3TN84L-RMZ
(B)=
(C)=

(D)=
(E)=
(F)=

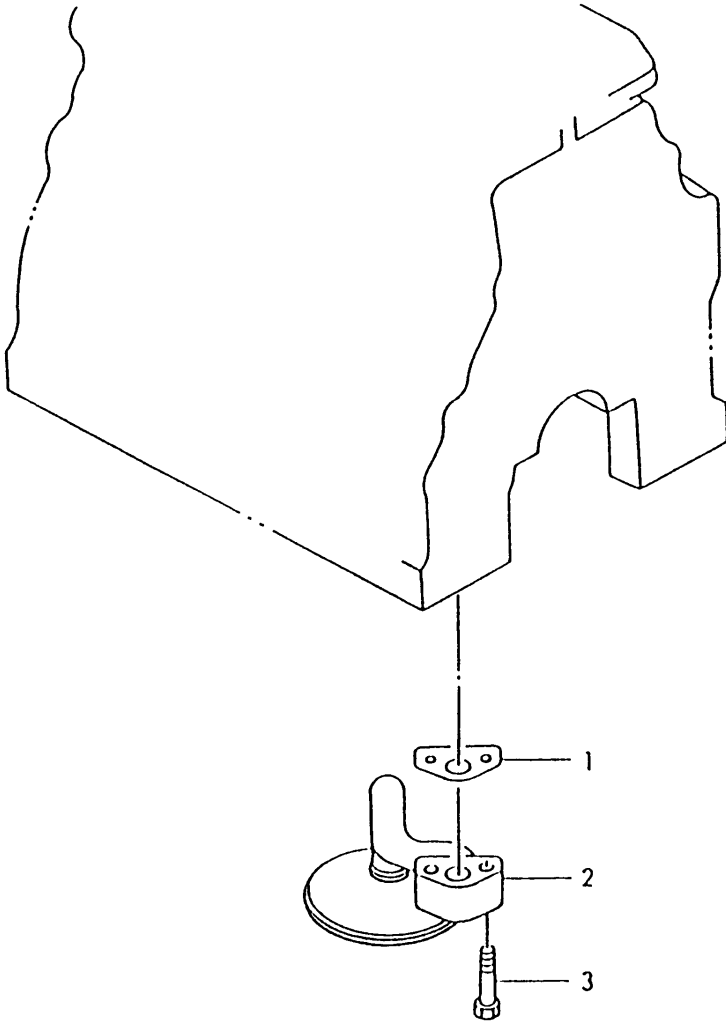
No.	Lev.	Parts No.	Description	Q'ty						I	R
				(A)	(B)	(C)	(D)	(E)	(F)		
1	1	129128-34800	DIPSTICK, OIL	1							
2	1	119260-34810	GUIDE, DIPSTICK	1							
3	1	129128-34810	GUIDE, DIPSTICK	1							
4	1	24311-240100	O-RING, 1AP10A	1							

Fig.23. LUB.OIL SUCTION PIPE

029100-35100

(A)=3TN84L-RMZ
(B)=
(C)=

(D)=
(E)=
(F)=



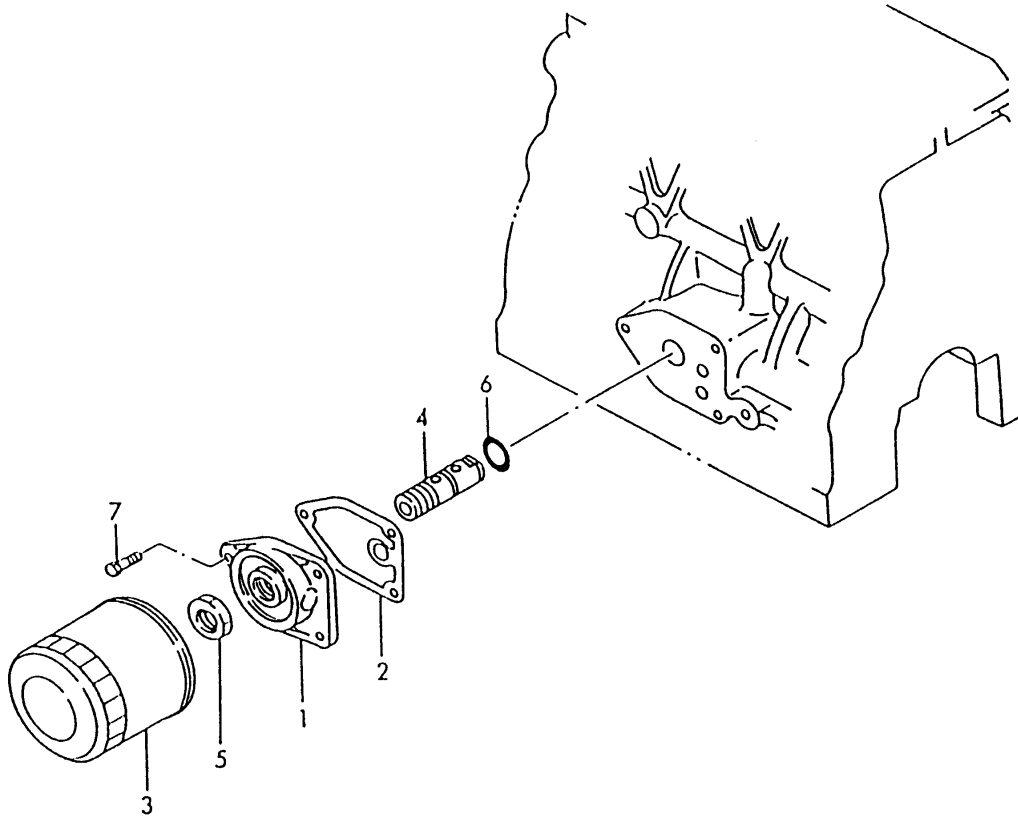
No.	Lev.	Parts No.	Description	Q'ty						I	R	
				(A)	(B)	(C)	(D)	(E)	(F)			
1	1	129150-35040	GASKET	1								
1-1	1	129150-35041	GASKET	1								N
(A=*1990.06)												
2	1	129150-35091	PIPE ASSY, OIL INLET	1								
3	1	26116-080352	BOLT, M8X 35 PLATED	2								
3-1	1	26106-080352	BOLT, M8X 35 PLATED	2								N
(A=EXXX)												

Fig.24. LUB.OIL STRAINER

(A)=3TN84L-RMZ
(B)=
(C)=

(D)=
(E)=
(F)=

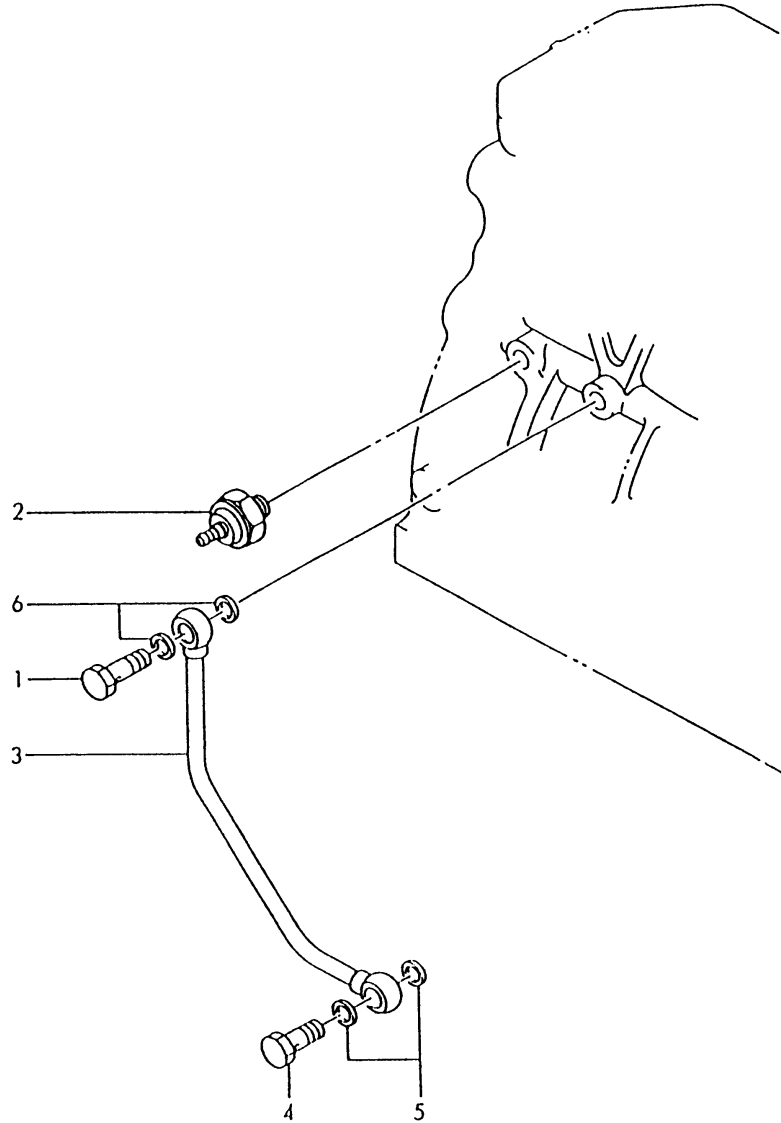
029100-35200



No.	Lev.	Parts No.	Description	Q'ty						I	R
				(A)	(B)	(C)	(D)	(E)	(F)		
1	1	129150-35101	BRACKET, STRAINER	1							
2	1	129150-35110	GASKET	1							
2-1	1	129150-35111	GASKET	1							N
(A=*1990.06)											
3	1	129150-35150	FILTER 90X80L	1							
4	1	119865-35300	VALVE ASSY, CONTROL	1							
5	1	129150-35350	NUT	1							
6	1	24311-000160	O-RING, 1AP16.0	1							
7	1	26106-080202	BOLT, M8X 20 PLATED	3							

Fig.25. LUB.OIL LINE

029150-39110
019600-39100



(A)=3TN84L-RMZ
(B)=
(C)=

(D)=
(E)=
(F)=

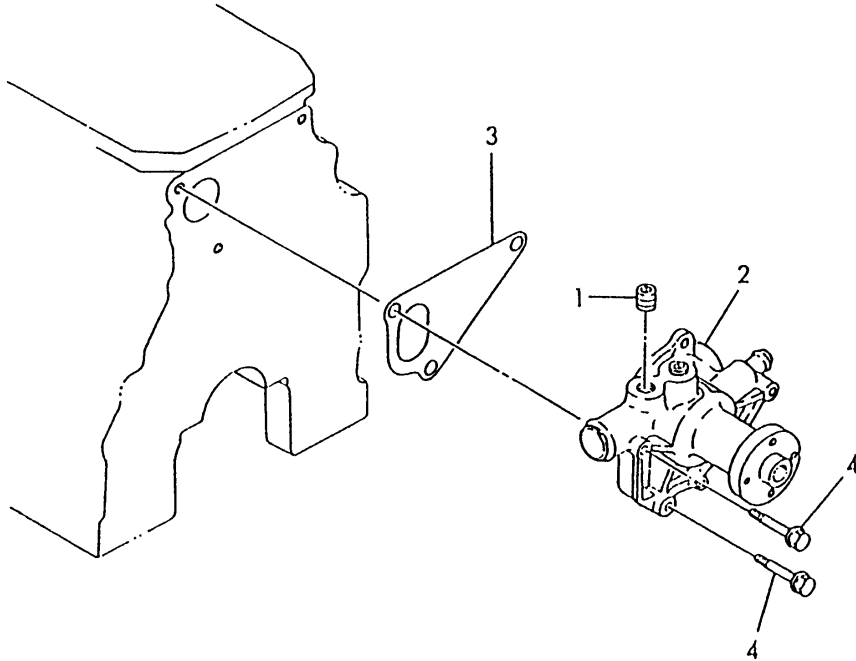
No.	Lev.	Parts No.	Description	Q'ty						I	R	
				(A)	(B)	(C)	(D)	(E)	(F)			
1	1	124160-39140	BOLT, PIPE JOINT M10	1								
2	1	124160-39450	SWITCH, 0.5KG	1								
3	1	129150-39450	PIPE ASSY, OIL	1								
4	1	124550-59820	BOLT, PIPE JOINT M8	1								
5	1	23414-080000	GASKET, 8X1.0	2								
6	1	23414-100000	GASKET, 10X1.0	2								

Fig.26. COOLING WATER PUMP

(A)=3TN84L-RMZ
(B)=
(C)=

(D)=
(E)=
(F)=

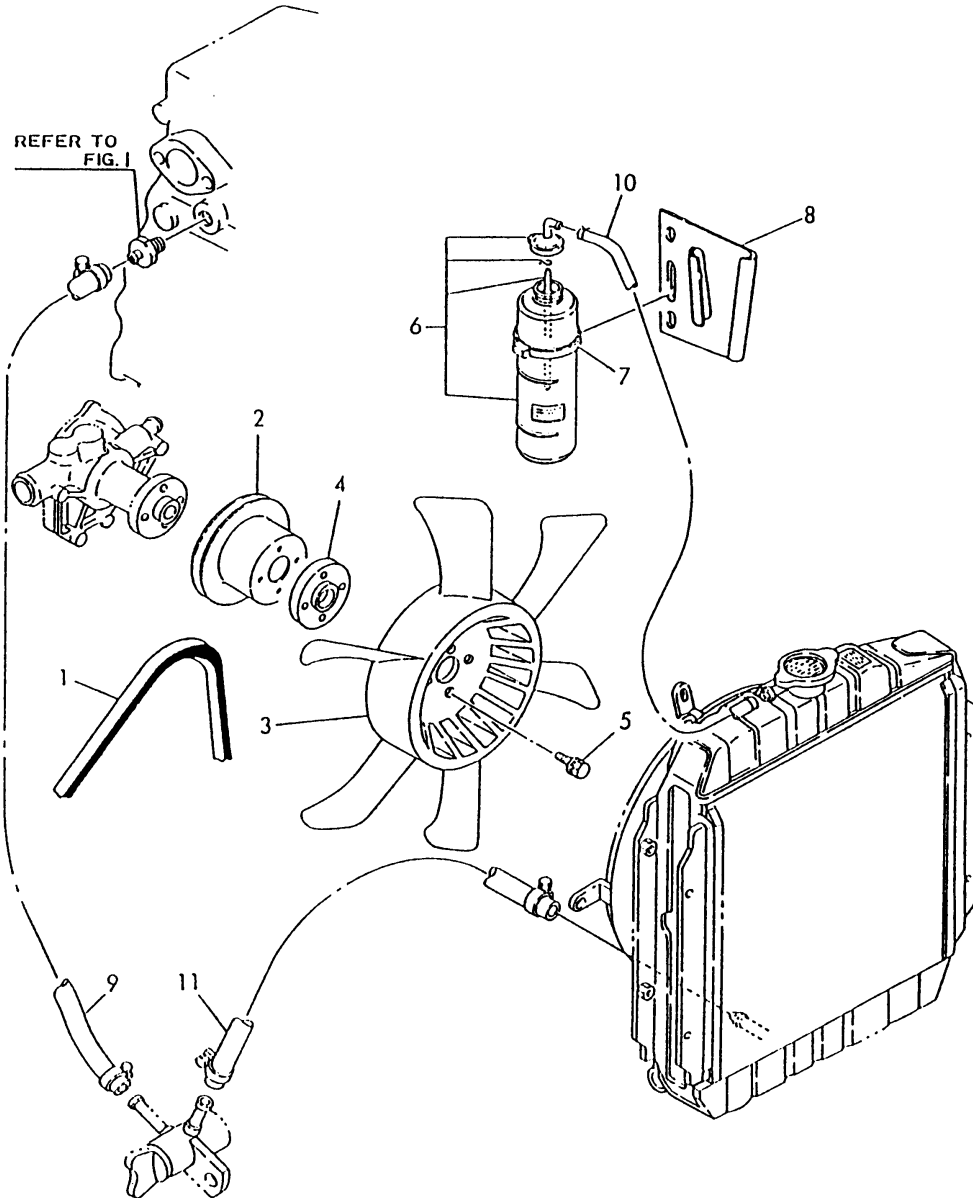
029100-42110



No.	Lev.	Parts No.	Description	Q'ty						I	R
				(A)	(B)	(C)	(D)	(E)	(F)		
1	1	121850-11860	PLUG, PT1/4	1							
2	1	129100-42000	PUMP ASSY, WATER	1							
2-1	1	129100-42001	PUMP ASSY, WATER	1							R
2-2	1	129100-42002	PUMP ASSY, WATER	1							N
		(A=E01447)									
		(A=*1990.06)									
3	1	129100-42020	GASKET, WATER PUMP	1							
4	1	26106-080602	BOLT, M8X 60 PLATED	3							

Fig.27. COOLING WATER FAN

029100-42320
 029410-44400
 029131-93020



(A)=3TN84L-RMZ
 (B)=
 (C)=

(D)=
 (E)=
 (F)=

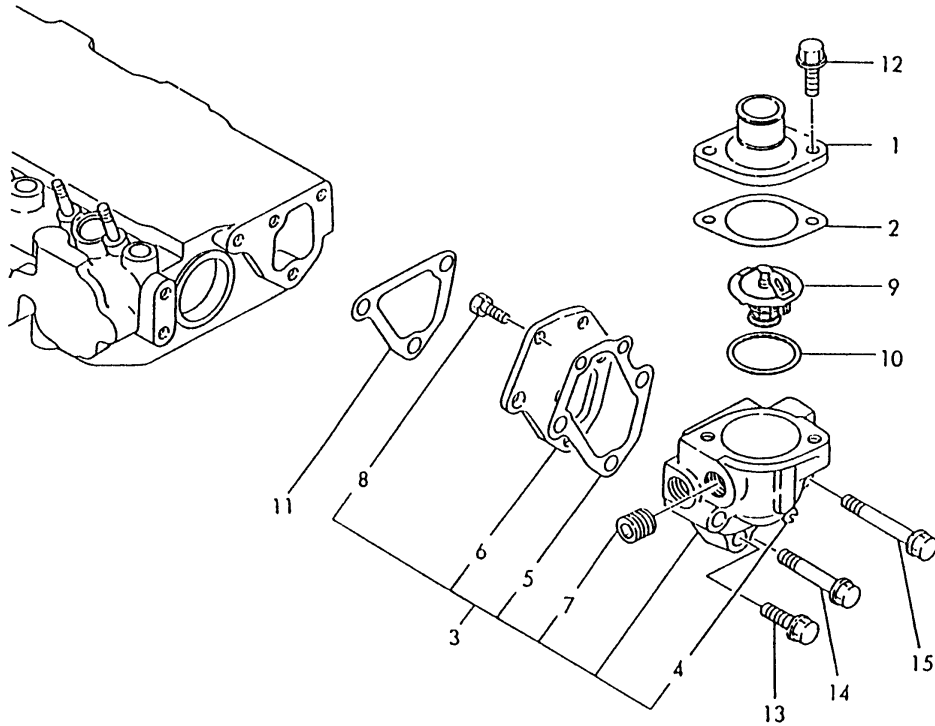
No.	Lev.	Parts No.	Description	Q'ty						I	R
				(A)	(B)	(C)	(D)	(E)	(F)		
1	1	124001-42290	V-BELT, 36	1							
2	1	129403-42380	V-PULLEY, D=110	1							
3	1	171440-44740	FAN, COOLING D350XQF	1							
4	1	124574-44761	SPACER, FAN	1							
5	1	26014-060252	BOLT, M6X 25	4							
6	1	124450-44510	TANK ASSY, SUB	1							
7	1	124450-44550	BAND	1							
8	1	121256-44600	BRACKET, SUB TANK	1							
9	1	124732-59080	PIPE, FUEL D12X1000	1							W
		(A=E03230)									
10	1	121522-59100	PIPE, FUEL D12X500	1							W
		(A=E03230)									
11	1	124766-59530	PIPE, FUEL D12X350	1							W
		(A=E03230)									

Fig.28. THERMOSTAT

029100-49210

(A)=3TN84L-RMZ
(B)=
(C)=

(D)=
(E)=
(F)=



No.	Lev.	Parts No.	Description	Q'ty						I	R
				(A)	(B)	(C)	(D)	(E)	(F)		
1	1	129350-49530	COVER, THERMOSTAT	1							
2	1	129795-49550	GASKET	1							
2-1	1	129795-49551	GASKET	1							N
(A=*1990.06)											
3	1	129100-49800	CASE ASSY, THERMOSTAT	1							
4	2	124770-11770	JOINT, PIPE PT1/8	1							
5	2	129100-49820	GASKET	1							
6	2	129100-49830	COVER, THERMOSTAT	1							
7	2	23871-030000	PLUG, R03	1							
8	2	26116-060162	BOLT, M6X 16 PLATED	2							
9	1	129155-49800	THERMOSTAT, 71	1							
10	1	129150-49810	GASKET, THERMOSTAT	1							
10-1	1	129150-49811	GASKET, THERMOSTAT	1							N
(A=*1990.06)											
11	1	129100-49840	GASKET	1							
12	1	26106-080202	BOLT, M8X 20 PLATED	2							
13	1	26106-080252	BOLT, M8X 25 PLATED	1							
14	1	26106-080502	BOLT, M8X 50 PLATED	1							
15	1	26106-080602	BOLT, M8X 60 PLATED	1							

Fig.29. COOLING WATER PIPE(BY-PASS)

(A)=3TN84L-RMZ
(B)=
(C)=

(D)=
(E)=
(F)=

029100-49500
029100-49610

No.	Lev.	Parts No.	Description	Q'ty						I	R
				(A)	(B)	(C)	(D)	(E)	(F)		
1	1	129100-49050	PIPE, WATER	1							
2	1	23000-016000	CLAMP, 16	2							
3	1	121450-42450	PLUG, M16	1							
4	1	121250-44901	SWITCH, 110	1							
5	1	124465-44950	GASKET, 16	1							
6	1	124465-44950	GASKET, 16	1							

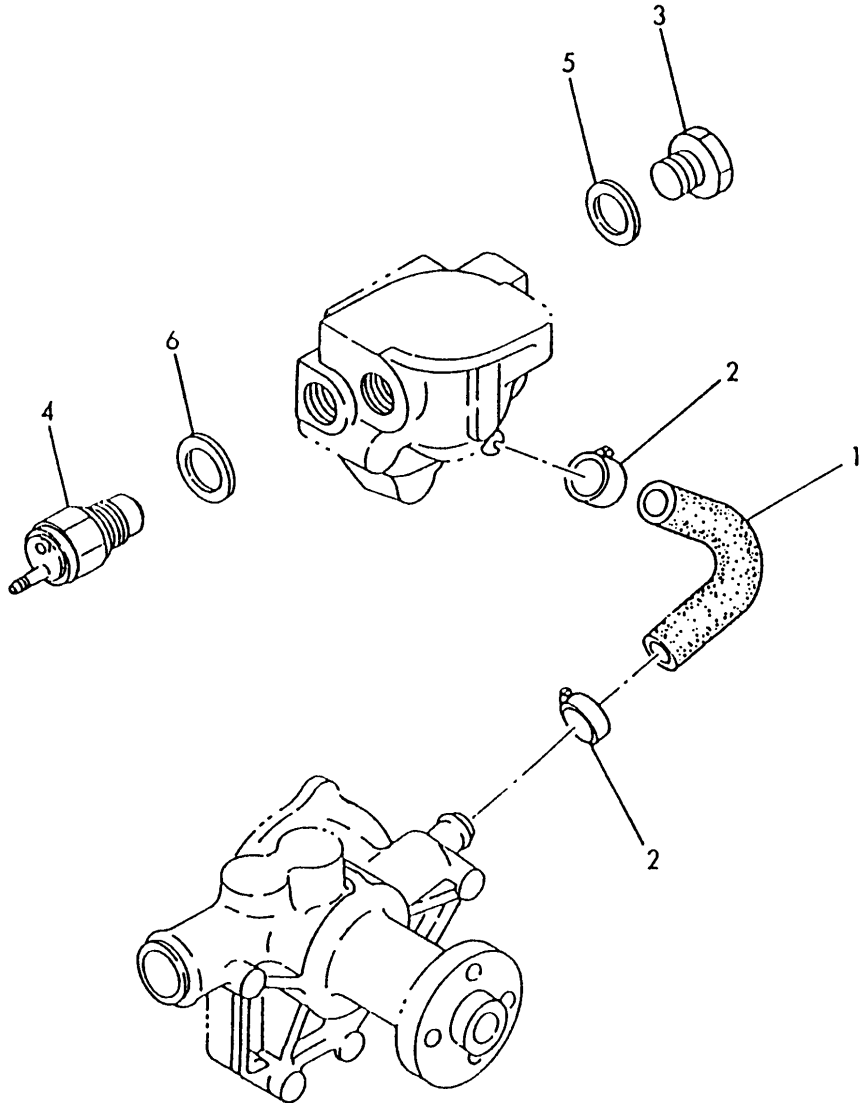


Fig.30. FUEL INJECTION PUMP

(A)=3TN84L-RMZ

(B)=

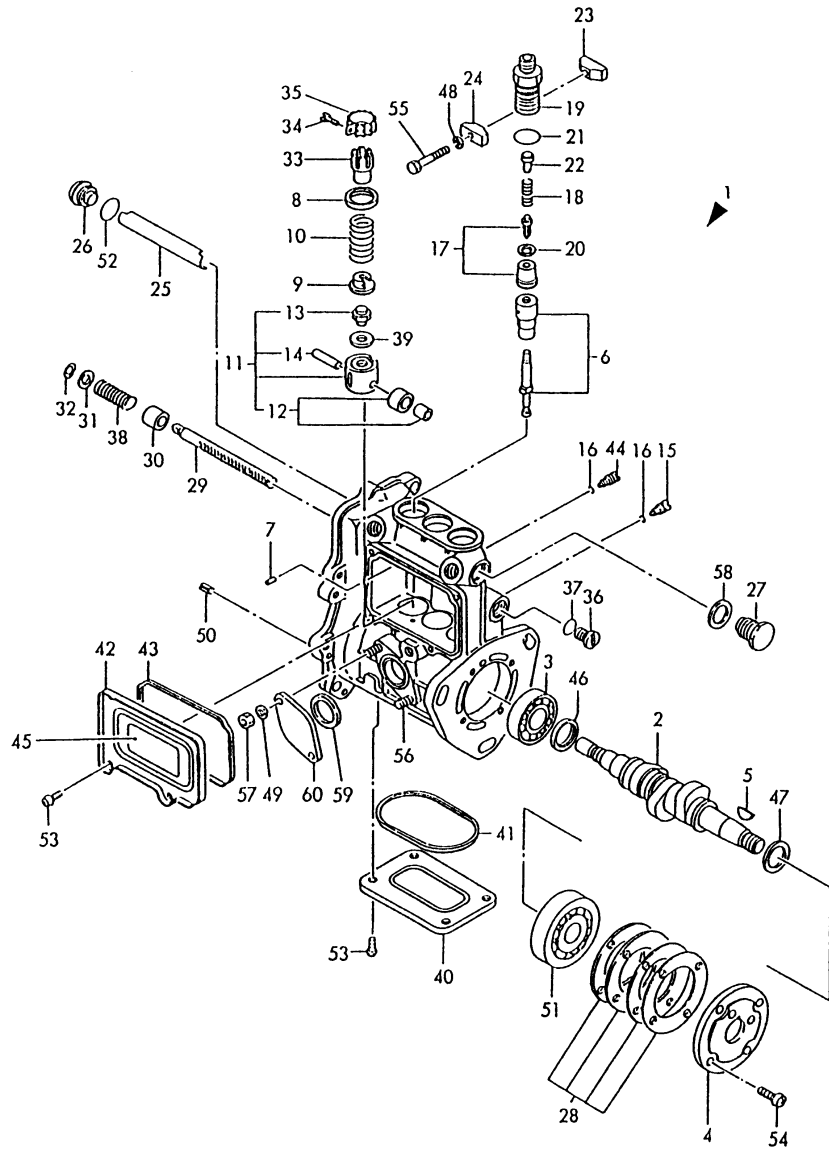
(C)=

(D)=

(E)=

(F)=

729131-51380



No.	Lev.	Parts No.	Description	Qty						I	R
				(A)	(B)	(C)	(D)	(E)	(F)		
1	1	729131-51360	PUMP ASSY, INJECTION	1							1
1-1	1	729131-51380	PUMP ASSY, INJECTION	1							N 1
(A=EXXX)											
2	2	119810-51040	CAMSHAFT	1							
3	2	129155-51050	BEARING, 17BM001D	1							
4	2	129155-51060	SUPPORT, CAMSHAFT	1							
5	2	122710-51090	KEY	1							
6	2	129400-51100	PLUNGER ASSY	3							
7	2	129155-51140	PIN	3							
8	2	174307-51170	RETAINER, SPRING A	3							
9	2	129155-51180	RETAINER, SPRING	3							
10	2	124950-51190	SPRING, PLUNGER	3							
11	2	129155-51200	TAPPET ASSY	3							
12	3	711100-51540	ROLLER ASSY	3							
13	3	129155-51250	BOLT, ADJUSTING	3							
14	3	174100-54120	PIN	3							
15	2	129155-51270	STOPPER, TAPPET	3							
16	2	129155-51280	O-RING, S6	3							
17	2	128170-51300	VALVE ASSY, DELIVERY	3							
18	2	129155-51320	SPRING, DELIVERY	3							
19	2	129155-51340	RETAINER	3							
20	2	124550-51350	GASKET, DELIVERY	3							
21	2	124550-51370	O-RING	3							
22	2	129155-51370	STOPPER, VALVE	3							
23	2	129155-51380	STOPPER	2							
24	2	129155-51390	STOPPER	2							
25	2	129155-51400	DEFLECTOR	1							
26	2	129155-51410	BOLT	1							
27	2	129155-51420	PLUG, M16	1							
28	2	129155-51450	SHIM SET, ADJUSTING	1							
29	2	129155-51500	RACK, CONTROL	1							
30	2	129155-51520	BUSH, RACK	1							
30-1	2	129155-51521	BUSH, RACK	1							N
(A=EXXX)											
31	2	129155-51530	SPACER	1							
32	2	129155-51540	CIRCLIP	1							
33	2	129155-51550	PINION, CONTROL	3							
34	2	122117-51560	SCREW	3							
35	2	174307-51560	PINION	3							
36	2	129155-51570	PLUG, M12	1							
37	2	129155-51580	O-RING	1							
38	2	129155-51591	SPRING, RACK	1							
39	2	129155-51600	SHIM SET, ADJUSTING	3							
40	2	129155-51700	COVER	1							
41	2	129155-51710	GASKET	1							
42	2	129155-51750	COVER	1							
43	2	129155-51760	GASKET	1							
44	2	129155-51790	STOPPER, RACK	1							
45	2	129156-51910	LABEL, CAUTION	1							
46	2	129155-51930	SPACER, T=3.25	1							
47	2	129155-51940	SPACER, T=1.5	1							

Remarks

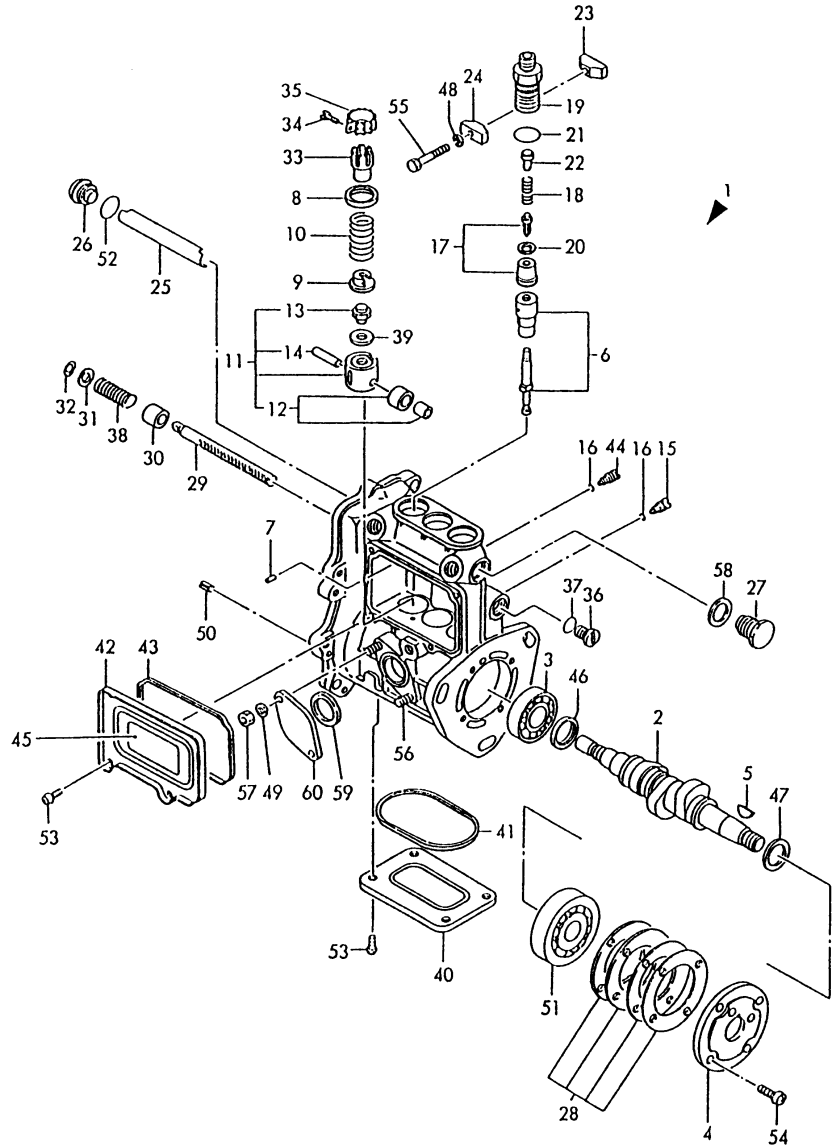
(1) GOVERNOR ASSY(FIG 35)IS INCORPORATED IN THIS FUEL INJECTION PUMP ASSY(REF,NO.1).

Fig.30. FUEL INJECTION PUMP

(A)=3TN84L-RMZ
(B)=
(C)=

(D)=
(E)=
(F)=

729131-51380



No.	Lev.	Parts No.	Description	Q'ty						I	R
				(A)	(B)	(C)	(D)	(E)	(F)		
48	2	22217-050000 (A=EXXX)	WASHER, SPRING 5	2							Z
49	2	22217-060000	WASHER, SPRING 6	2							
50	2	22351-050010	PIN, SPRING 5.0X10	2							
51	2	24101-063033	BEARING, BALL 6303P6	1							
51-1	2	24101-063034 (A=EXXX)	BEARING, BALL 6303	1							R
52	2	24341-000160	O-RING, 1AS16.0	1							
53	2	26022-050102	SCREW, M5X10	8							
54	2	26022-060162	SCREW, M6X16	4							
55	2	26116-050302	BOLT, M5X 30 PLATED	2							
56	2	26216-060162	STUD, M6X 16	2							
56-1	2	129155-51020 (A=E04533)	STUD	2							N
57	2	26716-060002	NUT, M6	2							
58	2	43400-500490	SEAL WASHER 16S	1							
59	2	129155-52050	GASKET	1							
60	2	129100-52200	COVER	1							

Remarks

(1) GOVERNOR ASSY(FIG 35)IS INCORPORATED IN THIS FUEL INJECTION PUMP ASSY(REF,NO.1).

Fig.31. FUEL INJECTION VALVE

(A)=3TN84L-RMZ
(B)=
(C)=

(D)=
(E)=
(F)=

029503-53100

No.	Lev.	Parts No.	Description	Q'ty						I	R
				(A)	(B)	(C)	(D)	(E)	(F)		
1	1	729102-53100	VALVE ASSY,INJECTION	3							
2	2	129102-53000	VALVE ASSY,INJECTION	3							
2-1	2	129503-53000	VALVE ASSY,INJECTION	3							S
(A=EXXX)											
3	2	114250-53080	NUT, NOZZLE D16.95	3							
5	2	114250-53120	SPRING, NOZZLE	3							
6	2	114250-53130	SEAT, SPRING	3							
7	2	114250-53140	PLATE	3							
8	2	114250-53210	PIN	6							
9	2	114250-53400	SHIM SET	3							

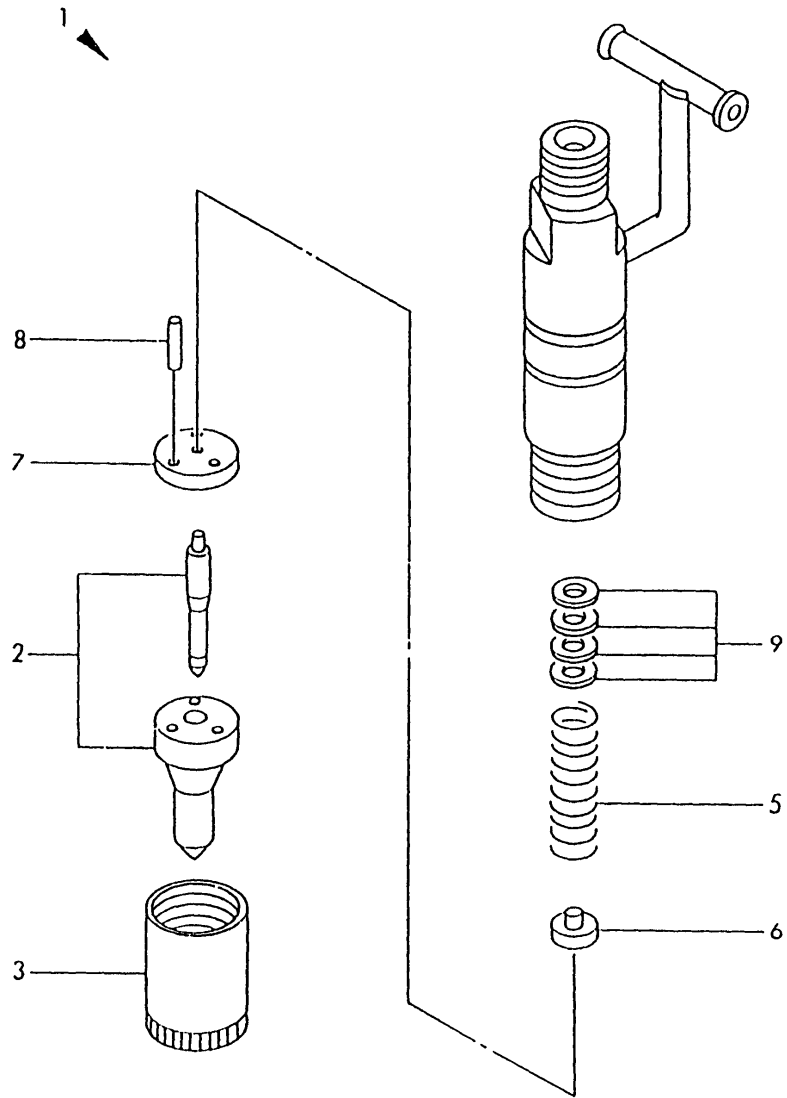
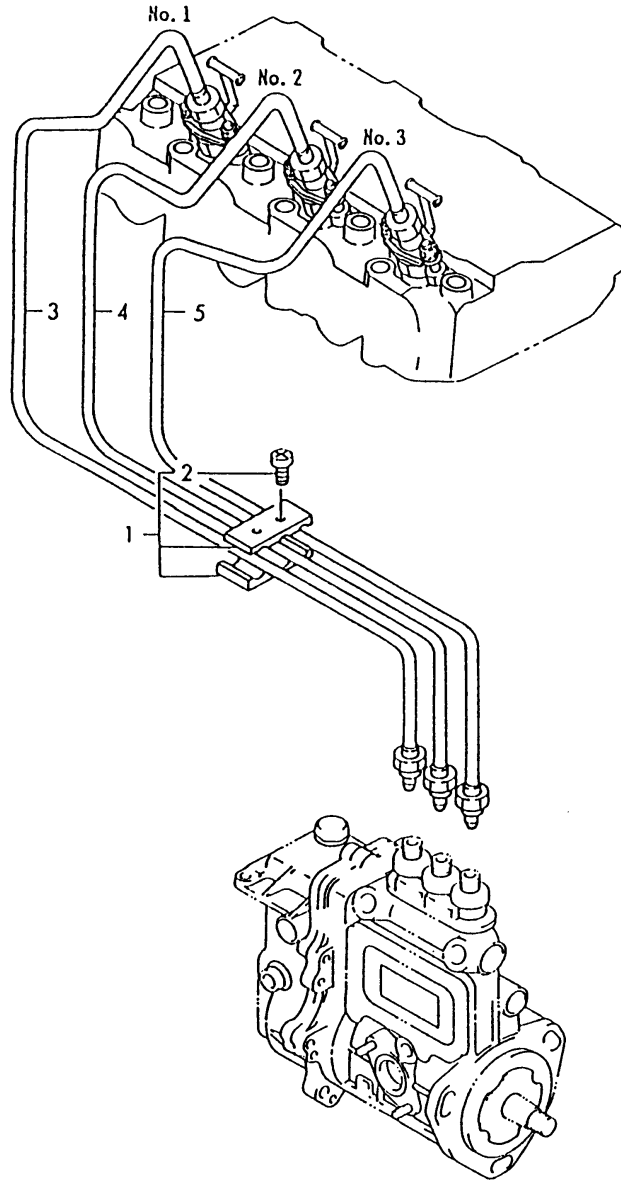


Fig.32. FUEL INJECTION LINE

D29100-59110

(A)=3TN84L-RMZ
(B)=
(C)=

(D)=
(E)=
(F)=



No.	Lev.	Parts No.	Description	Q'ty						I	R
				(A)	(B)	(C)	(D)	(E)	(F)		
1	1	129150-59120	RETAINER, PIPE	1							
2	2	129150-59130	BOLT, M4X12	2							
3	1	129100-59910	PIPE ASSY, INJECTION	1							
4	1	129100-59920	PIPE ASSY, INJECTION	1							
5	1	129100-59930	PIPE ASSY, INJECTION	1							

Fig.33. FUEL LINE

D29131-59200

(A)=3TN84L-RMZ
(B)=
(C)=

(D)=
(E)=
(F)=

No.	Lev.	Parts No.	Description	Qty						I	R
				(A)	(B)	(C)	(D)	(E)	(F)		
1	1	103854-39140	BOLT, PIPE JOINT	1							
2	1	101304-59020	JOINT, PIPE 12	1							
3	1	104200-59170	GASKET, 12	2							

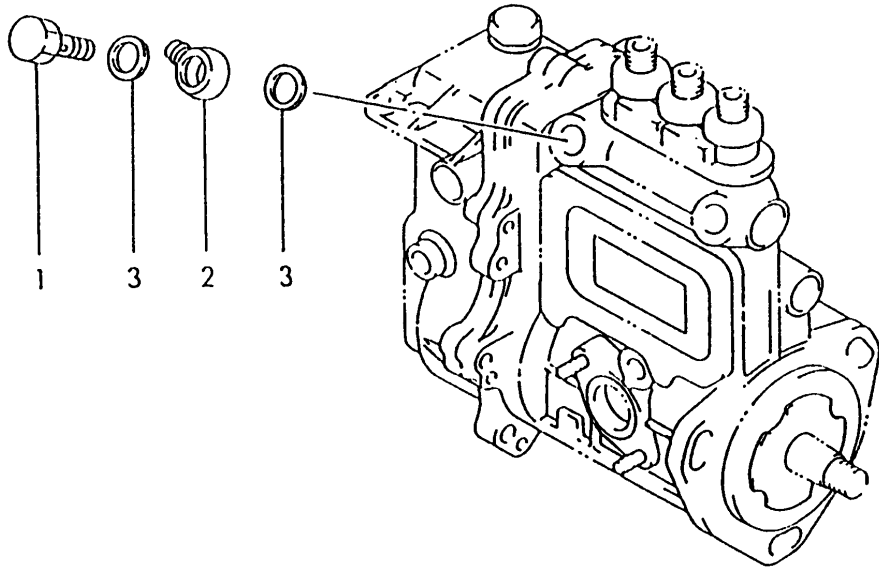
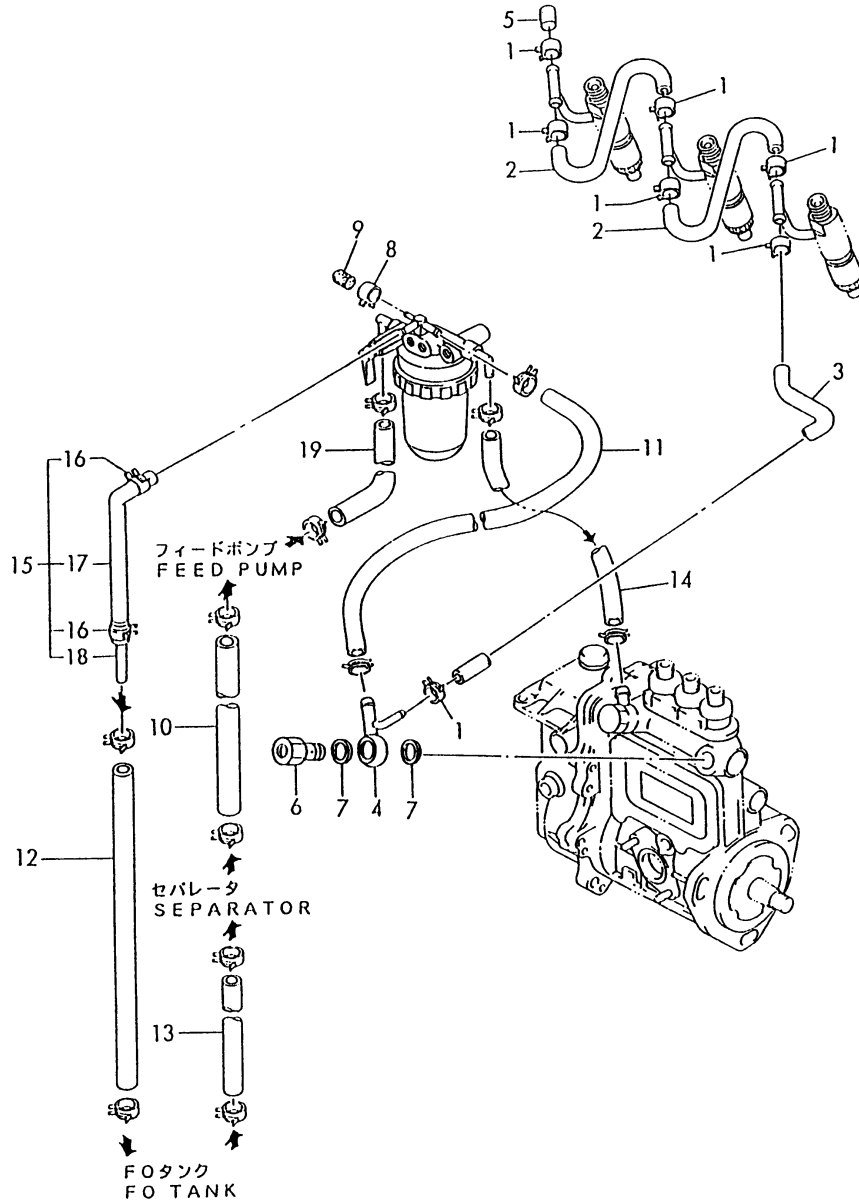


Fig.34. FUEL RETURN LINE

019867-59310
029131-93020



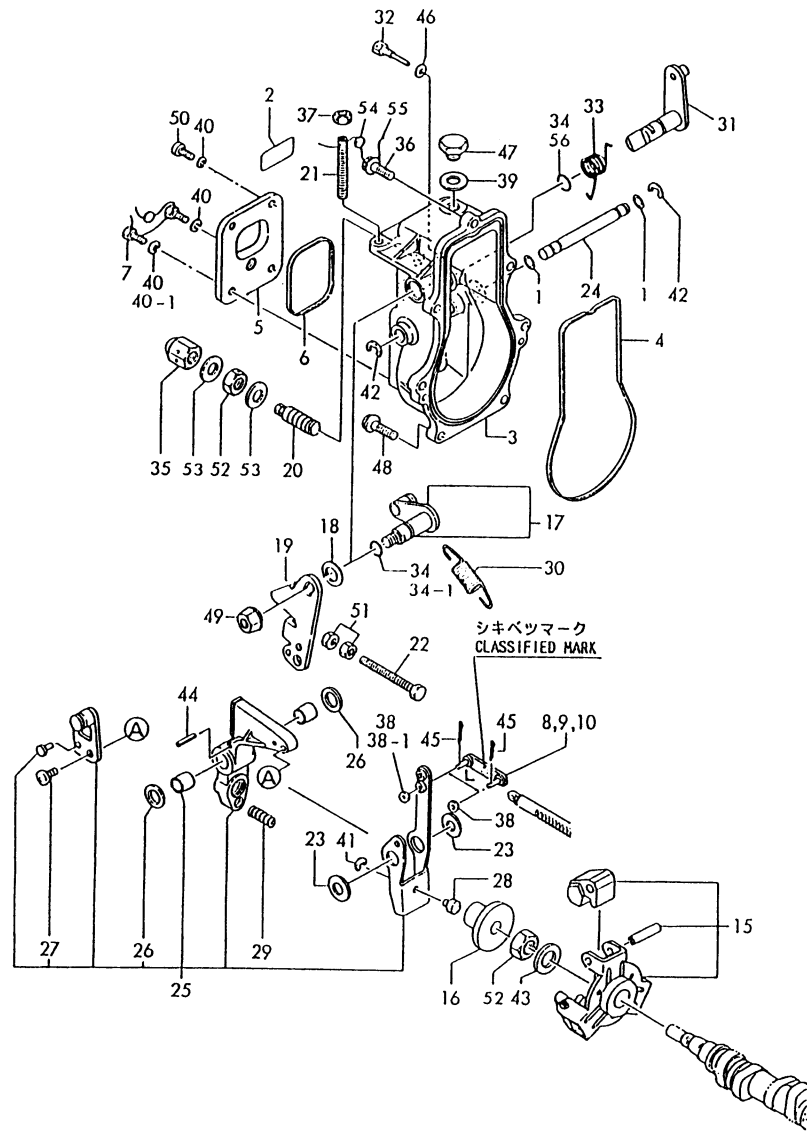
(A)=3TN84L-RMZ
(B)=
(C)=

(D)=
(E)=
(F)=

No.	Lev.	Parts No.	Description	Q'ty						I	R
				(A)	(B)	(C)	(D)	(E)	(F)		
1	1	124066-59100	CLIP, HOSE 8	7							
2	1	121250-59550	PIPE, FUEL D8X120	2							
3	1	119840-59560	PIPE, FUEL RETURN	1							
4	1	119840-59570	JOINT	1							
5	1	129150-59580	CAP	1							
6	1	129100-59951	VALVE ASSY, CHECK	1							
7	1	23414-120000	GASKET, 12X1.0	2							
8	1	124066-59100	CLIP, HOSE 8	1							
9	1	129150-59580	CAP	1							
10	1	124323-59030	PIPE, FUEL	1							W
		(A=E03230)									
11	1	124323-59040	PIPE, FUEL	1							W
		(A=E03230)									
11-1	1	106800-59560	PIPE, FUEL	1							N
		(A=*1990.08)									
12	1	121137-59080	PIPE, FUEL D12X1150	1							W
		(A=E03230)									
13	1	121522-59090	PIPE, FUEL D12X900	1							W
		(A=E03230)									
14	1	129555-59510	PIPE, D13/7.5X180	1							W
		(A=E03230)									
15	1	119840-59601	BEND	1							W
		(A=E03230)									
16	2	124766-59050	CLIP, HOSE 12	2							W
		(A=E03230)									
17	2	119840-59611	BEND	1							W
		(A=E03230)									
18	2	119840-59621	JOINT	1							W
		(A=E03230)									
19	1	105025-59760	PIPE, FUEL	1							W
		(A=E03230)									

Fig.35. GOVERNOR

729131-51380
029428-66400



(A)=3TN84L-RMZ
(B)=
(C)=

(D)=
(E)=
(F)=

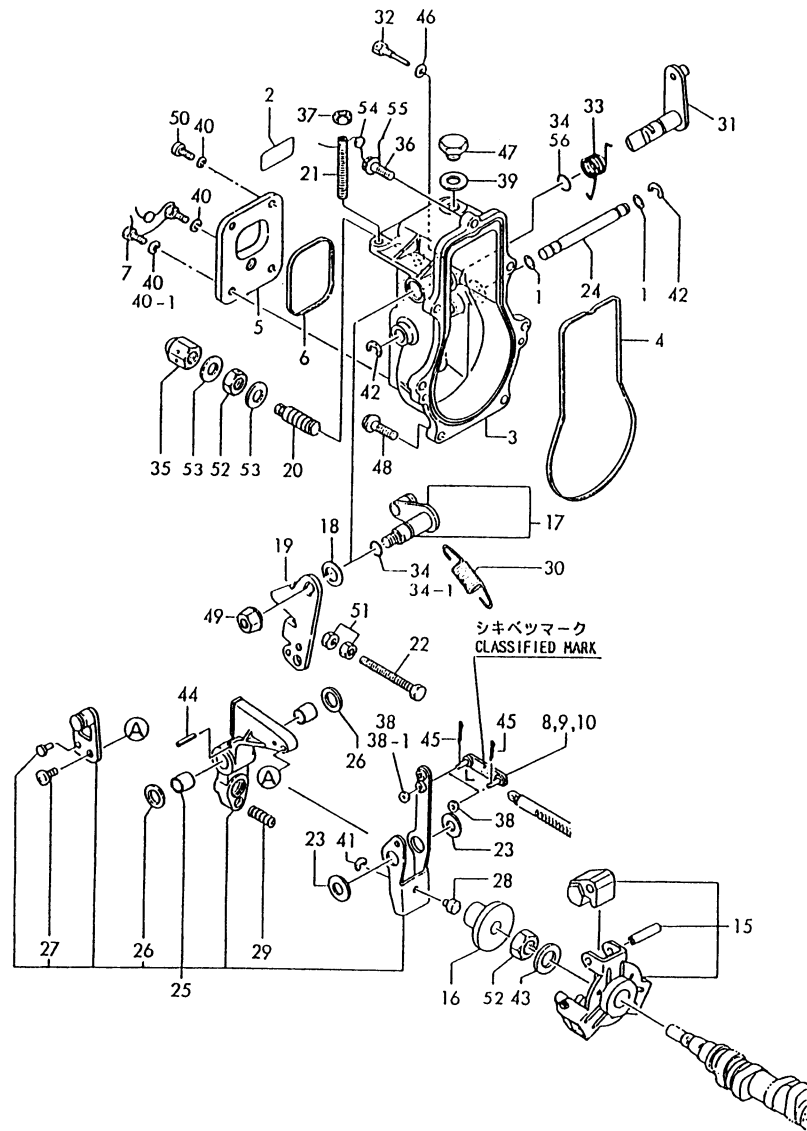
No.	Lev.	Parts No.	Description	Q'ty						I	R
				(A)	(B)	(C)	(D)	(E)	(F)		
1	2	129155-51280	O-RING, S6	2							
2	2	129131-51980	LABEL (729131-51380)	1							
3	2	129155-61010	CASE, GOVERNOR	1							
3-1	2	129155-61011	CASE, GOVERNOR	1							N
		(A=EXXX)									
4	2	129155-61050	GASKET	1							
5	2	129155-61060	COVER, GOVERNOR CASE	1							
6	2	129155-61070	GASKET	1							
7	2	129155-61090	BOLT	1							Z
		(A=EXXX)									
8	2	129155-61120	LINK, L=30 MARK 0	1							1
9	2	129155-61130	LINK, L=31 MARK 1	1							1
10	2	129155-61140	LINK, L=30.5 MARK 05	1							1
15	2	129155-61201	WEIGHT ASSY, GOVERNOR	1							
16	2	129155-61341	SLEEVE	1							
17	2	129100-61400	SHAFT ASSY	1							
18	2	129155-61430	SPACER	1							
19	2	129100-61440	LEVER, CONTROL	1							
20	2	129100-61450	LIMITER ASSY, FUEL	1							
21	2	129155-61450	BOLT, LIMITER	1							
22	2	129155-61460	BOLT, IDLE	1							
23	2	129155-61480	SPACER ASSY	2							
24	2	129155-61490	SHAFT	1							
25	2	129500-61500	LEVER ASSY, GOVERNOR	1							
26	3	174307-51700	SHIM SET	2							
27	3	26022-060122	SCREW, M6X12	1							
28	2	129155-61540	SHIFTER	1							
29	2	129100-61650	SPRING, CONTROLLER	1							
30	2	171353-61710	SPRING, GOVERNOR	1							
31	2	129155-61801	LEVER, STOP	1							
31-1	2	129155-61802	LEVER, STOP	1							N
		(A=E08030)									
32	2	129155-61810	PIN	1							
33	2	129155-61820	SPRING, RETURN	1							
33-1	2	129100-61821	SPRING, RETURN	1							N
		(A=EXXX)									
34	2	129155-61830	O-RING, S10	3							
34-1	2	129155-61830	O-RING, S10	1							K
		(A=EXXX)									
35	2	129100-61930	NUT, CAP	1							
35-1	2	26687-120002	NUT, CAP M12	1							N
		(A=EXXX)									
36	2	129155-61950	BOLT	1							
37	2	124550-66370	NUT, M6	1							
38	2	22117-040000	WASHER, 4	2							
38-1	2	22117-040000	WASHER, 4	1							K
		(A=EXXX)									
39	2	22190-100000	WASHER, SEAL 10	1							
39-1	2	43400-500430	SEAL WASHER 10S	1							R
		(A=*1989.)									
40	2	22217-050000	WASHER, SPRING 5	4							

Remarks

(1) SELECTIVE PARTS : CERTAIN THE CLASSIFICATION MARK, THEN PLACE YOUR ORDER. (ILLUSTRATION)

Fig.35. GOVERNOR

729131-51380
029428-66400



(A)=3TN84L-RMZ
(B)=
(C)=

(D)=
(E)=
(F)=

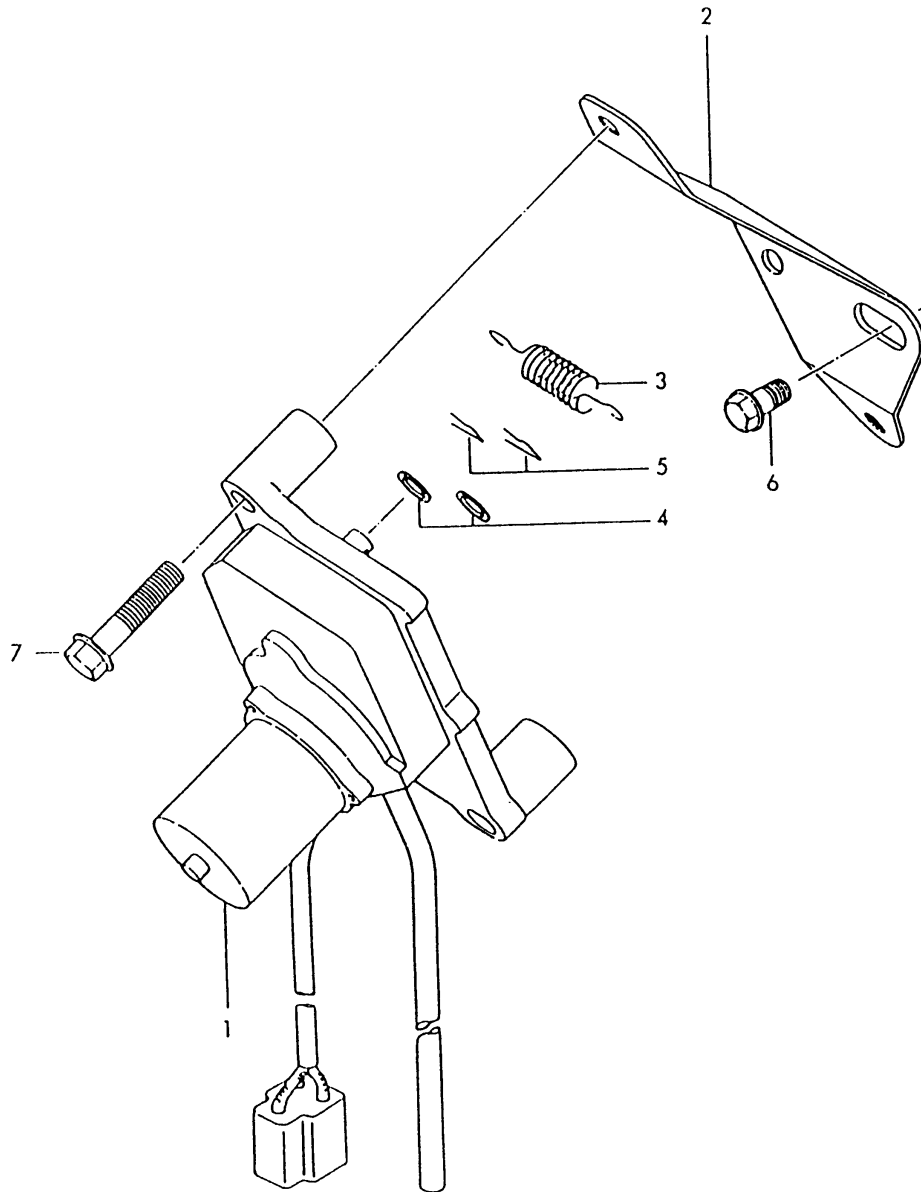
No.	Lev.	Parts No.	Description	Q'ty						I	R
				(A)	(B)	(C)	(D)	(E)	(F)		
40-1	2	22217-050000 (A=EXXX)	WASHER, SPRING 5	1							K
40-2	2	22217-050000 (A=EXXX)	WASHER, SPRING 5	1							Z
41	2	22272-000040	RING, E- 4	1							
42	2	22272-000060	RING, E- 6	2							
43	2	22282-120000	WASHER 12	1							
43-1	2	22287-120000 (A=EXXX)	WASHER, 12	1							R
44	2	22351-030016	PIN, SPRING 3.0X16	1							
45	2	22360-050000	SNAP PIN 5	2							
45-1	2	22360-040000 (A=EXXX)	PIN, SNAP 4	2							N
45-2	2	22372-040000 (A=*1991.02)	PIN, SNAP 4	2							R
46	2	23414-050000	GASKET, 5X1.0	1							
46-1	2	43400-500390 (A=*1989.)	SEAL WASHER 6S	1							N
47	2	23887-100002	PLUG, 10	1							
48	2	26107-060202	BOLT M 6X 20 PLATED	6							
48-1	2	26106-060202 (A=EXXX)	BOLT, M6X 20 PLATED	6							R
49	2	26366-080002	NUT, M8	1							
50	2	26557-050102	SCREW, M5X10	3							
50-1	2	26022-050102 (A=EXXX)	SCREW, M5X10	3							N
50-2	2	26022-050102 (A=EXXX)	SCREW, M5X10	4							K
51	2	26756-060002	NUT, LOCK M6	2							
51-1	2	26756-060002 (A=EXXX)	NUT, LOCK M6	1							K
52	2	26776-120002	NUT, LOCK M12	2							
53	2	43400-500450	SEAL WASHER 12S	2							
54	2	135210-61090	LEAD	1							
55	2	22451-060000	WIRE, 0.6	1							
56	2	24311-000080	O-RING, 1AP8.0	1							
56-1	2	24311-240100 (A=EXXX)	O-RING, 1AP10A	1							N

Remarks

(1) SELECTIVE PARTS : CERTAIN THE CLASSIFICATION MARK, THEN PLACE YOUR ORDER. (ILLUSTRATION)

Fig.36. ENGINE STOP

029155-66500



(A)=3TN84L-RMZ
(B)=
(C)=

(D)=
(E)=
(F)=

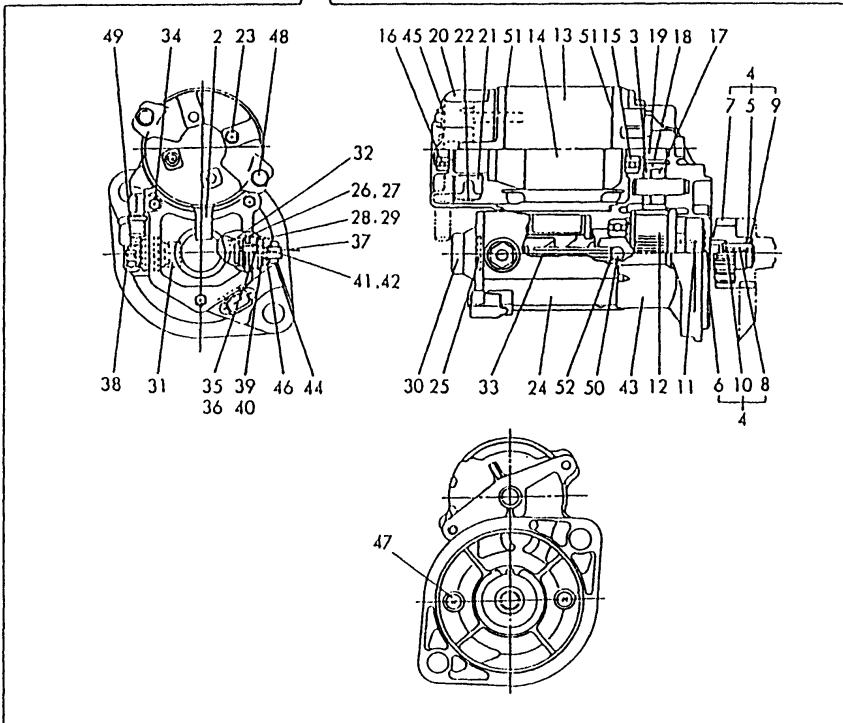
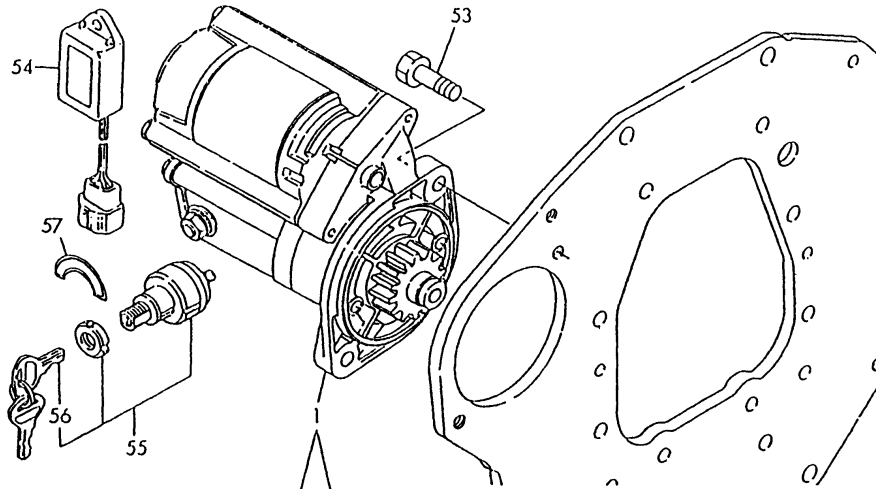
No.	Lev.	Parts No.	Description	Q'ty						I	R
				(A)	(B)	(C)	(D)	(E)	(F)		
1	2	129150-66800	MOTOR, STOP	1							N
2	1	129155-66810	BRACKET, STOP MOTOR	1							
3	1	129155-66820	SPRING	1							
4	1	22117-080000	WASHER, 8	2							
5	1	22360-080000	SNAP PIN 8	2							
6	1	26106-080122	BOLT, M8X 12 PLATED	2							
7	1	26106-080402	BOLT, M8X 40 PLATED	2							

Fig.37. STARTING MOTOR(COMPONENT PARTS)

(A)=3TN84L-RMZ
(B)=
(C)=

(D)=
(E)=
(F)=

U71352-77100
029131-93020



No.	Lev.	Parts No.	Description	Q'ty						I	R
				(A)	(B)	(C)	(D)	(E)	(F)		
1	1	121120-77011	STARTER	1							
2	2	X0280620480	COVER	1							
3	2	X0280630011	RETAINER	1							
4	2	X0280992381	CLUTCH KIT	1							
5	3	X0280210230	NUT	1							
6	3	X0283270140	RETAINER	1							
7	3	X0283711770	PINION	1							
8	3	X0283810040	SHAFT	1							
9	3	X9490721080	RING	1							
10	3	X9491703371	SPRING, COIL	1							
11	3	X9491704260	SPRING	1							
12	3	121120-77930	CASE ASSY, STARTER	1							
13	2	X0281003770	YOKE ASSY	1							
14	2	X0282002320	HOUSING ASSY	1							
15	3	X9491002590	BALL BEARING	1							
16	3	X9491002760	BALL BEARING	1							
17	2	X0283060061	ROLLER	5							
18	2	X0283711420	PINION	1							
19	2	X0283712360	PINION	1							
20	2	X0285011600	FRAME	1							
21	2	X0285100750	HOLDER ASSY, BRUSH	1							
22	3	X9491730461	SPRING	1							
23	2	X0289030010	SCREW	2							
24	2	X0534006470	SWITCH ASSY, MAGNET.	1							
25	3	X0534040320	GASKET	1							
26	3	X0534490120	BUSH	1							
27	3	X0534490120	BUSH	1							
28	3	X0534490230	BUSH	1							
29	3	X0534490230	BUSH	1							
30	3	X0535050620	COVER	1							
31	3	X0535130241	PLATE	1							
32	3	X0535130320	PLATE	1							
33	3	X0536600401	PLUNGER	1							
34	3	X9151005141	BOLT	3							
35	3	X9490170900	WASHER	1							
36	3	X9490170900	WASHER	1							
37	3	X9490441303	BOLT	1							
38	3	X9490441312	BOLT	1							
39	3	X9490502820	NUT	1							
40	3	X9490502820	NUT	1							
41	3	X9491402100	O-RING	1							
42	3	X9491402100	O-RING	1							
43	2	X1284000710	HOUSING	1							
44	2	X9019008651	NUT	1							
45	2	X9025806001	WASHER	2							
46	2	X9025808001	WASHER	1							
47	2	X9490071970	SCREW	2							
48	2	X9490422570	BOLT	2							
49	2	X9490561370	NUT	1							
50	2	X9491200240	BALL	1							
51	2	X9491403700	O-RING	2							

Fig.37. STARTING MOTOR(COMPONENT PARTS)

(A)=3TN84L-RMZ
(B)=
(C)=

(D)=
(E)=
(F)=

U71352-71100
029131-93020

No.	Lev.	Parts No.	Description	Q'ty						I	R
				(A)	(B)	(C)	(D)	(E)	(F)		
52	2	X9491703380	SPRING	1							
53	1	26116-120252	BOLT, M12X 25 PLATED	2							
54	1	128300-77920	TIMER	1							
55	1	121400-91251	SWITCH, STARTER	1							
56	2	121400-91271	KEY, SWITCH	1							
57	1	171085-91610	LABEL	1							W

(A=E08030)

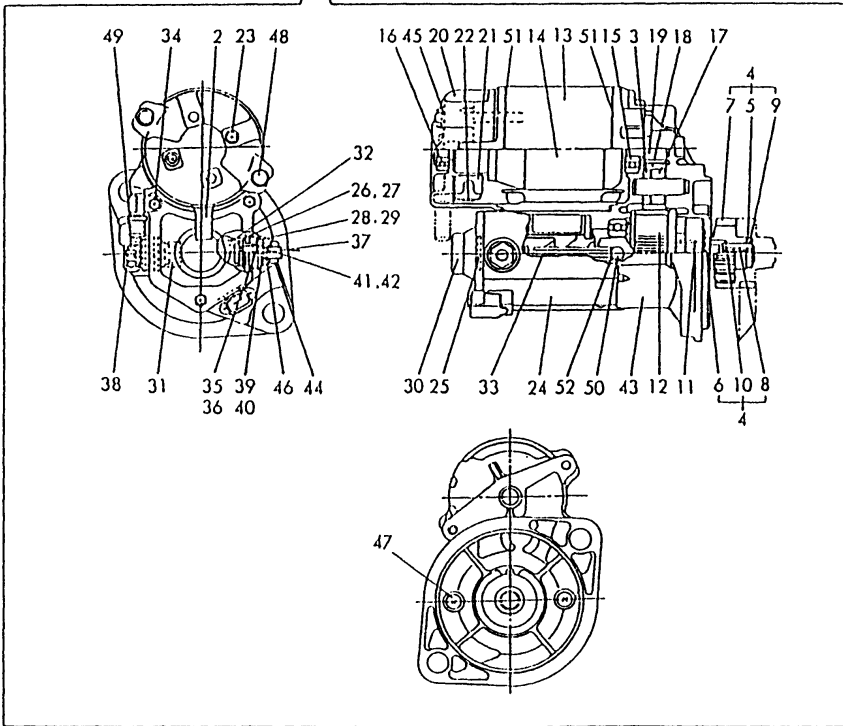
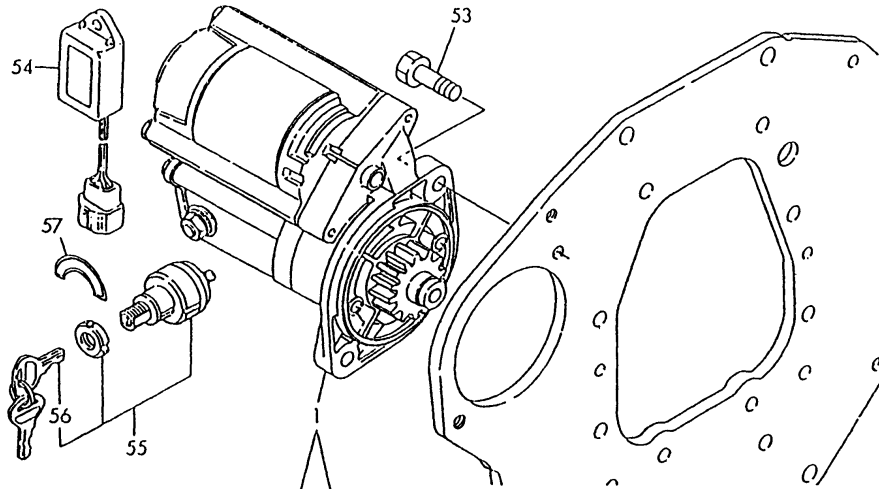
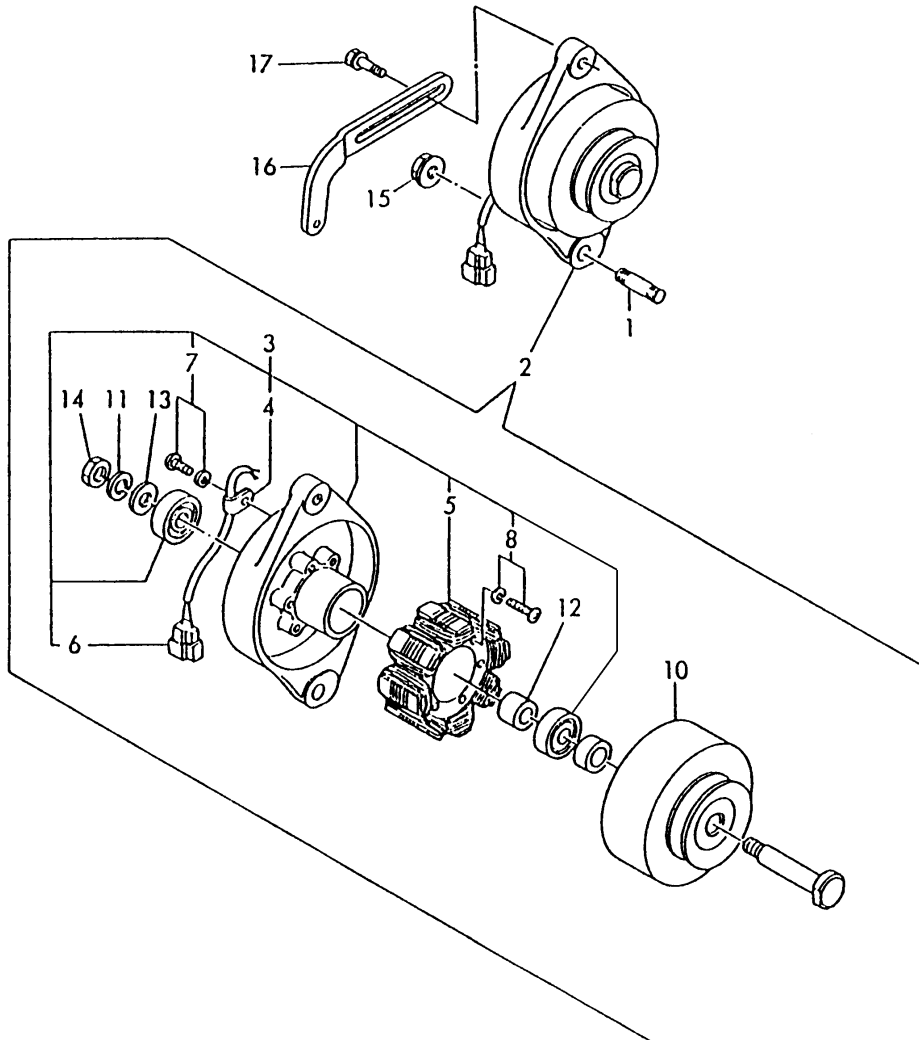


Fig.38. GENERATOR(COMPONENT PARTS)

D29131-77200
D29100-77310

(A)=3TN84L-RMZ
(B)=
(C)=

(D)=
(E)=
(F)=



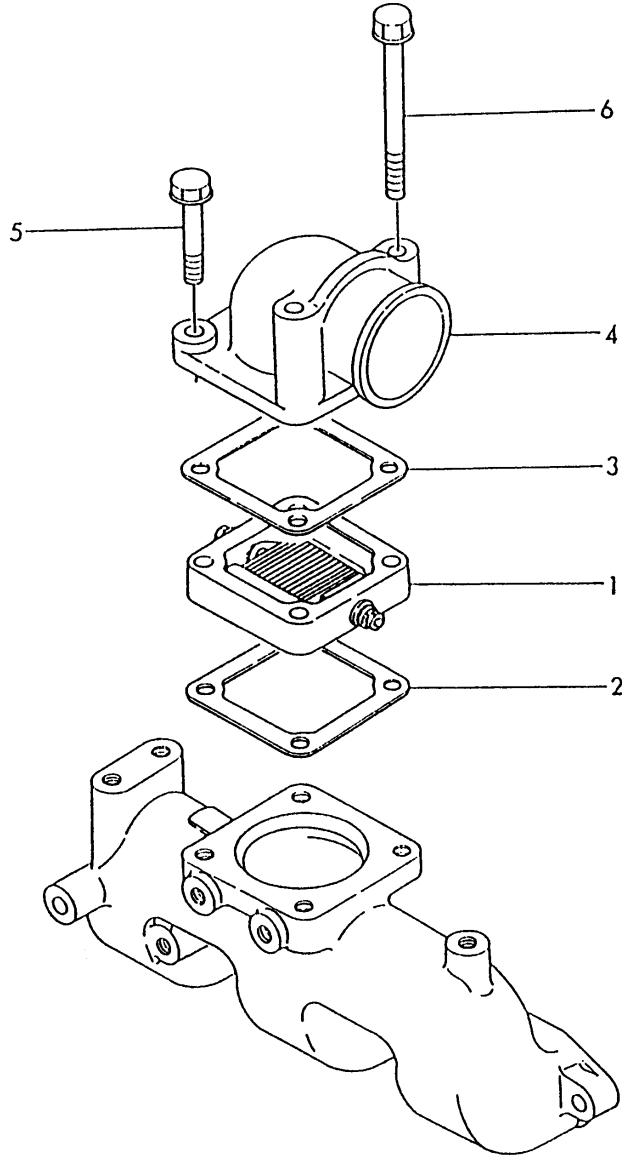
No.	Lev.	Parts No.	Description	Q'ty						I	R
				(A)	(B)	(C)	(D)	(E)	(F)		
1	1	121450-01570	BOLT, STUD	1							
2	1	129150-77201	DYNAMO ASSY	1							
2-1	1	129150-77202	GENERATOR	1							N
(A=E08030)											
3	2	XM081770000	PLATE ASSY	1							
3-1	2	129150-77210	PLATE ASSY	1							N
(A=E08030)											
4	3	XM069000000	CLAMP	1							
5	3	XM081780000	STATOR	1							
6	3	XM178780000	COUPLER	1							
7	3	XYSPS400800	SCREW	1							
8	3	XYSPS402400	SCREW	1							
8-1	3	XYSPS402400	SCREW	2							K
(A=E08030)											
10	2	XM821850000	PULLEY	1							
10-1	2	129150-77230	FLYWHEEL ASSY	1							N
(A=E08030)											
11	2	XM219230000	WASHER, SPRING	1							
12	2	XM329830000	COLLAR	1							
13	2	XM860250000	WASHER, 10	1							
14	2	XM863720000	NUT	1							
15	1	26366-100002	NUT, M10	1							
16	1	129100-77330	ADJUSTER	1							
17	1	26014-080252	BOLT, M8X 25	1							

Fig.39. AIR HEATER

(A)=3TN84L-RMZ
(B)=
(C)=

(D)=
(E)=
(F)=

U71353-77501

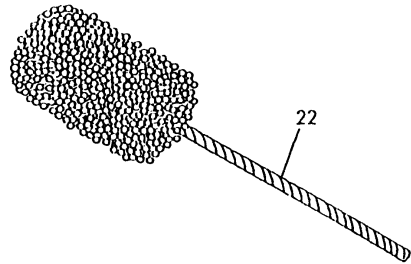
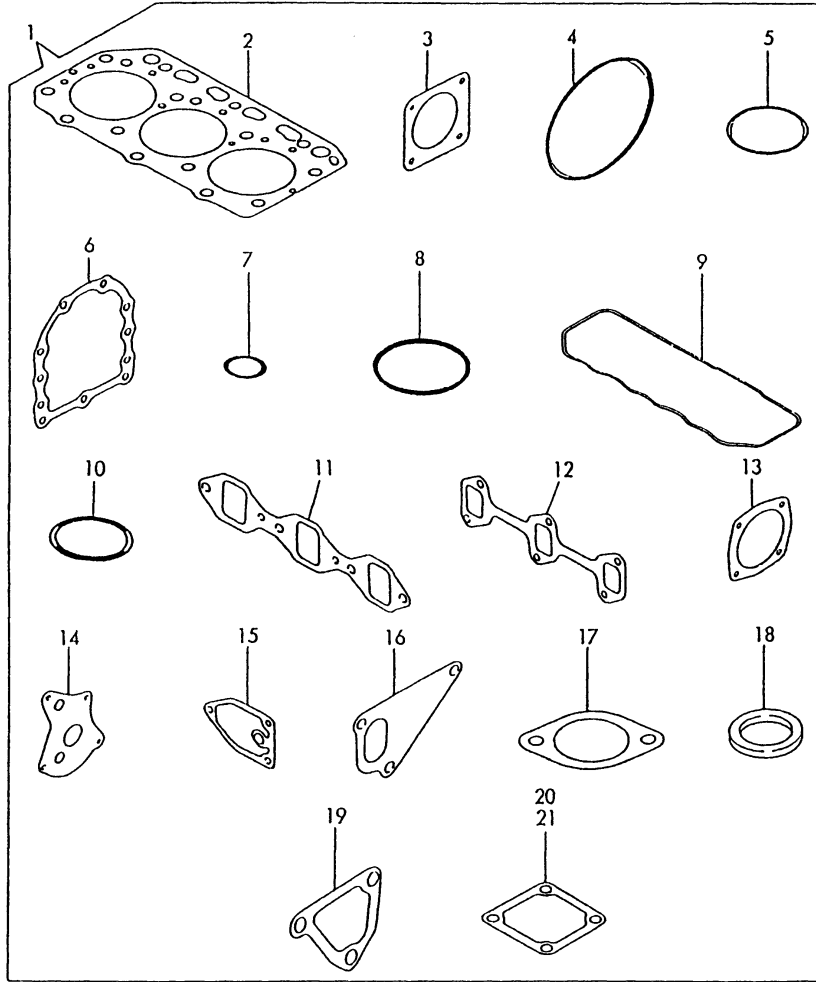


No.	Lev.	Parts No.	Description	Q'ty						I	R
				(A)	(B)	(C)	(D)	(E)	(F)		
1	1	129100-77500	HEATER, AIR 12V	1							
2	1	129100-77510	GASKET	1							
3	1	129150-77510	GASKET	1							
3-1	1	129150-77511	GASKET	1							N
		(A=*1990.06)									
4	1	171340-77520	BEND	1							
5	1	26106-080402	BOLT, M8X 40 PLATED	2							
6	1	26106-080802	BOLT, M8X 80 PLATED	2							

Fig.40. GASKET SET & TOOL(OPTIONAL)

(A)=3TN84L-RMZ
(B)=
(C)=

(D)=
(E)=
(F)=



No.	Lev.	Parts No.	Description	Q'ty						I	R
				(A)	(B)	(C)	(D)	(E)	(F)		
1	1	729131-92610	GASKET SET	1							1
1-1	1	729131-92611	GASKET SET	1							R 1
		(A=E01447)									
1-2	1	729132-92602	GASKET SET	1							N 1
		(A=EXXX)									
2	2	129105-01330	GASKET, HEAD	1							
2-1	2	129157-01332	GASKET, HEAD	1							R
		(A=E01447)									
3	2	124240-01882	GASKET	3							
3-1	2	124240-01883	GASKET	3							N
		(A=*1990.01)									
4	2	121850-51960	O-RING	1							
5	2	24311-000320	O-RING, 1AP32.0	1							
6	2	129150-01660	GASKET	1							Z
		(A=E08030)									
7	2	24311-000260	O-RING, 1AP26.0	1							
7-1	2	24341-000240	O-RING, 1AS24.0	1							N
		(A=EXXX)									
8	2	24341-000500	O-RING, 1AS50.0	1							
9	2	129150-11310	GASKET, BONNET	1							
10	2	24321-000350	O-RING, 1AG35.0	1							
11	2	129150-12110	GASKET, MANIFOLD	1							
11-1	2	129150-12111	GASKET, MANIFOLD	1							N
		(A=*1990.06)									
12	2	129150-13110	GASKET	1							
13	2	129150-01880	GASKET	1							
13-1	2	129150-01881	GASKET	1							N
		(A=*1990.06)									
14	2	129150-32020	GASKET, PUMP	1							
15	2	129150-35110	GASKET	1							
15-1	2	129150-35111	GASKET	1							N
		(A=*1990.06)									
16	2	129100-42020	GASKET, WATER PUMP	1							
17	2	129795-49550	GASKET	1							
17-1	2	129795-49551	GASKET	1							N
		(A=*1990.06)									
18	2	129150-49810	GASKET, THERMOSTAT	1							
18-1	2	129150-49811	GASKET, THERMOSTAT	1							N
		(A=*1990.06)									
19	2	129100-49840	GASKET	1							
20	2	129100-77510	GASKET	1							
21	2	129150-77510	GASKET	1							
21-1	2	129150-77511	GASKET	1							N
		(A=*1990.06)									
22	1	129400-92420	HONE	1							1

Remarks

(1) OPTIONAL PART.

N:Old $\xrightarrow{\text{Yes}}$ New, Q:Old $\xrightarrow{\text{No}}$ New, R:Old $\xrightarrow{\text{Yes}}$ New, S:Old $\xrightarrow{\text{No}}$ New, W:Add, Z:Discontinued, F:Interchangeable by set, K:Q'ty Change

Parts No. Index

Parts No.	Fig. No.	Ref. No.
101304-59020	33	2
103338-11190	9	14
103854-39140	33	1
104200-59170	33	3
105025-59760	34	19
106800-59560	34	11 -1
114250-53080	31	3
114250-53120	31	5
114250-53130	31	6
114250-53140	31	7
114250-53210	31	8
114250-53400	31	9
119260-34810	22	2
119625-11870	9	29
119625-11880	9	30
119625-11900	9	31
119810-51040	30	2
119840-59560	34	3
119840-59570	34	4
119840-59601	34	15
119840-59611	34	17
119840-59621	34	18
119865-35300	24	4
120130-11860	9	3
121023-01550	6	1
121100-22400	16	4
		4 -2
121120-77011	37	1
121120-77930	37	12
121137-59080	34	12
121250-44901	29	4
121250-59550	34	2
121256-44600	27	8
121400-11340	9	18 A
121400-91251	37	55
121400-91271	37	56
121420-01760	10	2
121450-01560	2	3
121450-01570	38	1
121450-42450	29	3
121522-59090	34	13
121522-59100	27	10
121550-23200	17	3
121550-49111	1	16
121850-11860	9	5
	26	1
121850-21680	14	7
121850-51960	2	9
	40	4
122117-51560	30	34

Parts No.	Fig. No.	Ref. No.
122710-51090	30	5
124001-42290	27	1
124066-59100	34	1
		8
124160-01751	2	4
	10	1 A
	1	2
124160-01910	1	2
124160-11360	10	5
124160-21501	15	1
124160-39140	25	1
124160-39450	25	2
124240-01871	2	6
		21
124240-01882	2	7
		22
	20	2
	40	3
124240-01883	2	7 -1
		22 -1
	20	2 -1
	40	3 -1
124323-59030	34	10
124323-59040	34	11
124450-21230	15	3
124450-44510	27	6
124450-44550	27	7
124460-11340	9	15
		15 -1
124465-44950	29	5
		6
124550-21600	15	4
124550-51350	30	20
124550-51370	30	21
124550-59820	25	4
124550-66370	35	37
124574-44761	27	4
124732-59080	27	9
124736-07900	8	1
124766-59050	34	16
124766-59530	27	11
124770-11770	28	4
124950-51190	30	10
128170-51300	30	17
128300-77920	37	54
129100-01520	2	2
129100-01580	3	2 -1
		2 -2
	5	4 -1
	14	4 B
	15	5 -1

Parts No.	Fig. No.	Ref. No.
129100-01580	15	5 -2
129100-01590	2	1
129100-01640	5	2
129100-01730	4	5
129100-01790	4	4
129100-11100	9	10
129100-11110	9	11
129100-11350	10	1
129100-13110	12	1
129100-23910	17	2
129100-25061	18	1
129100-42000	26	2
129100-42001	26	2 -1
129100-42002	26	2 -2
129100-42020	26	3
	40	16
129100-49050	29	1
129100-49800	28	3
129100-49820	28	5
129100-49830	28	6
129100-49840	28	11
	40	19
129100-52200	30	60
129100-59910	32	3
129100-59920	32	4
129100-59930	32	5
129100-59951	34	6
129100-61400	35	17
129100-61440	35	19
129100-61450	35	20
129100-61650	35	29
129100-61821	35	33 -1
129100-61930	35	35
129100-77330	38	16
129100-77500	39	1
129100-77510	39	2
	40	20
129102-53000	31	2
129105-01330	1	15
	40	2
129105-22080	16	1
		1 -2
129105-22500	16	2 -1
129128-34800	22	1
129128-34810	22	3
129129-14580	13	1
129131-21590	15	2
129131-51980	35	2
129150-01200	1	14
129150-01580	2	25

Parts No.	Fig. No.	Ref. No.
129150-01580	20	1
129150-01600	3	1
129150-01660	5	1
	40	6
129150-01880	20	3
	40	13
129150-01881	20	3 -1
		3 -2
	40	13 -1
129150-02020	1	8
129150-02450	1	12
	13	3 A
129150-02800	1	9
129150-02870	1	17
129150-02930	1	10
129150-02940	1	18
129150-03010	7	1
129150-03020	10	4 A
129150-03070	7	3
	10	4 B
129150-03080	7	2
	10	4 C
129150-03090	7	6
129150-03100	7	7
129150-11230	9	26
129150-11280	9	22
129150-11290	9	23
129150-11310	10	4
	40	9
129150-11370	9	16
129150-11750	9	27
129150-11810	9	4
129150-12100	11	1
129150-12110	11	2
	40	11
129150-12111	11	2 -1
	40	11 -1
129150-13110	12	2
	40	12
129150-14101	13	2
129150-14200	13	4
129150-14400	13	5
129150-21200	14	2
129150-22300	16	3
		3 -2
129150-23600	17	4
129150-23610	17	5
129150-25101	18	2
129150-25900	19	1
129150-26050	20	6

Parts No. Index

Parts No.	Fig. No.	Ref. No.
129150-32000	21	1
129150-32020	21	2
	40	14
129150-35040	23	1
129150-35041	23	1 -1
129150-35091	23	2
129150-35101	24	1
129150-35110	24	2
	40	15
129150-35111	24	2 -1
	40	15 -1
129150-35150	24	3
129150-35350	24	5
129150-39450	25	3
129150-49810	28	10
	40	18
129150-49811	28	10 -1
	40	18 -1
129150-59120	32	1
129150-59130	32	2
129150-59580	34	5
		9
129150-66800	36	1
129150-77201	38	2
129150-77202	38	2 -1
129150-77210	38	3 -1
129150-77230	38	10 -1
129150-77510	39	3
	40	21
129150-77511	39	3 -1
	40	21 -1
129155-11241	9	19
129155-11260	9	20
129155-11270	9	21
129155-49800	28	9
129155-51020	30	56 -1
129155-51050	30	3
129155-51060	30	4
129155-51140	30	7
129155-51180	30	9
129155-51200	30	11
129155-51250	30	13
129155-51270	30	15
129155-51280	30	16
	35	1
129155-51320	30	18
129155-51340	30	19
129155-51370	30	22
129155-51380	30	23
129155-51390	30	24

Parts No.	Fig. No.	Ref. No.
129155-51400	30	25
129155-51410	30	26
129155-51420	30	27
129155-51450	30	28
129155-51500	30	29
129155-51520	30	30
129155-51521	30	30 -1
129155-51530	30	31
129155-51540	30	32
129155-51550	30	33
129155-51570	30	36
129155-51580	30	37
129155-51591	30	38
129155-51600	30	39
129155-51700	30	40
129155-51710	30	41
129155-51750	30	42
129155-51760	30	43
129155-51790	30	44
129155-51930	30	46
129155-51940	30	47
129155-52050	30	59
129155-61010	35	3
129155-61011	35	3 -1
129155-61050	35	4
129155-61060	35	5
129155-61070	35	6
129155-61090	35	7
129155-61120	35	8
129155-61130	35	9
129155-61140	35	10
129155-61201	35	15
129155-61341	35	16
129155-61430	35	18
129155-61450	35	21
129155-61460	35	22
129155-61480	35	23
129155-61490	35	24
129155-61540	35	28
129155-61801	35	31
129155-61802	35	31 -1
129155-61810	35	32
129155-61820	35	33
129155-61830	35	34
		34 -1
129155-61950	35	36
129155-66810	36	2
129155-66820	36	3
129156-51910	30	45
129157-01332	1	15 -1

Parts No.	Fig. No.	Ref. No.
129157-01332	40	2 -1
129202-22300	16	3 -1
129350-49530	28	1
129400-51100	30	6
129400-92420	40	22
129403-42380	27	2
129500-61500	35	25
129503-53000	31	2 -1
129555-26000	20	5
129555-26201	20	7
129555-26240	20	8
129555-59510	34	14
129795-01780	5	3
129795-01800	2	1 B
		5
129795-01950	2	8
129795-02411	1	11
129795-11120	9	12
129795-11180	9	13
129795-21661	14	6
129795-49550	28	2
	40	17
129795-49551	28	2 -1
	40	17 -1
135210-61090	35	54
171031-11741	10	7
171051-01921	1	3
171085-91610	37	57
171301-01640	4	2
171340-21650	14	5
171340-77520	39	4
171353-61710	35	30
171440-44740	27	3
174100-54120	30	14
174307-51170	30	8
174307-51560	30	35
174307-51700	35	26
194640-41110	20	10
194990-22050	12	3
	20	4
22117-040000	35	38
		38 -1
22117-080000	36	4
22190-100000	35	39
22217-050000	30	48
	35	40
		40 -1
		40 -2
22217-060000	30	49
22217-120000	19	2

Parts No.	Fig. No.	Ref. No.
22252-000260	16	4 -1
22272-000040	35	41
22272-000060	35	42
22282-120000	35	43
22287-120000	35	43 -1
22312-080160	3	2
	5	4
	15	5
22351-030016	35	44
22351-040010	14	3
		8
22351-050010	30	50
22351-060012	9	17
22360-040000	35	45 -1
22360-050000	35	45
22360-080000	36	5
22372-040000	35	45 -2
22451-060000	35	55
22512-070140	13	3
	14	4
23000-016000	29	2
23414-050000	35	46
23414-080000	25	5
23414-100000	25	6
23414-120000	34	7
23871-010000	1	4
23871-030000	9	6
	28	7
23887-100002	35	47
24101-060024	20	9
24101-063033	30	51
24101-063034	30	51 -1
24311-000080	35	56
24311-000120	10	6
24311-000160	2	10
	24	6
24311-000260	6	2
	40	7
24311-000320	2	11
	10	2 -1
	40	5
24311-240100	22	4
	35	56 -1
24321-000350	10	8
	40	10
24341-000160	30	52
24341-000240	4	3
	6	2 -1
	40	7 -1
24341-000500	7	4

Parts No. Index

Parts No.	Fig. No.	Ref. No.
24341-000500	10	4 D
	40	8
26014-060252	27	5
26014-080252	38	17
26022-050102	30	53
	35	50 -1
		50 -2
26022-060122	35	27
26022-060162	30	54
26106-060122	6	3
26106-060202	35	48 -1
26106-080122	2	12
		23 -1
	36	6
26106-080142	8	2
26106-080162	1	13
	2	13
		14
		23
	4	7
	7	5
	10	4 E
26106-080202	24	7
	28	12
26106-080252	4	6
	9	32
	11	3
	28	13
26106-080302	5	5
26106-080352	5	6
	23	3 -1
26106-080402	20	1 -1
	36	7
	39	5
26106-080452	2	15
	4	8
	18	4
26106-080502	4	9
	9	33
	28	14
26106-080552	2	16
26106-080602	26	4
	28	15
26106-080802	12	4
	39	6
26106-080852	2	17
26106-081202	20	11
26107-060202	35	48
26116-050302	30	55
26116-060162	28	8

Parts No.	Fig. No.	Ref. No.
26116-080352	23	3
26116-120252	37	53
26206-100202	3	3
26206-100252	3	4
26216-060162	30	56
26216-060202	9	7
26216-080222	12	5
26216-080802	12	6
26226-080182	9	28
26366-060002	9	18
26366-080002	2	18
	35	49
26366-100002	38	15
26450-060252	21	3
26557-050102	35	50
26687-120002	35	35 -1
26716-060002	30	57
26716-120002	19	3
26756-060002	35	51
		51 -1
26776-120002	35	52
27231-500000	1	5
27241-100000	9	24
27241-120000	1	6
27241-220000	9	8
27241-300000	1	7
27241-400000	9	9
27310-080001	9	14 -1
43400-500390	35	46 -1
43400-500410	2	19
		20
		24
43400-500430	35	39 -1
43400-500450	35	53
43400-500490	30	58
529002-22080	16	1 -1
711100-51540	30	12
729100-01540	4	1
729102-01540	4	1 -1
729102-11700	9	1
729102-11701	9	1 -1
729102-21700	14	1 -1
729102-53100	31	1
729105-22900	16	5
729131-51360	30	1
729131-51380	30	1 -1
729131-92610	40	1
729131-92611	40	1 -1
729132-92602	40	1 -2
729150-11651	9	25

Parts No.	Fig. No.	Ref. No.
729150-21700	14	1
729150-23700	17	1
729157-01560	1	1
729157-22500	16	2
729157-22950	16	6
729402-11650	9	25 -1
729402-23100	17	1 -1
X0280210230	37	5
X0280620480	37	2
X0280630011	37	3
X0280992381	37	4
X0281003770	37	13
X0282002320	37	14
X0283060061	37	17
X0283270140	37	6
X0283711420	37	18
X0283711770	37	7
X0283712360	37	19
X0283810040	37	8
X0285011600	37	20
X0285100750	37	21
X0289030010	37	23
X0534006470	37	24
X0534040320	37	25
X0534490120	37	26
		27
X0534490230	37	28
		29
X0535050620	37	30
X0535130241	37	31
X0535130320	37	32
X0536600401	37	33
X1284000710	37	43
X9019008651	37	44
X9025806001	37	45
X9025808001	37	46
X9151005141	37	34
X9490071970	37	47
X9490170900	37	35
		36
X9490422570	37	48
X9490441303	37	37
X9490441312	37	38
X9490502820	37	39
		40
X9490561370	37	49
X9490721080	37	9
X9491002590	37	15
X9491002760	37	16
X9491200240	37	50

Parts No.	Fig. No.	Ref. No.
X9491402100	37	41
		42
X9491403700	37	51
X9491703371	37	10
X9491703380	37	52
X9491704260	37	11
X9491730461	37	22
XM069000000	38	4
XM081770000	38	3
XM081780000	38	5
XM178780000	38	6
XM219230000	38	11
XM329830000	38	12
XM821850000	38	10
XM860250000	38	13
XM863720000	38	14
XYSPS400800	38	7
XYSPS402400	38	8
		8 -1