

0CC50-M00910EN

# P R E F A C E

This parts catalog is the 1st edition of TF120ML-XA.

Published : July, 2017

# Contents

OCC50-M00910

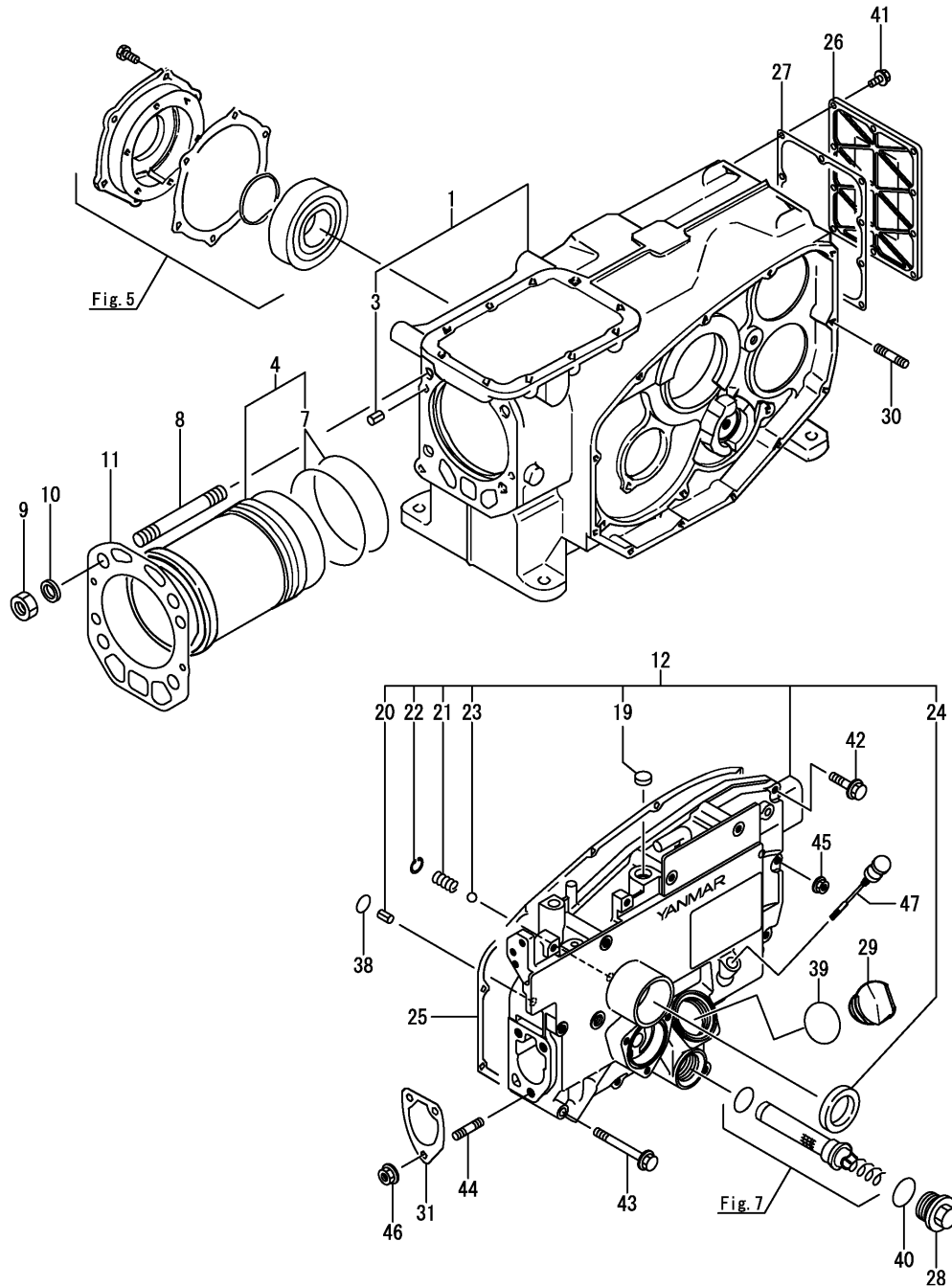
Fig. No. Fig. Name

Fig. No. Fig. Name

## ENGINE

1. CYLINDER BLOCK
2. CYLINDER HEAD & BONNET
3. AIR CLEANER & MUFFLER
4. CAMSHAFT & BALANCER
5. CRANKSHAFT & FLYWHEEL
6. PISTON & CONNECTING ROD
7. LUB. OIL SYSTEM
8. RADIATOR & FUEL TANK
9. FAN
10. FUEL INJECTION PUMP
11. FUEL INJECTION DEVICE
12. GOVERNOR & CONTROL EQUIPMENT
13. LIGHTING DEVICE
14. LABEL
15. TOOL

Fig.1. CYLINDER BLOCK

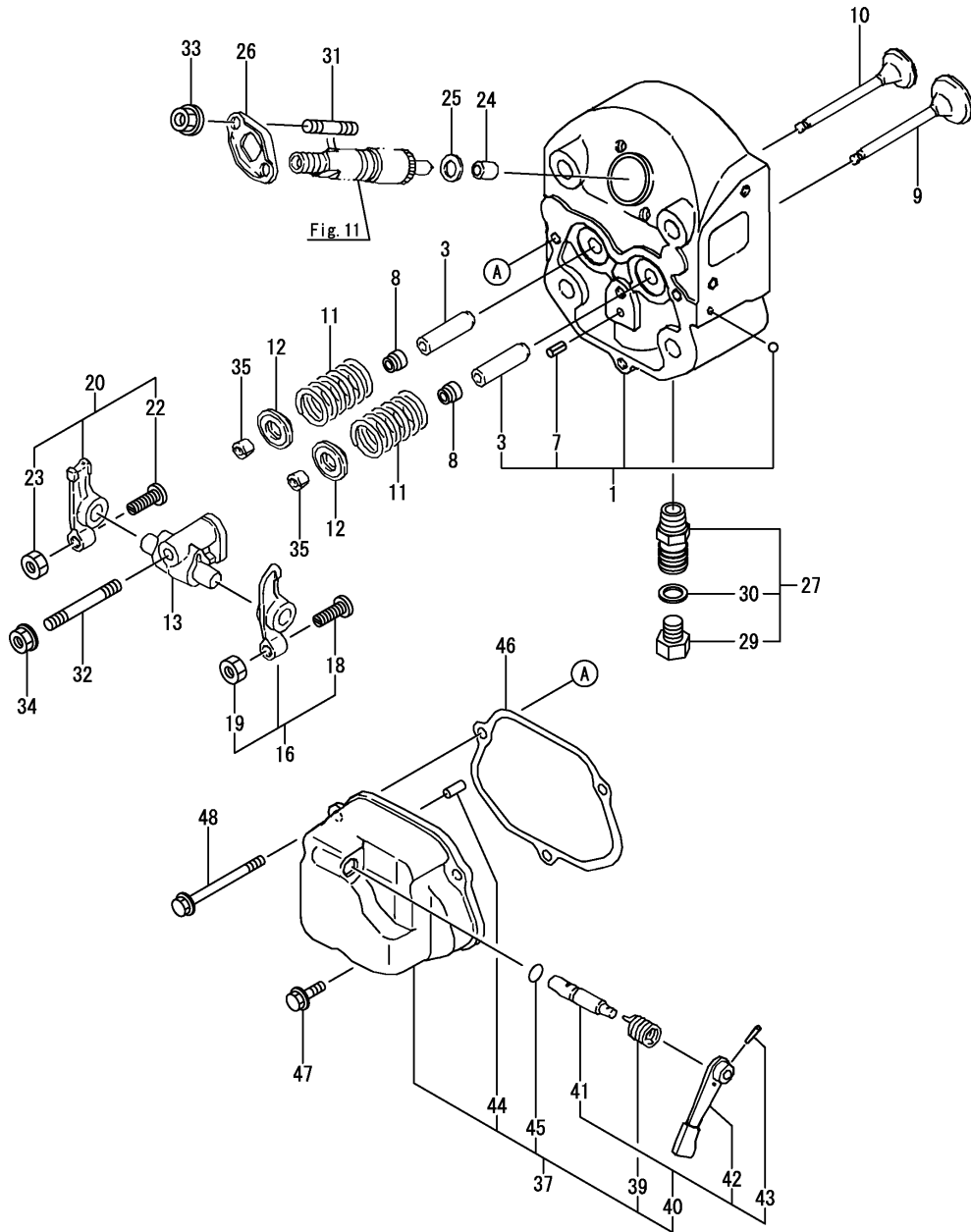


(A)=TF120ML-XA  
(B)=  
(C)=

(D)=  
(E)=  
(F)=

No.	Lev.	Parts No.	Description	Q'ty						I	R
				(A)	(B)	(C)	(D)	(E)	(F)		
1	1	105600-01560	BODY, CYLINDER SUB A	1							
3	2	22351-060012	PIN, SPRING 6.0X12	2							
4	1	705600-01900	LINER ASSY, CYLINDER	1							
7	2	105500-01300	GASKET, LINER	2							
8	1	105500-01230	BOLT, CYLINDER HEAD	4							
9	1	104300-01220	NUT, CYLINDER HEAD	4							
10	1	103338-01240	WASHER	4							
11	1	105500-01331	GASKET, HEAD	1							
12	1	10560G-01500	CASE SUB ASSY, GEAR	1							
19	2	105100-01660	PLUG, 14	1							
20	2	22351-060012	PIN, SPRING 6.0X12	1							
21	2	105300-34040	SPRING	1							
22	2	22252-000100	RING, 10	1							
23	2	24190-120001	BALL, STEEL 3/8	1							
24	2	120270-61250	SEAL, OIL	1							
25	1	105500-01410	GASKET	1							
26	1	105500-01480	COVER	1							
27	1	10550G-01490	GASKET	1							
28	1	105300-01690	PLUG	1							
29	1	10540H-01751	CAP, FEEDER	1							
30	1	10530H-01800	BOLT	1							
31	1	10560G-01850	SHIM ASSY, ADJUST	1							
38	1	24311-000060	O-RING, 1AP6.0	1							
39	1	24311-000320	O-RING, 1AP32.0	1							
40	1	24321-000250	O-RING, 1AG25.0	1							
41	1	26106-060162	BOLT, M6X 16 PLATED	10							
42	1	26106-060252	BOLT, M6X 25 PLATED	6							
43	1	26106-060652	BOLT, M6X 65 PLATED	6							
44	1	26216-080222	STUD, M8X 22	3							
45	1	26366-060002	NUT, M6	1							
46	1	26366-080002	NUT, M8	3							
47	1	10530H-34850	DIPSTICK, OIL	1							

Fig.2. CYLINDER HEAD & BONNET



(A)=TF120ML-XA  
(B)=  
(C)=

(D)=  
(E)=  
(F)=

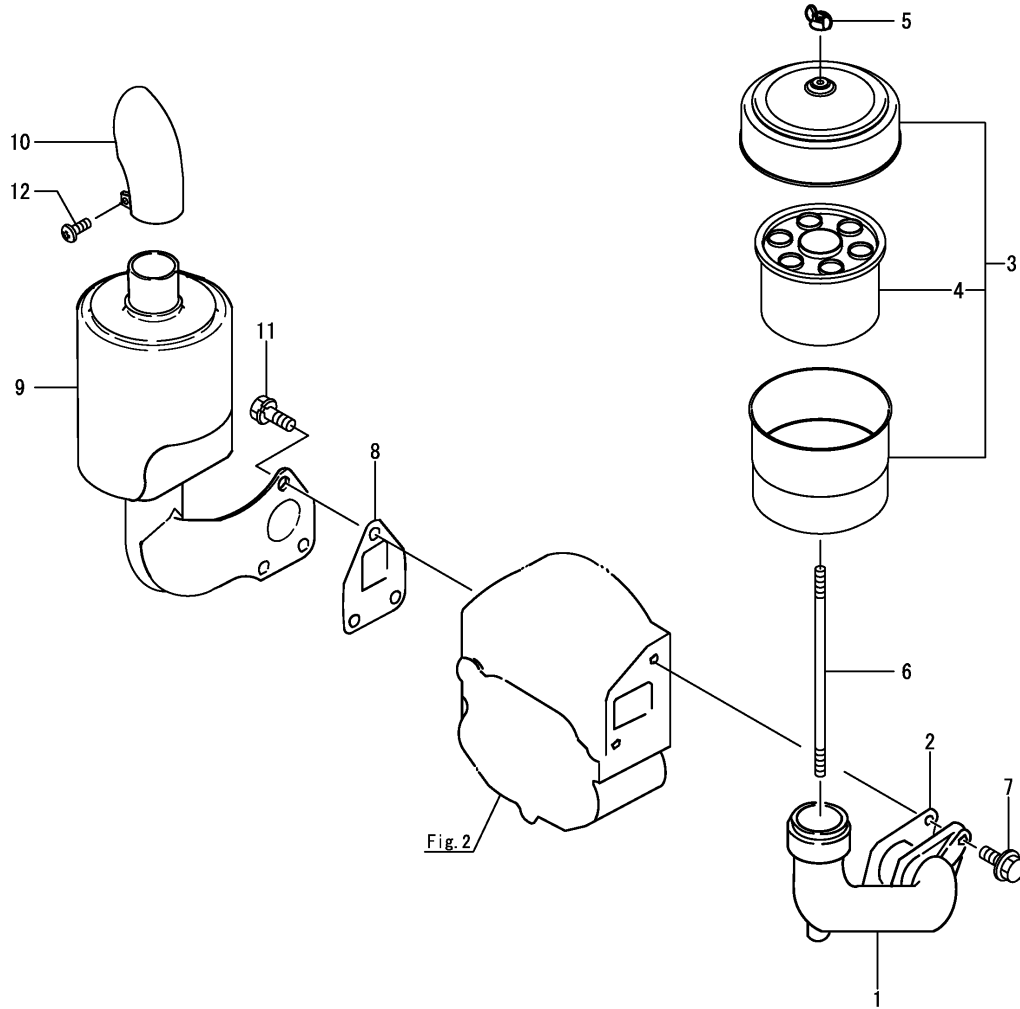
No.	Lev.	Parts No.	Description	Q'ty						I	R
				(A)	(B)	(C)	(D)	(E)	(F)		
1	1	10550G-11600	HEAD SUB ASSY, CYL.	1							
3	3	105600-11800	GUIDE, VALVE	2							1
7	2	22351-060012	PIN, SPRING 6.0X12	1							
8	1	105500-11340	SEAL, VALVE STEM	2							
9	1	105500-11100	VALVE, INTAKE	1							
10	1	105500-11111	VALVE, EXHAUST	1							
11	1	10550G-11120	SPRING, VALVE	2							
12	1	103338-11180	RETAINER, SPRING	2							
13	1	10550H-11290	SUPPORT ASSY, ARM	1							
16	1	105500-11650	ARM, ROCKER	1							
18	2	101158-11230	SCREW, VALVE ADJUST	1							
19	2	26756-080002	NUT, LOCK M8	1							
20	1	105500-11660	ARM, ROCKER	1							
22	2	101158-11230	SCREW, VALVE ADJUST	1							
23	2	26756-080002	NUT, LOCK M8	1							
24	1	119625-11871	PROTECTOR, NOZZLE	1							
25	1	119625-11880	SEAT, NOZZLE	1							
26	1	119625-11900	RETAINER, NOZZLE	1							
27	1	10510G-11921	DRAIN, CW ASSY	1							
29	2	10510G-11940	BOLT, DRAIN	1							
30	2	22190-120002	WASHER, SEAL 12	1							
31	1	26216-060252	STUD, M6X 25	2							
32	1	26216-080502	STUD, M8X 50	1							
33	1	26366-060002	NUT, M6	2							
34	1	26366-080002	NUT, M8	1							
35	1	27310-080001	COTTER, 8	2							
37	1	10550H-11520	BONNET ASSY	1							
39	2	104200-03641	SPRING, DECOMPRESSION	1							
40	2	10530H-03550	LEVER ASSY, DECOMP.	1							
41	3	10530H-03610	SHAFT, DECOMP LEVER	1							
42	3	104104-03750	LEVER, DECOMPRESSION	1							
43	3	22322-030160	PIN, TAPER 3X16	1							
44	2	22312-030180	PIN, PARALLEL M3X18	1							
45	2	24311-000070	O-RING, 1AP7.0	1							
46	1	105500-11310	GASKET, BONNET	1							
47	1	26106-060202	BOLT, M6X 20 PLATED	2							
48	1	26106-060702	BOLT, M6X 70 PLATED	1							

Remarks

(1) Spare parts.

N:Old  $\begin{matrix} \leftarrow \text{Yes} \\ \text{No} \end{matrix}$  New, Q:Old  $\begin{matrix} \leftarrow \text{No} \\ \text{Yes} \end{matrix}$  New, R:Old  $\begin{matrix} \leftarrow \text{Yes} \\ \text{Yes} \end{matrix}$  New, S:Old  $\begin{matrix} \leftarrow \text{No} \\ \text{No} \end{matrix}$  New, W:Add, Z:Discontinued, F:Interchangeable by set, K:Q'ty Change

Fig.3. AIR CLEANER & MUFFLER

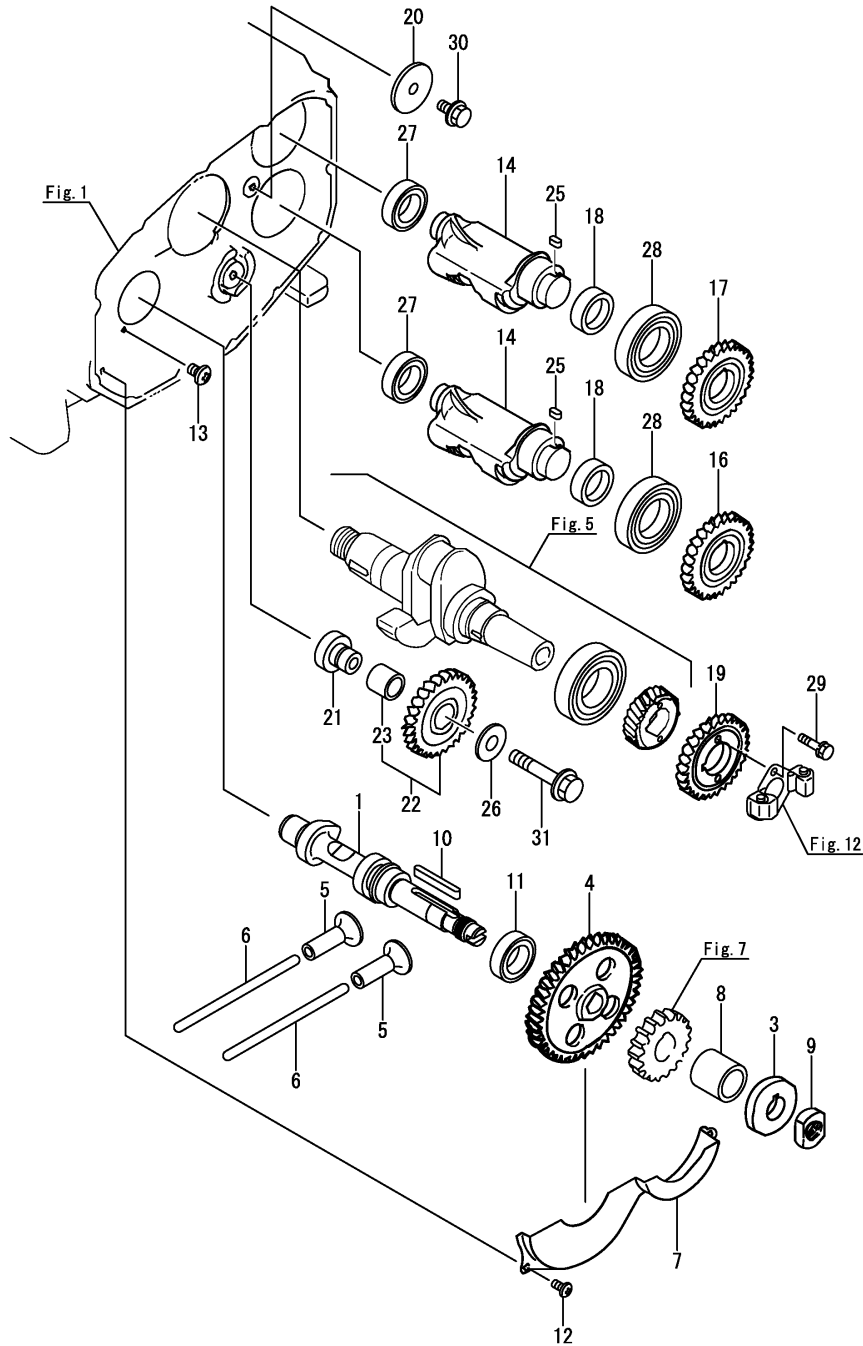


No.	Lev.	Parts No.	Description	Q'ty						I	R
				(A)	(B)	(C)	(D)	(E)	(F)		
1	1	10560G-12030	PIPE, AIR INTAKE	1							
2	1	105500-12050	GASKET	1							
3	1	10460G-12510	CLEANER ASSY, AIR	1							
4	2	104600-12540	ELEMENT, AIR CLEANER	1							
5	1	101147-12550	NUT	1							
6	1	105300-12550	BOLT	1							
7	1	26106-080202	BOLT, M8X 20 PLATED	2							
8	1	105500-13201	GASKET, SILENCER	1							
9	1	105500-13511	SILENCER ASSY	1							
10	1	10550G-13580	PIPE, EXHAUST	1							
11	1	26013-080209	BOLT, M8X 20	3							
12	1	26116-060162	BOLT, M6X 16 PLATED	1							

Fig.4. CAMSHAFT & BALANCER

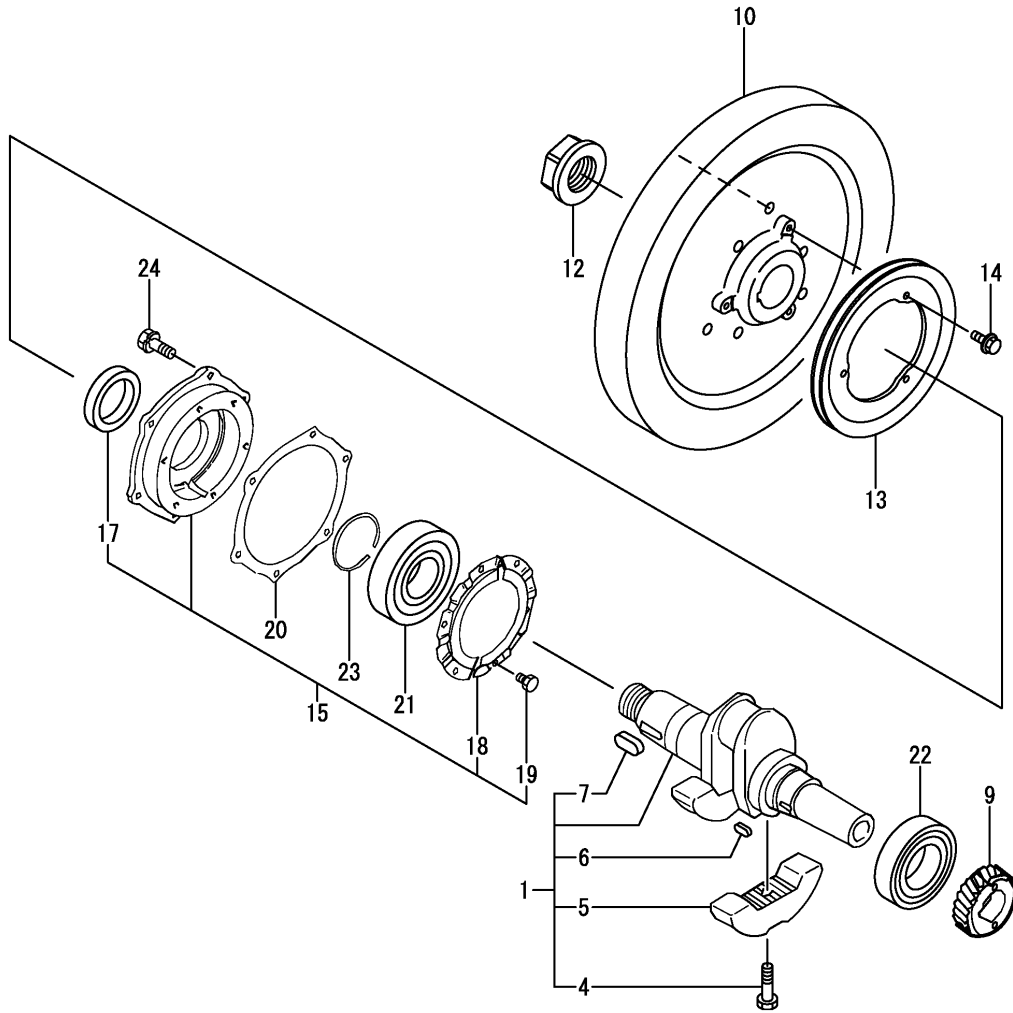
(A)=TF120ML-XA  
(B)=  
(C)=

(D)=  
(E)=  
(F)=



No.	Lev.	Parts No.	Description	Q'ty						I	R
				(A)	(B)	(C)	(D)	(E)	(F)		
1	1	10557H-14010	CAMSHAFT	1							
3	1	10560H-14090	CAM, FUEL	1							
4	1	10560H-14100	GEAR, CAMSHAFT	1							
5	1	10530H-14200	TAPPET	2							
6	1	10550H-14400	ROD, PUSH	2							
7	1	10550H-14600	COVER	1							
8	1	10530G-14700	SPACER	1							
9	1	104300-76460	NUT	1							
10	1	22512-070600	KEY, 7X 60	1							
11	1	24101-060064	BEARING, BALL 6006	1							
12	1	26022-060122	SCREW, M6X12	3							
13	1	26587-080122	SCREW, M8X12	1							
14	1	105500-28251	SHAFT, BALANCER	2							
16	1	10560G-28300	GEAR, BALANCER	1							
17	1	10560G-28310	GEAR, BALANCER	1							
18	1	105500-28380	SPACER	2							
19	1	10560H-28410	GEAR, BALANCER	1							
20	1	105300-28450	RETAINER	1							
21	1	105300-28700	SHAFT	1							
22	1	10550G-28750	GEAR ASSY	1							
23	2	105430-28720	BUSH, IDLE GEAR	1							
25	1	105215-76490	KEY	2							
26	1	123672-83880	RETAINER	1							
27	1	24101-060054	BEARING, BALL 6005	2							
28	1	24101-060094	BEARING, BALL 6009	2							
29	1	26013-060222	BOLT, M6X 22	2							
30	1	26106-080142	BOLT, M8X 14 PLATED	1							
31	1	26106-100502	BOLT, M10X 50 PLATED	1							

Fig.5. CRANKSHAFT & FLYWHEEL



(A)=TF120ML-XA  
(B)=  
(C)=

(D)=  
(E)=  
(F)=

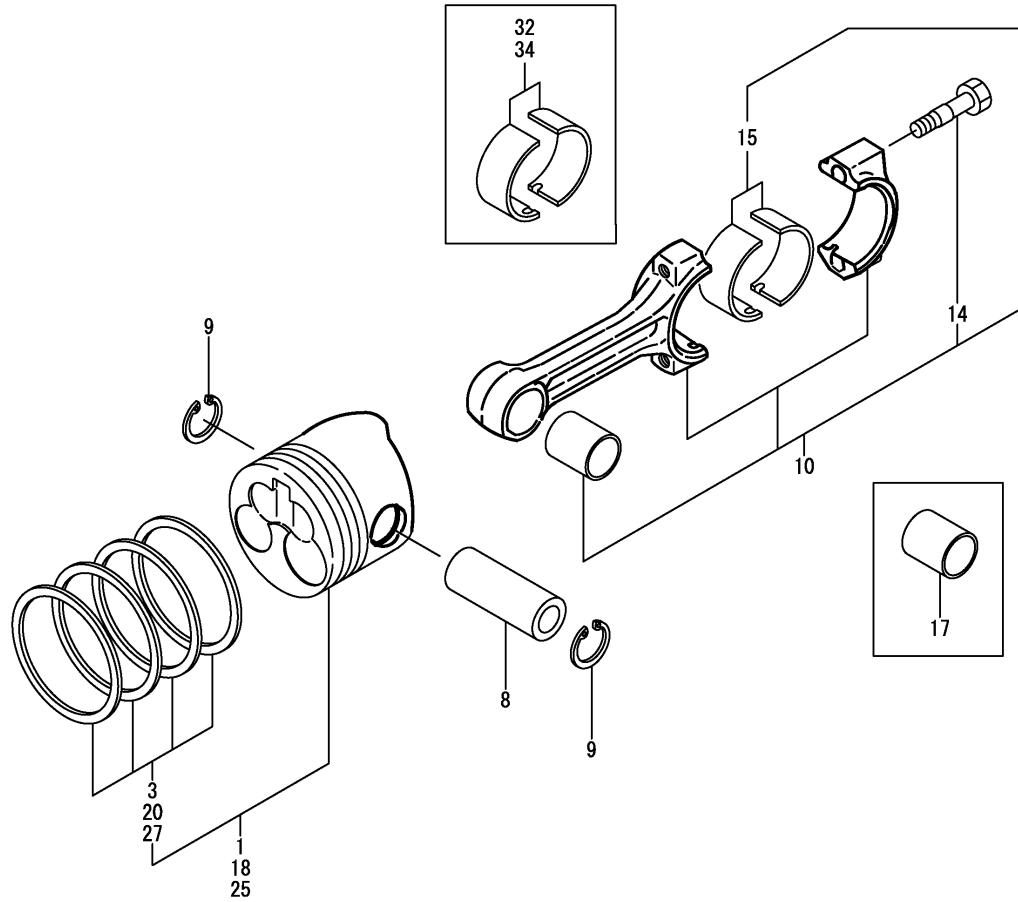
No.	Lev.	Parts No.	Description	Q'ty						I	R
				(A)	(B)	(C)	(D)	(E)	(F)		
1	1	705500-21701	CRANKSHAFT ASSY	1							
4	2	104271-21100	BOLT, BALANCE WEIGHT	2							
5	2	105500-21100	WEIGHT, BALANCE	2							
6	2	22512-050200	KEY, 5X 20	1							
7	2	22512-100300	KEY, 10X 30	1							
9	1	10560H-21200	GEAR, CRANKSHAFT	1							
10	1	105500-21401	FLYWHEEL	1							
12	1	106330-21530	NUT, END	1							
13	1	10530G-21600	V-PULLEY	1							
14	1	26106-060162	BOLT, M6X 16 PLATED	3							
15	1	10550G-02500	HOUSING SUB ASSY	1							
17	2	103288-02221	SEAL, OIL	1							
18	2	10550H-02320	RETAINER	1							
19	2	26116-060102	BOLT, M6X 10 PLATED	3							
20	1	105500-02020	GASKET	1							
21	1	105600-02300	BEARING, 6310G3C3	1							
22	1	10560H-02310	BEARING, NF309-C3	1							
23	1	22242-000500	RING, 50	1							
24	1	26013-080202	BOLT, M8X 20	7							



Fig.6. PISTON & CONNECTING ROD

(A)=TF120ML-XA  
(B)=  
(C)=

(D)=  
(E)=  
(F)=

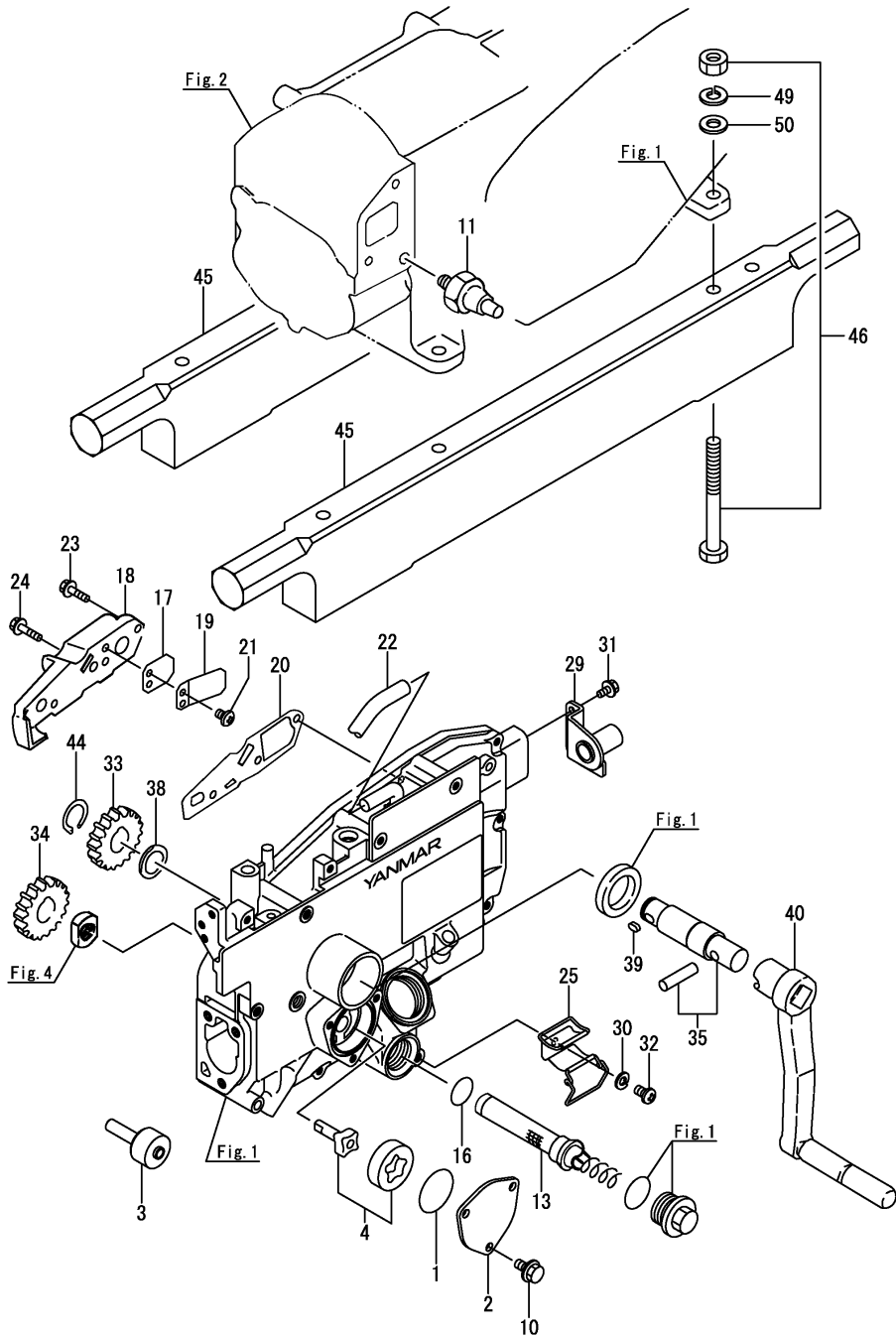


No.	Lev.	Parts No.	Description	Q'ty						I	R
				(A)	(B)	(C)	(D)	(E)	(F)		
1	1	10560H-22070	PISTON ASSY	1							
3	2	10567H-22500	RING SET, PISTON	1							
8	1	105500-22300	PIN, PISTON	1							
9	1	105500-22400	CIRCLIP	2							
10	1	70550G-23100	ROD ASSY, CONNECTING	1							
14	2	105500-23200	BOLT, CONNECTING ROD	2							
15	2	105500-23300	METAL, CRANK PIN	2							
17	1	105500-23910	BEARING, PISTON PIN	1							1
18	1	105600-22470	PISTON W/RING .25OS	1							2
20	2	105600-22510	RING SET, 0.25 OS	1							2
25	1	105600-22480	PISTON W/RING .50OS	1							3
27	2	105600-22520	RING SET, 0.50 OS	1							3
32	1	705500-23610	BEARING ASSY, 0.25	1							4
34	1	705500-23620	BEARING, 0.50 US	1							5

Remarks

- (1) Spare parts.
- (2) Over-sized (O.S.=0.25) parts.
- (3) Over-sized (O.S.=0.50) parts.
- (4) Under-sized (U.S.=0.25) parts.
- (5) Under-sized (U.S.=0.50) parts.

Fig.7. LUB. OIL SYSTEM

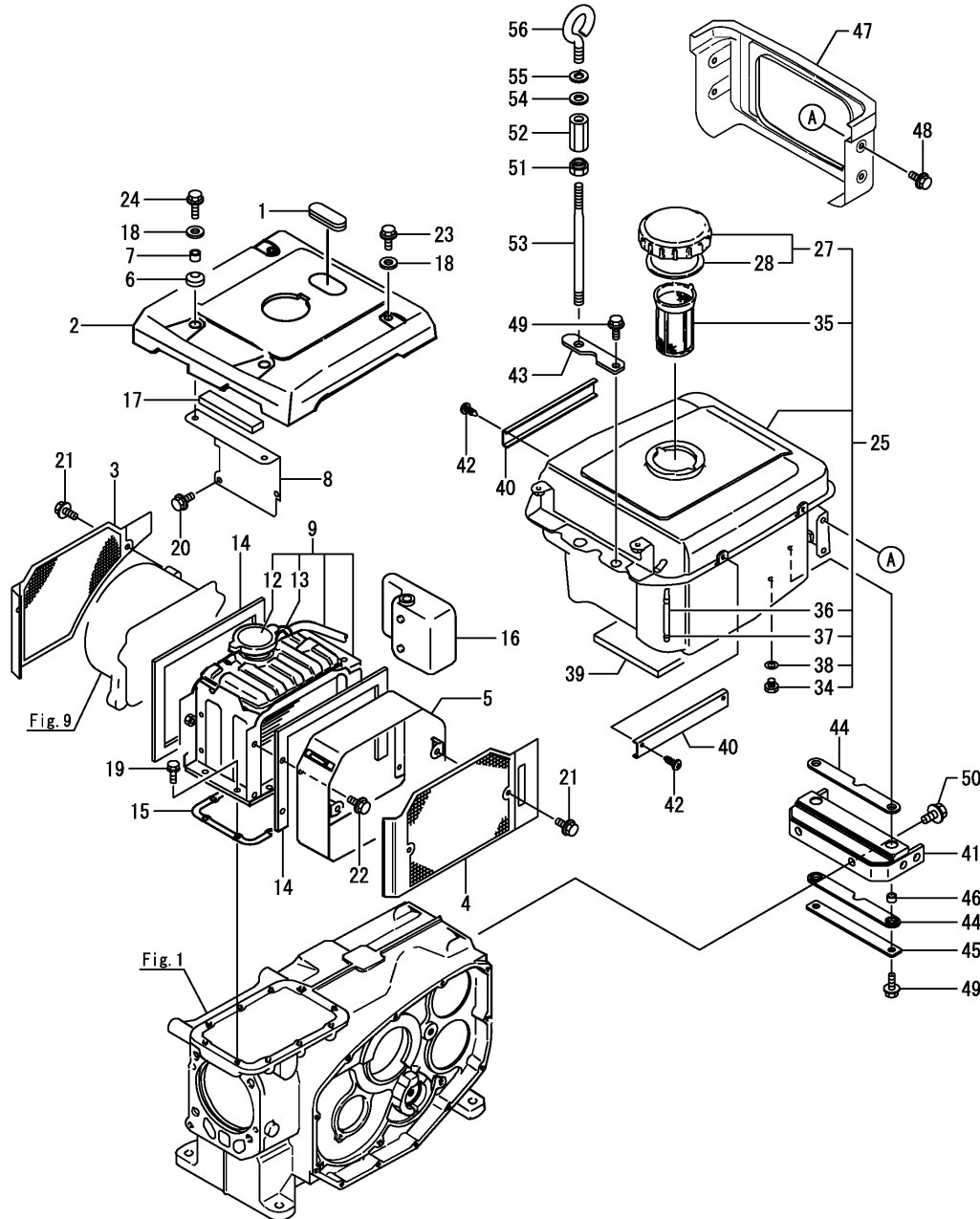


(A)=TF120ML-XA  
(B)=  
(C)=

(D)=  
(E)=  
(F)=

No.	Lev.	Parts No.	Description	Qty						I	R
				(A)	(B)	(C)	(D)	(E)	(F)		
1	1	103854-32051	O-RING	1							
2	1	103854-32082	COVER	1							
3	1	10530H-32200	PIECE	1							
4	1	10537H-32500	PUMP, LUB.OIL CMP	1							
10	1	26106-060122	BOLT, M6X 12 PLATED	3							
11	1	105582-34100	SIGNAL	1							
13	1	105306-35052	STRAINER ASSY, OIL	1							
16	1	24341-000200	O-RING, 1AS20.0	1							
17	1	101158-03061	VALVE	1							
18	1	10550H-03081	COVER, BREATHER	1							
19	1	101158-03111	RETAINER	1							
20	1	105500-03130	GASKET, BREATHER	1							
21	1	105362-78960	SCREW, M4X8	2							
22	1	23064-090400	PIPE, 9X 400	1							
23	1	26106-060222	BOLT, M6X 22 PLATED	2							
24	1	26106-060282	BOLT, M6X 28 PLATED	1							
25	1	10530G-08520	SPRING ASSY, HANDLE	1							
29	1	105378-08101	BRACKET, HANDLE	1							
30	1	22217-060000	WASHER, SPRING 6	1							
31	1	26106-060122	BOLT, M6X 12 PLATED	2							
32	1	26557-060102	SCREW, M6X10	1							
33	1	10530G-76330	GEAR, STARTING	1							
34	1	10530G-76330	GEAR, STARTING	1							
35	1	10510G-76500	SHAFT SUB ASSY,START	1							
38	1	105300-76470	COLLAR	1							
39	1	105300-76490	KEY, 7X10	1							
40	1	10510G-76790	HANDLE ASSY	1							
44	1	22242-000200	RING, 20	1							
45	1	10550G-08010	BED, WOODEN	2							
46	1	10540G-08050	BOLT, W/NUT	4							
49	1	10540G-08060	WASHER, SPRING	4							
50	1	22117-120000	WASHER, 12	4							

Fig.8. RADIATOR & FUEL TANK



(A)=TF120ML-XA

(B)=

(C)=

(D)=

(E)=

(F)=

No.	Lev.	Parts No.	Description	Q'ty						I	R
				(A)	(B)	(C)	(D)	(E)	(F)		
1	1	105300-44220	COVER, RADIATOR	1							
2	1	105600-44250	COVER, RADIATOR	1							
3	1	10550G-44330	SCREEN	1							
4	1	10560G-44340	SCREEN	1							
5	1	10550G-44360	DUCT, SCREEN	1							
6	1	105300-44451	RUBBER, CUSHION	2							
7	1	105300-44460	COLLAR	2							
8	1	105300-44491	STAY	1							
9	1	105600-44520	RADIATOR ASSY	1							
12	2	105198-44590	CAP, RADIATOR	1							
13	2	121250-44590	CLAMP, HOSE	1							
14	1	10580G-44540	SPONGE, RADIATOR	2							
15	1	10550H-44611	GASKET, RADIATOR	1							
16	1	105300-44630	TANK, SUB	1							
17	1	10540G-44850	FELT, STAY RADIATOR	1							
18	1	160120-76940	WASHER	4							
19	1	26013-060162	BOLT, M6X 16	9							
20	1	26106-060102	BOLT, M6X 10 PLATED	2							
21	1	26106-060102	BOLT, M6X 10 PLATED	4							
22	1	26106-060102	BOLT, M6X 10 PLATED	4							
23	1	26106-060122	BOLT, M6X 12 PLATED	2							
24	1	26106-060162	BOLT, M6X 16 PLATED	2							
25	1	10560G-55210	TANK SUB ASSY, FO	1							
27	2	10547H-55040	CAP, FUEL TANK	1							
28	3	10530H-55050	GASKET	1							
34	2	105300-55080	PLUG, 8	1							
35	2	101504-55101	STRAINER, FUEL	1							
36	2	10560G-55160	GAUGE, OIL LEVEL	1							
37	2	103854-55220	RETAINER	2							
38	2	104884-59170	GASKET	1							
39	1	10540G-55220	FELT, FO TANK	2							
40	1	10550G-55230	GUARD, LINE	2							
41	1	10550G-55240	STAY, FUEL TANK	1							
42	1	10570G-55270	SCREW, TAPPING	4							
43	1	105198-55520	RETAINER	1							
44	1	105400-55520	RUBBER, CUSHION	2							
45	1	10550G-55530	RETAINER	1							
46	1	105100-55540	COLLAR	2							
47	1	10550H-55810	COVER, LIGHT	1							
48	1	26106-060122	BOLT, M6X 12 PLATED	4							
49	1	26106-080222	BOLT, M8X 22 PLATED	3							
50	1	26106-100202	BOLT, M10X 20 PLATED	2							
51	1	104107-07900	NUT, M10	1							
52	1	105500-07920	NUT, M10	1							
53	1	10550G-07940	STUD	1							
54	1	22137-100000	WASHER, 10	1							
55	1	22217-100000	WASHER, SPRING 10	1							
56	1	26617-100002	BOLT, EYE M10	1							

Fig.9. FAN

(A)=TF120ML-XA

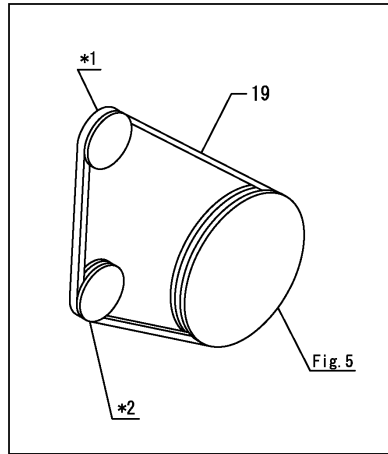
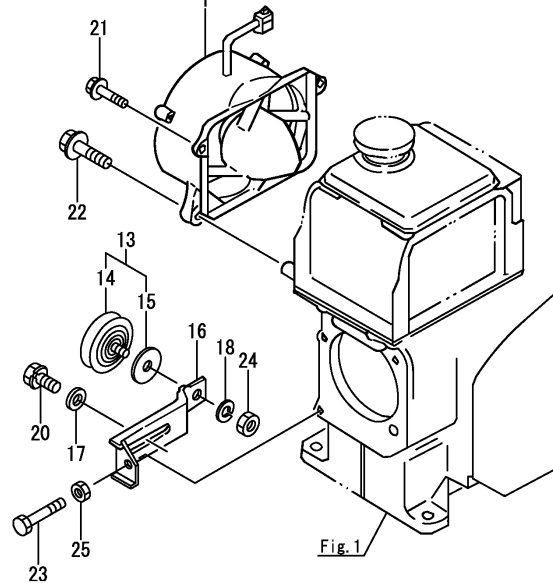
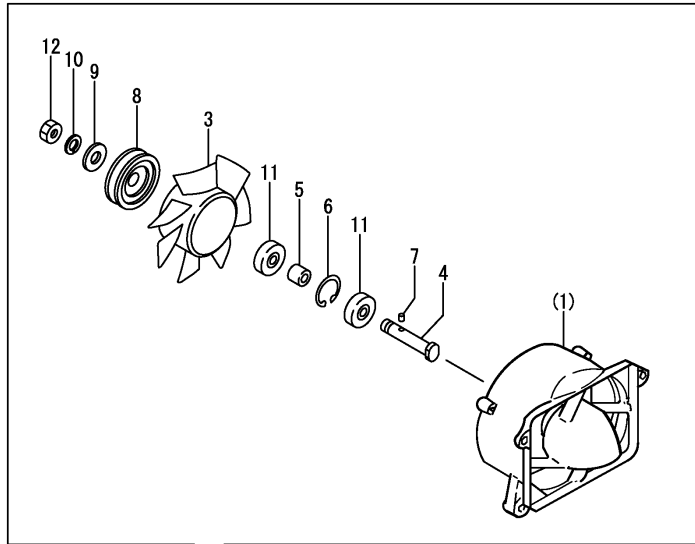
(B)=

(C)=

(D)=

(E)=

(F)=



No.	Lev.	Parts No.	Description	Q'ty						I	R
				(A)	(B)	(C)	(D)	(E)	(F)		
1	1	105500-44201	CASE ASSY, FAN	1							
3	2	105500-44700	FAN, COOLING	1							
4	2	105340-44710	SHAFT, FAN	1							
5	2	106383-44720	SPACER	1							
6	2	106383-44740	CIRCLIP	1							
7	2	105340-44750	PIN	1							
8	2	105100-44770	PULLEY, FAN	2							
9	2	105100-44780	WASHER, PULLEY	1							
10	2	22217-120000	WASHER, SPRING 12	1							
11	2	24107-062013	BEARING, 6201ZZP6	2							
12	2	26777-120002	NUT, LOCK M12	1							
13	1	10550G-44810	PULLEY ASSY, TENSION	1							
14	2	10610H-44651	PULLEY, TENSION	1							
15	2	106100-44960	CAP	1							
16	1	105500-44940	LEVER	1							
17	1	22137-080000	WASHER, 8	1							
18	1	22217-080000	WASHER, SPRING 8	1							
19	1	25117-003901	V-BELT, M39H	1							
20	1	26013-080162	BOLT, M8X 16	1							
21	1	26106-060252	BOLT, M6X 25 PLATED	2							
22	1	26106-080302	BOLT, M8X 30 PLATED	2							
23	1	26116-060504	BOLT, M6X 50 PLATED	1							
24	1	26716-080002	NUT, M8	1							
25	1	26756-060002	NUT, LOCK M6	1							

Remarks

\*1. Fan pulley

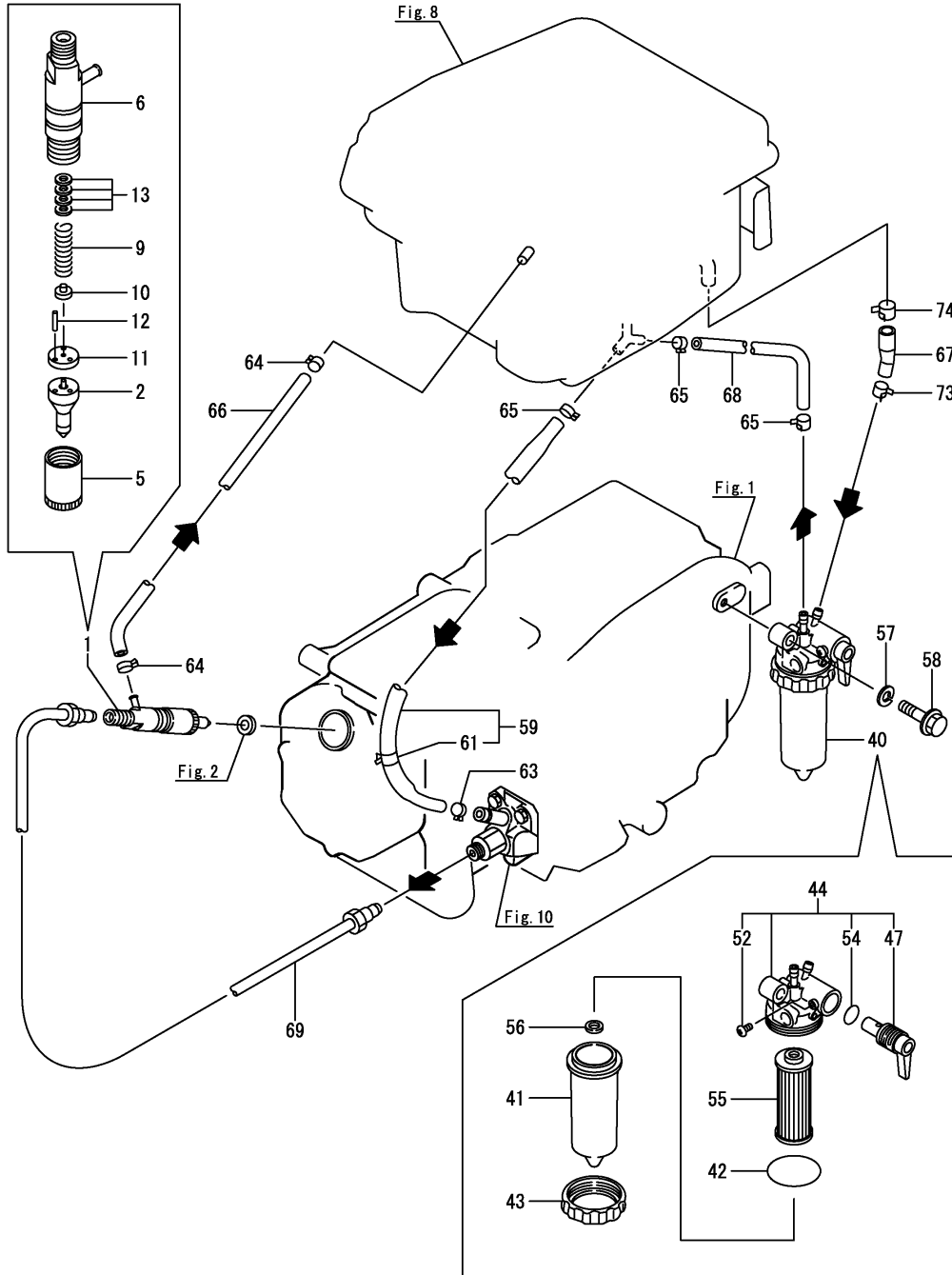
\*2. Tension pulley



Fig.11. FUEL INJECTION DEVICE

(A)=TF120ML-XA  
(B)=  
(C)=

(D)=  
(E)=  
(F)=



No.	Lev.	Parts No.	Description	Q'ty						I	R
				(A)	(B)	(C)	(D)	(E)	(F)		
1	1	705672-53100	FUEL INJECTOR ASSY	1							
2	2	105672-53000	NOZZLE ASSY	1							
5	2	114250-53080	NUT, NOZZLE	1							
6	2	105300-53100	HOLDER ASSY, NOZZLE	1							
9	2	114250-53120	SPRING, NOZZLE	1							
10	2	114250-53130	SEAT, SPRING	1							
11	2	114250-53140	SPACER	1							
12	2	114250-53210	PIN	2							
13	2	119803-53400	SHIM SET	1							
40	1	105198-55601	STRAINER ASSY, FO	1							
41	2	105198-55510	CUP, STRAINER	1							
42	2	105300-55520	O-RING	1							
43	2	105300-55610	RING, RETAINING	1							
44	2	105300-55730	BODY ASSY, STRAINER	1							
47	3	105300-55340	LEVER	1							
52	3	104200-55750	SCREW, PAN M4	1							
54	3	24311-000160	O-RING, 1AP16.0	1							
55	2	105370-55711	ELEMENT	1							
56	2	105300-55750	FLOAT	1							
57	1	22217-080000	WASHER, SPRING 8	1							
58	1	26106-080302	BOLT, M8X 30 PLATED	1							
59	1	105500-59020	PIPE ASSY, FUEL	1							
61	2	124766-59050	CLAMP, HOSE 11.5	1							
63	1	10540G-59050	CLAMP, HOSE M10	1							
64	1	124722-59050	CLAMP, HOSE 9	2							
65	1	124766-59050	CLAMP, HOSE 11.5	3							
66	1	10550G-59100	PIPE, OVERFLOW	1							
67	1	105500-59560	PIPE, FUEL	1							
68	1	105300-59570	PIPE, FUEL	1							
69	1	105500-59800	PIPE ASSY, INJECTION	1							
73	1	23080-013000	CLAMP, 13	1							
74	1	23080-015000	CLAMP, 15	1							

Fig.12. GOVERNOR & CONTROL EQUIPMENT

(A)=TF120ML-XA

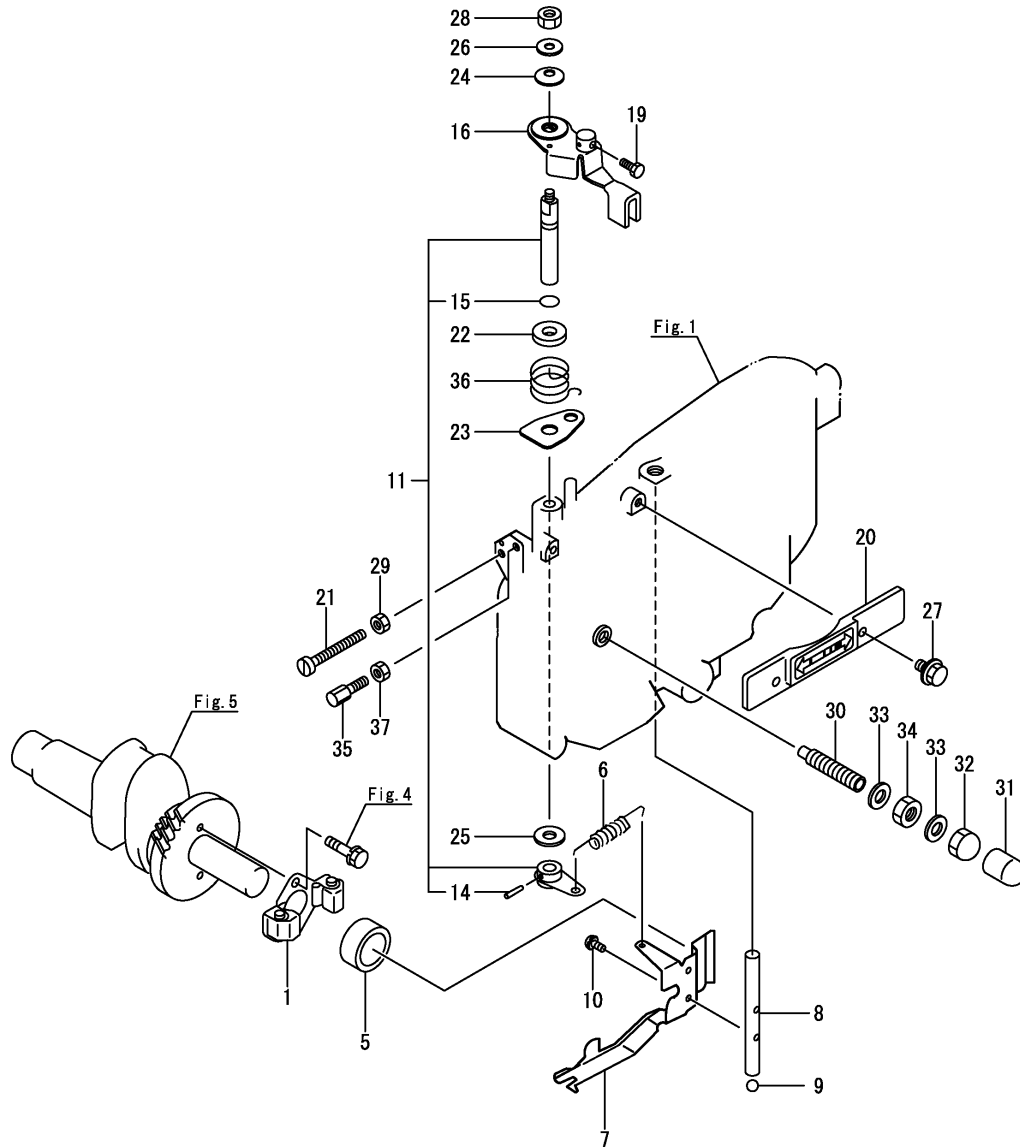
(B)=

(C)=

(D)=

(E)=

(F)=

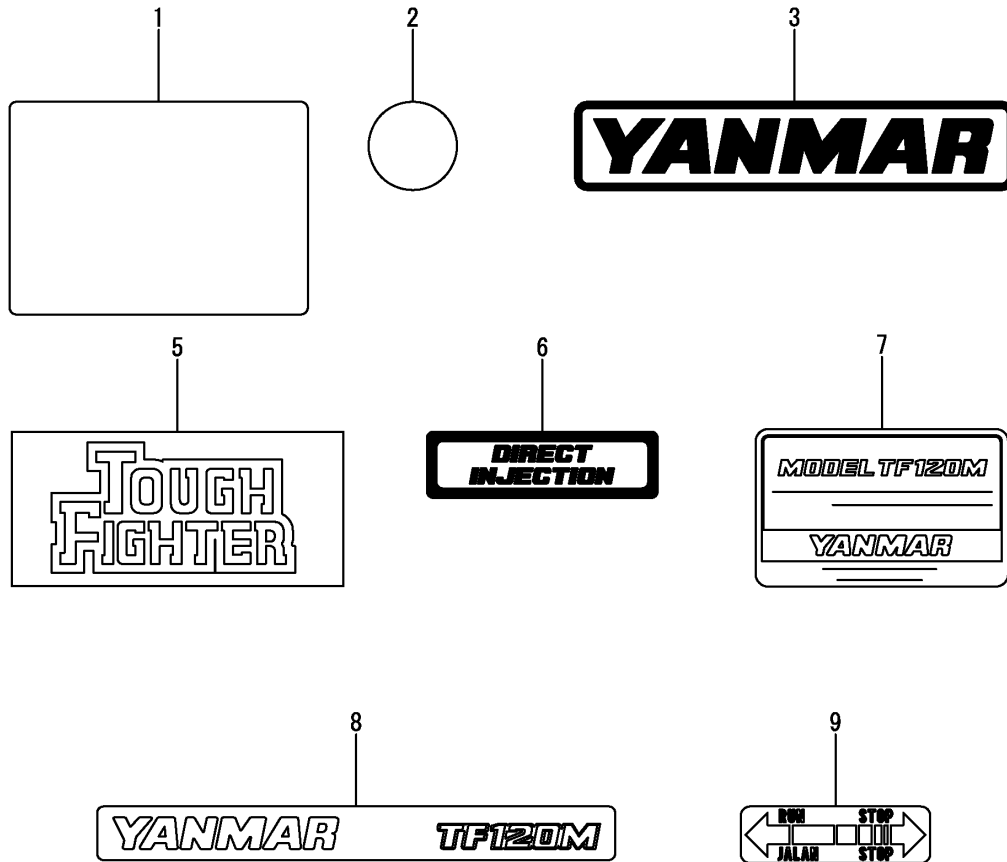


No.	Lev.	Parts No.	Description	Qty						I	R
				(A)	(B)	(C)	(D)	(E)	(F)		
1	1	705300-61701	GOVERNOR ASSY	1							
5	1	10530H-61600	SLEEVE, GOVERNOR	1							
6	1	105300-66010	SPRING, REGULATOR	1							
7	1	105500-66300	LEVER, GOVERNOR	1							
8	1	105300-66400	SHAFT	1							
9	1	24190-120001	BALL, STEEL 3/8	1							
10	1	26022-050102	SCREW, M5X10	2							
11	1	705300-66700	LEVER ASSY,REGULATOR	1							
14	2	22322-030200	PIN, TAPER 3X20	1							
15	2	24311-000070	O-RING, 1AP7.0	1							
16	1	10550G-66042	HANDLE ASSY	1							
19	1	105225-66990	SCREW, M5X8.5	1							
20	1	10530G-66110	COVER, HANDLE REG.	1							
21	1	105300-66520	SCREW	1							
22	1	10530H-66830	PLATE, FRICTION	1							
23	1	105300-66850	RETAINER	1							
24	1	105840-66880	SPRING	1							
25	1	22117-100000	WASHER, 10	1							
26	1	22137-060000	WASHER, 6	1							
27	1	26106-060102	BOLT, M6X 10 PLATED	2							
28	1	26347-060002	NUT, M6	1							
29	1	26756-060002	NUT, LOCK M6	1							
30	1	10567H-66550	LIMITER ASSY, FUEL	1							
31	1	105300-66610	CAP	1							
32	1	124060-66950	NUT, CAP M10	1							
33	1	22190-100002	WASHER, SEAL 10	2							
34	1	26796-100002	NUT, LOCK M10	1							
35	1	102100-67080	BOLT, ADJUST	1							
36	1	105502-67301	SPRING, RETURN	1							
37	1	26756-060002	NUT, LOCK M6	1							





Fig.14. LABEL

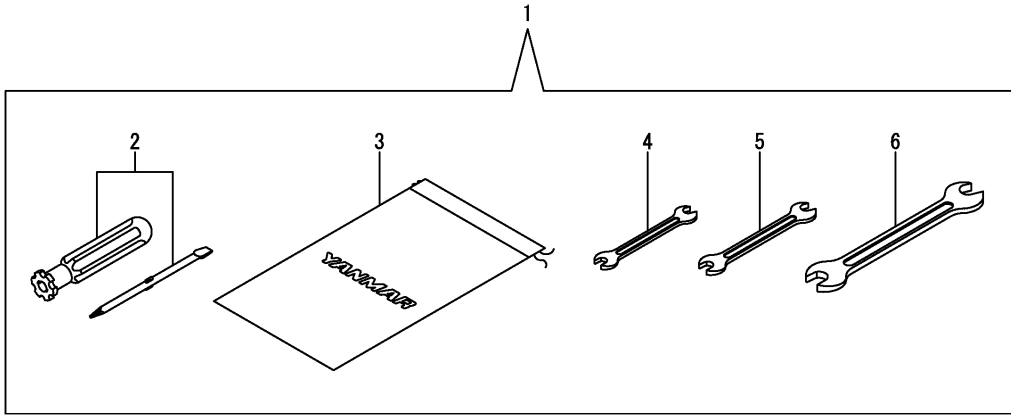


(A)=TF120ML-XA  
(B)=  
(C)=

(D)=  
(E)=  
(F)=

No.	Lev.	Parts No.	Description	Q'ty						I	R
				(A)	(B)	(C)	(D)	(E)	(F)		
1	1	10530G-07120	LABEL, MAINTENANCE	1							
2	1	105372-07150	LABEL, LUB.OIL	1							
3	1	10420G-07261	LABEL, YANMER	1							
5	1	10530G-07300	LABEL, FRONT	1							
6	1	10510G-07341	LABEL, DIRECT INJECT	1							
7	1	10560G-07640	LABEL, ENGINE SPEC.	1							
8	1	10560G-07710	LABEL, ENGINE MODEL	2							
9	1	10530G-66120	LABEL, COVER REGULAT	1							

Fig.15. TOOL



(A)=TF120ML-XA  
(B)=  
(C)=

(D)=  
(E)=  
(F)=

No.	Lev.	Parts No.	Description	Q'ty						I	R
				(A)	(B)	(C)	(D)	(E)	(F)		
1	1	10530H-92110	TOOL SET	1							
2	2	104200-92350	SCREW-DRIVER	1							
3	2	10530G-92600	BAG, TOOL	1							
4	2	28110-100120	SPANNER, 10X12	1							
5	2	28110-140170	SPANNER, 14X17	1							
6	2	28110-190220	SPANNER, 19X22	1							

## Parts No. Index

Parts No.	Fig. No.	Ref. No.
101147-12550	3	5
101158-03061	7	17
101158-03111	7	19
101158-11230	2	18
		22
101504-55101	8	35
102100-67080	12	35
103288-02221	5	17
103338-01240	1	10
103338-11180	2	12
103854-32051	7	1
103854-32082	7	2
103854-51251	10	13
103854-55220	8	37
104104-03750	2	42
104107-07900	8	51
104200-03641	2	39
104200-55750	11	52
104200-92350	15	2
10420G-07261	14	3
104271-21100	5	4
104271-51450	10	22
104271-51460	10	23
104300-01220	1	9
104300-76460	4	9
104600-12540	3	4
10460G-12510	3	3
104884-59170	8	38
105100-01660	1	19
105100-44770	9	8
105100-44780	9	9
105100-55540	8	46
10510G-07341	14	6
10510G-11921	2	27
10510G-11940	2	29
10510G-76500	7	35
10510G-76790	7	40
105198-44590	8	12
105198-55510	11	41
105198-55520	8	43
105198-55601	11	40
105215-76490	4	25
105225-66990	12	19
105300-01690	1	28
105300-12550	3	6
105300-28450	4	20
105300-28700	4	21
105300-34040	1	21
105300-44220	8	1
105300-44451	8	6

Parts No.	Fig. No.	Ref. No.
105300-44460	8	7
105300-44491	8	8
105300-44630	8	16
105300-51300	10	14
105300-51400	10	21
105300-51500	10	26
105300-51510	10	24
105300-51550	10	25
105300-51800	10	41
105300-53100	11	6
105300-55080	8	34
105300-55340	11	47
105300-55520	11	42
105300-55610	11	43
105300-55730	11	44
105300-55750	11	56
105300-59570	11	68
105300-66010	12	6
105300-66400	12	8
105300-66520	12	21
105300-66610	12	31
105300-66850	12	23
105300-76470	7	38
105300-76490	7	39
105306-35052	7	13
10530G-07120	14	1
10530G-07300	14	5
10530G-08520	7	25
10530G-14700	4	8
10530G-21600	5	13
10530G-66110	12	20
10530G-66120	14	9
10530G-76330	7	33
		34
10530G-92600	15	3
10530H-01800	1	30
10530H-03550	2	40
10530H-03610	2	41
10530H-14200	4	5
10530H-32200	7	3
10530H-34850	1	47
10530H-55050	8	28
10530H-61600	12	5
10530H-66830	12	22
10530H-78020	13	1
10530H-78250	13	2
10530H-92110	15	1
105340-44710	9	4
105340-44750	9	7
105362-78960	7	21

Parts No.	Fig. No.	Ref. No.
105370-55711	11	55
105372-07150	14	2
105378-08101	7	29
10537H-32500	7	4
105400-55520	8	44
10540G-08050	7	46
10540G-08060	7	49
10540G-44850	8	17
10540G-55220	8	39
10540G-59050	11	63
10540G-78550	13	3
10540H-01751	1	29
105430-28720	4	23
10547H-55040	8	27
105500-01230	1	8
105500-01300	1	7
105500-01331	1	11
105500-01410	1	25
105500-01480	1	26
105500-02020	5	20
105500-03130	7	20
105500-07920	8	52
105500-11100	2	9
105500-11111	2	10
105500-11310	2	46
105500-11340	2	8
105500-11650	2	16
105500-11660	2	20
105500-12050	3	2
105500-13201	3	8
105500-13511	3	9
105500-21100	5	5
105500-21401	5	10
105500-22300	6	8
105500-22400	6	9
105500-23200	6	14
105500-23300	6	15
105500-23910	6	17
105500-28251	4	14
105500-28380	4	18
105500-44201	9	1
105500-44700	9	3
105500-44940	9	16
105500-51600	10	27
105500-59020	11	59
105500-59560	11	67
105500-59800	11	69
105500-66300	12	7
105502-67301	12	36
10550G-01490	1	27

Parts No.	Fig. No.	Ref. No.
10550G-02500	5	15
10550G-07940	8	53
10550G-08010	7	45
10550G-11120	2	11
10550G-11600	2	1
10550G-13580	3	10
10550G-28750	4	22
10550G-44330	8	3
10550G-44360	8	5
10550G-44810	9	13
10550G-55230	8	40
10550G-55240	8	41
10550G-55530	8	45
10550G-59100	11	66
10550G-66042	12	16
10550H-02320	5	18
10550H-03081	7	18
10550H-11290	2	13
10550H-11520	2	37
10550H-14400	4	6
10550H-14600	4	7
10550H-44611	8	15
10550H-55810	8	47
10557H-14010	4	1
105582-34100	7	11
105600-01560	1	1
105600-02300	5	21
105600-11800	2	3
105600-22470	6	18
105600-22480	6	25
105600-22510	6	20
105600-22520	6	27
105600-44250	8	2
105600-44520	8	9
10560G-01500	1	12
10560G-01850	1	31
10560G-07640	14	7
10560G-07710	14	8
10560G-12030	3	1
10560G-28300	4	16
10560G-28310	4	17
10560G-44340	8	4
10560G-55160	8	36
10560G-55210	8	25
10560H-02310	5	22
10560H-14090	4	3
10560H-14100	4	4
10560H-21200	5	9
10560H-22070	6	1
10560H-28410	4	19

## Parts No. Index

Parts No.	Fig. No.	Ref. No.
105672-53000	11	2
10567H-22500	6	3
10567H-66550	12	30
10570G-55270	8	42
10580G-44540	8	14
105840-66880	12	24
106100-44960	9	15
10610H-44651	9	14
106330-21530	5	12
106383-44720	9	5
106383-44740	9	6
114250-51190	10	5
114250-53080	11	5
114250-53120	11	9
114250-53130	11	10
114250-53140	11	11
114250-53210	11	12
119625-11871	2	24
119625-11880	2	25
119625-11900	2	26
119803-53400	11	13
120270-61250	1	24
121250-44590	8	13
123672-83880	4	26
124060-66950	12	32
124550-51320	10	17
124550-51341	10	18
124550-51350	10	19
124550-51370	10	20
124722-59050	11	64
124766-59050	11	61
		65
124950-51190	10	6
158600-51170	10	3
160120-76940	8	18
174100-54120	10	12
174307-51181	10	4
174307-51700	10	30
22117-100000	12	25
22117-120000	7	50
22137-060000	12	26
22137-080000	9	17
22137-100000	8	54
22190-100002	12	33
22190-120002	2	30
22217-060000	7	30
22217-080000	9	18
	11	57
22217-100000	8	55
22217-120000	9	10

Parts No.	Fig. No.	Ref. No.
22242-000200	7	44
22242-000500	5	23
22252-000100	1	22
22312-030180	2	44
22322-030160	2	43
22322-030200	12	14
22351-060012	1	3
		20
	2	7
22512-050200	5	6
22512-070600	4	10
22512-100300	5	7
23064-090400	7	22
23080-013000	11	73
23080-015000	11	74
24101-060054	4	27
24101-060064	4	11
24101-060094	4	28
24107-062013	9	11
24190-120001	1	23
	12	9
24311-000060	1	38
24311-000070	2	45
	12	15
24311-000160	11	54
24311-000320	1	39
24321-000250	1	40
24341-000200	7	16
25117-003901	9	19
26013-060162	8	19
26013-060222	4	29
26013-080162	9	20
26013-080202	5	24
26013-080209	3	11
26022-050102	10	45
	12	10
26022-060122	4	12
26106-060102	8	20
		21
		22
	12	27
26106-060122	7	10
		31
	8	23
		48
	13	4
26106-060162	1	41
	5	14
	8	24
26106-060202	2	47

Parts No.	Fig. No.	Ref. No.
26106-060222	7	23
26106-060252	1	42
	9	21
26106-060282	7	24
26106-060652	1	43
26106-060702	2	48
26106-080142	4	30
26106-080202	3	7
26106-080222	8	49
26106-080302	9	22
	11	58
26106-100202	8	50
26106-100502	4	31
26116-060102	5	19
26116-060162	3	12
26116-060504	9	23
26216-060252	2	31
26216-080222	1	44
26216-080502	2	32
26347-060002	12	28
26366-060002	1	45
	2	33
26366-080002	1	46
	2	34
26557-060102	7	32
26587-080122	4	13
26617-100002	8	56
26716-080002	9	24
26756-060002	9	25
	12	29
		37
26756-080002	2	19
		23
26777-120002	9	12
26796-100002	12	34
27310-080001	2	35
28110-100120	15	4
28110-140170	15	5
28110-190220	15	6
705300-61701	12	1
705300-66700	12	11
705500-21701	5	1
705500-23610	6	32
705500-23620	6	34
70550G-23100	6	10
705600-01900	1	4
705600-51103	10	1
705672-53100	11	1
711100-51540	10	8
724550-51520	10	7

Parts No.	Fig. No.	Ref. No.
-----------	----------	----------