

0CC50-M00870EN

# P R E F A C E

This parts catalog is the 1st edition of L100N6FZ1T1AAAL for ASHOK LEYLAND.

Published : January, 2016

# Contents

OCC50-M00870

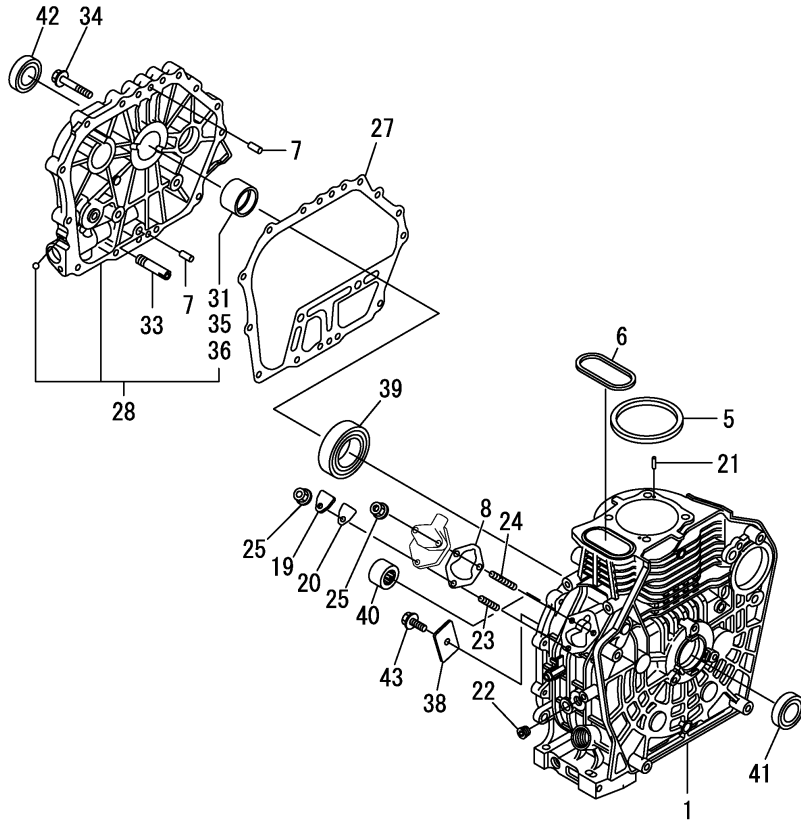
Fig. No. Fig. Name

Fig. No. Fig. Name

## ENGINE

1. CYLINDER BLOCK
2. DRAIN PLUG
3. LABEL
4. CYLINDER HEAD & BONNET
5. AIR CLEANER
6. EXHAUST MUFFLER
7. CAMSHAFT
8. CRANKSHAFT
9. FLYWHEEL
10. PISTON & CONNECTING ROD
11. BALANCER SHAFT
12. LUB. OIL PUMP & GOVERNOR
13. SWITCH CAP(OIL PRESSURE)
14. COVER
15. COOLING FAN CASE
16. FUEL INJECTION PUMP & FUEL INJECTION VALVE
17. FUEL TANK & FUEL PIPE
18. CONTROL DEVICE
19. RECOIL STARTER
20. GASKET SET & TOOL

Fig.1. CYLINDER BLOCK



(A)=L100N6FZ1T1AAAL  
(B)=  
(C)=

(D)=  
(E)=  
(F)=

| No. | Lev. | Parts No.    | Description          | Q'ty |     |     |     |     |     | I | R |
|-----|------|--------------|----------------------|------|-----|-----|-----|-----|-----|---|---|
|     |      |              |                      | (A)  | (B) | (C) | (D) | (E) | (F) |   |   |
| 1   | 1    | 114310-01020 | BLOCK ASSY, CYLINDER | 1    |     |     |     |     |     |   |   |
| 5   | 1    | 114695-01341 | GASKET, HEAD 0.5     | 1    |     |     |     |     |     |   |   |
| 6   | 1    | 114699-01380 | O-RING               | 1    |     |     |     |     |     |   |   |
| 7   | 1    | 114299-01600 | PIN, 8X12            | 2    |     |     |     |     |     |   |   |
| 8   | 1    | 114299-01800 | SHIM SET             | 1    |     |     |     |     |     |   |   |
| 19  | 1    | 114299-01830 | COVER                | 1    |     |     |     |     |     |   |   |
| 20  | 1    | 114250-01841 | GASKET               | 1    |     |     |     |     |     |   |   |
| 21  | 1    | 22312-040080 | PIN, PARALLEL M4X 8  | 2    |     |     |     |     |     |   |   |
| 22  | 1    | 23875-020000 | PLUG, R02            | 1    |     |     |     |     |     |   |   |
| 23  | 1    | 26226-060182 | STUD, M6X 18         | 1    |     |     |     |     |     |   |   |
| 24  | 1    | 26226-060222 | STUD, M6X 22         | 2    |     |     |     |     |     |   |   |
| 25  | 1    | 26366-060002 | NUT, M6              | 3    |     |     |     |     |     |   |   |
| 27  | 1    | 114699-01410 | GASKET, CRANK CASE   | 1    |     |     |     |     |     |   |   |
| 28  | 1    | 114310-01450 | COVER(D, CRANK CASE  | 1    |     |     |     |     |     |   |   |
| 31  | 2    | 114650-02100 | BEARING, MAIN        | 1    |     |     |     |     |     |   | 1 |
| 33  | 1    | 114299-35150 | PIPE, OIL INLET      | 1    |     |     |     |     |     |   |   |
| 34  | 1    | 26106-080352 | BOLT, M8X 35 PLATED  | 16   |     |     |     |     |     |   |   |
| 35  | 1    | 114650-02200 | BEARING, MAIN 0.25   | 1    |     |     |     |     |     |   | 2 |
| 36  | 1    | 114650-02210 | BEARING, MAIN 0.50   | 1    |     |     |     |     |     |   | 3 |
| 38  | 1    | 114299-02030 | RETAINER, BEARING    | 1    |     |     |     |     |     |   |   |
| 39  | 1    | 114650-02150 | BEARING, HR6308G3C3  | 1    |     |     |     |     |     |   |   |
| 40  | 1    | 24162-152220 | BEARING, 152220      | 1    |     |     |     |     |     |   |   |
| 41  | 1    | 24423-355008 | SEAL, OIL TC355008   | 1    |     |     |     |     |     |   |   |
| 42  | 1    | 24423-355008 | SEAL, OIL TC355008   | 1    |     |     |     |     |     |   |   |
| 43  | 1    | 26106-080122 | BOLT, M8X 12 PLATED  | 1    |     |     |     |     |     |   |   |

Remarks

- (1) Spare parts.
- (2) Under-sized(U.S.=0.25) parts.
- (3) Under-sized(U.S.=0.50) parts.

Fig.2. DRAIN PLUG

(A)=L100N6FZ1T1AAAL  
 (B)=  
 (C)=

(D)=  
 (E)=  
 (F)=

| No. | Lev. | Parts No.    | Description     | Q'ty |     |     |     |     |     | I | R |
|-----|------|--------------|-----------------|------|-----|-----|-----|-----|-----|---|---|
|     |      |              |                 | (A)  | (B) | (C) | (D) | (E) | (F) |   |   |
| 1   | 1    | 114299-01690 | PLUG M16        | 2    |     |     |     |     |     |   |   |
| 2   | 1    | 114699-01760 | CAP ASSY        | 1    |     |     |     |     |     |   |   |
| 4   | 2    | 114299-01950 | O-RING, 18      | 1    |     |     |     |     |     |   |   |
| 5   | 1    | 160110-01870 | PLUG, RUBBER    | 1    |     |     |     |     |     |   |   |
| 6   | 1    | 22190-160002 | WASHER, SEAL 16 | 2    |     |     |     |     |     |   |   |

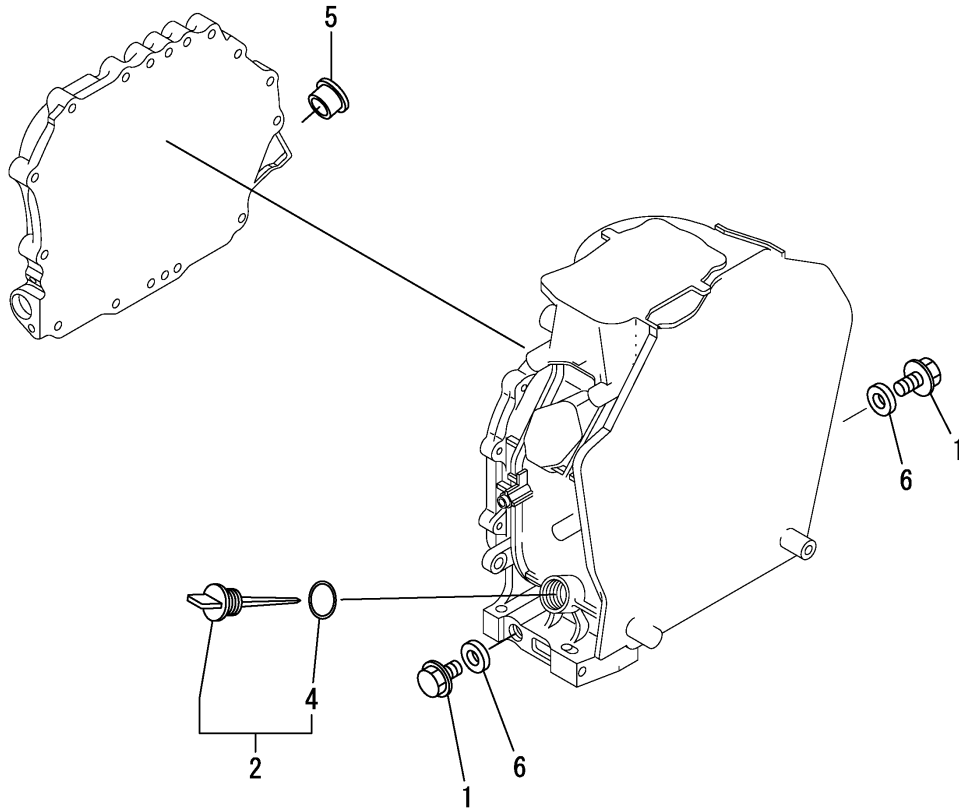
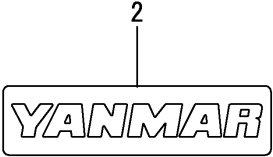


Fig.3. LABEL

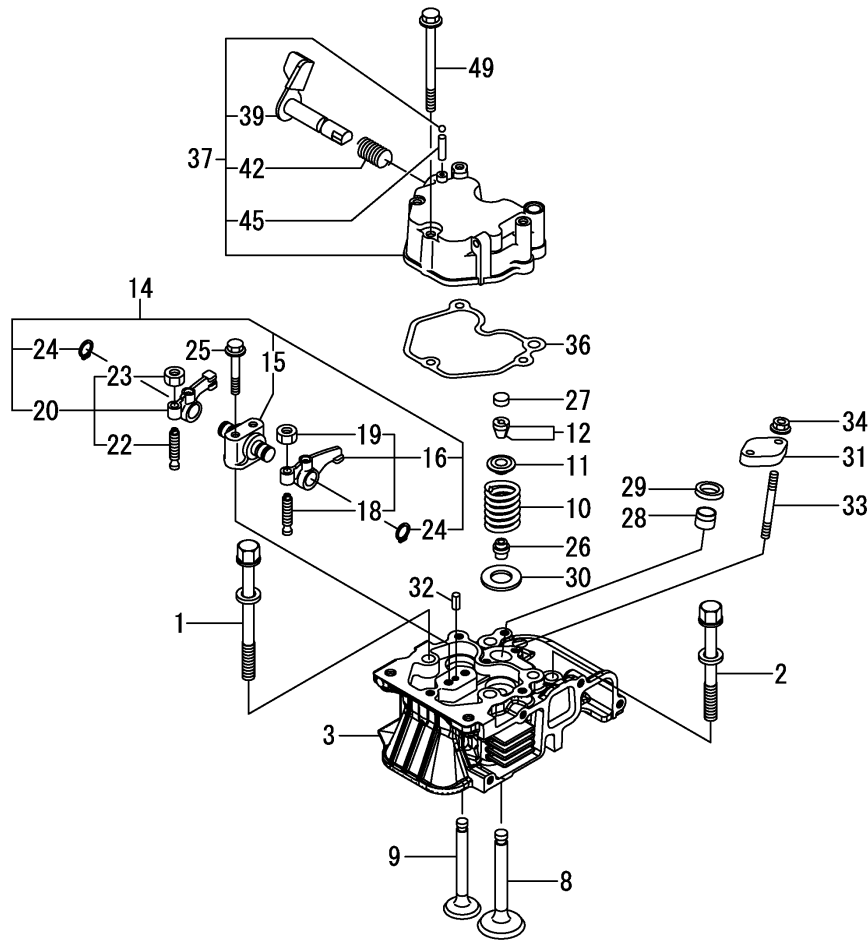


(A)=L100N6FZ1T1AAAL  
 (B)=  
 (C)=

(D)=  
 (E)=  
 (F)=

| No. | Lev. | Parts No.    | Description          | Q'ty |     |     |     |     |     | I | R |
|-----|------|--------------|----------------------|------|-----|-----|-----|-----|-----|---|---|
|     |      |              |                      | (A)  | (B) | (C) | (D) | (E) | (F) |   |   |
| 2   | 1    | 114299-07111 | LABEL, YANMAR MARK B | 1    |     |     |     |     |     |   |   |
|     |      |              |                      |      |     |     |     |     |     |   |   |
|     |      |              |                      |      |     |     |     |     |     |   |   |
|     |      |              |                      |      |     |     |     |     |     |   |   |
|     |      |              |                      |      |     |     |     |     |     |   |   |
|     |      |              |                      |      |     |     |     |     |     |   |   |
|     |      |              |                      |      |     |     |     |     |     |   |   |
|     |      |              |                      |      |     |     |     |     |     |   |   |
|     |      |              |                      |      |     |     |     |     |     |   |   |
|     |      |              |                      |      |     |     |     |     |     |   |   |
|     |      |              |                      |      |     |     |     |     |     |   |   |
|     |      |              |                      |      |     |     |     |     |     |   |   |
|     |      |              |                      |      |     |     |     |     |     |   |   |
|     |      |              |                      |      |     |     |     |     |     |   |   |
|     |      |              |                      |      |     |     |     |     |     |   |   |
|     |      |              |                      |      |     |     |     |     |     |   |   |
|     |      |              |                      |      |     |     |     |     |     |   |   |
|     |      |              |                      |      |     |     |     |     |     |   |   |
|     |      |              |                      |      |     |     |     |     |     |   |   |
|     |      |              |                      |      |     |     |     |     |     |   |   |
|     |      |              |                      |      |     |     |     |     |     |   |   |

Fig.4. CYLINDER HEAD & BONNET



(A)=L100N6FZ1T1AAAL  
(B)=  
(C)=

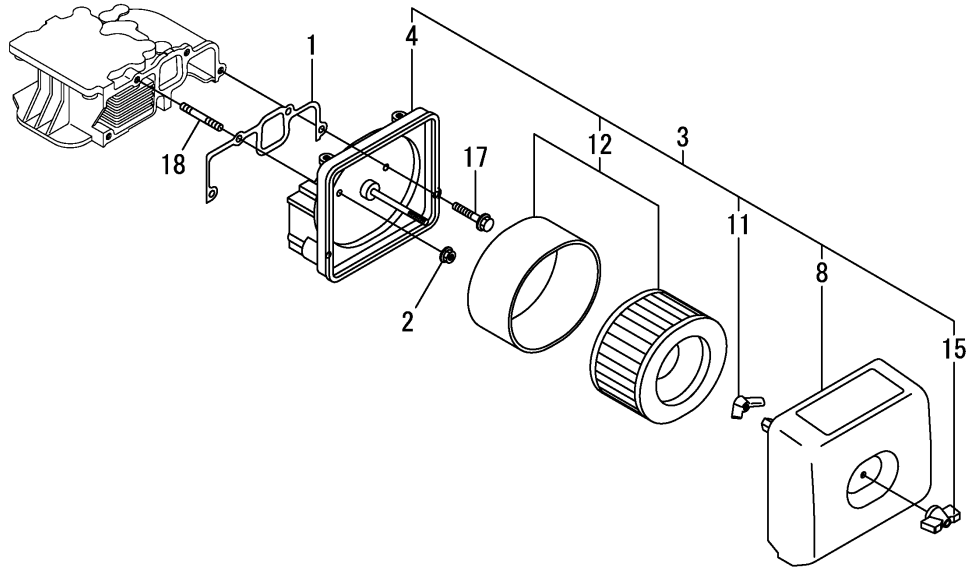
(D)=  
(E)=  
(F)=

| No. | Lev. | Parts No.    | Description          | Q'ty |     |     |     |     |     | I | R |
|-----|------|--------------|----------------------|------|-----|-----|-----|-----|-----|---|---|
|     |      |              |                      | (A)  | (B) | (C) | (D) | (E) | (F) |   |   |
| 1   | 1    | 114310-01200 | BOLT, CYL.HEAD A     | 2    |     |     |     |     |     |   |   |
| 2   | 1    | 114310-01210 | BOLT, CYL.HEAD B     | 2    |     |     |     |     |     |   |   |
| 3   | 1    | 11432C-11020 | HEAD ASSY, CYLINDER  | 1    |     |     |     |     |     |   |   |
| 8   | 1    | 11431C-11100 | VALVE, INTAKE        | 1    |     |     |     |     |     |   |   |
| 9   | 1    | 11431C-11110 | VALVE, EXHAUST       | 1    |     |     |     |     |     |   |   |
| 10  | 1    | 114310-11120 | SPRING, VALVE        | 2    |     |     |     |     |     |   |   |
| 11  | 1    | 114310-11180 | RETAINER, SPRING     | 2    |     |     |     |     |     |   |   |
| 12  | 1    | 114310-11930 | COTTER ASSY          | 2    |     |     |     |     |     |   |   |
| 14  | 1    | 11431C-11250 | SUPPORT ASSY, ARM    | 1    |     |     |     |     |     |   |   |
| 15  | 2    | 11431C-11260 | SUPPORT, ROCKER ARM  | 1    |     |     |     |     |     |   |   |
| 16  | 2    | 11431C-11650 | ARM, ROCKER          | 1    |     |     |     |     |     |   |   |
| 18  | 3    | 114250-11240 | SCREW, VALVE ADJUST  | 1    |     |     |     |     |     |   |   |
| 19  | 3    | 26856-060002 | NUT, M6              | 1    |     |     |     |     |     |   |   |
| 20  | 2    | 11431C-11660 | ARM, ROCKER          | 1    |     |     |     |     |     |   |   |
| 22  | 3    | 114250-11240 | SCREW, VALVE ADJUST  | 1    |     |     |     |     |     |   |   |
| 23  | 3    | 26856-060002 | NUT, M6              | 1    |     |     |     |     |     |   |   |
| 24  | 2    | 22242-000150 | RING, 15             | 2    |     |     |     |     |     |   |   |
| 25  | 1    | 114310-11290 | BOLT, SUPPORT        | 2    |     |     |     |     |     |   |   |
| 26  | 1    | 114650-11341 | SEAL, VALVE STEM     | 2    |     |     |     |     |     |   |   |
| 27  | 1    | 104211-11370 | CAP, VALVE           | 2    |     |     |     |     |     |   |   |
| 28  | 1    | 114240-11450 | PROTECTOR, NOZZLE    | 1    |     |     |     |     |     |   |   |
| 29  | 1    | 114240-11550 | SEAT, NOZZLE         | 1    |     |     |     |     |     |   |   |
| 30  | 1    | 114699-11600 | WASHER               | 2    |     |     |     |     |     |   |   |
| 31  | 1    | 114210-11901 | RETAINER, NOZZLE     | 1    |     |     |     |     |     |   |   |
| 32  | 1    | 22351-040008 | PIN, SPRING 4.0X 8   | 1    |     |     |     |     |     |   |   |
| 33  | 1    | 26226-060552 | STUD, M6X 55         | 2    |     |     |     |     |     |   |   |
| 34  | 1    | 26366-060002 | NUT, M6              | 2    |     |     |     |     |     |   |   |
| 36  | 1    | 114310-11310 | GASKET, BONNET       | 1    |     |     |     |     |     |   |   |
| 37  | 1    | 114310-11950 | BONNET ASSY, HEAD    | 1    |     |     |     |     |     |   |   |
| 39  | 2    | 114210-03590 | DECOMPRESSION ASSY   | 1    |     |     |     |     |     |   |   |
| 42  | 2    | 114299-03640 | SPRING,DECOMPRESSION | 1    |     |     |     |     |     |   |   |
| 45  | 2    | 22312-030160 | PIN, PARALLEL M3X16  | 1    |     |     |     |     |     |   |   |
| 49  | 1    | 26106-060652 | BOLT, M6X 65 PLATED  | 3    |     |     |     |     |     |   |   |

Fig.5. AIR CLEANER

(A)=L100N6FZ1T1AAAL  
(B)=  
(C)=

(D)=  
(E)=  
(F)=



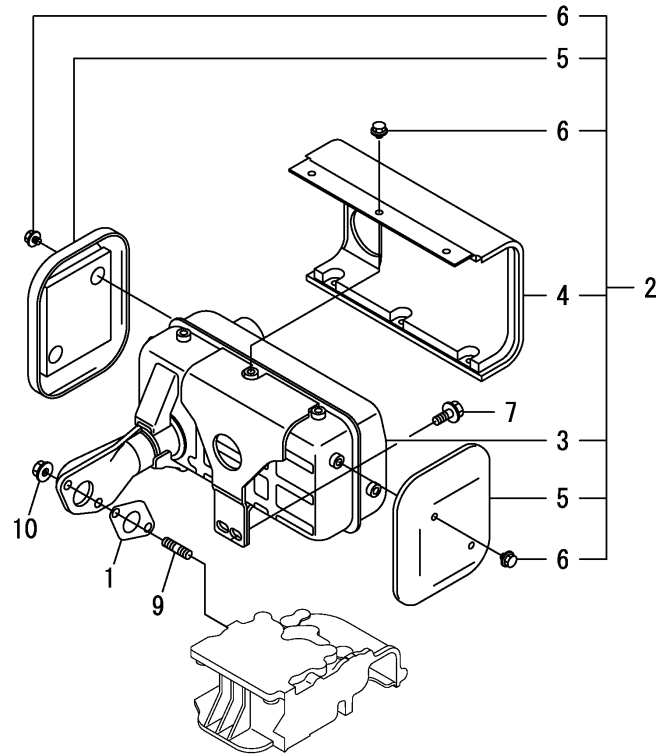
| No. | Lev. | Parts No.    | Description          | Q'ty |     |     |     |     |     | I | R |
|-----|------|--------------|----------------------|------|-----|-----|-----|-----|-----|---|---|
|     |      |              |                      | (A)  | (B) | (C) | (D) | (E) | (F) |   |   |
| 1   | 1    | 114310-12210 | GASKET, AIR CLEANER  | 1    |     |     |     |     |     |   |   |
| 2   | 1    | 114299-12300 | NUT                  | 3    |     |     |     |     |     |   |   |
| 3   | 1    | 114320-12550 | CLEANER ASSY, AIR    | 1    |     |     |     |     |     |   |   |
| 4   | 2    | 114310-12010 | BODY ASSY, AIR CLNR  | 1    |     |     |     |     |     |   |   |
| 8   | 2    | 114220-12500 | COVER ASSY, AIR CLNR | 1    |     |     |     |     |     |   |   |
| 11  | 2    | 114210-12560 | NUT, WING            | 1    |     |     |     |     |     |   |   |
| 12  | 2    | 114210-12590 | ELEMENT ASSY, AIR    | 1    |     |     |     |     |     |   |   |
| 15  | 2    | 114210-12600 | LOCKING KNOB         | 1    |     |     |     |     |     |   |   |
| 17  | 1    | 26106-060402 | BOLT, M6X 40 PLATED  | 1    |     |     |     |     |     |   |   |
| 18  | 1    | 26226-060352 | STUD, M6X 35         | 3    |     |     |     |     |     |   |   |



Fig.6. EXHAUST MUFFLER

(A)=L100N6FZ1T1AAAL  
(B)=  
(C)=

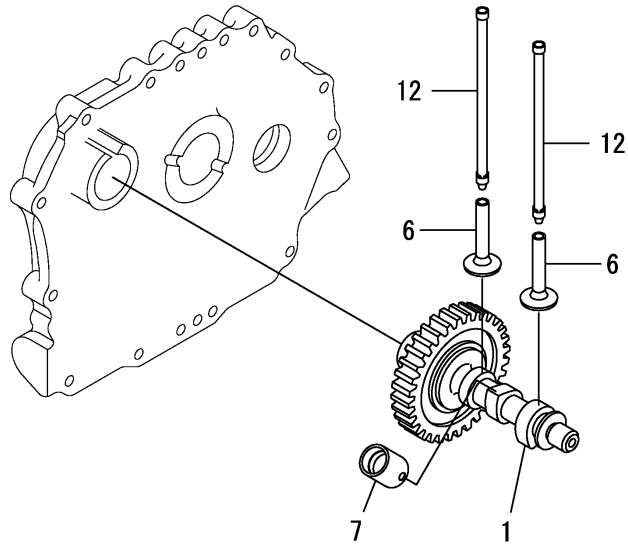
(D)=  
(E)=  
(F)=



| No. | Lev. | Parts No.    | Description         | Q'ty |     |     |     |     |     | I | R |
|-----|------|--------------|---------------------|------|-----|-----|-----|-----|-----|---|---|
|     |      |              |                     | (A)  | (B) | (C) | (D) | (E) | (F) |   |   |
| 1   | 1    | 114310-13200 | GASKET, MUFFLER     | 1    |     |     |     |     |     |   |   |
| 2   | 1    | 11431C-13550 | MUFFLER ASSY        | 1    |     |     |     |     |     |   |   |
| 3   | 2    | 11431C-13560 | MUFFLER             | 1    |     |     |     |     |     |   |   |
| 4   | 2    | 11431C-13700 | COVER               | 1    |     |     |     |     |     |   |   |
| 5   | 2    | 11431C-13710 | COVER               | 2    |     |     |     |     |     |   |   |
| 6   | 2    | 11431C-13720 | BOLT, M6            | 10   |     |     |     |     |     |   |   |
| 7   | 1    | 26106-080202 | BOLT, M8X 20 PLATED | 2    |     |     |     |     |     |   |   |
| 9   | 1    | 26216-080182 | STUD, M8X 18        | 2    |     |     |     |     |     |   |   |
| 10  | 1    | 26306-080002 | NUT, M8             | 2    |     |     |     |     |     |   |   |

OCC50-M00870 ENGINE  
**Fig.7. CAMSHAFT**

OCC50-M00870 Fig.7



(A)=L100N6FZ1T1AAAL  
 (B)=  
 (C)=

(D)=  
 (E)=  
 (F)=

| No. | Lev. | Parts No.    | Description         | Q'ty |     |     |     |     |     | I | R |
|-----|------|--------------|---------------------|------|-----|-----|-----|-----|-----|---|---|
|     |      |              |                     | (A)  | (B) | (C) | (D) | (E) | (F) |   |   |
| 1   | 1    | 71432C-14010 | CAMSHAFT ASSY       | 1    |     |     |     |     |     |   |   |
| 6   | 1    | 114310-14200 | TAPPET              | 2    |     |     |     |     |     |   |   |
| 7   | 1    | 114210-14300 | TAPPET ASSY, ROLLER | 1    |     |     |     |     |     |   |   |
| 12  | 1    | 114310-14400 | ROD ASSY, PUSH      | 2    |     |     |     |     |     |   |   |

---

---

---

---

---

---

---

---

---

---

---

---

---

---

---

---

---

---

---

---

---

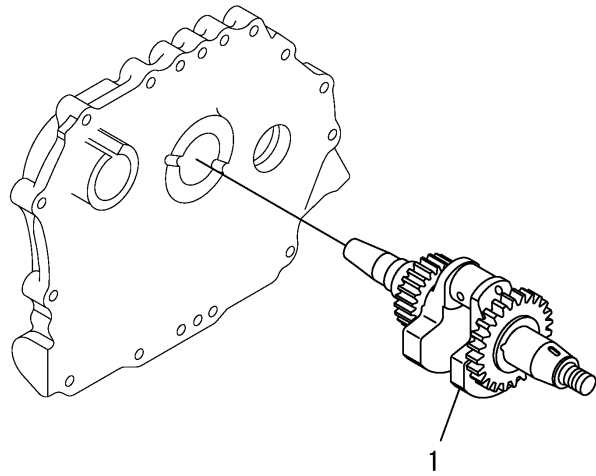
---

---

Fig.8. CRANKSHAFT

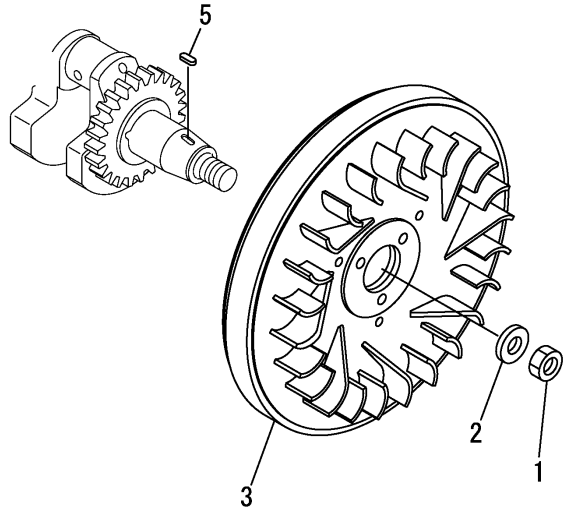
(A)=L100N6FZ1T1AAAL  
(B)=  
(C)=

(D)=  
(E)=  
(F)=



| No. | Lev. | Parts No.    | Description          | Q'ty |     |     |     |     |     | I | R |  |
|-----|------|--------------|----------------------|------|-----|-----|-----|-----|-----|---|---|--|
|     |      |              |                      | (A)  | (B) | (C) | (D) | (E) | (F) |   |   |  |
| 1   | 1    | 11431C-21760 | CRANKSHAFT(E-DI ASSY | 1    |     |     |     |     |     |   |   |  |
|     |      |              |                      |      |     |     |     |     |     |   |   |  |
|     |      |              |                      |      |     |     |     |     |     |   |   |  |
|     |      |              |                      |      |     |     |     |     |     |   |   |  |
|     |      |              |                      |      |     |     |     |     |     |   |   |  |
|     |      |              |                      |      |     |     |     |     |     |   |   |  |
|     |      |              |                      |      |     |     |     |     |     |   |   |  |
|     |      |              |                      |      |     |     |     |     |     |   |   |  |
|     |      |              |                      |      |     |     |     |     |     |   |   |  |
|     |      |              |                      |      |     |     |     |     |     |   |   |  |
|     |      |              |                      |      |     |     |     |     |     |   |   |  |
|     |      |              |                      |      |     |     |     |     |     |   |   |  |
|     |      |              |                      |      |     |     |     |     |     |   |   |  |
|     |      |              |                      |      |     |     |     |     |     |   |   |  |
|     |      |              |                      |      |     |     |     |     |     |   |   |  |
|     |      |              |                      |      |     |     |     |     |     |   |   |  |
|     |      |              |                      |      |     |     |     |     |     |   |   |  |
|     |      |              |                      |      |     |     |     |     |     |   |   |  |
|     |      |              |                      |      |     |     |     |     |     |   |   |  |
|     |      |              |                      |      |     |     |     |     |     |   |   |  |
|     |      |              |                      |      |     |     |     |     |     |   |   |  |
|     |      |              |                      |      |     |     |     |     |     |   |   |  |
|     |      |              |                      |      |     |     |     |     |     |   |   |  |
|     |      |              |                      |      |     |     |     |     |     |   |   |  |
|     |      |              |                      |      |     |     |     |     |     |   |   |  |

Fig.9. FLYWHEEL

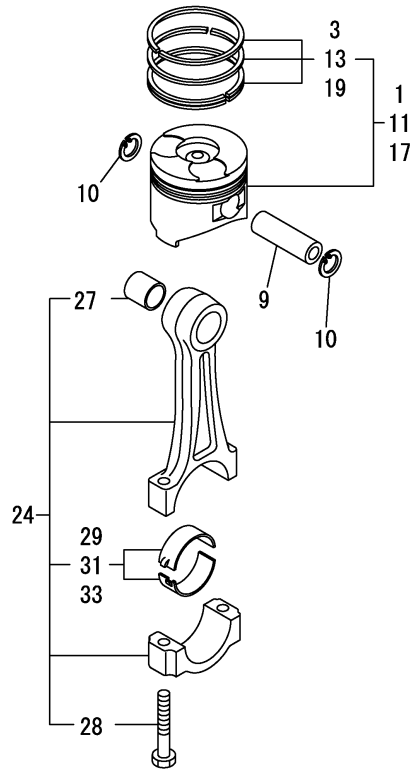


(A)=L100N6FZ1T1AAAL  
(B)=  
(C)=

(D)=  
(E)=  
(F)=

| No. | Lev. | Parts No.    | Description | Q'ty |     |     |     |     |     | I | R |
|-----|------|--------------|-------------|------|-----|-----|-----|-----|-----|---|---|
|     |      |              |             | (A)  | (B) | (C) | (D) | (E) | (F) |   |   |
| 1   | 1    | 114699-21220 | NUT         | 1    |     |     |     |     |     |   |   |
| 2   | 1    | 114699-21550 | WASHER      | 1    |     |     |     |     |     |   |   |
| 3   | 1    | 114699-21420 | FLYWHEEL    | 1    |     |     |     |     |     |   |   |
| 5   | 1    | 22512-050140 | KEY, 5X 14  | 1    |     |     |     |     |     |   |   |

Fig.10. PISTON & CONNECTING ROD



(A)=L100N6FZ1T1AAAL  
(B)=  
(C)=

(D)=  
(E)=  
(F)=

| No. | Lev. | Parts No.    | Description          | Q'ty |     |     |     |     |     | I | R |
|-----|------|--------------|----------------------|------|-----|-----|-----|-----|-----|---|---|
|     |      |              |                      | (A)  | (B) | (C) | (D) | (E) | (F) |   |   |
| 1   | 1    | 714320-22720 | PISTON W/RINGS (D)   | 1    |     |     |     |     |     |   |   |
| 3   | 2    | 714310-22500 | RING SET, PISTON     | 1    |     |     |     |     |     |   |   |
| 9   | 1    | 114699-22300 | PIN, PISTON D=23     | 1    |     |     |     |     |     |   |   |
| 10  | 1    | 114310-22500 | SEEGER RING, J23     | 2    |     |     |     |     |     |   |   |
| 11  | 1    | 714320-22620 | PISTON W/RING .25OS  | 1    |     |     |     |     |     |   | 1 |
| 13  | 2    | 714310-22540 | RING SET O.S.=0.25   | 1    |     |     |     |     |     |   | 1 |
| 17  | 1    | 714320-22580 | PISTON W/RING .50OS  | 1    |     |     |     |     |     |   | 2 |
| 19  | 2    | 714310-22550 | RING SET O.S.=0.50   | 1    |     |     |     |     |     |   | 2 |
| 24  | 1    | 71431C-23010 | ROD ASSY, CONNECTING | 1    |     |     |     |     |     |   |   |
| 27  | 3    | 124060-23100 | BEARING, PISTON PIN  | 1    |     |     |     |     |     |   |   |
| 28  | 3    | 114310-23200 | BOLT, CONNECTING ROD | 2    |     |     |     |     |     |   |   |
| 29  | 2    | 714650-23600 | BEARING, CRANK PIN   | 1    |     |     |     |     |     |   |   |
| 31  | 1    | 714650-23610 | BEARING ASSY, 0.25   | 1    |     |     |     |     |     |   | 3 |
| 33  | 1    | 714650-23620 | BEARING, 0.50 US     | 1    |     |     |     |     |     |   | 4 |

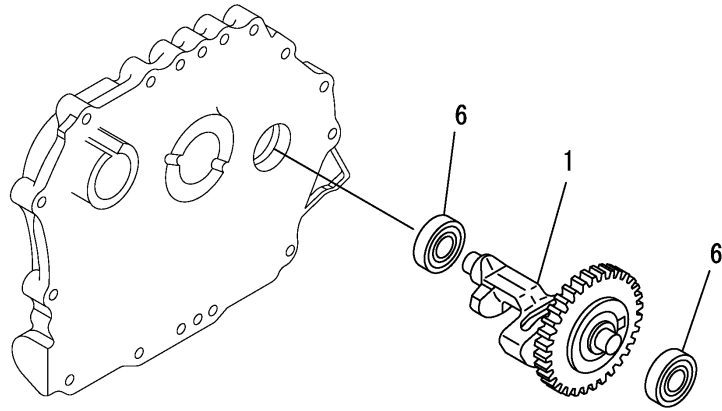
Remarks

- (1)Over-sized(O.S.=0.25) parts.
- (2)Over-sized(O.S.=0.50) parts.
- (3)Under-sized(U.S.=0.25) parts.
- (4)Under-sized(U.S.=0.50) parts.

Fig.11. BALANCER SHAFT

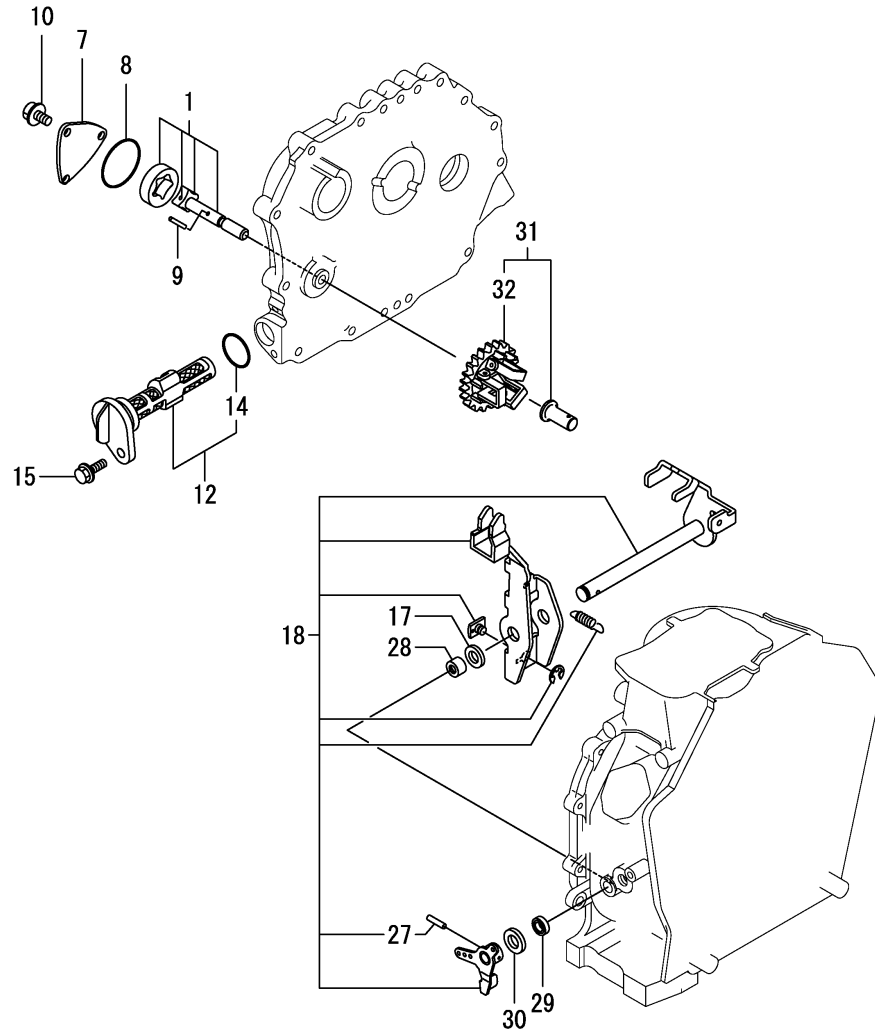
(A)=L100N6FZ1T1AAAL  
(B)=  
(C)=

(D)=  
(E)=  
(F)=



| No. | Lev. | Parts No.    | Description          | Q'ty |     |     |     |     |     | I | R |
|-----|------|--------------|----------------------|------|-----|-----|-----|-----|-----|---|---|
|     |      |              |                      | (A)  | (B) | (C) | (D) | (E) | (F) |   |   |
| 1   | 1    | 714310-28510 | SHAFT ASSY, BALANCER | 1    |     |     |     |     |     |   |   |
| 6   | 1    | 24101-063040 | BEARING, BALL 6304C3 | 2    |     |     |     |     |     |   |   |

Fig.12. LUB. OIL PUMP & GOVERNOR



(A)=L100N6FZ1T1AAAL  
(B)=  
(C)=

(D)=  
(E)=  
(F)=

| No. | Lev. | Parts No.    | Description          | Q'ty |     |     |     |     |     | I | R |
|-----|------|--------------|----------------------|------|-----|-----|-----|-----|-----|---|---|
|     |      |              |                      | (A)  | (B) | (C) | (D) | (E) | (F) |   |   |
| 1   | 1    | 114650-32010 | PUMP ASSY, OIL       | 1    |     |     |     |     |     |   |   |
| 7   | 1    | 114299-32070 | COVER                | 1    |     |     |     |     |     |   |   |
| 8   | 1    | 114299-32570 | O-RING               | 1    |     |     |     |     |     |   |   |
| 9   | 1    | 22312-030160 | PIN, PARALLEL M3X16  | 1    |     |     |     |     |     |   |   |
| 10  | 1    | 26106-060122 | BOLT, M6X 12 PLATED  | 3    |     |     |     |     |     |   |   |
| 12  | 1    | 114299-35110 | FILTER ASSY, OIL     | 1    |     |     |     |     |     |   |   |
| 14  | 2    | 24341-000224 | O-RING, 1AS22.4      | 1    |     |     |     |     |     |   |   |
| 15  | 1    | 26106-060162 | BOLT, M6X 16 PLATED  | 1    |     |     |     |     |     |   |   |
| 17  | 1    | 114299-61190 | WASHER               | 1    |     |     |     |     |     |   |   |
| 18  | 1    | 114311-61500 | LEVER ASSY, GOVERNOR | 1    |     |     |     |     |     |   | 1 |
| 27  | 2    | 22322-030200 | PIN, TAPER 3X20      | 1    |     |     |     |     |     |   |   |
| 28  | 1    | 114770-61520 | BEARING, NEEDLE      | 2    |     |     |     |     |     |   |   |
| 29  | 1    | 114299-61600 | SEAL, OIL            | 1    |     |     |     |     |     |   |   |
| 30  | 1    | 114770-61610 | WASHER, THRUST       | 1    |     |     |     |     |     |   |   |
| 31  | 1    | 714210-61701 | GOVERNOR ASSY        | 1    |     |     |     |     |     |   |   |
| 32  | 2    | 114210-61290 | WEIGHT ASSY,GOVERNOR | 1    |     |     |     |     |     |   |   |

Remarks

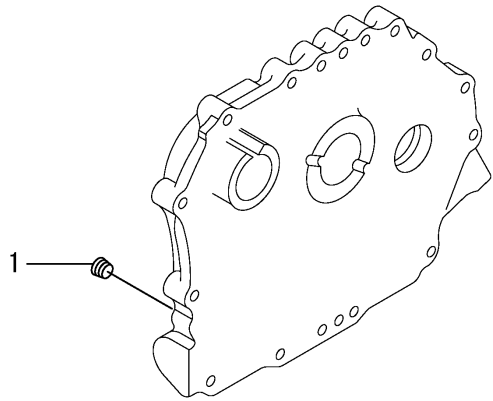
(1)On a guarantee of quality component parts shall not be sold.

N:Old  $\xrightarrow{\text{Yes}}$  New, Q:Old  $\xrightarrow{\text{No}}$  New, R:Old  $\xrightarrow{\text{Yes}}$  New, S:Old  $\xrightarrow{\text{No}}$  New, W:Add, Z:Discontinued, F:Interchangeable by set, K:Q'ty Change

Fig.13. SWITCH CAP(OIL PRESSURE)

(A)=L100N6FZ1T1AAAL  
(B)=  
(C)=

(D)=  
(E)=  
(F)=



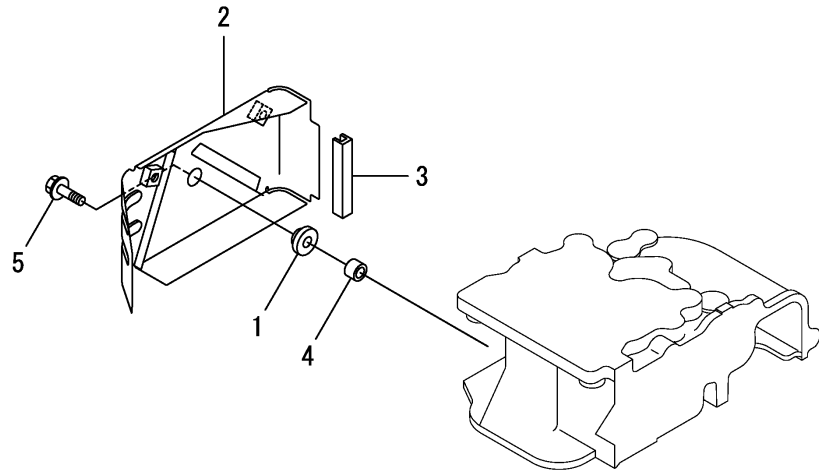
| No. | Lev. | Parts No.    | Description | (A) | (B) | (C) | (D) | (E) | (F) | I | R |
|-----|------|--------------|-------------|-----|-----|-----|-----|-----|-----|---|---|
| 1   | 1    | 23876-010000 | PLUG, R01   | 1   |     |     |     |     |     |   |   |
|     |      |              |             |     |     |     |     |     |     |   |   |
|     |      |              |             |     |     |     |     |     |     |   |   |
|     |      |              |             |     |     |     |     |     |     |   |   |
|     |      |              |             |     |     |     |     |     |     |   |   |
|     |      |              |             |     |     |     |     |     |     |   |   |
|     |      |              |             |     |     |     |     |     |     |   |   |
|     |      |              |             |     |     |     |     |     |     |   |   |
|     |      |              |             |     |     |     |     |     |     |   |   |
|     |      |              |             |     |     |     |     |     |     |   |   |
|     |      |              |             |     |     |     |     |     |     |   |   |
|     |      |              |             |     |     |     |     |     |     |   |   |
|     |      |              |             |     |     |     |     |     |     |   |   |
|     |      |              |             |     |     |     |     |     |     |   |   |
|     |      |              |             |     |     |     |     |     |     |   |   |
|     |      |              |             |     |     |     |     |     |     |   |   |
|     |      |              |             |     |     |     |     |     |     |   |   |
|     |      |              |             |     |     |     |     |     |     |   |   |
|     |      |              |             |     |     |     |     |     |     |   |   |
|     |      |              |             |     |     |     |     |     |     |   |   |



Fig.14. COVER

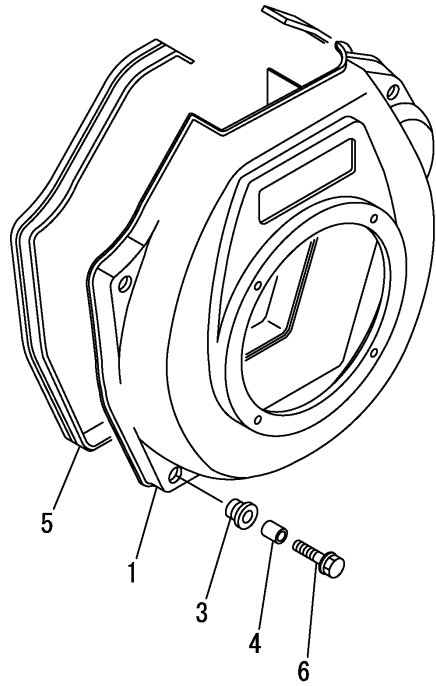
(A)=L100N6FZ1T1AAAL  
 (B)=  
 (C)=

(D)=  
 (E)=  
 (F)=



| No. | Lev. | Parts No.    | Description         | Q'ty |     |     |     |     |     | I | R |
|-----|------|--------------|---------------------|------|-----|-----|-----|-----|-----|---|---|
|     |      |              |                     | (A)  | (B) | (C) | (D) | (E) | (F) |   |   |
| 1   | 1    | 114299-45220 | GROMMET             | 1    |     |     |     |     |     |   |   |
| 2   | 1    | 114310-45260 | COVER B, SIDE       | 1    |     |     |     |     |     |   |   |
| 3   | 1    | 114399-45320 | RUBBER, SEAL        | 1    |     |     |     |     |     |   |   |
| 4   | 1    | 114399-45340 | COLLAR              | 1    |     |     |     |     |     |   |   |
| 5   | 1    | 26106-060202 | BOLT, M6X 20 PLATED | 1    |     |     |     |     |     |   |   |

Fig.15. COOLING FAN CASE



(A)=L100N6FZ1T1AAAL  
(B)=  
(C)=

(D)=  
(E)=  
(F)=

| No. | Lev. | Parts No.    | Description       | Q'ty |     |     |     |     |     | I | R |
|-----|------|--------------|-------------------|------|-----|-----|-----|-----|-----|---|---|
|     |      |              |                   | (A)  | (B) | (C) | (D) | (E) | (F) |   |   |
| 1   | 1    | 114310-45150 | CASE, COOLING FAN | 1    |     |     |     |     |     |   |   |
| 3   | 1    | 114299-45301 | RUBBER, CUSHION   | 4    |     |     |     |     |     |   |   |
| 4   | 1    | 114299-45310 | COLLAR            | 4    |     |     |     |     |     |   |   |
| 5   | 1    | 114699-45331 | SEAL, FAN CASE    | 1    |     |     |     |     |     |   |   |
| 6   | 1    | 114299-45350 | BOLT, FAN CASE    | 4    |     |     |     |     |     |   |   |

Fig.16. FUEL INJECTION PUMP & FUEL INJECTION VALVE

(A)=L100N6FZ1T1AAAL

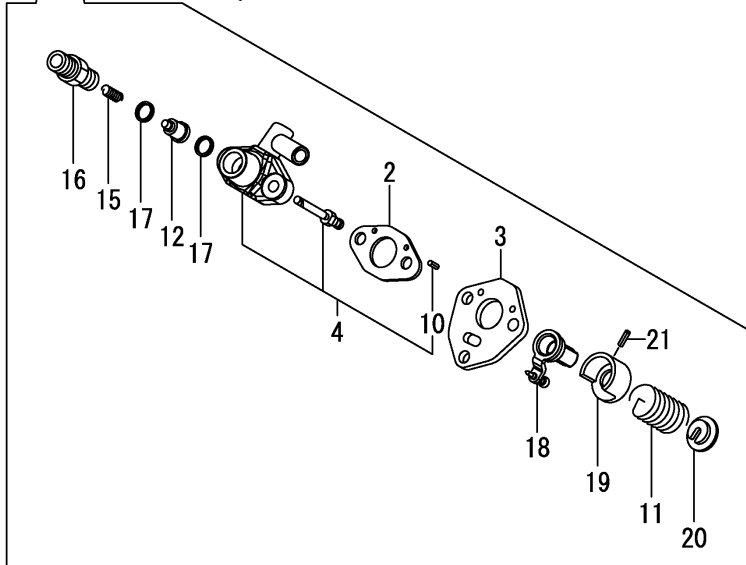
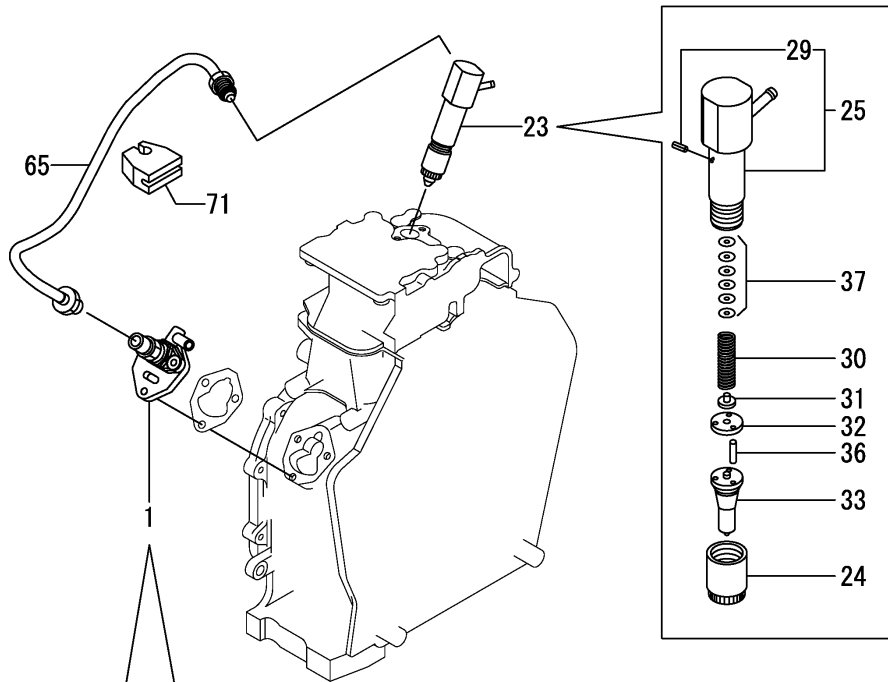
(B)=

(C)=

(D)=

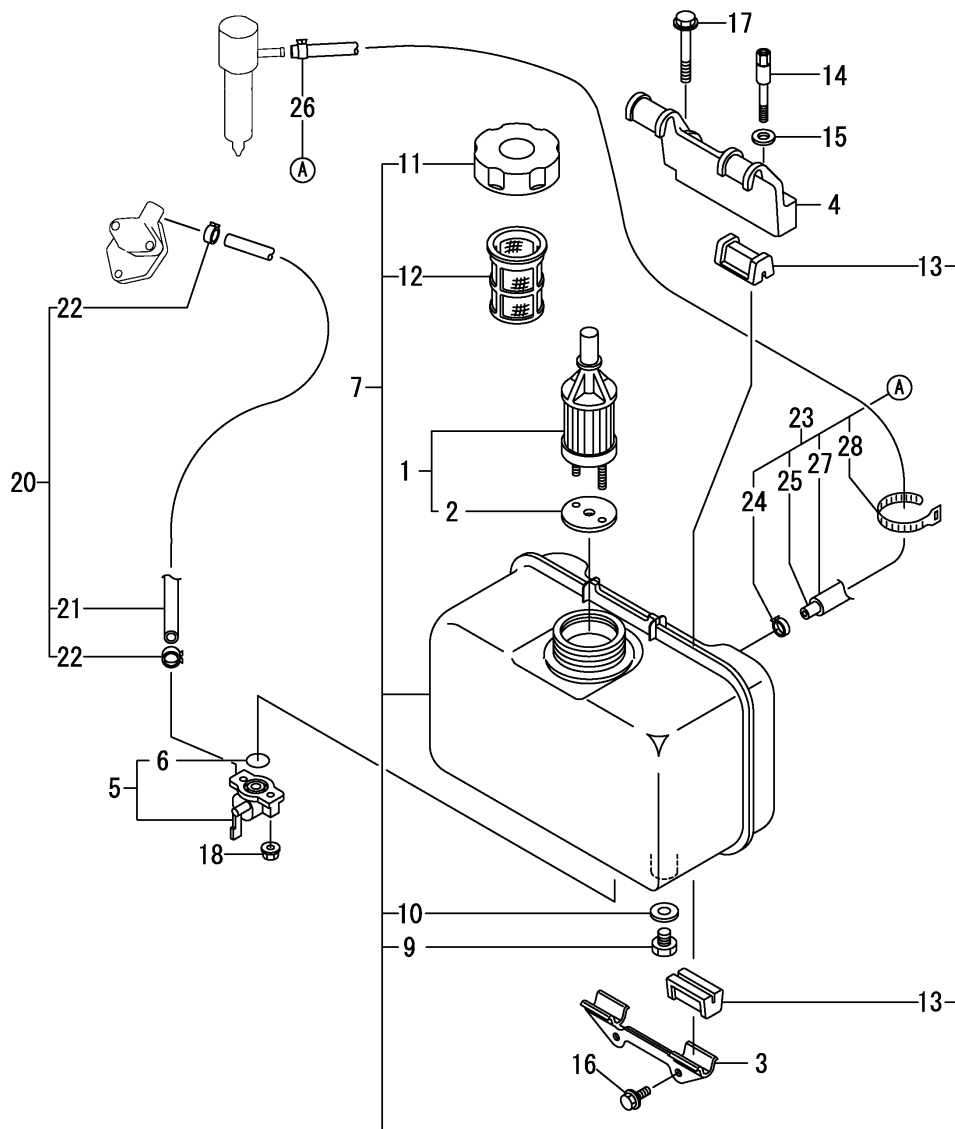
(E)=

(F)=



| No. | Lev. | Parts No.    | Description           | Q'ty |     |     |     |     |     | I | R |
|-----|------|--------------|-----------------------|------|-----|-----|-----|-----|-----|---|---|
|     |      |              |                       | (A)  | (B) | (C) | (D) | (E) | (F) |   |   |
| 1   | 1    | 714339-51200 | FOP ASSY              | 1    |     |     |     |     |     |   |   |
| 2   | 2    | 105546-51020 | GASKET                | 1    |     |     |     |     |     |   |   |
| 3   | 2    | 114250-51080 | PLATE                 | 1    |     |     |     |     |     |   |   |
| 4   | 2    | 114339-51100 | BODY ASSY, PUMP       | 1    |     |     |     |     |     |   |   |
| 10  | 4    | 22351-020006 | PIN, SPRING 2.0X 6    | 2    |     |     |     |     |     |   |   |
| 11  | 2    | 114250-51160 | SPRING, PLUNGER       | 1    |     |     |     |     |     |   |   |
| 12  | 2    | 114650-51300 | VALVE ASSY, DELIVERY  | 1    |     |     |     |     |     |   |   |
| 15  | 2    | 105546-51330 | SPRING, DELIVERY      | 1    |     |     |     |     |     |   |   |
| 16  | 2    | 114250-51340 | HOLDER, DELIVERY      | 1    |     |     |     |     |     |   |   |
| 17  | 2    | 124550-51350 | GASKET, DELIVERY      | 2    |     |     |     |     |     |   |   |
| 18  | 2    | 114250-51500 | LEVER, CONTROL        | 1    |     |     |     |     |     |   |   |
| 19  | 2    | 114250-51640 | SEAT, SPRING          | 1    |     |     |     |     |     |   |   |
| 20  | 2    | 114250-51650 | SEAT, SPRING          | 1    |     |     |     |     |     |   |   |
| 21  | 2    | 22351-030008 | PIN, SPRING 3.0X 8    | 1    |     |     |     |     |     |   |   |
| 23  | 1    | 714339-53200 | FUEL INJECTOR ASSY    | 1    |     |     |     |     |     |   |   |
| 24  | 2    | 114250-53080 | NUT, NOZZLE           | 1    |     |     |     |     |     |   |   |
| 25  | 2    | 114339-53100 | HOLDER ASSY, NOZZLE   | 1    |     |     |     |     |     |   |   |
| 29  | 3    | 22351-025005 | PIN, SPRING 2.5X 6    | 1    |     |     |     |     |     |   |   |
| 30  | 2    | 114250-53120 | SPRING, NOZZLE        | 1    |     |     |     |     |     |   |   |
| 31  | 2    | 114250-53130 | SEAT, SPRING          | 1    |     |     |     |     |     |   |   |
| 32  | 2    | 114250-53140 | SPACER                | 1    |     |     |     |     |     |   |   |
| 33  | 2    | 114339-53200 | VALVE ASSY, INJECTION | 1    |     |     |     |     |     |   |   |
| 36  | 2    | 114250-53210 | PIN                   | 2    |     |     |     |     |     |   |   |
| 37  | 2    | 119803-53400 | SHIM SET              | 1    |     |     |     |     |     |   |   |
| 65  | 1    | 114310-59800 | PIPE ASSY, INJECTION  | 1    |     |     |     |     |     |   |   |
| 71  | 1    | 114699-59850 | SUPPORT, PIPE         | 1    |     |     |     |     |     |   |   |

Fig.17. FUEL TANK & FUEL PIPE



(A)=L100N6FZ1T1AAAL  
(B)=  
(C)=

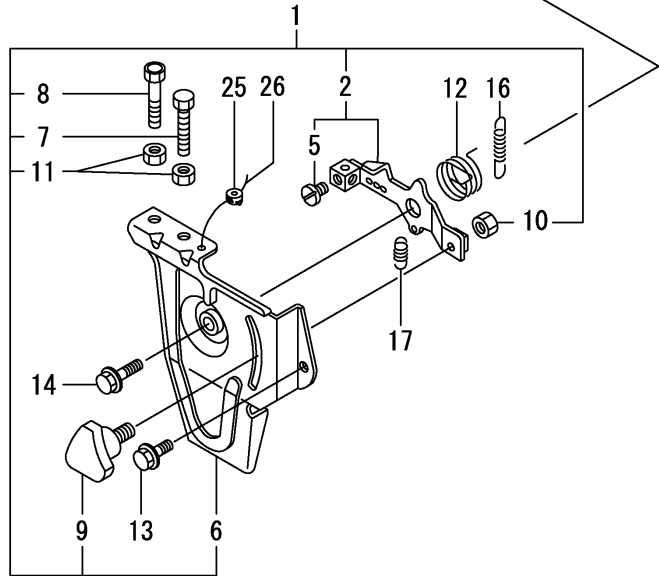
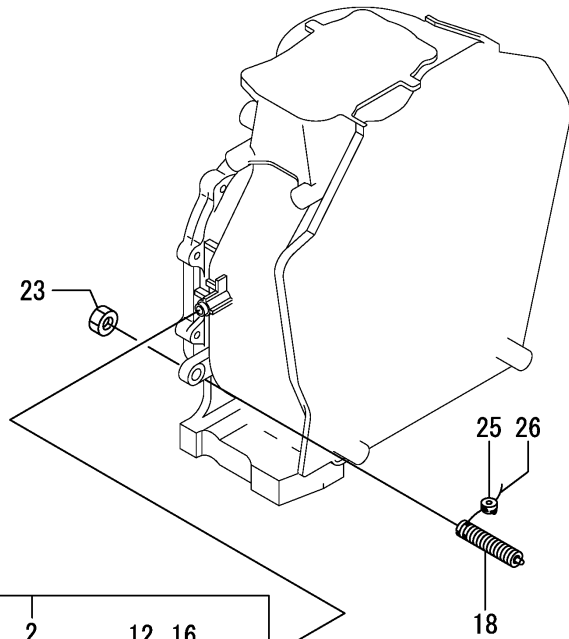
(D)=  
(E)=  
(F)=

| No. | Lev. | Parts No.    | Description          | Q'ty |     |     |     |     |     | I | R |
|-----|------|--------------|----------------------|------|-----|-----|-----|-----|-----|---|---|
|     |      |              |                      | (A)  | (B) | (C) | (D) | (E) | (F) |   |   |
| 1   | 1    | 114250-55121 | FILTER ASSY, FUEL    | 1    |     |     |     |     |     |   |   |
| 2   | 2    | 114250-55130 | GASKET               | 1    |     |     |     |     |     |   |   |
| 3   | 1    | 114210-55210 | STAY A, FUEL TANK    | 1    |     |     |     |     |     |   |   |
| 4   | 1    | 114310-55230 | STAY B, FUEL TANK    | 1    |     |     |     |     |     |   |   |
| 5   | 1    | 114250-55301 | COCK ASSY, FUEL      | 1    |     |     |     |     |     |   |   |
| 6   | 2    | 24341-000150 | O-RING, 1AS15.0      | 1    |     |     |     |     |     |   |   |
| 7   | 1    | 11431C-55710 | TANK,FUEL(BLACK)(13) | 1    |     |     |     |     |     |   |   |
| 9   | 2    | 114299-55080 | PLUG, DRAIN          | 1    |     |     |     |     |     |   |   |
| 10  | 2    | 23414-080000 | GASKET, 8X1.0        | 1    |     |     |     |     |     |   |   |
| 11  | 2    | 114299-55040 | CAP ASSY, FUEL TANK  | 1    |     |     |     |     |     |   |   |
| 12  | 2    | 114299-55100 | ELEMENT, FUEL FILTER | 1    |     |     |     |     |     |   |   |
| 13  | 2    | 114250-55201 | DAMPER, FUEL TANK    | 4    |     |     |     |     |     |   |   |
| 14  | 1    | 114210-55810 | BOLT, LIFTING        | 1    |     |     |     |     |     |   |   |
| 15  | 1    | 22117-080000 | WASHER, 8            | 1    |     |     |     |     |     |   |   |
| 16  | 1    | 26106-060162 | BOLT, M6X 16 PLATED  | 2    |     |     |     |     |     |   |   |
| 17  | 1    | 26106-080452 | BOLT, M8X 45 PLATED  | 1    |     |     |     |     |     |   |   |
| 18  | 1    | 26366-060002 | NUT, M6              | 2    |     |     |     |     |     |   |   |
| 20  | 1    | 114780-59010 | PIPE ASSY, FUEL L50  | 1    |     |     |     |     |     |   |   |
| 21  | 2    | 114780-59060 | PIPE, FUEL L=50      | 1    |     |     |     |     |     |   |   |
| 22  | 2    | 23080-014000 | CLAMP, 14            | 2    |     |     |     |     |     |   |   |
| 23  | 1    | 114339-59300 | PIPE ASSY, RETURN    | 1    |     |     |     |     |     |   |   |
| 24  | 2    | 124722-59050 | CLAMP, HOSE 9        | 1    |     |     |     |     |     |   |   |
| 25  | 2    | 114310-59060 | PIPE, FUEL RETURN    | 1    |     |     |     |     |     |   |   |
| 26  | 2    | 124066-59100 | CLAMP, HOSE 8        | 1    |     |     |     |     |     |   |   |
| 27  | 2    | 114310-59310 | HOSE, PROTECT        | 1    |     |     |     |     |     |   |   |
| 28  | 2    | 121750-59890 | BAND, NYLON          | 1    |     |     |     |     |     |   |   |

Fig.18. CONTROL DEVICE

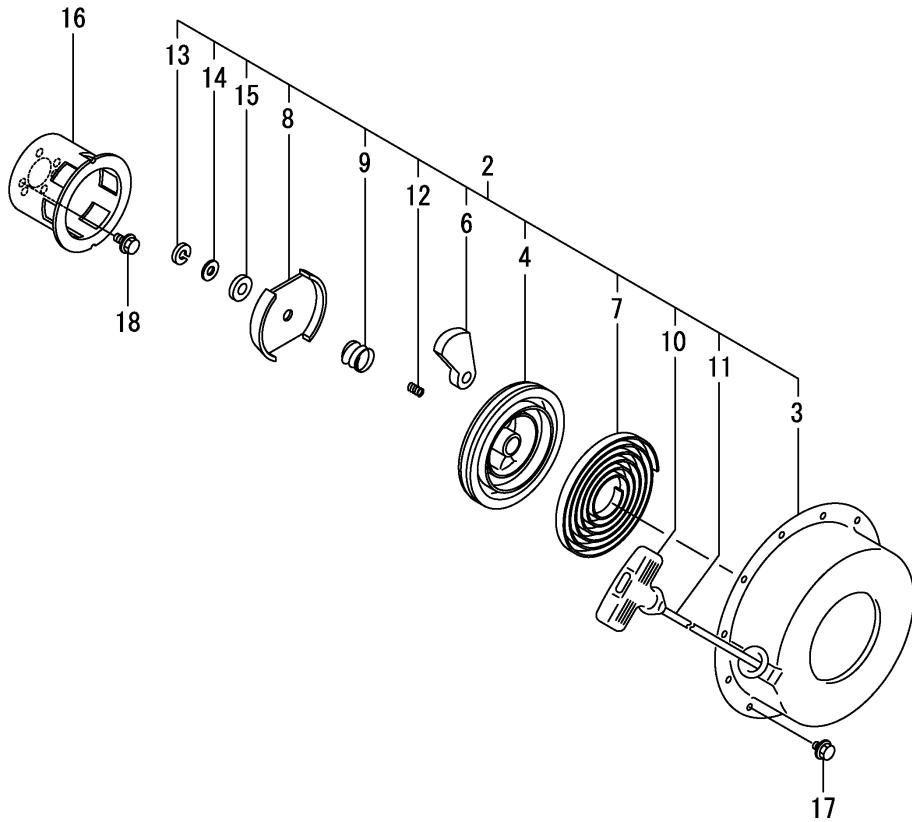
(A)=L100N6FZ1T1AAAL  
(B)=  
(C)=

(D)=  
(E)=  
(F)=



| No. | Lev. | Parts No.    | Description          | Q'ty |     |     |     |     |     | I | R |
|-----|------|--------------|----------------------|------|-----|-----|-----|-----|-----|---|---|
|     |      |              |                      | (A)  | (B) | (C) | (D) | (E) | (F) |   |   |
| 1   | 1    | 714210-66100 | SPEED CTRL, THAI     | 1    |     |     |     |     |     |   |   |
| 2   | 2    | 114210-66060 | HANDLE ASSY,REGLATR. | 1    |     |     |     |     |     |   |   |
| 5   | 3    | 26117-050089 | BOLT, M5X 8 PLATED   | 1    |     |     |     |     |     |   |   |
| 6   | 2    | 114210-66100 | BRACKET, REGULATOR   | 1    |     |     |     |     |     |   |   |
| 7   | 2    | 114299-66440 | BOLT, ADJUSTING      | 1    |     |     |     |     |     |   |   |
| 8   | 2    | 114299-67080 | BOLT, ADJUSTING      | 1    |     |     |     |     |     |   |   |
| 9   | 2    | 160725-78350 | KNOB, BOLT M6X15     | 1    |     |     |     |     |     |   |   |
| 10  | 2    | 26347-060002 | NUT, M6              | 1    |     |     |     |     |     |   |   |
| 11  | 2    | 26857-060002 | NUT, M6              | 2    |     |     |     |     |     |   |   |
| 12  | 1    | 114299-66250 | SPRING, RETURN       | 1    |     |     |     |     |     |   |   |
| 13  | 1    | 26106-060142 | BOLT, M6X 14 PLATED  | 1    |     |     |     |     |     |   |   |
| 14  | 1    | 26106-060202 | BOLT, M6X 20 PLATED  | 1    |     |     |     |     |     |   |   |
| 16  | 1    | 114320-66010 | SPRING, REGULATOR    | 1    |     |     |     |     |     |   |   |
| 17  | 1    | 114299-66201 | SPRING, RETURN       | 1    |     |     |     |     |     |   |   |
| 18  | 1    | 114320-66600 | LIMITER ASSY, FUEL   | 1    |     |     |     |     |     |   |   |
| 23  | 1    | 26776-100002 | NUT, LOCK M10        | 1    |     |     |     |     |     |   |   |
| 25  | 1    | 114780-61090 | TIN                  | 2    |     |     |     |     |     |   |   |
| 26  | 1    | 22451-060000 | WIRE, 0.6            | 2    |     |     |     |     |     |   |   |

Fig.19. RECOIL STARTER



(A)=L100N6FZ1T1AAAL  
(B)=  
(C)=

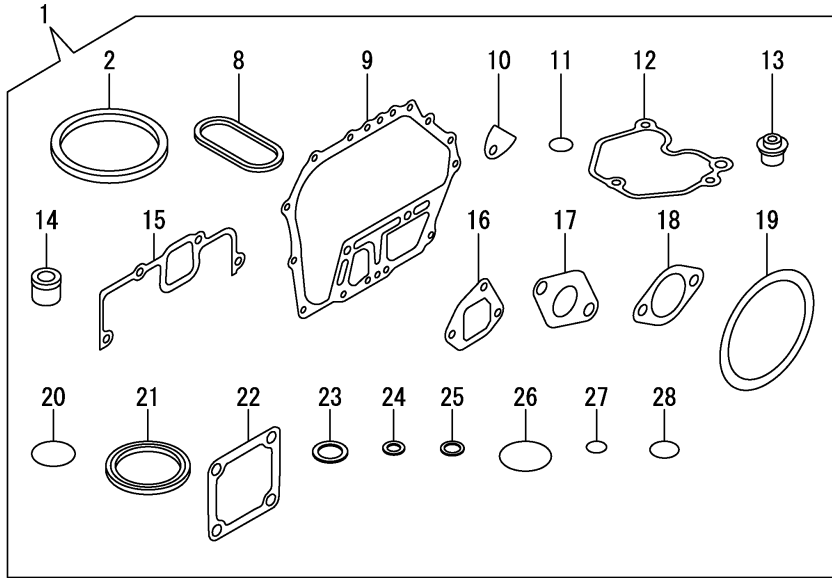
(D)=  
(E)=  
(F)=

| No. | Lev. | Parts No.    | Description         | Q'ty |     |     |     |     |     | I | R |
|-----|------|--------------|---------------------|------|-----|-----|-----|-----|-----|---|---|
|     |      |              |                     | (A)  | (B) | (C) | (D) | (E) | (F) |   |   |
| 2   | 2    | 114699-76251 | RECOIL ASSY         | 1    |     |     |     |     |     |   |   |
| 3   | 3    | 114699-76510 | CASE, STARTER       | 1    |     |     |     |     |     |   |   |
| 4   | 3    | 114699-76521 | REEL, RECOIL        | 1    |     |     |     |     |     |   |   |
| 6   | 3    | 114699-76531 | RATCHET             | 2    |     |     |     |     |     |   |   |
| 7   | 3    | 114399-76540 | SPRING, SPIRAL      | 1    |     |     |     |     |     |   |   |
| 8   | 3    | 114699-76551 | GUIDE, RATCHET      | 1    |     |     |     |     |     |   |   |
| 9   | 3    | 114699-76560 | SPRING, FRICTION    | 1    |     |     |     |     |     |   |   |
| 10  | 3    | 114399-76620 | KNOB, STARTER       | 1    |     |     |     |     |     |   |   |
| 11  | 3    | 114699-76630 | ROPE, STARTER       | 1    |     |     |     |     |     |   |   |
| 12  | 3    | 114699-76650 | SPRING, RETURN      | 1    |     |     |     |     |     |   |   |
| 13  | 3    | 114699-76660 | CIRCLIP             | 1    |     |     |     |     |     |   |   |
| 14  | 3    | 114699-76670 | WASHER              | 1    |     |     |     |     |     |   |   |
| 15  | 3    | 114699-76680 | WASHER              | 1    |     |     |     |     |     |   |   |
| 16  | 2    | 114699-76592 | PULLEY, STARTER     | 1    |     |     |     |     |     |   |   |
| 17  | 1    | 26106-060082 | BOLT, M6X 8 PLATED  | 4    |     |     |     |     |     |   |   |
| 18  | 1    | 26106-060122 | BOLT, M6X 12 PLATED | 3    |     |     |     |     |     |   |   |

Fig.20. GASKET SET & TOOL

(A)=L100N6FZ1T1AAAL  
(B)=  
(C)=

(D)=  
(E)=  
(F)=



| No. | Lev. | Parts No.    | Description         | Q'ty |     |     |     |     |     | I | R |
|-----|------|--------------|---------------------|------|-----|-----|-----|-----|-----|---|---|
|     |      |              |                     | (A)  | (B) | (C) | (D) | (E) | (F) |   |   |
| 1   | 1    | 114320-92600 | GASKET SET          | 1    |     |     |     |     |     |   | 1 |
| 2   | 2    | 114695-01331 | GASKET, HEAD        | 1    |     |     |     |     |     |   |   |
| 8   | 2    | 114699-01380 | O-RING              | 1    |     |     |     |     |     |   |   |
| 9   | 2    | 114699-01410 | GASKET, CRANK CASE  | 1    |     |     |     |     |     |   |   |
| 10  | 2    | 114250-01841 | GASKET              | 1    |     |     |     |     |     |   |   |
| 11  | 2    | 114299-01950 | O-RING, 18          | 2    |     |     |     |     |     |   |   |
| 12  | 2    | 114310-11310 | GASKET, BONNET      | 1    |     |     |     |     |     |   |   |
| 13  | 2    | 114650-11341 | SEAL, VALVE STEM    | 2    |     |     |     |     |     |   |   |
| 14  | 2    | 114771-11461 | GASKET, NOZZLE      | 1    |     |     |     |     |     |   |   |
| 15  | 2    | 114310-12210 | GASKET, AIR CLEANER | 1    |     |     |     |     |     |   |   |
| 16  | 2    | 114699-12210 | GASKET, AIR CLEANER | 2    |     |     |     |     |     |   |   |
| 17  | 2    | 114310-13200 | GASKET, MUFFLER     | 1    |     |     |     |     |     |   |   |
| 18  | 2    | 183671-13211 | GASKET, MUFFLER     | 1    |     |     |     |     |     |   |   |
| 19  | 2    | 114399-21980 | GASKET              | 1    |     |     |     |     |     |   |   |
| 20  | 2    | 114299-32570 | O-RING              | 1    |     |     |     |     |     |   |   |
| 21  | 2    | 160393-55050 | GASKET              | 4    |     |     |     |     |     |   |   |
| 22  | 2    | 129100-77510 | GASKET, AIR HEATER  | 3    |     |     |     |     |     |   |   |
| 23  | 2    | 22190-160002 | WASHER, SEAL 16     | 2    |     |     |     |     |     |   |   |
| 24  | 2    | 23414-080000 | GASKET, 8X1.0       | 1    |     |     |     |     |     |   |   |
| 25  | 2    | 23414-120000 | GASKET, 12X1.0      | 1    |     |     |     |     |     |   |   |
| 26  | 2    | 24311-000400 | O-RING, 1AP40.0     | 1    |     |     |     |     |     |   |   |
| 27  | 2    | 24341-000150 | O-RING, 1AS15.0     | 2    |     |     |     |     |     |   |   |
| 28  | 2    | 24341-000224 | O-RING, 1AS22.4     | 1    |     |     |     |     |     |   |   |

Remarks

(1)Optional parts.

N:Old  $\xrightarrow{\text{Yes}}$  New, Q:Old  $\xrightarrow{\text{No}}$  New, R:Old  $\xrightarrow{\text{Yes}}$  New, S:Old  $\xrightarrow{\text{No}}$  New, W:Add, Z:Discontinued, F:Interchangeable by set, K:Q'ty Change

## Parts No. Index

| Parts No.    | Fig. No. | Ref. No. |
|--------------|----------|----------|
| 104211-11370 | 4        | 27       |
| 105546-51020 | 16       | 2        |
| 105546-51330 | 16       | 15       |
| 114210-03590 | 4        | 39       |
| 114210-11901 | 4        | 31       |
| 114210-12560 | 5        | 11       |
| 114210-12590 | 5        | 12       |
| 114210-12600 | 5        | 15       |
| 114210-14300 | 7        | 7        |
| 114210-55210 | 17       | 3        |
| 114210-55810 | 17       | 14       |
| 114210-61290 | 12       | 32       |
| 114210-66060 | 18       | 2        |
| 114210-66100 | 18       | 6        |
| 114220-12500 | 5        | 8        |
| 114240-11450 | 4        | 28       |
| 114240-11550 | 4        | 29       |
| 114250-01841 | 1        | 20       |
|              | 20       | 10       |
| 114250-11240 | 4        | 18       |
|              |          | 22       |
| 114250-51080 | 16       | 3        |
| 114250-51160 | 16       | 11       |
| 114250-51340 | 16       | 16       |
| 114250-51500 | 16       | 18       |
| 114250-51640 | 16       | 19       |
| 114250-51650 | 16       | 20       |
| 114250-53080 | 16       | 24       |
| 114250-53120 | 16       | 30       |
| 114250-53130 | 16       | 31       |
| 114250-53140 | 16       | 32       |
| 114250-53210 | 16       | 36       |
| 114250-55121 | 17       | 1        |
| 114250-55130 | 17       | 2        |
| 114250-55201 | 17       | 13       |
| 114250-55301 | 17       | 5        |
| 114299-01600 | 1        | 7        |
| 114299-01690 | 2        | 1        |
| 114299-01800 | 1        | 8        |
| 114299-01830 | 1        | 19       |
| 114299-01950 | 2        | 4        |
|              | 20       | 11       |
| 114299-02030 | 1        | 38       |
| 114299-03640 | 4        | 42       |
| 114299-07111 | 3        | 2        |
| 114299-12300 | 5        | 2        |
| 114299-32070 | 12       | 7        |
| 114299-32570 | 12       | 8        |
|              | 20       | 20       |
| 114299-35110 | 12       | 12       |

| Parts No.    | Fig. No. | Ref. No. |
|--------------|----------|----------|
| 114299-35150 | 1        | 33       |
| 114299-45220 | 14       | 1        |
| 114299-45301 | 15       | 3        |
| 114299-45310 | 15       | 4        |
| 114299-45350 | 15       | 6        |
| 114299-55040 | 17       | 11       |
| 114299-55080 | 17       | 9        |
| 114299-55100 | 17       | 12       |
| 114299-61190 | 12       | 17       |
| 114299-61600 | 12       | 29       |
| 114299-66201 | 18       | 17       |
| 114299-66250 | 18       | 12       |
| 114299-66440 | 18       | 7        |
| 114299-67080 | 18       | 8        |
| 114310-01020 | 1        | 1        |
| 114310-01200 | 4        | 1        |
| 114310-01210 | 4        | 2        |
| 114310-01450 | 1        | 28       |
| 114310-11120 | 4        | 10       |
| 114310-11180 | 4        | 11       |
| 114310-11290 | 4        | 25       |
| 114310-11310 | 4        | 36       |
|              | 20       | 12       |
| 114310-11930 | 4        | 12       |
| 114310-11950 | 4        | 37       |
| 114310-12010 | 5        | 4        |
| 114310-12210 | 5        | 1        |
|              | 20       | 15       |
| 114310-13200 | 6        | 1        |
|              | 20       | 17       |
| 114310-14200 | 7        | 6        |
| 114310-14400 | 7        | 12       |
| 114310-22500 | 10       | 10       |
| 114310-23200 | 10       | 28       |
| 114310-45150 | 15       | 1        |
| 114310-45260 | 14       | 2        |
| 114310-55230 | 17       | 4        |
| 114310-59060 | 17       | 25       |
| 114310-59310 | 17       | 27       |
| 114310-59800 | 16       | 65       |
| 114311-61500 | 12       | 18       |
| 11431C-11100 | 4        | 8        |
| 11431C-11110 | 4        | 9        |
| 11431C-11250 | 4        | 14       |
| 11431C-11260 | 4        | 15       |
| 11431C-11650 | 4        | 16       |
| 11431C-11660 | 4        | 20       |
| 11431C-13550 | 6        | 2        |
| 11431C-13560 | 6        | 3        |
| 11431C-13700 | 6        | 4        |

| Parts No.    | Fig. No. | Ref. No. |
|--------------|----------|----------|
| 11431C-13710 | 6        | 5        |
| 11431C-13720 | 6        | 6        |
| 11431C-21760 | 8        | 1        |
| 11431C-55710 | 17       | 7        |
| 114320-12550 | 5        | 3        |
| 114320-66010 | 18       | 16       |
| 114320-66600 | 18       | 18       |
| 114320-92600 | 20       | 1        |
| 11432C-11020 | 4        | 3        |
| 114339-51100 | 16       | 4        |
| 114339-53100 | 16       | 25       |
| 114339-53200 | 16       | 33       |
| 114339-59300 | 17       | 23       |
| 114399-21980 | 20       | 19       |
| 114399-45320 | 14       | 3        |
| 114399-45340 | 14       | 4        |
| 114399-76540 | 19       | 7        |
| 114399-76620 | 19       | 10       |
| 114650-02100 | 1        | 31       |
| 114650-02150 | 1        | 39       |
| 114650-02200 | 1        | 35       |
| 114650-02210 | 1        | 36       |
| 114650-11341 | 4        | 26       |
|              | 20       | 13       |
| 114650-32010 | 12       | 1        |
| 114650-51300 | 16       | 12       |
| 114695-01331 | 20       | 2        |
| 114695-01341 | 1        | 5        |
| 114699-01380 | 1        | 6        |
|              | 20       | 8        |
| 114699-01410 | 1        | 27       |
|              | 20       | 9        |
| 114699-01760 | 2        | 2        |
| 114699-11600 | 4        | 30       |
| 114699-12210 | 20       | 16       |
| 114699-21220 | 9        | 1        |
| 114699-21420 | 9        | 3        |
| 114699-21550 | 9        | 2        |
| 114699-22300 | 10       | 9        |
| 114699-45331 | 15       | 5        |
| 114699-59850 | 16       | 71       |
| 114699-76251 | 19       | 2        |
| 114699-76510 | 19       | 3        |
| 114699-76521 | 19       | 4        |
| 114699-76531 | 19       | 6        |
| 114699-76551 | 19       | 8        |
| 114699-76560 | 19       | 9        |
| 114699-76592 | 19       | 16       |
| 114699-76630 | 19       | 11       |
| 114699-76650 | 19       | 12       |

| Parts No.    | Fig. No. | Ref. No. |
|--------------|----------|----------|
| 114699-76660 | 19       | 13       |
| 114699-76670 | 19       | 14       |
| 114699-76680 | 19       | 15       |
| 114770-61520 | 12       | 28       |
| 114770-61610 | 12       | 30       |
| 114771-11461 | 20       | 14       |
| 114780-59010 | 17       | 20       |
| 114780-59060 | 17       | 21       |
| 114780-61090 | 18       | 25       |
| 119803-53400 | 16       | 37       |
| 121750-59890 | 17       | 28       |
| 124060-23100 | 10       | 27       |
| 124066-59100 | 17       | 26       |
| 124550-51350 | 16       | 17       |
| 124722-59050 | 17       | 24       |
| 129100-77510 | 20       | 22       |
| 160110-01870 | 2        | 5        |
| 160393-55050 | 20       | 21       |
| 160725-78350 | 18       | 9        |
| 183671-13211 | 20       | 18       |
| 22117-080000 | 17       | 15       |
| 22190-160002 | 2        | 6        |
|              | 20       | 23       |
| 22242-000150 | 4        | 24       |
| 22312-030160 | 4        | 45       |
|              | 12       | 9        |
| 22312-040080 | 1        | 21       |
| 22322-030200 | 12       | 27       |
| 22351-020006 | 16       | 10       |
| 22351-025005 | 16       | 29       |
| 22351-030008 | 16       | 21       |
| 22351-040008 | 4        | 32       |
| 22451-060000 | 18       | 26       |
| 22512-050140 | 9        | 5        |
| 23080-014000 | 17       | 22       |
| 23414-080000 | 17       | 10       |
|              | 20       | 24       |
| 23414-120000 | 20       | 25       |
| 23875-020000 | 1        | 22       |
| 23876-010000 | 13       | 1        |
| 24101-063040 | 11       | 6        |
| 24162-152220 | 1        | 40       |
| 24311-000400 | 20       | 26       |
| 24341-000150 | 17       | 6        |
|              | 20       | 27       |
| 24341-000224 | 12       | 14       |
|              | 20       | 28       |
| 24423-355008 | 1        | 41       |
|              |          | 42       |
| 26106-060082 | 19       | 17       |



# Parts No. Index

| Parts No.    | Fig. No. | Ref. No. |
|--------------|----------|----------|
| 26106-060122 | 12       | 10       |
|              | 19       | 18       |
| 26106-060142 | 18       | 13       |
| 26106-060162 | 12       | 15       |
|              | 17       | 16       |
| 26106-060202 | 14       | 5        |
|              | 18       | 14       |
| 26106-060402 | 5        | 17       |
| 26106-060652 | 4        | 49       |
| 26106-080122 | 1        | 43       |
| 26106-080202 | 6        | 7        |
| 26106-080352 | 1        | 34       |
| 26106-080452 | 17       | 17       |
| 26117-050089 | 18       | 5        |
| 26216-080182 | 6        | 9        |
| 26226-060182 | 1        | 23       |
| 26226-060222 | 1        | 24       |
| 26226-060352 | 5        | 18       |
| 26226-060552 | 4        | 33       |
| 26306-080002 | 6        | 10       |
| 26347-060002 | 18       | 10       |
| 26366-060002 | 1        | 25       |
|              | 4        | 34       |
|              | 17       | 18       |
| 26776-100002 | 18       | 23       |
| 26856-060002 | 4        | 19       |
|              |          | 23       |
| 26857-060002 | 18       | 11       |
| 714210-61701 | 12       | 31       |
| 714210-66100 | 18       | 1        |
| 714310-22500 | 10       | 3        |
| 714310-22540 | 10       | 13       |
| 714310-22550 | 10       | 19       |
| 714310-28510 | 11       | 1        |
| 71431C-23010 | 10       | 24       |
| 714320-22580 | 10       | 17       |
| 714320-22620 | 10       | 11       |
| 714320-22720 | 10       | 1        |
| 71432C-14010 | 7        | 1        |
| 714339-51200 | 16       | 1        |
| 714339-53200 | 16       | 23       |
| 714650-23600 | 10       | 29       |
| 714650-23610 | 10       | 31       |
| 714650-23620 | 10       | 33       |

| Parts No. | Fig. No. | Ref. No. |
|-----------|----------|----------|
|-----------|----------|----------|

| Parts No. | Fig. No. | Ref. No. |
|-----------|----------|----------|
|-----------|----------|----------|

| Parts No. | Fig. No. | Ref. No. |
|-----------|----------|----------|
|-----------|----------|----------|