

0CC50-M00200EN

Introduction

1.This parts catalog is a first edition of the TF150DI-LYB, TF150DI-LEYB Diesel engine.

	Date of issue	Remarks
First edition	July,2014	

2.This parts catalog does not contain the technical data needed for maintenance service.

3.The illustrations used in this parts catalog have been simplified for clarity.

4.The contents of this parts catalog are subject to change without notice.

5.Be sure to use only Yanmar genuine parts for repairs.If imitation parts are used, it may cause engine defects.

Contents

OCC50-M00200

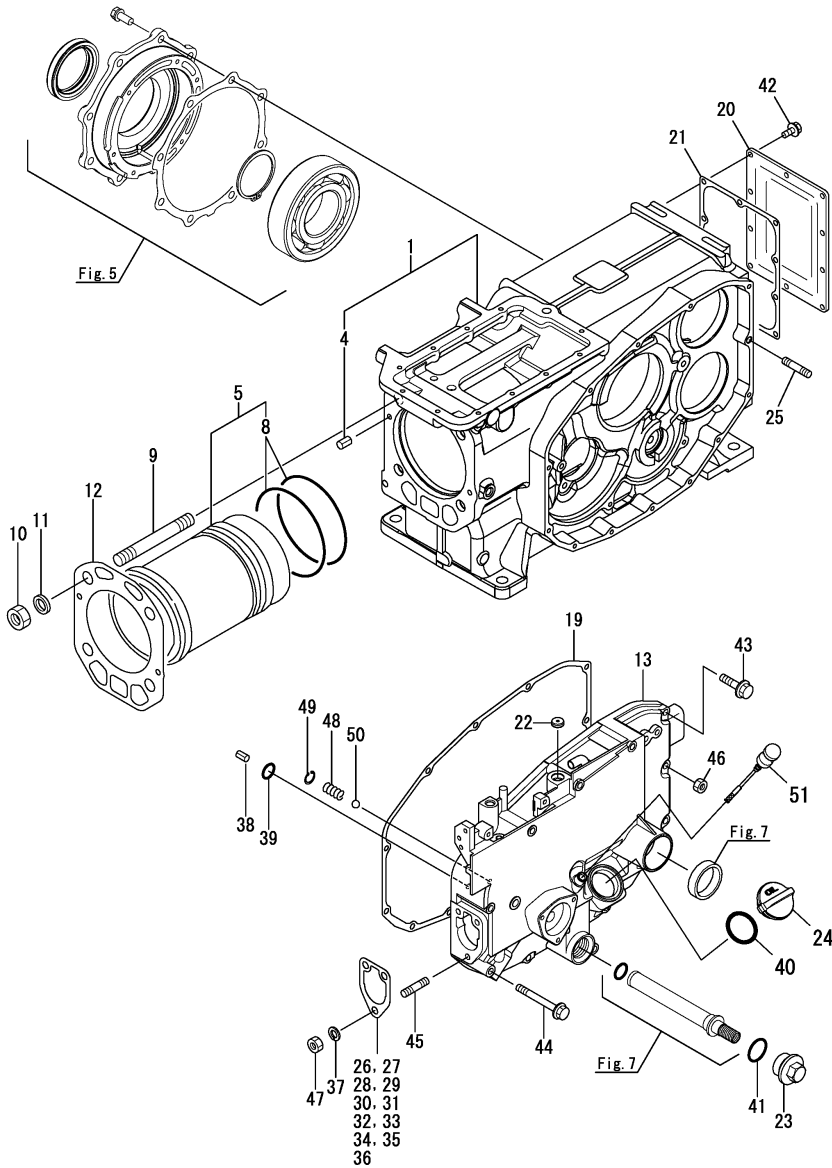
Fig. No. Fig. Name

Fig. No. Fig. Name

ENGINE

1. CYLINDER BLOCK
2. CYLINDER HEAD & BONNET
3. AIR CLEANER & MUFFLER
4. CAMSHAFT & BALANCER
5. CRANKSHAFT & FLYWHEEL
6. PISTON & CONNECTING ROD
7. LUB. OIL SYSTEM
8. RADIATOR & FUEL TANK
9. FAN
10. FUEL INJECTION PUMP
11. FUEL INJECTION DEVICE
12. GOVERNOR & CONTROL DEVICE
13. STARTER MOTOR
14. LAMP ASSY
15. TOOLS & LABEL
16. GASKET SET

Fig.1. CYLINDER BLOCK



(A)=TF150DI-LYB
(B)=TF150DI-LEYB
(C)=

(D)=
(E)=
(F)=

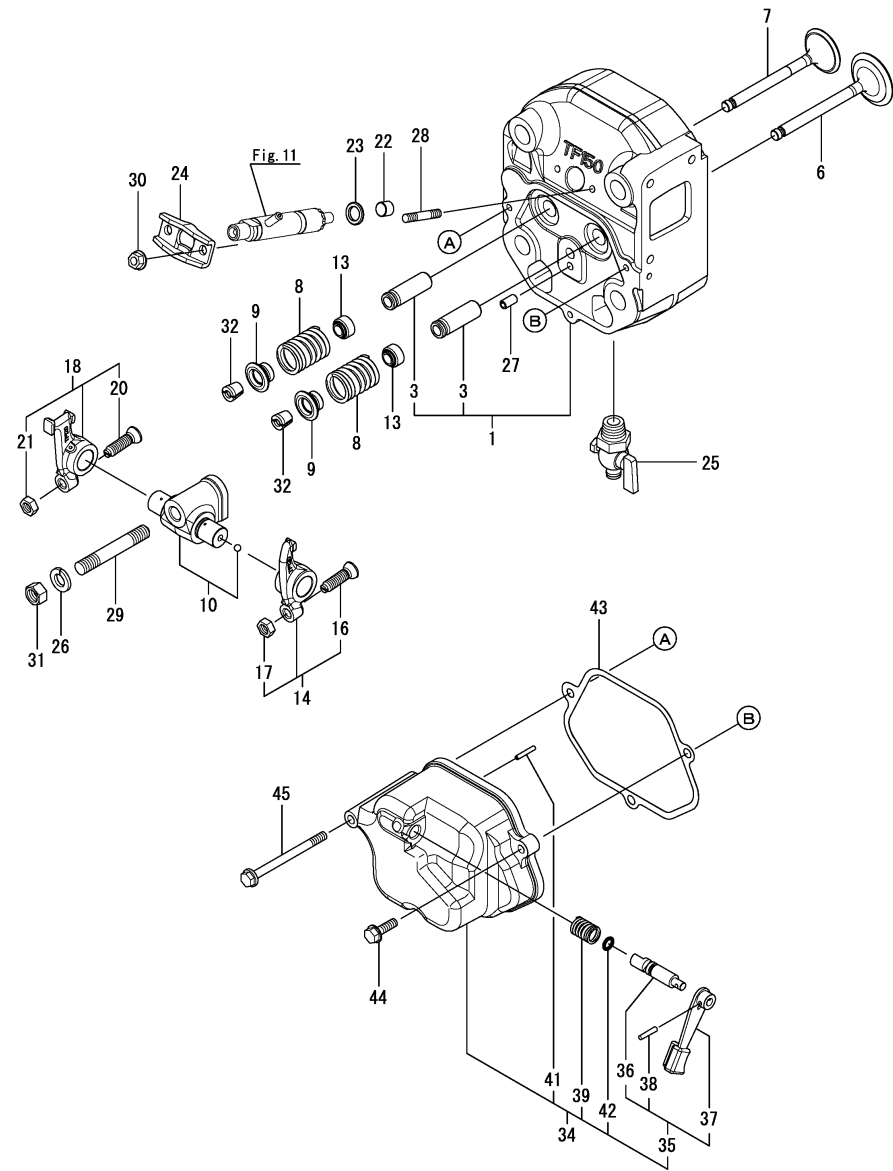
No.	Lev.	Parts No.	Description	Q'ty						I	R
				(A)	(B)	(C)	(D)	(E)	(F)		
1	1	10571H-01700	BLOCK ASSY, CYLINDER	1	1						
4	2	22351-060012	PIN, SPRING 6.0X12	1	1						
5	1	10571H-01710	LINER ASSY, CYLINDER	1	1						
8	2	10571H-01300	O-RING, CYL. LINER	2	2						A
9	1	10571H-01200	BOLT, CYLINDER HEAD	4	4						
10	1	104300-01220	NUT, CYLINDER HEAD	4	4						
11	1	103338-01240	WASHER	4	4						
12	1	10571H-01330	GASKET, HEAD	1	1						A
13	1	10567H-01390	CASE ASSY, GEAR	1	1						
19	1	105500-01410	GASKET	1	1						A
20	1	10571H-01480	COVER, REAR	1	1						
21	1	10571H-01490	GASKET, REAR COVER	1	1						
22	1	105100-01660	PLUG, 14	1	1						
23	1	105300-01690	PLUG	1	1						
24	1	10540H-01751	CAP, FEEDER	1	1						
25	1	10530H-01800	BOLT	1	1						
26	1	10520H-01850	SHIM (T=0.1)	1	1						
27	1	10520H-01860	SHIM (T=0.15)	1	1						
28	1	10520H-01870	SHIM (T=0.2)	1	1						
29	1	10520H-01880	SHIM (T=0.25)	1	1						
30	1	10520H-01920	SHIM (T=0.3)	1	1						
31	1	10520H-01930	SHIM (T=0.35)	1	1						
32	1	10520H-01940	SHIM (T=0.4)	1	1						
33	1	10520H-01950	SHIM (T=0.45)	1	1						
34	1	10520H-01960	SHIM (T=0.5)	1	1						
35	1	10520H-01970	SHIM (T=0.55)	1	1						
36	1	10520H-01980	SHIM (T=0.6)	1	1						
37	1	22217-080000	WASHER, SPRING 8	3	3						
38	1	22351-060012	PIN, SPRING 6.0X12	2	2						
39	1	24311-000060	O-RING, 1AP6.0	1	1						
40	1	24311-000320	O-RING, 1AP32.0	1	1						A
41	1	24321-000250	O-RING, 1AG25.0	1	1						
42	1	26106-060102	BOLT, M6X 10 PLATED	10	10						
43	1	26106-060252	BOLT, M6X 25 PLATED	6	6						
44	1	26106-060652	BOLT, M6X 65 PLATED	6	6						
45	1	26216-080222	STUD, M8X 22	3	3						
46	1	26366-060002	NUT, M6	1	1						
47	1	26716-080002	NUT, M8	3	3						
48	1	105300-34040	SPRING	1	1						
49	1	22252-000100	RING, 10	1	1						
50	1	24190-120001	BALL, STEEL 3/8	1	1						
51	1	10530H-34850	DIPSTICK, OIL	1	1						

Remarks

(A)Gasket kit is shown in Fig.16.

N:Old $\begin{matrix} \leftarrow \text{Yes} \\ \text{No} \end{matrix}$ New, Q:Old $\begin{matrix} \leftarrow \text{No} \\ \text{Yes} \end{matrix}$ New, R:Old $\begin{matrix} \leftarrow \text{Yes} \\ \text{Yes} \end{matrix}$ New, S:Old $\begin{matrix} \leftarrow \text{No} \\ \text{No} \end{matrix}$ New, W:Add, Z:Discontinued, F:Interchangeable by set, K:Q'ty Change

Fig.2. CYLINDER HEAD & BONNET



(A)=TF150DI-LYB
(B)=TF150DI-LEYB
(C)=

(D)=
(E)=
(F)=

No.	Lev.	Parts No.	Description	Q'ty						I	R
				(A)	(B)	(C)	(D)	(E)	(F)		
1	1	10571H-11010	HEAD ASSY, CYLINDER	1	1						
3	2	105600-11800	GUIDE, VALVE	2	2						1
6	1	10571H-11100	VALVE, SUCTION	1	1						
7	1	10571H-11110	VALVE, EXHAUST	1	1						
8	1	10571H-11120	SPRING, VALVE	2	2						
9	1	103338-11180	RETAINER, SPRING	2	2						
10	1	10571H-11290	SUPPORT ASSY, ARM	1	1						
13	1	105500-11340	SEAL, VALVE STEM	2	2						
14	1	10550H-11650	ARM ASSY, INTAKE	1	1						
16	2	101158-11230	SCREW, VALVE ADJUST	1	1						
17	2	26756-080002	NUT, LOCK M8	1	1						
18	1	10550H-11660	ARM ASSY, EXHAUST	1	1						
20	2	101158-11230	SCREW, VALVE ADJUST	1	1						
21	2	26756-080002	NUT, LOCK M8	1	1						
22	1	119625-11871	PROTECTOR, NOZZLE	1	1						A
23	1	119625-11880	SEAT, NOZZLE	1	1						
24	1	10530H-11900	RETAINER, VALVE	1	1						
25	1	105010-11920	COCK, WATER	1	1						
26	1	22217-100000	WASHER, SPRING 10	1	1						
27	1	22351-060012	PIN, SPRING 6.0X12	1	1						
28	1	26216-060302	STUD, M6X 30	2	2						
29	1	26216-100552	STUD, M10X 55	1	1						
30	1	26366-060002	NUT, M6	2	2						
31	1	26716-100002	NUT, M10	1	1						
32	1	27310-080001	COTTER, 8	2	2						
34	1	10571H-11520	BONNET ASSY, SUB	1	1						
35	2	10530H-03550	LEVER ASSY, DECOMP.	1	1						
36	3	10530H-03610	SHAFT, DECOMP LEVER	1	1						
37	3	104104-03750	LEVER, DECOMPRESSION	1	1						
38	3	22322-030160	PIN, TAPER 3X16	1	1						
39	2	104200-03641	SPRING, DECOMPRESSION	1	1						
41	2	22312-030180	PIN, PARALLEL M3X18	1	1						
42	2	24311-000070	O-RING, 1AP7.0	1	1						A
43	1	10571H-11310	GASKET, BONNET	1	1						A
44	1	26106-060202	BOLT, M6X 20 PLATED	2	2						
45	1	26106-060752	BOLT, M6X 75 PLATED	1	1						

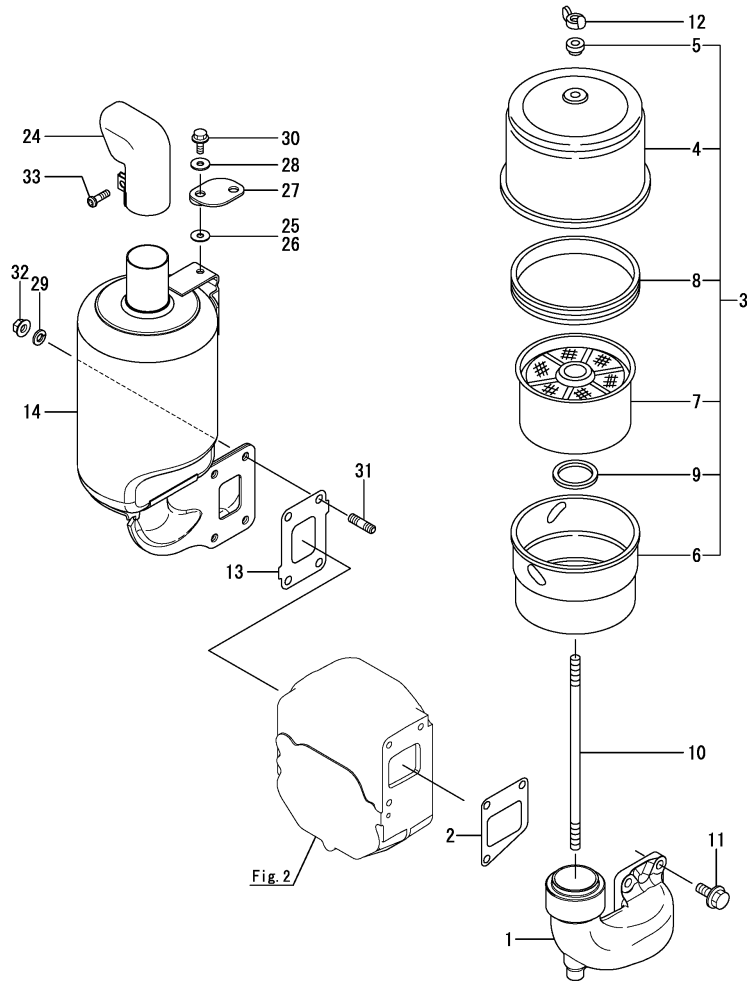
Remarks

- (1) Spare parts.
- (A) Gasket kit is shown in Fig.16.

Fig.3. AIR CLEANER & MUFFLER

(A)=TF150DI-LYB
(B)=TF150DI-LEYB
(C)=

(D)=
(E)=
(F)=



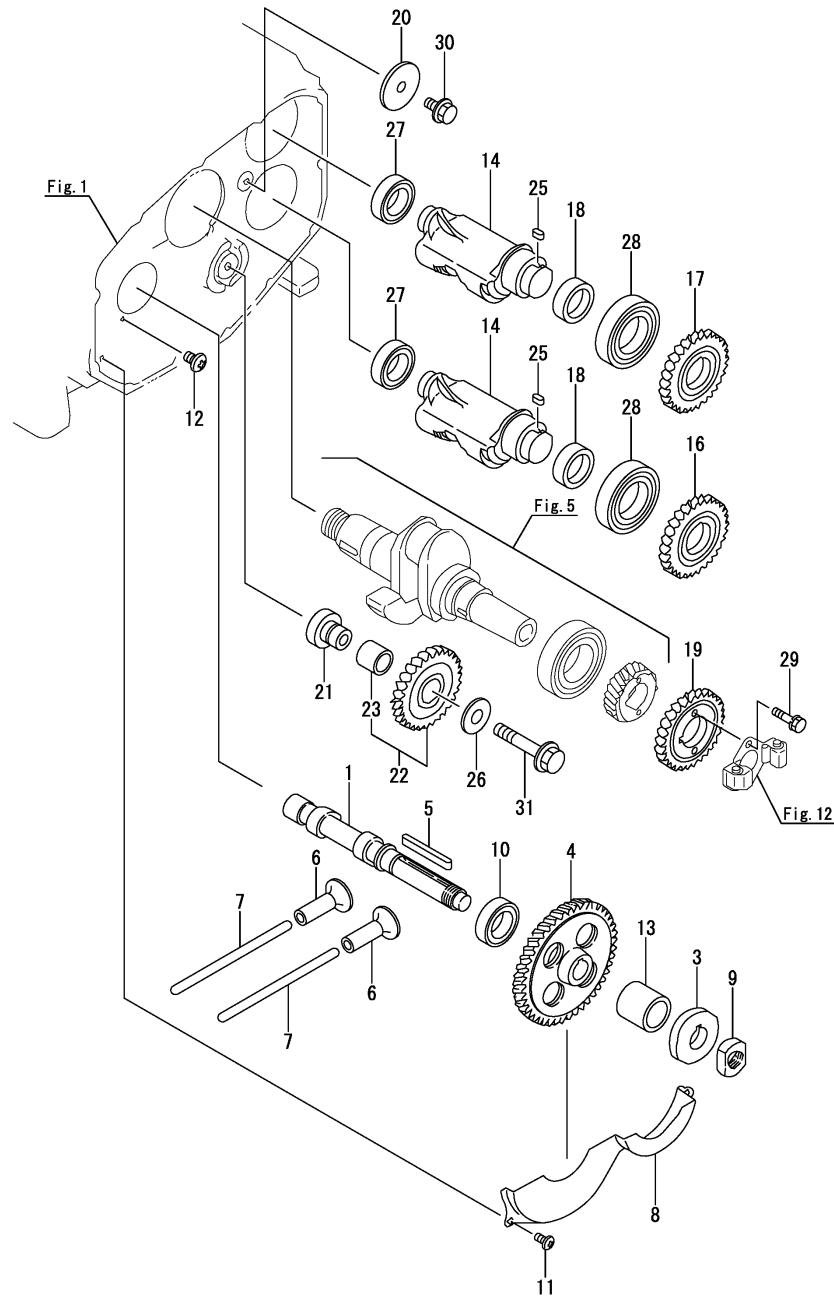
No.	Lev.	Parts No.	Description	Q'ty						I	R
				(A)	(B)	(C)	(D)	(E)	(F)		
1	1	10571H-12030	PIPE, AIR INTAKE	1	1						
2	1	105700-12050	GASKET	1	1						
3	1	10570H-12510	CLEANER ASSY, AIR	1	1						
4	2	10570H-12701	CAP, AIR CLEANER	1	1						
5	2	10570H-12710	WASHER, SEAL	1	1						
6	2	10570H-12750	BODY, AIR CLEANER	1	1						
7	2	10570H-12800	ELEMENT	1	1						
8	2	10570H-12850	GASKET, CAP	1	1						
9	2	10570H-12860	GASKET, AIR CLEANER	1	1						
10	1	10570H-12551	BOLT	1	1						
11	1	26106-080202	BOLT, M8X 20 PLATED	3	3						
12	1	26636-080002	NUT, WING M8	1	1						
13	1	10571H-13200	GASKET, SILENCER	1	1						A
14	1	10571H-13510	SILENCER	1	1						
24	1	10550H-13570	PIPE, EXHAUST	1	1						
25	1	10571H-13910	SHIM, SILENCER	1	1						
26	1	10571H-13920	SHIM, SILENCER	1	1						
27	1	10571H-13960	STIFFENER, SILENCER	1	1						
28	1	10540H-76940	WASHER	1	1						
29	1	22217-080000	WASHER, SPRING 8	4	4						
30	1	26106-060162	BOLT, M6X 16 PLATED	1	1						
31	1	26216-080202	STUD, M8X 20	4	4						
32	1	26366-080002	NUT, M8	4	4						
33	1	26557-060202	SCREW, M6X20	1	1						

Remarks
(A)Gasket kit is shown in Fig.16.

Fig.4. CAMSHAFT & BALANCER

(A)=TF150DI-LYB
(B)=TF150DI-LEYB
(C)=

(D)=
(E)=
(F)=

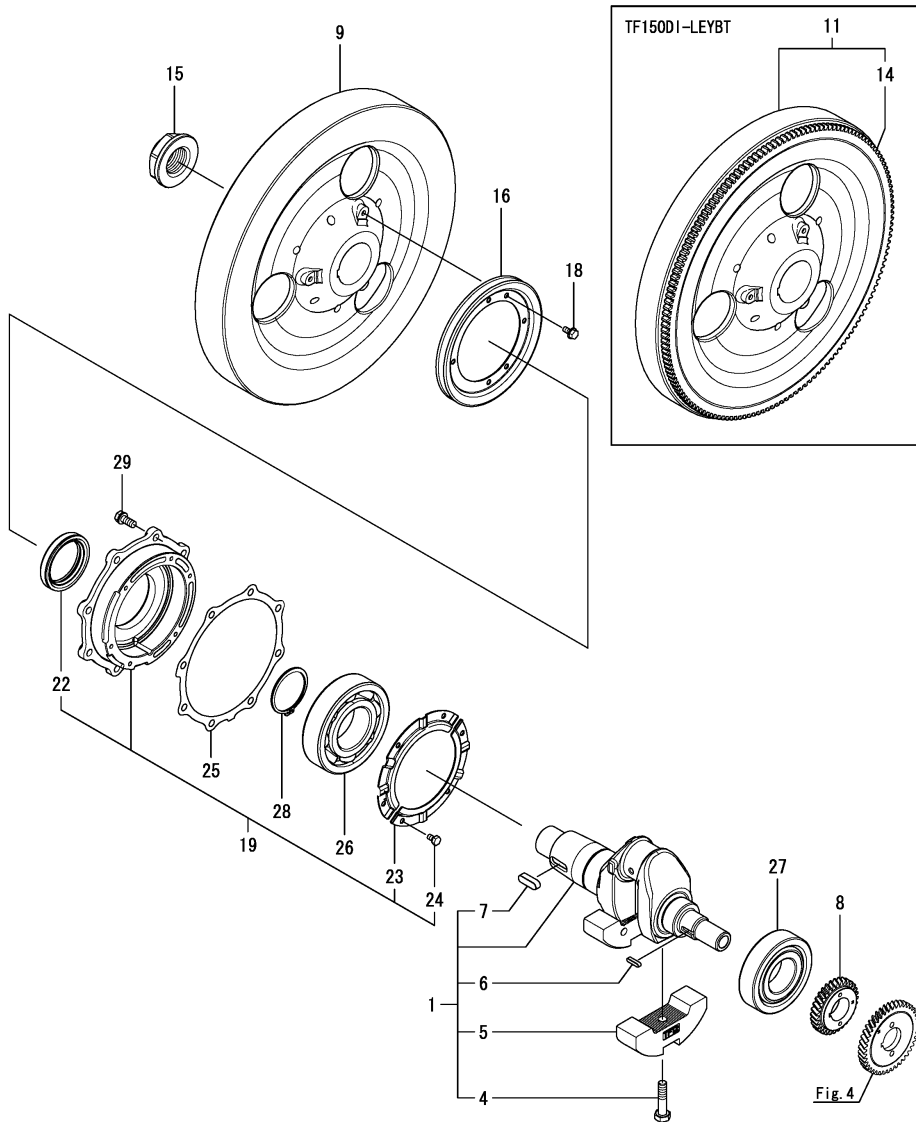


No.	Lev.	Parts No.	Description	Q'ty						I	R
				(A)	(B)	(C)	(D)	(E)	(F)		
1	1	10571H-14010	CAMSHAFT	1	1						
3	1	105300-14090	CAM, FUEL	1	1						
4	1	10560H-14100	GEAR, CAMSHAFT	1	1						
5	1	10537H-14190	KEY, CAMSHAFT GEAR	1	1						
6	1	10530H-14200	TAPPET	2	2						
7	1	10571H-14400	ROD, PUSH	2	2						
8	1	10550H-14600	COVER	1	1						
9	1	104300-76460	NUT	1	1						
10	1	24101-060064	BEARING, BALL 6006	1	1						
11	1	26022-060122	SCREW, M6X12	3	3						
12	1	26587-080122	SCREW, M8X12	1	1						
13	1	105302-14700	SPACER	1	1						
14	1	10571H-28250	SHAFT, BALANCER	2	2						
16	1	10560G-28300	GEAR, BALANCER	1	1						
17	1	10560G-28310	GEAR, BALANCER	1	1						
18	1	105500-28380	SPACER	2	2						
19	1	10560H-28410	GEAR, BALANCER	1	1						
20	1	105300-28450	RETAINER	1	1						
21	1	10540H-28700	SHAFT, IDLE GEAR	1	1						
22	1	10567H-28710	GEAR ASSY, IDLE	1	1						
23	2	105302-28720	BUSH	1	1						
25	1	105215-76490	KEY	2	2						
26	1	123672-83880	RETAINER	1	1						
27	1	24101-060054	BEARING, BALL 6005	2	2						
28	1	24101-060094	BEARING, BALL 6009	2	2						
29	1	26013-060222	BOLT, M6X 22	2	2						
30	1	26106-080142	BOLT, M8X 14 PLATED	1	1						
31	1	26106-100552	BOLT, M10X 55 PLATED	1	1						

Fig.5. CRANKSHAFT & FLYWHEEL

(A)=TF150DI-LYB
(B)=TF150DI-LEYB
(C)=

(D)=
(E)=
(F)=



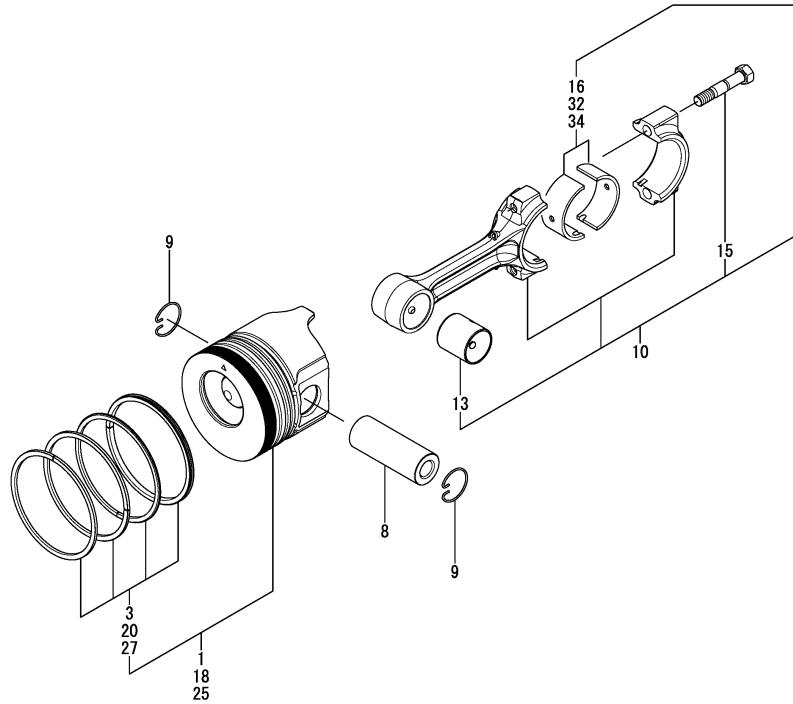
No.	Lev.	Parts No.	Description	Q'ty						I	R
				(A)	(B)	(C)	(D)	(E)	(F)		
1	1	10571H-21700	CRANKSHAFT ASSY	1	1						
4	2	104271-21100	BOLT, BALANCE WEIGHT	2	2						
5	2	10550H-21100	WEIGHT, BALANCE	2	2						
6	2	10557H-21290	KEY, CRANKSHAFT GEAR	1	1						
7	2	10557H-21520	KEY, FLYWHEEL	1	1						
8	1	10560H-21200	GEAR, CRANKSHAFT	1	1						
9	1	10571H-21400	FLYWHEEL		1						
11	1	10571H-21590	FLYWHEEL ASSY		1						
14	2	105500-21600	GEAR, RING		1						
15	1	10550H-21530	NUT, END	1	1						
16	1	104407-21600	V-PULLEY	1	1						
18	1	26013-060122	BOLT, M6X 12	3	3						
19	1	10571H-02700	HOUSING ASSY, METAL	1	1						
22	2	10571H-02220	SEAL, OIL	1	1						
23	2	10571H-02320	RETAINER, BEARING	2	2						
24	2	26116-060102	BOLT, M6X 10 PLATED	6	6						
25	1	10571H-02020	GASKET, HOUSING	1	1						A
26	1	10571H-02300	BEARING, BALL BL311	1	1						
27	1	10560H-02310	BEARING, NF309-C3	1	1						
28	1	22242-000550	RING, 55	1	1						
29	1	26013-080202	BOLT, M8X 20	8	8						

Remarks
(A)Gasket kit is shown in Fig.16.

Fig.6. PISTON & CONNECTING ROD

(A)=TF150DI-LYB
(B)=TF150DI-LEYB
(C)=

(D)=
(E)=
(F)=



No.	Lev.	Parts No.	Description	Q'ty						I	R
				(A)	(B)	(C)	(D)	(E)	(F)		
1	1	10571H-22190	PISTON ASSY	1	1						
3	2	10571H-22500	RING SET, PISTON	1	1						
8	1	10571H-22300	PIN, PISTON	1	1						
9	1	105500-22400	CIRCLIP	2	2						
10	1	105500-23500	ROD SUB ASSY,CONNECT	1	1						
13	3	105500-23910	BEARING, PISTON PIN	1	1						1
15	3	105500-23200	BOLT, CONNECTING ROD	2	2						
16	2	705500-23600	BEARING, CRANK PIN	1	1						
18	1	10571H-22470	PISTON W/RING .25OS	1	1						2
20	2	10571H-22510	RING SET, 0.25 OS	1	1						2
25	1	10571H-22480	PISTON W/RING .50OS	1	1						3
27	2	10571H-22520	RING SET, 0.50 OS	1	1						3
32	1	705500-23610	BEARING ASSY, 0.25	1	1						4
34	1	705500-23620	BEARING, 0.50 US	1	1						5

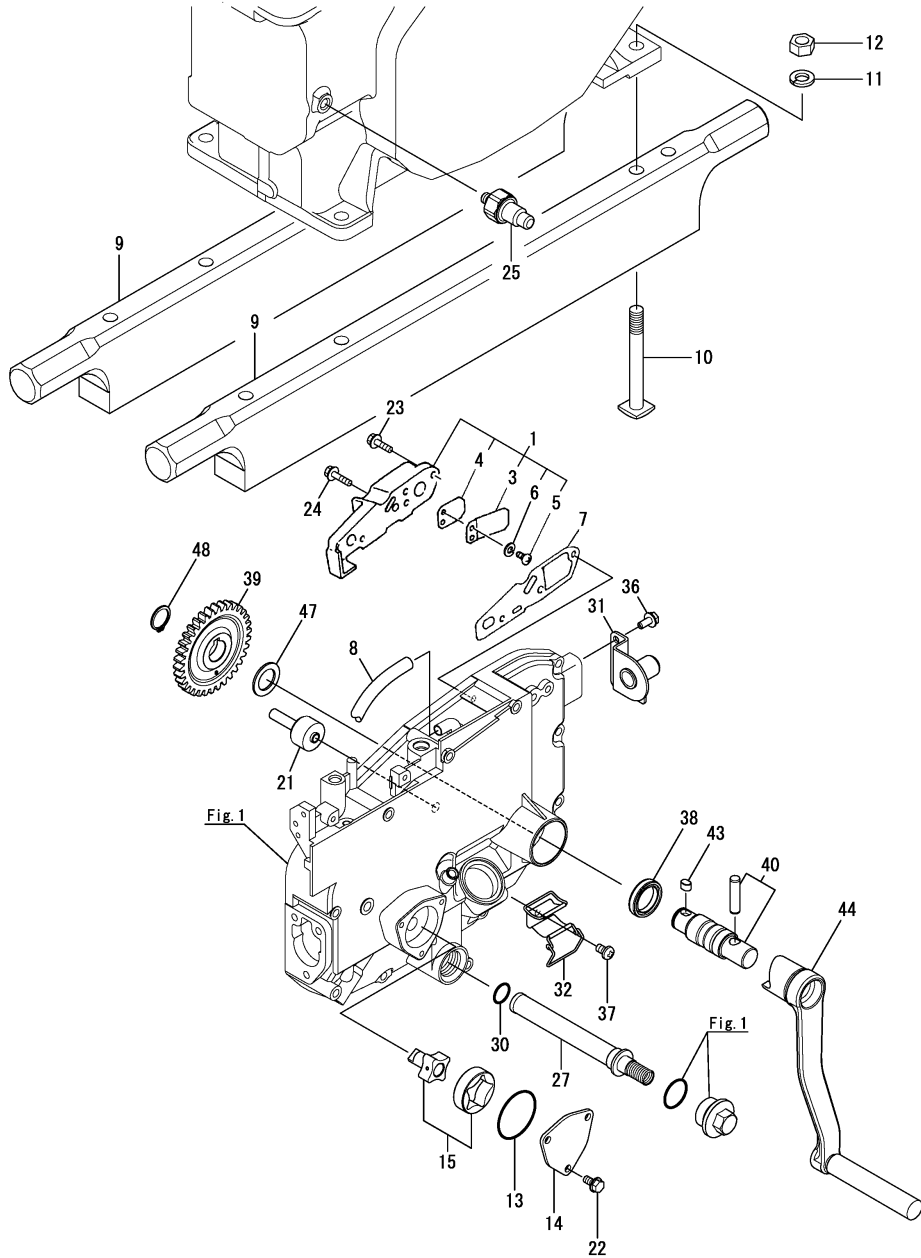
Remarks

- (1) Spare parts.
- (2) Over-sized (O.S.=0.25) parts.
- (3) Over-sized (O.S.=0.50) parts.
- (4) Under-sized (U.S.=0.25) parts.
- (5) Under-sized (U.S.=0.50) parts.

Fig.7. LUB. OIL SYSTEM

(A)=TF150DI-LYB
(B)=TF150DI-LEYB
(C)=

(D)=
(E)=
(F)=



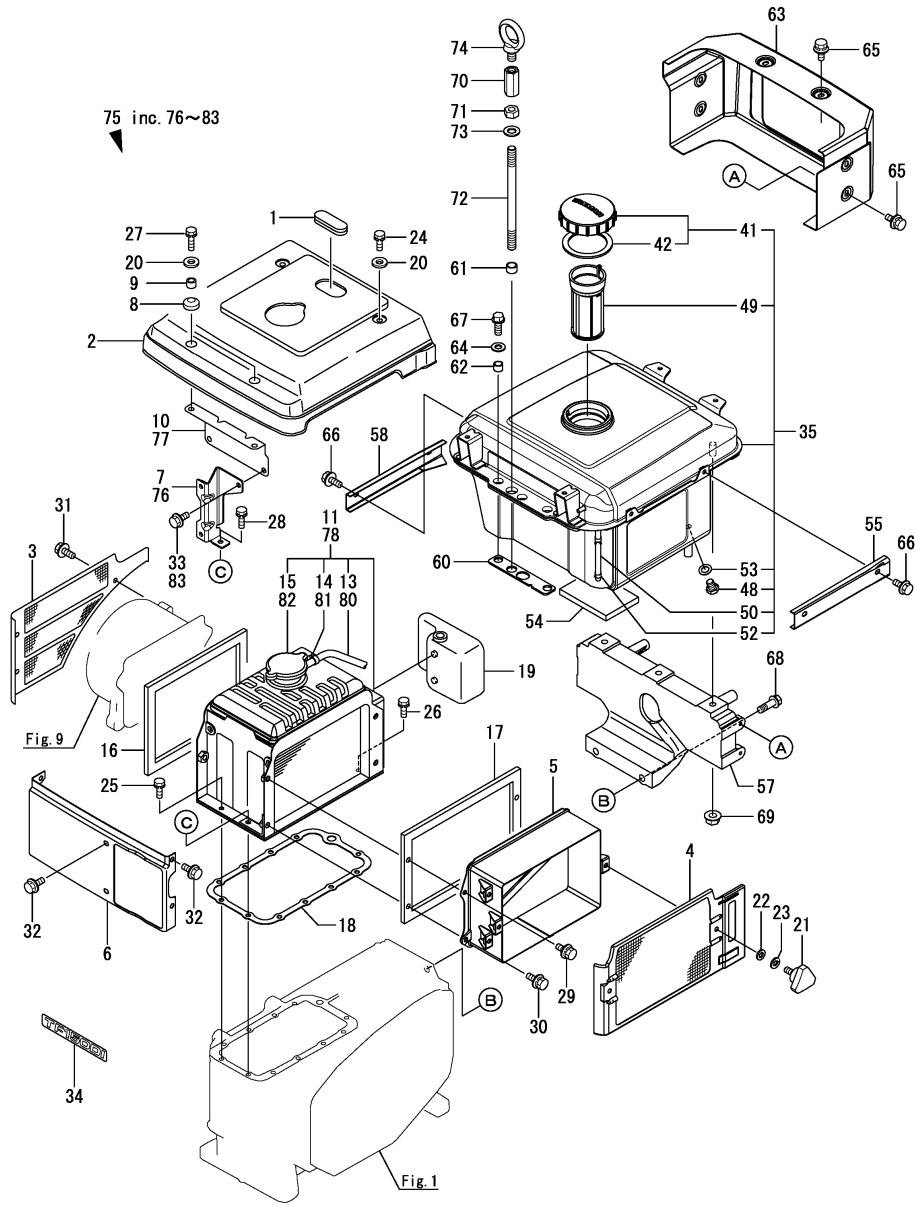
No.	Lev.	Parts No.	Description	Q'ty						I	R
				(A)	(B)	(C)	(D)	(E)	(F)		
1	1	10550H-03070	COVER ASSY, BREATHER	1	1						
3	2	101158-03111	RETAINER	1	1						
4	2	10537H-03060	VALVE, RETURN	1	1						
5	2	105362-78960	SCREW, M4X8	2	2						
6	2	22217-040000	WASHER, SPRING 4	2	2						
7	1	105500-03130	GASKET, BREATHER	1	1						
8	1	23064-090330	HOSE, 9 X 330	1	1						
9	1	10550H-08010	BED, WOODEN	2	2						
10	1	104300-08050	BOLT, FOUNDATION	4	4						
11	1	22217-120000	WASHER, SPRING 12	4	4						
12	1	26706-120002	NUT, M12	4	4						
13	1	103854-32051	O-RING	1	1						A
14	1	103854-32082	COVER	1	1						
15	1	10537H-32500	PUMP, LUB.OIL CMP	1	1						
21	1	10530H-32200	PIECE	1	1						
22	1	26106-060122	BOLT, M6X 12 PLATED	3	3						
23	1	26106-060222	BOLT, M6X 22 PLATED	2	2						
24	1	26106-060252	BOLT, M6X 25 PLATED	1	1						
25	1	105582-34100	SIGNAL	1	1						
27	1	105306-35052	STRAINER ASSY, OIL	1	1						
30	1	24341-000200	O-RING, 1AS20.0	1	1						A
31	1	10570H-08101	RETAINER, HANDLE	1	1						
32	1	10530G-08510	SPRING ASSY	1	1						
36	1	26106-060122	BOLT, M6X 12 PLATED	2	2						
37	1	26557-060102	SCREW, M6X10	1	1						
38	1	10571H-61250	SEAL,OIL START SHAFT	1	1						
39	1	10540H-76330	GEAR, STARTING	1	1						
40	1	10550H-76700	SHAFT, STARTING	1	1						
43	1	105300-76490	KEY, 7X10	1	1						
44	1	10570H-76790	HANDLE ASSY, START	1	1						
47	1	105300-76470	COLLAR	1	1						
48	1	22242-000200	RING, 20	1	1						

Remarks

(A)Gasket kit is shown in Fig.16.

N:Old $\begin{matrix} \leftarrow \text{Yes} \\ \text{No} \end{matrix}$ New, Q:Old $\begin{matrix} \leftarrow \text{No} \\ \text{Yes} \end{matrix}$ New, R:Old $\begin{matrix} \leftarrow \text{Yes} \\ \text{No} \end{matrix}$ New, S:Old $\begin{matrix} \leftarrow \text{No} \\ \text{Yes} \end{matrix}$ New, W:Add, Z:Discontinued, F:Interchangeable by set, K:Q'ty Change

Fig.8. RADIATOR & FUEL TANK



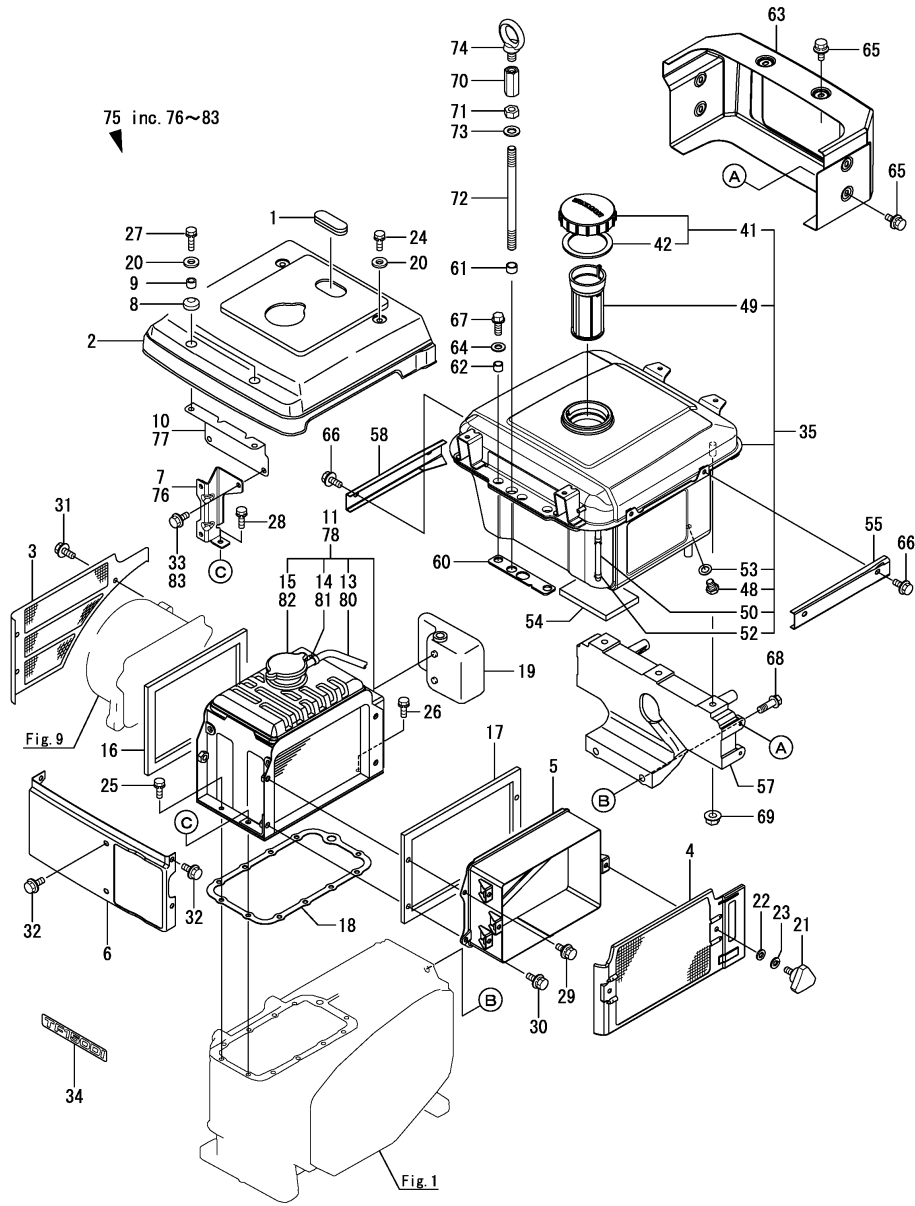
(A)=TF150DI-LYB
(B)=TF150DI-LEYB
(C)=

(D)=
(E)=
(F)=

No.	Lev.	Parts No.	Description	Q'ty						I	R
				(A)	(B)	(C)	(D)	(E)	(F)		
1	1	105300-44220	COVER, RADIATOR	1	1						
2	1	105700-44250	COVER, RADIATOR	1	1						
3	1	105700-44330	SCREEN	1	1						
4	1	10570H-44340	SCREEN	1	1						
5	1	10570H-44360	DUCT, SCREEN	1	1						
6	1	10570H-44370	COVER	1	1						
7	1	10570H-44380	STAY	1	1						Z
		(A=E000092) (B=E000006)									
8	1	105300-44451	ABSORBER	2	2						
9	1	105300-44460	COLLAR	2	2						
10	1	105700-44490	STAY	1	1						Z
		(A=E000092) (B=E000006)									
11	1	10570H-44500	RADIATOR ASSY	1	1						Z
		(A=E000092) (B=E000006)									
13	2	105640-44570	PIPE, 7X225	1	1						Z
		(A=E000092) (B=E000006)									
14	2	121250-44590	CLAMP	1	1						Z
		(A=E000092) (B=E000006)									
15	2	10530H-44600	CAP, RADIATOR	1	1						Z
		(A=E000092) (B=E000006)									
16	1	104607-44540	SPONGE	2	2						
17	1	106100-44560	SPONGE, 15X5X1000	1	1						
18	1	10571H-44610	GASKET, RADIATOR	1	1						
19	1	10570H-44630	TANK, SUB	1	1						
20	1	10540H-76940	WASHER	4	4						
21	1	160725-78350	KNOB	2	2						
22	1	22117-060000	WASHER, 6	2	2						
23	1	22217-060000	WASHER, SPRING 6	2	2						
24	1	26013-060142	BOLT, M6X 14	2	2						
25	1	26013-060162	BOLT, M6X 16	9	9						
26	1	26013-060182	BOLT, M6X 18	1	1						
27	1	26013-060182	BOLT, M6X 18	2	2						
28	1	26013-060202	BOLT, M6X 20	1	1						
29	1	26014-060142	BOLT, M6X 14	2	2						
30	1	26014-060182	BOLT, M6X 18	2	2						
31	1	26106-060122	BOLT, M6X 12 PLATED	3	3						
32	1	26106-060122	BOLT, M6X 12 PLATED	6	6						
33	1	26106-060122	BOLT, M6X 12 PLATED	2	2						Z
		(A=E000092) (B=E000006)									
34	1	10571H-07110	LABEL, MODEL	2	2						
35	1	10571H-55700	TANK SUB ASSY, FO	1	1						
41	2	10547H-55050	CAP ASSY, FUEL TANK	1	1						
42	3	10530H-55050	GASKET	1	1						A
48	2	105300-55080	PLUG, 8	1	1						
49	2	105372-55100	STRAINER, FUEL	1	1						
50	2	104300-55160	GAUGE, LEVEL	1	1						
52	2	103854-55220	RETAINER	2	2						
53	2	23414-080000	GASKET, 8X1.0	1	1						
54	1	10571H-55210	FELT, FO TANK	2	2						
55	1	10580H-55240	GUARD, LINE OFW	1	1						
57	1	10571H-55260	BRACKET, FO TANK	1	1						

Remarks
(A) Gasket kit is shown in Fig.16.
(1) Packaged parts.

Fig.8. RADIATOR & FUEL TANK



(A)=TF150DI-LYB
(B)=TF150DI-LEYB
(C)=

(D)=
(E)=
(F)=

No.	Lev.	Parts No.	Description	Q'ty						I	R
				(A)	(B)	(C)	(D)	(E)	(F)		
58	1	10580H-55290	GUARD, LINE FW	1	1						
60	1	10571H-55500	PAD, RUBBER	1	1						
61	1	10571H-55510	COLLAR, RUBBER A	1	1						
62	1	10571H-55520	COLLAR, RUBBER B	2	2						
63	1	10570H-55810	COVER, LIGHT	1	1						
64	1	22137-100000	WASHER, 10	2	2						
65	1	26014-060142	BOLT, M6X 14	6	6						
66	1	26106-060102	BOLT, M6X 10 PLATED	4	4						
67	1	26106-100252	BOLT, M10X 25 PLATED	2	2						
68	1	26106-100302	BOLT, M10X 30 PLATED	2	2						
69	1	26366-080002	NUT, M8	3	3						
70	1	105700-07910	NUT	1	1						
71	1	104507-07920	NUT, M12	1	1						
72	1	10550H-07940	BOLT, ENGINE LIFT	1	1						
73	1	22137-120000	WASHER, 12	1	1						
74	1	26617-120002	BOLT, EYE M12	1	1						1
75	1	10570H-44600	RADIATOR ASSY, SUB	1	1						W
		(A=E000092) (B=E000006)									
76	2	10570H-44380	STAY	1	1						W
		(A=E000092) (B=E000006)									
77	2	10570H-44490	STAY, RADIATOR COVER	1	1						W
		(A=E000092) (B=E000006)									
78	2	10570H-44500	RADIATOR ASSY	1	1						W
		(A=E000092) (B=E000006)									
80	3	105640-44570	PIPE, 7X225	1	1						W
		(A=E000092) (B=E000006)									
81	3	121250-44590	CLAMP	1	1						W
		(A=E000092) (B=E000006)									
82	3	10530H-44600	CAP, RADIATOR	1	1						W
		(A=E000092) (B=E000006)									
83	2	26106-060122	BOLT, M6X 12 PLATED	2	2						W
		(A=E000092) (B=E000006)									

Remarks

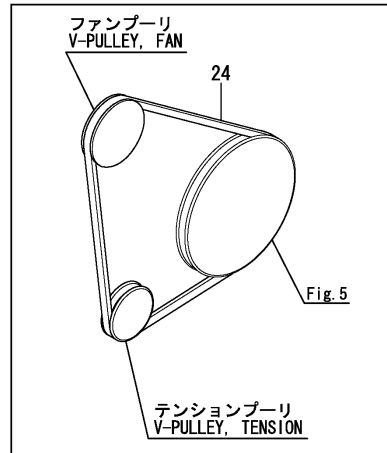
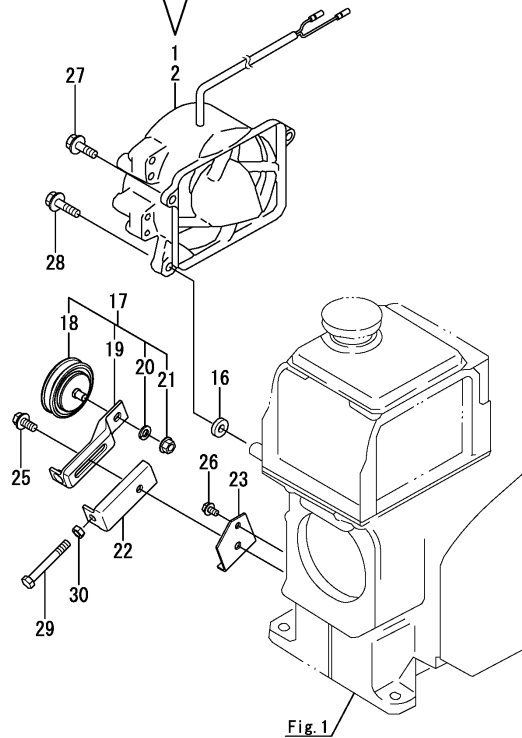
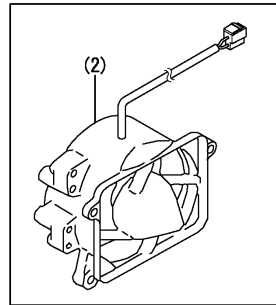
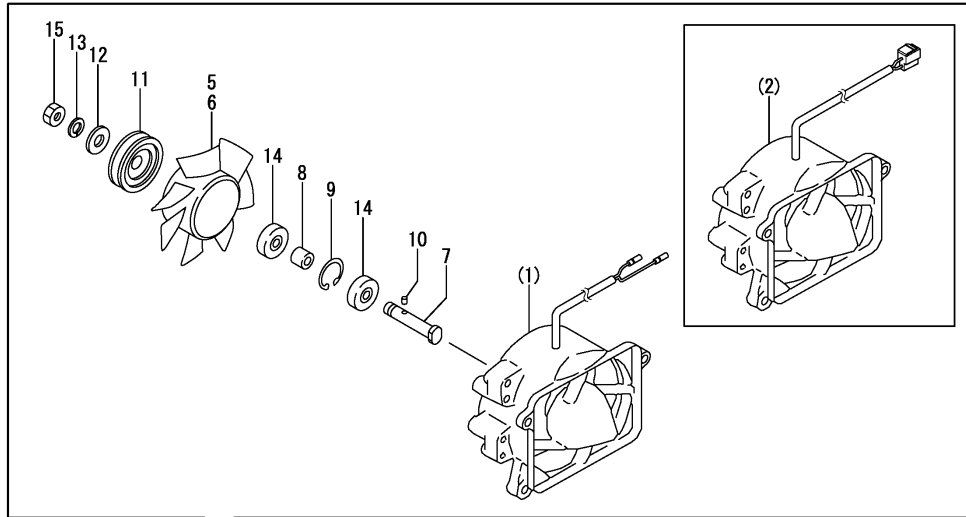
(A) Gasket kit is shown in Fig.16.

(1) Packaged parts.

Fig.9. FAN

(A)=TF150DI-LYB
(B)=TF150DI-LEYB
(C)=

(D)=
(E)=
(F)=

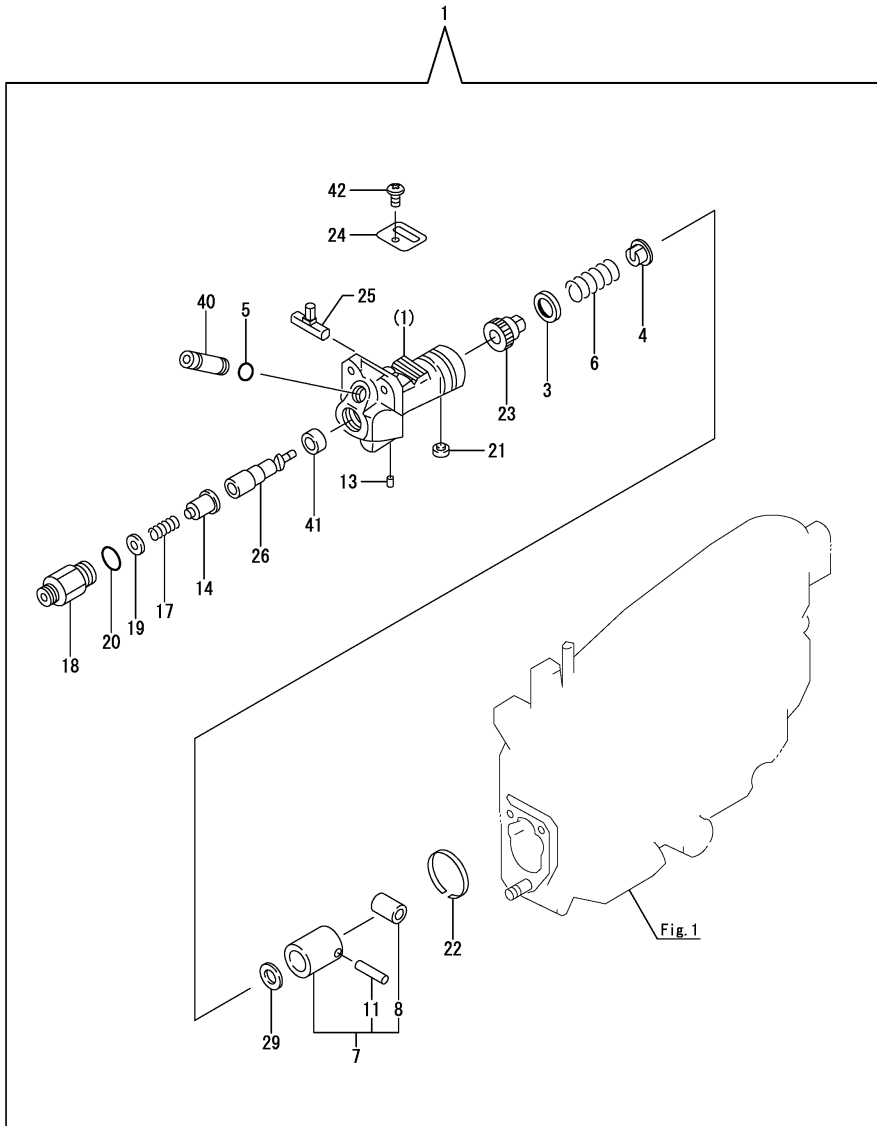


No.	Lev.	Parts No.	Description	Q'ty						I	R
				(A)	(B)	(C)	(D)	(E)	(F)		
1	1	10571H-44200	CASE ASSY, FAN	1							
2	1	10571H-44210	CASE ASSY, FAN		1						
5	2	105702-44700	FAN, COOLING	1							
6	2	105700-44850	FAN, COOLING		1						
7	2	105340-44710	SHAFT, FAN	1	1						
8	2	106383-44720	SPACER	1	1						
9	2	106383-44740	CIRCLIP	1	1						
10	2	105340-44750	PIN	1	1						
11	2	10571H-44770	PULLEY, FAN	2	2						
12	2	10571H-44780	WASHER	1	1						
13	2	22217-120000	WASHER, SPRING 12	1	1						
14	2	24107-062013	BEARING, 6201ZZP6	2	2						
15	2	26777-120002	NUT, LOCK M12	1	1						
16	1	10571H-44270	SPACER, FAN CASE	2	2						
17	1	10570H-44810	PULLEY ASSY, TENSION	1	1						
18	2	10610H-44651	PULLEY, TENSION	1	1						
19	2	10570H-44940	LEVER, PULLEY	1	1						
20	2	22217-080000	WASHER, SPRING 8	1	1						
21	2	26366-080002	NUT, M8	1	1						
22	1	10571H-44950	LEVER, B PULLEY	1	1						
23	1	10571H-44960	SPACER, LEVER B	1	1						
24	1	25157-003900	V BELT, M 39	1	1						
25	1	26014-080202	BOLT, M8X 20	1	1						
26	1	26106-060102	BOLT, M6X 10 PLATED	1	1						
27	1	26106-080252	BOLT, M8X 25 PLATED	2	2						
28	1	26106-080302	BOLT, M8X 30 PLATED	2	2						
29	1	26116-080604	BOLT, M8X 60 PLATED	1	1						
30	1	26756-080002	NUT, LOCK M8	1	1						

Fig.10. FUEL INJECTION PUMP

(A)=TF150DI-LYB
(B)=TF150DI-LEYB
(C)=

(D)=
(E)=
(F)=



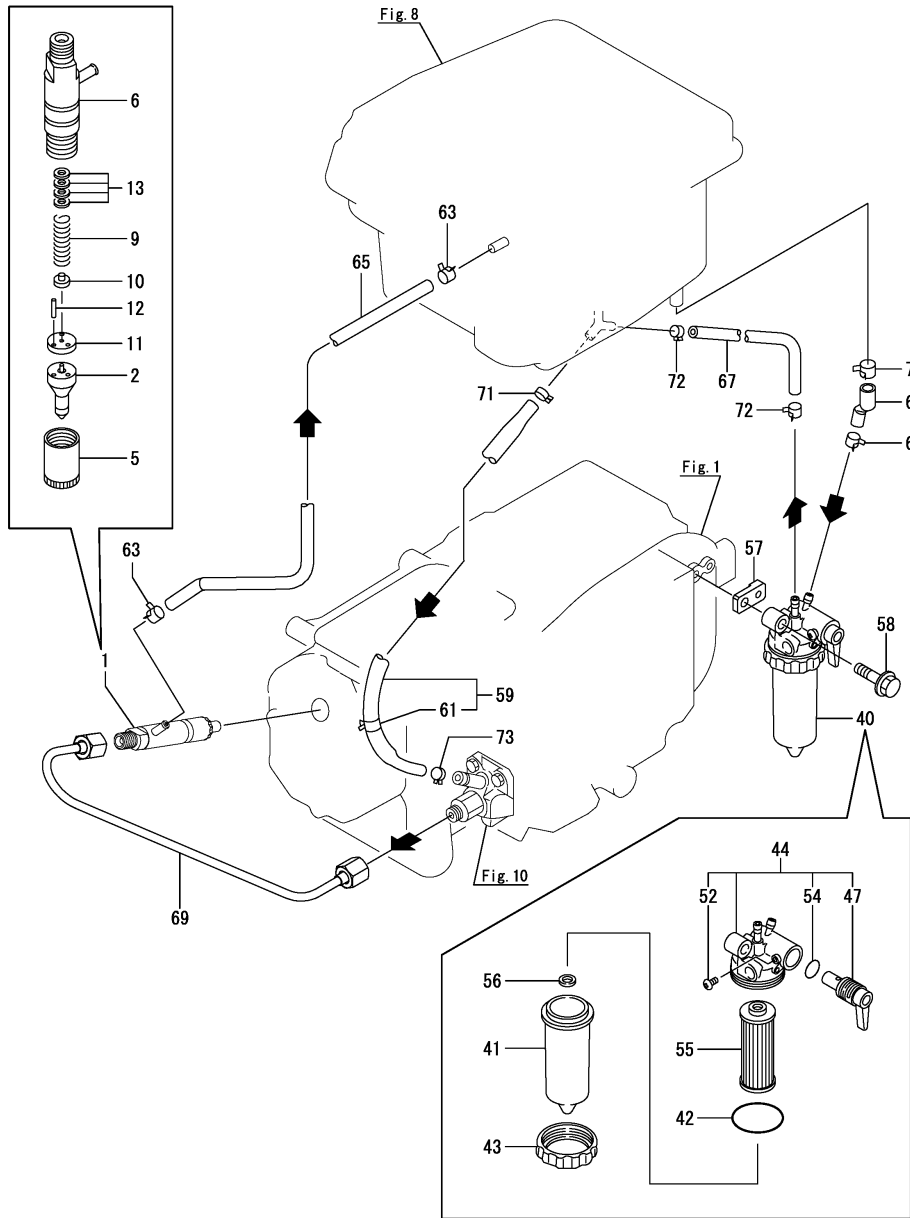
No.	Lev.	Parts No.	Description	Q'ty						I	R
				(A)	(B)	(C)	(D)	(E)	(F)		
1	1	70571H-51100	PUMP ASSY, INJECTION	1	1						
3	2	158600-51170	RETAINER, SPRING	1	1						
4	2	174307-51181	RETAINER, SPRING B	1	1						
5	2	114250-51190	O-RING, S27	1	1						
6	2	124950-51190	SPRING, PLUNGER	1	1						
7	2	724550-51520	GUIDE, PLUNGER	1	1						
8	3	711100-51540	ROLLER ASSY	1	1						
11	3	174100-54120	PIN	1	1						
13	2	103854-51251	PIN, PLUNGER	1	1						
14	2	105300-51300	VALVE ASSY, DELIVERY	1	1						
17	2	124550-51320	SPRING, DELIVERY	1	1						
18	2	124550-51341	HOLDER, DELIVERY L43	1	1						
19	2	124550-51350	GASKET, DELIVERY	1	1						A
20	2	124550-51370	O-RING	1	1						A
21	2	104271-51450	PIECE, GUIDE	1	1						
22	2	104271-51460	CIRCLIP	1	1						
23	2	105300-51510	PINION	1	1						
24	2	105300-51550	RETAINER, RACK	1	1						
25	2	105300-51500	RACK, CONTROL	1	1						
26	2	105500-51600	PLUNGER ASSY	1	1						
29	2	174307-51700	SHIM SET	1	1						
40	2	105300-51800	JOINT	1	1						
41	2	105300-51400	DEFLECTOR	1	1						
42	2	26022-050102	SCREW, M5X10	1	1						

Remarks
(A)Gasket kit is shown in Fig.16.

Fig.11. FUEL INJECTION DEVICE

(A)=TF150DI-LYB
(B)=TF150DI-LEYB
(C)=

(D)=
(E)=
(F)=



No.	Lev.	Parts No.	Description	Q'ty						I	R
				(A)	(B)	(C)	(D)	(E)	(F)		
1	1	70571H-53100	FUEL INJECTOR ASSY	1	1						
2	2	10571H-53000	NOZZLE ASSY	1	1						
5	2	114250-53080	NUT, NOZZLE D16.95	1	1						
6	2	10571H-53100	HOLDER ASSY, NOZZLE	1	1						
9	2	114250-53120	SPRING, NOZZLE	1	1						
10	2	114250-53130	SEAT, SPRING	1	1						
11	2	114250-53140	PLATE	1	1						
12	2	114250-53210	PIN	2	2						
13	2	119803-53400	SHIM SET	1	1						
40	1	105198-55600	STRAINER ASSY, FUEL	1	1						
41	2	105198-55510	CUP, STRAINER	1	1						
42	2	105300-55520	O-RING	1	1						A
43	2	105300-55610	RING, RETAINING	1	1						
44	2	105300-55700	BODY ASSY, STRAINER	1	1						
47	3	105300-55340	LEVER	1	1						
52	3	104200-55750	SCREW, M4	1	1						
54	3	24311-000160	O-RING, 1AP16.0	1	1						
55	2	105370-55711	ELEMENT	1	1						
56	2	105300-55750	FLOAT	1	1						
57	1	10571H-55840	SPACER, FUEL STRAINER	1	1						
58	1	26106-080352	BOLT, M8X 35 PLATED	1	1						
59	1	10571H-59020	PIPE, FO	1	1						
61	2	124766-59050	CLIP, HOSE 11.5	1	1						
63	1	124722-59050	CLIP, HOSE 9	2	2						
64	1	124766-59050	CLIP, HOSE 11.5	1	1						
65	1	10571H-59100	PIPE, FO RETURN	1	1						
67	1	10571H-59570	PIPE, FO	1	1						
68	1	10571H-59580	PIPE, FO	1	1						
69	1	10571H-59800	PIPE ASSY, INJECTION	1	1						
70	1	129301-03660	CLAMP 15	1	1						
71	1	129301-03660	CLAMP 15	1	1						
72	1	124766-59050	CLIP, HOSE 11.5	2	2						
73	1	124766-59050	CLIP, HOSE 11.5	1	1						

Remarks

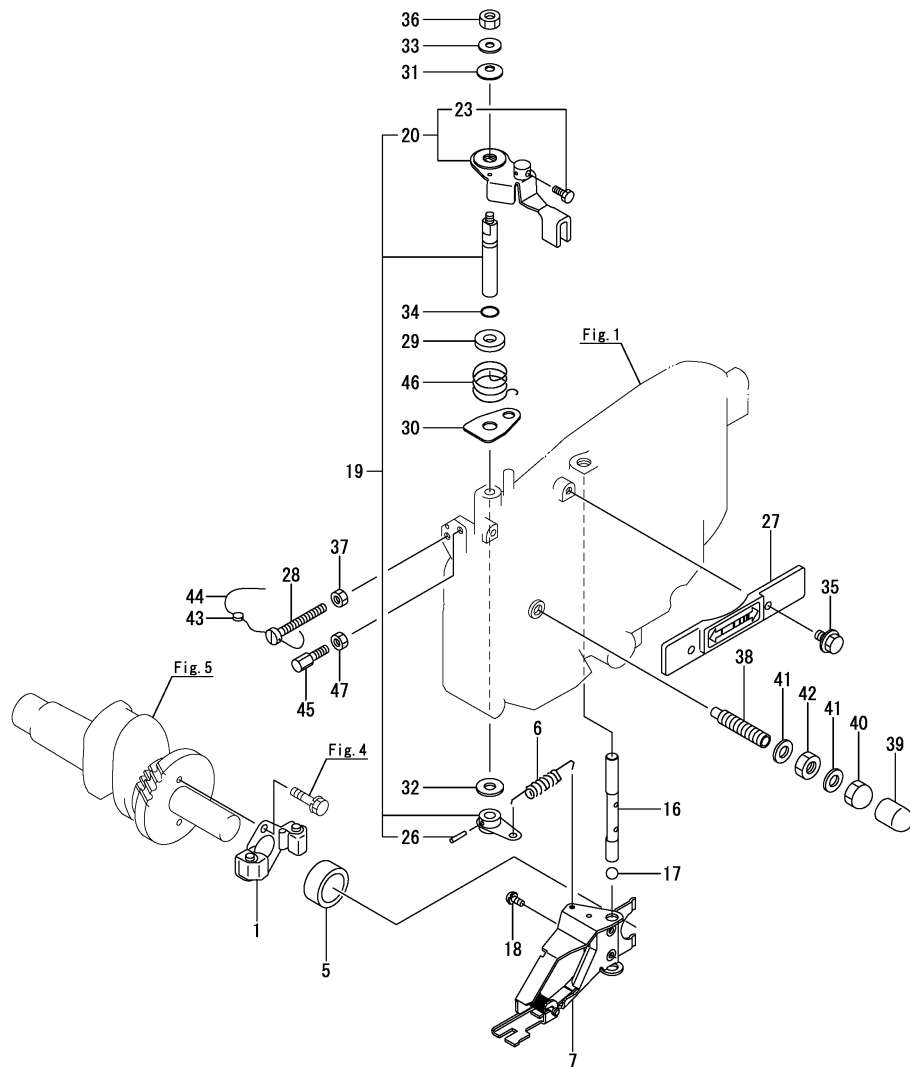
(A)Gasket kit is shown in Fig.16.

N:Old $\xrightarrow{\text{Yes}}$ New, Q:Old $\xrightarrow{\text{No}}$ New, R:Old $\xrightarrow{\text{Yes}}$ New, S:Old $\xrightarrow{\text{No}}$ New, W:Add, Z:Discontinued, F:Interchangeable by set, K:Q'ty Change

Fig.12. GOVERNOR & CONTROL DEVICE

(A)=TF150DI-LYB
(B)=TF150DI-LEYB
(C)=

(D)=
(E)=
(F)=



No.	Lev.	Parts No.	Description	Q'ty						I	R
				(A)	(B)	(C)	(D)	(E)	(F)		
1	1	705300-61701	GOVERNOR ASSY	1	1						
5	1	10530H-61600	SLEEVE, GOVERNOR	1	1						
6	1	10540H-66010	SPRING, REGULATOR	1	1						
7	1	10571H-66300	LEVER ASSY, GOVERNOR	1	1						
16	1	10571H-66400	SHAFT	1	1						
17	1	24190-120001	BALL, STEEL 3/8	1	1						
18	1	26022-050102	SCREW, M5X10	2	2						
19	1	10550H-66160	LEVER ASSY, HANDLE	1	1						
20	2	10550H-66040	HANDLE COMP,REGULATO	1	1						
23	3	10530H-66990	SCREW, INNER WIRE	1	1						
26	2	22322-030220	PIN, TAPER 3X22	1	1						
27	1	10530H-66110	COVER, HANDLE	1	1						
28	1	105300-66520	SCREW	1	1						
29	1	10530H-66830	PLATE, FRICTION	1	1						
30	1	10530H-66850	RETAINER	1	1						
31	1	10540H-66880	SPRING	1	1						
32	1	22117-100000	WASHER, 10	1	1						
33	1	22137-060000	WASHER, 6	1	1						
34	1	24311-000070	O-RING, 1AP7.0	1	1						A
35	1	26014-060142	BOLT, M6X 14	2	2						
36	1	26347-060002	NUT, M6	1	1						
37	1	26756-060002	NUT, LOCK M6	1	1						
38	1	10567H-66550	LIMITER ASSY, FUEL	1	1						
39	1	10530H-66610	CAP (F.O. LIMITTER)	1	1						
40	1	124060-66950	NUT, CAP M10	1	1						
41	1	22190-100002	WASHER, SEAL 10	2	2						
42	1	26796-100002	NUT, LOCK M10	1	1						
43	1	114780-61090	TIN	1	1						
44	1	22451-060000	WIRE, 0.6	1	1						
45	1	102100-67080	BOLT, ADJUSTING	1	1						
46	1	105502-67301	SPRING, RETURN	1	1						
47	1	26756-060002	NUT, LOCK M6	1	1						

Remarks

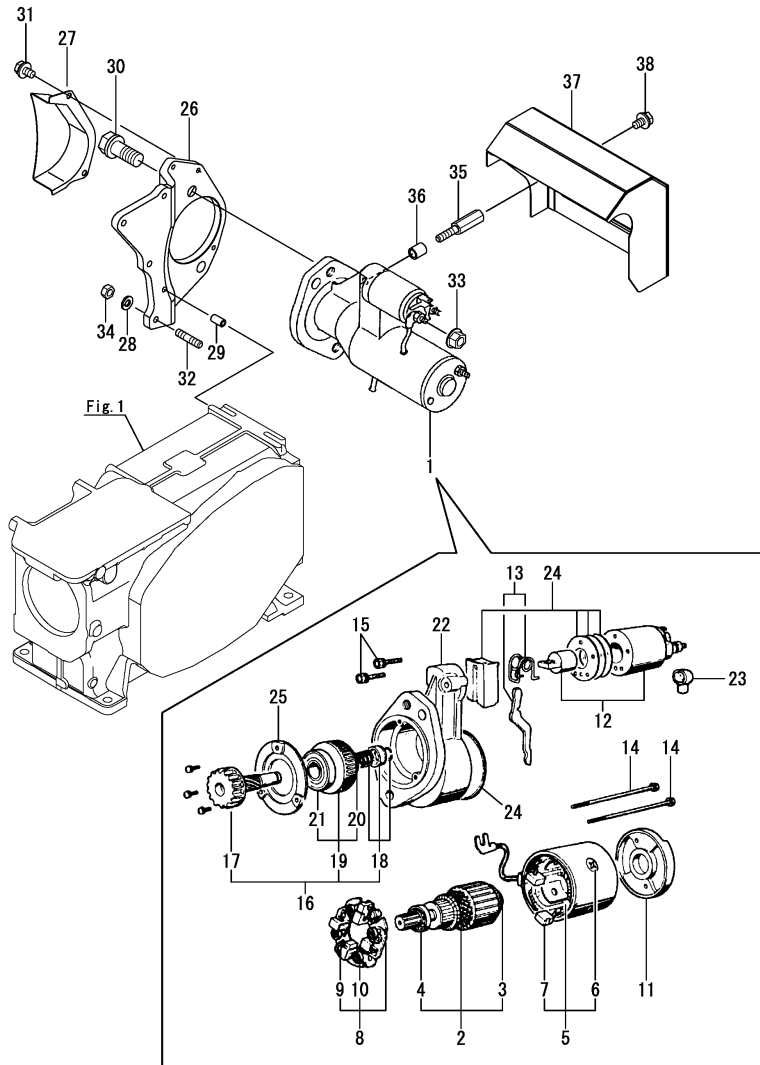
(A)Gasket kit is shown in Fig.16.

N:Old $\begin{matrix} \leftarrow \text{Yes} \\ \text{No} \end{matrix}$ New, Q:Old $\begin{matrix} \leftarrow \text{No} \\ \text{Yes} \end{matrix}$ New, R:Old $\begin{matrix} \leftarrow \text{Yes} \\ \text{No} \end{matrix}$ New, S:Old $\begin{matrix} \leftarrow \text{No} \\ \text{Yes} \end{matrix}$ New, W:Add, Z:Discontinued, F:Interchangeable by set, K:Q'ty Change

Fig.13. STARTER MOTOR

(A)=TF150DI-LYB
(B)=TF150DI-LEYB
(C)=

(D)=
(E)=
(F)=



No.	Lev.	Parts No.	Description	Q'ty						I	R
				(A)	(B)	(C)	(D)	(E)	(F)		
1	1	105300-77011	MOTOR, STARTING		1						
2	2	X211461005	ARMATURE		1						
3	3	X2130350900	BEARING, BALL		1						
4	3	X211425511	BALL BEARING		1						
5	2	X211442003	COIL ASSY, FIELD		1						
6	3	X21143215	SCREW, CORE		4						
7	3	X211469002	BRUSH (+)		2						
8	2	X211449007	HOLDER ASSY, BRUSH		1						
9	3	X211459002	BRUSH (-)		2						
10	3	X21148314	SPRING, BRUSH		4						
11	2	X211483003	COVER		1						
12	2	X2114T71110	SWITCH, MAGNETIC		1						
13	2	X211446012	LEVER, SHIFT		1						
14	2	X211468005	BOLT, THROUGH		2						
15	2	X21145866	BOLT		2						
16	2	X211455011	PINION ASSY		1						
17	3	X211465011	SHAFT, PINION		1						
18	3	X211429006	STOPPER SET		1						
19	3	X211425506	CLUTCH ASSY		1						
20	4	X211495502	BEARING, BALL		1						
21	4	X211455502	BALL BEARING		1						
22	2	X211456605	CASE ASSY, GEAR		1						
23	2	X21142742	COVER (A), RUBBER		1						
24	2	X211458012	COVER KIT		1						
25	2	X211428008	RETAINER, BEARING		1						
26	1	10571H-77470	BRACKET, STARTER		1						
27	1	10571H-77480	COVER, PINION GEAR		1						
28	1	22217-060000	WASHER, SPRING 6		4						
29	1	22351-060012	PIN, SPRING 6.0X12		1						
30	1	26013-120302	BOLT, M12X 30		2						
31	1	26014-060122	BOLT, M6X 12		2						
32	1	26216-060202	STUD, M6X 20		4						
33	1	26366-080002	NUT, M8		1						
34	1	26716-060002	NUT, M6		4						
35	1	10540H-77500	BOLT, SPACER		2						
36	1	10567H-77600	COLLAR		2						
37	1	10567H-77780	COVER, STARTER MOTOR		1						
38	1	26014-060122	BOLT, M6X 12		2						

Remarks

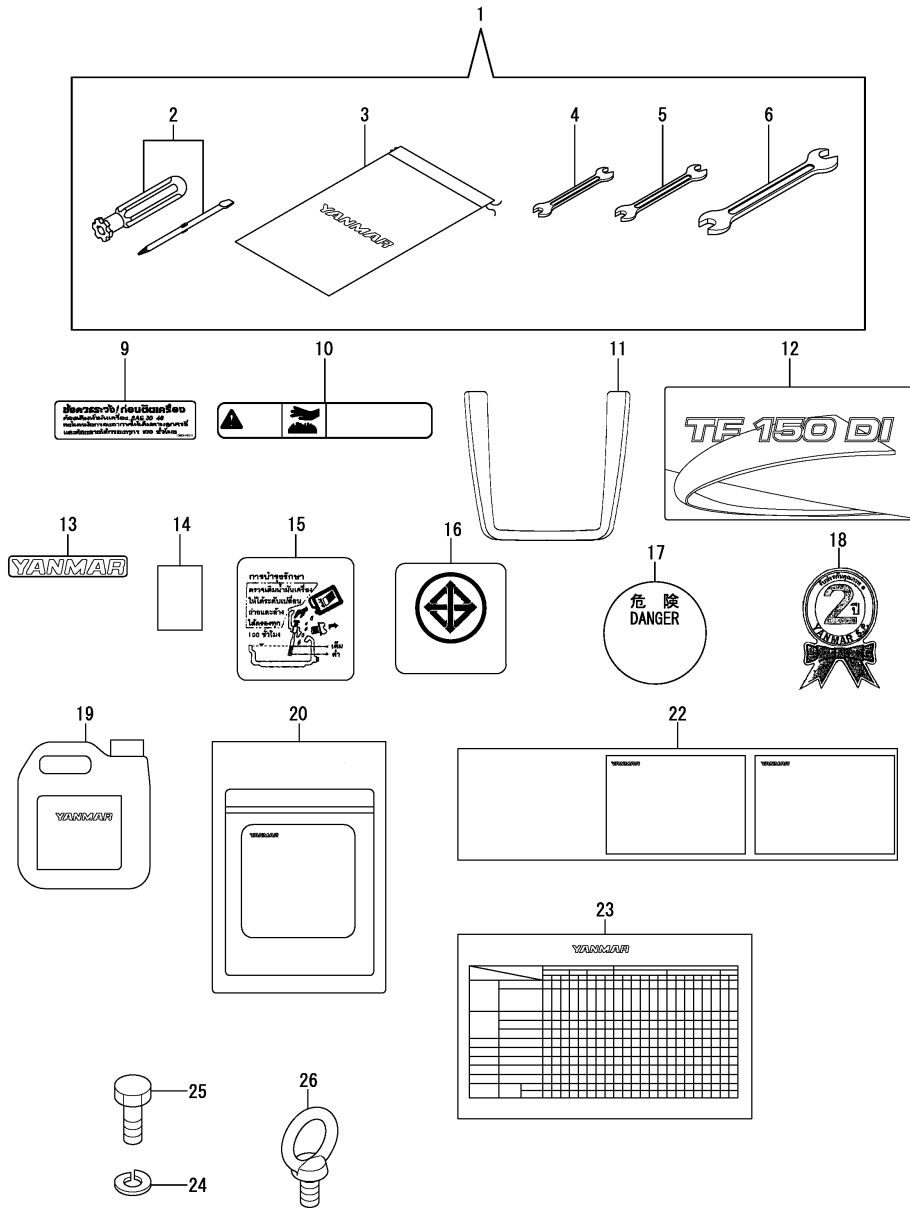
(1)Optional parts.

N:Old $\xrightarrow{\text{Yes}}$ New, Q:Old $\xrightarrow{\text{No}}$ New, R:Old $\xrightarrow{\text{Yes}}$ New, S:Old $\xrightarrow{\text{No}}$ New, W:Add, Z:Discontinued, F:Interchangeable by set, K:Q'ty Change

Fig.15. TOOLS & LABEL

(A)=TF150DI-LYB
(B)=TF150DI-LEYB
(C)=

(D)=
(E)=
(F)=



No.	Lev.	Parts No.	Description	Q'ty						I	R
				(A)	(B)	(C)	(D)	(E)	(F)		
1	1	10530H-92100	TOOL SET CMP	1	1						
2	2	104200-92350	DRIVER, SCREW	1	1						
3	2	10530G-92600	BAG, TOOL	1	1						
4	2	28110-100120	SPANNER, 10X12	1	1						
5	2	28110-140170	SPANNER, 14X17	1	1						
6	2	28110-190220	SPANNER, 19X22	1	1						
9	1	10530H-07211	LABEL, AIR CLEANER	1	1						
10	1	10537H-07330	LABEL, CAUTION	1	1						
11	1	10571H-07500	LABEL, STRIPE	1	1						
12	1	10571H-07520	LABEL, MODEL NAME	1	1						
13	1	10530H-07530	LABEL, YANMAR	1	1						
14	1	10540H-07640	LABEL, F.O. STRAINER	1	1						
15	1	10540H-07670	LABEL, CAUTION	1	1						
16	1	10530H-07720	LABEL, TIS MARK	1	1						
17	1	10530H-07750	LABEL, RADIATOR	1	1						
18	1	10530H-07781	LABEL, WARRANTY 2	1	1						
19	1	10530H-92501	OIL, YANMAR GENUINE	1	1						1
20	1	10540H-92701	COOLANT	1	1						1
22	1	10547H-95711	CARD, MAINTENANCE	1	1						1
23	1	10537H-97131	CARD, ACCESSORY	1	1						1
24	1	22217-120000	WASHER, SPRING 12	3	3						1
25	1	26206-120352	BOLT, M12X 35 PLATED	3	3						1
26	1	26617-120002	BOLT, EYE M12	1	1						1

Remarks

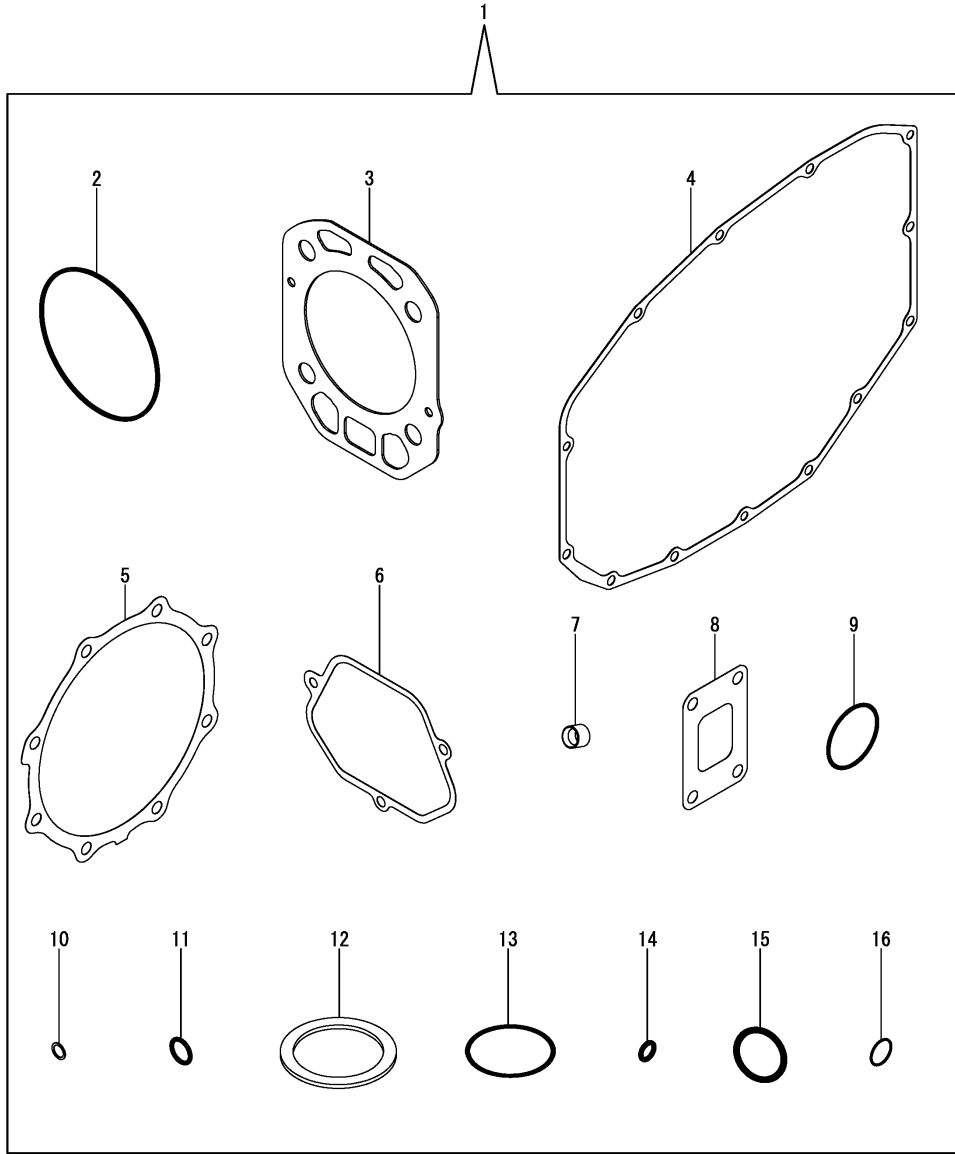
(1)Optional parts.

N:Old $\begin{matrix} \text{Yes} \\ \text{No} \end{matrix}$ New, Q:Old $\begin{matrix} \text{No} \\ \text{Yes} \end{matrix}$ New, R:Old $\begin{matrix} \text{Yes} \\ \text{No} \end{matrix}$ New, S:Old $\begin{matrix} \text{No} \\ \text{Yes} \end{matrix}$ New, W:Add, Z:Discontinued, F:Interchangeable by set, K:Q'ty Change

Fig.16. GASKET SET

(A)=TF150DI-LYB
(B)=TF150DI-LEYB
(C)=

(D)=
(E)=
(F)=



No.	Lev.	Parts No.	Description	Q'ty						I	R
				(A)	(B)	(C)	(D)	(E)	(F)		
1	1	10571H-92600	GASKET KIT	1	1						
2	2	10571H-01300	O-RING, CYL. LINER	2	2						
3	2	10571H-01330	GASKET, HEAD	1	1						
4	2	105500-01410	GASKET	1	1						
5	2	10571H-02020	GASKET, HOUSING	1	1						
6	2	10571H-11310	GASKET, BONNET	1	1						
7	2	119625-11871	PROTECTOR, NOZZLE	1	1						
8	2	105700-13201	GASKET, SILENCER	1	1						
9	2	103854-32051	O-RING	1	1						
10	2	124550-51350	GASKET, DELIVERY	1	1						
11	2	124550-51370	O-RING	1	1						
12	2	106760-55050	PK, FUEL TANK CAP	1	1						
13	2	105300-55520	O-RING	1	1						
14	2	24311-000070	O-RING, 1AP7.0	1	1						
15	2	24311-000320	O-RING, 1AP32.0	1	1						
16	2	24341-000200	O-RING, 1AS20.0	1	1						

Parts No. Index

Parts No.	Fig. No.	Ref. No.
101158-03111	7	3
101158-11230	2	16
		20
102100-67080	12	45
103338-01240	1	11
103338-11180	2	9
103854-32051	7	13
	16	9
103854-32082	7	14
103854-51251	10	13
103854-55220	8	52
104104-03750	2	37
104200-03641	2	39
104200-55750	11	52
104200-92350	15	2
104271-21100	5	4
104271-51450	10	21
104271-51460	10	22
104300-01220	1	10
104300-08050	7	10
104300-55160	8	50
104300-76460	4	9
104407-21600	5	16
104507-07920	8	71
104607-44540	8	16
105010-11920	2	25
105100-01660	1	22
105198-55510	11	41
105198-55600	11	40
10520H-01850	1	26
10520H-01860	1	27
10520H-01870	1	28
10520H-01880	1	29
10520H-01920	1	30
10520H-01930	1	31
10520H-01940	1	32
10520H-01950	1	33
10520H-01960	1	34
10520H-01970	1	35
10520H-01980	1	36
105215-76490	4	25
105300-01690	1	23
105300-14090	4	3
105300-28450	4	20
105300-34040	1	48
105300-44220	8	1
105300-44451	8	8
105300-44460	8	9
105300-51300	10	14
105300-51400	10	41

Parts No.	Fig. No.	Ref. No.
105300-51500	10	25
105300-51510	10	23
105300-51550	10	24
105300-51800	10	40
105300-55080	8	48
105300-55340	11	47
105300-55520	11	42
	16	13
105300-55610	11	43
105300-55700	11	44
105300-55750	11	56
105300-66520	12	28
105300-76470	7	47
105300-76490	7	43
105300-77011	13	1
105302-14700	4	13
105302-28720	4	23
105306-35052	7	27
10530G-08510	7	32
10530G-92600	15	3
10530H-01800	1	25
10530H-03550	2	35
10530H-03610	2	36
10530H-07211	15	9
10530H-07530	15	13
10530H-07720	15	16
10530H-07750	15	17
10530H-07781	15	18
10530H-11900	2	24
10530H-14200	4	6
10530H-32200	7	21
10530H-34850	1	51
10530H-44600	8	15
		82
10530H-55050	8	42
10530H-61600	12	5
10530H-66110	12	27
10530H-66610	12	39
10530H-66830	12	29
10530H-66850	12	30
10530H-66990	12	23
10530H-78250	14	2
10530H-78520	14	3
10530H-78530	14	4
10530H-78960	14	5
10530H-92100	15	1
10530H-92501	15	19
105340-44710	9	7
105340-44750	9	10
105362-78960	7	5

Parts No.	Fig. No.	Ref. No.
105370-55711	11	55
105372-55100	8	49
10537H-03060	7	4
10537H-07330	15	10
10537H-14190	4	5
10537H-32500	7	15
10537H-97131	15	23
10540H-01751	1	24
10540H-07640	15	14
10540H-07670	15	15
10540H-28700	4	21
10540H-66010	12	6
10540H-66880	12	31
10540H-76330	7	39
10540H-76940	3	28
	8	20
10540H-77500	13	35
10540H-92701	15	20
10547H-55050	8	41
10547H-95711	15	22
105500-01410	1	19
	16	4
105500-03130	7	7
105500-11340	2	13
105500-21600	5	14
105500-22400	6	9
105500-23200	6	15
105500-23500	6	10
105500-23910	6	13
105500-28380	4	18
105500-51600	10	26
105502-67301	12	46
10550H-03070	7	1
10550H-07940	8	72
10550H-08010	7	9
10550H-11650	2	14
10550H-11660	2	18
10550H-13570	3	24
10550H-14600	4	8
10550H-21100	5	5
10550H-21530	5	15
10550H-66040	12	20
10550H-66160	12	19
10550H-76700	7	40
10557H-21290	5	6
10557H-21520	5	7
105582-34100	7	25
105600-11800	2	3
10560G-28300	4	16
10560G-28310	4	17

Parts No.	Fig. No.	Ref. No.
10560H-02310	5	27
10560H-14100	4	4
10560H-21200	5	8
10560H-28410	4	19
105640-44570	8	13
		80
10567H-01390	1	13
10567H-28710	4	22
10567H-66550	12	38
10567H-77600	13	36
10567H-77780	13	37
10567H-78600	14	7
105700-07910	8	70
105700-12050	3	2
105700-13201	16	8
105700-44250	8	2
105700-44330	8	3
105700-44490	8	10
105700-44850	9	6
105702-44700	9	5
10570H-08101	7	31
10570H-12510	3	3
10570H-12551	3	10
10570H-12701	3	4
10570H-12710	3	5
10570H-12750	3	6
10570H-12800	3	7
10570H-12850	3	8
10570H-12860	3	9
10570H-44340	8	4
10570H-44360	8	5
10570H-44370	8	6
10570H-44380	8	7
		76
10570H-44490	8	77
10570H-44500	8	11
		78
10570H-44600	8	75
10570H-44630	8	19
10570H-44810	9	17
10570H-44940	9	19
10570H-55810	8	63
10570H-76790	7	44
10570H-78020	14	1
10571H-01200	1	9
10571H-01300	1	8
	16	2
10571H-01330	1	12
	16	3
10571H-01480	1	20

Parts No. Index

Parts No.	Fig. No.	Ref. No.
10571H-01490	1	21
10571H-01700	1	1
10571H-01710	1	5
10571H-02020	5	25
	16	5
10571H-02220	5	22
10571H-02300	5	26
10571H-02320	5	23
10571H-02700	5	19
10571H-07110	8	34
10571H-07500	15	11
10571H-07520	15	12
10571H-11010	2	1
10571H-11100	2	6
10571H-11110	2	7
10571H-11120	2	8
10571H-11290	2	10
10571H-11310	2	43
	16	6
10571H-11520	2	34
10571H-12030	3	1
10571H-13200	3	13
10571H-13510	3	14
10571H-13910	3	25
10571H-13920	3	26
10571H-13960	3	27
10571H-14010	4	1
10571H-14400	4	7
10571H-21400	5	9
10571H-21590	5	11
10571H-21700	5	1
10571H-22190	6	1
10571H-22300	6	8
10571H-22470	6	18
10571H-22480	6	25
10571H-22500	6	3
10571H-22510	6	20
10571H-22520	6	27
10571H-28250	4	14
10571H-44200	9	1
10571H-44210	9	2
10571H-44270	9	16
10571H-44610	8	18
10571H-44770	9	11
10571H-44780	9	12
10571H-44950	9	22
10571H-44960	9	23
10571H-53000	11	2
10571H-53100	11	6
10571H-55210	8	54

Parts No.	Fig. No.	Ref. No.
10571H-55260	8	57
10571H-55500	8	60
10571H-55510	8	61
10571H-55520	8	62
10571H-55700	8	35
10571H-55840	11	57
10571H-59020	11	59
10571H-59100	11	65
10571H-59570	11	67
10571H-59580	11	68
10571H-59800	11	69
10571H-61250	7	38
10571H-66300	12	7
10571H-66400	12	16
10571H-77470	13	26
10571H-77480	13	27
10571H-92600	16	1
10580H-55240	8	55
10580H-55290	8	58
106100-44560	8	17
10610H-44651	9	18
106383-44720	9	8
106383-44740	9	9
106760-55050	16	12
114250-51190	10	5
114250-53080	11	5
114250-53120	11	9
114250-53130	11	10
114250-53140	11	11
114250-53210	11	12
114780-61090	12	43
119625-11871	2	22
	16	7
119625-11880	2	23
119803-53400	11	13
121250-44590	8	14
		81
123672-83880	4	26
124060-66950	12	40
124550-51320	10	17
124550-51341	10	18
124550-51350	10	19
	16	10
124550-51370	10	20
	16	11
124722-59050	11	63
124766-59050	11	61
		64
		72
		73

Parts No.	Fig. No.	Ref. No.
124950-51190	10	6
129301-03660	11	70
		71
158600-51170	10	3
160725-78350	8	21
174100-54120	10	11
174307-51181	10	4
174307-51700	10	29
22117-060000	8	22
22117-100000	12	32
22137-060000	12	33
22137-100000	8	64
22137-120000	8	73
22190-100002	12	41
22217-040000	7	6
22217-060000	8	23
	13	28
22217-080000	1	37
	3	29
	9	20
22217-100000	2	26
22217-120000	7	11
	9	13
	15	24
22242-000200	7	48
22242-000550	5	28
22252-000100	1	49
22312-030180	2	41
22322-030160	2	38
22322-030220	12	26
22351-060012	1	4
		38
	2	27
	13	29
22451-060000	12	44
23064-090330	7	8
23414-080000	8	53
24101-060054	4	27
24101-060064	4	10
24101-060094	4	28
24107-062013	9	14
24190-120001	1	50
	12	17
24311-000060	1	39
24311-000070	2	42
	12	34
	16	14
24311-000160	11	54
24311-000320	1	40
	16	15

Parts No.	Fig. No.	Ref. No.
24321-000250	1	41
24341-000200	7	30
	16	16
25157-003900	9	24
26013-060122	5	18
26013-060142	8	24
26013-060162	8	25
26013-060182	8	26
		27
26013-060202	8	28
26013-060222	4	29
26013-080202	5	29
26013-120302	13	30
26014-060122	13	31
		38
26014-060142	8	29
		65
	12	35
	14	6
26014-060182	8	30
26014-080202	9	25
26022-050102	10	42
	12	18
26022-060122	4	11
26106-060102	1	42
	8	66
	9	26
26106-060122	7	22
		36
	8	31
		32
		33
		83
26106-060162	3	30
26106-060202	2	44
26106-060222	7	23
26106-060252	1	43
	7	24
26106-060652	1	44
26106-060752	2	45
26106-080142	4	30
26106-080202	3	11
26106-080252	9	27
26106-080302	9	28
26106-080352	11	58
26106-100252	8	67
26106-100302	8	68
26106-100552	4	31
26116-060102	5	24
26116-080604	9	29

Parts No. Index

Parts No.	Fig. No.	Ref. No.
26206-120352	15	25
26216-060202	13	32
26216-060302	2	28
26216-080202	3	31
26216-080222	1	45
26216-100552	2	29
26347-060002	12	36
26366-060002	1	46
	2	30
26366-080002	3	32
	8	69
	9	21
	13	33
26557-060102	7	37
26557-060202	3	33
26587-080122	4	12
26617-120002	8	74
	15	26
26636-080002	3	12
26706-120002	7	12
26716-060002	13	34
26716-080002	1	47
26716-100002	2	31
26756-060002	12	37
		47
26756-080002	2	17
		21
	9	30
26777-120002	9	15
26796-100002	12	42
27310-080001	2	32
28110-100120	15	4
28110-140170	15	5
28110-190220	15	6
705300-61701	12	1
705500-23600	6	16
705500-23610	6	32
705500-23620	6	34
70571H-51100	10	1
70571H-53100	11	1
711100-51540	10	8
724550-51520	10	7
X211425506	13	19
X211425511	13	4
X21142742	13	23
X211428008	13	25
X211429006	13	18
X21143215	13	6
X211442003	13	5
X211446012	13	13

Parts No.	Fig. No.	Ref. No.
X211449007	13	8
X211455011	13	16
X211455502	13	21
X211456605	13	22
X211458012	13	24
X21145866	13	15
X211459002	13	9
X211461005	13	2
X211465011	13	17
X211468005	13	14
X211469002	13	7
X211483003	13	11
X21148314	13	10
X211495502	13	20
X2114T71110	13	12
X2130350900	13	3

Parts No.	Fig. No.	Ref. No.
-----------	----------	----------

Parts No.	Fig. No.	Ref. No.
-----------	----------	----------