

0CB10-M77700EN

Directions for the Parts Catalog.

1. This Parts Catalog shows both standard and optional parts.
2. Parts may change without prior notice.
3. The following is an example of the Parts Catalog format.

REF.	LEV.	PARTS NO.	DESCRIPTION	Q'TY						I	R
				(A)	(B)	(C)	(D)	(E)	(F)		
1	1	729595-51390	FUEL INJECTION PUMP	1	1	1	1	1			1
1-1	1	729595-51391	FUEL INJECTION PUMP	1	1	1	1	1		N	1
		(A=E00185) (B=E00200)									
3	2	26022-060162	SCREW M 6X 16	9	9	9	9	9			
3-1	2	26022-060162	SCREW M 6X 16	4	4	4	4	4		K	
		(A=E00156) (B=E00156) (C=E00156) (D=E00156) (E=E00156)									
4	2	129470-51040	CAMSHAFT	1	1	1	1	1			
5	2	122710-51050	BEARING, ROLLER	2	2	2	2	2			
6	2	129470-51060	RETAINER	1	1	1	1	1			

Remarks
(1) BOOST COMPEMSATOR TYPE. OPTIONAL PART, TO E00155,(4JH-DT, 4JH-DTZ

① Ref. No.

The Ref. No. listed may not be in accordance with the illustration Ref. No.

(Ex.) Illustration No.

List Ref No.

1

1

(Before change)

1-1

(After change)

For interchangeable symbols N, R and K, illustrations for new parts may be abbreviated.

② Lev. (Level)

Level indication

The numbers below indicate the level of relativity towards the main part.

1 ----- Main parts (Assembly parts)

2 ----- Sub component included in " 1 ".

3 ----- Sub component included in " 2 ".

Note) Parts that are not for sale are partially illustrated but not listed.

③ Interchangeability Symbol

When a part change takes place, one of the following interchangeability symbols is indicated beside the part.

Symbol	Interchangeability	Contents note
N	Old $\begin{matrix} \leftarrow \text{Yes} \\ \text{No} \rightarrow \end{matrix}$ New	New Part is interchangeable for Old Part but Old Part is not interchangeable for New Part.
Q	Old $\begin{matrix} \leftarrow \text{No} \\ \text{Yes} \rightarrow \end{matrix}$ New	New Part is not interchangeable for Old Part but Old Part is interchangeable for New Part.
R	Old $\begin{matrix} \leftarrow \text{Yes} \\ \text{Yes} \rightarrow \end{matrix}$ New	New/ Old Parts are both interchangeable.
S	Old $\begin{matrix} \leftarrow \text{No} \\ \text{No} \rightarrow \end{matrix}$ New	New/ Old Parts are both not interchangeable.
W		Part newly added.
Z		Part discontinued.
F		Not interchangeable by a single part but interchangeable together with related parts.
K		Changes only for used parts quantities.

④ Effective Machine No.

When a part changes, the effective Machine No. will be indicated in the (A)-(F) column.

Product Symbol	Product No.	Product Symbol	Product No.
C	Clutch No. Compressor No.	F	Machine No. (Agricultural Equip.)
D	Drive No.	M	Machine No.
E	Engine No.		

Note 1) A date may follow the symbol. (Ex.) 1996.01

Note 2) "XXXXX" and "ZZZZZ" are for parts that could not be predicted or for engine models that could not be identified.

Note 3) (A=E00185) is the E (Engine Serial Number) for the column (A) model (in this case 4JH-DT) after the parts design change.

⑤ Remarks

Figures or alphabets (symbols) are entered in the remarks column.

The comments (remarks) on parts that are indicated at the bottom of the illustration are the same symbols as those stated above.

Contents

Fig. No. Fig. Name

3TNM68-HGB2B

1. CYLINDER BLOCK
2. GEAR HOUSING
3. FLYWHEEL HOUSING & OIL SUMP
4. CYLINDER HEAD & BONNET
5. AIR CLEANER
6. EXHAUST MANIFOLD
7. CAMSHAFT & DRIVING GEAR
8. CRANKSHAFT & PISTON
9. LUB.OIL SYSTEM
10. COOLING WATER SYSTEM
11. FUEL INJECTION PUMP
12. GOVERNOR
13. FUEL INJECTION VALVE
14. FUEL LINE
15. STARTING MOTOR
16. GENERATOR
17. GASKET SET & TOOLS

Fig. No. Fig. Name

Fig.1. CYLINDER BLOCK

(A)=3TNM68-HGB2B

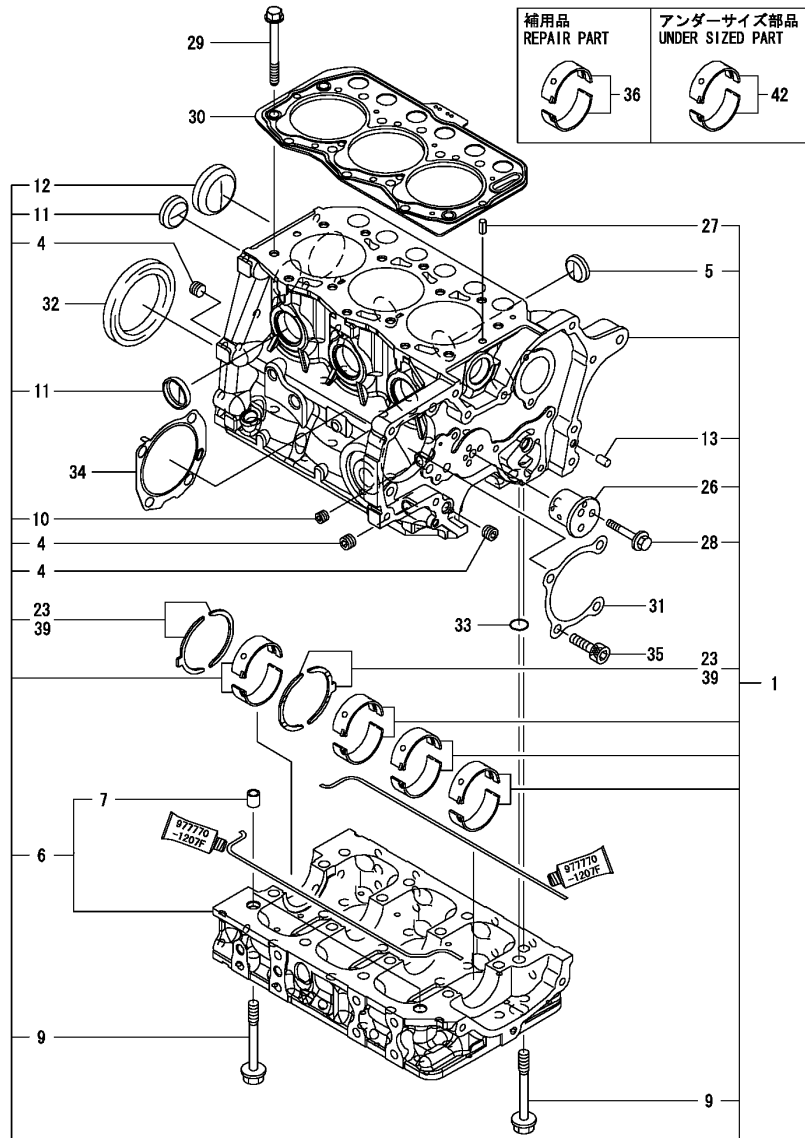
(B)=

(C)=

(D)=

(E)=

(F)=

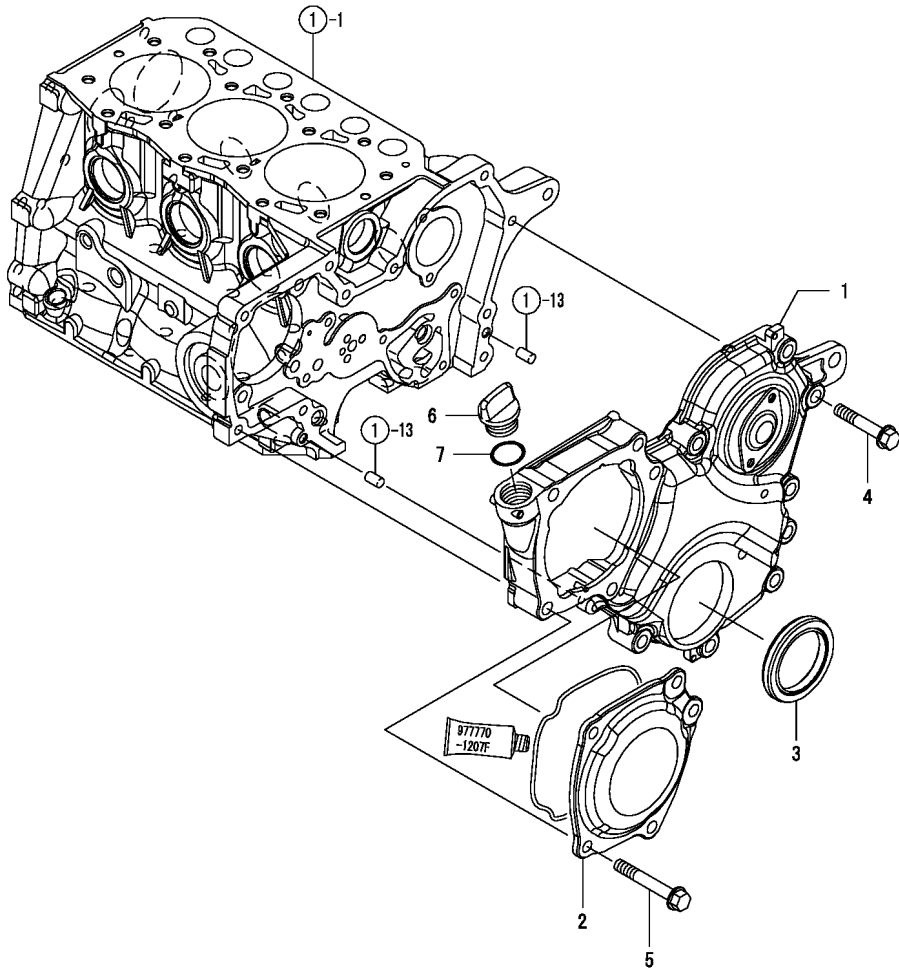


No.	Lev.	Parts No.	Description	Q'ty						I	R
				(A)	(B)	(C)	(D)	(E)	(F)		
1	1	119127-01560	BLOCK ASSY, CYLINDER	1							
4	2	124060-01050	PLUG, PT1/8	3							
5	2	119125-01970	PLUG, 25	3							
6	2	119125-02000	FRAME ASSY, PIPE	1							
7	3	119125-01960	PIPE, KNOCK	2							
9	2	119125-02061	BOLT, METAL CAP	16							
10	2	23876-005000	PLUG, R005	1							
11	2	27241-300000	PLUG 30	4							
12	2	27241-450000	PLUG, 45	1							
13	2	119620-01620	PIN, M6X10	2							
23	2	119125-02930	BEARING, THRUST	2							
26	2	119125-25050	SHAFT, IDLE GEAR	1							
27	2	22351-060012	PIN, SPRING 6.0X12	2							
28	2	26106-060402	BOLT, M6X 40 PLATED	3							
29	1	119266-01200	BOLT, HEAD	14							
30	1	119125-01330	GASKET, HEAD	1							
31	1	119125-01790	GASKET	1							
32	1	119734-02220	SEAL, OIL	1							
33	1	129900-32040	O-RING, P14	1							
34	1	119125-51800	GASKET	1							
35	1	26450-080252	BOLT, M8X 25	4							
36	1	119125-02900	BEARING, MAIN	4							1
39	1	119125-02940	BEARING, THRUST 0.25	2							2
42	1	119125-02910	BEARING, 0.25 US	4							3

Remarks

- (1) REPAIR PART.
- (2) OVER SIZED(O.S.=0.25)PART.
- (3) UNDER SIZED(U.S.=0.25)PART.

Fig.2. GEAR HOUSING

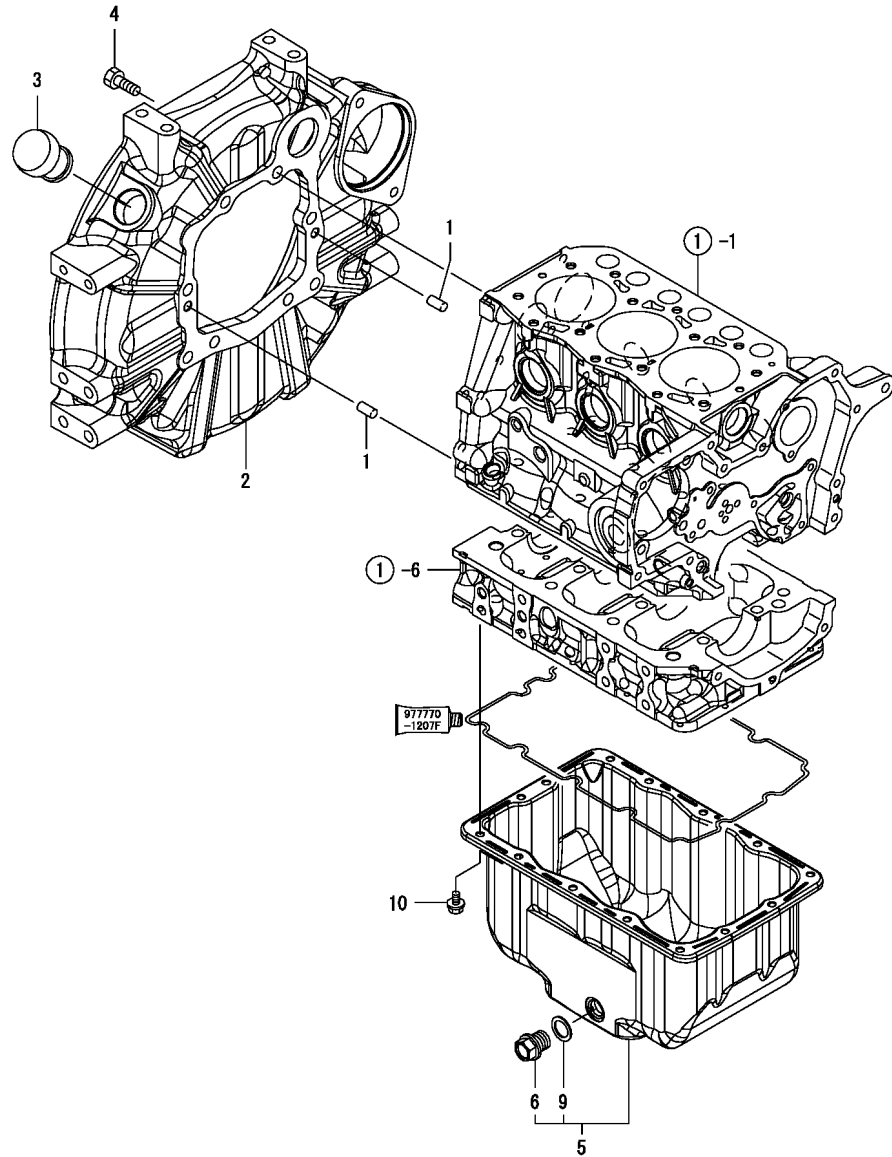


(A)=3TNM68-HGB2B
(B)=
(C)=

(D)=
(E)=
(F)=

No.	Lev.	Parts No.	Description	Q'ty						I	R
				(A)	(B)	(C)	(D)	(E)	(F)		
1	1	119125-01500	COVER, GEAR CASE	1							
2	1	119125-01750	COVER	1							
3	1	119717-01800	SEAL, OIL	1							
4	1	26106-080352	BOLT, M8X 35 PLATED	8							
5	1	26106-080452	BOLT, M8X 45 PLATED	5							
6	1	106760-01770	CAP	1							
7	1	24311-000180	O-RING, 1AP18.0	1							

Fig.3. FLYWHEEL HOUSING & OIL SUMP



(A)=3TNM68-HGB2B

(B)=

(C)=

(D)=

(E)=

(F)=

No.	Lev.	Parts No.	Description	Q'ty						I	R
				(A)	(B)	(C)	(D)	(E)	(F)		
1	1	129100-01580	PIN, M8X16	2							
2	1	119128-01620	HOUSING, FLYWHEEL	1							
3	1	119620-01750	CAP	1							
4	1	26206-100252	BOLT, M10X 25 PLATED	8							
5	1	119125-01760	SUMP ASSY, OIL	1							
6	2	105425-01690	PLUG, 16	1							
9	2	22190-160002	WASHER, SEAL 16	1							
10	1	119125-01780	BOLT, M6X10	14							

Fig.4. CYLINDER HEAD & BONNET

(A)=3TNM68-HGB2B

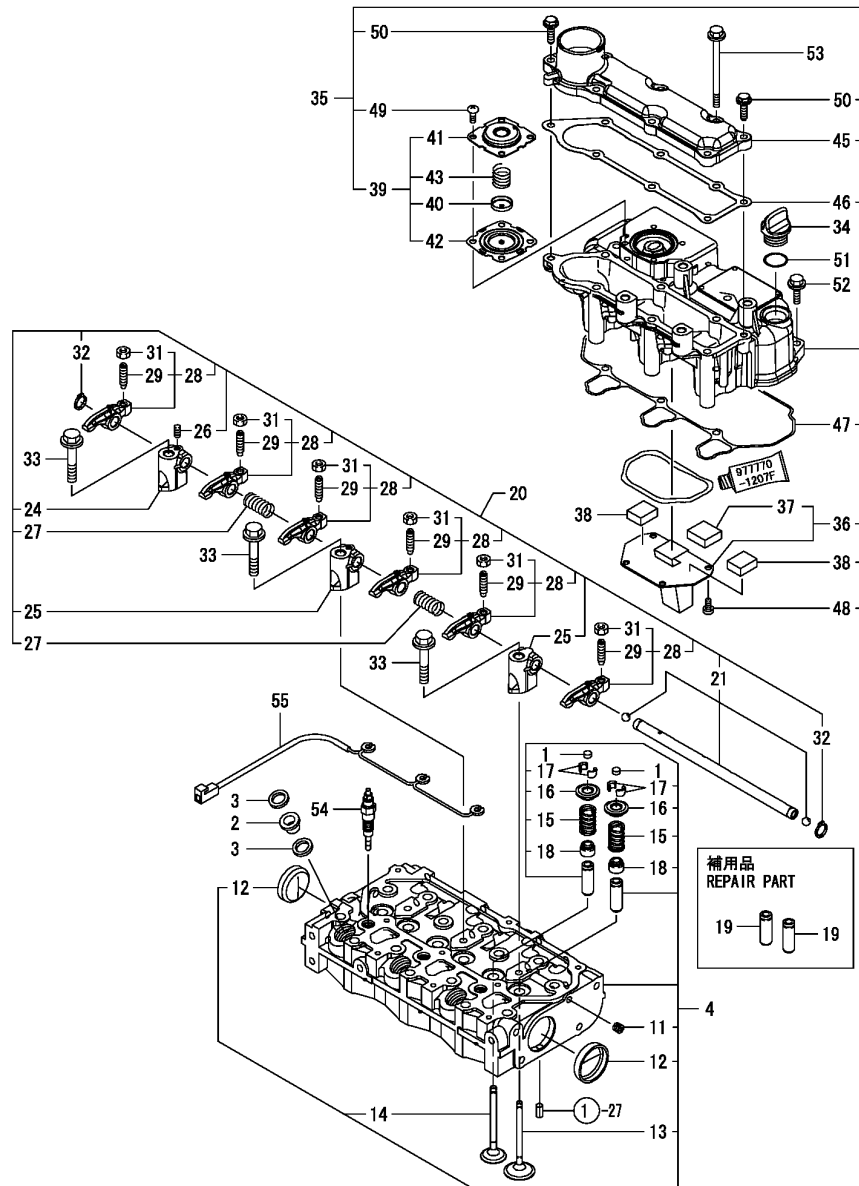
(B)=

(C)=

(D)=

(E)=

(F)=



No.	Lev.	Parts No.	Description	Qty						I	R
				(A)	(B)	(C)	(D)	(E)	(F)		
1	1	119260-11370	CAP, VALVE	6							
2	1	129901-11450	PROTECTOR, NOZZLE	3							
3	1	119600-11460	GASKET, NOZZLE	6							
4	1	119125-11740	HEAD ASSY, CYLINDER	1							
11	2	23876-005000	PLUG, R005	1							
12	2	27241-350000	PLUG, 35	2							
13	2	119125-11100	VALVE, INTAKE	3							
14	2	119125-11110	VALVE, EXHAUST	3							
15	2	119125-11130	SPRING, VALVE	6							
16	2	119125-11180	RETAINER, SPRING	6							
17	2	119125-11190	COTTER	12							
18	2	119125-11340	SEAL, VALVE STEM	6							
19	1	119125-11800	GUIDE, VALVE	6							1
20	1	119125-11200	SUPPORT ASSY, ARM	1							
21	2	119125-11240	SHAFT ASSY, ROCKER	1							
24	2	119125-11260	SUPPORT, ROCKER ARM	1							
25	2	119125-11270	SUPPORT, ROCKER ARM	2							
26	2	119260-11270	SCREW	1							
27	2	119260-11280	SPRING	2							
28	2	119125-11650	ARM, ROCKER	6							
29	3	105010-11230	SCREW, VALVE ADJUST	6							
31	3	26856-060002	NUT, M6	6							
32	2	22242-000100	RING, 10	2							
33	1	26106-080452	BOLT, M8X 45 PLATED	3							
34	1	106760-01770	CAP	1							
35	1	119125-11380	BONNET ASSY, HEAD	1							
36	2	119717-03031	PLATE	1							
37	3	119717-03070	BAFFLE, BREATHER	1							
38	2	119717-03070	BAFFLE, BREATHER	2							
39	2	119802-03100	DIAPHRAGM ASSY	1							
40	3	119802-03110	PLATE	1							
41	3	119802-03121	COVER, DIAPHRAGM	1							
42	3	119802-03131	DIAPHRAGM	1							
43	3	119802-03141	SPRING, DIAPHRAGM	1							
45	2	119125-11320	COVER, BONNET	1							
46	2	119125-11330	GASKET	1							
47	2	119125-11370	GASKET, BONNET	1							
48	2	22857-500100	SCREW, 5X10	4							
49	2	22857-500100	SCREW, 5X10	4							
50	2	26476-060202	SCREW, TAPPING M6X20	2							
51	1	24311-000180	O-RING, 1AP18.0	1							
52	1	26106-060202	BOLT, M6X 20 PLATED	3							
53	1	26106-060802	BOLT, M6X 80 PLATED	6							
54	1	119125-77800	PLUG, GLOW	3							
55	1	119125-77820	CONNECTOR, GLOW PLUG	1							

Remarks

(1)REPAIR PART.

Fig.5. AIR CLEANER

(A)=3TNV76-HGB2B

(B)=

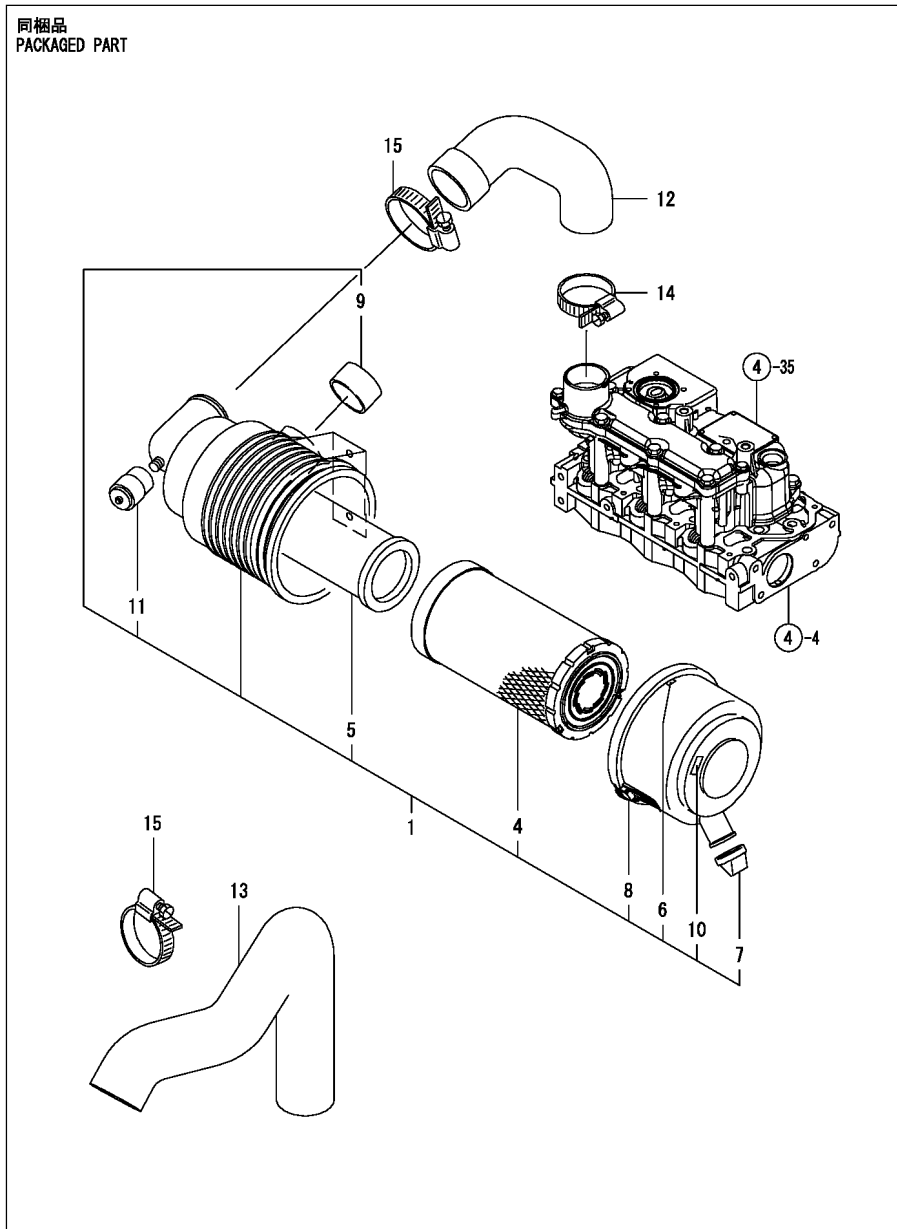
(C)=

(D)=

(E)=

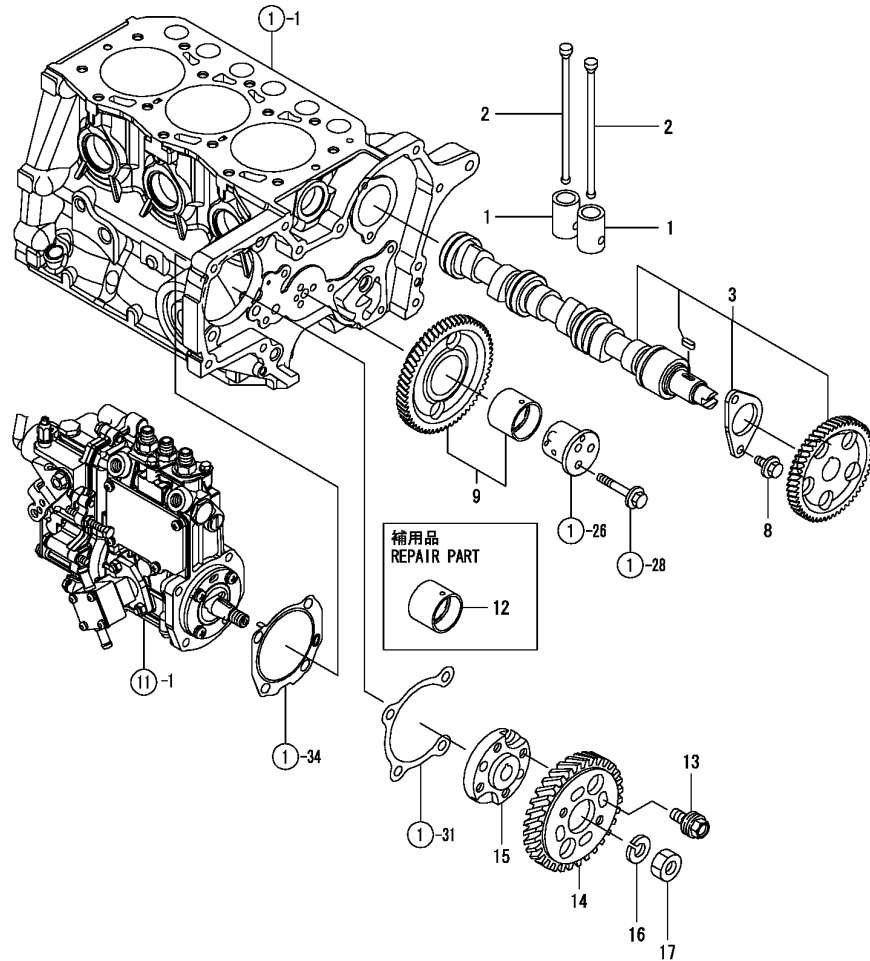
(F)=

同梱品
PACKAGED PART



No.	Lev.	Parts No.	Description	Q'ty						I	R
				(A)	(B)	(C)	(D)	(E)	(F)		
1	1	119746-12500	CLEANER ASSY, AIR	1							
4	2	129004-12520	ELEMENT	1							
5	2	129051-12530	ELEMENT	1							
6	2	129418-12530	LABEL, MARK	2							
7	2	119808-12540	VALVE, UNLOADER	1							
8	2	119866-12541	COVER ASSY	1							
9	2	129259-12570	RING	1							
10	2	129612-12650	LABEL, MARKING	1							
11	2	126650-12680	INDICATOR	1							
12	1	119128-12620	PIPE, AIR INTAKE	1							
13	1	119128-12630	PIPE, AIR INTAKE	1							
14	1	23000-054000	CLAMP, 54	1							
15	1	23000-060000	CLAMP, 60	2							

Fig.7. CAMSHAFT & DRIVING GEAR



(A)=3TNM68-HGB2B

(B)=

(C)=

(D)=

(E)=

(F)=

No.	Lev.	Parts No.	Description	Q'ty						I	R
				(A)	(B)	(C)	(D)	(E)	(F)		
1	1	119260-14200	TAPPET	6							
2	1	119260-14400	ROD, PUSH	6							
3	1	119125-14580	CAMSHAFT ASSY	1							
8	1	26106-060122	BOLT, M6X 12 PLATED	2							
9	1	119125-25100	GEAR ASSY, IDLE	1							
12	1	119125-25910	BUSH, IDLE GEAR	1							1
13	1	129150-25301	BOLT	4							
14	1	119125-25930	GEAR, PUMP	1							
15	1	119717-51150	FLANGE	1							
16	1	22217-120000	WASHER, SPRING 12	1							
17	1	26716-120002	NUT, M12	1							

Remarks

(1)REPAIR PART.

Fig.8. CRANKSHAFT & PISTON

(A)=3TNM68-HGB2B

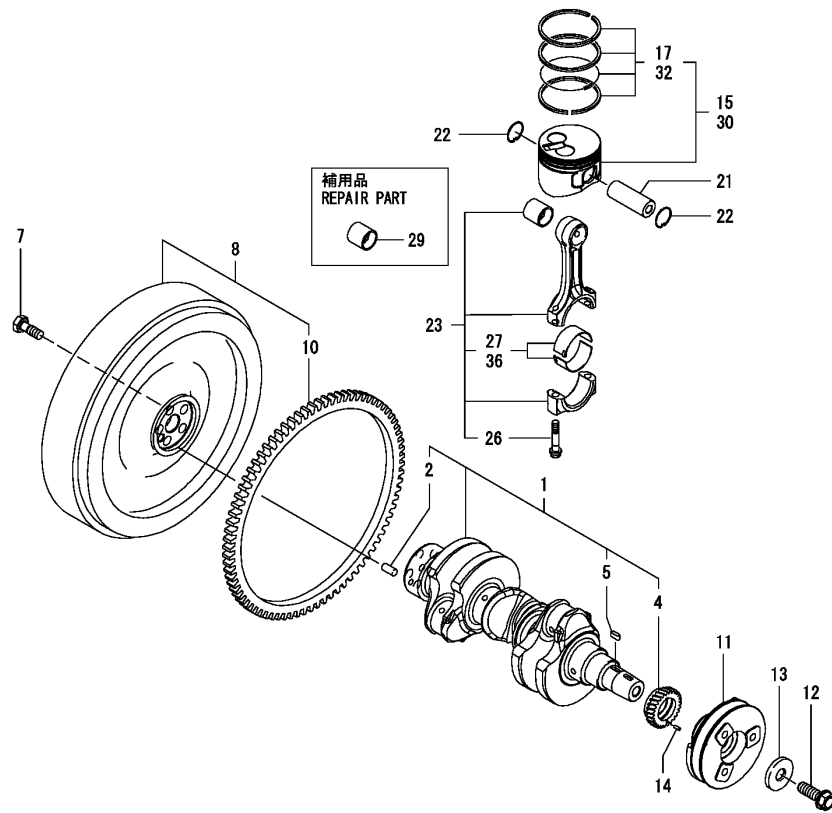
(B)=

(C)=

(D)=

(E)=

(F)=



No.	Lev.	Parts No.	Description	Q'ty						I	R
				(A)	(B)	(C)	(D)	(E)	(F)		
1	1	119125-21700	CRANKSHAFT ASSY	1							
2	2	129100-01580	PIN, M8X16	1							
4	2	119125-21200	GEAR, CRANKSHAFT	1							
5	2	22512-040120	KEY, 4X 12	1							
7	1	121111-21501	BOLT, FLYWHEEL	5							
8	1	119128-21570	FLYWHEEL ASSY	1							
10	2	119865-21600	GEAR, RING	1							
11	1	119125-21650	V-PULLEY	1							
12	1	119621-21680	BOLT, FLANGE 12X1.25	1							
13	1	119620-21941	WASHER	1							
14	1	22351-030010	PIN, SPRING 3.0X10	1							
15	1	119125-22080	PISTON ASSY	3							
17	2	119125-22500	RING SET, PISTON	3							
21	1	119125-22300	PIN, PISTON	3							
22	1	22252-000200	RING, 20	6							
23	1	119125-23000	ROD ASSY, CONNECTING	3							
26	2	119717-23200	BOLT, CONNECTING ROD	6							
27	2	119515-23601	BEARING, CRANK PIN	3							
29	1	119260-23910	BEARING, PISTON PIN	3							1
30	1	119125-22900	PISTON ASSY, 0.25 OS	3							2
32	2	119125-22550	RING SET, 0.25 OS	3							2
36	1	119515-23611	METAL ASSY, 0.25	3							3

Remarks

- (1)REPAIR PART.
- (2)OVER SIZED(O.S.=0.25)PART.
- (3)UNDER SIZED(U.S.=0.25)PART.

Fig.9. LUB.OIL SYSTEM

(A)=3TNM68-HGB2B

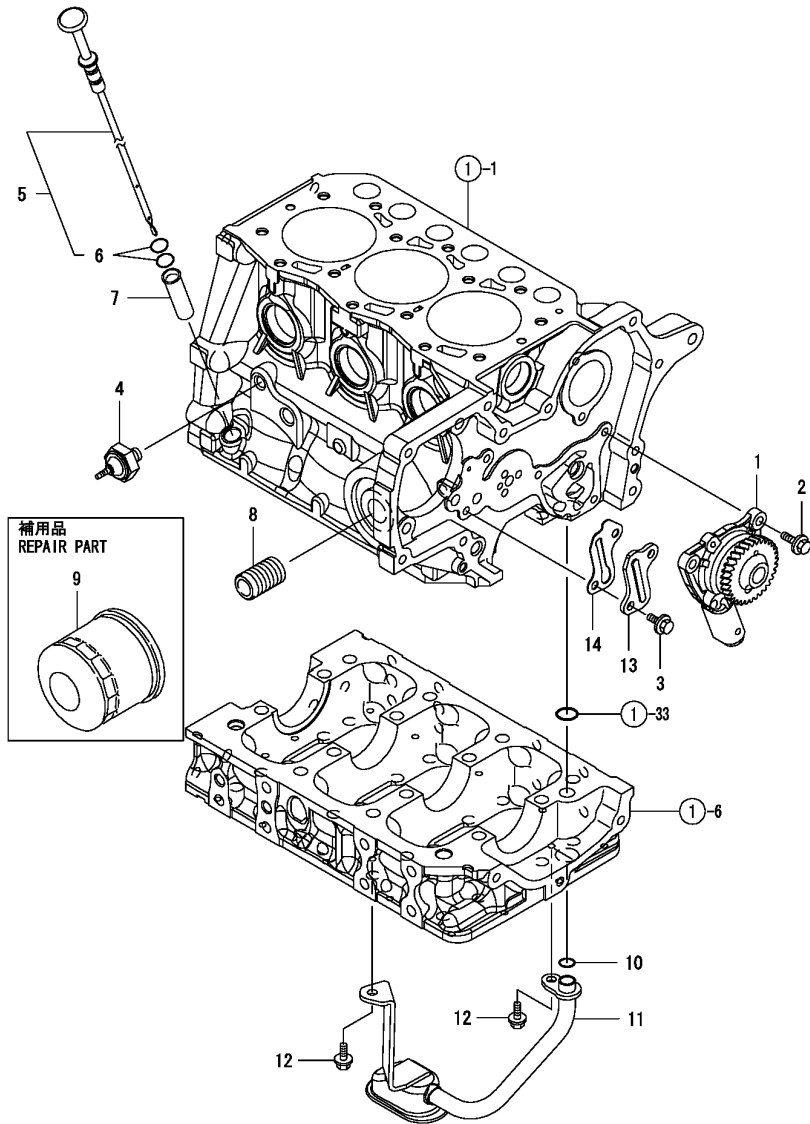
(B)=

(C)=

(D)=

(E)=

(F)=

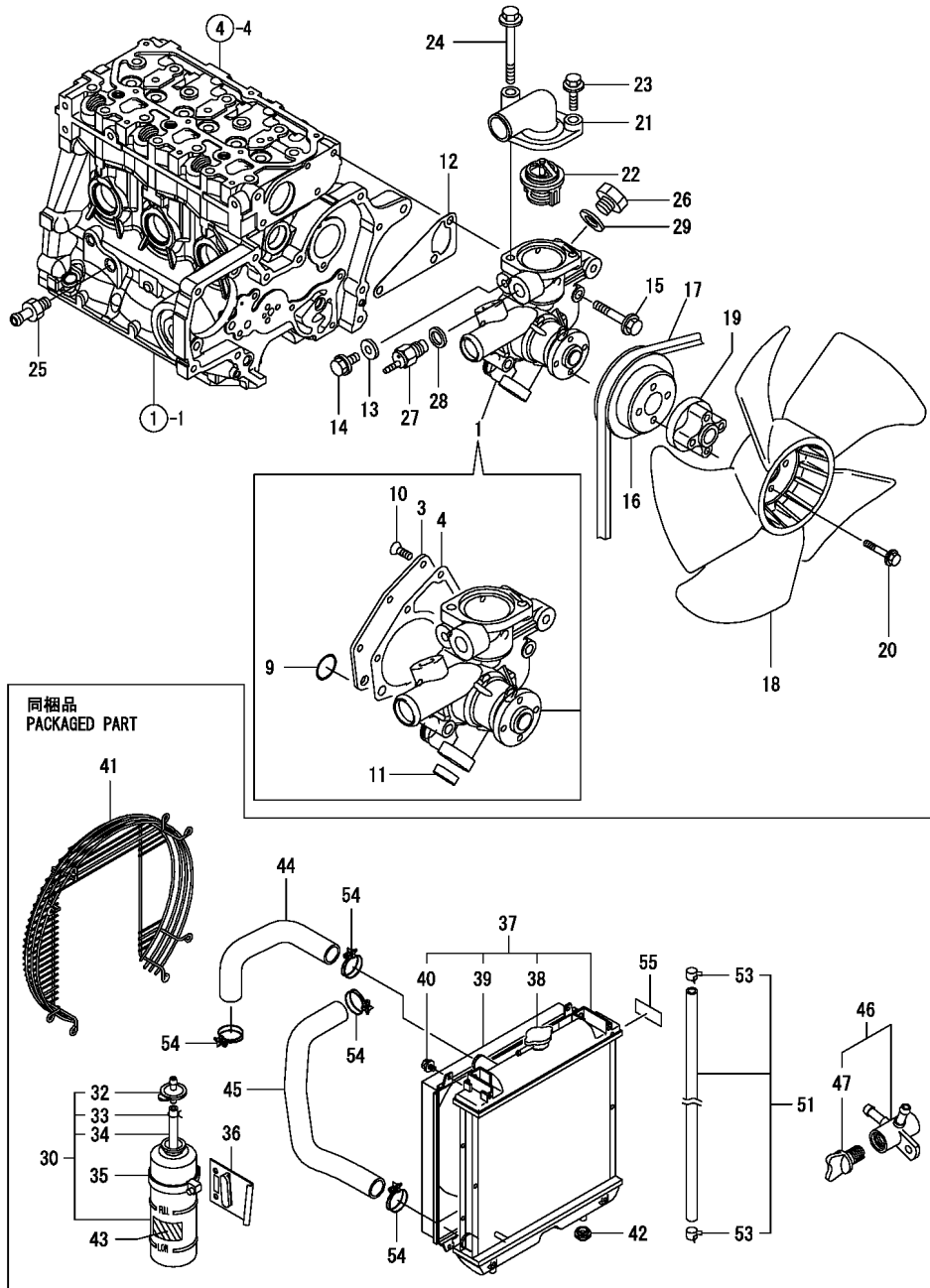


No.	Lev.	Parts No.	Description	Q'ty						I	R
				(A)	(B)	(C)	(D)	(E)	(F)		
1	1	119125-32000	PUMP ASSY, OIL	1							
2	1	26106-060142	BOLT, M6X 14 PLATED	3							
3	1	26106-060102	BOLT, M6X 10 PLATED	2							
4	1	114250-39450	SWITCH, 0.5KG	1							
5	1	119125-34820	DIPSTICK, OIL	1							
6	2	119125-34900	O-RING	1							
7	1	119125-34810	GUIDE, DIPSTICK	1							
8	1	129100-35140	STUD	1							
9	1	119305-35151	FILTER ASSY, D68XL65	1							1
10	1	119209-35030	O-RING, P11	1							
11	1	119128-35080	PIPE ASSY, OIL INLET	1							
12	1	26106-060102	BOLT, M6X 10 PLATED	2							
13	1	119125-39200	COVER	1							
14	1	119125-39220	GASKET	1							

Remarks

(1)REPAIR PART.

Fig.10. COOLING WATER SYSTEM



No.	Lev.	Parts No.	Description	Q'ty						I	R
				(A)	(B)	(C)	(D)	(E)	(F)		
1	1	119125-42000	PUMP ASSY, WATER	1							
3	2	119125-42020	COVER	1							
4	2	119125-42030	GASKET, WATER PUMP	1							
9	2	119209-42320	O-RING, P21 EPDM	1							
10	2	26577-060122	SCREW, M6X12	4							
11	2	27241-220000	PLUG, 22	1							
12	1	119260-42021	GASKET, WATER PUMP	1							
13	1	23414-080000	GASKET, 8X1.0	1							
14	1	26106-080122	BOLT, M8X 12 PLATED	1							
15	1	26106-080452	BOLT, M8X 45 PLATED	3							
16	1	119515-42350	V-PULLEY, D=110	1							
17	1	25132-003500	V-BELT, A35	1							
18	1	119265-44740	FAN, D=310X5F	1							
19	1	129457-44760	SPACER, FAN	1							
20	1	26106-060452	BOLT, M6X 45 PLATED	4							
21	1	124101-49531	COVER, THERMOSTAT	1							
22	1	119717-49800	THERMOSTAT, 71	1							
23	1	26106-080252	BOLT, M8X 25 PLATED	1							
24	1	26106-080652	BOLT, M8X 65 PLATED	1							
25	1	121550-49111	JOINT, PT1/4	1							
26	1	121450-42450	PLUG, M16	1							
27	1	121250-44901	SWITCH, 110	1							
28	1	124465-44950	GASKET, 16	1							
29	1	124465-44950	GASKET, 16	1							
30	1	124450-44510	TANK ASSY, SUB	1							
32	2	124450-44530	CAP	1							
33	2	124450-44560	RETAINER	1							
34	2	23061-070230	PIPE, 7X 230	1							
35	1	124450-44550	BAND	1							
36	1	121256-44600-3	BRACKET	1							
37	1	119515-44560	RADIATOR	1							
38	2	129107-44590	CAP, RADIATOR	1							
39	2	119515-44600	SHROUD	1							
40	2	26014-060122	BOLT, M6X 12	4							
41	1	119802-44560	GUARD	1							
42	1	119255-44660	ABSORBER	2							
43	1	124764-44810	LABEL, SUB TANK	1							
44	1	119128-49050	PIPE, WATER	1							
45	1	119128-49060	PIPE, WATER	1							
46	1	129150-49100	COCK ASSY, 3-WAY	1							
47	2	129150-49080	COCK, DRAIN	1							
51	1	129210-49280	PIPE ASSY, DRAIN	1							
53	2	124766-59050	CLIP, HOSE 12	2							
54	1	23010-038000	CLAMP, 38	4							
55	1	172437-03391	LABEL, RADIATOR	1							

Fig.11. FUEL INJECTION PUMP

(A)=3TNM68-HGB2B

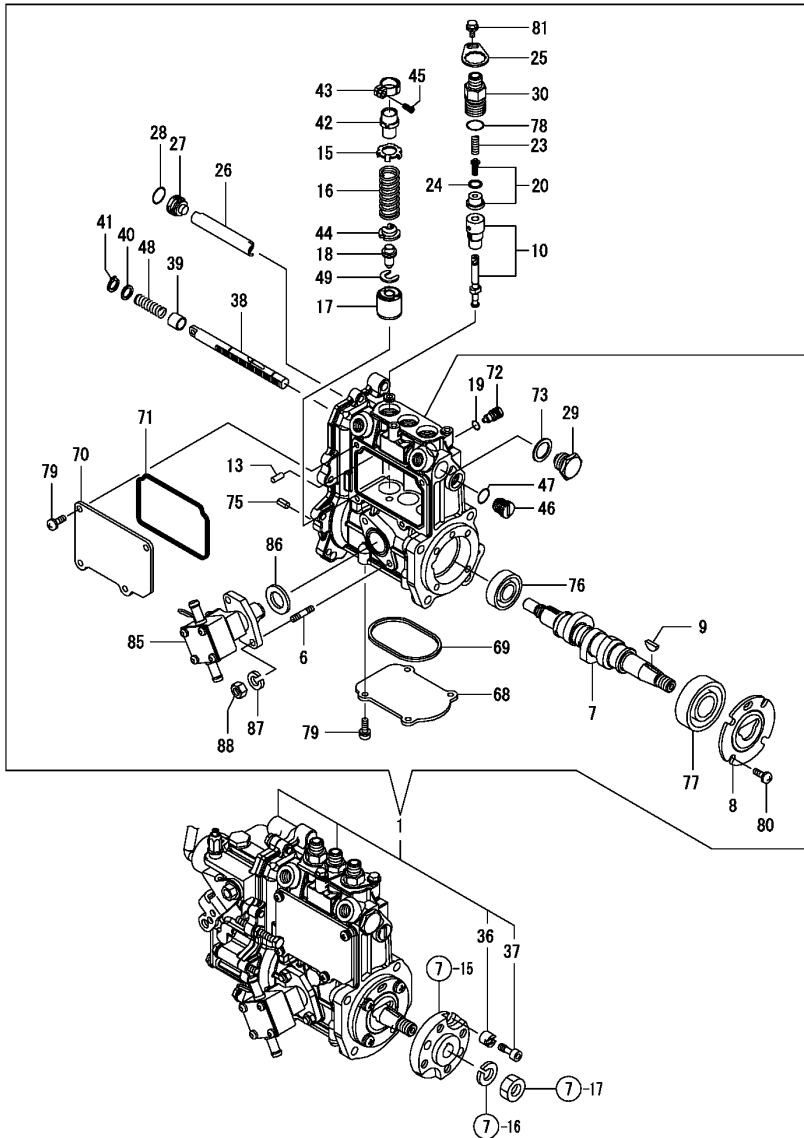
(B)=

(C)=

(D)=

(E)=

(F)=

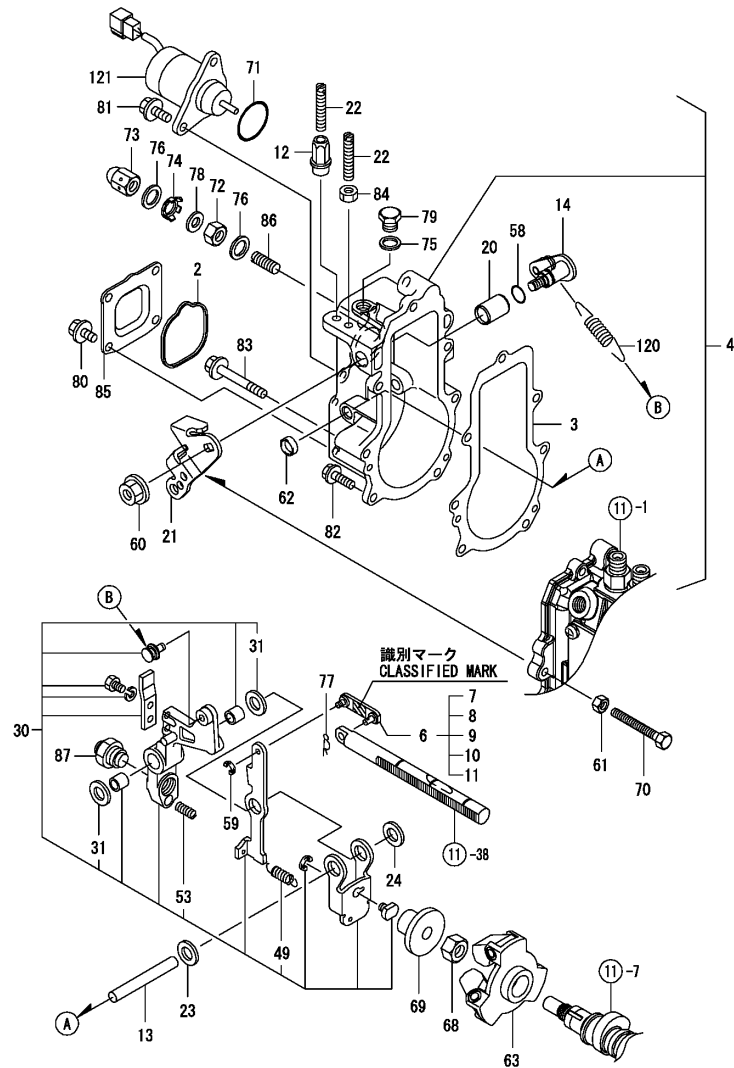


No.	Lev.	Parts No.	Description	Q'ty						I	R
				(A)	(B)	(C)	(D)	(E)	(F)		
1	1	719128-51300	PUMP ASSY, INJECTION	1							1
6	2	129155-51020	STUD	2							
7	2	119125-51030	CAMSHAFT	1							
8	2	119125-51060	RETAINER, BEARING	1							
9	2	122710-51090	KEY	1							
10	2	119125-51100	PLUNGER ASSY	3							
13	2	129155-51140	PIN	3							
15	2	158600-51170	RETAINER, SPRING	3							
16	2	119717-51190	SPRING, PLUNGER	3							
17	2	119125-51241	TAPPET	3							
18	2	119125-51250	GUIDE, TAPPET	3							
19	2	129155-51280	O-RING, S6	1							
20	2	119125-51300	VALVE ASSY, DELIVERY	3							
23	2	128990-51330	SPRING, DELIVERY	3							
24	2	124550-51350	GASKET, DELIVERY	3							
25	2	118400-51370	LOCKING	3							
26	2	129155-51400	DEFLECTOR	1							
27	2	158600-51410	PLUG, DEFLECTOR	1							
28	2	119717-51420	O-RING	1							
29	2	158600-51420	PLUG, DEFLECTOR	1							
30	2	158600-51442	VALVE ASSY, DELIVERY	3							
36	2	119125-51480	COLLAR	1							
37	2	119125-51490	BOLT	1							
38	2	119717-51500	RACK, CONTROL	1							
39	2	129155-51521	BUSH, RACK	1							
40	2	129155-51530	SPACER	1							
41	2	129155-51540	CIRCLIP	1							
42	2	129155-51550	PINION, CONTROL	3							
43	2	129100-51560	PINION	3							
44	2	119717-51570	RETAINER, SPRING	3							
45	2	129100-51570	SCREW	3							
46	2	158600-51570	PLUG	1							
47	2	129155-51580	O-RING	1							
48	2	129155-51591	SPRING, RACK	1							
49	2	129155-51600	SHIM SET, ADJUSTING	3							
68	2	119125-51700	COVER	1							
69	2	119717-51711	GASKET	1							
70	2	119717-51750	COVER	1							
71	2	119717-51761	GASKET	1							
72	2	158600-51790	STOOPER, RACK	1							
73	2	22190-160002	WASHER, SEAL 16	1							
75	2	22351-050010	PIN, SPRING 5.0X10	2							
76	2	24101-060034	BEARING, BALL 6003	1							
77	2	24101-063034	BEARING, BALL 6303	1							
78	2	24316-000150	O-RING, 4DP15.0	3							
79	2	26022-050122	SCREW, M5X12	8							
80	2	26022-060162	SCREW, M6X16	4							
81	2	26106-050102	BOLT, M5X 10 PLATED	3							
85	2	119125-52000	PUMP ASSY, FUEL FEED	1							
86	2	129155-52051	GASKET	1							
87	2	22217-060000	WASHER, SPRING 6	2							

Remarks

(1)GOVERNOR ASSY(FIG.12) IS INCORPORATED IN THIS FOP.CMP (REF.NO.1).

Fig.12. GOVERNOR



Remarks

(1)SELECTIVE PARTS:CERTAIN THE CLASSIFICATION MARK, THEN PLACE YOUR ORDER.(REF.TO.ILLUSTRATION).
 * THIS FIGURE(GOVERNOR ASSY)IS INCORPORATED IN THE FUEL INJECTION PUMP ASSY(FIG.11).

(A)=3TNM68-HGB2B

(B)=

(C)=

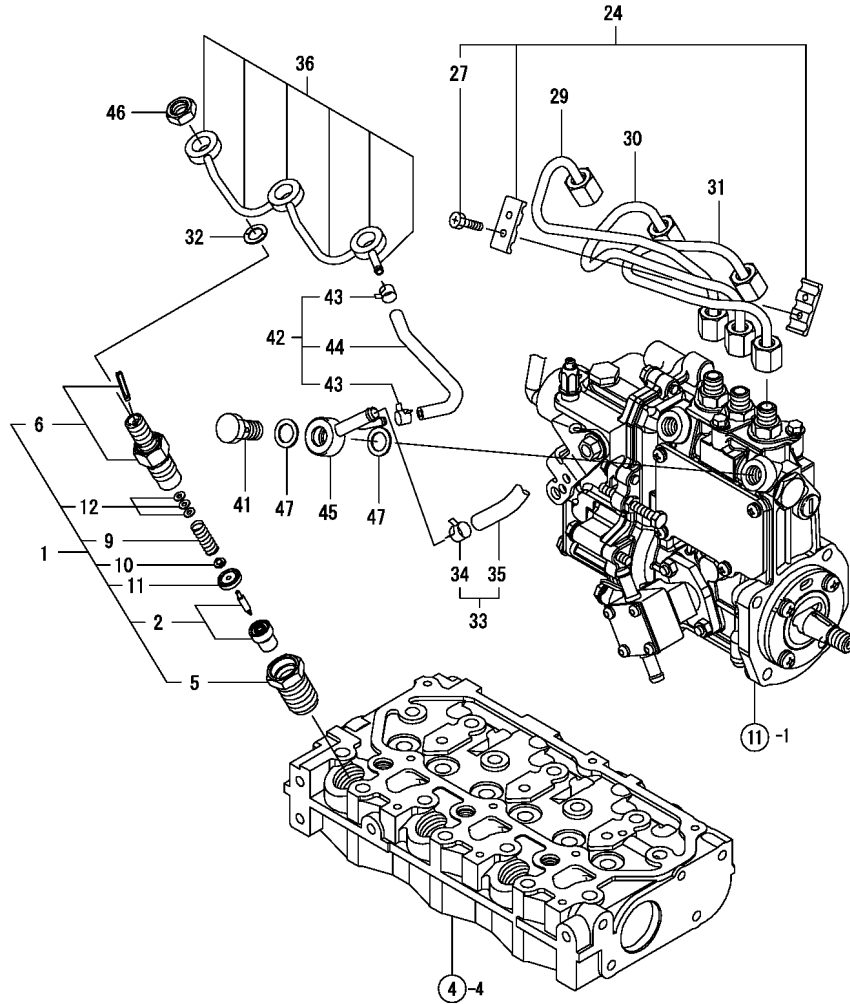
(D)=

(E)=

(F)=

No.	Lev.	Parts No.	Description	Q'ty						I	R
				(A)	(B)	(C)	(D)	(E)	(F)		
2	2	119717-61070	GASKET	1							
3	2	119717-61050	GASKET	1							
4	2	119128-61200	CASE ASSY, GOVERNOR	1							
6	3	119125-61110	LINK ASSY	1							
7	4	119125-61120	LINK, MARK 93	1							1
8	4	119125-61130	LINK, MARK 98	1							1
9	4	119125-61140	LINK, MARK 88	1							1
10	4	119125-61150	LINK, MARK 00	1							1
11	4	119125-61160	LINK, MARK 03	1							1
12	3	129209-61370	NUT, M6	1							
13	3	119125-61390	SHAFT	1							
14	3	119125-61401	SHAFT ASSY	1							
20	3	119125-61430	BUSH	1							
21	3	119546-61440	LEVER, CONTROL	1							
22	3	129155-61450	BOLT, LIMITER	2							
23	3	129156-61460	SHIM, T=0.6	1							
24	3	129155-61480	SPACER ASSY	1							
30	3	119025-61501	LEVER ASSY, GOVERNOR	1							
31	4	174307-51700	SHIM SET	2							
49	4	129486-61540	SPRING, SET	1							
53	4	129100-61650	SPRING, CONTROLLER	1							
58	3	129155-61830	O-RING, S10	1							
59	3	22272-000030	RING, E- 3	1							
60	3	26366-080002	NUT, M8	1							
61	2	26756-060002	NUT, LOCK M6	1							
62	3	27260-120000	PLUG, 12	1							
63	2	119125-61201	WEIGHT ASSY,GOVERNOR	1							
68	2	129008-61301	NUT	1							
69	2	129155-61341	SLEEVE	1							
70	2	129155-61460	BOLT, IDLE	1							
71	2	158552-61900	O-RING	1							
72	2	129209-61920	NUT, ARB	1							
73	2	129209-61930	NUT, CAP	1							
74	2	129209-61970	PLATE	1							
75	2	22190-100002	WASHER, SEAL 10	1							
76	2	22190-120002	WASHER, SEAL 12	2							
77	2	22372-040000	PIN, SNAP 4	1							
78	2	23414-120016	GASKET, 12X1.0	1							
79	2	23887-100002	PLUG, 10	1							
80	2	26106-060102	BOLT, M6X 10 PLATED	4							
81	2	26106-060142	BOLT, M6X 14 PLATED	2							
82	2	26106-060202	BOLT, M6X 20 PLATED	4							
83	2	26106-060452	BOLT, M6X 45 PLATED	3							
84	2	26756-060002	NUT, LOCK M6	1							
85	2	119717-61060	COVER, GOVERNOR CASE	1							
86	2	120323-61470	BOLT, CONTROL	1							
87	2	119761-61560	ANGLEICH ASSY	1							
120	2	129573-61700	SPRING, GOVERNOR	1							
121	2	119653-77950	SOLENOID, STOP	1							

Fig.13. FUEL INJECTION VALVE



(A)=3TNM68-HGB2B

(B)=

(C)=

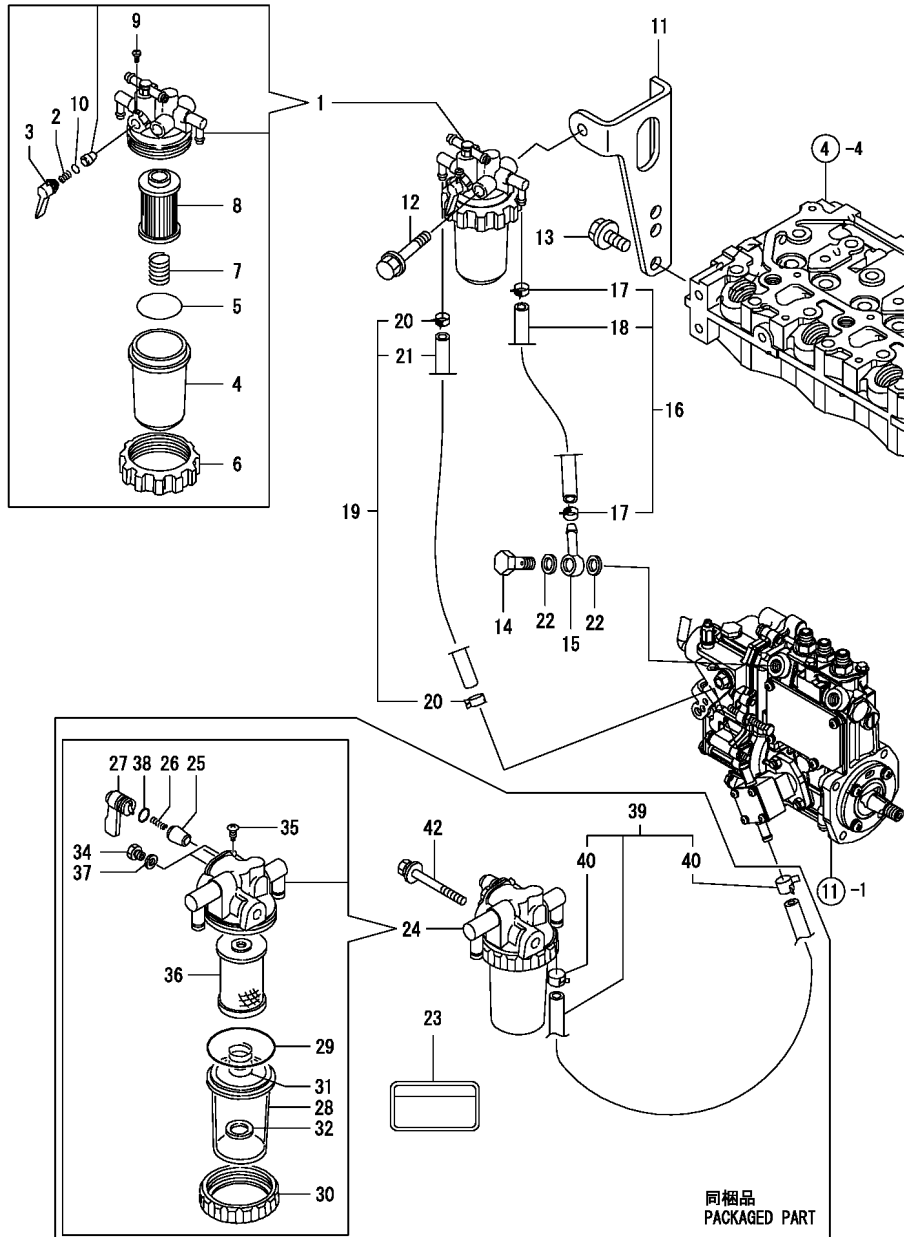
(D)=

(E)=

(F)=

No.	Lev.	Parts No.	Description	Q'ty						I	R
				(A)	(B)	(C)	(D)	(E)	(F)		
1	1	719125-53100	VALVE ASSY,INJECTION	3							
2	2	119125-53001	VALVE ASSY,INJECTION	3							
5	2	119125-53080	NUT, NOZZLE	3							
6	2	119125-53100	HOLDER ASSY, NOZZLE	3							
9	2	119125-53120	SPRING, NOZZLE	3							
10	2	119125-53130	SEAT, SPRING	3							
11	2	119125-53140	SPACER, VALVE STOP	3							
12	2	114250-53400	SHIM SET	3							
24	1	129150-59120	RETAINER, PIPE	1							
27	2	129150-59131	BOLT, M4X14	2							
29	1	119125-59810	PIPE, FUEL INJECTION	1							
30	1	119125-59820	PIPE, FUEL INJECTION	1							
31	1	119125-59830	PIPE, FUEL INJECTION	1							
32	1	129901-59560	GASKET	3							
33	1	129210-59140	PIPE ASSY, FUEL	1							
34	2	124766-59050	CLIP, HOSE 12	2							
35	2	105230-59510	PIPE, FUEL	1							
36	1	119125-59540	PIPE ASSY, RETURN	1							
41	1	119125-59560	BOLT, PIPE JOINT	1							
42	1	119125-59570	PIPE ASSY, RETURN	1							
43	2	124066-59100	CLIP, HOSE 8	2							
44	2	119000-59550	PIPE, FUEL RETURN	1							
45	1	119840-59570	JOINT	1							
46	1	119620-59700	NUT, NOZZLE	3							
47	1	22190-120002	WASHER, SEAL 12	2							

Fig.14. FUEL LINE



(A)=3TNM68-HGB2B

(B)=

(C)=

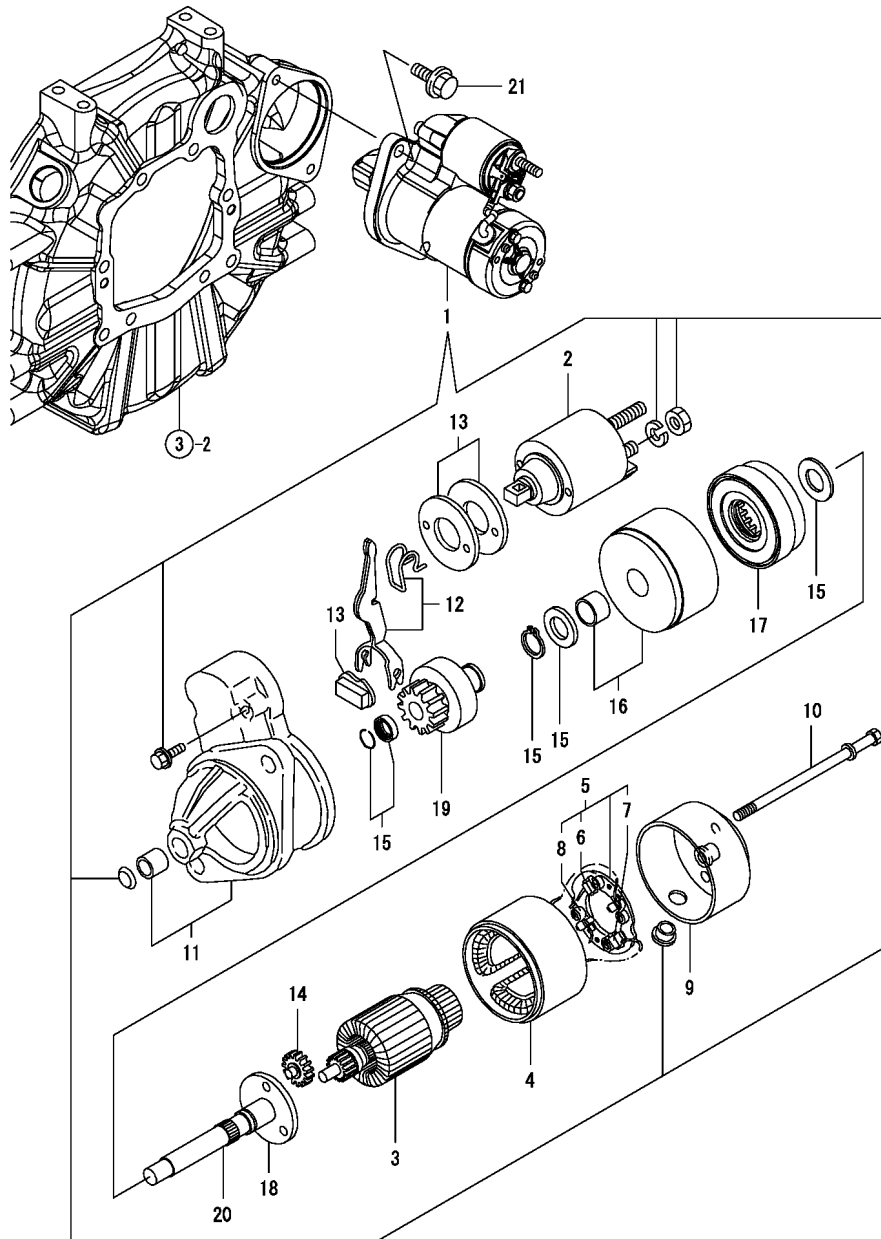
(D)=

(E)=

(F)=

No.	Lev.	Parts No.	Description	Qty						I	R
				(A)	(B)	(C)	(D)	(E)	(F)		
1	1	119833-55620	FILTER ASSY, FUEL	1							
2	2	104200-55330	SPRING, VALVE	1							
3	2	119810-55340	LEVER	1							
4	2	121254-55510	COVER	1							
5	2	102103-55520	O-RING	1							
6	2	110250-55610	RING, RETAINING	1							
7	2	121250-55620	SPRING	1							
8	2	119810-55650	ELEMENT	1							
9	2	104200-55750	SCREW, M4	1							
10	2	24311-240100	O-RING, 1AP10A	1							
11	1	119125-55650	BRACKET	1							
12	1	26014-080702	BOLT, M8X 70	1							
13	1	26106-080162	BOLT, M8X 16 PLATED	2							
14	1	103854-39140	BOLT, PIPE JOINT	1							
15	1	101304-59020	JOINT, PIPE 12	1							
16	1	129210-59230	PIPE ASSY, FUEL	1							
17	2	124766-59050	CLIP, HOSE 12	2							
18	2	129555-59511	PIPE, FUEL	1							
19	1	129210-59140	PIPE ASSY, FUEL	1							
20	2	124766-59050	CLIP, HOSE 12	2							
21	2	105230-59510	PIPE, FUEL	1							
22	1	22190-120002	WASHER, SEAL 12	2							
23	1	114110-07760	LABEL, FUEL CAUTION	1							
24	1	129335-55700	SEPARATOR ASSY,WATER	1							
25	2	104200-55321	VALVE, TAPER	1							
26	2	104200-55330	SPRING, VALVE	1							
27	2	104200-55341	HANDLE	1							
28	2	124064-55510	COVER	1							
29	2	102103-55520	O-RING	1							
30	2	110250-55610	RING, RETAINING	1							
31	2	121257-55720	SPRING	1							
32	2	121257-55731	FLOAT	1							
34	2	101720-55750	PLUG, 6	2							
35	2	104200-55750	SCREW, M4	1							
36	2	171081-55910	SCREEN	1							
37	2	23418-060000	GASKET, 6X1.0	2							
38	2	24311-240100	O-RING, 1AP10A	1							
39	1	129210-59140	PIPE ASSY, FUEL	1							
40	2	124766-59050	CLIP, HOSE 12	2							
42	1	26014-080702	BOLT, M8X 70	1							

Fig.15. STARTING MOTOR



(A)=3TNM68-HGB2B

(B)=

(C)=

(D)=

(E)=

(F)=

No.	Lev.	Parts No.	Description	Q'ty						I	R
				(A)	(B)	(C)	(D)	(E)	(F)		
1	1	119125-77010	STARTER ASSY, 1.2KW	1							
2	2	119125-77760	SWITCH ASSY	1							
3	2	119125-77710	ARMATURE ASSY	1							
4	2	129698-77110	YOKE ASSY	1							
5	2	129698-77120	HOLDER ASSY, BRUSH	1							
6	3	129698-77140	BRUSH SET	1							
7	3	129698-77130	BRUSH	2							
8	3	129698-77150	SPRING, BRUSH	4							
9	2	129698-77161	COVER ASSY	1							
10	2	124195-77770	BOLT, THROUGH	2							
11	2	119125-77520	CASE ASSY, GEAR	1							
12	2	119125-77270	LEVER SET, SHIFT	1							
13	2	119125-77280	COVER ASSY	1							
14	2	119125-77170	GEAR	3							
15	2	129698-77250	WASHER SET	1							
16	2	129698-77180	BRACKET	1							
17	2	119125-77200	GEAR, INTERNAL	1							
18	2	119125-77210	BRACKET	1							
19	2	119125-77660	PINION ASSY	1							
20	2	119125-77230	SHAFT, PINION	1							
21	1	26106-100252	BOLT, M10X 25 PLATED	2							

Fig.16. GENERATOR

(A)=3TNM68-HGB2B

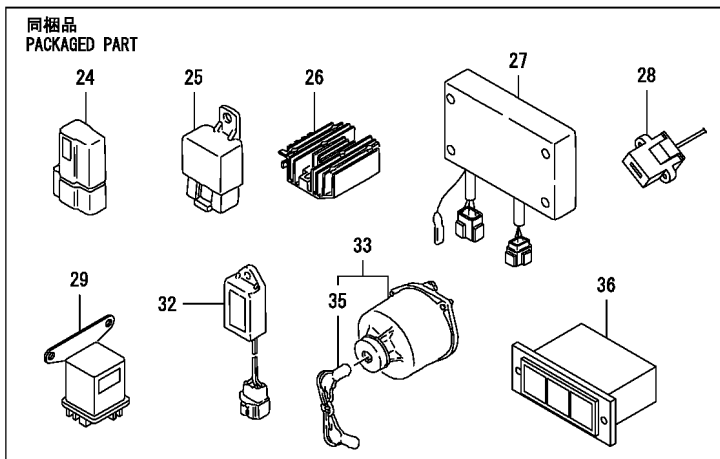
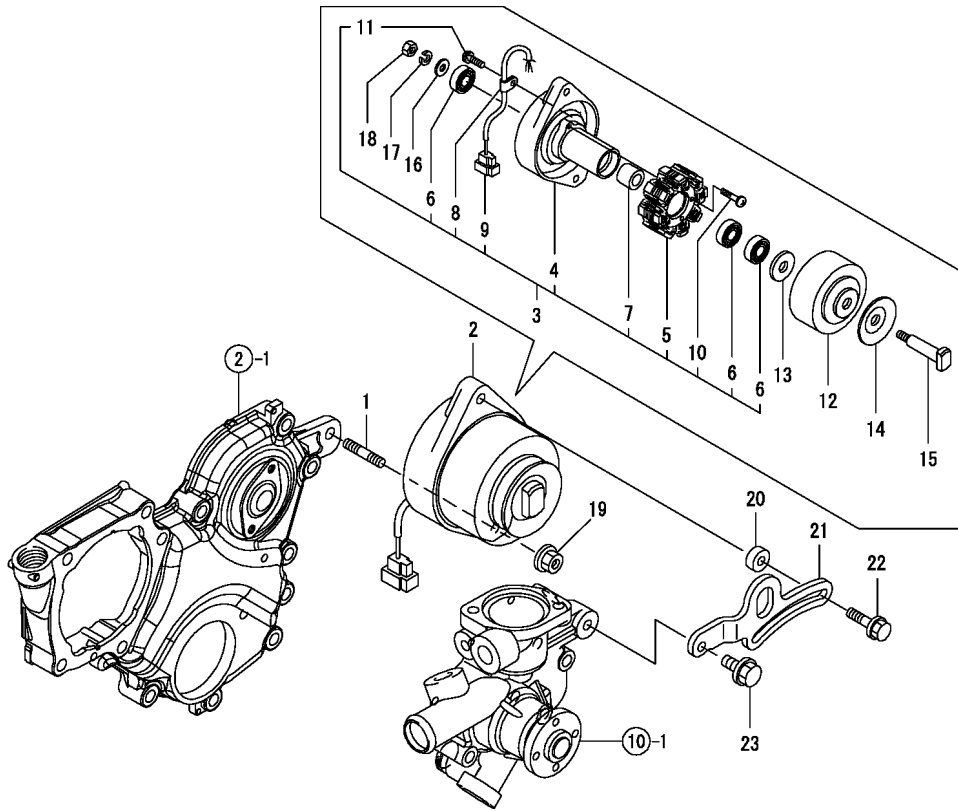
(B)=

(C)=

(D)=

(E)=

(F)=



No.	Lev.	Parts No.	Description	Q'ty						I	R
				(A)	(B)	(C)	(D)	(E)	(F)		
1	1	129795-01900	STUD	1							
2	1	171301-77201-1	DYNAMO, 15A	1							
3	2	XM08137	PLATE ASSY	1							
4	3	X2A07073KA	PLATE	1							
5	3	X4A07023KB	STATOR ASSY	1							
6	3	24104-062010	BEARING, 6201UUC3	3							
7	3	XM329830000	COLLAR	1							
8	3	XM069000000	CLAMP	1							
9	3	X417878	COUPLER	1							
10	3	XYSPS402400	SCREW	2							
11	3	XYSPS400800	SCREW	1							
12	2	X3A08877KA	FLYWHEEL	1							
13	2	XM67935	WASHER	1							
14	2	XM721740000	PULLEY	1							
15	2	X4A07403K01	SHAFT	1							
16	2	XM860250000	WASHER	1							
17	2	XM219230000	WASHER	1							
18	2	XM863720000	NUT	1							
19	1	26306-100002	NUT, M10	1							
20	1	119940-77270	SPACER, GENERATOR	1							
21	1	119540-77310	ADJUSTER	1							
22	1	129972-77341	BOLT, ADJUSTER L=50	1							
23	1	26106-080202	BOLT, M8X 20 PLATED	1							
24	1	119643-66900	DIODE	1							
25	1	119247-77100	RELAY, SAFETY	2							
26	1	119233-77712	LIMITER, CURRENT 15A	1							
27	1	171440-77801	RELAY, EMERGENCY	1							
28	1	119643-77900	CONNECTOR, STARTER	1							
29	1	119650-77910	RELAY ASSY, GLOW	1							
32	1	129211-77920	TIMER	1							
33	1	129115-91250	SWITCH ASSY	1							
35	2	129115-91270	KEY ASSY	1							
36	1	170038-91310	LAMP	1							

Fig.17. GASKET SET & TOOLS

(A)=3TNM68-HGB2B

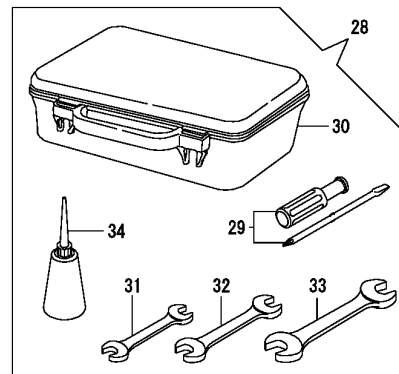
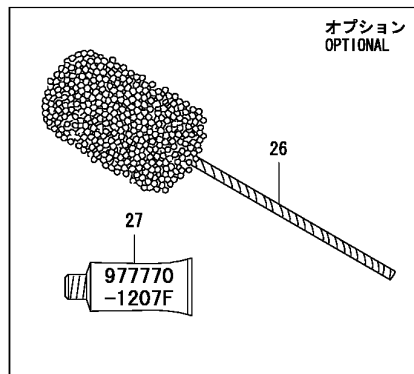
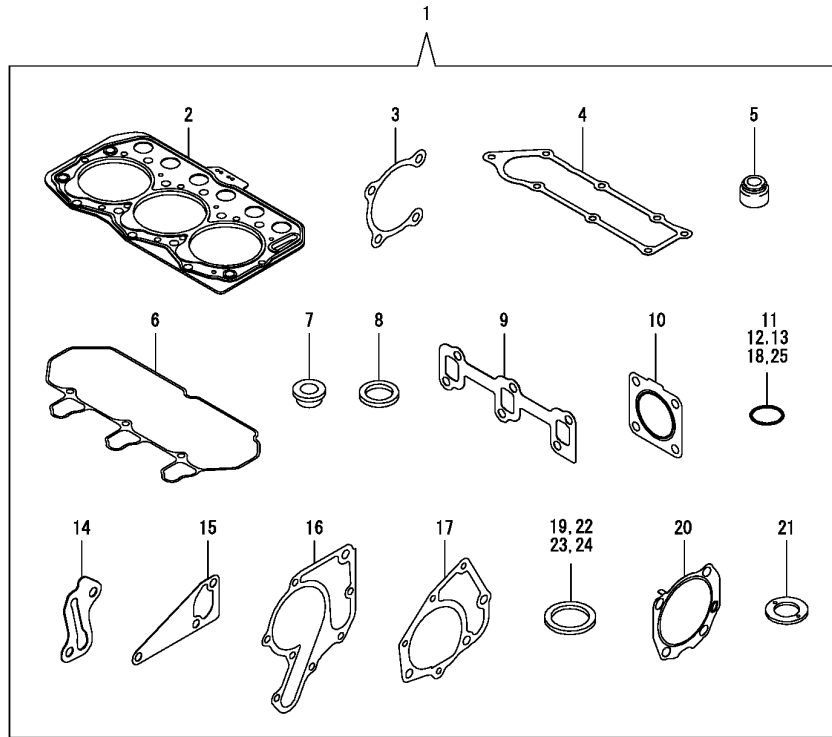
(B)=

(C)=

(D)=

(E)=

(F)=



No.	Lev.	Parts No.	Description	Q'ty						I	R
				(A)	(B)	(C)	(D)	(E)	(F)		
1	1	119125-92600	GASKET SET	1							1
2	2	119125-01330	GASKET, HEAD	1							
3	2	119125-01790	GASKET	1							
4	2	119125-11330	GASKET	1							
5	2	119125-11340	SEAL, VALVE STEM	6							
6	2	119125-11370	GASKET, BONNET	1							
7	2	129901-11450	PROTECTOR, NOZZLE	3							
8	2	119600-11460	GASKET, NOZZLE	6							
9	2	119125-13110	GASKET	1							
10	2	119515-13200	GASKET, SILENCER	1							
11	2	129900-32040	O-RING, P14	1							
12	2	119125-34900	O-RING	1							
13	2	119209-35030	O-RING, P11	1							
14	2	119125-39220	GASKET	1							
15	2	119260-42021	GASKET, WATER PUMP	1							
16	2	119275-42020	GASKET, WATER PUMP	1							
17	2	119125-42030	GASKET, WATER PUMP	1							
18	2	119209-42320	O-RING, P21 EPDM	1							
19	2	124465-44950	GASKET, 16	1							
20	2	119125-51800	GASKET	1							
21	2	119125-53800	GASKET	1							
22	2	22190-120002	WASHER, SEAL 12	5							
23	2	22190-160002	WASHER, SEAL 16	1							
24	2	23414-080000	GASKET, 8X1.0	1							
25	2	24311-000180	O-RING, 1AP18.0	2							
26	1	129400-92400	HONE	1							1
27	1	977770-1207F	GASKET.LIQUID	1							1
28	1	721400-92102	BOX ASSY, TOOL	1							
29	2	104200-92350	DRIVER, SCREW	1							
30	2	104200-92600	BOX, TOOL	1							
31	2	28110-100120	SPANNER, 10X12	1							
32	2	28110-140170	SPANNER, 14X17	1							
33	2	28110-190220	SPANNER, 19X22	1							
34	2	28210-000140	OILER	1							

Remarks
(1)OPTIONAL PART.

Parts No. Index

Parts No.	Fig. No.	Ref. No.
101304-59020	14	15
101720-55750	14	34
102103-55520	14	5
		29
103854-39140	14	14
104200-55321	14	25
104200-55330	14	2
		26
104200-55341	14	27
104200-55750	14	9
		35
104200-92350	17	29
104200-92600	17	30
105010-11230	4	29
105230-59510	13	35
	14	21
105425-01690	3	6
106760-01770	2	6
	4	34
110250-55610	14	6
		30
114110-07760	14	23
114250-39450	9	4
114250-53400	13	12
118400-51370	11	25
119000-59550	13	44
119025-61501	12	30
119125-01330	1	30
	17	2
119125-01500	2	1
119125-01750	2	2
119125-01760	3	5
119125-01780	3	10
119125-01790	1	31
	17	3
119125-01960	1	7
119125-01970	1	5
119125-02000	1	6
119125-02061	1	9
119125-02900	1	36
119125-02910	1	42
119125-02930	1	23
119125-02940	1	39
119125-11100	4	13
119125-11110	4	14
119125-11130	4	15
119125-11180	4	16
119125-11190	4	17
119125-11200	4	20
119125-11240	4	21

Parts No.	Fig. No.	Ref. No.
119125-11260	4	24
119125-11270	4	25
119125-11320	4	45
119125-11330	4	46
	17	4
119125-11340	4	18
	17	5
119125-11370	4	47
	17	6
119125-11380	4	35
119125-11650	4	28
119125-11740	4	4
119125-11800	4	19
119125-13110	6	1
	17	9
119125-13140	6	2
119125-14580	7	3
119125-21200	8	4
119125-21650	8	11
119125-21700	8	1
119125-22080	8	15
119125-22300	8	21
119125-22500	8	17
119125-22550	8	32
119125-22900	8	30
119125-23000	8	23
119125-25050	1	26
119125-25100	7	9
119125-25910	7	12
119125-25930	7	14
119125-32000	9	1
119125-34810	9	7
119125-34820	9	5
119125-34900	9	6
	17	12
119125-39200	9	13
119125-39220	9	14
	17	14
119125-42000	10	1
119125-42020	10	3
119125-42030	10	4
	17	17
119125-51030	11	7
119125-51060	11	8
119125-51100	11	10
119125-51241	11	17
119125-51250	11	18
119125-51300	11	20
119125-51480	11	36
119125-51490	11	37

Parts No.	Fig. No.	Ref. No.
119125-51700	11	68
119125-51800	1	34
	17	20
119125-52000	11	85
119125-53001	13	2
119125-53080	13	5
119125-53100	13	6
119125-53120	13	9
119125-53130	13	10
119125-53140	13	11
119125-53800	17	21
119125-55650	14	11
119125-59540	13	36
119125-59560	13	41
119125-59570	13	42
119125-59810	13	29
119125-59820	13	30
119125-59830	13	31
119125-61110	12	6
119125-61120	12	7
119125-61130	12	8
119125-61140	12	9
119125-61150	12	10
119125-61160	12	11
119125-61201	12	63
119125-61390	12	13
119125-61401	12	14
119125-61430	12	20
119125-77010	15	1
119125-77170	15	14
119125-77200	15	17
119125-77210	15	18
119125-77230	15	20
119125-77270	15	12
119125-77280	15	13
119125-77520	15	11
119125-77660	15	19
119125-77710	15	3
119125-77760	15	2
119125-77800	4	54
119125-77820	4	55
119125-92600	17	1
119127-01560	1	1
119128-01620	3	2
119128-12620	5	12
119128-12630	5	13
119128-21570	8	8
119128-35080	9	11
119128-49050	10	44
119128-49060	10	45

Parts No.	Fig. No.	Ref. No.
119128-61200	12	4
119131-18320	6	5
119209-35030	9	10
	17	13
119209-42320	10	9
	17	18
119233-77712	16	26
119247-77100	16	25
119255-44660	10	42
119260-11270	4	26
119260-11280	4	27
119260-11370	4	1
119260-14200	7	1
119260-14400	7	2
119260-23910	8	29
119260-42021	10	12
	17	15
119265-44740	10	18
119266-01200	1	29
119275-42020	17	16
119305-35151	9	9
119515-13200	6	7
	17	10
119515-23601	8	27
119515-23611	8	36
119515-42350	10	16
119515-44560	10	37
119515-44600	10	39
119540-77310	16	21
119546-61440	12	21
119600-11460	4	3
	17	8
119620-01620	1	13
119620-01750	3	3
119620-21941	8	13
119620-59700	13	46
119621-21680	8	12
119643-66900	16	24
119643-77900	16	28
119650-77910	16	29
119653-77950	12	121
119717-01800	2	3
119717-03031	4	36
119717-03070	4	37
		38
119717-13600	6	3
119717-23200	8	26
119717-49800	10	22
119717-51150	7	15
119717-51190	11	16

Parts No. Index

Parts No.	Fig. No.	Ref. No.
119717-51420	11	28
119717-51500	11	38
119717-51570	11	44
119717-51711	11	69
119717-51750	11	70
119717-51761	11	71
119717-61050	12	3
119717-61060	12	85
119717-61070	12	2
119734-02220	1	32
119746-12500	5	1
119761-61560	12	87
119802-03100	4	39
119802-03110	4	40
119802-03121	4	41
119802-03131	4	42
119802-03141	4	43
119802-13620	6	4
119802-44560	10	41
119808-12540	5	7
119810-55340	14	3
119810-55650	14	8
119833-55620	14	1
119840-59570	13	45
119865-21600	8	10
119866-12541	5	8
119940-77270	16	20
120323-61470	12	86
121111-21501	8	7
121250-44901	10	27
121250-55620	14	7
121254-55510	14	4
121256-44600-3	10	36
121257-55720	14	31
121257-55731	14	32
121450-42450	10	26
121550-49111	10	25
122710-51090	11	9
124060-01050	1	4
124064-55510	14	28
124066-59100	13	43
124101-49531	10	21
124195-77770	15	10
124450-44510	10	30
124450-44530	10	32
124450-44550	10	35
124450-44560	10	33
124465-44950	10	28
		29
	17	19

Parts No.	Fig. No.	Ref. No.
124550-51350	11	24
124764-44810	10	43
124766-59050	10	53
	13	34
	14	17
		20
		40
126650-12680	5	11
128990-51330	11	23
129004-12520	5	4
129004-13200	6	8
129008-61301	12	68
129051-12530	5	5
129100-01580	3	1
	8	2
129100-35140	9	8
129100-51560	11	43
129100-51570	11	45
129100-61650	12	53
129107-44590	10	38
129115-91250	16	33
129115-91270	16	35
129150-25301	7	13
129150-49080	10	47
129150-49100	10	46
129150-59120	13	24
129150-59131	13	27
129155-51020	11	6
129155-51140	11	13
129155-51280	11	19
129155-51400	11	26
129155-51521	11	39
129155-51530	11	40
129155-51540	11	41
129155-51550	11	42
129155-51580	11	47
129155-51591	11	48
129155-51600	11	49
129155-52051	11	86
129155-61341	12	69
129155-61450	12	22
129155-61460	12	70
129155-61480	12	24
129155-61830	12	58
129156-61460	12	23
129209-61370	12	12
129209-61920	12	72
129209-61930	12	73
129209-61970	12	74
129210-49280	10	51

Parts No.	Fig. No.	Ref. No.
129210-59140	13	33
	14	19
		39
129210-59230	14	16
129211-77920	16	32
129259-12570	5	9
129335-55700	14	24
129400-92400	17	26
129418-12530	5	6
129457-44760	10	19
129486-61540	12	49
129555-59511	14	18
129573-61700	12	120
129601-13500	6	10
129612-12650	5	10
129698-77110	15	4
129698-77120	15	5
129698-77130	15	7
129698-77140	15	6
129698-77150	15	8
129698-77161	15	9
129698-77180	15	16
129698-77250	15	15
129795-01900	16	1
129900-32040	1	33
	17	11
129901-11450	4	2
	17	7
129901-59560	13	32
129930-13201	6	9
129972-77341	16	22
158552-61900	12	71
158600-51170	11	15
158600-51410	11	27
158600-51420	11	29
158600-51442	11	30
158600-51570	11	46
158600-51790	11	72
170038-91310	16	36
171081-55910	14	36
171301-77201-1	16	2
171440-77801	16	27
172437-03391	10	55
174307-51700	12	31
22190-100002	12	75
22190-120002	12	76
	13	47
	14	22
	17	22
22190-160002	3	9

Parts No.	Fig. No.	Ref. No.
22190-160002	11	73
	17	23
22217-060000	11	87
22217-120000	7	16
22242-000100	4	32
22252-000200	8	22
22272-000030	12	59
22351-030010	8	14
22351-050010	11	75
22351-060012	1	27
22372-040000	12	77
22512-040120	8	5
22857-500100	4	48
		49
23000-054000	5	14
23000-060000	5	15
23010-038000	10	54
23061-070230	10	34
23414-080000	10	13
	17	24
23414-120016	12	78
23418-060000	14	37
23876-005000	1	10
	4	11
23887-100002	12	79
24101-060034	11	76
24101-063034	11	77
24104-062010	16	6
24311-000180	2	7
	4	51
	17	25
24311-240100	14	10
		38
24316-000150	11	78
25132-003500	10	17
26014-060122	10	40
26014-080702	14	12
		42
26022-050122	11	79
26022-060162	11	80
26106-050102	11	81
26106-060102	9	3
		12
	12	80
26106-060122	7	8
26106-060142	9	2
	12	81
26106-060202	4	52
	12	82
26106-060402	1	28

Parts No. Index

Parts No.	Fig. No.	Ref. No.
26106-060452	10	20
	12	83
26106-060802	4	53
26106-080122	10	14
26106-080162	14	13
26106-080202	16	23
26106-080252	10	23
26106-080352	2	4
26106-080452	2	5
	4	33
	10	15
26106-080652	10	24
26106-100252	15	21
26206-100252	3	4
26306-080002	6	6
26306-100002	16	19
26366-080002	12	60
26450-080252	1	35
26476-060202	4	50
26577-060122	10	10
26716-060002	11	88
26716-120002	7	17
26756-060002	12	61
		84
26856-060002	4	31
27241-220000	10	11
27241-300000	1	11
27241-350000	4	12
27241-450000	1	12
27260-120000	12	62
28110-100120	17	31
28110-140170	17	32
28110-190220	17	33
28210-000140	17	34
719125-53100	13	1
719128-51300	11	1
721400-92102	17	28
977770-1207F	17	27
X2A07073KA	16	4
X3A08877KA	16	12
X417878	16	9
X4A07023KB	16	5
X4A07403K01	16	15
XM069000000	16	8
XM08137	16	3
XM219230000	16	17
XM329830000	16	7
XM67935	16	13
XM721740000	16	14
XM860250000	16	16

Parts No.	Fig. No.	Ref. No.
XM863720000	16	18
XYSPS400800	16	11
XYSPS402400	16	10

Parts No.	Fig. No.	Ref. No.
-----------	----------	----------

Parts No.	Fig. No.	Ref. No.
-----------	----------	----------