

0CB10-M77600EN

## Directions for the Parts Catalog.

1. This Parts Catalog shows both standard and optional parts.
2. Parts may change without prior notice.
3. The following is an example of the Parts Catalog format.

REF.	LEV.	PARTS NO.	DESCRIPTION	Q'TY						I	R
				(A)	(B)	(C)	(D)	(E)	(F)		
1	1	729595-51390	FUEL INJECTION PUMP	1	1	1	1	1			1
1-1	1	729595-51391	FUEL INJECTION PUMP	1	1	1	1	1		N	1
		(A=E00185) (B=E00200)									
3	2	26022-060162	SCREW M 6X 16	9	9	9	9	9			
3-1	2	26022-060162	SCREW M 6X 16	4	4	4	4	4		K	
		(A=E00156) (B=E00156) (C=E00156) (D=E00156) (E=E00156)									
4	2	129470-51040	CAMSHAFT	1	1	1	1	1			
5	2	122710-51050	BEARING, ROLLER	2	2	2	2	2			
6	2	129470-51060	RETAINER	1	1	1	1	1			

Remarks
(1) BOOST COMPEMSATOR TYPE. OPTIONAL PART, TO E00155,(4JH-DT, 4JH-DTZ

### ① Ref. No.

The Ref. No. listed may not be in accordance with the illustration Ref. No.

(Ex.) Illustration No.

List Ref No.

1

1

(Before change)

1-1

(After change)

For interchangeable symbols N, R and K, illustrations for new parts may be abbreviated.

### ② Lev. (Level)

Level indication

The numbers below indicate the level of relativity towards the main part.

1 ----- Main parts (Assembly parts)

2 ----- Sub component included in " 1 ".

3 ----- Sub component included in " 2 ".

Note) Parts that are not for sale are partially illustrated but not listed.

### ③ Interchangeability Symbol

When a part change takes place, one of the following interchangeability symbols is indicated beside the part.

Symbol	Interchangeability	Contents note
N	Old $\begin{matrix} \leftarrow \text{Yes} \\ \text{No} \rightarrow \end{matrix}$ New	New Part is interchangeable for Old Part but Old Part is not interchangeable for New Part.
Q	Old $\begin{matrix} \leftarrow \text{No} \\ \text{Yes} \rightarrow \end{matrix}$ New	New Part is not interchangeable for Old Part but Old Part is interchangeable for New Part.
R	Old $\begin{matrix} \leftarrow \text{Yes} \\ \text{Yes} \rightarrow \end{matrix}$ New	New/ Old Parts are both interchangeable.
S	Old $\begin{matrix} \leftarrow \text{No} \\ \text{No} \rightarrow \end{matrix}$ New	New/ Old Parts are both not interchangeable.
W		Part newly added.
Z		Part discontinued.
F		Not interchangeable by a single part but interchangeable together with related parts.
K		Changes only for used parts quantities.

### ④ Effective Machine No.

When a part changes, the effective Machine No. will be indicated in the (A)-(F) column.

Product Symbol	Product No.	Product Symbol	Product No.
C	Clutch No. Compressor No.	F	Machine No. (Agricultural Equip.)
D	Drive No.	M	Machine No.
E	Engine No.		

Note 1) A date may follow the symbol. (Ex.) 1996.01

Note 2) "XXXXX" and "ZZZZZ" are for parts that could not be predicted or for engine models that could not be identified.

Note 3) (A=E00185) is the E (Engine Serial Number) for the column (A) model (in this case 4JH-DT) after the parts design change.

### ⑤ Remarks

Figures or alphabets (symbols) are entered in the remarks column.

The comments (remarks) on parts that are indicated at the bottom of the illustration are the same symbols as those stated above.

# Contents

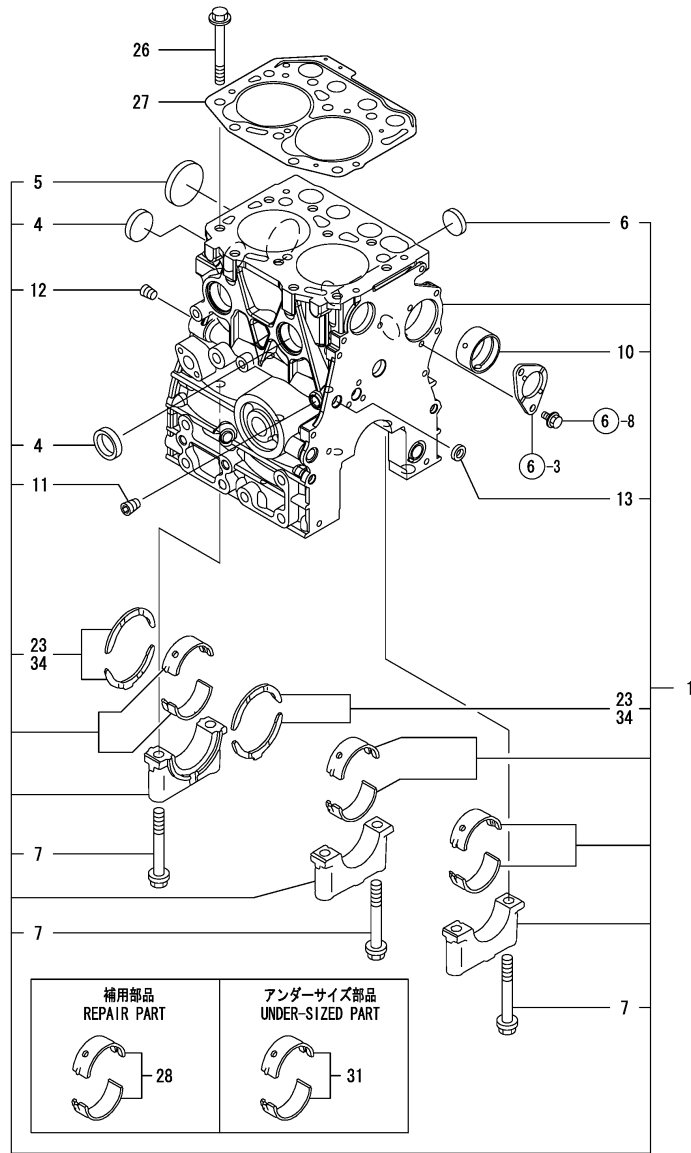
Fig. No. Fig. Name

2TNV70-ASG

1. CYLINDER BLOCK
2. GEAR HOUSING
3. FLYWHEEL HOUSING & OIL SUMP
4. CYLINDER HEAD & BONNET
5. EXHAUST MANIFOLD & SILENCER
6. CAMSHAFT & DRIVING GEAR
7. CRANKSHAFT & PISTON
8. LUB.OIL SYSTEM
9. COOLING WATER SYSTEM
10. FUEL INJECTION PUMP
11. GOVERNOR
12. FUEL INJECTION VALVE
13. FUEL FILTER
14. STARTING MOTOR
15. GENERATOR
16. GASKET SET

Fig. No. Fig. Name

Fig.1. CYLINDER BLOCK



(A)=2TNV70-ASG

(B)=

(C)=

(D)=

(E)=

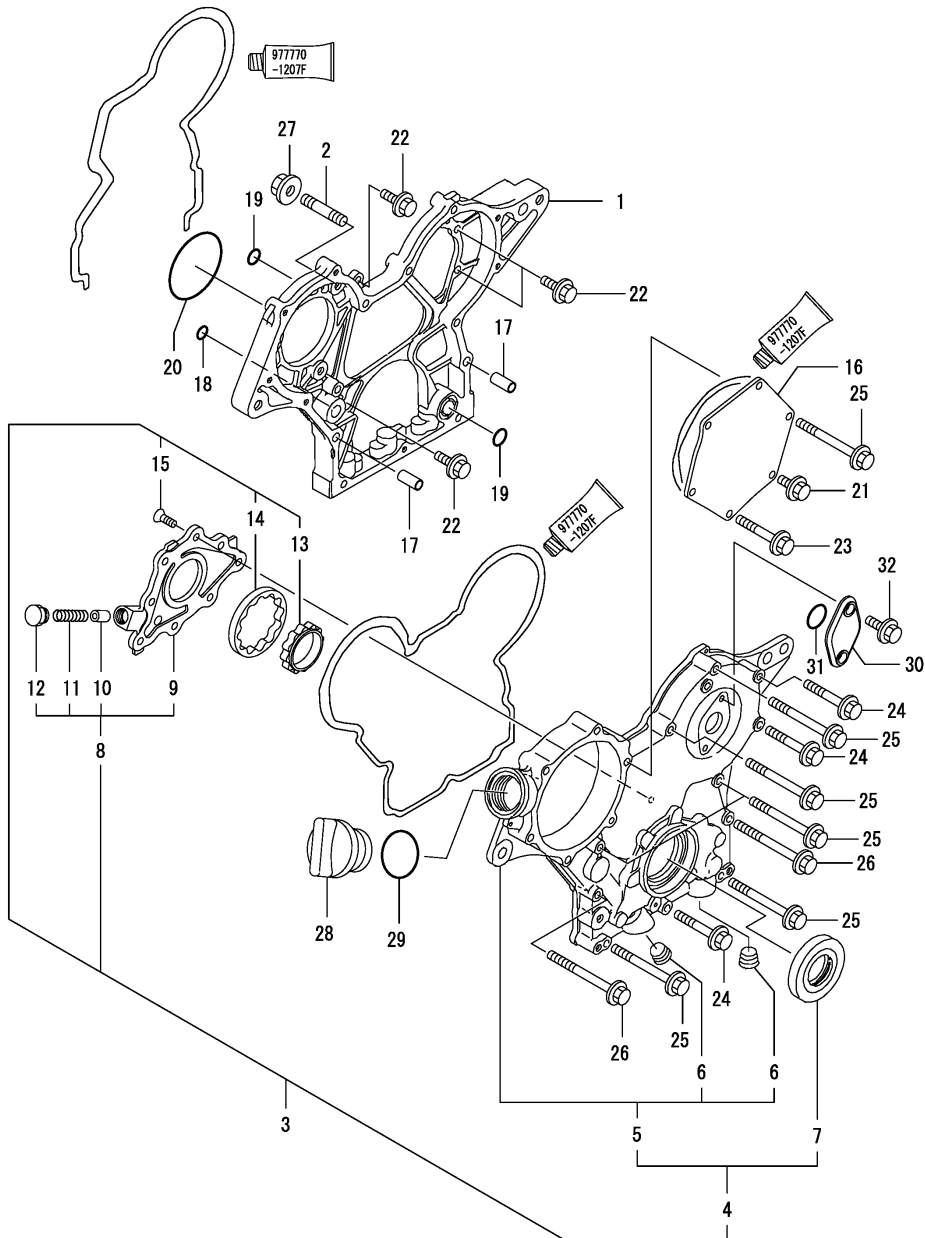
(F)=

No.	Lev.	Parts No.	Description	Q'ty						I	R
				(A)	(B)	(C)	(D)	(E)	(F)		
1	1	719415-01561	BLOCK ASSY, CYLINDER	1							
4	2	105311-01090	PLUG, 30	3							
5	2	119623-01250	PLUG, 45	1							
6	2	119285-01990	PLUG, 25	2							
7	2	119620-02020	BOLT, METAL CAP	6							
10	2	119717-02411	BUSH, CAMSHAFT	1							
11	2	124060-01050	PLUG, PT1/8	1							
12	2	124160-01910	PLUG, PT1/4	1							
13	2	27241-120000	PLUG, 12	1							
23	2	119717-02930	BEARING, THRUST	2							
26	1	119515-01200	BOLT, HEAD	10							
27	1	119415-01330	GASKET, HEAD	1							
28	1	719717-02901	BEARING, MAIN	3							1
31	1	719717-02911	BEARING, 0.25 US	3							2
34	1	119810-02941	BEARING, THRUST 0.25	2							3

Remarks

- (1) REPAIR PART.
- (2) UNDER-SIZED(U.S=0.25)PART.
- (3) OVER-SIZED(O.S=0.25)PART.

Fig.2. GEAR HOUSING



(A)=2TNV70-ASG

(B)=

(C)=

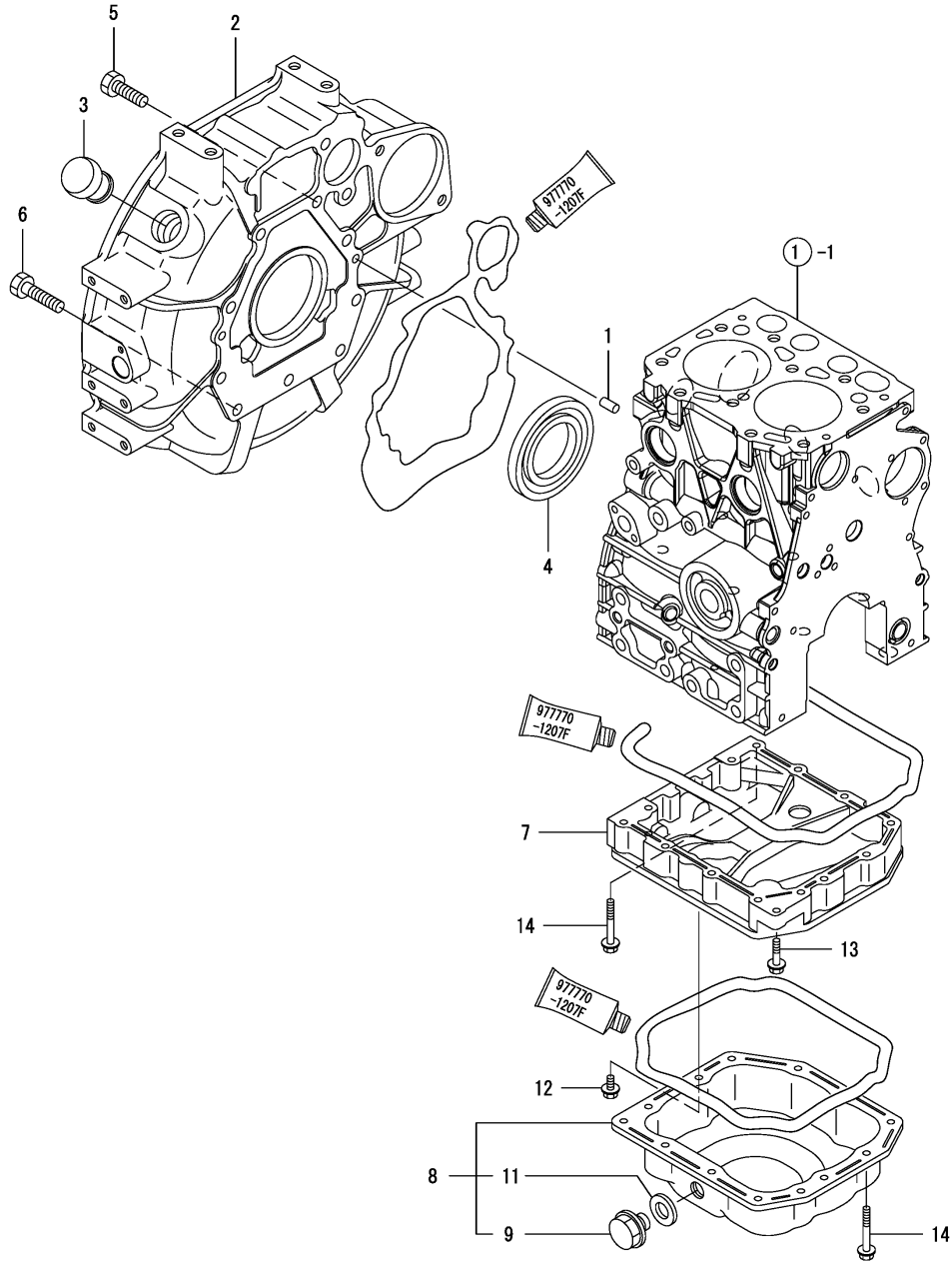
(D)=

(E)=

(F)=

No.	Lev.	Parts No.	Description	Q'ty						I	R
				(A)	(B)	(C)	(D)	(E)	(F)		
1	1	119717-01501	CASE, GEAR	1							
2	1	119717-01570	STUD	3							
3	1	119734-01580	CASE ASSY, GEAR	1							
4	2	719734-01510	CASE ASSY, GEAR	1							
5	3	119744-01521	COVER, GEAR CASE	1							
6	4	23876-030000	PLUG, R03	2							
7	3	119717-01800	SEAL, OIL	1							
8	2	119717-32100	COVER ASSY	1							
9	3	119717-32080	COVER	1							
10	3	129900-32130	VALVE, RELIEF	1							
11	3	129001-32320	SPRING	1							
12	3	129001-32330	PLUG	1							
13	2	119717-32110	ROTOR, INNER	1							
14	2	119717-32120	ROTOR, OUTER	1							
15	2	119802-32130	SCREW, M6X16	8							
16	1	119717-01750	COVER	1							
17	1	119660-01911	PIPE, KNOCK	4							
18	1	119624-32040	O-RING, P12.0	1							
19	1	119717-32050	O-RING, P17.0	3							
20	1	121850-51960	O-RING	1							
21	1	26106-060122	BOLT, M6X 12 PLATED	1							
22	1	26106-060162	BOLT, M6X 16 PLATED	4							
23	1	26106-060402	BOLT, M6X 40 PLATED	4							
24	1	26106-060402	BOLT, M6X 40 PLATED	3							
25	1	26106-060602	BOLT, M6X 60 PLATED	7							
26	1	26106-060652	BOLT, M6X 65 PLATED	2							
27	1	26306-080002	NUT, M8	3							
28	1	124160-01751	COVER, FILLER	1							
29	1	24311-000320	O-RING, 1AP32.0	1							
30	1	121023-01551	COVER	1							
31	1	24341-000240	O-RING, 1AS24.0	1							
32	1	26106-060162	BOLT, M6X 16 PLATED	2							

Fig.3. FLYWHEEL HOUSING & OIL SUMP

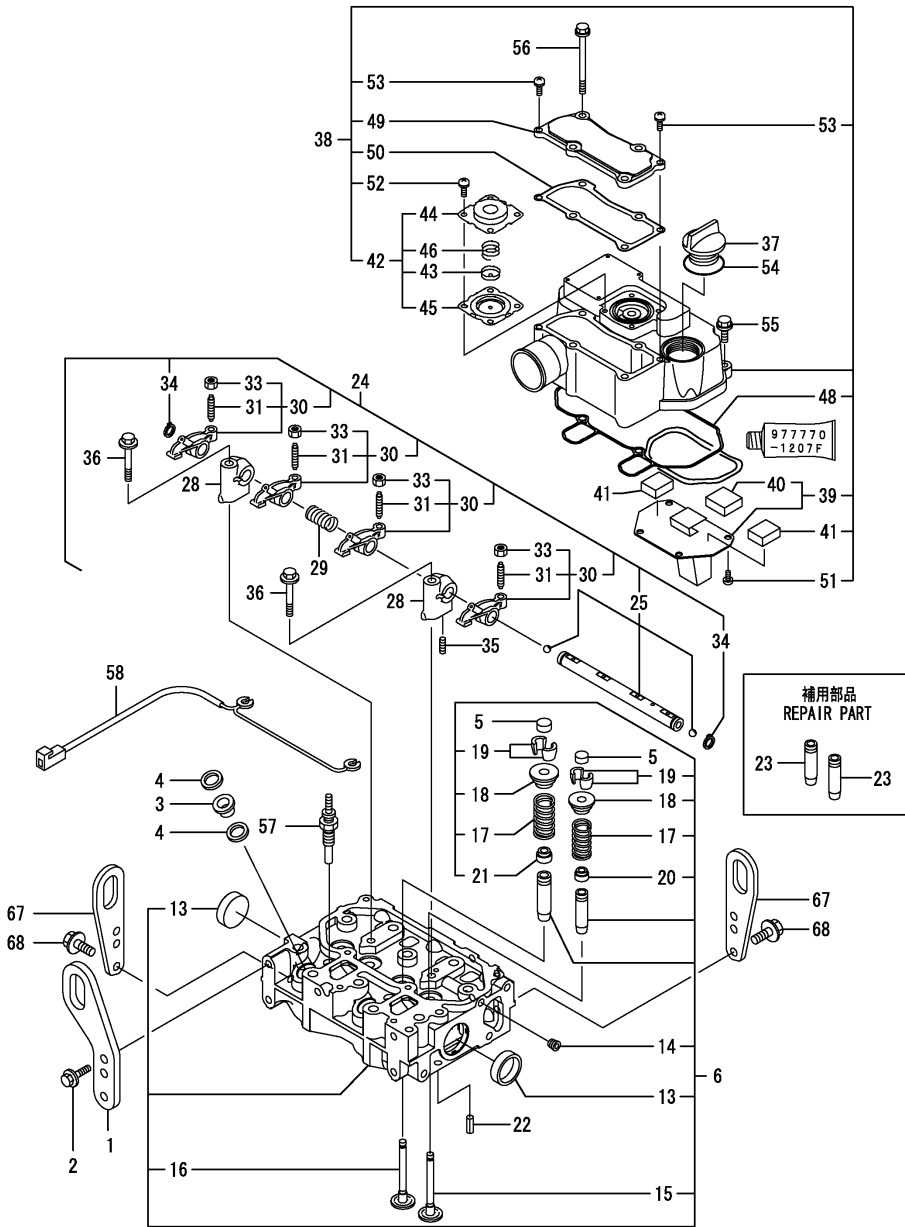


(A)=2TNV70-ASG  
(B)=  
(C)=

(D)=  
(E)=  
(F)=

No.	Lev.	Parts No.	Description	Qty						I	R
				(A)	(B)	(C)	(D)	(E)	(F)		
1	1	129100-01580	PIN, M8X16	2							
2	1	119446-01620	HOUSING, FLYWHEEL	1							
3	1	119620-01750	CAP	1							
4	1	119734-02220	SEAL, OIL	1							
5	1	26206-100252	BOLT, M10X 25 PLATED	8							
6	1	26206-100302	BOLT, M10X 30 PLATED	3							
7	1	119415-01720	SPACER, OIL SUMP	1							
8	1	119446-01770	SUMP ASSY, OIL	1							
9	2	105425-01690	PLUG, 16	1							
11	2	22190-160002	WASHER, SEAL 16	1							
12	1	26106-060122	BOLT, M6X 12 PLATED	1							
13	1	26106-060252	BOLT, M6X 25 PLATED	1							
14	1	26106-060452	BOLT, M6X 45 PLATED	13							

Fig.4. CYLINDER HEAD & BONNET



Remarks  
(1) REPAIR PART.

(A)=2TNV70-ASG

(B)=

(C)=

(D)=

(E)=

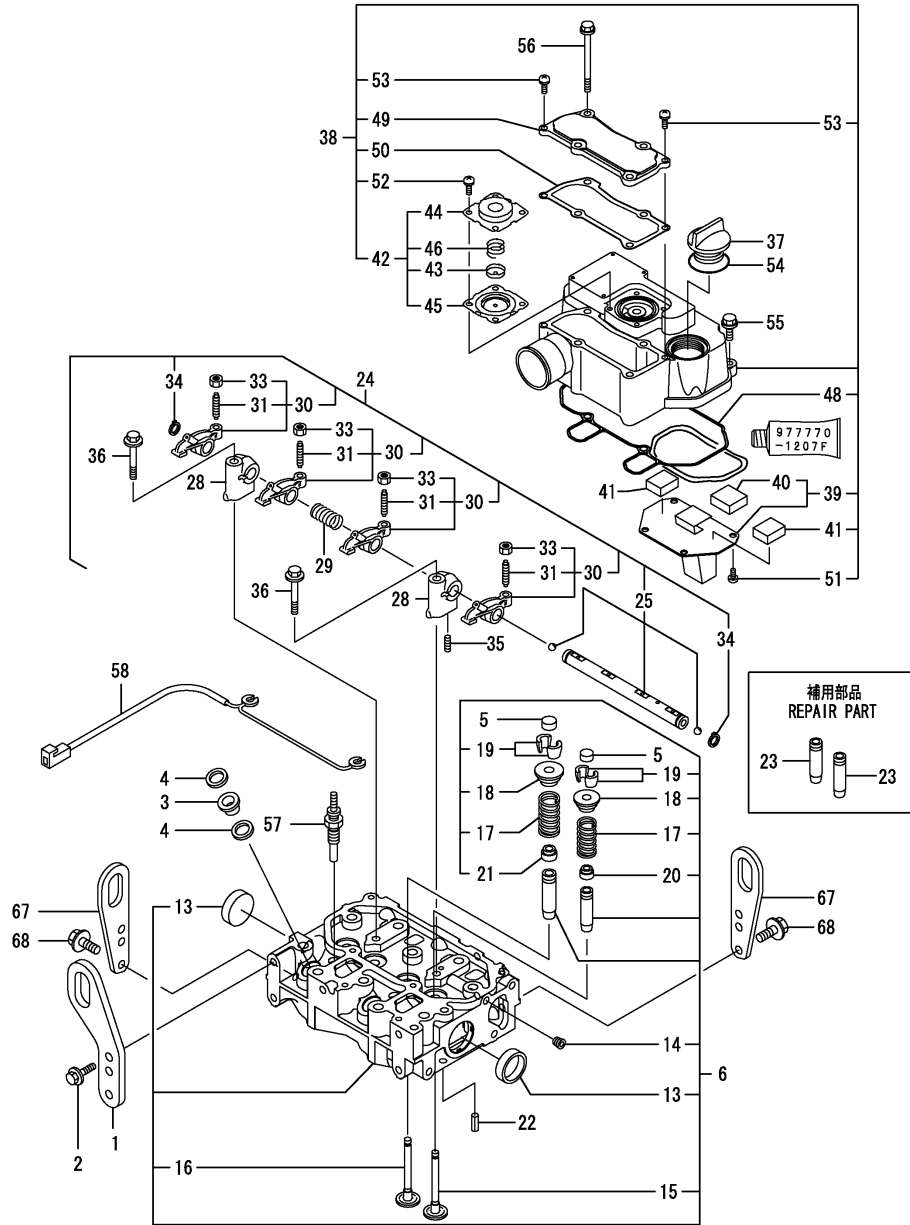
(F)=

No.	Lev.	Parts No.	Description	Q'ty						I	R
				(A)	(B)	(C)	(D)	(E)	(F)		
1	1	129486-07901	LIFTER	1							
2	1	26106-080142	BOLT, M8X 14 PLATED	2							
3	1	129901-11450	PROTECTOR, NOZZLE	2							
4	1	119600-11460	GASKET, NOZZLE	4							
5	1	105010-11490	CAP, VALVE	4							
6	1	119415-11750	HEAD ASSY, CYLINDER	1							
13	2	119285-11990	PLUG, 35	2							
14	2	23876-005000	PLUG, R005	1							
15	2	119515-11101	VALVE, INTAKE	2							
16	2	119515-11110	VALVE, EXHAUST	2							
17	2	119717-11131	SPRING, VALVE	4							
18	2	129508-11180	RETAINER, SPRING	4							
19	2	119717-11190	COTTER	8							
20	2	119717-11340	SEAL, VALVE STEM	2							
21	2	119717-11350	SEAL, VALVE STEM	2							
22	1	22351-060012	PIN, SPRING 6.0X12	2							
23	1	119515-11800	GUIDE, VALVE	4							1
24	1	119415-11200	SUPPORT ASSY, ARM	1							
25	2	119415-11240	SHAFT ASSY, ROCKER	1							
28	2	119717-11260	SUPPORT, ROCKER ARM	2							
29	2	119515-11280	SPRING	1							
30	2	119717-11650	ARM, ROCKER	4							
31	3	129150-11230	SCREW, VALVE ADJUST	4							
33	3	129150-11750	NUT, M8	4							
34	2	22242-000120	RING, 12	2							
35	2	26979-050162	SCREW, M5X16	1							
36	1	26106-080402	BOLT, M8X 40 PLATED	2							
37	1	124160-01751	COVER, FILLER	1							
38	1	119415-11380	BONNET ASSY, HEAD	1							
39	2	119717-03031	PLATE	1							
40	3	119717-03070	BAFFLE, BREATHER	1							
41	2	119717-03070	BAFFLE, BREATHER	2							
42	2	119802-03100	DIAPHRAGM ASSY	1							
43	3	119802-03110	PLATE	1							
44	3	119802-03121	COVER, DIAPHRAGM	1							
45	3	119802-03131	DIAPHRAGM	1							
46	3	119802-03141	SPRING, DIAPHRAGM	1							
48	2	119415-11310	GASKET, BONNET	1							
49	2	119415-11320	COVER, BONNET	1							
50	2	119415-11330	GASKET	1							
51	2	22857-500100	SCREW, 5X10	4							
52	2	22857-500100	SCREW, 5X10	4							
53	2	22857-500160	SCREW, 5X16	2							
54	1	24311-000320	O-RING, 1AP32.0	1							
55	1	26106-060202	BOLT, M6X 20 PLATED	2							
56	1	26106-060752	BOLT, M6X 75 PLATED	4							
57	1	119717-77800	PLUG, GLOW	2							
58	1	119415-77820	CONNECTOR, GLOW PLUG	1							
67	1	119226-07900	LIFTER	2							W
				(A=FROM 1ST)							
68	1	26106-080162	BOLT, M8X 16 PLATED	4							W

Fig.4. CYLINDER HEAD & BONNET

(A)=2TNV70-ASG  
(B)=  
(C)=

(D)=  
(E)=  
(F)=

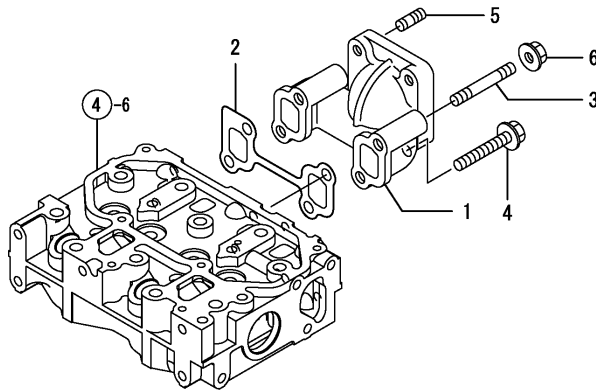
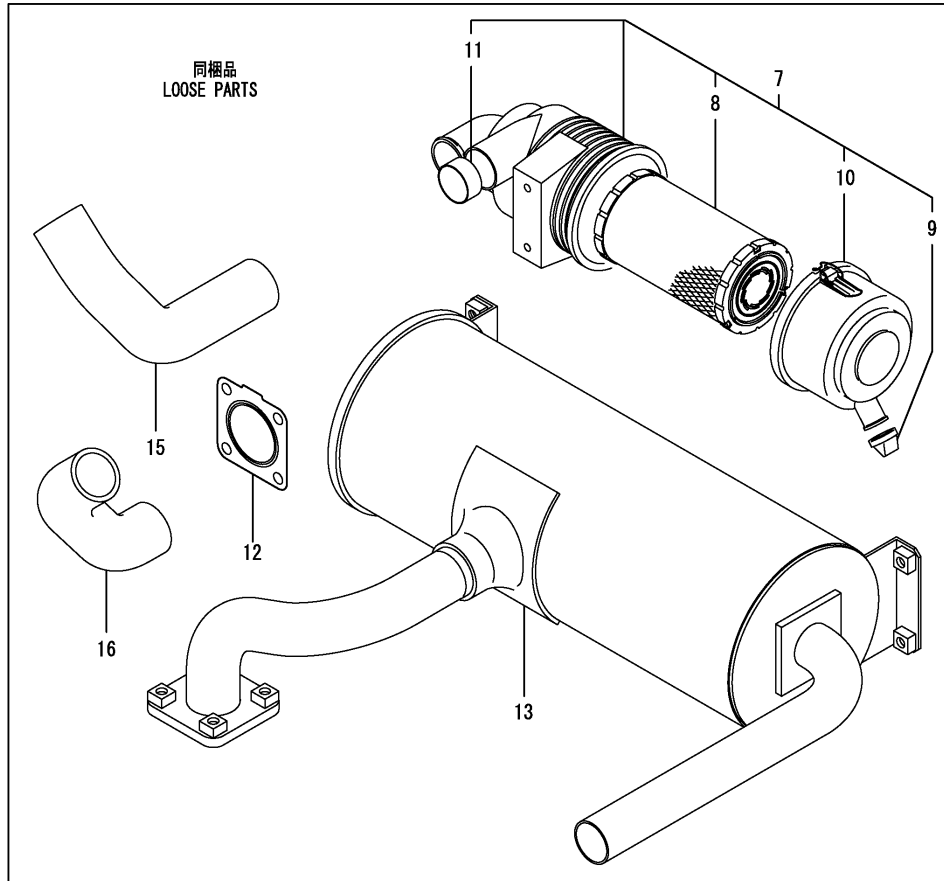


No.	Lev.	Parts No.	Description	Qty						I	R
				(A)	(B)	(C)	(D)	(E)	(F)		
(A=FROM 1ST)											

Remarks  
(1) REPAIR PART.



Fig.5. EXHAUST MANIFOLD & SILENCER



(A)=2TNV70-ASG

(B)=

(C)=

(D)=

(E)=

(F)=

No.	Lev.	Parts No.	Description	Qty						I	R
				(A)	(B)	(C)	(D)	(E)	(F)		
1	1	119415-13100	MANIFOLD, EXHAUST	1							
2	1	119415-13110	GASKET	1							
3	1	119717-13600	STUD, M8X50	2							
4	1	119802-13620	BOLT, M8X50	2							
5	1	119131-18320	STUD, M8X22	4							
6	1	26306-080002	NUT, M8	2							
7	1	119515-12501	CLEANER ASSY, AIR	1							
8	2	119515-12520	ELEMENT	1							
9	2	119808-12540	VALVE, UNLOADER	1							
10	2	119336-12570	COVER ASSY	1							
11	2	105027-12580	RING	1							
12	1	119515-13200	GASKET, SILENCER	3							
13	1	119446-13500	SILENCER	1							
15	1	119446-12030	PIPE, AIR INTAKE	1							W
(A=FROM 1ST)											
16	1	119446-12040	PIPE, AIR INTAKE	1							W
(A=FROM 1ST)											

Fig.6. CAMSHAFT & DRIVING GEAR

(A)=2TNV70-ASG

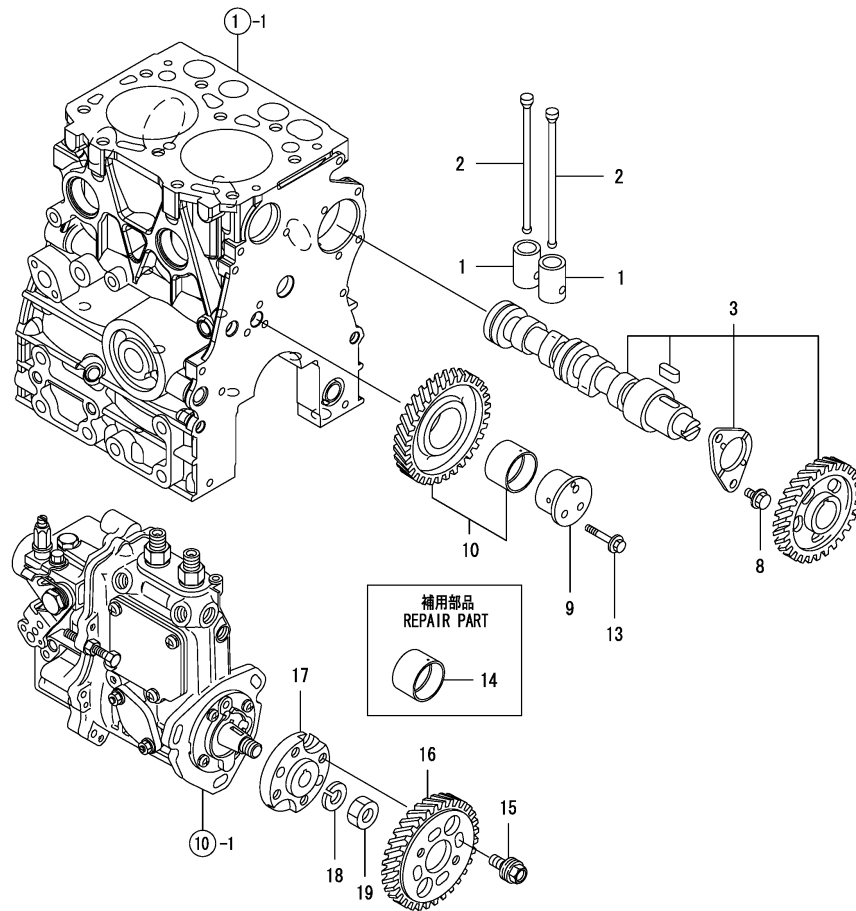
(B)=

(C)=

(D)=

(E)=

(F)=

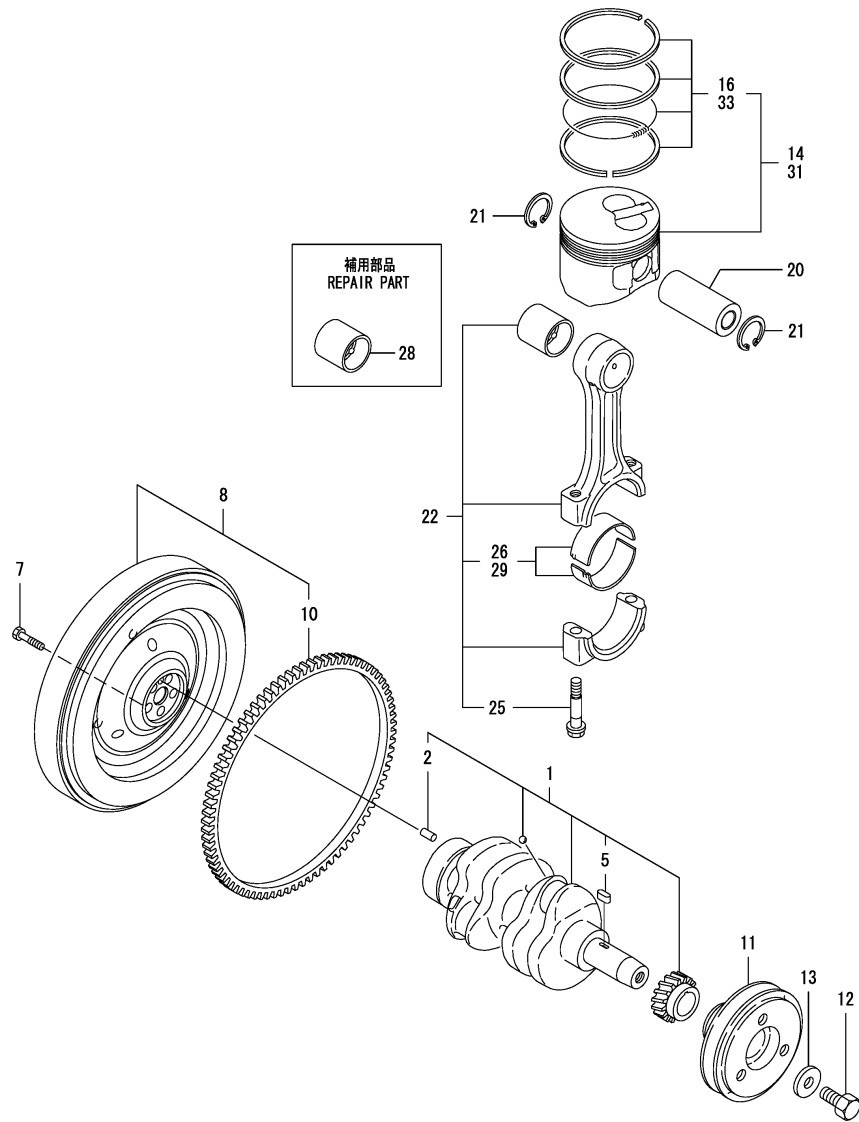


No.	Lev.	Parts No.	Description	Q'ty						I	R
				(A)	(B)	(C)	(D)	(E)	(F)		
1	1	119620-14200	TAPPET	4							
2	1	119515-14400	ROD, PUSH	4							
3	1	119415-14581	CAMSHAFT ASSY	1							
8	1	26106-060122	BOLT, M6X 12 PLATED	2							
9	1	119717-25050	SHAFT, IDLE	1							
10	1	119717-25101	GEAR ASSY, IDLE	1							
13	1	26106-060352	BOLT, M6X 35 PLATED	3							
14	1	119717-25911	BUSH, IDLE GEAR	1							1
15	1	129150-25301	BOLT	4							
16	1	119717-25930	GEAR, PUMP	1							
17	1	119717-51150	FLANGE	1							
18	1	22217-120000	WASHER, SPRING 12	1							
19	1	26716-120002	NUT, M12	1							

Remarks

(1) REPAIR PART.

Fig.7. CRANKSHAFT & PISTON



(A)=2TNV70-ASG

(B)=

(C)=

(D)=

(E)=

(F)=

No.	Lev.	Parts No.	Description	Q'ty						I	R
				(A)	(B)	(C)	(D)	(E)	(F)		
1	1	119415-21700	CRANKSHAFT ASSY	1							
2	2	129100-01580	PIN, M8X16	1							
5	2	22512-040120	KEY, 4X 12	1							
7	1	121111-21501	BOLT, FLYWHEEL	5							
8	1	119446-21590	FLYWHEEL ASSY	1							
10	2	119865-21600	GEAR, RING	1							
11	1	119740-21650	V-PULLEY	1							
12	1	119621-21680	BOLT, FLANGE 12X1.25	1							
13	1	119620-21941	WASHER	1							
14	1	119515-22080	PISTON ASSY	2							
16	2	119515-22500	RING SET, PISTON	2							
20	1	119515-22300	PIN, PISTON	2							
21	1	22252-000220	RING, 22	4							
22	1	119515-23000	ROD ASSY, CONNECTING	2							
25	2	119717-23200	BOLT, CONNECTING ROD	4							
26	2	119515-23601	BEARING, CRANK PIN	2							
28	1	119717-23910	BEARING, PISTON PIN	2							1
29	1	119515-23611	METAL ASSY, 0.25	2							2
31	1	119515-22900	PISTON ASSY, 0.25 OS	2							3
33	2	119515-22550	RING SET, 0.25 OS	2							3

Remarks

- (1) REPAIR PART.
- (2) UNDER-SIZED(U.S=0.25)PART.
- (3) OVER-SIZED(O.S=0.25)PART.

Fig.8. LUB.OIL SYSTEM

(A)=2TNV70-ASG

(B)=

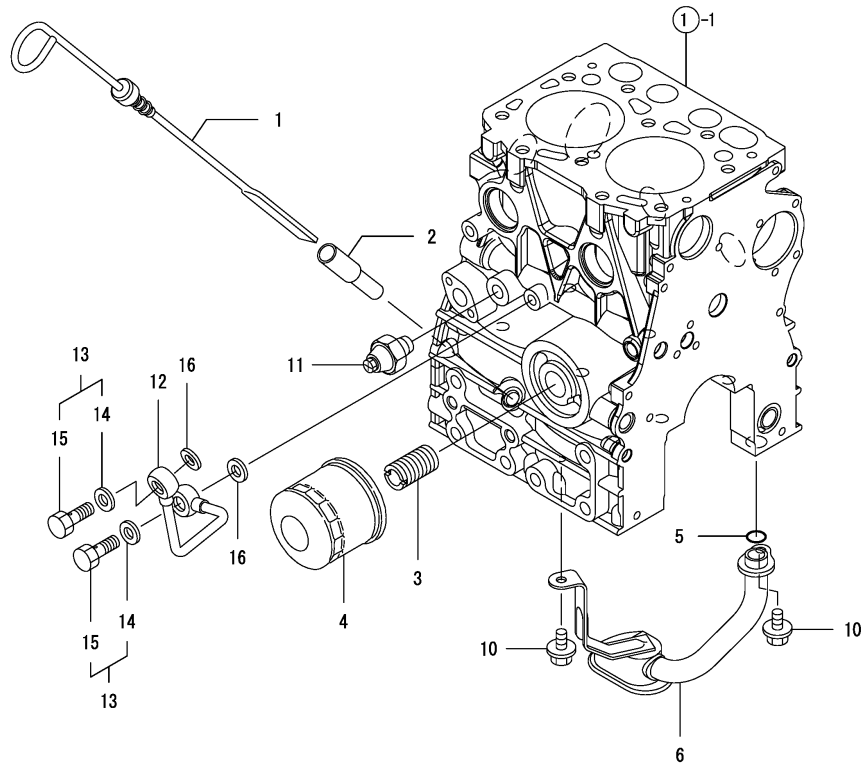
(C)=

(D)=

(E)=

(F)=

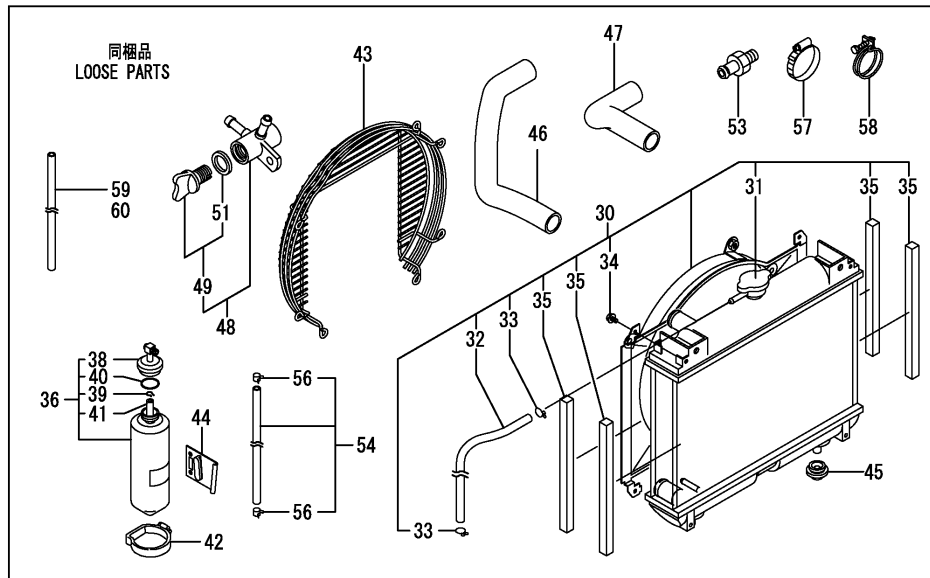
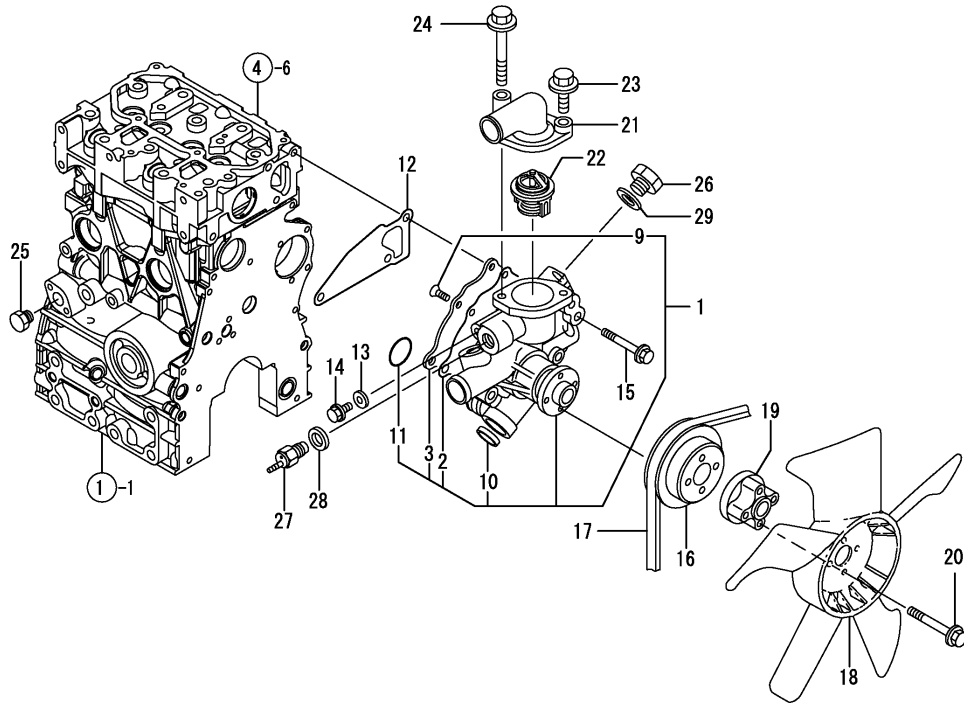
No.	Lev.	Parts No.	Description	Q'ty						I	R
				(A)	(B)	(C)	(D)	(E)	(F)		
1	1	119446-34801	DIPSTICK, OIL	1							
2	1	121520-34810	GUIDE, DIPSTICK	1							
3	1	129100-35140	STUD	1							
4	1	119305-35151	FILTER ASSY, D68XL65	1							1
5	1	119717-32060	O-RING, P15.0	1							
6	1	119446-35080	PIPE ASSY, OIL INLET	1							
10	1	26106-060102	BOLT, M6X 10 PLATED	2							
11	1	114250-39450	SWITCH, 0.5KG	1							
12	1	119415-39211	PIPE, OIL	1							
13	1	129005-59830	BOLT ASSY, JOINT M8	2							
14	2	22190-080002	WASHER, SEAL 6	2							
15	2	23857-030000	BOLT, JOINT 3	2							
16	1	22190-080002	WASHER, SEAL 6	2							



Remarks

(1) REPAIR PART.

Fig.9. COOLING WATER SYSTEM



(A)=2TNV70-ASG

(B)=

(C)=

(D)=

(E)=

(F)=

No.	Lev.	Parts No.	Description	Q'ty						I	R
				(A)	(B)	(C)	(D)	(E)	(F)		
1	1	119515-42001	PUMP ASSY, WATER	1							
2	2	119717-42031	GASKET	1							
3	2	119515-42041	COVER	1							
9	2	26577-060122	SCREW, M6X12	4							
10	2	27241-250000	PLUG, 25	1							
11	2	119717-42320	O-RING, P26	1							
12	1	119515-42020	GASKET, WATER PUMP	1							
13	1	23414-080000	GASKET, 8X1.0	1							
14	1	26106-080122	BOLT, M8X 12 PLATED	1							
15	1	26106-080502	BOLT, M8X 50 PLATED	3							
16	1	119717-42350	V-PULLEY, D=100	1							
17	1	25152-003500	V-BELT, A35	1							
18	1	119265-44740	FAN, D=310X5F	1							
19	1	129457-44760	SPACER, FAN	1							
20	1	26106-060452	BOLT, M6X 45 PLATED	4							
21	1	124101-49531	COVER, THERMOSTAT	1							
22	1	119717-49800	THERMOSTAT, 71	1							
23	1	26106-080252	BOLT, M8X 25 PLATED	1							
24	1	26106-080602	BOLT, M8X 60 PLATED	1							
25	1	171056-49120	PLUG, DRAIN	1							
26	1	121450-42450	PLUG, M16	1							
27	1	121250-44901	SWITCH, 110	1							
28	1	124465-44950	GASKET, 16	1							
29	1	124465-44950	GASKET, 16	1							
30	1	119446-44500	RADIATOR ASSY	1							
31	2	129107-44590	CAP, RADIATOR	1							
32	2	121492-59090	PIPE, FUEL	1							
33	2	121250-44590	CLAMP	2							
34	2	26014-060122	BOLT, M6X 12	4							
35	2	119128-44550	GASKET	4							
36	1	171064-44510	TANK ASSY, SUB	1							
38	2	121450-44531	CAP	1							
39	2	124450-44560	RETAINER	1							
40	2	121470-44581	GASKET	1							
41	2	23065-070225	HOSE 7X 225	1							
42	1	124450-44550	BAND	1							
43	1	119128-44561	GUARD	1							
44	1	121256-44600	BRACKET, SUB TANK	1							
45	1	119255-44660	ABSORBER	2							
46	1	119446-49030	PIPE, WATER	1							
47	1	119446-49040	PIPE, WATER	1							
48	1	129150-49100	COCK ASSY, 3-WAY	1							
49	2	129150-49080	COCK, DRAIN	1							
51	3	119629-49080	GASKET	1							
53	1	121550-49111	JOINT, PT1/4	1							
54	1	129210-49280	PIPE ASSY, DRAIN	5							
56	2	124766-59050	CLIP, HOSE 12	10							
57	1	23000-060000	CLAMP, 60	3							
58	1	23010-038000	CLAMP, 38	6							
58-1	1	23010-038000	CLAMP, 38	4							

(A)=FROM 1ST)

Fig.9. COOLING WATER SYSTEM

(A)=2TNV70-ASG

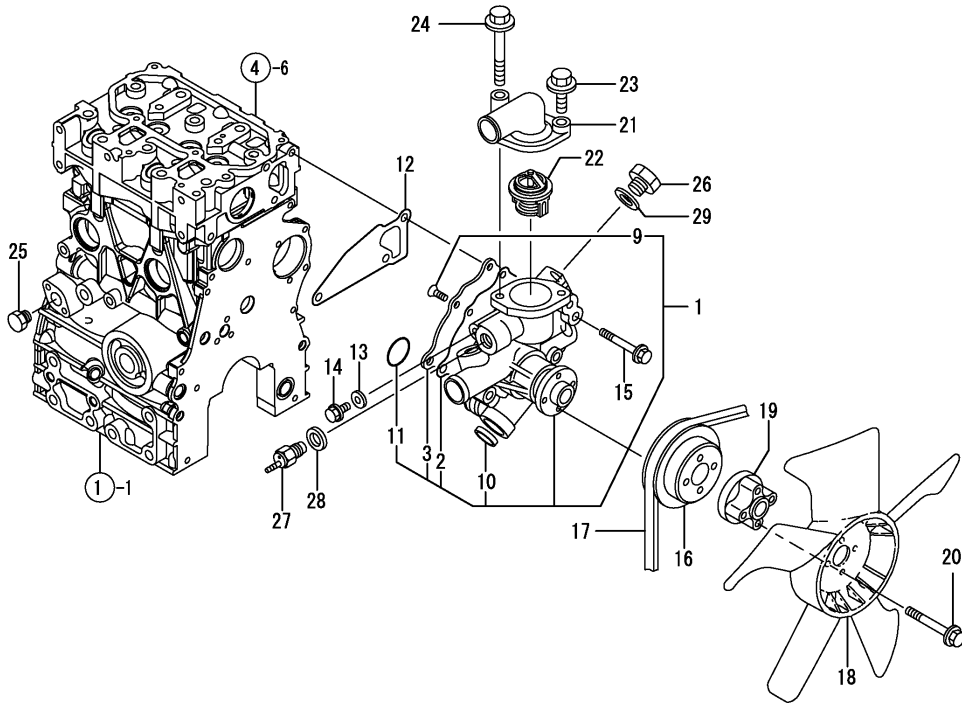
(B)=

(C)=

(D)=

(E)=

(F)=



No.	Lev.	Parts No.	Description	Q'ty						I	R
				(A)	(B)	(C)	(D)	(E)	(F)		
59	1	121250-49160	PIPE, WATER DRAIN	1							W
		(A=FROM 1ST)									
60	1	129210-49200	PIPE, WATER DRAIN	1							W
		(A=FROM 1ST)									

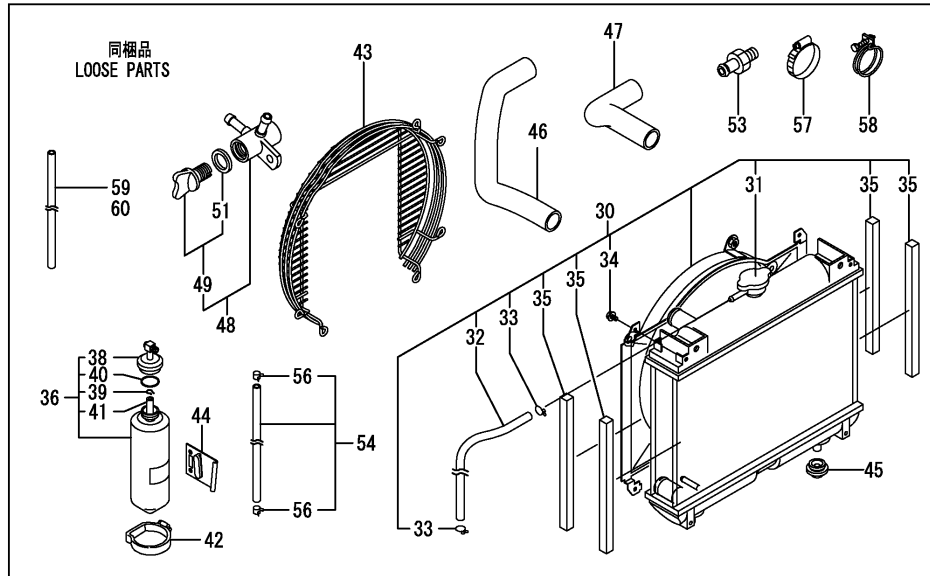
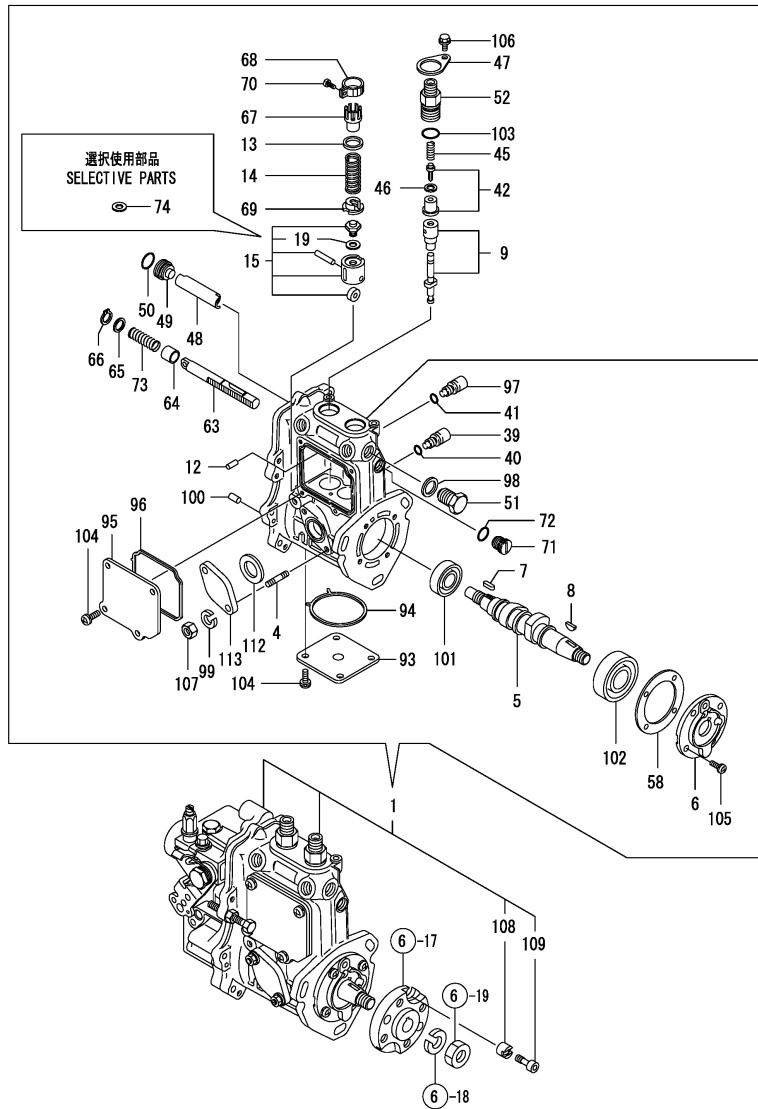


Fig.10. FUEL INJECTION PUMP

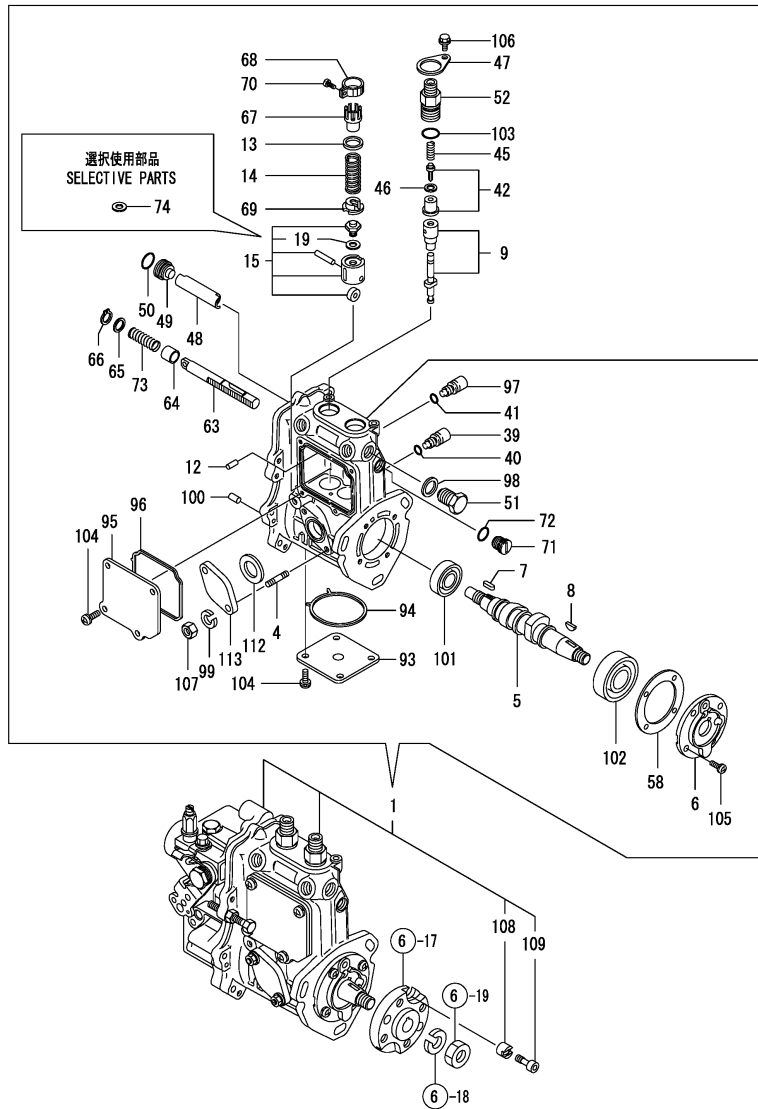


No.	Lev.	Parts No.	Description	Q'ty						I	R
				(A)	(B)	(C)	(D)	(E)	(F)		
1	1	719446-51370	PUMP ASSY, INJECTION	1							1
4	2	129155-51020	STUD	2							
5	2	119415-51030	CAMSHAFT	1							
6	2	119717-51060	SUPPORT, CAMSHAFT	1							
7	2	119717-51070	KEY	1							
8	2	122710-51090	KEY	1							
9	2	119515-51100	PLUNGER ASSY	2							
12	2	129155-51140	PIN	2							
13	2	158600-51170	RETAINER, SPRING	2							
14	2	119717-51190	SPRING, PLUNGER	2							
15	2	119717-51200	TAPPET ASSY	2							
19	3	129155-51600	SHIM SET, ADJUSTING	2							
39	2	158600-51270	STOPPER, TAPPET	2							
40	2	129155-51280	O-RING, S6	2							
41	2	129155-51280	O-RING, S6	1							
42	2	119717-51300	VALVE ASSY, DELIVERY	2							
45	2	119717-51330	SPRING, DELIVERY	2							
46	2	124550-51350	GASKET, DELIVERY	2							
47	2	118400-51370	LOCKING	2							
48	2	119415-51400	PROTECTOR	1							
49	2	158600-51410	PLUG, DEFLECTOR	1							
50	2	119717-51420	O-RING	1							
51	2	158600-51420	PLUG, DEFLECTOR	1							
52	2	158600-51442	VALVE ASSY, DELIVERY	2							
58	2	129155-51450	SHIM SET, ADJUSTING	1							
63	2	119415-51500	RACK, CONTROL	1							
64	2	129155-51521	BUSH, RACK	1							
65	2	129155-51530	SPACER	1							
66	2	129155-51540	CIRCLIP	1							
67	2	129155-51550	PINION, CONTROL	2							
68	2	129100-51560	PINION	2							
69	2	119717-51570	RETAINER, SPRING	2							
70	2	129100-51570	SCREW	2							
71	2	158600-51570	PLUG	1							
72	2	129155-51580	O-RING	1							
73	2	129155-51591	SPRING, RACK	1							
74	2	129155-51600	SHIM SET, ADJUSTING	2							2
93	2	119415-51700	COVER	1							
94	2	119415-51710	GASKET	1							
95	2	119415-51750	COVER	1							
96	2	119415-51760	GASKET	1							
97	2	158600-51790	STOOPER, RACK	1							
98	2	22190-160002	WASHER, SEAL 16	1							
99	2	22217-060000	WASHER, SPRING 6	2							
100	2	22351-050010	PIN, SPRING 5.0X10	2							
101	2	24101-060034	BEARING, BALL 6003	1							
102	2	24101-063034	BEARING, BALL 6303	1							
103	2	24316-000150	O-RING, 4DP15.0	2							
104	2	26022-050122	SCREW, M5X12	8							
105	2	26022-060162	SCREW, M6X16	4							
106	2	26106-050102	BOLT, M5X 10 PLATED	2							

Remarks

- (1) GOVERNOR ASSY(FIG.11) IS INCORPORATED IN THIS FUEL INJECTION PUMP(REF.NO.1).
- (2) SELECTIVE PARTS.

Fig.10. FUEL INJECTION PUMP



No.	Lev.	Parts No.	Description	Q'ty						I	R
				(A)	(B)	(C)	(D)	(E)	(F)		
107	2	26716-060002	NUT, M6	2							
108	2	119717-51480	COLLAR	1							
109	2	119717-51490	BOLT	1							
112	2	129155-52051	GASKET	1							
113	2	129100-52200	COVER	1							

Remarks  
 (1) GOVERNOR ASSY(FIG.11) IS INCORPORATED IN THIS FUEL INJECTION PUMP(REF.NO.1).  
 (2) SELECTIVE PARTS.



Fig.11. GOVERNOR

(A)=2TNV70-ASG

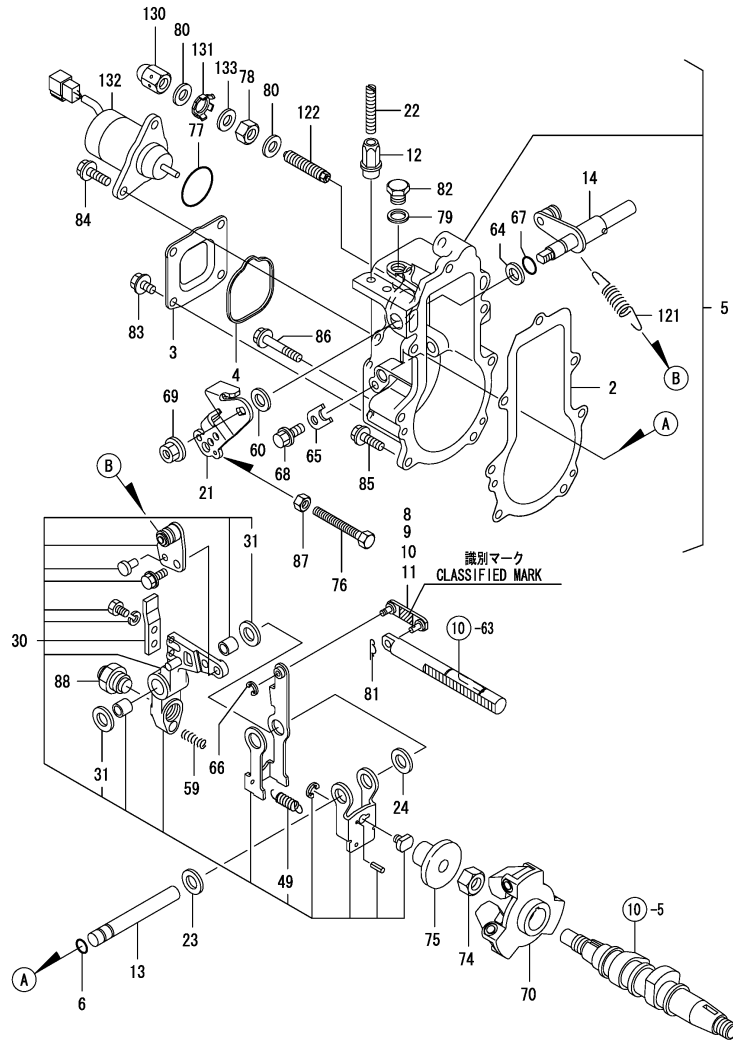
(B)=

(C)=

(D)=

(E)=

(F)=



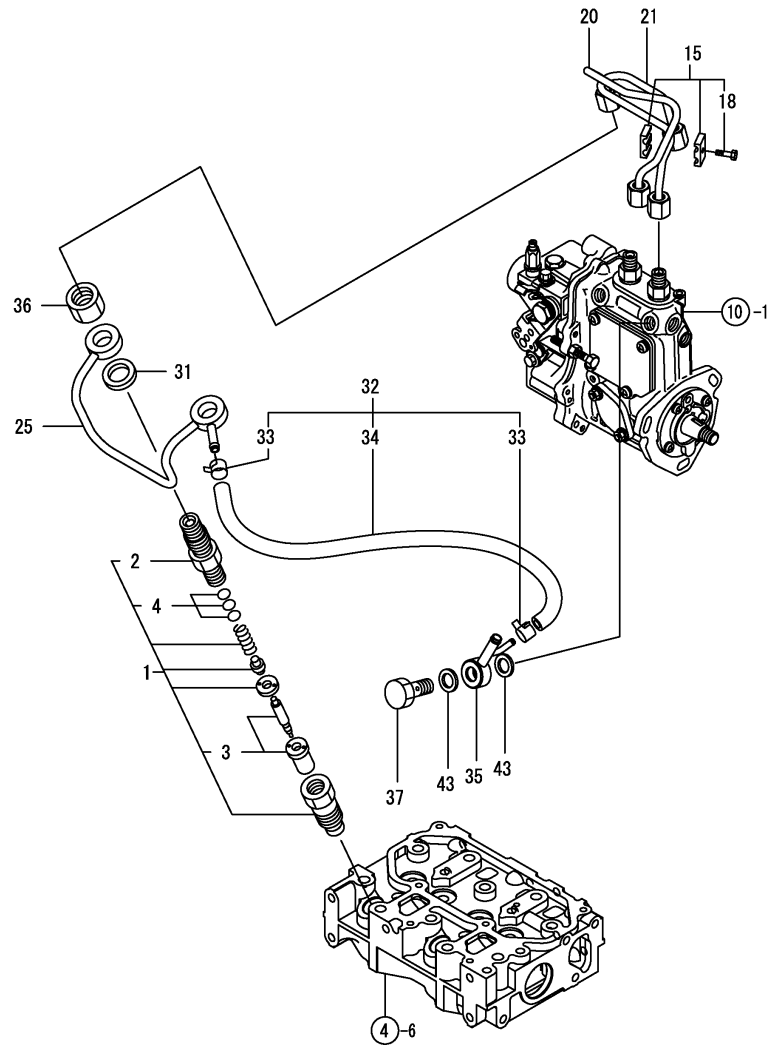
No.	Lev.	Parts No.	Description	Q'ty						I	R
				(A)	(B)	(C)	(D)	(E)	(F)		
2	2	119717-61050	GASKET	1							
3	2	119717-61060	COVER, GOVERNOR CASE	1							
4	2	119717-61070	GASKET	1							
5	2	119761-61100	CASE ASSY, GOVERNOR	1							
6	3	129155-51280	O-RING, S6	1							
8	3	119717-61120	LINK, MARK :3	1							1
9	3	119717-61130	LINK, MARK 98	1							1
10	3	119717-61140	LINK, MARK 88	1							1
11	3	119717-61150	LINK, MARK 03	1							1
12	3	129209-61370	NUT, M6	1							
13	3	129052-61390	SHAFT	1							
14	3	119717-61400	SHAFT ASSY	1							
21	3	119515-61440	LEVER, CONTROL	1							
22	3	129155-61450	BOLT, LIMITER	1							
23	3	129156-61460	SHIM, T=0.6	1							
24	3	129155-61480	SPACER ASSY	1							
30	3	119761-61500	LEVER ASSY, GOVERNOR	1							
31	4	174307-51700	SHIM SET	2							
49	4	129486-61540	SPRING, SET	1							
59	3	129100-61650	SPRING, CONTROLLER	1							
60	3	158552-61700	SHIM SET	1							
64	3	158552-61710	SHIM, T=1.0	1							
65	3	119660-61901	RETAINER, SHAFT	1							
66	3	22272-000030	RING, E- 3	1							
67	3	24341-000070	O-RING, 1AS7.0	1							
68	3	26106-060102	BOLT, M6X 10 PLATED	1							
69	3	26366-080002	NUT, M8	1							
70	2	119717-61200	WEIGHT ASSY,GOVERNOR	1							
74	2	129008-61301	NUT	1							
75	2	129155-61341	SLEEVE	1							
76	2	129155-61460	BOLT, IDLE	1							
77	2	158552-61900	O-RING	1							
78	2	129209-61920	NUT, ARB	1							
79	2	22190-100002	WASHER, SEAL 10	1							
80	2	22190-120002	WASHER, SEAL 12	2							
81	2	22372-040000	PIN, SNAP 4	1							
82	2	23887-100002	PLUG, 10	1							
83	2	26106-060102	BOLT, M6X 10 PLATED	4							
84	2	26106-060142	BOLT, M6X 14 PLATED	2							
85	2	26106-060202	BOLT, M6X 20 PLATED	4							
86	2	26106-060452	BOLT, M6X 45 PLATED	3							
87	2	26756-060002	NUT, LOCK M6	1							
88	2	119515-61560	ANGLEICH ASSY	1							
121	2	129100-61730	SPRING, GOVERNOR	1							
122	2	158601-61700	LIMITER ASSY, FUEL	1							
130	2	129209-61930	NUT, CAP	1							
131	2	129209-61970	PLATE	1							
132	2	119653-77950	SOLENOID, STOP	1							
133	2	23414-120016	GASKET, 12X1.0	1							

Remarks

\* THIS FIGURE(GOVERNOR ASSY)IS INCORPORATED IN THE FUEL INJECTION PUMP ASSY(FIG.10).

(1) SELECTIVE PARTS;CERTAIN THE CLASSIFICATION MARK, THEN PLACE YOUR ORDER(REF.TO ILLUSTRATION).

Fig.12. FUEL INJECTION VALVE



(A)=2TNV70-ASG

(B)=

(C)=

(D)=

(E)=

(F)=

No.	Lev.	Parts No.	Description	Q'ty						I	R
				(A)	(B)	(C)	(D)	(E)	(F)		
1	1	119515-53001	VALVE ASSY,INJECTION	2							
2	2	118200-53010	HOLDER, NOZZLE	2							
3	2	119515-53010	VALVE ASSY,INJECTION	2							
4	2	129901-53800	SHIM SET, ADJUSTING	2							1
15	1	119305-59120	RETAINER, PIPE	1							
18	2	129150-59131	BOLT, M4X14	1							
20	1	119415-59810	PIPE ASSY, INJECTION	1							
21	1	119415-59820	PIPE ASSY, INJECTION	1							
25	1	119415-59540	PIPE ASSY, RETURN	1							
31	1	129901-59560	GASKET	2							
32	1	119540-59570	PIPE ASSY, RETURN	1							
33	2	124066-59100	CLIP, HOSE 8	2							
34	2	119540-59560	PIPE ASSY, RETURN	1							
35	1	119840-59570	JOINT	1							
36	1	119620-59700	NUT, NOZZLE	2							
37	1	119813-59950	VALVE ASSY, CHECK	1							
43	1	22190-120002	WASHER, SEAL 12	2							

Remarks

(1) REPAIR PART.

Fig.13. FUEL FILTER

(A)=2TNV70-ASG

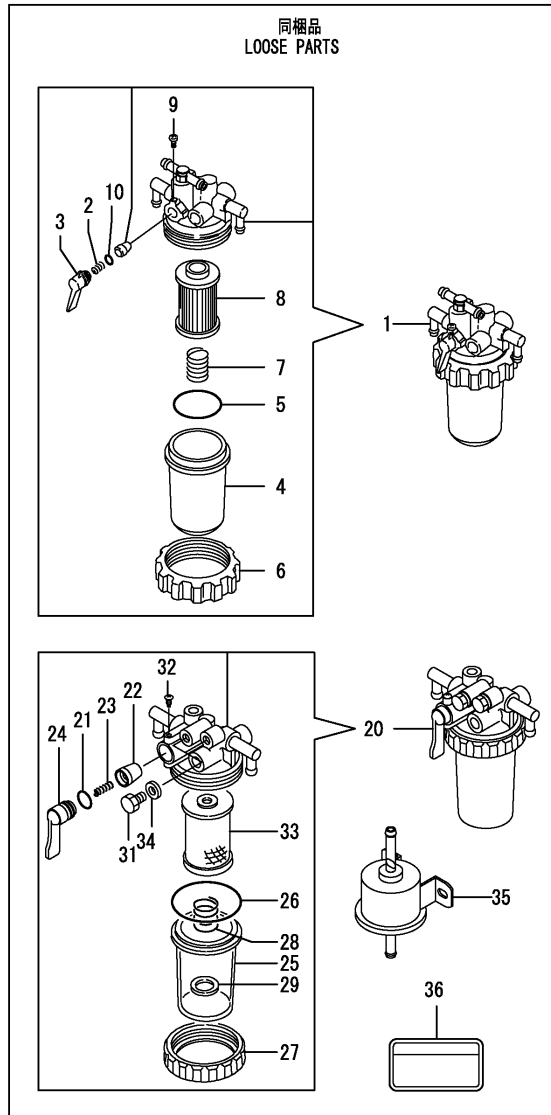
(B)=

(C)=

(D)=

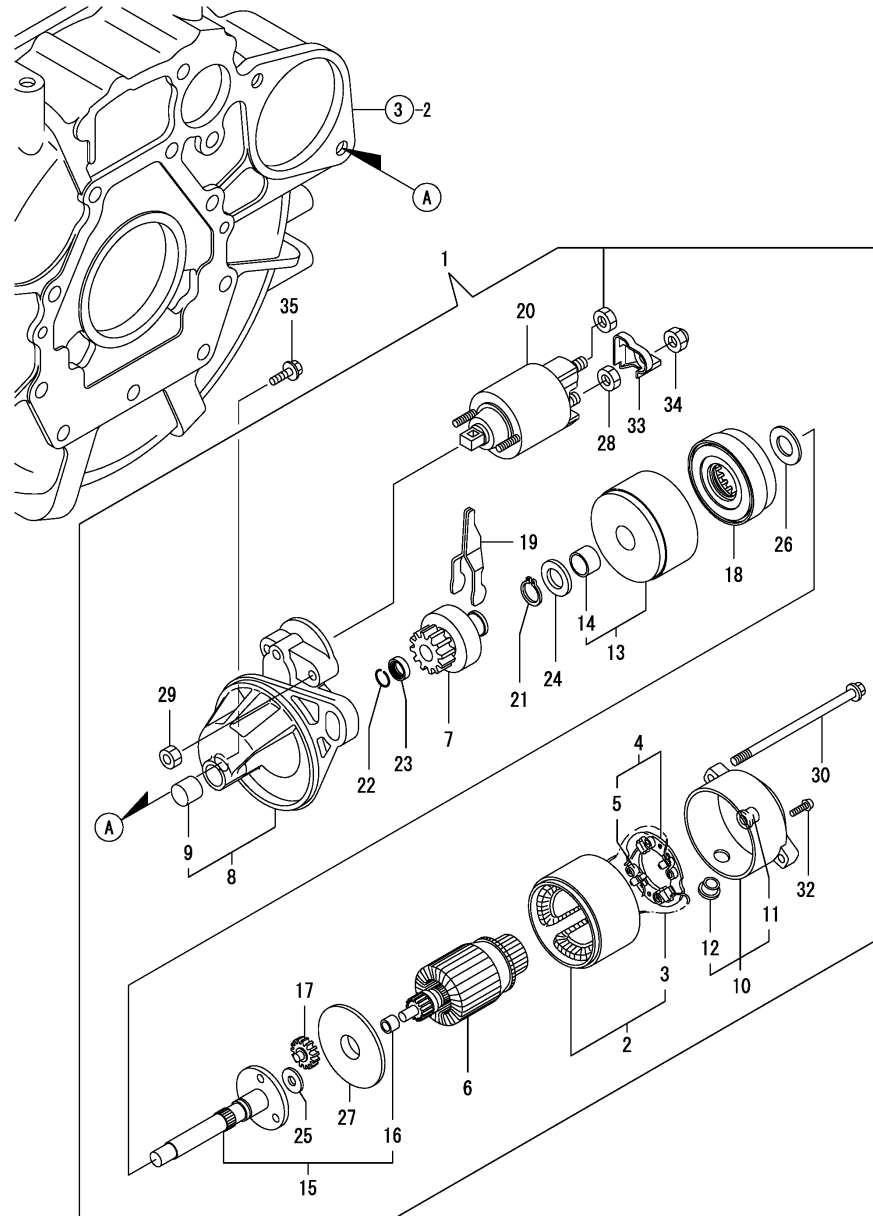
(E)=

(F)=



No.	Lev.	Parts No.	Description	Qty						I	R
				(A)	(B)	(C)	(D)	(E)	(F)		
1	1	119833-55620	FILTER ASSY, FUEL	1							
2	2	104200-55330	SPRING, VALVE	1							
3	2	119810-55340	LEVER	1							
4	2	121254-55510	COVER	1							
5	2	102103-55520	O-RING	1							
6	2	110250-55610	RING, RETAINING	1							
7	2	121250-55620	SPRING	1							
8	2	119810-55650	ELEMENT	1							
9	2	104200-55750	SCREW, M4	1							
10	2	24311-240100	O-RING, 1AP10A	1							
12	1	103854-39140	BOLT, PIPE JOINT	1							
13	1	101304-59020	JOINT, PIPE 12	1							
17	1	22190-120002	WASHER, SEAL 12	2							
20	1	129335-55700	SEPARATOR ASSY,WATER	1							
21	2	24311-240100	O-RING, 1AP10A	1							
22	2	104200-55321	VALVE, TAPER	1							
23	2	104200-55330	SPRING, VALVE	1							
24	2	104200-55341	HANDLE	1							
25	2	124064-55510	COVER	1							
26	2	102103-55520	O-RING	1							
27	2	110250-55610	RING, RETAINING	1							
28	2	121257-55720	SPRING	1							
29	2	121257-55731	FLOAT	1							
31	2	101720-55750	PLUG, 6	2							
32	2	104200-55750	SCREW, M4	1							
33	2	171081-55910	SCREEN	1							
34	2	23418-060000	GASKET, 6X1.0	2							
35	1	119225-52102	PUMP ASSY, FUEL FEED	1							
36	1	114110-07760	LABEL, FUEL CAUTION	1							

Fig.14. STARTING MOTOR



(A)=2TNV70-ASG

(B)=

(C)=

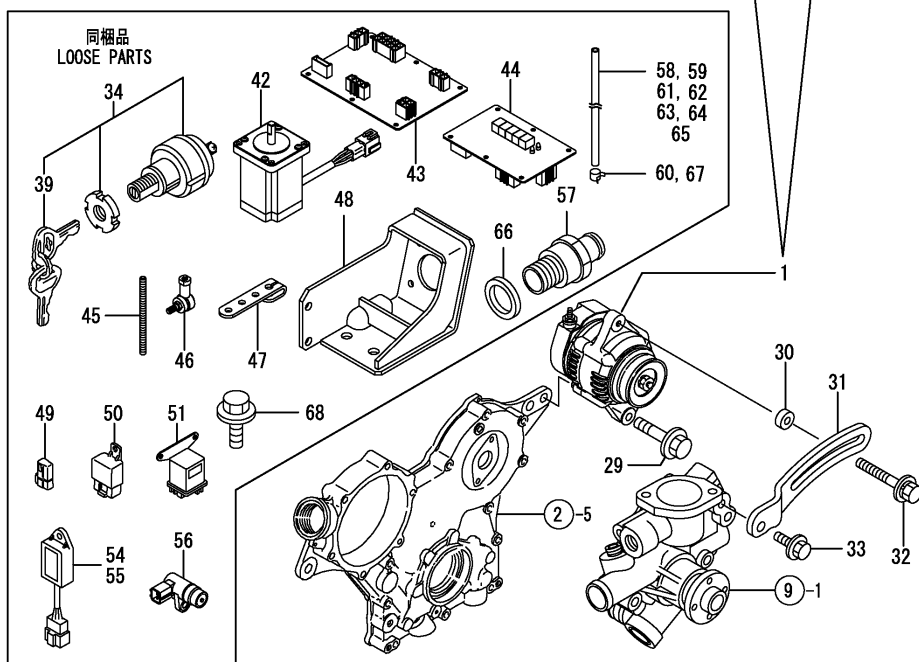
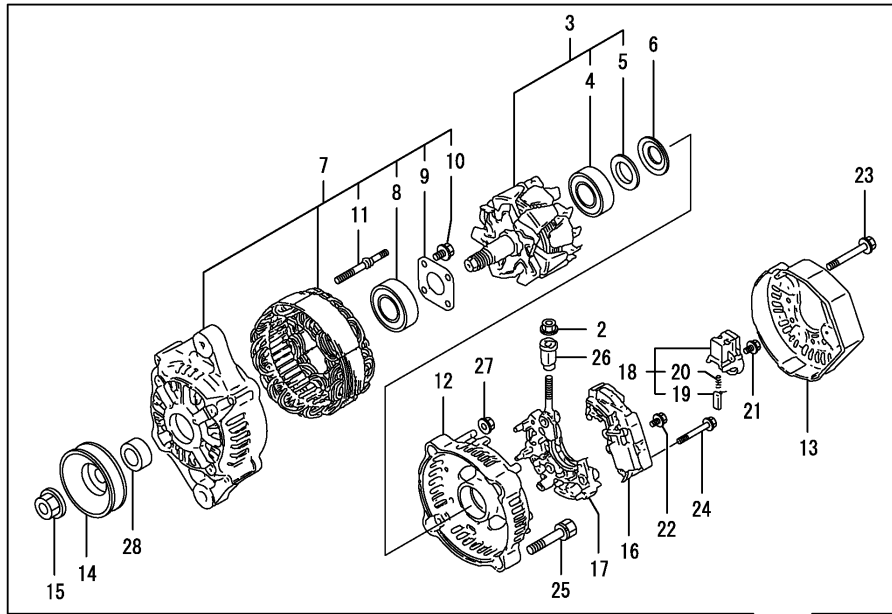
(D)=

(E)=

(F)=

No.	Lev.	Parts No.	Description	Q'ty						I	R
				(A)	(B)	(C)	(D)	(E)	(F)		
1	1	119515-77010	STARTER	1							
2	2	X0281007680	YOKE ASSY	1							
3	3	X0280996180	STARTER KIT	2							
4	2	X0285105190	HOLDER ASSY	1							
5	3	X0285205030	SPRING	4							
6	2	X0282005871	ARMATURE ASSY	1							
7	2	X0283006960	CLUTCH ASSY	1							
8	2	X4284001590	HOUSING ASSY	1							
9	3	X9491050100	BEARING, NEEDLE	1							
10	2	X0285007030	FRAME ASSY	1							
11	3	X9491040990	BEARING	1							
12	3	X0280626010	COVER	1							
13	2	X0284105040	BEARING ASSY	1							
14	3	X9491034330	BEARING	1							
15	2	X0286105010	SHAFT ASSY	1							
16	3	X9491034320	BEARING	1							
17	2	X0286305010	GEAR	3							
18	2	X0286355010	GEAR	1							
19	2	X0287405140	LEVER	1							
20	2	X0534007800	SWITCH ASSY	1							
21	2	X9055715000	RING	1							
22	2	X9490721360	RING	1							
23	2	X0280210331	NUT	1							
24	2	X9490138110	WASHER	1							
25	2	X9490138090	WASHER	1							
26	2	X9490138100	WASHER	1							
27	2	X0284525010	PLATE	1							
28	2	X9490562360	NUT	1							
29	2	X9490560750	NUT	2							
30	2	X9490423520	BOLT, THROUGH	2							
32	2	X9490065670	SCREW, M4X6	2							
33	2	X0280335360	COVER, TERMINAL	1							
34	2	X1289510130	NUT	1							
35	1	26106-100252	BOLT, M10X 25 PLATED	2							

Fig.15. GENERATOR



(A)=2TNV70-ASG

(B)=

(C)=

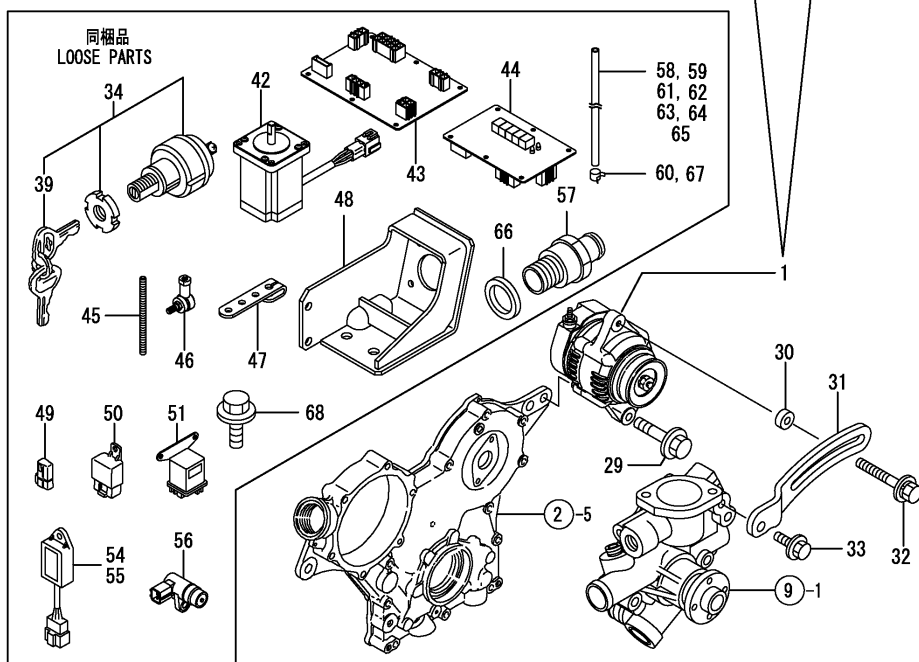
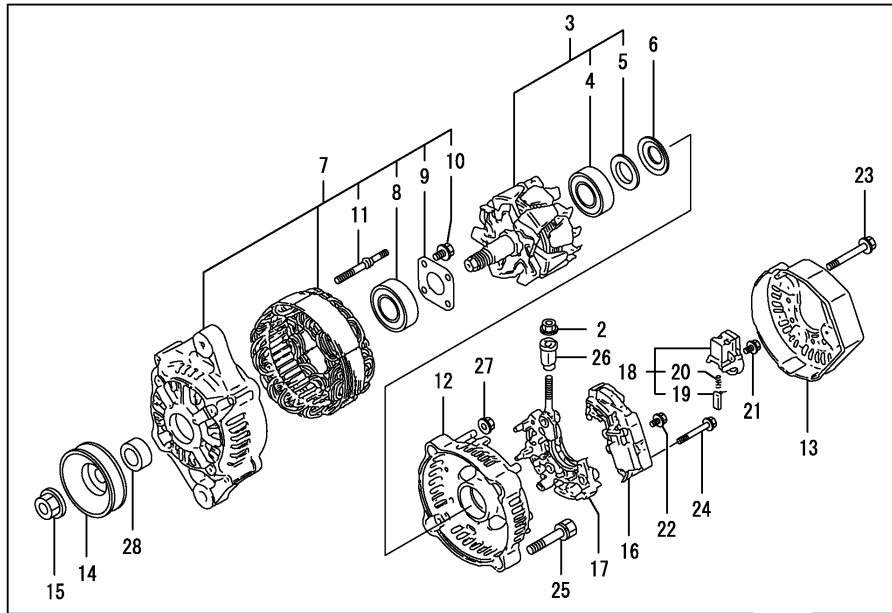
(D)=

(E)=

(F)=

No.	Lev.	Parts No.	Description	Q'ty						I	R
				(A)	(B)	(C)	(D)	(E)	(F)		
1	1	129423-77200	GENERATOR, 12V-40A	1							
2	2	X9490561001	NUT	1							
3	2	119620-77380	ROTOR ASSY	1							
4	3	123501-79240	BEARING, BALL	1							
5	3	119620-79250	COVER	1							
6	2	119620-79360	WASHER, THRUST	1							
7	2	119620-77421	FRAME ASSY, DRIVE	1							
8	3	119620-79200	BEARING, BALL	1							
9	3	119620-79210	PLATE, RETAINER	1							
10	3	119620-79220	SCREW	4							
11	3	119620-79230	STUD	2							
12	2	119620-77440	FRAME ASSY	1							
13	2	129240-79300	COVER	1							
14	2	119620-77461	PULLEY	1							
15	2	119620-77471	NUT	1							
16	2	129423-77710	REGULATOR ASSY	1							
17	2	119620-79260	HOLDER	1							
18	2	129052-79270	HOLDER, BRUSH	1							
19	3	119620-77480	BRUSH ASSY	2							
20	3	119620-79280	SPRING	2							
21	2	119620-79290	SCREW	6							
22	2	119620-79300	SCREW	1							
23	2	119620-79310	BOLT	3							
24	2	119620-79320	SCREW	2							
25	2	119620-79330	BOLT	2							
26	2	119620-79340	BUSH, INSULATION	1							
27	2	119620-79350	NUT	2							
28	2	119620-77490	COLLAR	1							
29	1	26106-100452	BOLT, M10X 45 PLATED	1							
30	1	119940-77270	SPACER, GENERATOR	1							
31	1	119717-77340	ADJUSTER	1							
32	1	129972-77341	BOLT, ADJUSTER L=50	1							
33	1	26106-080202	BOLT, M8X 20 PLATED	1							
34	1	194215-52110	SWITCH, STARTING	1							
39	2	194155-52160	KEY ASSY	1							
42	1	183012-66020	MOTOR	1							
43	1	183012-66030	DRIVE, MOTOR	1							
44	1	183012-66040	PANEL	1							
45	1	119446-66730	ROD	1							
46	1	119446-66740	JOINT	2							
47	1	119446-66800	LEVER	1							
48	1	119446-66810	BRACKET	1							
49	1	119643-66900	DIODE	2							
49-1	1	119643-66900	DIODE	1							K
(A=FROM 1ST)											
50	1	119247-77100	RELAY, SAFETY	5							
51	1	119650-77910	RELAY ASSY, GLOW	1							
54	1	129155-77925	TIMER	1							
55	1	129211-77920	TIMER	1							
56	1	124593-78500	PULSAR	1							
57	1	183366-08351	NIPPLE, DRAIN	1							W

Fig.15. GENERATOR



(A)=2TNV70-ASG

(B)=

(C)=

(D)=

(E)=

(F)=

No.	Lev.	Parts No.	Description	Q'ty						I	R
				(A)	(B)	(C)	(D)	(E)	(F)		
		(A=FROM 1ST)									
58	1	119446-39100	PIPE, DRAIN	1							W
		(A=FROM 1ST)									
59	1	171058-59010	PIPE, FUEL	1							W
		(A=FROM 1ST)									
60	1	124766-59050	CLIP, HOSE 12	16							W
		(A=FROM 1ST)									
61	1	119446-59100	PIPE, FUEL	1							W
		(A=FROM 1ST)									
62	1	105025-59510	PIPE, FUEL	1							W
		(A=FROM 1ST)									
63	1	105025-59530	PIPE, FUEL D13X400	1							W
		(A=FROM 1ST)									
64	1	105025-59750	PIPE, FUEL	1							W
		(A=FROM 1ST)									
65	1	105025-59760	PIPE, FUEL	1							W
		(A=FROM 1ST)									
66	1	22190-160002	WASHER, SEAL 16	1							W
		(A=FROM 1ST)									
67	1	23000-022000	CLAMP, 22	2							W
		(A=FROM 1ST)									
68	1	26106-100182	BOLT, M10X 18 PLATED	2							W
		(A=FROM 1ST)									

Fig.16. GASKET SET

(A)=2TNV70-ASG

(B)=

(C)=

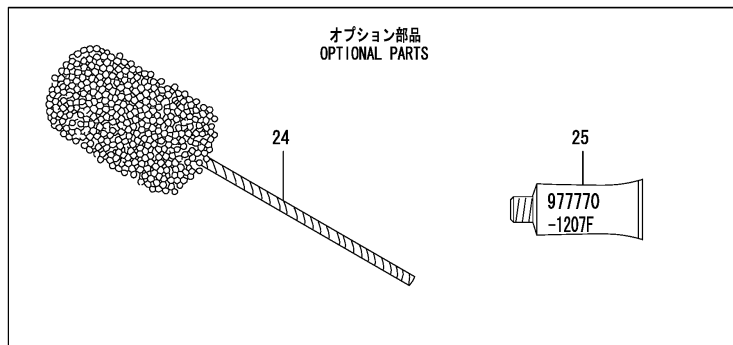
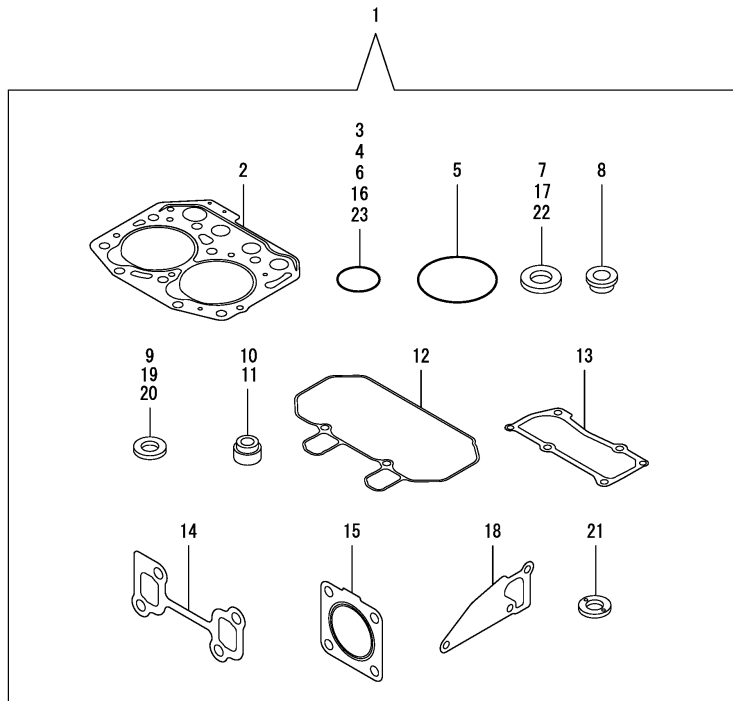
(D)=

(E)=

(F)=

Q'ty

No.	Lev.	Parts No.	Description	Q'ty						I	R
				(A)	(B)	(C)	(D)	(E)	(F)		
1	1	719415-92620	GASKET SET	1							1
2	2	119415-01330	GASKET, HEAD	1							
3	2	119624-32040	O-RING, P12.0	1							
4	2	119717-32050	O-RING, P17.0	3							
5	2	121850-51960	O-RING	1							
6	2	24311-000320	O-RING, 1AP32.0	2							
7	2	22190-160002	WASHER, SEAL 16	1							
8	2	129901-11450	PROTECTOR, NOZZLE	2							
9	2	119600-11460	GASKET, NOZZLE	4							
10	2	119717-11340	SEAL, VALVE STEM	2							
11	2	119717-11350	SEAL, VALVE STEM	2							
12	2	119415-11310	GASKET, BONNET	1							
13	2	119415-11330	GASKET	1							
14	2	119415-13110	GASKET	1							
15	2	119515-13200	GASKET, SILENCER	1							
16	2	119717-32060	O-RING, P15.0	1							
17	2	22190-080002	WASHER, SEAL 6	4							
18	2	119515-42020	GASKET, WATER PUMP	1							
19	2	23414-080000	GASKET, 8X1.0	1							
20	2	124465-44950	GASKET, 16	2							
21	2	129901-59560	GASKET	2							
22	2	22190-120002	WASHER, SEAL 12	4							
23	2	24341-000240	O-RING, 1AS24.0	1							
24	1	129400-92410	HONE	1							1
25	1	977770-01212	GASKET, LIQUID	1							1



Remarks  
(1) OPTIONAL PART.

## Parts No. Index

Parts No.	Fig. No.	Ref. No.
101304-59020	13	13
101720-55750	13	31
102103-55520	13	5
		26
103854-39140	13	12
104200-55321	13	22
104200-55330	13	2
		23
104200-55341	13	24
104200-55750	13	9
		32
105010-11490	4	5
105025-59510	15	62
105025-59530	15	63
105025-59750	15	64
105025-59760	15	65
105027-12580	5	11
105311-01090	1	4
105425-01690	3	9
110250-55610	13	6
		27
114110-07760	13	36
114250-39450	8	11
118200-53010	12	2
118400-51370	10	47
119128-44550	9	35
119128-44561	9	43
119131-18320	5	5
119225-52102	13	35
119226-07900	4	67
119247-77100	15	50
119255-44660	9	45
119265-44740	9	18
119285-01990	1	6
119285-11990	4	13
119305-35151	8	4
119305-59120	12	15
119336-12570	5	10
119415-01330	1	27
	16	2
119415-01720	3	7
119415-11200	4	24
119415-11240	4	25
119415-11310	4	48
	16	12
119415-11320	4	49
119415-11330	4	50
	16	13
119415-11380	4	38
119415-11750	4	6

Parts No.	Fig. No.	Ref. No.
119415-13100	5	1
119415-13110	5	2
	16	14
119415-14581	6	3
119415-21700	7	1
119415-39211	8	12
119415-51030	10	5
119415-51400	10	48
119415-51500	10	63
119415-51700	10	93
119415-51710	10	94
119415-51750	10	95
119415-51760	10	96
119415-59540	12	25
119415-59810	12	20
119415-59820	12	21
119415-77820	4	58
119446-01620	3	2
119446-01770	3	8
119446-12030	5	15
119446-12040	5	16
119446-13500	5	13
119446-21590	7	8
119446-34801	8	1
119446-35080	8	6
119446-39100	15	58
119446-44500	9	30
119446-49030	9	46
119446-49040	9	47
119446-59100	15	61
119446-66730	15	45
119446-66740	15	46
119446-66800	15	47
119446-66810	15	48
119515-01200	1	26
119515-11101	4	15
119515-11110	4	16
119515-11280	4	29
119515-11800	4	23
119515-12501	5	7
119515-12520	5	8
119515-13200	5	12
	16	15
119515-14400	6	2
119515-22080	7	14
119515-22300	7	20
119515-22500	7	16
119515-22550	7	33
119515-22900	7	31
119515-23000	7	22

Parts No.	Fig. No.	Ref. No.
119515-23601	7	26
119515-23611	7	29
119515-42001	9	1
119515-42020	9	12
	16	18
119515-42041	9	3
119515-51100	10	9
119515-53001	12	1
119515-53010	12	3
119515-61440	11	21
119515-61560	11	88
119515-77010	14	1
119540-59560	12	34
119540-59570	12	32
119600-11460	4	4
	16	9
119620-01750	3	3
119620-02020	1	7
119620-14200	6	1
119620-21941	7	13
119620-59700	12	36
119620-77380	15	3
119620-77421	15	7
119620-77440	15	12
119620-77461	15	14
119620-77471	15	15
119620-77480	15	19
119620-77490	15	28
119620-79200	15	8
119620-79210	15	9
119620-79220	15	10
119620-79230	15	11
119620-79250	15	5
119620-79260	15	17
119620-79280	15	20
119620-79290	15	21
119620-79300	15	22
119620-79310	15	23
119620-79320	15	24
119620-79330	15	25
119620-79340	15	26
119620-79350	15	27
119620-79360	15	6
119621-21680	7	12
119623-01250	1	5
119624-32040	2	18
	16	3
119629-49080	9	51
119643-66900	15	49
	49	-1

Parts No.	Fig. No.	Ref. No.
119650-77910	15	51
119653-77950	11	132
119660-01911	2	17
119660-61901	11	65
119717-01501	2	1
119717-01570	2	2
119717-01750	2	16
119717-01800	2	7
119717-02411	1	10
119717-02930	1	23
119717-03031	4	39
119717-03070	4	40
		41
119717-11131	4	17
119717-11190	4	19
119717-11260	4	28
119717-11340	4	20
	16	10
119717-11350	4	21
	16	11
119717-11650	4	30
119717-13600	5	3
119717-23200	7	25
119717-23910	7	28
119717-25050	6	9
119717-25101	6	10
119717-25911	6	14
119717-25930	6	16
119717-32050	2	19
	16	4
119717-32060	8	5
	16	16
119717-32080	2	9
119717-32100	2	8
119717-32110	2	13
119717-32120	2	14
119717-42031	9	2
119717-42320	9	11
119717-42350	9	16
119717-49800	9	22
119717-51060	10	6
119717-51070	10	7
119717-51150	6	17
119717-51190	10	14
119717-51200	10	15
119717-51300	10	42
119717-51330	10	45
119717-51420	10	50
119717-51480	10	108
119717-51490	10	109



## Parts No. Index

Parts No.	Fig. No.	Ref. No.
119717-51570	10	69
119717-61050	11	2
119717-61060	11	3
119717-61070	11	4
119717-61120	11	8
119717-61130	11	9
119717-61140	11	10
119717-61150	11	11
119717-61200	11	70
119717-61400	11	14
119717-77340	15	31
119717-77800	4	57
119734-01580	2	3
119734-02220	3	4
119740-21650	7	11
119744-01521	2	5
119761-61100	11	5
119761-61500	11	30
119802-03100	4	42
119802-03110	4	43
119802-03121	4	44
119802-03131	4	45
119802-03141	4	46
119802-13620	5	4
119802-32130	2	15
119808-12540	5	9
119810-02941	1	34
119810-55340	13	3
119810-55650	13	8
119813-59950	12	37
119833-55620	13	1
119840-59570	12	35
119865-21600	7	10
119940-77270	15	30
121023-01551	2	30
121111-21501	7	7
121250-44590	9	33
121250-44901	9	27
121250-49160	9	59
121250-55620	13	7
121254-55510	13	4
121256-44600	9	44
121257-55720	13	28
121257-55731	13	29
121450-42450	9	26
121450-44531	9	38
121470-44581	9	40
121492-59090	9	32
121520-34810	8	2
121550-49111	9	53

Parts No.	Fig. No.	Ref. No.
121850-51960	2	20
	16	5
122710-51090	10	8
123501-79240	15	4
124060-01050	1	11
124064-55510	13	25
124066-59100	12	33
124101-49531	9	21
124160-01751	2	28
	4	37
124160-01910	1	12
124450-44550	9	42
124450-44560	9	39
124465-44950	9	28
		29
	16	20
124550-51350	10	46
124593-78500	15	56
124766-59050	9	56
	15	60
129001-32320	2	11
129001-32330	2	12
129005-59830	8	13
129008-61301	11	74
129052-61390	11	13
129052-79270	15	18
129100-01580	3	1
	7	2
129100-35140	8	3
129100-51560	10	68
129100-51570	10	70
129100-52200	10	113
129100-61650	11	59
129100-61730	11	121
129107-44590	9	31
129150-11230	4	31
129150-11750	4	33
129150-25301	6	15
129150-49080	9	49
129150-49100	9	48
129150-59131	12	18
129155-51020	10	4
129155-51140	10	12
129155-51280	10	40
		41
	11	6
129155-51450	10	58
129155-51521	10	64
129155-51530	10	65
129155-51540	10	66

Parts No.	Fig. No.	Ref. No.
129155-51550	10	67
129155-51580	10	72
129155-51591	10	73
129155-51600	10	19
		74
129155-52051	10	112
129155-61341	11	75
129155-61450	11	22
129155-61460	11	76
129155-61480	11	24
129155-77925	15	54
129156-61460	11	23
129209-61370	11	12
129209-61920	11	78
129209-61930	11	130
129209-61970	11	131
129210-49200	9	60
129210-49280	9	54
129211-77920	15	55
129240-79300	15	13
129335-55700	13	20
129400-92410	16	24
129423-77200	15	1
129423-77710	15	16
129457-44760	9	19
129486-07901	4	1
129486-61540	11	49
129508-11180	4	18
129900-32130	2	10
129901-11450	4	3
	16	8
129901-53800	12	4
129901-59560	12	31
	16	21
129972-77341	15	32
158552-61700	11	60
158552-61710	11	64
158552-61900	11	77
158600-51170	10	13
158600-51270	10	39
158600-51410	10	49
158600-51420	10	51
158600-51442	10	52
158600-51570	10	71
158600-51790	10	97
158601-61700	11	122
171056-49120	9	25
171058-59010	15	59
171064-44510	9	36
171081-55910	13	33

Parts No.	Fig. No.	Ref. No.
174307-51700	11	31
183012-66020	15	42
183012-66030	15	43
183012-66040	15	44
183366-08351	15	57
194155-52160	15	39
194215-52110	15	34
22190-080002	8	14
		16
	16	17
22190-100002	11	79
22190-120002	11	80
	12	43
	13	17
	16	22
22190-160002	3	11
	10	98
	15	66
	16	7
22217-060000	10	99
22217-120000	6	18
22242-000120	4	34
22252-000220	7	21
22272-000030	11	66
22351-050010	10	100
22351-060012	4	22
22372-040000	11	81
22512-040120	7	5
22857-500100	4	51
		52
22857-500160	4	53
23000-022000	15	67
23000-060000	9	57
23010-038000	9	58
		58 -1
23065-070225	9	41
23414-080000	9	13
	16	19
23414-120016	11	133
23418-060000	13	34
23857-030000	8	15
23876-005000	4	14
23876-030000	2	6
23887-100002	11	82
24101-060034	10	101
24101-063034	10	102
24311-000320	2	29
		4
	16	6
24311-240100	13	10

## Parts No. Index

Parts No.	Fig. No.	Ref. No.
24311-240100	13	21
24316-000150	10	103
24341-000070	11	67
24341-000240	2	31
	16	23
25152-003500	9	17
26014-060122	9	34
26022-050122	10	104
26022-060162	10	105
26106-050102	10	106
26106-060102	8	10
	11	68
		83
26106-060122	2	21
	3	12
	6	8
26106-060142	11	84
26106-060162	2	22
		32
26106-060202	4	55
	11	85
26106-060252	3	13
26106-060352	6	13
26106-060402	2	23
		24
26106-060452	3	14
	9	20
	11	86
26106-060602	2	25
26106-060652	2	26
26106-060752	4	56
26106-080122	9	14
26106-080142	4	2
26106-080162	4	68
26106-080202	15	33
26106-080252	9	23
26106-080402	4	36
26106-080502	9	15
26106-080602	9	24
26106-100182	15	68
26106-100252	14	35
26106-100452	15	29
26206-100252	3	5
26206-100302	3	6
26306-080002	2	27
	5	6
26366-080002	11	69
26577-060122	9	9
26716-060002	10	107
26716-120002	6	19

Parts No.	Fig. No.	Ref. No.
26756-060002	11	87
26979-050162	4	35
27241-120000	1	13
27241-250000	9	10
719415-01561	1	1
719415-92620	16	1
719446-51370	10	1
719717-02901	1	28
719717-02911	1	31
719734-01510	2	4
977770-01212	16	25
X0280210331	14	23
X0280335360	14	33
X0280626010	14	12
X0280996180	14	3
X0281007680	14	2
X0282005871	14	6
X0283006960	14	7
X0284105040	14	13
X0284525010	14	27
X0285007030	14	10
X0285105190	14	4
X0285205030	14	5
X0286105010	14	15
X0286305010	14	17
X0286355010	14	18
X0287405140	14	19
X0534007800	14	20
X1289510130	14	34
X4284001590	14	8
X9055715000	14	21
X9490065670	14	32
X9490138090	14	25
X9490138100	14	26
X9490138110	14	24
X9490423520	14	30
X9490560750	14	29
X9490561001	15	2
X9490562360	14	28
X9490721360	14	22
X9491034320	14	16
X9491034330	14	14
X9491040990	14	11
X9491050100	14	9

Parts No.	Fig. No.	Ref. No.
-----------	----------	----------

Parts No.	Fig. No.	Ref. No.
-----------	----------	----------