

0CB10-M74700EN

Directions for the Parts Catalog.

1. This Parts Catalog shows both standard and optional parts.
2. Parts may change without prior notice.
3. The following is an example of the Parts Catalog format.

REF.	LEV.	PARTS NO.	DESCRIPTION	Q'TY						I	R
				(A)	(B)	(C)	(D)	(E)	(F)		
1	1	729595-51390	FUEL INJECTION PUMP	1	1	1	1	1			1
1-1	1	729595-51391	FUEL INJECTION PUMP	1	1	1	1	1		N	1
		(A=E00185) (B=E00200)									
3	2	26022-060162	SCREW M 6X 16	9	9	9	9	9			
3-1	2	26022-060162	SCREW M 6X 16	4	4	4	4	4		K	
		(A=E00156) (B=E00156) (C=E00156) (D=E00156) (E=E00156)									
4	2	129470-51040	CAMSHAFT	1	1	1	1	1			
5	2	122710-51050	BEARING, ROLLER	2	2	2	2	2			
6	2	129470-51060	RETAINER	1	1	1	1	1			

Remarks
(1) BOOST COMPEMSATOR TYPE. OPTIONAL PART, TO E00155,(4JH-DT, 4JH-DTZ

① Ref. No.

The Ref. No. listed may not be in accordance with the illustration Ref. No.

(Ex.) Illustration No.

List Ref No.

1

1

(Before change)

1-1

(After change)

For interchangeable symbols N, R and K, illustrations for new parts may be abbreviated.

② Lev. (Level)

Level indication

The numbers below indicate the level of relativity towards the main part.

1 ----- Main parts (Assembly parts)

2 ----- Sub component included in " 1 ".

3 ----- Sub component included in " 2 ".

Note) Parts that are not for sale are partially illustrated but not listed.

③ Interchangeability Symbol

When a part change takes place, one of the following interchangeability symbols is indicated beside the part.

Symbol	Interchangeability	Contents note
N	Old $\begin{matrix} \leftarrow \text{Yes} \\ \text{No} \rightarrow \end{matrix}$ New	New Part is interchangeable for Old Part but Old Part is not interchangeable for New Part.
Q	Old $\begin{matrix} \leftarrow \text{No} \\ \text{Yes} \rightarrow \end{matrix}$ New	New Part is not interchangeable for Old Part but Old Part is interchangeable for New Part.
R	Old $\begin{matrix} \leftarrow \text{Yes} \\ \text{Yes} \rightarrow \end{matrix}$ New	New/ Old Parts are both interchangeable.
S	Old $\begin{matrix} \leftarrow \text{No} \\ \text{No} \rightarrow \end{matrix}$ New	New/ Old Parts are both not interchangeable.
W		Part newly added.
Z		Part discontinued.
F		Not interchangeable by a single part but interchangeable together with related parts.
K		Changes only for used parts quantities.

④ Effective Machine No.

When a part changes, the effective Machine No. will be indicated in the (A)-(F) column.

Product Symbol	Product No.	Product Symbol	Product No.
C	Clutch No. Compressor No.	F	Machine No. (Agricultural Equip.)
D	Drive No.	M	Machine No.
E	Engine No.		

Note 1) A date may follow the symbol. (Ex.) 1996.01

Note 2) "XXXXX" and "ZZZZZ" are for parts that could not be predicted or for engine models that could not be identified.

Note 3) (A=E00185) is the E (Engine Serial Number) for the column (A) model (in this case 4JH-DT) after the parts design change.

⑤ Remarks

Figures or alphabets (symbols) are entered in the remarks column.

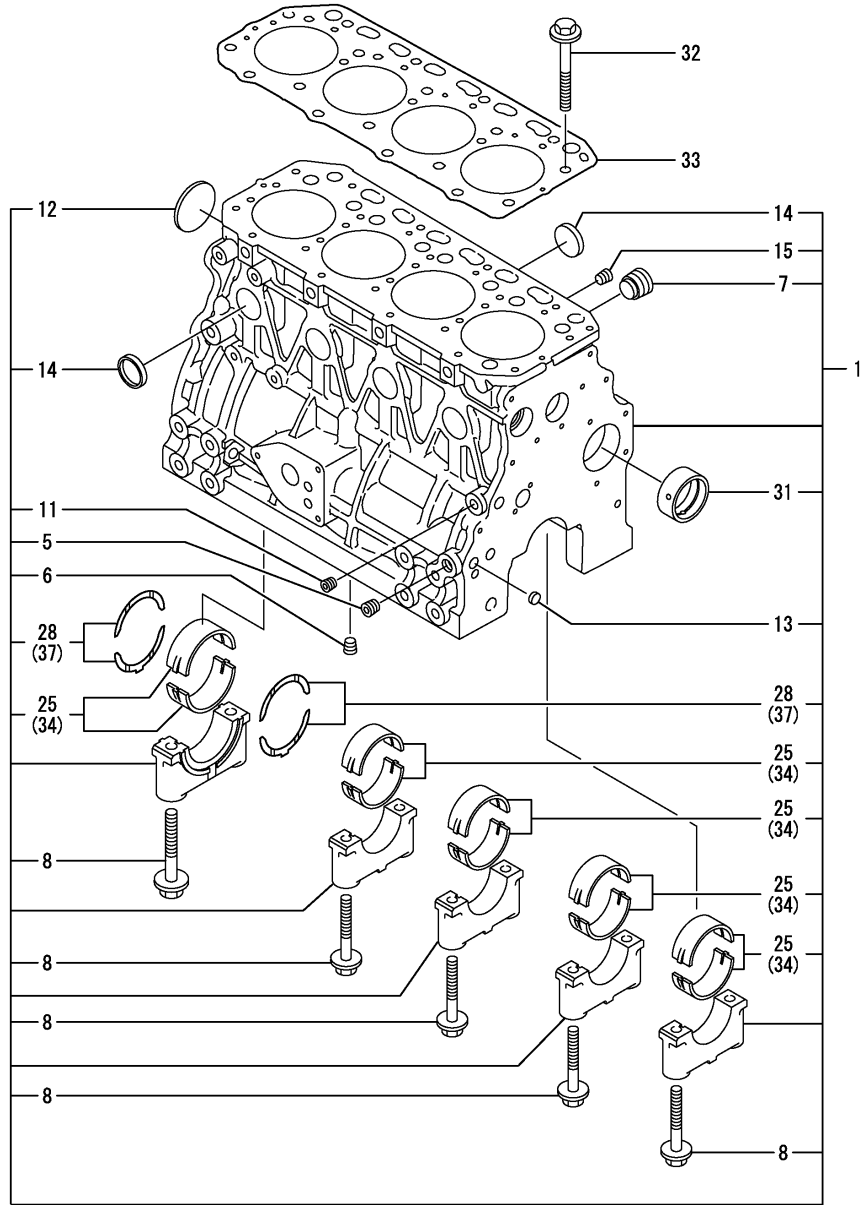
The comments (remarks) on parts that are indicated at the bottom of the illustration are the same symbols as those stated above.

Contents

0CB10-M74700

Fig. No.	Fig. Name	Fig. No.	Fig. Name
ENGINE SECTION			
1.	CYLINDER BLOCK		
2.	GEAR HOUSING		
3.	FLYWHEEL HOUSING & OIL SUMP		
4.	CYLINDER HEAD & BONNET		
5.	SUCTION MANIFOLD		
6.	EXHAUST MANIFOLD		
7.	CAMSHAFT & DRIVING GEAR		
8.	CRANKSHAFT & PISTON		
9.	LUB.OIL SYSTEM		
10.	COOLING WATER SYSTEM		
11.	FUEL INJECTION PUMP		
12.	GOVERNOR		
13.	FUEL INJECTION VALVE		
14.	FUEL LINE		
15.	STARTING MOTOR		
16.	GENERATOR		
17.	GASKET SET		

Fig.1. CYLINDER BLOCK



(A)=4TNE88-RAG2
(B)=
(C)=

(D)=
(E)=
(F)=

No.	Lev.	Parts No.	Description	Q'ty						I	R
				(A)	(B)	(C)	(D)	(E)	(F)		
1	1	729407-01561	BLOCK ASSY, CYLINDER	1							
5	2	124160-01910	PLUG, PT1/4	2							
6	2	124160-01910	PLUG, PT1/4	1							
7	2	171051-01921	PLUG, NPTF1	1							
8	2	129150-02020	BOLT, METAL CAP	10							
11	2	23876-010000	PLUG, R01	1							
12	2	129001-01250	PLUG, 50	1							
13	2	27241-120000	PLUG, 12	2							
14	2	27241-300000	PLUG 30	8							
15	2	23876-030000	PLUG, R03	1							
25	2	129001-02930	BEARING, MAIN	5							3
28	2	129150-02930	BEARING, THRUST	2							
31	2	129795-02411	BUSH, CAMSHAFT	1							
32	1	129150-01200	BOLT, HEAD	18							
33	1	129407-01340	GASKET, HEAD	1							
34	1	129150-02870	BEARING, 0.25 US	5							1
37	1	129150-02940	BEARING, THRUST 0.25	1							2

Remarks

- (1) UNDER-SIZED(U.S=0.25)PART.
- (2) OVER-SIZED(O.S=0.25)PART.
- (3) REPAIR PART.

Fig.2. GEAR HOUSING

(A)=4TNE88-RAG2

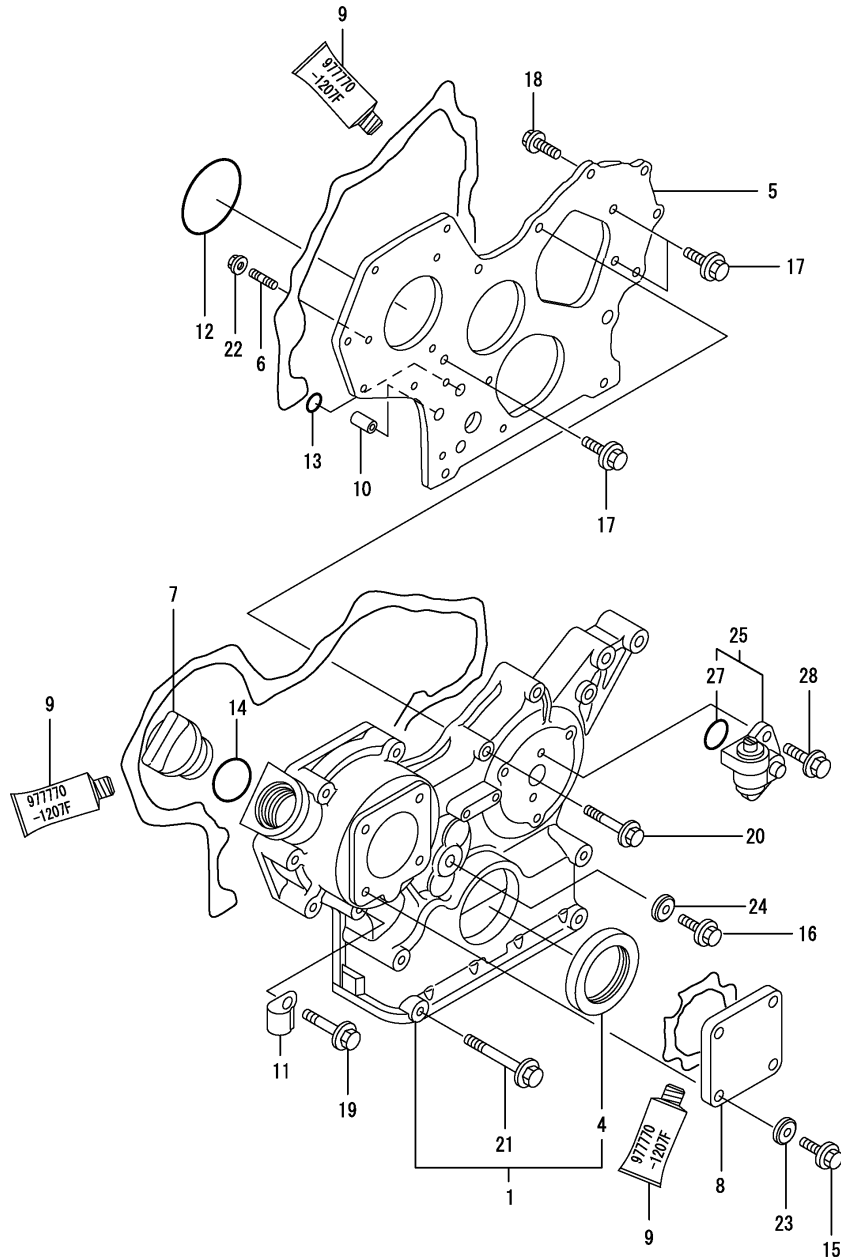
(B)=

(C)=

(D)=

(E)=

(F)=

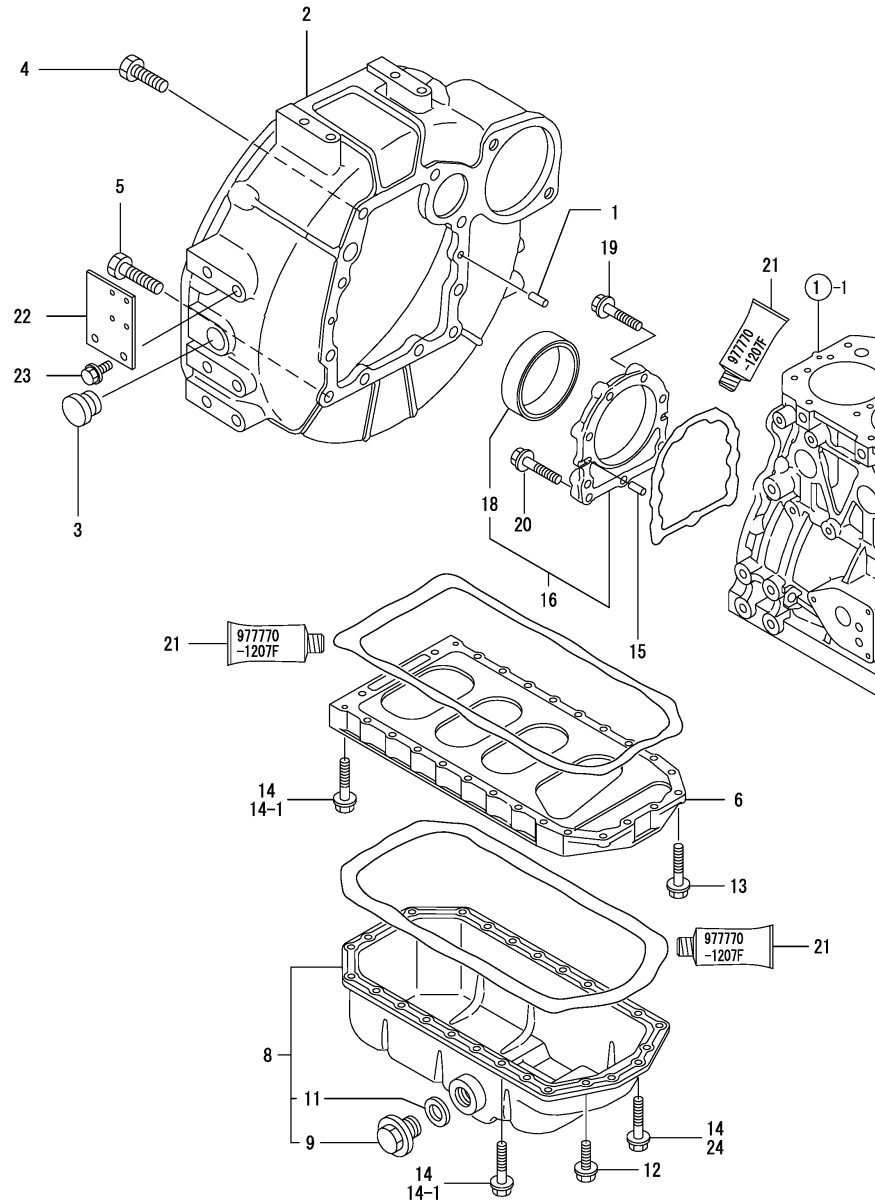


No.	Lev.	Parts No.	Description	Q'ty						I	R
				(A)	(B)	(C)	(D)	(E)	(F)		
1	1	719810-01500	CASE ASSY, GEAR	1							
4	2	129795-01800	SEAL, OIL	1							
5	1	129400-01520	FLANGE, GEAR CASE	1							
6	1	121450-01560	STUD, M8X22	3							
7	1	124160-01751	COVER, FILLER	1							
8	1	124240-01871	COVER	1							
9	1	977770-1207F	GASKET.LIQUID	1							1
10	1	129795-01950	PIPE, KNOCK L=18	2							
11	1	129150-03100	RETAINER, PIPE	1							
12	1	121850-51960	O-RING	1							
13	1	119609-32040	O-RING, P16	2							
14	1	24311-000320	O-RING, 1AP32.0	1							
15	1	26106-080122	BOLT, M8X 12 PLATED	4							
16	1	26106-080162	BOLT, M8X 16 PLATED	1							
17	1	26106-080162	BOLT, M8X 16 PLATED	3							
18	1	26106-080202	BOLT, M8X 20 PLATED	2							
19	1	26106-080452	BOLT, M8X 45 PLATED	6							
20	1	26106-080552	BOLT, M8X 55 PLATED	3							
21	1	129001-91841	BOLT, M8X85	4							
22	1	26306-080002	NUT, M8	3							
23	1	22190-080002	WASHER, SEAL 6	4							
24	1	22190-080002	WASHER, SEAL 6	1							
25	1	129150-91400	GEAR	1							
27	2	24341-000240	O-RING, 1AS24.0	1							
28	1	26106-060162	BOLT, M6X 16 PLATED	2							

Remarks

(1) OPTIONAL PART.

Fig.3. FLYWHEEL HOUSING & OIL SUMP



(A)=4TNE88-RAG2

(B)=

(C)=

(D)=

(E)=

(F)=

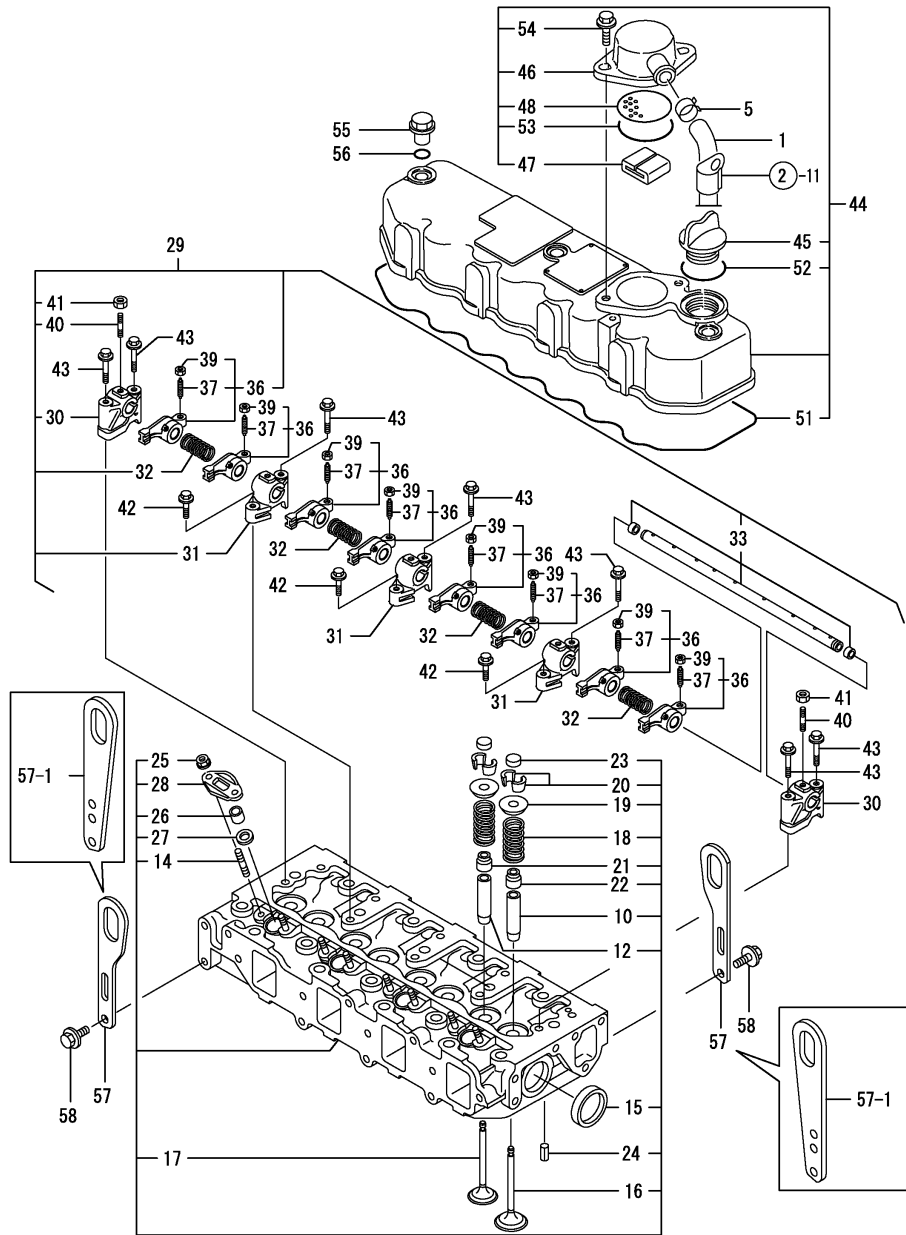
No.	Lev.	Parts No.	Description	Q'ty						I	R
				(A)	(B)	(C)	(D)	(E)	(F)		
1	1	129100-01580	PIN, M8X16	2							
2	1	171420-01600	HOUSING, FLYWHEEL	1							
3	1	119620-01750	CAP	1							
4	1	26206-100252	BOLT, M10X 25 PLATED	6							
5	1	26206-100302	BOLT, M10X 30 PLATED	4							
6	1	129400-01730	SPACER, OIL SUMP	1							
8	1	129400-01770	SUMP ASSY, OIL	1							
8-1	1	129688-01780	OIL PAN ASSY, DEEP	1							N
(A=EA6982)											
9	2	119640-01640	PLUG, DRAIN M22	1							
11	2	22190-220002	WASHER, SEAL 22	1							
12	1	26106-080162	BOLT, M8X 16 PLATED	4							
13	1	26106-080252	BOLT, M8X 25 PLATED	2							
14	1	26106-080452	BOLT, M8X 45 PLATED	24							
14-1	1	26106-080452	BOLT, M8X 45 PLATED	20							K
(A=FROM 1ST)											
15	1	129100-01580	PIN, M8X16	2							
16	1	129100-01640	CASE ASSY, OIL SEAL	1							
18	2	129795-01780	SEAL, OIL	1							
19	1	129486-01670	BOLT, M8X30	6							
20	1	26106-080352	BOLT, M8X 35 PLATED	3							
21	1	977770-1207F	GASKET, LIQUID	1							1
22	1	129111-67010	SUPPORT, WIRE	1							
23	1	26106-080162	BOLT, M8X 16 PLATED	2							
24	1	26106-080502	BOLT, M8X 50 PLATED	4							W
(A=FROM 1ST)											

Remarks

(1)Optional parts.

N:Old $\begin{matrix} \leftarrow \text{Yes} \\ \text{No} \end{matrix}$ New, Q:Old $\begin{matrix} \leftarrow \text{No} \\ \text{Yes} \end{matrix}$ New, R:Old $\begin{matrix} \leftarrow \text{Yes} \\ \text{Yes} \end{matrix}$ New, S:Old $\begin{matrix} \leftarrow \text{No} \\ \text{No} \end{matrix}$ New, W:Add, Z:Discontinued, F:Interchangeable by set, K:Q'ty Change

Fig.4. CYLINDER HEAD & BONNET



(A)=4TNE88-RAG2

(B)=

(C)=

(D)=

(E)=

(F)=

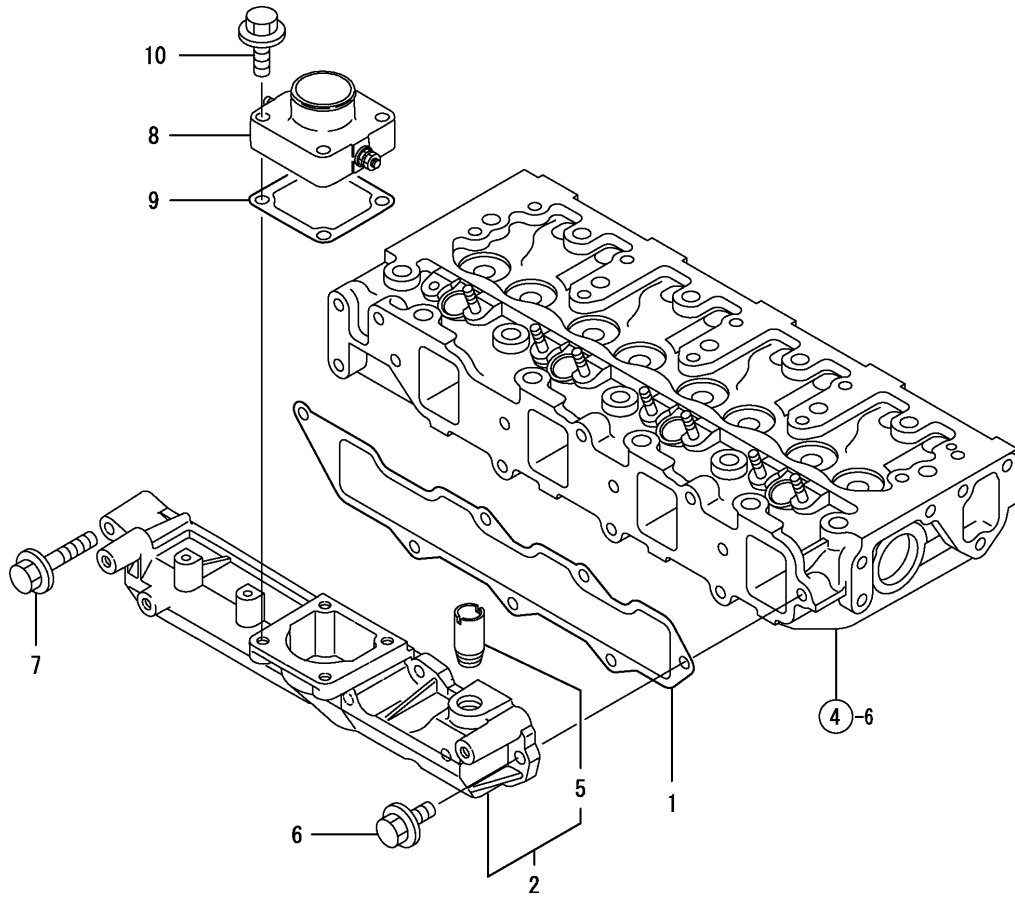
No.	Lev.	Parts No.	Description	Qty						I	R
				(A)	(B)	(C)	(D)	(E)	(F)		
1	1	129219-03100	PIPE , BREATHER	1							
5	1	129410-03990	CLIP	2							
6	1	129407-11700	HEAD ASSY, CYLINDER	1							
10	2	120130-11860	GUIDE, VALVE	4							1
12	2	129150-11810	GUIDE, VALVE	4							1
14	2	26216-060202	STUD, M6X 20	8							
15	2	27241-400000	PLUG, 40	2							
16	2	129100-11100	VALVE, INTAKE	4							
17	2	129100-11112	VALVE, EXHAUST	4							
18	2	129795-11120	SPRING, VALVE	8							
19	2	129795-11180	RETAINER, SPRING	8							
20	2	27310-080000	COTTER 8	8							
21	2	121400-11340	SEAL, VALVE STEM	4							
22	2	124460-11340	SEAL, VALVE STEM	4							
23	2	129150-11370	CAP, VALVE	8							
24	2	22351-060012	PIN, SPRING 6.0X12	2							
25	2	26366-060002	NUT, M6	8							
26	2	119625-11870	PROTECTOR, NOZZLE	4							
27	2	119625-11880	SEAT, NOZZLE	4							
28	2	119625-11900	RETAINER, NOZZLE	4							
29	1	129500-11240	SHAFT ASSY, ROCKER	1							
30	2	129155-11260	SUPPORT, ROCKER ARM	2							
31	2	129155-11270	SUPPORT, ROCKER ARM	3							
32	2	129150-11280	SPRING	4							
33	2	129550-11290	SHAFT, ROCKER ARM	1							
36	2	129100-11650	ARM, ROCKER	8							
37	3	129150-11230	SCREW, VALVE ADJUST	8							
39	3	129150-11750	NUT, M8	8							
40	2	119802-11280	STUD	3							
41	2	26756-080002	NUT, LOCK M8	3							
42	1	26106-080252	BOLT, M8X 25 PLATED	3							
43	1	26106-080502	BOLT, M8X 50 PLATED	7							
44	1	129400-11350	BONNET ASSY, HEAD	1							
45	2	124160-01751	COVER, FILLER	1							
46	2	129150-03020	COVER, BREATHER	1							
47	2	129150-03070	BAFFLE, BREATHER	1							
48	2	129150-03080	PLATE, BAFFLE	1							
51	2	129550-11310	GASKET, BONNET	1							
52	2	24311-000320	O-RING, 1AP32.0	1							
53	2	24341-000500	O-RING, 1AS50.0	1							
54	2	26106-080162	BOLT, M8X 16 PLATED	2							
55	1	124160-11360	KNOB	3							
56	1	24311-000120	O-RING, 1AP12.0	3							
57	1	124736-07900	LIFTER	2							
57-1	1	129900-07900	LIFTER	2							N
			(A=*2009.08)								
58	1	26106-080142	BOLT, M8X 14 PLATED	4							

Remarks

(1) REPAIR PART.

N:Old $\begin{matrix} \leftarrow \text{Yes} \\ \text{No} \end{matrix}$ New, Q:Old $\begin{matrix} \leftarrow \text{No} \\ \text{Yes} \end{matrix}$ New, R:Old $\begin{matrix} \leftarrow \text{Yes} \\ \text{Yes} \end{matrix}$ New, S:Old $\begin{matrix} \leftarrow \text{No} \\ \text{No} \end{matrix}$ New, W:Add, Z:Discontinued, F:Interchangeable by set, K:Qty Change

Fig.5. SUCTION MANIFOLD

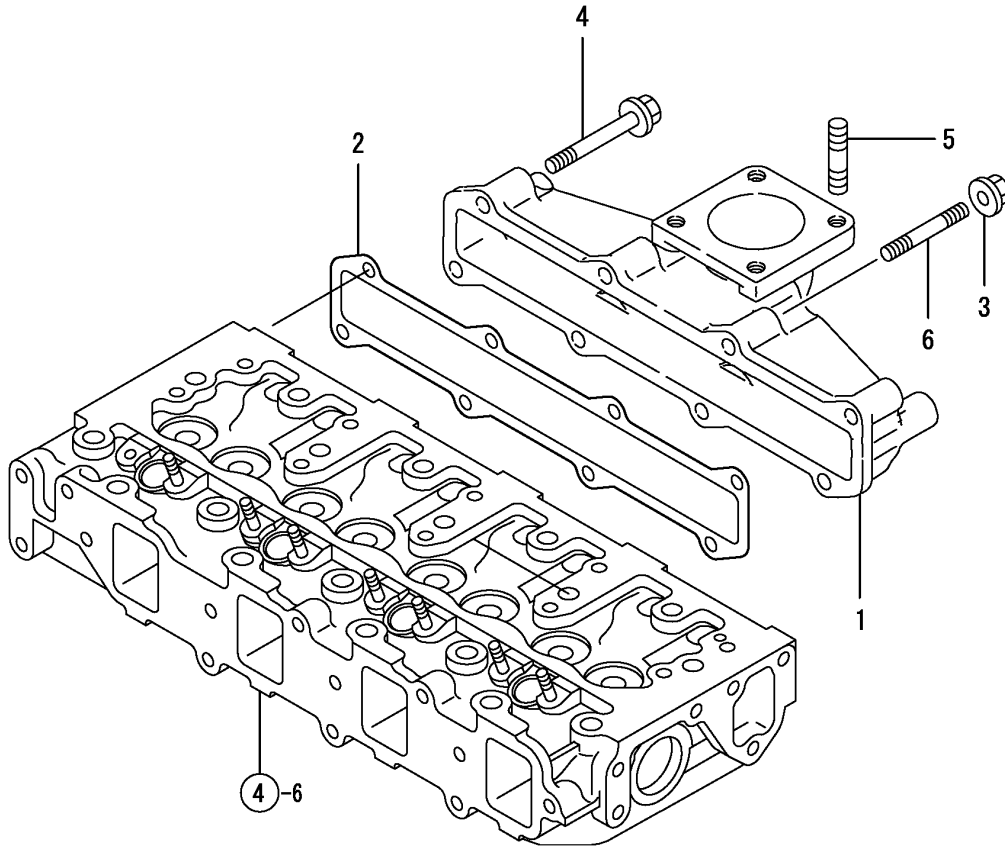


(A)=4TNE88-RAG2
(B)=
(C)=

(D)=
(E)=
(F)=

No.	Lev.	Parts No.	Description	Q'ty						I	R
				(A)	(B)	(C)	(D)	(E)	(F)		
1	1	129407-12110	GASKET, MANIFOLD	1							
2	1	129407-12700	MANIFOLD, AIR INTAKE	1							
5	2	104407-44480	JOINT	1							
6	1	26106-080202	BOLT, M8X 20 PLATED	6							
7	1	26106-080502	BOLT, M8X 50 PLATED	1							
8	1	129120-77501	HEATER	1							
9	1	129150-77511	GASKET	1							
10	1	26106-080352	BOLT, M8X 35 PLATED	4							

Fig.6. EXHAUST MANIFOLD



(A)=4TNE88-RAG2
(B)=
(C)=

(D)=
(E)=
(F)=

No.	Lev.	Parts No.	Description	Q'ty						I	R
				(A)	(B)	(C)	(D)	(E)	(F)		
1	1	129407-13101	MANIFOLD, EXHAUST	1							
2	1	129407-13110	GASKET	1							
3	1	26306-080002	NUT, M8	2							
4	1	119802-13600	BOLT, M8X40	6							
5	1	119131-18320	STUD, M8X22	4							
6	1	119802-13710	STUD, M8X40	2							

Fig.7. CAMSHAFT & DRIVING GEAR

(A)=4TNE88-RAG2

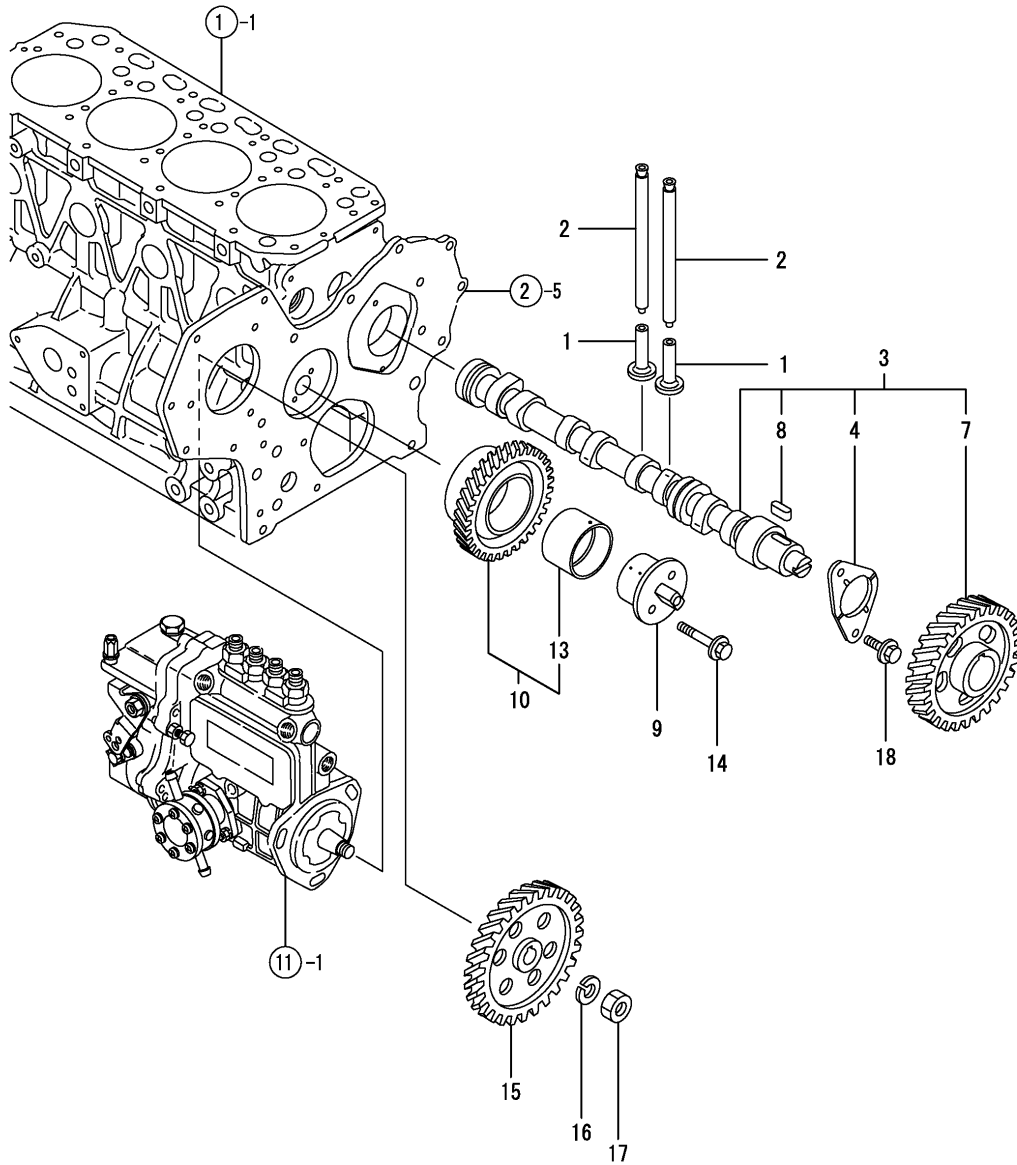
(B)=

(C)=

(D)=

(E)=

(F)=



No.	Lev.	Parts No.	Description	Q'ty						I	R
				(A)	(B)	(C)	(D)	(E)	(F)		
1	1	129150-14200	TAPPET	8							
2	1	129150-14400	ROD, PUSH L=178	8							
3	1	729402-14580	CAMSHAFT ASSY	1							
4	2	129150-02450	BEARING, THRUST	1							
7	2	129150-14101	GEAR, CAMSHAFT	1							
8	2	22512-070140	KEY, 7X 14	1							
9	1	129100-25061	SHAFT, IDLE	1							
10	1	129150-25101	GEAR ASSY, IDLE	1							
13	2	129150-25920	BUSH, IDLE GEAR	1							1
14	1	26106-080452	BOLT, M8X 45 PLATED	2							
15	1	129150-25900	GEAR, PUMP	1							
16	1	22217-120000	WASHER, SPRING 12	1							
17	1	26716-120002	NUT, M12	1							
18	1	26106-080142	BOLT, M8X 14 PLATED	2							

Remarks

(1) REPAIR PART.

Fig.8. CRANKSHAFT & PISTON

(A)=4TNE88-RAG2

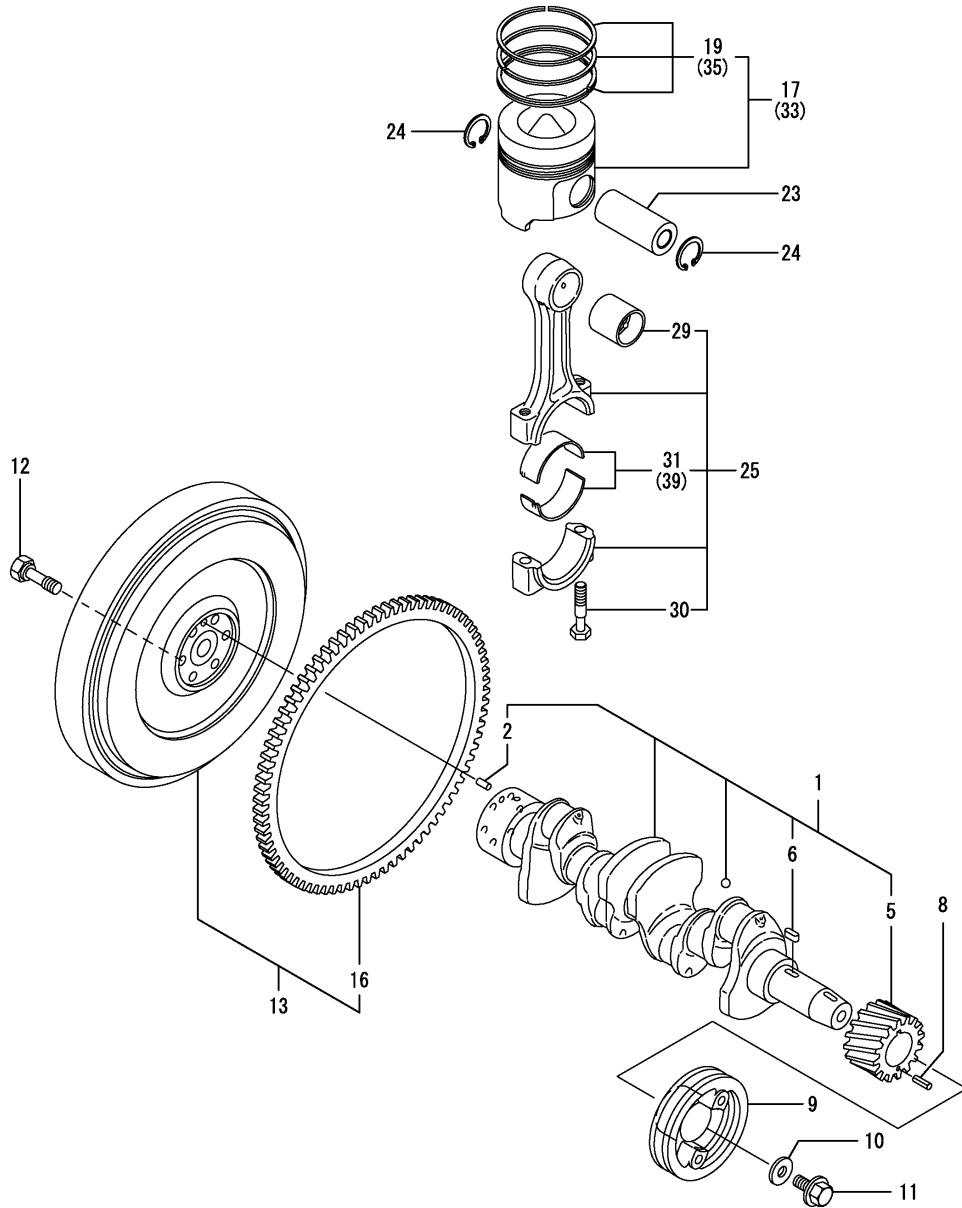
(B)=

(C)=

(D)=

(E)=

(F)=



No.	Lev.	Parts No.	Description	Q'ty						I	R
				(A)	(B)	(C)	(D)	(E)	(F)		
1	1	129407-21100	CRANKSHAFT ASSY	1							
2	2	129100-01580	PIN, M8X16	1							
5	2	129150-21200	GEAR, CRANKSHAFT	1							
6	2	22512-070140	KEY, 7X 14	1							
8	1	22351-040010	PIN, SPRING 4.0X10	1							
9	1	129550-21650	V-PULLEY	1							
10	1	129795-21661	WASHER	1							
11	1	121850-21680	BOLT	1							
12	1	121111-21501	BOLT, FLYWHEEL	6							
13	1	171420-21590	FLYWHEEL ASSY	1							
16	2	124550-21600	GEAR, RING	1							
17	1	129001-22081	PISTON ASSY	4							
19	2	129001-22500	RING SET, PISTON	4							
23	1	129202-22300	PIN, PISTON D26 L70	4							
24	1	22252-000260	RING, 26	8							
25	1	729402-23100	ROD ASSY, CONNECTING	4							
29	2	129100-23910	BEARING, PISTON PIN	4							1
30	2	121550-23200	BOLT, CONNECTING ROD	8							
31	2	129150-23600	BEARING, CRANK PIN	4							
33	1	129001-22901	PISTON ASSY, 0.25 OS	4							2
35	2	129001-22950	RING SET, 0.25 OS	4							2
39	1	129150-23610	BEARING, 0.25 US	4							3

Remarks

(1) REPAIR PART.

(2) OVER-SIZE(O.S=0.25)PART.

(3) UNDER-SIZE(U.S=0.25)PART.

Fig.9. LUB.OIL SYSTEM

(A)=4TNE88-RAG2

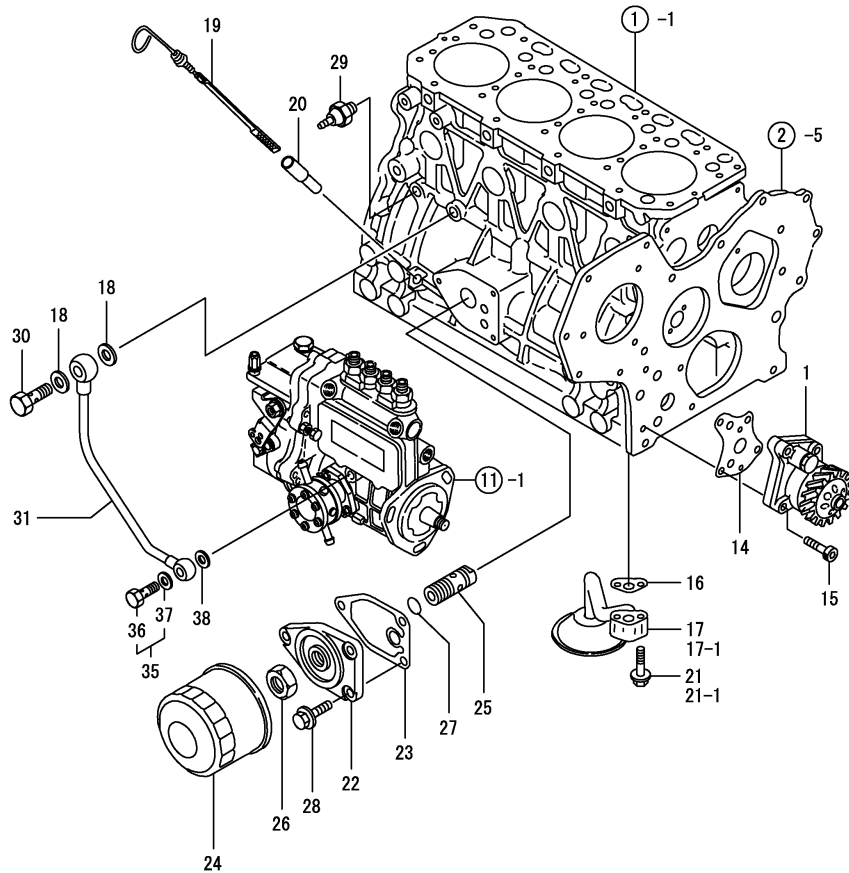
(B)=

(C)=

(D)=

(E)=

(F)=



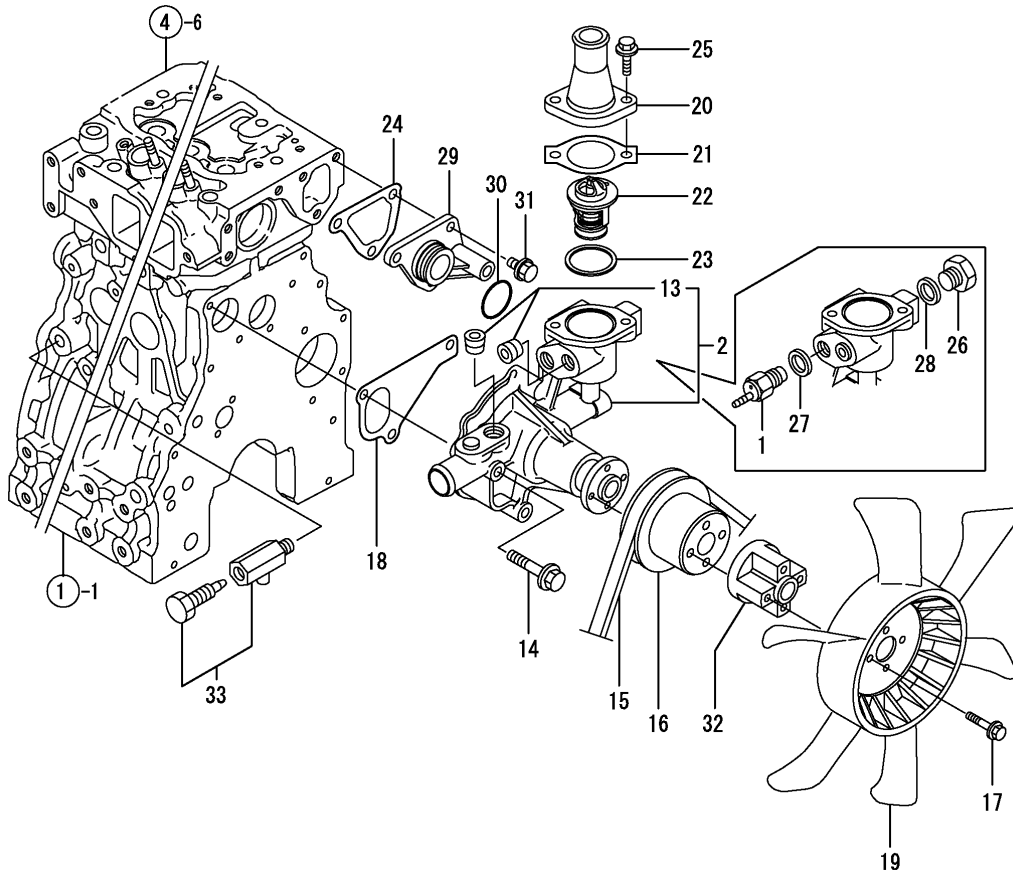
No.	Lev.	Parts No.	Description	Q'ty						I	R
				(A)	(B)	(C)	(D)	(E)	(F)		
1	1	129407-32000	PUMP ASSY, OIL	1							
14	1	129150-32020	GASKET, PUMP	1							
15	1	26450-060252	BOLT, M6X 25	4							
16	1	129150-35042	GASKET	1							
17	1	129436-35091	PIPE ASSY, OIL INLET	1							
17-1	1	129436-35070	PIPE ASSY	1							S
(A=EZZZZZ)											
18	1	22190-100002	WASHER, SEAL 10	2							
19	1	129136-34800	DIPSTICK, OIL	1							
20	1	121520-34810	GUIDE, DIPSTICK	1							
21	1	26106-080352	BOLT, M8X 35 PLATED	2							
21-1	1	26106-080552	BOLT, M8X 55 PLATED	2							S
(A=EZZZZZ)											
22	1	129150-35101	BRACKET, STRAINER	1							
23	1	129150-35111	GASKET	1							
24	1	129150-35170	FILTER, LO	1							1
25	1	129001-35300	BOLT, FILTER	1							
26	1	129150-35350	NUT	1							
27	1	24311-000160	O-RING, 1AP16.0	1							
28	1	26106-080202	BOLT, M8X 20 PLATED	3							
29	1	114250-39450	SWITCH, 0.5KG	1							
30	1	124160-39140	BOLT, PIPE JOINT M10	1							
31	1	129550-39450	PIPE ASSY, OIL	1							
35	1	124550-59830	BOLT ASSY, JOINT M8	1							
36	2	124550-59820	BOLT, PIPE JOINT M8	1							
37	2	22190-080002	WASHER, SEAL 6	1							
38	1	22190-080002	WASHER, SEAL 6	1							

Remarks

(1) REPAIR PART.

N:Old $\xrightarrow{\text{Yes}}$ New, Q:Old $\xrightarrow{\text{No}}$ New, R:Old $\xrightarrow{\text{Yes}}$ New, S:Old $\xrightarrow{\text{No}}$ New, W:Add, Z:Discontinued, F:Interchangeable by set, K:Q'ty Change

Fig.10. COOLING WATER SYSTEM

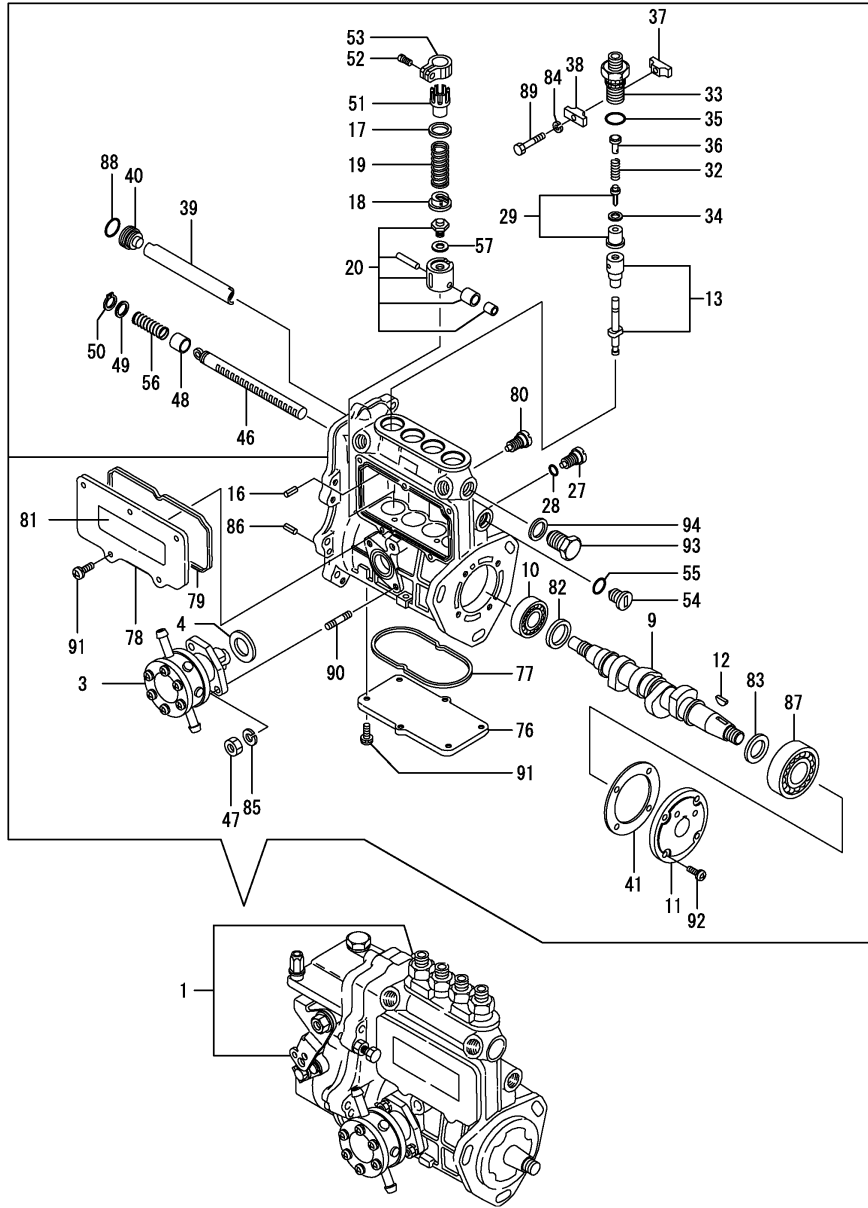


(A)=4TNE88-RAG2
(B)=
(C)=

(D)=
(E)=
(F)=

No.	Lev.	Parts No.	Description	Q'ty						I	R
				(A)	(B)	(C)	(D)	(E)	(F)		
1	1	121250-44901	SWITCH, 110	1							
2	1	129001-42004	PUMP ASSY, WATER	1							
13	2	129916-49740	PLUG, R03	2							
14	1	26106-080602	BOLT, M8X 60 PLATED	3							
15	1	129612-42350	V-BELT, A38	1							
16	1	129403-42380	V-PULLEY, D=110	1							
17	1	26106-060352	BOLT, M6X 35 PLATED	4							
18	1	129486-42021	GASKET, WATER PUMP	1							
19	1	171440-44740	FAN, COOLING D350XQF	1							
20	1	129350-49560	COVER, THERMOSTAT	1							
21	1	129795-49551	GASKET	1							
22	1	129457-49801	THERMOSTAT, 82	1							
23	1	129150-49811	GASKET, THERMOSTAT	1							
24	1	124395-49840	GASKET	1							
25	1	26106-080202	BOLT, M8X 20 PLATED	2							
26	1	121450-42450	PLUG, M16	1							
27	1	124465-44950	GASKET, 16	1							
28	1	124465-44950	GASKET, 16	1							
29	1	129001-42040	JOINT	1							
30	1	129486-42140	O-RING, G30	1							
31	1	26106-080162	BOLT, M8X 16 PLATED	3							
32	1	171353-44760	SPACER, FAN	1							
33	1	119620-49290	COCK ASSY, 1/4	1							

Fig.11. FUEL INJECTION PUMP



(A)=4TNE88-RAG2
(B)=
(C)=

(D)=
(E)=
(F)=

No.	Lev.	Parts No.	Description	Qty						I	R
				(A)	(B)	(C)	(D)	(E)	(F)		
1	1	729611-51340	PUMP ASSY, INJECTION	1							1
3	2	129100-52101	PUMP ASSY, FUEL FEED	1							
4	2	129155-52051	GASKET	1							
9	2	129470-51040	CAMSHAFT	1							
10	2	129155-51051	BEARING	1							
11	2	129155-51060	SUPPORT, CAMSHAFT	1							
12	2	122710-51090	KEY	1							
13	2	129470-51101	PLUNGER ASSY	4							
16	2	129155-51140	PIN	4							
17	2	174307-51170	RETAINER, SPRING A	4							
18	2	129155-51180	RETAINER, SPRING	4							
19	2	124950-51190	SPRING, PLUNGER	4							
20	2	129155-51200	TAPPET ASSY	4							
27	2	129155-51270	STOPPER, TAPPET	4							
28	2	129155-51280	O-RING, S6	4							
29	2	129100-51300	VALVE ASSY, DELIVERY	4							
32	2	129155-51320	SPRING, DELIVERY	4							
33	2	129155-51340	RETAINER	4							
34	2	124550-51350	GASKET, DELIVERY	4							
35	2	119717-51420	O-RING	4							
36	2	129155-51370	STOPPER, VALVE	4							
37	2	129155-51380	STOPPER	2							
38	2	129155-51390	STOPPER	2							
39	2	129555-51400	DEFLECTOR	1							
40	2	129155-51410	BOLT	1							
41	2	129155-51450	SHIM SET, ADJUSTING	1							
46	2	129555-51500	RACK, CONTROL	1							
47	2	26716-060002	NUT, M6	2							
48	2	129155-51521	BUSH, RACK	1							
49	2	129155-51530	SPACER	1							
50	2	129155-51540	CIRCLIP	1							
51	2	129155-51550	PINION, CONTROL	4							
52	2	129100-51570	SCREW	4							
53	2	129100-51560	PINION	4							
54	2	129155-51570	PLUG, M12	1							
55	2	129155-51580	O-RING	1							
56	2	129155-51591	SPRING, RACK	1							
57	2	129155-51600	SHIM SET, ADJUSTING	4							
76	2	129555-51701	COVER	1							
77	2	129555-51711	GASKET	1							
78	2	129555-51751	COVER	1							
79	2	129555-51761	GASKET	1							
80	2	129155-51790	STOOPER, RACK	1							
81	2	129156-51910	LABEL, CAUTION	1							
82	2	129155-51930	SPACER, T=3.25	1							
83	2	129155-51940	SPACER, T=1.5	1							
84	2	22217-050000	WASHER, SPRING 5	2							
85	2	22217-060000	WASHER, SPRING 6	2							
86	2	22351-050010	PIN, SPRING 5.0X10	2							
87	2	24101-063034	BEARING, BALL 6303	1							
88	2	24316-000150	O-RING, 4DP15.0	1							

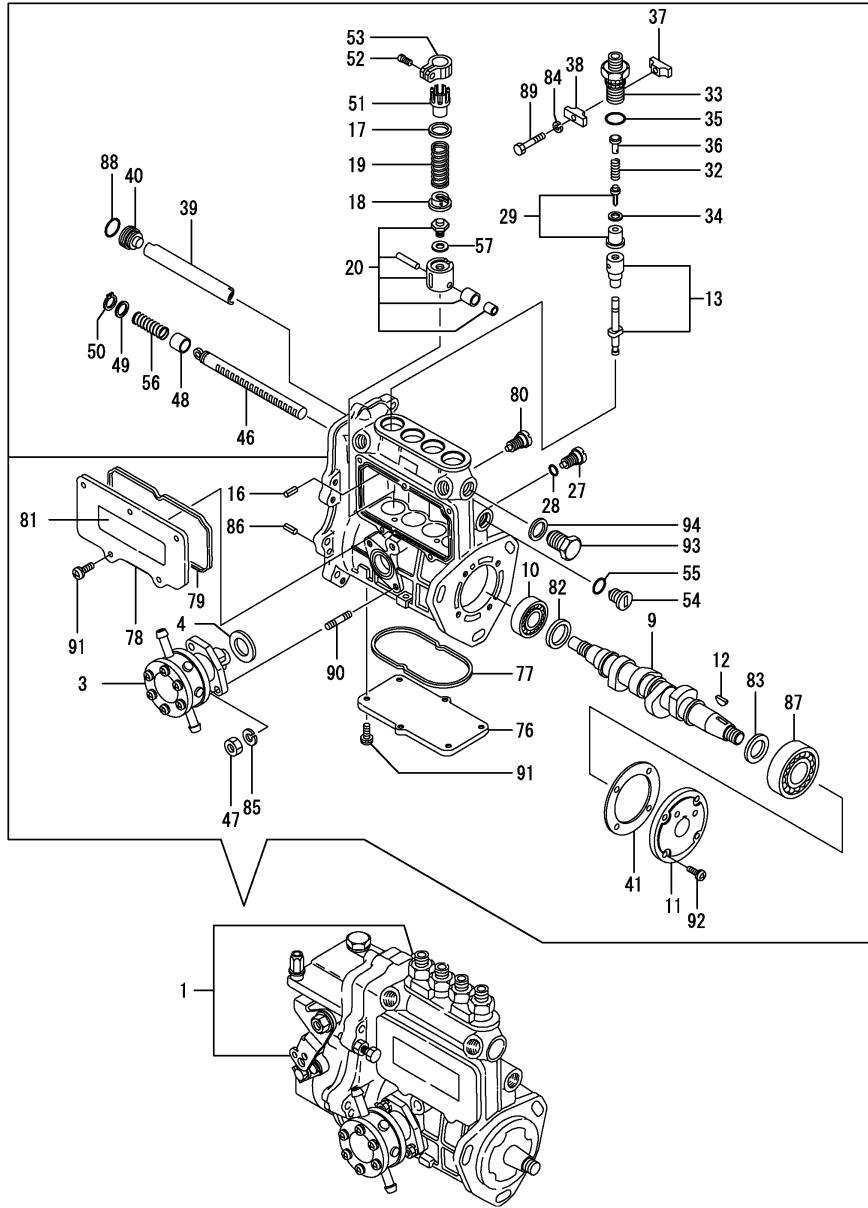
Remarks

(1) GOVERNOR ASSY(FIG.NO.12) IS INCORPORATED IN THIS FUEL INJECTION PUMP ASSY(REF.NO.1).

Fig.11. FUEL INJECTION PUMP

(A)=4TNE88-RAG2
(B)=
(C)=

(D)=
(E)=
(F)=



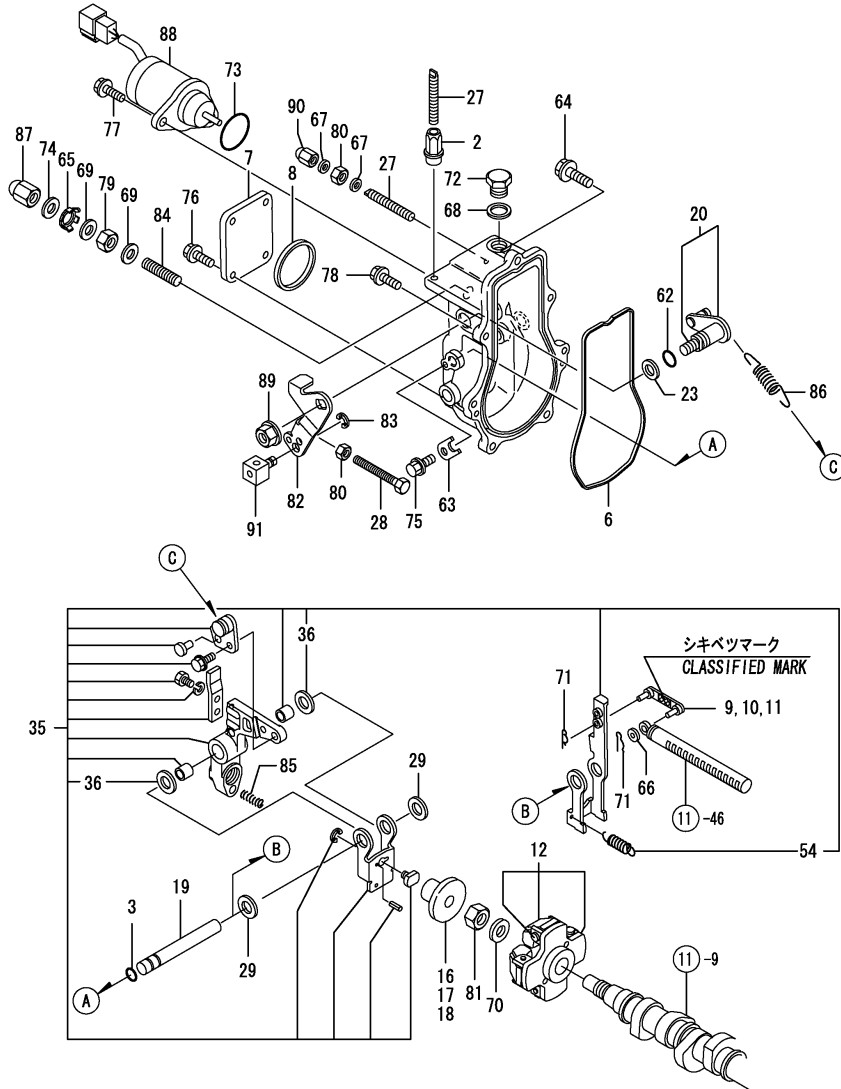
No.	Lev.	Parts No.	Description	Q'ty						I	R
				(A)	(B)	(C)	(D)	(E)	(F)		
89	2	26116-050302	BOLT, M5X 30 PLATED	2							
90	2	129155-51020	STUD	2							
91	2	26022-050122	SCREW, M5X12	11							
92	2	26022-060162	SCREW, M6X16	4							
93	2	129155-51420	PLUG, M16	1							
94	2	22190-160002	WASHER, SEAL 16	1							

Remarks
(1) GOVERNOR ASSY(FIG.NO.12) IS INCORPORATED IN THIS FUEL INJECTION PUMP ASSY(REF.NO.1).

Fig.12. GOVERNOR

(A)=4TNE88-RAG2
(B)=
(C)=

(D)=
(E)=
(F)=



No.	Lev.	Parts No.	Description	(A)	(B)	(C)	(D)	(E)	(F)	Q'ty	I	R
2	2	129209-61370	NUT, M6	1								
3	2	129155-51280	O-RING, S6	1								
6	2	129052-61051	GASKET	1								
7	2	129052-61060	COVER, GOVERNOR CASE	1								
8	2	129052-61071	GASKET	1								
9	2	129155-61120	LINK, L=30 MARK 0	1								1
10	2	129155-61130	LINK, L=31 MARK 1	1								1
11	2	129155-61140	LINK, L=30.5 MARK 05	1								1
12	2	171488-61200	WEIGHT ASSY,GOVERNOR	1								
16	2	129155-61341	SLEEVE	1								2
17	2	129155-61350	SLEEVE, L=24.9	1								2
18	2	129155-61360	SLEEVE, L=25.2	1								2
19	2	129052-61390	SHAFT	1								
20	2	129100-61400	SHAFT ASSY	1								
23	2	129155-61430	SPACER	1								
27	2	129155-61450	BOLT, LIMITER	2								
28	2	129155-61460	BOLT, IDLE	1								
29	2	129155-61480	SPACER ASSY	2								
35	2	129486-61501	LEVER ASSY, GOVERNOR	1								
36	3	174307-51700	SHIM SET	2								
54	3	129486-61540	SPRING, SET	1								
62	2	129155-61830	O-RING, S10	1								
63	2	119660-61901	RETAINER, SHAFT	1								
64	2	129155-61950	BOLT	1								
65	2	129209-61970	PLATE	1								
66	2	22117-040000	WASHER, 4	1								
67	2	22190-060003	SEAL WASER 6	2								
68	2	22190-100002	WASHER, SEAL 10	1								
69	2	22190-120002	WASHER, SEAL 12	2								
70	2	22287-120000	WASHER, 12	1								
71	2	22372-040000	PIN, SNAP 4	2								
72	2	23887-100002	PLUG, 10	1								
73	2	158552-61900	O-RING	1								
74	2	23414-120016	GASKET, 12X1.0	1								
75	2	26106-060102	BOLT, M6X 10 PLATED	1								
76	2	26106-060102	BOLT, M6X 10 PLATED	4								
77	2	26106-060142	BOLT, M6X 14 PLATED	2								
78	2	26106-060202	BOLT, M6X 20 PLATED	6								
79	2	26736-120002	NUT, M12	1								
80	2	26756-060002	NUT, LOCK M6	2								
81	2	26776-120002	NUT, LOCK M12	1								
82	2	129100-61440	LEVER, CONTROL	1								
83	2	22272-000070	RING, E- 7	1								
84	2	120323-61470	BOLT, CONTROL	1								
85	2	129500-61650	SPRING, FUEL CONTROL	1								
86	2	129477-61720	SPRING, GOVERNOR	1								
87	2	129209-61930	NUT, CAP	1								
88	2	119653-77950	SOLENOID, STOP	1								
89	2	26366-080002	NUT, M8	1								
90	2	119600-66840	NUT, CAP	1								
91	2	124756-67510	RETAINER	1								

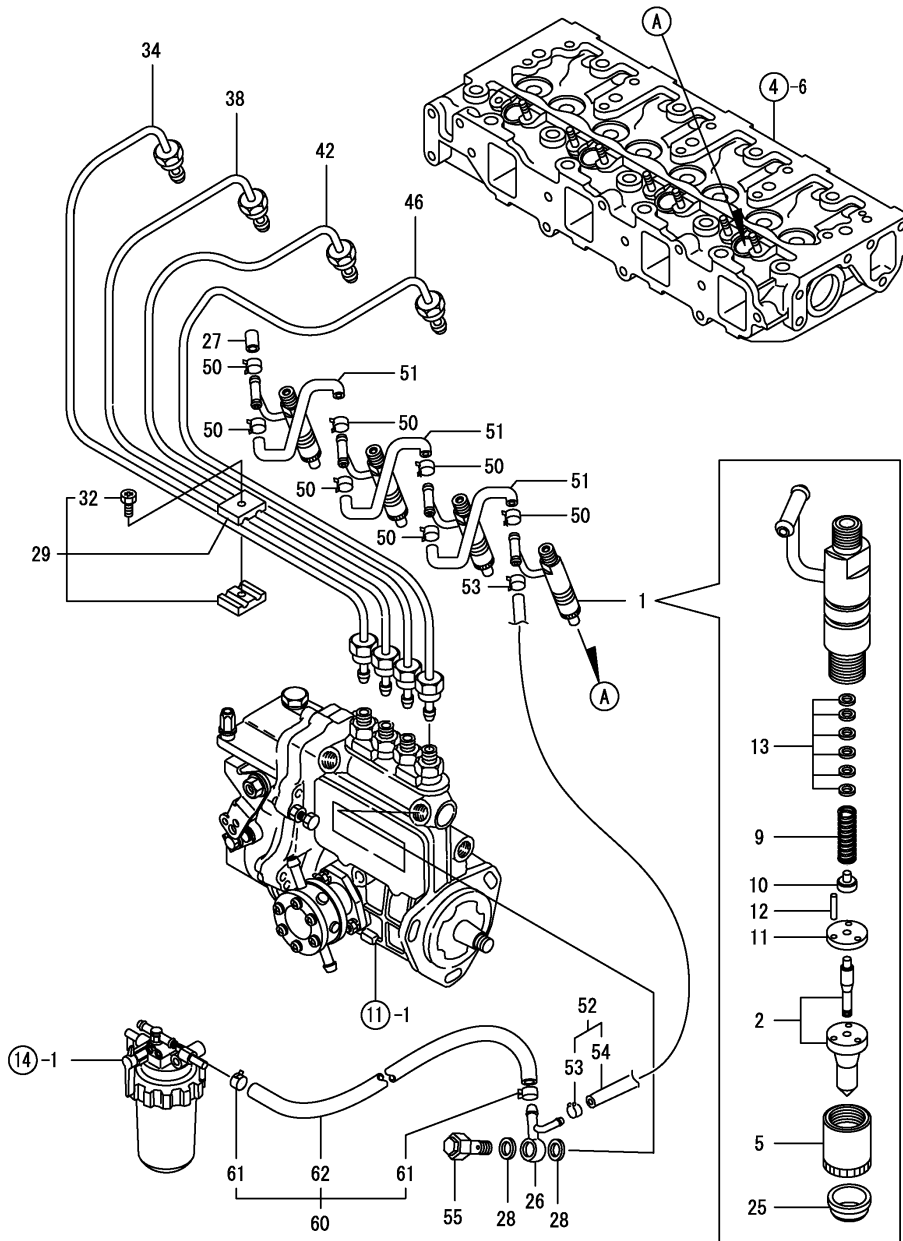
Remarks

(1) SELECTIVE PARTS: CERTAIN THE CLASSIFICATION MARK, THEN PLACE YOUR ORDER.(REFER TO ILLUSTRATION).

(2) SELECTIVE PARTS.

* THIS FIGURE(GOVERNOR ASSY)IS INCORPORATED IN THE FUEL INJECTION PUMP ASSY(FIG.11).

Fig.13. FUEL INJECTION VALVE



(A)=4TNE88-RAG2

(B)=

(C)=

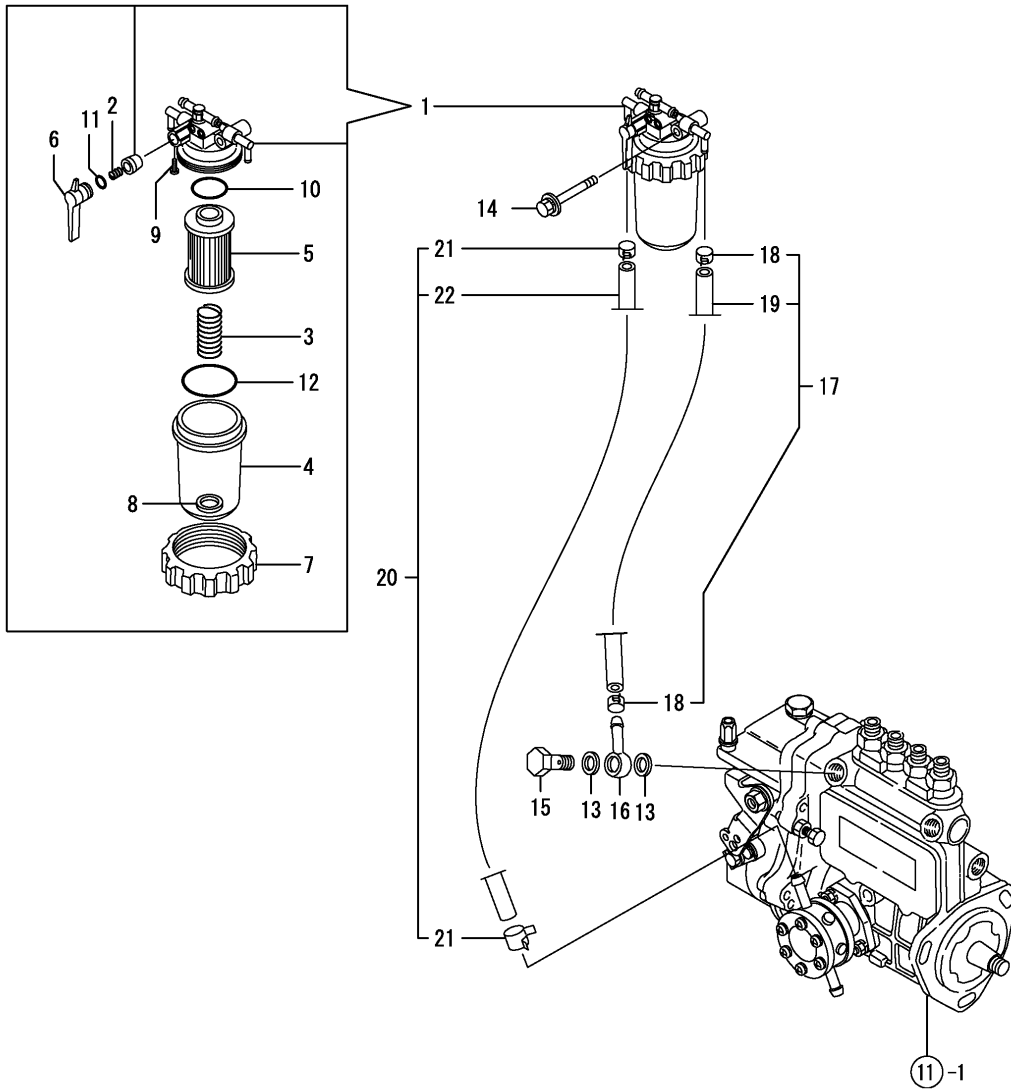
(D)=

(E)=

(F)=

No.	Lev.	Parts No.	Description	Q'ty						I	R
				(A)	(B)	(C)	(D)	(E)	(F)		
1	1	729577-53100	VALVE ASSY,INJECTION	4							
2	2	119807-53000	VALVE ASSY,INJECTION	4							
5	2	114250-53080	NUT, NOZZLE D16.95	4							
9	2	114250-53120	SPRING, NOZZLE	4							
10	2	114250-53130	SEAT, SPRING	4							
11	2	114250-53140	PLATE	4							
12	2	114250-53210	PIN	8							
13	2	114250-53400	SHIM SET	4							
25	2	129685-11930	GASKET, NOZZLE	4							
26	1	119840-59570	JOINT	1							
27	1	129150-59580	CAP	1							
28	1	22190-120002	WASHER, SEAL 12	2							
29	1	119305-59120	RETAINER, PIPE	2							
32	2	129150-59131	BOLT, M4X14	2							
34	1	129611-59910	PIPE ASSY, INJECTION	1							
38	1	129611-59920	PIPE ASSY, INJECTION	1							
42	1	129611-59930	PIPE ASSY, INJECTION	1							
46	1	129611-59940	PIPE ASSY, INJECTION	1							
50	1	124066-59100	CLIP, HOSE 8	9							
51	1	121250-59550	PIPE, FUEL D8X120	3							
52	1	119840-59500	PIPE ASSY, RETURN	1							
53	2	124066-59100	CLIP, HOSE 8	2							
54	2	119840-59560	PIPE, FUEL RETURN	1							
55	1	119813-59950	VALVE ASSY, CHECK	1							
60	1	129210-59150	PIPE ASSY, FUEL	1							
61	2	124766-59050	CLIP, HOSE 12	2							
62	2	105025-59530	PIPE, FUEL D13X400	1							

Fig.14. FUEL LINE



(A)=4TNE88-RAG2

(B)=

(C)=

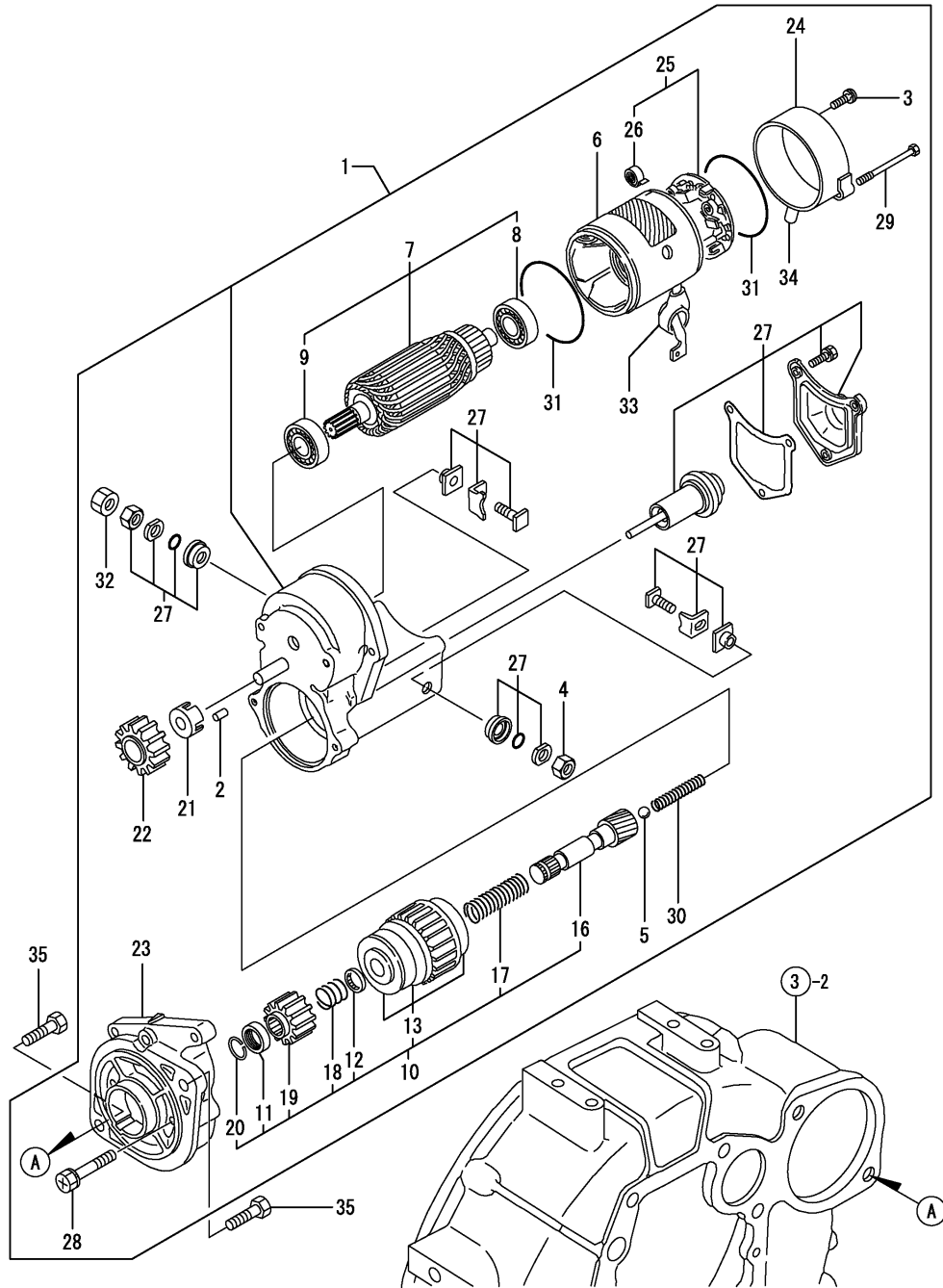
(D)=

(E)=

(F)=

No.	Lev.	Parts No.	Description	Qty						I	R
				(A)	(B)	(C)	(D)	(E)	(F)		
1	1	129612-55620	FILTER ASSY, FUEL	1							
2	2	104200-55330	SPRING, VALVE	1							
3	2	105900-55330	SPRING	1							
4	2	129612-55510	CUP	1							
5	2	129100-55650	ELEMENT	1							
6	2	129100-55670	LEVER	1							
7	2	129100-55690	RING, RETAINING	1							
8	2	121257-55731	FLOAT	1							
9	2	104200-55750	SCREW, M4	1							
10	2	24311-000160	O-RING, 1AP16.0	1							
11	2	24311-240100	O-RING, 1AP10A	1							
12	2	24321-000650	O-RING, 1AG65.0	1							
13	1	22190-120002	WASHER, SEAL 12	2							
14	1	26014-080702	BOLT, M8X 70	1							
15	1	103854-39140	BOLT, PIPE JOINT	1							
16	1	101304-59020	JOINT, PIPE 12	1							
17	1	129210-59040	PIPE ASSY, FUEL	1							
18	2	124766-59050	CLIP, HOSE 12	2							
19	2	129555-59510	PIPE, D13/7.5X180	1							
20	1	129210-59150	PIPE ASSY, FUEL	1							
21	2	124766-59050	CLIP, HOSE 12	2							
22	2	105025-59530	PIPE, FUEL D13X400	1							

Fig.15. STARTING MOTOR



(A)=4TNE88-RAG2
(B)=
(C)=

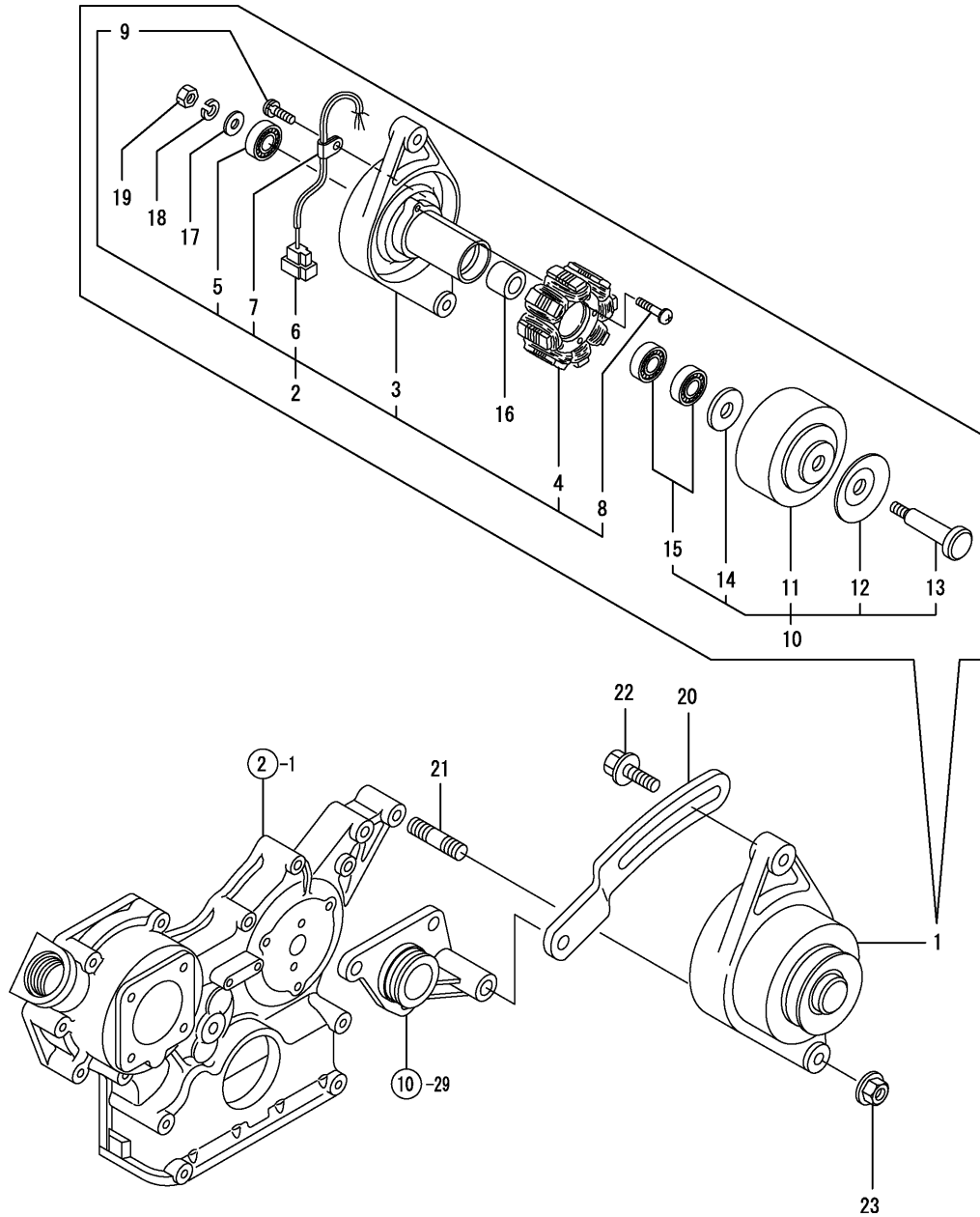
(D)=
(E)=
(F)=

No.	Lev.	Parts No.	Description	Q'ty						I	R
				(A)	(B)	(C)	(D)	(E)	(F)		
1	1	129407-77010	STARTER, RA1.4	1							
2	2	X0283060061	ROLLER	5							
3	2	129129-77460	SCREW	2							
4	2	X9490561370	NUT	1							
5	2	X9491200240	BALL	1							
6	2	129407-77210	YOKE ASSY	1							
7	2	129407-77220	ARMATURE ASSY	1							
8	3	129129-77230	BEARING	1							
9	3	129129-77240	BEARING	1							
10	2	129407-77250	STARTER	1							
11	3	X0280210230	NUT	1							
12	3	X0283270140	RETAINER	1							
13	3	129407-77390	CLUTCH ASSY	1							
16	3	129129-77400	SHAFT	1							
17	3	129129-77410	SPRING, COIL	1							
18	3	129407-77410	SPRING	1							
19	3	129129-77420	PINION, STARTER	1							
20	3	129129-77430	RING	1							
21	2	129129-77260	RETAINER	1							
22	2	129129-77270	PINION	1							
23	2	129407-77280	HOUSING	1							
24	2	129129-77290	FRAME	1							
25	2	129407-77300	HOLDER ASSY	1							
26	3	X9491730461	SPRING	4							
27	2	129407-77310	SWITCH ASSY	1							
28	2	129129-77320	BOLT	2							
29	2	129407-77330	BOLT	2							
30	2	129129-77340	SPRING	1							
31	2	129129-77350	O-RING	2							
32	2	129129-77370	NUT	1							
33	2	129129-77380	CAP	1							
34	2	129129-77362	COVER	1							
35	1	26116-120252	BOLT, M12X 25 PLATED	2							

Fig.16. GENERATOR

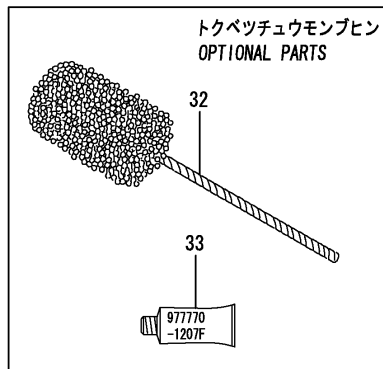
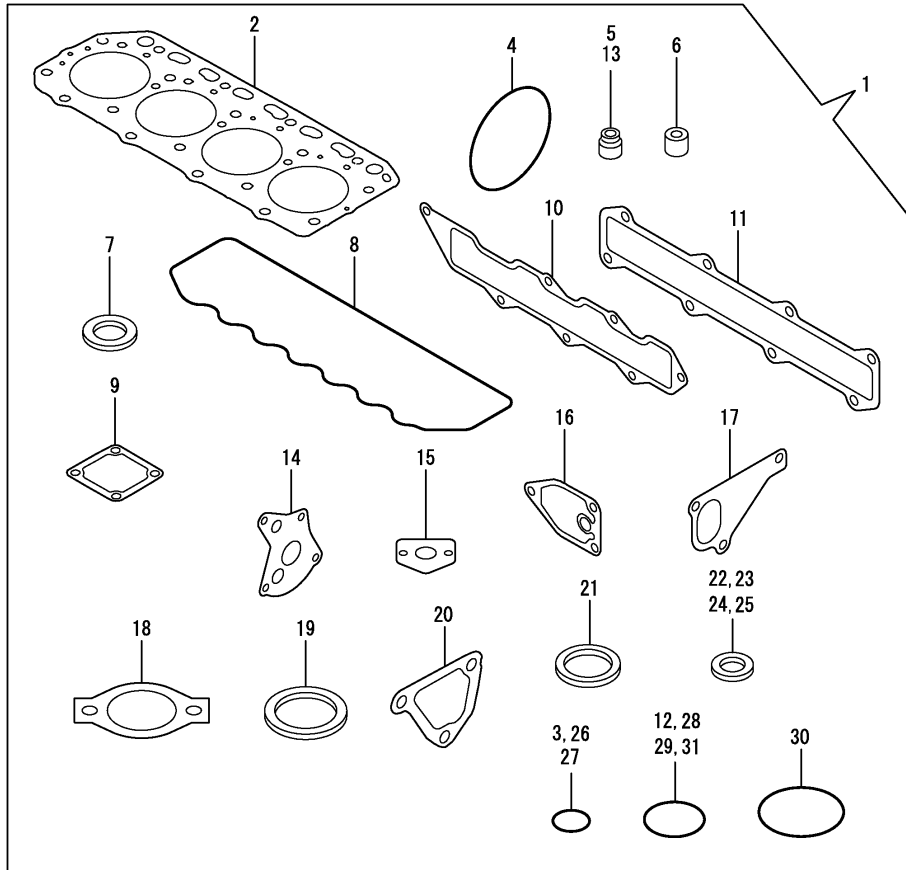
(A)=4TNE88-RAG2
(B)=
(C)=

(D)=
(E)=
(F)=



No.	Lev.	Parts No.	Description	Q'ty						I	R
				(A)	(B)	(C)	(D)	(E)	(F)		
1	1	171301-77201	DYNAMO ASSY, 15A	1							
2	2	XM08137	PLATE ASSY	1							
3	3	XM08138	PLATE	1							
4	3	XM08180	STATOR SET	1							
5	3	XM27436	BEARING, BALL	1							
6	3	XM17878	COUPLER	1							
7	3	XM36410	CLAMP	1							
8	3	26022-040252	SCREW, M4X25	2							
9	3	XYSPS4008	SCREW	1							
10	2	XM82184	FLYWHEEL ASSY	1							
11	3	XM82110	FLYWHEEL	1							
12	3	XM72174	PULLEY	1							
13	3	XM72664	SHAFT	1							
14	3	XM37336	WASHER	1							
15	3	XM27436	BEARING, BALL	2							
16	2	106383-44720	SPACER	1							
17	2	106383-44730	WASHER	1							
18	2	22212-100000	SPRING WASHER 10	1							
19	2	26716-100002	NUT, M10	1							
20	1	129410-77330	ADJUSTER	1							
21	1	129795-01900	STUD	1							
22	1	119810-77340	BOLT, ADJUSTER	1							
23	1	26306-100002	NUT, M10	1							

Fig.17. GASKET SET



(A)=4TNE88-RAG2

(B)=

(C)=

(D)=

(E)=

(F)=

No.	Lev.	Parts No.	Description	Q'ty						I	R
				(A)	(B)	(C)	(D)	(E)	(F)		
1	1	729611-92630	GASKET SET	1							1
2	2	129407-01340	GASKET, HEAD	1							
3	2	119609-32040	O-RING, P16	2							
4	2	121850-51960	O-RING	1							
5	2	124460-11340	SEAL, VALVE STEM	4							
6	2	119625-11870	PROTECTOR, NOZZLE	4							
7	2	119625-11880	SEAT, NOZZLE	4							
8	2	129550-11310	GASKET, BONNET	1							
9	2	129150-77511	GASKET	1							
10	2	129407-12110	GASKET, MANIFOLD	1							
11	2	129407-13110	GASKET	1							
12	2	24341-000250	O-RING, 1AS25.0	1							
13	2	121400-11340	SEAL, VALVE STEM	4							
14	2	129150-32020	GASKET, PUMP	1							
15	2	129150-35042	GASKET	1							
16	2	129150-35111	GASKET	1							
17	2	129486-42021	GASKET, WATER PUMP	1							
18	2	129795-49551	GASKET	1							
19	2	129150-49811	GASKET, THERMOSTAT	1							
20	2	124395-49840	GASKET	1							
21	2	129155-52050	GASKET	1							
22	2	22190-080002	WASHER, SEAL 6	7							
23	2	22190-100002	WASHER, SEAL 10	2							
24	2	124465-44950	GASKET, 16	2							
25	2	22190-120002	WASHER, SEAL 12	4							
26	2	24311-000120	O-RING, 1AP12.0	3							
27	2	24311-000160	O-RING, 1AP16.0	1							
28	2	24311-000320	O-RING, 1AP32.0	2							
29	2	24341-000240	O-RING, 1AS24.0	1							
30	2	24341-000500	O-RING, 1AS50.0	1							
31	2	129486-42140	O-RING, G30	1							
32	1	129400-92420	HONE	1							1
33	1	977770-1207F	GASKET.LIQUID	1							1

Remarks

(1) OPTIONAL PARTS.

Parts No. Index

Parts No.	Fig. No.	Ref. No.
101304-59020	14	16
103854-39140	14	15
104200-55330	14	2
104200-55750	14	9
104407-44480	5	5
105025-59530	13	62
	14	22
105900-55330	14	3
106383-44720	16	16
106383-44730	16	17
114250-39450	9	29
114250-53080	13	5
114250-53120	13	9
114250-53130	13	10
114250-53140	13	11
114250-53210	13	12
114250-53400	13	13
119131-18320	6	5
119305-59120	13	29
119600-66840	12	90
119609-32040	2	13
	17	3
119620-01750	3	3
119620-49290	10	33
119625-11870	4	26
	17	6
119625-11880	4	27
	17	7
119625-11900	4	28
119640-01640	3	9
119653-77950	12	88
119660-61901	12	63
119717-51420	11	35
119802-11280	4	40
119802-13600	6	4
119802-13710	6	6
119807-53000	13	2
119810-77340	16	22
119813-59950	13	55
119840-59500	13	52
119840-59560	13	54
119840-59570	13	26
120130-11860	4	10
120323-61470	12	84
121111-21501	8	12
121250-44901	10	1
121250-59550	13	51
121257-55731	14	8
121400-11340	4	21
	17	13

Parts No.	Fig. No.	Ref. No.
121450-01560	2	6
121450-42450	10	26
121520-34810	9	20
121550-23200	8	30
121850-21680	8	11
121850-51960	2	12
	17	4
122710-51090	11	12
124066-59100	13	50
		53
124160-01751	2	7
	4	45
124160-01910	1	5
		6
124160-11360	4	55
124160-39140	9	30
124240-01871	2	8
124395-49840	10	24
	17	20
124460-11340	4	22
	17	5
124465-44950	10	27
		28
	17	24
124550-21600	8	16
124550-51350	11	34
124550-59820	9	36
124550-59830	9	35
124736-07900	4	57
124756-67510	12	91
124766-59050	13	61
	14	18
		21
124950-51190	11	19
129001-01250	1	12
129001-02930	1	25
129001-22081	8	17
129001-22500	8	19
129001-22901	8	33
129001-22950	8	35
129001-35300	9	25
129001-42004	10	2
129001-42040	10	29
129001-91841	2	21
129052-61051	12	6
129052-61060	12	7
129052-61071	12	8
129052-61390	12	19
129100-01580	3	1
		15

Parts No.	Fig. No.	Ref. No.
129100-01580	8	2
129100-01640	3	16
129100-11100	4	16
129100-11112	4	17
129100-11650	4	36
129100-23910	8	29
129100-25061	7	9
129100-51300	11	29
129100-51560	11	53
129100-51570	11	52
129100-52101	11	3
129100-55650	14	5
129100-55670	14	6
129100-55690	14	7
129100-61400	12	20
129100-61440	12	82
129111-67010	3	22
129120-77501	5	8
129129-77230	15	8
129129-77240	15	9
129129-77260	15	21
129129-77270	15	22
129129-77290	15	24
129129-77320	15	28
129129-77340	15	30
129129-77350	15	31
129129-77362	15	34
129129-77370	15	32
129129-77380	15	33
129129-77400	15	16
129129-77410	15	17
129129-77420	15	19
129129-77430	15	20
129129-77460	15	3
129136-34800	9	19
129150-01200	1	32
129150-02020	1	8
129150-02450	7	4
129150-02870	1	34
129150-02930	1	28
129150-02940	1	37
129150-03020	4	46
129150-03070	4	47
129150-03080	4	48
129150-03100	2	11
129150-11230	4	37
129150-11280	4	32
129150-11370	4	23
129150-11750	4	39
129150-11810	4	12

Parts No.	Fig. No.	Ref. No.
129150-14101	7	7
129150-14200	7	1
129150-14400	7	2
129150-21200	8	5
129150-23600	8	31
129150-23610	8	39
129150-25101	7	10
129150-25900	7	15
129150-25920	7	13
129150-32020	9	14
	17	14
129150-35042	9	16
	17	15
129150-35101	9	22
129150-35111	9	23
	17	16
129150-35170	9	24
129150-35350	9	26
129150-49811	10	23
	17	19
129150-59131	13	32
129150-59580	13	27
129150-77511	5	9
	17	9
129150-91400	2	25
129155-11260	4	30
129155-11270	4	31
129155-51020	11	90
129155-51051	11	10
129155-51060	11	11
129155-51140	11	16
129155-51180	11	18
129155-51200	11	20
129155-51270	11	27
129155-51280	11	28
	12	3
129155-51320	11	32
129155-51340	11	33
129155-51370	11	36
129155-51380	11	37
129155-51390	11	38
129155-51410	11	40
129155-51420	11	93
129155-51450	11	41
129155-51521	11	48
129155-51530	11	49
129155-51540	11	50
129155-51550	11	51
129155-51570	11	54
129155-51580	11	55

Parts No. Index

Parts No.	Fig. No.	Ref. No.
129155-51591	11	56
129155-51600	11	57
129155-51790	11	80
129155-51930	11	82
129155-51940	11	83
129155-52050	17	21
129155-52051	11	4
129155-61120	12	9
129155-61130	12	10
129155-61140	12	11
129155-61341	12	16
129155-61350	12	17
129155-61360	12	18
129155-61430	12	23
129155-61450	12	27
129155-61460	12	28
129155-61480	12	29
129155-61830	12	62
129155-61950	12	64
129156-51910	11	81
129202-22300	8	23
129209-61370	12	2
129209-61930	12	87
129209-61970	12	65
129210-59040	14	17
129210-59150	13	60
	14	20
129219-03100	4	1
129350-49560	10	20
129400-01520	2	5
129400-01730	3	6
129400-01770	3	8
129400-11350	4	44
129400-92420	17	32
129403-42380	10	16
129407-01340	1	33
	17	2
129407-11700	4	6
129407-12110	5	1
	17	10
129407-12700	5	2
129407-13101	6	1
129407-13110	6	2
	17	11
129407-21100	8	1
129407-32000	9	1
129407-77010	15	1
129407-77210	15	6
129407-77220	15	7
129407-77250	15	10

Parts No.	Fig. No.	Ref. No.
129407-77280	15	23
129407-77300	15	25
129407-77310	15	27
129407-77330	15	29
129407-77390	15	13
129407-77410	15	18
129410-03990	4	5
129410-77330	16	20
129436-35070	9	17 -1
129436-35091	9	17
129457-49801	10	22
129470-51040	11	9
129470-51101	11	13
129477-61720	12	86
129486-01670	3	19
129486-42021	10	18
	17	17
129486-42140	10	30
	17	31
129486-61501	12	35
129486-61540	12	54
129500-11240	4	29
129500-61650	12	85
129550-11290	4	33
129550-11310	4	51
	17	8
129550-21650	8	9
129550-39450	9	31
129555-51400	11	39
129555-51500	11	46
129555-51701	11	76
129555-51711	11	77
129555-51751	11	78
129555-51761	11	79
129555-59510	14	19
129611-59910	13	34
129611-59920	13	38
129611-59930	13	42
129611-59940	13	46
129612-42350	10	15
129612-55510	14	4
129612-55620	14	1
129685-11930	13	25
129688-01780	3	8 -1
129795-01780	3	18
129795-01800	2	4
129795-01900	16	21
129795-01950	2	10
129795-02411	1	31
129795-11120	4	18

Parts No.	Fig. No.	Ref. No.
129795-11180	4	19
129795-21661	8	10
129795-49551	10	21
	17	18
129900-07900	4	57 -1
129916-49740	10	13
158552-61900	12	73
171051-01921	1	7
171301-77201	16	1
171353-44760	10	32
171420-01600	3	2
171420-21590	8	13
171440-44740	10	19
171488-61200	12	12
174307-51170	11	17
174307-51700	12	36
22117-040000	12	66
22190-060003	12	67
22190-080002	2	23
		24
	9	37
		38
	17	22
22190-100002	9	18
	12	68
	17	23
22190-120002	12	69
	13	28
	14	13
	17	25
22190-160002	11	94
22190-220002	3	11
22212-100000	16	18
22217-050000	11	84
22217-060000	11	85
22217-120000	7	16
22252-000260	8	24
22272-000070	12	83
22287-120000	12	70
22351-040010	8	8
22351-050010	11	86
22351-060012	4	24
22372-040000	12	71
22512-070140	7	8
	8	6
23414-120016	12	74
23876-010000	1	11
23876-030000	1	15
23887-100002	12	72
24101-063034	11	87

Parts No.	Fig. No.	Ref. No.
24311-000120	4	56
	17	26
24311-000160	9	27
	14	10
	17	27
24311-000320	2	14
	4	52
	17	28
24311-240100	14	11
24316-000150	11	88
24321-000650	14	12
24341-000240	2	27
	17	29
24341-000250	17	12
24341-000500	4	53
	17	30
26014-080702	14	14
26022-040252	16	8
26022-050122	11	91
26022-060162	11	92
26106-060102	12	75
		76
26106-060142	12	77
26106-060162	2	28
26106-060202	12	78
26106-060352	10	17
26106-080122	2	15
26106-080142	4	58
	7	18
26106-080162	2	16
		17
	3	12
		23
	4	54
26106-080202	10	31
	2	18
	5	6
	9	28
	10	25
26106-080252	3	13
	4	42
26106-080352	3	20
	5	10
	9	21
26106-080452	2	19
	3	14
		14 -1
	7	14
26106-080502	3	24
	4	43

Parts No. Index

Parts No.	Fig. No.	Ref. No.
26106-080502	5	7
26106-080552	2	20
	9	21 -1
26106-080602	10	14
26116-050302	11	89
26116-120252	15	35
26206-100252	3	4
26206-100302	3	5
26216-060202	4	14
26306-080002	2	22
	6	3
26306-100002	16	23
26366-060002	4	25
26366-080002	12	89
26450-060252	9	15
26716-060002	11	47
26716-100002	16	19
26716-120002	7	17
26736-120002	12	79
26756-060002	12	80
26756-080002	4	41
26776-120002	12	81
27241-120000	1	13
27241-300000	1	14
27241-400000	4	15
27310-080000	4	20
719810-01500	2	1
729402-14580	7	3
729402-23100	8	25
729407-01561	1	1
729577-53100	13	1
729611-51340	11	1
729611-92630	17	1
977770-1207F	2	9
	3	21
	17	33
X0280210230	15	11
X0283060061	15	2
X0283270140	15	12
X9490561370	15	4
X9491200240	15	5
X9491730461	15	26
XM08137	16	2
XM08138	16	3
XM08180	16	4
XM17878	16	6
XM27436	16	5
		15
XM36410	16	7
XM37336	16	14

Parts No.	Fig. No.	Ref. No.
XM72174	16	12
XM72664	16	13
XM82110	16	11
XM82184	16	10
XYSPS4008	16	9

Parts No.	Fig. No.	Ref. No.
-----------	----------	----------

Parts No.	Fig. No.	Ref. No.
-----------	----------	----------