

0CB10-M71401EN

## Directions for the Parts Catalog.

1. This Parts Catalog shows both standard and optional parts.
2. Parts may change without prior notice.
3. The following is an example of the Parts Catalog format.

REF.	LEV.	PARTS NO.	DESCRIPTION	Q'TY						I	R
				(A)	(B)	(C)	(D)	(E)	(F)		
1	1	729595-51390	FUEL INJECTION PUMP	1	1	1	1	1			1
1-1	1	729595-51391	FUEL INJECTION PUMP	1	1	1	1	1		N	1
		(A=E00185) (B=E00200)									
3	2	26022-060162	SCREW M 6X 16	9	9	9	9	9			
3-1	2	26022-060162	SCREW M 6X 16	4	4	4	4	4		K	
		(A=E00156) (B=E00156) (C=E00156) (D=E00156) (E=E00156)									
4	2	129470-51040	CAMSHAFT	1	1	1	1	1			
5	2	122710-51050	BEARING, ROLLER	2	2	2	2	2			
6	2	129470-51060	RETAINER	1	1	1	1	1			

Remarks
(1) BOOST COMPEMSATOR TYPE. OPTIONAL PART, TO E00155,(4JH-DT, 4JH-DTZ

### ① Ref. No.

The Ref. No. listed may not be in accordance with the illustration Ref. No.

(Ex.) Illustration No.

List Ref No.

1

1

(Before change)

1-1

(After change)

For interchangeable symbols N, R and K, illustrations for new parts may be abbreviated.

### ② Lev. (Level)

Level indication

The numbers below indicate the level of relativity towards the main part.

1 ----- Main parts (Assembly parts)

2 ----- Sub component included in " 1 ".

3 ----- Sub component included in " 2 ".

Note) Parts that are not for sale are partially illustrated but not listed.

### ③ Interchangeability Symbol

When a part change takes place, one of the following interchangeability symbols is indicated beside the part.

Symbol	Interchangeability	Contents note
N	Old $\begin{matrix} \leftarrow \text{Yes} \\ \text{No} \rightarrow \end{matrix}$ New	New Part is interchangeable for Old Part but Old Part is not interchangeable for New Part.
Q	Old $\begin{matrix} \leftarrow \text{No} \\ \text{Yes} \rightarrow \end{matrix}$ New	New Part is not interchangeable for Old Part but Old Part is interchangeable for New Part.
R	Old $\begin{matrix} \leftarrow \text{Yes} \\ \text{Yes} \rightarrow \end{matrix}$ New	New/ Old Parts are both interchangeable.
S	Old $\begin{matrix} \leftarrow \text{No} \\ \text{No} \rightarrow \end{matrix}$ New	New/ Old Parts are both not interchangeable.
W		Part newly added.
Z		Part discontinued.
F		Not interchangeable by a single part but interchangeable together with related parts.
K		Changes only for used parts quantities.

### ④ Effective Machine No.

When a part changes, the effective Machine No. will be indicated in the (A)-(F) column.

Product Symbol	Product No.	Product Symbol	Product No.
C	Clutch No. Compressor No.	F	Machine No. (Agricultural Equip.)
D	Drive No.	M	Machine No.
E	Engine No.		

Note 1) A date may follow the symbol. (Ex.) 1996.01

Note 2) "XXXXX" and "ZZZZZ" are for parts that could not be predicted or for engine models that could not be identified.

Note 3) (A=E00185) is the E (Engine Serial Number) for the column (A) model (in this case 4JH-DT) after the parts design change.

### ⑤ Remarks

Figures or alphabets (symbols) are entered in the remarks column.

The comments (remarks) on parts that are indicated at the bottom of the illustration are the same symbols as those stated above.

# Contents

0CB10-M71401

Fig. No. Fig. Name

Fig. No. Fig. Name

## ENGINE

1. CYLINDER BLOCK
2. GEAR HOUSING
3. FLYWHEEL HOUSING & OIL SUMP
4. CYLINDER HEAD & BONNET
5. EXHAUST MANIFOLD & SILENCER
6. CAMSHAFT & DRIVING GEAR
7. CRANKSHAFT & PISTON
8. LUB. OIL SYSTEM
9. COOLING WATER SYSTEM
10. FUEL INJECTION PUMP
11. GOVERNOR
12. FUEL INJECTION VALVE
13. FUEL PIPE
14. STARTER MOTOR
15. GENERATOR
16. GASKET SET & TOOL

Fig.1. CYLINDER BLOCK

(A)=3TNV76-PBV

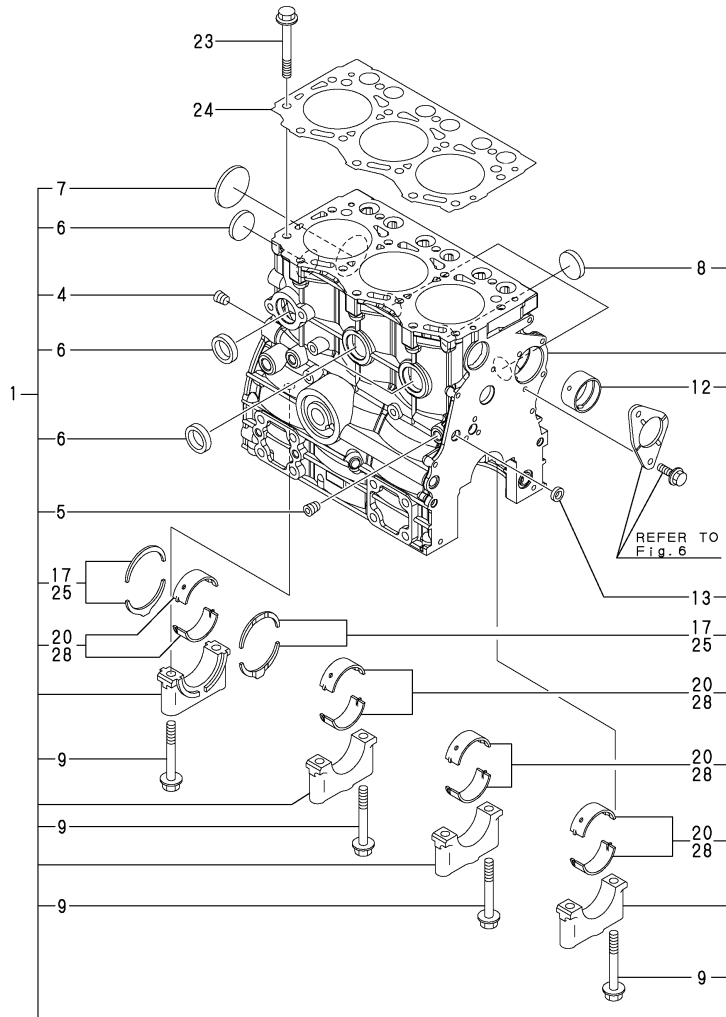
(B)=

(C)=

(D)=

(E)=

(F)=

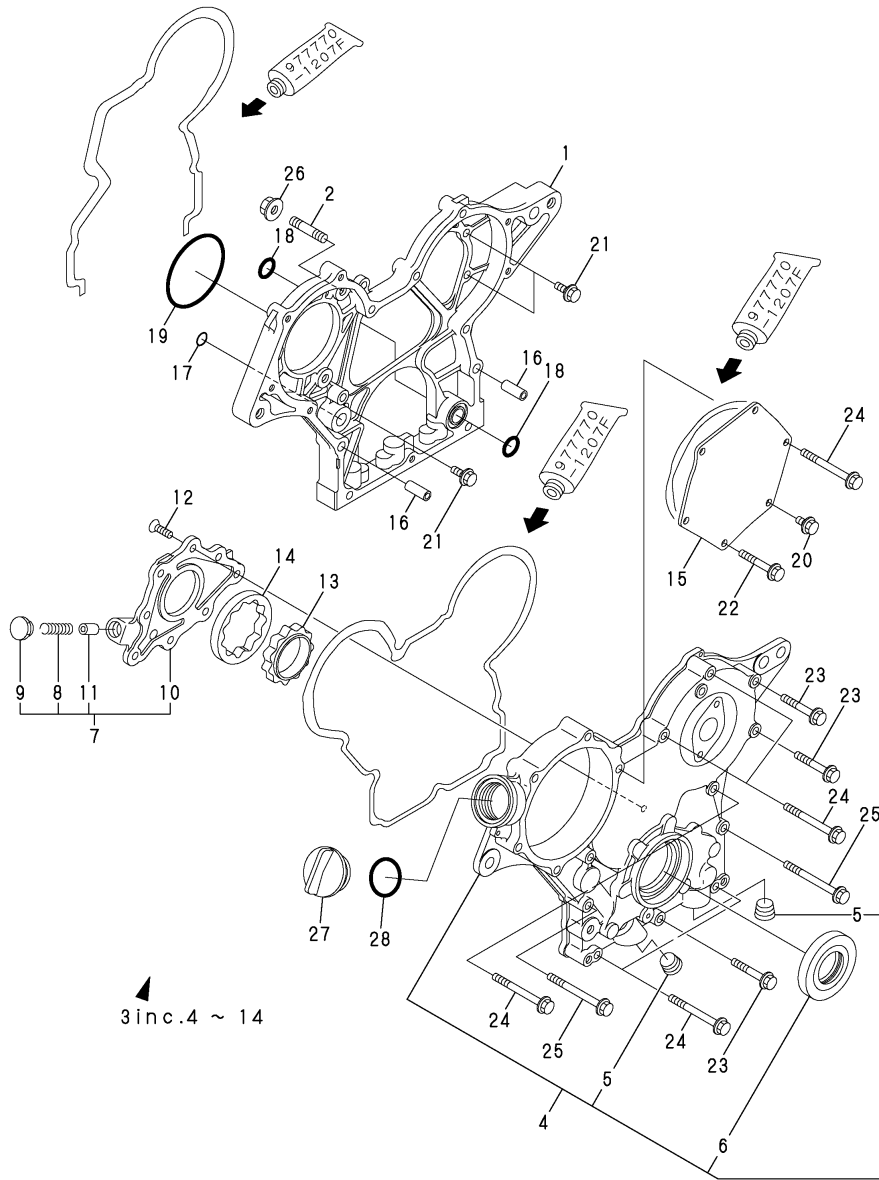


No.	Lev.	Parts No.	Description	Q'ty						I	R
				(A)	(B)	(C)	(D)	(E)	(F)		
1	1	719717-01560	BLOCK ASSY, CYLINDER	1							
1-1	1	719717-01562	BLOCK ASSY, CYLINDER	1							N
(A=E/#07139)											
4	3	124160-01910	PLUG, PT1/4	1							
5	3	124060-01050	PLUG, PT1/8	1							
6	3	105311-01090	PLUG, CUP TYPE 30	4							
7	3	119623-01250	PLUG, DISH TYPE 45	1							
8	3	119285-01990	PLUG, CUP TYPE 25	3							
9	3	119620-02020	BOLT, METAL CAP	8							
12	3	119717-02410	BUSH, CAMSHAFT	1							
12-1	3	119717-02411	BUSH, CAMSHAFT	1							N
(A=E/#24271)											
13	3	27241-120000	PLUG, 12	1							
17	2	119717-02930	BEARING ASSY, THRUST	2							2
17-1	2	119810-02931	BEARING, THRUST	1							N 2
(A=E/#24271)											
20	2	719717-02900	BEARING ASSY, MAIN	4							2
20-1	2	719717-02901	BEARING ASSY, MAIN	4							N 2
(A=E/#24271)											
23	1	119810-01200	BOLT, CYLINDER HEAD	14							
24	1	119717-01330	GASKET, HEAD	1							
25	1	119810-02940	BEARING, THRUST 0.25	2							1
25-1	1	119810-02941	BEARING, THRUST 0.25	2							N 1
(A=E/#24271)											
28	1	719717-02910	BEARING ASSY, MAIN	4							3
28-1	1	719717-02911	BEARING ASSY, MAIN	4							N 3
(A=E/#24271)											

Remarks

- (1)Over-sized(O.S.=0.25) parts.
- (2)Repair parts.
- (3)Under-sized(U.S.=0.25) parts.

Fig.2. GEAR HOUSING



(A)=3TNV76-PBV  
(B)=  
(C)=

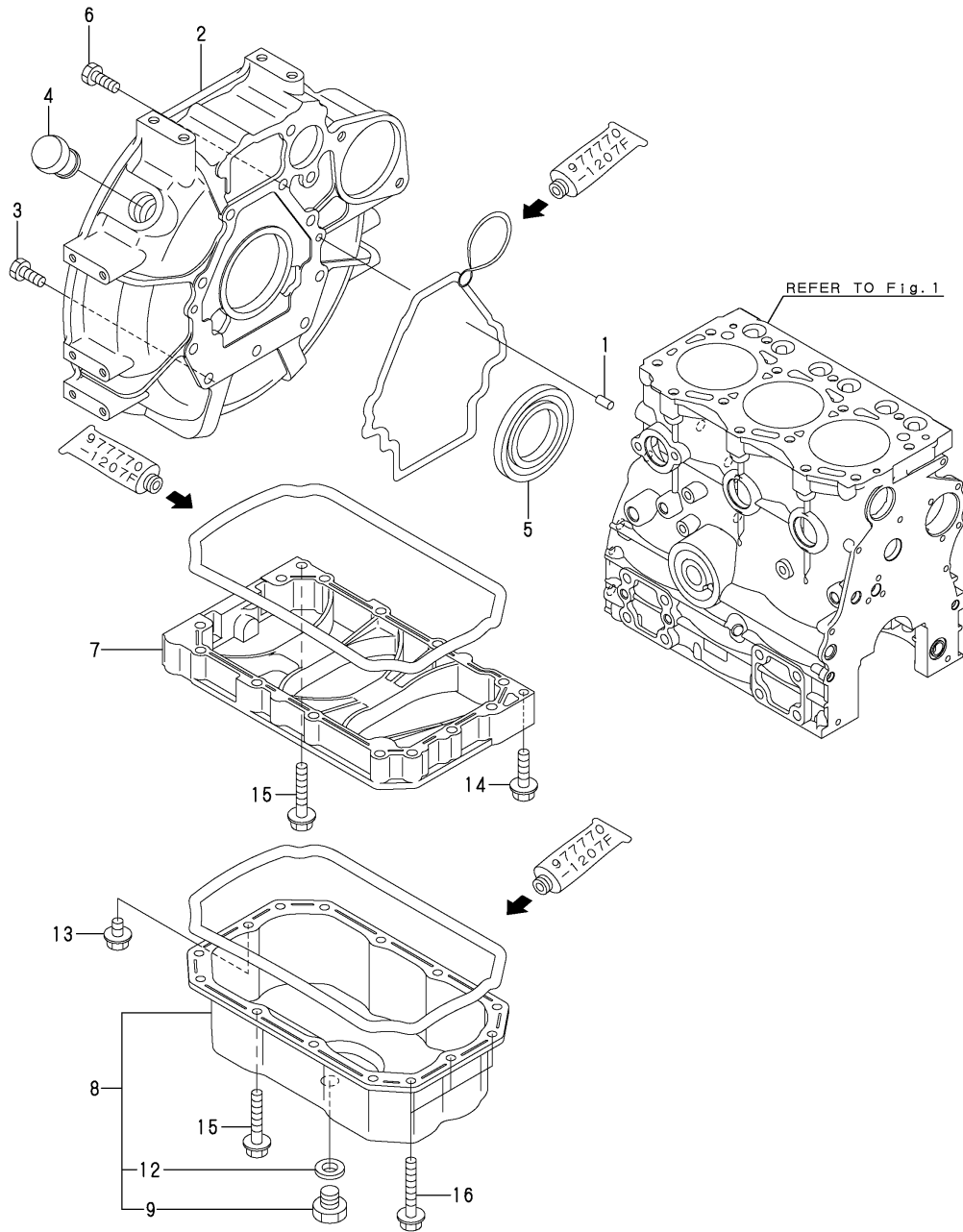
(D)=  
(E)=  
(F)=

No.	Lev.	Parts No.	Description	Q'ty						I	R
				(A)	(B)	(C)	(D)	(E)	(F)		
1	1	119717-01501	CASE, GEAR	1							
2	1	119717-01570	BOLT, STUD	3							
3	1	119717-01590	COVER ASSY,GEAR CASE	1							
4	2	719717-01500 (A=E/#06223)	COVER ASSY,GEAR CASE	1							W
5	3	23876-030000	PLUG, R03	2							1
6	3	119620-01800	SEAL, OIL	1							1
7	2	119717-32100	COVER ASSY	1							
8	3	129001-32320	SPRING	1							
9	3	129001-32330	PLUG	1							
10	3	119717-32080	COVER, PUMP	1							
11	3	129900-32130	VALVE, RELIEF	1							
12	2	119802-32130	SCREW, M6X16	8							
13	2	119717-32110	ROTOR, INNER	1							
14	2	119717-32120	ROTOR, OUTER	1							
15	1	119717-01750	COVER, PUMP	1							
16	1	119660-01911	PIPE, DOWEL 6X17	4							
17	1	119624-32040	O-RING, P12.0	1							
18	1	119717-32050	O-RING, P17.0	3							
19	1	121850-51960	O-RING	1							
20	1	26106-060122	BOLT, M6X 12 PLATED	1							
21	1	26106-060162	BOLT, M6X 16 PLATED	4							
22	1	26106-060402	BOLT, M6X 40 PLATED	4							
23	1	26106-060402	BOLT, M6X 40 PLATED	3							
24	1	26106-060602	BOLT, M6X 60 PLATED	7							
25	1	26106-060652	BOLT, M6X 65 PLATED	2							
26	1	26306-080002	NUT, M8	3							
27	1	124160-01751	CAP, FILLER	1							
28	1	24311-000320	O-RING, 1AP32.0	1							

Remarks

(1)Level changed.

Fig.3. FLYWHEEL HOUSING & OIL SUMP



(A)=3TNV76-PBV

(B)=

(C)=

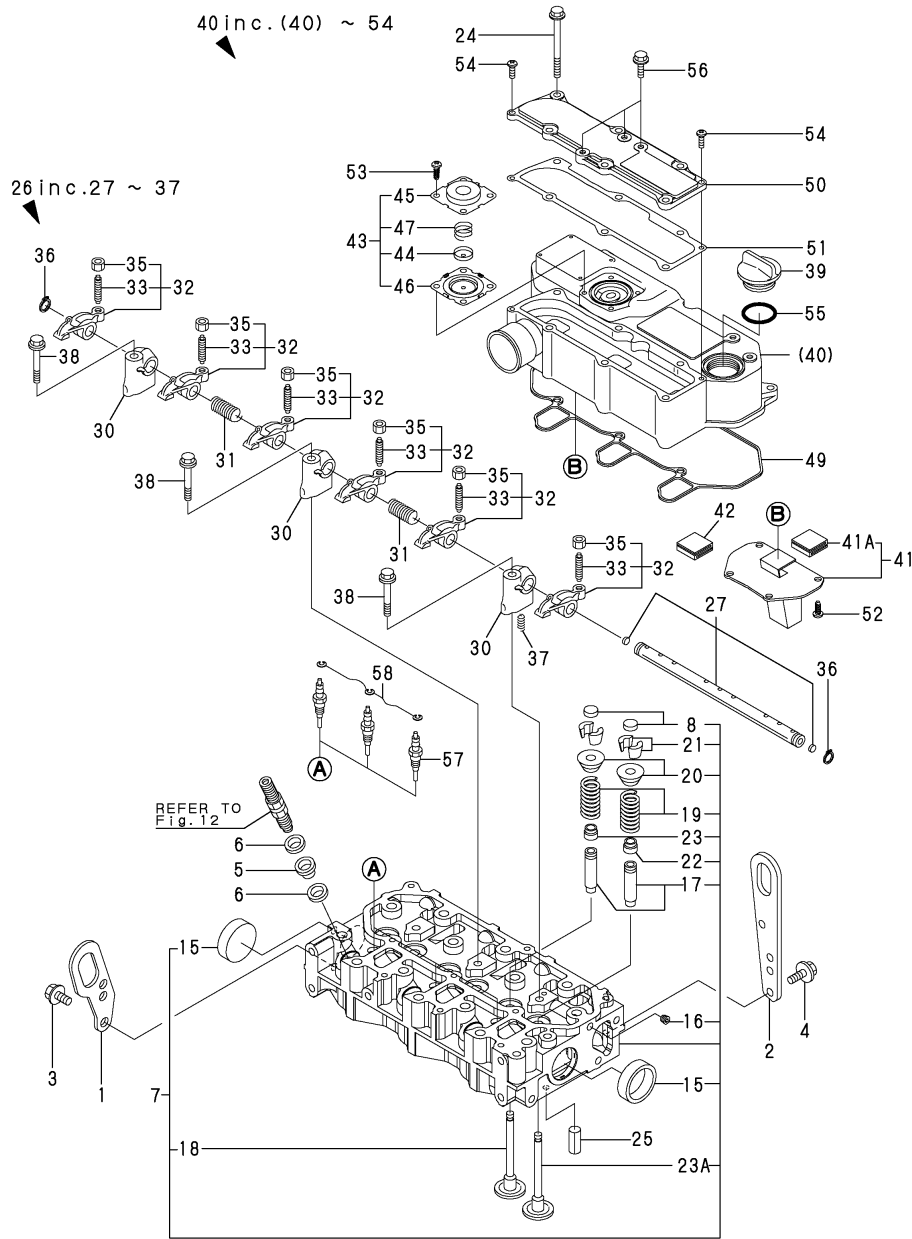
(D)=

(E)=

(F)=

No.	Lev.	Parts No.	Description	Q'ty						I	R
				(A)	(B)	(C)	(D)	(E)	(F)		
1	1	129100-01580	PIN, PARALLEL 8X16	2							
2	1	119717-01601	HOUSING, FLYWHEEL	1							
3	1	121120-01620	BOLT, M10X28	3							
4	1	119620-01750	CAP	1							
5	1	124085-02220	SEAL, OIL	1							
6	1	26206-100252	BOLT, M10X 25 PLATED	8							
7	1	119717-01720	SPACER, OIL-PAN	1							
8	1	119740-01770	OIL PAN ASSY	1							
9	2	105425-01690	PLUG, M16	1							
12	2	22190-160002	WASHER, SEAL 16	1							
13	1	26106-080122	BOLT, M8X 12 PLATED	1							
14	1	26106-080302	BOLT, M8X 30 PLATED	1							
15	1	26106-080452	BOLT, M8X 45 PLATED	11							
16	1	26106-080502	BOLT, M8X 50 PLATED	3							

Fig.4. CYLINDER HEAD & BONNET



(A)=3TNV76-PBV

(B)=

(C)=

(D)=

(E)=

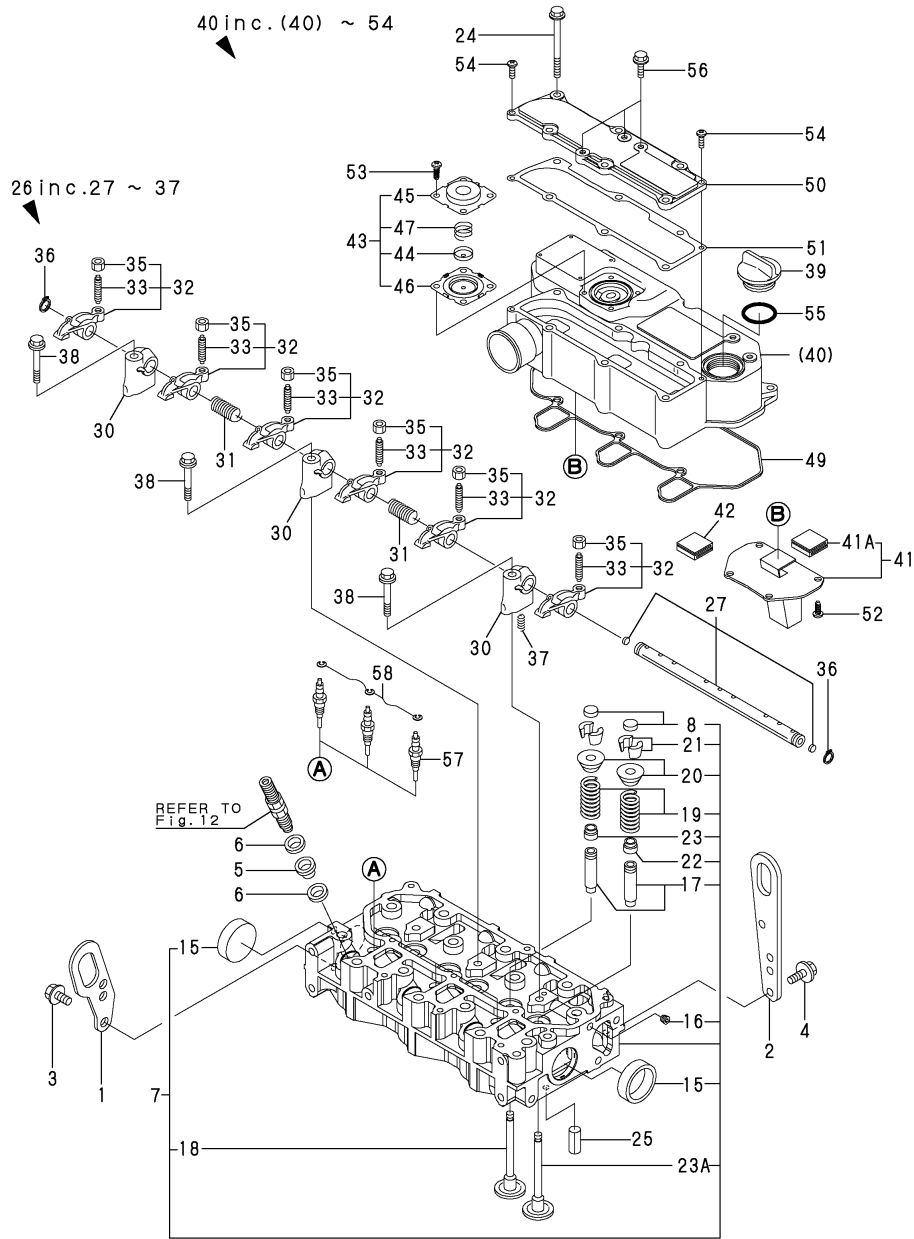
(F)=

No.	Lev.	Parts No.	Description	Q'ty						I	R
				(A)	(B)	(C)	(D)	(E)	(F)		
1	1	119260-07900	LIFTER, ENGINE	1							
1-1	1	119626-07900	LIFTER, ENGINE	1							N
(A=E/#09816)											
2	1	119940-07900	LIFTER, ENGINE	1							
3	1	26106-080142	BOLT, M8X 14 PLATED	2							
4	1	26106-080162	BOLT, M8X 16 PLATED	2							
5	1	129901-11450	PROTECTOR, NOZZLE	3							
6	1	119600-11460	GASKET, NOZZLE	6							
7	1	119717-11740	HEAD ASSY, CYLINDER	1							
8	2	105010-11490	CAP, VALVE	6							
15	3	119285-11990	PLUG, CUP TYPE 35	2							
16	3	23876-005000	PLUG, R005	1							
17	3	119717-11800	GUIDE, VALVE	6							1
18	2	119717-11110	VALVE, EXHAUST	3							
19	2	119717-11131	SPRING, VALVE	6							
20	2	129508-11180	RETAINER, SPRING	6							
21	2	119717-11190	COTTER, VALVE	12							
22	2	119717-11340	SEAL, VALVE STEM	3							
23	2	119717-11350	SEAL, VALVE STEM	3							
23A	2	119717-11100	VALVE, SUCTION	3							
24	1	26106-060752	BOLT, M6X 75 PLATED	6							
25	1	22351-060012	PIN, SPRING 6.0X12	2							
26	1	119717-11200	SUPPORT ASSY, ROCKER	1							
27	2	119717-11240	SHAFT ASSY, ROCKER	1							
30	2	119717-11260	SUPPORT, ROCKER ARM	3							
31	2	119620-11280	SPRING, ROCKER	2							
32	2	119717-11650	ARM ASSY, ROCKER	6							
33	3	129150-11230	SCREW, VALVE ADJUST	6							
35	3	129150-11750	NUT, M8	6							
36	2	22242-000120	RING, 12	2							
37	2	26979-050162	SCREW, M5X16	1							
38	1	26106-080402	BOLT, M8X 40 PLATED	3							
39	1	124160-01751	CAP, FILLER	1							
40	1	119717-11381	BONNET ASSY, HEAD	1							
41	2	119717-03031	PLATE, BAFFLE	1							
41A	3	119717-03070	BAFFLE, BREATHER	1							
42	2	119717-03070	BAFFLE, BREATHER	2							
43	2	119802-03100	DIAPHRAGM ASSY	1							
44	3	119802-03110	PLATE, DIAPHRAGM	1							
45	3	119802-03121	COVER, DIAPHRAGM	1							
46	3	119802-03131	DIAPHRAGM	1							
47	3	119802-03141	SPRING, DIAPHRAGM	1							
49	2	119718-11310	GASKET, BONNET	1							
50	2	119717-11320	COVER, BONNET	1							
51	2	119717-11331	GASKET	1							
52	2	22857-500100	SCREW, 5X10	4							
53	2	22857-500100	SCREW, 5X10	4							
54	2	22857-500160	SCREW, 5X16	2							
55	1	24311-000320	O-RING, 1AP32.0	1							
56	1	26106-060202	BOLT, M6X 20 PLATED	3							
57	1	119717-77800	PLUG, GLOW	3							

Remarks

(1)Repair parts.

Fig.4. CYLINDER HEAD & BONNET



(A)=3TNV76-PBV  
(B)=  
(C)=

(D)=  
(E)=  
(F)=

No.	Lev.	Parts No.	Description	Q'ty						I	R
				(A)	(B)	(C)	(D)	(E)	(F)		
58	1	119717-77820	CONNECTOR, GLOW PLUG	1							

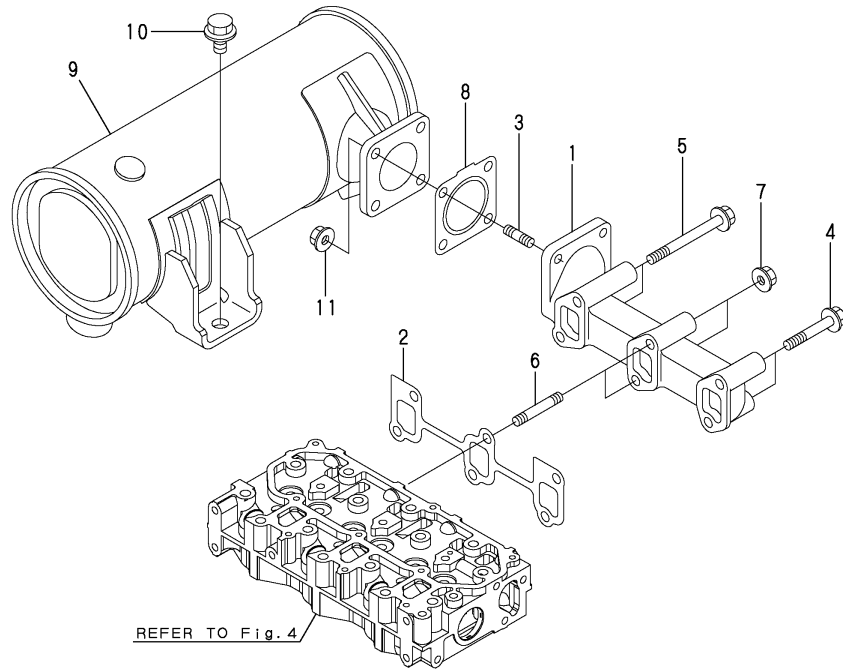
Remarks  
(1)Repair parts.



Fig.5. EXHAUST MANIFOLD & SILENCER

(A)=3TNV76-PBV  
(B)=  
(C)=

(D)=  
(E)=  
(F)=

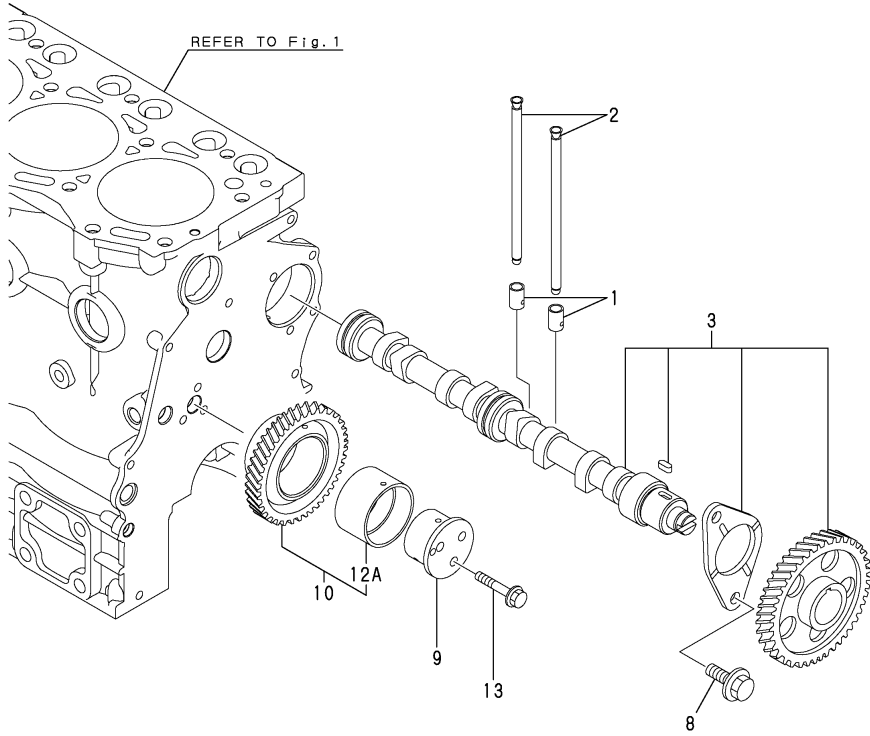


No.	Lev.	Parts No.	Description	Q'ty						I	R
				(A)	(B)	(C)	(D)	(E)	(F)		
1	1	119740-13100	MANIFOLD, EXHAUST	1							
2	1	119717-13110	GASKET, EXH.MANIFOLD	1							
3	1	119131-18320	BOLT, STUD M8X22	4							
4	1	119802-13620	BOLT, M8X50	2							
5	1	123900-13620	BOLT, M8X71	2							
6	1	119717-13600	BOLT, STUD M8X50	2							
7	1	26306-080002	NUT, M8	2							
8	1	119515-13200	GASKET, SILENCER	1							
9	1	119740-13510	SILENCER	1							
10	1	26106-100182	BOLT, M10X 18 PLATED	1							
11	1	26306-080002	NUT, M8	4							

Fig.6. CAMSHAFT & DRIVING GEAR

(A)=3TNV76-PBV  
(B)=  
(C)=

(D)=  
(E)=  
(F)=



No.	Lev.	Parts No.	Description	Q'ty						I	R
				(A)	(B)	(C)	(D)	(E)	(F)		
1	1	119620-14200	TAPPET	6							
2	1	119717-14400	PUSH-ROD	6							
3	1	119717-14580	CAMSHAFT ASSY	1							
3-1	1	119717-14581	CAMSHAFT ASSY	1							R
		(A=E/#23116)									
8	1	26106-060122	BOLT, M6X 12 PLATED	2							
9	1	119717-25050	SHAFT, IDLE	1							
10	1	119717-25100	GEAR ASSY, IDLE	1							
10-1	1	119717-25101	GEAR ASSY, IDLE	1							N
		(A=E/#24271)									
12A	2	119717-25911	BUSH, IDLE GEAR	1							W 1
		(A=E/#24271)									
13	1	26106-060352	BOLT, M6X 35 PLATED	3							

Remarks

(1)Repair parts.

Fig.7. CRANKSHAFT & PISTON

(A)=3TNV76-PBV

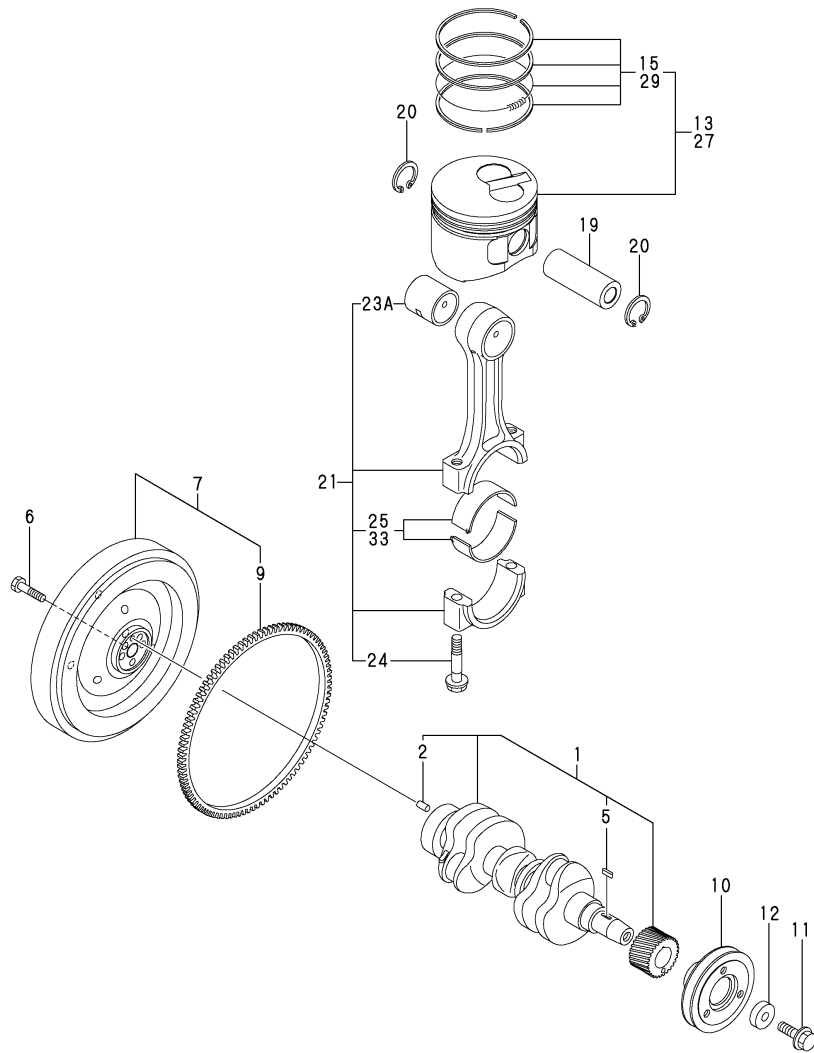
(B)=

(C)=

(D)=

(E)=

(F)=



No.	Lev.	Parts No.	Description	Q'ty						I	R
				(A)	(B)	(C)	(D)	(E)	(F)		
1	1	119717-21700	CRANKSHAFT ASSY	1							
2	2	129100-01580	PIN, PARALLEL 8X16	1							
5	2	22512-040120	KEY, 4X 12	1							
6	1	121111-21501	BOLT, FLYWHEEL	5							
7	1	119636-21580	FLYWHEEL ASSY	1							
9	2	119865-21600	GEAR, RING Z=116	1							
10	1	119717-21650	V-PULLEY, CRANKSHAFT	1							
11	1	119621-21680	BOLT, FLANGE 12X1.25	1							
12	1	119620-21941	WASHER	1							
13	1	119717-22080	PISTON ASSY	3							
15	2	119717-22500	RING SET, PISTON	3							
19	1	119717-22300	PIN, PISTON	3							
20	1	22252-000220	RING, 22	6							
21	1	119717-23000	ROD ASSY, CONNECTING	3							
23A	2	119717-23910	BEARING, PISTON PIN	3							1
24	2	119717-23200	BOLT, CONNECTING ROD	6							
25	2	119717-23600	BEARING, CRANK PIN	3							1
25-1	2	119717-23601	BEARING, CRANK PIN	3							N 1
(A=E/#24271)											
27	1	119717-22090	PISTON ASSY, 0.25 OS	3							2
29	2	119717-22550	RING SET, 0.25 OS	3							2
33	1	119717-23610	BEARING ASSY, 0.25	3							3
33-1	1	119717-23611	METAL ASSY, 0.25	3							N 3
(A=E/#24271)											

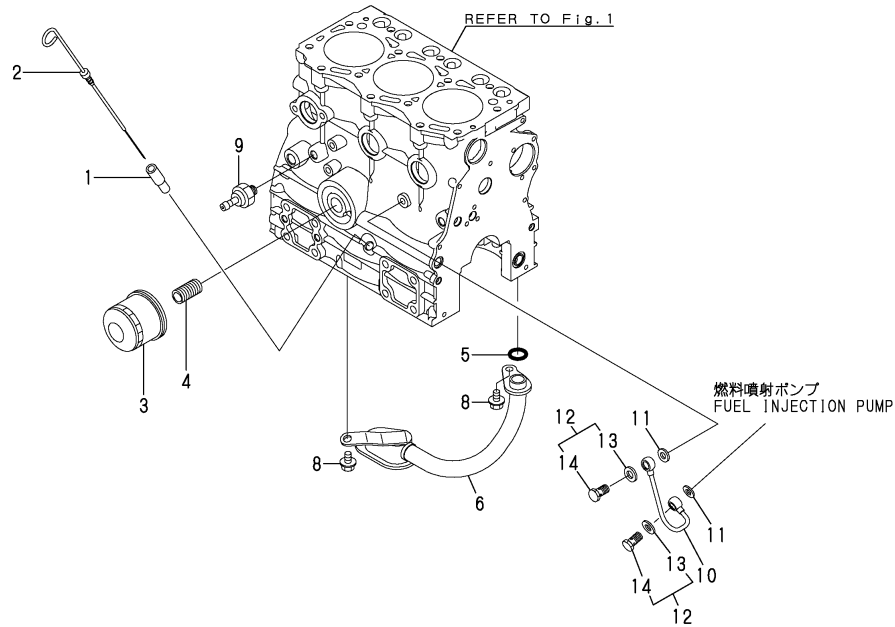
Remarks

- (1)Repair parts.
- (2)Over-sized(O.S.=0.25) parts.
- (3)Under-sized(U.S.=0.25) parts.

Fig.8. LUB. OIL SYSTEM

(A)=3TNV76-PBV  
(B)=  
(C)=

(D)=  
(E)=  
(F)=



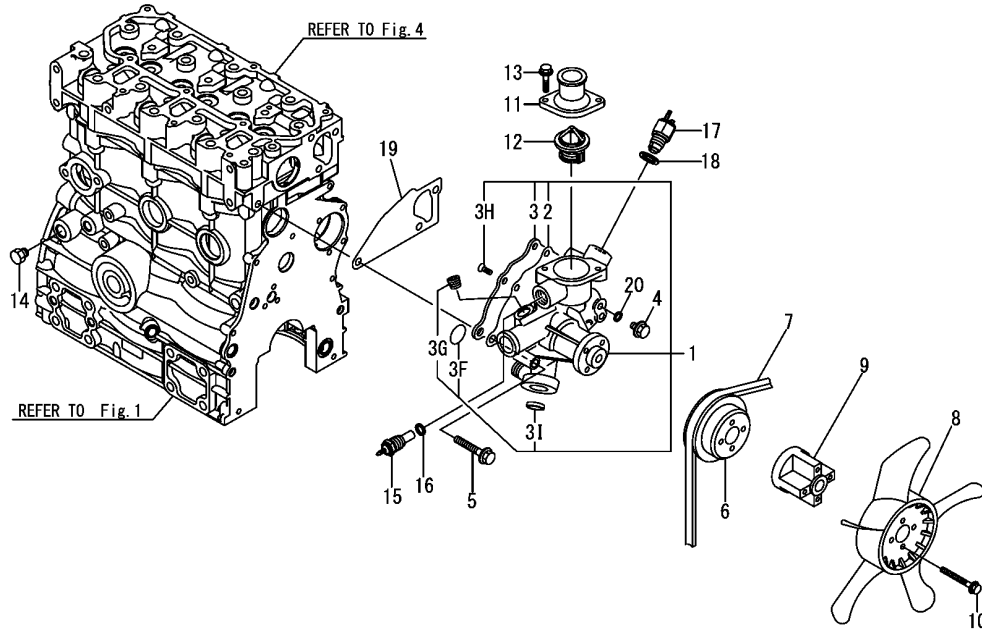
No.	Lev.	Parts No.	Description	Q'ty						I	R
				(A)	(B)	(C)	(D)	(E)	(F)		
1	1	121520-34810	GUIDE, DIPSTICK	1							
2	1	119740-34801	DIPSTICK, OIL	1							
3	1	119305-35170	FILTER ASSY, D68XL65	1							1
4	1	129100-35140	BOLT, STUD	1							
5	1	119717-32060	O-RING, P15.0	1							
6	1	119717-35080	PIPE ASSY, OIL INLET	1							
8	1	26106-060102	BOLT, M6X 10 PLATED	2							
9	1	114250-39450	SWITCH, HYDRAULIC	1							
10	1	119717-39210	PIPE, OIL	1							
11	1	22190-080002	WASHER, SEAL 6	2							
12	1	129005-59830	BOLT ASSY, JOINT M8	2							
13	2	22190-080002	WASHER, SEAL 6	2							
14	2	23857-030000	BOLT, JOINT 3	2							

Remarks  
(1)Repair parts.

Fig.9. COOLING WATER SYSTEM

(A)=3TNV76-PBV  
(B)=  
(C)=

(D)=  
(E)=  
(F)=

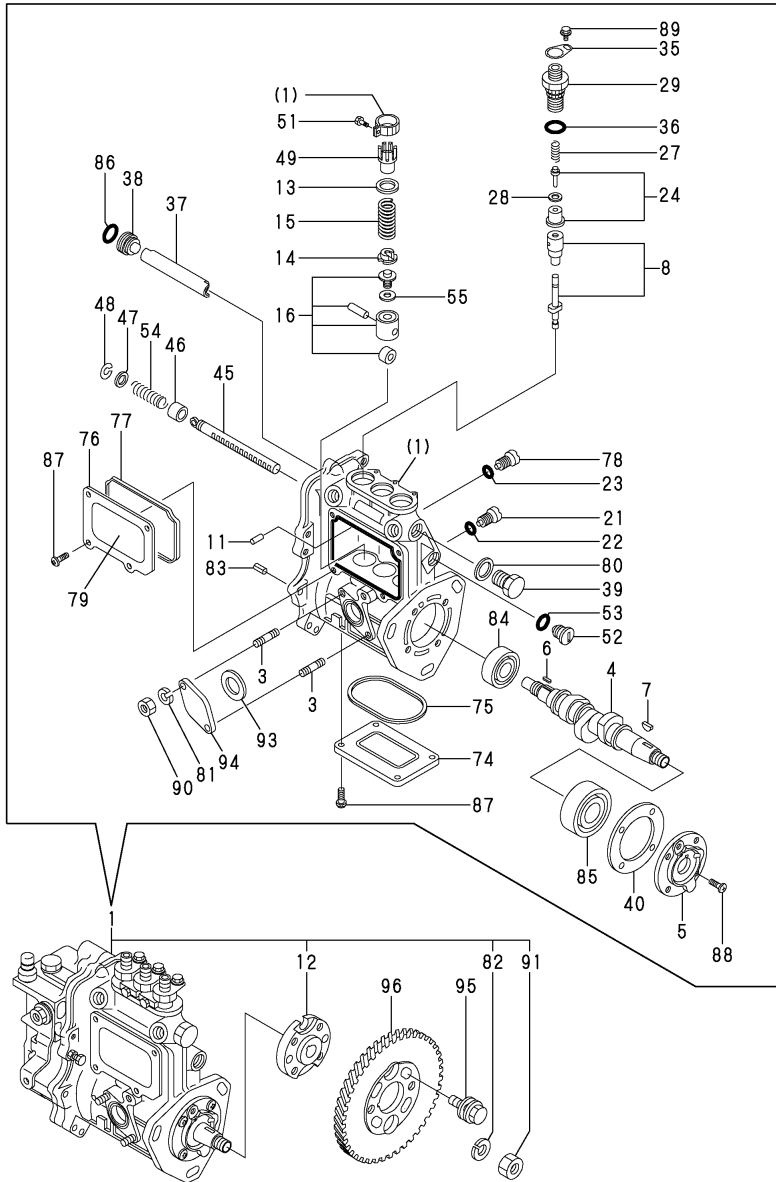


No.	Lev.	Parts No.	Description	Q'ty						I	R
				(A)	(B)	(C)	(D)	(E)	(F)		
1	1	119717-42002	PUMP ASSY, WATER	1							
2	2	119717-42031	GASKET	1							
3	2	119717-42041	COVER	1							
3F	2	119717-42320	O-RING, P26	1							
3G	2	129916-49740	PLUG, R3/8	1							
3H	2	26577-060122	SCREW, M6X12	4							
3I	2	27241-250000	PLUG, 25	1							
4	1	26106-080122	BOLT, M8X 12 PLATED	1							
5	1	26106-080502	BOLT, M8X 50 PLATED	3							
6	1	119740-42350	V-PULLEY, D=90	1							
7	1	171001-42290	V-BELT, A35.5	1							
8	1	119233-44740	FAN, D=290XUH	1							
9	1	171353-44760	SPACER, FAN	1							
10	1	26106-060402	BOLT, M6X 40 PLATED	4							
11	1	129350-49530	COVER, THERMOSTAT	1							
12	1	119717-49800	THERMOSTAT, 71C	1							
13	1	26106-080202	BOLT, M8X 20 PLATED	2							
14	1	171056-49120	PLUG, DRAIN R1/4	1							
15	1	171056-49351	SENSOR, WATER TEMP.	1							
16	1	129150-49360	GASKET	1							
17	1	121250-44901	SWITCH, THERMO 110	1							
18	1	124465-44950	GASKET, 16	1							
19	1	119717-42020	GASKET, WATER PUMP	1							
20	1	23414-080000	GASKET, 8X1.0	1							

Fig.10. FUEL INJECTION PUMP

(A)=3TNV76-PBV  
(B)=  
(C)=

(D)=  
(E)=  
(F)=



No.	Lev.	Parts No.	Description	Q'ty						I	R
				(A)	(B)	(C)	(D)	(E)	(F)		
1	1	719740-51360	PUMP ASSY, INJECTION	1							1
3	2	129155-51020	BOLT, STUD	2							
4	2	119717-51030	CAMSHAFT	1							
5	2	119717-51060	SUPPORT, CAMSHAFT	1							
6	2	119717-51070	FEATHER KEY, PARALLEL	1							
7	2	122710-51090	FEATHER KEY, WOODRUFF	1							
8	2	119740-51100	PLUNGER ASSY, FUEL	3							
11	2	129155-51140	PIN	3							
12	2	119717-51150	FLANGE	1							
13	2	158600-51170	RETAINER, SPRING	3							
14	2	119717-51180	RETAINER, SPRING	3							
14-1	2	119717-51570	RETAINER, SPRING	3							R
(A=E/#19699)											
15	2	119717-51190	SPRING, PLUNGER	3							
16	2	119717-51200	TAPPET ASSY	3							
21	2	158600-51270	STOPPER, TAPPET	3							
22	2	129155-51280	O-RING, S6	3							
23	2	129155-51280	O-RING, S6	1							
24	2	119717-51300	VALVE ASSY, DELIVERY	3							
27	2	119717-51330	SPRING, DELIVERY	3							
28	2	124550-51350	GASKET, DELIVERY	3							
29	2	158600-51440	VALVE ASSY, DELIVERY	3							
29-1	2	158600-51441	VALVE ASSY, DELIVERY	3							N
(A=E/#05062)											
29-2	2	158600-51442	VALVE ASSY, DELIVERY	3							N
(A=E/#15727)											
35	2	118400-51370	PLATE, LOCKING	3							
36	2	24316-000150	O-RING, 4DP15.0	3							
37	2	129155-51400	DEFLECTOR	1							
38	2	158600-51410	PLUG, DEFLECTOR	1							
39	2	158600-51420	PLUG, DEFLECTOR	1							
40	2	129155-51450	SHIM SET, ADJUSTING	1							
45	2	119717-51500	RACK, CONTROL	1							
46	2	129155-51521	BUSH, RACK	1							
47	2	129155-51530	SPACER	1							
48	2	129155-51540	CIRCLIP	1							
49	2	129155-51550	PINION, CONTROL	3							
51	2	129100-51570	SCREW, PINION	3							
52	2	158600-51570	PLUG, RACK	1							
53	2	129155-51580	O-RING	1							
54	2	129155-51591	SPRING, RACK	1							
55	2	129155-51600	SHIM SET, ADJUSTING	3							
74	2	129155-51701	COVER	1							
75	2	119717-51710	GASKET	1							
75-1	2	119717-51711	GASKET	1							N
(A=E/#24271)											
76	2	119717-51750	COVER	1							
77	2	119717-51760	GASKET	1							
77-1	2	119717-51761	GASKET	1							N
(A=E/#24271)											
78	2	158600-51790	STOPPER, RACK	1							

Remarks

(1) Governor (Fig.11) is incorporated in this Fuel Injection Pump (No.1).

Fig.10. FUEL INJECTION PUMP

(A)=3TNV76-PBV

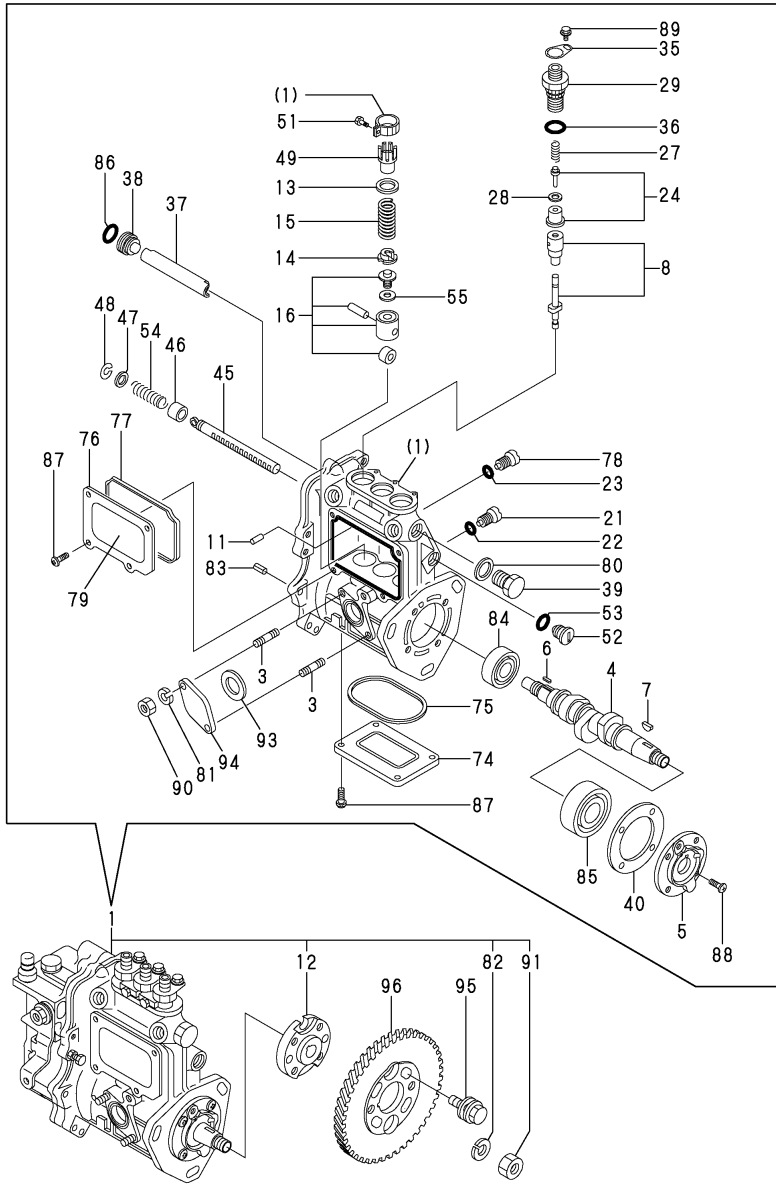
(B)=

(C)=

(D)=

(E)=

(F)=



No.	Lev.	Parts No.	Description	Q'ty						I	R
				(A)	(B)	(C)	(D)	(E)	(F)		
79	2	129156-51910	LABEL, CAUTION	1							
79-1	2	129156-51910	LABEL, CAUTION	1							Z
(A=E/#24271)											
80	2	22190-160002	WASHER, SEAL 16	1							
81	2	22217-060000	WASHER, SPRING 6	2							
82	2	22217-120000	WASHER, SPRING 12	1							
83	2	22351-050010	PIN, SPRING 5.0X10	2							
84	2	24101-060034	BEARING, BALL 6003	1							
85	2	24101-063034	BEARING, BALL 6303	1							
86	2	119717-51420	O-RING	1							
87	2	26022-050122	SCREW, M5X12	8							
88	2	26022-060162	SCREW, M6X16	4							
89	2	26106-050102	BOLT, M5X 10 PLATED	3							
90	2	26716-060002	NUT, M6	2							
91	2	26716-120002	NUT, M12	1							
93	2	129155-52051	GASKET	1							
94	2	129100-52200	COVER, PUMP	1							
95	1	129150-25301	BOLT	4							
96	1	119717-25930	GEAR, PUMP	1							

Remarks

(1)Governor(Fig.11) is incorporated in this Fuel Injection Pump(No.1).

N:Old  $\xrightarrow{\text{Yes}}$  New, Q:Old  $\xrightarrow{\text{No}}$  New, R:Old  $\xrightarrow{\text{Yes}}$  New, S:Old  $\xrightarrow{\text{No}}$  New, W:Add, Z:Discontinued, F:Interchangeable by set, K:Q'ty Change

Fig.11. GOVERNOR

(A)=3TNV76-PBV

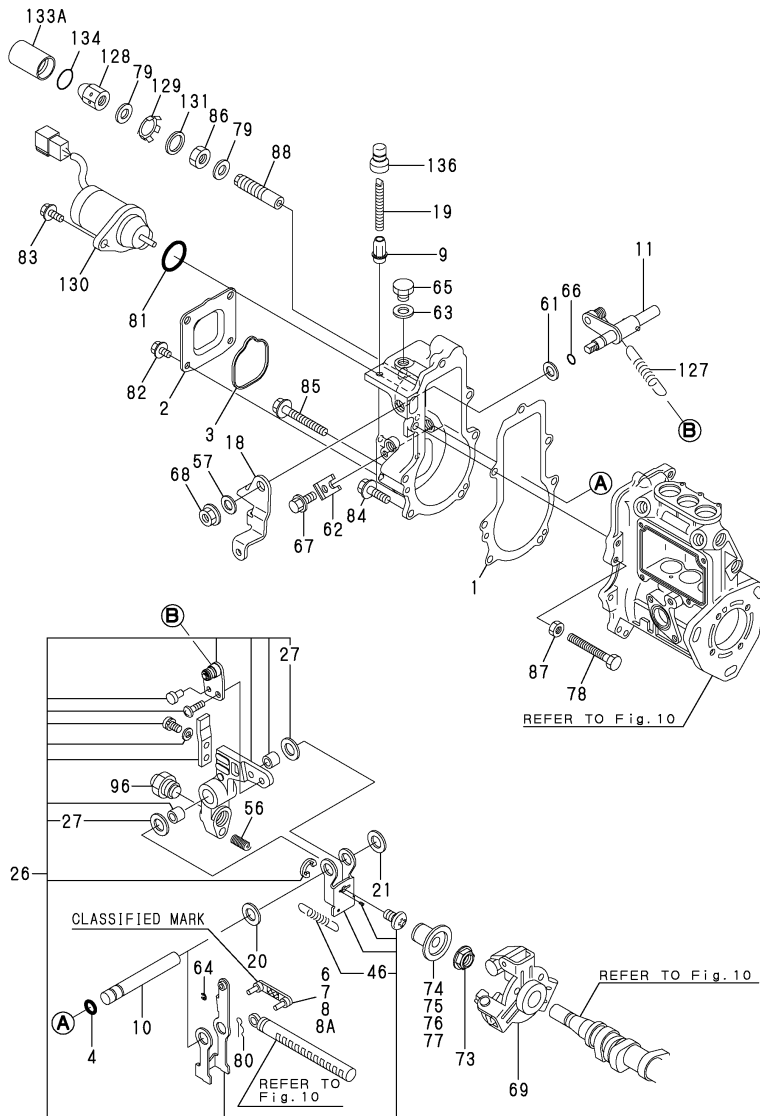
(B)=

(C)=

(D)=

(E)=

(F)=



No.	Lev.	Parts No.	Description	Q'ty						I	R
				(A)	(B)	(C)	(D)	(E)	(F)		
1	2	119717-61050	GASKET	1							
2	2	119717-61060	COVER, GOVERNOR CASE	1							
3	2	119717-61070	GASKET	1							
4	2	129155-51280	O-RING, S6	1							
6	2	119717-61120	LINK, MARK :3	1							1
7	2	119717-61130	LINK, MARK 98	1							1
8	2	119717-61140	LINK, MARK 88	1							1
8A	2	119717-61150	LINK, MARK 03	1							1
9	2	129209-61370	NUT, ARB M6	1							
10	2	129052-61390	SHAFT,GOVERNOR LEVER	1							
11	2	119717-61400	SHAFT ASSY	1							
18	2	119740-61440	LEVER, CONTROL	1							
19	2	129155-61450	BOLT, LIMITING	1							
20	2	129156-61460	SHIM, T=0.6	1							
21	2	129155-61480	SHIM ASSY	1							
26	2	119717-61500	LEVER ASSY, GOVERNOR	1							
27	3	174307-51700	SHIM SET, PLUNGER	2							
46	3	129486-61540	SPRING, GOV.LEVER	1							
56	2	129100-61650	SPRING, FUEL LIMITER	1							
57	2	158552-61700	SHIM SET	1							
61	2	158552-61710	SHIM, T=1.0	1							
62	2	119660-61901	STOPPER, SHAFT	1							
63	2	22190-100002	WASHER, SEAL 10	1							
64	2	22272-000030	RING, E- 3	1							
65	2	23887-100002	PLUG, 10	1							
66	2	24341-000070	O-RING, 1AS7.0	1							
67	2	26106-060102	BOLT, M6X 10 PLATED	1							
68	2	26366-080002	NUT, M8	1							
69	2	119717-61200	WEIGHT ASSY,GOVERNOR	1							
73	2	119660-61300	NUT	1							
74	2	129155-61341	SLEEVE	1							2
75	2	129155-61350	SLEEVE, L=24.9	1							2
76	2	129155-61360	SLEEVE, L=25.2	1							2
77	2	129155-61370	SLEEVE	1							2
78	2	129155-61460	BOLT, LIMITING	1							
79	2	22190-120002	WASHER, SEAL 12	2							
80	2	22372-040000	PIN, SNAP 4	1							
81	2	24341-000280	O-RING, 1AS28.0	1							
81-1	2	158552-61900	O-RING	1							N
(A=EXXXXX)											
82	2	26106-060102	BOLT, M6X 10 PLATED	4							
83	2	26106-060142	BOLT, M6X 14 PLATED	2							
84	2	26106-060202	BOLT, M6X 20 PLATED	4							
85	2	26106-060452	BOLT, M6X 45 PLATED	3							
86	2	26736-120002	NUT, M12	1							
87	2	26756-060002	NUT, LOCK M6	1							
88	2	158601-61700	LIMITER ASSY, FUEL	1							
96	2	119718-61560	ANGLEICH ASSY	1							
127	2	171353-61700	SPRING, GOVERNOR	1							
128	2	129209-61930	NUT, CAP	1							
129	2	129209-61970	PLATE	1							

Remarks

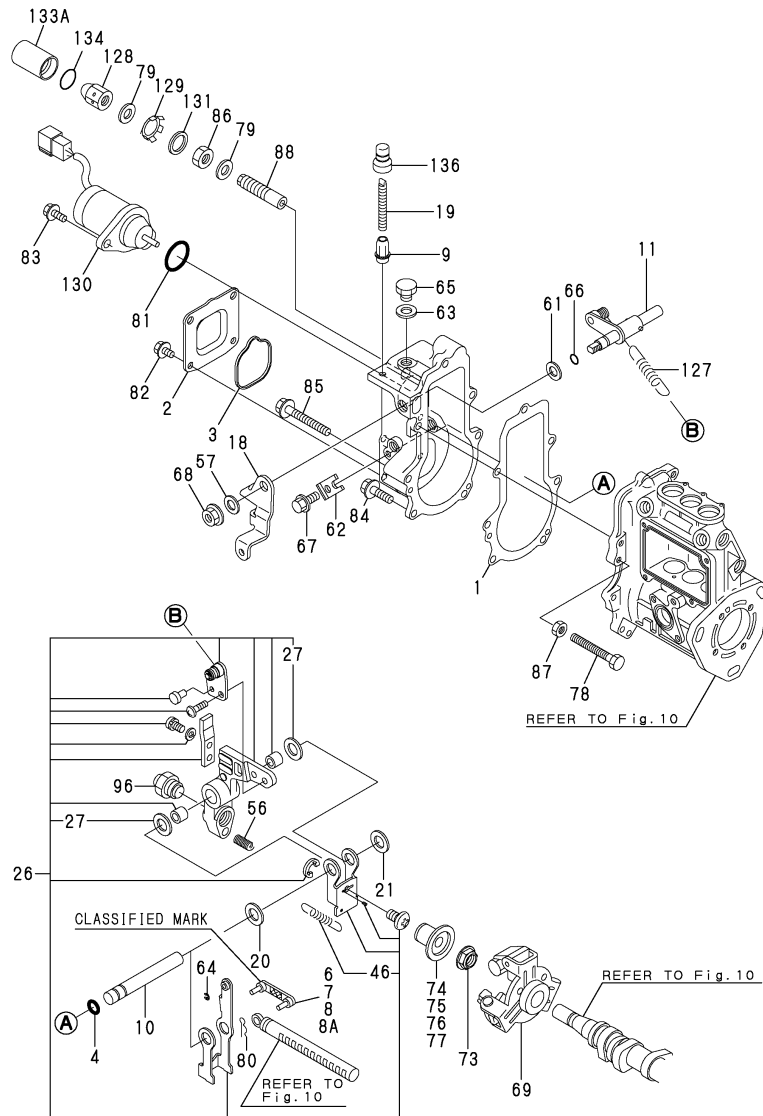
- (1) Selective parts.  
Certain the classification mark, then place your order(Refer to illustration).
- (2) Selective parts.
- (3) Repair parts.



Fig.11. GOVERNOR

(A)=3TNV76-PBV  
(B)=  
(C)=

(D)=  
(E)=  
(F)=



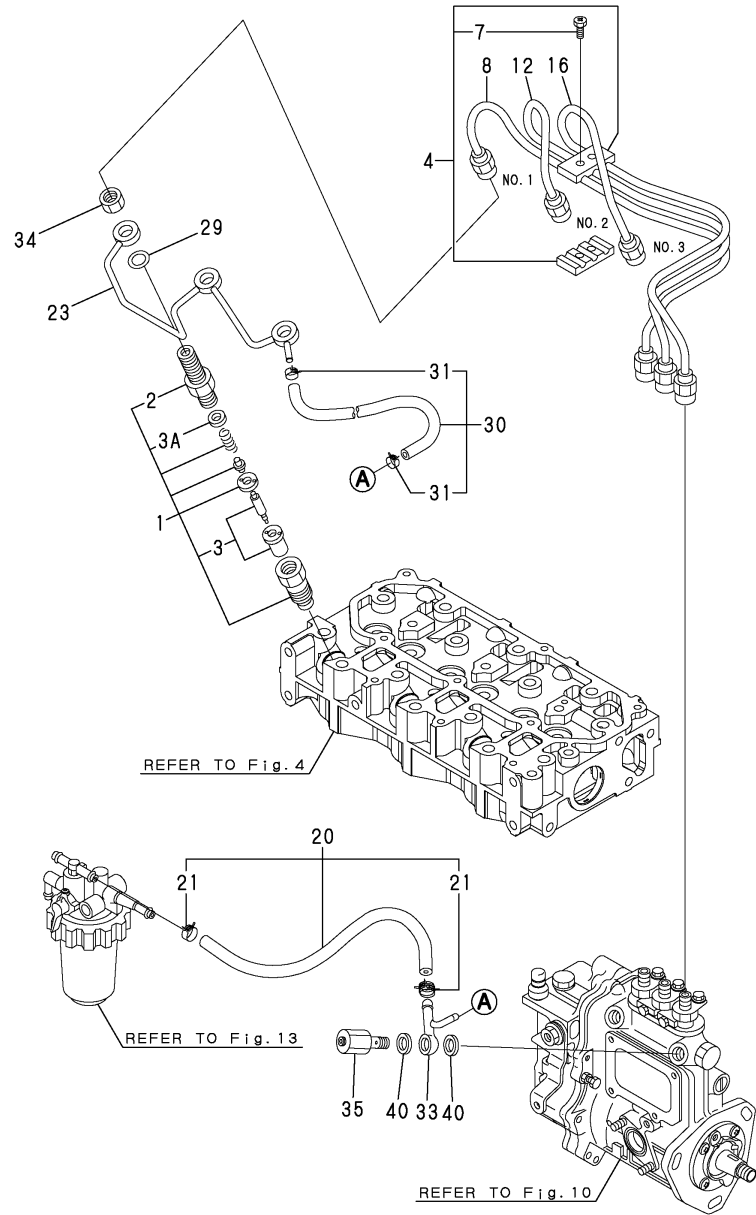
No.	Lev.	Parts No.	Description	Q'ty						I	R
				(A)	(B)	(C)	(D)	(E)	(F)		
130	2	119233-77932	SOLENOID, STOP	1							
131	2	23414-120016	GASKET, 12X1.0	1							
133A	1	129209-61960	CASE	1							3
134	1	24311-000150	O-RING, 1AP15.0	1							
136	1	119285-66650	CAP, HIGH-IDLE	1							3

Remarks  
 (1) Selective parts.  
 Certain the classification mark, then place your order(Refer to illustration).  
 (2) Selective parts.  
 (3) Repair parts.

Fig.12. FUEL INJECTION VALVE

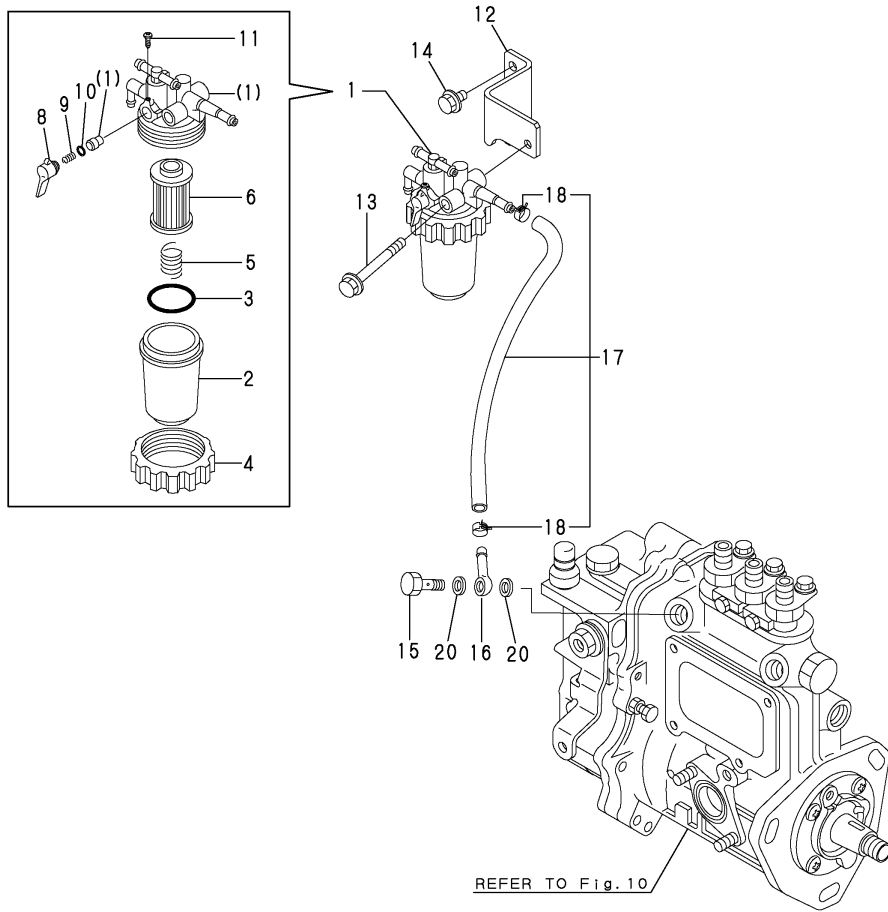
(A)=3TNV76-PBV  
(B)=  
(C)=

(D)=  
(E)=  
(F)=



No.	Lev.	Parts No.	Description	Q'ty						I	R
				(A)	(B)	(C)	(D)	(E)	(F)		
1	1	119717-53001	VALVE ASSY,INJECTION	3							
2	2	118200-53010	HOLDER, NOZZLE	3							
3	2	119717-53010	NOZZLE ASSY, F.I.	3							
3A	2	129901-53800	SHIM SET, ADJUSTING	3							
4	1	129150-59120	RETAINER, PIPE	1							
7	2	129150-59131	BOLT, M4X14	2							
8	1	119717-59810	PIPE ASSY, INJECTION	1							
12	1	119717-59820	PIPE ASSY, INJECTION	1							
16	1	119717-59830	PIPE ASSY, INJECTION	1							
20	1	129210-59100	HOSE ASSY, FUEL	1							
21	2	124766-59050	CLAMP, HOSE 11.5	2							
23	1	119717-59510	PIPE ASSY, RETURN	1							
29	1	129901-59560	GASKET	3							
30	1	119717-59570	HOSE ASSY, RETURN	1							
30-1	1	119540-59570	HOSE ASSY, RETURN	1							N
(A=E/#08188)											
31	2	124066-59100	CLAMP, HOSE 8	2							
33	1	119840-59570	JOINT	1							
34	1	119620-59700	NUT, NOZZLE	3							
35	1	119813-59950	VALVE ASSY, CHECK	1							
40	1	22190-120002	WASHER, SEAL 12	2							

Fig.13. FUEL PIPE

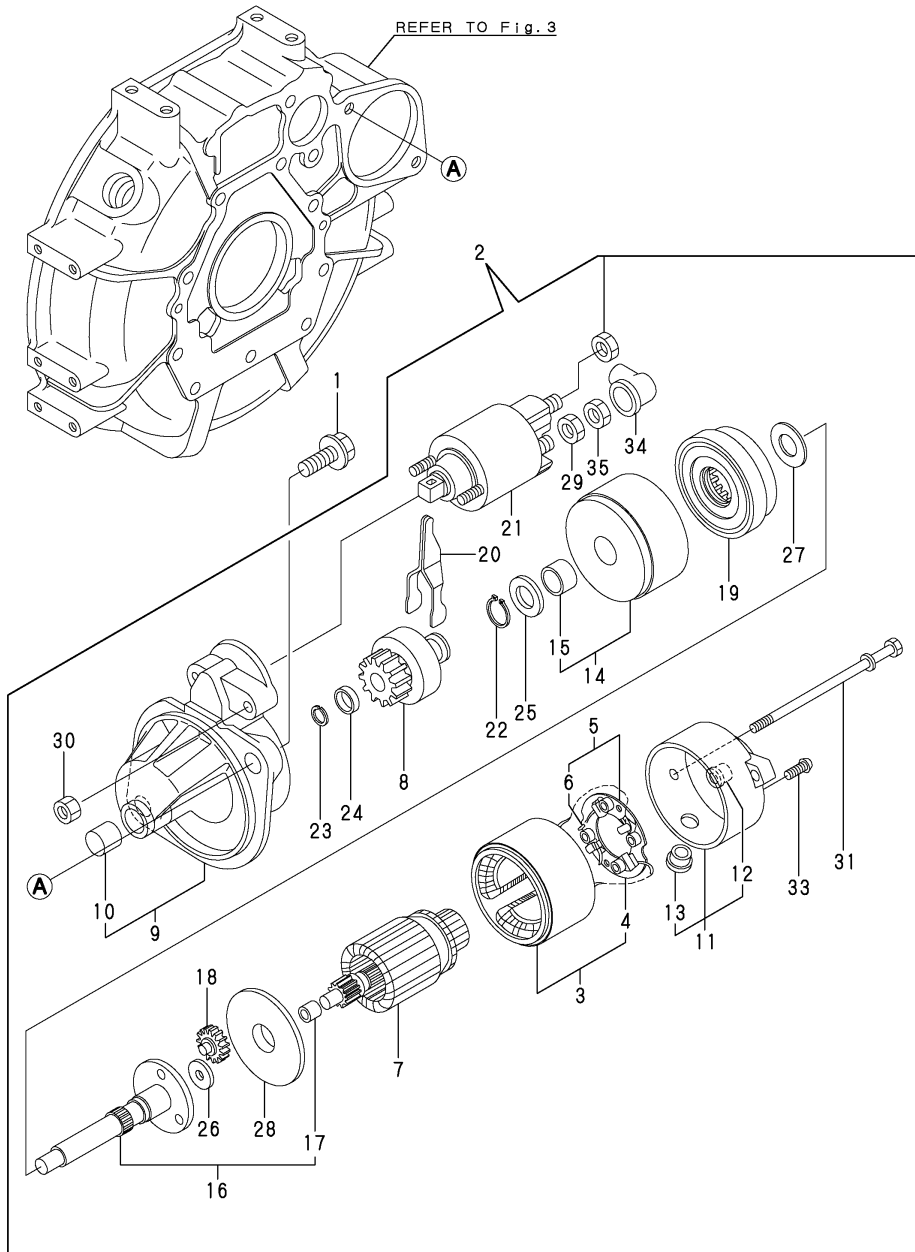


(A)=3TNV76-PBV  
(B)=  
(C)=

(D)=  
(E)=  
(F)=

No.	Lev.	Parts No.	Description	Q'ty						I	R
				(A)	(B)	(C)	(D)	(E)	(F)		
1	1	119740-55600	FILTER ASSY, FUEL	1							
2	2	121254-55510	CUP, FUEL STARINER	1							
3	2	102103-55520	O-RING	1							
4	2	110250-55610	RING, CUP RETAINING	1							
5	2	121250-55620	SPRING, ELEMENT	1							
6	2	119810-55650	ELEMENT	1							
8	2	119810-55340	LEVER, FUEL	1							
9	2	104200-55330	SPRING, FUEL VALVE	1							
10	2	24311-240100	O-RING, 1AP10A	1							
11	2	104200-55750	SCREW, PAN M4	1							
12	1	119740-55650	BRACKET, FILTER	1							
12-1	1	119740-55651	BRACKET, FILTER	1							N
(A=EZZZZZ)											
13	1	26014-080702	BOLT, M8X 70	1							
14	1	26106-080142	BOLT, M8X 14 PLATED	2							
15	1	103854-39140	BOLT, PIPE JOINT	1							
16	1	101304-59020	JOINT, PIPE 12	1							
17	1	129210-59020	PIPE ASSY, FUEL	1							
18	2	124766-59050	CLAMP, HOSE 11.5	2							
20	1	22190-120002	WASHER, SEAL 12	2							

Fig.14. STARTER MOTOR



(A)=3TNV76-PBV

(B)=

(C)=

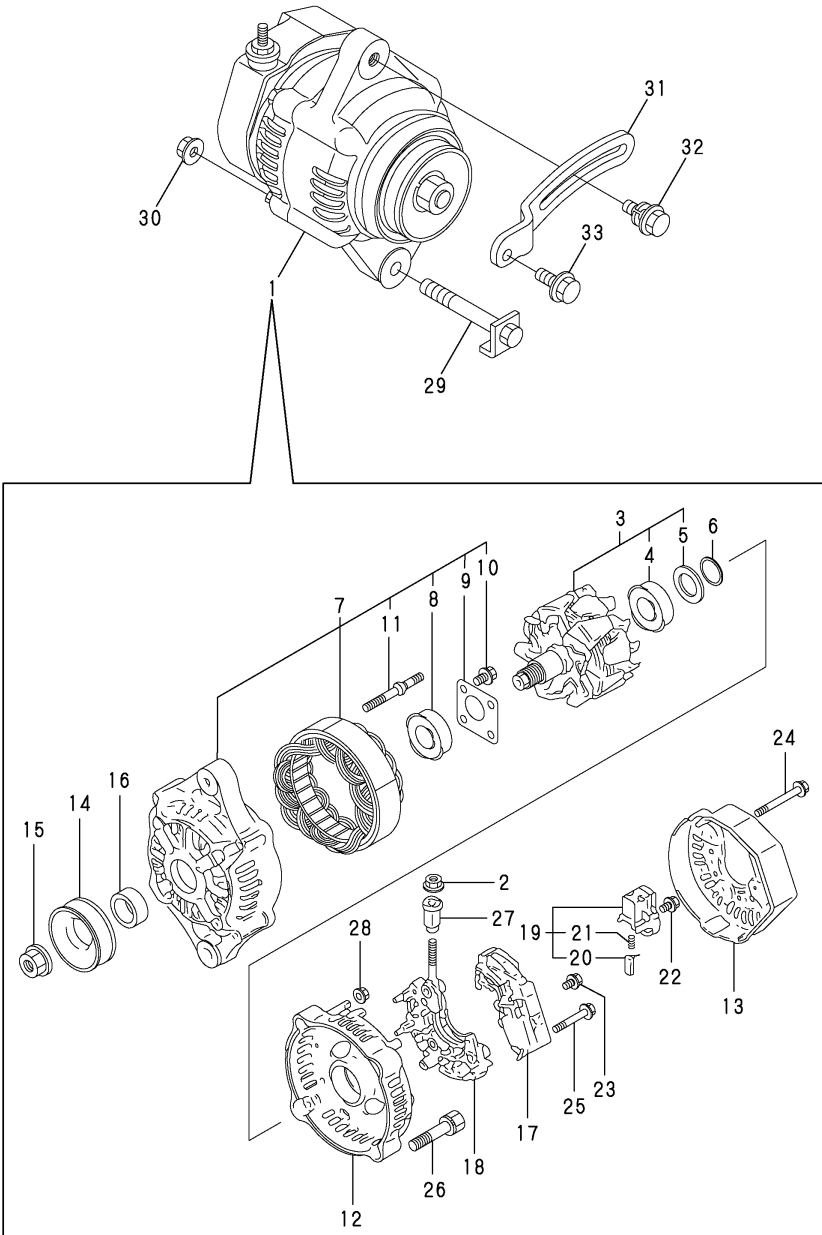
(D)=

(E)=

(F)=

No.	Lev.	Parts No.	Description	Q'ty						I	R
				(A)	(B)	(C)	(D)	(E)	(F)		
1	1	26106-100252	BOLT, M10X 25 PLATED	2							
2	1	119717-77010	STARTER ASSY	1							
3	2	X0281007750	YOKE ASSY	1							
4	3	X0280996180	STARTER KIT	2							
5	2	X0285105190	HOLDER ASSY	1							
6	3	X0285205030	SPRING	4							
7	2	X0282005991	ARMATURE ASSY	1							
8	2	X0283006960	CLUTCH ASSY	1							
9	2	X5128400414	HOUSING ASSY	1							
9-1	2	X4284001590	HOUSING ASSY	1							N
		(A=EXXX)									
10	3	X9491050100	BEARING, NEEDLE	1							
11	2	X0285007030	FRAME ASSY	1							
12	3	X9491040990	BEARING	1							
13	3	X0280626010	COVER	1							
14	2	X0284105040	BEARING ASSY	1							
15	3	X9491034330	BEARING	1							
16	2	X0286105010	SHAFT ASSY	1							
17	3	X9491034320	BEARING	1							
18	2	X0286305010	GEAR	3							
19	2	X0286355010	GEAR	1							
20	2	X0287405140	LEVER	1							
21	2	X0534007800	SWITCH ASSY	1							
22	2	X9055715000	RING	1							
23	2	X9490721360	RING	1							
24	2	X0280210331	NUT	1							
25	2	X9490138110	WASHER	1							
26	2	X9490138090	WASHER	1							
27	2	X9490138100	WASHER	1							
28	2	X0284525010	PLATE	1							
29	2	X9490562360	NUT	1							
30	2	X9490560750	NUT	2							
31	2	X9490423420	BOLT, THROUGH	2							
33	2	X9490665670	SCREW, M4X6	2							
34	2	X0280335350	COVER, TERMINAL	1							
35	2	X1289510130	NUT	1							

Fig.15. GENERATOR



(A)=3TNV76-PBV  
(B)=  
(C)=

(D)=  
(E)=  
(F)=

No.	Lev.	Parts No.	Description	Q'ty						I	R
				(A)	(B)	(C)	(D)	(E)	(F)		
1	1	129423-77200	GENERATOR ASSY, 40A	1							
2	2	X9490561001	NUT	1							
3	2	119620-77380	ROTOR ASSY	1							
4	3	119620-79240	BEARING, BALL	1							
4-1	3	123501-79240	BEARING, BALL	1							N
(A=E/#06223)											
5	3	119620-79250	COVER, BEARING	1							
6	2	119620-79360	WASHER, THRUST	1							
7	2	119620-77421	FRAME ASSY,GENERATOR	1							
8	3	119620-79200	BEARING, BALL	1							
9	3	119620-79210	RETAINER	1							
10	3	119620-79220	SCREW	4							
11	3	119620-79230	BOLT, STUD	2							
12	2	119620-77440	FRAME ASSY	1							
13	2	129240-79300	COVER	1							
14	2	119620-77461	PULLEY, GENERATOR	1							
15	2	119620-77471	NUT	1							
16	2	119620-77490	COLLAR	1							
17	2	129423-77710	REGULATOR ASSY	1							
18	2	119620-79260	HOLDER	1							
19	2	119620-79270	HOLDER, BRUSH	1							
19-1	2	129052-79270	HOLDER, BRUSH	1							N
(A=E/#06223)											
20	3	119620-77480	BRUSH	2							
21	3	119620-79280	SPRING	2							
22	2	119620-79290	SCREW	6							
23	2	119620-79300	SCREW	1							
24	2	119620-79310	BOLT	3							
25	2	119620-79320	SCREW	2							
26	2	119620-79330	BOLT	2							
27	2	119620-79340	BUSH, INSULATION	1							
28	2	119620-79350	NUT	2							
29	1	119740-77250	BOLT, M10X75	1							
30	1	26306-100002	NUT, M10	1							
31	1	119717-77330	ADJUSTER	1							
32	1	119810-77340	BOLT, ADJUST L=30	1							
33	1	26106-080202	BOLT, M8X 20 PLATED	1							

Fig.16. GASKET SET & TOOL

(A)=3TNV76-PBV

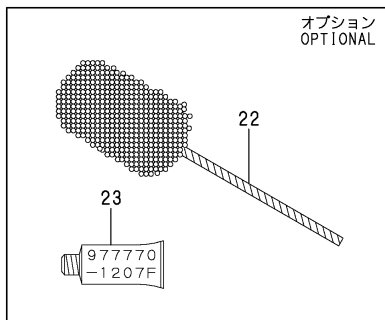
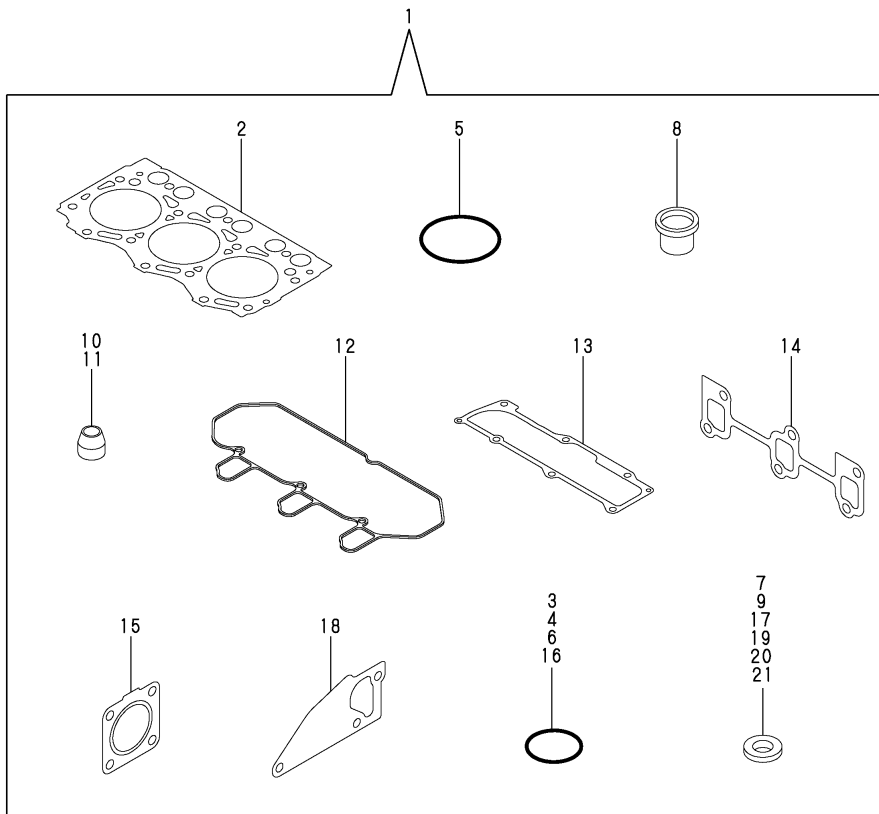
(B)=

(C)=

(D)=

(E)=

(F)=



No.	Lev.	Parts No.	Description	Q'ty						I	R
				(A)	(B)	(C)	(D)	(E)	(F)		
1	1	719740-92600	GASKET SET	1							1
2	2	119717-01330	GASKET, HEAD	1							
3	2	119624-32040	O-RING, P12.0	1							
4	2	119717-32050	O-RING, P17.0	2							
5	2	121850-51960	O-RING	1							
6	2	24311-000320	O-RING, 1AP32.0	2							
7	2	22190-160002	WASHER, SEAL 16	1							
8	2	129901-11450	PROTECTOR, NOZZLE	3							
9	2	119600-11460	GASKET, NOZZLE	6							
10	2	119717-11340	SEAL, VALVE STEM	3							
11	2	119717-11350	SEAL, VALVE STEM	3							
12	2	119718-11310	GASKET, BONNET	1							
13	2	119717-11331	GASKET	1							
14	2	119717-13110	GASKET, EXH.MANIFOLD	1							
15	2	119515-13200	GASKET, SILENCER	1							
16	2	119717-32060	O-RING, P15.0	1							
17	2	22190-080002	WASHER, SEAL 6	4							
18	2	119717-42020	GASKET, WATER PUMP	1							
19	2	23414-080000	GASKET, 8X1.0	1							
20	2	124465-44950	GASKET, 16	1							
21	2	129150-49360	GASKET	1							
22	1	129400-92420	HONE, FLEX	1							1
23	1	977770-1207F	GASKET.LIQUID	1							1

Remarks

(1)Optional parts.

N:Old  $\begin{matrix} \text{Yes} \\ \text{No} \end{matrix}$  New, Q:Old  $\begin{matrix} \text{No} \\ \text{Yes} \end{matrix}$  New, R:Old  $\begin{matrix} \text{Yes} \\ \text{No} \end{matrix}$  New, S:Old  $\begin{matrix} \text{No} \\ \text{Yes} \end{matrix}$  New, W:Add, Z:Discontinued, F:Interchangeable by set, K:Q'ty Change

## Parts No. Index

Parts No.	Fig. No.	Ref. No.
101304-59020	13	16
102103-55520	13	3
103854-39140	13	15
104200-55330	13	9
104200-55750	13	11
105010-11490	4	8
105311-01090	1	6
105425-01690	3	9
110250-55610	13	4
114250-39450	8	9
118200-53010	12	2
118400-51370	10	35
119131-18320	5	3
119233-44740	9	8
119233-77932	11	130
119260-07900	4	1
119285-01990	1	8
119285-11990	4	15
119285-66650	11	136
119305-35170	8	3
119515-13200	5	8
	16	15
119540-59570	12	30 -1
119600-11460	4	6
	16	9
119620-01750	3	4
119620-01800	2	6
119620-02020	1	9
119620-11280	4	31
119620-14200	6	1
119620-21941	7	12
119620-59700	12	34
119620-77380	15	3
119620-77421	15	7
119620-77440	15	12
119620-77461	15	14
119620-77471	15	15
119620-77480	15	20
119620-77490	15	16
119620-79200	15	8
119620-79210	15	9
119620-79220	15	10
119620-79230	15	11
119620-79240	15	4
119620-79250	15	5
119620-79260	15	18
119620-79270	15	19
119620-79280	15	21
119620-79290	15	22
119620-79300	15	23

Parts No.	Fig. No.	Ref. No.
119620-79310	15	24
119620-79320	15	25
119620-79330	15	26
119620-79340	15	27
119620-79350	15	28
119620-79360	15	6
119621-21680	7	11
119623-01250	1	7
119624-32040	2	17
	16	3
119626-07900	4	1 -1
119636-21580	7	7
119660-01911	2	16
119660-61300	11	73
119660-61901	11	62
119717-01330	1	24
	16	2
119717-01501	2	1
119717-01570	2	2
119717-01590	2	3
119717-01601	3	2
119717-01720	3	7
119717-01750	2	15
119717-02410	1	12
119717-02411	1	12 -1
119717-02930	1	17
119717-03031	4	41
119717-03070	4	41 A
		42
119717-11100	4	23 A
119717-11110	4	18
119717-11131	4	19
119717-11190	4	21
119717-11200	4	26
119717-11240	4	27
119717-11260	4	30
119717-11320	4	50
119717-11331	4	51
	16	13
119717-11340	4	22
	16	10
119717-11350	4	23
	16	11
119717-11381	4	40
119717-11650	4	32
119717-11740	4	7
119717-11800	4	17
119717-13110	5	2
	16	14
119717-13600	5	6

Parts No.	Fig. No.	Ref. No.
119717-14400	6	2
119717-14580	6	3
119717-14581	6	3 -1
119717-21650	7	10
119717-21700	7	1
119717-22080	7	13
119717-22090	7	27
119717-22300	7	19
119717-22500	7	15
119717-22550	7	29
119717-23000	7	21
119717-23200	7	24
119717-23600	7	25
119717-23601	7	25 -1
119717-23610	7	33
119717-23611	7	33 -1
119717-23910	7	23 A
119717-25050	6	9
119717-25100	6	10
119717-25101	6	10 -1
119717-25911	6	12 A
119717-25930	10	96
119717-32050	2	18
	16	4
119717-32060	8	5
	16	16
119717-32080	2	10
119717-32100	2	7
119717-32110	2	13
119717-32120	2	14
119717-35080	8	6
119717-39210	8	10
119717-42002	9	1
119717-42020	9	19
	16	18
119717-42031	9	2
119717-42041	9	3
119717-42320	9	3 F
119717-49800	9	12
119717-51030	10	4
119717-51060	10	5
119717-51070	10	6
119717-51150	10	12
119717-51180	10	14
119717-51190	10	15
119717-51200	10	16
119717-51300	10	24
119717-51330	10	27
119717-51420	10	86
119717-51500	10	45

Parts No.	Fig. No.	Ref. No.
119717-51570	10	14 -1
119717-51710	10	75
119717-51711	10	75 -1
119717-51750	10	76
119717-51760	10	77
119717-51761	10	77 -1
119717-53001	12	1
119717-53010	12	3
119717-59510	12	23
119717-59570	12	30
119717-59810	12	8
119717-59820	12	12
119717-59830	12	16
119717-61050	11	1
119717-61060	11	2
119717-61070	11	3
119717-61120	11	6
119717-61130	11	7
119717-61140	11	8
119717-61150	11	8 A
119717-61200	11	69
119717-61400	11	11
119717-61500	11	26
119717-77010	14	2
119717-77330	15	31
119717-77800	4	57
119717-77820	4	58
119718-11310	4	49
	16	12
119718-61560	11	96
119740-01770	3	8
119740-13100	5	1
119740-13510	5	9
119740-34801	8	2
119740-42350	9	6
119740-51100	10	8
119740-55600	13	1
119740-55650	13	12
119740-55651	13	12 -1
119740-61440	11	18
119740-77250	15	29
119802-03100	4	43
119802-03110	4	44
119802-03121	4	45
119802-03131	4	46
119802-03141	4	47
119802-13620	5	4
119802-32130	2	12
119810-01200	1	23
119810-02931	1	17 -1

## Parts No. Index

Parts No.	Fig. No.	Ref. No.
119810-02940	1	25
119810-02941	1	25 -1
119810-55340	13	8
119810-55650	13	6
119810-77340	15	32
119813-59950	12	35
119840-59570	12	33
119865-21600	7	9
119940-07900	4	2
121111-21501	7	6
121120-01620	3	3
121250-44901	9	17
121250-55620	13	5
121254-55510	13	2
121520-34810	8	1
121850-51960	2	19
	16	5
122710-51090	10	7
123501-79240	15	4 -1
123900-13620	5	5
124060-01050	1	5
124066-59100	12	31
124085-02220	3	5
124160-01751	2	27
	4	39
124160-01910	1	4
124465-44950	9	18
	16	20
124550-51350	10	28
124766-59050	12	21
	13	18
129001-32320	2	8
129001-32330	2	9
129005-59830	8	12
129052-61390	11	10
129052-79270	15	19 -1
129100-01580	3	1
	7	2
129100-35140	8	4
129100-51570	10	51
129100-52200	10	94
129100-61650	11	56
129150-11230	4	33
129150-11750	4	35
129150-25301	10	95
129150-49360	9	16
	16	21
129150-59120	12	4
129150-59131	12	7
129155-51020	10	3

Parts No.	Fig. No.	Ref. No.
129155-51140	10	11
129155-51280	10	22
		23
	11	4
129155-51400	10	37
129155-51450	10	40
129155-51521	10	46
129155-51530	10	47
129155-51540	10	48
129155-51550	10	49
129155-51580	10	53
129155-51591	10	54
129155-51600	10	55
129155-51701	10	74
129155-52051	10	93
129155-61341	11	74
129155-61350	11	75
129155-61360	11	76
129155-61370	11	77
129155-61450	11	19
129155-61460	11	78
129155-61480	11	21
129156-51910	10	79
		79 -1
129156-61460	11	20
129209-61370	11	9
129209-61930	11	128
129209-61960	11	133 A
129209-61970	11	129
129210-59020	13	17
129210-59100	12	20
129240-79300	15	13
129350-49530	9	11
129400-92420	16	22
129423-77200	15	1
129423-77710	15	17
129486-61540	11	46
129508-11180	4	20
129900-32130	2	11
129901-11450	4	5
	16	8
129901-53800	12	3 A
129901-59560	12	29
129916-49740	9	3 G
158552-61700	11	57
158552-61710	11	61
158552-61900	11	81 -1
158600-51170	10	13
158600-51270	10	21
158600-51410	10	38

Parts No.	Fig. No.	Ref. No.
158600-51420	10	39
158600-51440	10	29
158600-51441	10	29 -1
158600-51442	10	29 -2
158600-51570	10	52
158600-51790	10	78
158601-61700	11	88
171001-42290	9	7
171056-49120	9	14
171056-49351	9	15
171353-44760	9	9
171353-61700	11	127
174307-51700	11	27
22190-080002	8	11
		13
	16	17
22190-100002	11	63
22190-120002	11	79
	12	40
	13	20
22190-160002	3	12
	10	80
	16	7
22217-060000	10	81
22217-120000	10	82
22242-000120	4	36
22252-000220	7	20
22272-000030	11	64
22351-050010	10	83
22351-060012	4	25
22372-040000	11	80
22512-040120	7	5
22857-500100	4	52
		53
22857-500160	4	54
23414-080000	9	20
	16	19
23414-120016	11	131
23857-030000	8	14
23876-005000	4	16
23876-030000	2	5
23887-100002	11	65
24101-060034	10	84
24101-063034	10	85
24311-000150	11	134
24311-000320	2	28
	4	55
	16	6
24311-240100	13	10
24316-000150	10	36

Parts No.	Fig. No.	Ref. No.
24341-000070	11	66
24341-000280	11	81
26014-080702	13	13
26022-050122	10	87
26022-060162	10	88
26106-050102	10	89
26106-060102	8	8
	11	67
		82
26106-060122	2	20
	6	8
26106-060142	11	83
26106-060162	2	21
26106-060202	4	56
	11	84
26106-060352	6	13
26106-060402	2	22
		23
	9	10
26106-060452	11	85
26106-060602	2	24
26106-060652	2	25
26106-060752	4	24
26106-080122	3	13
	9	4
26106-080142	4	3
	13	14
26106-080162	4	4
26106-080202	9	13
	15	33
26106-080302	3	14
26106-080402	4	38
26106-080452	3	15
26106-080502	3	16
	9	5
26106-100182	5	10
26106-100252	14	1
26206-100252	3	6
26306-080002	2	26
	5	7
		11
26306-100002	15	30
26366-080002	11	68
26577-060122	9	3 H
26716-060002	10	90
26716-120002	10	91
26736-120002	11	86
26756-060002	11	87
26979-050162	4	37
27241-120000	1	13



## Parts No. Index

Parts No.	Fig. No.	Ref. No.
27241-250000	9	3 I
719717-01500	2	4
719717-01560	1	1
719717-01562	1	1 -1
719717-02900	1	20
719717-02901	1	20 -1
719717-02910	1	28
719717-02911	1	28 -1
719740-51360	10	1
719740-92600	16	1
977770-1207F	16	23
X0280210331	14	24
X0280335350	14	34
X0280626010	14	13
X0280996180	14	4
X0281007750	14	3
X0282005991	14	7
X0283006960	14	8
X0284105040	14	14
X0284525010	14	28
X0285007030	14	11
X0285105190	14	5
X0285205030	14	6
X0286105010	14	16
X0286305010	14	18
X0286355010	14	19
X0287405140	14	20
X0534007800	14	21
X1289510130	14	35
X4284001590	14	9 -1
X5128400414	14	9
X9055715000	14	22
X9490065670	14	33
X9490138090	14	26
X9490138100	14	27
X9490138110	14	25
X9490423420	14	31
X9490560750	14	30
X9490561001	15	2
X9490562360	14	29
X9490721360	14	23
X9491034320	14	17
X9491034330	14	15
X9491040990	14	12
X9491050100	14	10

Parts No.	Fig. No.	Ref. No.
-----------	----------	----------

Parts No.	Fig. No.	Ref. No.
-----------	----------	----------

Parts No.	Fig. No.	Ref. No.
-----------	----------	----------