

0CB10-M61100EN

# Contents

Fig. No.	Fig. Name	Fig. No.	Fig. Name
S6D125E-2		25.	PISTON
1.	DYLINDER HEAD	26.	CRANK PULLEY
2.	HEAD COVER	27.	ROCKER ARM
3.	AIRINTAKE MANIFOLD	28.	CAMSHAFT & TAPPET
4.	HEATER SWITCH	29.	YACHOMETER
5.	AIR CLEANER	30.	LUB.OIL PUMP
6.	AIR CLEANER CAP	31.	LUB.OIL FILTER
7.	EXH.MANIFOLD	32.	LUB.OIL COOLER
8.	TURBOCHARGER OIL PIPE	33.	WATER DRAIN VALVE
9.	EXH.PIPE	34.	FUEL INJECTION PUMP MOUNTING
10.	THERMOSTAT HOUSING	35.	FUEL INJECTION PIPE
11.	THERMOSTAT HOUSING BLIND PLUG	36.	FUEL INJECTION PUMP DRIVE
12.	CYLINDER BLOCK	37.	FUEL FILTER
13.	FRONT COVER	38.	FUEL INJECTION VALVE
14.	IDLER GEAR	39.	FUEL RETURN PIPE
15.	CAM FOLLOWER COVER	40.	STOP SOLENOIDO
16.	LUB.OIL PRESSURE SWITCH	41.	COOLING WATER PUMP
17.	OIL PAN & SUC.TUBE	42.	AIR VENT
18.	OIL GAUGE	43.	COOLING FAN
19.	OIL PAN PLUG	44.	FAN PULLEY
20.	FLYWHEEL HOUSING	45.	FAN DRIVE
21.	FLYWHEEL	46.	WATER TEMPERATURE SWITCH
22.	ENGINE MOUNTING	47.	CORROSION RESISTOR
23.	CRANKSHAFT	48.	GENERATOR
24.	DAMPER	49.	STARTING MOTOR

# Contents

Fig. No. Fig. Name

50. STARTING MOTOR COMPONENT PART

51. SAFETY GUARD

52. TOOL

53. HEATER SIGNAL

54. EXH.RELATED PART

55. RADIATOR

56. EMAERGENCY RERAY & SWITCH

57. STARTING SWITCH

58. HARNESS CONNECTOR & TERMINAL C

59. LABEL

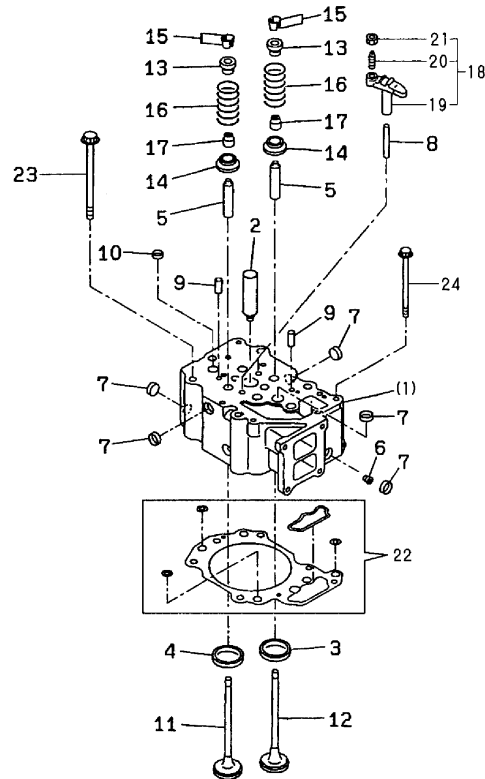
Fig. No. Fig. Name

# Fig.1. DYLINDER HEAD

Y0086110

Fig. 1 シリンダヘッド  
CYLINDER HEAD

見出しNo. 1は、見出しNo. (1) から10を含みます。  
1 inc. (1) ~ 10



(A)=S6D125E-2

(B)=

(C)=

(D)=

(E)=

(F)=

No.	Lev.	Parts No.	Description	Q'ty						I	R
				(A)	(B)	(C)	(D)	(E)	(F)		
1	1	182901-09960	CYLINDER HEAD ASS'Y,	6							
2	2	953KM0-11107	SLEEVE,HOLDER	1							
3	2	953KM0-11476	INSERT EXHAUST V.	2							
3A	2	953KM0-11504	INSERT 0.25MM (OS	2							1
3B	2	953KM0-11502	INSERT 0.50MM (OS	2							2
3C	2	953KM0-11500	INSERT 0.75MM (OS	2							3
3D	2	953KM0-11498	INSERT 1.00MM (OS	2							4
4	2	953KM0-11477	INSERT INTAKE V.(STD	2							
4A	2	953KM0-11505	INSERT 0.25MM (OS	2							1
4B	2	953KM0-11503	INSERT 0.50MM (OS	2							2
4C	2	953KM0-11501	INSERT 0.75MM (OS	2							3
4D	2	953KM0-11499	INSERT 1.00MM (OS	2							4
5	2	182901-09340	GUIDE,VALVE	4							
6	2	182900-24690	PLUG	1							
7	2	953KM0-11807	PLUG	10							
8	2	953KM0-11475	GUIDE	2							
9	2	953KM0-10830	PIN,DOWEL	2							
10	2	953KM0-10907	PLUG	1							
11	1	182901-09670	VALVE,INTAKE	12							
12	1	182901-09680	VALVE,EXHAUST	12							
13	1	953KM0-11609	SEAT,UPPER	24							
14	1	953KM0-11608	SEAT,LOWER	24							
15	1	953KM0-11244	COTTER	48							
16	1	182901-09650	SPRING	24							
17	1	182901-09660	SEAL,VALVE STEM	24							
18	1	182901-09700	CROSSHEAD ASS'Y	12							
19	2	182901-09710	CROSSHEAD	1							
20	2	953KM0-11621	SCREW	1							
21	2	953KM0-11622	NUT	1							
22	1	182901-09970	GASKET,HEAD	6							
23	1	953KM0-11478	BOLT	36							
24	1	182901-08860	BOLT	6							

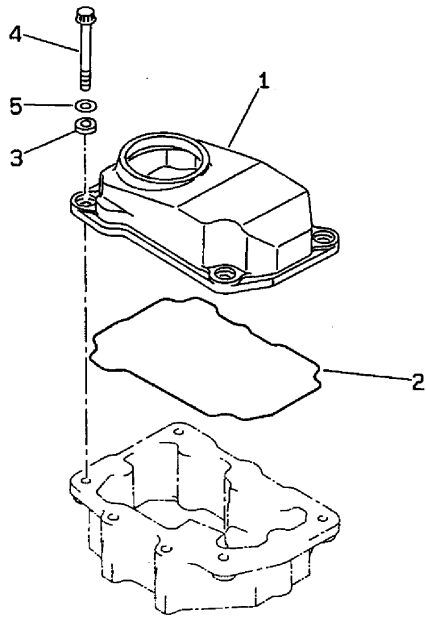
Remarks

- (1)OVER SIZED(O.S=0.25)PART.
- (2)OVER SIZED(O.S=0.5)PART.
- (3)OVER SIZED(O.S=0.75)PART.
- (4)OVER SIZED(O.S=1.0)PART.

# Fig.2. HEAD COVER

Y00B6110

Fig.2 ヘッドカバー  
HEAD COVER



(A)=S6D125E-2  
(B)=  
(C)=

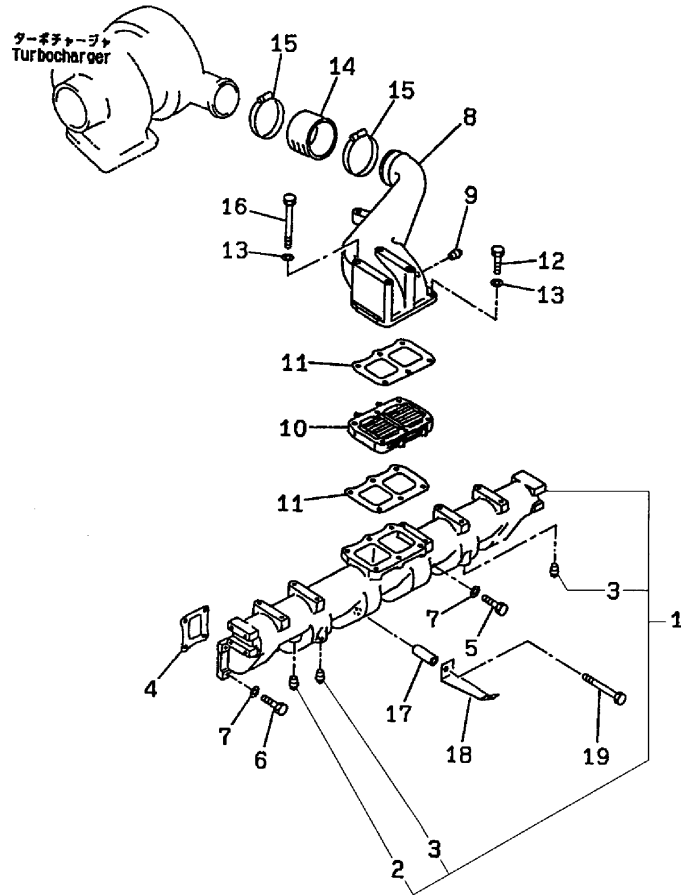
(D)=  
(E)=  
(F)=

No.	Lev.	Parts No.	Description	Qty						I	R
				(A)	(B)	(C)	(D)	(E)	(F)		
1	1	953KM0-11493	COVER HEAD	6							
2	1	953KM0-11494	GASKET	6							
3	1	953KM0-11495	RUBBER,COVER	24							
4	1	953KM0-11674	BOLT	24							
5	1	953KM0-00047	WASHER	24							

# Fig.3. AIRINTAKE MANIFOLD

Y00B6110

Fig.3 エアインテークマニホールド  
AIRINTAKE MANIFOLD



(A)=S6D125E-2

(B)=

(C)=

(D)=

(E)=

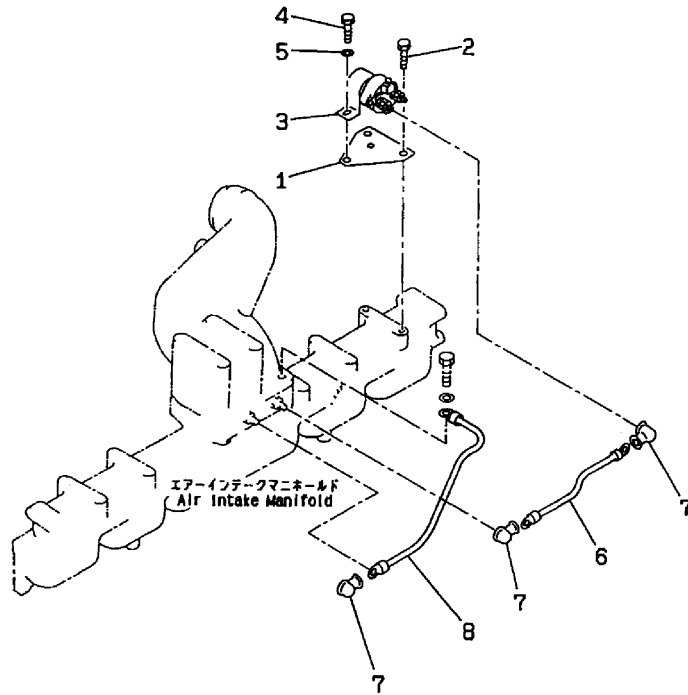
(F)=

No.	Lev.	Parts No.	Description	Q'ty						I	R
				(A)	(B)	(C)	(D)	(E)	(F)		
1	1	182901-09930	INTAKE MANIFOLD A	1							
2	2	182900-53470	PLUG	1							
3	2	23871-010000	PLUG, R01	2							
4	1	182900-44020	GASKET,INTAKE MANIFO	6							
5	1	953KM0-10744	BOLT	8							
6	1	953KM0-12184	BOLT	15							
7	1	953KM0-00047	WASHER	23							
8	1	182901-09990	CONNECTOR	1							
9	1	23871-010000	PLUG, R01	1							
10	1	182901-09180	HEATER	1							
11	1	182900-49260	GASKET	2							
12	1	953KM0-00121	BOLT	2							
13	1	953KM0-00047	WASHER	6							
14	1	953KM0-11686	HOSE	1							
15	1	953KM0-10947	CLAMP	2							
16	1	953KM0-10747	BOLT	4							
17	1	953KM0-11116	SPACER	1							
18	1	182901-10400	BRACKET	1							
19	1	953KM0-10743	BOLT	1							

# Fig.4. HEATER SWITCH

Y00B6110

Fig.4 ヒータスイッチ  
HEATER SWITCH



(A)=S6D125E-2  
(B)=  
(C)=

(D)=  
(E)=  
(F)=

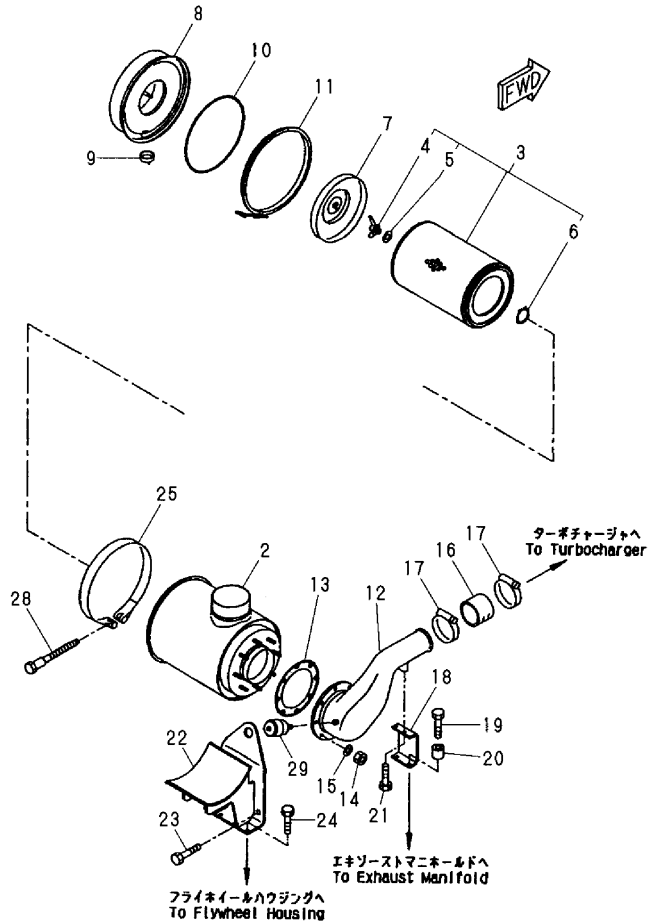
No.	Lev.	Parts No.	Description	Q'ty						I	R
				(A)	(B)	(C)	(D)	(E)	(F)		
1	1	953KM0-11796	BRACKET	1							
2	1	182900-04060	BOLT	2							
3	1	953KM0-11026	SWITCH,HEATER	1							
4	1	182900-10720	BOLT	2							
5	1	953KM0-00205	WASHER	2							
6	1	953KM0-11795	WIRE	1							
7	1	953KM0-10957	CAP	3							
8	1	953KM0-12024	WIRE	1							

Fig.5. AIR CLEANER

Y00B6110

Fig.5 エアクリーナ  
AIR CLEANER

見出しNo. 1は、見出しNo. (1) から11を含みます。  
1 inc. (1) ~ 11



(A)=S6D125E-2

(B)=

(C)=

(D)=

(E)=

(F)=

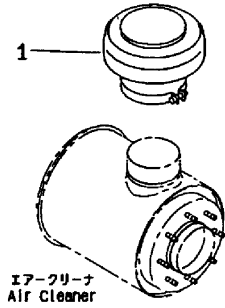
No.	Lev.	Parts No.	Description	Q'ty						I	R
				(A)	(B)	(C)	(D)	(E)	(F)		
1	1	953KM0-11805	AIR CLEANER	1							
2	2	953KM0-12034	BODY	1							
3	2	953KM0-10982	ELEMENT ASSY.	1							
4	3	953KM0-10972	NUT,WING	1							
5	3	953KM0-10984	WASHER,SEAL	1							
6	3	22242-000150	RING, 15	1							
7	2	953KM0-12033	BAFFLE	1							
8	2	953KM0-12032	CUP	1							
9	2	953KM0-10971	VALVE	1							
10	2	953KM0-11067	O-RING	1							
11	2	953KM0-10969	CLAMP	1							
12	1	953KM0-11684	CONNECTOR	1							
13	1	953KM0-11066	GASKET,AIR CLEANER	1							
13-1	1	182901-09250	GASKET	1							N
(A=E/#27785)											
14	1	953KM0-00181	NUT	8							
15	1	953KM0-00047	WASHER	8							
16	1	953KM0-11687	HOSE	1							
17	1	953KM0-10948	CLAMP	2							
18	1	953KM0-11689	BRACKET	1							
19	1	953KM0-01943	BOLT	2							
20	1	953KM0-12015	SPACER	2							
21	1	182900-04060	BOLT	2							
22	1	953KM0-11688	BRACKET	1							
23	1	953KM0-10740	BOLT	2							
24	1	182900-04060	BOLT	4							
25	1	953KM0-12026	BAND	1							
28	1	953KM0-12020	BOLT	1							
29	1	182901-09190	INDICATOR,DUST	1							



# Fig.6. AIR CLEANER CAP

Y00B6110

Fig. **6** エアクリーナキャップ  
AIR CLEANER CAP



(A)=S6D125E-2  
(B)=  
(C)=

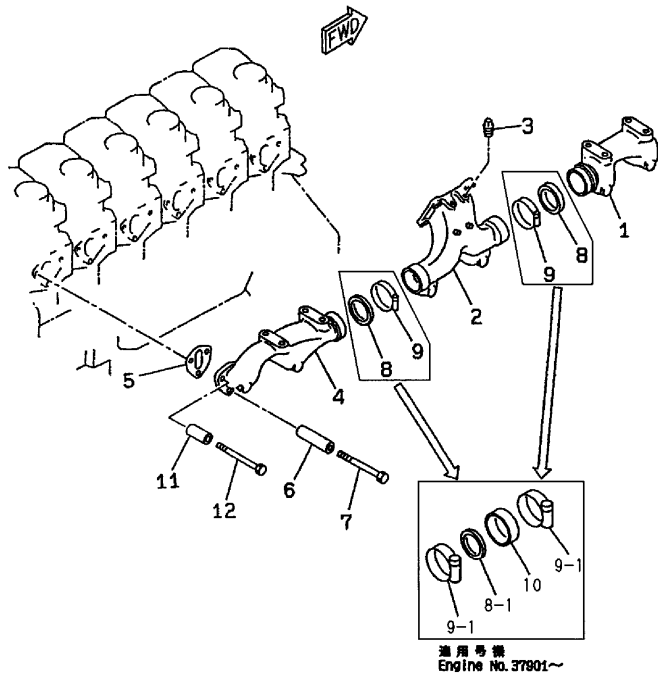
(D)=  
(E)=  
(F)=

No.	Lev.	Parts No.	Description	Q'ty						I	R
				(A)	(B)	(C)	(D)	(E)	(F)		
1	1	182901-09130	CAP,AIR CLEANER	1							

Fig.7. EXH.MANIFOLD

Y00B6110

Fig. 7 排気マニホールド  
EXH. MANIFOLD



(A)=S6D125E-2

(B)=

(C)=

(D)=

(E)=

(F)=

No.	Lev.	Parts No.	Description	Q'ty						I	R
				(A)	(B)	(C)	(D)	(E)	(F)		
1	1	953KM0-11692	MANIFOLD,EXH.FRONT	1							
2	1	953KM0-11691	MANIFOLD,EXH.CENTER	1							
3	1	23871-010000	PLUG, R01	1							
4	1	953KM0-11693	MANIFOLD,EXH.REAR	1							
5	1	953KM0-11483	GASKET	6							
5-1	1	182901-10000	GASKET	6							N
(A=E/#27785)											
6	1	953KM0-11116	SPACER	16							
7	1	953KM0-10741	BOLT	16							
7-1	1	182901-08780	BOLT	16							R
(A=E/#40050)											
8	1	953KM0-11696	SEAL,RING	2							
8-1	1	182901-10460	RING,SEAL	2							S 1
(A=E/#37901)											
9	1	953KM0-10949	CLAMP	2							
9-1	1	182901-09010	CLAMP	4							N
(A=E/#37901)											
10	1	182901-10470	RING	2							W
(A=E/#37901)											
11	1	953KM0-11099	SPACER	2							
12	1	182901-08760	BOLT	2							

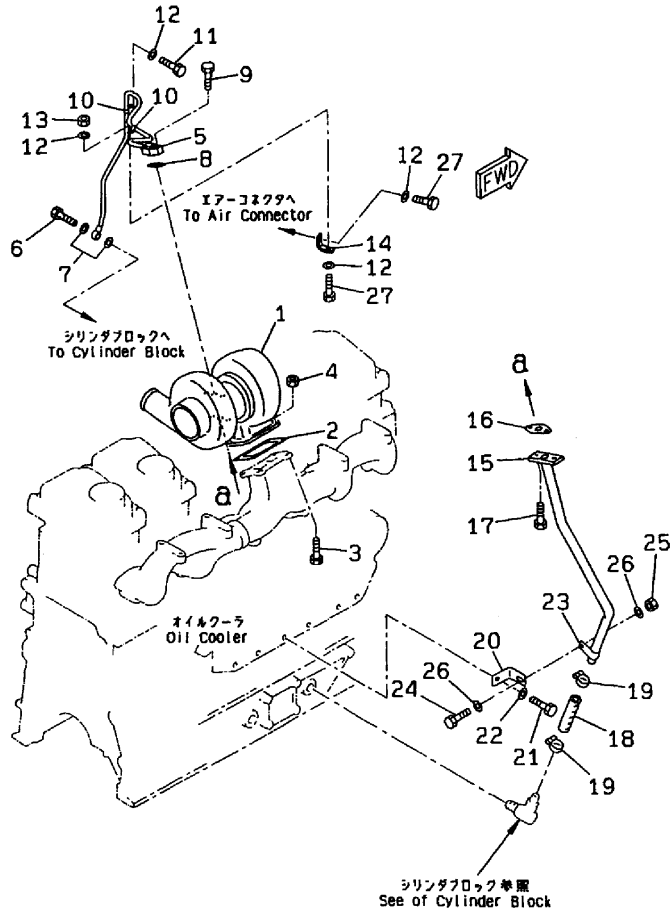
Remarks

(1)INTERCHANGEABLE BY SIMULTANEOUS REPLACEMENT WITH REF.NO.9-1&REF. NO.10

Fig.8. TURBOCHARGER OIL PIPE

Y00B6110

Fig. 8 タービンオイルパイプ  
TURBOCHARGER OIL PIPE



(A)=S6D125E-2

(B)=

(C)=

(D)=

(E)=

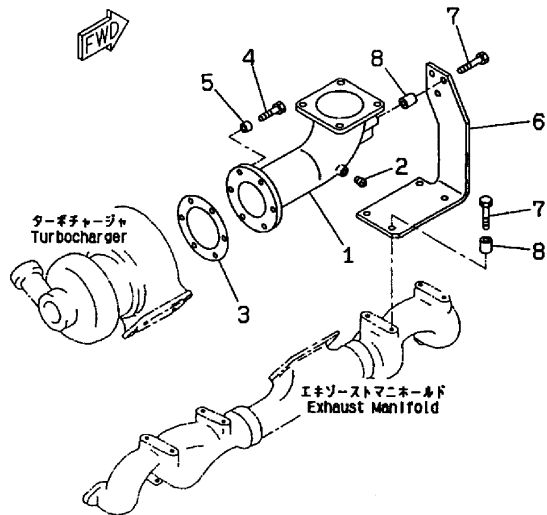
(F)=

No.	Lev.	Parts No.	Description	Q'ty						I	R
				(A)	(B)	(C)	(D)	(E)	(F)		
1	1	182901-10570	TURBOCHARGER ASS'Y	1							
2	1	182901-10710	GASKET	1							
3	1	182901-09330	BOLT	4							
4	1	953KM0-11058	NUT	4							
5	1	182901-10220	TUBE,OIL	1							
6	1	953KM0-10920	BOLT,JOINT	1							
7	1	22190-140002	WASHER, SEAL 14	2							
8	1	182901-07560	GASKET	1							
9	1	182900-04020	BOLT	2							
10	1	182901-10230	CLIP	2							
11	1	953KM0-00116	BOLT	3							
11-1	1	953KM0-00116	BOLT	1							K
(A=E/#65905)											
12	1	953KM0-00047	WASHER	3							
13	1	953KM0-01975	NUT	1							
14	1	182901-10730	BRACKET	1							
15	1	953KM0-11751	TUBE	1							
16	1	182901-07570	GASKET	1							
17	1	182900-04010	BOLT	2							
17-1	1	182900-04000	BOLT	2							N
(A=E/#65905)											
18	1	182901-10680	HOSE	1							
19	1	23000-041000	CLAMP, 41	2							
20	1	953KM0-11750	STAY	1							
21	1	953KM0-12184	BOLT	1							
22	1	953KM0-00047	WASHER	1							
23	1	953KM0-12013	CLIP	1							
23-1	1	182901-08930	CLIP	1							N
(A=E/#65905)											
24	1	953KM0-12187	BOLT	1							
25	1	953KM0-00181	NUT	1							
26	1	953KM0-00047	WASHER	2							
27	1	182900-04060	BOLT	2							W
(A=E/#65905)											

Fig.9. EXH.PIPE

Y00B6110

Fig. 9 排気パイプ  
EXH. PIPE



(A)=S6D125E-2  
(B)=  
(C)=

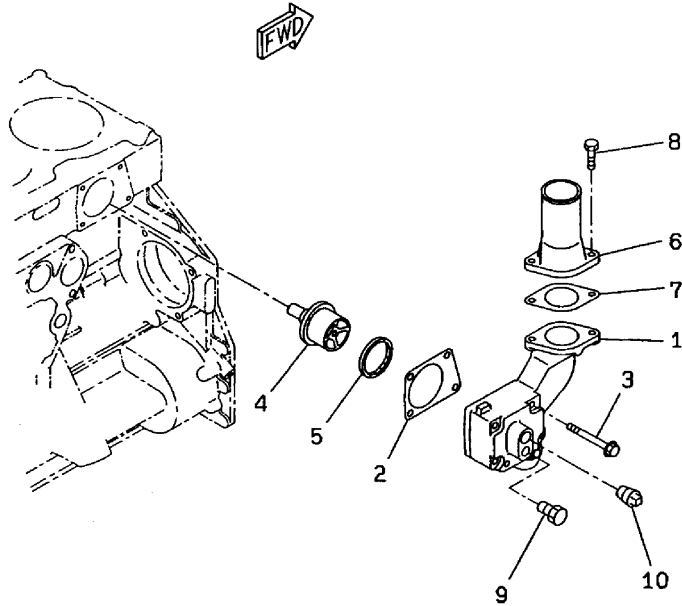
(D)=  
(E)=  
(F)=

No.	Lev.	Parts No.	Description	Q'ty						I	R
				(A)	(B)	(C)	(D)	(E)	(F)		
1	1	182901-09940	ELBOW,EXHAUST	1							
2	1	23871-010000	PLUG, R01	1							
3	1	182901-09320	GASKET	1							
4	1	182901-08790	BOLT	6							
5	1	182901-10770	SPACER	6							
6	1	182901-09950	BRACKET	1							
7	1	182901-08770	BOLT	7							
8	1	182900-62450	BOSS	7							

Fig.10. THERMOSTAT HOUSING

Y00B6110

Fig. 10 サーモスタットハウジング  
THERMOSTAT HOUSING



(A)=S6D125E-2  
(B)=  
(C)=

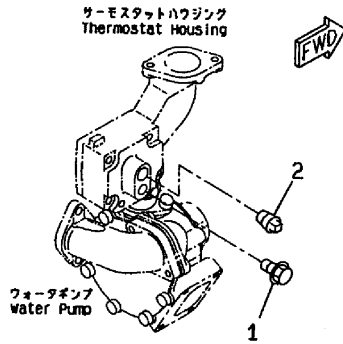
(D)=  
(E)=  
(F)=

No.	Lev.	Parts No.	Description	Q'ty						I	R
				(A)	(B)	(C)	(D)	(E)	(F)		
1	1	182901-09480	HOUSING	1							
2	1	182901-09500	GASKET(K2,K6)	1							
3	1	182901-08830	BOLT	4							
4	1	182901-09160	THERMOSTAT	1							
5	1	182901-10800	SEAL(K2)	1							
5-1	1	182901-10590	SEAL(K2)	1							R
(A=E/#64848)											
6	1	182901-10690	CONNECTOR	1							
7	1	182901-10700	GASKET(K2)	1							
8	1	182900-04060	BOLT	2							
9	1	182901-09100	PLUG	1							
10	1	182900-53470	PLUG	1							

Fig.11. THERMOSTAT HOUSING BLIND PLUG

Y00B6110

Fig. 11 サーモスタットハウジングブラインドプラグ  
THERMOSTAT HOUSING BLIND PLUG



(A)=S6D125E-2  
(B)=  
(C)=

(D)=  
(E)=  
(F)=

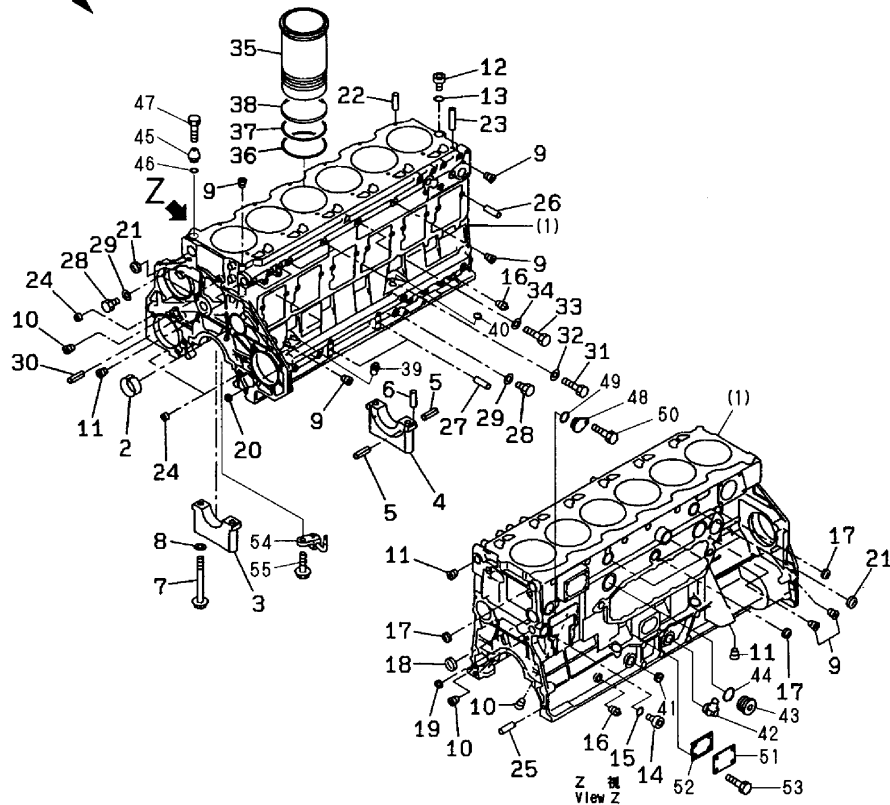
No.	Lev.	Parts No.	Description	Q'ty						I	R
				(A)	(B)	(C)	(D)	(E)	(F)		
1	1	182901-09110	PLUG	1							
2	1	182900-53470	PLUG	1							

Fig.12. CYLINDER BLOCK

Y00B6110

Fig. 12 シリンダブロック  
CYLINDER BLOCK

見出しNo. 1は、見出しNo. (1) から34を含みます。  
1 inc. (1) ~ 34



(A)=S6D125E-2

(B)=

(C)=

(D)=

(E)=

(F)=

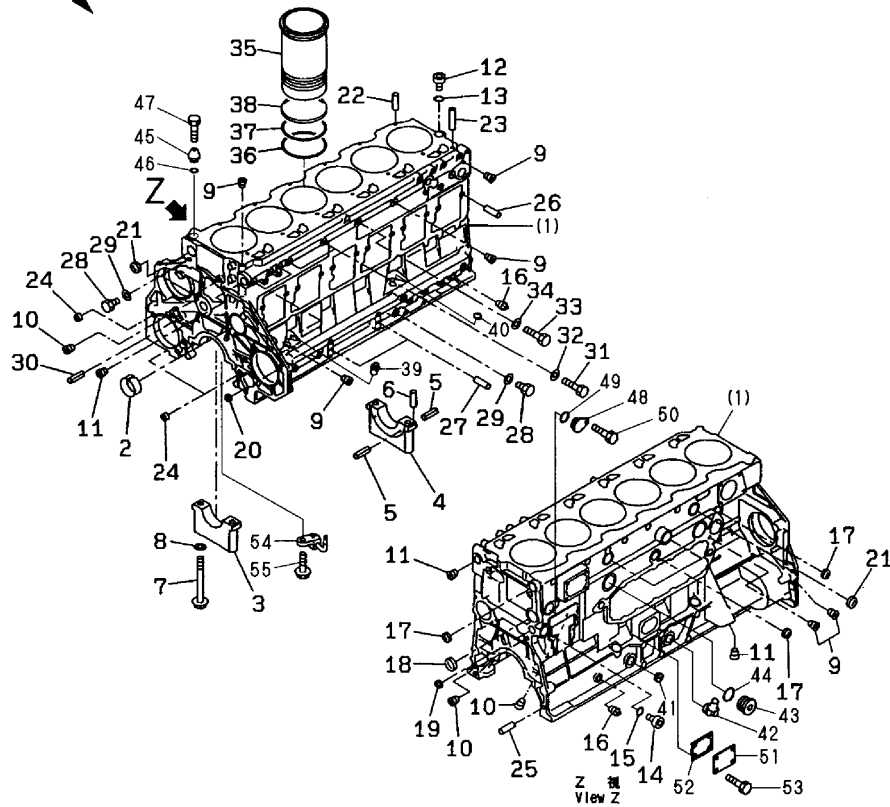
No.	Lev.	Parts No.	Description	Q'ty						I	R
				(A)	(B)	(C)	(D)	(E)	(F)		
1	1	182901-10040	CYLINDER BLOCK ASS'Y	1							
2	2	953KM0-11511	BUSH,COMSHAFT	7							
3	2	182901-09530	CAP,MAIN METAL, NO.1	6							
4	2	182901-09540	CAP,MAIN METAL, NO.7	1							
5	2	22351-040008	PIN, SPRING 4.0X 8	6							
6	2	953KM0-10829	PIN,DOWEL	2							
7	2	953KM0-11512	BOLT	14							
8	2	953KM0-00224	WASHER	14							
9	2	953KM0-10899	PLUG	7							
10	2	953KM0-10900	PLUG	3							
11	2	182901-08980	PLUG	3							
12	2	953KM0-00403	PLUG	1							
13	2	953KM0-10877	O-RING	1							
14	2	953KM0-10886	PLUG	1							
15	2	953KM0-10878	O-RING,CYL.BLOCK	1							
16	2	23871-030000	PLUG, R03	2							
17	2	953KM0-10911	PLUG	3							
18	2	953KM0-10913	PLUG	1							
19	2	953KM0-10903	PLUG	1							
20	2	953KM0-10901	PLUG	4							
21	2	953KM0-10912	PLUG	4							
22	2	953KM0-10830	PIN,DOWEL	12							
23	2	953KM0-11506	TUBE	1							
24	2	953KM0-11600	PIN	3							
25	2	953KM0-11528	PIN	2							
26	2	953KM0-11600	PIN	12							
27	2	953KM0-01839	PIN,DOWEL	2							
28	2	953KM0-11051	PLUG	3							
29	2	22190-140002	WASHER, SEAL 14	40002							
30	2	22351-050012	PIN, SPRING 5.0X12	1							
31	2	953KM0-10756	BOLT	2							
32	2	22190-100002	WASHER, SEAL 10	2							
33	2	182901-08820	BOLT	1							
34	2	22190-140002	WASHER, SEAL 14	1							
35	1	182901-10060	LINER,CYLINDER	6							
36	1	953KM0-11513	O-RING,LOWER	6							
37	1	953KM0-11514	O-RING,UPPER,CYL.LIN	6							
38	1	953KM0-11515	SEAL CLEVIS	6							
39	1	953KM0-11531	BUSH	1							
40	1	953KM0-10902	PLUG	3							
41	1	953KM0-10910	PLUG	1							
42	1	953KM0-11749	ELBOW	1							
43	1	953KM0-11507	PLUG	2							
44	1	953KM0-11508	O-RING	2							
45	1	182901-09460	COVER	1							
46	1	24311-000210	O-RING, 1AP21.0	1							
47	1	953KM0-12187	BOLT	1							
48	1	182901-09470	COVER	1							
49	1	24311-000300	O-RING, 1AP30.0	1							
50	1	182900-04060	BOLT	1							
51	1	182901-10760	PLATE	1							

Fig.12. CYLINDER BLOCK

Y00B6110

Fig. 12 シリンダブロック  
CYLINDER BLOCK

見出しNo. 1は、見出しNo. (1) から34を含みます。  
1 inc. (1) ~ 34



(A)=S6D125E-2

(B)=

(C)=

(D)=

(E)=

(F)=

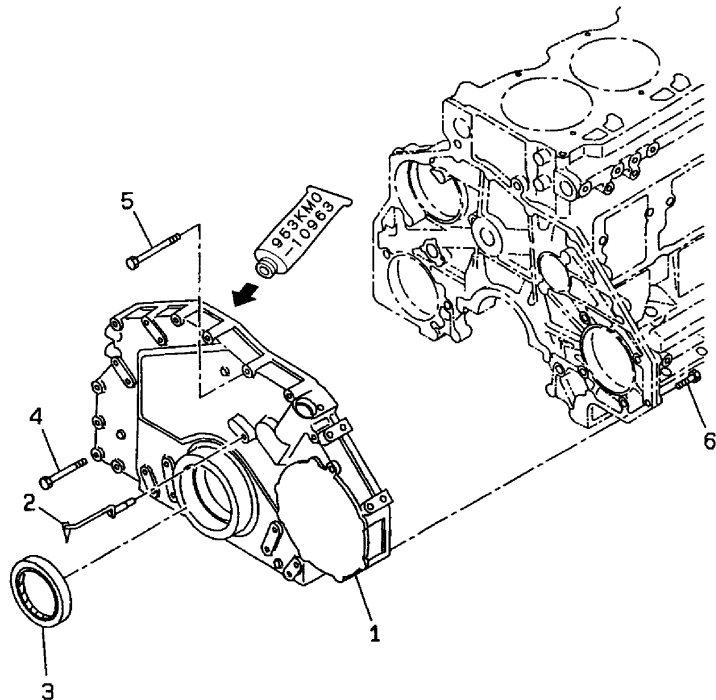
No.	Lev.	Parts No.	Description	Qty						I	R
				(A)	(B)	(C)	(D)	(E)	(F)		
52	1	182900-64020	GASKET	1							
53	1	953KM0-12187	BOLT	4							
54	1	182901-10050	NOZZLE,PISTON COOLIN	6							
55	1	182900-04220	BOLT	6							



Fig.13. FRONT COVER

Y00B6110

Fig. 13 フロントカバー  
FRONT COVER



(A)=S6D125E-2  
(B)=  
(C)=

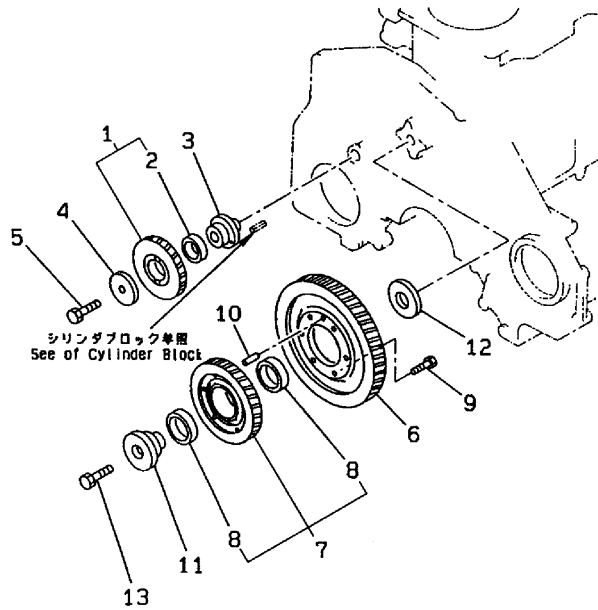
(D)=  
(E)=  
(F)=

No.	Lev.	Parts No.	Description	Qty						I	R
				(A)	(B)	(C)	(D)	(E)	(F)		
1	1	182901-10480	COVER,FRONT	1							
2	1	182901-10490	POINTER	1							
3	1	953KM0-11522	SEAL,FRONT	1							
4	1	953KM0-10735	BOLT	7							
5	1	182900-11550	BOLT	2							
6	1	953KM0-11667	BOLT	4							

Fig.14. IDLER GEAR

Y00B6110

Fig. 14 アイドラギヤ  
IDLER GEAR



(A)=S6D125E-2  
(B)=  
(C)=

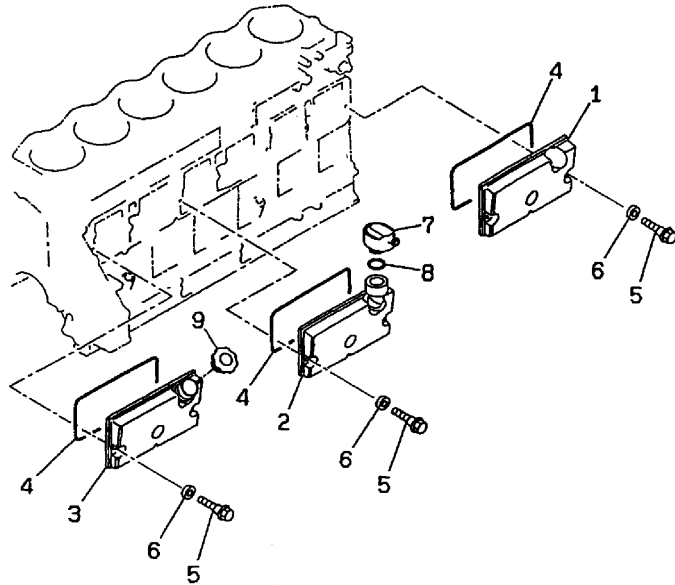
(D)=  
(E)=  
(F)=

No.	Lev.	Parts No.	Description	Q'ty						I	R
				(A)	(B)	(C)	(D)	(E)	(F)		
1	1	182901-09570	GEAR ASS'Y	1							
2	2	953KM0-11582	BUSH	1							
3	1	953KM0-11519	SHAFT	1							
4	1	953KM0-11520	PLATE	1							
5	1	953KM0-10732	BOLT	1							
6	1	182901-10500	GEAR	1							
7	1	182901-09580	GEAR ASS'Y	1							
8	2	953KM0-11585	BUSH	2							
9	1	953KM0-10715	BOLT	6							
10	1	953KM0-11063	PIN	1							
11	1	182901-09360	SHAFT	1							
12	1	182901-09370	PLATE	1							
13	1	182901-09380	BOLT	1							

Fig.15. CAM FOLLOWER COVER

Y00B6110

Fig. 15 カムフォロワカバー  
CAM FOLLOWER COVER



(A)=S6D125E-2  
(B)=  
(C)=

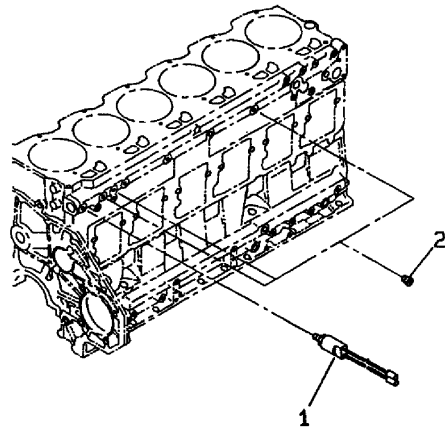
(D)=  
(E)=  
(F)=

No.	Lev.	Parts No.	Description	Q'ty						I	R
				(A)	(B)	(C)	(D)	(E)	(F)		
1	1	182901-09490	COVER	1							
2	1	182901-09520	COVER ASS'Y	1							
3	1	182901-09510	COVER ASS'Y	1							
4	1	182901-09440	GASKET	3							
5	1	182901-10670	BOLT	9							
6	1	182901-09430	PACKING	9							
7	1	953KM0-11543	BREATHER	1							
8	1	953KM0-11059	O-RING	1							
9	1	953KM0-11072	CAP	1							

# Fig.16. LUB.OIL PRESSURE SWITCH

Y00B6110

Fig. **16** 油圧スイッチ  
LUB.OIL PRESSURE SWITCH



(A)=S6D125E-2  
(B)=  
(C)=

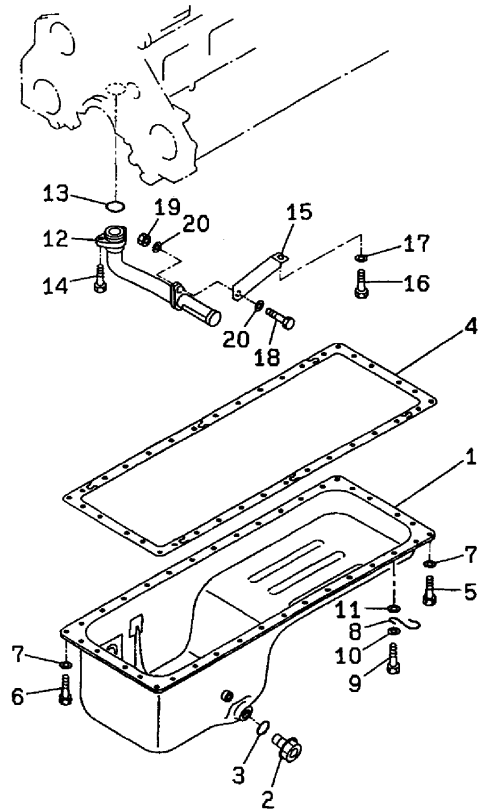
(D)=  
(E)=  
(F)=

No.	Lev.	Parts No.	Description	Q'ty						I	R
				(A)	(B)	(C)	(D)	(E)	(F)		
1	1	182901-09210	SWITCH,OIL PRESSURE	1							
2	1	953KM0-10894	PLUG	3							

Fig.17. OIL PAN & SUC.TUBE

Y00B6110

Fig. 17 オイルパン&サクシジョンチューブ  
OIL PAN & SUC.TUBE



(A)=S6D125E-2

(B)=

(C)=

(D)=

(E)=

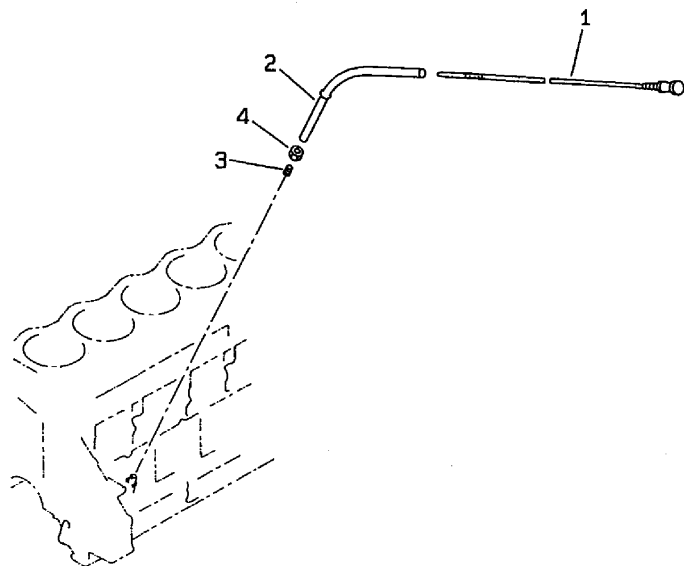
(F)=

No.	Lev.	Parts No.	Description	Q'ty						I	R
				(A)	(B)	(C)	(D)	(E)	(F)		
1	1	182901-09420	PAN,OIL	1							
2	1	182901-08990	PLUG	1							
3	1	953KM0-00387	O-RING	1							
4	1	182900-49240	GASKET,OIL PAN	1							
5	1	182900-04060	BOLT	29							
6	1	953KM0-12184	BOLT	6							
7	1	953KM0-00047	WASHER	35							
8	1	953KM0-11075	CLIP	1							
9	1	953KM0-12184	BOLT	1							
10	1	953KM0-00222	WASHER	1							
11	1	953KM0-00047	WASHER	1							
12	1	182901-09760	STRAINER,OIL	1							
13	1	953KM0-10875	O-RING,OIL STRAINER	1							
14	1	953KM0-10717	BOLT	2							
15	1	182901-09770	BRACKET	1							
16	1	953KM0-00058	BOLT	1							
17	1	953KM0-00204	WASHER	1							
18	1	953KM0-10715	BOLT	1							
19	1	953KM0-01975	NUT	1							
20	1	953KM0-00204	WASHER	2							

Fig.18. OIL GAUGE

Y00B6110

Fig. 18 ケンユボウ  
OIL GAUGE



(A)=S6D125E-2  
(B)=  
(C)=

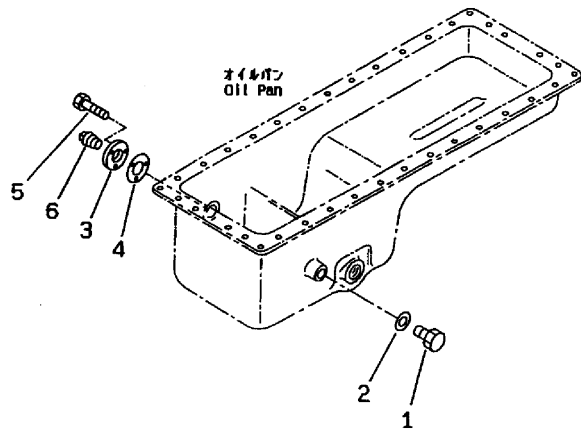
(D)=  
(E)=  
(F)=

No.	Lev.	Parts No.	Description	Q'ty						I	R
				(A)	(B)	(C)	(D)	(E)	(F)		
1	1	182901-10020	GAUGE,OIL LEVEL	1							
2	1	182901-09450	GUIDE	1							
3	1	953KM0-11532	COLLAR	1							
4	1	953KM0-11533	NUT	1							

Fig.19. OIL PAN PLUG

Y00B6110

Fig. 19 オイルパンプラグ  
OIL PAN PLUG



(A)=S6D125E-2  
(B)=  
(C)=

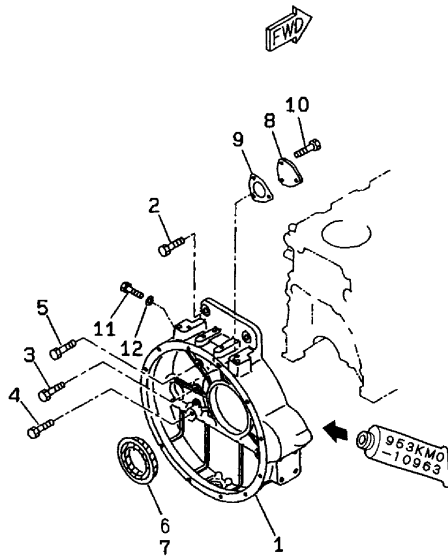
(D)=  
(E)=  
(F)=

No.	Lev.	Parts No.	Description	Qty						I	R	
				(A)	(B)	(C)	(D)	(E)	(F)			
1	1	953KM0-12021	PLUG	1								
2	1	22190-160002	WASHER, SEAL 16	1								
3	1	182901-10030	PLATE	1								
4	1	182901-09300	GASKET	1								
5	1	953KM0-00104	BOLT	3								
6	1	182901-08970	PLUG	1								

# Fig.20. FLYWHEEL HOUSING

Y00B6110

Fig. 20 フライホイールハウジング  
FLYWHEEL HOUSING



(A)=S6D125E-2

(B)=

(C)=

(D)=

(E)=

(F)=

No.	Lev.	Parts No.	Description	Q'ty						I	R
				(A)	(B)	(C)	(D)	(E)	(F)		
1	1	953KM0-11525	HOUSING,FLYWHEEL	1							
1-1	1	182901-09390	HOUSING,FLYWHEEL	1							S 1
(A=E/#43788)											
2	1	953KM0-00133	BOLT	2							
3	1	953KM0-01957	BOLT	6							
4	1	953KM0-10734	BOLT	2							
5	1	953KM0-01945	BOLT	2							
6	1	953KM0-11526	SEAL,REAR	1							
6-1	1	182901-10010	SEAL, REAR	1							N
(A=E/#43788)											
7	1	182901-09550	SEAL, REAR,(SERVICE	1							2
7-1	1	182901-10070	SEAL, REAR,(SERVICE	1							N 2
(A=E/#43788)											
8	1	953KM0-11527	PLATE	1							
9	1	182901-09400	GASKET	1							
9-1	1	182901-09410	GASKET	1							N
(A=E/#27785)											
10	1	953KM0-12187	BOLT	3							
11	1	182901-10620	BOLT	1							
12	1	22190-160002	WASHER, SEAL 16	1							

Remarks

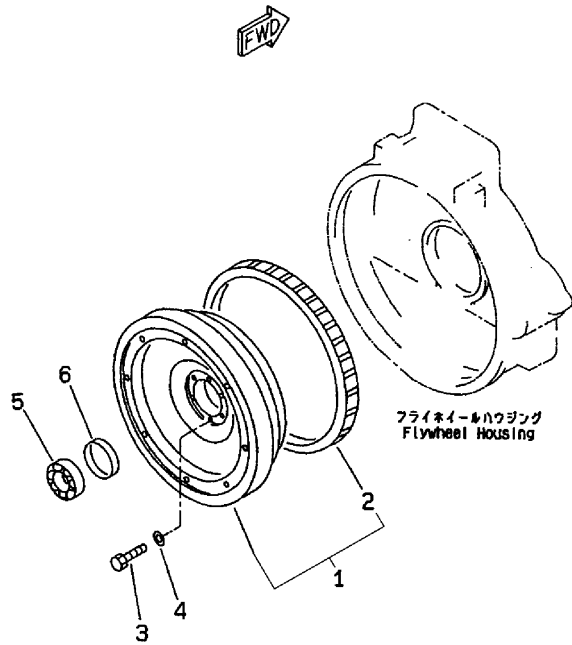
- (1)INTERCHANGEABLE BY SIMULTANEOUS REPLACEMENT WITH REF.NO.6-1, NO.11 & REF.NO.12.
- (2)REPAIR PARTS.



# Fig.21. FLYWHEEL

Y00B6110

Fig.21 フライホイール  
FLYWHEEL



(A)=S6D125E-2  
(B)=  
(C)=

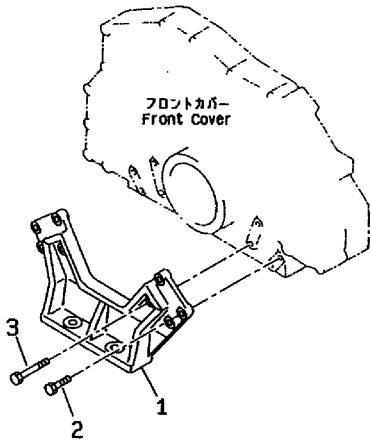
(D)=  
(E)=  
(F)=

No.	Lev.	Parts No.	Description	Q'ty						I	R
				(A)	(B)	(C)	(D)	(E)	(F)		
1	1	953KM0-11711	FLYWHEEL ASSY.	1							
2	2	953KM0-11571	GEAR,RING	1							
3	1	953KM0-10755	BOLT	6							
4	1	953KM0-00224	WASHER	6							
5	1	953KM0-10852	BEARING,BALL	1							
6	1	953KM0-11713	SPACER	1							

# Fig.22. ENGINE MOUNTING

Y0086110

Fig. **22** マウンティングフート  
ENGINE MOUNTING



(A)=S6D125E-2  
(B)=  
(C)=

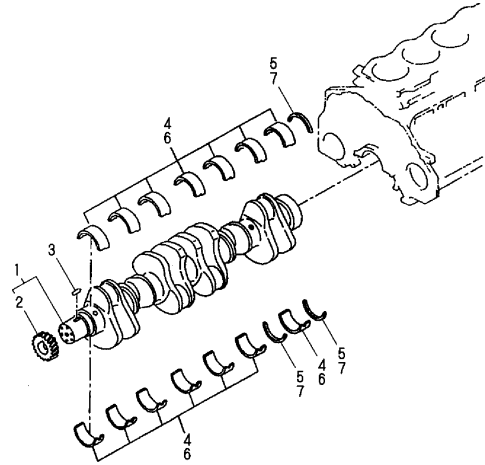
(D)=  
(E)=  
(F)=

No.	Lev.	Parts No.	Description	Q'ty						I	R
				(A)	(B)	(C)	(D)	(E)	(F)		
1	1	953KM0-11524	SUPPORT,FRONT	1							
2	1	182900-04070	BOLT	2							
3	1	182900-11560	BOLT	6							

# Fig.23. CRANKSHAFT

Y00B6110

Fig. 23 クランクシャフト  
CRANKSHAFT



(A)=S6D125E-2

(B)=

(C)=

(D)=

(E)=

(F)=

No.	Lev.	Parts No.	Description	Q'ty						I	R
				(A)	(B)	(C)	(D)	(E)	(F)		
1	1	182901-10090	CRANKSHAFT ASS'Y	1							
2	1	182901-09600	GEAR,CRANKSHAFT	1							
3	1	953KM0-11570	KEY	1							
4	1	953KM0-11544	MAIN METAL ASSY.(STD)	7							
5	1	953KM0-11545	THRUST METAL ASSY.	1							
6A	1	953KM0-11564	MAIN METAL ASSY.	7							1
6B	1	953KM0-11559	MAIN METAL ASSY.	7							2
6C	1	953KM0-11554	MAIN METAL ASSY.	7							3
6D	1	953KM0-11549	MAIN METAL ASSY.	7							4
7A	1	953KM0-11565	THRUST METAL ASSY.	1							5
7B	1	953KM0-11560	THRUST METAL ASSY.	1							6
7C	1	953KM0-11555	THRUST METAL ASSY.	1							7
7D	1	953KM0-11550	THRUST METAL ASSY.	1							8

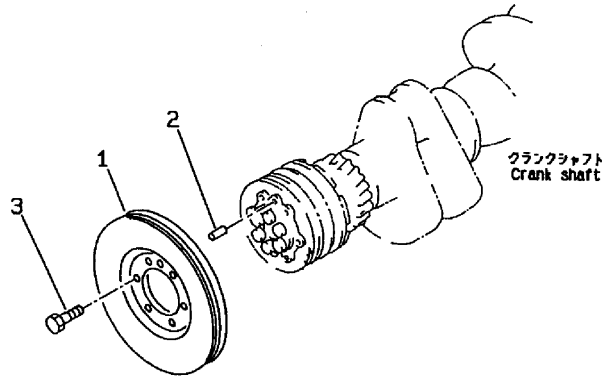
Remarks

- (1) UNDER SIZED(U.S=0.25)PART.
- (2) UNDER SIZED(U.S=0.5)PART.
- (3) UNDER SIZED(U.S=0.75)PART.
- (4) UNDER SIZED(U.S=1.0)PART.
- (5) OVER SIZED(O.S=0.25)PART.
- (6) OVER SIZED(O.S=0.5)PART.
- (7) OVER SIZED(O.S=0.75)PART.
- (8) OVER SIZED(O.S=1.0)PART.

# Fig.24. DAMPER

Y00B6110

Fig. **24** ダンパ  
DAMPER



(A)=S6D125E-2  
(B)=  
(C)=

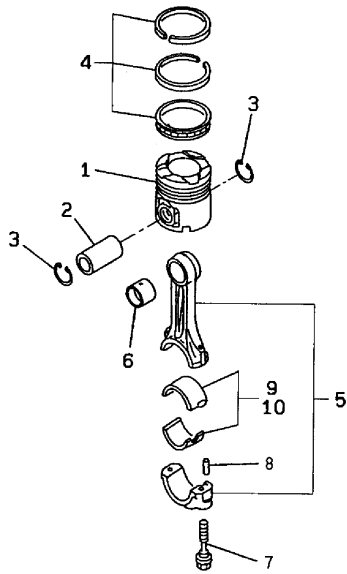
(D)=  
(E)=  
(F)=

No.	Lev.	Parts No.	Description	Qty						I	R
				(A)	(B)	(C)	(D)	(E)	(F)		
1	1	953KM0-11721	DAMPER ASSY.	1							
1-1	1	182901-10080 (A=E/#38114)	DAMPER ASS'Y	1							N
2	1	953KM0-00231	PIN, DOWEL	1							
3	1	953KM0-11721	DAMPER ASSY.	1							

# Fig.25. PISTON

Y00B6110

Fig. **25** ピストン  
PISTON



(A)=S6D125E-2

(B)=

(C)=

(D)=

(E)=

(F)=

No.	Lev.	Parts No.	Description	Qty						I	R
				(A)	(B)	(C)	(D)	(E)	(F)		
1	1	182901-10510	PISTON	6							
2	1	953KM0-11716	PIN,PISTON	6							
3	1	953KM0-10840	RING,SNAP	12							
4	1	182901-09590	PISTON RING ASS'Y	6							
5	1	953KM0-11718	CONNECTING ROD ASS'Y.	6							
6	1	953KM0-11578	BUSH	1							
7	1	953KM0-11579	BOLT	2							
8	1	953KM0-10819	PIN,DOWEL	2							
9	1	182901-09560	METAL ASS'Y	6							
10A	1	182901-09640	METAL ASS'Y	6							1
10B	1	182901-09630	METAL ASS'Y	6							2
10C	1	182901-09620	METAL ASS'Y	6							3
10D	1	182901-09610	METAL ASS'Y	6							4

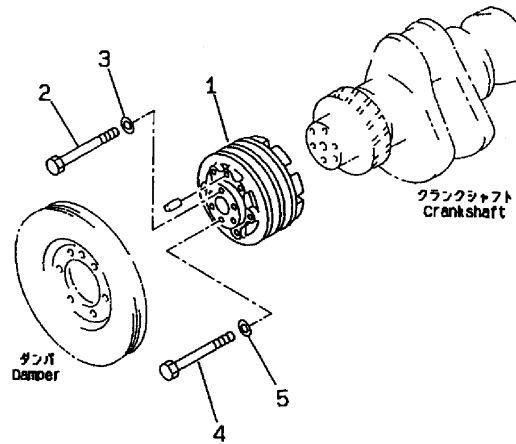
Remarks

- (1) UNDER SIZED(U.S=0.25)PART.
- (2) UNDER SIZED(U.S=0.5)PART.
- (3) UNDER SIZED(U.S=0.75)PART.
- (4) UNDER SIZED(U.S=1.0)PART.

# Fig.26. CRANK PULLEY

Y00B6110

Fig. **26** クランクプーリ  
CRANK PULLEY



(A)=S6D125E-2  
(B)=  
(C)=

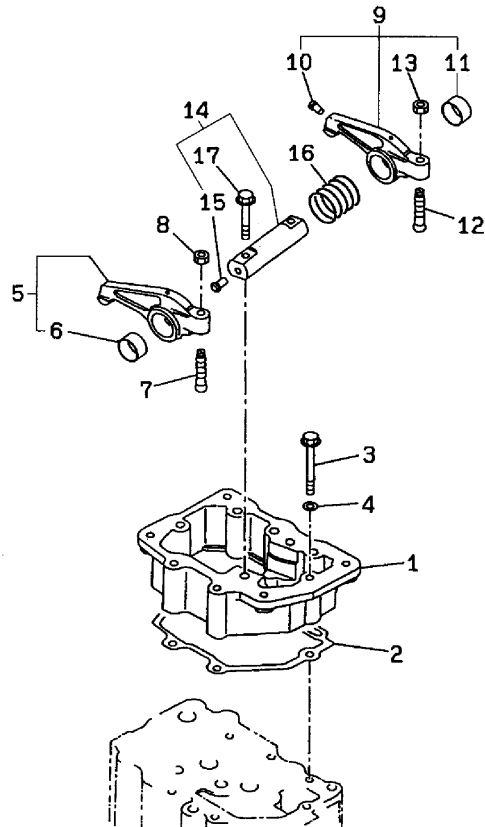
(D)=  
(E)=  
(F)=

No.	Lev.	Parts No.	Description	Q'ty						I	R
				(A)	(B)	(C)	(D)	(E)	(F)		
1	1	953KM0-11572	PULLEY	1							
2	1	953KM0-10759	BOLT	1							
3	1	953KM0-11077	WASHER	1							
4	1	953KM0-10760	BOLT	5							
5	1	953KM0-11573	WASHER	5							

Fig.27. ROCKER ARM

Y00B6110

Fig. **27** ロッカアーム  
ROCKER ARM



(A)=S6D125E-2

(B)=

(C)=

(D)=

(E)=

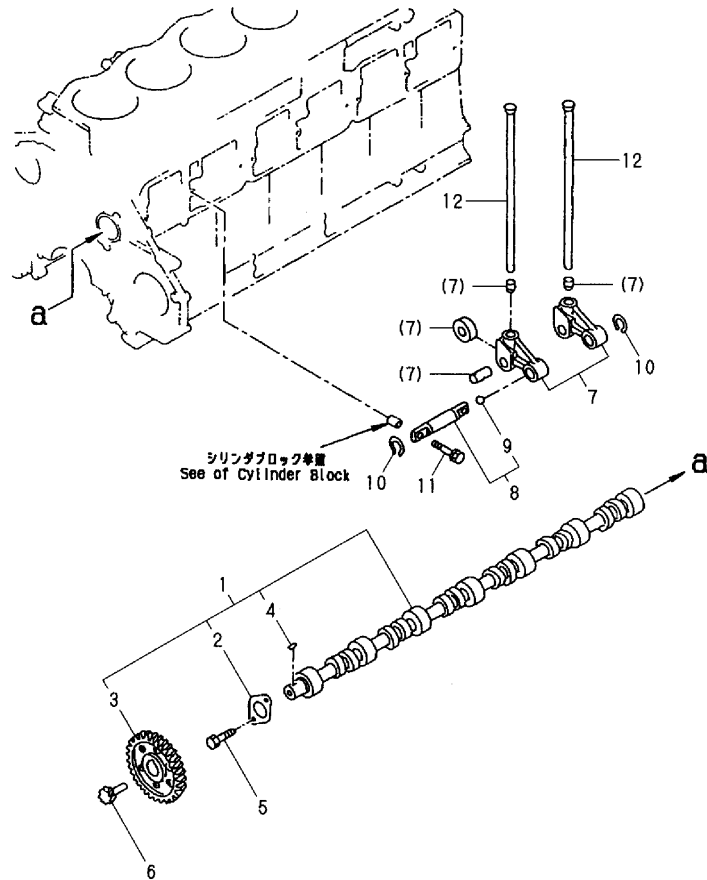
(F)=

No.	Lev.	Parts No.	Description	Q'ty						I	R
				(A)	(B)	(C)	(D)	(E)	(F)		
1	1	953KM0-11491	HOUSING,ROCKER ARM	6							
2	1	182900-44040	GASKET	6							
3	1	182901-08840	BOLT	42							
4	1	953KM0-00222	WASHER	42							
5	1	953KM0-11614	ARM ASSY.	6							
6	2	953KM0-11616	BUSH	1							
7	1	953KM0-11619	SCREW	6							
8	1	953KM0-01976	NUT	6							
9	1	953KM0-11617	ARM ASSY.	6							
10	2	953KM0-11616	BUSH	1							
11	2	953KM0-11808	RIVET	1							
12	1	953KM0-11619	SCREW	6							
13	1	953KM0-01976	NUT	6							
14	1	182901-09690	ROCKER ARM SHAFT A	6							
15	2	182901-10810	RIVET	1							
16	1	953KM0-11613	SPRING	6							
17	1	953KM0-11674	BOLT	12							

Fig.28. CAMSHAFT & TAPPET

Y0086110

Fig.28 カムシャフト&タペット  
CAMSHAFT & TAPPET



(A)=S6D125E-2  
(B)=  
(C)=

(D)=  
(E)=  
(F)=

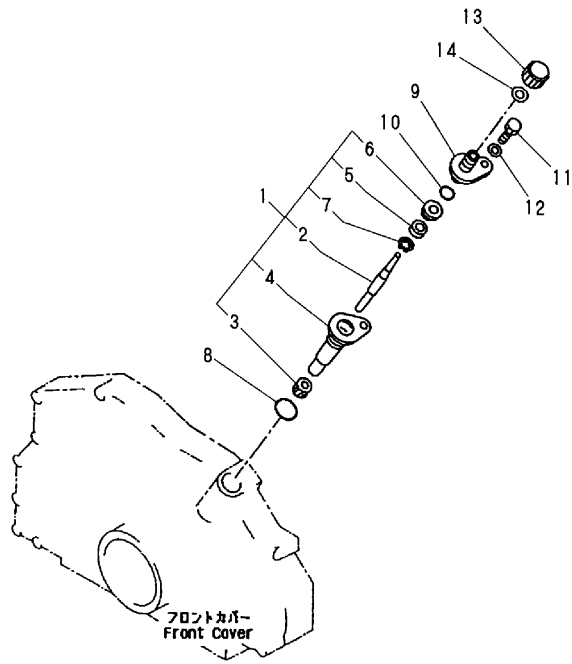
No.	Lev.	Parts No.	Description	Q'ty						I	R
				(A)	(B)	(C)	(D)	(E)	(F)		
1	1	953KM0-11591	CAMSHAFT ASSY.	1							
2	2	953KM0-11593	PLATE,THRUST	1							
3	2	953KM0-11592	GEAR,CAMSHAFT	1							
4	2	953KM0-10827	KEY	1							
5	1	953KM0-10714	BOLT	2							
6	1	953KM0-11662	GEAR	1							
7	1	953KM0-11594	LEVER ASSY.	12							
8	1	953KM0-11599	SHAFT ASSY.	6							
9	2	953KM0-11666	BALL	1							
10	1	22242-000200	RING, 20	12							
11	1	953KM0-11601	BOLT	12							
12	1	953KM0-11603	ROD,PUSH	12							



# Fig.29. YACHOMETER

Y00B6110

Fig. **29** タコメータ  
TACHOMETER



(A)=S6D125E-2  
(B)=  
(C)=

(D)=  
(E)=  
(F)=

No.	Lev.	Parts No.	Description	Q'ty						I	R
				(A)	(B)	(C)	(D)	(E)	(F)		
1	1	953KM0-11659	DRIVE ASSY.TACHOMET.	1							
2	2	953KM0-11661	SHAFT	1							
3	2	953KM0-11053	GEAR	1							
4	2	953KM0-11660	BUSH	1							
5	2	953KM0-11655	SEAL,OIL	1							
6	2	953KM0-11813	WASHER FELT	1							
7	2	953KM0-11814	SPACER	1							
8	1	24311-000300	O-RING, 1AP30.0	1							
9	1	953KM0-11663	HOUSING	1							
10	1	24311-000200	O-RING, 1AP20.0	1							
11	1	953KM0-10749	BOLT	1							
12	1	953KM0-00047	WASHER	1							
13	1	953KM0-11318	CAP	1							
14	1	953KM0-11086	GASKET	1							

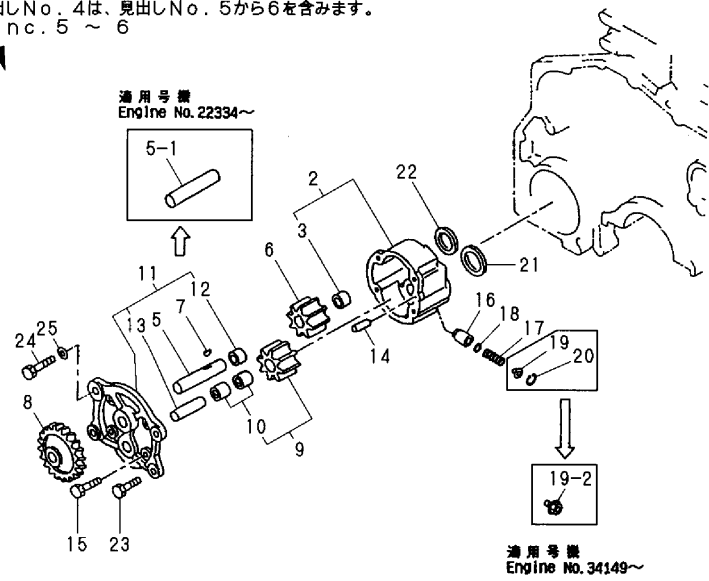
# Fig.30. LUB.OIL PUMP

Y00B6110

**Fig.30** 潤滑油ポンプ  
LUB.OIL PUMP

見出しNo. 1は、見出しNo. 2から19-2を含みます。  
1 inc. 2 ~ 19-2

見出しNo. 4は、見出しNo. 5から6を含みます。  
4 inc. 5 ~ 6



(A)=S6D125E-2  
(B)=  
(C)=

(D)=  
(E)=  
(F)=

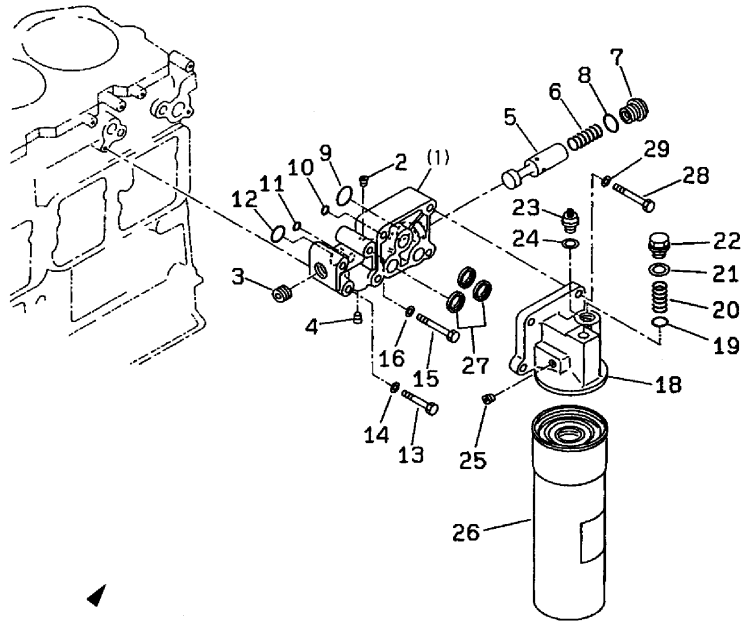
No.	Lev.	Parts No.	Description	Qty						I	R
				(A)	(B)	(C)	(D)	(E)	(F)		
1	1	182901-10100	OIL PUMP ASS'Y	1							
1-1	1	182901-10110	OIL PUMP ASS'Y	1							N
(A=E/#34149)											
1-2	1	182901-10120	OIL PUMP ASS'Y	1							N
(A=E/#22334)											
2	2	953KM0-11734	BODY ASSY.	1							
2-1	2	182901-10130	BODY ASS'Y	1							N
(A=E/#34149)											
3	3	953KM0-11742	BUSH	1							
4	2	182901-10140	SHAFT ASS'Y	1							
4-1	2	953KM0-11736	SHAFT ASSY.	1							N
(A=E/#22334)											
5	3	182901-10150	SHAFT	1							
5-1	3	953KM0-11737	SHAFT	1							N
(A=E/#22334)											
6	3	182901-10160	GEAR	1							
6-1	3	953KM0-11743	GEAR	1							N
(A=E/#22334)											
7	2	953KM0-10828	KEY	1							
8	2	953KM0-11744	GEAR	1							
9	2	953KM0-11739	GEAR ASSY.	1							
10	3	953KM0-11741	BUSH	2							
11	2	953KM0-11732	COVER ASSY.	1							
12	3	953KM0-11742	BUSH	1							
13	3	953KM0-11738	SHAFT	1							
14	2	953KM0-11270	PIN	1							
15	2	953KM0-01936	BOLT	4							
16	2	953KM0-11272	VALVE	1							
17	2	953KM0-11273	SPRING	1							
18	2	182901-10170	SHIM, 0.8MM	1							
19	2	182901-09720	RETAINER	1							
19-1	2	182901-09730	RETAINER	1							N
(A=E/#34149)											
19-2	2	182901-09740	PLUG	1							N
(A=E/#32192)											
20	1	953KM0-10837	RING,SNAP	1							
21	1	953KM0-11624	RING	1							
22	1	953KM0-11625	RING	1							
23	1	953KM0-10715	BOLT	3							
24	1	953KM0-10717	BOLT	1							
25	1	953KM0-00222	WASHER	1							

Fig.31. LUB.OIL FILTER

Y0086110

Fig.31 潤滑油フィルタ  
LUB.OIL FILTER

見出しNo. 1は、見出しNo. (1) から8を含みます。  
1 inc. (1) ~ 8



見出しNo. 17は、見出しNo. 18から26を含みます。  
17 inc. 18 ~ 26

(A)=S6D125E-2  
(B)=  
(C)=

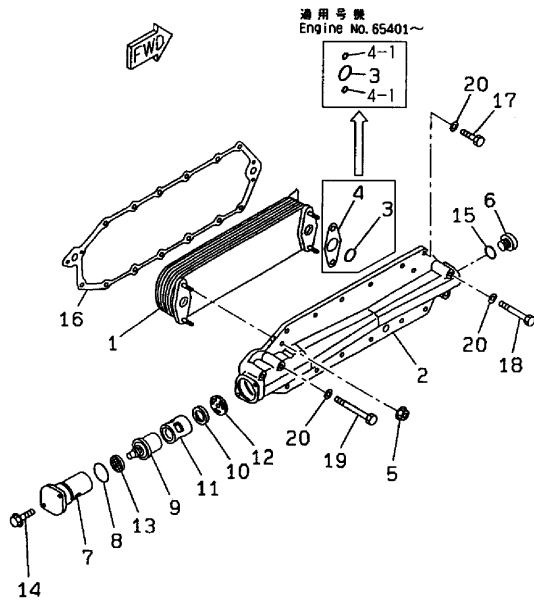
(D)=  
(E)=  
(F)=

No.	Lev.	Parts No.	Description	Q'ty						I	R
				(A)	(B)	(C)	(D)	(E)	(F)		
1	1	182901-10190	ADAPTER ASS'Y	1							
1-1	1	953KM0-11746	ADAPTER ASSY.	1							N
(A=E/#22250)											
2	2	953KM0-10894	PLUG	2							
3	2	953KM0-10898	PLUG	1							
4	2	953KM0-10896	PLUG	1							
5	2	182901-09750	VALVE	1							
5-1	2	953KM0-11626	VALVE	1							N
(A=E/#22250)											
6	2	953KM0-11748	SPRING	1							
7	2	953KM0-11627	PLUG	1							
8	2	953KM0-10872	O-RING,OIL FILTER	1							
9	1	953KM0-10873	O-RING,SUCTION PIPE	1							
10	1	953KM0-10871	O-RING	1							
11	1	953KM0-10869	O-RING,OIL ADAPTER	1							
12	1	953KM0-10872	O-RING,OIL FILTER	1							
13	1	182900-07310	BOLT	1							
14	1	953KM0-00047	WASHER	1							
15	1	953KM0-10736	BOLT	2							
16	1	953KM0-00047	WASHER	2							
17	1	182901-10200	OIL FILTER ASS'Y	1							
18	2	182901-10180	BRACKET	1							
19	2	953KM0-11811	GASKET	1							
20	2	953KM0-11000	SPRING	1							
21	2	953KM0-11810	GASKET	1							
22	2	182901-00610	CAP	1							
23	2	182901-09150	SENSOR,OIL PRESSURE	1							
24	2	22190-160002	WASHER, SEAL 16	1							
25	2	953KM0-10896	PLUG	1							
26	2	953KM0-10999	CARTRIDGE	1							
27	1	953KM0-11061	GROMET,OIL FILTER	3							
28	1	182900-11550	BOLT	4							
29	1	953KM0-00047	WASHER	4							

# Fig.32. LUB.OIL COOLER

Y00B6110

Fig. **32** 潤滑油クーラ  
LUB.OIL COOLER



(A)=S6D125E-2  
(B)=  
(C)=

(D)=  
(E)=  
(F)=

No.	Lev.	Parts No.	Description	Q'ty						I	R
				(A)	(B)	(C)	(D)	(E)	(F)		
1	1	953KM0-11762	ELEMENT	1							
2	1	953KM0-11635	COVER	1							
2-1	1	182901-09780	COVER	1						F	1
(A=E/#65401)											
3	1	953KM0-11639	O-RING	2							
4	1	182901-09800	GASKET	2							
4-1	1	182901-09790	GASKET	4							S
(A=E/#65401)											
5	1	182901-09810	NUT	4							
6	1	953KM0-11640	PLUG	1							
7	1	182901-10320	COVER	1							
8	1	953KM0-10874	O-RING,THERMOSTAT	1							
9	1	182901-10720	THERMOSTAT	1							
10	1	953KM0-11641	SEAL	1							
11	1	953KM0-11637	CASE	1							
12	1	953KM0-11638	PLATE	1							
13	1	182901-10330	STRAINER	1							
14	1	182900-11610	BOLT	2							
15	1	953KM0-11642	O-RING,OIL COOLER	1							
16	1	182900-49250	GASKET	1							
17	1	182900-04060	BOLT	12							
18	1	953KM0-10735	BOLT	2							
19	1	953KM0-10736	BOLT	2							
20	1	953KM0-00047	WASHER	16							

Remarks

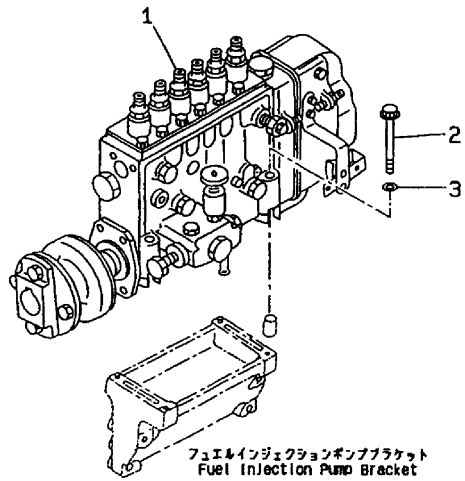
(1)INTERCHANGEABLE BY SIMULTANEOUS REPLACEMENT WITH REF.NO.2-1 & REF.NO.4-1



# Fig.34. FUEL INJECTION PUMP MOUNTING

Y00B6110

Fig. **34** 燃料噴射ポンプマウント  
FUEL INJECTION PUMP MOUNTING



(A)=S6D125E-2  
(B)=  
(C)=

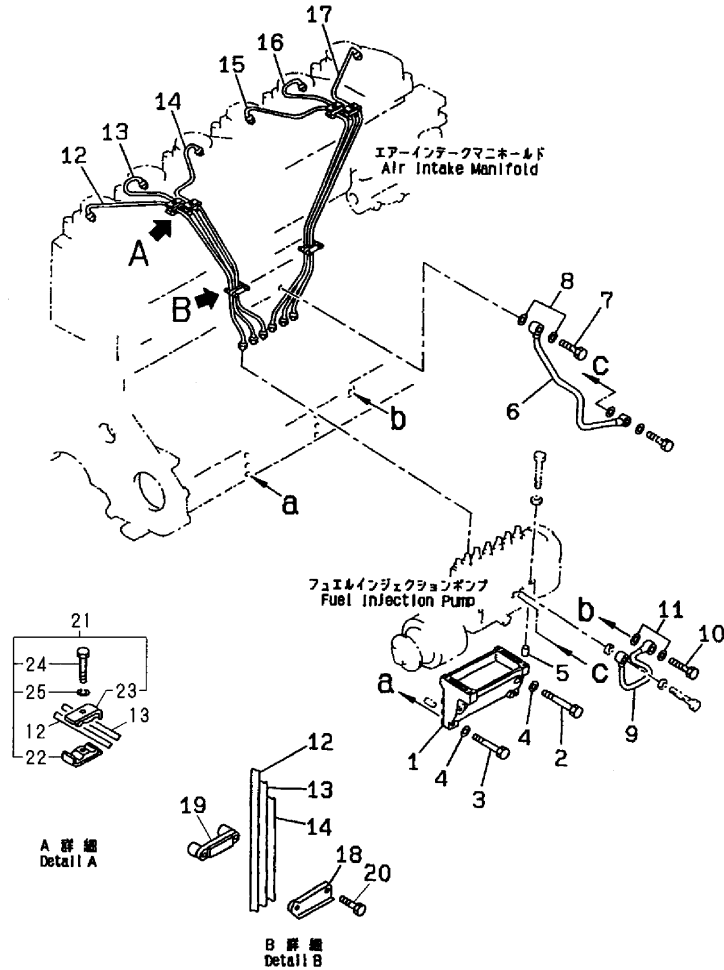
(D)=  
(E)=  
(F)=

No.	Lev.	Parts No.	Description	Qty						I	R
				(A)	(B)	(C)	(D)	(E)	(F)		
1	1	182901-10420	INJECTION PUMP ASS'Y	1							
2	1	182901-08850	BOLT	4							
3	1	953KM0-00214	WASHER	4							

Fig.35. FUEL INJECTION PIPE

Y00B6110

Fig. 35 燃料噴射パイプ  
FUEL INJECTION PIPE



(A)=S6D125E-2

(B)=

(C)=

(D)=

(E)=

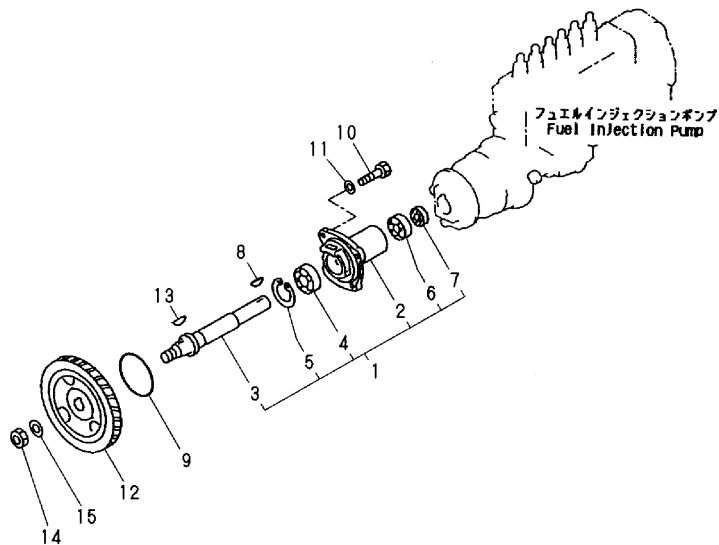
(F)=

No.	Lev.	Parts No.	Description	Q'ty						I	R
				(A)	(B)	(C)	(D)	(E)	(F)		
1	1	953KM0-11708	BRACKET	1							
2	1	182900-11550	BOLT	2							
3	1	182900-13820	BOLT	2							
4	1	953KM0-00222	WASHER	4							
5	1	953KM0-11600	PIN	2							
6	1	953KM0-11791	TUBE	1							
7	1	953KM0-10919	JOINT BOLT	1							
8	1	22190-100002	WASHER, SEAL 10	2							
9	1	953KM0-11792	TUBE	1							
10	1	953KM0-10920	BOLT,JOINT	1							
11	1	22190-140002	WASHER, SEAL 14	2							
12	1	953KM0-11783	TUBE,INJECTION NO.1	1							
13	1	953KM0-11784	TUBE,INJECTION NO.2	1							
14	1	953KM0-11785	TUBE,INJECTION NO.3	1							
15	1	953KM0-11786	TUBE,INJECTION NO.4	1							
16	1	953KM0-11787	TUBE,INJECTION NO.5	1							
17	1	953KM0-11788	TUBE,INJECTION NO.6	1							
18	1	953KM0-11473	CLAMP	2							
19	1	953KM0-11790	CLAMP	2							
20	1	953KM0-12184	BOLT	4							
21	1	182901-09290	CLIP ASS'Y	4							
22	2	953KM0-11104	CLIP	1							
23	2	953KM0-11103	PLATE	1							
24	2	182900-07300	BOLT	1							
25	2	953KM0-00200	WASHER, SPRING	1							

Fig.36. FUEL INJECTION PUMP DRIVE

Y00B6110

Fig.36 燃料噴射ポンプドライブ  
FUEL INJECTION PUMP DRIVE



(A)=S6D125E-2  
(B)=  
(C)=

(D)=  
(E)=  
(F)=

No.	Lev.	Parts No.	Description	Q'ty						I	R
				(A)	(B)	(C)	(D)	(E)	(F)		
1	1	953KM0-11778	CASE ASSY.	1							
2	2	953KM0-11779	CASE	1							
3	2	953KM0-11780	SHAFT	1							
4	2	953KM0-10856	BEARING,BALL	1							
5	2	22252-000800	RING, 80	1							
6	2	953KM0-10848	BEARING,BALL	1							
7	2	953KM0-11781	SEAL OIL	1							
8	1	953KM0-11656	KEY	1							
9	1	953KM0-10863	O-RING,INJECTION P.	1							
9-1	1	182901-08950	O-RING	1							R
		(A=E/#44196)									
10	1	182900-04060	BOLT	4							
11	1	953KM0-00047	WASHER	4							
12	1	953KM0-11657	GEAR	1							
13	1	953KM0-00229	KEY	1							
14	1	953KM0-10796	NUT	1							
15	1	953KM0-10814	WASHER	1							

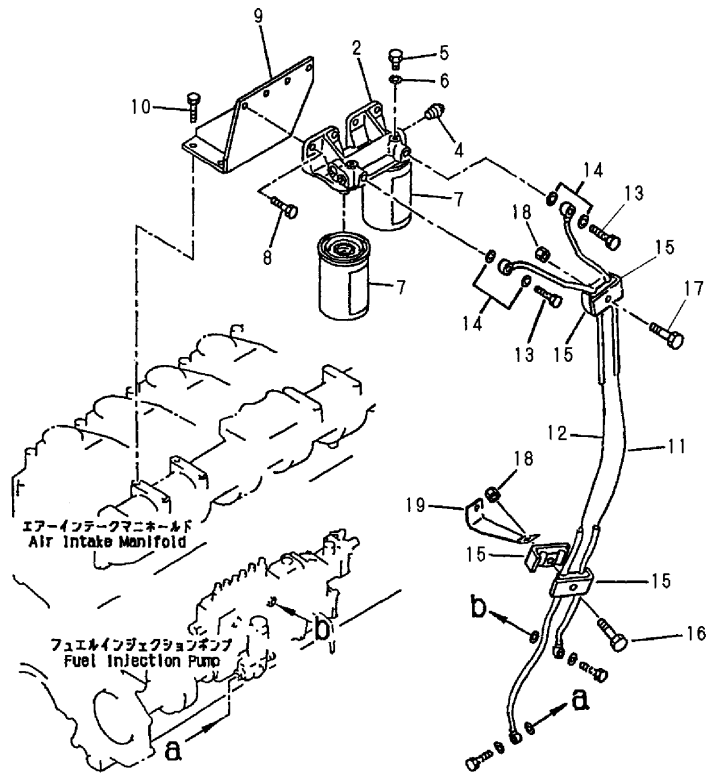


# Fig.37. FUEL FILTER

Y00B6110

Fig.37 燃料フィルタ  
FUEL FILTER

見出しNo. 1は、見出しNo. 2から7を含みます。  
1 inc. 2 ~ 7



(A)=S6D125E-2  
(B)=  
(C)=

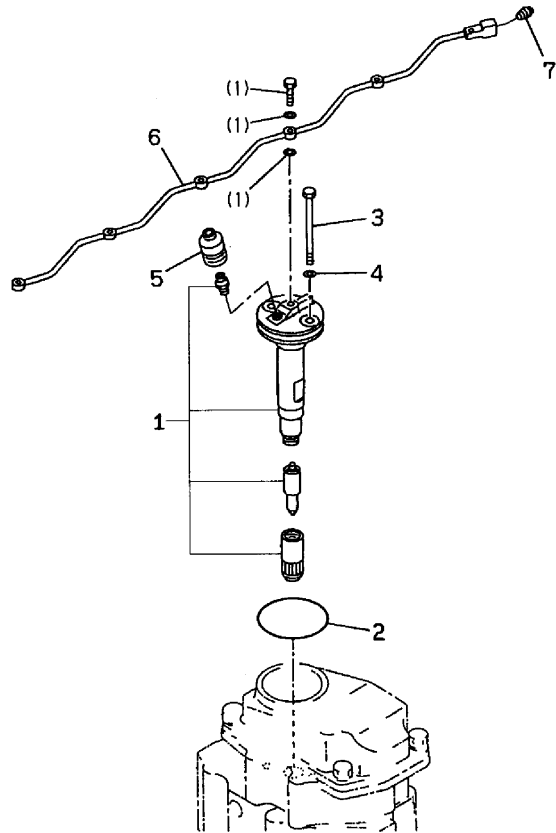
(D)=  
(E)=  
(F)=

No.	Lev.	Parts No.	Description	Qty						I	R
				(A)	(B)	(C)	(D)	(E)	(F)		
1	1	182901-09230	FUEL FILTER ASS'Y	1							
2	2	182901-09240	BRACKET	1							
4	2	23871-01000	PLUG, R01	1							
5	2	953KM0-11054	PLUG	2							
6	2	22190-080002	WASHER, SEAL 6	2							
7	2	182900-44240	CARTRIDGE	2							
8	1	953KM0-12184	BOLT	4							
9	1	182901-10390	BRACKET	1							
10	1	182900-04060	BOLT	4							
11	1	182901-10360	TUBE	1							
12	1	182901-10370	TUBE	1							
13	1	953KM0-10920	BOLT,JOINT	2							
14	1	22190-140002	WASHER, SEAL 14	4							
15	1	182901-10610	CLAMP	4							
16	1	182900-44340	BOLT	1							
17	1	182900-04030	BOLT	1							
18	1	953KM0-00180	NUT	2							
19	1	182901-08480	BRACKET,(SEE OF AIR	1							

Fig.38. FUEL INJECTION VALVE

Y00B6110

Fig.38 燃料噴射弁  
FUEL INJECTION VALVE



(A)=S6D125E-2  
(B)=  
(C)=

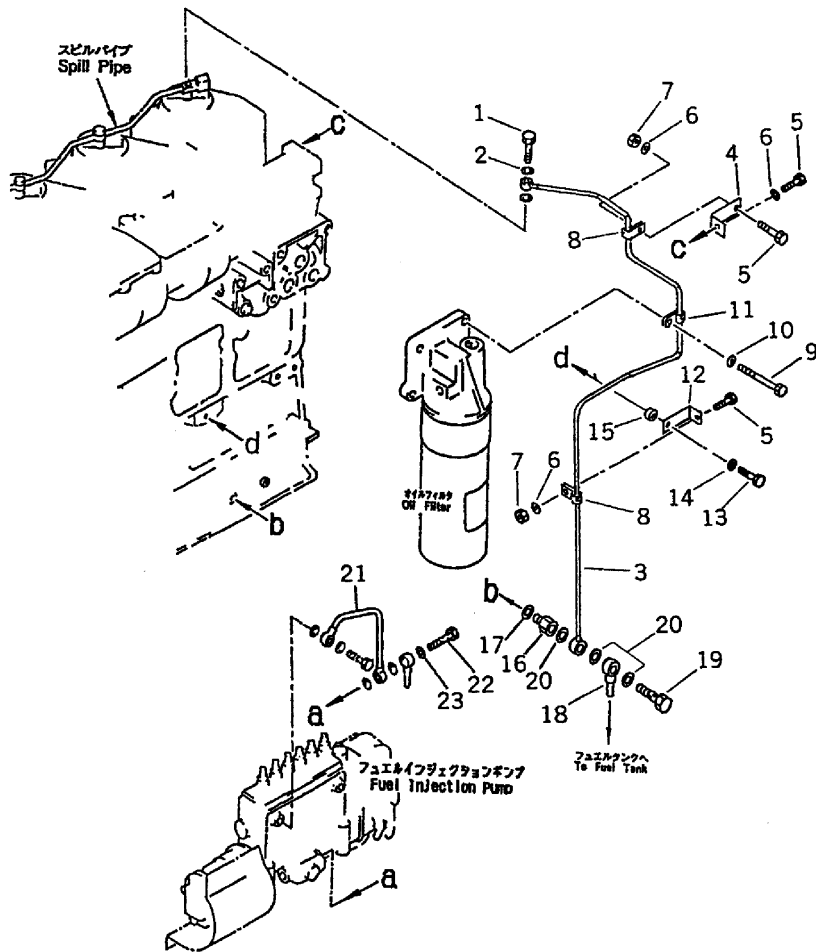
(D)=  
(E)=  
(F)=

No.	Lev.	Parts No.	Description	Q'ty						I	R
				(A)	(B)	(C)	(D)	(E)	(F)		
1	1	182901-09980	NOZZLE HOLDER ASS'Y	6							
2	1	953KM0-10876	O-RING,NOZZLE HOLDER	6							
3	1	953KM0-10746	BOLT	12							
4	1	22190-100002	WASHER, SEAL 10	12							
5	1	182901-10740	COVER	6							
6	1	953KM0-11658	TUBE	1							
7	1	23871-010000	PLUG, R01	1							

Fig.39. FUEL RETURN PIPE

Y00B6110

Fig. 39 燃料戻しパイプ  
FUEL RETURN PIPE



(A)=S6D125E-2  
(B)=  
(C)=

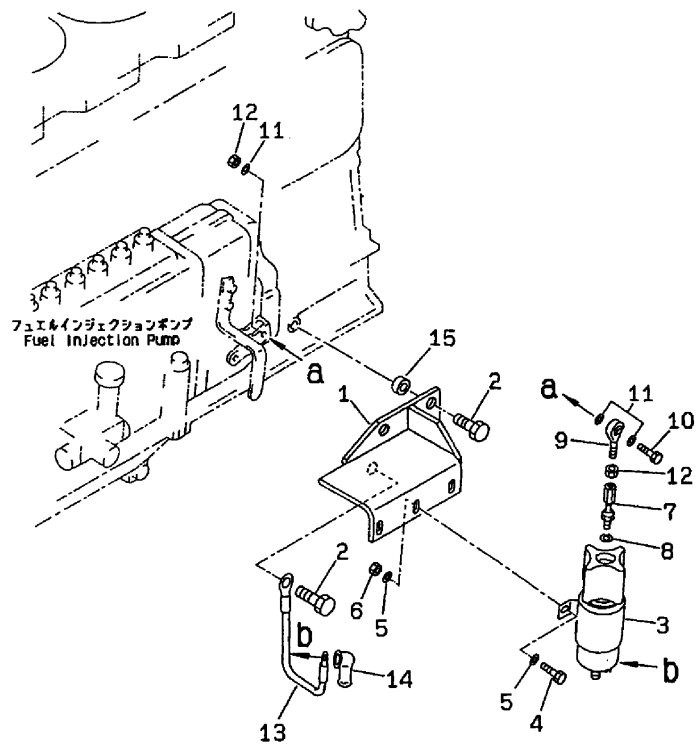
(D)=  
(E)=  
(F)=

No.	Lev.	Parts No.	Description	Q'ty						I	R
				(A)	(B)	(C)	(D)	(E)	(F)		
1	1	182901-09310	BOLT,JOINT	1							
2	1	22190-080002	WASHER, SEAL 6	1							
3	1	182901-10430	TUBE	1							
4	1	182901-10210	BRACKET	1							
5	1	182900-04060	BOLT	3							
6	1	953KM0-00222	WASHER	3							
7	1	953KM0-00181	NUT	2							
8	1	182901-08920	CLIP	2							
9	1	953KM0-10736	BOLT	1							
10	1	953KM0-00222	WASHER	1							
11	1	182901-08920	CLIP	1							
12	1	182901-10210	BRACKET	1							
13	1	182900-04070	BOLT	1							
14	1	953KM0-00222	WASHER	1							
15	1	182901-09090	SPACER	1							
16	1	182901-10410	ADAPTER	1							
17	1	953KM0-00222	WASHER	1							
18	1	953KM0-11464	JOINT	1							
19	1	182900-62660	BOLT	1							
20	1	22190-140002	WASHER, SEAL 14	3							
21	1	182901-10380	TUBE	1							
22	1	182900-62660	BOLT	1							
23	1	22190-140002	WASHER, SEAL 14	1							

Fig.40. STOP SOLENOID

Y00B6110

Fig.40 機関停止装置  
STOP SOLENOID



(A)=S6D125E-2  
(B)=  
(C)=

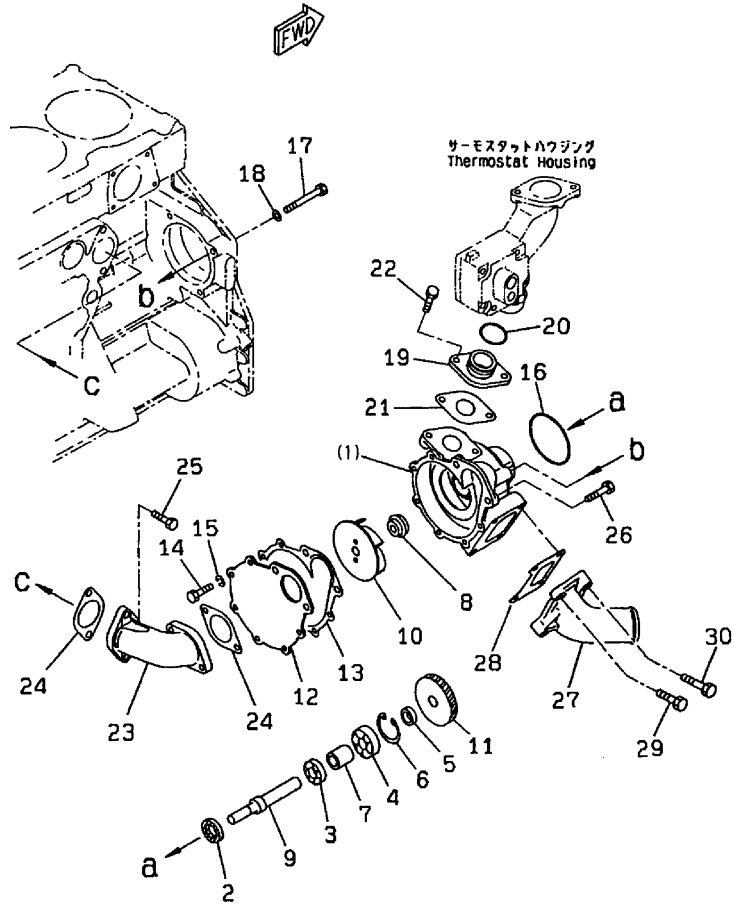
(D)=  
(E)=  
(F)=

No.	Lev.	Parts No.	Description	Q'ty						I	R
				(A)	(B)	(C)	(D)	(E)	(F)		
1	1	182901-10450	BRACKET	1							
2	1	182900-04080	BOLT	4							
3	1	182900-62630	SOLENOID ASS'Y	1							
4	1	953KM0-00105	BOLT	2							
5	1	953KM0-00220	WASHER	4							
6	1	953KM0-00179	NUT	2							
7	1	182901-10640	JOINT	1							
8	1	953KM0-00220	WASHER	1							
9	1	182901-08910	END,ROD	1							
10	1	182900-07290	BOLT	1							
11	1	953KM0-00220	WASHER	3							
12	1	953KM0-00179	NUT	2							
13	1	182901-10440	WIRE, 170MM	1							
14	1	953KM0-10957	CAP	1							
15	1	953KM0-12015	SPACER	4							

Fig.41. COOLING WATER PUMP

Y00B6110

Fig.41 冷却水ポンプ  
COOLING WATER PUMP



見出しNo. 1は、見出しNo. (1) から15を含みます。  
1 inc. (1) ~ 15

(A)=S6D125E-2

(B)=

(C)=

(D)=

(E)=

(F)=

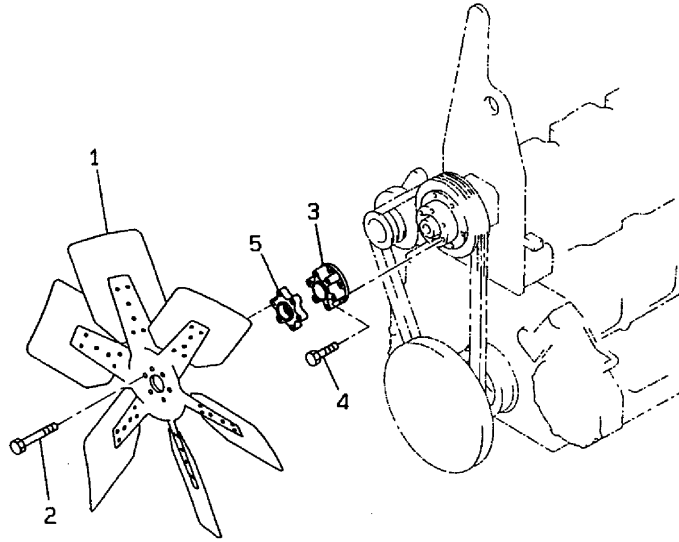
No.	Lev.	Parts No.	Description	Q'ty						I	R
				(A)	(B)	(C)	(D)	(E)	(F)		
1	1	182901-10300	WATER PUMP ASS'Y	1							
2	2	953KM0-11632	SEAL,WATER	1							
3	2	953KM0-10854	BEARING,BALL	1							
4	2	953KM0-10855	BEARING,BALL	1							
5	2	953KM0-11630	SPACER	1							
6	2	22252-000520	RING, 52	1							
7	2	953KM0-11761	SPACER	1							
8	2	182900-98600	SEAL, WATER	1							
9	2	182901-10310	SHAFT	1							
10	2	953KM0-11759	IMPELLER	1							
11	2	953KM0-11631	GEAR	1							
12	2	953KM0-11757	COVER	1							
13	2	182900-64650	GASKET	1							
14	2	182900-03990	BOLT	6							
15	2	953KM0-00201	WASHER, SPRING	6							
16	1	182901-08940	O-RING	1							
17	1	953KM0-10744	BOLT	3							
18	1	953KM0-00047	WASHER	3							
19	1	182901-09840	CONNECTOR	1							
20	1	182901-08890	O-RING	1							
21	1	182900-64670	GASKET,WATER CONNECT	1							
22	1	953KM0-12187	BOLT	2							
23	1	953KM0-11772	CONNECTOR	1							
24	1	182900-64670	GASKET,WATER CONNECT	2							
25	1	953KM0-12184	BOLT	2							
26	1	182900-04070	BOLT	2							
27	1	953KM0-11648	CONNECTOR	1							
28	1	182900-64660	GASKET,WATER CONNECT	1							
29	1	182900-04060	BOLT	2							
30	1	953KM0-00121	BOLT	2							



Fig.43. COOLING FAN

Y00B6110

Fig.43 クーリングファン  
COOLING FAN



(A)=S6D125E-2  
(B)=  
(C)=

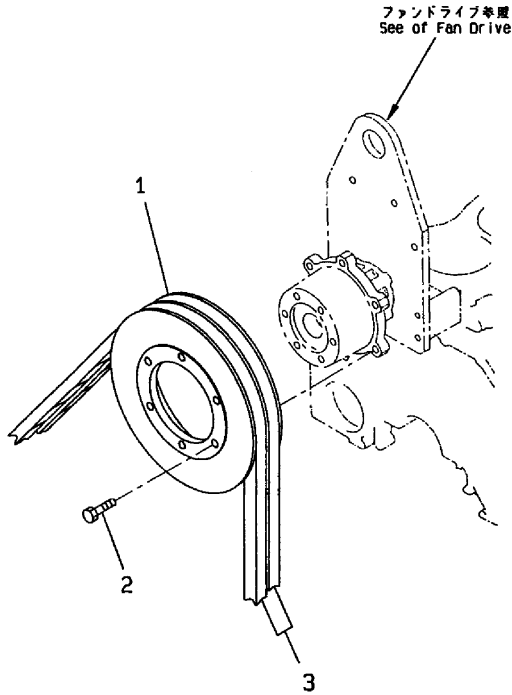
(D)=  
(E)=  
(F)=

No.	Lev.	Parts No.	Description	Qty						I	R
				(A)	(B)	(C)	(D)	(E)	(F)		
1	1	953KM0-11014	FAN	1							
2	1	953KM0-00120	BOLT	6							
3	1	182901-10280	SPACER	1							
4	1	182900-04060	BOLT	6							
5	1	182901-09270	SPACER	1							

Fig.44. FAN PULLEY

Y00B6110

Fig. 44 ファンプーリ  
FAN PULLEY



(A)=S6D125E-2  
(B)=  
(C)=

(D)=  
(E)=  
(F)=

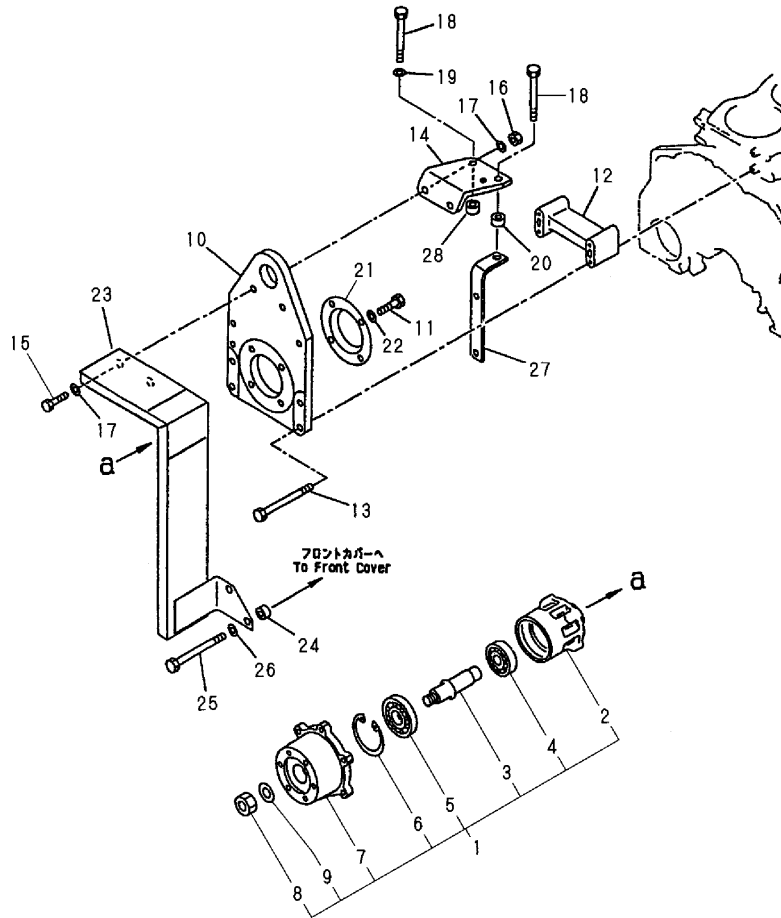
No.	Lev.	Parts No.	Description	Q'ty						I	R
				(A)	(B)	(C)	(D)	(E)	(F)		
1	1	182901-10260	PULLEY, NON HARDENING	1							
2	1	953KM0-12184	BOLT	6							
3	1	182901-08900	V-BELT SET	1							



Fig.45. FAN DRIVE

Y00B6110

Fig.45 ファンドライブ  
FAN DRIVE



(A)=S6D125E-2  
(B)=  
(C)=

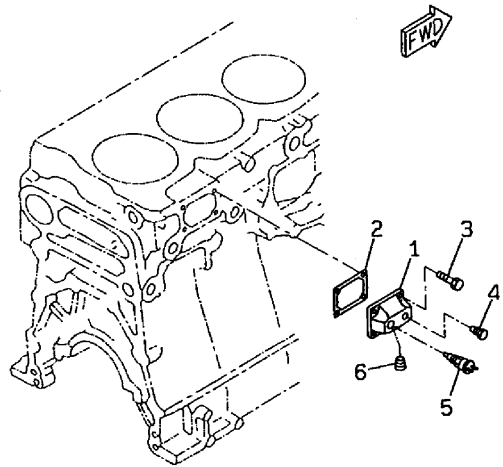
(D)=  
(E)=  
(F)=

No.	Lev.	Parts No.	Description	Q'ty						I	R
				(A)	(B)	(C)	(D)	(E)	(F)		
1	1	182901-10240	CASE ASS'Y	1							
2	2	953KM0-11764	CASE	1							
3	2	953KM0-11765	SHAFT	1							
4	2	953KM0-10857	BEARING,BALL	1							
5	2	953KM0-10859	BEARING,BALL	1							
6	2	22252-000800	RING, 80	1							
7	2	182901-10250	HUB	1							
8	2	953KM0-10795	NUT	1							
9	2	953KM0-10814	WASHER	1							
10	1	182901-10270	PLATE	1							
11	1	953KM0-12184	BOLT	4							
12	1	953KM0-11646	SPACER	1							
13	1	953KM0-10745	BOLT	4							
14	1	953KM0-11769	BRACKET	1							
15	1	182900-13820	BOLT	2							
16	1	953KM0-00181	NUT	2							
17	1	953KM0-00222	WASHER	4							
18	1	953KM0-10738	BOLT	2							
19	1	953KM0-00047	WASHER	1							
20	1	182901-10630	SPACER	1							
21	1	182901-10290	COVER	1							
22	1	953KM0-00214	WASHER	4							
23	1	182901-10340	COVER,SAFETY	1							
24	1	182900-62450	BOSS	2							
25	1	953KM0-10743	BOLT	2							
26	1	953KM0-00047	WASHER	2							
27	1	182901-09870	BRACKET	1							
28	1	953KM0-11092	SPACER	1							

# Fig.46. WATER TEMPERATURE SWITCH

Y00B6110

Fig. **46** 水温スイッチ  
WATER TEMPERATURE SWITCH



(A)=S6D125E-2  
(B)=  
(C)=

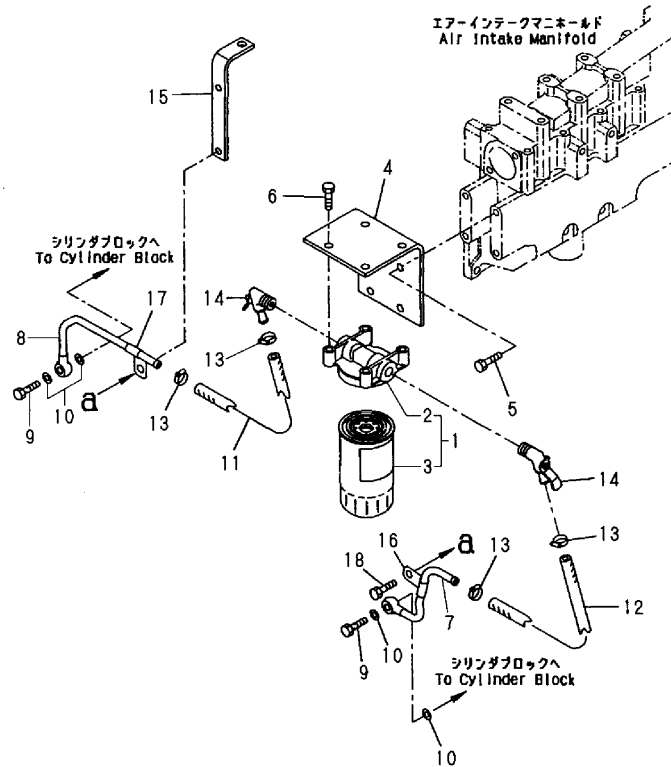
(D)=  
(E)=  
(F)=

No.	Lev.	Parts No.	Description	Q'ty						I	R
				(A)	(B)	(C)	(D)	(E)	(F)		
1	1	182901-10660	COVER	1							
2	1	182901-10650	GASKET	1							
3	1	182900-04060	BOLT	4							
4	1	182901-09110	PLUG	1							
5	1	953KM0-11023	SWITCH,THERMO	1							
6	1	182901-08960	PLUG	1							

# Fig.47. CORROSION RESISTOR

Y00B6110

Fig.47 コロージョンレジスタ  
CORROSION RESISTOR



(A)=S6D125E-2

(B)=

(C)=

(D)=

(E)=

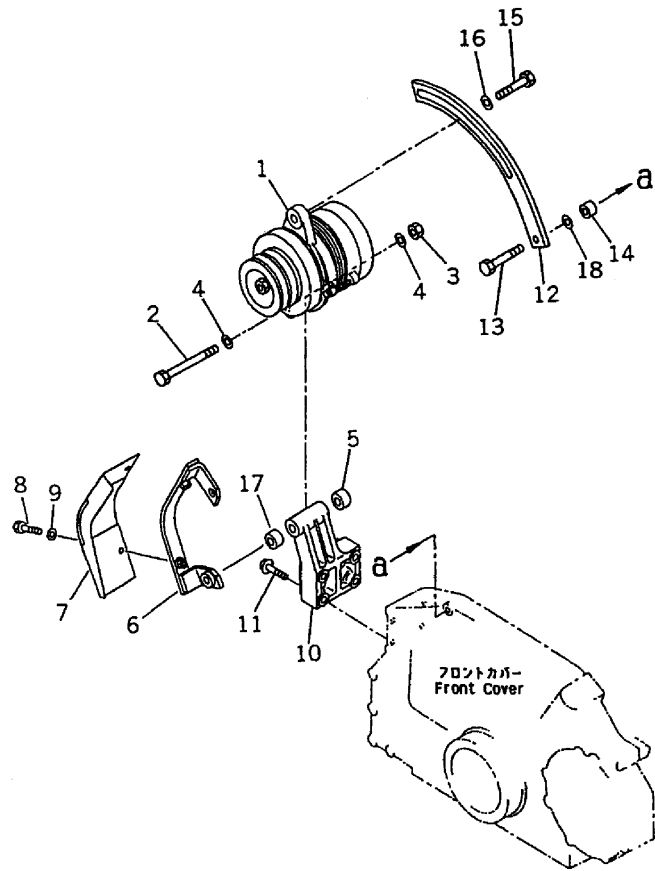
(F)=

No.	Lev.	Parts No.	Description	Q'ty						I	R
				(A)	(B)	(C)	(D)	(E)	(F)		
1	1	182901-09820	RESISTOR ASS'Y,CORRO	1							
2	2	953KM0-11652	HEAD	1							
3	2	182900-64680	CARTRIDGE	1							
4	1	182901-10560	BRACKET	1							
5	1	182900-04060	BOLT	4							
6	1	953KM0-10817	BOLT	4							
7	1	182901-09850	TUBE	1							
8	1	182901-09860	TUBE	1							
9	1	953KM0-10920	BOLT,JOINT	2							
10	1	22190-140002	WASHER, SEAL 14	4							
11	1	182900-04550	HOSE	1							
12	1	953KM0-00490	HOSE	1							
13	1	23000-016000	CLAMP, 16	4							
14	1	182901-09830	VALVE,WATER	2							
15	1	182901-08460	BRACKET,(SEE FIG.A50	1							
16	1	182901-09280	CLIP	1							
17	1	182901-10580	CLAMP	1							
18	1	953KM0-01941	BOLT	1							

# Fig.48. GENERATOR

Y00B6110

Fig.48 ジェネレータ  
GENERATOR



(A)=S6D125E-2

(B)=

(C)=

(D)=

(E)=

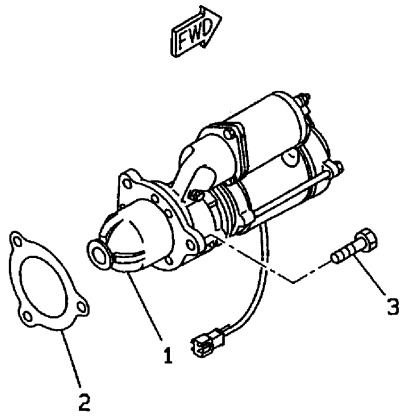
(F)=

No.	Lev.	Parts No.	Description	Qty						I	R
				(A)	(B)	(C)	(D)	(E)	(F)		
1	1	182901-09200	ALTERNATOR A. (35A)	1							
2	1	182901-09260	BOLT	1							
3	1	182901-08880	NUT	1							
4	1	182901-08870	WASHER	2							
5	1	182901-09120	SPACER	1							
6	1	182901-09920	BRACKET	1							
7	1	182901-09900	COVER,SAFETY	1							
8	1	182901-08800	BOLT	2							
9	1	953KM0-00047	WASHER	2							
10	1	182901-09890	BRACKET	1							
11	1	953KM0-11667	BOLT	4							
12	1	182901-09910	PLATE,ADJUST	1							
13	1	182900-33660	BOLT	1							
14	1	182901-10770	SPACER	1							
15	1	182901-08810	BOLT	1							
16	1	953KM0-00048	WASHER	1							
17	1	182901-09220	SPACER	1							
18	1	953KM0-00047	WASHER	1							

Fig.49. STARTING MOTOR

Y00B6110

Fig. **49** スタートリングモータ  
STARTING MOTOR



(A)=S6D125E-2  
(B)=  
(C)=

(D)=  
(E)=  
(F)=

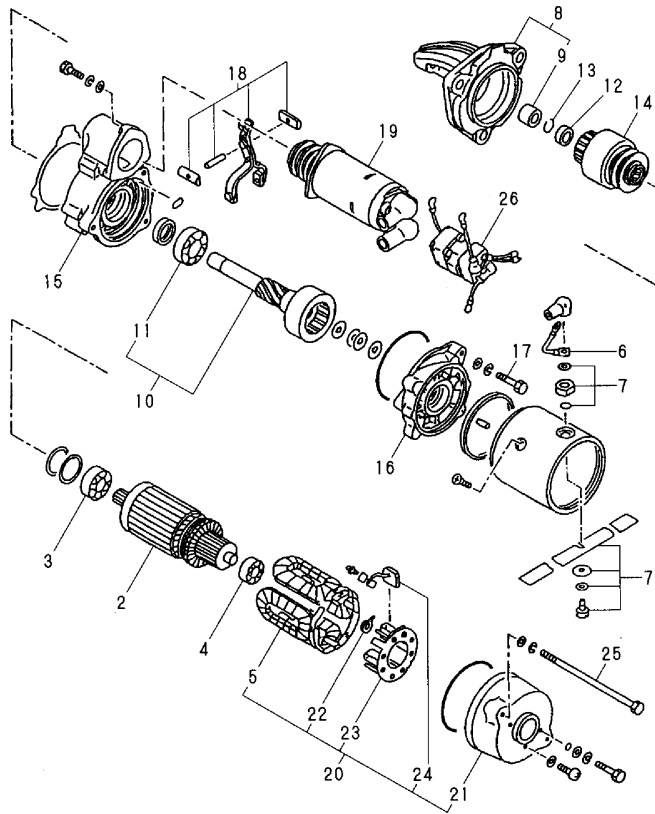
No.	Lev.	Parts No.	Description	Q'ty						I	R
				(A)	(B)	(C)	(D)	(E)	(F)		
1	1	182901-08440	STARTING MOTOR ASS'Y	1							
2	1	182901-10750	GASKET	1							
3	1	953KM0-10739	BOLT	3							

Fig.50. STARTING MOTOR COMPONENT PART

Y00B6110

Fig. 50 スタートインモーターパーツ  
STARTING MOTOR COMPONENT PART

見出しNo. 1は、見出しNo. 2から26を含みます。  
Inc. 2 ~ 26



(A)=S6D125E-2

(B)=

(C)=

(D)=

(E)=

(F)=

No.	Lev.	Parts No.	Description	Q'ty						I	R
				(A)	(B)	(C)	(D)	(E)	(F)		
1	1	182901-08440	STARTING MOTOR ASS'Y	1							
2	2	182901-08490	ARMATURE ASS'Y	1							
3	3	182901-08620	BEARING,BALL, FRONT	1							
4	3	953KM0-10592	BEARING,BALL	1							
5	2	182901-08500	FIELD COIL ASS'Y	1							
6	2	182901-08650	LEAD WIRE ASS'Y	1							
7	2	182901-08730	TERMINAL ASS'Y	1							
8	2	182901-08510	BRACKET,FRONT	1							
9	3	182901-08710	METAL	1							
10	2	182901-08690	SHAFT ASS'Y	1							
11	3	182901-08610	BEARING,BALL	1							
12	2	182901-08630	STOPPER,PINION	1							
13	2	182901-08670	RING,CLIP	1							
14	2	182901-08640	CLUTCH ASS'Y,OVER RU	1							
15	2	182901-08520	CENTER BRACKET A	1							
16	2	182901-08530	BRACKET,CENTER	1							
17	2	182901-08600	BOLT	3							
18	2	182901-08700	SHIFT LEVER ASS'Y	1							
19	2	182901-08590	MAGNETIC SWITCH A	1							
20	2	182901-08720	REAR BRACKET ASS'Y	1							
21	3	182901-08540	REAR BRACKET ASS'Y	1							
22	3	182901-08660	SPRING,BRUSH	4							
23	3	182901-08560	BRUSH HOLDER ASS'Y	1							
24	3	182901-08550	BRUSH ASS'Y	4							
25	2	182901-08570	BOLT	2							
26	2	182901-08580	SWITCH	1							
27	1	182901-08740	WASHER ASS'Y,(NOT SH	1							1
28	1	182901-08680	SEAL ASS'Y,(NOT SHOW	1							1

Remarks

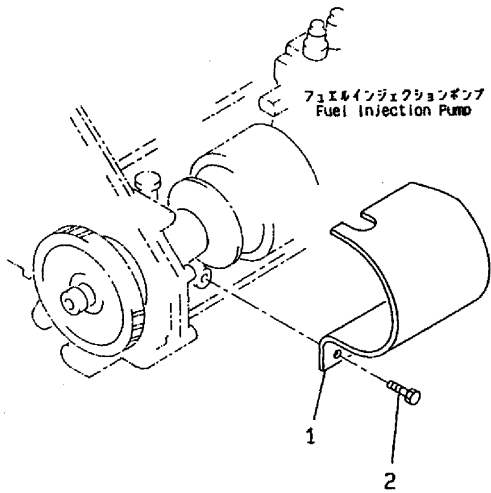
(1)NOT SHOWN.

N:Old  $\xrightarrow{\text{Yes}}$  New, Q:Old  $\xrightarrow{\text{No}}$  New, R:Old  $\xrightarrow{\text{Yes}}$  New, S:Old  $\xrightarrow{\text{No}}$  New, W:Add, Z:Discontinued, F:Interchangeable by set, K:Q'ty Change

Fig.51. SAFETY GUARD

Y00B6110

Fig. **51** セーフティガード  
SAFETY GUARD



(A)=S6D125E-2  
(B)=  
(C)=

(D)=  
(E)=  
(F)=

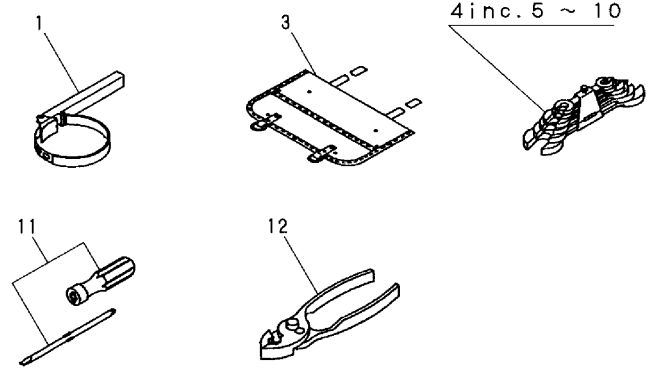
No.	Lev.	Parts No.	Description	Qty						I	R
				(A)	(B)	(C)	(D)	(E)	(F)		
1	1	182901-10350	COVER,SAFETY	1							
2	1	953KM0-12187	BOLT	2							

Fig.52. TOOL

Y00B6110

Fig. 52 工具 TOOL

見出しNo. 2は、見出しNo. 3から12を含みます。  
2 inc. 3 ~ 12



(A)=S6D125E-2  
(B)=  
(C)=

(D)=  
(E)=  
(F)=

No.	Lev.	Parts No.	Description	Q'ty						I	R
				(A)	(B)	(C)	(D)	(E)	(F)		
1	1	953KM0-00582	WRENCH, FILTER	1							
2	1	953KM0-12042	TOOL ASSY.	1							
3	2	953KM0-12043	BAG, TOOL	1							
4	2	953KM0-00581	WRENCH SET	1							
5	3	182901-09030	WRENCH, 8X10	1							
6	3	182901-09040	WRENCH, 12X14	1							
7	3	182901-09050	WRENCH, 13X17	1							
8	3	182901-09060	WRENCH, 19X22	1							
9	3	182901-09070	WRENCH, 24X27	1							
10	3	182901-09080	WRENCH, 30X32	1							
11	2	953KM0-00586	DRIVER, SCREW	1							
12	2	953KM0-00587	PLIERS	1							

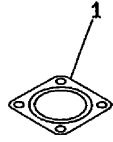




Fig.54. EXH.RELATED PART

Y00B6110

Fig. **54** 排気関連部品  
EXH. RELATED PART



(A)=S6D125E-2  
(B)=  
(C)=

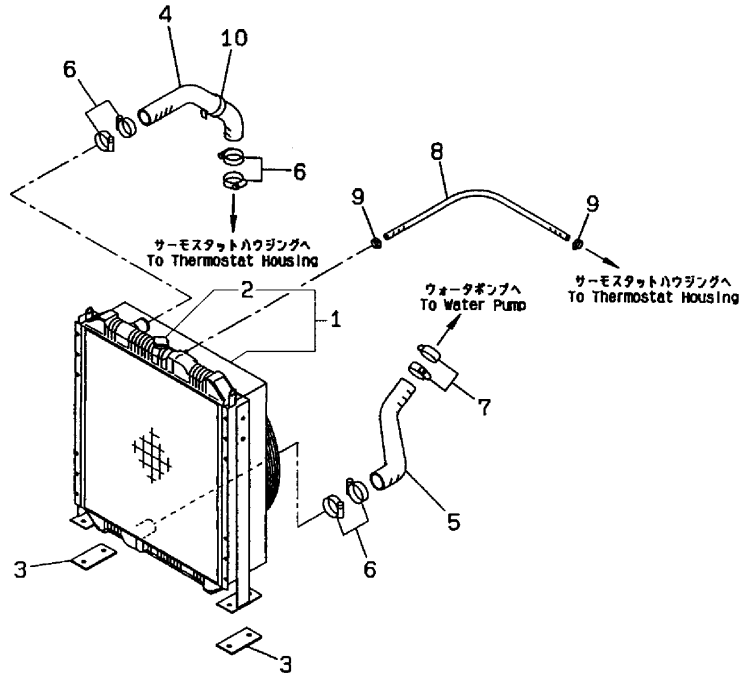
(D)=  
(E)=  
(F)=

No.	Lev.	Parts No.	Description	Q'ty						I	R
				(A)	(B)	(C)	(D)	(E)	(F)		
1	1	953KM0-11482	GASKET	1							
1-1	1	182901-07590	GASKET	1							N
(A=E/#47302)											

# Fig.55. RADIATOR

Y00B6110

Fig. **55** ラジエータ  
RADIATOR



(A)=S6D125E-2  
(B)=  
(C)=

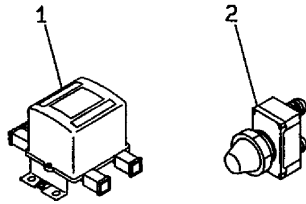
(D)=  
(E)=  
(F)=

No.	Lev.	Parts No.	Description	Q'ty						I	R
				(A)	(B)	(C)	(D)	(E)	(F)		
1	1	182901-10540	RADIATOR ASS'Y	1							
2	2	182901-08750	CAP	1							
3	1	182901-10530	SHEET,RUBBER	2							
4	1	182901-10550	HOSE,INLET	1							
5	1	182901-10520	HOSE,OUTLET	1							
6	1	953KM0-10945	CLAMP	6							
7	1	953KM0-10946	CLAMP	2							
8	1	182901-09000	HOSE	1							
9	1	23000-016000	CLAMP, 16	2							
10	1	953KM0-00552	BAND	1							

# Fig.56. EMAERGENCY RERAY & SWITCH

Y00B6110

Fig. **56** エマージェンシリレ&スイッチ  
EMAERGENCY RERAY & SWITCH



(A)=S6D125E-2  
(B)=  
(C)=

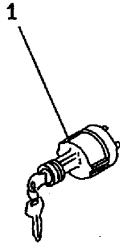
(D)=  
(E)=  
(F)=

No.	Lev.	Parts No.	Description	Q'ty						I	R
				(A)	(B)	(C)	(D)	(E)	(F)		
1	1	953KM0-11022	RELAY,EMERGENCY	1							
2	1	953KM0-10958	SWITCH,PUSH	1							

# Fig.57. STARTING SWITCH

Y00B6110

Fi g. **57** スターティングスイッチ  
STARTING SWITCH



(A)=S6D125E-2  
(B)=  
(C)=

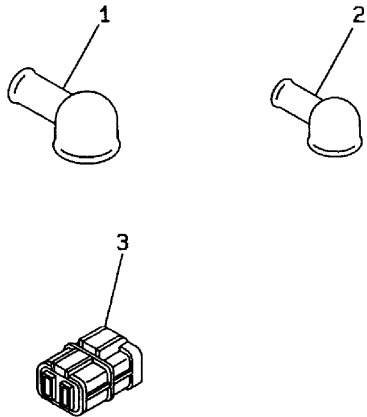
(D)=  
(E)=  
(F)=

No.	Lev.	Parts No.	Description	Q'ty						I	R
				(A)	(B)	(C)	(D)	(E)	(F)		
1	1	953KM0-11034	SWITCH,STARTER	1							

Fig.58. HARNESS CONNECTOR & TERMINAL C

Y00B6110

Fig. **58** ハーネスコネクタ&ターミナルキャップ  
 HARNESS CONNECTOR & TERMINAL CAP



(A)=S6D125E-2  
 (B)=  
 (C)=

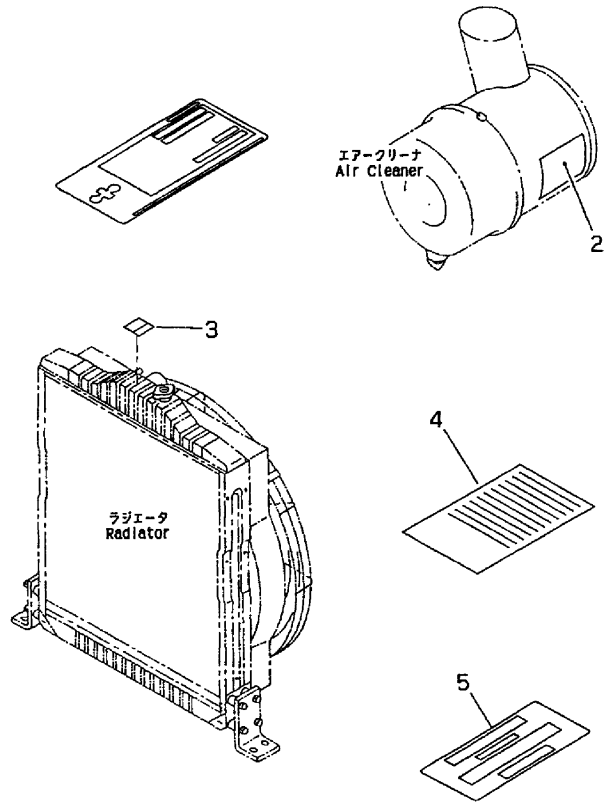
(D)=  
 (E)=  
 (F)=

No.	Lev.	Parts No.	Description	Q'ty						I	R
				(A)	(B)	(C)	(D)	(E)	(F)		
1	1	953KM0-00567	CAP	3							
2	1	182900-62430	CAP	4							
3	1	182901-09020	TERMINAL	1							

Fig.59. LABEL

Y00B6110

Fig.59 銘板 LABEL



(A)=S6D125E-2  
(B)=  
(C)=

(D)=  
(E)=  
(F)=

No.	Lev.	Parts No.	Description	Q'ty						I	R
				(A)	(B)	(C)	(D)	(E)	(F)		
2	1	953KM0-10962	PLATE,CAUTION	1							
3	1	953KM0-12516	PLATE. SAFETY RADIAT	1							
4	1	182901-10600	PLATE, INSTRUCTION,F	1							
5	1	182901-09140	PLATE	1							

## Parts No. Index

Parts No.	Fig. No.	Ref. No.
182900-03990	41	14
182900-04000	8	17 -1
182900-04010	8	17
182900-04020	8	9
182900-04030	37	17
182900-04060	4	2
	5	21
		24
	8	27
	10	8
	12	50
	17	5
	32	17
	36	10
	37	10
	39	5
	41	29
	43	4
	46	3
	47	5
182900-04070	22	2
	39	13
	41	26
182900-04080	40	2
182900-04220	12	55
182900-04550	47	11
182900-07290	40	10
182900-07300	35	24
182900-07310	31	13
182900-10720	4	4
182900-11550	13	5
	31	28
	35	2
182900-11560	22	3
182900-11610	32	14
182900-13820	35	3
	45	15
182900-24690	1	6
182900-33660	48	13
182900-44020	3	4
182900-44040	27	2
182900-44240	37	7
182900-44340	37	16
182900-49240	17	4
182900-49250	32	16
182900-49260	3	11
182900-53470	3	2
	10	10
	11	2
182900-62430	58	2

Parts No.	Fig. No.	Ref. No.
182900-62450	9	8
	45	24
182900-62630	40	3
182900-62660	39	19
		22
182900-64020	12	52
182900-64650	41	13
182900-64660	41	28
182900-64670	41	21
		24
182900-64680	47	3
182900-98600	41	8
182901-00610	31	22
182901-07560	8	8
182901-07570	8	16
182901-07590	54	1 -1
182901-08440	49	1
	50	1
182901-08460	47	15
182901-08480	37	19
182901-08490	50	2
182901-08500	50	5
182901-08510	50	8
182901-08520	50	15
182901-08530	50	16
182901-08540	50	21
182901-08550	50	24
182901-08560	50	23
182901-08570	50	25
182901-08580	50	26
182901-08590	50	19
182901-08600	50	17
182901-08610	50	11
182901-08620	50	3
182901-08630	50	12
182901-08640	50	14
182901-08650	50	6
182901-08660	50	22
182901-08670	50	13
182901-08680	50	28
182901-08690	50	10
182901-08700	50	18
182901-08710	50	9
182901-08720	50	20
182901-08730	50	7
182901-08740	50	27
182901-08750	55	2
182901-08760	7	12
182901-08770	9	7
182901-08780	7	7 -1

Parts No.	Fig. No.	Ref. No.
182901-08790	9	4
182901-08800	48	8
182901-08810	48	15
182901-08820	12	33
182901-08830	10	3
182901-08840	27	3
182901-08850	34	2
182901-08860	1	24
182901-08870	48	4
182901-08880	48	3
182901-08890	41	20
182901-08900	44	3
182901-08910	40	9
182901-08920	39	8
		11
182901-08930	8	23 -1
182901-08940	41	16
182901-08950	36	9 -1
182901-08960	46	6
182901-08970	19	6
182901-08980	12	11
182901-08990	17	2
182901-09000	55	8
182901-09010	7	9 -1
182901-09020	58	3
182901-09030	52	5
182901-09040	52	6
182901-09050	52	7
182901-09060	52	8
182901-09070	52	9
182901-09080	52	10
182901-09090	39	15
182901-09100	10	9
182901-09110	11	1
	46	4
182901-09120	48	5
182901-09130	6	1
182901-09140	59	5
182901-09150	31	23
182901-09160	10	4
182901-09180	3	10
182901-09190	5	29
182901-09200	48	1
182901-09210	16	1
182901-09220	48	17
182901-09230	37	1
182901-09240	37	2
182901-09250	5	13 -1
182901-09260	48	2
182901-09270	43	5

Parts No.	Fig. No.	Ref. No.
182901-09280	47	16
182901-09290	35	21
182901-09300	19	4
182901-09310	39	1
182901-09320	9	3
182901-09330	8	3
182901-09340	1	5
182901-09350	42	1
182901-09360	14	11
182901-09370	14	12
182901-09380	14	13
182901-09390	20	1 -1
182901-09400	20	9
182901-09410	20	9 -1
182901-09420	17	1
182901-09430	15	6
182901-09440	15	4
182901-09450	18	2
182901-09460	12	45
182901-09470	12	48
182901-09480	10	1
182901-09490	15	1
182901-09500	10	2
182901-09510	15	3
182901-09520	15	2
182901-09530	12	3
182901-09540	12	4
182901-09550	20	7
182901-09560	25	9
182901-09570	14	1
182901-09580	14	7
182901-09590	25	4
182901-09600	23	2
182901-09610	25	10 D
182901-09620	25	10 C
182901-09630	25	10 B
182901-09640	25	10 A
182901-09650	1	16
182901-09660	1	17
182901-09670	1	11
182901-09680	1	12
182901-09690	27	14
182901-09700	1	18
182901-09710	1	19
182901-09720	30	19
182901-09730	30	19 -1
182901-09740	30	19 -2
182901-09750	31	5
182901-09760	17	12
182901-09770	17	15



## Parts No. Index

Parts No.	Fig. No.	Ref. No.
182901-09780	32	2 -1
182901-09790	32	4 -1
182901-09800	32	4
182901-09810	32	5
182901-09820	47	1
182901-09830	47	14
182901-09840	41	19
182901-09850	47	7
182901-09860	47	8
182901-09870	45	27
182901-09890	48	10
182901-09900	48	7
182901-09910	48	12
182901-09920	48	6
182901-09930	3	1
182901-09940	9	1
182901-09950	9	6
182901-09960	1	1
182901-09970	1	22
182901-09980	38	1
182901-09990	3	8
182901-10000	7	5 -1
182901-10010	20	6 -1
182901-10020	18	1
182901-10030	19	3
182901-10040	12	1
182901-10050	12	54
182901-10060	12	35
182901-10070	20	7 -1
182901-10080	24	1 -1
182901-10090	23	1
182901-10100	30	1
182901-10110	30	1 -1
182901-10120	30	1 -2
182901-10130	30	2 -1
182901-10140	30	4
182901-10150	30	5
182901-10160	30	6
182901-10170	30	18
182901-10180	31	18
182901-10190	31	1
182901-10200	31	17
182901-10210	39	4
		12
182901-10220	8	5
182901-10230	8	10
182901-10240	45	1
182901-10250	45	7
182901-10260	44	1
182901-10270	45	10

Parts No.	Fig. No.	Ref. No.
182901-10280	43	3
182901-10290	45	21
182901-10300	41	1
182901-10310	41	9
182901-10320	32	7
182901-10330	32	13
182901-10340	45	23
182901-10350	51	1
182901-10360	37	11
182901-10370	37	12
182901-10380	39	21
182901-10390	37	9
182901-10400	3	18
182901-10410	39	16
182901-10420	34	1
182901-10430	39	3
182901-10440	40	13
182901-10450	40	1
182901-10460	7	8 -1
182901-10470	7	10
182901-10480	13	1
182901-10490	13	2
182901-10500	14	6
182901-10510	25	1
182901-10520	55	5
182901-10530	55	3
182901-10540	55	1
182901-10550	55	4
182901-10560	47	4
182901-10570	8	1
182901-10580	47	17
182901-10590	10	5 -1
182901-10600	59	4
182901-10610	37	15
182901-10620	20	11
182901-10630	45	20
182901-10640	40	7
182901-10650	46	2
182901-10660	46	1
182901-10670	15	5
182901-10680	8	18
182901-10690	10	6
182901-10700	10	7
182901-10710	8	2
182901-10720	32	9
182901-10730	8	14
182901-10740	38	5
182901-10750	49	2
182901-10760	12	51
182901-10770	9	5

Parts No.	Fig. No.	Ref. No.
182901-10770	48	14
182901-10800	10	5
182901-10810	27	15
22190-080002	37	6
	39	2
22190-100002	12	32
	35	8
	38	4
	42	3
22190-140002	8	7
	12	29
		34
	35	11
	37	14
	39	20
		23
	47	10
22190-160002	19	2
	20	12
	31	24
22242-000150	5	6
22242-000200	28	10
22252-000520	41	6
22252-000800	36	5
	45	6
22351-040008	12	5
22351-050012	12	30
23000-016000	47	13
	55	9
23000-041000	8	19
23871-010000	3	3
		9
	7	3
	9	2
	37	4
	38	7
23871-030000	12	16
24311-000200	29	10
24311-000210	12	46
24311-000300	12	49
	29	8
953KM0-00047	2	5
	3	7
		13
	5	15
	8	12
		22
		26
	17	7
		11

Parts No.	Fig. No.	Ref. No.
953KM0-00047	29	12
	31	14
		16
		29
	32	20
	36	11
	41	18
	45	19
		26
	48	9
		18
953KM0-00048	48	16
953KM0-00058	17	16
953KM0-00104	19	5
953KM0-00105	40	4
953KM0-00116	8	11
		11 -1
953KM0-00120	43	2
953KM0-00121	3	12
	41	30
953KM0-00133	20	2
953KM0-00179	40	6
		12
953KM0-00180	37	18
953KM0-00181	5	14
	8	25
	39	7
	45	16
953KM0-00200	35	25
953KM0-00201	41	15
953KM0-00204	17	17
		20
953KM0-00205	4	5
953KM0-00214	34	3
	45	22
953KM0-00220	40	5
		8
		11
953KM0-00222	17	10
	27	4
	30	25
	35	4
	39	6
		10
		14
		17
	45	17
953KM0-00224	12	8
	21	4
953KM0-00229	36	13

## Parts No. Index

Parts No.	Fig. No.	Ref. No.
953KM0-00231	24	2
953KM0-00387	17	3
953KM0-00403	12	12
953KM0-00490	47	12
953KM0-00552	55	10
953KM0-00567	58	1
953KM0-00581	52	4
953KM0-00582	52	1
953KM0-00586	52	11
953KM0-00587	52	12
953KM0-01839	12	27
953KM0-01936	30	15
953KM0-01941	47	18
953KM0-01943	5	19
953KM0-01945	20	5
953KM0-01957	20	3
953KM0-01975	8	13
	17	19
953KM0-01976	27	8
		13
953KM0-10592	50	4
953KM0-10714	28	5
953KM0-10715	14	9
	17	18
	30	23
953KM0-10717	17	14
	30	24
953KM0-10732	14	5
953KM0-10734	20	4
953KM0-10735	13	4
	32	18
953KM0-10736	31	15
	32	19
	39	9
953KM0-10738	45	18
953KM0-10739	49	3
953KM0-10740	5	23
953KM0-10741	7	7
953KM0-10743	3	19
	45	25
953KM0-10744	3	5
	41	17
953KM0-10745	45	13
953KM0-10746	38	3
953KM0-10747	3	16
953KM0-10749	29	11
953KM0-10755	21	3
953KM0-10756	12	31
953KM0-10759	26	2
953KM0-10760	26	4

Parts No.	Fig. No.	Ref. No.
953KM0-10795	45	8
953KM0-10796	36	14
953KM0-10814	36	15
	45	9
953KM0-10817	47	6
953KM0-10819	25	8
953KM0-10827	28	4
953KM0-10828	30	7
953KM0-10829	12	6
953KM0-10830	1	9
	12	22
953KM0-10837	30	20
953KM0-10840	25	3
953KM0-10848	36	6
953KM0-10852	21	5
953KM0-10854	41	3
953KM0-10855	41	4
953KM0-10856	36	4
953KM0-10857	45	4
953KM0-10859	45	5
953KM0-10863	36	9
953KM0-10869	31	11
953KM0-10871	31	10
953KM0-10872	31	8
		12
953KM0-10873	31	9
953KM0-10874	32	8
953KM0-10875	17	13
953KM0-10876	38	2
953KM0-10877	12	13
953KM0-10878	12	15
953KM0-10886	12	14
953KM0-10894	16	2
	31	2
953KM0-10896	31	4
		25
953KM0-10898	31	3
953KM0-10899	12	9
953KM0-10900	12	10
953KM0-10901	12	20
953KM0-10902	12	40
953KM0-10903	12	19
953KM0-10907	1	10
953KM0-10910	12	41
953KM0-10911	12	17
953KM0-10912	12	21
953KM0-10913	12	18
953KM0-10919	35	7
	42	2
953KM0-10920	8	6

Parts No.	Fig. No.	Ref. No.
953KM0-10920	35	10
	37	13
	47	9
953KM0-10945	55	6
953KM0-10946	55	7
953KM0-10947	3	15
953KM0-10948	5	17
953KM0-10949	7	9
953KM0-10957	4	7
	40	14
953KM0-10958	56	2
953KM0-10962	59	2
953KM0-10969	5	11
953KM0-10971	5	9
953KM0-10972	5	4
953KM0-10982	5	3
953KM0-10984	5	5
953KM0-10999	31	26
953KM0-11000	31	20
953KM0-11014	43	1
953KM0-11022	56	1
953KM0-11023	46	5
953KM0-11026	4	3
953KM0-11032	53	1
953KM0-11034	57	1
953KM0-11051	12	28
953KM0-11053	29	3
953KM0-11054	37	5
953KM0-11058	8	4
953KM0-11059	15	8
953KM0-11061	31	27
953KM0-11063	14	10
953KM0-11066	5	13
953KM0-11067	5	10
953KM0-11072	15	9
953KM0-11075	17	8
953KM0-11077	26	3
953KM0-11086	29	14
953KM0-11092	45	28
953KM0-11099	7	11
953KM0-11103	35	23
953KM0-11104	35	22
953KM0-11107	1	2
953KM0-11116	3	17
	7	6
953KM0-11244	1	15
953KM0-11270	30	14
953KM0-11272	30	16
953KM0-11273	30	17
953KM0-11318	29	13

Parts No.	Fig. No.	Ref. No.
953KM0-11460	33	1
953KM0-11464	39	18
953KM0-11473	35	18
953KM0-11475	1	8
953KM0-11476	1	3
953KM0-11477	1	4
953KM0-11478	1	23
953KM0-11482	54	1
953KM0-11483	7	5
953KM0-11491	27	1
953KM0-11493	2	1
953KM0-11494	2	2
953KM0-11495	2	3
953KM0-11498	1	3 D
953KM0-11499	1	4 D
953KM0-11500	1	3 C
953KM0-11501	1	4 C
953KM0-11502	1	3 B
953KM0-11503	1	4 B
953KM0-11504	1	3 A
953KM0-11505	1	4 A
953KM0-11506	12	23
953KM0-11507	12	43
953KM0-11508	12	44
953KM0-11511	12	2
953KM0-11512	12	7
953KM0-11513	12	36
953KM0-11514	12	37
953KM0-11515	12	38
953KM0-11519	14	3
953KM0-11520	14	4
953KM0-11522	13	3
953KM0-11524	22	1
953KM0-11525	20	1
953KM0-11526	20	6
953KM0-11527	20	8
953KM0-11528	12	25
953KM0-11531	12	39
953KM0-11532	18	3
953KM0-11533	18	4
953KM0-11543	15	7
953KM0-11544	23	4
953KM0-11545	23	5
953KM0-11549	23	6 D
953KM0-11550	23	7 D
953KM0-11554	23	6 C
953KM0-11555	23	7 C
953KM0-11559	23	6 B
953KM0-11560	23	7 B
953KM0-11564	23	6 A

## Parts No. Index

Parts No.	Fig. No.	Ref. No.
953KM0-11565	23	7 A
953KM0-11570	23	3
953KM0-11571	21	2
953KM0-11572	26	1
953KM0-11573	26	5
953KM0-11578	25	6
953KM0-11579	25	7
953KM0-11582	14	2
953KM0-11585	14	8
953KM0-11591	28	1
953KM0-11592	28	3
953KM0-11593	28	2
953KM0-11594	28	7
953KM0-11599	28	8
953KM0-11600	12	24
		26
	35	5
953KM0-11601	28	11
953KM0-11603	28	12
953KM0-11608	1	14
953KM0-11609	1	13
953KM0-11613	27	16
953KM0-11614	27	5
953KM0-11616	27	6
		10
953KM0-11617	27	9
953KM0-11619	27	7
		12
953KM0-11621	1	20
953KM0-11622	1	21
953KM0-11624	30	21
953KM0-11625	30	22
953KM0-11626	31	5 -1
953KM0-11627	31	7
953KM0-11630	41	5
953KM0-11631	41	11
953KM0-11632	41	2
953KM0-11635	32	2
953KM0-11637	32	11
953KM0-11638	32	12
953KM0-11639	32	3
953KM0-11640	32	6
953KM0-11641	32	10
953KM0-11642	32	15
953KM0-11646	45	12
953KM0-11648	41	27
953KM0-11652	47	2
953KM0-11655	29	5
953KM0-11656	36	8
953KM0-11657	36	12

Parts No.	Fig. No.	Ref. No.
953KM0-11658	38	6
953KM0-11659	29	1
953KM0-11660	29	4
953KM0-11661	29	2
953KM0-11662	28	6
953KM0-11663	29	9
953KM0-11666	28	9
953KM0-11667	13	6
	48	11
953KM0-11674	2	4
	27	17
953KM0-11684	5	12
953KM0-11686	3	14
953KM0-11687	5	16
953KM0-11688	5	22
953KM0-11689	5	18
953KM0-11691	7	2
953KM0-11692	7	1
953KM0-11693	7	4
953KM0-11696	7	8
953KM0-11708	35	1
953KM0-11711	21	1
953KM0-11713	21	6
953KM0-11716	25	2
953KM0-11718	25	5
953KM0-11721	24	1
		3
953KM0-11732	30	11
953KM0-11734	30	2
953KM0-11736	30	4 -1
953KM0-11738	30	13
953KM0-11739	30	9
953KM0-11741	30	10
953KM0-11742	30	3
		12
953KM0-11743	30	6 -1
953KM0-11744	30	8
953KM0-11746	31	1 -1
953KM0-11748	31	6
953KM0-11749	12	42
953KM0-11750	8	20
953KM0-11751	8	15
953KM0-11757	41	12
953KM0-11759	41	10
953KM0-11761	41	7
953KM0-11762	32	1
953KM0-11764	45	2
953KM0-11765	45	3
953KM0-11769	45	14
953KM0-11772	41	23

Parts No.	Fig. No.	Ref. No.
953KM0-11778	36	1
953KM0-11779	36	2
953KM0-11780	36	3
953KM0-11781	36	7
953KM0-11783	35	12
953KM0-11784	35	13
953KM0-11785	35	14
953KM0-11786	35	15
953KM0-11787	35	16
953KM0-11788	35	17
953KM0-11790	35	19
953KM0-11791	35	6
953KM0-11792	35	9
953KM0-11795	4	6
953KM0-11796	4	1
953KM0-11805	5	1
953KM0-11807	1	7
953KM0-11808	27	11
953KM0-11810	31	21
953KM0-11811	31	19
953KM0-11813	29	6
953KM0-11814	29	7
953KM0-12013	8	23
953KM0-12015	5	20
	40	15
953KM0-12020	5	28
953KM0-12021	19	1
953KM0-12024	4	8
953KM0-12026	5	25
953KM0-12032	5	8
953KM0-12033	5	7
953KM0-12034	5	2
953KM0-12042	52	2
953KM0-12043	52	3
953KM0-12184	3	6
	8	21
	17	6
		9
	35	20
	37	8
	41	25
	44	2
	45	11
953KM0-12187	8	24
	12	47
		53
	20	10
	41	22
	51	2
953KM0-12516	59	3

Parts No.	Fig. No.	Ref. No.
953KM0-11737	30	5 -1