

0CB10-M58901EN

## Directions for the Parts Catalog.

1. This Parts Catalog shows both standard and optional parts.
2. Parts may change without prior notice.
3. The following is an example of the Parts Catalog format.

REF.	LEV.	PARTS NO.	DESCRIPTION	Q'TY						I	R
				(A)	(B)	(C)	(D)	(E)	(F)		
1	1	729595-51390	FUEL INJECTION PUMP	1	1	1	1	1			1
1-1	1	729595-51391	FUEL INJECTION PUMP	1	1	1	1	1		N	1
		(A=E00185) (B=E00200)									
3	2	26022-060162	SCREW M 6X 16	9	9	9	9	9			
3-1	2	26022-060162	SCREW M 6X 16	4	4	4	4	4		K	
		(A=E00156) (B=E00156) (C=E00156) (D=E00156) (E=E00156)									
4	2	129470-51040	CAMSHAFT	1	1	1	1	1			
5	2	122710-51050	BEARING, ROLLER	2	2	2	2	2			
6	2	129470-51060	RETAINER	1	1	1	1	1			

Remarks
(1) BOOST COMPEMSATOR TYPE. OPTIONAL PART, TO E00155,(4JH-DT, 4JH-DTZ

### ① Ref. No.

The Ref. No. listed may not be in accordance with the illustration Ref. No.

(Ex.) Illustration No.

List Ref No.

1

1

(Before change)

1-1

(After change)

For interchangeable symbols N, R and K, illustrations for new parts may be abbreviated.

### ② Lev. (Level)

Level indication

The numbers below indicate the level of relativity towards the main part.

1 ----- Main parts (Assembly parts)

2 ----- Sub component included in " 1 ".

3 ----- Sub component included in " 2 ".

Note) Parts that are not for sale are partially illustrated but not listed.

### ③ Interchangeability Symbol

When a part change takes place, one of the following interchangeability symbols is indicated beside the part.

Symbol	Interchangeability	Contents note
N	Old $\begin{matrix} \leftarrow \text{Yes} \\ \text{No} \rightarrow \end{matrix}$ New	New Part is interchangeable for Old Part but Old Part is not interchangeable for New Part.
Q	Old $\begin{matrix} \leftarrow \text{No} \\ \text{Yes} \rightarrow \end{matrix}$ New	New Part is not interchangeable for Old Part but Old Part is interchangeable for New Part.
R	Old $\begin{matrix} \leftarrow \text{Yes} \\ \text{Yes} \rightarrow \end{matrix}$ New	New/ Old Parts are both interchangeable.
S	Old $\begin{matrix} \leftarrow \text{No} \\ \text{No} \rightarrow \end{matrix}$ New	New/ Old Parts are both not interchangeable.
W		Part newly added.
Z		Part discontinued.
F		Not interchangeable by a single part but interchangeable together with related parts.
K		Changes only for used parts quantities.

### ④ Effective Machine No.

When a part changes, the effective Machine No. will be indicated in the (A)-(F) column.

Product Symbol	Product No.	Product Symbol	Product No.
C	Clutch No. Compressor No.	F	Machine No. (Agricultural Equip.)
D	Drive No.	M	Machine No.
E	Engine No.		

Note 1) A date may follow the symbol. (Ex.) 1996.01

Note 2) "XXXXX" and "ZZZZZ" are for parts that could not be predicted or for engine models that could not be identified.

Note 3) (A=E00185) is the E (Engine Serial Number) for the column (A) model (in this case 4JH-DT) after the parts design change.

### ⑤ Remarks

Figures or alphabets (symbols) are entered in the remarks column.

The comments (remarks) on parts that are indicated at the bottom of the illustration are the same symbols as those stated above.

# Contents

0CB10-M58901

Fig. No. Fig. Name

Fig. No. Fig. Name

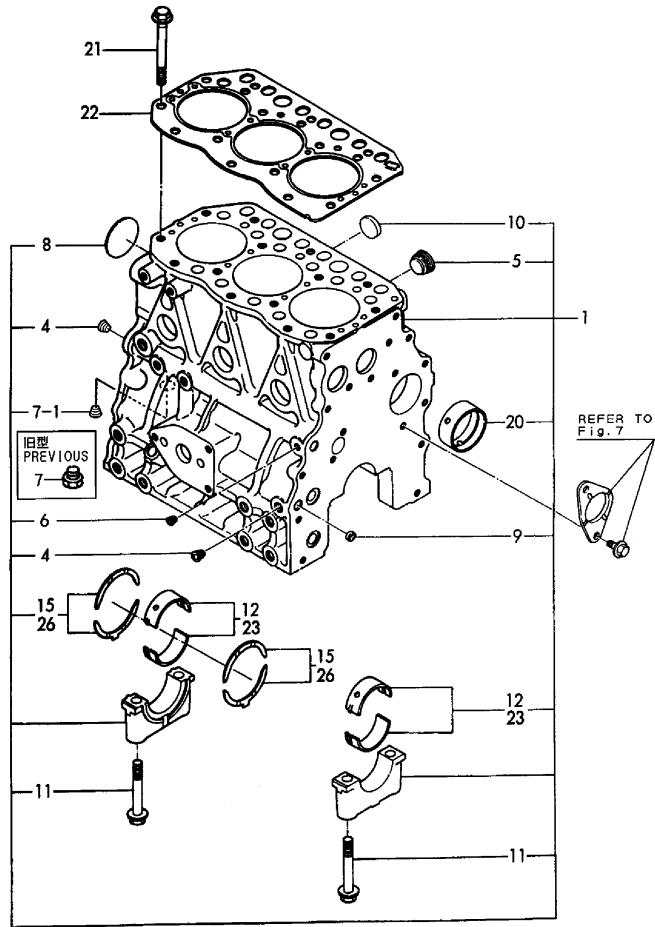
## ENGINE 3TNE82A-B1

1. CYLINDER BLOCK
2. GEAR HOUSING
3. FLYWHEEL HOUSING & OIL SUMP
4. CYLINDER HEAD & BONNET
5. SUC.MANIFOLD & AIR CLEANER
6. EXH.MANIFOLD & SILENCER
7. CAMSHAFT & DRIVING GEAR
8. CRANKSHAFT & PISTON
9. LUB. OIL SYSTEM
10. COOLING WATER SYSTEM
11. FUEL INJECTION PUMP
12. FUEL INJECTION PIPE
13. FUEL PIPE
14. GOVERNOR
15. STARTING MOTOR
16. GENERATOR
17. GASKET SET(OPTIONAL) & TOOL

Fig.1. CYLINDER BLOCK

(A)=3TNE82A-B1  
(B)=  
(C)=

(D)=  
(E)=  
(F)=

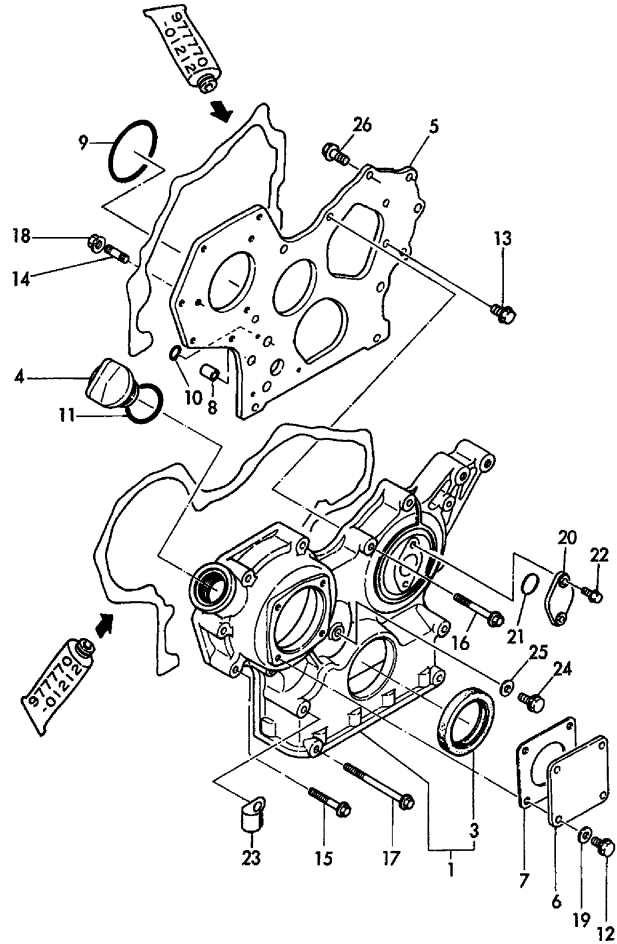


No.	Lev.	Parts No.	Description	Q'ty						I	R
				(A)	(B)	(C)	(D)	(E)	(F)		
1	1	719813-01560	BLOCK ASSY, CYLINDER	1							
4	3	124160-01910	PLUG, PT1/4	2							
5	3	171051-01921	PLUG, NPTF1	1							
6	3	23871-010000	PLUG, R01	1							
7	3	23887-120002	PLUG, 12	1							
7-1	3	124160-01910	PLUG, PT1/4	1							S
(A=E/#17106)											
8	3	27231-500000	PLUG 50	1							
9	3	27241-120000	PLUG, 12	2							
10	3	27241-300000	PLUG 30	6							
11	2	119620-02020	BOLT, METAL CAP	8							
12	2	119810-02800	BEARING, MAIN	4							
15	2	119810-02930	BEARING, THRUST	1							
20	2	129795-02411	BUSH, CAMSHAFT	1							
21	1	119810-01200	BOLT, HEAD	14							
22	1	119812-01330	GASKET, HEAD	1							A
23	1	119810-02870	BEARING, 0.25 US	4							1
26	1	119810-02940	BEARING, THRUST 0.25	2							2

Remarks

- (1) UNDER-SIZE(U.S=0.25)PART.
- (2) OVER-SIZE(O.S=0.25)PART.
- (A) THESE PART ARE ALSO SOLD BY FIG 17.REF NO.1 (GASKET SET.P/# 719813-92620).

Fig.2. GEAR HOUSING



(A)=3TNE82A-B1  
(B)=  
(C)=

(D)=  
(E)=  
(F)=

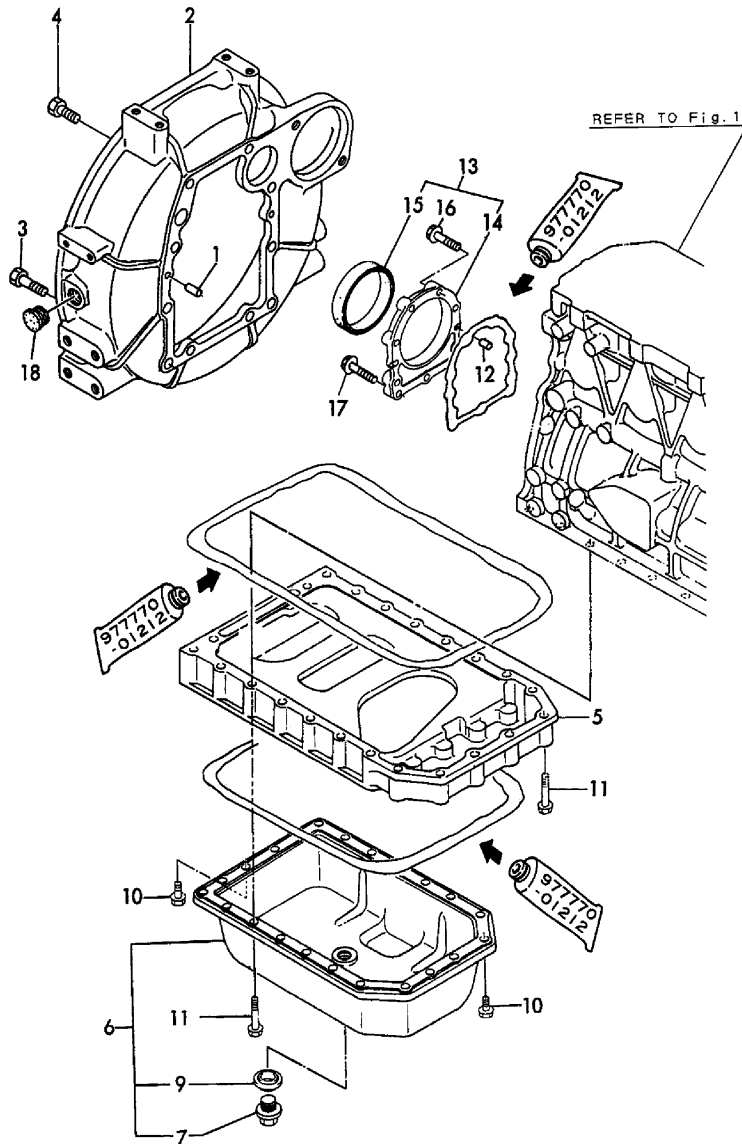
No.	Lev.	Parts No.	Description	Q'ty						I	R
				(A)	(B)	(C)	(D)	(E)	(F)		
1	1	719810-01500	CASE ASSY, GEAR	1							
3	2	129795-01800	SEAL, OIL	1							
4	1	124160-01751	COVER, FILLER	1							
5	1	129400-01520	FLANGE, GEAR CASE	1							
6	1	124240-01871	COVER	1							
7	1	124240-01883	GASKET	1							
8	1	129795-01950	PIPE, KNOCK L=18	2							
9	1	121850-51960	O-RING	1							
10	1	24311-000160	O-RING, 1AP16.0	2							
11	1	24311-000320	O-RING, 1AP32.0	1							A
12	1	26106-080122	BOLT, M8X 12 PLATED	4							
13	1	26106-080162	BOLT, M8X 16 PLATED	3							
14	1	121450-01560	STUD, M8X22	3							
15	1	26106-080452	BOLT, M8X 45 PLATED	6							
16	1	26106-080552	BOLT, M8X 55 PLATED	3							
17	1	26106-080852	BOLT, M8X 85 PLATED	4							
17-1	1	129001-91840	BOLT, M8X85	4							N
(A=E/#44311)											
18	1	26366-080002	NUT, M8	3							
19	1	22190-080002	WASHER, SEAL 6	4							
20	1	121023-01550	COVER	1							
21	1	24341-000240	O-RING, 1AS24.0	1							
22	1	26106-060122	BOLT, M6X 12 PLATED	2							
22-1	1	26106-060162	BOLT, M6X 16 PLATED	2							N
(A=E/#XXX)											
23	1	129150-03100	RETAINER, PIPE	1							
24	1	26106-080162	BOLT, M8X 16 PLATED	1							
25	1	22190-080002	WASHER, SEAL 6	1							
26	1	26106-080202	BOLT, M8X 20 PLATED	2							

Remarks  
(A) THESE PART ARE ALSO SOLD BY  
FIG 17.REF NO.1  
(GASKET SET.P/# 719813-92620).

Fig.3. FLYWHEEL HOUSING & OIL SUMP

(A)=3TNE82A-B1  
(B)=  
(C)=

(D)=  
(E)=  
(F)=

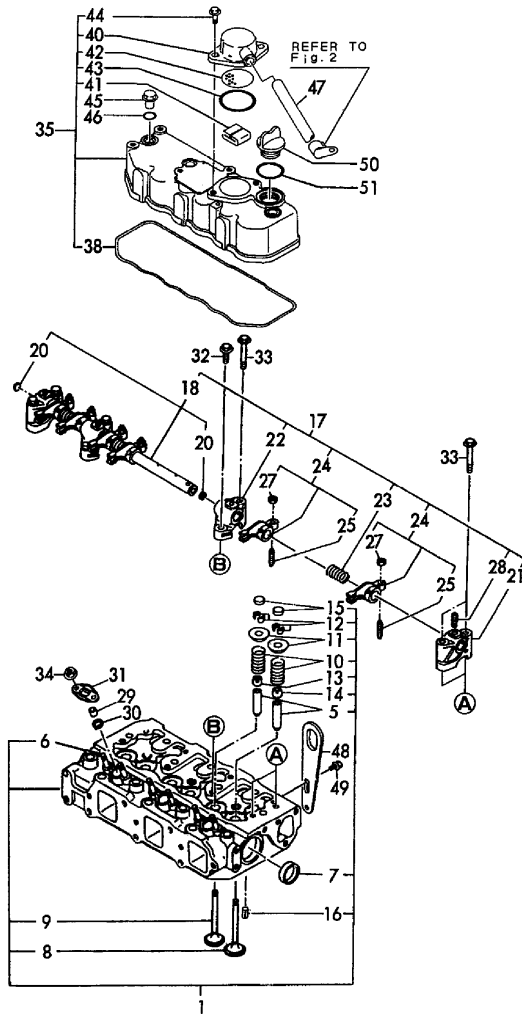


No.	Lev.	Parts No.	Description	Q'ty						I	R
				(A)	(B)	(C)	(D)	(E)	(F)		
1	1	129100-01580	PIN, M8X16	2							
2	1	171301-01600	HOUSING, FLYWHEEL	1							
2-1	1	129612-01600	HOUSING, FLYWHEEL	1							N
(A=E/#11243)											
3	1	26206-100302	BOLT, M10X 30 PLATED	4							
4	1	26206-100252	BOLT, M10X 25 PLATED	6							
5	1	119810-01730	SPACER, OIL SUMP	1							
6	1	119810-01790	SUMP ASSY, OIL	1							
7	2	119640-01640	PLUG, DRAIN M22	1							
9	2	22190-220002	WASHER, SEAL 22	1							
10	1	26106-080162	BOLT, M8X 16 PLATED	6							
11	1	26106-080452	BOLT, M8X 45 PLATED	22							
12	1	129100-01580	PIN, M8X16	2							
13	1	719810-01650	CASE ASSY, OIL SEAL	1							
14	2	119860-01650	CASE, OIL SEAL	1							
15	2	119810-01780	SEAL, 769310	1							
16	1	129486-01670	BOLT, M8X30	6							
17	1	26106-080352	BOLT, M8X 35 PLATED	3							
18	1	119620-01750	CAP	1							

Fig.4. CYLINDER HEAD & BONNET

(A)=3TNE82A-B1  
(B)=  
(C)=

(D)=  
(E)=  
(F)=



No.	Lev.	Parts No.	Description	Q'ty						I	R
				(A)	(B)	(C)	(D)	(E)	(F)		
1	1	119812-11700	HEAD ASSY, CYLINDER	1							
5	3	124060-11800	GUIDE, VALVE	6							1
6	3	26216-060302	STUD, M6X 30	6							
7	3	27241-400000	PLUG, 40	2							
8	2	119810-11100	VALVE, INTAKE	3							
9	2	119810-11110	VALVE, EXHAUST	3							
10	2	119810-11120	SPRING, VALVE	6							
11	2	104211-11180	RETAINER, SPRING	6							
12	2	27310-070001	COTTER, 7	6							N
(A=EXXXXX)											
13	2	124160-11340	SEAL, VALVE STEM	3							
14	2	124950-11340	SEAL, VALVE STEM	3							
15	2	104211-11370	CAP, VALVE	6							
16	2	22351-060012	PIN, SPRING 6.0X12	2							
17	1	119865-11210	SUPPORT ASSY	1							
18	2	119810-11240	SHAFT ASSY, ROCKER	1							
20	3	27241-100000	PLUG, 10	2							
21	2	129155-11260	SUPPORT, ROCKER ARM	2							
22	2	129155-11270	SUPPORT, ROCKER ARM	2							
23	2	129150-11280	SPRING	3							
24	2	719810-11660	ARM ASSY, ROCKER	6							
25	3	129150-11230	SCREW, VALVE ADJUST	6							
27	3	129150-11750	NUT, M8	6							
28	2	26226-080182	STUD, M8X 18	3							
29	1	119625-11871	PROTECTOR, NOZZLE	3							
29-1	1	119625-11870	PROTECTOR, NOZZLE	3							N
(A=E/#17106)											
30	1	119625-11880	SEAT, NOZZLE	3							
31	1	119625-11900	RETAINER, NOZZLE	3							
32	1	26106-080252	BOLT, M8X 25 PLATED	2							
33	1	26106-080502	BOLT, M8X 50 PLATED	6							
34	1	26366-060002	NUT, M6	6							
35	1	719810-11520	BONNET ASSY, HEAD	1							
38	2	119865-11310	GASKET, BONNET	1							A
40	2	129150-03020	COVER, BREATHER	1							
41	2	129150-03070	BAFFLE, BREATHER	1							
42	2	129150-03080	PLATE, BAFFLE	1							
43	2	24341-000500	O-RING, 1AS50.0	1							
44	2	26106-080162	BOLT, M8X 16 PLATED	2							
45	1	124160-11360	KNOB	3							
46	1	24311-000120	O-RING, 1AP12.0	3							
47	1	119856-03090	PIPE, BREATHER	1							
48	1	124736-07900	LIFTER	1							
49	1	26106-080142	BOLT, M8X 14 PLATED	2							
50	1	124160-01751	COVER, FILLER	1							
51	1	24311-000320	O-RING, 1AP32.0	1							

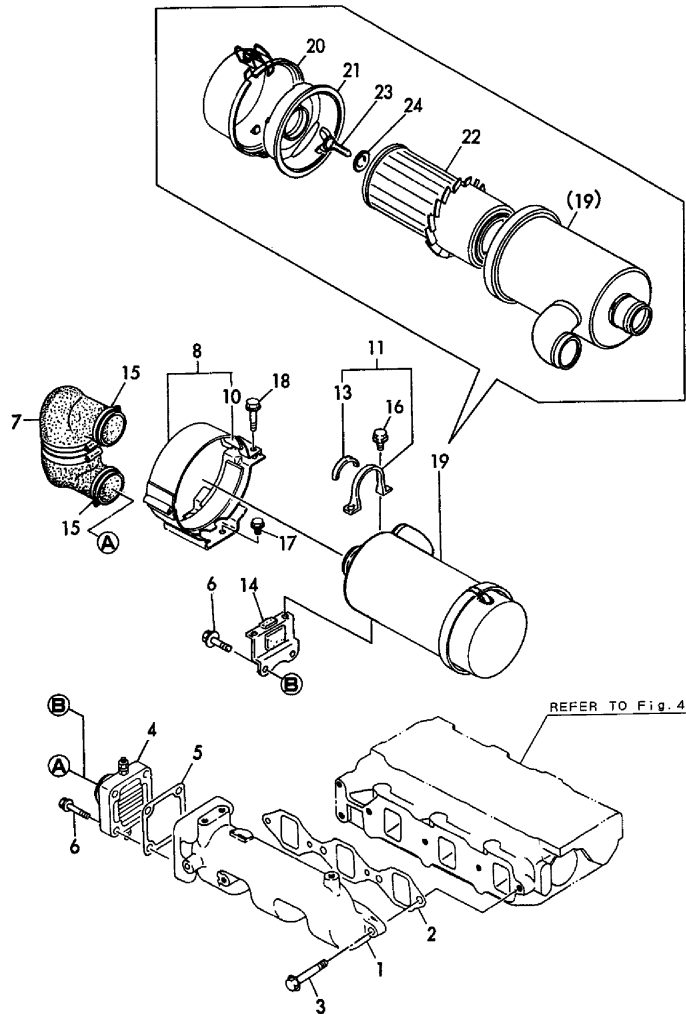
Remarks

(1) REPAIR PART.  
(A) THESE PART ARE ALSO SOLD BY  
FIG 17.REF NO.1  
(GASKET SET.P/# 719813-92620).

Fig.5. SUC.MANIFOLD & AIR CLEANER

(A)=3TNE82A-B1  
(B)=  
(C)=

(D)=  
(E)=  
(F)=



No.	Lev.	Parts No.	Description	Q'ty						I	R
				(A)	(B)	(C)	(D)	(E)	(F)		
1	1	171301-12701	MANIFOLD, AIR INTAKE	1							
2	1	119810-12111	GASKET, MANIFOLD	1							A
3	1	26106-080252	BOLT, M8X 25 PLATED	4							
4	1	129120-77501	HEATER	1							
5	1	129150-77511	GASKET	1							
6	1	26106-080352	BOLT, M8X 35 PLATED	4							
7	1	119812-12200	SILENCER	1							
8	1	129132-12581	SUPPORT ASSY,CLEANER	1							
10	2	129132-12570	SEAT, RUBBER	2							
11	1	129132-12800	BAND, AIR CLEANER	1							
13	2	129132-12860	SEAT, RUBBER	1							
14	1	119836-12810	SUPPORT, AIR CLEANER	1							
15	1	23000-060000	CLAMP, 60	2							
16	1	26106-060142	BOLT, M6X 14 PLATED	2							
17	1	26106-080142	BOLT, M8X 14 PLATED	4							
18	1	26106-080252	BOLT, M8X 25 PLATED	2							
19	1	129030-12500	CLEANER ASSY, AIR	1							
20	2	121120-12531	PAN, DUST	1							
21	2	121120-12541	RETAINER, ELEMENT	1							
22	2	129150-12510	ELEMENT	1							
23	2	121120-12561	BOLT	1							
24	2	121120-12571	WASHER, SEAL	1							

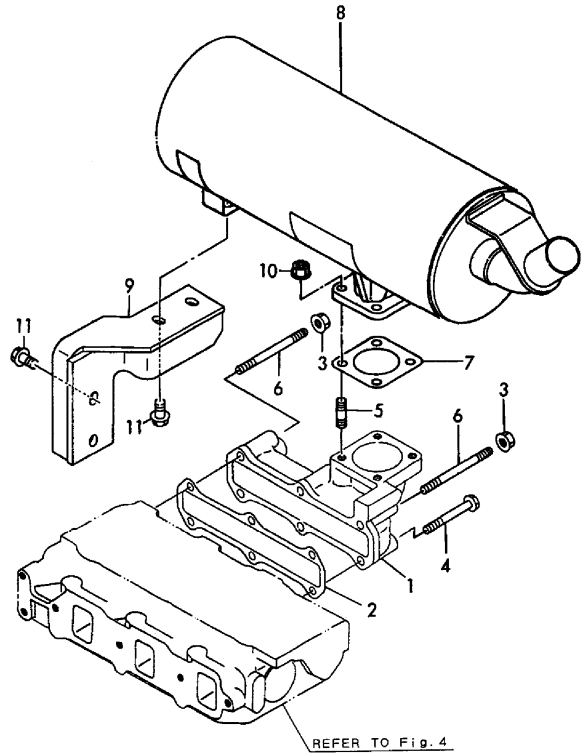
Remarks  
(A) THESE PART ARE ALSO SOLD BY  
FIG 17.REF NO.1  
(GASKET SET.P/# 719813-92620).



Fig.6. EXH.MANIFOLD & SILENCER

(A)=3TNE82A-B1  
(B)=  
(C)=

(D)=  
(E)=  
(F)=



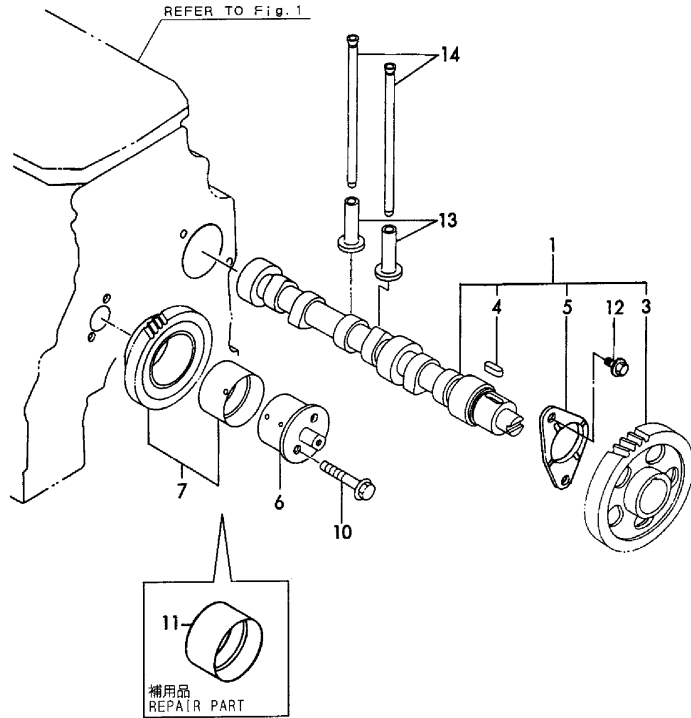
No.	Lev.	Parts No.	Description	Q'ty						I	R
				(A)	(B)	(C)	(D)	(E)	(F)		
1	1	119813-13100	MANIFOLD, EXHAUST	1							
2	1	119813-13110	GASKET	1							A
3	1	194990-22050	NUT, M8	2							
3-1	1	26366-080002 (A=E/#44548)	NUT, M8	2							R
4	1	26106-080602	BOLT, M8X 60 PLATED	4							
5	1	26216-080222	STUD, M8X 22	4							
5-1	1	119131-18320 (A=E/#16864)	STUD, M8X22	4							N
6	1	26216-080602	STUD, M8X 60	2							
7	1	124701-11911	GASKET, SILENCER	1							
8	1	119812-13500	SILENCER	1							
9	1	119836-13650	STAY, SILENCER	1							
10	1	194990-22050	NUT, M8	4							
10-1	1	26366-080002 (A=E/#44548)	NUT, M8	4							R
11	1	26014-080202	BOLT, M8X 20	4							

Remarks  
(A) THESE PART ARE ALSO SOLD BY  
FIG 17.REF NO.1  
(GASKET SET.P/# 719813-92620).

Fig.7. CAMSHAFT & DRIVING GEAR

(A)=3TNE82A-B1  
(B)=  
(C)=

(D)=  
(E)=  
(F)=



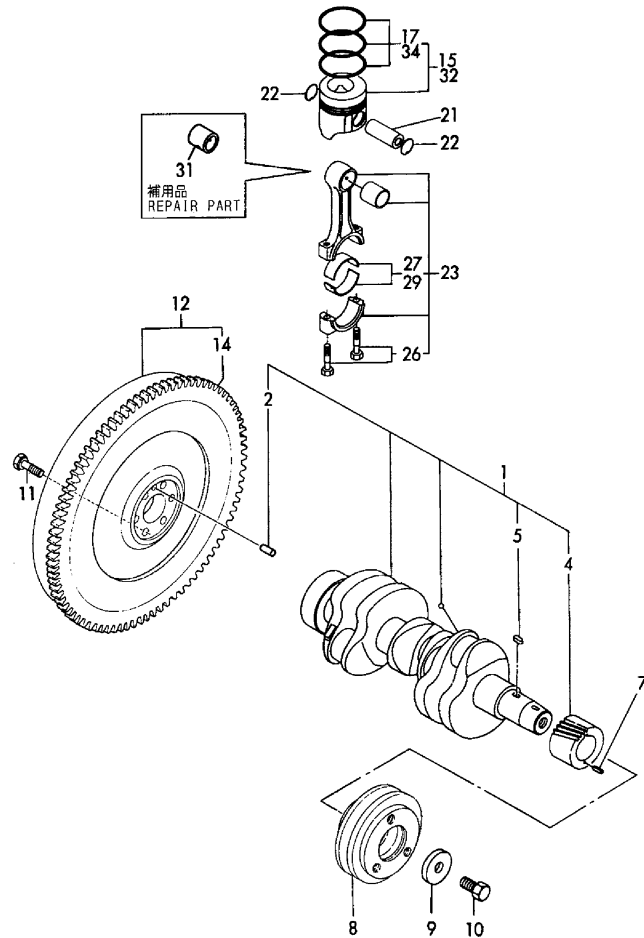
No.	Lev.	Parts No.	Description	Q'ty						I	R
				(A)	(B)	(C)	(D)	(E)	(F)		
1	1	119810-14580	CAMSHAFT ASSY	1							
3	2	129150-14101	GEAR, CAMSHAFT	1							
4	2	22512-070140	KEY, 7X 14	1							
5	2	129150-02450	BEARING, THRUST	1							
6	1	129100-25061	SHAFT, IDLE	1							
7	1	129150-25101	GEAR ASSY, IDLE	1							
10	1	26106-080452	BOLT, M8X 45 PLATED	2							
11	1	129150-25920	BUSH, IDLE GEAR	1							1
12	1	26106-080142	BOLT, M8X 14 PLATED	2							
13	1	129150-14200	TAPPET	6							
14	1	119810-14400	ROD, PUSH	6							

Remarks  
(1) REPAIR PART.

Fig.8. CRANKSHAFT & PISTON

(A)=3TNE82A-B1  
(B)=  
(C)=

(D)=  
(E)=  
(F)=



No.	Lev.	Parts No.	Description	Q'ty						I	R
				(A)	(B)	(C)	(D)	(E)	(F)		
1	1	119813-21000	CRANKSHAFT ASSY	1							
2	2	129100-01580	PIN, M8X16	1							
4	2	129150-21200	GEAR, CRANKSHAFT	1							
5	2	22512-070140	KEY, 7X 14	1							
7	1	22351-040010	PIN, SPRING 4.0X10	1							
8	1	171301-21650	V-PULLEY	1							
9	1	129795-21661	WASHER	1							
10	1	121850-21680	BOLT	1							
11	1	121111-21501	BOLT, FLYWHEEL	6							
12	1	171325-21590	FLYWHEEL ASSY	1							
14	2	119865-21600	GEAR, RING	1							
15	1	119813-22080	PISTON ASSY	3							
17	2	119813-22500	RING SET, PISTON	3							
21	1	119813-22300	PIN, PISTON	3							
22	1	129792-22400	CIRCLIP, 23	6							
23	1	719810-23100	ROD ASSY, CONNECTING	3							
26	2	119810-23200	BOLT, CONNECTING ROD	6							
27	2	119810-23600	BEARING, CRANK PIN	3							
29	1	119810-23610	BEARING, 0.25 US	3							1
31	1	119810-23910	BEARING, PISTON PIN	3							2
32	1	119813-22900	PISTON ASSY, 0.25 OS	3							3
34	2	129003-22950	RING SET, 0.25 OS	3							3

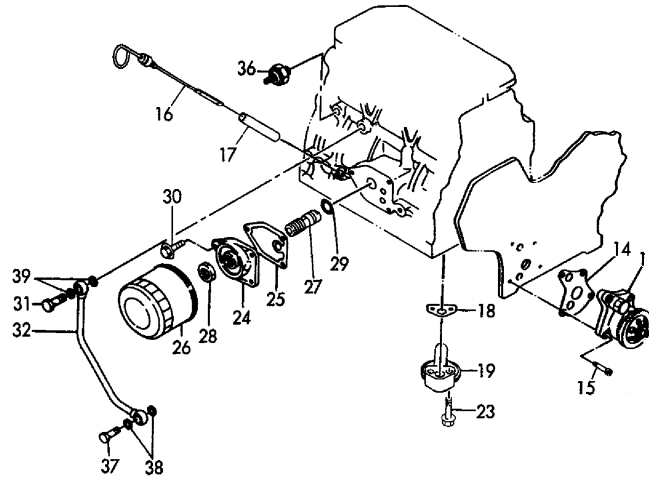
Remarks

- (1) UNDER-SIZED(U.S.=0.25)PART.
- (2) REPAIR PART.
- (3) OVER-SIZED(O,S=0.25)PART.

Fig.9. LUB. OIL SYSTEM

(A)=3TNE82A-B1  
(B)=  
(C)=

(D)=  
(E)=  
(F)=



No.	Lev.	Parts No.	Description	Q'ty						I	R
				(A)	(B)	(C)	(D)	(E)	(F)		
1	1	129001-32001	PUMP ASSY, OIL	1							
14	1	129150-32020	GASKET, PUMP	1							A
15	1	26450-060252	BOLT, M6X 25	4							
16	1	119812-34800	DIPSTICK, OIL	1							
17	1	121520-34810	GUIDE, DIPSTICK	1							
18	1	129150-35041	GASKET	1							A
19	1	119810-35401	PIPE ASSY, OIL INLET	1							
23	1	26106-080352	BOLT, M8X 35 PLATED	2							
24	1	129150-35101	BRACKET, STRAINER	1							
25	1	129150-35111	GASKET	1							A
26	1	129150-35151	FILTER, D80XL80	1							
27	1	129001-35300	BOLT, FILTER	1							
28	1	129150-35350	NUT	1							
29	1	24311-000160	O-RING, 1AP16.0	1							
30	1	26106-080202	BOLT, M8X 20 PLATED	3							
31	1	124160-39140	BOLT, PIPE JOINT M10	1							
32	1	119810-39200	PIPE ASSY, OIL	1							
36	1	124160-39450	SWITCH, 0.5KG	1							
37	1	124550-59820	BOLT, PIPE JOINT M8	1							
38	1	22190-080002	WASHER, SEAL 6	2							
39	1	23414-100000	GASKET, 10X1.0	2							

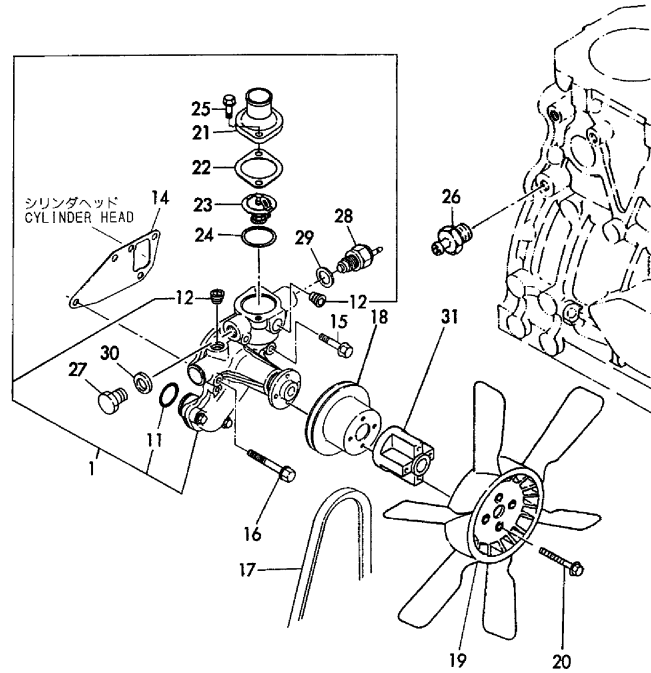
Remarks

(A) THESE PART ARE ALSO SOLD BY  
FIG 17.REF NO.1  
(GASKET SET.P/# 719813-92620).

Fig.10. COOLING WATER SYSTEM

(A)=3TNE82A-B1  
(B)=  
(C)=

(D)=  
(E)=  
(F)=



No.	Lev.	Parts No.	Description	Q'ty						I	R
				(A)	(B)	(C)	(D)	(E)	(F)		
1	1	119810-42001	PUMP ASSY, WATER	1							
11	2	129150-42320	O-RING	1							
12	2	23871-030000	PLUG, R03	2							
14	1	129150-42020	GASKET, WATER PUMP	1							A
15	1	26106-080352	BOLT, M8X 35 PLATED	1							
16	1	26106-080552	BOLT, M8X 55 PLATED	3							
17	1	25132-003900	V-BELT, A39	1							
17-1	1	129211-42290	V-BELT, A38.5	1							N
(A=E/#15170)											
18	1	129550-42350	V-PULLEY, D=120	1							
19	1	171340-44740	FAN, COOLING D335XNF	1							
20	1	26106-060552	BOLT, M6X 55 PLATED	4							
21	1	129350-49530	COVER, THERMOSTAT	1							A
22	1	129795-49551	GASKET	1							A
23	1	129155-49800	THERMOSTAT, 71	1							
24	1	129150-49811	GASKET, THERMOSTAT	1							A
25	1	26106-080202	BOLT, M8X 20 PLATED	2							
26	1	121550-49111	JOINT, PT1/4	1							
27	1	121450-42450	PLUG, M16	1							
28	1	121250-44901	SWITCH, 110	1							
29	1	124465-44950	GASKET, 16	1							
30	1	124465-44950	GASKET, 16	1							
31	1	119256-44760	SPACER, FAN	1							

Remarks

(A) THESE PART ARE ALSO SOLD BY  
FIG 17.REF NO.1  
(GASKET SET.P/# 719813-92620).

Fig.11. FUEL INJECTION PUMP

(A)=3TNE82A-B1

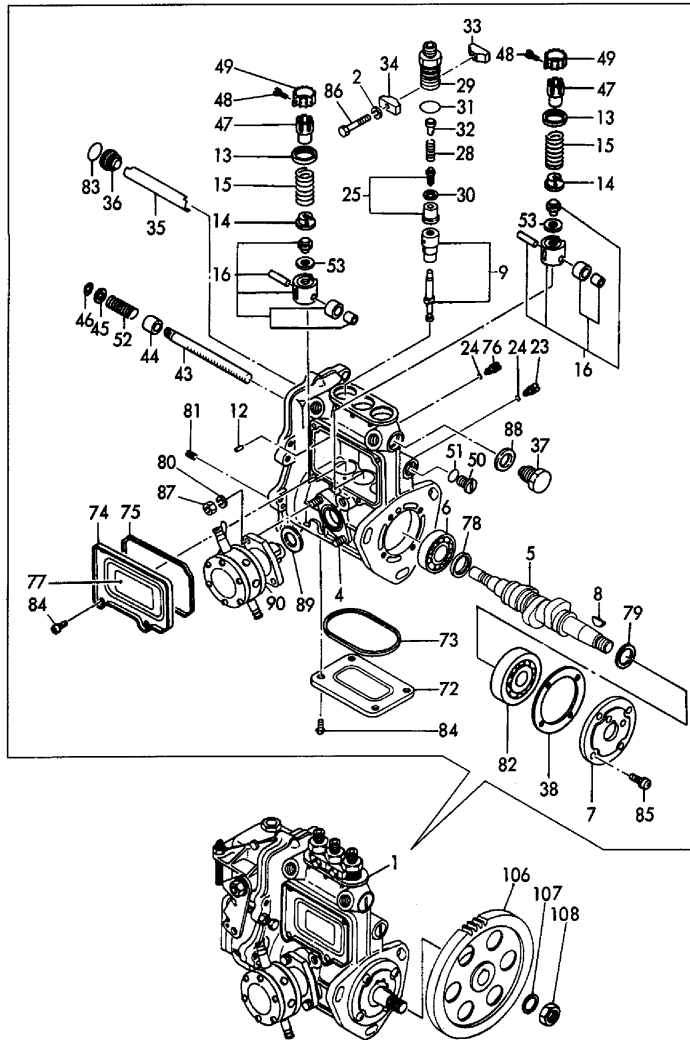
(B)=

(C)=

(D)=

(E)=

(F)=



No.	Lev.	Parts No.	Description	Q'ty						I	R
				(A)	(B)	(C)	(D)	(E)	(F)		
1	1	719824-51360	PUMP ASSY, INJECTION	1							1
2	2	22217-050000	WASHER, SPRING 5	2							
4	2	129155-51020	STUD	2							
5	2	119810-51040	CAMSHAFT	1							
6	2	129155-51050	BEARING, 17BM001D	1							
7	2	129155-51060	SUPPORT, CAMSHAFT	1							
8	2	122710-51090	KEY	1							
9	2	129108-51100	PLUNGER ASSY	3							
12	2	129155-51140	PIN	3							
13	2	174307-51170	RETAINER, SPRING A	3							
14	2	129155-51180	RETAINER, SPRING	3							
15	2	124950-51190	SPRING, PLUNGER	3							
16	2	129155-51200	TAPPET ASSY	3							
23	2	129155-51270	STOPPER, TAPPET	3							
24	2	129155-51280	O-RING, S6	3							
25	2	129505-51300	VALVE ASSY, DELIVERY	3							
28	2	129155-51320	SPRING, DELIVERY	3							
29	2	129155-51340	RETAINER	3							
30	2	124550-51350	GASKET, DELIVERY	3							
31	2	124550-51370	O-RING	3							
32	2	129155-51370	STOPPER, VALVE	3							
33	2	129155-51380	STOPPER	2							
34	2	129155-51390	STOPPER	2							
35	2	129155-51400	DEFLECTOR	1							
36	2	129155-51410	BOLT	1							
37	2	129155-51420	PLUG, M16	1							
38	2	129155-51450	SHIM SET, ADJUSTING	1							
43	2	129155-51500	RACK, CONTROL	1							
44	2	129155-51521	BUSH, RACK	1							
45	2	129155-51530	SPACER	1							
46	2	129155-51540	CIRCLIP	1							
47	2	129155-51550	PINION, CONTROL	3							
48	2	122117-51560	SCREW	3							
49	2	174307-51560	PINION	3							
50	2	129155-51570	PLUG, M12	1							
51	2	129155-51580	O-RING	1							
52	2	129155-51591	SPRING, RACK	1							
53	2	129155-51600	SHIM SET, ADJUSTING	3							
72	2	129155-51700	COVER	1							
73	2	129155-51710	GASKET	1							
74	2	129155-51750	COVER	1							
75	2	129155-51760	GASKET	1							
76	2	129155-51790	STOOPER, RACK	1							
77	2	129156-51910	LABEL, CAUTION	1							
78	2	129155-51930	SPACER, T=3.25	1							
79	2	129155-51940	SPACER, T=1.5	1							
80	2	22217-060000	WASHER, SPRING 6	2							
81	2	22351-050010	PIN, SPRING 5.0X10	2							
82	2	24101-063034	BEARING, BALL 6303	1							
83	2	24341-000160	O-RING, 1AS16.0	1							
84	2	26022-050102	SCREW, M5X10	8							

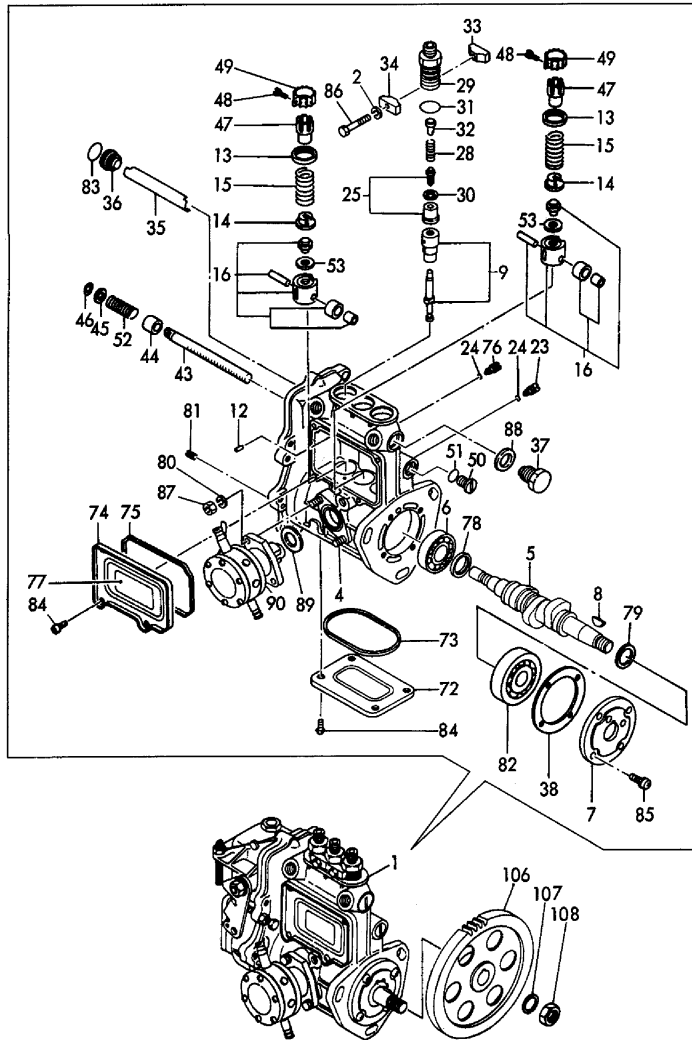
Remarks

(1) GOVERNOR ASSY(FIG.14)IS INCORPORATED IN THIS FUEL INJECTION PUMP ASSY(REF.NO.1)

Fig.11. FUEL INJECTION PUMP

(A)=3TNE82A-B1  
(B)=  
(C)=

(D)=  
(E)=  
(F)=



No.	Lev.	Parts No.	Description	Q'ty						I	R
				(A)	(B)	(C)	(D)	(E)	(F)		
85	2	26022-060162	SCREW, M6X16	4							
86	2	26116-050302	BOLT, M5X 30 PLATED	2							
87	2	26716-060002	NUT, M6	2							
88	2	22190-160002	WASHER, SEAL 16	1							
89	2	129155-52050	GASKET	1							
90	2	129100-52100	PUMP ASSY, FUEL FEED	1							
106	1	129150-25900	GEAR, PUMP	1							
107	1	22217-120000	WASHER, SPRING 12	1							
108	1	26716-120002	NUT, M12	1							

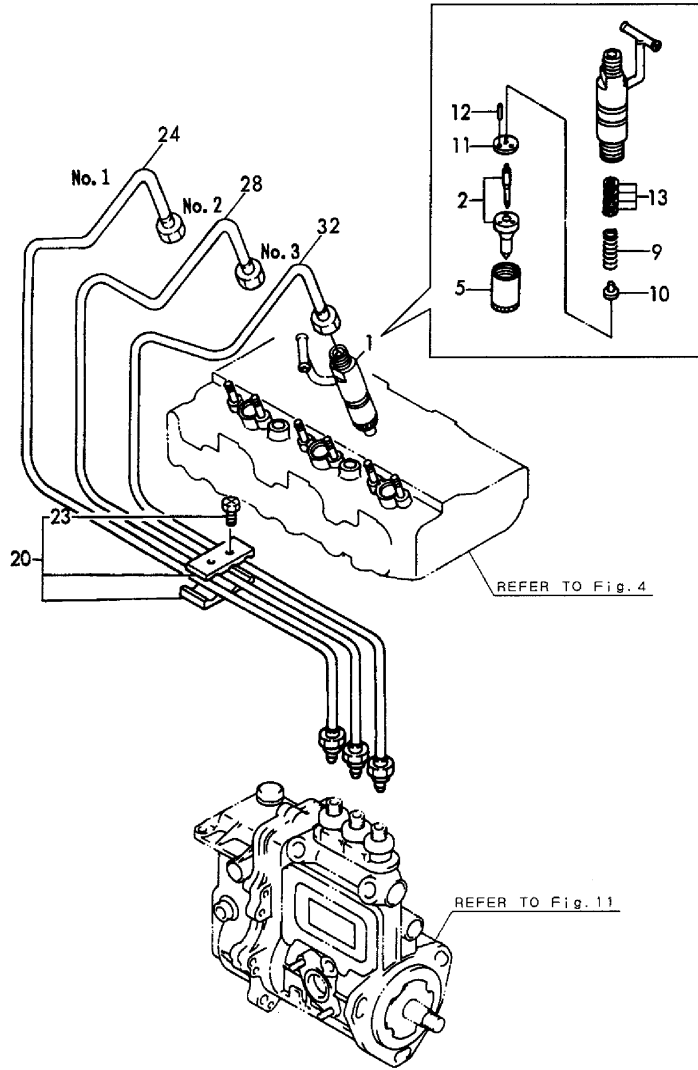
Remarks

(1) GOVERNOR ASSY(FIG.14)IS INCORPORATED IN THIS FUEL INJECTION PUMP ASSY(REF.NO.1)

Fig.12. FUEL INJECTION PIPE

(A)=3TNE82A-B1  
(B)=  
(C)=

(D)=  
(E)=  
(F)=



No.	Lev.	Parts No.	Description	Q'ty						I	R
				(A)	(B)	(C)	(D)	(E)	(F)		
1	1	729500-53200	VALVE ASSY,INJECTION	3							
2	2	129500-53050	VALVE ASSY,INJECTION	3							
5	2	114250-53080	NUT, NOZZLE D16.95	3							
9	2	114250-53120	SPRING, NOZZLE	3							
10	2	114250-53130	SEAT, SPRING	3							
11	2	114250-53140	PLATE	3							
12	2	114250-53210	PIN	6							
13	2	114250-53400	SHIM SET	3							
20	1	129150-59120	RETAINER, PIPE	1							
23	2	129150-59131	BOLT, M4X14	2							
24	1	119810-59810	PIPE ASSY, INJECTION	1							
28	1	119810-59820	PIPE ASSY, INJECTION	1							
32	1	119810-59830	PIPE ASSY, INJECTION	1							



Fig.13. FUEL PIPE

(A)=3TNE82A-B1

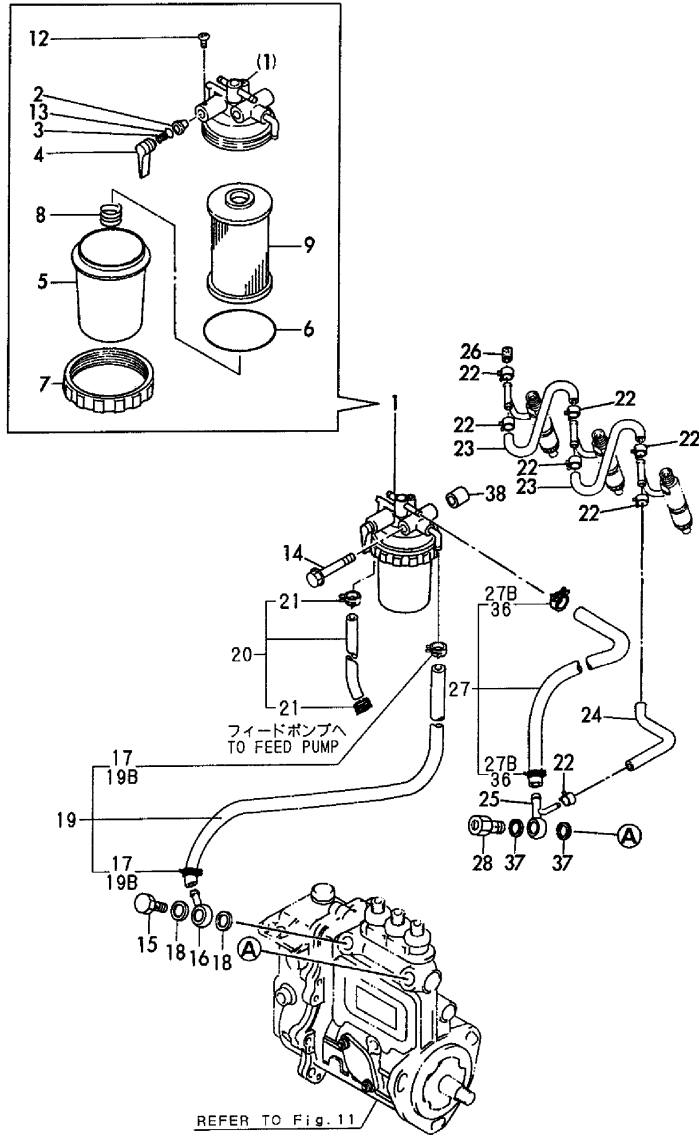
(B)=

(C)=

(D)=

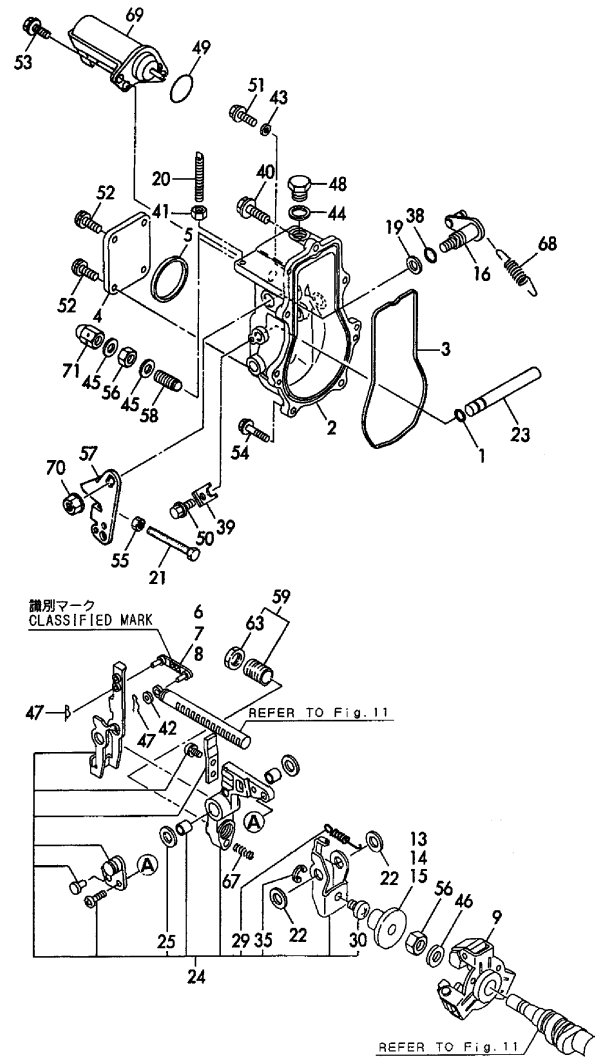
(E)=

(F)=



No.	Lev.	Parts No.	Description	Qty						I	R
				(A)	(B)	(C)	(D)	(E)	(F)		
1	1	119833-55620	FILTER ASSY, FUEL	1							
2	2	104200-55321	VALVE, TAPER	1							
3	2	104200-55330	SPRING, VALVE	1							
4	2	119810-55340	LEVER	1							
5	2	121254-55510	COVER	1							
6	2	102103-55520	O-RING	1							
7	2	110250-55610	RING, RETAINING	1							
8	2	121250-55620	SPRING	1							
9	2	119810-55650	ELEMENT	1							
12	2	104200-55750	SCREW, M4	1							
13	2	24311-240100	O-RING, 1AP10A	1							
14	1	26014-080852	BOLT, M8X 85	1							
15	1	103854-39140	BOLT, PIPE JOINT	1							
16	1	101304-59020	JOINT, PIPE 12	1							
17	1	124766-59050	CLIP, HOSE 12	2							Z
(A=E/#44670)											
18	1	22190-120002	WASHER, SEAL 12	2							
19	1	129210-59040	PIPE ASSY, FUEL	1							W
(A=E/#44670)											
19B	2	124766-59050	CLIP, HOSE 12	2							W
(A=E/#44670)											
20	1	129210-59130	PIPE ASSY, FUEL	1							W
(A=E/#44670)											
21	2	124766-59050	CLIP, HOSE 12	2							
22	1	124066-59100	CLIP, HOSE 8	7							
23	1	121250-59550	PIPE, FUEL D8X120	2							
24	1	119840-59560	PIPE, FUEL RETURN	1							
25	1	119840-59570	JOINT	1							
26	1	129150-59580	CAP	1							
27	1	129210-59130	PIPE ASSY, FUEL	1							W
(A=E/#44670)											
27A	2	105025-59750	PIPE, FUEL	1							
27B	2	124766-59050	CLIP, HOSE 12	2							W
(A=E/#44670)											
28	1	129100-59951	VALVE ASSY, CHECK	1							
36	1	124766-59050	CLIP, HOSE 12	2							Z
(A=E/#44670)											
37	1	23414-120000	GASKET, 12X1.0	2							
38	1	129411-55690	SPACER	1							

Fig.14. GOVERNOR



(A)=3TNE82A-B1  
(B)=  
(C)=

(D)=  
(E)=  
(F)=

No.	Lev.	Parts No.	Description	Q'ty						I	R
				(A)	(B)	(C)	(D)	(E)	(F)		
1	2	129155-51280	O-RING, S6	1							
2	2	129052-61010	CASE, GOVERNOR	1							
3	2	129052-61050	GASKET	1							
4	2	129052-61060	COVER, GOVERNOR CASE	1							
5	2	129052-61070	GASKET	1							
6	2	129155-61120	LINK, L=30 MARK 0	1							1
7	2	129155-61130	LINK, L=31 MARK 1	1							1
8	2	129155-61140	LINK, L=30.5 MARK 05	1							1
9	2	129155-61201	WEIGHT ASSY, GOVERNOR	1							
13	2	129155-61341	SLEEVE	1							2
14	2	129155-61350	SLEEVE, L=24.9	1							2
15	2	129155-61360	SLEEVE, L=25.2	1							2
16	2	129100-61400	SHAFT ASSY	1							
19	2	129155-61430	SPACER	1							
20	2	129155-61450	BOLT, LIMITER	1							
21	2	129155-61460	BOLT, IDLE	1							
22	2	129155-61480	SPACER ASSY	2							
23	2	129052-61390	SHAFT	1							
24	2	129052-61500	LEVER ASSY, GOVERNOR	1							
25	3	174307-51700	SHIM SET	2							
29	3	129052-61540	SPRING, SET	1							
30	3	129155-61540	SHIFTER	1							
35	3	22272-000040	RING, E- 4	1							
38	2	129155-61830	O-RING, S10	1							
39	2	119660-61901	RETAINER, SHAFT	1							
40	2	129155-61950	BOLT	1							
41	2	124550-66370	NUT, M6	1							
42	2	22117-040000	WASHER, 4	1							
43	2	22190-060002	WASHER, SEAL 6	1							
44	2	22190-100002	WASHER, SEAL 10	1							
45	2	22190-120002	WASHER, SEAL 12	2							
46	2	22287-120000	WASHER, 12	1							
47	2	22372-040000	PIN, SNAP 4	2							
48	2	23887-100002	PLUG, 10	1							
49	2	24341-000280	O-RING, 1AS28.0	1							
50	2	26106-060102	BOLT, M6X 10 PLATED	1							
51	2	26106-060102	BOLT, M6X 10 PLATED	1							
52	2	26106-060102	BOLT, M6X 10 PLATED	4							
53	2	26106-060142	BOLT, M6X 14 PLATED	2							
54	2	26106-060202	BOLT, M6X 20 PLATED	6							
55	2	26756-060002	NUT, LOCK M6	1							
56	2	26776-120002	NUT, LOCK M12	2							
57	1	129100-61440	LEVER, CONTROL	1							
58	1	129155-61470	BOLT, CONTROL	1							
59	1	129132-61550	ANGLEICH ASSY	1							
63	2	129155-61590	NUT, LOCK	1							
67	1	129100-61650	SPRING, CONTROLLER	1							
68	1	129489-61700	SPRING, GOVERNOR	1							
69	1	119233-77951	SOLENOID	1							
70	1	26366-080002	NUT, M8	1							
71	1	26687-120002	NUT, CAP M12	1							

Remarks

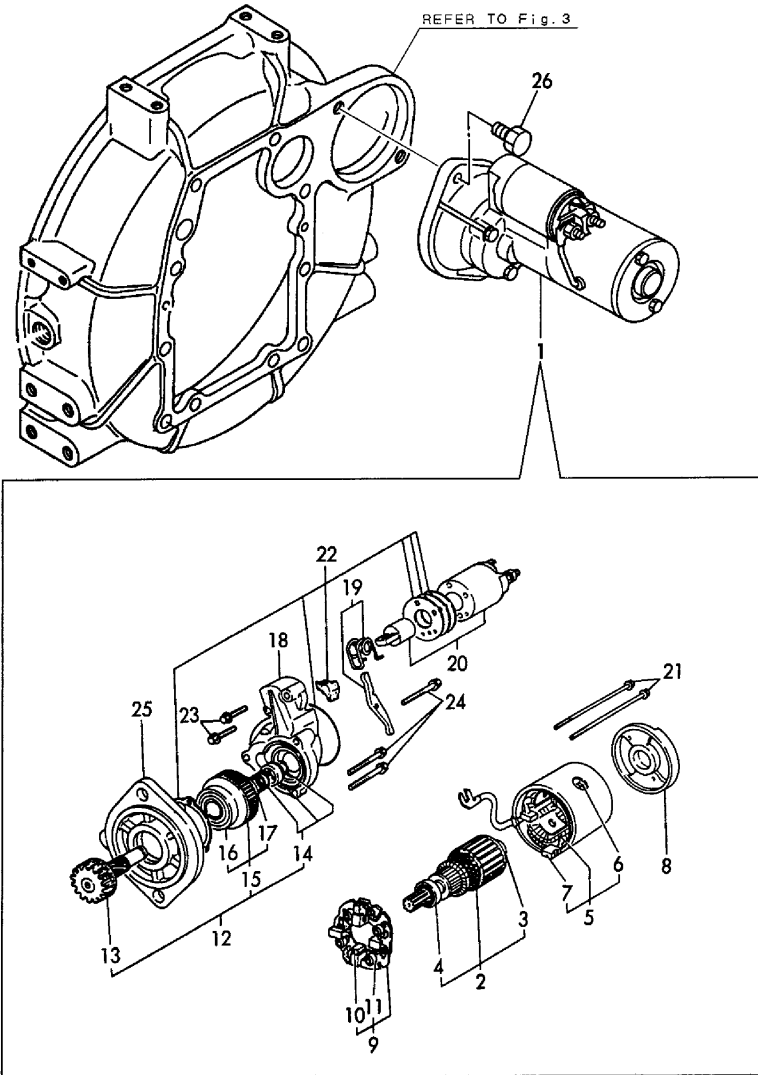
- (1) SELECTIVE PARTS : CERTAIN THE CLASSIFICATION MARK, THEN PLACE YOUR ORDER. (ILLUSTRATION)
- (2) SELECTIVE PART.

N:Old  $\xrightarrow{\text{Yes}}$  New, Q:Old  $\xrightarrow{\text{No}}$  New, R:Old  $\xrightarrow{\text{Yes}}$  New, S:Old  $\xrightarrow{\text{No}}$  New, W:Add, Z:Discontinued, F:Interchangeable by set, K:Q'ty Change

Fig.15. STARTING MOTOR

(A)=3TNE82A-B1  
(B)=  
(C)=

(D)=  
(E)=  
(F)=

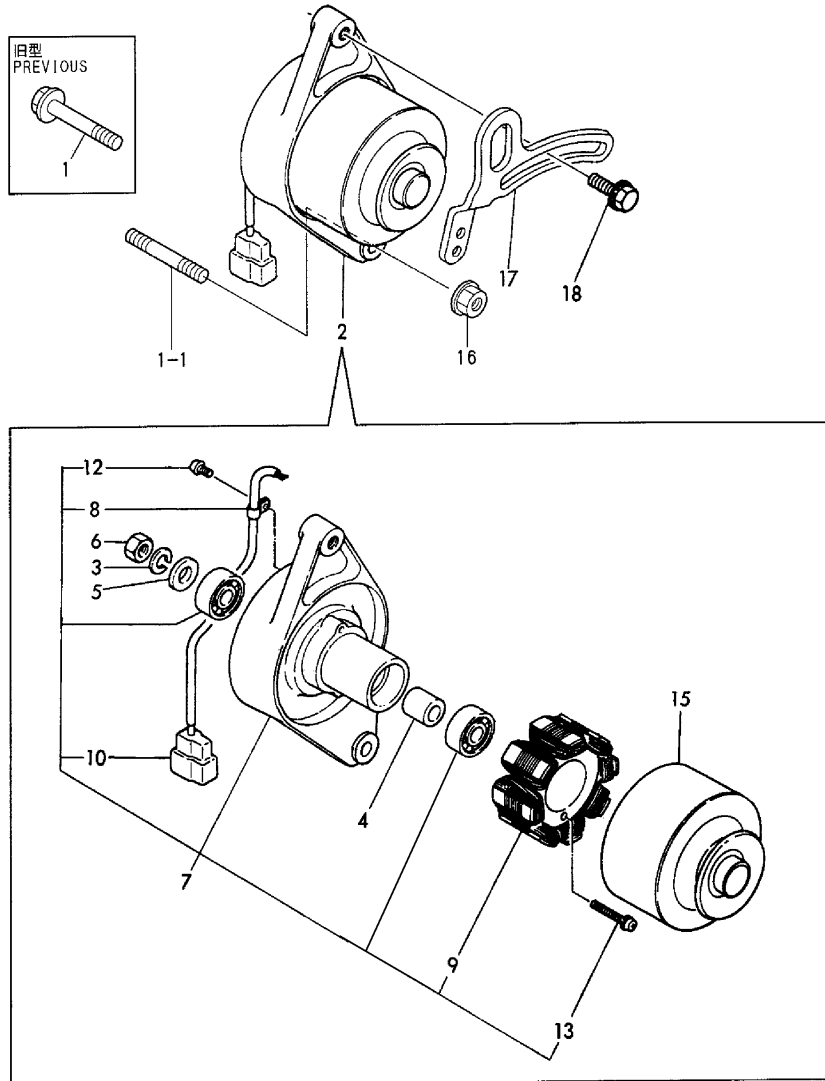


No.	Lev.	Parts No.	Description	Q'ty						I	R
				(A)	(B)	(C)	(D)	(E)	(F)		
1	1	124976-77011	STARTER, S114-349A	1							
2	2	X211451007	ARMATURE ASSY	1							
3	3	171008-77410	BEARING	1							
4	3	171008-77420	BEARING	1							
5	2	X211472106	COIL ASSY, FIELD	1							
6	3	171008-77450	SCREW	4							
7	3	171008-77460	BRUSH (+)	2							
8	2	171008-77500	COVER, REAR	1							
9	2	171008-77470	HOLDER ASSY, BRUSH	1							
10	3	171008-77480	BRUSH (-)	2							
11	3	171008-77490	SPRING, BRUSH	4							
12	2	X211415505	CLUTCH ASSY	1							
13	3	171008-77660	SHAFT	1							
14	3	171008-77670	STOPPER SET	1							
15	3	X211425505	CLUTCH ASSY	1							
16	4	171008-77730	BEARING, BALL	1							
17	4	171008-77740	BEARING	1							
18	2	171008-77510	CASE, GEAR	1							
19	2	X21146012	LEVER, SHIFT	1							
20	2	171008-55730	SWITCH ASSY	1							
21	2	124195-77770	BOLT, THROUGH	2							
22	2	171008-77571	COVER KIT, DUST	1							
23	2	26106-060322	BOLT, M6X 32 PLATED	2							
24	2	26106-060402	BOLT, M6X 40 PLATED	3							
25	2	X211414501	HOUSING, CENTER	1							
26	1	26116-120252	BOLT, M12X 25 PLATED	2							

Fig.16. GENERATOR

(A)=3TNE82A-B1  
(B)=  
(C)=

(D)=  
(E)=  
(F)=

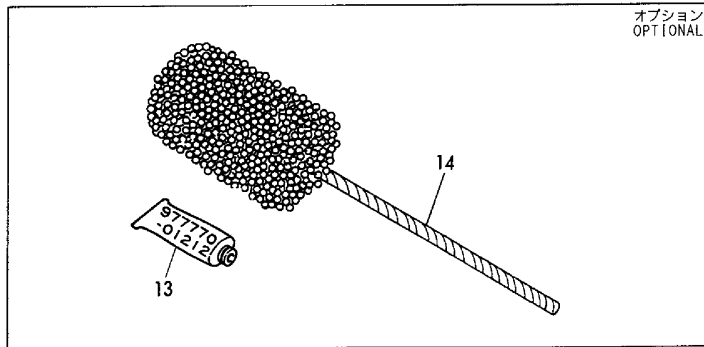
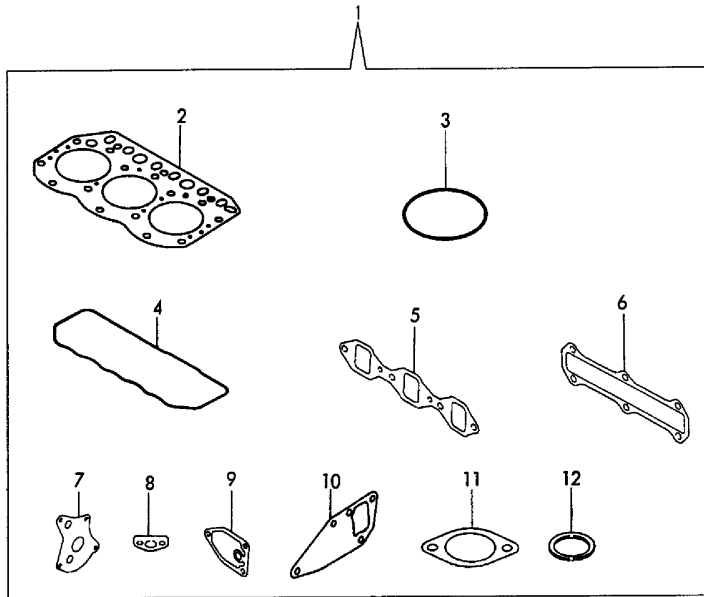


No.	Lev.	Parts No.	Description	Q'ty						I	R
				(A)	(B)	(C)	(D)	(E)	(F)		
1	1	26106-100652	BOLT, M10X 65 PLATED	1							
1-1	1	129795-01900	BOLT, STUD M10X33	1							N
(A=E15988)											
2	1	129150-77203	DINAMO ASSY	1							
3	2	XM219230000	WASHER, SPRING	1							
4	2	XM329830000	COLLAR	1							
5	2	XM860250000	WASHER, 10	1							
6	2	XM863720000	NUT	1							
7	2	129150-77210	PLATE ASSY	1							
8	3	XM069000000	CLAMP	1							
9	3	XM081780000	STATOR	1							
10	3	XM178780000	COUPLER	1							
12	3	XYSPS400800	SCREW	1							
13	3	XYSPS402400	SCREW	2							
15	2	129150-77280	FLYWHEEL ASSY	1							
16	1	26366-100002	NUT, M10	1							
17	1	119867-77331	ADJUSTER	1							
18	1	26014-080252	BOLT, M8X 25	1							
18-1	1	119810-77340	BOLT, ADJUST L=30	1							N
(A=E17106)											

Fig.17. GASKET SET(OPTIONAL) & TOOL

(A)=3TNE82A-B1  
(B)=  
(C)=

(D)=  
(E)=  
(F)=



No.	Lev.	Parts No.	Description	Q'ty						I	R
				(A)	(B)	(C)	(D)	(E)	(F)		
1	1	719813-92620	GASKET SET	1							1
2	2	119812-01330	GASKET, HEAD	1							
3	2	24311-000320	O-RING, 1AP32.0	2							
4	2	119865-11310	GASKET, BONNET	1							
5	2	119810-12111	GASKET, MANIFOLD	1							
6	2	119813-13110	GASKET	1							
7	2	129150-32020	GASKET, PUMP	1							
8	2	129150-35041	GASKET	1							
9	2	129150-35111	GASKET	1							
10	2	129150-42020	GASKET, WATER PUMP	1							
11	2	129795-49551	GASKET	1							
12	2	129150-49811	GASKET, THERMOSTAT	1							
13	1	97770-01212	GASKET, LIQUID	1							1
14	1	129400-92420	HONE	1							1

Remarks  
(1) OPTIONAL PART.

## Parts No. Index

Parts No.	Fig. No.	Ref. No.
101304-59020	13	16
102103-55520	13	6
103854-39140	13	15
104200-55321	13	2
104200-55330	13	3
104200-55750	13	12
104211-11180	4	11
104211-11370	4	15
105025-59750	13	27 A
110250-55610	13	7
114250-53080	12	5
114250-53120	12	9
114250-53130	12	10
114250-53140	12	11
114250-53210	12	12
114250-53400	12	13
119131-18320	6	5 -1
119233-77951	14	69
119256-44760	10	31
119620-01750	3	18
119620-02020	1	11
119625-11870	4	29 -1
119625-11871	4	29
119625-11880	4	30
119625-11900	4	31
119640-01640	3	7
119660-61901	14	39
119810-01200	1	21
119810-01730	3	5
119810-01780	3	15
119810-01790	3	6
119810-02800	1	12
119810-02870	1	23
119810-02930	1	15
119810-02940	1	26
119810-11100	4	8
119810-11110	4	9
119810-11120	4	10
119810-11240	4	18
119810-12111	5	2
	17	5
119810-14400	7	14
119810-14580	7	1
119810-23200	8	26
119810-23600	8	27
119810-23610	8	29
119810-23910	8	31
119810-35401	9	19
119810-39200	9	32
119810-42001	10	1

Parts No.	Fig. No.	Ref. No.
119810-51040	11	5
119810-55340	13	4
119810-55650	13	9
119810-59810	12	24
119810-59820	12	28
119810-59830	12	32
119810-77340	16	18 -1
119812-01330	1	22
	17	2
119812-11700	4	1
119812-12200	5	7
119812-13500	6	8
119812-34800	9	16
119813-13100	6	1
119813-13110	6	2
	17	6
119813-21000	8	1
119813-22080	8	15
119813-22300	8	21
119813-22500	8	17
119813-22900	8	32
119833-55620	13	1
119836-12810	5	14
119836-13650	6	9
119840-59560	13	24
119840-59570	13	25
119856-03090	4	47
119860-01650	3	14
119865-11210	4	17
119865-11310	4	38
	17	4
119865-21600	8	14
119867-77331	16	17
121023-01550	2	20
121111-21501	8	11
121120-12531	5	20
121120-12541	5	21
121120-12561	5	23
121120-12571	5	24
121250-44901	10	28
121250-55620	13	8
121250-59550	13	23
121254-55510	13	5
121450-01560	2	14
121450-42450	10	27
121520-34810	9	17
121550-49111	10	26
121850-21680	8	10
121850-51960	2	9
122117-51560	11	48

Parts No.	Fig. No.	Ref. No.
122710-51090	11	8
124060-11800	4	5
124066-59100	13	22
124160-01751	2	4
	4	50
124160-01910	1	4
		7 -1
124160-11340	4	13
124160-11360	4	45
124160-39140	9	31
124160-39450	9	36
124195-77770	15	21
124240-01871	2	6
124240-01883	2	7
124465-44950	10	29
		30
124550-51350	11	30
124550-51370	11	31
124550-59820	9	37
124550-66370	14	41
124701-11911	6	7
124736-07900	4	48
124766-59050	13	17
		19 B
		21
		27 B
		36
124950-11340	4	14
124950-51190	11	15
124976-77011	15	1
129001-32001	9	1
129001-35300	9	27
129001-91840	2	17 -1
129003-22950	8	34
129030-12500	5	19
129052-61010	14	2
129052-61050	14	3
129052-61060	14	4
129052-61070	14	5
129052-61390	14	23
129052-61500	14	24
129052-61540	14	29
129100-01580	3	1
		12
	8	2
129100-25061	7	6
129100-52100	11	90
129100-59951	13	28
129100-61400	14	16
129100-61440	14	57

Parts No.	Fig. No.	Ref. No.
129100-61650	14	67
129108-51100	11	9
129120-77501	5	4
129132-12570	5	10
129132-12581	5	8
129132-12800	5	11
129132-12860	5	13
129132-61550	14	59
129150-02450	7	5
129150-03020	4	40
129150-03070	4	41
129150-03080	4	42
129150-03100	2	23
129150-11230	4	25
129150-11280	4	23
129150-11750	4	27
129150-12510	5	22
129150-14101	7	3
129150-14200	7	13
129150-21200	8	4
129150-25101	7	7
129150-25900	11	106
129150-25920	7	11
129150-32020	9	14
	17	7
129150-35041	9	18
	17	8
129150-35101	9	24
129150-35111	9	25
	17	9
129150-35151	9	26
129150-35350	9	28
129150-42020	10	14
	17	10
129150-42320	10	11
129150-49811	10	24
	17	12
129150-59120	12	20
129150-59131	12	23
129150-59580	13	26
129150-77203	16	2
129150-77210	16	7
129150-77280	16	15
129150-77511	5	5
129155-11260	4	21
129155-11270	4	22
129155-49800	10	23
129155-51020	11	4
129155-51050	11	6
129155-51060	11	7

## Parts No. Index

Parts No.	Fig. No.	Ref. No.
129155-51140	11	12
129155-51180	11	14
129155-51200	11	16
129155-51270	11	23
129155-51280	11	24
	14	1
129155-51320	11	28
129155-51340	11	29
129155-51370	11	32
129155-51380	11	33
129155-51390	11	34
129155-51400	11	35
129155-51410	11	36
129155-51420	11	37
129155-51450	11	38
129155-51500	11	43
129155-51521	11	44
129155-51530	11	45
129155-51540	11	46
129155-51550	11	47
129155-51570	11	50
129155-51580	11	51
129155-51591	11	52
129155-51600	11	53
129155-51700	11	72
129155-51710	11	73
129155-51750	11	74
129155-51760	11	75
129155-51790	11	76
129155-51930	11	78
129155-51940	11	79
129155-52050	11	89
129155-61120	14	6
129155-61130	14	7
129155-61140	14	8
129155-61201	14	9
129155-61341	14	13
129155-61350	14	14
129155-61360	14	15
129155-61430	14	19
129155-61450	14	20
129155-61460	14	21
129155-61470	14	58
129155-61480	14	22
129155-61540	14	30
129155-61590	14	63
129155-61830	14	38
129155-61950	14	40
129156-51910	11	77
129210-59040	13	19

Parts No.	Fig. No.	Ref. No.
129210-59130	13	20
		27
129211-42290	10	17 -1
129350-49530	10	21
129400-01520	2	5
129400-92420	17	14
129411-55690	13	38
129486-01670	3	16
129489-61700	14	68
129500-53050	12	2
129505-51300	11	25
129550-42350	10	18
129612-01600	3	2 -1
129792-22400	8	22
129795-01800	2	3
129795-01900	16	1 -1
129795-01950	2	8
129795-02411	1	20
129795-21661	8	9
129795-49551	10	22
	17	11
171008-55730	15	20
171008-77410	15	3
171008-77420	15	4
171008-77450	15	6
171008-77460	15	7
171008-77470	15	9
171008-77480	15	10
171008-77490	15	11
171008-77500	15	8
171008-77510	15	18
171008-77571	15	22
171008-77660	15	13
171008-77670	15	14
171008-77730	15	16
171008-77740	15	17
171051-01921	1	5
171301-01600	3	2
171301-12701	5	1
171301-21650	8	8
171325-21590	8	12
171340-44740	10	19
174307-51170	11	13
174307-51560	11	49
174307-51700	14	25
194990-22050	6	3
		10
22117-040000	14	42
22190-060002	14	43
22190-080002	2	19

Parts No.	Fig. No.	Ref. No.
22190-080002	2	25
	9	38
22190-100002	14	44
22190-120002	13	18
	14	45
22190-160002	11	88
22190-220002	3	9
22217-050000	11	2
22217-060000	11	80
22217-120000	11	107
22272-000040	14	35
22287-120000	14	46
22351-040010	8	7
22351-050010	11	81
22351-060012	4	16
22372-040000	14	47
22512-070140	7	4
	8	5
23000-060000	5	15
23414-100000	9	39
23414-120000	13	37
23871-010000	1	6
23871-030000	10	12
23887-100002	14	48
23887-120002	1	7
24101-063034	11	82
24311-000120	4	46
24311-000160	2	10
	9	29
24311-000320	2	11
	4	51
	17	3
24311-240100	13	13
24341-000160	11	83
24341-000240	2	21
24341-000280	14	49
24341-000500	4	43
25132-003900	10	17
26014-080202	6	11
26014-080252	16	18
26014-080852	13	14
26022-050102	11	84
26022-060162	11	85
26106-060102	14	50
		51
		52
26106-060122	2	22
26106-060142	5	16
	14	53
26106-060162	2	22 -1

Parts No.	Fig. No.	Ref. No.
26106-060202	14	54
26106-060322	15	23
26106-060402	15	24
26106-060552	10	20
26106-080122	2	12
26106-080142	4	49
	5	17
	7	12
26106-080162	2	13
		24
	3	10
	4	44
26106-080202	2	26
	9	30
	10	25
26106-080252	4	32
	5	3
		18
26106-080352	3	17
	5	6
	9	23
	10	15
26106-080452	2	15
	3	11
	7	10
26106-080502	4	33
26106-080552	2	16
	10	16
26106-080602	6	4
26106-080852	2	17
26106-100652	16	1
26116-050302	11	86
26116-120252	15	26
26206-100252	3	4
26206-100302	3	3
26216-060302	4	6
26216-080222	6	5
26216-080602	6	6
26226-080182	4	28
26366-060002	4	34
26366-080002	2	18
	6	3 -1
		10 -1
	14	70
26366-100002	16	16
26450-060252	9	15
26687-120002	14	71
26716-060002	11	87
26716-120002	11	108
26756-060002	14	55

# Parts No. Index

Parts No.	Fig. No.	Ref. No.
26776-120002	14	56
27231-500000	1	8
27241-100000	4	20
27241-120000	1	9
27241-300000	1	10
27241-400000	4	7
27310-070001	4	12
719810-01500	2	1
719810-01650	3	13
719810-11520	4	35
719810-11660	4	24
719810-23100	8	23
719813-01560	1	1
719813-92620	17	1
719824-51360	11	1
729500-53200	12	1
977770-01212	17	13
X211414501	15	25
X211415505	15	12
X211425505	15	15
X211451007	15	2
X21146012	15	19
X211472106	15	5
XM069000000	16	8
XM081780000	16	9
XM178780000	16	10
XM219230000	16	3
XM329830000	16	4
XM860250000	16	5
XM863720000	16	6
XYSPS400800	16	12
XYSPS402400	16	13

Parts No.	Fig. No.	Ref. No.
-----------	----------	----------

Parts No.	Fig. No.	Ref. No.
-----------	----------	----------

Parts No.	Fig. No.	Ref. No.
-----------	----------	----------