

OCA10-M22101EN

Directions for the Parts Catalog.

1. This Parts Catalog shows both standard and optional parts.
2. Parts may change without prior notice.
3. The following is an example of the Parts Catalog format.

REF.	LEV.	PARTS NO.	DESCRIPTION	Q'TY						I	R
				(A)	(B)	(C)	(D)	(E)	(F)		
1	1	729595-51390	FUEL INJECTION PUMP	1	1	1	1	1			1
1-1	1	729595-51391	FUEL INJECTION PUMP	1	1	1	1	1		N	1
		(A=E00185) (B=E00200)									
3	2	26022-060162	SCREW M 6X 16	9	9	9	9	9			
3-1	2	26022-060162	SCREW M 6X 16	4	4	4	4	4		K	
		(A=E00156) (B=E00156) (C=E00156) (D=E00156) (E=E00156)									
4	2	129470-51040	CAMSHAFT	1	1	1	1	1			
5	2	122710-51050	BEARING, ROLLER	2	2	2	2	2			
6	2	129470-51060	RETAINER	1	1	1	1	1			

Remarks
(1) BOOST COMPEMSATOR TYPE. OPTIONAL PART, TO E00155,(4JH-DT, 4JH-DTZ

① Ref. No.

The Ref. No. listed may not be in accordance with the illustration Ref. No.

(Ex.) Illustration No.

List Ref No.

1

1

(Before change)

1-1

(After change)

For interchangeable symbols N, R and K, illustrations for new parts may be abbreviated.

② Lev. (Level)

Level indication

The numbers below indicate the level of relativity towards the main part.

1 ----- Main parts (Assembly parts)

2 ----- Sub component included in " 1 ".

3 ----- Sub component included in " 2 ".

Note) Parts that are not for sale are partially illustrated but not listed.

③ Interchangeability Symbol

When a part change takes place, one of the following interchangeability symbols is indicated beside the part.

Symbol	Interchangeability	Contents note
N	Old $\begin{matrix} \leftarrow \text{Yes} \\ \text{No} \rightarrow \end{matrix}$ New	New Part is interchangeable for Old Part but Old Part is not interchangeable for New Part.
Q	Old $\begin{matrix} \leftarrow \text{No} \\ \text{Yes} \rightarrow \end{matrix}$ New	New Part is not interchangeable for Old Part but Old Part is interchangeable for New Part.
R	Old $\begin{matrix} \leftarrow \text{Yes} \\ \text{Yes} \rightarrow \end{matrix}$ New	New/ Old Parts are both interchangeable.
S	Old $\begin{matrix} \leftarrow \text{No} \\ \text{No} \rightarrow \end{matrix}$ New	New/ Old Parts are both not interchangeable.
W		Part newly added.
Z		Part discontinued.
F		Not interchangeable by a single part but interchangeable together with related parts.
K		Changes only for used parts quantities.

④ Effective Machine No.

When a part changes, the effective Machine No. will be indicated in the (A)-(F) column.

Product Symbol	Product No.	Product Symbol	Product No.
C	Clutch No. Compressor No.	F	Machine No. (Agricultural Equip.)
D	Drive No.	M	Machine No.
E	Engine No.		

Note 1) A date may follow the symbol. (Ex.) 1996.01

Note 2) "XXXXX" and "ZZZZZ" are for parts that could not be predicted or for engine models that could not be identified.

Note 3) (A=E00185) is the E (Engine Serial Number) for the column (A) model (in this case 4JH-DT) after the parts design change.

⑤ Remarks

Figures or alphabets (symbols) are entered in the remarks column.

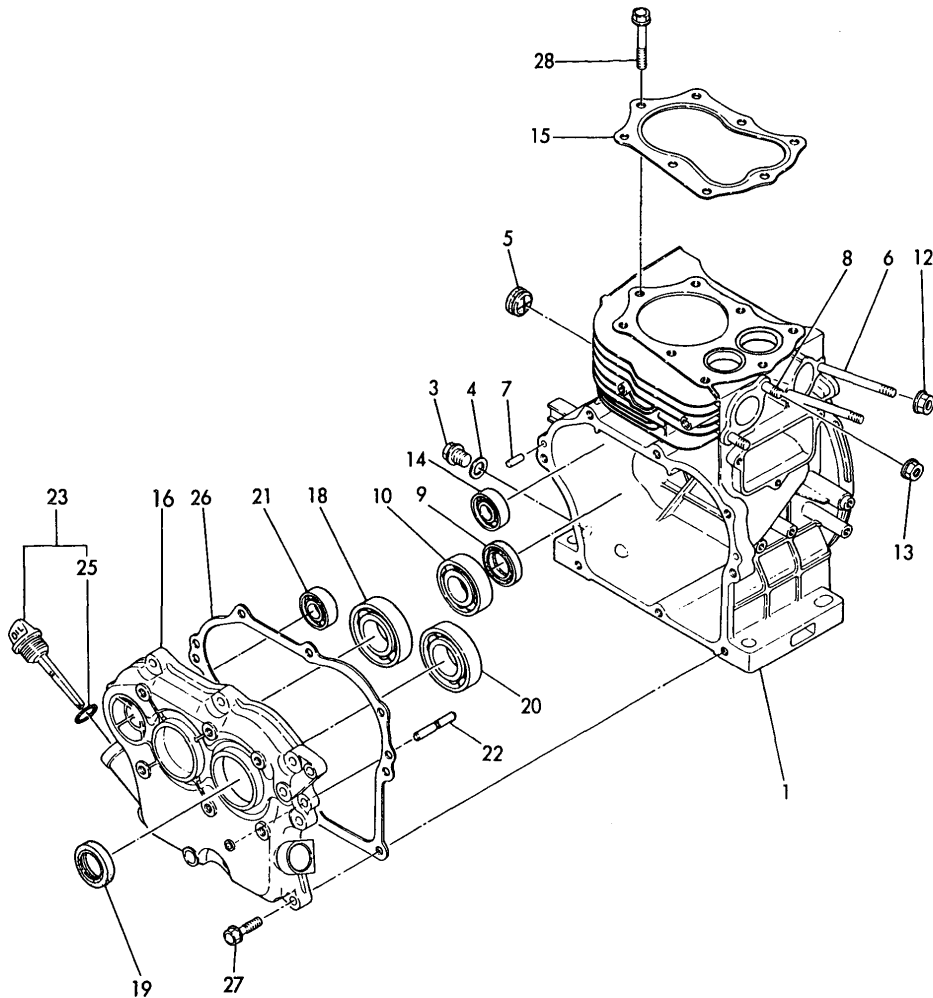
The comments (remarks) on parts that are indicated at the bottom of the illustration are the same symbols as those stated above.

Contents

Fig. No.	Fig. Name	Fig. No.	Fig. Name
ENGINE(GE70E-D.S)			
1.	CYLINDER BODY		
2.	CYLINDER BODY		
3.	MAIN BEARING		
4.	CAMSHAFT BEARING		
5.	BREATHER		
6.	LABEL		
7.	CYLINDER HEAD		
8.	AIR CLEANER		
9.	SILENCER		
10.	CAMSHAFT		
11.	CRANKSHAFT		
12.	PISTON		
13.	CONNECTING ROD		
14.	BALANCER		
15.	COOLING FAN CASE		
16.	FUEL TANK		
17.	CARBURETOR		
18.	FUEL PIPE		
19.	GOVERNOR		
20.	CONTROL DEVICE		
21.	STARTING DEVICE		
22.	STOP SWITCH		
23.	FLYWHEEL MAGNETO		
24.	TOOLS		

Fig.1. CYLINDER BODY

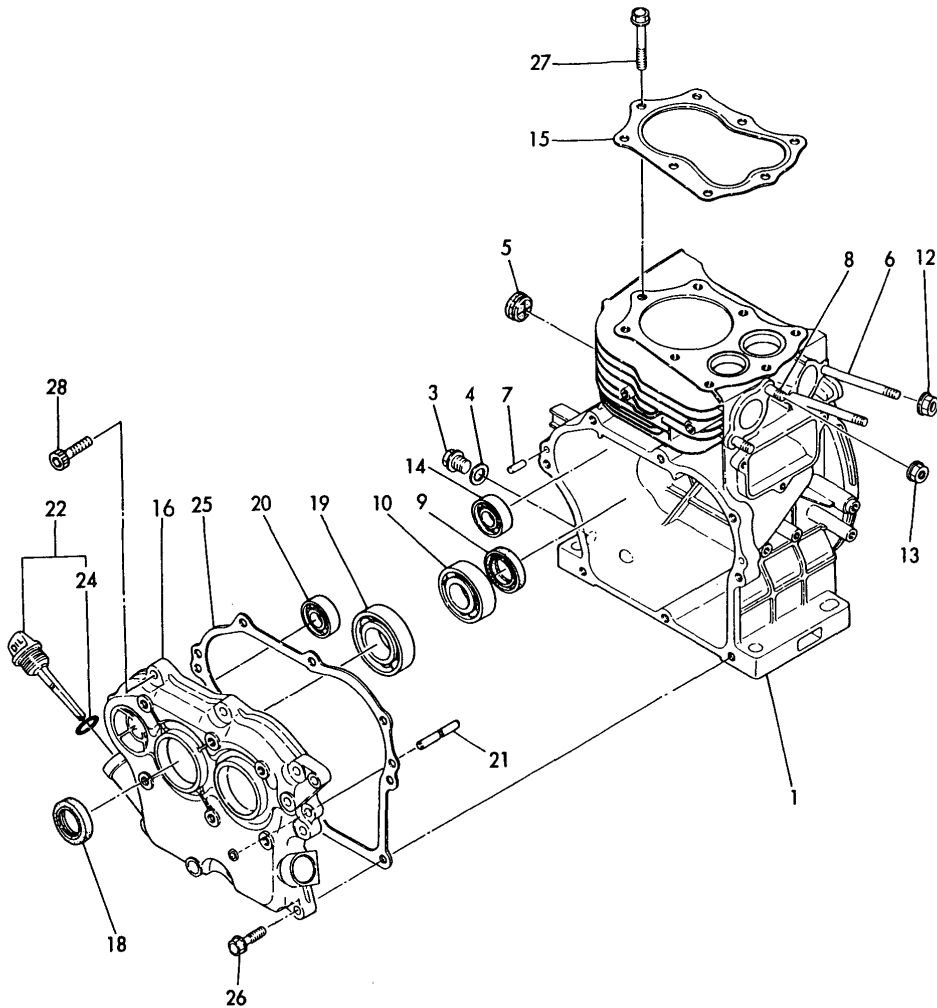
1 シリンダボディ CYLINDER BODY



No.	Lev.	Parts No.	Description	Q'ty						I	R
				(A)	(B)	(C)	(D)	(E)	(F)		
1	1	760810-01560	BLOCK ASSY, CYLINDER		1						
1-1	1	760810-01561 (B=EXXX)	BLOCK ASSY, CYLINDER		1						N
3	2	160610-01690	PLUG, M12		1						
4	2	104200-59170	GASKET, 12		1						
5	2	160820-01950	PLUG		1						
6	2	160610-04630	BOLT, M6X82		2						
7	2	22312-060160	PIN, PARALLEL M6X16		2						
8	2	26216-080182	STUD, M8X 18		2						
9	2	160210-02220	SEAL, 25X41.2X8		1						
9-1	2	160690-02220 (B=E56624)	SEAL, TC25416		1						R
10	2	24101-062050	BEARING, BALL 6205C3		1						
12	2	160260-01800	NUT, M6		2						
12-1	2	26366-060002 (B=*1983.03)	NUT, M6		2						N
13	2	160610-04900	NUT, M8		2						
13-1	2	26366-080002 (B=*1983.03)	NUT, M8		2						N
14	2	24101-062024	BEARING, BALL 6202		1						
14-1	2	160903-28020 (B=E57321)	BEARING, 6202C3E		1						N
15	1	160810-01330	GASKET, HEAD		1						
16	1	760810-01501	COVER ASSY		1						
16-1	1	760810-01520 (B=E56624)	COVER ASSY		1						N
18	2	24101-062060	BEARING, BALL 6206C3		1						
19	2	160110-02220	SEAL, OIL		1						
20	2	24101-062060	BEARING, BALL 6206C3		1						
21	2	24101-062024	BEARING, BALL 6202		1						
21-1	2	160903-28020 (B=E57321)	BEARING, 6202C3E		1						N
22	2	160610-61100	SHAFT, GOVERNOR		1						
23	1	160810-01740	CAP ASSY		1						
25	2	24311-000180	O-RING, 1AP18.0		1						
26	1	160810-01410	GASKET, CRANK CASE		1						
26-1	1	160810-01411 (B=E56624)	GASKET, CRANK CASE		1						S
27	1	160610-04160	BOLT, FLANGE M8X30		8						
27-1	1	26106-080302 (B=EXXX)	BOLT, M8X 30 PLATED		8						N
28	1	160610-04180	BOLT, FLANGE M8X50		8						

Fig.2. CYLINDER BODY

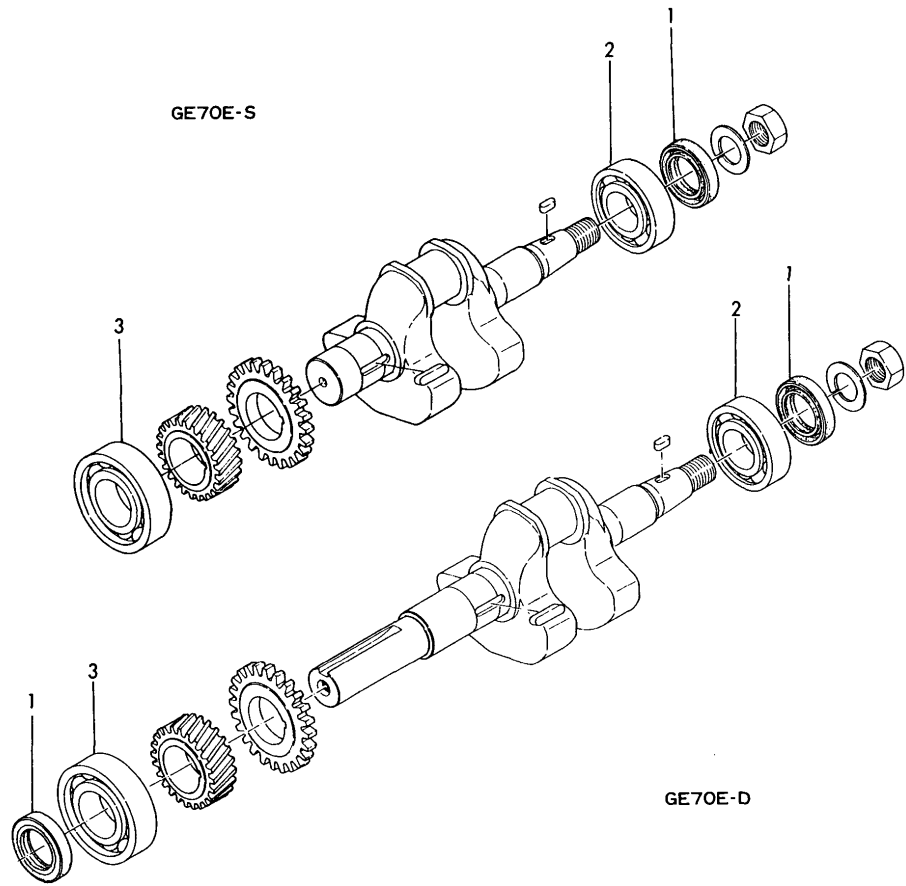
2 シリンダボディ CYLINDER BODY



No.	Lev.	Parts No.	Description	Q'ty						I	R
				(A)	(B)	(C)	(D)	(E)	(F)		
1	1	760810-01560	BLOCK ASSY, CYLINDER	1							
1-1	1	760810-01561 (A=E56921)	BLOCK ASSY, CYLINDER	1							N
3	2	160610-01690	PLUG, M12	1							
4	2	104200-59170	GASKET, 12	1							
5	2	160820-01950	PLUG	1							
6	2	160610-04630	BOLT, M6X82	2							
7	2	22312-060160	PIN, PARALLEL M6X16	2							
8	2	26216-080182	STUD, M8X 18	2							
9	2	160210-02220	SEAL, 25X41.2X8	1							
9-1	2	160690-02220 (A=E56921)	SEAL, TC25416	1							R
10	2	24101-062050	BEARING, BALL 6205C3	1							
12	2	160260-01800	NUT, M6	2							
12-1	2	26366-060002 (A=*1983.03)	NUT, M6	2							N
13	2	160610-04900	NUT, M8	2							
13-1	2	26366-080002 (A=*1983.03)	NUT, M8	2							N
14	2	24101-062024	BEARING, BALL 6202	1							
14-1	2	160903-28020 (A=E57248)	BEARING, 6202C3E	2							N
15	1	160810-01330	GASKET, HEAD	1							
16	1	760842-01500	COVER ASSY	1							
16-1	1	760842-01501 (A=E56921)	COVER ASSY	1							N
16-2	1	760842-01502 (A=E56921)	COVER ASSY	1							S
18	2	160210-02220	SEAL, 25X41.2X8	1							
18-1	2	160110-02220 (A=E56921)	SEAL, OIL	1							N
19	2	24101-062060	BEARING, BALL 6206C3	1							
20	2	24101-062024	BEARING, BALL 6202	1							
20-1	2	160903-28020 (A=E57248)	BEARING, 6202C3E	1							N
21	2	160610-61100	SHAFT, GOVERNOR	1							
22	1	160810-01740	CAP ASSY	1							
24	2	24311-000180	O-RING, 1AP18.0	1							
25	1	160810-01410	GASKET, CRANK CASE	1							
25-1	1	160810-01411 (A=E56921)	GASKET, CRANK CASE	1							S
26	1	160610-04160	BOLT, FLANGE M8X30	7							
26-1	1	26106-080302 (A=E56921)	BOLT, M8X 30 PLATED	7							N
27	1	160610-04180	BOLT, FLANGE M8X50	8							
28	1	26450-080352	BOLT, M8X 35	1							

Fig.3. MAIN BEARING

3 シュジクウケ
MAIN BEARING



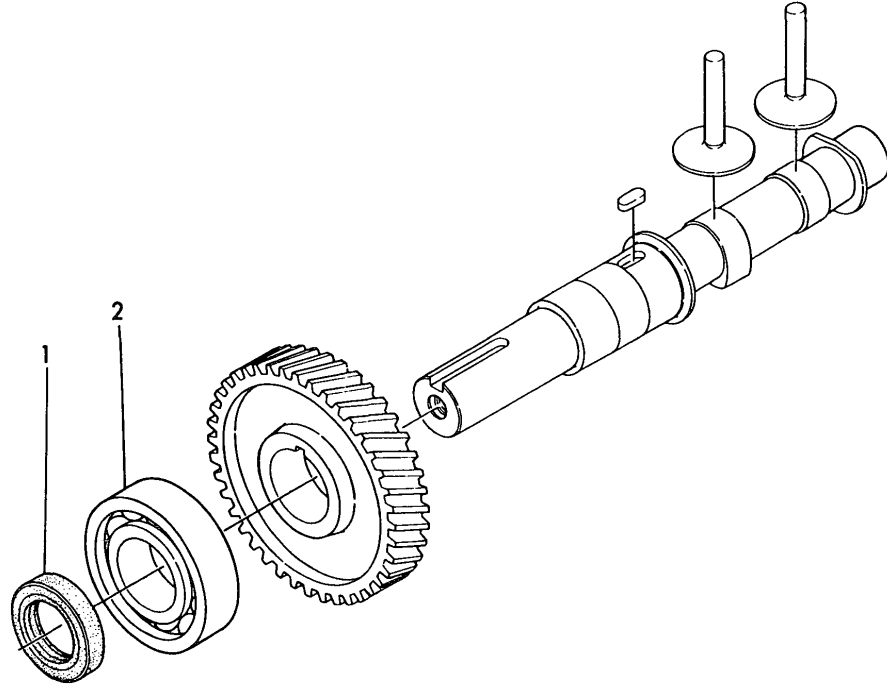
(A)=GE70E-D
(B)=GE70E-S
(C)=

(D)=
(E)=
(F)=

No.	Lev.	Parts No.	Description	Q'ty						I	R
				(A)	(B)	(C)	(D)	(E)	(F)		
1	1	160210-02220	SEAL, 25X41.2X8	2	1						
1-1A	1	160110-02220	SEAL, OIL	1							N
(A=E56921)											
1-1B	1	160690-02220	SEAL, TC25416	1	1						R
(B=E56624)											
2	1	24101-062050	BEARING, BALL 6205C3	1	1						
3	1	24101-062060	BEARING, BALL 6206C3	1	1						

Fig.4. CAMSHAFT BEARING

4 カムジクウケ
CAMSHAFT BEARING



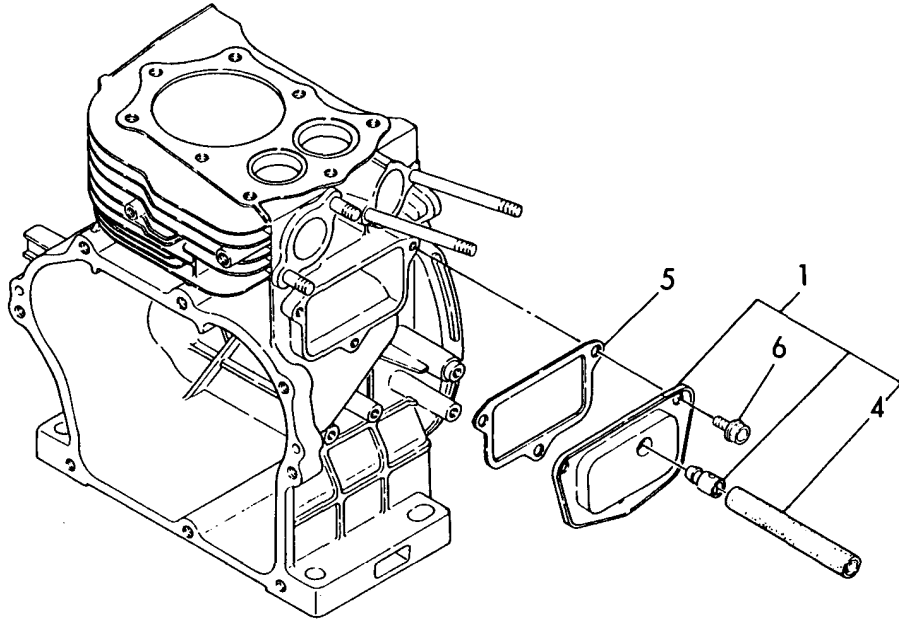
(A)=GE70E-D
(B)=GE70E-S
(C)=

(D)=
(E)=
(F)=

No.	Lev.	Parts No.	Description	Q'ty						I	R
				(A)	(B)	(C)	(D)	(E)	(F)		
1	1	160110-02220	SEAL, OIL		1						
2	1	24101-062060	BEARING, BALL 6206C3		1						

Fig.5. BREATHER

5 ブリーザ
BREATHER



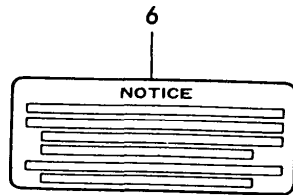
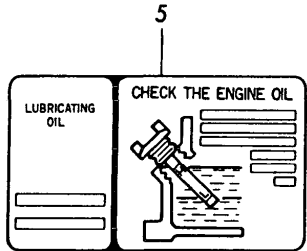
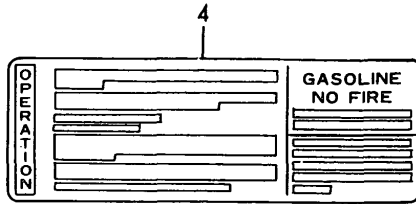
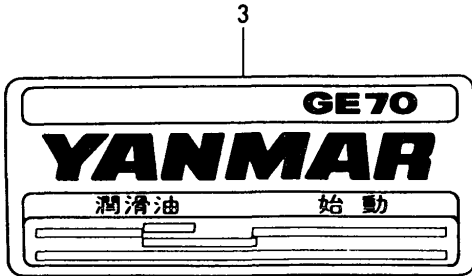
(A)=GE70E-D
(B)=GE70E-S
(C)=

(D)=
(E)=
(F)=

No.	Lev.	Parts No.	Description	Q'ty						I	R
				(A)	(B)	(C)	(D)	(E)	(F)		
1	1	160810-03010	BREATHER ASSY	1	1						
4	2	160810-03180	PIPE , BREATHER	1	1						
5	1	160810-03070	GASKET	1	1						
6	1	160610-04300	BOLT, M6X14	3	3						
6-1	1	26476-060142	SCREW, TAPPING M6X14	3	3						R
		(A=*1989.06)	(B=*1989.06)								

Fig.6. LABEL

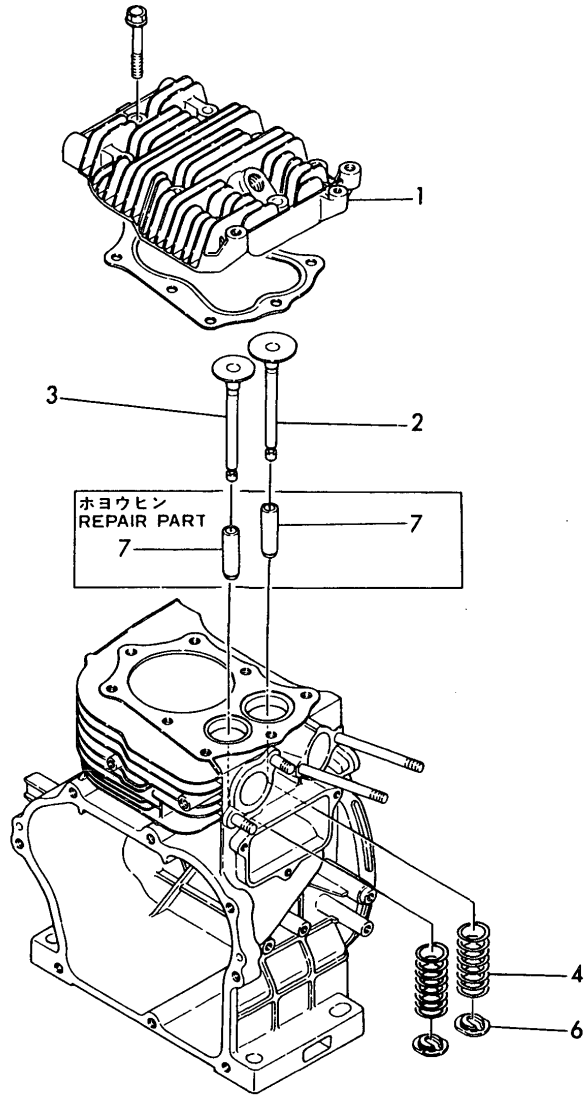
6 ラベル
LABELS



No.	Lev.	Parts No.	Description	Qty						I	R
				(A)	(B)	(C)	(D)	(E)	(F)		
3	1	160810-07100	LABEL	1	1						
4	1	160611-07250	LABEL	1	1						
5	1	160611-07260	LABEL	1	1						
6	1	160611-07370	LABEL	1	1						

Fig.7. CYLINDER HEAD

7 シリンダヘッド
CYLINDER HEAD



(A)=GE70E-D
(B)=GE70E-S
(C)=

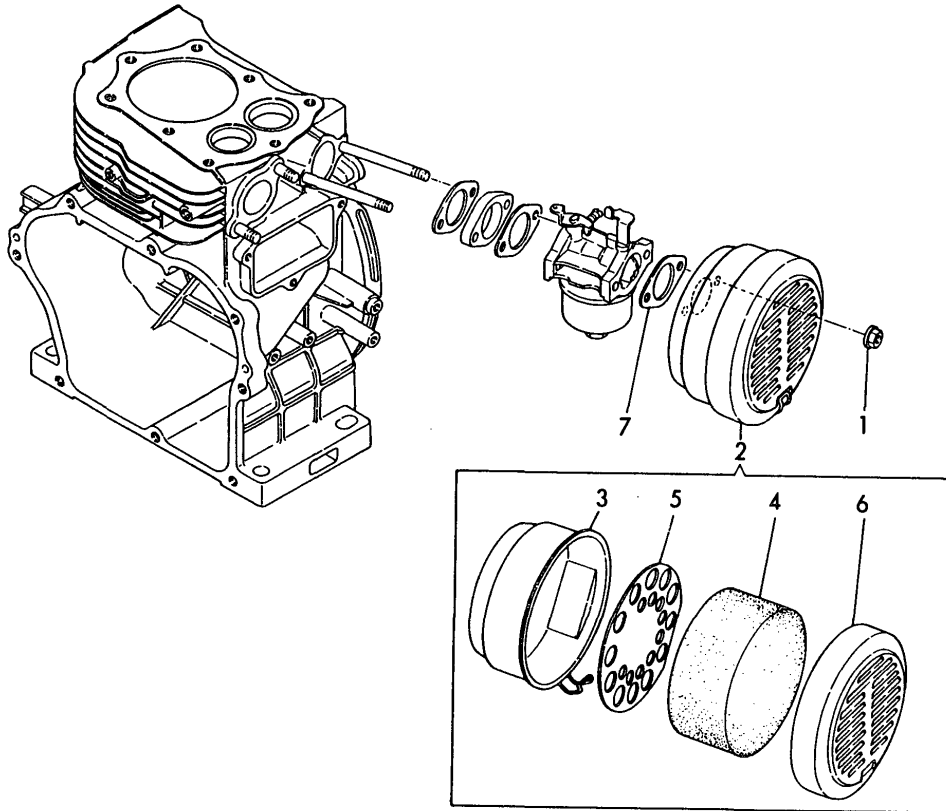
(D)=
(E)=
(F)=

No.	Lev.	Parts No.	Description	Q'ty						I	R		
				(A)	(B)	(C)	(D)	(E)	(F)				
1	1	160810-11010	HEAD, CYLINDER	1	1								
2	1	160810-11100	VALVE, INTAKE	1	1								
3	1	160810-11110	VALVE, EXHAUST	1	1								
4	1	160810-11120	SPRING, VALVE	2	2								
6	1	160810-11180	RETAINER, SPRING	2	2								
7	1	160810-11160	GUIDE, VALVE	2	2						W 1		
		(A=E57250)	(B=E57322)										

Remarks
(1) REPAIR PART.

Fig.8. AIR CLEANER

8 エアクリーナ
AIR CLEANER



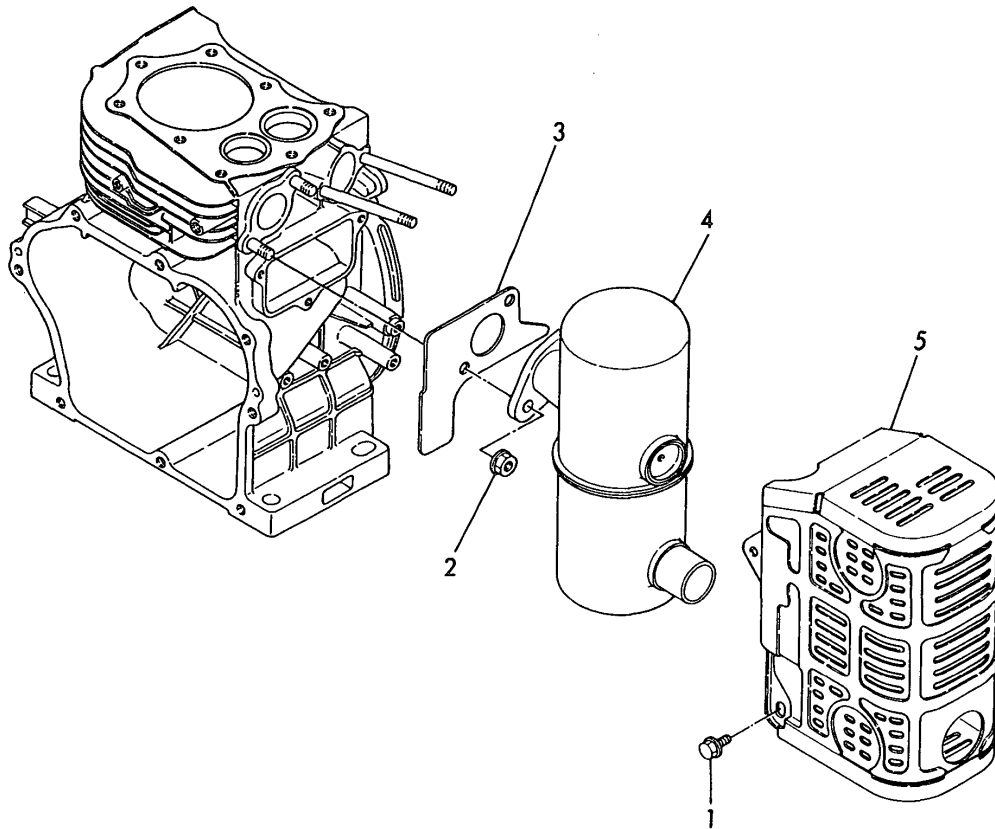
(A)=GE70E-D
(B)=GE70E-S
(C)=

(D)=
(E)=
(F)=

No.	Lev.	Parts No.	Description	Q'ty						I	R
				(A)	(B)	(C)	(D)	(E)	(F)		
1	1	160260-01800	NUT, M6	2	2						
1-1	1	26366-060002	NUT, M6	2	2						N
		(A=*1983.03)	(B=*1983.03)								
2	1	160810-12500	CLEANER ASSY, AIR	1	1						
3	2	160810-12520	BODY, AIR CLEANER	1	1						
4	2	160810-12540	ELEMENT	1	1						
5	2	160810-12550	HOLDER, ELEMENT	1	1						
6	2	160810-12730	CAP, AIR CLEANER	1	1						
7	1	160810-56150	GASKET, CARBURETOR	1	1						

Fig.9. SILENCER

9 サイレンサ
SILENCER



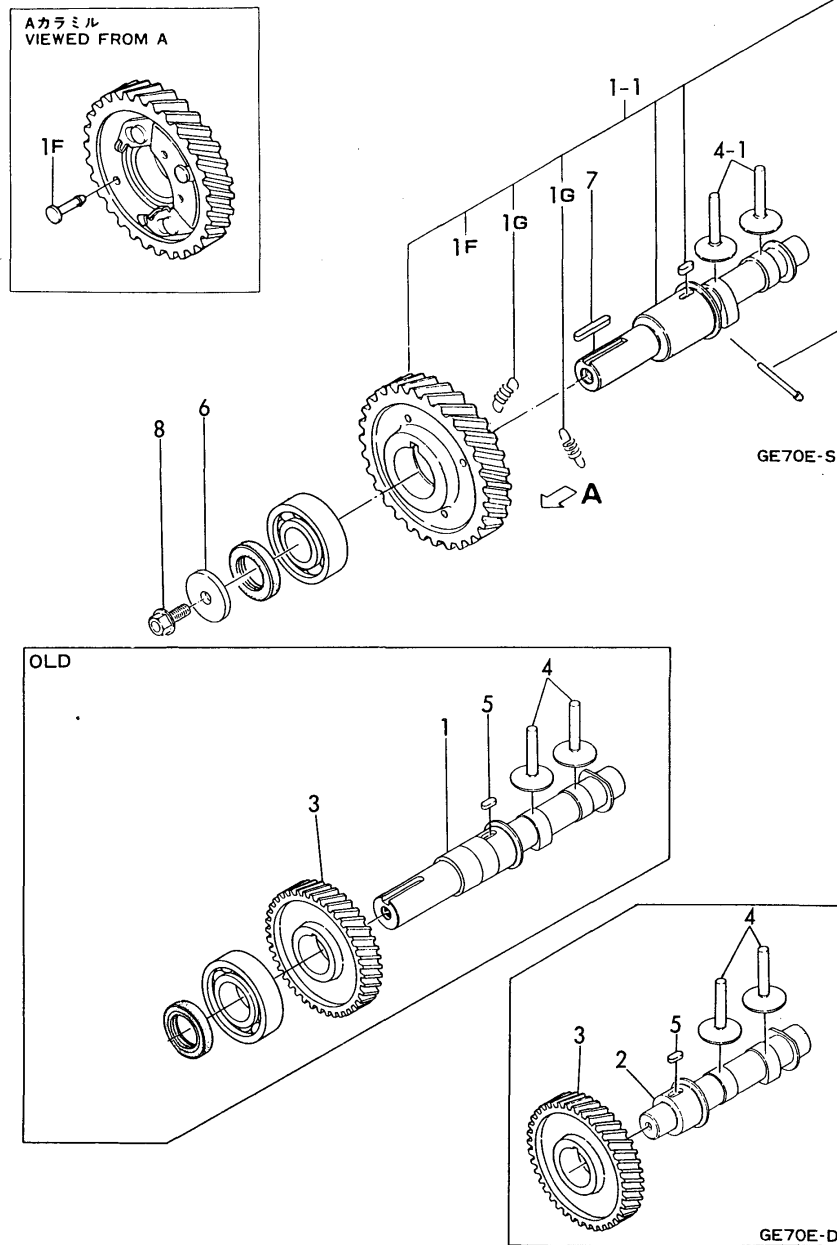
(A)=GE70E-D
(B)=GE70E-S
(C)=

(D)=
(E)=
(F)=

No.	Lev.	Parts No.	Description	Q'ty						I	R
				(A)	(B)	(C)	(D)	(E)	(F)		
1	1	160610-04300	BOLT, M6X14	4	4						
1-1	1	26476-060142	SCREW, TAPPING M6X14	4	4						R
		(A=*1986.06)	(B=*1986.06)								
2	1	160610-04900	NUT, M8	2	2						
2-1	1	26366-080002	NUT, M8	2	2						N
		(A=*1983.03)	(B=*1983.03)								
3	1	160810-13200	GASKET, MUFFLER	1	1						
4	1	160810-13500	SILENCER	1	1						
5	1	160810-13800	COVER, SILENCER	1	1						

Fig.10. CAMSHAFT

Fig. 10 カムシャフト
CAMSHAFT



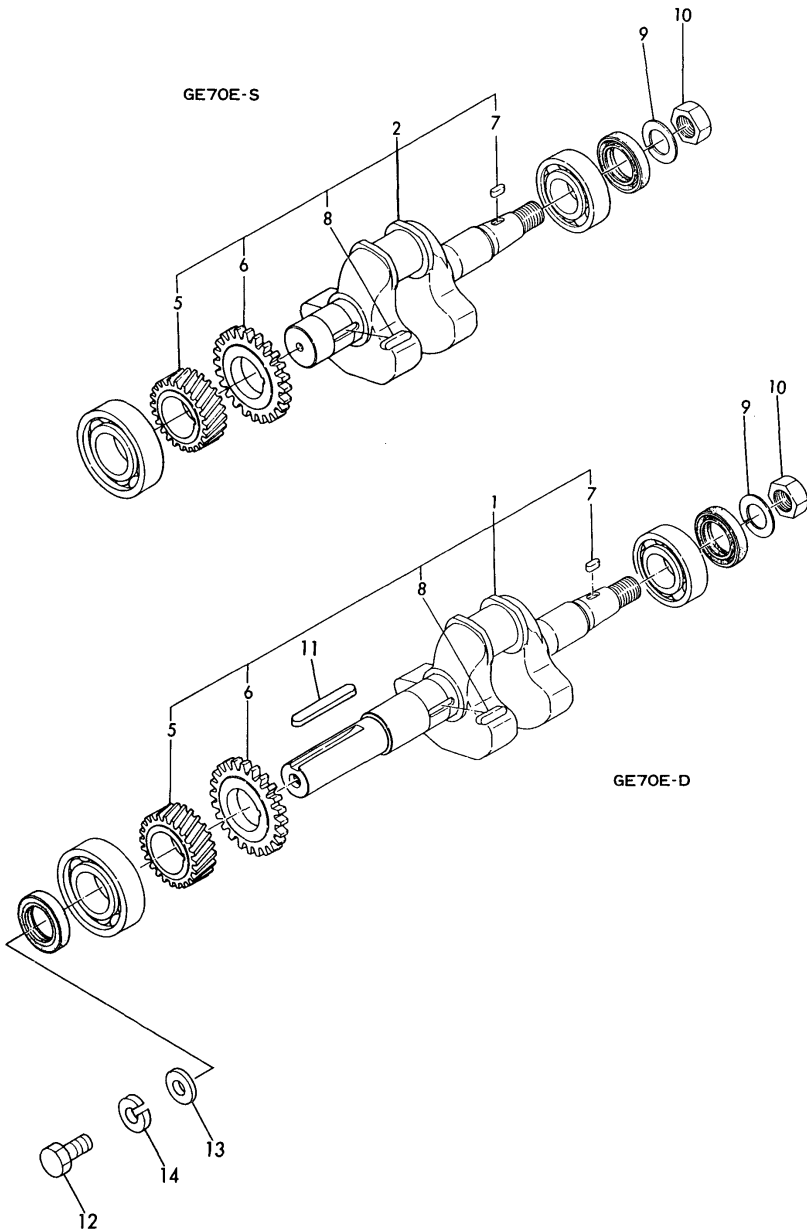
(A)=GE70E-D
(B)=GE70E-S
(C)=

(D)=
(E)=
(F)=

No.	Lev.	Parts No.	Description	Qty						I	R	
				(A)	(B)	(C)	(D)	(E)	(F)			
1	1	160810-14010	CAMSHAFT		1							
1-1	1	160808-14100 (B=E56297)	CAMSHAFT ASSY		1							N
1F	2	160810-14550 (B=E56294)	PIN, GUIDE			1						W
1G	2	160759-14560 (B=E56294)	SPRING, DECOMPRESSION			2						W
2	1	160840-14010	CAMSHAFT		1							R
2-1	1	160840-14011	CAMSHAFT		1							
3	1	160810-14100 (A=E29013)	GEAR, CAMSHAFT		1	1						
3-1	1	160810-14100 (B=E56297)	GEAR, CAMSHAFT			1						Z
4	1	160810-14200	TAPPET		2	2						
4-1	1	160800-14200	TAPPET			2						N
5	1	22512-050120 (B=EXXX)	KEY, 5X 12		1	1						
6	1	160310-14550	WASHER			1						W
7	1	22512-070380 (B=EXXX)	KEY, 7X 38			1						W
8	1	26106-080202 (B=EXXX)	BOLT, M8X 20 PLATED			1						W

Fig.11. CRANKSHAFT

11 クランクシャフト
CRANKSHAFT



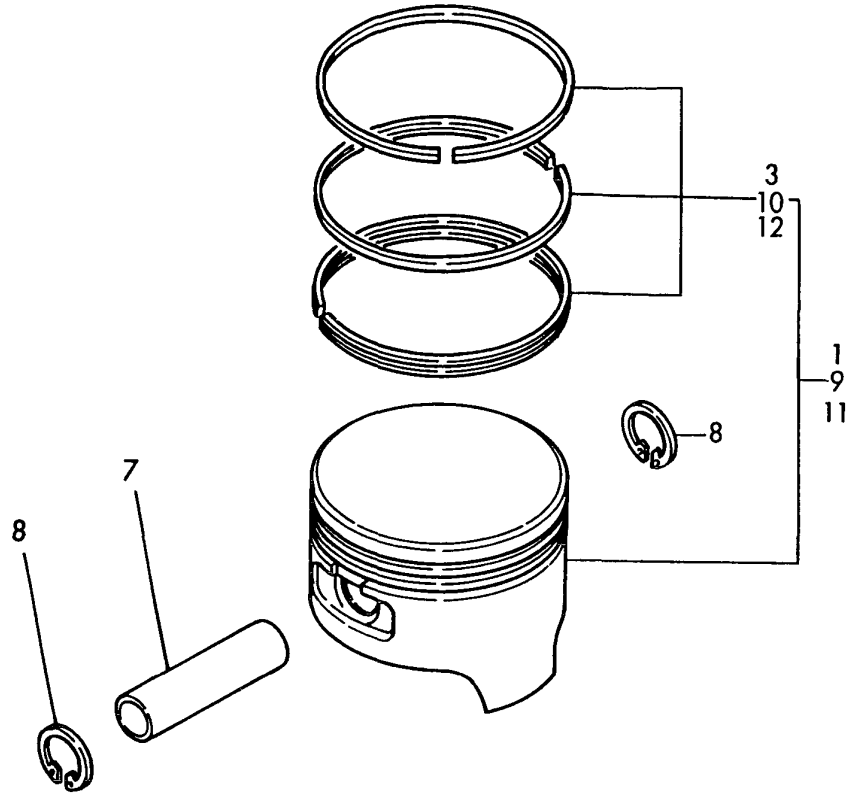
(A)=GE70E-D
(B)=GE70E-S
(C)=

(D)=
(E)=
(F)=

No.	Lev.	Parts No.	Description	Q'ty						I	R
				(A)	(B)	(C)	(D)	(E)	(F)		
1	1	760842-21700	CRANKSHAFT ASSY	1							
2	1	760810-21700	CRANKSHAFT ASSY		1						
5	2	160810-21200	GEAR, CRANKSHAFT	1	1						
6	2	160810-21220	GEAR, BALANCER	1	1						
7	2	160610-21290	KEY, 4X10	1	1						
8	2	160810-21290	KEY, 4X24	1	1						
9	1	22217-160000	WASHER, SPRING 16	1	1						
10	1	26737-160002	NUT, M16	1	1						
11	1	160842-21150	KEY, 6.3X50	1							W
		(A=E26780)									
12	1	160842-21250	BOLT, 7/16-20UNF	1							W
		(A=E26780)									
13	1	160842-21260	WASHER	1							W
		(A=E26780)									
14	1	22217-120000	WASHER, SPRING 12	1							W
		(A=E26780)									

Fig.12. PISTON

12 ピストン PISTON

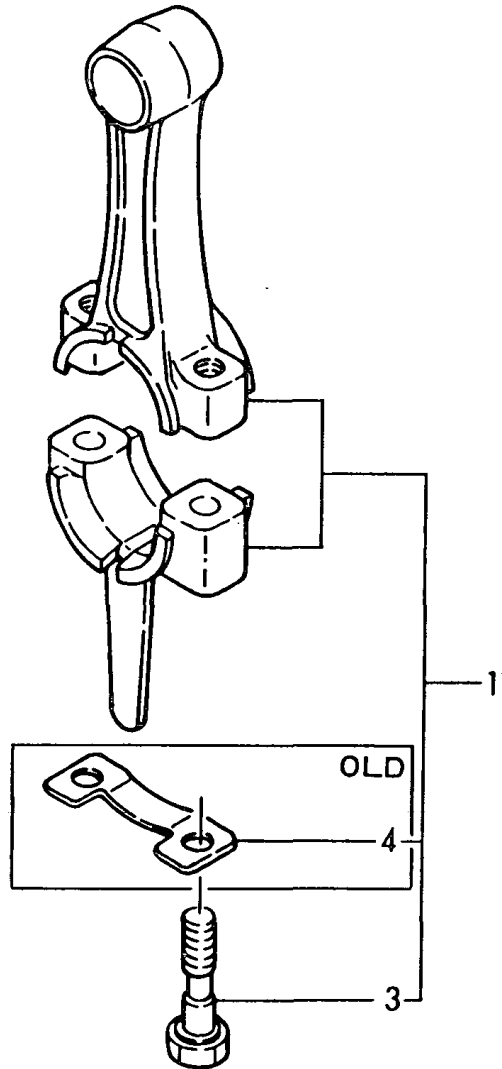


No.	Lev.	Parts No.	Description	Q'ty						I	R
				(A)	(B)	(C)	(D)	(E)	(F)		
1	1	160810-22010	PISTON ASSY	1	1						
1-1	1	160810-22011	PISTON ASSY	1	1						N
		(A=*1983.03) (B=*1983.03)									
3	2	760810-22500	RING SET, PISTON	1	1						
7	1	160810-22300	PIN, PISTON	1	1						
8	1	22252-000160	RING, 16	2	2						
9	1	160810-22470	PISTON ASSY, 0.25 OS	1	1						1
10	2	760810-22540	RING SET, 0.25 OS	1	1						1
11	1	160810-22480	PISTON ASSY, 0.50 OS	1	1						1
12	2	760810-22550	RING SET, 0.50 OS	1	1						1

Remarks
(1) OVER-SIZED PART,

Fig.13. CONNECTING ROD

13 コネクティングロッド CONNECTING ROD



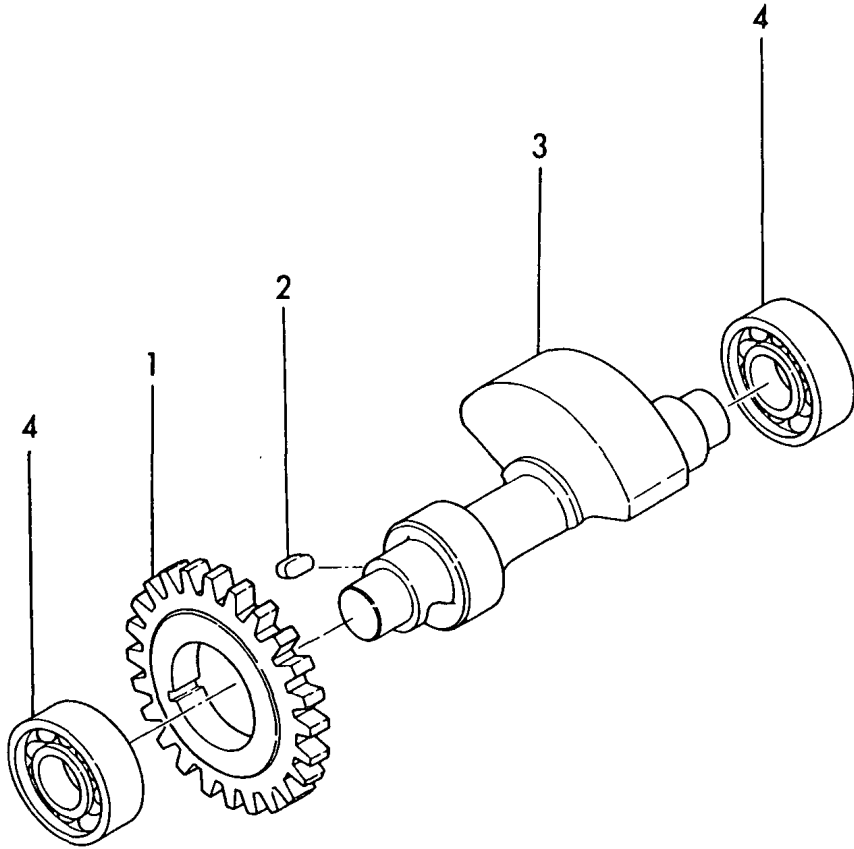
(A)=GE70E-D
(B)=GE70E-S
(C)=

(D)=
(E)=
(F)=

No.	Lev.	Parts No.	Description	Q'ty						I	R
				(A)	(B)	(C)	(D)	(E)	(F)		
1	1	760810-23100	ROD ASSY, CONNECTING	1	1						
1-1	1	760810-23101	ROD ASSY, CONNECTING	1	1						N
		(A=E52445) (B=E50786)									
3	2	160810-23200	BOLT, CONNECTING ROD	2	2						
3-1	2	160810-23201	BOLT, CONNECTING ROD	2	2						R
		(A=E52445) (B=E50786)									
4	2	160810-23210	WASHER	1	1						Z
		(A=E52445) (B=E50786)									

Fig.14. BALANCER

14 バランサ BALANCER



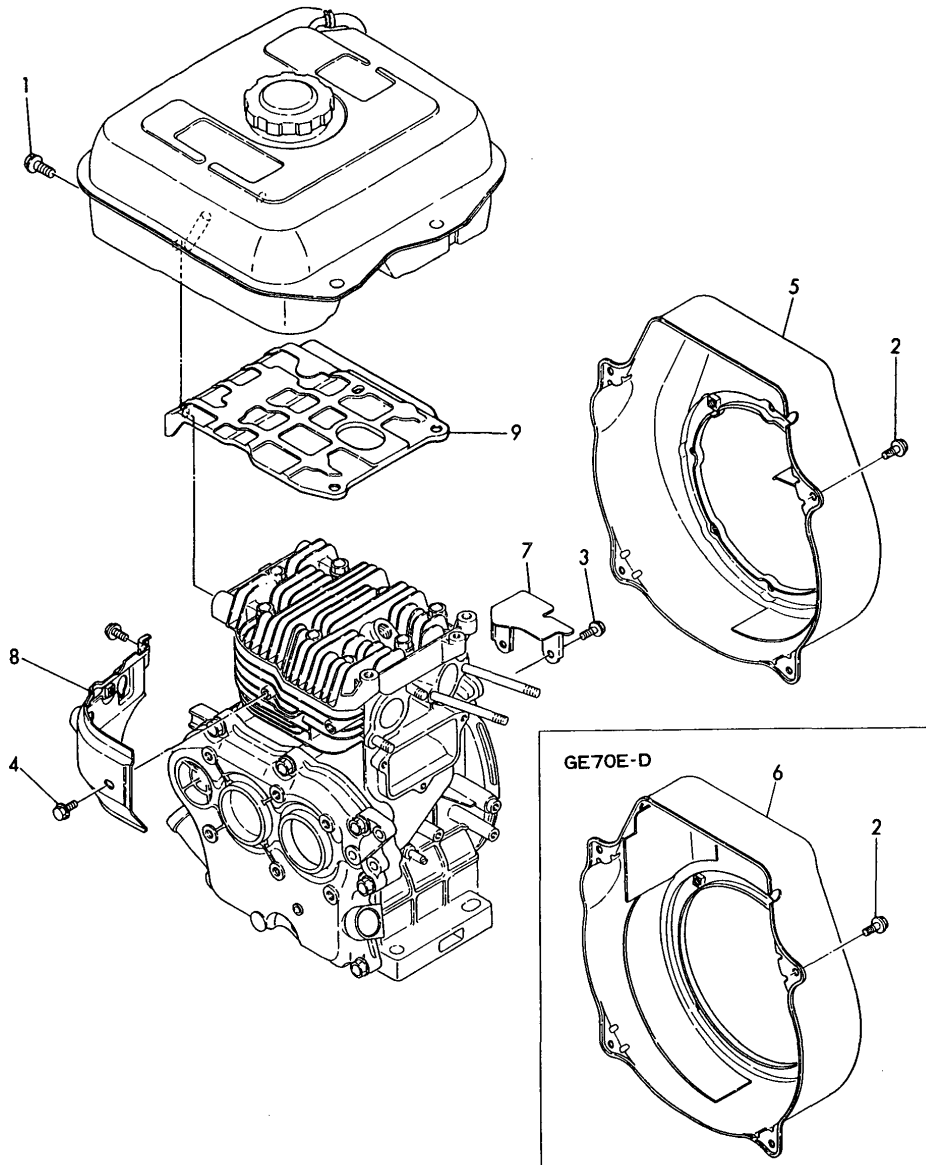
(A)=GE70E-D
(B)=GE70E-S
(C)=

(D)=
(E)=
(F)=

No.	Lev.	Parts No.	Description	Q'ty						I	R
				(A)	(B)	(C)	(D)	(E)	(F)		
1	1	160810-21220	GEAR, BALANCER	1	1						
2	1	160610-21290	KEY, 4X10	1	1						
3	1	160810-28010	SHAFT, BALANCER	1	1						
4	1	24101-062024	BEARING, BALL 6202	2	2						
4-1	1	160903-28020	BEARING, 6202C3E	2	2						N
		(A=E57248)	(B=E57321)								

Fig.15. COOLING FAN CASE

15 クーリングファンケース
COOLING FAN CASE



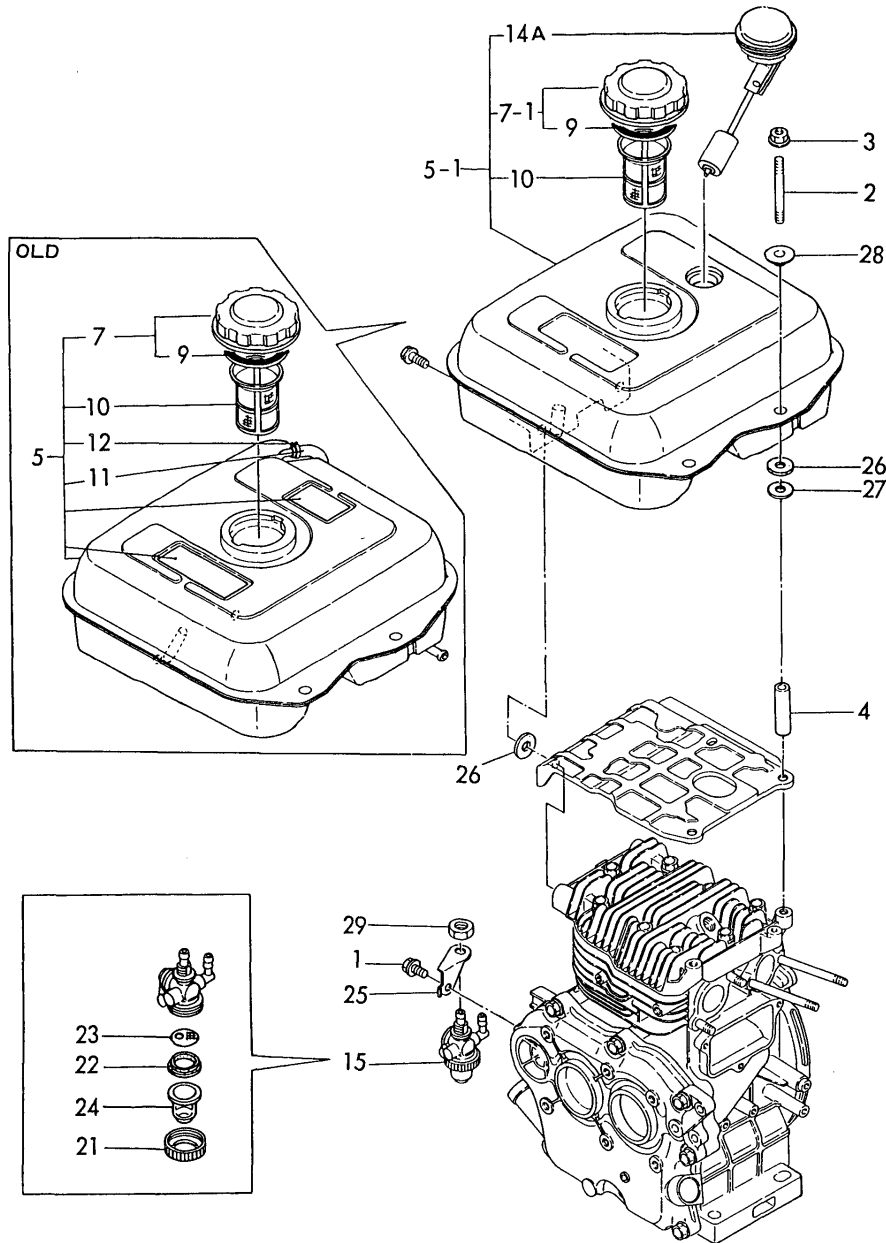
(A)=GE70E-D
(B)=GE70E-S
(C)=

(D)=
(E)=
(F)=

No.	Lev.	Parts No.	Description	Q'ty						I	R
				(A)	(B)	(C)	(D)	(E)	(F)		
1	1	160610-04150	BOLT, FLANGE M8X20	2	2						
1-1	1	26106-080202	BOLT, M8X 20 PLATED	2	2						N
		(A=*1983.03) (B=*1983.03)									
2	1	160610-04300	BOLT, M6X14	4	4						
2-1	1	26476-060142	SCREW, TAPPING M6X14	4	4						R
		(A=*1989.06) (B=*1989.06)									
3	1	160610-04300	BOLT, M6X14		2						
3-1	1	26476-060142	SCREW, TAPPING M6X14		2						R
		(B=*1989.06)									
4	1	160610-04300	BOLT, M6X14	2	2						
4-1	1	26476-060142	SCREW, TAPPING M6X14	2	2						R
		(A=*1989.06) (B=*1989.06)									
5	1	160810-45110	CASE, COOLING FAN		1						
6	1	160840-45110	CASE, COOLING FAN	1							
7	1	160810-45140	PLATE		1						
7-1	1	160802-45140	PLATE		1						R
		(B=E57321)									
8	1	160810-45200	COVER	1	1						
8-1	1	160810-45201	COVER	1	1						S
		(A=E19221) (B=E19258)									
9	1	160810-45250	COVER, HEAD	1	1						

Fig.16. FUEL TANK

Fig. 16 FOタンク
FUEL TANK



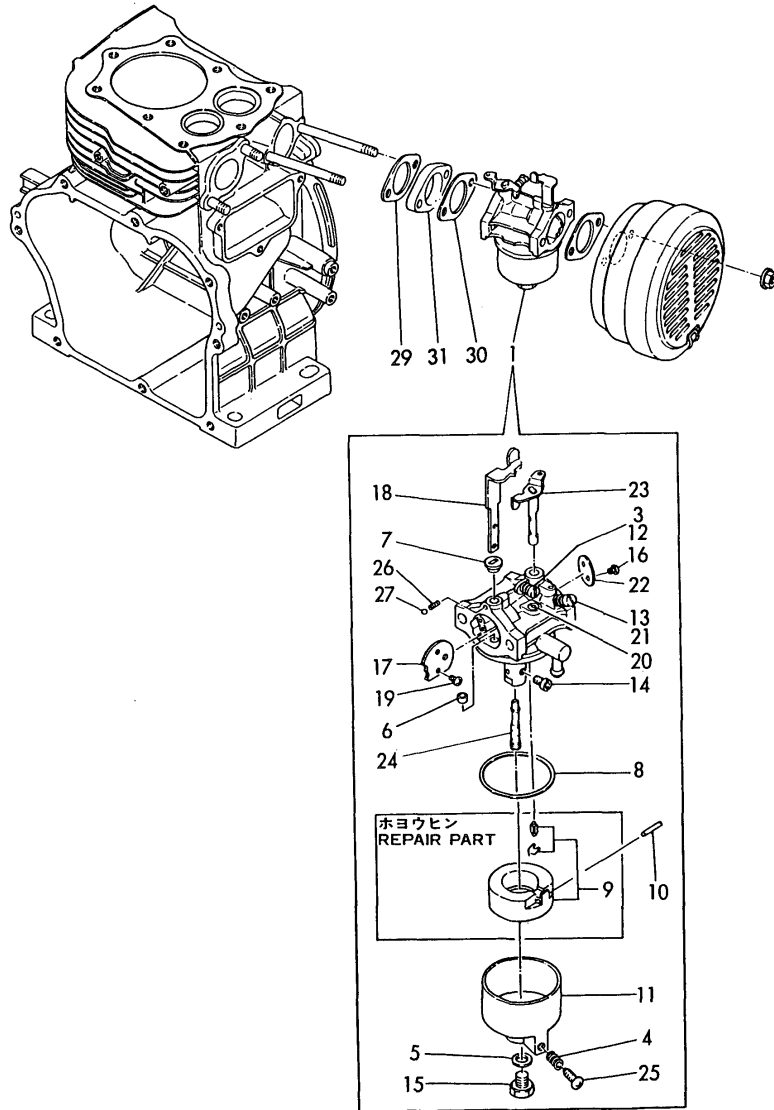
(A)=GE70E-D
(B)=GE70E-S
(C)=

(D)=
(E)=
(F)=

No.	Lev.	Parts No.	Description	Q'ty						I	R
				(A)	(B)	(C)	(D)	(E)	(F)		
1	1	160610-04140	BOLT, FLANGE M8X14	1	1						
1-1	1	26106-080142	BOLT, M8X 14 PLATED	1	1						N
		(A=*1983.03) (B=*1983.03)									
2	1	160610-04710	STUD, M8X75	2	2						
3	1	160610-04900	NUT, M8	2	2						
3-1	1	26366-080002	NUT, M8	2	2						N
		(A=*1983.03) (B=*1983.03)									
4	1	160810-55260	SPACER	2	2						
5	1	760810-55710-R	TANK ASSY, FUEL	1	1						
5-1	1	760810-55711	TANK ASSY, FUEL	1	1						N
		(A=E57250) (B=E57322)									
7	2	160710-55060	CAP ASSY	1	1						
7-1	2	160710-55061	CAP ASSY	1	1						N
		(A=E57250) (B=E57322)									
9	3	160393-55050	GASKET	1	1						
10	2	160610-55100	FILTER, FUEL	1	1						
11	2	160810-55150	GAUGE, LEVEL	1	1						Z
		(A=E57250) (B=E57322)									
12	2	124722-59050	CLIP, HOSE 9	2	2						Z
		(A=E57250) (B=E57322)									
14A	2	160762-55150	GAUGE, FUEL	1	1						W
		(A=E57250) (B=E57322)									
15	1	160810-55300	COCK ASSY, FUEL	1	1						
15-1	1	160810-55301	COCK ASSY, FUEL	1	1						N
		(A=E15740) (B=E15909)									
21	2	160710-55360	RING	1	1						
22	2	160710-55370	GASKET	1	1						
23	2	160210-55380	FILTER, FUEL	1	1						
23-1	2	160810-55380	FILTER	1	1						N
		(A=E45400) (B=E50752)									
24	2	160710-55390	CUP, FUEL COCK L37	1	1						
25	1	160810-55350	STAY	1	1						
26	1	160610-55460	INSULATOR	4	4						
27	1	160810-55470	WASHER	2	2						
28	1	160810-55480	PIECE	2	2						
29	1	26777-120002	NUT, LOCK M12	1	1						

Fig.17. CARBURETOR

17 キャブレタ
CARBRETOR



(A)=GE70E-D
(B)=GE70E-S
(C)=

(D)=
(E)=
(F)=

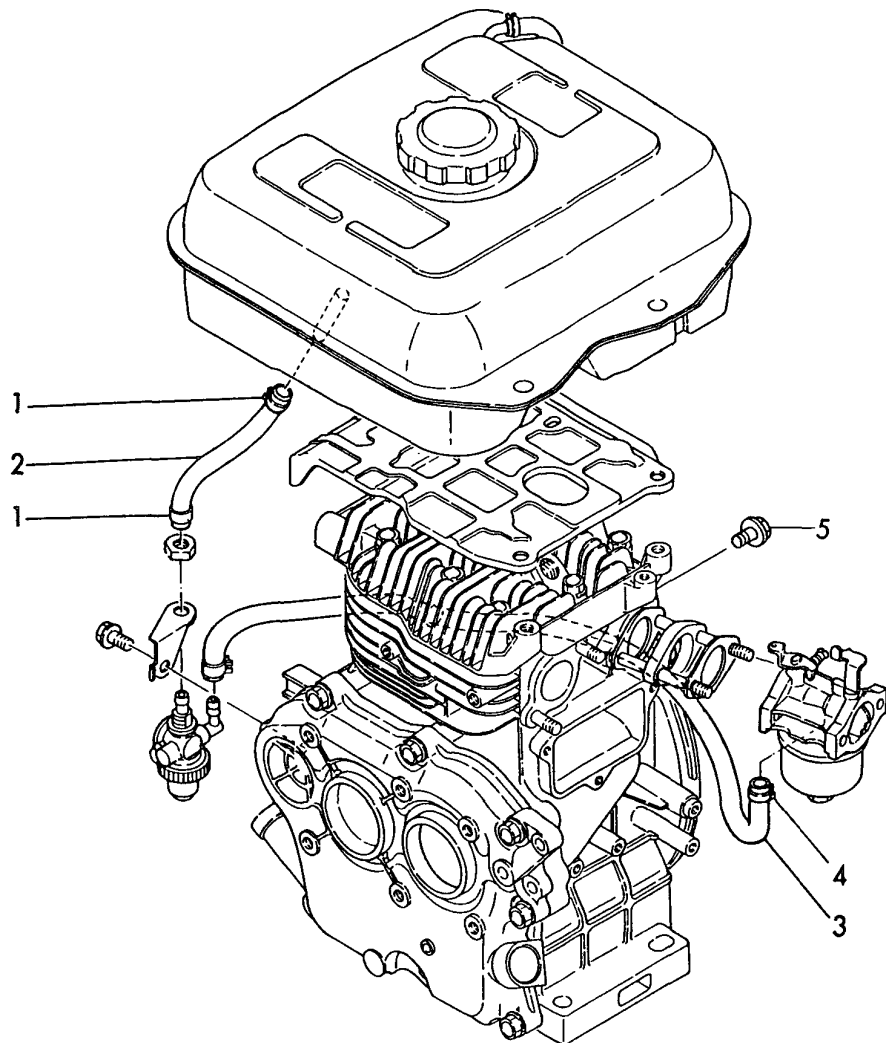
No.	Lev.	Parts No.	Description	Q'ty						I	R
				(A)	(B)	(C)	(D)	(E)	(F)		
1	1	160810-56010	CARBURETOR ASSY	1	1						
3	2	160810-56370	SCREW	1	1						
4	2	181230-56380	SPRING	1	1						
5	2	160810-56550	WASHER	1	1						
6	2	160810-56580	RING, CHOKE SHAFT	1	1						
7	2	160810-56590	RING, CHOKE LEVER	1	1						
8	2	160210-56610	WASHER	1	1						
10	2	160610-56630	PIN, FLOAT	1	1						
11	2	160810-56640	BODY, FLOAT CHAMBER	1	1						
12	2	181230-56380	SPRING	1	1						
13	2	181230-56380	SPRING	1	1						
14	2	160710-56650	JET, MAIN	1	1						
15	2	160810-56660	BOLT	1	1						
16	2	160810-56670	SCREW	2	2						
17	2	160810-56680	VALVE, CHOKE	1	1						
18	2	160810-56690	LEVER, CHOKE	1	1						
19	2	160710-56710	SCREW	2	2						
20	2	160810-56790	JET, PILOT	1	1						
21	2	160610-56750	SCREW	1	1						
22	2	160810-56780	VALVE, THROTTLE	1	1						
23	2	160810-56770	SHAFT, THROTTLE	1	1						
24	2	160810-56800	NOZZLE, MAIN	1	1						
25	2	160610-56900	SCREW	1	1						
26	2	160310-56980	SPRING, CHOKE	1	1						
27	2	160310-56990	BALL, STEEL	1	1						
28A	2	160810-56250	VALVE ASSY, NEEDLE	1	1						W 1
29	1	160810-56140	GASKET	1	1						
30	1	160810-56150	GASKET, CARBURETOR	1	1						
31	1	160810-56160	SPACER, CARBURETOR	1	1						

Remarks

(1) REPAIR PART.

Fig.18. FUEL PIPE

18 FOパイプ
FUEL PIPE



(A)=GE70E-D
(B)=GE70E-S
(C)=

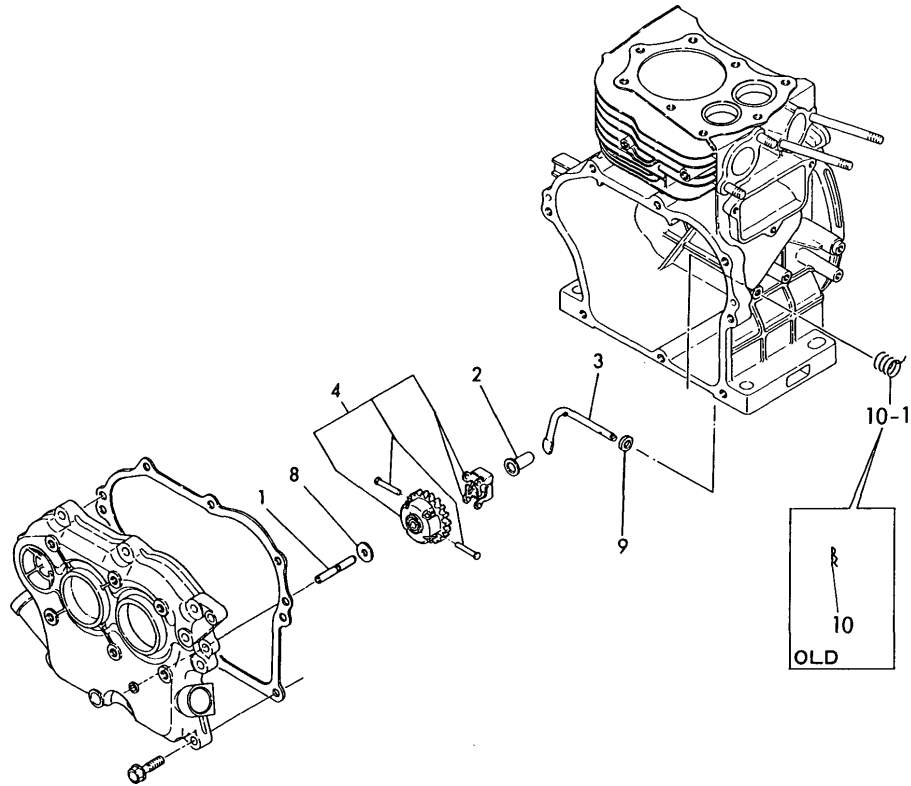
(D)=
(E)=
(F)=

No.	Lev.	Parts No.	Description	Q'ty						I	R
				(A)	(B)	(C)	(D)	(E)	(F)		
1	1	106990-44660	CLIP, HOSE 12.5	2	2						
2	1	160810-59350	PIPE, FUEL	1	1						
3	1	160810-59360	PIPE, FUEL	1	1						
4	1	124060-77680	CLIP, HOSE 10	2	2						
5	1	160610-04300	BOLT, M6X14	1	1						
5-1	1	26476-060142	SCREW, TAPPING M6X14	1	1						R

(A=*1989.06) (B=*1989.06)

Fig.19. GOVERNOR

19 ガバナ
GOVERNOR



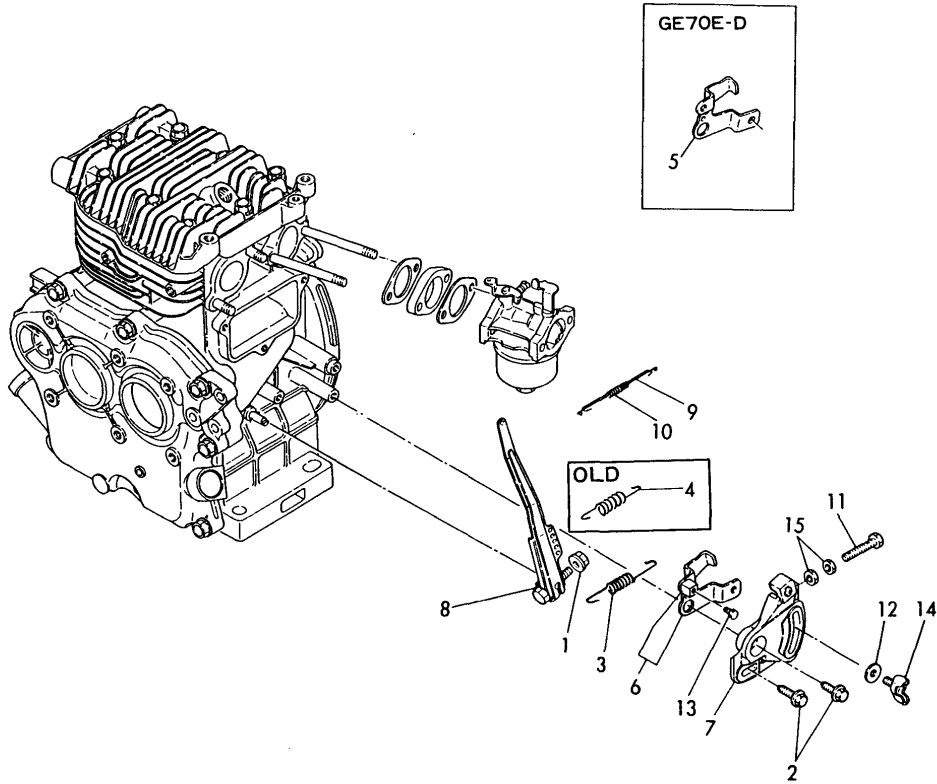
(A)=GE70E-D
(B)=GE70E-S
(C)=

(D)=
(E)=
(F)=

No.	Lev.	Parts No.	Description	Q'ty						I	R
				(A)	(B)	(C)	(D)	(E)	(F)		
1	1	160610-61100	SHAFT, GOVERNOR	1	1						
2	1	160610-61300	SPINDLE	1	1						
3	1	160810-61310	YOKE, GOVERNOR	1	1						
4	1	160610-61600	GEAR ASSY, GOVERNOR	1	1						
8	1	160120-76940	WASHER	1	1						
9	1	22137-060000	WASHER, 6	1	1						
10	1	22360-060000	PIN, SNAP 6	1	1						
10-1	1	160611-66030	SPRING, RETURN	1	1						N
		(A=EXXX) (B=EXXX)									

Fig.20. CONTROL DEVICE

20 ソウジュウソウチ
CONTROL DEVICE



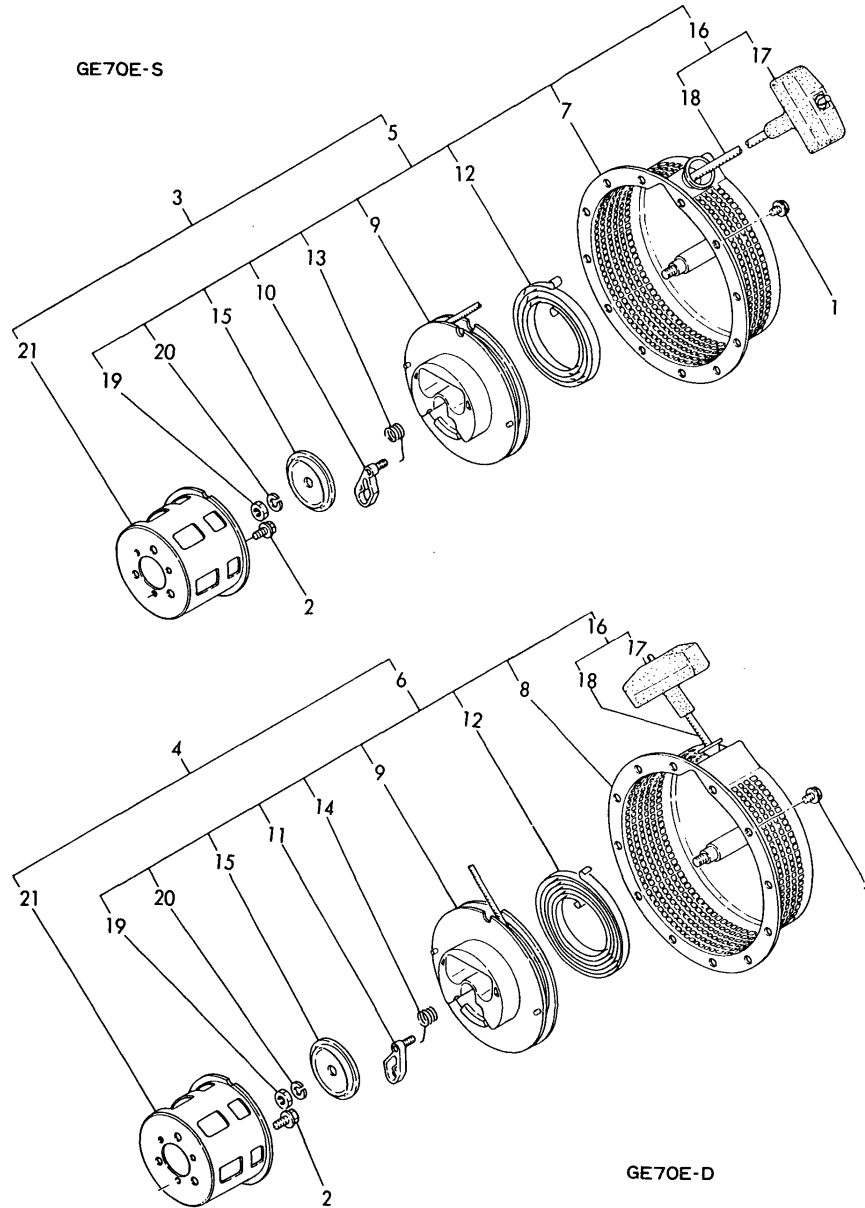
(A)=GE70E-D
(B)=GE70E-S
(C)=

(D)=
(E)=
(F)=

No.	Lev.	Parts No.	Description	Q'ty						I	R
				(A)	(B)	(C)	(D)	(E)	(F)		
1	1	160260-01800	NUT, M6	1	1						
1-1	1	26366-060002	NUT, M6	1	1						N
		(A=*1983.03)	(B=*1983.03)								
2	1	160610-04310	BOLT, M6X20	2	2						
2-1	1	26476-060202	SCREW, TAPPING M6X20	2	2						R
		(A=*1989.06)	(B=*1989.06)								
3	1	160810-66010	SPRING, REGULATOR	1	1						
4	1	160810-66020	SPRING, REGULATOR	1	1						Z
		(A=EXXX)	(B=EXXX)								
5	1	160730-66050	HANDLE ASSY	1							
6	1	160730-66050	HANDLE ASSY		1						
7	1	160610-66100	BASE ASSY	1	1						
8	1	160810-66150	LEVER, GOVERNOR	1	1						
8-1	1	160810-66151	LEVER, GOVERNOR	1	1						R
		(A=E21652)	(B=E20329)								
9	1	160810-66200	LINK, THROTTLE	1	1						
10	1	160810-66210	SPRING, TENSION	1	1						
11	1	160110-66440	BOLT	1	1						
11-1	1	160611-66440	BOLT, LIMITER	1	1						N
		(A=E24229)	(B=E20329)								
12	1	160120-76940	WASHER	1	1						
13	1	26117-040088	BOLT M 4X 8 PLATED		1						
14	1	26645-060152	BOLT, WING M6X15	1	1						
15	1	26757-060002	NUT, LOCK M6	2	2						

Fig.21. STARTING DEVICE

21 シドウスウチ
STARTING DEVICE



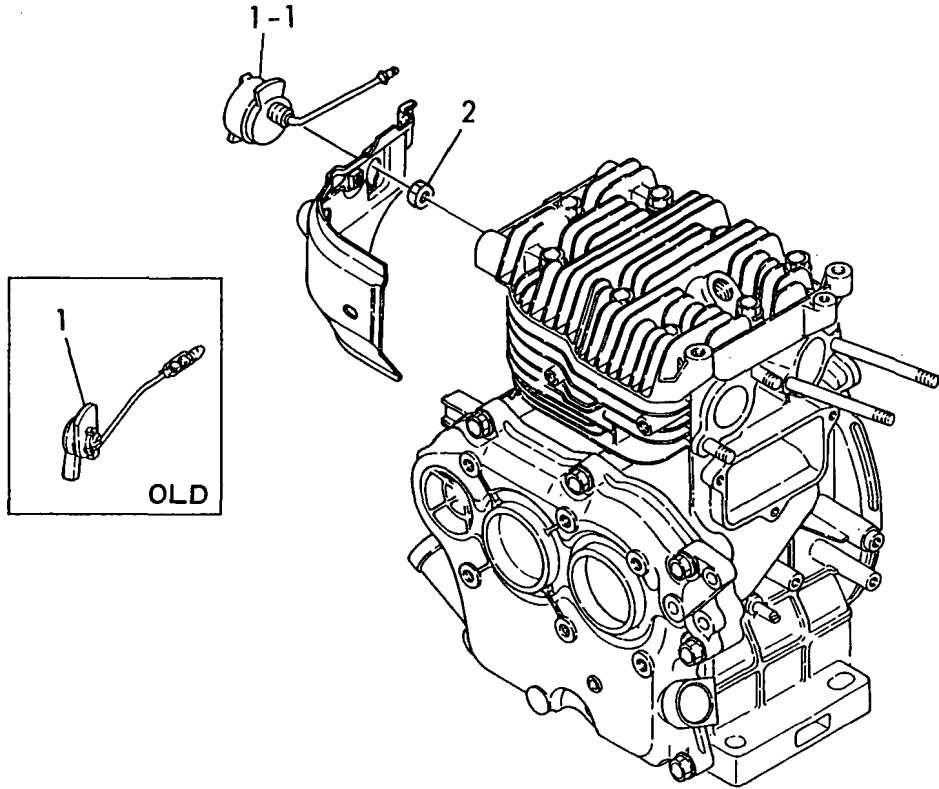
(A)=GE70E-D
(B)=GE70E-S
(C)=

(D)=
(E)=
(F)=

No.	Lev.	Parts No.	Description	Q'ty						I	R
				(A)	(B)	(C)	(D)	(E)	(F)		
1	1	160260-01500	BOLT, FLANGE M6X8	4	4						
1-1	1	26106-060082	BOLT, M6X 8 PLATED	4	4						N
		(A=*1983.03) (B=*1983.03)									
2	1	160260-01550	BOLT	3	3						
2-1	1	26106-060122	BOLT, M6X 12 PLATED	3	3						N
		(A=*1983.03) (B=*1983.03)									
3	1	160810-76050	STARTER ASSY, RECOIL				1				
4	1	160840-76050	STARTER ASSY, RECOIL	1							
5	2	160810-76250	STARTER ASSY, RECOIL				1				
6	2	160840-76250	STARTER ASSY, RECOIL	1							
7	3	160810-76510	CASE, STARTER				1				
8	3	160840-76510	CASE, STARTER	1							
9	3	160810-76520	REEL	1	1						
10	3	160810-76530	RATCHET				1				
11	3	160840-76530	RATCHET	1							
12	3	160810-76540	SPRING, SPIRAL	1	1						
13	3	160810-76560	SPRING, FRICTION				1				
14	3	160840-76560	SPRING, FRICTION	1							
15	3	160810-76580	PLATE, FRICTION	1	1						
16	3	160810-76610	ROPE ASSY, STARTER	1	1						
17	4	160810-76620	KNOB, STARTER	1	1						
18	4	160810-76630	ROPE, STARTER	1	1						
19	3	181130-76680	NUT	1	1						
20	3	181130-76700	WASHER	1	1						
21	2	160810-76590	PULLEY, STARTER	1	1						

Fig.22. STOP SWITCH

22 ストップスイッチ STOP SWITCH



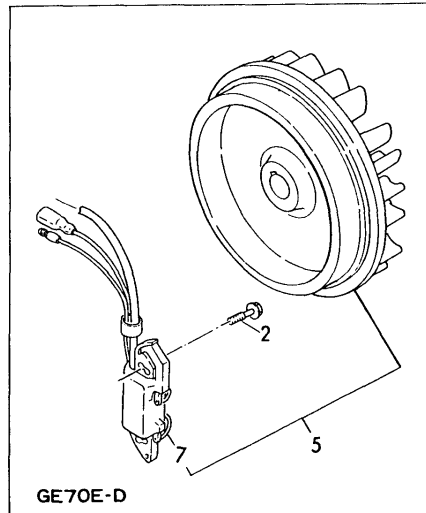
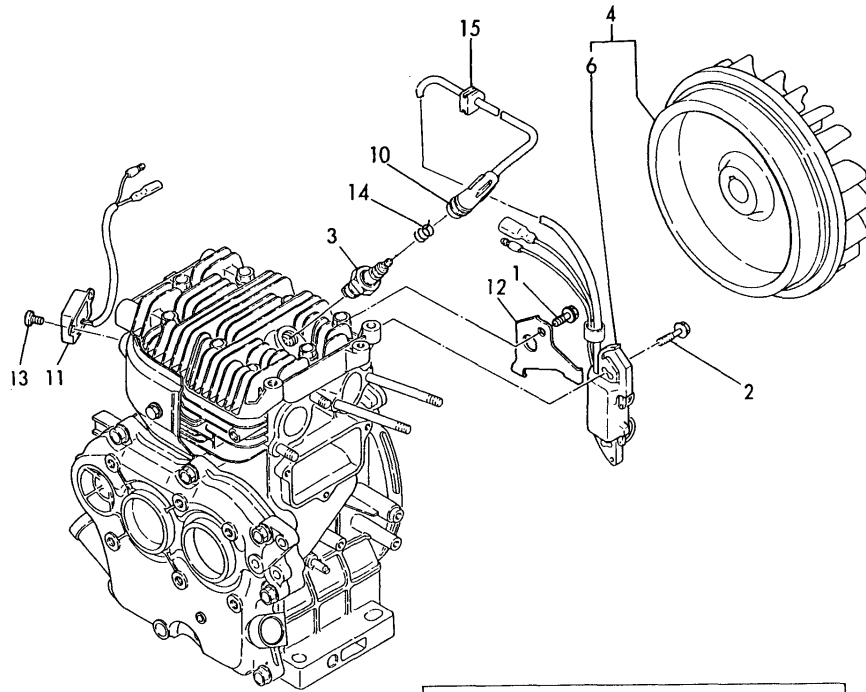
(A)=GE70E-D
(B)=GE70E-S
(C)=

(D)=
(E)=
(F)=

No.	Lev.	Parts No.	Description	Q'ty						I	R
				(A)	(B)	(C)	(D)	(E)	(F)		
1	1	160610-77250	SWITCH, STOP	1	1						
1-1	1	160611-77250	SWITCH, STOP	1	1						S
		(A=E19221) (B=E19258)									
2	1	26366-080002	NUT, M8	1	1						W
		(A=E19221) (B=E19258)									

Fig.23. FLYWHEEL MAGNETO

23 フライホイールマグネト
FLYWHEEL MAGNETO



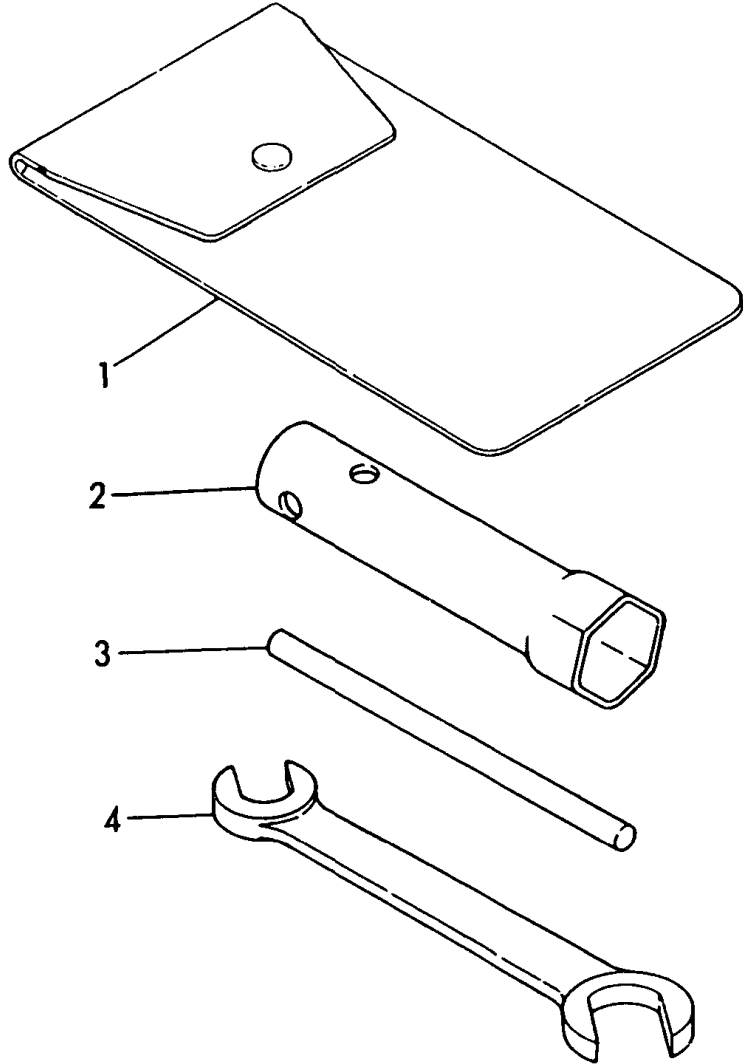
(A)=GE70E-D
(B)=GE70E-S
(C)=

(D)=
(E)=
(F)=

No.	Lev.	Parts No.	Description	Q'ty						I	R
				(A)	(B)	(C)	(D)	(E)	(F)		
1	1	160610-04300	BOLT, M6X14	1	1						
1-1	1	26476-060142	SCREW, TAPPING M6X14	1	1						R
		(A=*1989.06) (B=*1989.06)									
2	1	160610-04320	BOLT, M6X25	2	2						
2-1	1	26476-060252	SCREW, TAPPING M6X25	2	2						R
		(A=*1989.06) (B=*1989.06)									
3	1	160610-78010	PLUG, SPARK BP4HS	1	1						
3-1	1	160232-78010	PLUG, NZTE.NZBD	1	1						N
		(A=E21652) (B=E20329)									
4	1	160810-78060	MAGNETIC ASSY		1						
5	1	160840-78060	MAGNETIC ASSY	1							
6	2	160810-78510	COIL, IGNITION		1						
7	2	160840-78510	COIL, IGNITION	1							
10	1	160343-78040	CAP, PLUG	1	1						
10-1	1	160700-78040	CAP, PLUG	1	1						R
		(A=E43979) (B=E43836)									
11	1	160810-78650	TRANSISTOR	1	1						
12	1	160910-78790	CLAMP	1	1						
13	1	26022-050102	SCREW, M5X10	2	2						
14	1	160700-78050	TERMINAL, PLUG	1	1						W
		(A=E43979) (B=E43836)									
15	1	160700-78720	GROMMET	1	1						W
		(A=E43979) (B=E43836)									

Fig.24. TOOLS

24 コウグ TOOLS



(A)=GE70E-D
(B)=GE70E-S
(C)=

(D)=
(E)=
(F)=

No.	Lev.	Parts No.	Description	Q'ty						I	R
				(A)	(B)	(C)	(D)	(E)	(F)		
1	1	160110-92610	BAG, TOOL	1	1						
2	1	160110-92700	WRENCH, 21 L140	1	1						
3	1	160110-92710	HANDLE, WRENCH	1	1						
4	1	28110-100120	SPANNER, 10X12	1	1						

Parts No. Index

Parts No.	Fig. No.	Ref. No.
104200-59170	1	4
	2	4
106990-44660	18	1
124060-77680	18	4
124722-59050	16	12
160110-02220	1	19
	2	18 -1
	3	1 -1A
	4	1
160110-66440	20	11
160110-92610	24	1
160110-92700	24	2
160110-92710	24	3
160120-76940	19	8
	20	12
160210-02220	1	9
	2	9
		18
	3	1
160210-55380	16	23
160210-56610	17	8
160232-78010	23	3 -1
160260-01500	21	1
160260-01550	21	2
160260-01800	1	12
	2	12
	8	1
	20	1
160310-14550	10	6
160310-56980	17	26
160310-56990	17	27
160343-78040	23	10
160393-55050	16	9
160610-01690	1	3
	2	3
160610-04140	16	1
160610-04150	15	1
160610-04160	1	27
	2	26
160610-04180	1	28
	2	27
160610-04300	5	6
	9	1
	15	2
		3
		4
	18	5
	23	1
160610-04310	20	2
160610-04320	23	2

Parts No.	Fig. No.	Ref. No.
160610-04630	1	6
	2	6
160610-04710	16	2
160610-04900	1	13
	2	13
	9	2
	16	3
160610-21290	11	7
	14	2
160610-55100	16	10
160610-55460	16	26
160610-56630	17	10
160610-56750	17	21
160610-56900	17	25
160610-61100	1	22
	2	21
	19	1
160610-61300	19	2
160610-61600	19	4
160610-66100	20	7
160610-77250	22	1
160610-78010	23	3
160611-07250	6	4
160611-07260	6	5
160611-07370	6	6
160611-66030	19	10 -1
160611-66440	20	11 -1
160611-77250	22	1 -1
160690-02220	1	9 -1
	2	9 -1
	3	1 -1B
160700-78040	23	10 -1
160700-78050	23	14
160700-78720	23	15
160710-55060	16	7
160710-55061	16	7 -1
160710-55360	16	21
160710-55370	16	22
160710-55390	16	24
160710-56650	17	14
160710-56710	17	19
160730-66050	20	5
		6
160759-14560	10	1 G
160762-55150	16	14 A
160800-14200	10	4 -1
160802-45140	15	7 -1
160808-14100	10	1 -1
160810-01330	1	15
	2	15

Parts No.	Fig. No.	Ref. No.
160810-01410	1	26
	2	25
160810-01411	1	26 -1
	2	25 -1
160810-01740	1	23
	2	22
160810-03010	5	1
160810-03070	5	5
160810-03180	5	4
160810-07100	6	3
160810-11010	7	1
160810-11100	7	2
160810-11110	7	3
160810-11120	7	4
160810-11160	7	7
160810-11180	7	6
160810-12500	8	2
160810-12520	8	3
160810-12540	8	4
160810-12550	8	5
160810-12730	8	6
160810-13200	9	3
160810-13500	9	4
160810-13800	9	5
160810-14010	10	1
160810-14100	10	3
		3 -1
160810-14200	10	4
160810-14550	10	1 F
160810-21200	11	5
160810-21220	11	6
	14	1
160810-21290	11	8
160810-22010	12	1
160810-22011	12	1 -1
160810-22300	12	7
160810-22470	12	9
160810-22480	12	11
160810-23200	13	3
160810-23201	13	3 -1
160810-23210	13	4
160810-28010	14	3
160810-45110	15	5
160810-45140	15	7
160810-45200	15	8
160810-45201	15	8 -1
160810-45250	15	9
160810-55150	16	11
160810-55260	16	4
160810-55300	16	15

Parts No.	Fig. No.	Ref. No.
160810-55301	16	15 -1
160810-55350	16	25
160810-55380	16	23 -1
160810-55470	16	27
160810-55480	16	28
160810-56010	17	1
160810-56140	17	29
160810-56150	8	7
	17	30
160810-56160	17	31
160810-56250	17	28 A
160810-56370	17	3
160810-56550	17	5
160810-56580	17	6
160810-56590	17	7
160810-56640	17	11
160810-56660	17	15
160810-56670	17	16
160810-56680	17	17
160810-56690	17	18
160810-56770	17	23
160810-56780	17	22
160810-56790	17	20
160810-56800	17	24
160810-59350	18	2
160810-59360	18	3
160810-61310	19	3
160810-66010	20	3
160810-66020	20	4
160810-66150	20	8
160810-66151	20	8 -1
160810-66200	20	9
160810-66210	20	10
160810-76050	21	3
160810-76250	21	5
160810-76510	21	7
160810-76520	21	9
160810-76530	21	10
160810-76540	21	12
160810-76560	21	13
160810-76580	21	15
160810-76590	21	21
160810-76610	21	16
160810-76620	21	17
160810-76630	21	18
160810-78060	23	4
160810-78510	23	6
160810-78650	23	11
160820-01950	1	5
	2	5

Parts No. Index

Parts No.	Fig. No.	Ref. No.
160840-14010	10	2
160840-14011	10	2 -1
160840-45110	15	6
160840-76050	21	4
160840-76250	21	6
160840-76510	21	8
160840-76530	21	11
160840-76560	21	14
160840-78060	23	5
160840-78510	23	7
160842-21150	11	11
160842-21250	11	12
160842-21260	11	13
160903-28020	1	14 -1
		21 -1
	2	14 -1
		20 -1
	14	4 -1
160910-78790	23	12
181130-76680	21	19
181130-76700	21	20
181230-56380	17	4
		12
		13
22137-060000	19	9
22217-120000	11	14
22217-160000	11	9
22252-000160	12	8
22312-060160	1	7
	2	7
22360-060000	19	10
22512-050120	10	5
22512-070380	10	7
24101-062024	1	14
		21
	2	14
		20
	14	4
24101-062050	1	10
	2	10
	3	2
24101-062060	1	18
		20
	2	19
	3	3
	4	2
24311-000180	1	25
	2	24
26022-050102	23	13
26106-060082	21	1 -1

Parts No.	Fig. No.	Ref. No.
26106-060122	21	2 -1
26106-080142	16	1 -1
26106-080202	10	8
	15	1 -1
26106-080302	1	27 -1
	2	26 -1
26117-040088	20	13
26216-080182	1	8
	2	8
26366-060002	1	12 -1
	2	12 -1
	8	1 -1
	20	1 -1
26366-080002	1	13 -1
	2	13 -1
	9	2 -1
	16	3 -1
	22	2
26450-080352	2	28
26476-060142	5	6 -1
	9	1 -1
	15	2 -1
		3 -1
		4 -1
	18	5 -1
	23	1 -1
26476-060202	20	2 -1
26476-060252	23	2 -1
26645-060152	20	14
26737-160002	11	10
26757-060002	20	15
26777-120002	16	29
28110-100120	24	4
760810-01501	1	16
760810-01520	1	16 -1
760810-01560	1	1
	2	1
760810-01561	1	1 -1
	2	1 -1
760810-21700	11	2
760810-22500	12	3
760810-22540	12	10
760810-22550	12	12
760810-23100	13	1
760810-23101	13	1 -1
760810-55710-R	16	5
760810-55711	16	5 -1
760842-01500	2	16
760842-01501	2	16 -1
760842-01502	2	16 -2

Parts No.	Fig. No.	Ref. No.
760842-21700	11	1

Parts No.	Fig. No.	Ref. No.
-----------	----------	----------