

OCA10-M21901EN

Directions for the Parts Catalog.

1. This Parts Catalog shows both standard and optional parts.
2. Parts may change without prior notice.
3. The following is an example of the Parts Catalog format.

REF.	LEV.	PARTS NO.	DESCRIPTION	Q'TY						I	R
				(A)	(B)	(C)	(D)	(E)	(F)		
1	1	729595-51390	FUEL INJECTION PUMP	1	1	1	1	1			1
1-1	1	729595-51391	FUEL INJECTION PUMP	1	1	1	1	1		N	1
		(A=E00185) (B=E00200)									
3	2	26022-060162	SCREW M 6X 16	9	9	9	9	9			
3-1	2	26022-060162	SCREW M 6X 16	4	4	4	4	4		K	
		(A=E00156) (B=E00156) (C=E00156) (D=E00156) (E=E00156)									
4	2	129470-51040	CAMSHAFT	1	1	1	1	1			
5	2	122710-51050	BEARING, ROLLER	2	2	2	2	2			
6	2	129470-51060	RETAINER	1	1	1	1	1			

Remarks
(1) BOOST COMPEMSATOR TYPE. OPTIONAL PART, TO E00155,(4JH-DT, 4JH-DTZ

① Ref. No.

The Ref. No. listed may not be in accordance with the illustration Ref. No.

(Ex.) Illustration No.

List Ref No.

1

1

(Before change)

1-1

(After change)

For interchangeable symbols N, R and K, illustrations for new parts may be abbreviated.

② Lev. (Level)

Level indication

The numbers below indicate the level of relativity towards the main part.

1 ----- Main parts (Assembly parts)

2 ----- Sub component included in " 1 ".

3 ----- Sub component included in " 2 ".

Note) Parts that are not for sale are partially illustrated but not listed.

③ Interchangeability Symbol

When a part change takes place, one of the following interchangeability symbols is indicated beside the part.

Symbol	Interchangeability	Contents note
N	Old $\begin{matrix} \leftarrow \text{Yes} \\ \text{No} \rightarrow \end{matrix}$ New	New Part is interchangeable for Old Part but Old Part is not interchangeable for New Part.
Q	Old $\begin{matrix} \leftarrow \text{No} \\ \text{Yes} \rightarrow \end{matrix}$ New	New Part is not interchangeable for Old Part but Old Part is interchangeable for New Part.
R	Old $\begin{matrix} \leftarrow \text{Yes} \\ \text{Yes} \rightarrow \end{matrix}$ New	New/ Old Parts are both interchangeable.
S	Old $\begin{matrix} \leftarrow \text{No} \\ \text{No} \rightarrow \end{matrix}$ New	New/ Old Parts are both not interchangeable.
W		Part newly added.
Z		Part discontinued.
F		Not interchangeable by a single part but interchangeable together with related parts.
K		Changes only for used parts quantities.

④ Effective Machine No.

When a part changes, the effective Machine No. will be indicated in the (A)-(F) column.

Product Symbol	Product No.	Product Symbol	Product No.
C	Clutch No. Compressor No.	F	Machine No. (Agricultural Equip.)
D	Drive No.	M	Machine No.
E	Engine No.		

Note 1) A date may follow the symbol. (Ex.) 1996.01

Note 2) "XXXXX" and "ZZZZZ" are for parts that could not be predicted or for engine models that could not be identified.

Note 3) (A=E00185) is the E (Engine Serial Number) for the column (A) model (in this case 4JH-DT) after the parts design change.

⑤ Remarks

Figures or alphabets (symbols) are entered in the remarks column.

The comments (remarks) on parts that are indicated at the bottom of the illustration are the same symbols as those stated above.

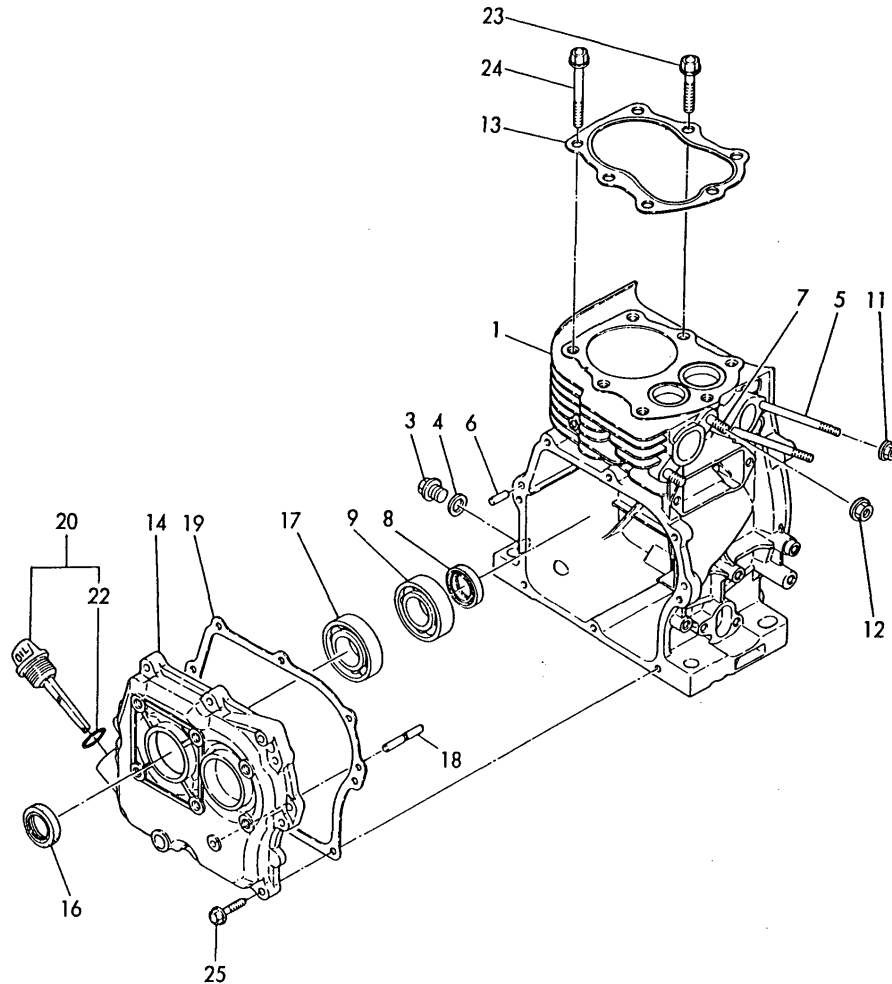
Contents

Fig. No.	Fig. Name
ENGINE(GE50E-(D)(S)H	
1.	CYLINDER BODY
2.	CYLINDER BODY
3.	MAIN BEARING
4.	CAMSHAFT BEARING
5.	BREATHER
6.	LABELS
7.	CYLINDER HEAD
8.	AIR CLEANER
9.	SILENCER
10.	CAMSHAFT
11.	CRANKSHAFT
12.	PISTON
13.	CONNECTING ROD
14.	COLLING FAN CASE
15.	FUEL TANK
16.	CARBURETOR
17.	FUEL PIPE
18.	GOVERNOR
19.	CONTROL DEVICE
20.	STARTING DEVICE
21.	STOP SWITCH
22.	FLYWHEEL MAGNETO
23.	TOOLS

Fig. No.	Fig. Name
----------	-----------

Fig.1. CYLINDER BODY

1 シリンダボディ
CYLINDER BODY



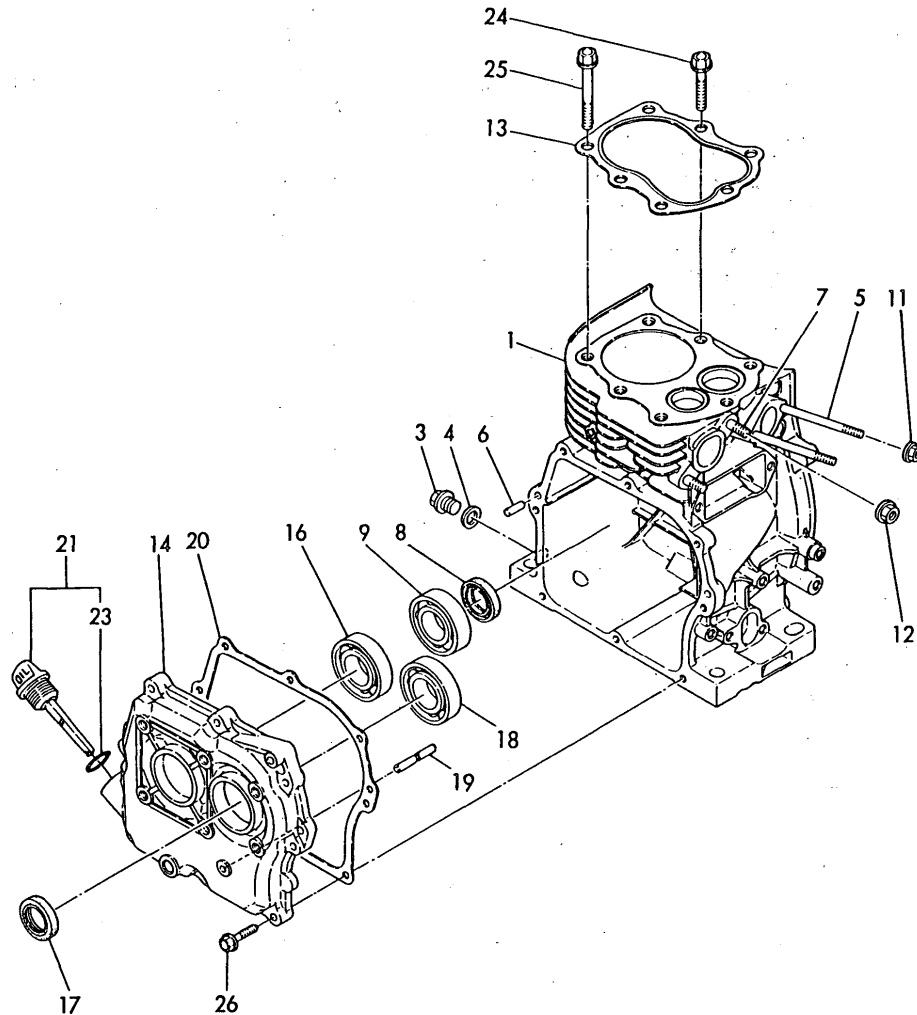
(A)=GE50E-DH
(B)=GE50E-D
(C)=GE50E-SH

(D)=GE50E-S
(E)=
(F)=

No.	Lev.	Parts No.	Description	Qty						I	R
				(A)	(B)	(C)	(D)	(E)	(F)		
1	1	760710-01561	BLOCK ASSY, CYLINDER	1	1						
3	2	160610-01690	PLUG, M12	1	1						
4	2	104200-59170	GASKET, 12	1	1						
5	2	160610-04630	BOLT, M6X82	2	2						
6	2	22312-060160	PIN, PARALLEL M6X16	2	2						
7	2	26216-080182	STUD, M8X 18	2	2						
8	2	160210-02220	SEAL, 25X41.2X8	1	1						
8-1	2	160690-02220	SEAL, TC25416	1	1						R
		(A=*1988.04) (B=EH4514)									
9	2	24101-062050	BEARING, BALL 6205C3	1	1						
11	2	160260-01800	NUT, M6	2	2						
11-1	2	26366-060002	NUT, M6	2	2						R
		(A=*1983.03) (B=*1983.03)									
12	2	160610-04900	NUT, M8	2	2						
12-1	2	26366-080002	NUT, M8	2	2						R
		(A=*1983.03) (B=*1983.03)									
13	1	160710-01330	GASKET, HEAD	1	1						
14	1	760740-01510	COVER ASSY	1	1						
14-1	1	760740-01511	COVER ASSY	1	1						N
		(A=*1988.04) (B=EH4514)									
16	2	160210-02220	SEAL, 25X41.2X8	1	1						
16-1	2	160690-02220	SEAL, TC25416	1	1						R
		(A=*1988.04) (B=EH4514)									
17	2	24101-062050	BEARING, BALL 6205C3	1	1						
18	2	160610-61100	SHAFT, GOVERNOR	1	1						
19	1	160710-01410	GASKET, CRANK CASE	1	1						
19-1	1	160710-01411	GASKET, CRANK CASE	1	1						S
		(A=*1988.04) (B=EH4514)									
20	1	160710-01740	CAP ASSY, L87	1	1						
20-1	1	160710-01760	CAP ASSY, L82	1	1						N
		(A=*1985.08) (B=EA1088)									
22	2	24311-000180	O-RING, 1AP18.0	1	1						
23	1	160610-04170	BOLT, FLANGE M8X38	4	4						
23-1	1	160610-04172	BOLT, FLANGE M8X38	4	4						R
		(A=*1988.03) (B=EH3664)									
24	1	160610-04190	BOLT, FLANGE M8X60	3	3						
24-1	1	160610-04211	BOLT, FLANGE M8X65	3	3						R
		(A=*1988.03) (B=EH3664)									
25	1	160610-04320	BOLT, M6X25	8	8						
25-1	1	26476-060252	SCREW, TAPPING M6X25	8	8						R
		(A=*1983.03) (B=*1983.03)									

Fig.2. CYLINDER BODY

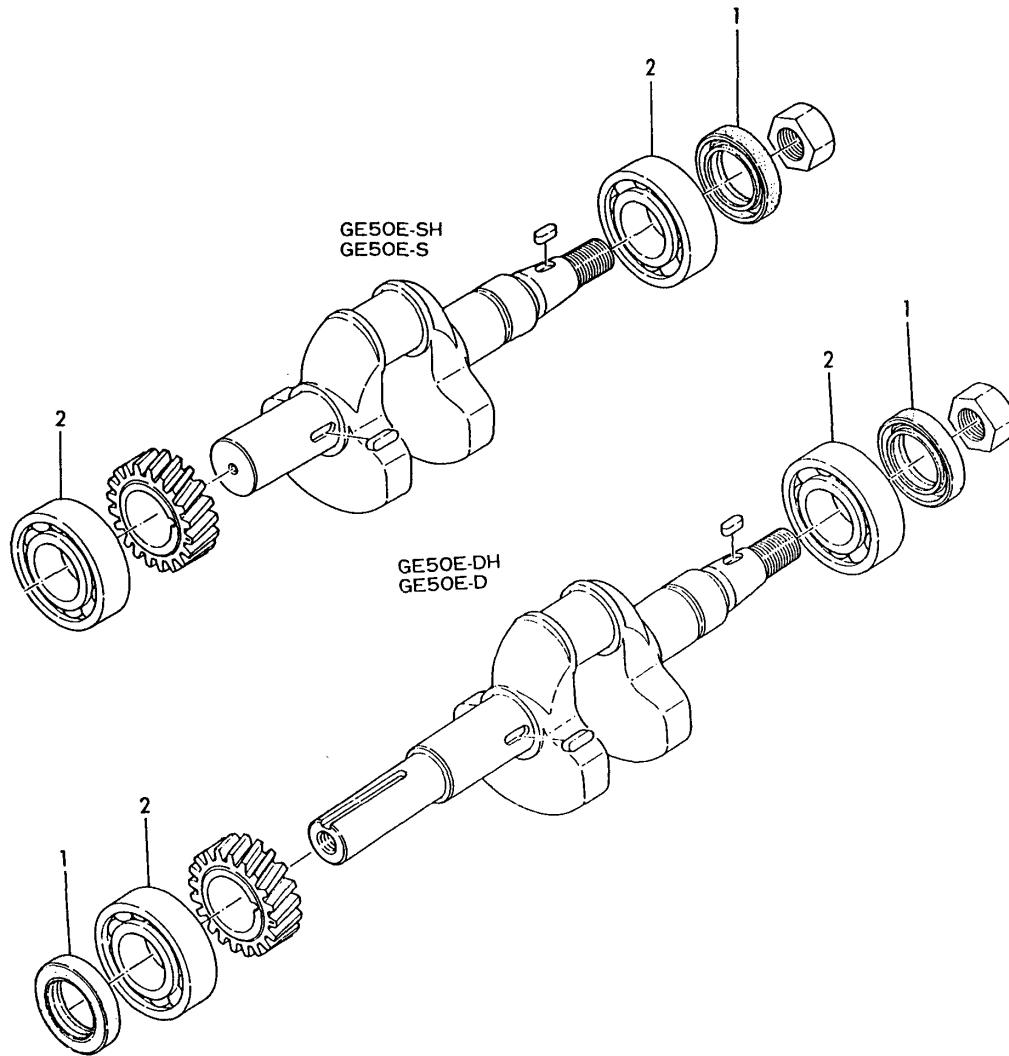
2 シリンダボディ CYLINDER BODY



No.	Lev.	Parts No.	Description	Q'ty						I	R
				(A)	(B)	(C)	(D)	(E)	(F)		
1	1	760710-01561	BLOCK ASSY, CYLINDER			1	1				
1-1	1	760710-01562	BLOCK ASSY, CYLINDER (D=EH5865)				1				R
3	2	160610-01690	PLUG, M12			1	1				
4	2	104200-59170	GASKET, 12			1	1				
5	2	160610-04630	BOLT, M6X82			1	1				
5-1	2	160610-04630	BOLT, M6X82 (C=EXXX) (D=EXXX)			2	2				K
6	2	22312-060160	PIN, PARALLEL M6X16			1	1				
6-1	2	22312-060160	PIN, PARALLEL M6X16 (C=EXXX) (D=EXXX)			2	2				K
7	2	26216-080182	STUD, M8X 18			1	1				
7-1	2	26216-080182	STUD, M8X 18 (C=EXXX) (D=EXXX)			2	2				K
8	2	160210-02220	SEAL, 25X41.2X8			1	1				
8-1	2	160690-02220	SEAL, TC25416 (C=*1988.04) (D=EH5864)			1	1				R
9	2	24101-062050	BEARING, BALL 6205C3			1	1				
11	2	160260-01800	NUT, M6			2	2				
11-1	2	26366-060002	NUT, M6 (C=*1983.03) (D=*1983.03)			2	2				R
12	2	160610-04900	NUT, M8			2	2				
12-1	2	26366-080002	NUT, M8 (C=*1983.03) (D=*1983.03)			2	2				R
13	1	160710-01330	GASKET, HEAD			1	1				
14	1	760710-01500	COVER ASSY			1	1				
14-1	1	760710-01502	COVER ASSY (D=EH5864)				1				N
16	2	24101-062050	BEARING, BALL 6205C3			1	1				
17	2	160210-02220	SEAL, 25X41.2X8			1	1				
17-1	2	160690-02220	SEAL, TC25416 (C=*1988.04) (D=EH5864)			1	1				
18	2	24101-062050	BEARING, BALL 6205C3			1	1				
19	2	160610-61100	SHAFT, GOVERNOR			1	1				
20	1	160710-01410	GASKET, CRANK CASE			1	1				
20-1	1	160710-01411	GASKET, CRANK CASE (C=*1988.04) (D=EH5864)			1	1				S
21	1	160710-01740	CAP ASSY, L87			1	1				
21-1	1	160710-01760	CAP ASSY, L82 (C=*1985.08) (D=EA1093)			1	1				N
23	2	24311-000180	O-RING, 1P18.0			1	1				
24	1	160610-04170	BOLT, FLANGE M8X38			1	1				
24-1	1	160610-04172	BOLT, FLANGE M8X38 (C=*1988.03) (D=EH3738)			4	4				R
25	1	160610-04190	BOLT, FLANGE M8X60			3	3				
25-1	1	160610-04211	BOLT, FLANGE M8X65 (C=*1988.03) (D=EH3738)			3	3				R
26	1	160610-04320	BOLT, M6X25			8	8				
26-1	1	26476-060252	SCREW, TAPPING M6X25 (C=*1983.03) (D=*1983.03)			8	8				R

Fig.3. MAIN BEARING

3 シュジクウケ
MAIN BEARING



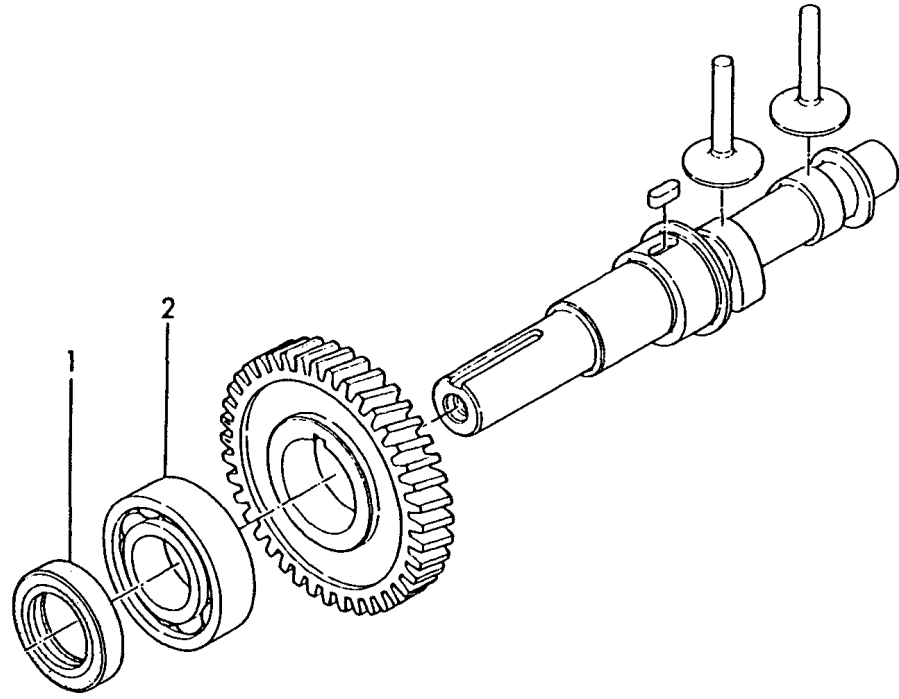
(A)=GE50E-DH
(B)=GE50E-D
(C)=GE50E-SH

(D)=GE50E-S
(E)=
(F)=

No.	Lev.	Parts No.	Description	Qty						I	R
				(A)	(B)	(C)	(D)	(E)	(F)		
1	1	160210-02220	SEAL, 25X41.2X8	2	2	1	1				
1-1	1	160690-02220	SEAL, TC25416	2	2	1	1				R
		(A=*1988.04)	(B=EH4514)	(C=*1988.04)	(D=EH5864)						
2	1	24101-062050	BEARING, BALL 6205C3	2	2	2	2				

Fig.4. CAMSHAFT BEARING

4 カムジクウケ
CAMSHAFT BEARING



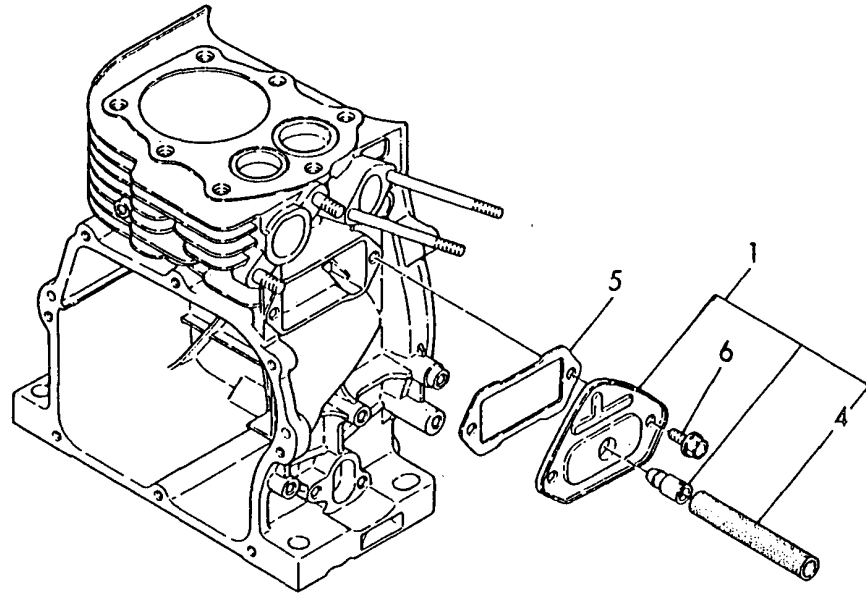
(A)=GE50E-DH
(B)=GE50E-D
(C)=GE50E-SH

(D)=GE50E-S
(E)=
(F)=

No.	Lev.	Parts No.	Description	Q'ty						I	R
				(A)	(B)	(C)	(D)	(E)	(F)		
1	1	160210-02220	SEAL, 25X41.2X8			1	1				
1-1	1	160690-02220	SEAL, TC25416 (C=*1988.04) (D=EH5864)			1	1				R
2	1	24101-062050	BEARING, BALL 6205C3			1	1				

Fig.5. BREATHER

5 ブリーザ
BREATHER



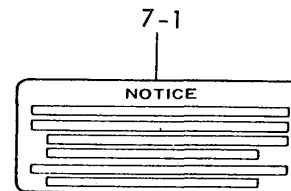
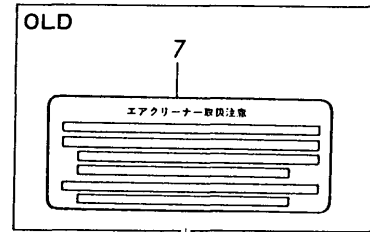
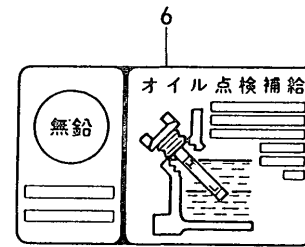
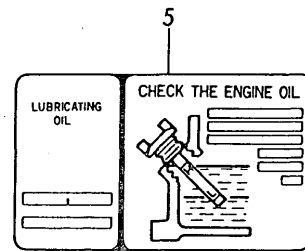
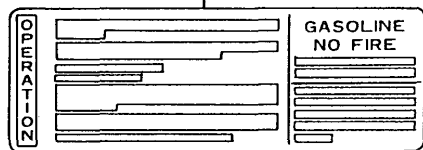
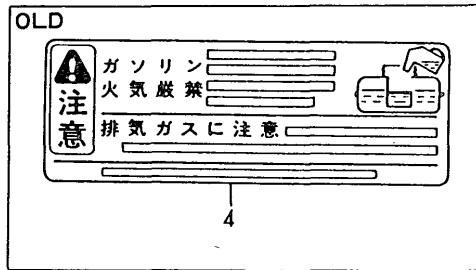
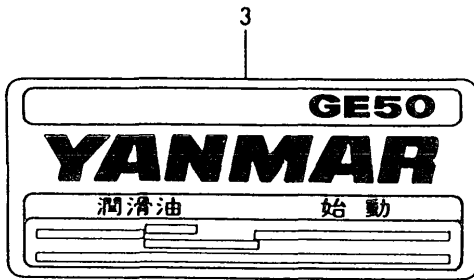
(A)=GE50E-DH
(B)=GE50E-D
(C)=GE50E-SH

(D)=GE50E-S
(E)=
(F)=

No.	Lev.	Parts No.	Description	Q'ty						I	R
				(A)	(B)	(C)	(D)	(E)	(F)		
1	1	160710-03010	BREATHER ASSY	1	1	1	1				
4	2	160710-03180	PIPE , BREATHER	1	1	1	1				
5	1	160710-03070	GASKET	1	1	1	1				
6	1	160610-04300	BOLT, M6X14	2	2	2	2				
6-1	1	26476-060142	SCREW, TAPPING M6X14	2	2	2	2				R
		(A=*1989.05)	(B=*1989.05)	(C=*1989.05)	(D=*1989.05)						

Fig.6. LABELS

6 ラベル
LABEL



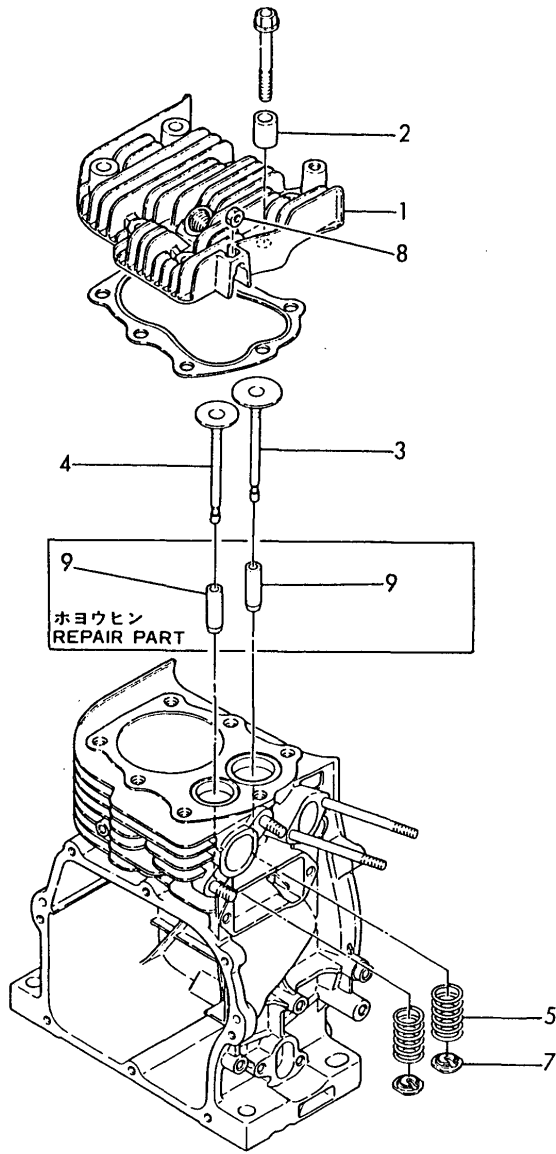
(A)=GE50E-DH
(B)=GE50E-D
(C)=GE50E-SH

(D)=GE50E-S
(E)=
(F)=

No.	Lev.	Parts No.	Description	Qty						I	R
				(A)	(B)	(C)	(D)	(E)	(F)		
3	1	160710-07100	LABEL	1	1	1	1				
4	1	160610-07250	LABEL			1	1				
4-1	1	160611-07250	LABEL	1	1	1	1				N
5	1	160611-07260	LABEL (C=EXXX) (D=EXXX) (C=EXXX) (D=EXXX)	1	1	1	1				W
6	1	160610-07290	LABEL			1	1				
7	1	160260-07370	LABEL			1	1				
7-1	1	160611-07370	LABEL (C=EXXX) (D=EXXX)	1	1	1	1				N

Fig.7. CYLINDER HEAD

7 シリンダヘッド
CYLINDER HEAD



(A)=GE50E-DH
(B)=GE50E-D
(C)=GE50E-SH

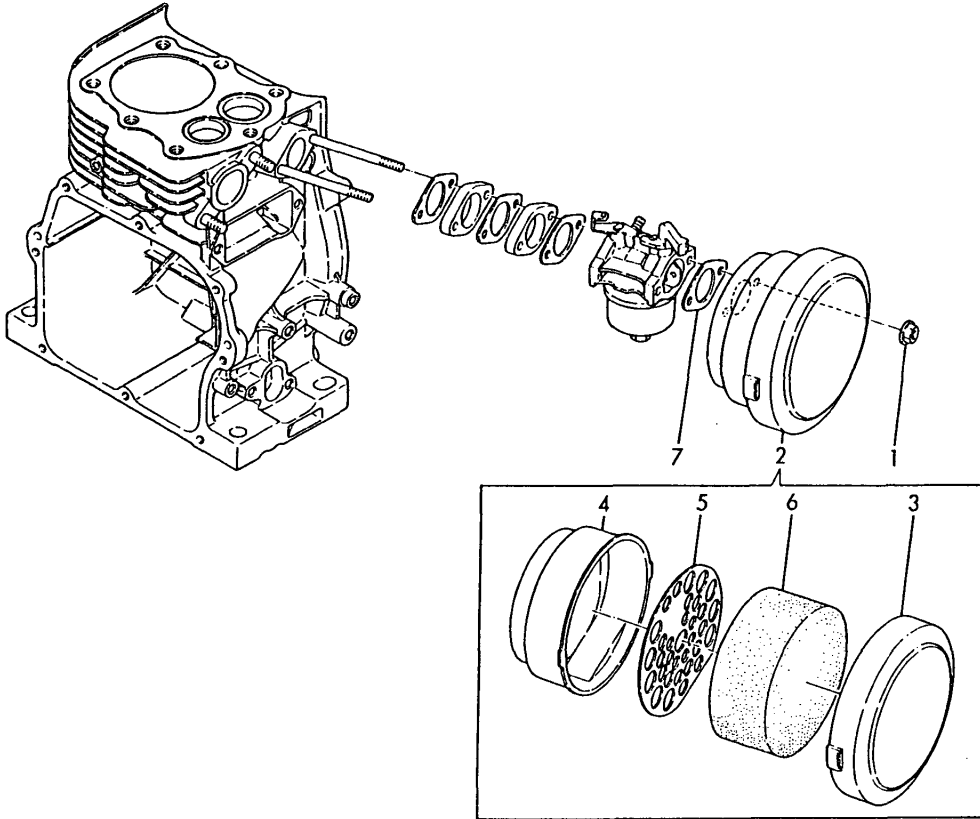
(D)=GE50E-S
(E)=
(F)=

No.	Lev.	Parts No.	Description	Q'ty						I	R
				(A)	(B)	(C)	(D)	(E)	(F)		
1	1	160710-11010	HEAD, CYLINDER	1	1	1	1				
2	1	160710-11050	SPACER	1	1	1	1				
3	1	160710-11100	VALVE, INTAKE	1	1	1	1				
4	1	160710-11110	VALVE, EXHAUST	1	1	1	1				
5	1	160710-11120	SPRING, VALVE	2	2	2	2				
7	1	160610-11180	RETAINER, SPRING	2	2	2	2				
8	1	26757-060002	NUT, LOCK M6	1	1	1	1				
9	1	160610-11160	GUIDE, VALVE	2	2	2	2			W	1

Remarks
(1) REPAIR PART.

Fig.8. AIR CLEANER

8 エアクリーナ
AIR CLEANER



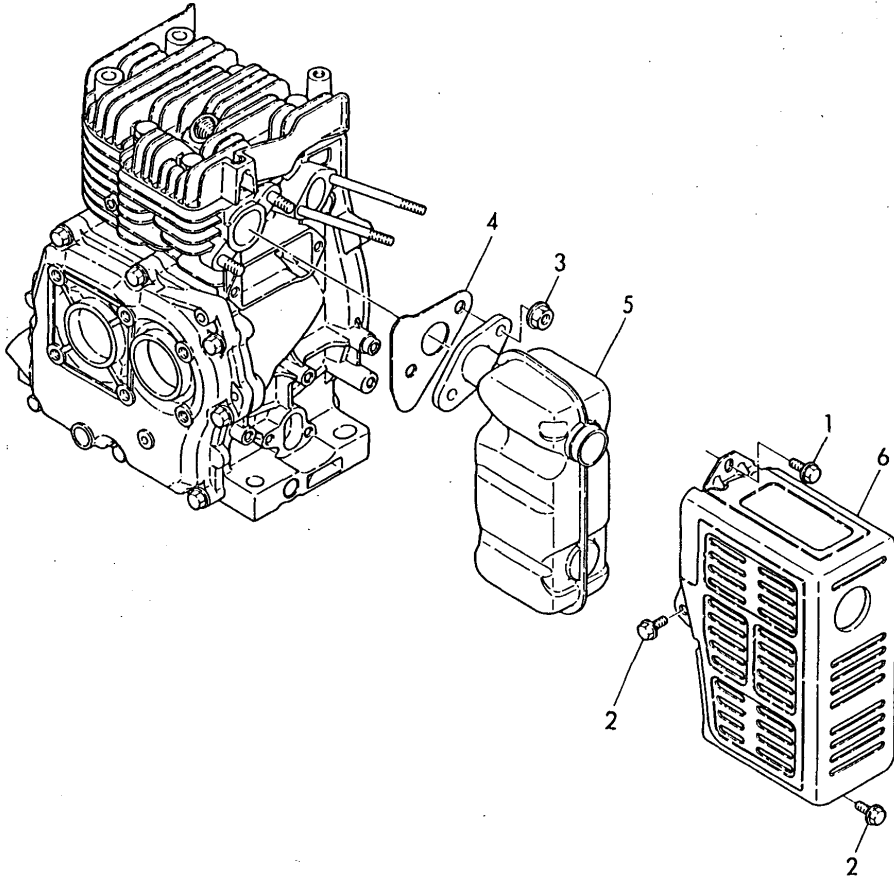
(A)=GE50E-DH
(B)=GE50E-D
(C)=GE50E-SH

(D)=GE50E-S
(E)=
(F)=

No.	Lev.	Parts No.	Description	Q'ty						I	R
				(A)	(B)	(C)	(D)	(E)	(F)		
1	1	160260-01800	NUT, M6	2	2	2	2				
1-1	1	26366-060002	NUT, M6	2	2	2	2				R
		(A=*1983.03)	(B=*1983.03)	(C=*1983.03)	(D=*1983.03)						
2	1	160710-12500	CLEANER ASSY, AIR	1	1	1	1				
3	2	160710-12530	CAP, AIR CLEANER	1	1	1	1				
4	2	160710-12540	BODY, AIR CLEANER	1	1	1	1				
5	2	160710-12550	HOLDER, ELEMENT	1	1	1	1				
6	2	160260-12570	ELEMENT	1	1	1	1				
7	1	160610-56150	GASKET, CARBURETOR	1	1	1	1				

Fig.9. SILENCER

9 サイレンサ
SILENCER



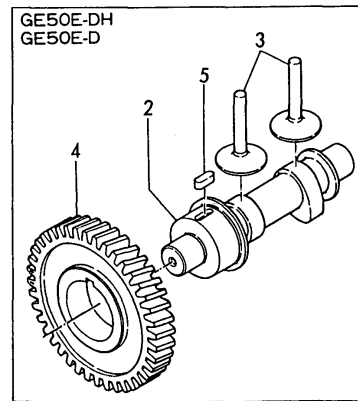
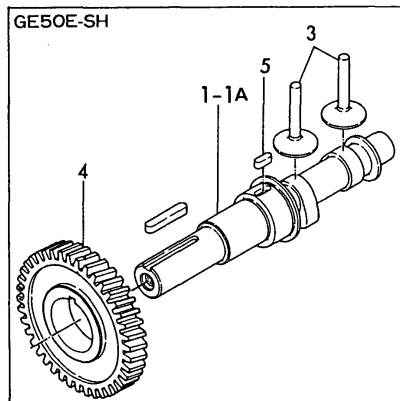
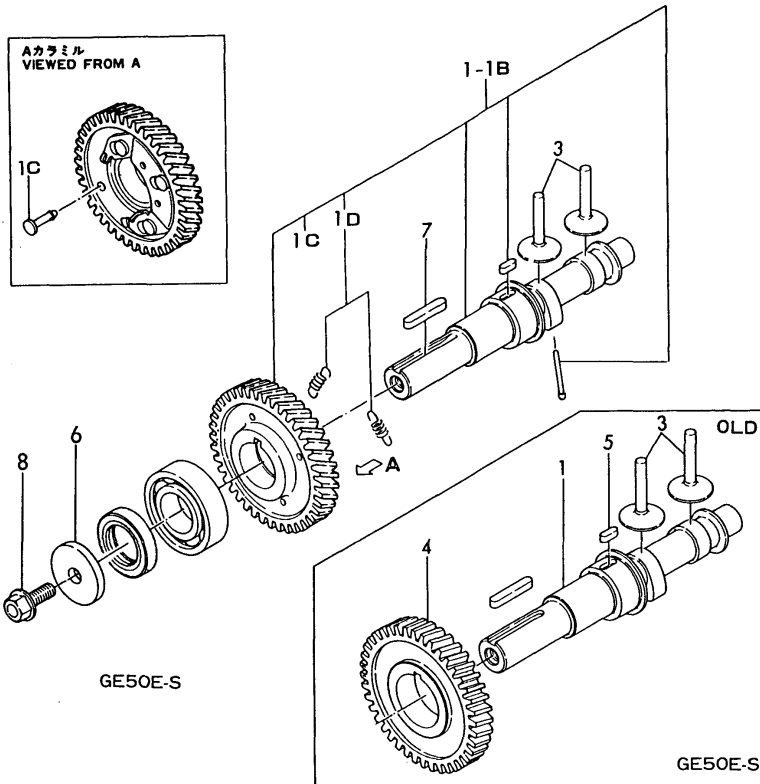
(A)=GE50E-DH
(B)=GE50E-D
(C)=GE50E-SH

(D)=GE50E-S
(E)=
(F)=

No.	Lev.	Parts No.	Description	Q'ty						I	R
				(A)	(B)	(C)	(D)	(E)	(F)		
1	1	160260-01550	BOLT	1	1	1	1				
1-1	1	26106-060122	BOLT, M6X 12 PLATED	1	1	1	1				R
		(A=*1983.03) (B=*1983.03) (C=*1983.03) (D=*1983.03)									
2	1	160610-04300	BOLT, M6X14	2	2	2	2				
2-1	1	26476-060142	SCREW, TAPPING M6X14	2	2	2	2				R
		(A=*1989.05) (B=*1989.05) (C=*1989.05) (D=*1989.05)									
3	1	160610-04900	NUT, M8	2	2	2	2				
3-1	1	26366-080002	NUT, M8	2	2	2	2				R
		(A=*1983.03) (B=*1983.03) (C=*1983.03) (D=*1983.03)									
4	1	160710-13200	GASKET, MUFFLER	1	1	1	1				
5	1	160710-13500	SILENCER	1	1	1	1				
6	1	160710-13800	COVER, SILENCER	1	1	1	1				

Fig.10. CAMSHAFT

10 カムシャフト
CAMSHAFT



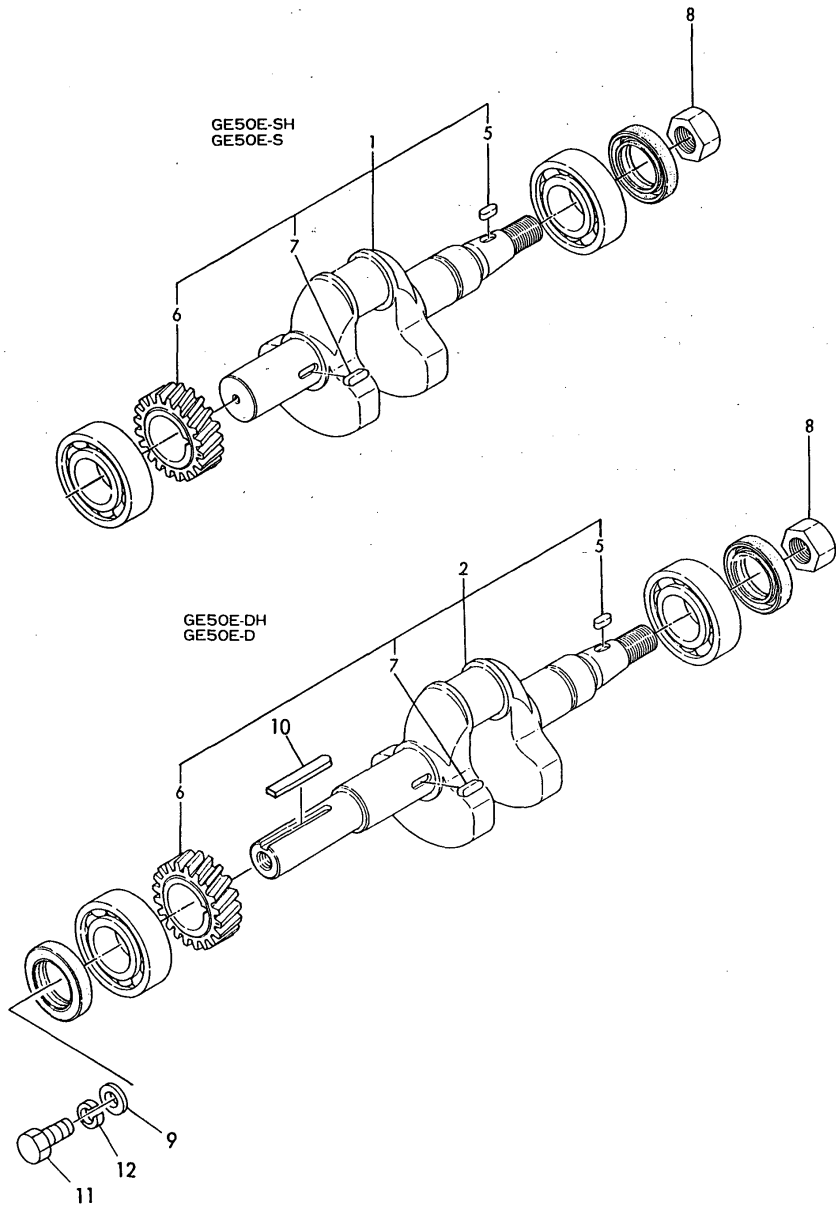
(A)=GE50E-DH
(B)=GE50E-D
(C)=GE50E-SH

(D)=GE50E-S
(E)=
(F)=

No.	Lev.	Parts No.	Description	Q'ty						I	R
				(A)	(B)	(C)	(D)	(E)	(F)		
1	1	160710-14011	CAMSHAFT				1	1			
1-1A	1	160710-14012	CAMSHAFT (C=*1984.06)				1				R
1-1B	1	160702-14100	CAMSHAFT ASSY (D=EXXX)						1		S
1C	2	160510-14540	PIN, GUIDE (D=EXXX)						1		W
1D	2	160759-14560	SPRING, DECOMPRESSION (D=EXXX)						2		W
2	1	160740-14010	CAMSHAFT	1	1						
2-1	1	160740-14011	CAMSHAFT (A=*1984.06) (B=E68925)	1	1						R
3	1	160710-14200	TAPPET		2	2	2	2			
4	1	160710-95010	GEAR, CAMSHAFT		1	1	1	1			
5	1	22512-040120	KEY, 4X 12		1	1	1	1			
6	1	160310-14550	WASHER (C=EXXX) (D=EXXX)				1	1			W
7	1	22512-050300	KEY, 5X 30 (C=EXXX) (D=EXXX)				1	1			W
8	1	26106-080202	BOLT, M8X 20 PLATED (C=EXXX) (D=EXXX)				1	1			W

Fig.11. CRANKSHAFT

11 クランクシャフト
CRANKSHAFT



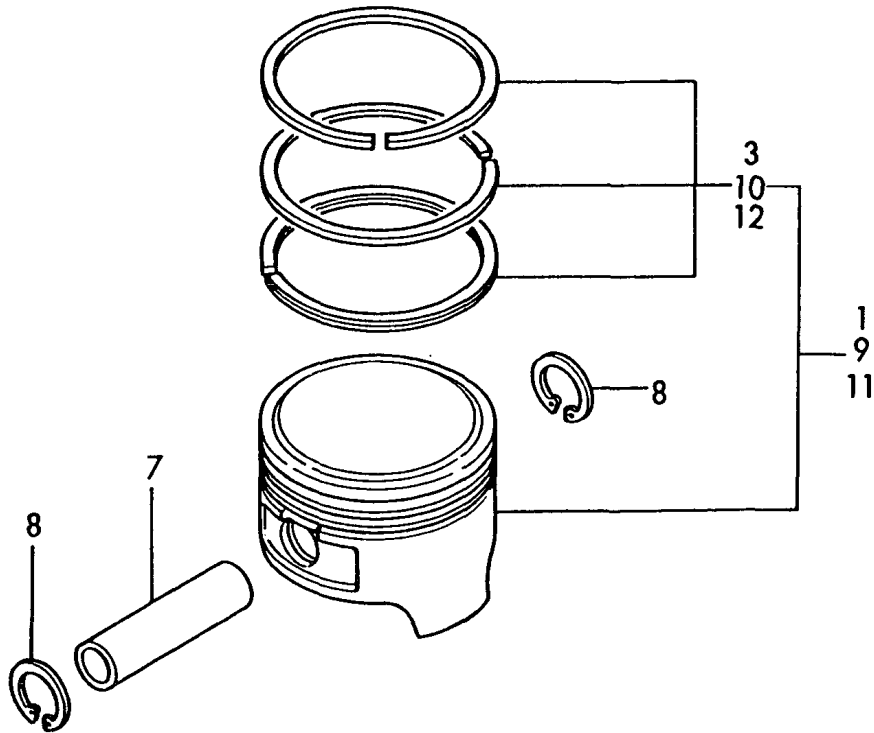
(A)=GE50E-DH
(B)=GE50E-D
(C)=GE50E-SH

(D)=GE50E-S
(E)=
(F)=

No.	Lev.	Parts No.	Description	Qty						I	R
				(A)	(B)	(C)	(D)	(E)	(F)		
1	1	760710-21701	CRANKSHAFT ASSY				1	1			
2	1	760742-21700	CRANKSHAFT ASSY	1	1						
5	2	160610-21290	KEY, 4X10	1	1	1	1				
6	2	160710-95020	GEAR, CRANKSHAFT	1	1	1	1				
7	2	22512-040120	KEY, 4X 12	1	1	1	1				
8	1	26737-140002	NUT, M14	1	1	1	1				
8-1	1	160610-04910	NUT, FLYWHEEL M14	1	1	1	1				S
		(A=*1985.05) (B=E85893) (C=*1985.05) (D=E93556)									
9	1	160310-14550	WASHER	1	1						W
		(A=*1984.03) (B=E61734)									
10	1	160642-21150	KEY, 4.7X30	1	1						W
		(A=*1984.03) (B=E61734)									
11	1	160642-21250	BOLT, 5/15-24UNF	1	1						W
		(A=*1984.03) (B=E61734)									
12	1	22217-080000	WASHER, SPRING 8	1	1						W
		(A=*1984.03) (B=E61734)									

Fig.12. PISTON

12 ピストン PISTON



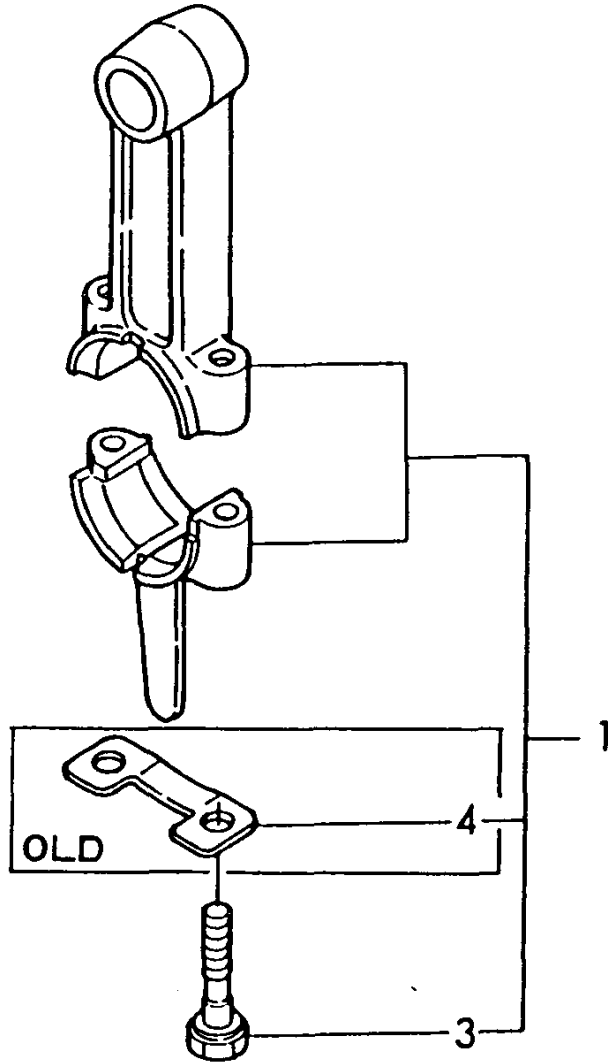
(A)=GE50E-DH
(B)=GE50E-D
(C)=GE50E-SH

(D)=GE50E-S
(E)=
(F)=

No.	Lev.	Parts No.	Description	Q'ty						I	R
				(A)	(B)	(C)	(D)	(E)	(F)		
1	1	160710-22010	PISTON ASSY	1	1	1	1				
1-1	1	160710-22011	PISTON ASSY	1	1	1	1				N
		(A=*1983.03)	(B=*1983.03)	(C=*1983.03)	(D=*1983.03)						
3	2	760710-22500	RING SET, PISTON	1	1	1	1				
7	1	160710-22300	PIN, PISTON	1	1	1	1				
8	1	22252-000160	RING, 16	2	2	2	2				
9	1	160710-22470	PISTON ASSY, 0.25 OS	1	1	1	1				
10	2	760710-22540	RING SET, 0.25 OS	1	1	1	1				
11	1	160710-22480	PISTON ASSY, 0.50 OS	1	1	1	1				
12	2	760710-22550	RING SET, 0.50 OS	1	1	1	1				

Fig.13. CONNECTING ROD

13 コネクティングロッド CONNECTING ROD



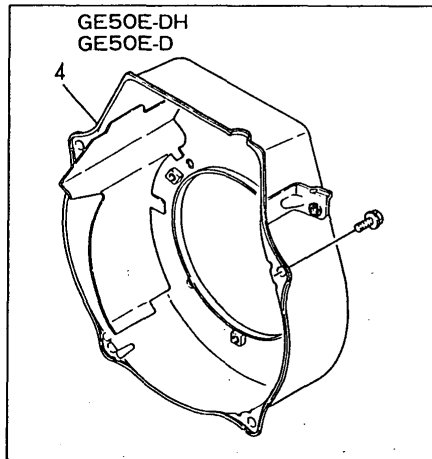
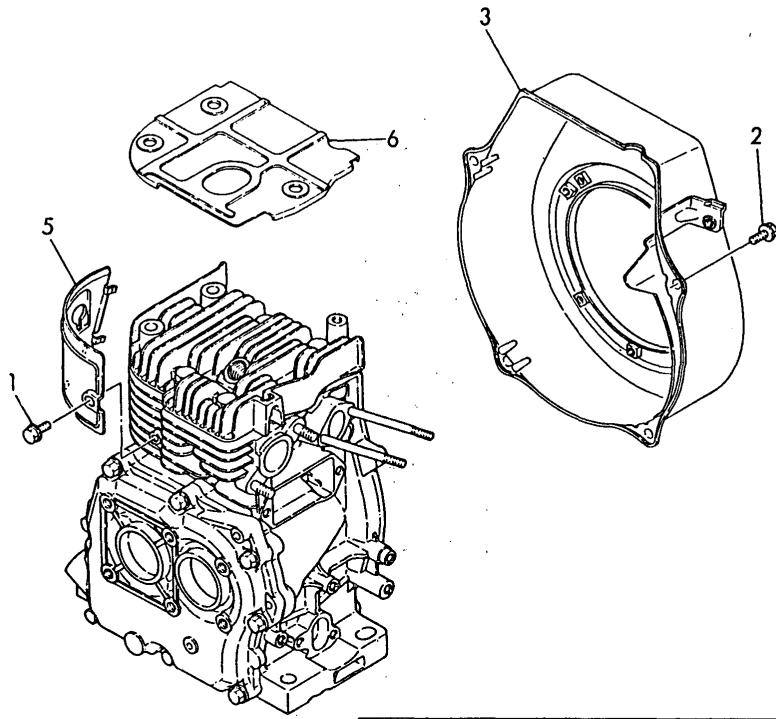
(A)=GE50E-DH
(B)=GE50E-D
(C)=GE50E-SH

(D)=GE50E-S
(E)=
(F)=

No.	Lev.	Parts No.	Description	Qty						I	R
				(A)	(B)	(C)	(D)	(E)	(F)		
1	1	760710-23100	ROD ASSY, CONNECTING	1	1	1	1				
3	2	160710-23200	BOLT, CONNECTING ROD	2	2	2	2				
3-1	2	160710-23201	BOLT, CONNECTING ROD	2	2	2	2				N
4	2	160710-23210	WASHER	1	1	1	1				Z
		(A=*1986.11)	(B=ED3469)	(C=*1986.11)	(D=ED8517)						
		(A=*1986.11)	(B=ED3469)	(C=*1986.11)	(D=ED8517)						

Fig.14. COLLING FAN CASE

14 クーリングファンケース
COOLING FAN CASE



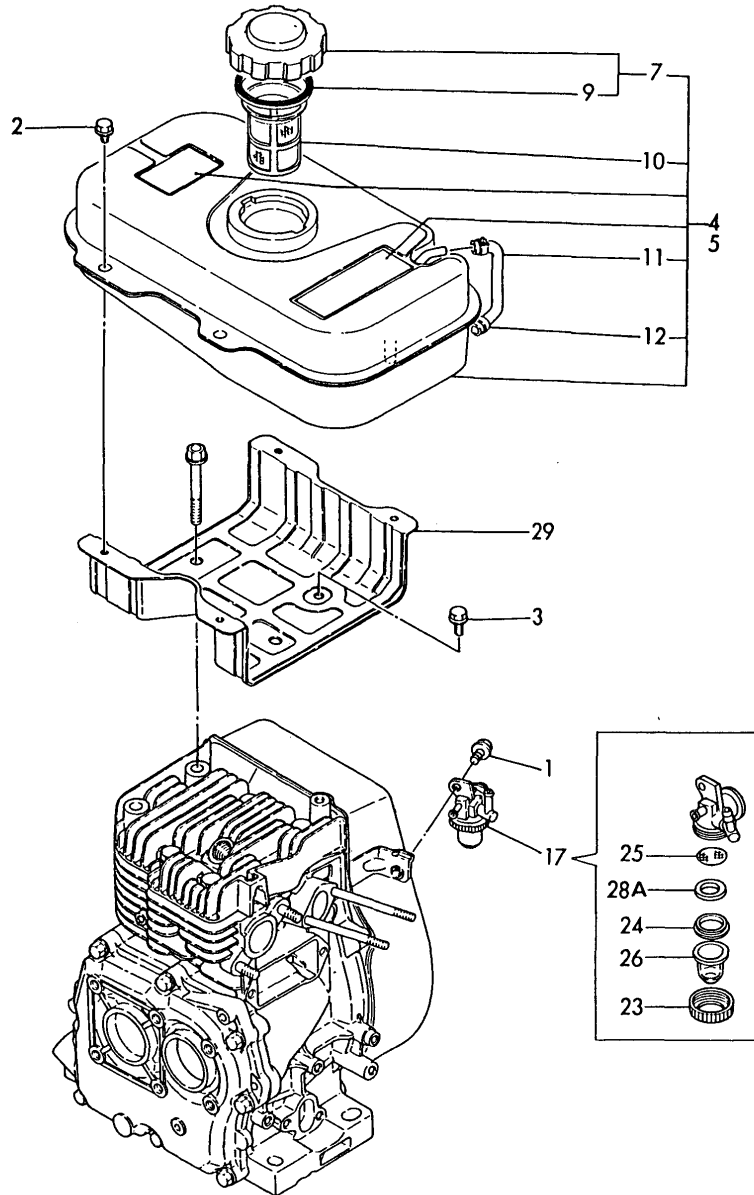
(A)=GE50E-DH
(B)=GE50E-D
(C)=GE50E-SH

(D)=GE50E-S
(E)=
(F)=

No.	Lev.	Parts No.	Description	Q'ty						I	R
				(A)	(B)	(C)	(D)	(E)	(F)		
1	1	160610-04300	BOLT, M6X14	1	1	1	1				
1-1	1	26476-060142	SCREW, TAPPING M6X14	1	1	1	1				R
		(A=*1989.05) (B=*1989.05) (C=*1989.05) (D=*1989.05)									
2	1	160610-04300	BOLT, M6X14	4	4	4	4				
2-1	1	26476-060142	SCREW, TAPPING M6X14	4	4	4	4				R
		(A=*1989.05) (B=*1989.05) (C=*1989.05) (D=*1989.05)									
3	1	160710-45121	CASE, COOLING FAN			1	1				
3-1	1	160700-45120	CASE, COOLING FAN (C=*1987.09) (D=EG1892)			1	1				N
4	1	160740-45121	CASE, COOLING FAN	1	1						
4-1	1	160740-45140	CASE, COOLING FAN (A=*1987.09) (B=EG0389)	1	1						N
5	1	160710-45200	PLATE	1	1	1	1				
5-1	1	160710-45201	PLATE (A=*1983.08) (B=E43155) (C=*1983.08) (D=E43170)	1	1	1	1				S
6	1	160710-45250	COVER, HEAD (A=*1983.08) (B=E43155) (C=*1983.08) (D=E43170)	1	1	1	1				W

Fig.15. FUEL TANK

15 FOタンク
FUEL TANK



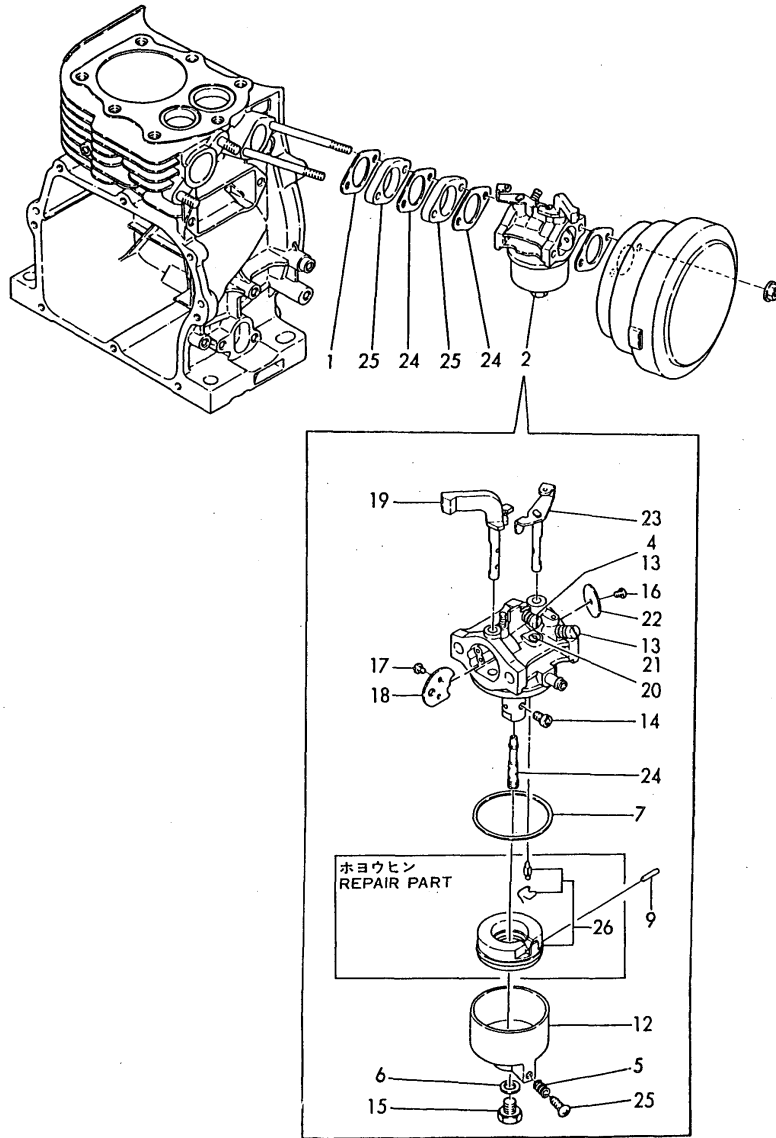
(A)=GE50E-DH
(B)=GE50E-D
(C)=GE50E-SH

(D)=GE50E-S
(E)=
(F)=

No.	Lev.	Parts No.	Description	Qty						I	R
				(A)	(B)	(C)	(D)	(E)	(F)		
1	1	160260-01500	BOLT, FLANGE M6X8	1	1	1	1				
1-1	1	26106-060082	BOLT, M6X 8 PLATED	1	1	1	1				R
		(A=*1983.03) (B=*1983.03) (C=*1983.03) (D=*1983.03)									
2	1	160260-01510	BOLT, FLANGE M6X10	4	4	4	4				
2-1	1	26106-060102	BOLT, M6X 10 PLATED	4	4	4	4				R
		(A=*1983.03) (B=*1983.03) (C=*1983.03) (D=*1983.03)									
3	1	160610-04300	BOLT, M6X14	1	1	1	1				
3-1	1	26476-060142	SCREW, TAPPING M6X14	1	1	1	1				R
		(A=*1989.05) (B=*1989.05) (C=*1989.05) (D=*1989.05)									
4	1	760710-55710	FUEL TANK ASSY.			1	1				
4-1	1	760710-55711-R	TANK ASSY, FUEL			1	1				S
		(C=*1988.06) (D=EH5865)									
5	1	760710-55720	TANK ASSY, FUEL	1	1						
5-1	1	760710-55731	TANK ASSY, FUEL	1	1						S
		(A=*1988.06) (B=EH9779)									
7	2	160710-55060	CAP ASSY	1	1	1	1				
7-1	2	160710-55061	CAP ASSY	1	1	1	1				S
		(A=*1988.06) (B=EH9779) (C=*1988.06) (D=EH5865)									
9	3	160393-55050	GASKET	1	1	1	1				
10	2	160710-55100	FILTER, FUEL	1	1	1	1				
10-1	2	160610-55100	FILTER, FUEL	1	1	1	1				R
		(A=*1988.06) (B=EH9779) (C=*1988.06) (D=EH5865)									
11	2	160710-55150	GAUGE, LEVEL	1	1	1	1				
12	2	124722-59050	CLIP, HOSE 9	2	2	2	2				
17	1	160710-55300	COCK ASSY, FUEL	1	1	1	1				
17-1	1	160710-55301	COCK ASSY, FUEL	1	1	1	1				N
		(A=*1987.03) (B=E34772) (C=*1987.03) (D=E36447)									
23	2	160710-55360	RING	1	1	1	1				
24	2	160710-55370	GASKET	1	1	1	1				
25	2	160710-55380	FILTER, FUEL	1	1	1	1				
25-1	2	160710-55381	FILTER, FUEL	1	1	1	1				N
		(A=*1987.03) (B=E34772) (C=*1987.03) (D=E36447)									
26	2	160710-55390	CUP, FUEL COCK L37	1	1	1	1				
28A	2	160692-55421	PLATE	1	1	1	1				W
		(A=*1987.03) (B=E34772) (C=*1987.03) (D=E36447)									
29	1	160710-55750	BRACKET, FUEL TANK	1	1	1	1				

Fig.16. CARBURETOR

16 キャブレタ
CARBRETOR



(A)=GE50E-DH
(B)=GE50E-D
(C)=GE50E-SH

(D)=GE50E-S
(E)=
(F)=

No.	Lev.	Parts No.	Description	Qty						I	R
				(A)	(B)	(C)	(D)	(E)	(F)		
1	1	160310-13200	GASKET	1	1	1	1				
1-1	1	160510-13200	GASKET, MUFFLER	1	1	1	1				R
		(A=*1988.05) (B=EH7618) (C=*1988.05) (D=EH5865)									
2	1	160710-56010	CARBURETOR ASSY	1	1	1	1				
4	2	160610-56370	SCREW	1	1	1	1				
5	2	181230-56380	SPRING	1	1	1	1				
6	2	160610-56611	GASKET	1	1	1	1				
7	2	160610-56610	GASKET	1	1	1	1				
9	2	160610-56631	PIN, FLOAT	1	1	1	1				
10	2	160769-56640	BODY, FLOAT CHAMBER	1	1	1	1				
11	2	181130-56640	SPRING	2	2	2	2				
12	2	160720-56650	JET, MAIN	1	1	1	1				
13	2	160769-56660	BOLT	1	1	1	1				
14	2	160120-56670	SCREW	1	1	1	1				
15	2	160610-56670	SCREW	2	2	2	2				
16	2	160710-56680	VALVE, CHOKE	1	1	1	1				
17	2	160610-56690	SHAFT, CHOKE	1	1	1	1				
18	2	160567-56090	JET, PILOT	1	1	1	1				
19	2	160710-56751	SCREW	1	1	1	1				
20	2	160610-56760	VALVE, THROTTLE	1	1	1	1				
21	2	160710-56770	SHAFT, THROTTLE	1	1	1	1				
22	2	160611-56800	NOZZLE, MAIN	1	1	1	1				
23	2	160610-56090	SCREW	1	1	1	1				
24	1	160610-56150	GASKET, CARBURETOR	2	2	2	2				
25	1	160610-56160	SPACER, CARBURETOR	2	2	2	2				
26	1	160610-56250	VALVE ASSY, NEEDLE	1	1	1	1				1

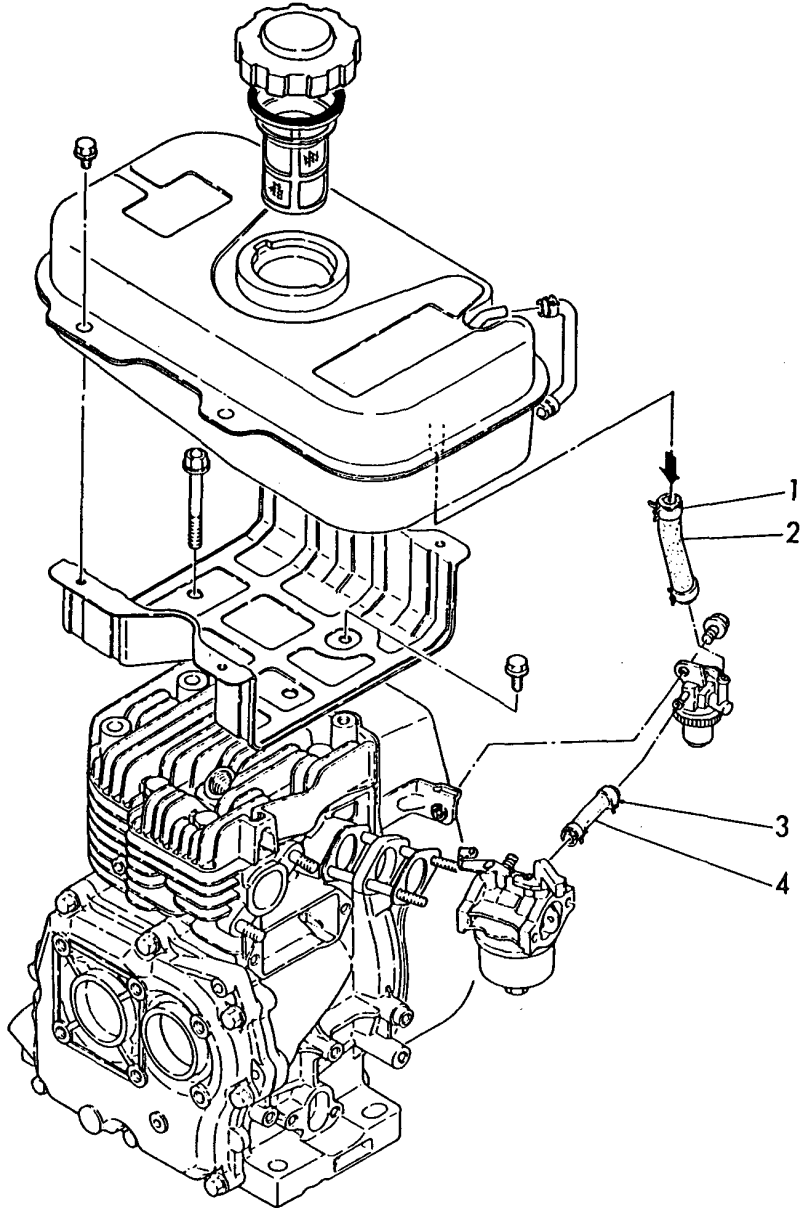
Remarks
(1) REPAIR PART.

Fig.17. FUEL PIPE

17 FOパイプ FUEL PIPE

(A)=GE50E-DH
(B)=GE50E-D
(C)=GE50E-SH

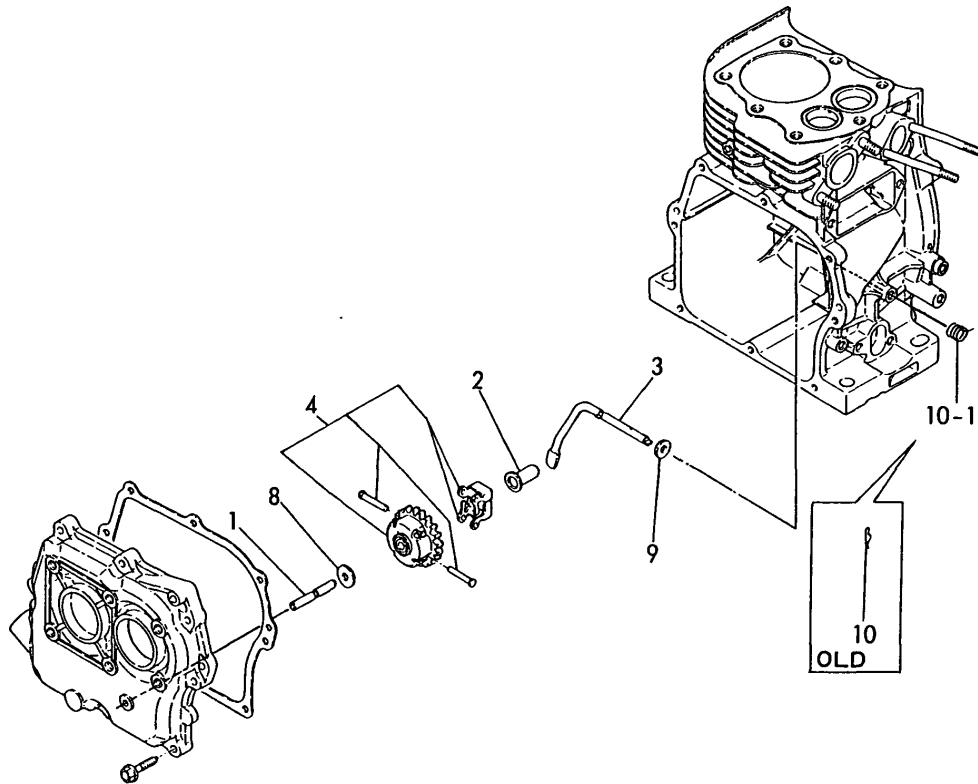
(D)=GE50E-S
(E)=
(F)=



No.	Lev.	Parts No.	Description	Qty						I	R
				(A)	(B)	(C)	(D)	(E)	(F)		
1	1	106990-44660	CLIP, HOSE 12.5	2	2	2	2				
2	1	160710-59350	PIPE, FUEL	1	1	1	1				
3	1	160820-59360	PIPE, FUEL	1	1	1	1				
4	1	124060-77680	CLIP, HOSE 10	2	2	2	2				

Fig.18. GOVERNOR

18 ガバナ
GOVERNOR



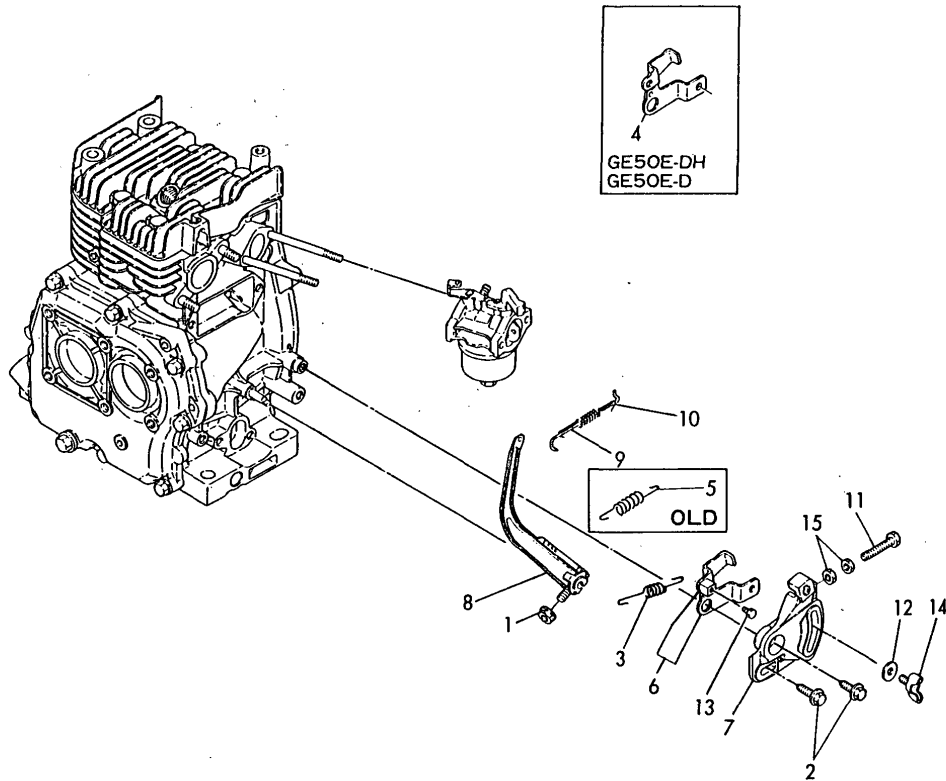
(A)=GE50E-DH
(B)=GE50E-D
(C)=GE50E-SH

(D)=GE50E-S
(E)=
(F)=

No.	Lev.	Parts No.	Description	Qty						I	R
				(A)	(B)	(C)	(D)	(E)	(F)		
1	1	160610-61100	SHAFT, GOVERNOR	1	1	1	1				
2	1	160610-61300	SPINDLE	1	1	1	1				
3	1	160710-61310	YOKE, GOVERNOR	1	1	1	1				
4	1	160610-61600	GEAR ASSY, GOVERNOR	1	1	1	1				
8	1	160120-76940	WASHER	1	1	1	1				
9	1	22137-060000	WASHER, 6	1	1	1	1				
10	1	22360-060000	PIN, SNAP 6	1	1	1	1				
10-1	1	160611-66030	SPRING, RETURN	1	1	1	1				S
		(A=E-XXX)	(B=E-XXX)	(C=E-XXX)	(D=E-XXX)						

Fig.19. CONTROL DEVICE

19 ソウジュウソウチ
CONTROL DEVICE



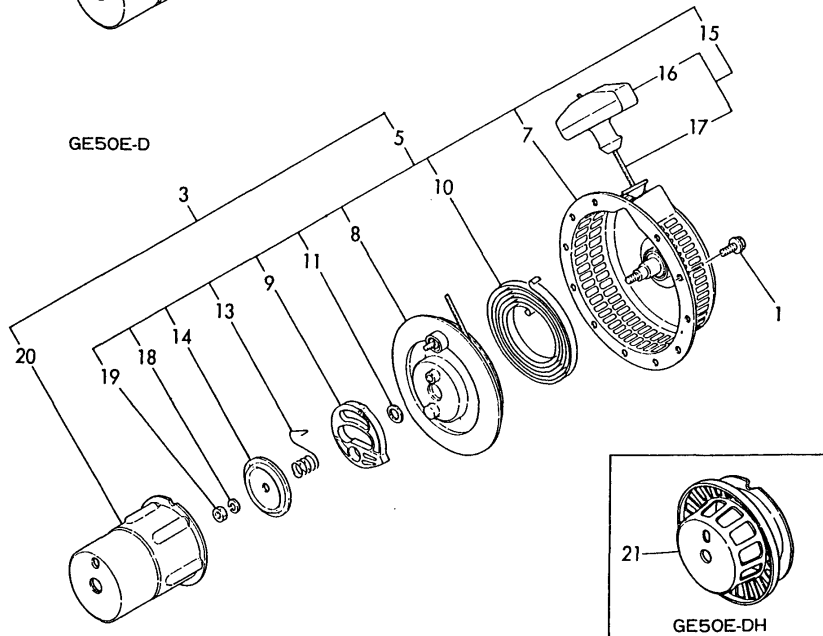
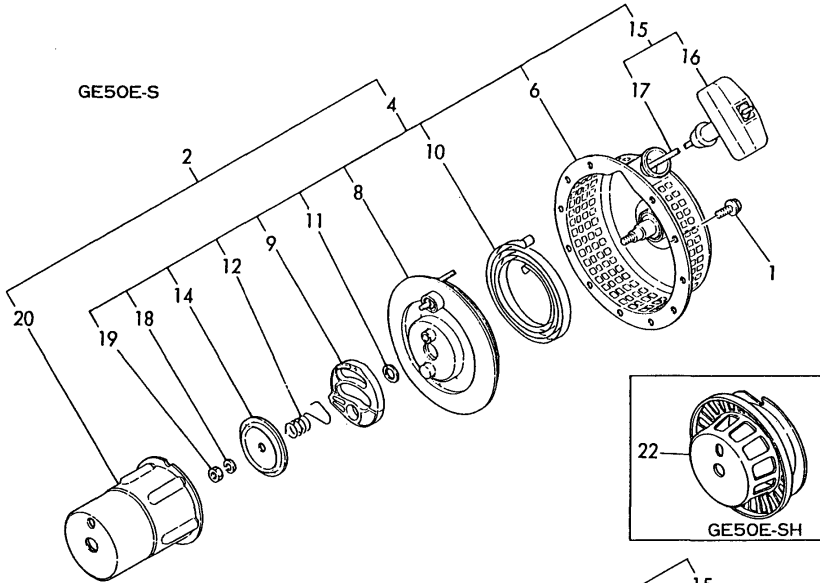
(A)=GE50E-DH
(B)=GE50E-D
(C)=GE50E-SH

(D)=GE50E-S
(E)=
(F)=

No.	Lev.	Parts No.	Description	Q'ty						I	R
				(A)	(B)	(C)	(D)	(E)	(F)		
1	1	160260-01800	NUT, M6	1	1	1	1				
1-1	1	26366-060002	NUT, M6	1	1	1	1				R
		(A=*1983.03) (B=*1983.03) (C=*1983.03) (D=*1983.03)									
2	1	160610-04310	BOLT, M6X20	2	2	2	2				
2-1	1	26476-060202	SCREW, TAPPING M6X20	2	2	2	2				R
		(A=*1983.03) (B=*1983.03) (C=*1983.03) (D=*1983.03)									
3	1	160710-66020	SPRING, REGULATOR	1	1	1	1				
4	1	160610-66050	HANDLE, REGULATOR	1	1						
4-1	1	160730-66050	HANDLE ASSY	1	1						N
		(A=*1983.06) (B=E40451)									
5	1	160710-66050	SPRING, REGULATOR	1	1	1	1				Z
		(A=E40451) (B=E40451) (C=E40451) (D=E40451)									
6	1	160730-66050	HANDLE ASSY			1	1				
7	1	160610-66100	BASE ASSY	1	1	1	1				
8	1	160710-66150	LEVER, GOVERNOR	1	1	1	1				
8-1	1	160710-66151	LEVER, GOVERNOR	1	1	1	1				R
		(A=*1983.10) (B=E48795) (C=*1983.10) (D=E48838)									
9	1	160610-66201	LINK, THROTTLE	1	1	1	1				
10	1	160610-66210	SPRING, TENSION	1	1	1	1				
11	1	160110-66440	BOLT	1	1	1	1				
11-1	1	160611-66440	BOLT, LIMITER	1	1	1	1				N
		(A=*1983.12) (B=E54900) (C=*1983.12) (D=E54908)									
12	1	160120-76940	WASHER	1	1	1	1				
13	1	26117-040088	BOLT M 4X 8 PLATED			1	1				
14	1	26645-060152	BOLT, WING M6X15	1	1	1	1				
15	1	26757-060002	NUT, LOCK M6	2	2	2	2				

Fig.20. STARTING DEVICE

20 シドウスウチ
STARTING DEVICE



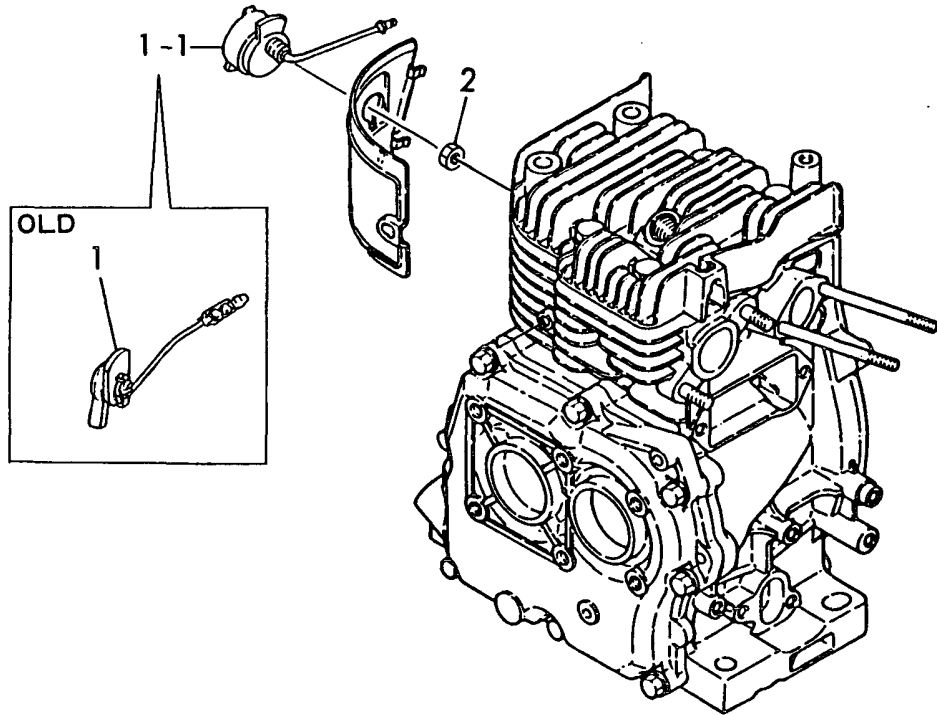
(A)=GE50E-DH
(B)=GE50E-D
(C)=GE50E-SH

(D)=GE50E-S
(E)=
(F)=

No.	Lev.	Parts No.	Description	Q'ty						I	R
				(A)	(B)	(C)	(D)	(E)	(F)		
1	1	160260-01500	BOLT, FLANGE M6X8		3				3		
1-1	1	26106-060082	BOLT, M6X 8 PLATED		3				3		R
		(B=*1983.03)									
		(D=*1983.03)									
2	1	160710-76050	STARTER ASSY, RECOIL							1	
3	1	160740-76050	STARTER ASSY, RECOIL		1						
4	2	160710-76250	STARTER ASSY, RECOIL							1	
5	2	160740-76250	STARTER ASSY, RECOIL		1						
6	3	160710-76510	CASE, STARTER							1	
7	3	160740-76510	CASE, STARTER		1						
8	3	160710-76520	REEL		1				1		
9	3	160610-76530	RATCHET		1				1		
10	3	160710-76540	SPRING, SPIRAL		1				1		
11	3	160610-76550	WASHER, THRUST		1				1		
12	3	160610-76560	SPRING, FRICTION							1	
13	3	160740-76560	SPRING, FRICTION		1						
14	3	160610-76580	PLATE, FRICTION		1				1		
15	3	160260-76610	ROPE ASSY, STARTER		1				1		
16	4	160260-76620	KNOB, STARTER		1				1		
17	4	160260-76630	ROPE, STARTER		1				1		
18	3	22217-060000	WASHER, SPRING 6		1				1		
19	3	26717-060002	NUT, M6		1				1		
20	2	160710-76590	PULLEY, STARTER						1	1	
21	1	160740-76700	PULLEY, STARTER		1						
22	1	160730-76700	PULLEY, STARTER							1	

Fig.21. STOP SWITCH

21 ストップスイッチ STOP SWITCH



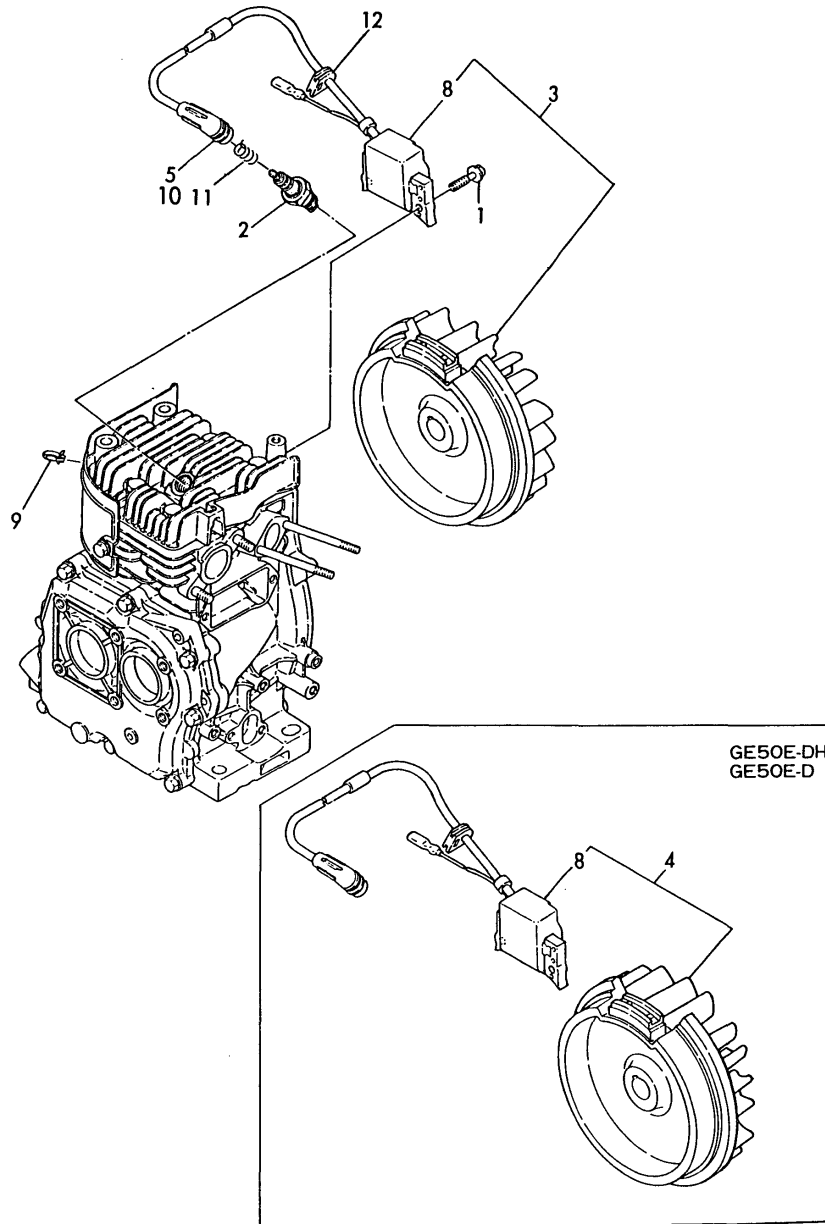
(A)=GE50E-DH
(B)=GE50E-D
(C)=GE50E-SH

(D)=GE50E-S
(E)=
(F)=

No.	Lev.	Parts No.	Description	Q'ty						I	R
				(A)	(B)	(C)	(D)	(E)	(F)		
1	1	160610-77250	SWITCH, STOP	1	1	1	1				
1-1	1	160611-77250	SWITCH, STOP	1	1	1	1				S
		(A=*1983.08)	(B=E43155)	(C=*1983.08)	(D=E43170)						
2	1	26366-080002	NUT, M8	1	1	1	1				W
		(A=*1983.08)	(B=E43155)	(C=*1983.08)	(D=E43170)						

Fig.22. FLYWHEEL MAGNETO

22 フライホイールマグネト
FLYWHEEL MAGNETO



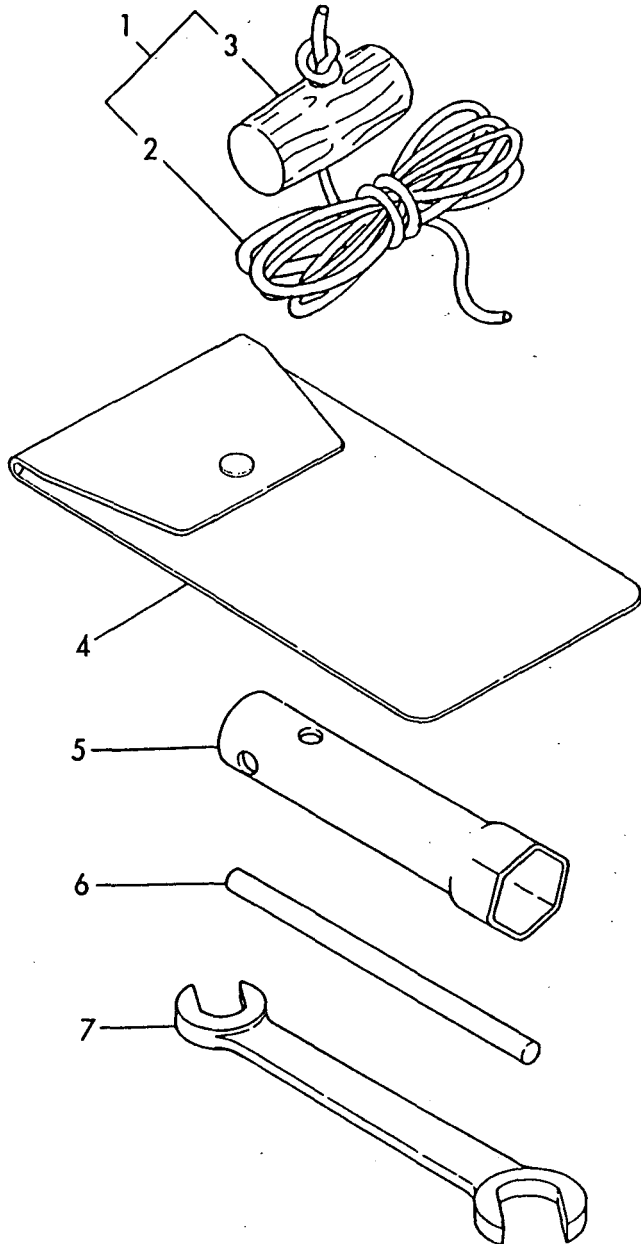
(A)=GE50E-DH
(B)=GE50E-D
(C)=GE50E-SH

(D)=GE50E-S
(E)=
(F)=

No.	Lev.	Parts No.	Description	Q'ty						I	R
				(A)	(B)	(C)	(D)	(E)	(F)		
1	1	160610-04330	BOLT, M6X30	2	2	2	2				
1-1A	1	26476-060252 (A=*1986.01)	SCREW, TAPPING M6X25 (B=EB5876)	2	2						N
1-1B	1	26476-060302 (C=*1983.03)	SCREW, TAPPING M6X30 (D=*1983.03)			2	2				R
2	1	160610-78010	PLUG, SPARK BP4HS	1	1	1	1				
2-1	1	160232-78010 (A=*1983.10)	PLUG, NZTE.NZBD (B=E48795)	1	1	1	1				N
3	1	160710-78060	MAGNETIC ASSY (C=*1983.10)			1	1				
3-1	1	160710-78061	MAGNETIC ASSY (D=E48838)			1	1				N
3-2	1	160710-78062 (C=*1986.01)	MAGNETIC ASSY (D=EB2640)			1	1				S
4	1	160740-78060	MAGNETIC ASSY (C=*1988.02)	1	1						
4-1	1	160740-78061	MAGNETIC ASSY (D=EH1914)	1	1						N
4-2	1	160740-78062 (A=*1986.01)	MAGNETIC ASSY (B=EB5876)	1	1						S
5	2	160343-78040 (A=*1986.01)	CAP, PLUG (B=EB5876)	1	1	1	1				Z
8	2	160710-78510	COIL, IGNITION (C=*1986.01)	1	1	1	1				
8-1	2	160710-78511 (A=*1986.01)	COIL, IGNITION (B=EB5876)	1	1	1	1				N
9	1	160710-78700	CLAMP, CORD (C=*1986.01)	1	1	1	1				
9-1	1	160260-78700	CLAMP (D=EB2640)			1	1				S
10	1	160700-78040	CAP, PLUG (C=*1986.02)	1	1	1	1				W
11	1	160700-78050 (A=*1986.08)	TERMINAL, PLUG (B=ED3469)	1	1	1	1				W
12	1	160700-78720 (A=*1986.08)	GROMMET (B=ED3469)	1	1	1	1				W

Fig.23. TOOLS

23 コウグ
TOOL



(A)=GE50E-DH
(B)=GE50E-D
(C)=GE50E-SH

(D)=GE50E-S
(E)=
(F)=

No.	Lev.	Parts No.	Description	Q'ty						I	R
				(A)	(B)	(C)	(D)	(E)	(F)		
1	1	160110-76650	ROPE, STARTER	1			1				
2	2	160110-76610	ROPE, STARTER	1			1				
3	2	160110-76620	KNOB, STARTER	1			1				
4	1	160110-92610	BAG, TOOL	1	1	1	1	1			
5	1	160120-92700	WRENCH, 21 L86	1	1	1	1	1			
6	1	160110-92710	HANDLE, WRENCH	1	1	1	1	1			
7	1	28110-100120	SPANNER, 10X12	1	1	1	1	1			

Parts No. Index

Parts No.	Fig. No.	Ref. No.
104200-59170	1	4
	2	4
106990-44660	17	1
124060-77680	17	4
124722-59050	15	12
160110-66440	19	11
160110-76610	23	2
160110-76620	23	3
160110-76650	23	1
160110-92610	23	4
160110-92710	23	6
160120-56670	16	14
160120-76940	18	8
	19	12
160120-92700	23	5
160210-02220	1	8
		16
	2	8
		17
	3	1
	4	1
160232-78010	22	2 -1
160260-01500	15	1
	20	1
160260-01510	15	2
160260-01550	9	1
160260-01800	1	11
	2	11
	8	1
	19	1
160260-07370	6	7
160260-12570	8	6
160260-76610	20	15
160260-76620	20	16
160260-76630	20	17
160260-78700	22	9 -1
160310-13200	16	1
160310-14550	10	6
	11	9
160343-78040	22	5
160393-55050	15	9
160510-13200	16	1 -1
160510-14540	10	1 C
160567-56090	16	18
160610-01690	1	3
	2	3
160610-04170	1	23
	2	24
160610-04172	1	23 -1
	2	24 -1

Parts No.	Fig. No.	Ref. No.
160610-04190	1	24
	2	25
160610-04211	1	24 -1
	2	25 -1
160610-04300	5	6
	9	2
	14	1
		2
	15	3
160610-04310	19	2
160610-04320	1	25
	2	26
160610-04330	22	1
160610-04630	1	5
	2	5
		5 -1
160610-04900	1	12
	2	12
	9	3
160610-04910	11	8 -1
160610-07250	6	4
160610-07290	6	6
160610-11160	7	9
160610-11180	7	7
160610-21290	11	5
160610-55100	15	10 -1
160610-56090	16	23
160610-56150	8	7
	16	24
160610-56160	16	25
160610-56250	16	26
160610-56370	16	4
160610-56610	16	7
160610-56611	16	6
160610-56631	16	9
160610-56670	16	15
160610-56690	16	17
160610-56760	16	20
160610-61100	1	18
	2	19
	18	1
160610-61300	18	2
160610-61600	18	4
160610-66050	19	4
160610-66100	19	7
160610-66201	19	9
160610-66210	19	10
160610-76530	20	9
160610-76550	20	11
160610-76560	20	12

Parts No.	Fig. No.	Ref. No.
160610-76580	20	14
160610-77250	21	1
160610-78010	22	2
160611-07250	6	4 -1
160611-07260	6	5
160611-07370	6	7 -1
160611-56800	16	22
160611-66030	18	10 -1
160611-66440	19	11 -1
160611-77250	21	1 -1
160642-21150	11	10
160642-21250	11	11
160690-02220	1	8 -1
		16 -1
	2	8 -1
		17 -1
	3	1 -1
	4	1 -1
160692-55421	15	28 A
160700-45120	14	3 -1
160700-78040	22	10
160700-78050	22	11
160700-78720	22	12
160702-14100	10	1 -1B
160710-01330	1	13
	2	13
160710-01410	1	19
	2	20
160710-01411	1	19 -1
	2	20 -1
160710-01740	1	20
	2	21
160710-01760	1	20 -1
	2	21 -1
160710-03010	5	1
160710-03070	5	5
160710-03180	5	4
160710-07100	6	3
160710-11010	7	1
160710-11050	7	2
160710-11100	7	3
160710-11110	7	4
160710-11120	7	5
160710-12500	8	2
160710-12530	8	3
160710-12540	8	4
160710-12550	8	5
160710-13200	9	4
160710-13500	9	5
160710-13800	9	6

Parts No.	Fig. No.	Ref. No.
160710-14011	10	1
160710-14012	10	1 -1A
160710-14200	10	3
160710-22010	12	1
160710-22011	12	1 -1
160710-22300	12	7
160710-22470	12	9
160710-22480	12	11
160710-23200	13	3
160710-23201	13	3 -1
160710-23210	13	4
160710-45121	14	3
160710-45200	14	5
160710-45201	14	5 -1
160710-45250	14	6
160710-55060	15	7
160710-55061	15	7 -1
160710-55100	15	10
160710-55150	15	11
160710-55300	15	17
160710-55301	15	17 -1
160710-55360	15	23
160710-55370	15	24
160710-55380	15	25
160710-55381	15	25 -1
160710-55390	15	26
160710-55750	15	29
160710-56010	16	2
160710-56680	16	16
160710-56751	16	19
160710-56770	16	21
160710-59350	17	2
160710-61310	18	3
160710-66020	19	3
160710-66050	19	5
160710-66150	19	8
160710-66151	19	8 -1
160710-76050	20	2
160710-76250	20	4
160710-76510	20	6
160710-76520	20	8
160710-76540	20	10
160710-76590	20	20
160710-78060	22	3
160710-78061	22	3 -1
160710-78062	22	3 -2
160710-78510	22	8
160710-78511	22	8 -1
160710-78700	22	9
160710-95010	10	4

Parts No. Index

Parts No.	Fig. No.	Ref. No.
160710-95020	11	6
160720-56650	16	12
160730-66050	19	4 -1
		6
160730-76700	20	22
160740-14010	10	2
160740-14011	10	2 -1
160740-45121	14	4
160740-45140	14	4 -1
160740-76050	20	3
160740-76250	20	5
160740-76510	20	7
160740-76560	20	13
160740-76700	20	21
160740-78060	22	4
160740-78061	22	4 -1
160740-78062	22	4 -2
160759-14560	10	1 D
160769-56640	16	10
160769-56660	16	13
160820-59360	17	3
181130-56640	16	11
181230-56380	16	5
22137-060000	18	9
22217-060000	20	18
22217-080000	11	12
22252-000160	12	8
22312-060160	1	6
	2	6
		6 -1
22360-060000	18	10
22512-040120	10	5
	11	7
22512-050300	10	7
24101-062050	1	9
		17
	2	9
		16
		18
	3	2
	4	2
24311-000180	1	22
	2	23
26106-060082	15	1 -1
	20	1 -1
26106-060102	15	2 -1
26106-060122	9	1 -1
26106-080202	10	8
26117-040088	19	13
26216-080182	1	7

Parts No.	Fig. No.	Ref. No.
26216-080182	2	7
		7 -1
26366-060002	1	11 -1
	2	11 -1
	8	1 -1
	19	1 -1
26366-080002	1	12 -1
	2	12 -1
	9	3 -1
	21	2
26476-060142	5	6 -1
	9	2 -1
	14	1 -1
		2 -1
	15	3 -1
26476-060202	19	2 -1
26476-060252	1	25 -1
	2	26 -1
	22	1 -1A
26476-060302	22	1 -1B
26645-060152	19	14
26717-060002	20	19
26737-140002	11	8
26757-060002	7	8
	19	15
28110-100120	23	7
760710-01500	2	14
760710-01502	2	14 -1
760710-01561	1	1
	2	1
760710-01562	2	1 -1
760710-21701	11	1
760710-22500	12	3
760710-22540	12	10
760710-22550	12	12
760710-23100	13	1
760710-55710	15	4
760710-55711-R	15	4 -1
760710-55720	15	5
760710-55731	15	5 -1
760740-01510	1	14
760740-01511	1	14 -1
760742-21700	11	2

Parts No.	Fig. No.	Ref. No.
-----------	----------	----------

Parts No.	Fig. No.	Ref. No.
-----------	----------	----------