

0CA10-M11800EN

はじめに

このパーツカタログは、ヤンマーガソリエンジン
GE36E-DP, GE36E-DPH, GE36E-DPK, GE36DPKH
を掲載しております。

このパーツカタログは、量産初号機の部品を収録しております。

R E F A C E

This Parts Catalog lists all parts of Model
GE36E-DP, GE36E-DPH, GE36EDPK, GE36E-DPKH.
YANMAR GASOLINE ENGINES.

This Parts Catalog covers all parts mass-produced
since the first unit.

Contents

Fig. No. Fig. Name

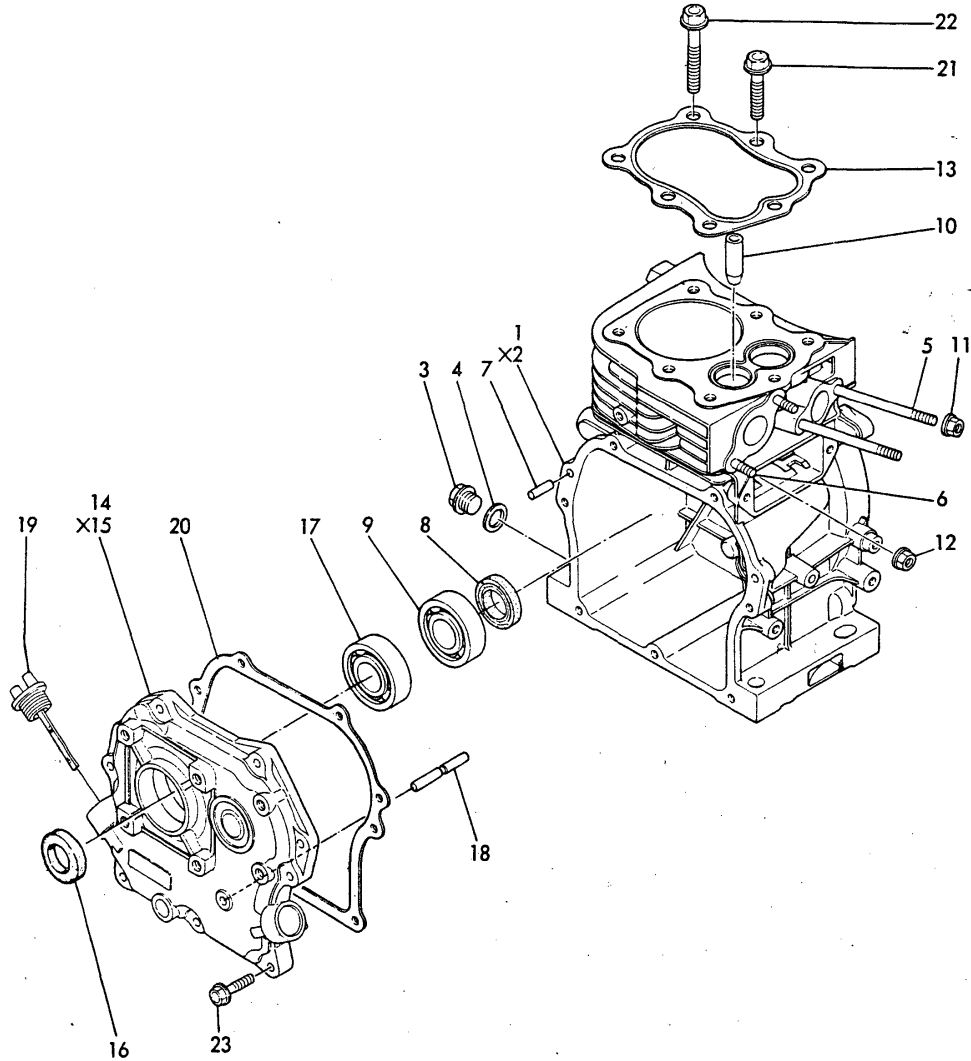
Fig. No. Fig. Name

GE36E

1. CYLINDER BODY
2. MAIN BEARING
3. BREATHER
4. LABEL
5. CYLINDER HEAD
6. AIR CLEANER
7. SILENCER
8. CAMSHAFT
9. CRANKSHAFT
10. PISTON
11. CONNECTING ROD
12. COOLING FAN CASE
13. FUEL TANK
14. CARBURETOR
15. FUEL PIPE
16. GOVERNOR
17. CONTROL DEVICE
18. STARTING DEVICE
19. STOP SWITCH
20. FLYWHEEL MAGNETO
21. TOOLS

Fig.1. CYLINDER BODY

1 シリンダボディ
CYLINDER BODY



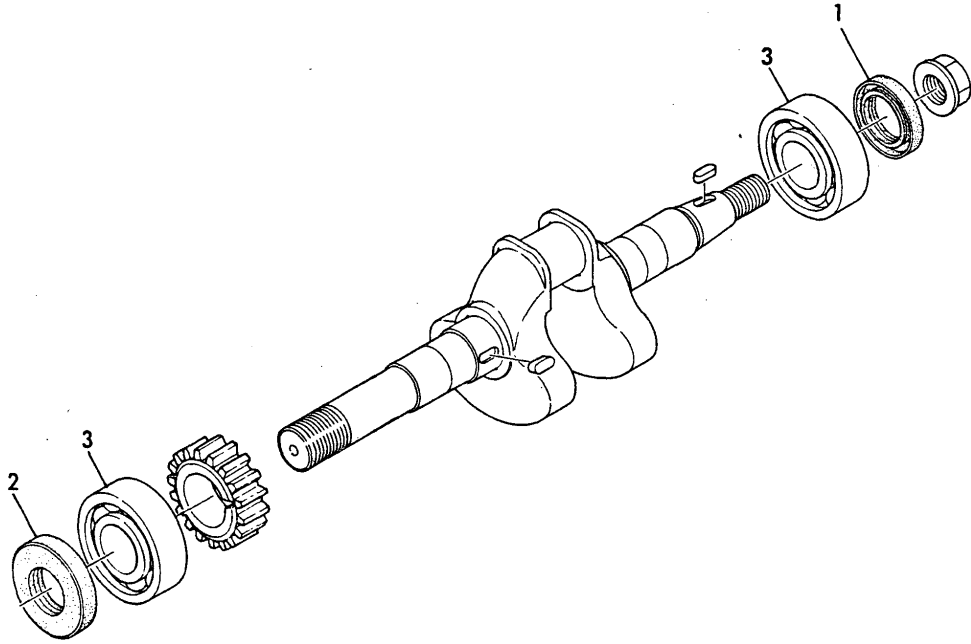
(A)=GE36E-DPKH
(B)=GE36E-DPK
(C)=GE36E-DPH

(D)=GE36E-DP
(E)=
(F)=

No.	Lev.	Parts No.	Description	Qty						I	R
				(A)	(B)	(C)	(D)	(E)	(F)		
1	1	760611-01560	BLOCK ASSY, CYLINDER	1	1	1	1				
3	2	160610-01690	PLUG, M12	1	1	1	1				
4	2	104200-59170	GASKET, 12	1	1	1	1				
5	2	160610-04570	BOLT, M6X70	2	2	2	2				
6	2	160610-04620	BOLT, M6X16	2	2	2	2				
7	2	22312-060160	PIN, PARALLEL M6X16	2	2	2	2				
8	2	*REF. 2=1	OIL SEAL TC20326	1	1	1	1				
9	2	*REF. 2=3	BEARING 6204 C3	1	1	1	1				
10	2	*REF. 5=5	VALVE GUIDE	1	1	1	1				
11	2	*REF. 6=1	NUT M6	2	2	2	2				
12	2	*REF. 7=1	NUT M6	2	2	2	2				
13	1	160611-01330	GASKET, HEAD	1	1	1	1				
14	1	760641-01510	COVER ASSY	1	1	1	1				
16	2	*REF. 2=2	OIL SEAL TC204127	1	1	1	1				
17	2	*REF. 2=3	BEARING 6204 C3	1	1	1	1				
18	2	*REF. 16=1	GOVERNOR SHAFT	1	1	1	1				
19	1	160610-01751	CAP, FILLER	1	1	1	1				
20	1	160610-01410	GASKET, CRANK CASE	1	1	1	1				
21	1	160610-04171	BOLT, FLANGE M8X38	4	4	4	4				
22	1	160610-04200	BOLT, FLANGE M8X53	3	3	3	3				
23	1	160610-04320	BOLT, M6X25	7	7	7	7				

Fig.2. MAIN BEARING

2 シュジクウケ
MAIN BEARING



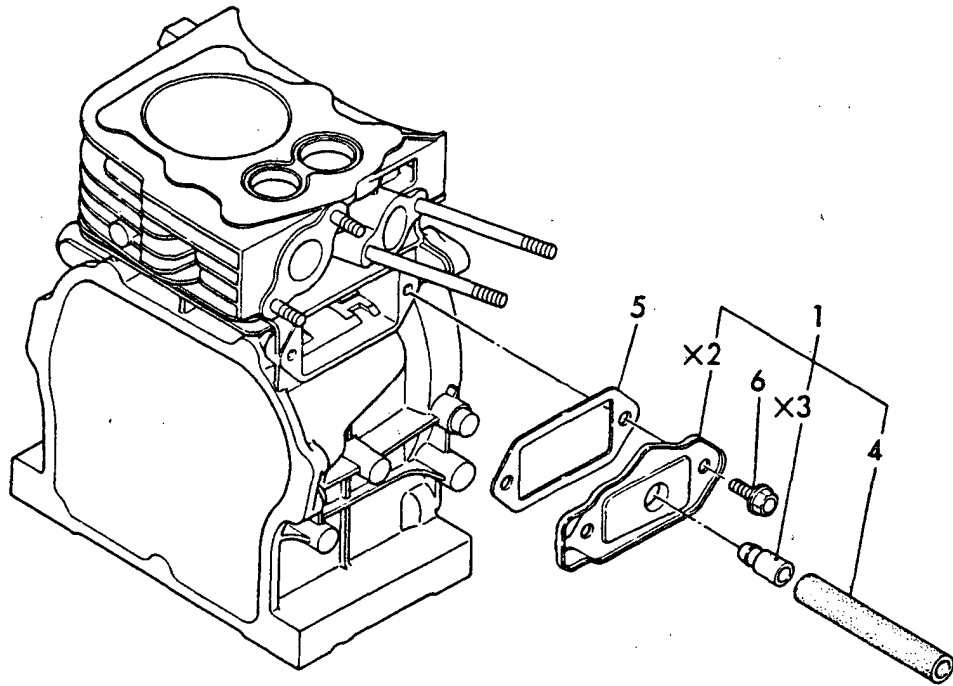
(A)=GE36E-DPKH
(B)=GE36E-DPK
(C)=GE36E-DPH

(D)=GE36E-DP
(E)=
(F)=

No.	Lev.	Parts No.	Description	Qty						I	R
				(A)	(B)	(C)	(D)	(E)	(F)		
1	1	160610-02220	SEAL, 20326	1	1	1	1				
2	1	160640-02220	SEAL, OIL	1	1	1	1				
3	1	24101-062040	BEARING, BALL 6204C3	2	2	2	2				

Fig.3. BREATHER

3 ブリーザ BREATHER



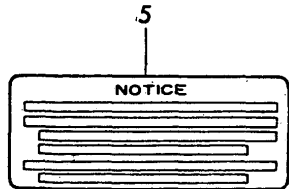
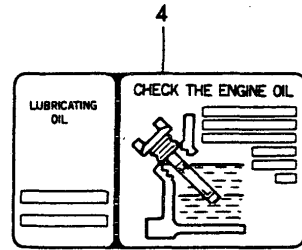
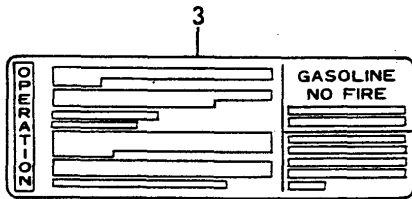
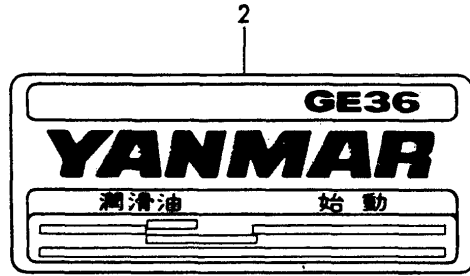
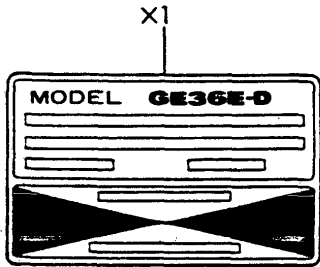
(A)=GE36E-DPKH
(B)=GE36E-DPK
(C)=GE36E-DPH

(D)=GE36E-DP
(E)=
(F)=

No.	Lev.	Parts No.	Description	Q'ty						I	R
				(A)	(B)	(C)	(D)	(E)	(F)		
1	1	160610-03010	BREATHER ASSY	1	1	1	1				
4	2	160610-03180	PIPE , BREATHER	1	1	1	1				
5	1	160610-03070	GASKET	1	1	1	1				
6	1	160610-04300	BOLT, M6X14	2	2	2	2				

Fig.4. LABEL

4 ラベル
LABELS



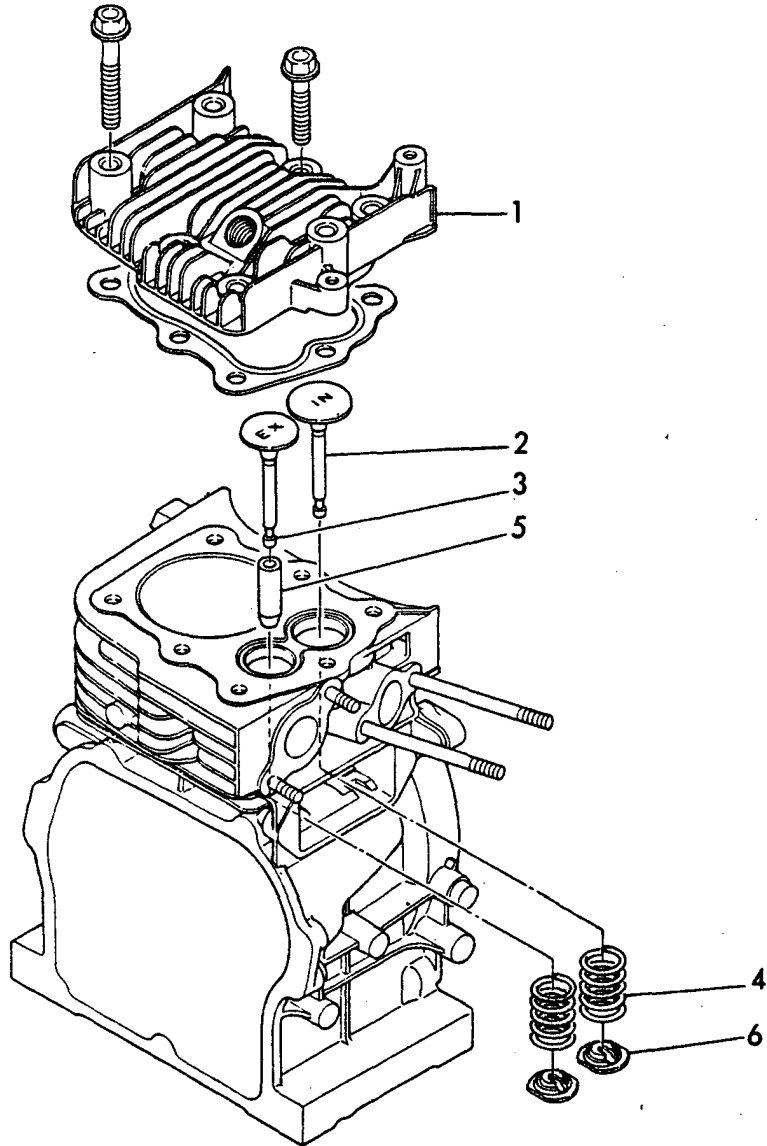
(A)=GE36E-DPKH
(B)=GE36E-DPK
(C)=GE36E-DPH

(D)=GE36E-DP
(E)=
(F)=

No.	Lev.	Parts No.	Description	Qty						I	R
				(A)	(B)	(C)	(D)	(E)	(F)		
2	1	160611-07100	LABEL, YANMAR	1	1	1	1				
3	1	160611-07250	LABEL, OPERATE	1	1	1	1				
4	1	160611-07260	LABEL, OIL	1	1	1	1				
5	1	160611-07370	LABEL, AIR CLEANER	1	1	1	1				

Fig.5. CYLINDER HEAD

5 シリンダヘッド CYLINDER HEAD



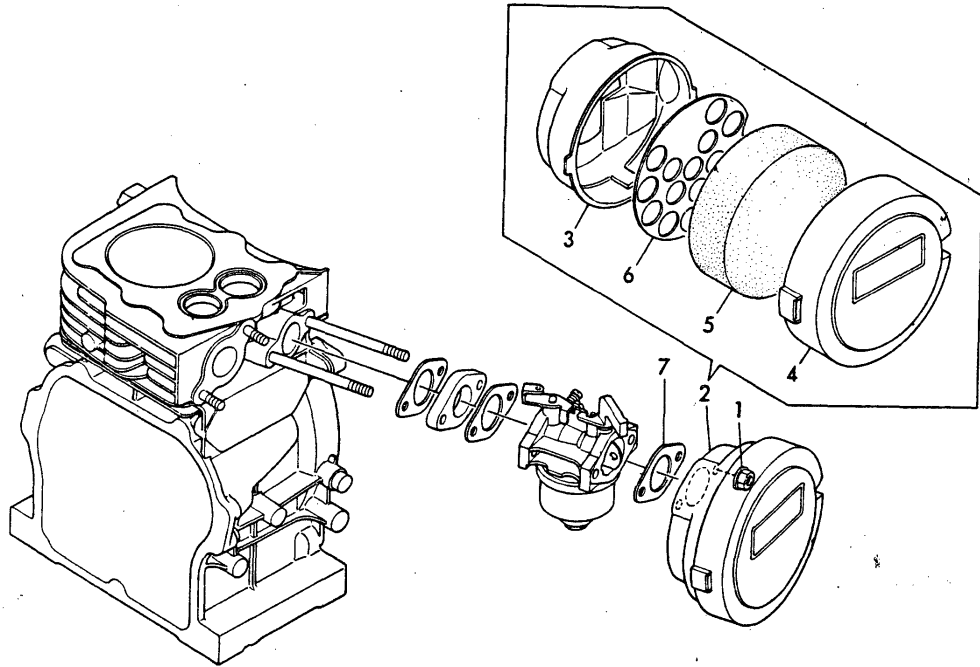
(A)=GE36E-DPKH
(B)=GE36E-DPK
(C)=GE36E-DPH

(D)=GE36E-DP
(E)=
(F)=

No.	Lev.	Parts No.	Description	Q'ty						I	R
				(A)	(B)	(C)	(D)	(E)	(F)		
1	1	160611-11010	HEAD, CYLINDER	1	1	1	1				
2	1	160610-11100	VALVE, INTAKE	1	1	1	1				
3	1	160610-11110	VALVE, EXHAUST	1	1	1	1				
4	1	160610-11120	SPRING, VALVE	2	2	2	2				
5	1	160610-11160	GUIDE, VALVE	1	1	1	1				
6	1	160610-11180	RETAINER, SPRING	2	2	2	2				

Fig.6. AIR CLEANER

6 エアクリーナ
AIR CLEANER



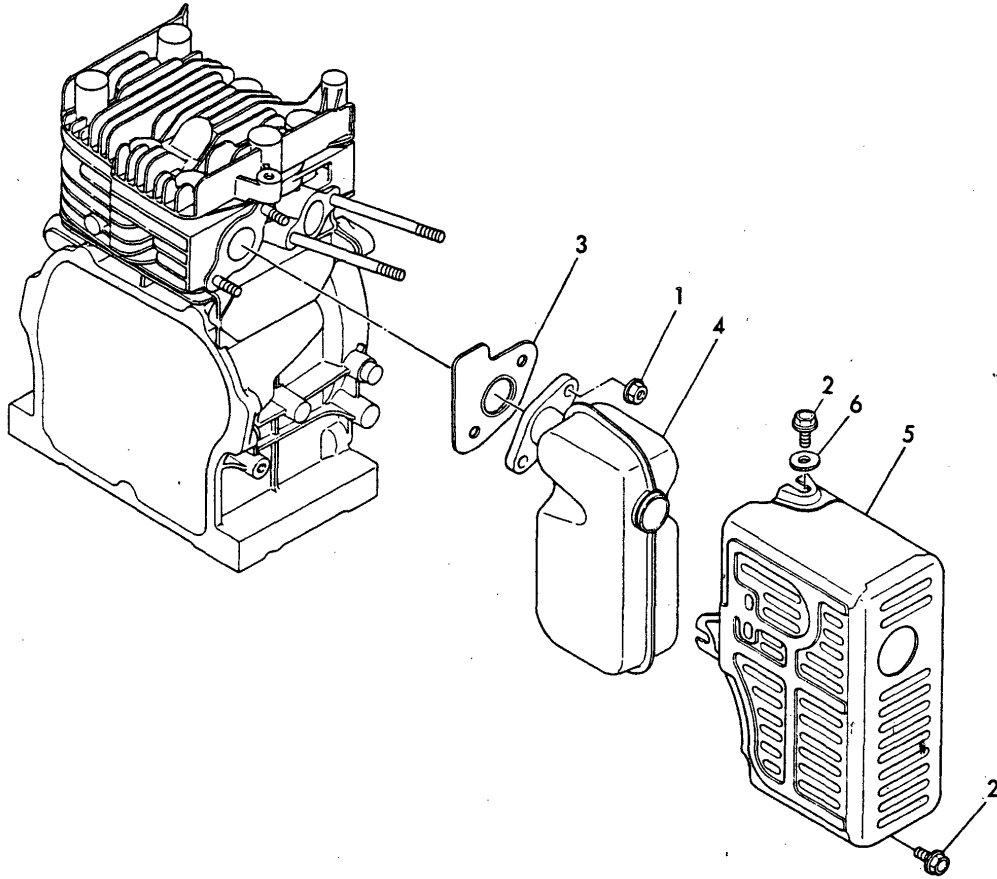
(A)=GE36E-DPKH
(B)=GE36E-DPK
(C)=GE36E-DPH

(D)=GE36E-DP
(E)=
(F)=

No.	Lev.	Parts No.	Description	Q'ty						I	R
				(A)	(B)	(C)	(D)	(E)	(F)		
1	1	160260-01800	NUT, M6	2	2	2	2				
2	1	160610-12500	CLEANER ASSY, AIR	1	1	1	1				
3	2	160610-12520	BODY, AIR CLEANER	1	1	1	1				
4	2	160610-12530	CAP, AIR CLEANER	1	1	1	1				
5	2	160610-12540	ELEMENT	1	1	1	1				
6	2	160610-12550	HOLDER, ELEMENT	1	1	1	1				
7	1	160610-56150	GASKET, CARBURETOR	1	1	1	1				

Fig.7. SILENCER

7 サイレンサ
SILENCER



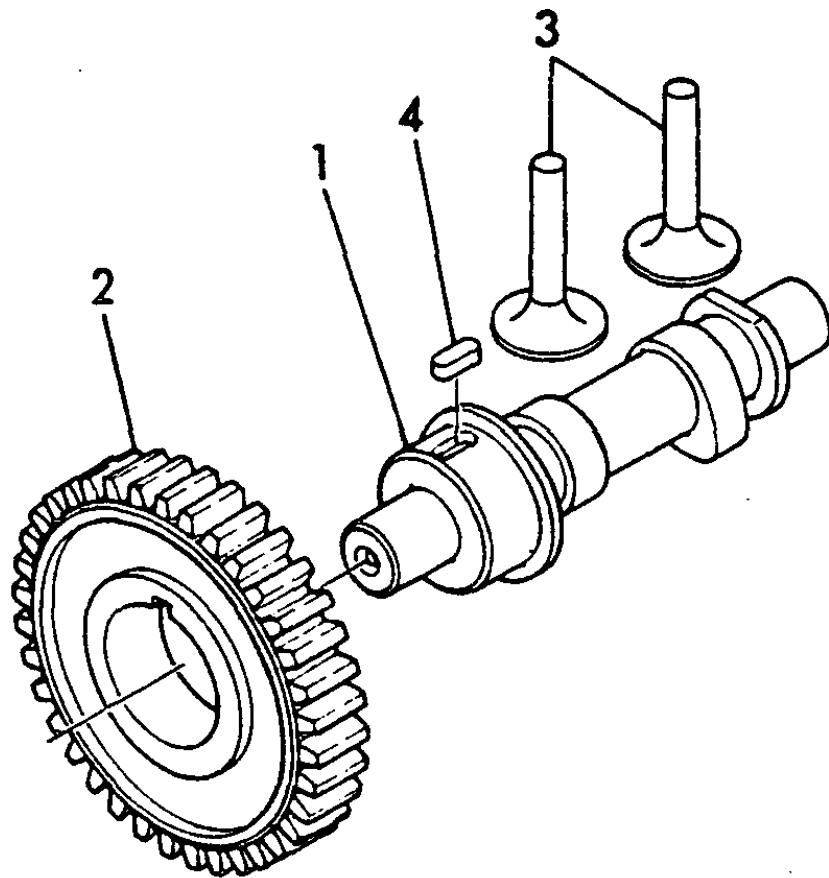
(A)=GE36E-DPKH
(B)=GE36E-DPK
(C)=GE36E-DPH

(D)=GE36E-DP
(E)=
(F)=

No.	Lev.	Parts No.	Description	Qty						I	R
				(A)	(B)	(C)	(D)	(E)	(F)		
1	1	160260-01800	NUT, M6	2	2	2	2				
2	1	160610-04300	BOLT, M6X14	2	2	2	2				
3	1	160610-13201	GASKET, MUFFLER	1	1	1	1				
4	1	160610-13501	SILENCER	1	1	1	1				
5	1	160610-13800	COVER	1	1	1	1				
6	1	160120-76940	WASHER	1	1	1	1				

Fig.8. CAMSHAFT

8 カムシャフト CAMSHAFT



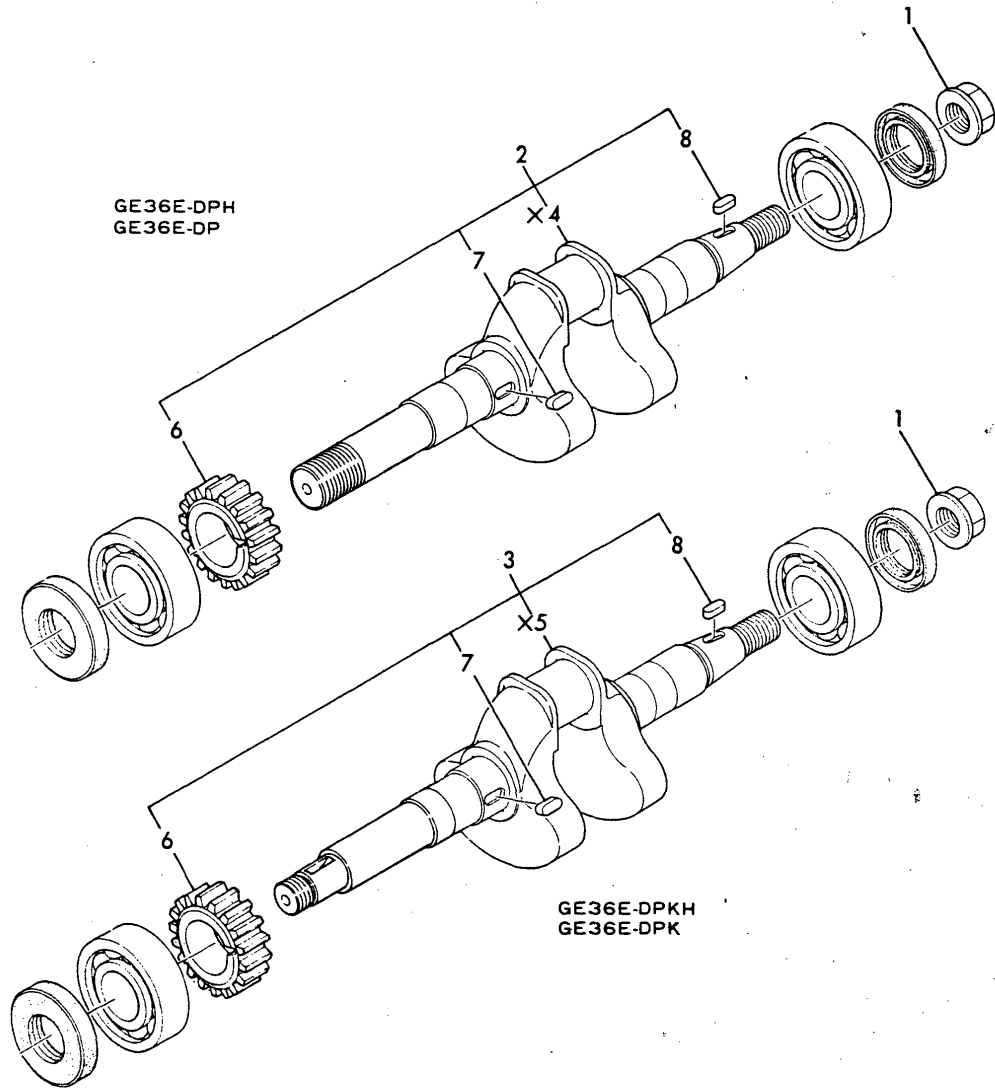
(A)=GE36E-DPKH
(B)=GE36E-DPK
(C)=GE36E-DPH

(D)=GE36E-DP
(E)=
(F)=

No.	Lev.	Parts No.	Description	Q'ty						I	R
				(A)	(B)	(C)	(D)	(E)	(F)		
1	1	160640-14010	CAMSHAFT	1	1	1	1				
2	1	160641-14100	GEAR, CAMSHAFT	1	1	1	1				
3	1	160610-14200	TAPPET	2	2	2	2				
4	1	160610-21290	KEY, 4X10	1	1	1	1				

Fig.9. CRANKSHAFT

9 クランクシャフト
CRANKSHAFT



(A)=GE36E-DPKH
(B)=GE36E-DPK
(C)=GE36E-DPH

(D)=GE36E-DP
(E)=
(F)=

No.	Lev.	Parts No.	Description	Qty						I	R
				(A)	(B)	(C)	(D)	(E)	(F)		
1	1	160610-04850	NUT, M12	1	1	1	1				
2	1	760641-21700	CRANKSHAFT ASSY			1	1				
3	1	760641-21710	CRANKSHAFT ASSY	1	1						
6	2	160641-21200	GEAR, CRANKSHAFT	1	1	1	1				
7	2	160610-21290	KEY, 4X10	1	1	1	1				
8	2	160610-21290	KEY, 4X10	1	1	1	1				

Fig.10. PISTON

10 ピストン PISTON

(A)=GE36E-DPKH
(B)=GE36E-DPK
(C)=GE36E-DPH
(D)=GE36E-DP
(E)=
(F)=

No.	Lev.	Parts No.	Description	Qty						I	R
				(A)	(B)	(C)	(D)	(E)	(F)		
1	1	160611-22010	PISTON ASSY	1	1	1	1				
3	2	760611-22500	RING SET, PISTON	1	1	1	1				
7	1	160611-22300	PIN, PISTON	1	1	1	1				
8	1	22252-000130	RING, 13	2	2	2	2				

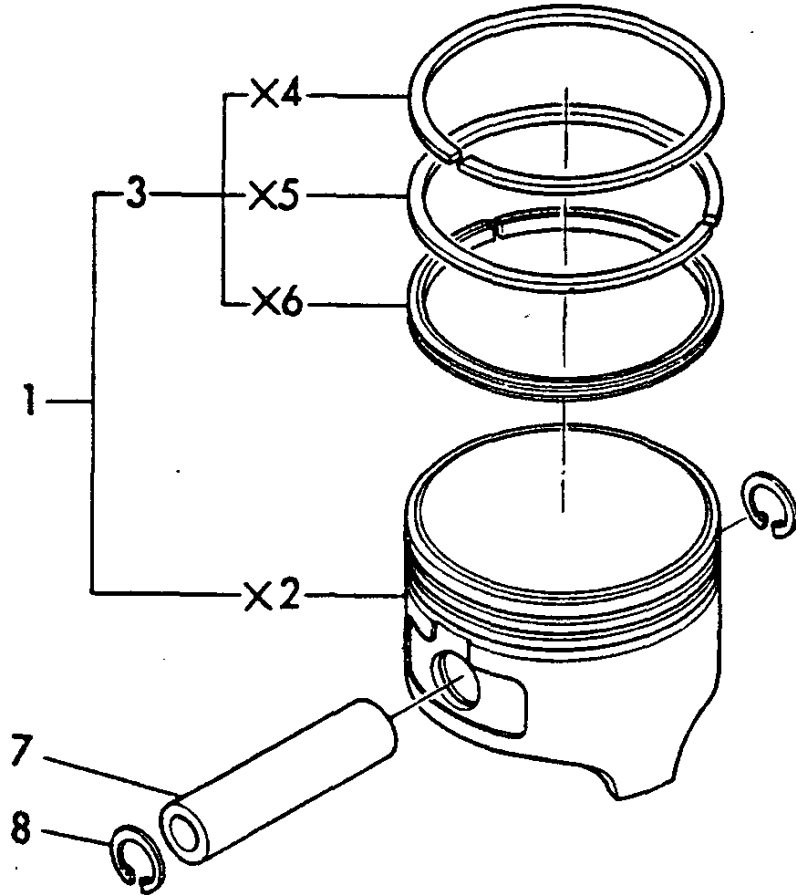
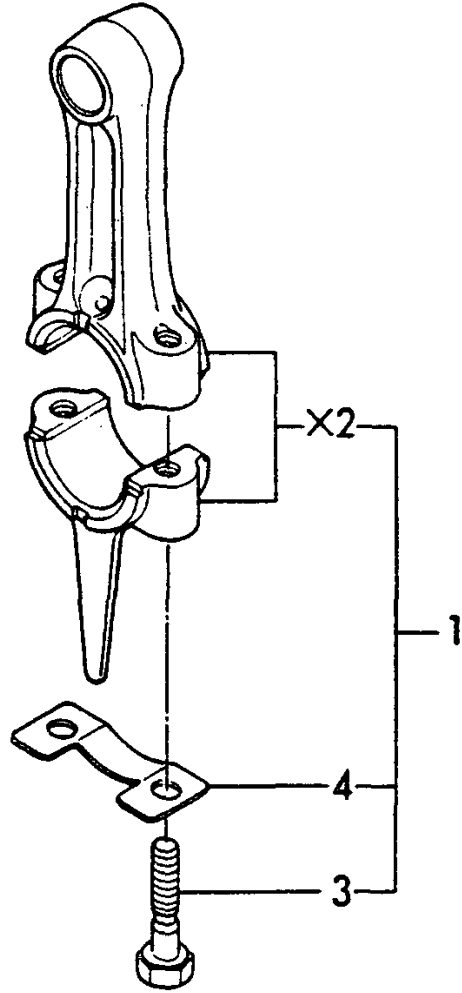


Fig.11. CONNECTING ROD

11 コネクティングロッド CONNECTING ROD



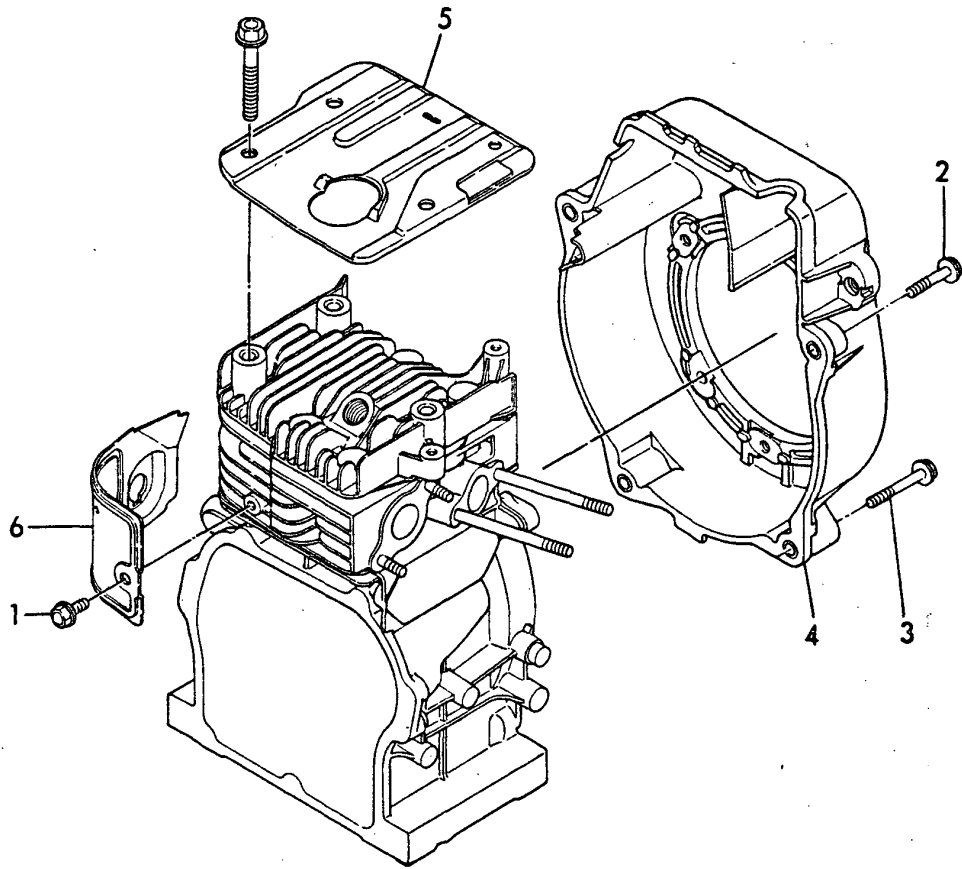
(A)=GE36E-DPKH
(B)=GE36E-DPK
(C)=GE36E-DPH

(D)=GE36E-DP
(E)=
(F)=

No.	Lev.	Parts No.	Description	Qty						I	R
				(A)	(B)	(C)	(D)	(E)	(F)		
1	1	760610-23100	ROD ASSY, CONNECTING	1	1	1	1				
3	2	160610-23200	BOLT, CONNECTING ROD	2	2	2	2				
4	2	160610-23210	WASHER	1	1	1	1				

Fig.12. COOLING FAN CASE

12 クーリングファンケース COOLING FAN CASE



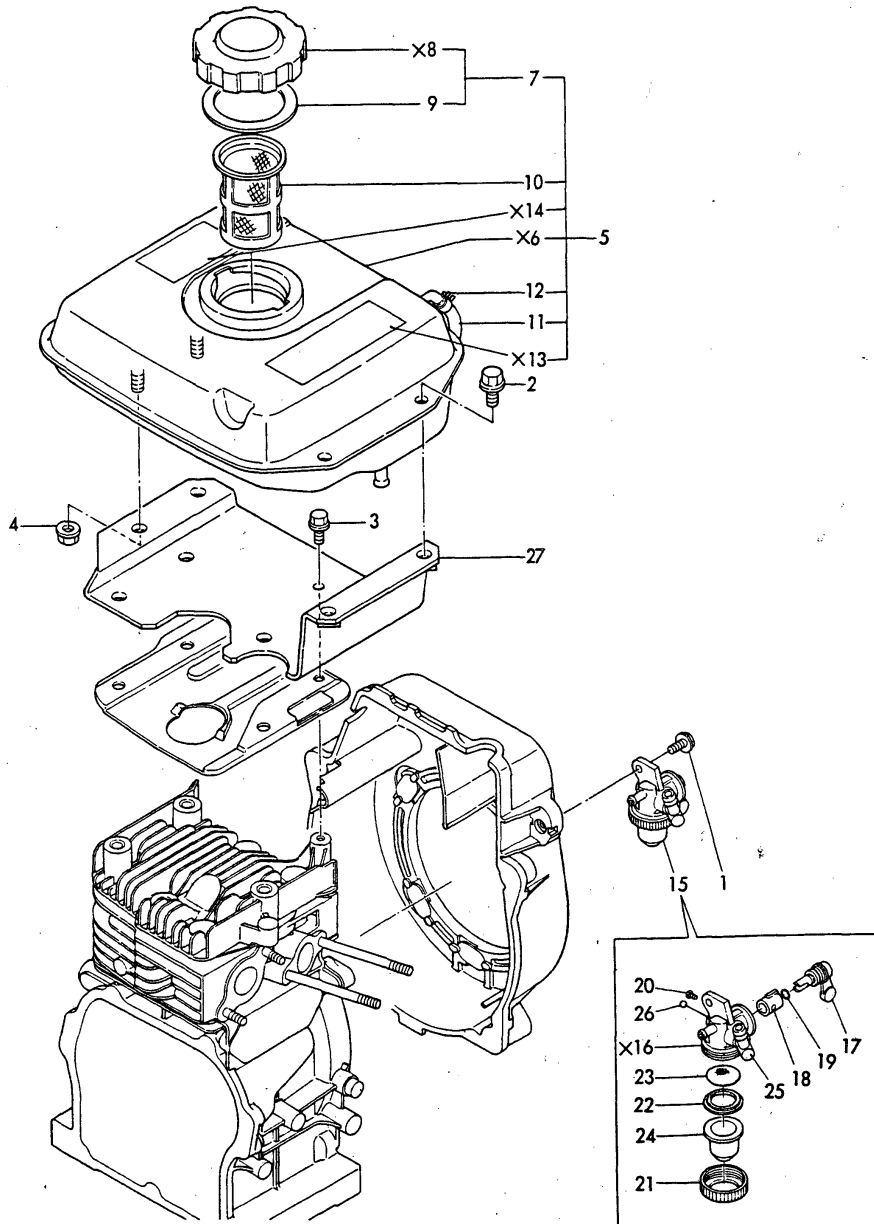
(A)=GE36E-DPKH
(B)=GE36E-DPK
(C)=GE36E-DPH

(D)=GE36E-DP
(E)=
(F)=

No.	Lev.	Parts No.	Description	Qty						I	R
				(A)	(B)	(C)	(D)	(E)	(F)		
1	1	160610-04300	BOLT, M6X14	1	1	1	1				
2	1	160610-04320	BOLT, M6X25	1	1	1	1				
3	1	160610-04350	BOLT, M6X40	3	3	3	3				
4	1	160641-45110	CASE, COOLING FAN	1	1	1	1				
5	1	160611-45200	COVER, HEAD	1	1	1	1				
6	1	160611-45210	COVER	1	1	1	1				

Fig.13. FUEL TANK

13 FOタンク
FUEL TANK



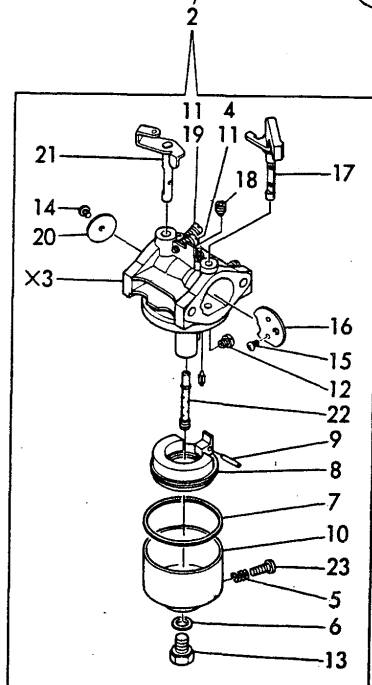
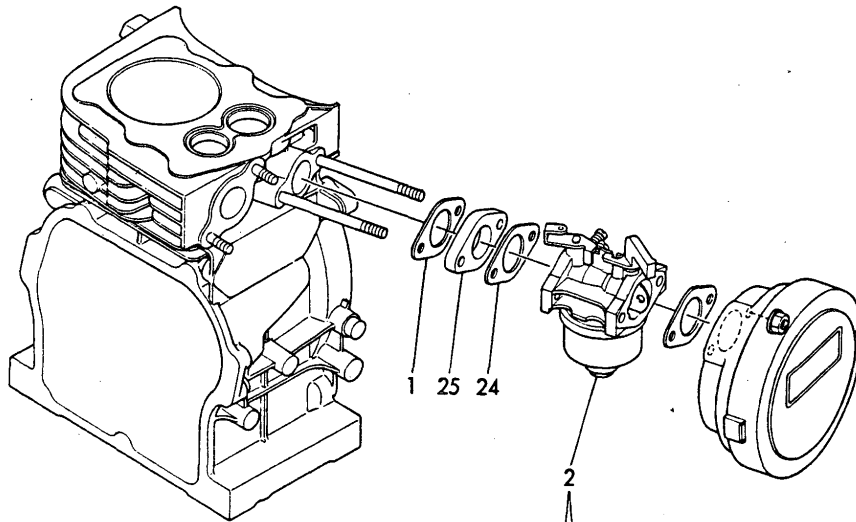
(A)=GE36E-DPKH
(B)=GE36E-DPK
(C)=GE36E-DPH

(D)=GE36E-DP
(E)=
(F)=

No.	Lev.	Parts No.	Description	Q'ty						I	R
				(A)	(B)	(C)	(D)	(E)	(F)		
1	1	160260-01550	BOLT	1	1	1	1				
2	1	160610-04140	BOLT, FLANGE M8X14	2	2	2	2				
3	1	160610-04300	BOLT, M6X14	1	1	1	1				
4	1	160610-04900	NUT, M8	2	2	2	2				
5	1	760611-55720-R	TANK ASSY, FUEL	1	1	1	1				
7	2	160710-55060	CAP ASSY	1	1	1	1				
9	3	160393-55050	GASKET	1	1	1	1				
10	2	160710-55100	FILTER, FUEL	1	1	1	1				
11	2	160260-55150	GAUGE, LEVEL	1	1	1	1				
12	2	124722-59050	CLIP, HOSE 9	2	2	2	2				
13	2	*REF. 4=3	LABEL, OPERATE	1	1	1	1				
14	2	*REF. 4=4	LABEL, OIL	1	1	1	1				
15	1	160710-55300	COCK ASSY, FUEL	1	1	1	1				
17	2	160710-55320	LEVER	1	1	1	1				
18	2	160710-55330	SEAT	1	1	1	1				
19	2	160710-55340	O-RING	1	1	1	1				
20	2	160710-55350	SCREW	1	1	1	1				
21	2	160710-55360	RING	1	1	1	1				
22	2	160710-55370	GASKET	1	1	1	1				
23	2	160710-55380	FILTER, FUEL	1	1	1	1				
24	2	160710-55390	CUP, FUEL COCK L37	1	1	1	1				
25	2	160710-55400	JOINT	1	1	1	1				
26	2	160710-55410	BALL	1	1	1	1				
27	1	160611-55780	BRACKET, FUEL TANK	1	1	1	1				

Fig.14. CARBURETOR

14 キャブレタ
CARBRETOR



(A)=GE36E-DPKH
(B)=GE36E-DPK
(C)=GE36E-DPH

(D)=GE36E-DP
(E)=
(F)=

No.	Lev.	Parts No.	Description	Q'ty						I	R
				(A)	(B)	(C)	(D)	(E)	(F)		
1	1	160310-13200	GASKET	1	1	1	1				
2	1	160641-56010	CARBURETOR ASSY	1	1	1	1				
4	2	181230-56370	SCREW	1	1	1	1				
5	2	181230-56380	SPRING	1	1	1	1				
6	2	160610-56550	WASHER	1	1	1	1				
7	2	160610-56610	GASKET	1	1	1	1				
8	2	160610-56621	FLOAT ASSY	1	1	1	1				
9	2	160610-56630	PIN, FLOAT	1	1	1	1				
10	2	160610-56640	BODY, FLOAT CHAMBER	1	1	1	1				
11	2	181130-56640	SPRING	2	2	2	2				
12	2	160610-56650	JET, MAIN	1	1	1	1				
13	2	160610-56660	BOLT	1	1	1	1				
14	2	160120-56670	SCREW	1	1	1	1				
15	2	160610-56670	SCREW	2	2	2	2				
16	2	160610-56680	VALVE, CHOKE	1	1	1	1				
17	2	160610-56690	SHAFT, CHOKE	1	1	1	1				
18	2	160610-56740	JET, PILOT	1	1	1	1				
19	2	160610-56750	SCREW	1	1	1	1				
20	2	160610-56760	VALVE, THROTTLE	1	1	1	1				
21	2	160610-56770	SHAFT, THROTTLE	1	1	1	1				
22	2	160611-56800	NOZZLE, MAIN	1	1	1	1				
23	2	160610-56900	SCREW	1	1	1	1				
24	1	160610-56150	GASKET, CARBURETOR	1	1	1	1				
25	1	160610-56160	SPACER, CARBURETOR	1	1	1	1				

Fig.15. FUEL PIPE

(A)=GE36E-DPKH
 (B)=GE36E-DPK
 (C)=GE36E-DPH

(D)=GE36E-DP
 (E)=
 (F)=

15 F Oパイプ FUEL PIPE

No.	Lev.	Parts No.	Description	Q'ty						I	R
				(A)	(B)	(C)	(D)	(E)	(F)		
1	1	106990-44660	CLIP, HOSE 12.5	2	2	2	2				
2	1	124722-59050	CLIP, HOSE 9	2	2	2	2				
3	1	160610-59160	PIPE, FUEL	1	1	1	1				
4	1	160710-59350	PIPE, FUEL	1	1	1	1				

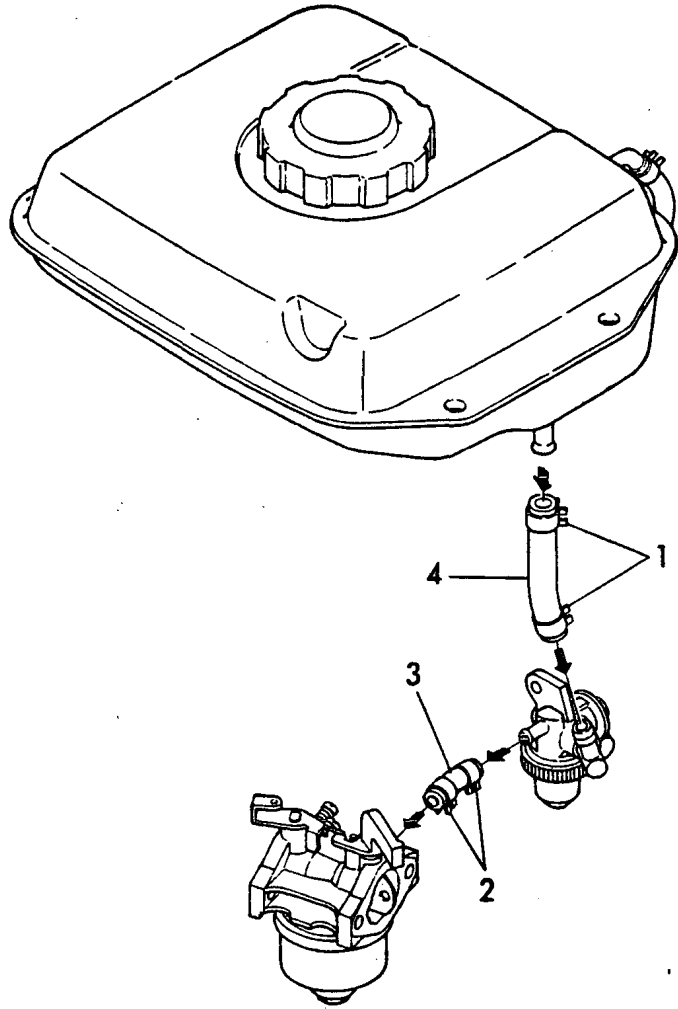
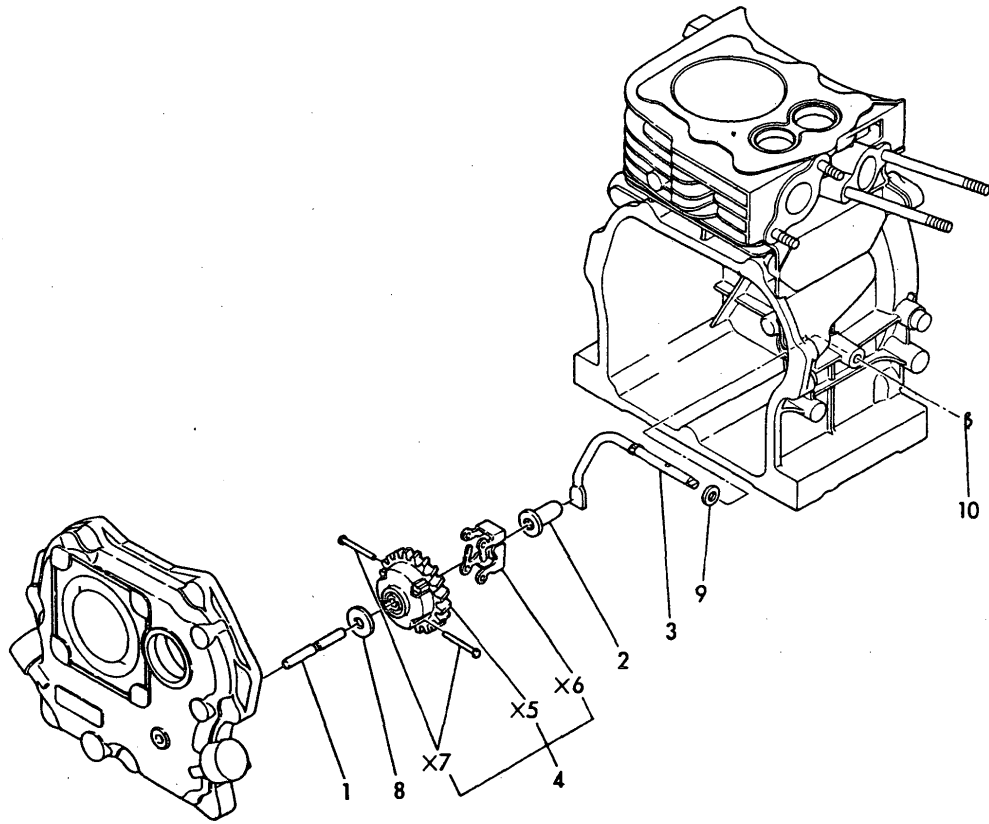


Fig.16. GOVERNOR

16 ガバナ
GOVERNOR



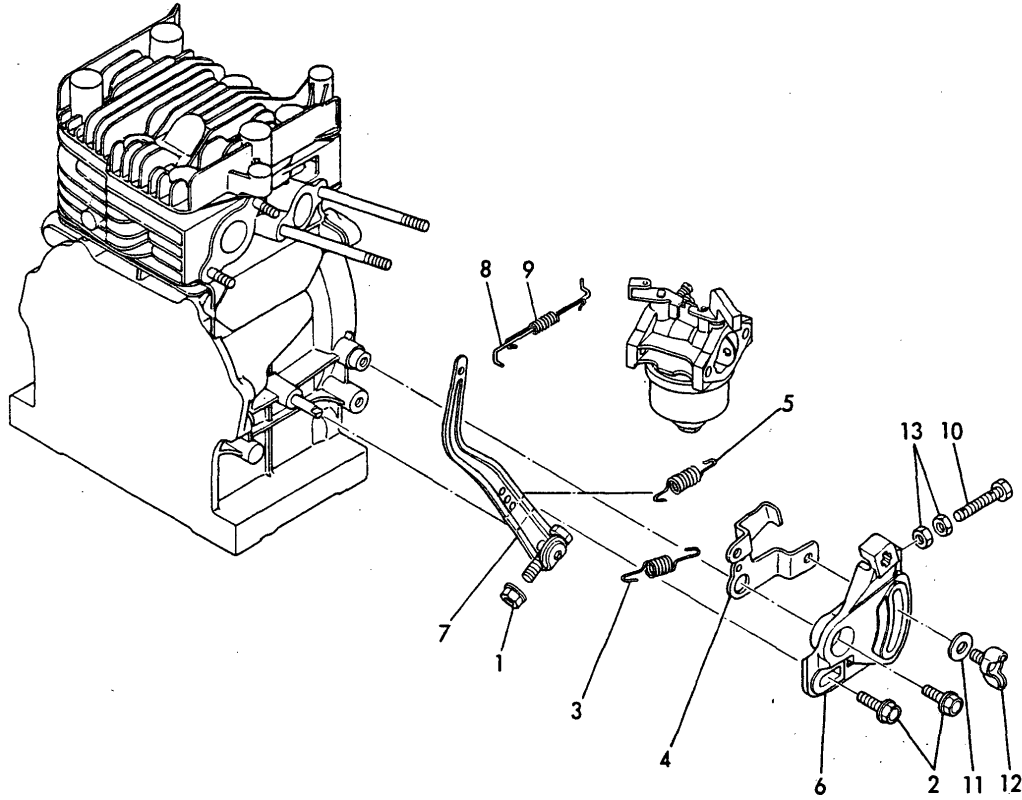
(A)=GE36E-DPKH
(B)=GE36E-DPK
(C)=GE36E-DPH

(D)=GE36E-DP
(E)=
(F)=

No.	Lev.	Parts No.	Description	Q'ty						I	R
				(A)	(B)	(C)	(D)	(E)	(F)		
1	1	160610-61100	SHAFT, GOVERNOR	1	1	1	1				
2	1	160610-61300	SPINDLE	1	1	1	1				
3	1	160610-61310	YOKE, GOVERNOR	1	1	1	1				
4	1	160641-61600	GEAR ASSY, GOVERNOR	1	1	1	1				
8	1	160120-76940	WASHER	1	1	1	1				
9	1	22137-060000	WASHER, 6	1	1	1	1				
10	1	22360-060000	PIN, SNAP 6	1	1	1	1				

Fig.17. CONTROL DEVICE

17 ソウジュウソウチ
CONTROL DEVICE



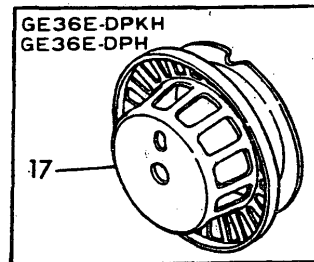
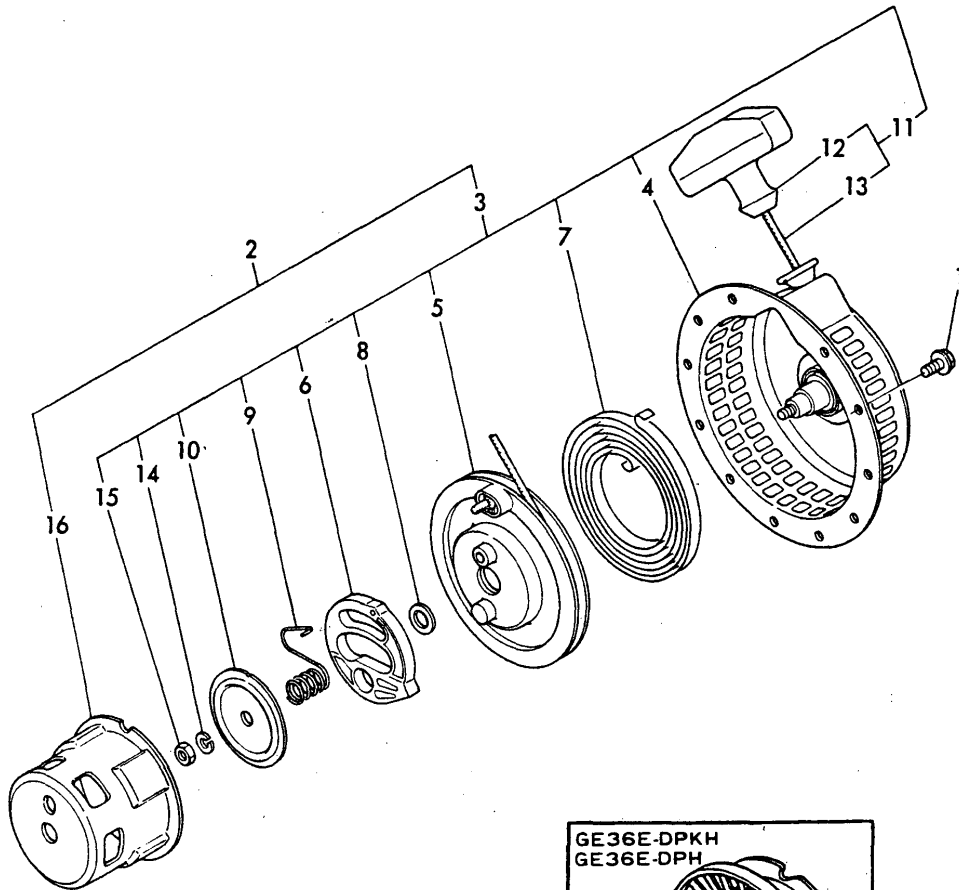
(A)=GE36E-DPKH
(B)=GE36E-DPK
(C)=GE36E-DPH

(D)=GE36E-DP
(E)=
(F)=

No.	Lev.	Parts No.	Description	Q'ty						I	R
				(A)	(B)	(C)	(D)	(E)	(F)		
1	1	160260-01800	NUT, M6	1	1	1	1				
2	1	160610-04310	BOLT, M6X20	2	2	2	2				
3	1	160610-66011	SPRING, REGULATOR	1	1	1	1				
4	1	160610-66050	HANDLE, REGULATOR	1	1	1	1				
5	1	160710-66050	SPRING, REGULATOR	1	1	1	1				
6	1	160610-66100	BASE ASSY	1	1	1	1				
7	1	160610-66150	LEVER, GOVERNOR	1	1	1	1				
8	1	160610-66201	LINK, THROTTLE	1	1	1	1				
9	1	160610-66210	SPRING, TENSION	1	1	1	1				
10	1	160110-66440	BOLT	1	1	1	1				
11	1	160120-76940	WASHER	1	1	1	1				
12	1	26645-060152	BOLT, WING M6X15	1	1	1	1				
13	1	26756-060002	NUT, LOCK M6	2	2	2	2				

Fig.18. STARTING DEVICE

18 シドウスウチ
STARTING DEVICE



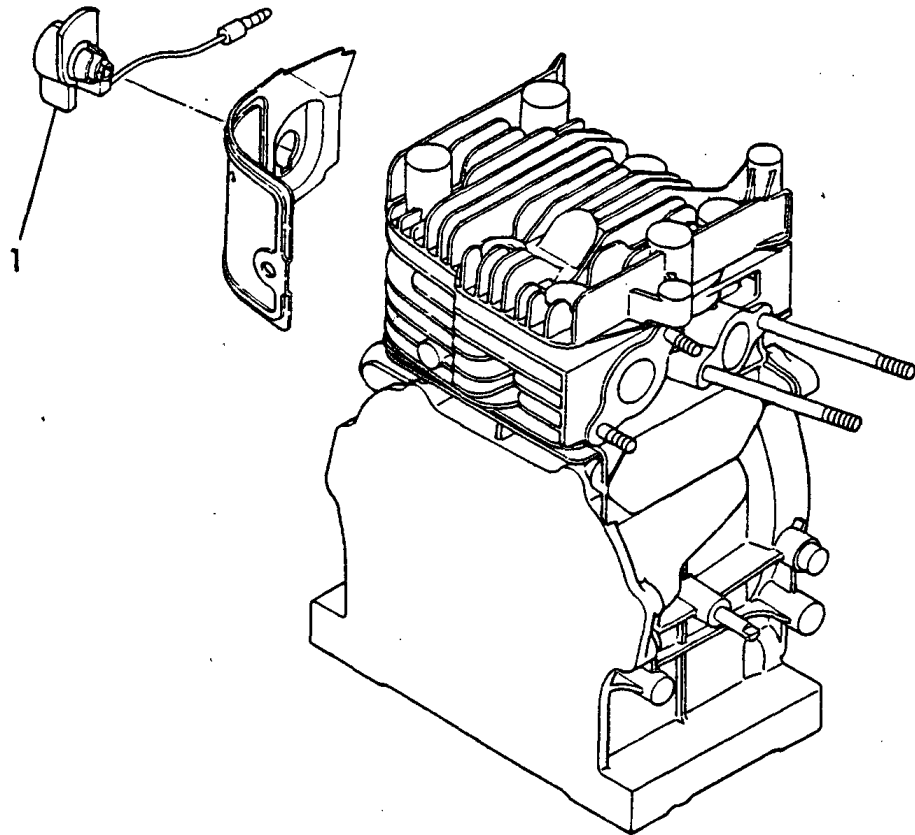
(A)=GE36E-DPKH
(B)=GE36E-DPK
(C)=GE36E-DPH

(D)=GE36E-DP
(E)=
(F)=

No.	Lev.	Parts No.	Description	Q'ty						I	R
				(A)	(B)	(C)	(D)	(E)	(F)		
1	1	160260-01550	BOLT		3				3		
2	1	160640-76050	STARTER ASSY, RECOIL		1				1		
3	2	160640-76250	STARTER ASSY, RECOIL		1				1		
4	3	160640-76510	CASE, STARTER		1				1		
5	3	160610-76520	REEL		1				1		
6	3	160610-76530	RATCHET		1				1		
7	3	160710-76540	SPRING, SPIRAL		1				1		
8	3	160610-76550	WASHER, THRUST		1				1		
9	3	160640-76560	SPRING, FRICTION		1				1		
10	3	160610-76580	PLATE, FRICTION		1				1		
11	3	160260-76610	ROPE ASSY, STARTER		1				1		
12	4	160260-76620	KNOB, STARTER		1				1		
13	4	160260-76630	ROPE, STARTER		1				1		
14	3	22217-060000	WASHER, SPRING 6		1				1		
15	3	26717-060002	NUT, M6		1				1		
16	2	160610-76590	PULLEY, STARTER		1				1		
17	1	160641-76700	PULLEY, STARTER	1					1		

Fig.19. STOP SWITCH

19 ストップスイッチ STOP SWITCH



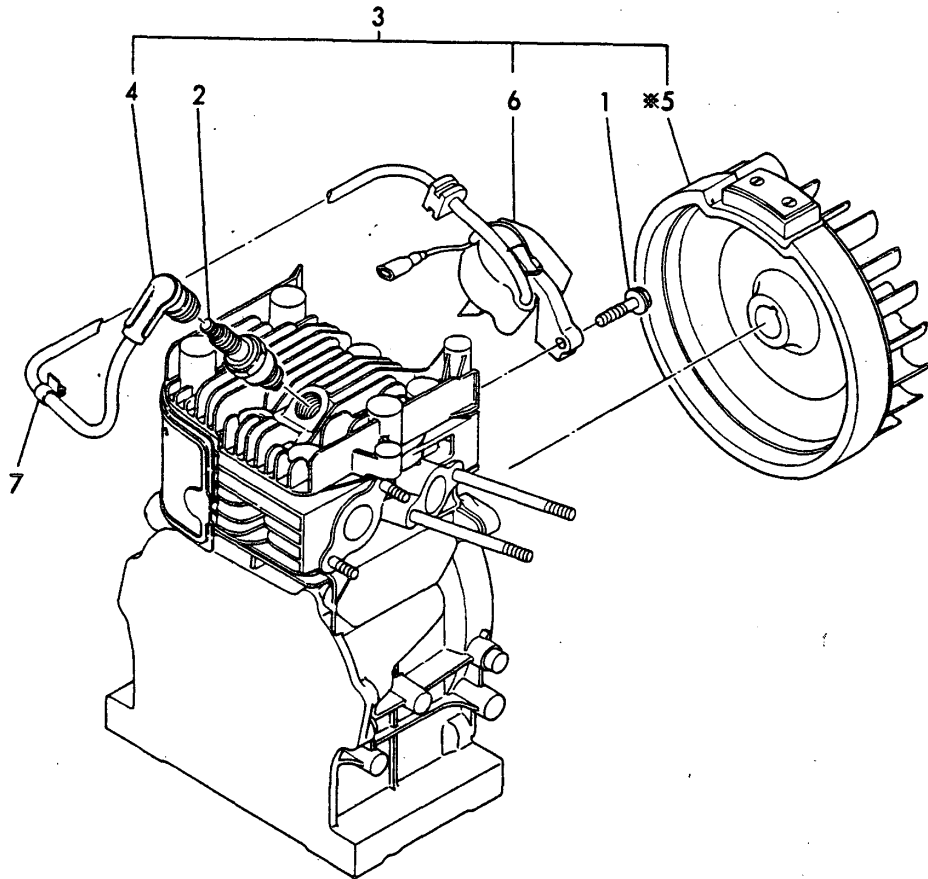
(A)=GE36E-DPKH
(B)=GE36E-DPK
(C)=GE36E-DPH

(D)=GE36E-DP
(E)=
(F)=

No.	Lev.	Parts No.	Description	Q'ty						I	R
				(A)	(B)	(C)	(D)	(E)	(F)		
1	1	160610-77250	SWITCH, STOP	1	1	1	1				

Fig.20. FLYWHEEL MAGNETO

20 フライホイールマグネト
FLYWHEEL MAGNETO



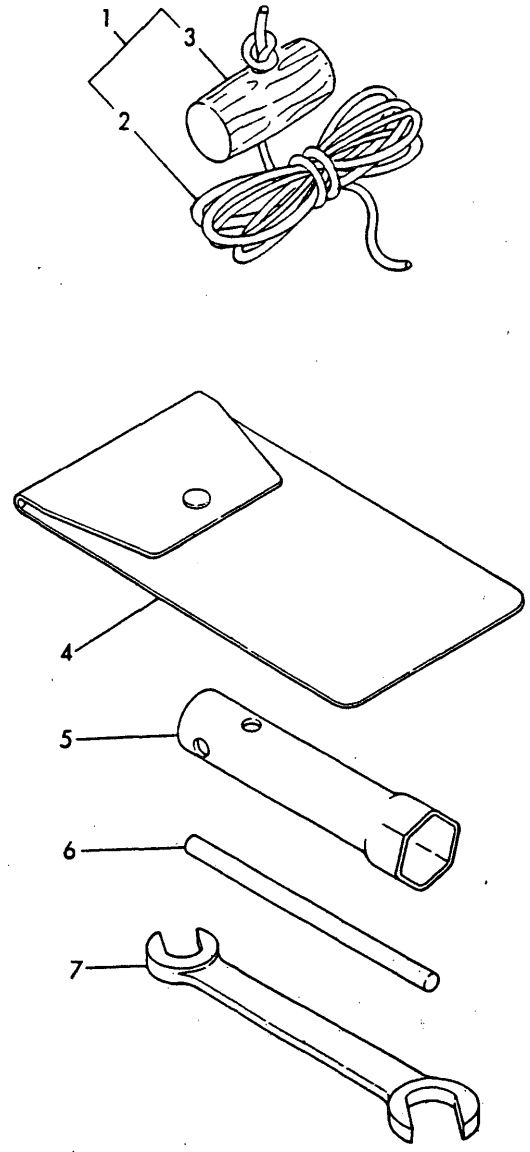
(A)=GE36E-DPKH
(B)=GE36E-DPK
(C)=GE36E-DPH

(D)=GE36E-DP
(E)=
(F)=

No.	Lev.	Parts No.	Description	Q'ty						I	R
				(A)	(B)	(C)	(D)	(E)	(F)		
1	1	160610-04320	BOLT, M6X25	2	2	2	2				
2	1	160610-78010	PLUG, SPARK BP4HS	1	1	1	1				
3	1	160641-78080	MAGNETIC ASSY	1	1	1	1				
4	2	160343-78040	CAP, PLUG	1	1	1	1				
6	2	160641-78540	COIL, IGNITION	1	1	1	1				
7	1	160710-78700	CLAMP, CORD	1	1	1	1				

Fig.21. TOOLS

21 コウグ
TOOLS



(A)=GE36E-DPKH
(B)=GE36E-DPK
(C)=GE36E-DPH

(D)=GE36E-DP
(E)=
(F)=

No.	Lev.	Parts No.	Description	Q'ty						I	R
				(A)	(B)	(C)	(D)	(E)	(F)		
1	1	160110-76650	ROPE, STARTER	1		1					
2	2	160110-76610	ROPE, STARTER	1		1					
3	2	160110-76620	KNOB, STARTER	1		1					
4	1	160110-92610	BAG, TOOL	1	1	1	1	1			
5	1	160110-92700	WRENCH, 21 L140	1	1	1	1	1			
6	1	160110-92710	HANDLE, WRENCH	1	1	1	1	1			
7	1	28110-100120	SPANNER, 10X12	1	1	1	1	1			

Parts No. Index

Parts No.	Fig. No.	Ref. No.
*REF. 2=1	1	8
*REF. 2=2	1	16
*REF. 2=3	1	9
		17
*REF. 4=3	13	13
*REF. 4=4	13	14
*REF. 5=5	1	10
*REF. 6=1	1	11
*REF. 7=1	1	12
*REF. 16=1	1	18
104200-59170	1	4
106990-44660	15	1
124722-59050	13	12
	15	2
160110-66440	17	10
160110-76610	21	2
160110-76620	21	3
160110-76650	21	1
160110-92610	21	4
160110-92700	21	5
160110-92710	21	6
160120-56670	14	14
160120-76940	7	6
	16	8
	17	11
160260-01550	13	1
	18	1
160260-01800	6	1
	7	1
	17	1
160260-55150	13	11
160260-76610	18	11
160260-76620	18	12
160260-76630	18	13
160310-13200	14	1
160343-78040	20	4
160393-55050	13	9
160610-01410	1	20
160610-01690	1	3
160610-01751	1	19
160610-02220	2	1
160610-03010	3	1
160610-03070	3	5
160610-03180	3	4
160610-04140	13	2
160610-04171	1	21
160610-04200	1	22
160610-04300	3	6
	7	2
	12	1

Parts No.	Fig. No.	Ref. No.
160610-04300	13	3
160610-04310	17	2
160610-04320	1	23
	12	2
	20	1
160610-04350	12	3
160610-04570	1	5
160610-04620	1	6
160610-04850	9	1
160610-04900	13	4
160610-11100	5	2
160610-11110	5	3
160610-11120	5	4
160610-11160	5	5
160610-11180	5	6
160610-12500	6	2
160610-12520	6	3
160610-12530	6	4
160610-12540	6	5
160610-12550	6	6
160610-13201	7	3
160610-13501	7	4
160610-13800	7	5
160610-14200	8	3
160610-21290	8	4
	9	7
		8
160610-23200	11	3
160610-23210	11	4
160610-56150	6	7
	14	24
160610-56160	14	25
160610-56550	14	6
160610-56610	14	7
160610-56621	14	8
160610-56630	14	9
160610-56640	14	10
160610-56650	14	12
160610-56660	14	13
160610-56670	14	15
160610-56680	14	16
160610-56690	14	17
160610-56740	14	18
160610-56750	14	19
160610-56760	14	20
160610-56770	14	21
160610-56900	14	23
160610-59160	15	3
160610-61100	16	1
160610-61300	16	2

Parts No.	Fig. No.	Ref. No.
160610-61310	16	3
160610-66011	17	3
160610-66050	17	4
160610-66100	17	6
160610-66150	17	7
160610-66201	17	8
160610-66210	17	9
160610-76520	18	5
160610-76530	18	6
160610-76550	18	8
160610-76580	18	10
160610-76590	18	16
160610-77250	19	1
160610-78010	20	2
160611-01330	1	13
160611-07100	4	2
160611-07250	4	3
160611-07260	4	4
160611-07370	4	5
160611-11010	5	1
160611-22010	10	1
160611-22300	10	7
160611-45200	12	5
160611-45210	12	6
160611-55780	13	27
160611-56800	14	22
160640-02220	2	2
160640-14010	8	1
160640-76050	18	2
160640-76250	18	3
160640-76510	18	4
160640-76560	18	9
160641-14100	8	2
160641-21200	9	6
160641-45110	12	4
160641-56010	14	2
160641-61600	16	4
160641-76700	18	17
160641-78080	20	3
160641-78540	20	6
160710-55060	13	7
160710-55100	13	10
160710-55300	13	15
160710-55320	13	17
160710-55330	13	18
160710-55340	13	19
160710-55350	13	20
160710-55360	13	21
160710-55370	13	22
160710-55380	13	23

Parts No.	Fig. No.	Ref. No.
160710-55390	13	24
160710-55400	13	25
160710-55410	13	26
160710-59350	15	4
160710-66050	17	5
160710-76540	18	7
160710-78700	20	7
181130-56640	14	11
181230-56370	14	4
181230-56380	14	5
22137-060000	16	9
22217-060000	18	14
22252-000130	10	8
22312-060160	1	7
22360-060000	16	10
24101-062040	2	3
26645-060152	17	12
26717-060002	18	15
26756-060002	17	13
28110-100120	21	7
760610-23100	11	1
760611-01560	1	1
760611-22500	10	3
760611-55720-R	13	5
760641-01510	1	14
760641-21700	9	2
760641-21710	9	3